



**Australian Government**

**Department of Infrastructure, Transport, Regional Development and Communications**

Bureau of Infrastructure and Transport Research Economics

STATISTICAL REPORT



# Aviation

Domestic airline on time performance  
May 2021

© Commonwealth of Australia 2021

ISSN: 1832-0759

### **Ownership of intellectual property rights in this publication**

Unless otherwise noted, copyright (and any other intellectual property rights, if any) in this publication is owned by the Commonwealth of Australia (referred to below as the Commonwealth).

### **Disclaimer**

The material contained in this publication is made available on the understanding that the Commonwealth is not providing professional advice, and that users exercise their own skill and care with respect to its use, and seek independent advice if necessary.

The Commonwealth makes no representations or warranties as to the contents or accuracy of the information contained in this publication. To the extent permitted by law, the Commonwealth disclaims liability to any person or organisation in respect of anything done, or omitted to be done, in reliance upon information contained in this publication.

### **Creative Commons licence**

With the exception of (a) the Coat of Arms; and (b) the Department of Infrastructure, Transport, Regional Development and Communications' photos and graphics, copyright in this publication is licensed under a Creative Commons Attribution 3.0 Australia Licence.

Creative Commons Attribution 3.0 Australia Licence is a standard form licence agreement that allows you to copy, communicate and adapt this publication provided that you attribute the work to the Commonwealth and abide by the other licence terms. A summary of the licence terms is available from <http://creativecommons.org/licenses/by/3.0/au/deed.en>. The full licence terms are available from <http://creativecommons.org/licenses/by/3.0/au/legalcode>.

### **Use of the Coat of Arms**

The Department of the Prime Minister and Cabinet sets the terms under which the Coat of Arms is used. Please refer to the Department's Commonwealth Coat of Arms and Government branding web page <http://www.dpmc.gov.au/guidelines/index.cfm#brand> and, in particular, the Guidelines on the use of the Commonwealth Coat of Arms publication.

An appropriate citation for this report is:

Bureau of Infrastructure and Transport Research Economics (BITRE), 2021, Domestic airline on time performance, Statistical Report, BITRE, Canberra ACT.

### **Contact us**

This publication is available in PDF format. All other rights are reserved, including in relation to any Departmental logos or trade marks which may exist. For enquiries regarding the licence and any use of this publication, please contact:

Bureau of Infrastructure and Transport Research Economics (BITRE)  
Department of Infrastructure, Transport, Regional Development and Communications  
GPO Box 501, Canberra ACT 2601, Australia  
Telephone: (international) +61 2 6274 7210  
Fax: (international) +61 2 6274 6855  
Email: [bitre@infrastructure.gov.au](mailto:bitre@infrastructure.gov.au)  
Website: [www.bitre.gov.au](http://www.bitre.gov.au)

### **Inquiries**

Should you require additional information about the statistics contained in this publication:

Telephone (02) 6274 7790 or Facsimile (02) 6274 7727

Electronic mail: [AVSTATS@infrastructure.gov.au](mailto:AVSTATS@infrastructure.gov.au)

Web site: <http://www.bitre.gov.au/statistics/aviation/otphome.aspx>

# Foreword

The Bureau of Infrastructure and Transport Research Economics (BITRE) monitors the punctuality and reliability of major domestic airlines operating between Australian airports. The purpose of this is to allow for evaluation of overall industry and individual airline performance, so that consumers of air travel can make informed decisions.

The following domestic airlines currently report this information monthly to the BITRE: Jetstar, Qantas, QantasLink, Regional Express, Virgin Australia and Virgin Australia Regional Airlines. Data has been gathered since November 2003, although some airlines commenced reporting at a later date, including Jetstar which first reported in May 2004, MacAir in July 2005, Tigerair Australia in April 2008 and Virgin Australia Regional Airlines in May 2013. MacAir ceased operations in February 2009 and data was not received for December 2008 onwards. Virgin Blue was rebranded as Virgin Australia in May 2011 and Tiger Airways was rebranded as Tigerair Australia in July 2013 and time series data in Microsoft Excel spreadsheet format on the BITRE website have been revised to reflect these changes. Services operated by Skywest on behalf of Virgin Australia using ATR/F100 aircraft commenced in November 2011 and were shown separately as Virgin Australia – ATR/F100 Operations. Virgin Australia Regional Airlines commenced operations in May 2013. It was formed after the acquisition of Skywest by Virgin Australia and represented a combination of operations previously reported under Skywest and Virgin Australia – ATR/F100 Operations. In January 2016, Virgin Australia transferred their ATR fleet from Virgin Australia Regional Airlines to Virgin Australia. Tigerair Australia ceased operations in March 2020 and data was not received for that month.

Information presented in this report is for Australian domestic routes for which the passenger load averaged 8 000 or more passengers per month over the previous six months and where two or more airlines operated in competition on those routes. There were 56 routes that met this definition in May 2021. Over time, routes which meet these criteria change as airline networks and traffic levels vary.

Participating airlines report their overall monthly network performance where this is possible.

Total industry figures encompass all services operated by reporting airlines only. These airlines collectively carried over 95 per cent of total domestic passengers (regular public transport only) in 2019.

The method of capturing on time performance varies between airlines utilising different recording systems. Jetstar and Qantas jet aircraft use Aircraft Communication Addressing and Reporting System (ACARS) to electronically measure on time performance. Regional Express, Tigerair Australia, Virgin Australia, Virgin Australia Regional Airlines and the Qantas non-jet fleet record on time performance manually using records from pilots, gate agents and/or ground crews.

After initial data is collected, aggregate reports are audited internally by participating airlines prior to publication.

Reports and detailed time series data in Microsoft Excel spreadsheet format are available from the BITRE website at: <http://www.bitre.gov.au/statistics/aviation/otphome.aspx>.



# Contents

	Page
Industry performance .....	1
Individual routes .....	9
Airports.....	21
Definitions .....	26



# Industry performance

Data was not received from Virgin Australia Regional Airlines in time to be included in this publication – figures for April 2021 have been used as a filler. As a result, no combined measures for the Virgin Australia network are provided.

For May 2021, on time performance over all routes operated by participating airlines (Jetstar, Qantas, QantasLink, Regional Express, Virgin Australia and Virgin Australia Regional Airlines) averaged 83.9 per cent for on time arrivals and 83.8 per cent for on time departures. The cancellation rate for the month was 4.7 per cent. The equivalent figures for May 2020 were 92.7 per cent for on time arrivals, 92.2 per cent for on time departures and 0.8 per cent for cancellations.

This month's on time arrivals figure was higher than the long term average performance for all routes (82.3 per cent) and the on time departures figure was slightly higher than the long term average (83.6 per cent). The rate of cancellations was higher than the long term average of 1.7 per cent.

The Qantas network (Qantas and QantasLink combined operations) recorded 82.4 per cent for on time arrivals. Virgin Australia achieved the highest on time arrivals among the major domestic airlines at 85.1 per cent followed by Qantas at 85.0 per cent and Jetstar at 84.7 per cent. Of the regional airlines, Regional Express recorded 86.0 per cent for on time arrivals, followed by QantasLink at 80.4 per cent.

The Qantas network recorded 83.8 per cent for on time departures. Qantas achieved the highest level of on time departures among the major domestic airlines for May 2021 at 87.4 per cent, followed by Jetstar at 82.6 per cent and Virgin Australia at 81.9 per cent. Of the regional airlines, Regional Express recorded 87.8 per cent for on time departures, followed by QantasLink at 81.0 per cent.

Jetstar recorded the highest percentage of cancellations (at 7.5 per cent) during the month, followed by Virgin Australia (at 5.5 per cent), Qantas (at 5.4 per cent), QantasLink (at 3.7 per cent) and Regional Express (at 1.4 per cent).

Airlines' on time performance varies across the routes they serve. Individual route data by specific airline for 56 routes are shown on pages 9-20.

Of the 56 routes which met the criteria for on time performance reporting in May 2021, the Brisbane-Mount Isa route had the highest percentage of on time arrivals (96.9 per cent) and the highest percentage of on time departures (also 96.9 per cent). The Alice Springs-Adelaide route had the lowest percentage of on time arrivals (54.2 per cent) and the lowest percentage of on time departures (50.0 per cent).

Cancellations were highest on the Melbourne-Sydney route at 15.2 per cent, followed by the Sydney-Melbourne route at 14.9 per cent, the Melbourne-Perth route at 12.1 per cent, the Perth-Melbourne route at 11.9 per cent and the Melbourne-Adelaide route at 11.6 per cent.

Travel restrictions were introduced late in the month associated with COVID-19 cases in Melbourne.

Mount Isa Airport recorded the highest percentage of on time arrivals (96.9 per cent) and Port Macquarie Airport recorded the highest percentage of on time departures (94.1 per cent). Mildura Airport recorded the lowest percentage of on time arrivals (66.1 per cent) and Alice Springs Airport recorded the lowest percentage of on time departures (50.0 per cent). These figures only refer to reported routes and do not cover all flights at these airports.



Table 1 On time performance for May 2021 — Total Industry

	Sectors		Arrivals On Time		Departures On Time		Cancellations	
	Scheduled	Flown	No.	%	No.	%	No.	%
Jetstar	6 591	6 097	5 162	84.7	5 039	82.6	494	7.5
Qantas - all QF designated services	17 572	16 793	13 837	82.4	14 072	83.8	779	4.4
Regional Express	5 638	5 560	4 780	86.0	4 883	87.8	78	1.4
Virgin Australia - all VA designated services *								
All Airlines	38 235	36 439	30 558	83.9	30 521	83.8	1 796	4.7
Individual operating entities								
Qantas	7 817	7 396	6 284	85.0	6 462	87.4	421	5.4
QantasLink	9 755	9 397	7 553	80.4	7 610	81.0	358	3.7
Virgin Australia	8 098	7 656	6 518	85.1	6 268	81.9	442	5.5
Virgin Australia Regional Airlines *	336	333	261	78.4	259	77.8	3	0.9

Total airline network data (including routes not shown in this report).

Airlines' on time performance varies across the routes they serve. Individual route data by specific airline for 56 routes are shown on pages 9-20.

\* Virgin Australia Regional Airlines - no data received for May 2021, figures shown are from April 2021. Because of this, no combined measure for VA designated services are shown this month.

Table 2 Top ten routes for on time performance for May 2021 (participating airlines only)

Arrivals		Departures	
Route	On Time (%)	Route	On Time (%)
Brisbane-Mount Isa	96.9	Brisbane-Mount Isa	96.9
Mount Isa-Brisbane	92.3	Port Macquarie-Sydney	94.1
Perth-Newman	92.0	Perth-Darwin	92.9
Cairns-Townsville	91.8	Wagga Wagga-Sydney	92.2
Sydney-Wagga Wagga	91.7	Cairns-Townsville	91.8
Sydney-Port Macquarie	91.4	Brisbane-Gladstone	90.9
Adelaide-Gold Coast	91.4	Adelaide-Port Lincoln	90.7
Brisbane-Emerald	91.3	Emerald-Brisbane	90.7
Adelaide-Port Lincoln	91.1	Adelaide-Sydney	90.6
Sydney-Dubbo	90.4	Dubbo-Sydney	90.4

Table 3 Top ten airports for on time performance for May 2021 (participating airlines and reported routes only)

Arrivals		Departures	
Airport	On Time (%)	Airport	On Time (%)
Mount Isa	96.9	Port Macquarie	94.1
Newman	92.0	Wagga Wagga	92.2
Wagga Wagga	91.7	Emerald	90.7
Port Macquarie	91.4	Dubbo	90.4
Emerald	91.3	Mount Isa	89.2
Port Lincoln	91.1	Port Lincoln	88.5
Dubbo	90.4	Adelaide	88.2
Albury	90.1	Ballina	86.9
Gladstone	89.8	Coffs Harbour	86.9
Hamilton Island	88.4	Cairns	86.5

## Total industry on time performance

Figure 1 On time performance (by month from May 2018)—Total Industry

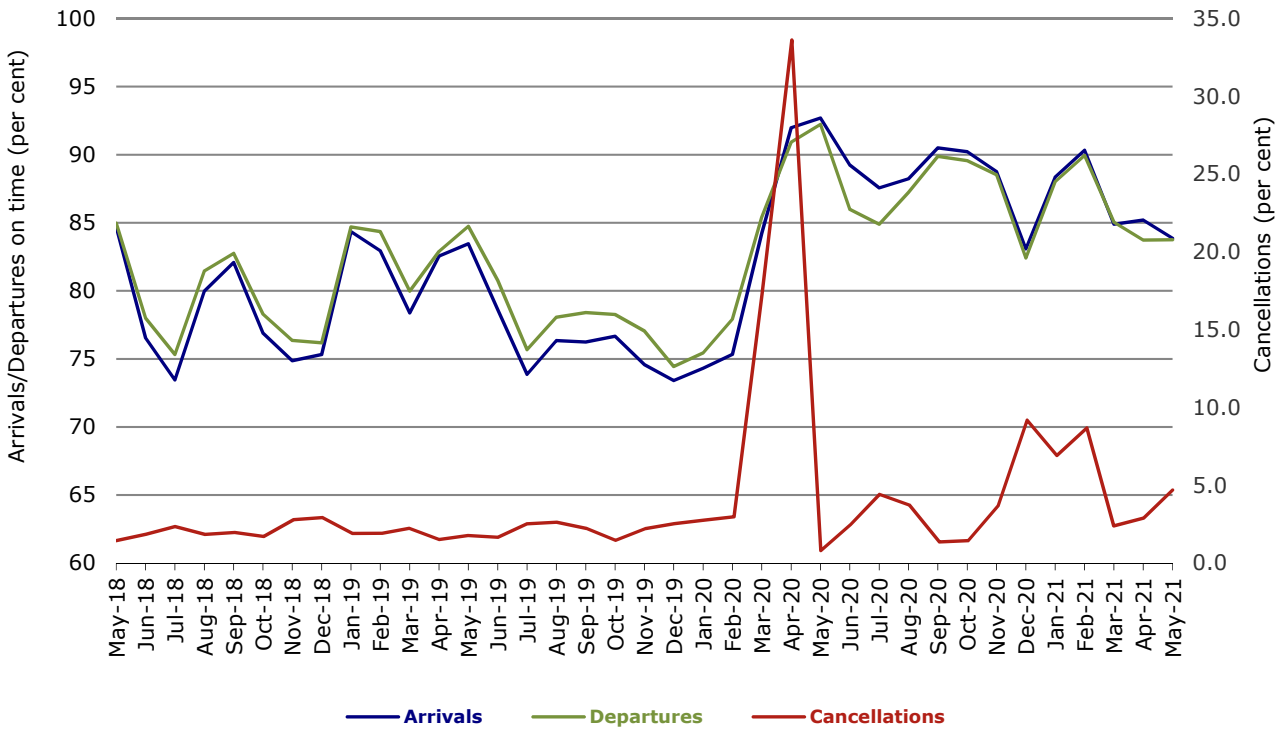


Figure 2 Arrivals on time (by month from May 2020)

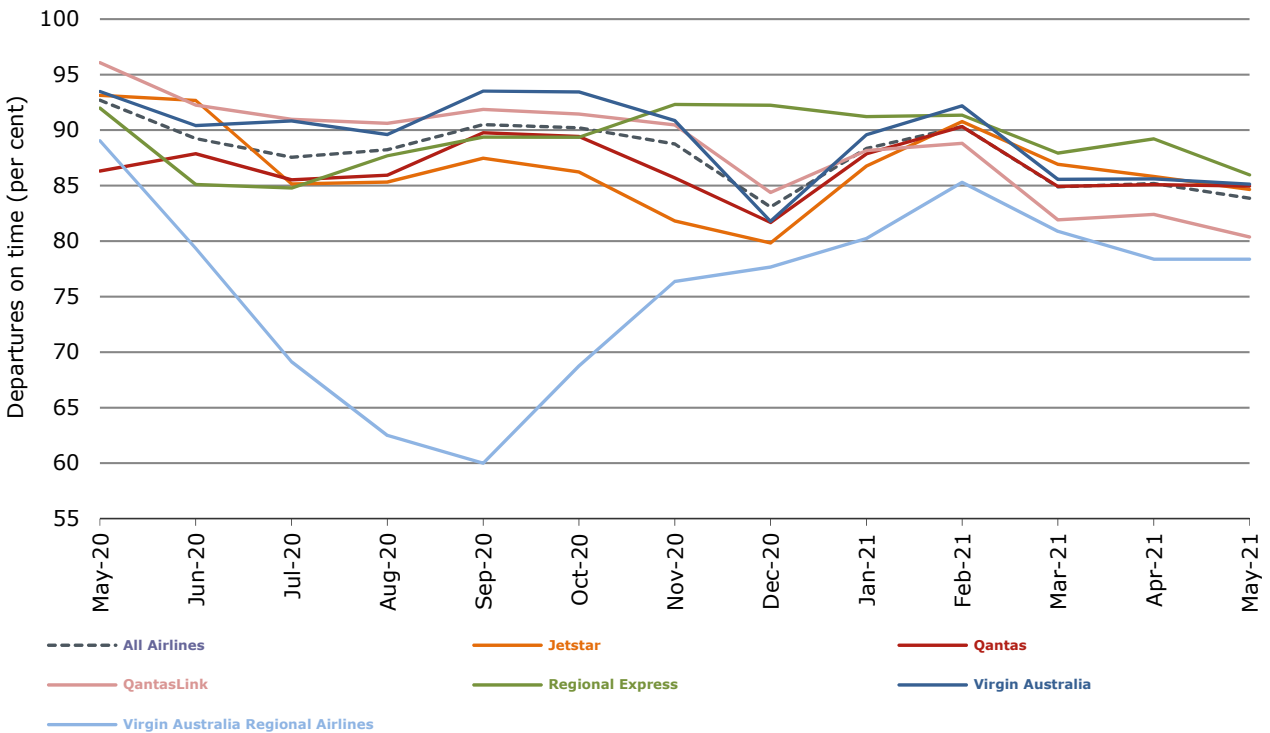


Figure 3 Departures on time (by month from May 2020)

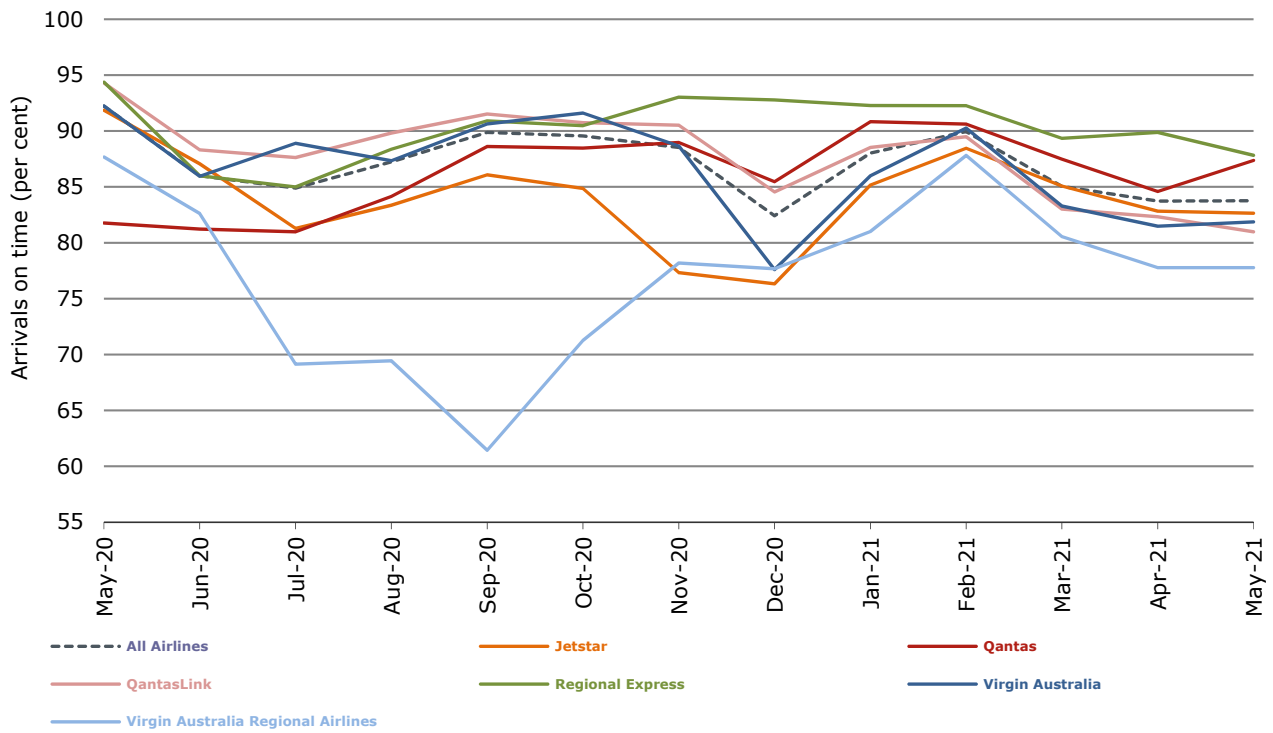
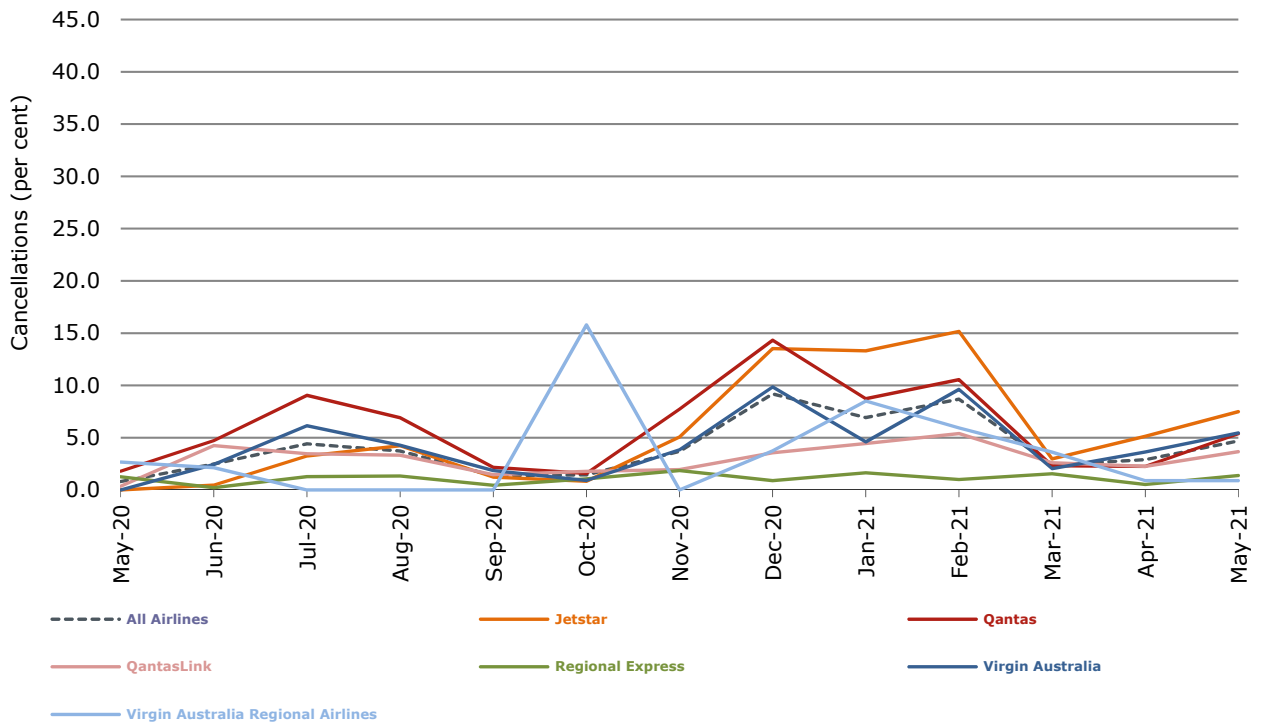


Figure 4 Cancellations (by month from May 2020)



## Major domestic airlines on time performance

Figure 5 On time performance (by month from May 2018)—Jetstar

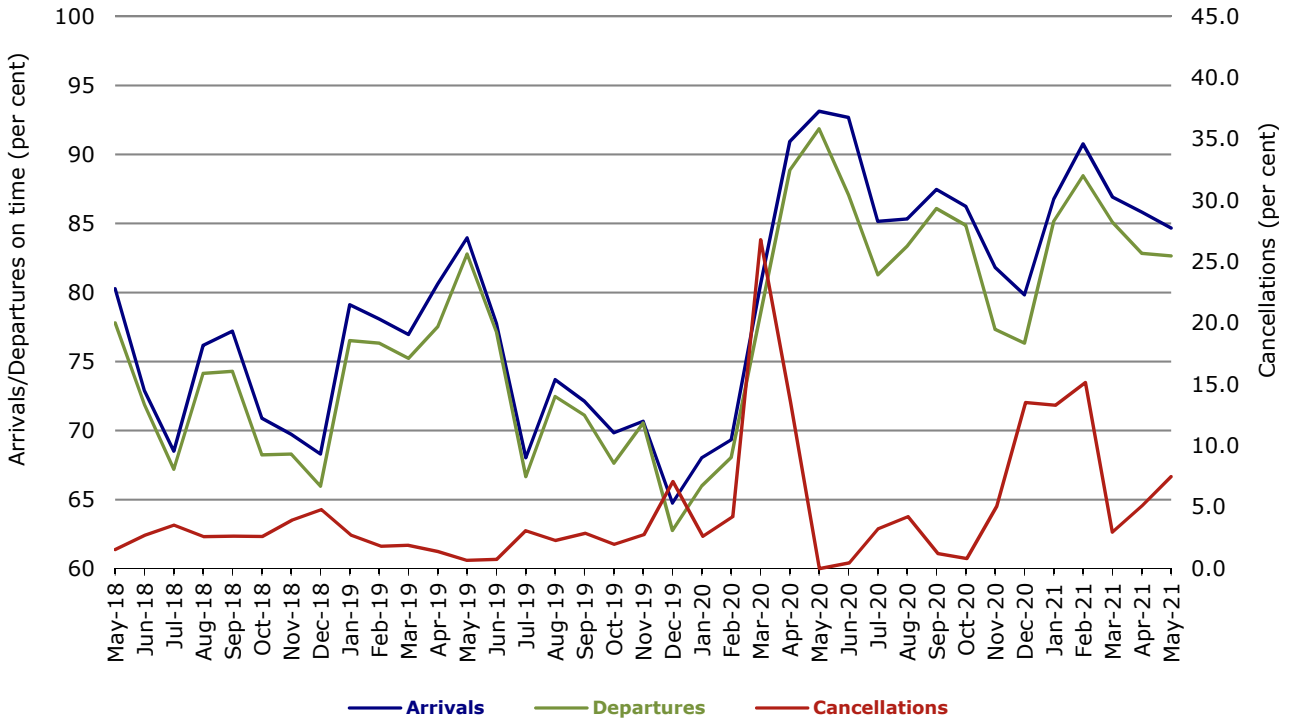


Figure 6 On time performance (by month from May 2018)—Qantas

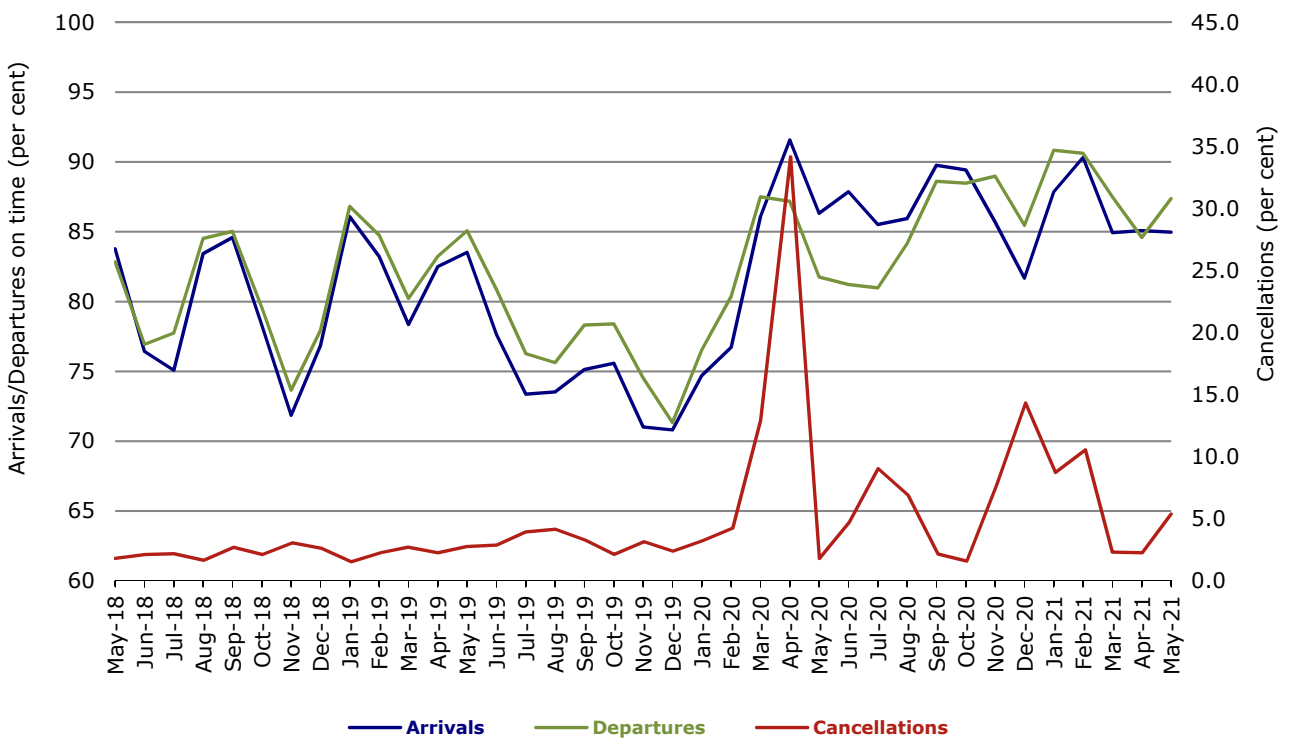
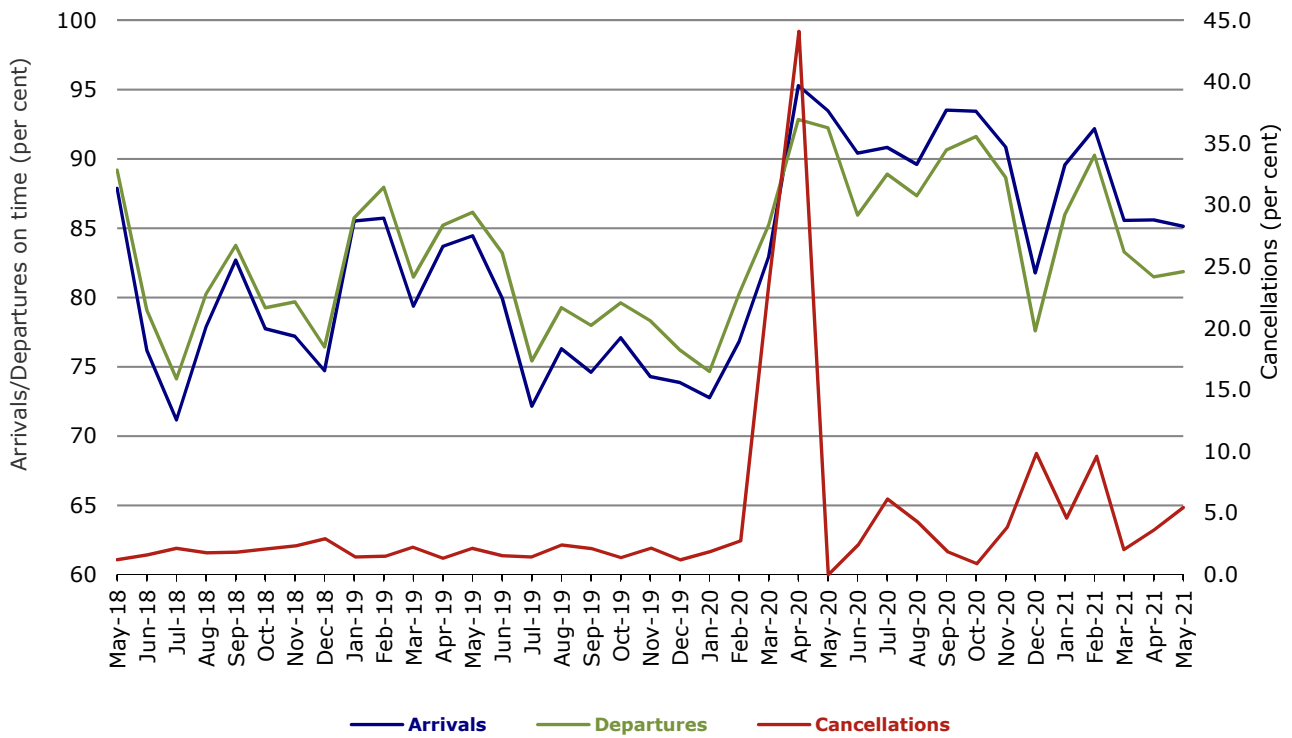


Figure 7 On time performance (by month from May 2018)—Virgin Australia



## Major regional airlines on time performance

Figure 8 On time performance (by month from May 2018)—QantasLink

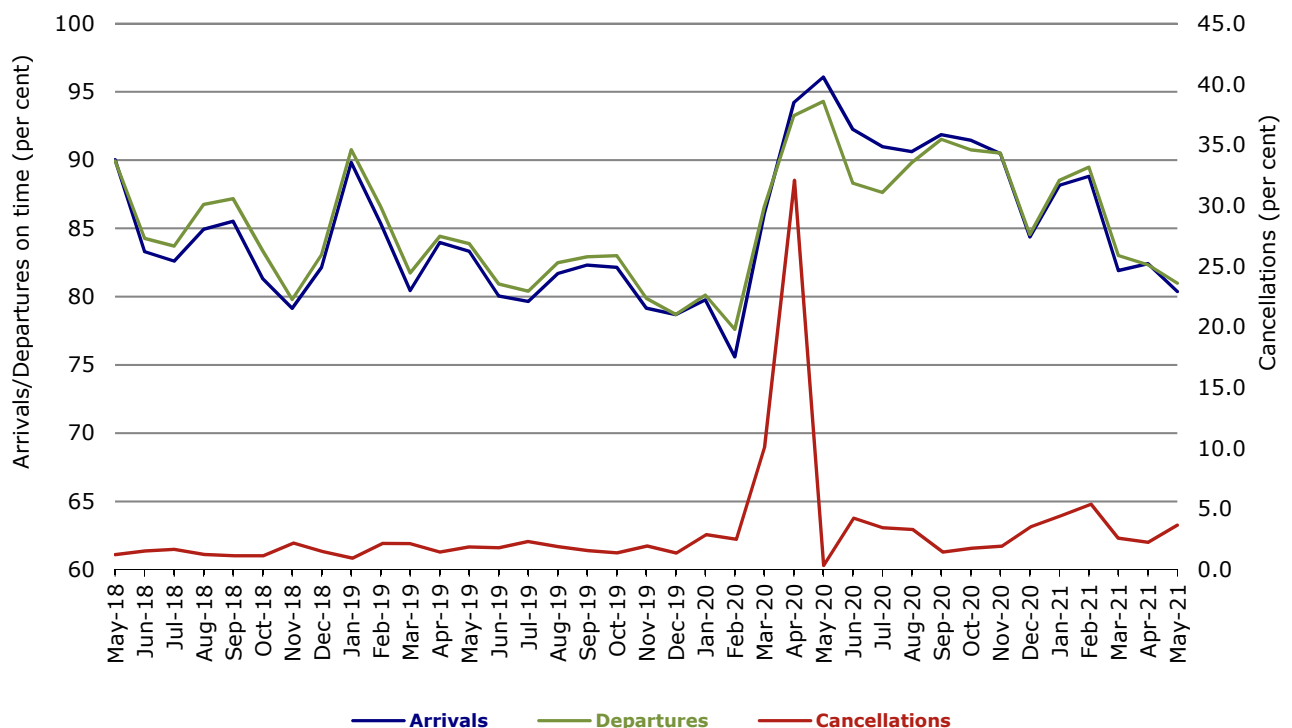


Figure 9 On time performance (by month from May 2018)—Regional Express

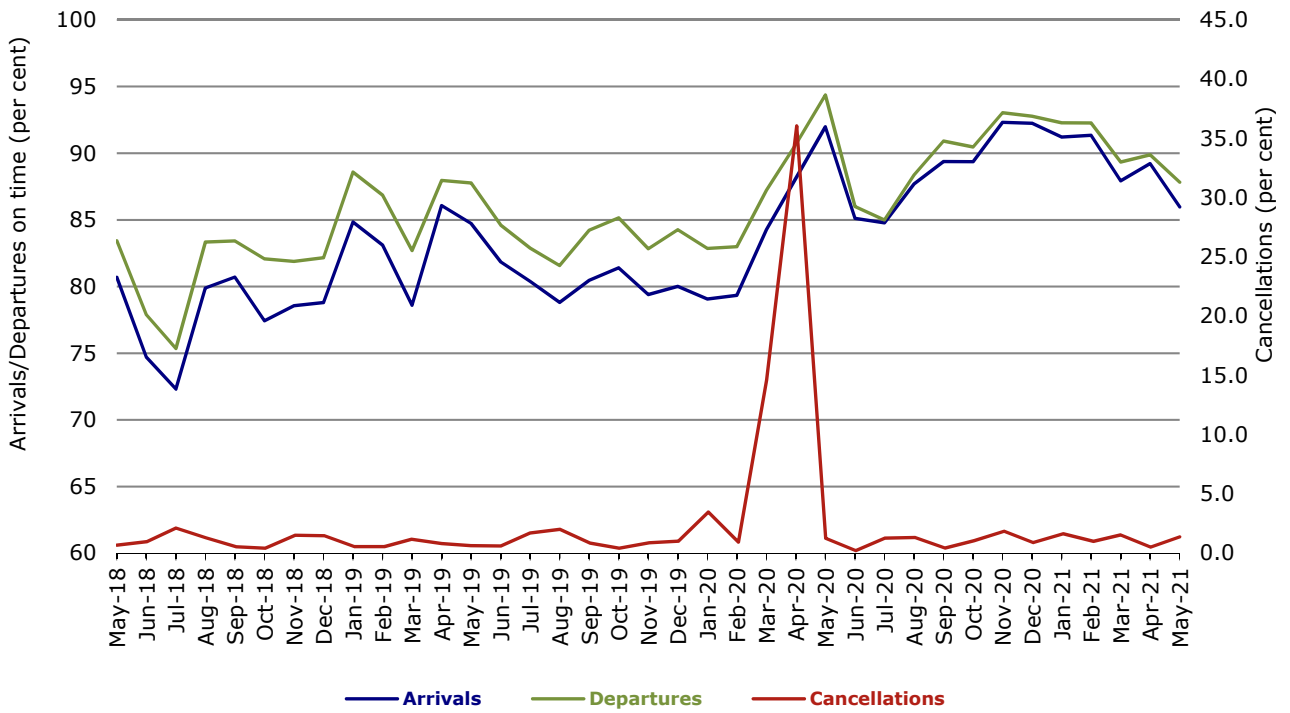
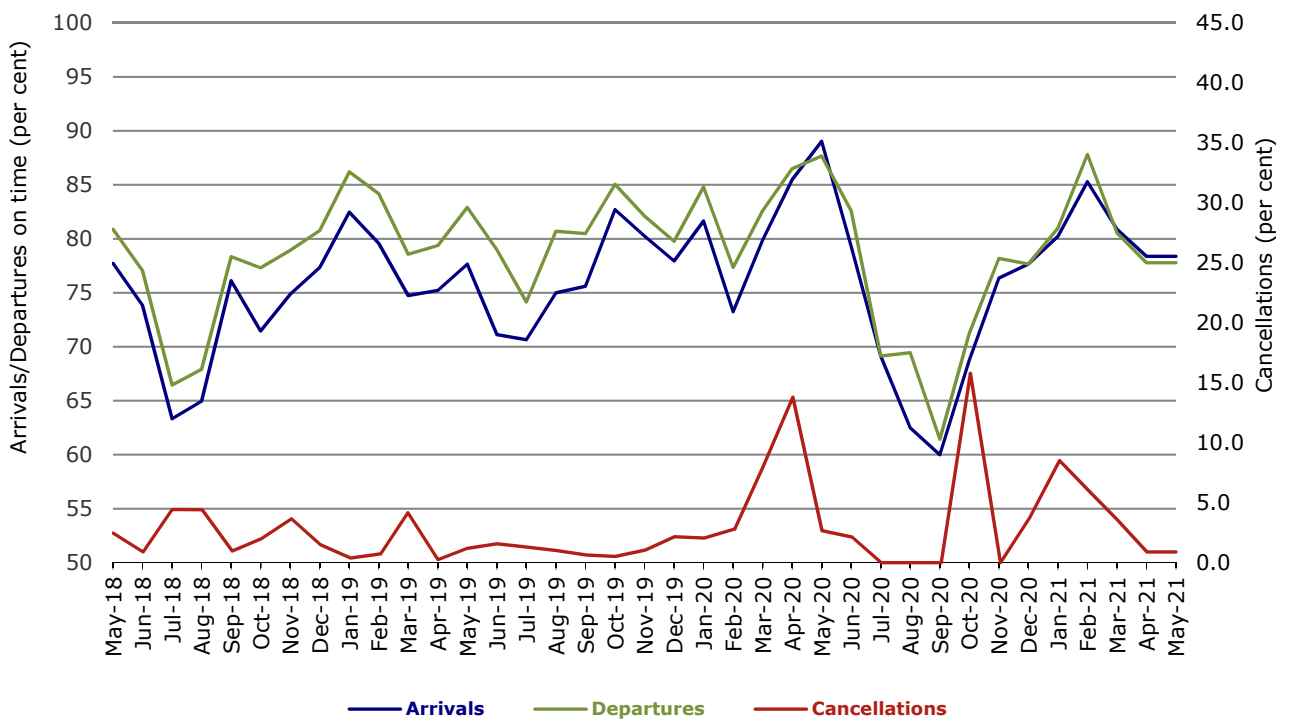


Figure 10 On time performance (by month from May 2018) Virgin Australia Regional Airlines



## Individual routes

On time performance is reported for all routes where the passenger load averages over 8000 passengers per month over the previous six months, and where two or more airlines operate in competition on those routes. There are now 56 routes which meet this definition. Over time, however, routes which meet this definition may change as airline networks and traffic levels vary.

	Sectors		Arrivals On Time		Departures On Time		Cancellations	
	Sched.	Flown	No.	%	No.	%	No.	%
<b>Adelaide-Alice Springs</b>								
Qantas	24	24	19	79.2	22	91.7	0	0.0
QantasLink	12	12	7	58.3	9	75.0	0	0.0
Virgin Australia	13	13	13	100.0	13	100.0	0	0.0
All Airlines	49	49	39	79.6	44	89.8	0	0.0
<b>Adelaide-Brisbane</b>								
Jetstar	27	27	23	85.2	21	77.8	0	0.0
Qantas	98	98	91	92.9	93	94.9	0	0.0
Virgin Australia	110	107	93	86.9	87	81.3	3	2.7
All Airlines	235	232	207	89.2	201	86.6	3	1.3
<b>Adelaide-Canberra</b>								
Qantas	39	39	25	64.1	27	69.2	0	0.0
Virgin Australia	26	26	24	92.3	23	88.5	0	0.0
All Airlines	65	65	49	75.4	50	76.9	0	0.0
<b>Adelaide-Gold Coast</b>								
Jetstar	27	27	24	88.9	23	85.2	0	0.0
Virgin Australia	31	31	29	93.5	28	90.3	0	0.0
All Airlines	58	58	53	91.4	51	87.9	0	0.0
<b>Adelaide-Melbourne</b>								
Jetstar	110	93	83	89.2	81	87.1	17	15.5
Qantas	220	200	186	93.0	184	92.0	20	9.1
Regional Express	70	66	55	83.3	56	84.8	4	5.7
Virgin Australia	206	179	152	84.9	145	81.0	27	13.1
All Airlines	606	538	476	88.5	466	86.6	68	11.2
<b>Adelaide-Perth</b>								
Jetstar	26	25	24	96.0	24	96.0	1	3.8
Qantas	88	88	76	86.4	77	87.5	0	0.0
Virgin Australia	38	38	36	94.7	35	92.1	0	0.0
All Airlines	152	151	136	90.1	136	90.1	1	0.7
<b>Adelaide-Port Lincoln</b>								
QantasLink	121	118	110	93.2	106	89.8	3	2.5
Regional Express	162	162	145	89.5	148	91.4	0	0.0
All Airlines	283	280	255	91.1	254	90.7	3	1.1
<b>Adelaide-Sydney</b>								
Jetstar	99	92	80	87.0	83	90.2	7	7.1
Qantas	191	188	163	86.7	175	93.1	3	1.6
Virgin Australia	127	125	102	81.6	109	87.2	2	1.6
All Airlines	417	405	345	85.2	367	90.6	12	2.9
<b>Albury-Sydney</b>								
QantasLink	109	108	94	87.0	92	85.2	1	0.9
Regional Express	53	53	46	86.8	47	88.7	0	0.0
All Airlines	162	161	140	87.0	139	86.3	1	0.6

	Sectors		Arrivals On Time		Departures On Time		Cancellations	
	Sched.	Flown	No.	%	No.	%	No.	%
<b>Alice Springs-Adelaide</b>								
Qantas	24	24	11	45.8	11	45.8	0	0.0
QantasLink	12	11	2	18.2	1	9.1	1	8.3
Virgin Australia	13	13	13	100.0	12	92.3	0	0.0
All Airlines	49	48	26	54.2	24	50.0	1	2.0
<b>Armidale-Sydney</b>								
QantasLink	82	80	61	76.3	57	71.3	2	2.4
Regional Express	52	52	35	67.3	36	69.2	0	0.0
All Airlines	134	132	96	72.7	93	70.5	2	1.5
<b>Ballina-Sydney</b>								
Jetstar	79	79	65	82.3	66	83.5	0	0.0
QantasLink	93	93	79	84.9	84	90.3	0	0.0
Regional Express	9	9	8	88.9	8	88.9	0	0.0
Virgin Australia	56	56	48	85.7	48	85.7	0	0.0
All Airlines	237	237	200	84.4	206	86.9	0	0.0
<b>Brisbane-Adelaide</b>								
Jetstar	27	27	22	81.5	17	63.0	0	0.0
Qantas	98	98	85	86.7	87	88.8	0	0.0
Virgin Australia	110	106	94	88.7	80	75.5	4	3.6
All Airlines	235	231	201	87.0	184	79.7	4	1.7
<b>Brisbane-Cairns</b>								
Jetstar	80	80	67	83.8	66	82.5	0	0.0
Qantas	130	130	112	86.2	117	90.0	0	0.0
QantasLink	12	12	7	58.3	10	83.3	0	0.0
Virgin Australia	131	131	102	77.9	97	74.0	0	0.0
All Airlines	353	353	288	81.6	290	82.2	0	0.0
<b>Brisbane-Canberra</b>								
Qantas	48	48	46	95.8	46	95.8	0	0.0
QantasLink	133	131	104	79.4	104	79.4	2	1.5
Virgin Australia	78	78	63	80.8	59	75.6	0	0.0
All Airlines	259	257	213	82.9	209	81.3	2	0.8
<b>Brisbane-Darwin</b>								
Jetstar	18	18	7	38.9	14	77.8	0	0.0
Qantas	41	40	30	75.0	37	92.5	1	2.4
Virgin Australia	39	39	34	87.2	30	76.9	0	0.0
All Airlines	98	97	71	73.2	81	83.5	1	1.0
<b>Brisbane-Emerald</b>								
QantasLink	124	124	112	90.3	109	87.9	0	0.0
Virgin Australia	26	26	25	96.2	25	96.2	0	0.0
All Airlines	150	150	137	91.3	134	89.3	0	0.0
<b>Brisbane-Gladstone</b>								
QantasLink	124	124	111	89.5	113	91.1	0	0.0
Virgin Australia	52	52	47	90.4	47	90.4	0	0.0
All Airlines	176	176	158	89.8	160	90.9	0	0.0
<b>Brisbane-Hamilton Island</b>								
Qantas	31	31	25	80.6	28	90.3	0	0.0
Virgin Australia	37	37	35	94.6	32	86.5	0	0.0
All Airlines	68	68	60	88.2	60	88.2	0	0.0



	<i>Sectors</i>		<i>Arrivals On Time</i>		<i>Departures On Time</i>		<i>Cancellations</i>	
	<i>Sched.</i>	<i>Flown</i>	<i>No.</i>	<i>%</i>	<i>No.</i>	<i>%</i>	<i>No.</i>	<i>%</i>
<b>Brisbane-Hobart</b>								
Jetstar	18	18	17	94.4	17	94.4	0	0.0
QantasLink	22	22	15	68.2	15	68.2	0	0.0
Virgin Australia	33	33	30	90.9	29	87.9	0	0.0
All Airlines	73	73	62	84.9	61	83.6	0	0.0
<b>Brisbane-Mackay</b>								
Jetstar	26	26	21	80.8	22	84.6	0	0.0
Qantas	90	90	74	82.2	80	88.9	0	0.0
QantasLink	19	19	18	94.7	17	89.5	0	0.0
Virgin Australia	87	87	67	77.0	57	65.5	0	0.0
All Airlines	222	222	180	81.1	176	79.3	0	0.0
<b>Brisbane-Melbourne</b>								
Jetstar	180	160	140	87.5	130	81.3	20	11.1
Qantas	296	269	240	89.2	223	82.9	27	9.1
Virgin Australia	271	238	189	79.4	174	73.1	33	12.2
All Airlines	747	667	569	85.3	527	79.0	80	10.7
<b>Brisbane-Mount Isa</b>								
Qantas	41	41	41	100.0	41	100.0	0	0.0
QantasLink	12	11	9	81.8	9	81.8	1	8.3
Virgin Australia	13	13	13	100.0	13	100.0	0	0.0
All Airlines	66	65	63	96.9	63	96.9	1	1.5
<b>Brisbane-Newcastle</b>								
Jetstar	61	60	54	90.0	52	86.7	1	1.6
QantasLink	96	96	79	82.3	81	84.4	0	0.0
Virgin Australia	56	56	48	85.7	46	82.1	0	0.0
All Airlines	213	212	181	85.4	179	84.4	1	0.5
<b>Brisbane-Perth</b>								
Qantas	86	85	70	82.4	75	88.2	1	1.2
Virgin Australia	68	67	55	82.1	42	62.7	1	1.5
All Airlines	154	152	125	82.2	117	77.0	2	1.3
<b>Brisbane-Proserpine</b>								
Jetstar	27	27	23	85.2	23	85.2	0	0.0
Virgin Australia	33	33	30	90.9	29	87.9	0	0.0
All Airlines	60	60	53	88.3	52	86.7	0	0.0
<b>Brisbane-Rockhampton</b>								
QantasLink	156	154	129	83.8	133	86.4	2	1.3
Virgin Australia	89	89	68	76.4	71	79.8	0	0.0
All Airlines	245	243	197	81.1	204	84.0	2	0.8
<b>Brisbane-Sydney</b>								
Jetstar	166	159	144	90.6	134	84.3	7	4.2
Qantas	452	435	407	93.6	402	92.4	17	3.8
Virgin Australia	346	328	280	85.4	273	83.2	18	5.2
All Airlines	964	922	831	90.1	809	87.7	42	4.4
<b>Brisbane-Townsville</b>								
Jetstar	61	61	52	85.2	50	82.0	0	0.0
Qantas	109	109	94	86.2	102	93.6	0	0.0
QantasLink	5	5	3	60.0	5	100.0	0	0.0
Virgin Australia	87	86	69	80.2	63	73.3	1	1.1
All Airlines	262	261	218	83.5	220	84.3	1	0.4

	<i>Sectors</i>		<i>Arrivals On Time</i>		<i>Departures On Time</i>		<i>Cancellations</i>	
	<i>Sched.</i>	<i>Flown</i>	<i>No.</i>	<i>%</i>	<i>No.</i>	<i>%</i>	<i>No.</i>	<i>%</i>
<b>Broome-Perth</b>								
QantasLink	95	94	68	72.3	60	63.8	1	1.1
Virgin Australia	23	23	20	87.0	9	39.1	0	0.0
Virgin Australia Regional Airlines	5	5	2	40.0	2	40.0	0	0.0
All Airlines	123	122	90	73.8	71	58.2	1	0.8
<b>Cairns-Brisbane</b>								
Jetstar	80	80	71	88.8	70	87.5	0	0.0
Qantas	131	131	113	86.3	124	94.7	0	0.0
QantasLink	12	12	5	41.7	7	58.3	0	0.0
Virgin Australia	131	131	116	88.5	108	82.4	0	0.0
All Airlines	354	354	305	86.2	309	87.3	0	0.0
<b>Cairns-Melbourne</b>								
Jetstar	116	110	95	86.4	89	80.9	6	5.2
Qantas	31	31	23	74.2	27	87.1	0	0.0
Virgin Australia	36	35	26	74.3	29	82.9	1	2.8
All Airlines	183	176	144	81.8	145	82.4	7	3.8
<b>Cairns-Sydney</b>								
Jetstar	85	81	71	87.7	67	82.7	4	4.7
Qantas	50	50	37	74.0	42	84.0	0	0.0
Virgin Australia	48	44	42	95.5	40	90.9	4	8.3
All Airlines	183	175	150	85.7	149	85.1	8	4.4
<b>Cairns-Townsville</b>								
QantasLink	109	109	100	91.7	100	91.7	0	0.0
Regional Express	13	13	12	92.3	12	92.3	0	0.0
All Airlines	122	122	112	91.8	112	91.8	0	0.0
<b>Canberra-Adelaide</b>								
Qantas	40	40	30	75.0	25	62.5	0	0.0
Virgin Australia	26	26	20	76.9	19	73.1	0	0.0
All Airlines	66	66	50	75.8	44	66.7	0	0.0
<b>Canberra-Brisbane</b>								
Qantas	48	48	45	93.8	46	95.8	0	0.0
QantasLink	132	129	96	74.4	102	79.1	3	2.3
Virgin Australia	78	78	64	82.1	61	78.2	0	0.0
All Airlines	258	255	205	80.4	209	82.0	3	1.2
<b>Canberra-Melbourne</b>								
Qantas	35	35	32	91.4	33	94.3	0	0.0
QantasLink	205	185	129	69.7	135	73.0	20	9.8
Virgin Australia	82	77	66	85.7	67	87.0	5	6.1
All Airlines	322	297	227	76.4	235	79.1	25	7.8
<b>Canberra-Sydney</b>								
Qantas	17	17	17	100.0	17	100.0	0	0.0
QantasLink	285	252	207	82.1	210	83.3	33	11.6
Regional Express	195	189	139	73.5	149	78.8	6	3.1
All Airlines	497	458	363	79.3	376	82.1	39	7.8
<b>Coffs Harbour-Sydney</b>								
QantasLink	119	115	96	83.5	97	84.3	4	3.4
Regional Express	83	83	68	81.9	75	90.4	0	0.0
All Airlines	202	198	164	82.8	172	86.9	4	2.0

	<i>Sectors</i>		<i>Arrivals On Time</i>		<i>Departures On Time</i>		<i>Cancellations</i>	
	<i>Sched.</i>	<i>Flown</i>	<i>No.</i>	<i>%</i>	<i>No.</i>	<i>%</i>	<i>No.</i>	<i>%</i>
<b>Darwin-Brisbane</b>								
Jetstar	18	18	6	33.3	5	27.8	0	0.0
Qantas	39	38	22	57.9	18	47.4	1	2.6
Virgin Australia	40	40	35	87.5	28	70.0	0	0.0
All Airlines	97	96	63	65.6	51	53.1	1	1.0
<b>Darwin-Perth</b>								
Qantas	31	31	21	67.7	24	77.4	0	0.0
Virgin Australia	11	11	10	90.9	9	81.8	0	0.0
All Airlines	42	42	31	73.8	33	78.6	0	0.0
<b>Dubbo-Sydney</b>								
QantasLink	97	97	86	88.7	90	92.8	0	0.0
Regional Express	81	80	66	82.5	70	87.5	1	1.2
All Airlines	178	177	152	85.9	160	90.4	1	0.6
<b>Emerald-Brisbane</b>								
QantasLink	124	124	112	90.3	113	91.1	0	0.0
Virgin Australia	26	26	23	88.5	23	88.5	0	0.0
All Airlines	150	150	135	90.0	136	90.7	0	0.0
<b>Gladstone-Brisbane</b>								
QantasLink	124	124	108	87.1	101	81.5	0	0.0
Virgin Australia	52	52	45	86.5	47	90.4	0	0.0
All Airlines	176	176	153	86.9	148	84.1	0	0.0
<b>Gold Coast-Adelaide</b>								
Jetstar	27	27	23	85.2	22	81.5	0	0.0
Virgin Australia	31	31	26	83.9	26	83.9	0	0.0
All Airlines	58	58	49	84.5	48	82.8	0	0.0
<b>Gold Coast-Melbourne</b>								
Jetstar	217	197	175	88.8	166	84.3	20	9.2
Qantas	58	58	53	91.4	52	89.7	0	0.0
QantasLink	4	4	2	50.0	2	50.0	0	0.0
Regional Express	61	58	35	60.3	42	72.4	3	4.9
Virgin Australia	216	200	175	87.5	154	77.0	16	7.4
All Airlines	556	517	440	85.1	416	80.5	39	7.0
<b>Gold Coast-Sydney</b>								
Jetstar	261	234	204	87.2	202	86.3	27	10.3
Qantas	88	86	74	86.0	74	86.0	2	2.3
Regional Express	63	63	56	88.9	57	90.5	0	0.0
Virgin Australia	239	236	213	90.3	203	86.0	3	1.3
All Airlines	651	619	547	88.4	536	86.6	32	4.9
<b>Hamilton Island-Brisbane</b>								
Qantas	31	31	21	67.7	22	71.0	0	0.0
Virgin Australia	37	37	33	89.2	33	89.2	0	0.0
All Airlines	68	68	54	79.4	55	80.9	0	0.0
<b>Hamilton Island-Sydney</b>								
Jetstar	13	13	10	76.9	9	69.2	0	0.0
Qantas	34	34	27	79.4	26	76.5	0	0.0
Virgin Australia	31	31	23	74.2	24	77.4	0	0.0
All Airlines	78	78	60	76.9	59	75.6	0	0.0

	Sectors		Arrivals On Time		Departures On Time		Cancellations	
	Sched.	Flown	No.	%	No.	%	No.	%
<b>Hobart-Brisbane</b>								
Jetstar	18	18	12	66.7	15	83.3	0	0.0
QantasLink	22	22	10	45.5	12	54.5	0	0.0
Virgin Australia	33	33	26	78.8	26	78.8	0	0.0
All Airlines	73	73	48	65.8	53	72.6	0	0.0
<b>Hobart-Melbourne</b>								
Jetstar	138	127	103	81.1	105	82.7	11	8.0
QantasLink	118	109	79	72.5	80	73.4	9	7.6
Virgin Australia	86	80	64	80.0	69	86.3	6	7.0
All Airlines	342	316	246	77.8	254	80.4	26	7.6
<b>Hobart-Sydney</b>								
Jetstar	63	63	53	84.1	55	87.3	0	0.0
Qantas	28	28	24	85.7	24	85.7	0	0.0
QantasLink	42	42	30	71.4	32	76.2	0	0.0
Virgin Australia	50	49	45	91.8	46	93.9	1	2.0
All Airlines	183	182	152	83.5	157	86.3	1	0.5
<b>Kalgoorlie-Perth</b>								
Qantas	9	8	7	87.5	7	87.5	1	11.1
QantasLink	64	63	53	84.1	47	74.6	1	1.6
Virgin Australia	21	21	15	71.4	8	38.1	0	0.0
Virgin Australia Regional Airlines	40	40	37	92.5	37	92.5	0	0.0
All Airlines	134	132	112	84.8	99	75.0	2	1.5
<b>Karratha-Perth</b>								
Qantas	25	24	22	91.7	23	95.8	1	4.0
QantasLink	113	110	80	72.7	76	69.1	3	2.7
Virgin Australia	33	33	28	84.8	25	75.8	0	0.0
Virgin Australia Regional Airlines	23	23	17	73.9	15	65.2	0	0.0
All Airlines	194	190	147	77.4	139	73.2	4	2.1
<b>Launceston-Melbourne</b>								
Jetstar	93	86	73	84.9	70	81.4	7	7.5
QantasLink	88	81	62	76.5	67	82.7	7	8.0
Virgin Australia	72	67	57	85.1	59	88.1	5	6.9
All Airlines	253	234	192	82.1	196	83.8	19	7.5
<b>Launceston-Sydney</b>								
Jetstar	27	27	16	59.3	13	48.1	0	0.0
QantasLink	19	19	13	68.4	17	89.5	0	0.0
Virgin Australia	23	23	18	78.3	19	82.6	0	0.0
All Airlines	69	69	47	68.1	49	71.0	0	0.0
<b>Mackay-Brisbane</b>								
Jetstar	26	26	22	84.6	20	76.9	0	0.0
Qantas	89	89	65	73.0	68	76.4	0	0.0
QantasLink	24	24	24	100.0	24	100.0	0	0.0
Virgin Australia	87	87	77	88.5	68	78.2	0	0.0
All Airlines	226	226	188	83.2	180	79.6	0	0.0
<b>Melbourne-Adelaide</b>								
Jetstar	110	93	84	90.3	81	87.1	17	15.5
Qantas	221	200	186	93.0	187	93.5	21	9.5
Regional Express	69	64	52	81.3	52	81.3	5	7.2
Virgin Australia	206	179	150	83.8	146	81.6	27	13.1
All Airlines	606	536	472	88.1	466	86.9	70	11.6

	<i>Sectors</i>		<i>Arrivals On Time</i>		<i>Departures On Time</i>		<i>Cancellations</i>	
	<i>Sched.</i>	<i>Flown</i>	<i>No.</i>	<i>%</i>	<i>No.</i>	<i>%</i>	<i>No.</i>	<i>%</i>
<b>Melbourne-Brisbane</b>								
Jetstar	180	160	130	81.3	136	85.0	20	11.1
Qantas	296	274	238	86.9	240	87.6	22	7.4
Virgin Australia	268	238	193	81.1	195	81.9	30	11.2
All Airlines	744	672	561	83.5	571	85.0	72	9.7
<b>Melbourne-Cairns</b>								
Jetstar	116	110	93	84.5	82	74.5	6	5.2
Qantas	31	31	24	77.4	23	74.2	0	0.0
Virgin Australia	36	35	31	88.6	30	85.7	1	2.8
All Airlines	183	176	148	84.1	135	76.7	7	3.8
<b>Melbourne-Canberra</b>								
Qantas	35	35	33	94.3	32	91.4	0	0.0
QantasLink	206	191	128	67.0	133	69.6	15	7.3
Virgin Australia	82	76	63	82.9	62	81.6	6	7.3
All Airlines	323	302	224	74.2	227	75.2	21	6.5
<b>Melbourne-Gold Coast</b>								
Jetstar	217	197	159	80.7	161	81.7	20	9.2
Qantas	58	57	47	82.5	47	82.5	1	1.7
QantasLink	4	4	2	50.0	2	50.0	0	0.0
Regional Express	62	59	44	74.6	41	69.5	3	4.8
Virgin Australia	217	200	166	83.0	161	80.5	17	7.8
All Airlines	558	517	418	80.9	412	79.7	41	7.3
<b>Melbourne-Hobart</b>								
Jetstar	138	127	108	85.0	108	85.0	11	8.0
QantasLink	118	108	66	61.1	80	74.1	10	8.5
Virgin Australia	86	79	64	81.0	64	81.0	7	8.1
All Airlines	342	314	238	75.8	252	80.3	28	8.2
<b>Melbourne-Launceston</b>								
Jetstar	93	86	69	80.2	69	80.2	7	7.5
QantasLink	89	82	52	63.4	60	73.2	7	7.9
Virgin Australia	72	66	50	75.8	55	83.3	6	8.3
All Airlines	254	234	171	73.1	184	78.6	20	7.9
<b>Melbourne-Mildura</b>								
QantasLink	119	107	60	56.1	59	55.1	12	10.1
Regional Express	82	82	65	79.3	68	82.9	0	0.0
All Airlines	201	189	125	66.1	127	67.2	12	6.0
<b>Melbourne-Newcastle</b>								
Jetstar	62	55	49	89.1	50	90.9	7	11.3
QantasLink	51	47	31	66.0	40	85.1	4	7.8
Virgin Australia	26	26	25	96.2	25	96.2	0	0.0
All Airlines	139	128	105	82.0	115	89.8	11	7.9
<b>Melbourne-Perth</b>								
Jetstar	62	51	41	80.4	43	84.3	11	17.7
Qantas	140	133	95	71.4	108	81.2	7	5.0
Virgin Australia	119	98	79	80.6	74	75.5	21	17.6
All Airlines	321	282	215	76.2	225	79.8	39	12.1
<b>Melbourne-Sunshine Coast</b>								
Jetstar	62	59	36	61.0	42	71.2	3	4.8
QantasLink	45	42	32	76.2	34	81.0	3	6.7
Virgin Australia	67	64	61	95.3	58	90.6	3	4.5
All Airlines	174	165	129	78.2	134	81.2	9	5.2

	<i>Sectors</i>		<i>Arrivals On Time</i>		<i>Departures On Time</i>		<i>Cancellations</i>	
	<i>Sched.</i>	<i>Flown</i>	<i>No.</i>	<i>%</i>	<i>No.</i>	<i>%</i>	<i>No.</i>	<i>%</i>
<b>Melbourne-Sydney</b>								
Jetstar	332	257	224	87.2	220	85.6	75	22.6
Qantas	805	679	619	91.2	628	92.5	126	15.7
Regional Express	162	148	128	86.5	126	85.1	14	8.6
Virgin Australia	574	505	409	81.0	413	81.8	69	12.0
All Airlines	1 873	1 589	1 380	86.8	1 387	87.3	284	15.2
<b>Mildura-Melbourne</b>								
QantasLink	119	107	55	51.4	55	51.4	12	10.1
Regional Express	82	82	70	85.4	75	91.5	0	0.0
All Airlines	201	189	125	66.1	130	68.8	12	6.0
<b>Mount Isa-Brisbane</b>								
Qantas	41	41	39	95.1	37	90.2	0	0.0
QantasLink	12	11	9	81.8	9	81.8	1	8.3
Virgin Australia	13	13	12	92.3	12	92.3	0	0.0
All Airlines	66	65	60	92.3	58	89.2	1	1.5
<b>Newcastle-Brisbane</b>								
Jetstar	61	60	53	88.3	52	86.7	1	1.6
QantasLink	96	96	82	85.4	81	84.4	0	0.0
Virgin Australia	56	56	52	92.9	53	94.6	0	0.0
All Airlines	213	212	187	88.2	186	87.7	1	0.5
<b>Newcastle-Melbourne</b>								
Jetstar	63	56	50	89.3	49	87.5	7	11.1
QantasLink	52	49	41	83.7	38	77.6	3	5.8
Virgin Australia	26	26	22	84.6	22	84.6	0	0.0
All Airlines	141	131	113	86.3	109	83.2	10	7.1
<b>Newman-Perth</b>								
Qantas	33	33	29	87.9	27	81.8	0	0.0
QantasLink	72	69	59	85.5	58	84.1	3	4.2
Virgin Australia	41	41	35	85.4	31	75.6	0	0.0
Virgin Australia Regional Airlines	20	20	18	90.0	16	80.0	0	0.0
All Airlines	166	163	141	86.5	132	81.0	3	1.8
<b>Perth-Adelaide</b>								
Jetstar	26	25	21	84.0	18	72.0	1	3.8
Qantas	89	89	75	84.3	79	88.8	0	0.0
Virgin Australia	38	37	35	94.6	36	97.3	1	2.6
All Airlines	153	151	131	86.8	133	88.1	2	1.3
<b>Perth-Brisbane</b>								
Qantas	86	85	34	40.0	70	82.4	1	1.2
Virgin Australia	67	66	59	89.4	58	87.9	1	1.5
All Airlines	153	151	93	61.6	128	84.8	2	1.3
<b>Perth-Broome</b>								
QantasLink	95	95	84	88.4	71	74.7	0	0.0
Virgin Australia	23	23	19	82.6	17	73.9	0	0.0
Virgin Australia Regional Airlines	5	5	4	80.0	3	60.0	0	0.0
All Airlines	123	123	107	87.0	91	74.0	0	0.0
<b>Perth-Darwin</b>								
Qantas	31	31	26	83.9	28	90.3	0	0.0
Virgin Australia	11	11	10	90.9	11	100.0	0	0.0
All Airlines	42	42	36	85.7	39	92.9	0	0.0

	Sectors		Arrivals On Time		Departures On Time		Cancellations	
	Sched.	Flown	No.	%	No.	%	No.	%
<b>Perth-Kalgoorlie</b>								
Qantas	9	8	8	100.0	7	87.5	1	11.1
QantasLink	64	64	50	78.1	50	78.1	0	0.0
Virgin Australia	21	21	20	95.2	20	95.2	0	0.0
Virgin Australia Regional Airlines	40	40	35	87.5	35	87.5	0	0.0
All Airlines	134	133	113	85.0	112	84.2	1	0.7
<b>Perth-Karratha</b>								
Qantas	25	24	22	91.7	23	95.8	1	4.0
QantasLink	109	107	77	72.0	86	80.4	2	1.8
Virgin Australia	34	34	30	88.2	34	100.0	0	0.0
Virgin Australia Regional Airlines	23	23	17	73.9	18	78.3	0	0.0
All Airlines	191	188	146	77.7	161	85.6	3	1.6
<b>Perth-Melbourne</b>								
Jetstar	62	50	35	70.0	34	68.0	12	19.4
Qantas	140	133	93	69.9	110	82.7	7	5.0
Virgin Australia	118	99	80	80.8	76	76.8	19	16.1
All Airlines	320	282	208	73.8	220	78.0	38	11.9
<b>Perth-Newman</b>								
Qantas	33	33	32	97.0	30	90.9	0	0.0
QantasLink	72	69	63	91.3	63	91.3	3	4.2
Virgin Australia	41	41	36	87.8	35	85.4	0	0.0
Virgin Australia Regional Airlines	20	20	19	95.0	19	95.0	0	0.0
All Airlines	166	163	150	92.0	147	90.2	3	1.8
<b>Perth-Port Hedland</b>								
Qantas	48	45	40	88.9	44	97.8	3	6.3
QantasLink	72	70	48	68.6	58	82.9	2	2.8
Virgin Australia Regional Airlines	52	52	48	92.3	48	92.3	0	0.0
All Airlines	172	167	136	81.4	150	89.8	5	2.9
<b>Perth-Sydney</b>								
Jetstar	49	47	21	44.7	17	36.2	2	4.1
Qantas	172	170	134	78.8	150	88.2	2	1.2
Virgin Australia	78	76	71	93.4	64	84.2	2	2.6
All Airlines	299	293	226	77.1	231	78.8	6	2.0
<b>Port Hedland-Perth</b>								
Qantas	48	45	37	82.2	37	82.2	3	6.3
QantasLink	72	70	49	70.0	52	74.3	2	2.8
Virgin Australia Regional Airlines	52	52	41	78.8	39	75.0	0	0.0
All Airlines	172	167	127	76.0	128	76.6	5	2.9
<b>Port Lincoln-Adelaide</b>								
QantasLink	120	117	103	88.0	106	90.6	3	2.5
Regional Express	162	162	138	85.2	141	87.0	0	0.0
All Airlines	282	279	241	86.4	247	88.5	3	1.1
<b>Port Macquarie-Sydney</b>								
QantasLink	109	108	101	93.5	102	94.4	1	0.9
Regional Express	79	79	67	84.8	74	93.7	0	0.0
All Airlines	188	187	168	89.8	176	94.1	1	0.5
<b>Proserpine-Brisbane</b>								
Jetstar	27	27	19	70.4	20	74.1	0	0.0
Virgin Australia	33	33	26	78.8	23	69.7	0	0.0
All Airlines	60	60	45	75.0	43	71.7	0	0.0

	<i>Sectors</i>		<i>Arrivals On Time</i>		<i>Departures On Time</i>		<i>Cancellations</i>	
	<i>Sched.</i>	<i>Flown</i>	<i>No.</i>	<i>%</i>	<i>No.</i>	<i>%</i>	<i>No.</i>	<i>%</i>
<b>Rockhampton-Brisbane</b>								
QantasLink	156	154	115	74.7	119	77.3	2	1.3
Virgin Australia	89	88	73	83.0	67	76.1	1	1.1
All Airlines	245	242	188	77.7	186	76.9	3	1.2
<b>Sunshine Coast-Melbourne</b>								
Jetstar	62	59	34	57.6	30	50.8	3	4.8
QantasLink	45	42	30	71.4	31	73.8	3	6.7
Virgin Australia	67	64	54	84.4	50	78.1	3	4.5
All Airlines	174	165	118	71.5	111	67.3	9	5.2
<b>Sunshine Coast-Sydney</b>								
Jetstar	83	82	69	84.1	71	86.6	1	1.2
QantasLink	57	57	40	70.2	39	68.4	0	0.0
Virgin Australia	58	57	43	75.4	47	82.5	1	1.7
All Airlines	198	196	152	77.6	157	80.1	2	1.0
<b>Sydney-Adelaide</b>								
Jetstar	99	92	84	91.3	83	90.2	7	7.1
Qantas	190	190	168	88.4	167	87.9	0	0.0
Virgin Australia	127	125	114	91.2	110	88.0	2	1.6
All Airlines	416	407	366	89.9	360	88.5	9	2.2
<b>Sydney-Albury</b>								
QantasLink	109	108	100	92.6	100	92.6	1	0.9
Regional Express	53	53	45	84.9	44	83.0	0	0.0
All Airlines	162	161	145	90.1	144	89.4	1	0.6
<b>Sydney-Armidale</b>								
QantasLink	82	80	60	75.0	56	70.0	2	2.4
Regional Express	52	52	34	65.4	36	69.2	0	0.0
All Airlines	134	132	94	71.2	92	69.7	2	1.5
<b>Sydney-Ballina</b>								
Jetstar	79	79	73	92.4	70	88.6	0	0.0
QantasLink	93	93	79	84.9	85	91.4	0	0.0
Regional Express	9	9	8	88.9	8	88.9	0	0.0
Virgin Australia	56	56	48	85.7	48	85.7	0	0.0
All Airlines	237	237	208	87.8	211	89.0	0	0.0
<b>Sydney-Brisbane</b>								
Jetstar	165	159	138	86.8	134	84.3	6	3.6
Qantas	454	436	378	86.7	377	86.5	18	4.0
Virgin Australia	347	328	291	88.7	289	88.1	19	5.5
All Airlines	966	923	807	87.4	800	86.7	43	4.5
<b>Sydney-Cairns</b>								
Jetstar	85	81	70	86.4	65	80.2	4	4.7
Qantas	50	50	36	72.0	33	66.0	0	0.0
Virgin Australia	48	45	44	97.8	42	93.3	3	6.3
All Airlines	183	176	150	85.2	140	79.5	7	3.8
<b>Sydney-Canberra</b>								
Qantas	17	17	17	100.0	17	100.0	0	0.0
QantasLink	286	258	200	77.5	198	76.7	28	9.8
Regional Express	196	190	133	70.0	150	78.9	6	3.1
All Airlines	499	465	350	75.3	365	78.5	34	6.8



	Sectors		Arrivals On Time		Departures On Time		Cancellations	
	Sched.	Flown	No.	%	No.	%	No.	%
<b>Sydney-Coffs Harbour</b>								
QantasLink	119	115	95	82.6	89	77.4	4	3.4
Regional Express	84	84	79	94.0	76	90.5	0	0.0
All Airlines	203	199	174	87.4	165	82.9	4	2.0
<b>Sydney-Dubbo</b>								
QantasLink	97	97	94	96.9	87	89.7	0	0.0
Regional Express	80	80	66	82.5	60	75.0	0	0.0
All Airlines	177	177	160	90.4	147	83.1	0	0.0
<b>Sydney-Gold Coast</b>								
Jetstar	261	234	200	85.5	201	85.9	27	10.3
Qantas	88	87	81	93.1	76	87.4	1	1.1
Regional Express	62	62	51	82.3	54	87.1	0	0.0
Virgin Australia	238	235	207	88.1	202	86.0	3	1.3
All Airlines	649	618	539	87.2	533	86.2	31	4.8
<b>Sydney-Hamilton Island</b>								
Jetstar	13	13	12	92.3	11	84.6	0	0.0
Qantas	34	34	30	88.2	30	88.2	0	0.0
Virgin Australia	31	31	27	87.1	25	80.6	0	0.0
All Airlines	78	78	69	88.5	66	84.6	0	0.0
<b>Sydney-Hobart</b>								
Jetstar	63	63	52	82.5	49	77.8	0	0.0
Qantas	28	28	26	92.9	26	92.9	0	0.0
QantasLink	42	42	32	76.2	33	78.6	0	0.0
Virgin Australia	50	49	48	98.0	47	95.9	1	2.0
All Airlines	183	182	158	86.8	155	85.2	1	0.5
<b>Sydney-Launceston</b>								
Jetstar	27	27	18	66.7	20	74.1	0	0.0
QantasLink	19	19	17	89.5	15	78.9	0	0.0
Virgin Australia	23	23	19	82.6	18	78.3	0	0.0
All Airlines	69	69	54	78.3	53	76.8	0	0.0
<b>Sydney-Melbourne</b>								
Jetstar	331	257	233	90.7	227	88.3	74	22.4
Qantas	806	680	627	92.2	608	89.4	126	15.6
Regional Express	151	139	121	87.1	124	89.2	12	7.9
Virgin Australia	574	509	422	82.9	390	76.6	65	11.3
All Airlines	1 862	1 585	1 403	88.5	1 349	85.1	277	14.9
<b>Sydney-Perth</b>								
Jetstar	49	49	38	77.6	30	61.2	0	0.0
Qantas	175	173	129	74.6	140	80.9	2	1.1
Virgin Australia	78	76	64	84.2	59	77.6	2	2.6
All Airlines	302	298	231	77.5	229	76.8	4	1.3
<b>Sydney-Port Macquarie</b>								
QantasLink	109	108	98	90.7	97	89.8	1	0.9
Regional Express	78	78	72	92.3	69	88.5	0	0.0
All Airlines	187	186	170	91.4	166	89.2	1	0.5
<b>Sydney-Sunshine Coast</b>								
Jetstar	83	83	73	88.0	72	86.7	0	0.0
QantasLink	57	57	35	61.4	40	70.2	0	0.0
Virgin Australia	58	57	47	82.5	48	84.2	1	1.7
All Airlines	198	197	155	78.7	160	81.2	1	0.5

	<i>Sectors</i>		<i>Arrivals On Time</i>		<i>Departures On Time</i>		<i>Cancellations</i>	
	<i>Sched.</i>	<i>Flown</i>	<i>No.</i>	<i>%</i>	<i>No.</i>	<i>%</i>	<i>No.</i>	<i>%</i>
<b>Sydney-Wagga Wagga</b>								
QantasLink	110	110	102	92.7	94	85.5	0	0.0
Regional Express	58	58	52	89.7	51	87.9	0	0.0
All Airlines	168	168	154	91.7	145	86.3	0	0.0
<b>Townsville-Brisbane</b>								
Jetstar	61	61	51	83.6	49	80.3	0	0.0
Qantas	109	109	87	79.8	96	88.1	0	0.0
QantasLink	5	5	3	60.0	5	100.0	0	0.0
Virgin Australia	87	86	73	84.9	67	77.9	1	1.1
All Airlines	262	261	214	82.0	217	83.1	1	0.4
<b>Townsville-Cairns</b>								
QantasLink	109	109	98	89.9	98	89.9	0	0.0
Regional Express	13	13	12	92.3	12	92.3	0	0.0
All Airlines	122	122	110	90.2	110	90.2	0	0.0
<b>Wagga Wagga-Sydney</b>								
QantasLink	110	109	99	90.8	101	92.7	1	0.9
Regional Express	58	58	49	84.5	53	91.4	0	0.0
All Airlines	168	167	148	88.6	154	92.2	1	0.6

# Airports

On time performance is reported for all routes where the passenger load averages over 8000 passengers per month, and where two or more airlines operate in competition. The following data reports by airport against flights operated on those routes only. This month, 8 major city airports and 28 regional city airports are covered.

Airport	Arrivals			Departures		
	Sectors	On Time		Sectors	On Time	
	Flown	No.	%	Flown	No.	%
<b>Adelaide</b>						
Jetstar	264	234	88.6	264	232	87.9
Qantas	641	555	86.6	637	578	90.7
QantasLink	128	105	82.0	130	115	88.5
Regional Express	226	190	84.1	228	204	89.5
Virgin Australia	517	452	87.4	519	440	84.8
All Airlines	1 776	1 536	86.5	1 778	1 569	88.2
Relates to services to and from Alice Springs, Brisbane, Canberra, Gold Coast, Melbourne, Perth, Port Lincoln and Sydney.						
<b>Albury</b>						
QantasLink	108	100	92.6	108	92	85.2
Regional Express	53	45	84.9	53	47	88.7
All Airlines	161	145	90.1	161	139	86.3
Relates to services to and from Sydney only.						
<b>Alice Springs</b>						
Qantas	24	19	79.2	24	11	45.8
QantasLink	12	7	58.3	11	1	9.1
Virgin Australia	13	13	100.0	13	12	92.3
All Airlines	49	39	79.6	48	24	50.0
Relates to services to and from Adelaide only.						
<b>Armidale</b>						
QantasLink	80	60	75.0	80	57	71.3
Regional Express	52	34	65.4	52	36	69.2
All Airlines	132	94	71.2	132	93	70.5
Relates to services to and from Sydney only.						
<b>Ballina</b>						
Jetstar	79	73	92.4	79	66	83.5
QantasLink	93	79	84.9	93	84	90.3
Regional Express	9	8	88.9	9	8	88.9
Virgin Australia	56	48	85.7	56	48	85.7
All Airlines	237	208	87.8	237	206	86.9
Relates to services to and from Sydney only.						
<b>Brisbane</b>						
Jetstar	636	525	82.5	636	525	82.5
Qantas	1 380	1 133	82.1	1 376	1 238	90.0
QantasLink	701	564	80.5	698	596	85.4
Virgin Australia	1 499	1 291	86.1	1 499	1 167	77.9
All Airlines	4 216	3 513	83.3	4 209	3 526	83.8
Relates to services to and from Adelaide, Cairns, Canberra, Darwin, Emerald, Gladstone, Hamilton Island, Hobart, Mackay, Melbourne, Mount Isa, Newcastle, Perth, Proserpine, Rockhampton, Sydney and Townsville.						

Airport	Arrivals			Departures		
	Sectors	On Time		Sectors	On Time	
	Flown	No.	%	Flown	No.	%
<b>Broome</b>						
QantasLink	95	84	88.4	94	60	63.8
Virgin Australia	23	19	82.6	23	9	39.1
Virgin Australia Regional Airlines	5	4	80.0	5	2	40.0
All Airlines	123	107	87.0	122	71	58.2
Relates to services to and from Perth only.						
<b>Cairns</b>						
Jetstar	271	230	84.9	271	226	83.4
Qantas	211	172	81.5	212	193	91.0
QantasLink	121	105	86.8	121	107	88.4
Regional Express	13	12	92.3	13	12	92.3
Virgin Australia	211	177	83.9	210	177	84.3
All Airlines	827	696	84.2	827	715	86.5
Relates to services to and from Brisbane, Melbourne, Sydney and Townsville.						
<b>Canberra</b>						
Qantas	139	121	87.1	140	121	86.4
QantasLink	580	432	74.5	566	447	79.0
Regional Express	190	133	70.0	189	149	78.8
Virgin Australia	180	150	83.3	181	147	81.2
All Airlines	1 089	836	76.8	1 076	864	80.3
Relates to services to and from Adelaide, Brisbane, Melbourne and Sydney.						
<b>Coffs Harbour</b>						
QantasLink	115	95	82.6	115	97	84.3
Regional Express	84	79	94.0	83	75	90.4
All Airlines	199	174	87.4	198	172	86.9
Relates to services to and from Sydney only.						
<b>Darwin</b>						
Jetstar	18	7	38.9	18	5	27.8
Qantas	71	56	78.9	69	42	60.9
Virgin Australia	50	44	88.0	51	37	72.5
All Airlines	139	107	77.0	138	84	60.9
Relates to services to and from Brisbane and Perth.						
<b>Dubbo</b>						
QantasLink	97	94	96.9	97	90	92.8
Regional Express	80	66	82.5	80	70	87.5
All Airlines	177	160	90.4	177	160	90.4
Relates to services to and from Sydney only.						
<b>Emerald</b>						
QantasLink	124	112	90.3	124	113	91.1
Virgin Australia	26	25	96.2	26	23	88.5
All Airlines	150	137	91.3	150	136	90.7
Relates to services to and from Brisbane only.						
<b>Gladstone</b>						
QantasLink	124	111	89.5	124	101	81.5
Virgin Australia	52	47	90.4	52	47	90.4
All Airlines	176	158	89.8	176	148	84.1
Relates to services to and from Brisbane only.						

Airport	Arrivals			Departures		
	Sectors Flown	On Time		Sectors Flown	On Time	
		No.	%		No.	%
<b>Gold Coast</b>						
Jetstar	458	383	83.6	458	390	85.2
Qantas	144	128	88.9	144	126	87.5
QantasLink	4	2	50.0	4	2	50.0
Regional Express	121	95	78.5	121	99	81.8
Virgin Australia	466	402	86.3	467	383	82.0
All Airlines	1 193	1 010	84.7	1 194	1 000	83.8
Relates to services to and from Adelaide, Melbourne and Sydney.						
<b>Hamilton Island</b>						
Jetstar	13	12	92.3	13	9	69.2
Qantas	65	55	84.6	65	48	73.8
Virgin Australia	68	62	91.2	68	57	83.8
All Airlines	146	129	88.4	146	114	78.1
Relates to services to and from Brisbane and Sydney.						
<b>Hobart</b>						
Jetstar	208	177	85.1	208	175	84.1
Qantas	28	26	92.9	28	24	85.7
QantasLink	172	113	65.7	173	124	71.7
Virgin Australia	161	142	88.2	162	141	87.0
All Airlines	569	458	80.5	571	464	81.3
Relates to services to and from Brisbane, Melbourne and Sydney.						
<b>Kalgoorlie</b>						
Qantas	8	8	100.0	8	7	87.5
QantasLink	64	50	78.1	63	47	74.6
Virgin Australia	21	20	95.2	21	8	38.1
Virgin Australia Regional Airlines	40	35	87.5	40	37	92.5
All Airlines	133	113	85.0	132	99	75.0
Relates to services to and from Perth only.						
<b>Karratha</b>						
Qantas	24	22	91.7	24	23	95.8
QantasLink	107	77	72.0	110	76	69.1
Virgin Australia	34	30	88.2	33	25	75.8
Virgin Australia Regional Airlines	23	17	73.9	23	15	65.2
All Airlines	188	146	77.7	190	139	73.2
Relates to services to and from Perth only.						
<b>Launceston</b>						
Jetstar	113	87	77.0	113	83	73.5
QantasLink	101	69	68.3	100	84	84.0
Virgin Australia	89	69	77.5	90	78	86.7
All Airlines	303	225	74.3	303	245	80.9
Relates to services to and from Melbourne and Sydney.						
<b>Mackay</b>						
Jetstar	26	21	80.8	26	20	76.9
Qantas	90	74	82.2	89	68	76.4
QantasLink	19	18	94.7	24	24	100.0
Virgin Australia	87	67	77.0	87	68	78.2
All Airlines	222	180	81.1	226	180	79.6
Relates to services to and from Brisbane only.						

Airport	Arrivals			Departures		
	Sectors Flown	On Time		Sectors Flown	On Time	
		No.	%		No.	%
<b>Melbourne</b>						
Jetstar	1 195	1 021	85.4	1 195	992	83.0
Qantas	1 406	1 254	89.2	1 409	1 265	89.8
QantasLink	577	398	69.0	581	408	70.2
Regional Express	345	281	81.4	353	287	81.3
Virgin Australia	1 574	1 307	83.0	1 566	1 283	81.9
All Airlines	5 097	4 261	83.6	5 104	4 235	83.0
Relates to services to and from Adelaide, Brisbane, Cairns, Canberra, Gold Coast, Hobart, Launceston, Mildura, Newcastle, Perth, Sunshine Coast and Sydney.						
<b>Mildura</b>						
QantasLink	107	60	56.1	107	55	51.4
Regional Express	82	65	79.3	82	75	91.5
All Airlines	189	125	66.1	189	130	68.8
Relates to services to and from Melbourne only.						
<b>Mount Isa</b>						
Qantas	41	41	100.0	41	37	90.2
QantasLink	11	9	81.8	11	9	81.8
Virgin Australia	13	13	100.0	13	12	92.3
All Airlines	65	63	96.9	65	58	89.2
Relates to services to and from Brisbane only.						
<b>Newcastle</b>						
Jetstar	115	103	89.6	116	101	87.1
QantasLink	143	110	76.9	145	119	82.1
Virgin Australia	82	73	89.0	82	75	91.5
All Airlines	340	286	84.1	343	295	86.0
Relates to services to and from Brisbane and Melbourne.						
<b>Newman</b>						
Qantas	33	32	97.0	33	27	81.8
QantasLink	69	63	91.3	69	58	84.1
Virgin Australia	41	36	87.8	41	31	75.6
Virgin Australia Regional Airlines	20	19	95.0	20	16	80.0
All Airlines	163	150	92.0	163	132	81.0
Relates to services to and from Perth only.						
<b>Perth</b>						
Jetstar	125	103	82.4	122	69	56.6
Qantas	620	486	78.4	618	541	87.5
QantasLink	406	309	76.1	405	328	81.0
Virgin Australia	408	342	83.8	408	351	86.0
Virgin Australia Regional Airlines	140	115	82.1	140	123	87.9
All Airlines	1 699	1 355	79.8	1 693	1 412	83.4
Relates to services to and from Adelaide, Brisbane, Broome, Darwin, Kalgoorlie, Karratha, Melbourne, Newman, Port Hedland and Sydney.						
<b>Port Hedland</b>						
Qantas	45	40	88.9	45	37	82.2
QantasLink	70	48	68.6	70	52	74.3
Virgin Australia Regional Airlines	52	48	92.3	52	39	75.0
All Airlines	167	136	81.4	167	128	76.6
Relates to services to and from Perth only.						

Airport	Arrivals			Departures		
	Sectors Flown	On Time		Sectors Flown	On Time	
		No.	%		No.	%
<b>Port Lincoln</b>						
QantasLink	118	110	93.2	117	106	90.6
Regional Express	162	145	89.5	162	141	87.0
All Airlines	280	255	91.1	279	247	88.5
Relates to services to and from Adelaide only.						
<b>Port Macquarie</b>						
QantasLink	108	98	90.7	108	102	94.4
Regional Express	78	72	92.3	79	74	93.7
All Airlines	186	170	91.4	187	176	94.1
Relates to services to and from Sydney only.						
<b>Proserpine</b>						
Jetstar	27	23	85.2	27	20	74.1
Virgin Australia	33	30	90.9	33	23	69.7
All Airlines	60	53	88.3	60	43	71.7
Relates to services to and from Brisbane only.						
<b>Rockhampton</b>						
QantasLink	154	129	83.8	154	119	77.3
Virgin Australia	89	68	76.4	88	67	76.1
All Airlines	243	197	81.1	242	186	76.9
Relates to services to and from Brisbane only.						
<b>Sunshine Coast</b>						
Jetstar	142	109	76.8	141	101	71.6
QantasLink	99	67	67.7	99	70	70.7
Virgin Australia	121	108	89.3	121	97	80.2
All Airlines	362	284	78.5	361	268	74.2
Relates to services to and from Melbourne and Sydney.						
<b>Sydney</b>						
Jetstar	1 134	957	84.4	1 137	962	84.6
Qantas	1 687	1 502	89.0	1 695	1 474	87.0
QantasLink	1 080	906	83.9	1 087	894	82.2
Regional Express	814	662	81.3	805	672	83.5
Virgin Australia	1 530	1 294	84.6	1 534	1 278	83.3
All Airlines	6 245	5 321	85.2	6 258	5 280	84.4
Relates to services to and from Adelaide, Albury, Armidale, Ballina, Brisbane, Cairns, Canberra, Coffs Harbour, Dubbo, Gold Coast, Hamilton Island, Hobart, Launceston, Melbourne, Perth, Port Macquarie, Sunshine Coast and Wagga Wagga.						
<b>Townsville</b>						
Jetstar	61	52	85.2	61	49	80.3
Qantas	109	94	86.2	109	96	88.1
QantasLink	114	103	90.4	114	103	90.4
Regional Express	13	12	92.3	13	12	92.3
Virgin Australia	86	69	80.2	86	67	77.9
All Airlines	383	330	86.2	383	327	85.4
Relates to services to and from Brisbane and Cairns.						
<b>Wagga Wagga</b>						
QantasLink	110	102	92.7	109	101	92.7
Regional Express	58	52	89.7	58	53	91.4
All Airlines	168	154	91.7	167	154	92.2
Relates to services to and from Sydney only.						

## Definitions

---

On time arrival	A flight arrival is counted as "on time" if it arrived at the gate before 15 minutes after the scheduled arrival time shown in the carriers' schedule. Neither diverted nor cancelled flights count as on time.
On time departure	A flight departure is counted as "on time" if it departs the gate before 15 minutes after the scheduled departure time shown in the carriers' schedule.
Cancellation	A flight removed from service within 7 days of scheduled departure is regarded as a cancellation.
On time departure percentage	The percentage of on time departures is measured against the number of departures <i>operated</i> on any particular sector.
On time arrival percentage	The percentage of on time arrivals is measured against the number of arrivals <i>operated</i> on any particular sector.
Cancellation percentage	The percentage of cancellations is measured against the number of services <i>scheduled</i> on any particular sector.

---