



Australian Government

Department of Infrastructure, Transport, Regional Development and Communications

Bureau of Infrastructure and Transport Research Economics

STATISTICAL REPORT



Aviation

Domestic airline on time performance
February 2021

© Commonwealth of Australia 2021

ISSN: 1832-0759

Ownership of intellectual property rights in this publication

Unless otherwise noted, copyright (and any other intellectual property rights, if any) in this publication is owned by the Commonwealth of Australia (referred to below as the Commonwealth).

Disclaimer

The material contained in this publication is made available on the understanding that the Commonwealth is not providing professional advice, and that users exercise their own skill and care with respect to its use, and seek independent advice if necessary.

The Commonwealth makes no representations or warranties as to the contents or accuracy of the information contained in this publication. To the extent permitted by law, the Commonwealth disclaims liability to any person or organisation in respect of anything done, or omitted to be done, in reliance upon information contained in this publication.

Creative Commons licence

With the exception of (a) the Coat of Arms; and (b) the Department of Infrastructure, Transport, Regional Development and Communications' photos and graphics, copyright in this publication is licensed under a Creative Commons Attribution 3.0 Australia Licence.

Creative Commons Attribution 3.0 Australia Licence is a standard form licence agreement that allows you to copy, communicate and adapt this publication provided that you attribute the work to the Commonwealth and abide by the other licence terms. A summary of the licence terms is available from <http://creativecommons.org/licenses/by/3.0/au/deed.en>. The full licence terms are available from <http://creativecommons.org/licenses/by/3.0/au/legalcode>.

Use of the Coat of Arms

The Department of the Prime Minister and Cabinet sets the terms under which the Coat of Arms is used. Please refer to the Department's Commonwealth Coat of Arms and Government branding web page <http://www.dpmpc.gov.au/guidelines/index.cfm#brand> and, in particular, the Guidelines on the use of the Commonwealth Coat of Arms publication.

An appropriate citation for this report is:

Bureau of Infrastructure and Transport Research Economics (BITRE), 2021, Domestic airline on time performance, Statistical Report, BITRE, Canberra ACT.

Contact us

This publication is available in PDF format. All other rights are reserved, including in relation to any Departmental logos or trade marks which may exist. For enquiries regarding the licence and any use of this publication, please contact:

Bureau of Infrastructure and Transport Research Economics (BITRE)
Department of Infrastructure, Transport, Regional Development and Communications
GPO Box 501, Canberra ACT 2601, Australia
Telephone: (international) +61 2 6274 7210
Fax: (international) +61 2 6274 6855
Email: bitre@infrastructure.gov.au
Website: www.bitre.gov.au

Inquiries

Should you require additional information about the statistics contained in this publication:

Telephone (02) 6274 7790 or Facsimile (02) 6274 7727

Electronic mail: AVSTATS@infrastructure.gov.au

Web site: <http://www.bitre.gov.au/statistics/aviation/otphome.aspx>

Foreword

The Bureau of Infrastructure and Transport Research Economics (BITRE) monitors the punctuality and reliability of major domestic airlines operating between Australian airports. The purpose of this is to allow for evaluation of overall industry and individual airline performance, so that consumers of air travel can make informed decisions.

The following domestic airlines currently report this information monthly to the BITRE: Jetstar, Qantas, QantasLink, Regional Express, Virgin Australia and Virgin Australia Regional Airlines. Data has been gathered since November 2003, although some airlines commenced reporting at a later date, including Jetstar which first reported in May 2004, MacAir in July 2005, Tigerair Australia in April 2008 and Virgin Australia Regional Airlines in May 2013. MacAir ceased operations in February 2009 and data was not received for December 2008 onwards. Virgin Blue was rebranded as Virgin Australia in May 2011 and Tiger Airways was rebranded as Tigerair Australia in July 2013 and time series data in Microsoft Excel spreadsheet format on the BITRE website have been revised to reflect these changes. Services operated by Skywest on behalf of Virgin Australia using ATR/F100 aircraft commenced in November 2011 and were shown separately as Virgin Australia – ATR/F100 Operations. Virgin Australia Regional Airlines commenced operations in May 2013. It was formed after the acquisition of Skywest by Virgin Australia and represented a combination of operations previously reported under Skywest and Virgin Australia – ATR/F100 Operations. In January 2016, Virgin Australia transferred their ATR fleet from Virgin Australia Regional Airlines to Virgin Australia. Tigerair Australia ceased operations in March 2020 and data was not received for that month.

Information presented in this report is for Australian domestic routes for which the passenger load averaged 8 000 or more passengers per month over the previous six months and where two or more airlines operated in competition on those routes. There were 54 routes that met this definition in February 2021. Over time, routes which meet these criteria change as airline networks and traffic levels vary.

Participating airlines report their overall monthly network performance where this is possible.

Total industry figures encompass all services operated by reporting airlines only. These airlines collectively carried over 95 per cent of total domestic passengers (regular public transport only) in 2019.

The method of capturing on time performance varies between airlines utilising different recording systems. Jetstar and Qantas jet aircraft use Aircraft Communication Addressing and Reporting System (ACARS) to electronically measure on time performance. Regional Express, Tigerair Australia, Virgin Australia, Virgin Australia Regional Airlines and the Qantas non-jet fleet record on time performance manually using records from pilots, gate agents and/or ground crews.

After initial data is collected, aggregate reports are audited internally by participating airlines prior to publication.

Reports and detailed time series data in Microsoft Excel spreadsheet format are available from the BITRE website at: <http://www.bitre.gov.au/statistics/aviation/otphome.aspx>.

Contents

	Page
Industry performance	1
Individual routes	9
Airports.....	20
Definitions	25

Industry performance

For February 2021, on time performance over all routes operated by participating airlines (Jetstar, Qantas, QantasLink, Regional Express, Virgin Australia and Virgin Australia Regional Airlines) averaged 90.3 per cent for on time arrivals and 89.9 per cent for on time departures. The cancellation rate for the month was 8.7 per cent. The equivalent figures for February 2020 were 75.3 per cent for on time arrivals, 77.9 per cent for on time departures and 3.0 per cent for cancellations.

This month's on time arrivals figure was higher than the long term average performance for all routes (82.2 per cent) and the on time departures figure was also higher than the long term average (83.5 per cent). The rate of cancellations was higher than the long term average of 1.7 per cent.

The Virgin Australia network (Virgin Australia and Virgin Australia Regional Airlines combined operations) recorded 91.8 per cent for on time arrivals while the Qantas network (Qantas and QantasLink combined operations) recorded 89.4 per cent. Virgin Australia achieved the highest on time arrivals among the major domestic airlines at 92.2 per cent followed by Jetstar at 90.8 per cent and Qantas at 90.3 per cent. Of the regional airlines, Regional Express recorded 91.3 per cent for on time arrivals, followed by QantasLink at 88.8 per cent and Virgin Australia Regional Airlines at 85.3 per cent.

The Virgin Australia network recorded 90.1 per cent for on time departures while the Qantas network recorded 89.9 per cent. Qantas achieved the highest level of on time departures among the major domestic airlines for February 2021 at 90.6 per cent, followed by Virgin Australia at 90.3 per cent and Jetstar at 88.5 per cent. Of the regional airlines, Regional Express recorded 92.3 per cent for on time departures, followed by QantasLink at 89.5 per cent and Virgin Australia Regional Airlines at 87.8 per cent.

Jetstar recorded the highest percentage of cancellations (at 15.2 per cent) during the month, followed by Qantas (at 10.6 per cent), Virgin Australia (at 9.6 per cent), Virgin Australia Regional Airlines (at 5.9 per cent), QantasLink (at 5.4 per cent) and Regional Express (at 1.0 per cent).

Airlines' on time performance varies across the routes they serve. Individual route data by specific airline for 54 routes are shown on pages 9-19.

Of the 54 routes which met the criteria for on time performance reporting in February 2021, the Cairns-Sydney and Adelaide-Alice Springs routes had the highest percentage of on time arrivals (100.0 per cent) and the Adelaide-Canberra route had the highest percentage of on time departures (97.8 per cent). The Perth-Broome route had the lowest percentage of on time arrivals (64.1 per cent) and the Perth-Brisbane route had the lowest percentage of on time departures (63.2 per cent).

Cancellations were highest on the Adelaide-Melbourne route at 36.3 per cent, followed by the Melbourne-Adelaide route at 36.1 per cent, the Perth-Melbourne route at 30.8 per cent, the Cairns-Melbourne and Melbourne-Cairns routes at 29.1 per cent and the Melbourne-Gold Coast

route at 27.6 per cent. COVID-19 related travel restrictions and border closures continue to affect the cancellation rate.

Alice Springs Airport recorded the highest percentage of on time arrivals (100.0 per cent) and Mackay airport recorded the highest percentage of on time departures (96.9 per cent). Broome Airport recorded the lowest percentage of on time arrivals (64.1 per cent) and Newman Airport recorded the lowest percentage of on time departures (75.4 per cent). These figures only refer to reported routes and do not cover all flights at these airports.

Table 1 On time performance for February 2021 — Total Industry

	<i>Sectors</i>		<i>Arrivals On Time</i>		<i>Departures On Time</i>		<i>Cancellations</i>	
	<i>Scheduled</i>	<i>Flown</i>	<i>No.</i>	<i>%</i>	<i>No.</i>	<i>%</i>	<i>No.</i>	<i>%</i>
Jetstar	4 238	3 595	3 263	90.8	3 180	88.5	643	15.2
Qantas - all QF designated services	10 686	9 897	8 845	89.4	8 898	89.9	789	7.4
Regional Express	2 183	2 161	1 974	91.3	1 994	92.3	22	1.0
Virgin Australia - all VA designated services	4 411	3 996	3 667	91.8	3 601	90.1	415	9.4
All Airlines	21 518	19 649	17 749	90.3	17 673	89.9	1 869	8.7
Individual operating entities								
Qantas	4 111	3 677	3 321	90.3	3 332	90.6	434	10.6
QantasLink	6 575	6 220	5 524	88.8	5 566	89.5	355	5.4
Virgin Australia	4 158	3 758	3 464	92.2	3 392	90.3	400	9.6
Virgin Australia Regional Airlines	253	238	203	85.3	209	87.8	15	5.9

Total airline network data (including routes not shown in this report).

Airlines' on time performance varies across the routes they serve. Individual route data by specific airline for 54 routes are shown on pages 9-19.

Table 2 Top ten routes for on time performance for February 2021 (participating airlines only)

<i>Arrivals</i>		<i>Departures</i>	
<i>Route</i>	<i>On Time (%)</i>	<i>Route</i>	<i>On Time (%)</i>
Cairns-Sydney	100.0	Adelaide-Canberra	97.8
Adelaide-Alice Springs	100.0	Brisbane-Emerald	97.6
Launceston-Melbourne	99.2	Adelaide-Alice Springs	97.5
Brisbane-Emerald	98.4	Launceston-Melbourne	96.9
Gold Coast-Melbourne	98.4	Mackay-Brisbane	96.9
Mackay-Brisbane	97.4	Emerald-Brisbane	96.8
Brisbane-Hobart	97.4	Gold Coast-Melbourne	96.2
Hamilton Island-Sydney	97.3	Cairns-Sydney	96.1
Sydney-Hamilton Island	97.3	Melbourne-Perth	95.7
Melbourne-Gold Coast	96.7	Cairns-Brisbane	95.1

Table 3 Top ten airports for on time performance for February 2021 (participating airlines and reported routes only)

<i>Arrivals</i>		<i>Departures</i>	
<i>Airport</i>	<i>On Time (%)</i>	<i>Airport</i>	<i>On Time (%)</i>
Alice Springs	100.0	Mackay	96.9
Emerald	98.4	Emerald	96.8
Coffs Harbour	94.9	Mount Isa	95.0
Mackay	94.3	Newcastle	94.7
Newcastle	94.3	Wagga Wagga	93.9
Gold Coast	94.1	Gold Coast	93.7
Port Lincoln	94.0	Cairns	92.7
Hobart	93.9	Canberra	92.4
Launceston	93.3	Launceston	92.3
Mount Isa	93.3	Dubbo	91.8

Total industry on time performance

Figure 1 On time performance (by month from February 2018)—Total Industry

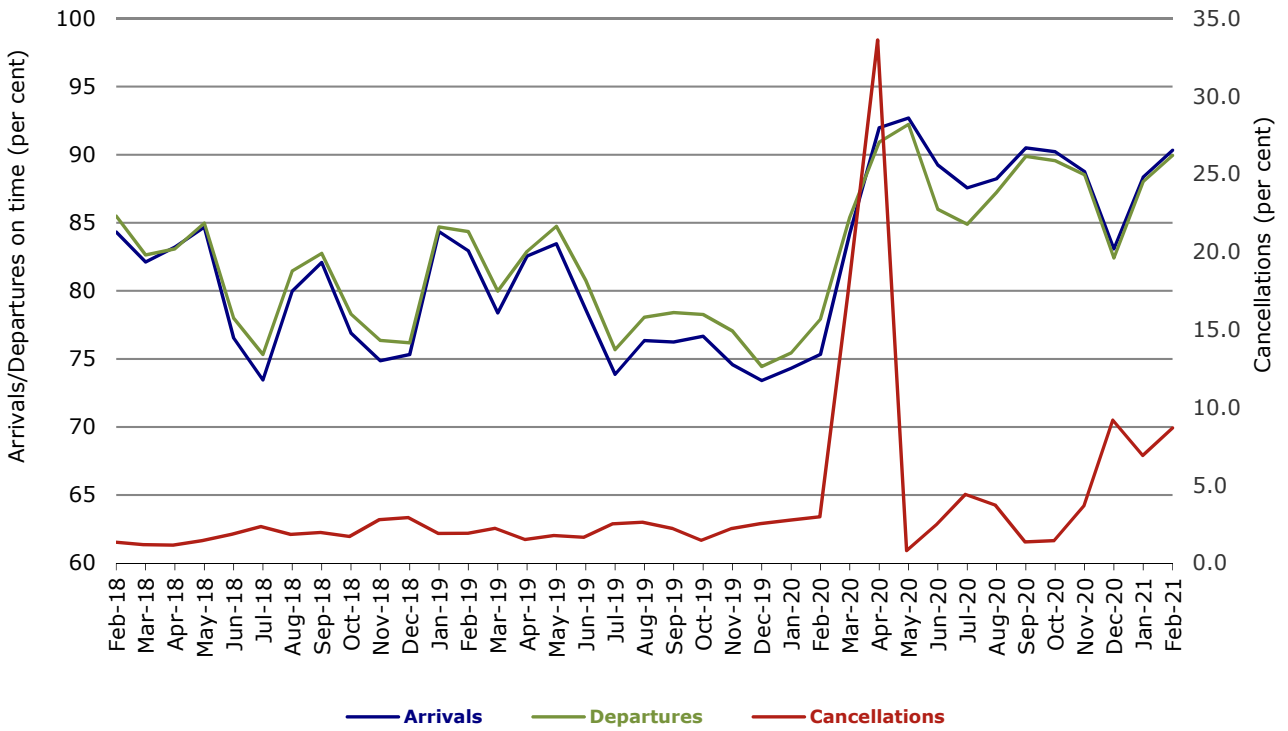


Figure 2 Arrivals on time (by month from February 2020)

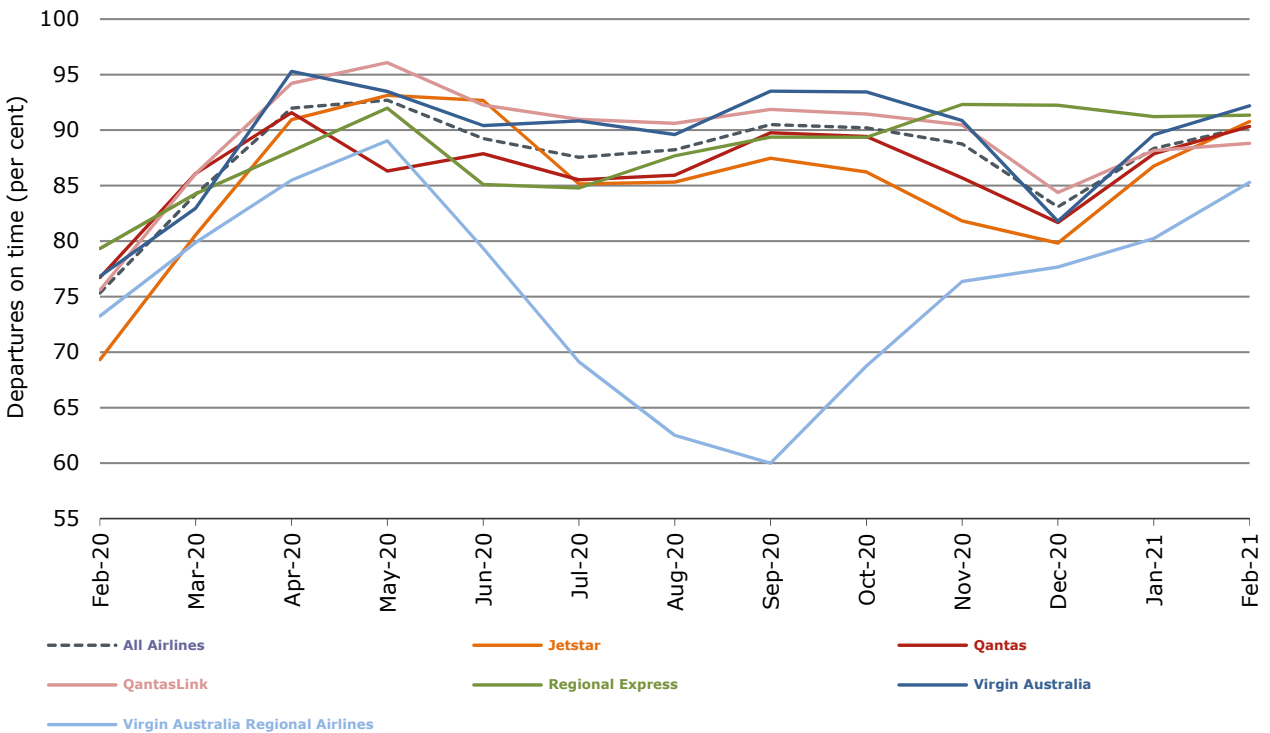


Figure 3 Departures on time (by month from February 2020)

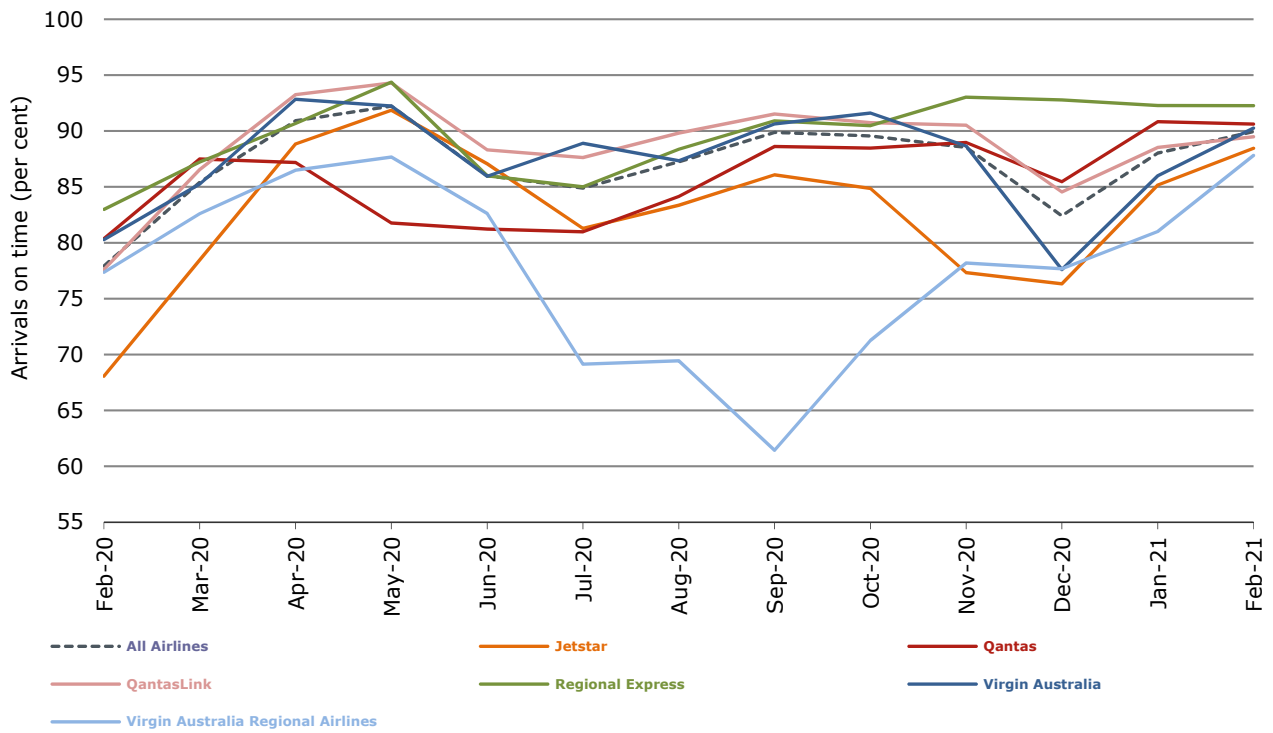
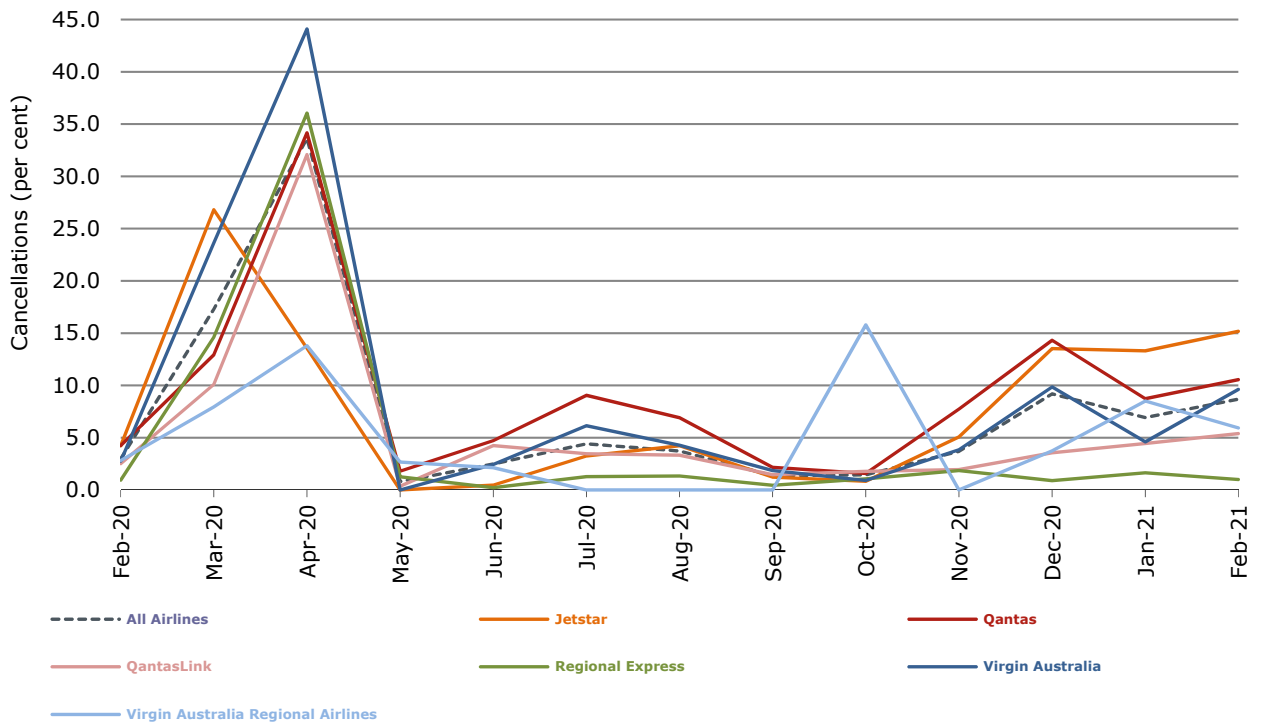


Figure 4 Cancellations (by month from February 2020)



Major domestic airlines on time performance

Figure 5 On time performance (by month from February 2018)—Jetstar

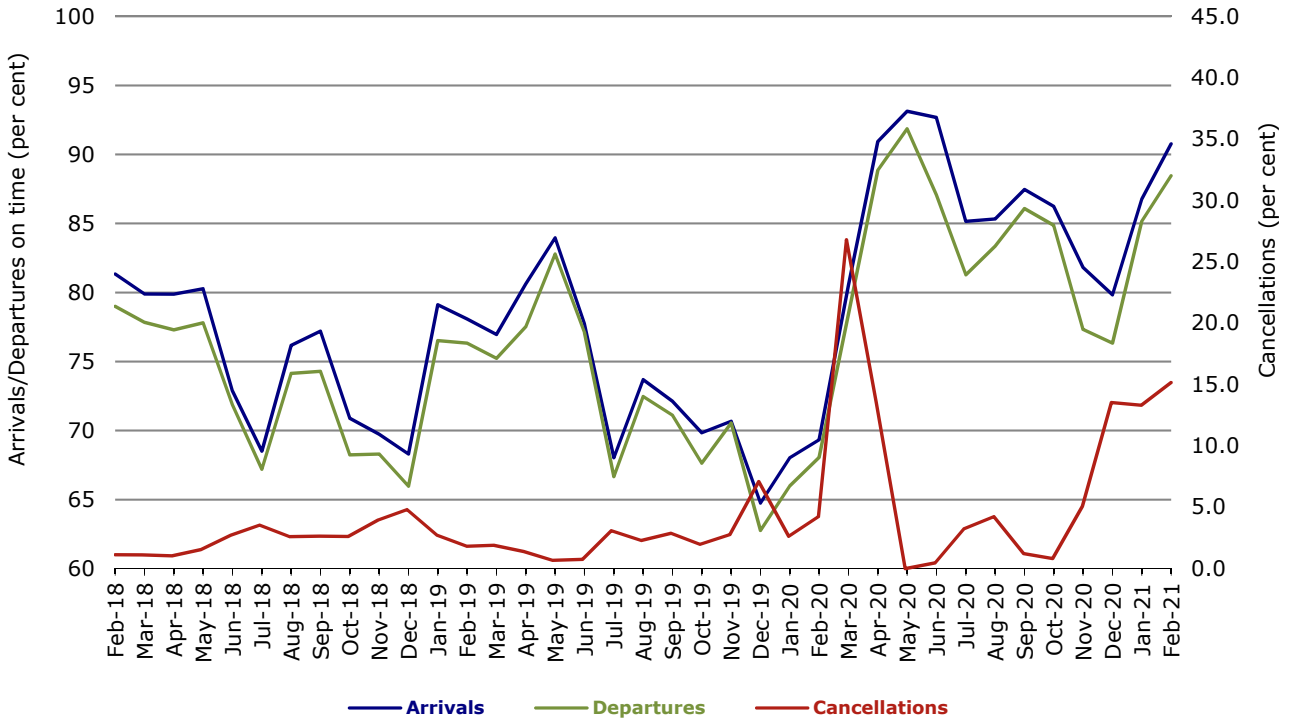


Figure 6 On time performance (by month from February 2018)—Qantas

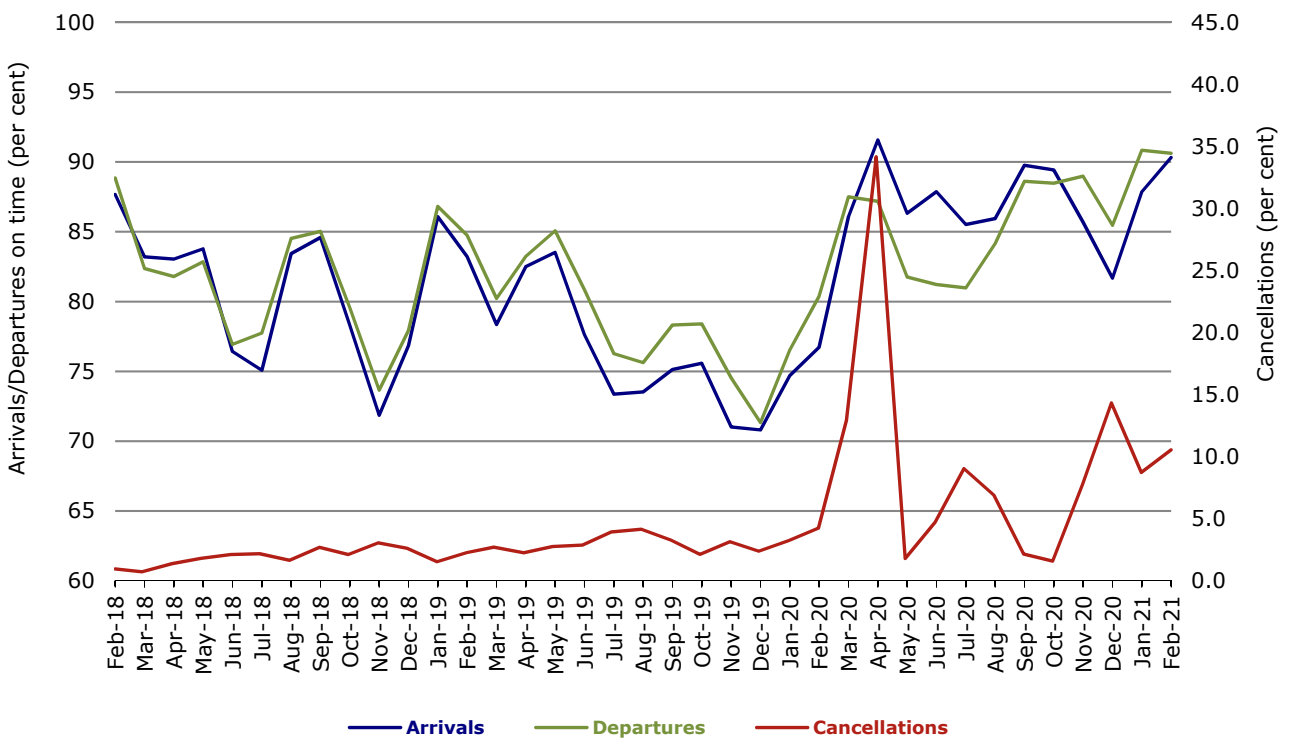
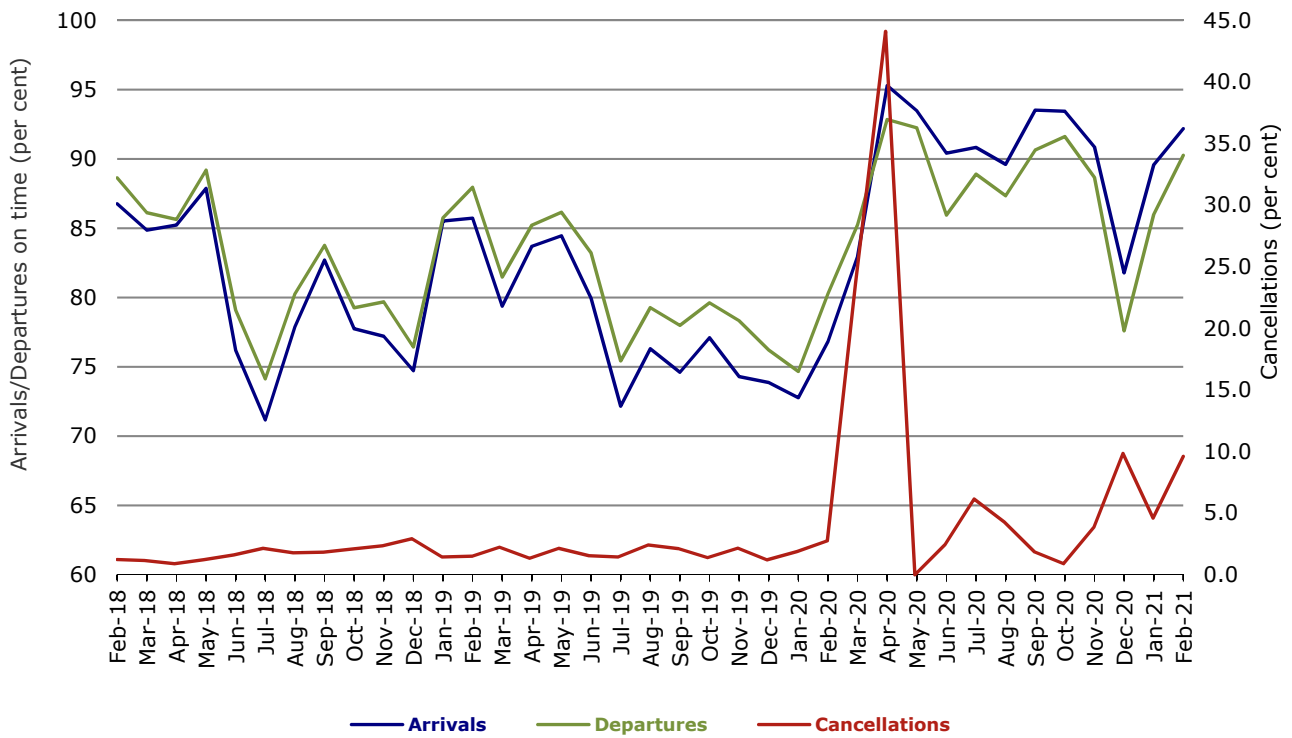


Figure 7 On time performance (by month from February 2018)—Virgin Australia



Major regional airlines on time performance

Figure 8 On time performance (by month from February 2018)—QantasLink

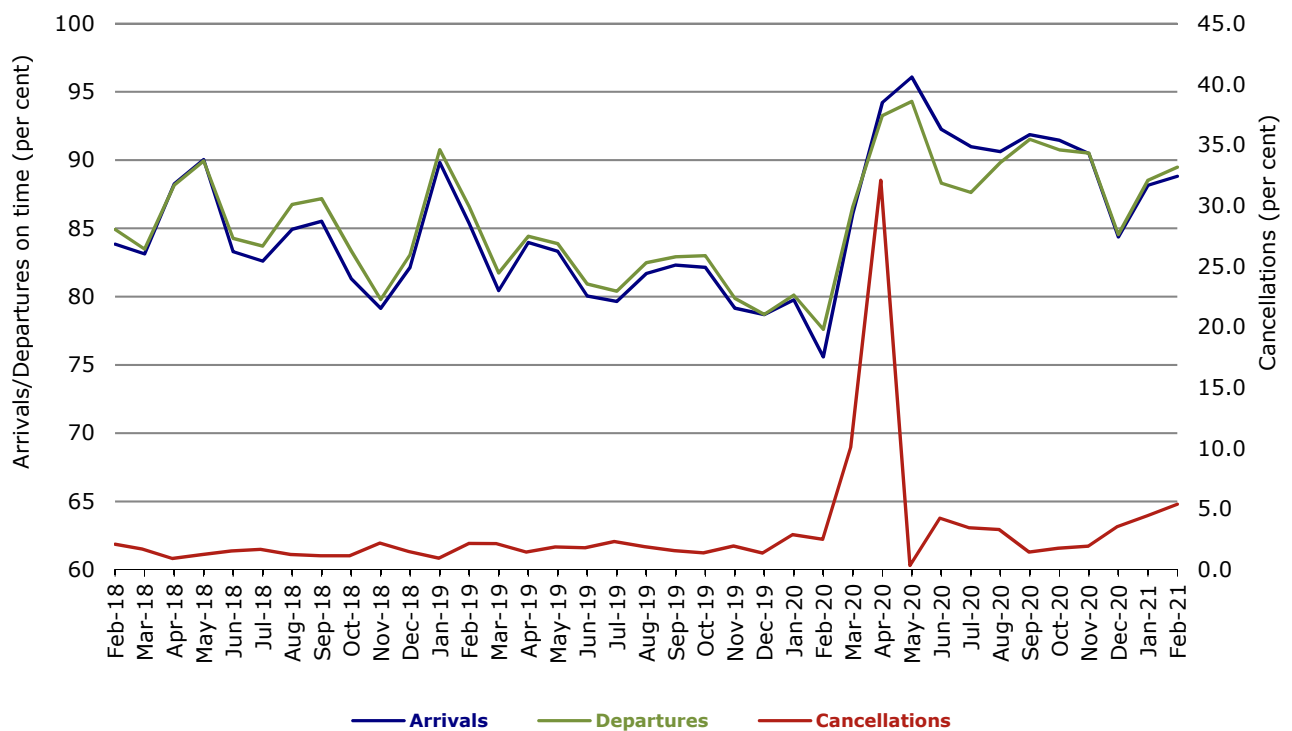


Figure 9 On time performance (by month from February 2018)—Regional Express

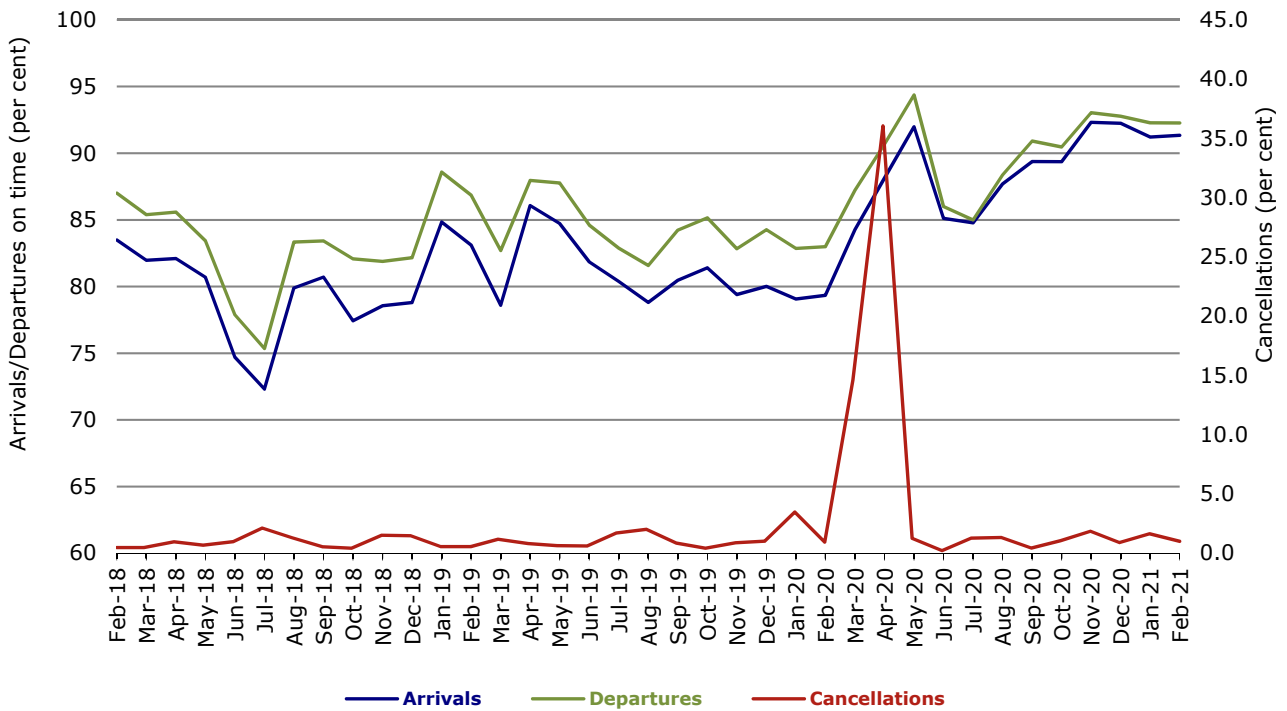
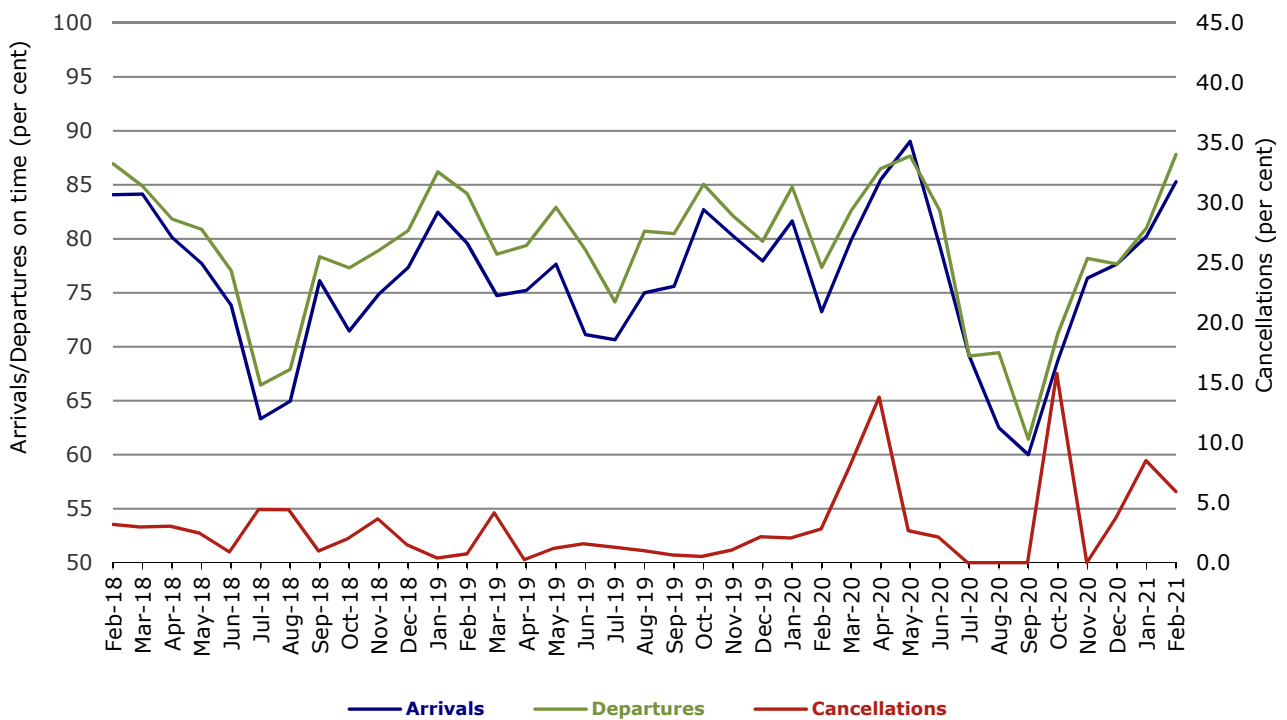


Figure 10 On time performance (by month from February 2018) Virgin Australia Regional Airlines



Individual routes

On time performance is reported for all routes where the passenger load averages over 8000 passengers per month over the previous six months, and where two or more airlines operate in competition on those routes. There are now 54 routes which meet this definition. Over time, however, routes which meet this definition may change as airline networks and traffic levels vary.

	Sectors		Arrivals On Time		Departures On Time		Cancellations	
	Sched.	Flown	No.	%	No.	%	No.	%
Adelaide-Alice Springs								
Qantas	28	28	28	100.0	27	96.4	0	0.0
Virgin Australia	12	12	12	100.0	12	100.0	0	0.0
All Airlines	40	40	40	100.0	39	97.5	0	0.0
Adelaide-Brisbane								
Jetstar	24	24	23	95.8	22	91.7	0	0.0
Qantas	75	74	66	89.2	64	86.5	1	1.3
Virgin Australia	63	63	60	95.2	57	90.5	0	0.0
All Airlines	162	161	149	92.5	143	88.8	1	0.6
Adelaide-Canberra								
Qantas	24	24	24	100.0	24	100.0	0	0.0
QantasLink	5	5	4	80.0	4	80.0	0	0.0
Virgin Australia	16	16	15	93.8	16	100.0	0	0.0
All Airlines	45	45	43	95.6	44	97.8	0	0.0
Adelaide-Gold Coast								
Jetstar	24	24	21	87.5	21	87.5	0	0.0
Virgin Australia	28	28	28	100.0	27	96.4	0	0.0
All Airlines	52	52	49	94.2	48	92.3	0	0.0
Adelaide-Melbourne								
Jetstar	96	43	40	93.0	40	93.0	53	55.2
Qantas	114	83	78	94.0	76	91.6	31	27.2
Virgin Australia	79	58	55	94.8	53	91.4	21	26.6
All Airlines	289	184	173	94.0	169	91.8	105	36.3
Adelaide-Perth								
Jetstar	20	15	15	100.0	14	93.3	5	25.0
Qantas	56	51	48	94.1	45	88.2	5	8.9
Virgin Australia	28	28	26	92.9	26	92.9	0	0.0
All Airlines	104	94	89	94.7	85	90.4	10	9.6
Adelaide-Port Lincoln								
QantasLink	70	70	69	98.6	69	98.6	0	0.0
Regional Express	98	98	89	90.8	89	90.8	0	0.0
All Airlines	168	168	158	94.0	158	94.0	0	0.0
Adelaide-Sydney								
Jetstar	53	51	46	90.2	46	90.2	2	3.8
Qantas	68	68	53	77.9	58	85.3	0	0.0
Virgin Australia	39	39	38	97.4	38	97.4	0	0.0
All Airlines	160	158	137	86.7	142	89.9	2	1.3
Albury-Sydney								
QantasLink	60	60	54	90.0	54	90.0	0	0.0
Regional Express	23	23	22	95.7	22	95.7	0	0.0
All Airlines	83	83	76	91.6	76	91.6	0	0.0

	Sectors		Arrivals On Time		Departures On Time		Cancellations	
	Sched.	Flown	No.	%	No.	%	No.	%
Alice Springs-Adelaide								
Qantas	28	28	24	85.7	23	82.1	0	0.0
Virgin Australia	12	12	12	100.0	12	100.0	0	0.0
All Airlines	40	40	36	90.0	35	87.5	0	0.0
Armidale-Sydney								
QantasLink	41	40	32	80.0	31	77.5	1	2.4
Regional Express	8	8	5	62.5	6	75.0	0	0.0
All Airlines	49	48	37	77.1	37	77.1	1	2.0
Ballina-Sydney								
Jetstar	75	75	66	88.0	65	86.7	0	0.0
Qantas	20	20	17	85.0	18	90.0	0	0.0
QantasLink	59	59	49	83.1	50	84.7	0	0.0
Regional Express	8	8	7	87.5	7	87.5	0	0.0
Virgin Australia	28	28	24	85.7	22	78.6	0	0.0
All Airlines	190	190	163	85.8	162	85.3	0	0.0
Brisbane-Adelaide								
Jetstar	24	24	22	91.7	23	95.8	0	0.0
Qantas	75	74	67	90.5	67	90.5	1	1.3
Virgin Australia	64	64	62	96.9	60	93.8	0	0.0
All Airlines	163	162	151	93.2	150	92.6	1	0.6
Brisbane-Cairns								
Jetstar	79	77	65	84.4	66	85.7	2	2.5
Qantas	90	90	84	93.3	83	92.2	0	0.0
QantasLink	4	4	4	100.0	4	100.0	0	0.0
Virgin Australia	77	74	61	82.4	65	87.8	3	3.9
All Airlines	250	245	214	87.3	218	89.0	5	2.0
Brisbane-Canberra								
Qantas	17	17	17	100.0	17	100.0	0	0.0
QantasLink	133	130	127	97.7	124	95.4	3	2.3
Virgin Australia	60	60	54	90.0	50	83.3	0	0.0
All Airlines	210	207	198	95.7	191	92.3	3	1.4
Brisbane-Darwin								
Jetstar	16	16	15	93.8	13	81.3	0	0.0
Qantas	24	24	21	87.5	20	83.3	0	0.0
Virgin Australia	26	26	21	80.8	21	80.8	0	0.0
All Airlines	66	66	57	86.4	54	81.8	0	0.0
Brisbane-Emerald								
QantasLink	112	106	104	98.1	103	97.2	6	5.4
Virgin Australia	20	20	20	100.0	20	100.0	0	0.0
All Airlines	132	126	124	98.4	123	97.6	6	4.5
Brisbane-Gladstone								
QantasLink	70	70	65	92.9	67	95.7	0	0.0
Virgin Australia	48	48	43	89.6	45	93.8	0	0.0
All Airlines	118	118	108	91.5	112	94.9	0	0.0
Brisbane-Hamilton Island								
Qantas	28	28	27	96.4	27	96.4	0	0.0
Virgin Australia	30	29	24	82.8	27	93.1	1	3.3
All Airlines	58	57	51	89.5	54	94.7	1	1.7

	<i>Sectors</i>		<i>Arrivals On Time</i>		<i>Departures On Time</i>		<i>Cancellations</i>	
	<i>Sched.</i>	<i>Flown</i>	<i>No.</i>	<i>%</i>	<i>No.</i>	<i>%</i>	<i>No.</i>	<i>%</i>
Brisbane-Hobart								
Jetstar	28	28	26	92.9	25	89.3	0	0.0
QantasLink	20	20	20	100.0	19	95.0	0	0.0
Virgin Australia	28	28	28	100.0	25	89.3	0	0.0
All Airlines	76	76	74	97.4	69	90.8	0	0.0
Brisbane-Mackay								
Jetstar	28	28	28	100.0	26	92.9	0	0.0
Qantas	66	66	63	95.5	63	95.5	0	0.0
QantasLink	32	32	31	96.9	30	93.8	0	0.0
Virgin Australia	68	66	59	89.4	57	86.4	2	2.9
All Airlines	194	192	181	94.3	176	91.7	2	1.0
Brisbane-Melbourne								
Jetstar	92	54	47	87.0	41	75.9	38	41.3
Qantas	159	125	106	84.8	113	90.4	34	21.4
Virgin Australia	89	72	64	88.9	59	81.9	17	19.1
All Airlines	340	251	217	86.5	213	84.9	89	26.2
Brisbane-Mount Isa								
Qantas	32	32	30	93.8	31	96.9	0	0.0
QantasLink	16	16	15	93.8	13	81.3	0	0.0
Virgin Australia	12	12	11	91.7	11	91.7	0	0.0
All Airlines	60	60	56	93.3	55	91.7	0	0.0
Brisbane-Newcastle								
Jetstar	65	63	59	93.7	58	92.1	2	3.1
QantasLink	50	49	46	93.9	46	93.9	1	2.0
Virgin Australia	29	29	28	96.6	26	89.7	0	0.0
All Airlines	144	141	133	94.3	130	92.2	3	2.1
Brisbane-Perth								
Qantas	39	36	30	83.3	27	75.0	3	7.7
Virgin Australia	22	22	18	81.8	16	72.7	0	0.0
All Airlines	61	58	48	82.8	43	74.1	3	4.9
Brisbane-Proserpine								
Jetstar	28	28	23	82.1	25	89.3	0	0.0
Virgin Australia	28	28	26	92.9	28	100.0	0	0.0
All Airlines	56	56	49	87.5	53	94.6	0	0.0
Brisbane-Rockhampton								
QantasLink	112	111	102	91.9	105	94.6	1	0.9
Virgin Australia	67	63	48	76.2	52	82.5	4	6.0
All Airlines	179	174	150	86.2	157	90.2	5	2.8
Brisbane-Sydney								
Jetstar	78	71	64	90.1	60	84.5	7	9.0
Qantas	277	269	253	94.1	249	92.6	8	2.9
Virgin Australia	191	188	183	97.3	177	94.1	3	1.6
All Airlines	546	528	500	94.7	486	92.0	18	3.3
Brisbane-Townsville								
Jetstar	40	40	36	90.0	35	87.5	0	0.0
Qantas	92	92	86	93.5	89	96.7	0	0.0
Virgin Australia	67	64	55	85.9	52	81.3	3	4.5
All Airlines	199	196	177	90.3	176	89.8	3	1.5

	<i>Sectors</i>		<i>Arrivals On Time</i>		<i>Departures On Time</i>		<i>Cancellations</i>	
	<i>Sched.</i>	<i>Flown</i>	<i>No.</i>	<i>%</i>	<i>No.</i>	<i>%</i>	<i>No.</i>	<i>%</i>
Broome-Perth								
QantasLink	75	65	59	90.8	55	84.6	10	13.3
Virgin Australia	28	28	27	96.4	26	92.9	0	0.0
All Airlines	103	93	86	92.5	81	87.1	10	9.7
Cairns-Brisbane								
Jetstar	79	77	71	92.2	72	93.5	2	2.5
Qantas	89	89	88	98.9	88	98.9	0	0.0
QantasLink	4	4	4	100.0	4	100.0	0	0.0
Virgin Australia	77	74	69	93.2	68	91.9	3	3.9
All Airlines	249	244	232	95.1	232	95.1	5	2.0
Cairns-Melbourne								
Jetstar	56	40	34	85.0	35	87.5	16	28.6
Qantas	14	11	9	81.8	9	81.8	3	21.4
Virgin Australia	19	12	12	100.0	12	100.0	7	36.8
All Airlines	89	63	55	87.3	56	88.9	26	29.2
Cairns-Sydney								
Jetstar	24	22	22	100.0	22	100.0	2	8.3
Qantas	10	10	10	100.0	8	80.0	0	0.0
Virgin Australia	20	19	19	100.0	19	100.0	1	5.0
All Airlines	54	51	51	100.0	49	96.1	3	5.6
Cairns-Townsville								
QantasLink	84	84	73	86.9	73	86.9	0	0.0
Regional Express	8	8	7	87.5	7	87.5	0	0.0
All Airlines	92	92	80	87.0	80	87.0	0	0.0
Canberra-Adelaide								
Qantas	24	24	24	100.0	24	100.0	0	0.0
QantasLink	5	5	3	60.0	3	60.0	0	0.0
Virgin Australia	16	16	15	93.8	15	93.8	0	0.0
All Airlines	45	45	42	93.3	42	93.3	0	0.0
Canberra-Brisbane								
Qantas	17	17	17	100.0	16	94.1	0	0.0
QantasLink	134	130	122	93.8	121	93.1	4	3.0
Virgin Australia	59	59	52	88.1	51	86.4	0	0.0
All Airlines	210	206	191	92.7	188	91.3	4	1.9
Canberra-Melbourne								
Qantas	11	11	11	100.0	11	100.0	0	0.0
QantasLink	164	126	115	91.3	116	92.1	38	23.2
Virgin Australia	42	33	32	97.0	32	97.0	9	21.4
All Airlines	217	170	158	92.9	159	93.5	47	21.7
Coffs Harbour-Sydney								
QantasLink	82	81	77	95.1	73	90.1	1	1.2
Virgin Australia	16	16	15	93.8	15	93.8	0	0.0
All Airlines	98	97	92	94.8	88	90.7	1	1.0
Darwin-Brisbane								
Jetstar	16	16	14	87.5	12	75.0	0	0.0
Qantas	24	24	18	75.0	16	66.7	0	0.0
Virgin Australia	26	26	19	73.1	20	76.9	0	0.0
All Airlines	66	66	51	77.3	48	72.7	0	0.0

	Sectors		Arrivals On Time		Departures On Time		Cancellations	
	Sched.	Flown	No.	%	No.	%	No.	%
Darwin-Perth								
Qantas	22	22	16	72.7	18	81.8	0	0.0
Virgin Australia	12	11	10	90.9	10	90.9	1	8.3
All Airlines	34	33	26	78.8	28	84.8	1	2.9
Dubbo-Sydney								
QantasLink	65	65	60	92.3	59	90.8	0	0.0
Regional Express	45	45	42	93.3	42	93.3	0	0.0
All Airlines	110	110	102	92.7	101	91.8	0	0.0
Emerald-Brisbane								
QantasLink	112	106	101	95.3	102	96.2	6	5.4
Virgin Australia	20	20	19	95.0	20	100.0	0	0.0
All Airlines	132	126	120	95.2	122	96.8	6	4.5
Gladstone-Brisbane								
QantasLink	70	70	65	92.9	64	91.4	0	0.0
Virgin Australia	48	48	42	87.5	44	91.7	0	0.0
All Airlines	118	118	107	90.7	108	91.5	0	0.0
Gold Coast-Adelaide								
Jetstar	24	24	21	87.5	20	83.3	0	0.0
Virgin Australia	28	28	28	100.0	28	100.0	0	0.0
All Airlines	52	52	49	94.2	48	92.3	0	0.0
Gold Coast-Melbourne								
Jetstar	135	99	98	99.0	95	96.0	36	26.7
Qantas	27	24	24	100.0	24	100.0	3	11.1
Virgin Australia	89	61	59	96.7	58	95.1	28	31.5
All Airlines	251	184	181	98.4	177	96.2	67	26.7
Gold Coast-Sydney								
Jetstar	116	112	109	97.3	104	92.9	4	3.4
Qantas	45	44	42	95.5	43	97.7	1	2.2
Virgin Australia	72	70	66	94.3	61	87.1	2	2.8
All Airlines	233	226	217	96.0	208	92.0	7	3.0
Hamilton Island-Brisbane								
Qantas	28	28	27	96.4	27	96.4	0	0.0
Virgin Australia	30	29	23	79.3	21	72.4	1	3.3
All Airlines	58	57	50	87.7	48	84.2	1	1.7
Hamilton Island-Sydney								
Jetstar	11	11	10	90.9	9	81.8	0	0.0
Qantas	8	8	8	100.0	8	100.0	0	0.0
Virgin Australia	18	18	18	100.0	17	94.4	0	0.0
All Airlines	37	37	36	97.3	34	91.9	0	0.0
Hobart-Brisbane								
Jetstar	28	28	24	85.7	25	89.3	0	0.0
QantasLink	20	20	18	90.0	17	85.0	0	0.0
Virgin Australia	28	28	27	96.4	27	96.4	0	0.0
All Airlines	76	76	69	90.8	69	90.8	0	0.0
Hobart-Melbourne								
Jetstar	125	95	87	91.6	83	87.4	30	24.0
QantasLink	63	59	52	88.1	53	89.8	4	6.3
Virgin Australia	44	33	28	84.8	29	87.9	11	25.0
All Airlines	232	187	167	89.3	165	88.2	45	19.4

	<i>Sectors</i>		<i>Arrivals On Time</i>		<i>Departures On Time</i>		<i>Cancellations</i>	
	<i>Sched.</i>	<i>Flown</i>	<i>No.</i>	<i>%</i>	<i>No.</i>	<i>%</i>	<i>No.</i>	<i>%</i>
Hobart-Sydney								
Jetstar	48	48	46	95.8	43	89.6	0	0.0
QantasLink	23	23	21	91.3	21	91.3	0	0.0
Virgin Australia	26	26	24	92.3	23	88.5	0	0.0
All Airlines	97	97	91	93.8	87	89.7	0	0.0
Kalgoorlie-Perth								
Qantas	7	7	5	71.4	5	71.4	0	0.0
QantasLink	60	54	44	81.5	42	77.8	6	10.0
Virgin Australia	21	19	13	68.4	13	68.4	2	9.5
Virgin Australia Regional Airlines	31	30	27	90.0	27	90.0	1	3.2
All Airlines	119	110	89	80.9	87	79.1	9	7.6
Karratha-Perth								
Qantas	17	15	13	86.7	13	86.7	2	11.8
QantasLink	115	102	75	73.5	74	72.5	13	11.3
Virgin Australia	40	39	38	97.4	37	94.9	1	2.5
Virgin Australia Regional Airlines	8	8	7	87.5	7	87.5	0	0.0
All Airlines	180	164	133	81.1	131	79.9	16	8.9
Launceston-Melbourne								
Jetstar	80	60	59	98.3	56	93.3	20	25.0
QantasLink	51	43	43	100.0	43	100.0	8	15.7
Virgin Australia	37	26	26	100.0	26	100.0	11	29.7
All Airlines	168	129	128	99.2	125	96.9	39	23.2
Launceston-Sydney								
Jetstar	34	34	29	85.3	27	79.4	0	0.0
QantasLink	12	11	10	90.9	10	90.9	1	8.3
Virgin Australia	21	21	18	85.7	18	85.7	0	0.0
All Airlines	67	66	57	86.4	55	83.3	1	1.5
Mackay-Brisbane								
Jetstar	28	28	28	100.0	28	100.0	0	0.0
Qantas	65	65	64	98.5	64	98.5	0	0.0
QantasLink	32	32	31	96.9	31	96.9	0	0.0
Virgin Australia	68	66	63	95.5	62	93.9	2	2.9
All Airlines	193	191	186	97.4	185	96.9	2	1.0
Melbourne-Adelaide								
Jetstar	96	43	42	97.7	40	93.0	53	55.2
Qantas	114	84	72	85.7	78	92.9	30	26.3
Virgin Australia	78	57	54	94.7	55	96.5	21	26.9
All Airlines	288	184	168	91.3	173	94.0	104	36.1
Melbourne-Brisbane								
Jetstar	92	54	45	83.3	41	75.9	38	41.3
Qantas	156	122	104	85.2	106	86.9	34	21.8
Virgin Australia	89	72	68	94.4	68	94.4	17	19.1
All Airlines	337	248	217	87.5	215	86.7	89	26.4
Melbourne-Cairns								
Jetstar	56	40	35	87.5	34	85.0	16	28.6
Qantas	14	11	8	72.7	9	81.8	3	21.4
Virgin Australia	19	12	12	100.0	12	100.0	7	36.8
All Airlines	89	63	55	87.3	55	87.3	26	29.2

	<i>Sectors</i>		<i>Arrivals On Time</i>		<i>Departures On Time</i>		<i>Cancellations</i>	
	<i>Sched.</i>	<i>Flown</i>	<i>No.</i>	<i>%</i>	<i>No.</i>	<i>%</i>	<i>No.</i>	<i>%</i>
Melbourne-Canberra								
Qantas	12	12	11	91.7	11	91.7	0	0.0
QantasLink	165	125	108	86.4	110	88.0	40	24.2
Virgin Australia	42	33	31	93.9	31	93.9	9	21.4
All Airlines	219	170	150	88.2	152	89.4	49	22.4
Melbourne-Gold Coast								
Jetstar	134	96	92	95.8	86	89.6	38	28.4
Qantas	27	25	25	100.0	25	100.0	2	7.4
Virgin Australia	89	60	58	96.7	57	95.0	29	32.6
All Airlines	250	181	175	96.7	168	92.8	69	27.6
Melbourne-Hobart								
Jetstar	125	95	89	93.7	87	91.6	30	24.0
QantasLink	63	59	52	88.1	55	93.2	4	6.3
Virgin Australia	44	32	32	100.0	32	100.0	12	27.3
All Airlines	232	186	173	93.0	174	93.5	46	19.8
Melbourne-Launceston								
Jetstar	80	60	57	95.0	54	90.0	20	25.0
QantasLink	51	43	42	97.7	41	95.3	8	15.7
Virgin Australia	37	26	25	96.2	25	96.2	11	29.7
All Airlines	168	129	124	96.1	120	93.0	39	23.2
Melbourne-Mildura								
QantasLink	64	54	48	88.9	49	90.7	10	15.6
Regional Express	28	28	25	89.3	26	92.9	0	0.0
All Airlines	92	82	73	89.0	75	91.5	10	10.9
Melbourne-Newcastle								
Jetstar	37	33	30	90.9	30	90.9	4	10.8
Virgin Australia	19	18	18	100.0	18	100.0	1	5.3
All Airlines	56	51	48	94.1	48	94.1	5	8.9
Melbourne-Perth								
Jetstar	20	3	2	66.7	3	100.0	17	85.0
Qantas	20	20	10	50.0	19	95.0	0	0.0
Virgin Australia	23	23	21	91.3	22	95.7	0	0.0
All Airlines	63	46	33	71.7	44	95.7	17	27.0
Melbourne-Sunshine Coast								
Jetstar	58	44	39	88.6	38	86.4	14	24.1
QantasLink	23	19	16	84.2	18	94.7	4	17.4
Virgin Australia	30	29	28	96.6	29	100.0	1	3.3
All Airlines	111	92	83	90.2	85	92.4	19	17.1
Melbourne-Sydney								
Jetstar	167	136	119	87.5	115	84.6	31	18.6
Qantas	391	274	254	92.7	250	91.2	117	29.9
Virgin Australia	203	146	140	95.9	137	93.8	57	28.1
All Airlines	761	556	513	92.3	502	90.3	205	26.9
Mildura-Melbourne								
QantasLink	64	54	44	81.5	47	87.0	10	15.6
Regional Express	28	28	27	96.4	26	92.9	0	0.0
All Airlines	92	82	71	86.6	73	89.0	10	10.9

	<i>Sectors</i>		<i>Arrivals On Time</i>		<i>Departures On Time</i>		<i>Cancellations</i>	
	<i>Sched.</i>	<i>Flown</i>	<i>No.</i>	<i>%</i>	<i>No.</i>	<i>%</i>	<i>No.</i>	<i>%</i>
Mount Isa-Brisbane								
Qantas	32	32	31	96.9	31	96.9	0	0.0
QantasLink	16	16	15	93.8	15	93.8	0	0.0
Virgin Australia	12	12	10	83.3	11	91.7	0	0.0
All Airlines	60	60	56	93.3	57	95.0	0	0.0
Newcastle-Brisbane								
Jetstar	65	62	57	91.9	58	93.5	3	4.6
QantasLink	51	50	47	94.0	48	96.0	1	2.0
Virgin Australia	29	29	28	96.6	28	96.6	0	0.0
All Airlines	145	141	132	93.6	134	95.0	4	2.8
Newcastle-Melbourne								
Jetstar	36	31	29	93.5	28	90.3	5	13.9
Virgin Australia	19	18	18	100.0	18	100.0	1	5.3
All Airlines	55	49	47	95.9	46	93.9	6	10.9
Newman-Perth								
Qantas	21	19	16	84.2	16	84.2	2	9.5
QantasLink	92	79	59	74.7	56	70.9	13	14.1
Virgin Australia	34	27	19	70.4	19	70.4	7	20.6
Virgin Australia Regional Airlines	18	17	15	88.2	16	94.1	1	5.6
All Airlines	165	142	109	76.8	107	75.4	23	13.9
Perth-Adelaide								
Jetstar	20	15	14	93.3	11	73.3	5	25.0
Qantas	56	52	48	92.3	48	92.3	4	7.1
Virgin Australia	28	28	26	92.9	26	92.9	0	0.0
All Airlines	104	95	88	92.6	85	89.5	9	8.7
Perth-Brisbane								
Qantas	38	35	26	74.3	27	77.1	3	7.9
Virgin Australia	24	22	15	68.2	9	40.9	2	8.3
All Airlines	62	57	41	71.9	36	63.2	5	8.1
Perth-Broome								
QantasLink	73	64	31	48.4	52	81.3	9	12.3
Virgin Australia	28	28	28	100.0	25	89.3	0	0.0
All Airlines	101	92	59	64.1	77	83.7	9	8.9
Perth-Darwin								
Qantas	22	22	18	81.8	19	86.4	0	0.0
Virgin Australia	12	11	10	90.9	10	90.9	1	8.3
All Airlines	34	33	28	84.8	29	87.9	1	2.9
Perth-Kalgoorlie								
Qantas	7	7	5	71.4	5	71.4	0	0.0
QantasLink	60	54	45	83.3	45	83.3	6	10.0
Virgin Australia	21	19	15	78.9	16	84.2	2	9.5
Virgin Australia Regional Airlines	31	30	28	93.3	28	93.3	1	3.2
All Airlines	119	110	93	84.5	94	85.5	9	7.6
Perth-Karratha								
Qantas	17	15	14	93.3	14	93.3	2	11.8
QantasLink	116	104	70	67.3	81	77.9	12	10.3
Virgin Australia	40	39	39	100.0	39	100.0	1	2.5
Virgin Australia Regional Airlines	8	8	8	100.0	8	100.0	0	0.0
All Airlines	181	166	131	78.9	142	85.5	15	8.3

	Sectors		Arrivals On Time		Departures On Time		Cancellations	
	Sched.	Flown	No.	%	No.	%	No.	%
Perth-Melbourne								
Jetstar	20	3	3	100.0	2	66.7	17	85.0
Qantas	20	20	17	85.0	15	75.0	0	0.0
Virgin Australia	25	22	18	81.8	13	59.1	3	12.0
All Airlines	65	45	38	84.4	30	66.7	20	30.8
Perth-Newman								
Qantas	21	20	18	90.0	20	100.0	1	4.8
QantasLink	93	80	62	77.5	65	81.3	13	14.0
Virgin Australia	34	27	24	88.9	25	92.6	7	20.6
Virgin Australia Regional Airlines	18	17	16	94.1	16	94.1	1	5.6
All Airlines	166	144	120	83.3	126	87.5	22	13.3
Perth-Port Hedland								
Qantas	33	29	27	93.1	28	96.6	4	12.1
QantasLink	75	68	45	66.2	55	80.9	7	9.3
Virgin Australia	5	4	3	75.0	3	75.0	1	20.0
Virgin Australia Regional Airlines	43	42	38	90.5	40	95.2	1	2.3
All Airlines	156	143	113	79.0	126	88.1	13	8.3
Perth-Sydney								
Qantas	47	43	28	65.1	34	79.1	4	8.5
Virgin Australia	21	19	15	78.9	13	68.4	2	9.5
All Airlines	68	62	43	69.4	47	75.8	6	8.8
Port Hedland-Perth								
Qantas	33	29	28	96.6	26	89.7	4	12.1
QantasLink	74	67	41	61.2	52	77.6	7	9.5
Virgin Australia	5	4	4	100.0	3	75.0	1	20.0
Virgin Australia Regional Airlines	43	42	35	83.3	37	88.1	1	2.3
All Airlines	155	142	108	76.1	118	83.1	13	8.4
Port Lincoln-Adelaide								
QantasLink	70	70	64	91.4	61	87.1	0	0.0
Regional Express	98	98	82	83.7	82	83.7	0	0.0
All Airlines	168	168	146	86.9	143	85.1	0	0.0
Proserpine-Brisbane								
Jetstar	28	28	25	89.3	26	92.9	0	0.0
Virgin Australia	28	28	25	89.3	24	85.7	0	0.0
All Airlines	56	56	50	89.3	50	89.3	0	0.0
Rockhampton-Brisbane								
QantasLink	112	111	92	82.9	95	85.6	1	0.9
Virgin Australia	67	63	57	90.5	50	79.4	4	6.0
All Airlines	179	174	149	85.6	145	83.3	5	2.8
Sunshine Coast-Melbourne								
Jetstar	58	44	40	90.9	40	90.9	14	24.1
QantasLink	23	19	18	94.7	17	89.5	4	17.4
Virgin Australia	30	29	26	89.7	28	96.6	1	3.3
All Airlines	111	92	84	91.3	85	92.4	19	17.1
Sunshine Coast-Sydney								
Jetstar	31	30	26	86.7	26	86.7	1	3.2
QantasLink	27	27	21	77.8	22	81.5	0	0.0
Virgin Australia	25	25	21	84.0	21	84.0	0	0.0
All Airlines	83	82	68	82.9	69	84.1	1	1.2

	<i>Sectors</i>		<i>Arrivals On Time</i>		<i>Departures On Time</i>		<i>Cancellations</i>	
	<i>Sched.</i>	<i>Flown</i>	<i>No.</i>	<i>%</i>	<i>No.</i>	<i>%</i>	<i>No.</i>	<i>%</i>
Sydney-Adelaide								
Jetstar	53	51	50	98.0	44	86.3	2	3.8
Qantas	69	69	59	85.5	54	78.3	0	0.0
Virgin Australia	39	39	38	97.4	37	94.9	0	0.0
All Airlines	161	159	147	92.5	135	84.9	2	1.2
Sydney-Albury								
QantasLink	62	62	58	93.5	57	91.9	0	0.0
Regional Express	24	24	22	91.7	23	95.8	0	0.0
All Airlines	86	86	80	93.0	80	93.0	0	0.0
Sydney-Armidale								
QantasLink	41	41	33	80.5	32	78.0	0	0.0
Regional Express	8	8	6	75.0	6	75.0	0	0.0
All Airlines	49	49	39	79.6	38	77.6	0	0.0
Sydney-Ballina								
Jetstar	76	76	66	86.8	69	90.8	0	0.0
Qantas	20	20	16	80.0	18	90.0	0	0.0
QantasLink	60	60	50	83.3	55	91.7	0	0.0
Regional Express	8	8	7	87.5	8	100.0	0	0.0
Virgin Australia	28	28	26	92.9	28	100.0	0	0.0
All Airlines	192	192	165	85.9	178	92.7	0	0.0
Sydney-Brisbane								
Jetstar	78	71	60	84.5	60	84.5	7	9.0
Qantas	275	268	240	89.6	246	91.8	7	2.5
Virgin Australia	189	185	173	93.5	169	91.4	4	2.1
All Airlines	542	524	473	90.3	475	90.6	18	3.3
Sydney-Cairns								
Jetstar	24	22	19	86.4	19	86.4	2	8.3
Qantas	10	10	7	70.0	6	60.0	0	0.0
Virgin Australia	20	19	19	100.0	19	100.0	1	5.0
All Airlines	54	51	45	88.2	44	86.3	3	5.6
Sydney-Coffs Harbour								
QantasLink	83	82	78	95.1	77	93.9	1	1.2
Virgin Australia	16	16	15	93.8	15	93.8	0	0.0
All Airlines	99	98	93	94.9	92	93.9	1	1.0
Sydney-Dubbo								
QantasLink	66	66	59	89.4	61	92.4	0	0.0
Regional Express	45	45	44	97.8	44	97.8	0	0.0
All Airlines	111	111	103	92.8	105	94.6	0	0.0
Sydney-Gold Coast								
Jetstar	116	112	102	91.1	103	92.0	4	3.4
Qantas	46	45	44	97.8	45	100.0	1	2.2
Virgin Australia	73	71	64	90.1	67	94.4	2	2.7
All Airlines	235	228	210	92.1	215	94.3	7	3.0
Sydney-Hamilton Island								
Jetstar	11	11	11	100.0	10	90.9	0	0.0
Qantas	8	8	8	100.0	7	87.5	0	0.0
Virgin Australia	18	18	17	94.4	18	100.0	0	0.0
All Airlines	37	37	36	97.3	35	94.6	0	0.0

	<i>Sectors</i>		<i>Arrivals On Time</i>		<i>Departures On Time</i>		<i>Cancellations</i>	
	<i>Sched.</i>	<i>Flown</i>	<i>No.</i>	<i>%</i>	<i>No.</i>	<i>%</i>	<i>No.</i>	<i>%</i>
Sydney-Hobart								
Jetstar	48	48	45	93.8	45	93.8	0	0.0
QantasLink	23	23	20	87.0	19	82.6	0	0.0
Virgin Australia	26	26	25	96.2	24	92.3	0	0.0
All Airlines	97	97	90	92.8	88	90.7	0	0.0
Sydney-Launceston								
Jetstar	34	34	29	85.3	29	85.3	0	0.0
QantasLink	12	11	11	100.0	11	100.0	1	8.3
Virgin Australia	21	21	18	85.7	18	85.7	0	0.0
All Airlines	67	66	58	87.9	58	87.9	1	1.5
Sydney-Melbourne								
Jetstar	167	136	115	84.6	104	76.5	31	18.6
Qantas	391	276	248	89.9	231	83.7	115	29.4
Virgin Australia	203	146	133	91.1	123	84.2	57	28.1
All Airlines	761	558	496	88.9	458	82.1	203	26.7
Sydney-Perth								
Qantas	46	44	36	81.8	33	75.0	2	4.3
Virgin Australia	20	19	19	100.0	18	94.7	1	5.0
All Airlines	66	63	55	87.3	51	81.0	3	4.5
Sydney-Sunshine Coast								
Jetstar	31	31	26	83.9	26	83.9	0	0.0
QantasLink	27	27	22	81.5	20	74.1	0	0.0
Virgin Australia	25	25	24	96.0	24	96.0	0	0.0
All Airlines	83	83	72	86.7	70	84.3	0	0.0
Sydney-Wagga Wagga								
QantasLink	72	72	66	91.7	66	91.7	0	0.0
Regional Express	28	28	26	92.9	25	89.3	0	0.0
All Airlines	100	100	92	92.0	91	91.0	0	0.0
Townsville-Brisbane								
Jetstar	40	39	33	84.6	36	92.3	1	2.5
Qantas	92	92	91	98.9	88	95.7	0	0.0
Virgin Australia	68	64	56	87.5	52	81.3	4	5.9
All Airlines	200	195	180	92.3	176	90.3	5	2.5
Townsville-Cairns								
QantasLink	84	83	75	90.4	72	86.7	1	1.2
Regional Express	8	8	8	100.0	8	100.0	0	0.0
All Airlines	92	91	83	91.2	80	87.9	1	1.1
Wagga Wagga-Sydney								
QantasLink	71	71	67	94.4	65	91.5	0	0.0
Regional Express	28	28	28	100.0	28	100.0	0	0.0
All Airlines	99	99	95	96.0	93	93.9	0	0.0

Airports

On time performance is reported for all routes where the passenger load averages over 8000 passengers per month, and where two or more airlines operate in competition. The following data reports by airport against flights operated on those routes only. This month, 8 major city airports and 27 regional city airports are covered.

Airport	Arrivals			Departures		
	Sectors	On Time		Sectors	On Time	
	Flown	No.	%	Flown	No.	%
Adelaide						
Jetstar	157	149	94.9	157	143	91.1
Qantas	331	294	88.8	328	294	89.6
QantasLink	75	67	89.3	75	73	97.3
Regional Express	98	82	83.7	98	89	90.8
Virgin Australia	244	235	96.3	244	229	93.9
All Airlines	905	827	91.4	902	828	91.8
Relates to services to and from Alice Springs, Brisbane, Canberra, Gold Coast, Melbourne, Perth, Port Lincoln and Sydney.						
Albury						
QantasLink	62	58	93.5	60	54	90.0
Regional Express	24	22	91.7	23	22	95.7
All Airlines	86	80	93.0	83	76	91.6
Relates to services to and from Sydney only.						
Alice Springs						
Qantas	28	28	100.0	28	23	82.1
Virgin Australia	12	12	100.0	12	12	100.0
All Airlines	40	40	100.0	40	35	87.5
Relates to services to and from Adelaide only.						
Armidale						
QantasLink	41	33	80.5	40	31	77.5
Regional Express	8	6	75.0	8	6	75.0
All Airlines	49	39	79.6	48	37	77.1
Relates to services to and from Sydney only.						
Ballina						
Jetstar	76	66	86.8	75	65	86.7
Qantas	20	16	80.0	20	18	90.0
QantasLink	60	50	83.3	59	50	84.7
Regional Express	8	7	87.5	8	7	87.5
Virgin Australia	28	26	92.9	28	22	78.6
All Airlines	192	165	85.9	190	162	85.3
Relates to services to and from Sydney only.						
Brisbane						
Jetstar	427	380	89.0	429	372	86.7
Qantas	846	772	91.3	853	786	92.1
QantasLink	539	495	91.8	538	511	95.0
Virgin Australia	888	806	90.8	893	791	88.6
All Airlines	2 700	2 453	90.9	2 713	2 460	90.7
Relates to services to and from Adelaide, Cairns, Canberra, Darwin, Emerald, Gladstone, Hamilton Island, Hobart, Mackay, Melbourne, Mount Isa, Newcastle, Perth, Proserpine, Rockhampton, Sydney and Townsville.						

Airport	Arrivals			Departures		
	Sectors Flown	On Time		Sectors Flown	On Time	
		No.	%		No.	%
Broome						
QantasLink	64	31	48.4	65	55	84.6
Virgin Australia	28	28	100.0	28	26	92.9
All Airlines	92	59	64.1	93	81	87.1
Relates to services to and from Perth only.						
Cairns						
Jetstar	139	119	85.6	139	129	92.8
Qantas	111	99	89.2	110	105	95.5
QantasLink	87	79	90.8	88	77	87.5
Regional Express	8	8	100.0	8	7	87.5
Virgin Australia	105	92	87.6	105	99	94.3
All Airlines	450	397	88.2	450	417	92.7
Relates to services to and from Brisbane, Melbourne, Sydney and Townsville.						
Canberra						
Qantas	53	52	98.1	52	51	98.1
QantasLink	260	239	91.9	261	240	92.0
Virgin Australia	109	100	91.7	108	98	90.7
All Airlines	422	391	92.7	421	389	92.4
Relates to services to and from Adelaide, Brisbane and Melbourne.						
Coffs Harbour						
QantasLink	82	78	95.1	81	73	90.1
Virgin Australia	16	15	93.8	16	15	93.8
All Airlines	98	93	94.9	97	88	90.7
Relates to services to and from Sydney only.						
Darwin						
Jetstar	16	15	93.8	16	12	75.0
Qantas	46	39	84.8	46	34	73.9
Virgin Australia	37	31	83.8	37	30	81.1
All Airlines	99	85	85.9	99	76	76.8
Relates to services to and from Brisbane and Perth.						
Dubbo						
QantasLink	66	59	89.4	65	59	90.8
Regional Express	45	44	97.8	45	42	93.3
All Airlines	111	103	92.8	110	101	91.8
Relates to services to and from Sydney only.						
Emerald						
QantasLink	106	104	98.1	106	102	96.2
Virgin Australia	20	20	100.0	20	20	100.0
All Airlines	126	124	98.4	126	122	96.8
Relates to services to and from Brisbane only.						
Gladstone						
QantasLink	70	65	92.9	70	64	91.4
Virgin Australia	48	43	89.6	48	44	91.7
All Airlines	118	108	91.5	118	108	91.5
Relates to services to and from Brisbane only.						

Airport	Arrivals			Departures		
	Sectors	On Time		Sectors	On Time	
	Flown	No.	%	Flown	No.	%
Gold Coast						
Jetstar	232	215	92.7	235	219	93.2
Qantas	70	69	98.6	68	67	98.5
Virgin Australia	159	150	94.3	159	147	92.5
All Airlines	461	434	94.1	462	433	93.7
Relates to services to and from Adelaide, Melbourne and Sydney.						
Hamilton Island						
Jetstar	11	11	100.0	11	9	81.8
Qantas	36	35	97.2	36	35	97.2
Virgin Australia	47	41	87.2	47	38	80.9
All Airlines	94	87	92.6	94	82	87.2
Relates to services to and from Brisbane and Sydney.						
Hobart						
Jetstar	171	160	93.6	171	151	88.3
QantasLink	102	92	90.2	102	91	89.2
Virgin Australia	86	85	98.8	87	79	90.8
All Airlines	359	337	93.9	360	321	89.2
Relates to services to and from Brisbane, Melbourne and Sydney.						
Kalgoorlie						
Qantas	7	5	71.4	7	5	71.4
QantasLink	54	45	83.3	54	42	77.8
Virgin Australia	19	15	78.9	19	13	68.4
Virgin Australia Regional Airlines	30	28	93.3	30	27	90.0
All Airlines	110	93	84.5	110	87	79.1
Relates to services to and from Perth only.						
Karratha						
Qantas	15	14	93.3	15	13	86.7
QantasLink	104	70	67.3	102	74	72.5
Virgin Australia	39	39	100.0	39	37	94.9
Virgin Australia Regional Airlines	8	8	100.0	8	7	87.5
All Airlines	166	131	78.9	164	131	79.9
Relates to services to and from Perth only.						
Launceston						
Jetstar	94	86	91.5	94	83	88.3
QantasLink	54	53	98.1	54	53	98.1
Virgin Australia	47	43	91.5	47	44	93.6
All Airlines	195	182	93.3	195	180	92.3
Relates to services to and from Melbourne and Sydney.						
Mackay						
Jetstar	28	28	100.0	28	28	100.0
Qantas	66	63	95.5	65	64	98.5
QantasLink	32	31	96.9	32	31	96.9
Virgin Australia	66	59	89.4	66	62	93.9
All Airlines	192	181	94.3	191	185	96.9
Relates to services to and from Brisbane only.						

Airport	Arrivals			Departures		
	Sectors Flown	On Time		Sectors Flown	On Time	
		No.	%		No.	%
Melbourne						
Jetstar	605	552	91.2	604	528	87.4
Qantas	550	493	89.6	548	498	90.9
QantasLink	301	272	90.4	300	273	91.0
Regional Express	28	27	96.4	28	26	92.9
Virgin Australia	510	471	92.4	508	486	95.7
All Airlines	1 994	1 815	91.0	1 988	1 811	91.1
Relates to services to and from Adelaide, Brisbane, Cairns, Canberra, Gold Coast, Hobart, Launceston, Mildura, Newcastle, Perth, Sunshine Coast and Sydney.						
Mildura						
QantasLink	54	48	88.9	54	47	87.0
Regional Express	28	25	89.3	28	26	92.9
All Airlines	82	73	89.0	82	73	89.0
Relates to services to and from Melbourne only.						
Mount Isa						
Qantas	32	30	93.8	32	31	96.9
QantasLink	16	15	93.8	16	15	93.8
Virgin Australia	12	11	91.7	12	11	91.7
All Airlines	60	56	93.3	60	57	95.0
Relates to services to and from Brisbane only.						
Newcastle						
Jetstar	96	89	92.7	93	86	92.5
QantasLink	49	46	93.9	50	48	96.0
Virgin Australia	47	46	97.9	47	46	97.9
All Airlines	192	181	94.3	190	180	94.7
Relates to services to and from Brisbane and Melbourne.						
Newman						
Qantas	20	18	90.0	19	16	84.2
QantasLink	80	62	77.5	79	56	70.9
Virgin Australia	27	24	88.9	27	19	70.4
Virgin Australia Regional Airlines	17	16	94.1	17	16	94.1
All Airlines	144	120	83.3	142	107	75.4
Relates to services to and from Perth only.						
Perth						
Jetstar	18	17	94.4	18	13	72.2
Qantas	243	202	83.1	243	210	86.4
QantasLink	367	278	75.7	370	298	80.5
Virgin Australia	220	195	88.6	219	179	81.7
Virgin Australia Regional Airlines	97	84	86.6	97	92	94.8
All Airlines	945	776	82.1	947	792	83.6
Relates to services to and from Adelaide, Brisbane, Broome, Darwin, Kalgoorlie, Karratha, Melbourne, Newman, Port Hedland and Sydney.						
Port Hedland						
Qantas	29	27	93.1	29	26	89.7
QantasLink	68	45	66.2	67	52	77.6
Virgin Australia	4	3	75.0	4	3	75.0
Virgin Australia Regional Airlines	42	38	90.5	42	37	88.1
All Airlines	143	113	79.0	142	118	83.1
Relates to services to and from Perth only.						

Airport	Arrivals			Departures		
	Sectors Flown	On Time		Sectors Flown	On Time	
		No.	%		No.	%
Port Lincoln						
QantasLink	70	69	98.6	70	61	87.1
Regional Express	98	89	90.8	98	82	83.7
All Airlines	168	158	94.0	168	143	85.1
Relates to services to and from Adelaide only.						
Proserpine						
Jetstar	28	23	82.1	28	26	92.9
Virgin Australia	28	26	92.9	28	24	85.7
All Airlines	56	49	87.5	56	50	89.3
Relates to services to and from Brisbane only.						
Rockhampton						
QantasLink	111	102	91.9	111	95	85.6
Virgin Australia	63	48	76.2	63	50	79.4
All Airlines	174	150	86.2	174	145	83.3
Relates to services to and from Brisbane only.						
Sunshine Coast						
Jetstar	75	65	86.7	74	66	89.2
QantasLink	46	38	82.6	46	39	84.8
Virgin Australia	54	52	96.3	54	49	90.7
All Airlines	175	155	88.6	174	154	88.5
Relates to services to and from Melbourne and Sydney.						
Sydney						
Jetstar	590	537	91.0	592	509	86.0
Qantas	736	665	90.4	740	640	86.5
QantasLink	437	391	89.5	444	398	89.6
Regional Express	112	104	92.9	113	106	93.8
Virgin Australia	615	581	94.5	613	560	91.4
All Airlines	2 490	2 278	91.5	2 502	2 213	88.4
Relates to services to and from Adelaide, Albury, Armidale, Ballina, Brisbane, Cairns, Coffs Harbour, Dubbo, Gold Coast, Hamilton Island, Hobart, Launceston, Melbourne, Perth, Sunshine Coast and Wagga Wagga.						
Townsville						
Jetstar	40	36	90.0	39	36	92.3
Qantas	92	86	93.5	92	88	95.7
QantasLink	84	73	86.9	83	72	86.7
Regional Express	8	7	87.5	8	8	100.0
Virgin Australia	64	55	85.9	64	52	81.3
All Airlines	288	257	89.2	286	256	89.5
Relates to services to and from Brisbane only.						
Wagga Wagga						
QantasLink	72	66	91.7	71	65	91.5
Regional Express	28	26	92.9	28	28	100.0
All Airlines	100	92	92.0	99	93	93.9
Relates to services to and from Sydney only.						

Definitions

On time arrival	A flight arrival is counted as "on time" if it arrived at the gate before 15 minutes after the scheduled arrival time shown in the carriers' schedule. Neither diverted nor cancelled flights count as on time.
On time departure	A flight departure is counted as "on time" if it departs the gate before 15 minutes after the scheduled departure time shown in the carriers' schedule.
Cancellation	A flight removed from service within 7 days of scheduled departure is regarded as a cancellation.
On time departure percentage	The percentage of on time departures is measured against the number of departures <i>operated</i> on any particular sector.
On time arrival percentage	The percentage of on time arrivals is measured against the number of arrivals <i>operated</i> on any particular sector.
Cancellation percentage	The percentage of cancellations is measured against the number of services <i>scheduled</i> on any particular sector.
