



Australian Government

Department of Infrastructure, Transport, Regional Development and Communications

Bureau of Infrastructure and Transport Research Economics

STATISTICAL REPORT



Aviation

Domestic airline on time performance
November 2021

© Commonwealth of Australia 2021

ISSN: 1832-0759

Ownership of intellectual property rights in this publication

Unless otherwise noted, copyright (and any other intellectual property rights, if any) in this publication is owned by the Commonwealth of Australia (referred to below as the Commonwealth).

Disclaimer

The material contained in this publication is made available on the understanding that the Commonwealth is not providing professional advice, and that users exercise their own skill and care with respect to its use, and seek independent advice if necessary.

The Commonwealth makes no representations or warranties as to the contents or accuracy of the information contained in this publication. To the extent permitted by law, the Commonwealth disclaims liability to any person or organisation in respect of anything done, or omitted to be done, in reliance upon information contained in this publication.

Creative Commons licence

With the exception of (a) the Coat of Arms; and (b) the Department of Infrastructure, Transport, Regional Development and Communications' photos and graphics, copyright in this publication is licensed under a Creative Commons Attribution 3.0 Australia Licence.

Creative Commons Attribution 3.0 Australia Licence is a standard form licence agreement that allows you to copy, communicate and adapt this publication provided that you attribute the work to the Commonwealth and abide by the other licence terms. A summary of the licence terms is available from <http://creativecommons.org/licenses/by/3.0/au/deed.en>. The full licence terms are available from <http://creativecommons.org/licenses/by/3.0/au/legalcode>.

Use of the Coat of Arms

The Department of the Prime Minister and Cabinet sets the terms under which the Coat of Arms is used. Please refer to the Department's Commonwealth Coat of Arms and Government branding web page <http://www.dpmc.gov.au/guidelines/index.cfm#brand> and, in particular, the Guidelines on the use of the Commonwealth Coat of Arms publication.

An appropriate citation for this report is:

Bureau of Infrastructure and Transport Research Economics (BITRE), 2021, Domestic airline on time performance, Statistical Report, BITRE, Canberra ACT.

Contact us

This publication is available in PDF format. All other rights are reserved, including in relation to any Departmental logos or trade marks which may exist. For enquiries regarding the licence and any use of this publication, please contact:

Bureau of Infrastructure and Transport Research Economics (BITRE)
Department of Infrastructure, Transport, Regional Development and Communications
GPO Box 501, Canberra ACT 2601, Australia
Telephone: (international) +61 2 6274 7210
Fax: (international) +61 2 6274 6855
Email: bitre@infrastructure.gov.au
Website: www.bitre.gov.au

Inquiries

Should you require additional information about the statistics contained in this publication:

Telephone (02) 6274 7790 or Facsimile (02) 6274 7727

Electronic mail: AVSTATS@infrastructure.gov.au

Web site: <http://www.bitre.gov.au/statistics/aviation/otphome.aspx>

Foreword

The Bureau of Infrastructure and Transport Research Economics (BITRE) monitors the punctuality and reliability of major domestic airlines operating between Australian airports. The purpose of this is to allow for evaluation of overall industry and individual airline performance, so that consumers of air travel can make informed decisions.

The following domestic airlines currently report this information monthly to the BITRE: Jetstar, Qantas, QantasLink, Rex Airlines, Virgin Australia and Virgin Australia Regional Airlines.

Data has been gathered since November 2003, although some airlines commenced reporting at a later date, including Jetstar which first reported in May 2004, MacAir in July 2005, Tigerair Australia in April 2008 and Virgin Australia Regional Airlines in May 2013. MacAir ceased operations in February 2009 and data was not received for December 2008 onwards. Tigerair Australia ceased operations in March 2020 and data was not received for that month.

Virgin Blue was rebranded as Virgin Australia in May 2011 and Tiger Airways was rebranded as Tigerair Australia in July 2013 and time series data in Microsoft Excel spread sheet format on the BITRE website have been revised to reflect these changes. With effect from July 2021, Regional Express is reported as Rex Airlines.

Services operated by Skywest on behalf of Virgin Australia using ATR/F100 aircraft commenced in November 2011 and were shown separately as Virgin Australia – ATR/F100 Operations. Virgin Australia Regional Airlines commenced operations in May 2013. It was formed after the acquisition of Skywest by Virgin Australia and represented a combination of operations previously reported under Skywest and Virgin Australia – ATR/F100 Operations. In January 2016, Virgin Australia transferred their ATR fleet from Virgin Australia Regional Airlines to Virgin Australia.

Information presented in this report is for Australian domestic routes for which the passenger load averaged 8 000 or more passengers per month over the previous six months and where two or more airlines operated in competition on those routes. In order to present data for more routes during the period impacted by COVID-19, the passenger load restriction is not being applied. Data are presented for 51 routes in November 2021. Over time, routes which meet these criteria change as airline networks and traffic levels vary.

Participating airlines report their overall monthly network performance where this is possible.

Total industry figures encompass all services operated by reporting airlines only. These airlines collectively carried over 95 per cent of total domestic passengers (regular public transport only) in 2019.

The method of capturing on time performance varies between airlines utilising different recording systems. Jetstar and Qantas jet aircraft use Aircraft Communication Addressing and Reporting System (ACARS) to electronically measure on time performance. Rex Airlines, Virgin Australia, Virgin Australia Regional Airlines and the Qantas non-jet fleet record on time performance manually using records from pilots, gate agents and/or ground crews.

After initial data is collected, aggregate reports are reviewed by participating airlines prior to publication.

Reports and detailed time series data in Microsoft Excel spreadsheet format are available from the BITRE website at: <http://www.bitre.gov.au/statistics/aviation/otphome.aspx>

Contents

	Page
Industry performance	1
Individual routes	9
Airports.....	19
Definitions	24

Industry performance

For November 2021, on time performance over all routes operated by participating airlines (Jetstar, Qantas, QantasLink, REX Airlines, Virgin Australia and Virgin Australia Regional Airlines) averaged 87.4 per cent for on time arrivals and 87.0 per cent for on time departures. The cancellation rate for the month was 2.4 per cent. The equivalent figures for November 2020 were 88.8 per cent for on time arrivals, 88.5 per cent for on time departures and 3.7 per cent for cancellations.

This month's on time arrivals figure was higher than the long term average performance for all routes (82.3 per cent) and the on time departures figure was also higher than the long term average (83.6 per cent). The rate of cancellations was higher than the long term average of 1.9 per cent.

The Qantas network (Qantas and QantasLink combined operations) recorded 89.4 per cent for on time arrivals while the Virgin Australia network (Virgin Australia and Virgin Australia Regional Airlines combined operations) recorded 87.8 per cent. Qantas achieved the highest on time arrivals among the major domestic airlines at 91.5 per cent followed by Virgin Australia at 88.1 per cent and Jetstar at 79.6 per cent. Of the regional airlines, QantasLink recorded 88.5 per cent for on time arrivals, followed by REX Airlines at 86.2 per cent and Virgin Australia Regional Airlines at 84.6 per cent.

The Qantas network recorded 89.3 per cent for on time departures while the Virgin Australia network recorded 86.3 per cent. Qantas achieved the highest level of on time departures among the major domestic airlines for November 2021 at 91.9 per cent, followed by Virgin Australia at 86.5 per cent and Jetstar at 77.5 per cent. Of the regional airlines, REX Airlines recorded 88.3 per cent for on time departures, followed by QantasLink at 88.1 per cent and Virgin Australia Regional Airlines at 83.7 per cent.

Virgin Australia Regional Airlines recorded the highest percentage of cancellations (at 6.0 per cent) during the month, followed by Virgin Australia (at 3.4 per cent), QantasLink (at 3.2 per cent), Qantas (at 1.9 per cent), Jetstar (at 1.7 per cent) and REX Airlines (at 0.2 per cent).

Airlines' on time performance varies across the routes they serve. Individual route data by specific airline for 51 routes are shown on pages 9-18.

Of the 51 routes which met the criteria for on time performance reporting in November 2021, the Adelaide-Canberra route had the highest percentage of on time arrivals (100.0 per cent) and the highest percentage of on time departures (also 100.0 per cent). The Brisbane-Melbourne route had the lowest percentage of on time arrivals (35.7 per cent) and the lowest percentage of on time departures (40.5 per cent).

Cancellations were highest on the Perth-Darwin route at 13.4 per cent, followed by the Darwin-Perth route at 12.1 per cent, the Adelaide-Alice Springs and Alice Springs-Adelaide routes at 9.8 per cent, the Melbourne-Brisbane route at 9.1 per cent and the Brisbane-Melbourne route at 8.7 per cent.

Mildura Airport recorded the highest percentage of on time arrivals (97.3 per cent) and Albury Airport recorded the highest percentage of on time departures (95.0 per cent). Armidale Airport recorded the lowest percentage of on time arrivals (74.1 per cent) and Kalgoorlie Airport recorded the lowest percentage of on time departures (69.0 per cent). These figures only refer to reported routes and do not cover all flights at these airports.

Table 1 On time performance for November 2021 — Total Industry

	<i>Sectors</i>		<i>Arrivals On Time</i>		<i>Departures On Time</i>		<i>Cancellations</i>	
	<i>Scheduled</i>	<i>Flown</i>	<i>No.</i>	<i>%</i>	<i>No.</i>	<i>%</i>	<i>No.</i>	<i>%</i>
Jetstar	2 473	2 430	1 934	79.6	1 884	77.5	43	1.7
Qantas - all QF designated services	10 136	9 853	8 813	89.4	8 801	89.3	283	2.8
REX Airlines	3 109	3 102	2 674	86.2	2 738	88.3	7	0.2
Virgin Australia - all VA designated services	4 619	4 454	3 912	87.8	3 845	86.3	165	3.6
All Airlines	20 337	19 839	17 333	87.4	17 268	87.0	498	2.4
Individual operating entities								
Qantas	3 220	3 160	2 891	91.5	2 905	91.9	60	1.9
QantasLink	6 916	6 693	5 922	88.5	5 896	88.1	223	3.2
Virgin Australia	4 267	4 123	3 632	88.1	3 568	86.5	144	3.4
Virgin Australia Regional Airlines	352	331	280	84.6	277	83.7	21	6.0

Total airline network data (including routes not shown in this report).

Airlines' on time performance varies across the routes they serve. Individual route data by specific airline for 47 routes are shown on pages 9-18.

Table 2 Top ten routes for on time performance for November 2021 (participating airlines only)

<i>Arrivals</i>		<i>Departures</i>	
<i>Route</i>	<i>On Time (%)</i>	<i>Route</i>	<i>On Time (%)</i>
Adelaide-Canberra	100.0	Adelaide-Canberra	100.0
Melbourne-Mildura	97.3	Brisbane-Mount Isa	98.6
Cairns-Townsville	97.2	Adelaide-Alice Springs	97.3
Melbourne-Launceston	97.1	Canberra-Adelaide	96.8
Canberra-Adelaide	96.8	Sydney-Hobart	96.7
Sydney-Hobart	96.7	Cairns-Townsville	96.5
Cairns-Melbourne	96.6	Melbourne-Darwin	96.4
Perth-Darwin	96.6	Melbourne-Mildura	95.9
Darwin-Melbourne	96.4	Brisbane-Hamilton Island	95.7
Sydney-Albury	96.3	Brisbane-Newcastle	95.2

Table 3 Top ten airports for on time performance for November 2021 (participating airlines and reported routes only)

<i>Arrivals</i>		<i>Departures</i>	
<i>Airport</i>	<i>On Time (%)</i>	<i>Airport</i>	<i>On Time (%)</i>
Mildura	97.3	Albury	95.0
Albury	96.3	Melbourne	91.2
Broome	94.1	Cairns	91.2
Hobart	93.3	Broome	91.1
Mount Isa	91.5	Mildura	90.5
Port Hedland	91.3	Launceston	90.5
Townsville	91.1	Canberra	89.5
Emerald	90.8	Emerald	89.4
Newman	90.7	Rockhampton	89.4
Launceston	90.5	Adelaide	89.3

Total industry on time performance

Figure 1 On time performance (by month from November 2018)—Total Industry

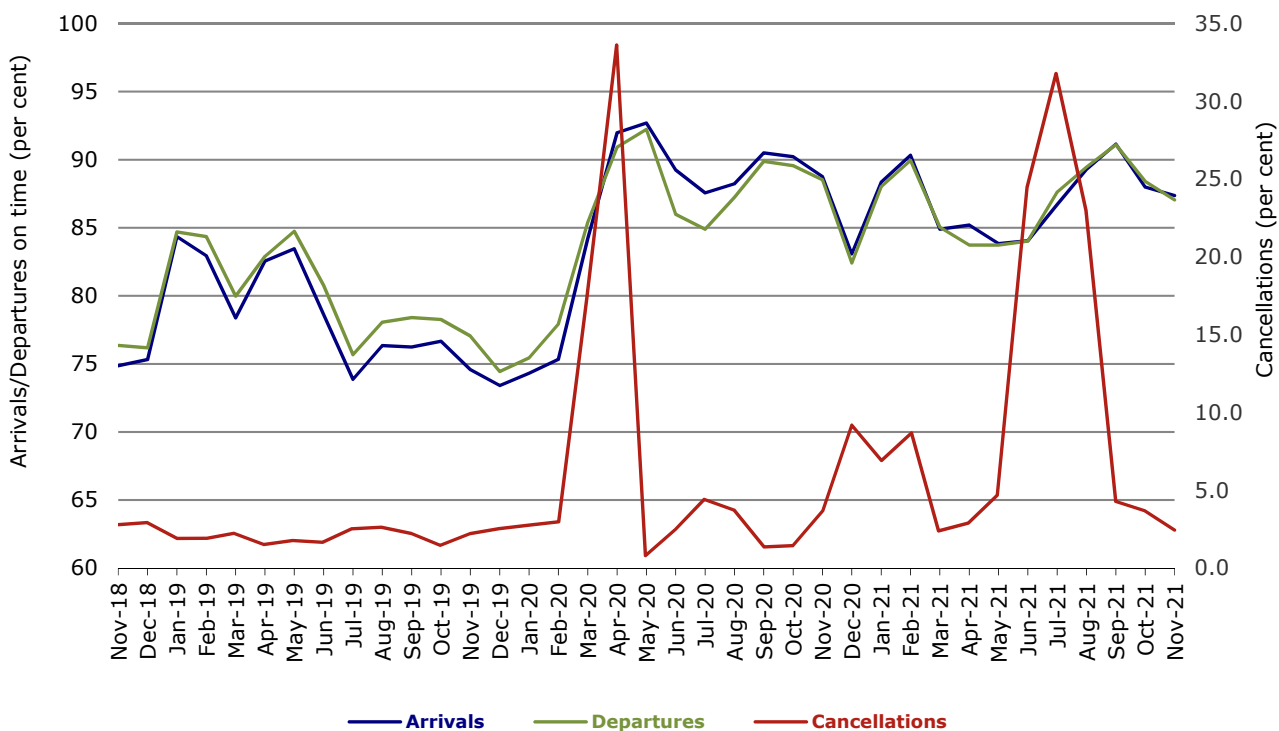
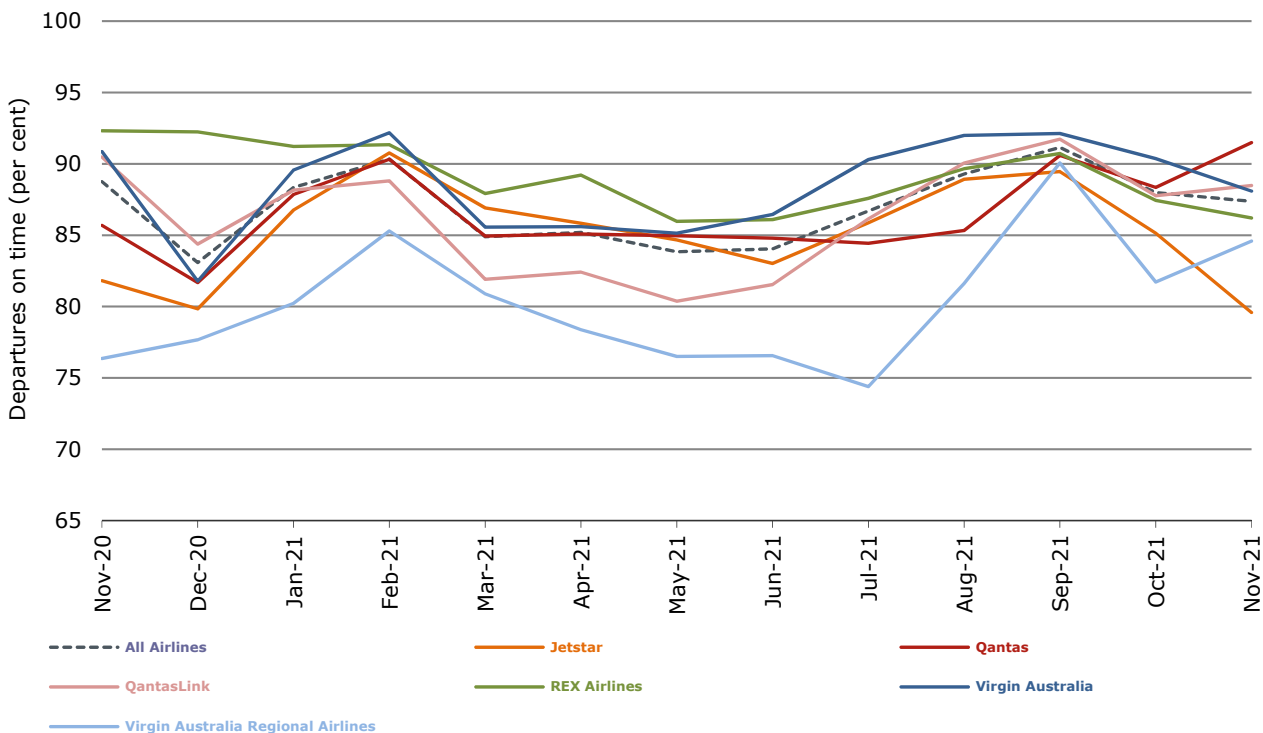
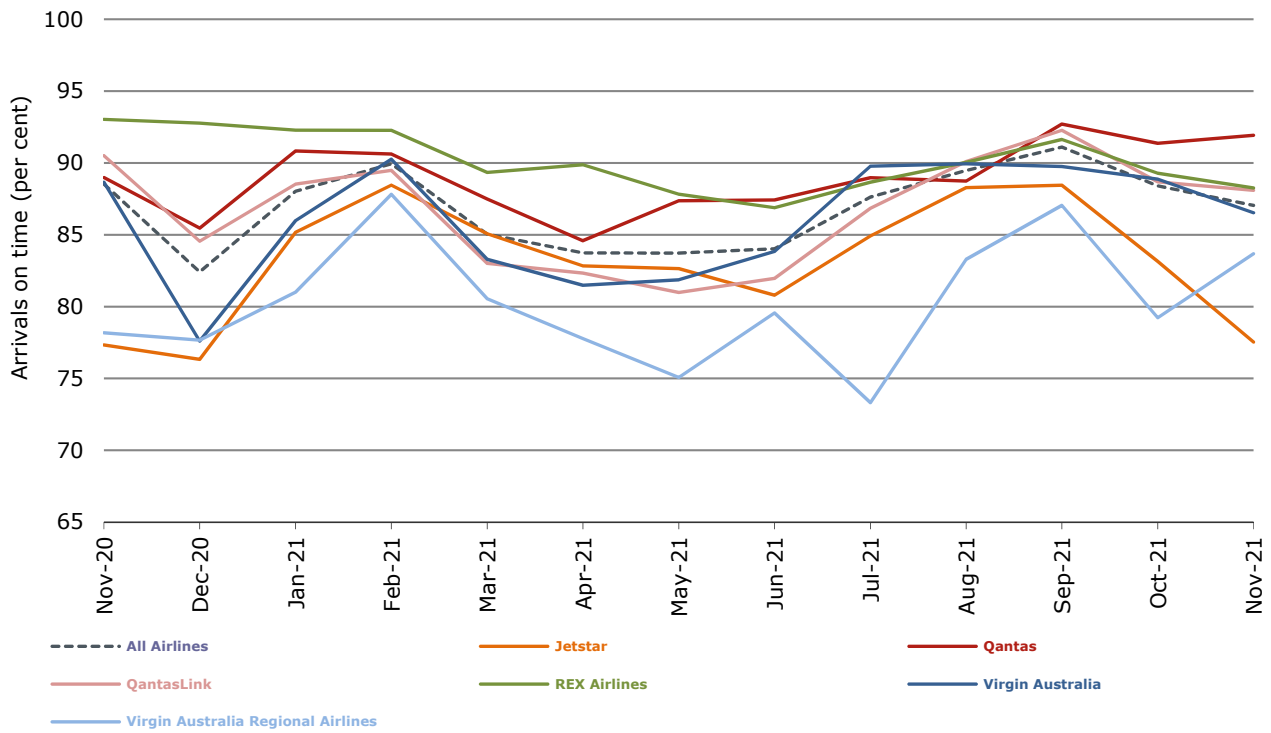


Figure 2 Arrivals on time (by month from November 2020)



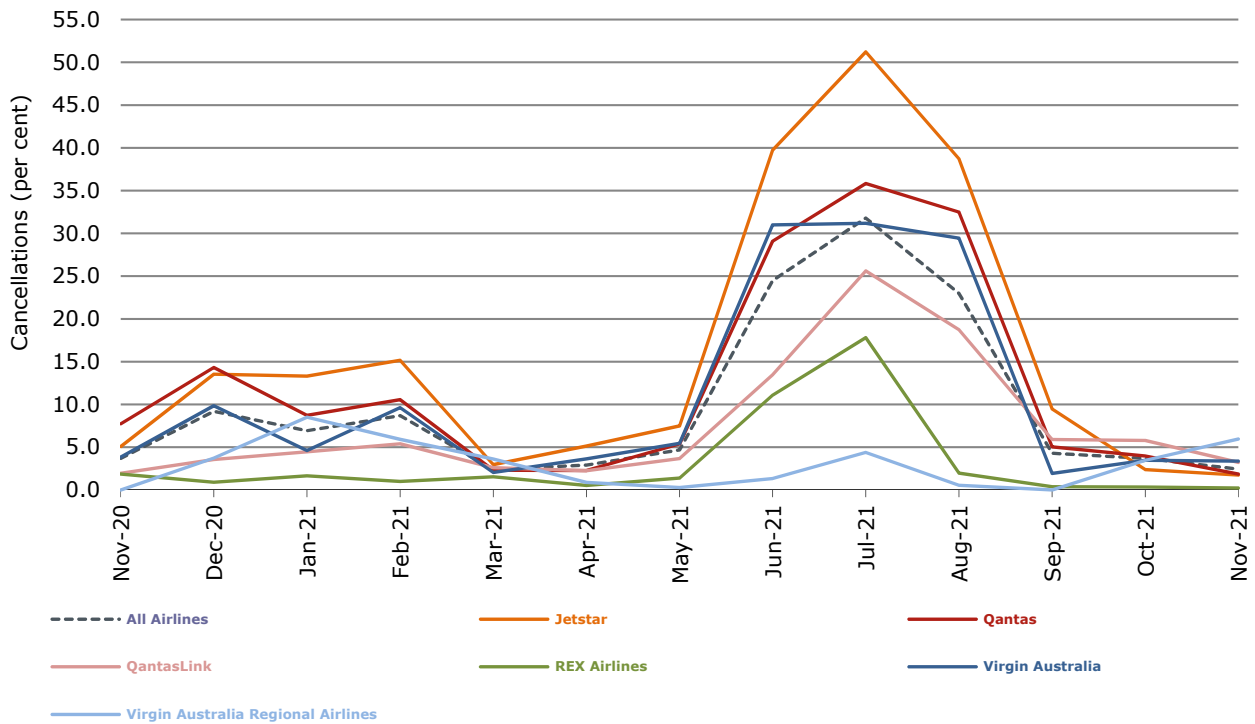
With effect from July 2021, Regional Express is reported as Rex Airlines

Figure 3 Departures on time (by month from November 2020)



With effect from July 2021, Regional Express is reported as Rex Airlines

Figure 4 Cancellations (by month from November 2020)



With effect from July 2021, Regional Express is reported as Rex Airlines

Major domestic airlines on time performance

Figure 5 On time performance (by month from November 2018)—Jetstar

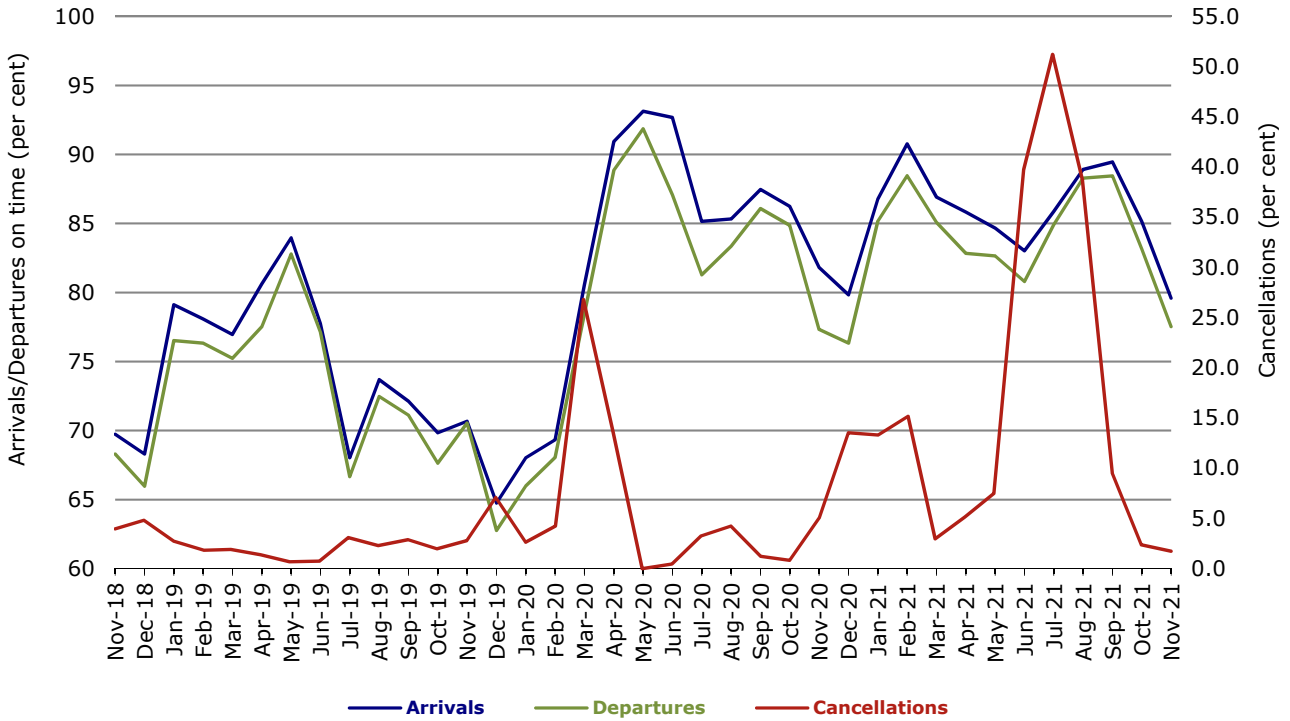


Figure 6 On time performance (by month from November 2018)—Qantas

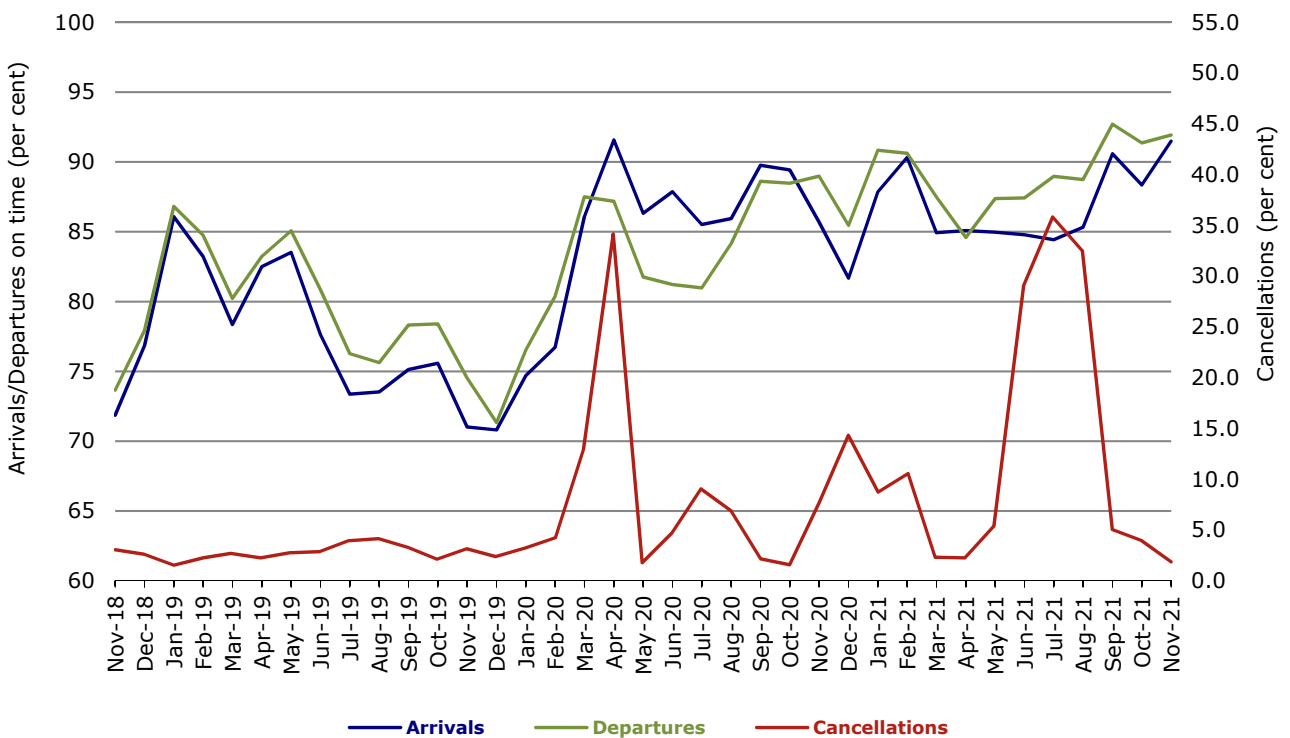
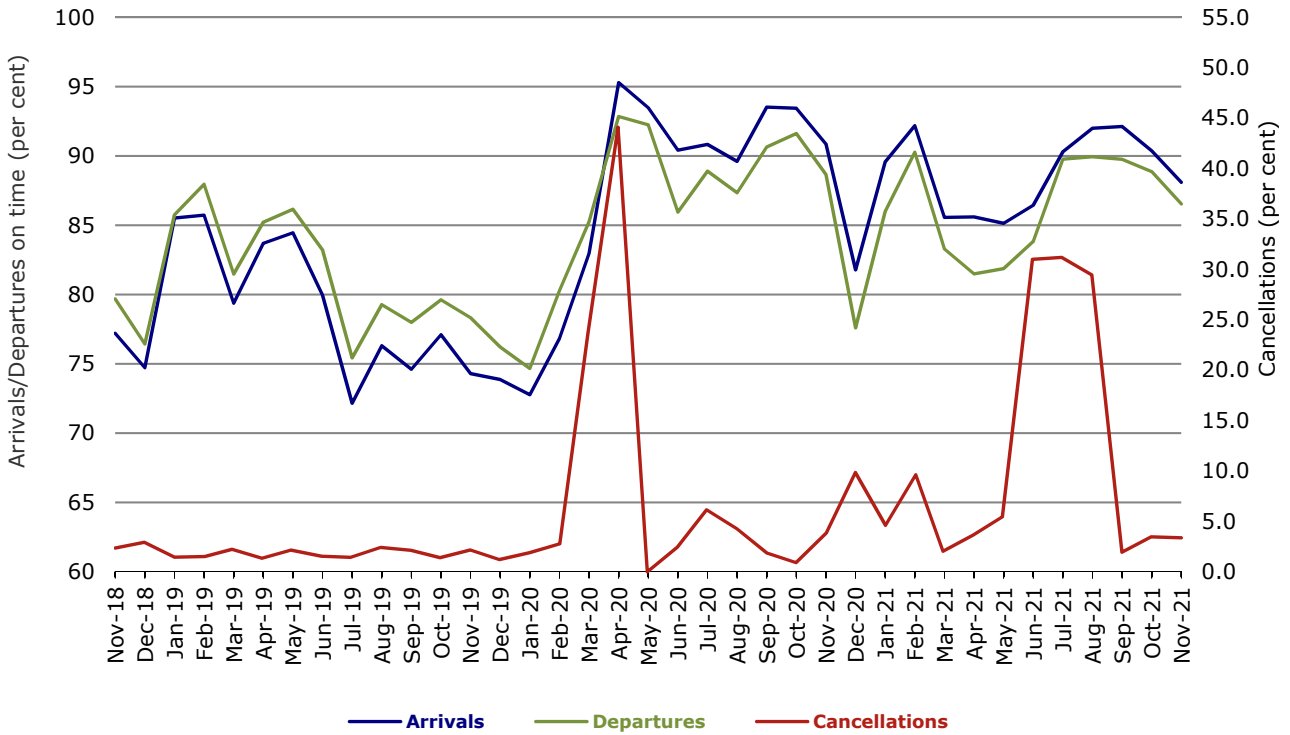


Figure 7 On time performance (by month from November 2018)—Virgin Australia



Major regional airlines on time performance

Figure 8 On time performance (by month from November 2018)—QantasLink

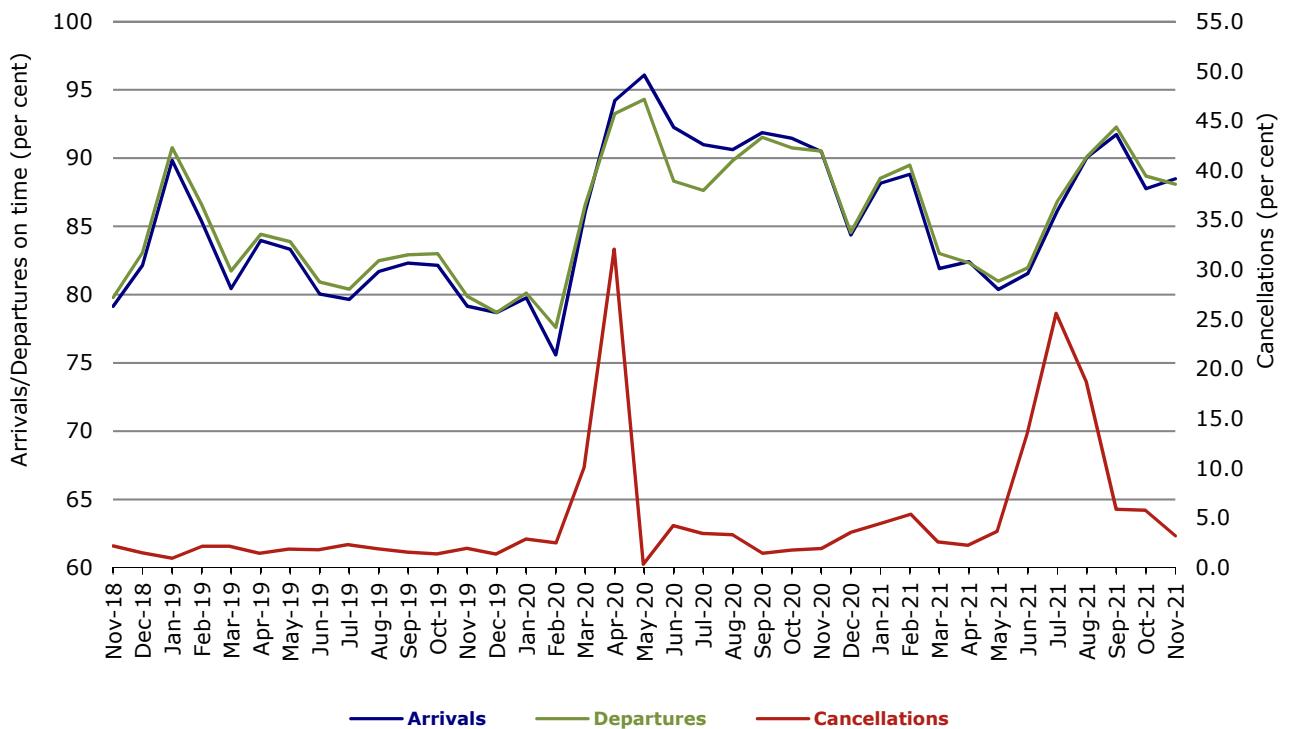
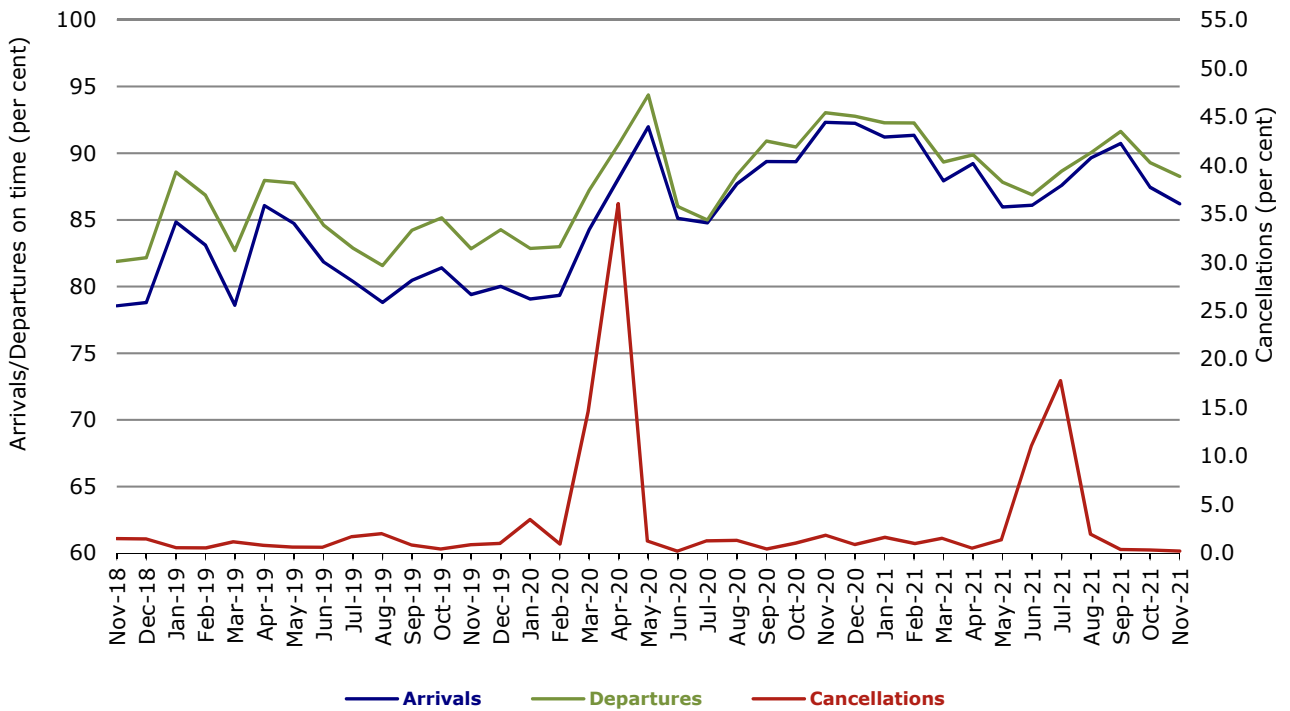
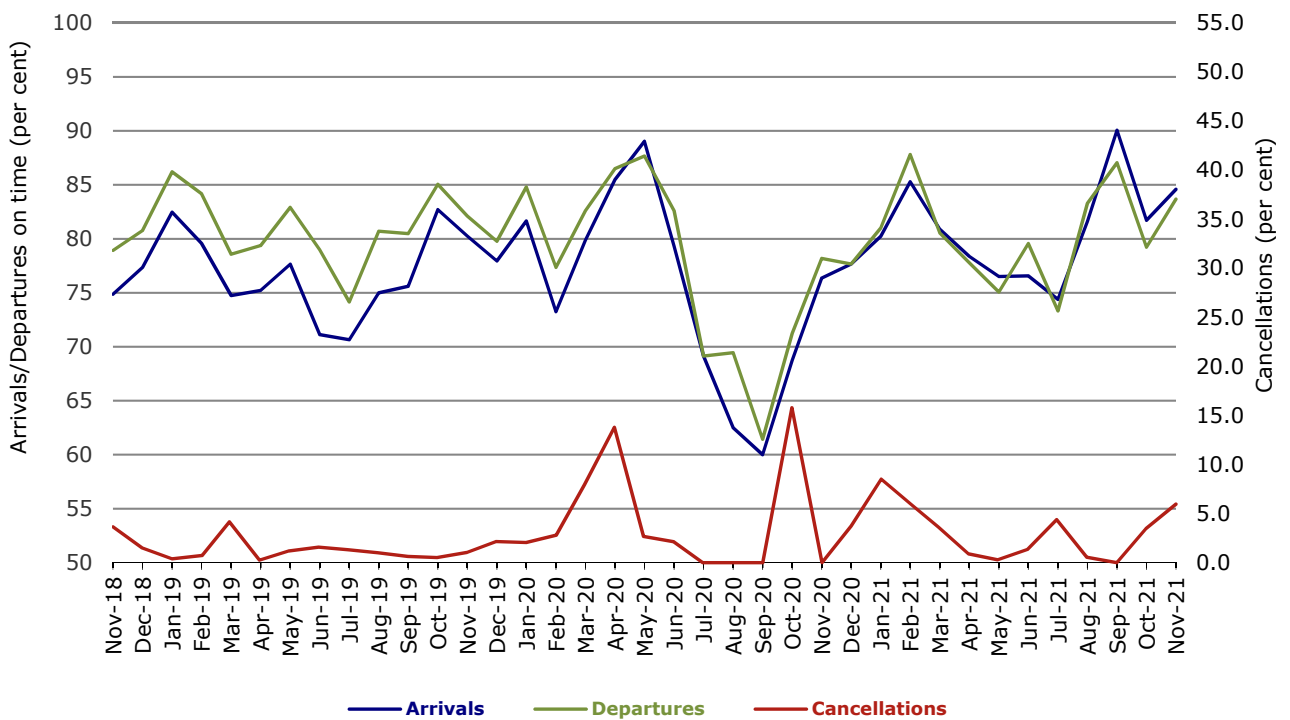


Figure 9 On time performance (by month from November 2018)—Rex Airlines



With effect from July 2021, Regional Express is reported as Rex Airlines

Figure 10 On time performance (by month from November 2018) Virgin Australia Regional Airlines



Individual routes

On time performance is reported for all routes where the passenger load averages over 8000 passengers per month over the previous six months, and where two or more airlines operate in competition on those routes. In order to present data for more routes during the period impacted by COVID-19, the passenger load restriction is not being applied. There are now 51 routes for which data are presented.

	<i>Sectors</i>		<i>Arrivals On Time</i>		<i>Departures On Time</i>		<i>Cancellations</i>	
	<i>Sched.</i>	<i>Flown</i>	<i>No.</i>	<i>%</i>	<i>No.</i>	<i>%</i>	<i>No.</i>	<i>%</i>
Adelaide-Alice Springs								
Qantas	28	24	23	95.8	24	100.0	4	14.3
Virgin Australia	13	13	10	76.9	12	92.3	0	0.0
All Airlines	41	37	33	89.2	36	97.3	4	9.8
Adelaide-Brisbane								
Jetstar	30	30	25	83.3	29	96.7	0	0.0
Qantas	93	93	89	95.7	90	96.8	0	0.0
Virgin Australia	92	87	81	93.1	77	88.5	5	5.4
All Airlines	215	210	195	92.9	196	93.3	5	2.3
Adelaide-Canberra								
Qantas	19	17	17	100.0	17	100.0	2	10.5
Virgin Australia	14	14	14	100.0	14	100.0	0	0.0
All Airlines	33	31	31	100.0	31	100.0	2	6.1
Adelaide-Melbourne								
Jetstar	26	23	19	82.6	18	78.3	3	11.5
Qantas	31	29	25	86.2	26	89.7	2	6.5
REX Airlines	7	6	5	83.3	5	83.3	1	14.3
Virgin Australia	54	51	46	90.2	44	86.3	3	5.6
All Airlines	118	109	95	87.2	93	85.3	9	7.6
Adelaide-Perth								
Jetstar	26	26	24	92.3	24	92.3	0	0.0
Qantas	98	97	87	89.7	87	89.7	1	1.0
Virgin Australia	41	40	33	82.5	34	85.0	1	2.4
All Airlines	165	163	144	88.3	145	89.0	2	1.2
Adelaide-Port Lincoln								
QantasLink	85	84	75	89.3	73	86.9	1	1.2
REX Airlines	168	167	142	85.0	149	89.2	1	0.6
All Airlines	253	251	217	86.5	222	88.4	2	0.8
Adelaide-Sydney								
Jetstar	26	24	17	70.8	16	66.7	2	7.7
Qantas	38	37	36	97.3	35	94.6	1	2.6
Virgin Australia	32	32	26	81.3	24	75.0	0	0.0
All Airlines	96	93	79	84.9	75	80.6	3	3.1
Albury-Sydney								
QantasLink	57	57	55	96.5	55	96.5	0	0.0
REX Airlines	23	23	20	87.0	21	91.3	0	0.0
All Airlines	80	80	75	93.8	76	95.0	0	0.0
Alice Springs-Adelaide								
Qantas	28	24	22	91.7	21	87.5	4	14.3
Virgin Australia	13	13	13	100.0	10	76.9	0	0.0
All Airlines	41	37	35	94.6	31	83.8	4	9.8

	<i>Sectors</i>		<i>Arrivals On Time</i>		<i>Departures On Time</i>		<i>Cancellations</i>	
	<i>Sched.</i>	<i>Flown</i>	<i>No.</i>	<i>%</i>	<i>No.</i>	<i>%</i>	<i>No.</i>	<i>%</i>
Armidale-Sydney								
QantasLink	63	59	45	76.3	44	74.6	4	6.3
REX Airlines	22	22	16	72.7	17	77.3	0	0.0
All Airlines	85	81	61	75.3	61	75.3	4	4.7
Ballina-Sydney								
Jetstar	121	118	80	67.8	69	58.5	3	2.5
Qantas	7	7	7	100.0	7	100.0	0	0.0
QantasLink	87	87	72	82.8	69	79.3	0	0.0
REX Airlines	9	9	7	77.8	7	77.8	0	0.0
Virgin Australia	73	71	62	87.3	56	78.9	2	2.7
All Airlines	297	292	228	78.1	208	71.2	5	1.7
Brisbane-Adelaide								
Jetstar	30	30	18	60.0	19	63.3	0	0.0
Qantas	93	93	89	95.7	90	96.8	0	0.0
Virgin Australia	92	86	79	91.9	81	94.2	6	6.5
All Airlines	215	209	186	89.0	190	90.9	6	2.8
Brisbane-Cairns								
Jetstar	79	79	62	78.5	62	78.5	0	0.0
Qantas	109	109	104	95.4	106	97.2	0	0.0
QantasLink	30	30	28	93.3	28	93.3	0	0.0
Virgin Australia	145	143	122	85.3	124	86.7	2	1.4
All Airlines	363	361	316	87.5	320	88.6	2	0.6
Brisbane-Canberra								
QantasLink	17	17	14	82.4	14	82.4	0	0.0
Virgin Australia	18	17	17	100.0	17	100.0	1	5.6
All Airlines	35	34	31	91.2	31	91.2	1	2.9
Brisbane-Darwin								
Jetstar	21	21	13	61.9	19	90.5	0	0.0
Qantas	42	41	34	82.9	40	97.6	1	2.4
Virgin Australia	28	26	21	80.8	24	92.3	2	7.1
All Airlines	91	88	68	77.3	83	94.3	3	3.3
Brisbane-Emerald								
QantasLink	117	116	105	90.5	108	93.1	1	0.9
Virgin Australia	26	26	24	92.3	23	88.5	0	0.0
All Airlines	143	142	129	90.8	131	92.3	1	0.7
Brisbane-Gladstone								
QantasLink	113	109	97	89.0	103	94.5	4	3.5
Virgin Australia	35	35	29	82.9	32	91.4	0	0.0
All Airlines	148	144	126	87.5	135	93.8	4	2.7
Brisbane-Hamilton Island								
Qantas	35	34	32	94.1	33	97.1	1	2.9
Virgin Australia	60	59	52	88.1	56	94.9	1	1.7
All Airlines	95	93	84	90.3	89	95.7	2	2.1
Brisbane-Hobart								
Jetstar	38	38	36	94.7	32	84.2	0	0.0
QantasLink	55	54	49	90.7	49	90.7	1	1.8
Virgin Australia	48	47	43	91.5	37	78.7	1	2.1
All Airlines	141	139	128	92.1	118	84.9	2	1.4

	<i>Sectors</i>		<i>Arrivals On Time</i>		<i>Departures On Time</i>		<i>Cancellations</i>	
	<i>Sched.</i>	<i>Flown</i>	<i>No.</i>	<i>%</i>	<i>No.</i>	<i>%</i>	<i>No.</i>	<i>%</i>
Brisbane-Mackay								
Jetstar	30	30	24	80.0	21	70.0	0	0.0
Qantas	102	100	92	92.0	94	94.0	2	2.0
QantasLink	10	10	9	90.0	9	90.0	0	0.0
Virgin Australia	106	101	85	84.2	89	88.1	5	4.7
All Airlines	248	241	210	87.1	213	88.4	7	2.8
Brisbane-Melbourne								
Jetstar	17	17	9	52.9	9	52.9	0	0.0
Virgin Australia	29	25	6	24.0	8	32.0	4	13.8
All Airlines	46	42	15	35.7	17	40.5	4	8.7
Brisbane-Mount Isa								
Qantas	38	38	37	97.4	38	100.0	0	0.0
QantasLink	14	14	12	85.7	14	100.0	0	0.0
Virgin Australia	20	19	16	84.2	18	94.7	1	5.0
All Airlines	72	71	65	91.5	70	98.6	1	1.4
Brisbane-Newcastle								
Jetstar	8	8	8	100.0	8	100.0	0	0.0
Virgin Australia	13	13	12	92.3	12	92.3	0	0.0
All Airlines	21	21	20	95.2	20	95.2	0	0.0
Brisbane-Perth								
Jetstar	13	13	8	61.5	8	61.5	0	0.0
Qantas	87	87	64	73.6	85	97.7	0	0.0
Virgin Australia	50	48	28	58.3	35	72.9	2	4.0
All Airlines	150	148	100	67.6	128	86.5	2	1.3
Brisbane-Proserpine								
Jetstar	35	35	21	60.0	25	71.4	0	0.0
QantasLink	46	46	44	95.7	44	95.7	0	0.0
Virgin Australia	49	49	46	93.9	47	95.9	0	0.0
All Airlines	130	130	111	85.4	116	89.2	0	0.0
Brisbane-Rockhampton								
QantasLink	168	161	148	91.9	149	92.5	7	4.2
Virgin Australia	90	87	69	79.3	75	86.2	3	3.3
All Airlines	258	248	217	87.5	224	90.3	10	3.9
Brisbane-Sydney								
Qantas	35	35	23	65.7	23	65.7	0	0.0
Virgin Australia	26	26	14	53.8	8	30.8	0	0.0
All Airlines	61	61	37	60.7	31	50.8	0	0.0
Brisbane-Townsville								
Jetstar	46	46	36	78.3	38	82.6	0	0.0
Qantas	124	124	119	96.0	119	96.0	0	0.0
Virgin Australia	111	102	84	82.4	87	85.3	9	8.1
All Airlines	281	272	239	87.9	244	89.7	9	3.2
Broome-Perth								
Qantas	10	10	9	90.0	9	90.0	0	0.0
QantasLink	72	70	65	92.9	63	90.0	2	2.8
Virgin Australia	40	36	34	94.4	34	94.4	4	10.0
Virgin Australia Regional Airlines	21	19	17	89.5	17	89.5	2	9.5
All Airlines	143	135	125	92.6	123	91.1	8	5.6

	<i>Sectors</i>		<i>Arrivals On Time</i>		<i>Departures On Time</i>		<i>Cancellations</i>	
	<i>Sched.</i>	<i>Flown</i>	<i>No.</i>	<i>%</i>	<i>No.</i>	<i>%</i>	<i>No.</i>	<i>%</i>
Cairns-Brisbane								
Jetstar	79	79	60	75.9	68	86.1	0	0.0
Qantas	108	107	102	95.3	103	96.3	1	0.9
QantasLink	30	30	29	96.7	29	96.7	0	0.0
Virgin Australia	145	143	132	92.3	120	83.9	2	1.4
All Airlines	362	359	323	90.0	320	89.1	3	0.8
Cairns-Melbourne								
Jetstar	13	13	12	92.3	11	84.6	0	0.0
Virgin Australia	17	16	16	100.0	16	100.0	1	5.9
All Airlines	30	29	28	96.6	27	93.1	1	3.3
Cairns-Sydney								
Jetstar	12	12	10	83.3	11	91.7	0	0.0
Virgin Australia	17	16	13	81.3	14	87.5	1	5.9
All Airlines	29	28	23	82.1	25	89.3	1	3.4
Cairns-Townsville								
QantasLink	132	130	126	96.9	125	96.2	2	1.5
REX Airlines	13	13	13	100.0	13	100.0	0	0.0
All Airlines	145	143	139	97.2	138	96.5	2	1.4
Canberra-Adelaide								
Qantas	19	17	16	94.1	16	94.1	2	10.5
Virgin Australia	14	14	14	100.0	14	100.0	0	0.0
All Airlines	33	31	30	96.8	30	96.8	2	6.1
Canberra-Brisbane								
QantasLink	17	17	15	88.2	15	88.2	0	0.0
Virgin Australia	17	17	15	88.2	15	88.2	0	0.0
All Airlines	34	34	30	88.2	30	88.2	0	0.0
Canberra-Melbourne								
QantasLink	117	109	95	87.2	98	89.9	8	6.8
Virgin Australia	49	49	47	95.9	44	89.8	0	0.0
All Airlines	166	158	142	89.9	142	89.9	8	4.8
Canberra-Sydney								
QantasLink	169	158	137	86.7	138	87.3	11	6.5
REX Airlines	46	46	38	82.6	42	91.3	0	0.0
All Airlines	215	204	175	85.8	180	88.2	11	5.1
Coffs Harbour-Sydney								
QantasLink	84	82	72	87.8	70	85.4	2	2.4
REX Airlines	38	38	32	84.2	34	89.5	0	0.0
Virgin Australia	20	19	19	100.0	17	89.5	1	5.0
All Airlines	142	139	123	88.5	121	87.1	3	2.1
Darwin-Brisbane								
Jetstar	22	22	11	50.0	14	63.6	0	0.0
Qantas	41	41	39	95.1	34	82.9	0	0.0
Virgin Australia	27	26	25	96.2	25	96.2	1	3.7
All Airlines	90	89	75	84.3	73	82.0	1	1.1
Darwin-Melbourne								
Qantas	17	16	15	93.8	15	93.8	1	5.9
Virgin Australia	13	12	12	100.0	11	91.7	1	7.7
All Airlines	30	28	27	96.4	26	92.9	2	6.7

	Sectors		Arrivals On Time		Departures On Time		Cancellations	
	Sched.	Flown	No.	%	No.	%	No.	%
Darwin-Perth								
Qantas	39	34	27	79.4	29	85.3	5	12.8
Virgin Australia	13	12	10	83.3	10	83.3	1	7.7
Virgin Australia Regional Airlines	14	12	12	100.0	12	100.0	2	14.3
All Airlines	66	58	49	84.5	51	87.9	8	12.1
Dubbo-Sydney								
QantasLink	67	65	55	84.6	47	72.3	2	3.0
REX Airlines	28	28	21	75.0	23	82.1	0	0.0
All Airlines	95	93	76	81.7	70	75.3	2	2.1
Emerald-Brisbane								
QantasLink	117	116	107	92.2	105	90.5	1	0.9
Virgin Australia	26	26	22	84.6	22	84.6	0	0.0
All Airlines	143	142	129	90.8	127	89.4	1	0.7
Gladstone-Brisbane								
QantasLink	115	112	100	89.3	100	89.3	3	2.6
Virgin Australia	35	35	29	82.9	29	82.9	0	0.0
All Airlines	150	147	129	87.8	129	87.8	3	2.0
Hamilton Island-Brisbane								
Qantas	35	34	31	91.2	31	91.2	1	2.9
Virgin Australia	60	59	50	84.7	49	83.1	1	1.7
All Airlines	95	93	81	87.1	80	86.0	2	2.1
Hobart-Brisbane								
Jetstar	38	38	34	89.5	29	76.3	0	0.0
QantasLink	55	53	51	96.2	50	94.3	2	3.6
Virgin Australia	48	47	36	76.6	37	78.7	1	2.1
All Airlines	141	138	121	87.7	116	84.1	3	2.1
Hobart-Melbourne								
Jetstar	21	21	18	85.7	17	81.0	0	0.0
Virgin Australia	22	20	19	95.0	20	100.0	2	9.1
All Airlines	43	41	37	90.2	37	90.2	2	4.7
Hobart-Sydney								
Jetstar	13	13	11	84.6	9	69.2	0	0.0
Virgin Australia	17	17	17	100.0	17	100.0	0	0.0
All Airlines	30	30	28	93.3	26	86.7	0	0.0
Kalgoorlie-Perth								
Qantas	16	15	10	66.7	11	73.3	1	6.3
QantasLink	58	55	45	81.8	42	76.4	3	5.2
Virgin Australia	27	27	13	48.1	13	48.1	0	0.0
Virgin Australia Regional Airlines	29	29	22	75.9	21	72.4	0	0.0
All Airlines	130	126	90	71.4	87	69.0	4	3.1
Karratha-Perth								
Qantas	36	35	26	74.3	25	71.4	1	2.8
QantasLink	107	100	88	88.0	87	87.0	7	6.5
Virgin Australia	35	35	34	97.1	30	85.7	0	0.0
Virgin Australia Regional Airlines	17	17	14	82.4	14	82.4	0	0.0
All Airlines	195	187	162	86.6	156	83.4	8	4.1
Launceston-Melbourne								
QantasLink	18	17	16	94.1	16	94.1	1	5.6
Virgin Australia	18	17	16	94.1	16	94.1	1	5.6
All Airlines	36	34	32	94.1	32	94.1	2	5.6

	<i>Sectors</i>		<i>Arrivals On Time</i>		<i>Departures On Time</i>		<i>Cancellations</i>	
	<i>Sched.</i>	<i>Flown</i>	<i>No.</i>	<i>%</i>	<i>No.</i>	<i>%</i>	<i>No.</i>	<i>%</i>
Launceston-Sydney								
Jetstar	13	12	8	66.7	8	66.7	1	7.7
Virgin Australia	17	17	17	100.0	17	100.0	0	0.0
All Airlines	30	29	25	86.2	25	86.2	1	3.3
Mackay-Brisbane								
Jetstar	30	29	24	82.8	20	69.0	1	3.3
Qantas	101	99	92	92.9	89	89.9	2	2.0
QantasLink	15	14	14	100.0	14	100.0	1	6.7
Virgin Australia	106	101	86	85.1	82	81.2	5	4.7
All Airlines	252	243	216	88.9	205	84.4	9	3.6
Melbourne-Adelaide								
Jetstar	25	23	19	82.6	17	73.9	2	8.0
Qantas	31	29	27	93.1	28	96.6	2	6.5
REX Airlines	7	6	6	100.0	6	100.0	1	14.3
Virgin Australia	56	51	47	92.2	47	92.2	5	8.9
All Airlines	119	109	99	90.8	98	89.9	10	8.4
Melbourne-Brisbane								
Jetstar	17	17	12	70.6	12	70.6	0	0.0
Virgin Australia	27	23	19	82.6	19	82.6	4	14.8
All Airlines	44	40	31	77.5	31	77.5	4	9.1
Melbourne-Cairns								
Jetstar	13	13	11	84.6	11	84.6	0	0.0
Virgin Australia	17	16	16	100.0	16	100.0	1	5.9
All Airlines	30	29	27	93.1	27	93.1	1	3.3
Melbourne-Canberra								
QantasLink	117	111	102	91.9	103	92.8	6	5.1
Virgin Australia	49	49	47	95.9	47	95.9	0	0.0
All Airlines	166	160	149	93.1	150	93.8	6	3.6
Melbourne-Darwin								
Qantas	17	16	15	93.8	15	93.8	1	5.9
Virgin Australia	13	12	10	83.3	12	100.0	1	7.7
All Airlines	30	28	25	89.3	27	96.4	2	6.7
Melbourne-Hobart								
Jetstar	21	21	19	90.5	17	81.0	0	0.0
Virgin Australia	22	20	20	100.0	19	95.0	2	9.1
All Airlines	43	41	39	95.1	36	87.8	2	4.7
Melbourne-Launceston								
QantasLink	17	17	16	94.1	15	88.2	0	0.0
Virgin Australia	19	17	17	100.0	16	94.1	2	10.5
All Airlines	36	34	33	97.1	31	91.2	2	5.6
Melbourne-Mildura								
QantasLink	56	56	55	98.2	53	94.6	0	0.0
REX Airlines	18	18	17	94.4	18	100.0	0	0.0
All Airlines	74	74	72	97.3	71	95.9	0	0.0
Melbourne-Newcastle								
Jetstar	45	42	25	59.5	28	66.7	3	6.7
QantasLink	17	16	13	81.3	14	87.5	1	5.9
Virgin Australia	23	22	20	90.9	20	90.9	1	4.3
All Airlines	85	80	58	72.5	62	77.5	5	5.9

	<i>Sectors</i>		<i>Arrivals On Time</i>		<i>Departures On Time</i>		<i>Cancellations</i>	
	<i>Sched.</i>	<i>Flown</i>	<i>No.</i>	<i>%</i>	<i>No.</i>	<i>%</i>	<i>No.</i>	<i>%</i>
Melbourne-Perth								
Qantas	22	22	17	77.3	17	77.3	0	0.0
Virgin Australia	22	21	20	95.2	20	95.2	1	4.5
All Airlines	44	43	37	86.0	37	86.0	1	2.3
Melbourne-Sydney								
Jetstar	192	186	156	83.9	152	81.7	6	3.1
Qantas	375	372	356	95.7	361	97.0	3	0.8
REX Airlines	49	49	46	93.9	47	95.9	0	0.0
Virgin Australia	253	250	233	93.2	234	93.6	3	1.2
All Airlines	869	857	791	92.3	794	92.6	12	1.4
Mildura-Melbourne								
QantasLink	56	56	54	96.4	52	92.9	0	0.0
REX Airlines	18	18	16	88.9	15	83.3	0	0.0
All Airlines	74	74	70	94.6	67	90.5	0	0.0
Mount Isa-Brisbane								
Qantas	38	38	37	97.4	33	86.8	0	0.0
QantasLink	14	14	12	85.7	12	85.7	0	0.0
Virgin Australia	20	19	18	94.7	18	94.7	1	5.0
All Airlines	72	71	67	94.4	63	88.7	1	1.4
Newcastle-Brisbane								
Jetstar	8	8	8	100.0	8	100.0	0	0.0
Virgin Australia	13	13	12	92.3	11	84.6	0	0.0
All Airlines	21	21	20	95.2	19	90.5	0	0.0
Newcastle-Melbourne								
Jetstar	45	42	26	61.9	20	47.6	3	6.7
QantasLink	16	15	14	93.3	12	80.0	1	6.3
Virgin Australia	22	22	20	90.9	19	86.4	0	0.0
All Airlines	83	79	60	75.9	51	64.6	4	4.8
Newman-Perth								
Qantas	10	9	6	66.7	5	55.6	1	10.0
QantasLink	108	104	84	80.8	88	84.6	4	3.7
Virgin Australia	40	40	30	75.0	29	72.5	0	0.0
Virgin Australia Regional Airlines	18	18	15	83.3	15	83.3	0	0.0
All Airlines	176	171	135	78.9	137	80.1	5	2.8
Perth-Adelaide								
Jetstar	26	26	17	65.4	16	61.5	0	0.0
Qantas	98	97	92	94.8	86	88.7	1	1.0
Virgin Australia	41	40	38	95.0	39	97.5	1	2.4
All Airlines	165	163	147	90.2	141	86.5	2	1.2
Perth-Brisbane								
Jetstar	13	13	7	53.8	7	53.8	0	0.0
Qantas	86	86	78	90.7	72	83.7	0	0.0
Virgin Australia	49	46	39	84.8	29	63.0	3	6.1
All Airlines	148	145	124	85.5	108	74.5	3	2.0
Perth-Broome								
Qantas	10	10	9	90.0	9	90.0	0	0.0
QantasLink	73	71	67	94.4	64	90.1	2	2.7
Virgin Australia	40	36	36	100.0	36	100.0	4	10.0
Virgin Australia Regional Airlines	21	19	16	84.2	17	89.5	2	9.5
All Airlines	144	136	128	94.1	126	92.6	8	5.6

	Sectors		Arrivals On Time		Departures On Time		Cancellations	
	Sched.	Flown	No.	%	No.	%	No.	%
Perth-Darwin								
Qantas	40	35	33	94.3	31	88.6	5	12.5
Virgin Australia	12	11	11	100.0	11	100.0	1	8.3
Virgin Australia Regional Airlines	15	12	12	100.0	12	100.0	3	20.0
All Airlines	67	58	56	96.6	54	93.1	9	13.4
Perth-Kalgoorlie								
Qantas	15	15	14	93.3	14	93.3	0	0.0
QantasLink	58	57	46	80.7	46	80.7	1	1.7
Virgin Australia	27	27	23	85.2	24	88.9	0	0.0
Virgin Australia Regional Airlines	29	29	24	82.8	25	86.2	0	0.0
All Airlines	129	128	107	83.6	109	85.2	1	0.8
Perth-Karratha								
Qantas	36	35	29	82.9	30	85.7	1	2.8
QantasLink	109	104	89	85.6	92	88.5	5	4.6
Virgin Australia	35	35	33	94.3	33	94.3	0	0.0
Virgin Australia Regional Airlines	17	17	15	88.2	15	88.2	0	0.0
All Airlines	197	191	166	86.9	170	89.0	6	3.0
Perth-Melbourne								
Qantas	22	22	19	86.4	20	90.9	0	0.0
Virgin Australia	21	21	15	71.4	10	47.6	0	0.0
All Airlines	43	43	34	79.1	30	69.8	0	0.0
Perth-Newman								
Qantas	10	9	8	88.9	7	77.8	1	10.0
QantasLink	108	105	96	91.4	97	92.4	3	2.8
Virgin Australia	40	40	35	87.5	37	92.5	0	0.0
Virgin Australia Regional Airlines	18	18	17	94.4	17	94.4	0	0.0
All Airlines	176	172	156	90.7	158	91.9	4	2.3
Perth-Port Hedland								
Qantas	43	43	38	88.4	37	86.0	0	0.0
QantasLink	89	88	80	90.9	80	90.9	1	1.1
Virgin Australia	11	11	9	81.8	9	81.8	0	0.0
Virgin Australia Regional Airlines	41	41	40	97.6	39	95.1	0	0.0
All Airlines	184	183	167	91.3	165	90.2	1	0.5
Perth-Sydney								
Qantas	17	17	17	100.0	16	94.1	0	0.0
Virgin Australia	22	22	19	86.4	16	72.7	0	0.0
All Airlines	39	39	36	92.3	32	82.1	0	0.0
Port Hedland-Perth								
Qantas	43	43	35	81.4	34	79.1	0	0.0
QantasLink	89	86	70	81.4	76	88.4	3	3.4
Virgin Australia	11	11	5	45.5	5	45.5	0	0.0
Virgin Australia Regional Airlines	41	40	32	80.0	32	80.0	1	2.4
All Airlines	184	180	142	78.9	147	81.7	4	2.2
Port Lincoln-Adelaide								
QantasLink	85	83	72	86.7	74	89.2	2	2.4
REX Airlines	168	167	136	81.4	138	82.6	1	0.6
All Airlines	253	250	208	83.2	212	84.8	3	1.2
Port Macquarie-Sydney								
QantasLink	62	58	49	84.5	46	79.3	4	6.5
REX Airlines	37	37	30	81.1	33	89.2	0	0.0
All Airlines	99	95	79	83.2	79	83.2	4	4.0

	<i>Sectors</i>		<i>Arrivals On Time</i>		<i>Departures On Time</i>		<i>Cancellations</i>	
	<i>Sched.</i>	<i>Flown</i>	<i>No.</i>	<i>%</i>	<i>No.</i>	<i>%</i>	<i>No.</i>	<i>%</i>
Proserpine-Brisbane								
Jetstar	36	35	22	62.9	21	60.0	1	2.8
QantasLink	45	45	44	97.8	42	93.3	0	0.0
Virgin Australia	49	49	40	81.6	36	73.5	0	0.0
All Airlines	130	129	106	82.2	99	76.7	1	0.8
Rockhampton-Brisbane								
QantasLink	168	159	140	88.1	142	89.3	9	5.4
Virgin Australia	89	86	77	89.5	77	89.5	3	3.4
All Airlines	257	245	217	88.6	219	89.4	12	4.7
Sydney-Adelaide								
Jetstar	25	24	20	83.3	17	70.8	1	4.0
Qantas	39	38	37	97.4	37	97.4	1	2.6
Virgin Australia	32	32	28	87.5	29	90.6	0	0.0
All Airlines	96	94	85	90.4	83	88.3	2	2.1
Sydney-Albury								
QantasLink	57	57	57	100.0	52	91.2	0	0.0
REX Airlines	23	23	20	87.0	18	78.3	0	0.0
All Airlines	80	80	77	96.3	70	87.5	0	0.0
Sydney-Armidale								
QantasLink	62	59	45	76.3	48	81.4	3	4.8
REX Airlines	22	22	15	68.2	15	68.2	0	0.0
All Airlines	84	81	60	74.1	63	77.8	3	3.6
Sydney-Ballina								
Jetstar	121	119	88	73.9	92	77.3	2	1.7
Qantas	7	7	7	100.0	7	100.0	0	0.0
QantasLink	88	88	76	86.4	78	88.6	0	0.0
REX Airlines	9	9	8	88.9	8	88.9	0	0.0
Virgin Australia	73	72	65	90.3	69	95.8	1	1.4
All Airlines	298	295	244	82.7	254	86.1	3	1.0
Sydney-Brisbane								
Qantas	37	37	30	81.1	30	81.1	0	0.0
Virgin Australia	22	22	18	81.8	16	72.7	0	0.0
All Airlines	59	59	48	81.4	46	78.0	0	0.0
Sydney-Cairns								
Jetstar	12	12	11	91.7	11	91.7	0	0.0
Virgin Australia	17	16	14	87.5	14	87.5	1	5.9
All Airlines	29	28	25	89.3	25	89.3	1	3.4
Sydney-Canberra								
QantasLink	169	161	138	85.7	139	86.3	8	4.7
REX Airlines	47	47	36	76.6	39	83.0	0	0.0
All Airlines	216	208	174	83.7	178	85.6	8	3.7
Sydney-Coffs Harbour								
QantasLink	85	83	72	86.7	74	89.2	2	2.4
REX Airlines	39	39	32	82.1	33	84.6	0	0.0
Virgin Australia	20	19	19	100.0	18	94.7	1	5.0
All Airlines	144	141	123	87.2	125	88.7	3	2.1
Sydney-Dubbo								
QantasLink	67	66	57	86.4	58	87.9	1	1.5
REX Airlines	29	29	25	86.2	23	79.3	0	0.0
All Airlines	96	95	82	86.3	81	85.3	1	1.0

	<i>Sectors</i>		<i>Arrivals On Time</i>		<i>Departures On Time</i>		<i>Cancellations</i>	
	<i>Sched.</i>	<i>Flown</i>	<i>No.</i>	<i>%</i>	<i>No.</i>	<i>%</i>	<i>No.</i>	<i>%</i>
Sydney-Hobart								
Jetstar	13	13	12	92.3	12	92.3	0	0.0
Virgin Australia	17	17	17	100.0	17	100.0	0	0.0
All Airlines	30	30	29	96.7	29	96.7	0	0.0
Sydney-Launceston								
Jetstar	13	12	7	58.3	9	75.0	1	7.7
Virgin Australia	17	17	17	100.0	17	100.0	0	0.0
All Airlines	30	29	24	82.8	26	89.7	1	3.3
Sydney-Melbourne								
Jetstar	193	186	168	90.3	151	81.2	7	3.6
Qantas	357	354	342	96.6	339	95.8	3	0.8
REX Airlines	49	49	47	95.9	45	91.8	0	0.0
Virgin Australia	252	249	226	90.8	200	80.3	3	1.2
All Airlines	851	838	783	93.4	735	87.7	13	1.5
Sydney-Perth								
Qantas	18	18	12	66.7	12	66.7	0	0.0
Virgin Australia	22	22	20	90.9	22	100.0	0	0.0
All Airlines	40	40	32	80.0	34	85.0	0	0.0
Sydney-Port Macquarie								
QantasLink	60	56	47	83.9	45	80.4	4	6.7
REX Airlines	38	38	33	86.8	33	86.8	0	0.0
All Airlines	98	94	80	85.1	78	83.0	4	4.1
Sydney-Wagga Wagga								
QantasLink	70	66	55	83.3	57	86.4	4	5.7
REX Airlines	24	24	18	75.0	18	75.0	0	0.0
All Airlines	94	90	73	81.1	75	83.3	4	4.3
Townsville-Brisbane								
Jetstar	47	46	37	80.4	35	76.1	1	2.1
Qantas	125	124	117	94.4	116	93.5	1	0.8
Virgin Australia	111	102	76	74.5	69	67.6	9	8.1
All Airlines	283	272	230	84.6	220	80.9	11	3.9
Townsville-Cairns								
QantasLink	132	129	118	91.5	114	88.4	3	2.3
REX Airlines	13	13	12	92.3	12	92.3	0	0.0
All Airlines	145	142	130	91.5	126	88.7	3	2.1
Wagga Wagga-Sydney								
QantasLink	70	66	58	87.9	52	78.8	4	5.7
REX Airlines	24	24	18	75.0	19	79.2	0	0.0
All Airlines	94	90	76	84.4	71	78.9	4	4.3

Airports

The following data reports by airport against flights operated on published routes only. This month, 6 major city airports and 28 regional city airports are covered.

Airport	Arrivals			Departures		
	Sectors	On Time		Sectors	On Time	
	Flown	No.	%	Flown	No.	%
Adelaide						
Jetstar	103	74	71.8	103	87	84.5
Qantas	298	283	95.0	297	279	93.9
QantasLink	83	72	86.7	84	73	86.9
REX Airlines	173	142	82.1	173	154	89.0
Virgin Australia	236	219	92.8	237	205	86.5
All Airlines	893	790	88.5	894	798	89.3

Relates to services to and from Alice Springs, Brisbane, Canberra, Melbourne, Perth, Port Lincoln and Sydney.

Albury

QantasLink	57	57	100.0	57	55	96.5
REX Airlines	23	20	87.0	23	21	91.3
All Airlines	80	77	96.3	80	76	95.0

Relates to services to and from Sydney only.

Alice Springs

Qantas	24	23	95.8	24	21	87.5
Virgin Australia	13	10	76.9	13	10	76.9
All Airlines	37	33	89.2	37	31	83.8

Relates to services to and from Adelaide only.

Armidale

QantasLink	59	45	76.3	59	44	74.6
REX Airlines	22	15	68.2	22	17	77.3
All Airlines	81	60	74.1	81	61	75.3

Relates to services to and from Sydney only.

Ballina

Jetstar	119	88	73.9	118	69	58.5
Qantas	7	7	100.0	7	7	100.0
QantasLink	88	76	86.4	87	69	79.3
REX Airlines	9	8	88.9	9	7	77.8
Virgin Australia	72	65	90.3	71	56	78.9
All Airlines	295	244	82.7	292	208	71.2

Relates to services to and from Sydney only.

Brisbane

Jetstar	317	240	75.7	317	241	76.0
Qantas	659	615	93.3	661	628	95.0
QantasLink	560	512	91.4	557	518	93.0
Virgin Australia	901	775	86.0	909	773	85.0
All Airlines	2 437	2 142	87.9	2 444	2 160	88.4

Relates to services to and from Adelaide, Cairns, Canberra, Darwin, Emerald, Gladstone, Hamilton Island, Hobart, Mackay, Melbourne, Mount Isa, Newcastle, Perth, Proserpine, Rockhampton, Sydney and Townsville.

Airport	Arrivals			Departures		
	Sectors Flown	On Time		Sectors Flown	On Time	
		No.	%		No.	%
Broome						
Qantas	10	9	90.0	10	9	90.0
QantasLink	71	67	94.4	70	63	90.0
Virgin Australia	36	36	100.0	36	34	94.4
Virgin Australia Regional Airlines	19	16	84.2	19	17	89.5
All Airlines	136	128	94.1	135	123	91.1
Relates to services to and from Perth only.						
Cairns						
Jetstar	104	84	80.8	104	90	86.5
Qantas	109	104	95.4	107	103	96.3
QantasLink	159	146	91.8	160	154	96.3
REX Airlines	13	12	92.3	13	13	100.0
Virgin Australia	175	152	86.9	175	150	85.7
All Airlines	560	498	88.9	559	510	91.2
Relates to services to and from Brisbane, Melbourne, Sydney and Townsville.						
Canberra						
Qantas	17	17	100.0	17	16	94.1
QantasLink	289	254	87.9	284	251	88.4
REX Airlines	47	36	76.6	46	42	91.3
Virgin Australia	80	78	97.5	80	73	91.3
All Airlines	433	385	88.9	427	382	89.5
Relates to services to and from Adelaide, Brisbane, Melbourne and Sydney only.						
Coffs Harbour						
QantasLink	83	72	86.7	82	70	85.4
REX Airlines	39	32	82.1	38	34	89.5
Virgin Australia	19	19	100.0	19	17	89.5
All Airlines	141	123	87.2	139	121	87.1
Relates to services to and from Sydney only.						
Darwin						
Jetstar	21	13	61.9	22	14	63.6
Qantas	92	82	89.1	91	78	85.7
Virgin Australia	49	42	85.7	50	46	92.0
Virgin Australia Regional Airlines	12	12	100.0	12	12	100.0
All Airlines	174	149	85.6	175	150	85.7
Relates to services to and from Brisbane, Melbourne and Perth.						
Dubbo						
QantasLink	66	57	86.4	65	47	72.3
REX Airlines	29	25	86.2	28	23	82.1
All Airlines	95	82	86.3	93	70	75.3
Relates to services to and from Sydney only.						
Emerald						
QantasLink	116	105	90.5	116	105	90.5
Virgin Australia	26	24	92.3	26	22	84.6
All Airlines	142	129	90.8	142	127	89.4
Relates to services to and from Brisbane only.						

Airport	Arrivals			Departures		
	Sectors	On Time		Sectors	On Time	
	Flown	No.	%	Flown	No.	%
Gladstone						
QantasLink	109	97	89.0	112	100	89.3
Virgin Australia	35	29	82.9	35	29	82.9
All Airlines	144	126	87.5	147	129	87.8
Relates to services to and from Brisbane only.						
Hamilton Island						
Qantas	34	32	94.1	34	31	91.2
Virgin Australia	59	52	88.1	59	49	83.1
All Airlines	93	84	90.3	93	80	86.0
Relates to services to and from Brisbane only.						
Hobart						
Jetstar	72	67	93.1	72	55	76.4
QantasLink	54	49	90.7	53	50	94.3
Virgin Australia	84	80	95.2	84	74	88.1
All Airlines	210	196	93.3	209	179	85.6
Relates to services to and from Brisbane, Melbourne and Sydney.						
Kalgoorlie						
Qantas	15	14	93.3	15	11	73.3
QantasLink	57	46	80.7	55	42	76.4
Virgin Australia	27	23	85.2	27	13	48.1
Virgin Australia Regional Airlines	29	24	82.8	29	21	72.4
All Airlines	128	107	83.6	126	87	69.0
Relates to services to and from Perth only.						
Karratha						
Qantas	35	29	82.9	35	25	71.4
QantasLink	104	89	85.6	100	87	87.0
Virgin Australia	35	33	94.3	35	30	85.7
Virgin Australia Regional Airlines	17	15	88.2	17	14	82.4
All Airlines	191	166	86.9	187	156	83.4
Relates to services to and from Perth only.						
Launceston						
Jetstar	12	7	58.3	12	8	66.7
QantasLink	17	16	94.1	17	16	94.1
Virgin Australia	34	34	100.0	34	33	97.1
All Airlines	63	57	90.5	63	57	90.5
Relates to services to and from Melbourne and Sydney.						
Mackay						
Jetstar	30	24	80.0	29	20	69.0
Qantas	100	92	92.0	99	89	89.9
QantasLink	10	9	90.0	14	14	100.0
Virgin Australia	101	85	84.2	101	82	81.2
All Airlines	241	210	87.1	243	205	84.4
Relates to services to and from Brisbane only.						

Airport	Arrivals			Departures		
	Sectors Flown	On Time		Sectors Flown	On Time	
		No.	%		No.	%
Melbourne						
Jetstar	302	252	83.4	302	237	78.5
Qantas	421	401	95.2	439	421	95.9
QantasLink	197	179	90.9	200	185	92.5
REX Airlines	73	68	93.2	73	71	97.3
Virgin Australia	482	423	87.8	481	450	93.6
All Airlines	1 475	1 323	89.7	1 495	1 364	91.2
Relates to services to and from Adelaide, Brisbane, Cairns, Canberra, Darwin, Hobart, Launceston, Mildura, Newcastle, Perth, and Sydney.						
Mildura						
QantasLink	56	55	98.2	56	52	92.9
REX Airlines	18	17	94.4	18	15	83.3
All Airlines	74	72	97.3	74	67	90.5
Relates to services to and from Melbourne only.						
Mount Isa						
Qantas	38	37	97.4	38	33	86.8
QantasLink	14	12	85.7	14	12	85.7
Virgin Australia	19	16	84.2	19	18	94.7
All Airlines	71	65	91.5	71	63	88.7
Relates to services to and from Brisbane only.						
Newcastle						
Jetstar	50	33	66.0	50	28	56.0
QantasLink	16	13	81.3	15	12	80.0
Virgin Australia	35	32	91.4	35	30	85.7
All Airlines	101	78	77.2	100	70	70.0
Relates to services to and from Brisbane and Melbourne.						
Newman						
Qantas	9	8	88.9	9	5	55.6
QantasLink	105	96	91.4	104	88	84.6
Virgin Australia	40	35	87.5	40	29	72.5
Virgin Australia Regional Airlines	18	17	94.4	18	15	83.3
All Airlines	172	156	90.7	171	137	80.1
Relates to services to and from Perth only.						
Perth						
Jetstar	39	32	82.1	39	23	59.0
Qantas	370	293	79.2	369	322	87.3
QantasLink	415	352	84.8	425	379	89.2
Virgin Australia	292	227	77.7	289	244	84.4
Virgin Australia Regional Airlines	135	112	83.0	136	125	91.9
All Airlines	1 251	1 016	81.2	1 258	1 093	86.9
Relates to services to and from Adelaide, Brisbane, Broome, Darwin, Kalgoorlie, Karratha, Melbourne, Newman, Port Hedland and Sydney.						
Port Hedland						
Qantas	43	38	88.4	43	34	79.1
QantasLink	88	80	90.9	86	76	88.4
Virgin Australia	11	9	81.8	11	5	45.5
Virgin Australia Regional Airlines	41	40	97.6	40	32	80.0
All Airlines	183	167	91.3	180	147	81.7
Relates to services to and from Perth only.						

Airport	Arrivals			Departures		
	Sectors	On Time		Sectors	On Time	
	Flown	No.	%	Flown	No.	%
Port Lincoln						
QantasLink	84	75	89.3	83	74	89.2
REX Airlines	167	142	85.0	167	138	82.6
All Airlines	251	217	86.5	250	212	84.8
Relates to services to and from Adelaide only.						
Port Macquarie						
QantasLink	56	47	83.9	58	46	79.3
REX Airlines	38	33	86.8	37	33	89.2
All Airlines	94	80	85.1	95	79	83.2
Relates to services to and from Sydney only.						
Proserpine						
Jetstar	35	21	60.0	35	21	60.0
QantasLink	46	44	95.7	45	42	93.3
Virgin Australia	49	46	93.9	49	36	73.5
All Airlines	130	111	85.4	129	99	76.7
Relates to services to and from Brisbane only.						
Rockhampton						
QantasLink	161	148	91.9	159	142	89.3
Virgin Australia	87	69	79.3	86	77	89.5
All Airlines	248	217	87.5	245	219	89.4
Relates to services to and from Brisbane only.						
Sydney						
Jetstar	365	282	77.3	366	292	79.8
Qantas	468	439	93.8	454	425	93.6
QantasLink	632	543	85.9	636	551	86.6
REX Airlines	276	228	82.6	280	232	82.9
Virgin Australia	470	420	89.4	466	402	86.3
All Airlines	2 211	1 912	86.5	2 202	1 902	86.4
Relates to services to and from Adelaide, Albury, Armidale, Ballina, Brisbane, Cairns, Canberra, Coffs Harbour, Dubbo, Hobart, Launceston, Melbourne, Perth, Port Macquarie and Wagga Wagga.						
Townsville						
Jetstar	46	36	78.3	46	35	76.1
Qantas	124	119	96.0	124	116	93.5
QantasLink	130	126	96.9	129	114	88.4
REX Airlines	13	13	100.0	13	12	92.3
Virgin Australia	102	84	82.4	102	69	67.6
All Airlines	415	378	91.1	414	346	83.6
Relates to services to and from Brisbane and Cairns.						
Wagga Wagga						
QantasLink	66	55	83.3	66	52	78.8
REX Airlines	24	18	75.0	24	19	79.2
All Airlines	90	73	81.1	90	71	78.9
Relates to services to and from Sydney only.						

Definitions

On time arrival	A flight arrival is counted as "on time" if it arrived at the gate before 15 minutes after the scheduled arrival time shown in the carriers' schedule. Neither diverted nor cancelled flights count as on time.
On time departure	A flight departure is counted as "on time" if it departs the gate before 15 minutes after the scheduled departure time shown in the carriers' schedule.
Cancellation	A flight removed from service within 7 days of scheduled departure is regarded as a cancellation.
On time departure percentage	The percentage of on time departures is measured against the number of departures <i>operated</i> on any particular sector.
On time arrival percentage	The percentage of on time arrivals is measured against the number of arrivals <i>operated</i> on any particular sector.
Cancellation percentage	The percentage of cancellations is measured against the number of services <i>scheduled</i> on any particular sector.
