



Australian Government

Department of Infrastructure, Transport, Regional Development and Communications

Bureau of Infrastructure and Transport Research Economics

STATISTICAL REPORT



Aviation

Domestic airline on time performance
July 2021

© Commonwealth of Australia 2021

ISSN: 1832-0759

Ownership of intellectual property rights in this publication

Unless otherwise noted, copyright (and any other intellectual property rights, if any) in this publication is owned by the Commonwealth of Australia (referred to below as the Commonwealth).

Disclaimer

The material contained in this publication is made available on the understanding that the Commonwealth is not providing professional advice, and that users exercise their own skill and care with respect to its use, and seek independent advice if necessary.

The Commonwealth makes no representations or warranties as to the contents or accuracy of the information contained in this publication. To the extent permitted by law, the Commonwealth disclaims liability to any person or organisation in respect of anything done, or omitted to be done, in reliance upon information contained in this publication.

Creative Commons licence

With the exception of (a) the Coat of Arms; and (b) the Department of Infrastructure, Transport, Regional Development and Communications' photos and graphics, copyright in this publication is licensed under a Creative Commons Attribution 3.0 Australia Licence.

Creative Commons Attribution 3.0 Australia Licence is a standard form licence agreement that allows you to copy, communicate and adapt this publication provided that you attribute the work to the Commonwealth and abide by the other licence terms. A summary of the licence terms is available from <http://creativecommons.org/licenses/by/3.0/au/deed.en>. The full licence terms are available from <http://creativecommons.org/licenses/by/3.0/au/legalcode>.

Use of the Coat of Arms

The Department of the Prime Minister and Cabinet sets the terms under which the Coat of Arms is used. Please refer to the Department's Commonwealth Coat of Arms and Government branding web page <http://www.dpmc.gov.au/guidelines/index.cfm#brand> and, in particular, the Guidelines on the use of the Commonwealth Coat of Arms publication.

An appropriate citation for this report is:

Bureau of Infrastructure and Transport Research Economics (BITRE), 2021, Domestic airline on time performance, Statistical Report, BITRE, Canberra ACT.

Contact us

This publication is available in PDF format. All other rights are reserved, including in relation to any Departmental logos or trade marks which may exist. For enquiries regarding the licence and any use of this publication, please contact:

Bureau of Infrastructure and Transport Research Economics (BITRE)
Department of Infrastructure, Transport, Regional Development and Communications
GPO Box 501, Canberra ACT 2601, Australia
Telephone: (international) +61 2 6274 7210
Fax: (international) +61 2 6274 6855
Email: bitre@infrastructure.gov.au
Website: www.bitre.gov.au

Inquiries

Should you require additional information about the statistics contained in this publication:

Telephone (02) 6274 7790 or Facsimile (02) 6274 7727

Electronic mail: AVSTATS@infrastructure.gov.au

Web site: <http://www.bitre.gov.au/statistics/aviation/otphome.aspx>

Foreword

The Bureau of Infrastructure and Transport Research Economics (BITRE) monitors the punctuality and reliability of major domestic airlines operating between Australian airports. The purpose of this is to allow for evaluation of overall industry and individual airline performance, so that consumers of air travel can make informed decisions.

The following domestic airlines currently report this information monthly to the BITRE: Jetstar, Qantas, QantasLink, Rex Airlines, Virgin Australia and Virgin Australia Regional Airlines.

Data has been gathered since November 2003, although some airlines commenced reporting at a later date, including Jetstar which first reported in May 2004, MacAir in July 2005, Tigerair Australia in April 2008 and Virgin Australia Regional Airlines in May 2013. MacAir ceased operations in February 2009 and data was not received for December 2008 onwards. Tigerair Australia ceased operations in March 2020 and data was not received for that month.

Virgin Blue was rebranded as Virgin Australia in May 2011 and Tiger Airways was rebranded as Tigerair Australia in July 2013 and time series data in Microsoft Excel spread sheet format on the BITRE website have been revised to reflect these changes. With effect from July 2021, Regional Express is reported as Rex Airlines.

Services operated by Skywest on behalf of Virgin Australia using ATR/F100 aircraft commenced in November 2011 and were shown separately as Virgin Australia – ATR/F100 Operations. Virgin Australia Regional Airlines commenced operations in May 2013. It was formed after the acquisition of Skywest by Virgin Australia and represented a combination of operations previously reported under Skywest and Virgin Australia – ATR/F100 Operations. In January 2016, Virgin Australia transferred their ATR fleet from Virgin Australia Regional Airlines to Virgin Australia.

Information presented in this report is for Australian domestic routes for which the passenger load averaged 8 000 or more passengers per month over the previous six months and where two or more airlines operated in competition on those routes. There were 57 routes that met this definition in July 2021. Over time, routes which meet these criteria change as airline networks and traffic levels vary.

Participating airlines report their overall monthly network performance where this is possible.

Total industry figures encompass all services operated by reporting airlines only. These airlines collectively carried over 95 per cent of total domestic passengers (regular public transport only) in 2019.

The method of capturing on time performance varies between airlines utilising different recording systems. Jetstar and Qantas jet aircraft use Aircraft Communication Addressing and Reporting System (ACARS) to electronically measure on time performance. Rex Airlines, Virgin Australia, Virgin Australia Regional Airlines and the Qantas non-jet fleet record on time performance manually using records from pilots, gate agents and/or ground crews.

After initial data is collected, aggregate reports are reviewed by participating airlines prior to publication.

Reports and detailed time series data in Microsoft Excel spreadsheet format are available from the BITRE website at: <http://www.bitre.gov.au/statistics/aviation/otphome.aspx>

Contents

	Page
Industry performance	1
Individual routes	9
Airports.....	21
Definitions	26

Industry performance

For July 2021, on time performance over all routes operated by participating airlines (Jetstar, Qantas, QantasLink, REX Airlines, Virgin Australia and Virgin Australia Regional Airlines) averaged 86.7 per cent for on time arrivals and 87.6 percent for on time departures. The cancellation rate for the month was 31.8 per cent. Travel restrictions due to the COVID-19 pandemic resulted in the second highest number of cancelled flights recorded since OTP reporting commenced in November 2003 (9 351 this month and 9 406 in June 2021). The equivalent figures for July 2020 were 87.6 per cent for on time arrivals, 84.9 per cent for on time departures and 4.4 per cent for cancellations.

This month's on time arrivals figure was higher than the long term average performance for all routes (82.3 per cent) and the on time departures figure was also higher than the long term average (83.6 per cent). The rate of cancellations was significantly higher than the long term average of 1.9 per cent.

The Virgin Australia network (Virgin Australia and Virgin Australia Regional Airlines combined operations) recorded 89.0 per cent for on time arrivals while the Qantas network (Qantas and QantasLink combined operations) recorded 85.5 per cent. Virgin Australia achieved the highest on time arrivals among the major domestic airlines at 90.3 per cent followed by Jetstar at 85.9 per cent and Qantas at 84.4 per cent. Of the regional airlines, REX Airlines recorded 87.6 per cent for on time arrivals, followed by QantasLink at 86.1 per cent and Virgin Australia Regional Airlines at 74.4 per cent.

The Virgin Australia network recorded 88.4 per cent for on time departures while the Qantas network recorded 87.6 per cent. Virgin Australia achieved the highest level of on time departures among the major domestic airlines for July 2021 at 89.8 per cent, followed by Qantas at 89.0 per cent and Jetstar at 84.9 per cent. Of the regional airlines, REX Airlines recorded 88.7 per cent for on time departures, followed by QantasLink at 86.9 per cent and Virgin Australia Regional Airlines at 73.3 per cent.

Jetstar recorded the highest percentage of cancellations (at 51.2 per cent) during the month, followed by Qantas (at 35.8 per cent), Virgin Australia (at 31.2 per cent), QantasLink (at 25.6 per cent), REX Airlines (at 17.8 per cent) and Virgin Australia Regional Airlines (at 4.4 per cent).

Airlines' on time performance varies across the routes they serve. Individual route data by specific airline for 57 routes are shown on pages 9-20.

Of the 57 routes which met the criteria for on time performance reporting in July 2021, the Hamilton Island-Sydney, Sunshine Coast-Sydney and Sydney-Sunshine Coast routes had the highest percentage of on time arrivals (100.0 per cent). The Sunshine Coast-Sydney, Sydney-Coffs Harbour and Sydney-Sunshine Coast routes had the highest percentage of on time departures (100.0 per cent). The Brisbane-Perth route had the lowest percentage of on time arrivals (33.7 per cent) and the Perth-Melbourne route had the lowest percentage of on time departures (49.4 per cent).

Cancellations were highest on the Sydney-Melbourne route at 79.1 per cent, followed by the Sydney-Gold Coast route at 78.7 per cent, the Gold Coast-Sydney route at 78.2 per cent, the Melbourne-Sydney route at 77.0 per cent and the Brisbane-Sydney route at 76.5 per cent.

Dubbo Airport recorded the highest percentage of on time arrivals (98.4 per cent) and Port Macquarie Airport recorded the highest percentage of on time departures (95.3 per cent). Perth Airport recorded the lowest percentage of on time arrivals (68.7 per cent) and Alice Springs Airport recorded the lowest percentage of on time departures (62.7 per cent). These figures only refer to reported routes and do not cover all flights at these airports.

Table 1 On time performance for July 2021 — Total Industry

	Sectors		Arrivals On Time		Departures On Time		Cancellations	
	Scheduled	Flown	No.	%	No.	%	No.	%
Jetstar	5 164	2 519	2 163	85.9	2 139	84.9	2 645	51.2
Qantas - all QF designated services	13 790	9 711	8 307	85.5	8 507	87.6	4 079	29.6
REX Airlines	3 959	3 254	2 850	87.6	2 885	88.7	705	17.8
Virgin Australia - all VA designated services	6 498	4 576	4 073	89.0	4 047	88.4	1 922	29.6
All Airlines	29 411	20 060	17 393	86.7	17 578	87.6	9 351	31.8
Individual operating entities								
Qantas	5 356	3 437	2 902	84.4	3 058	89.0	1 919	35.8
QantasLink	8 434	6 274	5 405	86.1	5 449	86.9	2 160	25.6
Virgin Australia	6 110	4 205	3 797	90.3	3 775	89.8	1 905	31.2
Virgin Australia Regional Airlines	388	371	276	74.4	272	73.3	17	4.4

Total airline network data (including routes not shown in this report).

Airlines' on time performance varies across the routes they serve. Individual route data by specific airline for 57 routes are shown on pages 9-20.

Table 2 Top ten routes for on time performance for July 2021 (participating airlines only)

Arrivals		Departures	
Route	On Time (%)	Route	On Time (%)
Hamilton Island-Sydney	100.0	Sunshine Coast-Sydney	100.0
Sunshine Coast-Sydney	100.0	Sydney-Coffs Harbour	100.0
Sydney-Sunshine Coast	100.0	Sydney-Sunshine Coast	100.0
Sydney-Dubbo	98.4	Sydney-Adelaide	98.4
Sydney-Coffs Harbour	97.9	Sydney-Dubbo	98.4
Mount Isa-Brisbane	97.0	Adelaide-Gold Coast	97.2
Sydney-Gold Coast	96.8	Gold Coast-Adelaide	97.1
Coffs Harbour-Sydney	95.7	Brisbane-Mount Isa	97.1
Cairns-Sydney	95.6	Sydney-Gold Coast	96.8
Hamilton Island-Brisbane	95.4	Hamilton Island-Sydney	95.7

Table 3 Top ten airports for on time performance for July 2021 (participating airlines and reported routes only)

Arrivals		Departures	
Airport	On Time (%)	Airport	On Time (%)
Dubbo	98.4	Port Macquarie	95.3
Coffs Harbour	97.9	Gold Coast	94.3
Newcastle	94.3	Dubbo	93.8
Sunshine Coast	94.2	Coffs Harbour	93.5
Gladstone	94.0	Gladstone	93.3
Gold Coast	93.8	Emerald	92.8
Albury	93.5	Mount Isa	92.5
Port Macquarie	92.9	Hamilton Island	92.0
Mount Isa	92.6	Albury	91.9
Rockhampton	92.2	Sydney	91.8

Total industry on time performance

Figure 1 On time performance (by month from July 2018)—Total Industry

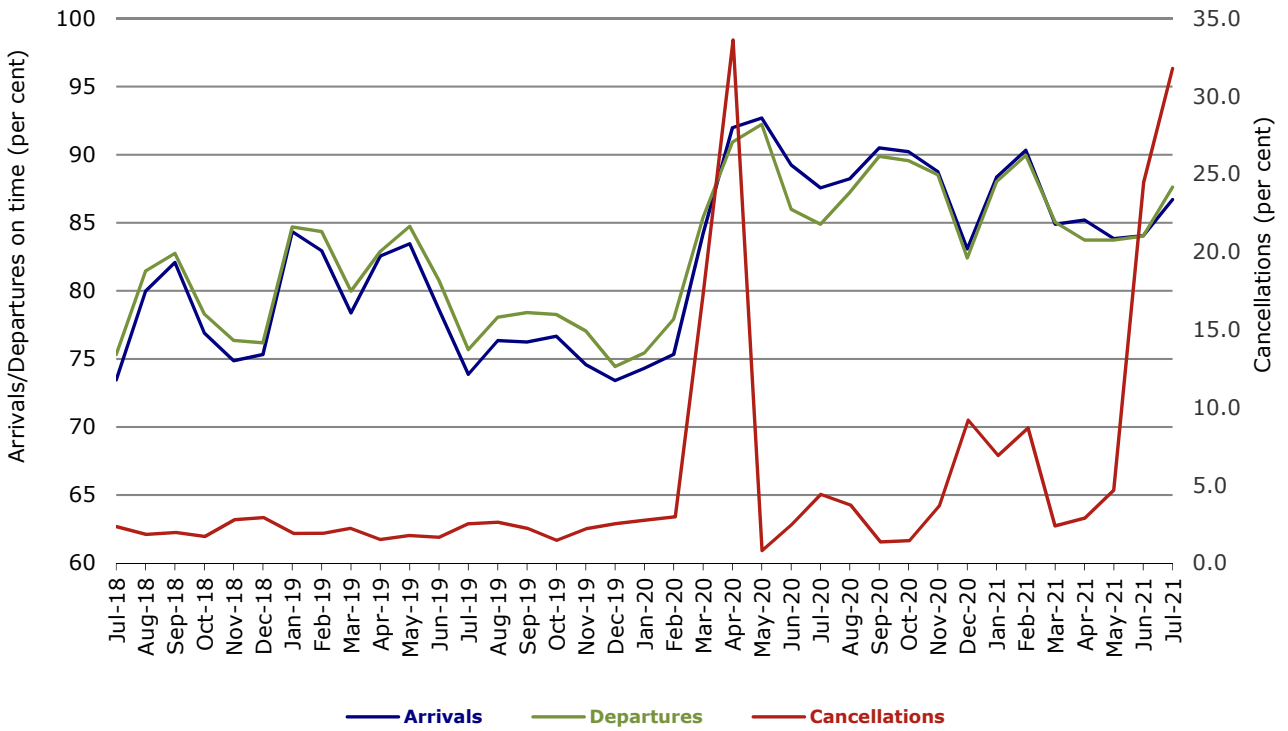
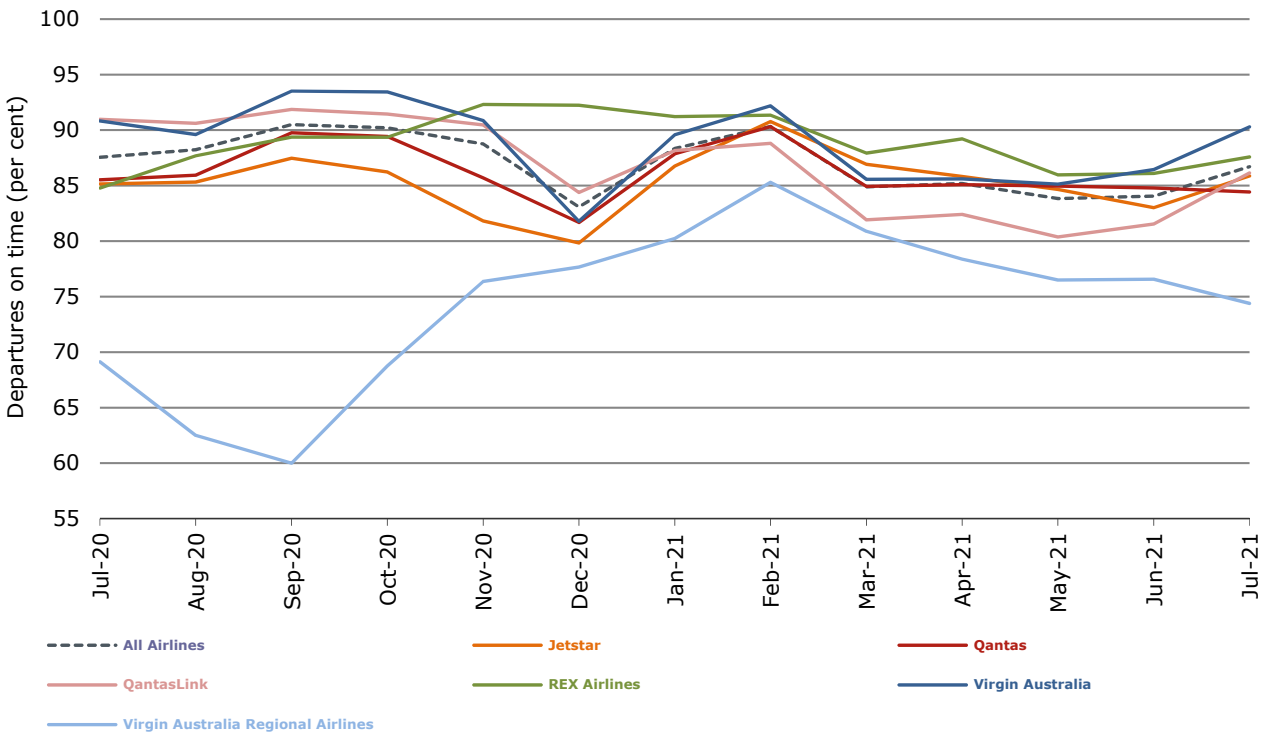
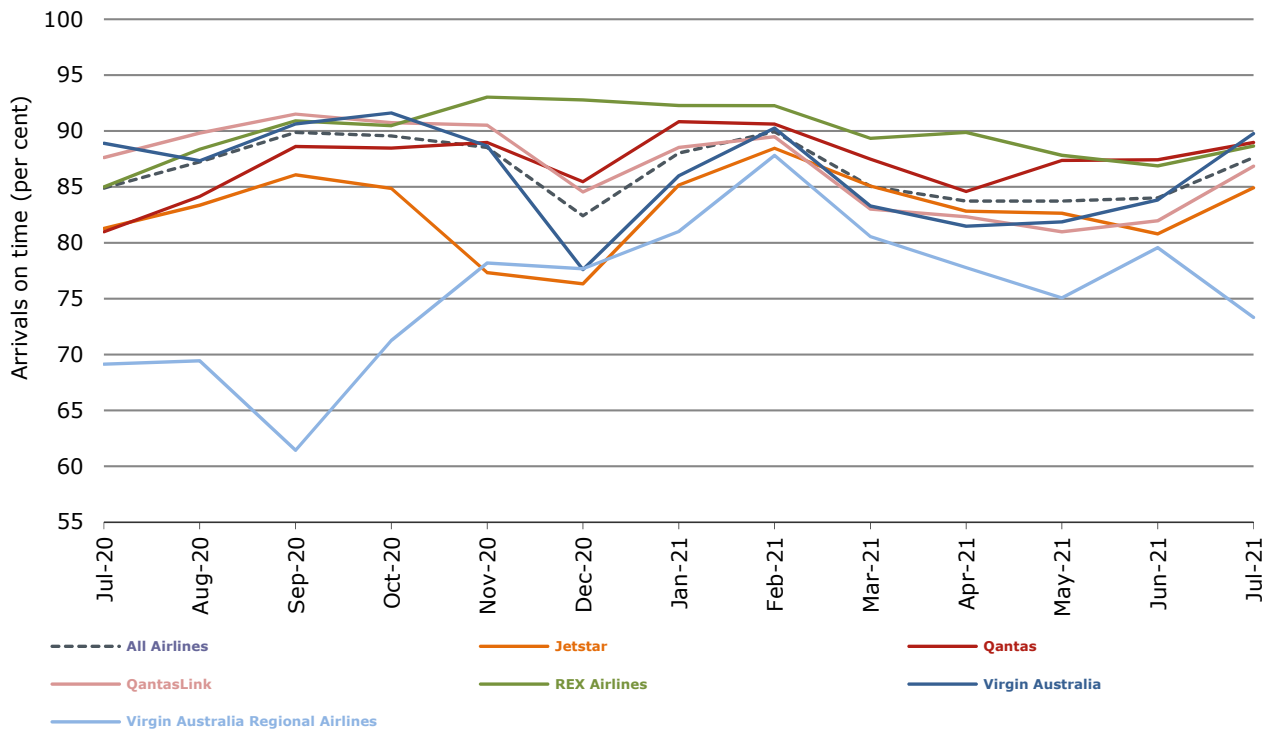


Figure 2 Arrivals on time (by month from July 2020)



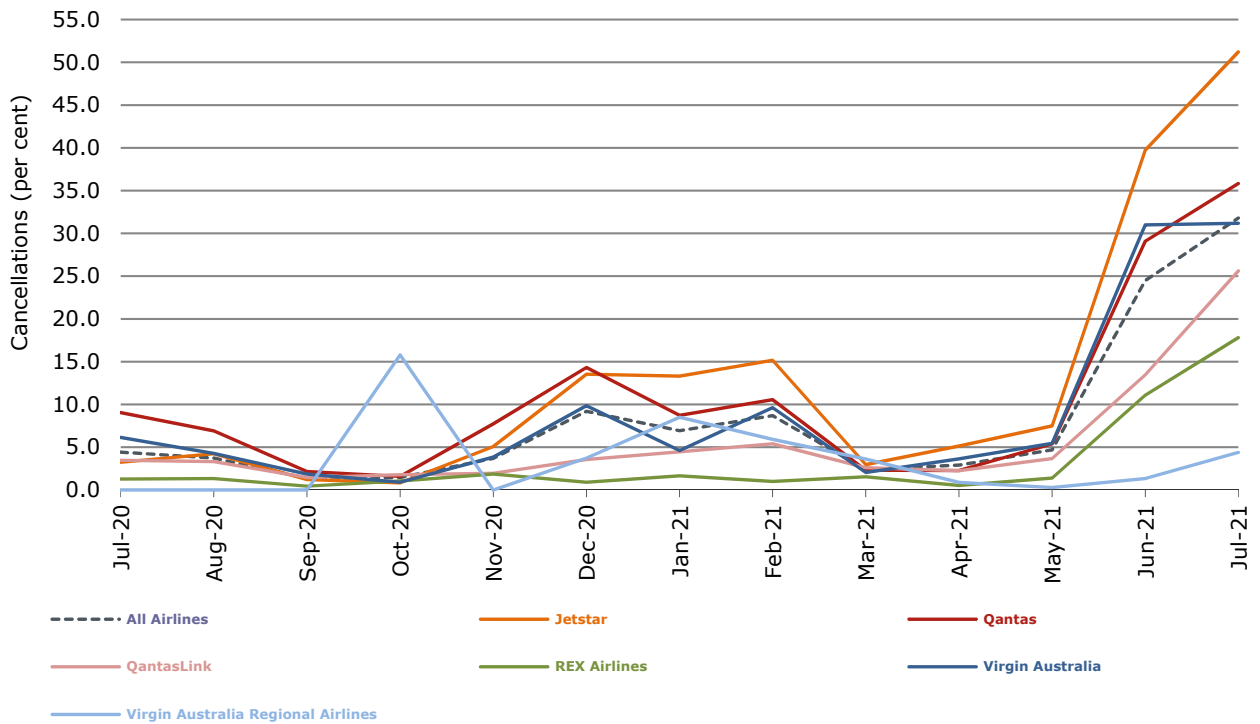
With effect from July 2021, Regional Express is reported as Rex Airlines

Figure 3 Departures on time (by month from July 2020)



With effect from July 2021, Regional Express is reported as Rex Airlines

Figure 4 Cancellations (by month from July 2020)



With effect from July 2021, Regional Express is reported as Rex Airlines

Major domestic airlines on time performance

Figure 5 On time performance (by month from July 2018)—Jetstar

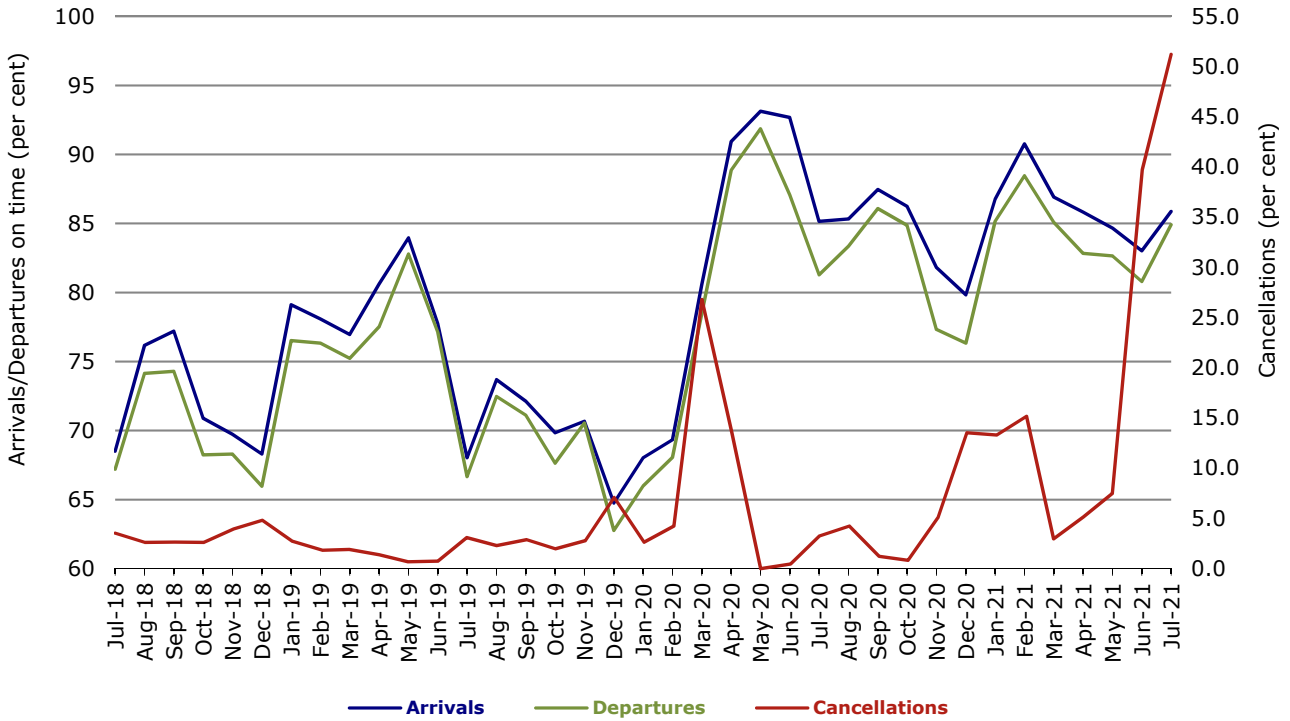


Figure 6 On time performance (by month from July 2018)—Qantas

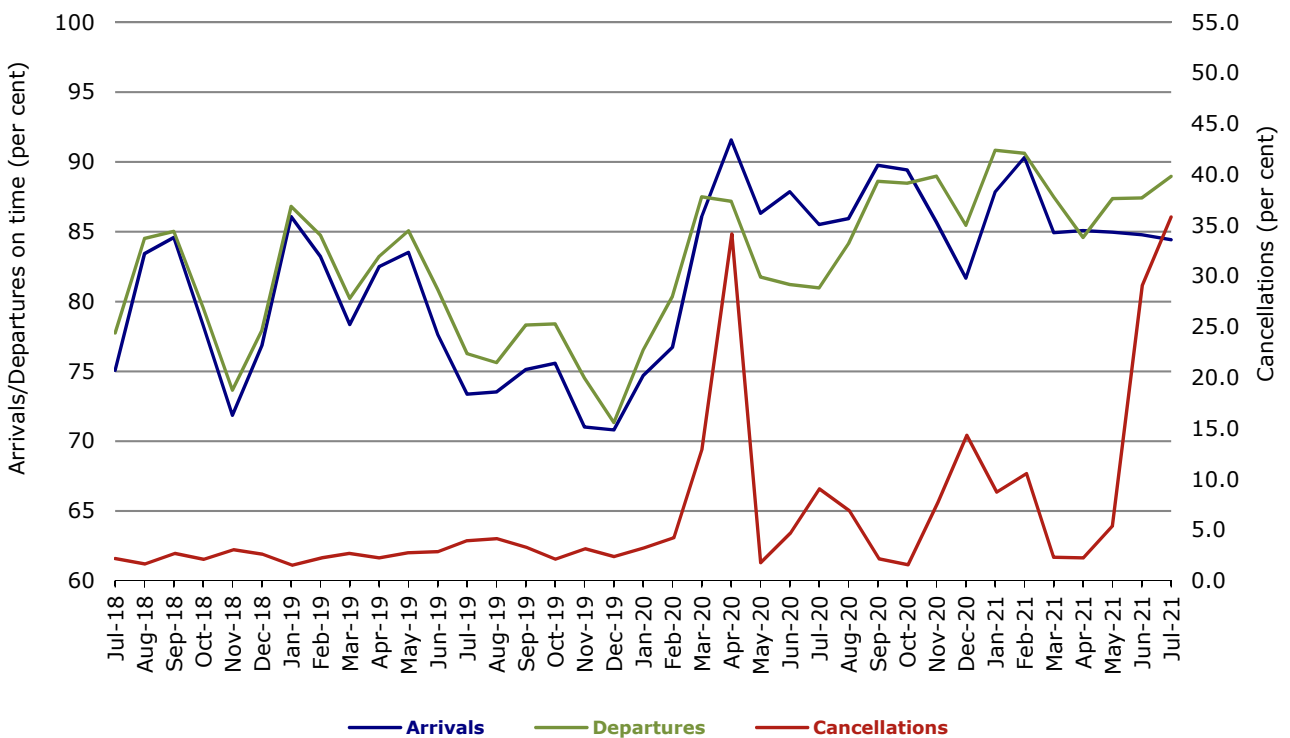
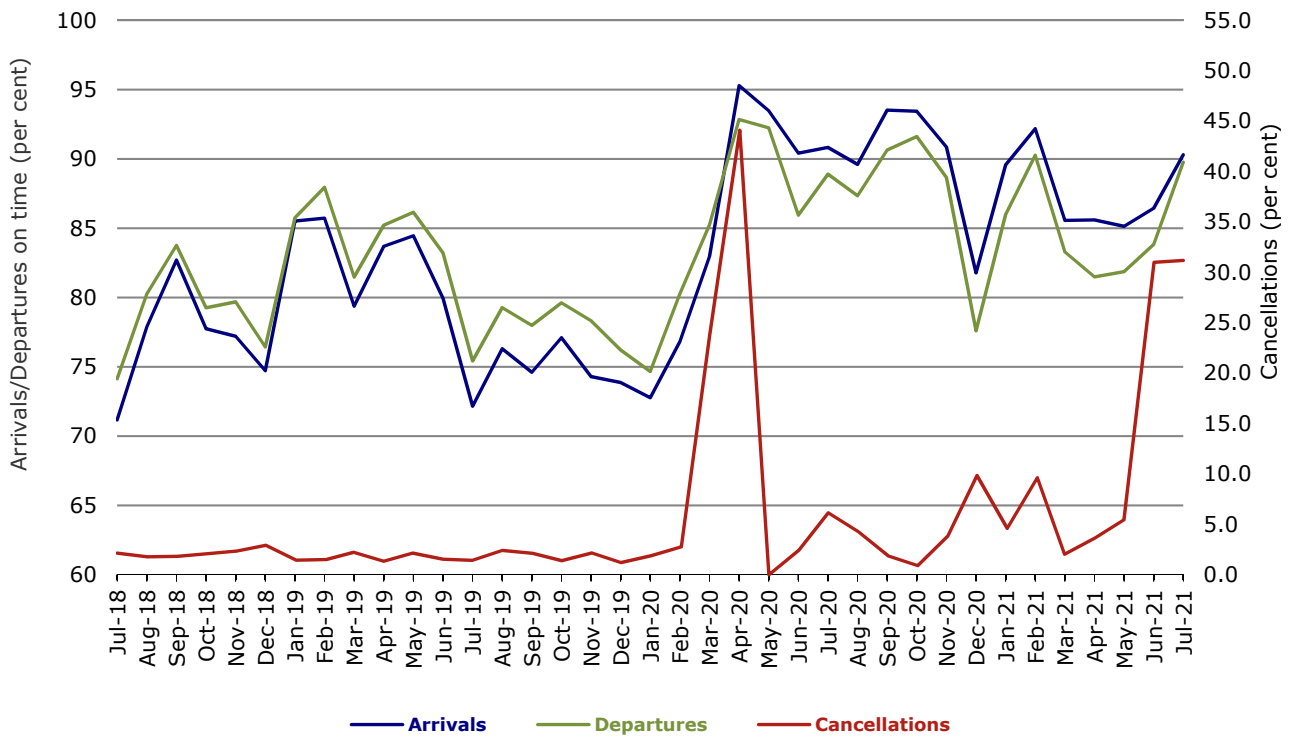


Figure 7 On time performance (by month from July 2018)—Virgin Australia



Major regional airlines on time performance

Figure 8 On time performance (by month from July 2018)—QantasLink

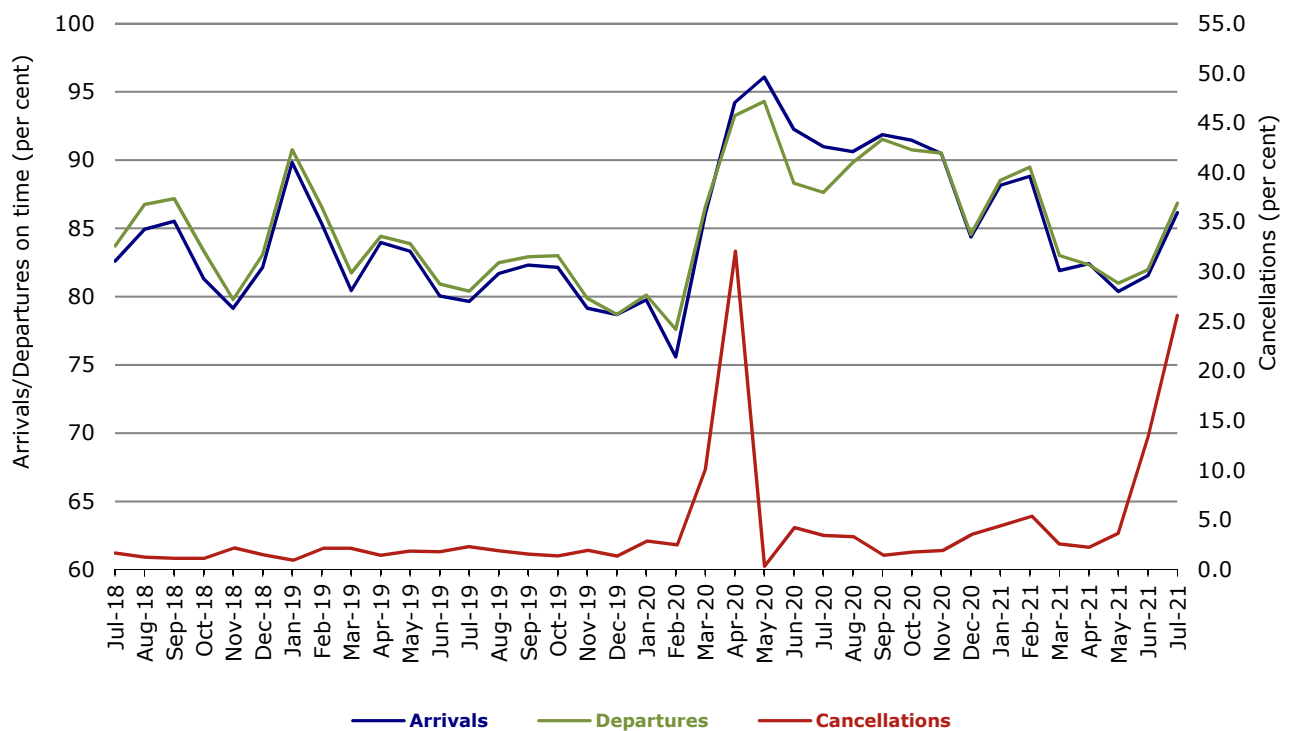
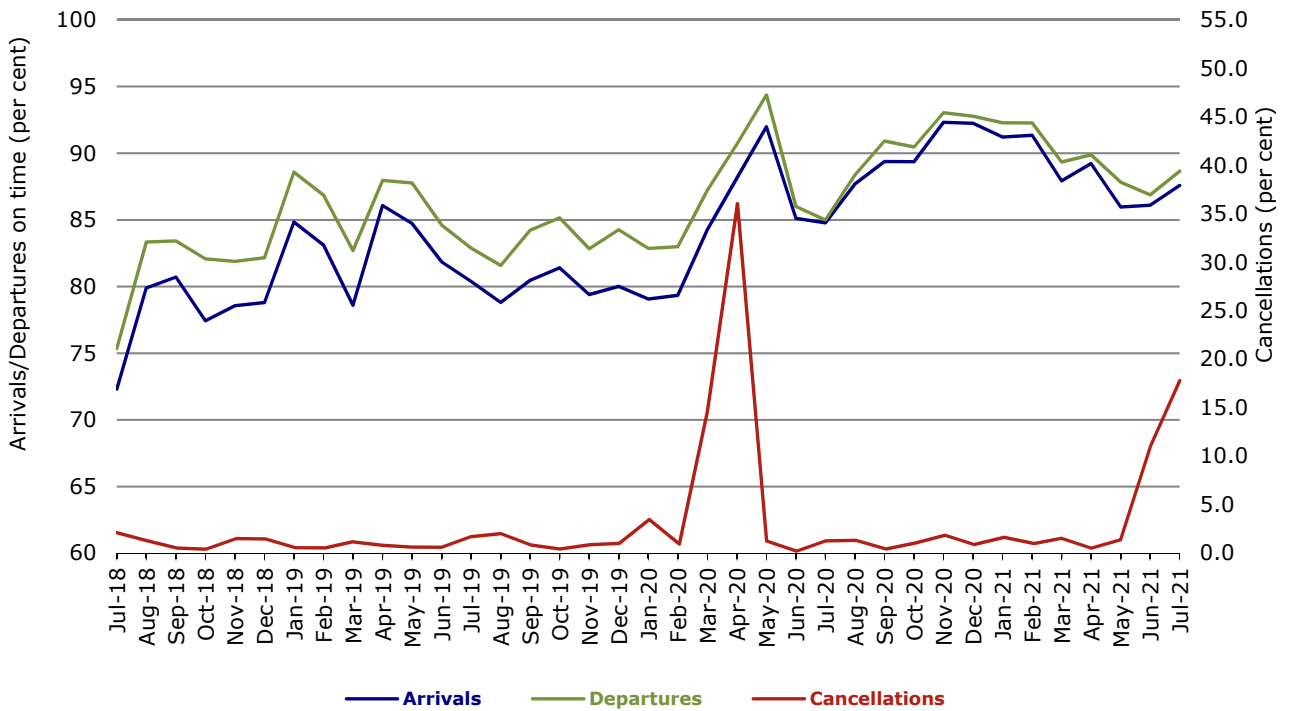
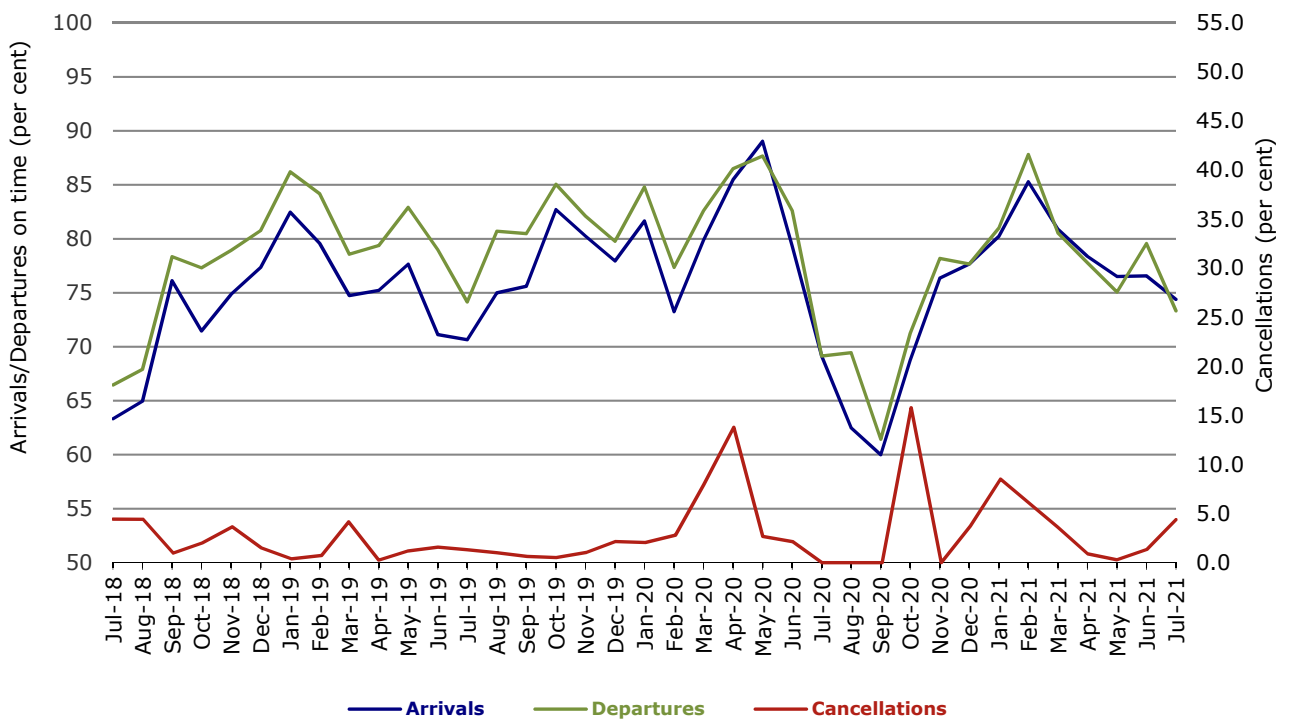


Figure 9 On time performance (by month from July 2018)—Rex Airlines



With effect from July 2021, Regional Express is reported as Rex Airlines

Figure 10 On time performance (by month from July 2018) Virgin Australia Regional Airlines



Individual routes

On time performance is reported for all routes where the passenger load averages over 8000 passengers per month over the previous six months, and where two or more airlines operate in competition on those routes. There are now 57 routes which meet this definition. Over time, however, routes which meet this definition may change as airline networks and traffic levels vary.

	Sectors		Arrivals On Time		Departures On Time		Cancellations	
	Sched.	Flown	No.	%	No.	%	No.	%
Adelaide-Alice Springs								
QantasLink	50	38	33	86.8	32	84.2	12	24.0
Virgin Australia	13	13	11	84.6	12	92.3	0	0.0
All Airlines	63	51	44	86.3	44	86.3	12	19.0
Adelaide-Brisbane								
Jetstar	34	10	8	80.0	7	70.0	24	70.6
Qantas	83	60	55	91.7	50	83.3	23	27.7
Virgin Australia	74	37	35	94.6	30	81.1	37	50.0
All Airlines	191	107	98	91.6	87	81.3	84	44.0
Adelaide-Canberra								
Qantas	29	20	17	85.0	17	85.0	9	31.0
Virgin Australia	18	13	12	92.3	12	92.3	5	27.8
All Airlines	47	33	29	87.9	29	87.9	14	29.8
Adelaide-Gold Coast								
Jetstar	26	10	8	80.0	9	90.0	16	61.5
QantasLink	19	7	7	100.0	7	100.0	12	63.2
Virgin Australia	32	19	19	100.0	19	100.0	13	40.6
All Airlines	77	36	34	94.4	35	97.2	41	53.2
Adelaide-Melbourne								
Jetstar	93	47	42	89.4	42	89.4	46	49.5
Qantas	147	81	76	93.8	74	91.4	66	44.9
REX Airlines	48	28	26	92.9	26	92.9	20	41.7
Virgin Australia	169	86	79	91.9	74	86.0	83	49.1
All Airlines	457	242	223	92.1	216	89.3	215	47.0
Adelaide-Perth								
Jetstar	24	12	8	66.7	11	91.7	12	50.0
Qantas	69	54	30	55.6	48	88.9	15	21.7
Virgin Australia	30	16	7	43.8	13	81.3	14	46.7
Virgin Australia Regional Airlines	8	6	3	50.0	3	50.0	2	25.0
All Airlines	131	88	48	54.5	75	85.2	43	32.8
Adelaide-Port Lincoln								
QantasLink	119	84	78	92.9	77	91.7	35	29.4
REX Airlines	150	123	105	85.4	113	91.9	27	18.0
All Airlines	269	207	183	88.4	190	91.8	62	23.0
Adelaide-Sydney								
Jetstar	68	1	1	100.0	1	100.0	67	98.5
Qantas	95	34	29	85.3	29	85.3	61	64.2
Virgin Australia	52	27	26	96.3	26	96.3	25	48.1
All Airlines	215	62	56	90.3	56	90.3	153	71.2
Albury-Sydney								
QantasLink	64	31	29	93.5	29	93.5	33	51.6
REX Airlines	39	31	29	93.5	28	90.3	8	20.5
All Airlines	103	62	58	93.5	57	91.9	41	39.8

	<i>Sectors</i>		<i>Arrivals On Time</i>		<i>Departures On Time</i>		<i>Cancellations</i>	
	<i>Sched.</i>	<i>Flown</i>	<i>No.</i>	<i>%</i>	<i>No.</i>	<i>%</i>	<i>No.</i>	<i>%</i>
Alice Springs-Adelaide								
QantasLink	50	38	24	63.2	21	55.3	12	24.0
Virgin Australia	13	13	12	92.3	11	84.6	0	0.0
All Airlines	63	51	36	70.6	32	62.7	12	19.0
Armidale-Sydney								
QantasLink	43	26	21	80.8	21	80.8	17	39.5
REX Airlines	27	21	17	81.0	17	81.0	6	22.2
All Airlines	70	47	38	80.9	38	80.9	23	32.9
Ballina-Sydney								
Jetstar	52	4	4	100.0	4	100.0	48	92.3
QantasLink	52	27	17	63.0	20	74.1	25	48.1
REX Airlines	9	9	8	88.9	8	88.9	0	0.0
Virgin Australia	30	20	19	95.0	18	90.0	10	33.3
All Airlines	143	60	48	80.0	50	83.3	83	58.0
Brisbane-Adelaide								
Jetstar	34	10	4	40.0	8	80.0	24	70.6
Qantas	82	59	45	76.3	56	94.9	23	28.0
Virgin Australia	74	37	31	83.8	35	94.6	37	50.0
All Airlines	190	106	80	75.5	99	93.4	84	44.2
Brisbane-Cairns								
Jetstar	106	100	93	93.0	92	92.0	6	5.7
Qantas	135	133	117	88.0	124	93.2	2	1.5
QantasLink	4	4	3	75.0	4	100.0	0	0.0
Virgin Australia	153	145	138	95.2	134	92.4	8	5.2
All Airlines	398	382	351	91.9	354	92.7	16	4.0
Brisbane-Canberra								
Qantas	61	45	40	88.9	42	93.3	16	26.2
QantasLink	98	70	65	92.9	67	95.7	28	28.6
Virgin Australia	82	76	70	92.1	69	90.8	6	7.3
All Airlines	241	191	175	91.6	178	93.2	50	20.7
Brisbane-Darwin								
Jetstar	29	22	17	77.3	18	81.8	7	24.1
Qantas	43	37	20	54.1	34	91.9	6	14.0
Virgin Australia	41	38	37	97.4	37	97.4	3	7.3
All Airlines	113	97	74	76.3	89	91.8	16	14.2
Brisbane-Emerald								
QantasLink	126	114	103	90.4	105	92.1	12	9.5
Virgin Australia	26	26	24	92.3	24	92.3	0	0.0
All Airlines	152	140	127	90.7	129	92.1	12	7.9
Brisbane-Gladstone								
QantasLink	116	98	91	92.9	91	92.9	18	15.5
Virgin Australia	53	52	50	96.2	51	98.1	1	1.9
All Airlines	169	150	141	94.0	142	94.7	19	11.2
Brisbane-Hamilton Island								
Qantas	36	35	27	77.1	34	97.1	1	2.8
Virgin Australia	32	31	29	93.5	29	93.5	1	3.1
All Airlines	68	66	56	84.8	63	95.5	2	2.9

	Sectors		Arrivals On Time		Departures On Time		Cancellations	
	Sched.	Flown	No.	%	No.	%	No.	%
Brisbane-Hobart								
Jetstar	26	22	20	90.9	21	95.5	4	15.4
Qantas	8	7	7	100.0	7	100.0	1	12.5
QantasLink	6	5	4	80.0	4	80.0	1	16.7
Virgin Australia	42	38	34	89.5	35	92.1	4	9.5
All Airlines	82	72	65	90.3	67	93.1	10	12.2
Brisbane-Mackay								
Jetstar	31	31	28	90.3	28	90.3	0	0.0
Qantas	108	92	83	90.2	84	91.3	16	14.8
QantasLink	5	5	3	60.0	3	60.0	0	0.0
Virgin Australia	105	101	97	96.0	95	94.1	4	3.8
All Airlines	249	229	211	92.1	210	91.7	20	8.0
Brisbane-Melbourne								
Jetstar	148	42	32	76.2	32	76.2	106	71.6
Qantas	207	127	114	89.8	119	93.7	80	38.6
Virgin Australia	218	120	86	71.7	103	85.8	98	45.0
All Airlines	573	289	232	80.3	254	87.9	284	49.6
Brisbane-Mount Isa								
Qantas	41	39	36	92.3	39	100.0	2	4.9
QantasLink	12	12	12	100.0	12	100.0	0	0.0
Virgin Australia	17	17	15	88.2	15	88.2	0	0.0
All Airlines	70	68	63	92.6	66	97.1	2	2.9
Brisbane-Newcastle								
Jetstar	54	19	18	94.7	18	94.7	35	64.8
QantasLink	78	53	51	96.2	50	94.3	25	32.1
Virgin Australia	36	27	25	92.6	25	92.6	9	25.0
All Airlines	168	99	94	94.9	93	93.9	69	41.1
Brisbane-Perth								
Qantas	87	54	16	29.6	47	87.0	33	37.9
Virgin Australia	43	29	12	41.4	26	89.7	14	32.6
All Airlines	130	83	28	33.7	73	88.0	47	36.2
Brisbane-Proserpine								
Jetstar	34	34	28	82.4	28	82.4	0	0.0
Virgin Australia	39	39	37	94.9	37	94.9	0	0.0
All Airlines	73	73	65	89.0	65	89.0	0	0.0
Brisbane-Rockhampton								
QantasLink	168	157	145	92.4	148	94.3	11	6.5
Virgin Australia	103	99	91	91.9	92	92.9	4	3.9
All Airlines	271	256	236	92.2	240	93.8	15	5.5
Brisbane-Sydney								
Jetstar	104	2	2	100.0	2	100.0	102	98.1
Qantas	233	69	60	87.0	58	84.1	164	70.4
Virgin Australia	126	38	35	92.1	29	76.3	88	69.8
All Airlines	463	109	97	89.0	89	81.7	354	76.5
Brisbane-Townsville								
Jetstar	62	61	56	91.8	56	91.8	1	1.6
Qantas	103	98	77	78.6	88	89.8	5	4.9
Virgin Australia	116	111	105	94.6	102	91.9	5	4.3
All Airlines	281	270	238	88.1	246	91.1	11	3.9

	Sectors		Arrivals On Time		Departures On Time		Cancellations	
	Sched.	Flown	No.	%	No.	%	No.	%
Broome-Perth								
Qantas	44	44	35	79.5	34	77.3	0	0.0
QantasLink	61	54	36	66.7	36	66.7	7	11.5
Virgin Australia	23	23	19	82.6	14	60.9	0	0.0
Virgin Australia Regional Airlines	17	17	13	76.5	8	47.1	0	0.0
All Airlines	145	138	103	74.6	92	66.7	7	4.8
Cairns-Brisbane								
Jetstar	106	100	87	87.0	90	90.0	6	5.7
Qantas	135	134	116	86.6	123	91.8	1	0.7
QantasLink	4	4	3	75.0	3	75.0	0	0.0
Virgin Australia	152	145	140	96.6	138	95.2	7	4.6
All Airlines	397	383	346	90.3	354	92.4	14	3.5
Cairns-Melbourne								
Jetstar	97	83	72	86.7	68	81.9	14	14.4
Qantas	56	51	40	78.4	47	92.2	5	8.9
Virgin Australia	61	48	46	95.8	45	93.8	13	21.3
All Airlines	214	182	158	86.8	160	87.9	32	15.0
Cairns-Sydney								
Jetstar	55	11	11	100.0	10	90.9	44	80.0
Qantas	44	15	15	100.0	15	100.0	29	65.9
Virgin Australia	30	19	17	89.5	17	89.5	11	36.7
All Airlines	129	45	43	95.6	42	93.3	84	65.1
Cairns-Townsville								
QantasLink	119	119	111	93.3	113	95.0	0	0.0
REX Airlines	21	21	17	81.0	18	85.7	0	0.0
All Airlines	140	140	128	91.4	131	93.6	0	0.0
Canberra-Adelaide								
Qantas	29	20	17	85.0	17	85.0	9	31.0
Virgin Australia	17	13	12	92.3	12	92.3	4	23.5
All Airlines	46	33	29	87.9	29	87.9	13	28.3
Canberra-Brisbane								
Qantas	61	44	43	97.7	42	95.5	17	27.9
QantasLink	95	69	65	94.2	66	95.7	26	27.4
Virgin Australia	87	78	66	84.6	66	84.6	9	10.3
All Airlines	243	191	174	91.1	174	91.1	52	21.4
Canberra-Melbourne								
Qantas	2	2	2	100.0	2	100.0	0	0.0
QantasLink	140	70	59	84.3	61	87.1	70	50.0
Virgin Australia	61	41	38	92.7	38	92.7	20	32.8
All Airlines	203	113	99	87.6	101	89.4	90	44.3
Canberra-Sydney								
Qantas	5	0	0	na	0	na	5	100.0
QantasLink	163	58	47	81.0	45	77.6	105	64.4
REX Airlines	59	29	21	72.4	22	75.9	30	50.8
All Airlines	227	87	68	78.2	67	77.0	140	61.7
Coffs Harbour-Sydney								
QantasLink	63	24	24	100.0	23	95.8	39	61.9
REX Airlines	37	22	20	90.9	20	90.9	15	40.5
All Airlines	100	46	44	95.7	43	93.5	54	54.0

	Sectors		Arrivals On Time		Departures On Time		Cancellations	
	Sched.	Flown	No.	%	No.	%	No.	%
Darwin-Brisbane								
Jetstar	29	21	13	61.9	15	71.4	8	27.6
Qantas	40	35	20	57.1	24	68.6	5	12.5
Virgin Australia	41	37	35	94.6	33	89.2	4	9.8
All Airlines	110	93	68	73.1	72	77.4	17	15.5
Darwin-Melbourne								
Jetstar	30	19	14	73.7	12	63.2	11	36.7
Qantas	57	47	33	70.2	35	74.5	10	17.5
Virgin Australia	31	18	13	72.2	14	77.8	13	41.9
All Airlines	118	84	60	71.4	61	72.6	34	28.8
Darwin-Perth								
Qantas	47	39	32	82.1	35	89.7	8	17.0
Virgin Australia	3	3	3	100.0	3	100.0	0	0.0
Virgin Australia Regional Airlines	19	18	13	72.2	11	61.1	1	5.3
All Airlines	69	60	48	80.0	49	81.7	9	13.0
Dubbo-Sydney								
QantasLink	69	28	25	89.3	27	96.4	41	59.4
REX Airlines	47	37	35	94.6	34	91.9	10	21.3
All Airlines	116	65	60	92.3	61	93.8	51	44.0
Emerald-Brisbane								
QantasLink	126	113	105	92.9	105	92.9	13	10.3
Virgin Australia	26	26	25	96.2	24	92.3	0	0.0
All Airlines	152	139	130	93.5	129	92.8	13	8.6
Gladstone-Brisbane								
QantasLink	116	97	92	94.8	90	92.8	19	16.4
Virgin Australia	53	52	47	90.4	49	94.2	1	1.9
All Airlines	169	149	139	93.3	139	93.3	20	11.8
Gold Coast-Adelaide								
Jetstar	26	10	8	80.0	9	90.0	16	61.5
QantasLink	19	7	7	100.0	7	100.0	12	63.2
Virgin Australia	32	18	17	94.4	18	100.0	14	43.8
All Airlines	77	35	32	91.4	34	97.1	42	54.5
Gold Coast-Melbourne								
Jetstar	174	84	68	81.0	72	85.7	90	51.7
Qantas	49	39	36	92.3	39	100.0	10	20.4
QantasLink	5	4	4	100.0	4	100.0	1	20.0
REX Airlines	50	29	26	89.7	28	96.6	21	42.0
Virgin Australia	231	133	123	92.5	129	97.0	98	42.4
All Airlines	509	289	257	88.9	272	94.1	220	43.2
Gold Coast-Sydney								
Jetstar	115	6	5	83.3	4	66.7	109	94.8
Qantas	45	12	11	91.7	11	91.7	33	73.3
REX Airlines	23	11	11	100.0	11	100.0	12	52.2
Virgin Australia	101	33	32	97.0	32	97.0	68	67.3
All Airlines	284	62	59	95.2	58	93.5	222	78.2
Hamilton Island-Brisbane								
Qantas	36	35	33	94.3	32	91.4	1	2.8
Virgin Australia	31	30	29	96.7	27	90.0	1	3.2
All Airlines	67	65	62	95.4	59	90.8	2	3.0

	Sectors		Arrivals On Time		Departures On Time		Cancellations	
	Sched.	Flown	No.	%	No.	%	No.	%
Hamilton Island-Sydney								
Jetstar	15	0	0	na	0	na	15	100.0
Qantas	25	9	9	100.0	8	88.9	16	64.0
Virgin Australia	18	14	14	100.0	14	100.0	4	22.2
All Airlines	58	23	23	100.0	22	95.7	35	60.3
Hobart-Brisbane								
Jetstar	26	22	20	90.9	19	86.4	4	15.4
Qantas	8	8	7	87.5	7	87.5	0	0.0
QantasLink	6	5	5	100.0	5	100.0	1	16.7
Virgin Australia	41	38	32	84.2	31	81.6	3	7.3
All Airlines	81	73	64	87.7	62	84.9	8	9.9
Hobart-Melbourne								
Jetstar	135	100	93	93.0	92	92.0	35	25.9
QantasLink	102	82	65	79.3	67	81.7	20	19.6
Virgin Australia	80	60	57	95.0	58	96.7	20	25.0
All Airlines	317	242	215	88.8	217	89.7	75	23.7
Hobart-Sydney								
Jetstar	46	8	8	100.0	8	100.0	38	82.6
Qantas	13	7	7	100.0	7	100.0	6	46.2
QantasLink	18	3	3	100.0	3	100.0	15	83.3
Virgin Australia	31	20	18	90.0	18	90.0	11	35.5
All Airlines	108	38	36	94.7	36	94.7	70	64.8
Kalgoorlie-Perth								
Qantas	12	12	9	75.0	9	75.0	0	0.0
QantasLink	63	58	47	81.0	48	82.8	5	7.9
Virgin Australia	27	26	17	65.4	18	69.2	1	3.7
Virgin Australia Regional Airlines	30	30	22	73.3	23	76.7	0	0.0
All Airlines	132	126	95	75.4	98	77.8	6	4.5
Karratha-Perth								
Qantas	38	37	35	94.6	34	91.9	1	2.6
QantasLink	113	95	77	81.1	84	88.4	18	15.9
Virgin Australia	34	34	25	73.5	21	61.8	0	0.0
Virgin Australia Regional Airlines	20	20	14	70.0	14	70.0	0	0.0
All Airlines	205	186	151	81.2	153	82.3	19	9.3
Launceston-Melbourne								
Jetstar	66	45	42	93.3	41	91.1	21	31.8
QantasLink	76	60	49	81.7	50	83.3	16	21.1
Virgin Australia	58	47	46	97.9	45	95.7	11	19.0
All Airlines	200	152	137	90.1	136	89.5	48	24.0
Launceston-Sydney								
Jetstar	36	18	15	83.3	15	83.3	18	50.0
QantasLink	8	2	2	100.0	2	100.0	6	75.0
Virgin Australia	22	18	18	100.0	18	100.0	4	18.2
All Airlines	66	38	35	92.1	35	92.1	28	42.4
Mackay-Brisbane								
Jetstar	31	31	28	90.3	28	90.3	0	0.0
Qantas	109	93	85	91.4	83	89.2	16	14.7
QantasLink	10	10	8	80.0	6	60.0	0	0.0
Virgin Australia	105	101	96	95.0	95	94.1	4	3.8
All Airlines	255	235	217	92.3	212	90.2	20	7.8

	<i>Sectors</i>		<i>Arrivals On Time</i>		<i>Departures On Time</i>		<i>Cancellations</i>	
	<i>Sched.</i>	<i>Flown</i>	<i>No.</i>	<i>%</i>	<i>No.</i>	<i>%</i>	<i>No.</i>	<i>%</i>
Melbourne-Adelaide								
Jetstar	93	47	40	85.1	39	83.0	46	49.5
Qantas	145	81	75	92.6	76	93.8	64	44.1
REX Airlines	52	28	26	92.9	26	92.9	24	46.2
Virgin Australia	167	87	78	89.7	78	89.7	80	47.9
All Airlines	457	243	219	90.1	219	90.1	214	46.8
Melbourne-Brisbane								
Jetstar	148	42	32	76.2	31	73.8	106	71.6
Qantas	207	125	120	96.0	114	91.2	82	39.6
Virgin Australia	219	124	116	93.5	109	87.9	95	43.4
All Airlines	574	291	268	92.1	254	87.3	283	49.3
Melbourne-Cairns								
Jetstar	97	83	66	79.5	51	61.4	14	14.4
Qantas	54	49	40	81.6	39	79.6	5	9.3
Virgin Australia	61	48	46	95.8	46	95.8	13	21.3
All Airlines	212	180	152	84.4	136	75.6	32	15.1
Melbourne-Canberra								
Qantas	2	2	1	50.0	1	50.0	0	0.0
QantasLink	139	66	60	90.9	59	89.4	73	52.5
Virgin Australia	60	41	39	95.1	38	92.7	19	31.7
All Airlines	201	109	100	91.7	98	89.9	92	45.8
Melbourne-Darwin								
Jetstar	29	18	14	77.8	15	83.3	11	37.9
Qantas	60	47	36	76.6	39	83.0	13	21.7
Virgin Australia	29	17	13	76.5	15	88.2	12	41.4
All Airlines	118	82	63	76.8	69	84.1	36	30.5
Melbourne-Gold Coast								
Jetstar	174	84	71	84.5	61	72.6	90	51.7
Qantas	51	38	36	94.7	37	97.4	13	25.5
QantasLink	5	4	4	100.0	4	100.0	1	20.0
REX Airlines	50	30	29	96.7	29	96.7	20	40.0
Virgin Australia	233	135	131	97.0	129	95.6	98	42.1
All Airlines	513	291	271	93.1	260	89.3	222	43.3
Melbourne-Hobart								
Jetstar	135	100	95	95.0	94	94.0	35	25.9
QantasLink	105	82	68	82.9	68	82.9	23	21.9
Virgin Australia	79	59	58	98.3	57	96.6	20	25.3
All Airlines	319	241	221	91.7	219	90.9	78	24.5
Melbourne-Launceston								
Jetstar	66	45	41	91.1	40	88.9	21	31.8
QantasLink	75	59	47	79.7	50	84.7	16	21.3
Virgin Australia	57	46	42	91.3	43	93.5	11	19.3
All Airlines	198	150	130	86.7	133	88.7	48	24.2
Melbourne-Mildura								
QantasLink	104	74	53	71.6	51	68.9	30	28.8
REX Airlines	62	51	42	82.4	44	86.3	11	17.7
All Airlines	166	125	95	76.0	95	76.0	41	24.7
Melbourne-Newcastle								
Jetstar	39	17	17	100.0	16	94.1	22	56.4
QantasLink	22	6	3	50.0	4	66.7	16	72.7
Virgin Australia	20	19	19	100.0	18	94.7	1	5.0
All Airlines	81	42	39	92.9	38	90.5	39	48.1

	<i>Sectors</i>		<i>Arrivals On Time</i>		<i>Departures On Time</i>		<i>Cancellations</i>	
	<i>Sched.</i>	<i>Flown</i>	<i>No.</i>	<i>%</i>	<i>No.</i>	<i>%</i>	<i>No.</i>	<i>%</i>
Melbourne-Perth								
Jetstar	33	7	5	71.4	4	57.1	26	78.8
Qantas	82	50	22	44.0	46	92.0	32	39.0
Virgin Australia	54	30	21	70.0	29	96.7	24	44.4
All Airlines	169	87	48	55.2	79	90.8	82	48.5
Melbourne-Sunshine Coast								
Jetstar	72	42	39	92.9	38	90.5	30	41.7
QantasLink	30	23	20	87.0	21	91.3	7	23.3
Virgin Australia	89	56	53	94.6	51	91.1	33	37.1
All Airlines	191	121	112	92.6	110	90.9	70	36.6
Melbourne-Sydney								
Jetstar	140	16	14	87.5	12	75.0	124	88.6
Qantas	286	83	78	94.0	75	90.4	203	71.0
REX Airlines	59	9	9	100.0	9	100.0	50	84.7
Virgin Australia	197	49	48	98.0	48	98.0	148	75.1
All Airlines	682	157	149	94.9	144	91.7	525	77.0
Mildura-Melbourne								
QantasLink	105	75	52	69.3	49	65.3	30	28.6
REX Airlines	58	50	45	90.0	46	92.0	8	13.8
All Airlines	163	125	97	77.6	95	76.0	38	23.3
Mount Isa-Brisbane								
Qantas	41	39	39	100.0	37	94.9	2	4.9
QantasLink	12	11	11	100.0	11	100.0	1	8.3
Virgin Australia	17	17	15	88.2	14	82.4	0	0.0
All Airlines	70	67	65	97.0	62	92.5	3	4.3
Newcastle-Brisbane								
Jetstar	54	19	18	94.7	18	94.7	35	64.8
QantasLink	75	55	47	85.5	48	87.3	20	26.7
Virgin Australia	38	27	25	92.6	25	92.6	11	28.9
All Airlines	167	101	90	89.1	91	90.1	66	39.5
Newcastle-Melbourne								
Jetstar	39	17	15	88.2	16	94.1	22	56.4
QantasLink	22	6	5	83.3	5	83.3	16	72.7
Virgin Australia	21	19	18	94.7	19	100.0	2	9.5
All Airlines	82	42	38	90.5	40	95.2	40	48.8
Newman-Perth								
Qantas	22	22	18	81.8	20	90.9	0	0.0
QantasLink	90	82	65	79.3	73	89.0	8	8.9
Virgin Australia	36	35	22	62.9	24	68.6	1	2.8
Virgin Australia Regional Airlines	20	20	16	80.0	17	85.0	0	0.0
All Airlines	168	159	121	76.1	134	84.3	9	5.4
Perth-Adelaide								
Jetstar	24	12	6	50.0	3	25.0	12	50.0
Qantas	69	54	48	88.9	42	77.8	15	21.7
Virgin Australia	24	17	14	82.4	14	82.4	7	29.2
Virgin Australia Regional Airlines	8	6	4	66.7	3	50.0	2	25.0
All Airlines	125	89	72	80.9	62	69.7	36	28.8
Perth-Brisbane								
Qantas	89	56	37	66.1	30	53.6	33	37.1
Virgin Australia	51	29	24	82.8	16	55.2	22	43.1
All Airlines	140	85	61	71.8	46	54.1	55	39.3

	Sectors		Arrivals On Time		Departures On Time		Cancellations	
	Sched.	Flown	No.	%	No.	%	No.	%
Perth-Broome								
Qantas	45	45	43	95.6	43	95.6	0	0.0
QantasLink	60	55	49	89.1	46	83.6	5	8.3
Virgin Australia	23	23	20	87.0	14	60.9	0	0.0
Virgin Australia Regional Airlines	17	17	14	82.4	12	70.6	0	0.0
All Airlines	145	140	126	90.0	115	82.1	5	3.4
Perth-Darwin								
Qantas	47	39	36	92.3	39	100.0	8	17.0
Virgin Australia	3	3	3	100.0	3	100.0	0	0.0
Virgin Australia Regional Airlines	19	18	16	88.9	15	83.3	1	5.3
All Airlines	69	60	55	91.7	57	95.0	9	13.0
Perth-Kalgoorlie								
Qantas	12	12	11	91.7	11	91.7	0	0.0
QantasLink	63	59	50	84.7	50	84.7	4	6.3
Virgin Australia	27	26	24	92.3	24	92.3	1	3.7
Virgin Australia Regional Airlines	30	30	27	90.0	27	90.0	0	0.0
All Airlines	132	127	112	88.2	112	88.2	5	3.8
Perth-Karratha								
Qantas	38	37	36	97.3	35	94.6	1	2.6
QantasLink	111	94	82	87.2	89	94.7	17	15.3
Virgin Australia	34	34	27	79.4	31	91.2	0	0.0
Virgin Australia Regional Airlines	20	20	17	85.0	18	90.0	0	0.0
All Airlines	203	185	162	87.6	173	93.5	18	8.9
Perth-Melbourne								
Jetstar	32	7	4	57.1	0	0.0	25	78.1
Qantas	80	50	42	84.0	36	72.0	30	37.5
Virgin Australia	51	30	18	60.0	7	23.3	21	41.2
All Airlines	163	87	64	73.6	43	49.4	76	46.6
Perth-Newman								
Qantas	22	22	22	100.0	22	100.0	0	0.0
QantasLink	91	83	75	90.4	75	90.4	8	8.8
Virgin Australia	36	35	29	82.9	30	85.7	1	2.8
Virgin Australia Regional Airlines	20	20	20	100.0	20	100.0	0	0.0
All Airlines	169	160	146	91.3	147	91.9	9	5.3
Perth-Port Hedland								
Qantas	38	38	36	94.7	36	94.7	0	0.0
QantasLink	84	76	67	88.2	70	92.1	8	9.5
Virgin Australia	8	8	6	75.0	6	75.0	0	0.0
Virgin Australia Regional Airlines	46	43	36	83.7	36	83.7	3	6.5
All Airlines	176	165	145	87.9	148	89.7	11	6.3
Perth-Sydney								
Jetstar	28	0	0	na	0	na	28	100.0
Qantas	67	33	31	93.9	27	81.8	34	50.7
Virgin Australia	38	25	24	96.0	16	64.0	13	34.2
All Airlines	133	58	55	94.8	43	74.1	75	56.4
Port Hedland-Perth								
Qantas	39	39	33	84.6	37	94.9	0	0.0
QantasLink	85	77	57	74.0	62	80.5	8	9.4
Virgin Australia	8	8	5	62.5	4	50.0	0	0.0
Virgin Australia Regional Airlines	46	42	21	50.0	23	54.8	4	8.7
All Airlines	178	166	116	69.9	126	75.9	12	6.7

	<i>Sectors</i>		<i>Arrivals On Time</i>		<i>Departures On Time</i>		<i>Cancellations</i>	
	<i>Sched.</i>	<i>Flown</i>	<i>No.</i>	<i>%</i>	<i>No.</i>	<i>%</i>	<i>No.</i>	<i>%</i>
Port Lincoln-Adelaide								
QantasLink	119	85	78	91.8	77	90.6	34	28.6
REX Airlines	148	123	102	82.9	100	81.3	25	16.9
All Airlines	267	208	180	86.5	177	85.1	59	22.1
Port Macquarie-Sydney								
QantasLink	67	25	25	100.0	25	100.0	42	62.7
REX Airlines	28	18	15	83.3	16	88.9	10	35.7
All Airlines	95	43	40	93.0	41	95.3	52	54.7
Proserpine-Brisbane								
Jetstar	34	34	29	85.3	29	85.3	0	0.0
Virgin Australia	39	39	34	87.2	33	84.6	0	0.0
All Airlines	73	73	63	86.3	62	84.9	0	0.0
Rockhampton-Brisbane								
QantasLink	169	157	130	82.8	137	87.3	12	7.1
Virgin Australia	103	99	95	96.0	92	92.9	4	3.9
All Airlines	272	256	225	87.9	229	89.5	16	5.9
Sunshine Coast-Melbourne								
Jetstar	72	42	35	83.3	39	92.9	30	41.7
QantasLink	30	23	18	78.3	18	78.3	7	23.3
Virgin Australia	86	56	46	82.1	51	91.1	30	34.9
All Airlines	188	121	99	81.8	108	89.3	67	35.6
Sunshine Coast-Sydney								
Jetstar	39	4	4	100.0	4	100.0	35	89.7
QantasLink	24	7	7	100.0	7	100.0	17	70.8
Virgin Australia	34	22	22	100.0	22	100.0	12	35.3
All Airlines	97	33	33	100.0	33	100.0	64	66.0
Sydney-Adelaide								
Jetstar	68	1	1	100.0	1	100.0	67	98.5
Qantas	98	35	32	91.4	35	100.0	63	64.3
Virgin Australia	53	27	27	100.0	26	96.3	26	49.1
All Airlines	219	63	60	95.2	62	98.4	156	71.2
Sydney-Albury								
QantasLink	68	30	29	96.7	28	93.3	38	55.9
REX Airlines	40	32	29	90.6	28	87.5	8	20.0
All Airlines	108	62	58	93.5	56	90.3	46	42.6
Sydney-Armidale								
QantasLink	46	26	21	80.8	21	80.8	20	43.5
REX Airlines	26	20	17	85.0	17	85.0	6	23.1
All Airlines	72	46	38	82.6	38	82.6	26	36.1
Sydney-Ballina								
Jetstar	52	4	4	100.0	4	100.0	48	92.3
QantasLink	56	27	20	74.1	23	85.2	29	51.8
REX Airlines	9	9	8	88.9	8	88.9	0	0.0
Virgin Australia	30	20	18	90.0	17	85.0	10	33.3
All Airlines	147	60	50	83.3	52	86.7	87	59.2
Sydney-Brisbane								
Jetstar	103	2	2	100.0	2	100.0	101	98.1
Qantas	233	71	66	93.0	62	87.3	162	69.5
Virgin Australia	125	38	37	97.4	38	100.0	87	69.6
All Airlines	461	111	105	94.6	102	91.9	350	75.9

	Sectors		Arrivals On Time		Departures On Time		Cancellations	
	Sched.	Flown	No.	%	No.	%	No.	%
Sydney-Cairns								
Jetstar	54	11	9	81.8	9	81.8	43	79.6
Qantas	44	15	14	93.3	15	100.0	29	65.9
Virgin Australia	32	19	18	94.7	17	89.5	13	40.6
All Airlines	130	45	41	91.1	41	91.1	85	65.4
Sydney-Canberra								
Qantas	7	0	0	na	0	na	7	100.0
QantasLink	165	59	49	83.1	55	93.2	106	64.2
REX Airlines	60	30	23	76.7	25	83.3	30	50.0
All Airlines	232	89	72	80.9	80	89.9	143	61.6
Sydney-Coffs Harbour								
QantasLink	66	26	26	100.0	26	100.0	40	60.6
REX Airlines	38	22	21	95.5	22	100.0	16	42.1
All Airlines	104	48	47	97.9	48	100.0	56	53.8
Sydney-Dubbo								
QantasLink	73	28	27	96.4	27	96.4	45	61.6
REX Airlines	47	35	35	100.0	35	100.0	12	25.5
All Airlines	120	63	62	98.4	62	98.4	57	47.5
Sydney-Gold Coast								
Jetstar	115	6	5	83.3	5	83.3	109	94.8
Qantas	50	12	11	91.7	11	91.7	38	76.0
REX Airlines	24	11	11	100.0	11	100.0	13	54.2
Virgin Australia	102	33	33	100.0	33	100.0	69	67.6
All Airlines	291	62	60	96.8	60	96.8	229	78.7
Sydney-Hamilton Island								
Jetstar	15	0	0	na	0	na	15	100.0
Qantas	25	9	8	88.9	7	77.8	16	64.0
Virgin Australia	18	14	13	92.9	13	92.9	4	22.2
All Airlines	58	23	21	91.3	20	87.0	35	60.3
Sydney-Hobart								
Jetstar	46	8	8	100.0	8	100.0	38	82.6
Qantas	13	7	7	100.0	7	100.0	6	46.2
QantasLink	23	3	3	100.0	3	100.0	20	87.0
Virgin Australia	32	20	17	85.0	17	85.0	12	37.5
All Airlines	114	38	35	92.1	35	92.1	76	66.7
Sydney-Launceston								
Jetstar	36	18	17	94.4	17	94.4	18	50.0
QantasLink	8	2	2	100.0	2	100.0	6	75.0
Virgin Australia	21	18	17	94.4	17	94.4	3	14.3
All Airlines	65	38	36	94.7	36	94.7	27	41.5
Sydney-Melbourne								
Jetstar	140	16	12	75.0	12	75.0	124	88.6
Qantas	270	67	61	91.0	61	91.0	203	75.2
REX Airlines	59	9	9	100.0	9	100.0	50	84.7
Virgin Australia	196	47	47	100.0	46	97.9	149	76.0
All Airlines	665	139	129	92.8	128	92.1	526	79.1
Sydney-Perth								
Jetstar	28	0	0	na	0	na	28	100.0
Qantas	72	34	17	50.0	28	82.4	38	52.8
Virgin Australia	37	25	16	64.0	25	100.0	12	32.4
All Airlines	137	59	33	55.9	53	89.8	78	56.9

	<i>Sectors</i>		<i>Arrivals On Time</i>		<i>Departures On Time</i>		<i>Cancellations</i>	
	<i>Sched.</i>	<i>Flown</i>	<i>No.</i>	<i>%</i>	<i>No.</i>	<i>%</i>	<i>No.</i>	<i>%</i>
Sydney-Port Macquarie								
QantasLink	71	25	22	88.0	22	88.0	46	64.8
REX Airlines	27	17	17	100.0	16	94.1	10	37.0
All Airlines	98	42	39	92.9	38	90.5	56	57.1
Sydney-Sunshine Coast								
Jetstar	39	4	4	100.0	4	100.0	35	89.7
QantasLink	28	7	7	100.0	7	100.0	21	75.0
Virgin Australia	35	22	22	100.0	22	100.0	13	37.1
All Airlines	102	33	33	100.0	33	100.0	69	67.6
Sydney-Wagga Wagga								
QantasLink	70	30	29	96.7	27	90.0	40	57.1
REX Airlines	41	34	27	79.4	25	73.5	7	17.1
All Airlines	111	64	56	87.5	52	81.3	47	42.3
Townsville-Brisbane								
Jetstar	62	61	56	91.8	56	91.8	1	1.6
Qantas	104	98	75	76.5	82	83.7	6	5.8
Virgin Australia	117	110	106	96.4	103	93.6	7	6.0
All Airlines	283	269	237	88.1	241	89.6	14	4.9
Townsville-Cairns								
QantasLink	120	116	108	93.1	105	90.5	4	3.3
REX Airlines	21	21	18	85.7	18	85.7	0	0.0
All Airlines	141	137	126	92.0	123	89.8	4	2.8
Wagga Wagga-Sydney								
QantasLink	66	30	28	93.3	28	93.3	36	54.5
REX Airlines	42	34	28	82.4	27	79.4	8	19.0
All Airlines	108	64	56	87.5	55	85.9	44	40.7

Airports

On time performance is reported for all routes where the passenger load averages over 8000 passengers per month, and where two or more airlines operate in competition. The following data reports by airport against flights operated on those routes only. This month, 8 major city airports and 28 regional city airports are covered.

Airport	Arrivals			Departures		
	Sectors	On Time		Sectors	On Time	
	Flown	No.	%	Flown	No.	%
Adelaide						
Jetstar	80	59	73.8	80	70	87.5
Qantas	249	217	87.1	249	218	87.6
QantasLink	130	109	83.8	129	116	89.9
REX Airlines	151	128	84.8	151	139	92.1
Virgin Australia	212	191	90.1	211	186	88.2
Virgin Australia Regional Airlines	6	4	66.7	6	3	50.0
All Airlines	828	708	85.5	826	732	88.6
Relates to services to and from Alice Springs, Brisbane, Canberra, Gold Coast, Melbourne, Perth, Port Lincoln and Sydney.						
Albury						
QantasLink	30	29	96.7	31	29	93.5
REX Airlines	32	29	90.6	31	28	90.3
All Airlines	62	58	93.5	62	57	91.9
Relates to services to and from Sydney only.						
Alice Springs						
QantasLink	38	33	86.8	38	21	55.3
Virgin Australia	13	11	84.6	13	11	84.6
All Airlines	51	44	86.3	51	32	62.7
Relates to services to and from Adelaide only.						
Armidale						
QantasLink	26	21	80.8	26	21	80.8
REX Airlines	20	17	85.0	21	17	81.0
All Airlines	46	38	82.6	47	38	80.9
Relates to services to and from Sydney only.						
Ballina						
Jetstar	4	4	100.0	4	4	100.0
QantasLink	27	20	74.1	27	20	74.1
REX Airlines	9	8	88.9	9	8	88.9
Virgin Australia	20	18	90.0	20	18	90.0
All Airlines	60	50	83.3	60	50	83.3
Relates to services to and from Sydney only.						
Brisbane						
Jetstar	342	293	85.7	343	303	88.3
Qantas	798	696	87.2	795	732	92.1
QantasLink	521	466	89.4	518	484	93.4
Virgin Australia	1 027	957	93.2	1 024	938	91.6
All Airlines	2 688	2 412	89.7	2 680	2 457	91.7
Relates to services to and from Adelaide, Cairns, Canberra, Darwin, Emerald, Gladstone, Hamilton Island, Hobart, Mackay, Melbourne, Mount Isa, Newcastle, Perth, Proserpine, Rockhampton, Sydney and Townsville.						

Airport	Arrivals			Departures		
	Sectors Flown	On Time		Sectors Flown	On Time	
		No.	%		No.	%
Broome						
Qantas	45	43	95.6	44	34	77.3
QantasLink	55	49	89.1	54	36	66.7
Virgin Australia	23	20	87.0	23	14	60.9
Virgin Australia Regional Airlines	17	14	82.4	17	8	47.1
All Airlines	140	126	90.0	138	92	66.7
Relates to services to and from Perth only.						
Cairns						
Jetstar	194	168	86.6	194	168	86.6
Qantas	197	171	86.8	200	185	92.5
QantasLink	120	111	92.5	123	116	94.3
REX Airlines	21	18	85.7	21	18	85.7
Virgin Australia	212	202	95.3	212	200	94.3
All Airlines	744	670	90.1	750	687	91.6
Relates to services to and from Brisbane, Melbourne, Sydney and Townsville.						
Canberra						
Qantas	67	58	86.6	66	61	92.4
QantasLink	195	174	89.2	197	172	87.3
REX Airlines	30	23	76.7	29	22	75.9
Virgin Australia	130	121	93.1	132	116	87.9
All Airlines	422	376	89.1	424	371	87.5
Relates to services to and from Adelaide, Brisbane, Melbourne and Sydney.						
Coffs Harbour						
QantasLink	26	26	100.0	24	23	95.8
REX Airlines	22	21	95.5	22	20	90.9
All Airlines	48	47	97.9	46	43	93.5
Relates to services to and from Sydney only.						
Darwin						
Jetstar	40	31	77.5	40	27	67.5
Qantas	123	92	74.8	121	94	77.7
Virgin Australia	58	53	91.4	58	50	86.2
Virgin Australia Regional Airlines	18	16	88.9	18	11	61.1
All Airlines	239	192	80.3	237	182	76.8
Relates to services to and from Brisbane, Melbourne and Perth.						
Dubbo						
QantasLink	28	27	96.4	28	27	96.4
REX Airlines	35	35	100.0	37	34	91.9
All Airlines	63	62	98.4	65	61	93.8
Relates to services to and from Sydney only.						
Emerald						
QantasLink	114	103	90.4	113	105	92.9
Virgin Australia	26	24	92.3	26	24	92.3
All Airlines	140	127	90.7	139	129	92.8
Relates to services to and from Brisbane only.						
Gladstone						
QantasLink	98	91	92.9	97	90	92.8
Virgin Australia	52	50	96.2	52	49	94.2
All Airlines	150	141	94.0	149	139	93.3
Relates to services to and from Brisbane only.						

Airport	Arrivals			Departures		
	Sectors Flown	On Time		Sectors Flown	On Time	
		No.	%		No.	%
Gold Coast						
Jetstar	100	84	84.0	100	85	85.0
Qantas	50	47	94.0	51	50	98.0
QantasLink	11	11	100.0	11	11	100.0
REX Airlines	41	40	97.6	40	39	97.5
Virgin Australia	187	183	97.9	184	179	97.3
All Airlines	389	365	93.8	386	364	94.3
Relates to services to and from Adelaide, Melbourne and Sydney.						
Hamilton Island						
Jetstar	0	0	0.0	0	0	0.0
Qantas	44	35	79.5	44	40	90.9
Virgin Australia	45	42	93.3	44	41	93.2
All Airlines	89	77	86.5	88	81	92.0
Relates to services to and from Brisbane and Sydney.						
Hobart						
Jetstar	130	123	94.6	130	119	91.5
Qantas	14	14	100.0	15	14	93.3
QantasLink	90	75	83.3	90	75	83.3
Virgin Australia	117	109	93.2	118	107	90.7
All Airlines	351	321	91.5	353	315	89.2
Relates to services to and from Brisbane, Melbourne and Sydney.						
Kalgoorlie						
Qantas	12	11	91.7	12	9	75.0
QantasLink	59	50	84.7	58	48	82.8
Virgin Australia	26	24	92.3	26	18	69.2
Virgin Australia Regional Airlines	30	27	90.0	30	23	76.7
All Airlines	127	112	88.2	126	98	77.8
Relates to services to and from Perth only.						
Karratha						
Qantas	37	36	97.3	37	34	91.9
QantasLink	94	82	87.2	95	84	88.4
Virgin Australia	34	27	79.4	34	21	61.8
Virgin Australia Regional Airlines	20	17	85.0	20	14	70.0
All Airlines	185	162	87.6	186	153	82.3
Relates to services to and from Perth only.						
Launceston						
Jetstar	63	58	92.1	63	56	88.9
QantasLink	61	49	80.3	62	52	83.9
Virgin Australia	64	59	92.2	65	63	96.9
All Airlines	188	166	88.3	190	171	90.0
Relates to services to and from Melbourne and Sydney.						
Mackay						
Jetstar	31	28	90.3	31	28	90.3
Qantas	92	83	90.2	93	83	89.2
QantasLink	5	3	60.0	10	6	60.0
Virgin Australia	101	97	96.0	101	95	94.1
All Airlines	229	211	92.1	235	212	90.2
Relates to services to and from Brisbane only.						

Airport	Arrivals			Departures		
	Sectors Flown	On Time		Sectors Flown	On Time	
		No.	%		No.	%
Melbourne						
Jetstar	502	429	85.5	501	401	80.0
Qantas	464	404	87.1	475	427	89.9
QantasLink	320	252	78.8	314	257	81.8
REX Airlines	116	106	91.4	118	108	91.5
Virgin Australia	705	617	87.5	711	661	93.0
All Airlines	2 107	1 808	85.8	2 119	1 854	87.5
Relates to services to and from Adelaide, Brisbane, Cairns, Canberra, Darwin, Gold Coast, Hobart, Launceston, Mildura, Newcastle, Perth, Sunshine Coast and Sydney.						
Mildura						
QantasLink	74	53	71.6	75	49	65.3
REX Airlines	51	42	82.4	50	46	92.0
All Airlines	125	95	76.0	125	95	76.0
Relates to services to and from Melbourne only.						
Mount Isa						
Qantas	39	36	92.3	39	37	94.9
QantasLink	12	12	100.0	11	11	100.0
Virgin Australia	17	15	88.2	17	14	82.4
All Airlines	68	63	92.6	67	62	92.5
Relates to services to and from Brisbane only.						
Newcastle						
Jetstar	36	35	97.2	36	34	94.4
QantasLink	59	54	91.5	61	53	86.9
Virgin Australia	46	44	95.7	46	44	95.7
All Airlines	141	133	94.3	143	131	91.6
Relates to services to and from Brisbane and Melbourne.						
Newman						
Qantas	22	22	100.0	22	20	90.9
QantasLink	83	75	90.4	82	73	89.0
Virgin Australia	35	29	82.9	35	24	68.6
Virgin Australia Regional Airlines	20	20	100.0	20	17	85.0
All Airlines	160	146	91.3	159	134	84.3
Relates to services to and from Perth only.						
Perth						
Jetstar	19	13	68.4	19	3	15.8
Qantas	385	247	64.2	386	321	83.2
QantasLink	366	282	77.0	367	330	89.9
Virgin Australia	229	147	64.2	230	161	70.0
Virgin Australia Regional Airlines	153	102	66.7	154	131	85.1
All Airlines	1 152	791	68.7	1 156	946	81.8
Relates to services to and from Adelaide, Brisbane, Broome, Darwin, Kalgoorlie, Karratha, Melbourne, Newman, Port Hedland and Sydney.						
Port Hedland						
Qantas	38	36	94.7	39	37	94.9
QantasLink	76	67	88.2	77	62	80.5
Virgin Australia	8	6	75.0	8	4	50.0
Virgin Australia Regional Airlines	43	36	83.7	42	23	54.8
All Airlines	165	145	87.9	166	126	75.9
Relates to services to and from Perth only.						

Airport	Arrivals			Departures		
	Sectors Flown	On Time		Sectors Flown	On Time	
		No.	%		No.	%
Port Lincoln						
QantasLink	84	78	92.9	85	77	90.6
REX Airlines	123	105	85.4	123	100	81.3
All Airlines	207	183	88.4	208	177	85.1
Relates to services to and from Adelaide only.						
Port Macquarie						
QantasLink	25	22	88.0	25	25	100.0
REX Airlines	17	17	100.0	18	16	88.9
All Airlines	42	39	92.9	43	41	95.3
Relates to services to and from Sydney only.						
Proserpine						
Jetstar	34	28	82.4	34	29	85.3
Virgin Australia	39	37	94.9	39	33	84.6
All Airlines	73	65	89.0	73	62	84.9
Relates to services to and from Brisbane only.						
Rockhampton						
QantasLink	157	145	92.4	157	137	87.3
Virgin Australia	99	91	91.9	99	92	92.9
All Airlines	256	236	92.2	256	229	89.5
Relates to services to and from Brisbane only.						
Sunshine Coast						
Jetstar	46	43	93.5	46	43	93.5
QantasLink	30	27	90.0	30	25	83.3
Virgin Australia	78	75	96.2	78	73	93.6
All Airlines	154	145	94.2	154	141	91.6
Relates to services to and from Melbourne and Sydney.						
Sydney						
Jetstar	70	64	91.4	70	62	88.6
Qantas	262	240	91.6	250	226	90.4
QantasLink	261	228	87.4	263	241	91.6
REX Airlines	221	193	87.3	219	196	89.5
Virgin Australia	285	273	95.8	283	271	95.8
All Airlines	1 099	998	90.8	1 085	996	91.8
Relates to services to and from Adelaide, Albury, Armidale, Ballina, Brisbane, Cairns, Canberra, Coffs Harbour, Dubbo, Gold Coast, Hamilton Island, Hobart, Launceston, Melbourne, Perth, Port Macquarie, Sunshine Coast and Wagga Wagga.						
Townsville						
Jetstar	61	56	91.8	61	56	91.8
Qantas	98	77	78.6	98	82	83.7
QantasLink	119	111	93.3	116	105	90.5
REX Airlines	21	17	81.0	21	18	85.7
Virgin Australia	111	105	94.6	110	103	93.6
All Airlines	410	366	89.3	406	364	89.7
Relates to services to and from Brisbane and Cairns.						
Wagga Wagga						
QantasLink	30	29	96.7	30	28	93.3
REX Airlines	34	27	79.4	34	27	79.4
All Airlines	64	56	87.5	64	55	85.9
Relates to services to and from Sydney only.						

Definitions

On time arrival	A flight arrival is counted as "on time" if it arrived at the gate before 15 minutes after the scheduled arrival time shown in the carriers' schedule. Neither diverted nor cancelled flights count as on time.
On time departure	A flight departure is counted as "on time" if it departs the gate before 15 minutes after the scheduled departure time shown in the carriers' schedule.
Cancellation	A flight removed from service within 7 days of scheduled departure is regarded as a cancellation.
On time departure percentage	The percentage of on time departures is measured against the number of departures <i>operated</i> on any particular sector.
On time arrival percentage	The percentage of on time arrivals is measured against the number of arrivals <i>operated</i> on any particular sector.
Cancellation percentage	The percentage of cancellations is measured against the number of services <i>scheduled</i> on any particular sector.
