



**Australian Government**

**Department of Infrastructure, Transport,  
Regional Development, Communications and the Arts**  
Bureau of Infrastructure and Transport Research Economics

STATISTICAL REPORT



# Aviation

**Domestic airline on time performance  
July 2022**

© Commonwealth of Australia 2022

ISSN: 1832-0759

### **Ownership of intellectual property rights in this publication**

Unless otherwise noted, copyright (and any other intellectual property rights, if any) in this publication is owned by the Commonwealth of Australia (referred to below as the Commonwealth).

### **Disclaimer**

The material contained in this publication is made available on the understanding that the Commonwealth is not providing professional advice, and that users exercise their own skill and care with respect to its use, and seek independent advice if necessary.

The Commonwealth makes no representations or warranties as to the contents or accuracy of the information contained in this publication. To the extent permitted by law, the Commonwealth disclaims liability to any person or organisation in respect of anything done, or omitted to be done, in reliance upon information contained in this publication.

### **Creative Commons licence**

With the exception of (a) the Coat of Arms; and (b) the Department of Infrastructure, Transport, Regional Development, Communications and the Arts' photos and graphics, copyright in this publication is licensed under a Creative Commons Attribution 3.0 Australia Licence.

Creative Commons Attribution 3.0 Australia Licence is a standard form licence agreement that allows you to copy, communicate and adapt this publication provided that you attribute the work to the Commonwealth and abide by the other licence terms. A summary of the licence terms is available from <http://creativecommons.org/licenses/by/3.0/au/deed.en>. The full licence terms are available from <http://creativecommons.org/licenses/by/3.0/au/legalcode>.

### **Use of the Coat of Arms**

The Department of the Prime Minister and Cabinet sets the terms under which the Coat of Arms is used. Please refer to the Department's Commonwealth Coat of Arms and Government branding web page <http://www.dpmc.gov.au/guidelines/index.cfm#brand> and, in particular, the Guidelines on the use of the Commonwealth Coat of Arms publication.

An appropriate citation for this report is:

Bureau of Infrastructure and Transport Research Economics (BITRE), 2022, Domestic airline on time performance, Statistical Report, BITRE, Canberra ACT.

### **Contact us**

This publication is available in PDF format. All other rights are reserved, including in relation to any Departmental logos or trade marks which may exist. For enquiries regarding the licence and any use of this publication, please contact:

Bureau of Infrastructure and Transport Research Economics (BITRE)  
Department of Infrastructure, Transport, Regional Development, Communications and the Arts  
GPO Box 501, Canberra ACT 2601, Australia  
Telephone: (international) +61 2 6274 7210  
Fax: (international) +61 2 6274 6855  
Email: [bitre@infrastructure.gov.au](mailto:bitre@infrastructure.gov.au)  
Website: [www.bitre.gov.au](http://www.bitre.gov.au)

### **Inquiries**

Should you require additional information about the statistics contained in this publication:

Telephone (02) 6274 7790 or Facsimile (02) 6274 7727

Electronic mail: [AVSTATS@infrastructure.gov.au](mailto:AVSTATS@infrastructure.gov.au)

Web site: <http://www.bitre.gov.au/statistics/aviation/otphome.aspx>

# Foreword

The Bureau of Infrastructure and Transport Research Economics (BITRE) monitors the punctuality and reliability of major domestic airlines operating between Australian airports. The purpose of this is to allow for evaluation of overall industry and individual airline performance, so that consumers of air travel can make informed decisions.

The following domestic airlines currently report this information monthly to the BITRE: Jetstar, Qantas, QantasLink, Rex Airlines, Virgin Australia and Virgin Australia Regional Airlines.

Data has been gathered since November 2003, although some airlines commenced reporting at a later date, including Jetstar which first reported in May 2004, MacAir in July 2005, Tigerair Australia in April 2008 and Virgin Australia Regional Airlines in May 2013. MacAir ceased operations in February 2009 and data was not received for December 2008 onwards. Tigerair Australia ceased operations in March 2020 and data was not received for that month.

Virgin Blue was rebranded as Virgin Australia in May 2011 and Tiger Airways was rebranded as Tigerair Australia in July 2013 and time series data in Microsoft Excel spreadsheet format on the BITRE website have been revised to reflect these changes. With effect from July 2021, Regional Express is reported as Rex Airlines.

Services operated by Skywest on behalf of Virgin Australia using ATR/F100 aircraft commenced in November 2011 and were shown separately as Virgin Australia – ATR/F100 Operations. Virgin Australia Regional Airlines commenced operations in May 2013. It was formed after the acquisition of Skywest by Virgin Australia and represented a combination of operations previously reported under Skywest and Virgin Australia – ATR/F100 Operations. In January 2016, Virgin Australia transferred their ATR fleet from Virgin Australia Regional Airlines to Virgin Australia.

Information presented in this report is for Australian domestic routes for which the passenger load averaged 8 000 or more passengers per month over the previous six months and where two or more airlines operated in competition on those routes. In order to present data for more routes during the period impacted by COVID-19, the passenger load restriction is not being applied. Data are presented for 58 routes in July 2022. Over time, routes which meet these criteria change as airline networks and traffic levels vary.

Participating airlines report their overall monthly network performance where this is possible.

Total industry figures encompass all services operated by reporting airlines only. These airlines collectively carried over 95 per cent of total domestic passengers (regular public transport only) in 2019.

The method of capturing on time performance varies between airlines utilising different recording systems. Jetstar and Qantas jet aircraft use Aircraft Communication Addressing and Reporting System (ACARS) to electronically measure on time performance. Rex Airlines, Virgin Australia, Virgin Australia Regional Airlines and the Qantas non-jet fleet record on time performance manually using records from pilots, gate agents and/or ground crews.

After initial data is collected, aggregate reports are reviewed by participating airlines prior to publication.

Reports and detailed time series data in Microsoft Excel spreadsheet format are available from the BITRE website at: <http://www.bitre.gov.au/statistics/aviation/otphome.aspx>



# Contents

	Page
Industry performance .....	1
Individual routes .....	9
Airports .....	21
Definitions .....	27



# Industry performance

For July 2022, on time performance over all routes operated by participating airlines (Jetstar, Qantas, QantasLink, Rex Airlines, Virgin Australia and Virgin Australia Regional Airlines) averaged 55.0 per cent for on time arrivals and 54.0 per cent for on time departures. The cancellation rate for the month was 6.4 per cent. This month's figures were impacted by weather related events, congestion (Sectors Flown approaching levels recorded prior to COVID-19) and other COVID-19 related issues. The equivalent figures for July 2021 were 86.7 per cent for on time arrivals, 87.6 per cent for on time departures and 31.8 per cent for cancellations.

This month's on time arrivals figure was significantly lower than the long term average performance for all routes (81.9 per cent) and the on time departures figure was also significantly lower than the long term average (83.1 per cent). The rate of cancellations was higher than the long term average of 2.1 per cent.

The Qantas network (Qantas and QantasLink combined operations) recorded 53.0 per cent for on time arrivals while the Virgin Australia network (Virgin Australia and Virgin Australia Regional Airlines combined operations) recorded 52.5 per cent. Virgin Australia achieved the highest on time arrivals among the major domestic airlines at 52.6 per cent followed by Jetstar at 51.5 per cent and Qantas at 47.1 per cent. Of the regional airlines, Rex Airlines recorded 68.3 per cent for on time arrivals, followed by QantasLink at 57.3 per cent and Virgin Australia Regional Airlines at 50.5 per cent.

The Qantas network recorded 52.3 per cent for on time departures while the Virgin Australia network recorded 50.9 per cent. Virgin Australia achieved the highest level of on time departures among the major domestic airlines for July 2022 at 51.1 per cent, followed by Jetstar at 47.7 per cent and Qantas at 45.3 per cent. Of the regional airlines, Rex Airlines recorded 70.6 per cent for on time departures, followed by QantasLink at 57.5 per cent and Virgin Australia Regional Airlines at 47.6 per cent.

Jetstar recorded the highest percentage of cancellations (at 8.8 per cent) during the month, followed by Virgin Australia (at 7.8 per cent), QantasLink (at 6.5 per cent), Virgin Australia Regional Airlines (at 5.9 per cent), Qantas (at 5.6 per cent) and Rex Airlines (at 2.1 per cent).

Airlines' on time performance varies across the routes they serve. Individual route data by specific airline for 58 routes are shown on pages 9-20.

Of the 58 routes which met the criteria for on time performance reporting in July 2022, the Cairns-Townsville route had the highest percentage of on time arrivals (85.9 per cent) and the Adelaide-Canberra route recorded the highest percentage of on time departures (85.9 per cent). The Darwin-Sydney route had the lowest percentage of on time arrivals (19.8 per cent) and the lowest percentage of on time departures (26.4 per cent).

Cancellations were highest on the Melbourne-Sydney and Sydney-Melbourne routes at 13.9 per cent, followed by the Armidale-Sydney route at 12.5 per cent and the Canberra-Melbourne and Melbourne-Canberra routes at 11.2 per cent.

Port Lincoln Airport recorded the highest percentage of on time arrivals (77.8 per cent) and the highest percentage of on time departures (80.1 per cent). Perth Airport recorded the lowest percentage of on time arrivals (38.7 per cent) and Darwin Airport recorded the lowest percentage of on time departures (30.9 per cent). These figures only refer to reported routes and do not cover all flights at these airports.



Table 1 On time performance for July 2022 — Total Industry

	<i>Sectors</i>		<i>Arrivals On Time</i>		<i>Departures On Time</i>		<i>Cancellations</i>	
	<i>Scheduled</i>	<i>Flown</i>	<i>No.</i>	<i>%</i>	<i>No.</i>	<i>%</i>	<i>No.</i>	<i>%</i>
Jetstar	7 201	6 565	3 382	51.5	3 129	47.7	636	8.8
Qantas - all QF designated services	19 527	18 326	9 712	53.0	9 590	52.3	1 201	6.2
Rex Airlines	6 559	6 422	4 384	68.3	4 535	70.6	137	2.1
Virgin Australia - all VA designated services	11 864	10 950	5 751	52.5	5 573	50.9	914	7.7
All Airlines	45 151	42 263	23 229	55.0	22 827	54.0	2 888	6.4
Individual operating entities								
Qantas	8 160	7 702	3 629	47.1	3 486	45.3	458	5.6
QantasLink	11 367	10 624	6 083	57.3	6 104	57.5	743	6.5
Virgin Australia	11 188	10 314	5 430	52.6	5 270	51.1	874	7.8
Virgin Australia Regional Airlines	676	636	321	50.5	303	47.6	40	5.9

Total airline network data (including routes not shown in this report).

Airlines' on time performance varies across the routes they serve. Individual route data by specific airline are shown on page 9 and onwards.

Table 2 Top ten routes for on time performance for July 2022 (participating airlines only)

<i>Arrivals</i>		<i>Departures</i>	
<i>Route</i>	<i>On Time (%)</i>	<i>Route</i>	<i>On Time (%)</i>
Cairns-Townsville	85.9	Adelaide-Canberra	85.9
Adelaide-Canberra	80.8	Cairns-Townsville	85.3
Brisbane-Hamilton Island	79.4	Port Lincoln-Adelaide	80.1
Port Lincoln-Adelaide	79.4	Adelaide-Alice Springs	79.5
Adelaide-Port Lincoln	77.8	Brisbane-Hamilton Island	79.4
Brisbane-Emerald	77.4	Brisbane-Emerald	78.9
Adelaide-Alice Springs	77.3	Adelaide-Port Lincoln	78.1
Brisbane-Adelaide	75.9	Mildura-Melbourne	71.2
Emerald-Brisbane	72.2	Townsville-Cairns	69.4
Townsville-Cairns	70.1	Brisbane-Newcastle	69.2

Table 3 Top ten airports for on time performance for July 2022 (participating airlines and reported routes only)

<i>Arrivals</i>		<i>Departures</i>	
<i>Airport</i>	<i>On Time (%)</i>	<i>Airport</i>	<i>On Time (%)</i>
Port Lincoln	77.8	Port Lincoln	80.1
Emerald	77.4	Mildura	71.2
Alice Springs	77.3	Emerald	67.7
Hamilton Island	70.2	Gladstone	67.3
Newman	68.2	Dubbo	63.6
Broome	66.5	Albury	62.7
Albury	64.8	Port Macquarie	62.2
Darwin	64.0	Wagga Wagga	61.7
Townsville	62.9	Adelaide	59.3
Gladstone	62.7	Newman	58.7

## Total industry on time performance

Figure 1 On time performance (by month from July 2019)—Total Industry

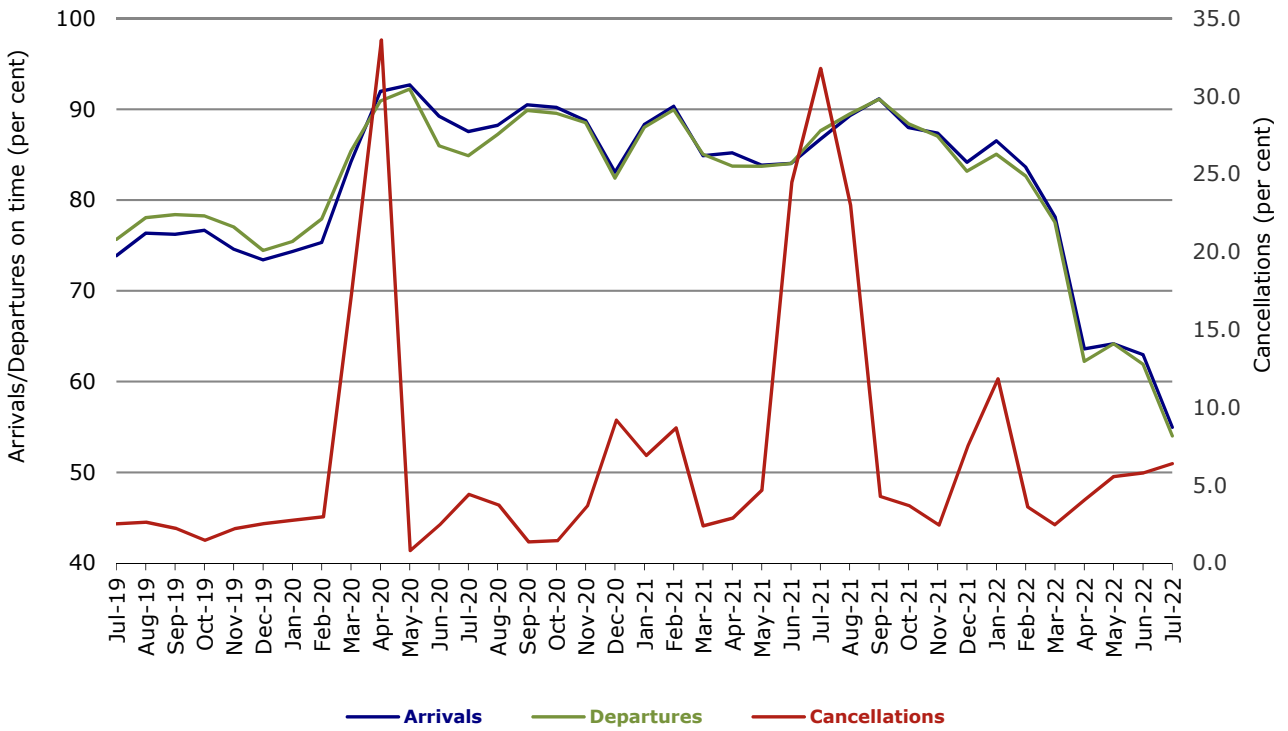
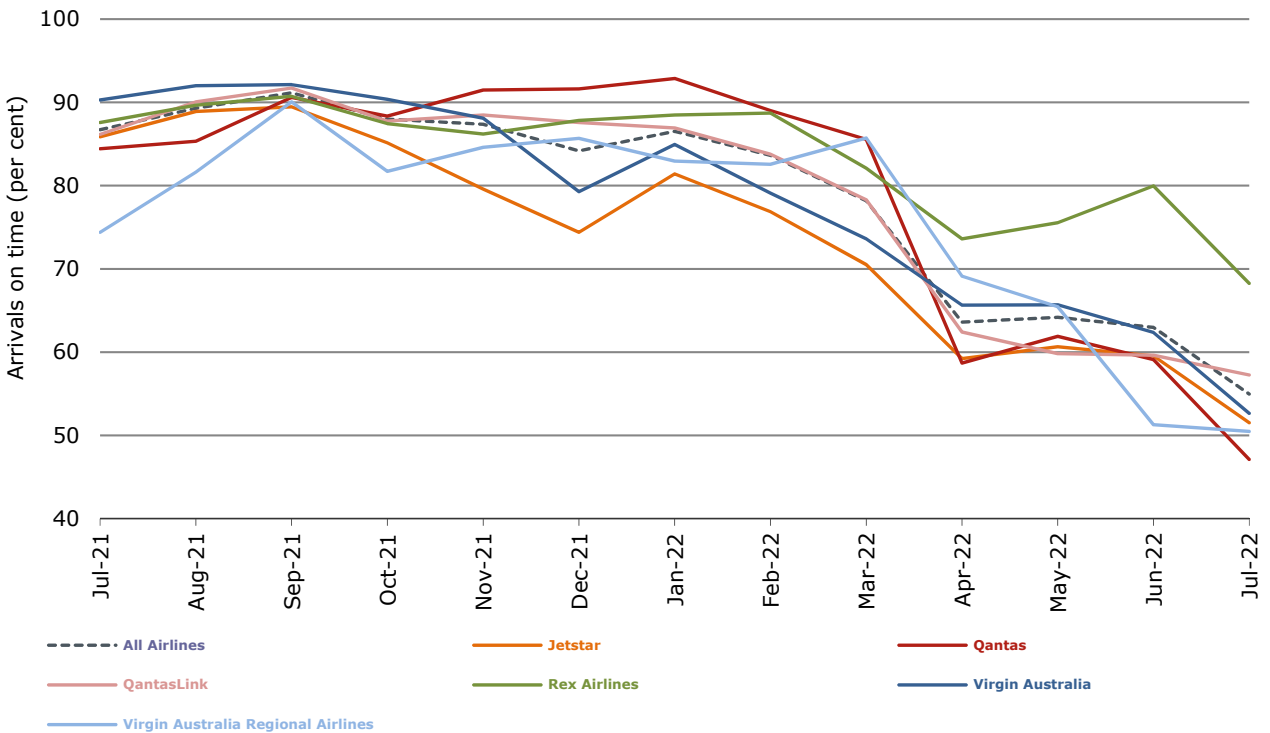
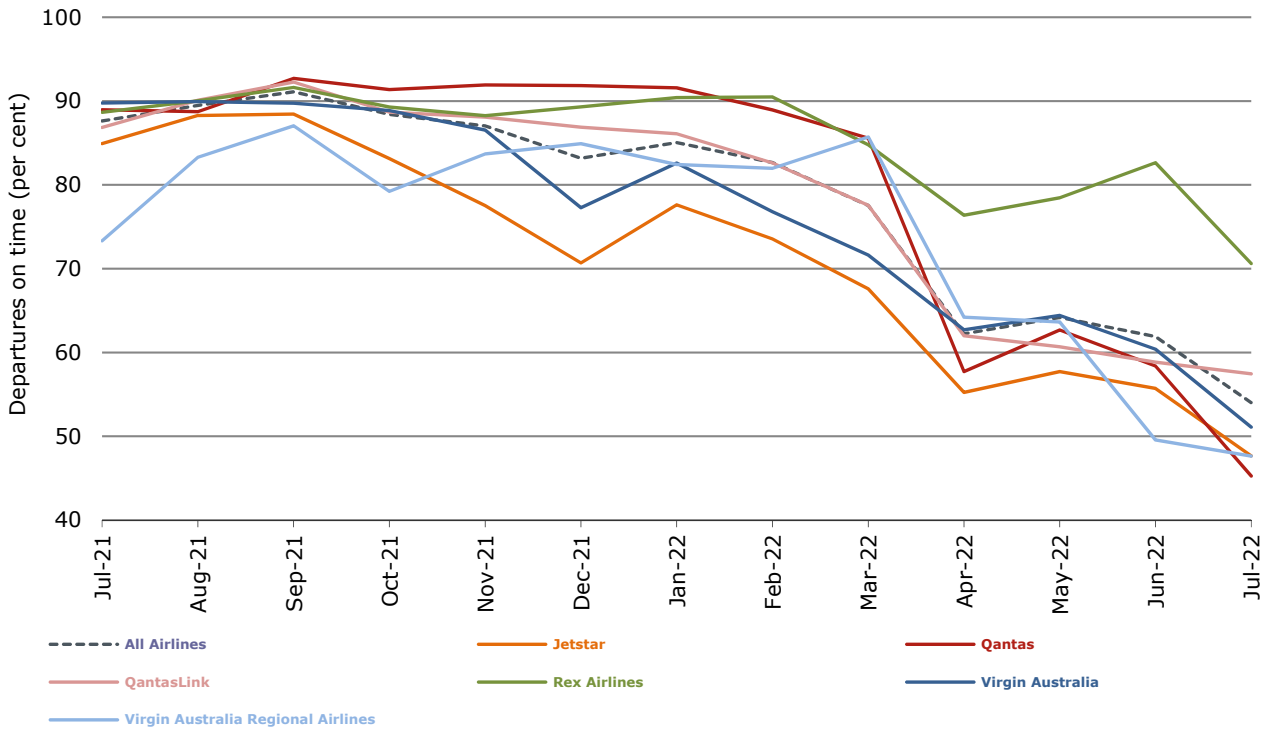


Figure 2 Arrivals on time (by month from July 2021)



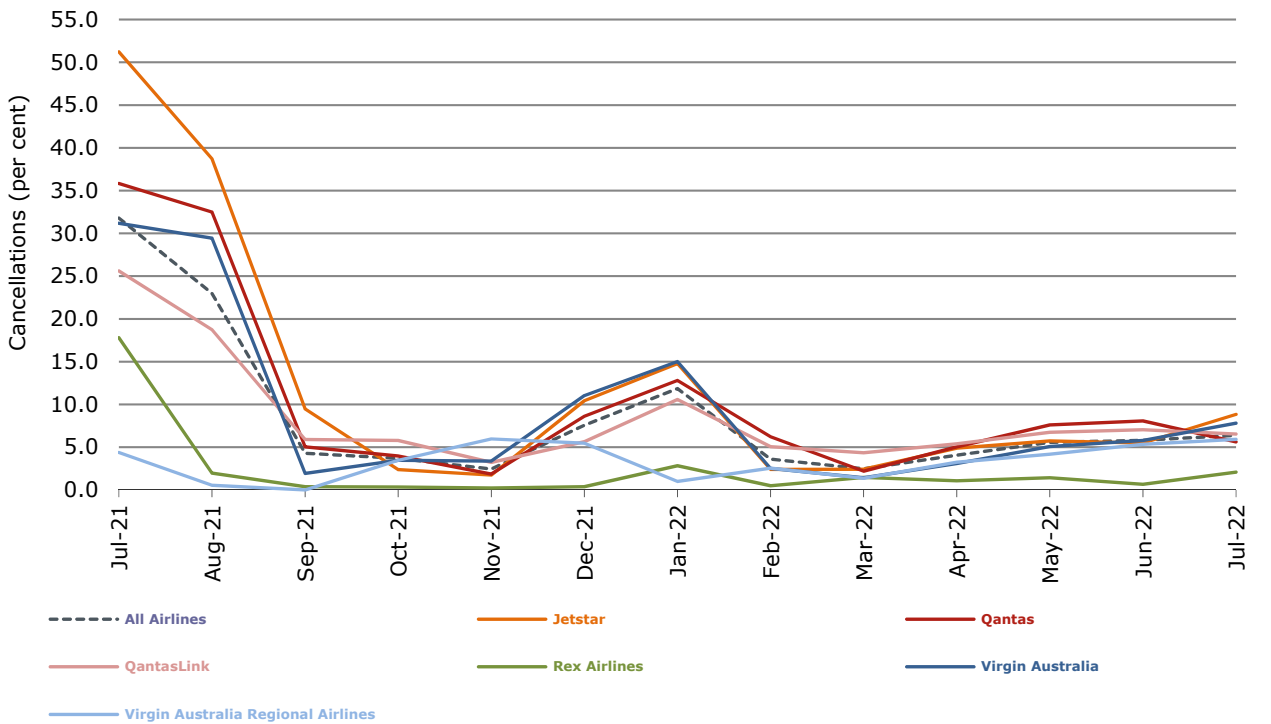
With effect from July 2021, Regional Express is reported as Rex Airlines

Figure 3 Departures on time (by month from July 2021)



With effect from July 2021, Regional Express is reported as Rex Airlines

Figure 4 Cancellations (by month from July 2021)



With effect from July 2021, Regional Express is reported as Rex Airlines

## Major domestic airlines on time performance

Figure 5 On time performance (by month from July 2019)—Jetstar

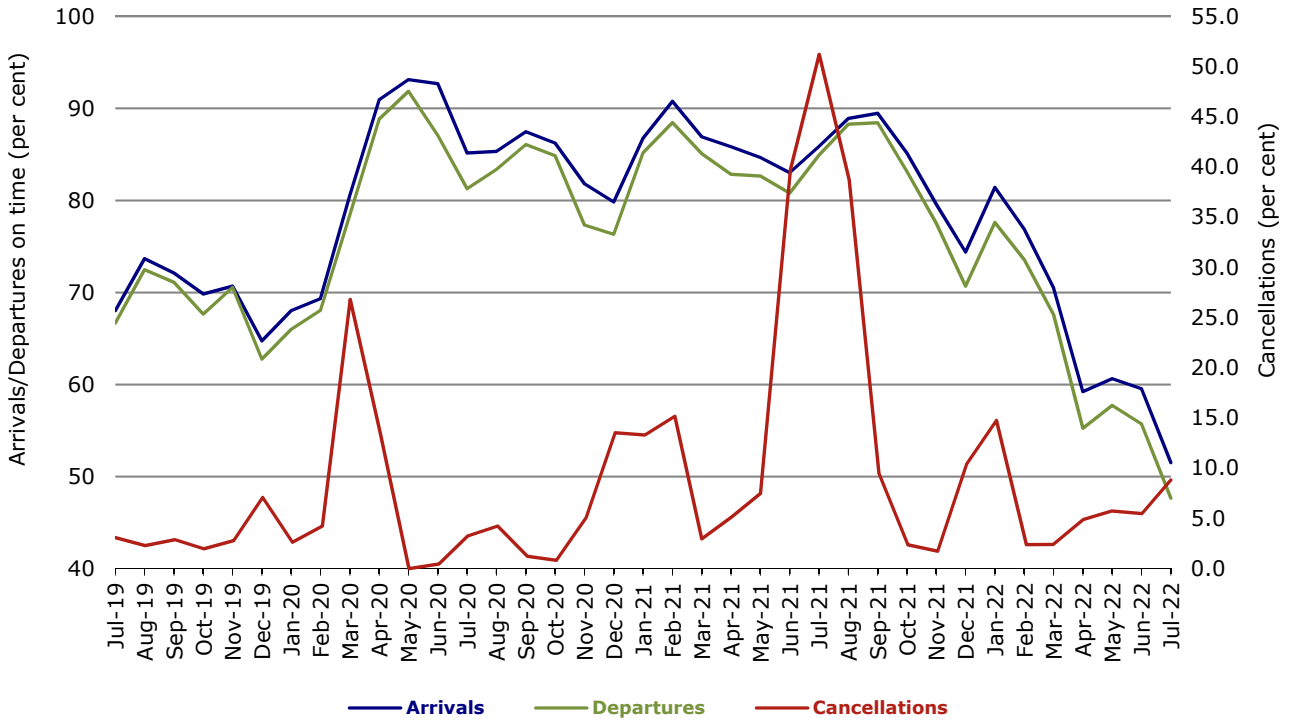


Figure 6 On time performance (by month from July 2019)—Qantas

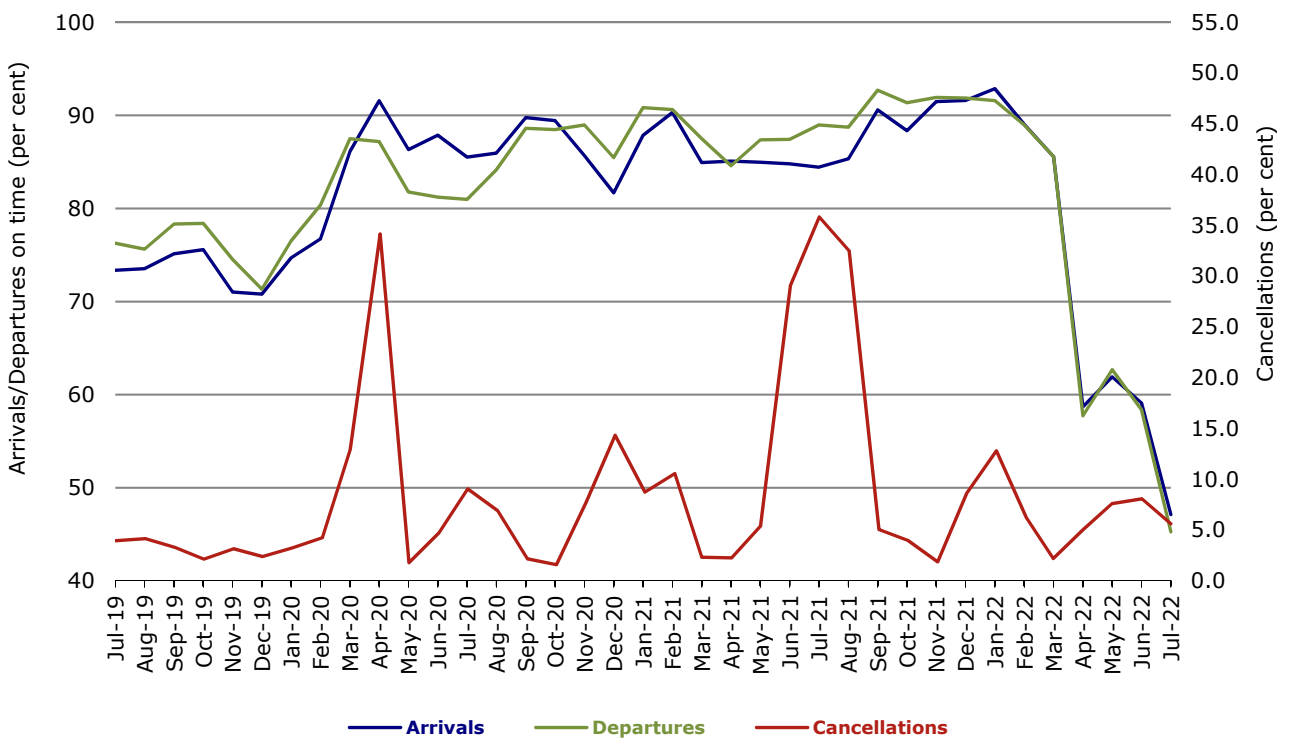
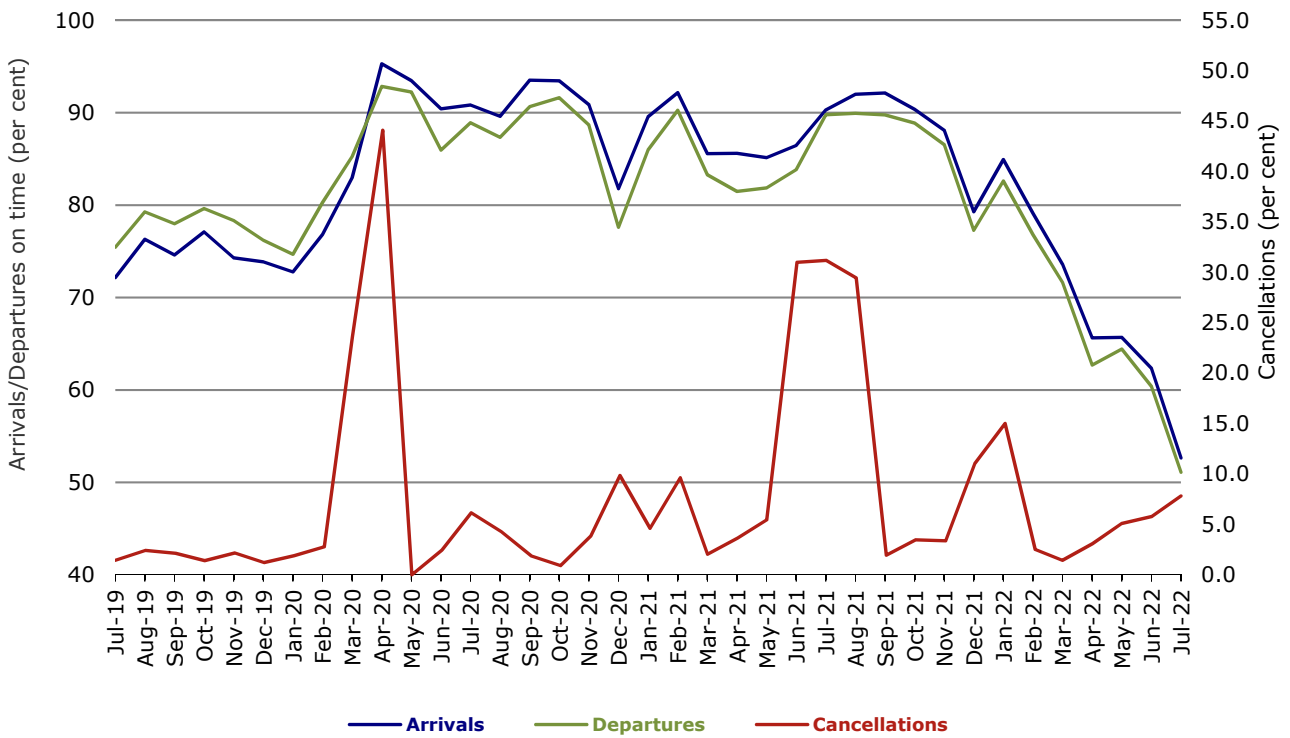


Figure 7 On time performance (by month from July 2019)—Virgin Australia



## Major regional airlines on time performance

Figure 8 On time performance (by month from July 2019)—QantasLink

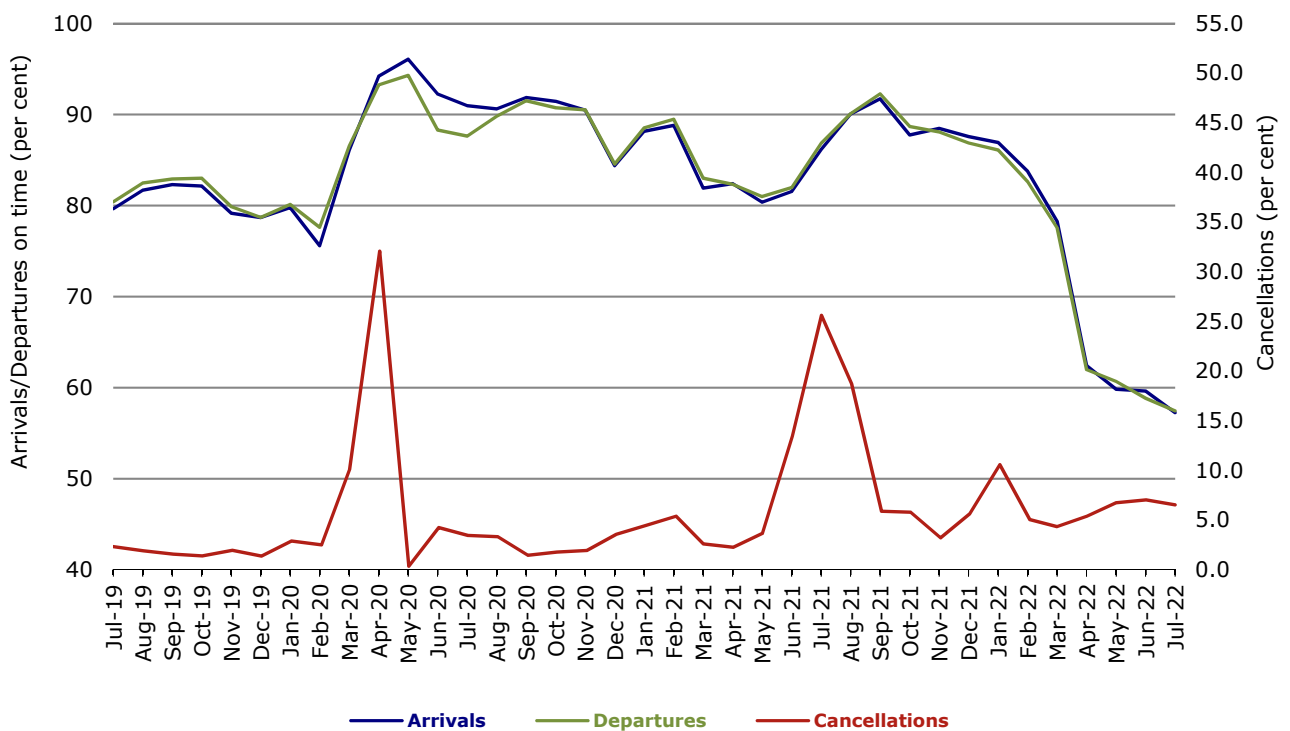
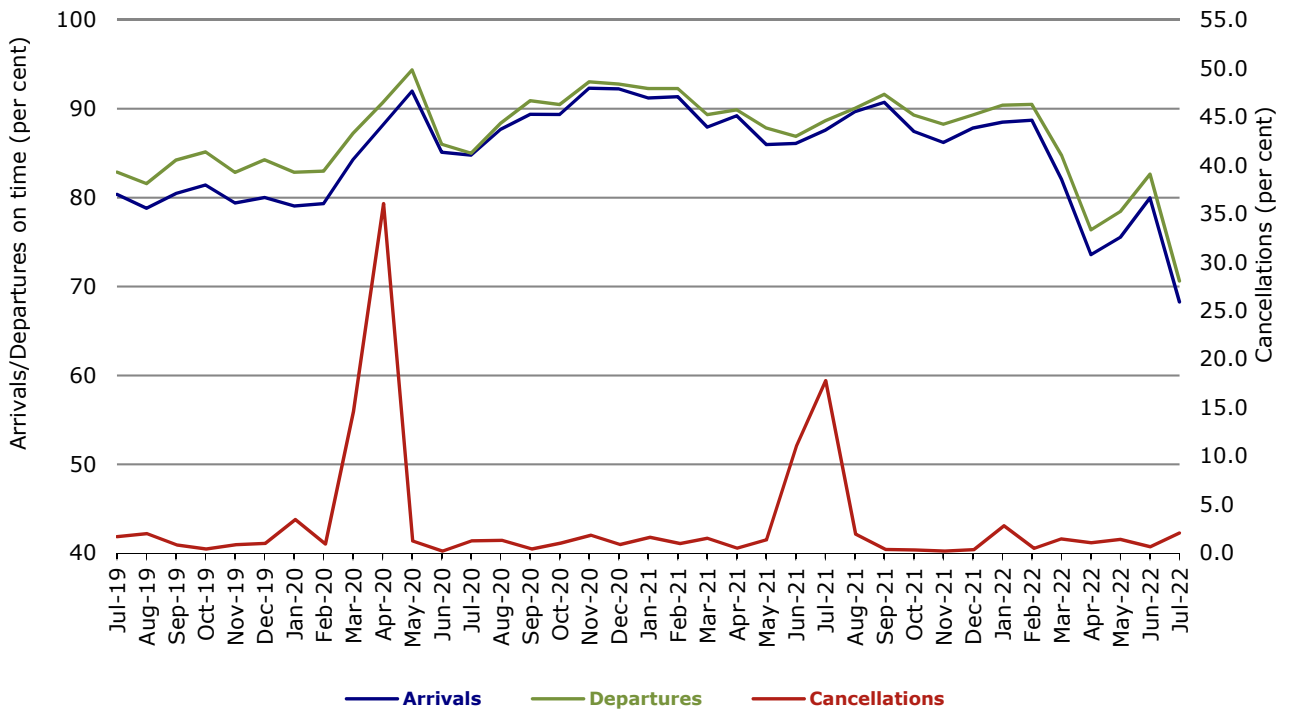
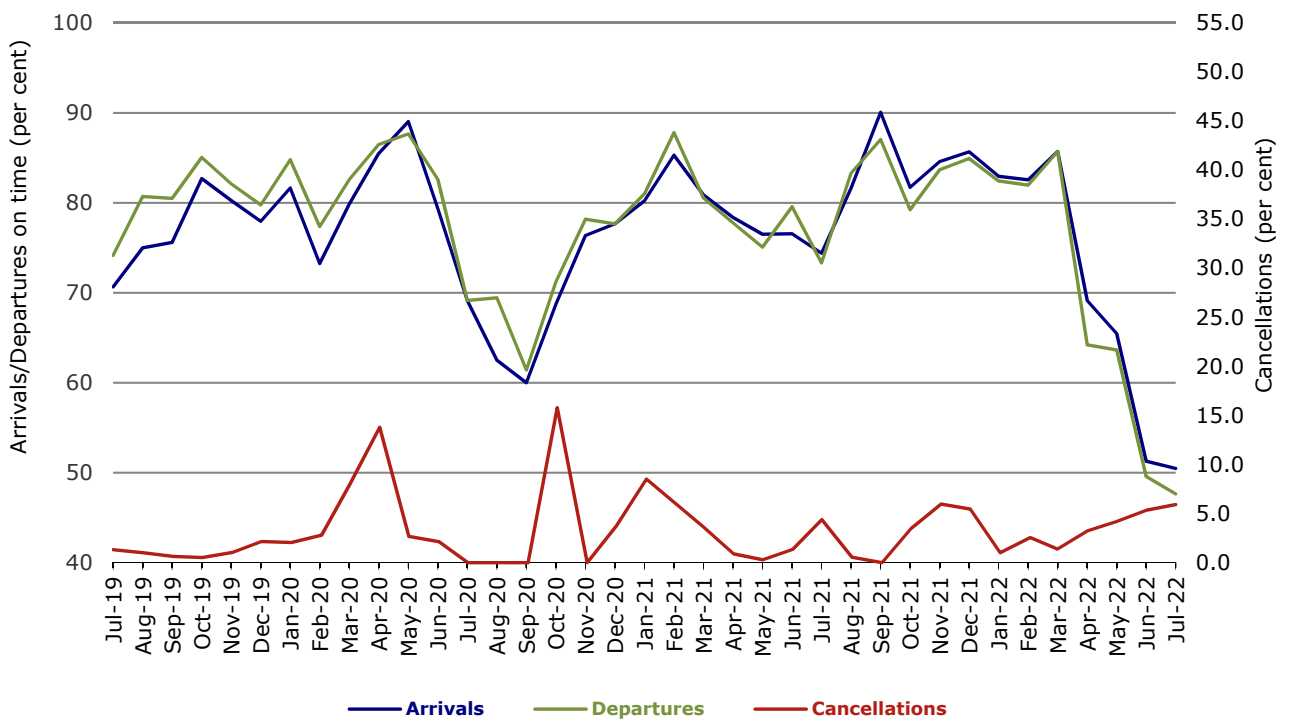


Figure 9 On time performance (by month from July 2019)—Rex Airlines



With effect from July 2021, Regional Express is reported as Rex Airlines

Figure 10 On time performance (by month from July 2019) Virgin Australia Regional Airlines



## Individual routes

On time performance is reported for all routes where the passenger load averages over 8000 passengers per month over the previous six months, and where two or more airlines operate in competition on those routes. In order to present data for more routes during the period impacted by COVID-19, the passenger load restriction is not being applied. There are now 58 routes for which data are presented.

	Sectors		Arrivals On Time		Departures On Time		Cancellations	
	Sched.	Flown	No.	%	No.	%	No.	%
<b>Adelaide-Alice Springs</b>								
Qantas	20	19	18	94.7	19	100.0	1	5.0
QantasLink	10	10	6	60.0	6	60.0	0	0.0
Virgin Australia	15	15	10	66.7	10	66.7	0	0.0
All Airlines	45	44	34	77.3	35	79.5	1	2.2
<b>Adelaide-Brisbane</b>								
Jetstar	35	33	21	63.6	21	63.6	2	5.7
Qantas	93	92	53	57.6	43	46.7	1	1.1
Virgin Australia	111	103	82	79.6	75	72.8	8	7.2
All Airlines	239	228	156	68.4	139	61.0	11	4.6
<b>Adelaide-Canberra</b>								
QantasLink	65	65	55	84.6	58	89.2	0	0.0
Virgin Australia	15	13	8	61.5	9	69.2	2	13.3
All Airlines	80	78	63	80.8	67	85.9	2	2.5
<b>Adelaide-Gold Coast</b>								
Jetstar	29	29	16	55.2	18	62.1	0	0.0
Virgin Australia	33	32	22	68.8	23	71.9	1	3.0
All Airlines	62	61	38	62.3	41	67.2	1	1.6
<b>Adelaide-Melbourne</b>								
Jetstar	102	90	58	64.4	51	56.7	12	11.8
Qantas	245	237	143	60.3	134	56.5	8	3.3
QantasLink	13	12	7	58.3	8	66.7	1	7.7
Rex Airlines	52	52	42	80.8	42	80.8	0	0.0
Virgin Australia	259	241	113	46.9	108	44.8	18	6.9
All Airlines	671	632	363	57.4	343	54.3	39	5.8
<b>Adelaide-Perth</b>								
Jetstar	25	23	10	43.5	13	56.5	2	8.0
Qantas	94	92	44	47.8	58	63.0	2	2.1
Virgin Australia	6	6	1	16.7	3	50.0	0	0.0
Virgin Australia Regional Airlines	54	48	11	22.9	13	27.1	6	11.1
All Airlines	179	169	66	39.1	87	51.5	10	5.6
<b>Adelaide-Port Lincoln</b>								
QantasLink	135	128	103	80.5	95	74.2	7	5.2
Rex Airlines	178	174	132	75.9	141	81.0	4	2.2
All Airlines	313	302	235	77.8	236	78.1	11	3.5
<b>Adelaide-Sydney</b>								
Jetstar	98	80	41	51.3	43	53.8	18	18.4
Qantas	233	224	87	38.8	94	42.0	9	3.9
Virgin Australia	120	108	47	43.5	58	53.7	12	10.0
All Airlines	451	412	175	42.5	195	47.3	39	8.6
<b>Albury-Sydney</b>								
QantasLink	101	96	49	51.0	60	62.5	5	5.0
Rex Airlines	126	121	62	51.2	76	62.8	5	4.0
All Airlines	227	217	111	51.2	136	62.7	10	4.4

	Sectors		Arrivals On Time		Departures On Time		Cancellations	
	Sched.	Flown	No.	%	No.	%	No.	%
<b>Alice Springs-Adelaide</b>								
Qantas	20	19	12	63.2	14	73.7	1	5.0
QantasLink	10	10	6	60.0	5	50.0	0	0.0
Virgin Australia	15	15	4	26.7	3	20.0	0	0.0
All Airlines	45	44	22	50.0	22	50.0	1	2.2
<b>Armidale-Sydney</b>								
QantasLink	97	80	58	72.5	59	73.8	17	17.5
Rex Airlines	79	74	20	27.0	29	39.2	5	6.3
All Airlines	176	154	78	50.6	88	57.1	22	12.5
<b>Ballina-Sydney</b>								
Jetstar	68	63	25	39.7	27	42.9	5	7.4
QantasLink	94	92	30	32.6	43	46.7	2	2.1
Rex Airlines	2	2	1	50.0	1	50.0	0	0.0
Virgin Australia	50	41	22	53.7	23	56.1	9	18.0
All Airlines	214	198	78	39.4	94	47.5	16	7.5
<b>Brisbane-Adelaide</b>								
Jetstar	35	33	17	51.5	12	36.4	2	5.7
Qantas	92	92	72	78.3	64	69.6	0	0.0
Virgin Australia	111	103	84	81.6	70	68.0	8	7.2
All Airlines	238	228	173	75.9	146	64.0	10	4.2
<b>Brisbane-Cairns</b>								
Jetstar	93	89	33	37.1	32	36.0	4	4.3
Qantas	104	104	52	50.0	49	47.1	0	0.0
QantasLink	39	39	10	25.6	15	38.5	0	0.0
Virgin Australia	138	134	79	59.0	67	50.0	4	2.9
All Airlines	374	366	174	47.5	163	44.5	8	2.1
<b>Brisbane-Canberra</b>								
Jetstar	31	31	19	61.3	16	51.6	0	0.0
Qantas	5	5	3	60.0	3	60.0	0	0.0
QantasLink	165	151	76	50.3	66	43.7	14	8.5
Virgin Australia	90	82	43	52.4	35	42.7	8	8.9
All Airlines	291	269	141	52.4	120	44.6	22	7.6
<b>Brisbane-Darwin</b>								
Jetstar	23	22	16	72.7	13	59.1	1	4.3
Qantas	51	51	32	62.7	28	54.9	0	0.0
Virgin Australia	38	37	23	62.2	13	35.1	1	2.6
All Airlines	112	110	71	64.5	54	49.1	2	1.8
<b>Brisbane-Emerald</b>								
QantasLink	109	107	83	77.6	86	80.4	2	1.8
Virgin Australia	26	26	20	76.9	19	73.1	0	0.0
All Airlines	135	133	103	77.4	105	78.9	2	1.5
<b>Brisbane-Gladstone</b>								
QantasLink	129	117	67	57.3	71	60.7	12	9.3
Virgin Australia	52	49	37	75.5	42	85.7	3	5.8
All Airlines	181	166	104	62.7	113	68.1	15	8.3
<b>Brisbane-Hamilton Island</b>								
Qantas	28	28	22	78.6	23	82.1	0	0.0
Virgin Australia	41	40	32	80.0	31	77.5	1	2.4
All Airlines	69	68	54	79.4	54	79.4	1	1.4
<b>Brisbane-Hobart</b>								
Jetstar	23	23	14	60.9	12	52.2	0	0.0
QantasLink	18	17	7	41.2	7	41.2	1	5.6
Virgin Australia	49	46	32	69.6	28	60.9	3	6.1
All Airlines	90	86	53	61.6	47	54.7	4	4.4



	Sectors		Arrivals On Time		Departures On Time		Cancellations	
	Sched.	Flown	No.	%	No.	%	No.	%
<b>Brisbane-Mackay</b>								
Jetstar	30	27	12	44.4	14	51.9	3	10.0
Qantas	102	102	58	56.9	59	57.8	0	0.0
QantasLink	13	13	5	38.5	5	38.5	0	0.0
Virgin Australia	114	106	63	59.4	61	57.5	8	7.0
All Airlines	259	248	138	55.6	139	56.0	11	4.2
<b>Brisbane-Melbourne</b>								
Jetstar	136	112	63	56.3	50	44.6	24	17.6
Qantas	336	329	150	45.6	139	42.2	7	2.1
Rex Airlines	53	53	39	73.6	37	69.8	0	0.0
Virgin Australia	333	303	149	49.2	152	50.2	30	9.0
All Airlines	858	797	401	50.3	378	47.4	61	7.1
<b>Brisbane-Mount Isa</b>								
Qantas	24	24	23	95.8	22	91.7	0	0.0
QantasLink	28	27	11	40.7	10	37.0	1	3.6
Virgin Australia	13	13	6	46.2	9	69.2	0	0.0
All Airlines	65	64	40	62.5	41	64.1	1	1.5
<b>Brisbane-Newcastle</b>								
Jetstar	52	49	33	67.3	36	73.5	3	5.8
QantasLink	118	108	58	53.7	62	57.4	10	8.5
Virgin Australia	83	83	51	61.4	68	81.9	0	0.0
All Airlines	253	240	142	59.2	166	69.2	13	5.1
<b>Brisbane-Perth</b>								
Jetstar	27	24	4	16.7	8	33.3	3	11.1
Qantas	143	141	41	29.1	60	42.6	2	1.4
Virgin Australia	103	101	53	52.5	50	49.5	2	1.9
All Airlines	273	266	98	36.8	118	44.4	7	2.6
<b>Brisbane-Proserpine</b>								
Jetstar	30	28	16	57.1	17	60.7	2	6.7
QantasLink	30	26	10	38.5	16	61.5	4	13.3
Virgin Australia	39	36	28	77.8	26	72.2	3	7.7
All Airlines	99	90	54	60.0	59	65.6	9	9.1
<b>Brisbane-Rockhampton</b>								
QantasLink	149	143	74	51.7	89	62.2	6	4.0
Virgin Australia	114	114	46	40.4	70	61.4	0	0.0
All Airlines	263	257	120	46.7	159	61.9	6	2.3
<b>Brisbane-Sydney</b>								
Jetstar	176	142	75	52.8	69	48.6	34	19.3
Qantas	573	523	276	52.8	295	56.4	50	8.7
Rex Airlines	83	83	59	71.1	71	85.5	0	0.0
Virgin Australia	481	419	191	45.6	190	45.3	62	12.9
All Airlines	1 313	1 167	601	51.5	625	53.6	146	11.1
<b>Brisbane-Townsville</b>								
Jetstar	45	41	19	46.3	20	48.8	4	8.9
Qantas	87	87	48	55.2	41	47.1	0	0.0
QantasLink	46	44	13	29.5	23	52.3	2	4.3
Virgin Australia	121	117	66	56.4	51	43.6	4	3.3
All Airlines	299	289	146	50.5	135	46.7	10	3.3
<b>Broome-Perth</b>								
Qantas	26	25	12	48.0	11	44.0	1	3.8
QantasLink	70	65	18	27.7	20	30.8	5	7.1
Virgin Australia	14	13	2	15.4	2	15.4	1	7.1
Virgin Australia Regional Airlines	59	55	28	50.9	21	38.2	4	6.8
All Airlines	169	158	60	38.0	54	34.2	11	6.5

	Sectors		Arrivals On Time		Departures On Time		Cancellations	
	Sched.	Flown	No.	%	No.	%	No.	%
<b>Cairns-Brisbane</b>								
Jetstar	91	87	43	49.4	44	50.6	4	4.4
Qantas	104	104	56	53.8	58	55.8	0	0.0
QantasLink	39	39	7	17.9	9	23.1	0	0.0
Virgin Australia	138	134	81	60.4	75	56.0	4	2.9
All Airlines	372	364	187	51.4	186	51.1	8	2.2
<b>Cairns-Melbourne</b>								
Jetstar	105	98	44	44.9	42	42.9	7	6.7
Qantas	47	47	16	34.0	21	44.7	0	0.0
Virgin Australia	81	79	25	31.6	36	45.6	2	2.5
All Airlines	233	224	85	37.9	99	44.2	9	3.9
<b>Cairns-Sydney</b>								
Jetstar	101	101	50	49.5	49	48.5	0	0.0
Qantas	73	73	22	30.1	22	30.1	0	0.0
Virgin Australia	80	79	37	46.8	42	53.2	1	1.3
All Airlines	254	253	109	43.1	113	44.7	1	0.4
<b>Cairns-Townsville</b>								
QantasLink	141	137	118	86.1	117	85.4	4	2.8
Rex Airlines	20	19	16	84.2	16	84.2	1	5.0
All Airlines	161	156	134	85.9	133	85.3	5	3.1
<b>Canberra-Adelaide</b>								
QantasLink	65	65	33	50.8	33	50.8	0	0.0
Virgin Australia	15	13	7	53.8	7	53.8	2	13.3
All Airlines	80	78	40	51.3	40	51.3	2	2.5
<b>Canberra-Brisbane</b>								
Jetstar	31	31	14	45.2	11	35.5	0	0.0
Qantas	5	5	2	40.0	2	40.0	0	0.0
QantasLink	164	152	58	38.2	68	44.7	12	7.3
Virgin Australia	90	82	37	45.1	35	42.7	8	8.9
All Airlines	290	270	111	41.1	116	43.0	20	6.9
<b>Canberra-Melbourne</b>								
Jetstar	31	31	16	51.6	15	48.4	0	0.0
Qantas	10	9	3	33.3	2	22.2	1	10.0
QantasLink	245	207	115	55.6	113	54.6	38	15.5
Rex Airlines	31	31	23	74.2	22	71.0	0	0.0
Virgin Australia	119	109	42	38.5	42	38.5	10	8.4
All Airlines	436	387	199	51.4	194	50.1	49	11.2
<b>Canberra-Sydney</b>								
QantasLink	479	419	242	57.8	273	65.2	60	12.5
Virgin Australia	249	242	164	67.8	159	65.7	7	2.8
All Airlines	728	661	406	61.4	432	65.4	67	9.2
<b>Coffs Harbour-Sydney</b>								
QantasLink	114	104	57	54.8	56	53.8	10	8.8
Rex Airlines	126	123	69	56.1	73	59.3	3	2.4
All Airlines	240	227	126	55.5	129	56.8	13	5.4
<b>Darwin-Brisbane</b>								
Jetstar	23	22	4	18.2	5	22.7	1	4.3
Qantas	52	52	11	21.2	16	30.8	0	0.0
Virgin Australia	38	37	16	43.2	10	27.0	1	2.6
All Airlines	113	111	31	27.9	31	27.9	2	1.8

	Sectors		Arrivals On Time		Departures On Time		Cancellations	
	Sched.	Flown	No.	%	No.	%	No.	%
<b>Darwin-Melbourne</b>								
Jetstar	29	27	0	0.0	1	3.7	2	6.9
Qantas	34	34	23	67.6	25	73.5	0	0.0
Virgin Australia	49	48	12	25.0	14	29.2	1	2.0
All Airlines	112	109	35	32.1	40	36.7	3	2.7
<b>Darwin-Perth</b>								
Qantas	5	5	2	40.0	2	40.0	0	0.0
QantasLink	30	26	8	30.8	5	19.2	4	13.3
Virgin Australia Regional Airlines	28	25	15	60.0	12	48.0	3	10.7
All Airlines	63	56	25	44.6	19	33.9	7	11.1
<b>Darwin-Sydney</b>								
Jetstar	29	26	6	23.1	6	23.1	3	10.3
Qantas	56	56	11	19.6	18	32.1	0	0.0
Virgin Australia	24	24	4	16.7	4	16.7	0	0.0
All Airlines	109	106	21	19.8	28	26.4	3	2.8
<b>Dubbo-Sydney</b>								
QantasLink	113	104	66	63.5	67	64.4	9	8.0
Rex Airlines	125	121	67	55.4	76	62.8	4	3.2
All Airlines	238	225	133	59.1	143	63.6	13	5.5
<b>Emerald-Brisbane</b>								
QantasLink	109	107	76	71.0	73	68.2	2	1.8
Virgin Australia	26	26	20	76.9	17	65.4	0	0.0
All Airlines	135	133	96	72.2	90	67.7	2	1.5
<b>Gladstone-Brisbane</b>								
QantasLink	128	116	77	66.4	77	66.4	12	9.4
Virgin Australia	52	49	27	55.1	34	69.4	3	5.8
All Airlines	180	165	104	63.0	111	67.3	15	8.3
<b>Gold Coast-Adelaide</b>								
Jetstar	29	29	18	62.1	13	44.8	0	0.0
Virgin Australia	33	32	20	62.5	21	65.6	1	3.0
All Airlines	62	61	38	62.3	34	55.7	1	1.6
<b>Gold Coast-Melbourne</b>								
Jetstar	265	229	128	55.9	109	47.6	36	13.6
Qantas	30	30	14	46.7	7	23.3	0	0.0
QantasLink	32	31	11	35.5	9	29.0	1	3.1
Rex Airlines	42	42	15	35.7	17	40.5	0	0.0
Virgin Australia	276	250	147	58.8	122	48.8	26	9.4
All Airlines	645	582	315	54.1	264	45.4	63	9.8
<b>Gold Coast-Sydney</b>								
Jetstar	241	216	122	56.5	120	55.6	25	10.4
Qantas	62	62	25	40.3	28	45.2	0	0.0
QantasLink	55	54	17	31.5	15	27.8	1	1.8
Rex Airlines	39	38	28	73.7	28	73.7	1	2.6
Virgin Australia	351	320	176	55.0	181	56.6	31	8.8
All Airlines	748	690	368	53.3	372	53.9	58	7.8
<b>Hamilton Island-Brisbane</b>								
Qantas	28	28	12	42.9	11	39.3	0	0.0
Virgin Australia	41	40	29	72.5	23	57.5	1	2.4
All Airlines	69	68	41	60.3	34	50.0	1	1.4
<b>Hamilton Island-Sydney</b>								
Jetstar	25	23	13	56.5	12	52.2	2	8.0
Qantas	32	32	12	37.5	16	50.0	0	0.0
Virgin Australia	30	27	11	40.7	15	55.6	3	10.0
All Airlines	87	82	36	43.9	43	52.4	5	5.7

	Sectors		Arrivals On Time		Departures On Time		Cancellations	
	Sched.	Flown	No.	%	No.	%	No.	%
<b>Hobart-Brisbane</b>								
Jetstar	23	23	8	34.8	8	34.8	0	0.0
QantasLink	18	18	5	27.8	5	27.8	0	0.0
Virgin Australia	49	46	13	28.3	12	26.1	3	6.1
All Airlines	90	87	26	29.9	25	28.7	3	3.3
<b>Hobart-Melbourne</b>								
Jetstar	121	114	53	46.5	47	41.2	7	5.8
Qantas	10	10	2	20.0	3	30.0	0	0.0
QantasLink	100	95	38	40.0	38	40.0	5	5.0
Virgin Australia	126	119	40	33.6	51	42.9	7	5.6
All Airlines	357	338	133	39.3	139	41.1	19	5.3
<b>Hobart-Sydney</b>								
Jetstar	83	75	50	66.7	56	74.7	8	9.6
Qantas	20	20	3	15.0	3	15.0	0	0.0
QantasLink	62	58	14	24.1	22	37.9	4	6.5
Virgin Australia	76	65	28	43.1	32	49.2	11	14.5
All Airlines	241	218	95	43.6	113	51.8	23	9.5
<b>Kalgoorlie-Perth</b>								
Qantas	25	25	10	40.0	5	20.0	0	0.0
QantasLink	51	42	25	59.5	21	50.0	9	17.6
Virgin Australia	28	28	9	32.1	7	25.0	0	0.0
Virgin Australia Regional Airlines	38	38	20	52.6	21	55.3	0	0.0
All Airlines	142	133	64	48.1	54	40.6	9	6.3
<b>Karratha-Perth</b>								
Qantas	26	25	14	56.0	11	44.0	1	3.8
QantasLink	120	107	50	46.7	38	35.5	13	10.8
Virgin Australia	13	13	7	53.8	7	53.8	0	0.0
Virgin Australia Regional Airlines	40	39	12	30.8	12	30.8	1	2.5
All Airlines	199	184	83	45.1	68	37.0	15	7.5
<b>Launceston-Melbourne</b>								
Jetstar	98	87	30	34.5	24	27.6	11	11.2
QantasLink	69	57	31	54.4	33	57.9	12	17.4
Virgin Australia	104	97	54	55.7	66	68.0	7	6.7
All Airlines	271	241	115	47.7	123	51.0	30	11.1
<b>Launceston-Sydney</b>								
Jetstar	43	39	23	59.0	24	61.5	4	9.3
QantasLink	18	18	10	55.6	9	50.0	0	0.0
Virgin Australia	31	28	13	46.4	17	60.7	3	9.7
All Airlines	92	85	46	54.1	50	58.8	7	7.6
<b>Mackay-Brisbane</b>								
Jetstar	30	27	9	33.3	10	37.0	3	10.0
Qantas	102	101	54	53.5	58	57.4	1	1.0
QantasLink	17	16	7	43.8	5	31.3	1	5.9
Virgin Australia	114	106	67	63.2	60	56.6	8	7.0
All Airlines	263	250	137	54.8	133	53.2	13	4.9
<b>Melbourne-Adelaide</b>								
Jetstar	102	90	59	65.6	49	54.4	12	11.8
Qantas	244	237	126	53.2	106	44.7	7	2.9
QantasLink	13	12	6	50.0	8	66.7	1	7.7
Rex Airlines	52	52	43	82.7	43	82.7	0	0.0
Virgin Australia	259	241	126	52.3	114	47.3	18	6.9
All Airlines	670	632	360	57.0	320	50.6	38	5.7

	Sectors		Arrivals On Time		Departures On Time		Cancellations	
	Sched.	Flown	No.	%	No.	%	No.	%
<b>Melbourne-Brisbane</b>								
Jetstar	136	111	45	40.5	38	34.2	25	18.4
Qantas	338	324	151	46.6	128	39.5	14	4.1
Rex Airlines	53	53	40	75.5	46	86.8	0	0.0
Virgin Australia	332	303	145	47.9	155	51.2	29	8.7
All Airlines	859	791	381	48.2	367	46.4	68	7.9
<b>Melbourne-Cairns</b>								
Jetstar	105	98	46	46.9	39	39.8	7	6.7
Qantas	47	47	28	59.6	16	34.0	0	0.0
Virgin Australia	81	79	53	67.1	46	58.2	2	2.5
All Airlines	233	224	127	56.7	101	45.1	9	3.9
<b>Melbourne-Canberra</b>								
Jetstar	31	31	19	61.3	17	54.8	0	0.0
Qantas	10	9	4	44.4	3	33.3	1	10.0
QantasLink	245	208	117	56.3	115	55.3	37	15.1
Rex Airlines	31	31	26	83.9	27	87.1	0	0.0
Virgin Australia	119	108	55	50.9	54	50.0	11	9.2
All Airlines	436	387	221	57.1	216	55.8	49	11.2
<b>Melbourne-Darwin</b>								
Jetstar	29	27	13	48.1	12	44.4	2	6.9
Qantas	34	34	27	79.4	14	41.2	0	0.0
Virgin Australia	49	48	32	66.7	21	43.8	1	2.0
All Airlines	112	109	72	66.1	47	43.1	3	2.7
<b>Melbourne-Gold Coast</b>								
Jetstar	262	229	107	46.7	102	44.5	33	12.6
Qantas	29	29	18	62.1	15	51.7	0	0.0
QantasLink	31	31	16	51.6	13	41.9	0	0.0
Rex Airlines	42	42	23	54.8	24	57.1	0	0.0
Virgin Australia	276	250	150	60.0	131	52.4	26	9.4
All Airlines	640	581	314	54.0	285	49.1	59	9.2
<b>Melbourne-Hobart</b>								
Jetstar	120	114	60	52.6	54	47.4	6	5.0
Qantas	10	10	8	80.0	7	70.0	0	0.0
QantasLink	100	96	36	37.5	31	32.3	4	4.0
Virgin Australia	126	119	56	47.1	59	49.6	7	5.6
All Airlines	356	339	160	47.2	151	44.5	17	4.8
<b>Melbourne-Launceston</b>								
Jetstar	98	87	37	42.5	42	48.3	11	11.2
QantasLink	69	57	30	52.6	30	52.6	12	17.4
Virgin Australia	104	97	45	46.4	55	56.7	7	6.7
All Airlines	271	241	112	46.5	127	52.7	30	11.1
<b>Melbourne-Mildura</b>								
QantasLink	114	107	45	42.1	46	43.0	7	6.1
Rex Airlines	108	108	85	78.7	86	79.6	0	0.0
All Airlines	222	215	130	60.5	132	61.4	7	3.2
<b>Melbourne-Newcastle</b>								
Jetstar	43	40	13	32.5	15	37.5	3	7.0
QantasLink	51	46	22	47.8	24	52.2	5	9.8
Virgin Australia	29	29	16	55.2	16	55.2	0	0.0
All Airlines	123	115	51	44.3	55	47.8	8	6.5
<b>Melbourne-Perth</b>								
Jetstar	64	61	34	55.7	25	41.0	3	4.7
Qantas	168	163	30	18.4	48	29.4	5	3.0
Virgin Australia	144	138	65	47.1	67	48.6	6	4.2
All Airlines	376	362	129	35.6	140	38.7	14	3.7

	Sectors		Arrivals On Time		Departures On Time		Cancellations	
	Sched.	Flown	No.	%	No.	%	No.	%
<b>Melbourne-Sunshine Coast</b>								
Jetstar	80	77	47	61.0	42	54.5	3	3.8
QantasLink	49	44	17	38.6	21	47.7	5	10.2
Virgin Australia	93	83	52	62.7	40	48.2	10	10.8
All Airlines	222	204	116	56.9	103	50.5	18	8.1
<b>Melbourne-Sydney</b>								
Jetstar	412	354	178	50.3	158	44.6	58	14.1
Qantas	827	693	313	45.2	343	49.5	134	16.2
Rex Airlines	128	127	110	86.6	110	86.6	1	0.8
Virgin Australia	746	645	283	43.9	330	51.2	101	13.5
All Airlines	2 113	1 819	884	48.6	941	51.7	294	13.9
<b>Mildura-Melbourne</b>								
QantasLink	114	107	50	46.7	57	53.3	7	6.1
Rex Airlines	108	108	82	75.9	96	88.9	0	0.0
All Airlines	222	215	132	61.4	153	71.2	7	3.2
<b>Mount Isa-Brisbane</b>								
Qantas	24	24	20	83.3	17	70.8	0	0.0
QantasLink	28	27	12	44.4	12	44.4	1	3.6
Virgin Australia	13	13	4	30.8	4	30.8	0	0.0
All Airlines	65	64	36	56.3	33	51.6	1	1.5
<b>Newcastle-Brisbane</b>								
Jetstar	53	50	31	62.0	30	60.0	3	5.7
QantasLink	120	108	61	56.5	66	61.1	12	10.0
Virgin Australia	83	83	50	60.2	60	72.3	0	0.0
All Airlines	256	241	142	58.9	156	64.7	15	5.9
<b>Newcastle-Melbourne</b>								
Jetstar	43	39	18	46.2	15	38.5	4	9.3
QantasLink	52	49	20	40.8	23	46.9	3	5.8
Virgin Australia	29	29	11	37.9	12	41.4	0	0.0
All Airlines	124	117	49	41.9	50	42.7	7	5.6
<b>Newman-Perth</b>								
Qantas	25	25	17	68.0	18	72.0	0	0.0
QantasLink	86	72	36	50.0	35	48.6	14	16.3
Virgin Australia	20	19	11	57.9	12	63.2	1	5.0
Virgin Australia Regional Airlines	35	34	19	55.9	23	67.6	1	2.9
All Airlines	166	150	83	55.3	88	58.7	16	9.6
<b>Perth-Adelaide</b>								
Jetstar	25	23	12	52.2	3	13.0	2	8.0
Qantas	96	93	49	52.7	29	31.2	3	3.1
Virgin Australia	5	5	3	60.0	2	40.0	0	0.0
Virgin Australia Regional Airlines	55	49	29	59.2	21	42.9	6	10.9
All Airlines	181	170	93	54.7	55	32.4	11	6.1
<b>Perth-Brisbane</b>								
Jetstar	27	24	1	4.2	0	0.0	3	11.1
Qantas	142	142	90	63.4	72	50.7	0	0.0
Virgin Australia	104	101	62	61.4	30	29.7	3	2.9
All Airlines	273	267	153	57.3	102	38.2	6	2.2
<b>Perth-Broome</b>								
Qantas	26	25	24	96.0	21	84.0	1	3.8
QantasLink	71	68	44	64.7	33	48.5	3	4.2
Virgin Australia	14	13	6	46.2	5	38.5	1	7.1
Virgin Australia Regional Airlines	59	55	33	60.0	25	45.5	4	6.8
All Airlines	170	161	107	66.5	84	52.2	9	5.3

	Sectors		Arrivals On Time		Departures On Time		Cancellations	
	Sched.	Flown	No.	%	No.	%	No.	%
<b>Perth-Darwin</b>								
Qantas	5	5	5	100.0	3	60.0	0	0.0
QantasLink	30	27	14	51.9	13	48.1	3	10.0
Virgin Australia Regional Airlines	28	25	13	52.0	11	44.0	3	10.7
All Airlines	63	57	32	56.1	27	47.4	6	9.5
<b>Perth-Kalgoorlie</b>								
Qantas	24	24	10	41.7	13	54.2	0	0.0
QantasLink	51	42	26	61.9	22	52.4	9	17.6
Virgin Australia	28	28	19	67.9	18	64.3	0	0.0
Virgin Australia Regional Airlines	38	38	22	57.9	21	55.3	0	0.0
All Airlines	141	132	77	58.3	74	56.1	9	6.4
<b>Perth-Karratha</b>								
Qantas	26	25	16	64.0	18	72.0	1	3.8
QantasLink	120	108	53	49.1	53	49.1	12	10.0
Virgin Australia	13	13	7	53.8	8	61.5	0	0.0
Virgin Australia Regional Airlines	40	40	17	42.5	20	50.0	0	0.0
All Airlines	199	186	93	50.0	99	53.2	13	6.5
<b>Perth-Melbourne</b>								
Jetstar	66	61	20	32.8	10	16.4	5	7.6
Qantas	167	165	88	53.3	77	46.7	2	1.2
Virgin Australia	143	135	96	71.1	68	50.4	8	5.6
All Airlines	376	361	204	56.5	155	42.9	15	4.0
<b>Perth-Newman</b>								
Qantas	25	25	20	80.0	18	72.0	0	0.0
QantasLink	88	73	45	61.6	44	60.3	15	17.0
Virgin Australia	20	19	13	68.4	13	68.4	1	5.0
Virgin Australia Regional Airlines	35	34	25	73.5	23	67.6	1	2.9
All Airlines	168	151	103	68.2	98	64.9	17	10.1
<b>Perth-Port Hedland</b>								
Qantas	30	30	22	73.3	16	53.3	0	0.0
QantasLink	90	83	51	61.4	48	57.8	7	7.8
Virgin Australia	5	5	2	40.0	2	40.0	0	0.0
Virgin Australia Regional Airlines	45	45	23	51.1	25	55.6	0	0.0
All Airlines	170	163	98	60.1	91	55.8	7	4.1
<b>Perth-Sydney</b>								
Jetstar	46	39	15	38.5	5	12.8	7	15.2
Qantas	176	171	90	52.6	73	42.7	5	2.8
Virgin Australia	138	132	79	59.8	42	31.8	6	4.3
All Airlines	360	342	184	53.8	120	35.1	18	5.0
<b>Port Hedland-Perth</b>								
Qantas	30	30	15	50.0	12	40.0	0	0.0
QantasLink	89	83	36	43.4	32	38.6	6	6.7
Virgin Australia	5	5	2	40.0	1	20.0	0	0.0
Virgin Australia Regional Airlines	45	45	17	37.8	20	44.4	0	0.0
All Airlines	169	163	70	42.9	65	39.9	6	3.6
<b>Port Lincoln-Adelaide</b>								
QantasLink	135	127	105	82.7	106	83.5	8	5.9
Rex Airlines	178	174	134	77.0	135	77.6	4	2.2
All Airlines	313	301	239	79.4	241	80.1	12	3.8
<b>Port Macquarie-Sydney</b>								
QantasLink	109	107	63	58.9	63	58.9	2	1.8
Rex Airlines	104	102	49	48.0	67	65.7	2	1.9
All Airlines	213	209	112	53.6	130	62.2	4	1.9

	Sectors		Arrivals On Time		Departures On Time		Cancellations	
	Sched.	Flown	No.	%	No.	%	No.	%
<b>Proserpine-Brisbane</b>								
Jetstar	32	30	14	46.7	13	43.3	2	6.3
QantasLink	30	26	4	15.4	6	23.1	4	13.3
Virgin Australia	39	36	24	66.7	17	47.2	3	7.7
All Airlines	101	92	42	45.7	36	39.1	9	8.9
<b>Rockhampton-Brisbane</b>								
QantasLink	149	139	65	46.8	71	51.1	10	6.7
Virgin Australia	114	114	69	60.5	68	59.6	0	0.0
All Airlines	263	253	134	53.0	139	54.9	10	3.8
<b>Sunshine Coast-Melbourne</b>								
Jetstar	80	77	39	50.6	43	55.8	3	3.8
QantasLink	49	42	8	19.0	11	26.2	7	14.3
Virgin Australia	93	83	30	36.1	35	42.2	10	10.8
All Airlines	222	202	77	38.1	89	44.1	20	9.0
<b>Sunshine Coast-Sydney</b>								
Jetstar	84	76	33	43.4	34	44.7	8	9.5
Qantas	41	40	11	27.5	9	22.5	1	2.4
Virgin Australia	102	90	26	28.9	43	47.8	12	11.8
All Airlines	227	206	70	34.0	86	41.7	21	9.3
<b>Sydney-Adelaide</b>								
Jetstar	98	80	37	46.3	32	40.0	18	18.4
Qantas	234	225	93	41.3	104	46.2	9	3.8
Virgin Australia	120	108	46	42.6	48	44.4	12	10.0
All Airlines	452	413	176	42.6	184	44.6	39	8.6
<b>Sydney-Albury</b>								
QantasLink	101	97	73	75.3	67	69.1	4	4.0
Rex Airlines	124	119	67	56.3	58	48.7	5	4.0
All Airlines	225	216	140	64.8	125	57.9	9	4.0
<b>Sydney-Armidale</b>								
QantasLink	94	80	56	70.0	47	58.8	14	14.9
Rex Airlines	79	74	33	44.6	32	43.2	5	6.3
All Airlines	173	154	89	57.8	79	51.3	19	11.0
<b>Sydney-Ballina</b>								
Jetstar	68	63	38	60.3	38	60.3	5	7.4
QantasLink	94	93	39	41.9	52	55.9	1	1.1
Rex Airlines	1	1	1	100.0	1	100.0	0	0.0
Virgin Australia	50	41	25	61.0	25	61.0	9	18.0
All Airlines	213	198	103	52.0	116	58.6	15	7.0
<b>Sydney-Brisbane</b>								
Jetstar	175	142	61	43.0	60	42.3	33	18.9
Qantas	572	532	202	38.0	210	39.5	40	7.0
Rex Airlines	83	83	55	66.3	61	73.5	0	0.0
Virgin Australia	479	417	236	56.6	251	60.2	62	12.9
All Airlines	1 309	1 174	554	47.2	582	49.6	135	10.3
<b>Sydney-Cairns</b>								
Jetstar	100	100	54	54.0	54	54.0	0	0.0
Qantas	73	72	23	31.9	19	26.4	1	1.4
Virgin Australia	80	79	49	62.0	39	49.4	1	1.3
All Airlines	253	251	126	50.2	112	44.6	2	0.8
<b>Sydney-Canberra</b>								
QantasLink	479	418	248	59.3	221	52.9	61	12.7
Virgin Australia	250	243	163	67.1	132	54.3	7	2.8
All Airlines	729	661	411	62.2	353	53.4	68	9.3



	<i>Sectors</i>		<i>Arrivals On Time</i>		<i>Departures On Time</i>		<i>Cancellations</i>	
	<i>Sched.</i>	<i>Flown</i>	<i>No.</i>	<i>%</i>	<i>No.</i>	<i>%</i>	<i>No.</i>	<i>%</i>
<b>Sydney-Coffs Harbour</b>								
QantasLink	116	105	53	50.5	38	36.2	11	9.5
Rex Airlines	127	124	82	66.1	77	62.1	3	2.4
All Airlines	243	229	135	59.0	115	50.2	14	5.8
<b>Sydney-Darwin</b>								
Jetstar	29	26	21	80.8	17	65.4	3	10.3
Qantas	56	56	32	57.1	21	37.5	0	0.0
Virgin Australia	25	25	17	68.0	9	36.0	0	0.0
All Airlines	110	107	70	65.4	47	43.9	3	2.7
<b>Sydney-Dubbo</b>								
QantasLink	113	105	63	60.0	60	57.1	8	7.1
Rex Airlines	126	123	75	61.0	67	54.5	3	2.4
All Airlines	239	228	138	60.5	127	55.7	11	4.6
<b>Sydney-Gold Coast</b>								
Jetstar	241	216	115	53.2	114	52.8	25	10.4
Qantas	62	62	24	38.7	19	30.6	0	0.0
QantasLink	55	54	21	38.9	21	38.9	1	1.8
Rex Airlines	39	38	30	78.9	30	78.9	1	2.6
Virgin Australia	351	320	157	49.1	167	52.2	31	8.8
All Airlines	748	690	347	50.3	351	50.9	58	7.8
<b>Sydney-Hamilton Island</b>								
Jetstar	25	24	18	75.0	19	79.2	1	4.0
Qantas	32	32	17	53.1	11	34.4	0	0.0
Virgin Australia	30	27	17	63.0	16	59.3	3	10.0
All Airlines	87	83	52	62.7	46	55.4	4	4.6
<b>Sydney-Hobart</b>								
Jetstar	84	76	62	81.6	53	69.7	8	9.5
Qantas	20	20	8	40.0	3	15.0	0	0.0
QantasLink	64	61	19	31.1	13	21.3	3	4.7
Virgin Australia	76	65	41	63.1	39	60.0	11	14.5
All Airlines	244	222	130	58.6	108	48.6	22	9.0
<b>Sydney-Launceston</b>								
Jetstar	42	38	26	68.4	24	63.2	4	9.5
QantasLink	17	17	9	52.9	8	47.1	0	0.0
Virgin Australia	31	28	21	75.0	18	64.3	3	9.7
All Airlines	90	83	56	67.5	50	60.2	7	7.8
<b>Sydney-Melbourne</b>								
Jetstar	409	356	186	52.2	159	44.7	53	13.0
Qantas	825	688	328	47.7	272	39.5	137	16.6
Rex Airlines	129	128	109	85.2	104	81.3	1	0.8
Virgin Australia	747	645	265	41.1	237	36.7	102	13.7
All Airlines	2 110	1 817	888	48.9	772	42.5	293	13.9
<b>Sydney-Perth</b>								
Jetstar	44	39	16	41.0	12	30.8	5	11.4
Qantas	173	170	29	17.1	52	30.6	3	1.7
Virgin Australia	138	132	44	33.3	59	44.7	6	4.3
All Airlines	355	341	89	26.1	123	36.1	14	3.9
<b>Sydney-Port Macquarie</b>								
QantasLink	109	107	59	55.1	45	42.1	2	1.8
Rex Airlines	104	102	61	59.8	59	57.8	2	1.9
All Airlines	213	209	120	57.4	104	49.8	4	1.9

	<i>Sectors</i>		<i>Arrivals On Time</i>		<i>Departures On Time</i>		<i>Cancellations</i>	
	<i>Sched.</i>	<i>Flown</i>	<i>No.</i>	<i>%</i>	<i>No.</i>	<i>%</i>	<i>No.</i>	<i>%</i>
<b>Sydney-Sunshine Coast</b>								
Jetstar	84	76	53	69.7	51	67.1	8	9.5
Qantas	42	41	10	24.4	10	24.4	1	2.4
Virgin Australia	101	90	51	56.7	54	60.0	11	10.9
All Airlines	227	207	114	55.1	115	55.6	20	8.8
<b>Sydney-Wagga Wagga</b>								
QantasLink	78	78	36	46.2	32	41.0	0	0.0
Rex Airlines	134	131	71	54.2	71	54.2	3	2.2
All Airlines	212	209	107	51.2	103	49.3	3	1.4
<b>Townsville-Brisbane</b>								
Jetstar	45	41	16	39.0	15	36.6	4	8.9
Qantas	87	87	42	48.3	45	51.7	0	0.0
QantasLink	46	44	5	11.4	10	22.7	2	4.3
Virgin Australia	121	116	74	63.8	61	52.6	5	4.1
All Airlines	299	288	137	47.6	131	45.5	11	3.7
<b>Townsville-Cairns</b>								
QantasLink	141	138	92	66.7	91	65.9	3	2.1
Rex Airlines	20	19	18	94.7	18	94.7	1	5.0
All Airlines	161	157	110	70.1	109	69.4	4	2.5
<b>Wagga Wagga-Sydney</b>								
QantasLink	78	78	43	55.1	43	55.1	0	0.0
Rex Airlines	132	128	70	54.7	84	65.6	4	3.0
All Airlines	210	206	113	54.9	127	61.7	4	1.9

# Airports

The following data reports by airport against flights operated on published routes only. This month, 8 major city airports and 28 regional city airports are covered.

Airport	Arrivals			Departures		
	Sectors	On Time		Sectors	On Time	
	Flown	No.	%	Flown	No.	%
<b>Adelaide</b>						
Jetstar	255	143	56.1	255	146	57.3
Qantas	666	352	52.9	664	348	52.4
QantasLink	214	150	70.1	215	167	77.7
Rex Airlines	226	177	78.3	226	183	81.0
Virgin Australia	517	290	56.1	518	286	55.2
Virgin Australia Regional Airlines	49	29	59.2	48	13	27.1
All Airlines	1 927	1 141	59.2	1 926	1 143	59.3
Relates to services to and from Alice Springs, Brisbane, Canberra, Gold Coast, Melbourne, Perth, Port Lincoln and Sydney only.						
<b>Albury</b>						
QantasLink	97	73	75.3	96	60	62.5
Rex Airlines	119	67	56.3	121	76	62.8
All Airlines	216	140	64.8	217	136	62.7
Relates to services to and from Sydney only.						
<b>Alice Springs</b>						
Qantas	19	18	94.7	19	14	73.7
QantasLink	10	6	60.0	10	5	50.0
Virgin Australia	15	10	66.7	15	3	20.0
All Airlines	44	34	77.3	44	22	50.0
Relates to services to and from Adelaide only.						
<b>Armidale</b>						
QantasLink	80	56	70.0	80	59	73.8
Rex Airlines	74	33	44.6	74	29	39.2
All Airlines	154	89	57.8	154	88	57.1
Relates to services to and from Sydney only.						
<b>Ballina</b>						
Jetstar	63	38	60.3	63	27	42.9
QantasLink	93	39	41.9	92	43	46.7
Rex Airlines	1	1	100.0	2	1	50.0
Virgin Australia	41	25	61.0	41	23	56.1
All Airlines	198	103	52.0	198	94	47.5
Relates to services to and from Sydney only.						
<b>Brisbane</b>						
Jetstar	621	267	43.0	621	299	48.1
Qantas	1 491	693	46.5	1 486	783	52.7
QantasLink	792	377	47.6	792	450	56.8
Rex Airlines	136	95	69.9	136	108	79.4
Virgin Australia	1 806	1 036	57.4	1 809	982	54.3
All Airlines	4 846	2 468	50.9	4 844	2 622	54.1
Relates to services to and from Adelaide, Cairns, Canberra, Darwin, Emerald, Gladstone, Hamilton Island, Hobart, Mackay, Melbourne, Mount Isa, Newcastle, Perth, Proserpine, Rockhampton, Sydney and Townsville only.						

Airport	Arrivals			Departures		
	Sectors Flown	On Time		Sectors Flown	On Time	
		No.	%		No.	%
<b>Broome</b>						
Qantas	25	24	96.0	25	11	44.0
QantasLink	68	44	64.7	65	20	30.8
Virgin Australia	13	6	46.2	13	2	15.4
Virgin Australia Regional Airlines	55	33	60.0	55	21	38.2
All Airlines	161	107	66.5	158	54	34.2
Relates to services to and from Perth only.						
<b>Cairns</b>						
Jetstar	287	133	46.3	286	135	47.2
Qantas	223	103	46.2	224	101	45.1
QantasLink	177	102	57.6	176	126	71.6
Rex Airlines	19	18	94.7	19	16	84.2
Virgin Australia	292	181	62.0	292	153	52.4
All Airlines	998	537	53.8	997	531	53.3
Relates to services to and from Brisbane, Melbourne, Sydney and Townsville only.						
<b>Canberra</b>						
Jetstar	62	38	61.3	62	26	41.9
Qantas	14	7	50.0	14	4	28.6
QantasLink	842	496	58.9	843	487	57.8
Rex Airlines	31	26	83.9	31	22	71.0
Virgin Australia	446	269	60.3	446	243	54.5
All Airlines	1 395	836	59.9	1 396	782	56.0
Relates to services to and from Adelaide, Brisbane, Melbourne and Sydney only.						
<b>Coffs Harbour</b>						
QantasLink	105	53	50.5	104	56	53.8
Rex Airlines	124	82	66.1	123	73	59.3
All Airlines	229	135	59.0	227	129	56.8
Relates to services to and from Sydney only.						
<b>Darwin</b>						
Jetstar	75	50	66.7	75	12	16.0
Qantas	146	96	65.8	147	61	41.5
QantasLink	27	14	51.9	26	5	19.2
Virgin Australia	110	72	65.5	109	28	25.7
Virgin Australia Regional Airlines	25	13	52.0	25	12	48.0
All Airlines	383	245	64.0	382	118	30.9
Relates to services to and from Brisbane, Melbourne, Perth and Sydney only.						
<b>Dubbo</b>						
QantasLink	105	63	60.0	104	67	64.4
Rex Airlines	123	75	61.0	121	76	62.8
All Airlines	228	138	60.5	225	143	63.6
Relates to services to and from Sydney only.						
<b>Emerald</b>						
QantasLink	107	83	77.6	107	73	68.2
Virgin Australia	26	20	76.9	26	17	65.4
All Airlines	133	103	77.4	133	90	67.7
Relates to services to and from Brisbane only.						

Airport	Arrivals			Departures		
	Sectors	On Time		Sectors	On Time	
	Flown	No.	%	Flown	No.	%
<b>Gladstone</b>						
QantasLink	117	67	57.3	116	77	66.4
Virgin Australia	49	37	75.5	49	34	69.4
All Airlines	166	104	62.7	165	111	67.3
Relates to services to and from Brisbane only.						
<b>Gold Coast</b>						
Jetstar	474	238	50.2	474	242	51.1
Qantas	91	42	46.2	92	35	38.0
QantasLink	85	37	43.5	85	24	28.2
Rex Airlines	80	53	66.3	80	45	56.3
Virgin Australia	602	329	54.7	602	324	53.8
All Airlines	1 332	699	52.5	1 333	670	50.3
Relates to services to and from Adelaide, Melbourne and Sydney only.						
<b>Hamilton Island</b>						
Jetstar	24	18	75.0	23	12	52.2
Qantas	60	39	65.0	60	27	45.0
Virgin Australia	67	49	73.1	67	38	56.7
All Airlines	151	106	70.2	150	77	51.3
Relates to services to and from Brisbane and Sydney only.						
<b>Hobart</b>						
Jetstar	213	136	63.8	212	111	52.4
Qantas	30	16	53.3	30	6	20.0
QantasLink	174	62	35.6	171	65	38.0
Virgin Australia	230	129	56.1	230	95	41.3
All Airlines	647	343	53.0	643	277	43.1
Relates to services to and from Brisbane, Melbourne and Sydney only.						
<b>Kalgoorlie</b>						
Qantas	24	10	41.7	25	5	20.0
QantasLink	42	26	61.9	42	21	50.0
Virgin Australia	28	19	67.9	28	7	25.0
Virgin Australia Regional Airlines	38	22	57.9	38	21	55.3
All Airlines	132	77	58.3	133	54	40.6
Relates to services to and from Perth only.						
<b>Karratha</b>						
Qantas	25	16	64.0	25	11	44.0
QantasLink	108	53	49.1	107	38	35.5
Virgin Australia	13	7	53.8	13	7	53.8
Virgin Australia Regional Airlines	40	17	42.5	39	12	30.8
All Airlines	186	93	50.0	184	68	37.0
Relates to services to and from Perth only.						
<b>Launceston</b>						
Jetstar	125	63	50.4	126	48	38.1
QantasLink	74	39	52.7	75	42	56.0
Virgin Australia	125	66	52.8	125	83	66.4
All Airlines	324	168	51.9	326	173	53.1
Relates to services to and from Melbourne and Sydney only.						

Airport	Arrivals			Departures		
	Sectors Flown	On Time		Sectors Flown	On Time	
		No.	%		No.	%
<b>Mackay</b>						
Jetstar	27	12	44.4	27	10	37.0
Qantas	102	58	56.9	101	58	57.4
QantasLink	13	5	38.5	16	5	31.3
Virgin Australia	106	63	59.4	106	60	56.6
All Airlines	248	138	55.6	250	133	53.2

Relates to services to and from Brisbane only.

### Melbourne

Jetstar	1 321	655	49.6	1 319	593	45.0
Qantas	1 549	767	49.5	1 546	680	44.0
QantasLink	600	280	46.7	601	288	47.9
Rex Airlines	414	310	74.9	413	336	81.4
Virgin Australia	2 138	984	46.0	2 140	1 088	50.8
All Airlines	6 022	2 996	49.8	6 019	2 985	49.6

Relates to services to and from Adelaide, Brisbane, Cairns, Canberra, Darwin, Gold Coast, Hobart, Launceston, Mildura, Newcastle, Perth, Sunshine Coast and Sydney only.

### Mildura

QantasLink	107	45	42.1	107	57	53.3
Rex Airlines	108	85	78.7	108	96	88.9
All Airlines	215	130	60.5	215	153	71.2

Relates to services to and from Melbourne only.

### Mount Isa

Qantas	24	23	95.8	24	17	70.8
QantasLink	27	11	40.7	27	12	44.4
Virgin Australia	13	6	46.2	13	4	30.8
All Airlines	64	40	62.5	64	33	51.6

Relates to services to and from Brisbane only.

### Newcastle

Jetstar	89	46	51.7	89	45	50.6
QantasLink	154	80	51.9	157	89	56.7
Virgin Australia	112	67	59.8	112	72	64.3
All Airlines	355	193	54.4	358	206	57.5

Relates to services to and from Brisbane and Melbourne only.

### Newman

Qantas	25	20	80.0	25	18	72.0
QantasLink	73	45	61.6	72	35	48.6
Virgin Australia	19	13	68.4	19	12	63.2
Virgin Australia Regional Airlines	34	25	73.5	34	23	67.6
All Airlines	151	103	68.2	150	88	58.7

Relates to services to and from Perth only.

### Perth

Jetstar	147	64	43.5	147	18	12.2
Qantas	701	214	30.5	705	340	48.2
QantasLink	395	173	43.8	401	213	53.1
Virgin Australia	455	194	42.6	451	188	41.7
Virgin Australia Regional Airlines	284	122	43.0	286	146	51.0
All Airlines	1 982	767	38.7	1 990	905	45.5

Relates to services to and from Adelaide, Brisbane, Broome, Darwin, Kalgoorlie, Karratha, Melbourne, Newman, Port Hedland and Sydney only.

Airport	Arrivals			Departures		
	Sectors	On Time		Sectors	On Time	
	Flown	No.	%	Flown	No.	%
<b>Port Hedland</b>						
Qantas	30	22	73.3	30	12	40.0
QantasLink	83	51	61.4	83	32	38.6
Virgin Australia	5	2	40.0	5	1	20.0
Virgin Australia Regional Airlines	45	23	51.1	45	20	44.4
All Airlines	163	98	60.1	163	65	39.9
Relates to services to and from Perth only.						
<b>Port Lincoln</b>						
QantasLink	128	103	80.5	127	106	83.5
Rex Airlines	174	132	75.9	174	135	77.6
All Airlines	302	235	77.8	301	241	80.1
Relates to services to and from Adelaide only.						
<b>Port Macquarie</b>						
QantasLink	107	59	55.1	107	63	58.9
Rex Airlines	102	61	59.8	102	67	65.7
All Airlines	209	120	57.4	209	130	62.2
Relates to services to and from Sydney only.						
<b>Proserpine</b>						
Jetstar	28	16	57.1	30	13	43.3
QantasLink	26	10	38.5	26	6	23.1
Virgin Australia	36	28	77.8	36	17	47.2
All Airlines	90	54	60.0	92	36	39.1
Relates to services to and from Brisbane only.						
<b>Rockhampton</b>						
QantasLink	143	74	51.7	139	71	51.1
Virgin Australia	114	46	40.4	114	68	59.6
All Airlines	257	120	46.7	253	139	54.9
Relates to services to and from Brisbane only.						
<b>Sunshine Coast</b>						
Jetstar	153	100	65.4	153	77	50.3
Qantas	41	10	24.4	40	9	22.5
QantasLink	44	17	38.6	42	11	26.2
Virgin Australia	173	103	59.5	173	78	45.1
All Airlines	411	230	56.0	408	175	42.9
Relates to services to and from Melbourne and Sydney only.						
<b>Sydney</b>						
Jetstar	1 234	631	51.1	1 236	633	51.2
Qantas	1 894	850	44.9	1 898	721	38.0
QantasLink	1 210	649	53.6	1 215	604	49.7
Rex Airlines	919	535	58.2	923	560	60.7
Virgin Australia	2 220	1 081	48.7	2 220	1 094	49.3
All Airlines	7 477	3 746	50.1	7 492	3 612	48.2

Relates to services to and from Adelaide, Albury, Armidale, Ballina, Brisbane, Cairns, Canberra, Coffs Harbour, Darwin, Dubbo, Gold Coast, Hamilton Island, Hobart, Launceston, Melbourne, Perth, Port Macquarie, Sunshine Coast and Wagga Wagga only.

<i>Airport</i>	<i>Arrivals</i>			<i>Departures</i>		
	<i>Sectors Flown</i>	<i>On Time</i>		<i>Sectors Flown</i>	<i>On Time</i>	
		<i>No.</i>	<i>%</i>		<i>No.</i>	<i>%</i>
<b>Townsville</b>						
Jetstar	41	19	46.3	41	15	36.6
Qantas	87	48	55.2	87	45	51.7
QantasLink	181	131	72.4	182	101	55.5
Rex Airlines	19	16	84.2	19	18	94.7
Virgin Australia	117	66	56.4	116	61	52.6
All Airlines	445	280	62.9	445	240	53.9

Relates to services to and from Brisbane and Cairns only.

**Wagga Wagga**

QantasLink	78	36	46.2	78	43	55.1
Rex Airlines	131	71	54.2	128	84	65.6
All Airlines	209	107	51.2	206	127	61.7

Relates to services to and from Sydney only.



## Definitions

---

On time arrival	A flight arrival is counted as "on time" if it arrived at the gate before 15 minutes after the scheduled arrival time shown in the carriers' schedule. Neither diverted nor cancelled flights count as on time.
On time departure	A flight departure is counted as "on time" if it departs the gate before 15 minutes after the scheduled departure time shown in the carriers' schedule.
Cancellation	A flight removed from service within 7 days of scheduled departure is regarded as a cancellation.
On time departure percentage	The percentage of on time departures is measured against the number of departures <i>operated</i> on any particular sector.
On time arrival percentage	The percentage of on time arrivals is measured against the number of arrivals <i>operated</i> on any particular sector.
Cancellation percentage	The percentage of cancellations is measured against the number of services <i>scheduled</i> on any particular sector.

---