



Australian Government

Department of Infrastructure, Regional Development and Cities

Bureau of Infrastructure, Transport and Regional Economics

STATISTICAL REPORT



Aviation

Domestic airline on time performance
April 2018

© Commonwealth of Australia 2018

ISSN: 1832-0759

Ownership of intellectual property rights in this publication

Unless otherwise noted, copyright (and any other intellectual property rights, if any) in this publication is owned by the Commonwealth of Australia (referred to below as the Commonwealth).

Disclaimer

The material contained in this publication is made available on the understanding that the Commonwealth is not providing professional advice, and that users exercise their own skill and care with respect to its use, and seek independent advice if necessary.

The Commonwealth makes no representations or warranties as to the contents or accuracy of the information contained in this publication. To the extent permitted by law, the Commonwealth disclaims liability to any person or organisation in respect of anything done, or omitted to be done, in reliance upon information contained in this publication.

Creative Commons licence

With the exception of (a) the Coat of Arms; and (b) the Department of Infrastructure, Regional Development and Cities' photos and graphics, copyright in this publication is licensed under a Creative Commons Attribution 3.0 Australia Licence.

Creative Commons Attribution 3.0 Australia Licence is a standard form licence agreement that allows you to copy, communicate and adapt this publication provided that you attribute the work to the Commonwealth and abide by the other licence terms. A summary of the licence terms is available from <http://creativecommons.org/licenses/by/3.0/au/deed.en>. The full licence terms are available from <http://creativecommons.org/licenses/by/3.0/au/legalcode>.

Use of the Coat of Arms

The Department of the Prime Minister and Cabinet sets the terms under which the Coat of Arms is used. Please refer to the Department's Commonwealth Coat of Arms and Government branding web page <http://www.dpmc.gov.au/guidelines/index.cfm#brand> and, in particular, the Guidelines on the use of the Commonwealth Coat of Arms publication.

An appropriate citation for this report is:

Bureau of Infrastructure, Transport and Regional Economics (BITRE), 2018, Domestic airline on time performance, Statistical Report, BITRE, Canberra ACT.

Contact us

This publication is available in PDF format. All other rights are reserved, including in relation to any Departmental logos or trade marks which may exist. For enquiries regarding the licence and any use of this publication, please contact:

Bureau of Infrastructure, Transport and Regional Economics (BITRE)
Department of Infrastructure, Regional Development and Cities
GPO Box 501, Canberra ACT 2601, Australia
Telephone: (international) +61 2 6274 7210
Fax: (international) +61 2 6274 6855
Email: bitre@infrastructure.gov.au
Website: www.bitre.gov.au

Inquiries

Should you require additional information about the statistics contained in this publication:

Telephone (02) 6274 7790 or Facsimile (02) 6274 7727

Electronic mail: AVSTATS@infrastructure.gov.au

Web site: <http://www.bitre.gov.au/statistics/aviation/otphome.aspx>

Foreword

The Bureau of Infrastructure, Transport and Regional Economics (BITRE) monitors the punctuality and reliability of major domestic airlines operating between Australian airports. The purpose of this is to allow for evaluation of overall industry and individual airline performance, so that consumers of air travel can make informed decisions.

The following domestic airlines currently report this information monthly to the BITRE: Jetstar, Qantas, QantasLink, Regional Express, Tigerair Australia, Virgin Australia and Virgin Australia Regional Airlines. Data has been gathered since November 2003, although some airlines commenced reporting at a later date, including Jetstar which first reported in May 2004, MacAir in July 2005, Tigerair Australia in April 2008 and Virgin Australia Regional Airlines in May 2013. MacAir ceased operations in February 2009 and data was not received for December 2008 onwards. Virgin Blue was rebranded as Virgin Australia in May 2011 and Tiger Airways was rebranded as Tigerair Australia in July 2013 and time series data in Microsoft Excel spreadsheet format on the BITRE website have been revised to reflect these changes. Services operated by Skywest on behalf of Virgin Australia using ATR/F100 aircraft commenced in November 2011 and were shown separately as Virgin Australia – ATR/F100 Operations. Virgin Australia Regional Airlines commenced operations in May 2013. It was formed after the acquisition of Skywest by Virgin Australia and represented a combination of operations previously reported under Skywest and Virgin Australia – ATR/F100 Operations. In January 2016, Virgin Australia transferred their ATR fleet from Virgin Australia Regional Airlines to Virgin Australia.

Information presented in this report is for Australian domestic routes for which the passenger load averaged 8 000 or more passengers per month over the previous six months and where two or more airlines operated in competition on those routes. There were 66 routes that met this definition in April 2018. Over time, routes which meet these criteria change as airline networks and traffic levels vary.

Participating airlines report their overall monthly network performance where this is possible.

Total industry figures encompass all services operated by reporting airlines only. These airlines collectively carried over 95 per cent of total domestic passengers (regular public transport only) in 2017.

The method of capturing on time performance varies between airlines utilising different recording systems. Jetstar and Qantas jet aircraft use Aircraft Communication Addressing and Reporting System (ACARS) to electronically measure on time performance. Regional Express, Tigerair Australia, Virgin Australia, Virgin Australia Regional Airlines and the Qantas non-jet fleet record on time performance manually using records from pilots, gate agents and/or ground crews.

After initial data is collected, aggregate reports are audited internally by participating airlines prior to publication.

Reports and detailed time series data in Microsoft Excel spreadsheet format are available from the BITRE website at: <http://www.bitre.gov.au/statistics/aviation/otphome.aspx>.

Contents

	Page
Industry performance	1
Individual routes	10
Airports.....	24
Definitions	30

Industry performance

For April 2018, on time performance over all routes operated by participating airlines (Jetstar, Qantas, QantasLink, Regional Express, Tigerair Australia, Virgin Australia and Virgin Australia Regional Airlines) averaged 83.2 per cent for on time arrivals and 83.1 per cent for on time departures. Cancellations represented 1.2 per cent of all scheduled flights. The equivalent figures for April 2017 were 85.4 per cent for on time arrivals, 85.1 per cent for on time departures and 2.1 per cent for cancellations.

This month's on time arrivals figure was higher than the long term average performance for all routes (82.7 per cent) but the on time departures figure was lower than the long term average (84.0 per cent). The rate of cancellations was lower than the long term average of 1.4 per cent.

Virgin Australia achieved the highest on time arrivals among the major domestic airlines at 85.2 per cent followed by Qantas at 83.0 per cent, Jetstar at 79.9 per cent and Tigerair Australia at 69.0 per cent. Of the regional airlines, QantasLink recorded 88.3 per cent for on time arrivals, followed by Regional Express at 82.1 per cent and Virgin Australia Regional Airlines at 80.1 per cent. The Qantas network (Qantas and QantasLink combined operations) recorded 85.8 per cent for on time arrivals while the Virgin Australia network (Virgin Australia and Virgin Australia Regional Airlines combined operations) recorded 84.9 per cent.

Virgin Australia also achieved the highest level of on time departures among the major domestic airlines for April 2018 at 85.6 per cent, followed by Qantas at 81.8 per cent, Jetstar at 77.3 per cent and Tigerair Australia at 69.2 per cent. Of the regional airlines, QantasLink recorded 88.2 per cent for on time departures, followed by Regional Express at 85.6 per cent and Virgin Australia Regional Airlines at 81.8 per cent. The Qantas network recorded 85.1 per cent for on time departures while the Virgin Australia network recorded 85.4 per cent.

Virgin Australia Regional Airlines recorded the highest percentage of cancellations (3.0 per cent) during the month, followed by Tigerair Australia (2.7 per cent), Qantas (1.4 per cent), Jetstar and Regional Express (both at 1.0 per cent) and QantasLink and Virgin Australia (both at 0.9 per cent).

Airlines' on time performance varies across the routes they serve. Individual route data by specific airline for 66 routes are shown on pages 10-23.

Of the 66 routes which met the criteria for on time performance reporting in April 2018, the Cairns-Townsville route had the highest percentage of on time arrivals (96.8 per cent) and the highest percentage of on time departures (97.4 per cent). The Melbourne-Townsville route had the lowest percentage of on time arrivals (63.6 per cent) and the Townsville-Melbourne route had the lowest percentage of on time departures (52.3 per cent).

Cancellations were highest on the Hamilton Island-Sydney and Sydney-Hamilton Island routes at 8.4 per cent, followed by the Brisbane-Hamilton Island and Hamilton Island-Brisbane routes at 5.0 per cent, the Adelaide-Alice Springs and Alice Springs-Adelaide routes at 3.9 per cent,

the Alice Springs-Darwin and Darwin-Alice Springs routes at 3.7 per cent and the Sydney-Melbourne route at 3.0 per cent.

Kalgoorlie Airport recorded the highest percentage of on time arrivals (92.5 per cent) and Alice Springs Airport recorded the highest percentage of on time departures (92.1 per cent). Melbourne Airport recorded the lowest percentage of on time arrivals (76.1 per cent) and Sunshine Coast Airport recorded the lowest percentage of on time departures (69.4 per cent). These figures only refer to reported routes and do not cover all flights at these airports.

Table 1 On time performance for April 2018 — Total Industry

	Sectors		Arrivals On Time		Departures On Time		Cancellations	
	Scheduled	Flown	No.	%	No.	%	No.	%
Jetstar	7 962	7 879	6 294	79.9	6 090	77.3	83	1.0
Qantas	8 775	8 654	7 187	83.0	7 078	81.8	121	1.4
QantasLink	9 480	9 392	8 289	88.3	8 281	88.2	88	0.9
Regional Express	5 828	5 772	4 739	82.1	4 940	85.6	56	1.0
Tigerair Australia	2 401	2 336	1 612	69.0	1 617	69.2	65	2.7
Virgin Australia	11 099	10 999	9 374	85.2	9 419	85.6	100	0.9
Virgin Australia Regional Airlines	789	765	613	80.1	626	81.8	24	3.0
All Airlines	46 334	45 797	38 108	83.2	38 051	83.1	537	1.2
Qantas - all QF designated services	18 255	18 046	15 476	85.8	15 359	85.1	209	1.1
Virgin Australia - all VA designated services	11 888	11 764	9 987	84.9	10 045	85.4	124	1.0

Total airline network data (including routes not shown in this report).

Airlines' on time performance varies across the routes they serve. Individual route data by specific airline for 66 routes are shown on pages 10-23.

Table 2 Top ten routes for on time performance for April 2018 (participating airlines only)

Arrivals		Departures	
Route	On Time (%)	Route	On Time (%)
Cairns-Townsville	96.8	Cairns-Townsville	97.4
Brisbane-Perth	95.6	Townsville-Brisbane	95.7
Townsville-Brisbane	94.1	Brisbane-Hobart	95.2
Adelaide-Canberra	93.8	Adelaide-Port Lincoln	94.8
Hamilton Island-Sydney	93.4	Perth-Kalgoorlie	94.5
Newman-Perth	93.4	Canberra-Brisbane	94.5
Brisbane-Townsville	92.9	Adelaide-Canberra	93.8
Brisbane-Adelaide	92.8	Perth-Port Hedland	92.7
Sydney-Cairns	92.6	Alice Springs-Darwin	92.3
Perth-Kalgoorlie	92.5	Darwin-Alice Springs	92.3

Table 3 Top ten airports for on time performance for April 2018 (participating airlines and reported routes only)

Arrivals		Departures	
Airport	On Time (%)	Airport	On Time (%)
Kalgoorlie	92.5	Alice Springs	92.1
Ayers Rock	91.7	Emerald	91.8
Port Lincoln	91.3	Gladstone	91.3
Townsville	91.3	Newman	91.0
Emerald	91.1	Port Lincoln	90.9
Port Hedland	91.1	Tamworth	90.2
Newman	91.0	Townsville	90.0
Wagga Wagga	90.5	Canberra	88.6
Gladstone	89.7	Cairns	88.5
Cairns	88.5	Perth	87.9

Total industry on time performance

Figure 1 On time performance (by month from April 2015)—Total Industry

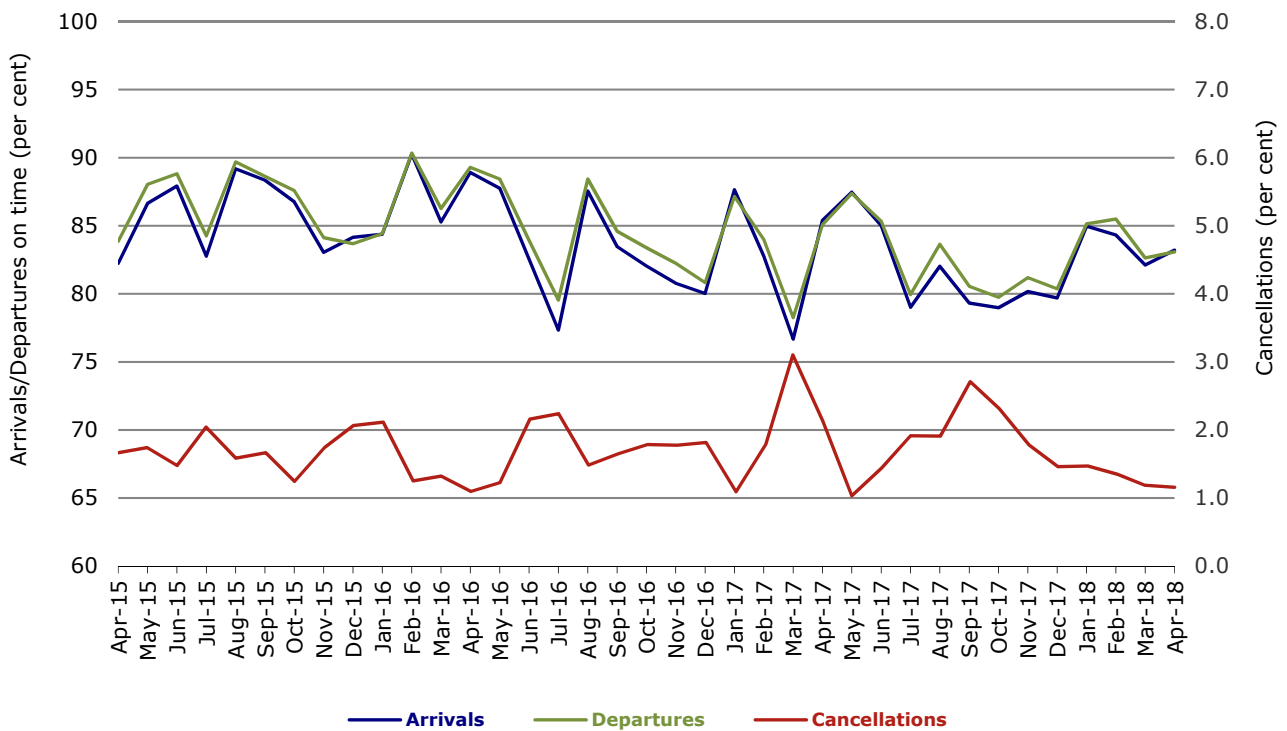


Figure 2 Arrivals on time (by month from April 2017)

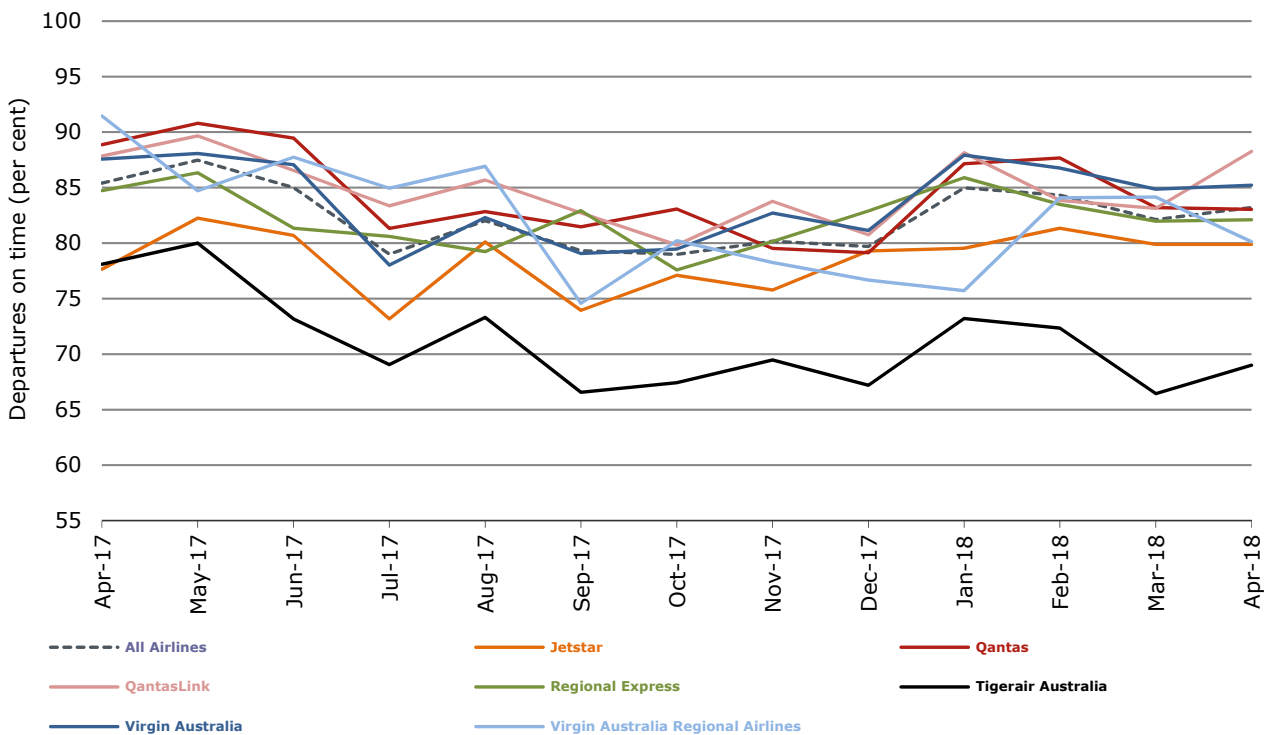


Figure 3 Departures on time (by month from April 2017)

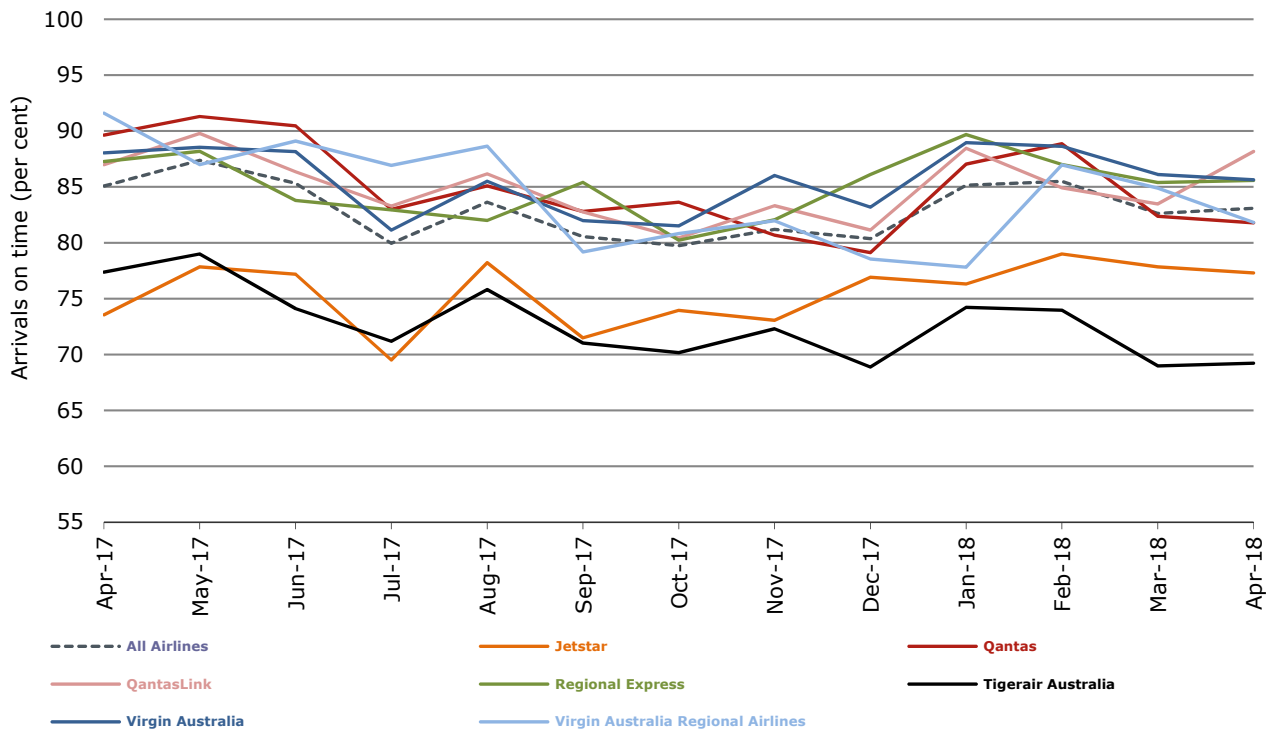
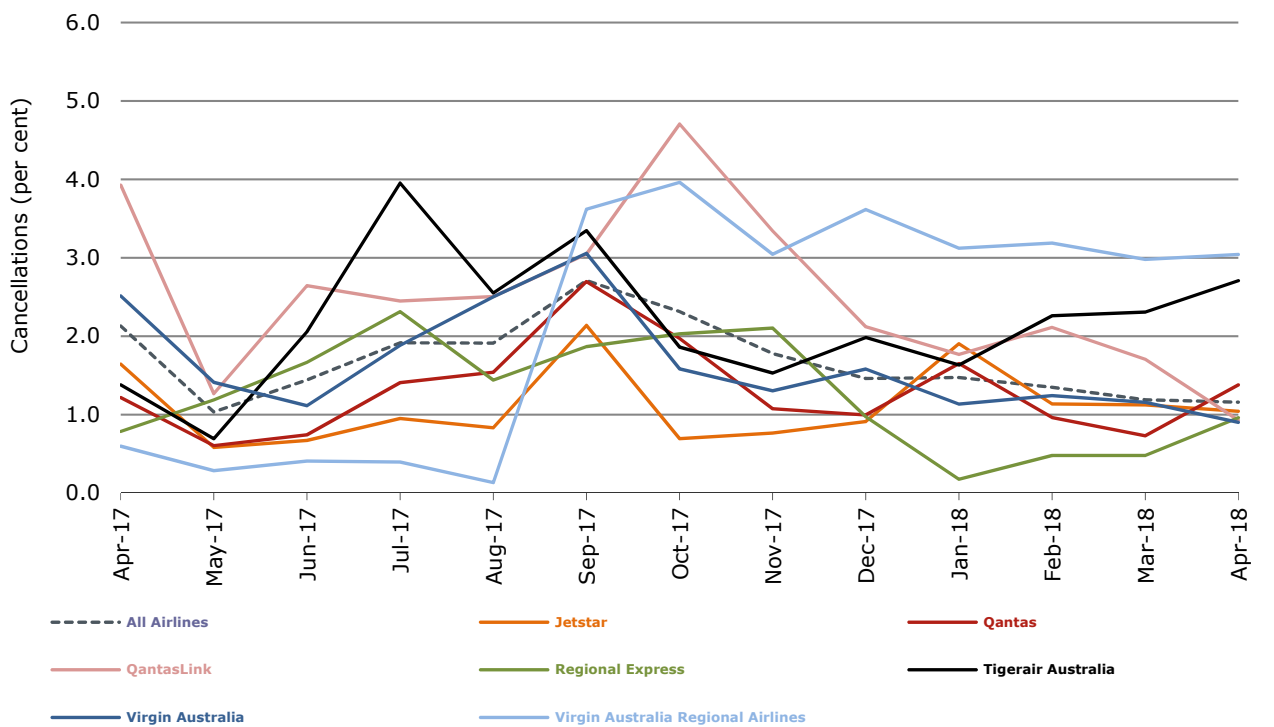


Figure 4 Cancellations (by month from April 2017)



Major domestic airlines on time performance

Figure 5 On time performance (by month from April 2015)—Jetstar

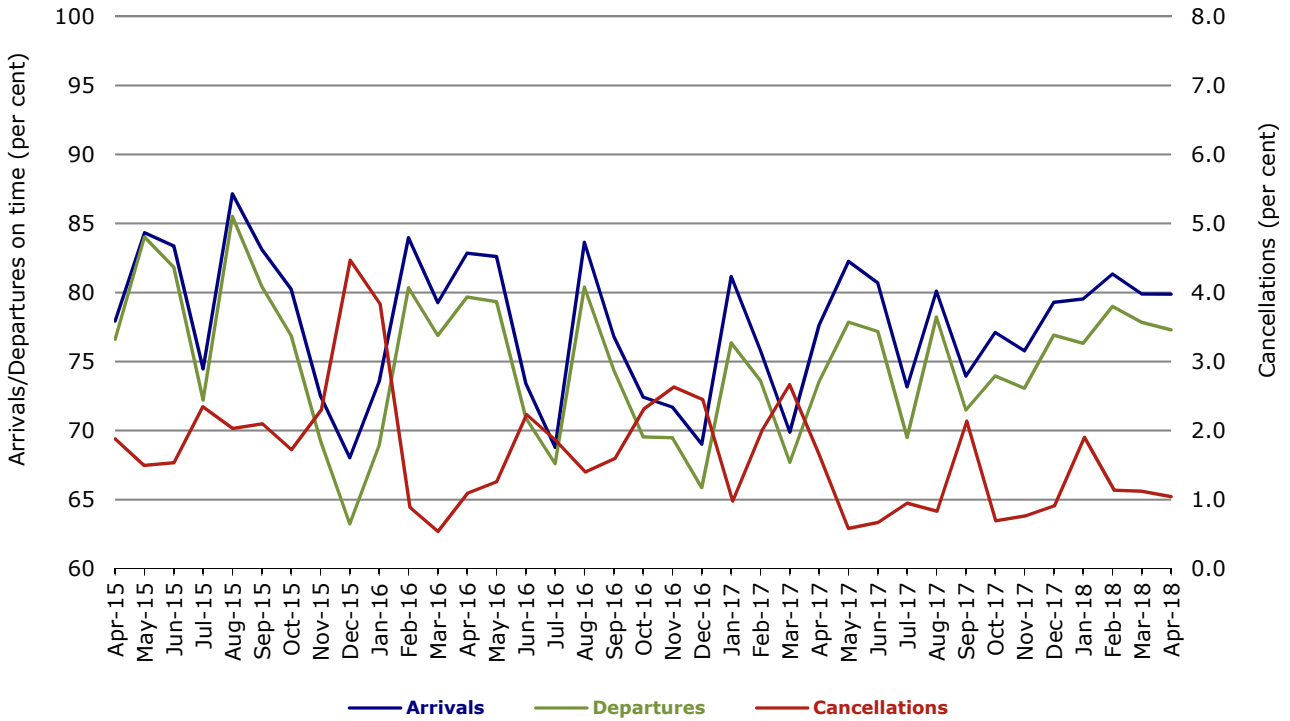


Figure 6 On time performance (by month from April 2015)—Qantas

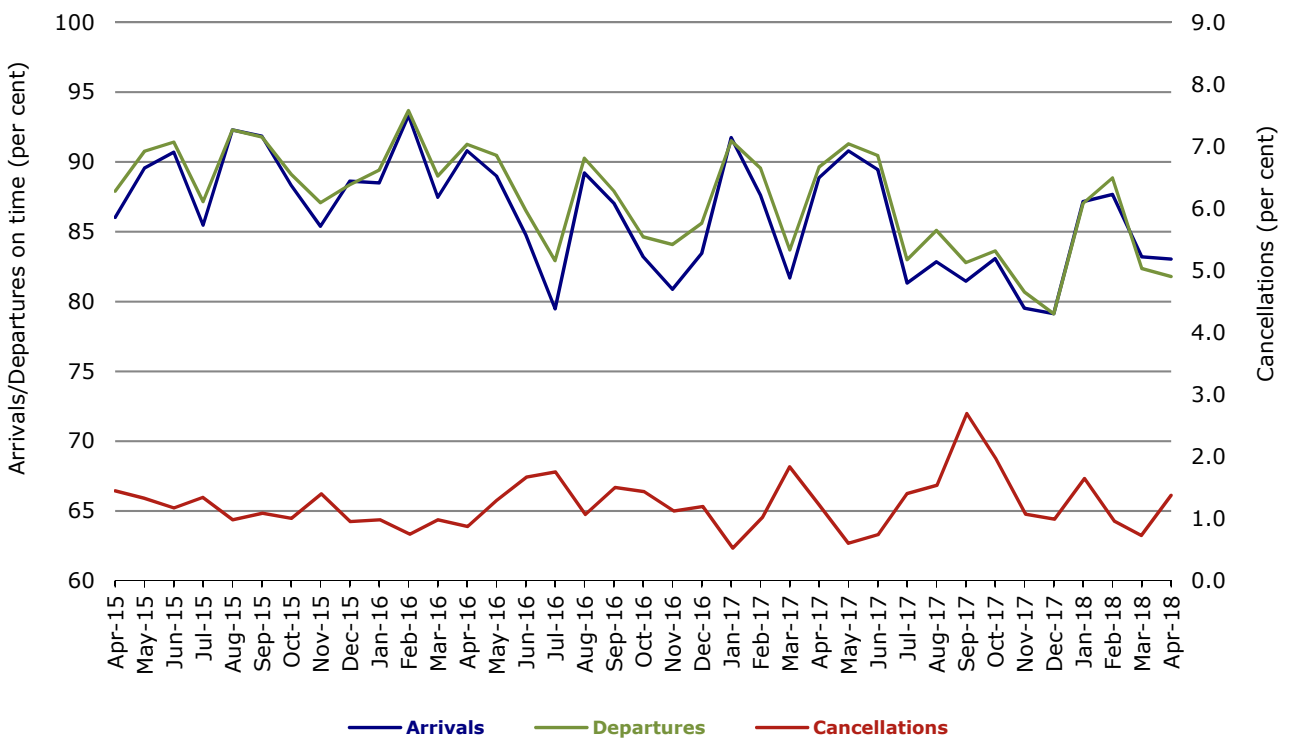


Figure 7 On time performance (by month from April 2015)—Tigerair Australia

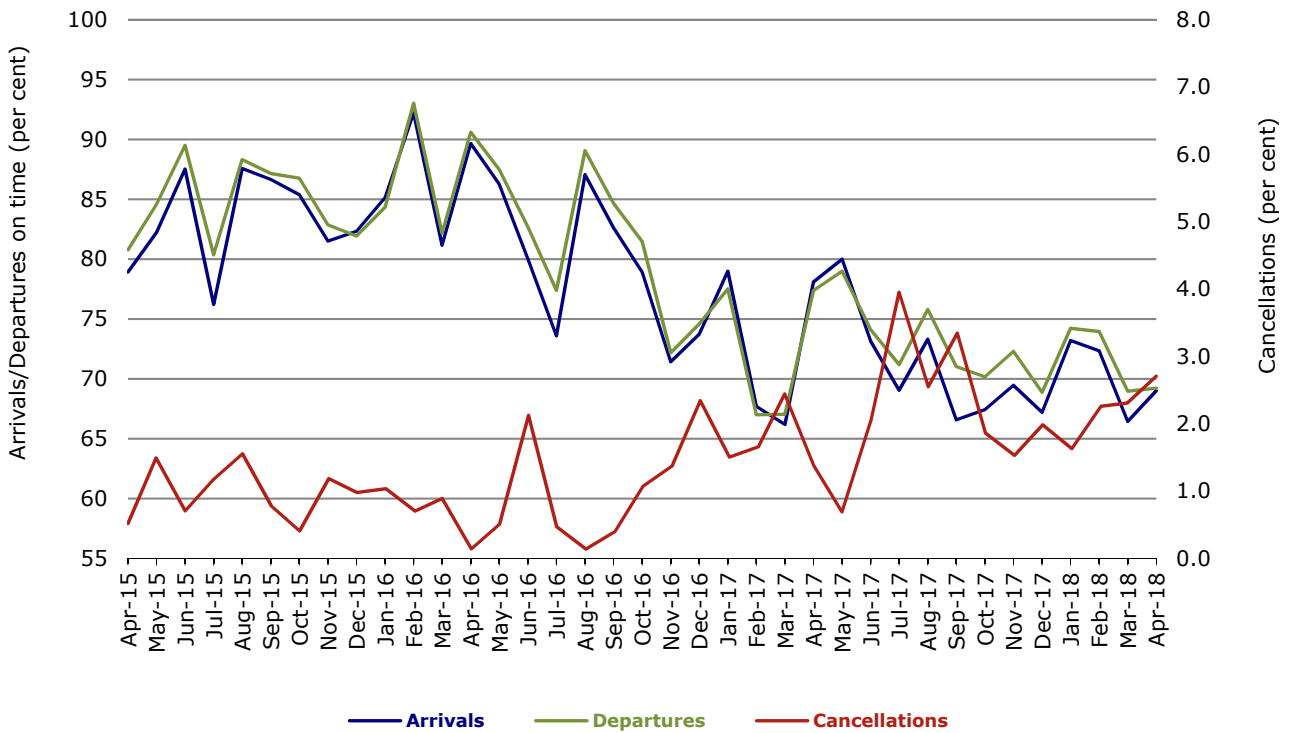
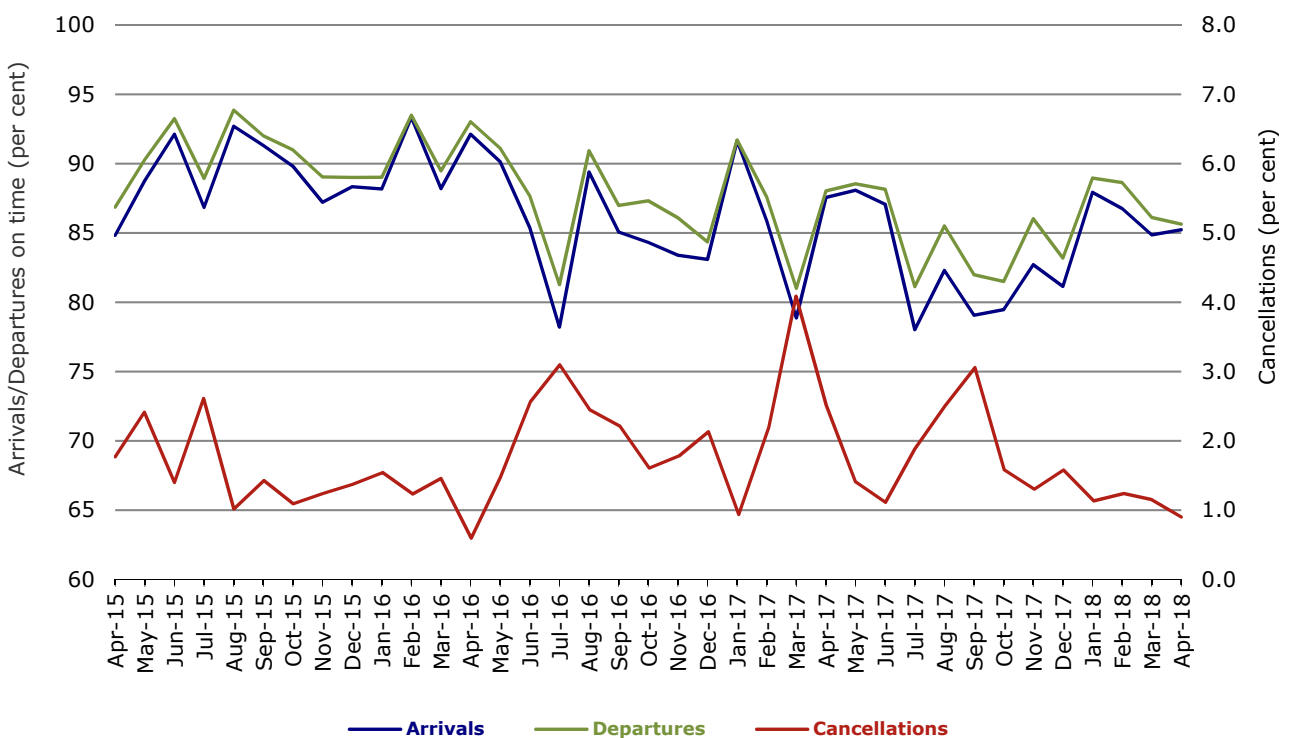


Figure 8 On time performance (by month from April 2015)—Virgin Australia



In January 2016, Virgin Australia transferred their ATR fleet from Virgin Australia Regional Airlines to Virgin Australia.

Major regional airlines on time performance

Figure 9 On time performance (by month from April 2015)—QantasLink

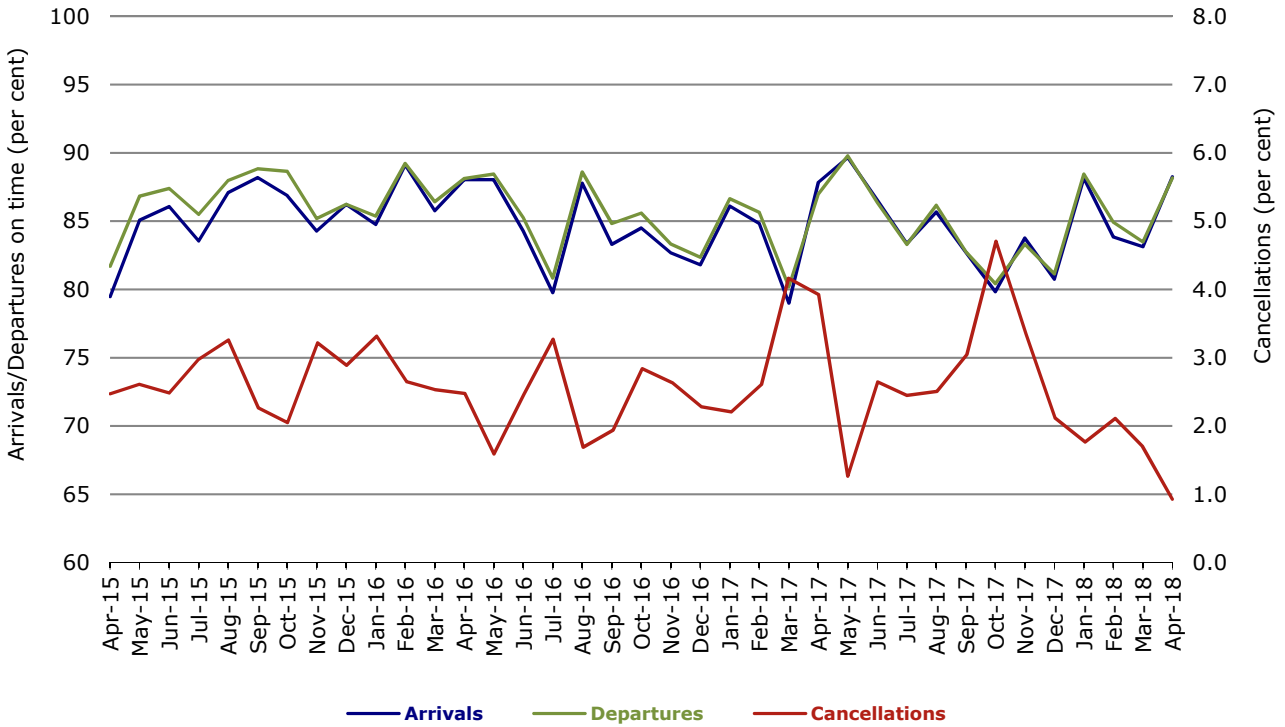


Figure 10 On time performance (by month from April 2015)—Regional Express

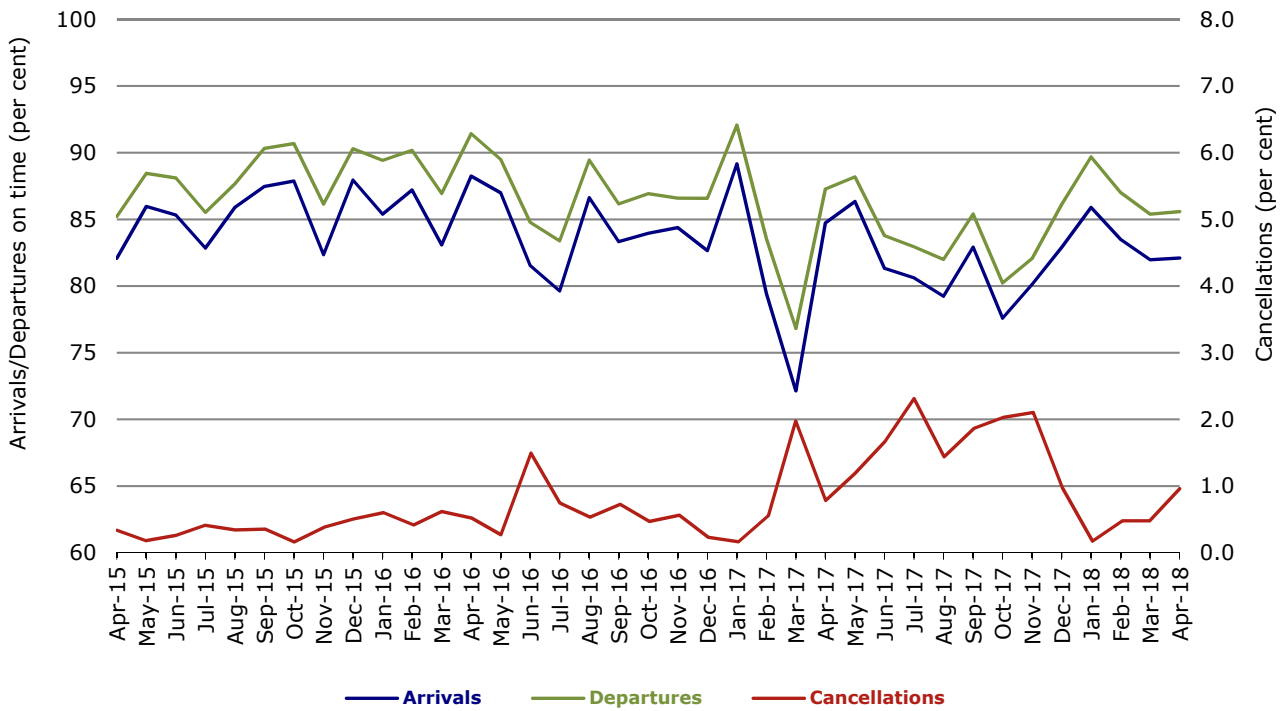
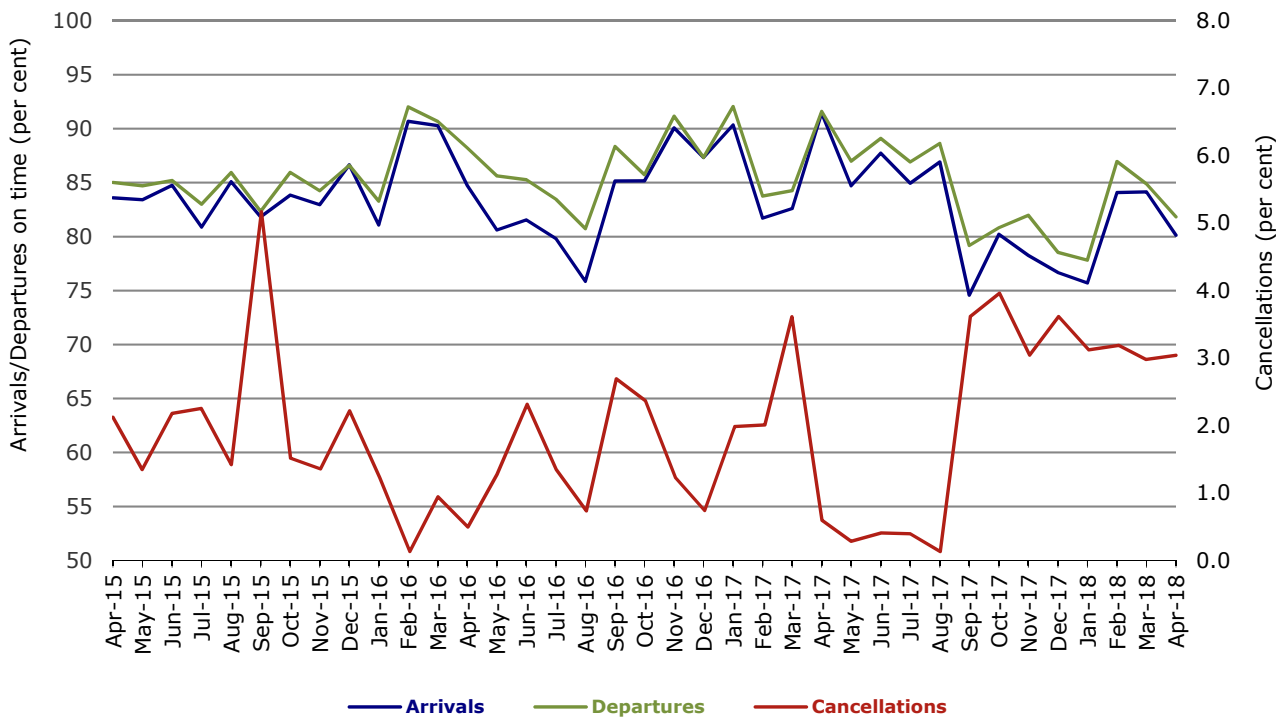


Figure 11 On time performance (by month from April 2015)
Virgin Australia Regional Airlines



In January 2016, Virgin Australia transferred their ATR fleet from Virgin Australia Regional Airlines to Virgin Australia.

Individual routes

On time performance is reported for all routes where the passenger load averages over 8000 passengers per month over the previous six months, and where two or more airlines operate in competition on those routes. There are now 66 routes which meet this definition. Over time, however, routes which meet this definition may change as airline networks and traffic levels vary.

	Sectors		Arrivals On Time		Departures On Time		Cancellations	
	Sched.	Flown	No.	%	No.	%	No.	%
Adelaide-Alice Springs								
Qantas	30	30	28	93.3	26	86.7	0	0.0
Virgin Australia	5	5	5	100.0	5	100.0	0	0.0
Virgin Australia Regional Airlines	16	14	7	50.0	9	64.3	2	12.5
All Airlines	51	49	40	81.6	40	81.6	2	3.9
Adelaide-Brisbane								
Jetstar	30	30	26	86.7	27	90.0	0	0.0
Qantas	60	60	53	88.3	52	86.7	0	0.0
QantasLink	62	60	51	85.0	57	95.0	2	3.2
Tigerair Australia	26	26	19	73.1	23	88.5	0	0.0
Virgin Australia	102	101	95	94.1	92	91.1	1	1.0
All Airlines	280	277	244	88.1	251	90.6	3	1.1
Adelaide-Canberra								
Qantas	38	38	37	97.4	37	97.4	0	0.0
Virgin Australia	26	26	23	88.5	23	88.5	0	0.0
All Airlines	64	64	60	93.8	60	93.8	0	0.0
Adelaide-Gold Coast								
Jetstar	28	28	26	92.9	26	92.9	0	0.0
Virgin Australia	34	34	29	85.3	31	91.2	0	0.0
All Airlines	62	62	55	88.7	57	91.9	0	0.0
Adelaide-Melbourne								
Jetstar	119	115	83	72.2	77	67.0	4	3.4
Qantas	272	270	210	77.8	209	77.4	2	0.7
Tigerair Australia	74	73	48	65.8	46	63.0	1	1.4
Virgin Australia	254	253	208	82.2	208	82.2	1	0.4
All Airlines	719	711	549	77.2	540	75.9	8	1.1
Adelaide-Perth								
Jetstar	30	30	25	83.3	23	76.7	0	0.0
Qantas	100	100	93	93.0	88	88.0	0	0.0
QantasLink	8	8	7	87.5	7	87.5	0	0.0
Virgin Australia	45	45	45	100.0	41	91.1	0	0.0
Virgin Australia Regional Airlines	31	29	19	65.5	18	62.1	2	6.5
All Airlines	214	212	189	89.2	177	83.5	2	0.9
Adelaide-Port Lincoln								
QantasLink	108	108	99	91.7	102	94.4	0	0.0
Regional Express	182	179	163	91.1	170	95.0	3	1.6
All Airlines	290	287	262	91.3	272	94.8	3	1.0
Adelaide-Sydney								
Jetstar	139	139	110	79.1	110	79.1	0	0.0
Qantas	212	211	173	82.0	192	91.0	1	0.5
QantasLink	27	27	24	88.9	24	88.9	0	0.0
Tigerair Australia	47	46	29	63.0	29	63.0	1	2.1
Virgin Australia	153	153	130	85.0	138	90.2	0	0.0
All Airlines	578	576	466	80.9	493	85.6	2	0.3

	<i>Sectors</i>		<i>Arrivals On Time</i>		<i>Departures On Time</i>		<i>Cancellations</i>	
	<i>Sched.</i>	<i>Flown</i>	<i>No.</i>	<i>%</i>	<i>No.</i>	<i>%</i>	<i>No.</i>	<i>%</i>
Albury-Sydney								
QantasLink	90	90	75	83.3	74	82.2	0	0.0
Regional Express	83	83	67	80.7	69	83.1	0	0.0
Virgin Australia	56	56	49	87.5	47	83.9	0	0.0
All Airlines	229	229	191	83.4	190	83.0	0	0.0
Alice Springs-Adelaide								
Qantas	30	30	28	93.3	29	96.7	0	0.0
Virgin Australia	5	5	5	100.0	5	100.0	0	0.0
Virgin Australia Regional Airlines	16	14	10	71.4	11	78.6	2	12.5
All Airlines	51	49	43	87.8	45	91.8	2	3.9
Alice Springs-Darwin								
QantasLink	60	60	57	95.0	57	95.0	0	0.0
Virgin Australia	5	5	5	100.0	5	100.0	0	0.0
Virgin Australia Regional Airlines	16	13	9	69.2	10	76.9	3	18.8
All Airlines	81	78	71	91.0	72	92.3	3	3.7
Armidale-Sydney								
QantasLink	114	114	98	86.0	97	85.1	0	0.0
Regional Express	69	69	46	66.7	51	73.9	0	0.0
All Airlines	183	183	144	78.7	148	80.9	0	0.0
Ayers Rock-Sydney								
Jetstar	30	29	22	75.9	21	72.4	1	3.3
Virgin Australia	30	30	26	86.7	25	83.3	0	0.0
All Airlines	60	59	48	81.4	46	78.0	1	1.7
Ballina-Sydney								
Jetstar	90	90	78	86.7	62	68.9	0	0.0
Regional Express	18	18	13	72.2	13	72.2	0	0.0
Virgin Australia	34	34	32	94.1	30	88.2	0	0.0
All Airlines	142	142	123	86.6	105	73.9	0	0.0
Brisbane-Adelaide								
Jetstar	30	30	27	90.0	25	83.3	0	0.0
Qantas	69	69	65	94.2	61	88.4	0	0.0
QantasLink	62	61	57	93.4	54	88.5	1	1.6
Tigerair Australia	26	26	24	92.3	22	84.6	0	0.0
Virgin Australia	93	93	86	92.5	82	88.2	0	0.0
All Airlines	280	279	259	92.8	244	87.5	1	0.4
Brisbane-Bundaberg								
QantasLink	101	101	89	88.1	91	90.1	0	0.0
Virgin Australia	30	30	26	86.7	28	93.3	0	0.0
All Airlines	131	131	115	87.8	119	90.8	0	0.0
Brisbane-Cairns								
Jetstar	110	110	103	93.6	99	90.0	0	0.0
Qantas	68	68	63	92.6	63	92.6	0	0.0
QantasLink	59	59	50	84.7	50	84.7	0	0.0
Tigerair Australia	29	29	20	69.0	19	65.5	0	0.0
Virgin Australia	124	124	113	91.1	108	87.1	0	0.0
All Airlines	390	390	349	89.5	339	86.9	0	0.0
Brisbane-Canberra								
Qantas	13	13	11	84.6	11	84.6	0	0.0
QantasLink	136	133	118	88.7	117	88.0	3	2.2
Tigerair Australia	13	13	9	69.2	11	84.6	0	0.0
Virgin Australia	97	97	93	95.9	89	91.8	0	0.0
All Airlines	259	256	231	90.2	228	89.1	3	1.2

	Sectors		Arrivals On Time		Departures On Time		Cancellations	
	Sched.	Flown	No.	%	No.	%	No.	%
Brisbane-Darwin								
Jetstar	25	25	25	100.0	23	92.0	0	0.0
Qantas	42	42	39	92.9	35	83.3	0	0.0
Tigerair Australia	13	12	9	75.0	10	83.3	1	7.7
Virgin Australia	30	30	27	90.0	27	90.0	0	0.0
All Airlines	110	109	100	91.7	95	87.2	1	0.9
Brisbane-Emerald								
QantasLink	97	97	89	91.8	87	89.7	0	0.0
Virgin Australia	49	49	44	89.8	45	91.8	0	0.0
All Airlines	146	146	133	91.1	132	90.4	0	0.0
Brisbane-Gladstone								
QantasLink	124	124	108	87.1	107	86.3	0	0.0
Virgin Australia	72	71	67	94.4	66	93.0	1	1.4
All Airlines	196	195	175	89.7	173	88.7	1	0.5
Brisbane-Hamilton Island								
QantasLink	30	29	25	86.2	25	86.2	1	3.3
Virgin Australia	30	28	25	89.3	25	89.3	2	6.7
All Airlines	60	57	50	87.7	50	87.7	3	5.0
Brisbane-Hobart								
Jetstar	29	29	29	100.0	29	100.0	0	0.0
Virgin Australia	34	34	26	76.5	31	91.2	0	0.0
All Airlines	63	63	55	87.3	60	95.2	0	0.0
Brisbane-Mackay								
Jetstar	30	30	23	76.7	20	66.7	0	0.0
QantasLink	113	112	103	92.0	99	88.4	1	0.9
Virgin Australia	137	137	116	84.7	116	84.7	0	0.0
All Airlines	280	279	242	86.7	235	84.2	1	0.4
Brisbane-Melbourne								
Jetstar	164	159	122	76.7	113	71.1	5	3.0
Qantas	404	400	339	84.8	320	80.0	4	1.0
Tigerair Australia	124	117	86	73.5	81	69.2	7	5.6
Virgin Australia	368	357	295	82.6	302	84.6	11	3.0
All Airlines	1 060	1 033	842	81.5	816	79.0	27	2.5
Brisbane-Mount Isa								
QantasLink	54	53	42	79.2	46	86.8	1	1.9
Virgin Australia	17	17	15	88.2	15	88.2	0	0.0
All Airlines	71	70	57	81.4	61	87.1	1	1.4
Brisbane-Newcastle								
Jetstar	91	89	76	85.4	75	84.3	2	2.2
QantasLink	46	44	39	88.6	40	90.9	2	4.3
Virgin Australia	79	79	67	84.8	69	87.3	0	0.0
All Airlines	216	212	182	85.8	184	86.8	4	1.9
Brisbane-Perth								
Qantas	143	143	135	94.4	107	74.8	0	0.0
Virgin Australia	108	108	105	97.2	89	82.4	0	0.0
All Airlines	251	251	240	95.6	196	78.1	0	0.0
Brisbane-Proserpine								
Jetstar	37	37	30	81.1	31	83.8	0	0.0
Virgin Australia	31	31	29	93.5	27	87.1	0	0.0
All Airlines	68	68	59	86.8	58	85.3	0	0.0

	<i>Sectors</i>		<i>Arrivals On Time</i>		<i>Departures On Time</i>		<i>Cancellations</i>	
	<i>Sched.</i>	<i>Flown</i>	<i>No.</i>	<i>%</i>	<i>No.</i>	<i>%</i>	<i>No.</i>	<i>%</i>
Brisbane-Rockhampton								
QantasLink	165	165	133	80.6	134	81.2	0	0.0
Virgin Australia	135	135	115	85.2	115	85.2	0	0.0
All Airlines	300	300	248	82.7	249	83.0	0	0.0
Brisbane-Sydney								
Jetstar	194	190	158	83.2	153	80.5	4	2.1
Qantas	597	586	498	85.0	482	82.3	11	1.8
QantasLink	4	4	4	100.0	4	100.0	0	0.0
Tigerair Australia	111	106	73	68.9	72	67.9	5	4.5
Virgin Australia	491	484	425	87.8	439	90.7	7	1.4
All Airlines	1 397	1 370	1 158	84.5	1 150	83.9	27	1.9
Brisbane-Townsville								
Jetstar	60	60	54	90.0	55	91.7	0	0.0
Qantas	83	83	75	90.4	66	79.5	0	0.0
QantasLink	56	56	55	98.2	53	94.6	0	0.0
Virgin Australia	130	127	119	93.7	109	85.8	3	2.3
All Airlines	329	326	303	92.9	283	86.8	3	0.9
Broome-Perth								
Qantas	2	2	1	50.0	1	50.0	0	0.0
QantasLink	78	77	74	96.1	69	89.6	1	1.3
Virgin Australia	2	2	2	100.0	2	100.0	0	0.0
Virgin Australia Regional Airlines	80	77	65	84.4	62	80.5	3	3.8
All Airlines	162	158	142	89.9	134	84.8	4	2.5
Bundaberg-Brisbane								
QantasLink	101	101	89	88.1	89	88.1	0	0.0
Virgin Australia	30	30	26	86.7	25	83.3	0	0.0
All Airlines	131	131	115	87.8	114	87.0	0	0.0
Cairns-Brisbane								
Jetstar	109	109	105	96.3	101	92.7	0	0.0
Qantas	68	68	62	91.2	63	92.6	0	0.0
QantasLink	59	59	49	83.1	56	94.9	0	0.0
Tigerair Australia	29	29	26	89.7	21	72.4	0	0.0
Virgin Australia	124	124	115	92.7	112	90.3	0	0.0
All Airlines	389	389	357	91.8	353	90.7	0	0.0
Cairns-Melbourne								
Jetstar	129	127	106	83.5	103	81.1	2	1.6
Qantas	40	40	36	90.0	32	80.0	0	0.0
Tigerair Australia	37	36	30	83.3	24	66.7	1	2.7
Virgin Australia	34	34	26	76.5	24	70.6	0	0.0
All Airlines	240	237	198	83.5	183	77.2	3	1.3
Cairns-Sydney								
Jetstar	111	111	107	96.4	102	91.9	0	0.0
Qantas	69	69	67	97.1	68	98.6	0	0.0
Tigerair Australia	39	38	27	71.1	26	68.4	1	2.6
Virgin Australia	92	91	79	86.8	82	90.1	1	1.1
All Airlines	311	309	280	90.6	278	90.0	2	0.6
Cairns-Townsville								
QantasLink	133	133	131	98.5	131	98.5	0	0.0
Regional Express	22	22	19	86.4	20	90.9	0	0.0
All Airlines	155	155	150	96.8	151	97.4	0	0.0

	<i>Sectors</i>		<i>Arrivals On Time</i>		<i>Departures On Time</i>		<i>Cancellations</i>	
	<i>Sched.</i>	<i>Flown</i>	<i>No.</i>	<i>%</i>	<i>No.</i>	<i>%</i>	<i>No.</i>	<i>%</i>
Canberra-Adelaide								
Qantas	38	38	36	94.7	33	86.8	0	0.0
Virgin Australia	26	26	23	88.5	21	80.8	0	0.0
All Airlines	64	64	59	92.2	54	84.4	0	0.0
Canberra-Brisbane								
Qantas	17	17	16	94.1	15	88.2	0	0.0
QantasLink	131	128	116	90.6	121	94.5	3	2.3
Tigerair Australia	13	13	13	100.0	12	92.3	0	0.0
Virgin Australia	97	97	89	91.8	93	95.9	0	0.0
All Airlines	258	255	234	91.8	241	94.5	3	1.2
Canberra-Melbourne								
Qantas	230	224	207	92.4	208	92.9	6	2.6
QantasLink	42	42	33	78.6	35	83.3	0	0.0
Tigerair Australia	30	30	17	56.7	17	56.7	0	0.0
Virgin Australia	142	141	111	78.7	118	83.7	1	0.7
All Airlines	444	437	368	84.2	378	86.5	7	1.6
Canberra-Sydney								
Qantas	21	21	20	95.2	21	100.0	0	0.0
QantasLink	421	415	363	87.5	358	86.3	6	1.4
Virgin Australia	181	180	164	91.1	164	91.1	1	0.6
All Airlines	623	616	547	88.8	543	88.1	7	1.1
Coffs Harbour-Sydney								
QantasLink	121	121	110	90.9	106	87.6	0	0.0
Tigerair Australia	14	14	11	78.6	11	78.6	0	0.0
Virgin Australia	46	46	39	84.8	41	89.1	0	0.0
All Airlines	181	181	160	88.4	158	87.3	0	0.0
Darwin-Alice Springs								
QantasLink	60	60	55	91.7	56	93.3	0	0.0
Virgin Australia	5	5	5	100.0	5	100.0	0	0.0
Virgin Australia Regional Airlines	16	13	11	84.6	11	84.6	3	18.8
All Airlines	81	78	71	91.0	72	92.3	3	3.7
Darwin-Brisbane								
Jetstar	25	25	25	100.0	25	100.0	0	0.0
Qantas	41	41	36	87.8	36	87.8	0	0.0
Tigerair Australia	13	12	12	100.0	11	91.7	1	7.7
Virgin Australia	30	30	24	80.0	24	80.0	0	0.0
All Airlines	109	108	97	89.8	96	88.9	1	0.9
Darwin-Melbourne								
Jetstar	28	28	26	92.9	22	78.6	0	0.0
Qantas	30	29	22	75.9	24	82.8	1	3.3
Virgin Australia	30	30	26	86.7	27	90.0	0	0.0
All Airlines	88	87	74	85.1	73	83.9	1	1.1
Darwin-Perth								
Qantas	30	30	24	80.0	24	80.0	0	0.0
Virgin Australia	22	22	16	72.7	14	63.6	0	0.0
Virgin Australia Regional Airlines	8	8	8	100.0	7	87.5	0	0.0
All Airlines	60	60	48	80.0	45	75.0	0	0.0
Darwin-Sydney								
Jetstar	28	28	25	89.3	28	100.0	0	0.0
Qantas	47	47	41	87.2	37	78.7	0	0.0
Virgin Australia	30	30	25	83.3	27	90.0	0	0.0
All Airlines	105	105	91	86.7	92	87.6	0	0.0

	<i>Sectors</i>		<i>Arrivals On Time</i>		<i>Departures On Time</i>		<i>Cancellations</i>	
	<i>Sched.</i>	<i>Flown</i>	<i>No.</i>	<i>%</i>	<i>No.</i>	<i>%</i>	<i>No.</i>	<i>%</i>
Dubbo-Sydney								
QantasLink	101	101	85	84.2	86	85.1	0	0.0
Regional Express	117	116	92	79.3	98	84.5	1	0.9
All Airlines	218	217	177	81.6	184	84.8	1	0.5
Emerald-Brisbane								
QantasLink	97	97	85	87.6	87	89.7	0	0.0
Virgin Australia	49	49	47	95.9	47	95.9	0	0.0
All Airlines	146	146	132	90.4	134	91.8	0	0.0
Geraldton-Perth								
QantasLink	47	46	45	97.8	45	97.8	1	2.1
Virgin Australia Regional Airlines	51	51	42	82.4	40	78.4	0	0.0
All Airlines	98	97	87	89.7	85	87.6	1	1.0
Gladstone-Brisbane								
QantasLink	124	124	111	89.5	111	89.5	0	0.0
Virgin Australia	72	71	66	93.0	67	94.4	1	1.4
All Airlines	196	195	177	90.8	178	91.3	1	0.5
Gold Coast-Adelaide								
Jetstar	28	28	28	100.0	28	100.0	0	0.0
Virgin Australia	36	36	31	86.1	29	80.6	0	0.0
All Airlines	64	64	59	92.2	57	89.1	0	0.0
Gold Coast-Melbourne								
Jetstar	225	216	185	85.6	168	77.8	9	4.0
Qantas	30	30	23	76.7	19	63.3	0	0.0
Tigerair Australia	80	78	58	74.4	57	73.1	2	2.5
Virgin Australia	211	208	179	86.1	155	74.5	3	1.4
All Airlines	546	532	445	83.6	399	75.0	14	2.6
Gold Coast-Sydney								
Jetstar	306	304	252	82.9	252	82.9	2	0.7
Qantas	101	101	85	84.2	82	81.2	0	0.0
QantasLink	22	22	17	77.3	18	81.8	0	0.0
Tigerair Australia	110	109	69	63.3	65	59.6	1	0.9
Virgin Australia	272	271	250	92.3	238	87.8	1	0.4
All Airlines	811	807	673	83.4	655	81.2	4	0.5
Hamilton Island-Brisbane								
QantasLink	30	29	20	69.0	22	75.9	1	3.3
Virgin Australia	30	28	25	89.3	23	82.1	2	6.7
All Airlines	60	57	45	78.9	45	78.9	3	5.0
Hamilton Island-Sydney								
Jetstar	30	29	28	96.6	26	89.7	1	3.3
Qantas	7	7	6	85.7	6	85.7	0	0.0
QantasLink	19	15	14	93.3	13	86.7	4	21.1
Virgin Australia	27	25	23	92.0	23	92.0	2	7.4
All Airlines	83	76	71	93.4	68	89.5	7	8.4
Hobart-Brisbane								
Jetstar	30	30	30	100.0	30	100.0	0	0.0
Virgin Australia	35	35	16	45.7	17	48.6	0	0.0
All Airlines	65	65	46	70.8	47	72.3	0	0.0

	Sectors		Arrivals On Time		Departures On Time		Cancellations	
	Sched.	Flown	No.	%	No.	%	No.	%
Hobart-Melbourne								
Jetstar	180	179	102	57.0	104	58.1	1	0.6
Qantas	112	111	92	82.9	90	81.1	1	0.9
Tigerair Australia	46	46	24	52.2	26	56.5	0	0.0
Virgin Australia	137	137	85	62.0	92	67.2	0	0.0
All Airlines	475	473	303	64.1	312	66.0	2	0.4
Hobart-Sydney								
Jetstar	88	88	70	79.5	61	69.3	0	0.0
Qantas	4	4	3	75.0	3	75.0	0	0.0
QantasLink	55	53	49	92.5	49	92.5	2	3.6
Virgin Australia	70	69	56	81.2	54	78.3	1	1.4
All Airlines	217	214	178	83.2	167	78.0	3	1.4
Kalgoorlie-Perth								
Qantas	9	9	9	100.0	8	88.9	0	0.0
QantasLink	70	70	66	94.3	63	90.0	0	0.0
Virgin Australia	36	35	28	80.0	27	77.1	1	2.8
Virgin Australia Regional Airlines	33	33	31	93.9	29	87.9	0	0.0
All Airlines	148	147	134	91.2	127	86.4	1	0.7
Karratha-Perth								
Qantas	19	19	19	100.0	17	89.5	0	0.0
QantasLink	162	159	137	86.2	133	83.6	3	1.9
Virgin Australia	1	1	0	0.0	0	0.0	0	0.0
Virgin Australia Regional Airlines	59	55	48	87.3	46	83.6	4	6.8
All Airlines	241	234	204	87.2	196	83.8	7	2.9
Launceston-Melbourne								
Jetstar	138	138	82	59.4	85	61.6	0	0.0
QantasLink	108	103	82	79.6	83	80.6	5	4.6
Virgin Australia	102	102	81	79.4	89	87.3	0	0.0
All Airlines	348	343	245	71.4	257	74.9	5	1.4
Launceston-Sydney								
Jetstar	48	47	31	66.0	31	66.0	1	2.1
Virgin Australia	33	33	27	81.8	22	66.7	0	0.0
All Airlines	81	80	58	72.5	53	66.3	1	1.2
Mackay-Brisbane								
Jetstar	31	30	23	76.7	20	66.7	1	3.2
QantasLink	109	108	96	88.9	95	88.0	1	0.9
Virgin Australia	137	137	125	91.2	122	89.1	0	0.0
All Airlines	277	275	244	88.7	237	86.2	2	0.7
Melbourne-Adelaide								
Jetstar	119	116	85	73.3	93	80.2	3	2.5
Qantas	271	270	207	76.7	203	75.2	1	0.4
Tigerair Australia	74	73	55	75.3	59	80.8	1	1.4
Virgin Australia	258	257	226	87.9	224	87.2	1	0.4
All Airlines	722	716	573	80.0	579	80.9	6	0.8
Melbourne-Brisbane								
Jetstar	165	161	117	72.7	110	68.3	4	2.4
Qantas	419	412	314	76.2	302	73.3	7	1.7
Tigerair Australia	125	119	86	72.3	85	71.4	6	4.8
Virgin Australia	364	354	304	85.9	314	88.7	10	2.7
All Airlines	1 073	1 046	821	78.5	811	77.5	27	2.5

	<i>Sectors</i>		<i>Arrivals On Time</i>		<i>Departures On Time</i>		<i>Cancellations</i>	
	<i>Sched.</i>	<i>Flown</i>	<i>No.</i>	<i>%</i>	<i>No.</i>	<i>%</i>	<i>No.</i>	<i>%</i>
Melbourne-Cairns								
Jetstar	129	127	101	79.5	95	74.8	2	1.6
Qantas	40	40	30	75.0	29	72.5	0	0.0
Tigerair Australia	37	36	29	80.6	31	86.1	1	2.7
Virgin Australia	34	33	27	81.8	29	87.9	1	2.9
All Airlines	240	236	187	79.2	184	78.0	4	1.7
Melbourne-Canberra								
Qantas	234	229	192	83.8	194	84.7	5	2.1
QantasLink	42	41	33	80.5	34	82.9	1	2.4
Tigerair Australia	30	30	24	80.0	24	80.0	0	0.0
Virgin Australia	143	142	122	85.9	125	88.0	1	0.7
All Airlines	449	442	371	83.9	377	85.3	7	1.6
Melbourne-Darwin								
Jetstar	28	28	22	78.6	22	78.6	0	0.0
Qantas	30	30	27	90.0	29	96.7	0	0.0
Virgin Australia	30	30	22	73.3	19	63.3	0	0.0
All Airlines	88	88	71	80.7	70	79.5	0	0.0
Melbourne-Gold Coast								
Jetstar	225	217	167	77.0	168	77.4	8	3.6
Qantas	30	30	19	63.3	21	70.0	0	0.0
Tigerair Australia	80	78	61	78.2	63	80.8	2	2.5
Virgin Australia	213	210	175	83.3	183	87.1	3	1.4
All Airlines	548	535	422	78.9	435	81.3	13	2.4
Melbourne-Hobart								
Jetstar	180	179	127	70.9	135	75.4	1	0.6
Qantas	112	112	92	82.1	96	85.7	0	0.0
Tigerair Australia	46	46	31	67.4	35	76.1	0	0.0
Virgin Australia	138	138	111	80.4	116	84.1	0	0.0
All Airlines	476	475	361	76.0	382	80.4	1	0.2
Melbourne-Launceston								
Jetstar	137	137	95	69.3	94	68.6	0	0.0
QantasLink	108	102	88	86.3	81	79.4	6	5.6
Virgin Australia	103	103	85	82.5	92	89.3	0	0.0
All Airlines	348	342	268	78.4	267	78.1	6	1.7
Melbourne-Mildura								
QantasLink	91	88	77	87.5	83	94.3	3	3.3
Regional Express	73	72	57	79.2	61	84.7	1	1.4
Virgin Australia	30	30	19	63.3	21	70.0	0	0.0
All Airlines	194	190	153	80.5	165	86.8	4	2.1
Melbourne-Newcastle								
Jetstar	120	119	86	72.3	83	69.7	1	0.8
Virgin Australia	30	30	25	83.3	26	86.7	0	0.0
All Airlines	150	149	111	74.5	109	73.2	1	0.7
Melbourne-Perth								
Jetstar	48	47	44	93.6	42	89.4	1	2.1
Qantas	224	224	178	79.5	162	72.3	0	0.0
Tigerair Australia	44	42	26	61.9	27	64.3	2	4.5
Virgin Australia	128	128	103	80.5	86	67.2	0	0.0
All Airlines	444	441	351	79.6	317	71.9	3	0.7

	<i>Sectors</i>		<i>Arrivals On Time</i>		<i>Departures On Time</i>		<i>Cancellations</i>	
	<i>Sched.</i>	<i>Flown</i>	<i>No.</i>	<i>%</i>	<i>No.</i>	<i>%</i>	<i>No.</i>	<i>%</i>
Melbourne-Sunshine Coast								
Jetstar	95	95	69	72.6	71	74.7	0	0.0
Virgin Australia	60	60	48	80.0	48	80.0	0	0.0
All Airlines	155	155	117	75.5	119	76.8	0	0.0
Melbourne-Sydney								
Jetstar	449	442	300	67.9	322	72.9	7	1.6
Qantas	912	878	679	77.3	700	79.7	34	3.7
Tigerair Australia	263	252	167	66.3	171	67.9	11	4.2
Virgin Australia	667	655	539	82.3	562	85.8	12	1.8
All Airlines	2 291	2 227	1 685	75.7	1 755	78.8	64	2.8
Melbourne-Townsville								
Jetstar	29	29	23	79.3	23	79.3	0	0.0
Tigerair Australia	15	15	5	33.3	7	46.7	0	0.0
All Airlines	44	44	28	63.6	30	68.2	0	0.0
Mildura-Melbourne								
QantasLink	91	88	73	83.0	71	80.7	3	3.3
Regional Express	72	71	47	66.2	52	73.2	1	1.4
Virgin Australia	30	30	21	70.0	19	63.3	0	0.0
All Airlines	193	189	141	74.6	142	75.1	4	2.1
Mount Isa-Brisbane								
QantasLink	54	54	41	75.9	41	75.9	0	0.0
Virgin Australia	16	16	14	87.5	15	93.8	0	0.0
All Airlines	70	70	55	78.6	56	80.0	0	0.0
Newcastle-Brisbane								
Jetstar	90	89	74	83.1	75	84.3	1	1.1
QantasLink	46	44	39	88.6	39	88.6	2	4.3
Virgin Australia	80	80	67	83.8	70	87.5	0	0.0
All Airlines	216	213	180	84.5	184	86.4	3	1.4
Newcastle-Melbourne								
Jetstar	120	119	77	64.7	77	64.7	1	0.8
Virgin Australia	30	30	22	73.3	22	73.3	0	0.0
All Airlines	150	149	99	66.4	99	66.4	1	0.7
Newman-Perth								
Qantas	44	44	42	95.5	42	95.5	0	0.0
QantasLink	85	85	79	92.9	76	89.4	0	0.0
Virgin Australia	16	16	14	87.5	14	87.5	0	0.0
Virgin Australia Regional Airlines	22	22	21	95.5	20	90.9	0	0.0
All Airlines	167	167	156	93.4	152	91.0	0	0.0
Perth-Adelaide								
Jetstar	30	29	20	69.0	22	75.9	1	3.3
Qantas	103	103	95	92.2	100	97.1	0	0.0
QantasLink	8	8	6	75.0	7	87.5	0	0.0
Virgin Australia	45	45	38	84.4	42	93.3	0	0.0
Virgin Australia Regional Airlines	30	30	19	63.3	27	90.0	0	0.0
All Airlines	216	215	178	82.8	198	92.1	1	0.5
Perth-Brisbane								
Qantas	142	142	104	73.2	130	91.5	0	0.0
Virgin Australia	106	106	81	76.4	95	89.6	0	0.0
All Airlines	248	248	185	74.6	225	90.7	0	0.0

	<i>Sectors</i>		<i>Arrivals On Time</i>		<i>Departures On Time</i>		<i>Cancellations</i>	
	<i>Sched.</i>	<i>Flown</i>	<i>No.</i>	<i>%</i>	<i>No.</i>	<i>%</i>	<i>No.</i>	<i>%</i>
Perth-Broome								
Qantas	2	2	1	50.0	1	50.0	0	0.0
QantasLink	78	78	73	93.6	69	88.5	0	0.0
Virgin Australia	2	2	2	100.0	2	100.0	0	0.0
Virgin Australia Regional Airlines	79	78	63	80.8	63	80.8	1	1.3
All Airlines	161	160	139	86.9	135	84.4	1	0.6
Perth-Darwin								
Qantas	30	30	25	83.3	26	86.7	0	0.0
Virgin Australia	22	22	17	77.3	18	81.8	0	0.0
Virgin Australia Regional Airlines	8	8	7	87.5	7	87.5	0	0.0
All Airlines	60	60	49	81.7	51	85.0	0	0.0
Perth-Geraldton								
QantasLink	47	46	44	95.7	43	93.5	1	2.1
Virgin Australia Regional Airlines	51	51	40	78.4	41	80.4	0	0.0
All Airlines	98	97	84	86.6	84	86.6	1	1.0
Perth-Kalgoorlie								
Qantas	9	9	9	100.0	9	100.0	0	0.0
QantasLink	70	70	66	94.3	67	95.7	0	0.0
Virgin Australia	35	34	30	88.2	31	91.2	1	2.9
Virgin Australia Regional Airlines	33	33	30	90.9	31	93.9	0	0.0
All Airlines	147	146	135	92.5	138	94.5	1	0.7
Perth-Karratha								
Qantas	19	19	19	100.0	19	100.0	0	0.0
QantasLink	162	161	133	82.6	131	81.4	1	0.6
Virgin Australia	1	1	1	100.0	1	100.0	0	0.0
Virgin Australia Regional Airlines	59	55	47	85.5	51	92.7	4	6.8
All Airlines	241	236	200	84.7	202	85.6	5	2.1
Perth-Melbourne								
Jetstar	49	48	38	79.2	34	70.8	1	2.0
Qantas	226	226	174	77.0	200	88.5	0	0.0
Tigerair Australia	43	41	24	58.5	24	58.5	2	4.7
Virgin Australia	129	129	89	69.0	107	82.9	0	0.0
All Airlines	447	444	325	73.2	365	82.2	3	0.7
Perth-Newman								
Qantas	44	44	44	100.0	44	100.0	0	0.0
QantasLink	85	85	75	88.2	72	84.7	0	0.0
Virgin Australia	16	16	15	93.8	15	93.8	0	0.0
Virgin Australia Regional Airlines	22	22	18	81.8	19	86.4	0	0.0
All Airlines	167	167	152	91.0	150	89.8	0	0.0
Perth-Port Hedland								
Qantas	29	29	27	93.1	27	93.1	0	0.0
QantasLink	99	99	91	91.9	91	91.9	0	0.0
Virgin Australia	23	23	22	95.7	22	95.7	0	0.0
Virgin Australia Regional Airlines	28	28	23	82.1	26	92.9	0	0.0
All Airlines	179	179	163	91.1	166	92.7	0	0.0
Perth-Sydney								
Jetstar	27	27	20	74.1	24	88.9	0	0.0
Qantas	200	200	145	72.5	170	85.0	0	0.0
Tigerair Australia	25	25	20	80.0	22	88.0	0	0.0
Virgin Australia	118	118	104	88.1	112	94.9	0	0.0
All Airlines	370	370	289	78.1	328	88.6	0	0.0

	<i>Sectors</i>		<i>Arrivals On Time</i>		<i>Departures On Time</i>		<i>Cancellations</i>	
	<i>Sched.</i>	<i>Flown</i>	<i>No.</i>	<i>%</i>	<i>No.</i>	<i>%</i>	<i>No.</i>	<i>%</i>
Port Hedland-Perth								
Qantas	29	29	28	96.6	25	86.2	0	0.0
QantasLink	97	96	85	88.5	85	88.5	1	1.0
Virgin Australia	22	22	21	95.5	20	90.9	0	0.0
Virgin Australia Regional Airlines	29	29	23	79.3	23	79.3	0	0.0
All Airlines	177	176	157	89.2	153	86.9	1	0.6
Port Lincoln-Adelaide								
QantasLink	107	107	97	90.7	99	92.5	0	0.0
Regional Express	183	180	155	86.1	162	90.0	3	1.6
All Airlines	290	287	252	87.8	261	90.9	3	1.0
Port Macquarie-Sydney								
QantasLink	94	93	75	80.6	77	82.8	1	1.1
Virgin Australia	56	56	43	76.8	43	76.8	0	0.0
All Airlines	150	149	118	79.2	120	80.5	1	0.7
Proserpine-Brisbane								
Jetstar	37	36	28	77.8	28	77.8	1	2.7
Virgin Australia	31	31	30	96.8	30	96.8	0	0.0
All Airlines	68	67	58	86.6	58	86.6	1	1.5
Proserpine-Sydney								
Jetstar	12	12	9	75.0	10	83.3	0	0.0
Tigerair Australia	26	26	21	80.8	19	73.1	0	0.0
All Airlines	38	38	30	78.9	29	76.3	0	0.0
Rockhampton-Brisbane								
QantasLink	169	168	135	80.4	141	83.9	1	0.6
Virgin Australia	134	134	119	88.8	121	90.3	0	0.0
All Airlines	303	302	254	84.1	262	86.8	1	0.3
Sunshine Coast-Melbourne								
Jetstar	95	95	69	72.6	52	54.7	0	0.0
Virgin Australia	59	59	46	78.0	36	61.0	0	0.0
All Airlines	154	154	115	74.7	88	57.1	0	0.0
Sunshine Coast-Sydney								
Jetstar	120	120	99	82.5	85	70.8	0	0.0
QantasLink	34	34	26	76.5	30	88.2	0	0.0
Virgin Australia	51	51	45	88.2	46	90.2	0	0.0
All Airlines	205	205	170	82.9	161	78.5	0	0.0
Sydney-Adelaide								
Jetstar	139	139	110	79.1	98	70.5	0	0.0
Qantas	200	200	186	93.0	177	88.5	0	0.0
QantasLink	27	27	23	85.2	21	77.8	0	0.0
Tigerair Australia	47	46	32	69.6	31	67.4	1	2.1
Virgin Australia	156	155	142	91.6	139	89.7	1	0.6
All Airlines	569	567	493	86.9	466	82.2	2	0.4
Sydney-Albury								
QantasLink	90	90	78	86.7	71	78.9	0	0.0
Regional Express	81	81	74	91.4	74	91.4	0	0.0
Virgin Australia	56	56	48	85.7	48	85.7	0	0.0
All Airlines	227	227	200	88.1	193	85.0	0	0.0
Sydney-Armidale								
QantasLink	115	115	96	83.5	93	80.9	0	0.0
Regional Express	71	71	59	83.1	57	80.3	0	0.0
All Airlines	186	186	155	83.3	150	80.6	0	0.0

	<i>Sectors</i>		<i>Arrivals On Time</i>		<i>Departures On Time</i>		<i>Cancellations</i>	
	<i>Sched.</i>	<i>Flown</i>	<i>No.</i>	<i>%</i>	<i>No.</i>	<i>%</i>	<i>No.</i>	<i>%</i>
Sydney-Ayers Rock								
Jetstar	30	30	27	90.0	27	90.0	0	0.0
Virgin Australia	30	30	28	93.3	27	90.0	0	0.0
All Airlines	60	60	55	91.7	54	90.0	0	0.0
Sydney-Ballina								
Jetstar	90	90	80	88.9	81	90.0	0	0.0
Regional Express	20	20	12	60.0	14	70.0	0	0.0
Virgin Australia	34	34	30	88.2	31	91.2	0	0.0
All Airlines	144	144	122	84.7	126	87.5	0	0.0
Sydney-Brisbane								
Jetstar	194	189	154	81.5	151	79.9	5	2.6
Qantas	587	578	479	82.9	480	83.0	9	1.5
QantasLink	8	8	8	100.0	8	100.0	0	0.0
Tigerair Australia	111	106	76	71.7	83	78.3	5	4.5
Virgin Australia	487	482	405	84.0	416	86.3	5	1.0
All Airlines	1 387	1 363	1 122	82.3	1 138	83.5	24	1.7
Sydney-Cairns								
Jetstar	112	112	105	93.8	100	89.3	0	0.0
Qantas	69	69	68	98.6	61	88.4	0	0.0
Tigerair Australia	39	38	29	76.3	27	71.1	1	2.6
Virgin Australia	92	91	85	93.4	82	90.1	1	1.1
All Airlines	312	310	287	92.6	270	87.1	2	0.6
Sydney-Canberra								
Qantas	21	21	21	100.0	21	100.0	0	0.0
QantasLink	414	409	339	82.9	354	86.6	5	1.2
Virgin Australia	179	178	151	84.8	148	83.1	1	0.6
All Airlines	614	608	511	84.0	523	86.0	6	1.0
Sydney-Coffs Harbour								
QantasLink	122	122	107	87.7	101	82.8	0	0.0
Tigerair Australia	14	14	11	78.6	11	78.6	0	0.0
Virgin Australia	46	46	41	89.1	41	89.1	0	0.0
All Airlines	182	182	159	87.4	153	84.1	0	0.0
Sydney-Darwin								
Jetstar	28	28	25	89.3	25	89.3	0	0.0
Qantas	47	47	42	89.4	35	74.5	0	0.0
Virgin Australia	30	30	27	90.0	28	93.3	0	0.0
All Airlines	105	105	94	89.5	88	83.8	0	0.0
Sydney-Dubbo								
QantasLink	102	102	86	84.3	87	85.3	0	0.0
Regional Express	117	116	104	89.7	103	88.8	1	0.9
All Airlines	219	218	190	87.2	190	87.2	1	0.5
Sydney-Gold Coast								
Jetstar	304	304	252	82.9	248	81.6	0	0.0
Qantas	101	101	84	83.2	83	82.2	0	0.0
QantasLink	22	22	17	77.3	18	81.8	0	0.0
Tigerair Australia	110	109	71	65.1	72	66.1	1	0.9
Virgin Australia	273	273	241	88.3	247	90.5	0	0.0
All Airlines	810	809	665	82.2	668	82.6	1	0.1

	Sectors		Arrivals On Time		Departures On Time		Cancellations	
	Sched.	Flown	No.	%	No.	%	No.	%
Sydney-Hamilton Island								
Jetstar	30	29	26	89.7	21	72.4	1	3.3
Qantas	7	7	6	85.7	6	85.7	0	0.0
QantasLink	19	15	13	86.7	13	86.7	4	21.1
Virgin Australia	27	25	22	88.0	22	88.0	2	7.4
All Airlines	83	76	67	88.2	62	81.6	7	8.4
Sydney-Hobart								
Jetstar	88	88	77	87.5	80	90.9	0	0.0
Qantas	4	4	3	75.0	2	50.0	0	0.0
QantasLink	56	56	46	82.1	49	87.5	0	0.0
Virgin Australia	70	69	60	87.0	61	88.4	1	1.4
All Airlines	218	217	186	85.7	192	88.5	1	0.5
Sydney-Launceston								
Jetstar	47	47	43	91.5	37	78.7	0	0.0
Virgin Australia	32	32	30	93.8	27	84.4	0	0.0
All Airlines	79	79	73	92.4	64	81.0	0	0.0
Sydney-Melbourne								
Jetstar	449	441	319	72.3	302	68.5	8	1.8
Qantas	926	889	663	74.6	637	71.7	37	4.0
Tigerair Australia	263	252	152	60.3	156	61.9	11	4.2
Virgin Australia	670	656	512	78.0	516	78.7	14	2.1
All Airlines	2 308	2 238	1 646	73.5	1 611	72.0	70	3.0
Sydney-Perth								
Jetstar	28	28	22	78.6	15	53.6	0	0.0
Qantas	211	211	196	92.9	159	75.4	0	0.0
Tigerair Australia	26	26	25	96.2	24	92.3	0	0.0
Virgin Australia	118	118	101	85.6	89	75.4	0	0.0
All Airlines	383	383	344	89.8	287	74.9	0	0.0
Sydney-Port Macquarie								
QantasLink	94	94	78	83.0	83	88.3	0	0.0
Virgin Australia	56	56	47	83.9	46	82.1	0	0.0
All Airlines	150	150	125	83.3	129	86.0	0	0.0
Sydney-Proserpine								
Jetstar	13	13	12	92.3	12	92.3	0	0.0
Tigerair Australia	26	26	20	76.9	21	80.8	0	0.0
All Airlines	39	39	32	82.1	33	84.6	0	0.0
Sydney-Sunshine Coast								
Jetstar	120	120	95	79.2	91	75.8	0	0.0
QantasLink	35	35	31	88.6	31	88.6	0	0.0
Virgin Australia	50	50	48	96.0	48	96.0	0	0.0
All Airlines	205	205	174	84.9	170	82.9	0	0.0
Sydney-Tamworth								
QantasLink	114	114	101	88.6	99	86.8	0	0.0
Virgin Australia	51	51	40	78.4	41	80.4	0	0.0
All Airlines	165	165	141	85.5	140	84.8	0	0.0
Sydney-Townsville								
Jetstar	27	27	23	85.2	22	81.5	0	0.0
Virgin Australia	21	21	19	90.5	17	81.0	0	0.0
All Airlines	48	48	42	87.5	39	81.3	0	0.0

	<i>Sectors</i>		<i>Arrivals On Time</i>		<i>Departures On Time</i>		<i>Cancellations</i>	
	<i>Sched.</i>	<i>Flown</i>	<i>No.</i>	<i>%</i>	<i>No.</i>	<i>%</i>	<i>No.</i>	<i>%</i>
Sydney-Wagga Wagga								
QantasLink	94	94	82	87.2	77	81.9	0	0.0
Regional Express	107	106	99	93.4	100	94.3	1	0.9
All Airlines	201	200	181	90.5	177	88.5	1	0.5
Tamworth-Sydney								
QantasLink	113	113	100	88.5	100	88.5	0	0.0
Virgin Australia	50	50	44	88.0	47	94.0	0	0.0
All Airlines	163	163	144	88.3	147	90.2	0	0.0
Townsville-Brisbane								
Jetstar	60	60	54	90.0	56	93.3	0	0.0
Qantas	83	83	78	94.0	78	94.0	0	0.0
QantasLink	56	55	52	94.5	54	98.2	1	1.8
Virgin Australia	130	126	121	96.0	122	96.8	4	3.1
All Airlines	329	324	305	94.1	310	95.7	5	1.5
Townsville-Cairns								
QantasLink	131	131	121	92.4	121	92.4	0	0.0
Regional Express	22	21	19	90.5	18	85.7	1	4.5
All Airlines	153	152	140	92.1	139	91.4	1	0.7
Townsville-Melbourne								
Jetstar	29	29	22	75.9	18	62.1	0	0.0
Tigerair Australia	15	15	7	46.7	5	33.3	0	0.0
All Airlines	44	44	29	65.9	23	52.3	0	0.0
Townsville-Sydney								
Jetstar	27	27	25	92.6	22	81.5	0	0.0
Virgin Australia	21	21	17	81.0	17	81.0	0	0.0
All Airlines	48	48	42	87.5	39	81.3	0	0.0
Wagga Wagga-Sydney								
QantasLink	93	93	80	86.0	78	83.9	0	0.0
Regional Express	106	105	87	82.9	95	90.5	1	0.9
All Airlines	199	198	167	84.3	173	87.4	1	0.5

Airports

On time performance is reported for all routes where the passenger load averages over 8000 passengers per month, and where two or more airlines operate in competition. The following data reports by airport against flights operated on those routes only. This month, 8 major city airports and 32 regional city airports are covered.

Airport	Arrivals			Departures		
	Sectors	On Time		Sectors	On Time	
	Flown	No.	%	Flown	No.	%
Adelaide						
Jetstar	342	270	78.9	342	263	76.9
Qantas	710	617	86.9	709	604	85.2
QantasLink	203	183	90.1	203	190	93.6
Regional Express	180	155	86.1	179	170	95.0
Tigerair Australia	145	111	76.6	145	98	67.6
Virgin Australia	617	551	89.3	617	538	87.2
Virgin Australia Regional Airlines	44	29	65.9	43	27	62.8
All Airlines	2 241	1 916	85.5	2 238	1 890	84.5
Relates to services to and from Alice Springs, Brisbane, Canberra, Gold Coast, Melbourne, Perth, Port Lincoln and Sydney.						
Albury						
QantasLink	90	78	86.7	90	74	82.2
Regional Express	81	74	91.4	83	69	83.1
Virgin Australia	56	48	85.7	56	47	83.9
All Airlines	227	200	88.1	229	190	83.0
Relates to services to and from Sydney only.						
Alice Springs						
Qantas	30	28	93.3	30	29	96.7
QantasLink	60	55	91.7	60	57	95.0
Virgin Australia	10	10	100.0	10	10	100.0
Virgin Australia Regional Airlines	27	18	66.7	27	21	77.8
All Airlines	127	111	87.4	127	117	92.1
Relates to services to and from Adelaide and Darwin.						
Armidale						
QantasLink	115	96	83.5	114	97	85.1
Regional Express	71	59	83.1	69	51	73.9
All Airlines	186	155	83.3	183	148	80.9
Relates to services to and from Sydney only.						
Ayers Rock						
Jetstar	30	27	90.0	29	21	72.4
Virgin Australia	30	28	93.3	30	25	83.3
All Airlines	60	55	91.7	59	46	78.0
Relates to services to and from Sydney only.						
Ballina						
Jetstar	90	80	88.9	90	62	68.9
Regional Express	20	12	60.0	18	13	72.2
Virgin Australia	34	30	88.2	34	30	88.2
All Airlines	144	122	84.7	142	105	73.9
Relates to services to and from Sydney only.						

Airport	Arrivals			Departures		
	Sectors	On Time		Sectors	On Time	
	Flown	No.	%	Flown	No.	%
Brisbane						
Jetstar	759	636	83.8	759	623	82.1
Qantas	1 401	1 142	81.5	1 404	1 145	81.6
QantasLink	1 035	892	86.2	1 038	907	87.4
Tigerair Australia	305	232	76.1	303	215	71.0
Virgin Australia	2 031	1 769	87.1	2 031	1 782	87.7
All Airlines	5 531	4 671	84.5	5 535	4 672	84.4

Relates to services to and from Adelaide, Bundaberg, Cairns, Canberra, Darwin, Emerald, Gladstone, Hamilton Island, Hobart, Mackay, Melbourne, Mount Isa, Newcastle, Perth, Proserpine, Rockhampton, Sydney and Townsville.

Broome

Qantas	2	1	50.0	2	1	50.0
QantasLink	78	73	93.6	77	69	89.6
Virgin Australia	2	2	100.0	2	2	100.0
Virgin Australia Regional Airlines	78	63	80.8	77	62	80.5
All Airlines	160	139	86.9	158	134	84.8

Relates to services to and from Perth only.

Bundaberg

QantasLink	101	89	88.1	101	89	88.1
Virgin Australia	30	26	86.7	30	25	83.3
All Airlines	131	115	87.8	131	114	87.0

Relates to services to and from Brisbane only.

Cairns

Jetstar	349	309	88.5	347	306	88.2
Qantas	177	161	91.0	177	163	92.1
QantasLink	190	171	90.0	192	187	97.4
Regional Express	21	19	90.5	22	20	90.9
Tigerair Australia	103	78	75.7	103	71	68.9
Virgin Australia	248	225	90.7	249	218	87.6
All Airlines	1 088	963	88.5	1 090	965	88.5

Relates to services to and from Brisbane, Melbourne, Sydney and Townsville.

Canberra

Qantas	301	261	86.7	300	277	92.3
QantasLink	583	490	84.0	585	514	87.9
Tigerair Australia	43	33	76.7	43	29	67.4
Virgin Australia	443	389	87.8	444	396	89.2
All Airlines	1 370	1 173	85.6	1 372	1 216	88.6

Relates to services to and from Adelaide, Brisbane, Melbourne and Sydney.

Coffs Harbour

QantasLink	122	107	87.7	121	106	87.6
Tigerair Australia	14	11	78.6	14	11	78.6
Virgin Australia	46	41	89.1	46	41	89.1
All Airlines	182	159	87.4	181	158	87.3

Relates to services to and from Sydney only.

Airport	Arrivals			Departures		
	Sectors Flown	On Time		Sectors Flown	On Time	
		No.	%		No.	%
Darwin						
Jetstar	81	72	88.9	81	75	92.6
Qantas	149	133	89.3	147	121	82.3
QantasLink	60	57	95.0	60	56	93.3
Tigerair Australia	12	9	75.0	12	11	91.7
Virgin Australia	117	98	83.8	117	97	82.9
Virgin Australia Regional Airlines	21	16	76.2	21	18	85.7
All Airlines	440	385	87.5	438	378	86.3
Relates to services to and from Alice Springs, Brisbane, Melbourne, Perth and Sydney.						
Dubbo						
QantasLink	102	86	84.3	101	86	85.1
Regional Express	116	104	89.7	116	98	84.5
All Airlines	218	190	87.2	217	184	84.8
Relates to services to and from Sydney only.						
Emerald						
QantasLink	97	89	91.8	97	87	89.7
Virgin Australia	49	44	89.8	49	47	95.9
All Airlines	146	133	91.1	146	134	91.8
Relates to services to and from Brisbane only.						
Geraldton						
QantasLink	46	44	95.7	46	45	97.8
Virgin Australia Regional Airlines	51	40	78.4	51	40	78.4
All Airlines	97	84	86.6	97	85	87.6
Relates to services to and from Perth only.						
Gladstone						
QantasLink	124	108	87.1	124	111	89.5
Virgin Australia	71	67	94.4	71	67	94.4
All Airlines	195	175	89.7	195	178	91.3
Relates to services to and from Brisbane only.						
Gold Coast						
Jetstar	549	445	81.1	548	448	81.8
Qantas	131	103	78.6	131	101	77.1
QantasLink	22	17	77.3	22	18	81.8
Tigerair Australia	187	132	70.6	187	122	65.2
Virgin Australia	517	445	86.1	515	422	81.9
All Airlines	1 406	1 142	81.2	1 403	1 111	79.2
Relates to services to and from Adelaide, Melbourne and Sydney.						
Hamilton Island						
Jetstar	29	26	89.7	29	26	89.7
Qantas	7	6	85.7	7	6	85.7
QantasLink	44	38	86.4	44	35	79.5
Virgin Australia	53	47	88.7	53	46	86.8
All Airlines	133	117	88.0	133	113	85.0
Relates to services to and from Brisbane and Sydney.						

Airport	Arrivals			Departures		
	Sectors Flown	On Time		Sectors Flown	On Time	
		No.	%		No.	%
Hobart						
Jetstar	296	233	78.7	297	195	65.7
Qantas	116	95	81.9	115	93	80.9
QantasLink	56	46	82.1	53	49	92.5
Tigerair Australia	46	31	67.4	46	26	56.5
Virgin Australia	241	197	81.7	241	163	67.6
All Airlines	755	602	79.7	752	526	69.9
Relates to services to and from Brisbane, Melbourne and Sydney.						
Kalgoorlie						
Qantas	9	9	100.0	9	8	88.9
QantasLink	70	66	94.3	70	63	90.0
Virgin Australia	34	30	88.2	35	27	77.1
Virgin Australia Regional Airlines	33	30	90.9	33	29	87.9
All Airlines	146	135	92.5	147	127	86.4
Relates to services to and from Perth only.						
Karratha						
Qantas	19	19	100.0	19	17	89.5
QantasLink	161	133	82.6	159	133	83.6
Virgin Australia	1	1	100.0	1	0	0.0
Virgin Australia Regional Airlines	55	47	85.5	55	46	83.6
All Airlines	236	200	84.7	234	196	83.8
Relates to services to and from Perth only.						
Launceston						
Jetstar	184	138	75.0	185	116	62.7
QantasLink	102	88	86.3	103	83	80.6
Virgin Australia	135	115	85.2	135	111	82.2
All Airlines	421	341	81.0	423	310	73.3
Relates to services to and from Melbourne and Sydney.						
Mackay						
Jetstar	30	23	76.7	30	20	66.7
QantasLink	112	103	92.0	108	95	88.0
Virgin Australia	137	116	84.7	137	122	89.1
All Airlines	279	242	86.7	275	237	86.2
Relates to services to and from Brisbane only.						
Melbourne						
Jetstar	1 694	1 231	72.7	1 697	1 258	74.1
Qantas	2 219	1 766	79.6	2 225	1 736	78.0
QantasLink	233	188	80.7	231	198	85.7
Regional Express	71	47	66.2	72	61	84.7
Tigerair Australia	688	446	64.8	691	502	72.6
Virgin Australia	2 166	1 701	78.5	2 170	1 845	85.0
All Airlines	7 071	5 379	76.1	7 086	5 600	79.0
Relates to services to and from Adelaide, Brisbane, Cairns, Canberra, Darwin, Gold Coast, Hobart, Launceston, Mildura, Newcastle, Perth, Sunshine Coast, Sydney and Townsville.						
Mildura						
QantasLink	88	77	87.5	88	71	80.7
Regional Express	72	57	79.2	71	52	73.2
Virgin Australia	30	19	63.3	30	19	63.3
All Airlines	190	153	80.5	189	142	75.1
Relates to services to and from Melbourne only.						

Airport	Arrivals			Departures		
	Sectors Flown	On Time		Sectors Flown	On Time	
		No.	%		No.	%
Mount Isa						
QantasLink	53	42	79.2	54	41	75.9
Virgin Australia	17	15	88.2	16	15	93.8
All Airlines	70	57	81.4	70	56	80.0
Relates to services to and from Brisbane only.						
Newcastle						
Jetstar	208	162	77.9	208	152	73.1
QantasLink	44	39	88.6	44	39	88.6
Virgin Australia	109	92	84.4	110	92	83.6
All Airlines	361	293	81.2	362	283	78.2
Relates to services to and from Brisbane and Melbourne.						
Newman						
Qantas	44	44	100.0	44	42	95.5
QantasLink	85	75	88.2	85	76	89.4
Virgin Australia	16	15	93.8	16	14	87.5
Virgin Australia Regional Airlines	22	18	81.8	22	20	90.9
All Airlines	167	152	91.0	167	152	91.0
Relates to services to and from Perth only.						
Perth						
Jetstar	105	91	86.7	104	80	76.9
Qantas	811	725	89.4	804	726	90.3
QantasLink	541	493	91.1	547	480	87.8
Tigerair Australia	68	51	75.0	66	46	69.7
Virgin Australia	497	435	87.5	496	445	89.7
Virgin Australia Regional Airlines	304	257	84.5	305	265	86.9
All Airlines	2 326	2 052	88.2	2 322	2 042	87.9
Relates to services to and from Adelaide, Brisbane, Broome, Darwin, Geraldton, Kalgoorlie, Karratha, Melbourne, Newman, Port Hedland and Sydney.						
Port Hedland						
Qantas	29	27	93.1	29	25	86.2
QantasLink	99	91	91.9	96	85	88.5
Virgin Australia	23	22	95.7	22	20	90.9
Virgin Australia Regional Airlines	28	23	82.1	29	23	79.3
All Airlines	179	163	91.1	176	153	86.9
Relates to services to and from Perth only.						
Port Lincoln						
QantasLink	108	99	91.7	107	99	92.5
Regional Express	179	163	91.1	180	162	90.0
All Airlines	287	262	91.3	287	261	90.9
Relates to services to and from Adelaide only.						
Port Macquarie						
QantasLink	94	78	83.0	93	77	82.8
Virgin Australia	56	47	83.9	56	43	76.8
All Airlines	150	125	83.3	149	120	80.5
Relates to services to and from Sydney only.						

Airport	Arrivals			Departures		
	Sectors	On Time		Sectors	On Time	
	Flown	No.	%	Flown	No.	%
Proserpine						
Jetstar	50	42	84.0	48	38	79.2
Tigerair Australia	26	20	76.9	26	19	73.1
Virgin Australia	31	29	93.5	31	30	96.8
All Airlines	107	91	85.0	105	87	82.9
Relates to services to and from Brisbane and Sydney.						
Rockhampton						
QantasLink	165	133	80.6	168	141	83.9
Virgin Australia	135	115	85.2	134	121	90.3
All Airlines	300	248	82.7	302	262	86.8
Relates to services to and from Brisbane only.						
Sunshine Coast						
Jetstar	215	164	76.3	215	137	63.7
QantasLink	35	31	88.6	34	30	88.2
Virgin Australia	110	96	87.3	110	82	74.5
All Airlines	360	291	80.8	359	249	69.4
Relates to services to and from Melbourne and Sydney.						
Sydney						
Jetstar	1 683	1 334	79.3	1 685	1 310	77.7
Qantas	2 124	1 717	80.8	2 127	1 661	78.1
QantasLink	1 295	1 120	86.5	1 303	1 105	84.8
Regional Express	391	305	78.0	394	348	88.3
Tigerair Australia	616	417	67.7	617	425	68.9
Virgin Australia	2 453	2 117	86.3	2 453	2 074	84.5
All Airlines	8 562	7 010	81.9	8 579	6 923	80.7
Relates to services to and from Adelaide, Albury, Armidale, Ayers Rock, Ballina, Brisbane, Cairns, Canberra, Coffs Harbour, Darwin, Dubbo, Gold Coast, Hamilton Island, Hobart, Launceston, Melbourne, Perth, Port Macquarie, Proserpine, Sunshine Coast, Tamworth, Townsville and Wagga Wagga.						
Tamworth						
QantasLink	114	101	88.6	113	100	88.5
Virgin Australia	51	40	78.4	50	47	94.0
All Airlines	165	141	85.5	163	147	90.2
Relates to services to and from Sydney only.						
Townsville						
Jetstar	116	100	86.2	116	96	82.8
Qantas	83	75	90.4	83	78	94.0
QantasLink	189	186	98.4	186	175	94.1
Regional Express	22	19	86.4	21	18	85.7
Tigerair Australia	15	5	33.3	15	5	33.3
Virgin Australia	148	138	93.2	147	139	94.6
All Airlines	573	523	91.3	568	511	90.0
Relates to services to and from Brisbane, Cairns, Melbourne and Sydney.						
Wagga Wagga						
QantasLink	94	82	87.2	93	78	83.9
Regional Express	106	99	93.4	105	95	90.5
All Airlines	200	181	90.5	198	173	87.4
Relates to services to and from Sydney only.						

Definitions

On time arrival	A flight arrival is counted as "on time" if it arrived at the gate before 15 minutes after the scheduled arrival time shown in the carriers' schedule. Neither diverted nor cancelled flights count as on time.
On time departure	A flight departure is counted as "on time" if it departs the gate before 15 minutes after the scheduled departure time shown in the carriers' schedule.
Cancellation	A flight removed from service within 7 days of scheduled departure is regarded as a cancellation.
On time departure percentage	The percentage of on time departures is measured against the number of departures <i>operated</i> on any particular sector.
On time arrival percentage	The percentage of on time arrivals is measured against the number of arrivals <i>operated</i> on any particular sector.
Cancellation percentage	The percentage of cancellations is measured against the number of services <i>scheduled</i> on any particular sector.
