



Australian Government

Department of Infrastructure and Regional Development

Bureau of Infrastructure, Transport and Regional Economics

STATISTICAL REPORT



Aviation

Domestic airline on time performance
November 2017

© Commonwealth of Australia 2017

ISSN: 1832-0759

Ownership of intellectual property rights in this publication

Unless otherwise noted, copyright (and any other intellectual property rights, if any) in this publication is owned by the Commonwealth of Australia (referred to below as the Commonwealth).

Disclaimer

The material contained in this publication is made available on the understanding that the Commonwealth is not providing professional advice, and that users exercise their own skill and care with respect to its use, and seek independent advice if necessary.

The Commonwealth makes no representations or warranties as to the contents or accuracy of the information contained in this publication. To the extent permitted by law, the Commonwealth disclaims liability to any person or organisation in respect of anything done, or omitted to be done, in reliance upon information contained in this publication.

Creative Commons licence

With the exception of (a) the Coat of Arms; and (b) the Department of Infrastructure and Regional Development's photos and graphics, copyright in this publication is licensed under a Creative Commons Attribution 3.0 Australia Licence.

Creative Commons Attribution 3.0 Australia Licence is a standard form licence agreement that allows you to copy, communicate and adapt this publication provided that you attribute the work to the Commonwealth and abide by the other licence terms. A summary of the licence terms is available from <http://creativecommons.org/licenses/by/3.0/au/deed.en>. The full licence terms are available from <http://creativecommons.org/licenses/by/3.0/au/legalcode>.

Use of the Coat of Arms

The Department of the Prime Minister and Cabinet sets the terms under which the Coat of Arms is used. Please refer to the Department's Commonwealth Coat of Arms and Government branding web page <http://www.dpmmc.gov.au/guidelines/index.cfm#brand> and, in particular, the Guidelines on the use of the Commonwealth Coat of Arms publication.

An appropriate citation for this report is:

Bureau of Infrastructure, Transport and Regional Economics (BITRE), 2017, Domestic airline on time performance, Statistical Report, BITRE, Canberra ACT.

Contact us

This publication is available in PDF format. All other rights are reserved, including in relation to any Departmental logos or trade marks which may exist. For enquiries regarding the licence and any use of this publication, please contact:

Bureau of Infrastructure, Transport and Regional Economics (BITRE)
Department of Infrastructure and Regional Development
GPO Box 501, Canberra ACT 2601, Australia
Telephone: (international) +61 2 6274 7210
Fax: (international) +61 2 6274 6855
Email: bitre@infrastructure.gov.au
Website: www.bitre.gov.au

Inquiries

Should you require additional information about the statistics contained in this publication:

Telephone (02) 6274 7790 or Facsimile (02) 6274 7727

Electronic mail: AVSTATS@infrastructure.gov.au

Web site: <http://www.bitre.gov.au/statistics/aviation/otphome.aspx>

Foreword

The Bureau of Infrastructure, Transport and Regional Economics (BITRE) monitors the punctuality and reliability of major domestic airlines operating between Australian airports. The purpose of this is to allow for evaluation of overall industry and individual airline performance, so that consumers of air travel can make informed decisions.

The following domestic airlines currently report this information monthly to the BITRE: Jetstar, Qantas, QantasLink, Regional Express, Tigerair Australia, Virgin Australia and Virgin Australia Regional Airlines. Data has been gathered since November 2003, although some airlines commenced reporting at a later date, including Jetstar which first reported in May 2004, MacAir in July 2005, Tigerair Australia in April 2008 and Virgin Australia Regional Airlines in May 2013. MacAir ceased operations in February 2009 and data was not received for December 2008 onwards. Virgin Blue was rebranded as Virgin Australia in May 2011 and Tiger Airways was rebranded as Tigerair Australia in July 2013 and time series data in Microsoft Excel spreadsheet format on the BITRE website have been revised to reflect these changes. Services operated by Skywest on behalf of Virgin Australia using ATR/F100 aircraft commenced in November 2011 and were shown separately as Virgin Australia – ATR/F100 Operations. Virgin Australia Regional Airlines commenced operations in May 2013. It was formed after the acquisition of Skywest by Virgin Australia and represented a combination of operations previously reported under Skywest and Virgin Australia – ATR/F100 Operations. In January 2016, Virgin Australia transferred their ATR fleet from Virgin Australia Regional Airlines to Virgin Australia.

Information presented in this report is for Australian domestic routes for which the passenger load averaged 8 000 or more passengers per month over the previous six months and where two or more airlines operated in competition on those routes. There were 66 routes that met this definition in November 2017. Over time, routes which meet these criteria change as airline networks and traffic levels vary.

Participating airlines report their overall monthly network performance where this is possible.

Total industry figures encompass all services operated by reporting airlines only. These airlines collectively carried over 95 per cent of total domestic passengers (regular public transport only) in 2016.

The method of capturing on time performance varies between airlines utilising different recording systems. Jetstar and Qantas jet aircraft use Aircraft Communication Addressing and Reporting System (ACARS) to electronically measure on time performance. Regional Express, Tigerair Australia, Virgin Australia, Virgin Australia Regional Airlines and the Qantas non-jet fleet record on time performance manually using records from pilots, gate agents and/or ground crews.

After initial data is collected, aggregate reports are audited internally by participating airlines prior to publication.

Reports and detailed time series data in Microsoft Excel spreadsheet format are available from the BITRE website at: <http://www.bitre.gov.au/statistics/aviation/otphome.aspx>.

Contents

	Page
Industry performance	1
Individual routes	10
Airports	24
Definitions	30

Industry performance

For November 2017, on time performance over all routes operated by participating airlines (Jetstar, Qantas, QantasLink, Regional Express, Tigerair Australia, Virgin Australia and Virgin Australia Regional Airlines) averaged 80.2 per cent for on time arrivals and 81.2 per cent for on time departures. Cancellations represented 1.8 per cent of all scheduled flights. The equivalent figures for November 2016 were 80.8 per cent for on time arrivals, 82.3 per cent for on time departures and 1.8 per cent for cancellations.

This month's on time arrivals figure was lower than the long term average performance for all routes (82.7 per cent) and the on time departures figure was also lower than the long term average (84.1 per cent). The rate of cancellations was higher than the long term average of 1.4 per cent.

Virgin Australia achieved the highest on time arrivals among the major domestic airlines at 82.7 per cent followed by Qantas at 79.5 per cent, Jetstar at 75.8 per cent and Tigerair Australia at 69.5 per cent. Of the regional airlines, QantasLink recorded 83.8 per cent for on time arrivals, followed by Regional Express at 80.1 per cent and Virgin Australia Regional Airlines at 78.3 per cent. The Qantas network (Qantas and QantasLink combined operations) recorded 81.8 per cent for on time arrivals while the Virgin Australia network (Virgin Australia and Virgin Australia Regional Airlines combined operations) recorded 82.4 per cent.

Virgin Australia also achieved the highest level of on time departures among the major domestic airlines for November 2017 at 86.0 per cent, followed by Qantas at 80.7 per cent, Jetstar at 73.1 per cent and Tigerair Australia at 72.3 per cent. Of the regional airlines, QantasLink recorded 83.3 per cent, followed by Regional Express at 82.1 per cent and Virgin Australia Regional Airlines at 82.0 per cent. The Qantas network recorded 82.1 per cent for on time departures while the Virgin Australia network recorded 85.7 per cent.

QantasLink recorded the highest percentage of cancellations (3.3 per cent) during the month, followed by Virgin Australia Regional Airlines (3.0 per cent), Regional Express (2.1 per cent), Tigerair Australia (1.5 per cent), Virgin Australia (1.3 per cent), Qantas (1.1 per cent) and Jetstar (0.8 per cent).

Airlines' on time performance varies across the routes they serve. Individual route data by specific airline for 66 routes are shown on pages 10-23.

Of the 66 routes which met the criteria for on time performance reporting in November 2017, the Brisbane-Hobart route had the highest percentage of on time arrivals (96.7 per cent) and the highest percentage of on time departures (also 96.7 per cent). The Cairns-Melbourne route had the lowest percentage of on time arrivals (62.5 per cent) and the Hobart-Melbourne and Sunshine Coast-Melbourne routes had the lowest percentage of on time departures (63.6 per cent).

Cancellations were highest on the Dubbo-Sydney route at 5.3 per cent, followed by the Sydney-Canberra route at 5.1 per cent, the Port Macquarie-Sydney and Sydney-Port

Macquarie routes at 4.9 per cent, the Canberra-Sydney route at 4.8 per cent and the Hobart-Melbourne route at 4.7 per cent.

Broome Airport recorded the highest percentage of on time arrivals (91.4 per cent) and Kalgoorlie Airport recorded the highest percentage of on time departures (91.2 per cent). Rockhampton Airport recorded the lowest percentage of on time arrivals (71.4 per cent) and Ballina Airport recorded the lowest percentage of on time departures (63.7 per cent). These figures only refer to reported routes and do not cover all flights at these airports.

Table 1 On time performance for November 2017 — Total Industry

	<i>Sectors</i>		<i>Arrivals On Time</i>		<i>Departures On Time</i>		<i>Cancellations</i>	
	<i>Scheduled</i>	<i>Flown</i>	<i>No.</i>	<i>%</i>	<i>No.</i>	<i>%</i>	<i>No.</i>	<i>%</i>
Jetstar	6 801	6 749	5 114	75.8	4 931	73.1	52	0.8
Qantas	9 027	8 930	7 102	79.5	7 205	80.7	97	1.1
QantasLink	10 230	9 888	8 282	83.8	8 238	83.3	342	3.3
Regional Express	6 748	6 606	5 294	80.1	5 421	82.1	142	2.1
Tigerair Australia	2 548	2 509	1 743	69.5	1 814	72.3	39	1.5
Virgin Australia	11 427	11 278	9 328	82.7	9 702	86.0	149	1.3
Virgin Australia Regional Airlines	887	860	673	78.3	705	82.0	27	3.0
All Airlines	47 668	46 820	37 536	80.2	38 016	81.2	848	1.8
Qantas - all QF designated services	19 257	18 818	15 384	81.8	15 443	82.1	439	2.3
Virgin Australia - all VA designated services	12 314	12 138	10 001	82.4	10 407	85.7	176	1.4

Total airline network data (including routes not shown in this report).

Airlines' on time performance varies across the routes they serve. Individual route data by specific airline for 66 routes are shown on pages 10-23.

Table 2 Top ten routes for on time performance for November 2017 (participating airlines only)

<i>Arrivals</i>		<i>Departures</i>	
<i>Route</i>	<i>On Time (%)</i>	<i>Route</i>	<i>On Time (%)</i>
Brisbane-Hobart	96.7	Brisbane-Hobart	96.7
Adelaide-Gold Coast	95.0	Gold Coast-Adelaide	93.3
Perth-Darwin	94.8	Darwin-Alice Springs	93.2
Gold Coast-Adelaide	93.3	Perth-Newman	92.9
Townsville-Cairns	92.1	Perth-Darwin	91.4
Kalgoorlie-Perth	91.9	Brisbane-Proserpine	91.4
Darwin-Alice Springs	91.8	Proserpine-Brisbane	91.3
Sydney-Perth	91.6	Kalgoorlie-Perth	91.2
Sydney-Hamilton Island	91.6	Perth-Port Hedland	90.6
Perth-Broome	91.4	Canberra-Adelaide	90.5

Table 3 Top ten airports for on time performance for November 2017 (participating airlines and reported routes only)

<i>Arrivals</i>		<i>Departures</i>	
<i>Airport</i>	<i>On Time (%)</i>	<i>Airport</i>	<i>On Time (%)</i>
Broome	91.4	Kalgoorlie	91.2
Newman	91.2	Port Hedland	89.4
Port Hedland	90.6	Port Lincoln	89.4
Karratha	90.4	Newman	88.8
Kalgoorlie	89.9	Karratha	88.6
Alice Springs	88.8	Perth	88.6
Hamilton Island	88.6	Broome	88.2
Ayers Rock	88.5	Alice Springs	87.9
Port Lincoln	88.0	Mackay	87.6
Perth	86.8	Adelaide	85.1

Total industry on time performance

Figure 1 On time performance (by month from November 2014)—Total Industry

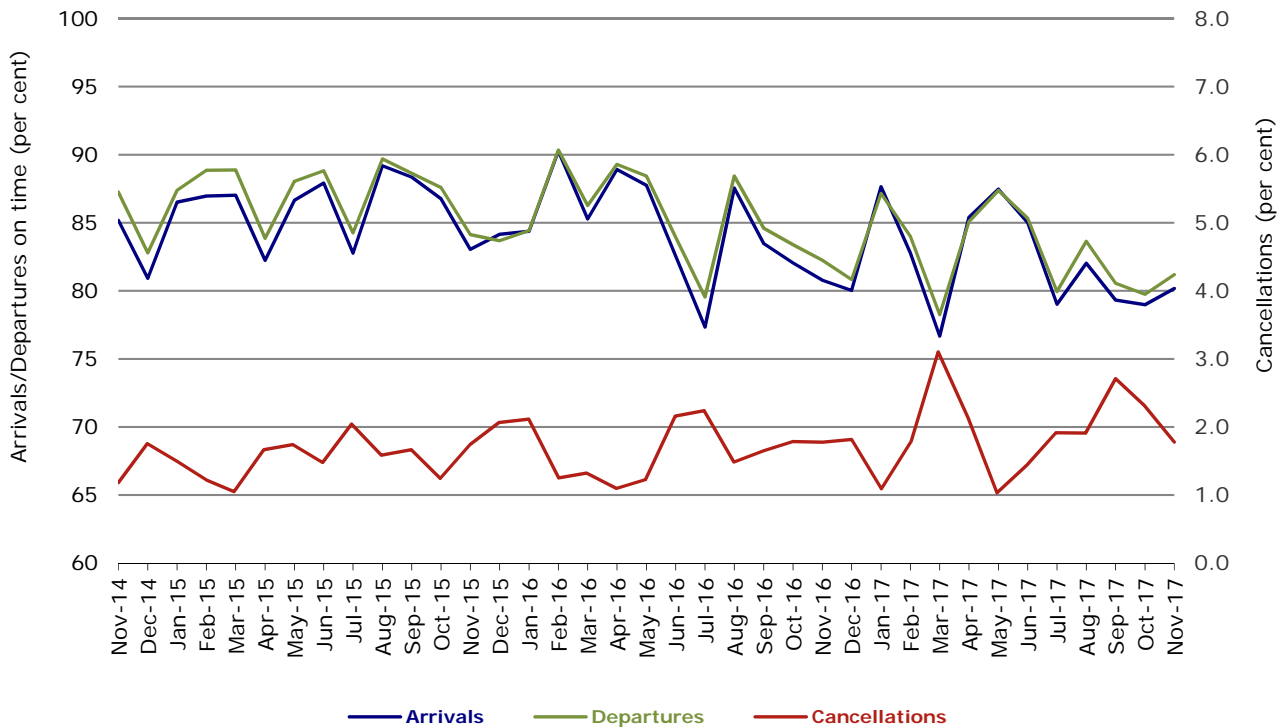


Figure 2 Arrivals on time (by month from November 2016)

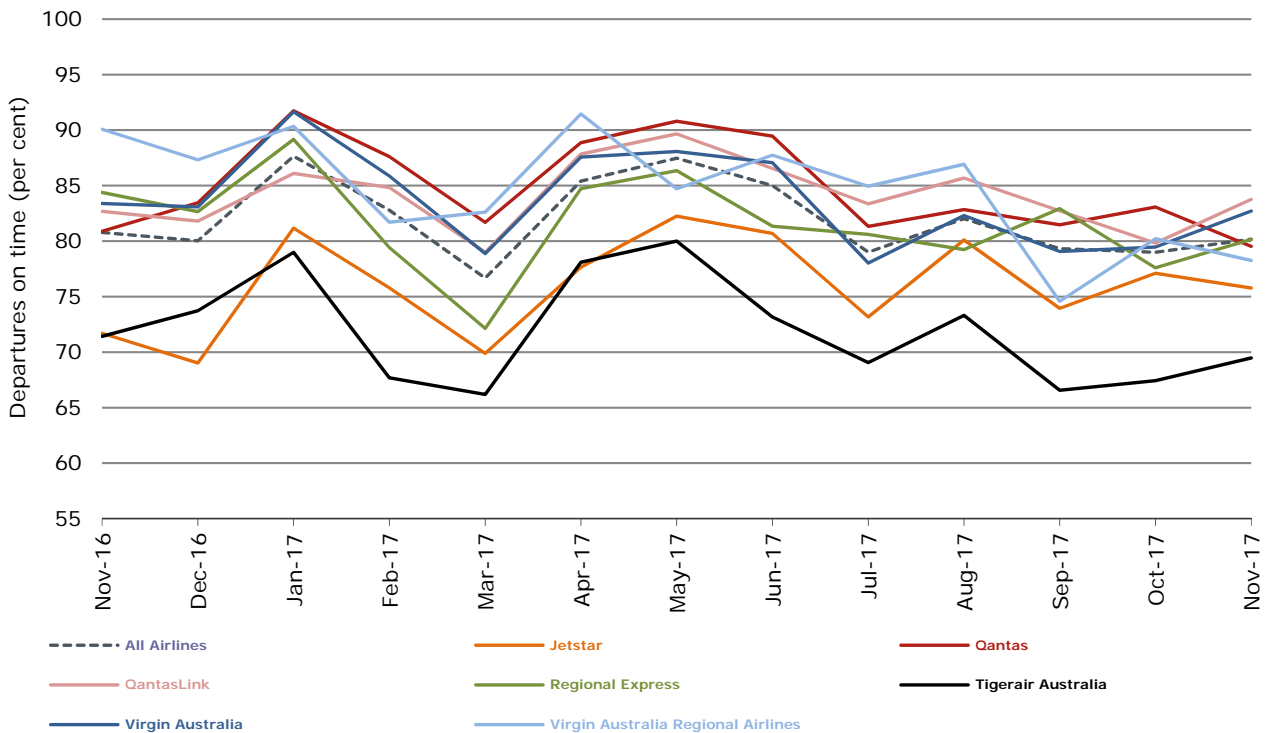


Figure 3 Departures on time (by month from November 2016)

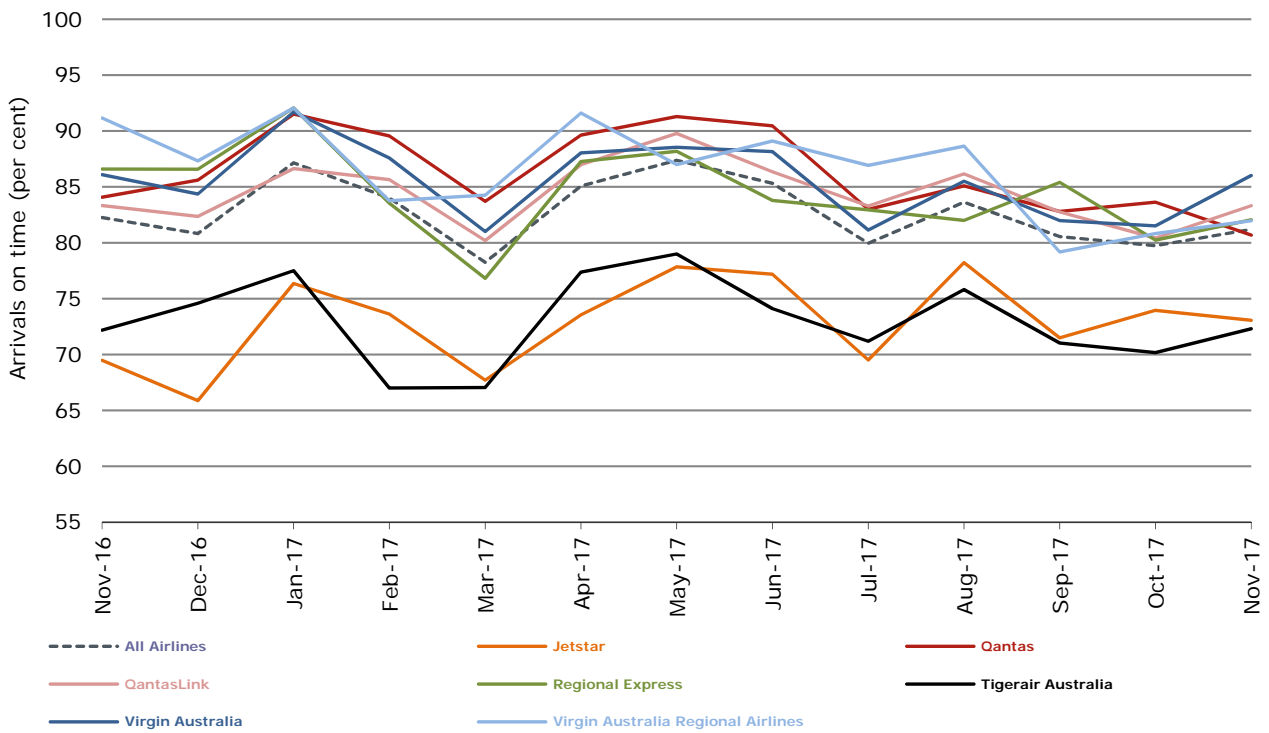
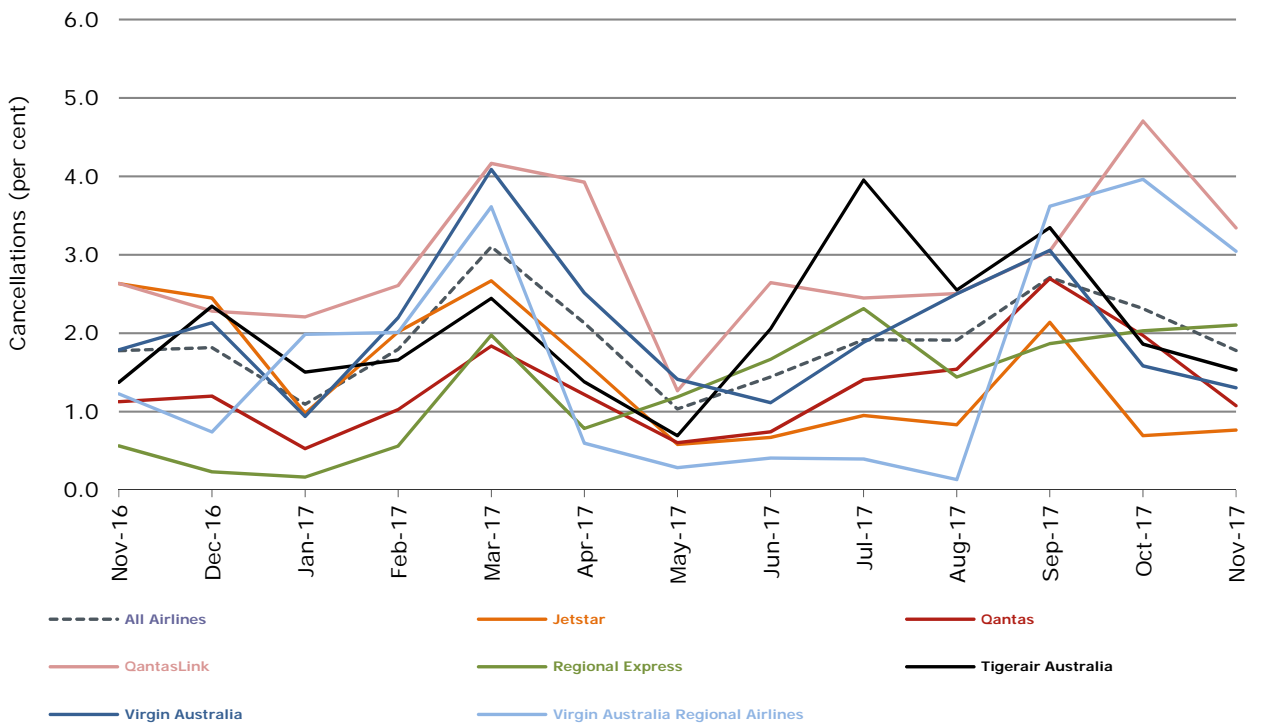


Figure 4 Cancellations (by month from November 2016)



Major domestic airlines on time performance

Figure 5 On time performance (by month from November 2014)—Jetstar

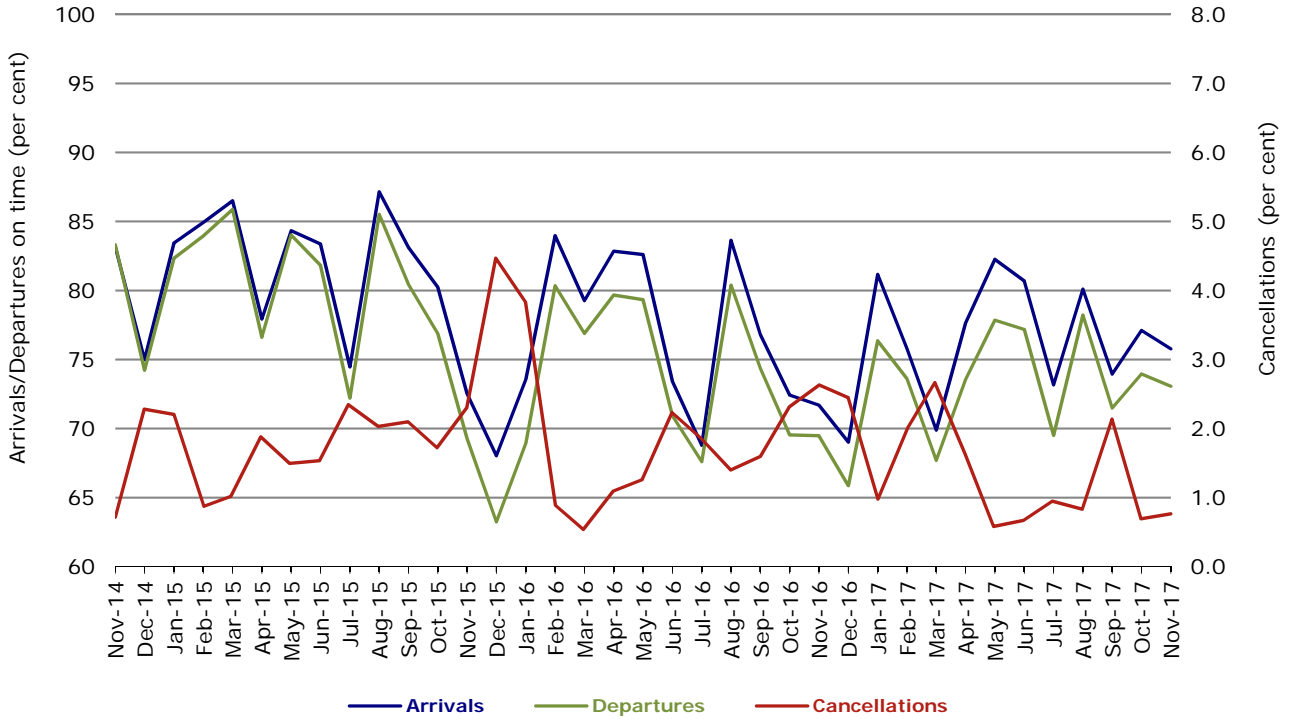


Figure 6 On time performance (by month from November 2014)—Qantas

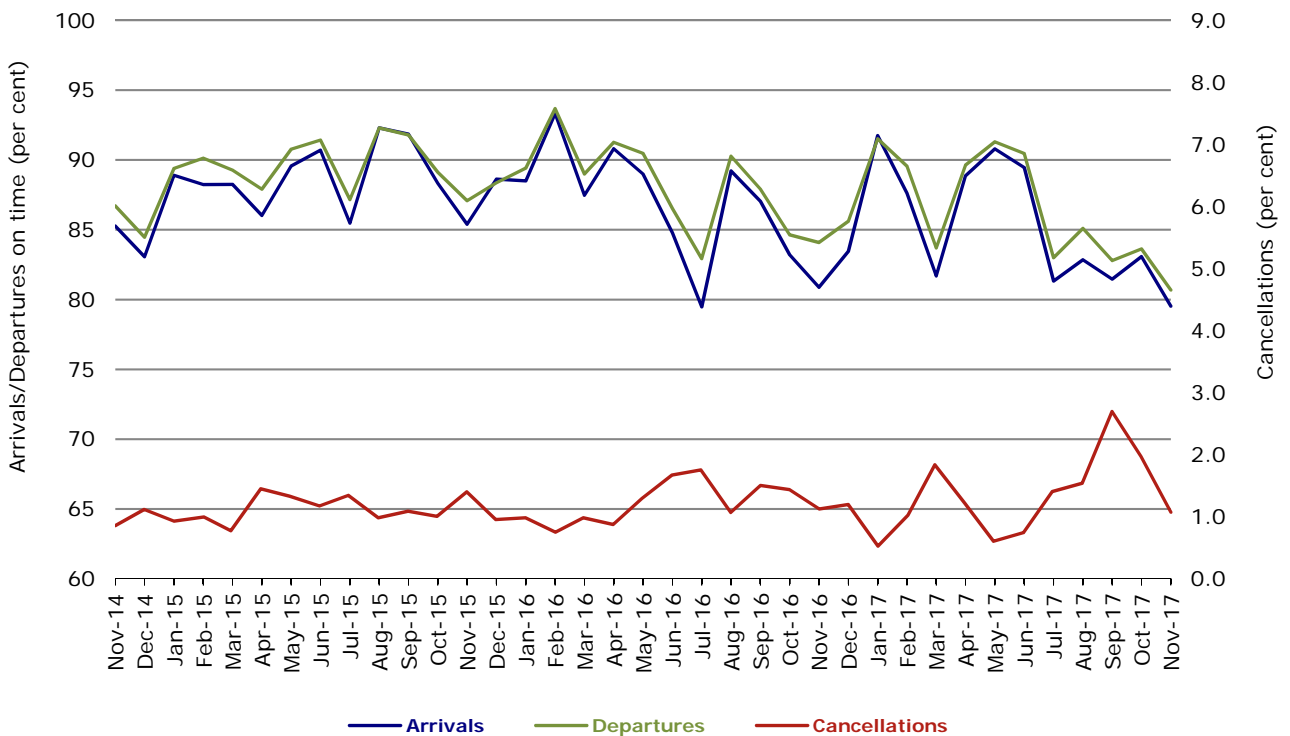


Figure 7 On time performance (by month from November 2014)—Tigerair Australia

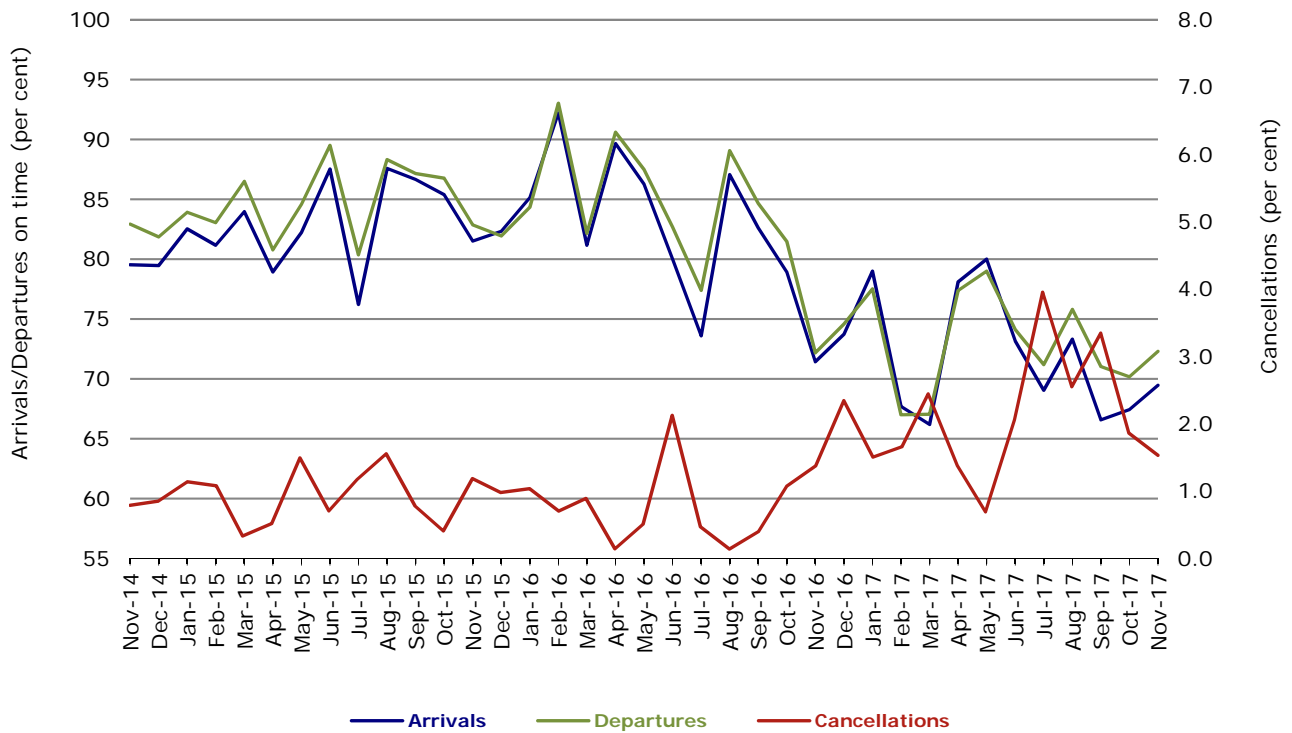
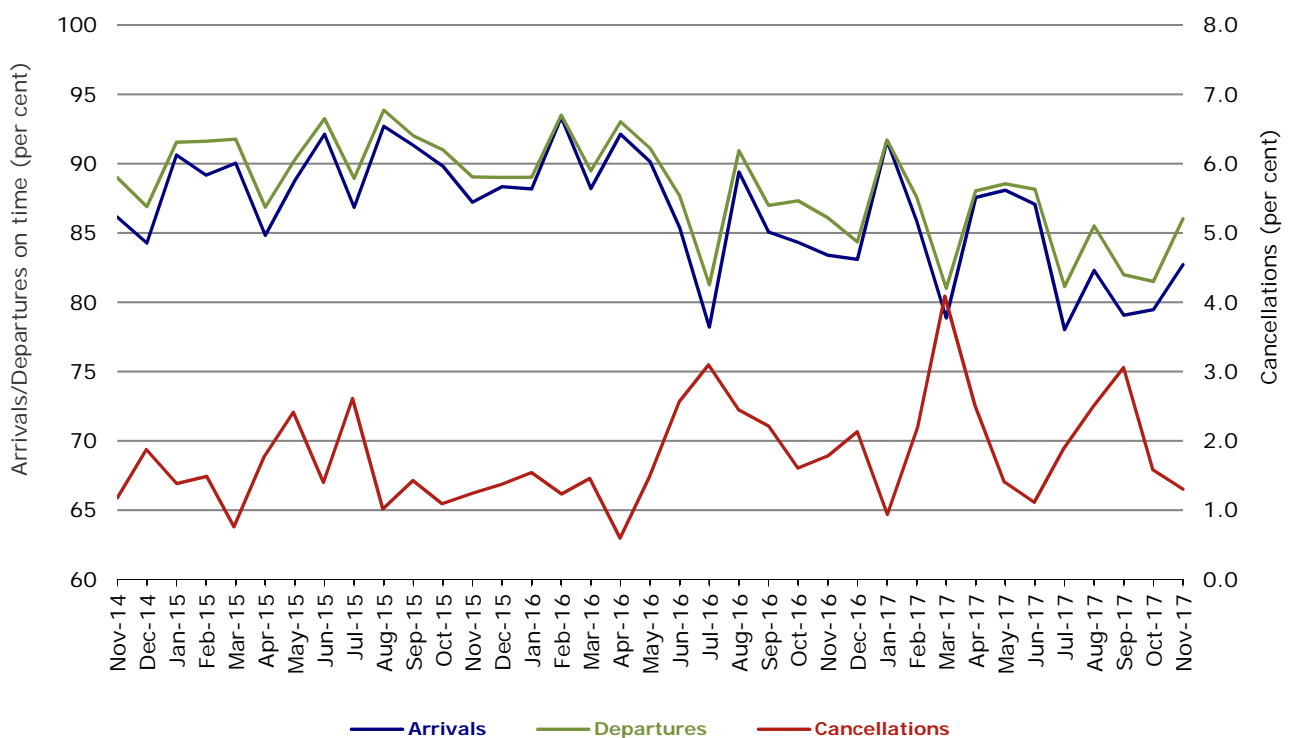


Figure 8 On time performance (by month from November 2014)—Virgin Australia



In January 2016, Virgin Australia transferred their ATR fleet from Virgin Australia Regional Airlines to Virgin Australia.

Major regional airlines on time performance

Figure 9 On time performance (by month from November 2014)—QantasLink

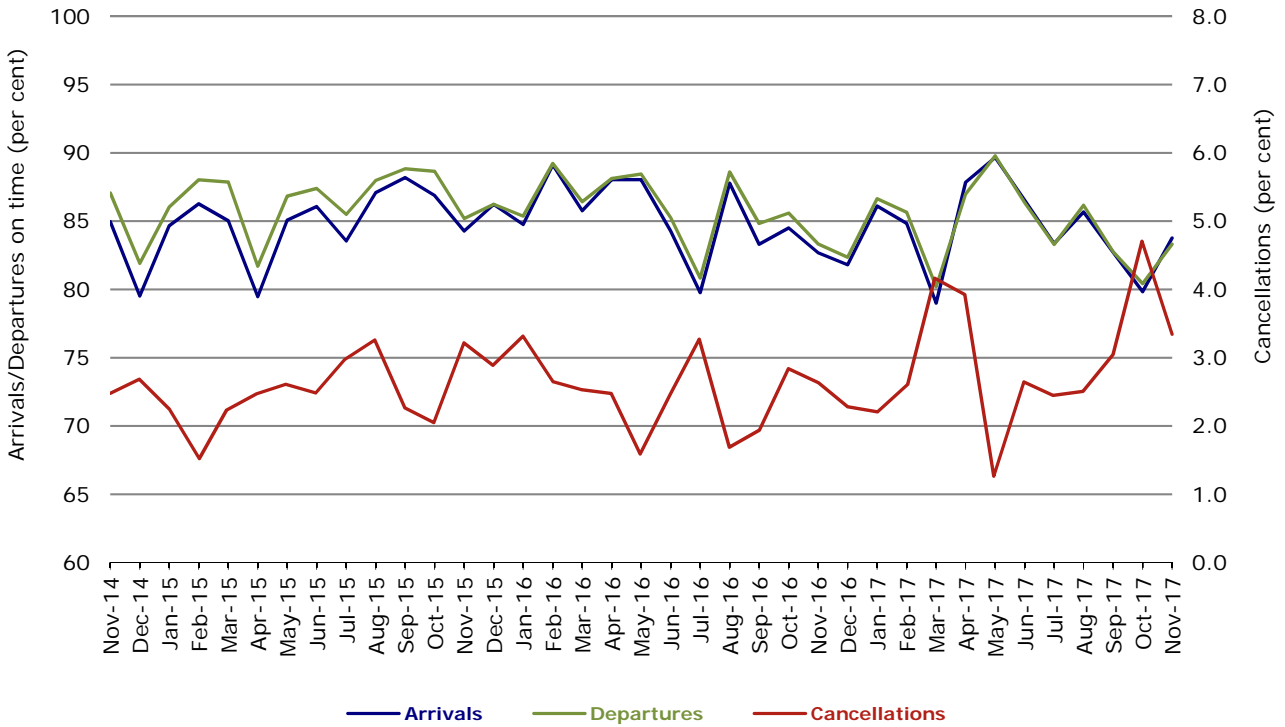


Figure 10 On time performance (by month from November 2014)—Regional Express

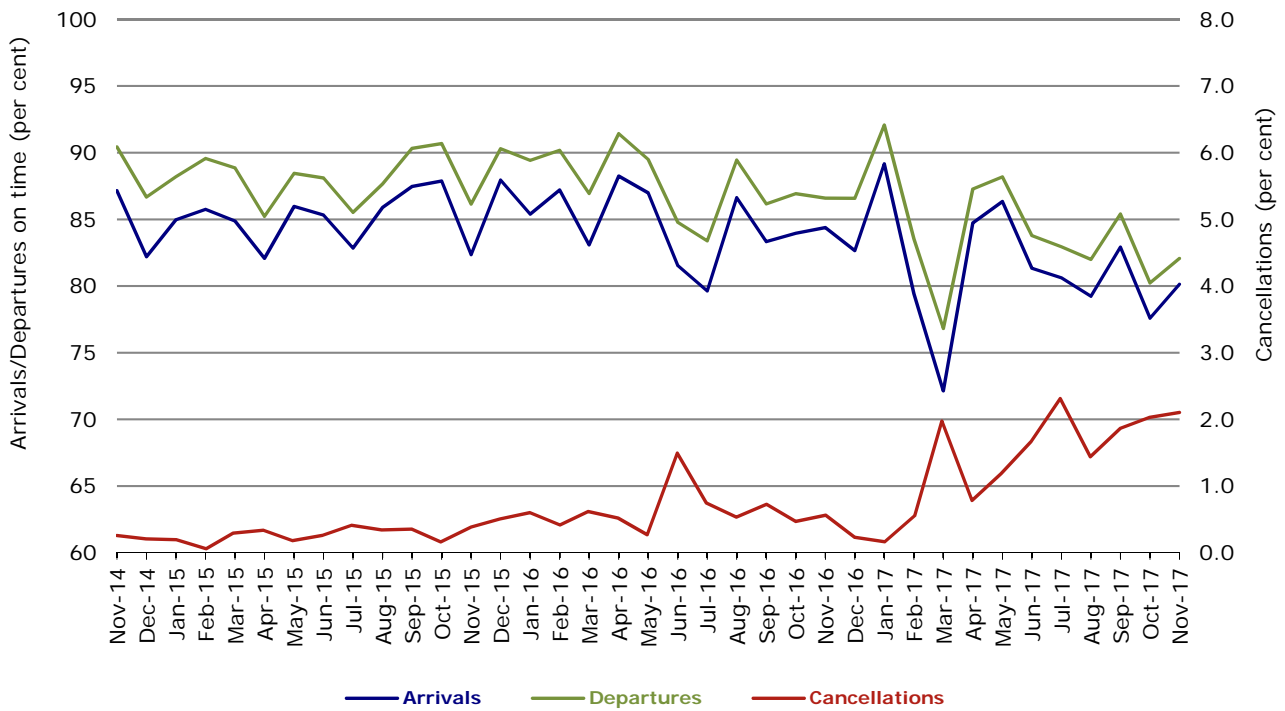
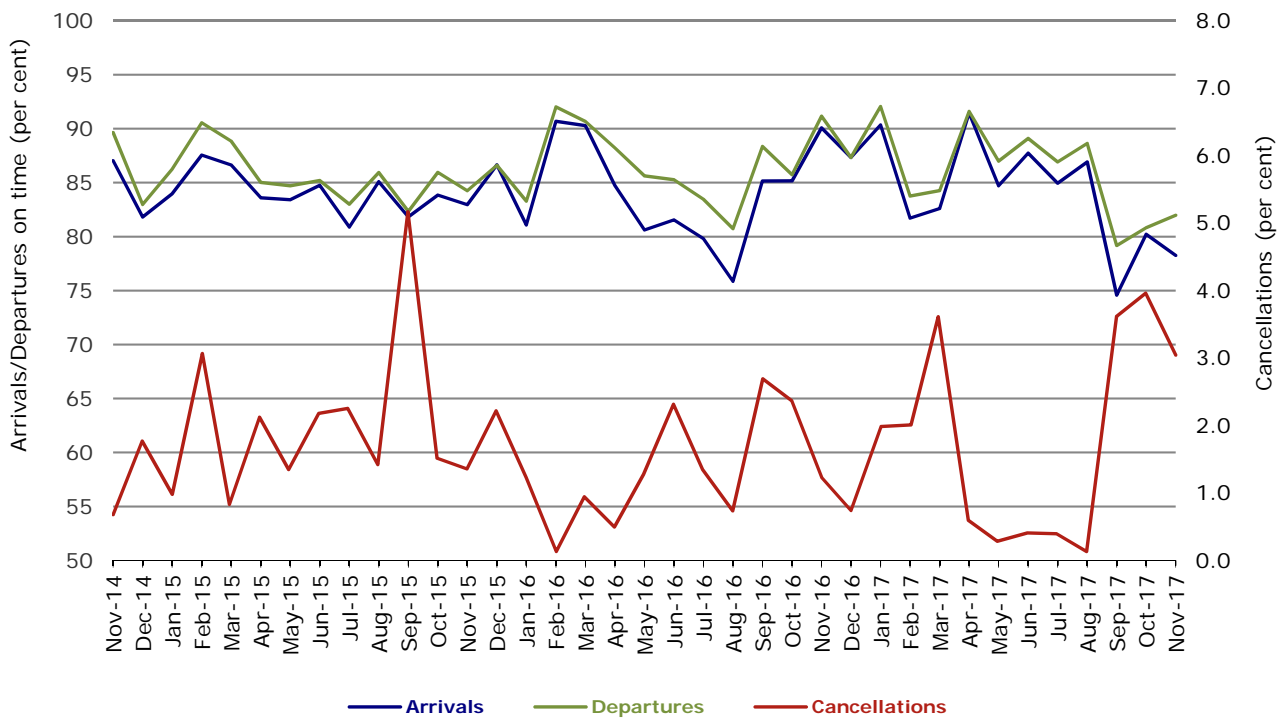


Figure 11 On time performance (by month from November 2014)
Virgin Australia Regional Airlines



In January 2016, Virgin Australia transferred their ATR fleet from Virgin Australia Regional Airlines to Virgin Australia.

Individual routes

On time performance is reported for all routes where the passenger load averages over 8000 passengers per month over the previous six months, and where two or more airlines operate in competition on those routes. There are now 66 routes which meet this definition. Over time, however, routes which meet this definition may change as airline networks and traffic levels vary.

	<i>Sectors</i>		<i>Arrivals On Time</i>		<i>Departures On Time</i>		<i>Cancellations</i>	
	<i>Sched.</i>	<i>Flown</i>	<i>No.</i>	<i>%</i>	<i>No.</i>	<i>%</i>	<i>No.</i>	<i>%</i>
Adelaide-Alice Springs								
Qantas	30	30	29	96.7	29	96.7	0	0.0
Virgin Australia	4	4	3	75.0	3	75.0	0	0.0
Virgin Australia Regional Airlines	18	18	12	66.7	13	72.2	0	0.0
All Airlines	52	52	44	84.6	45	86.5	0	0.0
Adelaide-Brisbane								
Jetstar	26	26	22	84.6	23	88.5	0	0.0
Qantas	99	99	79	79.8	81	81.8	0	0.0
QantasLink	30	28	22	78.6	26	92.9	2	6.7
Tigerair Australia	30	30	21	70.0	25	83.3	0	0.0
Virgin Australia	108	108	93	86.1	98	90.7	0	0.0
All Airlines	293	291	237	81.4	253	86.9	2	0.7
Adelaide-Canberra								
Qantas	48	48	35	72.9	38	79.2	0	0.0
Virgin Australia	26	26	25	96.2	25	96.2	0	0.0
All Airlines	74	74	60	81.1	63	85.1	0	0.0
Adelaide-Gold Coast								
Jetstar	30	30	28	93.3	25	83.3	0	0.0
Virgin Australia	30	30	29	96.7	29	96.7	0	0.0
All Airlines	60	60	57	95.0	54	90.0	0	0.0
Adelaide-Melbourne								
Jetstar	99	98	72	73.5	72	73.5	1	1.0
Qantas	280	278	227	81.7	231	83.1	2	0.7
Tigerair Australia	77	76	49	64.5	51	67.1	1	1.3
Virgin Australia	274	273	222	81.3	229	83.9	1	0.4
All Airlines	730	725	570	78.6	583	80.4	5	0.7
Adelaide-Perth								
Jetstar	25	25	22	88.0	18	72.0	0	0.0
Qantas	96	96	88	91.7	85	88.5	0	0.0
QantasLink	13	13	12	92.3	11	84.6	0	0.0
Virgin Australia	42	42	40	95.2	41	97.6	0	0.0
Virgin Australia Regional Airlines	35	35	18	51.4	31	88.6	0	0.0
All Airlines	211	211	180	85.3	186	88.2	0	0.0
Adelaide-Port Lincoln								
QantasLink	106	103	86	83.5	86	83.5	3	2.8
Regional Express	215	206	186	90.3	186	90.3	9	4.2
All Airlines	321	309	272	88.0	272	88.0	12	3.7
Adelaide-Sydney								
Jetstar	112	110	95	86.4	93	84.5	2	1.8
Qantas	233	232	201	86.6	206	88.8	1	0.4
QantasLink	29	24	18	75.0	15	62.5	5	17.2
Tigerair Australia	47	47	27	57.4	33	70.2	0	0.0
Virgin Australia	163	163	149	91.4	152	93.3	0	0.0
All Airlines	584	576	490	85.1	499	86.6	8	1.4

	<i>Sectors</i>		<i>Arrivals On Time</i>		<i>Departures On Time</i>		<i>Cancellations</i>	
	<i>Sched.</i>	<i>Flown</i>	<i>No.</i>	<i>%</i>	<i>No.</i>	<i>%</i>	<i>No.</i>	<i>%</i>
Albury-Sydney								
QantasLink	91	88	73	83.0	73	83.0	3	3.3
Regional Express	104	102	88	86.3	88	86.3	2	1.9
Virgin Australia	60	60	54	90.0	51	85.0	0	0.0
All Airlines	255	250	215	86.0	212	84.8	5	2.0
Alice Springs-Adelaide								
Qantas	30	30	28	93.3	28	93.3	0	0.0
Virgin Australia	4	4	3	75.0	3	75.0	0	0.0
Virgin Australia Regional Airlines	18	18	16	88.9	16	88.9	0	0.0
All Airlines	52	52	47	90.4	47	90.4	0	0.0
Alice Springs-Darwin								
QantasLink	52	50	44	88.0	46	92.0	2	3.8
Virgin Australia	4	4	4	100.0	3	75.0	0	0.0
Virgin Australia Regional Airlines	18	18	13	72.2	13	72.2	0	0.0
All Airlines	74	72	61	84.7	62	86.1	2	2.7
Armidale-Sydney								
QantasLink	117	114	83	72.8	81	71.1	3	2.6
Regional Express	74	70	53	75.7	57	81.4	4	5.4
All Airlines	191	184	136	73.9	138	75.0	7	3.7
Ayers Rock-Sydney								
Jetstar	22	22	15	68.2	16	72.7	0	0.0
Virgin Australia	30	30	23	76.7	23	76.7	0	0.0
All Airlines	52	52	38	73.1	39	75.0	0	0.0
Ballina-Sydney								
Jetstar	68	68	50	73.5	38	55.9	0	0.0
Regional Express	24	24	15	62.5	15	62.5	0	0.0
Virgin Australia	32	32	26	81.3	26	81.3	0	0.0
All Airlines	124	124	91	73.4	79	63.7	0	0.0
Brisbane-Adelaide								
Jetstar	26	26	20	76.9	18	69.2	0	0.0
Qantas	99	99	84	84.8	83	83.8	0	0.0
QantasLink	30	28	26	92.9	27	96.4	2	6.7
Tigerair Australia	30	30	27	90.0	28	93.3	0	0.0
Virgin Australia	108	108	100	92.6	98	90.7	0	0.0
All Airlines	293	291	257	88.3	254	87.3	2	0.7
Brisbane-Bundaberg								
QantasLink	121	120	97	80.8	98	81.7	1	0.8
Virgin Australia	30	30	23	76.7	24	80.0	0	0.0
All Airlines	151	150	120	80.0	122	81.3	1	0.7
Brisbane-Cairns								
Jetstar	90	90	72	80.0	75	83.3	0	0.0
Qantas	116	116	90	77.6	97	83.6	0	0.0
QantasLink	4	4	1	25.0	2	50.0	0	0.0
Tigerair Australia	47	46	34	73.9	36	78.3	1	2.1
Virgin Australia	124	124	108	87.1	106	85.5	0	0.0
All Airlines	381	380	305	80.3	316	83.2	1	0.3
Brisbane-Canberra								
Qantas	35	35	29	82.9	30	85.7	0	0.0
QantasLink	114	109	87	79.8	85	78.0	5	4.4
Tigerair Australia	13	13	7	53.8	9	69.2	0	0.0
Virgin Australia	92	92	81	88.0	78	84.8	0	0.0
All Airlines	254	249	204	81.9	202	81.1	5	2.0

	<i>Sectors</i>		<i>Arrivals On Time</i>		<i>Departures On Time</i>		<i>Cancellations</i>	
	<i>Sched.</i>	<i>Flown</i>	<i>No.</i>	<i>%</i>	<i>No.</i>	<i>%</i>	<i>No.</i>	<i>%</i>
Brisbane-Darwin								
Jetstar	16	16	15	93.8	14	87.5	0	0.0
Qantas	48	48	37	77.1	41	85.4	0	0.0
Tigerair Australia	17	17	13	76.5	15	88.2	0	0.0
Virgin Australia	30	30	10	33.3	27	90.0	0	0.0
All Airlines	111	111	75	67.6	97	87.4	0	0.0
Brisbane-Emerald								
QantasLink	108	105	91	86.7	87	82.9	3	2.8
Virgin Australia	52	52	41	78.8	45	86.5	0	0.0
All Airlines	160	157	132	84.1	132	84.1	3	1.9
Brisbane-Gladstone								
QantasLink	123	121	99	81.8	97	80.2	2	1.6
Virgin Australia	75	75	54	72.0	64	85.3	0	0.0
All Airlines	198	196	153	78.1	161	82.1	2	1.0
Brisbane-Hamilton Island								
QantasLink	37	36	29	80.6	27	75.0	1	2.7
Virgin Australia	30	30	27	90.0	29	96.7	0	0.0
All Airlines	67	66	56	84.8	56	84.8	1	1.5
Brisbane-Hobart								
Jetstar	30	30	29	96.7	29	96.7	0	0.0
Virgin Australia	30	30	29	96.7	29	96.7	0	0.0
All Airlines	60	60	58	96.7	58	96.7	0	0.0
Brisbane-Mackay								
Jetstar	30	30	23	76.7	25	83.3	0	0.0
QantasLink	107	107	87	81.3	88	82.2	0	0.0
Virgin Australia	136	136	119	87.5	118	86.8	0	0.0
All Airlines	273	273	229	83.9	231	84.6	0	0.0
Brisbane-Melbourne								
Jetstar	112	109	73	67.0	62	56.9	3	2.7
Qantas	419	416	308	74.0	324	77.9	3	0.7
QantasLink	12	12	10	83.3	10	83.3	0	0.0
Tigerair Australia	132	130	86	66.2	83	63.8	2	1.5
Virgin Australia	394	385	303	78.7	341	88.6	9	2.3
All Airlines	1 069	1 052	780	74.1	820	77.9	17	1.6
Brisbane-Mount Isa								
QantasLink	53	51	43	84.3	44	86.3	2	3.8
Virgin Australia	18	18	16	88.9	18	100.0	0	0.0
All Airlines	71	69	59	85.5	62	89.9	2	2.8
Brisbane-Newcastle								
Jetstar	86	84	64	76.2	62	73.8	2	2.3
QantasLink	86	84	72	85.7	71	84.5	2	2.3
Virgin Australia	89	89	82	92.1	82	92.1	0	0.0
All Airlines	261	257	218	84.8	215	83.7	4	1.5
Brisbane-Perth								
Qantas	132	132	99	75.0	103	78.0	0	0.0
Tigerair Australia	17	17	17	100.0	16	94.1	0	0.0
Virgin Australia	101	101	90	89.1	85	84.2	0	0.0
All Airlines	250	250	206	82.4	204	81.6	0	0.0
Brisbane-Proserpine								
Jetstar	30	30	27	90.0	28	93.3	0	0.0
Tigerair Australia	20	20	17	85.0	18	90.0	0	0.0
Virgin Australia	31	31	29	93.5	28	90.3	0	0.0
All Airlines	81	81	73	90.1	74	91.4	0	0.0

	<i>Sectors</i>		<i>Arrivals On Time</i>		<i>Departures On Time</i>		<i>Cancellations</i>	
	<i>Sched.</i>	<i>Flown</i>	<i>No.</i>	<i>%</i>	<i>No.</i>	<i>%</i>	<i>No.</i>	<i>%</i>
Brisbane-Rockhampton								
QantasLink	171	171	140	81.9	140	81.9	0	0.0
Virgin Australia	140	140	82	58.6	97	69.3	0	0.0
All Airlines	311	311	222	71.4	237	76.2	0	0.0
Brisbane-Sydney								
Jetstar	168	165	113	68.5	118	71.5	3	1.8
Qantas	627	615	494	80.3	490	79.7	12	1.9
QantasLink	8	7	6	85.7	6	85.7	1	12.5
Tigerair Australia	111	109	67	61.5	69	63.3	2	1.8
Virgin Australia	510	500	434	86.8	450	90.0	10	2.0
All Airlines	1 424	1 396	1 114	79.8	1 133	81.2	28	2.0
Brisbane-Townsville								
Jetstar	39	39	33	84.6	31	79.5	0	0.0
Qantas	66	66	39	59.1	39	59.1	0	0.0
QantasLink	76	70	56	80.0	63	90.0	6	7.9
Virgin Australia	136	136	120	88.2	124	91.2	0	0.0
All Airlines	317	311	248	79.7	257	82.6	6	1.9
Broome-Perth								
QantasLink	101	101	95	94.1	94	93.1	0	0.0
Virgin Australia	4	4	3	75.0	2	50.0	0	0.0
Virgin Australia Regional Airlines	58	56	45	80.4	46	82.1	2	3.4
All Airlines	163	161	143	88.8	142	88.2	2	1.2
Bundaberg-Brisbane								
QantasLink	120	119	91	76.5	97	81.5	1	0.8
Virgin Australia	30	30	20	66.7	24	80.0	0	0.0
All Airlines	150	149	111	74.5	121	81.2	1	0.7
Cairns-Brisbane								
Jetstar	90	90	65	72.2	59	65.6	0	0.0
Qantas	116	116	94	81.0	91	78.4	0	0.0
QantasLink	4	4	4	100.0	4	100.0	0	0.0
Tigerair Australia	47	46	35	76.1	33	71.7	1	2.1
Virgin Australia	124	124	106	85.5	104	83.9	0	0.0
All Airlines	381	380	304	80.0	291	76.6	1	0.3
Cairns-Melbourne								
Jetstar	81	81	50	61.7	52	64.2	0	0.0
Qantas	38	38	26	68.4	27	71.1	0	0.0
Tigerair Australia	35	35	23	65.7	27	77.1	0	0.0
Virgin Australia	30	30	16	53.3	18	60.0	0	0.0
All Airlines	184	184	115	62.5	124	67.4	0	0.0
Cairns-Sydney								
Jetstar	75	75	61	81.3	58	77.3	0	0.0
Qantas	72	72	67	93.1	64	88.9	0	0.0
Tigerair Australia	48	47	35	74.5	34	72.3	1	2.1
Virgin Australia	83	83	78	94.0	73	88.0	0	0.0
All Airlines	278	277	241	87.0	229	82.7	1	0.4
Cairns-Townsville								
QantasLink	129	128	117	91.4	117	91.4	1	0.8
Regional Express	36	36	31	86.1	31	86.1	0	0.0
All Airlines	165	164	148	90.2	148	90.2	1	0.6
Canberra-Adelaide								
Qantas	48	48	44	91.7	43	89.6	0	0.0
Virgin Australia	26	26	23	88.5	24	92.3	0	0.0
All Airlines	74	74	67	90.5	67	90.5	0	0.0

	<i>Sectors</i>		<i>Arrivals On Time</i>		<i>Departures On Time</i>		<i>Cancellations</i>	
	<i>Sched.</i>	<i>Flown</i>	<i>No.</i>	<i>%</i>	<i>No.</i>	<i>%</i>	<i>No.</i>	<i>%</i>
Canberra-Brisbane								
Qantas	35	35	32	91.4	34	97.1	0	0.0
QantasLink	113	111	81	73.0	82	73.9	2	1.8
Tigerair Australia	13	13	6	46.2	6	46.2	0	0.0
Virgin Australia	92	92	83	90.2	85	92.4	0	0.0
All Airlines	253	251	202	80.5	207	82.5	2	0.8
Canberra-Melbourne								
Qantas	204	203	169	83.3	173	85.2	1	0.5
QantasLink	99	89	69	77.5	74	83.1	10	10.1
Tigerair Australia	35	34	21	61.8	22	64.7	1	2.9
Virgin Australia	171	165	132	80.0	138	83.6	6	3.5
All Airlines	509	491	391	79.6	407	82.9	18	3.5
Canberra-Sydney								
Qantas	19	19	17	89.5	19	100.0	0	0.0
QantasLink	460	438	380	86.8	380	86.8	22	4.8
Virgin Australia	264	250	198	79.2	198	79.2	14	5.3
All Airlines	743	707	595	84.2	597	84.4	36	4.8
Coffs Harbour-Sydney								
QantasLink	151	148	120	81.1	124	83.8	3	2.0
Tigerair Australia	12	12	9	75.0	9	75.0	0	0.0
Virgin Australia	55	55	46	83.6	46	83.6	0	0.0
All Airlines	218	215	175	81.4	179	83.3	3	1.4
Darwin-Alice Springs								
QantasLink	52	51	46	90.2	46	90.2	1	1.9
Virgin Australia	4	4	3	75.0	4	100.0	0	0.0
Virgin Australia Regional Airlines	18	18	18	100.0	18	100.0	0	0.0
All Airlines	74	73	67	91.8	68	93.2	1	1.4
Darwin-Brisbane								
Jetstar	17	16	16	100.0	14	87.5	1	5.9
Qantas	48	48	39	81.3	34	70.8	0	0.0
Tigerair Australia	17	17	16	94.1	16	94.1	0	0.0
Virgin Australia	30	30	19	63.3	19	63.3	0	0.0
All Airlines	112	111	90	81.1	83	74.8	1	0.9
Darwin-Melbourne								
Jetstar	22	22	16	72.7	13	59.1	0	0.0
Qantas	30	30	26	86.7	24	80.0	0	0.0
Virgin Australia	30	30	29	96.7	30	100.0	0	0.0
All Airlines	82	82	71	86.6	67	81.7	0	0.0
Darwin-Perth								
Qantas	30	30	24	80.0	24	80.0	0	0.0
Virgin Australia	22	22	17	77.3	17	77.3	0	0.0
Virgin Australia Regional Airlines	8	6	2	33.3	3	50.0	2	25.0
All Airlines	60	58	43	74.1	44	75.9	2	3.3
Darwin-Sydney								
Jetstar	18	18	17	94.4	15	83.3	0	0.0
Qantas	46	46	41	89.1	33	71.7	0	0.0
Virgin Australia	30	30	26	86.7	24	80.0	0	0.0
All Airlines	94	94	84	89.4	72	76.6	0	0.0
Dubbo-Sydney								
QantasLink	110	103	85	82.5	84	81.6	7	6.4
Regional Express	156	149	121	81.2	128	85.9	7	4.5
All Airlines	266	252	206	81.7	212	84.1	14	5.3

	<i>Sectors</i>		<i>Arrivals On Time</i>		<i>Departures On Time</i>		<i>Cancellations</i>	
	<i>Sched.</i>	<i>Flown</i>	<i>No.</i>	<i>%</i>	<i>No.</i>	<i>%</i>	<i>No.</i>	<i>%</i>
Emerald-Brisbane								
QantasLink	109	105	74	70.5	82	78.1	4	3.7
Virgin Australia	53	53	41	77.4	43	81.1	0	0.0
All Airlines	162	158	115	72.8	125	79.1	4	2.5
Geraldton-Perth								
QantasLink	47	46	41	89.1	41	89.1	1	2.1
Virgin Australia Regional Airlines	52	51	40	78.4	39	76.5	1	1.9
All Airlines	99	97	81	83.5	80	82.5	2	2.0
Gladstone-Brisbane								
QantasLink	122	120	98	81.7	96	80.0	2	1.6
Virgin Australia	74	74	47	63.5	56	75.7	0	0.0
All Airlines	196	194	145	74.7	152	78.4	2	1.0
Gold Coast-Adelaide								
Jetstar	30	30	28	93.3	29	96.7	0	0.0
Virgin Australia	30	30	28	93.3	27	90.0	0	0.0
All Airlines	60	60	56	93.3	56	93.3	0	0.0
Gold Coast-Melbourne								
Jetstar	162	161	119	73.9	100	62.1	1	0.6
Qantas	32	32	27	84.4	24	75.0	0	0.0
Tigerair Australia	90	88	55	62.5	53	60.2	2	2.2
Virgin Australia	182	181	138	76.2	133	73.5	1	0.5
All Airlines	466	462	339	73.4	310	67.1	4	0.9
Gold Coast-Sydney								
Jetstar	274	272	227	83.5	220	80.9	2	0.7
Qantas	104	104	90	86.5	84	80.8	0	0.0
QantasLink	17	16	9	56.3	9	56.3	1	5.9
Tigerair Australia	115	113	76	67.3	77	68.1	2	1.7
Virgin Australia	245	243	206	84.8	204	84.0	2	0.8
All Airlines	755	748	608	81.3	594	79.4	7	0.9
Hamilton Island-Brisbane								
QantasLink	37	36	27	75.0	28	77.8	1	2.7
Virgin Australia	30	30	28	93.3	28	93.3	0	0.0
All Airlines	67	66	55	83.3	56	84.8	1	1.5
Hamilton Island-Sydney								
Jetstar	30	30	23	76.7	22	73.3	0	0.0
Qantas	15	15	15	100.0	15	100.0	0	0.0
QantasLink	15	13	11	84.6	11	84.6	2	13.3
Virgin Australia	25	25	22	88.0	22	88.0	0	0.0
All Airlines	85	83	71	85.5	70	84.3	2	2.4
Hobart-Brisbane								
Jetstar	30	30	24	80.0	25	83.3	0	0.0
Virgin Australia	30	30	27	90.0	27	90.0	0	0.0
All Airlines	60	60	51	85.0	52	86.7	0	0.0
Hobart-Melbourne								
Jetstar	181	178	107	60.1	88	49.4	3	1.7
QantasLink	140	121	81	66.9	84	69.4	19	13.6
Tigerair Australia	35	35	22	62.9	25	71.4	0	0.0
Virgin Australia	134	133	93	69.9	100	75.2	1	0.7
All Airlines	490	467	303	64.9	297	63.6	23	4.7
Hobart-Sydney								
Jetstar	83	82	48	58.5	46	56.1	1	1.2
QantasLink	56	52	41	78.8	39	75.0	4	7.1
Virgin Australia	68	67	52	77.6	55	82.1	1	1.5
All Airlines	207	201	141	70.1	140	69.7	6	2.9

	<i>Sectors</i>		<i>Arrivals On Time</i>		<i>Departures On Time</i>		<i>Cancellations</i>	
	<i>Sched.</i>	<i>Flown</i>	<i>No.</i>	<i>%</i>	<i>No.</i>	<i>%</i>	<i>No.</i>	<i>%</i>
Kalgoorlie-Perth								
Qantas	12	12	10	83.3	8	66.7	0	0.0
QantasLink	70	70	68	97.1	68	97.1	0	0.0
Virgin Australia	13	13	13	100.0	13	100.0	0	0.0
Virgin Australia Regional Airlines	53	53	45	84.9	46	86.8	0	0.0
All Airlines	148	148	136	91.9	135	91.2	0	0.0
Karratha-Perth								
Qantas	18	18	17	94.4	17	94.4	0	0.0
QantasLink	167	162	142	87.7	140	86.4	5	3.0
Virgin Australia	4	3	3	100.0	3	100.0	1	25.0
Virgin Australia Regional Airlines	66	63	57	90.5	58	92.1	3	4.5
All Airlines	255	246	219	89.0	218	88.6	9	3.5
Launceston-Melbourne								
Jetstar	145	145	102	70.3	93	64.1	0	0.0
QantasLink	116	107	87	81.3	86	80.4	9	7.8
Virgin Australia	93	93	77	82.8	80	86.0	0	0.0
All Airlines	354	345	266	77.1	259	75.1	9	2.5
Launceston-Sydney								
Jetstar	51	50	35	70.0	36	72.0	1	2.0
Virgin Australia	27	27	14	51.9	18	66.7	0	0.0
All Airlines	78	77	49	63.6	54	70.1	1	1.3
Mackay-Brisbane								
Jetstar	30	30	24	80.0	23	76.7	0	0.0
QantasLink	111	109	90	82.6	90	82.6	2	1.8
Virgin Australia	135	135	124	91.9	127	94.1	0	0.0
All Airlines	276	274	238	86.9	240	87.6	2	0.7
Melbourne-Adelaide								
Jetstar	99	99	71	71.7	69	69.7	0	0.0
Qantas	284	281	232	82.6	228	81.1	3	1.1
Tigerair Australia	77	76	61	80.3	64	84.2	1	1.3
Virgin Australia	268	267	230	86.1	234	87.6	1	0.4
All Airlines	728	723	594	82.2	595	82.3	5	0.7
Melbourne-Brisbane								
Jetstar	112	110	72	65.5	75	68.2	2	1.8
Qantas	421	419	303	72.3	331	79.0	2	0.5
QantasLink	12	12	10	83.3	11	91.7	0	0.0
Tigerair Australia	132	130	80	61.5	87	66.9	2	1.5
Virgin Australia	371	363	281	77.4	326	89.8	8	2.2
All Airlines	1 048	1 034	746	72.1	830	80.3	14	1.3
Melbourne-Cairns								
Jetstar	81	81	69	85.2	62	76.5	0	0.0
Qantas	38	38	29	76.3	34	89.5	0	0.0
Tigerair Australia	35	35	29	82.9	30	85.7	0	0.0
Virgin Australia	30	30	22	73.3	27	90.0	0	0.0
All Airlines	184	184	149	81.0	153	83.2	0	0.0
Melbourne-Canberra								
Qantas	204	203	163	80.3	167	82.3	1	0.5
QantasLink	99	89	66	74.2	72	80.9	10	10.1
Tigerair Australia	35	35	28	80.0	28	80.0	0	0.0
Virgin Australia	170	165	139	84.2	148	89.7	5	2.9
All Airlines	508	492	396	80.5	415	84.3	16	3.1

	<i>Sectors</i>		<i>Arrivals On Time</i>		<i>Departures On Time</i>		<i>Cancellations</i>	
	<i>Sched.</i>	<i>Flown</i>	<i>No.</i>	<i>%</i>	<i>No.</i>	<i>%</i>	<i>No.</i>	<i>%</i>
Melbourne-Darwin								
Jetstar	22	22	17	77.3	17	77.3	0	0.0
Qantas	30	30	24	80.0	29	96.7	0	0.0
Virgin Australia	30	30	23	76.7	26	86.7	0	0.0
All Airlines	82	82	64	78.0	72	87.8	0	0.0
Melbourne-Gold Coast								
Jetstar	162	162	113	69.8	115	71.0	0	0.0
Qantas	32	32	28	87.5	28	87.5	0	0.0
Tigerair Australia	90	88	59	67.0	68	77.3	2	2.2
Virgin Australia	182	180	142	78.9	154	85.6	2	1.1
All Airlines	466	462	342	74.0	365	79.0	4	0.9
Melbourne-Hobart								
Jetstar	181	181	112	61.9	121	66.9	0	0.0
QantasLink	137	122	84	68.9	86	70.5	15	10.9
Tigerair Australia	35	34	28	82.4	30	88.2	1	2.9
Virgin Australia	134	132	102	77.3	112	84.8	2	1.5
All Airlines	487	469	326	69.5	349	74.4	18	3.7
Melbourne-Launceston								
Jetstar	145	145	114	78.6	114	78.6	0	0.0
QantasLink	116	107	91	85.0	93	86.9	9	7.8
Virgin Australia	93	93	72	77.4	79	84.9	0	0.0
All Airlines	354	345	277	80.3	286	82.9	9	2.5
Melbourne-Mildura								
QantasLink	95	95	79	83.2	81	85.3	0	0.0
Regional Express	84	82	68	82.9	71	86.6	2	2.4
Virgin Australia	30	30	26	86.7	27	90.0	0	0.0
All Airlines	209	207	173	83.6	179	86.5	2	1.0
Melbourne-Newcastle								
Jetstar	89	89	53	59.6	56	62.9	0	0.0
Virgin Australia	43	43	34	79.1	38	88.4	0	0.0
All Airlines	132	132	87	65.9	94	71.2	0	0.0
Melbourne-Perth								
Jetstar	52	51	45	88.2	38	74.5	1	1.9
Qantas	198	197	158	80.2	137	69.5	1	0.5
Tigerair Australia	59	58	50	86.2	48	82.8	1	1.7
Virgin Australia	126	126	107	84.9	98	77.8	0	0.0
All Airlines	435	432	360	83.3	321	74.3	3	0.7
Melbourne-Sunshine Coast								
Jetstar	86	86	65	75.6	64	74.4	0	0.0
Virgin Australia	58	58	52	89.7	50	86.2	0	0.0
All Airlines	144	144	117	81.3	114	79.2	0	0.0
Melbourne-Sydney								
Jetstar	389	380	238	62.6	255	67.1	9	2.3
Qantas	1 033	1 008	724	71.8	797	79.1	25	2.4
QantasLink	8	7	7	100.0	7	100.0	1	12.5
Tigerair Australia	243	240	143	59.6	156	65.0	3	1.2
Virgin Australia	768	742	608	81.9	669	90.2	26	3.4
All Airlines	2 441	2 377	1 720	72.4	1 884	79.3	64	2.6
Melbourne-Townsville								
Jetstar	26	26	20	76.9	20	76.9	0	0.0
Tigerair Australia	17	17	15	88.2	16	94.1	0	0.0
All Airlines	43	43	35	81.4	36	83.7	0	0.0

	<i>Sectors</i>		<i>Arrivals On Time</i>		<i>Departures On Time</i>		<i>Cancellations</i>	
	<i>Sched.</i>	<i>Flown</i>	<i>No.</i>	<i>%</i>	<i>No.</i>	<i>%</i>	<i>No.</i>	<i>%</i>
Mildura-Melbourne								
QantasLink	95	95	76	80.0	74	77.9	0	0.0
Regional Express	84	81	57	70.4	63	77.8	3	3.6
Virgin Australia	30	30	23	76.7	27	90.0	0	0.0
All Airlines	209	206	156	75.7	164	79.6	3	1.4
Mount Isa-Brisbane								
QantasLink	54	51	40	78.4	41	80.4	3	5.6
Virgin Australia	18	18	12	66.7	17	94.4	0	0.0
All Airlines	72	69	52	75.4	58	84.1	3	4.2
Newcastle-Brisbane								
Jetstar	86	84	64	76.2	69	82.1	2	2.3
QantasLink	86	84	66	78.6	65	77.4	2	2.3
Virgin Australia	88	88	77	87.5	80	90.9	0	0.0
All Airlines	260	256	207	80.9	214	83.6	4	1.5
Newcastle-Melbourne								
Jetstar	89	89	69	77.5	67	75.3	0	0.0
Virgin Australia	43	43	28	65.1	31	72.1	0	0.0
All Airlines	132	132	97	73.5	98	74.2	0	0.0
Newman-Perth								
Qantas	53	53	48	90.6	49	92.5	0	0.0
QantasLink	78	76	64	84.2	65	85.5	2	2.6
Virgin Australia	13	13	13	100.0	13	100.0	0	0.0
Virgin Australia Regional Airlines	27	27	22	81.5	23	85.2	0	0.0
All Airlines	171	169	147	87.0	150	88.8	2	1.2
Perth-Adelaide								
Jetstar	25	25	20	80.0	21	84.0	0	0.0
Qantas	101	101	89	88.1	91	90.1	0	0.0
QantasLink	13	13	10	76.9	12	92.3	0	0.0
Virgin Australia	46	46	44	95.7	44	95.7	0	0.0
Virgin Australia Regional Airlines	35	35	18	51.4	31	88.6	0	0.0
All Airlines	220	220	181	82.3	199	90.5	0	0.0
Perth-Brisbane								
Qantas	129	129	111	86.0	112	86.8	0	0.0
Tigerair Australia	17	17	17	100.0	17	100.0	0	0.0
Virgin Australia	100	100	86	86.0	92	92.0	0	0.0
All Airlines	246	246	214	87.0	221	89.8	0	0.0
Perth-Broome								
QantasLink	101	101	95	94.1	88	87.1	0	0.0
Virgin Australia	4	4	2	50.0	2	50.0	0	0.0
Virgin Australia Regional Airlines	58	57	51	89.5	52	91.2	1	1.7
All Airlines	163	162	148	91.4	142	87.7	1	0.6
Perth-Darwin								
Qantas	30	30	28	93.3	27	90.0	0	0.0
Virgin Australia	22	22	22	100.0	21	95.5	0	0.0
Virgin Australia Regional Airlines	8	6	5	83.3	5	83.3	2	25.0
All Airlines	60	58	55	94.8	53	91.4	2	3.3
Perth-Geraldton								
QantasLink	47	46	41	89.1	40	87.0	1	2.1
Virgin Australia Regional Airlines	52	51	37	72.5	37	72.5	1	1.9
All Airlines	99	97	78	80.4	77	79.4	2	2.0

	<i>Sectors</i>		<i>Arrivals</i>		<i>Departures</i>		<i>Cancellations</i>	
	<i>Sched.</i>	<i>Flown</i>	<i>On Time</i>		<i>On Time</i>		<i>No.</i>	<i>%</i>
			<i>No.</i>	<i>%</i>	<i>No.</i>	<i>%</i>		
Perth-Kalgoorlie								
Qantas	12	12	8	66.7	8	66.7	0	0.0
QantasLink	70	70	68	97.1	68	97.1	0	0.0
Virgin Australia	13	13	13	100.0	13	100.0	0	0.0
Virgin Australia Regional Airlines	53	53	44	83.0	45	84.9	0	0.0
All Airlines	148	148	133	89.9	134	90.5	0	0.0
Perth-Karratha								
Qantas	18	18	17	94.4	16	88.9	0	0.0
QantasLink	169	166	147	88.6	143	86.1	3	1.8
Virgin Australia	5	4	4	100.0	4	100.0	1	20.0
Virgin Australia Regional Airlines	66	63	59	93.7	60	95.2	3	4.5
All Airlines	258	251	227	90.4	223	88.8	7	2.7
Perth-Melbourne								
Jetstar	52	50	38	76.0	40	80.0	2	3.8
Qantas	198	197	156	79.2	164	83.2	1	0.5
Tigerair Australia	60	59	48	81.4	50	84.7	1	1.7
Virgin Australia	123	123	97	78.9	108	87.8	0	0.0
All Airlines	433	429	339	79.0	362	84.4	4	0.9
Perth-Newman								
Qantas	53	53	50	94.3	51	96.2	0	0.0
QantasLink	78	77	70	90.9	70	90.9	1	1.3
Virgin Australia	13	13	12	92.3	13	100.0	0	0.0
Virgin Australia Regional Airlines	27	27	23	85.2	24	88.9	0	0.0
All Airlines	171	170	155	91.2	158	92.9	1	0.6
Perth-Port Hedland								
Qantas	31	31	30	96.8	30	96.8	0	0.0
QantasLink	103	98	88	89.8	88	89.8	5	4.9
Virgin Australia	14	14	14	100.0	14	100.0	0	0.0
Virgin Australia Regional Airlines	37	37	31	83.8	31	83.8	0	0.0
All Airlines	185	180	163	90.6	163	90.6	5	2.7
Perth-Sydney								
Jetstar	26	26	23	88.5	22	84.6	0	0.0
Qantas	206	206	185	89.8	184	89.3	0	0.0
Tigerair Australia	25	22	21	95.5	20	90.9	3	12.0
Virgin Australia	115	114	100	87.7	105	92.1	1	0.9
All Airlines	372	368	329	89.4	331	89.9	4	1.1
Port Hedland-Perth								
Qantas	31	31	30	96.8	30	96.8	0	0.0
QantasLink	104	97	84	86.6	84	86.6	7	6.7
Virgin Australia	15	15	15	100.0	15	100.0	0	0.0
Virgin Australia Regional Airlines	37	37	33	89.2	32	86.5	0	0.0
All Airlines	187	180	162	90.0	161	89.4	7	3.7
Port Lincoln-Adelaide								
QantasLink	106	103	91	88.3	90	87.4	3	2.8
Regional Express	218	208	186	89.4	188	90.4	10	4.6
All Airlines	324	311	277	89.1	278	89.4	13	4.0
Port Macquarie-Sydney								
QantasLink	124	115	86	74.8	75	65.2	9	7.3
Virgin Australia	58	58	39	67.2	39	67.2	0	0.0
All Airlines	182	173	125	72.3	114	65.9	9	4.9
Proserpine-Brisbane								
Jetstar	30	30	26	86.7	28	93.3	0	0.0
Tigerair Australia	20	19	17	89.5	17	89.5	1	5.0
Virgin Australia	31	31	29	93.5	28	90.3	0	0.0
All Airlines	81	80	72	90.0	73	91.3	1	1.2

	<i>Sectors</i>		<i>Arrivals On Time</i>		<i>Departures On Time</i>		<i>Cancellations</i>	
	<i>Sched.</i>	<i>Flown</i>	<i>No.</i>	<i>%</i>	<i>No.</i>	<i>%</i>	<i>No.</i>	<i>%</i>
Proserpine-Sydney								
Jetstar	13	13	10	76.9	9	69.2	0	0.0
Tigerair Australia	30	30	22	73.3	20	66.7	0	0.0
All Airlines	43	43	32	74.4	29	67.4	0	0.0
Rockhampton-Brisbane								
QantasLink	167	165	139	84.2	132	80.0	2	1.2
Virgin Australia	140	140	97	69.3	94	67.1	0	0.0
All Airlines	307	305	236	77.4	226	74.1	2	0.7
Sunshine Coast-Melbourne								
Jetstar	86	86	58	67.4	51	59.3	0	0.0
Virgin Australia	58	57	43	75.4	40	70.2	1	1.7
All Airlines	144	143	101	70.6	91	63.6	1	0.7
Sunshine Coast-Sydney								
Jetstar	116	116	96	82.8	94	81.0	0	0.0
QantasLink	34	32	26	81.3	27	84.4	2	5.9
Virgin Australia	46	46	36	78.3	37	80.4	0	0.0
All Airlines	196	194	158	81.4	158	81.4	2	1.0
Sydney-Adelaide								
Jetstar	112	110	99	90.0	96	87.3	2	1.8
Qantas	224	224	191	85.3	185	82.6	0	0.0
QantasLink	29	25	19	76.0	20	80.0	4	13.8
Tigerair Australia	47	47	32	68.1	29	61.7	0	0.0
Virgin Australia	165	165	150	90.9	149	90.3	0	0.0
All Airlines	577	571	491	86.0	479	83.9	6	1.0
Sydney-Albury								
QantasLink	91	88	71	80.7	70	79.5	3	3.3
Regional Express	103	100	81	81.0	81	81.0	3	2.9
Virgin Australia	60	60	54	90.0	52	86.7	0	0.0
All Airlines	254	248	206	83.1	203	81.9	6	2.4
Sydney-Armidale								
QantasLink	117	115	86	74.8	83	72.2	2	1.7
Regional Express	74	71	56	78.9	54	76.1	3	4.1
All Airlines	191	186	142	76.3	137	73.7	5	2.6
Sydney-Ayers Rock								
Jetstar	22	22	19	86.4	16	72.7	0	0.0
Virgin Australia	30	30	27	90.0	26	86.7	0	0.0
All Airlines	52	52	46	88.5	42	80.8	0	0.0
Sydney-Ballina								
Jetstar	68	68	51	75.0	54	79.4	0	0.0
Regional Express	20	20	15	75.0	15	75.0	0	0.0
Virgin Australia	32	32	28	87.5	28	87.5	0	0.0
All Airlines	120	120	94	78.3	97	80.8	0	0.0
Sydney-Brisbane								
Jetstar	167	165	121	73.3	115	69.7	2	1.2
Qantas	627	616	452	73.4	475	77.1	11	1.8
QantasLink	8	7	6	85.7	6	85.7	1	12.5
Tigerair Australia	111	109	81	74.3	89	81.7	2	1.8
Virgin Australia	532	519	403	77.6	434	83.6	13	2.4
All Airlines	1 445	1 416	1 063	75.1	1 119	79.0	29	2.0

	<i>Sectors</i>		<i>Arrivals On Time</i>		<i>Departures On Time</i>		<i>Cancellations</i>	
	<i>Sched.</i>	<i>Flown</i>	<i>No.</i>	<i>%</i>	<i>No.</i>	<i>%</i>	<i>No.</i>	<i>%</i>
Sydney-Cairns								
Jetstar	72	72	60	83.3	53	73.6	0	0.0
Qantas	72	72	63	87.5	61	84.7	0	0.0
Tigerair Australia	48	48	41	85.4	44	91.7	0	0.0
Virgin Australia	83	83	69	83.1	68	81.9	0	0.0
All Airlines	275	275	233	84.7	226	82.2	0	0.0
Sydney-Canberra								
Qantas	19	19	17	89.5	17	89.5	0	0.0
QantasLink	460	436	366	83.9	353	81.0	24	5.2
Virgin Australia	265	251	212	84.5	194	77.3	14	5.3
All Airlines	744	706	595	84.3	564	79.9	38	5.1
Sydney-Coffs Harbour								
QantasLink	149	147	124	84.4	118	80.3	2	1.3
Tigerair Australia	12	12	11	91.7	11	91.7	0	0.0
Virgin Australia	55	55	43	78.2	44	80.0	0	0.0
All Airlines	216	214	178	83.2	173	80.8	2	0.9
Sydney-Darwin								
Jetstar	18	18	18	100.0	17	94.4	0	0.0
Qantas	46	46	33	71.7	35	76.1	0	0.0
Virgin Australia	30	30	24	80.0	30	100.0	0	0.0
All Airlines	94	94	75	79.8	82	87.2	0	0.0
Sydney-Dubbo								
QantasLink	110	105	81	77.1	79	75.2	5	4.5
Regional Express	155	151	125	82.8	117	77.5	4	2.6
All Airlines	265	256	206	80.5	196	76.6	9	3.4
Sydney-Gold Coast								
Jetstar	274	273	232	85.0	228	83.5	1	0.4
Qantas	104	104	81	77.9	76	73.1	0	0.0
QantasLink	17	16	11	68.8	11	68.8	1	5.9
Tigerair Australia	115	114	85	74.6	91	79.8	1	0.9
Virgin Australia	245	243	207	85.2	215	88.5	2	0.8
All Airlines	755	750	616	82.1	621	82.8	5	0.7
Sydney-Hamilton Island								
Jetstar	30	30	27	90.0	23	76.7	0	0.0
Qantas	15	15	15	100.0	14	93.3	0	0.0
QantasLink	15	13	11	84.6	11	84.6	2	13.3
Virgin Australia	25	25	23	92.0	22	88.0	0	0.0
All Airlines	85	83	76	91.6	70	84.3	2	2.4
Sydney-Hobart								
Jetstar	82	82	65	79.3	60	73.2	0	0.0
QantasLink	56	52	36	69.2	36	69.2	4	7.1
Virgin Australia	68	68	64	94.1	63	92.6	0	0.0
All Airlines	206	202	165	81.7	159	78.7	4	1.9
Sydney-Launceston								
Jetstar	51	51	43	84.3	35	68.6	0	0.0
Virgin Australia	27	27	24	88.9	23	85.2	0	0.0
All Airlines	78	78	67	85.9	58	74.4	0	0.0
Sydney-Melbourne								
Jetstar	390	381	259	68.0	242	63.5	9	2.3
Qantas	1 042	1 011	763	75.5	770	76.2	31	3.0
QantasLink	8	8	7	87.5	6	75.0	0	0.0
Tigerair Australia	245	241	147	61.0	148	61.4	4	1.6
Virgin Australia	741	716	588	82.1	619	86.5	25	3.4
All Airlines	2 426	2 357	1 764	74.8	1 785	75.7	69	2.8

	<i>Sectors</i>		<i>Arrivals On Time</i>		<i>Departures On Time</i>		<i>Cancellations</i>	
	<i>Sched.</i>	<i>Flown</i>	<i>No.</i>	<i>%</i>	<i>No.</i>	<i>%</i>	<i>No.</i>	<i>%</i>
Sydney-Perth								
Jetstar	26	26	25	96.2	23	88.5	0	0.0
Qantas	205	205	184	89.8	159	77.6	0	0.0
Tigerair Australia	26	22	19	86.4	20	90.9	4	15.4
Virgin Australia	116	115	109	94.8	100	87.0	1	0.9
All Airlines	373	368	337	91.6	302	82.1	5	1.3
Sydney-Port Macquarie								
QantasLink	124	115	82	71.3	79	68.7	9	7.3
Virgin Australia	58	58	47	81.0	47	81.0	0	0.0
All Airlines	182	173	129	74.6	126	72.8	9	4.9
Sydney-Proserpine								
Jetstar	13	13	11	84.6	12	92.3	0	0.0
Tigerair Australia	30	30	20	66.7	20	66.7	0	0.0
All Airlines	43	43	31	72.1	32	74.4	0	0.0
Sydney-Sunshine Coast								
Jetstar	116	116	103	88.8	98	84.5	0	0.0
QantasLink	34	31	26	83.9	27	87.1	3	8.8
Virgin Australia	46	46	40	87.0	42	91.3	0	0.0
All Airlines	196	193	169	87.6	167	86.5	3	1.5
Sydney-Tamworth								
QantasLink	131	128	98	76.6	94	73.4	3	2.3
Virgin Australia	38	38	33	86.8	33	86.8	0	0.0
All Airlines	169	166	131	78.9	127	76.5	3	1.8
Sydney-Townsville								
Jetstar	21	21	17	81.0	14	66.7	0	0.0
Virgin Australia	24	24	24	100.0	24	100.0	0	0.0
All Airlines	45	45	41	91.1	38	84.4	0	0.0
Sydney-Wagga Wagga								
QantasLink	107	105	87	82.9	87	82.9	2	1.9
Regional Express	130	126	106	84.1	103	81.7	4	3.1
All Airlines	237	231	193	83.5	190	82.3	6	2.5
Tamworth-Sydney								
QantasLink	132	128	98	76.6	95	74.2	4	3.0
Virgin Australia	39	39	34	87.2	34	87.2	0	0.0
All Airlines	171	167	132	79.0	129	77.2	4	2.3
Townsville-Brisbane								
Jetstar	39	39	35	89.7	29	74.4	0	0.0
Qantas	66	66	45	68.2	42	63.6	0	0.0
QantasLink	77	70	60	85.7	57	81.4	7	9.1
Virgin Australia	135	135	125	92.6	123	91.1	0	0.0
All Airlines	317	310	265	85.5	251	81.0	7	2.2
Townsville-Cairns								
QantasLink	130	130	120	92.3	118	90.8	0	0.0
Regional Express	36	35	32	91.4	31	88.6	1	2.8
All Airlines	166	165	152	92.1	149	90.3	1	0.6
Townsville-Melbourne								
Jetstar	26	26	20	76.9	19	73.1	0	0.0
Tigerair Australia	17	17	10	58.8	10	58.8	0	0.0
All Airlines	43	43	30	69.8	29	67.4	0	0.0
Townsville-Sydney								
Jetstar	21	21	15	71.4	15	71.4	0	0.0
Virgin Australia	24	24	24	100.0	22	91.7	0	0.0
All Airlines	45	45	39	86.7	37	82.2	0	0.0

	<i>Sectors</i>		<i>Arrivals On Time</i>		<i>Departures On Time</i>		<i>Cancellations</i>	
	<i>Sched.</i>	<i>Flown</i>	<i>No.</i>	<i>%</i>	<i>No.</i>	<i>%</i>	<i>No.</i>	<i>%</i>
Wagga Wagga-Sydney								
QantasLink	108	106	87	82.1	88	83.0	2	1.9
Regional Express	128	125	91	72.8	101	80.8	3	2.3
All Airlines	236	231	178	77.1	189	81.8	5	2.1

Airports

On time performance is reported for all routes where the passenger load averages over 8000 passengers per month, and where two or more airlines operate in competition. The following data reports by airport against flights operated on those routes only. This month, 8 major city airports and 32 regional city airports are covered.

Airport	Arrivals			Departures		
	Sectors	On Time		Sectors	On Time	
	Flown	No.	%	Flown	No.	%
Adelaide						
Jetstar	290	238	82.1	289	231	79.9
Qantas	783	668	85.3	783	670	85.6
QantasLink	169	146	86.4	168	138	82.1
Regional Express	208	186	89.4	206	186	90.3
Tigerair Australia	153	120	78.4	153	109	71.2
Virgin Australia	646	578	89.5	646	577	89.3
Virgin Australia Regional Airlines	53	34	64.2	53	44	83.0
All Airlines	2 302	1 970	85.6	2 298	1 955	85.1
Relates to services to and from Alice Springs, Brisbane, Canberra, Gold Coast, Melbourne, Perth, Port Lincoln and Sydney.						
Albury						
QantasLink	88	71	80.7	88	73	83.0
Regional Express	100	81	81.0	102	88	86.3
Virgin Australia	60	54	90.0	60	51	85.0
All Airlines	248	206	83.1	250	212	84.8
Relates to services to and from Sydney only.						
Alice Springs						
Qantas	30	29	96.7	30	28	93.3
QantasLink	51	46	90.2	50	46	92.0
Virgin Australia	8	6	75.0	8	6	75.0
Virgin Australia Regional Airlines	36	30	83.3	36	29	80.6
All Airlines	125	111	88.8	124	109	87.9
Relates to services to and from Adelaide and Darwin.						
Armidale						
QantasLink	115	86	74.8	114	81	71.1
Regional Express	71	56	78.9	70	57	81.4
All Airlines	186	142	76.3	184	138	75.0
Relates to services to and from Sydney only.						
Ayers Rock						
Jetstar	22	19	86.4	22	16	72.7
Virgin Australia	30	27	90.0	30	23	76.7
All Airlines	52	46	88.5	52	39	75.0
Relates to services to and from Sydney only.						
Ballina						
Jetstar	68	51	75.0	68	38	55.9
Regional Express	20	15	75.0	24	15	62.5
Virgin Australia	32	28	87.5	32	26	81.3
All Airlines	120	94	78.3	124	79	63.7
Relates to services to and from Sydney only.						

Airport	Arrivals			Departures		
	Sectors	On Time		Sectors	On Time	
	Flown	No.	%	Flown	No.	%
Brisbane						
Jetstar	620	469	75.6	619	462	74.6
Qantas	1 528	1 155	75.6	1 527	1 207	79.0
QantasLink	1 021	808	79.1	1 025	845	82.4
Tigerair Australia	381	273	71.7	382	274	71.7
Virgin Australia	2 100	1 698	80.9	2 107	1 843	87.5
All Airlines	5 650	4 403	77.9	5 660	4 631	81.8

Relates to services to and from Adelaide, Bundaberg, Cairns, Canberra, Darwin, Emerald, Gladstone, Hamilton Island, Hobart, Mackay, Melbourne, Mount Isa, Newcastle, Perth, Proserpine, Rockhampton, Sydney and Townsville.

Broome

QantasLink	101	95	94.1	101	94	93.1
Virgin Australia	4	2	50.0	4	2	50.0
Virgin Australia Regional Airlines	57	51	89.5	56	46	82.1
All Airlines	162	148	91.4	161	142	88.2

Relates to services to and from Perth only.

Bundaberg

QantasLink	120	97	80.8	119	97	81.5
Virgin Australia	30	23	76.7	30	24	80.0
All Airlines	150	120	80.0	149	121	81.2

Relates to services to and from Brisbane only.

Cairns

Jetstar	243	201	82.7	246	169	68.7
Qantas	226	182	80.5	226	182	80.5
QantasLink	134	121	90.3	132	121	91.7
Regional Express	35	32	91.4	36	31	86.1
Tigerair Australia	129	104	80.6	128	94	73.4
Virgin Australia	237	199	84.0	237	195	82.3
All Airlines	1 004	839	83.6	1 005	792	78.8

Relates to services to and from Brisbane, Melbourne, Sydney and Townsville.

Canberra

Qantas	305	244	80.0	305	269	88.2
QantasLink	634	519	81.9	638	536	84.0
Tigerair Australia	48	35	72.9	47	28	59.6
Virgin Australia	534	457	85.6	533	445	83.5
All Airlines	1 521	1 255	82.5	1 523	1 278	83.9

Relates to services to and from Adelaide, Brisbane, Melbourne and Sydney.

Coffs Harbour

QantasLink	147	124	84.4	148	124	83.8
Tigerair Australia	12	11	91.7	12	9	75.0
Virgin Australia	55	43	78.2	55	46	83.6
All Airlines	214	178	83.2	215	179	83.3

Relates to services to and from Sydney only.

Airport	Arrivals			Departures		
	Sectors Flown	On Time		Sectors Flown	On Time	
		No.	%		No.	%
Darwin						
Jetstar	56	50	89.3	56	42	75.0
Qantas	154	122	79.2	154	115	74.7
QantasLink	50	44	88.0	51	46	90.2
Tigerair Australia	17	13	76.5	17	16	94.1
Virgin Australia	116	83	71.6	116	94	81.0
Virgin Australia Regional Airlines	24	18	75.0	24	21	87.5
All Airlines	417	330	79.1	418	334	79.9
Relates to services to and from Alice Springs, Brisbane, Melbourne, Perth and Sydney.						
Dubbo						
QantasLink	105	81	77.1	103	84	81.6
Regional Express	151	125	82.8	149	128	85.9
All Airlines	256	206	80.5	252	212	84.1
Relates to services to and from Sydney only.						
Emerald						
QantasLink	105	91	86.7	105	82	78.1
Virgin Australia	52	41	78.8	53	43	81.1
All Airlines	157	132	84.1	158	125	79.1
Relates to services to and from Brisbane only.						
Geraldton						
QantasLink	46	41	89.1	46	41	89.1
Virgin Australia Regional Airlines	51	37	72.5	51	39	76.5
All Airlines	97	78	80.4	97	80	82.5
Relates to services to and from Perth only.						
Gladstone						
QantasLink	121	99	81.8	120	96	80.0
Virgin Australia	75	54	72.0	74	56	75.7
All Airlines	196	153	78.1	194	152	78.4
Relates to services to and from Brisbane only.						
Gold Coast						
Jetstar	465	373	80.2	463	349	75.4
Qantas	136	109	80.1	136	108	79.4
QantasLink	16	11	68.8	16	9	56.3
Tigerair Australia	202	144	71.3	201	130	64.7
Virgin Australia	453	378	83.4	454	364	80.2
All Airlines	1 272	1 015	79.8	1 270	960	75.6
Relates to services to and from Adelaide, Melbourne and Sydney.						
Hamilton Island						
Jetstar	30	27	90.0	30	22	73.3
Qantas	15	15	100.0	15	15	100.0
QantasLink	49	40	81.6	49	39	79.6
Virgin Australia	55	50	90.9	55	50	90.9
All Airlines	149	132	88.6	149	126	84.6
Relates to services to and from Brisbane and Sydney.						

Airport	Arrivals			Departures		
	Sectors Flown	On Time		Sectors Flown	On Time	
		No.	%		No.	%
Hobart						
Jetstar	293	206	70.3	290	159	54.8
QantasLink	174	120	69.0	173	123	71.1
Tigerair Australia	34	28	82.4	35	25	71.4
Virgin Australia	230	195	84.8	230	182	79.1
All Airlines	731	549	75.1	728	489	67.2
Relates to services to and from Brisbane, Melbourne and Sydney.						
Kalgoorlie						
Qantas	12	8	66.7	12	8	66.7
QantasLink	70	68	97.1	70	68	97.1
Virgin Australia	13	13	100.0	13	13	100.0
Virgin Australia Regional Airlines	53	44	83.0	53	46	86.8
All Airlines	148	133	89.9	148	135	91.2
Relates to services to and from Perth only.						
Karratha						
Qantas	18	17	94.4	18	17	94.4
QantasLink	166	147	88.6	162	140	86.4
Virgin Australia	4	4	100.0	3	3	100.0
Virgin Australia Regional Airlines	63	59	93.7	63	58	92.1
All Airlines	251	227	90.4	246	218	88.6
Relates to services to and from Perth only.						
Launceston						
Jetstar	196	157	80.1	195	129	66.2
QantasLink	107	91	85.0	107	86	80.4
Virgin Australia	120	96	80.0	120	98	81.7
All Airlines	423	344	81.3	422	313	74.2
Relates to services to and from Melbourne and Sydney.						
Mackay						
Jetstar	30	23	76.7	30	23	76.7
QantasLink	107	87	81.3	109	90	82.6
Virgin Australia	136	119	87.5	135	127	94.1
All Airlines	273	229	83.9	274	240	87.6
Relates to services to and from Brisbane only.						
Melbourne						
Jetstar	1 426	983	68.9	1 432	1 006	70.3
Qantas	2 205	1 702	77.2	2 208	1 751	79.3
QantasLink	432	330	76.4	432	350	81.0
Regional Express	81	57	70.4	82	71	86.6
Tigerair Australia	715	461	64.5	713	527	73.9
Virgin Australia	2 259	1 789	79.2	2 259	1 988	88.0
All Airlines	7 118	5 322	74.8	7 126	5 693	79.9
Relates to services to and from Adelaide, Brisbane, Cairns, Canberra, Darwin, Gold Coast, Hobart, Launceston, Mildura, Newcastle, Perth, Sunshine Coast, Sydney and Townsville.						
Mildura						
QantasLink	95	79	83.2	95	74	77.9
Regional Express	82	68	82.9	81	63	77.8
Virgin Australia	30	26	86.7	30	27	90.0
All Airlines	207	173	83.6	206	164	79.6
Relates to services to and from Melbourne only.						

Airport	Arrivals			Departures		
	Sectors Flown	On Time		Sectors Flown	On Time	
		No.	%		No.	%
Mount Isa						
QantasLink	51	43	84.3	51	41	80.4
Virgin Australia	18	16	88.9	18	17	94.4
All Airlines	69	59	85.5	69	58	84.1
Relates to services to and from Brisbane only.						
Newcastle						
Jetstar	173	117	67.6	173	136	78.6
QantasLink	84	72	85.7	84	65	77.4
Virgin Australia	132	116	87.9	131	111	84.7
All Airlines	389	305	78.4	388	312	80.4
Relates to services to and from Brisbane and Melbourne.						
Newman						
Qantas	53	50	94.3	53	49	92.5
QantasLink	77	70	90.9	76	65	85.5
Virgin Australia	13	12	92.3	13	13	100.0
Virgin Australia Regional Airlines	27	23	85.2	27	23	85.2
All Airlines	170	155	91.2	169	150	88.8
Relates to services to and from Perth only.						
Perth						
Jetstar	102	92	90.2	101	83	82.2
Qantas	774	658	85.0	777	683	87.9
QantasLink	565	506	89.6	571	509	89.1
Tigerair Australia	97	86	88.7	98	87	88.8
Virgin Australia	454	410	90.3	453	416	91.8
Virgin Australia Regional Airlines	328	262	79.9	329	285	86.6
All Airlines	2 320	2 014	86.8	2 329	2 063	88.6
Relates to services to and from Adelaide, Brisbane, Broome, Darwin, Geraldton, Kalgoorlie, Karratha, Melbourne, Newman, Port Hedland and Sydney.						
Port Hedland						
Qantas	31	30	96.8	31	30	96.8
QantasLink	98	88	89.8	97	84	86.6
Virgin Australia	14	14	100.0	15	15	100.0
Virgin Australia Regional Airlines	37	31	83.8	37	32	86.5
All Airlines	180	163	90.6	180	161	89.4
Relates to services to and from Perth only.						
Port Lincoln						
QantasLink	103	86	83.5	103	90	87.4
Regional Express	206	186	90.3	208	188	90.4
All Airlines	309	272	88.0	311	278	89.4
Relates to services to and from Adelaide only.						
Port Macquarie						
QantasLink	115	82	71.3	115	75	65.2
Virgin Australia	58	47	81.0	58	39	67.2
All Airlines	173	129	74.6	173	114	65.9
Relates to services to and from Sydney only.						

Airport	Arrivals			Departures		
	Sectors Flown	On Time		Sectors Flown	On Time	
		No.	%		No.	%
Proserpine						
Jetstar	43	38	88.4	43	37	86.0
Tigerair Australia	50	37	74.0	49	37	75.5
Virgin Australia	31	29	93.5	31	28	90.3
All Airlines	124	104	83.9	123	102	82.9
Relates to services to and from Brisbane and Sydney.						
Rockhampton						
QantasLink	171	140	81.9	165	132	80.0
Virgin Australia	140	82	58.6	140	94	67.1
All Airlines	311	222	71.4	305	226	74.1
Relates to services to and from Brisbane only.						
Sunshine Coast						
Jetstar	202	168	83.2	202	145	71.8
QantasLink	31	26	83.9	32	27	84.4
Virgin Australia	104	92	88.5	103	77	74.8
All Airlines	337	286	84.9	337	249	73.9
Relates to services to and from Melbourne and Sydney.						
Sydney						
Jetstar	1 448	1 066	73.6	1 448	1 086	75.0
Qantas	2 317	1 834	79.2	2 312	1 792	77.5
QantasLink	1 391	1 130	81.2	1 391	1 080	77.6
Regional Express	470	368	78.3	468	370	79.1
Tigerair Australia	620	400	64.5	623	452	72.6
Virgin Australia	2 588	2 169	83.8	2 585	2 213	85.6
All Airlines	8 834	6 967	78.9	8 827	6 993	79.2
Relates to services to and from Adelaide, Albury, Armidale, Ayers Rock, Ballina, Brisbane, Cairns, Canberra, Coffs Harbour, Darwin, Dubbo, Gold Coast, Hamilton Island, Hobart, Launceston, Melbourne, Perth, Port Macquarie, Proserpine, Sunshine Coast, Tamworth, Townsville and Wagga Wagga.						
Tamworth						
QantasLink	128	98	76.6	128	95	74.2
Virgin Australia	38	33	86.8	39	34	87.2
All Airlines	166	131	78.9	167	129	77.2
Relates to services to and from Sydney only.						
Townsville						
Jetstar	86	70	81.4	86	63	73.3
Qantas	66	39	59.1	66	42	63.6
QantasLink	198	173	87.4	200	175	87.5
Regional Express	36	31	86.1	35	31	88.6
Tigerair Australia	17	15	88.2	17	10	58.8
Virgin Australia	160	144	90.0	159	145	91.2
All Airlines	563	472	83.8	563	466	82.8
Relates to services to and from Brisbane, Cairns, Melbourne and Sydney.						
Wagga Wagga						
QantasLink	105	87	82.9	106	88	83.0
Regional Express	126	106	84.1	125	101	80.8
All Airlines	231	193	83.5	231	189	81.8
Relates to services to and from Sydney only.						

Definitions

On time arrival	A flight arrival is counted as "on time" if it arrived at the gate before 15 minutes after the scheduled arrival time shown in the carriers' schedule. Neither diverted nor cancelled flights count as on time.
On time departure	A flight departure is counted as "on time" if it departs the gate before 15 minutes after the scheduled departure time shown in the carriers' schedule.
Cancellation	A flight removed from service within 7 days of scheduled departure is regarded as a cancellation.
On time departure percentage	The percentage of on time departures is measured against the number of departures <i>operated</i> on any particular sector.
On time arrival percentage	The percentage of on time arrivals is measured against the number of arrivals <i>operated</i> on any particular sector.
Cancellation percentage	The percentage of cancellations is measured against the number of services <i>scheduled</i> on any particular sector.
