



Australian Government

Department of Infrastructure and Regional Development

Bureau of Infrastructure, Transport and Regional Economics

STATISTICAL REPORT



Aviation

Domestic airline on time performance
November 2016

© Commonwealth of Australia 2016

ISSN: 1832-0759

Ownership of intellectual property rights in this publication

Unless otherwise noted, copyright (and any other intellectual property rights, if any) in this publication is owned by the Commonwealth of Australia (referred to below as the Commonwealth).

Disclaimer

The material contained in this publication is made available on the understanding that the Commonwealth is not providing professional advice, and that users exercise their own skill and care with respect to its use, and seek independent advice if necessary.

The Commonwealth makes no representations or warranties as to the contents or accuracy of the information contained in this publication. To the extent permitted by law, the Commonwealth disclaims liability to any person or organisation in respect of anything done, or omitted to be done, in reliance upon information contained in this publication.

Creative Commons licence

With the exception of (a) the Coat of Arms; and (b) the Department of Infrastructure and Regional Development's photos and graphics, copyright in this publication is licensed under a Creative Commons Attribution 3.0 Australia Licence.

Creative Commons Attribution 3.0 Australia Licence is a standard form licence agreement that allows you to copy, communicate and adapt this publication provided that you attribute the work to the Commonwealth and abide by the other licence terms. A summary of the licence terms is available from <http://creativecommons.org/licenses/by/3.0/au/deed.en>. The full licence terms are available from <http://creativecommons.org/licenses/by/3.0/au/legalcode>.

Use of the Coat of Arms

The Department of the Prime Minister and Cabinet sets the terms under which the Coat of Arms is used. Please refer to the Department's Commonwealth Coat of Arms and Government branding web page <http://www.dpmmc.gov.au/guidelines/index.cfm#brand> and, in particular, the Guidelines on the use of the Commonwealth Coat of Arms publication.

An appropriate citation for this report is:

Bureau of Infrastructure, Transport and Regional Economics (BITRE), 2016, Domestic airline on time performance, Statistical Report, BITRE, Canberra ACT.

Contact us

This publication is available in PDF format. All other rights are reserved, including in relation to any Departmental logos or trade marks which may exist. For enquiries regarding the licence and any use of this publication, please contact:

Bureau of Infrastructure, Transport and Regional Economics (BITRE)
Department of Infrastructure and Regional Development
GPO Box 501, Canberra ACT 2601, Australia
Telephone: (international) +61 2 6274 7210
Fax: (international) +61 2 6274 6855
Email: bitre@infrastructure.gov.au
Website: www.bitre.gov.au

Inquiries

Should you require additional information about the statistics contained in this publication:

Telephone (02) 6274 7790 or Facsimile (02) 6274 7727

Electronic mail: AVSTATS@infrastructure.gov.au

Web site: <http://www.bitre.gov.au/statistics/aviation/otphome.aspx>

Foreword

The Bureau of Infrastructure, Transport and Regional Economics (BITRE) monitors the punctuality and reliability of major domestic airlines operating between Australian airports. The purpose of this is to allow for evaluation of overall industry and individual airline performance, so that consumers of air travel can make informed decisions.

The following domestic airlines currently report this information monthly to the BITRE: Jetstar, Qantas, QantasLink, Regional Express, Tigerair Australia, Virgin Australia and Virgin Australia Regional Airlines. Data has been gathered since November 2003, although some airlines commenced reporting at a later date, including Jetstar which first reported in May 2004, MacAir in July 2005, Tigerair Australia in April 2008 and Virgin Australia Regional Airlines in May 2013. MacAir ceased operations in February 2009 and data was not received for December 2008 onwards. Virgin Blue was rebranded as Virgin Australia in May 2011 and Tiger Airways was rebranded as Tigerair Australia in July 2013 and time series data in Microsoft Excel spreadsheet format on the BITRE website have been revised to reflect these changes. Services operated by Skywest on behalf of Virgin Australia using ATR/F100 aircraft commenced in November 2011 and were shown separately as Virgin Australia – ATR/F100 Operations. Virgin Australia Regional Airlines commenced operations in May 2013. It was formed after the acquisition of Skywest by Virgin Australia and represented a combination of operations previously reported under Skywest and Virgin Australia – ATR/F100 Operations. In January 2016, Virgin Australia transferred their ATR fleet from Virgin Australia Regional Airlines to Virgin Australia.

Information presented in this report is for Australian domestic routes for which the passenger load averaged 8 000 or more passengers per month over the previous six months and where two or more airlines operated in competition on those routes. There were 66 routes that met this definition in November 2016. Over time, routes which meet these criteria change as airline networks and traffic levels vary.

Participating airlines report their overall monthly network performance where this is possible.

Total industry figures encompass all services operated by reporting airlines only. These airlines collectively carried over 95 per cent of total domestic passengers (regular public transport only) in 2015.

The method of capturing on time performance varies between airlines utilising different recording systems. Jetstar and Qantas jet aircraft use Aircraft Communication Addressing and Reporting System (ACARS) to electronically measure on time performance. Regional Express, Tigerair Australia, Virgin Australia, Virgin Australia Regional Airlines and the Qantas non-jet fleet record on time performance manually using records from pilots, gate agents and/or ground crews.

After initial data is collected, aggregate reports are audited internally by participating airlines prior to publication.

Reports and detailed time series data in Microsoft Excel spreadsheet format are available from the BITRE website at: <http://www.bitre.gov.au/statistics/aviation/otphome.aspx>.

Contents

	Page
Industry performance	1
Individual routes	10
Airports	23
Definitions	29

Industry performance

For November 2016, on time performance over all routes operated by participating airlines (Jetstar, Qantas, QantasLink, Regional Express, Tigerair Australia, Virgin Australia and Virgin Australia Regional Airlines) averaged 80.8 per cent for on time arrivals and 82.3 per cent for on time departures. Cancellations represented 1.8 per cent of all scheduled flights. The equivalent figures for November 2015 were 83.0 per cent for arrivals, 84.1 per cent for departures and 1.7 per cent for cancellations.

This month's on time arrivals figure was lower than the long term average performance for all routes (82.8 per cent) and the on time departures figure was also lower than the long term average (84.2 per cent). The rate of cancellations was higher than the long term average of 1.4 per cent.

Virgin Australia achieved the highest on time arrivals among the major domestic airlines at 83.4 per cent followed by Qantas at 80.9 per cent, Jetstar at 71.7 per cent and Tigerair Australia at 71.4 per cent. Of the regional airlines, Virgin Australia Regional Airlines recorded 90.1 per cent for on time arrivals, followed by Regional Express at 84.4 per cent and QantasLink at 82.7 per cent. The Qantas network (Qantas and QantasLink combined operations) recorded 81.8 per cent for on time arrivals while the Virgin Australia network (Virgin Australia and Virgin Australia Regional Airlines combined operations) recorded 83.7 per cent.

Virgin Australia also achieved the highest level of on time departures for November 2016 at 86.1 per cent, followed by Qantas at 84.1 per cent, Tigerair Australia at 72.2 per cent and Jetstar at 69.5 per cent. Of the regional airlines, Virgin Australia Regional Airlines recorded 91.2 per cent, followed by Regional Express at 86.6 per cent and QantasLink at 83.3 per cent. The Qantas network recorded 83.7 per cent for on time departures while the Virgin Australia network recorded 86.3 per cent.

QantasLink and Jetstar recorded the highest percentage of cancellations (both at 2.6 per cent) during the month, followed by Virgin Australia (1.8 per cent), Tigerair Australia (1.4 per cent), Virgin Australia Regional Airlines (1.2 per cent), Qantas (1.1 per cent), and Regional Express (0.6 per cent).

Airlines' on time performance varies across the routes they serve. Individual route data by specific airline for 66 routes are shown on pages 10-22.

Of the 66 routes which met the criteria for on time performance reporting in November 2016, the Darwin-Alice Springs route had the highest percentage of on time arrivals (100.0 per cent) and the Hamilton Island-Melbourne and Darwin-Alice Springs routes had the highest percentage of on time departures (both at 100.0 per cent). The Sunshine Coast-Melbourne route had the lowest percentage of on time arrivals (60.0 per cent) and the Launceston-Sydney route had the lowest percentage of on time departures (61.4 per cent).

Cancellations were highest on the Canberra-Sydney route at 5.3 per cent, followed by the Moranbah-Brisbane route at 5.1 per cent, the Sydney-Canberra and Brisbane-Moranbah routes

at 4.9 percent, the Sydney-Melbourne and Melbourne-Sydney routes at 4.6 per cent and the Tamworth-Sydney route at 4.1 per cent.

Alice Springs Airport recorded the highest percentage of on time arrivals (97.2 per cent) and Newman Airport recorded the highest percentage of on time departures (92.9 per cent). Melbourne Airport recorded the lowest percentage of on time arrivals (69.8 per cent) and Launceston Airport recorded the lowest percentage of on time departures (64.6 per cent). These figures only refer to reported routes and do not cover all flights at these airports.

Table 1 On time performance for November 2016 — Total Industry

	<i>Sectors</i>		<i>Arrivals On Time</i>		<i>Departures On Time</i>		<i>Cancellations</i>	
	<i>Scheduled</i>	<i>Flown</i>	<i>No.</i>	<i>%</i>	<i>No.</i>	<i>%</i>	<i>No.</i>	<i>%</i>
Jetstar	6 916	6 734	4 828	71.7	4 679	69.5	182	2.6
Qantas	9 060	8 958	7 245	80.9	7 532	84.1	102	1.1
QantasLink	10 556	10 278	8 498	82.7	8 564	83.3	278	2.6
Regional Express	6 570	6 533	5 513	84.4	5 657	86.6	37	0.6
Tigerair Australia	2 186	2 156	1 540	71.4	1 556	72.2	30	1.4
Virgin Australia	12 255	12 036	10 037	83.4	10 362	86.1	219	1.8
Virgin Australia Regional Airlines	653	645	581	90.1	588	91.2	8	1.2
All Airlines	48 196	47 340	38 242	80.8	38 938	82.3	856	1.8
Qantas - all QF designated services	19 616	19 236	15 743	81.8	16 096	83.7	380	1.9
Virgin Australia - all VA designated services	12 908	12 681	10 618	83.7	10 950	86.3	227	1.8

Total airline network data (including routes not shown in this report).

Airlines' on time performance varies across the routes they serve. Individual route data by specific airline for 66 routes are shown on pages 10-22.

Table 2 Top ten routes for on time performance for November 2016 (participating airlines only)

<i>Arrivals</i>		<i>Departures</i>	
<i>Route</i>	<i>On Time (%)</i>	<i>Route</i>	<i>On Time (%)</i>
Darwin-Alice Springs	100.0	Hamilton Island-Melbourne	100.0
Alice Springs-Adelaide	97.7	Darwin-Alice Springs	100.0
Melbourne-Hamilton Island	97.4	Perth-Darwin	95.4
Adelaide-Perth	95.8	Adelaide-Alice Springs	95.3
Cairns-Townsville	95.6	Cairns-Townsville	95.1
Adelaide-Gold Coast	94.8	Melbourne-Hamilton Island	94.7
Perth-Kalgoorlie	94.2	Perth-Adelaide	94.2
Darwin-Perth	93.8	Brisbane-Hamilton Island	94.1
Perth-Darwin	93.8	Perth-Kalgoorlie	93.5
Perth-Adelaide	93.7	Adelaide-Gold Coast	93.1

Table 3 Top ten airports for on time performance for November 2016 (participating airlines and reported routes only)

<i>Arrivals</i>		<i>Departures</i>	
<i>Airport</i>	<i>On Time (%)</i>	<i>Airport</i>	<i>On Time (%)</i>
Alice Springs	97.2	Newman	92.9
Kalgoorlie	94.2	Geraldton	92.6
Port Lincoln	91.6	Port Hedland	91.9
Karratha	91.4	Karratha	91.6
Emerald	90.8	Kalgoorlie	91.4
Newman	90.8	Port Lincoln	91.3
Geraldton	90.7	Alice Springs	90.6
Broome	90.1	Perth	90.0
Hamilton Island	89.8	Emerald	89.7
Proserpine	88.3	Moranbah	86.7

Total industry on time performance

Figure 1 On time performance (by month from November 2013)—Total Industry

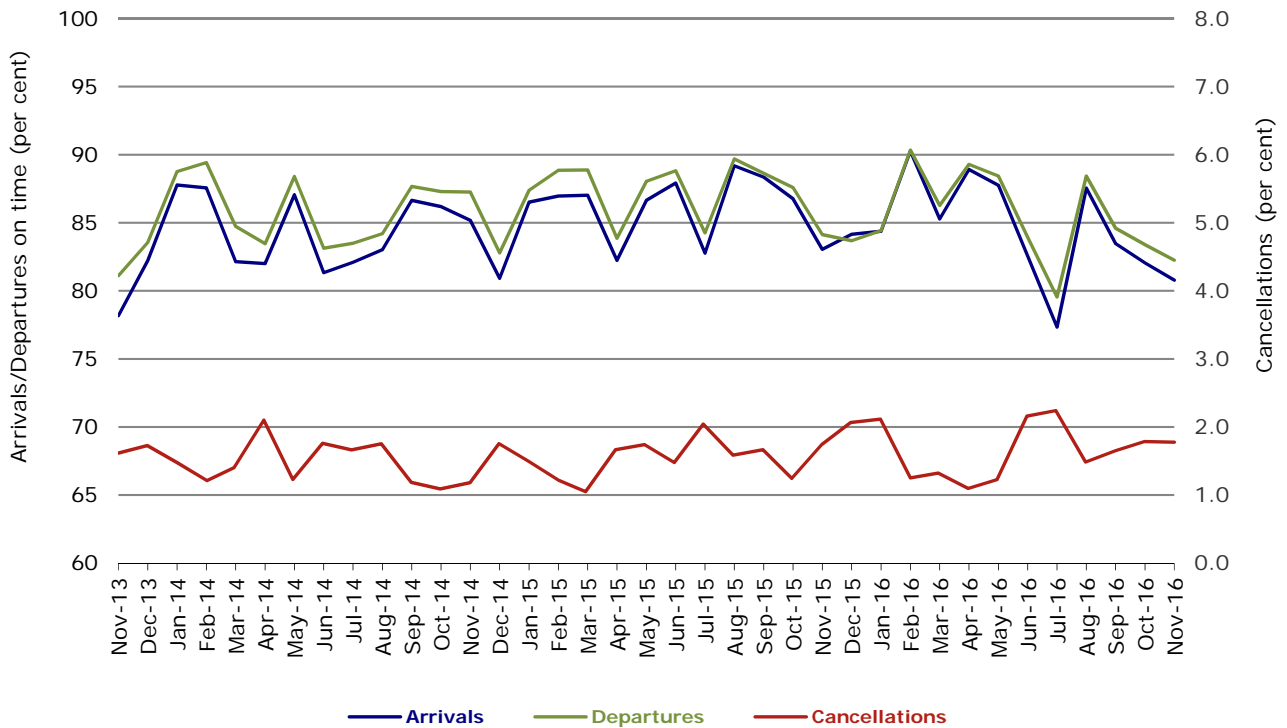


Figure 2 Arrivals on time (by month from November 2015)

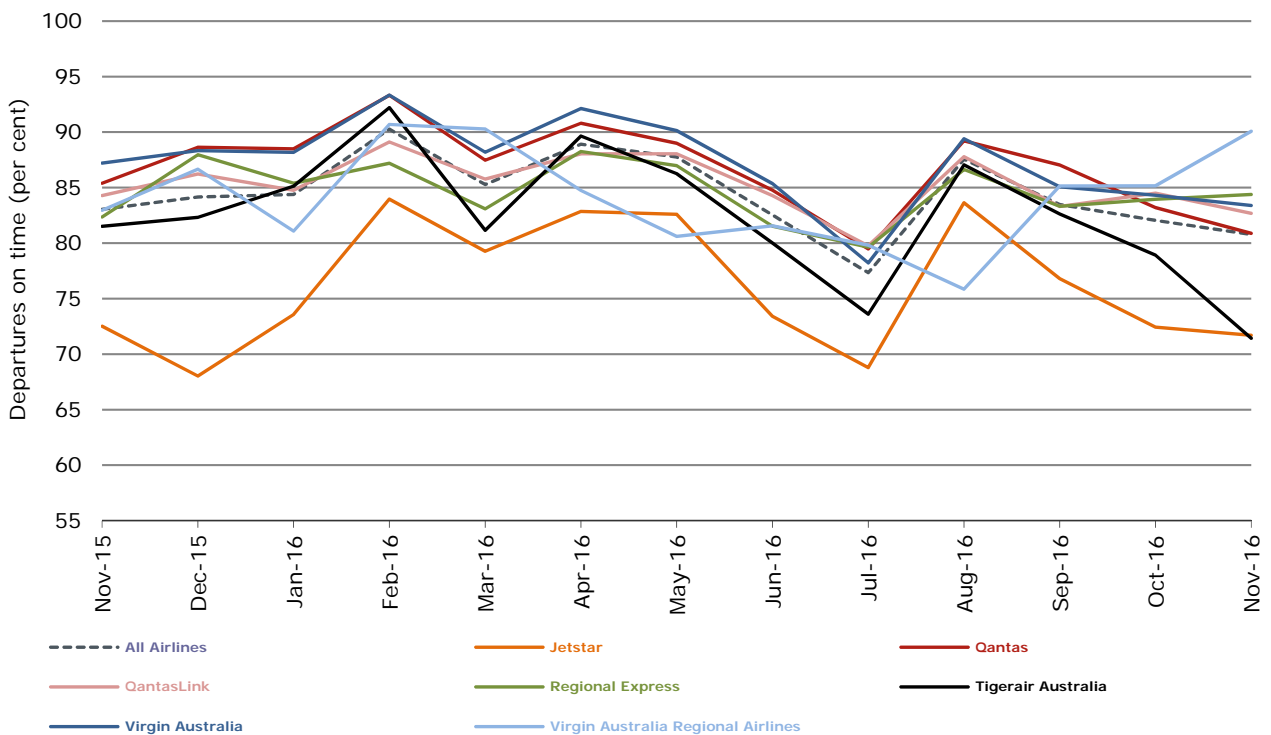


Figure 3 Departures on time (by month from November 2015)

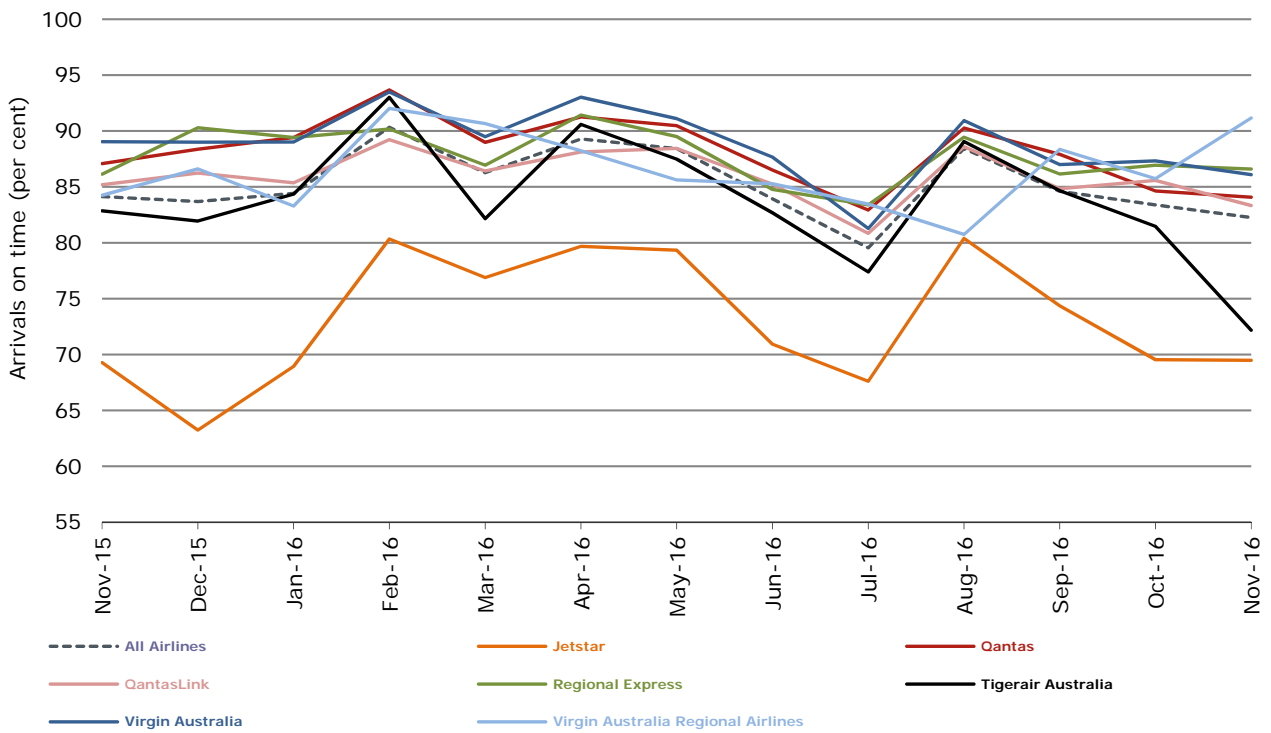
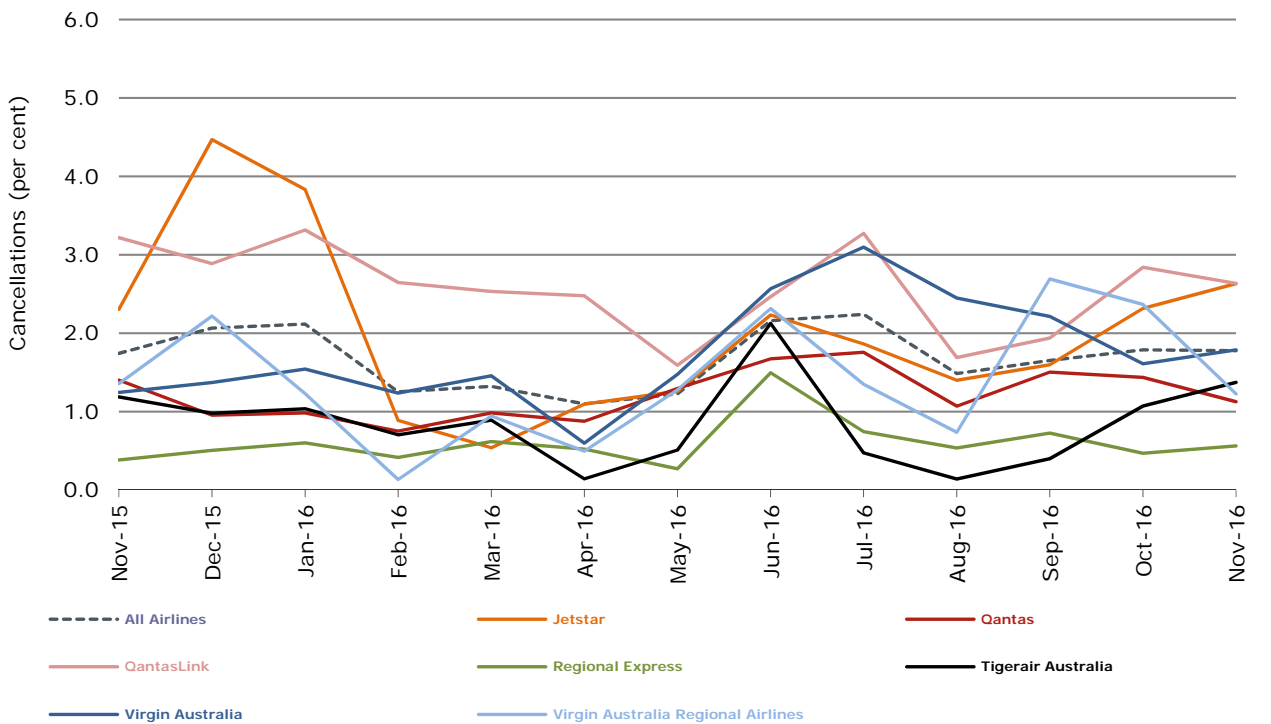


Figure 4 Cancellations (by month from November 2015)



Major domestic airlines on time performance

Figure 5 On time performance (by month from November 2013)—Jetstar

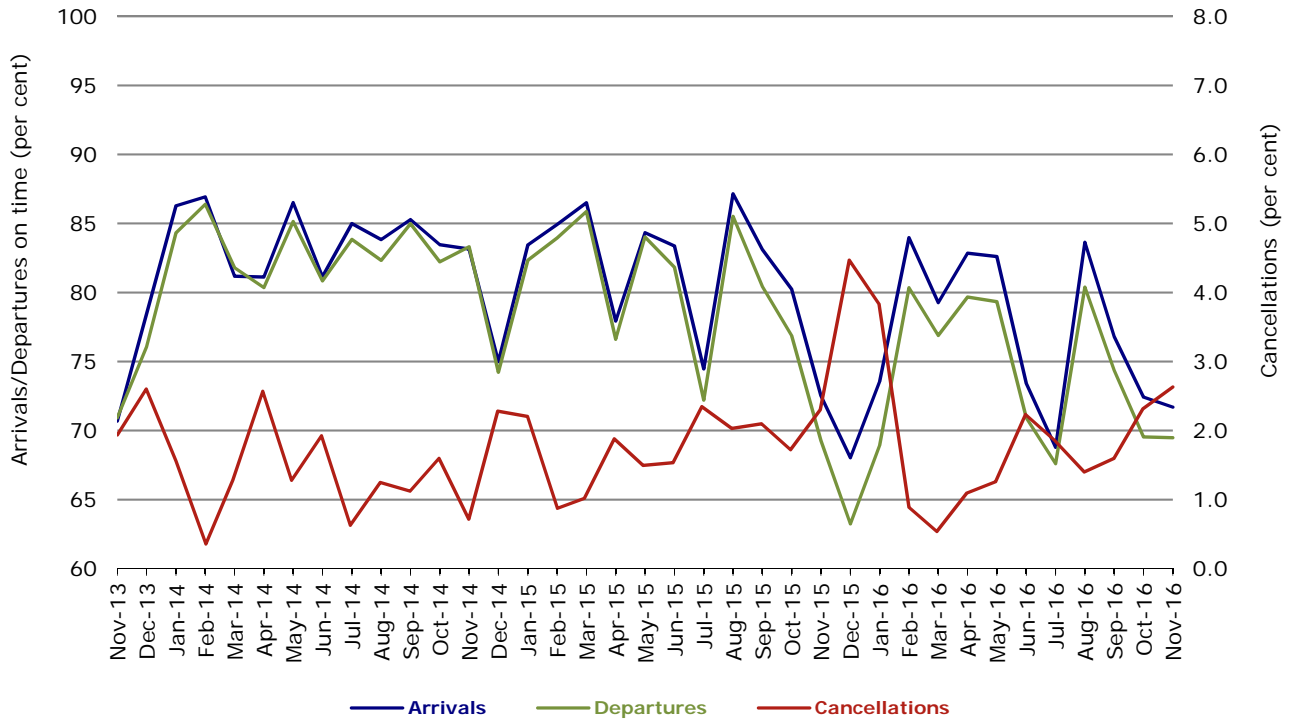


Figure 6 On time performance (by month from November 2013)—Qantas

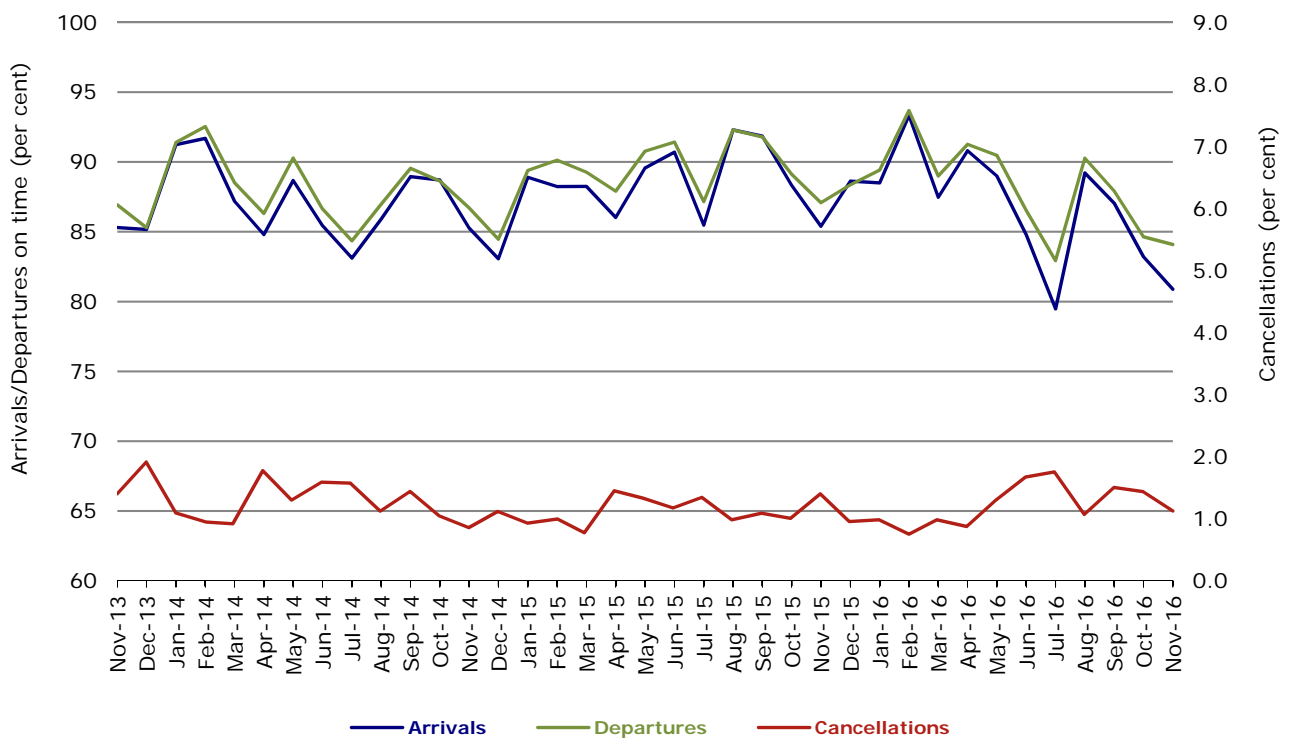


Figure 7 On time performance (by month from November 2013)—Tigerair Australia

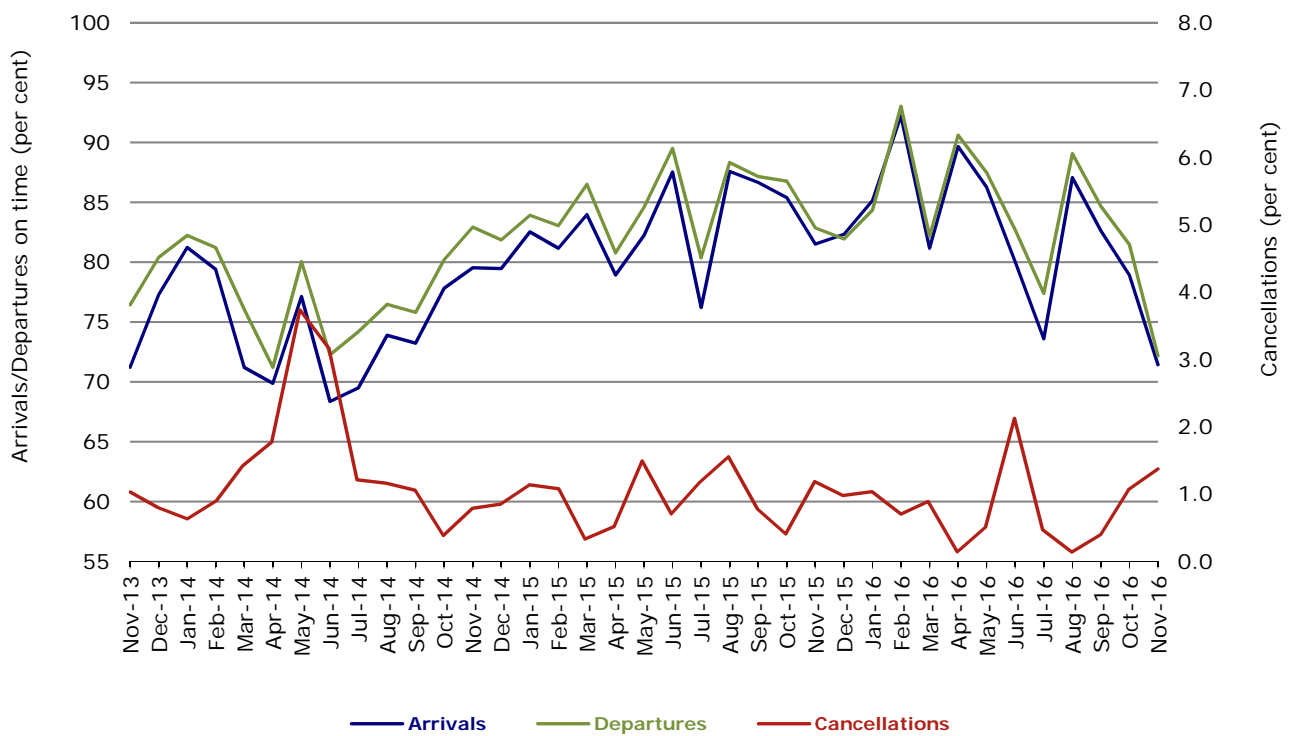
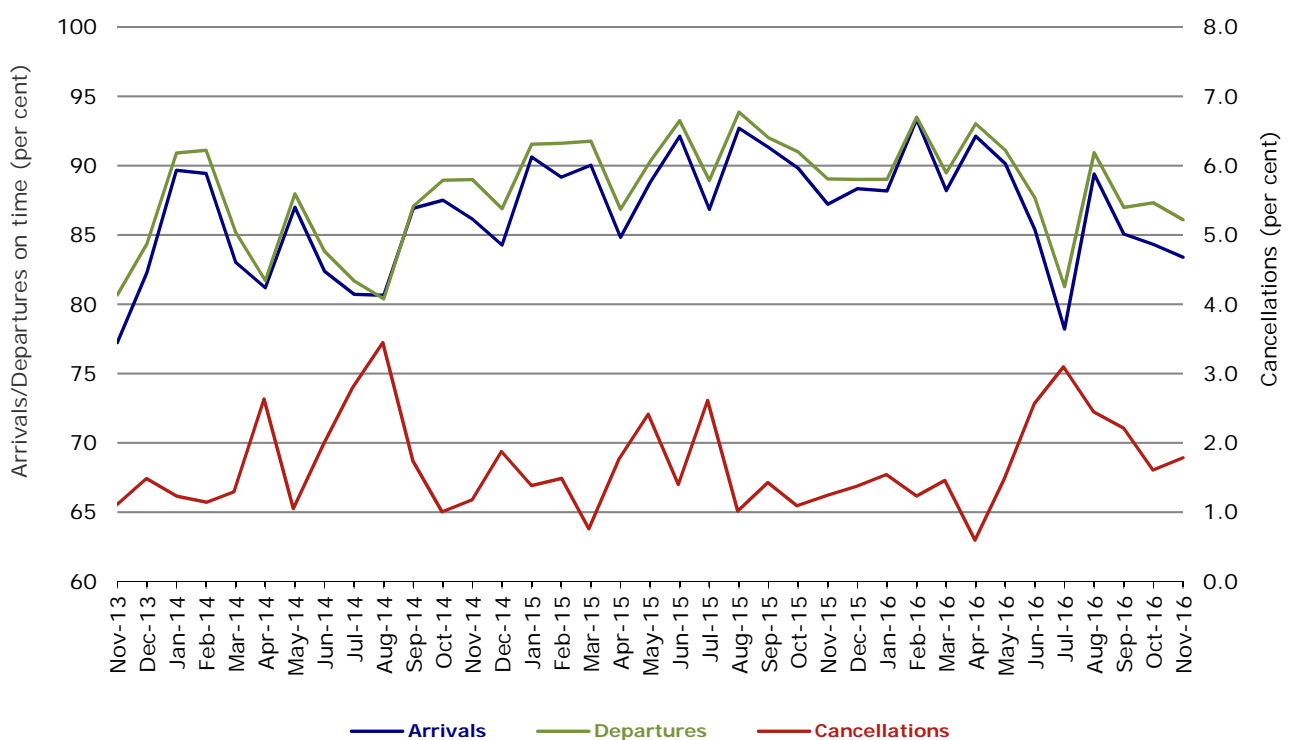


Figure 8 On time performance (by month from November 2013)—Virgin Australia



In January 2016, Virgin Australia transferred their ATR fleet from Virgin Australia Regional Airlines to Virgin Australia.

Major regional airlines on time performance

Figure 9 On time performance (by month from November 2013)—QantasLink

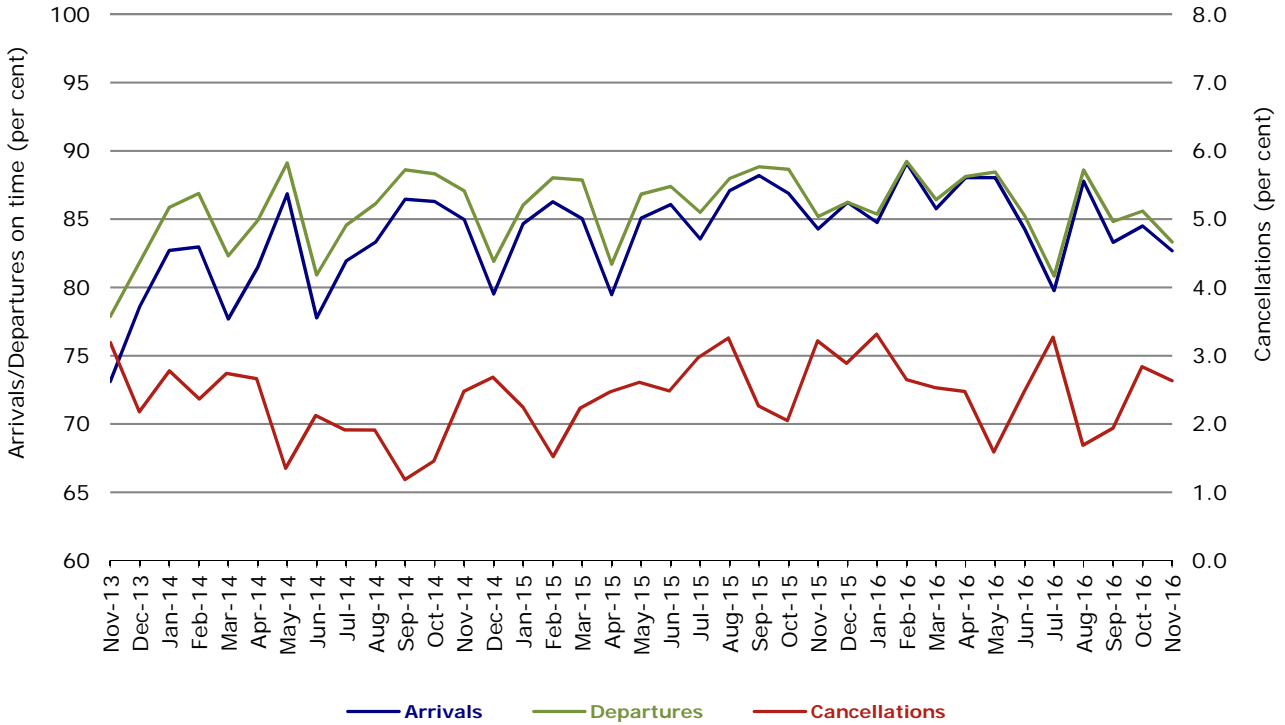


Figure 10 On time performance (by month from November 2013)—Regional Express

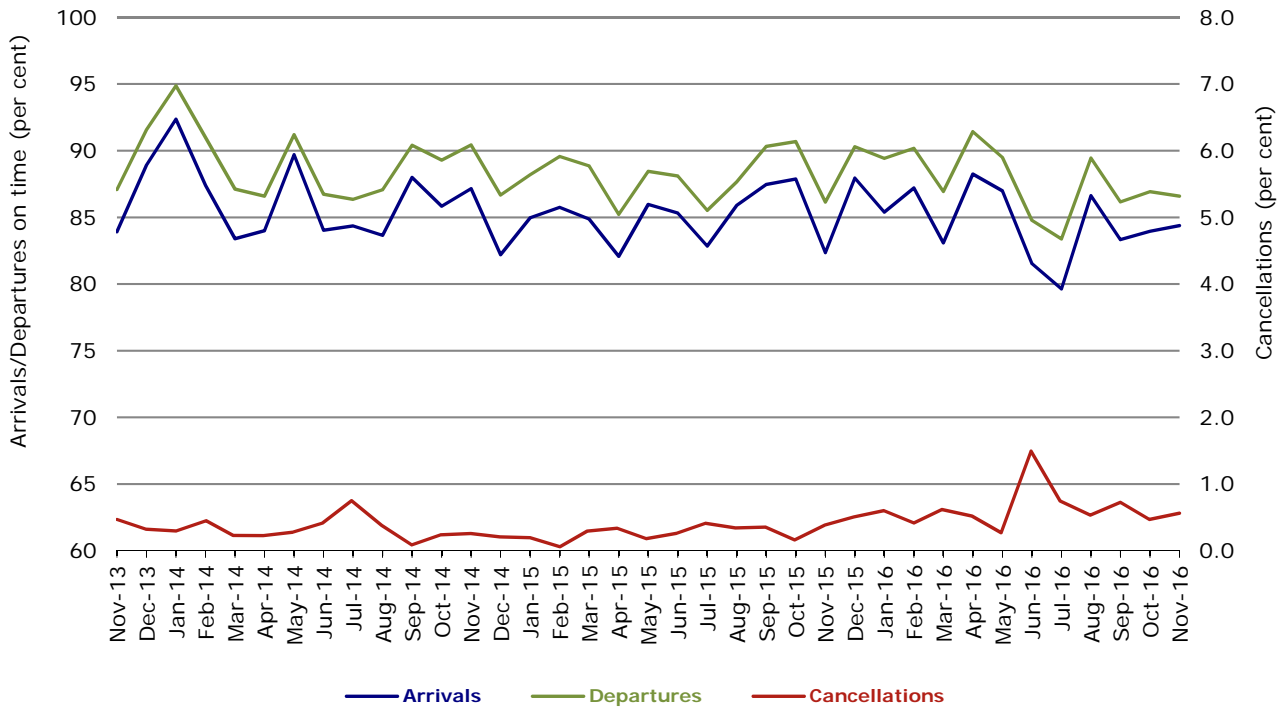
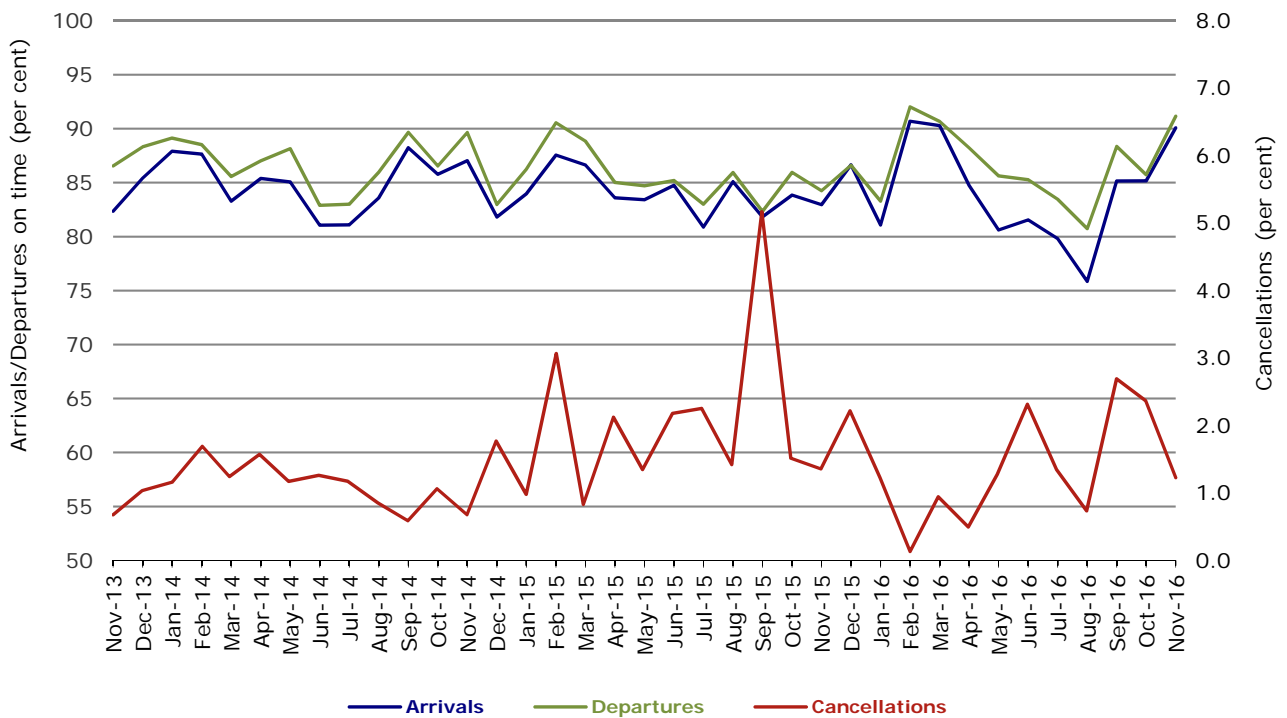


Figure 11 On time performance (by month from November 2013)
Virgin Australia Regional Airlines



Virgin Australia Regional Airlines commenced operations in May 2013. It was formed after the acquisition of Skywest by Virgin Australia and represented a combination of operations previously reported under Skywest and Virgin Australia – ATR/F100 Operations. In January 2016, Virgin Australia transferred their ATR fleet from Virgin Australia Regional Airlines to Virgin Australia.

Individual routes

On time performance is reported for all routes where the passenger load averages over 8000 passengers per month over the previous six months, and where two or more airlines operate in competition on those routes. There are now 66 routes which meet this definition. Over time, however, routes which meet this definition may change as airline networks and traffic levels vary.

	<i>Sectors</i>		<i>Arrivals On Time</i>		<i>Departures On Time</i>		<i>Cancellations</i>	
	<i>Sched.</i>	<i>Flown</i>	<i>No.</i>	<i>%</i>	<i>No.</i>	<i>%</i>	<i>No.</i>	<i>%</i>
Adelaide-Alice Springs								
Qantas	30	30	29	96.7	29	96.7	0	0.0
Virgin Australia	13	13	11	84.6	12	92.3	0	0.0
All Airlines	43	43	40	93.0	41	95.3	0	0.0
Adelaide-Brisbane								
Jetstar	31	30	22	73.3	20	66.7	1	3.2
Qantas	103	103	96	93.2	96	93.2	0	0.0
QantasLink	24	22	17	77.3	19	86.4	2	8.3
Tigerair Australia	24	24	17	70.8	18	75.0	0	0.0
Virgin Australia	112	112	101	90.2	102	91.1	0	0.0
All Airlines	294	291	253	86.9	255	87.6	3	1.0
Adelaide-Canberra								
Qantas	48	48	44	91.7	44	91.7	0	0.0
Virgin Australia	26	26	24	92.3	24	92.3	0	0.0
All Airlines	74	74	68	91.9	68	91.9	0	0.0
Adelaide-Gold Coast								
Jetstar	29	28	26	92.9	25	89.3	1	3.4
Virgin Australia	30	30	29	96.7	29	96.7	0	0.0
All Airlines	59	58	55	94.8	54	93.1	1	1.7
Adelaide-Melbourne								
Jetstar	98	95	75	78.9	72	75.8	3	3.1
Qantas	285	284	214	75.4	227	79.9	1	0.4
Tigerair Australia	75	73	48	65.8	52	71.2	2	2.7
Virgin Australia	283	278	224	80.6	224	80.6	5	1.8
All Airlines	741	730	561	76.8	575	78.8	11	1.5
Adelaide-Perth								
Jetstar	30	29	27	93.1	26	89.7	1	3.3
Qantas	114	114	110	96.5	105	92.1	0	0.0
Virgin Australia	72	72	69	95.8	68	94.4	0	0.0
All Airlines	216	215	206	95.8	199	92.6	1	0.5
Adelaide-Port Lincoln								
QantasLink	106	106	89	84.0	93	87.7	0	0.0
Regional Express	205	205	196	95.6	196	95.6	0	0.0
All Airlines	311	311	285	91.6	289	92.9	0	0.0
Adelaide-Sydney								
Jetstar	119	116	88	75.9	77	66.4	3	2.5
Qantas	230	230	208	90.4	215	93.5	0	0.0
QantasLink	27	26	22	84.6	21	80.8	1	3.7
Tigerair Australia	46	46	28	60.9	30	65.2	0	0.0
Virgin Australia	171	169	157	92.9	154	91.1	2	1.2
All Airlines	593	587	503	85.7	497	84.7	6	1.0
Albury-Sydney								
QantasLink	108	104	78	75.0	76	73.1	4	3.7
Regional Express	105	105	94	89.5	94	89.5	0	0.0
Virgin Australia	60	59	45	76.3	43	72.9	1	1.7
All Airlines	273	268	217	81.0	213	79.5	5	1.8

	<i>Sectors</i>		<i>Arrivals On Time</i>		<i>Departures On Time</i>		<i>Cancellations</i>	
	<i>Sched.</i>	<i>Flown</i>	<i>No.</i>	<i>%</i>	<i>No.</i>	<i>%</i>	<i>No.</i>	<i>%</i>
Alice Springs-Adelaide								
Qantas	30	30	29	96.7	26	86.7	0	0.0
Virgin Australia	13	13	13	100.0	13	100.0	0	0.0
All Airlines	43	43	42	97.7	39	90.7	0	0.0
Alice Springs-Darwin								
QantasLink	51	50	45	90.0	45	90.0	1	2.0
Virgin Australia	13	13	12	92.3	12	92.3	0	0.0
All Airlines	64	63	57	90.5	57	90.5	1	1.6
Armidale-Sydney								
QantasLink	120	120	77	64.2	77	64.2	0	0.0
Regional Express	76	75	60	80.0	64	85.3	1	1.3
All Airlines	196	195	137	70.3	141	72.3	1	0.5
Ayers Rock-Sydney								
Jetstar	25	25	18	72.0	12	48.0	0	0.0
Virgin Australia	30	30	26	86.7	24	80.0	0	0.0
All Airlines	55	55	44	80.0	36	65.5	0	0.0
Ballina-Sydney								
Jetstar	63	63	46	73.0	43	68.3	0	0.0
Regional Express	26	26	19	73.1	20	76.9	0	0.0
Virgin Australia	32	32	24	75.0	24	75.0	0	0.0
All Airlines	121	121	89	73.6	87	71.9	0	0.0
Brisbane-Adelaide								
Jetstar	30	29	24	82.8	25	86.2	1	3.3
Qantas	103	103	91	88.3	94	91.3	0	0.0
QantasLink	24	21	19	90.5	18	85.7	3	12.5
Tigerair Australia	24	24	18	75.0	18	75.0	0	0.0
Virgin Australia	116	115	103	89.6	106	92.2	1	0.9
All Airlines	297	292	255	87.3	261	89.4	5	1.7
Brisbane-Bundaberg								
QantasLink	130	130	108	83.1	111	85.4	0	0.0
Virgin Australia	30	30	26	86.7	24	80.0	0	0.0
All Airlines	160	160	134	83.8	135	84.4	0	0.0
Brisbane-Cairns								
Jetstar	94	92	77	83.7	71	77.2	2	2.1
Qantas	116	116	97	83.6	97	83.6	0	0.0
QantasLink	4	4	2	50.0	3	75.0	0	0.0
Tigerair Australia	30	30	22	73.3	22	73.3	0	0.0
Virgin Australia	135	135	120	88.9	117	86.7	0	0.0
All Airlines	379	377	318	84.4	310	82.2	2	0.5
Brisbane-Canberra								
Qantas	41	41	38	92.7	40	97.6	0	0.0
QantasLink	109	107	96	89.7	96	89.7	2	1.8
Virgin Australia	94	94	82	87.2	80	85.1	0	0.0
All Airlines	244	242	216	89.3	216	89.3	2	0.8
Brisbane-Darwin								
Jetstar	18	17	14	82.4	12	70.6	1	5.6
Qantas	48	48	37	77.1	44	91.7	0	0.0
Tigerair Australia	21	21	16	76.2	17	81.0	0	0.0
Virgin Australia	30	30	21	70.0	28	93.3	0	0.0
All Airlines	117	116	88	75.9	101	87.1	1	0.9
Brisbane-Emerald								
QantasLink	126	122	107	87.7	108	88.5	4	3.2
Virgin Australia	73	73	70	95.9	70	95.9	0	0.0
All Airlines	199	195	177	90.8	178	91.3	4	2.0

	<i>Sectors</i>		<i>Arrivals On Time</i>		<i>Departures On Time</i>		<i>Cancellations</i>	
	<i>Sched.</i>	<i>Flown</i>	<i>No.</i>	<i>%</i>	<i>No.</i>	<i>%</i>	<i>No.</i>	<i>%</i>
Brisbane-Gladstone								
QantasLink	155	155	123	79.4	130	83.9	0	0.0
Virgin Australia	109	108	86	79.6	88	81.5	1	0.9
All Airlines	264	263	209	79.5	218	82.9	1	0.4
Brisbane-Hamilton Island								
QantasLink	38	38	34	89.5	34	89.5	0	0.0
Virgin Australia	30	30	29	96.7	30	100.0	0	0.0
All Airlines	68	68	63	92.6	64	94.1	0	0.0
Brisbane-Hobart								
Jetstar	30	30	25	83.3	25	83.3	0	0.0
Virgin Australia	30	30	24	80.0	25	83.3	0	0.0
All Airlines	60	60	49	81.7	50	83.3	0	0.0
Brisbane-Mackay								
Jetstar	43	43	24	55.8	24	55.8	0	0.0
QantasLink	108	104	89	85.6	88	84.6	4	3.7
Virgin Australia	143	143	126	88.1	124	86.7	0	0.0
All Airlines	294	290	239	82.4	236	81.4	4	1.4
Brisbane-Melbourne								
Jetstar	107	98	67	68.4	67	68.4	9	8.4
Qantas	424	420	309	73.6	357	85.0	4	0.9
Tigerair Australia	125	125	88	70.4	88	70.4	0	0.0
Virgin Australia	398	388	285	73.5	332	85.6	10	2.5
All Airlines	1 054	1 031	749	72.6	844	81.9	23	2.2
Brisbane-Moranbah								
QantasLink	97	89	79	88.8	79	88.8	8	8.2
Virgin Australia	66	66	55	83.3	59	89.4	0	0.0
All Airlines	163	155	134	86.5	138	89.0	8	4.9
Brisbane-Mount Isa								
QantasLink	56	55	46	83.6	46	83.6	1	1.8
Virgin Australia	18	18	17	94.4	18	100.0	0	0.0
All Airlines	74	73	63	86.3	64	87.7	1	1.4
Brisbane-Newcastle								
Jetstar	88	85	62	72.9	63	74.1	3	3.4
QantasLink	96	94	81	86.2	83	88.3	2	2.1
Virgin Australia	89	89	77	86.5	78	87.6	0	0.0
All Airlines	273	268	220	82.1	224	83.6	5	1.8
Brisbane-Perth								
Qantas	125	125	104	83.2	102	81.6	0	0.0
Virgin Australia	108	108	94	87.0	91	84.3	0	0.0
All Airlines	233	233	198	85.0	193	82.8	0	0.0
Brisbane-Proserpine								
Jetstar	30	30	25	83.3	21	70.0	0	0.0
Virgin Australia	30	30	28	93.3	28	93.3	0	0.0
All Airlines	60	60	53	88.3	49	81.7	0	0.0
Brisbane-Rockhampton								
QantasLink	188	187	151	80.7	152	81.3	1	0.5
Virgin Australia	172	170	140	82.4	147	86.5	2	1.2
All Airlines	360	357	291	81.5	299	83.8	3	0.8

	<i>Sectors</i>		<i>Arrivals On Time</i>		<i>Departures On Time</i>		<i>Cancellations</i>	
	<i>Sched.</i>	<i>Flown</i>	<i>No.</i>	<i>%</i>	<i>No.</i>	<i>%</i>	<i>No.</i>	<i>%</i>
Brisbane-Sydney								
Jetstar	178	164	117	71.3	116	70.7	14	7.9
Qantas	632	627	531	84.7	571	91.1	5	0.8
Tigerair Australia	102	99	76	76.8	75	75.8	3	2.9
Virgin Australia	538	517	435	84.1	461	89.2	21	3.9
All Airlines	1 450	1 407	1 159	82.4	1 223	86.9	43	3.0
Brisbane-Townsville								
Jetstar	38	38	31	81.6	32	84.2	0	0.0
Qantas	72	72	62	86.1	62	86.1	0	0.0
QantasLink	69	69	57	82.6	57	82.6	0	0.0
Virgin Australia	147	147	130	88.4	128	87.1	0	0.0
All Airlines	326	326	280	85.9	279	85.6	0	0.0
Broome-Perth								
Qantas	18	18	16	88.9	15	83.3	0	0.0
QantasLink	63	62	57	91.9	56	90.3	1	1.6
Virgin Australia	1	1	0	0.0	0	0.0	0	0.0
Virgin Australia Regional Airlines	41	41	28	68.3	31	75.6	0	0.0
All Airlines	123	122	101	82.8	102	83.6	1	0.8
Bundaberg-Brisbane								
QantasLink	130	130	105	80.8	112	86.2	0	0.0
Virgin Australia	30	30	26	86.7	22	73.3	0	0.0
All Airlines	160	160	131	81.9	134	83.8	0	0.0
Cairns-Brisbane								
Jetstar	94	92	81	88.0	80	87.0	2	2.1
Qantas	116	116	106	91.4	103	88.8	0	0.0
QantasLink	4	4	4	100.0	4	100.0	0	0.0
Tigerair Australia	30	30	22	73.3	22	73.3	0	0.0
Virgin Australia	135	135	123	91.1	122	90.4	0	0.0
All Airlines	379	377	336	89.1	331	87.8	2	0.5
Cairns-Melbourne								
Jetstar	90	90	56	62.2	65	72.2	0	0.0
Qantas	38	38	21	55.3	29	76.3	0	0.0
Tigerair Australia	33	33	24	72.7	22	66.7	0	0.0
Virgin Australia	30	30	19	63.3	24	80.0	0	0.0
All Airlines	191	191	120	62.8	140	73.3	0	0.0
Cairns-Sydney								
Jetstar	69	69	59	85.5	60	87.0	0	0.0
Qantas	72	72	60	83.3	57	79.2	0	0.0
Tigerair Australia	44	44	32	72.7	33	75.0	0	0.0
Virgin Australia	87	87	80	92.0	73	83.9	0	0.0
All Airlines	272	272	231	84.9	223	82.0	0	0.0
Cairns-Townsville								
QantasLink	137	136	129	94.9	129	94.9	1	0.7
Regional Express	47	47	46	97.9	45	95.7	0	0.0
All Airlines	184	183	175	95.6	174	95.1	1	0.5
Canberra-Adelaide								
Qantas	48	48	45	93.8	44	91.7	0	0.0
Virgin Australia	26	26	24	92.3	24	92.3	0	0.0
All Airlines	74	74	69	93.2	68	91.9	0	0.0
Canberra-Brisbane								
Qantas	42	42	39	92.9	40	95.2	0	0.0
QantasLink	109	108	95	88.0	88	81.5	1	0.9
Virgin Australia	93	93	87	93.5	85	91.4	0	0.0
All Airlines	244	243	221	90.9	213	87.7	1	0.4

	<i>Sectors</i>		<i>Arrivals On Time</i>		<i>Departures On Time</i>		<i>Cancellations</i>	
	<i>Sched.</i>	<i>Flown</i>	<i>No.</i>	<i>%</i>	<i>No.</i>	<i>%</i>	<i>No.</i>	<i>%</i>
Canberra-Melbourne								
Qantas	197	197	150	76.1	167	84.8	0	0.0
QantasLink	89	83	59	71.1	63	75.9	6	6.7
Virgin Australia	170	166	122	73.5	137	82.5	4	2.4
All Airlines	456	446	331	74.2	367	82.3	10	2.2
Canberra-Sydney								
QantasLink	476	449	384	85.5	381	84.9	27	5.7
Virgin Australia	293	279	259	92.8	253	90.7	14	4.8
All Airlines	769	728	643	88.3	634	87.1	41	5.3
Coffs Harbour-Sydney								
QantasLink	150	149	110	73.8	120	80.5	1	0.7
Tigerair Australia	11	11	8	72.7	8	72.7	0	0.0
Virgin Australia	58	58	55	94.8	54	93.1	0	0.0
All Airlines	219	218	173	79.4	182	83.5	1	0.5
Darwin-Alice Springs								
QantasLink	51	50	50	100.0	50	100.0	1	2.0
Virgin Australia	13	13	13	100.0	13	100.0	0	0.0
All Airlines	64	63	63	100.0	63	100.0	1	1.6
Darwin-Brisbane								
Jetstar	17	16	14	87.5	10	62.5	1	5.9
Qantas	48	48	43	89.6	35	72.9	0	0.0
Tigerair Australia	21	21	20	95.2	19	90.5	0	0.0
Virgin Australia	30	30	29	96.7	27	90.0	0	0.0
All Airlines	116	115	106	92.2	91	79.1	1	0.9
Darwin-Melbourne								
Jetstar	23	23	19	82.6	15	65.2	0	0.0
Qantas	30	30	24	80.0	23	76.7	0	0.0
Virgin Australia	30	30	27	90.0	27	90.0	0	0.0
All Airlines	83	83	70	84.3	65	78.3	0	0.0
Darwin-Perth								
Qantas	35	35	32	91.4	31	88.6	0	0.0
Virgin Australia	30	30	29	96.7	29	96.7	0	0.0
All Airlines	65	65	61	93.8	60	92.3	0	0.0
Darwin-Sydney								
Jetstar	19	18	12	66.7	11	61.1	1	5.3
Qantas	46	46	39	84.8	38	82.6	0	0.0
Virgin Australia	30	30	27	90.0	23	76.7	0	0.0
All Airlines	95	94	78	83.0	72	76.6	1	1.1
Dubbo-Sydney								
QantasLink	126	123	92	74.8	96	78.0	3	2.4
Regional Express	153	152	124	81.6	130	85.5	1	0.7
All Airlines	279	275	216	78.5	226	82.2	4	1.4
Emerald-Brisbane								
QantasLink	126	121	104	86.0	103	85.1	5	4.0
Virgin Australia	73	73	72	98.6	71	97.3	0	0.0
All Airlines	199	194	176	90.7	174	89.7	5	2.5
Geraldton-Perth								
QantasLink	47	47	44	93.6	44	93.6	0	0.0
Virgin Australia Regional Airlines	61	61	55	90.2	56	91.8	0	0.0
All Airlines	108	108	99	91.7	100	92.6	0	0.0

	<i>Sectors</i>		<i>Arrivals On Time</i>		<i>Departures On Time</i>		<i>Cancellations</i>	
	<i>Sched.</i>	<i>Flown</i>	<i>No.</i>	<i>%</i>	<i>No.</i>	<i>%</i>	<i>No.</i>	<i>%</i>
Gladstone-Brisbane								
QantasLink	156	155	131	84.5	127	81.9	1	0.6
Virgin Australia	109	107	92	86.0	92	86.0	2	1.8
All Airlines	265	262	223	85.1	219	83.6	3	1.1
Gold Coast-Adelaide								
Jetstar	30	29	26	89.7	23	79.3	1	3.3
Virgin Australia	30	30	26	86.7	27	90.0	0	0.0
All Airlines	60	59	52	88.1	50	84.7	1	1.7
Gold Coast-Melbourne								
Jetstar	183	179	131	73.2	115	64.2	4	2.2
Qantas	31	31	15	48.4	15	48.4	0	0.0
Tigerair Australia	78	78	49	62.8	50	64.1	0	0.0
Virgin Australia	184	184	139	75.5	144	78.3	0	0.0
All Airlines	476	472	334	70.8	324	68.6	4	0.8
Gold Coast-Sydney								
Jetstar	286	276	229	83.0	225	81.5	10	3.5
Qantas	92	91	81	89.0	76	83.5	1	1.1
QantasLink	8	8	3	37.5	2	25.0	0	0.0
Tigerair Australia	117	116	81	69.8	76	65.5	1	0.9
Virgin Australia	249	246	203	82.5	202	82.1	3	1.2
All Airlines	752	737	597	81.0	581	78.8	15	2.0
Hamilton Island-Brisbane								
QantasLink	38	38	33	86.8	32	84.2	0	0.0
Virgin Australia	30	30	27	90.0	28	93.3	0	0.0
All Airlines	68	68	60	88.2	60	88.2	0	0.0
Hamilton Island-Melbourne								
Qantas	17	17	15	88.2	17	100.0	0	0.0
Virgin Australia	21	21	19	90.5	21	100.0	0	0.0
All Airlines	38	38	34	89.5	38	100.0	0	0.0
Hamilton Island-Sydney								
Jetstar	30	30	18	60.0	14	46.7	0	0.0
Qantas	13	13	12	92.3	12	92.3	0	0.0
QantasLink	17	17	13	76.5	12	70.6	0	0.0
Virgin Australia	30	30	28	93.3	27	90.0	0	0.0
All Airlines	90	90	71	78.9	65	72.2	0	0.0
Hobart-Brisbane								
Jetstar	30	30	24	80.0	22	73.3	0	0.0
Virgin Australia	30	30	22	73.3	18	60.0	0	0.0
All Airlines	60	60	46	76.7	40	66.7	0	0.0
Hobart-Melbourne								
Jetstar	169	168	88	52.4	77	45.8	1	0.6
QantasLink	141	137	106	77.4	108	78.8	4	2.8
Tigerair Australia	32	32	20	62.5	17	53.1	0	0.0
Virgin Australia	140	140	92	65.7	103	73.6	0	0.0
All Airlines	482	477	306	64.2	305	63.9	5	1.0
Hobart-Sydney								
Jetstar	92	91	54	59.3	57	62.6	1	1.1
QantasLink	56	55	44	80.0	44	80.0	1	1.8
Virgin Australia	60	60	48	80.0	49	81.7	0	0.0
All Airlines	208	206	146	70.9	150	72.8	2	1.0

	<i>Sectors</i>		<i>Arrivals On Time</i>		<i>Departures On Time</i>		<i>Cancellations</i>	
	<i>Sched.</i>	<i>Flown</i>	<i>No.</i>	<i>%</i>	<i>No.</i>	<i>%</i>	<i>No.</i>	<i>%</i>
Kalgoorlie-Perth								
Qantas	4	4	3	75.0	4	100.0	0	0.0
QantasLink	74	74	69	93.2	67	90.5	0	0.0
Virgin Australia	40	40	36	90.0	35	87.5	0	0.0
Virgin Australia Regional Airlines	21	21	21	100.0	21	100.0	0	0.0
All Airlines	139	139	129	92.8	127	91.4	0	0.0
Karratha-Perth								
Qantas	23	22	21	95.5	21	95.5	1	4.3
QantasLink	179	171	158	92.4	156	91.2	8	4.5
Virgin Australia	5	5	4	80.0	4	80.0	0	0.0
Virgin Australia Regional Airlines	77	77	69	89.6	71	92.2	0	0.0
All Airlines	284	275	252	91.6	252	91.6	9	3.2
Launceston-Melbourne								
Jetstar	141	137	72	52.6	62	45.3	4	2.8
QantasLink	116	110	78	70.9	82	74.5	6	5.2
Virgin Australia	94	94	72	76.6	79	84.0	0	0.0
All Airlines	351	341	222	65.1	223	65.4	10	2.8
Launceston-Sydney								
Jetstar	55	53	28	52.8	25	47.2	2	3.6
Virgin Australia	30	30	26	86.7	26	86.7	0	0.0
All Airlines	85	83	54	65.1	51	61.4	2	2.4
Mackay-Brisbane								
Jetstar	43	42	23	54.8	17	40.5	1	2.3
QantasLink	108	103	91	88.3	92	89.3	5	4.6
Virgin Australia	142	142	136	95.8	135	95.1	0	0.0
All Airlines	293	287	250	87.1	244	85.0	6	2.0
Melbourne-Adelaide								
Jetstar	98	95	51	53.7	52	54.7	3	3.1
Qantas	285	284	246	86.6	239	84.2	1	0.4
Tigerair Australia	75	73	57	78.1	57	78.1	2	2.7
Virgin Australia	279	274	220	80.3	237	86.5	5	1.8
All Airlines	737	726	574	79.1	585	80.6	11	1.5
Melbourne-Brisbane								
Jetstar	106	98	66	67.3	67	68.4	8	7.5
Qantas	427	422	357	84.6	361	85.5	5	1.2
Tigerair Australia	125	125	93	74.4	95	76.0	0	0.0
Virgin Australia	385	376	305	81.1	328	87.2	9	2.3
All Airlines	1 043	1 021	821	80.4	851	83.3	22	2.1
Melbourne-Cairns								
Jetstar	90	90	68	75.6	61	67.8	0	0.0
Qantas	38	38	33	86.8	35	92.1	0	0.0
Tigerair Australia	33	33	26	78.8	26	78.8	0	0.0
Virgin Australia	30	30	27	90.0	25	83.3	0	0.0
All Airlines	191	191	154	80.6	147	77.0	0	0.0
Melbourne-Canberra								
Qantas	197	196	172	87.8	167	85.2	1	0.5
QantasLink	89	83	58	69.9	59	71.1	6	6.7
Virgin Australia	171	167	145	86.8	149	89.2	4	2.3
All Airlines	457	446	375	84.1	375	84.1	11	2.4
Melbourne-Darwin								
Jetstar	23	23	20	87.0	16	69.6	0	0.0
Qantas	30	30	26	86.7	30	100.0	0	0.0
Virgin Australia	30	30	18	60.0	19	63.3	0	0.0
All Airlines	83	83	64	77.1	65	78.3	0	0.0

	<i>Sectors</i>		<i>Arrivals On Time</i>		<i>Departures On Time</i>		<i>Cancellations</i>	
	<i>Sched.</i>	<i>Flown</i>	<i>No.</i>	<i>%</i>	<i>No.</i>	<i>%</i>	<i>No.</i>	<i>%</i>
Melbourne-Gold Coast								
Jetstar	184	181	133	73.5	133	73.5	3	1.6
Qantas	31	31	21	67.7	18	58.1	0	0.0
Tigerair Australia	78	78	59	75.6	57	73.1	0	0.0
Virgin Australia	184	184	147	79.9	155	84.2	0	0.0
All Airlines	477	474	360	75.9	363	76.6	3	0.6
Melbourne-Hamilton Island								
Qantas	17	17	17	100.0	16	94.1	0	0.0
Virgin Australia	21	21	20	95.2	20	95.2	0	0.0
All Airlines	38	38	37	97.4	36	94.7	0	0.0
Melbourne-Hobart								
Jetstar	169	168	111	66.1	110	65.5	1	0.6
QantasLink	141	138	103	74.6	108	78.3	3	2.1
Tigerair Australia	32	32	23	71.9	23	71.9	0	0.0
Virgin Australia	140	140	121	86.4	120	85.7	0	0.0
All Airlines	482	478	358	74.9	361	75.5	4	0.8
Melbourne-Launceston								
Jetstar	142	139	98	70.5	94	67.6	3	2.1
QantasLink	116	110	88	80.0	92	83.6	6	5.2
Virgin Australia	94	94	78	83.0	81	86.2	0	0.0
All Airlines	352	343	264	77.0	267	77.8	9	2.6
Melbourne-Mildura								
QantasLink	93	93	71	76.3	72	77.4	0	0.0
Regional Express	84	84	64	76.2	68	81.0	0	0.0
Virgin Australia	30	30	25	83.3	27	90.0	0	0.0
All Airlines	207	207	160	77.3	167	80.7	0	0.0
Melbourne-Newcastle								
Jetstar	90	90	52	57.8	57	63.3	0	0.0
Virgin Australia	31	31	25	80.6	28	90.3	0	0.0
All Airlines	121	121	77	63.6	85	70.2	0	0.0
Melbourne-Perth								
Jetstar	57	53	47	88.7	42	79.2	4	7.0
Qantas	202	201	144	71.6	142	70.6	1	0.5
Tigerair Australia	59	57	49	86.0	48	84.2	2	3.4
Virgin Australia	142	142	121	85.2	119	83.8	0	0.0
All Airlines	460	453	361	79.7	351	77.5	7	1.5
Melbourne-Sunshine Coast								
Jetstar	88	86	66	76.7	61	70.9	2	2.3
Virgin Australia	39	39	32	82.1	32	82.1	0	0.0
All Airlines	127	125	98	78.4	93	74.4	2	1.6
Melbourne-Sydney								
Jetstar	376	356	188	52.8	203	57.0	20	5.3
Qantas	1 000	963	715	74.2	756	78.5	37	3.7
Tigerair Australia	237	229	147	64.2	143	62.4	8	3.4
Virgin Australia	794	749	603	80.5	636	84.9	45	5.7
All Airlines	2 407	2 297	1 653	72.0	1 738	75.7	110	4.6
Mildura-Melbourne								
QantasLink	93	93	72	77.4	71	76.3	0	0.0
Regional Express	83	82	52	63.4	48	58.5	1	1.2
Virgin Australia	30	30	26	86.7	26	86.7	0	0.0
All Airlines	206	205	150	73.2	145	70.7	1	0.5

	<i>Sectors</i>		<i>Arrivals On Time</i>		<i>Departures On Time</i>		<i>Cancellations</i>	
	<i>Sched.</i>	<i>Flown</i>	<i>No.</i>	<i>%</i>	<i>No.</i>	<i>%</i>	<i>No.</i>	<i>%</i>
Moranbah-Brisbane								
QantasLink	92	84	74	88.1	74	88.1	8	8.7
Virgin Australia	66	66	56	84.8	56	84.8	0	0.0
All Airlines	158	150	130	86.7	130	86.7	8	5.1
Mount Isa-Brisbane								
QantasLink	56	54	46	85.2	46	85.2	2	3.6
Virgin Australia	18	18	18	100.0	16	88.9	0	0.0
All Airlines	74	72	64	88.9	62	86.1	2	2.7
Newcastle-Brisbane								
Jetstar	88	85	58	68.2	63	74.1	3	3.4
QantasLink	96	93	84	90.3	82	88.2	3	3.1
Virgin Australia	90	89	81	91.0	79	88.8	1	1.1
All Airlines	274	267	223	83.5	224	83.9	7	2.6
Newcastle-Melbourne								
Jetstar	91	91	56	61.5	60	65.9	0	0.0
Virgin Australia	31	31	20	64.5	24	77.4	0	0.0
All Airlines	122	122	76	62.3	84	68.9	0	0.0
Newman-Perth								
Qantas	71	71	65	91.5	66	93.0	0	0.0
QantasLink	74	74	65	87.8	68	91.9	0	0.0
Virgin Australia	11	11	11	100.0	11	100.0	0	0.0
Virgin Australia Regional Airlines	29	27	24	88.9	25	92.6	2	6.9
All Airlines	185	183	165	90.2	170	92.9	2	1.1
Perth-Adelaide								
Jetstar	30	29	26	89.7	26	89.7	1	3.3
Qantas	118	118	109	92.4	109	92.4	0	0.0
Virgin Australia	76	76	74	97.4	75	98.7	0	0.0
All Airlines	224	223	209	93.7	210	94.2	1	0.4
Perth-Brisbane								
Qantas	121	121	107	88.4	105	86.8	0	0.0
Virgin Australia	108	108	99	91.7	104	96.3	0	0.0
All Airlines	229	229	206	90.0	209	91.3	0	0.0
Perth-Broome								
Qantas	18	18	16	88.9	17	94.4	0	0.0
QantasLink	62	61	57	93.4	56	91.8	1	1.6
Virgin Australia	1	1	0	0.0	0	0.0	0	0.0
Virgin Australia Regional Airlines	41	41	36	87.8	39	95.1	0	0.0
All Airlines	122	121	109	90.1	112	92.6	1	0.8
Perth-Darwin								
Qantas	35	35	32	91.4	33	94.3	0	0.0
Virgin Australia	30	30	29	96.7	29	96.7	0	0.0
All Airlines	65	65	61	93.8	62	95.4	0	0.0
Perth-Geraldton								
QantasLink	47	47	42	89.4	41	87.2	0	0.0
Virgin Australia Regional Airlines	61	61	56	91.8	55	90.2	0	0.0
All Airlines	108	108	98	90.7	96	88.9	0	0.0
Perth-Kalgoorlie								
Qantas	4	4	4	100.0	4	100.0	0	0.0
QantasLink	75	74	68	91.9	67	90.5	1	1.3
Virgin Australia	40	40	38	95.0	38	95.0	0	0.0
Virgin Australia Regional Airlines	21	21	21	100.0	21	100.0	0	0.0
All Airlines	140	139	131	94.2	130	93.5	1	0.7

	<i>Sectors</i>		<i>Arrivals On Time</i>		<i>Departures On Time</i>		<i>Cancellations</i>	
	<i>Sched.</i>	<i>Flown</i>	<i>No.</i>	<i>%</i>	<i>No.</i>	<i>%</i>	<i>No.</i>	<i>%</i>
Perth-Karratha								
Qantas	23	22	21	95.5	21	95.5	1	4.3
QantasLink	179	174	154	88.5	156	89.7	5	2.8
Virgin Australia	5	5	5	100.0	5	100.0	0	0.0
Virgin Australia Regional Airlines	77	77	74	96.1	75	97.4	0	0.0
All Airlines	284	278	254	91.4	257	92.4	6	2.1
Perth-Melbourne								
Jetstar	57	52	34	65.4	35	67.3	5	8.8
Qantas	202	201	151	75.1	164	81.6	1	0.5
Tigerair Australia	59	57	48	84.2	48	84.2	2	3.4
Virgin Australia	138	138	118	85.5	126	91.3	0	0.0
All Airlines	456	448	351	78.3	373	83.3	8	1.8
Perth-Newman								
Qantas	71	71	68	95.8	67	94.4	0	0.0
QantasLink	74	73	62	84.9	64	87.7	1	1.4
Virgin Australia	11	11	11	100.0	11	100.0	0	0.0
Virgin Australia Regional Airlines	29	29	26	89.7	27	93.1	0	0.0
All Airlines	185	184	167	90.8	169	91.8	1	0.5
Perth-Port Hedland								
Qantas	30	30	29	96.7	29	96.7	0	0.0
QantasLink	107	104	86	82.7	92	88.5	3	2.8
Virgin Australia	26	26	23	88.5	24	92.3	0	0.0
Virgin Australia Regional Airlines	26	26	25	96.2	25	96.2	0	0.0
All Airlines	189	186	163	87.6	170	91.4	3	1.6
Perth-Sydney								
Jetstar	30	29	27	93.1	24	82.8	1	3.3
Qantas	209	209	169	80.9	182	87.1	0	0.0
Tigerair Australia	25	25	24	96.0	23	92.0	0	0.0
Virgin Australia	116	116	102	87.9	108	93.1	0	0.0
All Airlines	380	379	322	85.0	337	88.9	1	0.3
Port Hedland-Perth								
Qantas	30	30	28	93.3	29	96.7	0	0.0
QantasLink	107	103	94	91.3	93	90.3	4	3.7
Virgin Australia	26	26	23	88.5	23	88.5	0	0.0
Virgin Australia Regional Airlines	26	26	24	92.3	25	96.2	0	0.0
All Airlines	189	185	169	91.4	170	91.9	4	2.1
Port Lincoln-Adelaide								
QantasLink	106	106	92	86.8	91	85.8	0	0.0
Regional Express	204	203	190	93.6	191	94.1	1	0.5
All Airlines	310	309	282	91.3	282	91.3	1	0.3
Port Macquarie-Sydney								
QantasLink	134	133	93	69.9	96	72.2	1	0.7
Virgin Australia	57	56	40	71.4	43	76.8	1	1.8
All Airlines	191	189	133	70.4	139	73.5	2	1.0
Proserpine-Brisbane								
Jetstar	30	30	23	76.7	21	70.0	0	0.0
Virgin Australia	30	30	25	83.3	25	83.3	0	0.0
All Airlines	60	60	48	80.0	46	76.7	0	0.0
Rockhampton-Brisbane								
QantasLink	188	186	142	76.3	148	79.6	2	1.1
Virgin Australia	171	169	141	83.4	143	84.6	2	1.2
All Airlines	359	355	283	79.7	291	82.0	4	1.1

	<i>Sectors</i>		<i>Arrivals On Time</i>		<i>Departures On Time</i>		<i>Cancellations</i>	
	<i>Sched.</i>	<i>Flown</i>	<i>No.</i>	<i>%</i>	<i>No.</i>	<i>%</i>	<i>No.</i>	<i>%</i>
Sunshine Coast-Melbourne								
Jetstar	88	86	50	58.1	47	54.7	2	2.3
Virgin Australia	39	39	25	64.1	30	76.9	0	0.0
All Airlines	127	125	75	60.0	77	61.6	2	1.6
Sunshine Coast-Sydney								
Jetstar	114	113	77	68.1	75	66.4	1	0.9
QantasLink	34	34	24	70.6	24	70.6	0	0.0
Virgin Australia	38	38	33	86.8	32	84.2	0	0.0
All Airlines	186	185	134	72.4	131	70.8	1	0.5
Sydney-Adelaide								
Jetstar	119	115	77	67.0	79	68.7	4	3.4
Qantas	226	226	188	83.2	180	79.6	0	0.0
QantasLink	27	26	22	84.6	21	80.8	1	3.7
Tigerair Australia	46	46	34	73.9	34	73.9	0	0.0
Virgin Australia	167	167	146	87.4	145	86.8	0	0.0
All Airlines	585	580	467	80.5	459	79.1	5	0.9
Sydney-Albury								
QantasLink	107	104	77	74.0	80	76.9	3	2.8
Regional Express	105	105	93	88.6	94	89.5	0	0.0
Virgin Australia	60	59	45	76.3	45	76.3	1	1.7
All Airlines	272	268	215	80.2	219	81.7	4	1.5
Sydney-Armidale								
QantasLink	120	120	77	64.2	79	65.8	0	0.0
Regional Express	77	77	65	84.4	64	83.1	0	0.0
All Airlines	197	197	142	72.1	143	72.6	0	0.0
Sydney-Ayers Rock								
Jetstar	26	26	24	92.3	23	88.5	0	0.0
Virgin Australia	30	30	24	80.0	27	90.0	0	0.0
All Airlines	56	56	48	85.7	50	89.3	0	0.0
Sydney-Ballina								
Jetstar	63	63	48	76.2	46	73.0	0	0.0
Regional Express	25	25	22	88.0	21	84.0	0	0.0
Virgin Australia	32	32	22	68.8	28	87.5	0	0.0
All Airlines	120	120	92	76.7	95	79.2	0	0.0
Sydney-Brisbane								
Jetstar	178	165	118	71.5	117	70.9	13	7.3
Qantas	634	630	523	83.0	545	86.5	4	0.6
Tigerair Australia	102	99	72	72.7	70	70.7	3	2.9
Virgin Australia	555	532	430	80.8	451	84.8	23	4.1
All Airlines	1 469	1 426	1 143	80.2	1 183	83.0	43	2.9
Sydney-Cairns								
Jetstar	68	68	57	83.8	56	82.4	0	0.0
Qantas	72	72	63	87.5	65	90.3	0	0.0
Tigerair Australia	44	44	36	81.8	40	90.9	0	0.0
Virgin Australia	87	87	68	78.2	74	85.1	0	0.0
All Airlines	271	271	224	82.7	235	86.7	0	0.0
Sydney-Canberra								
QantasLink	476	451	362	80.3	356	78.9	25	5.3
Virgin Australia	293	280	235	83.9	237	84.6	13	4.4
All Airlines	769	731	597	81.7	593	81.1	38	4.9

	<i>Sectors</i>		<i>Arrivals On Time</i>		<i>Departures On Time</i>		<i>Cancellations</i>	
	<i>Sched.</i>	<i>Flown</i>	<i>No.</i>	<i>%</i>	<i>No.</i>	<i>%</i>	<i>No.</i>	<i>%</i>
Sydney-Coffs Harbour								
QantasLink	150	149	116	77.9	111	74.5	1	0.7
Tigerair Australia	11	11	8	72.7	9	81.8	0	0.0
Virgin Australia	58	58	55	94.8	56	96.6	0	0.0
All Airlines	219	218	179	82.1	176	80.7	1	0.5
Sydney-Darwin								
Jetstar	19	19	15	78.9	14	73.7	0	0.0
Qantas	47	47	37	78.7	38	80.9	0	0.0
Virgin Australia	30	30	25	83.3	28	93.3	0	0.0
All Airlines	96	96	77	80.2	80	83.3	0	0.0
Sydney-Dubbo								
QantasLink	125	123	88	71.5	85	69.1	2	1.6
Regional Express	154	153	133	86.9	134	87.6	1	0.6
All Airlines	279	276	221	80.1	219	79.3	3	1.1
Sydney-Gold Coast								
Jetstar	285	276	226	81.9	219	79.3	9	3.2
Qantas	91	91	75	82.4	75	82.4	0	0.0
QantasLink	8	8	4	50.0	4	50.0	0	0.0
Tigerair Australia	117	116	88	75.9	89	76.7	1	0.9
Virgin Australia	249	247	202	81.8	210	85.0	2	0.8
All Airlines	750	738	595	80.6	597	80.9	12	1.6
Sydney-Hamilton Island								
Jetstar	30	30	26	86.7	23	76.7	0	0.0
Qantas	13	13	12	92.3	11	84.6	0	0.0
QantasLink	17	17	9	52.9	11	64.7	0	0.0
Virgin Australia	30	30	29	96.7	28	93.3	0	0.0
All Airlines	90	90	76	84.4	73	81.1	0	0.0
Sydney-Hobart								
Jetstar	92	91	72	79.1	70	76.9	1	1.1
QantasLink	56	56	42	75.0	43	76.8	0	0.0
Virgin Australia	60	60	49	81.7	52	86.7	0	0.0
All Airlines	208	207	163	78.7	165	79.7	1	0.5
Sydney-Launceston								
Jetstar	53	52	39	75.0	37	71.2	1	1.9
Virgin Australia	30	30	23	76.7	24	80.0	0	0.0
All Airlines	83	82	62	75.6	61	74.4	1	1.2
Sydney-Melbourne								
Jetstar	377	358	194	54.2	191	53.4	19	5.0
Qantas	1 004	965	652	67.6	741	76.8	39	3.9
Tigerair Australia	236	230	132	57.4	153	66.5	6	2.5
Virgin Australia	780	734	526	71.7	592	80.7	46	5.9
All Airlines	2 397	2 287	1 504	65.8	1 677	73.3	110	4.6
Sydney-Perth								
Jetstar	31	30	29	96.7	25	83.3	1	3.2
Qantas	209	209	159	76.1	164	78.5	0	0.0
Tigerair Australia	26	26	24	92.3	25	96.2	0	0.0
Virgin Australia	116	116	100	86.2	97	83.6	0	0.0
All Airlines	382	381	312	81.9	311	81.6	1	0.3
Sydney-Port Macquarie								
QantasLink	134	131	90	68.7	93	71.0	3	2.2
Virgin Australia	57	57	48	84.2	48	84.2	0	0.0
All Airlines	191	188	138	73.4	141	75.0	3	1.6

	<i>Sectors</i>		<i>Arrivals On Time</i>		<i>Departures On Time</i>		<i>Cancellations</i>	
	<i>Sched.</i>	<i>Flown</i>	<i>No.</i>	<i>%</i>	<i>No.</i>	<i>%</i>	<i>No.</i>	<i>%</i>
Sydney-Sunshine Coast								
Jetstar	114	113	95	84.1	93	82.3	1	0.9
QantasLink	34	34	26	76.5	27	79.4	0	0.0
Virgin Australia	38	38	33	86.8	35	92.1	0	0.0
All Airlines	186	185	154	83.2	155	83.8	1	0.5
Sydney-Tamworth								
QantasLink	155	148	117	79.1	116	78.4	7	4.5
Virgin Australia	39	39	31	79.5	34	87.2	0	0.0
All Airlines	194	187	148	79.1	150	80.2	7	3.6
Sydney-Townsville								
Jetstar	20	20	10	50.0	10	50.0	0	0.0
Virgin Australia	29	29	27	93.1	25	86.2	0	0.0
All Airlines	49	49	37	75.5	35	71.4	0	0.0
Sydney-Wagga Wagga								
QantasLink	112	111	89	80.2	92	82.9	1	0.9
Regional Express	136	136	120	88.2	119	87.5	0	0.0
All Airlines	248	247	209	84.6	211	85.4	1	0.4
Tamworth-Sydney								
QantasLink	155	147	121	82.3	123	83.7	8	5.2
Virgin Australia	40	40	33	82.5	33	82.5	0	0.0
All Airlines	195	187	154	82.4	156	83.4	8	4.1
Townsville-Brisbane								
Jetstar	38	38	32	84.2	28	73.7	0	0.0
Qantas	72	72	66	91.7	63	87.5	0	0.0
QantasLink	69	67	51	76.1	56	83.6	2	2.9
Virgin Australia	146	146	133	91.1	133	91.1	0	0.0
All Airlines	325	323	282	87.3	280	86.7	2	0.6
Townsville-Cairns								
QantasLink	137	134	126	94.0	126	94.0	3	2.2
Regional Express	48	48	43	89.6	40	83.3	0	0.0
All Airlines	185	182	169	92.9	166	91.2	3	1.6
Townsville-Sydney								
Jetstar	20	20	10	50.0	9	45.0	0	0.0
Virgin Australia	29	29	25	86.2	24	82.8	0	0.0
All Airlines	49	49	35	71.4	33	67.3	0	0.0
Wagga Wagga-Sydney								
QantasLink	112	111	96	86.5	93	83.8	1	0.9
Regional Express	136	136	118	86.8	121	89.0	0	0.0
All Airlines	248	247	214	86.6	214	86.6	1	0.4

Airports

On time performance is reported for all routes where the passenger load averages over 8000 passengers per month, and where two or more airlines operate in competition. The following data reports by airport against flights operated on those routes only. This month, 8 major city airports and 33 regional city airports are covered.

Airport	Arrivals			Departures		
	Sectors	On Time		Sectors	On Time	
	Flown	No.	%	Flown	No.	%
Adelaide						
Jetstar	297	204	68.7	298	220	73.8
Qantas	809	708	87.5	809	716	88.5
QantasLink	153	133	86.9	154	133	86.4
Regional Express	203	190	93.6	205	196	95.6
Tigerair Australia	143	109	76.2	143	100	69.9
Virgin Australia	701	606	86.4	700	613	87.6
All Airlines	2 306	1 950	84.6	2 309	1 978	85.7
Relates to services to and from Alice Springs, Brisbane, Canberra, Gold Coast, Melbourne, Perth, Port Lincoln and Sydney.						
Albury						
QantasLink	104	77	74.0	104	76	73.1
Regional Express	105	93	88.6	105	94	89.5
Virgin Australia	59	45	76.3	59	43	72.9
All Airlines	268	215	80.2	268	213	79.5
Relates to services to and from Sydney only.						
Alice Springs						
Qantas	30	29	96.7	30	26	86.7
QantasLink	50	50	100.0	50	45	90.0
Virgin Australia	26	24	92.3	26	25	96.2
All Airlines	106	103	97.2	106	96	90.6
Relates to services to and from Adelaide and Darwin.						
Armidale						
QantasLink	120	77	64.2	120	77	64.2
Regional Express	77	65	84.4	75	64	85.3
All Airlines	197	142	72.1	195	141	72.3
Relates to services to and from Sydney only.						
Ayers Rock						
Jetstar	26	24	92.3	25	12	48.0
Virgin Australia	30	24	80.0	30	24	80.0
All Airlines	56	48	85.7	55	36	65.5
Relates to services to and from Sydney only.						
Ballina						
Jetstar	63	48	76.2	63	43	68.3
Regional Express	25	22	88.0	26	20	76.9
Virgin Australia	32	22	68.8	32	24	75.0
All Airlines	120	92	76.7	121	87	71.9
Relates to services to and from Sydney only.						

Airport	Arrivals			Departures		
	Sectors Flown	On Time		Sectors Flown	On Time	
		No.	%		No.	%
Brisbane						
Jetstar	626	461	73.6	626	456	72.8
Qantas	1 554	1 337	86.0	1 552	1 367	88.1
QantasLink	1 165	977	83.9	1 175	1 005	85.5
Tigerair Australia	299	224	74.9	299	220	73.6
Virgin Australia	2 316	2 003	86.5	2 321	2 034	87.6
All Airlines	5 960	5 002	83.9	5 973	5 082	85.1

Relates to services to and from Adelaide, Bundaberg, Cairns, Canberra, Darwin, Emerald, Gladstone, Hamilton Island, Hobart, Mackay, Melbourne, Moranbah, Mount Isa, Newcastle, Perth, Proserpine, Rockhampton, Sydney and Townsville.

Broome

Qantas	18	16	88.9	18	15	83.3
QantasLink	61	57	93.4	62	56	90.3
Virgin Australia	1	0	0.0	1	0	0.0
Virgin Australia Regional Airlines	41	36	87.8	41	31	75.6
All Airlines	121	109	90.1	122	102	83.6

Relates to services to and from Perth only.

Bundaberg

QantasLink	130	108	83.1	130	112	86.2
Virgin Australia	30	26	86.7	30	22	73.3
All Airlines	160	134	83.8	160	134	83.8

Relates to services to and from Brisbane only.

Cairns

Jetstar	250	202	80.8	251	205	81.7
Qantas	226	193	85.4	226	189	83.6
QantasLink	138	128	92.8	140	133	95.0
Regional Express	48	43	89.6	47	45	95.7
Tigerair Australia	107	84	78.5	107	77	72.0
Virgin Australia	252	215	85.3	252	219	86.9
All Airlines	1 021	865	84.7	1 023	868	84.8

Relates to services to and from Brisbane, Melbourne, Sydney and Townsville.

Canberra

Qantas	285	254	89.1	287	251	87.5
QantasLink	641	516	80.5	640	532	83.1
Virgin Australia	567	486	85.7	564	499	88.5
All Airlines	1 493	1 256	84.1	1 491	1 282	86.0

Relates to services to and from Adelaide, Brisbane, Melbourne and Sydney.

Coffs Harbour

QantasLink	149	116	77.9	149	120	80.5
Tigerair Australia	11	8	72.7	11	8	72.7
Virgin Australia	58	55	94.8	58	54	93.1
All Airlines	218	179	82.1	218	182	83.5

Relates to services to and from Sydney only.

Darwin

Jetstar	59	49	83.1	57	36	63.2
Qantas	160	132	82.5	159	127	79.9
QantasLink	50	45	90.0	50	50	100.0
Tigerair Australia	21	16	76.2	21	19	90.5
Virgin Australia	133	105	78.9	133	119	89.5
All Airlines	423	347	82.0	420	351	83.6

Relates to services to and from Alice Springs, Brisbane, Melbourne, Perth and Sydney.

Airport	Arrivals			Departures		
	Sectors Flown	On Time		Sectors Flown	On Time	
		No.	%		No.	%
Dubbo						
QantasLink	123	88	71.5	123	96	78.0
Regional Express	153	133	86.9	152	130	85.5
All Airlines	276	221	80.1	275	226	82.2
Relates to services to and from Sydney only.						
Emerald						
QantasLink	122	107	87.7	121	103	85.1
Virgin Australia	73	70	95.9	73	71	97.3
All Airlines	195	177	90.8	194	174	89.7
Relates to services to and from Brisbane only.						
Geraldton						
QantasLink	47	42	89.4	47	44	93.6
Virgin Australia Regional Airlines	61	56	91.8	61	56	91.8
All Airlines	108	98	90.7	108	100	92.6
Relates to services to and from Perth only.						
Gladstone						
QantasLink	155	123	79.4	155	127	81.9
Virgin Australia	108	86	79.6	107	92	86.0
All Airlines	263	209	79.5	262	219	83.6
Relates to services to and from Brisbane only.						
Gold Coast						
Jetstar	485	385	79.4	484	363	75.0
Qantas	122	96	78.7	122	91	74.6
QantasLink	8	4	50.0	8	2	25.0
Tigerair Australia	194	147	75.8	194	126	64.9
Virgin Australia	461	378	82.0	460	373	81.1
All Airlines	1 270	1 010	79.5	1 268	955	75.3
Relates to services to and from Adelaide, Melbourne and Sydney.						
Hamilton Island						
Jetstar	30	26	86.7	30	14	46.7
Qantas	30	29	96.7	30	29	96.7
QantasLink	55	43	78.2	55	44	80.0
Virgin Australia	81	78	96.3	81	76	93.8
All Airlines	196	176	89.8	196	163	83.2
Relates to services to and from Brisbane, Melbourne and Sydney.						
Hobart						
Jetstar	289	208	72.0	289	156	54.0
QantasLink	194	145	74.7	192	152	79.2
Tigerair Australia	32	23	71.9	32	17	53.1
Virgin Australia	230	194	84.3	230	170	73.9
All Airlines	745	570	76.5	743	495	66.6
Relates to services to and from Brisbane, Melbourne and Sydney.						
Kalgoorlie						
Qantas	4	4	100.0	4	4	100.0
QantasLink	74	68	91.9	74	67	90.5
Virgin Australia	40	38	95.0	40	35	87.5
Virgin Australia Regional Airlines	21	21	100.0	21	21	100.0
All Airlines	139	131	94.2	139	127	91.4
Relates to services to and from Perth only.						

Airport	Arrivals			Departures		
	Sectors	On Time		Sectors	On Time	
	Flown	No.	%	Flown	No.	%
Karratha						
Qantas	22	21	95.5	22	21	95.5
QantasLink	174	154	88.5	171	156	91.2
Virgin Australia	5	5	100.0	5	4	80.0
Virgin Australia Regional Airlines	77	74	96.1	77	71	92.2
All Airlines	278	254	91.4	275	252	91.6
Relates to services to and from Perth only.						
Launceston						
Jetstar	191	137	71.7	190	87	45.8
QantasLink	110	88	80.0	110	82	74.5
Virgin Australia	124	101	81.5	124	105	84.7
All Airlines	425	326	76.7	424	274	64.6
Relates to services to and from Melbourne and Sydney.						
Mackay						
Jetstar	43	24	55.8	42	17	40.5
QantasLink	104	89	85.6	103	92	89.3
Virgin Australia	143	126	88.1	142	135	95.1
All Airlines	290	239	82.4	287	244	85.0
Relates to services to and from Brisbane only.						
Melbourne						
Jetstar	1 377	842	61.1	1 379	896	65.0
Qantas	2 183	1 551	71.0	2 182	1 764	80.8
QantasLink	423	315	74.5	424	331	78.1
Regional Express	82	52	63.4	84	68	81.0
Tigerair Australia	628	409	65.1	627	449	71.6
Virgin Australia	2 303	1 714	74.4	2 307	1 976	85.7
All Airlines	6 996	4 883	69.8	7 003	5 484	78.3
Relates to services to and from Adelaide, Brisbane, Cairns, Canberra, Darwin, Gold Coast, Hamilton Island, Hobart, Launceston, Mildura, Newcastle, Perth, Sunshine Coast and Sydney.						
Mildura						
QantasLink	93	71	76.3	93	71	76.3
Regional Express	84	64	76.2	82	48	58.5
Virgin Australia	30	25	83.3	30	26	86.7
All Airlines	207	160	77.3	205	145	70.7
Relates to services to and from Melbourne only.						
Moranbah						
QantasLink	89	79	88.8	84	74	88.1
Virgin Australia	66	55	83.3	66	56	84.8
All Airlines	155	134	86.5	150	130	86.7
Relates to services to and from Brisbane only.						
Mount Isa						
QantasLink	55	46	83.6	54	46	85.2
Virgin Australia	18	17	94.4	18	16	88.9
All Airlines	73	63	86.3	72	62	86.1
Relates to services to and from Brisbane only.						

Airport	Arrivals			Departures		
	Sectors Flown	On Time		Sectors Flown	On Time	
		No.	%		No.	%
Newcastle						
Jetstar	175	114	65.1	176	123	69.9
QantasLink	94	81	86.2	93	82	88.2
Virgin Australia	120	102	85.0	120	103	85.8
All Airlines	389	297	76.3	389	308	79.2
Relates to services to and from Brisbane and Melbourne.						
Newman						
Qantas	71	68	95.8	71	66	93.0
QantasLink	73	62	84.9	74	68	91.9
Virgin Australia	11	11	100.0	11	11	100.0
Virgin Australia Regional Airlines	29	26	89.7	27	25	92.6
All Airlines	184	167	90.8	183	170	92.9
Relates to services to and from Perth only.						
Perth						
Jetstar	112	103	92.0	110	85	77.3
Qantas	829	682	82.3	829	731	88.2
QantasLink	531	487	91.7	533	476	89.3
Tigerair Australia	83	73	88.0	82	71	86.6
Virgin Australia	551	487	88.4	551	520	94.4
Virgin Australia Regional Airlines	253	221	87.4	255	242	94.9
All Airlines	2 359	2 053	87.0	2 360	2 125	90.0
Relates to services to and from Adelaide, Brisbane, Broome, Darwin, Geraldton, Kalgoorlie, Karratha, Melbourne, Newman, Port Hedland and Sydney.						
Port Hedland						
Qantas	30	29	96.7	30	29	96.7
QantasLink	104	86	82.7	103	93	90.3
Virgin Australia	26	23	88.5	26	23	88.5
Virgin Australia Regional Airlines	26	25	96.2	26	25	96.2
All Airlines	186	163	87.6	185	170	91.9
Relates to services to and from Perth only.						
Port Lincoln						
QantasLink	106	89	84.0	106	91	85.8
Regional Express	205	196	95.6	203	191	94.1
All Airlines	311	285	91.6	309	282	91.3
Relates to services to and from Adelaide only.						
Port Macquarie						
QantasLink	131	90	68.7	133	96	72.2
Virgin Australia	57	48	84.2	56	43	76.8
All Airlines	188	138	73.4	189	139	73.5
Relates to services to and from Sydney only.						
Proserpine						
Jetstar	30	25	83.3	30	21	70.0
Virgin Australia	30	28	93.3	30	25	83.3
All Airlines	60	53	88.3	60	46	76.7
Relates to services to and from Brisbane only.						

Airport	Arrivals			Departures		
	Sectors	On Time		Sectors	On Time	
	Flown	No.	%	Flown	No.	%
Rockhampton						
QantasLink	187	151	80.7	186	148	79.6
Virgin Australia	170	140	82.4	169	143	84.6
All Airlines	357	291	81.5	355	291	82.0
Relates to services to and from Brisbane only.						
Sunshine Coast						
Jetstar	199	161	80.9	199	122	61.3
QantasLink	34	26	76.5	34	24	70.6
Virgin Australia	77	65	84.4	77	62	80.5
All Airlines	310	252	81.3	310	208	67.1
Relates to services to and from Melbourne and Sydney.						
Sydney						
Jetstar	1 423	971	68.2	1 426	1 003	70.3
Qantas	2 251	1 815	80.6	2 253	1 819	80.7
QantasLink	1 476	1 157	78.4	1 478	1 118	75.6
Regional Express	494	415	84.0	496	432	87.1
Tigerair Australia	570	396	69.5	572	420	73.4
Virgin Australia	2 655	2 249	84.7	2 655	2 236	84.2
All Airlines	8 869	7 003	79.0	8 880	7 028	79.1
Relates to services to and from Adelaide, Albury, Armidale, Ayers Rock, Ballina, Brisbane, Cairns, Canberra, Coffs Harbour, Darwin, Dubbo, Gold Coast, Hamilton Island, Hobart, Launceston, Melbourne, Perth, Port Macquarie, Sunshine Coast, Tamworth, Townsville and Wagga Wagga.						
Tamworth						
QantasLink	148	117	79.1	147	123	83.7
Virgin Australia	39	31	79.5	40	33	82.5
All Airlines	187	148	79.1	187	156	83.4
Relates to services to and from Sydney only.						
Townsville						
Jetstar	58	41	70.7	58	37	63.8
Qantas	72	62	86.1	72	63	87.5
QantasLink	205	186	90.7	201	182	90.5
Regional Express	47	46	97.9	48	40	83.3
Virgin Australia	176	157	89.2	175	157	89.7
All Airlines	558	492	88.2	554	479	86.5
Relates to services to and from Brisbane, Cairns and Sydney.						
Wagga Wagga						
QantasLink	111	89	80.2	111	93	83.8
Regional Express	136	120	88.2	136	121	89.0
All Airlines	247	209	84.6	247	214	86.6
Relates to services to and from Sydney only.						

Definitions

On time arrival	A flight arrival is counted as "on time" if it arrived at the gate before 15 minutes after the scheduled arrival time shown in the carriers' schedule. Neither diverted nor cancelled flights count as on time.
On time departure	A flight departure is counted as "on time" if it departs the gate before 15 minutes after the scheduled departure time shown in the carriers' schedule.
Cancellation	A flight removed from service within 7 days of scheduled departure is regarded as a cancellation.
On time departure percentage	The percentage of on time departures is measured against the number of departures <i>operated</i> on any particular sector.
On time arrival percentage	The percentage of on time arrivals is measured against the number of arrivals <i>operated</i> on any particular sector.
Cancellation percentage	The percentage of cancellations is measured against the number of services <i>scheduled</i> on any particular sector.
