



Australian Government

Department of Infrastructure, Transport, Regional Development and Communications

Bureau of Infrastructure, Transport and Regional Economics

STATISTICAL REPORT



Aviation

Domestic airline on time performance
January 2020

© Commonwealth of Australia 2020

ISSN: 1832-0759

Ownership of intellectual property rights in this publication

Unless otherwise noted, copyright (and any other intellectual property rights, if any) in this publication is owned by the Commonwealth of Australia (referred to below as the Commonwealth).

Disclaimer

The material contained in this publication is made available on the understanding that the Commonwealth is not providing professional advice, and that users exercise their own skill and care with respect to its use, and seek independent advice if necessary.

The Commonwealth makes no representations or warranties as to the contents or accuracy of the information contained in this publication. To the extent permitted by law, the Commonwealth disclaims liability to any person or organisation in respect of anything done, or omitted to be done, in reliance upon information contained in this publication.

Creative Commons licence

With the exception of (a) the Coat of Arms; and (b) the Department of Infrastructure, Transport, Regional Development and Communications' photos and graphics, copyright in this publication is licensed under a Creative Commons Attribution 3.0 Australia Licence.

Creative Commons Attribution 3.0 Australia Licence is a standard form licence agreement that allows you to copy, communicate and adapt this publication provided that you attribute the work to the Commonwealth and abide by the other licence terms. A summary of the licence terms is available from <http://creativecommons.org/licenses/by/3.0/au/deed.en>. The full licence terms are available from <http://creativecommons.org/licenses/by/3.0/au/legalcode>.

Use of the Coat of Arms

The Department of the Prime Minister and Cabinet sets the terms under which the Coat of Arms is used. Please refer to the Department's Commonwealth Coat of Arms and Government branding web page <http://www.dpmc.gov.au/guidelines/index.cfm#brand> and, in particular, the Guidelines on the use of the Commonwealth Coat of Arms publication.

An appropriate citation for this report is:

Bureau of Infrastructure, Transport and Regional Economics (BITRE), 2020, Domestic airline on time performance, Statistical Report, BITRE, Canberra ACT.

Contact us

This publication is available in PDF format. All other rights are reserved, including in relation to any Departmental logos or trade marks which may exist. For enquiries regarding the licence and any use of this publication, please contact:

Bureau of Infrastructure, Transport and Regional Economics (BITRE)
Department of Infrastructure, Transport, Regional Development and Communications
GPO Box 501, Canberra ACT 2601, Australia
Telephone: (international) +61 2 6274 7210
Fax: (international) +61 2 6274 6855
Email: bitre@infrastructure.gov.au
Website: www.bitre.gov.au

Inquiries

Should you require additional information about the statistics contained in this publication:

Telephone (02) 6274 7790 or Facsimile (02) 6274 7727

Electronic mail: AVSTATS@infrastructure.gov.au

Web site: <http://www.bitre.gov.au/statistics/aviation/otphome.aspx>

Foreword

The Bureau of Infrastructure, Transport and Regional Economics (BITRE) monitors the punctuality and reliability of major domestic airlines operating between Australian airports. The purpose of this is to allow for evaluation of overall industry and individual airline performance, so that consumers of air travel can make informed decisions.

The following domestic airlines currently report this information monthly to the BITRE: Jetstar, Qantas, QantasLink, Regional Express, Tigerair Australia, Virgin Australia and Virgin Australia Regional Airlines. Data has been gathered since November 2003, although some airlines commenced reporting at a later date, including Jetstar which first reported in May 2004, MacAir in July 2005, Tigerair Australia in April 2008 and Virgin Australia Regional Airlines in May 2013. MacAir ceased operations in February 2009 and data was not received for December 2008 onwards. Virgin Blue was rebranded as Virgin Australia in May 2011 and Tiger Airways was rebranded as Tigerair Australia in July 2013 and time series data in Microsoft Excel spreadsheet format on the BITRE website have been revised to reflect these changes. Services operated by Skywest on behalf of Virgin Australia using ATR/F100 aircraft commenced in November 2011 and were shown separately as Virgin Australia – ATR/F100 Operations. Virgin Australia Regional Airlines commenced operations in May 2013. It was formed after the acquisition of Skywest by Virgin Australia and represented a combination of operations previously reported under Skywest and Virgin Australia – ATR/F100 Operations. In January 2016, Virgin Australia transferred their ATR fleet from Virgin Australia Regional Airlines to Virgin Australia.

Information presented in this report is for Australian domestic routes for which the passenger load averaged 8 000 or more passengers per month over the previous six months and where two or more airlines operated in competition on those routes. There were 64 routes that met this definition in January 2020. Over time, routes which meet these criteria change as airline networks and traffic levels vary.

Participating airlines report their overall monthly network performance where this is possible.

Total industry figures encompass all services operated by reporting airlines only. These airlines collectively carried over 95 per cent of total domestic passengers (regular public transport only) in 2018.

The method of capturing on time performance varies between airlines utilising different recording systems. Jetstar and Qantas jet aircraft use Aircraft Communication Addressing and Reporting System (ACARS) to electronically measure on time performance. Regional Express, Tigerair Australia, Virgin Australia, Virgin Australia Regional Airlines and the Qantas non-jet fleet record on time performance manually using records from pilots, gate agents and/or ground crews.

After initial data is collected, aggregate reports are audited internally by participating airlines prior to publication.

Reports and detailed time series data in Microsoft Excel spreadsheet format are available from the BITRE website at: <http://www.bitre.gov.au/statistics/aviation/otphome.aspx>.

Contents

	Page
Industry performance	1
Individual routes	10
Airports.....	24
Definitions	30

Industry performance

For January 2020, on time performance over all routes operated by participating airlines (Jetstar, Qantas, QantasLink, Regional Express, Tigerair Australia, Virgin Australia and Virgin Australia Regional Airlines) averaged 74.3 per cent for on time arrivals and 75.4 per cent for on time departures. Cancellations represented 2.8 per cent of all scheduled flights. The equivalent figures for January 2019 were 84.4 per cent for on time arrivals, 84.7 per cent for on time departures and 1.9 per cent for cancellations.

This month's on time arrivals figure was lower than the long term average performance for all routes (82.2 per cent) and the on time departures figure was also lower than the long term average (83.5 per cent). The rate of cancellations was higher than the long term average of 1.5 per cent.

The Qantas network (Qantas and QantasLink combined operations) recorded 77.4 per cent for on time arrivals while the Virgin Australia network (Virgin Australia and Virgin Australia Regional Airlines combined operations) recorded 73.3 per cent. Qantas achieved the highest on time arrivals among the major domestic airlines at 74.7 per cent followed by Virgin Australia at 72.8 per cent, Jetstar at 68.0 per cent and Tigerair Australia at 67.1 per cent. Of the regional airlines, Virgin Australia Regional Airlines recorded 81.7 per cent for on time arrivals, followed by QantasLink at 79.8 per cent and Regional Express at 79.1 per cent.

The Qantas network recorded 78.5 per cent for on time departures while the Virgin Australia network recorded 75.3 per cent. Qantas achieved the highest level of on time departures among the major domestic airlines for January 2020 at 76.5 per cent, followed by Virgin Australia at 74.7 per cent, Tigerair Australia at 69.3 per cent and Jetstar at 66.0 per cent. Of the regional airlines, Virgin Australia Regional Airlines recorded 84.8 per cent for on time departures, followed by Regional Express at 82.9 per cent and QantasLink at 80.1 per cent.

Tigerair Australia recorded the highest percentage of cancellations (3.9 per cent) during the month, followed by Regional Express (3.5 per cent), Qantas (3.2 per cent), QantasLink (2.9 per cent), Jetstar (2.6 per cent), Virgin Australia Regional Airlines (2.1 per cent) and Virgin Australia (1.9 per cent).

Airlines' on time performance varies across the routes they serve. Individual route data by specific airline for 64 routes are shown on pages 10-23.

Of the 64 routes which met the criteria for on time performance reporting in January 2020, the Bundaberg-Brisbane route had the highest percentage of on time arrivals (95.6 per cent) and the Alice Springs-Darwin route had the highest percentage of on time departures (95.5 per cent). The Proserpine-Sydney and Melbourne-Newcastle routes had the lowest percentage of on time arrivals (53.1 per cent) and the Gold Coast-Melbourne route had the lowest percentage of on time departures (46.6 per cent).

Cancellations were highest on the Albury-Sydney route at 15.2 per cent, followed by the Sydney-Albury route at 14.5 per cent, the Newman-Perth route at 9.1 per cent, the Sydney-Canberra route at 7.3 per cent and the Perth-Newman route at 7.1 per cent.

Bundaberg Airport recorded the highest percentage of on time arrivals (94.9 per cent) and the highest percentage of on time departures (92.6 per cent). Mildura Airport recorded the lowest percentage of on time arrivals (57.7 per cent) and Gold Coast Airport recorded the lowest percentage of on time departures (53.3 per cent). These figures only refer to reported routes and do not cover all flights at these airports.

Table 1 On time performance for January 2020 — Total Industry

	<i>Sectors</i>		<i>Arrivals On Time</i>		<i>Departures On Time</i>		<i>Cancellations</i>	
	<i>Scheduled</i>	<i>Flown</i>	<i>No.</i>	<i>%</i>	<i>No.</i>	<i>%</i>	<i>No.</i>	<i>%</i>
Jetstar	7 643	7 442	5 063	68.0	4 911	66.0	201	2.6
Qantas - all QF designated services	18 192	17 636	13 653	77.4	13 836	78.5	556	3.1
Regional Express	4 666	4 504	3 561	79.1	3 732	82.9	162	3.5
Tigerair Australia	2 498	2 401	1 610	67.1	1 663	69.3	97	3.9
Virgin Australia - all VA designated services	12 236	12 003	8 803	73.3	9 040	75.3	233	1.9
All Airlines	45 235	43 986	32 690	74.3	33 182	75.4	1 249	2.8
Individual operating entities								
Qantas	8463	8189	6117	74.7	6267	76.5	274	3.2
QantasLink	9729	9447	7536	79.8	7569	80.1	282	2.9
Virgin Australia	11 457	11 240	8 180	72.8	8 393	74.7	217	1.9
Virgin Australia Regional Airlines	779	763	623	81.7	647	84.8	16	2.1

Total airline network data (including routes not shown in this report).

Airlines' on time performance varies across the routes they serve. Individual route data by specific airline for 64 routes are shown on pages 10-23.

Table 2 Top ten routes for on time performance for January 2020 (participating airlines only)

<i>Arrivals</i>		<i>Departures</i>	
<i>Route</i>	<i>On Time (%)</i>	<i>Route</i>	<i>On Time (%)</i>
Bundaberg-Brisbane	95.6	Alice Springs-Darwin	95.5
Alice Springs-Darwin	95.5	Perth-Darwin	95.2
Perth-Darwin	95.2	Adelaide-Port Lincoln	93.5
Brisbane-Bundaberg	94.9	Brisbane-Bundaberg	92.6
Darwin-Perth	93.5	Perth-Port Hedland	92.6
Adelaide-Port Lincoln	93.2	Bundaberg-Brisbane	92.6
Brisbane-Hobart	91.8	Brisbane-Emerald	91.3
Brisbane-Emerald	91.3	Perth-Karratha	91.0
Perth-Karratha	91.0	Perth-Kalgoorlie	91.0
Perth-Port Hedland	90.5	Darwin-Alice Springs	90.9

Table 3 Top ten airports for on time performance for January 2020 (participating airlines and reported routes only)

<i>Arrivals</i>		<i>Departures</i>	
<i>Airport</i>	<i>On Time (%)</i>	<i>Airport</i>	<i>On Time (%)</i>
Bundaberg	94.9	Bundaberg	92.6
Port Lincoln	93.2	Emerald	90.7
Emerald	91.3	Karratha	90.1
Karratha	91.0	Port Lincoln	90.0
Port Hedland	90.5	Kalgoorlie	88.3
Kalgoorlie	89.7	Port Hedland	88.0
Mount Isa	88.4	Alice Springs	87.0
Newman	88.2	Gladstone	86.5
Gladstone	88.1	Darwin	85.4
Alice Springs	84.6	Townsville	84.6

Total industry on time performance

Figure 1 On time performance (by month from January 2017)—Total Industry

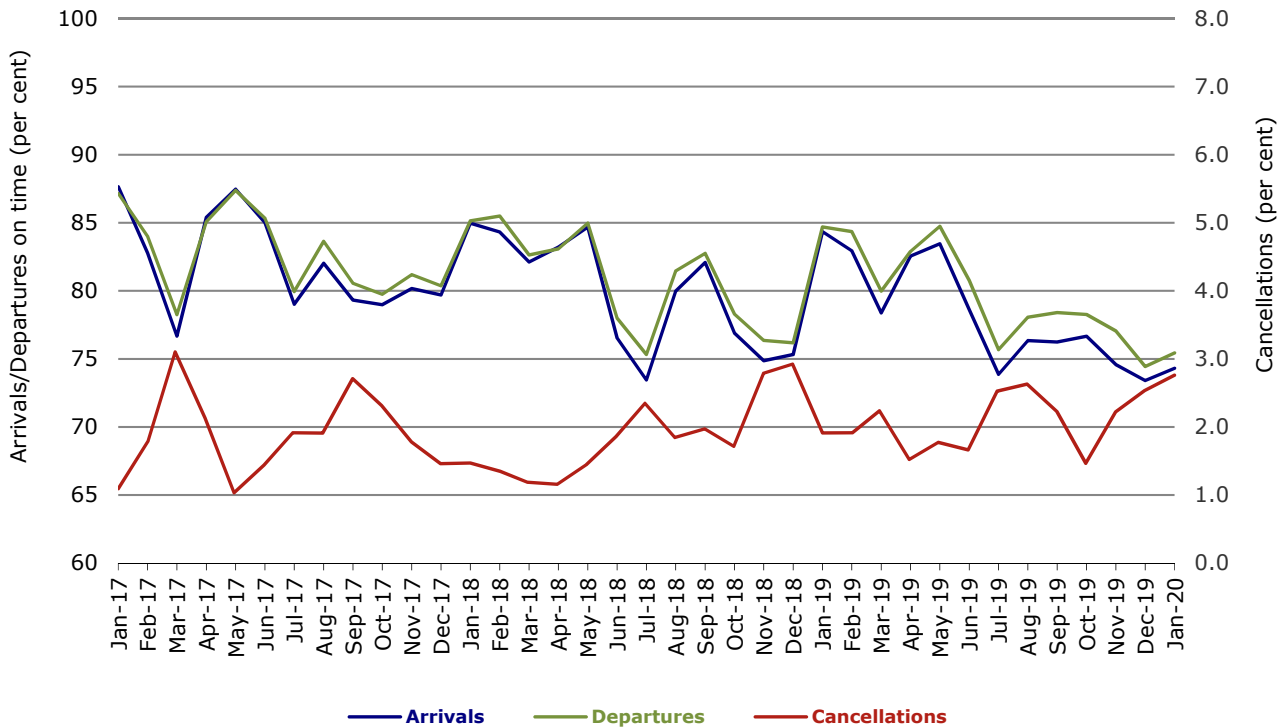


Figure 2 Arrivals on time (by month from January 2019)

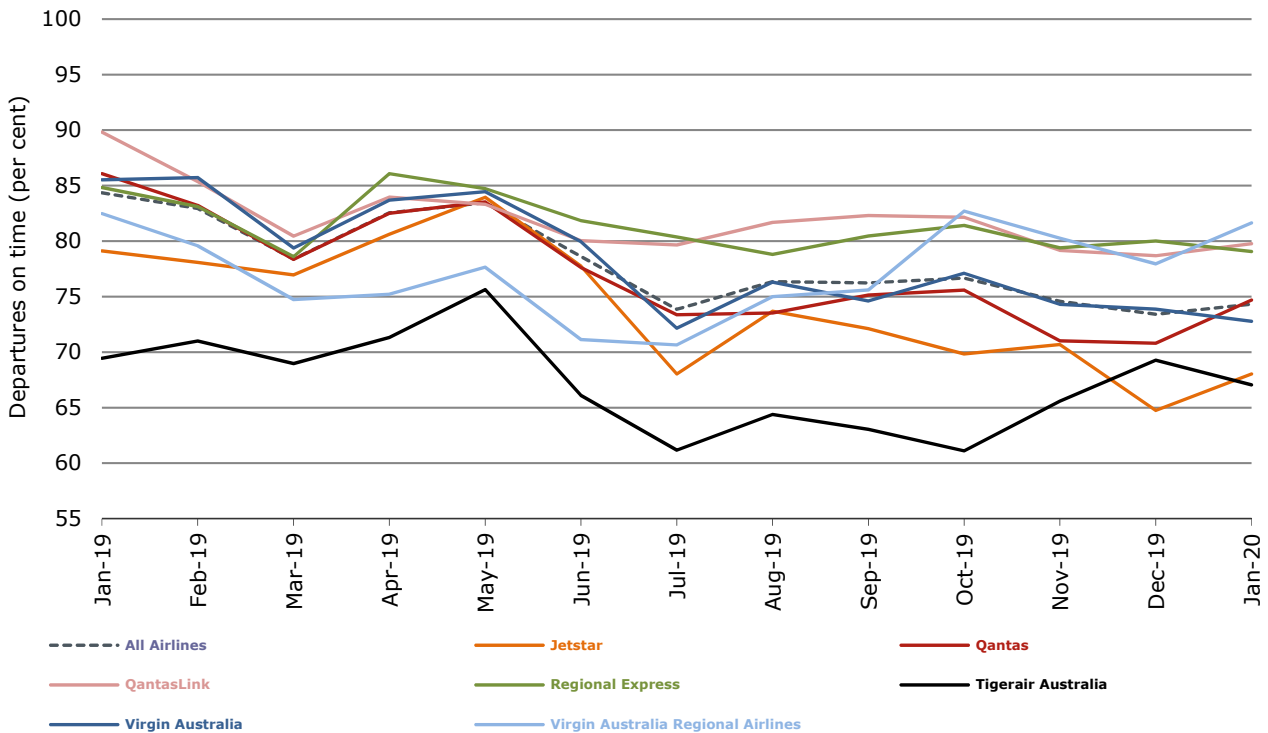


Figure 3 Departures on time (by month from January 2019)

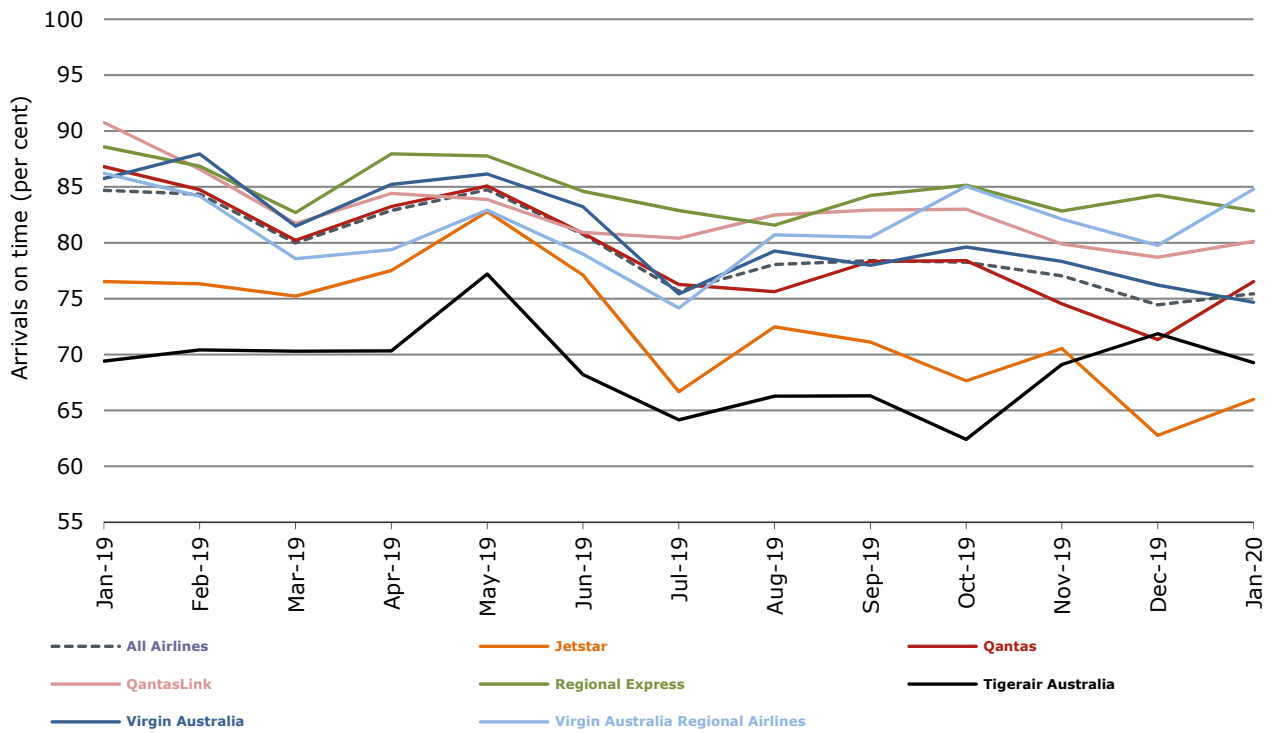
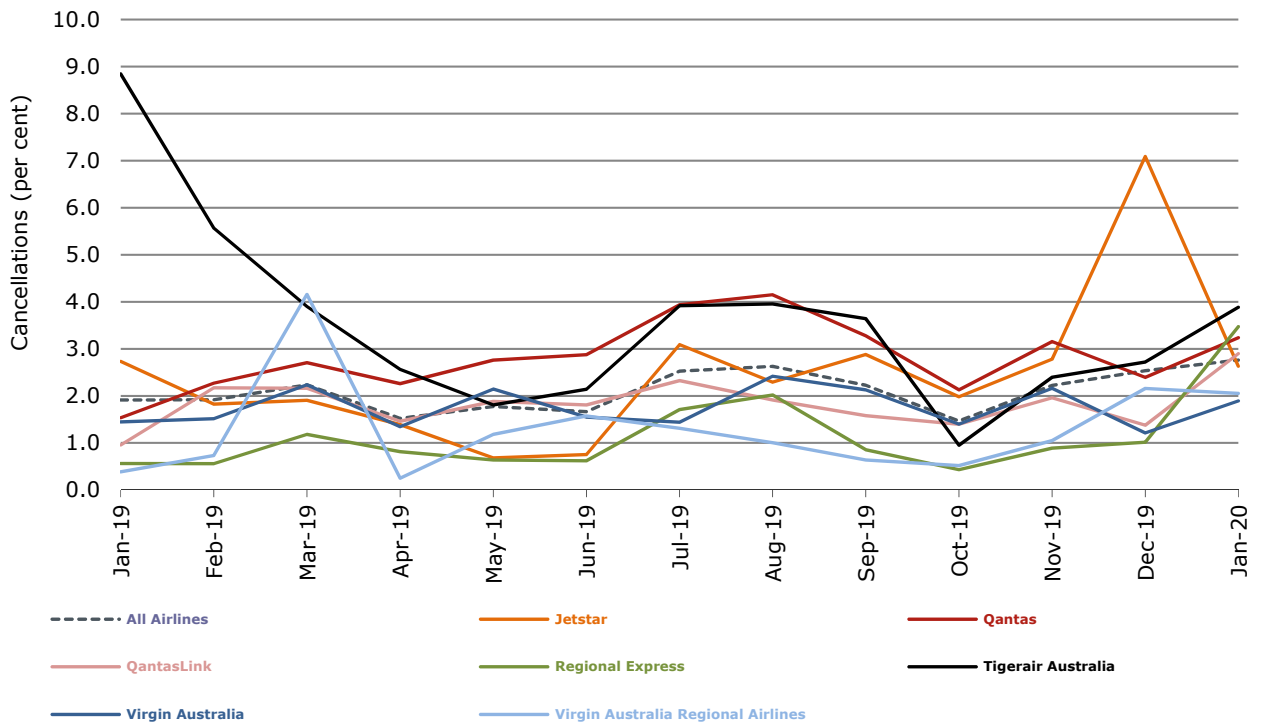


Figure 4 Cancellations (by month from January 2019)



Major domestic airlines on time performance

Figure 5 On time performance (by month from January 2017)—Jetstar

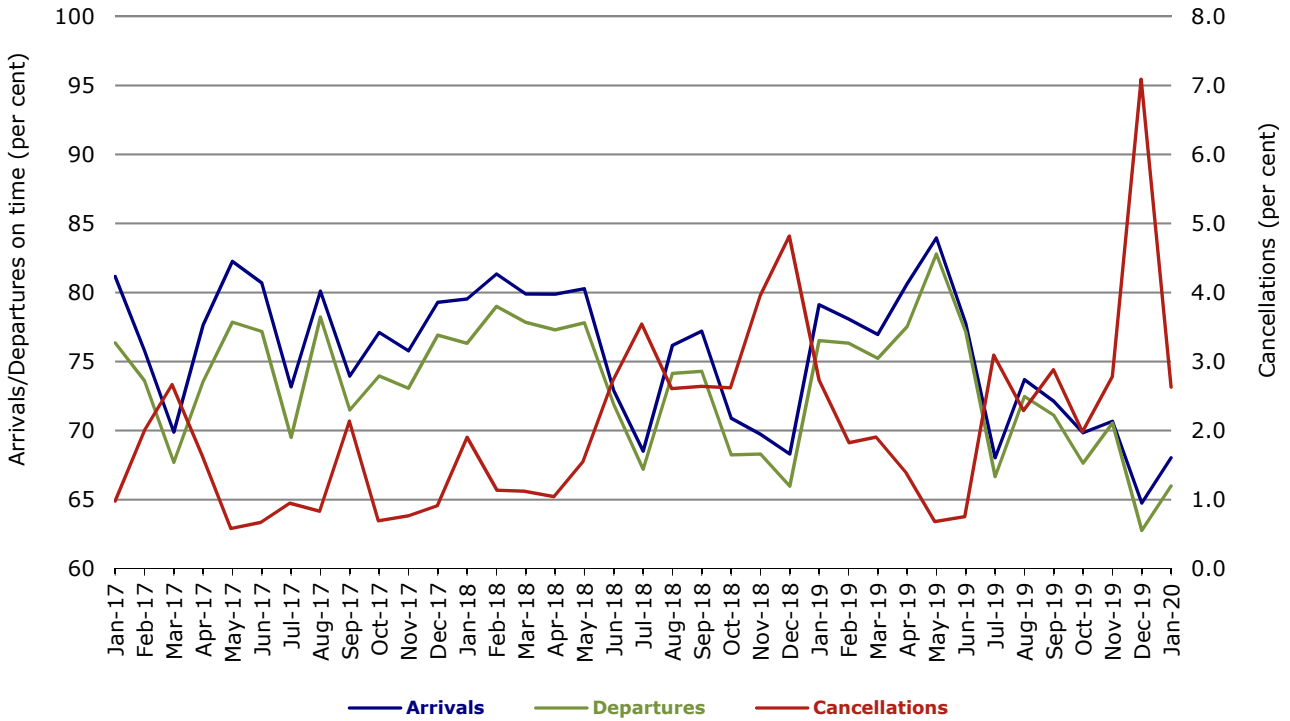


Figure 6 On time performance (by month from January 2017)—Qantas

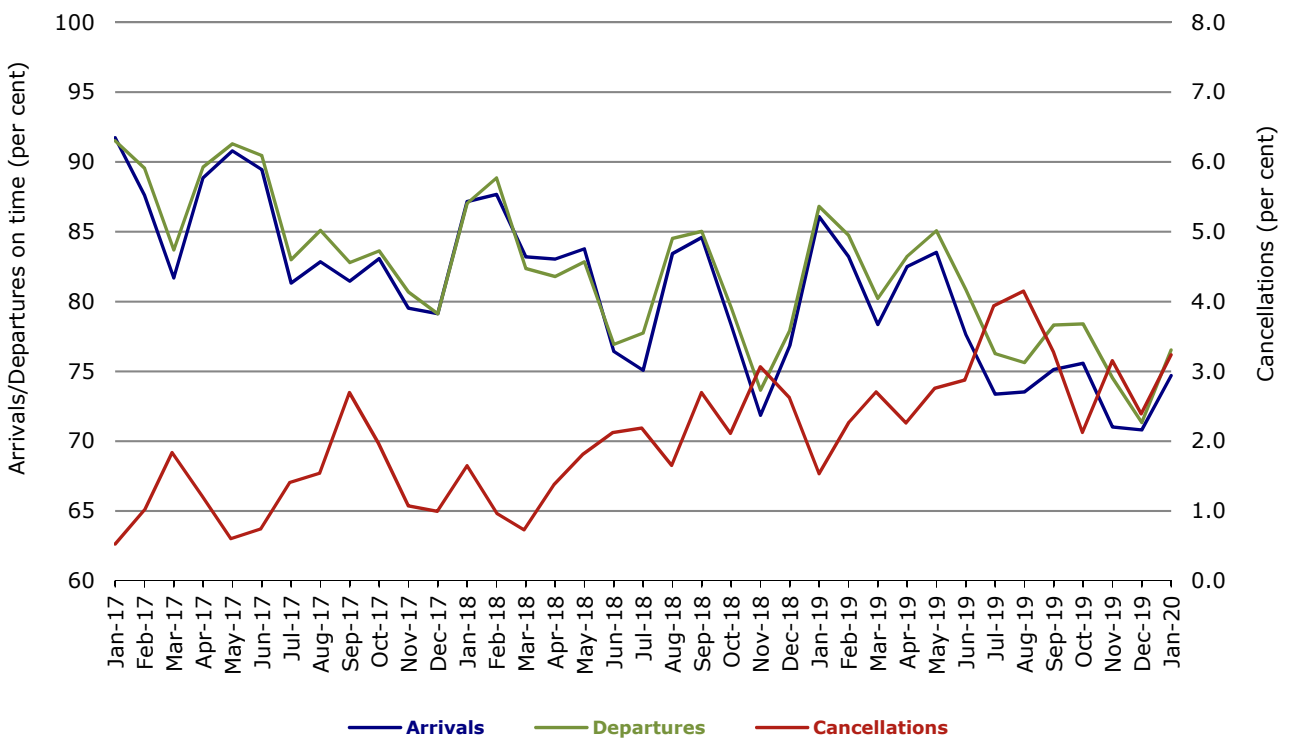


Figure 7 On time performance (by month from January 2017)—Tigerair Australia

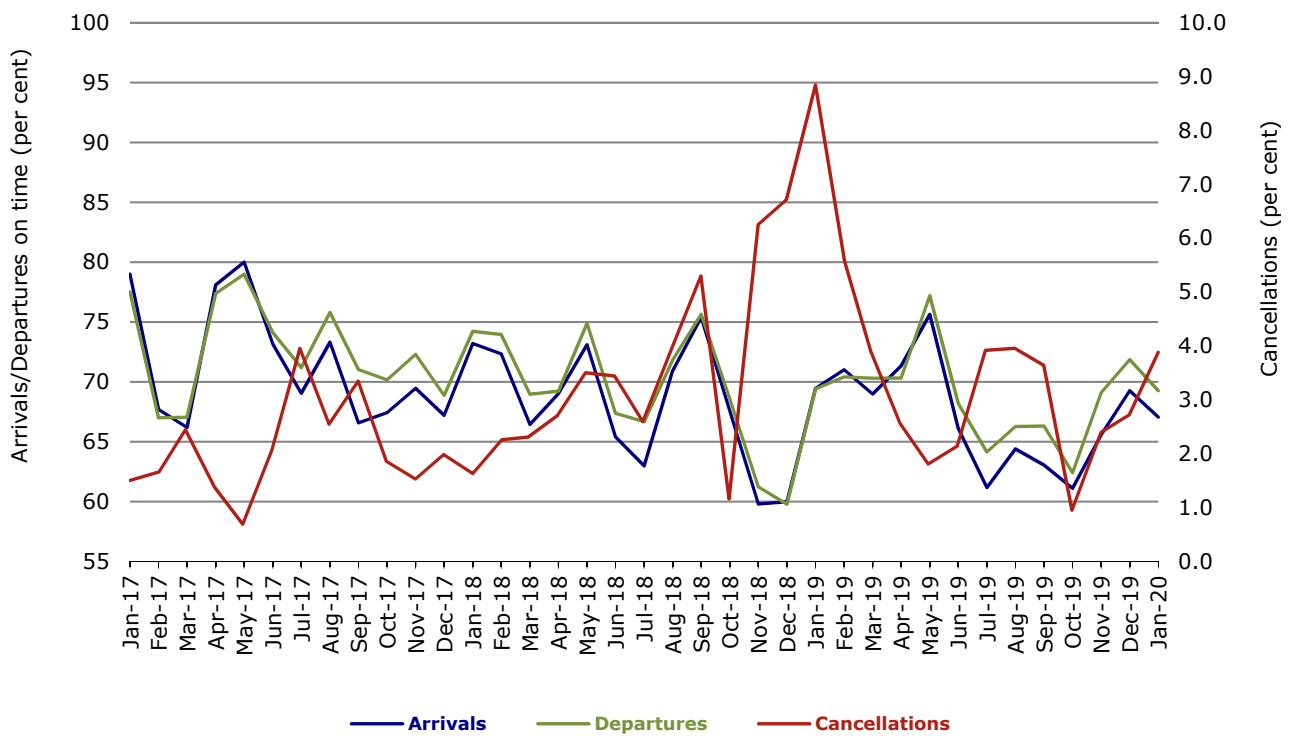
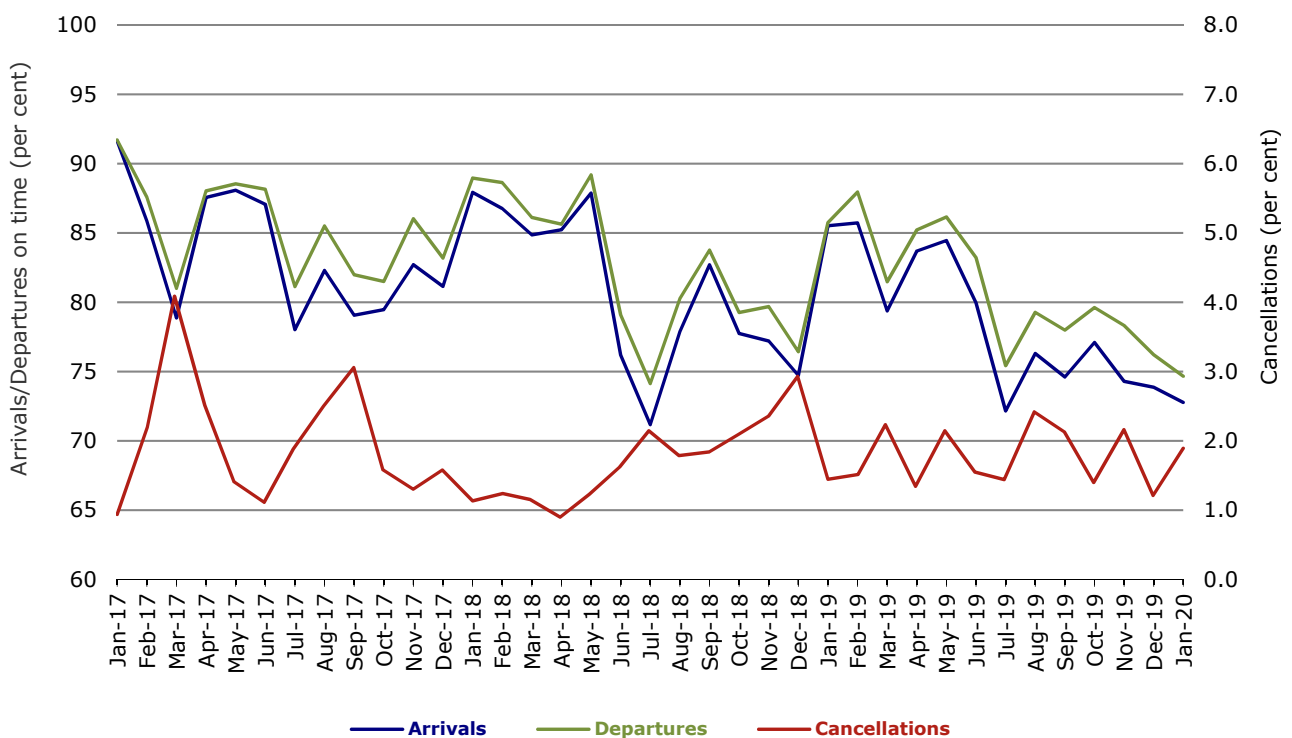


Figure 8 On time performance (by month from January 2017)—Virgin Australia



Major regional airlines on time performance

Figure 9 On time performance (by month from January 2017)—QantasLink

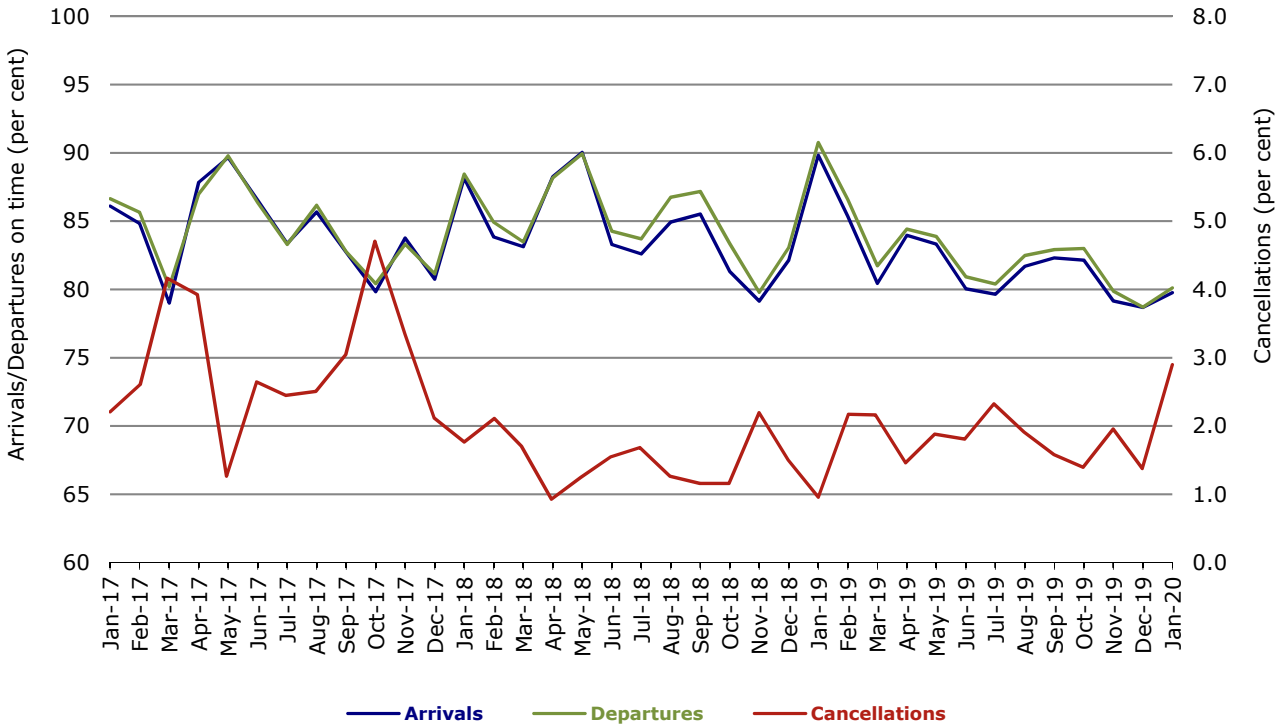


Figure 10 On time performance (by month from January 2017)—Regional Express

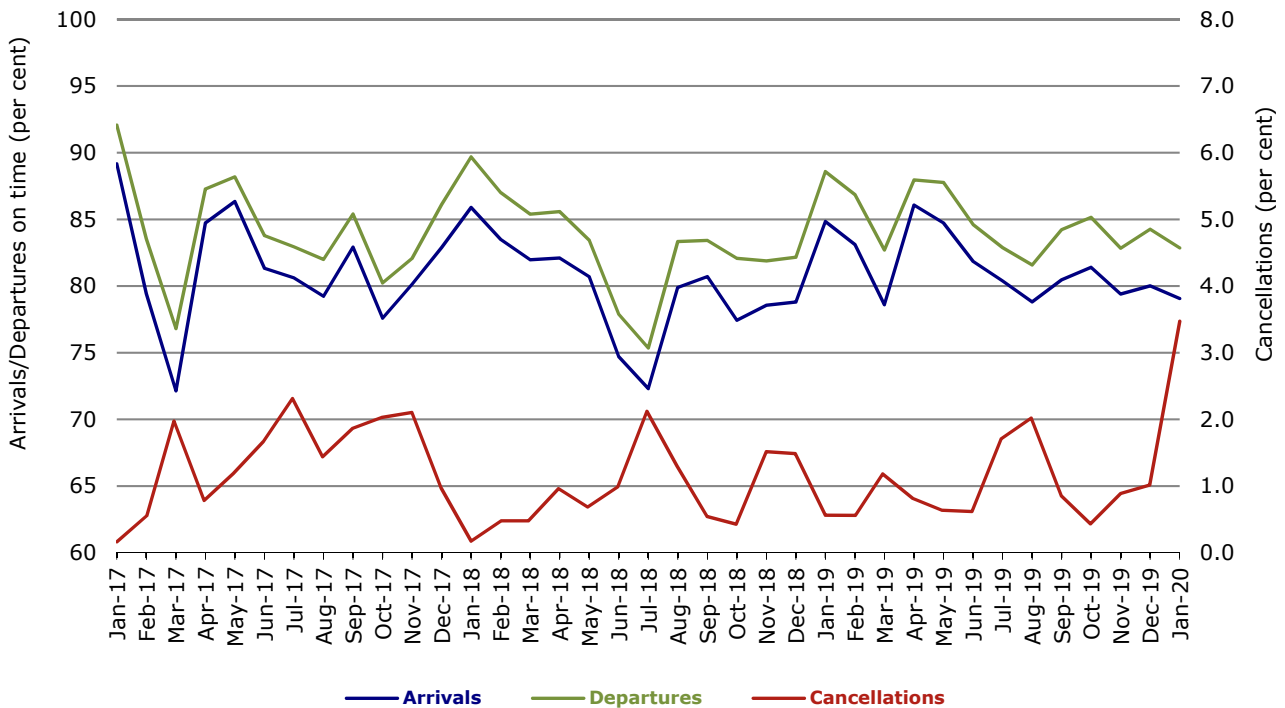
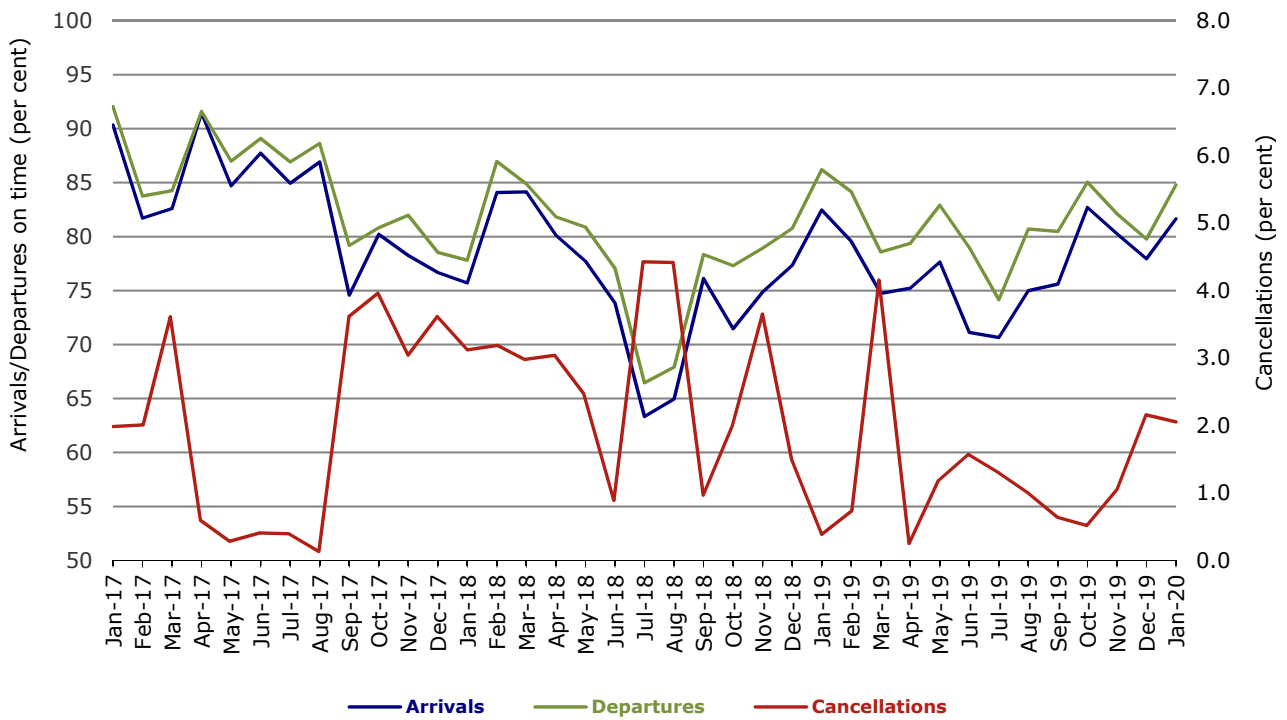


Figure 11 On time performance (by month from January 2017)
Virgin Australia Regional Airlines



Individual routes

On time performance is reported for all routes where the passenger load averages over 8000 passengers per month over the previous six months, and where two or more airlines operate in competition on those routes. There are now 64 routes which meet this definition. Over time, however, routes which meet this definition may change as airline networks and traffic levels vary.

	Sectors		Arrivals On Time		Departures On Time		Cancellations	
	Sched.	Flown	No.	%	No.	%	No.	%
Adelaide-Alice Springs								
Qantas	31	31	28	90.3	27	87.1	0	0.0
Virgin Australia Regional Airlines	16	16	13	81.3	13	81.3	0	0.0
All Airlines	47	47	41	87.2	40	85.1	0	0.0
Adelaide-Brisbane								
Jetstar	30	27	19	70.4	18	66.7	3	10.0
Qantas	108	107	97	90.7	98	91.6	1	0.9
Tigerair Australia	29	27	21	77.8	22	81.5	2	6.9
Virgin Australia	111	111	98	88.3	93	83.8	0	0.0
All Airlines	278	272	235	86.4	231	84.9	6	2.2
Adelaide-Canberra								
Qantas	31	30	29	96.7	28	93.3	1	3.2
QantasLink	4	4	4	100.0	4	100.0	0	0.0
Virgin Australia	27	26	21	80.8	21	80.8	1	3.7
All Airlines	62	60	54	90.0	53	88.3	2	3.2
Adelaide-Gold Coast								
Jetstar	31	30	14	46.7	15	50.0	1	3.2
Virgin Australia	34	34	31	91.2	33	97.1	0	0.0
All Airlines	65	64	45	70.3	48	75.0	1	1.5
Adelaide-Melbourne								
Jetstar	119	106	66	62.3	61	57.5	13	10.9
Qantas	256	246	182	74.0	184	74.8	10	3.9
Tigerair Australia	73	69	46	66.7	49	71.0	4	5.5
Virgin Australia	257	247	168	68.0	174	70.4	10	3.9
Virgin Australia Regional Airlines	6	5	3	60.0	3	60.0	1	16.7
All Airlines	711	673	465	69.1	471	70.0	38	5.3
Adelaide-Perth								
Jetstar	21	20	16	80.0	11	55.0	1	4.8
Qantas	107	107	91	85.0	89	83.2	0	0.0
Virgin Australia	42	42	32	76.2	34	81.0	0	0.0
Virgin Australia Regional Airlines	31	30	17	56.7	18	60.0	1	3.2
All Airlines	201	199	156	78.4	152	76.4	2	1.0
Adelaide-Port Lincoln								
QantasLink	103	103	90	87.4	90	87.4	0	0.0
Regional Express	176	176	170	96.6	171	97.2	0	0.0
All Airlines	279	279	260	93.2	261	93.5	0	0.0
Adelaide-Sydney								
Jetstar	91	87	69	79.3	69	79.3	4	4.4
Qantas	257	252	205	81.3	206	81.7	5	1.9
Tigerair Australia	30	29	12	41.4	17	58.6	1	3.3
Virgin Australia	162	161	128	79.5	130	80.7	1	0.6
All Airlines	540	529	414	78.3	422	79.8	11	2.0

	<i>Sectors</i>		<i>Arrivals On Time</i>		<i>Departures On Time</i>		<i>Cancellations</i>	
	<i>Sched.</i>	<i>Flown</i>	<i>No.</i>	<i>%</i>	<i>No.</i>	<i>%</i>	<i>No.</i>	<i>%</i>
Albury-Sydney								
QantasLink	86	72	47	65.3	50	69.4	14	16.3
Regional Express	41	38	31	81.6	34	89.5	3	7.3
Virgin Australia	51	41	22	53.7	24	58.5	10	19.6
All Airlines	178	151	100	66.2	108	71.5	27	15.2
Alice Springs-Adelaide								
Qantas	32	32	27	84.4	25	78.1	0	0.0
Virgin Australia Regional Airlines	16	16	13	81.3	13	81.3	0	0.0
All Airlines	48	48	40	83.3	38	79.2	0	0.0
Alice Springs-Darwin								
QantasLink	35	34	34	100.0	34	100.0	1	2.9
Virgin Australia Regional Airlines	10	10	8	80.0	8	80.0	0	0.0
All Airlines	45	44	42	95.5	42	95.5	1	2.2
Armidale-Sydney								
QantasLink	103	101	62	61.4	62	61.4	2	1.9
Regional Express	40	40	32	80.0	34	85.0	0	0.0
All Airlines	143	141	94	66.7	96	68.1	2	1.4
Ayers Rock-Sydney								
Jetstar	27	27	14	51.9	15	55.6	0	0.0
Virgin Australia	31	30	26	86.7	26	86.7	1	3.2
All Airlines	58	57	40	70.2	41	71.9	1	1.7
Ballina-Sydney								
Jetstar	108	108	76	70.4	70	64.8	0	0.0
Regional Express	3	3	1	33.3	1	33.3	0	0.0
Virgin Australia	44	44	28	63.6	23	52.3	0	0.0
All Airlines	155	155	105	67.7	94	60.6	0	0.0
Brisbane-Adelaide								
Jetstar	30	29	21	72.4	19	65.5	1	3.3
Qantas	108	106	94	88.7	87	82.1	2	1.9
Tigerair Australia	29	27	24	88.9	22	81.5	2	6.9
Virgin Australia	111	110	95	86.4	77	70.0	1	0.9
All Airlines	278	272	234	86.0	205	75.4	6	2.2
Brisbane-Bundaberg								
QantasLink	105	105	99	94.3	96	91.4	0	0.0
Virgin Australia	31	31	30	96.8	30	96.8	0	0.0
All Airlines	136	136	129	94.9	126	92.6	0	0.0
Brisbane-Cairns								
Jetstar	104	104	84	80.8	70	67.3	0	0.0
Qantas	21	21	18	85.7	18	85.7	0	0.0
QantasLink	134	133	120	90.2	117	88.0	1	0.7
Tigerair Australia	31	30	23	76.7	23	76.7	1	3.2
Virgin Australia	143	143	124	86.7	112	78.3	0	0.0
All Airlines	433	431	369	85.6	340	78.9	2	0.5
Brisbane-Canberra								
QantasLink	153	145	116	80.0	114	78.6	8	5.2
Tigerair Australia	31	30	25	83.3	25	83.3	1	3.2
Virgin Australia	91	88	72	81.8	69	78.4	3	3.3
All Airlines	275	263	213	81.0	208	79.1	12	4.4

	<i>Sectors</i>		<i>Arrivals On Time</i>		<i>Departures On Time</i>		<i>Cancellations</i>	
	<i>Sched.</i>	<i>Flown</i>	<i>No.</i>	<i>%</i>	<i>No.</i>	<i>%</i>	<i>No.</i>	<i>%</i>
Brisbane-Darwin								
Jetstar	25	25	24	96.0	23	92.0	0	0.0
Qantas	30	30	25	83.3	27	90.0	0	0.0
Tigerair Australia	19	19	16	84.2	14	73.7	0	0.0
Virgin Australia	32	32	18	56.3	17	53.1	0	0.0
All Airlines	106	106	83	78.3	81	76.4	0	0.0
Brisbane-Emerald								
QantasLink	118	117	105	89.7	105	89.7	1	0.8
Virgin Australia	44	44	42	95.5	42	95.5	0	0.0
All Airlines	162	161	147	91.3	147	91.3	1	0.6
Brisbane-Gladstone								
QantasLink	130	130	109	83.8	110	84.6	0	0.0
Virgin Australia	71	71	68	95.8	68	95.8	0	0.0
All Airlines	201	201	177	88.1	178	88.6	0	0.0
Brisbane-Hamilton Island								
QantasLink	32	31	27	87.1	26	83.9	1	3.1
Virgin Australia	31	31	25	80.6	23	74.2	0	0.0
All Airlines	63	62	52	83.9	49	79.0	1	1.6
Brisbane-Hobart								
Jetstar	43	43	38	88.4	39	90.7	0	0.0
Virgin Australia	42	42	40	95.2	36	85.7	0	0.0
All Airlines	85	85	78	91.8	75	88.2	0	0.0
Brisbane-Mackay								
Jetstar	31	31	25	80.6	24	77.4	0	0.0
QantasLink	130	125	102	81.6	104	83.2	5	3.8
Virgin Australia	141	141	110	78.0	110	78.0	0	0.0
All Airlines	302	297	237	79.8	238	80.1	5	1.7
Brisbane-Melbourne								
Jetstar	183	171	113	66.1	103	60.2	12	6.6
Qantas	391	382	270	70.7	281	73.6	9	2.3
Tigerair Australia	121	118	80	67.8	81	68.6	3	2.5
Virgin Australia	365	347	221	63.7	242	69.7	18	4.9
All Airlines	1 060	1 018	684	67.2	707	69.4	42	4.0
Brisbane-Mount Isa								
QantasLink	51	51	43	84.3	38	74.5	0	0.0
Virgin Australia	18	18	18	100.0	18	100.0	0	0.0
All Airlines	69	69	61	88.4	56	81.2	0	0.0
Brisbane-Newcastle								
Jetstar	82	80	53	66.3	53	66.3	2	2.4
QantasLink	78	75	67	89.3	70	93.3	3	3.8
Virgin Australia	85	84	66	78.6	66	78.6	1	1.2
All Airlines	245	239	186	77.8	189	79.1	6	2.4
Brisbane-Perth								
Qantas	145	144	111	77.1	96	66.7	1	0.7
Virgin Australia	112	112	78	69.6	64	57.1	0	0.0
All Airlines	257	256	189	73.8	160	62.5	1	0.4
Brisbane-Proserpine								
Jetstar	43	43	36	83.7	32	74.4	0	0.0
Virgin Australia	45	44	38	86.4	37	84.1	1	2.2
All Airlines	88	87	74	85.1	69	79.3	1	1.1

	<i>Sectors</i>		<i>Arrivals On Time</i>		<i>Departures On Time</i>		<i>Cancellations</i>	
	<i>Sched.</i>	<i>Flown</i>	<i>No.</i>	<i>%</i>	<i>No.</i>	<i>%</i>	<i>No.</i>	<i>%</i>
Brisbane-Rockhampton								
QantasLink	168	168	142	84.5	141	83.9	0	0.0
Virgin Australia	139	139	108	77.7	106	76.3	0	0.0
All Airlines	307	307	250	81.4	247	80.5	0	0.0
Brisbane-Sydney								
Jetstar	152	146	105	71.9	109	74.7	6	3.9
Qantas	503	490	367	74.9	390	79.6	13	2.6
QantasLink	5	5	2	40.0	3	60.0	0	0.0
Tigerair Australia	139	134	91	67.9	93	69.4	5	3.6
Virgin Australia	491	485	343	70.7	357	73.6	6	1.2
All Airlines	1 290	1 260	908	72.1	952	75.6	30	2.3
Brisbane-Townsville								
Jetstar	62	61	46	75.4	45	73.8	1	1.6
Qantas	35	35	32	91.4	29	82.9	0	0.0
QantasLink	108	107	92	86.0	91	85.0	1	0.9
Virgin Australia	134	132	100	75.8	93	70.5	2	1.5
All Airlines	339	335	270	80.6	258	77.0	4	1.2
Broome-Perth								
Qantas	2	2	0	0.0	0	0.0	0	0.0
QantasLink	85	81	70	86.4	66	81.5	4	4.7
Virgin Australia	10	9	6	66.7	6	66.7	1	10.0
Virgin Australia Regional Airlines	49	46	36	78.3	37	80.4	3	6.1
All Airlines	146	138	112	81.2	109	79.0	8	5.5
Bundaberg-Brisbane								
QantasLink	104	104	99	95.2	95	91.3	0	0.0
Virgin Australia	31	31	30	96.8	30	96.8	0	0.0
All Airlines	135	135	129	95.6	125	92.6	0	0.0
Cairns-Brisbane								
Jetstar	104	104	80	76.9	83	79.8	0	0.0
Qantas	21	21	18	85.7	18	85.7	0	0.0
QantasLink	134	132	109	82.6	112	84.8	2	1.5
Tigerair Australia	31	30	25	83.3	23	76.7	1	3.2
Virgin Australia	143	143	124	86.7	122	85.3	0	0.0
All Airlines	433	430	356	82.8	358	83.3	3	0.7
Cairns-Melbourne								
Jetstar	59	59	40	67.8	39	66.1	0	0.0
Qantas	36	36	22	61.1	20	55.6	0	0.0
Tigerair Australia	43	43	31	72.1	31	72.1	0	0.0
Virgin Australia	44	44	28	63.6	34	77.3	0	0.0
All Airlines	182	182	121	66.5	124	68.1	0	0.0
Cairns-Sydney								
Jetstar	92	91	69	75.8	75	82.4	1	1.1
Qantas	70	70	48	68.6	49	70.0	0	0.0
Tigerair Australia	31	31	27	87.1	25	80.6	0	0.0
Virgin Australia	100	100	79	79.0	81	81.0	0	0.0
All Airlines	293	292	223	76.4	230	78.8	1	0.3
Cairns-Townsville								
QantasLink	137	137	126	92.0	126	92.0	0	0.0
Regional Express	12	11	7	63.6	7	63.6	1	8.3
All Airlines	149	148	133	89.9	133	89.9	1	0.7

	<i>Sectors</i>		<i>Arrivals On Time</i>		<i>Departures On Time</i>		<i>Cancellations</i>	
	<i>Sched.</i>	<i>Flown</i>	<i>No.</i>	<i>%</i>	<i>No.</i>	<i>%</i>	<i>No.</i>	<i>%</i>
Canberra-Adelaide								
Qantas	31	29	27	93.1	27	93.1	2	6.5
QantasLink	4	4	3	75.0	2	50.0	0	0.0
Virgin Australia	27	26	19	73.1	20	76.9	1	3.7
All Airlines	62	59	49	83.1	49	83.1	3	4.8
Canberra-Brisbane								
QantasLink	154	144	117	81.3	117	81.3	10	6.5
Tigerair Australia	31	30	22	73.3	24	80.0	1	3.2
Virgin Australia	91	88	74	84.1	74	84.1	3	3.3
All Airlines	276	262	213	81.3	215	82.1	14	5.1
Canberra-Melbourne								
Qantas	172	159	123	77.4	127	79.9	13	7.6
QantasLink	34	32	18	56.3	19	59.4	2	5.9
Tigerair Australia	34	32	21	65.6	20	62.5	2	5.9
Virgin Australia	132	125	75	60.0	83	66.4	7	5.3
All Airlines	372	348	237	68.1	249	71.6	24	6.5
Canberra-Sydney								
QantasLink	321	292	197	67.5	208	71.2	29	9.0
Virgin Australia	157	154	117	76.0	122	79.2	3	1.9
All Airlines	478	446	314	70.4	330	74.0	32	6.7
Coffs Harbour-Sydney								
QantasLink	129	129	88	68.2	91	70.5	0	0.0
Tigerair Australia	27	26	21	80.8	22	84.6	1	3.7
Virgin Australia	31	31	23	74.2	22	71.0	0	0.0
All Airlines	187	186	132	71.0	135	72.6	1	0.5
Darwin-Alice Springs								
QantasLink	35	34	27	79.4	31	91.2	1	2.9
Virgin Australia Regional Airlines	10	10	9	90.0	9	90.0	0	0.0
All Airlines	45	44	36	81.8	40	90.9	1	2.2
Darwin-Brisbane								
Jetstar	25	25	24	96.0	24	96.0	0	0.0
Qantas	31	31	20	64.5	23	74.2	0	0.0
Tigerair Australia	18	18	15	83.3	15	83.3	0	0.0
Virgin Australia	32	32	23	71.9	27	84.4	0	0.0
All Airlines	106	106	82	77.4	89	84.0	0	0.0
Darwin-Melbourne								
Jetstar	26	26	17	65.4	19	73.1	0	0.0
Qantas	26	26	17	65.4	21	80.8	0	0.0
Virgin Australia	31	31	27	87.1	28	90.3	0	0.0
All Airlines	83	83	61	73.5	68	81.9	0	0.0
Darwin-Perth								
Qantas	31	31	30	96.8	30	96.8	0	0.0
Virgin Australia	20	20	17	85.0	17	85.0	0	0.0
Virgin Australia Regional Airlines	11	11	11	100.0	9	81.8	0	0.0
All Airlines	62	62	58	93.5	56	90.3	0	0.0
Darwin-Sydney								
Jetstar	27	25	15	60.0	21	84.0	2	7.4
Qantas	31	31	25	80.6	26	83.9	0	0.0
Virgin Australia	25	25	18	72.0	21	84.0	0	0.0
All Airlines	83	81	58	71.6	68	84.0	2	2.4

	<i>Sectors</i>		<i>Arrivals On Time</i>		<i>Departures On Time</i>		<i>Cancellations</i>	
	<i>Sched.</i>	<i>Flown</i>	<i>No.</i>	<i>%</i>	<i>No.</i>	<i>%</i>	<i>No.</i>	<i>%</i>
Dubbo-Sydney								
QantasLink	100	97	63	64.9	62	63.9	3	3.0
Regional Express	81	81	64	79.0	68	84.0	0	0.0
All Airlines	181	178	127	71.3	130	73.0	3	1.7
Emerald-Brisbane								
QantasLink	119	118	102	86.4	104	88.1	1	0.8
Virgin Australia	44	44	44	100.0	43	97.7	0	0.0
All Airlines	163	162	146	90.1	147	90.7	1	0.6
Gladstone-Brisbane								
QantasLink	129	129	106	82.2	105	81.4	0	0.0
Virgin Australia	71	71	64	90.1	68	95.8	0	0.0
All Airlines	200	200	170	85.0	173	86.5	0	0.0
Gold Coast-Adelaide								
Jetstar	31	30	21	70.0	17	56.7	1	3.2
Virgin Australia	34	34	26	76.5	17	50.0	0	0.0
All Airlines	65	64	47	73.4	34	53.1	1	1.5
Gold Coast-Melbourne								
Jetstar	182	176	105	59.7	83	47.2	6	3.3
Qantas	42	42	18	42.9	14	33.3	0	0.0
Tigerair Australia	87	86	51	59.3	50	58.1	1	1.1
Virgin Australia	224	222	124	55.9	98	44.1	2	0.9
All Airlines	535	526	298	56.7	245	46.6	9	1.7
Gold Coast-Sydney								
Jetstar	289	278	190	68.3	166	59.7	11	3.8
Qantas	158	157	107	68.2	91	58.0	1	0.6
QantasLink	39	39	26	66.7	26	66.7	0	0.0
Tigerair Australia	97	96	49	51.0	46	47.9	1	1.0
Virgin Australia	272	269	172	63.9	154	57.2	3	1.1
All Airlines	855	839	544	64.8	483	57.6	16	1.9
Hamilton Island-Brisbane								
QantasLink	31	30	22	73.3	22	73.3	1	3.2
Virgin Australia	31	31	23	74.2	23	74.2	0	0.0
All Airlines	62	61	45	73.8	45	73.8	1	1.6
Hamilton Island-Sydney								
Jetstar	30	30	23	76.7	19	63.3	0	0.0
Qantas	12	12	10	83.3	10	83.3	0	0.0
QantasLink	20	19	15	78.9	15	78.9	1	5.0
Virgin Australia	31	31	21	67.7	21	67.7	0	0.0
All Airlines	93	92	69	75.0	65	70.7	1	1.1
Hobart-Brisbane								
Jetstar	43	43	35	81.4	35	81.4	0	0.0
Virgin Australia	41	41	30	73.2	32	78.0	0	0.0
All Airlines	84	84	65	77.4	67	79.8	0	0.0
Hobart-Melbourne								
Jetstar	214	211	122	57.8	131	62.1	3	1.4
Qantas	120	120	75	62.5	82	68.3	0	0.0
Tigerair Australia	52	52	24	46.2	31	59.6	0	0.0
Virgin Australia	155	154	80	51.9	106	68.8	1	0.6
All Airlines	541	537	301	56.1	350	65.2	4	0.7

	Sectors		Arrivals On Time		Departures On Time		Cancellations	
	Sched.	Flown	No.	%	No.	%	No.	%
Hobart-Sydney								
Jetstar	108	107	57	53.3	65	60.7	1	0.9
QantasLink	87	86	63	73.3	64	74.4	1	1.1
Virgin Australia	76	75	55	73.3	62	82.7	1	1.3
All Airlines	271	268	175	65.3	191	71.3	3	1.1
Kalgoorlie-Perth								
Qantas	12	12	11	91.7	11	91.7	0	0.0
QantasLink	61	61	55	90.2	55	90.2	0	0.0
Virgin Australia	18	18	16	88.9	16	88.9	0	0.0
Virgin Australia Regional Airlines	64	63	53	84.1	54	85.7	1	1.6
All Airlines	155	154	135	87.7	136	88.3	1	0.6
Karratha-Perth								
Qantas	62	60	56	93.3	55	91.7	2	3.2
QantasLink	126	124	118	95.2	116	93.5	2	1.6
Virgin Australia	2	2	1	50.0	1	50.0	0	0.0
Virgin Australia Regional Airlines	67	67	51	76.1	56	83.6	0	0.0
All Airlines	257	253	226	89.3	228	90.1	4	1.6
Launceston-Melbourne								
Jetstar	179	178	101	56.7	105	59.0	1	0.6
QantasLink	120	113	75	66.4	75	66.4	7	5.8
Virgin Australia	105	105	74	70.5	80	76.2	0	0.0
All Airlines	404	396	250	63.1	260	65.7	8	2.0
Launceston-Sydney								
Jetstar	62	61	35	57.4	37	60.7	1	1.6
Virgin Australia	32	32	27	84.4	30	93.8	0	0.0
All Airlines	94	93	62	66.7	67	72.0	1	1.1
Mackay-Brisbane								
Jetstar	31	31	19	61.3	17	54.8	0	0.0
QantasLink	125	119	96	80.7	103	86.6	6	4.8
Virgin Australia	141	141	119	84.4	121	85.8	0	0.0
All Airlines	297	291	234	80.4	241	82.8	6	2.0
Melbourne-Adelaide								
Jetstar	119	109	61	56.0	61	56.0	10	8.4
Qantas	255	245	176	71.8	193	78.8	10	3.9
Tigerair Australia	73	69	53	76.8	56	81.2	4	5.5
Virgin Australia	257	248	165	66.5	188	75.8	9	3.5
Virgin Australia Regional Airlines	6	5	2	40.0	3	60.0	1	16.7
All Airlines	710	676	457	67.6	501	74.1	34	4.8
Melbourne-Brisbane								
Jetstar	180	171	108	63.2	103	60.2	9	5.0
Qantas	394	380	260	68.4	290	76.3	14	3.6
Tigerair Australia	121	118	81	68.6	91	77.1	3	2.5
Virgin Australia	363	344	230	66.9	263	76.5	19	5.2
All Airlines	1 058	1 013	679	67.0	747	73.7	45	4.3
Melbourne-Cairns								
Jetstar	60	60	35	58.3	34	56.7	0	0.0
Qantas	37	37	27	73.0	28	75.7	0	0.0
Tigerair Australia	43	43	34	79.1	34	79.1	0	0.0
Virgin Australia	44	44	38	86.4	40	90.9	0	0.0
All Airlines	184	184	134	72.8	136	73.9	0	0.0

	<i>Sectors</i>		<i>Arrivals On Time</i>		<i>Departures On Time</i>		<i>Cancellations</i>	
	<i>Sched.</i>	<i>Flown</i>	<i>No.</i>	<i>%</i>	<i>No.</i>	<i>%</i>	<i>No.</i>	<i>%</i>
Melbourne-Canberra								
Qantas	172	159	113	71.1	123	77.4	13	7.6
QantasLink	33	29	21	72.4	21	72.4	4	12.1
Tigerair Australia	34	32	23	71.9	23	71.9	2	5.9
Virgin Australia	132	126	73	57.9	74	58.7	6	4.5
All Airlines	371	346	230	66.5	241	69.7	25	6.7
Melbourne-Darwin								
Jetstar	26	26	20	76.9	17	65.4	0	0.0
Qantas	26	26	25	96.2	24	92.3	0	0.0
Virgin Australia	31	31	18	58.1	16	51.6	0	0.0
All Airlines	83	83	63	75.9	57	68.7	0	0.0
Melbourne-Gold Coast								
Jetstar	180	176	95	54.0	103	58.5	4	2.2
Qantas	43	43	30	69.8	36	83.7	0	0.0
Tigerair Australia	87	87	60	69.0	66	75.9	0	0.0
Virgin Australia	223	221	138	62.4	169	76.5	2	0.9
All Airlines	533	527	323	61.3	374	71.0	6	1.1
Melbourne-Hobart								
Jetstar	211	211	146	69.2	156	73.9	0	0.0
Qantas	120	120	89	74.2	87	72.5	0	0.0
Tigerair Australia	52	52	40	76.9	43	82.7	0	0.0
Virgin Australia	155	154	112	72.7	117	76.0	1	0.6
All Airlines	538	537	387	72.1	403	75.0	1	0.2
Melbourne-Launceston								
Jetstar	179	176	122	69.3	127	72.2	3	1.7
QantasLink	120	112	80	71.4	79	70.5	8	6.7
Virgin Australia	106	106	73	68.9	73	68.9	0	0.0
All Airlines	405	394	275	69.8	279	70.8	11	2.7
Melbourne-Mildura								
QantasLink	87	78	42	53.8	46	59.0	9	10.3
Regional Express	40	40	22	55.0	23	57.5	0	0.0
Virgin Australia	31	31	22	71.0	29	93.5	0	0.0
All Airlines	158	149	86	57.7	98	65.8	9	5.7
Melbourne-Newcastle								
Jetstar	99	97	50	51.5	51	52.6	2	2.0
Virgin Australia	31	31	18	58.1	25	80.6	0	0.0
All Airlines	130	128	68	53.1	76	59.4	2	1.5
Melbourne-Perth								
Jetstar	56	53	43	81.1	36	67.9	3	5.4
Qantas	211	206	136	66.0	135	65.5	5	2.4
Tigerair Australia	59	57	42	73.7	42	73.7	2	3.4
Virgin Australia	155	155	106	68.4	112	72.3	0	0.0
All Airlines	481	471	327	69.4	325	69.0	10	2.1
Melbourne-Sunshine Coast								
Jetstar	55	55	44	80.0	47	85.5	0	0.0
Virgin Australia	85	85	59	69.4	69	81.2	0	0.0
All Airlines	140	140	103	73.6	116	82.9	0	0.0

	<i>Sectors</i>		<i>Arrivals On Time</i>		<i>Departures On Time</i>		<i>Cancellations</i>	
	<i>Sched.</i>	<i>Flown</i>	<i>No.</i>	<i>%</i>	<i>No.</i>	<i>%</i>	<i>No.</i>	<i>%</i>
Melbourne-Sydney								
Jetstar	460	437	252	57.7	278	63.6	23	5.0
Qantas	916	847	565	66.7	676	79.8	69	7.5
Tigerair Australia	267	242	142	58.7	165	68.2	25	9.4
Virgin Australia	694	659	443	67.2	519	78.8	35	5.0
All Airlines	2 337	2 185	1 402	64.2	1 638	75.0	152	6.5
Mildura-Melbourne								
QantasLink	87	78	44	56.4	44	56.4	9	10.3
Regional Express	40	40	17	42.5	20	50.0	0	0.0
Virgin Australia	31	31	20	64.5	22	71.0	0	0.0
All Airlines	158	149	81	54.4	86	57.7	9	5.7
Mount Isa-Brisbane								
QantasLink	52	52	42	80.8	41	78.8	0	0.0
Virgin Australia	15	15	10	66.7	13	86.7	0	0.0
All Airlines	67	67	52	77.6	54	80.6	0	0.0
Newcastle-Brisbane								
Jetstar	82	78	53	67.9	58	74.4	4	4.9
QantasLink	78	75	70	93.3	68	90.7	3	3.8
Virgin Australia	84	83	64	77.1	66	79.5	1	1.2
All Airlines	244	236	187	79.2	192	81.4	8	3.3
Newcastle-Melbourne								
Jetstar	98	96	62	64.6	60	62.5	2	2.0
Virgin Australia	31	31	16	51.6	17	54.8	0	0.0
All Airlines	129	127	78	61.4	77	60.6	2	1.6
Newman-Perth								
Qantas	44	40	36	90.0	36	90.0	4	9.1
QantasLink	101	91	78	85.7	72	79.1	10	9.9
Virgin Australia	11	11	11	100.0	11	100.0	0	0.0
Virgin Australia Regional Airlines	30	27	21	77.8	23	85.2	3	10.0
All Airlines	186	169	146	86.4	142	84.0	17	9.1
Perth-Adelaide								
Jetstar	21	20	15	75.0	12	60.0	1	4.8
Qantas	108	108	88	81.5	84	77.8	0	0.0
Virgin Australia	43	43	40	93.0	40	93.0	0	0.0
Virgin Australia Regional Airlines	30	30	18	60.0	28	93.3	0	0.0
All Airlines	202	201	161	80.1	164	81.6	1	0.5
Perth-Brisbane								
Qantas	146	145	119	82.1	121	83.4	1	0.7
Virgin Australia	112	112	91	81.3	91	81.3	0	0.0
All Airlines	258	257	210	81.7	212	82.5	1	0.4
Perth-Broome								
Qantas	2	2	0	0.0	0	0.0	0	0.0
QantasLink	85	81	67	82.7	67	82.7	4	4.7
Virgin Australia	10	9	7	77.8	7	77.8	1	10.0
Virgin Australia Regional Airlines	48	46	38	82.6	38	82.6	2	4.2
All Airlines	145	138	112	81.2	112	81.2	7	4.8
Perth-Darwin								
Qantas	31	31	31	100.0	31	100.0	0	0.0
Virgin Australia	20	20	17	85.0	17	85.0	0	0.0
Virgin Australia Regional Airlines	11	11	11	100.0	11	100.0	0	0.0
All Airlines	62	62	59	95.2	59	95.2	0	0.0

	Sectors		Arrivals On Time		Departures On Time		Cancellations	
	Sched.	Flown	No.	%	No.	%	No.	%
Perth-Kalgoorlie								
Qantas	12	12	10	83.3	10	83.3	0	0.0
QantasLink	61	61	56	91.8	56	91.8	0	0.0
Virgin Australia	18	18	18	100.0	18	100.0	0	0.0
Virgin Australia Regional Airlines	64	64	55	85.9	57	89.1	0	0.0
All Airlines	155	155	139	89.7	141	91.0	0	0.0
Perth-Karratha								
Qantas	63	60	57	95.0	57	95.0	3	4.8
QantasLink	127	126	113	89.7	112	88.9	1	0.8
Virgin Australia	2	2	2	100.0	2	100.0	0	0.0
Virgin Australia Regional Airlines	67	67	60	89.6	61	91.0	0	0.0
All Airlines	259	255	232	91.0	232	91.0	4	1.5
Perth-Melbourne								
Jetstar	57	53	44	83.0	38	71.7	4	7.0
Qantas	211	207	158	76.3	141	68.1	4	1.9
Tigerair Australia	58	56	44	78.6	37	66.1	2	3.4
Virgin Australia	157	157	129	82.2	132	84.1	0	0.0
All Airlines	483	473	375	79.3	348	73.6	10	2.1
Perth-Newman								
Qantas	43	40	39	97.5	40	100.0	3	7.0
QantasLink	98	91	75	82.4	76	83.5	7	7.1
Virgin Australia	11	11	11	100.0	10	90.9	0	0.0
Virgin Australia Regional Airlines	30	27	24	88.9	25	92.6	3	10.0
All Airlines	182	169	149	88.2	151	89.3	13	7.1
Perth-Port Hedland								
Qantas	27	26	24	92.3	25	96.2	1	3.7
QantasLink	113	110	97	88.2	100	90.9	3	2.7
Virgin Australia	7	7	7	100.0	7	100.0	0	0.0
Virgin Australia Regional Airlines	47	47	44	93.6	44	93.6	0	0.0
All Airlines	194	190	172	90.5	176	92.6	4	2.1
Perth-Sydney								
Jetstar	31	30	23	76.7	26	86.7	1	3.2
Qantas	196	194	142	73.2	137	70.6	2	1.0
Tigerair Australia	27	27	19	70.4	16	59.3	0	0.0
Virgin Australia	126	126	111	88.1	110	87.3	0	0.0
All Airlines	380	377	295	78.2	289	76.7	3	0.8
Port Hedland-Perth								
Qantas	26	25	24	96.0	22	88.0	1	3.8
QantasLink	110	106	93	87.7	93	87.7	4	3.6
Virgin Australia	7	7	7	100.0	7	100.0	0	0.0
Virgin Australia Regional Airlines	47	46	42	91.3	40	87.0	1	2.1
All Airlines	190	184	166	90.2	162	88.0	6	3.2
Port Lincoln-Adelaide								
QantasLink	103	103	90	87.4	88	85.4	0	0.0
Regional Express	176	176	157	89.2	163	92.6	0	0.0
All Airlines	279	279	247	88.5	251	90.0	0	0.0
Port Macquarie-Sydney								
QantasLink	100	99	72	72.7	73	73.7	1	1.0
Virgin Australia	49	49	24	49.0	21	42.9	0	0.0
All Airlines	149	148	96	64.9	94	63.5	1	0.7

	<i>Sectors</i>		<i>Arrivals On Time</i>		<i>Departures On Time</i>		<i>Cancellations</i>	
	<i>Sched.</i>	<i>Flown</i>	<i>No.</i>	<i>%</i>	<i>No.</i>	<i>%</i>	<i>No.</i>	<i>%</i>
Proserpine-Brisbane								
Jetstar	43	43	34	79.1	35	81.4	0	0.0
Virgin Australia	45	44	39	88.6	37	84.1	1	2.2
All Airlines	88	87	73	83.9	72	82.8	1	1.1
Proserpine-Sydney								
Jetstar	13	13	7	53.8	7	53.8	0	0.0
Tigerair Australia	19	19	10	52.6	11	57.9	0	0.0
All Airlines	32	32	17	53.1	18	56.3	0	0.0
Rockhampton-Brisbane								
QantasLink	171	169	139	82.2	143	84.6	2	1.2
Virgin Australia	139	139	114	82.0	113	81.3	0	0.0
All Airlines	310	308	253	82.1	256	83.1	2	0.6
Sunshine Coast-Melbourne								
Jetstar	56	56	37	66.1	33	58.9	0	0.0
Virgin Australia	85	85	48	56.5	44	51.8	0	0.0
All Airlines	141	141	85	60.3	77	54.6	0	0.0
Sunshine Coast-Sydney								
Jetstar	62	61	27	44.3	27	44.3	1	1.6
QantasLink	60	60	45	75.0	45	75.0	0	0.0
Virgin Australia	63	63	38	60.3	41	65.1	0	0.0
All Airlines	185	184	110	59.8	113	61.4	1	0.5
Sydney-Adelaide								
Jetstar	91	87	61	70.1	58	66.7	4	4.4
Qantas	258	254	208	81.9	197	77.6	4	1.6
Tigerair Australia	30	29	18	62.1	17	58.6	1	3.3
Virgin Australia	162	161	127	78.9	123	76.4	1	0.6
All Airlines	541	531	414	78.0	395	74.4	10	1.8
Sydney-Albury								
QantasLink	85	73	46	63.0	45	61.6	12	14.1
Regional Express	43	39	34	87.2	32	82.1	4	9.3
Virgin Australia	51	41	23	56.1	25	61.0	10	19.6
All Airlines	179	153	103	67.3	102	66.7	26	14.5
Sydney-Armidale								
QantasLink	104	103	71	68.9	73	70.9	1	1.0
Regional Express	41	41	40	97.6	38	92.7	0	0.0
All Airlines	145	144	111	77.1	111	77.1	1	0.7
Sydney-Ayers Rock								
Jetstar	26	26	21	80.8	19	73.1	0	0.0
Virgin Australia	31	30	26	86.7	27	90.0	1	3.2
All Airlines	57	56	47	83.9	46	82.1	1	1.8
Sydney-Ballina								
Jetstar	107	107	81	75.7	80	74.8	0	0.0
Regional Express	4	4	3	75.0	3	75.0	0	0.0
Virgin Australia	44	44	33	75.0	34	77.3	0	0.0
All Airlines	155	155	117	75.5	117	75.5	0	0.0

	Sectors		Arrivals On Time		Departures On Time		Cancellations	
	Sched.	Flown	No.	%	No.	%	No.	%
Sydney-Brisbane								
Jetstar	152	148	98	66.2	86	58.1	4	2.6
Qantas	500	494	379	76.7	378	76.5	6	1.2
QantasLink	4	4	3	75.0	3	75.0	0	0.0
Tigerair Australia	139	134	92	68.7	94	70.1	5	3.6
Virgin Australia	491	485	338	69.7	331	68.2	6	1.2
All Airlines	1 286	1 265	910	71.9	892	70.5	21	1.6
Sydney-Cairns								
Jetstar	92	91	75	82.4	68	74.7	1	1.1
Qantas	70	70	57	81.4	54	77.1	0	0.0
Tigerair Australia	31	31	26	83.9	28	90.3	0	0.0
Virgin Australia	100	100	77	77.0	65	65.0	0	0.0
All Airlines	293	292	235	80.5	215	73.6	1	0.3
Sydney-Canberra								
QantasLink	323	295	199	67.5	204	69.2	28	8.7
Virgin Australia	157	150	116	77.3	115	76.7	7	4.5
All Airlines	480	445	315	70.8	319	71.7	35	7.3
Sydney-Coffs Harbour								
QantasLink	130	130	96	73.8	91	70.0	0	0.0
Tigerair Australia	27	26	22	84.6	22	84.6	1	3.7
Virgin Australia	31	31	23	74.2	22	71.0	0	0.0
All Airlines	188	187	141	75.4	135	72.2	1	0.5
Sydney-Darwin								
Jetstar	27	25	22	88.0	18	72.0	2	7.4
Qantas	31	31	26	83.9	18	58.1	0	0.0
Virgin Australia	25	25	22	88.0	20	80.0	0	0.0
All Airlines	83	81	70	86.4	56	69.1	2	2.4
Sydney-Dubbo								
QantasLink	101	99	61	61.6	62	62.6	2	2.0
Regional Express	77	77	68	88.3	67	87.0	0	0.0
All Airlines	178	176	129	73.3	129	73.3	2	1.1
Sydney-Gold Coast								
Jetstar	288	282	190	67.4	187	66.3	6	2.1
Qantas	155	154	123	79.9	120	77.9	1	0.6
QantasLink	40	40	31	77.5	32	80.0	0	0.0
Tigerair Australia	97	96	58	60.4	63	65.6	1	1.0
Virgin Australia	271	268	182	67.9	194	72.4	3	1.1
All Airlines	851	840	584	69.5	596	71.0	11	1.3
Sydney-Hamilton Island								
Jetstar	30	30	27	90.0	27	90.0	0	0.0
Qantas	11	11	9	81.8	9	81.8	0	0.0
QantasLink	20	20	16	80.0	17	85.0	0	0.0
Virgin Australia	31	31	25	80.6	23	74.2	0	0.0
All Airlines	92	92	77	83.7	76	82.6	0	0.0
Sydney-Hobart								
Jetstar	108	106	77	72.6	63	59.4	2	1.9
QantasLink	87	87	62	71.3	60	69.0	0	0.0
Virgin Australia	77	76	64	84.2	62	81.6	1	1.3
All Airlines	272	269	203	75.5	185	68.8	3	1.1

	<i>Sectors</i>		<i>Arrivals On Time</i>		<i>Departures On Time</i>		<i>Cancellations</i>	
	<i>Sched.</i>	<i>Flown</i>	<i>No.</i>	<i>%</i>	<i>No.</i>	<i>%</i>	<i>No.</i>	<i>%</i>
Sydney-Launceston								
Jetstar	62	62	53	85.5	45	72.6	0	0.0
Virgin Australia	32	32	22	68.8	20	62.5	0	0.0
All Airlines	94	94	75	79.8	65	69.1	0	0.0
Sydney-Melbourne								
Jetstar	462	440	280	63.6	266	60.5	22	4.8
Qantas	914	847	576	68.0	628	74.1	67	7.3
Tigerair Australia	268	243	143	58.8	142	58.4	25	9.3
Virgin Australia	694	661	432	65.4	476	72.0	33	4.8
All Airlines	2 338	2 191	1 431	65.3	1 512	69.0	147	6.3
Sydney-Perth								
Jetstar	31	31	27	87.1	24	77.4	0	0.0
Qantas	194	193	135	69.9	106	54.9	1	0.5
Tigerair Australia	28	28	20	71.4	19	67.9	0	0.0
Virgin Australia	126	126	102	81.0	84	66.7	0	0.0
All Airlines	379	378	284	75.1	233	61.6	1	0.3
Sydney-Port Macquarie								
QantasLink	101	101	64	63.4	63	62.4	0	0.0
Virgin Australia	49	49	34	69.4	33	67.3	0	0.0
All Airlines	150	150	98	65.3	96	64.0	0	0.0
Sydney-Proserpine								
Jetstar	13	13	9	69.2	6	46.2	0	0.0
Tigerair Australia	19	19	12	63.2	10	52.6	0	0.0
All Airlines	32	32	21	65.6	16	50.0	0	0.0
Sydney-Sunshine Coast								
Jetstar	62	62	45	72.6	40	64.5	0	0.0
QantasLink	61	60	47	78.3	47	78.3	1	1.6
Virgin Australia	64	64	46	71.9	47	73.4	0	0.0
All Airlines	187	186	138	74.2	134	72.0	1	0.5
Sydney-Tamworth								
QantasLink	125	125	71	56.8	79	63.2	0	0.0
Virgin Australia	51	51	38	74.5	37	72.5	0	0.0
All Airlines	176	176	109	61.9	116	65.9	0	0.0
Sydney-Townsville								
Jetstar	30	30	24	80.0	23	76.7	0	0.0
Virgin Australia	22	22	16	72.7	17	77.3	0	0.0
All Airlines	52	52	40	76.9	40	76.9	0	0.0
Sydney-Wagga Wagga								
QantasLink	86	84	50	59.5	52	61.9	2	2.3
Regional Express	62	59	47	79.7	49	83.1	3	4.8
All Airlines	148	143	97	67.8	101	70.6	5	3.4
Tamworth-Sydney								
QantasLink	123	123	73	59.3	75	61.0	0	0.0
Virgin Australia	50	49	34	69.4	36	73.5	1	2.0
All Airlines	173	172	107	62.2	111	64.5	1	0.6
Townsville-Brisbane								
Jetstar	62	61	45	73.8	45	73.8	1	1.6
Qantas	35	35	30	85.7	29	82.9	0	0.0
QantasLink	108	106	93	87.7	93	87.7	2	1.9
Virgin Australia	133	132	120	90.9	121	91.7	1	0.8
All Airlines	338	334	288	86.2	288	86.2	4	1.2

	<i>Sectors</i>		<i>Arrivals On Time</i>		<i>Departures On Time</i>		<i>Cancellations</i>	
	<i>Sched.</i>	<i>Flown</i>	<i>No.</i>	<i>%</i>	<i>No.</i>	<i>%</i>	<i>No.</i>	<i>%</i>
Townsville-Cairns								
QantasLink	139	137	123	89.8	122	89.1	2	1.4
Regional Express	12	11	9	81.8	9	81.8	1	8.3
All Airlines	151	148	132	89.2	131	88.5	3	2.0
Townsville-Sydney								
Jetstar	30	30	20	66.7	20	66.7	0	0.0
Virgin Australia	22	22	16	72.7	13	59.1	0	0.0
All Airlines	52	52	36	69.2	33	63.5	0	0.0
Wagga Wagga-Sydney								
QantasLink	84	81	46	56.8	52	64.2	3	3.6
Regional Express	66	62	46	74.2	51	82.3	4	6.1
All Airlines	150	143	92	64.3	103	72.0	7	4.7

Airports

On time performance is reported for all routes where the passenger load averages over 8000 passengers per month, and where two or more airlines operate in competition. The following data reports by airport against flights operated on those routes only. This month, 8 major city airports and 31 regional city airports are covered.

Airport	Arrivals			Departures		
	Sectors Flown	On Time No.	%	Sectors Flown	On Time No.	%
Adelaide						
Jetstar	275	179	65.1	270	174	64.4
Qantas	774	620	80.1	773	632	81.8
QantasLink	107	93	86.9	107	94	87.9
Regional Express	176	157	89.2	176	171	97.2
Tigerair Australia	125	95	76.0	125	88	70.4
Virgin Australia	622	472	75.9	621	485	78.1
Virgin Australia Regional Airlines	51	33	64.7	51	34	66.7
All Airlines	2 130	1 649	77.4	2 123	1 678	79.0
Relates to services to and from Alice Springs, Brisbane, Canberra, Gold Coast, Melbourne, Perth, Port Lincoln and Sydney.						
Albury						
QantasLink	73	46	63.0	72	50	69.4
Regional Express	39	34	87.2	38	34	89.5
Virgin Australia	41	23	56.1	41	24	58.5
All Airlines	153	103	67.3	151	108	71.5
Relates to services to and from Sydney only.						
Alice Springs						
Qantas	31	28	90.3	32	25	78.1
QantasLink	34	27	79.4	34	34	100.0
Virgin Australia Regional Airlines	26	22	84.6	26	21	80.8
All Airlines	91	77	84.6	92	80	87.0
Relates to services to and from Adelaide and Darwin.						
Armidale						
QantasLink	103	71	68.9	101	62	61.4
Regional Express	41	40	97.6	40	34	85.0
All Airlines	144	111	77.1	141	96	68.1
Relates to services to and from Sydney only.						
Ayers Rock						
Jetstar	26	21	80.8	27	15	55.6
Virgin Australia	30	26	86.7	30	26	86.7
All Airlines	56	47	83.9	57	41	71.9
Relates to services to and from Sydney only.						
Ballina						
Jetstar	107	81	75.7	108	70	64.8
Regional Express	4	3	75.0	3	1	33.3
Virgin Australia	44	33	75.0	44	23	52.3
All Airlines	155	117	75.5	155	94	60.6
Relates to services to and from Sydney only.						

Airport	Arrivals			Departures		
	Sectors	On Time		Sectors	On Time	
	Flown	No.	%	Flown	No.	%
Brisbane						
Jetstar	731	515	70.5	733	517	70.5
Qantas	1 213	923	76.1	1 208	928	76.8
QantasLink	1 182	998	84.4	1 192	1 015	85.2
Tigerair Australia	357	256	71.7	358	258	72.1
Virgin Australia	2 087	1 635	78.3	2 094	1 567	74.8
All Airlines	5 570	4 327	77.7	5 585	4 285	76.7

Relates to services to and from Adelaide, Bundaberg, Cairns, Canberra, Darwin, Emerald, Gladstone, Hamilton Island, Hobart, Mackay, Melbourne, Mount Isa, Newcastle, Perth, Proserpine, Rockhampton, Sydney and Townsville.

Broome

Qantas	2	0	0.0	2	0	0.0
QantasLink	81	67	82.7	81	66	81.5
Virgin Australia	9	7	77.8	9	6	66.7
Virgin Australia Regional Airlines	46	38	82.6	46	37	80.4
All Airlines	138	112	81.2	138	109	79.0

Relates to services to and from Perth only.

Bundaberg

QantasLink	105	99	94.3	104	95	91.3
Virgin Australia	31	30	96.8	31	30	96.8
All Airlines	136	129	94.9	135	125	92.6

Relates to services to and from Brisbane only.

Cairns

Jetstar	255	194	76.1	254	197	77.6
Qantas	128	102	79.7	127	87	68.5
QantasLink	270	243	90.0	269	238	88.5
Regional Express	11	9	81.8	11	7	63.6
Tigerair Australia	104	83	79.8	104	79	76.0
Virgin Australia	287	239	83.3	287	237	82.6
All Airlines	1 055	870	82.5	1 052	845	80.3

Relates to services to and from Brisbane, Melbourne, Sydney and Townsville.

Canberra

Qantas	189	142	75.1	188	154	81.9
QantasLink	473	340	71.9	472	346	73.3
Tigerair Australia	62	48	77.4	62	44	71.0
Virgin Australia	390	282	72.3	393	299	76.1
All Airlines	1 114	812	72.9	1 115	843	75.6

Relates to services to and from Adelaide, Brisbane, Melbourne and Sydney.

Coffs Harbour

QantasLink	130	96	73.8	129	91	70.5
Tigerair Australia	26	22	84.6	26	22	84.6
Virgin Australia	31	23	74.2	31	22	71.0
All Airlines	187	141	75.4	186	135	72.6

Relates to services to and from Sydney only.

Airport	Arrivals			Departures		
	Sectors Flown	On Time		Sectors Flown	On Time	
		No.	%		No.	%
Darwin						
Jetstar	76	66	86.8	76	64	84.2
Qantas	118	107	90.7	119	100	84.0
QantasLink	34	34	100.0	34	31	91.2
Tigerair Australia	19	16	84.2	18	15	83.3
Virgin Australia	108	75	69.4	108	93	86.1
Virgin Australia Regional Airlines	21	19	90.5	21	18	85.7
All Airlines	376	317	84.3	376	321	85.4
Relates to services to and from Alice Springs, Brisbane, Melbourne, Perth and Sydney.						
Dubbo						
QantasLink	99	61	61.6	97	62	63.9
Regional Express	77	68	88.3	81	68	84.0
All Airlines	176	129	73.3	178	130	73.0
Relates to services to and from Sydney only.						
Emerald						
QantasLink	117	105	89.7	118	104	88.1
Virgin Australia	44	42	95.5	44	43	97.7
All Airlines	161	147	91.3	162	147	90.7
Relates to services to and from Brisbane only.						
Gladstone						
QantasLink	130	109	83.8	129	105	81.4
Virgin Australia	71	68	95.8	71	68	95.8
All Airlines	201	177	88.1	200	173	86.5
Relates to services to and from Brisbane only.						
Gold Coast						
Jetstar	488	299	61.3	484	266	55.0
Qantas	197	153	77.7	199	105	52.8
QantasLink	40	31	77.5	39	26	66.7
Tigerair Australia	183	118	64.5	182	96	52.7
Virgin Australia	523	351	67.1	525	269	51.2
All Airlines	1 431	952	66.5	1 429	762	53.3
Relates to services to and from Adelaide, Melbourne and Sydney.						
Hamilton Island						
Jetstar	30	27	90.0	30	19	63.3
Qantas	11	9	81.8	12	10	83.3
QantasLink	51	43	84.3	49	37	75.5
Virgin Australia	62	50	80.6	62	44	71.0
All Airlines	154	129	83.8	153	110	71.9
Relates to services to and from Brisbane and Sydney.						
Hobart						
Jetstar	360	261	72.5	361	231	64.0
Qantas	120	89	74.2	120	82	68.3
QantasLink	87	62	71.3	86	64	74.4
Tigerair Australia	52	40	76.9	52	31	59.6
Virgin Australia	272	216	79.4	270	200	74.1
All Airlines	891	668	75.0	889	608	68.4
Relates to services to and from Brisbane, Melbourne and Sydney.						

Airport	Arrivals			Departures		
	Sectors Flown	On Time		Sectors Flown	On Time	
		No.	%		No.	%
Kalgoorlie						
Qantas	12	10	83.3	12	11	91.7
QantasLink	61	56	91.8	61	55	90.2
Virgin Australia	18	18	100.0	18	16	88.9
Virgin Australia Regional Airlines	64	55	85.9	63	54	85.7
All Airlines	155	139	89.7	154	136	88.3
Relates to services to and from Perth only.						
Karratha						
Qantas	60	57	95.0	60	55	91.7
QantasLink	126	113	89.7	124	116	93.5
Virgin Australia	2	2	100.0	2	1	50.0
Virgin Australia Regional Airlines	67	60	89.6	67	56	83.6
All Airlines	255	232	91.0	253	228	90.1
Relates to services to and from Perth only.						
Launceston						
Jetstar	238	175	73.5	239	142	59.4
QantasLink	112	80	71.4	113	75	66.4
Virgin Australia	138	95	68.8	137	110	80.3
All Airlines	488	350	71.7	489	327	66.9
Relates to services to and from Melbourne and Sydney.						
Mackay						
Jetstar	31	25	80.6	31	17	54.8
QantasLink	125	102	81.6	119	103	86.6
Virgin Australia	141	110	78.0	141	121	85.8
All Airlines	297	237	79.8	291	241	82.8
Relates to services to and from Brisbane only.						
Melbourne						
Jetstar	1 572	987	62.8	1 571	1 013	64.5
Qantas	2 065	1 441	69.8	2 063	1 592	77.2
QantasLink	223	137	61.4	219	146	66.7
Regional Express	40	17	42.5	40	23	57.5
Tigerair Australia	699	440	62.9	700	520	74.3
Virgin Australia	2 240	1 442	64.4	2 235	1 694	75.8
Virgin Australia Regional Airlines	5	3	60.0	5	3	60.0
All Airlines	6 844	4 467	65.3	6 833	4 991	73.0
Relates to services to and from Adelaide, Brisbane, Cairns, Canberra, Darwin, Gold Coast, Hobart, Launceston, Mildura, Newcastle, Perth, Sunshine Coast and Sydney.						
Mildura						
QantasLink	78	42	53.8	78	44	56.4
Regional Express	40	22	55.0	40	20	50.0
Virgin Australia	31	22	71.0	31	22	71.0
All Airlines	149	86	57.7	149	86	57.7
Relates to services to and from Melbourne only.						
Mount Isa						
QantasLink	51	43	84.3	52	41	78.8
Virgin Australia	18	18	100.0	15	13	86.7
All Airlines	69	61	88.4	67	54	80.6
Relates to services to and from Brisbane only.						

Airport	Arrivals			Departures		
	Sectors	On Time		Sectors	On Time	
	Flown	No.	%	Flown	No.	%
Newcastle						
Jetstar	177	103	58.2	174	118	67.8
QantasLink	75	67	89.3	75	68	90.7
Virgin Australia	115	84	73.0	114	83	72.8
All Airlines	367	254	69.2	363	269	74.1
Relates to services to and from Brisbane and Melbourne.						
Newman						
Qantas	40	39	97.5	40	36	90.0
QantasLink	91	75	82.4	91	72	79.1
Virgin Australia	11	11	100.0	11	11	100.0
Virgin Australia Regional Airlines	27	24	88.9	27	23	85.2
All Airlines	169	149	88.2	169	142	84.0
Relates to services to and from Perth only.						
Perth						
Jetstar	104	86	82.7	103	76	73.8
Qantas	820	630	76.8	825	646	78.3
QantasLink	463	414	89.4	469	411	87.6
Tigerair Australia	85	62	72.9	83	53	63.9
Virgin Australia	502	376	74.9	505	434	85.9
Virgin Australia Regional Airlines	290	231	79.7	292	264	90.4
All Airlines	2 264	1 799	79.5	2 277	1 884	82.7
Relates to services to and from Adelaide, Brisbane, Broome, Darwin, Kalgoorlie, Karratha, Melbourne, Newman, Port Hedland and Sydney.						
Port Hedland						
Qantas	26	24	92.3	25	22	88.0
QantasLink	110	97	88.2	106	93	87.7
Virgin Australia	7	7	100.0	7	7	100.0
Virgin Australia Regional Airlines	47	44	93.6	46	40	87.0
All Airlines	190	172	90.5	184	162	88.0
Relates to services to and from Perth only.						
Port Lincoln						
QantasLink	103	90	87.4	103	88	85.4
Regional Express	176	170	96.6	176	163	92.6
All Airlines	279	260	93.2	279	251	90.0
Relates to services to and from Adelaide only.						
Port Macquarie						
QantasLink	101	64	63.4	99	73	73.7
Virgin Australia	49	34	69.4	49	21	42.9
All Airlines	150	98	65.3	148	94	63.5
Relates to services to and from Sydney only.						
Proserpine						
Jetstar	56	45	80.4	56	42	75.0
Tigerair Australia	19	12	63.2	19	11	57.9
Virgin Australia	44	38	86.4	44	37	84.1
All Airlines	119	95	79.8	119	90	75.6
Relates to services to and from Brisbane and Sydney.						

Airport	Arrivals			Departures		
	Sectors	On Time		Sectors	On Time	
	Flown	No.	%	Flown	No.	%
Rockhampton						
QantasLink	168	142	84.5	169	143	84.6
Virgin Australia	139	108	77.7	139	113	81.3
All Airlines	307	250	81.4	308	256	83.1
Relates to services to and from Brisbane only.						
Sunshine Coast						
Jetstar	117	89	76.1	117	60	51.3
QantasLink	60	47	78.3	60	45	75.0
Virgin Australia	149	105	70.5	148	85	57.4
All Airlines	326	241	73.9	325	190	58.5
Relates to services to and from Melbourne and Sydney.						
Sydney						
Jetstar	1 531	982	64.1	1 540	1 010	65.6
Qantas	2 053	1 469	71.6	2 054	1 510	73.5
QantasLink	1 203	799	66.4	1 221	828	67.8
Regional Express	224	174	77.7	220	189	85.9
Tigerair Australia	604	371	61.4	606	395	65.2
Virgin Australia	2 446	1 725	70.5	2 447	1 755	71.7
All Airlines	8 061	5 520	68.5	8 088	5 687	70.3
Relates to services to and from Adelaide, Albury, Armidale, Ayers Rock, Ballina, Brisbane, Cairns, Canberra, Coffs Harbour, Darwin, Dubbo, Gold Coast, Hamilton Island, Hobart, Launceston, Melbourne, Perth, Port Macquarie, Proserpine, Sunshine Coast, Tamworth, Townsville and Wagga Wagga.						
Tamworth						
QantasLink	125	71	56.8	123	75	61.0
Virgin Australia	51	38	74.5	49	36	73.5
All Airlines	176	109	61.9	172	111	64.5
Relates to services to and from Sydney only.						
Townsville						
Jetstar	91	70	76.9	91	65	71.4
Qantas	35	32	91.4	35	29	82.9
QantasLink	244	218	89.3	243	215	88.5
Regional Express	11	7	63.6	11	9	81.8
Virgin Australia	154	116	75.3	154	134	87.0
All Airlines	535	443	82.8	534	452	84.6
Relates to services to and from Brisbane, Cairns and Sydney.						
Wagga Wagga						
QantasLink	84	50	59.5	81	52	64.2
Regional Express	59	47	79.7	62	51	82.3
All Airlines	143	97	67.8	143	103	72.0
Relates to services to and from Sydney only.						

Definitions

On time arrival	A flight arrival is counted as "on time" if it arrived at the gate before 15 minutes after the scheduled arrival time shown in the carriers' schedule. Neither diverted nor cancelled flights count as on time.
On time departure	A flight departure is counted as "on time" if it departs the gate before 15 minutes after the scheduled departure time shown in the carriers' schedule.
Cancellation	A flight removed from service within 7 days of scheduled departure is regarded as a cancellation.
On time departure percentage	The percentage of on time departures is measured against the number of departures <i>operated</i> on any particular sector.
On time arrival percentage	The percentage of on time arrivals is measured against the number of arrivals <i>operated</i> on any particular sector.
Cancellation percentage	The percentage of cancellations is measured against the number of services <i>scheduled</i> on any particular sector.
