



Australian Government

Department of Infrastructure, Transport, Cities and Regional Development

Bureau of Infrastructure, Transport and Regional Economics

STATISTICAL REPORT



Aviation

Domestic airline on time performance
September 2019

© Commonwealth of Australia 2019

ISSN: 1832-0759

Ownership of intellectual property rights in this publication

Unless otherwise noted, copyright (and any other intellectual property rights, if any) in this publication is owned by the Commonwealth of Australia (referred to below as the Commonwealth).

Disclaimer

The material contained in this publication is made available on the understanding that the Commonwealth is not providing professional advice, and that users exercise their own skill and care with respect to its use, and seek independent advice if necessary.

The Commonwealth makes no representations or warranties as to the contents or accuracy of the information contained in this publication. To the extent permitted by law, the Commonwealth disclaims liability to any person or organisation in respect of anything done, or omitted to be done, in reliance upon information contained in this publication.

Creative Commons licence

With the exception of (a) the Coat of Arms; and (b) the Department of Infrastructure, Transport, Cities and Regional Development's photos and graphics, copyright in this publication is licensed under a Creative Commons Attribution 3.0 Australia Licence.

Creative Commons Attribution 3.0 Australia Licence is a standard form licence agreement that allows you to copy, communicate and adapt this publication provided that you attribute the work to the Commonwealth and abide by the other licence terms. A summary of the licence terms is available from <http://creativecommons.org/licenses/by/3.0/au/deed.en>. The full licence terms are available from <http://creativecommons.org/licenses/by/3.0/au/legalcode>.

Use of the Coat of Arms

The Department of the Prime Minister and Cabinet sets the terms under which the Coat of Arms is used. Please refer to the Department's Commonwealth Coat of Arms and Government branding web page <http://www.dpmc.gov.au/guidelines/index.cfm#brand> and, in particular, the Guidelines on the use of the Commonwealth Coat of Arms publication.

An appropriate citation for this report is:

Bureau of Infrastructure, Transport and Regional Economics (BITRE), 2019, Domestic airline on time performance, Statistical Report, BITRE, Canberra ACT.

Contact us

This publication is available in PDF format. All other rights are reserved, including in relation to any Departmental logos or trade marks which may exist. For enquiries regarding the licence and any use of this publication, please contact:

Bureau of Infrastructure, Transport and Regional Economics (BITRE)
Department of Infrastructure, Transport, Cities and Regional Development
GPO Box 501, Canberra ACT 2601, Australia
Telephone: (international) +61 2 6274 7210
Fax: (international) +61 2 6274 6855
Email: bitre@infrastructure.gov.au
Website: www.bitre.gov.au

Inquiries

Should you require additional information about the statistics contained in this publication:

Telephone (02) 6274 7790 or Facsimile (02) 6274 7727

Electronic mail: AVSTATS@infrastructure.gov.au

Web site: <http://www.bitre.gov.au/statistics/aviation/otphome.aspx>

Foreword

The Bureau of Infrastructure, Transport and Regional Economics (BITRE) monitors the punctuality and reliability of major domestic airlines operating between Australian airports. The purpose of this is to allow for evaluation of overall industry and individual airline performance, so that consumers of air travel can make informed decisions.

The following domestic airlines currently report this information monthly to the BITRE: Jetstar, Qantas, QantasLink, Regional Express, Tigerair Australia, Virgin Australia and Virgin Australia Regional Airlines. Data has been gathered since November 2003, although some airlines commenced reporting at a later date, including Jetstar which first reported in May 2004, MacAir in July 2005, Tigerair Australia in April 2008 and Virgin Australia Regional Airlines in May 2013. MacAir ceased operations in February 2009 and data was not received for December 2008 onwards. Virgin Blue was rebranded as Virgin Australia in May 2011 and Tiger Airways was rebranded as Tigerair Australia in July 2013 and time series data in Microsoft Excel spreadsheet format on the BITRE website have been revised to reflect these changes. Services operated by Skywest on behalf of Virgin Australia using ATR/F100 aircraft commenced in November 2011 and were shown separately as Virgin Australia – ATR/F100 Operations. Virgin Australia Regional Airlines commenced operations in May 2013. It was formed after the acquisition of Skywest by Virgin Australia and represented a combination of operations previously reported under Skywest and Virgin Australia – ATR/F100 Operations. In January 2016, Virgin Australia transferred their ATR fleet from Virgin Australia Regional Airlines to Virgin Australia.

Information presented in this report is for Australian domestic routes for which the passenger load averaged 8 000 or more passengers per month over the previous six months and where two or more airlines operated in competition on those routes. There were 64 routes that met this definition in September 2019. Over time, routes which meet these criteria change as airline networks and traffic levels vary.

Participating airlines report their overall monthly network performance where this is possible.

Total industry figures encompass all services operated by reporting airlines only. These airlines collectively carried over 95 per cent of total domestic passengers (regular public transport only) in 2018.

The method of capturing on time performance varies between airlines utilising different recording systems. Jetstar and Qantas jet aircraft use Aircraft Communication Addressing and Reporting System (ACARS) to electronically measure on time performance. Regional Express, Tigerair Australia, Virgin Australia, Virgin Australia Regional Airlines and the Qantas non-jet fleet record on time performance manually using records from pilots, gate agents and/or ground crews.

After initial data is collected, aggregate reports are audited internally by participating airlines prior to publication.

Reports and detailed time series data in Microsoft Excel spreadsheet format are available from the BITRE website at: <http://www.bitre.gov.au/statistics/aviation/otphome.aspx>.

Contents

	Page
Industry performance	1
Individual routes	10
Airports.....	24
Definitions	30

Industry performance

For September 2019, on time performance over all routes operated by participating airlines (Jetstar, Qantas, QantasLink, Regional Express, Tigerair Australia, Virgin Australia and Virgin Australia Regional Airlines) averaged 76.2 per cent for on time arrivals and 78.4 per cent for on time departures. Cancellations represented 2.2 per cent of all scheduled flights. The equivalent figures for September 2018 were 82.1 per cent for on time arrivals, 82.7 per cent for on time departures and 2.0 per cent for cancellations.

This month's on time arrivals figure was lower than the long term average performance for all routes (82.3 per cent) and the on time departures figure was also lower than the long term average (83.7 per cent). The rate of cancellations was higher than the long term average of 1.5 per cent.

Qantas achieved the highest on time arrivals among the major domestic airlines at 75.1 per cent followed by Virgin Australia at 74.6 per cent, Jetstar at 72.1 per cent and Tigerair Australia at 63.0 per cent. Of the regional airlines, QantasLink recorded 82.3 per cent for on time arrivals, followed by Regional Express at 80.5 per cent and Virgin Australia Regional Airlines at 75.6 per cent. The Qantas network (Qantas and QantasLink combined operations) recorded 78.9 per cent for on time arrivals while the Virgin Australia network (Virgin Australia and Virgin Australia Regional Airlines combined operations) recorded 74.7 per cent.

Qantas also achieved the highest level of on time departures among the major domestic airlines for September 2019 at 78.3 per cent, followed by Virgin Australia at 78.0 per cent, Jetstar at 71.1 per cent and Tigerair Australia at 66.3 per cent. Of the regional airlines, Regional Express recorded 84.2 per cent for on time departures, followed by QantasLink at 82.9 per cent and Virgin Australia Regional Airlines at 80.5 per cent. The Qantas network recorded 80.8 per cent for on time departures while the Virgin Australia network recorded 78.1 per cent.

Tigerair Australia recorded the highest percentage of cancellations (3.6 per cent) during the month, followed by Qantas (3.3 per cent), Jetstar (2.9 per cent), Virgin Australia (2.1 per cent), QantasLink (1.6 per cent), Regional Express (0.9 per cent) and Virgin Australia Regional Airlines (0.6 per cent).

Airlines' on time performance varies across the routes they serve. Individual route data by specific airline for 64 routes are shown on pages 10-23.

Of the 64 routes which met the criteria for on time performance reporting in September 2019, the Alice Springs-Darwin route had the highest percentage of on time arrivals (96.3 per cent) and the Darwin-Alice Springs route had the highest percentage of on time departures (95.1 per cent). The Ayers Rock-Sydney route had the lowest percentage of on time arrivals (45.0 per cent) and the lowest percentage of on time departures (35.0 per cent).

Cancellations were highest on the Melbourne-Sydney route at 8.3 per cent, followed by the Sydney-Melbourne route at 8.2 per cent, the Brisbane-Sydney route at 4.6 per cent, the Mount Isa-Brisbane route at 4.4 per cent and the Sydney-Brisbane route at 4.0 per cent.

Emerald Airport recorded the highest percentage of on time arrivals (90.8 per cent) and Bundaberg Airport recorded the highest percentage of on time departures (92.7 per cent). Ayers Rock Airport recorded the lowest percentage of on time arrivals (46.7 per cent) and the lowest percentage of on time departures (35.0 per cent). These figures only refer to reported routes and do not cover all flights at these airports.

Table 1 On time performance for September 2019 — Total Industry

	<i>Sectors</i>		<i>Arrivals On Time</i>		<i>Departures On Time</i>		<i>Cancellations</i>	
	<i>Scheduled</i>	<i>Flown</i>	<i>No.</i>	<i>%</i>	<i>No.</i>	<i>%</i>	<i>No.</i>	<i>%</i>
Jetstar	7 150	6 944	5 008	72.1	4 938	71.1	206	2.9
Qantas	9 240	8 937	6 715	75.1	7 000	78.3	303	3.3
QantasLink	10 252	10 090	8 305	82.3	8 367	82.9	162	1.6
Regional Express	6 326	6 272	5 047	80.5	5 283	84.2	54	0.9
Tigerair Australia	2 390	2 303	1 452	63.0	1 527	66.3	87	3.6
Virgin Australia	11 660	11 412	8 515	74.6	8 900	78.0	248	2.1
Virgin Australia Regional Airlines	784	779	589	75.6	627	80.5	5	0.6
All Airlines	47 802	46 737	35 631	76.2	36 642	78.4	1 065	2.2
Qantas - all QF designated services	19 492	19 027	15 020	78.9	15 367	80.8	465	2.4
Virgin Australia - all VA designated services	12 444	12 191	9 104	74.7	9 527	78.1	253	2.0

Total airline network data (including routes not shown in this report).

Airlines' on time performance varies across the routes they serve. Individual route data by specific airline for 64 routes are shown on pages 10-23.

Table 2 Top ten routes for on time performance for September 2019 (participating airlines only)

<i>Arrivals</i>		<i>Departures</i>	
<i>Route</i>	<i>On Time (%)</i>	<i>Route</i>	<i>On Time (%)</i>
Alice Springs-Darwin	96.3	Darwin-Alice Springs	95.1
Darwin-Alice Springs	95.1	Gold Coast-Adelaide	93.2
Cairns-Townsville	93.7	Adelaide-Port Lincoln	92.9
Adelaide-Gold Coast	93.2	Bundaberg-Brisbane	92.7
Townsville-Cairns	93.0	Alice Springs-Darwin	92.6
Bundaberg-Brisbane	91.3	Cairns-Townsville	92.3
Mount Isa-Brisbane	90.8	Townsville-Cairns	92.3
Brisbane-Emerald	90.8	Brisbane-Bundaberg	92.0
Brisbane-Gladstone	90.4	Perth-Karratha	90.9
Port Lincoln-Adelaide	90.3	Mount Isa-Brisbane	90.8

Table 3 Top ten airports for on time performance for September 2019 (participating airlines and reported routes only)

<i>Arrivals</i>		<i>Departures</i>	
<i>Airport</i>	<i>On Time (%)</i>	<i>Airport</i>	<i>On Time (%)</i>
Emerald	90.8	Bundaberg	92.7
Gladstone	90.4	Mount Isa	90.8
Port Lincoln	90.0	Port Lincoln	90.3
Bundaberg	89.3	Alice Springs	89.4
Newman	86.8	Gladstone	88.0
Alice Springs	86.4	Rockhampton	86.9
Kalgoorlie	85.4	Mackay	86.1
Proserpine	85.3	Newman	86.0
Townsville	84.7	Kalgoorlie	85.8
Mackay	84.4	Townsville	85.2

Total industry on time performance

Figure 1 On time performance (by month from September 2016)—Total Industry

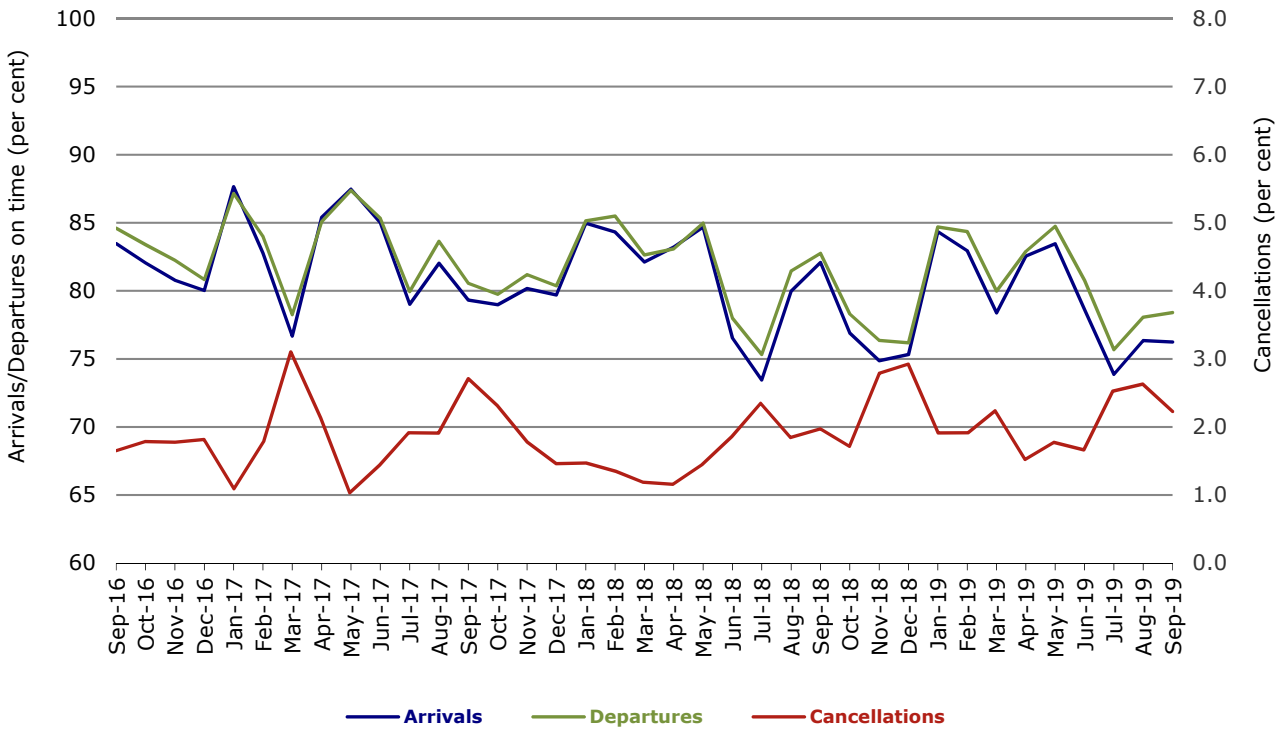


Figure 2 Arrivals on time (by month from September 2018)

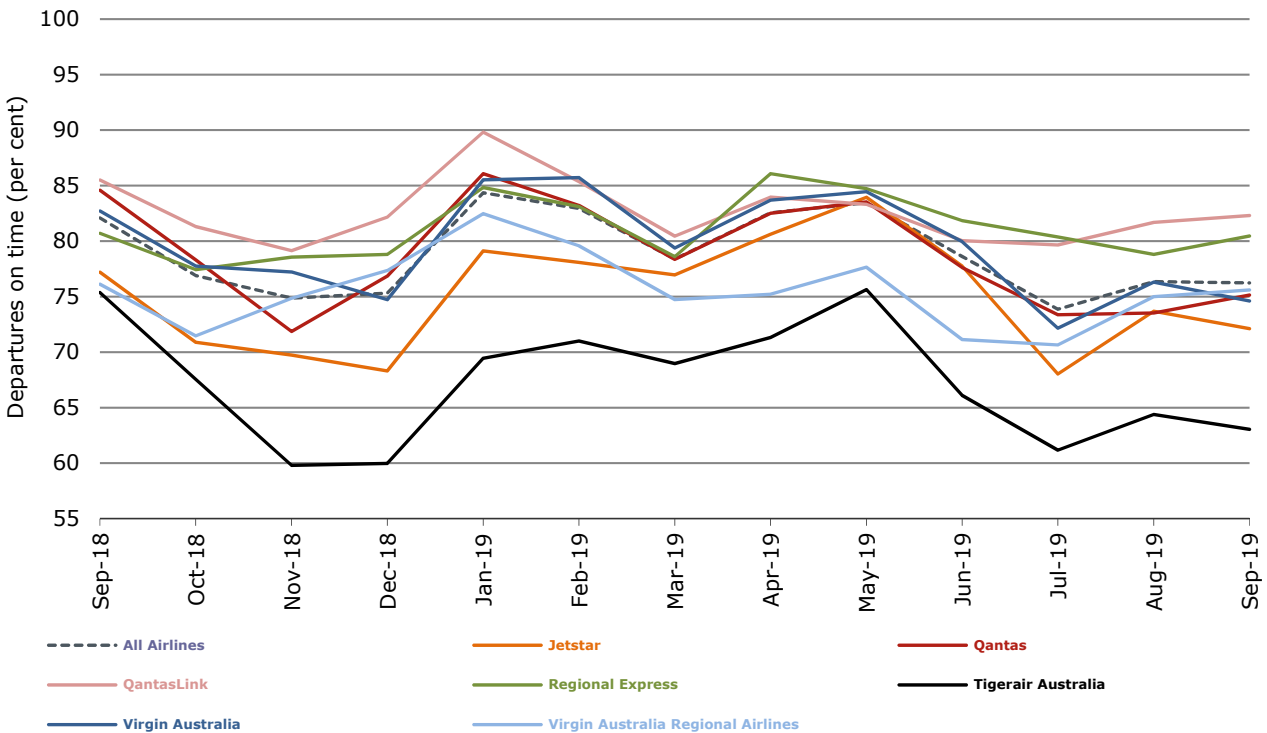


Figure 3 Departures on time (by month from September 2018)

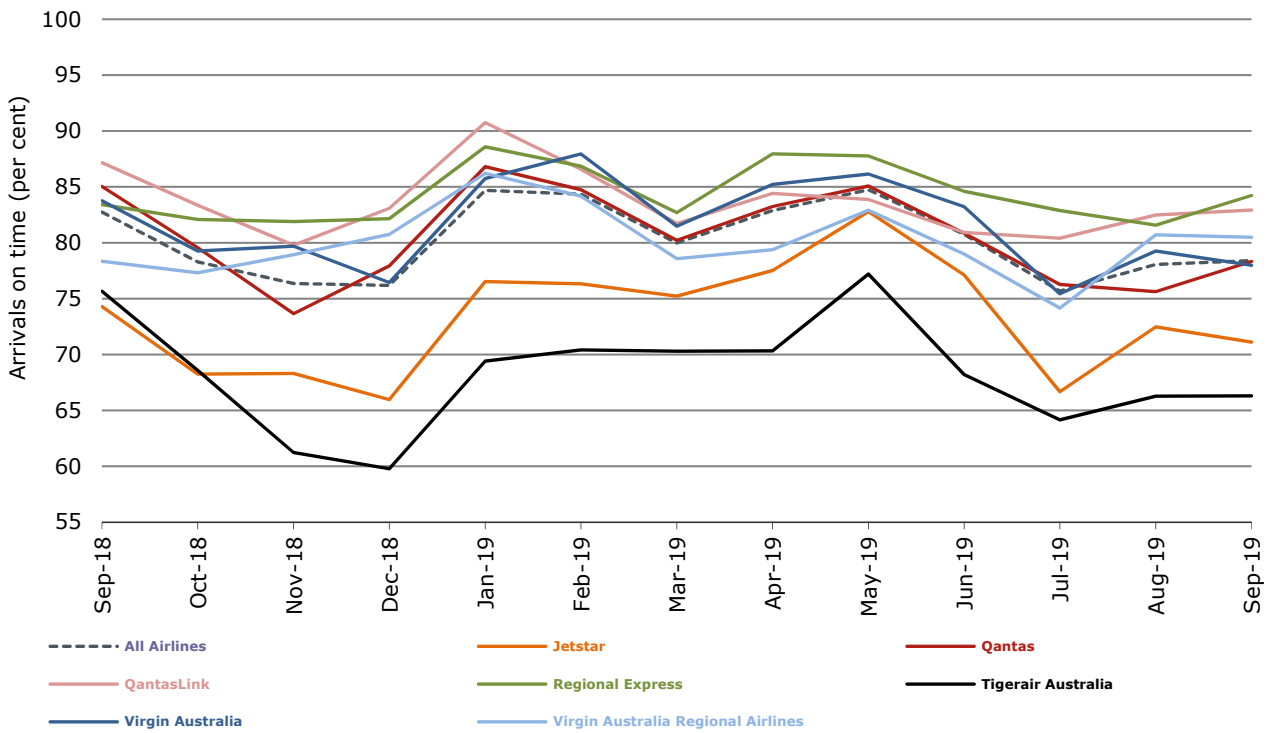
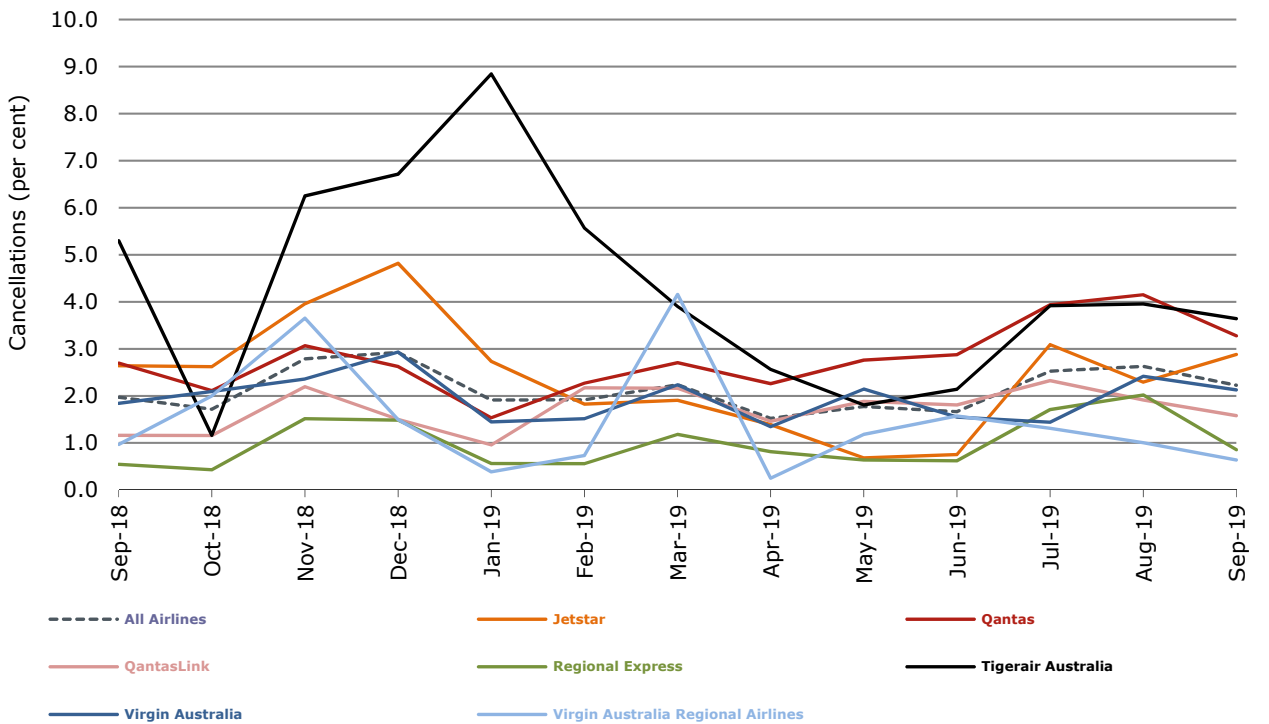


Figure 4 Cancellations (by month from September 2018)



Major domestic airlines on time performance

Figure 5 On time performance (by month from September 2016)—Jetstar

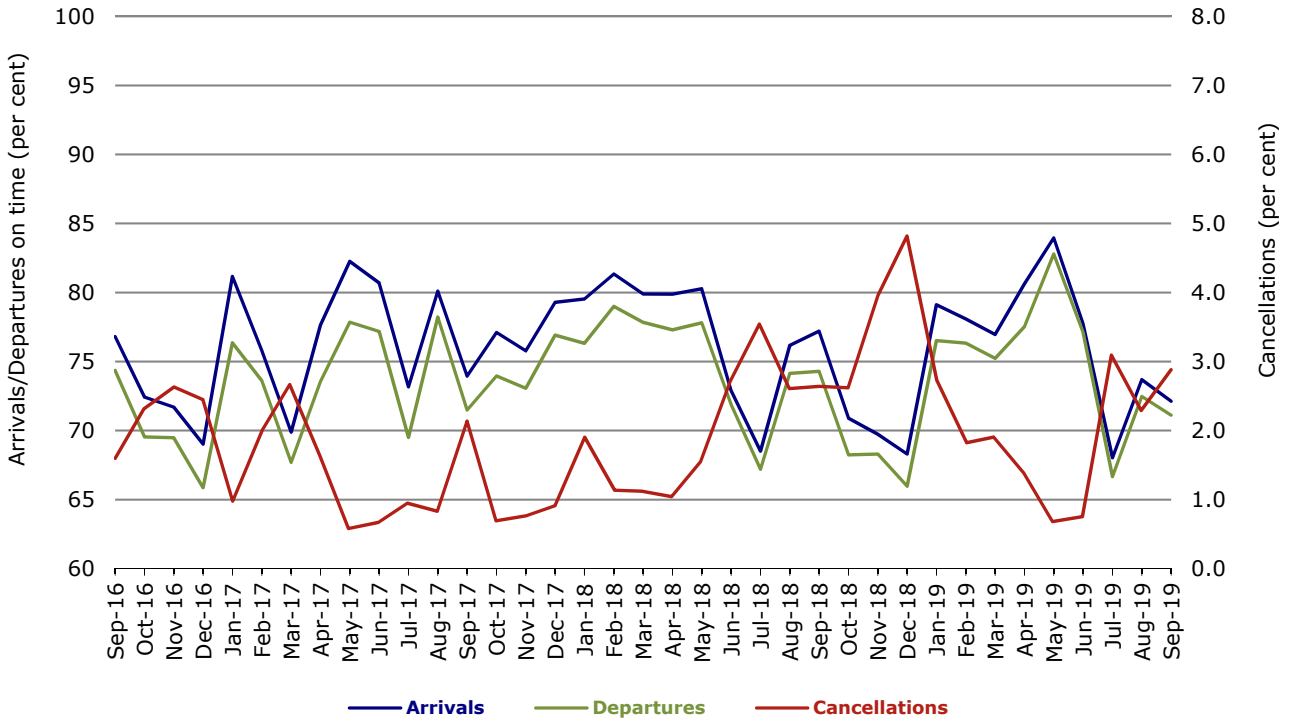


Figure 6 On time performance (by month from September 2016)—Qantas

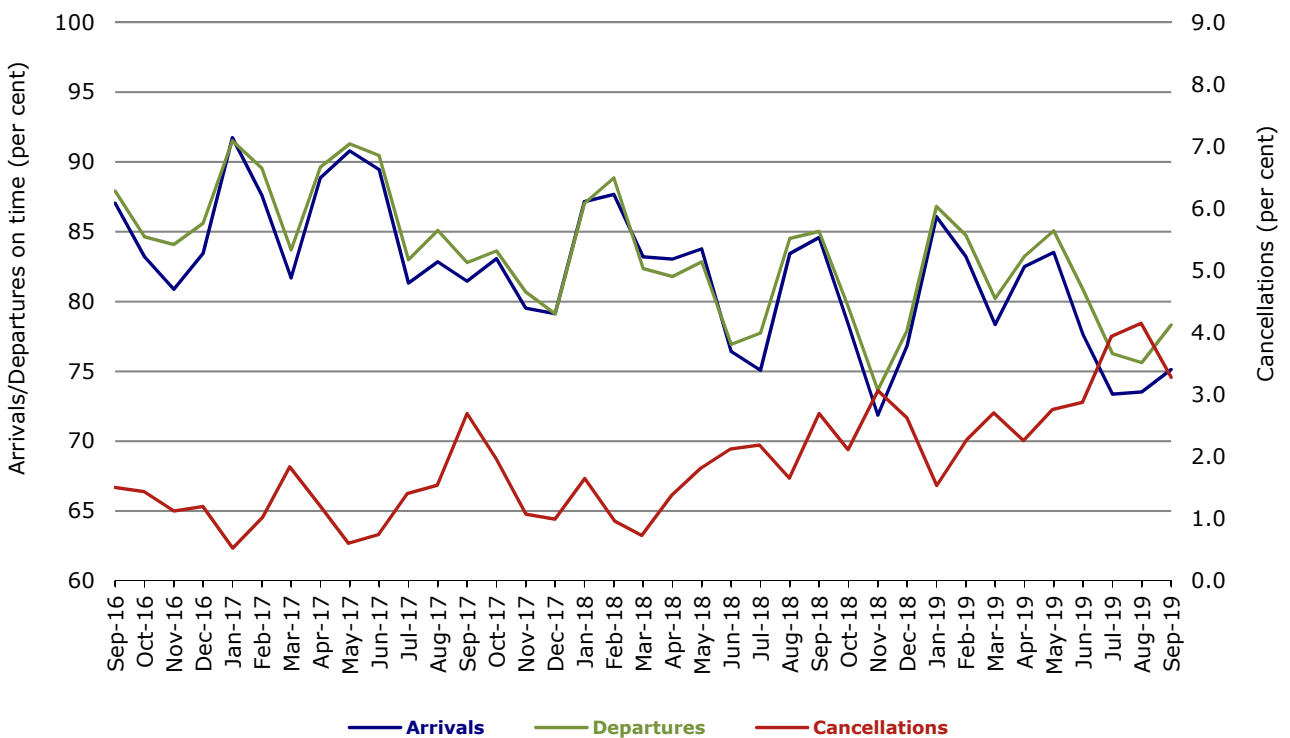


Figure 7 On time performance (by month from September 2016)—Tigerair Australia

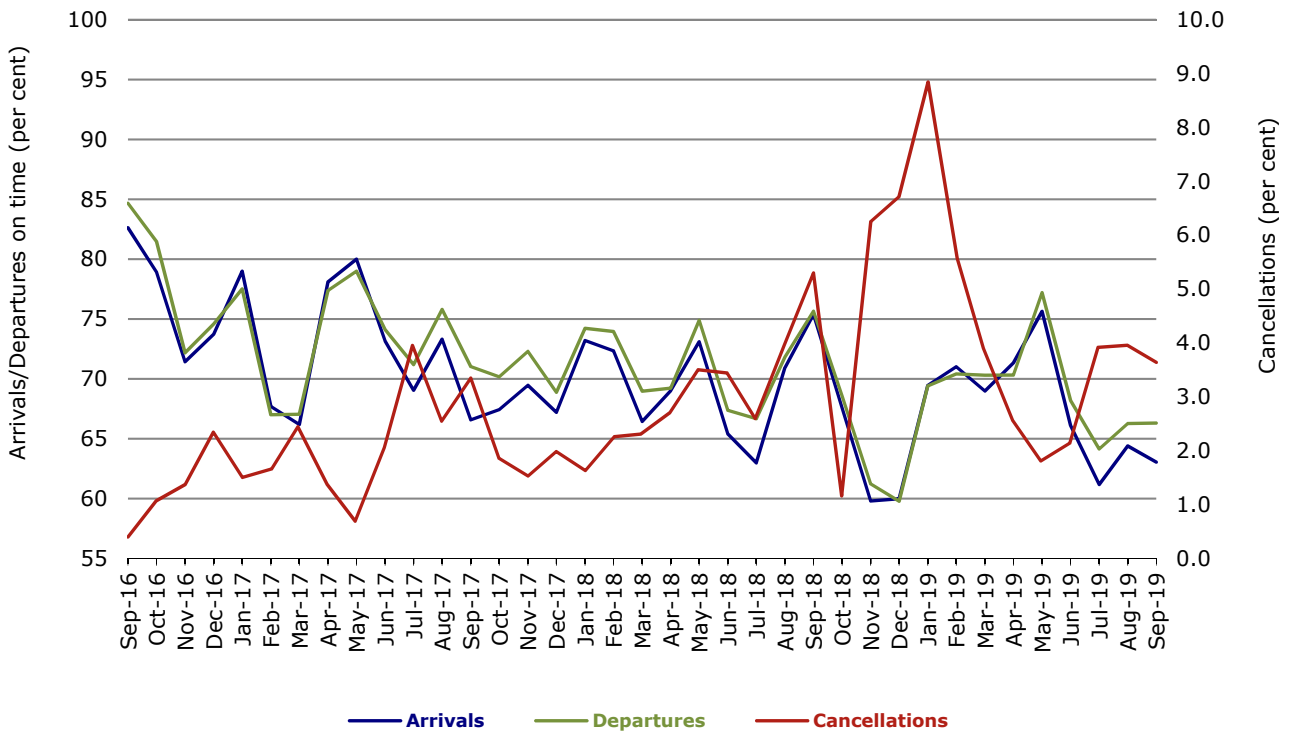
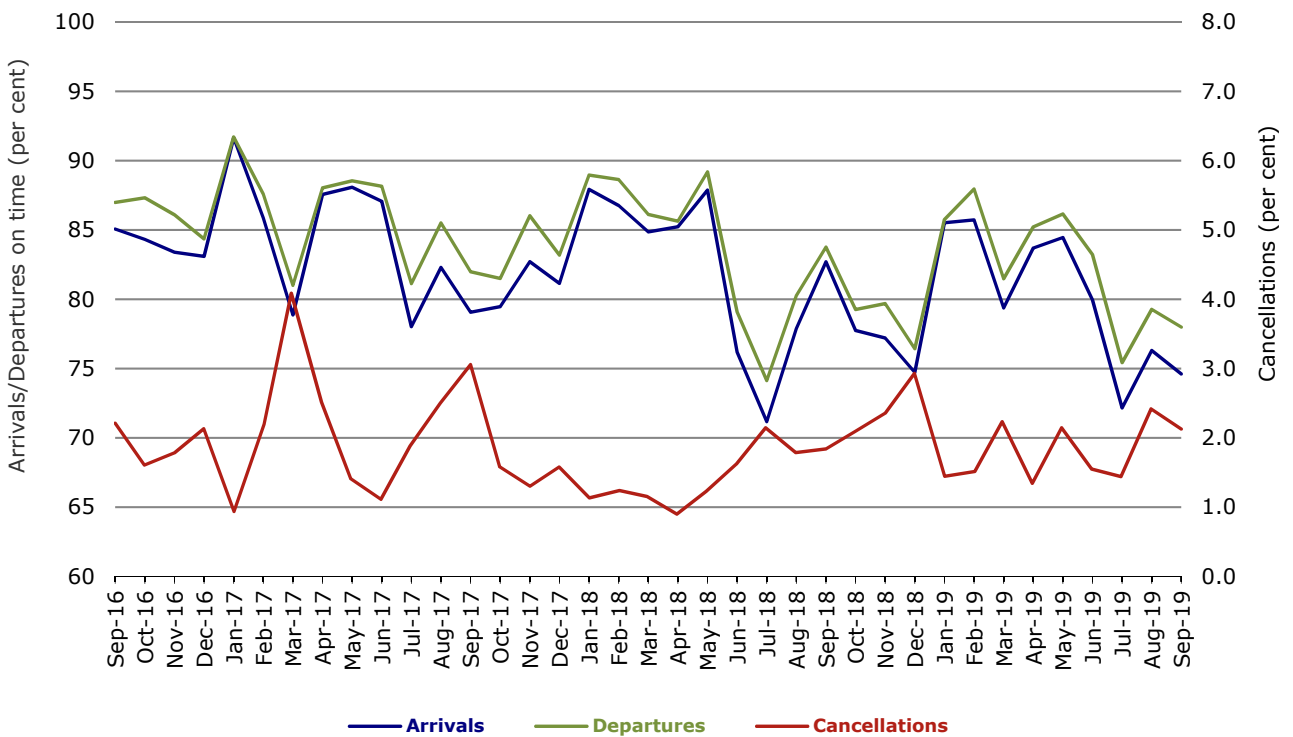


Figure 8 On time performance (by month from September 2016)—Virgin Australia



Major regional airlines on time performance

Figure 9 On time performance (by month from September 2016)—QantasLink

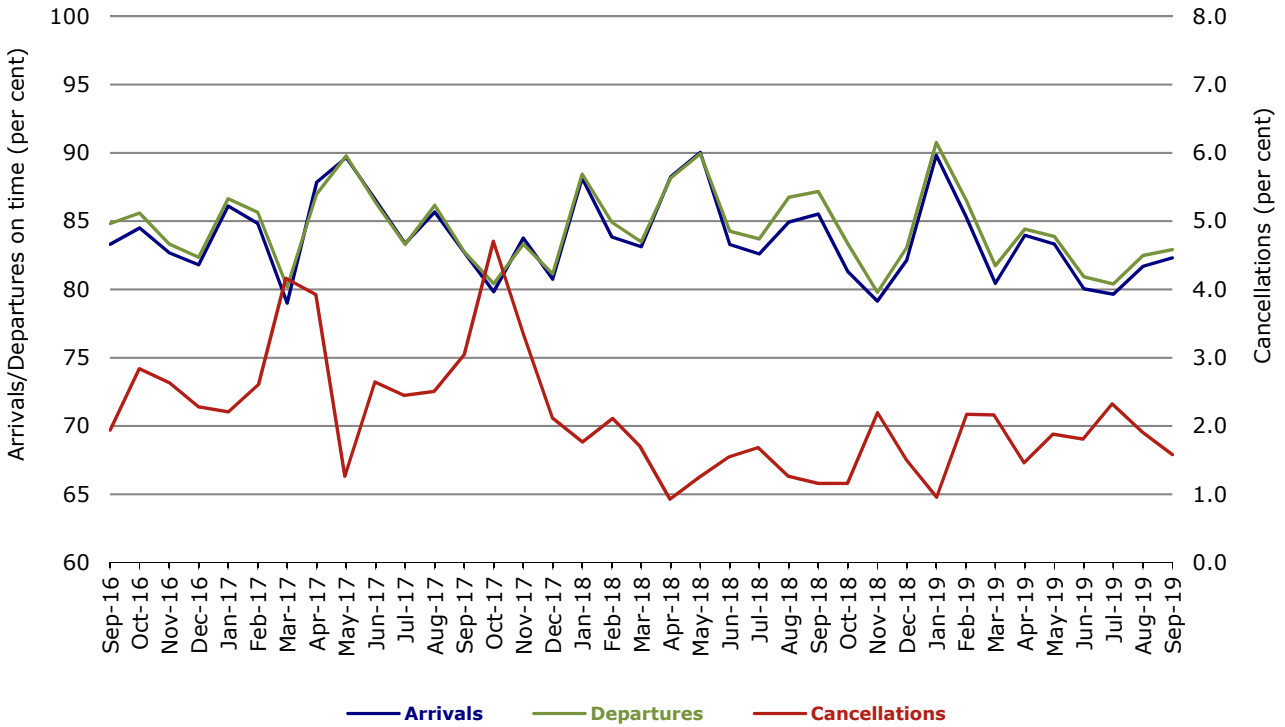


Figure 10 On time performance (by month from September 2016)—Regional Express

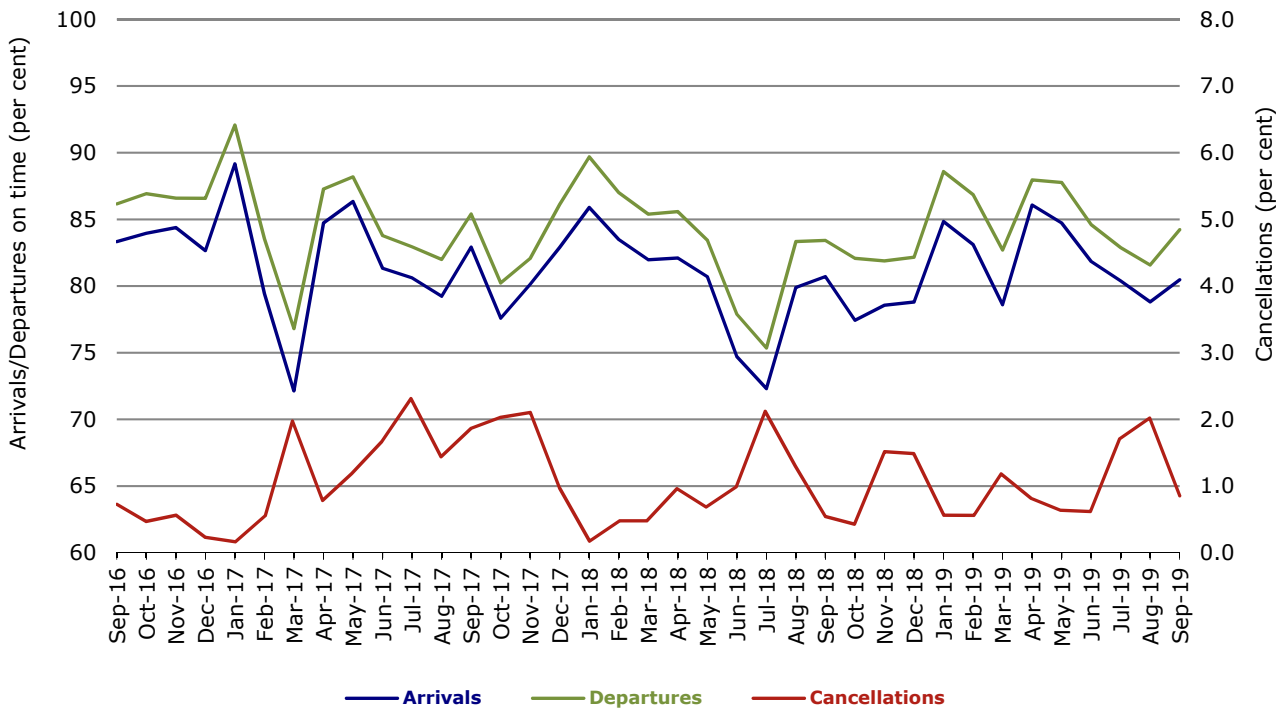
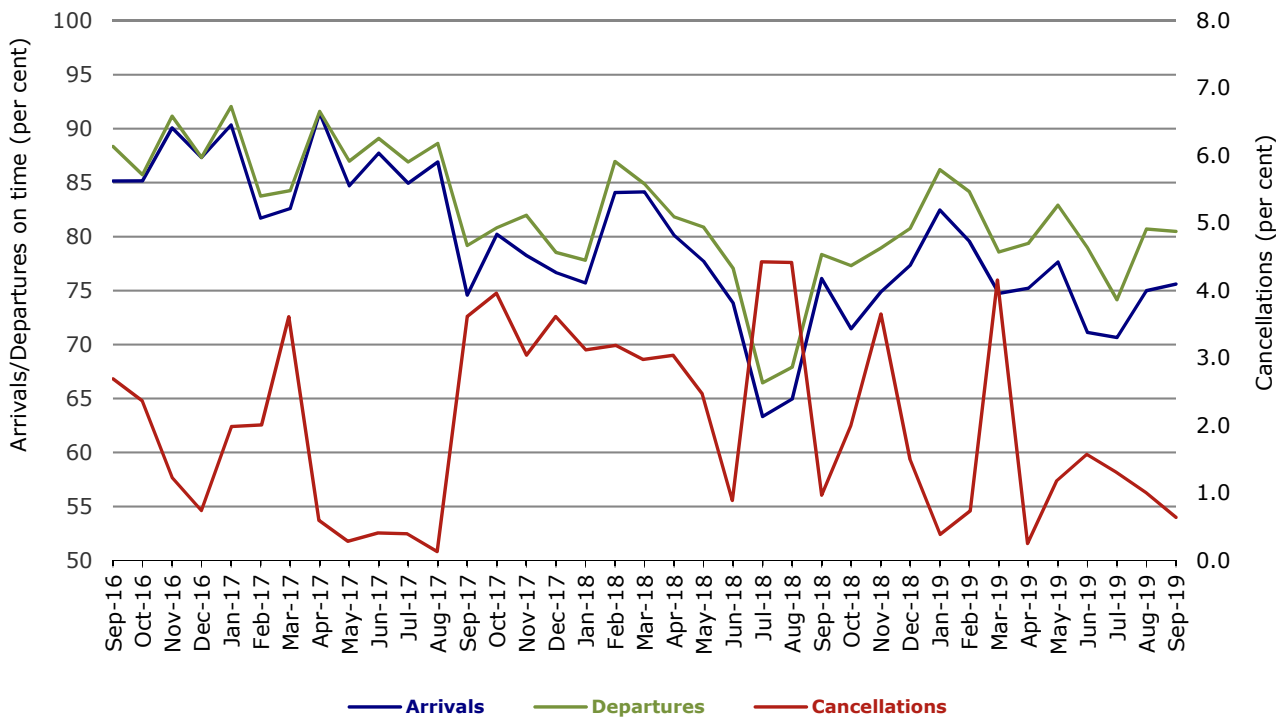


Figure 11 On time performance (by month from September 2016)
Virgin Australia Regional Airlines



Individual routes

On time performance is reported for all routes where the passenger load averages over 8000 passengers per month over the previous six months, and where two or more airlines operate in competition on those routes. There are now 64 routes which meet this definition. Over time, however, routes which meet this definition may change as airline networks and traffic levels vary.

	Sectors		Arrivals On Time		Departures On Time		Cancellations	
	Sched.	Flown	No.	%	No.	%	No.	%
Adelaide-Alice Springs								
Qantas	30	30	21	70.0	26	86.7	0	0.0
Virgin Australia	13	13	12	92.3	13	100.0	0	0.0
Virgin Australia Regional Airlines	8	8	4	50.0	6	75.0	0	0.0
All Airlines	51	51	37	72.5	45	88.2	0	0.0
Adelaide-Brisbane								
Jetstar	27	27	23	85.2	19	70.4	0	0.0
Qantas	107	107	96	89.7	92	86.0	0	0.0
Tigerair Australia	30	30	19	63.3	14	46.7	0	0.0
Virgin Australia	109	109	96	88.1	88	80.7	0	0.0
All Airlines	273	273	234	85.7	213	78.0	0	0.0
Adelaide-Canberra								
Qantas	47	47	37	78.7	34	72.3	0	0.0
QantasLink	4	4	4	100.0	4	100.0	0	0.0
Virgin Australia	26	26	24	92.3	23	88.5	0	0.0
All Airlines	77	77	65	84.4	61	79.2	0	0.0
Adelaide-Gold Coast								
Jetstar	30	28	26	92.9	25	89.3	2	6.7
Virgin Australia	31	31	29	93.5	28	90.3	0	0.0
All Airlines	61	59	55	93.2	53	89.8	2	3.3
Adelaide-Melbourne								
Jetstar	102	96	54	56.3	50	52.1	6	5.9
Qantas	289	282	228	80.9	230	81.6	7	2.4
Tigerair Australia	79	77	40	51.9	43	55.8	2	2.5
Virgin Australia	265	256	191	74.6	198	77.3	9	3.4
Virgin Australia Regional Airlines	11	11	8	72.7	9	81.8	0	0.0
All Airlines	746	722	521	72.2	530	73.4	24	3.2
Adelaide-Perth								
Jetstar	25	22	17	77.3	14	63.6	3	12.0
Qantas	112	112	93	83.0	90	80.4	0	0.0
Virgin Australia	35	35	31	88.6	33	94.3	0	0.0
Virgin Australia Regional Airlines	44	40	29	72.5	30	75.0	4	9.1
All Airlines	216	209	170	81.3	167	79.9	7	3.2
Adelaide-Port Lincoln								
QantasLink	99	96	83	86.5	84	87.5	3	3.0
Regional Express	216	213	195	91.5	203	95.3	3	1.4
All Airlines	315	309	278	90.0	287	92.9	6	1.9
Adelaide-Sydney								
Jetstar	97	92	63	68.5	62	67.4	5	5.2
Qantas	236	234	155	66.2	172	73.5	2	0.8
Tigerair Australia	30	29	13	44.8	13	44.8	1	3.3
Virgin Australia	159	158	116	73.4	123	77.8	1	0.6
All Airlines	522	513	347	67.6	370	72.1	9	1.7

	<i>Sectors</i>		<i>Arrivals On Time</i>		<i>Departures On Time</i>		<i>Cancellations</i>	
	<i>Sched.</i>	<i>Flown</i>	<i>No.</i>	<i>%</i>	<i>No.</i>	<i>%</i>	<i>No.</i>	<i>%</i>
Albury-Sydney								
QantasLink	103	101	69	68.3	70	69.3	2	1.9
Regional Express	107	107	84	78.5	88	82.2	0	0.0
Virgin Australia	54	54	37	68.5	38	70.4	0	0.0
All Airlines	264	262	190	72.5	196	74.8	2	0.8
Alice Springs-Adelaide								
Qantas	30	30	22	73.3	22	73.3	0	0.0
Virgin Australia	13	13	13	100.0	13	100.0	0	0.0
Virgin Australia Regional Airlines	8	8	7	87.5	8	100.0	0	0.0
All Airlines	51	51	42	82.4	43	84.3	0	0.0
Alice Springs-Darwin								
Qantas	60	60	59	98.3	58	96.7	0	0.0
Virgin Australia	13	13	13	100.0	13	100.0	0	0.0
Virgin Australia Regional Airlines	8	8	6	75.0	4	50.0	0	0.0
All Airlines	81	81	78	96.3	75	92.6	0	0.0
Armidale-Sydney								
QantasLink	120	118	75	63.6	79	66.9	2	1.7
Regional Express	68	68	50	73.5	55	80.9	0	0.0
All Airlines	188	186	125	67.2	134	72.0	2	1.1
Ayers Rock-Sydney								
Jetstar	30	30	13	43.3	10	33.3	0	0.0
Virgin Australia	30	30	14	46.7	11	36.7	0	0.0
All Airlines	60	60	27	45.0	21	35.0	0	0.0
Ballina-Sydney								
Jetstar	82	79	48	60.8	53	67.1	3	3.7
Regional Express	25	24	14	58.3	16	66.7	1	4.0
Virgin Australia	34	34	24	70.6	28	82.4	0	0.0
All Airlines	141	137	86	62.8	97	70.8	4	2.8
Brisbane-Adelaide								
Jetstar	27	27	20	74.1	23	85.2	0	0.0
Qantas	107	107	88	82.2	86	80.4	0	0.0
Tigerair Australia	30	30	15	50.0	22	73.3	0	0.0
Virgin Australia	102	102	77	75.5	84	82.4	0	0.0
All Airlines	266	266	200	75.2	215	80.8	0	0.0
Brisbane-Bundaberg								
QantasLink	120	120	106	88.3	109	90.8	0	0.0
Virgin Australia	30	30	28	93.3	29	96.7	0	0.0
All Airlines	150	150	134	89.3	138	92.0	0	0.0
Brisbane-Cairns								
Jetstar	103	102	87	85.3	82	80.4	1	1.0
Qantas	39	39	36	92.3	34	87.2	0	0.0
QantasLink	126	125	109	87.2	110	88.0	1	0.8
Tigerair Australia	30	30	26	86.7	25	83.3	0	0.0
Virgin Australia	128	128	111	86.7	98	76.6	0	0.0
All Airlines	426	424	369	87.0	349	82.3	2	0.5
Brisbane-Canberra								
Qantas	18	18	17	94.4	17	94.4	0	0.0
QantasLink	133	133	115	86.5	120	90.2	0	0.0
Tigerair Australia	30	30	25	83.3	23	76.7	0	0.0
Virgin Australia	99	99	82	82.8	84	84.8	0	0.0
All Airlines	280	280	239	85.4	244	87.1	0	0.0

	<i>Sectors</i>		<i>Arrivals On Time</i>		<i>Departures On Time</i>		<i>Cancellations</i>	
	<i>Sched.</i>	<i>Flown</i>	<i>No.</i>	<i>%</i>	<i>No.</i>	<i>%</i>	<i>No.</i>	<i>%</i>
Brisbane-Darwin								
Jetstar	26	26	25	96.2	23	88.5	0	0.0
Qantas	40	40	34	85.0	30	75.0	0	0.0
Tigerair Australia	18	18	16	88.9	13	72.2	0	0.0
Virgin Australia	30	30	26	86.7	26	86.7	0	0.0
All Airlines	114	114	101	88.6	92	80.7	0	0.0
Brisbane-Emerald								
QantasLink	123	122	107	87.7	107	87.7	1	0.8
Virgin Australia	51	51	50	98.0	50	98.0	0	0.0
All Airlines	174	173	157	90.8	157	90.8	1	0.6
Brisbane-Gladstone								
QantasLink	136	136	121	89.0	123	90.4	0	0.0
Virgin Australia	73	73	68	93.2	65	89.0	0	0.0
All Airlines	209	209	189	90.4	188	90.0	0	0.0
Brisbane-Hamilton Island								
QantasLink	32	32	26	81.3	21	65.6	0	0.0
Virgin Australia	30	30	27	90.0	27	90.0	0	0.0
All Airlines	62	62	53	85.5	48	77.4	0	0.0
Brisbane-Hobart								
Jetstar	24	24	21	87.5	22	91.7	0	0.0
Virgin Australia	39	39	31	79.5	34	87.2	0	0.0
All Airlines	63	63	52	82.5	56	88.9	0	0.0
Brisbane-Mackay								
Jetstar	34	34	27	79.4	26	76.5	0	0.0
QantasLink	138	134	115	85.8	109	81.3	4	2.9
Virgin Australia	146	146	123	84.2	122	83.6	0	0.0
All Airlines	318	314	265	84.4	257	81.8	4	1.3
Brisbane-Melbourne								
Jetstar	143	141	101	71.6	96	68.1	2	1.4
Qantas	405	401	275	68.6	325	81.0	4	1.0
Tigerair Australia	109	107	66	61.7	77	72.0	2	1.8
Virgin Australia	387	371	251	67.7	301	81.1	16	4.1
All Airlines	1 044	1 020	693	67.9	799	78.3	24	2.3
Brisbane-Mount Isa								
QantasLink	55	54	43	79.6	48	88.9	1	1.8
Virgin Australia	17	17	15	88.2	15	88.2	0	0.0
All Airlines	72	71	58	81.7	63	88.7	1	1.4
Brisbane-Newcastle								
Jetstar	77	75	67	89.3	67	89.3	2	2.6
QantasLink	89	86	67	77.9	68	79.1	3	3.4
Virgin Australia	86	85	75	88.2	77	90.6	1	1.2
All Airlines	252	246	209	85.0	212	86.2	6	2.4
Brisbane-Perth								
Qantas	148	148	111	75.0	113	76.4	0	0.0
Virgin Australia	107	107	78	72.9	74	69.2	0	0.0
All Airlines	255	255	189	74.1	187	73.3	0	0.0
Brisbane-Proserpine								
Jetstar	35	35	30	85.7	30	85.7	0	0.0
Virgin Australia	42	42	38	90.5	37	88.1	0	0.0
All Airlines	77	77	68	88.3	67	87.0	0	0.0

	Sectors		Arrivals On Time		Departures On Time		Cancellations	
	Sched.	Flown	No.	%	No.	%	No.	%
Brisbane-Rockhampton								
QantasLink	176	174	151	86.8	142	81.6	2	1.1
Virgin Australia	137	137	109	79.6	116	84.7	0	0.0
All Airlines	313	311	260	83.6	258	83.0	2	0.6
Brisbane-Sydney								
Jetstar	184	176	111	63.1	121	68.8	8	4.3
Qantas	609	585	442	75.6	484	82.7	24	3.9
Tigerair Australia	132	122	73	59.8	88	72.1	10	7.6
Virgin Australia	535	510	362	71.0	411	80.6	25	4.7
All Airlines	1 460	1 393	988	70.9	1 104	79.3	67	4.6
Brisbane-Townsville								
Jetstar	60	60	50	83.3	52	86.7	0	0.0
Qantas	58	57	50	87.7	48	84.2	1	1.7
QantasLink	93	93	76	81.7	79	84.9	0	0.0
Virgin Australia	146	146	125	85.6	118	80.8	0	0.0
All Airlines	357	356	301	84.6	297	83.4	1	0.3
Broome-Perth								
Qantas	4	4	3	75.0	2	50.0	0	0.0
QantasLink	90	87	70	80.5	69	79.3	3	3.3
Virgin Australia	1	1	0	0.0	0	0.0	0	0.0
Virgin Australia Regional Airlines	70	70	58	82.9	52	74.3	0	0.0
All Airlines	165	162	131	80.9	123	75.9	3	1.8
Bundaberg-Brisbane								
QantasLink	120	120	107	89.2	109	90.8	0	0.0
Virgin Australia	30	30	30	100.0	30	100.0	0	0.0
All Airlines	150	150	137	91.3	139	92.7	0	0.0
Cairns-Brisbane								
Jetstar	103	102	92	90.2	89	87.3	1	1.0
Qantas	39	39	36	92.3	34	87.2	0	0.0
QantasLink	125	123	103	83.7	106	86.2	2	1.6
Tigerair Australia	30	30	26	86.7	25	83.3	0	0.0
Virgin Australia	128	128	111	86.7	109	85.2	0	0.0
All Airlines	425	422	368	87.2	363	86.0	3	0.7
Cairns-Melbourne								
Jetstar	117	115	91	79.1	91	79.1	2	1.7
Qantas	35	35	19	54.3	23	65.7	0	0.0
Tigerair Australia	45	45	28	62.2	29	64.4	0	0.0
Virgin Australia	35	35	19	54.3	21	60.0	0	0.0
All Airlines	232	230	157	68.3	164	71.3	2	0.9
Cairns-Sydney								
Jetstar	89	88	76	86.4	72	81.8	1	1.1
Qantas	56	56	42	75.0	44	78.6	0	0.0
Tigerair Australia	35	35	31	88.6	31	88.6	0	0.0
Virgin Australia	84	84	60	71.4	64	76.2	0	0.0
All Airlines	264	263	209	79.5	211	80.2	1	0.4
Cairns-Townsville								
QantasLink	134	131	122	93.1	120	91.6	3	2.2
Regional Express	12	12	12	100.0	12	100.0	0	0.0
All Airlines	146	143	134	93.7	132	92.3	3	2.1

	<i>Sectors</i>		<i>Arrivals On Time</i>		<i>Departures On Time</i>		<i>Cancellations</i>	
	<i>Sched.</i>	<i>Flown</i>	<i>No.</i>	<i>%</i>	<i>No.</i>	<i>%</i>	<i>No.</i>	<i>%</i>
Canberra-Adelaide								
Qantas	46	46	36	78.3	32	69.6	0	0.0
QantasLink	4	4	2	50.0	2	50.0	0	0.0
Virgin Australia	26	26	25	96.2	26	100.0	0	0.0
All Airlines	76	76	63	82.9	60	78.9	0	0.0
Canberra-Brisbane								
Qantas	18	18	16	88.9	16	88.9	0	0.0
QantasLink	133	133	119	89.5	119	89.5	0	0.0
Tigerair Australia	30	29	24	82.8	23	79.3	1	3.3
Virgin Australia	99	98	88	89.8	88	89.8	1	1.0
All Airlines	280	278	247	88.8	246	88.5	2	0.7
Canberra-Melbourne								
Qantas	238	231	186	80.5	194	84.0	7	2.9
QantasLink	42	42	29	69.0	29	69.0	0	0.0
Tigerair Australia	39	36	21	58.3	20	55.6	3	7.7
Virgin Australia	170	167	116	69.5	140	83.8	3	1.8
All Airlines	489	476	352	73.9	383	80.5	13	2.7
Canberra-Sydney								
QantasLink	484	467	349	74.7	363	77.7	17	3.5
Virgin Australia	251	241	198	82.2	201	83.4	10	4.0
All Airlines	735	708	547	77.3	564	79.7	27	3.7
Coffs Harbour-Sydney								
QantasLink	141	139	102	73.4	109	78.4	2	1.4
Tigerair Australia	25	24	19	79.2	19	79.2	1	4.0
Virgin Australia	30	30	19	63.3	22	73.3	0	0.0
All Airlines	196	193	140	72.5	150	77.7	3	1.5
Darwin-Alice Springs								
Qantas	60	60	57	95.0	57	95.0	0	0.0
Virgin Australia	13	13	13	100.0	13	100.0	0	0.0
Virgin Australia Regional Airlines	8	8	7	87.5	7	87.5	0	0.0
All Airlines	81	81	77	95.1	77	95.1	0	0.0
Darwin-Brisbane								
Jetstar	26	26	24	92.3	23	88.5	0	0.0
Qantas	39	39	34	87.2	33	84.6	0	0.0
Tigerair Australia	17	17	13	76.5	13	76.5	0	0.0
Virgin Australia	30	30	21	70.0	25	83.3	0	0.0
All Airlines	112	112	92	82.1	94	83.9	0	0.0
Darwin-Melbourne								
Jetstar	27	25	18	72.0	14	56.0	2	7.4
Qantas	30	30	23	76.7	21	70.0	0	0.0
Virgin Australia	32	32	26	81.3	28	87.5	0	0.0
All Airlines	89	87	67	77.0	63	72.4	2	2.2
Darwin-Perth								
Qantas	30	30	28	93.3	29	96.7	0	0.0
Virgin Australia	21	21	14	66.7	15	71.4	0	0.0
Virgin Australia Regional Airlines	9	9	8	88.9	6	66.7	0	0.0
All Airlines	60	60	50	83.3	50	83.3	0	0.0
Darwin-Sydney								
Jetstar	23	23	22	95.7	20	87.0	0	0.0
Qantas	51	51	26	51.0	28	54.9	0	0.0
Virgin Australia	30	30	8	26.7	14	46.7	0	0.0
All Airlines	104	104	56	53.8	62	59.6	0	0.0

	<i>Sectors</i>		<i>Arrivals On Time</i>		<i>Departures On Time</i>		<i>Cancellations</i>	
	<i>Sched.</i>	<i>Flown</i>	<i>No.</i>	<i>%</i>	<i>No.</i>	<i>%</i>	<i>No.</i>	<i>%</i>
Dubbo-Sydney								
QantasLink	115	113	83	73.5	88	77.9	2	1.7
Regional Express	127	127	89	70.1	100	78.7	0	0.0
All Airlines	242	240	172	71.7	188	78.3	2	0.8
Emerald-Brisbane								
QantasLink	123	121	95	78.5	92	76.0	2	1.6
Virgin Australia	52	52	52	100.0	50	96.2	0	0.0
All Airlines	175	173	147	85.0	142	82.1	2	1.1
Gladstone-Brisbane								
QantasLink	135	135	119	88.1	115	85.2	0	0.0
Virgin Australia	73	73	68	93.2	68	93.2	0	0.0
All Airlines	208	208	187	89.9	183	88.0	0	0.0
Gold Coast-Adelaide								
Jetstar	30	28	22	78.6	27	96.4	2	6.7
Virgin Australia	31	31	24	77.4	28	90.3	0	0.0
All Airlines	61	59	46	78.0	55	93.2	2	3.3
Gold Coast-Melbourne								
Jetstar	205	202	139	68.8	138	68.3	3	1.5
Qantas	30	30	14	46.7	13	43.3	0	0.0
Tigerair Australia	79	79	41	51.9	49	62.0	0	0.0
Virgin Australia	184	184	117	63.6	118	64.1	0	0.0
All Airlines	498	495	311	62.8	318	64.2	3	0.6
Gold Coast-Sydney								
Jetstar	297	287	210	73.2	211	73.5	10	3.4
Qantas	69	69	44	63.8	42	60.9	0	0.0
QantasLink	58	58	46	79.3	50	86.2	0	0.0
Tigerair Australia	96	93	49	52.7	53	57.0	3	3.1
Virgin Australia	256	253	178	70.4	174	68.8	3	1.2
All Airlines	776	760	527	69.3	530	69.7	16	2.1
Hamilton Island-Brisbane								
QantasLink	32	32	17	53.1	19	59.4	0	0.0
Virgin Australia	30	30	28	93.3	29	96.7	0	0.0
All Airlines	62	62	45	72.6	48	77.4	0	0.0
Hamilton Island-Sydney								
Jetstar	24	23	13	56.5	13	56.5	1	4.2
Qantas	15	15	11	73.3	11	73.3	0	0.0
QantasLink	15	15	10	66.7	12	80.0	0	0.0
Virgin Australia	27	27	21	77.8	20	74.1	0	0.0
All Airlines	81	80	55	68.8	56	70.0	1	1.2
Hobart-Brisbane								
Jetstar	24	24	22	91.7	21	87.5	0	0.0
Virgin Australia	39	39	24	61.5	29	74.4	0	0.0
All Airlines	63	63	46	73.0	50	79.4	0	0.0
Hobart-Melbourne								
Jetstar	151	149	87	58.4	96	64.4	2	1.3
Qantas	109	109	73	67.0	85	78.0	0	0.0
Tigerair Australia	42	42	23	54.8	23	54.8	0	0.0
Virgin Australia	138	137	83	60.6	102	74.5	1	0.7
All Airlines	440	437	266	60.9	306	70.0	3	0.7

	Sectors		Arrivals On Time		Departures On Time		Cancellations	
	Sched.	Flown	No.	%	No.	%	No.	%
Hobart-Sydney								
Jetstar	74	73	44	60.3	40	54.8	1	1.4
QantasLink	73	72	47	65.3	59	81.9	1	1.4
Virgin Australia	72	72	50	69.4	56	77.8	0	0.0
All Airlines	219	217	141	65.0	155	71.4	2	0.9
Kalgoorlie-Perth								
Qantas	7	7	7	100.0	7	100.0	0	0.0
QantasLink	78	76	69	90.8	70	92.1	2	2.6
Virgin Australia	27	26	24	92.3	22	84.6	1	3.7
Virgin Australia Regional Airlines	54	53	40	75.5	40	75.5	1	1.9
All Airlines	166	162	140	86.4	139	85.8	4	2.4
Karratha-Perth								
Qantas	28	28	25	89.3	24	85.7	0	0.0
QantasLink	154	150	140	93.3	136	90.7	4	2.6
Virgin Australia	2	2	2	100.0	1	50.0	0	0.0
Virgin Australia Regional Airlines	62	62	47	75.8	44	71.0	0	0.0
All Airlines	246	242	214	88.4	205	84.7	4	1.6
Launceston-Melbourne								
Jetstar	98	97	63	64.9	61	62.9	1	1.0
QantasLink	116	112	100	89.3	99	88.4	4	3.4
Virgin Australia	98	97	72	74.2	89	91.8	1	1.0
All Airlines	312	306	235	76.8	249	81.4	6	1.9
Launceston-Sydney								
Jetstar	37	37	25	67.6	23	62.2	0	0.0
Virgin Australia	30	30	25	83.3	25	83.3	0	0.0
All Airlines	67	67	50	74.6	48	71.6	0	0.0
Mackay-Brisbane								
Jetstar	34	34	28	82.4	25	73.5	0	0.0
QantasLink	133	130	114	87.7	118	90.8	3	2.3
Virgin Australia	146	146	128	87.7	124	84.9	0	0.0
All Airlines	313	310	270	87.1	267	86.1	3	1.0
Melbourne-Adelaide								
Jetstar	103	97	54	55.7	59	60.8	6	5.8
Qantas	290	284	215	75.7	231	81.3	6	2.1
Tigerair Australia	79	77	46	59.7	52	67.5	2	2.5
Virgin Australia	268	259	182	70.3	196	75.7	9	3.4
Virgin Australia Regional Airlines	11	11	8	72.7	9	81.8	0	0.0
All Airlines	751	728	505	69.4	547	75.1	23	3.1
Melbourne-Brisbane								
Jetstar	142	140	98	70.0	88	62.9	2	1.4
Qantas	407	404	328	81.2	313	77.5	3	0.7
Tigerair Australia	109	107	84	78.5	83	77.6	2	1.8
Virgin Australia	388	371	289	77.9	287	77.4	17	4.4
All Airlines	1 046	1 022	799	78.2	771	75.4	24	2.3
Melbourne-Cairns								
Jetstar	117	116	86	74.1	84	72.4	1	0.9
Qantas	35	35	27	77.1	26	74.3	0	0.0
Tigerair Australia	45	45	34	75.6	40	88.9	0	0.0
Virgin Australia	36	35	26	74.3	33	94.3	1	2.8
All Airlines	233	231	173	74.9	183	79.2	2	0.9

	<i>Sectors</i>		<i>Arrivals On Time</i>		<i>Departures On Time</i>		<i>Cancellations</i>	
	<i>Sched.</i>	<i>Flown</i>	<i>No.</i>	<i>%</i>	<i>No.</i>	<i>%</i>	<i>No.</i>	<i>%</i>
Melbourne-Canberra								
Qantas	237	230	187	81.3	184	80.0	7	3.0
QantasLink	41	40	31	77.5	31	77.5	1	2.4
Tigerair Australia	39	36	24	66.7	25	69.4	3	7.7
Virgin Australia	170	167	131	78.4	140	83.8	3	1.8
All Airlines	487	473	373	78.9	380	80.3	14	2.9
Melbourne-Darwin								
Jetstar	27	26	15	57.7	18	69.2	1	3.7
Qantas	30	30	25	83.3	25	83.3	0	0.0
Virgin Australia	32	32	17	53.1	14	43.8	0	0.0
All Airlines	89	88	57	64.8	57	64.8	1	1.1
Melbourne-Gold Coast								
Jetstar	205	203	146	71.9	148	72.9	2	1.0
Qantas	31	31	23	74.2	25	80.6	0	0.0
Tigerair Australia	79	79	57	72.2	55	69.6	0	0.0
Virgin Australia	184	184	151	82.1	148	80.4	0	0.0
All Airlines	499	497	377	75.9	376	75.7	2	0.4
Melbourne-Hobart								
Jetstar	151	149	106	71.1	105	70.5	2	1.3
Qantas	109	109	77	70.6	83	76.1	0	0.0
Tigerair Australia	42	42	30	71.4	33	78.6	0	0.0
Virgin Australia	136	135	87	64.4	99	73.3	1	0.7
All Airlines	438	435	300	69.0	320	73.6	3	0.7
Melbourne-Launceston								
Jetstar	99	98	67	68.4	66	67.3	1	1.0
QantasLink	116	114	96	84.2	97	85.1	2	1.7
Virgin Australia	98	97	72	74.2	76	78.4	1	1.0
All Airlines	313	309	235	76.1	239	77.3	4	1.3
Melbourne-Mildura								
QantasLink	94	91	72	79.1	73	80.2	3	3.2
Regional Express	84	83	61	73.5	67	80.7	1	1.2
Virgin Australia	30	30	22	73.3	27	90.0	0	0.0
All Airlines	208	204	155	76.0	167	81.9	4	1.9
Melbourne-Newcastle								
Jetstar	102	100	74	74.0	63	63.0	2	2.0
Virgin Australia	30	30	21	70.0	21	70.0	0	0.0
All Airlines	132	130	95	73.1	84	64.6	2	1.5
Melbourne-Perth								
Jetstar	45	39	33	84.6	31	79.5	6	13.3
Qantas	203	201	133	66.2	137	68.2	2	1.0
Tigerair Australia	55	55	28	50.9	36	65.5	0	0.0
Virgin Australia	150	148	102	68.9	94	63.5	2	1.3
All Airlines	453	443	296	66.8	298	67.3	10	2.2
Melbourne-Sunshine Coast								
Jetstar	94	94	79	84.0	79	84.0	0	0.0
Virgin Australia	71	71	58	81.7	56	78.9	0	0.0
All Airlines	165	165	137	83.0	135	81.8	0	0.0

	<i>Sectors</i>		<i>Arrivals On Time</i>		<i>Departures On Time</i>		<i>Cancellations</i>	
	<i>Sched.</i>	<i>Flown</i>	<i>No.</i>	<i>%</i>	<i>No.</i>	<i>%</i>	<i>No.</i>	<i>%</i>
Melbourne-Sydney								
Jetstar	381	356	223	62.6	246	69.1	25	6.6
Qantas	1 099	992	696	70.2	766	77.2	107	9.7
Tigerair Australia	246	225	128	56.9	134	59.6	21	8.5
Virgin Australia	731	681	459	67.4	526	77.2	50	6.8
All Airlines	2 457	2 254	1 506	66.8	1 672	74.2	203	8.3
Mildura-Melbourne								
QantasLink	94	90	64	71.1	70	77.8	4	4.3
Regional Express	84	83	56	67.5	67	80.7	1	1.2
Virgin Australia	30	30	22	73.3	23	76.7	0	0.0
All Airlines	208	203	142	70.0	160	78.8	5	2.4
Mount Isa-Brisbane								
QantasLink	56	53	49	92.5	48	90.6	3	5.4
Virgin Australia	12	12	10	83.3	11	91.7	0	0.0
All Airlines	68	65	59	90.8	59	90.8	3	4.4
Newcastle-Brisbane								
Jetstar	77	75	66	88.0	64	85.3	2	2.6
QantasLink	88	85	73	85.9	70	82.4	3	3.4
Virgin Australia	86	85	73	85.9	77	90.6	1	1.2
All Airlines	251	245	212	86.5	211	86.1	6	2.4
Newcastle-Melbourne								
Jetstar	101	100	71	71.0	76	76.0	1	1.0
Virgin Australia	30	30	17	56.7	20	66.7	0	0.0
All Airlines	131	130	88	67.7	96	73.8	1	0.8
Newman-Perth								
Qantas	25	25	23	92.0	23	92.0	0	0.0
QantasLink	114	108	91	84.3	93	86.1	6	5.3
Virgin Australia	15	15	12	80.0	12	80.0	0	0.0
Virgin Australia Regional Airlines	23	23	19	82.6	19	82.6	0	0.0
All Airlines	177	171	145	84.8	147	86.0	6	3.4
Perth-Adelaide								
Jetstar	25	21	13	61.9	14	66.7	4	16.0
Qantas	112	112	97	86.6	97	86.6	0	0.0
Virgin Australia	34	34	32	94.1	31	91.2	0	0.0
Virgin Australia Regional Airlines	44	44	29	65.9	40	90.9	0	0.0
All Airlines	215	211	171	81.0	182	86.3	4	1.9
Perth-Brisbane								
Qantas	147	147	135	91.8	130	88.4	0	0.0
Virgin Australia	109	109	95	87.2	91	83.5	0	0.0
All Airlines	256	256	230	89.8	221	86.3	0	0.0
Perth-Broome								
Qantas	4	4	4	100.0	4	100.0	0	0.0
QantasLink	90	88	75	85.2	80	90.9	2	2.2
Virgin Australia	1	1	0	0.0	0	0.0	0	0.0
Virgin Australia Regional Airlines	70	70	51	72.9	61	87.1	0	0.0
All Airlines	165	163	130	79.8	145	89.0	2	1.2
Perth-Darwin								
Qantas	30	30	28	93.3	29	96.7	0	0.0
Virgin Australia	21	21	17	81.0	17	81.0	0	0.0
Virgin Australia Regional Airlines	9	9	8	88.9	8	88.9	0	0.0
All Airlines	60	60	53	88.3	54	90.0	0	0.0

	Sectors		Arrivals On Time		Departures On Time		Cancellations	
	Sched.	Flown	No.	%	No.	%	No.	%
Perth-Kalgoorlie								
Qantas	7	7	7	100.0	7	100.0	0	0.0
QantasLink	78	78	68	87.2	69	88.5	0	0.0
Virgin Australia	27	26	22	84.6	24	92.3	1	3.7
Virgin Australia Regional Airlines	53	53	43	81.1	46	86.8	0	0.0
All Airlines	165	164	140	85.4	146	89.0	1	0.6
Perth-Karratha								
Qantas	28	28	25	89.3	26	92.9	0	0.0
QantasLink	153	150	129	86.0	136	90.7	3	2.0
Virgin Australia	2	2	2	100.0	2	100.0	0	0.0
Virgin Australia Regional Airlines	62	62	47	75.8	56	90.3	0	0.0
All Airlines	245	242	203	83.9	220	90.9	3	1.2
Perth-Melbourne								
Jetstar	44	38	30	78.9	27	71.1	6	13.6
Qantas	202	199	153	76.9	147	73.9	3	1.5
Tigerair Australia	54	54	34	63.0	22	40.7	0	0.0
Virgin Australia	153	151	120	79.5	129	85.4	2	1.3
All Airlines	453	442	337	76.2	325	73.5	11	2.4
Perth-Newman								
Qantas	25	25	23	92.0	24	96.0	0	0.0
QantasLink	114	111	96	86.5	97	87.4	3	2.6
Virgin Australia	15	15	13	86.7	14	93.3	0	0.0
Virgin Australia Regional Airlines	23	23	19	82.6	19	82.6	0	0.0
All Airlines	177	174	151	86.8	154	88.5	3	1.7
Perth-Port Hedland								
Qantas	23	23	21	91.3	21	91.3	0	0.0
QantasLink	122	122	95	77.9	105	86.1	0	0.0
Virgin Australia	14	14	12	85.7	12	85.7	0	0.0
Virgin Australia Regional Airlines	37	37	32	86.5	32	86.5	0	0.0
All Airlines	196	196	160	81.6	170	86.7	0	0.0
Perth-Sydney								
Jetstar	24	23	20	87.0	15	65.2	1	4.2
Qantas	204	201	155	77.1	146	72.6	3	1.5
Tigerair Australia	26	26	18	69.2	10	38.5	0	0.0
Virgin Australia	116	116	105	90.5	99	85.3	0	0.0
All Airlines	370	366	298	81.4	270	73.8	4	1.1
Port Hedland-Perth								
Qantas	23	23	23	100.0	20	87.0	0	0.0
QantasLink	120	120	103	85.8	104	86.7	0	0.0
Virgin Australia	14	14	11	78.6	10	71.4	0	0.0
Virgin Australia Regional Airlines	37	37	29	78.4	27	73.0	0	0.0
All Airlines	194	194	166	85.6	161	83.0	0	0.0
Port Lincoln-Adelaide								
QantasLink	99	96	82	85.4	82	85.4	3	3.0
Regional Express	217	213	197	92.5	197	92.5	4	1.8
All Airlines	316	309	279	90.3	279	90.3	7	2.2
Port Macquarie-Sydney								
QantasLink	126	124	86	69.4	95	76.6	2	1.6
Virgin Australia	54	54	36	66.7	39	72.2	0	0.0
All Airlines	180	178	122	68.5	134	75.3	2	1.1

	<i>Sectors</i>		<i>Arrivals On Time</i>		<i>Departures On Time</i>		<i>Cancellations</i>	
	<i>Sched.</i>	<i>Flown</i>	<i>No.</i>	<i>%</i>	<i>No.</i>	<i>%</i>	<i>No.</i>	<i>%</i>
Proserpine-Brisbane								
Jetstar	35	35	25	71.4	26	74.3	0	0.0
Virgin Australia	42	42	37	88.1	36	85.7	0	0.0
All Airlines	77	77	62	80.5	62	80.5	0	0.0
Proserpine-Sydney								
Jetstar	13	13	11	84.6	11	84.6	0	0.0
Tigerair Australia	19	19	9	47.4	10	52.6	0	0.0
All Airlines	32	32	20	62.5	21	65.6	0	0.0
Rockhampton-Brisbane								
QantasLink	179	176	143	81.3	148	84.1	3	1.7
Virgin Australia	136	136	125	91.9	123	90.4	0	0.0
All Airlines	315	312	268	85.9	271	86.9	3	1.0
Sunshine Coast-Melbourne								
Jetstar	93	92	51	55.4	62	67.4	1	1.1
Virgin Australia	71	71	27	38.0	33	46.5	0	0.0
All Airlines	164	163	78	47.9	95	58.3	1	0.6
Sunshine Coast-Sydney								
Jetstar	105	101	67	66.3	68	67.3	4	3.8
QantasLink	55	55	39	70.9	38	69.1	0	0.0
Virgin Australia	54	54	32	59.3	38	70.4	0	0.0
All Airlines	214	210	138	65.7	144	68.6	4	1.9
Sydney-Adelaide								
Jetstar	97	92	51	55.4	53	57.6	5	5.2
Qantas	237	235	171	72.8	181	77.0	2	0.8
Tigerair Australia	30	29	17	58.6	19	65.5	1	3.3
Virgin Australia	164	163	113	69.3	119	73.0	1	0.6
All Airlines	528	519	352	67.8	372	71.7	9	1.7
Sydney-Albury								
QantasLink	103	101	68	67.3	70	69.3	2	1.9
Regional Express	104	104	83	79.8	84	80.8	0	0.0
Virgin Australia	54	54	33	61.1	35	64.8	0	0.0
All Airlines	261	259	184	71.0	189	73.0	2	0.8
Sydney-Armidale								
QantasLink	121	119	80	67.2	81	68.1	2	1.7
Regional Express	71	71	61	85.9	60	84.5	0	0.0
All Airlines	192	190	141	74.2	141	74.2	2	1.0
Sydney-Ayers Rock								
Jetstar	30	30	14	46.7	23	76.7	0	0.0
Virgin Australia	30	30	14	46.7	23	76.7	0	0.0
All Airlines	60	60	28	46.7	46	76.7	0	0.0
Sydney-Ballina								
Jetstar	81	81	62	76.5	62	76.5	0	0.0
Regional Express	26	26	20	76.9	20	76.9	0	0.0
Virgin Australia	34	34	27	79.4	29	85.3	0	0.0
All Airlines	141	141	109	77.3	111	78.7	0	0.0
Sydney-Brisbane								
Jetstar	183	175	123	70.3	111	63.4	8	4.4
Qantas	605	587	459	78.2	460	78.4	18	3.0
Tigerair Australia	132	122	87	71.3	87	71.3	10	7.6
Virgin Australia	526	504	355	70.4	351	69.6	22	4.2
All Airlines	1 446	1 388	1 024	73.8	1 009	72.7	58	4.0

	<i>Sectors</i>		<i>Arrivals On Time</i>		<i>Departures On Time</i>		<i>Cancellations</i>	
	<i>Sched.</i>	<i>Flown</i>	<i>No.</i>	<i>%</i>	<i>No.</i>	<i>%</i>	<i>No.</i>	<i>%</i>
Sydney-Cairns								
Jetstar	89	88	77	87.5	72	81.8	1	1.1
Qantas	56	56	43	76.8	42	75.0	0	0.0
Tigerair Australia	35	35	33	94.3	30	85.7	0	0.0
Virgin Australia	85	85	62	72.9	56	65.9	0	0.0
All Airlines	265	264	215	81.4	200	75.8	1	0.4
Sydney-Canberra								
QantasLink	484	470	355	75.5	360	76.6	14	2.9
Virgin Australia	251	243	193	79.4	187	77.0	8	3.2
All Airlines	735	713	548	76.9	547	76.7	22	3.0
Sydney-Coffs Harbour								
QantasLink	144	143	113	79.0	103	72.0	1	0.7
Tigerair Australia	25	24	16	66.7	18	75.0	1	4.0
Virgin Australia	30	30	23	76.7	22	73.3	0	0.0
All Airlines	199	197	152	77.2	143	72.6	2	1.0
Sydney-Darwin								
Jetstar	23	23	17	73.9	20	87.0	0	0.0
Qantas	52	52	31	59.6	23	44.2	0	0.0
Virgin Australia	30	30	20	66.7	22	73.3	0	0.0
All Airlines	105	105	68	64.8	65	61.9	0	0.0
Sydney-Dubbo								
QantasLink	116	114	91	79.8	85	74.6	2	1.7
Regional Express	133	133	103	77.4	105	78.9	0	0.0
All Airlines	249	247	194	78.5	190	76.9	2	0.8
Sydney-Gold Coast								
Jetstar	296	287	224	78.0	213	74.2	9	3.0
Qantas	69	69	48	69.6	47	68.1	0	0.0
QantasLink	59	59	51	86.4	49	83.1	0	0.0
Tigerair Australia	96	93	53	57.0	58	62.4	3	3.1
Virgin Australia	256	253	168	66.4	175	69.2	3	1.2
All Airlines	776	761	544	71.5	542	71.2	15	1.9
Sydney-Hamilton Island								
Jetstar	24	24	17	70.8	15	62.5	0	0.0
Qantas	15	15	11	73.3	11	73.3	0	0.0
QantasLink	15	15	13	86.7	15	100.0	0	0.0
Virgin Australia	27	27	22	81.5	22	81.5	0	0.0
All Airlines	81	81	63	77.8	63	77.8	0	0.0
Sydney-Hobart								
Jetstar	73	73	47	64.4	45	61.6	0	0.0
QantasLink	74	73	59	80.8	57	78.1	1	1.4
Virgin Australia	73	73	56	76.7	56	76.7	0	0.0
All Airlines	220	219	162	74.0	158	72.1	1	0.5
Sydney-Launceston								
Jetstar	37	37	32	86.5	30	81.1	0	0.0
Virgin Australia	30	30	26	86.7	25	83.3	0	0.0
All Airlines	67	67	58	86.6	55	82.1	0	0.0
Sydney-Melbourne								
Jetstar	382	354	253	71.5	257	72.6	28	7.3
Qantas	1 101	998	662	66.3	778	78.0	103	9.4
Tigerair Australia	245	224	120	53.6	141	62.9	21	8.6
Virgin Australia	727	678	430	63.4	495	73.0	49	6.7
All Airlines	2 455	2 254	1 465	65.0	1 671	74.1	201	8.2

	<i>Sectors</i>		<i>Arrivals On Time</i>		<i>Departures On Time</i>		<i>Cancellations</i>	
	<i>Sched.</i>	<i>Flown</i>	<i>No.</i>	<i>%</i>	<i>No.</i>	<i>%</i>	<i>No.</i>	<i>%</i>
Sydney-Perth								
Jetstar	24	24	14	58.3	7	29.2	0	0.0
Qantas	205	202	139	68.8	135	66.8	3	1.5
Tigerair Australia	27	27	14	51.9	15	55.6	0	0.0
Virgin Australia	122	122	71	58.2	58	47.5	0	0.0
All Airlines	378	375	238	63.5	215	57.3	3	0.8
Sydney-Port Macquarie								
QantasLink	126	124	93	75.0	91	73.4	2	1.6
Virgin Australia	54	54	45	83.3	46	85.2	0	0.0
All Airlines	180	178	138	77.5	137	77.0	2	1.1
Sydney-Proserpine								
Jetstar	13	13	12	92.3	13	100.0	0	0.0
Tigerair Australia	19	19	13	68.4	12	63.2	0	0.0
All Airlines	32	32	25	78.1	25	78.1	0	0.0
Sydney-Sunshine Coast								
Jetstar	104	102	75	73.5	70	68.6	2	1.9
QantasLink	56	56	39	69.6	44	78.6	0	0.0
Virgin Australia	54	53	40	75.5	38	71.7	1	1.9
All Airlines	214	211	154	73.0	152	72.0	3	1.4
Sydney-Tamworth								
QantasLink	121	121	85	70.2	80	66.1	0	0.0
Virgin Australia	52	50	34	68.0	36	72.0	2	3.8
All Airlines	173	171	119	69.6	116	67.8	2	1.2
Sydney-Townsville								
Jetstar	30	30	21	70.0	17	56.7	0	0.0
Virgin Australia	26	26	14	53.8	16	61.5	0	0.0
All Airlines	56	56	35	62.5	33	58.9	0	0.0
Sydney-Wagga Wagga								
QantasLink	113	113	89	78.8	88	77.9	0	0.0
Regional Express	137	135	115	85.2	119	88.1	2	1.5
All Airlines	250	248	204	82.3	207	83.5	2	0.8
Tamworth-Sydney								
QantasLink	119	119	81	68.1	87	73.1	0	0.0
Virgin Australia	51	49	37	75.5	44	89.8	2	3.9
All Airlines	170	168	118	70.2	131	78.0	2	1.2
Townsville-Brisbane								
Jetstar	60	60	48	80.0	47	78.3	0	0.0
Qantas	58	57	51	89.5	49	86.0	1	1.7
QantasLink	93	92	81	88.0	82	89.1	1	1.1
Virgin Australia	146	146	136	93.2	133	91.1	0	0.0
All Airlines	357	355	316	89.0	311	87.6	2	0.6
Townsville-Cairns								
QantasLink	131	131	121	92.4	120	91.6	0	0.0
Regional Express	12	12	12	100.0	12	100.0	0	0.0
All Airlines	143	143	133	93.0	132	92.3	0	0.0
Townsville-Sydney								
Jetstar	30	30	22	73.3	16	53.3	0	0.0
Virgin Australia	26	26	12	46.2	13	50.0	0	0.0
All Airlines	56	56	34	60.7	29	51.8	0	0.0

	<i>Sectors</i>		<i>Arrivals On Time</i>		<i>Departures On Time</i>		<i>Cancellations</i>	
	<i>Sched.</i>	<i>Flown</i>	<i>No.</i>	<i>%</i>	<i>No.</i>	<i>%</i>	<i>No.</i>	<i>%</i>
Wagga Wagga-Sydney								
QantasLink	112	112	87	77.7	89	79.5	0	0.0
Regional Express	135	131	99	75.6	113	86.3	4	3.0
All Airlines	247	243	186	76.5	202	83.1	4	1.6

Airports

On time performance is reported for all routes where the passenger load averages over 8000 passengers per month, and where two or more airlines operate in competition. The following data reports by airport against flights operated on those routes only. This month, 8 major city airports and 31 regional city airports are covered.

Airport	Arrivals			Departures		
	Sectors	On Time		Sectors	On Time	
	Flown	No.	%	Flown	No.	%
Adelaide						
Jetstar	265	160	60.4	265	170	64.2
Qantas	814	629	77.3	812	644	79.3
QantasLink	100	84	84.0	100	88	88.0
Regional Express	213	197	92.5	213	203	95.3
Tigerair Australia	136	78	57.4	136	70	51.5
Virgin Australia	628	466	74.2	628	506	80.6
Virgin Australia Regional Airlines	63	44	69.8	59	45	76.3
All Airlines	2 219	1 658	74.7	2 213	1 726	78.0
Relates to services to and from Alice Springs, Brisbane, Canberra, Gold Coast, Melbourne, Perth, Port Lincoln and Sydney.						
Albury						
QantasLink	101	68	67.3	101	70	69.3
Regional Express	104	83	79.8	107	88	82.2
Virgin Australia	54	33	61.1	54	38	70.4
All Airlines	259	184	71.0	262	196	74.8
Relates to services to and from Sydney only.						
Alice Springs						
Qantas	90	78	86.7	90	80	88.9
Virgin Australia	26	25	96.2	26	26	100.0
Virgin Australia Regional Airlines	16	11	68.8	16	12	75.0
All Airlines	132	114	86.4	132	118	89.4
Relates to services to and from Adelaide and Darwin.						
Armidale						
QantasLink	119	80	67.2	118	79	66.9
Regional Express	71	61	85.9	68	55	80.9
All Airlines	190	141	74.2	186	134	72.0
Relates to services to and from Sydney only.						
Ayers Rock						
Jetstar	30	14	46.7	30	10	33.3
Virgin Australia	30	14	46.7	30	11	36.7
All Airlines	60	28	46.7	60	21	35.0
Relates to services to and from Sydney only.						
Ballina						
Jetstar	81	62	76.5	79	53	67.1
Regional Express	26	20	76.9	24	16	66.7
Virgin Australia	34	27	79.4	34	28	82.4
All Airlines	141	109	77.3	137	97	70.8
Relates to services to and from Sydney only.						

Airport	Arrivals			Departures		
	Sectors	On Time		Sectors	On Time	
	Flown	No.	%	Flown	No.	%
Brisbane						
Jetstar	698	549	78.7	700	542	77.4
Qantas	1 398	1 155	82.6	1 395	1 137	81.5
QantasLink	1 200	1 020	85.0	1 209	1 036	85.7
Tigerair Australia	335	253	75.5	337	248	73.6
Virgin Australia	2 140	1 766	82.5	2 143	1 768	82.5
All Airlines	5 771	4 743	82.2	5 784	4 731	81.8

Relates to services to and from Adelaide, Bundaberg, Cairns, Canberra, Darwin, Emerald, Gladstone, Hamilton Island, Hobart, Mackay, Melbourne, Mount Isa, Newcastle, Perth, Proserpine, Rockhampton, Sydney and Townsville.

Broome

Qantas	4	4	100.0	4	2	50.0
QantasLink	88	75	85.2	87	69	79.3
Virgin Australia	1	0	0.0	1	0	0.0
Virgin Australia Regional Airlines	70	51	72.9	70	52	74.3
All Airlines	163	130	79.8	162	123	75.9

Relates to services to and from Perth only.

Bundaberg

QantasLink	120	106	88.3	120	109	90.8
Virgin Australia	30	28	93.3	30	30	100.0
All Airlines	150	134	89.3	150	139	92.7

Relates to services to and from Brisbane only.

Cairns

Jetstar	306	250	81.7	305	252	82.6
Qantas	130	106	81.5	130	101	77.7
QantasLink	256	230	89.8	254	226	89.0
Regional Express	12	12	100.0	12	12	100.0
Tigerair Australia	110	93	84.5	110	85	77.3
Virgin Australia	248	199	80.2	247	194	78.5
All Airlines	1 062	890	83.8	1 058	870	82.2

Relates to services to and from Brisbane, Melbourne, Sydney and Townsville.

Canberra

Qantas	295	241	81.7	295	242	82.0
QantasLink	647	505	78.1	646	513	79.4
Tigerair Australia	66	49	74.2	65	43	66.2
Virgin Australia	535	430	80.4	532	455	85.5
All Airlines	1 543	1 225	79.4	1 538	1 253	81.5

Relates to services to and from Adelaide, Brisbane, Melbourne and Sydney.

Coffs Harbour

QantasLink	143	113	79.0	139	109	78.4
Tigerair Australia	24	16	66.7	24	19	79.2
Virgin Australia	30	23	76.7	30	22	73.3
All Airlines	197	152	77.2	193	150	77.7

Relates to services to and from Sydney only.

Airport	Arrivals			Departures		
	Sectors Flown	On Time		Sectors Flown	On Time	
		No.	%		No.	%
Darwin						
Jetstar	75	57	76.0	74	57	77.0
Qantas	212	177	83.5	210	168	80.0
Tigerair Australia	18	16	88.9	17	13	76.5
Virgin Australia	126	93	73.8	126	95	75.4
Virgin Australia Regional Airlines	17	14	82.4	17	13	76.5
All Airlines	448	357	79.7	444	346	77.9
Relates to services to and from Alice Springs, Brisbane, Melbourne, Perth and Sydney.						
Dubbo						
QantasLink	114	91	79.8	113	88	77.9
Regional Express	133	103	77.4	127	100	78.7
All Airlines	247	194	78.5	240	188	78.3
Relates to services to and from Sydney only.						
Emerald						
QantasLink	122	107	87.7	121	92	76.0
Virgin Australia	51	50	98.0	52	50	96.2
All Airlines	173	157	90.8	173	142	82.1
Relates to services to and from Brisbane only.						
Gladstone						
QantasLink	136	121	89.0	135	115	85.2
Virgin Australia	73	68	93.2	73	68	93.2
All Airlines	209	189	90.4	208	183	88.0
Relates to services to and from Brisbane only.						
Gold Coast						
Jetstar	518	396	76.4	517	376	72.7
Qantas	100	71	71.0	99	55	55.6
QantasLink	59	51	86.4	58	50	86.2
Tigerair Australia	172	110	64.0	172	102	59.3
Virgin Australia	468	348	74.4	468	320	68.4
All Airlines	1 317	976	74.1	1 314	903	68.7
Relates to services to and from Adelaide, Melbourne and Sydney.						
Hamilton Island						
Jetstar	24	17	70.8	23	13	56.5
Qantas	15	11	73.3	15	11	73.3
QantasLink	47	39	83.0	47	31	66.0
Virgin Australia	57	49	86.0	57	49	86.0
All Airlines	143	116	81.1	142	104	73.2
Relates to services to and from Brisbane and Sydney.						
Hobart						
Jetstar	246	174	70.7	246	157	63.8
Qantas	109	77	70.6	109	85	78.0
QantasLink	73	59	80.8	72	59	81.9
Tigerair Australia	42	30	71.4	42	23	54.8
Virgin Australia	247	174	70.4	248	187	75.4
All Airlines	717	514	71.7	717	511	71.3
Relates to services to and from Brisbane, Melbourne and Sydney.						

Airport	Arrivals			Departures		
	Sectors	On Time		Sectors	On Time	
	Flown	No.	%	Flown	No.	%
Kalgoorlie						
Qantas	7	7	100.0	7	7	100.0
QantasLink	78	68	87.2	76	70	92.1
Virgin Australia	26	22	84.6	26	22	84.6
Virgin Australia Regional Airlines	53	43	81.1	53	40	75.5
All Airlines	164	140	85.4	162	139	85.8
Relates to services to and from Perth only.						
Karratha						
Qantas	28	25	89.3	28	24	85.7
QantasLink	150	129	86.0	150	136	90.7
Virgin Australia	2	2	100.0	2	1	50.0
Virgin Australia Regional Airlines	62	47	75.8	62	44	71.0
All Airlines	242	203	83.9	242	205	84.7
Relates to services to and from Perth only.						
Launceston						
Jetstar	135	99	73.3	134	84	62.7
QantasLink	114	96	84.2	112	99	88.4
Virgin Australia	127	98	77.2	127	114	89.8
All Airlines	376	293	77.9	373	297	79.6
Relates to services to and from Melbourne and Sydney.						
Mackay						
Jetstar	34	27	79.4	34	25	73.5
QantasLink	134	115	85.8	130	118	90.8
Virgin Australia	146	123	84.2	146	124	84.9
All Airlines	314	265	84.4	310	267	86.1
Relates to services to and from Brisbane only.						
Melbourne						
Jetstar	1 409	958	68.0	1 418	987	69.6
Qantas	2 315	1 633	70.5	2 316	1 790	77.3
QantasLink	244	193	79.1	245	201	82.0
Regional Express	83	56	67.5	83	67	80.7
Tigerair Australia	664	373	56.2	666	458	68.8
Virgin Australia	2 239	1 491	66.6	2 240	1 717	76.7
Virgin Australia Regional Airlines	11	8	72.7	11	9	81.8
All Airlines	6 965	4 712	67.7	6 979	5 229	74.9
Relates to services to and from Adelaide, Brisbane, Cairns, Canberra, Darwin, Gold Coast, Hobart, Launceston, Mildura, Newcastle, Perth, Sunshine Coast and Sydney.						
Mildura						
QantasLink	91	72	79.1	90	70	77.8
Regional Express	83	61	73.5	83	67	80.7
Virgin Australia	30	22	73.3	30	23	76.7
All Airlines	204	155	76.0	203	160	78.8
Relates to services to and from Melbourne only.						
Mount Isa						
QantasLink	54	43	79.6	53	48	90.6
Virgin Australia	17	15	88.2	12	11	91.7
All Airlines	71	58	81.7	65	59	90.8
Relates to services to and from Brisbane only.						

Airport	Arrivals			Departures		
	Sectors	On Time		Sectors	On Time	
	Flown	No.	%	Flown	No.	%
Newcastle						
Jetstar	175	141	80.6	175	140	80.0
QantasLink	86	67	77.9	85	70	82.4
Virgin Australia	115	96	83.5	115	97	84.3
All Airlines	376	304	80.9	375	307	81.9
Relates to services to and from Brisbane and Melbourne.						
Newman						
Qantas	25	23	92.0	25	23	92.0
QantasLink	111	96	86.5	108	93	86.1
Virgin Australia	15	13	86.7	15	12	80.0
Virgin Australia Regional Airlines	23	19	82.6	23	19	82.6
All Airlines	174	151	86.8	171	147	86.0
Relates to services to and from Perth only.						
Perth						
Jetstar	85	64	75.3	82	56	68.3
Qantas	780	585	75.0	776	631	81.3
QantasLink	541	473	87.4	549	487	88.7
Tigerair Australia	82	42	51.2	80	32	40.0
Virgin Australia	491	345	70.3	489	419	85.7
Virgin Australia Regional Airlines	294	230	78.2	298	262	87.9
All Airlines	2 273	1 739	76.5	2 274	1 887	83.0
Relates to services to and from Adelaide, Brisbane, Broome, Darwin, Kalgoorlie, Karratha, Melbourne, Newman, Port Hedland and Sydney.						
Port Hedland						
Qantas	23	21	91.3	23	20	87.0
QantasLink	122	95	77.9	120	104	86.7
Virgin Australia	14	12	85.7	14	10	71.4
Virgin Australia Regional Airlines	37	32	86.5	37	27	73.0
All Airlines	196	160	81.6	194	161	83.0
Relates to services to and from Perth only.						
Port Lincoln						
QantasLink	96	83	86.5	96	82	85.4
Regional Express	213	195	91.5	213	197	92.5
All Airlines	309	278	90.0	309	279	90.3
Relates to services to and from Adelaide only.						
Port Macquarie						
QantasLink	124	93	75.0	124	95	76.6
Virgin Australia	54	45	83.3	54	39	72.2
All Airlines	178	138	77.5	178	134	75.3
Relates to services to and from Sydney only.						
Proserpine						
Jetstar	48	42	87.5	48	37	77.1
Tigerair Australia	19	13	68.4	19	10	52.6
Virgin Australia	42	38	90.5	42	36	85.7
All Airlines	109	93	85.3	109	83	76.1
Relates to services to and from Brisbane and Sydney.						

Airport	Arrivals			Departures		
	Sectors Flown	On Time		Sectors Flown	On Time	
		No.	%		No.	%
Rockhampton						
QantasLink	174	151	86.8	176	148	84.1
Virgin Australia	137	109	79.6	136	123	90.4
All Airlines	311	260	83.6	312	271	86.9
Relates to services to and from Brisbane only.						
Sunshine Coast						
Jetstar	196	154	78.6	193	130	67.4
QantasLink	56	39	69.6	55	38	69.1
Virgin Australia	124	98	79.0	125	71	56.8
All Airlines	376	291	77.4	373	239	64.1
Relates to services to and from Melbourne and Sydney.						
Sydney						
Jetstar	1 431	968	67.6	1 433	1 008	70.3
Qantas	2 203	1 571	71.3	2 214	1 677	75.7
QantasLink	1 493	1 074	71.9	1 508	1 123	74.5
Regional Express	457	336	73.5	469	388	82.7
Tigerair Australia	573	340	59.3	573	380	66.3
Virgin Australia	2 533	1 793	70.8	2 539	1 811	71.3
All Airlines	8 690	6 082	70.0	8 736	6 387	73.1
Relates to services to and from Adelaide, Albury, Armidale, Ayers Rock, Ballina, Brisbane, Cairns, Canberra, Coffs Harbour, Darwin, Dubbo, Gold Coast, Hamilton Island, Hobart, Launceston, Melbourne, Perth, Port Macquarie, Proserpine, Sunshine Coast, Tamworth, Townsville and Wagga Wagga.						
Tamworth						
QantasLink	121	85	70.2	119	87	73.1
Virgin Australia	50	34	68.0	49	44	89.8
All Airlines	171	119	69.6	168	131	78.0
Relates to services to and from Sydney only.						
Townsville						
Jetstar	90	71	78.9	90	63	70.0
Qantas	57	50	87.7	57	49	86.0
QantasLink	224	198	88.4	223	202	90.6
Regional Express	12	12	100.0	12	12	100.0
Virgin Australia	172	139	80.8	172	146	84.9
All Airlines	555	470	84.7	554	472	85.2
Relates to services to and from Brisbane, Cairns and Sydney.						
Wagga Wagga						
QantasLink	113	89	78.8	112	89	79.5
Regional Express	135	115	85.2	131	113	86.3
All Airlines	248	204	82.3	243	202	83.1
Relates to services to and from Sydney only.						

Definitions

On time arrival	A flight arrival is counted as "on time" if it arrived at the gate before 15 minutes after the scheduled arrival time shown in the carriers' schedule. Neither diverted nor cancelled flights count as on time.
On time departure	A flight departure is counted as "on time" if it departs the gate before 15 minutes after the scheduled departure time shown in the carriers' schedule.
Cancellation	A flight removed from service within 7 days of scheduled departure is regarded as a cancellation.
On time departure percentage	The percentage of on time departures is measured against the number of departures <i>operated</i> on any particular sector.
On time arrival percentage	The percentage of on time arrivals is measured against the number of arrivals <i>operated</i> on any particular sector.
Cancellation percentage	The percentage of cancellations is measured against the number of services <i>scheduled</i> on any particular sector.
