



**Australian Government**

**Department of Infrastructure and Regional Development**

Bureau of Infrastructure, Transport and Regional Economics

STATISTICAL REPORT



## Aviation

Domestic airline on time performance  
June 2017

© Commonwealth of Australia 2017

ISSN: 1832-0759

### **Ownership of intellectual property rights in this publication**

Unless otherwise noted, copyright (and any other intellectual property rights, if any) in this publication is owned by the Commonwealth of Australia (referred to below as the Commonwealth).

### **Disclaimer**

The material contained in this publication is made available on the understanding that the Commonwealth is not providing professional advice, and that users exercise their own skill and care with respect to its use, and seek independent advice if necessary.

The Commonwealth makes no representations or warranties as to the contents or accuracy of the information contained in this publication. To the extent permitted by law, the Commonwealth disclaims liability to any person or organisation in respect of anything done, or omitted to be done, in reliance upon information contained in this publication.

### **Creative Commons licence**

With the exception of (a) the Coat of Arms; and (b) the Department of Infrastructure and Regional Development's photos and graphics, copyright in this publication is licensed under a Creative Commons Attribution 3.0 Australia Licence.

Creative Commons Attribution 3.0 Australia Licence is a standard form licence agreement that allows you to copy, communicate and adapt this publication provided that you attribute the work to the Commonwealth and abide by the other licence terms. A summary of the licence terms is available from <http://creativecommons.org/licenses/by/3.0/au/deed.en>. The full licence terms are available from <http://creativecommons.org/licenses/by/3.0/au/legalcode>.

### **Use of the Coat of Arms**

The Department of the Prime Minister and Cabinet sets the terms under which the Coat of Arms is used. Please refer to the Department's Commonwealth Coat of Arms and Government branding web page <http://www.dpmmc.gov.au/guidelines/index.cfm#brand> and, in particular, the Guidelines on the use of the Commonwealth Coat of Arms publication.

An appropriate citation for this report is:

Bureau of Infrastructure, Transport and Regional Economics (BITRE), 2017, Domestic airline on time performance, Statistical Report, BITRE, Canberra ACT.

### **Contact us**

This publication is available in PDF format. All other rights are reserved, including in relation to any Departmental logos or trade marks which may exist. For enquiries regarding the licence and any use of this publication, please contact:

Bureau of Infrastructure, Transport and Regional Economics (BITRE)  
Department of Infrastructure and Regional Development  
GPO Box 501, Canberra ACT 2601, Australia  
Telephone: (international) +61 2 6274 7210  
Fax: (international) +61 2 6274 6855  
Email: [bitre@infrastructure.gov.au](mailto:bitre@infrastructure.gov.au)  
Website: [www.bitre.gov.au](http://www.bitre.gov.au)

### **Inquiries**

Should you require additional information about the statistics contained in this publication:

Telephone (02) 6274 7790 or Facsimile (02) 6274 7727

Electronic mail: [AVSTATS@infrastructure.gov.au](mailto:AVSTATS@infrastructure.gov.au)

Web site: <http://www.bitre.gov.au/statistics/aviation/otphome.aspx>

# Foreword

The Bureau of Infrastructure, Transport and Regional Economics (BITRE) monitors the punctuality and reliability of major domestic airlines operating between Australian airports. The purpose of this is to allow for evaluation of overall industry and individual airline performance, so that consumers of air travel can make informed decisions.

The following domestic airlines currently report this information monthly to the BITRE: Jetstar, Qantas, QantasLink, Regional Express, Tigerair Australia, Virgin Australia and Virgin Australia Regional Airlines. Data has been gathered since November 2003, although some airlines commenced reporting at a later date, including Jetstar which first reported in May 2004, MacAir in July 2005, Tigerair Australia in April 2008 and Virgin Australia Regional Airlines in May 2013. MacAir ceased operations in February 2009 and data was not received for December 2008 onwards. Virgin Blue was rebranded as Virgin Australia in May 2011 and Tiger Airways was rebranded as Tigerair Australia in July 2013 and time series data in Microsoft Excel spreadsheet format on the BITRE website have been revised to reflect these changes. Services operated by Skywest on behalf of Virgin Australia using ATR/F100 aircraft commenced in November 2011 and were shown separately as Virgin Australia – ATR/F100 Operations. Virgin Australia Regional Airlines commenced operations in May 2013. It was formed after the acquisition of Skywest by Virgin Australia and represented a combination of operations previously reported under Skywest and Virgin Australia – ATR/F100 Operations. In January 2016, Virgin Australia transferred their ATR fleet from Virgin Australia Regional Airlines to Virgin Australia.

Information presented in this report is for Australian domestic routes for which the passenger load averaged 8 000 or more passengers per month over the previous six months and where two or more airlines operated in competition on those routes. There were 65 routes that met this definition in June 2017. Over time, routes which meet these criteria change as airline networks and traffic levels vary.

Participating airlines report their overall monthly network performance where this is possible.

Total industry figures encompass all services operated by reporting airlines only. These airlines collectively carried over 95 per cent of total domestic passengers (regular public transport only) in 2016.

The method of capturing on time performance varies between airlines utilising different recording systems. Jetstar and Qantas jet aircraft use Aircraft Communication Addressing and Reporting System (ACARS) to electronically measure on time performance. Regional Express, Tigerair Australia, Virgin Australia, Virgin Australia Regional Airlines and the Qantas non-jet fleet record on time performance manually using records from pilots, gate agents and/or ground crews.

After initial data is collected, aggregate reports are audited internally by participating airlines prior to publication.

Reports and detailed time series data in Microsoft Excel spreadsheet format are available from the BITRE website at: <http://www.bitre.gov.au/statistics/aviation/otphome.aspx>.



# Contents

	Page
Industry performance .....	1
Individual routes .....	10
Airports .....	23
Definitions .....	30



## Industry performance

For June 2017, on time performance over all routes operated by participating airlines (Jetstar, Qantas, QantasLink, Regional Express, Tigerair Australia, Virgin Australia and Virgin Australia Regional Airlines) averaged 85.0 per cent for on time arrivals and 85.3 per cent for on time departures. Cancellations represented 1.4 per cent of all scheduled flights. The equivalent figures for June 2016 were 82.5 per cent for on time arrivals, 83.9 per cent for on time departures and 2.2 per cent for cancellations.

This month's on time arrivals figure was higher than the long term average performance for all routes (82.8 per cent) and the on time departures figure was also higher than the long term average (84.2 per cent). The rate of cancellations was the same as the long term average of 1.4 per cent.

Qantas achieved the highest on time arrivals among the major domestic airlines at 89.5 per cent followed by Virgin Australia at 87.1 per cent, Jetstar at 80.7 per cent and Tigerair Australia at 73.2 per cent. Of the regional airlines, Virgin Australia Regional Airlines recorded 87.7 per cent for on time arrivals, followed by QantasLink at 86.5 per cent and Regional Express at 81.3 per cent. The Qantas network (Qantas and QantasLink combined operations) recorded 87.9 per cent for on time arrivals while the Virgin Australia network (Virgin Australia and Virgin Australia Regional Airlines combined operations) recorded 87.1 per cent.

Qantas also achieved the highest level of on time departures among the major domestic airlines for June 2017 at 90.5 per cent, followed by Virgin Australia at 88.2 per cent, Jetstar at 77.2 per cent and Tigerair Australia at 74.1 per cent. Of the regional airlines, Virgin Australia Regional Airlines recorded 89.1 per cent, followed by QantasLink at 86.4 per cent and Regional Express at 83.8 per cent. Both the Qantas network and the Virgin Australia network recorded 88.2 per cent for on time departures.

QantasLink recorded the highest percentage of cancellations (2.6 per cent) during the month, followed by Tigerair Australia (2.1 per cent), Regional Express (1.7 per cent), Virgin Australia (1.1 per cent), Qantas and Jetstar (both at 0.7 per cent) and Virgin Australia Regional Airlines (0.4 per cent).

Airlines' on time performance varies across the routes they serve. Individual route data by specific airline for 65 routes are shown on pages 10-22.

Of the 65 routes which met the criteria for on time performance reporting in June 2017, the Hamilton Island-Brisbane route had the highest percentage of on time arrivals (97.0 per cent) and the Alice Springs-Darwin route recorded the highest percentage of on time departures (97.3 per cent). The Albury-Sydney route had the lowest percentage of on time arrivals (64.8 per cent) and the Townsville-Sydney route had the lowest percentage of on time departures (61.5 per cent).

Cancellations were highest on the Armidale-Sydney route at 9.0 per cent, followed by the Sydney-Hamilton Island route at 7.1 per cent, the Port Hedland-Perth and Canberra-Sydney

routes at 5.9 percent, the Hamilton Island-Sydney route at 5.4 per cent and the Sydney-Canberra route at 5.3 per cent.

Port Lincoln Airport recorded the highest percentage of on time arrivals (95.5 per cent) and the highest percentage of on time departures (also 95.5 per cent). Albury Airport recorded the lowest percentage of on time arrivals (68.1 per cent) and the lowest percentage of on time departures (66.8 per cent). These figures only refer to reported routes and do not cover all flights at these airports.



Table 1 On time performance for June 2017 — Total Industry

	<i>Sectors</i>		<i>Arrivals On Time</i>		<i>Departures On Time</i>		<i>Cancellations</i>	
	<i>Scheduled</i>	<i>Flown</i>	<i>No.</i>	<i>%</i>	<i>No.</i>	<i>%</i>	<i>No.</i>	<i>%</i>
Jetstar	6 415	6 372	5 142	80.7	4 918	77.2	43	0.7
Qantas	8 618	8 554	7 652	89.5	7 738	90.5	64	0.7
QantasLink	10 320	10 047	8 695	86.5	8 676	86.4	273	2.6
Regional Express	6 359	6 253	5 086	81.3	5 239	83.8	106	1.7
Tigerair Australia	2 382	2 333	1 707	73.2	1 729	74.1	49	2.1
Virgin Australia	10 962	10 840	9 438	87.1	9 556	88.2	122	1.1
Virgin Australia Regional Airlines	737	734	644	87.7	654	89.1	3	0.4
All Airlines	45 793	45 133	38 364	85.0	38 510	85.3	660	1.4
Qantas - all QF designated services	18 938	18 601	16 347	87.9	16 414	88.2	337	1.8
Virgin Australia - all VA designated services	11 699	11 574	10 082	87.1	10 210	88.2	125	1.1

Total airline network data (including routes not shown in this report).

Airlines' on time performance varies across the routes they serve. Individual route data by specific airline for 65 routes are shown on pages 10-22.

Table 2 Top ten routes for on time performance for June 2017 (participating airlines only)

<i>Arrivals</i>		<i>Departures</i>	
<i>Route</i>	<i>On Time (%)</i>	<i>Route</i>	<i>On Time (%)</i>
Hamilton Island-Brisbane	97.0	Alice Springs-Darwin	97.3
Townsville-Cairns	96.1	Perth-Darwin	96.9
Alice Springs-Darwin	95.9	Townsville-Cairns	96.7
Cairns-Townsville	95.7	Adelaide-Port Lincoln	96.1
Brisbane-Hamilton Island	95.5	Brisbane-Mount Isa	95.8
Adelaide-Port Lincoln	95.5	Hamilton Island-Brisbane	95.5
Canberra-Adelaide	95.5	Port Lincoln-Adelaide	95.5
Adelaide-Gold Coast	94.9	Perth-Brisbane	95.4
Brisbane-Emerald	94.6	Gold Coast-Adelaide	95.0
Moranbah-Brisbane	94.4	Adelaide-Gold Coast	94.9

Table 3 Top ten airports for on time performance for June 2017 (participating airlines and reported routes only)

<i>Arrivals</i>		<i>Departures</i>	
<i>Airport</i>	<i>On Time (%)</i>	<i>Airport</i>	<i>On Time (%)</i>
Port Lincoln	95.5	Port Lincoln	95.5
Emerald	94.6	Gladstone	94.2
Geraldton	93.9	Alice Springs	94.0
Gladstone	93.8	Port Hedland	93.8
Newman	93.4	Moranbah	93.6
Karratha	93.4	Newman	92.7
Alice Springs	93.1	Perth	92.5
Port Hedland	92.3	Emerald	92.2
Broome	91.8	Geraldton	91.9
Mount Isa	91.5	Mount Isa	90.3

## Total industry on time performance

Figure 1 On time performance (by month from June 2014)—Total Industry

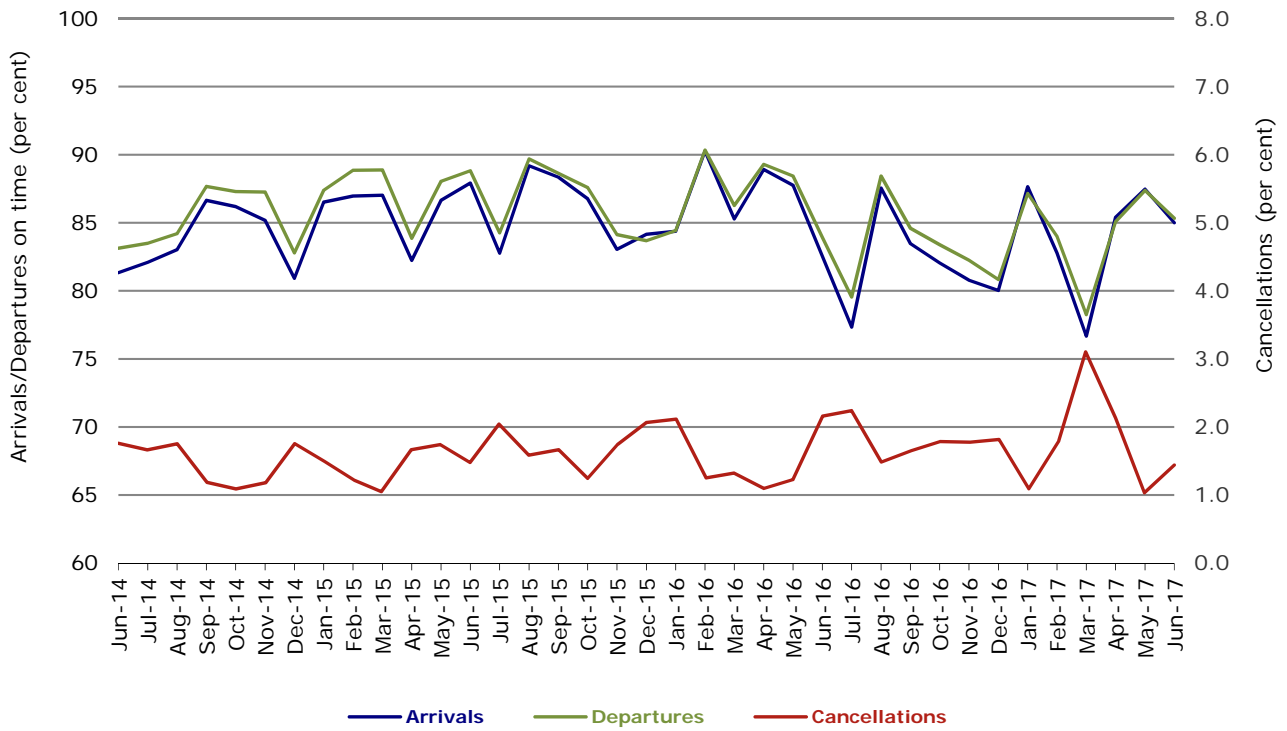


Figure 2 Arrivals on time (by month from June 2016)

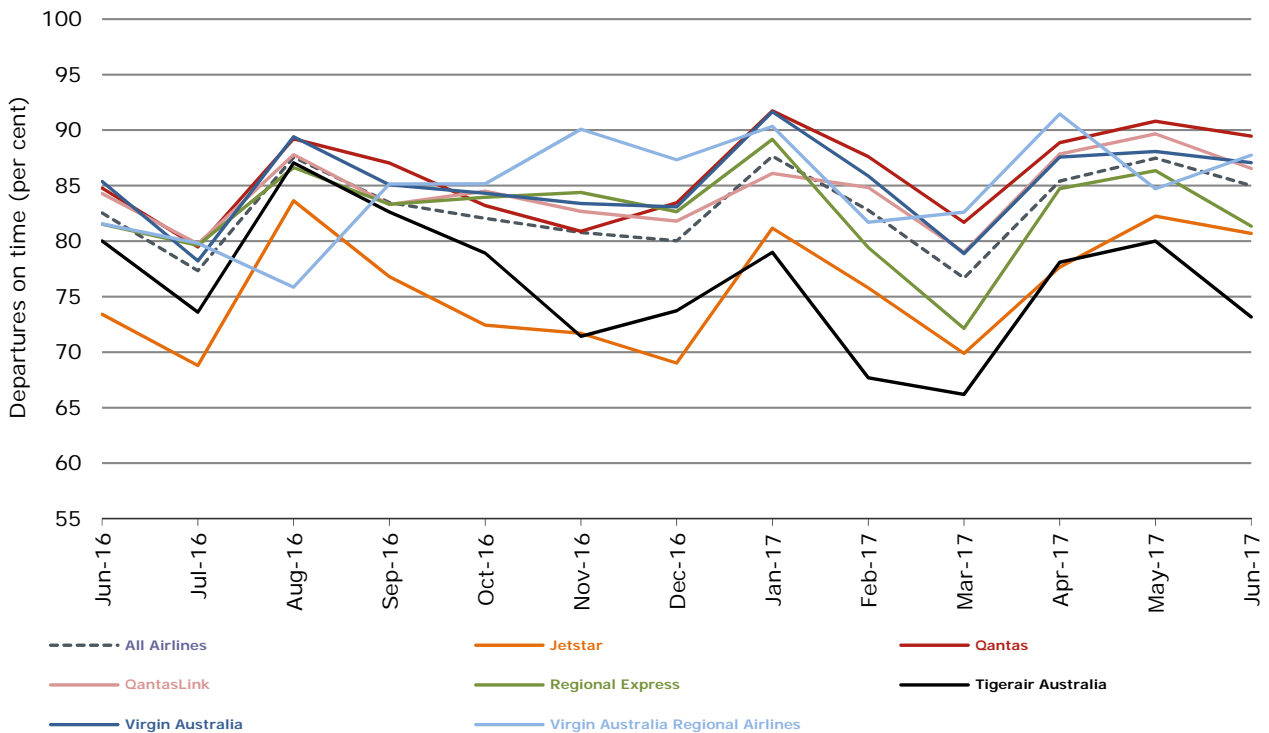


Figure 3 Departures on time (by month from June 2016)

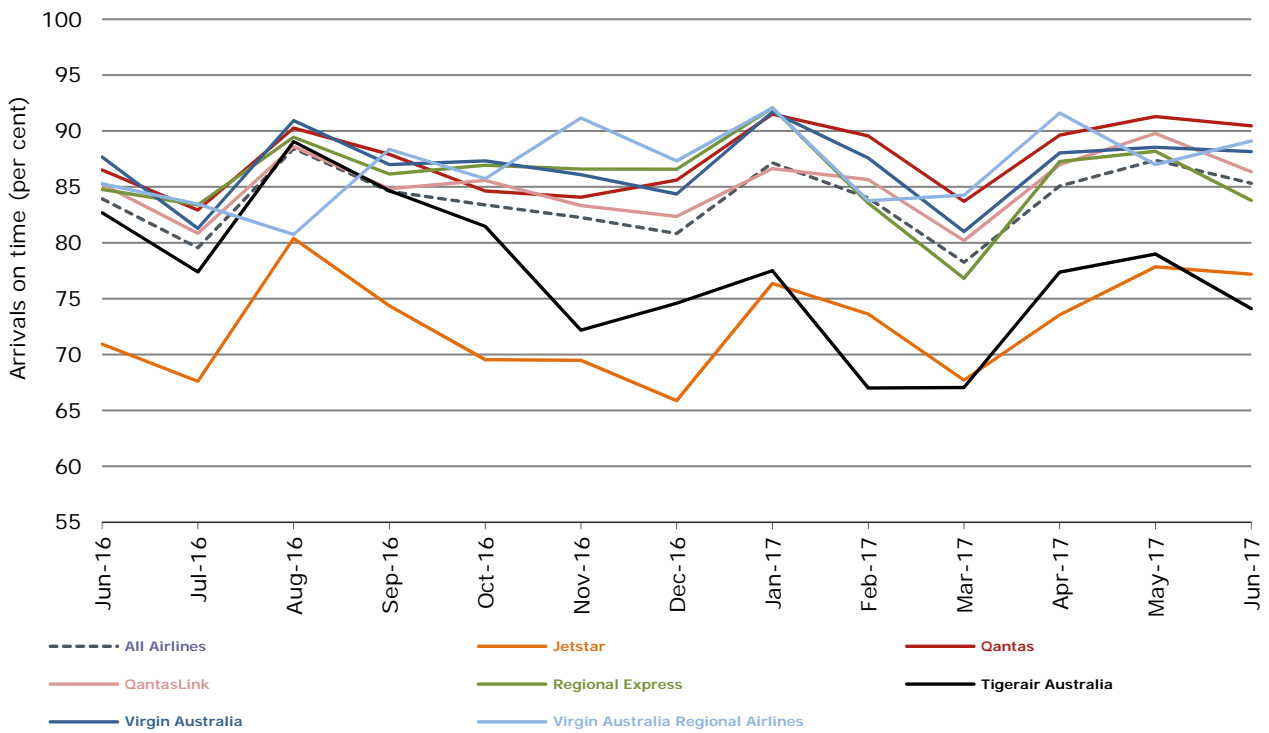
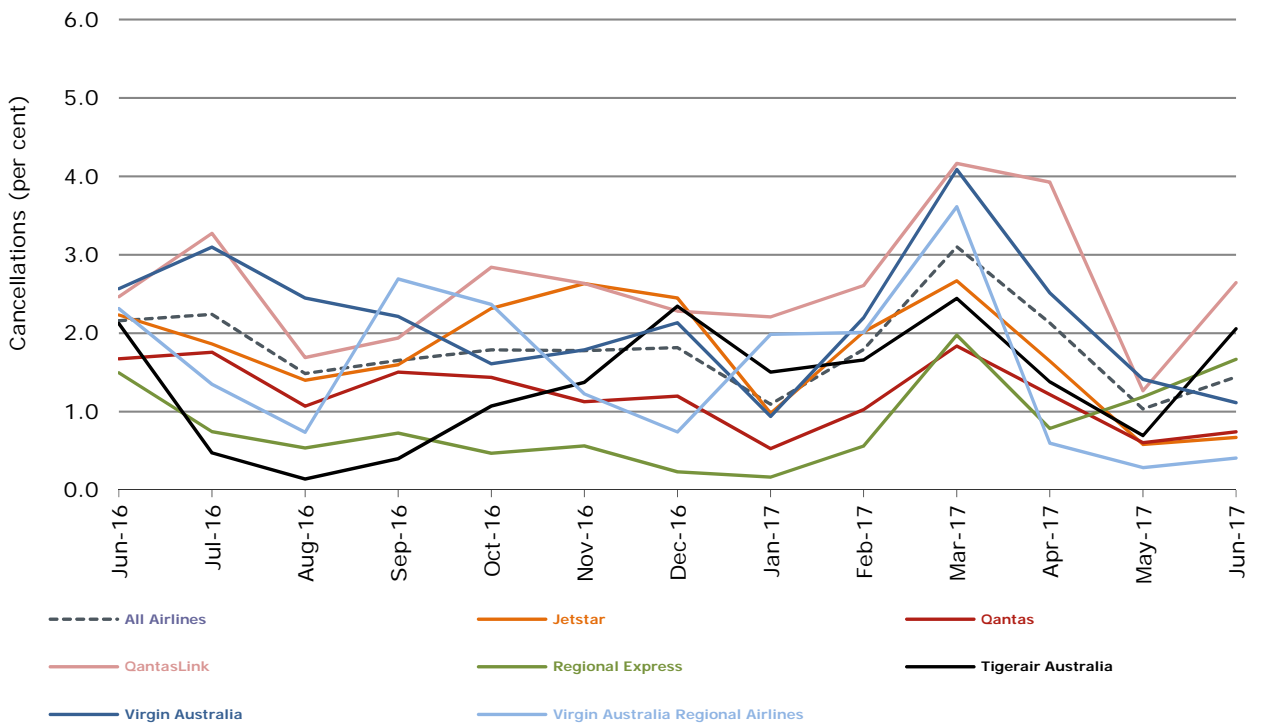


Figure 4 Cancellations (by month from June 2016)



## Major domestic airlines on time performance

Figure 5 On time performance (by month from June 2014)—Jetstar

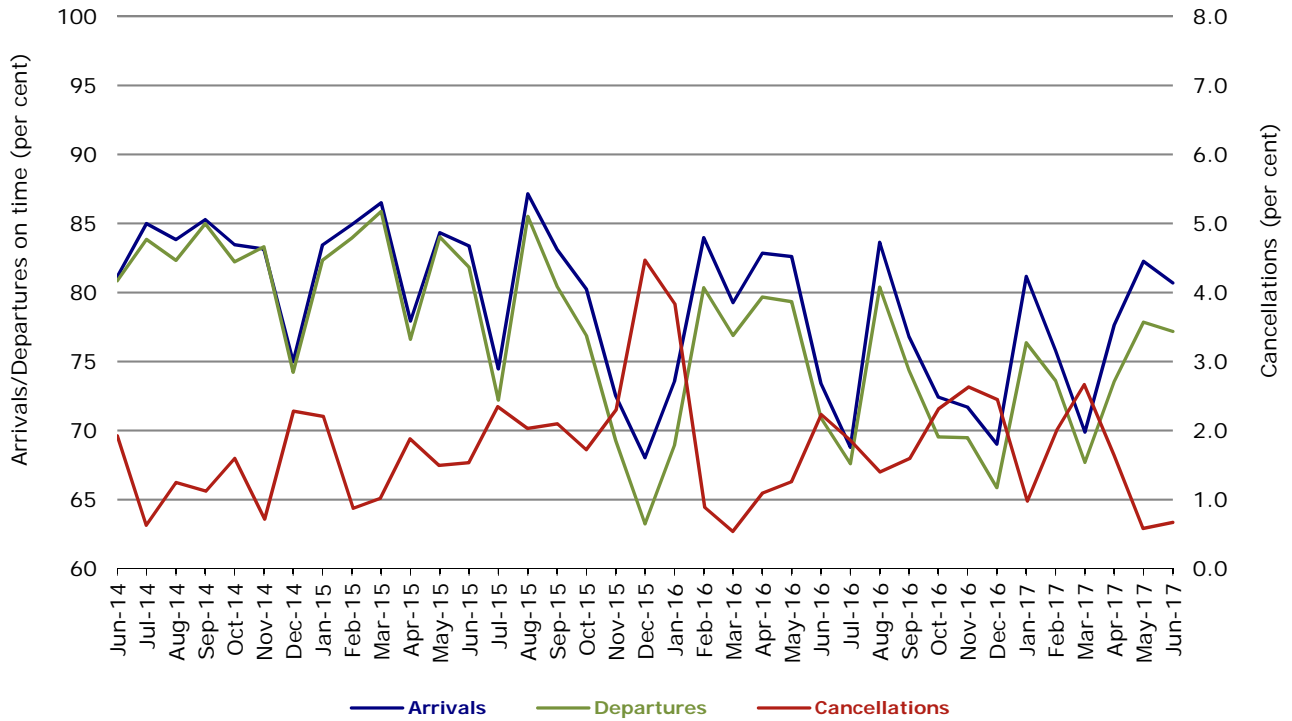


Figure 6 On time performance (by month from June 2014)—Qantas

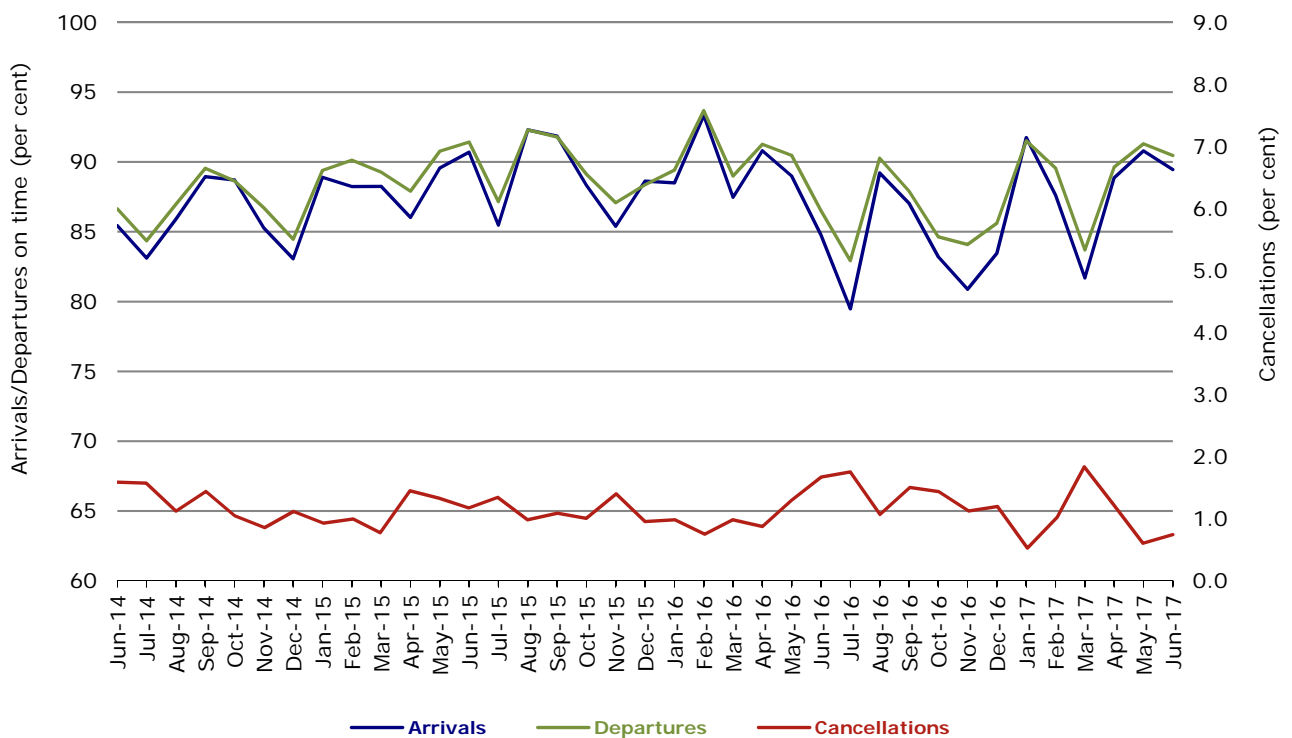


Figure 7 On time performance (by month from June 2014)—Tigerair Australia

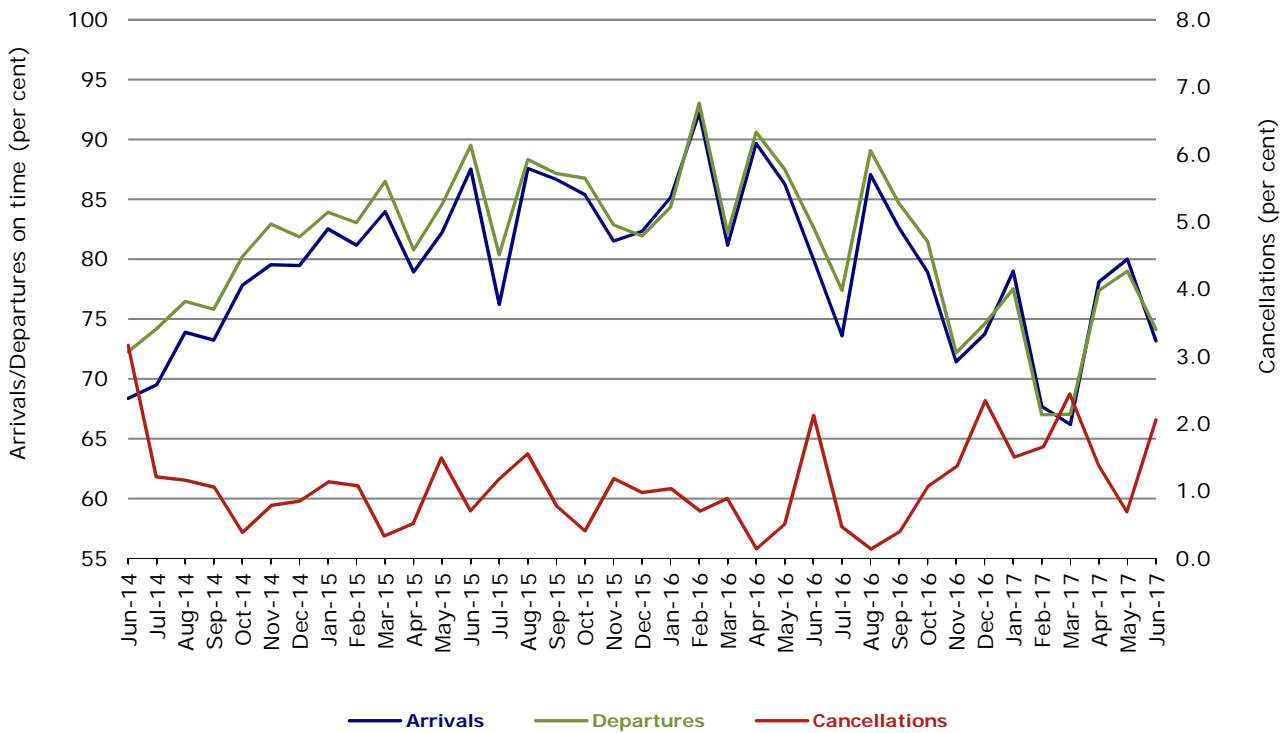
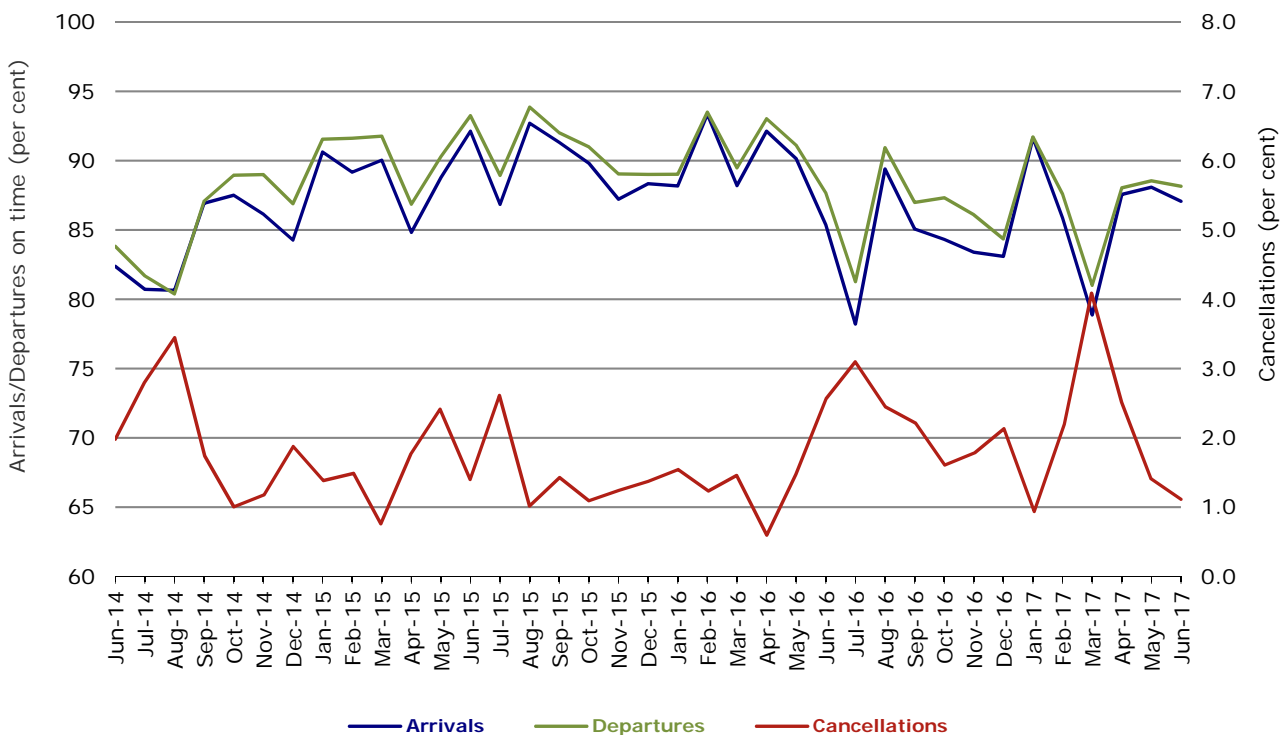


Figure 8 On time performance (by month from June 2014)—Virgin Australia



In January 2016, Virgin Australia transferred their ATR fleet from Virgin Australia Regional Airlines to Virgin Australia.

## Major regional airlines on time performance

Figure 9 On time performance (by month from June 2014)—QantasLink

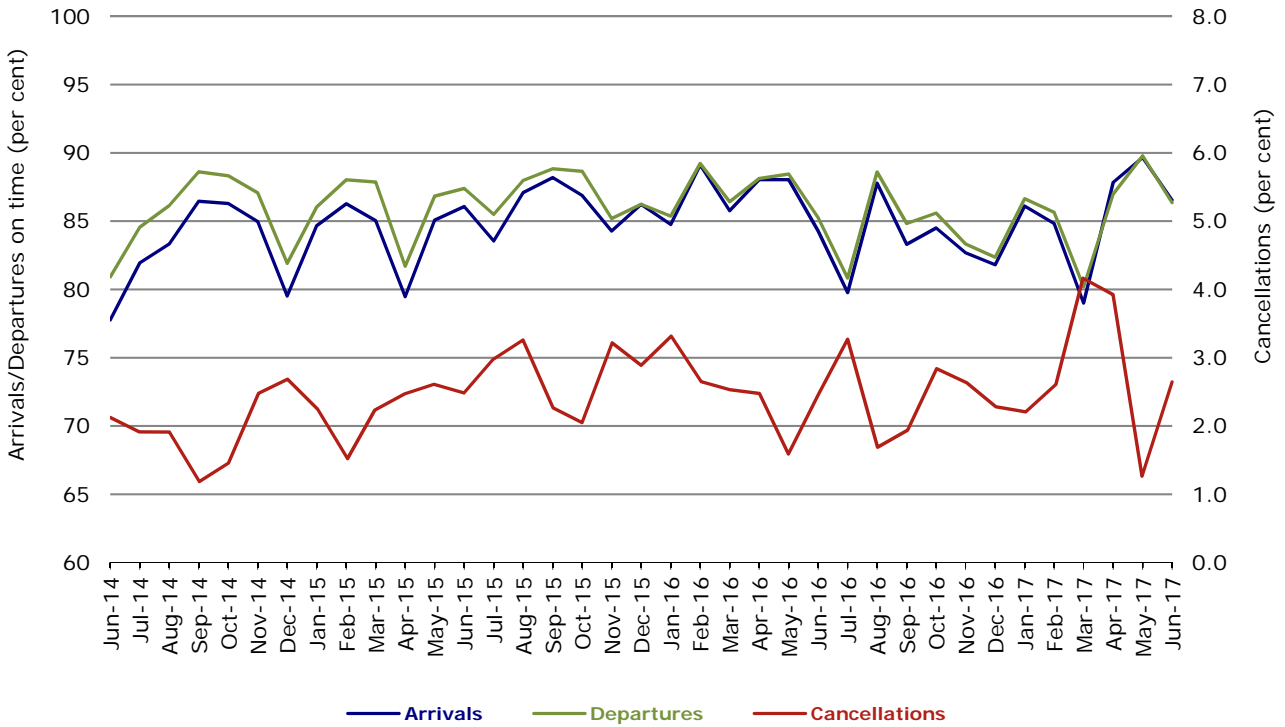


Figure 10 On time performance (by month from June 2014)—Regional Express

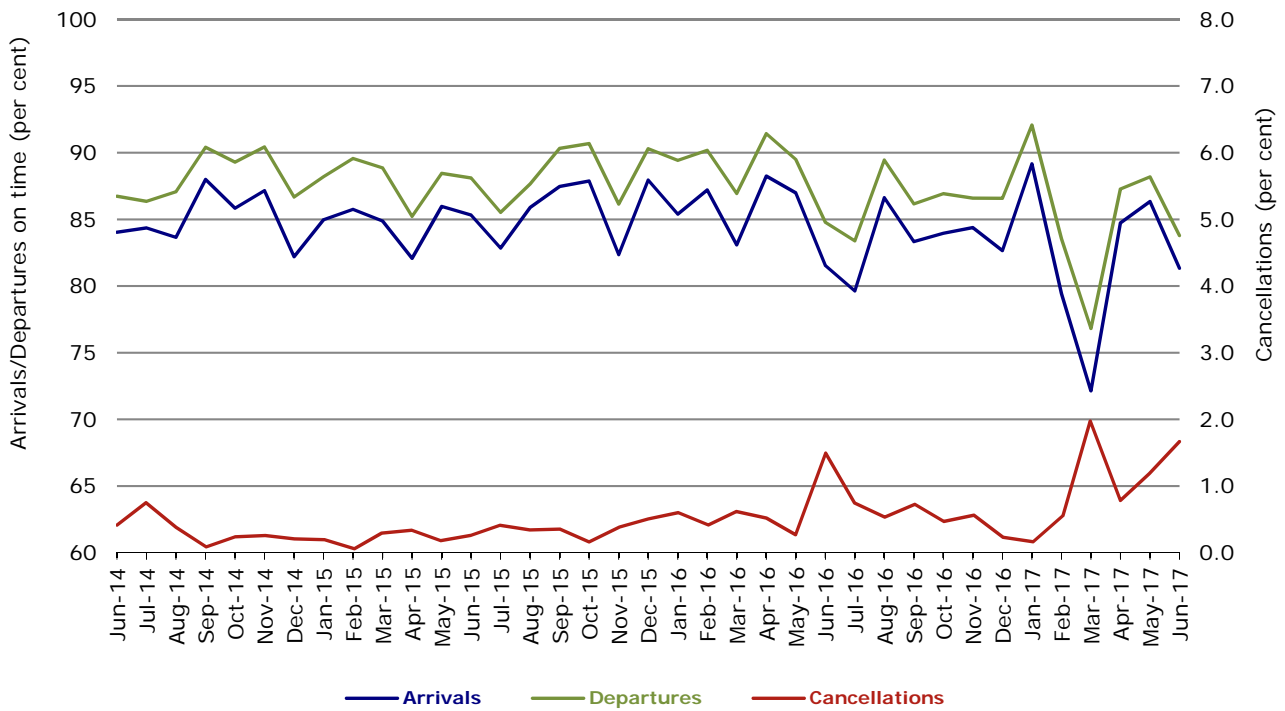
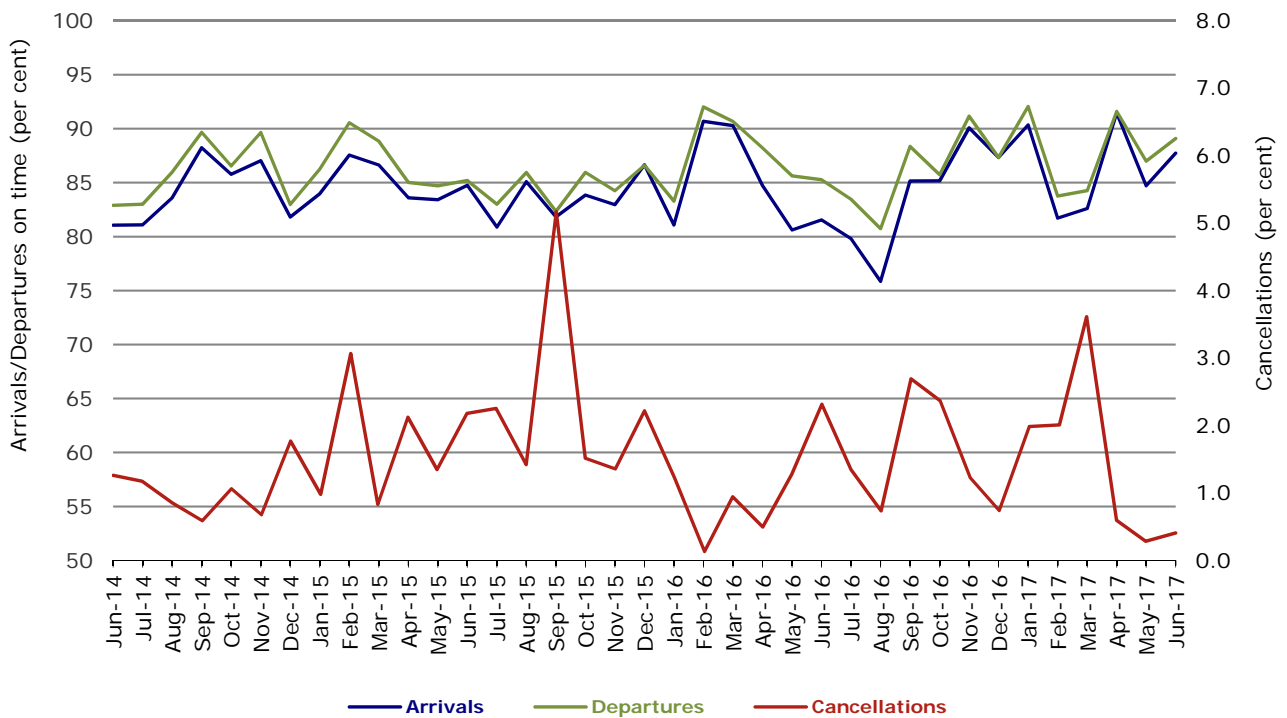


Figure 11 On time performance (by month from June 2014)  
Virgin Australia Regional Airlines



In January 2016, Virgin Australia transferred their ATR fleet from Virgin Australia Regional Airlines to Virgin Australia.

## Individual routes

On time performance is reported for all routes where the passenger load averages over 8000 passengers per month over the previous six months, and where two or more airlines operate in competition on those routes. There are now 65 routes which meet this definition. Over time, however, routes which meet this definition may change as airline networks and traffic levels vary.

	<i>Sectors</i>		<i>Arrivals On Time</i>		<i>Departures On Time</i>		<i>Cancellations</i>	
	<i>Sched.</i>	<i>Flown</i>	<i>No.</i>	<i>%</i>	<i>No.</i>	<i>%</i>	<i>No.</i>	<i>%</i>
<b>Adelaide-Alice Springs</b>								
Qantas	30	30	27	90.0	26	86.7	0	0.0
Virgin Australia	13	13	13	100.0	13	100.0	0	0.0
All Airlines	43	43	40	93.0	39	90.7	0	0.0
<b>Adelaide-Brisbane</b>								
Jetstar	22	22	20	90.9	20	90.9	0	0.0
Qantas	78	78	73	93.6	74	94.9	0	0.0
QantasLink	29	27	22	81.5	26	96.3	2	6.9
Tigerair Australia	30	29	19	65.5	23	79.3	1	3.3
Virgin Australia	102	102	95	93.1	89	87.3	0	0.0
All Airlines	261	258	229	88.8	232	89.9	3	1.1
<b>Adelaide-Canberra</b>								
Qantas	40	40	35	87.5	39	97.5	0	0.0
Virgin Australia	26	26	24	92.3	23	88.5	0	0.0
All Airlines	66	66	59	89.4	62	93.9	0	0.0
<b>Adelaide-Gold Coast</b>								
Jetstar	30	29	26	89.7	26	89.7	1	3.3
Virgin Australia	30	30	30	100.0	30	100.0	0	0.0
All Airlines	60	59	56	94.9	56	94.9	1	1.7
<b>Adelaide-Melbourne</b>								
Jetstar	97	97	89	91.8	81	83.5	0	0.0
Qantas	275	274	257	93.8	258	94.2	1	0.4
Tigerair Australia	75	75	48	64.0	51	68.0	0	0.0
Virgin Australia	258	258	243	94.2	241	93.4	0	0.0
All Airlines	705	704	637	90.5	631	89.6	1	0.1
<b>Adelaide-Perth</b>								
Jetstar	26	26	24	92.3	23	88.5	0	0.0
Qantas	73	73	67	91.8	65	89.0	0	0.0
QantasLink	23	23	20	87.0	21	91.3	0	0.0
Virgin Australia	61	61	60	98.4	58	95.1	0	0.0
All Airlines	183	183	171	93.4	167	91.3	0	0.0
<b>Adelaide-Port Lincoln</b>								
QantasLink	107	106	100	94.3	100	94.3	1	0.9
Regional Express	204	203	195	96.1	197	97.0	1	0.5
All Airlines	311	309	295	95.5	297	96.1	2	0.6
<b>Adelaide-Sydney</b>								
Jetstar	86	85	64	75.3	65	76.5	1	1.2
Qantas	225	225	189	84.0	208	92.4	0	0.0
QantasLink	28	26	18	69.2	18	69.2	2	7.1
Tigerair Australia	43	42	17	40.5	21	50.0	1	2.3
Virgin Australia	145	143	120	83.9	129	90.2	2	1.4
All Airlines	527	521	408	78.3	441	84.6	6	1.1
<b>Albury-Sydney</b>								
QantasLink	106	100	64	64.0	65	65.0	6	5.7
Regional Express	103	99	71	71.7	76	76.8	4	3.9
Virgin Australia	53	51	27	52.9	26	51.0	2	3.8
All Airlines	262	250	162	64.8	167	66.8	12	4.6



	<i>Sectors</i>		<i>Arrivals On Time</i>		<i>Departures On Time</i>		<i>Cancellations</i>	
	<i>Sched.</i>	<i>Flown</i>	<i>No.</i>	<i>%</i>	<i>No.</i>	<i>%</i>	<i>No.</i>	<i>%</i>
<b>Alice Springs-Adelaide</b>								
Qantas	30	30	28	93.3	27	90.0	0	0.0
Virgin Australia	13	13	11	84.6	11	84.6	0	0.0
All Airlines	43	43	39	90.7	38	88.4	0	0.0
<b>Alice Springs-Darwin</b>								
QantasLink	60	60	58	96.7	58	96.7	0	0.0
Virgin Australia	13	13	12	92.3	13	100.0	0	0.0
All Airlines	73	73	70	95.9	71	97.3	0	0.0
<b>Armidale-Sydney</b>								
QantasLink	121	107	71	66.4	76	71.0	14	11.6
Regional Express	79	75	49	65.3	53	70.7	4	5.1
All Airlines	200	182	120	65.9	129	70.9	18	9.0
<b>Ayers Rock-Sydney</b>								
Jetstar	30	30	23	76.7	18	60.0	0	0.0
Virgin Australia	30	30	24	80.0	23	76.7	0	0.0
All Airlines	60	60	47	78.3	41	68.3	0	0.0
<b>Ballina-Sydney</b>								
Jetstar	72	72	61	84.7	50	69.4	0	0.0
Regional Express	24	22	11	50.0	13	59.1	2	8.3
Virgin Australia	31	31	25	80.6	25	80.6	0	0.0
All Airlines	127	125	97	77.6	88	70.4	2	1.6
<b>Brisbane-Adelaide</b>								
Jetstar	22	22	22	100.0	22	100.0	0	0.0
Qantas	78	78	75	96.2	77	98.7	0	0.0
QantasLink	29	27	25	92.6	26	96.3	2	6.9
Tigerair Australia	30	29	23	79.3	23	79.3	1	3.3
Virgin Australia	99	99	87	87.9	87	87.9	0	0.0
All Airlines	258	255	232	91.0	235	92.2	3	1.2
<b>Brisbane-Bundaberg</b>								
QantasLink	132	132	119	90.2	120	90.9	0	0.0
Virgin Australia	30	30	26	86.7	26	86.7	0	0.0
All Airlines	162	162	145	89.5	146	90.1	0	0.0
<b>Brisbane-Cairns</b>								
Jetstar	86	84	56	66.7	55	65.5	2	2.3
Qantas	129	129	119	92.2	120	93.0	0	0.0
QantasLink	1	1	1	100.0	1	100.0	0	0.0
Tigerair Australia	48	47	39	83.0	42	89.4	1	2.1
Virgin Australia	118	118	103	87.3	105	89.0	0	0.0
All Airlines	382	379	318	83.9	323	85.2	3	0.8
<b>Brisbane-Canberra</b>								
Qantas	31	31	31	100.0	31	100.0	0	0.0
QantasLink	120	119	84	70.6	86	72.3	1	0.8
Virgin Australia	99	99	85	85.9	88	88.9	0	0.0
All Airlines	250	249	200	80.3	205	82.3	1	0.4
<b>Brisbane-Darwin</b>								
Jetstar	23	23	18	78.3	18	78.3	0	0.0
Qantas	47	47	42	89.4	45	95.7	0	0.0
Tigerair Australia	17	17	4	23.5	5	29.4	0	0.0
Virgin Australia	31	31	20	64.5	26	83.9	0	0.0
All Airlines	118	118	84	71.2	94	79.7	0	0.0
<b>Brisbane-Emerald</b>								
QantasLink	117	116	108	93.1	106	91.4	1	0.9
Virgin Australia	51	51	50	98.0	50	98.0	0	0.0
All Airlines	168	167	158	94.6	156	93.4	1	0.6

	<i>Sectors</i>		<i>Arrivals On Time</i>		<i>Departures On Time</i>		<i>Cancellations</i>	
	<i>Sched.</i>	<i>Flown</i>	<i>No.</i>	<i>%</i>	<i>No.</i>	<i>%</i>	<i>No.</i>	<i>%</i>
<b>Brisbane-Gladstone</b>								
QantasLink	141	140	134	95.7	133	95.0	1	0.7
Virgin Australia	86	86	78	90.7	77	89.5	0	0.0
All Airlines	227	226	212	93.8	210	92.9	1	0.4
<b>Brisbane-Hamilton Island</b>								
QantasLink	39	37	35	94.6	34	91.9	2	5.1
Virgin Australia	30	30	29	96.7	29	96.7	0	0.0
All Airlines	69	67	64	95.5	63	94.0	2	2.9
<b>Brisbane-Hobart</b>								
Jetstar	23	23	22	95.7	22	95.7	0	0.0
Virgin Australia	28	28	26	92.9	26	92.9	0	0.0
All Airlines	51	51	48	94.1	48	94.1	0	0.0
<b>Brisbane-Mackay</b>								
Jetstar	47	47	36	76.6	31	66.0	0	0.0
QantasLink	108	107	96	89.7	94	87.9	1	0.9
Virgin Australia	128	128	111	86.7	114	89.1	0	0.0
All Airlines	283	282	243	86.2	239	84.8	1	0.4
<b>Brisbane-Melbourne</b>								
Jetstar	99	98	88	89.8	76	77.6	1	1.0
Qantas	395	394	366	92.9	366	92.9	1	0.3
Tigerair Australia	129	125	90	72.0	92	73.6	4	3.1
Virgin Australia	363	359	301	83.8	329	91.6	4	1.1
All Airlines	986	976	845	86.6	863	88.4	10	1.0
<b>Brisbane-Moranbah</b>								
QantasLink	79	79	71	89.9	74	93.7	0	0.0
Virgin Australia	51	51	48	94.1	49	96.1	0	0.0
All Airlines	130	130	119	91.5	123	94.6	0	0.0
<b>Brisbane-Mount Isa</b>								
QantasLink	55	54	52	96.3	52	96.3	1	1.8
Virgin Australia	17	17	13	76.5	16	94.1	0	0.0
All Airlines	72	71	65	91.5	68	95.8	1	1.4
<b>Brisbane-Newcastle</b>								
Jetstar	79	79	60	75.9	60	75.9	0	0.0
QantasLink	92	90	83	92.2	84	93.3	2	2.2
Virgin Australia	81	80	73	91.3	75	93.8	1	1.2
All Airlines	252	249	216	86.7	219	88.0	3	1.2
<b>Brisbane-Perth</b>								
Qantas	121	121	112	92.6	109	90.1	0	0.0
Tigerair Australia	21	21	18	85.7	18	85.7	0	0.0
Virgin Australia	100	100	86	86.0	81	81.0	0	0.0
All Airlines	242	242	216	89.3	208	86.0	0	0.0
<b>Brisbane-Proserpine</b>								
Jetstar	23	23	18	78.3	19	82.6	0	0.0
Tigerair Australia	18	18	17	94.4	17	94.4	0	0.0
Virgin Australia	30	30	29	96.7	29	96.7	0	0.0
All Airlines	71	71	64	90.1	65	91.5	0	0.0
<b>Brisbane-Rockhampton</b>								
QantasLink	182	182	162	89.0	162	89.0	0	0.0
Virgin Australia	134	134	111	82.8	120	89.6	0	0.0
All Airlines	316	316	273	86.4	282	89.2	0	0.0

	<i>Sectors</i>		<i>Arrivals On Time</i>		<i>Departures On Time</i>		<i>Cancellations</i>	
	<i>Sched.</i>	<i>Flown</i>	<i>No.</i>	<i>%</i>	<i>No.</i>	<i>%</i>	<i>No.</i>	<i>%</i>
<b>Brisbane-Sydney</b>								
Jetstar	168	167	129	77.2	127	76.0	1	0.6
Qantas	584	579	518	89.5	527	91.0	5	0.9
Tigerair Australia	107	106	80	75.5	82	77.4	1	0.9
Virgin Australia	493	482	418	86.7	428	88.8	11	2.2
All Airlines	1 352	1 334	1 145	85.8	1 164	87.3	18	1.3
<b>Brisbane-Townsville</b>								
Jetstar	48	48	38	79.2	40	83.3	0	0.0
Qantas	67	67	63	94.0	60	89.6	0	0.0
QantasLink	79	77	62	80.5	61	79.2	2	2.5
Virgin Australia	135	133	120	90.2	122	91.7	2	1.5
All Airlines	329	325	283	87.1	283	87.1	4	1.2
<b>Broome-Perth</b>								
Qantas	16	16	15	93.8	16	100.0	0	0.0
QantasLink	64	64	61	95.3	60	93.8	0	0.0
Virgin Australia	5	5	5	100.0	5	100.0	0	0.0
Virgin Australia Regional Airlines	61	61	49	80.3	49	80.3	0	0.0
All Airlines	146	146	130	89.0	130	89.0	0	0.0
<b>Bundaberg-Brisbane</b>								
QantasLink	132	132	116	87.9	119	90.2	0	0.0
Virgin Australia	30	30	24	80.0	21	70.0	0	0.0
All Airlines	162	162	140	86.4	140	86.4	0	0.0
<b>Cairns-Brisbane</b>								
Jetstar	86	84	73	86.9	65	77.4	2	2.3
Qantas	129	129	122	94.6	119	92.2	0	0.0
QantasLink	1	1	1	100.0	1	100.0	0	0.0
Tigerair Australia	48	47	41	87.2	40	85.1	1	2.1
Virgin Australia	118	118	108	91.5	102	86.4	0	0.0
All Airlines	382	379	345	91.0	327	86.3	3	0.8
<b>Cairns-Melbourne</b>								
Jetstar	100	100	73	73.0	71	71.0	0	0.0
Qantas	37	37	31	83.8	32	86.5	0	0.0
Tigerair Australia	33	32	22	68.8	21	65.6	1	3.0
Virgin Australia	31	31	23	74.2	23	74.2	0	0.0
All Airlines	201	200	149	74.5	147	73.5	1	0.5
<b>Cairns-Sydney</b>								
Jetstar	83	82	67	81.7	65	79.3	1	1.2
Qantas	77	77	67	87.0	66	85.7	0	0.0
Tigerair Australia	37	37	32	86.5	26	70.3	0	0.0
Virgin Australia	71	71	58	81.7	57	80.3	0	0.0
All Airlines	268	267	224	83.9	214	80.1	1	0.4
<b>Cairns-Townsville</b>								
QantasLink	142	142	138	97.2	135	95.1	0	0.0
Regional Express	44	43	39	90.7	39	90.7	1	2.3
All Airlines	186	185	177	95.7	174	94.1	1	0.5
<b>Canberra-Adelaide</b>								
Qantas	40	40	38	95.0	38	95.0	0	0.0
Virgin Australia	26	26	25	96.2	24	92.3	0	0.0
All Airlines	66	66	63	95.5	62	93.9	0	0.0
<b>Canberra-Brisbane</b>								
Qantas	31	31	30	96.8	29	93.5	0	0.0
QantasLink	120	117	91	77.8	93	79.5	3	2.5
Virgin Australia	100	100	83	83.0	87	87.0	0	0.0
All Airlines	251	248	204	82.3	209	84.3	3	1.2

	<i>Sectors</i>		<i>Arrivals On Time</i>		<i>Departures On Time</i>		<i>Cancellations</i>	
	<i>Sched.</i>	<i>Flown</i>	<i>No.</i>	<i>%</i>	<i>No.</i>	<i>%</i>	<i>No.</i>	<i>%</i>
<b>Canberra-Melbourne</b>								
Qantas	201	201	192	95.5	195	97.0	0	0.0
QantasLink	63	58	44	75.9	43	74.1	5	7.9
Tigerair Australia	30	30	18	60.0	16	53.3	0	0.0
Virgin Australia	167	163	139	85.3	141	86.5	4	2.4
All Airlines	461	452	393	86.9	395	87.4	9	2.0
<b>Canberra-Sydney</b>								
QantasLink	472	441	343	77.8	338	76.6	31	6.6
Virgin Australia	245	234	192	82.1	200	85.5	11	4.5
All Airlines	717	675	535	79.3	538	79.7	42	5.9
<b>Coffs Harbour-Sydney</b>								
QantasLink	151	146	112	76.7	105	71.9	5	3.3
Tigerair Australia	13	13	12	92.3	12	92.3	0	0.0
Virgin Australia	48	47	35	74.5	38	80.9	1	2.1
All Airlines	212	206	159	77.2	155	75.2	6	2.8
<b>Darwin-Alice Springs</b>								
QantasLink	60	60	56	93.3	57	95.0	0	0.0
Virgin Australia	13	13	12	92.3	12	92.3	0	0.0
All Airlines	73	73	68	93.2	69	94.5	0	0.0
<b>Darwin-Brisbane</b>								
Jetstar	23	23	16	69.6	11	47.8	0	0.0
Qantas	47	47	42	89.4	35	74.5	0	0.0
Tigerair Australia	18	18	14	77.8	13	72.2	0	0.0
Virgin Australia	31	31	25	80.6	22	71.0	0	0.0
All Airlines	119	119	97	81.5	81	68.1	0	0.0
<b>Darwin-Melbourne</b>								
Jetstar	30	30	18	60.0	15	50.0	0	0.0
Qantas	39	39	35	89.7	32	82.1	0	0.0
Virgin Australia	32	32	27	84.4	27	84.4	0	0.0
All Airlines	101	101	80	79.2	74	73.3	0	0.0
<b>Darwin-Perth</b>								
Qantas	39	39	36	92.3	36	92.3	0	0.0
Virgin Australia	25	25	20	80.0	21	84.0	0	0.0
All Airlines	64	64	56	87.5	57	89.1	0	0.0
<b>Darwin-Sydney</b>								
Jetstar	26	26	14	53.8	16	61.5	0	0.0
Qantas	60	60	48	80.0	45	75.0	0	0.0
Virgin Australia	30	30	16	53.3	14	46.7	0	0.0
All Airlines	116	116	78	67.2	75	64.7	0	0.0
<b>Dubbo-Sydney</b>								
QantasLink	124	120	88	73.3	94	78.3	4	3.2
Regional Express	151	148	114	77.0	125	84.5	3	2.0
All Airlines	275	268	202	75.4	219	81.7	7	2.5
<b>Emerald-Brisbane</b>								
QantasLink	117	116	104	89.7	103	88.8	1	0.9
Virgin Australia	51	51	51	100.0	51	100.0	0	0.0
All Airlines	168	167	155	92.8	154	92.2	1	0.6
<b>Geraldton-Perth</b>								
QantasLink	47	47	46	97.9	46	97.9	0	0.0
Virgin Australia Regional Airlines	52	52	44	84.6	45	86.5	0	0.0
All Airlines	99	99	90	90.9	91	91.9	0	0.0

	<i>Sectors</i>		<i>Arrivals On Time</i>		<i>Departures On Time</i>		<i>Cancellations</i>	
	<i>Sched.</i>	<i>Flown</i>	<i>No.</i>	<i>%</i>	<i>No.</i>	<i>%</i>	<i>No.</i>	<i>%</i>
<b>Gladstone-Brisbane</b>								
QantasLink	141	140	134	95.7	133	95.0	1	0.7
Virgin Australia	86	85	78	91.8	79	92.9	1	1.2
All Airlines	227	225	212	94.2	212	94.2	2	0.9
<b>Gold Coast-Adelaide</b>								
Jetstar	30	30	27	90.0	28	93.3	0	0.0
Virgin Australia	30	30	28	93.3	29	96.7	0	0.0
All Airlines	60	60	55	91.7	57	95.0	0	0.0
<b>Gold Coast-Melbourne</b>								
Jetstar	174	174	146	83.9	131	75.3	0	0.0
Qantas	30	30	27	90.0	27	90.0	0	0.0
Tigerair Australia	79	79	55	69.6	55	69.6	0	0.0
Virgin Australia	157	157	136	86.6	136	86.6	0	0.0
All Airlines	440	440	364	82.7	349	79.3	0	0.0
<b>Gold Coast-Sydney</b>								
Jetstar	254	250	196	78.4	190	76.0	4	1.6
Qantas	87	87	77	88.5	76	87.4	0	0.0
QantasLink	18	17	14	82.4	13	76.5	1	5.6
Tigerair Australia	117	114	93	81.6	94	82.5	3	2.6
Virgin Australia	227	227	190	83.7	191	84.1	0	0.0
All Airlines	703	695	570	82.0	564	81.2	8	1.1
<b>Hamilton Island-Brisbane</b>								
QantasLink	39	37	36	97.3	35	94.6	2	5.1
Virgin Australia	30	30	29	96.7	29	96.7	0	0.0
All Airlines	69	67	65	97.0	64	95.5	2	2.9
<b>Hamilton Island-Sydney</b>								
Jetstar	13	12	7	58.3	8	66.7	1	7.7
Qantas	10	10	8	80.0	8	80.0	0	0.0
QantasLink	10	9	7	77.8	7	77.8	1	10.0
Virgin Australia	23	22	19	86.4	20	90.9	1	4.3
All Airlines	56	53	41	77.4	43	81.1	3	5.4
<b>Hobart-Brisbane</b>								
Jetstar	22	22	22	100.0	22	100.0	0	0.0
Virgin Australia	28	28	23	82.1	22	78.6	0	0.0
All Airlines	50	50	45	90.0	44	88.0	0	0.0
<b>Hobart-Melbourne</b>								
Jetstar	160	160	115	71.9	106	66.3	0	0.0
Qantas	4	4	4	100.0	4	100.0	0	0.0
QantasLink	133	124	111	89.5	113	91.1	9	6.8
Tigerair Australia	33	33	24	72.7	22	66.7	0	0.0
Virgin Australia	130	130	114	87.7	113	86.9	0	0.0
All Airlines	460	451	368	81.6	358	79.4	9	2.0
<b>Hobart-Sydney</b>								
Jetstar	62	62	54	87.1	50	80.6	0	0.0
QantasLink	56	53	36	67.9	40	75.5	3	5.4
Virgin Australia	62	62	55	88.7	56	90.3	0	0.0
All Airlines	180	177	145	81.9	146	82.5	3	1.7
<b>Kalgoorlie-Perth</b>								
Qantas	8	8	8	100.0	8	100.0	0	0.0
QantasLink	72	72	62	86.1	62	86.1	0	0.0
Virgin Australia	19	19	18	94.7	17	89.5	0	0.0
Virgin Australia Regional Airlines	41	41	39	95.1	39	95.1	0	0.0
All Airlines	140	140	127	90.7	126	90.0	0	0.0

	<i>Sectors</i>		<i>Arrivals On Time</i>		<i>Departures On Time</i>		<i>Cancellations</i>	
	<i>Sched.</i>	<i>Flown</i>	<i>No.</i>	<i>%</i>	<i>No.</i>	<i>%</i>	<i>No.</i>	<i>%</i>
<b>Karratha-Perth</b>								
Qantas	16	16	16	100.0	16	100.0	0	0.0
QantasLink	169	167	146	87.4	149	89.2	2	1.2
Virgin Australia Regional Airlines	72	72	61	84.7	60	83.3	0	0.0
All Airlines	257	255	223	87.5	225	88.2	2	0.8
<b>Launceston-Melbourne</b>								
Jetstar	100	98	76	77.6	77	78.6	2	2.0
QantasLink	116	115	106	92.2	106	92.2	1	0.9
Virgin Australia	88	88	77	87.5	81	92.0	0	0.0
All Airlines	304	301	259	86.0	264	87.7	3	1.0
<b>Launceston-Sydney</b>								
Jetstar	33	33	25	75.8	22	66.7	0	0.0
Virgin Australia	29	29	24	82.8	25	86.2	0	0.0
All Airlines	62	62	49	79.0	47	75.8	0	0.0
<b>Mackay-Brisbane</b>								
Jetstar	47	47	38	80.9	28	59.6	0	0.0
QantasLink	108	107	91	85.0	94	87.9	1	0.9
Virgin Australia	128	128	114	89.1	110	85.9	0	0.0
All Airlines	283	282	243	86.2	232	82.3	1	0.4
<b>Melbourne-Adelaide</b>								
Jetstar	97	96	79	82.3	77	80.2	1	1.0
Qantas	275	275	264	96.0	256	93.1	0	0.0
Tigerair Australia	75	75	59	78.7	61	81.3	0	0.0
Virgin Australia	253	253	237	93.7	237	93.7	0	0.0
All Airlines	700	699	639	91.4	631	90.3	1	0.1
<b>Melbourne-Brisbane</b>								
Jetstar	99	99	76	76.8	76	76.8	0	0.0
Qantas	399	397	370	93.2	376	94.7	2	0.5
Tigerair Australia	129	125	96	76.8	91	72.8	4	3.1
Virgin Australia	362	359	333	92.8	333	92.8	3	0.8
All Airlines	989	980	875	89.3	876	89.4	9	0.9
<b>Melbourne-Cairns</b>								
Jetstar	100	100	73	73.0	73	73.0	0	0.0
Qantas	37	37	35	94.6	33	89.2	0	0.0
Tigerair Australia	33	32	25	78.1	28	87.5	1	3.0
Virgin Australia	31	31	25	80.6	26	83.9	0	0.0
All Airlines	201	200	158	79.0	160	80.0	1	0.5
<b>Melbourne-Canberra</b>								
Qantas	201	201	186	92.5	188	93.5	0	0.0
QantasLink	63	61	55	90.2	56	91.8	2	3.2
Tigerair Australia	30	30	19	63.3	18	60.0	0	0.0
Virgin Australia	166	163	142	87.1	150	92.0	3	1.8
All Airlines	460	455	402	88.4	412	90.5	5	1.1
<b>Melbourne-Darwin</b>								
Jetstar	30	30	21	70.0	22	73.3	0	0.0
Qantas	39	39	33	84.6	37	94.9	0	0.0
Virgin Australia	32	32	22	68.8	27	84.4	0	0.0
All Airlines	101	101	76	75.2	86	85.1	0	0.0
<b>Melbourne-Gold Coast</b>								
Jetstar	174	174	140	80.5	141	81.0	0	0.0
Qantas	30	30	28	93.3	28	93.3	0	0.0
Tigerair Australia	79	79	62	78.5	65	82.3	0	0.0
Virgin Australia	157	157	148	94.3	146	93.0	0	0.0
All Airlines	440	440	378	85.9	380	86.4	0	0.0

	<i>Sectors</i>		<i>Arrivals On Time</i>		<i>Departures On Time</i>		<i>Cancellations</i>	
	<i>Sched.</i>	<i>Flown</i>	<i>No.</i>	<i>%</i>	<i>No.</i>	<i>%</i>	<i>No.</i>	<i>%</i>
<b>Melbourne-Hobart</b>								
Jetstar	160	160	129	80.6	132	82.5	0	0.0
Qantas	4	4	3	75.0	3	75.0	0	0.0
QantasLink	134	123	107	87.0	113	91.9	11	8.2
Tigerair Australia	33	33	25	75.8	25	75.8	0	0.0
Virgin Australia	130	130	114	87.7	118	90.8	0	0.0
All Airlines	461	450	378	84.0	391	86.9	11	2.4
<b>Melbourne-Launceston</b>								
Jetstar	100	98	78	79.6	82	83.7	2	2.0
QantasLink	116	114	104	91.2	107	93.9	2	1.7
Virgin Australia	87	87	76	87.4	81	93.1	0	0.0
All Airlines	303	299	258	86.3	270	90.3	4	1.3
<b>Melbourne-Mildura</b>								
QantasLink	95	95	87	91.6	88	92.6	0	0.0
Regional Express	83	82	70	85.4	73	89.0	1	1.2
Virgin Australia	30	30	25	83.3	25	83.3	0	0.0
All Airlines	208	207	182	87.9	186	89.9	1	0.5
<b>Melbourne-Newcastle</b>								
Jetstar	105	105	84	80.0	79	75.2	0	0.0
Virgin Australia	31	31	28	90.3	28	90.3	0	0.0
All Airlines	136	136	112	82.4	107	78.7	0	0.0
<b>Melbourne-Perth</b>								
Jetstar	57	57	54	94.7	53	93.0	0	0.0
Qantas	190	190	166	87.4	158	83.2	0	0.0
Tigerair Australia	40	39	31	79.5	28	71.8	1	2.5
Virgin Australia	125	125	115	92.0	109	87.2	0	0.0
All Airlines	412	411	366	89.1	348	84.7	1	0.2
<b>Melbourne-Sunshine Coast</b>								
Jetstar	68	68	62	91.2	57	83.8	0	0.0
Virgin Australia	43	43	39	90.7	40	93.0	0	0.0
All Airlines	111	111	101	91.0	97	87.4	0	0.0
<b>Melbourne-Sydney</b>								
Jetstar	337	335	263	78.5	266	79.4	2	0.6
Qantas	957	936	794	84.8	851	90.9	21	2.2
Tigerair Australia	247	238	153	64.3	159	66.8	9	3.6
Virgin Australia	702	679	586	86.3	619	91.2	23	3.3
All Airlines	2 243	2 188	1 796	82.1	1 895	86.6	55	2.5
<b>Mildura-Melbourne</b>								
QantasLink	95	95	83	87.4	84	88.4	0	0.0
Regional Express	84	83	65	78.3	71	85.5	1	1.2
Virgin Australia	30	30	24	80.0	24	80.0	0	0.0
All Airlines	209	208	172	82.7	179	86.1	1	0.5
<b>Moranbah-Brisbane</b>								
QantasLink	75	74	70	94.6	70	94.6	1	1.3
Virgin Australia	51	51	48	94.1	47	92.2	0	0.0
All Airlines	126	125	118	94.4	117	93.6	1	0.8
<b>Mount Isa-Brisbane</b>								
QantasLink	55	54	50	92.6	51	94.4	1	1.8
Virgin Australia	18	18	15	83.3	14	77.8	0	0.0
All Airlines	73	72	65	90.3	65	90.3	1	1.4

	<i>Sectors</i>		<i>Arrivals On Time</i>		<i>Departures On Time</i>		<i>Cancellations</i>	
	<i>Sched.</i>	<i>Flown</i>	<i>No.</i>	<i>%</i>	<i>No.</i>	<i>%</i>	<i>No.</i>	<i>%</i>
<b>Newcastle-Brisbane</b>								
Jetstar	79	79	69	87.3	69	87.3	0	0.0
QantasLink	92	90	80	88.9	78	86.7	2	2.2
Virgin Australia	81	80	76	95.0	74	92.5	1	1.2
All Airlines	252	249	225	90.4	221	88.8	3	1.2
<b>Newcastle-Melbourne</b>								
Jetstar	105	104	87	83.7	84	80.8	1	1.0
Virgin Australia	31	31	29	93.5	29	93.5	0	0.0
All Airlines	136	135	116	85.9	113	83.7	1	0.7
<b>Newman-Perth</b>								
Qantas	58	57	55	96.5	56	98.2	1	1.7
QantasLink	73	68	58	85.3	61	89.7	5	6.8
Virgin Australia	14	14	13	92.9	13	92.9	0	0.0
Virgin Australia Regional Airlines	25	25	21	84.0	22	88.0	0	0.0
All Airlines	170	164	147	89.6	152	92.7	6	3.5
<b>Perth-Adelaide</b>								
Jetstar	26	26	22	84.6	21	80.8	0	0.0
Qantas	79	79	74	93.7	76	96.2	0	0.0
QantasLink	23	23	20	87.0	20	87.0	0	0.0
Virgin Australia	63	63	61	96.8	63	100.0	0	0.0
All Airlines	191	191	177	92.7	180	94.2	0	0.0
<b>Perth-Brisbane</b>								
Qantas	116	116	104	89.7	111	95.7	0	0.0
Tigerair Australia	23	23	16	69.6	18	78.3	0	0.0
Virgin Australia	101	101	96	95.0	100	99.0	0	0.0
All Airlines	240	240	216	90.0	229	95.4	0	0.0
<b>Perth-Broome</b>								
Qantas	16	16	16	100.0	16	100.0	0	0.0
QantasLink	64	64	62	96.9	61	95.3	0	0.0
Virgin Australia	5	5	5	100.0	5	100.0	0	0.0
Virgin Australia Regional Airlines	61	61	51	83.6	55	90.2	0	0.0
All Airlines	146	146	134	91.8	137	93.8	0	0.0
<b>Perth-Darwin</b>								
Qantas	39	39	38	97.4	38	97.4	0	0.0
Virgin Australia	25	25	22	88.0	24	96.0	0	0.0
All Airlines	64	64	60	93.8	62	96.9	0	0.0
<b>Perth-Geraldton</b>								
QantasLink	47	47	44	93.6	43	91.5	0	0.0
Virgin Australia Regional Airlines	52	52	49	94.2	45	86.5	0	0.0
All Airlines	99	99	93	93.9	88	88.9	0	0.0
<b>Perth-Kalgoorlie</b>								
Qantas	8	8	8	100.0	8	100.0	0	0.0
QantasLink	72	72	63	87.5	64	88.9	0	0.0
Virgin Australia	20	20	19	95.0	18	90.0	0	0.0
Virgin Australia Regional Airlines	41	41	37	90.2	38	92.7	0	0.0
All Airlines	141	141	127	90.1	128	90.8	0	0.0
<b>Perth-Karratha</b>								
Qantas	16	16	15	93.8	15	93.8	0	0.0
QantasLink	168	168	161	95.8	158	94.0	0	0.0
Virgin Australia Regional Airlines	72	72	63	87.5	68	94.4	0	0.0
All Airlines	256	256	239	93.4	241	94.1	0	0.0



	<i>Sectors</i>		<i>Arrivals On Time</i>		<i>Departures On Time</i>		<i>Cancellations</i>	
	<i>Sched.</i>	<i>Flown</i>	<i>No.</i>	<i>%</i>	<i>No.</i>	<i>%</i>	<i>No.</i>	<i>%</i>
<b>Perth-Melbourne</b>								
Jetstar	56	56	51	91.1	48	85.7	0	0.0
Qantas	191	190	155	81.6	176	92.6	1	0.5
Tigerair Australia	39	37	27	73.0	28	75.7	2	5.1
Virgin Australia	125	125	109	87.2	119	95.2	0	0.0
All Airlines	411	408	342	83.8	371	90.9	3	0.7
<b>Perth-Newman</b>								
Qantas	58	57	55	96.5	56	98.2	1	1.7
QantasLink	73	70	63	90.0	64	91.4	3	4.1
Virgin Australia	14	14	14	100.0	13	92.9	0	0.0
Virgin Australia Regional Airlines	25	25	23	92.0	23	92.0	0	0.0
All Airlines	170	166	155	93.4	156	94.0	4	2.4
<b>Perth-Port Hedland</b>								
Qantas	29	27	25	92.6	25	92.6	2	6.9
QantasLink	105	102	92	90.2	95	93.1	3	2.9
Virgin Australia	10	10	10	100.0	10	100.0	0	0.0
Virgin Australia Regional Airlines	42	42	40	95.2	40	95.2	0	0.0
All Airlines	186	181	167	92.3	170	93.9	5	2.7
<b>Perth-Sydney</b>								
Jetstar	30	29	22	75.9	22	75.9	1	3.3
Qantas	198	198	166	83.8	180	90.9	0	0.0
Tigerair Australia	24	22	16	72.7	18	81.8	2	8.3
Virgin Australia	110	110	100	90.9	100	90.9	0	0.0
All Airlines	362	359	304	84.7	320	89.1	3	0.8
<b>Port Hedland-Perth</b>								
Qantas	29	27	27	100.0	27	100.0	2	6.9
QantasLink	106	97	89	91.8	88	90.7	9	8.5
Virgin Australia	10	10	10	100.0	10	100.0	0	0.0
Virgin Australia Regional Airlines	42	42	39	92.9	40	95.2	0	0.0
All Airlines	187	176	165	93.8	165	93.8	11	5.9
<b>Port Lincoln-Adelaide</b>								
QantasLink	107	106	99	93.4	99	93.4	1	0.9
Regional Express	206	205	193	94.1	198	96.6	1	0.5
All Airlines	313	311	292	93.9	297	95.5	2	0.6
<b>Port Macquarie-Sydney</b>								
QantasLink	135	130	94	72.3	89	68.5	5	3.7
Virgin Australia	53	53	39	73.6	39	73.6	0	0.0
All Airlines	188	183	133	72.7	128	69.9	5	2.7
<b>Proserpine-Brisbane</b>								
Jetstar	23	23	21	91.3	20	87.0	0	0.0
Tigerair Australia	18	18	16	88.9	16	88.9	0	0.0
Virgin Australia	30	30	27	90.0	25	83.3	0	0.0
All Airlines	71	71	64	90.1	61	85.9	0	0.0
<b>Rockhampton-Brisbane</b>								
QantasLink	182	181	160	88.4	160	88.4	1	0.5
Virgin Australia	134	134	118	88.1	107	79.9	0	0.0
All Airlines	316	315	278	88.3	267	84.8	1	0.3
<b>Sunshine Coast-Melbourne</b>								
Jetstar	67	67	48	71.6	42	62.7	0	0.0
Virgin Australia	43	43	36	83.7	36	83.7	0	0.0
All Airlines	110	110	84	76.4	78	70.9	0	0.0

	<i>Sectors</i>		<i>Arrivals On Time</i>		<i>Departures On Time</i>		<i>Cancellations</i>	
	<i>Sched.</i>	<i>Flown</i>	<i>No.</i>	<i>%</i>	<i>No.</i>	<i>%</i>	<i>No.</i>	<i>%</i>
<b>Sunshine Coast-Sydney</b>								
Jetstar	88	88	69	78.4	61	69.3	0	0.0
QantasLink	34	33	24	72.7	25	75.8	1	2.9
Virgin Australia	36	36	27	75.0	27	75.0	0	0.0
All Airlines	158	157	120	76.4	113	72.0	1	0.6
<b>Sydney-Adelaide</b>								
Jetstar	85	84	63	75.0	56	66.7	1	1.2
Qantas	220	220	196	89.1	190	86.4	0	0.0
QantasLink	28	26	19	73.1	18	69.2	2	7.1
Tigerair Australia	43	42	27	64.3	24	57.1	1	2.3
Virgin Australia	152	150	128	85.3	131	87.3	2	1.3
All Airlines	528	522	433	83.0	419	80.3	6	1.1
<b>Sydney-Albury</b>								
QantasLink	106	100	73	73.0	67	67.0	6	5.7
Regional Express	99	95	69	72.6	68	71.6	4	4.0
Virgin Australia	53	53	27	50.9	28	52.8	0	0.0
All Airlines	258	248	169	68.1	163	65.7	10	3.9
<b>Sydney-Armidale</b>								
QantasLink	121	114	73	64.0	74	64.9	7	5.8
Regional Express	77	76	61	80.3	60	78.9	1	1.3
All Airlines	198	190	134	70.5	134	70.5	8	4.0
<b>Sydney-Ayers Rock</b>								
Jetstar	30	30	23	76.7	25	83.3	0	0.0
Virgin Australia	30	30	24	80.0	28	93.3	0	0.0
All Airlines	60	60	47	78.3	53	88.3	0	0.0
<b>Sydney-Ballina</b>								
Jetstar	72	72	59	81.9	58	80.6	0	0.0
Regional Express	26	26	22	84.6	23	88.5	0	0.0
Virgin Australia	31	31	27	87.1	26	83.9	0	0.0
All Airlines	129	129	108	83.7	107	82.9	0	0.0
<b>Sydney-Brisbane</b>								
Jetstar	168	167	131	78.4	125	74.9	1	0.6
Qantas	583	579	504	87.0	516	89.1	4	0.7
Tigerair Australia	107	106	82	77.4	83	78.3	1	0.9
Virgin Australia	487	476	416	87.4	419	88.0	11	2.3
All Airlines	1 345	1 328	1 133	85.3	1 143	86.1	17	1.3
<b>Sydney-Cairns</b>								
Jetstar	82	82	64	78.0	63	76.8	0	0.0
Qantas	78	78	65	83.3	68	87.2	0	0.0
Tigerair Australia	37	37	29	78.4	36	97.3	0	0.0
Virgin Australia	72	72	59	81.9	63	87.5	0	0.0
All Airlines	269	269	217	80.7	230	85.5	0	0.0
<b>Sydney-Canberra</b>								
QantasLink	470	442	349	79.0	341	77.1	28	6.0
Virgin Australia	245	235	196	83.4	183	77.9	10	4.1
All Airlines	715	677	545	80.5	524	77.4	38	5.3
<b>Sydney-Coffs Harbour</b>								
QantasLink	151	146	109	74.7	107	73.3	5	3.3
Tigerair Australia	13	13	12	92.3	12	92.3	0	0.0
Virgin Australia	48	47	38	80.9	42	89.4	1	2.1
All Airlines	212	206	159	77.2	161	78.2	6	2.8

	<i>Sectors</i>		<i>Arrivals On Time</i>		<i>Departures On Time</i>		<i>Cancellations</i>	
	<i>Sched.</i>	<i>Flown</i>	<i>No.</i>	<i>%</i>	<i>No.</i>	<i>%</i>	<i>No.</i>	<i>%</i>
<b>Sydney-Darwin</b>								
Jetstar	26	26	22	84.6	21	80.8	0	0.0
Qantas	60	60	51	85.0	48	80.0	0	0.0
Virgin Australia	30	30	20	66.7	23	76.7	0	0.0
All Airlines	116	116	93	80.2	92	79.3	0	0.0
<b>Sydney-Dubbo</b>								
QantasLink	124	120	92	76.7	88	73.3	4	3.2
Regional Express	151	147	125	85.0	118	80.3	4	2.6
All Airlines	275	267	217	81.3	206	77.2	8	2.9
<b>Sydney-Gold Coast</b>								
Jetstar	254	250	204	81.6	202	80.8	4	1.6
Qantas	87	87	82	94.3	79	90.8	0	0.0
QantasLink	18	17	13	76.5	13	76.5	1	5.6
Tigerair Australia	117	114	101	88.6	103	90.4	3	2.6
Virgin Australia	227	227	193	85.0	191	84.1	0	0.0
All Airlines	703	695	593	85.3	588	84.6	8	1.1
<b>Sydney-Hamilton Island</b>								
Jetstar	13	12	10	83.3	11	91.7	1	7.7
Qantas	10	10	7	70.0	7	70.0	0	0.0
QantasLink	10	8	6	75.0	7	87.5	2	20.0
Virgin Australia	23	22	19	86.4	19	86.4	1	4.3
All Airlines	56	52	42	80.8	44	84.6	4	7.1
<b>Sydney-Hobart</b>								
Jetstar	62	62	57	91.9	60	96.8	0	0.0
QantasLink	56	54	39	72.2	38	70.4	2	3.6
Virgin Australia	63	63	55	87.3	56	88.9	0	0.0
All Airlines	181	179	151	84.4	154	86.0	2	1.1
<b>Sydney-Launceston</b>								
Jetstar	33	33	28	84.8	27	81.8	0	0.0
Virgin Australia	30	30	26	86.7	24	80.0	0	0.0
All Airlines	63	63	54	85.7	51	81.0	0	0.0
<b>Sydney-Melbourne</b>								
Jetstar	338	334	272	81.4	247	74.0	4	1.2
Qantas	963	942	817	86.7	805	85.5	21	2.2
Tigerair Australia	247	237	151	63.7	149	62.9	10	4.0
Virgin Australia	698	675	590	87.4	597	88.4	23	3.3
All Airlines	2 246	2 188	1 830	83.6	1 798	82.2	58	2.6
<b>Sydney-Perth</b>								
Jetstar	30	30	27	90.0	27	90.0	0	0.0
Qantas	197	197	175	88.8	164	83.2	0	0.0
Tigerair Australia	24	23	20	87.0	20	87.0	1	4.2
Virgin Australia	110	110	88	80.0	90	81.8	0	0.0
All Airlines	361	360	310	86.1	301	83.6	1	0.3
<b>Sydney-Port Macquarie</b>								
QantasLink	134	129	94	72.9	88	68.2	5	3.7
Virgin Australia	53	53	39	73.6	41	77.4	0	0.0
All Airlines	187	182	133	73.1	129	70.9	5	2.7
<b>Sydney-Sunshine Coast</b>								
Jetstar	88	88	73	83.0	65	73.9	0	0.0
QantasLink	34	33	26	78.8	26	78.8	1	2.9
Virgin Australia	36	36	29	80.6	28	77.8	0	0.0
All Airlines	158	157	128	81.5	119	75.8	1	0.6

	<i>Sectors</i>		<i>Arrivals On Time</i>		<i>Departures On Time</i>		<i>Cancellations</i>	
	<i>Sched.</i>	<i>Flown</i>	<i>No.</i>	<i>%</i>	<i>No.</i>	<i>%</i>	<i>No.</i>	<i>%</i>
<b>Sydney-Tamworth</b>								
QantasLink	155	147	119	81.0	115	78.2	8	5.2
Virgin Australia	51	50	45	90.0	43	86.0	1	2.0
All Airlines	206	197	164	83.2	158	80.2	9	4.4
<b>Sydney-Townsville</b>								
Jetstar	20	20	14	70.0	15	75.0	0	0.0
Virgin Australia	20	20	17	85.0	18	90.0	0	0.0
All Airlines	40	40	31	77.5	33	82.5	0	0.0
<b>Sydney-Wagga Wagga</b>								
QantasLink	112	109	89	81.7	81	74.3	3	2.7
Regional Express	131	125	104	83.2	104	83.2	6	4.6
All Airlines	243	234	193	82.5	185	79.1	9	3.7
<b>Tamworth-Sydney</b>								
QantasLink	155	147	120	81.6	119	81.0	8	5.2
Virgin Australia	51	50	42	84.0	42	84.0	1	2.0
All Airlines	206	197	162	82.2	161	81.7	9	4.4
<b>Townsville-Brisbane</b>								
Jetstar	48	48	37	77.1	34	70.8	0	0.0
Qantas	67	67	61	91.0	60	89.6	0	0.0
QantasLink	79	76	60	78.9	59	77.6	3	3.8
Virgin Australia	135	133	127	95.5	122	91.7	2	1.5
All Airlines	329	324	285	88.0	275	84.9	5	1.5
<b>Townsville-Cairns</b>								
QantasLink	137	137	133	97.1	134	97.8	0	0.0
Regional Express	45	43	40	93.0	40	93.0	2	4.4
All Airlines	182	180	173	96.1	174	96.7	2	1.1
<b>Townsville-Sydney</b>								
Jetstar	20	20	14	70.0	10	50.0	0	0.0
Virgin Australia	19	19	15	78.9	14	73.7	0	0.0
All Airlines	39	39	29	74.4	24	61.5	0	0.0
<b>Wagga Wagga-Sydney</b>								
QantasLink	112	109	89	81.7	88	80.7	3	2.7
Regional Express	128	122	92	75.4	101	82.8	6	4.7
All Airlines	240	231	181	78.4	189	81.8	9	3.8

## Airports

On time performance is reported for all routes where the passenger load averages over 8000 passengers per month, and where two or more airlines operate in competition. The following data reports by airport against flights operated on those routes only. This month, 8 major city airports and 33 regional city airports are covered.

Airport	Arrivals			Departures		
	Sectors	On Time		Sectors	On Time	
	Flown	No.	%	Flown	No.	%
<b>Adelaide</b>						
Jetstar	258	213	82.6	259	215	83.0
Qantas	722	675	93.5	720	670	93.1
QantasLink	182	163	89.6	182	165	90.7
Regional Express	205	193	94.1	203	197	97.0
Tigerair Australia	146	109	74.7	146	95	65.1
Virgin Australia	634	577	91.0	633	583	92.1
All Airlines	2 147	1 930	89.9	2 143	1 925	89.8
Relates to services to and from Alice Springs, Brisbane, Canberra, Gold Coast, Melbourne, Perth, Port Lincoln and Sydney.						
<b>Albury</b>						
QantasLink	100	73	73.0	100	65	65.0
Regional Express	95	69	72.6	99	76	76.8
Virgin Australia	53	27	50.9	51	26	51.0
All Airlines	248	169	68.1	250	167	66.8
Relates to services to and from Sydney only.						
<b>Alice Springs</b>						
Qantas	30	27	90.0	30	27	90.0
QantasLink	60	56	93.3	60	58	96.7
Virgin Australia	26	25	96.2	26	24	92.3
All Airlines	116	108	93.1	116	109	94.0
Relates to services to and from Adelaide and Darwin.						
<b>Armidale</b>						
QantasLink	114	73	64.0	107	76	71.0
Regional Express	76	61	80.3	75	53	70.7
All Airlines	190	134	70.5	182	129	70.9
Relates to services to and from Sydney only.						
<b>Ayers Rock</b>						
Jetstar	30	23	76.7	30	18	60.0
Virgin Australia	30	24	80.0	30	23	76.7
All Airlines	60	47	78.3	60	41	68.3
Relates to services to and from Sydney only.						
<b>Ballina</b>						
Jetstar	72	59	81.9	72	50	69.4
Regional Express	26	22	84.6	22	13	59.1
Virgin Australia	31	27	87.1	31	25	80.6
All Airlines	129	108	83.7	125	88	70.4
Relates to services to and from Sydney only.						

Airport	Arrivals			Departures		
	Sectors	On Time		Sectors	On Time	
	Flown	No.	%	Flown	No.	%
<b>Brisbane</b>						
Jetstar	614	503	81.9	614	470	76.5
Qantas	1 444	1 306	90.4	1 446	1 335	92.3
QantasLink	1 152	1 015	88.1	1 161	1 033	89.0
Tigerair Australia	366	284	77.6	363	279	76.9
Virgin Australia	2 085	1 886	90.5	2 086	1 877	90.0
All Airlines	5 661	4 994	88.2	5 670	4 994	88.1

Relates to services to and from Adelaide, Bundaberg, Cairns, Canberra, Darwin, Emerald, Gladstone, Hamilton Island, Hobart, Mackay, Melbourne, Moranbah, Mount Isa, Newcastle, Perth, Proserpine, Rockhampton, Sydney and Townsville.

#### Broome

Qantas	16	16	100.0	16	16	100.0
QantasLink	64	62	96.9	64	60	93.8
Virgin Australia	5	5	100.0	5	5	100.0
Virgin Australia Regional Airlines	61	51	83.6	61	49	80.3
All Airlines	146	134	91.8	146	130	89.0

Relates to services to and from Perth only.

#### Bundaberg

QantasLink	132	119	90.2	132	119	90.2
Virgin Australia	30	26	86.7	30	21	70.0
All Airlines	162	145	89.5	162	140	86.4

Relates to services to and from Brisbane only.

#### Cairns

Jetstar	266	193	72.6	266	201	75.6
Qantas	244	219	89.8	243	217	89.3
QantasLink	138	134	97.1	143	136	95.1
Regional Express	43	40	93.0	43	39	90.7
Tigerair Australia	116	93	80.2	116	87	75.0
Virgin Australia	221	187	84.6	220	182	82.7
All Airlines	1 028	866	84.2	1 031	862	83.6

Relates to services to and from Brisbane, Melbourne, Sydney and Townsville.

#### Canberra

Qantas	272	252	92.6	272	262	96.3
QantasLink	622	488	78.5	616	474	76.9
Tigerair Australia	30	19	63.3	30	16	53.3
Virgin Australia	523	447	85.5	523	452	86.4
All Airlines	1 447	1 206	83.3	1 441	1 204	83.6

Relates to services to and from Adelaide, Brisbane, Melbourne and Sydney.

#### Coffs Harbour

QantasLink	146	109	74.7	146	105	71.9
Tigerair Australia	13	12	92.3	13	12	92.3
Virgin Australia	47	38	80.9	47	38	80.9
All Airlines	206	159	77.2	206	155	75.2

Relates to services to and from Sydney only.

Airport	Arrivals			Departures		
	Sectors Flown	On Time		Sectors Flown	On Time	
		No.	%		No.	%
<b>Darwin</b>						
Jetstar	79	61	77.2	79	42	53.2
Qantas	185	164	88.6	185	148	80.0
QantasLink	60	58	96.7	60	57	95.0
Tigerair Australia	17	4	23.5	18	13	72.2
Virgin Australia	131	96	73.3	131	96	73.3
All Airlines	472	383	81.1	473	356	75.3
Relates to services to and from Alice Springs, Brisbane, Melbourne, Perth and Sydney.						
<b>Dubbo</b>						
QantasLink	120	92	76.7	120	94	78.3
Regional Express	147	125	85.0	148	125	84.5
All Airlines	267	217	81.3	268	219	81.7
Relates to services to and from Sydney only.						
<b>Emerald</b>						
QantasLink	116	108	93.1	116	103	88.8
Virgin Australia	51	50	98.0	51	51	100.0
All Airlines	167	158	94.6	167	154	92.2
Relates to services to and from Brisbane only.						
<b>Geraldton</b>						
QantasLink	47	44	93.6	47	46	97.9
Virgin Australia Regional Airlines	52	49	94.2	52	45	86.5
All Airlines	99	93	93.9	99	91	91.9
Relates to services to and from Perth only.						
<b>Gladstone</b>						
QantasLink	140	134	95.7	140	133	95.0
Virgin Australia	86	78	90.7	85	79	92.9
All Airlines	226	212	93.8	225	212	94.2
Relates to services to and from Brisbane only.						
<b>Gold Coast</b>						
Jetstar	453	370	81.7	454	349	76.9
Qantas	117	110	94.0	117	103	88.0
QantasLink	17	13	76.5	17	13	76.5
Tigerair Australia	193	163	84.5	193	149	77.2
Virgin Australia	414	371	89.6	414	356	86.0
All Airlines	1 194	1 027	86.0	1 195	970	81.2
Relates to services to and from Adelaide, Melbourne and Sydney.						
<b>Hamilton Island</b>						
Jetstar	12	10	83.3	12	8	66.7
Qantas	10	7	70.0	10	8	80.0
QantasLink	45	41	91.1	46	42	91.3
Virgin Australia	52	48	92.3	52	49	94.2
All Airlines	119	106	89.1	120	107	89.2
Relates to services to and from Brisbane and Sydney.						

Airport	Arrivals			Departures		
	Sectors Flown	On Time		Sectors Flown	On Time	
		No.	%		No.	%
<b>Hobart</b>						
Jetstar	245	208	84.9	244	178	73.0
Qantas	4	3	75.0	4	4	100.0
QantasLink	177	146	82.5	177	153	86.4
Tigerair Australia	33	25	75.8	33	22	66.7
Virgin Australia	221	195	88.2	220	191	86.8
All Airlines	680	577	84.9	678	548	80.8

Relates to services to and from Brisbane, Melbourne and Sydney.

### Kalgoorlie

Qantas	8	8	100.0	8	8	100.0
QantasLink	72	63	87.5	72	62	86.1
Virgin Australia	20	19	95.0	19	17	89.5
Virgin Australia Regional Airlines	41	37	90.2	41	39	95.1
All Airlines	141	127	90.1	140	126	90.0

Relates to services to and from Perth only.

### Karratha

Qantas	16	15	93.8	16	16	100.0
QantasLink	168	161	95.8	167	149	89.2
Virgin Australia Regional Airlines	72	63	87.5	72	60	83.3
All Airlines	256	239	93.4	255	225	88.2

Relates to services to and from Perth only.

### Launceston

Jetstar	131	106	80.9	131	99	75.6
QantasLink	114	104	91.2	115	106	92.2
Virgin Australia	117	102	87.2	117	106	90.6
All Airlines	362	312	86.2	363	311	85.7

Relates to services to and from Melbourne and Sydney.

### Mackay

Jetstar	47	36	76.6	47	28	59.6
QantasLink	107	96	89.7	107	94	87.9
Virgin Australia	128	111	86.7	128	110	85.9
All Airlines	282	243	86.2	282	232	82.3

Relates to services to and from Brisbane only.

### Melbourne

Jetstar	1 318	1 063	80.7	1 322	1 058	80.0
Qantas	2 111	1 884	89.2	2 109	1 930	91.5
QantasLink	392	344	87.8	393	364	92.6
Regional Express	83	65	78.3	82	73	89.0
Tigerair Australia	648	435	67.1	651	475	73.0
Virgin Australia	2 122	1 848	87.1	2 120	1 939	91.5
All Airlines	6 674	5 639	84.5	6 677	5 839	87.4

Relates to services to and from Adelaide, Brisbane, Cairns, Canberra, Darwin, Gold Coast, Hobart, Launceston, Mildura, Newcastle, Perth, Sunshine Coast and Sydney.

### Mildura

QantasLink	95	87	91.6	95	84	88.4
Regional Express	82	70	85.4	83	71	85.5
Virgin Australia	30	25	83.3	30	24	80.0
All Airlines	207	182	87.9	208	179	86.1

Relates to services to and from Melbourne only.



Airport	Arrivals			Departures		
	Sectors Flown	On Time		Sectors Flown	On Time	
		No.	%		No.	%
<b>Moranbah</b>						
QantasLink	79	71	89.9	74	70	94.6
Virgin Australia	51	48	94.1	51	47	92.2
All Airlines	130	119	91.5	125	117	93.6
Relates to services to and from Brisbane only.						
<b>Mount Isa</b>						
QantasLink	54	52	96.3	54	51	94.4
Virgin Australia	17	13	76.5	18	14	77.8
All Airlines	71	65	91.5	72	65	90.3
Relates to services to and from Brisbane only.						
<b>Newcastle</b>						
Jetstar	184	144	78.3	183	153	83.6
QantasLink	90	83	92.2	90	78	86.7
Virgin Australia	111	101	91.0	111	103	92.8
All Airlines	385	328	85.2	384	334	87.0
Relates to services to and from Brisbane and Melbourne.						
<b>Newman</b>						
Qantas	57	55	96.5	57	56	98.2
QantasLink	70	63	90.0	68	61	89.7
Virgin Australia	14	14	100.0	14	13	92.9
Virgin Australia Regional Airlines	25	23	92.0	25	22	88.0
All Airlines	166	155	93.4	164	152	92.7
Relates to services to and from Perth only.						
<b>Perth</b>						
Jetstar	113	105	92.9	111	91	82.0
Qantas	744	677	91.0	746	701	94.0
QantasLink	538	482	89.6	546	505	92.5
Tigerair Australia	83	69	83.1	82	64	78.0
Virgin Australia	469	415	88.5	473	452	95.6
Virgin Australia Regional Airlines	293	253	86.3	293	269	91.8
All Airlines	2 240	2 001	89.3	2 251	2 082	92.5
Relates to services to and from Adelaide, Brisbane, Broome, Darwin, Geraldton, Kalgoorlie, Karratha, Melbourne, Newman, Port Hedland and Sydney.						
<b>Port Hedland</b>						
Qantas	27	25	92.6	27	27	100.0
QantasLink	102	92	90.2	97	88	90.7
Virgin Australia	10	10	100.0	10	10	100.0
Virgin Australia Regional Airlines	42	40	95.2	42	40	95.2
All Airlines	181	167	92.3	176	165	93.8
Relates to services to and from Perth only.						
<b>Port Lincoln</b>						
QantasLink	106	100	94.3	106	99	93.4
Regional Express	203	195	96.1	205	198	96.6
All Airlines	309	295	95.5	311	297	95.5
Relates to services to and from Adelaide only.						

Airport	Arrivals			Departures		
	Sectors Flown	On Time		Sectors Flown	On Time	
		No.	%		No.	%
<b>Port Macquarie</b>						
QantasLink	129	94	72.9	130	89	68.5
Virgin Australia	53	39	73.6	53	39	73.6
All Airlines	182	133	73.1	183	128	69.9
Relates to services to and from Sydney only.						
<b>Proserpine</b>						
Jetstar	23	18	78.3	23	20	87.0
Tigerair Australia	18	17	94.4	18	16	88.9
Virgin Australia	30	29	96.7	30	25	83.3
All Airlines	71	64	90.1	71	61	85.9
Relates to services to and from Brisbane only.						
<b>Rockhampton</b>						
QantasLink	182	162	89.0	181	160	88.4
Virgin Australia	134	111	82.8	134	107	79.9
All Airlines	316	273	86.4	315	267	84.8
Relates to services to and from Brisbane only.						
<b>Sunshine Coast</b>						
Jetstar	156	135	86.5	155	103	66.5
QantasLink	33	26	78.8	33	25	75.8
Virgin Australia	79	68	86.1	79	63	79.7
All Airlines	268	229	85.4	267	191	71.5
Relates to services to and from Melbourne and Sydney.						
<b>Sydney</b>						
Jetstar	1 291	1 008	78.1	1 290	1 002	77.7
Qantas	2 172	1 867	86.0	2 173	1 877	86.4
QantasLink	1 438	1 080	75.1	1 445	1 063	73.6
Regional Express	466	337	72.3	469	373	79.5
Tigerair Australia	572	403	70.5	572	427	74.7
Virgin Australia	2 406	2 012	83.6	2 410	2 050	85.1
All Airlines	8 345	6 707	80.4	8 359	6 792	81.3
Relates to services to and from Adelaide, Albury, Armidale, Ayers Rock, Ballina, Brisbane, Cairns, Canberra, Coffs Harbour, Darwin, Dubbo, Gold Coast, Hamilton Island, Hobart, Launceston, Melbourne, Perth, Port Macquarie, Sunshine Coast, Tamworth, Townsville and Wagga Wagga.						
<b>Tamworth</b>						
QantasLink	147	119	81.0	147	119	81.0
Virgin Australia	50	45	90.0	50	42	84.0
All Airlines	197	164	83.2	197	161	81.7
Relates to services to and from Sydney only.						
<b>Townsville</b>						
Jetstar	68	52	76.5	68	44	64.7
Qantas	67	63	94.0	67	60	89.6
QantasLink	219	200	91.3	213	193	90.6
Regional Express	43	39	90.7	43	40	93.0
Virgin Australia	153	137	89.5	152	136	89.5
All Airlines	550	491	89.3	543	473	87.1
Relates to services to and from Brisbane, Cairns and Sydney.						

<i>Airport</i>	<i>Arrivals</i>			<i>Departures</i>		
	<i>Sectors</i>	<i>On Time</i>		<i>Sectors</i>	<i>On Time</i>	
	<i>Flown</i>	<i>No.</i>	<i>%</i>	<i>Flown</i>	<i>No.</i>	<i>%</i>
<b>Wagga Wagga</b>						
QantasLink	109	89	81.7	109	88	80.7
Regional Express	125	104	83.2	122	101	82.8
All Airlines	234	193	82.5	231	189	81.8

Relates to services to and from Sydney only.

## Definitions

---

On time arrival	A flight arrival is counted as "on time" if it arrived at the gate before 15 minutes after the scheduled arrival time shown in the carriers' schedule. Neither diverted nor cancelled flights count as on time.
On time departure	A flight departure is counted as "on time" if it departs the gate before 15 minutes after the scheduled departure time shown in the carriers' schedule.
Cancellation	A flight removed from service within 7 days of scheduled departure is regarded as a cancellation.
On time departure percentage	The percentage of on time departures is measured against the number of departures <i>operated</i> on any particular sector.
On time arrival percentage	The percentage of on time arrivals is measured against the number of arrivals <i>operated</i> on any particular sector.
Cancellation percentage	The percentage of cancellations is measured against the number of services <i>scheduled</i> on any particular sector.

---