



Australian Government

Department of Infrastructure, Transport,
Regional Development and Local Government
Bureau of Infrastructure, Transport and Regional Economics



bitre

AVIATION STATISTICS

Airline
On Time Performance

2007-08 Financial Year
Report — OTP 62

© Commonwealth of Australia 2008

ISSN 1832-0759

This work is copyright and the data contained in this publication should not be reproduced or used in any form without acknowledgement.

Enquiries

Bureau of Infrastructure, Transport and Regional Economics

GPO Box 501

Canberra ACT 2601

Telephone: 02 6274 7210

Facsimile: 02 6274 7727

Web site: www.bitre.gov.au

Email: avstats@infrastructure.gov.au

This publication, including a spreadsheet of the time-series data, can be downloaded from the BITRE web site: <http://www.bitre.gov.au/info.aspx?ResourceId=214&NodeId=104>.

Disclaimers

BITRE seeks to publish its work to the highest professional standards. However, it cannot accept responsibility for any consequences arising from the use of information herein. Readers should rely on their own skill and judgment in applying any information or analysis to particular issues or circumstances.

Foreword

The Bureau of Infrastructure, Transport and Regional Economics (BITRE) reports on domestic aviation on time performance of the following participating Australian domestic airlines: Jetstar, MacAir, Qantas, QantasLink, Regional Express, Skywest Airlines, Tiger Airways and Virgin Blue.

Reporting commenced in November 2003, except for Jetstar which commenced reporting in May 2004, MacAir which commenced reporting in July 2005, and Tiger Airways which commenced reporting in April 2008.

The purpose of collecting this information is to monitor overall industry and individual airline performance on punctuality and to allow consumers of air travel to make informed decisions when planning air travel.

On time performance is reported for all routes where the passenger load averaged 8000 or more passengers per month over the previous six months, and where two or more airlines operated in competition on those routes. Over time, routes which meet these criteria may change as airline networks and traffic levels vary. In 2007–08, there were 49 routes that met this definition, three of which for only part of the financial year: Melbourne–Alice Springs (April–June 2008), Perth–Port Hedland (July 2007–April 2008), and Sydney–Port Macquarie (February–June 2008).

The participating airlines also report overall monthly network performance, except for MacAir which only supplies total network data because it does not operate on competitive routes.

Total industry figures refer to all services operated by reporting airlines only. These airlines collectively carried over 95 per cent of total domestic passengers (regular public transport only) in 2007.

The method of capturing on time performance varies between airlines utilising different recording systems. Jetstar and Qantas jet aircraft use Aircraft Communication Addressing and Reporting System (ACARS) to electronically measure on time performance. MacAir, Regional Express, Skywest, Tiger Airways, Virgin Blue and the Qantas non-jet fleet record on time performance manually using records from pilots, gate agents and/or ground crews.

Reports are published monthly on the BITRE web site. After collection of initial data, aggregate reports are subject to internal audit by participating airlines prior to publication. The target date for publication is within six weeks of the end of the reporting period. The report for the year ending 30 June 2008 includes comparable data for the total industry for the previous financial year.

Information on the total network for the year ending 30 June 2008 is presented on Page 1.

On time performance reporting was provided for 49 different routes covering 30 airports for the year ending 30 June 2008. Detailed information on the performance of these routes is included in the tables beginning on Page 9, while detailed information on performance by airport is included from Page 21. The definitions can be found on Page 27.

Detailed time series data is available in Microsoft Excel spreadsheet format from the BITRE web site at <http://www.bitre.gov.au/info.aspx?ResourceId=214&NodeId=104>.

Contents

Industry performance	1
Individual routes	9
Airports	21
Definitions.....	27

Industry performance

For the year ending 30 June 2008, airline on time performance over all routes operated by participating airlines (Jetstar, MacAir, Qantas, QantasLink, Regional Express, Skywest Airlines, Tiger Airways, and Virgin Blue) averaged 80.6 per cent for on time departures and 78.8 per cent for on time arrivals. Cancellations for 2007–08 represented 1.7 per cent of all scheduled flights. The equivalent figures for 2006–07 were 86.9 per cent for departures, 85.6 per cent for arrivals and 0.8 per cent for cancellations.

The long term average performance for all routes since reporting commenced in November 2003 is 85.8 per cent for on time departures and 84.6 per cent for on time arrivals. Cancellations average 1.1 per cent of all scheduled flights. However, as shown in Figure 1, there has been a noticeable decrease in airline on time performance since June 2007. Whereas on time arrivals and on time departures tracked around 87 per cent before June 2007, they have since been tracking around 80 per cent. Similarly, except for one or two occasions, there has been a steady increase in the number of cancellations since December 2006 (Figure 2 refers).

Of the major domestic airlines that reported for all twelve months, Virgin Blue achieved the highest level of on time departures for 2007–08 at 80.3 per cent, while Qantas achieved 79.1 per cent, and Jetstar 78.4 per cent. Regional Express was the best performing regional airline with 83.1 per cent departures on time, followed by QantasLink (82.8 per cent), MacAir (79.8 per cent) and Skywest (79.7 per cent).

Of the major domestic airlines that reported for all twelve months, Qantas achieved the highest level of on time arrivals for 2007–08 at 79.6 per cent, with Virgin Blue at 77.6 per cent, and Jetstar at 76.3 per cent. MacAir was the best performing regional airlines for on time arrivals at 80.8 per cent, followed by QantasLink (80.7 per cent), Skywest (80.0 per cent) and Regional Express (78.1 per cent).

MacAir had the highest percentage of cancellations for 2007–08 at 5.2 per cent, followed by Qantas with 2.3 per cent, Virgin Blue with 1.9 per cent, QantasLink and Regional Express both with 1.2 per cent, and Jetstar and Skywest both with 0.9 per cent.

Tiger Airways recorded 81.1 per cent for on time departures, 81.3 per cent for on time arrivals, and 0.1 per cent for cancellations for its three months of reporting.

Of the routes which met the criteria for on time performance reporting for all twelve months in 2007-08, the Canberra–Adelaide route had the highest percentage of on time departures (90.9 per cent), while the Perth–Brisbane route had the lowest (62.1 per cent).

On time arrivals were also highest on the Canberra–Adelaide route (90.4 per cent), and lowest on the Ballina–Sydney route (65.8 per cent).

Cancellations were highest on the Melbourne–Sydney route (11.5 per cent), followed by Sydney–Melbourne (11.3 per cent), Brisbane–Sydney (10.4 per cent), and Sydney–Brisbane (10.3 per cent).

Townsville Airport recorded the highest percentage of on time departures (85.8 per cent), and Maroochydore Airport recorded the lowest (71.1 per cent). Alice Springs Airport recorded the highest percentage of on time arrivals (87.7 per cent), while Wagga Wagga Airport recorded the lowest (66.7 per cent).

Table 1 On time performance for the year ending 30 June 2008—Total Industry

	<i>Sectors</i>		<i>Departures On Time</i>		<i>Arrivals On Time</i>		<i>Cancellations</i>	
	<i>Scheduled</i>	<i>Flown</i>	<i>No.</i>	<i>%</i>	<i>No.</i>	<i>%</i>	<i>No.</i>	<i>%</i>
Jetstar	55 427	54 918	43 050	78.4	41 895	76.3	509	0.9
MacAir	13 902	13 173	10 512	79.8	10 647	80.8	729	5.2
Qantas	124 064	121 242	95 952	79.1	96 546	79.6	2 822	2.3
QantasLink	97 564	96 437	79 876	82.8	77 819	80.7	1 127	1.2
Regional Express	67 970	67 155	55 803	83.1	52 450	78.1	815	1.2
Skywest	13 265	13 151	10 484	79.7	10 518	80.0	114	0.9
Tiger Airways	2 366	2 364	1 917	81.1	1 921	81.3	2	0.1
Virgin Blue	122 006	119 672	96 067	80.3	92 889	77.6	2 334	1.9
All Airlines	496 564	488 112	393 661	80.6	384 685	78.8	8 452	1.7

Note: 1. Total airline network data (including routes not shown in this report).

2. Tiger Airways figures are only for April-June 2008.

Table 2 Top ten routes for on time performance for the year ending 30 June 2008 (only for participating airlines and routes reported for all twelve months)

<i>Departures</i>		<i>Arrivals</i>	
<i>Route</i>	<i>On Time (%)</i>	<i>Route</i>	<i>On Time (%)</i>
Canberra-Adelaide	90.9	Canberra-Adelaide	90.4
Sydney-Townsville	86.9	Melbourne-Alice Springs	87.7
Canberra-Melbourne	86.9	Adelaide-Perth	86.8
Cairns-Brisbane	86.7	Townsville-Brisbane	86.8
Townsville-Brisbane	86.2	Cairns-Brisbane	86.1
Adelaide-Melbourne	86.2	Brisbane-Canberra	85.8
Canberra-Brisbane	86.0	Brisbane-Adelaide	85.4
Adelaide-Sydney	85.3	Sydney-Townsville	85.4
Hobart-Sydney	85.1	Adelaide-Melbourne	84.8
Sydney-Maroochydore	84.7	Adelaide-Sydney	84.6

Table 3 Top ten airports for on time performance for the year ending 30 June 2008 (only for participating airlines and routes reported for all twelve months)

<i>Departures</i>		<i>Arrivals</i>	
<i>Airport</i>	<i>On Time (%)</i>	<i>Airport</i>	<i>On Time (%)</i>
Townsville	85.8	Alice Springs	87.7
Canberra	85.3	Hamilton Island	83.2
Adelaide	84.8	Adelaide	82.8
Mildura	84.1	Townsville	81.8
Cairns	82.2	Canberra	81.7
Rockhampton	81.8	Mildura	81.2
Hamilton Island	81.8	Rockhampton	79.8
Mackay	81.6	Brisbane	79.2
Hobart	81.5	Kalgoorlie	78.4
Brisbane	80.7	Cairns	78.4

Total industry on time performance

Figure 1 On time performance (by month from November 2003)—Total Industry

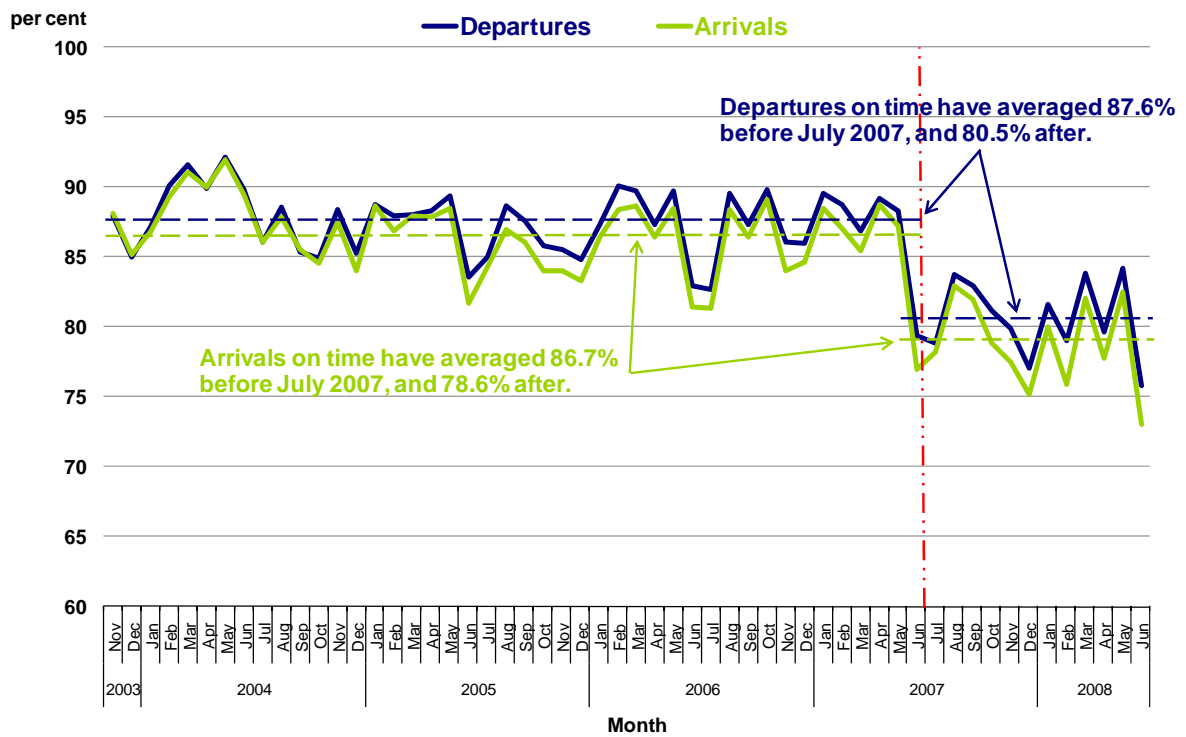
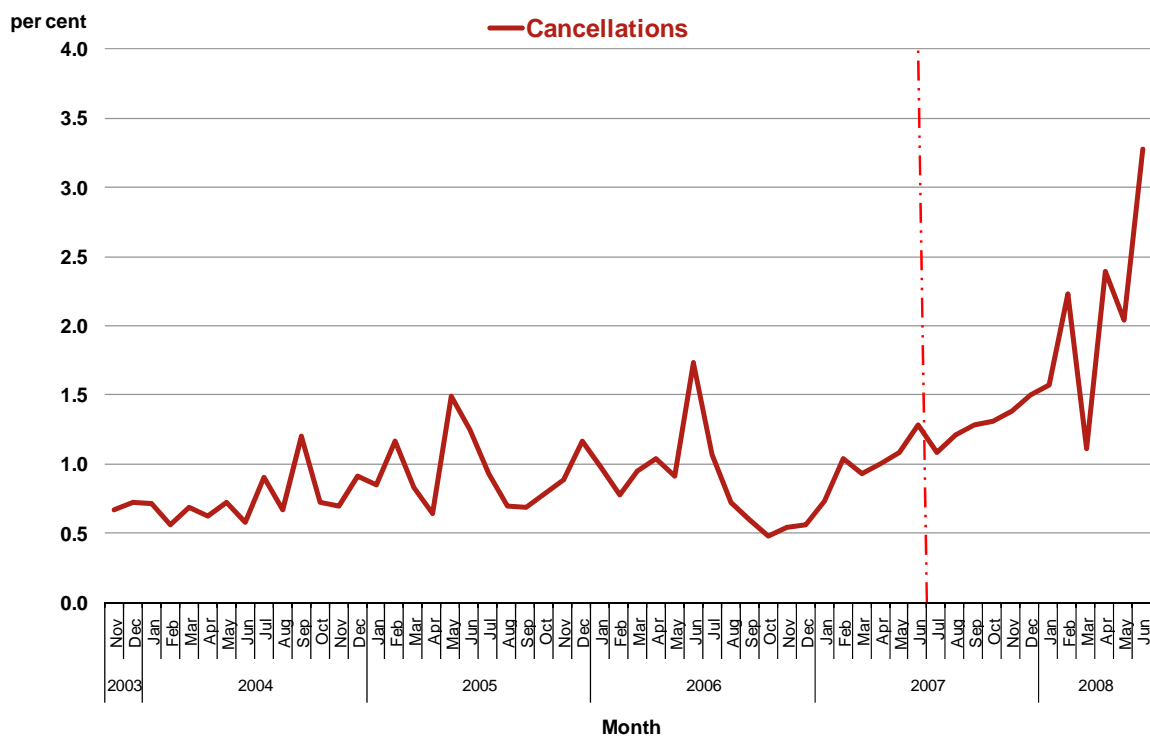


Figure 2 Cancellations (by month from November 2003)—Total Industry



Major domestic airlines on time performance

Figure 5 On time performance (by month from November 2003)—Jetstar

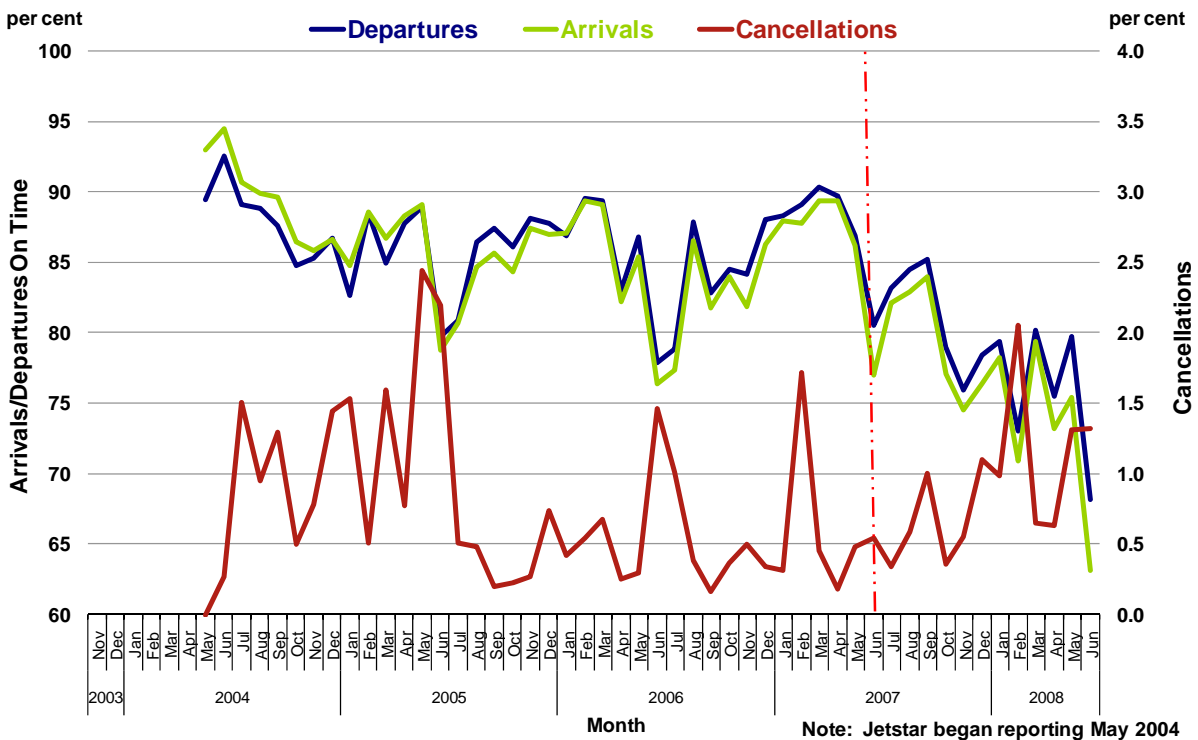


Figure 6 On time performance (by month from November 2003)—Qantas

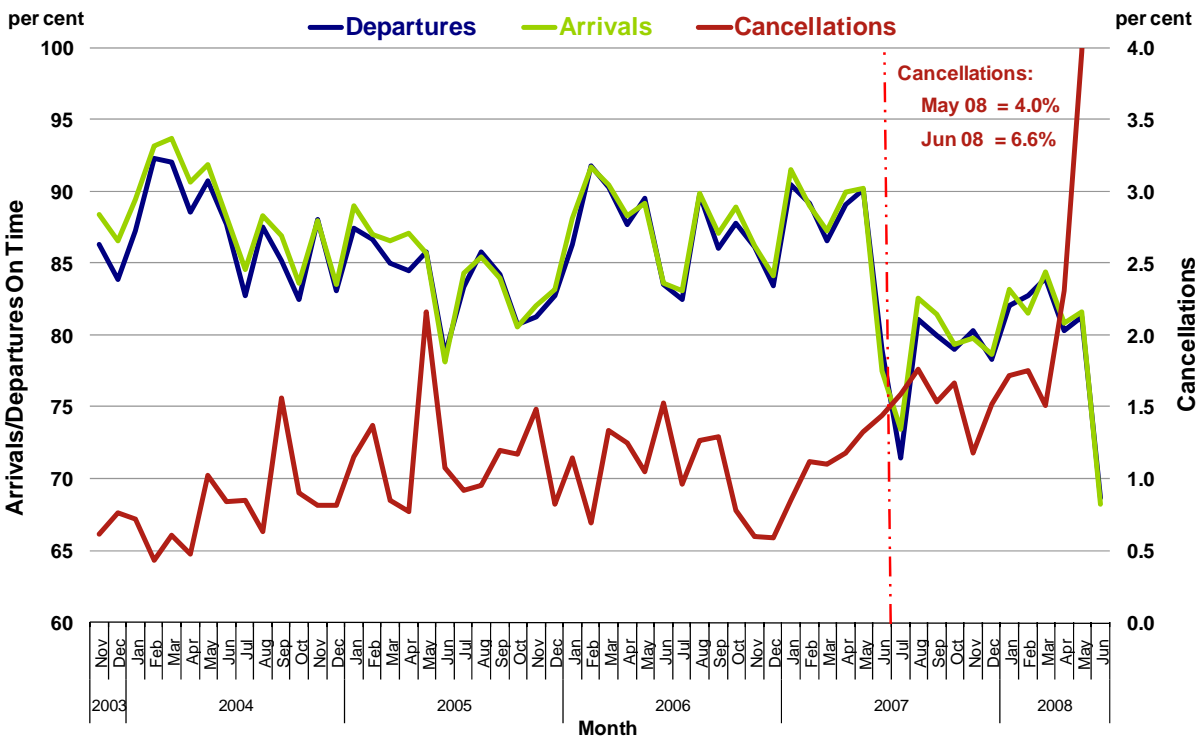


Figure 7 On time performance (by month from November 2003)—Tiger Airways

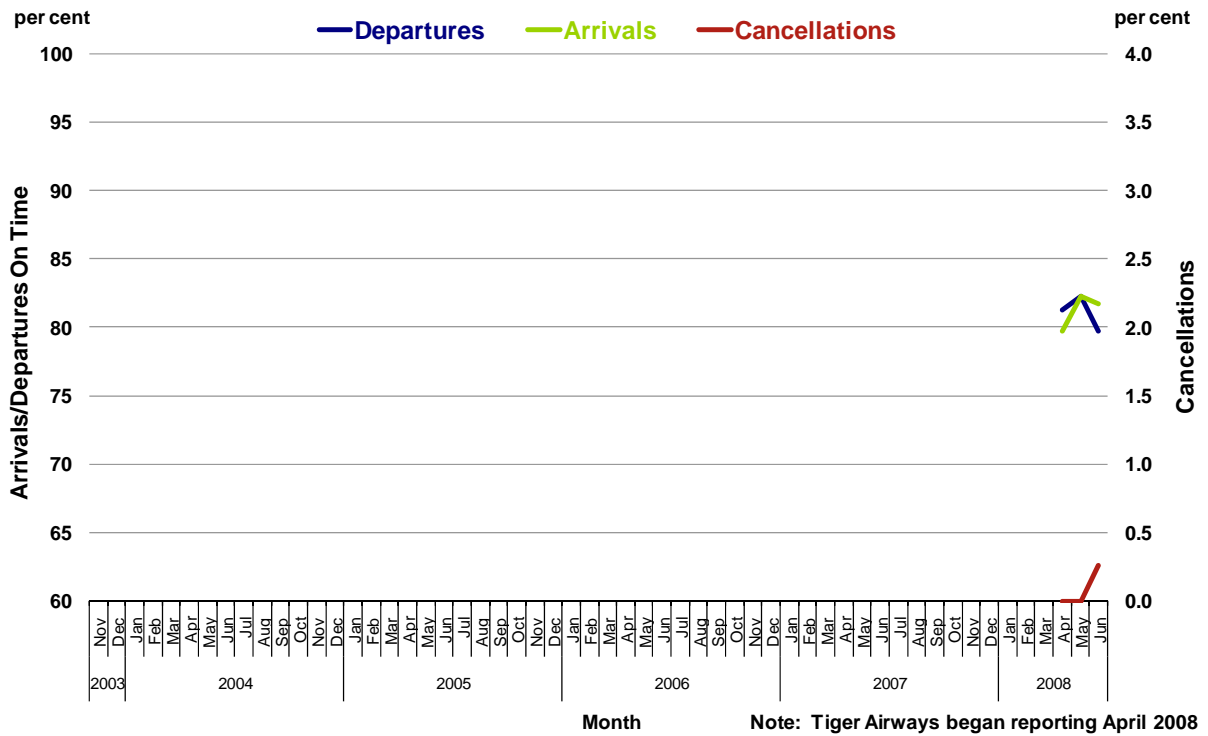
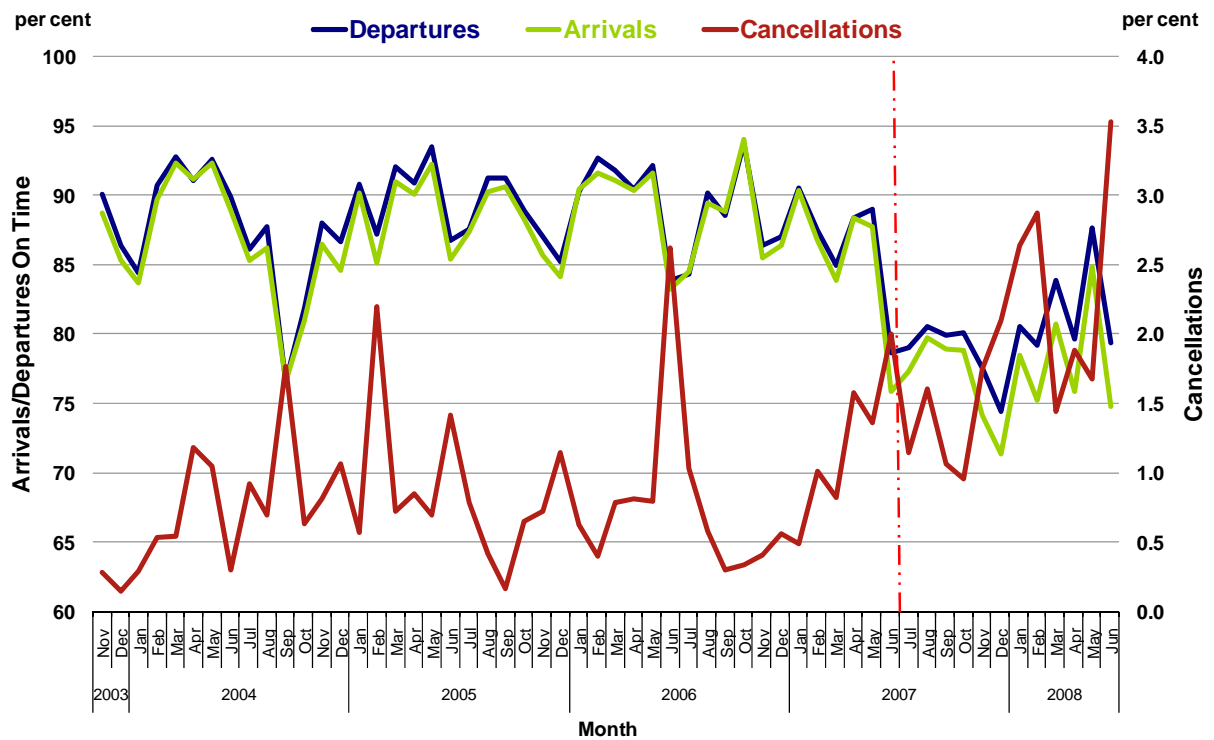


Figure 8 On time performance (by month from November 2003)—Virgin Blue



Major regional airlines on time performance

Figure 8 On time performance (by month from November 2003)—MacAir

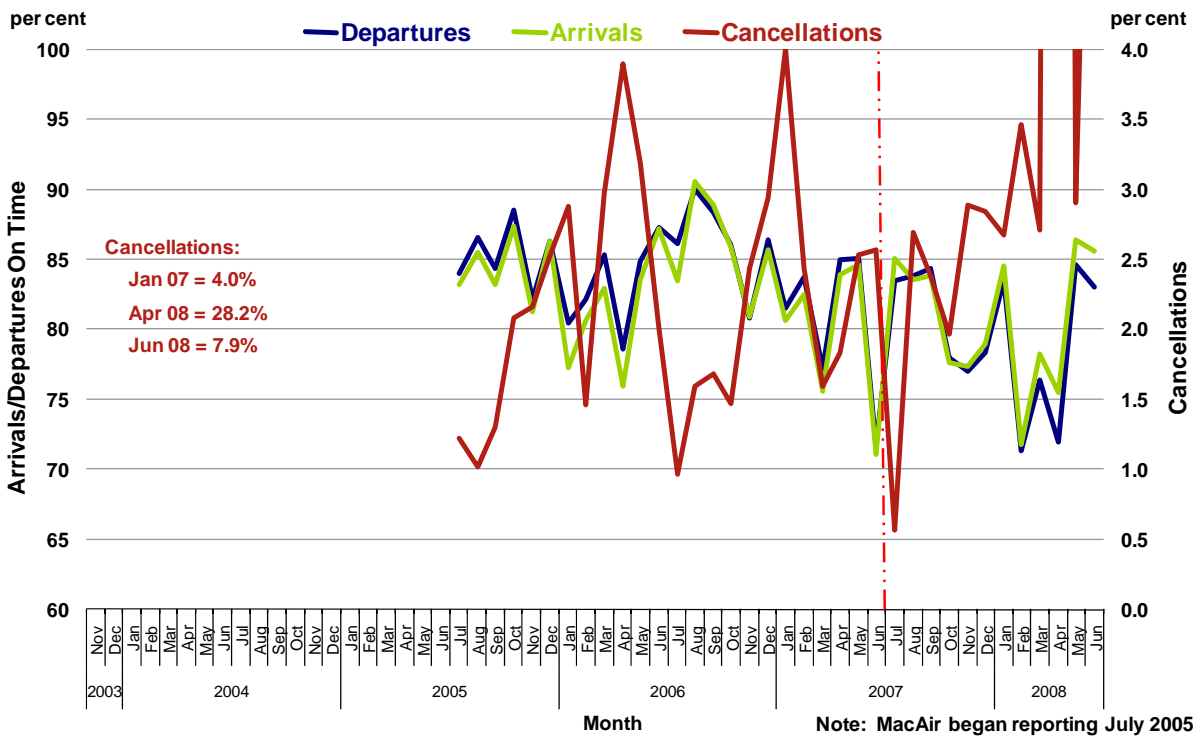


Figure 9 On time performance (by month from November 2003)—QantasLink

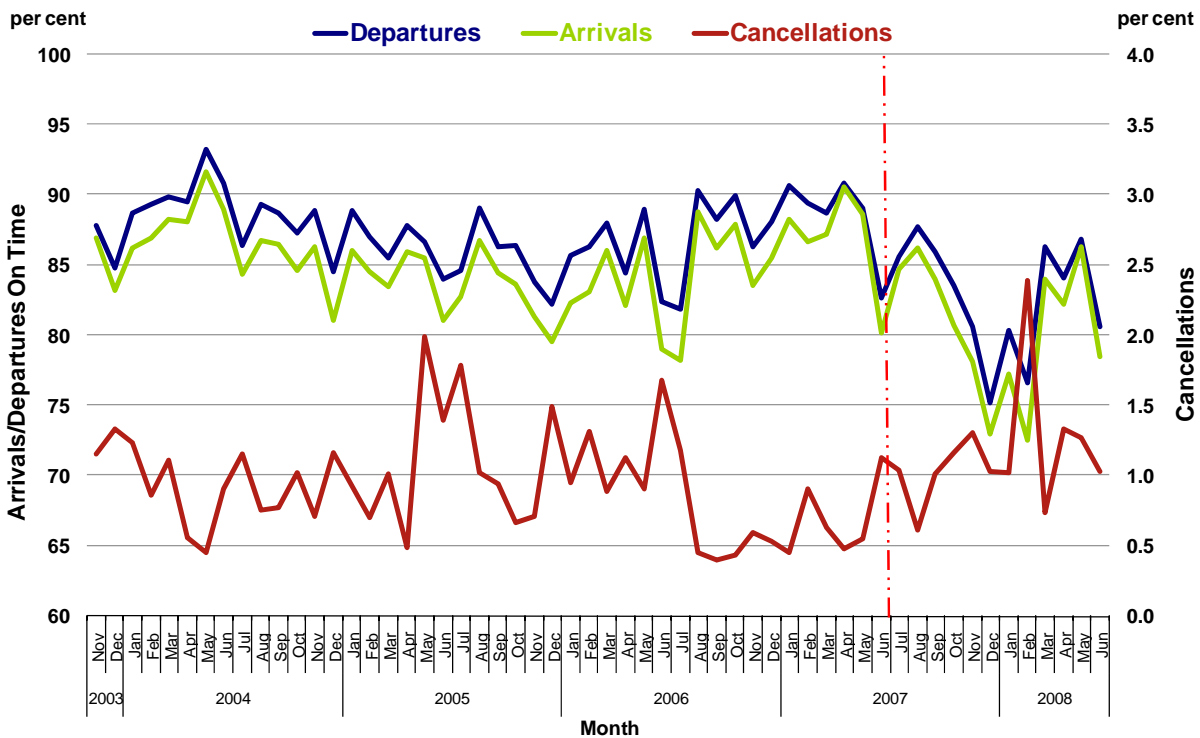


Figure 10 On time performance (by month from November 2003)—Regional Express

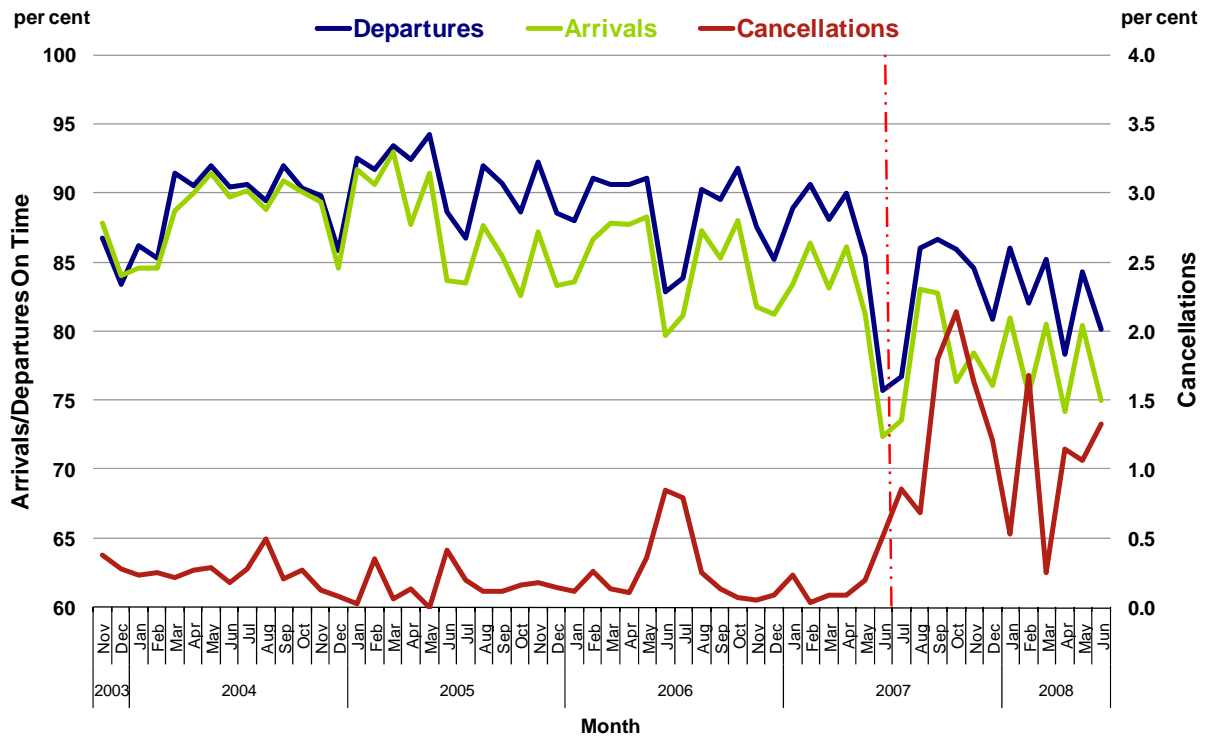
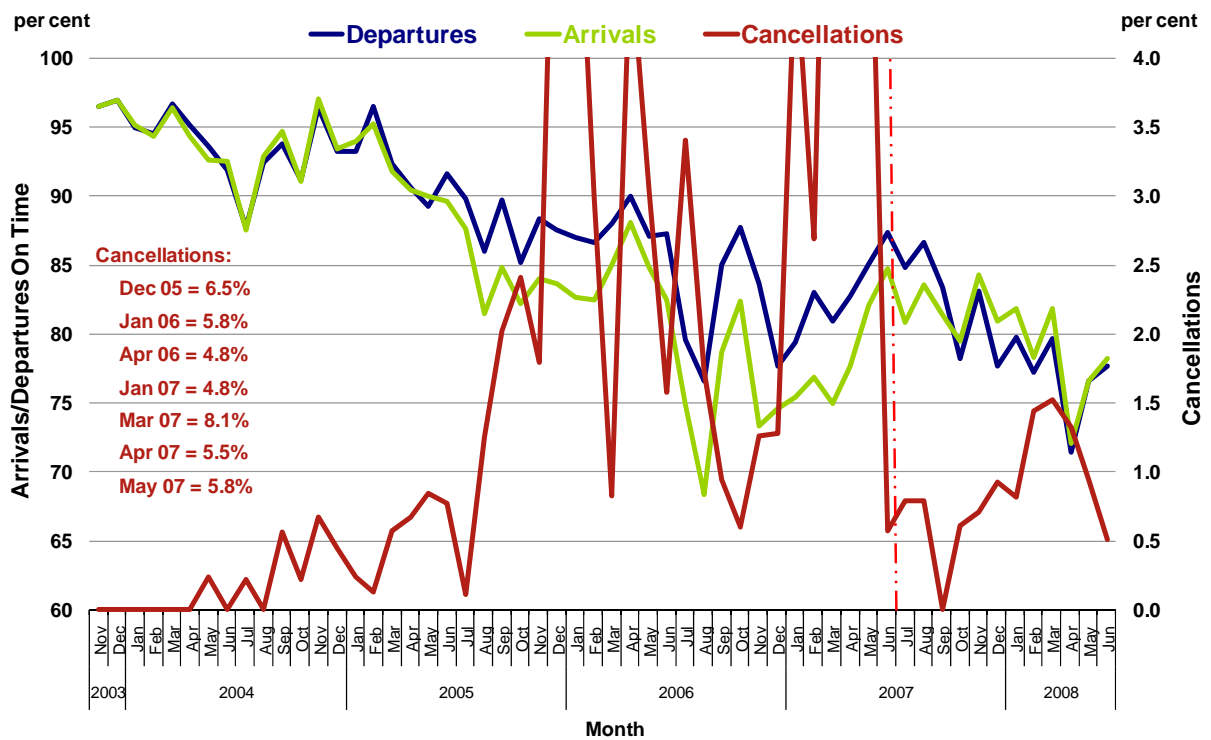


Figure 11 On time performance (by month from November 2003)—Skywest



Individual routes

On time performance is reported for all routes where the passenger load averaged over 8000 passengers per month over the previous six months, and where two or more airlines operated in competition on those routes. During 2007–08, there were 49 routes which met this definition. Over time, however, routes which meet this definition may change as airline networks and traffic levels vary.

	Sectors		Departures		Arrivals		Cancellations	
	Sched.	Flown	On Time		On Time		No.	
			No.	%	No.	%	No.	%
Adelaide-Brisbane								
Jetstar	366	358	289	80.7	291	81.3	8	2.2
Qantas	1 051	1 047	898	85.8	883	84.3	4	0.4
Virgin Blue	1 154	1 138	926	81.4	927	81.5	16	1.4
All Airlines	2 571	2 543	2 113	83.1	2 101	82.6	28	1.1
Adelaide-Canberra								
Qantas	545	544	487	89.5	489	89.9	1	0.2
Virgin Blue	363	359	250	69.6	260	72.4	4	1.1
All Airlines	908	903	737	81.6	749	82.9	5	0.6
Adelaide-Gold Coast								
Jetstar	365	365	320	87.7	314	86.0	0	0.0
Virgin Blue	366	363	278	76.6	267	73.6	3	0.8
All Airlines	731	728	598	82.1	581	79.8	3	0.4
Adelaide-Melbourne								
Qantas	4 325	4 223	3 623	85.8	3 593	85.1	102	2.4
Tiger Airways	182	182	133	73.1	143	78.6	0	0.0
Virgin Blue	3 132	3 085	2 697	87.4	2 618	84.9	47	1.5
All Airlines	7 639	7 490	6 453	86.2	6 354	84.8	149	2.0
Adelaide-Perth								
Qantas	1 732	1 732	1 430	82.6	1 518	87.6	0	0.0
Virgin Blue	458	457	394	86.2	383	83.8	1	0.2
All Airlines	2 190	2 189	1 824	83.3	1 901	86.8	1	0.0
Adelaide-Sydney								
Jetstar	658	653	608	93.1	574	87.9	5	0.8
Qantas	3 807	3 765	3 223	85.6	3 185	84.6	42	1.1
Virgin Blue	1 819	1 802	1 474	81.8	1 505	83.5	17	0.9
All Airlines	6 284	6 220	5 305	85.3	5 264	84.6	64	1.0
Albury-Sydney								
QantasLink	1 369	1 368	1 074	78.5	1 083	79.2	1	0.1
Regional Express	1 406	1 379	1 027	74.5	980	71.1	27	1.9
Virgin Blue	285	275	184	66.9	167	60.7	10	3.5
All Airlines	3 060	3 022	2 285	75.6	2 230	73.8	38	1.2
Alice Springs-Melbourne (April-June 2008 only)								
Qantas	91	91	74	81.3	67	73.6	0	0.0
Tiger Airways	39	39	29	74.4	31	79.5	0	0.0
All Airlines	130	130	103	79.2	98	75.4	0	0.0

	<i>Sectors</i>		<i>Departures On Time</i>		<i>Arrivals On Time</i>		<i>Cancellations</i>	
	<i>Sched.</i>	<i>Flown</i>	<i>No.</i>	<i>%</i>	<i>No.</i>	<i>%</i>	<i>No.</i>	<i>%</i>
Ballina-Sydney								
Jetstar	366	366	284	77.6	270	73.8	0	0.0
Regional Express	1 192	1 164	797	68.5	699	60.1	28	2.3
Virgin Blue	435	419	329	78.5	313	74.7	16	3.7
All Airlines	1 993	1 949	1 410	72.3	1 282	65.8	44	2.2
Brisbane-Adelaide								
Jetstar	367	358	317	88.5	306	85.5	9	2.5
Qantas	1 051	1 050	867	82.6	935	89.0	1	0.1
Virgin Blue	1 155	1 138	934	82.1	934	82.1	17	1.5
All Airlines	2 573	2 546	2 118	83.2	2 175	85.4	27	1.0
Brisbane-Cairns								
Jetstar	1 082	1 068	689	64.5	735	68.8	14	1.3
Qantas	1 464	1 463	1 205	82.4	1 288	88.0	1	0.1
Virgin Blue	1 642	1 635	1 399	85.6	1 373	84.0	7	0.4
All Airlines	4 188	4 166	3 293	79.0	3 396	81.5	22	0.5
Brisbane-Canberra								
Qantas	1 614	1 607	1 312	81.6	1 391	86.6	7	0.4
QantasLink	260	253	222	87.7	224	88.5	7	2.7
Virgin Blue	1 319	1 300	1 127	86.7	1 095	84.2	19	1.4
All Airlines	3 193	3 160	2 661	84.2	2 710	85.8	33	1.0
Brisbane-Darwin								
Jetstar	313	310	247	79.7	236	76.1	3	1.0
Qantas	368	368	292	79.3	300	81.5	0	0.0
Virgin Blue	367	365	273	74.8	273	74.8	2	0.5
All Airlines	1 048	1 043	812	77.9	809	77.6	5	0.5
Brisbane-Hamilton Island								
Jetstar	366	366	301	82.2	314	85.8	0	0.0
Virgin Blue	366	365	318	87.1	294	80.5	1	0.3
All Airlines	732	731	619	84.7	608	83.2	1	0.1
Brisbane-Hobart								
Jetstar	156	156	109	69.9	98	62.8	0	0.0
Virgin Blue	452	452	378	83.6	369	81.6	0	0.0
All Airlines	608	608	487	80.1	467	76.8	0	0.0
Brisbane-Mackay								
Jetstar	1 094	1 087	867	79.8	864	79.5	7	0.6
QantasLink	614	606	477	78.7	474	78.2	8	1.3
Virgin Blue	1 281	1 269	1 009	79.5	937	73.8	12	0.9
All Airlines	2 989	2 962	2 353	79.4	2 275	76.8	27	0.9
Brisbane-Melbourne								
Qantas	5 485	5 397	4 408	81.7	4 629	85.8	88	1.6
Virgin Blue	3 852	3 815	3 089	81.0	3 054	80.1	37	1.0
All Airlines	9 337	9 212	7 497	81.4	7 683	83.4	125	1.3

	Sectors		Departures On Time		Arrivals On Time		Cancellations	
	Sched.	Flown	No.	%	No.	%	No.	%
Brisbane-Newcastle								
Jetstar	1 120	1 120	838	74.8	874	78.0	0	0.0
QantasLink	352	350	285	81.4	259	74.0	2	0.6
Virgin Blue	590	589	477	81.0	468	79.5	1	0.2
All Airlines	2 062	2 059	1 600	77.7	1 601	77.8	3	0.1
Brisbane-Perth								
Qantas	1 466	1 466	1 040	70.9	1 119	76.3	0	0.0
Virgin Blue	375	375	266	70.9	257	68.5	0	0.0
All Airlines	1 841	1 841	1 306	70.9	1 376	74.7	0	0.0
Brisbane-Proserpine								
Jetstar	366	356	262	73.6	267	75.0	10	2.7
Virgin Blue	369	366	299	81.7	278	76.0	3	0.8
All Airlines	735	722	561	77.7	545	75.5	13	1.8
Brisbane-Rockhampton								
Jetstar	366	366	306	83.6	293	80.1	0	0.0
QantasLink	2 186	2 166	1 797	83.0	1 806	83.4	20	0.9
Virgin Blue	1 204	1 202	913	76.0	881	73.3	2	0.2
All Airlines	3 756	3 734	3 016	80.8	2 980	79.8	22	0.6
Brisbane-Sydney								
Qantas	8 034	7 723	6 071	78.6	5 859	75.9	311	3.9
Virgin Blue	6 982	6 716	5 686	84.7	5 350	79.7	266	3.8
All Airlines	15 016	14 439	11 757	81.4	11 209	77.6	577	3.8
Brisbane-Townsville								
Jetstar	370	363	273	75.2	278	76.6	7	1.9
Qantas	1 768	1 766	1 417	80.2	1 453	82.3	2	0.1
Virgin Blue	1 365	1 360	1 130	83.1	1 101	81.0	5	0.4
All Airlines	3 503	3 489	2 820	80.8	2 832	81.2	14	0.4
Broome-Perth								
Qantas	332	331	208	62.8	228	68.9	1	0.3
QantasLink	442	439	365	83.1	370	84.3	3	0.7
Skywest	383	376	286	76.1	257	68.4	7	1.8
Virgin Blue	275	274	152	55.5	157	57.3	1	0.4
All Airlines	1 432	1 420	1 011	71.2	1 012	71.3	12	0.8
Cairns-Brisbane								
Jetstar	1 084	1 070	850	79.4	793	74.1	14	1.3
Qantas	1 465	1 462	1 323	90.5	1 355	92.7	3	0.2
Virgin Blue	1 641	1 634	1 440	88.1	1 439	88.1	7	0.4
All Airlines	4 190	4 166	3 613	86.7	3 587	86.1	24	0.6
Cairns-Melbourne								
Jetstar	450	440	360	81.8	333	75.7	10	2.2
Qantas	367	365	233	63.8	288	78.9	2	0.5
Virgin Blue	762	760	586	77.1	587	77.2	2	0.3
All Airlines	1 579	1 565	1 179	75.3	1 208	77.2	14	0.9

	Sectors		Departures		Arrivals		Cancellations	
	Sched.	Flown	On Time		On Time			
			No.	%	No.	%	No.	%
Cairns-Sydney								
Jetstar	549	540	421	78.0	415	76.9	9	1.6
Qantas	1 279	1 274	1 033	81.1	1 096	86.0	5	0.4
Virgin Blue	1 219	1 207	949	78.6	978	81.0	12	1.0
All Airlines	3 047	3 021	2 403	79.5	2 489	82.4	26	0.9
Canberra-Adelaide								
Qantas	595	595	546	91.8	547	91.9	0	0.0
Virgin Blue	362	359	321	89.4	315	87.7	3	0.8
All Airlines	957	954	867	90.9	862	90.4	3	0.3
Canberra-Brisbane								
Qantas	1 617	1 607	1 415	88.1	1 363	84.8	10	0.6
QantasLink	259	251	200	79.7	193	76.9	8	3.1
Virgin Blue	1 317	1 294	1 095	84.6	1 072	82.8	23	1.7
All Airlines	3 193	3 152	2 710	86.0	2 628	83.4	41	1.3
Canberra-Melbourne								
Qantas	2 768	2 738	2 375	86.7	2 302	84.1	30	1.1
QantasLink	1 052	1 014	879	86.7	827	81.6	38	3.6
Tiger Airways	91	91	81	89.0	83	91.2	0	0.0
Virgin Blue	1 565	1 554	1 354	87.1	1 304	83.9	11	0.7
All Airlines	5 476	5 397	4 689	86.9	4 516	83.7	79	1.4
Canberra-Sydney								
Qantas	932	910	782	85.9	741	81.4	22	2.4
QantasLink	2 363	2 186	1 721	78.7	1 604	73.4	177	7.5
Virgin Blue	1 137	1 055	877	83.1	804	76.2	82	7.2
All Airlines	4 432	4 151	3 380	81.4	3 149	75.9	281	6.3
Coffs Harbour-Sydney								
QantasLink	1 608	1 607	1 236	76.9	1 155	71.9	1	0.1
Virgin Blue	727	723	624	86.3	612	84.6	4	0.6
All Airlines	2 335	2 330	1 860	79.8	1 767	75.8	5	0.2
Darwin-Brisbane								
Jetstar	313	309	221	71.5	224	72.5	4	1.3
Qantas	368	368	272	73.9	300	81.5	0	0.0
Virgin Blue	367	365	277	75.9	297	81.4	2	0.5
All Airlines	1 048	1 042	770	73.9	821	78.8	6	0.6
Darwin-Melbourne								
Jetstar	440	438	365	83.3	360	82.2	2	0.5
Tiger Airways	91	91	55	60.4	80	87.9	0	0.0
Virgin Blue	157	157	124	79.0	113	72.0	0	0.0
All Airlines	688	686	544	79.3	553	80.6	2	0.3
Dubbo-Sydney								
QantasLink	1 200	1 196	984	82.3	907	75.8	4	0.3
Regional Express	1 797	1 771	1 318	74.4	1 285	72.6	26	1.4
All Airlines	2 997	2 967	2 302	77.6	2 192	73.9	30	1.0

	Sectors		Departures On Time		Arrivals On Time		Cancellations	
	Sched.	Flown	No.	%	No.	%	No.	%
Gold Coast-Adelaide								
Jetstar	363	363	299	82.4	305	84.0	0	0.0
Virgin Blue	366	363	213	58.7	251	69.1	3	0.8
All Airlines	729	726	512	70.5	556	76.6	3	0.4
Gold Coast-Melbourne								
Jetstar	2 297	2 297	1 704	74.2	1 628	70.9	0	0.0
Tiger Airways	273	272	219	80.5	224	82.4	1	0.4
Virgin Blue	2 543	2 496	1 890	75.7	1 881	75.4	47	1.8
All Airlines	5 113	5 065	3 813	75.3	3 733	73.7	48	0.9
Gold Coast-Sydney								
Jetstar	3 045	3 045	2 474	81.2	2 292	75.3	0	0.0
Qantas	732	731	634	86.7	634	86.7	1	0.1
Virgin Blue	4 292	4 186	3 259	77.9	3 278	78.3	106	2.5
All Airlines	8 069	7 962	6 367	80.0	6 204	77.9	107	1.3
Hamilton Island-Brisbane								
Jetstar	366	366	296	80.9	292	79.8	0	0.0
Virgin Blue	366	364	301	82.7	308	84.6	2	0.5
All Airlines	732	730	597	81.8	600	82.2	2	0.3
Hervey Bay-Sydney								
Jetstar	210	209	182	87.1	185	88.5	1	0.5
Virgin Blue	367	364	271	74.5	267	73.4	3	0.8
All Airlines	577	573	453	79.1	452	78.9	4	0.7
Hobart-Brisbane								
Jetstar	156	156	84	53.8	84	53.8	0	0.0
Virgin Blue	451	451	334	74.1	330	73.2	0	0.0
All Airlines	607	607	418	68.9	414	68.2	0	0.0
Hobart-Melbourne								
Jetstar	1 547	1 543	1 296	84.0	1 225	79.4	4	0.3
Qantas	734	733	608	82.9	584	79.7	1	0.1
Tiger Airways	91	91	68	74.7	66	72.5	0	0.0
Virgin Blue	1 554	1 551	1 239	79.9	1 175	75.8	3	0.2
All Airlines	3 926	3 918	3 211	82.0	3 050	77.8	8	0.2
Hobart-Sydney								
Jetstar	576	573	484	84.5	454	79.2	3	0.5
Qantas	370	370	281	75.9	291	78.6	0	0.0
Virgin Blue	730	727	657	90.4	627	86.2	3	0.4
All Airlines	1 676	1 670	1 422	85.1	1 372	82.2	6	0.4
Kalgoorlie-Perth								
Qantas	582	576	439	76.2	463	80.4	6	1.0
QantasLink	370	370	294	79.5	316	85.4	0	0.0
Skywest	517	491	365	74.3	342	69.7	26	5.0
All Airlines	1 469	1 437	1 098	76.4	1 121	78.0	32	2.2

	Sectors		Departures On Time		Arrivals On Time		Cancellations	
	Sched.	Flown	No.	%	No.	%	No.	%
Launceston-Melbourne								
Jetstar	1 098	1 097	732	66.7	745	67.9	1	0.1
QantasLink	769	769	669	87.0	558	72.6	0	0.0
Tiger Airways	91	91	67	73.6	72	79.1	0	0.0
Virgin Blue	1 514	1 505	1 218	80.9	1 218	80.9	9	0.6
All Airlines	3 472	3 462	2 686	77.6	2 593	74.9	10	0.3
Launceston-Sydney								
Jetstar	368	362	237	65.5	262	72.4	6	1.6
Virgin Blue	406	405	275	67.9	291	71.9	1	0.2
All Airlines	774	767	512	66.8	553	72.1	7	0.9
Mackay-Brisbane								
Jetstar	1 094	1 088	826	75.9	781	71.8	6	0.5
QantasLink	611	602	523	86.9	492	81.7	9	1.5
Virgin Blue	1 279	1 267	1 064	84.0	1 053	83.1	12	0.9
All Airlines	2 984	2 957	2 413	81.6	2 326	78.7	27	0.9
Maroochydore-Melbourne								
Jetstar	782	762	495	65.0	503	66.0	20	2.6
Tiger Airways	39	39	36	92.3	37	94.9	0	0.0
Virgin Blue	734	703	505	71.8	522	74.3	31	4.2
All Airlines	1 555	1 504	1 036	68.9	1 062	70.6	51	3.3
Maroochydore-Sydney								
Jetstar	1 019	1 000	729	72.9	725	72.5	19	1.9
Virgin Blue	540	521	387	74.3	393	75.4	19	3.5
All Airlines	1 559	1 521	1 116	73.4	1 118	73.5	38	2.4
Melbourne-Adelaide								
Qantas	4 529	4 413	3 657	82.9	3 689	83.6	116	2.6
Tiger Airways	182	182	140	76.9	140	76.9	0	0.0
Virgin Blue	3 131	3 083	2 525	81.9	2 475	80.3	48	1.5
All Airlines	7 842	7 678	6 322	82.3	6 304	82.1	164	2.1
Melbourne-Alice Springs (April-June 2008 only)								
Qantas	91	91	74	81.3	83	91.2	0	0.0
Tiger Airways	39	39	31	79.5	31	79.5	0	0.0
All Airlines	130	130	105	80.8	114	87.7	0	0.0
Melbourne-Brisbane								
Qantas	5 435	5 360	4 337	80.9	4 241	79.1	75	1.4
Virgin Blue	3 845	3 797	3 066	80.7	2 955	77.8	48	1.2
All Airlines	9 280	9 157	7 403	80.8	7 196	78.6	123	1.3
Melbourne-Cairns								
Jetstar	451	441	379	85.9	357	81.0	10	2.2
Qantas	366	364	273	75.0	273	75.0	2	0.5
Virgin Blue	762	761	530	69.6	521	68.5	1	0.1
All Airlines	1 579	1 566	1 182	75.5	1 151	73.5	13	0.8

	Sectors		Departures On Time		Arrivals On Time		Cancellations	
	Sched.	Flown	No.	%	No.	%	No.	%
Melbourne-Canberra								
Qantas	2 591	2 564	2 135	83.3	2 184	85.2	27	1.0
QantasLink	1 051	1 011	848	83.9	829	82.0	40	3.8
Tiger Airways	91	91	83	91.2	81	89.0	0	0.0
Virgin Blue	1 555	1 539	1 275	82.8	1 224	79.5	16	1.0
All Airlines	5 288	5 205	4 341	83.4	4 318	83.0	83	1.6
Melbourne-Darwin								
Jetstar	441	439	340	77.4	326	74.3	2	0.5
Tiger Airways	91	91	78	85.7	55	60.4	0	0.0
Virgin Blue	157	157	128	81.5	127	80.9	0	0.0
All Airlines	689	687	546	79.5	508	73.9	2	0.3
Melbourne-Gold Coast								
Jetstar	2 307	2 307	1 865	80.8	1 780	77.2	0	0.0
Tiger Airways	273	272	233	85.7	219	80.5	1	0.4
Virgin Blue	2 544	2 503	2 025	80.9	1 911	76.3	41	1.6
All Airlines	5 124	5 082	4 123	81.1	3 910	76.9	42	0.8
Melbourne-Hobart								
Jetstar	1 547	1 542	1 265	82.0	1 244	80.7	5	0.3
Qantas	734	733	514	70.1	485	66.2	1	0.1
Tiger Airways	91	91	71	78.0	68	74.7	0	0.0
Virgin Blue	1 553	1 551	1 177	75.9	1 129	72.8	2	0.1
All Airlines	3 925	3 917	3 027	77.3	2 926	74.7	8	0.2
Melbourne-Launceston								
Jetstar	1 099	1 097	784	71.5	730	66.5	2	0.2
QantasLink	770	767	570	74.3	572	74.6	3	0.4
Tiger Airways	91	91	78	85.7	66	72.5	0	0.0
Virgin Blue	1 512	1 507	1 168	77.5	1 097	72.8	5	0.3
All Airlines	3 472	3 462	2 600	75.1	2 465	71.2	10	0.3
Melbourne-Maroochydore								
Jetstar	783	769	633	82.3	566	73.6	14	1.8
Tiger Airways	39	39	37	94.9	36	92.3	0	0.0
Virgin Blue	735	713	554	77.7	566	79.4	22	3.0
All Airlines	1 557	1 521	1 224	80.5	1 168	76.8	36	2.3
Melbourne-Mildura								
QantasLink	1 496	1 492	1 173	78.6	1 169	78.4	4	0.3
Regional Express	1 327	1 314	1 187	90.3	1 110	84.5	13	1.0
All Airlines	2 823	2 806	2 360	84.1	2 279	81.2	17	0.6
Melbourne-Newcastle								
Jetstar	745	745	539	72.3	512	68.7	0	0.0
QantasLink	547	544	455	83.6	439	80.7	3	0.5
Tiger Airways	91	91	75	82.4	77	84.6	0	0.0
Virgin Blue	366	365	336	92.1	317	86.8	1	0.3
All Airlines	1 749	1 745	1 405	80.5	1 345	77.1	4	0.2

	Sectors		Departures		Arrivals		Cancellations	
	Sched.	Flown	On Time		On Time			
			No.	%	No.	%	No.	%
Melbourne-Perth								
Qantas	2 496	2 475	1 451	58.6	1 710	69.1	21	0.8
Tiger Airways	91	91	82	90.1	83	91.2	0	0.0
Virgin Blue	1 462	1 460	1 286	88.1	1 179	80.8	2	0.1
All Airlines	4 049	4 026	2 819	70.0	2 972	73.8	23	0.6
Melbourne-Sydney								
Qantas	11 331	10 620	8 240	77.6	7 479	70.4	711	6.3
Virgin Blue	9 555	9 199	7 343	79.8	6 788	73.8	356	3.7
All Airlines	20 886	19 819	15 583	78.6	14 267	72.0	1,067	5.1
Mildura-Melbourne								
QantasLink	1 496	1 485	1 182	79.6	1 174	79.1	11	0.7
Regional Express	1 326	1 313	1 180	89.9	1 138	86.7	13	1.0
All Airlines	2 822	2 798	2 362	84.4	2 312	82.6	24	0.9
Newcastle-Brisbane								
Jetstar	1 118	1 118	757	67.7	697	62.3	0	0.0
QantasLink	351	350	286	81.7	278	79.4	1	0.3
Virgin Blue	589	586	471	80.4	472	80.5	3	0.5
All Airlines	2 058	2 054	1 514	73.7	1 447	70.4	4	0.2
Newcastle-Melbourne								
Jetstar	749	749	550	73.4	561	74.9	0	0.0
QantasLink	543	541	432	79.9	406	75.0	2	0.4
Tiger Airways	91	91	77	84.6	75	82.4	0	0.0
Virgin Blue	366	364	290	79.7	263	72.3	2	0.5
All Airlines	1 749	1 745	1 349	77.3	1 305	74.8	4	0.2
Perth-Adelaide								
Qantas	1 732	1 722	1 405	81.6	1 418	82.3	10	0.6
Virgin Blue	458	457	391	85.6	395	86.4	1	0.2
All Airlines	2 190	2 179	1 796	82.4	1 813	83.2	11	0.5
Perth-Brisbane								
Qantas	1 466	1 465	897	61.2	978	66.8	1	0.1
Virgin Blue	376	375	245	65.3	233	62.1	1	0.3
All Airlines	1 842	1 840	1 142	62.1	1 211	65.8	2	0.1
Perth-Broome								
Qantas	332	332	246	74.1	264	79.5	0	0.0
QantasLink	441	439	343	78.1	338	77.0	2	0.5
Skywest	382	377	298	79.0	293	77.7	5	1.3
Virgin Blue	275	274	151	55.1	159	58.0	1	0.4
All Airlines	1 430	1 422	1 038	73.0	1 054	74.1	8	0.6
Perth-Kalgoorlie								
Qantas	581	574	481	83.8	478	83.3	7	1.2
QantasLink	370	370	290	78.4	290	78.4	0	0.0
Skywest	516	489	375	76.7	355	72.6	27	5.2
All Airlines	1 467	1 433	1 146	80.0	1 123	78.4	34	2.3

	Sectors		Departures On Time		Arrivals On Time		Cancellations	
	Sched.	Flown	No.	%	No.	%	No.	%
Perth-Melbourne								
Qantas	2 489	2 459	1 621	65.9	1 593	64.8	30	1.2
Tiger Airways	91	91	69	75.8	81	89.0	0	0.0
Virgin Blue	1 462	1 457	1 225	84.1	1 121	76.9	5	0.3
All Airlines	4 042	4 007	2 915	72.7	2 795	69.8	35	0.9
Perth-Port Hedland (July 2007 - April 2008)								
QantasLink	824	824	669	81.2	695	84.3	0	0.0
Skywest	121	121	86	71.1	82	67.8	0	0.0
All Airlines	945	945	755	79.9	777	82.2	0	0.0
Perth-Sydney								
Qantas	1 968	1 956	1 352	69.1	1 354	69.2	12	0.6
Virgin Blue	1 134	1 131	960	84.9	834	73.7	3	0.3
All Airlines	3 102	3 087	2 312	74.9	2 188	70.9	15	0.5
Port Hedland-Perth (July 2007 - April 2008)								
QantasLink	819	819	692	84.5	687	83.9	0	0.0
Skywest	127	127	76	59.8	66	52.0	0	0.0
All Airlines	946	946	768	81.2	753	79.6	0	0.0
Port Macquarie-Sydney (February-June 2008 only)								
QantasLink	599	598	464	77.6	441	73.7	1	0.2
Virgin Blue	148	148	77	52.0	68	45.9	0	0.0
All Airlines	747	746	541	72.5	509	68.2	1	0.1
Proserpine-Brisbane								
Jetstar	366	355	240	67.6	237	66.8	11	3.0
Virgin Blue	370	365	290	79.5	299	81.9	5	1.4
All Airlines	736	720	530	73.6	536	74.4	16	2.2
Rockhampton-Brisbane								
Jetstar	366	366	259	70.8	229	62.6	0	0.0
QantasLink	1 749	1 733	1 449	83.6	1 446	83.4	16	0.9
Virgin Blue	1 205	1 201	993	82.7	984	81.9	4	0.3
All Airlines	3 320	3 300	2 701	81.8	2 659	80.6	20	0.6
Sydney-Adelaide								
Jetstar	524	521	370	71.0	423	81.2	3	0.6
Qantas	3 554	3 532	2 831	80.2	3 006	85.1	22	0.6
Virgin Blue	1 820	1 805	1 400	77.6	1 363	75.5	15	0.8
All Airlines	5 898	5 858	4 601	78.5	4 792	81.8	40	0.7
Sydney-Albury								
QantasLink	1 372	1 371	993	72.4	941	68.6	1	0.1
Regional Express	1 404	1 379	1 007	73.0	910	66.0	25	1.8
Virgin Blue	286	278	178	64.0	185	66.5	8	2.8
All Airlines	3 062	3 028	2 178	71.9	2 036	67.2	34	1.1

	<i>Sectors</i>		<i>Departures On Time</i>		<i>Arrivals On Time</i>		<i>Cancellations</i>	
	<i>Sched.</i>	<i>Flown</i>	<i>No.</i>	<i>%</i>	<i>No.</i>	<i>%</i>	<i>No.</i>	<i>%</i>
Sydney-Ballina								
Jetstar	369	369	304	82.4	294	79.7	0	0.0
Regional Express	1 197	1 169	847	72.5	772	66.0	28	2.3
Virgin Blue	435	427	345	80.8	334	78.2	8	1.8
All Airlines	2 001	1 965	1 496	76.1	1 400	71.2	36	1.8
Sydney-Brisbane								
Qantas	8 082	7 762	5 995	77.2	6 230	80.3	320	4.0
Virgin Blue	6 976	6 706	5 232	78.0	4 982	74.3	270	3.9
All Airlines	15 058	14 468	11 227	77.6	11 212	77.5	590	3.9
Sydney-Cairns								
Jetstar	551	542	475	87.6	460	84.9	9	1.6
Qantas	1 279	1 277	965	75.6	1 008	78.9	2	0.2
Virgin Blue	1 220	1 210	920	76.0	850	70.2	10	0.8
All Airlines	3 050	3 029	2 360	77.9	2 318	76.5	21	0.7
Sydney-Canberra								
Qantas	975	952	765	80.4	764	80.3	23	2.4
QantasLink	2 361	2 190	1 744	79.6	1 664	76.0	171	7.2
Virgin Blue	1 144	1 068	791	74.1	802	75.1	76	6.6
All Airlines	4 480	4 210	3 300	78.4	3 230	76.7	270	6.0
Sydney-Coffs Harbour								
QantasLink	1 610	1 610	1 197	74.3	1 158	71.9	0	0.0
Virgin Blue	730	730	630	86.3	613	84.0	0	0.0
All Airlines	2 340	2 340	1 827	78.1	1 771	75.7	0	0.0
Sydney-Dubbo								
QantasLink	1 201	1 198	911	76.0	944	78.8	3	0.2
Regional Express	1 794	1 772	1 200	67.7	1 132	63.9	22	1.2
All Airlines	2 995	2 970	2 111	71.1	2 076	69.9	25	0.8
Sydney-Gold Coast								
Jetstar	3 049	3 049	2 460	80.7	2 429	79.7	0	0.0
Qantas	732	731	566	77.4	564	77.2	1	0.1
Virgin Blue	4 292	4 196	3 261	77.7	3 176	75.7	96	2.2
All Airlines	8 073	7 976	6 287	78.8	6 169	77.3	97	1.2
Sydney-Hervey Bay								
Jetstar	210	210	185	88.1	186	88.6	0	0.0
Virgin Blue	367	366	255	69.7	259	70.8	1	0.3
All Airlines	577	576	440	76.4	445	77.3	1	0.2
Sydney-Hobart								
Jetstar	576	575	477	83.0	489	85.0	1	0.2
Qantas	370	370	288	77.8	292	78.9	0	0.0
Virgin Blue	730	728	489	67.2	467	64.1	2	0.3
All Airlines	1 676	1 673	1 254	75.0	1 248	74.6	3	0.2

	Sectors		Departures On Time		Arrivals On Time		Cancellations	
	Sched.	Flown	No.	%	No.	%	No.	%
Sydney-Launceston								
Jetstar	366	364	265	72.8	251	69.0	2	0.5
Virgin Blue	406	406	301	74.1	288	70.9	0	0.0
All Airlines	772	770	566	73.5	539	70.0	2	0.3
Sydney-Maroochydore								
Jetstar	1 018	1 010	847	83.9	788	78.0	8	0.8
Virgin Blue	540	525	453	86.3	419	79.8	15	2.8
All Airlines	1 558	1 535	1 300	84.7	1 207	78.6	23	1.5
Sydney-Melbourne								
Qantas	11 304	10 610	7 704	72.6	7 465	70.4	694	6.1
Virgin Blue	9 544	9 185	7 440	81.0	7 151	77.9	359	3.8
All Airlines	20 848	19 795	15 144	76.5	14 616	73.8	1,053	5.1
Sydney-Perth								
Qantas	1 969	1 963	1 320	67.2	1 485	75.6	6	0.3
Virgin Blue	1 137	1 136	812	71.5	735	64.7	1	0.1
All Airlines	3 106	3 099	2 132	68.8	2 220	71.6	7	0.2
Sydney-Port Macquarie (February-June 2008 only)								
QantasLink	600	599	470	78.5	442	73.8	1	0.2
Virgin Blue	148	148	87	58.8	80	54.1	0	0.0
All Airlines	748	747	557	74.6	522	69.9	1	0.1
Sydney-Townsville								
Jetstar	262	262	256	97.7	250	95.4	0	0.0
Virgin Blue	366	366	290	79.2	286	78.1	0	0.0
All Airlines	628	628	546	86.9	536	85.4	0	0.0
Sydney-Wagga Wagga								
QantasLink	1 338	1 336	926	69.3	894	66.9	2	0.1
Regional Express	1 679	1 655	1 242	75.0	1 101	66.5	24	1.4
All Airlines	3017	2991	2168	72.5	1995	66.7	26	0.9
Townsville-Brisbane								
Jetstar	366	363	257	70.8	256	70.5	3	0.8
Qantas	1 766	1 761	1 540	87.5	1 546	87.8	5	0.3
Virgin Blue	1 365	1 360	1 207	88.8	1 221	89.8	5	0.4
All Airlines	3 497	3 484	3 004	86.2	3 023	86.8	13	0.4
Townsville-Sydney								
Jetstar	261	261	239	91.6	232	88.9	0	0.0
Virgin Blue	366	366	283	77.3	293	80.1	0	0.0
All Airlines	627	627	522	83.3	525	83.7	0	0.0
Wagga Wagga-Sydney								
QantasLink	1 337	1 336	1 021	76.4	862	64.5	1	0.1
Regional Express	1 677	1 652	1 251	75.7	1 191	72.1	25	1.5
All Airlines	3 014	2 988	2 272	76.0	2 053	68.7	26	0.9

Airports

On time performance is reported for all routes where the passenger load averages over 8000 passengers per month and where two or more airlines operate in competition. The following data reports by airport against flights operated on those routes only.

Airport	Departures			Arrivals		
	Sectors Flown	On Time No.	On Time %	Sectors Flown	On Time No.	On Time %
Adelaide						
Jetstar	1 376	1 217	88.4	1 242	1 034	83.3
Qantas	11 311	9 661	85.4	11 312	9 595	84.8
Tiger Airways	182	133	73.1	182	140	76.9
Virgin Blue	7 204	6 019	83.6	7 205	5 733	79.6
All Airlines	20 073	17 030	84.8	19 941	16 502	82.8
Relates to services to and from Brisbane, Canberra, Gold Coast, Melbourne, Perth and Sydney.						
Albury						
QantasLink	1 368	1 074	78.5	1 371	941	68.6
Regional Express	1 379	1 027	74.5	1 379	910	66.0
Virgin Blue	275	184	66.9	278	185	66.5
All Airlines	3 022	2 285	75.6	3 028	2 036	67.2
Relates to services to and from Sydney only.						
Alice Springs						
Qantas	91	74	81.3	91	83	91.2
Tiger Airways	39	29	74.4	39	31	79.5
All Airlines	130	103	79.2	130	114	87.7
Relates to services to and from Melbourne only (from April 2008).						
Ballina						
Jetstar	366	284	77.6	369	294	79.7
Regional Express	1 164	797	68.5	1 169	772	66.0
Virgin Blue	419	329	78.5	427	334	78.2
All Airlines	1 949	1 410	72.3	1 965	1 400	71.2
Relates to services to and from Sydney only.						
Brisbane						
Jetstar	5 550	4 209	75.8	5 549	3 884	70.0
Qantas	20 840	16 612	79.7	20 832	16 896	81.1
QantasLink	3 375	2 781	82.4	2 936	2 409	82.1
Virgin Blue	20 947	17 298	82.6	20 903	16 572	79.3
All Airlines	50 712	40 900	80.7	50 220	39 761	79.2
Relates to services to and from Adelaide, Cairns, Canberra, Darwin, Hamilton Island, Hobart, Mackay, Melbourne, Newcastle, Perth, Proserpine, Rockhampton, Sydney and Townsville.						

Airport	Departures			Arrivals		
	Sectors Flown	On Time No.	On Time %	Sectors Flown	On Time No.	On Time %
Broome						
Qantas	331	208	62.8	332	264	79.5
QantasLink	439	365	83.1	439	338	77.0
Skywest	376	286	76.1	377	293	77.7
Virgin Blue	274	152	55.5	274	159	58.0
All Airlines	1 420	1 011	71.2	1 422	1 054	74.1
Relates to services to and from Perth only.						
Cairns						
Jetstar	2 050	1 631	79.6	2 051	1 552	75.7
Qantas	3 101	2 589	83.5	3 104	2 569	82.8
Virgin Blue	3 601	2 975	82.6	3 606	2 744	76.1
All Airlines	8 752	7 195	82.2	8 761	6 865	78.4
Relates to services to and from Brisbane, Melbourne and Sydney.						
Canberra						
Qantas	5 850	5 118	87.5	5 667	4 828	85.2
QantasLink	3 451	2 800	81.1	3 454	2 717	78.7
Tiger Airways	91	81	89.0	91	81	89.0
Virgin Blue	4 262	3 647	85.6	4 266	3 381	79.3
All Airlines	13 654	11 646	85.3	13 478	11 007	81.7
Relates to services to and from Adelaide, Brisbane, Melbourne and Sydney.						
Coffs Harbour						
QantasLink	1 607	1 236	76.9	1 610	1 158	71.9
Virgin Blue	723	624	86.3	730	613	84.0
All Airlines	2 330	1 860	79.8	2 340	1 771	75.7
Relates to services to and from Sydney only.						
Darwin						
Jetstar	747	586	78.4	749	562	75.0
Qantas	368	272	73.9	368	300	81.5
Tiger Airways	91	55	60.4	91	55	60.4
Virgin Blue	522	401	76.8	522	400	76.6
All Airlines	1 728	1 314	76.0	1 730	1 317	76.1
Relates to services to and from Brisbane and Melbourne.						
Dubbo						
QantasLink	1 196	984	82.3	1 198	944	78.8
Regional Express	1 771	1 318	74.4	1 772	1 132	63.9
All Airlines	2 967	2 302	77.6	2 970	2 076	69.9
Relates to services to and from Sydney only.						
Gold Coast						
Jetstar	5 705	4 477	78.5	5 721	4 523	79.1
Qantas	731	634	86.7	731	564	77.2
Tiger Airways	272	219	80.5	272	219	80.5
Virgin Blue	7 045	5 362	76.1	7 062	5 354	75.8
All Airlines	13 753	10 692	77.7	13 786	10 660	77.3
Relates to services to and from Adelaide, Melbourne and Sydney.						

Airport	Departures			Arrivals		
	Sectors Flown	On Time		Sectors Flown	On Time	
		No.	%		No.	%
Hamilton Island						
Jetstar	366	296	80.9	366	314	85.8
Virgin Blue	364	301	82.7	365	294	80.5
All Airlines	730	597	81.8	731	608	83.2
Relates to services to and from Brisbane only.						
Hervey Bay						
Jetstar	209	182	87.1	210	186	88.6
Virgin Blue	364	271	74.5	366	259	70.8
All Airlines	573	453	79.1	576	445	77.3
Relates to services to and from Sydney only.						
Hobart						
Jetstar	2 272	1 864	82.0	2 273	1 831	80.6
Qantas	1 103	889	80.6	1 103	777	70.4
Tiger Airways	91	68	74.7	91	68	74.7
Virgin Blue	2 729	2 230	81.7	2 731	1 965	72.0
All Airlines	6 195	5 051	81.5	6 198	4 641	74.9
Relates to services to and from Brisbane, Melbourne and Sydney.						
Kalgoorlie						
Qantas	576	439	76.2	574	478	83.3
QantasLink	370	294	79.5	370	290	78.4
Skywest	491	365	74.3	489	355	72.6
All Airlines	1 437	1 098	76.4	1 433	1 123	78.4
Relates to services to and from Perth only.						
Launceston						
Jetstar	1 459	969	66.4	1 461	981	67.1
QantasLink	769	669	87.0	767	572	74.6
Tiger Airways	91	67	73.6	91	66	72.5
Virgin Blue	1 910	1 493	78.2	1 913	1 385	72.4
All Airlines	4 229	3 198	75.6	4 232	3 004	71.0
Relates to services to and from Melbourne and Sydney.						
Mackay						
Jetstar	1 088	826	75.9	1 087	864	79.5
QantasLink	602	523	86.9	606	474	78.2
Virgin Blue	1 267	1 064	84.0	1 269	937	73.8
All Airlines	2 957	2 413	81.6	2 962	2 275	76.8
Relates to services to and from Brisbane only.						
Maroochydore						
Jetstar	1 762	1 224	69.5	1 779	1 354	76.1
Tiger Airways	39	36	92.3	39	36	92.3
Virgin Blue	1 224	892	72.9	1 238	985	79.6
All Airlines	3 025	2 152	71.1	3 056	2 375	77.7
Relates to services to and from Melbourne and Sydney.						

Airport	Departures			Arrivals		
	Sectors Flown	On Time No.	On Time %	Sectors Flown	On Time No.	On Time %
Melbourne						
Jetstar	7 340	5 805	79.1	7 326	5 355	73.1
Qantas	26 620	20 681	77.7	26 616	20 521	77.1
QantasLink	3 814	3 046	79.9	3 809	2 965	77.8
Regional Express	1 314	1 187	90.3	1 313	1 138	86.7
Tiger Airways	1 078	908	84.2	1 078	892	82.7
Virgin Blue	26 635	21 413	80.4	26 632	21 007	78.9
All Airlines	66 801	53 040	79.4	66 774	51 878	77.7
Relates to services to and from Adelaide, Alice Springs, Brisbane, Cairns, Canberra, Darwin, Gold Coast, Hobart, Launceston, Maroochydore, Mildura, Newcastle, Perth and Sydney.						
Mildura						
QantasLink	1 485	1 182	79.6	1 492	1 169	78.4
Regional Express	1 313	1 180	89.9	1 314	1 110	84.5
All Airlines	2 798	2 362	84.4	2 806	2 279	81.2
Relates to services to and from Melbourne only.						
Newcastle						
Jetstar	1 867	1 307	70.0	1 865	1 386	74.3
Tiger Airways	91	77	84.6	91	77	84.6
Virgin Blue	950	761	80.1	954	785	82.3
All Airlines	3 799	2 863	75.4	3 804	2 946	77.4
Relates to services to and from Brisbane and Melbourne.						
Perth						
Qantas	8 508	6 002	70.5	8 543	6 523	76.4
QantasLink	1 633	1 302	79.7	1 628	1 373	84.3
Skywest	987	759	76.9	994	665	66.9
Tiger Airways	91	69	75.8	91	83	91.2
Virgin Blue	3 694	2 972	80.5	3 702	2 711	73.2
All Airlines	14 913	11 104	74.5	14 958	11 355	75.9
Relates to services to and from Adelaide, Brisbane, Broome, Kalgoorlie, Melbourne, Port Hedland and Sydney.						
Port Hedland						
QantasLink	819	692	84.5	824	695	84.3
Skywest	127	76	59.8	121	82	67.8
All Airlines	946	768	81.2	945	777	82.2
Relates to services to and from Perth only (up to April 2008).						
Port Macquarie						
QantasLink	598	464	77.6	599	442	73.8
Virgin Blue	148	77	52.0	148	80	54.1
All Airlines	746	541	72.5	747	522	69.9
Relates to services to and from Sydney only (from February 2008).						
Proserpine						
Jetstar	355	240	67.6	356	267	75.0
Virgin Blue	365	290	79.5	366	278	76.0
All Airlines	720	530	73.6	722	545	75.5
Relates to services to and from Brisbane only.						

<i>Airport</i>	<i>Departures</i>			<i>Arrivals</i>		
	<i>Sectors Flown</i>	<i>On Time</i>		<i>Sectors Flown</i>	<i>On Time</i>	
		<i>No.</i>	<i>%</i>		<i>No.</i>	<i>%</i>
Rockhampton						
Jetstar	366	259	70.8	366	293	80.1
QantasLink	1 733	1 449	83.6	2 166	1 806	83.4
Virgin Blue	1 201	993	82.7	1 202	881	73.3
All Airlines	3 300	2 701	81.8	3 734	2 980	79.8
Relates to services to and from Brisbane only.						
Sydney						
Jetstar	6 902	5 639	81.7	7 009	5 409	77.2
Qantas	27 197	20 434	75.1	27 349	20 639	75.5
QantasLink	8 304	6 241	75.2	8 291	6 052	73.0
Regional Express	5 975	4 296	71.9	5 966	4 155	69.6
Virgin Blue	29 280	22 884	78.2	29 244	22 568	77.2
All Airlines	77 658	59 494	76.6	77 859	58 823	75.6
Relates to services to and from Adelaide, Albury, Ballina, Brisbane, Cairns, Canberra, Coffs Harbour, Dubbo, Gold Coast, Hervey Bay, Hobart, Launceston, Maroochydore, Melbourne, Perth, Port Macquarie, Townsville and Wagga Wagga.						
Townsville						
Jetstar	624	496	79.5	625	528	84.5
Qantas	1 761	1 540	87.5	1 766	1 453	82.3
Virgin Blue	1 726	1 490	86.3	1 726	1 387	80.4
All Airlines	4 111	3 526	85.8	4 117	3 368	81.8
Relates to services to and from Brisbane and Sydney.						
Wagga Wagga						
QantasLink	1 336	1 021	76.4	1 336	894	66.9
Regional Express	1 652	1 251	75.7	1 655	1 101	66.5
All Airlines	2 988	2 272	76.0	2 991	1 995	66.7
Relates to services to and from Sydney only.						

Definitions

On time departure	A flight departure is counted as "on time" if it departs the gate within 15 minutes of the scheduled departure time shown in the carriers' schedule.
On time arrival	A flight arrival is counted as "on time" if it arrived at the gate within 15 minutes of the scheduled arrival time shown in the carriers' schedule. Neither diverted nor cancelled flights count as on time.
Cancellation	A flight is regarded as a cancellation if it is cancelled or rescheduled less than 7 days prior to its scheduled departure time.
On time departure percentage	The percentage of on time departures is measured against the number of departures <i>operated</i> on any particular sector.
On time arrival percentage	The percentage of on time arrivals is measured against the number of arrivals <i>operated</i> on any particular sector.
Cancellation percentage	The percentage of cancellations is measured against the number of services <i>scheduled</i> on any particular sector.
