



Australian Government

Department of Infrastructure and Regional Development

Bureau of Infrastructure, Transport and Regional Economics

STATISTICAL REPORT



Aviation

Domestic airline on time performance 2014-15

© Commonwealth of Australia 2015

ISSN: 1832-0759

Ownership of intellectual property rights in this publication

Unless otherwise noted, copyright (and any other intellectual property rights, if any) in this publication is owned by the Commonwealth of Australia (referred to below as the Commonwealth).

Disclaimer

The material contained in this publication is made available on the understanding that the Commonwealth is not providing professional advice, and that users exercise their own skill and care with respect to its use, and seek independent advice if necessary.

The Commonwealth makes no representations or warranties as to the contents or accuracy of the information contained in this publication. To the extent permitted by law, the Commonwealth disclaims liability to any person or organisation in respect of anything done, or omitted to be done, in reliance upon information contained in this publication.

Creative Commons licence

With the exception of (a) the Coat of Arms; and (b) the Department of Infrastructure and Regional Development's photos and graphics, copyright in this publication is licensed under a Creative Commons Attribution 3.0 Australia Licence.

Creative Commons Attribution 3.0 Australia Licence is a standard form licence agreement that allows you to copy, communicate and adapt this publication provided that you attribute the work to the Commonwealth and abide by the other licence terms. A summary of the licence terms is available from <http://creativecommons.org/licenses/by/3.0/au/deed.en>. The full licence terms are available from <http://creativecommons.org/licenses/by/3.0/au/legalcode>.

Use of the Coat of Arms

The Department of the Prime Minister and Cabinet sets the terms under which the Coat of Arms is used. Please refer to the Department's Commonwealth Coat of Arms and Government branding web page <http://www.dpmmc.gov.au/guidelines/index.cfm#brand> and, in particular, the Guidelines on the use of the Commonwealth Coat of Arms publication.

An appropriate citation for this report is:

Bureau of Infrastructure, Transport and Regional Economics (BITRE), 2015, Domestic airline on time performance, Statistical Report, BITRE, Canberra ACT.

Contact us

This publication is available in PDF format. All other rights are reserved, including in relation to any Departmental logos or trade marks which may exist. For enquiries regarding the licence and any use of this publication, please contact:

Bureau of Infrastructure, Transport and Regional Economics (BITRE)
Department of Infrastructure and Regional Development
GPO Box 501, Canberra ACT 2601, Australia
Telephone: (international) +61 2 6274 7210
Fax: (international) +61 2 6274 6855
Email: bitre@infrastructure.gov.au
Website: www.bitre.gov.au

Inquiries

Should you require additional information about the statistics contained in this publication:

Telephone (02) 6274 7790 or Facsimile (02) 6274 7727

Electronic mail: AVSTATS@infrastructure.gov.au

Web site: <http://www.bitre.gov.au/statistics/aviation/otphome.aspx>

Foreword

The Bureau of Infrastructure, Transport and Regional Economics (BITRE) monitors the punctuality and reliability of major domestic airlines operating between Australian airports. The purpose of this is to allow for evaluation of overall industry and individual airline performance, so that consumers of air travel can make informed decisions.

The following domestic airlines currently report this information monthly to the BITRE: Jetstar, Qantas, QantasLink, Regional Express, Tigerair, Virgin Australia and Virgin Australia Regional Airlines. Data has been gathered since November 2003, although some airlines commenced reporting at a later date, including Jetstar which first reported in May 2004, MacAir in July 2005 and Tigerair in April 2008. MacAir ceased operations in February 2009 and data was not received for December 2008 onwards. Virgin Blue was rebranded as Virgin Australia in May 2011 and Tiger Airways was rebranded as Tigerair in July 2013 and time series data in Microsoft Excel spreadsheet format on the BITRE website have been revised to reflect these changes. Virgin Australia Regional Airlines commenced operations in May 2013. It was formed after the acquisition of Skywest by Virgin Australia and represents a combination of operations previously reported under Skywest and Virgin Australia – ATR/F100 Operations. Services operated by Skywest on behalf of Virgin Australia using ATR/F100 aircraft commenced in November 2011 and were shown separately as Virgin Australia – ATR/F100 Operations until April 2013.

Information presented in this report is for Australian domestic routes for which the passenger load averaged 8 000 or more passengers per month over the previous six months and where two or more airlines operated in competition on those routes. There were 62 routes that met these criteria for all twelve months in 2014-15 and another 4 routes did so for a shorter period of the year. Over time, routes which meet these criteria change as airline networks and traffic levels vary.

Participating airlines report their overall monthly network performance where this is possible.

Total industry figures encompass all services operated by reporting airlines only. These airlines collectively carried over 95 per cent of total domestic passengers (regular public transport only) in 2014.

The method of capturing on time performance varies between airlines utilising different recording systems. Jetstar and Qantas jet aircraft use Aircraft Communication Addressing and Reporting System (ACARS) to electronically measure on time performance. Regional Express, Tigerair, Virgin Australia, Virgin Australia Regional Airlines and the Qantas non-jet fleet record on time performance manually using records from pilots, gate agents and/or ground crews.

After initial data is collected, aggregate reports are audited internally by participating airlines prior to publication.

Reports and detailed time series data in Microsoft Excel spreadsheet format are available from the BITRE website at: <http://www.bitre.gov.au/statistics/aviation/otphome.aspx>.

Contents

	Page
Industry performance	1
Individual routes	9
Airports	22
Definitions	28

Industry performance

For the year ended June 2015, on time performance over all routes operated by participating airlines (Jetstar, Qantas, QantasLink, Regional Express, Tigerair, Virgin Australia and Virgin Australia Regional Airlines) averaged 85.1 per cent for on time arrivals and 86.5 per cent for on time departures. Cancellations represented 1.4 per cent of all scheduled flights. The equivalent figures for 2013-14 were 81.9 per cent for arrivals, 83.8 per cent for departures and 1.6 per cent for cancellations.

The figures for 2014-15 were above the long term average performance for all routes (82.5 per cent for arrivals and 84.0 per cent for departures). The rate of cancellations was higher than the long term average of 1.3 per cent.

Qantas achieved the highest on time arrivals among the major domestic airlines at 87.2 per cent, followed by Virgin Australia at 86.8 per cent, Jetstar at 82.9 per cent and Tigerair at 79.3 per cent. Regional Express was the best performing regional airline for on time arrivals at 85.0 per cent, followed by Virgin Australia Regional Airlines at 84.8 per cent and QantasLink at 84.1 per cent. The Qantas network (Qantas and QantasLink combined operations) recorded 85.6 per cent for on time arrivals while the Virgin Australia network (Virgin Australia and Virgin Australia Regional Airlines combined operations) recorded 86.4 per cent.

Qantas also achieved the highest level of on time departures for 2014-15 at 88.3 per cent, followed by Virgin Australia at 88.2 per cent, Jetstar at 82.0 per cent and Tigerair at 81.8 per cent. The regional airlines were led by Regional Express at 88.2 per cent, followed by Virgin Australia Regional Airlines at 86.5 per cent and QantasLink at 86.2 per cent. The Qantas network recorded 87.2 per cent for on time departures while the Virgin Australia network recorded 87.9 per cent.

QantasLink had the highest percentage of cancellations (2.1 per cent) during 2014-15, followed by Virgin Australia (1.8 per cent), Jetstar (1.4 per cent), Virgin Australia Regional Airlines (also 1.4 per cent), Qantas (1.2 per cent), Tigerair (0.9 per cent) and Regional Express (0.3 per cent).

Airlines' on time performance varies across the routes they serve. Individual route data by specific airline for 66 routes are shown on pages 9-21.

Of the 62 routes which met the criteria for on time performance reporting for all 12 months in 2014-15, the Newman-Perth route had the highest percentage of on time arrivals (94.8 per cent) and the Brisbane-Mount Isa route had the highest percentage of on time departures (95.3 per cent). The Port Macquarie-Sydney route had the lowest percentage of on time arrivals (67.0 per cent) and the Hobart-Brisbane route had the lowest percentage of on time departures (71.4 per cent).

Cancellations were highest on the Canberra-Sydney route at 4.5 per cent, followed by the Sydney-Canberra route at 4.0 per cent, the Melbourne-Sydney route at 3.5 per cent, the Sydney-Melbourne route at 3.4 per cent and the Brisbane-Moranbah route at 3.1 per cent.

Port Hedland Airport recorded the highest percentage of on time arrivals (94.4 per cent) and Newman Airport recorded the highest percentage of on time departures (94.5 per cent). Port

Macquarie Airport recorded the lowest percentage of on time arrivals (73.2 per cent) and the lowest percentage of on time departures (74.4 per cent). These figures only refer to reported routes and do not cover all flights at these airports.

Table 1 On time performance for the year ended June 2015 — Total Industry

	<i>Sectors</i>		<i>Arrivals On Time</i>		<i>Departures On Time</i>		<i>Cancellations</i>	
	<i>Scheduled</i>	<i>Flown</i>	<i>No.</i>	<i>%</i>	<i>No.</i>	<i>%</i>	<i>No.</i>	<i>%</i>
Jetstar	85 050	83 844	69 487	82.9	68 736	82.0	1 206	1.4
Qantas	113 894	112 580	98 209	87.2	99 403	88.3	1 314	1.2
QantasLink	124 225	121 618	102 263	84.1	104 849	86.2	2 607	2.1
Regional Express	66 077	65 894	56 039	85.0	58 134	88.2	183	0.3
Tigerair	23 535	23 328	18 493	79.3	19 072	81.8	207	0.9
Virgin Australia	130 813	128 476	111 468	86.8	113 323	88.2	2 337	1.8
Virgin Australia Regional Airlines	30 372	29 955	25 394	84.8	25 912	86.5	417	1.4
All Airlines	573 966	565 695	481 353	85.1	489 429	86.5	8 271	1.4
Qantas - all QF designated services	238 119	234 198	200 472	85.6	204 252	87.2	3 921	1.6
Virgin Australia - all VA designated services	161 185	158 431	136 862	86.4	139 235	87.9	2 754	1.7

Total airline network data (including routes not shown in this report).

Airlines' on time performance varies across the routes they serve. Individual route data by specific airline for 66 routes are shown on pages 9-21.

Table 2 Top ten routes for on time performance for the year ended June 2015 (participating airlines only)

<i>Arrivals</i>		<i>Departures</i>	
<i>Route</i>	<i>On Time (%)</i>	<i>Route</i>	<i>On Time</i>
Newman-Perth	94.8	Brisbane-Mount Isa	95.3
Perth-Port Hedland	94.4	Perth-Port Hedland	94.8
Perth-Newman	94.0	Newman-Perth	94.5
Brisbane-Mount Isa	93.9	Perth-Newman	94.2
Adelaide-Gold Coast	93.2	Adelaide-Gold Coast	94.1
Adelaide-Canberra	93.2	Perth-Darwin	94.0
Mount Isa-Brisbane	93.2	Perth-Karratha	93.4
Perth-Darwin	93.1	Adelaide-Port Lincoln	92.9
Perth-Adelaide	93.1	Adelaide-Canberra	92.8
Port Hedland-Perth	92.8	Karratha-Perth	92.2

Table 3 Top ten airports for on time performance for the year ended June 2015 (participating airlines and reported routes only)

<i>Arrivals</i>		<i>Departures</i>	
<i>Airport</i>	<i>On Time (%)</i>	<i>Airport</i>	<i>On Time</i>
Port Hedland	94.4	Newman	94.5
Newman	94.0	Karratha	92.2
Mount Isa	93.9	Port Lincoln	92.2
Karratha	92.4	Port Hedland	92.1
Port Lincoln	91.2	Geraldton	91.4
Moranbah	90.0	Mount Isa	91.1
Kalgoorlie	89.8	Perth	89.6
Broome	89.7	Adelaide	89.4
Proserpine	89.7	Kalgoorlie	89.2
Mackay	89.0	Proserpine	89.0

Total industry on time performance

Figure 1 On time performance (by month from June 2010)—Total Industry

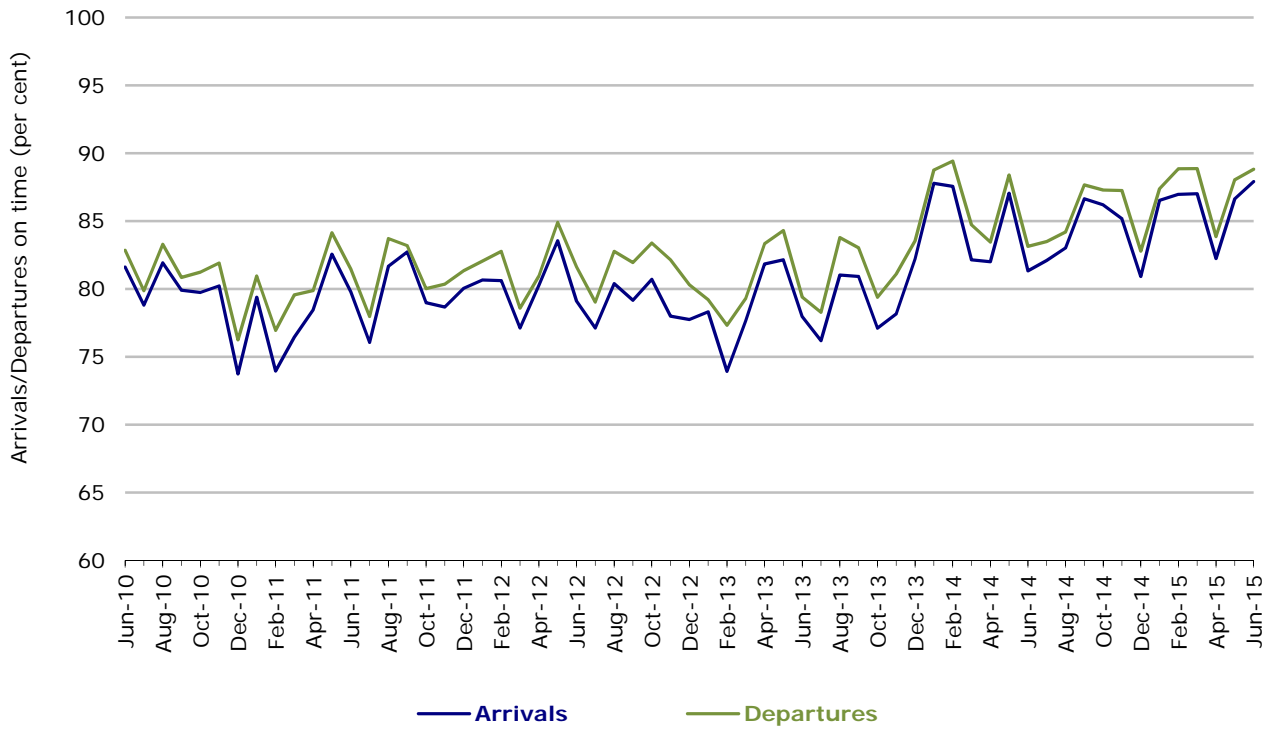
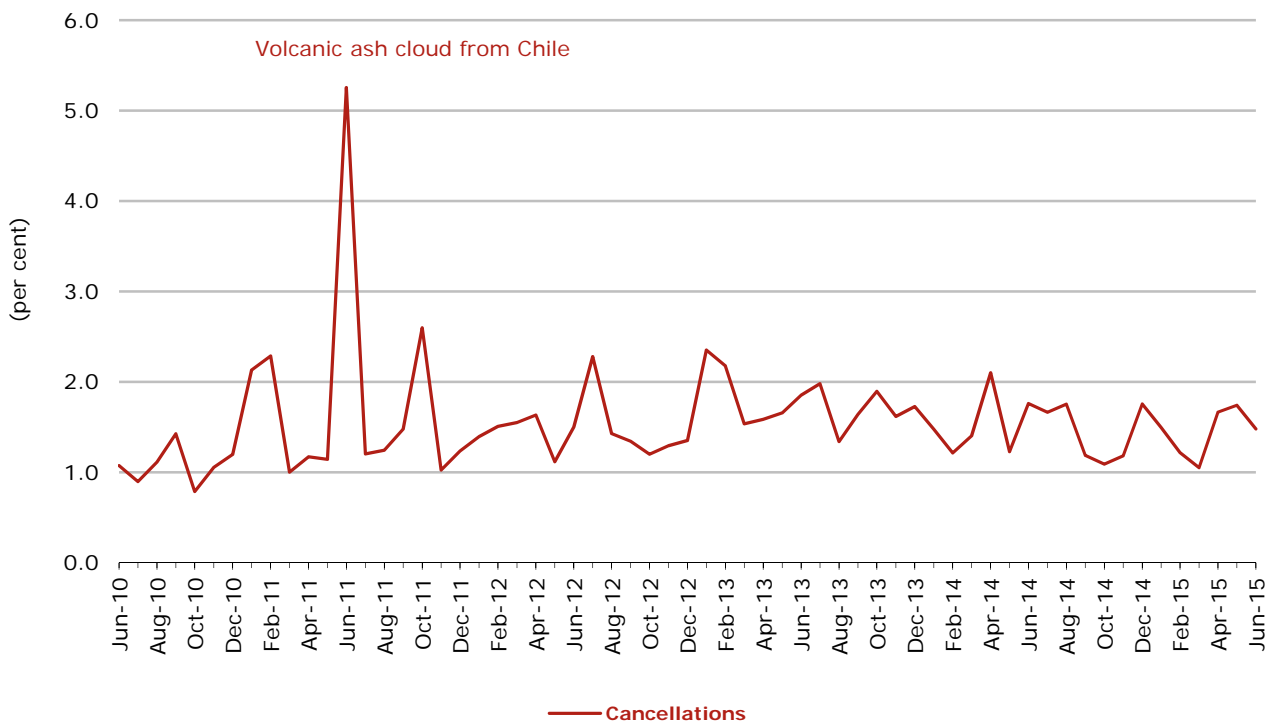


Figure 2 Cancellations (by month from June 2010)—Total Industry



Major domestic airlines on time performance

Figure 3 On time performance (by month from June 2010)—Jetstar

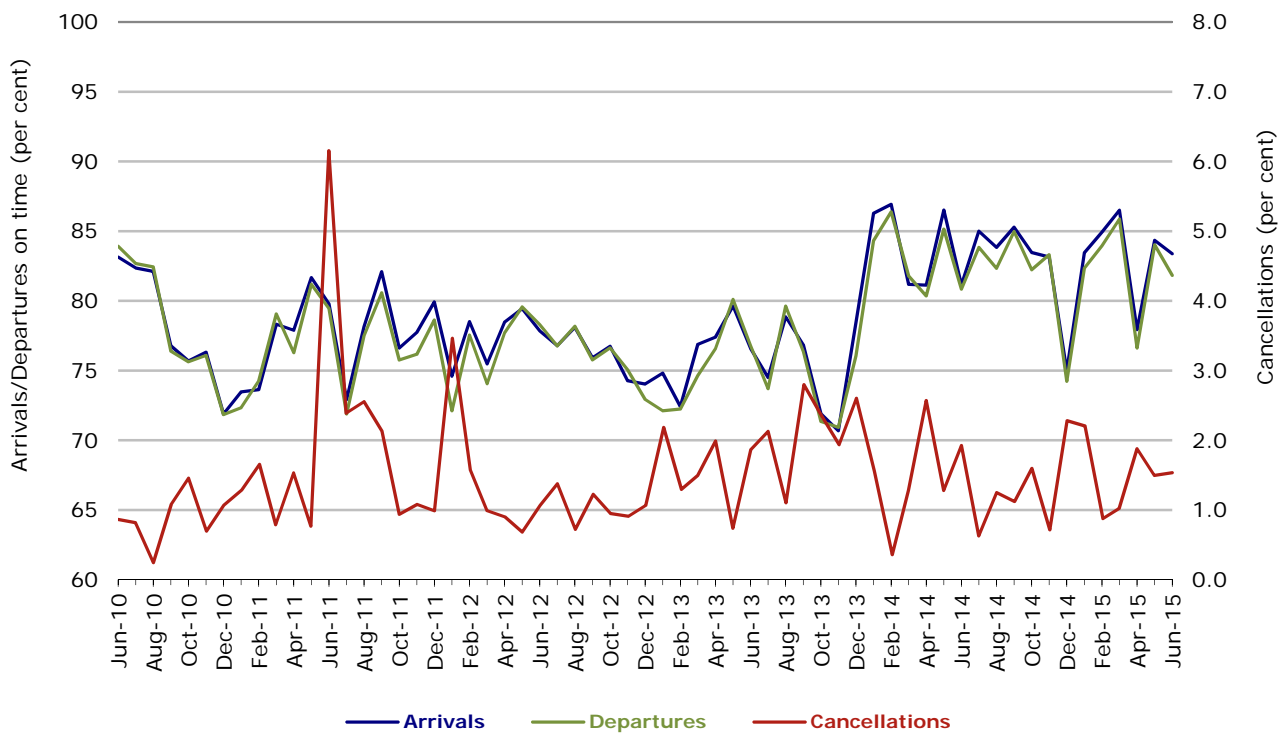
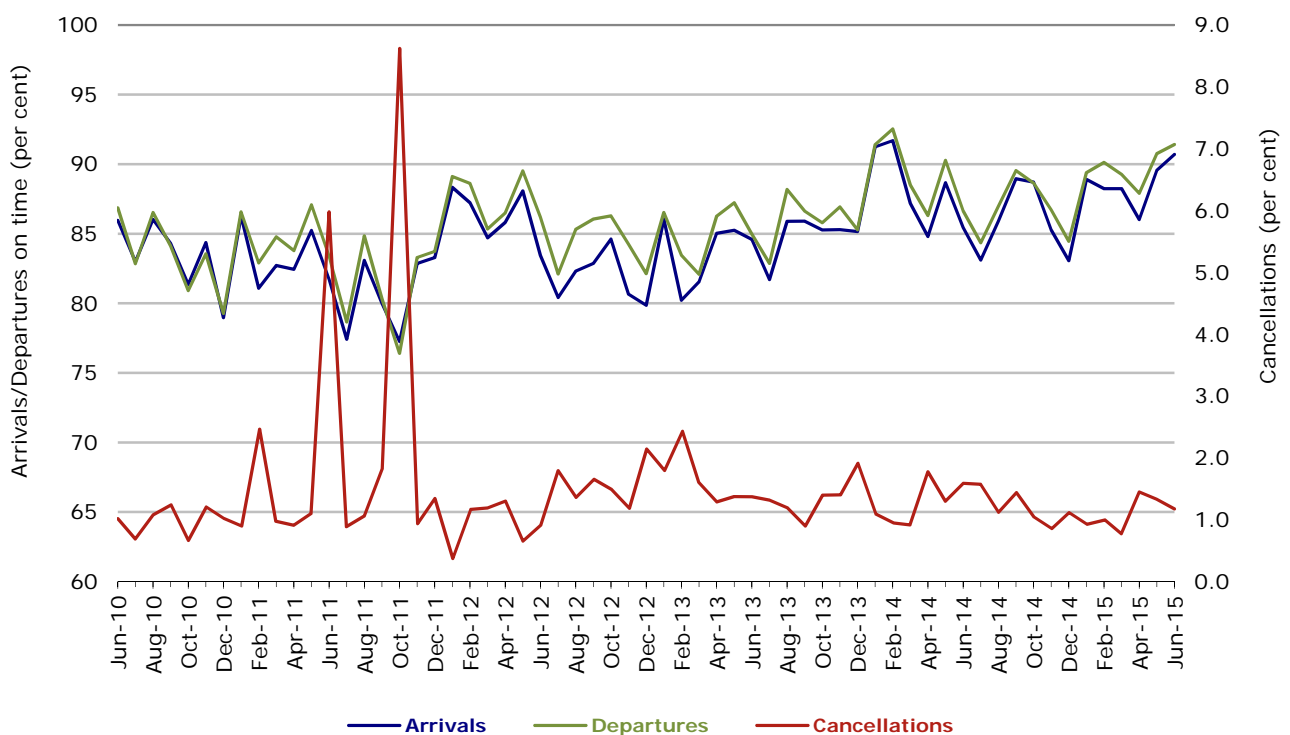
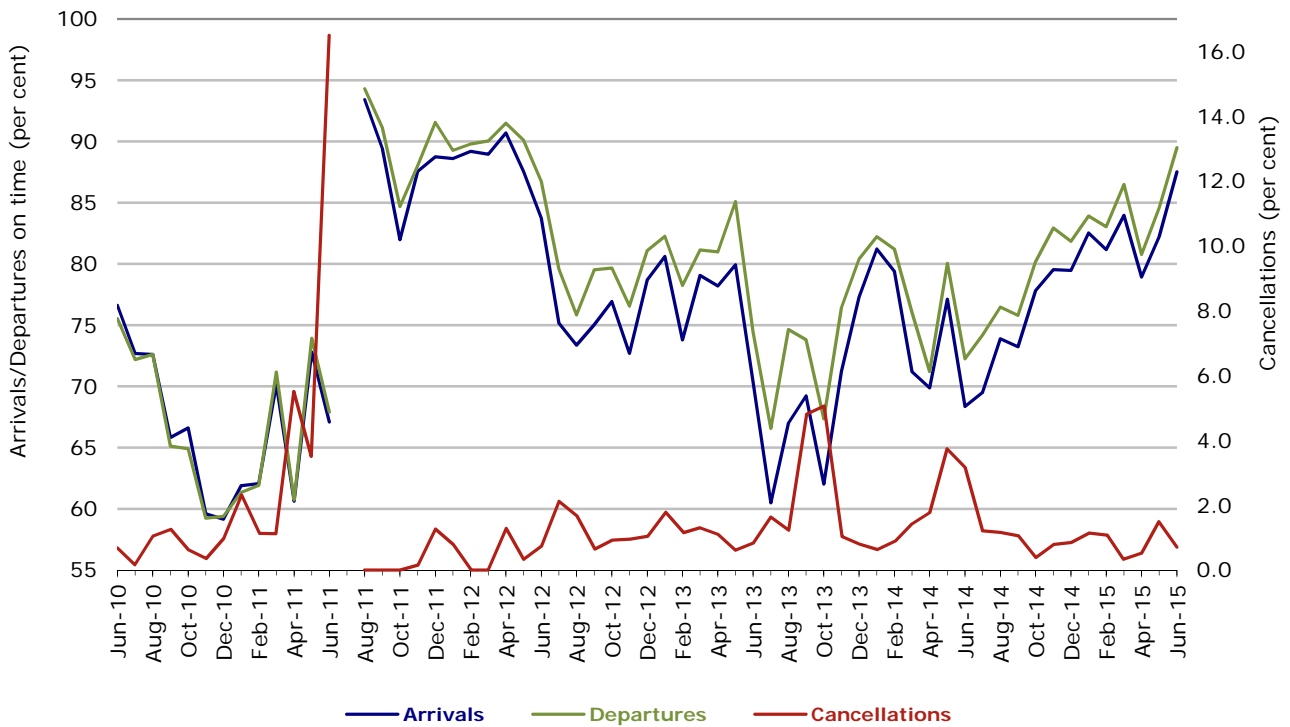


Figure 4 On time performance (by month from June 2010)—Qantas



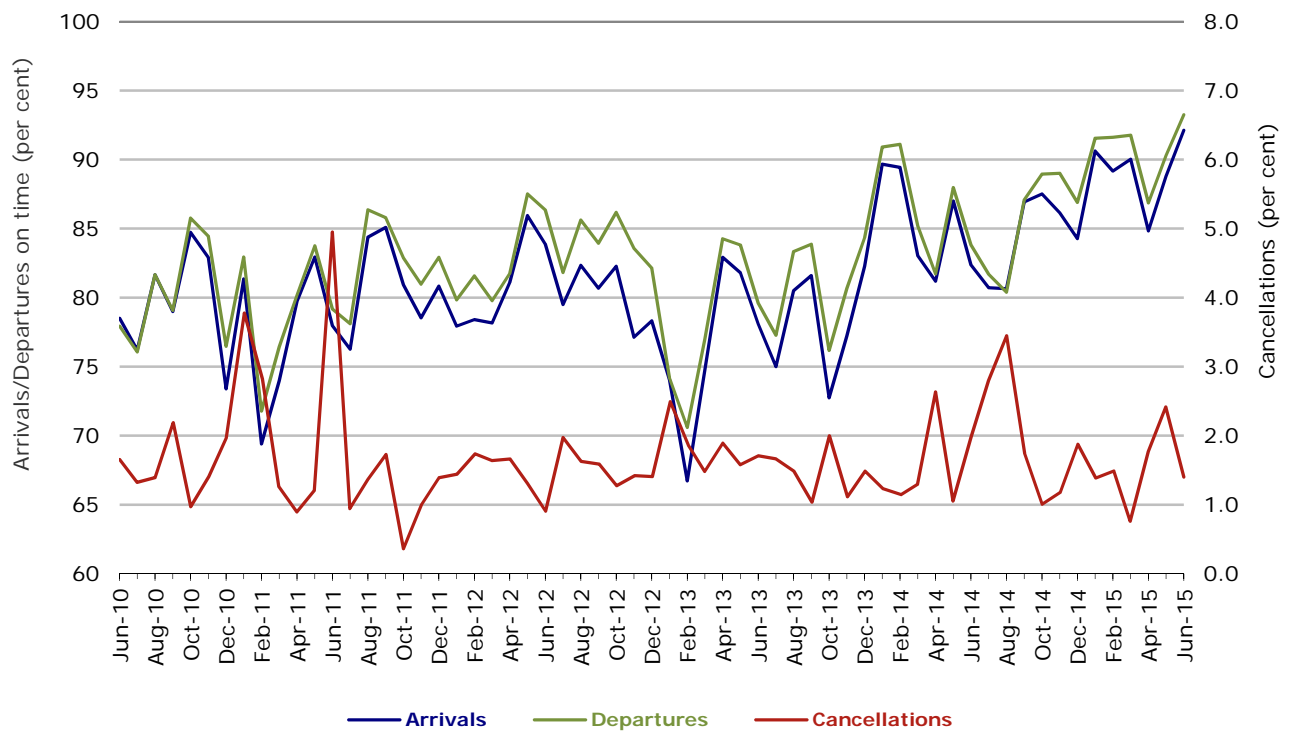
During October 2011 there were disruptions to Qantas services on several days due to industrial disputes and the entire fleet was grounded for nearly 48 hours at the end of the month.

Figure 5 On time performance (by month from June 2010)—Tigerair



No data for Tigerair for July 2011 as it was grounded by CASA from 2/7/2011 to 11/8/2011.

Figure 6 On time performance (by month from June 2010)—Virgin Australia



Major regional airlines on time performance

Figure 7 On time performance (by month from June 2010)—QantasLink

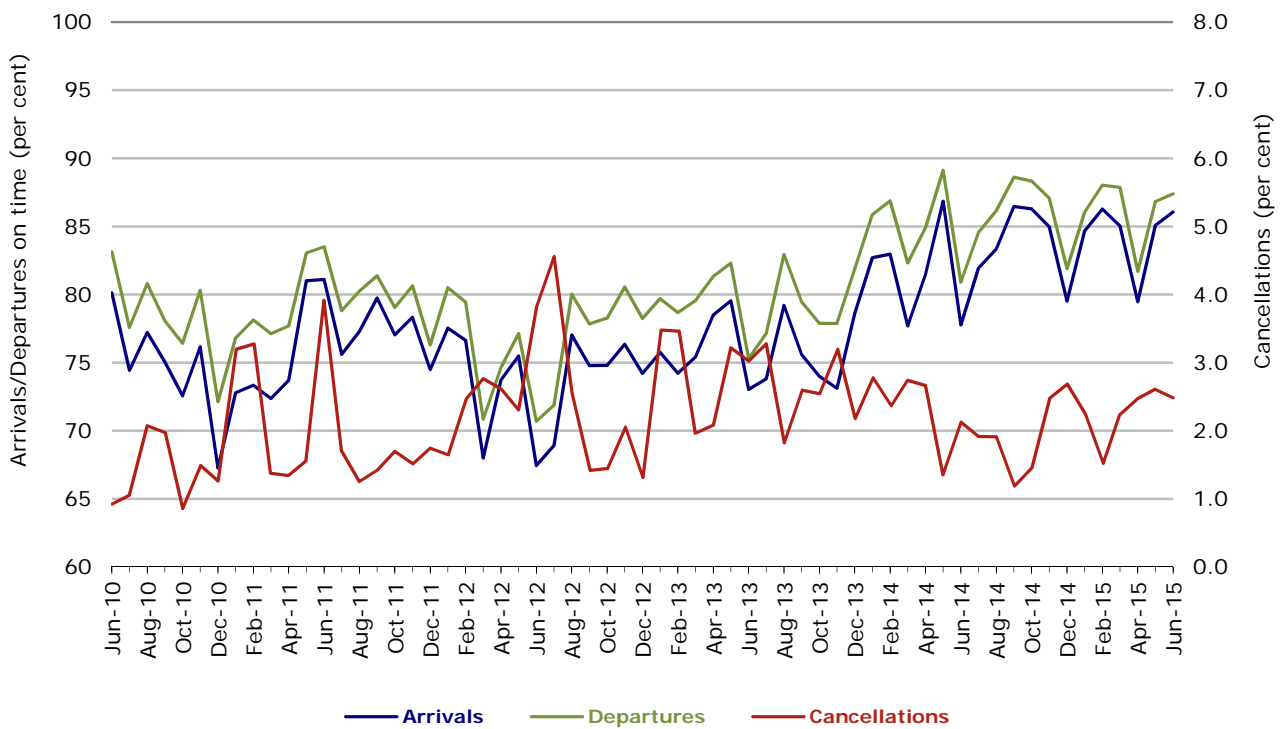


Figure 8 On time performance (by month from June 2010)—Regional Express

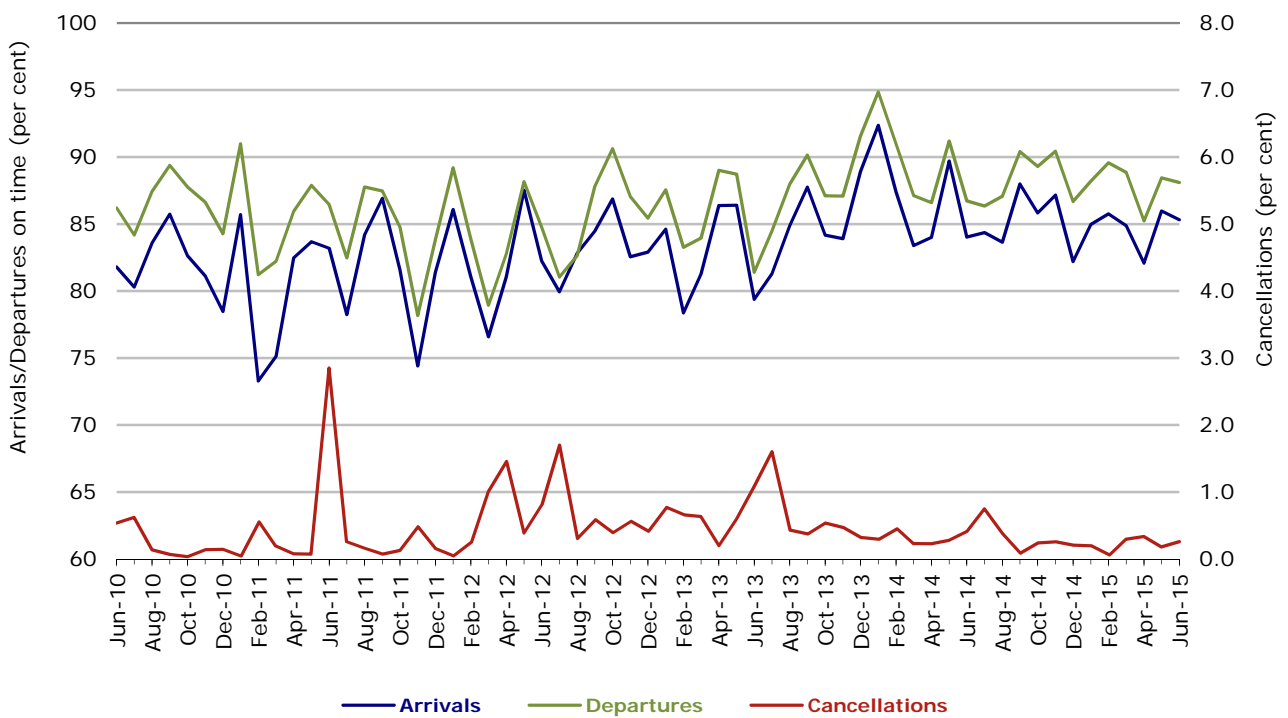
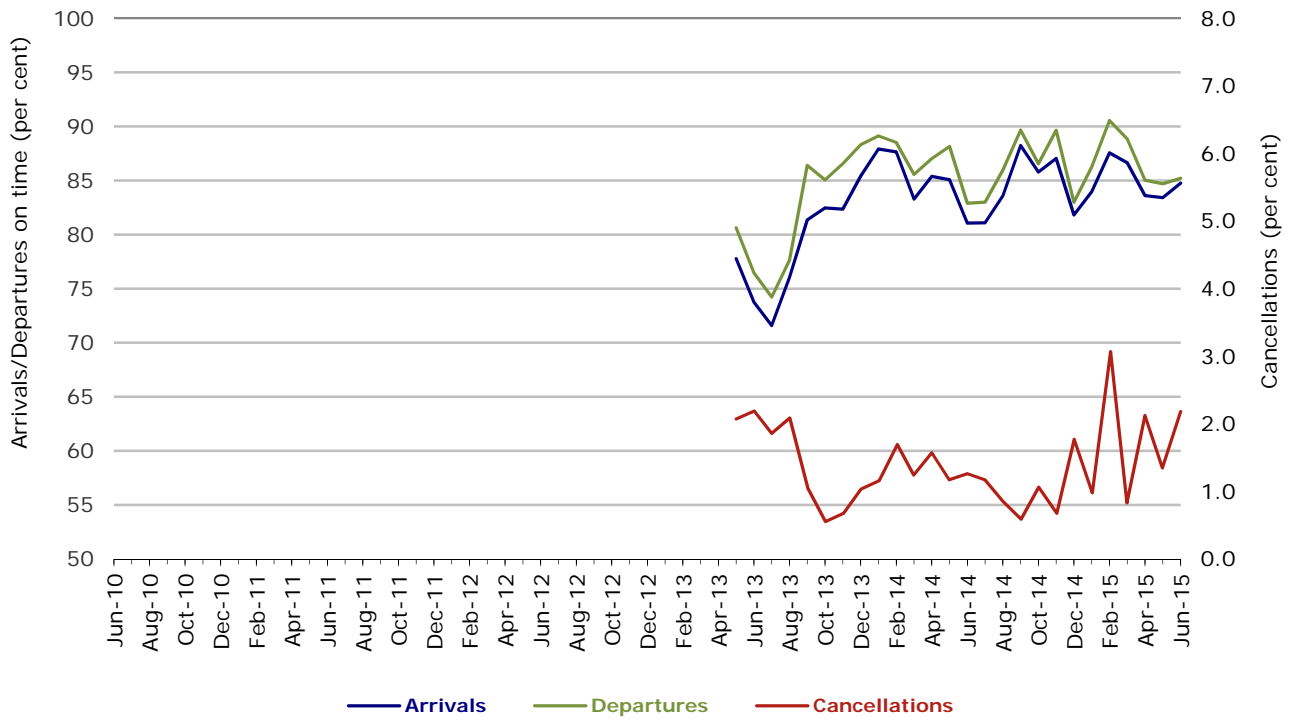


Figure 9 On time performance (by month from June 2010)
Virgin Australia Regional Airlines



Virgin Australia Regional Airlines commenced operations in May 2013. It was formed after the acquisition of Skywest by Virgin Australia and represents a combination of operations previously reported under Skywest and Virgin Australia – ATR/F100 Operations.

Individual routes

On time performance is reported for all routes where the passenger load averages over 8000 passengers per month over the previous six months, and where two or more airlines operate in competition on those routes. There are now 64 routes which meet this definition. Over time, however, routes which meet this definition may change as airline networks and traffic levels vary.

	<i>Sectors</i>		<i>Arrivals On Time</i>		<i>Departures On Time</i>		<i>Cancellations</i>	
	<i>Sched.</i>	<i>Flown</i>	<i>No.</i>	<i>%</i>	<i>No.</i>	<i>%</i>	<i>No.</i>	<i>%</i>
Adelaide-Alice Springs			(From June 2015 only)					
Qantas	30	30	28	93.3	27	90.0	0	0.0
Virgin Australia	13	13	13	100.0	13	100.0	0	0.0
All Airlines	43	43	41	95.3	40	93.0	0	0.0
Adelaide-Brisbane								
Jetstar	322	322	304	94.4	294	91.3	0	0.0
Qantas	1 288	1 286	1 156	89.9	1 186	92.2	2	0.2
Tigerair	282	282	264	93.6	263	93.3	0	0.0
Virgin Australia	1 353	1 344	1 234	91.8	1 238	92.1	9	0.7
All Airlines	3 245	3 234	2 958	91.5	2 981	92.2	11	0.3
Adelaide-Canberra								
Qantas	524	524	494	94.3	495	94.5	0	0.0
QantasLink	160	156	135	86.5	130	83.3	4	2.5
Virgin Australia	313	310	294	94.8	294	94.8	3	1.0
All Airlines	997	990	923	93.2	919	92.8	7	0.7
Adelaide-Gold Coast								
Jetstar	425	423	383	90.5	388	91.7	2	0.5
Virgin Australia	363	361	348	96.4	350	97.0	2	0.6
All Airlines	788	784	731	93.2	738	94.1	4	0.5
Adelaide-Melbourne								
Jetstar	1 294	1 268	1 051	82.9	1 037	81.8	26	2.0
Qantas	3 443	3 430	3 134	91.4	3 065	89.4	13	0.4
QantasLink	28	27	24	88.9	25	92.6	1	3.6
Tigerair	848	843	709	84.1	713	84.6	5	0.6
Virgin Australia	3 307	3 270	2 892	88.4	2 902	88.7	37	1.1
All Airlines	8 920	8 838	7 810	88.4	7 742	87.6	82	0.9
Adelaide-Perth								
Jetstar	408	408	349	85.5	336	82.4	0	0.0
Qantas	1 346	1 345	1 247	92.7	1 227	91.2	1	0.1
Virgin Australia	813	806	734	91.1	744	92.3	7	0.9
All Airlines	2 567	2 559	2 330	91.1	2 307	90.2	8	0.3
Adelaide-Port Lincoln								
QantasLink	1 208	1 202	1 047	87.1	1 054	87.7	6	0.5
Regional Express	2 388	2 383	2 222	93.2	2 275	95.5	5	0.2
All Airlines	3 596	3 585	3 269	91.2	3 329	92.9	11	0.3
Adelaide-Sydney								
Jetstar	1 481	1 466	1 183	80.7	1 186	80.9	15	1.0
Qantas	2 864	2 860	2 566	89.7	2 578	90.1	4	0.1
QantasLink	254	240	171	71.3	161	67.1	14	5.5
Tigerair	330	328	292	89.0	277	84.5	2	0.6
Virgin Australia	2 027	2 018	1 825	90.4	1 839	91.1	9	0.4
All Airlines	6 956	6 912	6 037	87.3	6 041	87.4	44	0.6
Albury-Sydney								
QantasLink	1 149	1 137	906	79.7	950	83.6	12	1.0
Regional Express	1 191	1 189	1 020	85.8	1 069	89.9	2	0.2
Virgin Australia Regional Airlines	729	727	564	77.6	612	84.2	2	0.3
All Airlines	3 069	3 053	2 490	81.6	2 631	86.2	16	0.5

	<i>Sectors</i>		<i>Arrivals On Time</i>		<i>Departures On Time</i>		<i>Cancellations</i>	
	<i>Sched.</i>	<i>Flown</i>	<i>No.</i>	<i>%</i>	<i>No.</i>	<i>%</i>	<i>No.</i>	<i>%</i>
Alice Springs-Adelaide			(From June 2015 only)					
Qantas	30	30	29	96.7	27	90.0	0	0.0
Virgin Australia	13	13	13	100.0	12	92.3	0	0.0
All Airlines	43	43	42	97.7	39	90.7	0	0.0
Alice Springs-Darwin			(From June 2015 only)					
QantasLink	60	60	55	91.7	57	95.0	0	0.0
Virgin Australia	13	13	12	92.3	12	92.3	0	0.0
All Airlines	73	73	67	91.8	69	94.5	0	0.0
Alice Springs-Melbourne			(To July 2014 only)					
Qantas	31	31	16	51.6	15	48.4	0	0.0
Tigerair	12	12	6	50.0	6	50.0	0	0.0
All Airlines	43	43	22	51.2	21	48.8	0	0.0
Alice Springs-Sydney			(To July 2014 only)					
Qantas	31	31	28	90.3	21	67.7	0	0.0
Tigerair	12	12	10	83.3	8	66.7	0	0.0
All Airlines	43	43	38	88.4	29	67.4	0	0.0
Armidale-Sydney								
QantasLink	1 584	1 543	1 245	80.7	1 201	77.8	41	2.6
Regional Express	873	869	626	72.0	743	85.5	4	0.5
All Airlines	2 457	2 412	1 871	77.6	1 944	80.6	45	1.8
Ayers Rock-Sydney								
Jetstar	344	342	273	79.8	296	86.5	2	0.6
Virgin Australia	365	363	334	92.0	313	86.2	2	0.5
All Airlines	709	705	607	86.1	609	86.4	4	0.6
Ballina-Sydney								
Jetstar	843	837	640	76.5	621	74.2	6	0.7
Regional Express	275	274	195	71.2	218	79.6	1	0.4
Virgin Australia	365	359	326	90.8	317	88.3	6	1.6
All Airlines	1 483	1 470	1 161	79.0	1 156	78.6	13	0.9
Brisbane-Adelaide								
Jetstar	320	320	308	96.3	310	96.9	0	0.0
Qantas	1 288	1 287	1 178	91.5	1 164	90.4	1	0.1
Tigerair	283	283	241	85.2	251	88.7	0	0.0
Virgin Australia	1 354	1 350	1 188	88.0	1 207	89.4	4	0.3
All Airlines	3 245	3 240	2 915	90.0	2 932	90.5	5	0.2
Brisbane-Bundaberg								
QantasLink	1 467	1 450	1 269	87.5	1 286	88.7	17	1.2
Virgin Australia Regional Airlines	460	458	403	88.0	404	88.2	2	0.4
All Airlines	1 927	1 908	1 672	87.6	1 690	88.6	19	1.0
Brisbane-Cairns								
Jetstar	1 262	1 255	1 077	85.8	1 064	84.8	7	0.6
Qantas	1 408	1 408	1 267	90.0	1 247	88.6	0	0.0
QantasLink	52	52	44	84.6	46	88.5	0	0.0
Tigerair	323	323	253	78.3	244	75.5	0	0.0
Virgin Australia	1 609	1 604	1 420	88.5	1 418	88.4	5	0.3
All Airlines	4 654	4 642	4 061	87.5	4 019	86.6	12	0.3
Brisbane-Canberra								
Qantas	406	406	377	92.9	373	91.9	0	0.0
QantasLink	1 510	1 498	1 311	87.5	1 315	87.8	12	0.8
Virgin Australia	1 115	1 113	981	88.1	983	88.3	2	0.2
All Airlines	3 031	3 017	2 669	88.5	2 671	88.5	14	0.5

	<i>Sectors</i>		<i>Arrivals On Time</i>		<i>Departures On Time</i>		<i>Cancellations</i>	
	<i>Sched.</i>	<i>Flown</i>	<i>No.</i>	<i>%</i>	<i>No.</i>	<i>%</i>	<i>No.</i>	<i>%</i>
Brisbane-Darwin								
Jetstar	305	303	272	89.8	253	83.5	2	0.7
Qantas	541	540	475	88.0	501	92.8	1	0.2
Tigerair	251	250	217	86.8	237	94.8	1	0.4
Virgin Australia	365	365	317	86.8	331	90.7	0	0.0
All Airlines	1 462	1 458	1 281	87.9	1 322	90.7	4	0.3
Brisbane-Emerald								
QantasLink	1 722	1 702	1 426	83.8	1 548	91.0	20	1.2
Virgin Australia Regional Airlines	973	967	776	80.2	854	88.3	6	0.6
All Airlines	2 695	2 669	2 202	82.5	2 402	90.0	26	1.0
Brisbane-Gladstone								
QantasLink	2 529	2 448	2 197	89.7	2 250	91.9	81	3.2
Virgin Australia	82	81	69	85.2	69	85.2	1	1.2
Virgin Australia Regional Airlines	1 731	1 711	1 436	83.9	1 484	86.7	20	1.2
All Airlines	4 342	4 240	3 702	87.3	3 803	89.7	102	2.3
Brisbane-Hamilton Island								
Jetstar	64	64	61	95.3	60	93.8	0	0.0
QantasLink	124	122	101	82.8	108	88.5	2	1.6
Virgin Australia	363	363	336	92.6	337	92.8	0	0.0
All Airlines	551	549	498	90.7	505	92.0	2	0.4
Brisbane-Hobart								
Jetstar	351	351	305	86.9	321	91.5	0	0.0
Qantas	1	1	1	100.0	1	100.0	0	0.0
Virgin Australia	365	365	310	84.9	335	91.8	0	0.0
All Airlines	717	717	616	85.9	657	91.6	0	0.0
Brisbane-Mackay								
Jetstar	706	702	576	82.1	549	78.2	4	0.6
QantasLink	1 281	1 268	1 162	91.6	1 141	90.0	13	1.0
Virgin Australia	1 841	1 818	1 635	89.9	1 621	89.2	23	1.2
All Airlines	3 828	3 788	3 373	89.0	3 311	87.4	40	1.0
Brisbane-Melbourne								
Jetstar	1 429	1 403	1 149	81.9	1 070	76.3	26	1.8
Qantas	5 084	5 054	4 372	86.5	4 462	88.3	30	0.6
Tigerair	1 374	1 364	1 053	77.2	1 077	79.0	10	0.7
Virgin Australia	4 715	4 587	3 672	80.1	4 003	87.3	128	2.7
All Airlines	12 602	12 408	10 246	82.6	10 612	85.5	194	1.5
Brisbane-Moranbah								
QantasLink	1 484	1 412	1 269	89.9	1 303	92.3	72	4.9
Virgin Australia Regional Airlines	933	929	839	90.3	828	89.1	4	0.4
All Airlines	2 417	2 341	2 108	90.0	2 131	91.0	76	3.1
Brisbane-Mount Isa								
Qantas	608	608	568	93.4	579	95.2	0	0.0
Virgin Australia	261	261	248	95.0	249	95.4	0	0.0
All Airlines	869	869	816	93.9	828	95.3	0	0.0
Brisbane-Newcastle								
Jetstar	1 054	1 048	941	89.8	927	88.5	6	0.6
QantasLink	858	845	599	70.9	711	84.1	13	1.5
Virgin Australia	988	985	878	89.1	886	89.9	3	0.3
All Airlines	2 900	2 878	2 418	84.0	2 524	87.7	22	0.8
Brisbane-Perth								
Qantas	1 510	1 508	1 250	82.9	1 239	82.2	2	0.1
Virgin Australia	1 188	1 181	934	79.1	912	77.2	7	0.6
All Airlines	2 698	2 689	2 184	81.2	2 151	80.0	9	0.3

	<i>Sectors</i>		<i>Arrivals On Time</i>		<i>Departures On Time</i>		<i>Cancellations</i>	
	<i>Sched.</i>	<i>Flown</i>	<i>No.</i>	<i>%</i>	<i>No.</i>	<i>%</i>	<i>No.</i>	<i>%</i>
Brisbane-Proserpine								
Jetstar	347	346	293	84.7	291	84.1	1	0.3
Virgin Australia	627	624	577	92.5	577	92.5	3	0.5
All Airlines	974	970	870	89.7	868	89.5	4	0.4
Brisbane-Rockhampton								
QantasLink	2 537	2 485	2 125	85.5	2 165	87.1	52	2.0
Virgin Australia	1 224	1 198	1 067	89.1	1 071	89.4	26	2.1
Virgin Australia Regional Airlines	1 261	1 217	1 003	82.4	1 022	84.0	44	3.5
All Airlines	5 022	4 900	4 195	85.6	4 258	86.9	122	2.4
Brisbane-Sydney								
Jetstar	2 082	1 991	1 593	80.0	1 532	76.9	91	4.4
Qantas	7 129	6 988	6 134	87.8	6 272	89.8	141	2.0
Tigerair	1 057	1 049	859	81.9	859	81.9	8	0.8
Virgin Australia	6 496	6 318	5 495	87.0	5 675	89.8	178	2.7
All Airlines	16 764	16 346	14 081	86.1	14 338	87.7	418	2.5
Brisbane-Townsville								
Jetstar	657	652	565	86.7	581	89.1	5	0.8
Qantas	1 763	1 762	1 561	88.6	1 538	87.3	1	0.1
Virgin Australia	1 836	1 818	1 586	87.2	1 596	87.8	18	1.0
All Airlines	4 256	4 232	3 712	87.7	3 715	87.8	24	0.6
Broome-Perth								
Qantas	398	397	360	90.7	330	83.1	1	0.3
QantasLink	585	582	542	93.1	541	93.0	3	0.5
Virgin Australia	326	316	253	80.1	251	79.4	10	3.1
Virgin Australia Regional Airlines	301	300	175	58.3	193	64.3	1	0.3
All Airlines	1 610	1 595	1 330	83.4	1 315	82.4	15	0.9
Bundaberg-Brisbane								
QantasLink	1 467	1 449	1 212	83.6	1 269	87.6	18	1.2
Virgin Australia Regional Airlines	461	459	393	85.6	393	85.6	2	0.4
All Airlines	1 928	1 908	1 605	84.1	1 662	87.1	20	1.0
Cairns-Brisbane								
Jetstar	1 259	1 255	1 117	89.0	1 111	88.5	4	0.3
Qantas	1 408	1 405	1 227	87.3	1 235	87.9	3	0.2
QantasLink	52	52	48	92.3	50	96.2	0	0.0
Tigerair	324	323	212	65.6	236	73.1	1	0.3
Virgin Australia	1 608	1 604	1 411	88.0	1 394	86.9	4	0.2
All Airlines	4 651	4 639	4 015	86.5	4 026	86.8	12	0.3
Cairns-Melbourne								
Jetstar	1 106	1 099	896	81.5	885	80.5	7	0.6
Qantas	373	373	312	83.6	282	75.6	0	0.0
Tigerair	410	409	298	72.9	315	77.0	1	0.2
Virgin Australia	392	392	322	82.1	306	78.1	0	0.0
All Airlines	2 281	2 273	1 828	80.4	1 788	78.7	8	0.4
Cairns-Sydney								
Jetstar	1 132	1 127	970	86.1	976	86.6	5	0.4
Qantas	873	873	714	81.8	696	79.7	0	0.0
Tigerair	366	364	298	81.9	288	79.1	2	0.5
Virgin Australia	1 074	1 067	986	92.4	951	89.1	7	0.7
All Airlines	3 445	3 431	2 968	86.5	2 911	84.8	14	0.4
Canberra-Adelaide								
Qantas	524	524	491	93.7	485	92.6	0	0.0
QantasLink	160	156	126	80.8	128	82.1	4	2.5
Virgin Australia	313	310	284	91.6	280	90.3	3	1.0
All Airlines	997	990	901	91.0	893	90.2	7	0.7

	<i>Sectors</i>		<i>Arrivals On Time</i>		<i>Departures On Time</i>		<i>Cancellations</i>	
	<i>Sched.</i>	<i>Flown</i>	<i>No.</i>	<i>%</i>	<i>No.</i>	<i>%</i>	<i>No.</i>	<i>%</i>
Canberra-Brisbane								
Qantas	406	406	390	96.1	389	95.8	0	0.0
QantasLink	1 509	1 494	1 246	83.4	1 271	85.1	15	1.0
Virgin Australia	1 119	1 111	946	85.1	978	88.0	8	0.7
All Airlines	3 034	3 011	2 582	85.8	2 638	87.6	23	0.8
Canberra-Melbourne								
Qantas	2 142	2 137	1 962	91.8	1 981	92.7	5	0.2
QantasLink	1 075	1 050	868	82.7	893	85.0	25	2.3
Virgin Australia	1 924	1 899	1 666	87.7	1 680	88.5	25	1.3
Virgin Australia Regional Airlines	229	223	180	80.7	205	91.9	6	2.6
All Airlines	5 370	5 309	4 676	88.1	4 759	89.6	61	1.1
Canberra-Sydney								
Qantas	97	94	83	88.3	85	90.4	3	3.1
QantasLink	6 011	5 690	4 930	86.6	4 970	87.3	321	5.3
Virgin Australia	364	349	301	86.2	304	87.1	15	4.1
Virgin Australia Regional Airlines	3 098	3 008	2 714	90.2	2 715	90.3	90	2.9
All Airlines	9 570	9 141	8 028	87.8	8 074	88.3	429	4.5
Coffs Harbour-Sydney								
Qantas	3	2	1	50.0	1	50.0	1	33.3
QantasLink	1 810	1 790	1 450	81.0	1 476	82.5	20	1.1
Tigerair	156	153	125	81.7	123	80.4	3	1.9
Virgin Australia	722	706	647	91.6	636	90.1	16	2.2
All Airlines	2 691	2 651	2 223	83.9	2 236	84.3	40	1.5
Darwin-Alice Springs								
			(From June 2015 only)					
QantasLink	60	60	53	88.3	54	90.0	0	0.0
Virgin Australia	13	13	13	100.0	13	100.0	0	0.0
All Airlines	73	73	66	90.4	67	91.8	0	0.0
Darwin-Brisbane								
Jetstar	306	304	279	91.8	260	85.5	2	0.7
Qantas	541	540	422	78.1	430	79.6	1	0.2
Tigerair	248	247	212	85.8	224	90.7	1	0.4
Virgin Australia	366	363	211	58.1	280	77.1	3	0.8
All Airlines	1 461	1 454	1 124	77.3	1 194	82.1	7	0.5
Darwin-Melbourne								
Jetstar	327	323	251	77.7	232	71.8	4	1.2
Qantas	343	343	267	77.8	269	78.4	0	0.0
Virgin Australia	365	364	277	76.1	304	83.5	1	0.3
All Airlines	1 035	1 030	795	77.2	805	78.2	5	0.5
Darwin-Perth								
Qantas	437	437	400	91.5	403	92.2	0	0.0
Virgin Australia	334	333	281	84.4	286	85.9	1	0.3
All Airlines	771	770	681	88.4	689	89.5	1	0.1
Darwin-Sydney								
Jetstar	314	308	199	64.6	187	60.7	6	1.9
Qantas	593	593	489	82.5	492	83.0	0	0.0
Virgin Australia	365	365	266	72.9	269	73.7	0	0.0
All Airlines	1 272	1 266	954	75.4	948	74.9	6	0.5
Dubbo-Sydney								
QantasLink	1 470	1 459	1 173	80.4	1 181	80.9	11	0.7
Regional Express	1 680	1 667	1 400	84.0	1 501	90.0	13	0.8
All Airlines	3 150	3 126	2 573	82.3	2 682	85.8	24	0.8

	<i>Sectors</i>		<i>Arrivals On Time</i>		<i>Departures On Time</i>		<i>Cancellations</i>	
	<i>Sched.</i>	<i>Flown</i>	<i>No.</i>	<i>%</i>	<i>No.</i>	<i>%</i>	<i>No.</i>	<i>%</i>
Emerald-Brisbane								
QantasLink	1 723	1 696	1 388	81.8	1 387	81.8	27	1.6
Virgin Australia Regional Airlines	972	962	837	87.0	834	86.7	10	1.0
All Airlines	2 695	2 658	2 225	83.7	2 221	83.6	37	1.4
Geraldton-Perth								
QantasLink	615	608	566	93.1	564	92.8	7	1.1
Virgin Australia Regional Airlines	1 106	1 102	979	88.8	999	90.7	4	0.4
All Airlines	1 721	1 710	1 545	90.4	1 563	91.4	11	0.6
Gladstone-Brisbane								
QantasLink	2 665	2 579	2 180	84.5	2 231	86.5	86	3.2
Virgin Australia	82	81	60	74.1	63	77.8	1	1.2
Virgin Australia Regional Airlines	1 726	1 703	1 341	78.7	1 409	82.7	23	1.3
All Airlines	4 473	4 363	3 581	82.1	3 703	84.9	110	2.5
Gold Coast-Adelaide								
Jetstar	424	423	380	89.8	382	90.3	1	0.2
Virgin Australia	364	362	329	90.9	337	93.1	2	0.5
All Airlines	788	785	709	90.3	719	91.6	3	0.4
Gold Coast-Melbourne								
Jetstar	2 563	2 533	2 217	87.5	2 168	85.6	30	1.2
Tigerair	884	874	610	69.8	573	65.6	10	1.1
Virgin Australia	2 165	2 137	1 875	87.7	1 851	86.6	28	1.3
All Airlines	5 612	5 544	4 702	84.8	4 592	82.8	68	1.2
Gold Coast-Sydney								
Jetstar	3 816	3 723	3 183	85.5	3 141	84.4	93	2.4
Qantas	1 090	1 086	958	88.2	934	86.0	4	0.4
QantasLink	9	9	8	88.9	7	77.8	0	0.0
Tigerair	1 064	1 049	863	82.3	860	82.0	15	1.4
Virgin Australia	3 160	3 077	2 673	86.9	2 650	86.1	83	2.6
All Airlines	9 139	8 944	7 685	85.9	7 592	84.9	195	2.1
Hamilton Island-Brisbane								
Jetstar	64	63	58	92.1	58	92.1	1	1.6
QantasLink	124	122	110	90.2	91	74.6	2	1.6
Virgin Australia	363	362	312	86.2	317	87.6	1	0.3
All Airlines	551	547	480	87.8	466	85.2	4	0.7
Hamilton Island-Melbourne								
Jetstar	223	222	196	88.3	191	86.0	1	0.4
Virgin Australia	219	218	188	86.2	184	84.4	1	0.5
All Airlines	442	440	384	87.3	375	85.2	2	0.5
Hamilton Island-Sydney								
Jetstar	312	311	262	84.2	260	83.6	1	0.3
Qantas	96	96	70	72.9	61	63.5	0	0.0
Virgin Australia	366	363	314	86.5	303	83.5	3	0.8
All Airlines	774	770	646	83.9	624	81.0	4	0.5
Hobart-Brisbane								
Jetstar	353	353	243	68.8	265	75.1	0	0.0
Virgin Australia	365	363	274	75.5	246	67.8	2	0.5
All Airlines	718	716	517	72.2	511	71.4	2	0.3
Hobart-Melbourne								
Jetstar	2 228	2 203	1 728	78.4	1 716	77.9	25	1.1
Qantas	11	11	10	90.9	9	81.8	0	0.0
QantasLink	1 410	1 394	948	68.0	974	69.9	16	1.1
Tigerair	351	350	230	65.7	245	70.0	1	0.3
Virgin Australia	1 715	1 701	1 421	83.5	1 459	85.8	14	0.8
All Airlines	5 715	5 659	4 337	76.6	4 403	77.8	56	1.0

	<i>Sectors</i>		<i>Arrivals On Time</i>		<i>Departures On Time</i>		<i>Cancellations</i>	
	<i>Sched.</i>	<i>Flown</i>	<i>No.</i>	<i>%</i>	<i>No.</i>	<i>%</i>	<i>No.</i>	<i>%</i>
Hobart-Sydney								
Jetstar	889	885	670	75.7	699	79.0	4	0.4
Qantas	8	8	5	62.5	3	37.5	0	0.0
QantasLink	375	372	281	75.5	299	80.4	3	0.8
Virgin Australia	729	729	629	86.3	631	86.6	0	0.0
All Airlines	2 001	1 994	1 585	79.5	1 632	81.8	7	0.3
Kalgoorlie-Perth								
Qantas	272	270	245	90.7	246	91.1	2	0.7
QantasLink	710	701	641	91.4	645	92.0	9	1.3
Virgin Australia	447	438	391	89.3	388	88.6	9	2.0
Virgin Australia Regional Airlines	228	228	182	79.8	182	79.8	0	0.0
All Airlines	1 657	1 637	1 459	89.1	1 461	89.2	20	1.2
Karratha-Perth								
Qantas	1 326	1 292	1 223	94.7	1 216	94.1	34	2.6
QantasLink	1 191	1 172	1 087	92.7	1 101	93.9	19	1.6
Virgin Australia	798	784	700	89.3	708	90.3	14	1.8
Virgin Australia Regional Airlines	222	218	176	80.7	170	78.0	4	1.8
All Airlines	3 537	3 466	3 186	91.9	3 195	92.2	71	2.0
Launceston-Melbourne								
Jetstar	1 505	1 484	1 156	77.9	1 170	78.8	21	1.4
QantasLink	1 440	1 394	1 119	80.3	1 171	84.0	46	3.2
Virgin Australia	1 218	1 212	1 014	83.7	1 081	89.2	6	0.5
Virgin Australia Regional Airlines	34	33	22	66.7	24	72.7	1	2.9
All Airlines	4 197	4 123	3 311	80.3	3 446	83.6	74	1.8
Launceston-Sydney								
Jetstar	662	660	510	77.3	512	77.6	2	0.3
Virgin Australia	365	365	300	82.2	300	82.2	0	0.0
All Airlines	1 027	1 025	810	79.0	812	79.2	2	0.2
Mackay-Brisbane								
Jetstar	706	698	544	77.9	531	76.1	8	1.1
QantasLink	1 281	1 260	1 142	90.6	1 137	90.2	21	1.6
Virgin Australia	1 841	1 816	1 624	89.4	1 620	89.2	25	1.4
All Airlines	3 828	3 774	3 310	87.7	3 288	87.1	54	1.4
Melbourne-Adelaide								
Jetstar	1 293	1 272	1 014	79.7	1 023	80.4	21	1.6
Qantas	3 440	3 431	3 099	90.3	3 130	91.2	9	0.3
QantasLink	28	26	20	76.9	22	84.6	2	7.1
Tigerair	850	845	739	87.5	763	90.3	5	0.6
Virgin Australia	3 304	3 271	2 864	87.6	2 899	88.6	33	1.0
All Airlines	8 915	8 845	7 736	87.5	7 837	88.6	70	0.8
Melbourne-Alice Springs								
			(To July 2014 only)					
Qantas	31	31	19	61.3	17	54.8	0	0.0
Tigerair	12	12	8	66.7	11	91.7	0	0.0
All Airlines	43	43	27	62.8	28	65.1	0	0.0
Melbourne-Brisbane								
Jetstar	1 428	1 407	1 064	75.6	992	70.5	21	1.5
Qantas	5 075	5 043	4 251	84.3	4 454	88.3	32	0.6
Tigerair	1 375	1 367	1 012	74.0	1 069	78.2	8	0.6
Virgin Australia	4 695	4 559	3 749	82.2	3 992	87.6	136	2.9
All Airlines	12 573	12 376	10 076	81.4	10 507	84.9	197	1.6

	<i>Sectors</i>		<i>Arrivals On Time</i>		<i>Departures On Time</i>		<i>Cancellations</i>	
	<i>Sched.</i>	<i>Flown</i>	<i>No.</i>	<i>%</i>	<i>No.</i>	<i>%</i>	<i>No.</i>	<i>%</i>
Melbourne-Cairns								
Jetstar	1 105	1 101	920	83.6	900	81.7	4	0.4
Qantas	373	373	317	85.0	299	80.2	0	0.0
Tigerair	409	408	363	89.0	372	91.2	1	0.2
Virgin Australia	391	391	324	82.9	341	87.2	0	0.0
All Airlines	2 278	2 273	1 924	84.6	1 912	84.1	5	0.2
Melbourne-Canberra								
Qantas	2 142	2 137	1 944	91.0	1 960	91.7	5	0.2
QantasLink	1 071	1 040	824	79.2	871	83.8	31	2.9
Virgin Australia	1 922	1 898	1 700	89.6	1 715	90.4	24	1.2
Virgin Australia Regional Airlines	229	222	150	67.6	169	76.1	7	3.1
All Airlines	5 364	5 297	4 618	87.2	4 715	89.0	67	1.2
Melbourne-Darwin								
Jetstar	324	324	266	82.1	259	79.9	0	0.0
Qantas	343	343	280	81.6	302	88.0	0	0.0
Virgin Australia	366	365	326	89.3	326	89.3	1	0.3
All Airlines	1 033	1 032	872	84.5	887	85.9	1	0.1
Melbourne-Gold Coast								
Jetstar	2 568	2 543	2 093	82.3	2 063	81.1	25	1.0
Tigerair	883	877	647	73.8	740	84.4	6	0.7
Virgin Australia	2 165	2 137	1 882	88.1	1 880	88.0	28	1.3
All Airlines	5 616	5 557	4 622	83.2	4 683	84.3	59	1.1
Melbourne-Hamilton Island								
Jetstar	225	224	210	93.8	201	89.7	1	0.4
Virgin Australia	219	219	193	88.1	202	92.2	0	0.0
All Airlines	444	443	403	91.0	403	91.0	1	0.2
Melbourne-Hobart								
Jetstar	2 227	2 206	1 859	84.3	1 824	82.7	21	0.9
Qantas	10	10	10	100.0	10	100.0	0	0.0
QantasLink	1 411	1 397	834	59.7	881	63.1	14	1.0
Tigerair	351	351	256	72.9	279	79.5	0	0.0
Virgin Australia	1 717	1 704	1 470	86.3	1 496	87.8	13	0.8
All Airlines	5 716	5 668	4 429	78.1	4 490	79.2	48	0.8
Melbourne-Launceston								
Jetstar	1 504	1 485	1 256	84.6	1 256	84.6	19	1.3
QantasLink	1 442	1 401	1 122	80.1	1 208	86.2	41	2.8
Virgin Australia	1 217	1 209	1 018	84.2	1 050	86.8	8	0.7
Virgin Australia Regional Airlines	34	33	26	78.8	27	81.8	1	2.9
All Airlines	4 197	4 128	3 422	82.9	3 541	85.8	69	1.6
Melbourne-Mildura								
QantasLink	1 041	1 040	856	82.3	913	87.8	1	0.1
Regional Express	958	958	852	88.9	874	91.2	0	0.0
Virgin Australia	365	364	315	86.5	322	88.5	1	0.3
All Airlines	2 364	2 362	2 023	85.6	2 109	89.3	2	0.1
Melbourne-Newcastle								
Jetstar	1 196	1 190	1 002	84.2	983	82.6	6	0.5
Virgin Australia	372	369	317	85.9	329	89.2	3	0.8
All Airlines	1 568	1 559	1 319	84.6	1 312	84.2	9	0.6
Melbourne-Perth								
Jetstar	911	875	756	86.4	731	83.5	36	4.0
Qantas	2 602	2 594	2 099	80.9	2 135	82.3	8	0.3
Tigerair	671	666	520	78.1	552	82.9	5	0.7
Virgin Australia	1 654	1 643	1 373	83.6	1 367	83.2	11	0.7
All Airlines	5 838	5 778	4 748	82.2	4 785	82.8	60	1.0

	<i>Sectors</i>		<i>Arrivals On Time</i>		<i>Departures On Time</i>		<i>Cancellations</i>	
	<i>Sched.</i>	<i>Flown</i>	<i>No.</i>	<i>%</i>	<i>No.</i>	<i>%</i>	<i>No.</i>	<i>%</i>
Melbourne-Sunshine Coast								
Jetstar	868	863	731	84.7	709	82.2	5	0.6
Tigerair	21	21	18	85.7	20	95.2	0	0.0
Virgin Australia	384	379	316	83.4	325	85.8	5	1.3
All Airlines	1 273	1 263	1 065	84.3	1 054	83.5	10	0.8
Melbourne-Sydney								
Jetstar	4 025	3 884	2 913	75.0	2 904	74.8	141	3.5
Qantas	11 356	10 990	9 228	84.0	9 659	87.9	366	3.2
Tigerair	2 686	2 646	2 070	78.2	2 147	81.1	40	1.5
Virgin Australia	9 298	8 896	7 712	86.7	7 997	89.9	402	4.3
All Airlines	27 365	26 416	21 923	83.0	22 707	86.0	949	3.5
Mildura-Melbourne								
QantasLink	1 041	1 037	888	85.6	910	87.8	4	0.4
Regional Express	959	957	790	82.5	831	86.8	2	0.2
Virgin Australia	365	364	323	88.7	317	87.1	1	0.3
All Airlines	2 365	2 358	2 001	84.9	2 058	87.3	7	0.3
Moranbah-Brisbane								
QantasLink	1 421	1 359	1 182	87.0	1 178	86.7	62	4.4
Virgin Australia Regional Airlines	933	926	813	87.8	827	89.3	7	0.8
All Airlines	2 354	2 285	1 995	87.3	2 005	87.7	69	2.9
Mount Isa-Brisbane								
Qantas	608	601	553	92.0	543	90.3	7	1.2
Virgin Australia	261	261	250	95.8	242	92.7	0	0.0
All Airlines	869	862	803	93.2	785	91.1	7	0.8
Newcastle-Brisbane								
Jetstar	1 053	1 047	832	79.5	862	82.3	6	0.6
QantasLink	857	846	589	69.6	619	73.2	11	1.3
Virgin Australia	991	982	825	84.0	830	84.5	9	0.9
All Airlines	2 901	2 875	2 246	78.1	2 311	80.4	26	0.9
Newcastle-Melbourne								
Jetstar	1 198	1 186	1 013	85.4	1 032	87.0	12	1.0
Virgin Australia	373	367	280	76.3	272	74.1	6	1.6
All Airlines	1 571	1 553	1 293	83.3	1 304	84.0	18	1.1
Newman-Perth								
Qantas	1 153	1 132	1 081	95.5	1 077	95.1	21	1.8
QantasLink	631	622	593	95.3	591	95.0	9	1.4
Virgin Australia	355	351	328	93.4	327	93.2	4	1.1
Virgin Australia Regional Airlines	52	52	43	82.7	43	82.7	0	0.0
All Airlines	2 191	2 157	2 045	94.8	2 038	94.5	34	1.6
Perth-Adelaide								
Jetstar	408	406	331	81.5	326	80.3	2	0.5
Qantas	1 397	1 395	1 338	95.9	1 304	93.5	2	0.1
Virgin Australia	814	806	758	94.0	738	91.6	8	1.0
All Airlines	2 619	2 607	2 427	93.1	2 368	90.8	12	0.5
Perth-Brisbane								
Qantas	1 511	1 511	1 276	84.4	1 334	88.3	0	0.0
Virgin Australia	1 190	1 188	1 047	88.1	1 058	89.1	2	0.2
All Airlines	2 701	2 699	2 323	86.1	2 392	88.6	2	0.1
Perth-Broome								
Qantas	398	397	369	92.9	372	93.7	1	0.3
QantasLink	586	583	545	93.5	544	93.3	3	0.5
Virgin Australia	324	316	289	91.5	286	90.5	8	2.5
Virgin Australia Regional Airlines	249	248	182	73.4	199	80.2	1	0.4
All Airlines	1 557	1 544	1 385	89.7	1 401	90.7	13	0.8

	<i>Sectors</i>		<i>Arrivals On Time</i>		<i>Departures On Time</i>		<i>Cancellations</i>	
	<i>Sched.</i>	<i>Flown</i>	<i>No.</i>	<i>%</i>	<i>No.</i>	<i>%</i>	<i>No.</i>	<i>%</i>
Perth-Darwin								
Qantas	438	438	419	95.7	419	95.7	0	0.0
Virgin Australia	334	334	300	89.8	307	91.9	0	0.0
All Airlines	772	772	719	93.1	726	94.0	0	0.0
Perth-Geraldton								
QantasLink	615	610	550	90.2	559	91.6	5	0.8
Virgin Australia Regional Airlines	1 053	1 053	927	88.0	952	90.4	0	0.0
All Airlines	1 668	1 663	1 477	88.8	1 511	90.9	5	0.3
Perth-Kalgoorlie								
Qantas	271	268	245	91.4	248	92.5	3	1.1
QantasLink	712	703	650	92.5	654	93.0	9	1.3
Virgin Australia	445	441	403	91.4	395	89.6	4	0.9
Virgin Australia Regional Airlines	229	229	175	76.4	176	76.9	0	0.0
All Airlines	1 657	1 641	1 473	89.8	1 473	89.8	16	1.0
Perth-Karratha								
Qantas	1 326	1 301	1 234	94.9	1 242	95.5	25	1.9
QantasLink	1 191	1 171	1 084	92.6	1 092	93.3	20	1.7
Virgin Australia	798	786	720	91.6	732	93.1	12	1.5
Virgin Australia Regional Airlines	222	220	175	79.5	182	82.7	2	0.9
All Airlines	3 537	3 478	3 213	92.4	3 248	93.4	59	1.7
Perth-Melbourne								
Jetstar	911	868	700	80.6	691	79.6	43	4.7
Qantas	2 606	2 595	2 284	88.0	2 219	85.5	11	0.4
Tigerair	674	662	517	78.1	522	78.9	12	1.8
Virgin Australia	1 651	1 638	1 432	87.4	1 445	88.2	13	0.8
All Airlines	5 842	5 763	4 933	85.6	4 877	84.6	79	1.4
Perth-Newman								
Qantas	1 153	1 134	1 072	94.5	1 072	94.5	19	1.6
QantasLink	632	625	592	94.7	597	95.5	7	1.1
Virgin Australia	355	352	319	90.6	318	90.3	3	0.8
Virgin Australia Regional Airlines	52	52	50	96.2	50	96.2	0	0.0
All Airlines	2 192	2 163	2 033	94.0	2 037	94.2	29	1.3
Perth-Port Hedland								
Qantas	1 329	1 302	1 244	95.5	1 242	95.4	27	2.0
QantasLink	550	539	499	92.6	510	94.6	11	2.0
Virgin Australia	521	516	481	93.2	482	93.4	5	1.0
All Airlines	2 400	2 357	2 224	94.4	2 234	94.8	43	1.8
Perth-Sydney								
Jetstar	356	352	267	75.9	264	75.0	4	1.1
Qantas	2 399	2 399	2 086	87.0	2 060	85.9	0	0.0
Tigerair	289	284	245	86.3	253	89.1	5	1.7
Virgin Australia	1 392	1 378	1 279	92.8	1 225	88.9	14	1.0
All Airlines	4 436	4 413	3 877	87.9	3 802	86.2	23	0.5
Port Hedland-Perth								
Qantas	1 329	1 298	1 218	93.8	1 200	92.4	31	2.3
QantasLink	553	540	509	94.3	506	93.7	13	2.4
Virgin Australia	519	515	457	88.7	462	89.7	4	0.8
All Airlines	2 401	2 353	2 184	92.8	2 168	92.1	48	2.0
Port Lincoln-Adelaide								
QantasLink	1 208	1 201	1 043	86.8	1 063	88.5	7	0.6
Regional Express	2 384	2 375	2 199	92.6	2 233	94.0	9	0.4
All Airlines	3 592	3 576	3 242	90.7	3 296	92.2	16	0.4

	<i>Sectors</i>		<i>Arrivals On Time</i>		<i>Departures On Time</i>		<i>Cancellations</i>	
	<i>Sched.</i>	<i>Flown</i>	<i>No.</i>	<i>%</i>	<i>No.</i>	<i>%</i>	<i>No.</i>	<i>%</i>
Port Macquarie-Sydney								
QantasLink	1 596	1 579	969	61.4	1 105	70.0	17	1.1
Virgin Australia Regional Airlines	728	724	574	79.3	608	84.0	4	0.5
All Airlines	2 324	2 303	1 543	67.0	1 713	74.4	21	0.9
Proserpine-Brisbane								
Jetstar	346	344	303	88.1	307	89.2	2	0.6
Virgin Australia	627	624	554	88.8	555	88.9	3	0.5
All Airlines	973	968	857	88.5	862	89.0	5	0.5
Rockhampton-Brisbane								
QantasLink	2 340	2 292	1 749	76.3	1 849	80.7	48	2.1
Virgin Australia	1 225	1 196	1 059	88.5	1 064	89.0	29	2.4
Virgin Australia Regional Airlines	1 253	1 207	1 067	88.4	1 069	88.6	46	3.7
All Airlines	4 818	4 695	3 875	82.5	3 982	84.8	123	2.6
Sunshine Coast-Melbourne								
Jetstar	868	860	681	79.2	655	76.2	8	0.9
Tigerair	21	21	13	61.9	18	85.7	0	0.0
Virgin Australia	384	378	302	79.9	290	76.7	6	1.6
All Airlines	1 273	1 259	996	79.1	963	76.5	14	1.1
Sunshine Coast-Sydney								
Jetstar	1 203	1 191	979	82.2	960	80.6	12	1.0
Virgin Australia	366	360	314	87.2	314	87.2	6	1.6
All Airlines	1 569	1 551	1 293	83.4	1 274	82.1	18	1.1
Sydney-Adelaide								
Jetstar	1 481	1 467	1 163	79.3	1 161	79.1	14	0.9
Qantas	2 816	2 812	2 444	86.9	2 438	86.7	4	0.1
QantasLink	253	242	172	71.1	183	75.6	11	4.3
Tigerair	331	329	292	88.8	298	90.6	2	0.6
Virgin Australia	2 029	2 021	1 828	90.5	1 826	90.4	8	0.4
All Airlines	6 910	6 871	5 899	85.9	5 906	86.0	39	0.6
Sydney-Albury								
QantasLink	1 149	1 140	927	81.3	931	81.7	9	0.8
Regional Express	1 195	1 194	989	82.8	997	83.5	1	0.1
Virgin Australia Regional Airlines	730	729	622	85.3	634	87.0	1	0.1
All Airlines	3 074	3 063	2 538	82.9	2 562	83.6	11	0.4
Sydney-Alice Springs								
			(To July 2014 only)					
Qantas	31	31	26	83.9	28	90.3	0	0.0
Tigerair	12	12	11	91.7	12	100.0	0	0.0
All Airlines	43	43	37	86.0	40	93.0	0	0.0
Sydney-Armidale								
QantasLink	1 586	1 558	1 204	77.3	1 266	81.3	28	1.8
Regional Express	870	869	749	86.2	747	86.0	1	0.1
All Airlines	2 456	2 427	1 953	80.5	2 013	82.9	29	1.2
Sydney-Ayers Rock								
Jetstar	343	342	300	87.7	300	87.7	1	0.3
Virgin Australia	365	364	317	87.1	333	91.5	1	0.3
All Airlines	708	706	617	87.4	633	89.7	2	0.3
Sydney-Ballina								
Jetstar	845	841	678	80.6	690	82.0	4	0.5
Regional Express	302	301	267	88.7	270	89.7	1	0.3
Virgin Australia	365	360	330	91.7	337	93.6	5	1.4
All Airlines	1 512	1 502	1 275	84.9	1 297	86.4	10	0.7

	<i>Sectors</i>		<i>Arrivals On Time</i>		<i>Departures On Time</i>		<i>Cancellations</i>	
	<i>Sched.</i>	<i>Flown</i>	<i>No.</i>	<i>%</i>	<i>No.</i>	<i>%</i>	<i>No.</i>	<i>%</i>
Sydney-Brisbane								
Jetstar	2 078	1 990	1 520	76.4	1 494	75.1	88	4.2
Qantas	7 039	6 915	5 593	80.9	5 970	86.3	124	1.8
Tigerair	1 059	1 052	855	81.3	903	85.8	7	0.7
Virgin Australia	6 521	6 335	5 362	84.6	5 603	88.4	186	2.9
All Airlines	16 697	16 292	13 330	81.8	13 970	85.7	405	2.4
Sydney-Cairns								
Jetstar	1 131	1 128	1 002	88.8	994	88.1	3	0.3
Qantas	873	873	750	85.9	755	86.5	0	0.0
Tigerair	366	365	311	85.2	336	92.1	1	0.3
Virgin Australia	1 073	1 067	924	86.6	940	88.1	6	0.6
All Airlines	3 443	3 433	2 987	87.0	3 025	88.1	10	0.3
Sydney-Canberra								
Qantas	96	96	84	87.5	93	96.9	0	0.0
QantasLink	6 018	5 729	4 868	85.0	4 886	85.3	289	4.8
Virgin Australia	359	352	317	90.1	318	90.3	7	1.9
Virgin Australia Regional Airlines	3 098	3 012	2 695	89.5	2 668	88.6	86	2.8
All Airlines	9 571	9 189	7 964	86.7	7 965	86.7	382	4.0
Sydney-Coffs Harbour								
Qantas	2	2	2	100.0	2	100.0	0	0.0
QantasLink	1 813	1 794	1 507	84.0	1 473	82.1	19	1.0
Tigerair	157	154	125	81.2	129	83.8	3	1.9
Virgin Australia	722	706	646	91.5	648	91.8	16	2.2
All Airlines	2 694	2 656	2 280	85.8	2 252	84.8	38	1.4
Sydney-Darwin								
Jetstar	314	311	251	80.7	252	81.0	3	1.0
Qantas	593	593	476	80.3	442	74.5	0	0.0
Virgin Australia	364	364	304	83.5	329	90.4	0	0.0
All Airlines	1 271	1 268	1 031	81.3	1 023	80.7	3	0.2
Sydney-Dubbo								
QantasLink	1 471	1 459	1 136	77.9	1 131	77.5	12	0.8
Regional Express	1 667	1 658	1 494	90.1	1 469	88.6	9	0.5
All Airlines	3 138	3 117	2 630	84.4	2 600	83.4	21	0.7
Sydney-Gold Coast								
Jetstar	3 817	3 741	3 188	85.2	3 203	85.6	76	2.0
Qantas	1 090	1 089	1 017	93.4	1 015	93.2	1	0.1
QantasLink	9	9	7	77.8	6	66.7	0	0.0
Tigerair	1 061	1 050	881	83.9	921	87.7	11	1.0
Virgin Australia	3 158	3 089	2 647	85.7	2 705	87.6	69	2.2
All Airlines	9 135	8 978	7 740	86.2	7 850	87.4	157	1.7
Sydney-Hamilton Island								
Jetstar	311	310	262	84.5	272	87.7	1	0.3
Qantas	96	96	85	88.5	88	91.7	0	0.0
Virgin Australia	367	366	320	87.4	331	90.4	1	0.3
All Airlines	774	772	667	86.4	691	89.5	2	0.3
Sydney-Hobart								
Jetstar	887	885	788	89.0	761	86.0	2	0.2
Qantas	8	8	4	50.0	7	87.5	0	0.0
QantasLink	374	372	307	82.5	314	84.4	2	0.5
Virgin Australia	729	729	677	92.9	685	94.0	0	0.0
All Airlines	1 998	1 994	1 776	89.1	1 767	88.6	4	0.2
Sydney-Launceston								
Jetstar	661	660	561	85.0	538	81.5	1	0.2
Virgin Australia	366	366	334	91.3	330	90.2	0	0.0
All Airlines	1 027	1 026	895	87.2	868	84.6	1	0.1

	<i>Sectors</i>		<i>Arrivals On Time</i>		<i>Departures On Time</i>		<i>Cancellations</i>	
	<i>Sched.</i>	<i>Flown</i>	<i>No.</i>	<i>%</i>	<i>No.</i>	<i>%</i>	<i>No.</i>	<i>%</i>
Sydney-Melbourne								
Jetstar	4 024	3 890	3 040	78.1	2 995	77.0	134	3.3
Qantas	11 340	10 978	9 292	84.6	9 516	86.7	362	3.2
Tigerair	2 684	2 646	2 035	76.9	2 041	77.1	38	1.4
Virgin Australia	9 278	8 870	7 537	85.0	7 711	86.9	408	4.4
All Airlines	27 326	26 384	21 904	83.0	22 263	84.4	942	3.4
Sydney-Perth								
Jetstar	360	359	308	85.8	292	81.3	1	0.3
Qantas	2 450	2 448	2 023	82.6	1 989	81.3	2	0.1
Tigerair	292	292	250	85.6	271	92.8	0	0.0
Virgin Australia	1 393	1 380	1 181	85.6	1 182	85.7	13	0.9
All Airlines	4 495	4 479	3 762	84.0	3 734	83.4	16	0.4
Sydney-Port Macquarie								
QantasLink	1 597	1 582	1 078	68.1	1 278	80.8	15	0.9
Virgin Australia Regional Airlines	727	723	610	84.4	615	85.1	4	0.6
All Airlines	2 324	2 305	1 688	73.2	1 893	82.1	19	0.8
Sydney-Sunshine Coast								
Jetstar	1 206	1 196	1 032	86.3	1 019	85.2	10	0.8
Virgin Australia	366	361	321	88.9	328	90.9	5	1.4
All Airlines	1 572	1 557	1 353	86.9	1 347	86.5	15	1.0
Sydney-Townsville								
Jetstar	283	283	244	86.2	234	82.7	0	0.0
Virgin Australia	352	352	290	82.4	316	89.8	0	0.0
All Airlines	635	635	534	84.1	550	86.6	0	0.0
Sydney-Wagga Wagga								
QantasLink	1 346	1 341	1 078	80.4	1 082	80.7	5	0.4
Regional Express	1 492	1 487	1 348	90.7	1 358	91.3	5	0.3
All Airlines	2 838	2 828	2 426	85.8	2 440	86.3	10	0.4
Townsville-Brisbane								
Jetstar	658	651	541	83.1	541	83.1	7	1.1
Qantas	1 763	1 762	1 612	91.5	1 629	92.5	1	0.1
Virgin Australia	1 835	1 815	1 625	89.5	1 588	87.5	20	1.1
All Airlines	4 256	4 228	3 778	89.4	3 758	88.9	28	0.7
Townsville-Sydney								
Jetstar	283	282	221	78.4	216	76.6	1	0.4
Virgin Australia	353	353	271	76.8	261	73.9	0	0.0
All Airlines	636	635	492	77.5	477	75.1	1	0.2
Wagga Wagga-Sydney								
QantasLink	1 346	1 337	1 080	80.8	1 075	80.4	9	0.7
Regional Express	1 493	1 490	1 247	83.7	1 340	89.9	3	0.2
All Airlines	2 839	2 827	2 327	82.3	2 415	85.4	12	0.4

Airports

On time performance is reported for all routes where the passenger load averages over 8000 passengers per month, and where two or more airlines operate in competition. The following data reports by airport against flights operated on those routes only. This year, 8 major city airports and 32 regional city airports are covered.

Airport	Arrivals			Departures		
	Sectors	On Time		Sectors	On Time	
	Flown	No.	%	Flown	No.	%
Adelaide						
Jetstar	3 888	3 196	82.2	3 887	3 241	83.4
Qantas	9 479	8 579	90.5	9 475	8 578	90.5
QantasLink	1 625	1 361	83.8	1 625	1 370	84.3
Regional Express	2 375	2 199	92.6	2 383	2 275	95.5
Tigerair	1 457	1 272	87.3	1 453	1 253	86.2
Virgin Australia	8 133	7 264	89.3	8 122	7 380	90.9
All Airlines	26 957	23 871	88.6	26 945	24 097	89.4

Relates to services to and from Alice Springs (June 2015 only), Brisbane, Canberra, Gold Coast, Melbourne, Perth, Port Lincoln and Sydney.

Albury

QantasLink	1 140	927	81.3	1 137	950	83.6
Regional Express	1 194	989	82.8	1 189	1 069	89.9
Virgin Australia Regional Airlines	729	622	85.3	727	612	84.2
All Airlines	3 063	2 538	82.9	3 053	2 631	86.2

Relates to services to and from Sydney only.

Alice Springs

(July 2014 and June 2015 only)

Qantas	92	73	79.3	92	63	68.5
QantasLink	60	53	88.3	60	57	95.0
Tigerair	24	19	79.2	24	14	58.3
Virgin Australia	26	26	100.0	26	24	92.3
All Airlines	202	171	84.7	202	158	78.2

Relates to services to and from Adelaide and Darwin (June 2015 only) and Melbourne and Sydney (July 2014 only).

Armidale

QantasLink	1 558	1 204	77.3	1 543	1 201	77.8
Regional Express	869	749	86.2	869	743	85.5
All Airlines	2 427	1 953	80.5	2 412	1 944	80.6

Relates to services to and from Sydney only.

Ayers Rock

Jetstar	342	300	87.7	342	296	86.5
Virgin Australia	364	317	87.1	363	313	86.2
All Airlines	706	617	87.4	705	609	86.4

Relates to services to and from Sydney only.

Ballina

Jetstar	841	678	80.6	837	621	74.2
Regional Express	301	267	88.7	274	218	79.6
Virgin Australia	360	330	91.7	359	317	88.3
All Airlines	1 502	1 275	84.9	1 470	1 156	78.6

Relates to services to and from Sydney only.

Airport	Arrivals			Departures		
	Sectors Flown	On Time		Sectors Flown	On Time	
		No.	%		No.	%
Brisbane						
Jetstar	8 434	6 805	80.7	8 435	6 958	82.5
Qantas	19 469	16 480	84.6	19 562	17 376	88.8
QantasLink	13 149	10 846	82.5	13 282	11 873	89.4
Tigerair	3 271	2 555	78.1	3 269	2 668	81.6
Virgin Australia	24 004	20 543	85.6	24 031	21 270	88.5
Virgin Australia Regional Airlines	5 257	4 451	84.7	5 282	4 592	86.9
All Airlines	73 584	61 680	83.8	73 861	64 737	87.6

Relates to services to and from Adelaide, Bundaberg, Cairns, Canberra, Darwin, Emerald, Gladstone, Hamilton Island, Hobart, Mackay, Melbourne, Moranbah, Mount Isa, Newcastle, Perth, Proserpine, Rockhampton, Sydney and Townsville.

Broome

Qantas	397	369	92.9	397	330	83.1
QantasLink	583	545	93.5	582	541	93.0
Virgin Australia	316	289	91.5	316	251	79.4
Virgin Australia Regional Airlines	248	182	73.4	300	193	64.3
All Airlines	1 544	1 385	89.7	1 595	1 315	82.4

Relates to services to and from Perth only.

Bundaberg

QantasLink	1 450	1 269	87.5	1 449	1 269	87.6
Virgin Australia Regional Airlines	458	403	88.0	459	393	85.6
All Airlines	1 908	1 672	87.6	1 908	1 662	87.1

Relates to services to and from Brisbane only.

Cairns

Jetstar	3 484	2 999	86.1	3 481	2 972	85.4
Qantas	2 654	2 334	87.9	2 651	2 213	83.5
QantasLink	52	44	84.6	52	50	96.2
Tigerair	1 096	927	84.6	1 096	839	76.6
Virgin Australia	3 062	2 668	87.1	3 063	2 651	86.5
All Airlines	10 348	8 972	86.7	10 343	8 725	84.4

Relates to services to and from Brisbane, Melbourne and Sydney.

Canberra

Qantas	3 163	2 899	91.7	3 161	2 940	93.0
QantasLink	8 423	7 138	84.7	8 390	7 262	86.6
Virgin Australia	3 673	3 292	89.6	3 669	3 242	88.4
Virgin Australia Regional Airlines	3 234	2 845	88.0	3 231	2 920	90.4
All Airlines	18 493	16 174	87.5	18 451	16 364	88.7

Relates to services to and from Adelaide, Brisbane, Melbourne and Sydney.

Coffs Harbour

Qantas	2	2	100.0	2	1	50.0
QantasLink	1 794	1 507	84.0	1 790	1 476	82.5
Tigerair	154	125	81.2	153	123	80.4
Virgin Australia	706	646	91.5	706	636	90.1
All Airlines	2 656	2 280	85.8	2 651	2 236	84.3

Relates to services to and from Sydney only.

Airport	Arrivals			Departures		
	Sectors	On Time		Sectors	On Time	
	Flown	No.	%	Flown	No.	%
Darwin						
Jetstar	938	789	84.1	935	679	72.6
Qantas	1 914	1 650	86.2	1 913	1 594	83.3
QantasLink	60	55	91.7	60	54	90.0
Tigerair	250	217	86.8	247	224	90.7
Virgin Australia	1 441	1 259	87.4	1 438	1 152	80.1
All Airlines	4 603	3 970	86.2	4 593	3 703	80.6
Relates to services to and from Alice Springs (June 2015 only), Brisbane, Melbourne, Perth and Sydney.						
Dubbo						
QantasLink	1 459	1 136	77.9	1 459	1 181	80.9
Regional Express	1 658	1 494	90.1	1 667	1 501	90.0
All Airlines	3 117	2 630	84.4	3 126	2 682	85.8
Relates to services to and from Sydney only.						
Emerald						
QantasLink	1 702	1 426	83.8	1 696	1 387	81.8
Virgin Australia Regional Airlines	967	776	80.2	962	834	86.7
All Airlines	2 669	2 202	82.5	2 658	2 221	83.6
Relates to services to and from Brisbane only.						
Geraldton						
QantasLink	610	550	90.2	608	564	92.8
Virgin Australia Regional Airlines	1 053	927	88.0	1 102	999	90.7
All Airlines	1 663	1 477	88.8	1 710	1 563	91.4
Relates to services to and from Perth only.						
Gladstone						
QantasLink	2 448	2 197	89.7	2 579	2 231	86.5
Virgin Australia	81	69	85.2	81	63	77.8
Virgin Australia Regional Airlines	1 711	1 436	83.9	1 703	1 409	82.7
All Airlines	4 240	3 702	87.3	4 363	3 703	84.9
Relates to services to and from Brisbane only.						
Gold Coast						
Jetstar	6 707	5 664	84.4	6 679	5 691	85.2
Qantas	1 089	1 017	93.4	1 086	934	86.0
QantasLink	9	7	77.8	9	7	77.8
Tigerair	1 927	1 528	79.3	1 923	1 433	74.5
Virgin Australia	5 587	4 877	87.3	5 576	4 838	86.8
All Airlines	15 319	13 093	85.5	15 273	12 903	84.5
Relates to services to and from Adelaide, Melbourne and Sydney.						
Hamilton Island						
Jetstar	598	533	89.1	596	509	85.4
Qantas	96	85	88.5	96	61	63.5
QantasLink	122	101	82.8	122	91	74.6
Virgin Australia	948	849	89.6	943	804	85.3
All Airlines	1 764	1 568	88.9	1 757	1 465	83.4
Relates to services to and from Brisbane, Melbourne and Sydney.						

Airport	Arrivals			Departures		
	Sectors	On Time		Sectors	On Time	
	Flown	No.	%	Flown	No.	%
Hobart						
Jetstar	3 442	2 952	85.8	3 441	2 680	77.9
Qantas	19	15	78.9	19	12	63.2
QantasLink	1 769	1 141	64.5	1 766	1 273	72.1
Tigerair	351	256	72.9	350	245	70.0
Virgin Australia	2 798	2 457	87.8	2 793	2 336	83.6
All Airlines	8 379	6 821	81.4	8 369	6 546	78.2
Relates to services to and from Brisbane, Melbourne and Sydney.						
Kalgoorlie						
Qantas	268	245	91.4	270	246	91.1
QantasLink	703	650	92.5	701	645	92.0
Virgin Australia	441	403	91.4	438	388	88.6
Virgin Australia Regional Airlines	229	175	76.4	228	182	79.8
All Airlines	1 641	1 473	89.8	1 637	1 461	89.2
Relates to services to and from Perth only.						
Karratha						
Qantas	1 301	1 234	94.9	1 292	1 216	94.1
QantasLink	1 171	1 084	92.6	1 172	1 101	93.9
Virgin Australia	786	720	91.6	784	708	90.3
Virgin Australia Regional Airlines	220	175	79.5	218	170	78.0
All Airlines	3 478	3 213	92.4	3 466	3 195	92.2
Relates to services to and from Perth only.						
Launceston						
Jetstar	2 145	1 817	84.7	2 144	1 682	78.5
QantasLink	1 401	1 122	80.1	1 394	1 171	84.0
Virgin Australia	1 575	1 352	85.8	1 577	1 381	87.6
Virgin Australia Regional Airlines	33	26	78.8	33	24	72.7
All Airlines	5 154	4 317	83.8	5 148	4 258	82.7
Relates to services to and from Melbourne and Sydney.						
Mackay						
Jetstar	702	576	82.1	698	531	76.1
QantasLink	1 268	1 162	91.6	1 260	1 137	90.2
Virgin Australia	1 818	1 635	89.9	1 816	1 620	89.2
All Airlines	3 788	3 373	89.0	3 774	3 288	87.1
Relates to services to and from Brisbane only.						
Melbourne						
Jetstar	17 339	14 078	81.2	17 374	13 845	79.7
Qantas	24 952	21 649	86.8	24 952	21 966	88.0
QantasLink	4 902	3 847	78.5	4 904	3 895	79.4
Regional Express	957	790	82.5	958	874	91.2
Tigerair	7 181	5 471	76.2	7 193	5 953	82.8
Virgin Australia	27 397	23 201	84.7	27 404	24 241	88.5
Virgin Australia Regional Airlines	256	202	78.9	255	196	76.9
All Airlines	82 984	69 238	83.4	83 040	70 970	85.5
Relates to services to and from Adelaide, Alice Springs (July 2014 only), Brisbane, Cairns, Canberra, Darwin, Gold Coast, Hamilton Island, Hobart, Launceston, Mildura, Newcastle, Perth, Sunshine Coast and Sydney.						

Airport	Arrivals			Departures		
	Sectors	On Time		Sectors	On Time	
	Flown	No.	%	Flown	No.	%
Mildura						
QantasLink	1 040	856	82.3	1 037	910	87.8
Regional Express	958	852	88.9	957	831	86.8
Virgin Australia	364	315	86.5	364	317	87.1
All Airlines	2 362	2 023	85.6	2 358	2 058	87.3
Relates to services to and from Melbourne only.						
Moranbah						
QantasLink	1 412	1 269	89.9	1 359	1 178	86.7
Virgin Australia Regional Airlines	929	839	90.3	926	827	89.3
All Airlines	2 341	2 108	90.0	2 285	2 005	87.7
Relates to services to and from Brisbane only.						
Mount Isa						
Qantas	608	568	93.4	601	543	90.3
Virgin Australia	261	248	95.0	261	242	92.7
All Airlines	869	816	93.9	862	785	91.1
Relates to services to and from Brisbane only.						
Newcastle						
Jetstar	2 238	1 943	86.8	2 233	1 894	84.8
QantasLink	845	599	70.9	846	619	73.2
Virgin Australia	1 354	1 195	88.3	1 349	1 102	81.7
All Airlines	4 437	3 737	84.2	4 428	3 615	81.6
Relates to services to and from Brisbane and Melbourne.						
Newman						
Qantas	1 134	1 072	94.5	1 132	1 077	95.1
QantasLink	625	592	94.7	622	591	95.0
Virgin Australia	352	319	90.6	351	327	93.2
Virgin Australia Regional Airlines	52	50	96.2	52	43	82.7
All Airlines	2 163	2 033	94.0	2 157	2 038	94.5
Relates to services to and from Perth only.						
Perth						
Jetstar	1 642	1 413	86.1	1 626	1 281	78.8
Qantas	12 721	11 146	87.6	12 740	11 512	90.4
QantasLink	4 225	3 938	93.2	4 231	3 956	93.5
Tigerair	958	770	80.4	946	775	81.9
Virgin Australia	7 747	6 632	85.6	7 755	6 986	90.1
Virgin Australia Regional Airlines	1 900	1 555	81.8	1 802	1 559	86.5
All Airlines	29 193	25 454	87.2	29 100	26 069	89.6
Relates to services to and from Adelaide, Brisbane, Broome, Darwin, Geraldton, Kalgoorlie, Karratha, Melbourne, Newman, Port Hedland and Sydney.						
Port Hedland						
Qantas	1 302	1 244	95.5	1 298	1 200	92.4
QantasLink	539	499	92.6	540	506	93.7
Virgin Australia	516	481	93.2	515	462	89.7
All Airlines	2 357	2 224	94.4	2 353	2 168	92.1
Relates to services to and from Perth only.						

Airport	Arrivals			Departures		
	Sectors Flown	On Time		Sectors Flown	On Time	
		No.	%		No.	%
Port Lincoln						
QantasLink	1 202	1 047	87.1	1 201	1 063	88.5
Regional Express	2 383	2 222	93.2	2 375	2 233	94.0
All Airlines	3 585	3 269	91.2	3 576	3 296	92.2
Relates to services to and from Adelaide only.						
Port Macquarie						
QantasLink	1 582	1 078	68.1	1 579	1 105	70.0
Virgin Australia Regional Airlines	723	610	84.4	724	608	84.0
All Airlines	2 305	1 688	73.2	2 303	1 713	74.4
Relates to services to and from Sydney only.						
Proserpine						
Jetstar	346	293	84.7	344	307	89.2
Virgin Australia	624	577	92.5	624	555	88.9
All Airlines	970	870	89.7	968	862	89.0
Relates to services to and from Brisbane only.						
Rockhampton						
QantasLink	2 485	2 125	85.5	2 292	1 849	80.7
Virgin Australia	1 198	1 067	89.1	1 196	1 064	89.0
Virgin Australia Regional Airlines	1 217	1 003	82.4	1 207	1 069	88.6
All Airlines	4 900	4 195	85.6	4 695	3 982	84.8
Relates to services to and from Brisbane only.						
Sunshine Coast						
Jetstar	2 059	1 763	85.6	2 051	1 615	78.7
Tigerair	21	18	85.7	21	18	85.7
Virgin Australia	740	637	86.1	738	604	81.8
All Airlines	2 820	2 418	85.7	2 810	2 237	79.6
Relates to services to and from Melbourne and Sydney.						
Sydney						
Jetstar	17 359	13 863	79.9	17 403	14 205	81.6
Qantas	26 020	22 362	85.9	25 941	22 343	86.1
QantasLink	15 156	12 213	80.6	15 226	12 550	82.4
Regional Express	5 489	4 488	81.8	5 509	4 841	87.9
Tigerair	5 885	4 762	80.9	5 900	4 911	83.2
Virgin Australia	27 066	23 672	87.5	27 082	23 922	88.3
Virgin Australia Regional Airlines	4 459	3 852	86.4	4 464	3 917	87.7
All Airlines	101 434	85 212	84.0	101 525	86 689	85.4
Relates to services to and from Adelaide, Albury, Alice Springs (July 2014 only), Armidale, Ayers Rock, Ballina, Brisbane, Cairns, Canberra, Coffs Harbour, Darwin, Dubbo, Gold Coast, Hamilton Island, Hobart, Launceston, Melbourne, Perth, Port Macquarie, Sunshine Coast, Townsville and Wagga Wagga.						
Townsville						
Jetstar	935	809	86.5	933	757	81.1
Qantas	1 762	1 561	88.6	1 762	1 629	92.5
Virgin Australia	2 170	1 876	86.5	2 168	1 849	85.3
All Airlines	4 867	4 246	87.2	4 863	4 235	87.1
Relates to services to and from Brisbane and Sydney.						
Wagga Wagga						
QantasLink	1 341	1 078	80.4	1 337	1 075	80.4
Regional Express	1 487	1 348	90.7	1 490	1 340	89.9
All Airlines	2 828	2 426	85.8	2 827	2 415	85.4
Relates to services to and from Sydney only.						

Definitions

On time arrival	A flight arrival is counted as "on time" if it arrived at the gate before 15 minutes after the scheduled arrival time shown in the carriers' schedule. Neither diverted nor cancelled flights count as on time.
On time departure	A flight departure is counted as "on time" if it departs the gate before 15 minutes after the scheduled departure time shown in the carriers' schedule.
Cancellation	A flight removed from service within 7 days of scheduled departure is regarded as a cancellation.
On time departure percentage	The percentage of on time departures is measured against the number of departures <i>operated</i> on any particular sector.
On time arrival percentage	The percentage of on time arrivals is measured against the number of arrivals <i>operated</i> on any particular sector.
Cancellation percentage	The percentage of cancellations is measured against the number of services <i>scheduled</i> on any particular sector.
