



Australian Government

Department of Infrastructure, Transport, Regional Development and Communications

Bureau of Infrastructure and Transport Research Economics

STATISTICAL REPORT



Aviation

Domestic airline on time performance
April 2022

© Commonwealth of Australia 2022

ISSN: 1832-0759

Ownership of intellectual property rights in this publication

Unless otherwise noted, copyright (and any other intellectual property rights, if any) in this publication is owned by the Commonwealth of Australia (referred to below as the Commonwealth).

Disclaimer

The material contained in this publication is made available on the understanding that the Commonwealth is not providing professional advice, and that users exercise their own skill and care with respect to its use, and seek independent advice if necessary.

The Commonwealth makes no representations or warranties as to the contents or accuracy of the information contained in this publication. To the extent permitted by law, the Commonwealth disclaims liability to any person or organisation in respect of anything done, or omitted to be done, in reliance upon information contained in this publication.

Creative Commons licence

With the exception of (a) the Coat of Arms; and (b) the Department of Infrastructure, Transport, Regional Development and Communications' photos and graphics, copyright in this publication is licensed under a Creative Commons Attribution 3.0 Australia Licence.

Creative Commons Attribution 3.0 Australia Licence is a standard form licence agreement that allows you to copy, communicate and adapt this publication provided that you attribute the work to the Commonwealth and abide by the other licence terms. A summary of the licence terms is available from <http://creativecommons.org/licenses/by/3.0/au/deed.en>. The full licence terms are available from <http://creativecommons.org/licenses/by/3.0/au/legalcode>.

Use of the Coat of Arms

The Department of the Prime Minister and Cabinet sets the terms under which the Coat of Arms is used. Please refer to the Department's Commonwealth Coat of Arms and Government branding web page <http://www.dpmc.gov.au/guidelines/index.cfm#brand> and, in particular, the Guidelines on the use of the Commonwealth Coat of Arms publication.

An appropriate citation for this report is:

Bureau of Infrastructure and Transport Research Economics (BITRE), 2022, Domestic airline on time performance, Statistical Report, BITRE, Canberra ACT.

Contact us

This publication is available in PDF format. All other rights are reserved, including in relation to any Departmental logos or trade marks which may exist. For enquiries regarding the licence and any use of this publication, please contact:

Bureau of Infrastructure and Transport Research Economics (BITRE)
Department of Infrastructure, Transport, Regional Development and Communications
GPO Box 501, Canberra ACT 2601, Australia
Telephone: (international) +61 2 6274 7210
Fax: (international) +61 2 6274 6855
Email: bitre@infrastructure.gov.au
Website: www.bitre.gov.au

Inquiries

Should you require additional information about the statistics contained in this publication:

Telephone (02) 6274 7790 or Facsimile (02) 6274 7727

Electronic mail: AVSTATS@infrastructure.gov.au

Web site: <http://www.bitre.gov.au/statistics/aviation/otphome.aspx>

Foreword

The Bureau of Infrastructure and Transport Research Economics (BITRE) monitors the punctuality and reliability of major domestic airlines operating between Australian airports. The purpose of this is to allow for evaluation of overall industry and individual airline performance, so that consumers of air travel can make informed decisions.

The following domestic airlines currently report this information monthly to the BITRE: Jetstar, Qantas, QantasLink, Rex Airlines, Virgin Australia and Virgin Australia Regional Airlines.

Data has been gathered since November 2003, although some airlines commenced reporting at a later date, including Jetstar which first reported in May 2004, MacAir in July 2005, Tigerair Australia in April 2008 and Virgin Australia Regional Airlines in May 2013. MacAir ceased operations in February 2009 and data was not received for December 2008 onwards. Tigerair Australia ceased operations in March 2020 and data was not received for that month.

Virgin Blue was rebranded as Virgin Australia in May 2011 and Tiger Airways was rebranded as Tigerair Australia in July 2013 and time series data in Microsoft Excel spread sheet format on the BITRE website have been revised to reflect these changes. With effect from July 2021, Regional Express is reported as Rex Airlines.

Services operated by Skywest on behalf of Virgin Australia using ATR/F100 aircraft commenced in November 2011 and were shown separately as Virgin Australia – ATR/F100 Operations. Virgin Australia Regional Airlines commenced operations in May 2013. It was formed after the acquisition of Skywest by Virgin Australia and represented a combination of operations previously reported under Skywest and Virgin Australia – ATR/F100 Operations. In January 2016, Virgin Australia transferred their ATR fleet from Virgin Australia Regional Airlines to Virgin Australia.

Information presented in this report is for Australian domestic routes for which the passenger load averaged 8 000 or more passengers per month over the previous six months and where two or more airlines operated in competition on those routes. In order to present data for more routes during the period impacted by COVID-19, the passenger load restriction is not being applied. Data are presented for 57 routes in April 2022. Over time, routes which meet these criteria change as airline networks and traffic levels vary.

Participating airlines report their overall monthly network performance where this is possible.

Total industry figures encompass all services operated by reporting airlines only. These airlines collectively carried over 95 per cent of total domestic passengers (regular public transport only) in 2019.

The method of capturing on time performance varies between airlines utilising different recording systems. Jetstar and Qantas jet aircraft use Aircraft Communication Addressing and Reporting System (ACARS) to electronically measure on time performance. Rex Airlines, Virgin Australia, Virgin Australia Regional Airlines and the Qantas non-jet fleet record on time performance manually using records from pilots, gate agents and/or ground crews.

After initial data is collected, aggregate reports are reviewed by participating airlines prior to publication.

Reports and detailed time series data in Microsoft Excel spreadsheet format are available from the BITRE website at: <http://www.bitre.gov.au/statistics/aviation/otphome.aspx>

Contents

	Page
Industry performance	1
Individual routes	9
Airports.....	21
Definitions	27

Industry performance

For April 2022, on time performance over all routes operated by participating airlines (Jetstar, Qantas, QantasLink, Rex Airlines, Virgin Australia and Virgin Australia Regional Airlines) averaged 63.6 per cent for on time arrivals and 62.2 per cent for on time departures. The cancellation rate for the month was 4.1 per cent. These are the worst on time performance figures recorded since recording commenced in November 2003. This month's figures were impacted by weather related events, congestion (highest number of Sectors Flown since the commencement of COVID-19) and other COVID-19 related issues. The equivalent figures for April 2021 were 85.2 per cent for on time arrivals, 83.7 per cent for on time departures and 2.9 per cent for cancellations.

This month's on time arrivals figure was significantly lower than the long term average performance for all routes (82.2 per cent) and the on time departures figure was also significantly lower than the long term average (83.5 per cent). The rate of cancellations was higher than the long term average of 2.0 per cent.

The Virgin Australia network (Virgin Australia and Virgin Australia Regional Airlines combined operations) recorded 65.8 per cent for on time arrivals while the Qantas network (Qantas and QantasLink combined operations) recorded 60.8 per cent. Virgin Australia achieved the highest on time arrivals among the major domestic airlines at 65.6 per cent followed by Jetstar at 59.2 per cent and Qantas at 58.7 per cent. Of the regional airlines, Rex Airlines recorded 73.6 per cent for on time arrivals, followed by Virgin Australia Regional Airlines at 69.1 per cent and QantasLink at 62.4 per cent.

The Virgin Australia network recorded 62.8 per cent for on time departures while the Qantas network recorded 60.1 per cent. Virgin Australia achieved the highest level of on time departures among the major domestic airlines for April 2022 at 62.7 per cent, followed by Qantas at 57.7 per cent and Jetstar at 55.2 per cent. Of the regional airlines, Rex Airlines recorded 76.4 per cent for on time departures, followed by Virgin Australia Regional Airlines at 64.2 per cent and QantasLink at 62.0 per cent.

QantasLink recorded the highest percentage of cancellations (at 5.4 per cent) during the month, followed by Qantas (at 5.0 per cent), Jetstar (at 4.9 per cent), Virgin Australia Regional Airlines (at 3.2 per cent), Virgin Australia (at 3.1 per cent) and Rex Airlines (at 1.1 per cent).

Airlines' on time performance varies across the routes they serve. Individual route data by specific airline for 57 routes are shown on pages 9-20.

Of the 57 routes which met the criteria for on time performance reporting in April 2022, the Karratha-Perth route had the highest percentage of on time arrivals (88.9 per cent) and the Adelaide-Port Lincoln route had the highest percentage of on time departures (84.7 per cent). The Launceston-Melbourne route had the lowest percentage of on time arrivals (37.0 per cent) and the Melbourne-Perth route had the lowest percentage of on time departures (32.4 per cent).

Cancellations were highest on the Ballina-Sydney route at 14.0 per cent, followed by the Sydney-Ballina route at 12.7 per cent, the Melbourne-Sydney route at 11.3 per cent, the Sydney-Melbourne route at 11.1 per cent and the Newman-Perth route at 9.7 per cent.

Emerald Airport recorded the highest percentage of on time arrivals (86.6 per cent) and Port Lincoln Airport recorded the highest percentage of on time departures (84.1 per cent). Mildura Airport recorded the lowest percentage of on time arrivals (49.7 per cent) and Alice Springs Airport recorded the lowest percentage of on time departures (43.4 per cent). These figures only refer to reported routes and do not cover all flights at these airports.

Table 1 On time performance for April 2022 — Total Industry

	<i>Sectors</i>		<i>Arrivals On Time</i>		<i>Departures On Time</i>		<i>Cancellations</i>	
	<i>Scheduled</i>	<i>Flown</i>	<i>No.</i>	<i>%</i>	<i>No.</i>	<i>%</i>	<i>No.</i>	<i>%</i>
Jetstar	8 210	7 809	4 625	59.2	4 314	55.2	401	4.9
Qantas - all QF designated services	19 398	18 381	11 175	60.8	11 053	60.1	1 017	5.2
Rex Airlines	6 225	6 158	4 532	73.6	4 703	76.4	67	1.1
Virgin Australia - all VA designated services	11 414	11 061	7 276	65.8	6 942	62.8	353	3.1
All Airlines	45 247	43 409	27 608	63.6	27 012	62.2	1 838	4.1
Individual operating entities								
Qantas	8 438	8 012	4 702	58.7	4 625	57.7	426	5.0
QantasLink	10 960	10 369	6 473	62.4	6 428	62.0	591	5.4
Virgin Australia	10 952	10 614	6 967	65.6	6 655	62.7	338	3.1
Virgin Australia Regional Airlines	462	447	309	69.1	287	64.2	15	3.2

Total airline network data (including routes not shown in this report).

Airlines' on time performance varies across the routes they serve. Individual route data by specific airline are shown on page 9 and onwards.

Table 2 Top ten routes for on time performance for April 2022 (participating airlines only)

<i>Arrivals</i>		<i>Departures</i>	
<i>Route</i>	<i>On Time (%)</i>	<i>Route</i>	<i>On Time (%)</i>
Karratha-Perth	88.9	Adelaide-Port Lincoln	84.7
Brisbane-Emerald	86.6	Brisbane-Hamilton Island	84.3
Brisbane-Mount Isa	83.9	Port Lincoln-Adelaide	84.1
Brisbane-Hamilton Island	83.1	Cairns-Townsville	83.4
Cairns-Townsville	82.8	Perth-Karratha	83.2
Perth-Newman	82.8	Perth-Newman	82.1
Port Lincoln-Adelaide	82.8	Perth-Port Hedland	81.3
Perth-Karratha	82.2	Wagga Wagga-Sydney	80.9
Brisbane-Hobart	81.7	Mount Isa-Brisbane	80.3
Adelaide-Port Lincoln	81.4	Canberra-Sydney	80.2

Table 3 Top ten airports for on time performance for April 2022 (participating airlines and reported routes only)

<i>Arrivals</i>		<i>Departures</i>	
<i>Airport</i>	<i>On Time (%)</i>	<i>Airport</i>	<i>On Time (%)</i>
Emerald	86.6	Port Lincoln	84.1
Mount Isa	83.9	Wagga Wagga	80.9
Newman	82.8	Mount Isa	80.3
Karratha	82.2	Emerald	79.8
Port Lincoln	81.4	Karratha	78.9
Broome	80.3	Newman	75.8
Mackay	80.2	Townsville	74.1
Port Hedland	79.4	Albury	73.3
Townsville	78.6	Mackay	71.7
Hamilton Island	78.5	Gladstone	71.4

Total industry on time performance

Figure 1 On time performance (by month from April 2019)—Total Industry

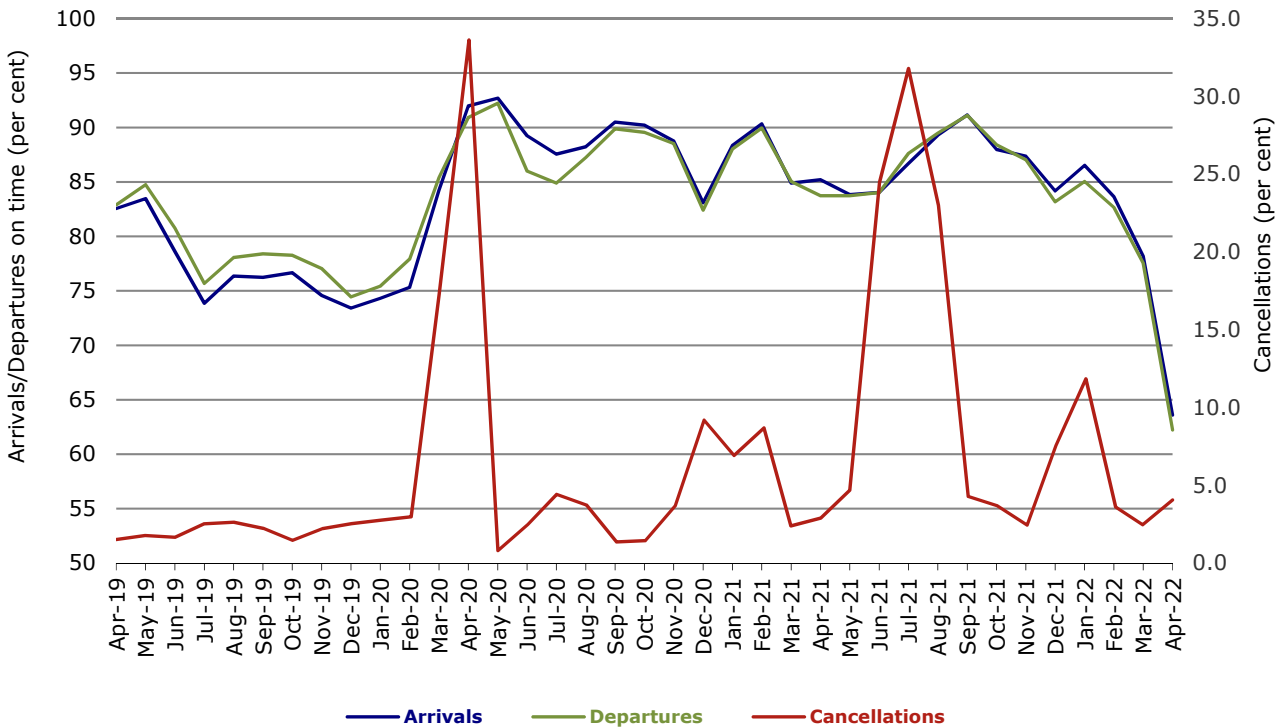
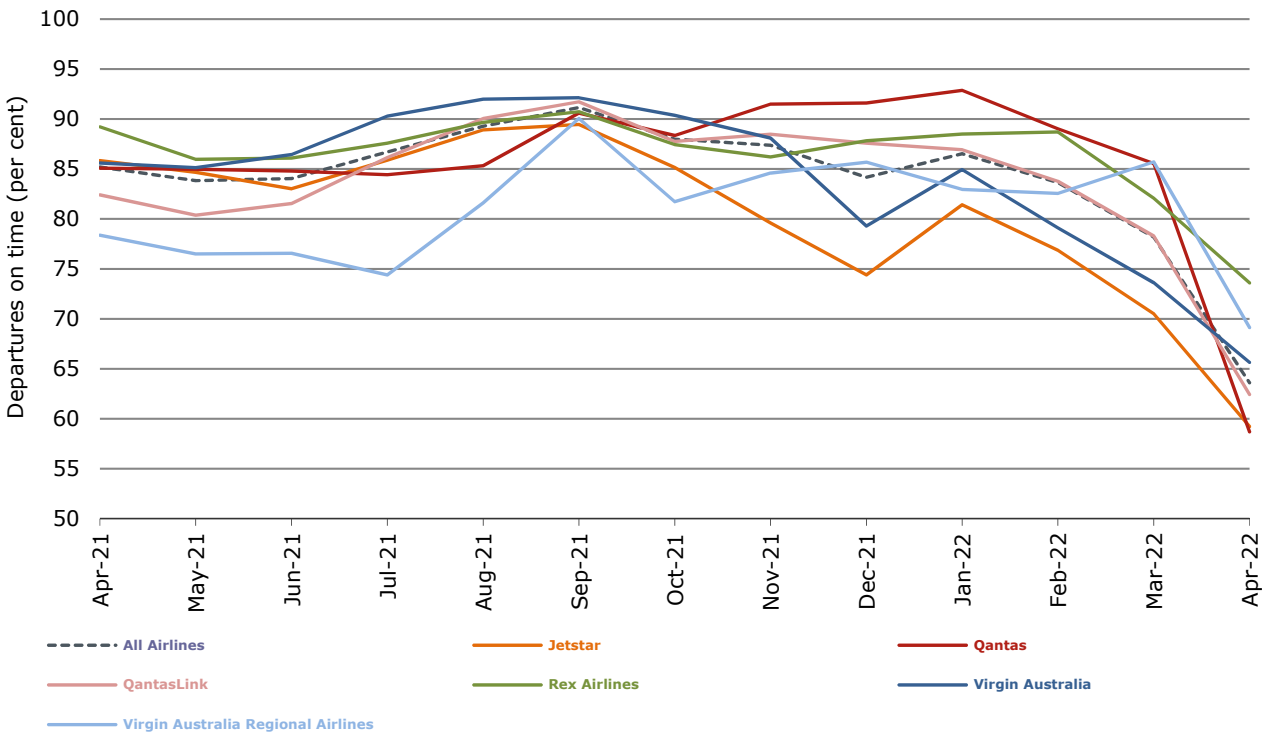
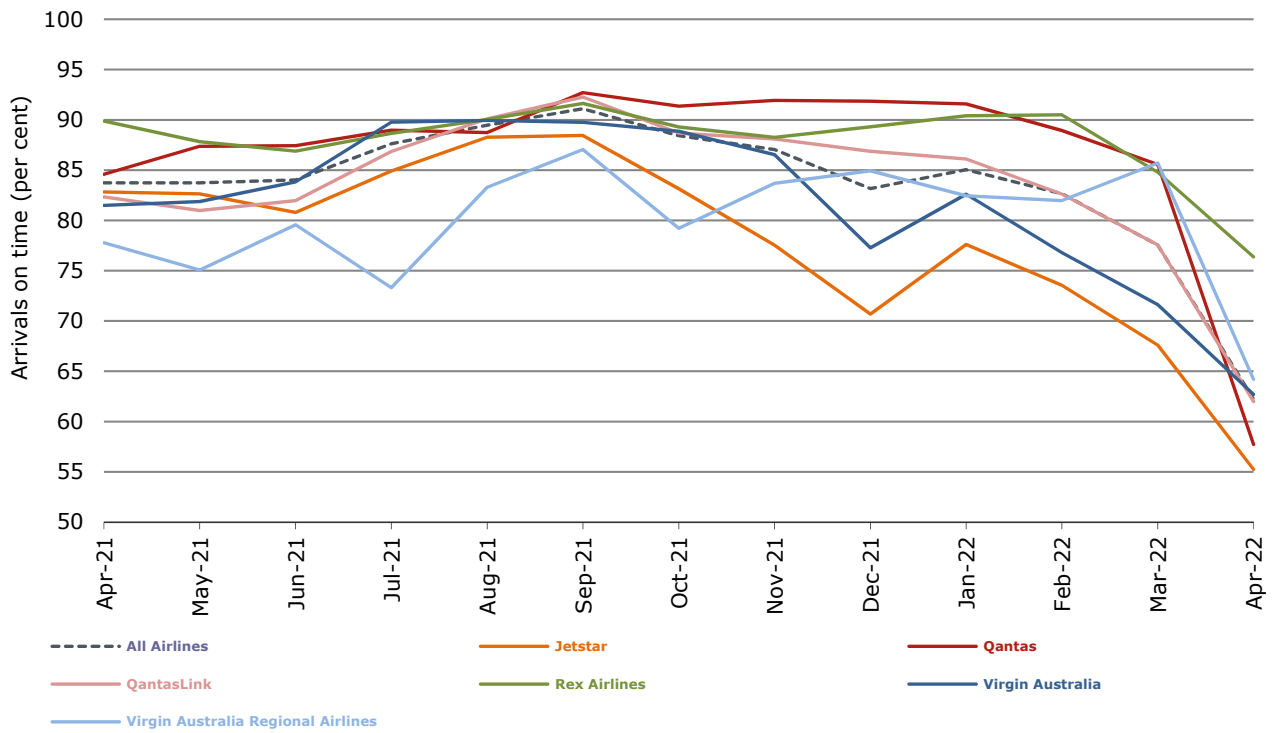


Figure 2 Arrivals on time (by month from April 2021)



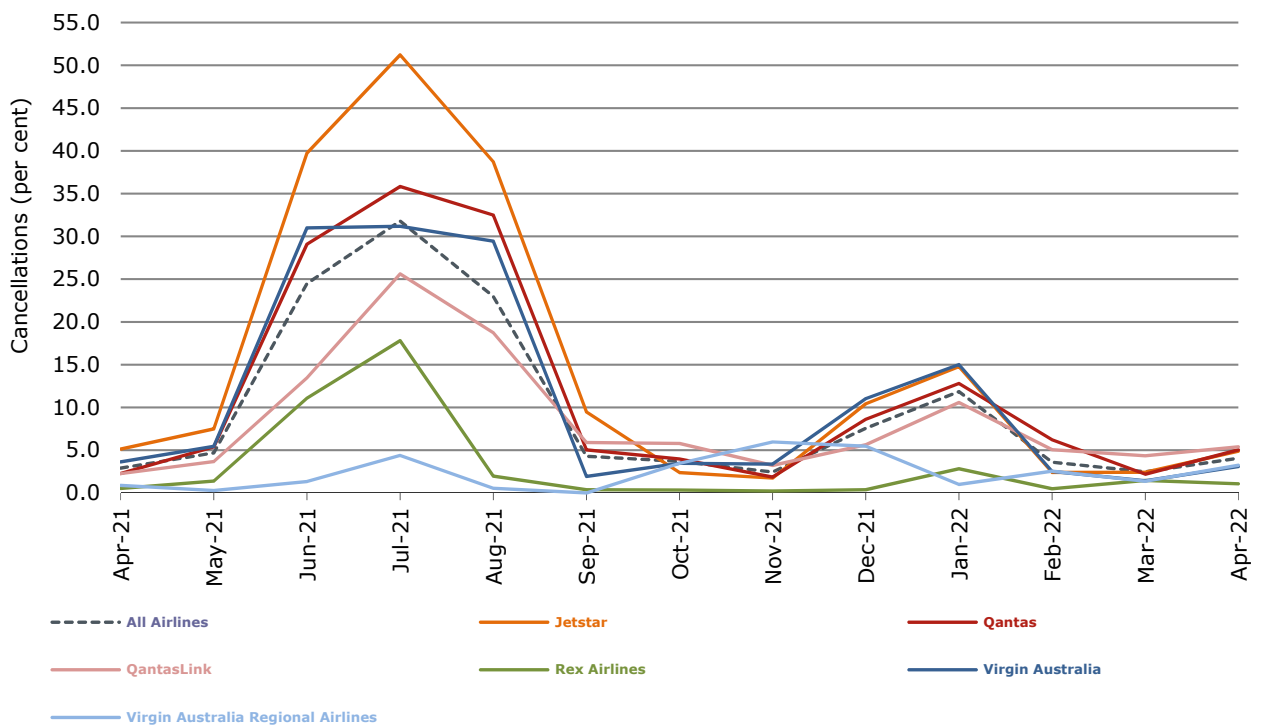
With effect from July 2021, Regional Express is reported as Rex Airlines

Figure 3 Departures on time (by month from April 2021)



With effect from July 2021, Regional Express is reported as Rex Airlines

Figure 4 Cancellations (by month from April 2021)



With effect from July 2021, Regional Express is reported as Rex Airlines

Major domestic airlines on time performance

Figure 5 On time performance (by month from April 2019)—Jetstar

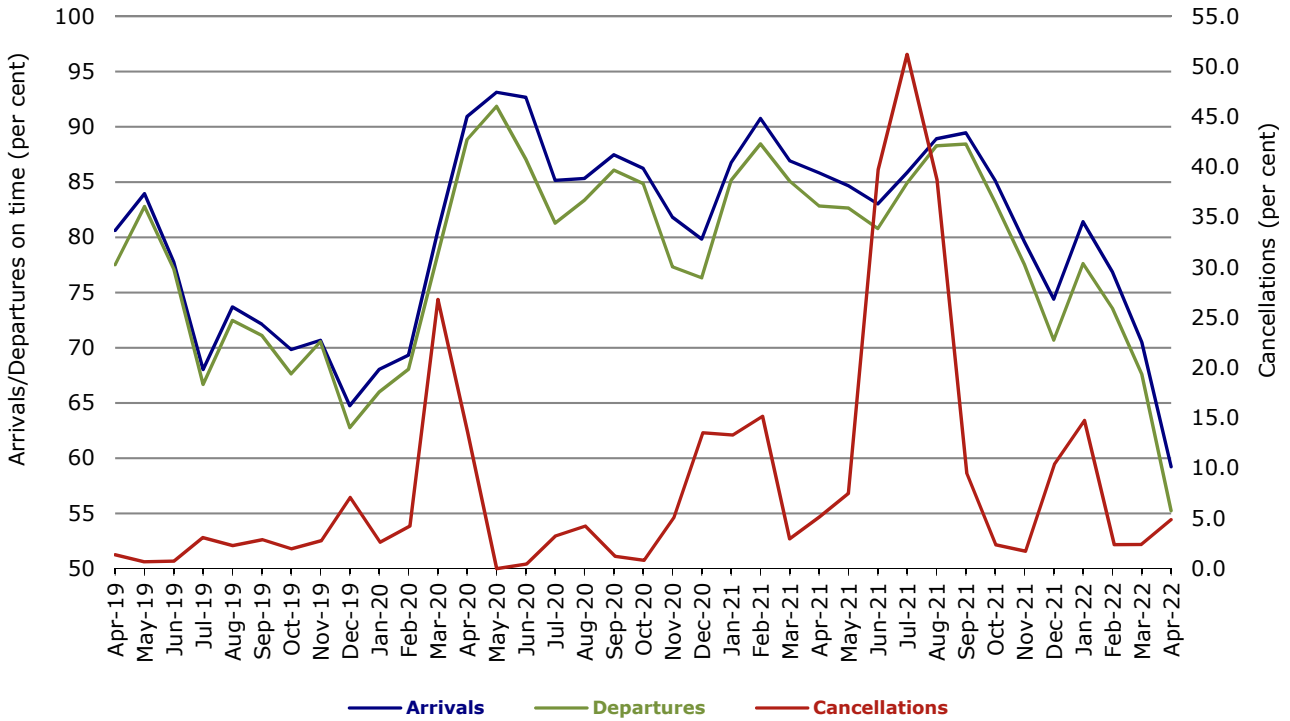


Figure 6 On time performance (by month from April 2019)—Qantas

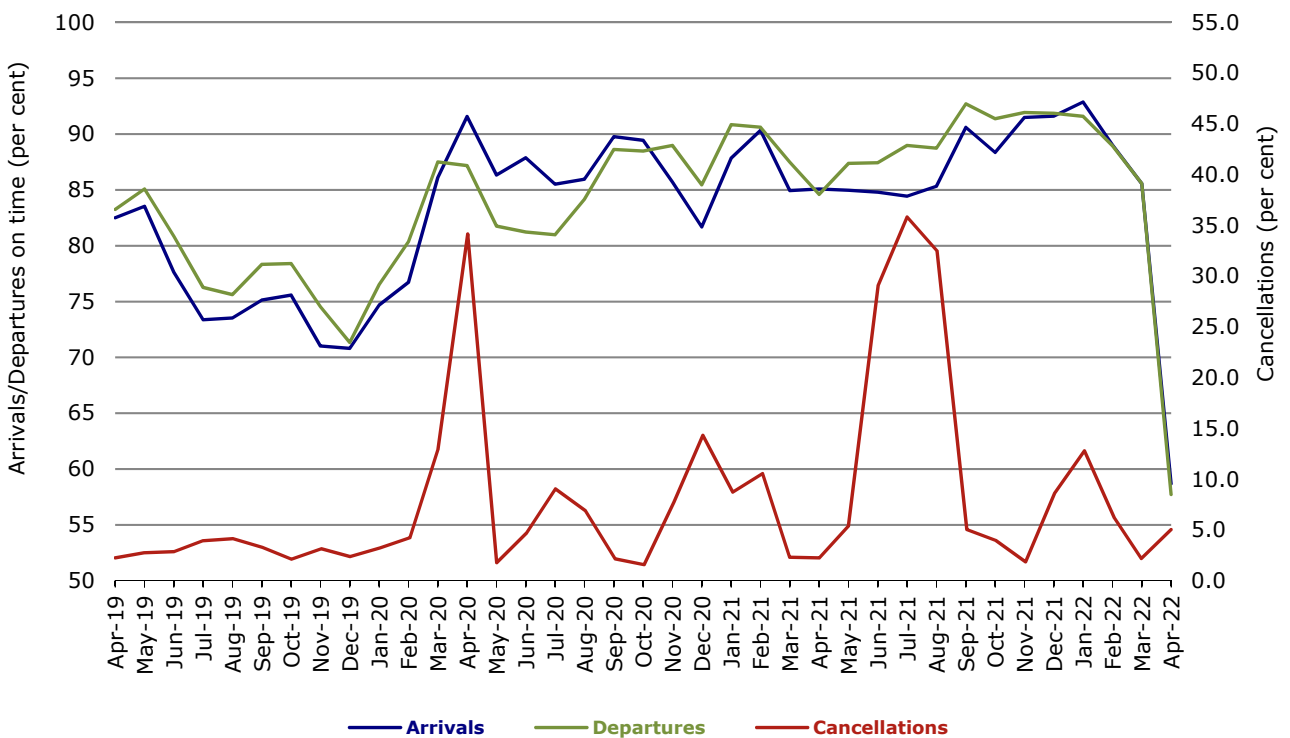
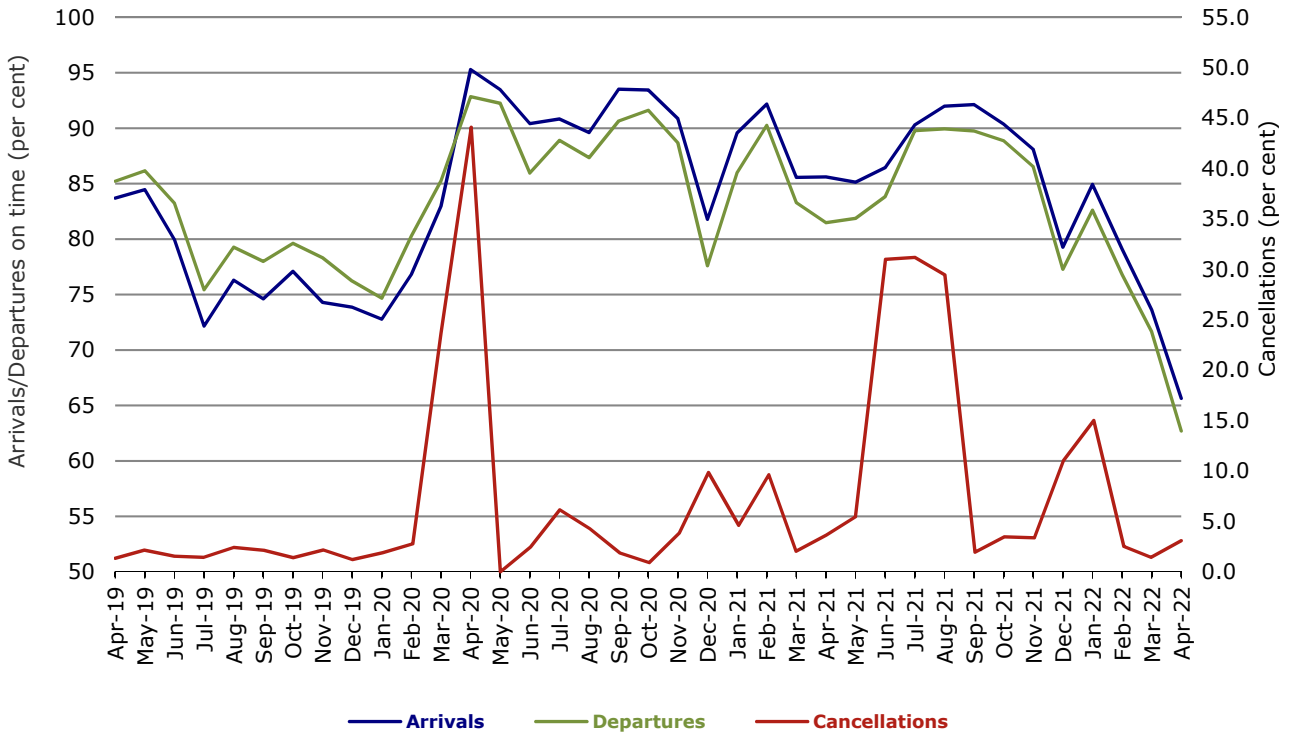


Figure 7 On time performance (by month from April 2019)—Virgin Australia



Major regional airlines on time performance

Figure 8 On time performance (by month from April 2019)—QantasLink

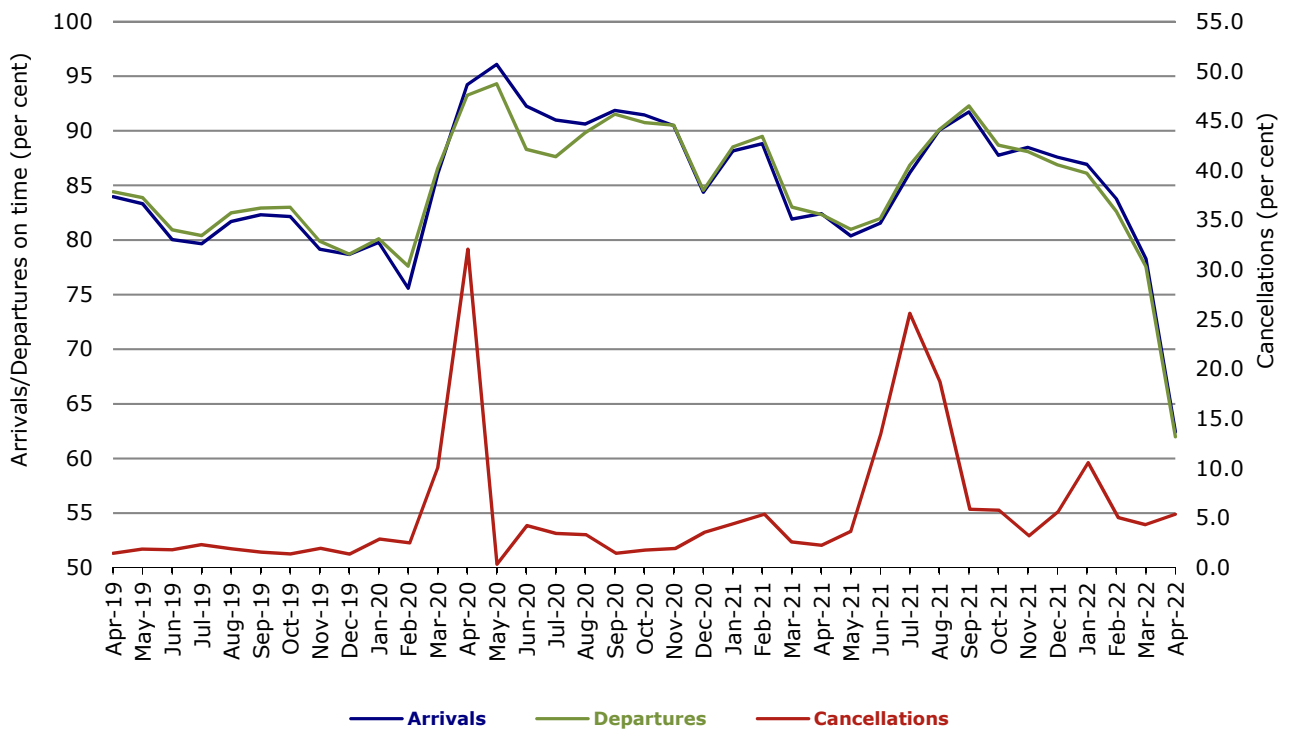
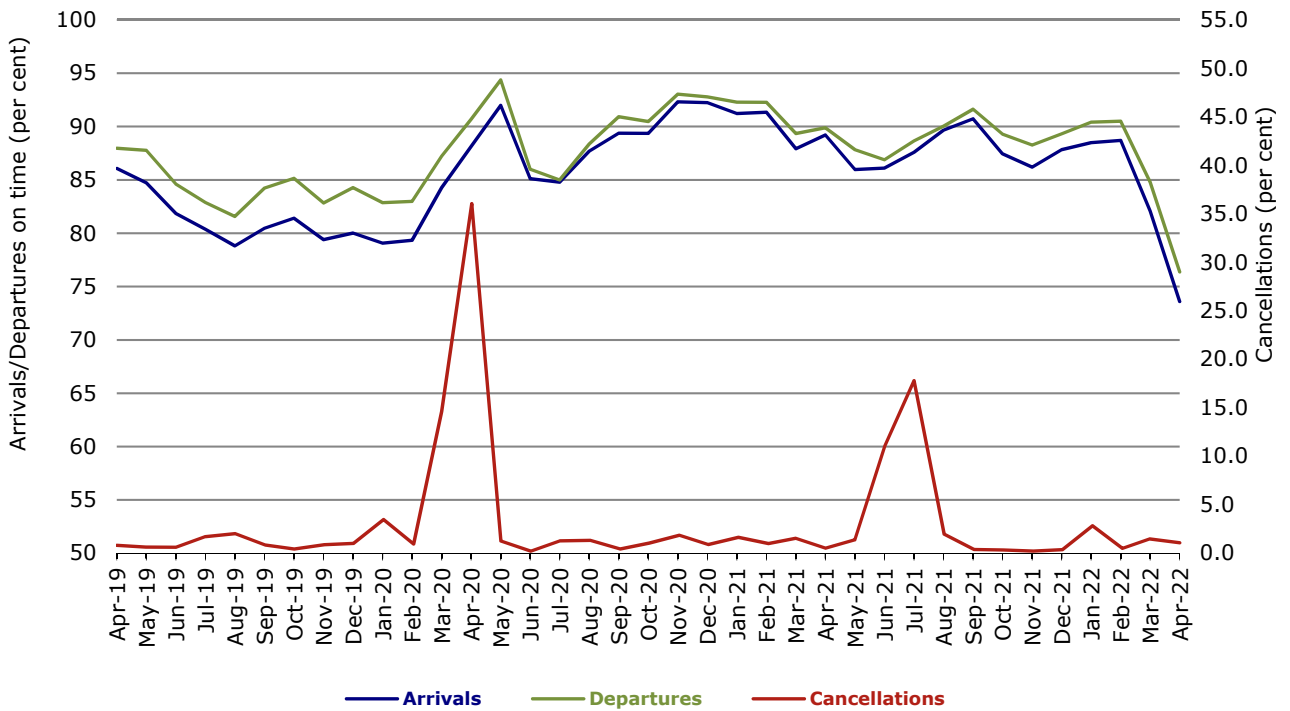
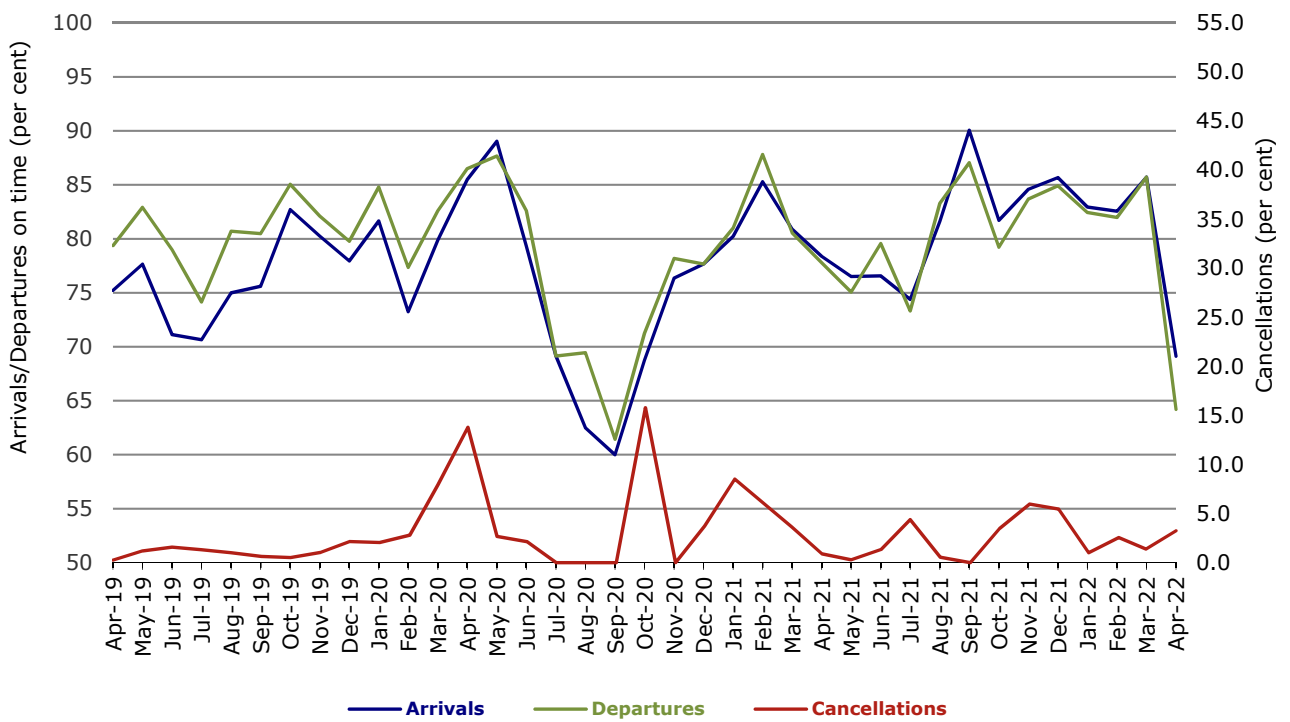


Figure 9 On time performance (by month from April 2019)—Rex Airlines



With effect from July 2021, Regional Express is reported as Rex Airlines

Figure 10 On time performance (by month from April 2019) Virgin Australia Regional Airlines



Individual routes

On time performance is reported for all routes where the passenger load averages over 8000 passengers per month over the previous six months, and where two or more airlines operate in competition on those routes. In order to present data for more routes during the period impacted by COVID-19, the passenger load restriction is not being applied. There are now 57 routes for which data are presented.

	Sectors		Arrivals On Time		Departures On Time		Cancellations	
	Sched.	Flown	No.	%	No.	%	No.	%
Adelaide-Alice Springs								
QantasLink	45	44	33	75.0	32	72.7	1	2.2
Virgin Australia	9	9	7	77.8	7	77.8	0	0.0
All Airlines	54	53	40	75.5	39	73.6	1	1.9
Adelaide-Brisbane								
Jetstar	35	33	23	69.7	20	60.6	2	5.7
Qantas	45	45	38	84.4	35	77.8	0	0.0
QantasLink	65	53	10	18.9	15	28.3	12	18.5
Virgin Australia	105	105	85	81.0	84	80.0	0	0.0
All Airlines	250	236	156	66.1	154	65.3	14	5.6
Adelaide-Canberra								
QantasLink	62	59	43	72.9	45	76.3	3	4.8
Virgin Australia	16	15	12	80.0	11	73.3	1	6.3
All Airlines	78	74	55	74.3	56	75.7	4	5.1
Adelaide-Gold Coast								
Jetstar	30	30	26	86.7	26	86.7	0	0.0
QantasLink	14	13	9	69.2	10	76.9	1	7.1
Virgin Australia	33	33	23	69.7	23	69.7	0	0.0
All Airlines	77	76	58	76.3	59	77.6	1	1.3
Adelaide-Melbourne								
Jetstar	125	117	67	57.3	64	54.7	8	6.4
Qantas	238	232	154	66.4	154	66.4	6	2.5
Rex Airlines	54	53	45	84.9	45	84.9	1	1.9
Virgin Australia	265	263	136	51.7	133	50.6	2	0.8
All Airlines	682	665	402	60.5	396	59.5	17	2.5
Adelaide-Perth								
Jetstar	26	26	20	76.9	18	69.2	0	0.0
Qantas	93	92	65	70.7	60	65.2	1	1.1
Virgin Australia	9	9	6	66.7	4	44.4	0	0.0
Virgin Australia Regional Airlines	31	31	16	51.6	5	16.1	0	0.0
All Airlines	159	158	107	67.7	87	55.1	1	0.6
Adelaide-Port Lincoln								
QantasLink	136	131	106	80.9	103	78.6	5	3.7
Rex Airlines	164	164	134	81.7	147	89.6	0	0.0
All Airlines	300	295	240	81.4	250	84.7	5	1.7
Adelaide-Sydney								
Jetstar	133	125	91	72.8	92	73.6	8	6.0
Qantas	215	213	118	55.4	141	66.2	2	0.9
Virgin Australia	112	112	60	53.6	63	56.3	0	0.0
All Airlines	460	450	269	59.8	296	65.8	10	2.2
Albury-Sydney								
QantasLink	86	85	57	67.1	55	64.7	1	1.2
Rex Airlines	102	102	75	73.5	82	80.4	0	0.0
All Airlines	188	187	132	70.6	137	73.3	1	0.5

	Sectors		Arrivals On Time		Departures On Time		Cancellations	
	Sched.	Flown	No.	%	No.	%	No.	%
Alice Springs-Adelaide								
QantasLink	45	44	25	56.8	21	47.7	1	2.2
Virgin Australia	9	9	3	33.3	2	22.2	0	0.0
All Airlines	54	53	28	52.8	23	43.4	1	1.9
Armidale-Sydney								
QantasLink	83	80	61	76.3	60	75.0	3	3.6
Rex Airlines	76	74	36	48.6	45	60.8	2	2.6
All Airlines	159	154	97	63.0	105	68.2	5	3.1
Ballina-Sydney								
Jetstar	99	78	51	65.4	44	56.4	21	21.2
QantasLink	105	95	48	50.5	50	52.6	10	9.5
Rex Airlines	22	20	14	70.0	13	65.0	2	9.1
Virgin Australia	73	64	40	62.5	42	65.6	9	12.3
All Airlines	299	257	153	59.5	149	58.0	42	14.0
Brisbane-Adelaide								
Jetstar	35	33	26	78.8	19	57.6	2	5.7
Qantas	46	46	45	97.8	42	91.3	0	0.0
QantasLink	65	53	20	37.7	17	32.1	12	18.5
Virgin Australia	105	105	93	88.6	67	63.8	0	0.0
All Airlines	251	237	184	77.6	145	61.2	14	5.6
Brisbane-Cairns								
Jetstar	95	92	46	50.0	44	47.8	3	3.2
Qantas	93	93	75	80.6	70	75.3	0	0.0
QantasLink	35	29	12	41.4	13	44.8	6	17.1
Virgin Australia	142	141	103	73.0	86	61.0	1	0.7
All Airlines	365	355	236	66.5	213	60.0	10	2.7
Brisbane-Canberra								
Jetstar	21	21	14	66.7	8	38.1	0	0.0
Qantas	51	51	43	84.3	37	72.5	0	0.0
QantasLink	84	77	41	53.2	37	48.1	7	8.3
Virgin Australia	82	82	57	69.5	48	58.5	0	0.0
All Airlines	238	231	155	67.1	130	56.3	7	2.9
Brisbane-Darwin								
Jetstar	23	23	19	82.6	15	65.2	0	0.0
Qantas	50	50	36	72.0	33	66.0	0	0.0
Virgin Australia	50	49	44	89.8	32	65.3	1	2.0
All Airlines	123	122	99	81.1	80	65.6	1	0.8
Brisbane-Emerald								
QantasLink	97	94	81	86.2	72	76.6	3	3.1
Virgin Australia	25	25	22	88.0	21	84.0	0	0.0
All Airlines	122	119	103	86.6	93	78.2	3	2.5
Brisbane-Gladstone								
QantasLink	118	114	72	63.2	66	57.9	4	3.4
Virgin Australia	38	32	21	65.6	23	71.9	6	15.8
All Airlines	156	146	93	63.7	89	61.0	10	6.4
Brisbane-Hamilton Island								
Qantas	42	39	32	82.1	33	84.6	3	7.1
Virgin Australia	54	50	42	84.0	42	84.0	4	7.4
All Airlines	96	89	74	83.1	75	84.3	7	7.3

	<i>Sectors</i>		<i>Arrivals On Time</i>		<i>Departures On Time</i>		<i>Cancellations</i>	
	<i>Sched.</i>	<i>Flown</i>	<i>No.</i>	<i>%</i>	<i>No.</i>	<i>%</i>	<i>No.</i>	<i>%</i>
Brisbane-Hobart								
Jetstar	34	34	28	82.4	27	79.4	0	0.0
Qantas	8	8	6	75.0	7	87.5	0	0.0
QantasLink	25	25	19	76.0	18	72.0	0	0.0
Virgin Australia	55	53	45	84.9	41	77.4	2	3.6
All Airlines	122	120	98	81.7	93	77.5	2	1.6
Brisbane-Mackay								
Jetstar	30	30	22	73.3	26	86.7	0	0.0
Qantas	103	102	80	78.4	79	77.5	1	1.0
QantasLink	10	9	7	77.8	6	66.7	1	10.0
Virgin Australia	107	107	90	84.1	85	79.4	0	0.0
All Airlines	250	248	199	80.2	196	79.0	2	0.8
Brisbane-Melbourne								
Jetstar	210	192	101	52.6	78	40.6	18	8.6
Qantas	393	374	247	66.0	234	62.6	19	4.8
Rex Airlines	49	47	36	76.6	33	70.2	2	4.1
Virgin Australia	346	331	172	52.0	162	48.9	15	4.3
All Airlines	998	944	556	58.9	507	53.7	54	5.4
Brisbane-Mount Isa								
Qantas	34	34	33	97.1	31	91.2	0	0.0
QantasLink	17	16	9	56.3	6	37.5	1	5.9
Virgin Australia	13	12	10	83.3	11	91.7	1	7.7
All Airlines	64	62	52	83.9	48	77.4	2	3.1
Brisbane-Newcastle								
Jetstar	62	60	43	71.7	41	68.3	2	3.2
QantasLink	126	120	71	59.2	61	50.8	6	4.8
Virgin Australia	75	75	59	78.7	62	82.7	0	0.0
All Airlines	263	255	173	67.8	164	64.3	8	3.0
Brisbane-Perth								
Jetstar	26	26	18	69.2	12	46.2	0	0.0
Qantas	100	100	76	76.0	61	61.0	0	0.0
Virgin Australia	57	57	53	93.0	36	63.2	0	0.0
All Airlines	183	183	147	80.3	109	59.6	0	0.0
Brisbane-Proserpine								
Jetstar	42	41	23	56.1	23	56.1	1	2.4
QantasLink	33	27	11	40.7	16	59.3	6	18.2
Virgin Australia	54	54	45	83.3	42	77.8	0	0.0
All Airlines	129	122	79	64.8	81	66.4	7	5.4
Brisbane-Rockhampton								
QantasLink	133	132	93	70.5	93	70.5	1	0.8
Virgin Australia	80	80	40	50.0	46	57.5	0	0.0
All Airlines	213	212	133	62.7	139	65.6	1	0.5
Brisbane-Sydney								
Jetstar	176	152	78	51.3	66	43.4	24	13.6
Qantas	505	488	299	61.3	325	66.6	17	3.4
Rex Airlines	76	73	65	89.0	65	89.0	3	3.9
Virgin Australia	454	441	302	68.5	283	64.2	13	2.9
All Airlines	1 211	1 154	744	64.5	739	64.0	57	4.7

	Sectors		Arrivals On Time		Departures On Time		Cancellations	
	Sched.	Flown	No.	%	No.	%	No.	%
Brisbane-Townsville								
Jetstar	56	54	40	74.1	38	70.4	2	3.6
Qantas	113	113	80	70.8	76	67.3	0	0.0
QantasLink	2	2	0	0.0	0	0.0	0	0.0
Virgin Australia	106	106	90	84.9	82	77.4	0	0.0
All Airlines	277	275	210	76.4	196	71.3	2	0.7
Broome-Perth								
Qantas	17	13	10	76.9	8	61.5	4	23.5
QantasLink	75	69	52	75.4	48	69.6	6	8.0
Virgin Australia	20	19	14	73.7	6	31.6	1	5.0
Virgin Australia Regional Airlines	39	38	30	78.9	19	50.0	1	2.6
All Airlines	151	139	106	76.3	81	58.3	12	7.9
Cairns-Brisbane								
Jetstar	95	92	49	53.3	56	60.9	3	3.2
Qantas	92	91	79	86.8	80	87.9	1	1.1
QantasLink	36	28	8	28.6	11	39.3	8	22.2
Virgin Australia	142	141	121	85.8	112	79.4	1	0.7
All Airlines	365	352	257	73.0	259	73.6	13	3.6
Cairns-Melbourne								
Jetstar	120	114	89	78.1	78	68.4	6	5.0
Qantas	60	58	26	44.8	26	44.8	2	3.3
Virgin Australia	88	83	50	60.2	50	60.2	5	5.7
All Airlines	268	255	165	64.7	154	60.4	13	4.9
Cairns-Sydney								
Jetstar	123	120	97	80.8	88	73.3	3	2.4
Qantas	81	81	40	49.4	38	46.9	0	0.0
Virgin Australia	88	84	69	82.1	63	75.0	4	4.5
All Airlines	292	285	206	72.3	189	66.3	7	2.4
Cairns-Townsville								
QantasLink	136	131	106	80.9	107	81.7	5	3.7
Rex Airlines	20	20	19	95.0	19	95.0	0	0.0
All Airlines	156	151	125	82.8	126	83.4	5	3.2
Canberra-Adelaide								
QantasLink	62	59	37	62.7	35	59.3	3	4.8
Virgin Australia	16	15	10	66.7	10	66.7	1	6.3
All Airlines	78	74	47	63.5	45	60.8	4	5.1
Canberra-Brisbane								
Jetstar	23	22	8	36.4	5	22.7	1	4.3
Qantas	51	51	41	80.4	35	68.6	0	0.0
QantasLink	85	77	42	54.5	46	59.7	8	9.4
Virgin Australia	82	82	58	70.7	57	69.5	0	0.0
All Airlines	241	232	149	64.2	143	61.6	9	3.7
Canberra-Melbourne								
Qantas	6	4	1	25.0	1	25.0	2	33.3
QantasLink	258	250	135	54.0	147	58.8	8	3.1
Rex Airlines	30	30	18	60.0	16	53.3	0	0.0
Virgin Australia	107	106	54	50.9	52	49.1	1	0.9
All Airlines	401	390	208	53.3	216	55.4	11	2.7

	<i>Sectors</i>		<i>Arrivals On Time</i>		<i>Departures On Time</i>		<i>Cancellations</i>	
	<i>Sched.</i>	<i>Flown</i>	<i>No.</i>	<i>%</i>	<i>No.</i>	<i>%</i>	<i>No.</i>	<i>%</i>
Canberra-Sydney								
QantasLink	486	418	291	69.6	316	75.6	68	14.0
Rex Airlines	109	108	78	72.2	95	88.0	1	0.9
Virgin Australia	224	221	189	85.5	188	85.1	3	1.3
All Airlines	819	747	558	74.7	599	80.2	72	8.8
Coffs Harbour-Sydney								
QantasLink	116	115	76	66.1	72	62.6	1	0.9
Rex Airlines	78	78	40	51.3	46	59.0	0	0.0
All Airlines	194	193	116	60.1	118	61.1	1	0.5
Darwin-Brisbane								
Jetstar	23	23	15	65.2	17	73.9	0	0.0
Qantas	50	50	16	32.0	19	38.0	0	0.0
Virgin Australia	50	47	35	74.5	32	68.1	3	6.0
All Airlines	123	120	66	55.0	68	56.7	3	2.4
Darwin-Melbourne								
Jetstar	28	25	10	40.0	8	32.0	3	10.7
Qantas	32	32	10	31.3	13	40.6	0	0.0
Virgin Australia	24	24	11	45.8	11	45.8	0	0.0
All Airlines	84	81	31	38.3	32	39.5	3	3.6
Darwin-Perth								
Qantas	26	26	21	80.8	15	57.7	0	0.0
QantasLink	6	6	0	0.0	1	16.7	0	0.0
Virgin Australia	8	8	3	37.5	3	37.5	0	0.0
Virgin Australia Regional Airlines	9	9	4	44.4	4	44.4	0	0.0
All Airlines	49	49	28	57.1	23	46.9	0	0.0
Dubbo-Sydney								
QantasLink	87	85	62	72.9	61	71.8	2	2.3
Rex Airlines	105	105	63	60.0	72	68.6	0	0.0
All Airlines	192	190	125	65.8	133	70.0	2	1.0
Emerald-Brisbane								
QantasLink	97	94	68	72.3	73	77.7	3	3.1
Virgin Australia	25	25	22	88.0	22	88.0	0	0.0
All Airlines	122	119	90	75.6	95	79.8	3	2.5
Gladstone-Brisbane								
QantasLink	120	115	84	73.0	83	72.2	5	4.2
Virgin Australia	38	32	18	56.3	22	68.8	6	15.8
All Airlines	158	147	102	69.4	105	71.4	11	7.0
Gold Coast-Adelaide								
Jetstar	30	30	26	86.7	21	70.0	0	0.0
QantasLink	14	13	6	46.2	4	30.8	1	7.1
Virgin Australia	33	33	21	63.6	18	54.5	0	0.0
All Airlines	77	76	53	69.7	43	56.6	1	1.3
Gold Coast-Melbourne								
Jetstar	239	235	148	63.0	134	57.0	4	1.7
Qantas	80	78	38	48.7	25	32.1	2	2.5
QantasLink	5	3	0	0.0	0	0.0	2	40.0
Rex Airlines	60	59	37	62.7	43	72.9	1	1.7
Virgin Australia	379	367	239	65.1	210	57.2	12	3.2
All Airlines	763	742	462	62.3	412	55.5	21	2.8

	Sectors		Arrivals On Time		Departures On Time		Cancellations	
	Sched.	Flown	No.	%	No.	%	No.	%
Gold Coast-Sydney								
Jetstar	301	293	190	64.8	176	60.1	8	2.7
Qantas	97	97	53	54.6	49	50.5	0	0.0
QantasLink	20	20	9	45.0	9	45.0	0	0.0
Rex Airlines	55	50	40	80.0	39	78.0	5	9.1
Virgin Australia	371	356	237	66.6	214	60.1	15	4.0
All Airlines	844	816	529	64.8	487	59.7	28	3.3
Hamilton Island-Brisbane								
Qantas	42	39	29	74.4	28	71.8	3	7.1
Virgin Australia	54	50	39	78.0	36	72.0	4	7.4
All Airlines	96	89	68	76.4	64	71.9	7	7.3
Hamilton Island-Sydney								
Jetstar	30	30	17	56.7	14	46.7	0	0.0
Qantas	38	37	22	59.5	22	59.5	1	2.6
Virgin Australia	30	30	21	70.0	22	73.3	0	0.0
All Airlines	98	97	60	61.9	58	59.8	1	1.0
Hobart-Brisbane								
Jetstar	34	34	23	67.6	24	70.6	0	0.0
Qantas	8	8	5	62.5	4	50.0	0	0.0
QantasLink	25	25	18	72.0	18	72.0	0	0.0
Virgin Australia	55	53	37	69.8	37	69.8	2	3.6
All Airlines	122	120	83	69.2	83	69.2	2	1.6
Hobart-Melbourne								
Jetstar	182	176	72	40.9	69	39.2	6	3.3
Qantas	5	5	2	40.0	2	40.0	0	0.0
QantasLink	103	102	57	55.9	55	53.9	1	1.0
Virgin Australia	115	114	58	50.9	66	57.9	1	0.9
All Airlines	405	397	189	47.6	192	48.4	8	2.0
Hobart-Sydney								
Jetstar	112	109	65	59.6	72	66.1	3	2.7
Qantas	26	25	13	52.0	13	52.0	1	3.8
QantasLink	48	45	18	40.0	26	57.8	3	6.3
Virgin Australia	84	83	56	67.5	67	80.7	1	1.2
All Airlines	270	262	152	58.0	178	67.9	8	3.0
Kalgoorlie-Perth								
Qantas	25	24	19	79.2	16	66.7	1	4.0
QantasLink	47	43	29	67.4	25	58.1	4	8.5
Virgin Australia	33	33	16	48.5	11	33.3	0	0.0
Virgin Australia Regional Airlines	26	25	17	68.0	14	56.0	1	3.8
All Airlines	131	125	81	64.8	66	52.8	6	4.6
Karratha-Perth								
Qantas	51	47	44	93.6	40	85.1	4	7.8
QantasLink	91	82	71	86.6	65	79.3	9	9.9
Virgin Australia	24	24	23	95.8	18	75.0	0	0.0
Virgin Australia Regional Airlines	27	27	22	81.5	19	70.4	0	0.0
All Airlines	193	180	160	88.9	142	78.9	13	6.7
Launceston-Melbourne								
Jetstar	129	120	48	40.0	45	37.5	9	7.0
QantasLink	113	107	27	25.2	41	38.3	6	5.3
Virgin Australia	84	81	39	48.1	45	55.6	3	3.6
All Airlines	326	308	114	37.0	131	42.5	18	5.5

	<i>Sectors</i>		<i>Arrivals On Time</i>		<i>Departures On Time</i>		<i>Cancellations</i>	
	<i>Sched.</i>	<i>Flown</i>	<i>No.</i>	<i>%</i>	<i>No.</i>	<i>%</i>	<i>No.</i>	<i>%</i>
Launceston-Sydney								
Jetstar	56	56	27	48.2	28	50.0	0	0.0
QantasLink	32	31	14	45.2	15	48.4	1	3.1
Virgin Australia	30	30	23	76.7	24	80.0	0	0.0
All Airlines	118	117	64	54.7	67	57.3	1	0.8
Mackay-Brisbane								
Jetstar	30	30	18	60.0	21	70.0	0	0.0
Qantas	104	102	74	72.5	77	75.5	2	1.9
QantasLink	14	12	8	66.7	8	66.7	2	14.3
Virgin Australia	107	107	80	74.8	74	69.2	0	0.0
All Airlines	255	251	180	71.7	180	71.7	4	1.6
Melbourne-Adelaide								
Jetstar	125	117	72	61.5	60	51.3	8	6.4
Qantas	237	232	119	51.3	103	44.4	5	2.1
Rex Airlines	52	51	37	72.5	37	72.5	1	1.9
Virgin Australia	267	264	141	53.4	126	47.7	3	1.1
All Airlines	681	664	369	55.6	326	49.1	17	2.5
Melbourne-Brisbane								
Jetstar	212	193	74	38.3	82	42.5	19	9.0
Qantas	395	387	199	51.4	185	47.8	8	2.0
Rex Airlines	49	48	32	66.7	34	70.8	1	2.0
Virgin Australia	349	336	175	52.1	177	52.7	13	3.7
All Airlines	1 005	964	480	49.8	478	49.6	41	4.1
Melbourne-Cairns								
Jetstar	120	115	50	43.5	41	35.7	5	4.2
Qantas	60	59	28	47.5	25	42.4	1	1.7
Virgin Australia	88	82	53	64.6	53	64.6	6	6.8
All Airlines	268	256	131	51.2	119	46.5	12	4.5
Melbourne-Canberra								
Qantas	6	4	1	25.0	1	25.0	2	33.3
QantasLink	259	251	123	49.0	127	50.6	8	3.1
Rex Airlines	30	30	19	63.3	21	70.0	0	0.0
Virgin Australia	107	106	59	55.7	59	55.7	1	0.9
All Airlines	402	391	202	51.7	208	53.2	11	2.7
Melbourne-Darwin								
Jetstar	27	26	14	53.8	15	57.7	1	3.7
Qantas	32	32	17	53.1	11	34.4	0	0.0
Virgin Australia	23	23	17	73.9	18	78.3	0	0.0
All Airlines	82	81	48	59.3	44	54.3	1	1.2
Melbourne-Gold Coast								
Jetstar	238	235	111	47.2	117	49.8	3	1.3
Qantas	80	78	42	53.8	42	53.8	2	2.5
QantasLink	6	3	1	33.3	1	33.3	3	50.0
Rex Airlines	60	58	45	77.6	43	74.1	2	3.3
Virgin Australia	379	368	215	58.4	209	56.8	11	2.9
All Airlines	763	742	414	55.8	412	55.5	21	2.8
Melbourne-Hobart								
Jetstar	182	176	94	53.4	77	43.8	6	3.3
Qantas	5	5	3	60.0	3	60.0	0	0.0
QantasLink	103	102	52	51.0	43	42.2	1	1.0
Virgin Australia	115	114	72	63.2	78	68.4	1	0.9
All Airlines	405	397	221	55.7	201	50.6	8	2.0

	<i>Sectors</i>		<i>Arrivals On Time</i>		<i>Departures On Time</i>		<i>Cancellations</i>	
	<i>Sched.</i>	<i>Flown</i>	<i>No.</i>	<i>%</i>	<i>No.</i>	<i>%</i>	<i>No.</i>	<i>%</i>
Melbourne-Launceston								
Jetstar	128	120	64	53.3	60	50.0	8	6.3
QantasLink	112	107	37	34.6	44	41.1	5	4.5
Virgin Australia	84	81	40	49.4	44	54.3	3	3.6
All Airlines	324	308	141	45.8	148	48.1	16	4.9
Melbourne-Mildura								
QantasLink	92	91	31	34.1	31	34.1	1	1.1
Rex Airlines	82	82	55	67.1	54	65.9	0	0.0
All Airlines	174	173	86	49.7	85	49.1	1	0.6
Melbourne-Newcastle								
Jetstar	94	92	38	41.3	44	47.8	2	2.1
QantasLink	48	46	18	39.1	19	41.3	2	4.2
Virgin Australia	30	30	11	36.7	13	43.3	0	0.0
All Airlines	172	168	67	39.9	76	45.2	4	2.3
Melbourne-Perth								
Jetstar	45	45	30	66.7	20	44.4	0	0.0
Qantas	134	133	40	30.1	30	22.6	1	0.7
Virgin Australia	100	100	71	71.0	40	40.0	0	0.0
All Airlines	279	278	141	50.7	90	32.4	1	0.4
Melbourne-Sunshine Coast								
Jetstar	85	84	43	51.2	42	50.0	1	1.2
Qantas	57	57	27	47.4	26	45.6	0	0.0
QantasLink	21	20	6	30.0	9	45.0	1	4.8
Virgin Australia	138	131	76	58.0	66	50.4	7	5.1
All Airlines	301	292	152	52.1	143	49.0	9	3.0
Melbourne-Sydney								
Jetstar	450	402	206	51.2	198	49.3	48	10.7
Qantas	881	740	348	47.0	393	53.1	141	16.0
QantasLink	30	25	8	32.0	14	56.0	5	16.7
Rex Airlines	112	105	74	70.5	78	74.3	7	6.3
Virgin Australia	691	647	351	54.3	386	59.7	44	6.4
All Airlines	2 164	1 919	987	51.4	1 069	55.7	245	11.3
Mildura-Melbourne								
QantasLink	93	92	27	29.3	31	33.7	1	1.1
Rex Airlines	83	83	58	69.9	65	78.3	0	0.0
All Airlines	176	175	85	48.6	96	54.9	1	0.6
Mount Isa-Brisbane								
Qantas	34	33	31	93.9	31	93.9	1	2.9
QantasLink	17	16	10	62.5	9	56.3	1	5.9
Virgin Australia	13	12	8	66.7	9	75.0	1	7.7
All Airlines	64	61	49	80.3	49	80.3	3	4.7
Newcastle-Brisbane								
Jetstar	62	60	38	63.3	40	66.7	2	3.2
QantasLink	128	120	69	57.5	68	56.7	8	6.3
Virgin Australia	76	76	60	78.9	65	85.5	0	0.0
All Airlines	266	256	167	65.2	173	67.6	10	3.8
Newcastle-Melbourne								
Jetstar	93	91	43	47.3	33	36.3	2	2.2
QantasLink	49	46	29	63.0	32	69.6	3	6.1
Virgin Australia	30	30	4	13.3	9	30.0	0	0.0
All Airlines	172	167	76	45.5	74	44.3	5	2.9

	Sectors		Arrivals On Time		Departures On Time		Cancellations	
	Sched.	Flown	No.	%	No.	%	No.	%
Newman-Perth								
Qantas	34	30	28	93.3	28	93.3	4	11.8
QantasLink	77	68	52	76.5	47	69.1	9	11.7
Virgin Australia	19	19	19	100.0	17	89.5	0	0.0
Virgin Australia Regional Airlines	35	32	21	65.6	21	65.6	3	8.6
All Airlines	165	149	120	80.5	113	75.8	16	9.7
Perth-Adelaide								
Jetstar	26	26	12	46.2	13	50.0	0	0.0
Qantas	94	93	59	63.4	61	65.6	1	1.1
Virgin Australia	8	8	4	50.0	4	50.0	0	0.0
Virgin Australia Regional Airlines	31	31	14	45.2	20	64.5	0	0.0
All Airlines	159	158	89	56.3	98	62.0	1	0.6
Perth-Brisbane								
Jetstar	26	26	9	34.6	6	23.1	0	0.0
Qantas	100	100	67	67.0	79	79.0	0	0.0
Virgin Australia	59	59	30	50.8	26	44.1	0	0.0
All Airlines	185	185	106	57.3	111	60.0	0	0.0
Perth-Broome								
Qantas	17	14	13	92.9	11	78.6	3	17.6
QantasLink	75	70	57	81.4	51	72.9	5	6.7
Virgin Australia	20	20	17	85.0	13	65.0	0	0.0
Virgin Australia Regional Airlines	39	38	27	71.1	27	71.1	1	2.6
All Airlines	151	142	114	80.3	102	71.8	9	6.0
Perth-Darwin								
Qantas	26	26	19	73.1	19	73.1	0	0.0
QantasLink	6	6	3	50.0	3	50.0	0	0.0
Virgin Australia	8	8	3	37.5	3	37.5	0	0.0
Virgin Australia Regional Airlines	9	9	4	44.4	5	55.6	0	0.0
All Airlines	49	49	29	59.2	30	61.2	0	0.0
Perth-Kalgoorlie								
Qantas	25	24	22	91.7	22	91.7	1	4.0
QantasLink	47	43	28	65.1	28	65.1	4	8.5
Virgin Australia	33	33	23	69.7	24	72.7	0	0.0
Virgin Australia Regional Airlines	26	25	17	68.0	18	72.0	1	3.8
All Airlines	131	125	90	72.0	92	73.6	6	4.6
Perth-Karratha								
Qantas	51	49	40	81.6	40	81.6	2	3.9
QantasLink	94	85	70	82.4	70	82.4	9	9.6
Virgin Australia	24	24	21	87.5	23	95.8	0	0.0
Virgin Australia Regional Airlines	27	27	21	77.8	21	77.8	0	0.0
All Airlines	196	185	152	82.2	154	83.2	11	5.6
Perth-Melbourne								
Jetstar	44	44	20	45.5	19	43.2	0	0.0
Qantas	134	132	64	48.5	93	70.5	2	1.5
Virgin Australia	100	100	53	53.0	55	55.0	0	0.0
All Airlines	278	276	137	49.6	167	60.5	2	0.7
Perth-Newman								
Qantas	34	30	27	90.0	27	90.0	4	11.8
QantasLink	78	70	53	75.7	52	74.3	8	10.3
Virgin Australia	19	19	18	94.7	17	89.5	0	0.0
Virgin Australia Regional Airlines	35	32	27	84.4	28	87.5	3	8.6
All Airlines	166	151	125	82.8	124	82.1	15	9.0

	Sectors		Arrivals On Time		Departures On Time		Cancellations	
	Sched.	Flown	No.	%	No.	%	No.	%
Perth-Port Hedland								
Qantas	38	36	34	94.4	32	88.9	2	5.3
QantasLink	81	73	53	72.6	55	75.3	8	9.9
Virgin Australia	17	17	13	76.5	14	82.4	0	0.0
Virgin Australia Regional Airlines	35	34	27	79.4	29	85.3	1	2.9
All Airlines	171	160	127	79.4	130	81.3	11	6.4
Perth-Sydney								
Jetstar	35	31	13	41.9	12	38.7	4	11.4
Qantas	153	153	88	57.5	97	63.4	0	0.0
Virgin Australia	78	78	54	69.2	46	59.0	0	0.0
All Airlines	266	262	155	59.2	155	59.2	4	1.5
Port Hedland-Perth								
Qantas	38	36	30	83.3	25	69.4	2	5.3
QantasLink	82	74	50	67.6	47	63.5	8	9.8
Virgin Australia	17	17	9	52.9	8	47.1	0	0.0
Virgin Australia Regional Airlines	34	32	23	71.9	19	59.4	2	5.9
All Airlines	171	159	112	70.4	99	62.3	12	7.0
Port Lincoln-Adelaide								
QantasLink	137	133	111	83.5	113	85.0	4	2.9
Rex Airlines	164	163	134	82.2	136	83.4	1	0.6
All Airlines	301	296	245	82.8	249	84.1	5	1.7
Port Macquarie-Sydney								
QantasLink	98	96	71	74.0	72	75.0	2	2.0
Rex Airlines	81	81	33	40.7	50	61.7	0	0.0
All Airlines	179	177	104	58.8	122	68.9	2	1.1
Proserpine-Brisbane								
Jetstar	43	42	14	33.3	13	31.0	1	2.3
QantasLink	32	25	7	28.0	9	36.0	7	21.9
Virgin Australia	54	54	41	75.9	31	57.4	0	0.0
All Airlines	129	121	62	51.2	53	43.8	8	6.2
Rockhampton-Brisbane								
QantasLink	134	132	76	57.6	83	62.9	2	1.5
Virgin Australia	80	80	49	61.3	43	53.8	0	0.0
All Airlines	214	212	125	59.0	126	59.4	2	0.9
Sunshine Coast-Melbourne								
Jetstar	83	82	36	43.9	34	41.5	1	1.2
Qantas	57	56	20	35.7	24	42.9	1	1.8
QantasLink	21	20	8	40.0	8	40.0	1	4.8
Virgin Australia	138	129	69	53.5	74	57.4	9	6.5
All Airlines	299	287	133	46.3	140	48.8	12	4.0
Sunshine Coast-Sydney								
Jetstar	106	102	67	65.7	69	67.6	4	3.8
Qantas	79	75	50	66.7	51	68.0	4	5.1
Virgin Australia	110	99	50	50.5	64	64.6	11	10.0
All Airlines	295	276	167	60.5	184	66.7	19	6.4
Sydney-Adelaide								
Jetstar	133	125	90	72.0	71	56.8	8	6.0
Qantas	214	212	119	56.1	116	54.7	2	0.9
Virgin Australia	112	111	64	57.7	58	52.3	1	0.9
All Airlines	459	448	273	60.9	245	54.7	11	2.4

	Sectors		Arrivals On Time		Departures On Time		Cancellations	
	Sched.	Flown	No.	%	No.	%	No.	%
Sydney-Albury								
QantasLink	85	84	60	71.4	53	63.1	1	1.2
Rex Airlines	102	102	83	81.4	79	77.5	0	0.0
All Airlines	187	186	143	76.9	132	71.0	1	0.5
Sydney-Armidale								
QantasLink	81	79	53	67.1	44	55.7	2	2.5
Rex Airlines	75	72	49	68.1	47	65.3	3	4.0
All Airlines	156	151	102	67.5	91	60.3	5	3.2
Sydney-Ballina								
Jetstar	99	78	56	71.8	54	69.2	21	21.2
QantasLink	105	97	40	41.2	58	59.8	8	7.6
Rex Airlines	23	22	12	54.5	12	54.5	1	4.3
Virgin Australia	73	65	41	63.1	43	66.2	8	11.0
All Airlines	300	262	149	56.9	167	63.7	38	12.7
Sydney-Brisbane								
Jetstar	175	155	69	44.5	66	42.6	20	11.4
Qantas	506	485	229	47.2	220	45.4	21	4.2
Rex Airlines	76	73	51	69.9	56	76.7	3	3.9
Virgin Australia	453	439	319	72.7	313	71.3	14	3.1
All Airlines	1 210	1 152	668	58.0	655	56.9	58	4.8
Sydney-Cairns								
Jetstar	123	120	77	64.2	70	58.3	3	2.4
Qantas	81	81	42	51.9	39	48.1	0	0.0
Virgin Australia	88	84	70	83.3	61	72.6	4	4.5
All Airlines	292	285	189	66.3	170	59.6	7	2.4
Sydney-Canberra								
QantasLink	485	423	290	68.6	280	66.2	62	12.8
Rex Airlines	108	107	65	60.7	76	71.0	1	0.9
Virgin Australia	224	221	188	85.1	167	75.6	3	1.3
All Airlines	817	751	543	72.3	523	69.6	66	8.1
Sydney-Coffs Harbour								
QantasLink	115	114	72	63.2	66	57.9	1	0.9
Rex Airlines	77	77	43	55.8	42	54.5	0	0.0
All Airlines	192	191	115	60.2	108	56.5	1	0.5
Sydney-Dubbo								
QantasLink	87	86	52	60.5	45	52.3	1	1.1
Rex Airlines	108	108	68	63.0	67	62.0	0	0.0
All Airlines	195	194	120	61.9	112	57.7	1	0.5
Sydney-Gold Coast								
Jetstar	301	293	181	61.8	180	61.4	8	2.7
Qantas	97	97	45	46.4	45	46.4	0	0.0
QantasLink	20	20	13	65.0	13	65.0	0	0.0
Rex Airlines	55	49	37	75.5	40	81.6	6	10.9
Virgin Australia	374	359	212	59.1	225	62.7	15	4.0
All Airlines	847	818	488	59.7	503	61.5	29	3.4
Sydney-Hamilton Island								
Jetstar	30	30	23	76.7	24	80.0	0	0.0
Qantas	38	37	22	59.5	20	54.1	1	2.6
Virgin Australia	30	30	27	90.0	29	96.7	0	0.0
All Airlines	98	97	72	74.2	73	75.3	1	1.0

	<i>Sectors</i>		<i>Arrivals On Time</i>		<i>Departures On Time</i>		<i>Cancellations</i>	
	<i>Sched.</i>	<i>Flown</i>	<i>No.</i>	<i>%</i>	<i>No.</i>	<i>%</i>	<i>No.</i>	<i>%</i>
Sydney-Hobart								
Jetstar	112	109	92	84.4	81	74.3	3	2.7
Qantas	26	26	15	57.7	11	42.3	0	0.0
QantasLink	48	46	18	39.1	18	39.1	2	4.2
Virgin Australia	84	83	72	86.7	68	81.9	1	1.2
All Airlines	270	264	197	74.6	178	67.4	6	2.2
Sydney-Launceston								
Jetstar	56	56	38	67.9	32	57.1	0	0.0
QantasLink	32	31	14	45.2	12	38.7	1	3.1
Virgin Australia	30	30	23	76.7	18	60.0	0	0.0
All Airlines	118	117	75	64.1	62	53.0	1	0.8
Sydney-Melbourne								
Jetstar	451	403	236	58.6	197	48.9	48	10.6
Qantas	861	730	411	56.3	378	51.8	131	15.2
QantasLink	31	23	6	26.1	10	43.5	8	25.8
Rex Airlines	114	104	78	75.0	78	75.0	10	8.8
Virgin Australia	692	651	363	55.8	333	51.2	41	5.9
All Airlines	2 149	1 911	1 094	57.2	996	52.1	238	11.1
Sydney-Perth								
Jetstar	34	32	19	59.4	15	46.9	2	5.9
Qantas	155	155	64	41.3	41	26.5	0	0.0
Virgin Australia	78	78	56	71.8	38	48.7	0	0.0
All Airlines	267	265	139	52.5	94	35.5	2	0.7
Sydney-Port Macquarie								
QantasLink	97	96	69	71.9	63	65.6	1	1.0
Rex Airlines	80	80	38	47.5	36	45.0	0	0.0
All Airlines	177	176	107	60.8	99	56.3	1	0.6
Sydney-Sunshine Coast								
Jetstar	105	101	74	73.3	76	75.2	4	3.8
Qantas	79	78	36	46.2	42	53.8	1	1.3
Virgin Australia	110	99	72	72.7	69	69.7	11	10.0
All Airlines	294	278	182	65.5	187	67.3	16	5.4
Sydney-Wagga Wagga								
QantasLink	80	80	51	63.8	46	57.5	0	0.0
Rex Airlines	83	83	54	65.1	47	56.6	0	0.0
All Airlines	163	163	105	64.4	93	57.1	0	0.0
Townsville-Brisbane								
Jetstar	56	54	32	59.3	34	63.0	2	3.6
Qantas	113	113	79	69.9	84	74.3	0	0.0
QantasLink	2	2	0	0.0	0	0.0	0	0.0
Virgin Australia	106	106	93	87.7	83	78.3	0	0.0
All Airlines	277	275	204	74.2	201	73.1	2	0.7
Townsville-Cairns								
QantasLink	136	133	100	75.2	97	72.9	3	2.2
Rex Airlines	20	20	20	100.0	19	95.0	0	0.0
All Airlines	156	153	120	78.4	116	75.8	3	1.9
Wagga Wagga-Sydney								
QantasLink	81	80	61	76.3	59	73.8	1	1.2
Rex Airlines	83	82	66	80.5	72	87.8	1	1.2
All Airlines	164	162	127	78.4	131	80.9	2	1.2

Airports

The following data reports by airport against flights operated on published routes only. This month, 8 major city airports and 28 regional city airports are covered.

Airport	Arrivals			Departures		
	Sectors Flown	On Time No.	%	Sectors Flown	On Time No.	%
Adelaide						
Jetstar	331	226	68.3	331	220	66.5
Qantas	583	342	58.7	582	390	67.0
QantasLink	302	199	65.9	300	205	68.3
Rex Airlines	214	171	79.9	217	192	88.5
Virgin Australia	545	336	61.7	546	325	59.5
Virgin Australia Regional Airlines	31	14	45.2	31	5	16.1
All Airlines	2 006	1 288	64.2	2 007	1 337	66.6
Relates to services to and from Alice Springs, Brisbane, Canberra, Gold Coast, Melbourne, Perth, Port Lincoln and Sydney only.						
Albury						
QantasLink	84	60	71.4	85	55	64.7
Rex Airlines	102	83	81.4	102	82	80.4
All Airlines	186	143	76.9	187	137	73.3
Relates to services to and from Sydney only.						
Alice Springs						
QantasLink	44	33	75.0	44	21	47.7
Virgin Australia	9	7	77.8	9	2	22.2
All Airlines	53	40	75.5	53	23	43.4
Relates to services to and from Adelaide only.						
Armidale						
QantasLink	79	53	67.1	80	60	75.0
Rex Airlines	72	49	68.1	74	45	60.8
All Airlines	151	102	67.5	154	105	68.2
Relates to services to and from Sydney only.						
Ballina						
Jetstar	78	56	71.8	78	44	56.4
QantasLink	97	40	41.2	95	50	52.6
Rex Airlines	22	12	54.5	20	13	65.0
Virgin Australia	65	41	63.1	64	42	65.6
All Airlines	262	149	56.9	257	149	58.0
Relates to services to and from Sydney only.						
Brisbane						
Jetstar	764	372	48.7	758	397	52.4
Qantas	1 504	887	59.0	1 498	1 028	68.6
QantasLink	699	400	57.2	698	405	58.0
Rex Airlines	121	83	68.6	120	98	81.7
Virgin Australia	1 804	1 270	70.4	1 800	1 169	64.9
All Airlines	4 892	3 012	61.6	4 874	3 097	63.5
Relates to services to and from Adelaide, Cairns, Canberra, Darwin, Emerald, Gladstone, Hamilton Island, Hobart, Mackay, Melbourne, Mount Isa, Newcastle, Perth, Proserpine, Rockhampton, Sydney and Townsville only.						

Airport	Arrivals			Departures		
	Sectors Flown	On Time		Sectors Flown	On Time	
		No.	%		No.	%
Broome						
Qantas	14	13	92.9	13	8	61.5
QantasLink	70	57	81.4	69	48	69.6
Virgin Australia	20	17	85.0	19	6	31.6
Virgin Australia Regional Airlines	38	27	71.1	38	19	50.0
All Airlines	142	114	80.3	139	81	58.3
Relates to services to and from Perth only.						
Cairns						
Jetstar	327	173	52.9	326	222	68.1
Qantas	233	145	62.2	230	144	62.6
QantasLink	162	112	69.1	159	118	74.2
Rex Airlines	20	20	100.0	20	19	95.0
Virgin Australia	307	226	73.6	308	225	73.1
All Airlines	1 049	676	64.4	1 043	728	69.8
Relates to services to and from Brisbane, Melbourne, Sydney and Townsville only.						
Canberra						
Jetstar	21	14	66.7	22	5	22.7
Qantas	55	44	80.0	55	36	65.5
QantasLink	810	497	61.4	804	544	67.7
Rex Airlines	137	84	61.3	138	111	80.4
Virgin Australia	424	316	74.5	424	307	72.4
All Airlines	1 447	955	66.0	1 443	1 003	69.5
Relates to services to and from Adelaide, Brisbane, Melbourne and Sydney only.						
Coffs Harbour						
QantasLink	114	72	63.2	115	72	62.6
Rex Airlines	77	43	55.8	78	46	59.0
All Airlines	191	115	60.2	193	118	61.1
Relates to services to and from Sydney only.						
Darwin						
Jetstar	49	33	67.3	48	25	52.1
Qantas	108	72	66.7	108	47	43.5
QantasLink	6	3	50.0	6	1	16.7
Virgin Australia	80	64	80.0	79	46	58.2
Virgin Australia Regional Airlines	9	4	44.4	9	4	44.4
All Airlines	252	176	69.8	250	123	49.2
Relates to services to and from Brisbane, Melbourne and Perth only.						
Dubbo						
QantasLink	86	52	60.5	85	61	71.8
Rex Airlines	108	68	63.0	105	72	68.6
All Airlines	194	120	61.9	190	133	70.0
Relates to services to and from Sydney only.						
Emerald						
QantasLink	94	81	86.2	94	73	77.7
Virgin Australia	25	22	88.0	25	22	88.0
All Airlines	119	103	86.6	119	95	79.8
Relates to services to and from Brisbane only.						

Airport	Arrivals			Departures		
	Sectors Flown	On Time		Sectors Flown	On Time	
		No.	%		No.	%
Gladstone						
QantasLink	114	72	63.2	115	83	72.2
Virgin Australia	32	21	65.6	32	22	68.8
All Airlines	146	93	63.7	147	105	71.4
Relates to services to and from Brisbane only.						
Gold Coast						
Jetstar	558	318	57.0	558	331	59.3
Qantas	175	87	49.7	175	74	42.3
QantasLink	36	23	63.9	36	13	36.1
Rex Airlines	107	82	76.6	109	82	75.2
Virgin Australia	760	450	59.2	756	442	58.5
All Airlines	1 636	960	58.7	1 634	942	57.6
Relates to services to and from Adelaide, Melbourne and Sydney only.						
Hamilton Island						
Jetstar	30	23	76.7	30	14	46.7
Qantas	76	54	71.1	76	50	65.8
Virgin Australia	80	69	86.3	80	58	72.5
All Airlines	186	146	78.5	186	122	65.6
Relates to services to and from Brisbane and Sydney only.						
Hobart						
Jetstar	319	214	67.1	319	165	51.7
Qantas	39	24	61.5	38	19	50.0
QantasLink	173	89	51.4	172	99	57.6
Virgin Australia	250	189	75.6	250	170	68.0
All Airlines	781	516	66.1	779	453	58.2
Relates to services to and from Brisbane, Melbourne and Sydney only.						
Kalgoorlie						
Qantas	24	22	91.7	24	16	66.7
QantasLink	43	28	65.1	43	25	58.1
Virgin Australia	33	23	69.7	33	11	33.3
Virgin Australia Regional Airlines	25	17	68.0	25	14	56.0
All Airlines	125	90	72.0	125	66	52.8
Relates to services to and from Perth only.						
Karratha						
Qantas	49	40	81.6	47	40	85.1
QantasLink	85	70	82.4	82	65	79.3
Virgin Australia	24	21	87.5	24	18	75.0
Virgin Australia Regional Airlines	27	21	77.8	27	19	70.4
All Airlines	185	152	82.2	180	142	78.9
Relates to services to and from Perth only.						
Launceston						
Jetstar	176	102	58.0	176	73	41.5
QantasLink	138	51	37.0	138	56	40.6
Virgin Australia	111	63	56.8	111	69	62.2
All Airlines	425	216	50.8	425	198	46.6
Relates to services to and from Melbourne and Sydney only.						

Airport	Arrivals			Departures		
	Sectors Flown	On Time		Sectors Flown	On Time	
		No.	%		No.	%
Mackay						
Jetstar	30	22	73.3	30	21	70.0
Qantas	102	80	78.4	102	77	75.5
QantasLink	9	7	77.8	12	8	66.7
Virgin Australia	107	90	84.1	107	74	69.2
All Airlines	248	199	80.2	251	180	71.7

Relates to services to and from Brisbane only.

Melbourne

Jetstar	1 599	870	54.4	1 605	756	47.1
Qantas	1 701	973	57.2	1 727	819	47.4
QantasLink	643	289	44.9	645	288	44.7
Rex Airlines	376	272	72.3	374	267	71.4
Virgin Australia	2 279	1 248	54.8	2 282	1 269	55.6
All Airlines	6 598	3 652	55.4	6 633	3 399	51.2

Relates to services to and from Adelaide, Brisbane, Cairns, Canberra, Darwin, Gold Coast, Hobart, Launceston, Mildura, Newcastle, Perth, Sunshine Coast and Sydney only.

Mildura

QantasLink	91	31	34.1	92	31	33.7
Rex Airlines	82	55	67.1	83	65	78.3
All Airlines	173	86	49.7	175	96	54.9

Relates to services to and from Melbourne only.

Mount Isa

Qantas	34	33	97.1	33	31	93.9
QantasLink	16	9	56.3	16	9	56.3
Virgin Australia	12	10	83.3	12	9	75.0
All Airlines	62	52	83.9	61	49	80.3

Relates to services to and from Brisbane only.

Newcastle

Jetstar	152	81	53.3	151	73	48.3
QantasLink	166	89	53.6	166	100	60.2
Virgin Australia	105	70	66.7	106	74	69.8
All Airlines	423	240	56.7	423	247	58.4

Relates to services to and from Brisbane and Melbourne only.

Newman

Qantas	30	27	90.0	30	28	93.3
QantasLink	70	53	75.7	68	47	69.1
Virgin Australia	19	18	94.7	19	17	89.5
Virgin Australia Regional Airlines	32	27	84.4	32	21	65.6
All Airlines	151	125	82.8	149	113	75.8

Relates to services to and from Perth only.

Perth

Jetstar	129	87	67.4	127	50	39.4
Qantas	656	397	60.5	657	481	73.2
QantasLink	342	254	74.3	347	259	74.6
Virgin Australia	364	270	74.2	366	225	61.5
Virgin Australia Regional Airlines	194	133	68.6	196	148	75.5
All Airlines	1 685	1 141	67.7	1 693	1 163	68.7

Relates to services to and from Adelaide, Brisbane, Broome, Darwin, Kalgoorlie, Karratha, Melbourne, Newman, Port Hedland and Sydney only.

Airport	Arrivals			Departures		
	Sectors Flown	On Time		Sectors Flown	On Time	
		No.	%		No.	%
Port Hedland						
Qantas	36	34	94.4	36	25	69.4
QantasLink	73	53	72.6	74	47	63.5
Virgin Australia	17	13	76.5	17	8	47.1
Virgin Australia Regional Airlines	34	27	79.4	32	19	59.4
All Airlines	160	127	79.4	159	99	62.3
Relates to services to and from Perth only.						
Port Lincoln						
QantasLink	131	106	80.9	133	113	85.0
Rex Airlines	164	134	81.7	163	136	83.4
All Airlines	295	240	81.4	296	249	84.1
Relates to services to and from Adelaide only.						
Port Macquarie						
QantasLink	96	69	71.9	96	72	75.0
Rex Airlines	80	38	47.5	81	50	61.7
All Airlines	176	107	60.8	177	122	68.9
Relates to services to and from Sydney only.						
Proserpine						
Jetstar	41	23	56.1	42	13	31.0
QantasLink	27	11	40.7	25	9	36.0
Virgin Australia	54	45	83.3	54	31	57.4
All Airlines	122	79	64.8	121	53	43.8
Relates to services to and from Brisbane only.						
Rockhampton						
QantasLink	132	93	70.5	132	83	62.9
Virgin Australia	80	40	50.0	80	43	53.8
All Airlines	212	133	62.7	212	126	59.4
Relates to services to and from Brisbane only.						
Sunshine Coast						
Jetstar	185	117	63.2	184	103	56.0
Qantas	135	63	46.7	131	75	57.3
QantasLink	20	6	30.0	20	8	40.0
Virgin Australia	230	148	64.3	228	138	60.5
All Airlines	570	334	58.6	563	324	57.5
Relates to services to and from Melbourne and Sydney only.						
Sydney						
Jetstar	1 498	902	60.2	1 502	866	57.7
Qantas	1 909	1 031	54.0	1 901	912	48.0
QantasLink	1 175	776	66.0	1 179	708	60.1
Rex Airlines	878	584	66.5	877	580	66.1
Virgin Australia	2 245	1 452	64.7	2 250	1 422	63.2
All Airlines	7 705	4 745	61.6	7 709	4 488	58.2

Relates to services to and from Adelaide, Albury, Armidale, Ballina, Brisbane, Cairns, Canberra, Coffs Harbour, Dubbo, Gold Coast, Hamilton Island, Hobart, Launceston, Melbourne, Perth, Port Macquarie, Sunshine Coast and Wagga Wagga only.

<i>Airport</i>	<i>Arrivals</i>			<i>Departures</i>		
	<i>Sectors</i>	<i>On Time</i>		<i>Sectors</i>	<i>On Time</i>	
	<i>Flown</i>	<i>No.</i>	<i>%</i>	<i>Flown</i>	<i>No.</i>	<i>%</i>
Townsville						
Jetstar	54	40	74.1	54	34	63.0
Qantas	113	80	70.8	113	84	74.3
QantasLink	133	106	79.7	135	97	71.9
Rex Airlines	20	19	95.0	20	19	95.0
Virgin Australia	106	90	84.9	106	83	78.3
All Airlines	426	335	78.6	428	317	74.1

Relates to services to and from Brisbane and Cairns only.

Wagga Wagga

QantasLink	80	51	63.8	80	59	73.8
Rex Airlines	83	54	65.1	82	72	87.8
All Airlines	163	105	64.4	162	131	80.9

Relates to services to and from Sydney only.

Definitions

On time arrival	A flight arrival is counted as "on time" if it arrived at the gate before 15 minutes after the scheduled arrival time shown in the carriers' schedule. Neither diverted nor cancelled flights count as on time.
On time departure	A flight departure is counted as "on time" if it departs the gate before 15 minutes after the scheduled departure time shown in the carriers' schedule.
Cancellation	A flight removed from service within 7 days of scheduled departure is regarded as a cancellation.
On time departure percentage	The percentage of on time departures is measured against the number of departures <i>operated</i> on any particular sector.
On time arrival percentage	The percentage of on time arrivals is measured against the number of arrivals <i>operated</i> on any particular sector.
Cancellation percentage	The percentage of cancellations is measured against the number of services <i>scheduled</i> on any particular sector.
