



Australian Government

Department of Infrastructure, Regional Development and Cities

Bureau of Infrastructure, Transport and Regional Economics

STATISTICAL REPORT



Aviation

Domestic airline on time performance
February 2018

© Commonwealth of Australia 2018

ISSN: 1832-0759

Ownership of intellectual property rights in this publication

Unless otherwise noted, copyright (and any other intellectual property rights, if any) in this publication is owned by the Commonwealth of Australia (referred to below as the Commonwealth).

Disclaimer

The material contained in this publication is made available on the understanding that the Commonwealth is not providing professional advice, and that users exercise their own skill and care with respect to its use, and seek independent advice if necessary.

The Commonwealth makes no representations or warranties as to the contents or accuracy of the information contained in this publication. To the extent permitted by law, the Commonwealth disclaims liability to any person or organisation in respect of anything done, or omitted to be done, in reliance upon information contained in this publication.

Creative Commons licence

With the exception of (a) the Coat of Arms; and (b) the Department of Infrastructure, Regional Development and Cities' photos and graphics, copyright in this publication is licensed under a Creative Commons Attribution 3.0 Australia Licence.

Creative Commons Attribution 3.0 Australia Licence is a standard form licence agreement that allows you to copy, communicate and adapt this publication provided that you attribute the work to the Commonwealth and abide by the other licence terms. A summary of the licence terms is available from <http://creativecommons.org/licenses/by/3.0/au/deed.en>. The full licence terms are available from <http://creativecommons.org/licenses/by/3.0/au/legalcode>.

Use of the Coat of Arms

The Department of the Prime Minister and Cabinet sets the terms under which the Coat of Arms is used. Please refer to the Department's Commonwealth Coat of Arms and Government branding web page <http://www.dpmmc.gov.au/guidelines/index.cfm#brand> and, in particular, the Guidelines on the use of the Commonwealth Coat of Arms publication.

An appropriate citation for this report is:

Bureau of Infrastructure, Transport and Regional Economics (BITRE), 2018, Domestic airline on time performance, Statistical Report, BITRE, Canberra ACT.

Contact us

This publication is available in PDF format. All other rights are reserved, including in relation to any Departmental logos or trade marks which may exist. For enquiries regarding the licence and any use of this publication, please contact:

Bureau of Infrastructure, Transport and Regional Economics (BITRE)
Department of Infrastructure, Regional Development and Cities
GPO Box 501, Canberra ACT 2601, Australia
Telephone: (international) +61 2 6274 7210
Fax: (international) +61 2 6274 6855
Email: bitre@infrastructure.gov.au
Website: www.bitre.gov.au

Inquiries

Should you require additional information about the statistics contained in this publication:

Telephone (02) 6274 7790 or Facsimile (02) 6274 7727

Electronic mail: AVSTATS@infrastructure.gov.au

Web site: <http://www.bitre.gov.au/statistics/aviation/otphome.aspx>

Foreword

The Bureau of Infrastructure, Transport and Regional Economics (BITRE) monitors the punctuality and reliability of major domestic airlines operating between Australian airports. The purpose of this is to allow for evaluation of overall industry and individual airline performance, so that consumers of air travel can make informed decisions.

The following domestic airlines currently report this information monthly to the BITRE: Jetstar, Qantas, QantasLink, Regional Express, Tigerair Australia, Virgin Australia and Virgin Australia Regional Airlines. Data has been gathered since November 2003, although some airlines commenced reporting at a later date, including Jetstar which first reported in May 2004, MacAir in July 2005, Tigerair Australia in April 2008 and Virgin Australia Regional Airlines in May 2013. MacAir ceased operations in February 2009 and data was not received for December 2008 onwards. Virgin Blue was rebranded as Virgin Australia in May 2011 and Tiger Airways was rebranded as Tigerair Australia in July 2013 and time series data in Microsoft Excel spreadsheet format on the BITRE website have been revised to reflect these changes. Services operated by Skywest on behalf of Virgin Australia using ATR/F100 aircraft commenced in November 2011 and were shown separately as Virgin Australia – ATR/F100 Operations. Virgin Australia Regional Airlines commenced operations in May 2013. It was formed after the acquisition of Skywest by Virgin Australia and represented a combination of operations previously reported under Skywest and Virgin Australia – ATR/F100 Operations. In January 2016, Virgin Australia transferred their ATR fleet from Virgin Australia Regional Airlines to Virgin Australia.

Information presented in this report is for Australian domestic routes for which the passenger load averaged 8 000 or more passengers per month over the previous six months and where two or more airlines operated in competition on those routes. There were 66 routes that met this definition in February 2018. Over time, routes which meet these criteria change as airline networks and traffic levels vary.

Participating airlines report their overall monthly network performance where this is possible.

Total industry figures encompass all services operated by reporting airlines only. These airlines collectively carried over 95 per cent of total domestic passengers (regular public transport only) in 2016.

The method of capturing on time performance varies between airlines utilising different recording systems. Jetstar and Qantas jet aircraft use Aircraft Communication Addressing and Reporting System (ACARS) to electronically measure on time performance. Regional Express, Tigerair Australia, Virgin Australia, Virgin Australia Regional Airlines and the Qantas non-jet fleet record on time performance manually using records from pilots, gate agents and/or ground crews.

After initial data is collected, aggregate reports are audited internally by participating airlines prior to publication.

Reports and detailed time series data in Microsoft Excel spreadsheet format are available from the BITRE website at: <http://www.bitre.gov.au/statistics/aviation/otphome.aspx>.

Contents

	Page
Industry performance	1
Individual routes	10
Airports	24
Definitions	30

Industry performance

For February 2018, on time performance over all routes operated by participating airlines (Jetstar, Qantas, QantasLink, Regional Express, Tigerair Australia, Virgin Australia and Virgin Australia Regional Airlines) averaged 84.3 per cent for on time arrivals and 85.5 per cent for on time departures. Cancellations represented 1.3 per cent of all scheduled flights. The equivalent figures for February 2017 were 82.8 per cent for on time arrivals, 84.0 per cent for on time departures and 1.8 per cent for cancellations.

This month's on time arrivals figure was higher than the long term average performance for all routes (82.7 per cent) and the on time departures figure was also higher than the long term average (84.1 per cent). The rate of cancellations was lower than the long term average of 1.4 per cent.

Qantas achieved the highest on time arrivals among the major domestic airlines at 87.7 per cent followed by Virgin Australia at 86.8 per cent, Jetstar at 81.3 per cent and Tigerair Australia at 72.3 per cent. Of the regional airlines, Virgin Australia Regional Airlines recorded 84.1 per cent for on time arrivals, followed by QantasLink at 83.8 per cent and Regional Express at 83.5 per cent. The Qantas network (Qantas and QantasLink combined operations) recorded 85.7 per cent for on time arrivals while the Virgin Australia network (Virgin Australia and Virgin Australia Regional Airlines combined operations) recorded 86.6 per cent.

Qantas also achieved the highest level of on time departures among the major domestic airlines for February 2018 at 88.9 per cent, followed by Virgin Australia at 88.6 per cent, Jetstar at 79.0 per cent and Tigerair Australia at 74.0 per cent. Of the regional airlines, Regional Express and Virgin Australia Regional Airlines recorded 87.0 per cent, followed by QantasLink at 84.9 per cent. The Qantas network recorded 86.8 per cent for on time departures while the Virgin Australia network recorded 88.5 per cent.

Virgin Australia Regional Airlines recorded the highest percentage of cancellations (3.2 per cent) during the month, followed by Tigerair Australia (2.3 per cent), QantasLink (2.1 per cent), Virgin Australia (1.2 per cent), Jetstar (1.1 per cent), Qantas (1.0 per cent) and Regional Express (0.5 per cent).

Airlines' on time performance varies across the routes they serve. Individual route data by specific airline for 66 routes are shown on pages 10-23.

Of the 66 routes which met the criteria for on time performance reporting in February 2018, the Canberra-Adelaide route had the highest percentage of on time arrivals (100.0 per cent) and the Adelaide-Canberra and Canberra-Adelaide routes had the highest percentage of on time departures (both at 97.1 per cent). The Mount Isa-Brisbane route had the lowest percentage of on time arrivals (53.7 per cent) and the Port Macquarie-Sydney route had the lowest percentage of on time departures (68.2 per cent).

Cancellations were highest on the Broome-Perth route at 6.1 per cent, followed by the Perth-Broome route at 5.2 per cent, the Port Hedland-Perth route at 4.8 per cent, the

Perth-Port Hedland route at 4.1 per cent and the Kalgoorlie-Perth and Perth-Kalgoorlie routes at 3.6 per cent.

Ayers Rock Airport recorded the highest percentage of on time arrivals (94.2 per cent) and Newman Airport recorded the highest percentage of on time departures (94.7 per cent). Port Macquarie Airport recorded the lowest percentage of on time arrivals (69.9 per cent) and the lowest percentage of on time departures (68.2 per cent). These figures only refer to reported routes and do not cover all flights at these airports.

Table 1 On time performance for February 2018 — Total Industry

	<i>Sectors</i>		<i>Arrivals On Time</i>		<i>Departures On Time</i>		<i>Cancellations</i>	
	<i>Scheduled</i>	<i>Flown</i>	<i>No.</i>	<i>%</i>	<i>No.</i>	<i>%</i>	<i>No.</i>	<i>%</i>
Jetstar	6 164	6 094	4 957	81.3	4 814	79.0	70	1.1
Qantas	8 208	8 129	7 127	87.7	7 223	88.9	79	1.0
QantasLink	9 049	8 858	7 427	83.8	7 522	84.9	191	2.1
Regional Express	5 423	5 397	4 506	83.5	4 696	87.0	26	0.5
Tigerair Australia	2 212	2 162	1 564	72.3	1 599	74.0	50	2.3
Virgin Australia	10 627	10 495	9 106	86.8	9 302	88.6	132	1.2
Virgin Australia Regional Airlines	753	729	613	84.1	634	87.0	24	3.2
All Airlines	42 436	41 864	35 300	84.3	35 790	85.5	572	1.3
Qantas - all QF designated services	17 257	16 987	14 554	85.7	14 745	86.8	270	1.6
Virgin Australia - all VA designated services	11 380	11 224	9 719	86.6	9 936	88.5	156	1.4

Total airline network data (including routes not shown in this report).

Airlines' on time performance varies across the routes they serve. Individual route data by specific airline for 66 routes are shown on pages 10-23.

Table 2 Top ten routes for on time performance for February 2018 (participating airlines only)

<i>Arrivals</i>		<i>Departures</i>	
<i>Route</i>	<i>On Time (%)</i>	<i>Route</i>	<i>On Time (%)</i>
Canberra-Adelaide	100.0	Adelaide-Canberra	97.1
Adelaide-Canberra	97.1	Canberra-Adelaide	97.1
Melbourne-Townsville	96.9	Perth-Karratha	94.8
Brisbane-Hobart	96.4	Newman-Perth	94.7
Melbourne-Darwin	95.8	Adelaide-Gold Coast	94.6
Brisbane-Proserpine	95.8	Perth-Darwin	94.6
Newman-Perth	94.7	Brisbane-Proserpine	94.4
Adelaide-Gold Coast	94.6	Perth-Newman	94.1
Sydney-Ayers Rock	94.2	Townsville-Melbourne	93.8
Gold Coast-Adelaide	92.9	Adelaide-Alice Springs	93.6

Table 3 Top ten airports for on time performance for February 2018 (participating airlines and reported routes only)

<i>Arrivals</i>		<i>Departures</i>	
<i>Airport</i>	<i>On Time (%)</i>	<i>Airport</i>	<i>On Time (%)</i>
Ayers Rock	94.2	Newman	94.7
Port Lincoln	92.1	Karratha	93.0
Karratha	91.8	Port Lincoln	92.8
Proserpine	91.6	Canberra	90.4
Darwin	90.8	Perth	89.8
Newman	90.8	Port Hedland	89.8
Alice Springs	90.4	Townsville	89.7
Kalgoorlie	90.4	Albury	88.9
Canberra	89.8	Kalgoorlie	88.9
Adelaide	89.1	Adelaide	88.7

Total industry on time performance

Figure 1 On time performance (by month from February 2015)—Total Industry

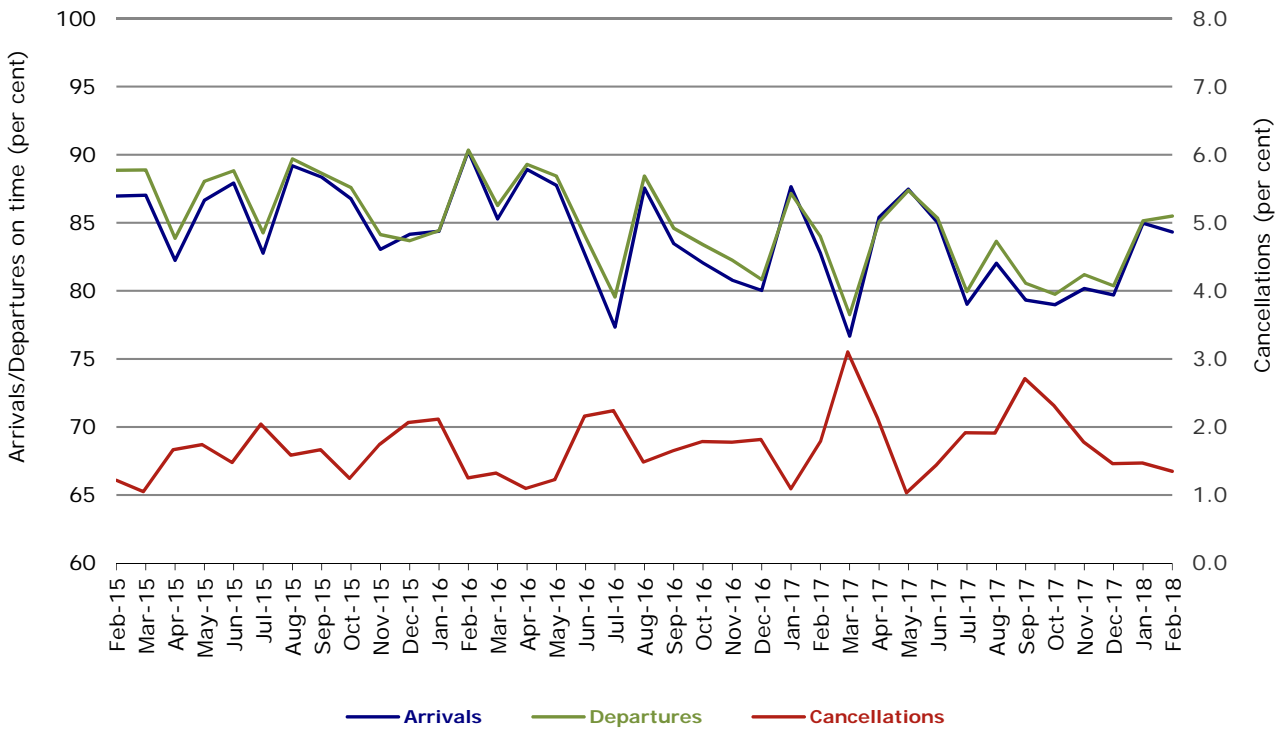


Figure 2 Arrivals on time (by month from February 2017)

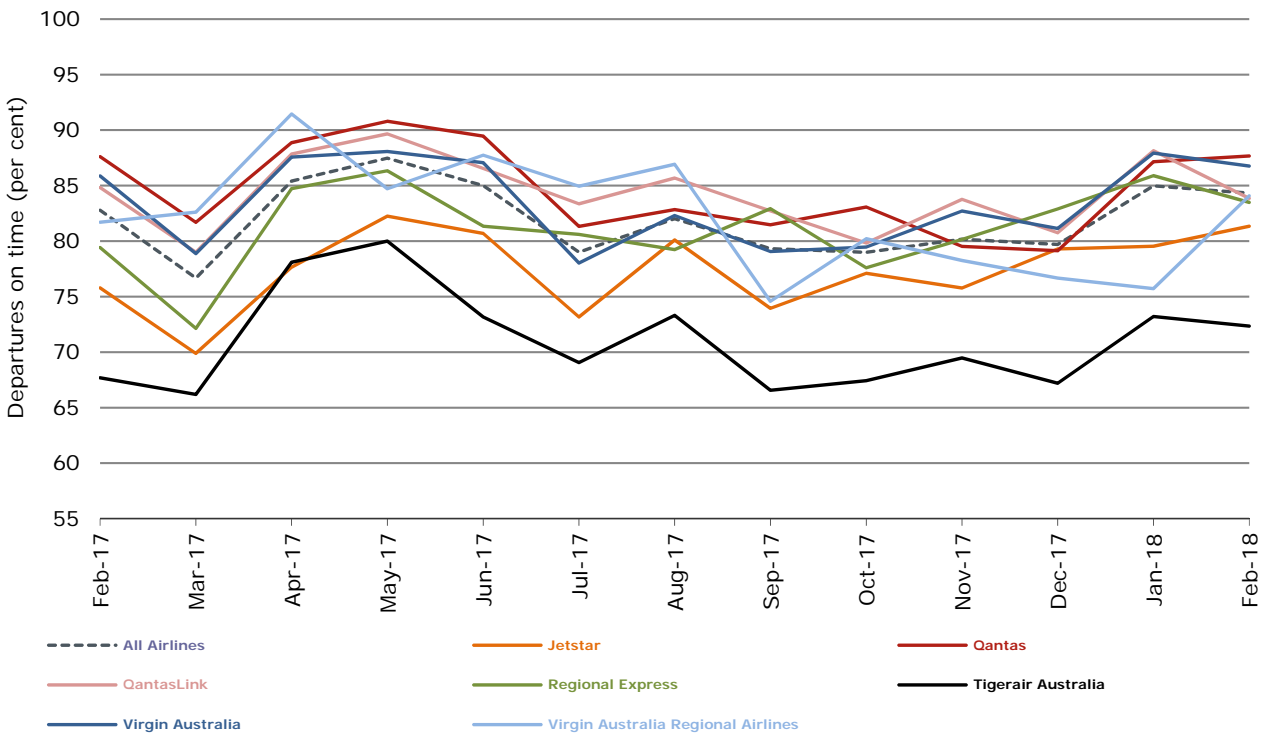


Figure 3 Departures on time (by month from February 2017)

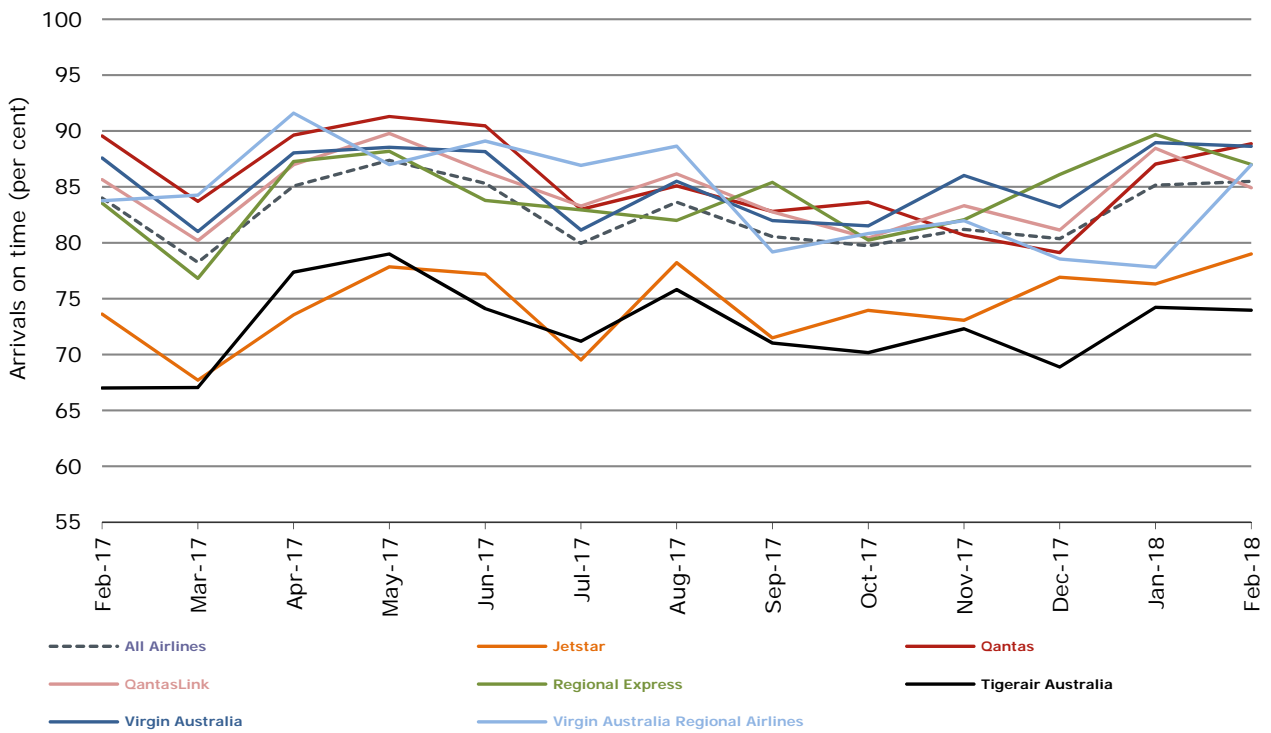
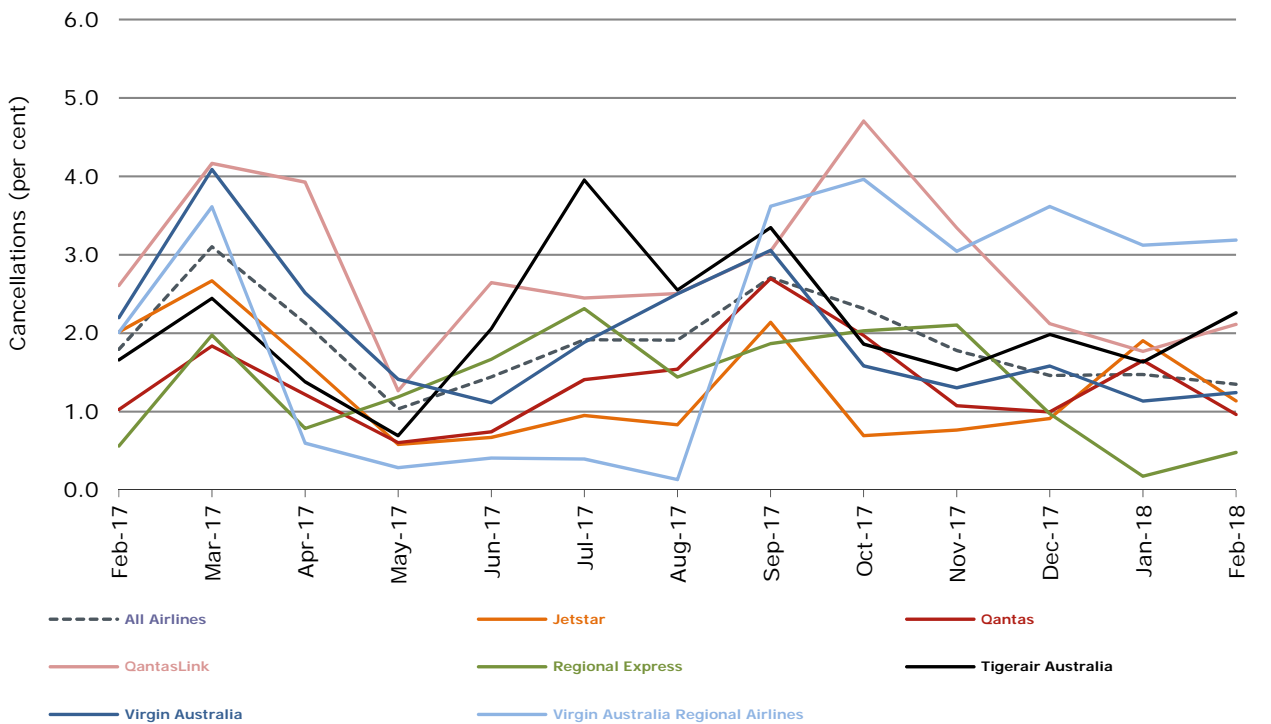


Figure 4 Cancellations (by month from February 2017)



Major domestic airlines on time performance

Figure 5 On time performance (by month from February 2015)—Jetstar

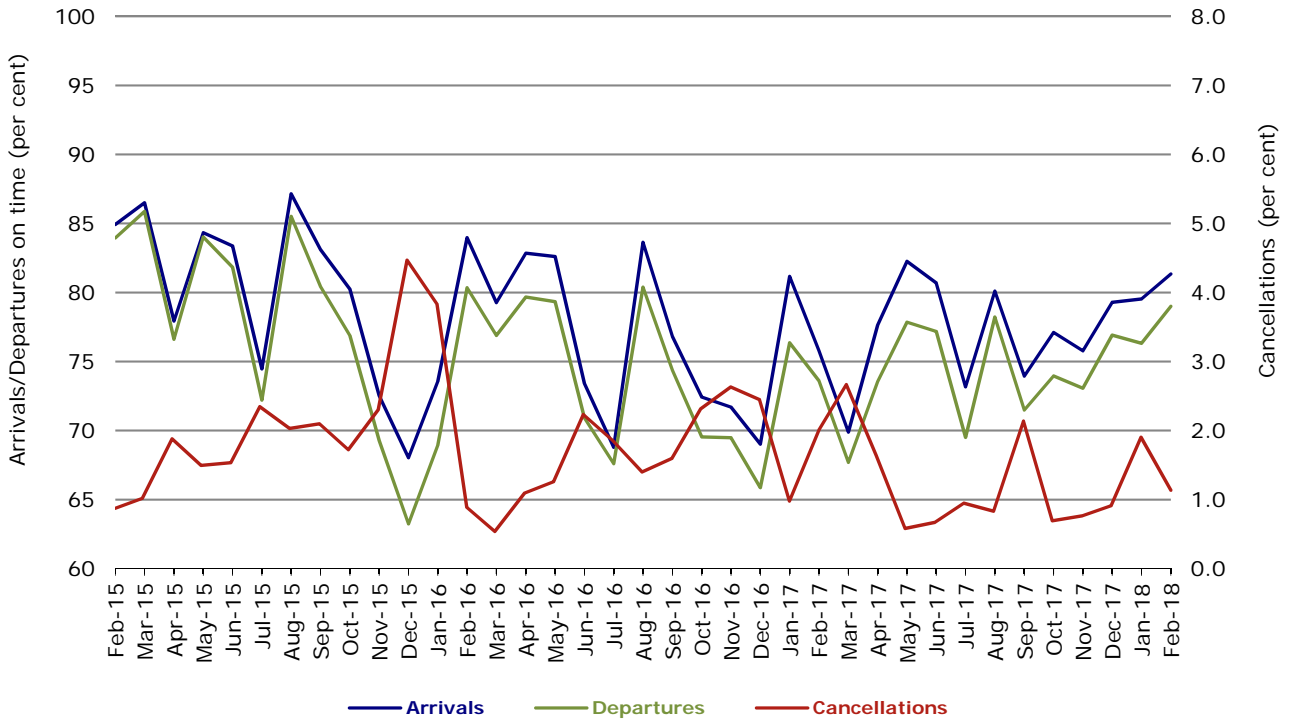


Figure 6 On time performance (by month from February 2015)—Qantas

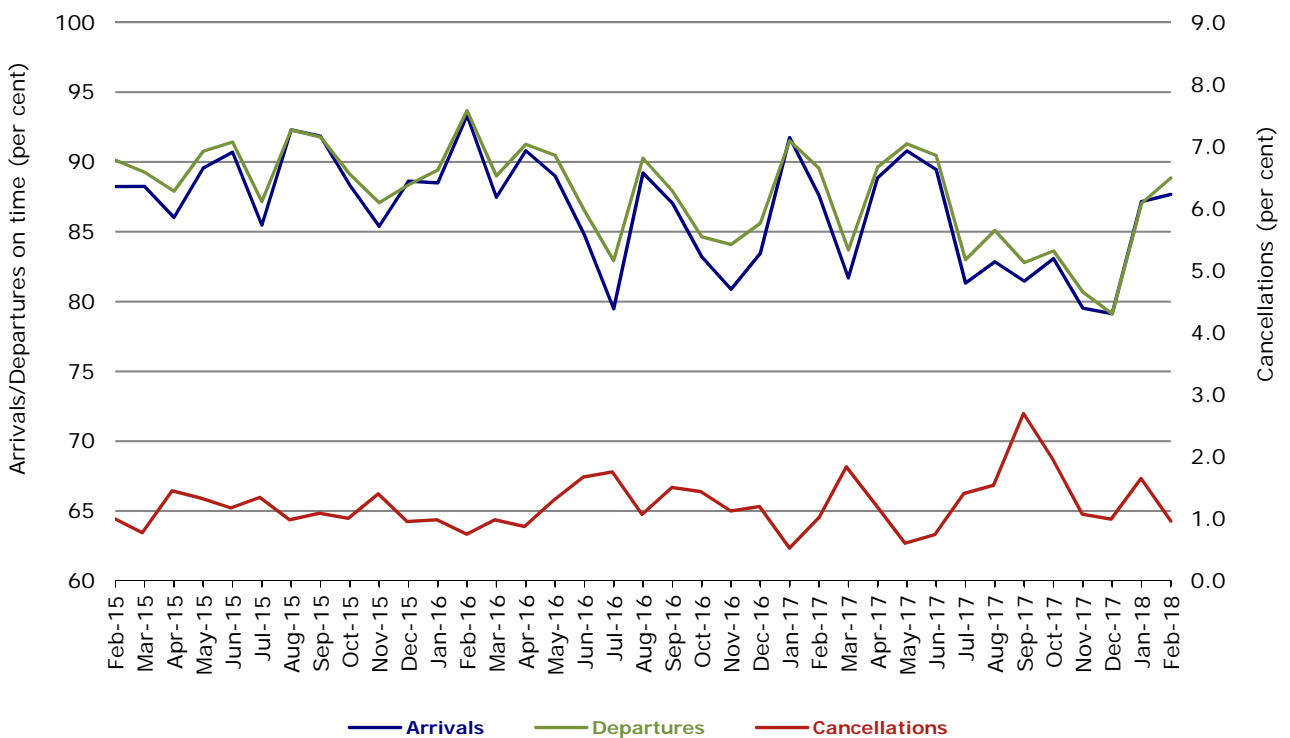


Figure 7 On time performance (by month from February 2015)—Tigerair Australia

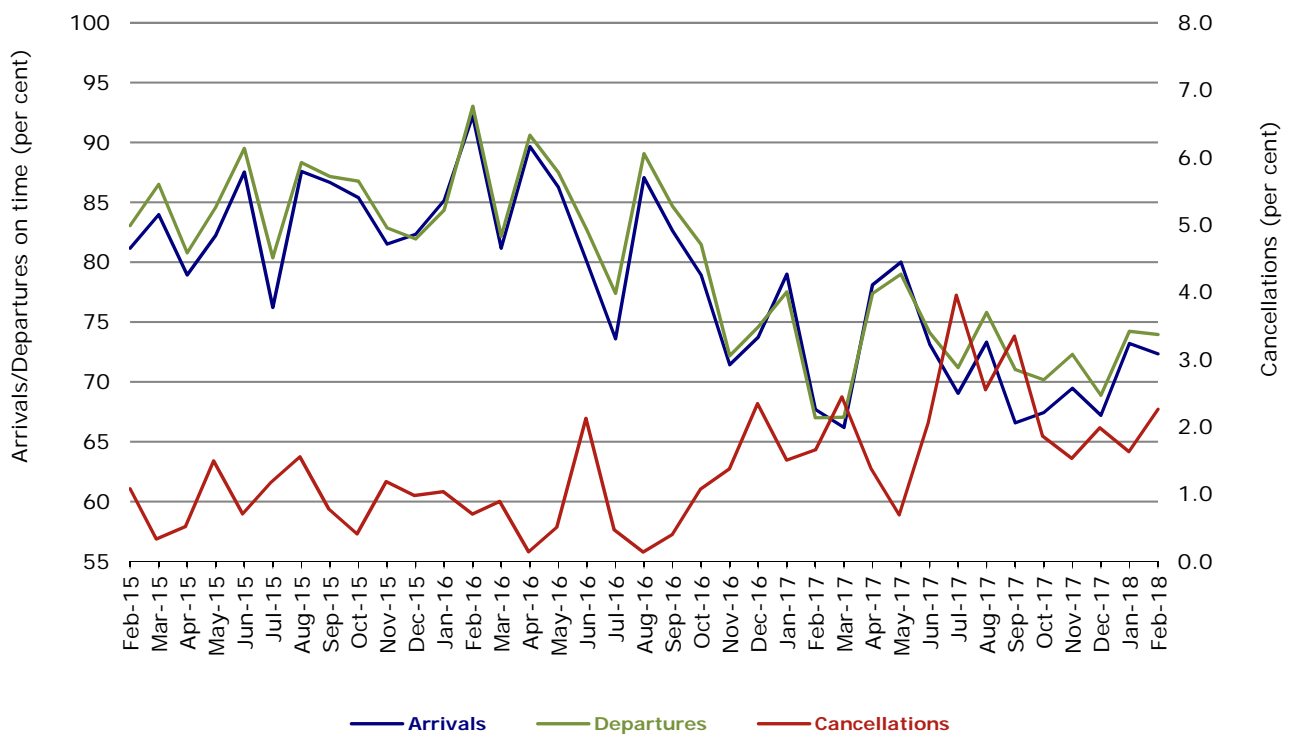
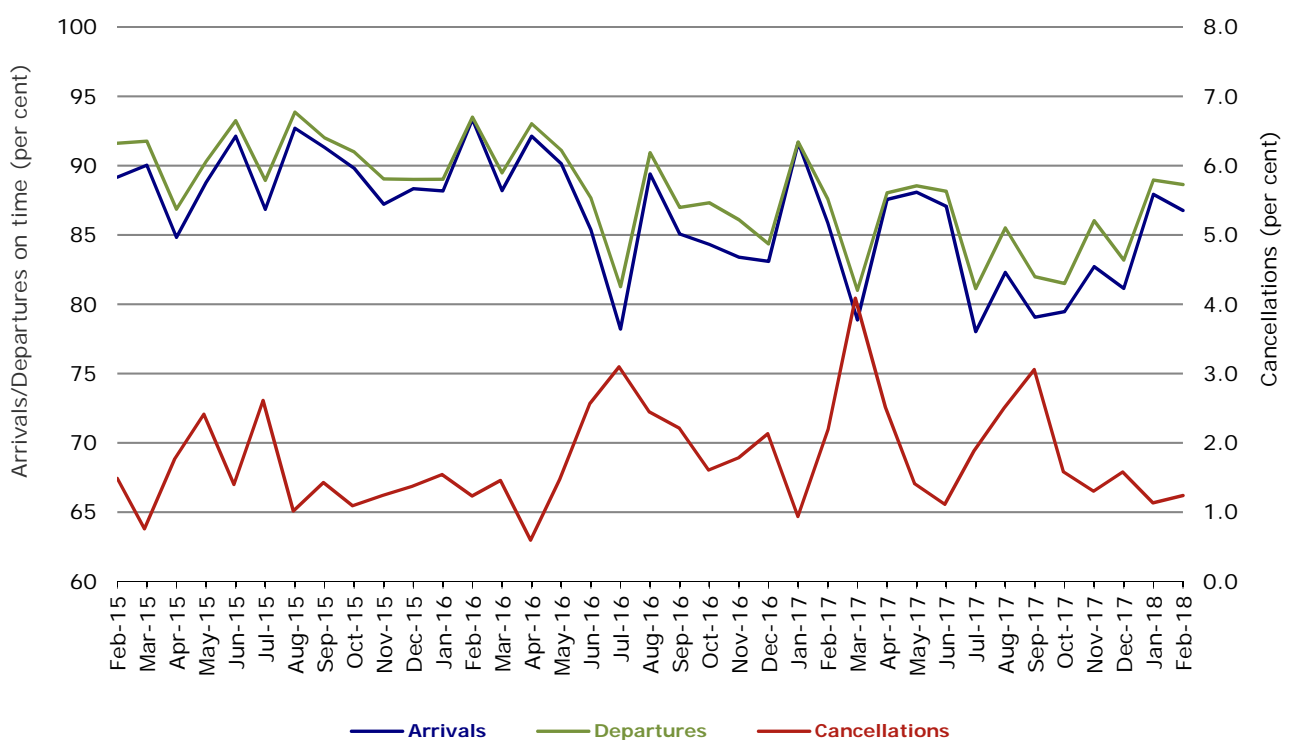


Figure 8 On time performance (by month from February 2015)—Virgin Australia



In January 2016, Virgin Australia transferred their ATR fleet from Virgin Australia Regional Airlines to Virgin Australia.

Major regional airlines on time performance

Figure 9 On time performance (by month from February 2015)—QantasLink

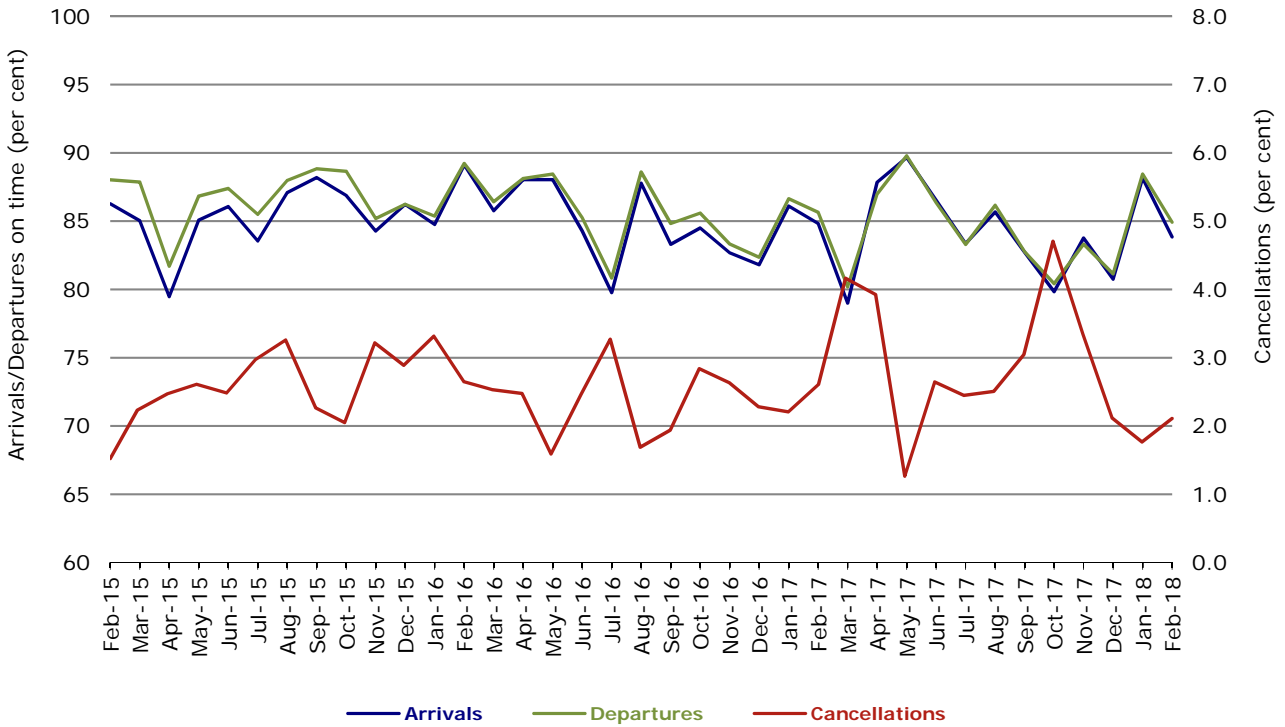


Figure 10 On time performance (by month from February 2015)—Regional Express

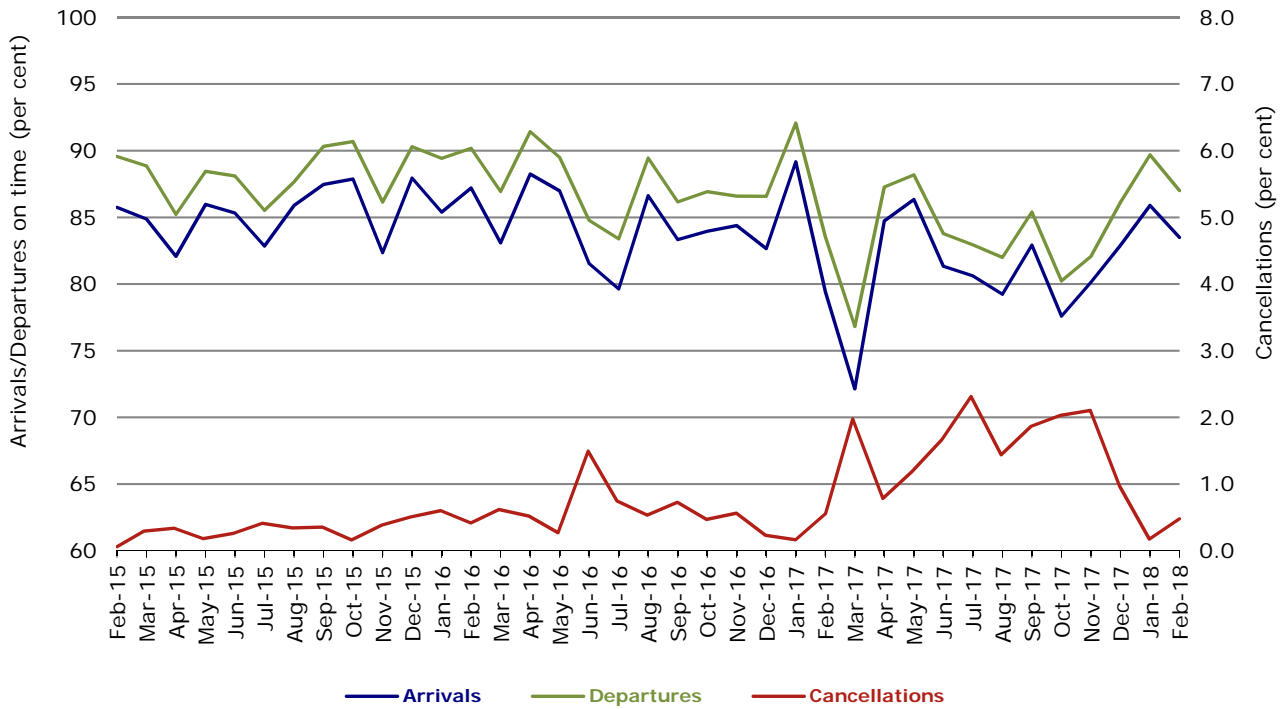
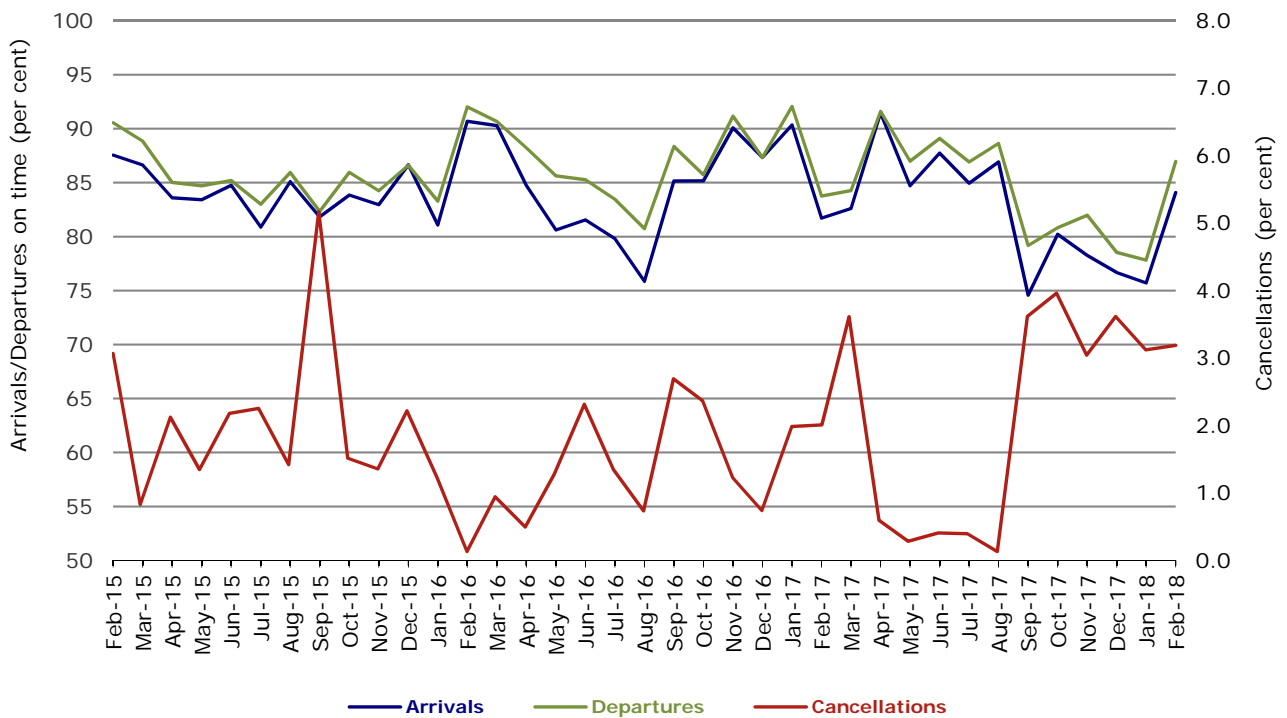


Figure 11 On time performance (by month from February 2015)
Virgin Australia Regional Airlines



In January 2016, Virgin Australia transferred their ATR fleet from Virgin Australia Regional Airlines to Virgin Australia.

Individual routes

On time performance is reported for all routes where the passenger load averages over 8000 passengers per month over the previous six months, and where two or more airlines operate in competition on those routes. There are now 66 routes which meet this definition. Over time, however, routes which meet this definition may change as airline networks and traffic levels vary.

	<i>Sectors</i>		<i>Arrivals On Time</i>		<i>Departures On Time</i>		<i>Cancellations</i>	
	<i>Sched.</i>	<i>Flown</i>	<i>No.</i>	<i>%</i>	<i>No.</i>	<i>%</i>	<i>No.</i>	<i>%</i>
Adelaide-Alice Springs								
Qantas	28	28	26	92.9	26	92.9	0	0.0
Virgin Australia	4	4	4	100.0	4	100.0	0	0.0
Virgin Australia Regional Airlines	16	15	12	80.0	14	93.3	1	6.3
All Airlines	48	47	42	89.4	44	93.6	1	2.1
Adelaide-Brisbane								
Jetstar	24	24	20	83.3	22	91.7	0	0.0
Qantas	84	84	72	85.7	79	94.0	0	0.0
QantasLink	27	26	19	73.1	22	84.6	1	3.7
Tigerair Australia	26	26	18	69.2	22	84.6	0	0.0
Virgin Australia	95	93	89	95.7	87	93.5	2	2.1
All Airlines	256	253	218	86.2	232	91.7	3	1.2
Adelaide-Canberra								
Qantas	44	44	43	97.7	43	97.7	0	0.0
Virgin Australia	24	24	23	95.8	23	95.8	0	0.0
All Airlines	68	68	66	97.1	66	97.1	0	0.0
Adelaide-Gold Coast								
Jetstar	28	28	27	96.4	27	96.4	0	0.0
Virgin Australia	28	28	26	92.9	26	92.9	0	0.0
All Airlines	56	56	53	94.6	53	94.6	0	0.0
Adelaide-Melbourne								
Jetstar	100	98	82	83.7	79	80.6	2	2.0
Qantas	256	256	235	91.8	236	92.2	0	0.0
Tigerair Australia	71	69	51	73.9	49	71.0	2	2.8
Virgin Australia	260	258	235	91.1	225	87.2	2	0.8
All Airlines	687	681	603	88.5	589	86.5	6	0.9
Adelaide-Perth								
Jetstar	24	24	22	91.7	19	79.2	0	0.0
Qantas	88	88	85	96.6	81	92.0	0	0.0
QantasLink	12	12	11	91.7	11	91.7	0	0.0
Virgin Australia	42	42	39	92.9	41	97.6	0	0.0
Virgin Australia Regional Airlines	30	29	24	82.8	25	86.2	1	3.3
All Airlines	196	195	181	92.8	177	90.8	1	0.5
Adelaide-Port Lincoln								
QantasLink	96	96	84	87.5	84	87.5	0	0.0
Regional Express	182	182	172	94.5	174	95.6	0	0.0
All Airlines	278	278	256	92.1	258	92.8	0	0.0
Adelaide-Sydney								
Jetstar	105	102	92	90.2	90	88.2	3	2.9
Qantas	206	206	178	86.4	180	87.4	0	0.0
QantasLink	29	29	25	86.2	25	86.2	0	0.0
Tigerair Australia	44	42	24	57.1	26	61.9	2	4.5
Virgin Australia	147	147	131	89.1	126	85.7	0	0.0
All Airlines	531	526	450	85.6	447	85.0	5	0.9

	<i>Sectors</i>		<i>Arrivals On Time</i>		<i>Departures On Time</i>		<i>Cancellations</i>	
	<i>Sched.</i>	<i>Flown</i>	<i>No.</i>	<i>%</i>	<i>No.</i>	<i>%</i>	<i>No.</i>	<i>%</i>
Albury-Sydney								
QantasLink	82	81	63	77.8	72	88.9	1	1.2
Regional Express	76	76	65	85.5	67	88.2	0	0.0
Virgin Australia	52	51	45	88.2	46	90.2	1	1.9
All Airlines	210	208	173	83.2	185	88.9	2	1.0
Alice Springs-Adelaide								
Qantas	28	28	23	82.1	24	85.7	0	0.0
Virgin Australia	4	4	4	100.0	3	75.0	0	0.0
Virgin Australia Regional Airlines	16	15	12	80.0	12	80.0	1	6.3
All Airlines	48	47	39	83.0	39	83.0	1	2.1
Alice Springs-Darwin								
QantasLink	39	38	35	92.1	35	92.1	1	2.6
Virgin Australia	4	4	4	100.0	4	100.0	0	0.0
Virgin Australia Regional Airlines	16	15	13	86.7	13	86.7	1	6.3
All Airlines	59	57	52	91.2	52	91.2	2	3.4
Armidale-Sydney								
QantasLink	95	95	75	78.9	74	77.9	0	0.0
Regional Express	69	69	53	76.8	57	82.6	0	0.0
All Airlines	164	164	128	78.0	131	79.9	0	0.0
Ayers Rock-Sydney								
Jetstar	24	24	18	75.0	19	79.2	0	0.0
Virgin Australia	28	28	26	92.9	26	92.9	0	0.0
All Airlines	52	52	44	84.6	45	86.5	0	0.0
Ballina-Sydney								
Jetstar	80	80	67	83.8	58	72.5	0	0.0
Regional Express	21	20	18	90.0	18	90.0	1	4.8
Virgin Australia	28	28	27	96.4	26	92.9	0	0.0
All Airlines	129	128	112	87.5	102	79.7	1	0.8
Brisbane-Adelaide								
Jetstar	24	24	21	87.5	22	91.7	0	0.0
Qantas	84	84	75	89.3	78	92.9	0	0.0
QantasLink	27	27	24	88.9	23	85.2	0	0.0
Tigerair Australia	26	26	25	96.2	25	96.2	0	0.0
Virgin Australia	93	91	80	87.9	81	89.0	2	2.2
All Airlines	254	252	225	89.3	229	90.9	2	0.8
Brisbane-Bundaberg								
QantasLink	101	101	88	87.1	89	88.1	0	0.0
Virgin Australia	28	28	20	71.4	24	85.7	0	0.0
All Airlines	129	129	108	83.7	113	87.6	0	0.0
Brisbane-Cairns								
Jetstar	76	75	67	89.3	63	84.0	1	1.3
Qantas	80	80	69	86.3	74	92.5	0	0.0
QantasLink	20	20	13	65.0	11	55.0	0	0.0
Tigerair Australia	39	37	33	89.2	33	89.2	2	5.1
Virgin Australia	124	124	113	91.1	112	90.3	0	0.0
All Airlines	339	336	295	87.8	293	87.2	3	0.9
Brisbane-Canberra								
Qantas	29	29	27	93.1	27	93.1	0	0.0
QantasLink	111	110	96	87.3	93	84.5	1	0.9
Tigerair Australia	12	12	6	50.0	8	66.7	0	0.0
Virgin Australia	83	83	77	92.8	74	89.2	0	0.0
All Airlines	235	234	206	88.0	202	86.3	1	0.4

	<i>Sectors</i>		<i>Arrivals On Time</i>		<i>Departures On Time</i>		<i>Cancellations</i>	
	<i>Sched.</i>	<i>Flown</i>	<i>No.</i>	<i>%</i>	<i>No.</i>	<i>%</i>	<i>No.</i>	<i>%</i>
Brisbane-Darwin								
Jetstar	16	16	14	87.5	13	81.3	0	0.0
Qantas	28	28	28	100.0	26	92.9	0	0.0
Tigerair Australia	16	16	12	75.0	12	75.0	0	0.0
Virgin Australia	28	28	24	85.7	26	92.9	0	0.0
All Airlines	88	88	78	88.6	77	87.5	0	0.0
Brisbane-Emerald								
QantasLink	99	99	83	83.8	85	85.9	0	0.0
Virgin Australia	48	48	42	87.5	44	91.7	0	0.0
All Airlines	147	147	125	85.0	129	87.8	0	0.0
Brisbane-Gladstone								
QantasLink	120	118	85	72.0	91	77.1	2	1.7
Virgin Australia	68	66	47	71.2	62	93.9	2	2.9
All Airlines	188	184	132	71.7	153	83.2	4	2.1
Brisbane-Hamilton Island								
QantasLink	23	23	21	91.3	21	91.3	0	0.0
Virgin Australia	28	28	23	82.1	22	78.6	0	0.0
All Airlines	51	51	44	86.3	43	84.3	0	0.0
Brisbane-Hobart								
Jetstar	28	28	26	92.9	25	89.3	0	0.0
Virgin Australia	28	28	28	100.0	27	96.4	0	0.0
All Airlines	56	56	54	96.4	52	92.9	0	0.0
Brisbane-Mackay								
Jetstar	28	28	21	75.0	25	89.3	0	0.0
QantasLink	95	93	75	80.6	77	82.8	2	2.1
Virgin Australia	124	124	110	88.7	109	87.9	0	0.0
All Airlines	247	245	206	84.1	211	86.1	2	0.8
Brisbane-Melbourne								
Jetstar	104	101	68	67.3	68	67.3	3	2.9
Qantas	377	374	314	84.0	344	92.0	3	0.8
QantasLink	16	15	12	80.0	13	86.7	1	6.3
Tigerair Australia	113	111	76	68.5	87	78.4	2	1.8
Virgin Australia	353	344	268	77.9	314	91.3	9	2.5
All Airlines	963	945	738	78.1	826	87.4	18	1.9
Brisbane-Mount Isa								
QantasLink	52	51	35	68.6	38	74.5	1	1.9
Virgin Australia	16	16	15	93.8	15	93.8	0	0.0
All Airlines	68	67	50	74.6	53	79.1	1	1.5
Brisbane-Newcastle								
Jetstar	72	72	54	75.0	52	72.2	0	0.0
QantasLink	57	55	43	78.2	45	81.8	2	3.5
Virgin Australia	80	79	71	89.9	70	88.6	1	1.3
All Airlines	209	206	168	81.6	167	81.1	3	1.4
Brisbane-Perth								
Qantas	124	124	111	89.5	113	91.1	0	0.0
Tigerair Australia	16	16	15	93.8	15	93.8	0	0.0
Virgin Australia	94	94	88	93.6	84	89.4	0	0.0
All Airlines	234	234	214	91.5	212	90.6	0	0.0
Brisbane-Proserpine								
Jetstar	28	28	26	92.9	25	89.3	0	0.0
Tigerair Australia	16	15	15	100.0	15	100.0	1	6.3
Virgin Australia	28	28	27	96.4	27	96.4	0	0.0
All Airlines	72	71	68	95.8	67	94.4	1	1.4

	<i>Sectors</i>		<i>Arrivals On Time</i>		<i>Departures On Time</i>		<i>Cancellations</i>	
	<i>Sched.</i>	<i>Flown</i>	<i>No.</i>	<i>%</i>	<i>No.</i>	<i>%</i>	<i>No.</i>	<i>%</i>
Brisbane-Rockhampton								
QantasLink	134	129	102	79.1	103	79.8	5	3.7
Virgin Australia	128	127	95	74.8	98	77.2	1	0.8
All Airlines	262	256	197	77.0	201	78.5	6	2.3
Brisbane-Sydney								
Jetstar	146	139	109	78.4	106	76.3	7	4.8
Qantas	564	559	459	82.1	477	85.3	5	0.9
QantasLink	8	8	3	37.5	1	12.5	0	0.0
Tigerair Australia	100	95	68	71.6	65	68.4	5	5.0
Virgin Australia	479	467	399	85.4	420	89.9	12	2.5
All Airlines	1 297	1 268	1 038	81.9	1 069	84.3	29	2.2
Brisbane-Townsville								
Jetstar	28	28	22	78.6	21	75.0	0	0.0
Qantas	56	56	46	82.1	49	87.5	0	0.0
QantasLink	79	78	55	70.5	63	80.8	1	1.3
Virgin Australia	126	125	109	87.2	108	86.4	1	0.8
All Airlines	289	287	232	80.8	241	84.0	2	0.7
Broome-Perth								
QantasLink	75	70	61	87.1	57	81.4	5	6.7
Virgin Australia	2	2	2	100.0	2	100.0	0	0.0
Virgin Australia Regional Airlines	54	51	39	76.5	40	78.4	3	5.6
All Airlines	131	123	102	82.9	99	80.5	8	6.1
Bundaberg-Brisbane								
QantasLink	101	101	88	87.1	88	87.1	0	0.0
Virgin Australia	28	28	22	78.6	23	82.1	0	0.0
All Airlines	129	129	110	85.3	111	86.0	0	0.0
Cairns-Brisbane								
Jetstar	76	76	63	82.9	61	80.3	0	0.0
Qantas	80	80	71	88.8	73	91.3	0	0.0
QantasLink	20	20	8	40.0	11	55.0	0	0.0
Tigerair Australia	39	37	31	83.8	30	81.1	2	5.1
Virgin Australia	124	124	106	85.5	107	86.3	0	0.0
All Airlines	339	337	279	82.8	282	83.7	2	0.6
Cairns-Melbourne								
Jetstar	48	48	40	83.3	39	81.3	0	0.0
Qantas	35	35	32	91.4	31	88.6	0	0.0
Tigerair Australia	28	28	16	57.1	18	64.3	0	0.0
Virgin Australia	33	33	26	78.8	28	84.8	0	0.0
All Airlines	144	144	114	79.2	116	80.6	0	0.0
Cairns-Sydney								
Jetstar	76	76	57	75.0	55	72.4	0	0.0
Qantas	68	68	67	98.5	64	94.1	0	0.0
Tigerair Australia	38	38	28	73.7	28	73.7	0	0.0
Virgin Australia	87	87	78	89.7	77	88.5	0	0.0
All Airlines	269	269	230	85.5	224	83.3	0	0.0
Cairns-Townsville								
QantasLink	120	120	102	85.0	104	86.7	0	0.0
Regional Express	33	31	29	93.5	29	93.5	2	6.1
All Airlines	153	151	131	86.8	133	88.1	2	1.3
Canberra-Adelaide								
Qantas	44	44	44	100.0	42	95.5	0	0.0
Virgin Australia	24	24	24	100.0	24	100.0	0	0.0
All Airlines	68	68	68	100.0	66	97.1	0	0.0

	<i>Sectors</i>		<i>Arrivals On Time</i>		<i>Departures On Time</i>		<i>Cancellations</i>	
	<i>Sched.</i>	<i>Flown</i>	<i>No.</i>	<i>%</i>	<i>No.</i>	<i>%</i>	<i>No.</i>	<i>%</i>
Canberra-Brisbane								
Qantas	29	29	28	96.6	29	100.0	0	0.0
QantasLink	111	109	93	85.3	92	84.4	2	1.8
Tigerair Australia	12	12	4	33.3	4	33.3	0	0.0
Virgin Australia	83	83	80	96.4	79	95.2	0	0.0
All Airlines	235	233	205	88.0	204	87.6	2	0.9
Canberra-Melbourne								
Qantas	188	188	177	94.1	181	96.3	0	0.0
QantasLink	92	90	79	87.8	78	86.7	2	2.2
Tigerair Australia	30	29	18	62.1	17	58.6	1	3.3
Virgin Australia	158	157	138	87.9	139	88.5	1	0.6
All Airlines	468	464	412	88.8	415	89.4	4	0.9
Canberra-Sydney								
Qantas	34	34	34	100.0	32	94.1	0	0.0
QantasLink	388	373	335	89.8	338	90.6	15	3.9
Virgin Australia	236	230	209	90.9	213	92.6	6	2.5
All Airlines	658	637	578	90.7	583	91.5	21	3.2
Coffs Harbour-Sydney								
QantasLink	140	139	123	88.5	121	87.1	1	0.7
Tigerair Australia	12	12	10	83.3	9	75.0	0	0.0
Virgin Australia	47	46	43	93.5	42	91.3	1	2.1
All Airlines	199	197	176	89.3	172	87.3	2	1.0
Darwin-Alice Springs								
QantasLink	39	38	38	100.0	37	97.4	1	2.6
Virgin Australia	4	4	3	75.0	3	75.0	0	0.0
Virgin Australia Regional Airlines	16	15	11	73.3	12	80.0	1	6.3
All Airlines	59	57	52	91.2	52	91.2	2	3.4
Darwin-Brisbane								
Jetstar	16	16	13	81.3	13	81.3	0	0.0
Qantas	28	28	25	89.3	25	89.3	0	0.0
Tigerair Australia	16	16	14	87.5	14	87.5	0	0.0
Virgin Australia	28	28	16	57.1	24	85.7	0	0.0
All Airlines	88	88	68	77.3	76	86.4	0	0.0
Darwin-Melbourne								
Jetstar	16	16	11	68.8	13	81.3	0	0.0
Qantas	28	28	28	100.0	26	92.9	0	0.0
Virgin Australia	28	28	24	85.7	26	92.9	0	0.0
All Airlines	72	72	63	87.5	65	90.3	0	0.0
Darwin-Perth								
Qantas	28	28	25	89.3	24	85.7	0	0.0
Virgin Australia	20	20	17	85.0	16	80.0	0	0.0
Virgin Australia Regional Airlines	8	8	6	75.0	6	75.0	0	0.0
All Airlines	56	56	48	85.7	46	82.1	0	0.0
Darwin-Sydney								
Jetstar	16	15	11	73.3	14	93.3	1	6.3
Qantas	32	32	26	81.3	28	87.5	0	0.0
Virgin Australia	28	28	21	75.0	24	85.7	0	0.0
All Airlines	76	75	58	77.3	66	88.0	1	1.3
Dubbo-Sydney								
QantasLink	101	101	82	81.2	88	87.1	0	0.0
Regional Express	115	115	94	81.7	102	88.7	0	0.0
All Airlines	216	216	176	81.5	190	88.0	0	0.0

	<i>Sectors</i>		<i>Arrivals On Time</i>		<i>Departures On Time</i>		<i>Cancellations</i>	
	<i>Sched.</i>	<i>Flown</i>	<i>No.</i>	<i>%</i>	<i>No.</i>	<i>%</i>	<i>No.</i>	<i>%</i>
Emerald-Brisbane								
QantasLink	98	97	65	67.0	77	79.4	1	1.0
Virgin Australia	48	48	42	87.5	43	89.6	0	0.0
All Airlines	146	145	107	73.8	120	82.8	1	0.7
Geraldton-Perth								
QantasLink	41	39	33	84.6	34	87.2	2	4.9
Virgin Australia Regional Airlines	48	47	38	80.9	37	78.7	1	2.1
All Airlines	89	86	71	82.6	71	82.6	3	3.4
Gladstone-Brisbane								
QantasLink	120	116	88	75.9	88	75.9	4	3.3
Virgin Australia	68	66	51	77.3	53	80.3	2	2.9
All Airlines	188	182	139	76.4	141	77.5	6	3.2
Gold Coast-Adelaide								
Jetstar	28	28	27	96.4	26	92.9	0	0.0
Virgin Australia	28	28	25	89.3	24	85.7	0	0.0
All Airlines	56	56	52	92.9	50	89.3	0	0.0
Gold Coast-Melbourne								
Jetstar	124	124	102	82.3	94	75.8	0	0.0
Qantas	28	28	23	82.1	23	82.1	0	0.0
Tigerair Australia	60	60	33	55.0	33	55.0	0	0.0
Virgin Australia	172	172	146	84.9	145	84.3	0	0.0
All Airlines	384	384	304	79.2	295	76.8	0	0.0
Gold Coast-Sydney								
Jetstar	249	246	209	85.0	203	82.5	3	1.2
Qantas	75	75	67	89.3	65	86.7	0	0.0
QantasLink	31	28	20	71.4	23	82.1	3	9.7
Tigerair Australia	97	95	62	65.3	64	67.4	2	2.1
Virgin Australia	221	220	196	89.1	189	85.9	1	0.5
All Airlines	673	664	554	83.4	544	81.9	9	1.3
Hamilton Island-Brisbane								
QantasLink	23	23	16	69.6	18	78.3	0	0.0
Virgin Australia	28	28	24	85.7	21	75.0	0	0.0
All Airlines	51	51	40	78.4	39	76.5	0	0.0
Hamilton Island-Sydney								
Jetstar	16	16	13	81.3	15	93.8	0	0.0
Qantas	9	9	8	88.9	9	100.0	0	0.0
QantasLink	11	11	8	72.7	8	72.7	0	0.0
Virgin Australia	27	27	24	88.9	24	88.9	0	0.0
All Airlines	63	63	53	84.1	56	88.9	0	0.0
Hobart-Brisbane								
Jetstar	28	28	26	92.9	19	67.9	0	0.0
Virgin Australia	28	28	26	92.9	25	89.3	0	0.0
All Airlines	56	56	52	92.9	44	78.6	0	0.0
Hobart-Melbourne								
Jetstar	186	185	130	70.3	114	61.6	1	0.5
QantasLink	104	100	79	79.0	82	82.0	4	3.8
Tigerair Australia	37	37	23	62.2	28	75.7	0	0.0
Virgin Australia	128	128	87	68.0	95	74.2	0	0.0
All Airlines	455	450	319	70.9	319	70.9	5	1.1
Hobart-Sydney								
Jetstar	80	80	56	70.0	59	73.8	0	0.0
Qantas	52	52	43	82.7	44	84.6	0	0.0
Virgin Australia	64	64	49	76.6	51	79.7	0	0.0
All Airlines	196	196	148	75.5	154	78.6	0	0.0

	<i>Sectors</i>		<i>Arrivals On Time</i>		<i>Departures On Time</i>		<i>Cancellations</i>	
	<i>Sched.</i>	<i>Flown</i>	<i>No.</i>	<i>%</i>	<i>No.</i>	<i>%</i>	<i>No.</i>	<i>%</i>
Kalgoorlie-Perth								
Qantas	12	12	12	100.0	12	100.0	0	0.0
QantasLink	64	61	53	86.9	53	86.9	3	4.7
Virgin Australia	26	26	24	92.3	24	92.3	0	0.0
Virgin Australia Regional Airlines	38	36	30	83.3	31	86.1	2	5.3
All Airlines	140	135	119	88.1	120	88.9	5	3.6
Karratha-Perth								
Qantas	20	20	20	100.0	20	100.0	0	0.0
QantasLink	148	145	133	91.7	132	91.0	3	2.0
Virgin Australia	7	7	7	100.0	7	100.0	0	0.0
Virgin Australia Regional Airlines	58	57	50	87.7	54	94.7	1	1.7
All Airlines	233	229	210	91.7	213	93.0	4	1.7
Launceston-Melbourne								
Jetstar	140	140	97	69.3	101	72.1	0	0.0
QantasLink	108	104	80	76.9	84	80.8	4	3.7
Virgin Australia	88	88	76	86.4	78	88.6	0	0.0
All Airlines	336	332	253	76.2	263	79.2	4	1.2
Launceston-Sydney								
Jetstar	58	56	44	78.6	41	73.2	2	3.4
Virgin Australia	24	24	21	87.5	21	87.5	0	0.0
All Airlines	82	80	65	81.3	62	77.5	2	2.4
Mackay-Brisbane								
Jetstar	29	28	21	75.0	20	71.4	1	3.4
QantasLink	99	97	74	76.3	78	80.4	2	2.0
Virgin Australia	124	124	111	89.5	114	91.9	0	0.0
All Airlines	252	249	206	82.7	212	85.1	3	1.2
Melbourne-Adelaide								
Jetstar	100	98	81	82.7	80	81.6	2	2.0
Qantas	260	260	237	91.2	237	91.2	0	0.0
Tigerair Australia	71	69	56	81.2	57	82.6	2	2.8
Virgin Australia	250	248	216	87.1	224	90.3	2	0.8
All Airlines	681	675	590	87.4	598	88.6	6	0.9
Melbourne-Brisbane								
Jetstar	104	101	70	69.3	64	63.4	3	2.9
Qantas	381	378	340	89.9	344	91.0	3	0.8
QantasLink	16	15	12	80.0	12	80.0	1	6.3
Tigerair Australia	112	111	80	72.1	78	70.3	1	0.9
Virgin Australia	338	330	279	84.5	288	87.3	8	2.4
All Airlines	951	935	781	83.5	786	84.1	16	1.7
Melbourne-Cairns								
Jetstar	48	48	44	91.7	41	85.4	0	0.0
Qantas	35	35	31	88.6	31	88.6	0	0.0
Tigerair Australia	28	28	23	82.1	23	82.1	0	0.0
Virgin Australia	33	33	30	90.9	29	87.9	0	0.0
All Airlines	144	144	128	88.9	124	86.1	0	0.0
Melbourne-Canberra								
Qantas	188	188	181	96.3	179	95.2	0	0.0
QantasLink	92	89	77	86.5	76	85.4	3	3.3
Tigerair Australia	30	29	18	62.1	18	62.1	1	3.3
Virgin Australia	158	157	145	92.4	148	94.3	1	0.6
All Airlines	468	463	421	90.9	421	90.9	5	1.1

	<i>Sectors</i>		<i>Arrivals On Time</i>		<i>Departures On Time</i>		<i>Cancellations</i>	
	<i>Sched.</i>	<i>Flown</i>	<i>No.</i>	<i>%</i>	<i>No.</i>	<i>%</i>	<i>No.</i>	<i>%</i>
Melbourne-Darwin								
Jetstar	16	16	15	93.8	15	93.8	0	0.0
Qantas	28	28	27	96.4	26	92.9	0	0.0
Virgin Australia	28	28	27	96.4	26	92.9	0	0.0
All Airlines	72	72	69	95.8	67	93.1	0	0.0
Melbourne-Gold Coast								
Jetstar	124	124	95	76.6	84	67.7	0	0.0
Qantas	28	28	23	82.1	23	82.1	0	0.0
Tigerair Australia	59	59	39	66.1	40	67.8	0	0.0
Virgin Australia	173	173	152	87.9	153	88.4	0	0.0
All Airlines	384	384	309	80.5	300	78.1	0	0.0
Melbourne-Hobart								
Jetstar	186	186	144	77.4	150	80.6	0	0.0
QantasLink	104	100	79	79.0	83	83.0	4	3.8
Tigerair Australia	37	37	33	89.2	35	94.6	0	0.0
Virgin Australia	128	128	112	87.5	113	88.3	0	0.0
All Airlines	455	451	368	81.6	381	84.5	4	0.9
Melbourne-Launceston								
Jetstar	140	140	112	80.0	109	77.9	0	0.0
QantasLink	108	104	78	75.0	78	75.0	4	3.7
Virgin Australia	88	88	71	80.7	75	85.2	0	0.0
All Airlines	336	332	261	78.6	262	78.9	4	1.2
Melbourne-Mildura								
QantasLink	88	88	75	85.2	79	89.8	0	0.0
Regional Express	71	71	63	88.7	65	91.5	0	0.0
Virgin Australia	28	28	21	75.0	22	78.6	0	0.0
All Airlines	187	187	159	85.0	166	88.8	0	0.0
Melbourne-Newcastle								
Jetstar	84	84	65	77.4	63	75.0	0	0.0
Virgin Australia	28	28	22	78.6	22	78.6	0	0.0
All Airlines	112	112	87	77.7	85	75.9	0	0.0
Melbourne-Perth								
Jetstar	48	43	38	88.4	34	79.1	5	10.4
Qantas	181	181	147	81.2	147	81.2	0	0.0
Tigerair Australia	46	44	34	77.3	32	72.7	2	4.3
Virgin Australia	120	119	96	80.7	104	87.4	1	0.8
All Airlines	395	387	315	81.4	317	81.9	8	2.0
Melbourne-Sunshine Coast								
Jetstar	68	68	59	86.8	58	85.3	0	0.0
Virgin Australia	55	55	48	87.3	45	81.8	0	0.0
All Airlines	123	123	107	87.0	103	83.7	0	0.0
Melbourne-Sydney								
Jetstar	363	356	269	75.6	270	75.8	7	1.9
Qantas	923	895	759	84.8	780	87.2	28	3.0
QantasLink	4	4	3	75.0	4	100.0	0	0.0
Tigerair Australia	214	209	143	68.4	140	67.0	5	2.3
Virgin Australia	711	686	585	85.3	616	89.8	25	3.5
All Airlines	2 215	2 150	1 759	81.8	1 810	84.2	65	2.9
Melbourne-Townsville								
Jetstar	16	16	16	100.0	14	87.5	0	0.0
Tigerair Australia	16	16	15	93.8	15	93.8	0	0.0
All Airlines	32	32	31	96.9	29	90.6	0	0.0

	<i>Sectors</i>		<i>Arrivals On Time</i>		<i>Departures On Time</i>		<i>Cancellations</i>	
	<i>Sched.</i>	<i>Flown</i>	<i>No.</i>	<i>%</i>	<i>No.</i>	<i>%</i>	<i>No.</i>	<i>%</i>
Mildura-Melbourne								
QantasLink	88	86	75	87.2	72	83.7	2	2.3
Regional Express	72	72	53	73.6	57	79.2	0	0.0
Virgin Australia	28	28	25	89.3	27	96.4	0	0.0
All Airlines	188	186	153	82.3	156	83.9	2	1.1
Mount Isa-Brisbane								
QantasLink	52	51	27	52.9	34	66.7	1	1.9
Virgin Australia	16	16	9	56.3	14	87.5	0	0.0
All Airlines	68	67	36	53.7	48	71.6	1	1.5
Newcastle-Brisbane								
Jetstar	72	72	59	81.9	62	86.1	0	0.0
QantasLink	57	54	42	77.8	44	81.5	3	5.3
Virgin Australia	80	79	71	89.9	72	91.1	1	1.3
All Airlines	209	205	172	83.9	178	86.8	4	1.9
Newcastle-Melbourne								
Jetstar	84	83	69	83.1	71	85.5	1	1.2
Virgin Australia	28	28	22	78.6	24	85.7	0	0.0
All Airlines	112	111	91	82.0	95	85.6	1	0.9
Newman-Perth								
Qantas	56	55	51	92.7	52	94.5	1	1.8
QantasLink	62	60	58	96.7	57	95.0	2	3.2
Virgin Australia	16	16	16	100.0	15	93.8	0	0.0
Virgin Australia Regional Airlines	20	20	18	90.0	19	95.0	0	0.0
All Airlines	154	151	143	94.7	143	94.7	3	1.9
Perth-Adelaide								
Jetstar	24	24	21	87.5	18	75.0	0	0.0
Qantas	92	92	89	96.7	89	96.7	0	0.0
QantasLink	12	12	12	100.0	12	100.0	0	0.0
Virgin Australia	46	46	38	82.6	41	89.1	0	0.0
Virgin Australia Regional Airlines	30	29	27	93.1	28	96.6	1	3.3
All Airlines	204	203	187	92.1	188	92.6	1	0.5
Perth-Brisbane								
Qantas	120	120	107	89.2	111	92.5	0	0.0
Tigerair Australia	16	16	15	93.8	15	93.8	0	0.0
Virgin Australia	94	94	83	88.3	87	92.6	0	0.0
All Airlines	230	230	205	89.1	213	92.6	0	0.0
Perth-Broome								
QantasLink	78	74	64	86.5	63	85.1	4	5.1
Virgin Australia	2	2	2	100.0	2	100.0	0	0.0
Virgin Australia Regional Airlines	54	51	43	84.3	44	86.3	3	5.6
All Airlines	134	127	109	85.8	109	85.8	7	5.2
Perth-Darwin								
Qantas	28	28	26	92.9	28	100.0	0	0.0
Virgin Australia	20	20	17	85.0	19	95.0	0	0.0
Virgin Australia Regional Airlines	8	8	6	75.0	6	75.0	0	0.0
All Airlines	56	56	49	87.5	53	94.6	0	0.0
Perth-Geraldton								
QantasLink	41	39	33	84.6	33	84.6	2	4.9
Virgin Australia Regional Airlines	48	47	39	83.0	39	83.0	1	2.1
All Airlines	89	86	72	83.7	72	83.7	3	3.4

	<i>Sectors</i>		<i>Arrivals On Time</i>		<i>Departures On Time</i>		<i>Cancellations</i>	
	<i>Sched.</i>	<i>Flown</i>	<i>No.</i>	<i>%</i>	<i>No.</i>	<i>%</i>	<i>No.</i>	<i>%</i>
Perth-Kalgoorlie								
Qantas	12	12	12	100.0	12	100.0	0	0.0
QantasLink	64	61	53	86.9	53	86.9	3	4.7
Virgin Australia	26	26	26	100.0	25	96.2	0	0.0
Virgin Australia Regional Airlines	38	36	31	86.1	32	88.9	2	5.3
All Airlines	140	135	122	90.4	122	90.4	5	3.6
Perth-Karratha								
Qantas	20	20	18	90.0	19	95.0	0	0.0
QantasLink	148	144	132	91.7	135	93.8	4	2.7
Virgin Australia	7	7	7	100.0	7	100.0	0	0.0
Virgin Australia Regional Airlines	61	60	55	91.7	58	96.7	1	1.6
All Airlines	236	231	212	91.8	219	94.8	5	2.1
Perth-Melbourne								
Jetstar	48	42	37	88.1	35	83.3	6	12.5
Qantas	177	177	163	92.1	155	87.6	0	0.0
Tigerair Australia	46	44	35	79.5	33	75.0	2	4.3
Virgin Australia	116	115	105	91.3	105	91.3	1	0.9
All Airlines	387	378	340	89.9	328	86.8	9	2.3
Perth-Newman								
Qantas	56	55	52	94.5	52	94.5	1	1.8
QantasLink	62	61	52	85.2	56	91.8	1	1.6
Virgin Australia	16	16	15	93.8	16	100.0	0	0.0
Virgin Australia Regional Airlines	20	20	19	95.0	19	95.0	0	0.0
All Airlines	154	152	138	90.8	143	94.1	2	1.3
Perth-Port Hedland								
Qantas	28	28	27	96.4	27	96.4	0	0.0
QantasLink	95	88	77	87.5	77	87.5	7	7.4
Virgin Australia	20	20	17	85.0	17	85.0	0	0.0
Virgin Australia Regional Airlines	28	28	25	89.3	25	89.3	0	0.0
All Airlines	171	164	146	89.0	146	89.0	7	4.1
Perth-Sydney								
Jetstar	24	24	22	91.7	18	75.0	0	0.0
Qantas	187	186	166	89.2	156	83.9	1	0.5
Tigerair Australia	25	24	23	95.8	24	100.0	1	4.0
Virgin Australia	109	109	102	93.6	100	91.7	0	0.0
All Airlines	345	343	313	91.3	298	86.9	2	0.6
Port Hedland-Perth								
Qantas	28	28	27	96.4	26	92.9	0	0.0
QantasLink	89	81	72	88.9	73	90.1	8	9.0
Virgin Australia	20	20	18	90.0	17	85.0	0	0.0
Virgin Australia Regional Airlines	28	28	25	89.3	25	89.3	0	0.0
All Airlines	165	157	142	90.4	141	89.8	8	4.8
Port Lincoln-Adelaide								
QantasLink	96	96	86	89.6	85	88.5	0	0.0
Regional Express	183	182	167	91.8	173	95.1	1	0.5
All Airlines	279	278	253	91.0	258	92.8	1	0.4
Port Macquarie-Sydney								
QantasLink	102	100	73	73.0	64	64.0	2	2.0
Virgin Australia	53	51	39	76.5	39	76.5	2	3.8
All Airlines	155	151	112	74.2	103	68.2	4	2.6
Proserpine-Brisbane								
Jetstar	28	28	22	78.6	26	92.9	0	0.0
Tigerair Australia	16	15	14	93.3	14	93.3	1	6.3
Virgin Australia	28	28	24	85.7	25	89.3	0	0.0
All Airlines	72	71	60	84.5	65	91.5	1	1.4

	<i>Sectors</i>		<i>Arrivals On Time</i>		<i>Departures On Time</i>		<i>Cancellations</i>	
	<i>Sched.</i>	<i>Flown</i>	<i>No.</i>	<i>%</i>	<i>No.</i>	<i>%</i>	<i>No.</i>	<i>%</i>
Proserpine-Sydney								
Jetstar	12	12	10	83.3	9	75.0	0	0.0
Tigerair Australia	24	24	16	66.7	16	66.7	0	0.0
All Airlines	36	36	26	72.2	25	69.4	0	0.0
Rockhampton-Brisbane								
QantasLink	129	125	100	80.0	101	80.8	4	3.1
Virgin Australia	129	128	102	79.7	103	80.5	1	0.8
All Airlines	258	253	202	79.8	204	80.6	5	1.9
Sunshine Coast-Melbourne								
Jetstar	68	68	56	82.4	54	79.4	0	0.0
Virgin Australia	55	55	44	80.0	43	78.2	0	0.0
All Airlines	123	123	100	81.3	97	78.9	0	0.0
Sunshine Coast-Sydney								
Jetstar	88	87	68	78.2	62	71.3	1	1.1
QantasLink	32	31	21	67.7	24	77.4	1	3.1
Virgin Australia	44	44	40	90.9	40	90.9	0	0.0
All Airlines	164	162	129	79.6	126	77.8	2	1.2
Sydney-Adelaide								
Jetstar	105	102	88	86.3	88	86.3	3	2.9
Qantas	198	198	174	87.9	169	85.4	0	0.0
QantasLink	29	29	26	89.7	26	89.7	0	0.0
Tigerair Australia	44	41	27	65.9	31	75.6	3	6.8
Virgin Australia	156	156	146	93.6	146	93.6	0	0.0
All Airlines	532	526	461	87.6	460	87.5	6	1.1
Sydney-Albury								
QantasLink	82	81	71	87.7	70	86.4	1	1.2
Regional Express	76	76	66	86.8	69	90.8	0	0.0
Virgin Australia	52	51	48	94.1	47	92.2	1	1.9
All Airlines	210	208	185	88.9	186	89.4	2	1.0
Sydney-Armidale								
QantasLink	95	95	70	73.7	67	70.5	0	0.0
Regional Express	67	67	61	91.0	63	94.0	0	0.0
All Airlines	162	162	131	80.9	130	80.2	0	0.0
Sydney-Ayers Rock								
Jetstar	24	24	21	87.5	19	79.2	0	0.0
Virgin Australia	28	28	28	100.0	23	82.1	0	0.0
All Airlines	52	52	49	94.2	42	80.8	0	0.0
Sydney-Ballina								
Jetstar	80	80	69	86.3	67	83.8	0	0.0
Regional Express	22	22	11	50.0	19	86.4	0	0.0
Virgin Australia	28	28	27	96.4	27	96.4	0	0.0
All Airlines	130	130	107	82.3	113	86.9	0	0.0
Sydney-Brisbane								
Jetstar	144	140	112	80.0	107	76.4	4	2.8
Qantas	566	558	479	85.8	496	88.9	8	1.4
QantasLink	8	8	7	87.5	7	87.5	0	0.0
Tigerair Australia	101	96	72	75.0	79	82.3	5	5.0
Virgin Australia	492	480	403	84.0	417	86.9	12	2.4
All Airlines	1 311	1 282	1 073	83.7	1 106	86.3	29	2.2

	<i>Sectors</i>		<i>Arrivals On Time</i>		<i>Departures On Time</i>		<i>Cancellations</i>	
	<i>Sched.</i>	<i>Flown</i>	<i>No.</i>	<i>%</i>	<i>No.</i>	<i>%</i>	<i>No.</i>	<i>%</i>
Sydney-Cairns								
Jetstar	76	76	67	88.2	59	77.6	0	0.0
Qantas	68	68	65	95.6	66	97.1	0	0.0
Tigerair Australia	38	38	34	89.5	35	92.1	0	0.0
Virgin Australia	87	87	71	81.6	68	78.2	0	0.0
All Airlines	269	269	237	88.1	228	84.8	0	0.0
Sydney-Canberra								
Qantas	35	35	33	94.3	34	97.1	0	0.0
QantasLink	386	374	326	87.2	314	84.0	12	3.1
Virgin Australia	237	231	210	90.9	202	87.4	6	2.5
All Airlines	658	640	569	88.9	550	85.9	18	2.7
Sydney-Coffs Harbour								
QantasLink	140	138	120	87.0	116	84.1	2	1.4
Tigerair Australia	12	12	9	75.0	10	83.3	0	0.0
Virgin Australia	47	46	43	93.5	42	91.3	1	2.1
All Airlines	199	196	172	87.8	168	85.7	3	1.5
Sydney-Darwin								
Jetstar	16	15	14	93.3	12	80.0	1	6.3
Qantas	32	32	29	90.6	29	90.6	0	0.0
Virgin Australia	28	28	25	89.3	25	89.3	0	0.0
All Airlines	76	75	68	90.7	66	88.0	1	1.3
Sydney-Dubbo								
QantasLink	101	101	80	79.2	82	81.2	0	0.0
Regional Express	115	115	103	89.6	101	87.8	0	0.0
All Airlines	216	216	183	84.7	183	84.7	0	0.0
Sydney-Gold Coast								
Jetstar	248	246	207	84.1	210	85.4	2	0.8
Qantas	75	75	65	86.7	65	86.7	0	0.0
QantasLink	31	28	21	75.0	22	78.6	3	9.7
Tigerair Australia	95	94	69	73.4	75	79.8	1	1.1
Virgin Australia	220	219	195	89.0	197	90.0	1	0.5
All Airlines	669	662	557	84.1	569	86.0	7	1.0
Sydney-Hamilton Island								
Jetstar	16	16	15	93.8	14	87.5	0	0.0
Qantas	9	9	9	100.0	9	100.0	0	0.0
QantasLink	11	11	8	72.7	9	81.8	0	0.0
Virgin Australia	27	27	24	88.9	26	96.3	0	0.0
All Airlines	63	63	56	88.9	58	92.1	0	0.0
Sydney-Hobart								
Jetstar	80	80	72	90.0	73	91.3	0	0.0
Qantas	52	52	48	92.3	41	78.8	0	0.0
Virgin Australia	64	64	57	89.1	59	92.2	0	0.0
All Airlines	196	196	177	90.3	173	88.3	0	0.0
Sydney-Launceston								
Jetstar	56	56	48	85.7	45	80.4	0	0.0
Virgin Australia	24	24	22	91.7	22	91.7	0	0.0
All Airlines	80	80	70	87.5	67	83.8	0	0.0
Sydney-Melbourne								
Jetstar	363	359	282	78.6	273	76.0	4	1.1
Qantas	936	907	741	81.7	768	84.7	29	3.1
QantasLink	4	4	4	100.0	4	100.0	0	0.0
Tigerair Australia	214	209	137	65.6	139	66.5	5	2.3
Virgin Australia	689	665	577	86.8	593	89.2	24	3.5
All Airlines	2 206	2 144	1 741	81.2	1 777	82.9	62	2.8

	<i>Sectors</i>		<i>Arrivals On Time</i>		<i>Departures On Time</i>		<i>Cancellations</i>	
	<i>Sched.</i>	<i>Flown</i>	<i>No.</i>	<i>%</i>	<i>No.</i>	<i>%</i>	<i>No.</i>	<i>%</i>
Sydney-Perth								
Jetstar	24	24	23	95.8	22	91.7	0	0.0
Qantas	183	183	148	80.9	143	78.1	0	0.0
Tigerair Australia	24	24	22	91.7	22	91.7	0	0.0
Virgin Australia	109	109	94	86.2	92	84.4	0	0.0
All Airlines	340	340	287	84.4	279	82.1	0	0.0
Sydney-Port Macquarie								
QantasLink	101	100	63	63.0	69	69.0	1	1.0
Virgin Australia	53	53	44	83.0	44	83.0	0	0.0
All Airlines	154	153	107	69.9	113	73.9	1	0.6
Sydney-Proserpine								
Jetstar	12	12	11	91.7	10	83.3	0	0.0
Tigerair Australia	24	24	19	79.2	16	66.7	0	0.0
All Airlines	36	36	30	83.3	26	72.2	0	0.0
Sydney-Sunshine Coast								
Jetstar	88	87	72	82.8	70	80.5	1	1.1
QantasLink	32	31	26	83.9	27	87.1	1	3.1
Virgin Australia	44	44	39	88.6	41	93.2	0	0.0
All Airlines	164	162	137	84.6	138	85.2	2	1.2
Sydney-Tamworth								
QantasLink	120	119	99	83.2	100	84.0	1	0.8
Virgin Australia	37	37	33	89.2	33	89.2	0	0.0
All Airlines	157	156	132	84.6	133	85.3	1	0.6
Sydney-Townsville								
Jetstar	16	16	12	75.0	11	68.8	0	0.0
Virgin Australia	21	21	20	95.2	19	90.5	0	0.0
All Airlines	37	37	32	86.5	30	81.1	0	0.0
Sydney-Wagga Wagga								
QantasLink	95	95	82	86.3	78	82.1	0	0.0
Regional Express	96	96	85	88.5	86	89.6	0	0.0
All Airlines	191	191	167	87.4	164	85.9	0	0.0
Tamworth-Sydney								
QantasLink	120	116	97	83.6	98	84.5	4	3.3
Virgin Australia	37	37	33	89.2	33	89.2	0	0.0
All Airlines	157	153	130	85.0	131	85.6	4	2.5
Townsville-Brisbane								
Jetstar	28	28	23	82.1	22	78.6	0	0.0
Qantas	56	56	51	91.1	51	91.1	0	0.0
QantasLink	78	77	55	71.4	64	83.1	1	1.3
Virgin Australia	126	125	118	94.4	120	96.0	1	0.8
All Airlines	288	286	247	86.4	257	89.9	2	0.7
Townsville-Cairns								
QantasLink	120	118	104	88.1	104	88.1	2	1.7
Regional Express	33	31	30	96.8	30	96.8	2	6.1
All Airlines	153	149	134	89.9	134	89.9	4	2.6
Townsville-Melbourne								
Jetstar	16	16	15	93.8	16	100.0	0	0.0
Tigerair Australia	16	16	14	87.5	14	87.5	0	0.0
All Airlines	32	32	29	90.6	30	93.8	0	0.0
Townsville-Sydney								
Jetstar	16	16	12	75.0	12	75.0	0	0.0
Virgin Australia	21	21	20	95.2	19	90.5	0	0.0
All Airlines	37	37	32	86.5	31	83.8	0	0.0

	<i>Sectors</i>		<i>Arrivals On Time</i>		<i>Departures On Time</i>		<i>Cancellations</i>	
	<i>Sched.</i>	<i>Flown</i>	<i>No.</i>	<i>%</i>	<i>No.</i>	<i>%</i>	<i>No.</i>	<i>%</i>
Wagga Wagga-Sydney								
QantasLink	95	95	83	87.4	82	86.3	0	0.0
Regional Express	94	94	71	75.5	76	80.9	0	0.0
All Airlines	189	189	154	81.5	158	83.6	0	0.0

Airports

On time performance is reported for all routes where the passenger load averages over 8000 passengers per month, and where two or more airlines operate in competition. The following data reports by airport against flights operated on those routes only. This month, 8 major city airports and 32 regional city airports are covered.

Airport	Arrivals			Departures		
	Sectors	On Time		Sectors	On Time	
	Flown	No.	%	Flown	No.	%
Adelaide						
Jetstar	276	238	86.2	276	237	85.9
Qantas	706	642	90.9	706	645	91.4
QantasLink	164	148	90.2	163	142	87.1
Regional Express	182	167	91.8	182	174	95.6
Tigerair Australia	136	108	79.4	137	97	70.8
Virgin Australia	597	533	89.3	596	532	89.3
Virgin Australia Regional Airlines	44	39	88.6	44	39	88.6
All Airlines	2 105	1 875	89.1	2 104	1 866	88.7
Relates to services to and from Alice Springs, Brisbane, Canberra, Gold Coast, Melbourne, Perth, Port Lincoln and Sydney.						
Albury						
QantasLink	81	71	87.7	81	72	88.9
Regional Express	76	66	86.8	76	67	88.2
Virgin Australia	51	48	94.1	51	46	90.2
All Airlines	208	185	88.9	208	185	88.9
Relates to services to and from Sydney only.						
Alice Springs						
Qantas	28	26	92.9	28	24	85.7
QantasLink	38	38	100.0	38	35	92.1
Virgin Australia	8	7	87.5	8	7	87.5
Virgin Australia Regional Airlines	30	23	76.7	30	25	83.3
All Airlines	104	94	90.4	104	91	87.5
Relates to services to and from Adelaide and Darwin.						
Armidale						
QantasLink	95	70	73.7	95	74	77.9
Regional Express	67	61	91.0	69	57	82.6
All Airlines	162	131	80.9	164	131	79.9
Relates to services to and from Sydney only.						
Ayers Rock						
Jetstar	24	21	87.5	24	19	79.2
Virgin Australia	28	28	100.0	28	26	92.9
All Airlines	52	49	94.2	52	45	86.5
Relates to services to and from Sydney only.						
Ballina						
Jetstar	80	69	86.3	80	58	72.5
Regional Express	22	11	50.0	20	18	90.0
Virgin Australia	28	27	96.4	28	26	92.9
All Airlines	130	107	82.3	128	102	79.7
Relates to services to and from Sydney only.						

Airport	Arrivals			Departures		
	Sectors	On Time		Sectors	On Time	
	Flown	No.	%	Flown	No.	%
Brisbane						
Jetstar	541	429	79.3	539	420	77.9
Qantas	1 333	1 173	88.0	1 334	1 188	89.1
QantasLink	919	694	75.5	927	753	81.2
Tigerair Australia	329	248	75.4	328	260	79.3
Virgin Australia	1 930	1 656	85.8	1 928	1 717	89.1
All Airlines	5 052	4 200	83.1	5 056	4 338	85.8

Relates to services to and from Adelaide, Bundaberg, Cairns, Canberra, Darwin, Emerald, Gladstone, Hamilton Island, Hobart, Mackay, Melbourne, Mount Isa, Newcastle, Perth, Proserpine, Rockhampton, Sydney and Townsville.

Broome

QantasLink	74	64	86.5	70	57	81.4
Virgin Australia	2	2	100.0	2	2	100.0
Virgin Australia Regional Airlines	51	43	84.3	51	40	78.4
All Airlines	127	109	85.8	123	99	80.5

Relates to services to and from Perth only.

Bundaberg

QantasLink	101	88	87.1	101	88	87.1
Virgin Australia	28	20	71.4	28	23	82.1
All Airlines	129	108	83.7	129	111	86.0

Relates to services to and from Brisbane only.

Cairns

Jetstar	199	178	89.4	200	155	77.5
Qantas	183	165	90.2	183	168	91.8
QantasLink	138	117	84.8	140	115	82.1
Regional Express	31	30	96.8	31	29	93.5
Tigerair Australia	103	90	87.4	103	76	73.8
Virgin Australia	244	214	87.7	244	212	86.9
All Airlines	898	794	88.4	901	755	83.8

Relates to services to and from Brisbane, Melbourne, Sydney and Townsville.

Canberra

Qantas	296	284	95.9	295	284	96.3
QantasLink	573	499	87.1	572	508	88.8
Tigerair Australia	41	24	58.5	41	21	51.2
Virgin Australia	495	455	91.9	494	455	92.1
All Airlines	1 405	1 262	89.8	1 402	1 268	90.4

Relates to services to and from Adelaide, Brisbane, Melbourne and Sydney.

Coffs Harbour

QantasLink	138	120	87.0	139	121	87.1
Tigerair Australia	12	9	75.0	12	9	75.0
Virgin Australia	46	43	93.5	46	42	91.3
All Airlines	196	172	87.8	197	172	87.3

Relates to services to and from Sydney only.

Airport	Arrivals			Departures		
	Sectors Flown	On Time		Sectors Flown	On Time	
		No.	%		No.	%
Darwin						
Jetstar	47	43	91.5	47	40	85.1
Qantas	116	110	94.8	116	103	88.8
QantasLink	38	35	92.1	38	37	97.4
Tigerair Australia	16	12	75.0	16	14	87.5
Virgin Australia	108	97	89.8	108	93	86.1
Virgin Australia Regional Airlines	23	19	82.6	23	18	78.3
All Airlines	348	316	90.8	348	305	87.6
Relates to services to and from Alice Springs, Brisbane, Melbourne, Perth and Sydney.						
Dubbo						
QantasLink	101	80	79.2	101	88	87.1
Regional Express	115	103	89.6	115	102	88.7
All Airlines	216	183	84.7	216	190	88.0
Relates to services to and from Sydney only.						
Emerald						
QantasLink	99	83	83.8	97	77	79.4
Virgin Australia	48	42	87.5	48	43	89.6
All Airlines	147	125	85.0	145	120	82.8
Relates to services to and from Brisbane only.						
Geraldton						
QantasLink	39	33	84.6	39	34	87.2
Virgin Australia Regional Airlines	47	39	83.0	47	37	78.7
All Airlines	86	72	83.7	86	71	82.6
Relates to services to and from Perth only.						
Gladstone						
QantasLink	118	85	72.0	116	88	75.9
Virgin Australia	66	47	71.2	66	53	80.3
All Airlines	184	132	71.7	182	141	77.5
Relates to services to and from Brisbane only.						
Gold Coast						
Jetstar	398	329	82.7	398	323	81.2
Qantas	103	88	85.4	103	88	85.4
QantasLink	28	21	75.0	28	23	82.1
Tigerair Australia	153	108	70.6	155	97	62.6
Virgin Australia	420	373	88.8	420	358	85.2
All Airlines	1 102	919	83.4	1 104	889	80.5
Relates to services to and from Adelaide, Melbourne and Sydney.						
Hamilton Island						
Jetstar	16	15	93.8	16	15	93.8
Qantas	9	9	100.0	9	9	100.0
QantasLink	34	29	85.3	34	26	76.5
Virgin Australia	55	47	85.5	55	45	81.8
All Airlines	114	100	87.7	114	95	83.3
Relates to services to and from Brisbane and Sydney.						

Airport	Arrivals			Departures		
	Sectors Flown	On Time		Sectors Flown	On Time	
		No.	%		No.	%
Hobart						
Jetstar	294	242	82.3	293	192	65.5
Qantas	52	48	92.3	52	44	84.6
QantasLink	100	79	79.0	100	82	82.0
Tigerair Australia	37	33	89.2	37	28	75.7
Virgin Australia	220	197	89.5	220	171	77.7
All Airlines	703	599	85.2	702	517	73.6
Relates to services to and from Brisbane, Melbourne and Sydney.						
Kalgoorlie						
Qantas	12	12	100.0	12	12	100.0
QantasLink	61	53	86.9	61	53	86.9
Virgin Australia	26	26	100.0	26	24	92.3
Virgin Australia Regional Airlines	36	31	86.1	36	31	86.1
All Airlines	135	122	90.4	135	120	88.9
Relates to services to and from Perth only.						
Karratha						
Qantas	20	18	90.0	20	20	100.0
QantasLink	144	132	91.7	145	132	91.0
Virgin Australia	7	7	100.0	7	7	100.0
Virgin Australia Regional Airlines	60	55	91.7	57	54	94.7
All Airlines	231	212	91.8	229	213	93.0
Relates to services to and from Perth only.						
Launceston						
Jetstar	196	160	81.6	196	142	72.4
QantasLink	104	78	75.0	104	84	80.8
Virgin Australia	112	93	83.0	112	99	88.4
All Airlines	412	331	80.3	412	325	78.9
Relates to services to and from Melbourne and Sydney.						
Mackay						
Jetstar	28	21	75.0	28	20	71.4
QantasLink	93	75	80.6	97	78	80.4
Virgin Australia	124	110	88.7	124	114	91.9
All Airlines	245	206	84.1	249	212	85.1
Relates to services to and from Brisbane only.						
Melbourne						
Jetstar	1 280	989	77.3	1 280	982	76.7
Qantas	1 993	1 713	86.0	1 993	1 767	88.7
QantasLink	399	329	82.5	400	332	83.0
Regional Express	72	53	73.6	71	65	91.5
Tigerair Australia	603	403	66.8	602	438	72.8
Virgin Australia	2 099	1 773	84.5	2 101	1 865	88.8
All Airlines	6 446	5 260	81.6	6 447	5 449	84.5
Relates to services to and from Adelaide, Brisbane, Cairns, Canberra, Darwin, Gold Coast, Hobart, Launceston, Mildura, Newcastle, Perth, Sunshine Coast, Sydney and Townsville.						
Mildura						
QantasLink	88	75	85.2	86	72	83.7
Regional Express	71	63	88.7	72	57	79.2
Virgin Australia	28	21	75.0	28	27	96.4
All Airlines	187	159	85.0	186	156	83.9
Relates to services to and from Melbourne only.						

Airport	Arrivals			Departures		
	Sectors Flown	On Time		Sectors Flown	On Time	
		No.	%		No.	%
Mount Isa						
QantasLink	51	35	68.6	51	34	66.7
Virgin Australia	16	15	93.8	16	14	87.5
All Airlines	67	50	74.6	67	48	71.6
Relates to services to and from Brisbane only.						
Newcastle						
Jetstar	156	119	76.3	155	133	85.8
QantasLink	55	43	78.2	54	44	81.5
Virgin Australia	107	93	86.9	107	96	89.7
All Airlines	318	255	80.2	316	273	86.4
Relates to services to and from Brisbane and Melbourne.						
Newman						
Qantas	55	52	94.5	55	52	94.5
QantasLink	61	52	85.2	60	57	95.0
Virgin Australia	16	15	93.8	16	15	93.8
Virgin Australia Regional Airlines	20	19	95.0	20	19	95.0
All Airlines	152	138	90.8	151	143	94.7
Relates to services to and from Perth only.						
Perth						
Jetstar	91	83	91.2	90	71	78.9
Qantas	719	626	87.1	718	649	90.4
QantasLink	468	421	90.0	479	429	89.6
Tigerair Australia	84	71	84.5	84	72	85.7
Virgin Australia	455	401	88.1	455	419	92.1
Virgin Australia Regional Airlines	276	230	83.3	279	251	90.0
All Airlines	2 093	1 832	87.5	2 105	1 891	89.8
Relates to services to and from Adelaide, Brisbane, Broome, Darwin, Geraldton, Kalgoorlie, Karratha, Melbourne, Newman, Port Hedland and Sydney.						
Port Hedland						
Qantas	28	27	96.4	28	26	92.9
QantasLink	88	77	87.5	81	73	90.1
Virgin Australia	20	17	85.0	20	17	85.0
Virgin Australia Regional Airlines	28	25	89.3	28	25	89.3
All Airlines	164	146	89.0	157	141	89.8
Relates to services to and from Perth only.						
Port Lincoln						
QantasLink	96	84	87.5	96	85	88.5
Regional Express	182	172	94.5	182	173	95.1
All Airlines	278	256	92.1	278	258	92.8
Relates to services to and from Adelaide only.						
Port Macquarie						
QantasLink	100	63	63.0	100	64	64.0
Virgin Australia	53	44	83.0	51	39	76.5
All Airlines	153	107	69.9	151	103	68.2
Relates to services to and from Sydney only.						

Airport	Arrivals			Departures		
	Sectors Flown	On Time		Sectors Flown	On Time	
		No.	%		No.	%
Proserpine						
Jetstar	40	37	92.5	40	35	87.5
Tigerair Australia	39	34	87.2	39	30	76.9
Virgin Australia	28	27	96.4	28	25	89.3
All Airlines	107	98	91.6	107	90	84.1
Relates to services to and from Brisbane and Sydney.						
Rockhampton						
QantasLink	129	102	79.1	125	101	80.8
Virgin Australia	127	95	74.8	128	103	80.5
All Airlines	256	197	77.0	253	204	80.6
Relates to services to and from Brisbane only.						
Sunshine Coast						
Jetstar	155	131	84.5	155	116	74.8
QantasLink	31	26	83.9	31	24	77.4
Virgin Australia	99	87	87.9	99	83	83.8
All Airlines	285	244	85.6	285	223	78.2
Relates to services to and from Melbourne and Sydney.						
Sydney						
Jetstar	1 329	1 057	79.5	1 333	1 080	81.0
Qantas	2 116	1 807	85.4	2 117	1 820	86.0
QantasLink	1 211	1 011	83.5	1 214	991	81.6
Regional Express	374	301	80.5	376	338	89.9
Tigerair Australia	539	374	69.4	538	407	75.7
Virgin Australia	2 395	2 088	87.2	2 398	2 123	88.5
All Airlines	7 964	6 638	83.4	7 976	6 759	84.7
Relates to services to and from Adelaide, Albury, Armidale, Ayers Rock, Ballina, Brisbane, Cairns, Canberra, Coffs Harbour, Darwin, Dubbo, Gold Coast, Hamilton Island, Hobart, Launceston, Melbourne, Perth, Port Macquarie, Proserpine, Sunshine Coast, Tamworth, Townsville and Wagga Wagga.						
Tamworth						
QantasLink	119	99	83.2	116	98	84.5
Virgin Australia	37	33	89.2	37	33	89.2
All Airlines	156	132	84.6	153	131	85.6
Relates to services to and from Sydney only.						
Townsville						
Jetstar	60	50	83.3	60	50	83.3
Qantas	56	46	82.1	56	51	91.1
QantasLink	198	157	79.3	195	168	86.2
Regional Express	31	29	93.5	31	30	96.8
Tigerair Australia	16	15	93.8	16	14	87.5
Virgin Australia	146	129	88.4	146	139	95.2
All Airlines	507	426	84.0	504	452	89.7
Relates to services to and from Brisbane, Cairns, Melbourne and Sydney.						
Wagga Wagga						
QantasLink	95	82	86.3	95	82	86.3
Regional Express	96	85	88.5	94	76	80.9
All Airlines	191	167	87.4	189	158	83.6
Relates to services to and from Sydney only.						

Definitions

On time arrival	A flight arrival is counted as "on time" if it arrived at the gate before 15 minutes after the scheduled arrival time shown in the carriers' schedule. Neither diverted nor cancelled flights count as on time.
On time departure	A flight departure is counted as "on time" if it departs the gate before 15 minutes after the scheduled departure time shown in the carriers' schedule.
Cancellation	A flight removed from service within 7 days of scheduled departure is regarded as a cancellation.
On time departure percentage	The percentage of on time departures is measured against the number of departures <i>operated</i> on any particular sector.
On time arrival percentage	The percentage of on time arrivals is measured against the number of arrivals <i>operated</i> on any particular sector.
Cancellation percentage	The percentage of cancellations is measured against the number of services <i>scheduled</i> on any particular sector.
