



**Australian Government**

**Department of Infrastructure, Transport, Regional Development and Communications**

Bureau of Infrastructure and Transport Research Economics

STATISTICAL REPORT



# Aviation

Domestic airline on time performance  
May 2022

© Commonwealth of Australia 2022

ISSN: 1832-0759

### **Ownership of intellectual property rights in this publication**

Unless otherwise noted, copyright (and any other intellectual property rights, if any) in this publication is owned by the Commonwealth of Australia (referred to below as the Commonwealth).

### **Disclaimer**

The material contained in this publication is made available on the understanding that the Commonwealth is not providing professional advice, and that users exercise their own skill and care with respect to its use, and seek independent advice if necessary.

The Commonwealth makes no representations or warranties as to the contents or accuracy of the information contained in this publication. To the extent permitted by law, the Commonwealth disclaims liability to any person or organisation in respect of anything done, or omitted to be done, in reliance upon information contained in this publication.

### **Creative Commons licence**

With the exception of (a) the Coat of Arms; and (b) the Department of Infrastructure, Transport, Regional Development and Communications' photos and graphics, copyright in this publication is licensed under a Creative Commons Attribution 3.0 Australia Licence.

Creative Commons Attribution 3.0 Australia Licence is a standard form licence agreement that allows you to copy, communicate and adapt this publication provided that you attribute the work to the Commonwealth and abide by the other licence terms. A summary of the licence terms is available from <http://creativecommons.org/licenses/by/3.0/au/deed.en>. The full licence terms are available from <http://creativecommons.org/licenses/by/3.0/au/legalcode>.

### **Use of the Coat of Arms**

The Department of the Prime Minister and Cabinet sets the terms under which the Coat of Arms is used. Please refer to the Department's Commonwealth Coat of Arms and Government branding web page <http://www.dpmc.gov.au/guidelines/index.cfm#brand> and, in particular, the Guidelines on the use of the Commonwealth Coat of Arms publication.

An appropriate citation for this report is:

Bureau of Infrastructure and Transport Research Economics (BITRE), 2022, Domestic airline on time performance, Statistical Report, BITRE, Canberra ACT.

### **Contact us**

This publication is available in PDF format. All other rights are reserved, including in relation to any Departmental logos or trade marks which may exist. For enquiries regarding the licence and any use of this publication, please contact:

Bureau of Infrastructure and Transport Research Economics (BITRE)  
Department of Infrastructure, Transport, Regional Development and Communications  
GPO Box 501, Canberra ACT 2601, Australia  
Telephone: (international) +61 2 6274 7210  
Fax: (international) +61 2 6274 6855  
Email: [bitre@infrastructure.gov.au](mailto:bitre@infrastructure.gov.au)  
Website: [www.bitre.gov.au](http://www.bitre.gov.au)

### **Inquiries**

Should you require additional information about the statistics contained in this publication:

Telephone (02) 6274 7790 or Facsimile (02) 6274 7727

Electronic mail: [AVSTATS@infrastructure.gov.au](mailto:AVSTATS@infrastructure.gov.au)

Web site: <http://www.bitre.gov.au/statistics/aviation/otphome.aspx>

# Foreword

The Bureau of Infrastructure and Transport Research Economics (BITRE) monitors the punctuality and reliability of major domestic airlines operating between Australian airports. The purpose of this is to allow for evaluation of overall industry and individual airline performance, so that consumers of air travel can make informed decisions.

The following domestic airlines currently report this information monthly to the BITRE: Jetstar, Qantas, QantasLink, Rex Airlines, Virgin Australia and Virgin Australia Regional Airlines.

Data has been gathered since November 2003, although some airlines commenced reporting at a later date, including Jetstar which first reported in May 2004, MacAir in July 2005, Tigerair Australia in April 2008 and Virgin Australia Regional Airlines in May 2013. MacAir ceased operations in February 2009 and data was not received for December 2008 onwards. Tigerair Australia ceased operations in March 2020 and data was not received for that month.

Virgin Blue was rebranded as Virgin Australia in May 2011 and Tiger Airways was rebranded as Tigerair Australia in July 2013 and time series data in Microsoft Excel spread sheet format on the BITRE website have been revised to reflect these changes. With effect from July 2021, Regional Express is reported as Rex Airlines.

Services operated by Skywest on behalf of Virgin Australia using ATR/F100 aircraft commenced in November 2011 and were shown separately as Virgin Australia – ATR/F100 Operations. Virgin Australia Regional Airlines commenced operations in May 2013. It was formed after the acquisition of Skywest by Virgin Australia and represented a combination of operations previously reported under Skywest and Virgin Australia – ATR/F100 Operations. In January 2016, Virgin Australia transferred their ATR fleet from Virgin Australia Regional Airlines to Virgin Australia.

Information presented in this report is for Australian domestic routes for which the passenger load averaged 8 000 or more passengers per month over the previous six months and where two or more airlines operated in competition on those routes. In order to present data for more routes during the period impacted by COVID-19, the passenger load restriction is not being applied. Data are presented for 58 routes in May 2022. Over time, routes which meet these criteria change as airline networks and traffic levels vary.

Participating airlines report their overall monthly network performance where this is possible.

Total industry figures encompass all services operated by reporting airlines only. These airlines collectively carried over 95 per cent of total domestic passengers (regular public transport only) in 2019.

The method of capturing on time performance varies between airlines utilising different recording systems. Jetstar and Qantas jet aircraft use Aircraft Communication Addressing and Reporting System (ACARS) to electronically measure on time performance. Rex Airlines, Virgin Australia, Virgin Australia Regional Airlines and the Qantas non-jet fleet record on time performance manually using records from pilots, gate agents and/or ground crews.

After initial data is collected, aggregate reports are reviewed by participating airlines prior to publication.

Reports and detailed time series data in Microsoft Excel spreadsheet format are available from the BITRE website at: <http://www.bitre.gov.au/statistics/aviation/otphome.aspx>



# Contents

	Page
Industry performance .....	1
Individual routes .....	9
Airports.....	22
Definitions .....	28



# Industry performance

For May 2022, on time performance over all routes operated by participating airlines (Jetstar, Qantas, QantasLink, Rex Airlines, Virgin Australia and Virgin Australia Regional Airlines) averaged 64.2 per cent for on time arrivals and also for on time departures. The cancellation rate for the month was 5.6 per cent. This month's figures were impacted by weather related events, congestion (Sectors Flown approaching levels recorded prior to COVID-19) and other COVID-19 related issues. The equivalent figures for May 2021 were 83.8 per cent for on time arrivals, 83.7 per cent for on time departures and 4.7 per cent for cancellations.

This month's on time arrivals figure was significantly lower than the long term average performance for all routes (82.2 per cent) and the on time departures figure was also significantly lower than the long term average (83.4 per cent). The rate of cancellations was higher than the long term average of 2.0 per cent.

The Virgin Australia network (Virgin Australia and Virgin Australia Regional Airlines combined operations) recorded 65.7 per cent for on time arrivals while the Qantas network (Qantas and QantasLink combined operations) recorded 60.7 per cent. Virgin Australia achieved the highest on time arrivals among the major domestic airlines at 65.7 per cent followed by Qantas at 61.9 per cent and Jetstar at 60.6 per cent. Of the regional airlines, Rex Airlines recorded 75.5 per cent for on time arrivals, followed by Virgin Australia Regional Airlines at 65.5 per cent and QantasLink at 59.8 per cent.

The Virgin Australia network recorded 64.4 per cent for on time departures while the Qantas network recorded 61.5 per cent. Virgin Australia achieved the highest level of on time departures among the major domestic airlines for May 2022 at 64.4 per cent, followed by Qantas at 62.7 per cent and Jetstar at 57.7 per cent. Of the regional airlines, Rex Airlines recorded 78.5 per cent for on time departures, followed by Virgin Australia Regional Airlines at 63.6 per cent and QantasLink at 60.7 per cent.

Qantas recorded the highest percentage of cancellations (at 7.6 per cent) during the month, followed by QantasLink (at 6.8 per cent), Jetstar (at 5.7 per cent), Virgin Australia (at 5.1 per cent), Virgin Australia Regional Airlines (at 4.2 per cent) and Rex Airlines (at 1.4 per cent).

Airlines' on time performance varies across the routes they serve. Individual route data by specific airline for 58 routes are shown on pages 9-21.

Of the 58 routes which met the criteria for on time performance reporting in May 2022, the Adelaide-Gold Coast route had the highest percentage of on time arrivals (87.7 per cent) and the highest percentage of on time departures (89.5 per cent). The Darwin-Perth route had the lowest percentage of on time arrivals (35.7 per cent) and the lowest percentage of on time departures (32.1 per cent).

Cancellations were highest on the Sydney-Melbourne route at 16.5 per cent, followed by the Melbourne-Sydney route at 16.2 per cent, the Launceston-Melbourne route at 12.0 per cent, the Melbourne-Launceston route at 11.3 per cent and the Armidale-Sydney route at 9.4 per cent.

Alice Springs Airport recorded the highest percentage of on time arrivals (84.5 per cent) and Port Lincoln Airport recorded the highest percentage of on time departures (83.1 per cent). Launceston Airport recorded the lowest percentage of on time arrivals (48.9 per cent) and Darwin Airport recorded the lowest percentage of on time departures (35.7 per cent). These figures only refer to reported routes and do not cover all flights at these airports.



Table 1 On time performance for May 2022 — Total Industry

	<i>Sectors</i>		<i>Arrivals On Time</i>		<i>Departures On Time</i>		<i>Cancellations</i>	
	<i>Scheduled</i>	<i>Flown</i>	<i>No.</i>	<i>%</i>	<i>No.</i>	<i>%</i>	<i>No.</i>	<i>%</i>
Jetstar	6 882	6 487	3 934	60.6	3 745	57.7	395	5.7
Qantas - all QF designated services	20 569	19 108	11 596	60.7	11 753	61.5	1 461	7.1
Rex Airlines	6 427	6 335	4 786	75.5	4 970	78.5	92	1.4
Virgin Australia - all VA designated services	12 379	11 755	7 720	65.7	7 568	64.4	624	5.0
All Airlines	46 257	43 685	28 036	64.2	28 036	64.2	2 572	5.6
Individual operating entities								
Qantas	8 542	7 893	4 886	61.9	4 948	62.7	649	7.6
QantasLink	12 027	11 215	6 710	59.8	6 805	60.7	812	6.8
Virgin Australia	11 805	11 205	7 360	65.7	7 218	64.4	600	5.1
Virgin Australia Regional Airlines	574	550	360	65.5	350	63.6	24	4.2

Total airline network data (including routes not shown in this report).

Airlines' on time performance varies across the routes they serve. Individual route data by specific airline are shown on page 9 and onwards.

Table 2 Top ten routes for on time performance for May 2022 (participating airlines only)

<i>Arrivals</i>		<i>Departures</i>	
<i>Route</i>	<i>On Time (%)</i>	<i>Route</i>	<i>On Time (%)</i>
Adelaide-Gold Coast	87.7	Adelaide-Gold Coast	89.5
Brisbane-Hamilton Island	85.1	Adelaide-Canberra	89.3
Adelaide-Alice Springs	84.5	Adelaide-Alice Springs	86.2
Adelaide-Port Lincoln	82.6	Adelaide-Port Lincoln	84.2
Cairns-Townsville	82.2	Brisbane-Hamilton Island	83.8
Canberra-Adelaide	82.1	Port Lincoln-Adelaide	83.1
Adelaide-Canberra	79.8	Cairns-Townsville	80.9
Perth-Newman	79.6	Canberra-Sydney	79.2
Port Lincoln-Adelaide	78.8	Sydney-Hamilton Island	78.8
Brisbane-Hobart	78.7	Canberra-Adelaide	78.6

Table 3 Top ten airports for on time performance for May 2022 (participating airlines and reported routes only)

<i>Arrivals</i>		<i>Departures</i>	
<i>Airport</i>	<i>On Time (%)</i>	<i>Airport</i>	<i>On Time (%)</i>
Alice Springs	84.5	Port Lincoln	83.1
Port Lincoln	82.6	Alice Springs	77.6
Newman	79.6	Wagga Wagga	76.6
Emerald	77.9	Townsville	74.9
Hamilton Island	77.9	Canberra	73.9
Townsville	76.4	Port Macquarie	73.2
Broome	71.7	Mackay	71.8
Port Hedland	71.3	Emerald	71.7
Albury	69.2	Albury	71.4
Kalgoorlie	68.2	Adelaide	69.4

## Total industry on time performance

Figure 1 On time performance (by month from May 2019)—Total Industry

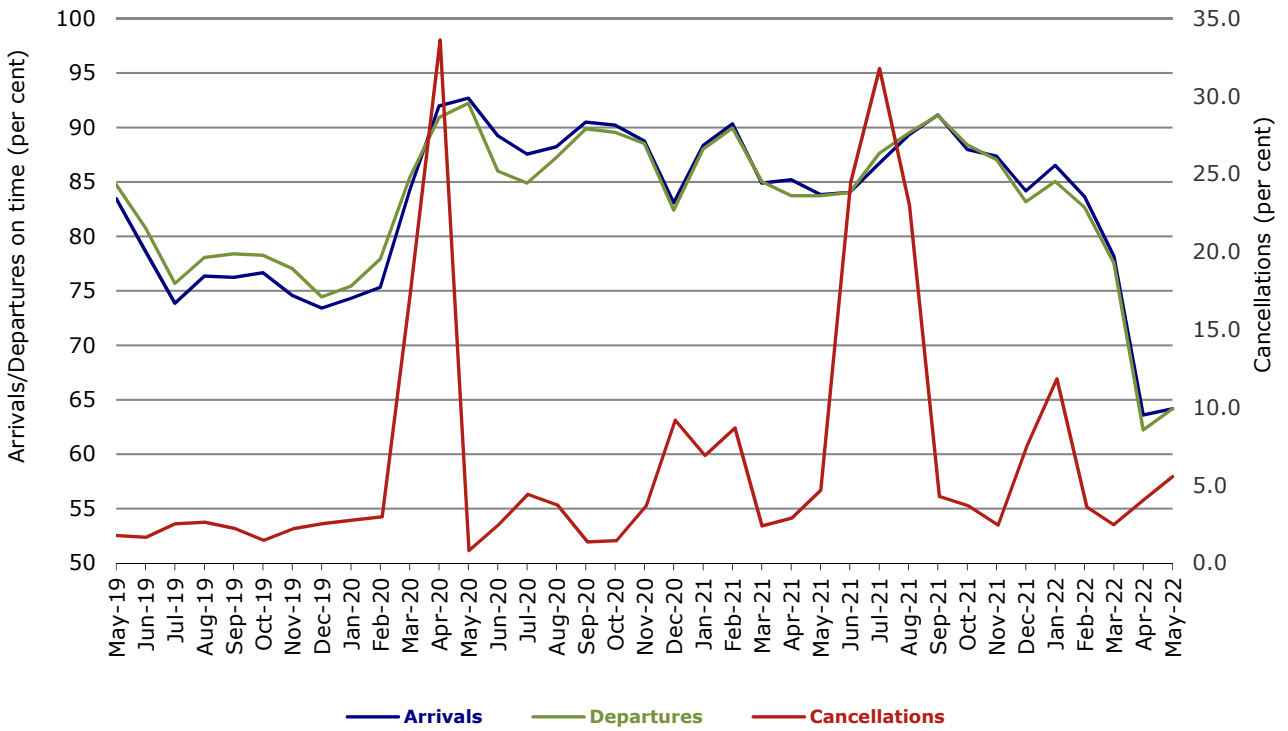
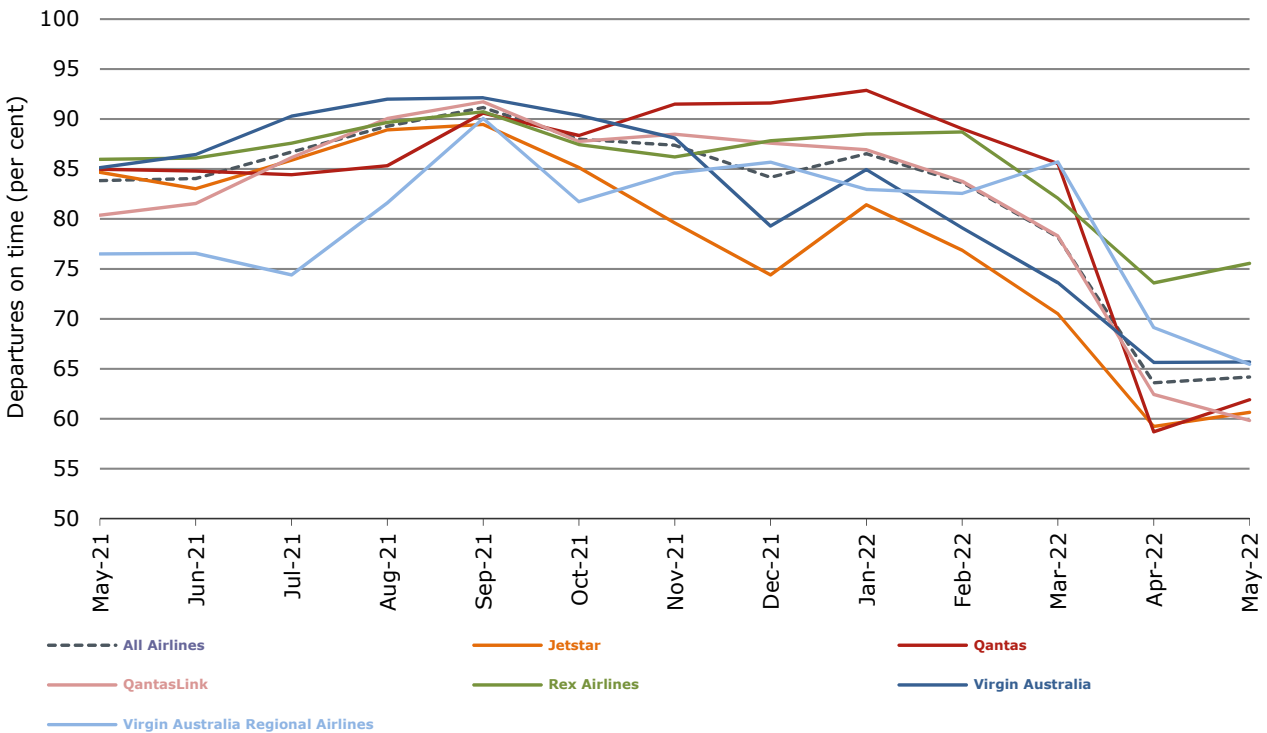
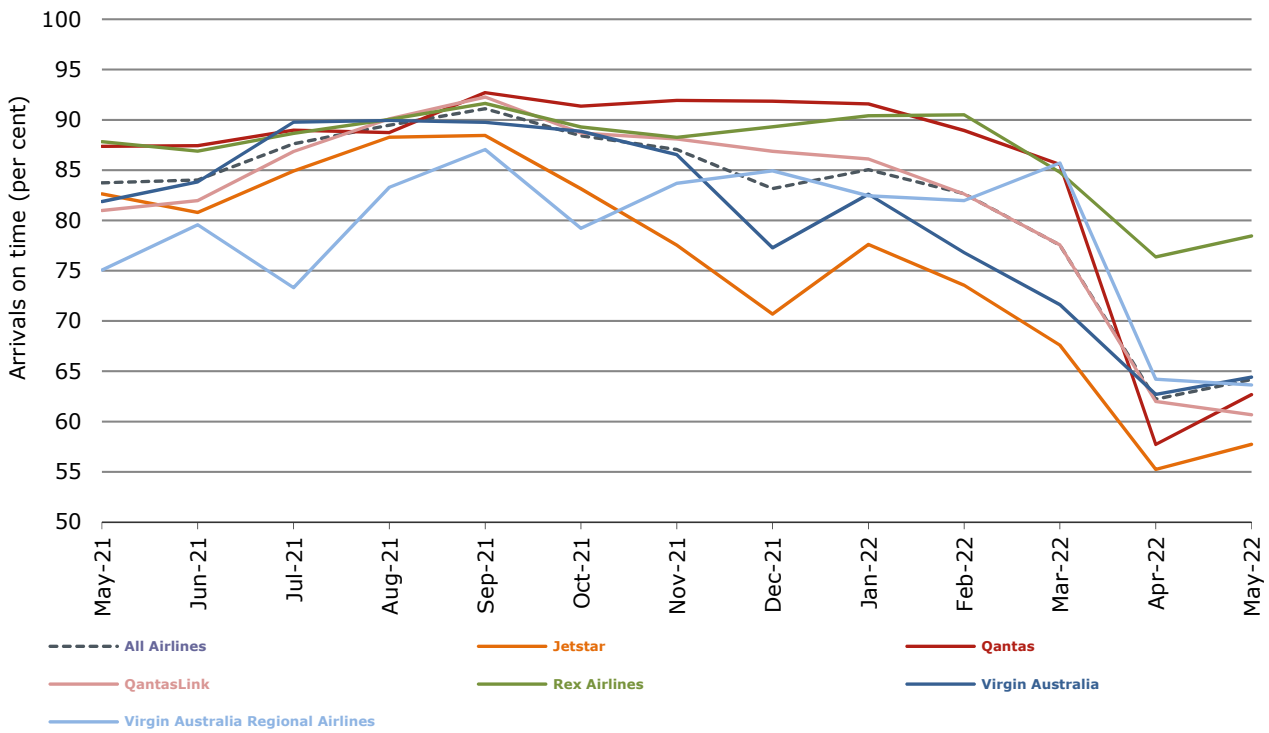


Figure 2 Arrivals on time (by month from May 2021)



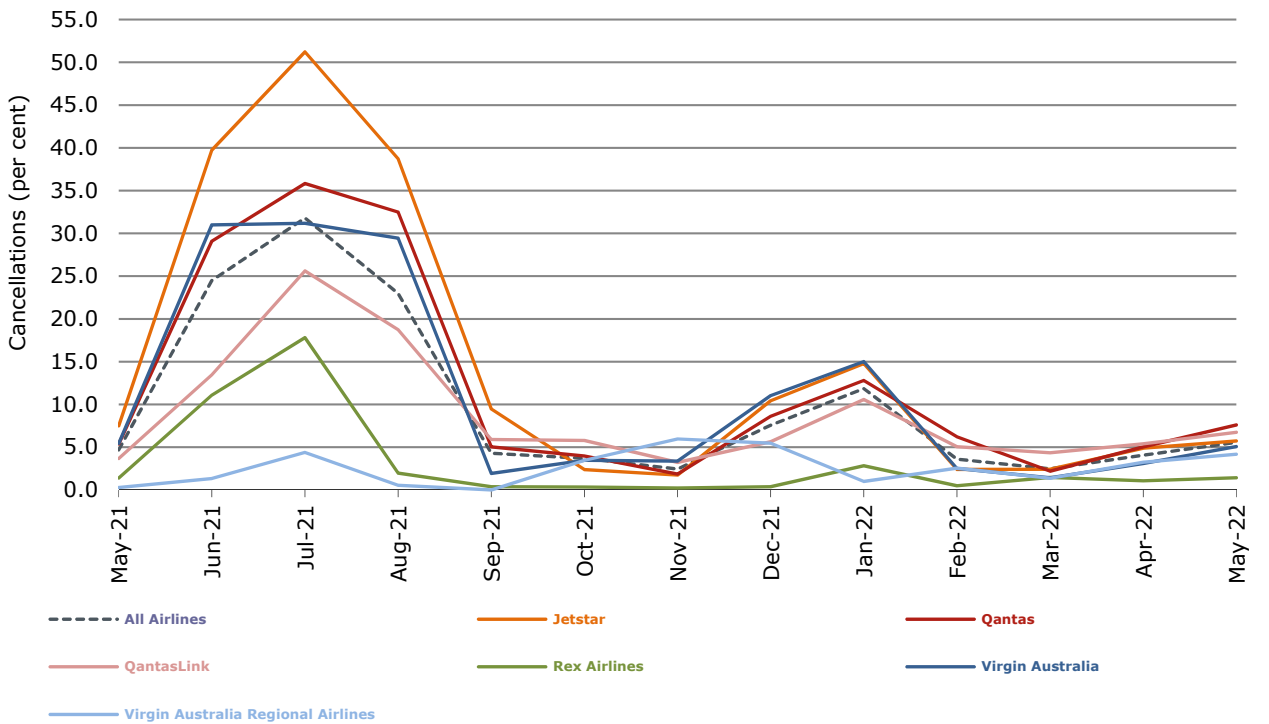
With effect from July 2021, Regional Express is reported as Rex Airlines

Figure 3 Departures on time (by month from May 2021)



With effect from July 2021, Regional Express is reported as Rex Airlines

Figure 4 Cancellations (by month from May 2021)



With effect from July 2021, Regional Express is reported as Rex Airlines

## Major domestic airlines on time performance

Figure 5 On time performance (by month from May 2019)—Jetstar

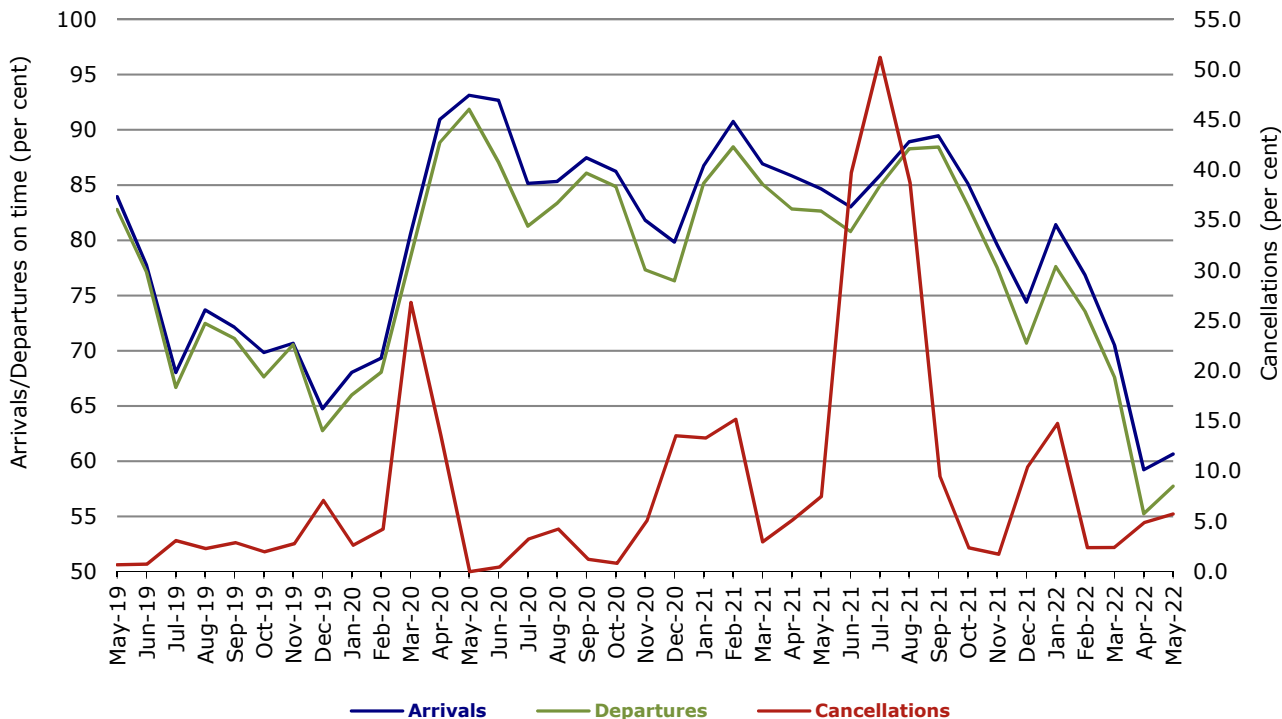


Figure 6 On time performance (by month from May 2019)—Qantas

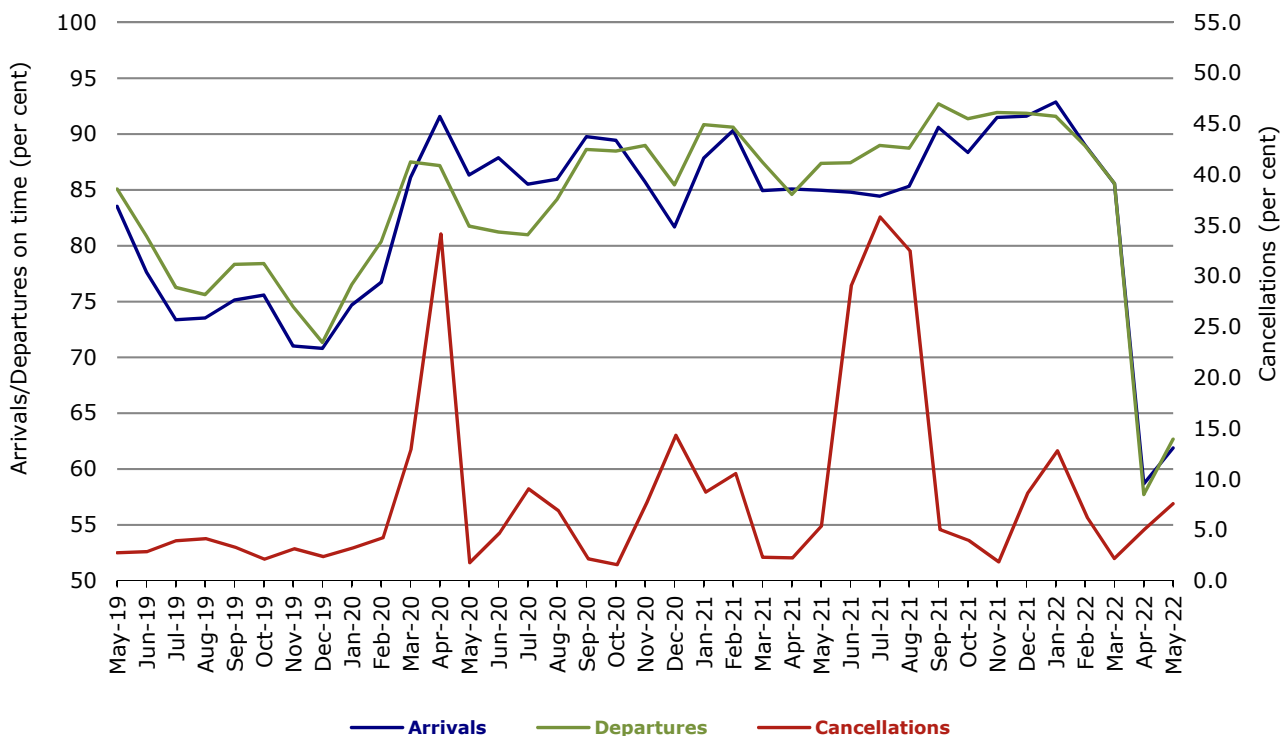
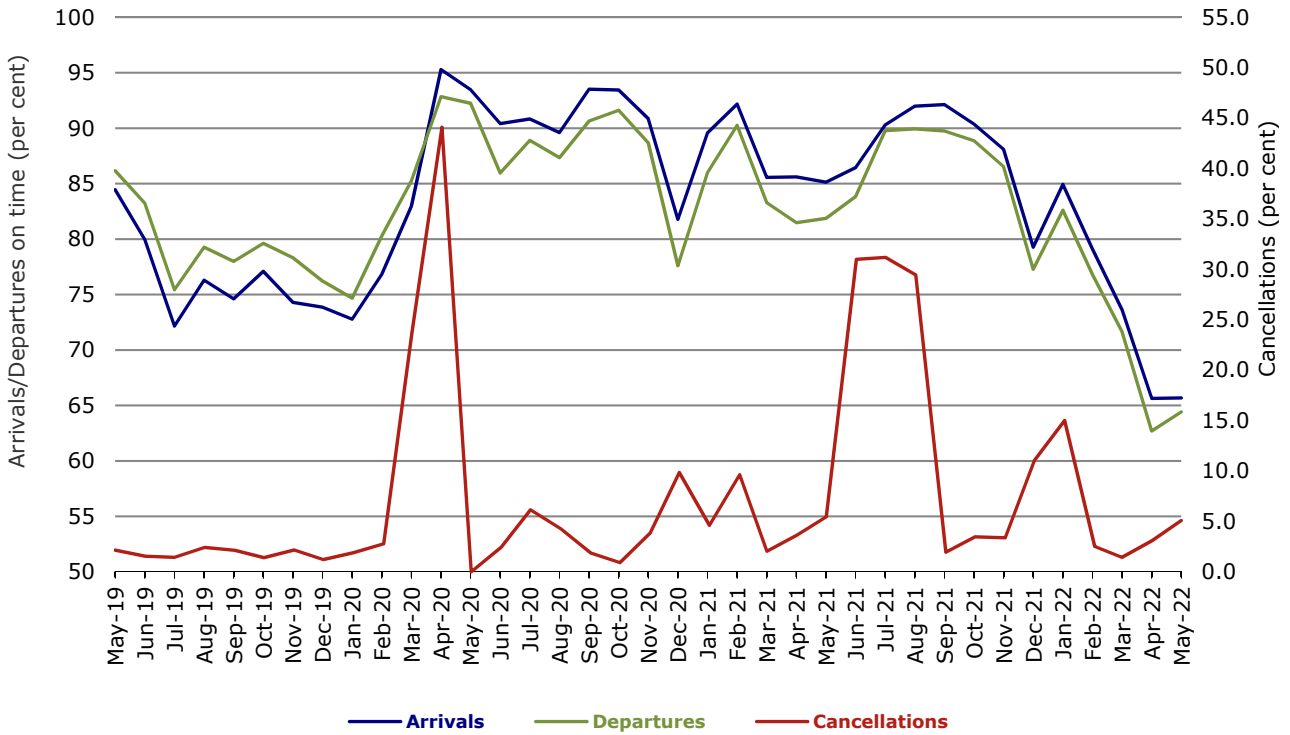


Figure 7 On time performance (by month from May 2019)—Virgin Australia



## Major regional airlines on time performance

Figure 8 On time performance (by month from May 2019)—QantasLink

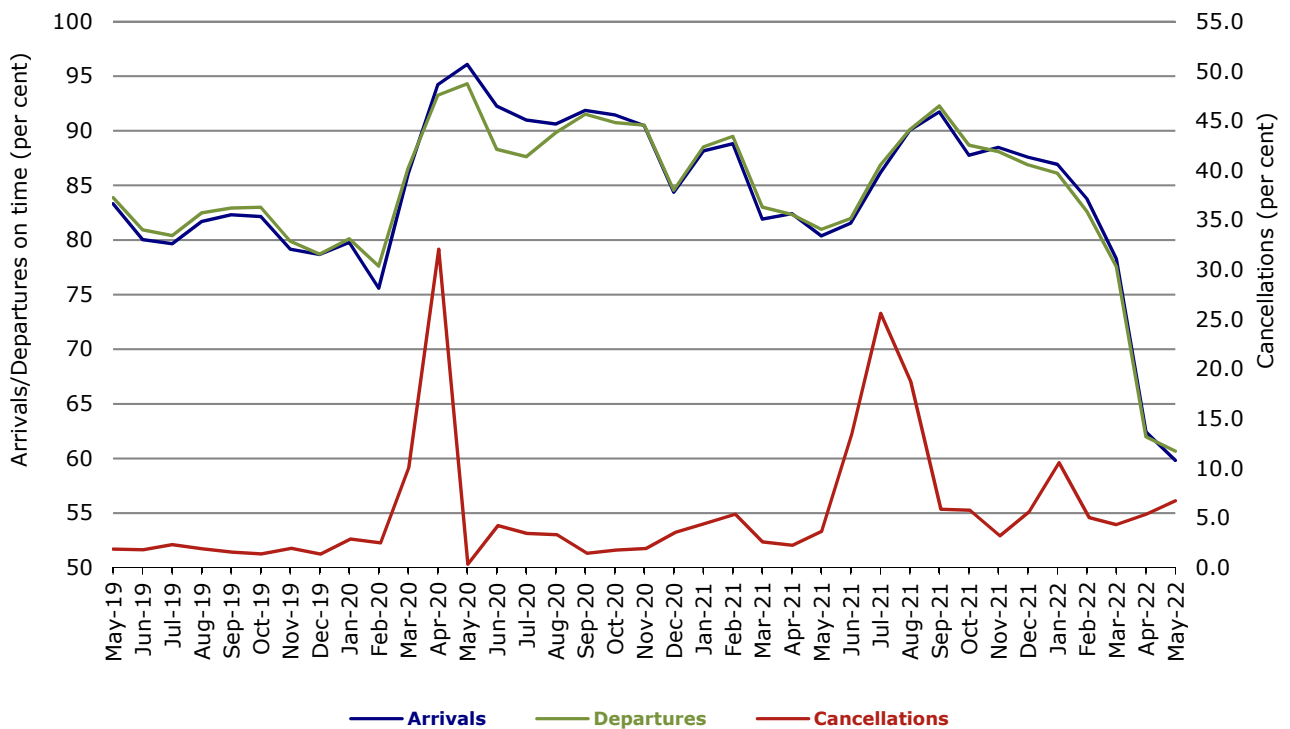
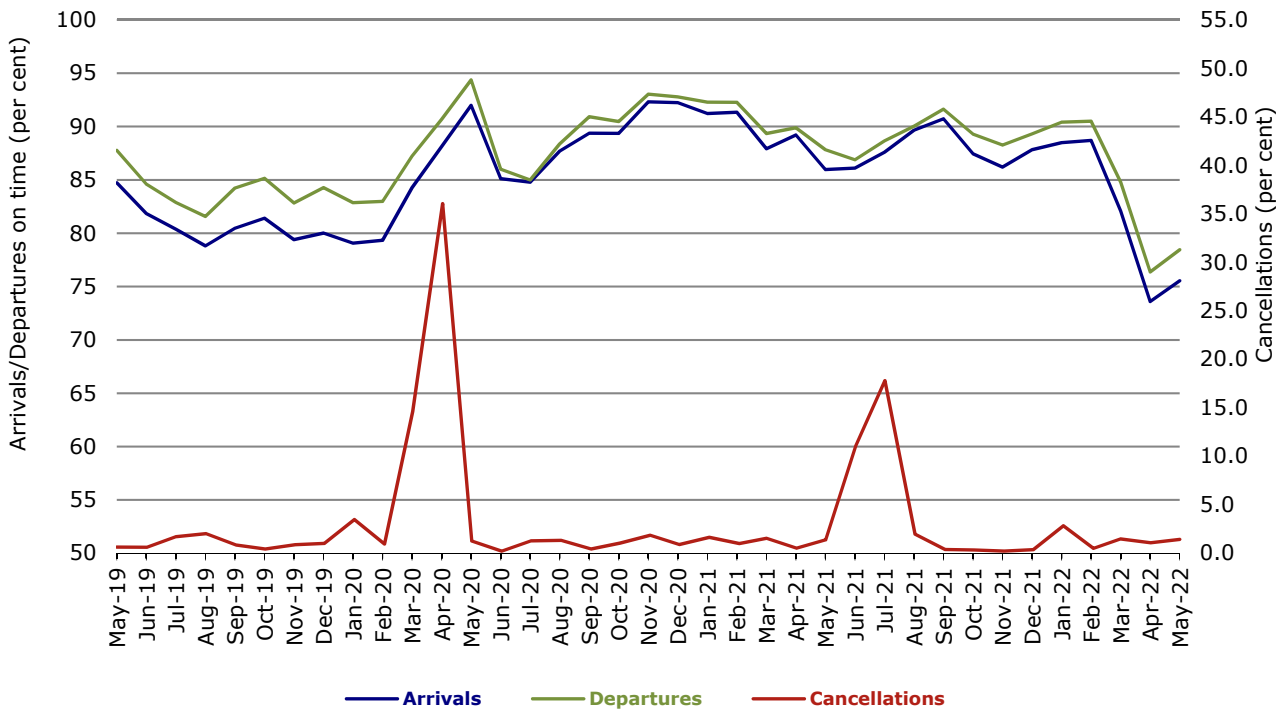
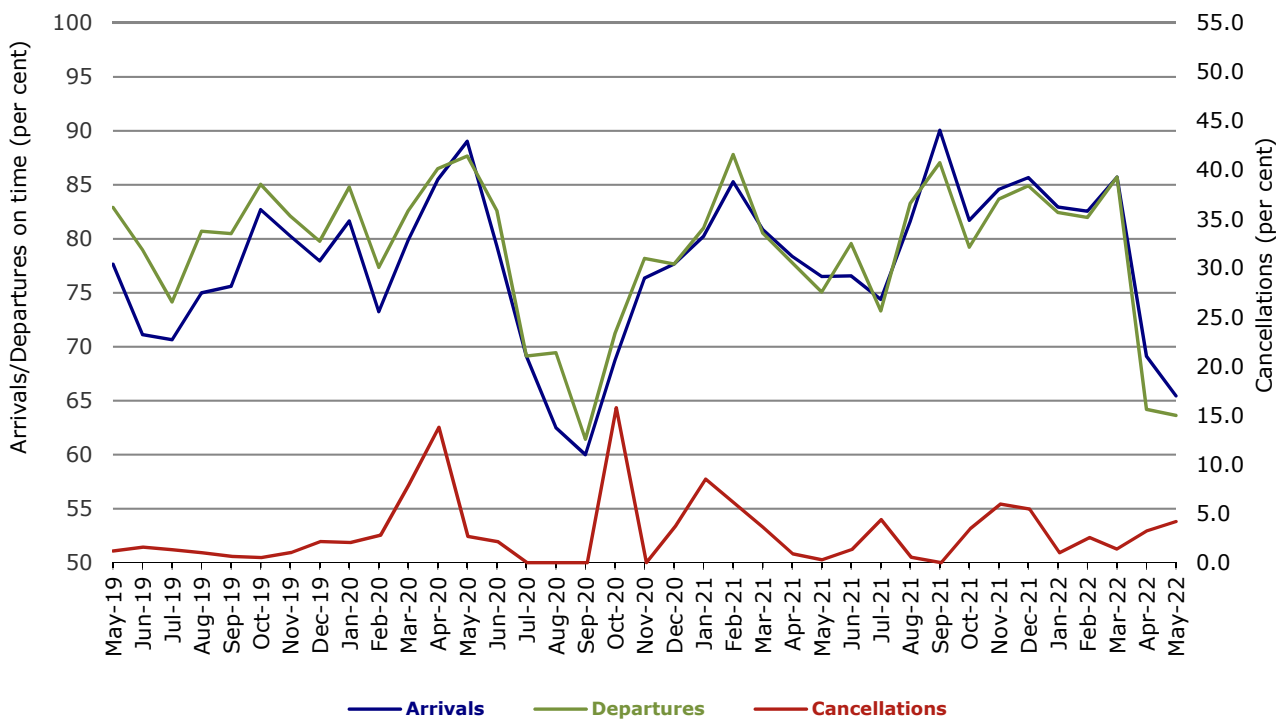


Figure 9 On time performance (by month from May 2019)—Rex Airlines



With effect from July 2021, Regional Express is reported as Rex Airlines

Figure 10 On time performance (by month from May 2019) Virgin Australia Regional Airlines



## Individual routes

On time performance is reported for all routes where the passenger load averages over 8000 passengers per month over the previous six months, and where two or more airlines operate in competition on those routes. In order to present data for more routes during the period impacted by COVID-19, the passenger load restriction is not being applied. There are now 58 routes for which data are presented.

	<i>Sectors</i>		<i>Arrivals On Time</i>		<i>Departures On Time</i>		<i>Cancellations</i>	
	<i>Sched.</i>	<i>Flown</i>	<i>No.</i>	<i>%</i>	<i>No.</i>	<i>%</i>	<i>No.</i>	<i>%</i>
<b>Adelaide-Alice Springs</b>								
Qantas	9	9	9	100.0	9	100.0	0	0.0
QantasLink	37	36	29	80.6	30	83.3	1	2.7
Virgin Australia	13	13	11	84.6	11	84.6	0	0.0
All Airlines	59	58	49	84.5	50	86.2	1	1.7
<b>Adelaide-Brisbane</b>								
Jetstar	32	31	19	61.3	21	67.7	1	3.1
Qantas	49	49	41	83.7	38	77.6	0	0.0
QantasLink	61	57	9	15.8	13	22.8	4	6.6
Virgin Australia	106	103	90	87.4	90	87.4	3	2.8
All Airlines	248	240	159	66.3	162	67.5	8	3.2
<b>Adelaide-Canberra</b>								
QantasLink	65	63	46	73.0	54	85.7	2	3.1
Virgin Australia	23	21	21	100.0	21	100.0	2	8.7
All Airlines	88	84	67	79.8	75	89.3	4	4.5
<b>Adelaide-Gold Coast</b>								
Jetstar	27	27	22	81.5	22	81.5	0	0.0
Virgin Australia	31	30	28	93.3	29	96.7	1	3.2
All Airlines	58	57	50	87.7	51	89.5	1	1.7
<b>Adelaide-Melbourne</b>								
Jetstar	111	97	62	63.9	59	60.8	14	12.6
Qantas	252	237	172	72.6	163	68.8	15	6.0
Rex Airlines	44	44	43	97.7	42	95.5	0	0.0
Virgin Australia	291	277	153	55.2	152	54.9	14	4.8
All Airlines	698	655	430	65.6	416	63.5	43	6.2
<b>Adelaide-Perth</b>								
Jetstar	27	26	15	57.7	13	50.0	1	3.7
Qantas	107	105	79	75.2	80	76.2	2	1.9
Virgin Australia	3	3	3	100.0	2	66.7	0	0.0
Virgin Australia Regional Airlines	48	42	21	50.0	14	33.3	6	12.5
All Airlines	185	176	118	67.0	109	61.9	9	4.9
<b>Adelaide-Port Lincoln</b>								
QantasLink	140	128	110	85.9	105	82.0	12	8.6
Rex Airlines	178	176	141	80.1	151	85.8	2	1.1
All Airlines	318	304	251	82.6	256	84.2	14	4.4
<b>Adelaide-Sydney</b>								
Jetstar	96	88	52	59.1	48	54.5	8	8.3
Qantas	245	240	136	56.7	161	67.1	5	2.0
Virgin Australia	144	141	85	60.3	90	63.8	3	2.1
All Airlines	485	469	273	58.2	299	63.8	16	3.3
<b>Albury-Sydney</b>								
QantasLink	93	90	54	60.0	55	61.1	3	3.2
Rex Airlines	106	106	82	77.4	85	80.2	0	0.0
All Airlines	199	196	136	69.4	140	71.4	3	1.5

	Sectors		Arrivals On Time		Departures On Time		Cancellations	
	Sched.	Flown	No.	%	No.	%	No.	%
<b>Alice Springs-Adelaide</b>								
Qantas	9	9	8	88.9	8	88.9	0	0.0
QantasLink	37	36	28	77.8	28	77.8	1	2.7
Virgin Australia	13	13	8	61.5	9	69.2	0	0.0
All Airlines	59	58	44	75.9	45	77.6	1	1.7
<b>Armidale-Sydney</b>								
QantasLink	91	81	55	67.9	54	66.7	10	11.0
Rex Airlines	80	74	34	45.9	41	55.4	6	7.5
All Airlines	171	155	89	57.4	95	61.3	16	9.4
<b>Ballina-Sydney</b>								
Jetstar	81	79	55	69.6	54	68.4	2	2.5
QantasLink	110	100	49	49.0	52	52.0	10	9.1
Rex Airlines	21	19	11	57.9	12	63.2	2	9.5
Virgin Australia	88	84	55	65.5	51	60.7	4	4.5
All Airlines	300	282	170	60.3	169	59.9	18	6.0
<b>Brisbane-Adelaide</b>								
Jetstar	32	31	15	48.4	8	25.8	1	3.1
Qantas	49	49	45	91.8	43	87.8	0	0.0
QantasLink	62	58	22	37.9	21	36.2	4	6.5
Virgin Australia	106	103	88	85.4	75	72.8	3	2.8
All Airlines	249	241	170	70.5	147	61.0	8	3.2
<b>Brisbane-Cairns</b>								
Jetstar	75	75	34	45.3	37	49.3	0	0.0
Qantas	119	119	87	73.1	85	71.4	0	0.0
QantasLink	3	3	1	33.3	1	33.3	0	0.0
Virgin Australia	138	138	94	68.1	87	63.0	0	0.0
All Airlines	335	335	216	64.5	210	62.7	0	0.0
<b>Brisbane-Canberra</b>								
Jetstar	22	22	15	68.2	11	50.0	0	0.0
Qantas	1	1	1	100.0	1	100.0	0	0.0
QantasLink	166	160	96	60.0	85	53.1	6	3.6
Virgin Australia	104	100	80	80.0	72	72.0	4	3.8
All Airlines	293	283	192	67.8	169	59.7	10	3.4
<b>Brisbane-Darwin</b>								
Jetstar	22	22	18	81.8	13	59.1	0	0.0
Qantas	53	53	25	47.2	27	50.9	0	0.0
Virgin Australia	44	44	36	81.8	31	70.5	0	0.0
All Airlines	119	119	79	66.4	71	59.7	0	0.0
<b>Brisbane-Emerald</b>								
QantasLink	122	118	92	78.0	92	78.0	4	3.3
Virgin Australia	30	27	21	77.8	20	74.1	3	10.0
All Airlines	152	145	113	77.9	112	77.2	7	4.6
<b>Brisbane-Gladstone</b>								
QantasLink	133	126	69	54.8	73	57.9	7	5.3
Virgin Australia	53	50	37	74.0	41	82.0	3	5.7
All Airlines	186	176	106	60.2	114	64.8	10	5.4
<b>Brisbane-Hamilton Island</b>								
Qantas	31	31	28	90.3	28	90.3	0	0.0
Virgin Australia	44	43	35	81.4	34	79.1	1	2.3
All Airlines	75	74	63	85.1	62	83.8	1	1.3



	Sectors		Arrivals On Time		Departures On Time		Cancellations	
	Sched.	Flown	No.	%	No.	%	No.	%
<b>Brisbane-Hobart</b>								
Jetstar	22	22	19	86.4	18	81.8	0	0.0
QantasLink	22	20	13	65.0	13	65.0	2	9.1
Virgin Australia	48	47	38	80.9	31	66.0	1	2.1
All Airlines	92	89	70	78.7	62	69.7	3	3.3
<b>Brisbane-Mackay</b>								
Jetstar	32	31	11	35.5	14	45.2	1	3.1
Qantas	109	108	83	76.9	86	79.6	1	0.9
QantasLink	10	7	3	42.9	5	71.4	3	30.0
Virgin Australia	132	132	91	68.9	93	70.5	0	0.0
All Airlines	283	278	188	67.6	198	71.2	5	1.8
<b>Brisbane-Melbourne</b>								
Jetstar	108	93	67	72.0	51	54.8	15	13.9
Qantas	411	378	273	72.2	247	65.3	33	8.0
Rex Airlines	42	42	38	90.5	35	83.3	0	0.0
Virgin Australia	356	331	167	50.5	143	43.2	25	7.0
All Airlines	917	844	545	64.6	476	56.4	73	8.0
<b>Brisbane-Mount Isa</b>								
Qantas	26	26	24	92.3	25	96.2	0	0.0
QantasLink	27	27	9	33.3	10	37.0	0	0.0
Virgin Australia	13	13	9	69.2	8	61.5	0	0.0
All Airlines	66	66	42	63.6	43	65.2	0	0.0
<b>Brisbane-Newcastle</b>								
Jetstar	57	54	32	59.3	35	64.8	3	5.3
QantasLink	131	122	65	53.3	60	49.2	9	6.9
Virgin Australia	85	84	62	73.8	65	77.4	1	1.2
All Airlines	273	260	159	61.2	160	61.5	13	4.8
<b>Brisbane-Perth</b>								
Jetstar	23	21	7	33.3	7	33.3	2	8.7
Qantas	152	147	96	65.3	97	66.0	5	3.3
Virgin Australia	79	79	66	83.5	48	60.8	0	0.0
All Airlines	254	247	169	68.4	152	61.5	7	2.8
<b>Brisbane-Proserpine</b>								
Jetstar	31	31	14	45.2	17	54.8	0	0.0
QantasLink	23	20	9	45.0	16	80.0	3	13.0
Virgin Australia	39	39	22	56.4	21	53.8	0	0.0
All Airlines	93	90	45	50.0	54	60.0	3	3.2
<b>Brisbane-Rockhampton</b>								
QantasLink	171	161	109	67.7	108	67.1	10	5.8
Virgin Australia	88	88	49	55.7	62	70.5	0	0.0
All Airlines	259	249	158	63.5	170	68.3	10	3.9
<b>Brisbane-Sydney</b>								
Jetstar	175	166	99	59.6	91	54.8	9	5.1
Qantas	584	545	381	69.9	385	70.6	39	6.7
Rex Airlines	74	72	61	84.7	65	90.3	2	2.7
Virgin Australia	535	495	324	65.5	308	62.2	40	7.5
All Airlines	1 368	1 278	865	67.7	849	66.4	90	6.6

	Sectors		Arrivals On Time		Departures On Time		Cancellations	
	Sched.	Flown	No.	%	No.	%	No.	%
<b>Brisbane-Townsville</b>								
Jetstar	59	58	46	79.3	46	79.3	1	1.7
Qantas	112	112	78	69.6	76	67.9	0	0.0
QantasLink	10	10	4	40.0	5	50.0	0	0.0
Virgin Australia	133	130	100	76.9	93	71.5	3	2.3
All Airlines	314	310	228	73.5	220	71.0	4	1.3
<b>Broome-Perth</b>								
Qantas	18	18	10	55.6	7	38.9	0	0.0
QantasLink	79	70	39	55.7	36	51.4	9	11.4
Virgin Australia	13	13	4	30.8	4	30.8	0	0.0
Virgin Australia Regional Airlines	51	48	32	66.7	26	54.2	3	5.9
All Airlines	161	149	85	57.0	73	49.0	12	7.5
<b>Cairns-Brisbane</b>								
Jetstar	75	75	34	45.3	39	52.0	0	0.0
Qantas	119	119	83	69.7	94	79.0	0	0.0
QantasLink	3	3	0	0.0	0	0.0	0	0.0
Virgin Australia	138	138	111	80.4	90	65.2	0	0.0
All Airlines	335	335	228	68.1	223	66.6	0	0.0
<b>Cairns-Melbourne</b>								
Jetstar	85	83	50	60.2	48	57.8	2	2.4
Qantas	56	55	36	65.5	35	63.6	1	1.8
Virgin Australia	69	64	38	59.4	31	48.4	5	7.2
All Airlines	210	202	124	61.4	114	56.4	8	3.8
<b>Cairns-Sydney</b>								
Jetstar	84	81	58	71.6	55	67.9	3	3.6
Qantas	65	65	34	52.3	34	52.3	0	0.0
Virgin Australia	77	74	56	75.7	53	71.6	3	3.9
All Airlines	226	220	148	67.3	142	64.5	6	2.7
<b>Cairns-Townsville</b>								
QantasLink	142	137	113	82.5	111	81.0	5	3.5
Rex Airlines	20	20	16	80.0	16	80.0	0	0.0
All Airlines	162	157	129	82.2	127	80.9	5	3.1
<b>Canberra-Adelaide</b>								
QantasLink	65	63	50	79.4	46	73.0	2	3.1
Virgin Australia	23	21	19	90.5	20	95.2	2	8.7
All Airlines	88	84	69	82.1	66	78.6	4	4.5
<b>Canberra-Brisbane</b>								
Jetstar	22	22	9	40.9	10	45.5	0	0.0
Qantas	1	1	1	100.0	1	100.0	0	0.0
QantasLink	165	159	89	56.0	103	64.8	6	3.6
Virgin Australia	104	100	82	82.0	79	79.0	4	3.8
All Airlines	292	282	181	64.2	193	68.4	10	3.4
<b>Canberra-Melbourne</b>								
QantasLink	290	265	158	59.6	163	61.5	25	8.6
Rex Airlines	31	31	30	96.8	30	96.8	0	0.0
Virgin Australia	132	132	91	68.9	92	69.7	0	0.0
All Airlines	453	428	279	65.2	285	66.6	25	5.5
<b>Canberra-Sydney</b>								
QantasLink	513	461	308	66.8	333	72.2	52	10.1
Rex Airlines	105	93	77	82.8	85	91.4	12	11.4
Virgin Australia	256	255	220	86.3	223	87.5	1	0.4
All Airlines	874	809	605	74.8	641	79.2	65	7.4

	Sectors		Arrivals On Time		Departures On Time		Cancellations	
	Sched.	Flown	No.	%	No.	%	No.	%
<b>Coffs Harbour-Sydney</b>								
QantasLink	114	108	74	68.5	76	70.4	6	5.3
Rex Airlines	80	79	49	62.0	51	64.6	1	1.3
All Airlines	194	187	123	65.8	127	67.9	7	3.6
<b>Darwin-Brisbane</b>								
Jetstar	23	23	13	56.5	13	56.5	0	0.0
Qantas	52	52	15	28.8	14	26.9	0	0.0
Virgin Australia	43	43	27	62.8	17	39.5	0	0.0
All Airlines	118	118	55	46.6	44	37.3	0	0.0
<b>Darwin-Melbourne</b>								
Jetstar	31	30	15	50.0	10	33.3	1	3.2
Qantas	31	31	14	45.2	10	32.3	0	0.0
Virgin Australia	31	31	9	29.0	11	35.5	0	0.0
All Airlines	93	92	38	41.3	31	33.7	1	1.1
<b>Darwin-Perth</b>								
Qantas	5	5	5	100.0	4	80.0	0	0.0
QantasLink	35	33	4	12.1	4	12.1	2	5.7
Virgin Australia	1	1	0	0.0	0	0.0	0	0.0
Virgin Australia Regional Airlines	17	17	11	64.7	10	58.8	0	0.0
All Airlines	58	56	20	35.7	18	32.1	2	3.4
<b>Darwin-Sydney</b>								
Jetstar	30	28	20	71.4	9	32.1	2	6.7
Qantas	44	44	12	27.3	11	25.0	0	0.0
Virgin Australia	12	12	11	91.7	12	100.0	0	0.0
All Airlines	86	84	43	51.2	32	38.1	2	2.3
<b>Dubbo-Sydney</b>								
QantasLink	90	89	54	60.7	52	58.4	1	1.1
Rex Airlines	106	106	66	62.3	67	63.2	0	0.0
All Airlines	196	195	120	61.5	119	61.0	1	0.5
<b>Emerald-Brisbane</b>								
QantasLink	122	118	83	70.3	80	67.8	4	3.3
Virgin Australia	27	27	25	92.6	24	88.9	0	0.0
All Airlines	149	145	108	74.5	104	71.7	4	2.7
<b>Gladstone-Brisbane</b>								
QantasLink	132	123	71	57.7	72	58.5	9	6.8
Virgin Australia	53	50	31	62.0	36	72.0	3	5.7
All Airlines	185	173	102	59.0	108	62.4	12	6.5
<b>Gold Coast-Adelaide</b>								
Jetstar	27	27	22	81.5	17	63.0	0	0.0
Virgin Australia	31	30	20	66.7	20	66.7	1	3.2
All Airlines	58	57	42	73.7	37	64.9	1	1.7
<b>Gold Coast-Melbourne</b>								
Jetstar	222	204	145	71.1	123	60.3	18	8.1
Qantas	17	17	10	58.8	6	35.3	0	0.0
QantasLink	66	51	32	62.7	25	49.0	15	22.7
Rex Airlines	45	40	33	82.5	33	82.5	5	11.1
Virgin Australia	319	303	207	68.3	162	53.5	16	5.0
All Airlines	669	615	427	69.4	349	56.7	54	8.1

	Sectors		Arrivals On Time		Departures On Time		Cancellations	
	Sched.	Flown	No.	%	No.	%	No.	%
<b>Gold Coast-Sydney</b>								
Jetstar	314	293	210	71.7	202	68.9	21	6.7
Qantas	69	69	49	71.0	44	63.8	0	0.0
QantasLink	45	39	19	48.7	19	48.7	6	13.3
Rex Airlines	51	47	42	89.4	41	87.2	4	7.8
Virgin Australia	370	342	233	68.1	219	64.0	28	7.6
All Airlines	849	790	553	70.0	525	66.5	59	6.9
<b>Hamilton Island-Brisbane</b>								
Qantas	31	30	20	66.7	19	63.3	1	3.2
Virgin Australia	44	43	30	69.8	27	62.8	1	2.3
All Airlines	75	73	50	68.5	46	63.0	2	2.7
<b>Hamilton Island-Sydney</b>								
Jetstar	18	18	9	50.0	8	44.4	0	0.0
Qantas	31	31	18	58.1	17	54.8	0	0.0
Virgin Australia	31	31	20	64.5	15	48.4	0	0.0
All Airlines	80	80	47	58.8	40	50.0	0	0.0
<b>Hobart-Brisbane</b>								
Jetstar	22	22	9	40.9	12	54.5	0	0.0
QantasLink	22	20	9	45.0	11	55.0	2	9.1
Virgin Australia	48	47	25	53.2	27	57.4	1	2.1
All Airlines	92	89	43	48.3	50	56.2	3	3.3
<b>Hobart-Melbourne</b>								
Jetstar	138	130	61	46.9	67	51.5	8	5.8
Qantas	5	5	2	40.0	2	40.0	0	0.0
QantasLink	119	112	61	54.5	59	52.7	7	5.9
Virgin Australia	127	124	62	50.0	76	61.3	3	2.4
All Airlines	389	371	186	50.1	204	55.0	18	4.6
<b>Hobart-Sydney</b>								
Jetstar	65	64	33	51.6	38	59.4	1	1.5
Qantas	8	8	6	75.0	6	75.0	0	0.0
QantasLink	76	74	29	39.2	42	56.8	2	2.6
Virgin Australia	80	79	48	60.8	55	69.6	1	1.3
All Airlines	229	225	116	51.6	141	62.7	4	1.7
<b>Kalgoorlie-Perth</b>								
Qantas	15	15	9	60.0	5	33.3	0	0.0
QantasLink	60	52	27	51.9	20	38.5	8	13.3
Virgin Australia	25	24	7	29.2	5	20.8	1	4.0
Virgin Australia Regional Airlines	37	36	23	63.9	21	58.3	1	2.7
All Airlines	137	127	66	52.0	51	40.2	10	7.3
<b>Karratha-Perth</b>								
Qantas	22	20	11	55.0	11	55.0	2	9.1
QantasLink	126	112	59	52.7	56	50.0	14	11.1
Virgin Australia	23	23	16	69.6	15	65.2	0	0.0
Virgin Australia Regional Airlines	30	30	23	76.7	18	60.0	0	0.0
All Airlines	201	185	109	58.9	100	54.1	16	8.0
<b>Launceston-Melbourne</b>								
Jetstar	82	78	32	41.0	28	35.9	4	4.9
QantasLink	122	92	19	20.7	30	32.6	30	24.6
Virgin Australia	87	86	41	47.7	50	58.1	1	1.1
All Airlines	291	256	92	35.9	108	42.2	35	12.0

	Sectors		Arrivals On Time		Departures On Time		Cancellations	
	Sched.	Flown	No.	%	No.	%	No.	%
<b>Launceston-Sydney</b>								
Jetstar	27	27	10	37.0	10	37.0	0	0.0
QantasLink	14	14	6	42.9	5	35.7	0	0.0
Virgin Australia	31	31	23	74.2	28	90.3	0	0.0
All Airlines	72	72	39	54.2	43	59.7	0	0.0
<b>Mackay-Brisbane</b>								
Jetstar	32	30	8	26.7	10	33.3	2	6.3
Qantas	108	106	76	71.7	82	77.4	2	1.9
QantasLink	13	9	7	77.8	6	66.7	4	30.8
Virgin Australia	132	132	107	81.1	101	76.5	0	0.0
All Airlines	285	277	198	71.5	199	71.8	8	2.8
<b>Melbourne-Adelaide</b>								
Jetstar	111	98	67	68.4	58	59.2	13	11.7
Qantas	252	237	134	56.5	136	57.4	15	6.0
Rex Airlines	44	44	40	90.9	41	93.2	0	0.0
Virgin Australia	291	278	166	59.7	160	57.6	13	4.5
All Airlines	698	657	407	61.9	395	60.1	41	5.9
<b>Melbourne-Brisbane</b>								
Jetstar	108	94	35	37.2	35	37.2	14	13.0
Qantas	410	373	210	56.3	221	59.2	37	9.0
Rex Airlines	41	41	35	85.4	38	92.7	0	0.0
Virgin Australia	357	334	174	52.1	184	55.1	23	6.4
All Airlines	916	842	454	53.9	478	56.8	74	8.1
<b>Melbourne-Cairns</b>								
Jetstar	85	84	44	52.4	35	41.7	1	1.2
Qantas	56	55	36	65.5	35	63.6	1	1.8
Virgin Australia	69	64	37	57.8	40	62.5	5	7.2
All Airlines	210	203	117	57.6	110	54.2	7	3.3
<b>Melbourne-Canberra</b>								
QantasLink	288	266	149	56.0	144	54.1	22	7.6
Rex Airlines	31	31	30	96.8	30	96.8	0	0.0
Virgin Australia	132	132	87	65.9	83	62.9	0	0.0
All Airlines	451	429	266	62.0	257	59.9	22	4.9
<b>Melbourne-Darwin</b>								
Jetstar	31	30	21	70.0	18	60.0	1	3.2
Qantas	31	31	20	64.5	15	48.4	0	0.0
Virgin Australia	31	31	19	61.3	18	58.1	0	0.0
All Airlines	93	92	60	65.2	51	55.4	1	1.1
<b>Melbourne-Gold Coast</b>								
Jetstar	222	206	117	56.8	128	62.1	16	7.2
Qantas	17	17	11	64.7	9	52.9	0	0.0
QantasLink	65	50	27	54.0	32	64.0	15	23.1
Rex Airlines	45	40	31	77.5	33	82.5	5	11.1
Virgin Australia	319	302	161	53.3	177	58.6	17	5.3
All Airlines	668	615	347	56.4	379	61.6	53	7.9
<b>Melbourne-Hobart</b>								
Jetstar	137	130	82	63.1	80	61.5	7	5.1
Qantas	5	5	4	80.0	4	80.0	0	0.0
QantasLink	120	114	46	40.4	44	38.6	6	5.0
Virgin Australia	127	125	75	60.0	84	67.2	2	1.6
All Airlines	389	374	207	55.3	212	56.7	15	3.9

	<i>Sectors</i>		<i>Arrivals On Time</i>		<i>Departures On Time</i>		<i>Cancellations</i>	
	<i>Sched.</i>	<i>Flown</i>	<i>No.</i>	<i>%</i>	<i>No.</i>	<i>%</i>	<i>No.</i>	<i>%</i>
<b>Melbourne-Launceston</b>								
Jetstar	82	78	39	50.0	38	48.7	4	4.9
QantasLink	123	95	32	33.7	35	36.8	28	22.8
Virgin Australia	88	87	42	48.3	51	58.6	1	1.1
All Airlines	293	260	113	43.5	124	47.7	33	11.3
<b>Melbourne-Mildura</b>								
QantasLink	110	108	35	32.4	35	32.4	2	1.8
Rex Airlines	97	97	66	68.0	69	71.1	0	0.0
All Airlines	207	205	101	49.3	104	50.7	2	1.0
<b>Melbourne-Newcastle</b>								
Jetstar	72	68	40	58.8	40	58.8	4	5.6
QantasLink	49	49	19	38.8	20	40.8	0	0.0
Virgin Australia	31	31	12	38.7	14	45.2	0	0.0
All Airlines	152	148	71	48.0	74	50.0	4	2.6
<b>Melbourne-Perth</b>								
Jetstar	62	59	42	71.2	37	62.7	3	4.8
Qantas	173	171	79	46.2	72	42.1	2	1.2
Virgin Australia	129	126	88	69.8	63	50.0	3	2.3
All Airlines	364	356	209	58.7	172	48.3	8	2.2
<b>Melbourne-Sunshine Coast</b>								
Jetstar	62	61	35	57.4	38	62.3	1	1.6
Virgin Australia	130	122	66	54.1	71	58.2	8	6.2
All Airlines	192	183	101	55.2	109	59.6	9	4.7
<b>Melbourne-Sydney</b>								
Jetstar	409	348	216	62.1	186	53.4	61	14.9
Qantas	983	772	433	56.1	471	61.0	211	21.5
QantasLink	39	30	14	46.7	16	53.3	9	23.1
Rex Airlines	112	111	100	90.1	102	91.9	1	0.9
Virgin Australia	857	750	471	62.8	495	66.0	107	12.5
All Airlines	2 400	2 011	1 234	61.4	1 270	63.2	389	16.2
<b>Mildura-Melbourne</b>								
QantasLink	109	107	36	33.6	40	37.4	2	1.8
Rex Airlines	96	96	71	74.0	74	77.1	0	0.0
All Airlines	205	203	107	52.7	114	56.2	2	1.0
<b>Mount Isa-Brisbane</b>								
Qantas	26	26	24	92.3	21	80.8	0	0.0
QantasLink	27	27	16	59.3	13	48.1	0	0.0
Virgin Australia	13	13	5	38.5	7	53.8	0	0.0
All Airlines	66	66	45	68.2	41	62.1	0	0.0
<b>Newcastle-Brisbane</b>								
Jetstar	57	54	28	51.9	27	50.0	3	5.3
QantasLink	131	122	66	54.1	70	57.4	9	6.9
Virgin Australia	84	83	57	68.7	67	80.7	1	1.2
All Airlines	272	259	151	58.3	164	63.3	13	4.8
<b>Newcastle-Melbourne</b>								
Jetstar	72	68	39	57.4	39	57.4	4	5.6
QantasLink	53	52	33	63.5	33	63.5	1	1.9
Virgin Australia	31	30	10	33.3	9	30.0	1	3.2
All Airlines	156	150	82	54.7	81	54.0	6	3.8

	Sectors		Arrivals On Time		Departures On Time		Cancellations	
	Sched.	Flown	No.	%	No.	%	No.	%
<b>Newman-Perth</b>								
Qantas	40	38	24	63.2	25	65.8	2	5.0
QantasLink	79	70	41	58.6	46	65.7	9	11.4
Virgin Australia	21	20	14	70.0	15	75.0	1	4.8
Virgin Australia Regional Airlines	38	37	23	62.2	26	70.3	1	2.6
All Airlines	178	165	102	61.8	112	67.9	13	7.3
<b>Perth-Adelaide</b>								
Jetstar	27	26	11	42.3	6	23.1	1	3.7
Qantas	107	105	70	66.7	71	67.6	2	1.9
Virgin Australia	3	3	3	100.0	3	100.0	0	0.0
Virgin Australia Regional Airlines	48	43	25	58.1	28	65.1	5	10.4
All Airlines	185	177	109	61.6	108	61.0	8	4.3
<b>Perth-Brisbane</b>								
Jetstar	23	21	5	23.8	3	14.3	2	8.7
Qantas	152	149	105	70.5	104	69.8	3	2.0
Virgin Australia	78	77	41	53.2	35	45.5	1	1.3
All Airlines	253	247	151	61.1	142	57.5	6	2.4
<b>Perth-Broome</b>								
Qantas	18	18	13	72.2	10	55.6	0	0.0
QantasLink	79	73	53	72.6	49	67.1	6	7.6
Virgin Australia	13	13	6	46.2	2	15.4	0	0.0
Virgin Australia Regional Airlines	51	48	37	77.1	38	79.2	3	5.9
All Airlines	161	152	109	71.7	99	65.1	9	5.6
<b>Perth-Darwin</b>								
Qantas	5	5	4	80.0	4	80.0	0	0.0
QantasLink	35	33	17	51.5	13	39.4	2	5.7
Virgin Australia	1	1	0	0.0	0	0.0	0	0.0
Virgin Australia Regional Airlines	17	17	13	76.5	10	58.8	0	0.0
All Airlines	58	56	34	60.7	27	48.2	2	3.4
<b>Perth-Kalgoorlie</b>								
Qantas	15	15	12	80.0	14	93.3	0	0.0
QantasLink	60	53	29	54.7	32	60.4	7	11.7
Virgin Australia	25	25	21	84.0	21	84.0	0	0.0
Virgin Australia Regional Airlines	36	36	26	72.2	28	77.8	0	0.0
All Airlines	136	129	88	68.2	95	73.6	7	5.1
<b>Perth-Karratha</b>								
Qantas	22	21	16	76.2	14	66.7	1	4.5
QantasLink	130	117	69	59.0	76	65.0	13	10.0
Virgin Australia	23	23	19	82.6	19	82.6	0	0.0
Virgin Australia Regional Airlines	30	30	19	63.3	26	86.7	0	0.0
All Airlines	205	191	123	64.4	135	70.7	14	6.8
<b>Perth-Melbourne</b>								
Jetstar	61	58	25	43.1	17	29.3	3	4.9
Qantas	171	168	99	58.9	112	66.7	3	1.8
Virgin Australia	129	127	70	55.1	62	48.8	2	1.6
All Airlines	361	353	194	55.0	191	54.1	8	2.2
<b>Perth-Newman</b>								
Qantas	40	38	31	81.6	30	78.9	2	5.0
QantasLink	79	72	57	79.2	51	70.8	7	8.9
Virgin Australia	21	20	18	90.0	18	90.0	1	4.8
Virgin Australia Regional Airlines	38	37	27	73.0	27	73.0	1	2.6
All Airlines	178	167	133	79.6	126	75.4	11	6.2

	<i>Sectors</i>		<i>Arrivals On Time</i>		<i>Departures On Time</i>		<i>Cancellations</i>	
	<i>Sched.</i>	<i>Flown</i>	<i>No.</i>	<i>%</i>	<i>No.</i>	<i>%</i>	<i>No.</i>	<i>%</i>
<b>Perth-Port Hedland</b>								
Qantas	33	32	23	71.9	24	75.0	1	3.0
QantasLink	95	88	62	70.5	66	75.0	7	7.4
Virgin Australia	15	15	12	80.0	12	80.0	0	0.0
Virgin Australia Regional Airlines	37	36	25	69.4	24	66.7	1	2.7
All Airlines	180	171	122	71.3	126	73.7	9	5.0
<b>Perth-Sydney</b>								
Jetstar	33	30	10	33.3	5	16.7	3	9.1
Qantas	176	174	118	67.8	123	70.7	2	1.1
Virgin Australia	106	104	67	64.4	38	36.5	2	1.9
All Airlines	315	308	195	63.3	166	53.9	7	2.2
<b>Port Hedland-Perth</b>								
Qantas	33	32	20	62.5	18	56.3	1	3.0
QantasLink	97	90	58	64.4	53	58.9	7	7.2
Virgin Australia	15	15	8	53.3	9	60.0	0	0.0
Virgin Australia Regional Airlines	37	36	19	52.8	19	52.8	1	2.7
All Airlines	182	173	105	60.7	99	57.2	9	4.9
<b>Port Lincoln-Adelaide</b>								
QantasLink	138	127	109	85.8	109	85.8	11	8.0
Rex Airlines	177	175	129	73.7	142	81.1	2	1.1
All Airlines	315	302	238	78.8	251	83.1	13	4.1
<b>Port Macquarie-Sydney</b>								
QantasLink	102	99	70	70.7	71	71.7	3	2.9
Rex Airlines	86	84	47	56.0	63	75.0	2	2.3
All Airlines	188	183	117	63.9	134	73.2	5	2.7
<b>Proserpine-Brisbane</b>								
Jetstar	31	31	12	38.7	12	38.7	0	0.0
QantasLink	23	20	9	45.0	7	35.0	3	13.0
Virgin Australia	39	39	24	61.5	17	43.6	0	0.0
All Airlines	93	90	45	50.0	36	40.0	3	3.2
<b>Rockhampton-Brisbane</b>								
QantasLink	171	159	85	53.5	88	55.3	12	7.0
Virgin Australia	88	88	62	70.5	65	73.9	0	0.0
All Airlines	259	247	147	59.5	153	61.9	12	4.6
<b>Sunshine Coast-Melbourne</b>								
Jetstar	63	62	27	43.5	25	40.3	1	1.6
Virgin Australia	130	121	58	47.9	53	43.8	9	6.9
All Airlines	193	183	85	46.4	78	42.6	10	5.2
<b>Sunshine Coast-Sydney</b>								
Jetstar	101	96	63	65.6	65	67.7	5	5.0
Qantas	62	61	41	67.2	33	54.1	1	1.6
Virgin Australia	111	103	50	48.5	59	57.3	8	7.2
All Airlines	274	260	154	59.2	157	60.4	14	5.1
<b>Sydney-Adelaide</b>								
Jetstar	96	88	43	48.9	30	34.1	8	8.3
Qantas	248	244	130	53.3	139	57.0	4	1.6
Virgin Australia	144	142	88	62.0	83	58.5	2	1.4
All Airlines	488	474	261	55.1	252	53.2	14	2.9



	Sectors		Arrivals On Time		Departures On Time		Cancellations	
	Sched.	Flown	No.	%	No.	%	No.	%
<b>Sydney-Albury</b>								
QantasLink	94	92	64	69.6	57	62.0	2	2.1
Rex Airlines	106	106	73	68.9	76	71.7	0	0.0
All Airlines	200	198	137	69.2	133	67.2	2	1.0
<b>Sydney-Armidale</b>								
QantasLink	88	82	50	61.0	43	52.4	6	6.8
Rex Airlines	79	74	43	58.1	42	56.8	5	6.3
All Airlines	167	156	93	59.6	85	54.5	11	6.6
<b>Sydney-Ballina</b>								
Jetstar	81	79	61	77.2	63	79.7	2	2.5
QantasLink	110	101	32	31.7	61	60.4	9	8.2
Rex Airlines	22	21	15	71.4	14	66.7	1	4.5
Virgin Australia	88	84	48	57.1	53	63.1	4	4.5
All Airlines	301	285	156	54.7	191	67.0	16	5.3
<b>Sydney-Brisbane</b>								
Jetstar	178	169	90	53.3	95	56.2	9	5.1
Qantas	584	551	286	51.9	323	58.6	33	5.7
Rex Airlines	75	73	52	71.2	58	79.5	2	2.7
Virgin Australia	536	495	336	67.9	357	72.1	41	7.6
All Airlines	1 373	1 288	764	59.3	833	64.7	85	6.2
<b>Sydney-Cairns</b>								
Jetstar	85	83	61	73.5	59	71.1	2	2.4
Qantas	65	65	33	50.8	34	52.3	0	0.0
Virgin Australia	77	74	61	82.4	55	74.3	3	3.9
All Airlines	227	222	155	69.8	148	66.7	5	2.2
<b>Sydney-Canberra</b>								
QantasLink	515	465	290	62.4	294	63.2	50	9.7
Rex Airlines	107	93	67	72.0	74	79.6	14	13.1
Virgin Australia	256	255	213	83.5	200	78.4	1	0.4
All Airlines	878	813	570	70.1	568	69.9	65	7.4
<b>Sydney-Coffs Harbour</b>								
QantasLink	116	111	64	57.7	62	55.9	5	4.3
Rex Airlines	82	82	54	65.9	55	67.1	0	0.0
All Airlines	198	193	118	61.1	117	60.6	5	2.5
<b>Sydney-Darwin</b>								
Jetstar	30	28	21	75.0	17	60.7	2	6.7
Qantas	44	44	22	50.0	22	50.0	0	0.0
Virgin Australia	11	11	11	100.0	9	81.8	0	0.0
All Airlines	85	83	54	65.1	48	57.8	2	2.4
<b>Sydney-Dubbo</b>								
QantasLink	90	89	43	48.3	48	53.9	1	1.1
Rex Airlines	111	111	78	70.3	74	66.7	0	0.0
All Airlines	201	200	121	60.5	122	61.0	1	0.5
<b>Sydney-Gold Coast</b>								
Jetstar	314	293	207	70.6	218	74.4	21	6.7
Qantas	69	69	35	50.7	37	53.6	0	0.0
QantasLink	45	40	24	60.0	26	65.0	5	11.1
Rex Airlines	51	47	38	80.9	43	91.5	4	7.8
Virgin Australia	369	342	199	58.2	221	64.6	27	7.3
All Airlines	848	791	503	63.6	545	68.9	57	6.7

	Sectors		Arrivals On Time		Departures On Time		Cancellations	
	Sched.	Flown	No.	%	No.	%	No.	%
<b>Sydney-Hamilton Island</b>								
Jetstar	18	18	16	88.9	15	83.3	0	0.0
Qantas	31	31	17	54.8	23	74.2	0	0.0
Virgin Australia	31	31	24	77.4	25	80.6	0	0.0
All Airlines	80	80	57	71.3	63	78.8	0	0.0
<b>Sydney-Hobart</b>								
Jetstar	65	65	54	83.1	44	67.7	0	0.0
Qantas	8	8	7	87.5	5	62.5	0	0.0
QantasLink	77	75	24	32.0	17	22.7	2	2.6
Virgin Australia	80	79	65	82.3	64	81.0	1	1.3
All Airlines	230	227	150	66.1	130	57.3	3	1.3
<b>Sydney-Launceston</b>								
Jetstar	26	26	15	57.7	15	57.7	0	0.0
QantasLink	14	14	5	35.7	4	28.6	0	0.0
Virgin Australia	31	31	29	93.5	23	74.2	0	0.0
All Airlines	71	71	49	69.0	42	59.2	0	0.0
<b>Sydney-Melbourne</b>								
Jetstar	409	347	218	62.8	210	60.5	62	15.2
Qantas	972	756	473	62.6	451	59.7	216	22.2
QantasLink	39	32	10	31.3	17	53.1	7	17.9
Rex Airlines	110	109	97	89.0	101	92.7	1	0.9
Virgin Australia	857	750	447	59.6	442	58.9	107	12.5
All Airlines	2 387	1 994	1 245	62.4	1 221	61.2	393	16.5
<b>Sydney-Perth</b>								
Jetstar	32	31	20	64.5	13	41.9	1	3.1
Qantas	174	174	75	43.1	71	40.8	0	0.0
Virgin Australia	105	104	66	63.5	56	53.8	1	1.0
All Airlines	311	309	161	52.1	140	45.3	2	0.6
<b>Sydney-Port Macquarie</b>								
QantasLink	103	101	62	61.4	57	56.4	2	1.9
Rex Airlines	87	85	55	64.7	52	61.2	2	2.3
All Airlines	190	186	117	62.9	109	58.6	4	2.1
<b>Sydney-Sunshine Coast</b>								
Jetstar	99	95	70	73.7	73	76.8	4	4.0
Qantas	61	60	28	46.7	38	63.3	1	1.6
Virgin Australia	111	103	64	62.1	80	77.7	8	7.2
All Airlines	271	258	162	62.8	191	74.0	13	4.8
<b>Sydney-Wagga Wagga</b>								
QantasLink	86	85	53	62.4	54	63.5	1	1.2
Rex Airlines	91	91	64	70.3	63	69.2	0	0.0
All Airlines	177	176	117	66.5	117	66.5	1	0.6
<b>Townsville-Brisbane</b>								
Jetstar	59	58	37	63.8	38	65.5	1	1.7
Qantas	112	111	73	65.8	83	74.8	1	0.9
QantasLink	10	10	3	30.0	5	50.0	0	0.0
Virgin Australia	132	129	109	84.5	107	82.9	3	2.3
All Airlines	313	308	222	72.1	233	75.6	5	1.6
<b>Townsville-Cairns</b>								
QantasLink	142	138	105	76.1	99	71.7	4	2.8
Rex Airlines	20	20	17	85.0	17	85.0	0	0.0
All Airlines	162	158	122	77.2	116	73.4	4	2.5

	<i>Sectors</i>		<i>Arrivals On Time</i>		<i>Departures On Time</i>		<i>Cancellations</i>	
	<i>Sched.</i>	<i>Flown</i>	<i>No.</i>	<i>%</i>	<i>No.</i>	<i>%</i>	<i>No.</i>	<i>%</i>
<b>Wagga Wagga-Sydney</b>								
QantasLink	85	84	62	73.8	59	70.2	1	1.2
Rex Airlines	91	91	66	72.5	75	82.4	0	0.0
All Airlines	176	175	128	73.1	134	76.6	1	0.6

# Airports

The following data reports by airport against flights operated on published routes only. This month, 8 major city airports and 28 regional city airports are covered.

Airport	Arrivals			Departures		
	Sectors	On Time		Sectors	On Time	
	Flown	No.	%	Flown	No.	%
<b>Adelaide</b>						
Jetstar	270	158	58.5	269	163	60.6
Qantas	644	387	60.1	640	451	70.5
QantasLink	284	209	73.6	284	202	71.1
Rex Airlines	219	169	77.2	220	193	87.7
Virgin Australia	590	392	66.4	588	395	67.2
Virgin Australia Regional Airlines	43	25	58.1	42	14	33.3
All Airlines	2 050	1 340	65.4	2 043	1 418	69.4
Relates to services to and from Alice Springs, Brisbane, Canberra, Gold Coast, Melbourne, Perth, Port Lincoln and Sydney only.						
<b>Albury</b>						
QantasLink	92	64	69.6	90	55	61.1
Rex Airlines	106	73	68.9	106	85	80.2
All Airlines	198	137	69.2	196	140	71.4
Relates to services to and from Sydney only.						
<b>Alice Springs</b>						
Qantas	9	9	100.0	9	8	88.9
QantasLink	36	29	80.6	36	28	77.8
Virgin Australia	13	11	84.6	13	9	69.2
All Airlines	58	49	84.5	58	45	77.6
Relates to services to and from Adelaide only.						
<b>Armidale</b>						
QantasLink	82	50	61.0	81	54	66.7
Rex Airlines	74	43	58.1	74	41	55.4
All Airlines	156	93	59.6	155	95	61.3
Relates to services to and from Sydney only.						
<b>Ballina</b>						
Jetstar	79	61	77.2	79	54	68.4
QantasLink	101	32	31.7	100	52	52.0
Rex Airlines	21	15	71.4	19	12	63.2
Virgin Australia	84	48	57.1	84	51	60.7
All Airlines	285	156	54.7	282	169	59.9
Relates to services to and from Sydney only.						
<b>Brisbane</b>						
Jetstar	630	299	47.5	626	348	55.6
Qantas	1 567	934	59.6	1 569	1 100	70.1
QantasLink	827	447	54.1	832	489	58.8
Rex Airlines	114	87	76.3	114	100	87.7
Virgin Australia	1 941	1 336	68.8	1 943	1 232	63.4
All Airlines	5 079	3 103	61.1	5 084	3 269	64.3
Relates to services to and from Adelaide, Cairns, Canberra, Darwin, Emerald, Gladstone, Hamilton Island, Hobart, Mackay, Melbourne, Mount Isa, Newcastle, Perth, Proserpine, Rockhampton, Sydney and Townsville only.						

Airport	Arrivals			Departures		
	Sectors Flown	On Time		Sectors Flown	On Time	
		No.	%		No.	%
<b>Broome</b>						
Qantas	18	13	72.2	18	7	38.9
QantasLink	73	53	72.6	70	36	51.4
Virgin Australia	13	6	46.2	13	4	30.8
Virgin Australia Regional Airlines	48	37	77.1	48	26	54.2
All Airlines	152	109	71.7	149	73	49.0
Relates to services to and from Perth only.						
<b>Cairns</b>						
Jetstar	242	139	57.4	239	142	59.4
Qantas	239	156	65.3	239	163	68.2
QantasLink	141	106	75.2	140	111	79.3
Rex Airlines	20	17	85.0	20	16	80.0
Virgin Australia	276	192	69.6	276	174	63.0
All Airlines	918	610	66.4	914	606	66.3
Relates to services to and from Brisbane, Melbourne, Sydney and Townsville only.						
<b>Canberra</b>						
Jetstar	22	15	68.2	22	10	45.5
Qantas	1	1	100.0	1	1	100.0
QantasLink	954	581	60.9	948	645	68.0
Rex Airlines	124	97	78.2	124	115	92.7
Virgin Australia	508	401	78.9	508	414	81.5
All Airlines	1 609	1 095	68.1	1 603	1 185	73.9
Relates to services to and from Adelaide, Brisbane, Melbourne and Sydney only.						
<b>Coffs Harbour</b>						
QantasLink	111	64	57.7	108	76	70.4
Rex Airlines	82	54	65.9	79	51	64.6
All Airlines	193	118	61.1	187	127	67.9
Relates to services to and from Sydney only.						
<b>Darwin</b>						
Jetstar	80	60	75.0	81	32	39.5
Qantas	133	71	53.4	132	39	29.5
QantasLink	33	17	51.5	33	4	12.1
Virgin Australia	87	66	75.9	87	40	46.0
Virgin Australia Regional Airlines	17	13	76.5	17	10	58.8
All Airlines	350	227	64.9	350	125	35.7
Relates to services to and from Brisbane, Melbourne, Perth and Sydney only.						
<b>Dubbo</b>						
QantasLink	89	43	48.3	89	52	58.4
Rex Airlines	111	78	70.3	106	67	63.2
All Airlines	200	121	60.5	195	119	61.0
Relates to services to and from Sydney only.						
<b>Emerald</b>						
QantasLink	118	92	78.0	118	80	67.8
Virgin Australia	27	21	77.8	27	24	88.9
All Airlines	145	113	77.9	145	104	71.7
Relates to services to and from Brisbane only.						

Airport	Arrivals			Departures		
	Sectors Flown	On Time		Sectors Flown	On Time	
		No.	%		No.	%
<b>Gladstone</b>						
QantasLink	126	69	54.8	123	72	58.5
Virgin Australia	50	37	74.0	50	36	72.0
All Airlines	176	106	60.2	173	108	62.4
Relates to services to and from Brisbane only.						
<b>Gold Coast</b>						
Jetstar	526	346	65.8	524	342	65.3
Qantas	86	46	53.5	86	50	58.1
QantasLink	90	51	56.7	90	44	48.9
Rex Airlines	87	69	79.3	87	74	85.1
Virgin Australia	674	388	57.6	675	401	59.4
All Airlines	1 463	900	61.5	1 462	911	62.3
Relates to services to and from Adelaide, Melbourne and Sydney only.						
<b>Hamilton Island</b>						
Jetstar	18	16	88.9	18	8	44.4
Qantas	62	45	72.6	61	36	59.0
Virgin Australia	74	59	79.7	74	42	56.8
All Airlines	154	120	77.9	153	86	56.2
Relates to services to and from Brisbane and Sydney only.						
<b>Hobart</b>						
Jetstar	217	155	71.4	216	117	54.2
Qantas	13	11	84.6	13	8	61.5
QantasLink	209	83	39.7	206	112	54.4
Virgin Australia	251	178	70.9	250	158	63.2
All Airlines	690	427	61.9	685	395	57.7
Relates to services to and from Brisbane, Melbourne and Sydney only.						
<b>Kalgoorlie</b>						
Qantas	15	12	80.0	15	5	33.3
QantasLink	53	29	54.7	52	20	38.5
Virgin Australia	25	21	84.0	24	5	20.8
Virgin Australia Regional Airlines	36	26	72.2	36	21	58.3
All Airlines	129	88	68.2	127	51	40.2
Relates to services to and from Perth only.						
<b>Karratha</b>						
Qantas	21	16	76.2	20	11	55.0
QantasLink	117	69	59.0	112	56	50.0
Virgin Australia	23	19	82.6	23	15	65.2
Virgin Australia Regional Airlines	30	19	63.3	30	18	60.0
All Airlines	191	123	64.4	185	100	54.1
Relates to services to and from Perth only.						
<b>Launceston</b>						
Jetstar	104	54	51.9	105	38	36.2
QantasLink	109	37	33.9	106	35	33.0
Virgin Australia	118	71	60.2	117	78	66.7
All Airlines	331	162	48.9	328	151	46.0
Relates to services to and from Melbourne and Sydney only.						

Airport	Arrivals			Departures		
	Sectors Flown	On Time		Sectors Flown	On Time	
		No.	%		No.	%
<b>Mackay</b>						
Jetstar	31	11	35.5	30	10	33.3
Qantas	108	83	76.9	106	82	77.4
QantasLink	7	3	42.9	9	6	66.7
Virgin Australia	132	91	68.9	132	101	76.5
All Airlines	278	188	67.6	277	199	71.8

Relates to services to and from Brisbane only.

### Melbourne

Jetstar	1 250	741	59.3	1 256	693	55.2
Qantas	1 647	1 079	65.5	1 661	963	58.0
QantasLink	711	349	49.1	712	326	45.8
Rex Airlines	362	312	86.2	364	313	86.0
Virgin Australia	2 376	1 353	56.9	2 382	1 440	60.5
All Airlines	6 346	3 834	60.4	6 375	3 735	58.6

Relates to services to and from Adelaide, Brisbane, Cairns, Canberra, Darwin, Gold Coast, Hobart, Launceston, Mildura, Newcastle, Perth, Sunshine Coast and Sydney only.

### Mildura

QantasLink	108	35	32.4	107	40	37.4
Rex Airlines	97	66	68.0	96	74	77.1
All Airlines	205	101	49.3	203	114	56.2

Relates to services to and from Melbourne only.

### Mount Isa

Qantas	26	24	92.3	26	21	80.8
QantasLink	27	9	33.3	27	13	48.1
Virgin Australia	13	9	69.2	13	7	53.8
All Airlines	66	42	63.6	66	41	62.1

Relates to services to and from Brisbane only.

### Newcastle

Jetstar	122	72	59.0	122	66	54.1
QantasLink	171	84	49.1	174	103	59.2
Virgin Australia	115	74	64.3	113	76	67.3
All Airlines	408	230	56.4	409	245	59.9

Relates to services to and from Brisbane and Melbourne only.

### Newman

Qantas	38	31	81.6	38	25	65.8
QantasLink	72	57	79.2	70	46	65.7
Virgin Australia	20	18	90.0	20	15	75.0
Virgin Australia Regional Airlines	37	27	73.0	37	26	70.3
All Airlines	167	133	79.6	165	112	67.9

Relates to services to and from Perth only.

### Perth

Jetstar	137	84	61.3	135	31	23.0
Qantas	725	408	56.3	725	506	69.8
QantasLink	427	228	53.4	436	287	65.8
Virgin Australia	408	272	66.7	408	210	51.5
Virgin Australia Regional Airlines	246	152	61.8	247	181	73.3
All Airlines	1 943	1 144	58.9	1 951	1 215	62.3

Relates to services to and from Adelaide, Brisbane, Broome, Darwin, Kalgoorlie, Karratha, Melbourne, Newman, Port Hedland and Sydney only.

Airport	Arrivals			Departures		
	Sectors Flown	On Time		Sectors Flown	On Time	
		No.	%		No.	%
<b>Port Hedland</b>						
Qantas	32	23	71.9	32	18	56.3
QantasLink	88	62	70.5	90	53	58.9
Virgin Australia	15	12	80.0	15	9	60.0
Virgin Australia Regional Airlines	36	25	69.4	36	19	52.8
All Airlines	171	122	71.3	173	99	57.2
Relates to services to and from Perth only.						
<b>Port Lincoln</b>						
QantasLink	128	110	85.9	127	109	85.8
Rex Airlines	176	141	80.1	175	142	81.1
All Airlines	304	251	82.6	302	251	83.1
Relates to services to and from Adelaide only.						
<b>Port Macquarie</b>						
QantasLink	101	62	61.4	99	71	71.7
Rex Airlines	85	55	64.7	84	63	75.0
All Airlines	186	117	62.9	183	134	73.2
Relates to services to and from Sydney only.						
<b>Proserpine</b>						
Jetstar	31	14	45.2	31	12	38.7
QantasLink	20	9	45.0	20	7	35.0
Virgin Australia	39	22	56.4	39	17	43.6
All Airlines	90	45	50.0	90	36	40.0
Relates to services to and from Brisbane only.						
<b>Rockhampton</b>						
QantasLink	161	109	67.7	159	88	55.3
Virgin Australia	88	49	55.7	88	65	73.9
All Airlines	249	158	63.5	247	153	61.9
Relates to services to and from Brisbane only.						
<b>Sunshine Coast</b>						
Jetstar	156	105	67.3	158	90	57.0
Qantas	60	28	46.7	61	33	54.1
Virgin Australia	225	130	57.8	224	112	50.0
All Airlines	441	263	59.6	443	235	53.0
Relates to services to and from Melbourne and Sydney only.						
<b>Sydney</b>						
Jetstar	1 318	835	63.4	1 322	852	64.4
Qantas	2 009	1 228	61.1	2 002	1 143	57.1
QantasLink	1 269	794	62.6	1 287	740	57.5
Rex Airlines	882	635	72.0	892	652	73.1
Virgin Australia	2 501	1 663	66.5	2 501	1 668	66.7
All Airlines	7 979	5 155	64.6	8 004	5 055	63.2
Relates to services to and from Adelaide, Albury, Armidale, Ballina, Brisbane, Cairns, Canberra, Coffs Harbour, Darwin, Dubbo, Gold Coast, Hamilton Island, Hobart, Launceston, Melbourne, Perth, Port Macquarie, Sunshine Coast and Wagga Wagga only.						



<i>Airport</i>	<i>Arrivals</i>			<i>Departures</i>		
	<i>Sectors</i>	<i>On Time</i>		<i>Sectors</i>	<i>On Time</i>	
	<i>Flown</i>	<i>No.</i>	<i>%</i>	<i>Flown</i>	<i>No.</i>	<i>%</i>
<b>Townsville</b>						
Jetstar	58	46	79.3	58	38	65.5
Qantas	112	78	69.6	111	83	74.8
QantasLink	147	117	79.6	148	104	70.3
Rex Airlines	20	16	80.0	20	17	85.0
Virgin Australia	130	100	76.9	129	107	82.9
All Airlines	467	357	76.4	466	349	74.9

Relates to services to and from Brisbane and Cairns only.

### **Wagga Wagga**

QantasLink	85	53	62.4	84	59	70.2
Rex Airlines	91	64	70.3	91	75	82.4
All Airlines	176	117	66.5	175	134	76.6

Relates to services to and from Sydney only.

## Definitions

---

On time arrival	A flight arrival is counted as "on time" if it arrived at the gate before 15 minutes after the scheduled arrival time shown in the carriers' schedule. Neither diverted nor cancelled flights count as on time.
On time departure	A flight departure is counted as "on time" if it departs the gate before 15 minutes after the scheduled departure time shown in the carriers' schedule.
Cancellation	A flight removed from service within 7 days of scheduled departure is regarded as a cancellation.
On time departure percentage	The percentage of on time departures is measured against the number of departures <i>operated</i> on any particular sector.
On time arrival percentage	The percentage of on time arrivals is measured against the number of arrivals <i>operated</i> on any particular sector.
Cancellation percentage	The percentage of cancellations is measured against the number of services <i>scheduled</i> on any particular sector.

---