



Australian Government

Department of Infrastructure, Transport, Regional Development and Communications

Bureau of Infrastructure and Transport Research Economics

STATISTICAL REPORT



Aviation

Domestic airline on time performance 2020-21

© Commonwealth of Australia 2021

ISSN: 1832-0759

Ownership of intellectual property rights in this publication

Unless otherwise noted, copyright (and any other intellectual property rights, if any) in this publication is owned by the Commonwealth of Australia (referred to below as the Commonwealth).

Disclaimer

The material contained in this publication is made available on the understanding that the Commonwealth is not providing professional advice, and that users exercise their own skill and care with respect to its use, and seek independent advice if necessary.

The Commonwealth makes no representations or warranties as to the contents or accuracy of the information contained in this publication. To the extent permitted by law, the Commonwealth disclaims liability to any person or organisation in respect of anything done, or omitted to be done, in reliance upon information contained in this publication.

Creative Commons licence

With the exception of (a) the Coat of Arms; and (b) the Department of Infrastructure, Transport, Regional Development and Communications' photos and graphics, copyright in this publication is licensed under a Creative Commons Attribution 3.0 Australia Licence.

Creative Commons Attribution 3.0 Australia Licence is a standard form licence agreement that allows you to copy, communicate and adapt this publication provided that you attribute the work to the Commonwealth and abide by the other licence terms. A summary of the licence terms is available from <http://creativecommons.org/licenses/by/3.0/au/deed.en>. The full licence terms are available from <http://creativecommons.org/licenses/by/3.0/au/legalcode>.

Use of the Coat of Arms

The Department of the Prime Minister and Cabinet sets the terms under which the Coat of Arms is used. Please refer to the Department's Commonwealth Coat of Arms and Government branding web page <http://www.dpmc.gov.au/guidelines/index.cfm#brand> and, in particular, the Guidelines on the use of the Commonwealth Coat of Arms publication.

An appropriate citation for this report is:

Bureau of Infrastructure and Transport Research Economics (BITRE), 2021, Domestic airline on time performance, Statistical Report, BITRE, Canberra ACT.

Contact us

This publication is available in PDF format. All other rights are reserved, including in relation to any Departmental logos or trade marks which may exist. For enquiries regarding the licence and any use of this publication, please contact:

Bureau of Infrastructure and Transport Research Economics (BITRE)
Department of Infrastructure, Transport, Regional Development and Communications
GPO Box 501, Canberra ACT 2601, Australia
Telephone: (international) +61 2 6274 7210
Fax: (international) +61 2 6274 6855
Email: bitre@infrastructure.gov.au
Website: www.bitre.gov.au

Inquiries

Should you require additional information about the statistics contained in this publication:

Telephone (02) 6274 7790 or Facsimile (02) 6274 7727

Electronic mail: AVSTATS@infrastructure.gov.au

Web site: <http://www.bitre.gov.au/statistics/aviation/otphome.aspx>

Foreword

The Bureau of Infrastructure and Transport Research Economics (BITRE) monitors the punctuality and reliability of major domestic airlines operating between Australian airports. The purpose of this is to allow for evaluation of overall industry and individual airline performance, so that consumers of air travel can make informed decisions.

The following domestic airlines currently report this information monthly to the BITRE: Jetstar, Qantas, QantasLink, Regional Express, Virgin Australia and Virgin Australia Regional Airlines.

Data has been gathered since November 2003, although some airlines commenced reporting at a later date, including Jetstar which first reported in May 2004, MacAir in July 2005, Tigerair Australia in April 2008 and Virgin Australia Regional Airlines in May 2013. MacAir ceased operations in February 2009 and data was not received for December 2008 onwards. Tigerair Australia ceased operations in March 2020 and data was not received for that month.

Virgin Blue was rebranded as Virgin Australia in May 2011 and Tiger Airways was rebranded as Tigerair Australia in July 2013 and time series data in Microsoft Excel spreadsheet format on the BITRE website have been revised to reflect these changes.

Services operated by Skywest on behalf of Virgin Australia using ATR/F100 aircraft commenced in November 2011 and were shown separately as Virgin Australia – ATR/F100 Operations. Virgin Australia Regional Airlines commenced operations in May 2013. It was formed after the acquisition of Skywest by Virgin Australia and represented a combination of operations previously reported under Skywest and Virgin Australia – ATR/F100 Operations. In January 2016, Virgin Australia transferred their ATR fleet from Virgin Australia Regional Airlines to Virgin Australia.

Information presented in this report is for Australian domestic routes for which the passenger load averaged 8 000 or more passengers per month over the previous six months and where two or more airlines operated in competition on those routes. There were 39 routes that met these criteria for all twelve months in 2020-21. Over time, routes which meet these criteria change as airline networks and traffic levels vary.

Participating airlines report their overall monthly network performance where this is possible.

Total industry figures encompass all services operated by reporting airlines only. These airlines collectively carried over 95 per cent of total domestic passengers (regular public transport only) in 2019.

The method of capturing on time performance varies between airlines utilising different recording systems. Jetstar and Qantas jet aircraft use Aircraft Communication Addressing and Reporting System (ACARS) to electronically measure on time performance. Regional Express, Virgin Australia, Virgin Australia Regional Airlines and the Qantas non-jet fleet record on time performance manually using records from pilots, gate agents and/or ground crews.

After initial data is collected, aggregate reports are reviewed by participating airlines prior to publication.

Reports and detailed time series data in Microsoft Excel spreadsheet format are available from the BITRE website at: <http://www.bitre.gov.au/statistics/aviation/otphome.aspx>

Contents

	Page
Industry performance	1
Individual routes	8
Airports.....	21
Definitions	27

Industry performance

For the year ended June 2021, on time performance over all routes operated by participating airlines (Jetstar, Qantas, QantasLink, Regional Express, Virgin Australia and Virgin Australia Regional Airlines) averaged 86.1 per cent for on time arrivals and 85.6 per cent for on time departures. Cancellations represented 7.6 per cent of all scheduled flights. The equivalent figures for 2019-20 were 76.4 per cent for on time arrivals, 78.0 per cent for on time departures and 4.3 per cent for cancellations. COVID-19 related travel restrictions have severely impacted the number of flights operated and the cancellation rate since March 2020.

The 2020-21 on time arrivals figure was above the long term average performance for all routes of 82.3 per cent and the on time departures figure was also above the long term average of 83.6 per cent. The rate of cancellations was higher than the long term average of 1.9 per cent.

The Virgin Australia network (Virgin Australia and Virgin Australia Regional Airlines combined operations) recorded 86.8 per cent for on time arrivals while the Qantas network (Qantas and QantasLink combined operations) recorded 85.5 per cent. Virgin Australia achieved the highest on time arrivals among the major domestic airlines at 87.2 per cent, followed by Qantas at 85.6 per cent and Jetstar at 85.2 per cent. Regional Express was the best performing regional airline for on time arrivals at 88.5 per cent, followed by QantasLink at 85.4 per cent and Virgin Australia Regional Airlines at 77.2 per cent.

The Qantas network recorded 86.2 per cent for on time departures and the Virgin Australia network recorded 83.9 per cent. Qantas achieved the highest level of on time departures among the major domestic airlines for 2020-21 at 87.2 per cent, followed by Virgin Australia at 84.2 per cent and Jetstar at 82.7 per cent. The regional airlines were led by Regional Express at 89.5 per cent, followed by QantasLink at 85.5 per cent and Virgin Australia Regional Airlines at 78.1 per cent.

Jetstar had the highest percentage of cancellations at 12.0 per cent during 2020-21, followed by Qantas at 10.0 per cent, Virgin Australia at 9.1 per cent, QantasLink at 4.5 per cent, Virgin Australia Regional Airlines at 3.2 per cent and Regional Express at 2.6 per cent.

Airlines' on time performance varies across the routes they serve. Individual route data by specific airline for 59 routes are shown on pages 8-20.

Of the 39 routes which met the criteria for on time performance reporting for all 12 months in 2020-21, the Mount Isa-Brisbane route had the highest percentage of on time arrivals at 91.7 per cent and the Brisbane-Mount Isa route had the highest percentage of on time departures at 93.8 per cent. The Darwin-Brisbane route had the lowest percentage of on time arrivals at 65.0 per cent and the lowest percentage of on time departures at 60.8 per cent.

Of the 39 routes which met the criteria for on time performance reporting for all 12 months in 2020-21, cancellations were highest on the Melbourne-Sydney route at 25.1 per cent, followed by the Sydney-Melbourne route at 25.0 per cent, the Brisbane-Melbourne route at 21.2 per cent, the Melbourne-Brisbane route at 20.9 per cent and the Perth-Melbourne route at 19.8 per cent.

Of the 32 airports with on time performance reporting for all 12 months in 2020-21, Gladstone Airport recorded the highest percentage of on time arrivals at 91.1 per cent and Wagga Wagga Airport recorded the highest percentage of on time departures at 90.6 per cent. Darwin Airport recorded the lowest percentage of on time arrivals at 79.5 per cent and the lowest percentage of on time departures at 64.5 per cent. These figures only refer to reported routes and do not cover all flights at these airports.

Table 1 On time performance for the year ended June 2021 — Total Industry

	<i>Sectors</i>		<i>Arrivals On Time</i>		<i>Departures On Time</i>		<i>Cancellations</i>	
	<i>Scheduled</i>	<i>Flown</i>	<i>No.</i>	<i>%</i>	<i>No.</i>	<i>%</i>	<i>No.</i>	<i>%</i>
Jetstar	49 173	43 273	36 873	85.2	35 806	82.7	5 900	12.0
Qantas - all QF designated services	126 873	118 333	101 155	85.5	101 965	86.2	8 540	6.7
Regional Express	36 395	35 436	31 366	88.5	31 729	89.5	959	2.6
Virgin Australia - all VA designated services	55 786	50 832	44 104	86.8	42 672	83.9	4 954	8.9
All Airlines	268 227	247 874	213 498	86.1	212 172	85.6	20 353	7.6
Individual operating entities								
Qantas	51 573	46 427	39 756	85.6	40 467	87.2	5 146	10.0
QantasLink	75 300	71 906	61 399	85.4	61 498	85.5	3 394	4.5
Virgin Australia	53 247	48 375	42 206	87.2	40 753	84.2	4 872	9.1
Virgin Australia Regional Airlines	2 539	2 457	1 898	77.2	1 919	78.1	82	3.2

Total airline network data (including routes not shown in this report).

Airlines' on time performance varies across the routes they serve. Individual route data by specific airline for 59 routes are shown on pages 8-20.

Table 2 Top ten routes for on time performance for the year ended June 2021 (routes for participating airlines only and with published data for the 12 month period)

<i>Arrivals</i>		<i>Departures</i>	
<i>Route</i>	<i>On Time (%)</i>	<i>Route</i>	<i>On Time (%)</i>
Mount Isa-Brisbane	91.7	Brisbane-Mount Isa	93.8
Brisbane-Canberra	91.2	Brisbane-Gladstone	93.0
Brisbane-Gladstone	91.1	Perth-Newman	91.6
Perth-Newman	90.9	Perth-Port Hedland	91.0
Brisbane-Mount Isa	90.9	Wagga Wagga-Sydney	90.6
Wagga Wagga-Sydney	90.8	Sydney-Ballina	90.2
Mackay-Brisbane	90.7	Cairns-Townsville	89.7
Sydney-Wagga Wagga	90.6	Gladstone-Brisbane	89.6
Townsville-Cairns	90.5	Perth-Kalgoorlie	89.3
Brisbane-Sydney	90.3	Coffs Harbour-Sydney	89.2

Table 3 Top ten airports for on time performance for the year ended June 2021 (airports for participating airlines and reported routes only and with published data for the 12 month period)

<i>Arrivals</i>		<i>Departures</i>	
<i>Airport</i>	<i>On Time (%)</i>	<i>Airport</i>	<i>On Time (%)</i>
Gladstone	91.1	Wagga Wagga	90.6
Newman	90.9	Gladstone	89.6
Mount Isa	90.9	Coffs Harbour	89.2
Wagga Wagga	90.6	Mackay	88.9
Albury	90.2	Mount Isa	88.6
Coffs Harbour	90.1	Albury	87.8
Dubbo	89.7	Dubbo	87.5
Kalgoorlie	88.1	Newcastle	87.4
Mackay	87.4	Townsville	87.0
Sydney	87.2	Brisbane	87.0

Total industry on time performance

Figure 1 On time performance (by month from June 2016)—Total Industry

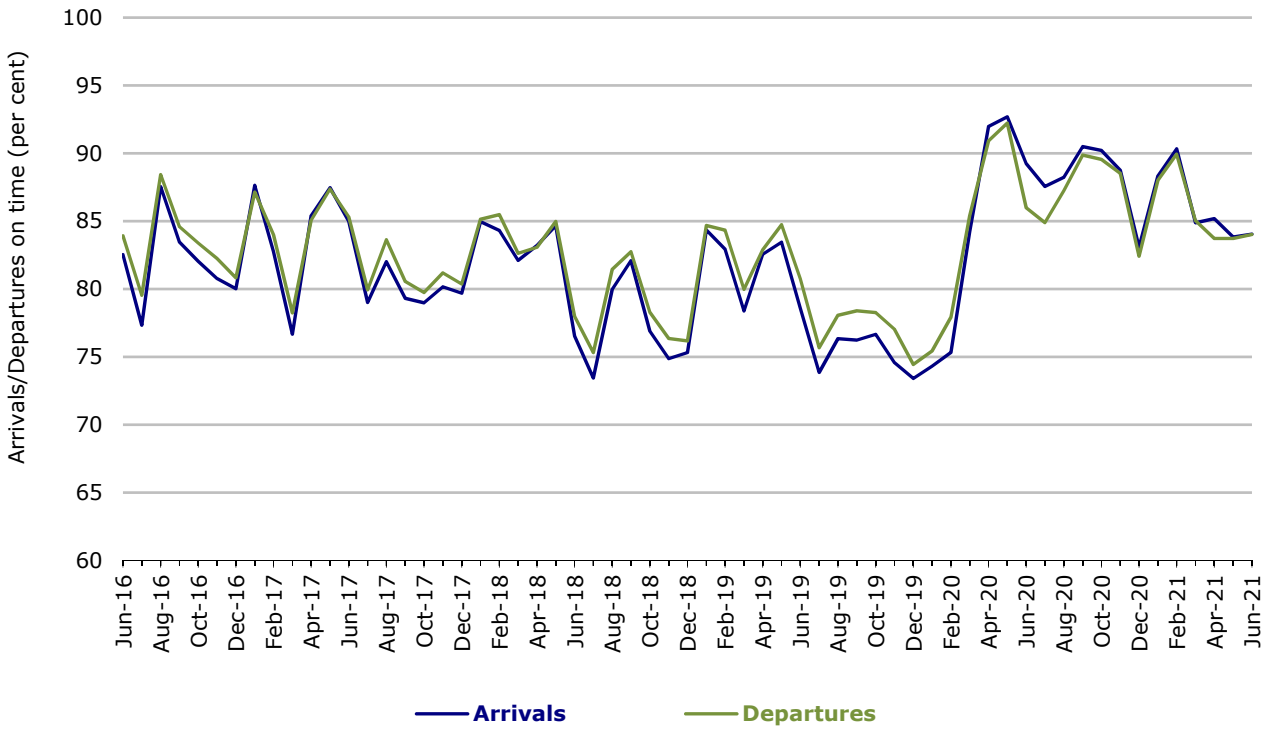
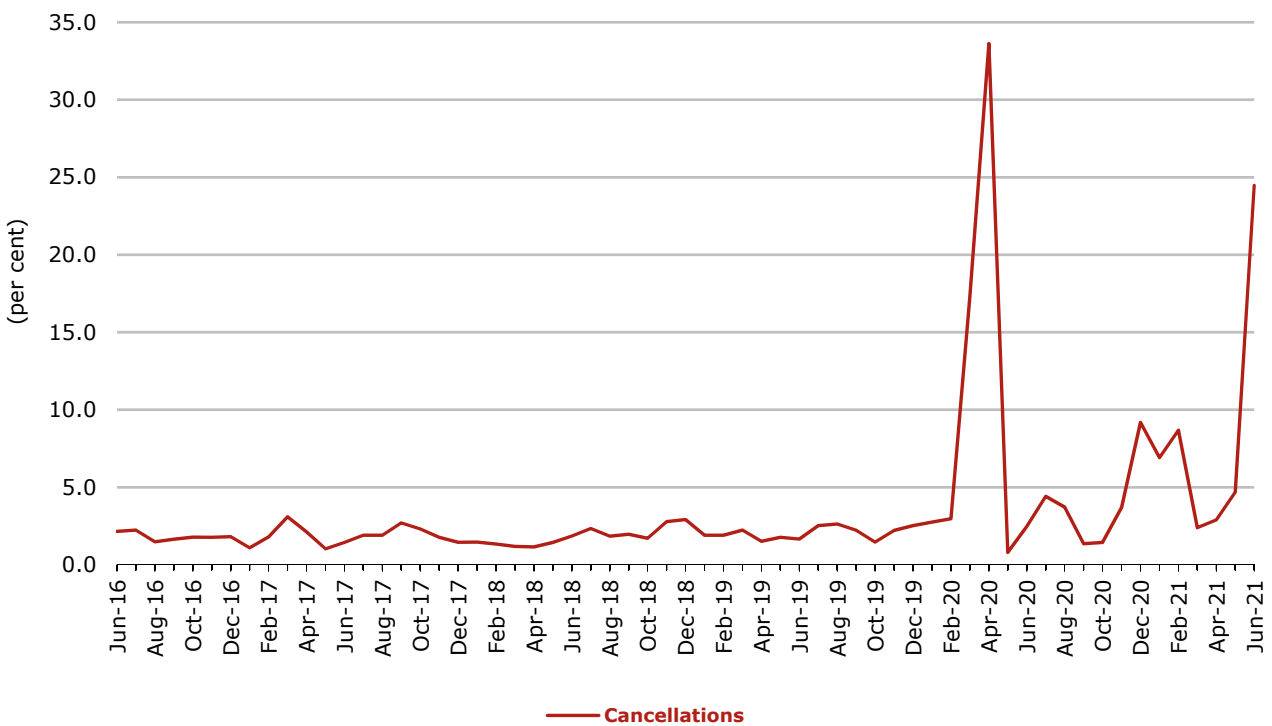


Figure 2 Cancellations (by month from June 2016)—Total Industry



Major domestic airlines on time performance

Figure 3 On time performance (by month from June 2016)—Jetstar

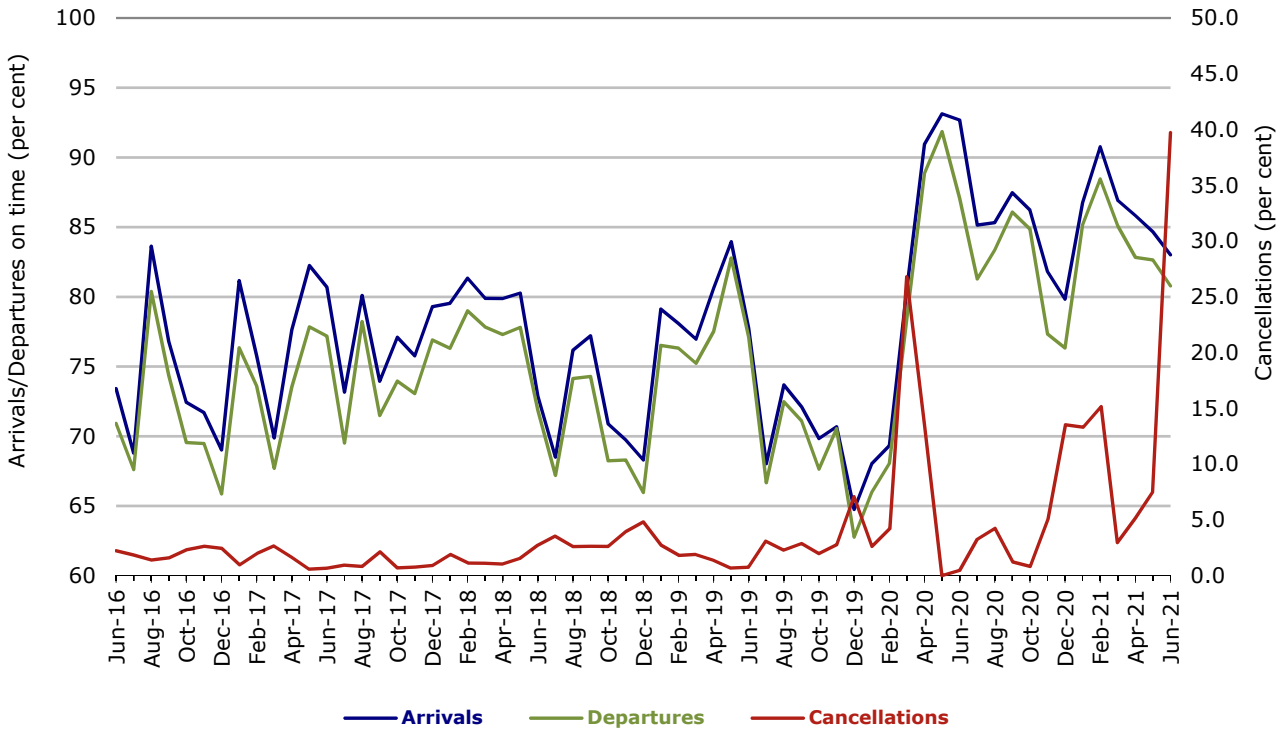


Figure 4 On time performance (by month from June 2016)—Qantas

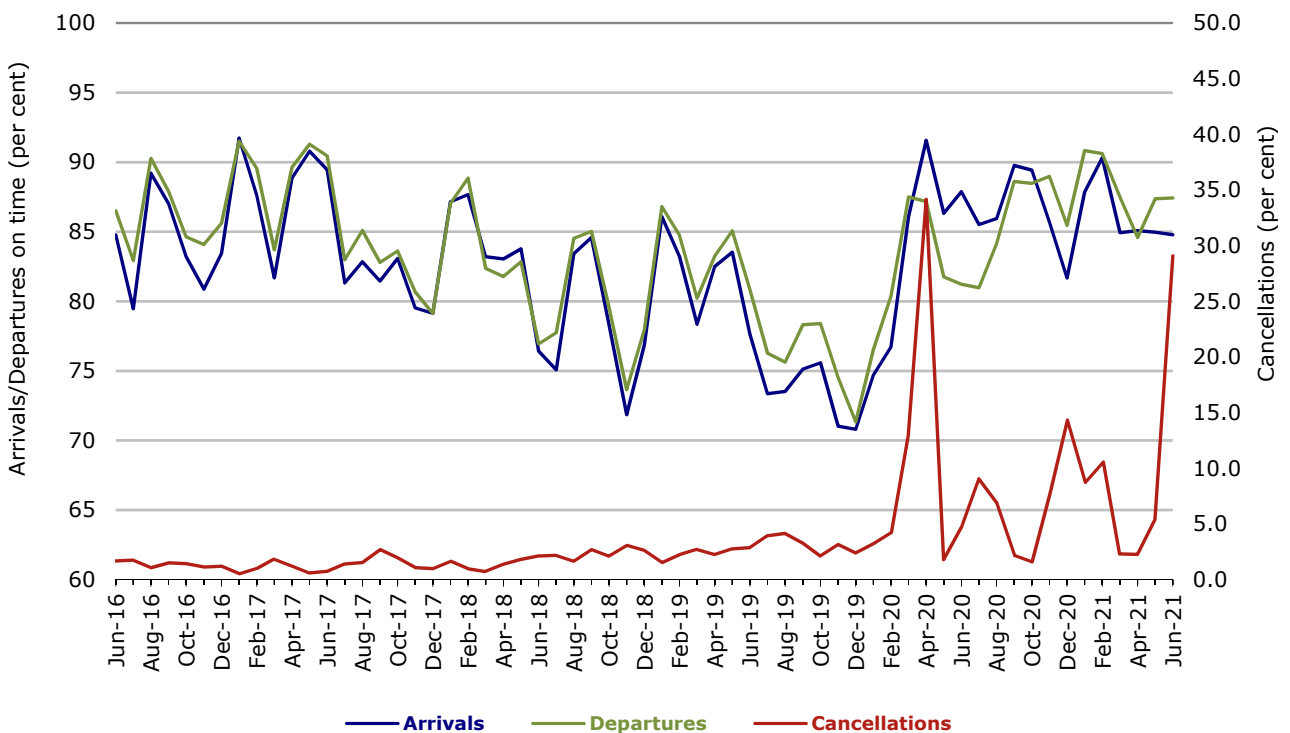
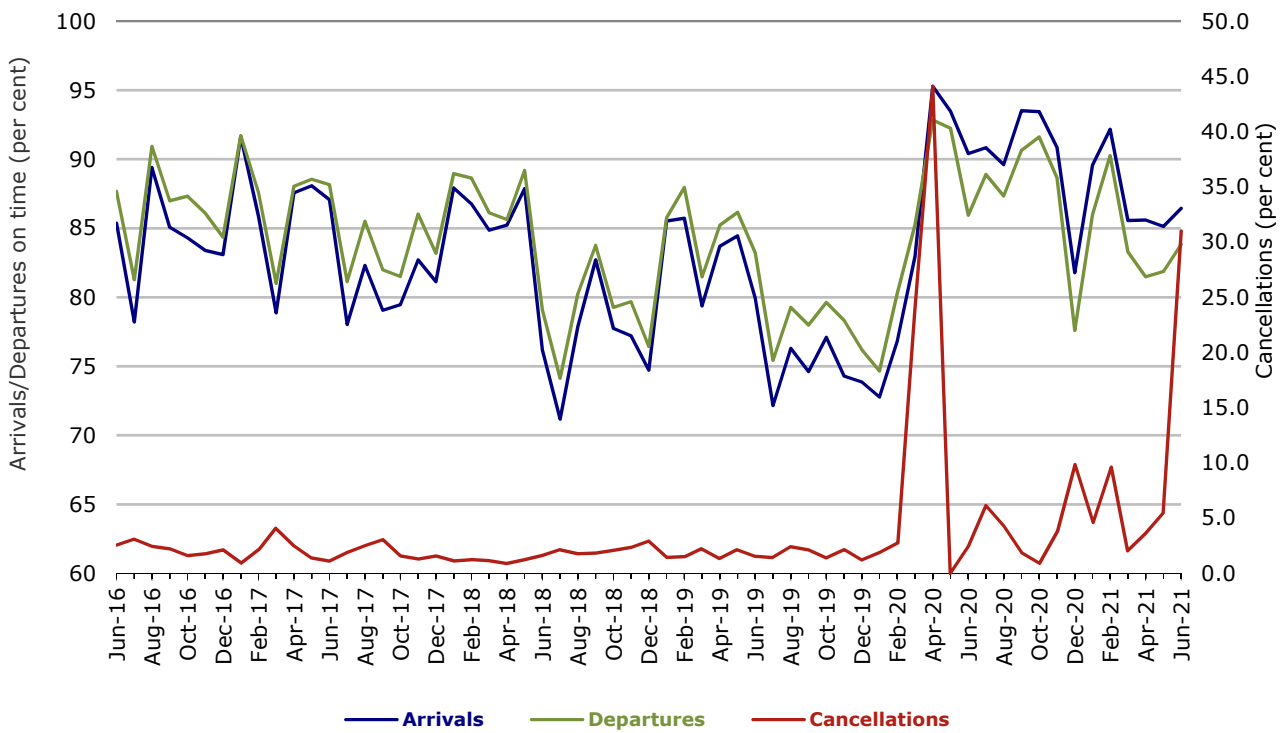


Figure 5 On time performance (by month from June 2016)—Virgin Australia



Major regional airlines on time performance

Figure 6 On time performance (by month from June 2016)—QantasLink

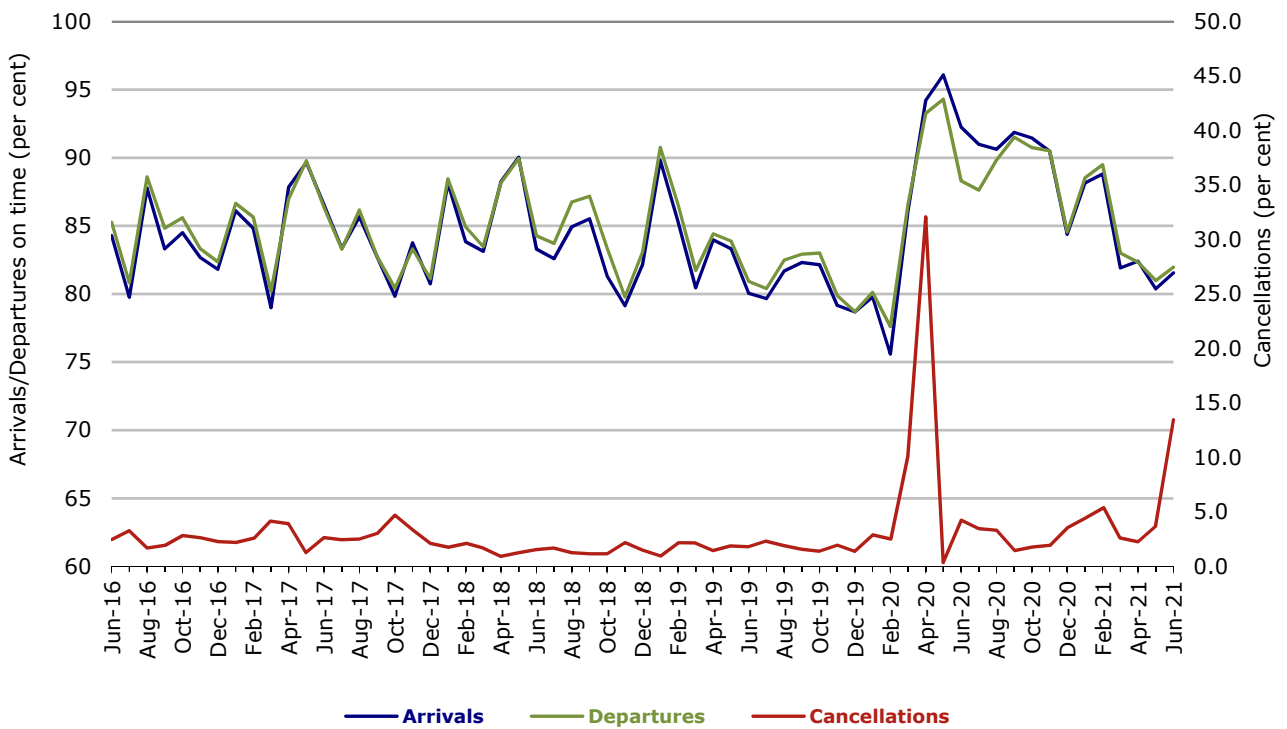


Figure 7 On time performance (by month from June 2016)—Regional Express

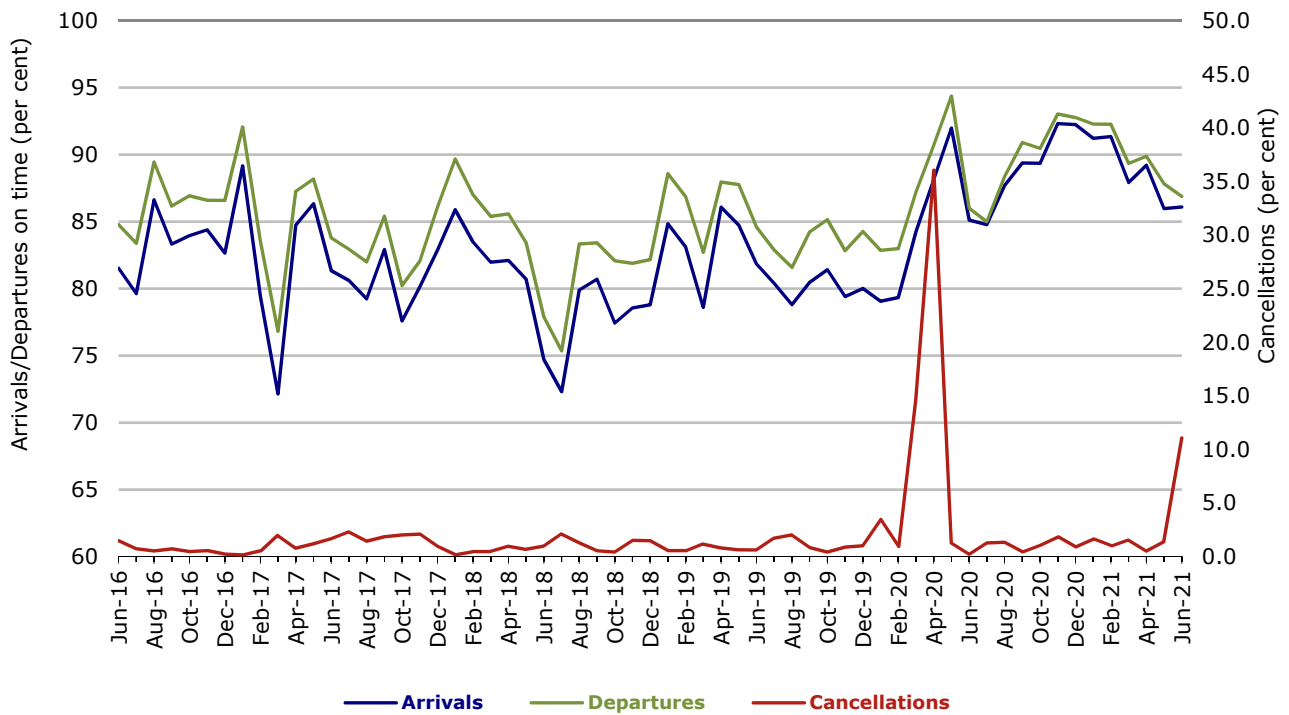
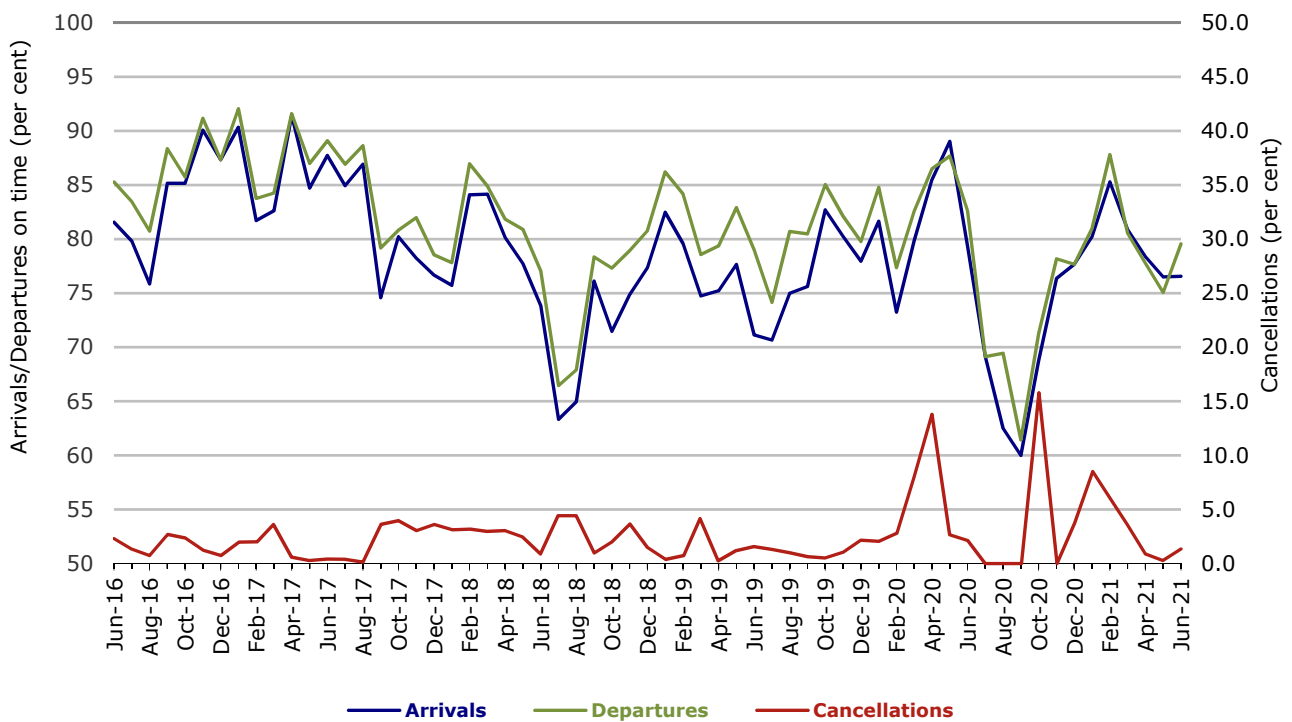


Figure 8 On time performance (by month from June 2016)
Virgin Australia Regional Airlines



Individual routes

On time performance is reported for all routes where the passenger load averages over 8000 passengers per month over the previous six months, and where two or more airlines operate in competition on those routes. There are now 58 routes which meet this definition. Over time, however, routes which meet this definition may change as airline networks and traffic levels vary.

	Sectors		Arrivals On Time		Departures On Time		Cancellations	
	Sched.	Flown	No.	%	No.	%	No.	%
Adelaide-Alice Springs								
Qantas	308	304	253	83.2	264	86.8	4	1.3
QantasLink	64	64	35	54.7	40	62.5	0	0.0
Virgin Australia	153	153	128	83.7	130	85.0	0	0.0
All Airlines	525	521	416	79.8	434	83.3	4	0.8
Adelaide-Brisbane								
Jetstar	301	293	251	85.7	246	84.0	8	2.7
Qantas	918	876	784	89.5	764	87.2	42	4.6
Virgin Australia	822	765	684	89.4	631	82.5	57	6.9
All Airlines	2 041	1 934	1 719	88.9	1 641	84.9	107	5.2
Adelaide-Canberra								
			(From October 2020)					
Qantas	299	290	252	86.9	250	86.2	9	3.0
QantasLink	43	38	30	78.9	29	76.3	5	11.6
Virgin Australia	161	156	143	91.7	140	89.7	5	3.1
All Airlines	503	484	425	87.8	419	86.6	19	3.8
Adelaide-Gold Coast								
			(From August 2020)					
Jetstar	261	255	222	87.1	223	87.5	6	2.3
QantasLink	6	6	6	100.0	6	100.0	0	0.0
Virgin Australia	257	249	235	94.4	235	94.4	8	3.1
All Airlines	524	510	463	90.8	464	91.0	14	2.7
Adelaide-Melbourne								
Jetstar	794	642	573	89.3	555	86.4	152	19.1
Qantas	1 059	857	787	91.8	767	89.5	202	19.1
Regional Express	180	143	122	85.3	124	86.7	37	20.6
Virgin Australia	976	783	695	88.8	656	83.8	193	19.8
All Airlines	3 009	2 425	2 177	89.8	2 102	86.7	584	19.4
Adelaide-Perth								
Jetstar	150	141	130	92.2	129	91.5	9	6.0
Qantas	583	557	486	87.3	469	84.2	26	4.5
Virgin Australia	314	308	269	87.3	266	86.4	6	1.9
Virgin Australia Regional Airlines	12	12	12	100.0	10	83.3	0	0.0
All Airlines	1 059	1 018	897	88.1	874	85.9	41	3.9
Adelaide-Port Lincoln								
QantasLink	865	843	745	88.4	738	87.5	22	2.5
Regional Express	1 333	1 325	1 142	86.2	1 173	88.5	8	0.6
All Airlines	2 198	2 168	1 887	87.0	1 911	88.1	30	1.4
Adelaide-Sydney								
Jetstar	845	743	663	89.2	645	86.8	102	12.1
Qantas	1 211	1 108	946	85.4	989	89.3	103	8.5
Virgin Australia	743	675	591	87.6	585	86.7	68	9.2
All Airlines	2 799	2 526	2 200	87.1	2 219	87.8	273	9.8

	<i>Sectors</i>		<i>Arrivals On Time</i>		<i>Departures On Time</i>		<i>Cancellations</i>	
	<i>Sched.</i>	<i>Flown</i>	<i>No.</i>	<i>%</i>	<i>No.</i>	<i>%</i>	<i>No.</i>	<i>%</i>
Albury-Sydney								
QantasLink	730	713	623	87.4	602	84.4	17	2.3
Regional Express	406	399	369	92.5	374	93.7	7	1.7
All Airlines	1 136	1 112	992	89.2	976	87.8	24	2.1
Alice Springs-Adelaide								
Qantas	305	302	214	70.9	200	66.2	3	1.0
QantasLink	64	63	33	52.4	28	44.4	1	1.6
Virgin Australia	153	153	141	92.2	132	86.3	0	0.0
All Airlines	522	518	388	74.9	360	69.5	4	0.8
Armidale-Sydney								
QantasLink	531	508	429	84.4	420	82.7	23	4.3
Regional Express	225	223	180	80.7	181	81.2	2	0.9
All Airlines	756	731	609	83.3	601	82.2	25	3.3
Ballina-Sydney								
Jetstar	969	954	824	86.4	798	83.6	15	1.5
Qantas	171	166	146	88.0	145	87.3	5	2.9
QantasLink	802	770	597	77.5	613	79.6	32	4.0
Regional Express	107	106	95	89.6	94	88.7	1	0.9
Virgin Australia	438	427	380	89.0	357	83.6	11	2.5
All Airlines	2 487	2 423	2 042	84.3	2 007	82.8	64	2.6
Brisbane-Adelaide								
Jetstar	301	293	236	80.5	213	72.7	8	2.7
Qantas	918	876	780	89.0	794	90.6	42	4.6
Virgin Australia	823	766	706	92.2	657	85.8	57	6.9
All Airlines	2 042	1 935	1 722	89.0	1 664	86.0	107	5.2
Brisbane-Bundaberg								
			(To September 2020)					
QantasLink	40	40	40	100.0	37	92.5	0	0.0
Virgin Australia	64	64	58	90.6	60	93.8	0	0.0
All Airlines	104	104	98	94.2	97	93.3	0	0.0
Brisbane-Cairns								
Jetstar	1 125	1 101	889	80.7	898	81.6	24	2.1
Qantas	1 027	1 022	889	87.0	932	91.2	5	0.5
QantasLink	495	494	441	89.3	453	91.7	1	0.2
Virgin Australia	1 063	1 045	833	79.7	829	79.3	18	1.7
All Airlines	3 710	3 662	3 052	83.3	3 112	85.0	48	1.3
Brisbane-Canberra								
Qantas	296	292	282	96.6	275	94.2	4	1.4
QantasLink	1 102	1 070	974	91.0	948	88.6	32	2.9
Virgin Australia	606	586	520	88.7	484	82.6	20	3.3
All Airlines	2 004	1 948	1 776	91.2	1 707	87.6	56	2.8
Brisbane-Darwin								
Jetstar	228	227	160	70.5	177	78.0	1	0.4
Qantas	365	358	268	74.9	324	90.5	7	1.9
Virgin Australia	305	305	264	86.6	261	85.6	0	0.0
All Airlines	898	890	692	77.8	762	85.6	8	0.9
Brisbane-Emerald								
			(From November 2020)					
QantasLink	935	914	857	93.8	851	93.1	21	2.2
Virgin Australia	167	166	156	94.0	155	93.4	1	0.6
All Airlines	1 102	1 080	1 013	93.8	1 006	93.1	22	2.0

	<i>Sectors</i>		<i>Arrivals On Time</i>		<i>Departures On Time</i>		<i>Cancellations</i>	
	<i>Sched.</i>	<i>Flown</i>	<i>No.</i>	<i>%</i>	<i>No.</i>	<i>%</i>	<i>No.</i>	<i>%</i>
Brisbane-Gladstone								
QantasLink	1 034	1 014	933	92.0	941	92.8	20	1.9
Virgin Australia	530	523	467	89.3	488	93.3	7	1.3
All Airlines	1 564	1 537	1 400	91.1	1 429	93.0	27	1.7
Brisbane-Hamilton Island								
			(From August 2020)					
Qantas	328	326	280	85.9	309	94.8	2	0.6
QantasLink	134	133	126	94.7	125	94.0	1	0.7
Virgin Australia	390	385	347	90.1	346	89.9	5	1.3
All Airlines	852	844	753	89.2	780	92.4	8	0.9
Brisbane-Hobart								
			(From August 2020)					
Jetstar	274	274	247	90.1	241	88.0	0	0.0
Qantas	4	4	4	100.0	4	100.0	0	0.0
QantasLink	159	154	132	85.7	130	84.4	5	3.1
Virgin Australia	285	278	248	89.2	221	79.5	7	2.5
All Airlines	722	710	631	88.9	596	83.9	12	1.7
Brisbane-Mackay								
Jetstar	333	330	282	85.5	276	83.6	3	0.9
Qantas	864	849	746	87.9	783	92.2	15	1.7
QantasLink	341	337	308	91.4	309	91.7	4	1.2
Virgin Australia	830	823	709	86.1	683	83.0	7	0.8
All Airlines	2 368	2 339	2 045	87.4	2 051	87.7	29	1.2
Brisbane-Melbourne								
Jetstar	1 129	822	699	85.0	630	76.6	307	27.2
Qantas	1 749	1 441	1 275	88.5	1 299	90.1	308	17.6
Virgin Australia	1 370	1 085	878	80.9	797	73.5	285	20.8
All Airlines	4 248	3 348	2 852	85.2	2 726	81.4	900	21.2
Brisbane-Mount Isa								
Qantas	367	367	340	92.6	351	95.6	0	0.0
QantasLink	204	196	176	89.8	178	90.8	8	3.9
Virgin Australia	153	151	133	88.1	141	93.4	2	1.3
All Airlines	724	714	649	90.9	670	93.8	10	1.4
Brisbane-Newcastle								
Jetstar	547	507	434	85.6	434	85.6	40	7.3
QantasLink	574	547	481	87.9	484	88.5	27	4.7
Virgin Australia	398	378	343	90.7	334	88.4	20	5.0
All Airlines	1 519	1 432	1 258	87.8	1 252	87.4	87	5.7
Brisbane-Perth								
Qantas	733	699	541	77.4	604	86.4	34	4.6
Virgin Australia	473	449	373	83.1	323	71.9	24	5.1
All Airlines	1 206	1 148	914	79.6	927	80.7	58	4.8
Brisbane-Proserpine								
Jetstar	406	405	331	81.7	353	87.2	1	0.2
Virgin Australia	338	336	296	88.1	302	89.9	2	0.6
All Airlines	744	741	627	84.6	655	88.4	3	0.4
Brisbane-Rockhampton								
QantasLink	1 574	1 547	1 399	90.4	1 424	92.0	27	1.7
Virgin Australia	800	788	627	79.6	649	82.4	12	1.5
All Airlines	2 374	2 335	2 026	86.8	2 073	88.8	39	1.6

	Sectors		Arrivals On Time		Departures On Time		Cancellations	
	Sched.	Flown	No.	%	No.	%	No.	%
Brisbane-Sydney								
Jetstar	1 147	973	853	87.7	787	80.9	174	15.2
Qantas	2 958	2 680	2 455	91.6	2 428	90.6	278	9.4
QantasLink	2	1	1	100.0	1	100.0	1	50.0
Virgin Australia	1 926	1 735	1 556	89.7	1 480	85.3	191	9.9
All Airlines	6 033	5 389	4 865	90.3	4 696	87.1	644	10.7
Brisbane-Townsville								
Jetstar	657	656	562	85.7	570	86.9	1	0.2
Qantas	1 004	986	855	86.7	902	91.5	18	1.8
QantasLink	133	128	110	85.9	121	94.5	5	3.8
Virgin Australia	837	824	705	85.6	686	83.3	13	1.6
All Airlines	2 631	2 594	2 232	86.0	2 279	87.9	37	1.4
Broome-Perth								
Qantas	215	210	179	85.2	173	82.4	5	2.3
QantasLink	926	901	717	79.6	708	78.6	25	2.7
Virgin Australia	368	366	331	90.4	290	79.2	2	0.5
Virgin Australia Regional Airlines	40	40	26	65.0	18	45.0	0	0.0
All Airlines	1 549	1 517	1 253	82.6	1 189	78.4	32	2.1
Bundaberg-Brisbane								
			(To September 2020)					
QantasLink	40	40	39	97.5	39	97.5	0	0.0
Virgin Australia	23	23	19	82.6	20	87.0	0	0.0
All Airlines	63	63	58	92.1	59	93.7	0	0.0
Cairns-Brisbane								
Jetstar	1 129	1 103	904	82.0	879	79.7	26	2.3
Qantas	1 027	1 021	844	82.7	870	85.2	6	0.6
QantasLink	495	490	416	84.9	443	90.4	5	1.0
Virgin Australia	1 062	1 043	947	90.8	885	84.9	19	1.8
All Airlines	3 713	3 657	3 111	85.1	3 077	84.1	56	1.5
Cairns-Melbourne								
			(From December 2020)					
Jetstar	612	514	433	84.2	415	80.7	98	16.0
Qantas	219	200	170	85.0	175	87.5	19	8.7
Virgin Australia	222	200	180	90.0	175	87.5	22	9.9
All Airlines	1 053	914	783	85.7	765	83.7	139	13.2
Cairns-Sydney								
			(Does not cover September and October 2020)					
Jetstar	486	435	376	86.4	353	81.1	51	10.5
Qantas	360	330	286	86.7	292	88.5	30	8.3
Virgin Australia	270	250	237	94.8	231	92.4	20	7.4
All Airlines	1 116	1 015	899	88.6	876	86.3	101	9.1
Cairns-Townsville								
QantasLink	1 001	998	895	89.7	892	89.4	3	0.3
Regional Express	143	142	130	91.5	131	92.3	1	0.7
All Airlines	1 144	1 140	1 025	89.9	1 023	89.7	4	0.3
Canberra-Adelaide								
			(From October 2020)					
Qantas	300	291	249	85.6	243	83.5	9	3.0
QantasLink	43	38	30	78.9	27	71.1	5	11.6
Virgin Australia	160	156	128	82.1	127	81.4	4	2.5
All Airlines	503	485	407	83.9	397	81.9	18	3.6
Canberra-Brisbane								
Qantas	295	291	274	94.2	273	93.8	4	1.4
QantasLink	1 097	1 062	925	87.1	924	87.0	35	3.2
Virgin Australia	607	585	487	83.2	460	78.6	22	3.6
All Airlines	1 999	1 938	1 686	87.0	1 657	85.5	61	3.1

	<i>Sectors</i>		<i>Arrivals On Time</i>		<i>Departures On Time</i>		<i>Cancellations</i>	
	<i>Sched.</i>	<i>Flown</i>	<i>No.</i>	<i>%</i>	<i>No.</i>	<i>%</i>	<i>No.</i>	<i>%</i>
Canberra-Melbourne								
Qantas	115	87	79	90.8	80	92.0	28	24.3
QantasLink	1 202	1 030	839	81.5	850	82.5	172	14.3
Virgin Australia	489	431	378	87.7	368	85.4	58	11.9
All Airlines	1 806	1 548	1 296	83.7	1 298	83.9	258	14.3
Canberra-Sydney								
			(From April 2021)					
Qantas	36	30	30	100.0	30	100.0	6	16.7
QantasLink	802	695	564	81.2	568	81.7	107	13.3
Regional Express	443	414	327	79.0	343	82.9	29	6.5
All Airlines	1 281	1 139	921	80.9	941	82.6	142	11.1
Coffs Harbour-Sydney								
QantasLink	949	928	837	90.2	825	88.9	21	2.2
Regional Express	253	253	220	87.0	231	91.3	0	0.0
Virgin Australia	119	119	110	92.4	103	86.6	0	0.0
All Airlines	1 321	1 300	1 167	89.8	1 159	89.2	21	1.6
Darwin-Brisbane								
Jetstar	228	227	105	46.3	110	48.5	1	0.4
Qantas	358	350	219	62.6	220	62.9	8	2.2
Virgin Australia	305	305	249	81.6	206	67.5	0	0.0
All Airlines	891	882	573	65.0	536	60.8	9	1.0
Darwin-Melbourne								
			(From June 2021)					
Jetstar	24	15	9	60.0	8	53.3	9	37.5
Qantas	56	42	31	73.8	27	64.3	14	25.0
Virgin Australia	17	10	9	90.0	6	60.0	7	41.2
All Airlines	97	67	49	73.1	41	61.2	30	30.9
Darwin-Perth								
Qantas	230	227	161	70.9	173	76.2	3	1.3
Virgin Australia	121	120	96	80.0	90	75.0	1	0.8
Virgin Australia Regional Airlines	21	21	8	38.1	9	42.9	0	0.0
All Airlines	372	368	265	72.0	272	73.9	4	1.1
Dubbo-Sydney								
QantasLink	712	692	623	90.0	609	88.0	20	2.8
Regional Express	655	647	560	86.6	562	86.9	8	1.2
All Airlines	1 367	1 339	1 183	88.3	1 171	87.5	28	2.0
Emerald-Brisbane								
			(From November 2020)					
QantasLink	935	911	858	94.2	853	93.6	24	2.6
Virgin Australia	167	166	154	92.8	154	92.8	1	0.6
All Airlines	1 102	1 077	1 012	94.0	1 007	93.5	25	2.3
Gladstone-Brisbane								
QantasLink	1 031	1 009	916	90.8	898	89.0	22	2.1
Virgin Australia	571	564	489	86.7	511	90.6	7	1.2
All Airlines	1 602	1 573	1 405	89.3	1 409	89.6	29	1.8
Gold Coast-Adelaide								
			(From August 2020)					
Jetstar	260	254	223	87.8	215	84.6	6	2.3
QantasLink	6	6	6	100.0	6	100.0	0	0.0
Virgin Australia	256	249	227	91.2	225	90.4	7	2.7
All Airlines	522	509	456	89.6	446	87.6	13	2.5

	<i>Sectors</i>		<i>Arrivals</i>		<i>Departures</i>		<i>Cancellations</i>	
	<i>Sched.</i>	<i>Flown</i>	<i>On Time</i>		<i>On Time</i>		<i>No.</i>	<i>%</i>
			<i>No.</i>	<i>%</i>	<i>No.</i>	<i>%</i>		
Gold Coast-Melbourne			(From November 2020)					
Jetstar	1 211	1 034	917	88.7	874	84.5	177	14.6
Qantas	364	341	302	88.6	300	88.0	23	6.3
QantasLink	7	7	2	28.6	2	28.6	0	0.0
Regional Express	183	156	93	59.6	106	67.9	27	14.8
Virgin Australia	1 148	936	815	87.1	726	77.6	212	18.5
All Airlines	2 913	2 474	2 129	86.1	2 008	81.2	439	15.1
Gold Coast-Sydney			(Does not cover September and October 2020)					
Jetstar	1 365	1 197	1 072	89.6	1 047	87.5	168	12.3
Qantas	516	488	435	89.1	425	87.1	28	5.4
Regional Express	183	172	156	90.7	154	89.5	11	6.0
Virgin Australia	1 218	1 119	957	85.5	882	78.8	99	8.1
All Airlines	3 282	2 976	2 620	88.0	2 508	84.3	306	9.3
Hamilton Island-Brisbane			(From August 2020)					
Qantas	329	326	285	87.4	289	88.7	3	0.9
QantasLink	133	132	117	88.6	123	93.2	1	0.8
Virgin Australia	390	385	342	88.8	327	84.9	5	1.3
All Airlines	852	843	744	88.3	739	87.7	9	1.1
Hamilton Island-Sydney			(From December 2020)					
Jetstar	100	86	69	80.2	67	77.9	14	14.0
Qantas	174	159	131	82.4	132	83.0	15	8.6
Virgin Australia	171	167	148	88.6	145	86.8	4	2.3
All Airlines	445	412	348	84.5	344	83.5	33	7.4
Hobart-Brisbane			(From August 2020)					
Jetstar	274	274	225	82.1	231	84.3	0	0.0
Qantas	4	4	2	50.0	2	50.0	0	0.0
QantasLink	159	154	121	78.6	125	81.2	5	3.1
Virgin Australia	285	278	221	79.5	220	79.1	7	2.5
All Airlines	722	710	569	80.1	578	81.4	12	1.7
Hobart-Melbourne			(Does not cover August to October 2020)					
Jetstar	1 076	934	801	85.8	777	83.2	142	13.2
Qantas	62	57	52	91.2	52	91.2	5	8.1
QantasLink	567	500	381	76.2	391	78.2	67	11.8
Virgin Australia	503	436	374	85.8	382	87.6	67	13.3
All Airlines	2 208	1 927	1 608	83.4	1 602	83.1	281	12.7
Hobart-Sydney								
Jetstar	581	526	453	86.1	459	87.3	55	9.5
Qantas	114	112	94	83.9	92	82.1	2	1.8
QantasLink	316	293	243	82.9	247	84.3	23	7.3
Virgin Australia	357	336	300	89.3	301	89.6	21	5.9
All Airlines	1 368	1 267	1 090	86.0	1 099	86.7	101	7.4
Kalgoorlie-Perth								
Qantas	145	140	128	91.4	122	87.1	5	3.4
QantasLink	673	648	564	87.0	545	84.1	25	3.7
Virgin Australia	307	298	239	80.2	222	74.5	9	2.9
Virgin Australia Regional Airlines	238	234	205	87.6	201	85.9	4	1.7
All Airlines	1 363	1 320	1 136	86.1	1 090	82.6	43	3.2
Karratha-Perth								
Qantas	388	367	338	92.1	335	91.3	21	5.4
QantasLink	1 199	1 131	907	80.2	889	78.6	68	5.7
Virgin Australia	437	432	378	87.5	351	81.3	5	1.1
Virgin Australia Regional Airlines	110	110	80	72.7	78	70.9	0	0.0
All Airlines	2 134	2 040	1 703	83.5	1 653	81.0	94	4.4

	<i>Sectors</i>		<i>Arrivals On Time</i>		<i>Departures On Time</i>		<i>Cancellations</i>	
	<i>Sched.</i>	<i>Flown</i>	<i>No.</i>	<i>%</i>	<i>No.</i>	<i>%</i>	<i>No.</i>	<i>%</i>
Launceston-Melbourne			(From November 2020)					
Jetstar	719	617	545	88.3	526	85.3	102	14.2
QantasLink	501	430	362	84.2	363	84.4	71	14.2
Virgin Australia	415	369	333	90.2	337	91.3	46	11.1
All Airlines	1 635	1 416	1 240	87.6	1 226	86.6	219	13.4
Launceston-Sydney								
Jetstar	355	328	266	81.1	250	76.2	27	7.6
QantasLink	112	104	64	61.5	84	80.8	8	7.1
Virgin Australia	222	211	183	86.7	186	88.2	11	5.0
All Airlines	689	643	513	79.8	520	80.9	46	6.7
Mackay-Brisbane								
Jetstar	333	330	293	88.8	278	84.2	3	0.9
Qantas	863	846	742	87.7	751	88.8	17	2.0
QantasLink	359	354	337	95.2	334	94.4	5	1.4
Virgin Australia	829	821	760	92.6	726	88.4	8	1.0
All Airlines	2 384	2 351	2 132	90.7	2 089	88.9	33	1.4
Melbourne-Adelaide								
Jetstar	794	644	583	90.5	554	86.0	150	18.9
Qantas	1 064	863	781	90.5	791	91.7	201	18.9
Regional Express	183	142	110	77.5	107	75.4	41	22.4
Virgin Australia	978	781	680	87.1	669	85.7	197	20.1
All Airlines	3 019	2 430	2 154	88.6	2 121	87.3	589	19.5
Melbourne-Brisbane								
Jetstar	1 127	825	693	84.0	672	81.5	302	26.8
Qantas	1 735	1 433	1 185	82.7	1 244	86.8	302	17.4
Virgin Australia	1 357	1 081	902	83.4	891	82.4	276	20.3
All Airlines	4 219	3 339	2 780	83.3	2 807	84.1	880	20.9
Melbourne-Cairns			(From December 2020)					
Jetstar	611	516	427	82.8	395	76.6	95	15.5
Qantas	221	200	173	86.5	177	88.5	21	9.5
Virgin Australia	220	200	183	91.5	178	89.0	20	9.1
All Airlines	1 052	916	783	85.5	750	81.9	136	12.9
Melbourne-Canberra								
Qantas	117	89	83	93.3	82	92.1	28	23.9
QantasLink	1 199	1 032	808	78.3	825	79.9	167	13.9
Virgin Australia	494	432	375	86.8	367	85.0	62	12.6
All Airlines	1 810	1 553	1 266	81.5	1 274	82.0	257	14.2
Melbourne-Darwin			(From June 2021)					
Jetstar	24	16	11	68.8	14	87.5	8	33.3
Qantas	59	42	37	88.1	38	90.5	17	28.8
Virgin Australia	20	11	8	72.7	9	81.8	9	45.0
All Airlines	103	69	56	81.2	61	88.4	34	33.0
Melbourne-Gold Coast			(From November 2020)					
Jetstar	1 210	1 031	866	84.0	850	82.4	179	14.8
Qantas	367	342	301	88.0	304	88.9	25	6.8
QantasLink	7	7	2	28.6	2	28.6	0	0.0
Regional Express	184	157	109	69.4	106	67.5	27	14.7
Virgin Australia	1 158	938	811	86.5	782	83.4	220	19.0
All Airlines	2 926	2 475	2 089	84.4	2 044	82.6	451	15.4

	<i>Sectors</i>		<i>Arrivals On Time</i>		<i>Departures On Time</i>		<i>Cancellations</i>	
	<i>Sched.</i>	<i>Flown</i>	<i>No.</i>	<i>%</i>	<i>No.</i>	<i>%</i>	<i>No.</i>	<i>%</i>
Melbourne-Hobart								
			(Does not cover August to October 2020)					
Jetstar	1 076	938	812	86.6	794	84.6	138	12.8
Qantas	62	56	51	91.1	53	94.6	6	9.7
QantasLink	577	501	346	69.1	372	74.3	76	13.2
Virgin Australia	508	437	377	86.3	378	86.5	71	14.0
All Airlines	2 223	1 932	1 586	82.1	1 597	82.7	291	13.1
Melbourne-Launceston								
			(From November 2020)					
Jetstar	718	617	535	86.7	526	85.3	101	14.1
QantasLink	510	437	356	81.5	367	84.0	73	14.3
Virgin Australia	420	369	312	84.6	318	86.2	51	12.1
All Airlines	1 648	1 423	1 203	84.5	1 211	85.1	225	13.7
Melbourne-Mildura								
QantasLink	656	593	455	76.7	440	74.2	63	9.6
Regional Express	458	438	382	87.2	391	89.3	20	4.4
All Airlines	1 114	1 031	837	81.2	831	80.6	83	7.5
Melbourne-Newcastle								
			(From November 2020)					
Jetstar	464	379	324	85.5	320	84.4	85	18.3
QantasLink	178	142	96	67.6	110	77.5	36	20.2
Virgin Australia	159	150	136	90.7	138	92.0	9	5.7
All Airlines	801	671	556	82.9	568	84.6	130	16.2
Melbourne-Perth								
Jetstar	280	157	133	84.7	132	84.1	123	43.9
Qantas	701	607	425	70.0	467	76.9	94	13.4
Virgin Australia	541	460	394	85.7	372	80.9	81	15.0
All Airlines	1 522	1 224	952	77.8	971	79.3	298	19.6
Melbourne-Sunshine Coast								
			(From November 2020)					
Jetstar	474	431	340	78.9	364	84.5	43	9.1
QantasLink	260	229	164	71.6	183	79.9	31	11.9
Virgin Australia	382	335	315	94.0	314	93.7	47	12.3
All Airlines	1 116	995	819	82.3	861	86.5	121	10.8
Melbourne-Sydney								
Jetstar	2 265	1 645	1 451	88.2	1 389	84.4	620	27.4
Qantas	4 145	3 094	2 826	91.3	2 823	91.2	1 051	25.4
Regional Express	675	534	489	91.6	484	90.6	141	20.9
Virgin Australia	2 654	2 021	1 772	87.7	1 759	87.0	633	23.9
All Airlines	9 739	7 294	6 538	89.6	6 455	88.5	2 445	25.1
Mildura-Melbourne								
QantasLink	654	592	418	70.6	431	72.8	62	9.5
Regional Express	456	439	399	90.9	402	91.6	17	3.7
All Airlines	1 110	1 031	817	79.2	833	80.8	79	7.1
Mount Isa-Brisbane								
Qantas	367	364	334	91.8	317	87.1	3	0.8
QantasLink	202	193	182	94.3	180	93.3	9	4.5
Virgin Australia	153	151	133	88.1	130	86.1	2	1.3
All Airlines	722	708	649	91.7	627	88.6	14	1.9
Newcastle-Brisbane								
Jetstar	548	503	418	83.1	421	83.7	45	8.2
QantasLink	569	544	492	90.4	483	88.8	25	4.4
Virgin Australia	396	377	360	95.5	359	95.2	19	4.8
All Airlines	1 513	1 424	1 270	89.2	1 263	88.7	89	5.9

	<i>Sectors</i>		<i>Arrivals On Time</i>		<i>Departures On Time</i>		<i>Cancellations</i>	
	<i>Sched.</i>	<i>Flown</i>	<i>No.</i>	<i>%</i>	<i>No.</i>	<i>%</i>	<i>No.</i>	<i>%</i>
Newcastle-Melbourne								
			(From November 2020)					
Jetstar	463	374	325	86.9	311	83.2	89	19.2
QantasLink	177	144	127	88.2	124	86.1	33	18.6
Virgin Australia	159	150	133	88.7	131	87.3	9	5.7
All Airlines	799	668	585	87.6	566	84.7	131	16.4
Newman-Perth								
Qantas	301	281	224	79.7	218	77.6	20	6.6
QantasLink	835	785	636	81.0	626	79.7	50	6.0
Virgin Australia	354	330	267	80.9	254	77.0	24	6.8
Virgin Australia Regional Airlines	119	118	101	85.6	97	82.2	1	0.8
All Airlines	1 609	1 514	1 228	81.1	1 195	78.9	95	5.9
Perth-Adelaide								
Jetstar	149	140	118	84.3	106	75.7	9	6.0
Qantas	585	555	467	84.1	500	90.1	30	5.1
Virgin Australia	313	308	262	85.1	279	90.6	5	1.6
Virgin Australia Regional Airlines	12	12	11	91.7	12	100.0	0	0.0
All Airlines	1 059	1 015	858	84.5	897	88.4	44	4.2
Perth-Brisbane								
Qantas	732	696	476	68.4	579	83.2	36	4.9
Virgin Australia	484	451	368	81.6	323	71.6	33	6.8
All Airlines	1 216	1 147	844	73.6	902	78.6	69	5.7
Perth-Broome								
Qantas	215	210	200	95.2	192	91.4	5	2.3
QantasLink	924	906	708	78.1	756	83.4	18	1.9
Virgin Australia	367	366	339	92.6	310	84.7	1	0.3
Virgin Australia Regional Airlines	40	40	33	82.5	30	75.0	0	0.0
All Airlines	1 546	1 522	1 280	84.1	1 288	84.6	24	1.6
Perth-Darwin								
Qantas	229	226	187	82.7	198	87.6	3	1.3
Virgin Australia	121	120	105	87.5	107	89.2	1	0.8
Virgin Australia Regional Airlines	21	21	14	66.7	16	76.2	0	0.0
All Airlines	371	367	306	83.4	321	87.5	4	1.1
Perth-Kalgoorlie								
Qantas	145	140	129	92.1	130	92.9	5	3.4
QantasLink	673	652	557	85.4	569	87.3	21	3.1
Virgin Australia	307	298	270	90.6	271	90.9	9	2.9
Virgin Australia Regional Airlines	238	234	210	89.7	212	90.6	4	1.7
All Airlines	1 363	1 324	1 166	88.1	1 182	89.3	39	2.9
Perth-Karratha								
Qantas	388	370	350	94.6	350	94.6	18	4.6
QantasLink	1 196	1 141	886	77.7	966	84.7	55	4.6
Virgin Australia	438	433	401	92.6	408	94.2	5	1.1
Virgin Australia Regional Airlines	109	109	89	81.7	96	88.1	0	0.0
All Airlines	2 131	2 053	1 726	84.1	1 820	88.7	78	3.7
Perth-Melbourne								
Jetstar	280	154	110	71.4	94	61.0	126	45.0
Qantas	702	610	408	66.9	457	74.9	92	13.1
Virgin Australia	547	462	365	79.0	338	73.2	85	15.5
All Airlines	1 529	1 226	883	72.0	889	72.5	303	19.8

	Sectors		Arrivals On Time		Departures On Time		Cancellations	
	Sched.	Flown	No.	%	No.	%	No.	%
Perth-Newman								
Qantas	300	284	261	91.9	265	93.3	16	5.3
QantasLink	837	791	705	89.1	707	89.4	46	5.5
Virgin Australia	353	329	308	93.6	311	94.5	24	6.8
Virgin Australia Regional Airlines	119	118	110	93.2	111	94.1	1	0.8
All Airlines	1 609	1 522	1 384	90.9	1 394	91.6	87	5.4
Perth-Port Hedland								
Qantas	444	424	398	93.9	402	94.8	20	4.5
QantasLink	747	699	541	77.4	610	87.3	48	6.4
Virgin Australia	141	137	130	94.9	130	94.9	4	2.8
Virgin Australia Regional Airlines	358	354	321	90.7	327	92.4	4	1.1
All Airlines	1 690	1 614	1 390	86.1	1 469	91.0	76	4.5
Perth-Sydney								
Jetstar	175	144	87	60.4	68	47.2	31	17.7
Qantas	908	848	601	70.9	637	75.1	60	6.6
Virgin Australia	467	432	367	85.0	326	75.5	35	7.5
All Airlines	1 550	1 424	1 055	74.1	1 031	72.4	126	8.1
Port Hedland-Perth								
Qantas	442	420	335	79.8	347	82.6	22	5.0
QantasLink	748	694	459	66.1	536	77.2	54	7.2
Virgin Australia	141	136	115	84.6	106	77.9	5	3.5
Virgin Australia Regional Airlines	358	353	271	76.8	276	78.2	5	1.4
All Airlines	1 689	1 603	1 180	73.6	1 265	78.9	86	5.1
Port Lincoln-Adelaide								
QantasLink	864	841	718	85.4	725	86.2	23	2.7
Regional Express	1 334	1 326	1 084	81.7	1 076	81.1	8	0.6
All Airlines	2 198	2 167	1 802	83.2	1 801	83.1	31	1.4
Port Macquarie-Sydney								
			(From March 2021)					
QantasLink	418	390	353	90.5	355	91.0	28	6.7
Regional Express	238	236	200	84.7	217	91.9	2	0.8
All Airlines	656	626	553	88.3	572	91.4	30	4.6
Proserpine-Brisbane								
Jetstar	411	406	328	80.8	317	78.1	5	1.2
Virgin Australia	338	336	295	87.8	274	81.5	2	0.6
All Airlines	749	742	623	84.0	591	79.6	7	0.9
Rockhampton-Brisbane								
QantasLink	1 561	1 525	1 280	83.9	1 302	85.4	36	2.3
Virgin Australia	798	785	685	87.3	637	81.1	13	1.6
All Airlines	2 359	2 310	1 965	85.1	1 939	83.9	49	2.1
Sunshine Coast-Melbourne								
			(From November 2020)					
Jetstar	474	429	336	78.3	315	73.4	45	9.5
QantasLink	263	228	178	78.1	173	75.9	35	13.3
Virgin Australia	382	335	278	83.0	280	83.6	47	12.3
All Airlines	1 119	992	792	79.8	768	77.4	127	11.3
Sunshine Coast-Sydney								
			(Does not cover August to November 2020)					
Jetstar	428	391	334	85.4	335	85.7	37	8.6
QantasLink	307	288	228	79.2	220	76.4	19	6.2
Virgin Australia	324	302	226	74.8	243	80.5	22	6.8
All Airlines	1 059	981	788	80.3	798	81.3	78	7.4

	Sectors		Arrivals On Time		Departures On Time		Cancellations	
	Sched.	Flown	No.	%	No.	%	No.	%
Sydney-Adelaide								
Jetstar	846	747	669	89.6	642	85.9	99	11.7
Qantas	1 213	1 111	982	88.4	984	88.6	102	8.4
Virgin Australia	741	673	591	87.8	570	84.7	68	9.2
All Airlines	2 800	2 531	2 242	88.6	2 196	86.8	269	9.6
Sydney-Albury								
QantasLink	733	718	641	89.3	617	85.9	15	2.0
Regional Express	409	405	372	91.9	363	89.6	4	1.0
All Airlines	1 142	1 123	1 013	90.2	980	87.3	19	1.7
Sydney-Armidale								
QantasLink	530	512	430	84.0	420	82.0	18	3.4
Regional Express	226	224	178	79.5	178	79.5	2	0.9
All Airlines	756	736	608	82.6	598	81.3	20	2.6
Sydney-Ballina								
Jetstar	968	956	858	89.7	866	90.6	12	1.2
Qantas	171	166	145	87.3	153	92.2	5	2.9
QantasLink	806	776	611	78.7	686	88.4	30	3.7
Regional Express	107	106	99	93.4	99	93.4	1	0.9
Virgin Australia	438	427	381	89.2	388	90.9	11	2.5
All Airlines	2 490	2 431	2 094	86.1	2 192	90.2	59	2.4
Sydney-Brisbane								
Jetstar	1 145	973	819	84.2	798	82.0	172	15.0
Qantas	2 968	2 688	2 382	88.6	2 418	90.0	280	9.4
QantasLink	2	1	0	0.0	1	100.0	1	50.0
Virgin Australia	1 921	1 725	1 536	89.0	1 527	88.5	196	10.2
All Airlines	6 036	5 387	4 737	87.9	4 744	88.1	649	10.8
Sydney-Cairns								
			(Does not cover September and October 2020)					
Jetstar	487	438	373	85.2	343	78.3	49	10.1
Qantas	359	330	270	81.8	267	80.9	29	8.1
Virgin Australia	270	252	239	94.8	232	92.1	18	6.7
All Airlines	1 116	1 020	882	86.5	842	82.5	96	8.6
Sydney-Canberra								
			(From April 2021)					
Qantas	36	30	30	100.0	30	100.0	6	16.7
QantasLink	804	705	561	79.6	561	79.6	99	12.3
Regional Express	445	416	310	74.5	341	82.0	29	6.5
All Airlines	1 285	1 151	901	78.3	932	81.0	134	10.4
Sydney-Coffs Harbour								
QantasLink	952	931	834	89.6	816	87.6	21	2.2
Regional Express	254	254	234	92.1	229	90.2	0	0.0
Virgin Australia	119	119	107	89.9	107	89.9	0	0.0
All Airlines	1 325	1 304	1 175	90.1	1 152	88.3	21	1.6
Sydney-Dubbo								
QantasLink	713	695	625	89.9	613	88.2	18	2.5
Regional Express	650	644	576	89.4	564	87.6	6	0.9
All Airlines	1 363	1 339	1 201	89.7	1 177	87.9	24	1.8
Sydney-Gold Coast								
			(Does not cover September and October 2020)					
Jetstar	1 365	1 197	1 053	88.0	1 058	88.4	168	12.3
Qantas	520	493	449	91.1	439	89.0	27	5.2
Regional Express	182	171	150	87.7	155	90.6	11	6.0
Virgin Australia	1 220	1 118	926	82.8	948	84.8	102	8.4
All Airlines	3 287	2 979	2 578	86.5	2 600	87.3	308	9.4

	<i>Sectors</i>		<i>Arrivals</i>		<i>Departures</i>		<i>Cancellations</i>	
	<i>Sched.</i>	<i>Flown</i>	<i>On Time</i>		<i>On Time</i>		<i>No.</i>	<i>%</i>
			<i>No.</i>	<i>%</i>	<i>No.</i>	<i>%</i>	<i>No.</i>	<i>%</i>
Sydney-Hamilton Island			(From December 2020)					
Jetstar	100	86	76	88.4	68	79.1	14	14.0
Qantas	173	158	140	88.6	137	86.7	15	8.7
Virgin Australia	171	167	153	91.6	154	92.2	4	2.3
All Airlines	444	411	369	89.8	359	87.3	33	7.4
Sydney-Hobart								
Jetstar	581	526	468	89.0	452	85.9	55	9.5
Qantas	112	110	103	93.6	100	90.9	2	1.8
QantasLink	318	294	249	84.7	237	80.6	24	7.5
Virgin Australia	357	336	311	92.6	305	90.8	21	5.9
All Airlines	1 368	1 266	1 131	89.3	1 094	86.4	102	7.5
Sydney-Launceston								
Jetstar	362	328	275	83.8	267	81.4	34	9.4
QantasLink	112	104	89	85.6	82	78.8	8	7.1
Virgin Australia	222	211	184	87.2	179	84.8	11	5.0
All Airlines	696	643	548	85.2	528	82.1	53	7.6
Sydney-Melbourne								
Jetstar	2 263	1 645	1 435	87.2	1 334	81.1	618	27.3
Qantas	4 153	3 096	2 790	90.1	2 737	88.4	1 057	25.5
Regional Express	663	527	475	90.1	480	91.1	136	20.5
Virgin Australia	2 655	2 029	1 772	87.3	1 627	80.2	626	23.6
All Airlines	9 734	7 297	6 472	88.7	6 178	84.7	2 437	25.0
Sydney-Perth								
Jetstar	172	146	115	78.8	95	65.1	26	15.1
Qantas	906	851	627	73.7	632	74.3	55	6.1
Virgin Australia	465	434	377	86.9	346	79.7	31	6.7
All Airlines	1 543	1 431	1 119	78.2	1 073	75.0	112	7.3
Sydney-Port Macquarie			(From March 2021)					
QantasLink	418	389	341	87.7	333	85.6	29	6.9
Regional Express	238	236	217	91.9	209	88.6	2	0.8
All Airlines	656	625	558	89.3	542	86.7	31	4.7
Sydney-Sunshine Coast			(Does not cover August to November 2020)					
Jetstar	426	395	342	86.6	343	86.8	31	7.3
QantasLink	308	290	208	71.7	222	76.6	18	5.8
Virgin Australia	325	304	251	82.6	264	86.8	21	6.5
All Airlines	1 059	989	801	81.0	829	83.8	70	6.6
Sydney-Townsville			(From June 2021)					
Jetstar	27	19	16	84.2	15	78.9	8	29.6
Virgin Australia	4	4	3	75.0	4	100.0	0	0.0
All Airlines	31	23	19	82.6	19	82.6	8	25.8
Sydney-Wagga Wagga								
QantasLink	758	742	669	90.2	646	87.1	16	2.1
Regional Express	458	455	416	91.4	409	89.9	3	0.7
All Airlines	1 216	1 197	1 085	90.6	1 055	88.1	19	1.6
Townsville-Brisbane								
Jetstar	655	652	552	84.7	553	84.8	3	0.5
Qantas	1 000	981	839	85.5	858	87.5	19	1.9
QantasLink	133	127	111	87.4	120	94.5	6	4.5
Virgin Australia	837	823	753	91.5	702	85.3	14	1.7
All Airlines	2 625	2 583	2 255	87.3	2 233	86.4	42	1.6

	<i>Sectors</i>		<i>Arrivals On Time</i>		<i>Departures On Time</i>		<i>Cancellations</i>	
	<i>Sched.</i>	<i>Flown</i>	<i>No.</i>	<i>%</i>	<i>No.</i>	<i>%</i>	<i>No.</i>	<i>%</i>
Townsville-Cairns								
QantasLink	999	993	890	89.6	865	87.1	6	0.6
Regional Express	143	142	137	96.5	137	96.5	1	0.7
All Airlines	1 142	1 135	1 027	90.5	1 002	88.3	7	0.6
Townsville-Sydney								
			(From June 2021)					
Jetstar	27	24	21	87.5	20	83.3	3	11.1
Virgin Australia	4	4	3	75.0	4	100.0	0	0.0
All Airlines	31	28	24	85.7	24	85.7	3	9.7
Wagga Wagga-Sydney								
QantasLink	755	738	677	91.7	669	90.7	17	2.3
Regional Express	463	462	412	89.2	418	90.5	1	0.2
All Airlines	1 218	1 200	1 089	90.8	1 087	90.6	18	1.5

Airports

On time performance is reported for all routes where the passenger load averages over 8000 passengers per month, and where two or more airlines operate in competition. The following data reports by airport against flights operated on those routes only. This year, 8 major city airports and 29 regional city airports are covered.

Airport	Arrivals			Departures		
	Sectors	On Time		Sectors	On Time	
	Flown	No.	%	Flown	No.	%
Adelaide						
Jetstar	2 078	1 829	88.0	2 074	1 798	86.7
Qantas	3 998	3 473	86.9	3 992	3 503	87.8
QantasLink	948	787	83.0	951	813	85.5
Regional Express	1 468	1 194	81.3	1 468	1 297	88.4
Virgin Australia	3 086	2 735	88.6	3 089	2 643	85.6
Virgin Australia Regional Airlines	12	11	91.7	12	10	83.3
All Airlines	11 590	10 029	86.5	11 586	10 064	86.9

Relates to services to and from Alice Springs, Brisbane, Canberra, Gold Coast, Melbourne, Perth, Port Lincoln and Sydney.

Albury

QantasLink	718	641	89.3	713	602	84.4
Regional Express	405	372	91.9	399	374	93.7
All Airlines	1 123	1 013	90.2	1 112	976	87.8

Relates to services to and from Sydney only.

Alice Springs

Qantas	304	253	83.2	302	200	66.2
QantasLink	64	35	54.7	63	28	44.4
Virgin Australia	153	128	83.7	153	132	86.3
All Airlines	521	416	79.8	518	360	69.5

Relates to services to and from Adelaide only.

Armidale

QantasLink	512	430	84.0	508	420	82.7
Regional Express	224	178	79.5	223	181	81.2
All Airlines	736	608	82.6	731	601	82.2

Relates to services to and from Sydney only.

Ballina

Jetstar	956	858	89.7	954	798	83.6
Qantas	166	145	87.3	166	145	87.3
QantasLink	776	611	78.7	770	613	79.6
Regional Express	106	99	93.4	106	94	88.7
Virgin Australia	427	381	89.2	427	357	83.6
All Airlines	2 431	2 094	86.1	2 423	2 007	82.8

Relates to services to and from Sydney only.

Brisbane

Jetstar	5 586	4 588	82.1	5 588	4 579	81.9
Qantas	9 876	8 366	84.7	9 900	9 005	91.0
QantasLink	6 542	5 794	88.6	6 575	6 002	91.3
Virgin Australia	10 664	9 384	88.0	10 687	8 896	83.2
All Airlines	32 668	28 132	86.1	32 750	28 482	87.0

Relates to services to and from Adelaide, Bundaberg, Cairns, Canberra, Darwin, Emerald, Gladstone, Hamilton Island, Hobart, Mackay, Melbourne, Mount Isa, Newcastle, Perth, Proserpine, Rockhampton, Sydney and Townsville.

Airport	Arrivals			Departures		
	Sectors Flown	On Time		Sectors Flown	On Time	
		No.	%		No.	%
Broome						
Qantas	210	200	95.2	210	173	82.4
QantasLink	906	708	78.1	901	708	78.6
Virgin Australia	366	339	92.6	366	290	79.2
Virgin Australia Regional Airlines	40	33	82.5	40	18	45.0
All Airlines	1 522	1 280	84.1	1 517	1 189	78.4
Relates to services to and from Perth only.						
Bundaberg						
			(To September 2020)			
QantasLink	40	40	100.0	40	39	97.5
Virgin Australia	64	58	90.6	23	20	87.0
All Airlines	104	98	94.2	63	59	93.7
Relates to services to and from Brisbane only.						
Cairns						
Jetstar	2 055	1 689	82.2	2 052	1 647	80.3
Qantas	1 552	1 332	85.8	1 551	1 337	86.2
QantasLink	1 487	1 331	89.5	1 488	1 335	89.7
Regional Express	142	137	96.5	142	131	92.3
Virgin Australia	1 497	1 255	83.8	1 493	1 291	86.5
All Airlines	6 733	5 744	85.3	6 726	5 741	85.4
Relates to services to and from Brisbane, Melbourne, Sydney and Townsville.						
Canberra						
Qantas	701	647	92.3	699	626	89.6
QantasLink	2 845	2 373	83.4	2 825	2 369	83.9
Regional Express	416	310	74.5	414	343	82.9
Virgin Australia	1 174	1 038	88.4	1 172	955	81.5
All Airlines	5 136	4 368	85.0	5 110	4 293	84.0
Relates to services to and from Adelaide, Brisbane, Melbourne and Sydney.						
Coffs Harbour						
QantasLink	931	834	89.6	928	825	88.9
Regional Express	254	234	92.1	253	231	91.3
Virgin Australia	119	107	89.9	119	103	86.6
All Airlines	1 304	1 175	90.1	1 300	1 159	89.2
Relates to services to and from Sydney only.						
Darwin						
Jetstar	243	171	70.4	242	118	48.8
Qantas	626	492	78.6	619	420	67.9
Virgin Australia	436	377	86.5	435	302	69.4
Virgin Australia Regional Airlines	21	14	66.7	21	9	42.9
All Airlines	1 326	1 054	79.5	1 317	849	64.5
Relates to services to and from Alice Springs, Brisbane, Melbourne and Perth.						
Dubbo						
QantasLink	695	625	89.9	692	609	88.0
Regional Express	644	576	89.4	647	562	86.9
All Airlines	1 339	1 201	89.7	1 339	1 171	87.5
Relates to services to and from Sydney only.						
Emerald						
			(From November 2020)			
QantasLink	914	857	93.8	911	853	93.6
Virgin Australia	166	156	94.0	166	154	92.8
All Airlines	1 080	1 013	93.8	1 077	1 007	93.5
Relates to services to and from Brisbane only.						

Airport	Arrivals			Departures		
	Sectors Flown	On Time		Sectors Flown	On Time	
		No.	%		No.	%
Gladstone						
QantasLink	1 014	933	92.0	1 009	898	89.0
Virgin Australia	523	467	89.3	564	511	90.6
All Airlines	1 537	1 400	91.1	1 573	1 409	89.6
Relates to services to and from Brisbane only.						
Gold Coast						
Jetstar	2 483	2 141	86.2	2 485	2 136	86.0
Qantas	835	750	89.8	829	725	87.5
QantasLink	13	8	61.5	13	8	61.5
Regional Express	328	259	79.0	328	260	79.3
Virgin Australia	2 305	1 972	85.6	2 304	1 833	79.6
All Airlines	5 964	5 130	86.0	5 959	4 962	83.3
Relates to services to and from Adelaide, Melbourne and Sydney.						
Hamilton Island						
	(From August 2020)					
Jetstar	86	76	88.4	86	67	77.9
Qantas	484	420	86.8	485	421	86.8
QantasLink	133	126	94.7	132	123	93.2
Virgin Australia	552	500	90.6	552	472	85.5
All Airlines	1 255	1 122	89.4	1 255	1 083	86.3
Relates to services to and from Brisbane and Sydney.						
Hobart						
Jetstar	1 738	1 527	87.9	1 734	1 467	84.6
Qantas	170	158	92.9	173	146	84.4
QantasLink	949	727	76.6	947	763	80.6
Virgin Australia	1 051	936	89.1	1 050	903	86.0
All Airlines	3 908	3 348	85.7	3 904	3 279	84.0
Relates to services to and from Brisbane, Melbourne and Sydney.						
Kalgoorlie						
Qantas	140	129	92.1	140	122	87.1
QantasLink	652	557	85.4	648	545	84.1
Virgin Australia	298	270	90.6	298	222	74.5
Virgin Australia Regional Airlines	234	210	89.7	234	201	85.9
All Airlines	1 324	1 166	88.1	1 320	1 090	82.6
Relates to services to and from Perth only.						
Karratha						
Qantas	370	350	94.6	367	335	91.3
QantasLink	1 141	886	77.7	1 131	889	78.6
Virgin Australia	433	401	92.6	432	351	81.3
Virgin Australia Regional Airlines	109	89	81.7	110	78	70.9
All Airlines	2 053	1 726	84.1	2 040	1 653	81.0
Relates to services to and from Perth only.						
Launceston						
Jetstar	945	810	85.7	945	776	82.1
QantasLink	541	445	82.3	534	447	83.7
Virgin Australia	580	496	85.5	580	523	90.2
All Airlines	2 066	1 751	84.8	2 059	1 746	84.8
Relates to services to and from Melbourne and Sydney.						

Airport	Arrivals			Departures		
	Sectors Flown	On Time		Sectors Flown	On Time	
		No.	%		No.	%
Mackay						
Jetstar	330	282	85.5	330	278	84.2
Qantas	849	746	87.9	846	751	88.8
QantasLink	337	308	91.4	354	334	94.4
Virgin Australia	823	709	86.1	821	726	88.4
All Airlines	2 339	2 045	87.4	2 351	2 089	88.9
Relates to services to and from Brisbane only.						
Melbourne						
Jetstar	7 180	6 183	86.1	7 199	6 010	83.5
Qantas	6 731	5 894	87.6	6 726	5 979	88.9
QantasLink	2 931	2 307	78.7	2 941	2 299	78.2
Regional Express	1 265	1 089	86.1	1 271	1 088	85.6
Virgin Australia	7 226	6 210	85.9	7 215	6 175	85.6
All Airlines	25 333	21 683	85.6	25 352	21 551	85.0
Relates to services to and from Adelaide, Brisbane, Cairns, Canberra, Darwin, Gold Coast, Hobart, Launceston, Mildura, Newcastle, Perth, Sunshine Coast and Sydney.						
Mildura						
QantasLink	593	455	76.7	592	431	72.8
Regional Express	438	382	87.2	439	402	91.6
All Airlines	1 031	837	81.2	1 031	833	80.8
Relates to services to and from Melbourne only.						
Mount Isa						
Qantas	367	340	92.6	364	317	87.1
QantasLink	196	176	89.8	193	180	93.3
Virgin Australia	151	133	88.1	151	130	86.1
All Airlines	714	649	90.9	708	627	88.6
Relates to services to and from Brisbane only.						
Newcastle						
Jetstar	886	758	85.6	877	732	83.5
QantasLink	689	577	83.7	688	607	88.2
Virgin Australia	528	479	90.7	527	490	93.0
All Airlines	2 103	1 814	86.3	2 092	1 829	87.4
Relates to services to and from Brisbane and Melbourne.						
Newman						
Qantas	284	261	91.9	281	218	77.6
QantasLink	791	705	89.1	785	626	79.7
Virgin Australia	329	308	93.6	330	254	77.0
Virgin Australia Regional Airlines	118	110	93.2	118	97	82.2
All Airlines	1 522	1 384	90.9	1 514	1 195	78.9
Relates to services to and from Perth only.						
Perth						
Jetstar	444	378	85.1	438	268	61.2
Qantas	4 359	3 444	79.0	4 363	3 710	85.0
QantasLink	4 159	3 283	78.9	4 189	3 608	86.1
Virgin Australia	3 333	2 839	85.2	3 336	2 803	84.0
Virgin Australia Regional Airlines	888	703	79.2	888	804	90.5
All Airlines	13 183	10 647	80.8	13 214	11 193	84.7
Relates to services to and from Adelaide, Brisbane, Broome, Darwin, Kalgoorlie, Karratha, Melbourne, Newman, Port Hedland and Sydney.						

Airport	Arrivals			Departures		
	Sectors Flown	On Time		Sectors Flown	On Time	
		No.	%		No.	%
Port Hedland						
Qantas	424	398	93.9	420	347	82.6
QantasLink	699	541	77.4	694	536	77.2
Virgin Australia	137	130	94.9	136	106	77.9
Virgin Australia Regional Airlines	354	321	90.7	353	276	78.2
All Airlines	1 614	1 390	86.1	1 603	1 265	78.9
Relates to services to and from Perth only.						
Port Lincoln						
QantasLink	843	745	88.4	841	725	86.2
Regional Express	1 325	1 142	86.2	1 326	1 076	81.1
All Airlines	2 168	1 887	87.0	2 167	1 801	83.1
Relates to services to and from Adelaide only.						
Port Macquarie						
	(From March 2021)					
QantasLink	389	341	87.7	390	355	91.0
Regional Express	236	217	91.9	236	217	91.9
All Airlines	625	558	89.3	626	572	91.4
Relates to services to and from Sydney only.						
Proserpine						
Jetstar	405	331	81.7	406	317	78.1
Virgin Australia	336	296	88.1	336	274	81.5
All Airlines	741	627	84.6	742	591	79.6
Relates to services to and from Brisbane only.						
Rockhampton						
QantasLink	1 547	1 399	90.4	1 525	1 302	85.4
Virgin Australia	788	627	79.6	785	637	81.1
All Airlines	2 335	2 026	86.8	2 310	1 939	83.9
Relates to services to and from Brisbane only.						
Sunshine Coast						
	(Does not cover August to October 2020)					
Jetstar	826	682	82.6	820	650	79.3
QantasLink	519	372	71.7	516	393	76.2
Virgin Australia	639	566	88.6	637	523	82.1
All Airlines	1 984	1 620	81.7	1 973	1 566	79.4
Relates to services to and from Melbourne and Sydney.						
Sydney						
Jetstar	7 446	6 469	86.9	7 456	6 281	84.2
Qantas	9 015	7 950	88.2	9 033	7 897	87.4
QantasLink	6 120	5 239	85.6	6 157	5 234	85.0
Regional Express	3 446	3 008	87.3	3 438	3 027	88.0
Virgin Australia	7 798	6 830	87.6	7 799	6 651	85.3
All Airlines	33 825	29 496	87.2	33 883	29 090	85.9
Relates to services to and from Adelaide, Albury, Armidale, Ballina, Brisbane, Cairns, Canberra, Coffs Harbour, Dubbo, Gold Coast, Hamilton Island, Hobart, Launceston, Melbourne, Perth, Port Macquarie, Sunshine Coast, Townsville and Wagga Wagga.						
Townsville						
Jetstar	675	578	85.6	676	573	84.8
Qantas	986	855	86.7	981	858	87.5
QantasLink	1 126	1 005	89.3	1 120	985	87.9
Regional Express	142	130	91.5	142	137	96.5
Virgin Australia	828	708	85.5	827	706	85.4
All Airlines	3 757	3 276	87.2	3 746	3 259	87.0
Relates to services to and from Brisbane, Cairns and Sydney.						

<i>Airport</i>	<i>Arrivals</i>			<i>Departures</i>		
	<i>Sectors</i>	<i>On Time</i>		<i>Sectors</i>	<i>On Time</i>	
	<i>Flown</i>	<i>No.</i>	<i>%</i>	<i>Flown</i>	<i>No.</i>	<i>%</i>
Wagga Wagga						
QantasLink	742	669	90.2	738	669	90.7
Regional Express	455	416	91.4	462	418	90.5
All Airlines	1 197	1 085	90.6	1 200	1 087	90.6

Relates to services to and from Sydney only.

Definitions

On time arrival	A flight arrival is counted as "on time" if it arrived at the gate before 15 minutes after the scheduled arrival time shown in the carriers' schedule. Neither diverted nor cancelled flights count as on time.
On time departure	A flight departure is counted as "on time" if it departs the gate before 15 minutes after the scheduled departure time shown in the carriers' schedule.
Cancellation	A flight removed from service within 7 days of scheduled departure is regarded as a cancellation.
On time departure percentage	The percentage of on time departures is measured against the number of departures <i>operated</i> on any particular sector.
On time arrival percentage	The percentage of on time arrivals is measured against the number of arrivals <i>operated</i> on any particular sector.
Cancellation percentage	The percentage of cancellations is measured against the number of services <i>scheduled</i> on any particular sector.
