



Australian Government

Department of Transport and Regional Services
Bureau of Transport and Regional Economics



btre

AVIATION STATISTICS

Airline
On Time Performance

2006—OTP 41

© Commonwealth of Australia 2007

ISSN 1832-0759

This work is copyright and the data contained in this publication should not be reproduced or used in any form without acknowledgement.

Enquiries

Bureau of Transport and Regional Economics

GPO Box 501
Canberra ACT 2601

Telephone: 02 6274 7720

Facsimile: 02 6274 7727

Website: www.btre.gov.au

Email: avstats@dotars.gov.au

This publication can be downloaded from the BTRE website. A spreadsheet of the time-series data is also available at

<http://www.btre.gov.au/statistics/aviation/otphome.aspx>

Disclaimers

The BTRE seeks to publish its work to the highest professional standards. However, it cannot accept responsibility for any consequences arising from the use of information herein. Readers should rely on their own skill and judgment in applying any information or analysis to particular issues or circumstances.

FOREWORD

In late 2003, the Bureau of Transport and Regional Economics (BTRE) established an agreement with major Australian airlines to report domestic aviation on time performance statistics. Qantas, QantasLink, Regional Express, Skywest Airlines and Virgin Blue agreed to report monthly on time performance statistics to BTRE from November 2003. Jetstar, which commenced operations on 25 May 2004, is also now participating. Macair, who commenced reporting in July 2005, only supply total network data as they have no competitive routes. Ozjet reported airline on time performance during the period January–March 2006 only. The purpose of collecting and publishing this information is to monitor overall industry and individual airline performance on punctuality and to allow consumers of air travel to make informed decisions when planning air travel.

On time performance is reported for all routes which are flown by two or more airlines where the passenger load averages over 8,000 passengers per month. In 2006 there were 49 routes which met this definition, however, over time routes which meet this definition may change as airline networks and traffic levels vary.

Airlines also report overall monthly network performance. Total industry figures refer to all services operated by reporting airlines only. This currently represents over 95 per cent of scheduled aviation services in Australia.

The method of capturing on time performance varies between airlines utilising different recording systems. Jetstar and Qantas jet aircraft use Aircraft Communication Addressing and Reporting System (ACARS) to electronically measure on time performance. Virgin Blue, Regional Express, Skywest, Macair and the Qantas non-jet fleet record on time performance manually using records from pilots, gate agents and/or ground crews.

Reports are published monthly on the BTRE web site. After collection of initial data, aggregate reports are subject to internal audit by participating airlines prior to publication. This report collates data for the total industry and individual routes and airports for the year ended 31 December 2006.

Definitions relating to on time performance are provided at the end of this report.

Detailed time series data is available in Microsoft Excel spreadsheet format from the BTRE web site at http://www.btre.gov.au/statistics/aviation/otp_downloads.aspx

Bureau of Transport and Regional Economics

GPO Box 501

Canberra ACT 2601

Telephone: 02 6274 7720

Facsimile: 02 6274 7727

Website: <http://www.btre.gov.au/statistics/statsindex.aspx>

Email: avstats@dotars.gov.au

CONTENTS

Industry performance	1
Individual routes	3
Airports	13
Definitions	19

This page is intentionally left blank.

INDUSTRY PERFORMANCE

Airline on time performance over all routes operated by airlines participating in on time performance reporting (i.e. Jetstar, Macair, Ozjet, Qantas, QantasLink, Regional Express, Skywest Airlines and Virgin Blue), averaged 87.3 per cent in terms of on time departures and 86.1 per cent for on time arrivals for the year ended 31 December 2006. Cancellations averaged 0.9 per cent of all scheduled flights.

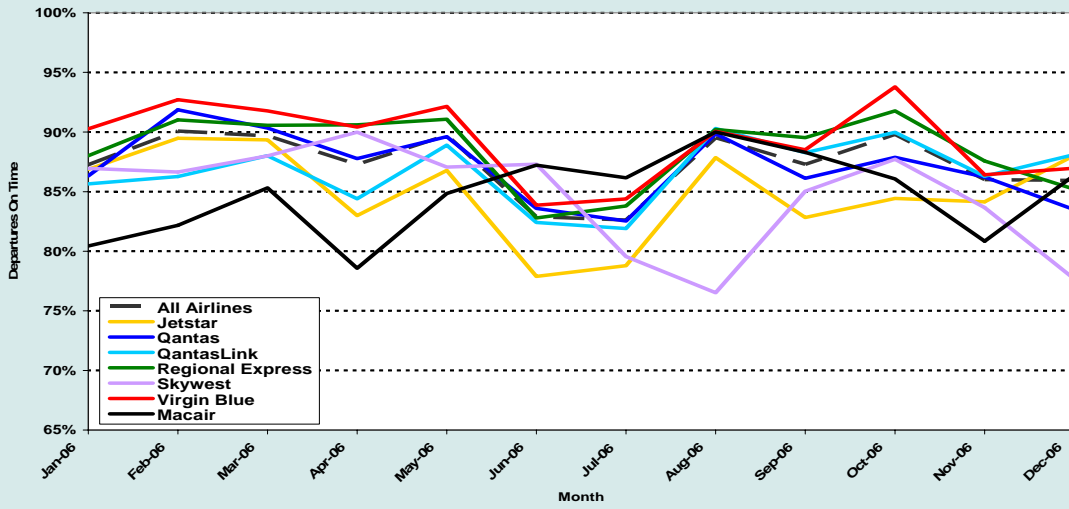
The highest level of on time performance was recorded in February, with 90.1 per cent in terms of departures on time and October, with 89.0 per cent in terms of arrivals on time. The lowest percentage of cancellations was recorded in October and November, with 0.5 per cent of scheduled flights cancelled.

The lowest level of on time performance was recorded in July with 82.6 per cent of departures and 81.3 per cent of arrivals being on time. The highest percentage of cancellations was recorded in June, with 1.7 per cent of scheduled flights cancelled.

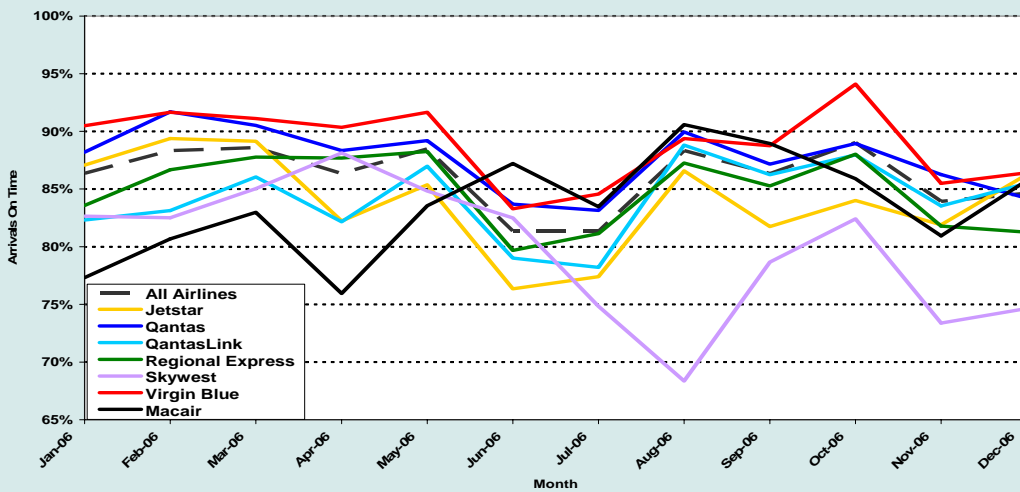
On time performance – total industry for the year ending 31 December 2006

	Jetstar	Macair	Qantas	Qantas Link	Regional Express	Skywest	Virgin Blue	All Airlines
Sectors Scheduled	48,863	15,366	118,782	97,497	61,823	11,799	107,279	461,798
Sectors Flown	48,599	15,012	117,543	96,649	61,656	11,522	106,449	457,809
On Time Departures	41,246	12,720	102,403	83,838	54,571	9,760	95,030	399,865
On Time Arrivals	40,749	12,556	102,960	81,393	52,328	9,202	94,678	394,128
Cancellations	264	354	1,239	848	167	277	830	3,989
On Time Departures (%)	84.9	84.7	87.1	86.7	88.5	84.7	89.3	87.3
On Time Arrivals (%)	83.8	83.6	87.6	84.2	84.9	79.9	88.9	86.1
Cancellations (%)	0.5	2.3	1.0	0.9	0.3	2.3	0.8	0.9

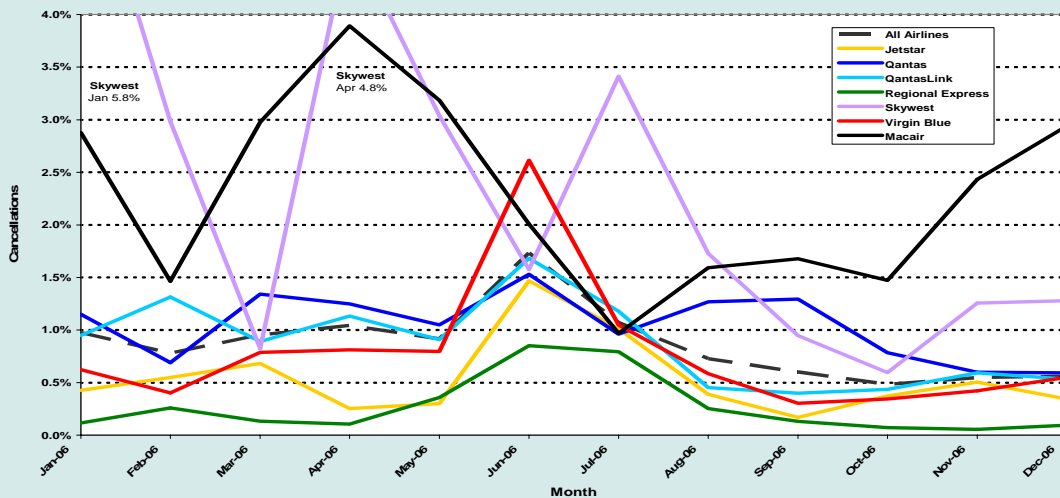
ON TIME DEPARTURES – TOTAL INDUSTRY



ON TIME ARRIVALS – TOTAL INDUSTRY



CANCELLATIONS – TOTAL INDUSTRY



INDIVIDUAL ROUTES

On time performance is reported for all routes which are flown by two or more airlines where the passenger load averages over 8,000 passengers per month. In 2006 there were 49 routes which met this definition, however, over time routes which meet this definition may change as airline networks and traffic levels vary.

	Sectors		On time departures		On time arrivals		Cancellations	
	sched.	flown	no.	%	no.	%	no.	%
Adelaide-Brisbane								
Jetstar	364	363	335	92.3%	333	91.7%	1	0.3%
Qantas	1 089	1 089	999	91.7%	996	91.5%	0	0.0%
Virgin Blue	1 095	1 092	975	89.3%	996	91.2%	3	0.3%
All Airlines	2 548	2 544	2 309	90.8%	2 325	91.4%	4	0.2%
Adelaide-Canberra								
Qantas	543	543	470	86.6%	465	85.6%	0	0.0%
Virgin Blue	361	361	310	85.9%	324	89.8%	0	0.0%
All Airlines	904	904	780	86.3%	789	87.3%	0	0.0%
Adelaide-Gold Coast								
Jetstar	277	276	244	88.4%	243	88.0%	1	0.4%
Virgin Blue	485	482	450	93.4%	444	92.1%	3	0.6%
All Airlines	762	758	694	91.6%	687	90.6%	4	0.5%
Adelaide-Melbourne								
Qantas	4 088	4 049	3 660	90.4%	3 670	90.6%	39	1.0%
Virgin Blue	3 071	3 039	2 827	93.0%	2 840	93.5%	32	1.0%
All Airlines	7 159	7 088	6 487	91.5%	6 510	91.8%	71	1.0%
Adelaide-Perth								
Qantas	1 496	1 487	1 303	87.6%	1 352	90.9%	9	0.6%
Virgin Blue	454	454	415	91.4%	420	92.5%	0	0.0%
All Airlines	1 950	1 941	1 718	88.5%	1 772	91.3%	9	0.5%
Adelaide-Port Lincoln								
QantasLink	500	496	472	95.2%	463	93.3%	4	0.8%
Regional Express	830	829	768	92.6%	756	91.2%	1	0.1%
All Airlines	1 330	1 325	1 240	93.6%	1 219	92.0%	5	0.4%
Adelaide-Sydney								
Jetstar	334	334	278	83.2%	289	86.5%	0	0.0%
Qantas	3 797	3 774	3 417	90.5%	3 400	90.1%	23	0.6%
Virgin Blue	1 823	1 815	1 623	89.4%	1 618	89.1%	8	0.4%
All Airlines	5 954	5 923	5 318	89.8%	5 307	89.6%	31	0.5%
Albury-Sydney								
QantasLink	1 383	1 376	1 099	79.9%	1 072	77.9%	7	0.5%
Regional Express	1 279	1 275	1 082	84.9%	1 058	83.0%	4	0.3%
All Airlines	2 662	2 651	2 181	82.3%	2 130	80.3%	11	0.4%

	Sectors		On time departures		On time arrivals		Cancellations	
	sched.	flown	no.	%	no.	%	no.	%
Ballina-Sydney								
Jetstar	435	428	374	87.4%	370	86.4%	7	1.6%
Regional Express	1 199	1 199	1 060	88.4%	985	82.2%	0	0.0%
Virgin Blue	426	422	350	82.9%	354	83.9%	4	0.9%
All Airlines	2 060	2 049	1 784	87.1%	1 709	83.4%	11	0.5%
Brisbane-Adelaide								
Jetstar	334	334	320	95.8%	319	95.5%	0	0.0%
Qantas	1 089	1 089	992	91.1%	1 025	94.1%	0	0.0%
Virgin Blue	1 095	1 093	1 020	93.3%	1 010	92.4%	2	0.2%
All Airlines	2 518	2 516	2 332	92.7%	2 354	93.6%	2	0.1%
Brisbane-Cairns								
Jetstar	815	813	713	87.7%	696	85.6%	2	0.2%
Qantas	1 424	1 421	1 236	87.0%	1 286	90.5%	3	0.2%
Virgin Blue	1 522	1 520	1 401	92.2%	1 356	89.2%	2	0.1%
All Airlines	3 761	3 754	3 350	89.2%	3 338	88.9%	7	0.2%
Brisbane-Canberra								
Qantas	1 377	1 374	1 254	91.3%	1 276	92.9%	3	0.2%
QantasLink	272	268	232	86.6%	249	92.9%	4	1.5%
Virgin Blue	1 093	1 093	1 025	93.8%	1 024	93.7%	0	0.0%
All Airlines	2 742	2 735	2 511	91.8%	2 549	93.2%	7	0.3%
Brisbane-Darwin								
Jetstar	210	210	181	86.2%	169	80.5%	0	0.0%
Qantas	428	426	348	81.7%	345	81.0%	2	0.5%
Virgin Blue	366	365	293	80.3%	297	81.4%	1	0.3%
All Airlines	1 004	1 001	822	82.1%	811	81.0%	3	0.3%
Brisbane-Hamilton Island								
Jetstar	364	364	328	90.1%	321	88.2%	0	0.0%
Qantas	5	5	4	80.0%	4	80.0%	0	0.0%
Virgin Blue	380	380	355	93.4%	351	92.4%	0	0.0%
All Airlines	749	749	687	91.7%	676	90.3%	0	0.0%
Brisbane-Hobart								
Jetstar	169	168	149	88.7%	149	88.7%	1	0.6%
Virgin Blue	373	372	350	94.1%	345	92.7%	1	0.3%
All Airlines	542	540	499	92.4%	494	91.5%	2	0.4%
Brisbane-Mackay								
Jetstar	1 015	1 012	890	87.9%	894	88.3%	3	0.3%
Qantas	60	60	59	98.3%	58	96.7%	0	0.0%
QantasLink	574	574	483	84.1%	503	87.6%	0	0.0%
Virgin Blue	1 072	1 070	955	89.3%	929	86.8%	2	0.2%
All Airlines	2 721	2 716	2 387	87.9%	2 384	87.8%	5	0.2%
Brisbane-Melbourne								
Qantas	5 314	5 234	4 731	90.4%	4 842	92.5%	80	1.5%
Virgin Blue	3 591	3 570	3 169	88.8%	3 188	89.3%	21	0.6%
All Airlines	8 905	8 804	7 900	89.7%	8 030	91.2%	101	1.1%
Brisbane-Newcastle								
Jetstar	1 082	1 082	922	85.2%	905	83.6%	0	0.0%
QantasLink	573	568	493	86.8%	462	81.3%	5	0.9%
Virgin Blue	529	528	464	87.9%	471	89.2%	1	0.2%
All Airlines	2 184	2 178	1 879	86.3%	1 838	84.4%	6	0.3%

	Sectors		On time departures		On time arrivals		Cancellations	
	sched.	flown	no.	%	no.	%	no.	%
Brisbane-Perth								
Qantas	1 159	1 159	980	84.6%	969	83.6%	0	0.0%
Virgin Blue	365	365	306	83.8%	322	88.2%	0	0.0%
All Airlines	1 524	1 524	1 286	84.4%	1 291	84.7%	0	0.0%
Brisbane-Proserpine								
Jetstar	364	363	316	87.1%	288	79.3%	1	0.3%
Virgin Blue	365	365	331	90.7%	330	90.4%	0	0.0%
All Airlines	729	728	647	88.9%	618	84.9%	1	0.1%
Brisbane-Rockhampton								
Jetstar	365	365	338	92.6%	332	91.0%	0	0.0%
QantasLink	2 725	2 711	2 455	90.6%	2 462	90.8%	14	0.5%
Virgin Blue	1 070	1 070	914	85.4%	916	85.6%	0	0.0%
All Airlines	4 160	4 146	3 707	89.4%	3 710	89.5%	14	0.3%
Brisbane-Sydney								
Qantas	7 327	7 247	6 403	88.4%	6 211	85.7%	80	1.1%
Virgin Blue	6 091	5 987	5 430	90.7%	5 301	88.5%	104	1.7%
All Airlines	13 418	13 234	11 833	89.4%	11 512	87.0%	184	1.4%
Brisbane-Townsville								
Jetstar	364	362	291	80.4%	293	80.9%	2	0.5%
Qantas	1 667	1 656	1 482	89.5%	1 509	91.1%	11	0.7%
Virgin Blue	1 152	1 150	1 047	91.0%	1 051	91.4%	2	0.2%
All Airlines	3 183	3 168	2 820	89.0%	2 853	90.1%	15	0.5%
Broome-Perth								
Qantas	395	391	300	76.7%	331	84.7%	4	1.0%
QantasLink	268	265	237	89.4%	236	89.1%	3	1.1%
Skywest	287	283	211	74.6%	195	68.9%	4	1.4%
Virgin Blue	275	275	205	74.5%	230	83.6%	0	0.0%
All Airlines	1 225	1 214	953	78.5%	992	81.7%	11	0.9%
Burnie-Melbourne								
QantasLink	169	164	143	87.2%	115	70.1%	5	3.0%
Regional Express	154	154	146	94.8%	130	84.4%	0	0.0%
All Airlines	323	318	289	90.9%	245	77.0%	5	1.5%
January 2006 to June 2006 data only.								
Cairns-Brisbane								
Jetstar	845	844	758	89.8%	746	88.4%	1	0.1%
Qantas	1 423	1 416	1 320	93.2%	1 343	94.8%	7	0.5%
Virgin Blue	1 524	1 520	1 413	93.0%	1 428	93.9%	4	0.3%
All Airlines	3 792	3 780	3 491	92.4%	3 517	93.0%	12	0.3%
Cairns-Melbourne								
Jetstar	568	567	421	74.3%	452	79.7%	1	0.2%
Qantas	368	366	290	79.2%	330	90.2%	2	0.5%
Virgin Blue	704	702	572	81.5%	598	85.2%	2	0.3%
All Airlines	1 640	1 635	1 283	78.5%	1 380	84.4%	5	0.3%
Cairns-Sydney								
Jetstar	460	458	363	79.3%	378	82.5%	2	0.4%
Qantas	1 226	1 221	1 074	88.0%	1 121	91.8%	5	0.4%
Virgin Blue	1 041	1 036	878	84.7%	916	88.4%	5	0.5%
All Airlines	2 727	2 715	2 315	85.3%	2 415	89.0%	12	0.4%

	Sectors		On time departures		On time arrivals		Cancellations	
	sched.	flown	no.	%	no.	%	no.	%
Canberra-Adelaide								
Qantas	656	656	612	93.3%	615	93.8%	0	0.0%
Virgin Blue	361	361	325	90.0%	324	89.8%	0	0.0%
All Airlines	1 017	1 017	937	92.1%	939	92.3%	0	0.0%
Canberra-Brisbane								
Qantas	1 376	1 371	1 262	92.0%	1 247	91.0%	5	0.4%
QantasLink	271	263	200	76.0%	212	80.6%	8	3.0%
Virgin Blue	1 094	1 091	1 020	93.5%	1 019	93.4%	3	0.3%
All Airlines	2 741	2 725	2 482	91.1%	2 478	90.9%	16	0.6%
Canberra-Melbourne								
Qantas	2 630	2 614	2 276	87.1%	2 236	85.5%	16	0.6%
QantasLink	1 218	1 203	1 028	85.5%	986	82.0%	15	1.2%
Virgin Blue	1 444	1 427	1 322	92.6%	1 311	91.9%	17	1.2%
All Airlines	5 292	5 244	4 626	88.2%	4 533	86.4%	48	0.9%
Coffs Harbour-Sydney								
QantasLink	1 779	1 772	1 431	80.8%	1 365	77.0%	7	0.4%
Virgin Blue	728	723	657	90.9%	661	91.4%	5	0.7%
All Airlines	2 507	2 495	2 088	83.7%	2 026	81.2%	12	0.5%
Darwin-Brisbane								
Jetstar	209	209	139	66.5%	165	78.9%	0	0.0%
Qantas	429	427	291	68.1%	329	77.0%	2	0.5%
Virgin Blue	366	365	279	76.4%	306	83.8%	1	0.3%
All Airlines	1 004	1 001	709	70.8%	800	79.9%	3	0.3%
Darwin-Melbourne								
Jetstar	199	199	139	69.8%	163	81.9%	0	0.0%
Qantas	53	53	45	84.9%	44	83.0%	0	0.0%
Virgin Blue	156	156	133	85.3%	140	89.7%	0	0.0%
All Airlines	408	408	317	77.7%	347	85.0%	0	0.0%
Dubbo-Sydney								
QantasLink	1 414	1 403	1 183	84.3%	1 118	79.7%	11	0.8%
Regional Express	1 439	1 436	1 218	84.8%	1 241	86.4%	3	0.2%
All Airlines	2 853	2 839	2 401	84.6%	2 359	83.1%	14	0.5%
Gold Coast-Adelaide								
Jetstar	276	276	248	89.9%	252	91.3%	0	0.0%
Virgin Blue	485	482	430	89.2%	439	91.1%	3	0.6%
All Airlines	761	758	678	89.4%	691	91.2%	3	0.4%
Gold Coast-Melbourne								
Jetstar	2 032	2 016	1 575	78.1%	1 663	82.5%	16	0.8%
Virgin Blue	2 244	2 229	1 939	87.0%	2 015	90.4%	15	0.7%
All Airlines	4 276	4 245	3 514	82.8%	3 678	86.6%	31	0.7%
Gold Coast-Sydney								
Jetstar	2 762	2 719	2 312	85.0%	2 248	82.7%	43	1.6%
Qantas	731	731	630	86.2%	640	87.6%	0	0.0%
Virgin Blue	3 731	3 707	3 268	88.2%	3 323	89.6%	24	0.6%
All Airlines	7 224	7 157	6 210	86.8%	6 211	86.8%	67	0.9%
Hamilton Island-Brisbane								
Jetstar	366	365	305	83.6%	305	83.6%	1	0.3%
Qantas	5	5	5	100.0%	5	100.0%	0	0.0%
Virgin Blue	381	378	361	95.5%	363	96.0%	3	0.8%
All Airlines	752	748	671	89.7%	673	90.0%	4	0.5%

	Sectors		On time departures		On time arrivals		Cancellations	
	sched.	flown	no.	%	no.	%	no.	%
Hervey Bay-Sydney								
Jetstar	192	191	165	86.4%	165	86.4%	1	0.5%
Virgin Blue	317	316	269	85.1%	271	85.8%	1	0.3%
All Airlines	509	507	434	85.6%	436	86.0%	2	0.4%
Hobart-Brisbane								
Jetstar	170	168	148	88.1%	154	91.7%	2	1.2%
Virgin Blue	373	372	317	85.2%	339	91.1%	1	0.3%
All Airlines	543	540	465	86.1%	493	91.3%	3	0.6%
Hobart-Melbourne								
Jetstar	1 517	1 513	1 253	82.8%	1 220	80.6%	4	0.3%
Qantas	731	731	620	84.8%	607	83.0%	0	0.0%
Virgin Blue	1 491	1 490	1 355	90.9%	1 318	88.5%	1	0.1%
All Airlines	3 739	3 734	3 228	86.4%	3 145	84.2%	5	0.1%
Hobart-Sydney								
Jetstar	621	621	558	89.9%	549	88.4%	0	0.0%
Qantas	428	428	376	87.9%	383	89.5%	0	0.0%
Virgin Blue	730	728	629	86.4%	618	84.9%	2	0.3%
All Airlines	1 779	1 777	1 563	88.0%	1 550	87.2%	2	0.1%
Kalgoorlie-Perth								
Qantas	577	575	497	86.4%	510	88.7%	2	0.3%
QantasLink	385	380	328	86.3%	338	88.9%	5	1.3%
Skywest	550	492	464	94.3%	449	91.3%	58	10.5%
All Airlines	1 512	1 447	1 289	89.1%	1 297	89.6%	65	4.3%
Karratha-Perth								
Qantas	435	424	397	93.6%	399	94.1%	11	2.5%
QantasLink	561	544	459	84.4%	470	86.4%	17	3.0%
Skywest	143	121	107	88.4%	107	88.4%	22	15.4%
All Airlines	1 139	1 089	963	88.4%	976	89.6%	50	4.4%
January 2006 to September 2006 data only.								
Launceston-Melbourne								
Jetstar	1 168	1 154	912	79.0%	873	75.6%	14	1.2%
Qantas	226	226	213	94.2%	208	92.0%	0	0.0%
QantasLink	320	319	280	87.8%	213	66.8%	1	0.3%
Virgin Blue	1 441	1 437	1 327	92.3%	1 339	93.2%	4	0.3%
All Airlines	3 155	3 136	2 732	87.1%	2 633	84.0%	19	0.6%
Launceston-Sydney								
Jetstar	364	363	305	84.0%	325	89.5%	1	0.3%
Virgin Blue	398	397	330	83.1%	340	85.6%	1	0.3%
All Airlines	762	760	635	83.6%	665	87.5%	2	0.3%
Mackay-Brisbane								
Jetstar	1 015	1 011	843	83.4%	857	84.8%	4	0.4%
Qantas	60	60	53	88.3%	55	91.7%	0	0.0%
QantasLink	577	575	520	90.4%	515	89.6%	2	0.3%
Virgin Blue	1 071	1 070	978	91.4%	989	92.4%	1	0.1%
All Airlines	2 723	2 716	2 394	88.1%	2 416	89.0%	7	0.3%
Maroochydore-Melbourne								
Jetstar	702	700	532	76.0%	523	74.7%	2	0.3%
Virgin Blue	744	739	628	85.0%	648	87.7%	5	0.7%
All Airlines	1 446	1 439	1 160	80.6%	1 171	81.4%	7	0.5%

	Sectors		On time departures		On time arrivals		Cancellations	
	sched.	flown	no.	%	no.	%	no.	%
Maroochydore-Sydney								
Jetstar	1 032	1 027	860	83.7%	832	81.0%	5	0.5%
Virgin Blue	492	489	377	77.1%	396	81.0%	3	0.6%
All Airlines	1 524	1 516	1 237	81.6%	1 228	81.0%	8	0.5%
Melbourne-Adelaide								
Qantas	4 343	4 301	3 849	89.5%	3 928	91.3%	42	1.0%
Virgin Blue	3 072	3 041	2 743	90.2%	2 774	91.2%	31	1.0%
All Airlines	7 415	7 342	6 592	89.8%	6 702	91.3%	73	1.0%
Melbourne-Brisbane								
Qantas	5 333	5 260	4 730	89.9%	4 734	90.0%	73	1.4%
Virgin Blue	3 589	3 572	3 183	89.1%	3 100	86.8%	17	0.5%
All Airlines	8 922	8 832	7 913	89.6%	7 834	88.7%	90	1.0%
Melbourne-Burnie								
QantasLink	172	169	133	78.7%	135	79.9%	3	1.7%
Regional Express	154	154	144	93.5%	143	92.9%	0	0.0%
All Airlines	326	323	277	85.8%	278	86.1%	3	0.9%
Melbourne-Cairns								
Jetstar	568	567	502	88.5%	486	85.7%	1	0.2%
Qantas	367	366	305	83.3%	316	86.3%	1	0.3%
Virgin Blue	704	701	602	85.9%	623	88.9%	3	0.4%
All Airlines	1 639	1 634	1 409	86.2%	1 425	87.2%	5	0.3%
Melbourne-Canberra								
Qantas	2 380	2 365	2 047	86.6%	2 055	86.9%	15	0.6%
QantasLink	1 218	1 200	1 020	85.0%	1 012	84.3%	18	1.5%
Virgin Blue	1 444	1 429	1 302	91.1%	1 296	90.7%	15	1.0%
All Airlines	5 042	4 994	4 369	87.5%	4 363	87.4%	48	1.0%
Melbourne-Darwin								
Jetstar	201	200	169	84.5%	152	76.0%	1	0.5%
Qantas	51	51	42	82.4%	39	76.5%	0	0.0%
Virgin Blue	156	156	141	90.4%	139	89.1%	0	0.0%
All Airlines	408	407	352	86.5%	330	81.1%	1	0.2%
Melbourne-Gold Coast								
Jetstar	2 031	2 018	1 758	87.1%	1 691	83.8%	13	0.6%
Virgin Blue	2 245	2 232	2 037	91.3%	1 964	88.0%	13	0.6%
All Airlines	4 276	4 250	3 795	89.3%	3 655	86.0%	26	0.6%
Melbourne-Hobart								
Jetstar	1 518	1 512	1 271	84.1%	1 269	83.9%	6	0.4%
Qantas	761	761	610	80.2%	629	82.7%	0	0.0%
Virgin Blue	1 492	1 489	1 334	89.6%	1 328	89.2%	3	0.2%
All Airlines	3 771	3 762	3 215	85.5%	3 226	85.8%	9	0.2%
Melbourne-Launceston								
Jetstar	1 167	1 154	964	83.5%	929	80.5%	13	1.1%
Qantas	229	229	171	74.7%	185	80.8%	0	0.0%
QantasLink	322	322	286	88.8%	271	84.2%	0	0.0%
Virgin Blue	1 442	1 440	1 274	88.5%	1 279	88.8%	2	0.1%
All Airlines	3 160	3 145	2 695	85.7%	2 664	84.7%	15	0.5%
Melbourne-Maroochydore								
Jetstar	702	701	589	84.0%	574	81.9%	1	0.1%
Virgin Blue	744	740	663	89.6%	657	88.8%	4	0.5%
All Airlines	1 446	1 441	1 252	86.9%	1 231	85.4%	5	0.3%

	Sectors		On time departures		On time arrivals		Cancellations	
	sched.	flown	no.	%	no.	%	no.	%
Melbourne-Mildura								
Qantas	1	1	1	100.0%	0	0.0%	0	0.0%
QantasLink	1 618	1 605	1 331	82.9%	1 323	82.4%	13	0.8%
Regional Express	1 290	1 288	1 159	90.0%	1 119	86.9%	2	0.2%
All Airlines	2 909	2 894	2 491	86.1%	2 442	84.4%	15	0.5%
Melbourne-Newcastle								
Jetstar	766	766	624	81.5%	606	79.1%	0	0.0%
QantasLink	873	866	723	83.5%	708	81.8%	7	0.8%
Virgin Blue	365	364	338	92.9%	335	92.0%	1	0.3%
All Airlines	2 004	1 996	1 685	84.4%	1 649	82.6%	8	0.4%
Melbourne-Perth								
Qantas	2 480	2 468	1 941	78.6%	1 960	79.4%	12	0.5%
Virgin Blue	1 464	1 460	1 350	92.5%	1 329	91.0%	4	0.3%
All Airlines	3 944	3 928	3 291	83.8%	3 289	83.7%	16	0.4%
Melbourne-Sydney								
Ozjet	284	283	272	96.1%	257	90.8%	1	0.4%
Qantas	10 339	10 050	8 788	87.4%	8 498	84.6%	289	2.8%
Virgin Blue	8 297	8 159	7 234	88.7%	7 080	86.8%	138	1.7%
All Airlines	18 920	18 492	16 294	88.1%	15 835	85.6%	428	2.3%
Mildura-Melbourne								
Qantas	1	1	1	100.0%	1	100.0%	0	0.0%
QantasLink	1 618	1 603	1 389	86.7%	1 368	85.3%	15	0.9%
Regional Express	1 289	1 287	1 194	92.8%	1 171	91.0%	2	0.2%
All Airlines	2 908	2 891	2 584	89.4%	2 540	87.9%	17	0.6%
Newcastle-Brisbane								
Jetstar	1 082	1 082	887	82.0%	863	79.8%	0	0.0%
QantasLink	573	567	508	89.6%	472	83.2%	6	1.0%
Virgin Blue	529	525	478	91.0%	475	90.5%	4	0.8%
All Airlines	2 184	2 174	1 873	86.2%	1 810	83.3%	10	0.5%
Newcastle-Melbourne								
Jetstar	788	787	666	84.6%	637	80.9%	1	0.1%
QantasLink	869	863	769	89.1%	721	83.5%	6	0.7%
Virgin Blue	365	364	330	90.7%	328	90.1%	1	0.3%
All Airlines	2 022	2 014	1 765	87.6%	1 686	83.7%	8	0.4%
Perth-Adelaide								
Qantas	1 452	1 448	1 305	90.1%	1 232	85.1%	4	0.3%
Virgin Blue	454	453	422	93.2%	431	95.1%	1	0.2%
All Airlines	1 906	1 901	1 727	90.8%	1 663	87.5%	5	0.3%
Perth-Brisbane								
Qantas	1 163	1 161	891	76.7%	942	81.1%	2	0.2%
Virgin Blue	365	365	318	87.1%	313	85.8%	0	0.0%
All Airlines	1 528	1 526	1 209	79.2%	1 255	82.2%	2	0.1%
Perth-Broome								
Qantas	397	396	344	86.9%	353	89.1%	1	0.3%
QantasLink	294	289	229	79.2%	234	81.0%	5	1.7%
Skywest	289	284	227	79.9%	209	73.6%	5	1.7%
Virgin Blue	275	275	226	82.2%	233	84.7%	0	0.0%
All Airlines	1 255	1 244	1 026	82.5%	1 029	82.7%	11	0.9%

	Sectors		On time departures		On time arrivals		Cancellations	
	sched.	flown	no.	%	no.	%	no.	%
Perth-Kalgoorlie								
Qantas	575	574	515	89.7%	515	89.7%	1	0.2%
QantasLink	385	380	318	83.7%	330	86.8%	5	1.3%
Skywest	549	493	446	90.5%	433	87.8%	56	10.2%
All Airlines	1 509	1 447	1 279	88.4%	1 278	88.3%	62	4.1%
Perth-Karratha								
Qantas	435	425	394	92.7%	392	92.2%	10	2.3%
QantasLink	555	538	458	85.1%	472	87.7%	17	3.1%
Skywest	116	110	91	82.7%	85	77.3%	6	5.2%
All Airlines	1 106	1 073	943	87.9%	949	88.4%	33	3.0%
Perth-Melbourne								
Qantas	2 516	2 500	1 971	78.8%	1 907	76.3%	16	0.6%
Virgin Blue	1 464	1 459	1 323	90.7%	1 296	88.8%	5	0.3%
All Airlines	3 980	3 959	3 294	83.2%	3 203	80.9%	21	0.5%
Perth-Port Hedland								
QantasLink	734	731	627	85.8%	634	86.7%	3	0.4%
Skywest	111	93	81	87.1%	79	84.9%	18	16.2%
All Airlines	845	824	708	85.9%	713	86.5%	21	2.5%
Perth-Sydney								
Qantas	1 972	1 963	1 573	80.1%	1 483	75.5%	9	0.5%
Virgin Blue	1 111	1 109	1 029	92.8%	972	87.6%	2	0.2%
All Airlines	3 083	3 072	2 602	84.7%	2 455	79.9%	11	0.4%
Port Hedland-Perth								
QantasLink	731	727	581	79.9%	627	86.2%	4	0.5%
Skywest	91	82	71	86.6%	69	84.1%	9	9.9%
All Airlines	822	809	652	80.6%	696	86.0%	13	1.6%
Port Lincoln-Adelaide								
QantasLink	498	493	463	93.9%	432	87.6%	5	1.0%
Regional Express	830	829	766	92.4%	740	89.3%	1	0.1%
All Airlines	1 328	1 322	1 229	93.0%	1 172	88.7%	6	0.5%
January 2006 to June 2006 data only.								
Proserpine-Brisbane								
Jetstar	366	364	264	72.5%	250	68.7%	2	0.5%
Virgin Blue	365	365	338	92.6%	342	93.7%	0	0.0%
All Airlines	731	729	602	82.6%	592	81.2%	2	0.3%
Rockhampton-Brisbane								
Jetstar	365	365	311	85.2%	313	85.8%	0	0.0%
QantasLink	2 348	2 331	2 121	91.0%	2 124	91.1%	17	0.7%
Virgin Blue	1 070	1 070	982	91.8%	979	91.5%	0	0.0%
All Airlines	3 783	3 766	3 414	90.7%	3 416	90.7%	17	0.4%
Sydney-Adelaide								
Jetstar	334	334	287	85.9%	282	84.4%	0	0.0%
Qantas	3 501	3 490	2 985	85.5%	3 220	92.3%	11	0.3%
Virgin Blue	1 823	1 816	1 631	89.8%	1 600	88.1%	7	0.4%
All Airlines	5 658	5 640	4 903	86.9%	5 102	90.5%	18	0.3%
Sydney-Albury								
QantasLink	1 383	1 377	1 109	80.5%	996	72.3%	6	0.4%
Regional Express	1 283	1 279	1 060	82.9%	993	77.6%	4	0.3%
All Airlines	2 666	2 656	2 169	81.7%	1 989	74.9%	10	0.4%

	Sectors		On time departures		On time arrivals		Cancellations	
	sched.	flown	no.	%	no.	%	no.	%
Sydney-Ballina								
Jetstar	435	432	401	92.8%	383	88.7%	3	0.7%
Regional Express	1 200	1 200	1 070	89.2%	1 031	85.9%	0	0.0%
Virgin Blue	426	425	371	87.3%	363	85.4%	1	0.2%
All Airlines	2 061	2 057	1 842	89.5%	1 777	86.4%	4	0.2%
Sydney-Brisbane								
Qantas	7 305	7 233	6 419	88.7%	6 562	90.7%	72	1.0%
Virgin Blue	6 088	5 970	5 191	87.0%	5 155	86.3%	118	1.9%
All Airlines	13 393	13 203	11 610	87.9%	11 717	88.7%	190	1.4%
Sydney-Cairns								
Jetstar	459	458	409	89.3%	389	84.9%	1	0.2%
Qantas	1 167	1 164	985	84.6%	1 008	86.6%	3	0.3%
Virgin Blue	1 041	1 039	850	81.8%	843	81.1%	2	0.2%
All Airlines	2 667	2 661	2 244	84.3%	2 240	84.2%	6	0.2%
Sydney-Coffs Harbour								
QantasLink	1 786	1 784	1 452	81.4%	1 332	74.7%	2	0.1%
Virgin Blue	726	724	661	91.3%	652	90.1%	2	0.3%
All Airlines	2 512	2 508	2 113	84.3%	1 984	79.1%	4	0.2%
Sydney-Dubbo								
QantasLink	1 414	1 405	1 157	82.3%	1 131	80.5%	9	0.6%
Regional Express	1 440	1 437	1 216	84.6%	1 193	83.0%	3	0.2%
All Airlines	2 854	2 842	2 373	83.5%	2 324	81.8%	12	0.4%
Sydney-Gold Coast								
Jetstar	2 763	2 721	2 355	86.5%	2 364	86.9%	42	1.5%
Qantas	835	835	673	80.6%	698	83.6%	0	0.0%
Virgin Blue	3 731	3 716	3 293	88.6%	3 281	88.3%	15	0.4%
All Airlines	7 329	7 272	6 321	86.9%	6 343	87.2%	57	0.8%
Sydney-Hervey Bay								
Jetstar	192	192	183	95.3%	174	90.6%	0	0.0%
Virgin Blue	317	317	266	83.9%	268	84.5%	0	0.0%
All Airlines	509	509	449	88.2%	442	86.8%	0	0.0%
Sydney-Hobart								
Jetstar	610	610	520	85.2%	524	85.9%	0	0.0%
Qantas	335	335	260	77.6%	270	80.6%	0	0.0%
Virgin Blue	731	731	581	79.5%	576	78.8%	0	0.0%
All Airlines	1 676	1 676	1 361	81.2%	1 370	81.7%	0	0.0%
Sydney-Launceston								
Jetstar	365	365	339	92.9%	320	87.7%	0	0.0%
Virgin Blue	398	398	338	84.9%	341	85.7%	0	0.0%
All Airlines	763	763	677	88.7%	661	86.6%	0	0.0%
Sydney-Maroochydore								
Jetstar	1 034	1 030	909	88.3%	880	85.4%	4	0.4%
Virgin Blue	492	490	405	82.7%	388	79.2%	2	0.4%
All Airlines	1 526	1 520	1 314	86.4%	1 268	83.4%	6	0.4%
Sydney-Melbourne								
Ozjet	283	280	262	93.6%	241	86.1%	3	1.1%
Qantas	10 294	10 033	8 434	84.1%	8 320	82.9%	261	2.5%
Virgin Blue	8 299	8 155	7 347	90.1%	7 287	89.4%	144	1.7%
All Airlines	18 876	18 468	16 043	86.9%	15 848	85.8%	408	2.2%

	Sectors		On time departures		On time arrivals		Cancellations	
	sched.	flown	no.	%	no.	%	no.	%
Sydney-Perth								
Qantas	2 013	2 011	1 491	74.1%	1 592	79.2%	2	0.1%
Virgin Blue	1 112	1 110	954	85.9%	948	85.4%	2	0.2%
All Airlines	3 125	3 121	2 445	78.3%	2 540	81.4%	4	0.1%
Sydney-Townsville								
Jetstar	186	185	177	95.7%	175	94.6%	1	0.5%
Qantas	126	125	107	85.6%	112	89.6%	1	0.8%
Virgin Blue	365	364	329	90.4%	331	90.9%	1	0.3%
All Airlines	677	674	613	90.9%	618	91.7%	3	0.4%
Sydney-Wagga Wagga								
QantasLink	1 416	1 404	1 092	77.8%	969	69.0%	12	0.8%
Regional Express	1 644	1 636	1 348	82.4%	1 240	75.8%	8	0.5%
All Airlines	3 060	3 040	2 440	80.3%	2 209	72.7%	20	0.7%
Townsville-Brisbane								
Jetstar	364	362	279	77.1%	276	76.2%	2	0.5%
Qantas	1 666	1 655	1 532	92.6%	1 539	93.0%	11	0.7%
Virgin Blue	1 153	1 150	1 102	95.8%	1 093	95.0%	3	0.3%
All Airlines	3 183	3 167	2 913	92.0%	2 908	91.8%	16	0.5%
Townsville-Sydney								
Jetstar	185	184	168	91.3%	164	89.1%	1	0.5%
Qantas	128	127	112	88.2%	113	89.0%	1	0.8%
Virgin Blue	365	364	326	89.6%	331	90.9%	1	0.3%
All Airlines	678	675	606	89.8%	608	90.1%	3	0.4%
Wagga Wagga-Sydney								
QantasLink	1 415	1 400	1 097	78.4%	924	66.0%	15	1.1%
Regional Express	1 645	1 637	1 380	84.3%	1 376	84.1%	8	0.5%
All Airlines	3 060	3 037	2 477	81.6%	2 300	75.7%	23	0.8%

AIRPORTS

On time performance is reported for all routes which are flown by two or more airlines where the passenger load averages over 8,000 passengers per month. The following data reports by airport against flights operated on those routes only.

	Departures			Arrivals		
	Sectors Flown	No. on Time	% on Time	Sectors Flown	No. on Time	% on Time
Adelaide Airport						
Jetstar	973	857	88.1	944	853	90.4
Qantas	10 942	9 849	90.0	10 984	10 020	91.2
QantasLink	496	472	95.2	493	432	87.6
Regional Express	829	768	92.6	829	740	89.3
Virgin Blue	7 243	6 600	91.1	7 246	6 578	90.8
All Airlines	20 483	18 546	90.5	20 496	18 623	90.9
Relates to services to and from Brisbane, Canberra, Gold Coast, Melbourne, Perth and Sydney.						
Albury Airport						
QantasLink	1 376	1 099	79.9	1 377	996	72.3
Regional Express	1 275	1 082	84.9	1 279	993	77.6
All Airlines	2 651	2 181	82.3	2 656	1 989	74.9
Relates to services to and from Sydney only.						
Ballina Airport						
Jetstar	428	374	87.4	432	383	88.7
Regional Express	1 199	1 060	88.4	1 200	1 031	85.9
Virgin Blue	422	350	82.9	425	363	85.4
All Airlines	2 049	1 784	87.1	2 057	1 777	86.4
Relates to services to and from Sydney only.						
Brisbane Airport						
Jetstar	5 073	4 448	87.7	5 133	4 262	83.0
Qantas	19 671	17 489	88.9	19 677	17 752	90.2
QantasLink	4 121	3 663	88.9	3 736	3 323	88.9
Virgin Blue	18 928	17 060	90.1	18 905	16 897	89.4
All Airlines	47 793	42 660	89.3	47 451	42 234	89.0
Relates to services to and from Adelaide, Cairns, Canberra, Darwin, Hamilton Island, Hobart, Mackay, Melbourne, Newcastle, Proserpine, Rockhampton, Sydney and Townsville.						
Broome Airport						
Qantas	391	300	76.7	396	353	89.1
QantasLink	265	237	89.4	289	234	81.0
Skywest	283	211	74.6	284	209	73.6
Virgin Blue	275	205	74.5	275	233	84.7
All Airlines	1 214	953	78.5	1 244	1 029	82.7
Relates to services to and from Perth only.						

	Departures			Arrivals		
	Sectors Flown	No. on Time	% on Time	Sectors Flown	No. on Time	% on Time
Burnie Airport						
QantasLink	164	143	87.2	169	135	79.9
Regional Express	154	146	94.8	154	143	92.9
All Airlines	318	289	90.9	323	278	86.1
Relates to services to and from Melbourne only. January 2006 to June 2006 data only.						
Cairns Airport						
Jetstar	1 869	1 542	82.5	1 838	1 571	85.5
Qantas	3 003	2 684	89.4	2 951	2 610	88.4
Virgin Blue	3 258	2 863	87.9	3 260	2 822	86.6
All Airlines	8 130	7 089	87.2	8 049	7 003	87.0
Relates to services to and from Brisbane, Melbourne and Sydney.						
Canberra Airport						
Qantas	4 641	4 150	89.4	4 282	3 796	88.7
QantasLink	1 466	1 228	83.8	1 468	1 261	85.9
Virgin Blue	2 879	2 667	92.6	2 883	2 644	91.7
All Airlines	8 986	8 045	89.5	8 633	7 701	89.2
Relates to services to and from Adelaide, Brisbane and Melbourne.						
Coffs Harbour Airport						
QantasLink	1 772	1 431	80.8	1 784	1 332	74.7
Virgin Blue	723	657	90.9	724	652	90.1
All Airlines	2 495	2 088	83.7	2 508	1 984	79.1
Relates to services to and from Sydney only.						
Darwin Airport						
Jetstar	408	278	68.1	410	321	78.3
Qantas	480	336	70.0	477	384	80.5
Virgin Blue	521	412	79.1	521	436	83.7
All Airlines	1 409	1 026	72.8	1 408	1 141	81.0
Relates to services to and from Brisbane, Melbourne and Sydney.						
Dubbo Airport						
QantasLink	1 403	1 183	84.3	1 405	1 131	80.5
Regional Express	1 436	1 218	84.8	1 437	1 193	83.0
All Airlines	2 839	2 401	84.6	2 842	2 324	81.8
Relates to services to and from Sydney only.						
Gold Coast Airport						
Jetstar	5 011	4 135	82.5	5 015	4 298	85.7
Qantas	731	630	86.2	835	698	83.6
Virgin Blue	6 418	5 637	87.8	6 430	5 689	88.5
All Airlines	12 160	10 402	85.5	12 280	10 685	87.0
Relates to services to and from Adelaide, Melbourne and Sydney.						

	Departures			Arrivals		
	Sectors Flown	No. on Time	% on Time	Sectors Flown	No. on Time	% on Time
Hamilton Island Airport						
Jetstar	365	305	83.6	364	321	88.2
Qantas	5	5	100.0	5	4	80.0
Virgin Blue	378	361	95.5	380	351	92.4
All Airlines	748	671	89.7	749	676	90.3
Relates to services to and from Brisbane only.						
Hervey Bay Airport						
Jetstar	191	165	86.4	192	174	90.6
Virgin Blue	316	269	85.1	317	268	84.5
All Airlines	507	434	85.6	509	442	86.8
Relates to services to and from Sydney only.						
Hobart Airport						
Jetstar	2 302	1 959	85.1	2 290	1 942	84.8
Qantas	1 159	996	85.9	1 096	899	82.0
Virgin Blue	2 590	2 301	88.8	2 592	2 249	86.8
All Airlines	6 051	5 256	86.9	5 978	5 090	85.1
Relates to services to and from Brisbane, Melbourne and Sydney.						
Kalgoorlie Airport						
Qantas	575	497	86.4	574	515	89.7
QantasLink	380	328	86.3	380	330	86.8
Skywest	492	464	94.3	493	433	87.8
All Airlines	1 447	1 289	89.1	1 447	1 278	88.3
Relates to services to and from Perth only.						
Karratha Airport						
Qantas	424	397	93.6	425	392	92.2
QantasLink	544	459	84.4	538	472	87.7
Skywest	121	107	88.4	110	85	77.3
All Airlines	1 089	963	88.4	1 073	949	88.4
Relates to services to and from Perth only. January 2006 to September 2006 data only.						
Launceston Airport						
Jetstar	1 517	1 217	80.2	1 519	1 249	82.2
Qantas	226	213	94.2	229	185	80.8
QantasLink	319	280	87.8	322	271	84.2
Virgin Blue	1 834	1 657	90.3	1 838	1 620	88.1
All Airlines	3 896	3 367	86.4	3 908	3 325	85.1
Relates to services to and from Melbourne and Sydney.						
Mackay Airport						
Jetstar	1 011	843	83.4	1 012	894	88.3
Qantas	60	53	88.3	60	58	96.7
QantasLink	575	520	90.4	574	503	87.6
Virgin Blue	1 070	978	91.4	1 070	929	86.8
All Airlines	2 716	2 394	88.1	2 716	2 384	87.8
Relates to services to and from Brisbane only.						
Maroochydore Airport						
Jetstar	1727	1392	80.6022	1731	1454	83.99769
Virgin Blue	1228	1005	81.84039	1230	1045	84.95935
All Airlines	2955	2397	81.11675	2961	2499	84.39716
Relates to services to and from Melbourne and Sydney.						

	Departures			Arrivals		
	Sectors Flown	No. on Time	% on Time	Sectors Flown	No. on Time	% on Time
Melbourne Airport						
Jetstar	6 918	5 877	85.0	6 936	5 531	79.7
Qantas	25 852	22 484	87.0	25 807	22 165	85.9
QantasLink	4 162	3 493	83.9	4 152	3 403	82.0
Regional Express	1 442	1 303	90.4	1 441	1 301	90.3
Virgin Blue	24 783	22 201	89.6	24 767	22 308	90.1
Ozjet	283	272	96.1	280	241	86.1
All Airlines	63 440	55 630	87.7	63 383	54 949	86.7

Relates to services to and from Adelaide, Brisbane, Burnie, Cairns, Canberra, Darwin, Gold Coast, Hobart, Launceston, Maroochydore, Mildura, Newcastle, Perth and Sydney.

Mildura Airport

QantasLink	1 603	1 389	86.7	1 605	1 323	82.4
Regional Express	1 287	1 194	92.8	1 288	1 119	86.9
All Airlines	2 891	2 584	89.4	2 894	2 442	84.4

Relates to services to and from Melbourne only.

Newcastle Airport

Jetstar	1 869	1 553	83.1	1 848	1 511	81.8
QantasLink	1 430	1 277	89.3	1 434	1 170	81.6
Virgin Blue	889	808	90.9	892	806	90.4
All Airlines	4 188	3 638	86.9	4 174	3 487	83.5

Relates to services to and from Brisbane and Melbourne.

Perth Airport

Qantas	8 467	6 993	82.6	8 515	7 113	83.5
QantasLink	1 938	1 632	84.2	1 916	1 671	87.2
Skywest	980	845	86.2	978	820	83.8
Virgin Blue	3 661	3 318	90.6	3 664	3 249	88.7
All Airlines	15 046	12 788	85.0	15 073	12 853	85.3

Relates to services to and from Adelaide, Brisbane, Broome, Kalgoorlie, Melbourne, Port Hedland and Sydney.

Port Hedland Airport

QantasLink	727	581	79.9	731	634	86.7
Skywest	82	71	86.6	93	79	84.9
All Airlines	809	652	80.6	824	713	86.5

Relates to services to and from Perth only.

Port Lincoln Airport

QantasLink	493	463	93.9	496	463	93.3
Regional express	829	766	92.4	829	756	91.2
All Airlines	1 322	1 229	93.0	1 325	1 219	92.0

Relates to services to and from Adelaide only.

January 2006 to June 2006 data only.

Proserpine Airport

Jetstar	364	264	72.5	363	288	79.3
Virgin Blue	365	338	92.6	365	330	90.4
All Airlines	729	602	82.6	728	618	84.9

Relates to services to and from Brisbane only.

	Departures			Arrivals		
	Sectors Flown	No. on Time	% on Time	Sectors Flown	No. on Time	% on Time
Rockhampton Airport						
Jetstar	365	311	85.2	365	332	91.0
QantasLink	2 331	2 121	91.0	2 711	2 462	90.8
Virgin Blue	1 070	982	91.8	1 070	916	85.6
All Airlines	3 766	3 414	90.7	4 146	3 710	89.5
Relates to services to and from Brisbane only.						
Sydney Airport						
Jetstar	6 327	5 580	88.2	6 325	5 320	84.1
Qantas	25 226	21 354	84.7	25 541	21 849	85.5
QantasLink	5 970	4 810	80.6	5 951	4 479	75.3
Regional Express	5 552	4 694	84.5	5 547	4 660	84.0
Virgin Blue	25 255	22 217	88.0	25 252	22 181	87.8
Ozjet	280	262	93.6	283	257	90.8
All Airlines	68610	58917	85.9	68899	58746	85.3
Relates to services to and from Adelaide, Albury, Ballina, Brisbane, Cairns, Canberra, Coffs Harbour, Darwin, Dubbo, Hervey Bay, Gold Coast, Maroochydore, Melbourne, Perth, Townsville and Wagga Wagga.						
Townsville Airport						
Jetstar	546	447	81.9	547	468	85.6
Qantas	1782	1644	92.3	1781	1621	91.0
Virgin Blue	1514	1428	94.3	1514	1382	91.3
All Airlines	3842	3519	91.6	3842	3471	90.3
Relates to services to and from Brisbane and Sydney.						
Wagga Wagga Airport						
QantasLink	1400	1097	78.4	1404	969	69.0
Regional Express	1637	1380	84.3	1636	1240	75.8
All Airlines	3037	2477	81.6	3040	2209	72.7
Relates to services to and from Sydney only.						

This page is intentionally left blank.

DEFINITIONS

On time departure	A flight departure is counted as "on time" if it departs the gate within 15 minutes of the scheduled departure time shown in the carriers' schedule.
On time arrival	A flight arrival is counted as "on time" if it arrived at the gate within 15 minutes of the scheduled arrival time shown in the carriers' schedule. Neither diverted nor cancelled flights count as on time.
Cancellation	A flight is regarded as a cancellation if it is cancelled or rescheduled less than 7 days prior to its scheduled departure time.
On time departure percentage	The percentage of on time departures is measured against the number of departures <i>operated</i> on any particular sector.
On time arrival percentage	The percentage of on time arrivals is measured against the number of arrivals <i>operated</i> on any particular sector.
Cancellation percentage	The percentage of cancellations is measured against the number of services <i>scheduled</i> on any particular sector.
