



Australian Government

Department of Infrastructure, Transport, Cities and Regional Development

Bureau of Infrastructure, Transport and Regional Economics

STATISTICAL REPORT



Aviation

Domestic airline on time performance
December 2019

© Commonwealth of Australia 2020

ISSN: 1832-0759

Ownership of intellectual property rights in this publication

Unless otherwise noted, copyright (and any other intellectual property rights, if any) in this publication is owned by the Commonwealth of Australia (referred to below as the Commonwealth).

Disclaimer

The material contained in this publication is made available on the understanding that the Commonwealth is not providing professional advice, and that users exercise their own skill and care with respect to its use, and seek independent advice if necessary.

The Commonwealth makes no representations or warranties as to the contents or accuracy of the information contained in this publication. To the extent permitted by law, the Commonwealth disclaims liability to any person or organisation in respect of anything done, or omitted to be done, in reliance upon information contained in this publication.

Creative Commons licence

With the exception of (a) the Coat of Arms; and (b) the Department of Infrastructure, Transport, Cities and Regional Development's photos and graphics, copyright in this publication is licensed under a Creative Commons Attribution 3.0 Australia Licence.

Creative Commons Attribution 3.0 Australia Licence is a standard form licence agreement that allows you to copy, communicate and adapt this publication provided that you attribute the work to the Commonwealth and abide by the other licence terms. A summary of the licence terms is available from <http://creativecommons.org/licenses/by/3.0/au/deed.en>. The full licence terms are available from <http://creativecommons.org/licenses/by/3.0/au/legalcode>.

Use of the Coat of Arms

The Department of the Prime Minister and Cabinet sets the terms under which the Coat of Arms is used. Please refer to the Department's Commonwealth Coat of Arms and Government branding web page <http://www.dpmc.gov.au/guidelines/index.cfm#brand> and, in particular, the Guidelines on the use of the Commonwealth Coat of Arms publication.

An appropriate citation for this report is:

Bureau of Infrastructure, Transport and Regional Economics (BITRE), 2020, Domestic airline on time performance, Statistical Report, BITRE, Canberra ACT.

Contact us

This publication is available in PDF format. All other rights are reserved, including in relation to any Departmental logos or trade marks which may exist. For enquiries regarding the licence and any use of this publication, please contact:

Bureau of Infrastructure, Transport and Regional Economics (BITRE)
Department of Infrastructure, Transport, Cities and Regional Development
GPO Box 501, Canberra ACT 2601, Australia
Telephone: (international) +61 2 6274 7210
Fax: (international) +61 2 6274 6855
Email: bitre@infrastructure.gov.au
Website: www.bitre.gov.au

Inquiries

Should you require additional information about the statistics contained in this publication:

Telephone (02) 6274 7790 or Facsimile (02) 6274 7727

Electronic mail: AVSTATS@infrastructure.gov.au

Web site: <http://www.bitre.gov.au/statistics/aviation/otphome.aspx>

Foreword

The Bureau of Infrastructure, Transport and Regional Economics (BITRE) monitors the punctuality and reliability of major domestic airlines operating between Australian airports. The purpose of this is to allow for evaluation of overall industry and individual airline performance, so that consumers of air travel can make informed decisions.

The following domestic airlines currently report this information monthly to the BITRE: Jetstar, Qantas, QantasLink, Regional Express, Tigerair Australia, Virgin Australia and Virgin Australia Regional Airlines. Data has been gathered since November 2003, although some airlines commenced reporting at a later date, including Jetstar which first reported in May 2004, MacAir in July 2005, Tigerair Australia in April 2008 and Virgin Australia Regional Airlines in May 2013. MacAir ceased operations in February 2009 and data was not received for December 2008 onwards. Virgin Blue was rebranded as Virgin Australia in May 2011 and Tiger Airways was rebranded as Tigerair Australia in July 2013 and time series data in Microsoft Excel spreadsheet format on the BITRE website have been revised to reflect these changes. Services operated by Skywest on behalf of Virgin Australia using ATR/F100 aircraft commenced in November 2011 and were shown separately as Virgin Australia – ATR/F100 Operations. Virgin Australia Regional Airlines commenced operations in May 2013. It was formed after the acquisition of Skywest by Virgin Australia and represented a combination of operations previously reported under Skywest and Virgin Australia – ATR/F100 Operations. In January 2016, Virgin Australia transferred their ATR fleet from Virgin Australia Regional Airlines to Virgin Australia.

Information presented in this report is for Australian domestic routes for which the passenger load averaged 8 000 or more passengers per month over the previous six months and where two or more airlines operated in competition on those routes. There were 64 routes that met this definition in December 2019. Over time, routes which meet these criteria change as airline networks and traffic levels vary.

Participating airlines report their overall monthly network performance where this is possible.

Total industry figures encompass all services operated by reporting airlines only. These airlines collectively carried over 95 per cent of total domestic passengers (regular public transport only) in 2018.

The method of capturing on time performance varies between airlines utilising different recording systems. Jetstar and Qantas jet aircraft use Aircraft Communication Addressing and Reporting System (ACARS) to electronically measure on time performance. Regional Express, Tigerair Australia, Virgin Australia, Virgin Australia Regional Airlines and the Qantas non-jet fleet record on time performance manually using records from pilots, gate agents and/or ground crews.

After initial data is collected, aggregate reports are audited internally by participating airlines prior to publication.

Reports and detailed time series data in Microsoft Excel spreadsheet format are available from the BITRE website at: <http://www.bitre.gov.au/statistics/aviation/otphome.aspx>.

Contents

	Page
Industry performance	1
Individual routes	10
Airports.....	24
Definitions	30

Industry performance

For December 2019, on time performance over all routes operated by participating airlines (Jetstar, Qantas, QantasLink, Regional Express, Tigerair Australia, Virgin Australia and Virgin Australia Regional Airlines) averaged 73.4 per cent for on time arrivals and 74.4 per cent for on time departures. Cancellations represented 2.5 per cent of all scheduled flights. This month's on time performance figures are some of the worst recorded and were probably impacted by smoke haze from bushfires. The equivalent figures for December 2018 were 75.3 per cent for on time arrivals, 76.2 per cent for on time departures and 2.9 per cent for cancellations.

This month's on time arrivals figure was lower than the long term average performance for all routes (82.2 per cent) and the on time departures figure was also lower than the long term average (83.5 per cent). The rate of cancellations was higher than the long term average of 1.5 per cent.

Virgin Australia achieved the highest on time arrivals among the major domestic airlines at 73.9 per cent followed by Qantas at 70.8 per cent, Tigerair Australia at 69.3 per cent and Jetstar at 64.7 per cent. Of the regional airlines, Regional Express recorded 80.0 per cent for on time arrivals, followed by QantasLink at 78.7 per cent and Virgin Australia Regional Airlines at 78.0 per cent. The Qantas network (Qantas and QantasLink combined operations) recorded 75.0 per cent for on time arrivals while the Virgin Australia network (Virgin Australia and Virgin Australia Regional Airlines combined operations) recorded 74.1 per cent.

Virgin Australia also achieved the highest level of on time departures among the major domestic airlines for December 2019 at 76.2 per cent, followed by Tigerair Australia at 71.9 per cent, Qantas at 71.3 per cent and Jetstar at 62.8 per cent. Of the regional airlines, Regional Express recorded 84.3 per cent for on time departures, followed by Virgin Australia Regional Airlines at 79.8 per cent and QantasLink at 78.7 per cent. The Qantas network recorded 75.3 per cent for on time departures while the Virgin Australia network recorded 76.4 per cent.

Jetstar recorded the highest percentage of cancellations (7.1 per cent) during the month, followed by Tigerair Australia (2.7 per cent), Qantas (2.4 per cent), Virgin Australia Regional Airlines (2.2 per cent), QantasLink (1.4 per cent), Virgin Australia (1.2 per cent) and Regional Express (1.0 per cent).

Airlines' on time performance varies across the routes they serve. Individual route data by specific airline for 64 routes are shown on pages 10-23.

Of the 64 routes which met the criteria for on time performance reporting in December 2019, the Sydney-Ayers Rock route had the highest percentage of on time arrivals (94.8 per cent) and the Perth-Darwin route had the highest percentage of on time departures (96.8 per cent). The Armidale-Sydney route had the lowest percentage of on time arrivals (50.3 per cent) and the Sydney-Launceston route had the lowest percentage of on time departures (48.6 per cent).

Cancellations were highest on the Sydney-Melbourne route at 6.9 per cent, followed by the Melbourne-Sydney route at 6.6 per cent, the Armidale-Sydney route at 5.8 per cent, the Gold Coast-Sydney route at 5.0 per cent and the Brisbane-Sydney route at 4.7 per cent.

Ayers Rock Airport recorded the highest percentage of on time arrivals (94.8 per cent) and Kalgoorlie Airport had the highest percentage of on time departures (89.8 per cent). Armidale Airport recorded the lowest percentage of on time arrivals (63.1 per cent) and Gold Coast Airport recorded the lowest percentage of on time departures (58.3 per cent). These figures only refer to reported routes and do not cover all flights at these airports.

Table 1 On time performance for December 2019 – Total Industry

	<i>Sectors</i>		<i>Arrivals On Time</i>		<i>Departures On Time</i>		<i>Cancellations</i>	
	<i>Scheduled</i>	<i>Flown</i>	<i>No.</i>	<i>%</i>	<i>No.</i>	<i>%</i>	<i>No.</i>	<i>%</i>
Jetstar	7 969	7 404	4 794	64.7	4 647	62.8	565	7.1
Qantas	8 738	8 529	6 039	70.8	6 084	71.3	209	2.4
QantasLink	10 018	9 880	7 774	78.7	7 776	78.7	138	1.4
Regional Express	5 420	5 365	4 293	80.0	4 521	84.3	55	1.0
Tigerair Australia	2 462	2 395	1 659	69.3	1 721	71.9	67	2.7
Virgin Australia	11 629	11 488	8 486	73.9	8 755	76.2	141	1.2
Virgin Australia Regional Airlines	788	771	601	78.0	615	79.8	17	2.2
All Airlines	47 024	45 832	33 646	73.4	34 119	74.4	1 192	2.5
Qantas - all QF designated services	18 756	18 409	13 813	75.0	13 860	75.3	347	1.9
Virgin Australia - all VA designated services	12 417	12 259	9 087	74.1	9 370	76.4	158	1.3

Total airline network data (including routes not shown in this report).

Airlines' on time performance varies across the routes they serve. Individual route data by specific airline for 64 routes are shown on pages 10-23.

Table 2 Top ten routes for on time performance for December 2019 (participating airlines only)

<i>Arrivals</i>		<i>Departures</i>	
<i>Route</i>	<i>On Time (%)</i>	<i>Route</i>	<i>On Time (%)</i>
Sydney-Ayers Rock	94.8	Perth-Darwin	96.8
Perth-Darwin	93.5	Adelaide-Port Lincoln	91.9
Cairns-Townsville	91.8	Cairns-Townsville	91.8
Brisbane-Mount Isa	91.3	Perth-Kalgoorlie	91.4
Kalgoorlie-Perth	91.2	Perth-Newman	90.3
Perth-Newman	90.3	Kalgoorlie-Perth	89.8
Perth-Kalgoorlie	89.9	Port Lincoln-Adelaide	88.9
Brisbane-Bundaberg	89.7	Mount Isa-Brisbane	88.5
Adelaide-Port Lincoln	88.9	Darwin-Alice Springs	88.2
Bundaberg-Brisbane	88.3	Brisbane-Emerald	88.2

Table 3 Top ten airports for on time performance for December 2019 (participating airlines and reported routes only)

<i>Arrivals</i>		<i>Departures</i>	
<i>Airport</i>	<i>On Time (%)</i>	<i>Airport</i>	<i>On Time (%)</i>
Ayers Rock	94.8	Kalgoorlie	89.8
Mount Isa	91.3	Port Lincoln	88.9
Newman	90.3	Mount Isa	88.5
Kalgoorlie	89.9	Bundaberg	85.5
Bundaberg	89.7	Newman	84.2
Port Lincoln	88.9	Ayers Rock	83.9
Karratha	88.2	Perth	83.1
Port Hedland	87.6	Broome	82.8
Mildura	87.0	Wagga Wagga	80.9
Emerald	85.7	Emerald	80.7

Total industry on time performance

Figure 1 On time performance (by month from December 2016)—Total Industry

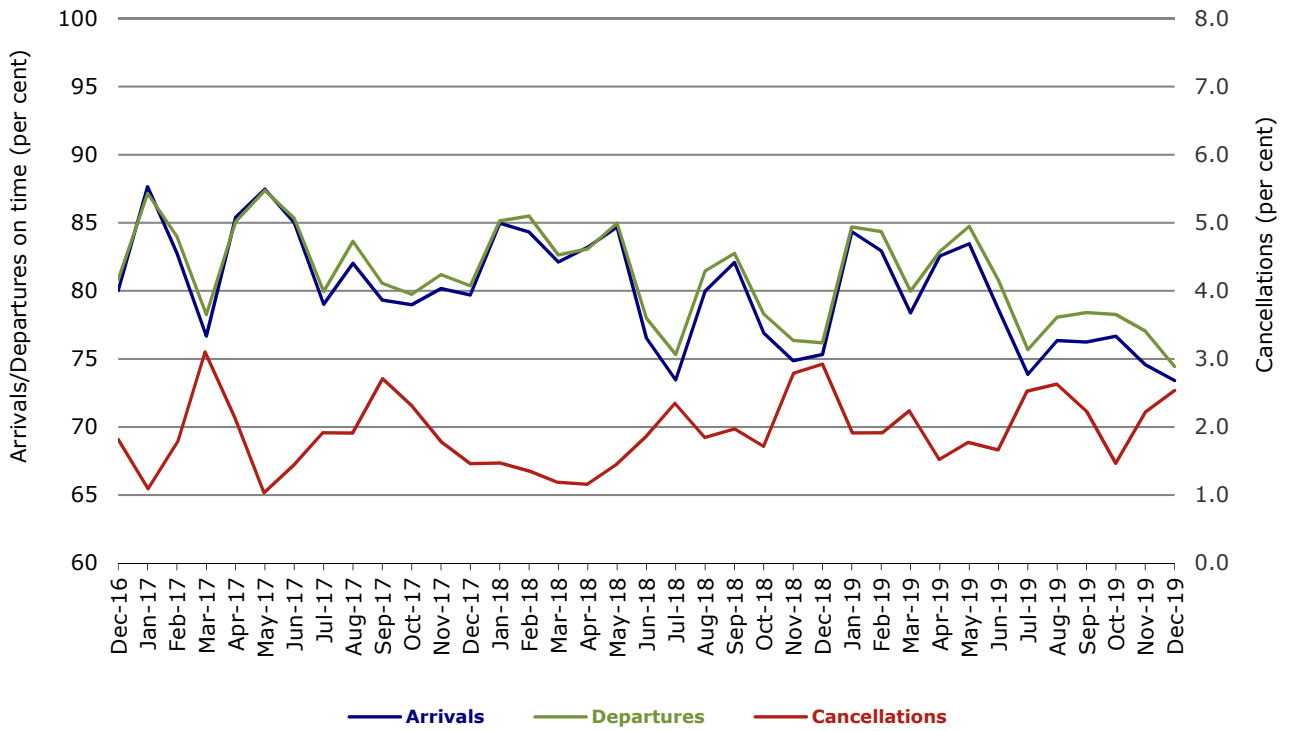


Figure 2 Arrivals on time (by month from December 2018)

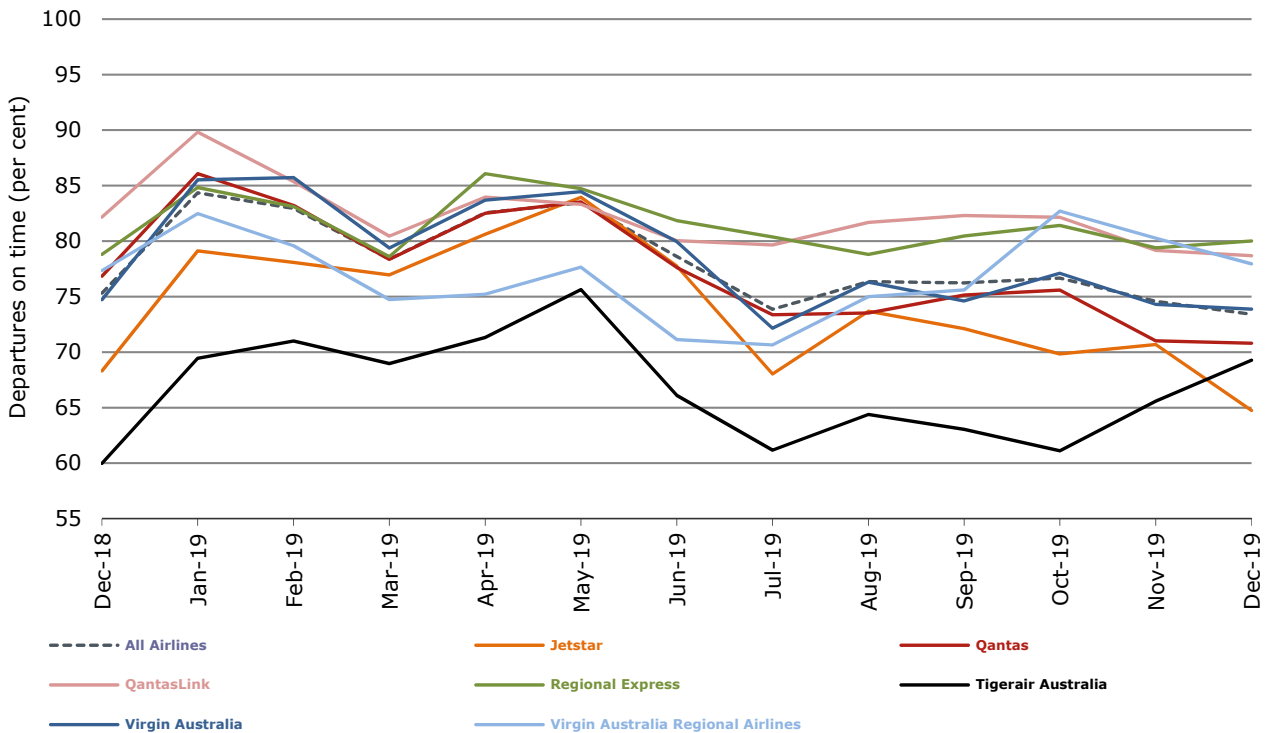


Figure 3 Departures on time (by month from December 2018)

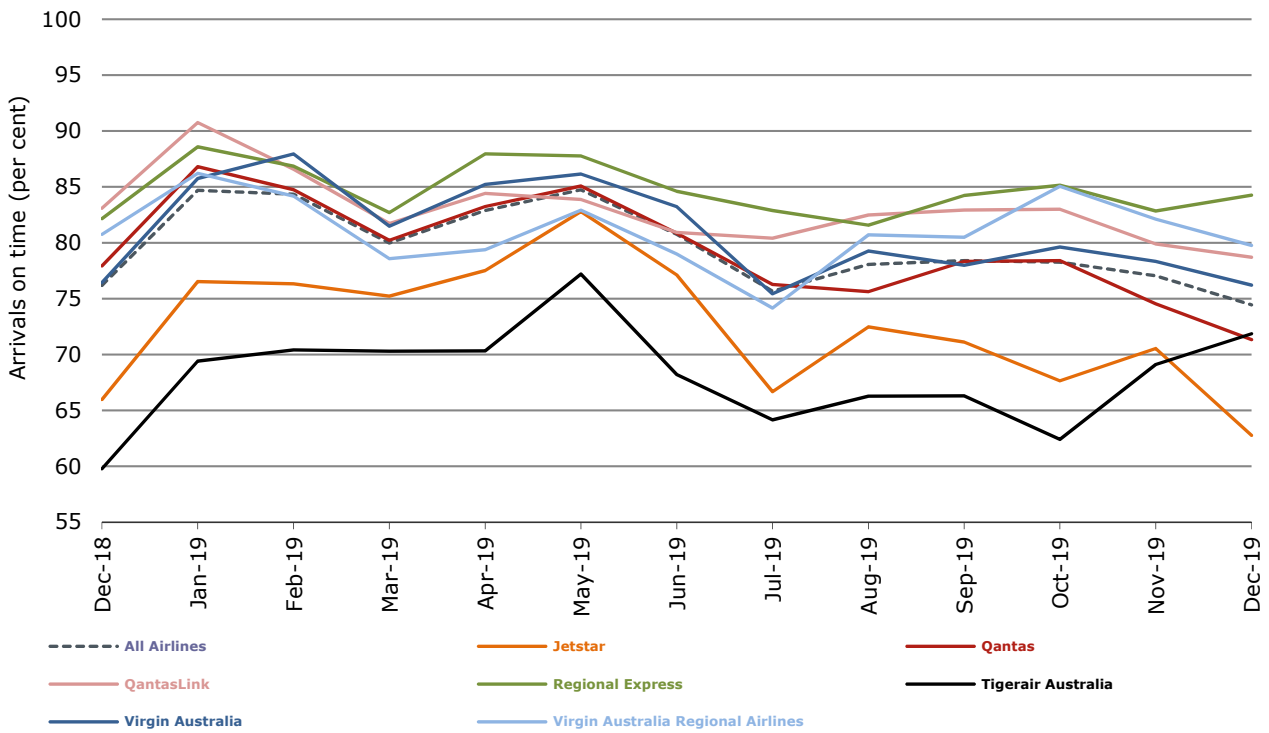
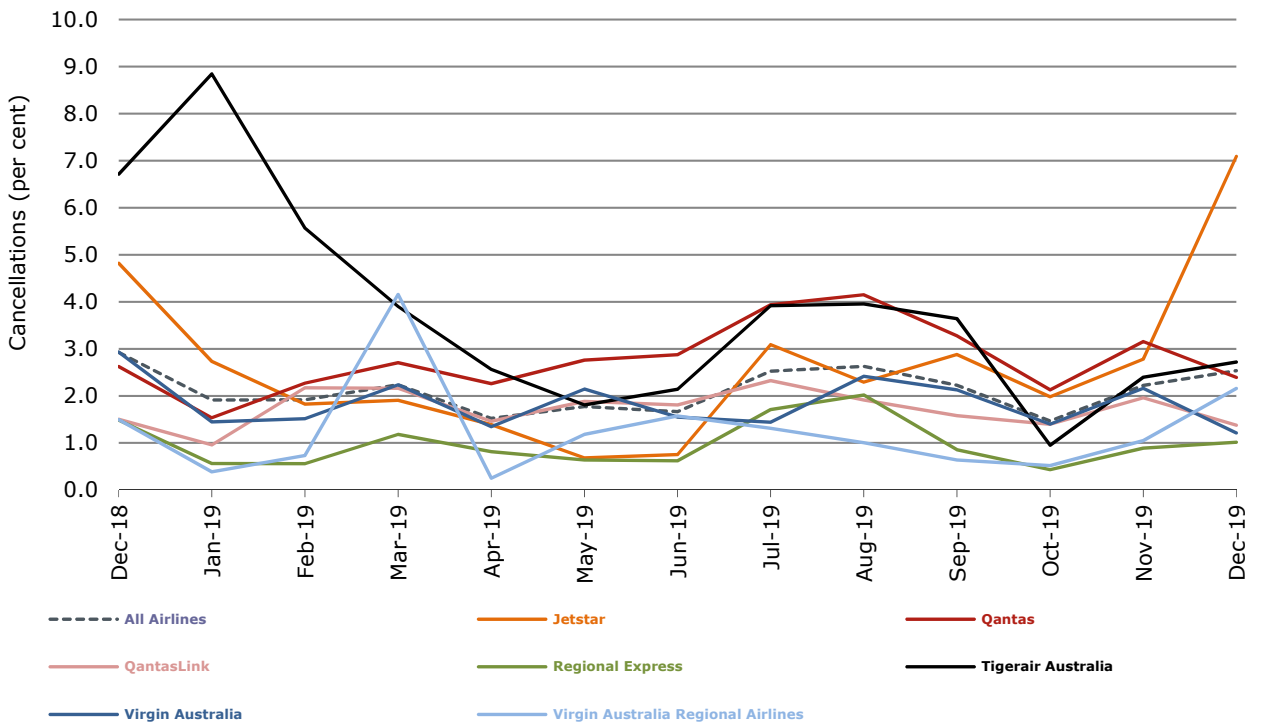


Figure 4 Cancellations (by month from December 2018)



Major domestic airlines on time performance

Figure 5 On time performance (by month from December 2016)—Jetstar

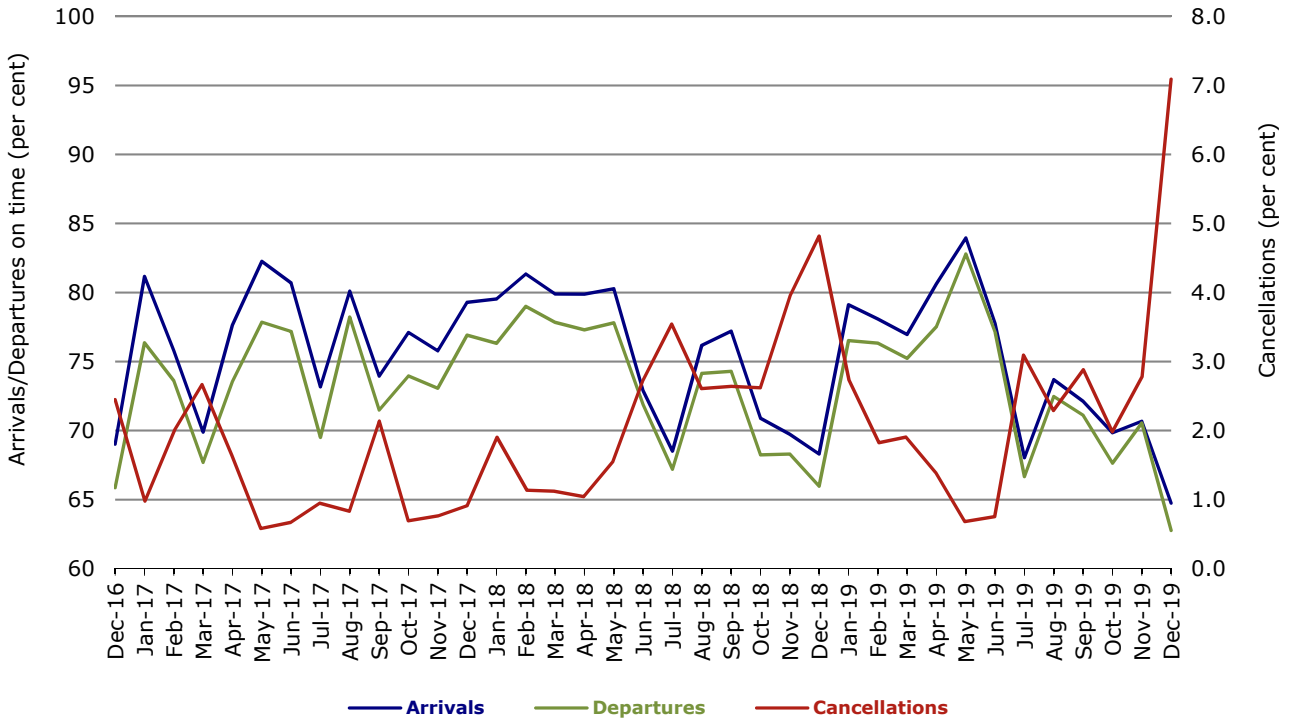


Figure 6 On time performance (by month from December 2016)—Qantas

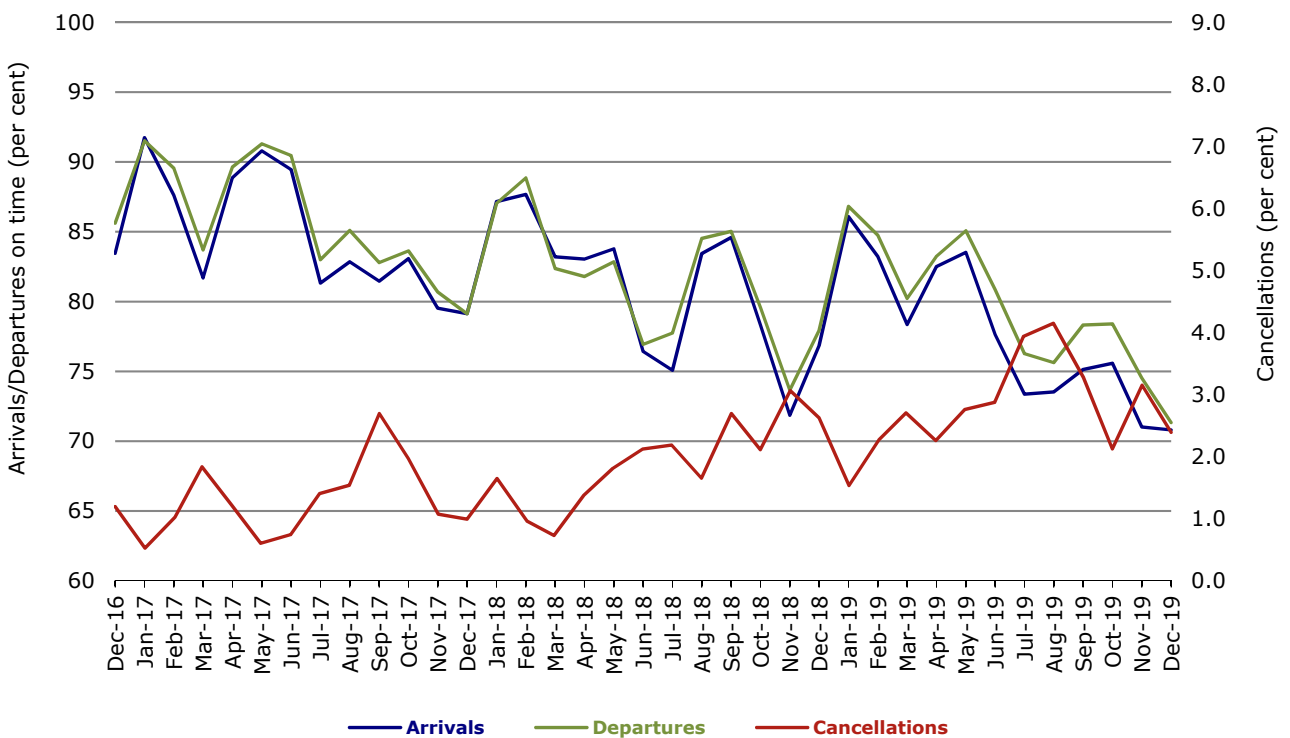


Figure 7 On time performance (by month from December 2016)—Tigerair Australia

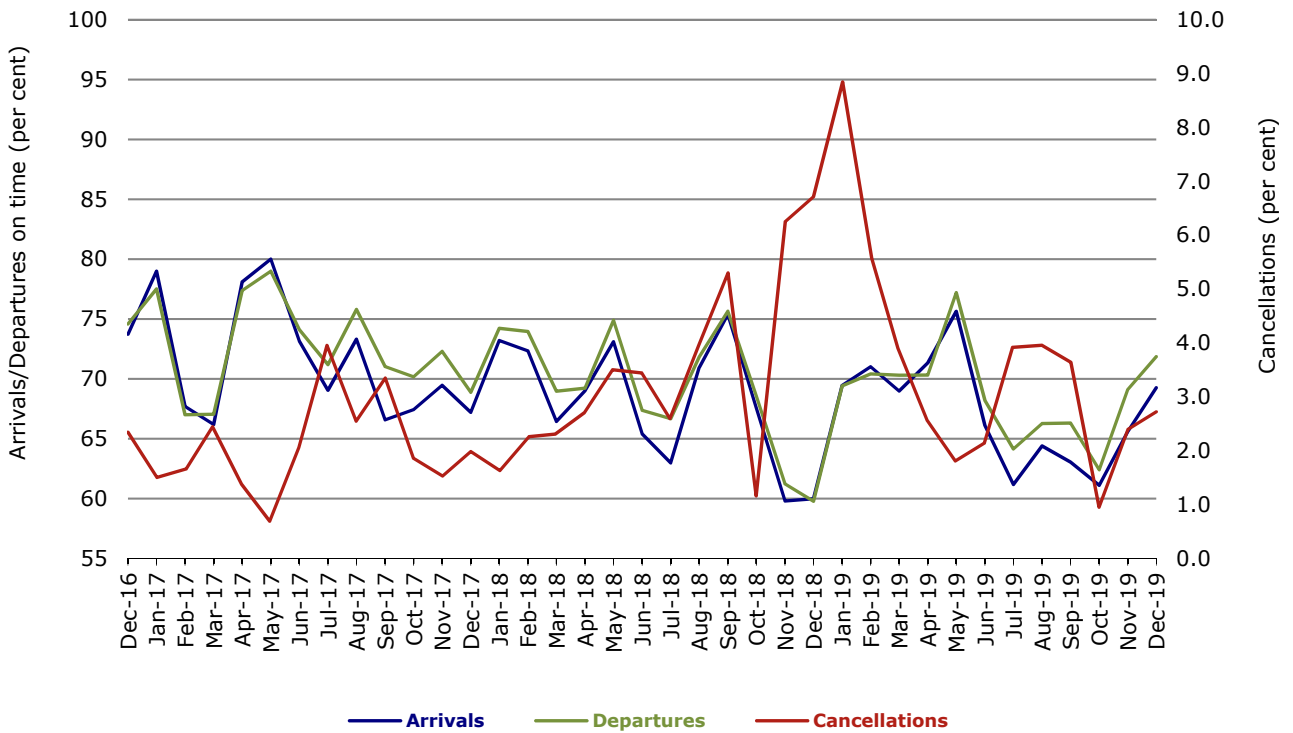
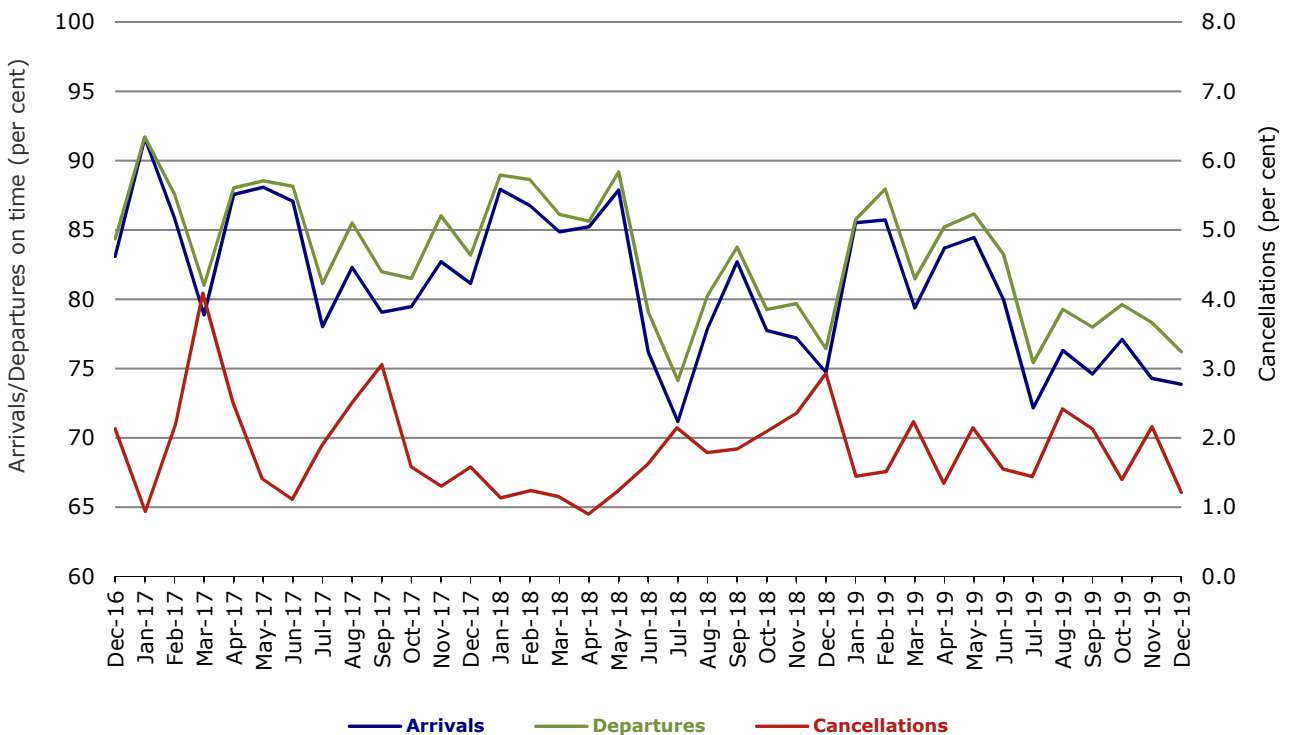


Figure 8 On time performance (by month from December 2016)—Virgin Australia



Major regional airlines on time performance

Figure 9 On time performance (by month from December 2016)—QantasLink

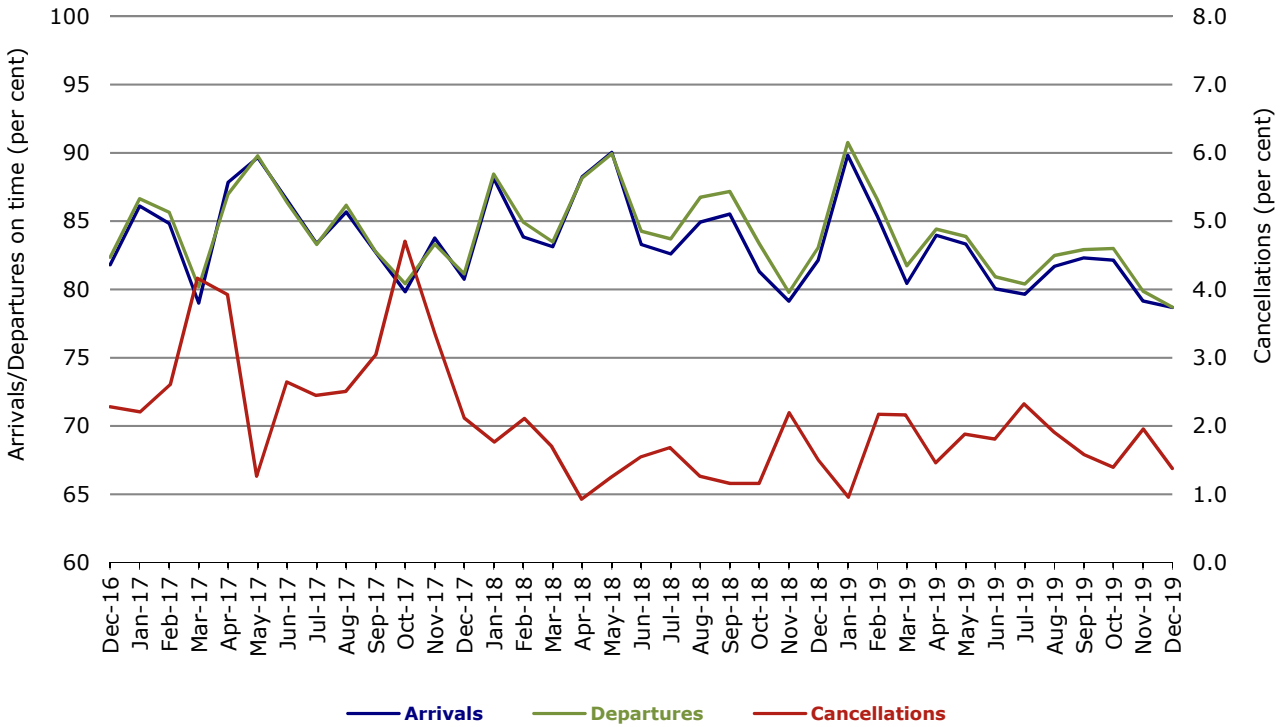


Figure 10 On time performance (by month from December 2016)—Regional Express

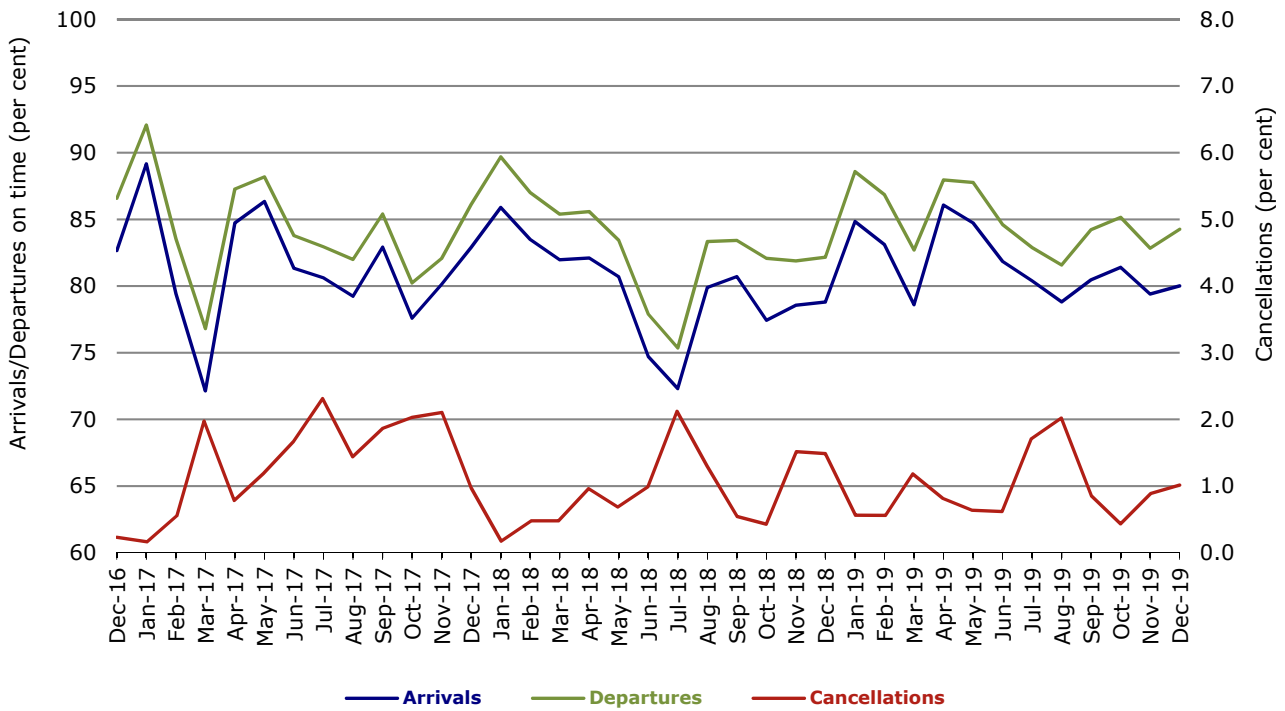
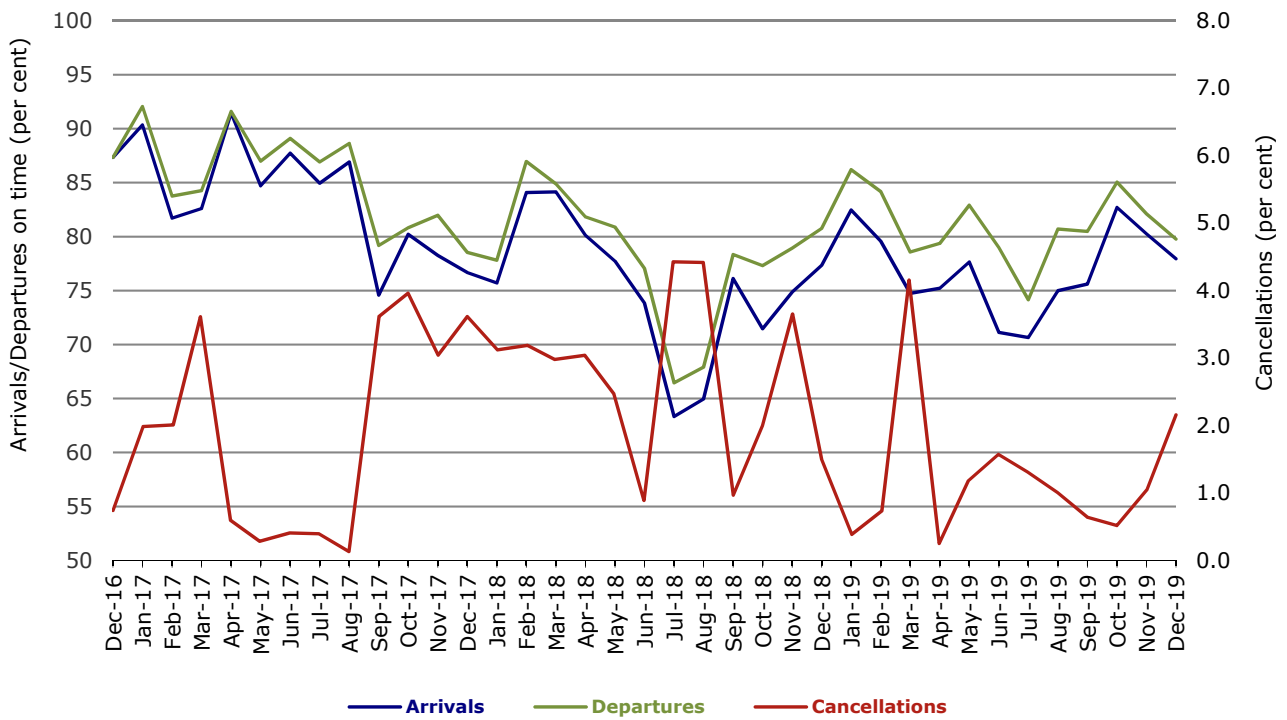


Figure 11 On time performance (by month from December 2016)
Virgin Australia Regional Airlines



Individual routes

On time performance is reported for all routes where the passenger load averages over 8000 passengers per month over the previous six months, and where two or more airlines operate in competition on those routes. There are now 64 routes which meet this definition. Over time, however, routes which meet this definition may change as airline networks and traffic levels vary.

	Sectors		Arrivals On Time		Departures On Time		Cancellations	
	Sched.	Flown	No.	%	No.	%	No.	%
Adelaide-Alice Springs								
Qantas	31	31	29	93.5	29	93.5	0	0.0
Virgin Australia Regional Airlines	22	21	16	76.2	15	71.4	1	4.5
All Airlines	53	52	45	86.5	44	84.6	1	1.9
Adelaide-Brisbane								
Jetstar	27	23	13	56.5	12	52.2	4	14.8
Qantas	108	108	88	81.5	83	76.9	0	0.0
Tigerair Australia	31	31	24	77.4	25	80.6	0	0.0
Virgin Australia	113	113	99	87.6	99	87.6	0	0.0
All Airlines	279	275	224	81.5	219	79.6	4	1.4
Adelaide-Canberra								
Qantas	39	38	32	84.2	29	76.3	1	2.6
QantasLink	4	4	4	100.0	4	100.0	0	0.0
Virgin Australia	25	25	20	80.0	19	76.0	0	0.0
All Airlines	68	67	56	83.6	52	77.6	1	1.5
Adelaide-Gold Coast								
Jetstar	30	29	16	55.2	15	51.7	1	3.3
Virgin Australia	35	35	30	85.7	32	91.4	0	0.0
All Airlines	65	64	46	71.9	47	73.4	1	1.5
Adelaide-Melbourne								
Jetstar	111	100	67	67.0	64	64.0	11	9.9
Qantas	271	266	208	78.2	204	76.7	5	1.8
Tigerair Australia	76	73	52	71.2	51	69.9	3	3.9
Virgin Australia	254	251	211	84.1	208	82.9	3	1.2
Virgin Australia Regional Airlines	11	10	7	70.0	6	60.0	1	9.1
All Airlines	723	700	545	77.9	533	76.1	23	3.2
Adelaide-Perth								
Jetstar	22	22	19	86.4	11	50.0	0	0.0
Qantas	115	114	94	82.5	81	71.1	1	0.9
Virgin Australia	40	40	31	77.5	29	72.5	0	0.0
Virgin Australia Regional Airlines	33	33	17	51.5	17	51.5	0	0.0
All Airlines	210	209	161	77.0	138	66.0	1	0.5
Adelaide-Port Lincoln								
QantasLink	102	102	92	90.2	92	90.2	0	0.0
Regional Express	195	194	171	88.1	180	92.8	1	0.5
All Airlines	297	296	263	88.9	272	91.9	1	0.3
Adelaide-Sydney								
Jetstar	122	110	80	72.7	77	70.0	12	9.8
Qantas	236	235	151	64.3	166	70.6	1	0.4
Tigerair Australia	30	30	16	53.3	19	63.3	0	0.0
Virgin Australia	167	166	133	80.1	141	84.9	1	0.6
All Airlines	555	541	380	70.2	403	74.5	14	2.5

	<i>Sectors</i>		<i>Arrivals On Time</i>		<i>Departures On Time</i>		<i>Cancellations</i>	
	<i>Sched.</i>	<i>Flown</i>	<i>No.</i>	<i>%</i>	<i>No.</i>	<i>%</i>	<i>No.</i>	<i>%</i>
Albury-Sydney								
QantasLink	96	94	54	57.4	61	64.9	2	2.1
Regional Express	82	81	63	77.8	69	85.2	1	1.2
Virgin Australia	56	55	37	67.3	36	65.5	1	1.8
All Airlines	234	230	154	67.0	166	72.2	4	1.7
Alice Springs-Adelaide								
Qantas	31	31	21	67.7	22	71.0	0	0.0
Virgin Australia Regional Airlines	23	21	15	71.4	15	71.4	2	8.7
All Airlines	54	52	36	69.2	37	71.2	2	3.7
Alice Springs-Darwin								
QantasLink	37	37	36	97.3	35	94.6	0	0.0
Virgin Australia Regional Airlines	15	14	8	57.1	9	64.3	1	6.7
All Airlines	52	51	44	86.3	44	86.3	1	1.9
Armidale-Sydney								
QantasLink	112	105	49	46.7	58	55.2	7	6.3
Regional Express	59	56	32	57.1	47	83.9	3	5.1
All Airlines	171	161	81	50.3	105	65.2	10	5.8
Ayers Rock-Sydney								
Jetstar	27	26	13	50.0	19	73.1	1	3.7
Virgin Australia	31	30	26	86.7	28	93.3	1	3.2
All Airlines	58	56	39	69.6	47	83.9	2	3.4
Ballina-Sydney								
Jetstar	93	88	48	54.5	47	53.4	5	5.4
Regional Express	16	16	12	75.0	14	87.5	0	0.0
Virgin Australia	42	42	32	76.2	26	61.9	0	0.0
All Airlines	151	146	92	63.0	87	59.6	5	3.3
Brisbane-Adelaide								
Jetstar	27	23	18	78.3	16	69.6	4	14.8
Qantas	109	109	88	80.7	83	76.1	0	0.0
Tigerair Australia	31	31	26	83.9	26	83.9	0	0.0
Virgin Australia	114	114	97	85.1	97	85.1	0	0.0
All Airlines	281	277	229	82.7	222	80.1	4	1.4
Brisbane-Bundaberg								
QantasLink	115	115	104	90.4	101	87.8	0	0.0
Virgin Australia	31	31	27	87.1	22	71.0	0	0.0
All Airlines	146	146	131	89.7	123	84.2	0	0.0
Brisbane-Cairns								
Jetstar	100	93	60	64.5	55	59.1	7	7.0
Qantas	30	30	27	90.0	28	93.3	0	0.0
QantasLink	122	120	97	80.8	95	79.2	2	1.6
Tigerair Australia	31	31	22	71.0	21	67.7	0	0.0
Virgin Australia	134	134	104	77.6	107	79.9	0	0.0
All Airlines	417	408	310	76.0	306	75.0	9	2.2
Brisbane-Canberra								
QantasLink	154	152	115	75.7	112	73.7	2	1.3
Tigerair Australia	31	31	30	96.8	30	96.8	0	0.0
Virgin Australia	94	94	74	78.7	75	79.8	0	0.0
All Airlines	279	277	219	79.1	217	78.3	2	0.7

	Sectors		Arrivals On Time		Departures On Time		Cancellations	
	Sched.	Flown	No.	%	No.	%	No.	%
Brisbane-Darwin								
Jetstar	23	19	16	84.2	16	84.2	4	17.4
Qantas	37	37	26	70.3	27	73.0	0	0.0
Tigerair Australia	18	18	15	83.3	12	66.7	0	0.0
Virgin Australia	32	32	18	56.3	27	84.4	0	0.0
All Airlines	110	106	75	70.8	82	77.4	4	3.6
Brisbane-Emerald								
QantasLink	116	116	102	87.9	105	90.5	0	0.0
Virgin Australia	45	45	36	80.0	37	82.2	0	0.0
All Airlines	161	161	138	85.7	142	88.2	0	0.0
Brisbane-Gladstone								
QantasLink	130	129	106	82.2	104	80.6	1	0.8
Virgin Australia	69	69	59	85.5	61	88.4	0	0.0
All Airlines	199	198	165	83.3	165	83.3	1	0.5
Brisbane-Hamilton Island								
QantasLink	31	31	23	74.2	22	71.0	0	0.0
Virgin Australia	31	31	28	90.3	26	83.9	0	0.0
All Airlines	62	62	51	82.3	48	77.4	0	0.0
Brisbane-Hobart								
Jetstar	39	36	26	72.2	29	80.6	3	7.7
Virgin Australia	47	47	40	85.1	37	78.7	0	0.0
All Airlines	86	83	66	79.5	66	79.5	3	3.5
Brisbane-Mackay								
Jetstar	31	29	21	72.4	23	79.3	2	6.5
QantasLink	142	140	114	81.4	106	75.7	2	1.4
Virgin Australia	135	135	91	67.4	94	69.6	0	0.0
All Airlines	308	304	226	74.3	223	73.4	4	1.3
Brisbane-Melbourne								
Jetstar	163	151	107	70.9	104	68.9	12	7.4
Qantas	410	407	252	61.9	276	67.8	3	0.7
Tigerair Australia	120	118	85	72.0	81	68.6	2	1.7
Virgin Australia	377	368	254	69.0	287	78.0	9	2.4
All Airlines	1 070	1 044	698	66.9	748	71.6	26	2.4
Brisbane-Mount Isa								
QantasLink	51	51	46	90.2	39	76.5	0	0.0
Virgin Australia	18	18	17	94.4	17	94.4	0	0.0
All Airlines	69	69	63	91.3	56	81.2	0	0.0
Brisbane-Newcastle								
Jetstar	81	78	45	57.7	44	56.4	3	3.7
QantasLink	83	81	67	82.7	64	79.0	2	2.4
Virgin Australia	83	82	69	84.1	71	86.6	1	1.2
All Airlines	247	241	181	75.1	179	74.3	6	2.4
Brisbane-Perth								
Qantas	153	152	132	86.8	103	67.8	1	0.7
Virgin Australia	113	113	91	80.5	71	62.8	0	0.0
All Airlines	266	265	223	84.2	174	65.7	1	0.4
Brisbane-Proserpine								
Jetstar	39	38	37	97.4	35	92.1	1	2.6
Virgin Australia	45	45	32	71.1	35	77.8	0	0.0
All Airlines	84	83	69	83.1	70	84.3	1	1.2

	Sectors		Arrivals On Time		Departures On Time		Cancellations	
	Sched.	Flown	No.	%	No.	%	No.	%
Brisbane-Rockhampton								
QantasLink	168	167	140	83.8	133	79.6	1	0.6
Virgin Australia	132	132	104	78.8	103	78.0	0	0.0
All Airlines	300	299	244	81.6	236	78.9	1	0.3
Brisbane-Sydney								
Jetstar	178	152	94	61.8	95	62.5	26	14.6
Qantas	582	564	366	64.9	420	74.5	18	3.1
QantasLink	7	7	4	57.1	4	57.1	0	0.0
Tigerair Australia	143	137	84	61.3	100	73.0	6	4.2
Virgin Australia	508	491	312	63.5	378	77.0	17	3.3
All Airlines	1 418	1 351	860	63.7	997	73.8	67	4.7
Brisbane-Townsville								
Jetstar	54	53	43	81.1	41	77.4	1	1.9
Qantas	31	31	23	74.2	23	74.2	0	0.0
QantasLink	126	124	88	71.0	89	71.8	2	1.6
Virgin Australia	140	140	108	77.1	102	72.9	0	0.0
All Airlines	351	348	262	75.3	255	73.3	3	0.9
Broome-Perth								
Qantas	5	4	4	100.0	4	100.0	1	20.0
QantasLink	84	84	75	89.3	71	84.5	0	0.0
Virgin Australia	7	7	7	100.0	6	85.7	0	0.0
Virgin Australia Regional Airlines	50	50	39	78.0	39	78.0	0	0.0
All Airlines	146	145	125	86.2	120	82.8	1	0.7
Bundaberg-Brisbane								
QantasLink	116	114	103	90.4	97	85.1	2	1.7
Virgin Australia	31	31	25	80.6	27	87.1	0	0.0
All Airlines	147	145	128	88.3	124	85.5	2	1.4
Cairns-Brisbane								
Jetstar	99	93	72	77.4	66	71.0	6	6.1
Qantas	30	30	28	93.3	27	90.0	0	0.0
QantasLink	123	119	88	73.9	96	80.7	4	3.3
Tigerair Australia	31	31	22	71.0	21	67.7	0	0.0
Virgin Australia	134	134	115	85.8	107	79.9	0	0.0
All Airlines	417	407	325	79.9	317	77.9	10	2.4
Cairns-Melbourne								
Jetstar	87	80	56	70.0	58	72.5	7	8.0
Qantas	38	38	30	78.9	28	73.7	0	0.0
Tigerair Australia	47	47	34	72.3	36	76.6	0	0.0
Virgin Australia	38	38	25	65.8	30	78.9	0	0.0
All Airlines	210	203	145	71.4	152	74.9	7	3.3
Cairns-Sydney								
Jetstar	106	94	57	60.6	65	69.1	12	11.3
Qantas	66	66	42	63.6	45	68.2	0	0.0
Tigerair Australia	31	31	26	83.9	25	80.6	0	0.0
Virgin Australia	92	92	76	82.6	72	78.3	0	0.0
All Airlines	295	283	201	71.0	207	73.1	12	4.1
Cairns-Townsville								
QantasLink	134	133	123	92.5	122	91.7	1	0.7
Regional Express	13	13	11	84.6	12	92.3	0	0.0
All Airlines	147	146	134	91.8	134	91.8	1	0.7

	<i>Sectors</i>		<i>Arrivals On Time</i>		<i>Departures On Time</i>		<i>Cancellations</i>	
	<i>Sched.</i>	<i>Flown</i>	<i>No.</i>	<i>%</i>	<i>No.</i>	<i>%</i>	<i>No.</i>	<i>%</i>
Canberra-Adelaide								
Qantas	39	39	31	79.5	31	79.5	0	0.0
QantasLink	4	4	3	75.0	3	75.0	0	0.0
Virgin Australia	25	25	20	80.0	22	88.0	0	0.0
All Airlines	68	68	54	79.4	56	82.4	0	0.0
Canberra-Brisbane								
QantasLink	153	151	124	82.1	118	78.1	2	1.3
Tigerair Australia	31	31	28	90.3	29	93.5	0	0.0
Virgin Australia	95	95	82	86.3	82	86.3	0	0.0
All Airlines	279	277	234	84.5	229	82.7	2	0.7
Canberra-Melbourne								
Qantas	210	208	165	79.3	175	84.1	2	1.0
QantasLink	37	37	27	73.0	25	67.6	0	0.0
Tigerair Australia	33	32	30	93.8	30	93.8	1	3.0
Virgin Australia	149	148	110	74.3	119	80.4	1	0.7
All Airlines	429	425	332	78.1	349	82.1	4	0.9
Canberra-Sydney								
QantasLink	402	392	267	68.1	295	75.3	10	2.5
Virgin Australia	202	193	149	77.2	153	79.3	9	4.5
All Airlines	604	585	416	71.1	448	76.6	19	3.1
Coffs Harbour-Sydney								
QantasLink	139	138	89	64.5	99	71.7	1	0.7
Tigerair Australia	23	22	14	63.6	17	77.3	1	4.3
Virgin Australia	31	31	21	67.7	22	71.0	0	0.0
All Airlines	193	191	124	64.9	138	72.3	2	1.0
Darwin-Alice Springs								
QantasLink	37	37	30	81.1	36	97.3	0	0.0
Virgin Australia Regional Airlines	16	14	9	64.3	9	64.3	2	12.5
All Airlines	53	51	39	76.5	45	88.2	2	3.8
Darwin-Brisbane								
Jetstar	23	19	17	89.5	17	89.5	4	17.4
Qantas	37	37	29	78.4	20	54.1	0	0.0
Tigerair Australia	18	18	10	55.6	11	61.1	0	0.0
Virgin Australia	32	32	18	56.3	17	53.1	0	0.0
All Airlines	110	106	74	69.8	65	61.3	4	3.6
Darwin-Melbourne								
Jetstar	24	23	17	73.9	15	65.2	1	4.2
Qantas	30	30	23	76.7	24	80.0	0	0.0
Virgin Australia	31	31	21	67.7	23	74.2	0	0.0
All Airlines	85	84	61	72.6	62	73.8	1	1.2
Darwin-Perth								
Qantas	31	31	25	80.6	25	80.6	0	0.0
Virgin Australia	18	18	15	83.3	14	77.8	0	0.0
Virgin Australia Regional Airlines	14	13	10	76.9	10	76.9	1	7.1
All Airlines	63	62	50	80.6	49	79.0	1	1.6
Darwin-Sydney								
Jetstar	23	21	14	66.7	18	85.7	2	8.7
Qantas	37	37	20	54.1	20	54.1	0	0.0
Virgin Australia	26	26	16	61.5	18	69.2	0	0.0
All Airlines	86	84	50	59.5	56	66.7	2	2.3

	<i>Sectors</i>		<i>Arrivals On Time</i>		<i>Departures On Time</i>		<i>Cancellations</i>	
	<i>Sched.</i>	<i>Flown</i>	<i>No.</i>	<i>%</i>	<i>No.</i>	<i>%</i>	<i>No.</i>	<i>%</i>
Dubbo-Sydney								
QantasLink	107	103	73	70.9	73	70.9	4	3.7
Regional Express	101	100	58	58.0	73	73.0	1	1.0
All Airlines	208	203	131	64.5	146	71.9	5	2.4
Emerald-Brisbane								
QantasLink	116	116	96	82.8	94	81.0	0	0.0
Virgin Australia	45	45	38	84.4	36	80.0	0	0.0
All Airlines	161	161	134	83.2	130	80.7	0	0.0
Gladstone-Brisbane								
QantasLink	131	130	109	83.8	101	77.7	1	0.8
Virgin Australia	69	69	56	81.2	57	82.6	0	0.0
All Airlines	200	199	165	82.9	158	79.4	1	0.5
Gold Coast-Adelaide								
Jetstar	30	29	18	62.1	17	58.6	1	3.3
Virgin Australia	34	34	25	73.5	15	44.1	0	0.0
All Airlines	64	63	43	68.3	32	50.8	1	1.6
Gold Coast-Melbourne								
Jetstar	216	205	143	69.8	127	62.0	11	5.1
Qantas	45	45	24	53.3	21	46.7	0	0.0
Tigerair Australia	91	91	61	67.0	52	57.1	0	0.0
Virgin Australia	219	219	154	70.3	134	61.2	0	0.0
All Airlines	571	560	382	68.2	334	59.6	11	1.9
Gold Coast-Sydney								
Jetstar	317	283	163	57.6	163	57.6	34	10.7
Qantas	92	89	51	57.3	49	55.1	3	3.3
QantasLink	49	49	28	57.1	32	65.3	0	0.0
Tigerair Australia	91	88	47	53.4	45	51.1	3	3.3
Virgin Australia	265	264	161	61.0	159	60.2	1	0.4
All Airlines	814	773	450	58.2	448	58.0	41	5.0
Hamilton Island-Brisbane								
QantasLink	31	31	22	71.0	23	74.2	0	0.0
Virgin Australia	31	31	26	83.9	27	87.1	0	0.0
All Airlines	62	62	48	77.4	50	80.6	0	0.0
Hamilton Island-Sydney								
Jetstar	25	24	15	62.5	15	62.5	1	4.0
Qantas	13	13	11	84.6	11	84.6	0	0.0
QantasLink	20	20	17	85.0	17	85.0	0	0.0
Virgin Australia	30	30	21	70.0	19	63.3	0	0.0
All Airlines	88	87	64	73.6	62	71.3	1	1.1
Hobart-Brisbane								
Jetstar	39	36	25	69.4	24	66.7	3	7.7
Virgin Australia	46	46	35	76.1	36	78.3	0	0.0
All Airlines	85	82	60	73.2	60	73.2	3	3.5
Hobart-Melbourne								
Jetstar	221	213	134	62.9	128	60.1	8	3.6
Qantas	120	117	85	72.6	89	76.1	3	2.5
Tigerair Australia	53	53	34	64.2	37	69.8	0	0.0
Virgin Australia	158	158	97	61.4	112	70.9	0	0.0
All Airlines	552	541	350	64.7	366	67.7	11	2.0

	<i>Sectors</i>		<i>Arrivals On Time</i>		<i>Departures On Time</i>		<i>Cancellations</i>	
	<i>Sched.</i>	<i>Flown</i>	<i>No.</i>	<i>%</i>	<i>No.</i>	<i>%</i>	<i>No.</i>	<i>%</i>
Hobart-Sydney								
Jetstar	128	118	55	46.6	73	61.9	10	7.8
QantasLink	84	83	60	72.3	63	75.9	1	1.2
Virgin Australia	80	78	48	61.5	58	74.4	2	2.5
All Airlines	292	279	163	58.4	194	69.5	13	4.5
Kalgoorlie-Perth								
Qantas	9	9	9	100.0	8	88.9	0	0.0
QantasLink	59	57	51	89.5	51	89.5	2	3.4
Virgin Australia	17	17	17	100.0	16	94.1	0	0.0
Virgin Australia Regional Airlines	57	54	48	88.9	48	88.9	3	5.3
All Airlines	142	137	125	91.2	123	89.8	5	3.5
Karratha-Perth								
Qantas	48	45	37	82.2	34	75.6	3	6.3
QantasLink	129	129	104	80.6	105	81.4	0	0.0
Virgin Australia	2	2	1	50.0	1	50.0	0	0.0
Virgin Australia Regional Airlines	64	62	44	71.0	47	75.8	2	3.1
All Airlines	243	238	186	78.2	187	78.6	5	2.1
Launceston-Melbourne								
Jetstar	175	169	105	62.1	106	62.7	6	3.4
QantasLink	120	118	107	90.7	103	87.3	2	1.7
Virgin Australia	108	108	74	68.5	80	74.1	0	0.0
All Airlines	403	395	286	72.4	289	73.2	8	2.0
Launceston-Sydney								
Jetstar	76	75	40	53.3	36	48.0	1	1.3
Virgin Australia	33	33	27	81.8	25	75.8	0	0.0
All Airlines	109	108	67	62.0	61	56.5	1	0.9
Mackay-Brisbane								
Jetstar	31	29	12	41.4	11	37.9	2	6.5
QantasLink	135	134	110	82.1	107	79.9	1	0.7
Virgin Australia	135	135	101	74.8	104	77.0	0	0.0
All Airlines	301	298	223	74.8	222	74.5	3	1.0
Melbourne-Adelaide								
Jetstar	111	101	60	59.4	57	56.4	10	9.0
Qantas	271	268	209	78.0	204	76.1	3	1.1
Tigerair Australia	76	73	53	72.6	56	76.7	3	3.9
Virgin Australia	255	252	193	76.6	201	79.8	3	1.2
Virgin Australia Regional Airlines	11	11	9	81.8	9	81.8	0	0.0
All Airlines	724	705	524	74.3	527	74.8	19	2.6
Melbourne-Brisbane								
Jetstar	163	150	106	70.7	103	68.7	13	8.0
Qantas	412	410	292	71.2	268	65.4	2	0.5
Tigerair Australia	121	119	94	79.0	97	81.5	2	1.7
Virgin Australia	377	367	276	75.2	294	80.1	10	2.7
All Airlines	1 073	1 046	768	73.4	762	72.8	27	2.5
Melbourne-Cairns								
Jetstar	87	80	56	70.0	54	67.5	7	8.0
Qantas	37	37	34	91.9	33	89.2	0	0.0
Tigerair Australia	47	47	39	83.0	40	85.1	0	0.0
Virgin Australia	38	38	31	81.6	33	86.8	0	0.0
All Airlines	209	202	160	79.2	160	79.2	7	3.3

	<i>Sectors</i>		<i>Arrivals On Time</i>		<i>Departures On Time</i>		<i>Cancellations</i>	
	<i>Sched.</i>	<i>Flown</i>	<i>No.</i>	<i>%</i>	<i>No.</i>	<i>%</i>	<i>No.</i>	<i>%</i>
Melbourne-Canberra								
Qantas	210	207	166	80.2	164	79.2	3	1.4
QantasLink	37	37	30	81.1	30	81.1	0	0.0
Tigerair Australia	33	32	31	96.9	29	90.6	1	3.0
Virgin Australia	151	150	117	78.0	112	74.7	1	0.7
All Airlines	431	426	344	80.8	335	78.6	5	1.2
Melbourne-Darwin								
Jetstar	24	23	18	78.3	16	69.6	1	4.2
Qantas	30	30	26	86.7	27	90.0	0	0.0
Virgin Australia	31	31	25	80.6	22	71.0	0	0.0
All Airlines	85	84	69	82.1	65	77.4	1	1.2
Melbourne-Gold Coast								
Jetstar	215	205	132	64.4	128	62.4	10	4.7
Qantas	45	45	38	84.4	40	88.9	0	0.0
Tigerair Australia	91	91	60	65.9	68	74.7	0	0.0
Virgin Australia	219	219	168	76.7	182	83.1	0	0.0
All Airlines	570	560	398	71.1	418	74.6	10	1.8
Melbourne-Hobart								
Jetstar	222	215	146	67.9	147	68.4	7	3.2
Qantas	120	120	86	71.7	83	69.2	0	0.0
Tigerair Australia	53	53	43	81.1	49	92.5	0	0.0
Virgin Australia	157	157	105	66.9	116	73.9	0	0.0
All Airlines	552	545	380	69.7	395	72.5	7	1.3
Melbourne-Launceston								
Jetstar	175	170	125	73.5	122	71.8	5	2.9
QantasLink	120	118	106	89.8	99	83.9	2	1.7
Virgin Australia	108	108	73	67.6	76	70.4	0	0.0
All Airlines	403	396	304	76.8	297	75.0	7	1.7
Melbourne-Mildura								
QantasLink	89	88	77	87.5	78	88.6	1	1.1
Regional Express	66	66	56	84.8	54	81.8	0	0.0
Virgin Australia	31	31	28	90.3	28	90.3	0	0.0
All Airlines	186	185	161	87.0	160	86.5	1	0.5
Melbourne-Newcastle								
Jetstar	104	101	55	54.5	52	51.5	3	2.9
Virgin Australia	31	31	23	74.2	25	80.6	0	0.0
All Airlines	135	132	78	59.1	77	58.3	3	2.2
Melbourne-Perth								
Jetstar	58	55	45	81.8	43	78.2	3	5.2
Qantas	205	205	152	74.1	127	62.0	0	0.0
Tigerair Australia	58	56	48	85.7	45	80.4	2	3.4
Virgin Australia	158	158	127	80.4	105	66.5	0	0.0
All Airlines	479	474	372	78.5	320	67.5	5	1.0
Melbourne-Sunshine Coast								
Jetstar	87	86	68	79.1	66	76.7	1	1.1
Virgin Australia	83	83	76	91.6	73	88.0	0	0.0
All Airlines	170	169	144	85.2	139	82.2	1	0.6

	<i>Sectors</i>		<i>Arrivals On Time</i>		<i>Departures On Time</i>		<i>Cancellations</i>	
	<i>Sched.</i>	<i>Flown</i>	<i>No.</i>	<i>%</i>	<i>No.</i>	<i>%</i>	<i>No.</i>	<i>%</i>
Melbourne-Sydney								
Jetstar	458	399	210	52.6	227	56.9	59	12.9
Qantas	943	883	567	64.2	627	71.0	60	6.4
Tigerair Australia	247	234	143	61.1	155	66.2	13	5.3
Virgin Australia	690	667	477	71.5	543	81.4	23	3.3
All Airlines	2 338	2 183	1 397	64.0	1 552	71.1	155	6.6
Mildura-Melbourne								
QantasLink	89	88	69	78.4	71	80.7	1	1.1
Regional Express	67	67	51	76.1	52	77.6	0	0.0
Virgin Australia	31	31	21	67.7	27	87.1	0	0.0
All Airlines	187	186	141	75.8	150	80.6	1	0.5
Mount Isa-Brisbane								
QantasLink	51	50	42	84.0	44	88.0	1	2.0
Virgin Australia	11	11	6	54.5	10	90.9	0	0.0
All Airlines	62	61	48	78.7	54	88.5	1	1.6
Newcastle-Brisbane								
Jetstar	80	77	52	67.5	56	72.7	3	3.8
QantasLink	82	80	70	87.5	67	83.8	2	2.4
Virgin Australia	83	82	71	86.6	68	82.9	1	1.2
All Airlines	245	239	193	80.8	191	79.9	6	2.4
Newcastle-Melbourne								
Jetstar	103	101	61	60.4	63	62.4	2	1.9
Virgin Australia	31	31	15	48.4	20	64.5	0	0.0
All Airlines	134	132	76	57.6	83	62.9	2	1.5
Newman-Perth								
Qantas	39	37	35	94.6	35	94.6	2	5.1
QantasLink	92	89	74	83.1	71	79.8	3	3.3
Virgin Australia	13	13	13	100.0	11	84.6	0	0.0
Virgin Australia Regional Airlines	26	26	22	84.6	22	84.6	0	0.0
All Airlines	170	165	144	87.3	139	84.2	5	2.9
Perth-Adelaide								
Jetstar	22	22	13	59.1	15	68.2	0	0.0
Qantas	115	114	84	73.7	95	83.3	1	0.9
Virgin Australia	40	40	30	75.0	33	82.5	0	0.0
Virgin Australia Regional Airlines	32	32	18	56.3	27	84.4	0	0.0
All Airlines	209	208	145	69.7	170	81.7	1	0.5
Perth-Brisbane								
Qantas	152	152	103	67.8	113	74.3	0	0.0
Virgin Australia	114	114	76	66.7	86	75.4	0	0.0
All Airlines	266	266	179	67.3	199	74.8	0	0.0
Perth-Broome								
Qantas	5	4	4	100.0	4	100.0	1	20.0
QantasLink	84	84	75	89.3	72	85.7	0	0.0
Virgin Australia	7	7	6	85.7	5	71.4	0	0.0
Virgin Australia Regional Airlines	50	50	39	78.0	39	78.0	0	0.0
All Airlines	146	145	124	85.5	120	82.8	1	0.7
Perth-Darwin								
Qantas	31	31	29	93.5	30	96.8	0	0.0
Virgin Australia	18	18	16	88.9	17	94.4	0	0.0
Virgin Australia Regional Airlines	13	13	13	100.0	13	100.0	0	0.0
All Airlines	62	62	58	93.5	60	96.8	0	0.0

	Sectors		Arrivals On Time		Departures On Time		Cancellations	
	Sched.	Flown	No.	%	No.	%	No.	%
Perth-Kalgoorlie								
Qantas	9	9	9	100.0	9	100.0	0	0.0
QantasLink	59	57	46	80.7	48	84.2	2	3.4
Virgin Australia	17	17	17	100.0	17	100.0	0	0.0
Virgin Australia Regional Airlines	56	56	53	94.6	53	94.6	0	0.0
All Airlines	141	139	125	89.9	127	91.4	2	1.4
Perth-Karratha								
Qantas	48	45	40	88.9	39	86.7	3	6.3
QantasLink	129	129	110	85.3	111	86.0	0	0.0
Virgin Australia	2	2	2	100.0	2	100.0	0	0.0
Virgin Australia Regional Airlines	64	62	58	93.5	57	91.9	2	3.1
All Airlines	243	238	210	88.2	209	87.8	5	2.1
Perth-Melbourne								
Jetstar	57	53	41	77.4	41	77.4	4	7.0
Qantas	204	203	154	75.9	156	76.8	1	0.5
Tigerair Australia	58	55	45	81.8	46	83.6	3	5.2
Virgin Australia	155	155	120	77.4	131	84.5	0	0.0
All Airlines	474	466	360	77.3	374	80.3	8	1.7
Perth-Newman								
Qantas	39	37	36	97.3	36	97.3	2	5.1
QantasLink	92	89	78	87.6	76	85.4	3	3.3
Virgin Australia	13	13	13	100.0	13	100.0	0	0.0
Virgin Australia Regional Airlines	26	26	22	84.6	24	92.3	0	0.0
All Airlines	170	165	149	90.3	149	90.3	5	2.9
Perth-Port Hedland								
Qantas	34	30	27	90.0	26	86.7	4	11.8
QantasLink	107	105	89	84.8	91	86.7	2	1.9
Virgin Australia	8	8	7	87.5	7	87.5	0	0.0
Virgin Australia Regional Airlines	43	43	40	93.0	39	90.7	0	0.0
All Airlines	192	186	163	87.6	163	87.6	6	3.1
Perth-Sydney								
Jetstar	29	27	20	74.1	20	74.1	2	6.9
Qantas	209	207	136	65.7	157	75.8	2	1.0
Tigerair Australia	28	27	18	66.7	19	70.4	1	3.6
Virgin Australia	130	130	99	76.2	115	88.5	0	0.0
All Airlines	396	391	273	69.8	311	79.5	5	1.3
Port Hedland-Perth								
Qantas	34	30	26	86.7	25	83.3	4	11.8
QantasLink	107	105	85	81.0	86	81.9	2	1.9
Virgin Australia	8	8	4	50.0	3	37.5	0	0.0
Virgin Australia Regional Airlines	44	43	33	76.7	34	79.1	1	2.3
All Airlines	193	186	148	79.6	148	79.6	7	3.6
Port Lincoln-Adelaide								
QantasLink	102	101	92	91.1	93	92.1	1	1.0
Regional Express	197	196	166	84.7	171	87.2	1	0.5
All Airlines	299	297	258	86.9	264	88.9	2	0.7
Port Macquarie-Sydney								
QantasLink	111	108	77	71.3	83	76.9	3	2.7
Virgin Australia	56	55	24	43.6	27	49.1	1	1.8
All Airlines	167	163	101	62.0	110	67.5	4	2.4

	<i>Sectors</i>		<i>Arrivals On Time</i>		<i>Departures On Time</i>		<i>Cancellations</i>	
	<i>Sched.</i>	<i>Flown</i>	<i>No.</i>	<i>%</i>	<i>No.</i>	<i>%</i>	<i>No.</i>	<i>%</i>
Proserpine-Brisbane								
Jetstar	39	38	33	86.8	30	78.9	1	2.6
Virgin Australia	45	45	34	75.6	31	68.9	0	0.0
All Airlines	84	83	67	80.7	61	73.5	1	1.2
Proserpine-Sydney								
Jetstar	13	13	6	46.2	5	38.5	0	0.0
Tigerair Australia	18	18	13	72.2	15	83.3	0	0.0
All Airlines	31	31	19	61.3	20	64.5	0	0.0
Rockhampton-Brisbane								
QantasLink	174	173	137	79.2	136	78.6	1	0.6
Virgin Australia	131	130	104	80.0	101	77.7	1	0.8
All Airlines	305	303	241	79.5	237	78.2	2	0.7
Sunshine Coast-Melbourne								
Jetstar	86	85	59	69.4	58	68.2	1	1.2
Virgin Australia	83	83	56	67.5	57	68.7	0	0.0
All Airlines	169	168	115	68.5	115	68.5	1	0.6
Sunshine Coast-Sydney								
Jetstar	99	89	36	40.4	41	46.1	10	10.1
QantasLink	60	60	44	73.3	43	71.7	0	0.0
Virgin Australia	70	70	35	50.0	42	60.0	0	0.0
All Airlines	229	219	115	52.5	126	57.5	10	4.4
Sydney-Adelaide								
Jetstar	121	111	77	69.4	73	65.8	10	8.3
Qantas	236	235	152	64.7	145	61.7	1	0.4
Tigerair Australia	31	31	22	71.0	20	64.5	0	0.0
Virgin Australia	166	165	132	80.0	123	74.5	1	0.6
All Airlines	554	542	383	70.7	361	66.6	12	2.2
Sydney-Albury								
QantasLink	94	93	57	61.3	51	54.8	1	1.1
Regional Express	79	79	62	78.5	64	81.0	0	0.0
Virgin Australia	56	56	37	66.1	41	73.2	0	0.0
All Airlines	229	228	156	68.4	156	68.4	1	0.4
Sydney-Armidale								
QantasLink	109	104	57	54.8	59	56.7	5	4.6
Regional Express	58	56	44	78.6	42	75.0	2	3.4
All Airlines	167	160	101	63.1	101	63.1	7	4.2
Sydney-Ayers Rock								
Jetstar	27	27	24	88.9	17	63.0	0	0.0
Virgin Australia	31	31	31	100.0	25	80.6	0	0.0
All Airlines	58	58	55	94.8	42	72.4	0	0.0
Sydney-Ballina								
Jetstar	93	89	52	58.4	53	59.6	4	4.3
Regional Express	16	16	13	81.3	12	75.0	0	0.0
Virgin Australia	42	42	34	81.0	35	83.3	0	0.0
All Airlines	151	147	99	67.3	100	68.0	4	2.6

	<i>Sectors</i>		<i>Arrivals On Time</i>		<i>Departures On Time</i>		<i>Cancellations</i>	
	<i>Sched.</i>	<i>Flown</i>	<i>No.</i>	<i>%</i>	<i>No.</i>	<i>%</i>	<i>No.</i>	<i>%</i>
Sydney-Brisbane								
Jetstar	179	154	92	59.7	79	51.3	25	14.0
Qantas	580	563	390	69.3	376	66.8	17	2.9
QantasLink	7	7	2	28.6	2	28.6	0	0.0
Tigerair Australia	141	135	92	68.1	98	72.6	6	4.3
Virgin Australia	511	495	347	70.1	341	68.9	16	3.1
All Airlines	1 418	1 354	923	68.2	896	66.2	64	4.5
Sydney-Cairns								
Jetstar	106	94	68	72.3	54	57.4	12	11.3
Qantas	65	65	48	73.8	45	69.2	0	0.0
Tigerair Australia	31	31	29	93.5	29	93.5	0	0.0
Virgin Australia	93	93	58	62.4	54	58.1	0	0.0
All Airlines	295	283	203	71.7	182	64.3	12	4.1
Sydney-Canberra								
QantasLink	402	392	279	71.2	293	74.7	10	2.5
Virgin Australia	202	194	144	74.2	139	71.6	8	4.0
All Airlines	604	586	423	72.2	432	73.7	18	3.0
Sydney-Coffs Harbour								
QantasLink	140	137	98	71.5	83	60.6	3	2.1
Tigerair Australia	23	22	17	77.3	17	77.3	1	4.3
Virgin Australia	31	31	27	87.1	26	83.9	0	0.0
All Airlines	194	190	142	74.7	126	66.3	4	2.1
Sydney-Darwin								
Jetstar	23	21	18	85.7	17	81.0	2	8.7
Qantas	37	37	22	59.5	19	51.4	0	0.0
Virgin Australia	26	26	21	80.8	23	88.5	0	0.0
All Airlines	86	84	61	72.6	59	70.2	2	2.3
Sydney-Dubbo								
QantasLink	107	103	67	65.0	71	68.9	4	3.7
Regional Express	107	106	75	70.8	74	69.8	1	0.9
All Airlines	214	209	142	67.9	145	69.4	5	2.3
Sydney-Gold Coast								
Jetstar	316	285	170	59.6	166	58.2	31	9.8
Qantas	93	90	66	73.3	57	63.3	3	3.2
QantasLink	50	50	30	60.0	32	64.0	0	0.0
Tigerair Australia	91	90	50	55.6	58	64.4	1	1.1
Virgin Australia	266	265	164	61.9	184	69.4	1	0.4
All Airlines	816	780	480	61.5	497	63.7	36	4.4
Sydney-Hamilton Island								
Jetstar	25	25	20	80.0	15	60.0	0	0.0
Qantas	13	13	11	84.6	10	76.9	0	0.0
QantasLink	20	20	17	85.0	17	85.0	0	0.0
Virgin Australia	30	30	23	76.7	23	76.7	0	0.0
All Airlines	88	88	71	80.7	65	73.9	0	0.0
Sydney-Hobart								
Jetstar	127	120	78	65.0	71	59.2	7	5.5
QantasLink	86	85	50	58.8	57	67.1	1	1.2
Virgin Australia	80	80	62	77.5	67	83.8	0	0.0
All Airlines	293	285	190	66.7	195	68.4	8	2.7

	<i>Sectors</i>		<i>Arrivals On Time</i>		<i>Departures On Time</i>		<i>Cancellations</i>	
	<i>Sched.</i>	<i>Flown</i>	<i>No.</i>	<i>%</i>	<i>No.</i>	<i>%</i>	<i>No.</i>	<i>%</i>
Sydney-Launceston								
Jetstar	76	74	36	48.6	35	47.3	2	2.6
Virgin Australia	33	33	19	57.6	17	51.5	0	0.0
All Airlines	109	107	55	51.4	52	48.6	2	1.8
Sydney-Melbourne								
Jetstar	456	394	225	57.1	216	54.8	62	13.6
Qantas	947	891	520	58.4	565	63.4	56	5.9
Tigerair Australia	246	231	131	56.7	143	61.9	15	6.1
Virgin Australia	690	662	460	69.5	512	77.3	28	4.1
All Airlines	2 339	2 178	1 336	61.3	1 436	65.9	161	6.9
Sydney-Perth								
Jetstar	29	27	22	81.5	13	48.1	2	6.9
Qantas	208	207	152	73.4	108	52.2	1	0.5
Tigerair Australia	29	28	18	64.3	16	57.1	1	3.4
Virgin Australia	131	131	104	79.4	77	58.8	0	0.0
All Airlines	397	393	296	75.3	214	54.5	4	1.0
Sydney-Port Macquarie								
QantasLink	110	106	77	72.6	74	69.8	4	3.6
Virgin Australia	56	55	36	65.5	37	67.3	1	1.8
All Airlines	166	161	113	70.2	111	68.9	5	3.0
Sydney-Proserpine								
Jetstar	13	13	8	61.5	8	61.5	0	0.0
Tigerair Australia	18	18	16	88.9	13	72.2	0	0.0
All Airlines	31	31	24	77.4	21	67.7	0	0.0
Sydney-Sunshine Coast								
Jetstar	99	89	57	64.0	52	58.4	10	10.1
QantasLink	61	61	43	70.5	43	70.5	0	0.0
Virgin Australia	70	70	44	62.9	42	60.0	0	0.0
All Airlines	230	220	144	65.5	137	62.3	10	4.3
Sydney-Tamworth								
QantasLink	128	126	81	64.3	78	61.9	2	1.6
Virgin Australia	47	47	33	70.2	31	66.0	0	0.0
All Airlines	175	173	114	65.9	109	63.0	2	1.1
Sydney-Townsville								
Jetstar	27	27	15	55.6	13	48.1	0	0.0
Virgin Australia	28	28	21	75.0	20	71.4	0	0.0
All Airlines	55	55	36	65.5	33	60.0	0	0.0
Sydney-Wagga Wagga								
QantasLink	96	96	72	75.0	76	79.2	0	0.0
Regional Express	104	102	84	82.4	89	87.3	2	1.9
All Airlines	200	198	156	78.8	165	83.3	2	1.0
Tamworth-Sydney								
QantasLink	125	123	83	67.5	87	70.7	2	1.6
Virgin Australia	47	47	33	70.2	41	87.2	0	0.0
All Airlines	172	170	116	68.2	128	75.3	2	1.2
Townsville-Brisbane								
Jetstar	55	53	43	81.1	42	79.2	2	3.6
Qantas	31	31	23	74.2	18	58.1	0	0.0
QantasLink	125	122	87	71.3	89	73.0	3	2.4
Virgin Australia	140	140	125	89.3	120	85.7	0	0.0
All Airlines	351	346	278	80.3	269	77.7	5	1.4

	<i>Sectors</i>		<i>Arrivals On Time</i>		<i>Departures On Time</i>		<i>Cancellations</i>	
	<i>Sched.</i>	<i>Flown</i>	<i>No.</i>	<i>%</i>	<i>No.</i>	<i>%</i>	<i>No.</i>	<i>%</i>
Townsville-Cairns								
QantasLink	131	129	114	88.4	108	83.7	2	1.5
Regional Express	13	13	11	84.6	11	84.6	0	0.0
All Airlines	144	142	125	88.0	119	83.8	2	1.4
Townsville-Sydney								
Jetstar	27	27	13	48.1	11	40.7	0	0.0
Virgin Australia	28	28	21	75.0	17	60.7	0	0.0
All Airlines	55	55	34	61.8	28	50.9	0	0.0
Wagga Wagga-Sydney								
QantasLink	97	97	69	71.1	73	75.3	0	0.0
Regional Express	98	97	67	69.1	84	86.6	1	1.0
All Airlines	195	194	136	70.1	157	80.9	1	0.5

Airports

On time performance is reported for all routes where the passenger load averages over 8000 passengers per month, and where two or more airlines operate in competition. The following data reports by airport against flights operated on those routes only. This month, 8 major city airports and 31 regional city airports are covered.

Airport	Arrivals			Departures		
	Sectors	On Time		Sectors	On Time	
	Flown	No.	%	Flown	No.	%
Adelaide						
Jetstar	286	186	65.0	284	179	63.0
Qantas	796	585	73.5	792	592	74.7
QantasLink	105	95	90.5	106	96	90.6
Regional Express	196	166	84.7	194	180	92.8
Tigerair Australia	135	101	74.8	134	95	70.9
Virgin Australia	630	497	78.9	630	528	83.8
Virgin Australia Regional Airlines	64	42	65.6	64	38	59.4
All Airlines	2 212	1 672	75.6	2 204	1 708	77.5
Relates to services to and from Alice Springs, Brisbane, Canberra, Gold Coast, Melbourne, Perth, Port Lincoln and Sydney.						
Albury						
QantasLink	93	57	61.3	94	61	64.9
Regional Express	79	62	78.5	81	69	85.2
Virgin Australia	56	37	66.1	55	36	65.5
All Airlines	228	156	68.4	230	166	72.2
Relates to services to and from Sydney only.						
Alice Springs						
Qantas	31	29	93.5	31	22	71.0
QantasLink	37	30	81.1	37	35	94.6
Virgin Australia Regional Airlines	35	25	71.4	35	24	68.6
All Airlines	103	84	81.6	103	81	78.6
Relates to services to and from Adelaide and Darwin.						
Armidale						
QantasLink	104	57	54.8	105	58	55.2
Regional Express	56	44	78.6	56	47	83.9
All Airlines	160	101	63.1	161	105	65.2
Relates to services to and from Sydney only.						
Ayers Rock						
Jetstar	27	24	88.9	26	19	73.1
Virgin Australia	31	31	100.0	30	28	93.3
All Airlines	58	55	94.8	56	47	83.9
Relates to services to and from Sydney only.						
Ballina						
Jetstar	89	52	58.4	88	47	53.4
Regional Express	16	13	81.3	16	14	87.5
Virgin Australia	42	34	81.0	42	26	61.9
All Airlines	147	99	67.3	146	87	59.6
Relates to services to and from Sydney only.						

Airport	Arrivals			Departures		
	Sectors	On Time		Sectors	On Time	
	Flown	No.	%	Flown	No.	%
Brisbane						
Jetstar	672	465	69.2	672	458	68.2
Qantas	1 331	953	71.6	1 330	960	72.2
QantasLink	1 227	990	80.7	1 233	974	79.0
Tigerair Australia	365	270	74.0	366	270	73.8
Virgin Australia	2 115	1 634	77.3	2 121	1 647	77.7
All Airlines	5 710	4 312	75.5	5 722	4 309	75.3

Relates to services to and from Adelaide, Bundaberg, Cairns, Canberra, Darwin, Emerald, Gladstone, Hamilton Island, Hobart, Mackay, Melbourne, Mount Isa, Newcastle, Perth, Proserpine, Rockhampton, Sydney and Townsville.

Broome

Qantas	4	4	100.0	4	4	100.0
QantasLink	84	75	89.3	84	71	84.5
Virgin Australia	7	6	85.7	7	6	85.7
Virgin Australia Regional Airlines	50	39	78.0	50	39	78.0
All Airlines	145	124	85.5	145	120	82.8

Relates to services to and from Perth only.

Bundaberg

QantasLink	115	104	90.4	114	97	85.1
Virgin Australia	31	27	87.1	31	27	87.1
All Airlines	146	131	89.7	145	124	85.5

Relates to services to and from Brisbane only.

Cairns

Jetstar	267	184	68.9	267	189	70.8
Qantas	132	109	82.6	134	100	74.6
QantasLink	249	211	84.7	252	218	86.5
Regional Express	13	11	84.6	13	12	92.3
Tigerair Australia	109	90	82.6	109	82	75.2
Virgin Australia	265	193	72.8	264	209	79.2
All Airlines	1 035	798	77.1	1 039	810	78.0

Relates to services to and from Brisbane, Melbourne, Sydney and Townsville.

Canberra

Qantas	245	198	80.8	247	206	83.4
QantasLink	585	428	73.2	584	441	75.5
Tigerair Australia	63	61	96.8	63	59	93.7
Virgin Australia	463	355	76.7	461	376	81.6
All Airlines	1 356	1 042	76.8	1 355	1 082	79.9

Relates to services to and from Adelaide, Brisbane, Melbourne and Sydney.

Coffs Harbour

QantasLink	137	98	71.5	138	99	71.7
Tigerair Australia	22	17	77.3	22	17	77.3
Virgin Australia	31	27	87.1	31	22	71.0
All Airlines	190	142	74.7	191	138	72.3

Relates to services to and from Sydney only.

Airport	Arrivals			Departures		
	Sectors Flown	On Time		Sectors Flown	On Time	
		No.	%		No.	%
Darwin						
Jetstar	63	52	82.5	63	50	79.4
Qantas	135	103	76.3	135	89	65.9
QantasLink	37	36	97.3	37	36	97.3
Tigerair Australia	18	15	83.3	18	11	61.1
Virgin Australia	107	80	74.8	107	72	67.3
Virgin Australia Regional Airlines	27	21	77.8	27	19	70.4
All Airlines	387	307	79.3	387	277	71.6
Relates to services to and from Alice Springs, Brisbane, Melbourne, Perth and Sydney.						
Dubbo						
QantasLink	103	67	65.0	103	73	70.9
Regional Express	106	75	70.8	100	73	73.0
All Airlines	209	142	67.9	203	146	71.9
Relates to services to and from Sydney only.						
Emerald						
QantasLink	116	102	87.9	116	94	81.0
Virgin Australia	45	36	80.0	45	36	80.0
All Airlines	161	138	85.7	161	130	80.7
Relates to services to and from Brisbane only.						
Gladstone						
QantasLink	129	106	82.2	130	101	77.7
Virgin Australia	69	59	85.5	69	57	82.6
All Airlines	198	165	83.3	199	158	79.4
Relates to services to and from Brisbane only.						
Gold Coast						
Jetstar	519	318	61.3	517	307	59.4
Qantas	135	104	77.0	134	70	52.2
QantasLink	50	30	60.0	49	32	65.3
Tigerair Australia	181	110	60.8	179	97	54.2
Virgin Australia	519	362	69.7	517	308	59.6
All Airlines	1 404	924	65.8	1 396	814	58.3
Relates to services to and from Adelaide, Melbourne and Sydney.						
Hamilton Island						
Jetstar	25	20	80.0	24	15	62.5
Qantas	13	11	84.6	13	11	84.6
QantasLink	51	40	78.4	51	40	78.4
Virgin Australia	61	51	83.6	61	46	75.4
All Airlines	150	122	81.3	149	112	75.2
Relates to services to and from Brisbane and Sydney.						
Hobart						
Jetstar	371	250	67.4	367	225	61.3
Qantas	120	86	71.7	117	89	76.1
QantasLink	85	50	58.8	83	63	75.9
Tigerair Australia	53	43	81.1	53	37	69.8
Virgin Australia	284	207	72.9	282	206	73.0
All Airlines	913	636	69.7	902	620	68.7
Relates to services to and from Brisbane, Melbourne and Sydney.						

Airport	Arrivals			Departures		
	Sectors	On Time		Sectors	On Time	
	Flown	No.	%	Flown	No.	%
Kalgoorlie						
Qantas	9	9	100.0	9	8	88.9
QantasLink	57	46	80.7	57	51	89.5
Virgin Australia	17	17	100.0	17	16	94.1
Virgin Australia Regional Airlines	56	53	94.6	54	48	88.9
All Airlines	139	125	89.9	137	123	89.8
Relates to services to and from Perth only.						
Karratha						
Qantas	45	40	88.9	45	34	75.6
QantasLink	129	110	85.3	129	105	81.4
Virgin Australia	2	2	100.0	2	1	50.0
Virgin Australia Regional Airlines	62	58	93.5	62	47	75.8
All Airlines	238	210	88.2	238	187	78.6
Relates to services to and from Perth only.						
Launceston						
Jetstar	244	161	66.0	244	142	58.2
QantasLink	118	106	89.8	118	103	87.3
Virgin Australia	141	92	65.2	141	105	74.5
All Airlines	503	359	71.4	503	350	69.6
Relates to services to and from Melbourne and Sydney.						
Mackay						
Jetstar	29	21	72.4	29	11	37.9
QantasLink	140	114	81.4	134	107	79.9
Virgin Australia	135	91	67.4	135	104	77.0
All Airlines	304	226	74.3	298	222	74.5
Relates to services to and from Brisbane only.						
Melbourne						
Jetstar	1 574	1 015	64.5	1 585	1 015	64.0
Qantas	2 205	1 461	66.3	2 205	1 573	71.3
QantasLink	243	203	83.5	243	207	85.2
Regional Express	67	51	76.1	66	54	81.8
Tigerair Australia	700	472	67.4	705	539	76.5
Virgin Australia	2 283	1 618	70.9	2 292	1 810	79.0
Virgin Australia Regional Airlines	10	7	70.0	11	9	81.8
All Airlines	7 082	4 827	68.2	7 107	5 207	73.3
Relates to services to and from Adelaide, Brisbane, Cairns, Canberra, Darwin, Gold Coast, Hobart, Launceston, Mildura, Newcastle, Perth, Sunshine Coast and Sydney.						
Mildura						
QantasLink	88	77	87.5	88	71	80.7
Regional Express	66	56	84.8	67	52	77.6
Virgin Australia	31	28	90.3	31	27	87.1
All Airlines	185	161	87.0	186	150	80.6
Relates to services to and from Melbourne only.						
Mount Isa						
QantasLink	51	46	90.2	50	44	88.0
Virgin Australia	18	17	94.4	11	10	90.9
All Airlines	69	63	91.3	61	54	88.5
Relates to services to and from Brisbane only.						

Airport	Arrivals			Departures		
	Sectors	On Time		Sectors	On Time	
	Flown	No.	%	Flown	No.	%
Newcastle						
Jetstar	179	100	55.9	178	119	66.9
QantasLink	81	67	82.7	80	67	83.8
Virgin Australia	113	92	81.4	113	88	77.9
All Airlines	373	259	69.4	371	274	73.9
Relates to services to and from Brisbane and Melbourne.						
Newman						
Qantas	37	36	97.3	37	35	94.6
QantasLink	89	78	87.6	89	71	79.8
Virgin Australia	13	13	100.0	13	11	84.6
Virgin Australia Regional Airlines	26	22	84.6	26	22	84.6
All Airlines	165	149	90.3	165	139	84.2
Relates to services to and from Perth only.						
Perth						
Jetstar	104	86	82.7	102	76	74.5
Qantas	834	666	79.9	832	665	79.9
QantasLink	464	389	83.8	464	398	85.8
Tigerair Australia	84	66	78.6	82	65	79.3
Virgin Australia	507	410	80.9	504	426	84.5
Virgin Australia Regional Airlines	281	213	75.8	282	252	89.4
All Airlines	2 274	1 830	80.5	2 266	1 882	83.1
Relates to services to and from Adelaide, Brisbane, Broome, Darwin, Kalgoorlie, Karratha, Melbourne, Newman, Port Hedland and Sydney.						
Port Hedland						
Qantas	30	27	90.0	30	25	83.3
QantasLink	105	89	84.8	105	86	81.9
Virgin Australia	8	7	87.5	8	3	37.5
Virgin Australia Regional Airlines	43	40	93.0	43	34	79.1
All Airlines	186	163	87.6	186	148	79.6
Relates to services to and from Perth only.						
Port Lincoln						
QantasLink	102	92	90.2	101	93	92.1
Regional Express	194	171	88.1	196	171	87.2
All Airlines	296	263	88.9	297	264	88.9
Relates to services to and from Adelaide only.						
Port Macquarie						
QantasLink	106	77	72.6	108	83	76.9
Virgin Australia	55	36	65.5	55	27	49.1
All Airlines	161	113	70.2	163	110	67.5
Relates to services to and from Sydney only.						
Proserpine						
Jetstar	51	45	88.2	51	35	68.6
Tigerair Australia	18	16	88.9	18	15	83.3
Virgin Australia	45	32	71.1	45	31	68.9
All Airlines	114	93	81.6	114	81	71.1
Relates to services to and from Brisbane and Sydney.						

Airport	Arrivals			Departures		
	Sectors	On Time		Sectors	On Time	
	Flown	No.	%	Flown	No.	%
Rockhampton						
QantasLink	167	140	83.8	173	136	78.6
Virgin Australia	132	104	78.8	130	101	77.7
All Airlines	299	244	81.6	303	237	78.2
Relates to services to and from Brisbane only.						
Sunshine Coast						
Jetstar	175	125	71.4	174	99	56.9
QantasLink	61	43	70.5	60	43	71.7
Virgin Australia	153	120	78.4	153	99	64.7
All Airlines	389	288	74.0	387	241	62.3
Relates to services to and from Melbourne and Sydney.						
Sydney						
Jetstar	1 546	864	55.9	1 550	882	56.9
Qantas	2 094	1 344	64.2	2 101	1 325	63.1
QantasLink	1 379	914	66.3	1 380	936	67.8
Regional Express	350	232	66.3	359	281	78.3
Tigerair Australia	587	361	61.5	586	394	67.2
Virgin Australia	2 528	1 748	69.1	2 534	1 817	71.7
All Airlines	8 484	5 463	64.4	8 510	5 635	66.2
Relates to services to and from Adelaide, Albury, Armidale, Ayers Rock, Ballina, Brisbane, Cairns, Canberra, Coffs Harbour, Darwin, Dubbo, Gold Coast, Hamilton Island, Hobart, Launceston, Melbourne, Perth, Port Macquarie, Proserpine, Sunshine Coast, Tamworth, Townsville and Wagga Wagga.						
Tamworth						
QantasLink	126	81	64.3	123	87	70.7
Virgin Australia	47	33	70.2	47	41	87.2
All Airlines	173	114	65.9	170	128	75.3
Relates to services to and from Sydney only.						
Townsville						
Jetstar	80	58	72.5	80	53	66.3
Qantas	31	23	74.2	31	18	58.1
QantasLink	257	211	82.1	251	197	78.5
Regional Express	13	11	84.6	13	11	84.6
Virgin Australia	168	129	76.8	168	137	81.5
All Airlines	549	432	78.7	543	416	76.6
Relates to services to and from Brisbane, Cairns and Sydney.						
Wagga Wagga						
QantasLink	96	72	75.0	97	73	75.3
Regional Express	102	84	82.4	97	84	86.6
All Airlines	198	156	78.8	194	157	80.9
Relates to services to and from Sydney only.						

Definitions

On time arrival	A flight arrival is counted as "on time" if it arrived at the gate before 15 minutes after the scheduled arrival time shown in the carriers' schedule. Neither diverted nor cancelled flights count as on time.
On time departure	A flight departure is counted as "on time" if it departs the gate before 15 minutes after the scheduled departure time shown in the carriers' schedule.
Cancellation	A flight removed from service within 7 days of scheduled departure is regarded as a cancellation.
On time departure percentage	The percentage of on time departures is measured against the number of departures <i>operated</i> on any particular sector.
On time arrival percentage	The percentage of on time arrivals is measured against the number of arrivals <i>operated</i> on any particular sector.
Cancellation percentage	The percentage of cancellations is measured against the number of services <i>scheduled</i> on any particular sector.
