



Australian Government

Department of Infrastructure, Transport, Cities and Regional Development

Bureau of Infrastructure, Transport and Regional Economics

STATISTICAL REPORT



Aviation

Domestic airline on time performance
October 2019

© Commonwealth of Australia 2019

ISSN: 1832-0759

Ownership of intellectual property rights in this publication

Unless otherwise noted, copyright (and any other intellectual property rights, if any) in this publication is owned by the Commonwealth of Australia (referred to below as the Commonwealth).

Disclaimer

The material contained in this publication is made available on the understanding that the Commonwealth is not providing professional advice, and that users exercise their own skill and care with respect to its use, and seek independent advice if necessary.

The Commonwealth makes no representations or warranties as to the contents or accuracy of the information contained in this publication. To the extent permitted by law, the Commonwealth disclaims liability to any person or organisation in respect of anything done, or omitted to be done, in reliance upon information contained in this publication.

Creative Commons licence

With the exception of (a) the Coat of Arms; and (b) the Department of Infrastructure, Transport, Cities and Regional Development's photos and graphics, copyright in this publication is licensed under a Creative Commons Attribution 3.0 Australia Licence.

Creative Commons Attribution 3.0 Australia Licence is a standard form licence agreement that allows you to copy, communicate and adapt this publication provided that you attribute the work to the Commonwealth and abide by the other licence terms. A summary of the licence terms is available from <http://creativecommons.org/licenses/by/3.0/au/deed.en>. The full licence terms are available from <http://creativecommons.org/licenses/by/3.0/au/legalcode>.

Use of the Coat of Arms

The Department of the Prime Minister and Cabinet sets the terms under which the Coat of Arms is used. Please refer to the Department's Commonwealth Coat of Arms and Government branding web page <http://www.dpmc.gov.au/guidelines/index.cfm#brand> and, in particular, the Guidelines on the use of the Commonwealth Coat of Arms publication.

An appropriate citation for this report is:

Bureau of Infrastructure, Transport and Regional Economics (BITRE), 2019, Domestic airline on time performance, Statistical Report, BITRE, Canberra ACT.

Contact us

This publication is available in PDF format. All other rights are reserved, including in relation to any Departmental logos or trade marks which may exist. For enquiries regarding the licence and any use of this publication, please contact:

Bureau of Infrastructure, Transport and Regional Economics (BITRE)
Department of Infrastructure, Transport, Cities and Regional Development
GPO Box 501, Canberra ACT 2601, Australia
Telephone: (international) +61 2 6274 7210
Fax: (international) +61 2 6274 6855
Email: bitre@infrastructure.gov.au
Website: www.bitre.gov.au

Inquiries

Should you require additional information about the statistics contained in this publication:

Telephone (02) 6274 7790 or Facsimile (02) 6274 7727

Electronic mail: AVSTATS@infrastructure.gov.au

Web site: <http://www.bitre.gov.au/statistics/aviation/otphome.aspx>

Foreword

The Bureau of Infrastructure, Transport and Regional Economics (BITRE) monitors the punctuality and reliability of major domestic airlines operating between Australian airports. The purpose of this is to allow for evaluation of overall industry and individual airline performance, so that consumers of air travel can make informed decisions.

The following domestic airlines currently report this information monthly to the BITRE: Jetstar, Qantas, QantasLink, Regional Express, Tigerair Australia, Virgin Australia and Virgin Australia Regional Airlines. Data has been gathered since November 2003, although some airlines commenced reporting at a later date, including Jetstar which first reported in May 2004, MacAir in July 2005, Tigerair Australia in April 2008 and Virgin Australia Regional Airlines in May 2013. MacAir ceased operations in February 2009 and data was not received for December 2008 onwards. Virgin Blue was rebranded as Virgin Australia in May 2011 and Tiger Airways was rebranded as Tigerair Australia in July 2013 and time series data in Microsoft Excel spreadsheet format on the BITRE website have been revised to reflect these changes. Services operated by Skywest on behalf of Virgin Australia using ATR/F100 aircraft commenced in November 2011 and were shown separately as Virgin Australia – ATR/F100 Operations. Virgin Australia Regional Airlines commenced operations in May 2013. It was formed after the acquisition of Skywest by Virgin Australia and represented a combination of operations previously reported under Skywest and Virgin Australia – ATR/F100 Operations. In January 2016, Virgin Australia transferred their ATR fleet from Virgin Australia Regional Airlines to Virgin Australia.

Information presented in this report is for Australian domestic routes for which the passenger load averaged 8 000 or more passengers per month over the previous six months and where two or more airlines operated in competition on those routes. There were 64 routes that met this definition in October 2019. Over time, routes which meet these criteria change as airline networks and traffic levels vary.

Participating airlines report their overall monthly network performance where this is possible.

Total industry figures encompass all services operated by reporting airlines only. These airlines collectively carried over 95 per cent of total domestic passengers (regular public transport only) in 2018.

The method of capturing on time performance varies between airlines utilising different recording systems. Jetstar and Qantas jet aircraft use Aircraft Communication Addressing and Reporting System (ACARS) to electronically measure on time performance. Regional Express, Tigerair Australia, Virgin Australia, Virgin Australia Regional Airlines and the Qantas non-jet fleet record on time performance manually using records from pilots, gate agents and/or ground crews.

After initial data is collected, aggregate reports are audited internally by participating airlines prior to publication.

Reports and detailed time series data in Microsoft Excel spreadsheet format are available from the BITRE website at: <http://www.bitre.gov.au/statistics/aviation/otphome.aspx>.

Contents

	Page
Industry performance	1
Individual routes	10
Airports.....	24
Definitions	30

Industry performance

For October 2019, on time performance over all routes operated by participating airlines (Jetstar, Qantas, QantasLink, Regional Express, Tigerair Australia, Virgin Australia and Virgin Australia Regional Airlines) averaged 76.7 per cent for on time arrivals and 78.3 per cent for on time departures. Cancellations represented 1.5 per cent of all scheduled flights. The equivalent figures for October 2018 were 76.9 per cent for on time arrivals, 78.3 per cent for on time departures and 1.7 per cent for cancellations.

This month's on time arrivals figure was lower than the long term average performance for all routes (82.3 per cent) and the on time departures figure was also lower than the long term average (83.6 per cent). The rate of cancellations was the same as the long term average of 1.5 per cent.

Virgin Australia achieved the highest on time arrivals among the major domestic airlines at 77.1 per cent followed by Qantas at 75.6 per cent, Jetstar at 69.8 per cent and Tigerair Australia at 61.1 per cent. Of the regional airlines, Virgin Australia Regional Airlines recorded 82.7 per cent for on time arrivals, followed by QantasLink at 82.1 per cent and Regional Express at 81.4 per cent. The Qantas network (Qantas and QantasLink combined operations) recorded 79.1 per cent for on time arrivals while the Virgin Australia network (Virgin Australia and Virgin Australia Regional Airlines combined operations) recorded 77.4 per cent.

Virgin Australia also achieved the highest level of on time departures among the major domestic airlines for October 2019 at 79.6 per cent, followed by Qantas at 78.4 per cent, Jetstar at 67.6 per cent and Tigerair Australia at 62.4 per cent. Of the regional airlines, Regional Express recorded 85.1 per cent for on time departures, followed by Virgin Australia Regional Airlines at 85.0 per cent and QantasLink at 83.0 per cent. The Qantas network recorded 80.8 per cent for on time departures while the Virgin Australia network recorded 80.0 per cent.

Qantas recorded the highest percentage of cancellations (2.1 per cent) during the month, followed by Jetstar (2.0 per cent), Virgin Australia and QantasLink (1.4 per cent), Tigerair Australia (1.0 per cent), Virgin Australia Regional Airlines (0.5 per cent) and Regional Express (0.4 per cent).

Airlines' on time performance varies across the routes they serve. Individual route data by specific airline for 64 routes are shown on pages 10-23.

Of the 64 routes which met the criteria for on time performance reporting in October 2019, the Perth-Darwin and Cairns-Townsville routes had the highest percentage of on time arrivals (96.7 per cent) and the Cairns-Townsville route had the highest percentage of on time departures (96.0 per cent). The Hobart-Melbourne and Sunshine Coast-Sydney routes had the lowest percentage of on time arrivals (55.2 per cent) and the Sunshine Coast-Sydney route had the lowest percentage of on time departures (54.7 per cent).

Cancellations were highest on the Melbourne-Sydney route at 6.0 per cent, followed by the Sydney-Melbourne route at 5.6 per cent, the Newman-Perth route at 3.6 per cent, the

Hamilton Island-Sydney and Sydney-Hamilton Island routes at 3.4 per cent and the Port Hedland-Perth route at 3.3 per cent.

Mount Isa Airport recorded the highest percentage of on time arrivals (94.7 per cent) and Kalgoorlie Airport recorded the highest percentage of on time departures (92.6 per cent). Melbourne Airport recorded the lowest percentage of on time arrivals (67.2 per cent) and Sunshine Coast Airport recorded the lowest percentage of on time departures (54.9 per cent). These figures only refer to reported routes and do not cover all flights at these airports.

Table 1 On time performance for October 2019 — Total Industry

	<i>Sectors</i>		<i>Arrivals On Time</i>		<i>Departures On Time</i>		<i>Cancellations</i>	
	<i>Scheduled</i>	<i>Flown</i>	<i>No.</i>	<i>%</i>	<i>No.</i>	<i>%</i>	<i>No.</i>	<i>%</i>
Jetstar	7 617	7 466	5 214	69.8	5 050	67.6	151	2.0
Qantas	9 595	9 391	7 098	75.6	7 363	78.4	204	2.1
QantasLink	10 747	10 597	8 705	82.1	8 796	83.0	150	1.4
Regional Express	6 472	6 444	5 246	81.4	5 487	85.1	28	0.4
Tigerair Australia	2 417	2 394	1 463	61.1	1 494	62.4	23	1.0
Virgin Australia	12 060	11 891	9 168	77.1	9 468	79.6	169	1.4
Virgin Australia Regional Airlines	773	769	636	82.7	654	85.0	4	0.5
All Airlines	49 681	48 952	37 530	76.7	38 312	78.3	729	1.5
Qantas - all QF designated services	20 342	19 988	15 803	79.1	16 159	80.8	354	1.7
Virgin Australia - all VA designated services	12 833	12 660	9 804	77.4	10 122	80.0	173	1.3

Total airline network data (including routes not shown in this report).

Airlines' on time performance varies across the routes they serve. Individual route data by specific airline for 64 routes are shown on pages 10-23.

Table 2 Top ten routes for on time performance for October 2019 (participating airlines only)

<i>Arrivals</i>		<i>Departures</i>	
<i>Route</i>	<i>On Time (%)</i>	<i>Route</i>	<i>On Time (%)</i>
Perth-Darwin	96.7	Cairns-Townsville	96.0
Cairns-Townsville	96.7	Perth-Newman	95.3
Brisbane-Mount Isa	94.7	Perth-Kalgoorlie	95.1
Perth-Kalgoorlie	94.5	Perth-Darwin	95.1
Kalgoorlie-Perth	93.3	Darwin-Alice Springs	94.0
Perth-Newman	92.7	Perth-Port Hedland	93.2
Newman-Perth	92.6	Kalgoorlie-Perth	92.6
Townsville-Cairns	91.4	Adelaide-Port Lincoln	92.1
Port Hedland-Perth	91.2	Newman-Perth	92.0
Adelaide-Port Lincoln	90.9	Perth-Karratha	91.0

Table 3 Top ten airports for on time performance for October 2019 (participating airlines and reported routes only)

<i>Arrivals</i>		<i>Departures</i>	
<i>Airport</i>	<i>On Time (%)</i>	<i>Airport</i>	<i>On Time (%)</i>
Mount Isa	94.7	Kalgoorlie	92.6
Kalgoorlie	94.5	Newman	92.0
Newman	92.7	Port Hedland	90.7
Port Lincoln	90.9	Port Lincoln	89.6
Port Hedland	90.3	Mount Isa	88.7
Gladstone	89.0	Wagga Wagga	88.4
Hamilton Island	88.4	Gladstone	88.1
Karratha	88.2	Karratha	87.8
Alice Springs	86.2	Bundaberg	87.0
Emerald	85.3	Rockhampton	86.5

Total industry on time performance

Figure 1 On time performance (by month from October 2016)—Total Industry

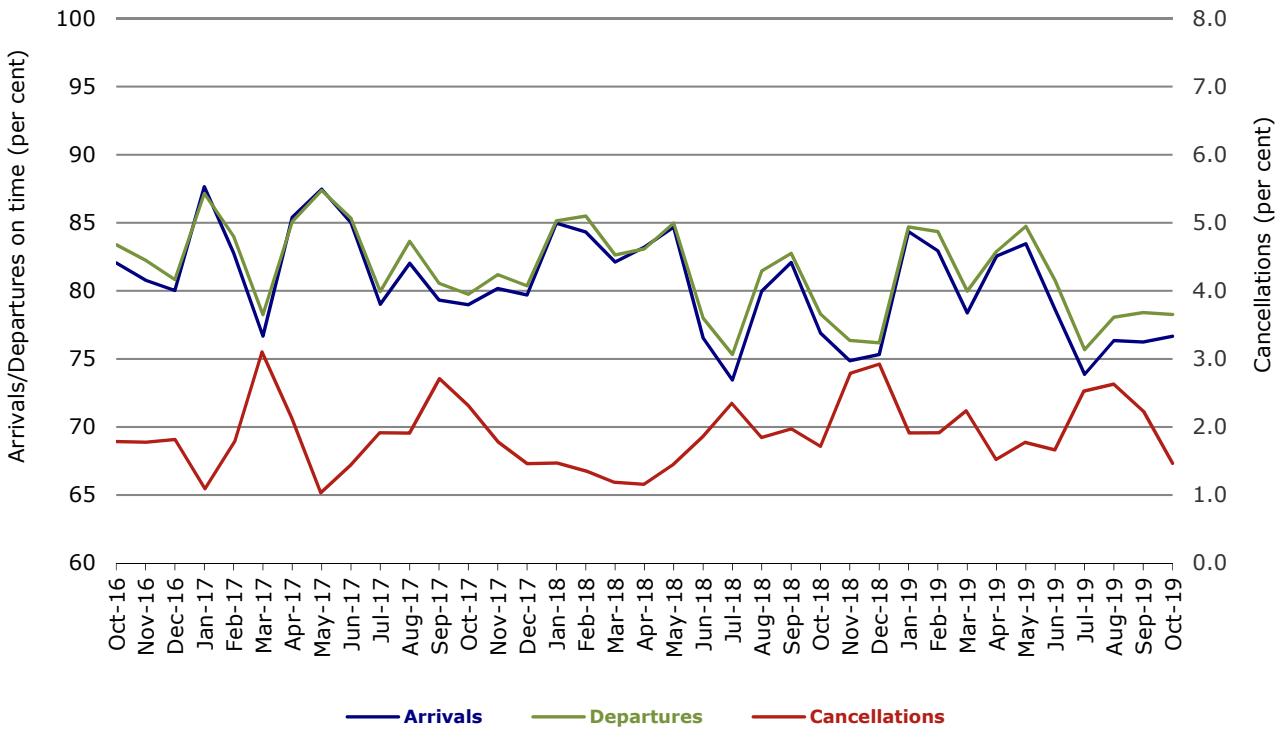


Figure 2 Arrivals on time (by month from October 2018)

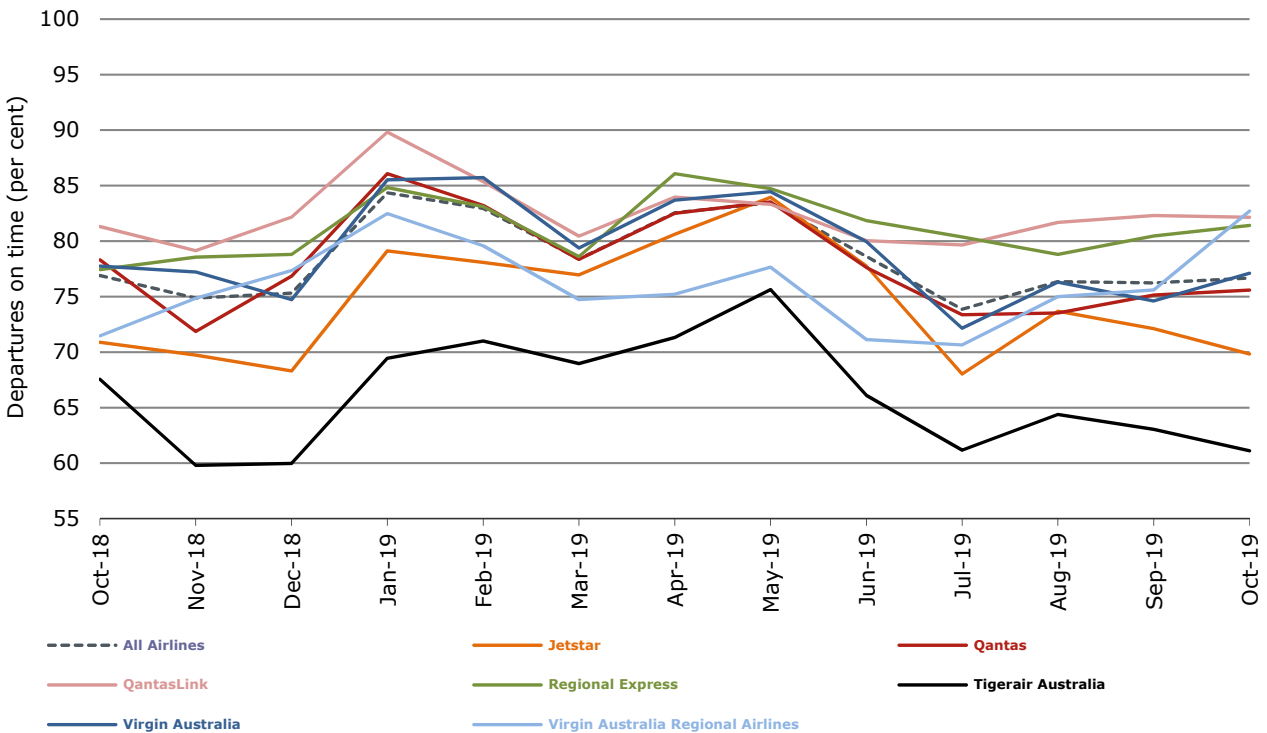


Figure 3 Departures on time (by month from October 2018)

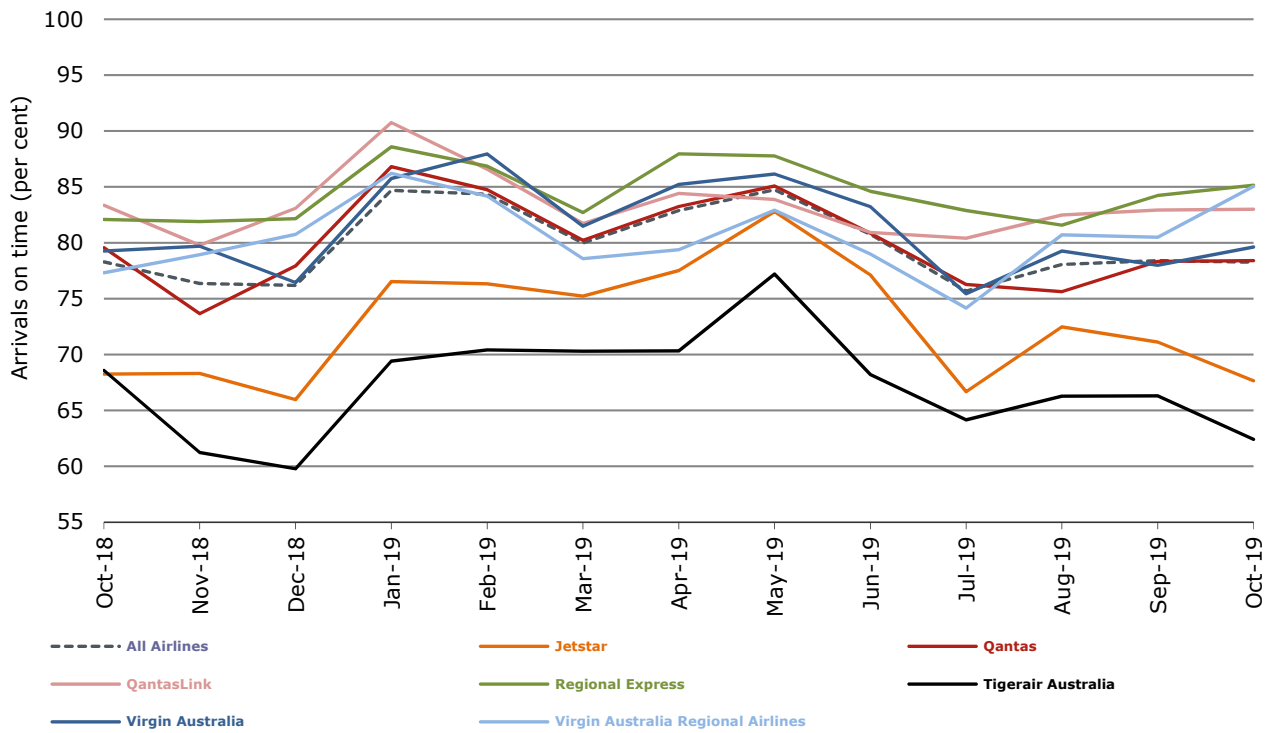
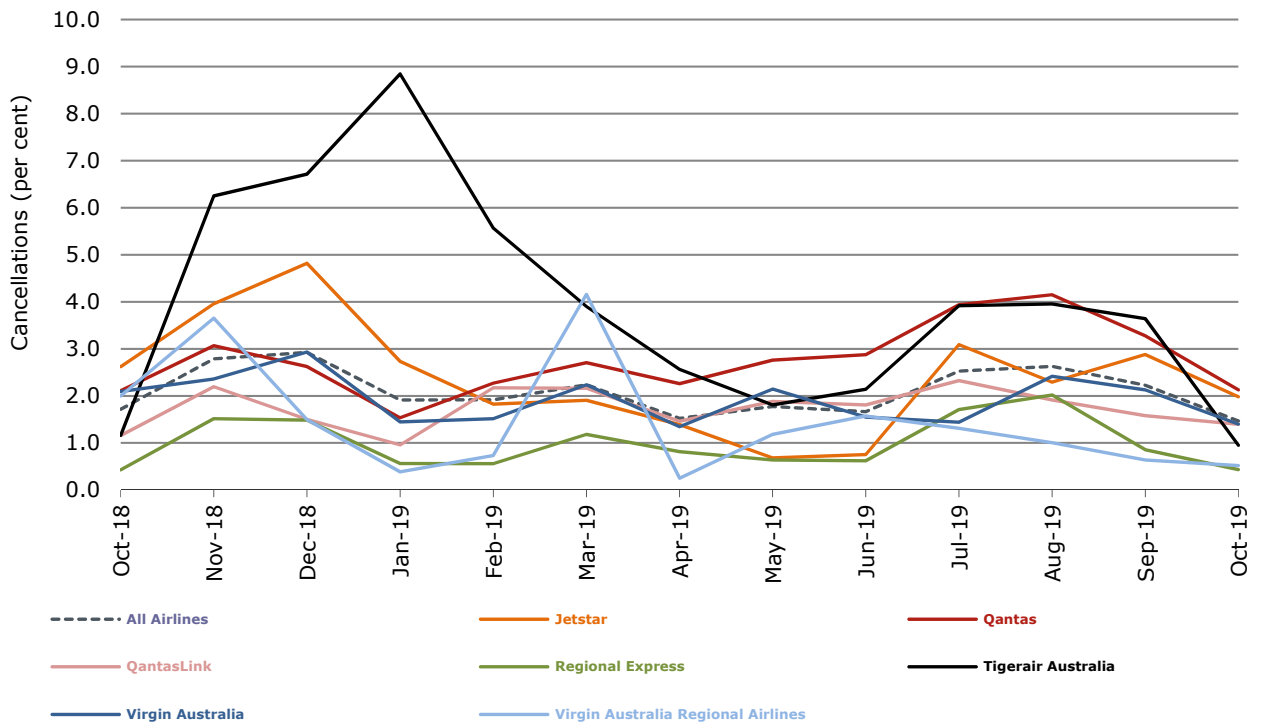


Figure 4 Cancellations (by month from October 2018)



Major domestic airlines on time performance

Figure 5 On time performance (by month from October 2016)—Jetstar

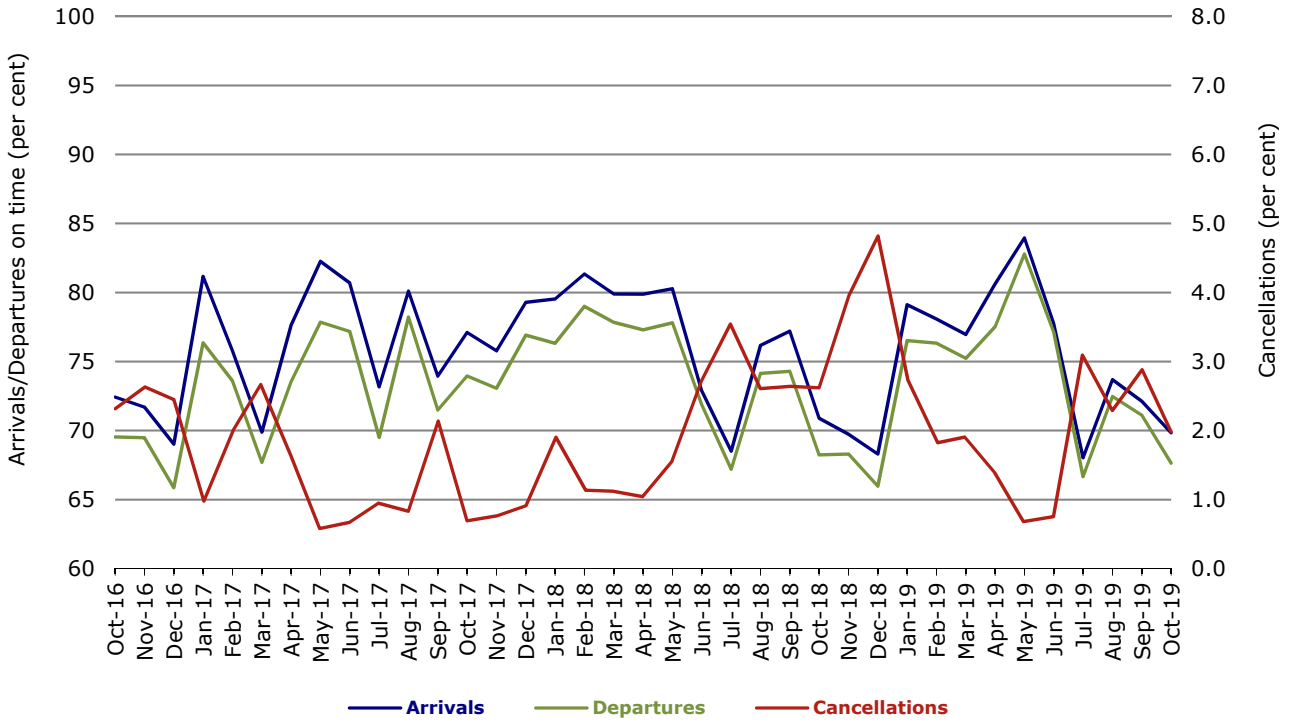


Figure 6 On time performance (by month from October 2016)—Qantas

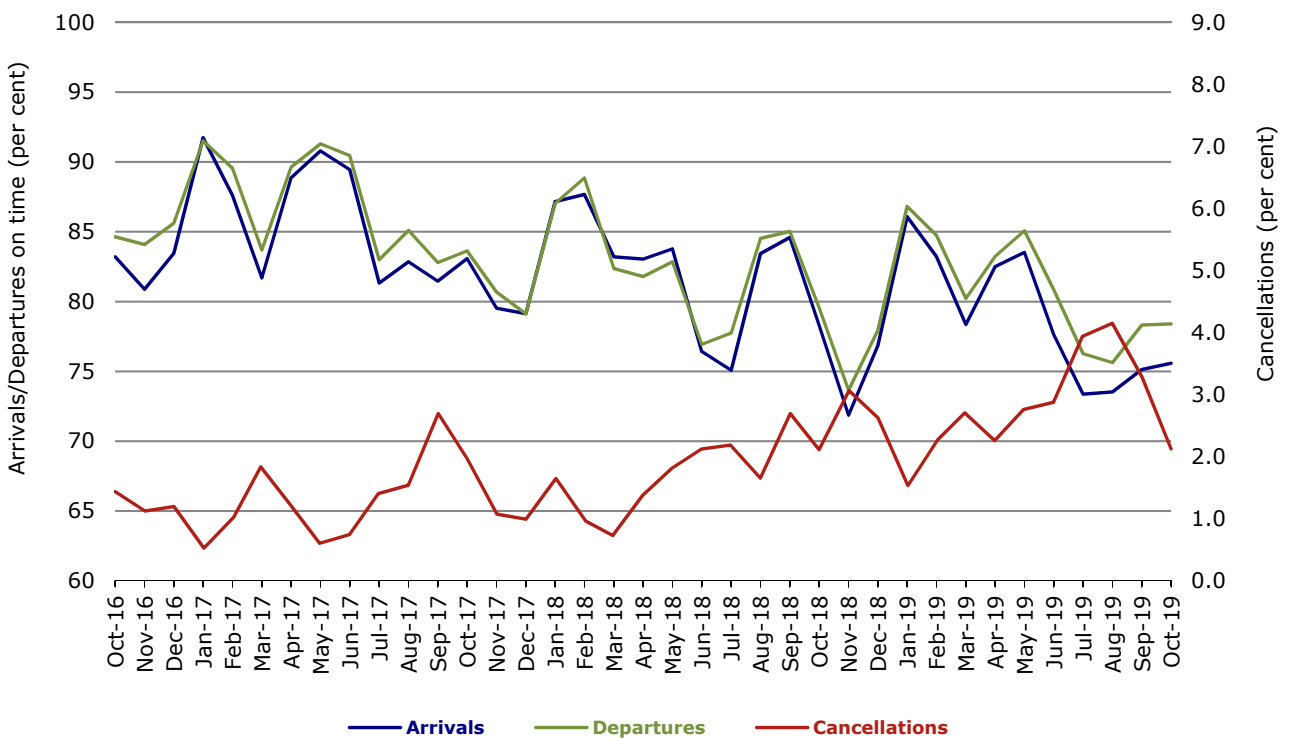


Figure 7 On time performance (by month from October 2016)—Tigerair Australia

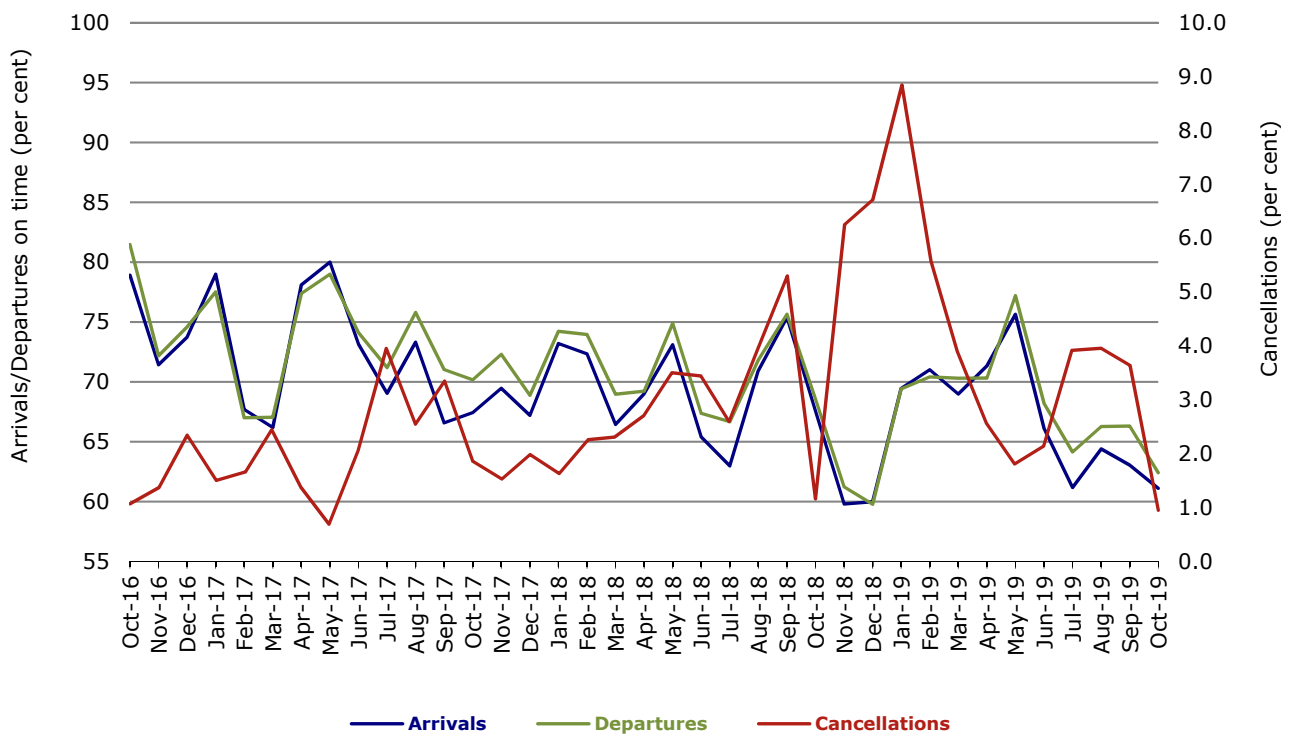
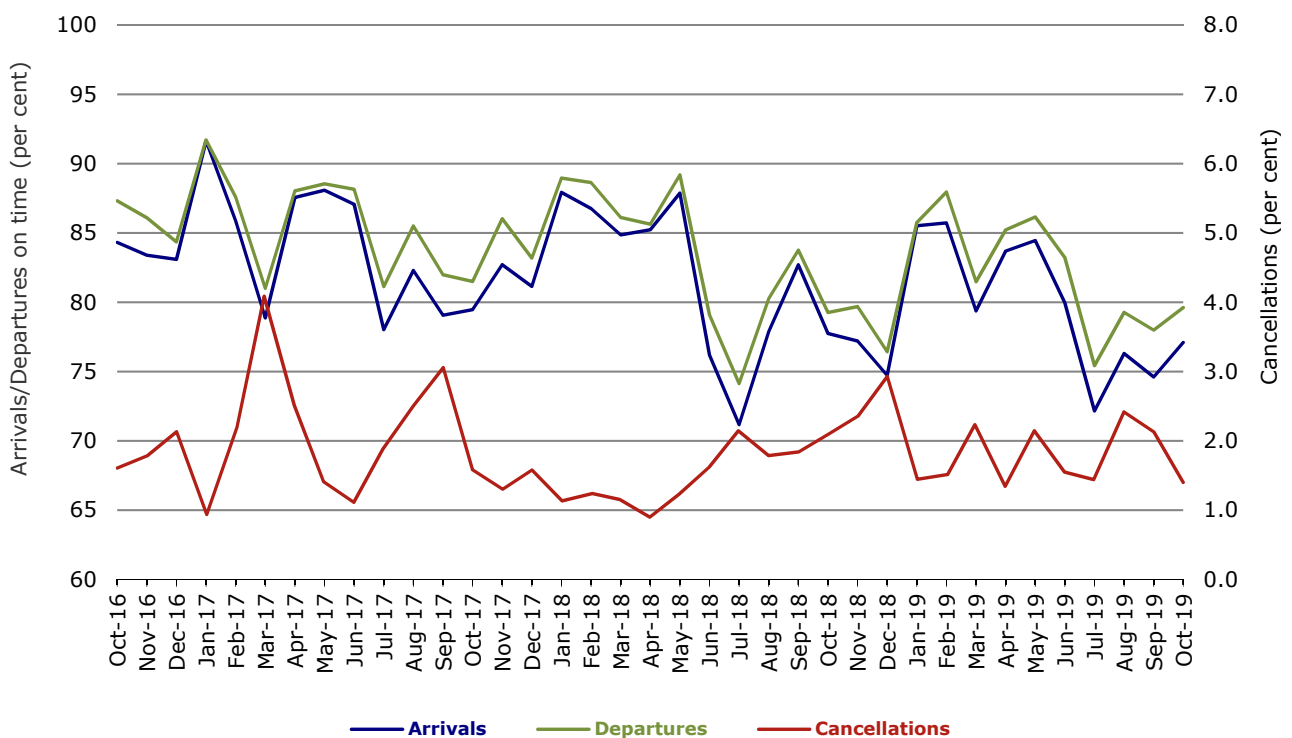


Figure 8 On time performance (by month from October 2016)—Virgin Australia



Major regional airlines on time performance

Figure 9 On time performance (by month from October 2016)—QantasLink

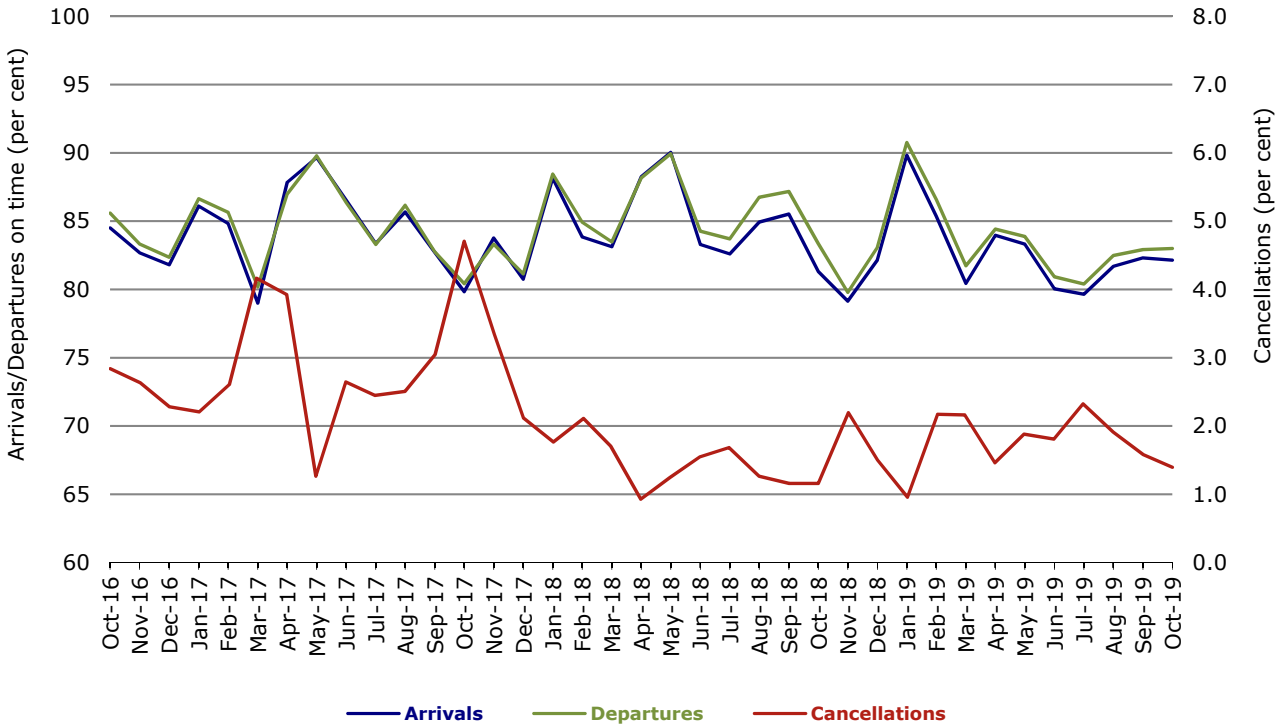


Figure 10 On time performance (by month from October 2016)—Regional Express

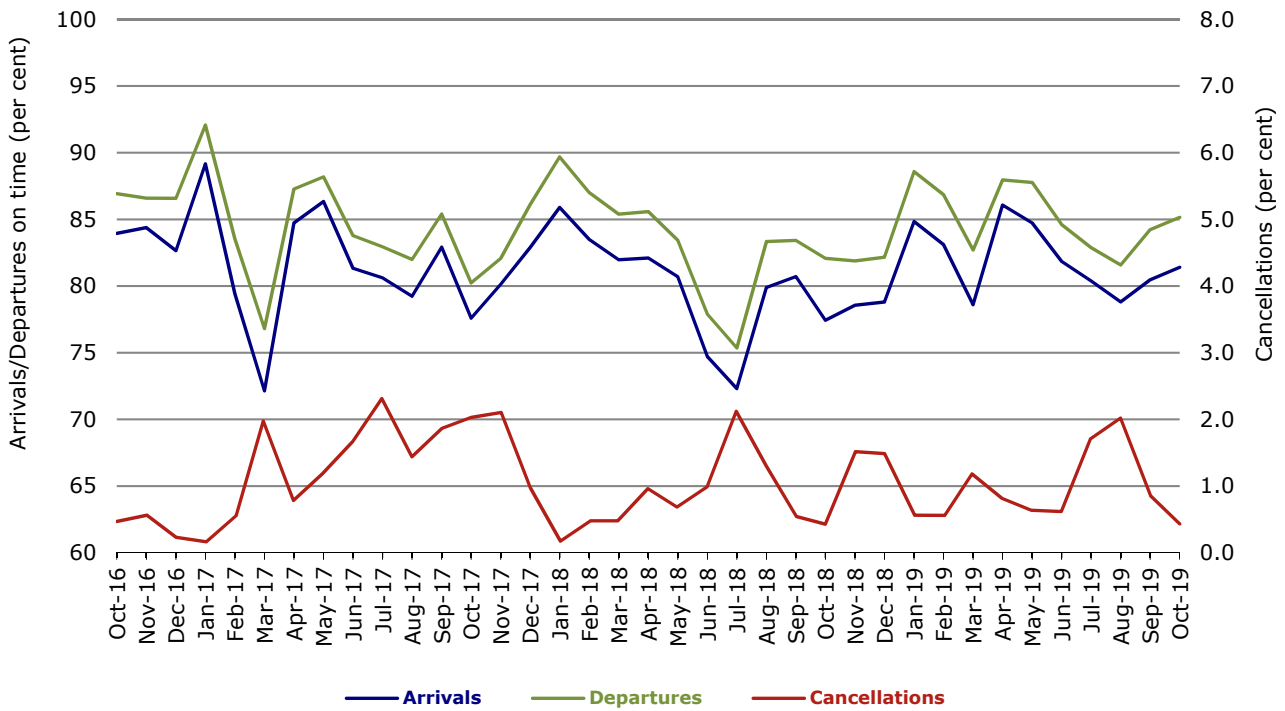
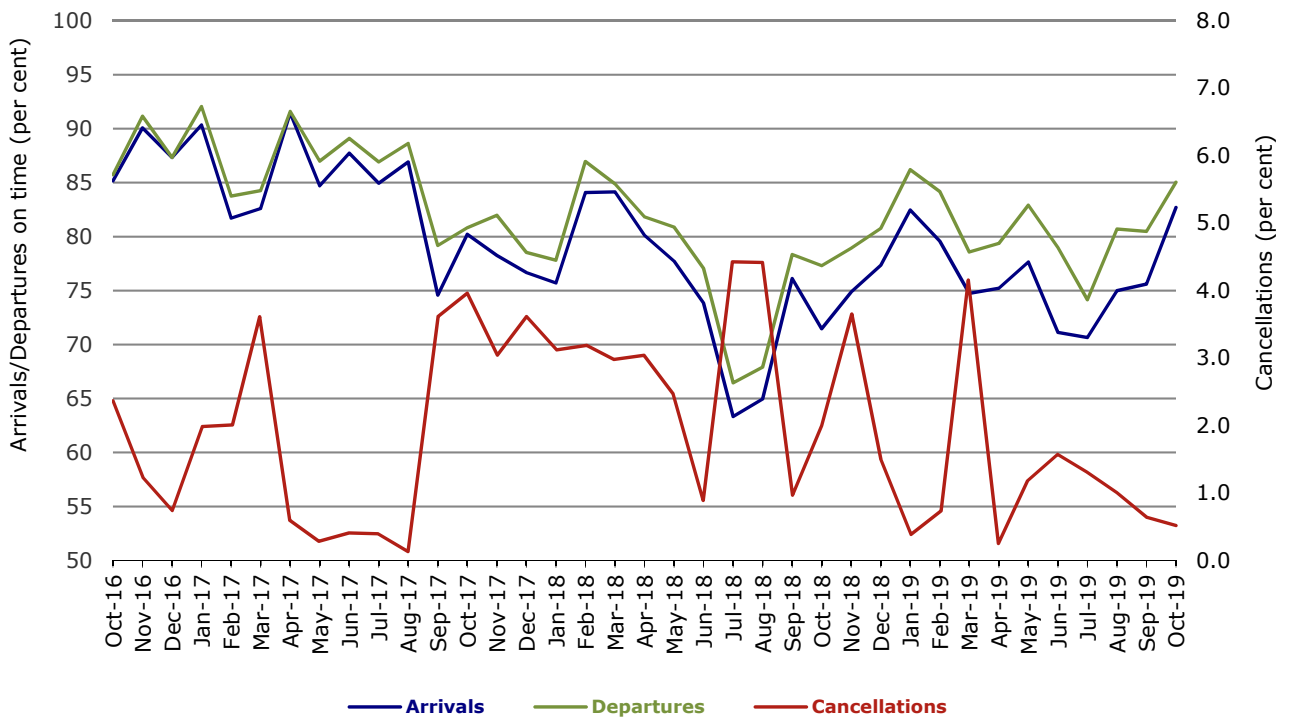


Figure 11 On time performance (by month from October 2016)
Virgin Australia Regional Airlines



Individual routes

On time performance is reported for all routes where the passenger load averages over 8000 passengers per month over the previous six months, and where two or more airlines operate in competition on those routes. There are now 64 routes which meet this definition. Over time, however, routes which meet this definition may change as airline networks and traffic levels vary.

	Sectors		Arrivals On Time		Departures On Time		Cancellations	
	Sched.	Flown	No.	%	No.	%	No.	%
Adelaide-Alice Springs								
Qantas	31	31	27	87.1	30	96.8	0	0.0
Virgin Australia	12	12	11	91.7	11	91.7	0	0.0
Virgin Australia Regional Airlines	12	11	7	63.6	7	63.6	1	8.3
All Airlines	55	54	45	83.3	48	88.9	1	1.8
Adelaide-Brisbane								
Jetstar	27	27	22	81.5	20	74.1	0	0.0
Qantas	112	112	92	82.1	95	84.8	0	0.0
Tigerair Australia	31	31	23	74.2	25	80.6	0	0.0
Virgin Australia	116	116	108	93.1	104	89.7	0	0.0
All Airlines	286	286	245	85.7	244	85.3	0	0.0
Adelaide-Canberra								
Qantas	49	49	45	91.8	40	81.6	0	0.0
QantasLink	4	4	3	75.0	3	75.0	0	0.0
Virgin Australia	27	27	24	88.9	25	92.6	0	0.0
All Airlines	80	80	72	90.0	68	85.0	0	0.0
Adelaide-Gold Coast								
Jetstar	30	30	26	86.7	22	73.3	0	0.0
Virgin Australia	33	33	31	93.9	31	93.9	0	0.0
All Airlines	63	63	57	90.5	53	84.1	0	0.0
Adelaide-Melbourne								
Jetstar	104	101	68	67.3	55	54.5	3	2.9
Qantas	300	296	232	78.4	241	81.4	4	1.3
Tigerair Australia	76	76	35	46.1	35	46.1	0	0.0
Virgin Australia	276	269	194	72.1	203	75.5	7	2.5
Virgin Australia Regional Airlines	12	12	10	83.3	11	91.7	0	0.0
All Airlines	768	754	539	71.5	545	72.3	14	1.8
Adelaide-Perth								
Jetstar	25	24	22	91.7	22	91.7	1	4.0
Qantas	124	124	108	87.1	114	91.9	0	0.0
Virgin Australia	45	45	40	88.9	41	91.1	0	0.0
Virgin Australia Regional Airlines	37	36	23	63.9	30	83.3	1	2.7
All Airlines	231	229	193	84.3	207	90.4	2	0.9
Adelaide-Port Lincoln								
QantasLink	102	101	88	87.1	87	86.1	1	1.0
Regional Express	217	217	201	92.6	206	94.9	0	0.0
All Airlines	319	318	289	90.9	293	92.1	1	0.3
Adelaide-Sydney								
Jetstar	113	111	74	66.7	83	74.8	2	1.8
Qantas	246	246	169	68.7	191	77.6	0	0.0
Tigerair Australia	31	31	12	38.7	14	45.2	0	0.0
Virgin Australia	171	171	124	72.5	142	83.0	0	0.0
All Airlines	561	559	379	67.8	430	76.9	2	0.4

	<i>Sectors</i>		<i>Arrivals On Time</i>		<i>Departures On Time</i>		<i>Cancellations</i>	
	<i>Sched.</i>	<i>Flown</i>	<i>No.</i>	<i>%</i>	<i>No.</i>	<i>%</i>	<i>No.</i>	<i>%</i>
Albury-Sydney								
QantasLink	107	106	81	76.4	86	81.1	1	0.9
Regional Express	108	106	92	86.8	96	90.6	2	1.9
Virgin Australia	55	55	40	72.7	43	78.2	0	0.0
All Airlines	270	267	213	79.8	225	84.3	3	1.1
Alice Springs-Adelaide								
Qantas	31	31	21	67.7	23	74.2	0	0.0
Virgin Australia	12	12	10	83.3	10	83.3	0	0.0
Virgin Australia Regional Airlines	10	10	6	60.0	9	90.0	0	0.0
All Airlines	53	53	37	69.8	42	79.2	0	0.0
Alice Springs-Darwin								
Qantas	52	52	45	86.5	45	86.5	0	0.0
QantasLink	10	10	6	60.0	7	70.0	0	0.0
Virgin Australia	12	12	11	91.7	11	91.7	0	0.0
Virgin Australia Regional Airlines	11	10	8	80.0	8	80.0	1	9.1
All Airlines	85	84	70	83.3	71	84.5	1	1.2
Armidale-Sydney								
QantasLink	124	124	76	61.3	86	69.4	0	0.0
Regional Express	73	73	51	69.9	58	79.5	0	0.0
All Airlines	197	197	127	64.5	144	73.1	0	0.0
Ayers Rock-Sydney								
Jetstar	31	30	15	50.0	16	53.3	1	3.2
Virgin Australia	31	31	26	83.9	25	80.6	0	0.0
All Airlines	62	61	41	67.2	41	67.2	1	1.6
Ballina-Sydney								
Jetstar	85	84	50	59.5	48	57.1	1	1.2
Regional Express	26	26	17	65.4	24	92.3	0	0.0
Virgin Australia	34	34	20	58.8	22	64.7	0	0.0
All Airlines	145	144	87	60.4	94	65.3	1	0.7
Brisbane-Adelaide								
Jetstar	27	27	21	77.8	21	77.8	0	0.0
Qantas	111	111	94	84.7	89	80.2	0	0.0
Tigerair Australia	31	31	23	74.2	25	80.6	0	0.0
Virgin Australia	116	116	104	89.7	103	88.8	0	0.0
All Airlines	285	285	242	84.9	238	83.5	0	0.0
Brisbane-Bundaberg								
QantasLink	124	123	102	82.9	105	85.4	1	0.8
Virgin Australia	31	31	28	90.3	29	93.5	0	0.0
All Airlines	155	154	130	84.4	134	87.0	1	0.6
Brisbane-Cairns								
Jetstar	104	101	91	90.1	90	89.1	3	2.9
Qantas	34	34	34	100.0	31	91.2	0	0.0
QantasLink	134	132	93	70.5	99	75.0	2	1.5
Tigerair Australia	31	31	23	74.2	23	74.2	0	0.0
Virgin Australia	134	134	100	74.6	105	78.4	0	0.0
All Airlines	437	432	341	78.9	348	80.6	5	1.1
Brisbane-Canberra								
Qantas	11	11	11	100.0	11	100.0	0	0.0
QantasLink	147	142	112	78.9	106	74.6	5	3.4
Tigerair Australia	30	30	23	76.7	21	70.0	0	0.0
Virgin Australia	105	104	92	88.5	88	84.6	1	1.0
All Airlines	293	287	238	82.9	226	78.7	6	2.0

	Sectors		Arrivals On Time		Departures On Time		Cancellations	
	Sched.	Flown	No.	%	No.	%	No.	%
Brisbane-Darwin								
Jetstar	23	23	20	87.0	20	87.0	0	0.0
Qantas	36	36	31	86.1	28	77.8	0	0.0
Tigerair Australia	17	17	15	88.2	14	82.4	0	0.0
Virgin Australia	31	31	22	71.0	28	90.3	0	0.0
All Airlines	107	107	88	82.2	90	84.1	0	0.0
Brisbane-Emerald								
QantasLink	126	124	104	83.9	105	84.7	2	1.6
Virgin Australia	53	53	47	88.7	52	98.1	0	0.0
All Airlines	179	177	151	85.3	157	88.7	2	1.1
Brisbane-Gladstone								
QantasLink	143	143	122	85.3	119	83.2	0	0.0
Virgin Australia	76	76	73	96.1	76	100.0	0	0.0
All Airlines	219	219	195	89.0	195	89.0	0	0.0
Brisbane-Hamilton Island								
QantasLink	31	30	26	86.7	23	76.7	1	3.2
Virgin Australia	31	31	27	87.1	27	87.1	0	0.0
All Airlines	62	61	53	86.9	50	82.0	1	1.6
Brisbane-Hobart								
Jetstar	27	27	24	88.9	24	88.9	0	0.0
Virgin Australia	39	39	33	84.6	36	92.3	0	0.0
All Airlines	66	66	57	86.4	60	90.9	0	0.0
Brisbane-Mackay								
Jetstar	32	32	22	68.8	24	75.0	0	0.0
QantasLink	147	144	123	85.4	122	84.7	3	2.0
Virgin Australia	146	146	120	82.2	123	84.2	0	0.0
All Airlines	325	322	265	82.3	269	83.5	3	0.9
Brisbane-Melbourne								
Jetstar	159	157	107	68.2	91	58.0	2	1.3
Qantas	425	422	307	72.7	322	76.3	3	0.7
Tigerair Australia	109	109	55	50.5	59	54.1	0	0.0
Virgin Australia	397	377	273	72.4	292	77.5	20	5.0
All Airlines	1 090	1 065	742	69.7	764	71.7	25	2.3
Brisbane-Mount Isa								
QantasLink	57	57	55	96.5	54	94.7	0	0.0
Virgin Australia	19	19	17	89.5	15	78.9	0	0.0
All Airlines	76	76	72	94.7	69	90.8	0	0.0
Brisbane-Newcastle								
Jetstar	71	71	58	81.7	57	80.3	0	0.0
QantasLink	95	94	77	81.9	80	85.1	1	1.1
Virgin Australia	88	88	75	85.2	76	86.4	0	0.0
All Airlines	254	253	210	83.0	213	84.2	1	0.4
Brisbane-Perth								
Qantas	151	151	129	85.4	126	83.4	0	0.0
Virgin Australia	112	112	90	80.4	83	74.1	0	0.0
All Airlines	263	263	219	83.3	209	79.5	0	0.0
Brisbane-Proserpine								
Jetstar	34	34	31	91.2	28	82.4	0	0.0
Virgin Australia	42	42	35	83.3	36	85.7	0	0.0
All Airlines	76	76	66	86.8	64	84.2	0	0.0

	<i>Sectors</i>		<i>Arrivals On Time</i>		<i>Departures On Time</i>		<i>Cancellations</i>	
	<i>Sched.</i>	<i>Flown</i>	<i>No.</i>	<i>%</i>	<i>No.</i>	<i>%</i>	<i>No.</i>	<i>%</i>
Brisbane-Rockhampton								
QantasLink	186	186	162	87.1	157	84.4	0	0.0
Virgin Australia	143	143	115	80.4	117	81.8	0	0.0
All Airlines	329	329	277	84.2	274	83.3	0	0.0
Brisbane-Sydney								
Jetstar	189	176	120	68.2	119	67.6	13	6.9
Qantas	635	631	486	77.0	536	84.9	4	0.6
Tigerair Australia	131	130	87	66.9	95	73.1	1	0.8
Virgin Australia	536	527	397	75.3	423	80.3	9	1.7
All Airlines	1 491	1 464	1 090	74.5	1 173	80.1	27	1.8
Brisbane-Townsville								
Jetstar	58	58	50	86.2	50	86.2	0	0.0
Qantas	59	59	53	89.8	54	91.5	0	0.0
QantasLink	99	97	60	61.9	65	67.0	2	2.0
Virgin Australia	143	142	118	83.1	116	81.7	1	0.7
All Airlines	359	356	281	78.9	285	80.1	3	0.8
Broome-Perth								
Qantas	3	3	1	33.3	1	33.3	0	0.0
QantasLink	93	93	85	91.4	80	86.0	0	0.0
Virgin Australia	2	2	2	100.0	2	100.0	0	0.0
Virgin Australia Regional Airlines	70	69	57	82.6	54	78.3	1	1.4
All Airlines	168	167	145	86.8	137	82.0	1	0.6
Bundaberg-Brisbane								
QantasLink	124	123	99	80.5	105	85.4	1	0.8
Virgin Australia	31	31	28	90.3	29	93.5	0	0.0
All Airlines	155	154	127	82.5	134	87.0	1	0.6
Cairns-Brisbane								
Jetstar	104	101	89	88.1	84	83.2	3	2.9
Qantas	34	34	31	91.2	30	88.2	0	0.0
QantasLink	133	128	92	71.9	94	73.4	5	3.8
Tigerair Australia	31	31	24	77.4	22	71.0	0	0.0
Virgin Australia	135	135	112	83.0	107	79.3	0	0.0
All Airlines	437	429	348	81.1	337	78.6	8	1.8
Cairns-Melbourne								
Jetstar	121	117	86	73.5	84	71.8	4	3.3
Qantas	32	32	15	46.9	23	71.9	0	0.0
Tigerair Australia	43	43	33	76.7	33	76.7	0	0.0
Virgin Australia	39	39	26	66.7	30	76.9	0	0.0
All Airlines	235	231	160	69.3	170	73.6	4	1.7
Cairns-Sydney								
Jetstar	109	107	86	80.4	90	84.1	2	1.8
Qantas	62	61	41	67.2	41	67.2	1	1.6
Tigerair Australia	37	36	29	80.6	25	69.4	1	2.7
Virgin Australia	92	92	76	82.6	76	82.6	0	0.0
All Airlines	300	296	232	78.4	232	78.4	4	1.3
Cairns-Townsville								
QantasLink	138	137	133	97.1	132	96.4	1	0.7
Regional Express	13	13	12	92.3	12	92.3	0	0.0
All Airlines	151	150	145	96.7	144	96.0	1	0.7

	<i>Sectors</i>		<i>Arrivals On Time</i>		<i>Departures On Time</i>		<i>Cancellations</i>	
	<i>Sched.</i>	<i>Flown</i>	<i>No.</i>	<i>%</i>	<i>No.</i>	<i>%</i>	<i>No.</i>	<i>%</i>
Canberra-Adelaide								
Qantas	49	49	46	93.9	44	89.8	0	0.0
QantasLink	4	4	3	75.0	2	50.0	0	0.0
Virgin Australia	27	27	22	81.5	23	85.2	0	0.0
All Airlines	80	80	71	88.8	69	86.3	0	0.0
Canberra-Brisbane								
Qantas	11	11	10	90.9	9	81.8	0	0.0
QantasLink	147	141	110	78.0	111	78.7	6	4.1
Tigerair Australia	30	30	21	70.0	20	66.7	0	0.0
Virgin Australia	105	104	91	87.5	87	83.7	1	1.0
All Airlines	293	286	232	81.1	227	79.4	7	2.4
Canberra-Melbourne								
Qantas	248	243	206	84.8	210	86.4	5	2.0
QantasLink	45	44	30	68.2	33	75.0	1	2.2
Tigerair Australia	38	38	23	60.5	21	55.3	0	0.0
Virgin Australia	166	163	124	76.1	140	85.9	3	1.8
All Airlines	497	488	383	78.5	404	82.8	9	1.8
Canberra-Sydney								
Qantas	5	5	3	60.0	5	100.0	0	0.0
QantasLink	495	480	386	80.4	413	86.0	15	3.0
Virgin Australia	262	256	204	79.7	216	84.4	6	2.3
All Airlines	762	741	593	80.0	634	85.6	21	2.8
Coffs Harbour-Sydney								
QantasLink	148	146	116	79.5	116	79.5	2	1.4
Tigerair Australia	23	23	17	73.9	17	73.9	0	0.0
Virgin Australia	31	31	22	71.0	22	71.0	0	0.0
All Airlines	202	200	155	77.5	155	77.5	2	1.0
Darwin-Alice Springs								
Qantas	52	52	50	96.2	52	100.0	0	0.0
QantasLink	10	10	4	40.0	6	60.0	0	0.0
Virgin Australia	12	12	12	100.0	12	100.0	0	0.0
Virgin Australia Regional Airlines	10	10	8	80.0	9	90.0	0	0.0
All Airlines	84	84	74	88.1	79	94.0	0	0.0
Darwin-Brisbane								
Jetstar	23	23	22	95.7	19	82.6	0	0.0
Qantas	37	37	31	83.8	28	75.7	0	0.0
Tigerair Australia	18	18	15	83.3	14	77.8	0	0.0
Virgin Australia	31	31	25	80.6	29	93.5	0	0.0
All Airlines	109	109	93	85.3	90	82.6	0	0.0
Darwin-Melbourne								
Jetstar	26	26	15	57.7	14	53.8	0	0.0
Qantas	31	31	25	80.6	27	87.1	0	0.0
Virgin Australia	34	34	27	79.4	29	85.3	0	0.0
All Airlines	91	91	67	73.6	70	76.9	0	0.0
Darwin-Perth								
Qantas	31	31	28	90.3	29	93.5	0	0.0
Virgin Australia	23	23	19	82.6	22	95.7	0	0.0
Virgin Australia Regional Airlines	8	8	8	100.0	5	62.5	0	0.0
All Airlines	62	62	55	88.7	56	90.3	0	0.0

	<i>Sectors</i>		<i>Arrivals On Time</i>		<i>Departures On Time</i>		<i>Cancellations</i>	
	<i>Sched.</i>	<i>Flown</i>	<i>No.</i>	<i>%</i>	<i>No.</i>	<i>%</i>	<i>No.</i>	<i>%</i>
Darwin-Sydney								
Jetstar	26	26	19	73.1	22	84.6	0	0.0
Qantas	51	51	28	54.9	35	68.6	0	0.0
Virgin Australia	31	31	21	67.7	22	71.0	0	0.0
All Airlines	108	108	68	63.0	79	73.1	0	0.0
Dubbo-Sydney								
QantasLink	124	124	101	81.5	103	83.1	0	0.0
Regional Express	132	131	93	71.0	104	79.4	1	0.8
All Airlines	256	255	194	76.1	207	81.2	1	0.4
Emerald-Brisbane								
QantasLink	126	124	92	74.2	91	73.4	2	1.6
Virgin Australia	53	53	51	96.2	48	90.6	0	0.0
All Airlines	179	177	143	80.8	139	78.5	2	1.1
Gladstone-Brisbane								
QantasLink	143	143	124	86.7	122	85.3	0	0.0
Virgin Australia	76	76	67	88.2	71	93.4	0	0.0
All Airlines	219	219	191	87.2	193	88.1	0	0.0
Gold Coast-Adelaide								
Jetstar	30	30	23	76.7	25	83.3	0	0.0
Virgin Australia	34	34	25	73.5	25	73.5	0	0.0
All Airlines	64	64	48	75.0	50	78.1	0	0.0
Gold Coast-Melbourne								
Jetstar	216	214	141	65.9	129	60.3	2	0.9
Qantas	32	32	21	65.6	21	65.6	0	0.0
Tigerair Australia	93	91	46	50.5	53	58.2	2	2.2
Virgin Australia	195	195	124	63.6	108	55.4	0	0.0
All Airlines	536	532	332	62.4	311	58.5	4	0.7
Gold Coast-Sydney								
Jetstar	309	304	213	70.1	210	69.1	5	1.6
Qantas	74	73	48	65.8	46	63.0	1	1.4
QantasLink	57	56	36	64.3	42	75.0	1	1.8
Tigerair Australia	97	97	48	49.5	48	49.5	0	0.0
Virgin Australia	266	264	170	64.4	169	64.0	2	0.8
All Airlines	803	794	515	64.9	515	64.9	9	1.1
Hamilton Island-Brisbane								
QantasLink	31	30	19	63.3	23	76.7	1	3.2
Virgin Australia	31	31	25	80.6	24	77.4	0	0.0
All Airlines	62	61	44	72.1	47	77.0	1	1.6
Hamilton Island-Sydney								
Jetstar	26	26	18	69.2	19	73.1	0	0.0
Qantas	11	11	9	81.8	10	90.9	0	0.0
QantasLink	20	17	17	100.0	17	100.0	3	15.0
Virgin Australia	31	31	27	87.1	27	87.1	0	0.0
All Airlines	88	85	71	83.5	73	85.9	3	3.4
Hobart-Brisbane								
Jetstar	28	28	23	82.1	23	82.1	0	0.0
Virgin Australia	39	39	23	59.0	28	71.8	0	0.0
All Airlines	67	67	46	68.7	51	76.1	0	0.0

	Sectors		Arrivals On Time		Departures On Time		Cancellations	
	Sched.	Flown	No.	%	No.	%	No.	%
Hobart-Melbourne								
Jetstar	167	165	74	44.8	97	58.8	2	1.2
Qantas	115	115	66	57.4	81	70.4	0	0.0
Tigerair Australia	41	41	18	43.9	24	58.5	0	0.0
Virgin Australia	145	145	99	68.3	113	77.9	0	0.0
All Airlines	468	466	257	55.2	315	67.6	2	0.4
Hobart-Sydney								
Jetstar	87	87	54	62.1	53	60.9	0	0.0
QantasLink	76	75	44	58.7	53	70.7	1	1.3
Virgin Australia	76	76	52	68.4	60	78.9	0	0.0
All Airlines	239	238	150	63.0	166	69.7	1	0.4
Kalgoorlie-Perth								
Qantas	7	7	7	100.0	7	100.0	0	0.0
QantasLink	83	82	77	93.9	78	95.1	1	1.2
Virgin Australia	28	27	24	88.9	23	85.2	1	3.6
Virgin Australia Regional Airlines	47	47	44	93.6	43	91.5	0	0.0
All Airlines	165	163	152	93.3	151	92.6	2	1.2
Karratha-Perth								
Qantas	44	40	39	97.5	37	92.5	4	9.1
QantasLink	148	146	131	89.7	131	89.7	2	1.4
Virgin Australia	1	1	1	100.0	1	100.0	0	0.0
Virgin Australia Regional Airlines	67	67	53	79.1	54	80.6	0	0.0
All Airlines	260	254	224	88.2	223	87.8	6	2.3
Launceston-Melbourne								
Jetstar	120	120	73	60.8	76	63.3	0	0.0
QantasLink	120	119	97	81.5	101	84.9	1	0.8
Virgin Australia	100	100	78	78.0	89	89.0	0	0.0
All Airlines	340	339	248	73.2	266	78.5	1	0.3
Launceston-Sydney								
Jetstar	45	44	26	59.1	26	59.1	1	2.2
Virgin Australia	31	31	25	80.6	25	80.6	0	0.0
All Airlines	76	75	51	68.0	51	68.0	1	1.3
Mackay-Brisbane								
Jetstar	31	31	26	83.9	17	54.8	0	0.0
QantasLink	140	137	116	84.7	117	85.4	3	2.1
Virgin Australia	146	146	123	84.2	121	82.9	0	0.0
All Airlines	317	314	265	84.4	255	81.2	3	0.9
Melbourne-Adelaide								
Jetstar	103	100	63	63.0	66	66.0	3	2.9
Qantas	301	300	232	77.3	237	79.0	1	0.3
Tigerair Australia	76	76	43	56.6	46	60.5	0	0.0
Virgin Australia	274	268	212	79.1	217	81.0	6	2.2
Virgin Australia Regional Airlines	12	12	8	66.7	8	66.7	0	0.0
All Airlines	766	756	558	73.8	574	75.9	10	1.3
Melbourne-Brisbane								
Jetstar	159	157	101	64.3	94	59.9	2	1.3
Qantas	423	422	334	79.1	334	79.1	1	0.2
Tigerair Australia	109	109	73	67.0	73	67.0	0	0.0
Virgin Australia	392	380	317	83.4	325	85.5	12	3.1
All Airlines	1 083	1 068	825	77.2	826	77.3	15	1.4

	Sectors		Arrivals On Time		Departures On Time		Cancellations	
	Sched.	Flown	No.	%	No.	%	No.	%
Melbourne-Cairns								
Jetstar	120	116	85	73.3	76	65.5	4	3.3
Qantas	32	32	29	90.6	29	90.6	0	0.0
Tigerair Australia	43	43	36	83.7	36	83.7	0	0.0
Virgin Australia	40	40	36	90.0	40	100.0	0	0.0
All Airlines	235	231	186	80.5	181	78.4	4	1.7
Melbourne-Canberra								
Qantas	248	243	201	82.7	200	82.3	5	2.0
QantasLink	45	45	38	84.4	35	77.8	0	0.0
Tigerair Australia	38	38	21	55.3	22	57.9	0	0.0
Virgin Australia	166	163	131	80.4	138	84.7	3	1.8
All Airlines	497	489	391	80.0	395	80.8	8	1.6
Melbourne-Darwin								
Jetstar	26	26	12	46.2	12	46.2	0	0.0
Qantas	31	31	29	93.5	27	87.1	0	0.0
Virgin Australia	34	34	24	70.6	25	73.5	0	0.0
All Airlines	91	91	65	71.4	64	70.3	0	0.0
Melbourne-Gold Coast								
Jetstar	216	215	146	67.9	142	66.0	1	0.5
Qantas	32	32	28	87.5	25	78.1	0	0.0
Tigerair Australia	93	91	61	67.0	64	70.3	2	2.2
Virgin Australia	196	196	159	81.1	158	80.6	0	0.0
All Airlines	537	534	394	73.8	389	72.8	3	0.6
Melbourne-Hobart								
Jetstar	167	165	114	69.1	112	67.9	2	1.2
Qantas	115	115	83	72.2	83	72.2	0	0.0
Tigerair Australia	41	41	35	85.4	38	92.7	0	0.0
Virgin Australia	145	145	106	73.1	117	80.7	0	0.0
All Airlines	468	466	338	72.5	350	75.1	2	0.4
Melbourne-Launceston								
Jetstar	120	120	71	59.2	75	62.5	0	0.0
QantasLink	121	120	107	89.2	102	85.0	1	0.8
Virgin Australia	100	100	82	82.0	85	85.0	0	0.0
All Airlines	341	340	260	76.5	262	77.1	1	0.3
Melbourne-Mildura								
QantasLink	98	96	81	84.4	81	84.4	2	2.0
Regional Express	88	88	67	76.1	71	80.7	0	0.0
Virgin Australia	31	31	26	83.9	29	93.5	0	0.0
All Airlines	217	215	174	80.9	181	84.2	2	0.9
Melbourne-Newcastle								
Jetstar	107	106	70	66.0	63	59.4	1	0.9
Virgin Australia	36	36	28	77.8	29	80.6	0	0.0
All Airlines	143	142	98	69.0	92	64.8	1	0.7
Melbourne-Perth								
Jetstar	48	48	36	75.0	34	70.8	0	0.0
Qantas	206	206	140	68.0	137	66.5	0	0.0
Tigerair Australia	54	54	34	63.0	33	61.1	0	0.0
Virgin Australia	142	142	114	80.3	105	73.9	0	0.0
All Airlines	450	450	324	72.0	309	68.7	0	0.0

	<i>Sectors</i>		<i>Arrivals On Time</i>		<i>Departures On Time</i>		<i>Cancellations</i>	
	<i>Sched.</i>	<i>Flown</i>	<i>No.</i>	<i>%</i>	<i>No.</i>	<i>%</i>	<i>No.</i>	<i>%</i>
Melbourne-Sunshine Coast								
Jetstar	97	96	73	76.0	71	74.0	1	1.0
Virgin Australia	66	66	57	86.4	55	83.3	0	0.0
All Airlines	163	162	130	80.2	126	77.8	1	0.6
Melbourne-Sydney								
Jetstar	419	390	225	57.7	243	62.3	29	6.9
Qantas	1 149	1 068	717	67.1	833	78.0	81	7.0
Tigerair Australia	243	236	142	60.2	154	65.3	7	2.9
Virgin Australia	774	736	529	71.9	600	81.5	38	4.9
All Airlines	2 585	2 430	1 613	66.4	1 830	75.3	155	6.0
Mildura-Melbourne								
QantasLink	98	95	73	76.8	78	82.1	3	3.1
Regional Express	88	88	58	65.9	62	70.5	0	0.0
Virgin Australia	31	31	23	74.2	27	87.1	0	0.0
All Airlines	217	214	154	72.0	167	78.0	3	1.4
Mount Isa-Brisbane								
QantasLink	58	58	50	86.2	52	89.7	0	0.0
Virgin Australia	14	13	10	76.9	11	84.6	1	7.1
All Airlines	72	71	60	84.5	63	88.7	1	1.4
Newcastle-Brisbane								
Jetstar	71	71	64	90.1	61	85.9	0	0.0
QantasLink	94	93	78	83.9	77	82.8	1	1.1
Virgin Australia	87	87	79	90.8	78	89.7	0	0.0
All Airlines	252	251	221	88.0	216	86.1	1	0.4
Newcastle-Melbourne								
Jetstar	106	105	71	67.6	75	71.4	1	0.9
Virgin Australia	36	36	16	44.4	23	63.9	0	0.0
All Airlines	142	141	87	61.7	98	69.5	1	0.7
Newman-Perth								
Qantas	32	30	30	100.0	30	100.0	2	6.3
QantasLink	119	114	104	91.2	105	92.1	5	4.2
Virgin Australia	19	19	17	89.5	19	100.0	0	0.0
Virgin Australia Regional Airlines	25	25	23	92.0	19	76.0	0	0.0
All Airlines	195	188	174	92.6	173	92.0	7	3.6
Perth-Adelaide								
Jetstar	25	24	20	83.3	20	83.3	1	4.0
Qantas	125	125	111	88.8	106	84.8	0	0.0
Virgin Australia	46	46	43	93.5	43	93.5	0	0.0
Virgin Australia Regional Airlines	38	38	32	84.2	38	100.0	0	0.0
All Airlines	234	233	206	88.4	207	88.8	1	0.4
Perth-Brisbane								
Qantas	151	151	118	78.1	125	82.8	0	0.0
Virgin Australia	113	113	95	84.1	94	83.2	0	0.0
All Airlines	264	264	213	80.7	219	83.0	0	0.0
Perth-Broome								
Qantas	3	3	2	66.7	3	100.0	0	0.0
QantasLink	94	94	78	83.0	83	88.3	0	0.0
Virgin Australia	2	2	2	100.0	2	100.0	0	0.0
Virgin Australia Regional Airlines	69	69	57	82.6	58	84.1	0	0.0
All Airlines	168	168	139	82.7	146	86.9	0	0.0

	Sectors		Arrivals On Time		Departures On Time		Cancellations	
	Sched.	Flown	No.	%	No.	%	No.	%
Perth-Darwin								
Qantas	30	30	28	93.3	28	93.3	0	0.0
Virgin Australia	23	23	23	100.0	22	95.7	0	0.0
Virgin Australia Regional Airlines	8	8	8	100.0	8	100.0	0	0.0
All Airlines	61	61	59	96.7	58	95.1	0	0.0
Perth-Kalgoorlie								
Qantas	7	7	7	100.0	7	100.0	0	0.0
QantasLink	84	82	76	92.7	77	93.9	2	2.4
Virgin Australia	28	28	27	96.4	27	96.4	0	0.0
Virgin Australia Regional Airlines	47	47	45	95.7	45	95.7	0	0.0
All Airlines	166	164	155	94.5	156	95.1	2	1.2
Perth-Karratha								
Qantas	44	40	39	97.5	38	95.0	4	9.1
QantasLink	148	147	129	87.8	134	91.2	1	0.7
Virgin Australia	1	1	1	100.0	1	100.0	0	0.0
Virgin Australia Regional Airlines	67	67	56	83.6	59	88.1	0	0.0
All Airlines	260	255	225	88.2	232	91.0	5	1.9
Perth-Melbourne								
Jetstar	49	49	39	79.6	29	59.2	0	0.0
Qantas	205	204	155	76.0	161	78.9	1	0.5
Tigerair Australia	55	55	34	61.8	28	50.9	0	0.0
Virgin Australia	142	142	112	78.9	116	81.7	0	0.0
All Airlines	451	450	340	75.6	334	74.2	1	0.2
Perth-Newman								
Qantas	32	31	31	100.0	31	100.0	1	3.1
QantasLink	120	116	105	90.5	108	93.1	4	3.3
Virgin Australia	20	20	19	95.0	20	100.0	0	0.0
Virgin Australia Regional Airlines	25	25	23	92.0	24	96.0	0	0.0
All Airlines	197	192	178	92.7	183	95.3	5	2.5
Perth-Port Hedland								
Qantas	27	27	26	96.3	26	96.3	0	0.0
QantasLink	131	126	109	86.5	113	89.7	5	3.8
Virgin Australia	19	19	19	100.0	19	100.0	0	0.0
Virgin Australia Regional Airlines	35	35	33	94.3	35	100.0	0	0.0
All Airlines	212	207	187	90.3	193	93.2	5	2.4
Perth-Sydney								
Jetstar	27	27	21	77.8	20	74.1	0	0.0
Qantas	212	211	167	79.1	163	77.3	1	0.5
Tigerair Australia	28	28	16	57.1	11	39.3	0	0.0
Virgin Australia	120	119	110	92.4	108	90.8	1	0.8
All Airlines	387	385	314	81.6	302	78.4	2	0.5
Port Hedland-Perth								
Qantas	27	27	26	96.3	27	100.0	0	0.0
QantasLink	131	124	111	89.5	112	90.3	7	5.3
Virgin Australia	19	19	17	89.5	16	84.2	0	0.0
Virgin Australia Regional Airlines	35	35	33	94.3	31	88.6	0	0.0
All Airlines	212	205	187	91.2	186	90.7	7	3.3
Port Lincoln-Adelaide								
QantasLink	102	101	87	86.1	84	83.2	1	1.0
Regional Express	217	216	199	92.1	200	92.6	1	0.5
All Airlines	319	317	286	90.2	284	89.6	2	0.6

	<i>Sectors</i>		<i>Arrivals On Time</i>		<i>Departures On Time</i>		<i>Cancellations</i>	
	<i>Sched.</i>	<i>Flown</i>	<i>No.</i>	<i>%</i>	<i>No.</i>	<i>%</i>	<i>No.</i>	<i>%</i>
Port Macquarie-Sydney								
QantasLink	128	127	89	70.1	94	74.0	1	0.8
Virgin Australia	55	55	35	63.6	37	67.3	0	0.0
All Airlines	183	182	124	68.1	131	72.0	1	0.5
Proserpine-Brisbane								
Jetstar	34	34	28	82.4	28	82.4	0	0.0
Virgin Australia	42	42	32	76.2	27	64.3	0	0.0
All Airlines	76	76	60	78.9	55	72.4	0	0.0
Proserpine-Sydney								
Jetstar	14	14	11	78.6	11	78.6	0	0.0
Tigerair Australia	21	21	11	52.4	12	57.1	0	0.0
All Airlines	35	35	22	62.9	23	65.7	0	0.0
Rockhampton-Brisbane								
QantasLink	191	191	153	80.1	165	86.4	0	0.0
Virgin Australia	143	143	127	88.8	124	86.7	0	0.0
All Airlines	334	334	280	83.8	289	86.5	0	0.0
Sunshine Coast-Melbourne								
Jetstar	96	95	55	57.9	57	60.0	1	1.0
Virgin Australia	66	66	34	51.5	32	48.5	0	0.0
All Airlines	162	161	89	55.3	89	55.3	1	0.6
Sunshine Coast-Sydney								
Jetstar	115	114	68	59.6	66	57.9	1	0.9
QantasLink	58	58	35	60.3	32	55.2	0	0.0
Virgin Australia	51	51	20	39.2	24	47.1	0	0.0
All Airlines	224	223	123	55.2	122	54.7	1	0.4
Sydney-Adelaide								
Jetstar	114	112	71	63.4	63	56.3	2	1.8
Qantas	245	245	189	77.1	179	73.1	0	0.0
Tigerair Australia	31	31	15	48.4	13	41.9	0	0.0
Virgin Australia	173	173	134	77.5	132	76.3	0	0.0
All Airlines	563	561	409	72.9	387	69.0	2	0.4
Sydney-Albury								
QantasLink	107	106	81	76.4	80	75.5	1	0.9
Regional Express	106	104	86	82.7	88	84.6	2	1.9
Virgin Australia	55	55	46	83.6	43	78.2	0	0.0
All Airlines	268	265	213	80.4	211	79.6	3	1.1
Sydney-Armidale								
QantasLink	122	122	89	73.0	91	74.6	0	0.0
Regional Express	74	74	61	82.4	60	81.1	0	0.0
All Airlines	196	196	150	76.5	151	77.0	0	0.0
Sydney-Ayers Rock								
Jetstar	32	32	23	71.9	26	81.3	0	0.0
Virgin Australia	31	31	27	87.1	25	80.6	0	0.0
All Airlines	63	63	50	79.4	51	81.0	0	0.0
Sydney-Ballina								
Jetstar	86	86	63	73.3	64	74.4	0	0.0
Regional Express	26	26	22	84.6	22	84.6	0	0.0
Virgin Australia	34	34	23	67.6	26	76.5	0	0.0
All Airlines	146	146	108	74.0	112	76.7	0	0.0

	<i>Sectors</i>		<i>Arrivals On Time</i>		<i>Departures On Time</i>		<i>Cancellations</i>	
	<i>Sched.</i>	<i>Flown</i>	<i>No.</i>	<i>%</i>	<i>No.</i>	<i>%</i>	<i>No.</i>	<i>%</i>
Sydney-Brisbane								
Jetstar	189	179	130	72.6	116	64.8	10	5.3
Qantas	635	631	469	74.3	478	75.8	4	0.6
Tigerair Australia	131	130	93	71.5	92	70.8	1	0.8
Virgin Australia	535	521	381	73.1	390	74.9	14	2.6
All Airlines	1 490	1 461	1 073	73.4	1 076	73.6	29	1.9
Sydney-Cairns								
Jetstar	108	106	92	86.8	78	73.6	2	1.9
Qantas	61	61	48	78.7	47	77.0	0	0.0
Tigerair Australia	37	36	29	80.6	30	83.3	1	2.7
Virgin Australia	92	92	60	65.2	59	64.1	0	0.0
All Airlines	298	295	229	77.6	214	72.5	3	1.0
Sydney-Canberra								
Qantas	5	5	4	80.0	5	100.0	0	0.0
QantasLink	491	483	392	81.2	395	81.8	8	1.6
Virgin Australia	262	256	203	79.3	203	79.3	6	2.3
All Airlines	758	744	599	80.5	603	81.0	14	1.8
Sydney-Coffs Harbour								
QantasLink	148	146	119	81.5	107	73.3	2	1.4
Tigerair Australia	23	23	14	60.9	14	60.9	0	0.0
Virgin Australia	31	31	25	80.6	25	80.6	0	0.0
All Airlines	202	200	158	79.0	146	73.0	2	1.0
Sydney-Darwin								
Jetstar	26	26	21	80.8	19	73.1	0	0.0
Qantas	50	50	34	68.0	24	48.0	0	0.0
Virgin Australia	31	31	27	87.1	24	77.4	0	0.0
All Airlines	107	107	82	76.6	67	62.6	0	0.0
Sydney-Dubbo								
QantasLink	124	124	104	83.9	103	83.1	0	0.0
Regional Express	135	135	111	82.2	108	80.0	0	0.0
All Airlines	259	259	215	83.0	211	81.5	0	0.0
Sydney-Gold Coast								
Jetstar	309	302	221	73.2	216	71.5	7	2.3
Qantas	74	73	55	75.3	55	75.3	1	1.4
QantasLink	57	55	39	70.9	38	69.1	2	3.5
Tigerair Australia	97	97	53	54.6	59	60.8	0	0.0
Virgin Australia	265	263	192	73.0	193	73.4	2	0.8
All Airlines	802	790	560	70.9	561	71.0	12	1.5
Sydney-Hamilton Island								
Jetstar	26	26	23	88.5	20	76.9	0	0.0
Qantas	11	11	10	90.9	9	81.8	0	0.0
QantasLink	20	17	16	94.1	16	94.1	3	15.0
Virgin Australia	31	31	27	87.1	29	93.5	0	0.0
All Airlines	88	85	76	89.4	74	87.1	3	3.4
Sydney-Hobart								
Jetstar	88	88	63	71.6	59	67.0	0	0.0
QantasLink	76	76	46	60.5	41	53.9	0	0.0
Virgin Australia	76	76	59	77.6	58	76.3	0	0.0
All Airlines	240	240	168	70.0	158	65.8	0	0.0

	<i>Sectors</i>		<i>Arrivals On Time</i>		<i>Departures On Time</i>		<i>Cancellations</i>	
	<i>Sched.</i>	<i>Flown</i>	<i>No.</i>	<i>%</i>	<i>No.</i>	<i>%</i>	<i>No.</i>	<i>%</i>
Sydney-Launceston								
Jetstar	45	44	36	81.8	30	68.2	1	2.2
Virgin Australia	31	31	24	77.4	24	77.4	0	0.0
All Airlines	76	75	60	80.0	54	72.0	1	1.3
Sydney-Melbourne								
Jetstar	420	392	235	59.9	223	56.9	28	6.7
Qantas	1 151	1 072	712	66.4	782	72.9	79	6.9
Tigerair Australia	243	237	122	51.5	122	51.5	6	2.5
Virgin Australia	773	740	486	65.7	538	72.7	33	4.3
All Airlines	2 587	2 441	1 555	63.7	1 665	68.2	146	5.6
Sydney-Perth								
Jetstar	27	27	16	59.3	11	40.7	0	0.0
Qantas	212	211	146	69.2	128	60.7	1	0.5
Tigerair Australia	27	27	13	48.1	8	29.6	0	0.0
Virgin Australia	120	119	76	63.9	66	55.5	1	0.8
All Airlines	386	384	251	65.4	213	55.5	2	0.5
Sydney-Port Macquarie								
QantasLink	128	128	99	77.3	98	76.6	0	0.0
Virgin Australia	55	55	47	85.5	44	80.0	0	0.0
All Airlines	183	183	146	79.8	142	77.6	0	0.0
Sydney-Proserpine								
Jetstar	13	13	11	84.6	10	76.9	0	0.0
Tigerair Australia	21	21	12	57.1	10	47.6	0	0.0
All Airlines	34	34	23	67.6	20	58.8	0	0.0
Sydney-Sunshine Coast								
Jetstar	115	114	76	66.7	72	63.2	1	0.9
QantasLink	58	58	33	56.9	38	65.5	0	0.0
Virgin Australia	51	51	32	62.7	33	64.7	0	0.0
All Airlines	224	223	141	63.2	143	64.1	1	0.4
Sydney-Tamworth								
QantasLink	134	133	110	82.7	107	80.5	1	0.7
Virgin Australia	53	53	41	77.4	44	83.0	0	0.0
All Airlines	187	186	151	81.2	151	81.2	1	0.5
Sydney-Townsville								
Jetstar	29	29	23	79.3	18	62.1	0	0.0
Virgin Australia	25	25	18	72.0	18	72.0	0	0.0
All Airlines	54	54	41	75.9	36	66.7	0	0.0
Sydney-Wagga Wagga								
QantasLink	116	116	95	81.9	97	83.6	0	0.0
Regional Express	137	137	118	86.1	122	89.1	0	0.0
All Airlines	253	253	213	84.2	219	86.6	0	0.0
Tamworth-Sydney								
QantasLink	133	131	103	78.6	105	80.2	2	1.5
Virgin Australia	53	53	47	88.7	49	92.5	0	0.0
All Airlines	186	184	150	81.5	154	83.7	2	1.1
Townsville-Brisbane								
Jetstar	59	59	48	81.4	44	74.6	0	0.0
Qantas	59	59	55	93.2	52	88.1	0	0.0
QantasLink	99	97	71	73.2	71	73.2	2	2.0
Virgin Australia	142	141	130	92.2	124	87.9	1	0.7
All Airlines	359	356	304	85.4	291	81.7	3	0.8

	<i>Sectors</i>		<i>Arrivals On Time</i>		<i>Departures On Time</i>		<i>Cancellations</i>	
	<i>Sched.</i>	<i>Flown</i>	<i>No.</i>	<i>%</i>	<i>No.</i>	<i>%</i>	<i>No.</i>	<i>%</i>
Townsville-Cairns								
QantasLink	139	138	127	92.0	123	89.1	1	0.7
Regional Express	13	13	11	84.6	11	84.6	0	0.0
All Airlines	152	151	138	91.4	134	88.7	1	0.7
Townsville-Sydney								
Jetstar	29	29	24	82.8	22	75.9	0	0.0
Virgin Australia	25	25	17	68.0	16	64.0	0	0.0
All Airlines	54	54	41	75.9	38	70.4	0	0.0
Wagga Wagga-Sydney								
QantasLink	116	115	97	84.3	98	85.2	1	0.9
Regional Express	136	136	107	78.7	124	91.2	0	0.0
All Airlines	252	251	204	81.3	222	88.4	1	0.4

Airports

On time performance is reported for all routes where the passenger load averages over 8000 passengers per month, and where two or more airlines operate in competition. The following data reports by airport against flights operated on those routes only. This month, 8 major city airports and 31 regional city airports are covered.

Airport	Arrivals			Departures		
	Sectors Flown	On Time No.	%	Sectors Flown	On Time No.	%
Adelaide						
Jetstar	293	198	67.6	293	202	68.9
Qantas	861	693	80.5	858	711	82.9
QantasLink	105	90	85.7	105	90	85.7
Regional Express	216	199	92.1	217	206	94.9
Tigerair Australia	138	81	58.7	138	74	53.6
Virgin Australia	676	550	81.4	673	557	82.8
Virgin Australia Regional Airlines	60	46	76.7	59	48	81.4
All Airlines	2 349	1 857	79.1	2 343	1 888	80.6
Relates to services to and from Alice Springs, Brisbane, Canberra, Gold Coast, Melbourne, Perth, Port Lincoln and Sydney.						
Albury						
QantasLink	106	81	76.4	106	86	81.1
Regional Express	104	86	82.7	106	96	90.6
Virgin Australia	55	46	83.6	55	43	78.2
All Airlines	265	213	80.4	267	225	84.3
Relates to services to and from Sydney only.						
Alice Springs						
Qantas	83	77	92.8	83	68	81.9
QantasLink	10	4	40.0	10	7	70.0
Virgin Australia	24	23	95.8	24	21	87.5
Virgin Australia Regional Airlines	21	15	71.4	20	17	85.0
All Airlines	138	119	86.2	137	113	82.5
Relates to services to and from Adelaide and Darwin.						
Armidale						
QantasLink	122	89	73.0	124	86	69.4
Regional Express	74	61	82.4	73	58	79.5
All Airlines	196	150	76.5	197	144	73.1
Relates to services to and from Sydney only.						
Ayers Rock						
Jetstar	32	23	71.9	30	16	53.3
Virgin Australia	31	27	87.1	31	25	80.6
All Airlines	63	50	79.4	61	41	67.2
Relates to services to and from Sydney only.						
Ballina						
Jetstar	86	63	73.3	84	48	57.1
Regional Express	26	22	84.6	26	24	92.3
Virgin Australia	34	23	67.6	34	22	64.7
All Airlines	146	108	74.0	144	94	65.3
Relates to services to and from Sydney only.						

Airport	Arrivals			Departures		
	Sectors	On Time		Sectors	On Time	
	Flown	No.	%	Flown	No.	%
Brisbane						
Jetstar	710	553	77.9	706	524	74.2
Qantas	1 457	1 140	78.2	1 455	1 197	82.3
QantasLink	1 265	1 004	79.4	1 272	1 035	81.4
Tigerair Australia	349	249	71.3	348	237	68.1
Virgin Australia	2 202	1 824	82.8	2 211	1 825	82.5
All Airlines	5 983	4 770	79.7	5 992	4 818	80.4

Relates to services to and from Adelaide, Bundaberg, Cairns, Canberra, Darwin, Emerald, Gladstone, Hamilton Island, Hobart, Mackay, Melbourne, Mount Isa, Newcastle, Perth, Proserpine, Rockhampton, Sydney and Townsville.

Broome

Qantas	3	2	66.7	3	1	33.3
QantasLink	94	78	83.0	93	80	86.0
Virgin Australia	2	2	100.0	2	2	100.0
Virgin Australia Regional Airlines	69	57	82.6	69	54	78.3
All Airlines	168	139	82.7	167	137	82.0

Relates to services to and from Perth only.

Bundaberg

QantasLink	123	102	82.9	123	105	85.4
Virgin Australia	31	28	90.3	31	29	93.5
All Airlines	154	130	84.4	154	134	87.0

Relates to services to and from Brisbane only.

Cairns

Jetstar	323	268	83.0	325	258	79.4
Qantas	127	111	87.4	127	94	74.0
QantasLink	270	220	81.5	265	226	85.3
Regional Express	13	11	84.6	13	12	92.3
Tigerair Australia	110	88	80.0	110	80	72.7
Virgin Australia	266	196	73.7	266	213	80.1
All Airlines	1 109	894	80.6	1 106	883	79.8

Relates to services to and from Brisbane, Melbourne, Sydney and Townsville.

Canberra

Qantas	308	261	84.7	308	268	87.0
QantasLink	674	545	80.9	669	559	83.6
Tigerair Australia	68	44	64.7	68	41	60.3
Virgin Australia	550	450	81.8	550	466	84.7
All Airlines	1 600	1 300	81.3	1 595	1 334	83.6

Relates to services to and from Adelaide, Brisbane, Melbourne and Sydney.

Coffs Harbour

QantasLink	146	119	81.5	146	116	79.5
Tigerair Australia	23	14	60.9	23	17	73.9
Virgin Australia	31	25	80.6	31	22	71.0
All Airlines	200	158	79.0	200	155	77.5

Relates to services to and from Sydney only.

Airport	Arrivals			Departures		
	Sectors Flown	On Time		Sectors Flown	On Time	
		No.	%		No.	%
Darwin						
Jetstar	75	53	70.7	75	55	73.3
Qantas	199	167	83.9	202	171	84.7
QantasLink	10	6	60.0	10	6	60.0
Tigerair Australia	17	15	88.2	18	14	77.8
Virgin Australia	131	107	81.7	131	114	87.0
Virgin Australia Regional Airlines	18	16	88.9	18	14	77.8
All Airlines	450	364	80.9	454	374	82.4
Relates to services to and from Alice Springs, Brisbane, Melbourne, Perth and Sydney.						
Dubbo						
QantasLink	124	104	83.9	124	103	83.1
Regional Express	135	111	82.2	131	104	79.4
All Airlines	259	215	83.0	255	207	81.2
Relates to services to and from Sydney only.						
Emerald						
QantasLink	124	104	83.9	124	91	73.4
Virgin Australia	53	47	88.7	53	48	90.6
All Airlines	177	151	85.3	177	139	78.5
Relates to services to and from Brisbane only.						
Gladstone						
QantasLink	143	122	85.3	143	122	85.3
Virgin Australia	76	73	96.1	76	71	93.4
All Airlines	219	195	89.0	219	193	88.1
Relates to services to and from Brisbane only.						
Gold Coast						
Jetstar	547	393	71.8	548	364	66.4
Qantas	105	83	79.0	105	67	63.8
QantasLink	55	39	70.9	56	42	75.0
Tigerair Australia	188	114	60.6	188	101	53.7
Virgin Australia	492	382	77.6	493	302	61.3
All Airlines	1 387	1 011	72.9	1 390	876	63.0
Relates to services to and from Adelaide, Melbourne and Sydney.						
Hamilton Island						
Jetstar	26	23	88.5	26	19	73.1
Qantas	11	10	90.9	11	10	90.9
QantasLink	47	42	89.4	47	40	85.1
Virgin Australia	62	54	87.1	62	51	82.3
All Airlines	146	129	88.4	146	120	82.2
Relates to services to and from Brisbane and Sydney.						
Hobart						
Jetstar	280	201	71.8	280	173	61.8
Qantas	115	83	72.2	115	81	70.4
QantasLink	76	46	60.5	75	53	70.7
Tigerair Australia	41	35	85.4	41	24	58.5
Virgin Australia	260	198	76.2	260	201	77.3
All Airlines	772	563	72.9	771	532	69.0
Relates to services to and from Brisbane, Melbourne and Sydney.						

Airport	Arrivals			Departures		
	Sectors	On Time		Sectors	On Time	
	Flown	No.	%	Flown	No.	%
Kalgoorlie						
Qantas	7	7	100.0	7	7	100.0
QantasLink	82	76	92.7	82	78	95.1
Virgin Australia	28	27	96.4	27	23	85.2
Virgin Australia Regional Airlines	47	45	95.7	47	43	91.5
All Airlines	164	155	94.5	163	151	92.6
Relates to services to and from Perth only.						
Karratha						
Qantas	40	39	97.5	40	37	92.5
QantasLink	147	129	87.8	146	131	89.7
Virgin Australia	1	1	100.0	1	1	100.0
Virgin Australia Regional Airlines	67	56	83.6	67	54	80.6
All Airlines	255	225	88.2	254	223	87.8
Relates to services to and from Perth only.						
Launceston						
Jetstar	164	107	65.2	164	102	62.2
QantasLink	120	107	89.2	119	101	84.9
Virgin Australia	131	106	80.9	131	114	87.0
All Airlines	415	320	77.1	414	317	76.6
Relates to services to and from Melbourne and Sydney.						
Mackay						
Jetstar	32	22	68.8	31	17	54.8
QantasLink	144	123	85.4	137	117	85.4
Virgin Australia	146	120	82.2	146	121	82.9
All Airlines	322	265	82.3	314	255	81.2
Relates to services to and from Brisbane only.						
Melbourne						
Jetstar	1 541	964	62.6	1 539	988	64.2
Qantas	2 447	1 739	71.1	2 449	1 905	77.8
QantasLink	258	200	77.5	261	218	83.5
Regional Express	88	58	65.9	88	71	80.7
Tigerair Australia	690	366	53.0	688	466	67.7
Virgin Australia	2 337	1 616	69.1	2 337	1 923	82.3
Virgin Australia Regional Airlines	12	10	83.3	12	8	66.7
All Airlines	7 373	4 953	67.2	7 374	5 579	75.7
Relates to services to and from Adelaide, Brisbane, Cairns, Canberra, Darwin, Gold Coast, Hobart, Launceston, Mildura, Newcastle, Perth, Sunshine Coast and Sydney.						
Mildura						
QantasLink	96	81	84.4	95	78	82.1
Regional Express	88	67	76.1	88	62	70.5
Virgin Australia	31	26	83.9	31	27	87.1
All Airlines	215	174	80.9	214	167	78.0
Relates to services to and from Melbourne only.						
Mount Isa						
QantasLink	57	55	96.5	58	52	89.7
Virgin Australia	19	17	89.5	13	11	84.6
All Airlines	76	72	94.7	71	63	88.7
Relates to services to and from Brisbane only.						

Airport	Arrivals			Departures		
	Sectors	On Time		Sectors	On Time	
	Flown	No.	%	Flown	No.	%
Newcastle						
Jetstar	177	128	72.3	176	136	77.3
QantasLink	94	77	81.9	93	77	82.8
Virgin Australia	124	103	83.1	123	101	82.1
All Airlines	395	308	78.0	392	314	80.1
Relates to services to and from Brisbane and Melbourne.						
Newman						
Qantas	31	31	100.0	30	30	100.0
QantasLink	116	105	90.5	114	105	92.1
Virgin Australia	20	19	95.0	19	19	100.0
Virgin Australia Regional Airlines	25	23	92.0	25	19	76.0
All Airlines	192	178	92.7	188	173	92.0
Relates to services to and from Perth only.						
Perth						
Jetstar	99	74	74.7	100	69	69.0
Qantas	830	654	78.8	829	688	83.0
QantasLink	559	508	90.9	565	515	91.2
Tigerair Australia	81	47	58.0	83	39	47.0
Virgin Australia	509	400	78.6	513	452	88.1
Virgin Australia Regional Airlines	287	241	84.0	289	267	92.4
All Airlines	2 365	1 924	81.4	2 379	2 030	85.3
Relates to services to and from Adelaide, Brisbane, Broome, Darwin, Kalgoorlie, Karratha, Melbourne, Newman, Port Hedland and Sydney.						
Port Hedland						
Qantas	27	26	96.3	27	27	100.0
QantasLink	126	109	86.5	124	112	90.3
Virgin Australia	19	19	100.0	19	16	84.2
Virgin Australia Regional Airlines	35	33	94.3	35	31	88.6
All Airlines	207	187	90.3	205	186	90.7
Relates to services to and from Perth only.						
Port Lincoln						
QantasLink	101	88	87.1	101	84	83.2
Regional Express	217	201	92.6	216	200	92.6
All Airlines	318	289	90.9	317	284	89.6
Relates to services to and from Adelaide only.						
Port Macquarie						
QantasLink	128	99	77.3	127	94	74.0
Virgin Australia	55	47	85.5	55	37	67.3
All Airlines	183	146	79.8	182	131	72.0
Relates to services to and from Sydney only.						
Proserpine						
Jetstar	47	42	89.4	48	39	81.3
Tigerair Australia	21	12	57.1	21	12	57.1
Virgin Australia	42	35	83.3	42	27	64.3
All Airlines	110	89	80.9	111	78	70.3
Relates to services to and from Brisbane and Sydney.						

Airport	Arrivals			Departures		
	Sectors Flown	On Time		Sectors Flown	On Time	
		No.	%		No.	%
Rockhampton						
QantasLink	186	162	87.1	191	165	86.4
Virgin Australia	143	115	80.4	143	124	86.7
All Airlines	329	277	84.2	334	289	86.5
Relates to services to and from Brisbane only.						
Sunshine Coast						
Jetstar	210	149	71.0	209	123	58.9
QantasLink	58	33	56.9	58	32	55.2
Virgin Australia	117	89	76.1	117	56	47.9
All Airlines	385	271	70.4	384	211	54.9
Relates to services to and from Melbourne and Sydney.						
Sydney						
Jetstar	1 569	1 024	65.3	1 576	1 025	65.0
Qantas	2 357	1 668	70.8	2 359	1 707	72.4
QantasLink	1 559	1 181	75.8	1 564	1 211	77.4
Regional Express	472	360	76.3	476	400	84.0
Tigerair Australia	602	362	60.1	602	348	57.8
Virgin Australia	2 669	1 962	73.5	2 668	1 974	74.0
All Airlines	9 228	6 557	71.1	9 245	6 665	72.1
Relates to services to and from Adelaide, Albury, Armidale, Ayers Rock, Ballina, Brisbane, Cairns, Canberra, Coffs Harbour, Darwin, Dubbo, Gold Coast, Hamilton Island, Hobart, Launceston, Melbourne, Perth, Port Macquarie, Proserpine, Sunshine Coast, Tamworth, Townsville and Wagga Wagga.						
Tamworth						
QantasLink	133	110	82.7	131	105	80.2
Virgin Australia	53	41	77.4	53	49	92.5
All Airlines	186	151	81.2	184	154	83.7
Relates to services to and from Sydney only.						
Townsville						
Jetstar	87	73	83.9	88	66	75.0
Qantas	59	53	89.8	59	52	88.1
QantasLink	234	193	82.5	235	194	82.6
Regional Express	13	12	92.3	13	11	84.6
Virgin Australia	167	136	81.4	166	140	84.3
All Airlines	560	467	83.4	561	463	82.5
Relates to services to and from Brisbane, Cairns and Sydney.						
Wagga Wagga						
QantasLink	116	95	81.9	115	98	85.2
Regional Express	137	118	86.1	136	124	91.2
All Airlines	253	213	84.2	251	222	88.4
Relates to services to and from Sydney only.						

Definitions

On time arrival	A flight arrival is counted as "on time" if it arrived at the gate before 15 minutes after the scheduled arrival time shown in the carriers' schedule. Neither diverted nor cancelled flights count as on time.
On time departure	A flight departure is counted as "on time" if it departs the gate before 15 minutes after the scheduled departure time shown in the carriers' schedule.
Cancellation	A flight removed from service within 7 days of scheduled departure is regarded as a cancellation.
On time departure percentage	The percentage of on time departures is measured against the number of departures <i>operated</i> on any particular sector.
On time arrival percentage	The percentage of on time arrivals is measured against the number of arrivals <i>operated</i> on any particular sector.
Cancellation percentage	The percentage of cancellations is measured against the number of services <i>scheduled</i> on any particular sector.
