



**Australian Government**

**Department of Infrastructure and Regional Development**

Bureau of Infrastructure, Transport and Regional Economics

STATISTICAL REPORT



## Aviation

Domestic airline on time performance  
May 2017

© Commonwealth of Australia 2017

ISSN: 1832-0759

### **Ownership of intellectual property rights in this publication**

Unless otherwise noted, copyright (and any other intellectual property rights, if any) in this publication is owned by the Commonwealth of Australia (referred to below as the Commonwealth).

### **Disclaimer**

The material contained in this publication is made available on the understanding that the Commonwealth is not providing professional advice, and that users exercise their own skill and care with respect to its use, and seek independent advice if necessary.

The Commonwealth makes no representations or warranties as to the contents or accuracy of the information contained in this publication. To the extent permitted by law, the Commonwealth disclaims liability to any person or organisation in respect of anything done, or omitted to be done, in reliance upon information contained in this publication.

### **Creative Commons licence**

With the exception of (a) the Coat of Arms; and (b) the Department of Infrastructure and Regional Development's photos and graphics, copyright in this publication is licensed under a Creative Commons Attribution 3.0 Australia Licence.

Creative Commons Attribution 3.0 Australia Licence is a standard form licence agreement that allows you to copy, communicate and adapt this publication provided that you attribute the work to the Commonwealth and abide by the other licence terms. A summary of the licence terms is available from <http://creativecommons.org/licenses/by/3.0/au/deed.en>. The full licence terms are available from <http://creativecommons.org/licenses/by/3.0/au/legalcode>.

### **Use of the Coat of Arms**

The Department of the Prime Minister and Cabinet sets the terms under which the Coat of Arms is used. Please refer to the Department's Commonwealth Coat of Arms and Government branding web page <http://www.dpmmc.gov.au/guidelines/index.cfm#brand> and, in particular, the Guidelines on the use of the Commonwealth Coat of Arms publication.

An appropriate citation for this report is:

Bureau of Infrastructure, Transport and Regional Economics (BITRE), 2017, Domestic airline on time performance, Statistical Report, BITRE, Canberra ACT.

### **Contact us**

This publication is available in PDF format. All other rights are reserved, including in relation to any Departmental logos or trade marks which may exist. For enquiries regarding the licence and any use of this publication, please contact:

Bureau of Infrastructure, Transport and Regional Economics (BITRE)  
Department of Infrastructure and Regional Development  
GPO Box 501, Canberra ACT 2601, Australia  
Telephone: (international) +61 2 6274 7210  
Fax: (international) +61 2 6274 6855  
Email: [bitre@infrastructure.gov.au](mailto:bitre@infrastructure.gov.au)  
Website: [www.bitre.gov.au](http://www.bitre.gov.au)

### **Inquiries**

Should you require additional information about the statistics contained in this publication:

Telephone (02) 6274 7790 or Facsimile (02) 6274 7727

Electronic mail: [AVSTATS@infrastructure.gov.au](mailto:AVSTATS@infrastructure.gov.au)

Web site: <http://www.bitre.gov.au/statistics/aviation/otphome.aspx>

# Foreword

The Bureau of Infrastructure, Transport and Regional Economics (BITRE) monitors the punctuality and reliability of major domestic airlines operating between Australian airports. The purpose of this is to allow for evaluation of overall industry and individual airline performance, so that consumers of air travel can make informed decisions.

The following domestic airlines currently report this information monthly to the BITRE: Jetstar, Qantas, QantasLink, Regional Express, Tigerair Australia, Virgin Australia and Virgin Australia Regional Airlines. Data has been gathered since November 2003, although some airlines commenced reporting at a later date, including Jetstar which first reported in May 2004, MacAir in July 2005, Tigerair Australia in April 2008 and Virgin Australia Regional Airlines in May 2013. MacAir ceased operations in February 2009 and data was not received for December 2008 onwards. Virgin Blue was rebranded as Virgin Australia in May 2011 and Tiger Airways was rebranded as Tigerair Australia in July 2013 and time series data in Microsoft Excel spreadsheet format on the BITRE website have been revised to reflect these changes. Services operated by Skywest on behalf of Virgin Australia using ATR/F100 aircraft commenced in November 2011 and were shown separately as Virgin Australia – ATR/F100 Operations. Virgin Australia Regional Airlines commenced operations in May 2013. It was formed after the acquisition of Skywest by Virgin Australia and represented a combination of operations previously reported under Skywest and Virgin Australia – ATR/F100 Operations. In January 2016, Virgin Australia transferred their ATR fleet from Virgin Australia Regional Airlines to Virgin Australia.

Information presented in this report is for Australian domestic routes for which the passenger load averaged 8 000 or more passengers per month over the previous six months and where two or more airlines operated in competition on those routes. There were 66 routes that met this definition in May 2017. Over time, routes which meet these criteria change as airline networks and traffic levels vary.

Participating airlines report their overall monthly network performance where this is possible.

Total industry figures encompass all services operated by reporting airlines only. These airlines collectively carried over 95 per cent of total domestic passengers (regular public transport only) in 2016.

The method of capturing on time performance varies between airlines utilising different recording systems. Jetstar and Qantas jet aircraft use Aircraft Communication Addressing and Reporting System (ACARS) to electronically measure on time performance. Regional Express, Tigerair Australia, Virgin Australia, Virgin Australia Regional Airlines and the Qantas non-jet fleet record on time performance manually using records from pilots, gate agents and/or ground crews.

After initial data is collected, aggregate reports are audited internally by participating airlines prior to publication.

Reports and detailed time series data in Microsoft Excel spreadsheet format are available from the BITRE website at: <http://www.bitre.gov.au/statistics/aviation/otphome.aspx>.



# Contents

	Page
Industry performance .....	1
Individual routes .....	10
Airports .....	23
Definitions .....	30



## Industry performance

For May 2017, on time performance over all routes operated by participating airlines (Jetstar, Qantas, QantasLink, Regional Express, Tigerair Australia, Virgin Australia and Virgin Australia Regional Airlines) averaged 87.5 per cent for on time arrivals and 87.4 per cent for on time departures. Cancellations represented 1.0 per cent of all scheduled flights. The equivalent figures for May 2016 were 87.8 per cent for on time arrivals, 88.4 per cent for on time departures and 1.2 per cent for cancellations.

This month's on time arrivals figure was higher than the long term average performance for all routes (82.8 per cent) and the on time departures figure was also higher than the long term average (84.2 per cent). The rate of cancellations was lower than the long term average of 1.4 per cent.

Qantas achieved the highest on time arrivals among the major domestic airlines at 90.8 per cent followed by Virgin Australia at 88.1 per cent, Jetstar at 82.3 per cent and Tigerair Australia at 80.0 per cent. Of the regional airlines, QantasLink recorded 89.7 per cent for on time arrivals, followed by Regional Express at 86.3 per cent and Virgin Australia Regional Airlines at 84.7 per cent. The Qantas network (Qantas and QantasLink combined operations) recorded 90.2 per cent for on time arrivals while the Virgin Australia network (Virgin Australia and Virgin Australia Regional Airlines combined operations) recorded 87.9 per cent.

Qantas also achieved the highest level of on time departures among the major domestic airlines for May 2017 at 91.3 per cent, followed by Virgin Australia at 88.6 per cent, Tigerair Australia at 79.0 per cent and Jetstar at 77.8 per cent. Of the regional airlines, QantasLink recorded 89.8 per cent, followed by Regional Express at 88.2 per cent and Virgin Australia Regional Airlines at 87.0 per cent. The Qantas network recorded 90.5 per cent for on time departures while the Virgin Australia network recorded 88.5 per cent.

Virgin Australia recorded the highest percentage of cancellations (1.4 per cent) during the month, followed by QantasLink (1.3 per cent), Regional Express (1.2 per cent), Tigerair Australia (0.7 per cent), Qantas and Jetstar (both at 0.6 per cent) and Virgin Australia Regional Airlines (0.3 per cent).

Airlines' on time performance varies across the routes they serve. Individual route data by specific airline for 66 routes are shown on pages 10-22.

Of the 66 routes which met the criteria for on time performance reporting in May 2017, the Hamilton Island-Melbourne and Melbourne-Hamilton Island routes had the highest percentage of on time arrivals (100.0 per cent) and the highest percentage of on time departures (also 100.0 per cent). The Launceston-Sydney route had the lowest percentage of on time arrivals (68.3 per cent) and the lowest percentage of on time departures (61.7 per cent).

Cancellations were highest on the Hamilton Island-Melbourne and Melbourne-Hamilton Island routes at 10.0 per cent, followed by the Brisbane-Hamilton Island and Hamilton Island-Brisbane routes at 5.9 per cent, the Emerald-Brisbane route at 5.3 percent,

the Hamilton Island-Sydney, Sydney-Hamilton Island and Brisbane-Emerald routes at 4.7 per cent and the Adelaide-Perth route at 2.6 per cent.

Port Hedland Airport recorded the highest percentage of on time arrivals (97.9 per cent) and Newman Airport recorded the highest percentage of on time departures (97.2 per cent). Mackay Airport recorded the lowest percentage of on time arrivals (78.7 per cent) and Sunshine Coast Airport recorded the lowest percentage of on time departures (67.0 per cent). These figures only refer to reported routes and do not cover all flights at these airports.



Table 1 On time performance for May 2017 — Total Industry

	<i>Sectors</i>		<i>Arrivals On Time</i>		<i>Departures On Time</i>		<i>Cancellations</i>	
	<i>Scheduled</i>	<i>Flown</i>	<i>No.</i>	<i>%</i>	<i>No.</i>	<i>%</i>	<i>No.</i>	<i>%</i>
Jetstar	6 194	6 158	5 065	82.3	4 794	77.8	36	0.6
Qantas	8 777	8 724	7 921	90.8	7 965	91.3	53	0.6
QantasLink	10 589	10 455	9 374	89.7	9 387	89.8	134	1.3
Regional Express	6 741	6 661	5 751	86.3	5 874	88.2	80	1.2
Tigerair Australia	2 311	2 295	1 836	80.0	1 813	79.0	16	0.7
Virgin Australia	11 614	11 450	10 085	88.1	10 139	88.6	164	1.4
Virgin Australia Regional Airlines	702	700	593	84.7	609	87.0	2	0.3
All Airlines	46 928	46 443	40 625	87.5	40 581	87.4	485	1.0
Qantas - all QF designated services	19 366	19 179	17 295	90.2	17 352	90.5	187	1.0
Virgin Australia - all VA designated services	12 316	12 150	10 678	87.9	10 748	88.5	166	1.3

Total airline network data (including routes not shown in this report).

Airlines' on time performance varies across the routes they serve. Individual route data by specific airline for 66 routes are shown on pages 10-22.

Table 2 Top ten routes for on time performance for May 2017 (participating airlines only)

<i>Arrivals</i>		<i>Departures</i>	
<i>Route</i>	<i>On Time (%)</i>	<i>Route</i>	<i>On Time (%)</i>
Hamilton Island-Melbourne	100.0	Hamilton Island-Melbourne	100.0
Melbourne-Hamilton Island	100.0	Melbourne-Hamilton Island	100.0
Adelaide-Gold Coast	98.4	Adelaide-Gold Coast	98.4
Perth-Port Hedland	97.9	Perth-Port Hedland	97.4
Perth-Darwin	96.7	Newman-Perth	97.2
Alice Springs-Darwin	95.9	Brisbane-Proserpine	97.1
Darwin-Alice Springs	95.9	Cairns-Townsville	96.3
Brisbane-Proserpine	95.6	Darwin-Alice Springs	95.9
Cairns-Townsville	95.2	Adelaide-Port Lincoln	95.6
Gold Coast-Adelaide	95.2	Gold Coast-Adelaide	95.2

Table 3 Top ten airports for on time performance for May 2017 (participating airlines and reported routes only)

<i>Arrivals</i>		<i>Departures</i>	
<i>Airport</i>	<i>On Time (%)</i>	<i>Airport</i>	<i>On Time (%)</i>
Port Hedland	97.9	Newman	97.2
Proserpine	95.6	Port Hedland	94.7
Newman	94.9	Port Lincoln	91.9
Ballina	93.7	Wagga Wagga	91.8
Karratha	93.2	Perth	91.5
Coffs Harbour	92.8	Proserpine	91.3
Kalgoorlie	92.5	Kalgoorlie	91.2
Port Lincoln	92.5	Coffs Harbour	91.0
Wagga Wagga	92.2	Albury	90.4
Broome	90.7	Canberra	90.3

## Total industry on time performance

Figure 1 On time performance (by month from May 2014)—Total Industry

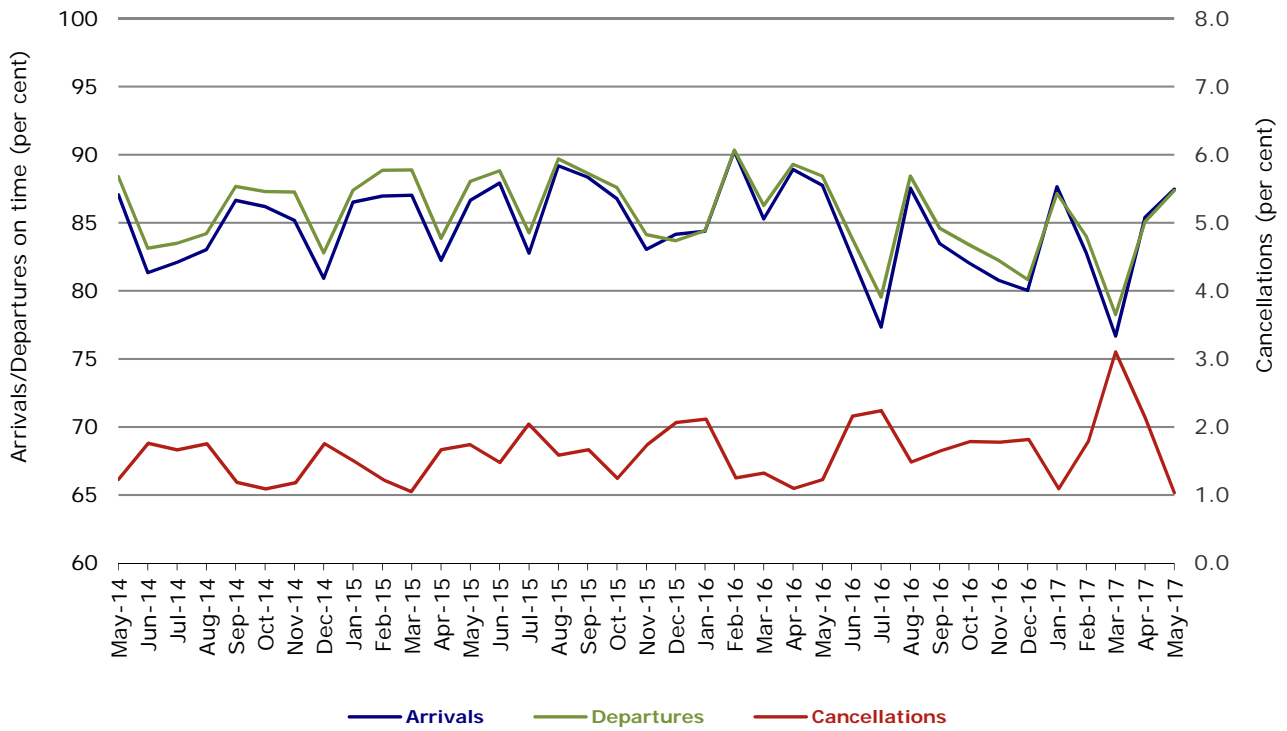


Figure 2 Arrivals on time (by month from May 2016)

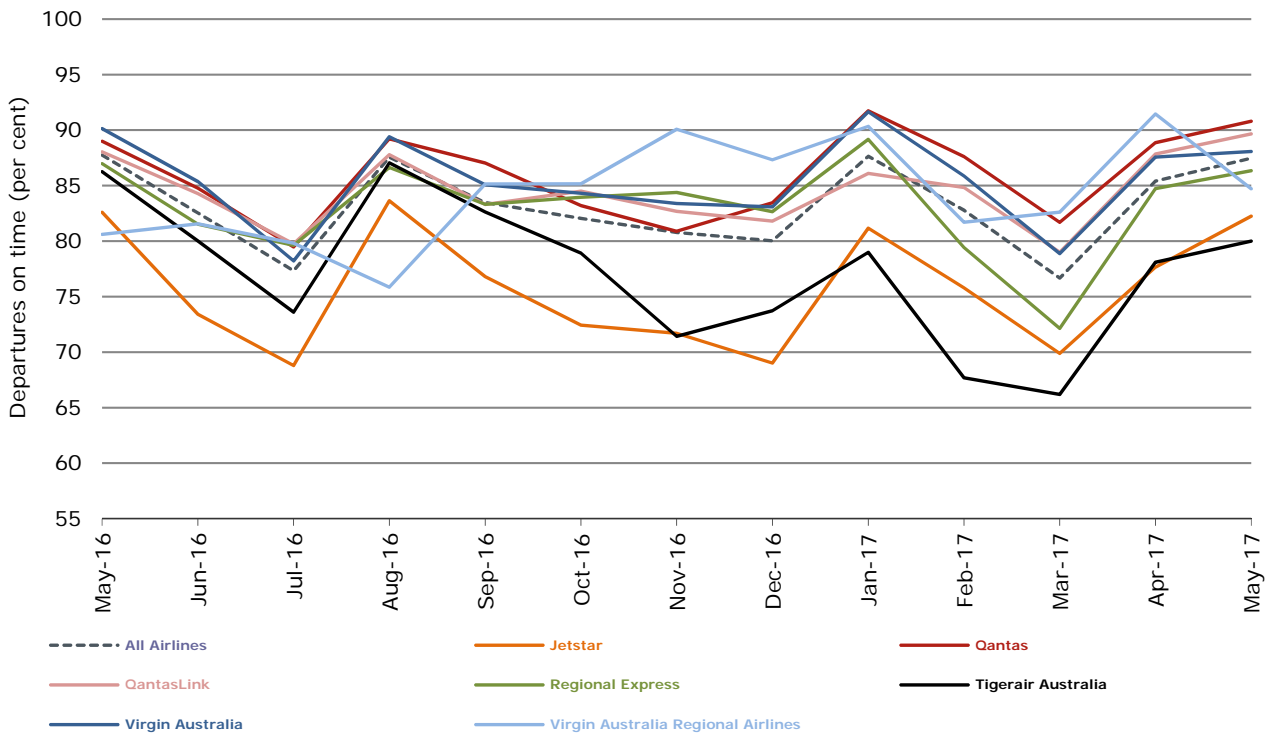


Figure 3 Departures on time (by month from May 2016)

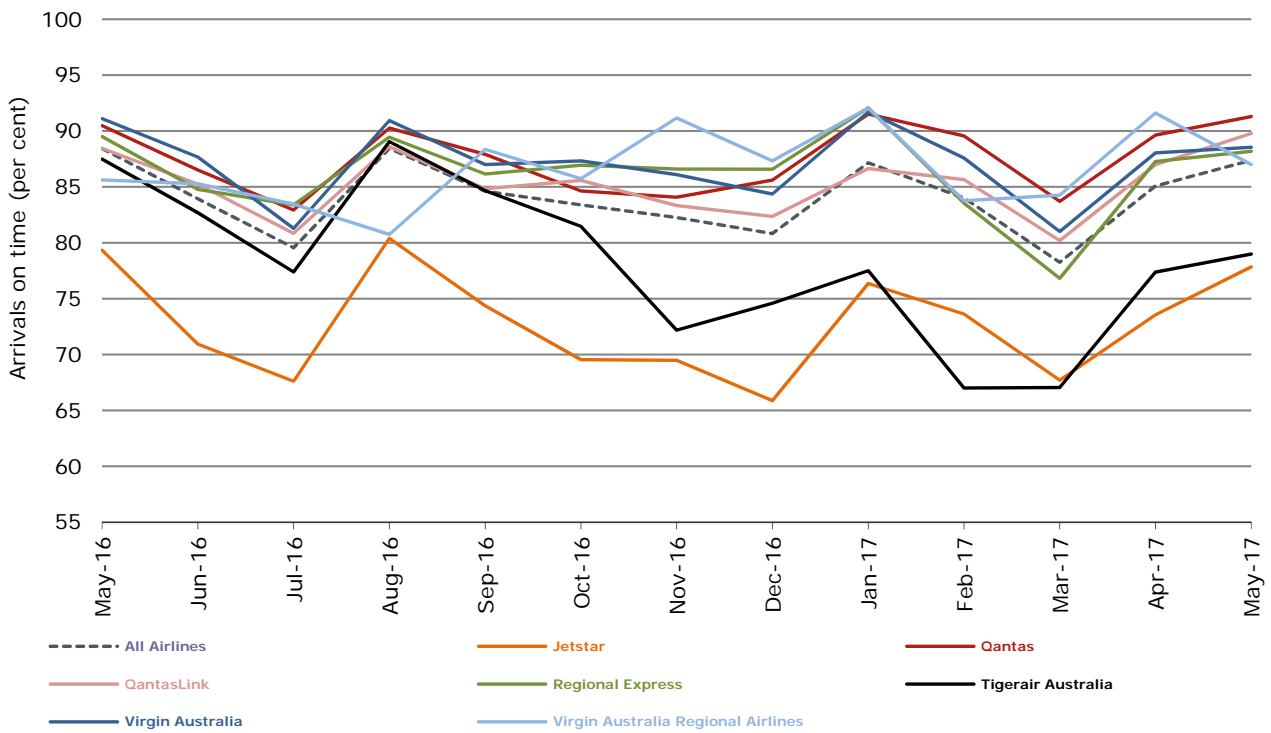
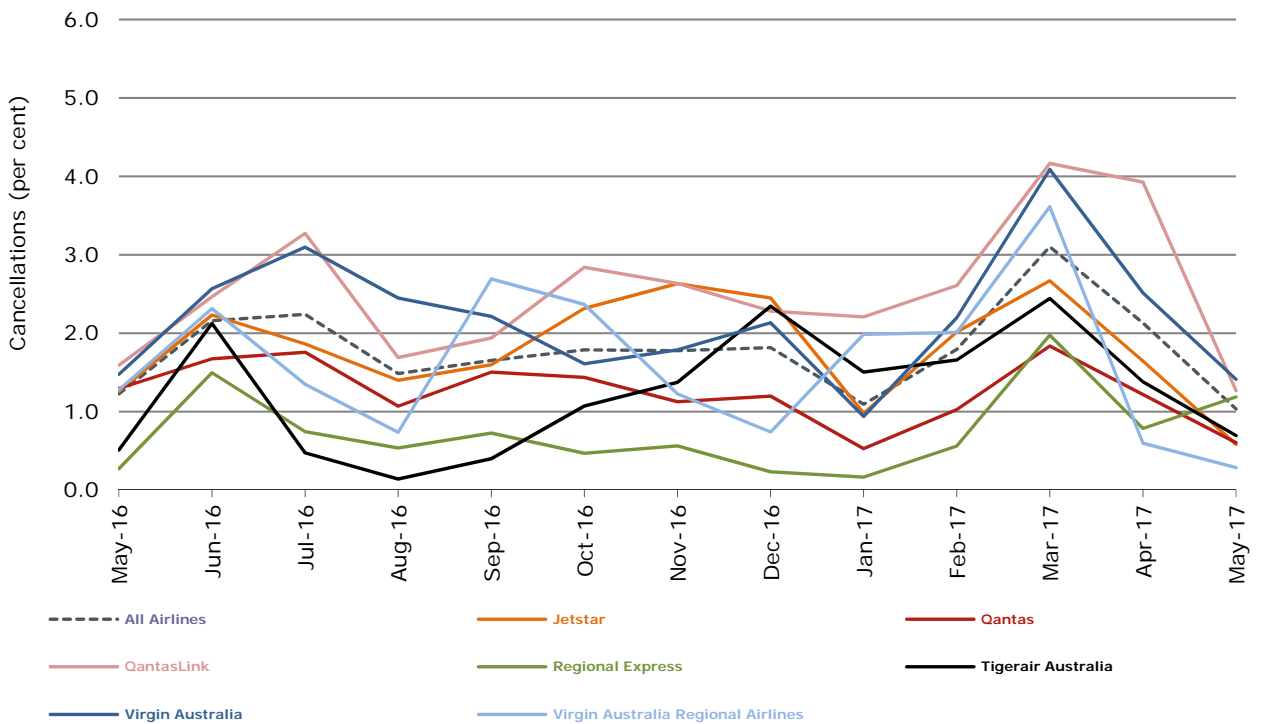


Figure 4 Cancellations (by month from May 2016)



## Major domestic airlines on time performance

Figure 5 On time performance (by month from May 2014)—Jetstar

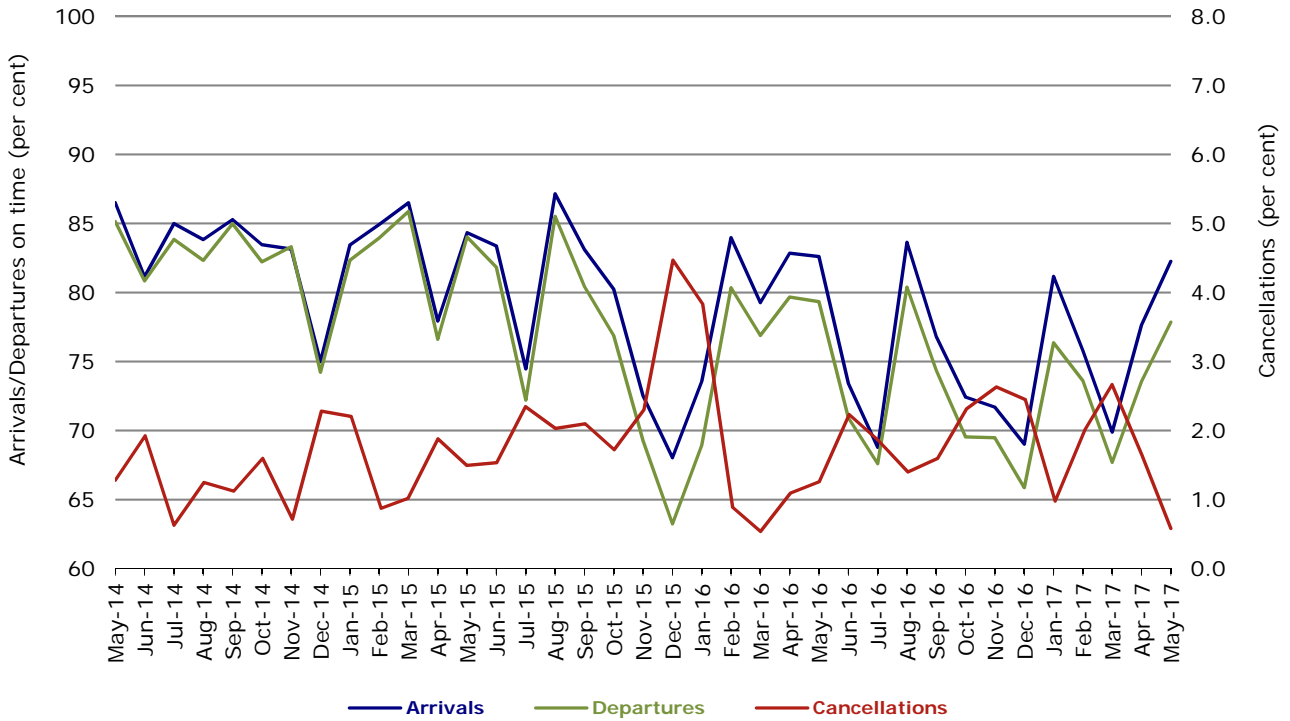


Figure 6 On time performance (by month from May 2014)—Qantas

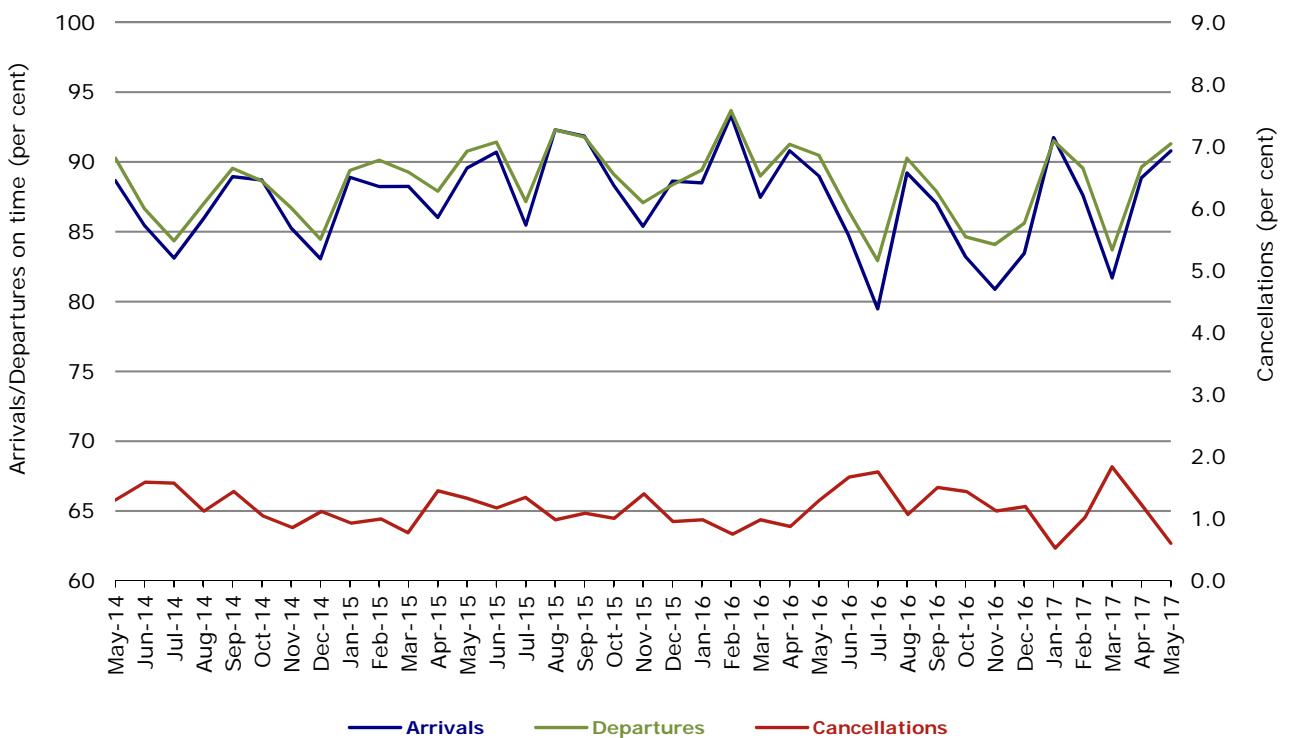


Figure 7 On time performance (by month from May 2014)—Tigerair Australia

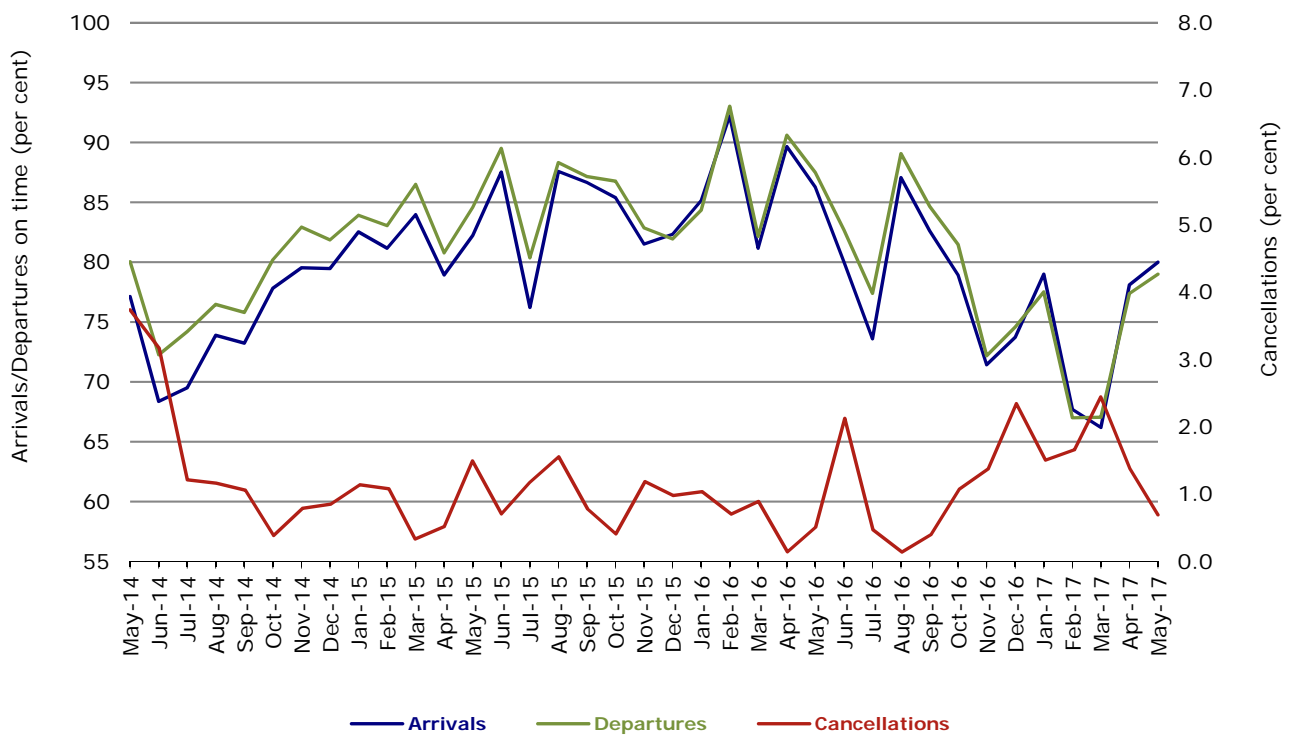
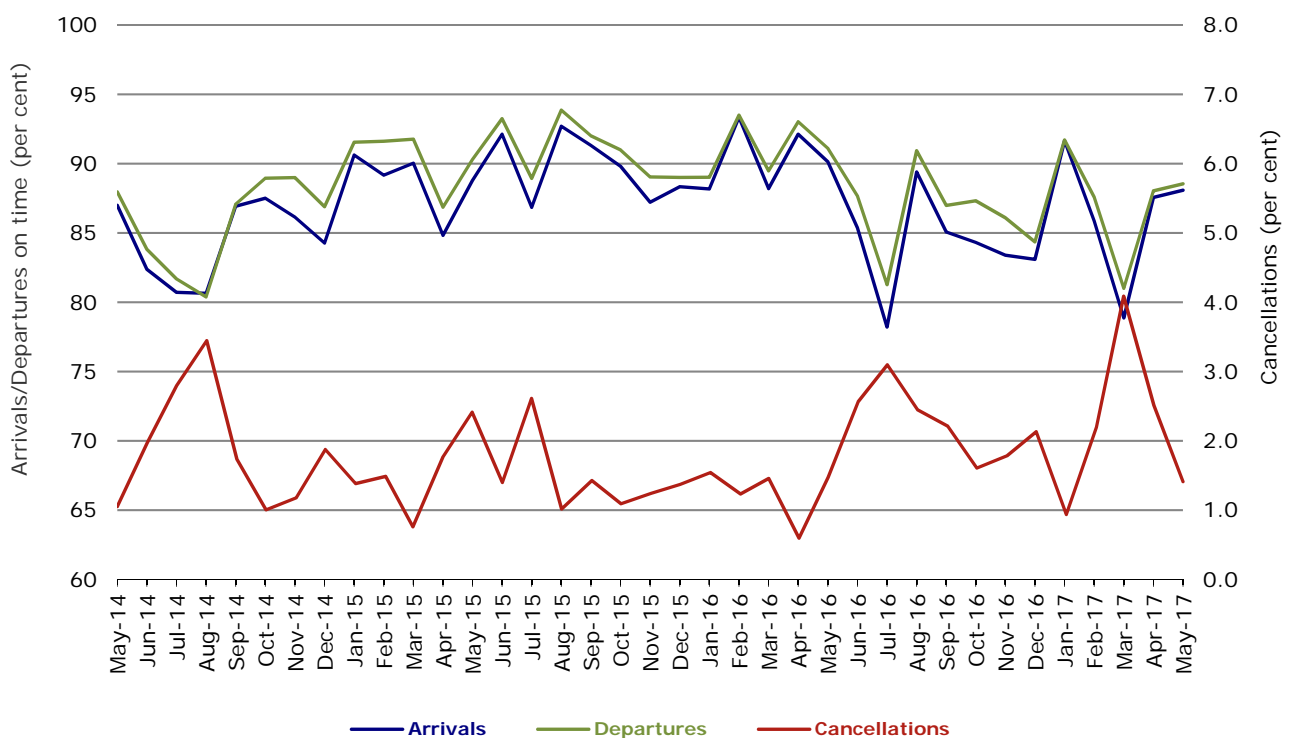


Figure 8 On time performance (by month from May 2014)—Virgin Australia



In January 2016, Virgin Australia transferred their ATR fleet from Virgin Australia Regional Airlines to Virgin Australia.

## Major regional airlines on time performance

Figure 9 On time performance (by month from May 2014)—QantasLink

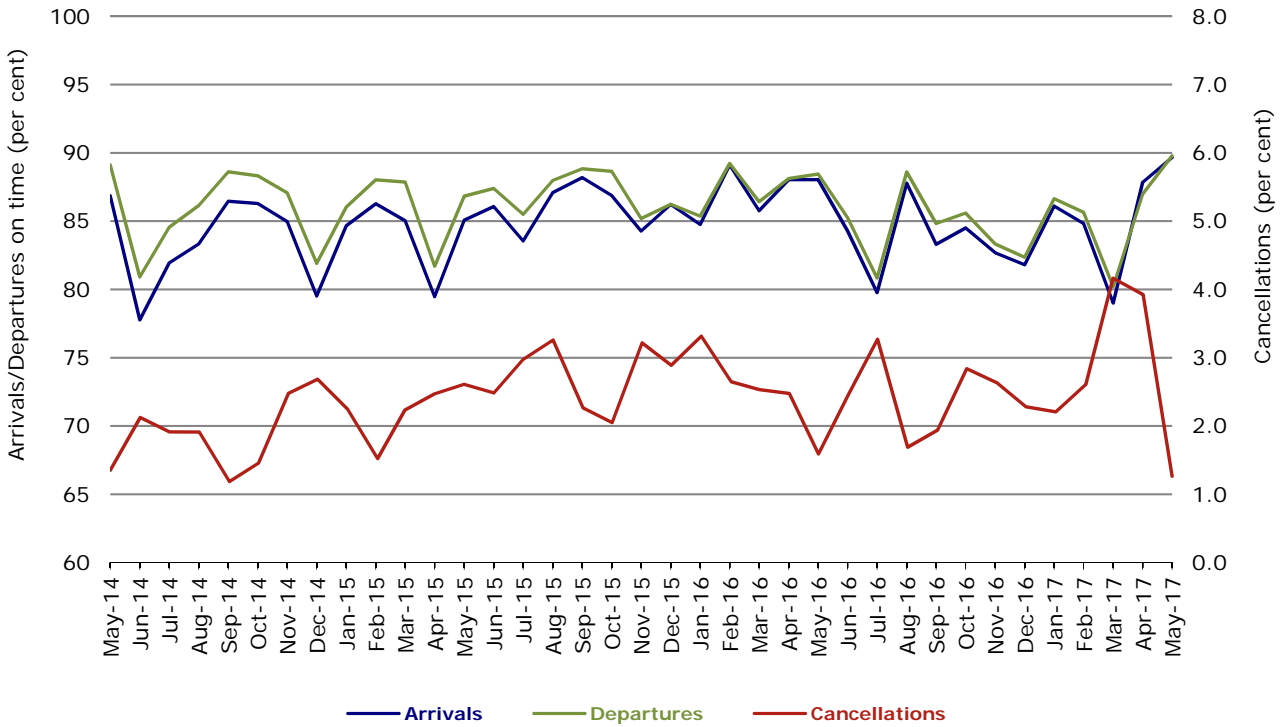


Figure 10 On time performance (by month from May 2014)—Regional Express

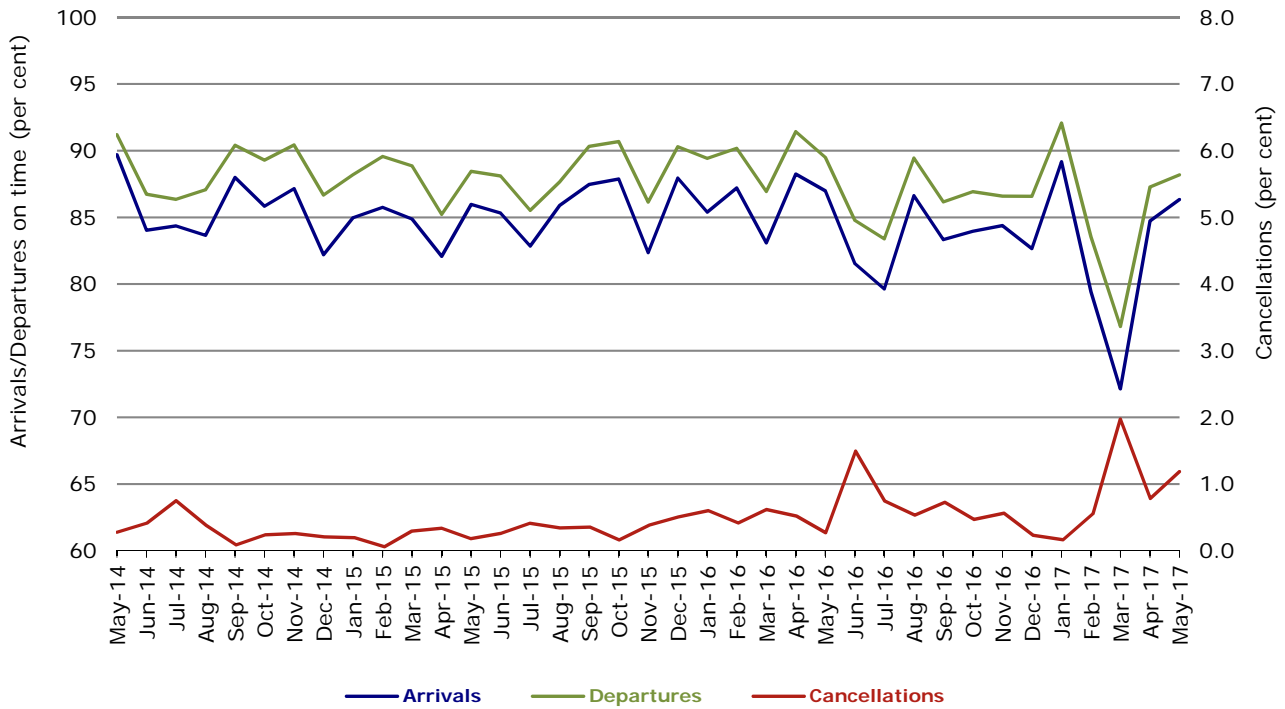
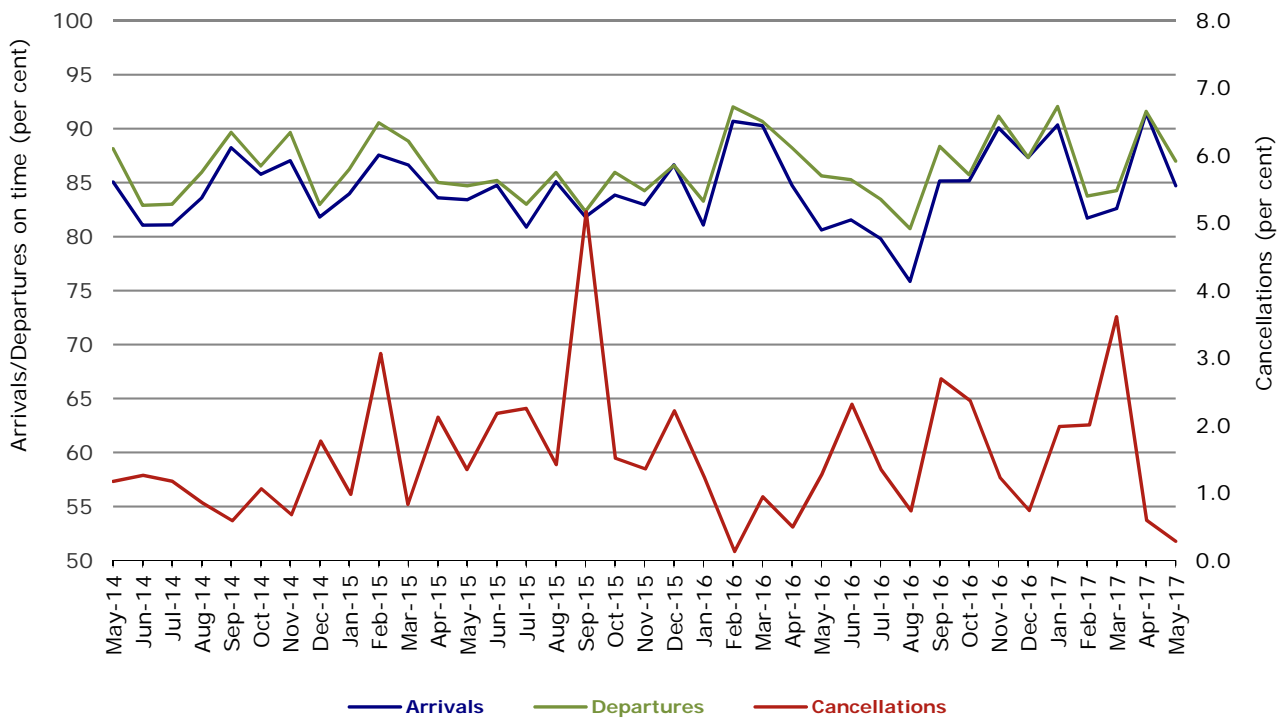


Figure 11 On time performance (by month from May 2014)  
Virgin Australia Regional Airlines



In January 2016, Virgin Australia transferred their ATR fleet from Virgin Australia Regional Airlines to Virgin Australia.

## Individual routes

On time performance is reported for all routes where the passenger load averages over 8000 passengers per month over the previous six months, and where two or more airlines operate in competition on those routes. There are now 66 routes which meet this definition. Over time, however, routes which meet this definition may change as airline networks and traffic levels vary.

	<i>Sectors</i>		<i>Arrivals On Time</i>		<i>Departures On Time</i>		<i>Cancellations</i>	
	<i>Sched.</i>	<i>Flown</i>	<i>No.</i>	<i>%</i>	<i>No.</i>	<i>%</i>	<i>No.</i>	<i>%</i>
<b>Adelaide-Alice Springs</b>								
Qantas	31	31	25	80.6	24	77.4	0	0.0
Virgin Australia	14	14	12	85.7	14	100.0	0	0.0
All Airlines	45	45	37	82.2	38	84.4	0	0.0
<b>Adelaide-Brisbane</b>								
Jetstar	22	22	14	63.6	15	68.2	0	0.0
Qantas	77	77	74	96.1	75	97.4	0	0.0
QantasLink	32	31	21	67.7	26	83.9	1	3.1
Tigerair Australia	31	31	28	90.3	28	90.3	0	0.0
Virgin Australia	111	110	100	90.9	99	90.0	1	0.9
All Airlines	273	271	237	87.5	243	89.7	2	0.7
<b>Adelaide-Canberra</b>								
Qantas	40	40	37	92.5	36	90.0	0	0.0
Virgin Australia	27	27	21	77.8	21	77.8	0	0.0
All Airlines	67	67	58	86.6	57	85.1	0	0.0
<b>Adelaide-Gold Coast</b>								
Jetstar	31	31	31	100.0	31	100.0	0	0.0
Virgin Australia	31	31	30	96.8	30	96.8	0	0.0
All Airlines	62	62	61	98.4	61	98.4	0	0.0
<b>Adelaide-Melbourne</b>								
Jetstar	95	95	78	82.1	69	72.6	0	0.0
Qantas	282	280	261	93.2	260	92.9	2	0.7
Tigerair Australia	67	67	45	67.2	50	74.6	0	0.0
Virgin Australia	271	267	244	91.4	245	91.8	4	1.5
All Airlines	715	709	628	88.6	624	88.0	6	0.8
<b>Adelaide-Perth</b>								
Jetstar	27	26	21	80.8	17	65.4	1	3.7
Qantas	75	75	67	89.3	65	86.7	0	0.0
QantasLink	27	23	18	78.3	18	78.3	4	14.8
Virgin Australia	64	64	59	92.2	56	87.5	0	0.0
All Airlines	193	188	165	87.8	156	83.0	5	2.6
<b>Adelaide-Port Lincoln</b>								
QantasLink	110	106	99	93.4	98	92.5	4	3.6
Regional Express	215	214	197	92.1	208	97.2	1	0.5
All Airlines	325	320	296	92.5	306	95.6	5	1.5
<b>Adelaide-Sydney</b>								
Jetstar	83	83	74	89.2	72	86.7	0	0.0
Qantas	235	234	216	92.3	225	96.2	1	0.4
QantasLink	30	28	26	92.9	26	92.9	2	6.7
Tigerair Australia	39	39	29	74.4	30	76.9	0	0.0
Virgin Australia	157	157	143	91.1	145	92.4	0	0.0
All Airlines	544	541	488	90.2	498	92.1	3	0.6
<b>Albury-Sydney</b>								
QantasLink	110	107	98	91.6	93	86.9	3	2.7
Regional Express	112	111	106	95.5	107	96.4	1	0.9
Virgin Australia	54	54	46	85.2	46	85.2	0	0.0
All Airlines	276	272	250	91.9	246	90.4	4	1.4



	<i>Sectors</i>		<i>Arrivals On Time</i>		<i>Departures On Time</i>		<i>Cancellations</i>	
	<i>Sched.</i>	<i>Flown</i>	<i>No.</i>	<i>%</i>	<i>No.</i>	<i>%</i>	<i>No.</i>	<i>%</i>
<b>Alice Springs-Adelaide</b>								
Qantas	31	31	26	83.9	26	83.9	0	0.0
Virgin Australia	14	14	10	71.4	11	78.6	0	0.0
All Airlines	45	45	36	80.0	37	82.2	0	0.0
<b>Alice Springs-Darwin</b>								
QantasLink	59	59	58	98.3	58	98.3	0	0.0
Virgin Australia	14	14	12	85.7	10	71.4	0	0.0
All Airlines	73	73	70	95.9	68	93.2	0	0.0
<b>Armidale-Sydney</b>								
QantasLink	122	121	106	87.6	104	86.0	1	0.8
Regional Express	80	79	69	87.3	69	87.3	1	1.3
All Airlines	202	200	175	87.5	173	86.5	2	1.0
<b>Ayers Rock-Sydney</b>								
Jetstar	31	30	28	93.3	23	76.7	1	3.2
Virgin Australia	31	31	24	77.4	22	71.0	0	0.0
All Airlines	62	61	52	85.2	45	73.8	1	1.6
<b>Ballina-Sydney</b>								
Jetstar	69	69	61	88.4	55	79.7	0	0.0
Regional Express	28	28	25	89.3	24	85.7	0	0.0
Virgin Australia	31	31	25	80.6	25	80.6	0	0.0
All Airlines	128	128	111	86.7	104	81.3	0	0.0
<b>Brisbane-Adelaide</b>								
Jetstar	22	22	18	81.8	15	68.2	0	0.0
Qantas	77	77	76	98.7	76	98.7	0	0.0
QantasLink	32	31	26	83.9	26	83.9	1	3.1
Tigerair Australia	31	31	29	93.5	29	93.5	0	0.0
Virgin Australia	102	102	93	91.2	88	86.3	0	0.0
All Airlines	264	263	242	92.0	234	89.0	1	0.4
<b>Brisbane-Bundaberg</b>								
QantasLink	136	136	110	80.9	113	83.1	0	0.0
Virgin Australia	31	31	28	90.3	28	90.3	0	0.0
All Airlines	167	167	138	82.6	141	84.4	0	0.0
<b>Brisbane-Cairns</b>								
Jetstar	85	85	73	85.9	72	84.7	0	0.0
Qantas	115	115	107	93.0	107	93.0	0	0.0
QantasLink	4	4	4	100.0	4	100.0	0	0.0
Tigerair Australia	44	44	38	86.4	41	93.2	0	0.0
Virgin Australia	123	123	106	86.2	105	85.4	0	0.0
All Airlines	371	371	328	88.4	329	88.7	0	0.0
<b>Brisbane-Canberra</b>								
Qantas	32	32	32	100.0	32	100.0	0	0.0
QantasLink	123	121	101	83.5	100	82.6	2	1.6
Virgin Australia	102	102	94	92.2	92	90.2	0	0.0
All Airlines	257	255	227	89.0	224	87.8	2	0.8
<b>Brisbane-Darwin</b>								
Jetstar	22	22	21	95.5	22	100.0	0	0.0
Qantas	50	50	42	84.0	47	94.0	0	0.0
Tigerair Australia	19	19	16	84.2	17	89.5	0	0.0
Virgin Australia	31	31	24	77.4	22	71.0	0	0.0
All Airlines	122	122	103	84.4	108	88.5	0	0.0
<b>Brisbane-Emerald</b>								
QantasLink	119	113	99	87.6	103	91.2	6	5.0
Virgin Australia	53	51	49	96.1	49	96.1	2	3.8
All Airlines	172	164	148	90.2	152	92.7	8	4.7

	<i>Sectors</i>		<i>Arrivals On Time</i>		<i>Departures On Time</i>		<i>Cancellations</i>	
	<i>Sched.</i>	<i>Flown</i>	<i>No.</i>	<i>%</i>	<i>No.</i>	<i>%</i>	<i>No.</i>	<i>%</i>
<b>Brisbane-Gladstone</b>								
QantasLink	141	141	125	88.7	126	89.4	0	0.0
Virgin Australia	85	85	75	88.2	75	88.2	0	0.0
All Airlines	226	226	200	88.5	201	88.9	0	0.0
<b>Brisbane-Hamilton Island</b>								
QantasLink	37	34	27	79.4	27	79.4	3	8.1
Virgin Australia	31	30	26	86.7	25	83.3	1	3.2
All Airlines	68	64	53	82.8	52	81.3	4	5.9
<b>Brisbane-Hobart</b>								
Jetstar	21	21	18	85.7	18	85.7	0	0.0
Virgin Australia	31	31	28	90.3	29	93.5	0	0.0
All Airlines	52	52	46	88.5	47	90.4	0	0.0
<b>Brisbane-Mackay</b>								
Jetstar	46	46	34	73.9	34	73.9	0	0.0
QantasLink	110	108	85	78.7	91	84.3	2	1.8
Virgin Australia	133	133	107	80.5	111	83.5	0	0.0
All Airlines	289	287	226	78.7	236	82.2	2	0.7
<b>Brisbane-Melbourne</b>								
Jetstar	97	95	82	86.3	74	77.9	2	2.1
Qantas	401	397	374	94.2	367	92.4	4	1.0
Tigerair Australia	128	124	90	72.6	84	67.7	4	3.1
Virgin Australia	373	361	310	85.9	317	87.8	12	3.2
All Airlines	999	977	856	87.6	842	86.2	22	2.2
<b>Brisbane-Moranbah</b>								
QantasLink	81	80	62	77.5	65	81.3	1	1.2
Virgin Australia	58	57	48	84.2	49	86.0	1	1.7
All Airlines	139	137	110	80.3	114	83.2	2	1.4
<b>Brisbane-Mount Isa</b>								
Qantas	2	2	2	100.0	2	100.0	0	0.0
QantasLink	56	56	51	91.1	52	92.9	0	0.0
Virgin Australia	19	19	13	68.4	17	89.5	0	0.0
All Airlines	77	77	66	85.7	71	92.2	0	0.0
<b>Brisbane-Newcastle</b>								
Jetstar	76	76	65	85.5	62	81.6	0	0.0
QantasLink	92	87	76	87.4	71	81.6	5	5.4
Virgin Australia	88	88	78	88.6	79	89.8	0	0.0
All Airlines	256	251	219	87.3	212	84.5	5	2.0
<b>Brisbane-Perth</b>								
Qantas	125	125	108	86.4	112	89.6	0	0.0
Virgin Australia	110	110	92	83.6	88	80.0	0	0.0
All Airlines	235	235	200	85.1	200	85.1	0	0.0
<b>Brisbane-Proserpine</b>								
Jetstar	20	20	20	100.0	19	95.0	0	0.0
Tigerair Australia	17	17	16	94.1	16	94.1	0	0.0
Virgin Australia	31	31	29	93.5	31	100.0	0	0.0
All Airlines	68	68	65	95.6	66	97.1	0	0.0
<b>Brisbane-Rockhampton</b>								
QantasLink	183	183	150	82.0	159	86.9	0	0.0
Virgin Australia	136	136	122	89.7	121	89.0	0	0.0
All Airlines	319	319	272	85.3	280	87.8	0	0.0

	<i>Sectors</i>		<i>Arrivals On Time</i>		<i>Departures On Time</i>		<i>Cancellations</i>	
	<i>Sched.</i>	<i>Flown</i>	<i>No.</i>	<i>%</i>	<i>No.</i>	<i>%</i>	<i>No.</i>	<i>%</i>
<b>Brisbane-Sydney</b>								
Jetstar	156	152	133	87.5	123	80.9	4	2.6
Qantas	596	594	543	91.4	542	91.2	2	0.3
Tigerair Australia	111	111	96	86.5	89	80.2	0	0.0
Virgin Australia	537	524	465	88.7	463	88.4	13	2.4
All Airlines	1 400	1 381	1 237	89.6	1 217	88.1	19	1.4
<b>Brisbane-Townsville</b>								
Jetstar	43	43	35	81.4	39	90.7	0	0.0
Qantas	75	75	69	92.0	67	89.3	0	0.0
QantasLink	76	75	68	90.7	68	90.7	1	1.3
Virgin Australia	144	141	121	85.8	121	85.8	3	2.1
All Airlines	338	334	293	87.7	295	88.3	4	1.2
<b>Broome-Perth</b>								
Qantas	4	4	3	75.0	3	75.0	0	0.0
QantasLink	81	81	71	87.7	71	87.7	0	0.0
Virgin Australia	1	1	1	100.0	1	100.0	0	0.0
Virgin Australia Regional Airlines	56	56	38	67.9	43	76.8	0	0.0
All Airlines	142	142	113	79.6	118	83.1	0	0.0
<b>Bundaberg-Brisbane</b>								
QantasLink	136	136	109	80.1	107	78.7	0	0.0
Virgin Australia	31	31	29	93.5	26	83.9	0	0.0
All Airlines	167	167	138	82.6	133	79.6	0	0.0
<b>Cairns-Brisbane</b>								
Jetstar	85	85	79	92.9	72	84.7	0	0.0
Qantas	115	115	108	93.9	102	88.7	0	0.0
QantasLink	4	4	4	100.0	4	100.0	0	0.0
Tigerair Australia	44	44	38	86.4	33	75.0	0	0.0
Virgin Australia	123	123	108	87.8	106	86.2	0	0.0
All Airlines	371	371	337	90.8	317	85.4	0	0.0
<b>Cairns-Melbourne</b>								
Jetstar	93	93	80	86.0	78	83.9	0	0.0
Qantas	34	34	29	85.3	27	79.4	0	0.0
Tigerair Australia	31	31	28	90.3	23	74.2	0	0.0
Virgin Australia	31	31	27	87.1	25	80.6	0	0.0
All Airlines	189	189	164	86.8	153	81.0	0	0.0
<b>Cairns-Sydney</b>								
Jetstar	74	73	69	94.5	62	84.9	1	1.4
Qantas	74	74	67	90.5	57	77.0	0	0.0
Tigerair Australia	39	39	35	89.7	32	82.1	0	0.0
Virgin Australia	79	79	71	89.9	68	86.1	0	0.0
All Airlines	266	265	242	91.3	219	82.6	1	0.4
<b>Cairns-Townsville</b>								
QantasLink	147	146	141	96.6	142	97.3	1	0.7
Regional Express	42	41	37	90.2	38	92.7	1	2.4
All Airlines	189	187	178	95.2	180	96.3	2	1.1
<b>Canberra-Adelaide</b>								
Qantas	40	40	39	97.5	40	100.0	0	0.0
Virgin Australia	27	27	23	85.2	21	77.8	0	0.0
All Airlines	67	67	62	92.5	61	91.0	0	0.0

	<i>Sectors</i>		<i>Arrivals On Time</i>		<i>Departures On Time</i>		<i>Cancellations</i>	
	<i>Sched.</i>	<i>Flown</i>	<i>No.</i>	<i>%</i>	<i>No.</i>	<i>%</i>	<i>No.</i>	<i>%</i>
<b>Canberra-Brisbane</b>								
Qantas	32	32	27	84.4	29	90.6	0	0.0
QantasLink	123	123	103	83.7	100	81.3	0	0.0
Virgin Australia	102	102	88	86.3	88	86.3	0	0.0
All Airlines	257	257	218	84.8	217	84.4	0	0.0
<b>Canberra-Melbourne</b>								
Qantas	206	205	199	97.1	197	96.1	1	0.5
QantasLink	78	72	62	86.1	63	87.5	6	7.7
Tigerair Australia	32	32	23	71.9	24	75.0	0	0.0
Virgin Australia	174	172	153	89.0	155	90.1	2	1.1
All Airlines	490	481	437	90.9	439	91.3	9	1.8
<b>Canberra-Sydney</b>								
Qantas	13	13	12	92.3	12	92.3	0	0.0
QantasLink	476	470	436	92.8	431	91.7	6	1.3
Virgin Australia	260	255	229	89.8	234	91.8	5	1.9
All Airlines	749	738	677	91.7	677	91.7	11	1.5
<b>Coffs Harbour-Sydney</b>								
QantasLink	151	150	137	91.3	135	90.0	1	0.7
Tigerair Australia	13	13	12	92.3	11	84.6	0	0.0
Virgin Australia	58	58	55	94.8	55	94.8	0	0.0
All Airlines	222	221	204	92.3	201	91.0	1	0.5
<b>Darwin-Alice Springs</b>								
QantasLink	59	59	58	98.3	58	98.3	0	0.0
Virgin Australia	14	14	12	85.7	12	85.7	0	0.0
All Airlines	73	73	70	95.9	70	95.9	0	0.0
<b>Darwin-Brisbane</b>								
Jetstar	22	22	18	81.8	18	81.8	0	0.0
Qantas	50	49	47	95.9	44	89.8	1	2.0
Tigerair Australia	17	17	17	100.0	17	100.0	0	0.0
Virgin Australia	31	31	27	87.1	22	71.0	0	0.0
All Airlines	120	119	109	91.6	101	84.9	1	0.8
<b>Darwin-Melbourne</b>								
Jetstar	26	26	25	96.2	18	69.2	0	0.0
Qantas	31	31	30	96.8	29	93.5	0	0.0
Virgin Australia	31	31	27	87.1	25	80.6	0	0.0
All Airlines	88	88	82	93.2	72	81.8	0	0.0
<b>Darwin-Perth</b>								
Qantas	31	31	30	96.8	29	93.5	0	0.0
Virgin Australia	30	30	26	86.7	27	90.0	0	0.0
All Airlines	61	61	56	91.8	56	91.8	0	0.0
<b>Darwin-Sydney</b>								
Jetstar	22	22	21	95.5	16	72.7	0	0.0
Qantas	48	47	41	87.2	36	76.6	1	2.1
Virgin Australia	31	31	24	77.4	18	58.1	0	0.0
All Airlines	101	100	86	86.0	70	70.0	1	1.0
<b>Dubbo-Sydney</b>								
QantasLink	131	130	110	84.6	114	87.7	1	0.8
Regional Express	163	160	138	86.3	142	88.8	3	1.8
All Airlines	294	290	248	85.5	256	88.3	4	1.4

	<i>Sectors</i>		<i>Arrivals On Time</i>		<i>Departures On Time</i>		<i>Cancellations</i>	
	<i>Sched.</i>	<i>Flown</i>	<i>No.</i>	<i>%</i>	<i>No.</i>	<i>%</i>	<i>No.</i>	<i>%</i>
<b>Emerald-Brisbane</b>								
QantasLink	118	111	97	87.4	91	82.0	7	5.9
Virgin Australia	53	51	46	90.2	46	90.2	2	3.8
All Airlines	171	162	143	88.3	137	84.6	9	5.3
<b>Geraldton-Perth</b>								
QantasLink	48	48	47	97.9	46	95.8	0	0.0
Virgin Australia Regional Airlines	54	54	41	75.9	40	74.1	0	0.0
All Airlines	102	102	88	86.3	86	84.3	0	0.0
<b>Gladstone-Brisbane</b>								
QantasLink	141	141	125	88.7	125	88.7	0	0.0
Virgin Australia	85	85	74	87.1	75	88.2	0	0.0
All Airlines	226	226	199	88.1	200	88.5	0	0.0
<b>Gold Coast-Adelaide</b>								
Jetstar	31	31	31	100.0	31	100.0	0	0.0
Virgin Australia	31	31	28	90.3	28	90.3	0	0.0
All Airlines	62	62	59	95.2	59	95.2	0	0.0
<b>Gold Coast-Melbourne</b>								
Jetstar	154	153	126	82.4	96	62.7	1	0.6
Qantas	30	30	28	93.3	26	86.7	0	0.0
Tigerair Australia	71	71	57	80.3	54	76.1	0	0.0
Virgin Australia	156	154	132	85.7	121	78.6	2	1.3
All Airlines	411	408	343	84.1	297	72.8	3	0.7
<b>Gold Coast-Sydney</b>								
Jetstar	247	246	210	85.4	191	77.6	1	0.4
Qantas	84	84	81	96.4	77	91.7	0	0.0
QantasLink	7	7	5	71.4	5	71.4	0	0.0
Tigerair Australia	106	106	85	80.2	75	70.8	0	0.0
Virgin Australia	238	237	210	88.6	204	86.1	1	0.4
All Airlines	682	680	591	86.9	552	81.2	2	0.3
<b>Hamilton Island-Brisbane</b>								
QantasLink	37	34	29	85.3	28	82.4	3	8.1
Virgin Australia	31	30	27	90.0	27	90.0	1	3.2
All Airlines	68	64	56	87.5	55	85.9	4	5.9
<b>Hamilton Island-Melbourne</b>								
Qantas	9	8	8	100.0	8	100.0	1	11.1
Virgin Australia	11	10	10	100.0	10	100.0	1	9.1
All Airlines	20	18	18	100.0	18	100.0	2	10.0
<b>Hamilton Island-Sydney</b>								
Jetstar	18	18	13	72.2	13	72.2	0	0.0
Qantas	11	11	10	90.9	8	72.7	0	0.0
QantasLink	10	8	8	100.0	7	87.5	2	20.0
Virgin Australia	25	24	23	95.8	22	91.7	1	4.0
All Airlines	64	61	54	88.5	50	82.0	3	4.7
<b>Hobart-Brisbane</b>								
Jetstar	22	22	14	63.6	15	68.2	0	0.0
Virgin Australia	31	31	25	80.6	27	87.1	0	0.0
All Airlines	53	53	39	73.6	42	79.2	0	0.0
<b>Hobart-Melbourne</b>								
Jetstar	152	151	78	51.7	77	51.0	1	0.7
QantasLink	132	130	119	91.5	122	93.8	2	1.5
Tigerair Australia	32	32	24	75.0	25	78.1	0	0.0
Virgin Australia	136	135	111	82.2	108	80.0	1	0.7
All Airlines	452	448	332	74.1	332	74.1	4	0.9

	<i>Sectors</i>		<i>Arrivals On Time</i>		<i>Departures On Time</i>		<i>Cancellations</i>	
	<i>Sched.</i>	<i>Flown</i>	<i>No.</i>	<i>%</i>	<i>No.</i>	<i>%</i>	<i>No.</i>	<i>%</i>
<b>Hobart-Sydney</b>								
Jetstar	52	52	42	80.8	38	73.1	0	0.0
QantasLink	58	57	51	89.5	55	96.5	1	1.7
Virgin Australia	62	61	53	86.9	54	88.5	1	1.6
All Airlines	172	170	146	85.9	147	86.5	2	1.2
<b>Kalgoorlie-Perth</b>								
Qantas	9	9	8	88.9	8	88.9	0	0.0
QantasLink	75	75	69	92.0	69	92.0	0	0.0
Virgin Australia	27	27	24	88.9	24	88.9	0	0.0
Virgin Australia Regional Airlines	36	36	34	94.4	33	91.7	0	0.0
All Airlines	147	147	135	91.8	134	91.2	0	0.0
<b>Karratha-Perth</b>								
Qantas	20	20	17	85.0	17	85.0	0	0.0
QantasLink	169	166	158	95.2	157	94.6	3	1.8
Virgin Australia	2	2	2	100.0	2	100.0	0	0.0
Virgin Australia Regional Airlines	74	73	50	68.5	57	78.1	1	1.4
All Airlines	265	261	227	87.0	233	89.3	4	1.5
<b>Launceston-Melbourne</b>								
Jetstar	101	101	69	68.3	64	63.4	0	0.0
QantasLink	120	120	108	90.0	109	90.8	0	0.0
Virgin Australia	90	90	80	88.9	86	95.6	0	0.0
All Airlines	311	311	257	82.6	259	83.3	0	0.0
<b>Launceston-Sydney</b>								
Jetstar	29	29	21	72.4	20	69.0	0	0.0
Virgin Australia	31	31	20	64.5	17	54.8	0	0.0
All Airlines	60	60	41	68.3	37	61.7	0	0.0
<b>Mackay-Brisbane</b>								
Jetstar	46	46	35	76.1	29	63.0	0	0.0
QantasLink	111	109	90	82.6	87	79.8	2	1.8
Virgin Australia	133	133	107	80.5	104	78.2	0	0.0
All Airlines	290	288	232	80.6	220	76.4	2	0.7
<b>Melbourne-Adelaide</b>								
Jetstar	95	95	72	75.8	72	75.8	0	0.0
Qantas	282	280	260	92.9	259	92.5	2	0.7
Tigerair Australia	67	67	55	82.1	57	85.1	0	0.0
Virgin Australia	272	268	240	89.6	244	91.0	4	1.5
All Airlines	716	710	627	88.3	632	89.0	6	0.8
<b>Melbourne-Brisbane</b>								
Jetstar	96	95	71	74.7	63	66.3	1	1.0
Qantas	404	399	361	90.5	373	93.5	5	1.2
Tigerair Australia	128	124	91	73.4	92	74.2	4	3.1
Virgin Australia	370	358	309	86.3	325	90.8	12	3.2
All Airlines	998	976	832	85.2	853	87.4	22	2.2
<b>Melbourne-Cairns</b>								
Jetstar	93	93	70	75.3	76	81.7	0	0.0
Qantas	34	34	30	88.2	30	88.2	0	0.0
Tigerair Australia	31	31	25	80.6	29	93.5	0	0.0
Virgin Australia	31	31	24	77.4	28	90.3	0	0.0
All Airlines	189	189	149	78.8	163	86.2	0	0.0
<b>Melbourne-Canberra</b>								
Qantas	206	206	192	93.2	195	94.7	0	0.0
QantasLink	78	74	68	91.9	68	91.9	4	5.1
Tigerair Australia	32	32	27	84.4	25	78.1	0	0.0
Virgin Australia	174	171	148	86.5	153	89.5	3	1.7
All Airlines	490	483	435	90.1	441	91.3	7	1.4

	<i>Sectors</i>		<i>Arrivals On Time</i>		<i>Departures On Time</i>		<i>Cancellations</i>	
	<i>Sched.</i>	<i>Flown</i>	<i>No.</i>	<i>%</i>	<i>No.</i>	<i>%</i>	<i>No.</i>	<i>%</i>
<b>Melbourne-Darwin</b>								
Jetstar	26	26	24	92.3	25	96.2	0	0.0
Qantas	31	31	27	87.1	28	90.3	0	0.0
Virgin Australia	31	31	27	87.1	30	96.8	0	0.0
All Airlines	88	88	78	88.6	83	94.3	0	0.0
<b>Melbourne-Gold Coast</b>								
Jetstar	153	153	104	68.0	118	77.1	0	0.0
Qantas	30	30	25	83.3	26	86.7	0	0.0
Tigerair Australia	71	71	57	80.3	60	84.5	0	0.0
Virgin Australia	156	154	134	87.0	136	88.3	2	1.3
All Airlines	410	408	320	78.4	340	83.3	2	0.5
<b>Melbourne-Hamilton Island</b>								
Qantas	9	8	8	100.0	8	100.0	1	11.1
Virgin Australia	11	10	10	100.0	10	100.0	1	9.1
All Airlines	20	18	18	100.0	18	100.0	2	10.0
<b>Melbourne-Hobart</b>								
Jetstar	152	151	117	77.5	119	78.8	1	0.7
QantasLink	131	129	115	89.1	123	95.3	2	1.5
Tigerair Australia	32	32	28	87.5	26	81.3	0	0.0
Virgin Australia	136	136	113	83.1	119	87.5	0	0.0
All Airlines	451	448	373	83.3	387	86.4	3	0.7
<b>Melbourne-Launceston</b>								
Jetstar	102	102	81	79.4	77	75.5	0	0.0
QantasLink	120	120	108	90.0	108	90.0	0	0.0
Virgin Australia	90	90	77	85.6	87	96.7	0	0.0
All Airlines	312	312	266	85.3	272	87.2	0	0.0
<b>Melbourne-Mildura</b>								
QantasLink	97	97	94	96.9	94	96.9	0	0.0
Regional Express	89	88	76	86.4	79	89.8	1	1.1
Virgin Australia	31	31	24	77.4	24	77.4	0	0.0
All Airlines	217	216	194	89.8	197	91.2	1	0.5
<b>Melbourne-Newcastle</b>								
Jetstar	110	110	94	85.5	89	80.9	0	0.0
Virgin Australia	31	31	29	93.5	29	93.5	0	0.0
All Airlines	141	141	123	87.2	118	83.7	0	0.0
<b>Melbourne-Perth</b>								
Jetstar	39	39	38	97.4	36	92.3	0	0.0
Qantas	195	195	175	89.7	167	85.6	0	0.0
Tigerair Australia	45	45	39	86.7	38	84.4	0	0.0
Virgin Australia	129	129	121	93.8	114	88.4	0	0.0
All Airlines	408	408	373	91.4	355	87.0	0	0.0
<b>Melbourne-Sunshine Coast</b>								
Jetstar	62	62	51	82.3	52	83.9	0	0.0
Virgin Australia	43	43	37	86.0	39	90.7	0	0.0
All Airlines	105	105	88	83.8	91	86.7	0	0.0
<b>Melbourne-Sydney</b>								
Jetstar	332	327	245	74.9	248	75.8	5	1.5
Qantas	1 014	997	902	90.5	938	94.1	17	1.7
Tigerair Australia	263	260	193	74.2	189	72.7	3	1.1
Virgin Australia	770	742	681	91.8	703	94.7	28	3.6
All Airlines	2 379	2 326	2 021	86.9	2 078	89.3	53	2.2

	<i>Sectors</i>		<i>Arrivals On Time</i>		<i>Departures On Time</i>		<i>Cancellations</i>	
	<i>Sched.</i>	<i>Flown</i>	<i>No.</i>	<i>%</i>	<i>No.</i>	<i>%</i>	<i>No.</i>	<i>%</i>
<b>Mildura-Melbourne</b>								
QantasLink	97	97	93	95.9	92	94.8	0	0.0
Regional Express	89	87	66	75.9	71	81.6	2	2.2
Virgin Australia	31	30	23	76.7	23	76.7	1	3.2
All Airlines	217	214	182	85.0	186	86.9	3	1.4
<b>Moranbah-Brisbane</b>								
QantasLink	76	75	58	77.3	56	74.7	1	1.3
Virgin Australia	58	57	50	87.7	46	80.7	1	1.7
All Airlines	134	132	108	81.8	102	77.3	2	1.5
<b>Mount Isa-Brisbane</b>								
Qantas	2	2	2	100.0	2	100.0	0	0.0
QantasLink	56	56	52	92.9	51	91.1	0	0.0
Virgin Australia	18	18	12	66.7	12	66.7	0	0.0
All Airlines	76	76	66	86.8	65	85.5	0	0.0
<b>Newcastle-Brisbane</b>								
Jetstar	76	76	62	81.6	67	88.2	0	0.0
QantasLink	92	87	77	88.5	77	88.5	5	5.4
Virgin Australia	89	88	76	86.4	76	86.4	1	1.1
All Airlines	257	251	215	85.7	220	87.6	6	2.3
<b>Newcastle-Melbourne</b>								
Jetstar	110	110	89	80.9	91	82.7	0	0.0
Virgin Australia	31	31	26	83.9	28	90.3	0	0.0
All Airlines	141	141	115	81.6	119	84.4	0	0.0
<b>Newman-Perth</b>								
Qantas	68	68	67	98.5	67	98.5	0	0.0
QantasLink	69	68	62	91.2	66	97.1	1	1.4
Virgin Australia	26	26	25	96.2	24	92.3	0	0.0
Virgin Australia Regional Airlines	15	15	14	93.3	15	100.0	0	0.0
All Airlines	178	177	168	94.9	172	97.2	1	0.6
<b>Perth-Adelaide</b>								
Jetstar	27	25	16	64.0	16	64.0	2	7.4
Qantas	79	79	74	93.7	72	91.1	0	0.0
QantasLink	26	24	16	66.7	21	87.5	2	7.7
Virgin Australia	62	62	56	90.3	56	90.3	0	0.0
All Airlines	194	190	162	85.3	165	86.8	4	2.1
<b>Perth-Brisbane</b>								
Qantas	119	119	108	90.8	106	89.1	0	0.0
Virgin Australia	110	110	104	94.5	107	97.3	0	0.0
All Airlines	229	229	212	92.6	213	93.0	0	0.0
<b>Perth-Broome</b>								
Qantas	4	4	4	100.0	4	100.0	0	0.0
QantasLink	81	81	75	92.6	72	88.9	0	0.0
Virgin Australia	1	1	1	100.0	1	100.0	0	0.0
Virgin Australia Regional Airlines	54	54	47	87.0	48	88.9	0	0.0
All Airlines	140	140	127	90.7	125	89.3	0	0.0
<b>Perth-Darwin</b>								
Qantas	31	31	30	96.8	30	96.8	0	0.0
Virgin Australia	30	30	29	96.7	27	90.0	0	0.0
All Airlines	61	61	59	96.7	57	93.4	0	0.0
<b>Perth-Geraldton</b>								
QantasLink	48	48	45	93.8	46	95.8	0	0.0
Virgin Australia Regional Airlines	54	54	41	75.9	43	79.6	0	0.0
All Airlines	102	102	86	84.3	89	87.3	0	0.0



	<i>Sectors</i>		<i>Arrivals On Time</i>		<i>Departures On Time</i>		<i>Cancellations</i>	
	<i>Sched.</i>	<i>Flown</i>	<i>No.</i>	<i>%</i>	<i>No.</i>	<i>%</i>	<i>No.</i>	<i>%</i>
<b>Perth-Kalgoorlie</b>								
Qantas	9	9	8	88.9	8	88.9	0	0.0
QantasLink	75	75	71	94.7	71	94.7	0	0.0
Virgin Australia	27	27	25	92.6	25	92.6	0	0.0
Virgin Australia Regional Airlines	36	36	32	88.9	32	88.9	0	0.0
All Airlines	147	147	136	92.5	136	92.5	0	0.0
<b>Perth-Karratha</b>								
Qantas	20	20	19	95.0	17	85.0	0	0.0
QantasLink	170	169	164	97.0	163	96.4	1	0.6
Virgin Australia	2	2	2	100.0	2	100.0	0	0.0
Virgin Australia Regional Airlines	74	73	61	83.6	64	87.7	1	1.4
All Airlines	266	264	246	93.2	246	93.2	2	0.8
<b>Perth-Melbourne</b>								
Jetstar	39	39	31	79.5	28	71.8	0	0.0
Qantas	195	195	172	88.2	180	92.3	0	0.0
Tigerair Australia	46	46	40	87.0	39	84.8	0	0.0
Virgin Australia	130	130	112	86.2	118	90.8	0	0.0
All Airlines	410	410	355	86.6	365	89.0	0	0.0
<b>Perth-Newman</b>								
Qantas	68	68	65	95.6	66	97.1	0	0.0
QantasLink	69	68	63	92.6	62	91.2	1	1.4
Virgin Australia	26	26	25	96.2	25	96.2	0	0.0
Virgin Australia Regional Airlines	15	15	15	100.0	15	100.0	0	0.0
All Airlines	178	177	168	94.9	168	94.9	1	0.6
<b>Perth-Port Hedland</b>								
Qantas	34	34	33	97.1	33	97.1	0	0.0
QantasLink	103	103	101	98.1	99	96.1	0	0.0
Virgin Australia	10	10	10	100.0	10	100.0	0	0.0
Virgin Australia Regional Airlines	44	44	43	97.7	44	100.0	0	0.0
All Airlines	191	191	187	97.9	186	97.4	0	0.0
<b>Perth-Sydney</b>								
Jetstar	31	31	25	80.6	21	67.7	0	0.0
Qantas	199	199	181	91.0	181	91.0	0	0.0
Tigerair Australia	24	24	23	95.8	23	95.8	0	0.0
Virgin Australia	118	117	117	100.0	113	96.6	1	0.8
All Airlines	372	371	346	93.3	338	91.1	1	0.3
<b>Port Hedland-Perth</b>								
Qantas	34	34	32	94.1	32	94.1	0	0.0
QantasLink	102	102	93	91.2	95	93.1	0	0.0
Virgin Australia	10	10	9	90.0	9	90.0	0	0.0
Virgin Australia Regional Airlines	44	44	43	97.7	44	100.0	0	0.0
All Airlines	190	190	177	93.2	180	94.7	0	0.0
<b>Port Lincoln-Adelaide</b>								
QantasLink	110	105	93	88.6	95	90.5	5	4.5
Regional Express	218	216	197	91.2	200	92.6	2	0.9
All Airlines	328	321	290	90.3	295	91.9	7	2.1
<b>Port Macquarie-Sydney</b>								
QantasLink	139	139	125	89.9	117	84.2	0	0.0
Virgin Australia	59	58	52	89.7	51	87.9	1	1.7
All Airlines	198	197	177	89.8	168	85.3	1	0.5
<b>Proserpine-Brisbane</b>								
Jetstar	21	21	20	95.2	18	85.7	0	0.0
Tigerair Australia	17	17	16	94.1	16	94.1	0	0.0
Virgin Australia	31	31	29	93.5	29	93.5	0	0.0
All Airlines	69	69	65	94.2	63	91.3	0	0.0

	<i>Sectors</i>		<i>Arrivals On Time</i>		<i>Departures On Time</i>		<i>Cancellations</i>	
	<i>Sched.</i>	<i>Flown</i>	<i>No.</i>	<i>%</i>	<i>No.</i>	<i>%</i>	<i>No.</i>	<i>%</i>
<b>Rockhampton-Brisbane</b>								
QantasLink	184	183	152	83.1	149	81.4	1	0.5
Virgin Australia	136	136	118	86.8	116	85.3	0	0.0
All Airlines	320	319	270	84.6	265	83.1	1	0.3
<b>Sunshine Coast-Melbourne</b>								
Jetstar	62	62	45	72.6	34	54.8	0	0.0
Virgin Australia	43	43	35	81.4	33	76.7	0	0.0
All Airlines	105	105	80	76.2	67	63.8	0	0.0
<b>Sunshine Coast-Sydney</b>								
Jetstar	93	93	66	71.0	52	55.9	0	0.0
QantasLink	34	33	28	84.8	31	93.9	1	2.9
Virgin Australia	33	33	28	84.8	27	81.8	0	0.0
All Airlines	160	159	122	76.7	110	69.2	1	0.6
<b>Sydney-Adelaide</b>								
Jetstar	83	83	74	89.2	69	83.1	0	0.0
Qantas	232	232	218	94.0	217	93.5	0	0.0
QantasLink	30	28	26	92.9	26	92.9	2	6.7
Tigerair Australia	39	39	37	94.9	35	89.7	0	0.0
Virgin Australia	166	166	151	91.0	155	93.4	0	0.0
All Airlines	550	548	506	92.3	502	91.6	2	0.4
<b>Sydney-Albury</b>								
QantasLink	110	107	96	89.7	90	84.1	3	2.7
Regional Express	112	111	99	89.2	99	89.2	1	0.9
Virgin Australia	54	54	46	85.2	47	87.0	0	0.0
All Airlines	276	272	241	88.6	236	86.8	4	1.4
<b>Sydney-Armidale</b>								
QantasLink	122	122	101	82.8	106	86.9	0	0.0
Regional Express	81	81	75	92.6	71	87.7	0	0.0
All Airlines	203	203	176	86.7	177	87.2	0	0.0
<b>Sydney-Ayers Rock</b>								
Jetstar	31	31	30	96.8	31	100.0	0	0.0
Virgin Australia	31	31	25	80.6	28	90.3	0	0.0
All Airlines	62	62	55	88.7	59	95.2	0	0.0
<b>Sydney-Ballina</b>								
Jetstar	69	69	65	94.2	64	92.8	0	0.0
Regional Express	27	26	24	92.3	24	92.3	1	3.7
Virgin Australia	31	31	29	93.5	29	93.5	0	0.0
All Airlines	127	126	118	93.7	117	92.9	1	0.8
<b>Sydney-Brisbane</b>								
Jetstar	157	154	134	87.0	129	83.8	3	1.9
Qantas	599	599	512	85.5	540	90.2	0	0.0
Tigerair Australia	111	111	96	86.5	101	91.0	0	0.0
Virgin Australia	531	518	436	84.2	455	87.8	13	2.4
All Airlines	1 398	1 382	1 178	85.2	1 225	88.6	16	1.1
<b>Sydney-Cairns</b>								
Jetstar	74	73	64	87.7	59	80.8	1	1.4
Qantas	74	74	54	73.0	61	82.4	0	0.0
Tigerair Australia	39	39	29	74.4	36	92.3	0	0.0
Virgin Australia	78	78	67	85.9	72	92.3	0	0.0
All Airlines	265	264	214	81.1	228	86.4	1	0.4

	<i>Sectors</i>		<i>Arrivals On Time</i>		<i>Departures On Time</i>		<i>Cancellations</i>	
	<i>Sched.</i>	<i>Flown</i>	<i>No.</i>	<i>%</i>	<i>No.</i>	<i>%</i>	<i>No.</i>	<i>%</i>
<b>Sydney-Canberra</b>								
Qantas	13	13	12	92.3	12	92.3	0	0.0
QantasLink	476	469	430	91.7	432	92.1	7	1.5
Virgin Australia	259	254	226	89.0	227	89.4	5	1.9
All Airlines	748	736	668	90.8	671	91.2	12	1.6
<b>Sydney-Coffs Harbour</b>								
QantasLink	151	150	139	92.7	137	91.3	1	0.7
Tigerair Australia	13	13	11	84.6	11	84.6	0	0.0
Virgin Australia	58	58	55	94.8	54	93.1	0	0.0
All Airlines	222	221	205	92.8	202	91.4	1	0.5
<b>Sydney-Darwin</b>								
Jetstar	22	22	20	90.9	21	95.5	0	0.0
Qantas	48	48	39	81.3	41	85.4	0	0.0
Virgin Australia	31	31	25	80.6	26	83.9	0	0.0
All Airlines	101	101	84	83.2	88	87.1	0	0.0
<b>Sydney-Dubbo</b>								
QantasLink	131	130	111	85.4	112	86.2	1	0.8
Regional Express	164	161	141	87.6	138	85.7	3	1.8
All Airlines	295	291	252	86.6	250	85.9	4	1.4
<b>Sydney-Gold Coast</b>								
Jetstar	247	246	209	85.0	207	84.1	1	0.4
Qantas	84	84	80	95.2	77	91.7	0	0.0
QantasLink	7	7	5	71.4	5	71.4	0	0.0
Tigerair Australia	106	106	86	81.1	90	84.9	0	0.0
Virgin Australia	238	237	202	85.2	205	86.5	1	0.4
All Airlines	682	680	582	85.6	584	85.9	2	0.3
<b>Sydney-Hamilton Island</b>								
Jetstar	18	18	14	77.8	16	88.9	0	0.0
Qantas	11	11	8	72.7	10	90.9	0	0.0
QantasLink	10	8	7	87.5	7	87.5	2	20.0
Virgin Australia	25	24	22	91.7	23	95.8	1	4.0
All Airlines	64	61	51	83.6	56	91.8	3	4.7
<b>Sydney-Hobart</b>								
Jetstar	52	52	48	92.3	46	88.5	0	0.0
QantasLink	58	58	55	94.8	53	91.4	0	0.0
Virgin Australia	62	61	57	93.4	57	93.4	1	1.6
All Airlines	172	171	160	93.6	156	91.2	1	0.6
<b>Sydney-Launceston</b>								
Jetstar	29	29	27	93.1	27	93.1	0	0.0
Virgin Australia	31	31	29	93.5	27	87.1	0	0.0
All Airlines	60	60	56	93.3	54	90.0	0	0.0
<b>Sydney-Melbourne</b>								
Jetstar	332	328	260	79.3	223	68.0	4	1.2
Qantas	1 018	1 003	883	88.0	893	89.0	15	1.5
Tigerair Australia	263	260	187	71.9	182	70.0	3	1.1
Virgin Australia	765	738	660	89.4	662	89.7	27	3.5
All Airlines	2 378	2 329	1 990	85.4	1 960	84.2	49	2.1
<b>Sydney-Perth</b>								
Jetstar	31	31	29	93.5	29	93.5	0	0.0
Qantas	199	199	176	88.4	168	84.4	0	0.0
Tigerair Australia	24	24	23	95.8	23	95.8	0	0.0
Virgin Australia	120	119	111	93.3	108	90.8	1	0.8
All Airlines	374	373	339	90.9	328	87.9	1	0.3

	<i>Sectors</i>		<i>Arrivals On Time</i>		<i>Departures On Time</i>		<i>Cancellations</i>	
	<i>Sched.</i>	<i>Flown</i>	<i>No.</i>	<i>%</i>	<i>No.</i>	<i>%</i>	<i>No.</i>	<i>%</i>
<b>Sydney-Port Macquarie</b>								
QantasLink	139	139	116	83.5	115	82.7	0	0.0
Virgin Australia	59	58	46	79.3	47	81.0	1	1.7
All Airlines	198	197	162	82.2	162	82.2	1	0.5
<b>Sydney-Sunshine Coast</b>								
Jetstar	93	93	71	76.3	68	73.1	0	0.0
QantasLink	34	34	31	91.2	31	91.2	0	0.0
Virgin Australia	33	33	30	90.9	31	93.9	0	0.0
All Airlines	160	160	132	82.5	130	81.3	0	0.0
<b>Sydney-Tamworth</b>								
QantasLink	155	153	132	86.3	135	88.2	2	1.3
Virgin Australia	54	54	49	90.7	50	92.6	0	0.0
All Airlines	209	207	181	87.4	185	89.4	2	1.0
<b>Sydney-Townsville</b>								
Jetstar	22	22	15	68.2	18	81.8	0	0.0
Virgin Australia	19	19	17	89.5	18	94.7	0	0.0
All Airlines	41	41	32	78.0	36	87.8	0	0.0
<b>Sydney-Wagga Wagga</b>								
QantasLink	116	115	107	93.0	102	88.7	1	0.9
Regional Express	144	142	130	91.5	129	90.8	2	1.4
All Airlines	260	257	237	92.2	231	89.9	3	1.2
<b>Tamworth-Sydney</b>								
QantasLink	155	153	135	88.2	132	86.3	2	1.3
Virgin Australia	54	54	52	96.3	53	98.1	0	0.0
All Airlines	209	207	187	90.3	185	89.4	2	1.0
<b>Townsville-Brisbane</b>								
Jetstar	43	43	36	83.7	34	79.1	0	0.0
Qantas	75	75	67	89.3	68	90.7	0	0.0
QantasLink	76	74	62	83.8	64	86.5	2	2.6
Virgin Australia	144	141	127	90.1	120	85.1	3	2.1
All Airlines	338	333	292	87.7	286	85.9	5	1.5
<b>Townsville-Cairns</b>								
QantasLink	143	143	133	93.0	133	93.0	0	0.0
Regional Express	42	42	37	88.1	39	92.9	0	0.0
All Airlines	185	185	170	91.9	172	93.0	0	0.0
<b>Townsville-Sydney</b>								
Jetstar	22	21	20	95.2	11	52.4	1	4.5
Virgin Australia	19	19	16	84.2	15	78.9	0	0.0
All Airlines	41	40	36	90.0	26	65.0	1	2.4
<b>Wagga Wagga-Sydney</b>								
QantasLink	116	115	108	93.9	108	93.9	1	0.9
Regional Express	144	142	126	88.7	128	90.1	2	1.4
All Airlines	260	257	234	91.1	236	91.8	3	1.2

# Airports

On time performance is reported for all routes where the passenger load averages over 8000 passengers per month, and where two or more airlines operate in competition. The following data reports by airport against flights operated on those routes only. This month, 8 major city airports and 33 regional city airports are covered.

Airport	Arrivals			Departures		
	Sectors	On Time		Sectors	On Time	
	Flown	No.	%	Flown	No.	%
<b>Adelaide</b>						
Jetstar	256	211	82.4	257	204	79.4
Qantas	739	693	93.8	737	685	92.9
QantasLink	188	161	85.6	188	168	89.4
Regional Express	216	197	91.2	214	208	97.2
Tigerair Australia	137	121	88.3	137	108	78.8
Virgin Australia	670	601	89.7	670	610	91.0
All Airlines	2 206	1 984	89.9	2 203	1 983	90.0
Relates to services to and from Alice Springs, Brisbane, Canberra, Gold Coast, Melbourne, Perth, Port Lincoln and Sydney.						
<b>Albury</b>						
QantasLink	107	96	89.7	107	93	86.9
Regional Express	111	99	89.2	111	107	96.4
Virgin Australia	54	46	85.2	54	46	85.2
All Airlines	272	241	88.6	272	246	90.4
Relates to services to and from Sydney only.						
<b>Alice Springs</b>						
Qantas	31	25	80.6	31	26	83.9
QantasLink	59	58	98.3	59	58	98.3
Virgin Australia	28	24	85.7	28	21	75.0
All Airlines	118	107	90.7	118	105	89.0
Relates to services to and from Adelaide and Darwin.						
<b>Armidale</b>						
QantasLink	122	101	82.8	121	104	86.0
Regional Express	81	75	92.6	79	69	87.3
All Airlines	203	176	86.7	200	173	86.5
Relates to services to and from Sydney only.						
<b>Ayers Rock</b>						
Jetstar	31	30	96.8	30	23	76.7
Virgin Australia	31	25	80.6	31	22	71.0
All Airlines	62	55	88.7	61	45	73.8
Relates to services to and from Sydney only.						
<b>Ballina</b>						
Jetstar	69	65	94.2	69	55	79.7
Regional Express	26	24	92.3	28	24	85.7
Virgin Australia	31	29	93.5	31	25	80.6
All Airlines	126	118	93.7	128	104	81.3
Relates to services to and from Sydney only.						

Airport	Arrivals			Departures		
	Sectors	On Time		Sectors	On Time	
	Flown	No.	%	Flown	No.	%
<b>Brisbane</b>						
Jetstar	586	483	82.4	582	478	82.1
Qantas	1 467	1 306	89.0	1 467	1 352	92.2
QantasLink	1 164	979	84.1	1 169	1 005	86.0
Tigerair Australia	344	286	83.1	346	276	79.8
Virgin Australia	2 184	1 892	86.6	2 186	1 910	87.4
All Airlines	5 745	4 946	86.1	5 750	5 021	87.3

Relates to services to and from Adelaide, Bundaberg, Cairns, Canberra, Darwin, Emerald, Gladstone, Hamilton Island, Hobart, Mackay, Melbourne, Moranbah, Mount Isa, Newcastle, Perth, Proserpine, Rockhampton, Sydney and Townsville.

#### Broome

Qantas	4	4	100.0	4	3	75.0
QantasLink	81	75	92.6	81	71	87.7
Virgin Australia	1	1	100.0	1	1	100.0
Virgin Australia Regional Airlines	54	47	87.0	56	43	76.8
All Airlines	140	127	90.7	142	118	83.1

Relates to services to and from Perth only.

#### Bundaberg

QantasLink	136	110	80.9	136	107	78.7
Virgin Australia	31	28	90.3	31	26	83.9
All Airlines	167	138	82.6	167	133	79.6

Relates to services to and from Brisbane only.

#### Cairns

Jetstar	251	207	82.5	251	212	84.5
Qantas	223	191	85.7	223	186	83.4
QantasLink	147	137	93.2	150	146	97.3
Regional Express	42	37	88.1	41	38	92.7
Tigerair Australia	114	92	80.7	114	88	77.2
Virgin Australia	232	197	84.9	233	199	85.4
All Airlines	1 009	861	85.3	1 012	869	85.9

Relates to services to and from Brisbane, Melbourne, Sydney and Townsville.

#### Canberra

Qantas	291	273	93.8	290	278	95.9
QantasLink	664	599	90.2	665	594	89.3
Tigerair Australia	32	27	84.4	32	24	75.0
Virgin Australia	554	489	88.3	556	498	89.6
All Airlines	1 541	1 388	90.1	1 543	1 394	90.3

Relates to services to and from Adelaide, Brisbane, Melbourne and Sydney.

#### Coffs Harbour

QantasLink	150	139	92.7	150	135	90.0
Tigerair Australia	13	11	84.6	13	11	84.6
Virgin Australia	58	55	94.8	58	55	94.8
All Airlines	221	205	92.8	221	201	91.0

Relates to services to and from Sydney only.

Airport	Arrivals			Departures		
	Sectors	On Time		Sectors	On Time	
	Flown	No.	%	Flown	No.	%
<b>Darwin</b>						
Jetstar	70	65	92.9	70	52	74.3
Qantas	160	138	86.3	158	138	87.3
QantasLink	59	58	98.3	59	58	98.3
Tigerair Australia	19	16	84.2	17	17	100.0
Virgin Australia	137	117	85.4	137	104	75.9
All Airlines	445	394	88.5	441	369	83.7
Relates to services to and from Alice Springs, Brisbane, Melbourne, Perth and Sydney.						
<b>Dubbo</b>						
QantasLink	130	111	85.4	130	114	87.7
Regional Express	161	141	87.6	160	142	88.8
All Airlines	291	252	86.6	290	256	88.3
Relates to services to and from Sydney only.						
<b>Emerald</b>						
QantasLink	113	99	87.6	111	91	82.0
Virgin Australia	51	49	96.1	51	46	90.2
All Airlines	164	148	90.2	162	137	84.6
Relates to services to and from Brisbane only.						
<b>Geraldton</b>						
QantasLink	48	45	93.8	48	46	95.8
Virgin Australia Regional Airlines	54	41	75.9	54	40	74.1
All Airlines	102	86	84.3	102	86	84.3
Relates to services to and from Perth only.						
<b>Gladstone</b>						
QantasLink	141	125	88.7	141	125	88.7
Virgin Australia	85	75	88.2	85	75	88.2
All Airlines	226	200	88.5	226	200	88.5
Relates to services to and from Brisbane only.						
<b>Gold Coast</b>						
Jetstar	430	344	80.0	430	318	74.0
Qantas	114	105	92.1	114	103	90.4
QantasLink	7	5	71.4	7	5	71.4
Tigerair Australia	177	143	80.8	177	129	72.9
Virgin Australia	422	366	86.7	422	353	83.6
All Airlines	1 150	963	83.7	1 150	908	79.0
Relates to services to and from Adelaide, Melbourne and Sydney.						
<b>Hamilton Island</b>						
Jetstar	18	14	77.8	18	13	72.2
Qantas	19	16	84.2	19	16	84.2
QantasLink	42	34	81.0	42	35	83.3
Virgin Australia	64	58	90.6	64	59	92.2
All Airlines	143	122	85.3	143	123	86.0
Relates to services to and from Brisbane, Melbourne and Sydney.						

Airport	Arrivals			Departures		
	Sectors Flown	On Time		Sectors Flown	On Time	
		No.	%		No.	%
<b>Hobart</b>						
Jetstar	224	183	81.7	225	130	57.8
QantasLink	187	170	90.9	187	177	94.7
Tigerair Australia	32	28	87.5	32	25	78.1
Virgin Australia	228	198	86.8	227	189	83.3
All Airlines	671	579	86.3	671	521	77.6
Relates to services to and from Brisbane, Melbourne and Sydney.						
<b>Kalgoorlie</b>						
Qantas	9	8	88.9	9	8	88.9
QantasLink	75	71	94.7	75	69	92.0
Virgin Australia	27	25	92.6	27	24	88.9
Virgin Australia Regional Airlines	36	32	88.9	36	33	91.7
All Airlines	147	136	92.5	147	134	91.2
Relates to services to and from Perth only.						
<b>Karratha</b>						
Qantas	20	19	95.0	20	17	85.0
QantasLink	169	164	97.0	166	157	94.6
Virgin Australia	2	2	100.0	2	2	100.0
Virgin Australia Regional Airlines	73	61	83.6	73	57	78.1
All Airlines	264	246	93.2	261	233	89.3
Relates to services to and from Perth only.						
<b>Launceston</b>						
Jetstar	131	108	82.4	130	84	64.6
QantasLink	120	108	90.0	120	109	90.8
Virgin Australia	121	106	87.6	121	103	85.1
All Airlines	372	322	86.6	371	296	79.8
Relates to services to and from Melbourne and Sydney.						
<b>Mackay</b>						
Jetstar	46	34	73.9	46	29	63.0
QantasLink	108	85	78.7	109	87	79.8
Virgin Australia	133	107	80.5	133	104	78.2
All Airlines	287	226	78.7	288	220	76.4
Relates to services to and from Brisbane only.						
<b>Melbourne</b>						
Jetstar	1 253	963	76.9	1 253	975	77.8
Qantas	2 183	1 984	90.9	2 180	2 024	92.8
QantasLink	419	382	91.2	420	393	93.6
Regional Express	87	66	75.9	88	79	89.8
Tigerair Australia	663	494	74.5	662	516	77.9
Virgin Australia	2 223	1 950	87.7	2 225	2 041	91.7
All Airlines	6 828	5 839	85.5	6 828	6 028	88.3
Relates to services to and from Adelaide, Brisbane, Cairns, Canberra, Darwin, Gold Coast, Hamilton Island, Hobart, Launceston, Mildura, Newcastle, Perth, Sunshine Coast and Sydney.						
<b>Mildura</b>						
QantasLink	97	94	96.9	97	92	94.8
Regional Express	88	76	86.4	87	71	81.6
Virgin Australia	31	24	77.4	30	23	76.7
All Airlines	216	194	89.8	214	186	86.9
Relates to services to and from Melbourne only.						



Airport	Arrivals			Departures		
	Sectors	On Time		Sectors	On Time	
	Flown	No.	%	Flown	No.	%
<b>Moranbah</b>						
QantasLink	80	62	77.5	75	56	74.7
Virgin Australia	57	48	84.2	57	46	80.7
All Airlines	137	110	80.3	132	102	77.3
Relates to services to and from Brisbane only.						
<b>Mount Isa</b>						
Qantas	2	2	100.0	2	2	100.0
QantasLink	56	51	91.1	56	51	91.1
Virgin Australia	19	13	68.4	18	12	66.7
All Airlines	77	66	85.7	76	65	85.5
Relates to services to and from Brisbane only.						
<b>Newcastle</b>						
Jetstar	186	159	85.5	186	158	84.9
QantasLink	87	76	87.4	87	77	88.5
Virgin Australia	119	107	89.9	119	104	87.4
All Airlines	392	342	87.2	392	339	86.5
Relates to services to and from Brisbane and Melbourne.						
<b>Newman</b>						
Qantas	68	65	95.6	68	67	98.5
QantasLink	68	63	92.6	68	66	97.1
Virgin Australia	26	25	96.2	26	24	92.3
Virgin Australia Regional Airlines	15	15	100.0	15	15	100.0
All Airlines	177	168	94.9	177	172	97.2
Relates to services to and from Perth only.						
<b>Perth</b>						
Jetstar	96	88	91.7	95	65	68.4
Qantas	760	683	89.9	758	697	92.0
QantasLink	563	518	92.0	568	534	94.0
Tigerair Australia	69	62	89.9	70	62	88.6
Virgin Australia	518	470	90.7	515	484	94.0
Virgin Australia Regional Airlines	278	220	79.1	276	246	89.1
All Airlines	2 284	2 041	89.4	2 282	2 088	91.5
Relates to services to and from Adelaide, Brisbane, Broome, Darwin, Geraldton, Kalgoorlie, Karratha, Melbourne, Newman, Port Hedland and Sydney.						
<b>Port Hedland</b>						
Qantas	34	33	97.1	34	32	94.1
QantasLink	103	101	98.1	102	95	93.1
Virgin Australia	10	10	100.0	10	9	90.0
Virgin Australia Regional Airlines	44	43	97.7	44	44	100.0
All Airlines	191	187	97.9	190	180	94.7
Relates to services to and from Perth only.						
<b>Port Lincoln</b>						
QantasLink	106	99	93.4	105	95	90.5
Regional Express	214	197	92.1	216	200	92.6
All Airlines	320	296	92.5	321	295	91.9
Relates to services to and from Adelaide only.						

Airport	Arrivals			Departures		
	Sectors Flown	On Time		Sectors Flown	On Time	
		No.	%		No.	%
<b>Port Macquarie</b>						
QantasLink	139	116	83.5	139	117	84.2
Virgin Australia	58	46	79.3	58	51	87.9
All Airlines	197	162	82.2	197	168	85.3
Relates to services to and from Sydney only.						
<b>Proserpine</b>						
Jetstar	20	20	100.0	21	18	85.7
Tigerair Australia	17	16	94.1	17	16	94.1
Virgin Australia	31	29	93.5	31	29	93.5
All Airlines	68	65	95.6	69	63	91.3
Relates to services to and from Brisbane only.						
<b>Rockhampton</b>						
QantasLink	183	150	82.0	183	149	81.4
Virgin Australia	136	122	89.7	136	116	85.3
All Airlines	319	272	85.3	319	265	83.1
Relates to services to and from Brisbane only.						
<b>Sunshine Coast</b>						
Jetstar	155	122	78.7	155	86	55.5
QantasLink	34	31	91.2	33	31	93.9
Virgin Australia	76	67	88.2	76	60	78.9
All Airlines	265	220	83.0	264	177	67.0
Relates to services to and from Melbourne and Sydney.						
<b>Sydney</b>						
Jetstar	1 246	1 028	82.5	1 251	1 007	80.5
Qantas	2 253	2 053	91.1	2 263	2 019	89.2
QantasLink	1 518	1 373	90.4	1 520	1 351	88.9
Regional Express	520	464	89.2	521	461	88.5
Tigerair Australia	592	473	79.9	592	478	80.7
Virgin Australia	2 596	2 334	89.9	2 595	2 321	89.4
All Airlines	8 725	7 725	88.5	8 742	7 637	87.4
Relates to services to and from Adelaide, Albury, Armidale, Ayers Rock, Ballina, Brisbane, Cairns, Canberra, Coffs Harbour, Darwin, Dubbo, Gold Coast, Hamilton Island, Hobart, Launceston, Melbourne, Perth, Port Macquarie, Sunshine Coast, Tamworth, Townsville and Wagga Wagga.						
<b>Tamworth</b>						
QantasLink	153	132	86.3	153	132	86.3
Virgin Australia	54	49	90.7	54	53	98.1
All Airlines	207	181	87.4	207	185	89.4
Relates to services to and from Sydney only.						
<b>Townsville</b>						
Jetstar	65	50	76.9	64	45	70.3
Qantas	75	69	92.0	75	68	90.7
QantasLink	221	209	94.6	217	197	90.8
Regional Express	41	37	90.2	42	39	92.9
Virgin Australia	160	138	86.3	160	135	84.4
All Airlines	562	503	89.5	558	484	86.7
Relates to services to and from Brisbane, Cairns and Sydney.						

<i>Airport</i>	<i>Arrivals</i>			<i>Departures</i>		
	<i>Sectors</i>	<i>On Time</i>		<i>Sectors</i>	<i>On Time</i>	
	<i>Flown</i>	<i>No.</i>	<i>%</i>	<i>Flown</i>	<i>No.</i>	<i>%</i>
<b>Wagga Wagga</b>						
QantasLink	115	107	93.0	115	108	93.9
Regional Express	142	130	91.5	142	128	90.1
All Airlines	257	237	92.2	257	236	91.8

Relates to services to and from Sydney only.

## Definitions

---

On time arrival	A flight arrival is counted as "on time" if it arrived at the gate before 15 minutes after the scheduled arrival time shown in the carriers' schedule. Neither diverted nor cancelled flights count as on time.
On time departure	A flight departure is counted as "on time" if it departs the gate before 15 minutes after the scheduled departure time shown in the carriers' schedule.
Cancellation	A flight removed from service within 7 days of scheduled departure is regarded as a cancellation.
On time departure percentage	The percentage of on time departures is measured against the number of departures <i>operated</i> on any particular sector.
On time arrival percentage	The percentage of on time arrivals is measured against the number of arrivals <i>operated</i> on any particular sector.
Cancellation percentage	The percentage of cancellations is measured against the number of services <i>scheduled</i> on any particular sector.

---