



Australian Government

Department of Infrastructure, Regional Development and Cities

Bureau of Infrastructure, Transport and Regional Economics

STATISTICAL REPORT



Aviation

Domestic airline on time performance
March 2018

© Commonwealth of Australia 2018

ISSN: 1832-0759

Ownership of intellectual property rights in this publication

Unless otherwise noted, copyright (and any other intellectual property rights, if any) in this publication is owned by the Commonwealth of Australia (referred to below as the Commonwealth).

Disclaimer

The material contained in this publication is made available on the understanding that the Commonwealth is not providing professional advice, and that users exercise their own skill and care with respect to its use, and seek independent advice if necessary.

The Commonwealth makes no representations or warranties as to the contents or accuracy of the information contained in this publication. To the extent permitted by law, the Commonwealth disclaims liability to any person or organisation in respect of anything done, or omitted to be done, in reliance upon information contained in this publication.

Creative Commons licence

With the exception of (a) the Coat of Arms; and (b) the Department of Infrastructure, Regional Development and Cities' photos and graphics, copyright in this publication is licensed under a Creative Commons Attribution 3.0 Australia Licence.

Creative Commons Attribution 3.0 Australia Licence is a standard form licence agreement that allows you to copy, communicate and adapt this publication provided that you attribute the work to the Commonwealth and abide by the other licence terms. A summary of the licence terms is available from <http://creativecommons.org/licenses/by/3.0/au/deed.en>. The full licence terms are available from <http://creativecommons.org/licenses/by/3.0/au/legalcode>.

Use of the Coat of Arms

The Department of the Prime Minister and Cabinet sets the terms under which the Coat of Arms is used. Please refer to the Department's Commonwealth Coat of Arms and Government branding web page <http://www.dpmmc.gov.au/guidelines/index.cfm#brand> and, in particular, the Guidelines on the use of the Commonwealth Coat of Arms publication.

An appropriate citation for this report is:

Bureau of Infrastructure, Transport and Regional Economics (BITRE), 2018, Domestic airline on time performance, Statistical Report, BITRE, Canberra ACT.

Contact us

This publication is available in PDF format. All other rights are reserved, including in relation to any Departmental logos or trade marks which may exist. For enquiries regarding the licence and any use of this publication, please contact:

Bureau of Infrastructure, Transport and Regional Economics (BITRE)
Department of Infrastructure, Regional Development and Cities
GPO Box 501, Canberra ACT 2601, Australia
Telephone: (international) +61 2 6274 7210
Fax: (international) +61 2 6274 6855
Email: bitre@infrastructure.gov.au
Website: www.bitre.gov.au

Inquiries

Should you require additional information about the statistics contained in this publication:

Telephone (02) 6274 7790 or Facsimile (02) 6274 7727

Electronic mail: AVSTATS@infrastructure.gov.au

Web site: <http://www.bitre.gov.au/statistics/aviation/otphome.aspx>

Foreword

The Bureau of Infrastructure, Transport and Regional Economics (BITRE) monitors the punctuality and reliability of major domestic airlines operating between Australian airports. The purpose of this is to allow for evaluation of overall industry and individual airline performance, so that consumers of air travel can make informed decisions.

The following domestic airlines currently report this information monthly to the BITRE: Jetstar, Qantas, QantasLink, Regional Express, Tigerair Australia, Virgin Australia and Virgin Australia Regional Airlines. Data has been gathered since November 2003, although some airlines commenced reporting at a later date, including Jetstar which first reported in May 2004, MacAir in July 2005, Tigerair Australia in April 2008 and Virgin Australia Regional Airlines in May 2013. MacAir ceased operations in February 2009 and data was not received for December 2008 onwards. Virgin Blue was rebranded as Virgin Australia in May 2011 and Tiger Airways was rebranded as Tigerair Australia in July 2013 and time series data in Microsoft Excel spreadsheet format on the BITRE website have been revised to reflect these changes. Services operated by Skywest on behalf of Virgin Australia using ATR/F100 aircraft commenced in November 2011 and were shown separately as Virgin Australia – ATR/F100 Operations. Virgin Australia Regional Airlines commenced operations in May 2013. It was formed after the acquisition of Skywest by Virgin Australia and represented a combination of operations previously reported under Skywest and Virgin Australia – ATR/F100 Operations. In January 2016, Virgin Australia transferred their ATR fleet from Virgin Australia Regional Airlines to Virgin Australia.

Information presented in this report is for Australian domestic routes for which the passenger load averaged 8 000 or more passengers per month over the previous six months and where two or more airlines operated in competition on those routes. There were 66 routes that met this definition in March 2018. Over time, routes which meet these criteria change as airline networks and traffic levels vary.

Participating airlines report their overall monthly network performance where this is possible.

Total industry figures encompass all services operated by reporting airlines only. These airlines collectively carried over 95 per cent of total domestic passengers (regular public transport only) in 2017.

The method of capturing on time performance varies between airlines utilising different recording systems. Jetstar and Qantas jet aircraft use Aircraft Communication Addressing and Reporting System (ACARS) to electronically measure on time performance. Regional Express, Tigerair Australia, Virgin Australia, Virgin Australia Regional Airlines and the Qantas non-jet fleet record on time performance manually using records from pilots, gate agents and/or ground crews.

After initial data is collected, aggregate reports are audited internally by participating airlines prior to publication.

Reports and detailed time series data in Microsoft Excel spreadsheet format are available from the BITRE website at: <http://www.bitre.gov.au/statistics/aviation/otphome.aspx>.

Contents

	Page
Industry performance	1
Individual routes	10
Airports.....	24
Definitions	30

Industry performance

For March 2018, on time performance over all routes operated by participating airlines (Jetstar, Qantas, QantasLink, Regional Express, Tigerair Australia, Virgin Australia and Virgin Australia Regional Airlines) averaged 82.1 per cent for on time arrivals and 82.6 per cent for on time departures. Cancellations represented 1.2 per cent of all scheduled flights. The equivalent figures for March 2017 were 76.7 per cent for on time arrivals, 78.3 per cent for on time departures and 3.1 per cent for cancellations.

This month's on time arrivals figure was lower than the long term average performance for all routes (82.7 per cent) and the on time departures figure was also lower than the long term average (84.0 per cent). The rate of cancellations was lower than the long term average of 1.4 per cent.

Virgin Australia achieved the highest on time arrivals among the major domestic airlines at 84.9 per cent followed by Qantas at 83.2 per cent, Jetstar at 79.9 per cent and Tigerair Australia at 66.4 per cent. Of the regional airlines, Virgin Australia Regional Airlines recorded 84.2 per cent for on time arrivals, followed by QantasLink at 83.1 per cent and Regional Express at 82.0 per cent. The Qantas network (Qantas and QantasLink combined operations) recorded 83.2 per cent for on time arrivals while the Virgin Australia network (Virgin Australia and Virgin Australia Regional Airlines combined operations) recorded 84.8 per cent.

Virgin Australia also achieved the highest level of on time departures among the major domestic airlines for March 2018 at 86.1 per cent, followed by Qantas at 82.4 per cent, Jetstar at 77.8 per cent and Tigerair Australia at 69.0 per cent. Of the regional airlines, Regional Express recorded 85.4 per cent for on time departures, followed by Virgin Australia Regional Airlines at 84.9 per cent and QantasLink at 83.5 per cent. The Qantas network recorded 82.9 per cent for on time departures while the Virgin Australia network recorded 86.0 per cent.

Virgin Australia Regional Airlines recorded the highest percentage of cancellations (3.0 per cent) during the month, followed by Tigerair Australia (2.3 per cent), QantasLink (1.7 per cent), Virgin Australia (1.2 per cent), Jetstar (1.1 per cent), Qantas (0.7 per cent) and Regional Express (0.5 per cent).

Airlines' on time performance varies across the routes they serve. Individual route data by specific airline for 66 routes are shown on pages 10-23.

Of the 66 routes which met the criteria for on time performance reporting in March 2018, the Perth-Darwin route had the highest percentage of on time arrivals (94.9 per cent) and the Perth-Darwin and Darwin-Melbourne routes had the highest percentage of on time departures (both at 94.9 per cent). The Mount Isa-Brisbane route had the lowest percentage of on time arrivals (58.6 per cent) and the Port Macquarie-Sydney route had the lowest percentage of on time departures (63.8 per cent).

Cancellations were highest on the Melbourne-Townsville and Townsville-Melbourne routes at 8.1 per cent, followed by the Alice Springs-Darwin route at 6.8 per cent, the Brisbane-Darwin

and Darwin-Brisbane routes at 5.9 per cent, the Darwin-Alice Springs route at 5.5 per cent and the Darwin-Sydney and Sydney-Darwin routes at 5.4 per cent.

Newman Airport recorded the highest percentage of on time arrivals (93.3 per cent) and Port Lincoln Airport recorded the highest percentage of on time departures (93.1 per cent). Port Macquarie Airport recorded the lowest percentage of on time arrivals (65.2 per cent) and the lowest percentage of on time departures (63.8 per cent). These figures only refer to reported routes and do not cover all flights at these airports.

Table 1 On time performance for March 2018 — Total Industry

	Sectors		Arrivals On Time		Departures On Time		Cancellations	
	Scheduled	Flown	No.	%	No.	%	No.	%
Jetstar	6 859	6 782	5 418	79.9	5 279	77.8	77	1.1
Qantas	9 185	9 118	7 587	83.2	7 510	82.4	67	0.7
QantasLink	9 969	9 799	8 146	83.1	8 180	83.5	170	1.7
Regional Express	6 060	6 031	4 944	82.0	5 150	85.4	29	0.5
Tigerair Australia	2 471	2 414	1 604	66.4	1 665	69.0	57	2.3
Virgin Australia	11 942	11 804	10 017	84.9	10 165	86.1	138	1.2
Virgin Australia Regional Airlines	839	814	685	84.2	691	84.9	25	3.0
All Airlines	47 325	46 762	38 401	82.1	38 640	82.6	563	1.2
Qantas - all QF designated services	19 154	18 917	15 733	83.2	15 690	82.9	237	1.2
Virgin Australia - all VA designated services	12 781	12 618	10 702	84.8	10 856	86.0	163	1.3

Total airline network data (including routes not shown in this report).

Airlines' on time performance varies across the routes they serve. Individual route data by specific airline for 66 routes are shown on pages 10-23.

Table 2 Top ten routes for on time performance for March 2018 (participating airlines only)

Arrivals		Departures	
Route	On Time (%)	Route	On Time (%)
Perth-Darwin	94.9	Perth-Darwin	94.9
Brisbane-Adelaide	94.1	Darwin-Melbourne	94.9
Perth-Newman	93.3	Brisbane-Hobart	93.4
Sydney-Ayers Rock	93.0	Port Lincoln-Adelaide	93.1
Darwin-Brisbane	92.7	Darwin-Alice Springs	92.8
Kalgoorlie-Perth	92.6	Adelaide-Port Lincoln	92.4
Port Lincoln-Adelaide	92.5	Perth-Newman	92.1
Proserpine-Brisbane	92.3	Gold Coast-Adelaide	92.1
Newman-Perth	92.1	Perth-Kalgoorlie	91.9
Gold Coast-Adelaide	92.1	Adelaide-Brisbane	91.6

Table 3 Top ten airports for on time performance for March 2018 (participating airlines and reported routes only)

Arrivals		Departures	
Airport	On Time (%)	Airport	On Time (%)
Newman	93.3	Port Lincoln	93.1
Ayers Rock	93.0	Alice Springs	90.8
Kalgoorlie	91.9	Newman	90.3
Port Lincoln	91.4	Mackay	89.1
Mackay	90.7	Darwin	88.9
Emerald	89.4	Karratha	88.2
Darwin	88.6	Emerald	88.1
Karratha	88.2	Bundaberg	87.9
Alice Springs	87.6	Kalgoorlie	87.9
Bundaberg	87.2	Geraldton	87.8

Total industry on time performance

Figure 1 On time performance (by month from March 2015)—Total Industry

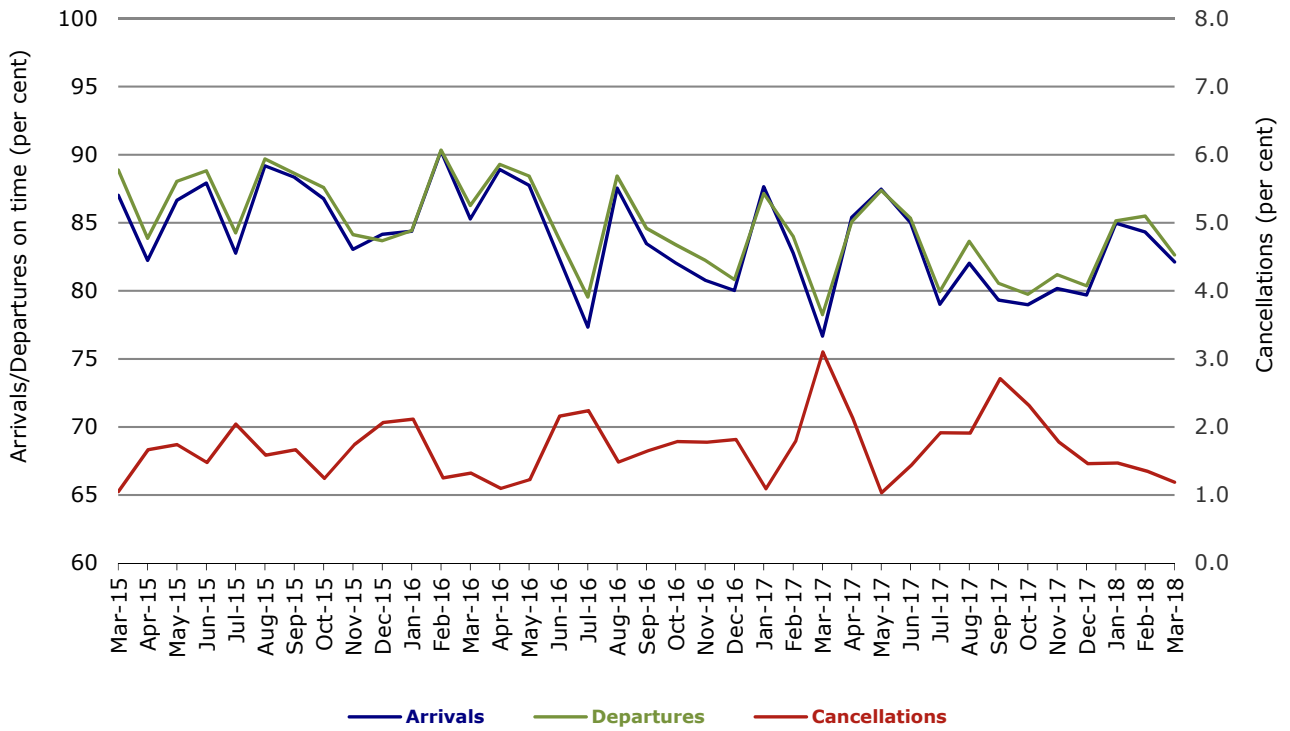


Figure 2 Arrivals on time (by month from March 2017)

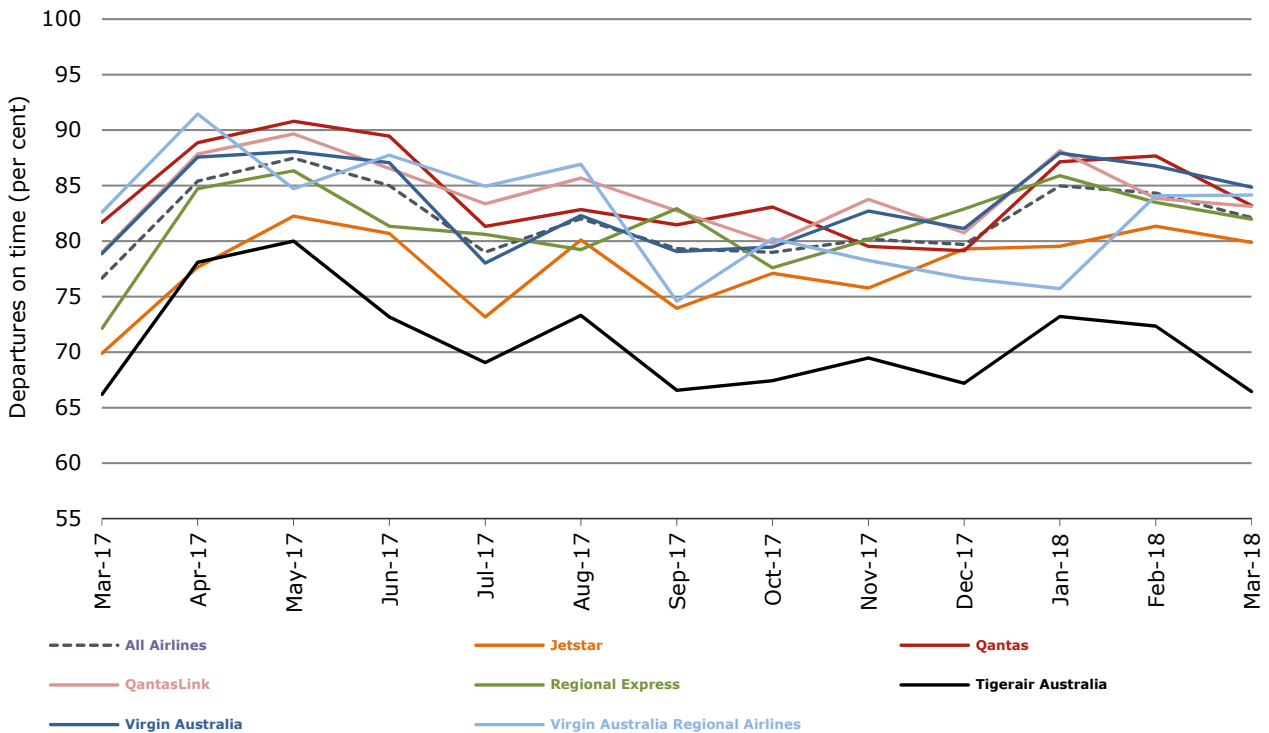


Figure 3 Departures on time (by month from March 2017)

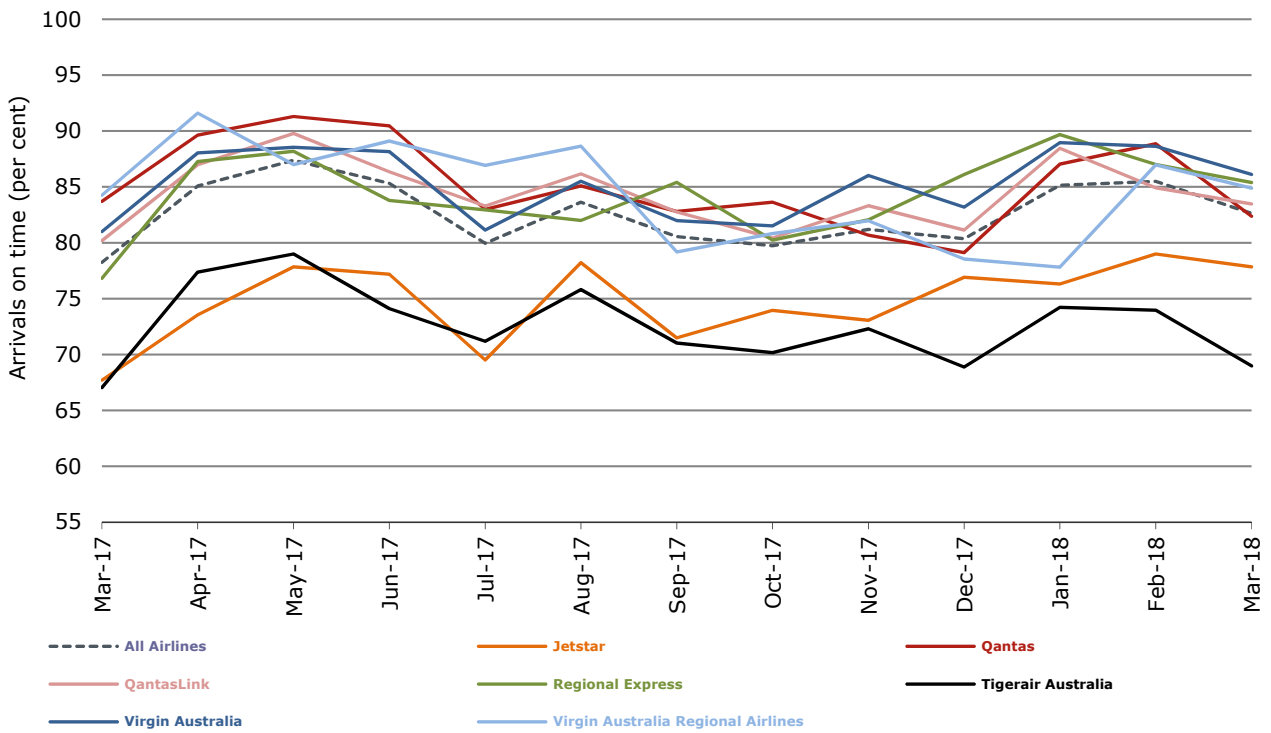
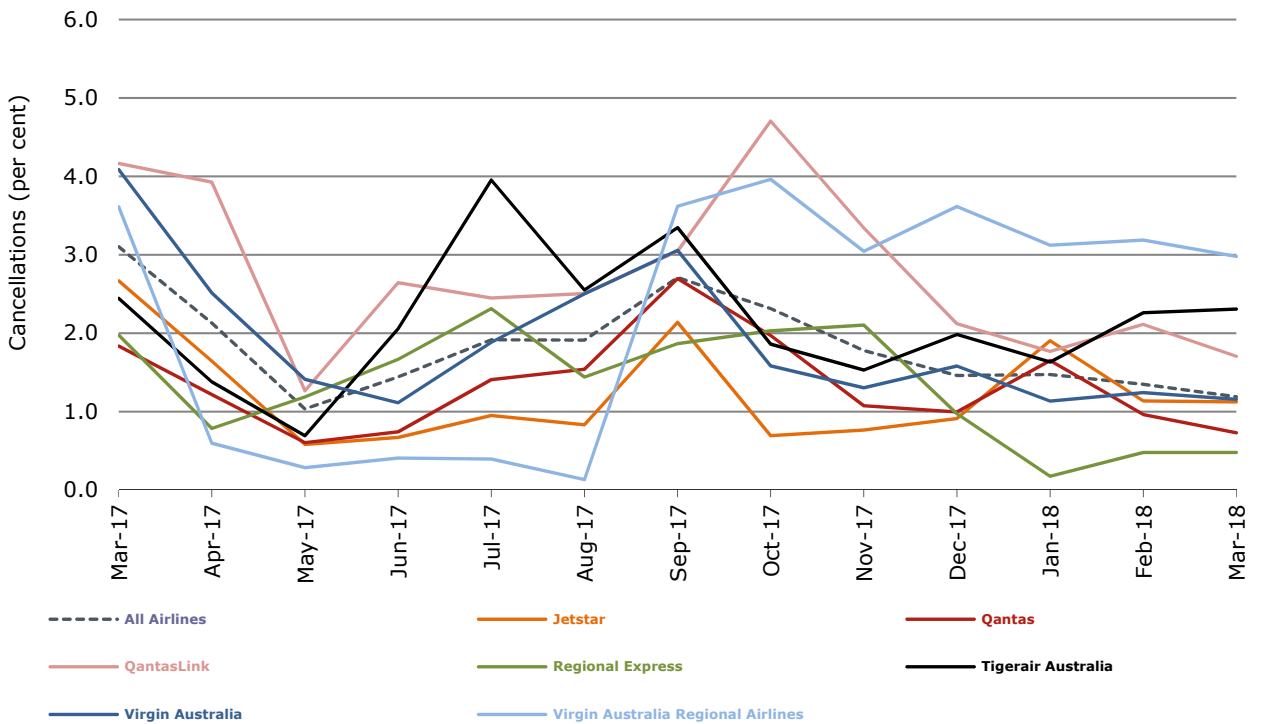


Figure 4 Cancellations (by month from March 2017)



Major domestic airlines on time performance

Figure 5 On time performance (by month from March 2015)—Jetstar

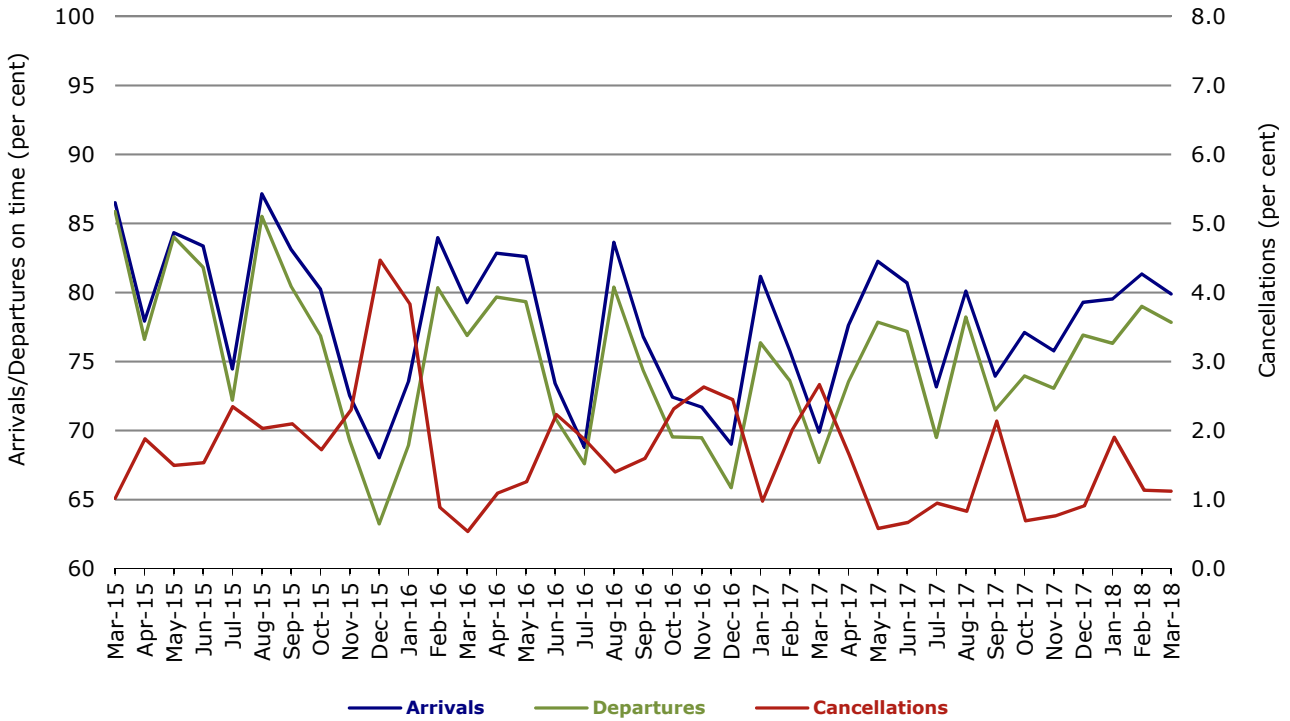


Figure 6 On time performance (by month from March 2015)—Qantas

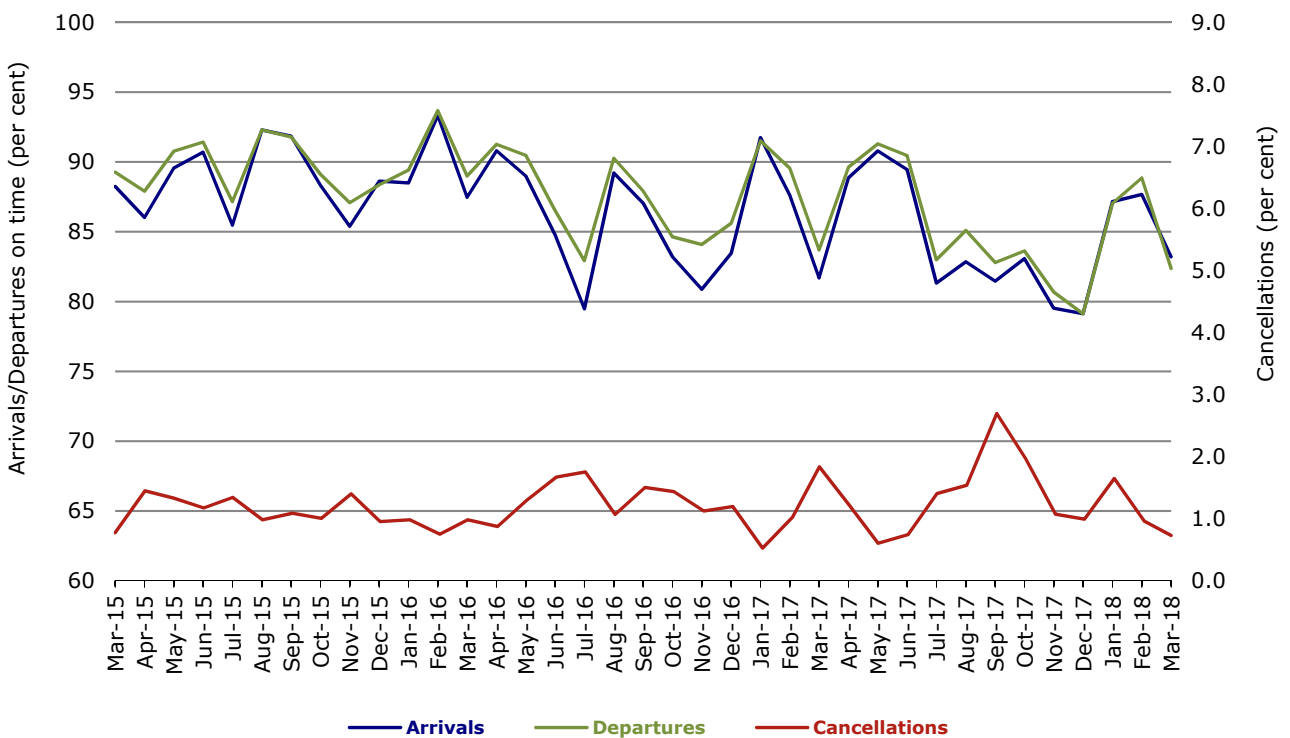


Figure 7 On time performance (by month from March 2015)—Tigerair Australia

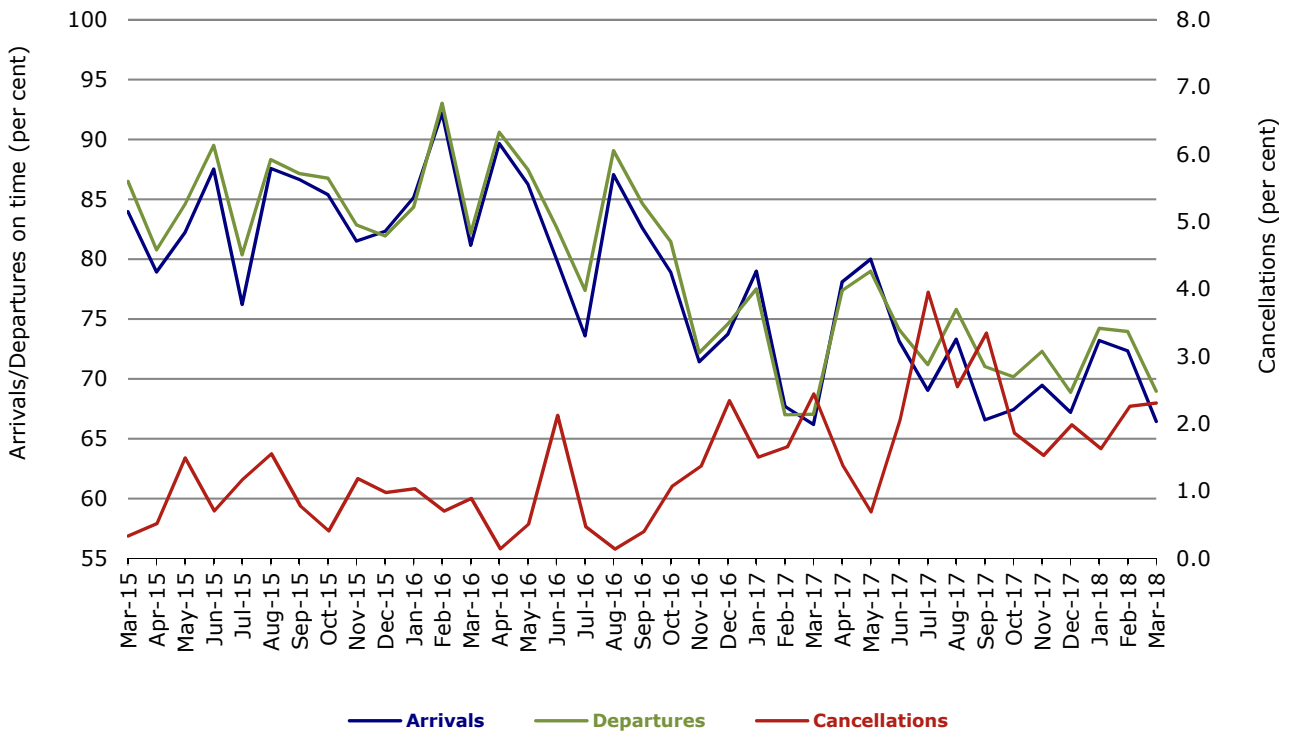
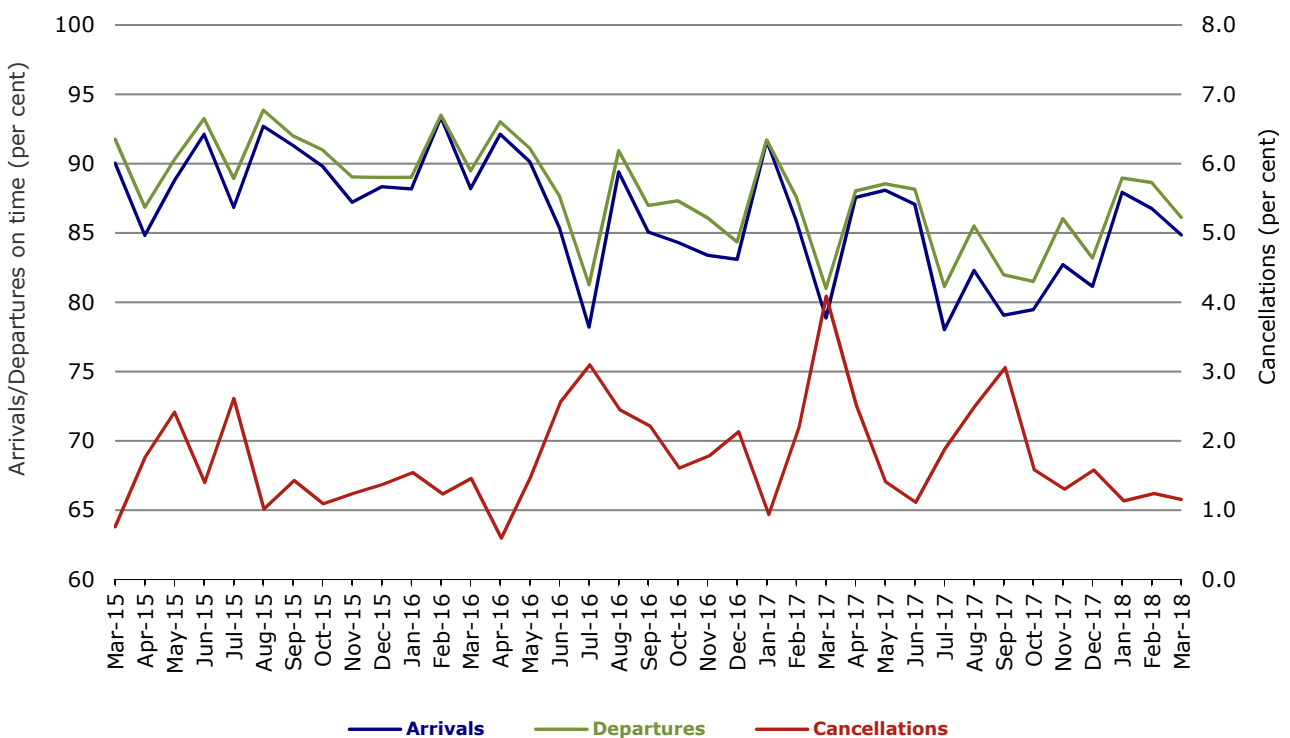


Figure 8 On time performance (by month from March 2015)—Virgin Australia



In January 2016, Virgin Australia transferred their ATR fleet from Virgin Australia Regional Airlines to Virgin Australia.

Major regional airlines on time performance

Figure 9 On time performance (by month from March 2015)—QantasLink

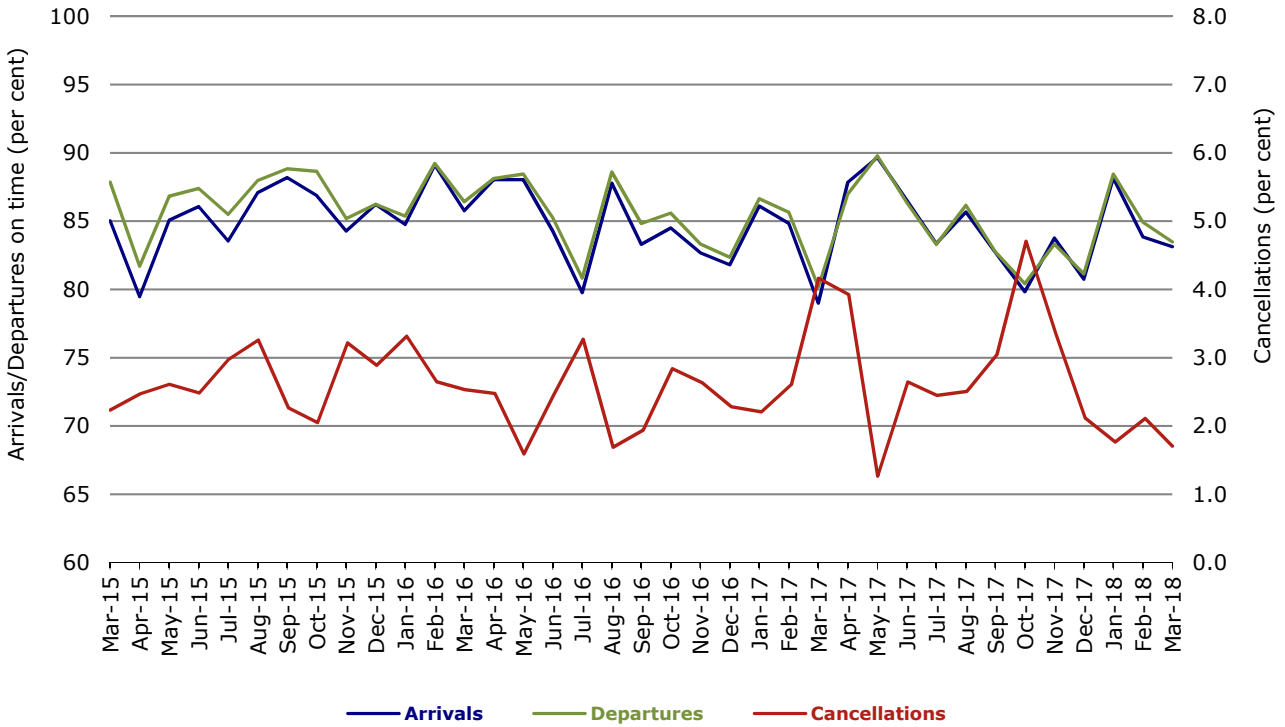


Figure 10 On time performance (by month from March 2015)—Regional Express

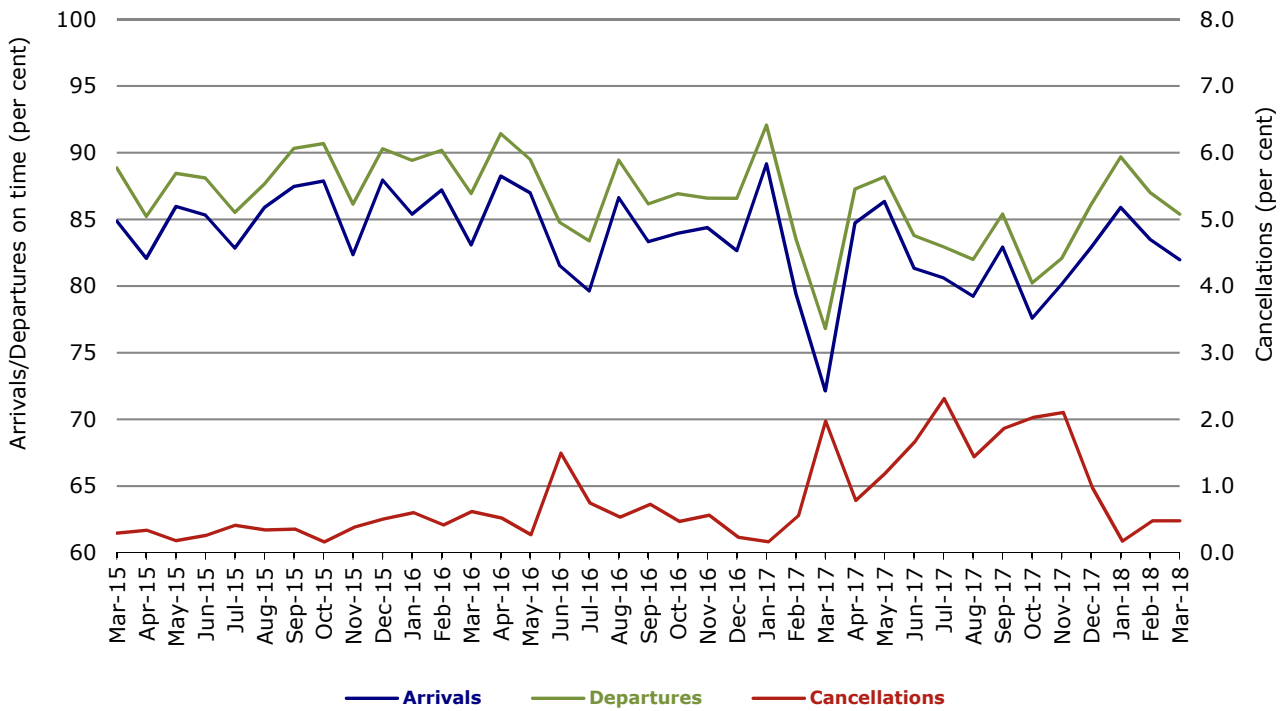
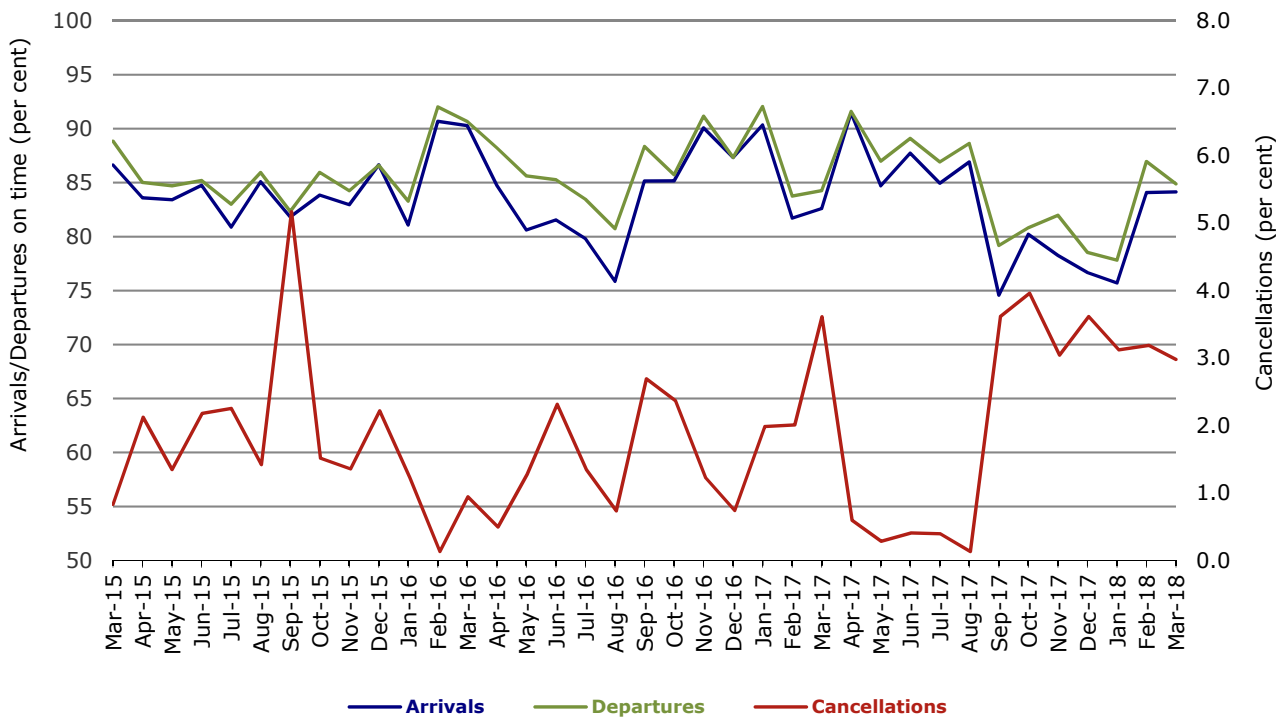


Figure 11 On time performance (by month from March 2015)
Virgin Australia Regional Airlines



In January 2016, Virgin Australia transferred their ATR fleet from Virgin Australia Regional Airlines to Virgin Australia.

Individual routes

On time performance is reported for all routes where the passenger load averages over 8000 passengers per month over the previous six months, and where two or more airlines operate in competition on those routes. There are now 66 routes which meet this definition. Over time, however, routes which meet this definition may change as airline networks and traffic levels vary.

	Sectors		Arrivals On Time		Departures On Time		Cancellations	
	Sched.	Flown	No.	%	No.	%	No.	%
Adelaide-Alice Springs								
Qantas	30	30	28	93.3	27	90.0	0	0.0
Virgin Australia	4	4	4	100.0	4	100.0	0	0.0
Virgin Australia Regional Airlines	18	18	13	72.2	14	77.8	0	0.0
All Airlines	52	52	45	86.5	45	86.5	0	0.0
Adelaide-Brisbane								
Jetstar	26	26	22	84.6	22	84.6	0	0.0
Qantas	93	93	84	90.3	86	92.5	0	0.0
QantasLink	34	33	29	87.9	30	90.9	1	2.9
Tigerair Australia	24	24	18	75.0	21	87.5	0	0.0
Virgin Australia	111	110	103	93.6	103	93.6	1	0.9
All Airlines	288	286	256	89.5	262	91.6	2	0.7
Adelaide-Canberra								
Qantas	47	47	44	93.6	41	87.2	0	0.0
Virgin Australia	26	26	23	88.5	22	84.6	0	0.0
All Airlines	73	73	67	91.8	63	86.3	0	0.0
Adelaide-Gold Coast								
Jetstar	30	30	28	93.3	28	93.3	0	0.0
Virgin Australia	33	33	27	81.8	29	87.9	0	0.0
All Airlines	63	63	55	87.3	57	90.5	0	0.0
Adelaide-Melbourne								
Jetstar	112	111	89	80.2	84	75.7	1	0.9
Qantas	281	279	245	87.8	244	87.5	2	0.7
Tigerair Australia	76	75	56	74.7	58	77.3	1	1.3
Virgin Australia	301	300	258	86.0	258	86.0	1	0.3
All Airlines	770	765	648	84.7	644	84.2	5	0.6
Adelaide-Perth								
Jetstar	27	27	21	77.8	22	81.5	0	0.0
Qantas	102	102	97	95.1	92	90.2	0	0.0
QantasLink	11	11	9	81.8	10	90.9	0	0.0
Virgin Australia	39	39	37	94.9	36	92.3	0	0.0
Virgin Australia Regional Airlines	43	40	29	72.5	28	70.0	3	7.0
All Airlines	222	219	193	88.1	188	85.8	3	1.4
Adelaide-Port Lincoln								
QantasLink	111	111	102	91.9	101	91.0	0	0.0
Regional Express	193	193	176	91.2	180	93.3	0	0.0
All Airlines	304	304	278	91.4	281	92.4	0	0.0
Adelaide-Sydney								
Jetstar	113	111	95	85.6	94	84.7	2	1.8
Qantas	233	233	203	87.1	208	89.3	0	0.0
QantasLink	33	31	28	90.3	28	90.3	2	6.1
Tigerair Australia	48	48	29	60.4	31	64.6	0	0.0
Virgin Australia	177	176	154	87.5	163	92.6	1	0.6
All Airlines	604	599	509	85.0	524	87.5	5	0.8

	<i>Sectors</i>		<i>Arrivals On Time</i>		<i>Departures On Time</i>		<i>Cancellations</i>	
	<i>Sched.</i>	<i>Flown</i>	<i>No.</i>	<i>%</i>	<i>No.</i>	<i>%</i>	<i>No.</i>	<i>%</i>
Albury-Sydney								
QantasLink	92	90	67	74.4	68	75.6	2	2.2
Regional Express	90	90	77	85.6	79	87.8	0	0.0
Virgin Australia	59	59	53	89.8	55	93.2	0	0.0
All Airlines	241	239	197	82.4	202	84.5	2	0.8
Alice Springs-Adelaide								
Qantas	30	30	26	86.7	26	86.7	0	0.0
Virgin Australia	4	4	4	100.0	4	100.0	0	0.0
Virgin Australia Regional Airlines	19	18	16	88.9	17	94.4	1	5.3
All Airlines	53	52	46	88.5	47	90.4	1	1.9
Alice Springs-Darwin								
QantasLink	50	46	43	93.5	43	93.5	4	8.0
Virgin Australia	4	4	3	75.0	4	100.0	0	0.0
Virgin Australia Regional Airlines	19	18	15	83.3	15	83.3	1	5.3
All Airlines	73	68	61	89.7	62	91.2	5	6.8
Armidale-Sydney								
QantasLink	103	99	65	65.7	64	64.6	4	3.9
Regional Express	72	72	48	66.7	52	72.2	0	0.0
All Airlines	175	171	113	66.1	116	67.8	4	2.3
Ayers Rock-Sydney								
Jetstar	27	27	22	81.5	23	85.2	0	0.0
Virgin Australia	31	31	27	87.1	27	87.1	0	0.0
All Airlines	58	58	49	84.5	50	86.2	0	0.0
Ballina-Sydney								
Jetstar	84	84	66	78.6	61	72.6	0	0.0
Regional Express	25	24	14	58.3	18	75.0	1	4.0
Virgin Australia	33	33	31	93.9	32	97.0	0	0.0
All Airlines	142	141	111	78.7	111	78.7	1	0.7
Brisbane-Adelaide								
Jetstar	26	26	24	92.3	20	76.9	0	0.0
Qantas	96	96	93	96.9	91	94.8	0	0.0
QantasLink	34	33	30	90.9	31	93.9	1	2.9
Tigerair Australia	24	24	23	95.8	23	95.8	0	0.0
Virgin Australia	110	110	102	92.7	95	86.4	0	0.0
All Airlines	290	289	272	94.1	260	90.0	1	0.3
Brisbane-Bundaberg								
QantasLink	110	110	98	89.1	96	87.3	0	0.0
Virgin Australia	31	31	25	80.6	26	83.9	0	0.0
All Airlines	141	141	123	87.2	122	86.5	0	0.0
Brisbane-Cairns								
Jetstar	88	87	77	88.5	71	81.6	1	1.1
Qantas	86	86	73	84.9	78	90.7	0	0.0
QantasLink	28	28	18	64.3	17	60.7	0	0.0
Tigerair Australia	26	25	20	80.0	19	76.0	1	3.8
Virgin Australia	127	127	116	91.3	111	87.4	0	0.0
All Airlines	355	353	304	86.1	296	83.9	2	0.6
Brisbane-Canberra								
Qantas	29	29	26	89.7	25	86.2	0	0.0
QantasLink	124	124	107	86.3	104	83.9	0	0.0
Tigerair Australia	14	14	9	64.3	13	92.9	0	0.0
Virgin Australia	98	98	89	90.8	86	87.8	0	0.0
All Airlines	265	265	231	87.2	228	86.0	0	0.0

	<i>Sectors</i>		<i>Arrivals On Time</i>		<i>Departures On Time</i>		<i>Cancellations</i>	
	<i>Sched.</i>	<i>Flown</i>	<i>No.</i>	<i>%</i>	<i>No.</i>	<i>%</i>	<i>No.</i>	<i>%</i>
Brisbane-Darwin								
Jetstar	19	17	17	100.0	16	94.1	2	10.5
Qantas	35	34	32	94.1	31	91.2	1	2.9
Tigerair Australia	17	15	12	80.0	11	73.3	2	11.8
Virgin Australia	31	30	23	76.7	27	90.0	1	3.2
All Airlines	102	96	84	87.5	85	88.5	6	5.9
Brisbane-Emerald								
QantasLink	108	108	101	93.5	101	93.5	0	0.0
Virgin Australia	52	52	42	80.8	41	78.8	0	0.0
All Airlines	160	160	143	89.4	142	88.8	0	0.0
Brisbane-Gladstone								
QantasLink	127	127	96	75.6	96	75.6	0	0.0
Virgin Australia	73	72	56	77.8	60	83.3	1	1.4
All Airlines	200	199	152	76.4	156	78.4	1	0.5
Brisbane-Hamilton Island								
QantasLink	25	25	23	92.0	24	96.0	0	0.0
Virgin Australia	31	31	27	87.1	26	83.9	0	0.0
All Airlines	56	56	50	89.3	50	89.3	0	0.0
Brisbane-Hobart								
Jetstar	29	29	25	86.2	27	93.1	0	0.0
Virgin Australia	32	32	31	96.9	30	93.8	0	0.0
All Airlines	61	61	56	91.8	57	93.4	0	0.0
Brisbane-Mackay								
Jetstar	34	33	27	81.8	28	84.8	1	2.9
QantasLink	110	110	102	92.7	102	92.7	0	0.0
Virgin Australia	137	137	125	91.2	125	91.2	0	0.0
All Airlines	281	280	254	90.7	255	91.1	1	0.4
Brisbane-Melbourne								
Jetstar	123	120	102	85.0	89	74.2	3	2.4
Qantas	420	419	329	78.5	329	78.5	1	0.2
QantasLink	13	13	10	76.9	10	76.9	0	0.0
Tigerair Australia	124	118	86	72.9	83	70.3	6	4.8
Virgin Australia	402	385	323	83.9	347	90.1	17	4.2
All Airlines	1 082	1 055	850	80.6	858	81.3	27	2.5
Brisbane-Mount Isa								
QantasLink	55	55	36	65.5	40	72.7	0	0.0
Virgin Australia	17	17	15	88.2	16	94.1	0	0.0
All Airlines	72	72	51	70.8	56	77.8	0	0.0
Brisbane-Newcastle								
Jetstar	80	80	60	75.0	62	77.5	0	0.0
QantasLink	59	58	47	81.0	50	86.2	1	1.7
Virgin Australia	86	86	79	91.9	81	94.2	0	0.0
All Airlines	225	224	186	83.0	193	86.2	1	0.4
Brisbane-Perth								
Qantas	138	138	123	89.1	110	79.7	0	0.0
Virgin Australia	106	106	99	93.4	82	77.4	0	0.0
All Airlines	244	244	222	91.0	192	78.7	0	0.0
Brisbane-Proserpine								
Jetstar	33	33	28	84.8	28	84.8	0	0.0
Virgin Australia	32	32	30	93.8	31	96.9	0	0.0
All Airlines	65	65	58	89.2	59	90.8	0	0.0

	<i>Sectors</i>		<i>Arrivals On Time</i>		<i>Departures On Time</i>		<i>Cancellations</i>	
	<i>Sched.</i>	<i>Flown</i>	<i>No.</i>	<i>%</i>	<i>No.</i>	<i>%</i>	<i>No.</i>	<i>%</i>
Brisbane-Rockhampton								
QantasLink	158	156	123	78.8	126	80.8	2	1.3
Virgin Australia	141	139	100	71.9	104	74.8	2	1.4
All Airlines	299	295	223	75.6	230	78.0	4	1.3
Brisbane-Sydney								
Jetstar	158	154	113	73.4	108	70.1	4	2.5
Qantas	627	625	501	80.2	486	77.8	2	0.3
QantasLink	8	8	3	37.5	3	37.5	0	0.0
Tigerair Australia	115	115	81	70.4	84	73.0	0	0.0
Virgin Australia	533	525	470	89.5	475	90.5	8	1.5
All Airlines	1 441	1 427	1 168	81.9	1 156	81.0	14	1.0
Brisbane-Townsville								
Jetstar	40	40	31	77.5	32	80.0	0	0.0
Qantas	66	66	52	78.8	49	74.2	0	0.0
QantasLink	83	83	67	80.7	73	88.0	0	0.0
Virgin Australia	140	138	125	90.6	119	86.2	2	1.4
All Airlines	329	327	275	84.1	273	83.5	2	0.6
Broome-Perth								
QantasLink	85	85	76	89.4	74	87.1	0	0.0
Virgin Australia	3	3	3	100.0	3	100.0	0	0.0
Virgin Australia Regional Airlines	65	65	51	78.5	50	76.9	0	0.0
All Airlines	153	153	130	85.0	127	83.0	0	0.0
Bundaberg-Brisbane								
QantasLink	110	110	98	89.1	98	89.1	0	0.0
Virgin Australia	31	31	23	74.2	26	83.9	0	0.0
All Airlines	141	141	121	85.8	124	87.9	0	0.0
Cairns-Brisbane								
Jetstar	89	88	71	80.7	72	81.8	1	1.1
Qantas	87	87	76	87.4	75	86.2	0	0.0
QantasLink	27	27	10	37.0	13	48.1	0	0.0
Tigerair Australia	26	25	20	80.0	20	80.0	1	3.8
Virgin Australia	126	126	114	90.5	109	86.5	0	0.0
All Airlines	355	353	291	82.4	289	81.9	2	0.6
Cairns-Melbourne								
Jetstar	63	62	53	85.5	49	79.0	1	1.6
Qantas	40	40	33	82.5	32	80.0	0	0.0
Tigerair Australia	36	36	25	69.4	22	61.1	0	0.0
Virgin Australia	35	35	26	74.3	30	85.7	0	0.0
All Airlines	174	173	137	79.2	133	76.9	1	0.6
Cairns-Sydney								
Jetstar	81	79	69	87.3	71	89.9	2	2.5
Qantas	75	75	69	92.0	66	88.0	0	0.0
Tigerair Australia	42	41	29	70.7	28	68.3	1	2.4
Virgin Australia	91	91	85	93.4	81	89.0	0	0.0
All Airlines	289	286	252	88.1	246	86.0	3	1.0
Cairns-Townsville								
QantasLink	133	132	105	79.5	101	76.5	1	0.8
Regional Express	30	30	22	73.3	21	70.0	0	0.0
All Airlines	163	162	127	78.4	122	75.3	1	0.6

	Sectors		Arrivals On Time		Departures On Time		Cancellations	
	Sched.	Flown	No.	%	No.	%	No.	%
Canberra-Adelaide								
Qantas	47	47	45	95.7	42	89.4	0	0.0
Virgin Australia	26	26	21	80.8	19	73.1	0	0.0
All Airlines	73	73	66	90.4	61	83.6	0	0.0
Canberra-Brisbane								
Qantas	30	30	29	96.7	29	96.7	0	0.0
QantasLink	123	123	106	86.2	107	87.0	0	0.0
Tigerair Australia	14	14	11	78.6	11	78.6	0	0.0
Virgin Australia	98	98	84	85.7	85	86.7	0	0.0
All Airlines	265	265	230	86.8	232	87.5	0	0.0
Canberra-Melbourne								
Qantas	211	211	192	91.0	191	90.5	0	0.0
QantasLink	90	87	73	83.9	73	83.9	3	3.3
Tigerair Australia	36	36	20	55.6	23	63.9	0	0.0
Virgin Australia	172	171	147	86.0	155	90.6	1	0.6
All Airlines	509	505	432	85.5	442	87.5	4	0.8
Canberra-Sydney								
Qantas	34	34	31	91.2	33	97.1	0	0.0
QantasLink	433	418	354	84.7	358	85.6	15	3.5
Virgin Australia	256	250	221	88.4	229	91.6	6	2.3
All Airlines	723	702	606	86.3	620	88.3	21	2.9
Coffs Harbour-Sydney								
QantasLink	146	143	115	80.4	114	79.7	3	2.1
Tigerair Australia	13	13	9	69.2	9	69.2	0	0.0
Virgin Australia	52	52	50	96.2	50	96.2	0	0.0
All Airlines	211	208	174	83.7	173	83.2	3	1.4
Darwin-Alice Springs								
QantasLink	50	47	42	89.4	43	91.5	3	6.0
Virgin Australia	4	4	4	100.0	4	100.0	0	0.0
Virgin Australia Regional Airlines	19	18	15	83.3	17	94.4	1	5.3
All Airlines	73	69	61	88.4	64	92.8	4	5.5
Darwin-Brisbane								
Jetstar	19	17	16	94.1	16	94.1	2	10.5
Qantas	35	34	33	97.1	30	88.2	1	2.9
Tigerair Australia	17	15	13	86.7	13	86.7	2	11.8
Virgin Australia	31	30	27	90.0	27	90.0	1	3.2
All Airlines	102	96	89	92.7	86	89.6	6	5.9
Darwin-Melbourne								
Jetstar	19	18	14	77.8	15	83.3	1	5.3
Qantas	31	30	29	96.7	30	100.0	1	3.2
Virgin Australia	31	30	28	93.3	29	96.7	1	3.2
All Airlines	81	78	71	91.0	74	94.9	3	3.7
Darwin-Perth								
Qantas	31	30	27	90.0	26	86.7	1	3.2
Virgin Australia	26	26	23	88.5	22	84.6	0	0.0
Virgin Australia Regional Airlines	5	3	2	66.7	1	33.3	2	40.0
All Airlines	62	59	52	88.1	49	83.1	3	4.8
Darwin-Sydney								
Jetstar	19	17	13	76.5	14	82.4	2	10.5
Qantas	42	40	36	90.0	33	82.5	2	4.8
Virgin Australia	31	30	25	83.3	26	86.7	1	3.2
All Airlines	92	87	74	85.1	73	83.9	5	5.4

	<i>Sectors</i>		<i>Arrivals On Time</i>		<i>Departures On Time</i>		<i>Cancellations</i>	
	<i>Sched.</i>	<i>Flown</i>	<i>No.</i>	<i>%</i>	<i>No.</i>	<i>%</i>	<i>No.</i>	<i>%</i>
Dubbo-Sydney								
QantasLink	110	110	75	68.2	80	72.7	0	0.0
Regional Express	129	129	96	74.4	111	86.0	0	0.0
All Airlines	239	239	171	71.5	191	79.9	0	0.0
Emerald-Brisbane								
QantasLink	108	107	92	86.0	97	90.7	1	0.9
Virgin Australia	52	52	41	78.8	43	82.7	0	0.0
All Airlines	160	159	133	83.6	140	88.1	1	0.6
Geraldton-Perth								
QantasLink	47	46	44	95.7	43	93.5	1	2.1
Virgin Australia Regional Airlines	53	52	44	84.6	43	82.7	1	1.9
All Airlines	100	98	88	89.8	86	87.8	2	2.0
Gladstone-Brisbane								
QantasLink	127	127	100	78.7	101	79.5	0	0.0
Virgin Australia	74	72	57	79.2	58	80.6	2	2.7
All Airlines	201	199	157	78.9	159	79.9	2	1.0
Gold Coast-Adelaide								
Jetstar	30	30	29	96.7	30	100.0	0	0.0
Virgin Australia	33	33	29	87.9	28	84.8	0	0.0
All Airlines	63	63	58	92.1	58	92.1	0	0.0
Gold Coast-Melbourne								
Jetstar	154	154	132	85.7	125	81.2	0	0.0
Qantas	31	31	28	90.3	27	87.1	0	0.0
Tigerair Australia	84	81	54	66.7	49	60.5	3	3.6
Virgin Australia	204	203	168	82.8	154	75.9	1	0.5
All Airlines	473	469	382	81.4	355	75.7	4	0.8
Gold Coast-Sydney								
Jetstar	287	284	233	82.0	229	80.6	3	1.0
Qantas	90	90	84	93.3	81	90.0	0	0.0
QantasLink	33	32	30	93.8	29	90.6	1	3.0
Tigerair Australia	106	104	63	60.6	57	54.8	2	1.9
Virgin Australia	251	249	219	88.0	206	82.7	2	0.8
All Airlines	767	759	629	82.9	602	79.3	8	1.0
Hamilton Island-Brisbane								
QantasLink	25	25	20	80.0	23	92.0	0	0.0
Virgin Australia	31	31	28	90.3	25	80.6	0	0.0
All Airlines	56	56	48	85.7	48	85.7	0	0.0
Hamilton Island-Sydney								
Jetstar	20	20	15	75.0	16	80.0	0	0.0
Qantas	7	7	7	100.0	7	100.0	0	0.0
QantasLink	14	14	11	78.6	12	85.7	0	0.0
Virgin Australia	28	28	25	89.3	24	85.7	0	0.0
All Airlines	69	69	58	84.1	59	85.5	0	0.0
Hobart-Brisbane								
Jetstar	28	28	26	92.9	25	89.3	0	0.0
Virgin Australia	32	32	29	90.6	28	87.5	0	0.0
All Airlines	60	60	55	91.7	53	88.3	0	0.0

	<i>Sectors</i>		<i>Arrivals On Time</i>		<i>Departures On Time</i>		<i>Cancellations</i>	
	<i>Sched.</i>	<i>Flown</i>	<i>No.</i>	<i>%</i>	<i>No.</i>	<i>%</i>	<i>No.</i>	<i>%</i>
Hobart-Melbourne								
Jetstar	194	192	126	65.6	118	61.5	2	1.0
Qantas	52	51	42	82.4	42	82.4	1	1.9
QantasLink	87	85	77	90.6	81	95.3	2	2.3
Tigerair Australia	48	47	24	51.1	27	57.4	1	2.1
Virgin Australia	149	149	102	68.5	108	72.5	0	0.0
All Airlines	530	524	371	70.8	376	71.8	6	1.1
Hobart-Sydney								
Jetstar	85	85	59	69.4	57	67.1	0	0.0
Qantas	46	46	38	82.6	42	91.3	0	0.0
QantasLink	13	13	9	69.2	12	92.3	0	0.0
Virgin Australia	72	72	54	75.0	59	81.9	0	0.0
All Airlines	216	216	160	74.1	170	78.7	0	0.0
Kalgoorlie-Perth								
Qantas	11	11	11	100.0	11	100.0	0	0.0
QantasLink	72	69	64	92.8	61	88.4	3	4.2
Virgin Australia	31	31	28	90.3	25	80.6	0	0.0
Virgin Australia Regional Airlines	38	38	35	92.1	34	89.5	0	0.0
All Airlines	152	149	138	92.6	131	87.9	3	2.0
Karratha-Perth								
Qantas	20	20	20	100.0	20	100.0	0	0.0
QantasLink	165	165	144	87.3	144	87.3	0	0.0
Virgin Australia	8	8	8	100.0	8	100.0	0	0.0
Virgin Australia Regional Airlines	66	61	52	85.2	52	85.2	5	7.6
All Airlines	259	254	224	88.2	224	88.2	5	1.9
Launceston-Melbourne								
Jetstar	144	144	111	77.1	106	73.6	0	0.0
QantasLink	118	116	101	87.1	101	87.1	2	1.7
Virgin Australia	111	111	81	73.0	87	78.4	0	0.0
All Airlines	373	371	293	79.0	294	79.2	2	0.5
Launceston-Sydney								
Jetstar	57	57	47	82.5	48	84.2	0	0.0
Virgin Australia	31	31	29	93.5	29	93.5	0	0.0
All Airlines	88	88	76	86.4	77	87.5	0	0.0
Mackay-Brisbane								
Jetstar	35	33	28	84.8	25	75.8	2	5.7
QantasLink	113	113	89	78.8	99	87.6	0	0.0
Virgin Australia	138	138	130	94.2	129	93.5	0	0.0
All Airlines	286	284	247	87.0	253	89.1	2	0.7
Melbourne-Adelaide								
Jetstar	112	112	80	71.4	81	72.3	0	0.0
Qantas	286	286	242	84.6	243	85.0	0	0.0
Tigerair Australia	76	75	63	84.0	63	84.0	1	1.3
Virgin Australia	297	295	249	84.4	257	87.1	2	0.7
All Airlines	771	768	634	82.6	644	83.9	3	0.4
Melbourne-Brisbane								
Jetstar	123	120	95	79.2	87	72.5	3	2.4
Qantas	425	425	316	74.4	319	75.1	0	0.0
QantasLink	14	14	10	71.4	9	64.3	0	0.0
Tigerair Australia	124	118	71	60.2	79	66.9	6	4.8
Virgin Australia	388	372	320	86.0	335	90.1	16	4.1
All Airlines	1 074	1 049	812	77.4	829	79.0	25	2.3

	<i>Sectors</i>		<i>Arrivals On Time</i>		<i>Departures On Time</i>		<i>Cancellations</i>	
	<i>Sched.</i>	<i>Flown</i>	<i>No.</i>	<i>%</i>	<i>No.</i>	<i>%</i>	<i>No.</i>	<i>%</i>
Melbourne-Cairns								
Jetstar	63	63	50	79.4	48	76.2	0	0.0
Qantas	40	40	34	85.0	33	82.5	0	0.0
Tigerair Australia	36	36	28	77.8	31	86.1	0	0.0
Virgin Australia	35	35	31	88.6	32	91.4	0	0.0
All Airlines	174	174	143	82.2	144	82.8	0	0.0
Melbourne-Canberra								
Qantas	212	212	188	88.7	181	85.4	0	0.0
QantasLink	90	86	77	89.5	78	90.7	4	4.4
Tigerair Australia	36	36	26	72.2	26	72.2	0	0.0
Virgin Australia	172	170	150	88.2	149	87.6	2	1.2
All Airlines	510	504	441	87.5	434	86.1	6	1.2
Melbourne-Darwin								
Jetstar	19	18	16	88.9	18	100.0	1	5.3
Qantas	31	30	30	100.0	29	96.7	1	3.2
Virgin Australia	31	29	22	75.9	21	72.4	2	6.5
All Airlines	81	77	68	88.3	68	88.3	4	4.9
Melbourne-Gold Coast								
Jetstar	152	152	123	80.9	123	80.9	0	0.0
Qantas	31	31	28	90.3	28	90.3	0	0.0
Tigerair Australia	84	82	59	72.0	63	76.8	2	2.4
Virgin Australia	203	203	167	82.3	176	86.7	0	0.0
All Airlines	470	468	377	80.6	390	83.3	2	0.4
Melbourne-Hobart								
Jetstar	194	192	148	77.1	155	80.7	2	1.0
Qantas	53	53	45	84.9	47	88.7	0	0.0
QantasLink	86	84	74	88.1	74	88.1	2	2.3
Tigerair Australia	48	48	32	66.7	37	77.1	0	0.0
Virgin Australia	149	148	119	80.4	122	82.4	1	0.7
All Airlines	530	525	418	79.6	435	82.9	5	0.9
Melbourne-Launceston								
Jetstar	145	145	117	80.7	115	79.3	0	0.0
QantasLink	118	116	103	88.8	101	87.1	2	1.7
Virgin Australia	111	111	86	77.5	89	80.2	0	0.0
All Airlines	374	372	306	82.3	305	82.0	2	0.5
Melbourne-Mildura								
QantasLink	97	95	83	87.4	85	89.5	2	2.1
Regional Express	76	76	61	80.3	65	85.5	0	0.0
Virgin Australia	31	31	25	80.6	27	87.1	0	0.0
All Airlines	204	202	169	83.7	177	87.6	2	1.0
Melbourne-Newcastle								
Jetstar	100	100	72	72.0	68	68.0	0	0.0
Virgin Australia	35	35	26	74.3	29	82.9	0	0.0
All Airlines	135	135	98	72.6	97	71.9	0	0.0
Melbourne-Perth								
Jetstar	53	52	46	88.5	44	84.6	1	1.9
Qantas	208	207	166	80.2	147	71.0	1	0.5
Tigerair Australia	53	52	33	63.5	35	67.3	1	1.9
Virgin Australia	143	143	114	79.7	104	72.7	0	0.0
All Airlines	457	454	359	79.1	330	72.7	3	0.7

	<i>Sectors</i>		<i>Arrivals On Time</i>		<i>Departures On Time</i>		<i>Cancellations</i>	
	<i>Sched.</i>	<i>Flown</i>	<i>No.</i>	<i>%</i>	<i>No.</i>	<i>%</i>	<i>No.</i>	<i>%</i>
Melbourne-Sunshine Coast								
Jetstar	75	75	58	77.3	55	73.3	0	0.0
Virgin Australia	67	66	57	86.4	57	86.4	1	1.5
All Airlines	142	141	115	81.6	112	79.4	1	0.7
Melbourne-Sydney								
Jetstar	387	379	255	67.3	275	72.6	8	2.1
Qantas	1 030	1 008	749	74.3	816	81.0	22	2.1
QantasLink	3	3	3	100.0	3	100.0	0	0.0
Tigerair Australia	265	258	138	53.5	162	62.8	7	2.6
Virgin Australia	773	754	596	79.0	661	87.7	19	2.5
All Airlines	2 458	2 402	1 741	72.5	1 917	79.8	56	2.3
Melbourne-Townsville								
Jetstar	19	19	14	73.7	16	84.2	0	0.0
Tigerair Australia	18	15	11	73.3	12	80.0	3	16.7
All Airlines	37	34	25	73.5	28	82.4	3	8.1
Mildura-Melbourne								
QantasLink	97	95	80	84.2	81	85.3	2	2.1
Regional Express	76	76	58	76.3	58	76.3	0	0.0
Virgin Australia	31	31	26	83.9	25	80.6	0	0.0
All Airlines	204	202	164	81.2	164	81.2	2	1.0
Mount Isa-Brisbane								
QantasLink	53	52	32	61.5	33	63.5	1	1.9
Virgin Australia	18	18	9	50.0	13	72.2	0	0.0
All Airlines	71	70	41	58.6	46	65.7	1	1.4
Newcastle-Brisbane								
Jetstar	80	80	69	86.3	72	90.0	0	0.0
QantasLink	59	57	51	89.5	51	89.5	2	3.4
Virgin Australia	86	86	69	80.2	71	82.6	0	0.0
All Airlines	225	223	189	84.8	194	87.0	2	0.9
Newcastle-Melbourne								
Jetstar	100	99	77	77.8	78	78.8	1	1.0
Virgin Australia	35	35	23	65.7	25	71.4	0	0.0
All Airlines	135	134	100	74.6	103	76.9	1	0.7
Newman-Perth								
Qantas	58	58	55	94.8	55	94.8	0	0.0
QantasLink	72	68	62	91.2	59	86.8	4	5.6
Virgin Australia	17	17	15	88.2	15	88.2	0	0.0
Virgin Australia Regional Airlines	22	22	20	90.9	20	90.9	0	0.0
All Airlines	169	165	152	92.1	149	90.3	4	2.4
Perth-Adelaide								
Jetstar	27	27	23	85.2	21	77.8	0	0.0
Qantas	106	106	100	94.3	95	89.6	0	0.0
QantasLink	11	11	10	90.9	11	100.0	0	0.0
Virgin Australia	43	43	40	93.0	41	95.3	0	0.0
Virgin Australia Regional Airlines	43	42	34	81.0	38	90.5	1	2.3
All Airlines	230	229	207	90.4	206	90.0	1	0.4
Perth-Brisbane								
Qantas	135	135	110	81.5	115	85.2	0	0.0
Virgin Australia	107	107	96	89.7	98	91.6	0	0.0
All Airlines	242	242	206	85.1	213	88.0	0	0.0

	<i>Sectors</i>		<i>Arrivals On Time</i>		<i>Departures On Time</i>		<i>Cancellations</i>	
	<i>Sched.</i>	<i>Flown</i>	<i>No.</i>	<i>%</i>	<i>No.</i>	<i>%</i>	<i>No.</i>	<i>%</i>
Perth-Broome								
QantasLink	85	85	75	88.2	70	82.4	0	0.0
Virgin Australia	3	3	3	100.0	3	100.0	0	0.0
Virgin Australia Regional Airlines	65	65	53	81.5	54	83.1	0	0.0
All Airlines	153	153	131	85.6	127	83.0	0	0.0
Perth-Darwin								
Qantas	31	30	30	100.0	30	100.0	1	3.2
Virgin Australia	26	26	24	92.3	24	92.3	0	0.0
Virgin Australia Regional Airlines	5	3	2	66.7	2	66.7	2	40.0
All Airlines	62	59	56	94.9	56	94.9	3	4.8
Perth-Geraldton								
QantasLink	47	47	41	87.2	41	87.2	0	0.0
Virgin Australia Regional Airlines	53	52	43	82.7	44	84.6	1	1.9
All Airlines	100	99	84	84.8	85	85.9	1	1.0
Perth-Kalgoorlie								
Qantas	11	11	10	90.9	10	90.9	0	0.0
QantasLink	71	68	62	91.2	62	91.2	3	4.2
Virgin Australia	32	32	31	96.9	31	96.9	0	0.0
Virgin Australia Regional Airlines	38	38	34	89.5	34	89.5	0	0.0
All Airlines	152	149	137	91.9	137	91.9	3	2.0
Perth-Karratha								
Qantas	20	20	20	100.0	20	100.0	0	0.0
QantasLink	166	166	141	84.9	138	83.1	0	0.0
Virgin Australia	8	8	8	100.0	8	100.0	0	0.0
Virgin Australia Regional Airlines	66	61	56	91.8	57	93.4	5	7.6
All Airlines	260	255	225	88.2	223	87.5	5	1.9
Perth-Melbourne								
Jetstar	53	52	45	86.5	44	84.6	1	1.9
Qantas	207	206	175	85.0	175	85.0	1	0.5
Tigerair Australia	53	51	35	68.6	33	64.7	2	3.8
Virgin Australia	140	140	116	82.9	125	89.3	0	0.0
All Airlines	453	449	371	82.6	377	84.0	4	0.9
Perth-Newman								
Qantas	58	57	56	98.2	54	94.7	1	1.7
QantasLink	73	69	61	88.4	61	88.4	4	5.5
Virgin Australia	17	17	17	100.0	17	100.0	0	0.0
Virgin Australia Regional Airlines	22	22	20	90.9	20	90.9	0	0.0
All Airlines	170	165	154	93.3	152	92.1	5	2.9
Perth-Port Hedland								
Qantas	27	27	27	100.0	27	100.0	0	0.0
QantasLink	112	105	85	81.0	85	81.0	7	6.3
Virgin Australia	25	25	24	96.0	24	96.0	0	0.0
Virgin Australia Regional Airlines	28	28	24	85.7	25	89.3	0	0.0
All Airlines	192	185	160	86.5	161	87.0	7	3.6
Perth-Sydney								
Jetstar	27	26	21	80.8	16	61.5	1	3.7
Qantas	212	212	180	84.9	183	86.3	0	0.0
Tigerair Australia	27	27	23	85.2	25	92.6	0	0.0
Virgin Australia	124	123	104	84.6	109	88.6	1	0.8
All Airlines	390	388	328	84.5	333	85.8	2	0.5

	<i>Sectors</i>		<i>Arrivals On Time</i>		<i>Departures On Time</i>		<i>Cancellations</i>	
	<i>Sched.</i>	<i>Flown</i>	<i>No.</i>	<i>%</i>	<i>No.</i>	<i>%</i>	<i>No.</i>	<i>%</i>
Port Hedland-Perth								
Qantas	27	27	25	92.6	24	88.9	0	0.0
QantasLink	111	104	84	80.8	86	82.7	7	6.3
Virgin Australia	25	25	23	92.0	24	96.0	0	0.0
Virgin Australia Regional Airlines	28	28	24	85.7	25	89.3	0	0.0
All Airlines	191	184	156	84.8	159	86.4	7	3.7
Port Lincoln-Adelaide								
QantasLink	112	112	106	94.6	108	96.4	0	0.0
Regional Express	194	194	177	91.2	177	91.2	0	0.0
All Airlines	306	306	283	92.5	285	93.1	0	0.0
Port Macquarie-Sydney								
QantasLink	108	105	71	67.6	73	69.5	3	2.8
Virgin Australia	58	58	33	56.9	31	53.4	0	0.0
All Airlines	166	163	104	63.8	104	63.8	3	1.8
Proserpine-Brisbane								
Jetstar	33	33	29	87.9	25	75.8	0	0.0
Virgin Australia	32	32	31	96.9	29	90.6	0	0.0
All Airlines	65	65	60	92.3	54	83.1	0	0.0
Proserpine-Sydney								
Jetstar	14	14	11	78.6	9	64.3	0	0.0
Tigerair Australia	28	28	20	71.4	20	71.4	0	0.0
All Airlines	42	42	31	73.8	29	69.0	0	0.0
Rockhampton-Brisbane								
QantasLink	155	154	128	83.1	129	83.8	1	0.6
Virgin Australia	142	140	115	82.1	112	80.0	2	1.4
All Airlines	297	294	243	82.7	241	82.0	3	1.0
Sunshine Coast-Melbourne								
Jetstar	76	76	52	68.4	47	61.8	0	0.0
Virgin Australia	67	65	54	83.1	56	86.2	2	3.0
All Airlines	143	141	106	75.2	103	73.0	2	1.4
Sunshine Coast-Sydney								
Jetstar	99	98	71	72.4	69	70.4	1	1.0
QantasLink	36	34	28	82.4	29	85.3	2	5.6
Virgin Australia	50	50	45	90.0	45	90.0	0	0.0
All Airlines	185	182	144	79.1	143	78.6	3	1.6
Sydney-Adelaide								
Jetstar	112	111	93	83.8	94	84.7	1	0.9
Qantas	222	222	184	82.9	178	80.2	0	0.0
QantasLink	33	31	28	90.3	27	87.1	2	6.1
Tigerair Australia	48	48	34	70.8	34	70.8	0	0.0
Virgin Australia	177	176	155	88.1	156	88.6	1	0.6
All Airlines	592	588	494	84.0	489	83.2	4	0.7
Sydney-Albury								
QantasLink	92	91	68	74.7	66	72.5	1	1.1
Regional Express	92	92	79	85.9	83	90.2	0	0.0
Virgin Australia	59	59	54	91.5	51	86.4	0	0.0
All Airlines	243	242	201	83.1	200	82.6	1	0.4
Sydney-Armidale								
QantasLink	102	100	67	67.0	74	74.0	2	2.0
Regional Express	70	70	59	84.3	58	82.9	0	0.0
All Airlines	172	170	126	74.1	132	77.6	2	1.2

	Sectors		Arrivals On Time		Departures On Time		Cancellations	
	Sched.	Flown	No.	%	No.	%	No.	%
Sydney-Ayers Rock								
Jetstar	26	26	23	88.5	21	80.8	0	0.0
Virgin Australia	31	31	30	96.8	27	87.1	0	0.0
All Airlines	57	57	53	93.0	48	84.2	0	0.0
Sydney-Ballina								
Jetstar	83	83	69	83.1	69	83.1	0	0.0
Regional Express	25	25	11	44.0	17	68.0	0	0.0
Virgin Australia	33	33	32	97.0	32	97.0	0	0.0
All Airlines	141	141	112	79.4	118	83.7	0	0.0
Sydney-Brisbane								
Jetstar	157	154	118	76.6	112	72.7	3	1.9
Qantas	626	624	503	80.6	511	81.9	2	0.3
QantasLink	9	9	8	88.9	8	88.9	0	0.0
Tigerair Australia	115	115	81	70.4	87	75.7	0	0.0
Virgin Australia	546	539	418	77.6	439	81.4	7	1.3
All Airlines	1 453	1 441	1 128	78.3	1 157	80.3	12	0.8
Sydney-Cairns								
Jetstar	82	80	73	91.3	67	83.8	2	2.4
Qantas	75	75	66	88.0	62	82.7	0	0.0
Tigerair Australia	42	41	27	65.9	32	78.0	1	2.4
Virgin Australia	91	91	76	83.5	75	82.4	0	0.0
All Airlines	290	287	242	84.3	236	82.2	3	1.0
Sydney-Canberra								
Qantas	33	33	31	93.9	31	93.9	0	0.0
QantasLink	434	421	357	84.8	342	81.2	13	3.0
Virgin Australia	258	253	221	87.4	214	84.6	5	1.9
All Airlines	725	707	609	86.1	587	83.0	18	2.5
Sydney-Coffs Harbour								
QantasLink	145	144	115	79.9	108	75.0	1	0.7
Tigerair Australia	13	13	9	69.2	10	76.9	0	0.0
Virgin Australia	52	52	46	88.5	47	90.4	0	0.0
All Airlines	210	209	170	81.3	165	78.9	1	0.5
Sydney-Darwin								
Jetstar	19	17	16	94.1	15	88.2	2	10.5
Qantas	42	40	34	85.0	26	65.0	2	4.8
Virgin Australia	31	30	24	80.0	24	80.0	1	3.2
All Airlines	92	87	74	85.1	65	74.7	5	5.4
Sydney-Dubbo								
QantasLink	109	109	77	70.6	78	71.6	0	0.0
Regional Express	128	128	118	92.2	108	84.4	0	0.0
All Airlines	237	237	195	82.3	186	78.5	0	0.0
Sydney-Gold Coast								
Jetstar	287	286	233	81.5	229	80.1	1	0.3
Qantas	91	91	79	86.8	71	78.0	0	0.0
QantasLink	32	31	26	83.9	27	87.1	1	3.1
Tigerair Australia	106	104	69	66.3	74	71.2	2	1.9
Virgin Australia	251	250	212	84.8	217	86.8	1	0.4
All Airlines	767	762	619	81.2	618	81.1	5	0.7

	Sectors		Arrivals On Time		Departures On Time		Cancellations	
	Sched.	Flown	No.	%	No.	%	No.	%
Sydney-Hamilton Island								
Jetstar	20	20	18	90.0	20	100.0	0	0.0
Qantas	7	7	6	85.7	5	71.4	0	0.0
QantasLink	14	14	11	78.6	12	85.7	0	0.0
Virgin Australia	28	28	24	85.7	25	89.3	0	0.0
All Airlines	69	69	59	85.5	62	89.9	0	0.0
Sydney-Hobart								
Jetstar	84	84	72	85.7	70	83.3	0	0.0
Qantas	45	45	41	91.1	35	77.8	0	0.0
QantasLink	13	13	10	76.9	10	76.9	0	0.0
Virgin Australia	72	72	67	93.1	68	94.4	0	0.0
All Airlines	214	214	190	88.8	183	85.5	0	0.0
Sydney-Launceston								
Jetstar	57	57	49	86.0	48	84.2	0	0.0
Virgin Australia	31	31	28	90.3	29	93.5	0	0.0
All Airlines	88	88	77	87.5	77	87.5	0	0.0
Sydney-Melbourne								
Jetstar	388	376	290	77.1	266	70.7	12	3.1
Qantas	1 043	1 021	779	76.3	758	74.2	22	2.1
QantasLink	3	3	3	100.0	3	100.0	0	0.0
Tigerair Australia	266	258	136	52.7	138	53.5	8	3.0
Virgin Australia	759	737	612	83.0	626	84.9	22	2.9
All Airlines	2 459	2 395	1 820	76.0	1 791	74.8	64	2.6
Sydney-Perth								
Jetstar	27	26	22	84.6	18	69.2	1	3.7
Qantas	208	208	182	87.5	165	79.3	0	0.0
Tigerair Australia	27	27	25	92.6	22	81.5	0	0.0
Virgin Australia	124	124	107	86.3	90	72.6	0	0.0
All Airlines	386	385	336	87.3	295	76.6	1	0.3
Sydney-Port Macquarie								
QantasLink	108	106	67	63.2	73	68.9	2	1.9
Virgin Australia	58	58	40	69.0	41	70.7	0	0.0
All Airlines	166	164	107	65.2	114	69.5	2	1.2
Sydney-Proserpine								
Jetstar	14	14	11	78.6	12	85.7	0	0.0
Tigerair Australia	28	28	20	71.4	18	64.3	0	0.0
All Airlines	42	42	31	73.8	30	71.4	0	0.0
Sydney-Sunshine Coast								
Jetstar	98	98	75	76.5	73	74.5	0	0.0
QantasLink	35	34	29	85.3	30	88.2	1	2.9
Virgin Australia	50	50	46	92.0	45	90.0	0	0.0
All Airlines	183	182	150	82.4	148	81.3	1	0.5
Sydney-Tamworth								
QantasLink	127	125	92	73.6	92	73.6	2	1.6
Virgin Australia	41	41	35	85.4	36	87.8	0	0.0
All Airlines	168	166	127	76.5	128	77.1	2	1.2
Sydney-Townsville								
Jetstar	17	17	13	76.5	14	82.4	0	0.0
Virgin Australia	26	26	23	88.5	23	88.5	0	0.0
All Airlines	43	43	36	83.7	37	86.0	0	0.0

	<i>Sectors</i>		<i>Arrivals On Time</i>		<i>Departures On Time</i>		<i>Cancellations</i>	
	<i>Sched.</i>	<i>Flown</i>	<i>No.</i>	<i>%</i>	<i>No.</i>	<i>%</i>	<i>No.</i>	<i>%</i>
Sydney-Wagga Wagga								
QantasLink	106	106	86	81.1	80	75.5	0	0.0
Regional Express	120	119	105	88.2	104	87.4	1	0.8
All Airlines	226	225	191	84.9	184	81.8	1	0.4
Tamworth-Sydney								
QantasLink	128	126	101	80.2	100	79.4	2	1.6
Virgin Australia	41	41	36	87.8	36	87.8	0	0.0
All Airlines	169	167	137	82.0	136	81.4	2	1.2
Townsville-Brisbane								
Jetstar	39	39	30	76.9	30	76.9	0	0.0
Qantas	66	66	53	80.3	51	77.3	0	0.0
QantasLink	83	81	58	71.6	65	80.2	2	2.4
Virgin Australia	141	139	130	93.5	128	92.1	2	1.4
All Airlines	329	325	271	83.4	274	84.3	4	1.2
Townsville-Cairns								
QantasLink	134	132	106	80.3	112	84.8	2	1.5
Regional Express	30	30	22	73.3	24	80.0	0	0.0
All Airlines	164	162	128	79.0	136	84.0	2	1.2
Townsville-Melbourne								
Jetstar	19	19	14	73.7	14	73.7	0	0.0
Tigerair Australia	18	15	12	80.0	10	66.7	3	16.7
All Airlines	37	34	26	76.5	24	70.6	3	8.1
Townsville-Sydney								
Jetstar	17	17	13	76.5	13	76.5	0	0.0
Virgin Australia	26	26	26	100.0	23	88.5	0	0.0
All Airlines	43	43	39	90.7	36	83.7	0	0.0
Wagga Wagga-Sydney								
QantasLink	107	106	87	82.1	86	81.1	1	0.9
Regional Express	122	121	96	79.3	103	85.1	1	0.8
All Airlines	229	227	183	80.6	189	83.3	2	0.9

Airports

On time performance is reported for all routes where the passenger load averages over 8000 passengers per month, and where two or more airlines operate in competition. The following data reports by airport against flights operated on those routes only. This month, 8 major city airports and 32 regional city airports are covered.

Airport	Arrivals			Departures		
	Sectors	On Time		Sectors	On Time	
	Flown	No.	%	Flown	No.	%
Adelaide						
Jetstar	306	249	81.4	305	250	82.0
Qantas	787	690	87.7	784	698	89.0
QantasLink	187	174	93.0	186	169	90.9
Regional Express	194	177	91.2	193	180	93.3
Tigerair Australia	147	120	81.6	147	110	74.8
Virgin Australia	687	600	87.3	688	615	89.4
Virgin Australia Regional Airlines	60	50	83.3	58	42	72.4
All Airlines	2 368	2 060	87.0	2 361	2 064	87.4
Relates to services to and from Alice Springs, Brisbane, Canberra, Gold Coast, Melbourne, Perth, Port Lincoln and Sydney.						
Albury						
QantasLink	91	68	74.7	90	68	75.6
Regional Express	92	79	85.9	90	79	87.8
Virgin Australia	59	54	91.5	59	55	93.2
All Airlines	242	201	83.1	239	202	84.5
Relates to services to and from Sydney only.						
Alice Springs						
Qantas	30	28	93.3	30	26	86.7
QantasLink	47	42	89.4	46	43	93.5
Virgin Australia	8	8	100.0	8	8	100.0
Virgin Australia Regional Airlines	36	28	77.8	36	32	88.9
All Airlines	121	106	87.6	120	109	90.8
Relates to services to and from Adelaide and Darwin.						
Armidale						
QantasLink	100	67	67.0	99	64	64.6
Regional Express	70	59	84.3	72	52	72.2
All Airlines	170	126	74.1	171	116	67.8
Relates to services to and from Sydney only.						
Ayers Rock						
Jetstar	26	23	88.5	27	23	85.2
Virgin Australia	31	30	96.8	31	27	87.1
All Airlines	57	53	93.0	58	50	86.2
Relates to services to and from Sydney only.						
Ballina						
Jetstar	83	69	83.1	84	61	72.6
Regional Express	25	11	44.0	24	18	75.0
Virgin Australia	33	32	97.0	33	32	97.0
All Airlines	141	112	79.4	141	111	78.7
Relates to services to and from Sydney only.						

Airport	Arrivals			Departures		
	Sectors	On Time		Sectors	On Time	
	Flown	No.	%	Flown	No.	%
Brisbane						
Jetstar	618	504	81.6	619	481	77.7
Qantas	1 494	1 204	80.6	1 493	1 199	80.3
QantasLink	1 032	831	80.5	1 038	873	84.1
Tigerair Australia	311	214	68.8	311	233	74.9
Virgin Australia	2 153	1 824	84.7	2 148	1 882	87.6
All Airlines	5 608	4 577	81.6	5 609	4 668	83.2

Relates to services to and from Adelaide, Bundaberg, Cairns, Canberra, Darwin, Emerald, Gladstone, Hamilton Island, Hobart, Mackay, Melbourne, Mount Isa, Newcastle, Perth, Proserpine, Rockhampton, Sydney and Townsville.

Broome

QantasLink	85	75	88.2	85	74	87.1
Virgin Australia	3	3	100.0	3	3	100.0
Virgin Australia Regional Airlines	65	53	81.5	65	50	76.9
All Airlines	153	131	85.6	153	127	83.0

Relates to services to and from Perth only.

Bundaberg

QantasLink	110	98	89.1	110	98	89.1
Virgin Australia	31	25	80.6	31	26	83.9
All Airlines	141	123	87.2	141	124	87.9

Relates to services to and from Brisbane only.

Cairns

Jetstar	230	200	87.0	229	192	83.8
Qantas	201	173	86.1	202	173	85.6
QantasLink	160	124	77.5	159	114	71.7
Regional Express	30	22	73.3	30	21	70.0
Tigerair Australia	102	75	73.5	102	70	68.6
Virgin Australia	253	223	88.1	252	220	87.3
All Airlines	976	817	83.7	974	790	81.1

Relates to services to and from Brisbane, Melbourne, Sydney and Townsville.

Canberra

Qantas	321	289	90.0	322	295	91.6
QantasLink	631	541	85.7	628	538	85.7
Tigerair Australia	50	35	70.0	50	34	68.0
Virgin Australia	547	483	88.3	545	488	89.5
All Airlines	1 549	1 348	87.0	1 545	1 355	87.7

Relates to services to and from Adelaide, Brisbane, Melbourne and Sydney.

Coffs Harbour

QantasLink	144	115	79.9	143	114	79.7
Tigerair Australia	13	9	69.2	13	9	69.2
Virgin Australia	52	46	88.5	52	50	96.2
All Airlines	209	170	81.3	208	173	83.2

Relates to services to and from Sydney only.

Airport	Arrivals			Departures		
	Sectors Flown	On Time		Sectors Flown	On Time	
		No.	%		No.	%
Darwin						
Jetstar	52	49	94.2	52	45	86.5
Qantas	134	126	94.0	134	119	88.8
QantasLink	46	43	93.5	47	43	91.5
Tigerair Australia	15	12	80.0	15	13	86.7
Virgin Australia	119	96	80.7	120	108	90.0
Virgin Australia Regional Airlines	21	17	81.0	21	18	85.7
All Airlines	387	343	88.6	389	346	88.9
Relates to services to and from Alice Springs, Brisbane, Melbourne, Perth and Sydney.						
Dubbo						
QantasLink	109	77	70.6	110	80	72.7
Regional Express	128	118	92.2	129	111	86.0
All Airlines	237	195	82.3	239	191	79.9
Relates to services to and from Sydney only.						
Emerald						
QantasLink	108	101	93.5	107	97	90.7
Virgin Australia	52	42	80.8	52	43	82.7
All Airlines	160	143	89.4	159	140	88.1
Relates to services to and from Brisbane only.						
Geraldton						
QantasLink	47	41	87.2	46	43	93.5
Virgin Australia Regional Airlines	52	43	82.7	52	43	82.7
All Airlines	99	84	84.8	98	86	87.8
Relates to services to and from Perth only.						
Gladstone						
QantasLink	127	96	75.6	127	101	79.5
Virgin Australia	72	56	77.8	72	58	80.6
All Airlines	199	152	76.4	199	159	79.9
Relates to services to and from Brisbane only.						
Gold Coast						
Jetstar	468	384	82.1	468	384	82.1
Qantas	122	107	87.7	121	108	89.3
QantasLink	31	26	83.9	32	29	90.6
Tigerair Australia	186	128	68.8	185	106	57.3
Virgin Australia	486	406	83.5	485	388	80.0
All Airlines	1 293	1 051	81.3	1 291	1 015	78.6
Relates to services to and from Adelaide, Melbourne and Sydney.						
Hamilton Island						
Jetstar	20	18	90.0	20	16	80.0
Qantas	7	6	85.7	7	7	100.0
QantasLink	39	34	87.2	39	35	89.7
Virgin Australia	59	51	86.4	59	49	83.1
All Airlines	125	109	87.2	125	107	85.6
Relates to services to and from Brisbane and Sydney.						

Airport	Arrivals			Departures		
	Sectors Flown	On Time		Sectors Flown	On Time	
		No.	%		No.	%
Hobart						
Jetstar	305	245	80.3	305	200	65.6
Qantas	98	86	87.8	97	84	86.6
QantasLink	97	84	86.6	98	93	94.9
Tigerair Australia	48	32	66.7	47	27	57.4
Virgin Australia	252	217	86.1	253	195	77.1
All Airlines	800	664	83.0	800	599	74.9
Relates to services to and from Brisbane, Melbourne and Sydney.						
Kalgoorlie						
Qantas	11	10	90.9	11	11	100.0
QantasLink	68	62	91.2	69	61	88.4
Virgin Australia	32	31	96.9	31	25	80.6
Virgin Australia Regional Airlines	38	34	89.5	38	34	89.5
All Airlines	149	137	91.9	149	131	87.9
Relates to services to and from Perth only.						
Karratha						
Qantas	20	20	100.0	20	20	100.0
QantasLink	166	141	84.9	165	144	87.3
Virgin Australia	8	8	100.0	8	8	100.0
Virgin Australia Regional Airlines	61	56	91.8	61	52	85.2
All Airlines	255	225	88.2	254	224	88.2
Relates to services to and from Perth only.						
Launceston						
Jetstar	202	166	82.2	201	154	76.6
QantasLink	116	103	88.8	116	101	87.1
Virgin Australia	142	114	80.3	142	116	81.7
All Airlines	460	383	83.3	459	371	80.8
Relates to services to and from Melbourne and Sydney.						
Mackay						
Jetstar	33	27	81.8	33	25	75.8
QantasLink	110	102	92.7	113	99	87.6
Virgin Australia	137	125	91.2	138	129	93.5
All Airlines	280	254	90.7	284	253	89.1
Relates to services to and from Brisbane only.						
Melbourne						
Jetstar	1 423	1 105	77.7	1 427	1 085	76.0
Qantas	2 288	1 852	80.9	2 292	1 843	80.4
QantasLink	399	344	86.2	398	350	87.9
Regional Express	76	58	76.3	76	65	85.5
Tigerair Australia	717	448	62.5	720	508	70.6
Virgin Australia	2 392	1 964	82.1	2 392	2 059	86.1
All Airlines	7 295	5 771	79.1	7 305	5 910	80.9
Relates to services to and from Adelaide, Brisbane, Cairns, Canberra, Darwin, Gold Coast, Hobart, Launceston, Mildura, Newcastle, Perth, Sunshine Coast, Sydney and Townsville.						
Mildura						
QantasLink	95	83	87.4	95	81	85.3
Regional Express	76	61	80.3	76	58	76.3
Virgin Australia	31	25	80.6	31	25	80.6
All Airlines	202	169	83.7	202	164	81.2
Relates to services to and from Melbourne only.						

Airport	Arrivals			Departures		
	Sectors Flown	On Time		Sectors Flown	On Time	
		No.	%		No.	%
Mount Isa						
QantasLink	55	36	65.5	52	33	63.5
Virgin Australia	17	15	88.2	18	13	72.2
All Airlines	72	51	70.8	70	46	65.7
Relates to services to and from Brisbane only.						
Newcastle						
Jetstar	180	132	73.3	179	150	83.8
QantasLink	58	47	81.0	57	51	89.5
Virgin Australia	121	105	86.8	121	96	79.3
All Airlines	359	284	79.1	357	297	83.2
Relates to services to and from Brisbane and Melbourne.						
Newman						
Qantas	57	56	98.2	58	55	94.8
QantasLink	69	61	88.4	68	59	86.8
Virgin Australia	17	17	100.0	17	15	88.2
Virgin Australia Regional Airlines	22	20	90.9	22	20	90.9
All Airlines	165	154	93.3	165	149	90.3
Relates to services to and from Perth only.						
Perth						
Jetstar	105	89	84.8	105	81	77.1
Qantas	801	706	88.1	804	709	88.2
QantasLink	548	483	88.1	551	468	84.9
Tigerair Australia	79	58	73.4	78	58	74.4
Virgin Australia	522	457	87.5	524	480	91.6
Virgin Australia Regional Airlines	309	257	83.2	311	274	88.1
All Airlines	2 364	2 050	86.7	2 373	2 070	87.2
Relates to services to and from Adelaide, Brisbane, Broome, Darwin, Geraldton, Kalgoorlie, Karratha, Melbourne, Newman, Port Hedland and Sydney.						
Port Hedland						
Qantas	27	27	100.0	27	24	88.9
QantasLink	105	85	81.0	104	86	82.7
Virgin Australia	25	24	96.0	25	24	96.0
Virgin Australia Regional Airlines	28	24	85.7	28	25	89.3
All Airlines	185	160	86.5	184	159	86.4
Relates to services to and from Perth only.						
Port Lincoln						
QantasLink	111	102	91.9	112	108	96.4
Regional Express	193	176	91.2	194	177	91.2
All Airlines	304	278	91.4	306	285	93.1
Relates to services to and from Adelaide only.						
Port Macquarie						
QantasLink	106	67	63.2	105	73	69.5
Virgin Australia	58	40	69.0	58	31	53.4
All Airlines	164	107	65.2	163	104	63.8
Relates to services to and from Sydney only.						

Airport	Arrivals			Departures		
	Sectors Flown	On Time		Sectors Flown	On Time	
		No.	%		No.	%
Proserpine						
Jetstar	47	39	83.0	47	34	72.3
Tigerair Australia	28	20	71.4	28	20	71.4
Virgin Australia	32	30	93.8	32	29	90.6
All Airlines	107	89	83.2	107	83	77.6
Relates to services to and from Brisbane and Sydney.						
Rockhampton						
QantasLink	156	123	78.8	154	129	83.8
Virgin Australia	139	100	71.9	140	112	80.0
All Airlines	295	223	75.6	294	241	82.0
Relates to services to and from Brisbane only.						
Sunshine Coast						
Jetstar	173	133	76.9	174	116	66.7
QantasLink	34	29	85.3	34	29	85.3
Virgin Australia	116	103	88.8	115	101	87.8
All Airlines	323	265	82.0	323	246	76.2
Relates to services to and from Melbourne and Sydney.						
Sydney						
Jetstar	1 452	1 103	76.0	1 449	1 128	77.8
Qantas	2 370	1 898	80.1	2 366	1 842	77.9
QantasLink	1 332	1 047	78.6	1 337	1 030	77.0
Regional Express	436	331	75.9	434	370	85.3
Tigerair Australia	634	392	61.8	634	415	65.5
Virgin Australia	2 679	2 283	85.2	2 681	2 265	84.5
All Airlines	8 903	7 054	79.2	8 901	7 050	79.2
Relates to services to and from Adelaide, Albury, Armidale, Ayers Rock, Ballina, Brisbane, Cairns, Canberra, Coffs Harbour, Darwin, Dubbo, Gold Coast, Hamilton Island, Hobart, Launceston, Melbourne, Perth, Port Macquarie, Proserpine, Sunshine Coast, Tamworth, Townsville and Wagga Wagga.						
Tamworth						
QantasLink	125	92	73.6	126	100	79.4
Virgin Australia	41	35	85.4	41	36	87.8
All Airlines	166	127	76.5	167	136	81.4
Relates to services to and from Sydney only.						
Townsville						
Jetstar	76	58	76.3	75	57	76.0
Qantas	66	52	78.8	66	51	77.3
QantasLink	215	172	80.0	213	177	83.1
Regional Express	30	22	73.3	30	24	80.0
Tigerair Australia	15	11	73.3	15	10	66.7
Virgin Australia	164	148	90.2	165	151	91.5
All Airlines	566	463	81.8	564	470	83.3
Relates to services to and from Brisbane, Cairns, Melbourne and Sydney.						
Wagga Wagga						
QantasLink	106	86	81.1	106	86	81.1
Regional Express	119	105	88.2	121	103	85.1
All Airlines	225	191	84.9	227	189	83.3
Relates to services to and from Sydney only.						

Definitions

On time arrival	A flight arrival is counted as "on time" if it arrived at the gate before 15 minutes after the scheduled arrival time shown in the carriers' schedule. Neither diverted nor cancelled flights count as on time.
On time departure	A flight departure is counted as "on time" if it departs the gate before 15 minutes after the scheduled departure time shown in the carriers' schedule.
Cancellation	A flight removed from service within 7 days of scheduled departure is regarded as a cancellation.
On time departure percentage	The percentage of on time departures is measured against the number of departures <i>operated</i> on any particular sector.
On time arrival percentage	The percentage of on time arrivals is measured against the number of arrivals <i>operated</i> on any particular sector.
Cancellation percentage	The percentage of cancellations is measured against the number of services <i>scheduled</i> on any particular sector.
