



Australian Government

Department of Infrastructure, Regional Development and Cities

Bureau of Infrastructure, Transport and Regional Economics

STATISTICAL REPORT



Aviation

Domestic airline on time performance
November 2018

© Commonwealth of Australia 2018

ISSN: 1832-0759

Ownership of intellectual property rights in this publication

Unless otherwise noted, copyright (and any other intellectual property rights, if any) in this publication is owned by the Commonwealth of Australia (referred to below as the Commonwealth).

Disclaimer

The material contained in this publication is made available on the understanding that the Commonwealth is not providing professional advice, and that users exercise their own skill and care with respect to its use, and seek independent advice if necessary.

The Commonwealth makes no representations or warranties as to the contents or accuracy of the information contained in this publication. To the extent permitted by law, the Commonwealth disclaims liability to any person or organisation in respect of anything done, or omitted to be done, in reliance upon information contained in this publication.

Creative Commons licence

With the exception of (a) the Coat of Arms; and (b) the Department of Infrastructure, Regional Development and Cities' photos and graphics, copyright in this publication is licensed under a Creative Commons Attribution 3.0 Australia Licence.

Creative Commons Attribution 3.0 Australia Licence is a standard form licence agreement that allows you to copy, communicate and adapt this publication provided that you attribute the work to the Commonwealth and abide by the other licence terms. A summary of the licence terms is available from <http://creativecommons.org/licenses/by/3.0/au/deed.en>. The full licence terms are available from <http://creativecommons.org/licenses/by/3.0/au/legalcode>.

Use of the Coat of Arms

The Department of the Prime Minister and Cabinet sets the terms under which the Coat of Arms is used. Please refer to the Department's Commonwealth Coat of Arms and Government branding web page <http://www.dpmmc.gov.au/guidelines/index.cfm#brand> and, in particular, the Guidelines on the use of the Commonwealth Coat of Arms publication.

An appropriate citation for this report is:

Bureau of Infrastructure, Transport and Regional Economics (BITRE), 2018, Domestic airline on time performance, Statistical Report, BITRE, Canberra ACT.

Contact us

This publication is available in PDF format. All other rights are reserved, including in relation to any Departmental logos or trade marks which may exist. For enquiries regarding the licence and any use of this publication, please contact:

Bureau of Infrastructure, Transport and Regional Economics (BITRE)
Department of Infrastructure, Regional Development and Cities
GPO Box 501, Canberra ACT 2601, Australia
Telephone: (international) +61 2 6274 7210
Fax: (international) +61 2 6274 6855
Email: bitre@infrastructure.gov.au
Website: www.bitre.gov.au

Inquiries

Should you require additional information about the statistics contained in this publication:

Telephone (02) 6274 7790 or Facsimile (02) 6274 7727

Electronic mail: AVSTATS@infrastructure.gov.au

Web site: <http://www.bitre.gov.au/statistics/aviation/otphome.aspx>

Foreword

The Bureau of Infrastructure, Transport and Regional Economics (BITRE) monitors the punctuality and reliability of major domestic airlines operating between Australian airports. The purpose of this is to allow for evaluation of overall industry and individual airline performance, so that consumers of air travel can make informed decisions.

The following domestic airlines currently report this information monthly to the BITRE: Jetstar, Qantas, QantasLink, Regional Express, Tigerair Australia, Virgin Australia and Virgin Australia Regional Airlines. Data has been gathered since November 2003, although some airlines commenced reporting at a later date, including Jetstar which first reported in May 2004, MacAir in July 2005, Tigerair Australia in April 2008 and Virgin Australia Regional Airlines in May 2013. MacAir ceased operations in February 2009 and data was not received for December 2008 onwards. Virgin Blue was rebranded as Virgin Australia in May 2011 and Tiger Airways was rebranded as Tigerair Australia in July 2013 and time series data in Microsoft Excel spreadsheet format on the BITRE website have been revised to reflect these changes. Services operated by Skywest on behalf of Virgin Australia using ATR/F100 aircraft commenced in November 2011 and were shown separately as Virgin Australia – ATR/F100 Operations. Virgin Australia Regional Airlines commenced operations in May 2013. It was formed after the acquisition of Skywest by Virgin Australia and represented a combination of operations previously reported under Skywest and Virgin Australia – ATR/F100 Operations. In January 2016, Virgin Australia transferred their ATR fleet from Virgin Australia Regional Airlines to Virgin Australia.

Information presented in this report is for Australian domestic routes for which the passenger load averaged 8 000 or more passengers per month over the previous six months and where two or more airlines operated in competition on those routes. There were 65 routes that met this definition in November 2018. Over time, routes which meet these criteria change as airline networks and traffic levels vary.

Participating airlines report their overall monthly network performance where this is possible.

Total industry figures encompass all services operated by reporting airlines only. These airlines collectively carried over 95 per cent of total domestic passengers (regular public transport only) in 2017.

The method of capturing on time performance varies between airlines utilising different recording systems. Jetstar and Qantas jet aircraft use Aircraft Communication Addressing and Reporting System (ACARS) to electronically measure on time performance. Regional Express, Tigerair Australia, Virgin Australia, Virgin Australia Regional Airlines and the Qantas non-jet fleet record on time performance manually using records from pilots, gate agents and/or ground crews.

After initial data is collected, aggregate reports are audited internally by participating airlines prior to publication.

Reports and detailed time series data in Microsoft Excel spreadsheet format are available from the BITRE website at: <http://www.bitre.gov.au/statistics/aviation/otphome.aspx>.

Contents

	Page
Industry performance	1
Individual routes	10
Airports.....	24
Definitions	30

Industry performance

For November 2018, on time performance over all routes operated by participating airlines (Jetstar, Qantas, QantasLink, Regional Express, Tigerair Australia, Virgin Australia and Virgin Australia Regional Airlines) averaged 74.9 per cent for on time arrivals and 76.4 per cent for on time departures. Cancellations represented 2.8 per cent of all scheduled flights. The equivalent figures for November 2017 were 80.2 per cent for on time arrivals, 81.2 per cent for on time departures and 1.8 per cent for cancellations.

This month's on time arrivals figure was lower than the long term average performance for all routes (82.5 per cent) and the on time departures figure was also lower than the long term average (83.9 per cent). The rate of cancellations was higher than the long term average of 1.4 per cent.

Virgin Australia achieved the highest on time arrivals among the major domestic airlines at 77.2 per cent followed by Qantas at 71.9 per cent, Jetstar at 69.7 per cent and Tigerair Australia at 59.8 per cent. Of the regional airlines, QantasLink recorded 79.1 per cent for on time arrivals, followed by Regional Express at 78.6 per cent and Virgin Australia Regional Airlines at 74.9 per cent. The Qantas network (Qantas and QantasLink combined operations) recorded 75.8 per cent for on time arrivals while the Virgin Australia network (Virgin Australia and Virgin Australia Regional Airlines combined operations) recorded 77.1 per cent.

Virgin Australia also achieved the highest level of on time departures among the major domestic airlines for November 2018 at 79.7 per cent, followed by Qantas at 73.7 per cent, Jetstar at 68.3 per cent and Tigerair Australia at 61.2 per cent. Of the regional airlines, Regional Express recorded 81.9 per cent for on time departures, followed by QantasLink at 79.8 per cent and Virgin Australia Regional Airlines at 78.9 per cent. The Qantas network recorded 76.9 per cent for on time departures while the Virgin Australia network recorded 79.6 per cent.

Tigerair Australia recorded the highest percentage of cancellations (6.3 per cent) during the month, followed by Jetstar (4.0 per cent), Virgin Australia Regional Airlines (3.7 per cent), Qantas (3.1 per cent), Virgin Australia (2.4 per cent), QantasLink (2.2 per cent) and Regional Express (1.5 per cent).

Airlines' on time performance varies across the routes they serve. Individual route data by specific airline for 65 routes are shown on pages 10-23.

Of the 65 routes which met the criteria for on time performance reporting in November 2018, the Adelaide-Gold Coast route had the highest percentage of on time arrivals (100.0 per cent) and the highest percentage of on time departures (94.6 per cent). The Brisbane-Perth route had the lowest percentage of on time arrivals (43.8 per cent) and the Ayers Rock-Sydney route had the lowest percentage of on time departures (41.1 per cent).

Cancellations were highest on the Melbourne-Sydney route at 7.6 per cent, followed by the Sydney-Melbourne route at 7.4 per cent, the Launceston-Sydney route at 6.3 per cent, the

Sydney-Townsville and Townsville-Sydney routes at 5.9 per cent and the Canberra-Sydney route at 5.2 per cent.

Bundaberg Airport recorded the highest percentage of on time arrivals (90.0 per cent) and the highest percentage of on time departures (91.3 per cent). Melbourne Airport recorded the lowest percentage of on time arrivals (65.0 per cent) and Ayers Rock Airport recorded the lowest percentage of on time departures (41.1 per cent). These figures only refer to reported routes and do not cover all flights at these airports.

Table 1 On time performance for November 2018 — Total Industry

	<i>Sectors</i>		<i>Arrivals On Time</i>		<i>Departures On Time</i>		<i>Cancellations</i>	
	<i>Scheduled</i>	<i>Flown</i>	<i>No.</i>	<i>%</i>	<i>No.</i>	<i>%</i>	<i>No.</i>	<i>%</i>
Jetstar	6 744	6 477	4 517	69.7	4 424	68.3	267	4.0
Qantas	8 905	8 632	6 203	71.9	6 358	73.7	273	3.1
QantasLink	10 207	9 983	7 901	79.1	7 965	79.8	224	2.2
Regional Express	6 331	6 235	4 898	78.6	5 106	81.9	96	1.5
Tigerair Australia	2 383	2 234	1 336	59.8	1 368	61.2	149	6.3
Virgin Australia	11 910	11 629	8 979	77.2	9 267	79.7	281	2.4
Virgin Australia Regional Airlines	739	712	533	74.9	562	78.9	27	3.7
All Airlines	47 219	45 902	34 367	74.9	35 050	76.4	1 317	2.8
Qantas - all QF designated services	19 112	18 615	14 104	75.8	14 323	76.9	497	2.6
Virgin Australia - all VA designated services	12 649	12 341	9 512	77.1	9 829	79.6	308	2.4

Total airline network data (including routes not shown in this report).

Airlines' on time performance varies across the routes they serve. Individual route data by specific airline for 65 routes are shown on pages 10-23.

Table 2 Top ten routes for on time performance for November 2018 (participating airlines only)

<i>Arrivals</i>		<i>Departures</i>	
<i>Route</i>	<i>On Time (%)</i>	<i>Route</i>	<i>On Time (%)</i>
Adelaide-Gold Coast	100.0	Adelaide-Gold Coast	94.6
Brisbane-Hobart	97.1	Brisbane-Hobart	94.2
Hobart-Brisbane	97.1	Brisbane-Proserpine	93.3
Bundaberg-Brisbane	91.3	Gold Coast-Adelaide	92.9
Brisbane-Bundaberg	90.0	Bundaberg-Brisbane	91.3
Brisbane-Proserpine	89.3	Hobart-Brisbane	91.2
Perth-Newman	89.3	Perth-Newman	90.5
Darwin-Alice Springs	88.9	Perth-Kalgoorlie	89.9
Brisbane-Emerald	88.5	Brisbane-Emerald	89.7
Emerald-Brisbane	88.4	Port Lincoln-Adelaide	89.0

Table 3 Top ten airports for on time performance for November 2018 (participating airlines and reported routes only)

<i>Arrivals</i>		<i>Departures</i>	
<i>Airport</i>	<i>On Time (%)</i>	<i>Airport</i>	<i>On Time (%)</i>
Bundaberg	90.0	Bundaberg	91.3
Newman	89.3	Port Lincoln	89.0
Emerald	88.5	Gladstone	88.7
Gladstone	86.8	Kalgoorlie	88.6
Kalgoorlie	85.9	Emerald	88.4
Geraldton	85.9	Mackay	87.3
Proserpine	85.7	Newman	87.3
Port Hedland	85.6	Karratha	86.8
Port Lincoln	85.0	Port Hedland	86.1
Townsville	84.2	Townsville	85.2

Total industry on time performance

Figure 1 On time performance (by month from November 2015)—Total Industry

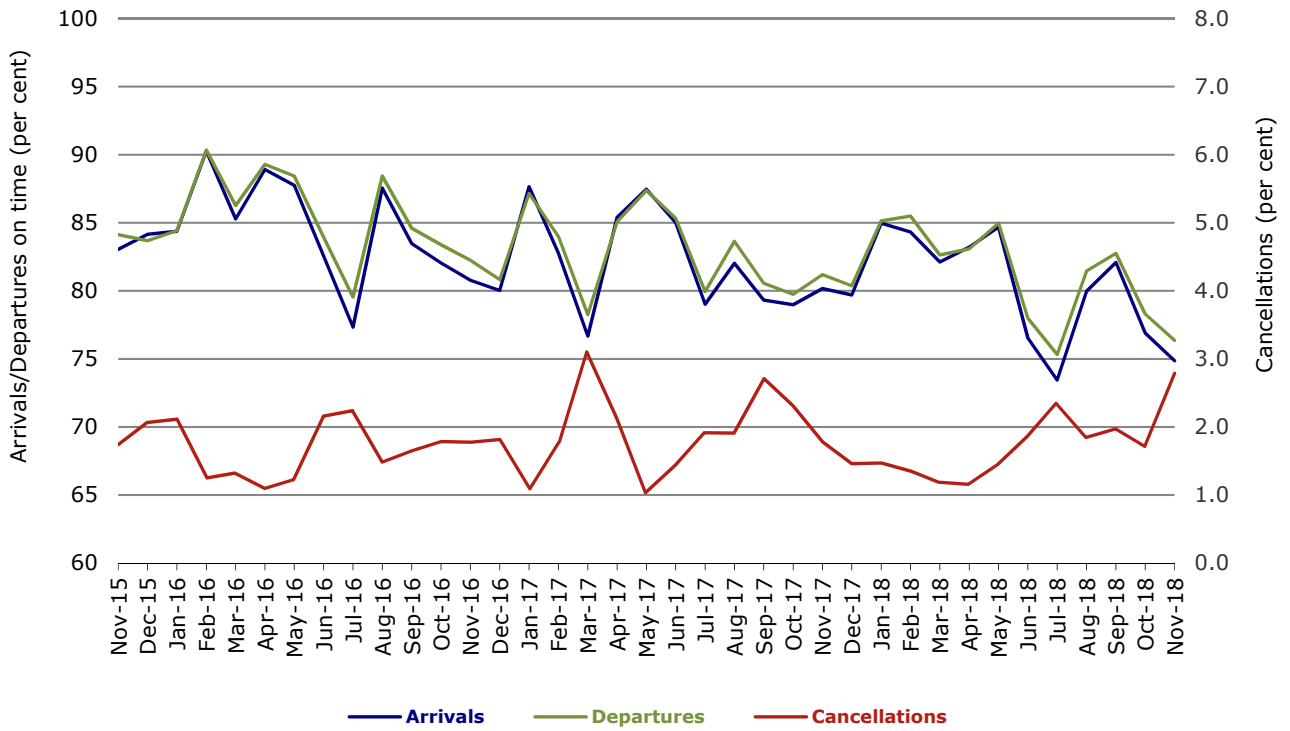


Figure 2 Arrivals on time (by month from November 2017)

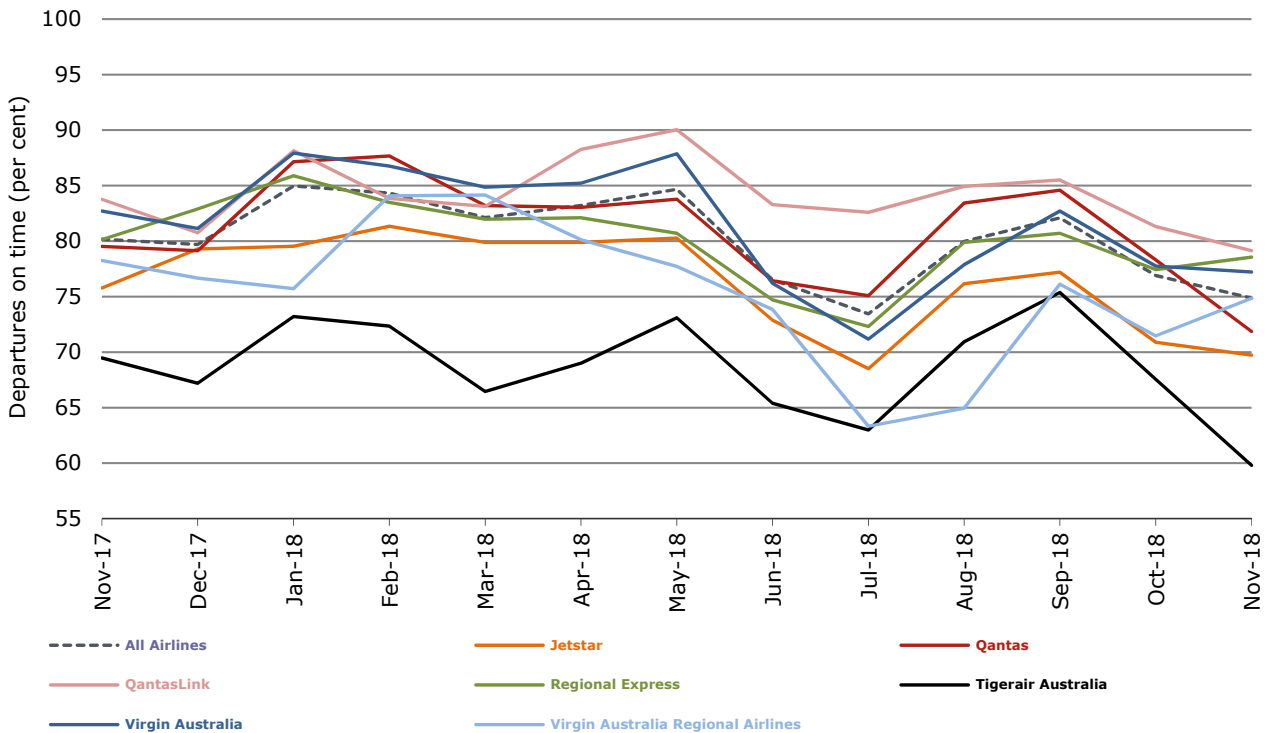


Figure 3 Departures on time (by month from November 2017)

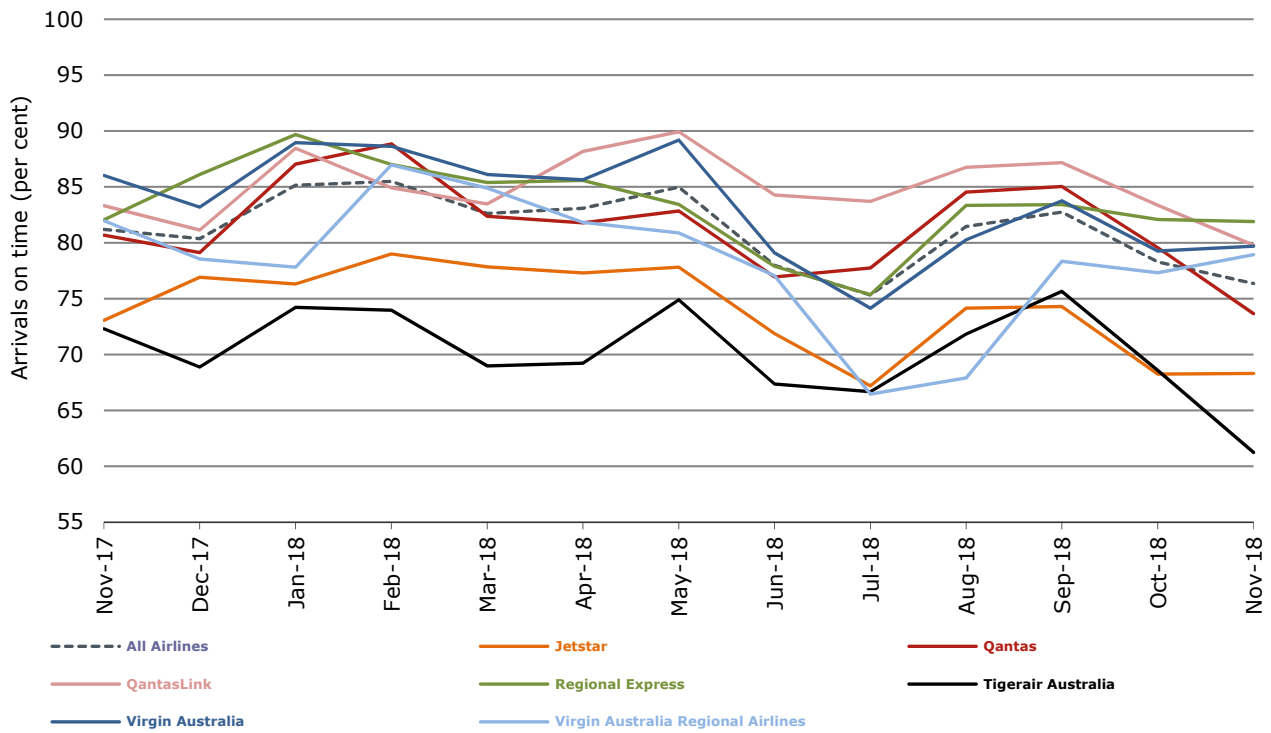
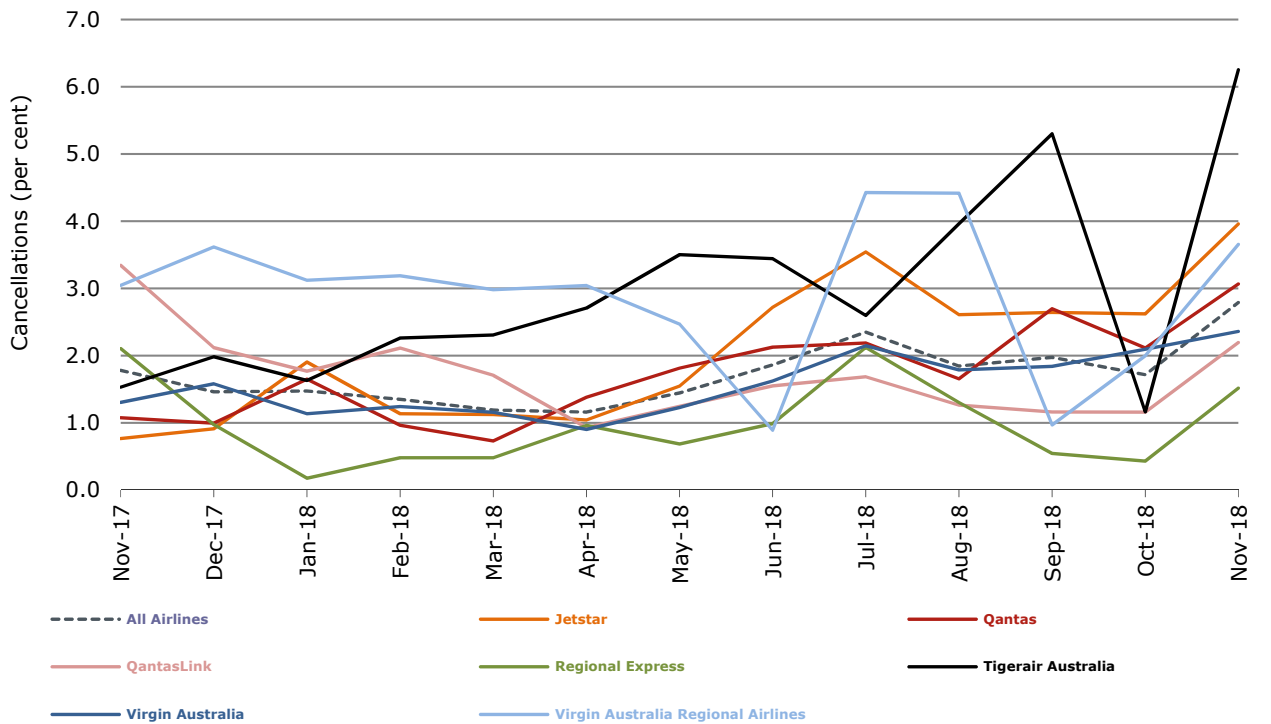


Figure 4 Cancellations (by month from November 2017)



Major domestic airlines on time performance

Figure 5 On time performance (by month from November 2015)—Jetstar

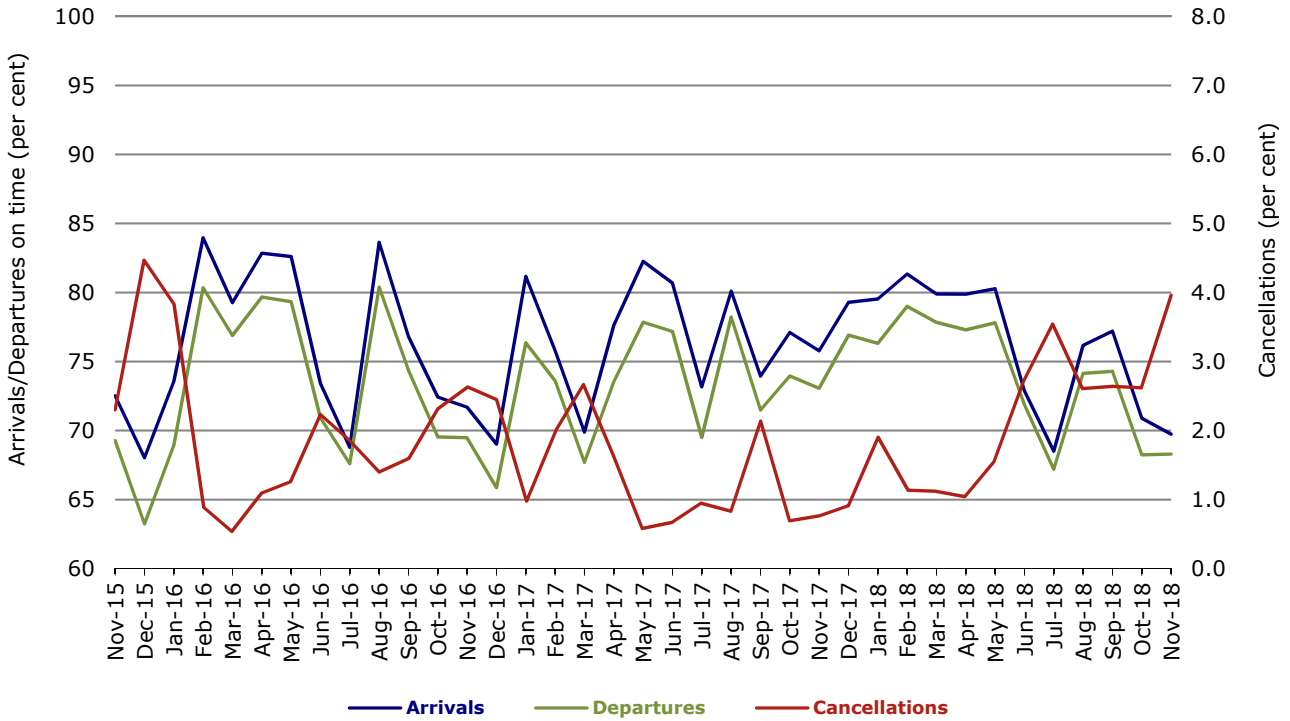


Figure 6 On time performance (by month from November 2015)—Qantas

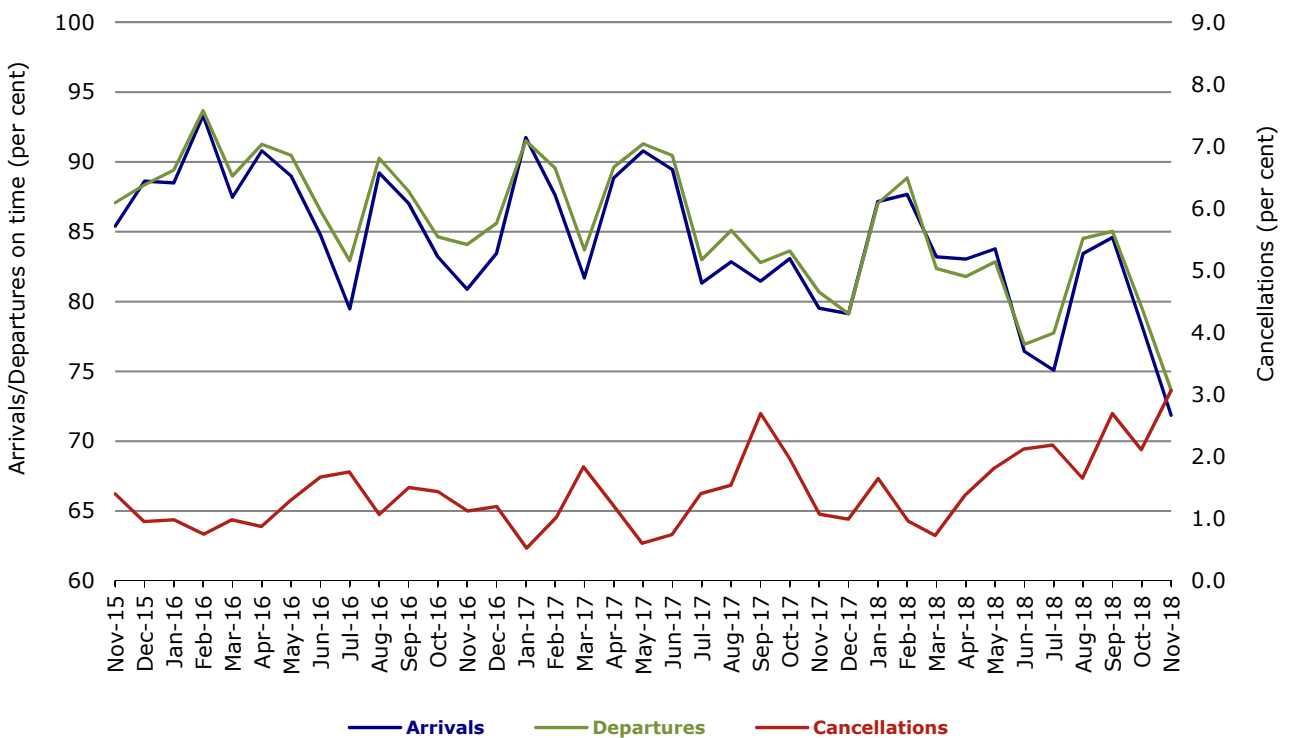


Figure 7 On time performance (by month from November 2015)—Tigerair Australia

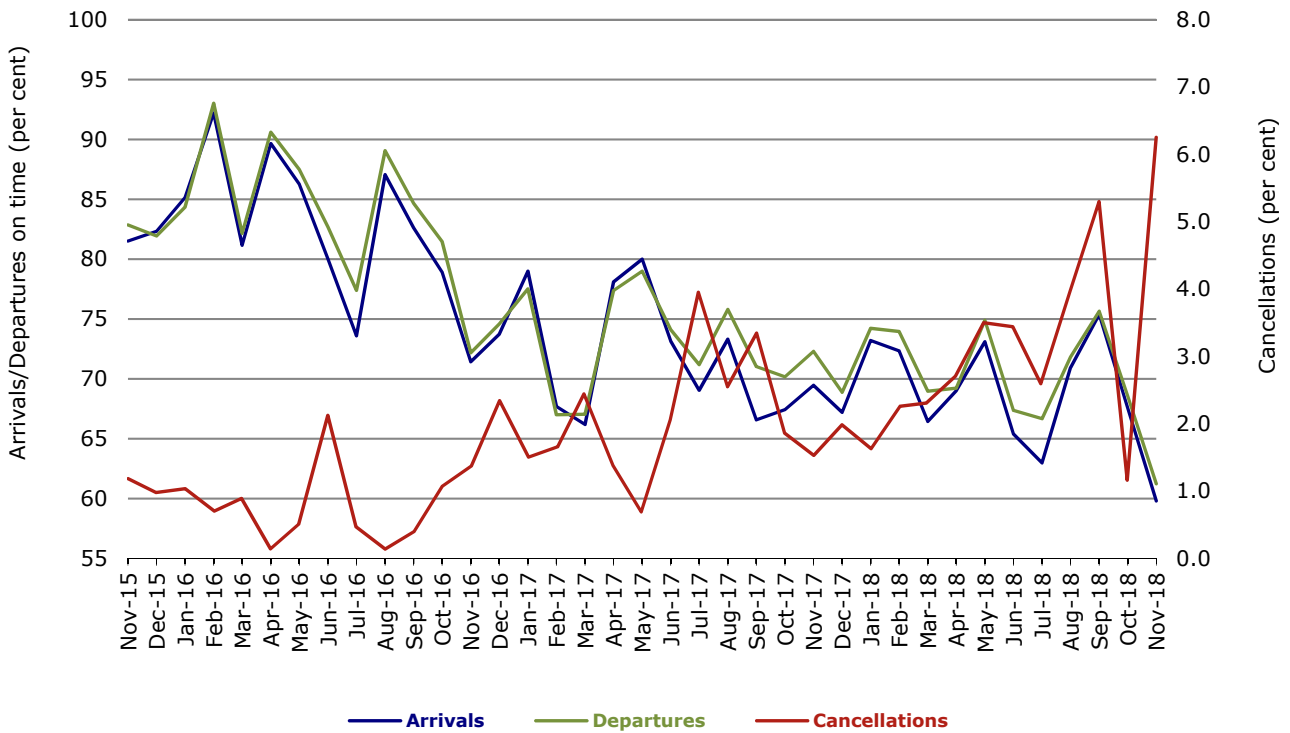
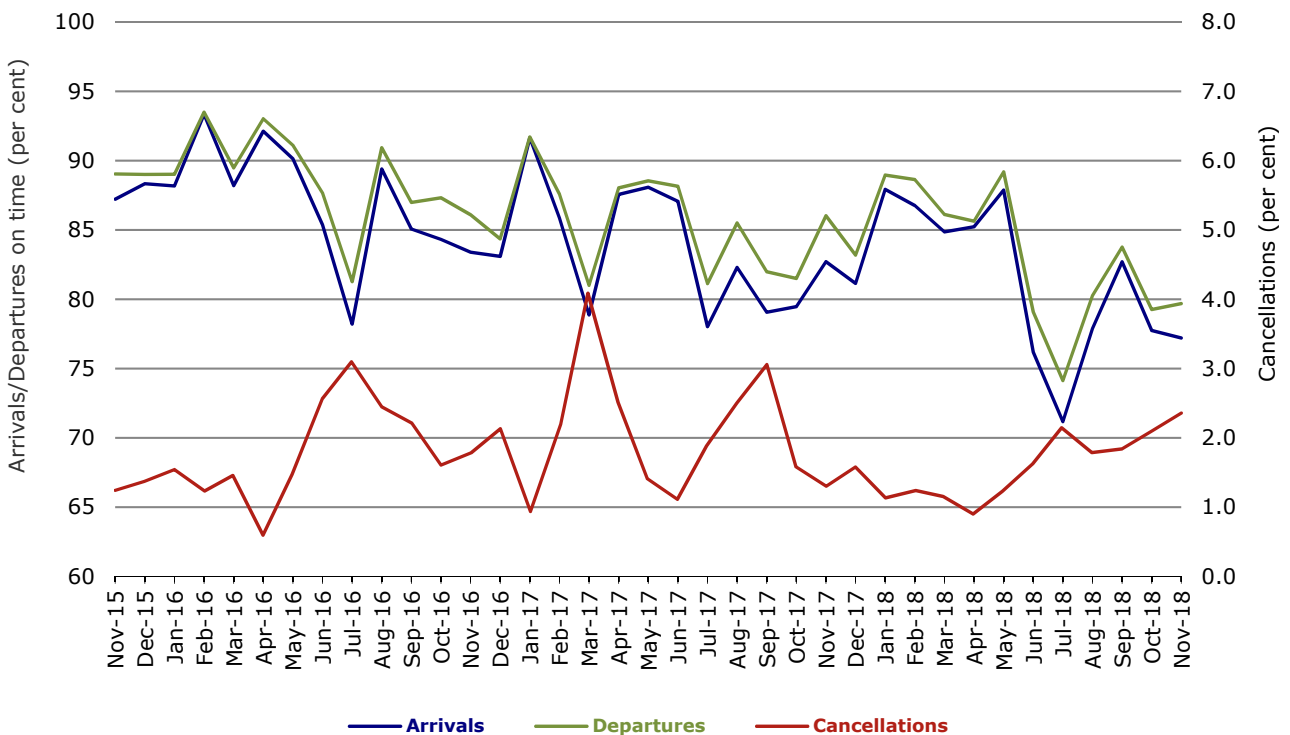


Figure 8 On time performance (by month from November 2015)—Virgin Australia



In January 2016, Virgin Australia transferred their ATR fleet from Virgin Australia Regional Airlines to Virgin Australia.

Major regional airlines on time performance

Figure 9 On time performance (by month from November 2015)—QantasLink

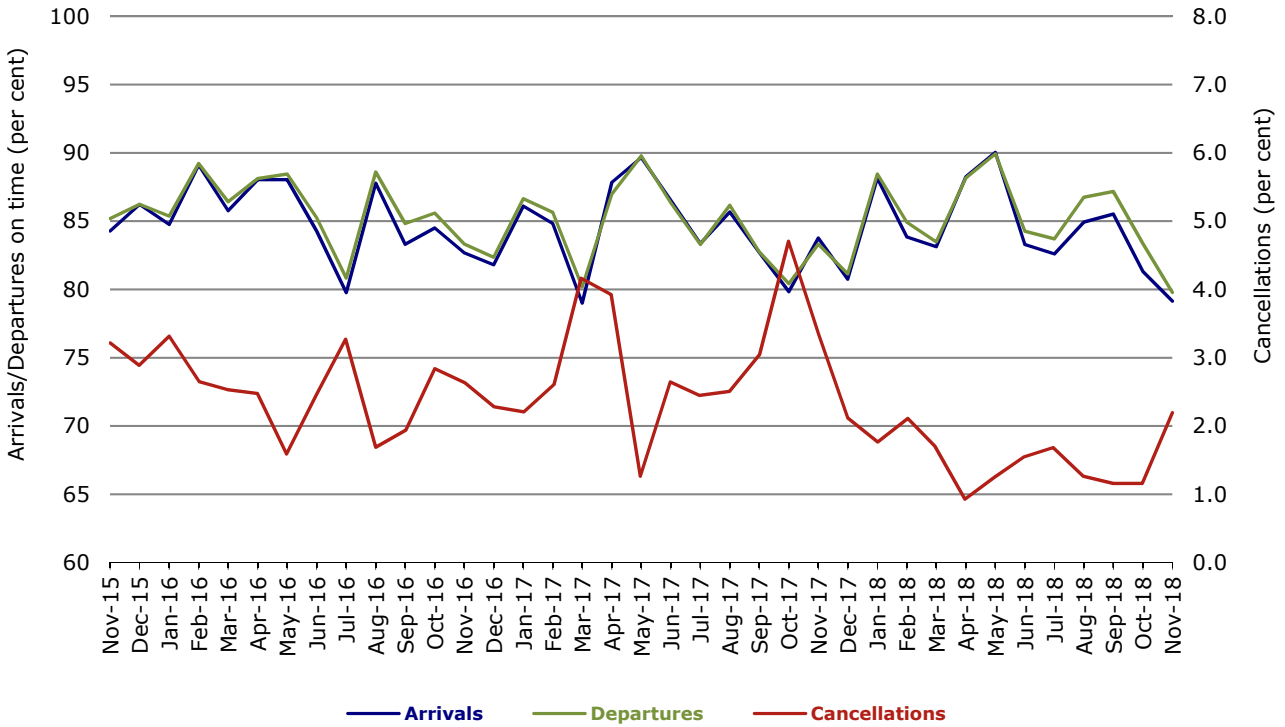


Figure 10 On time performance (by month from November 2015)—Regional Express

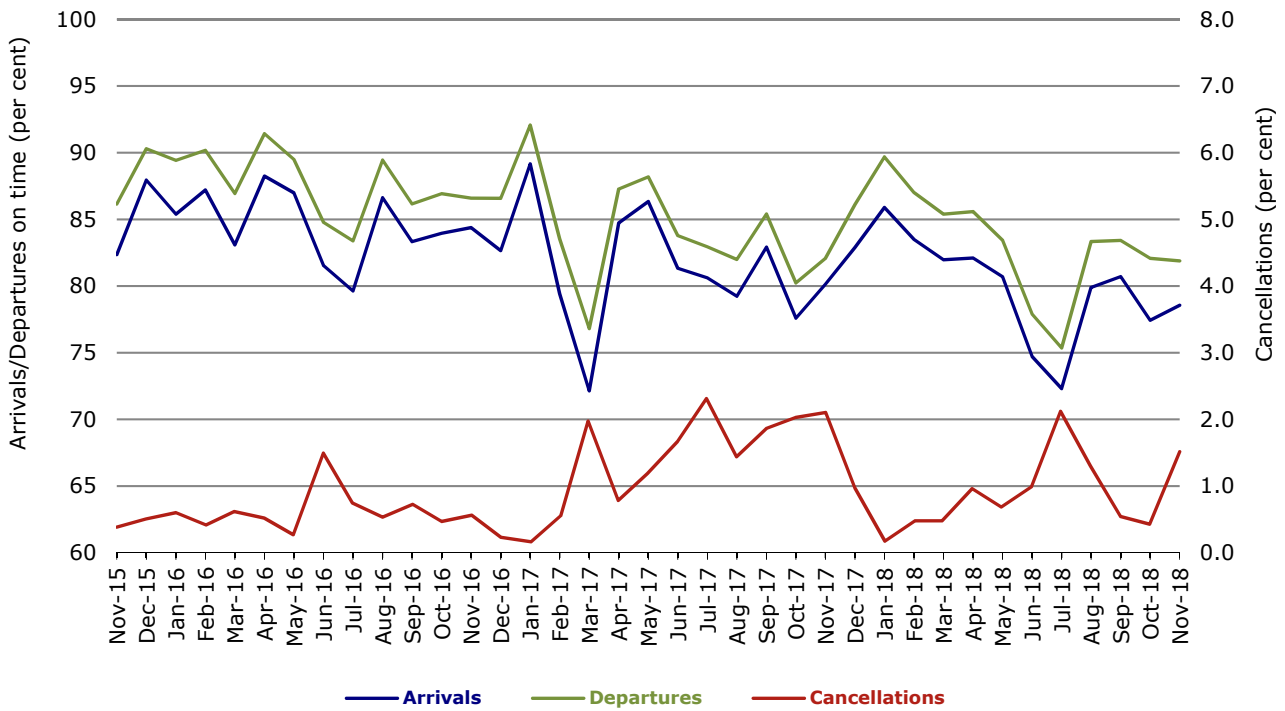
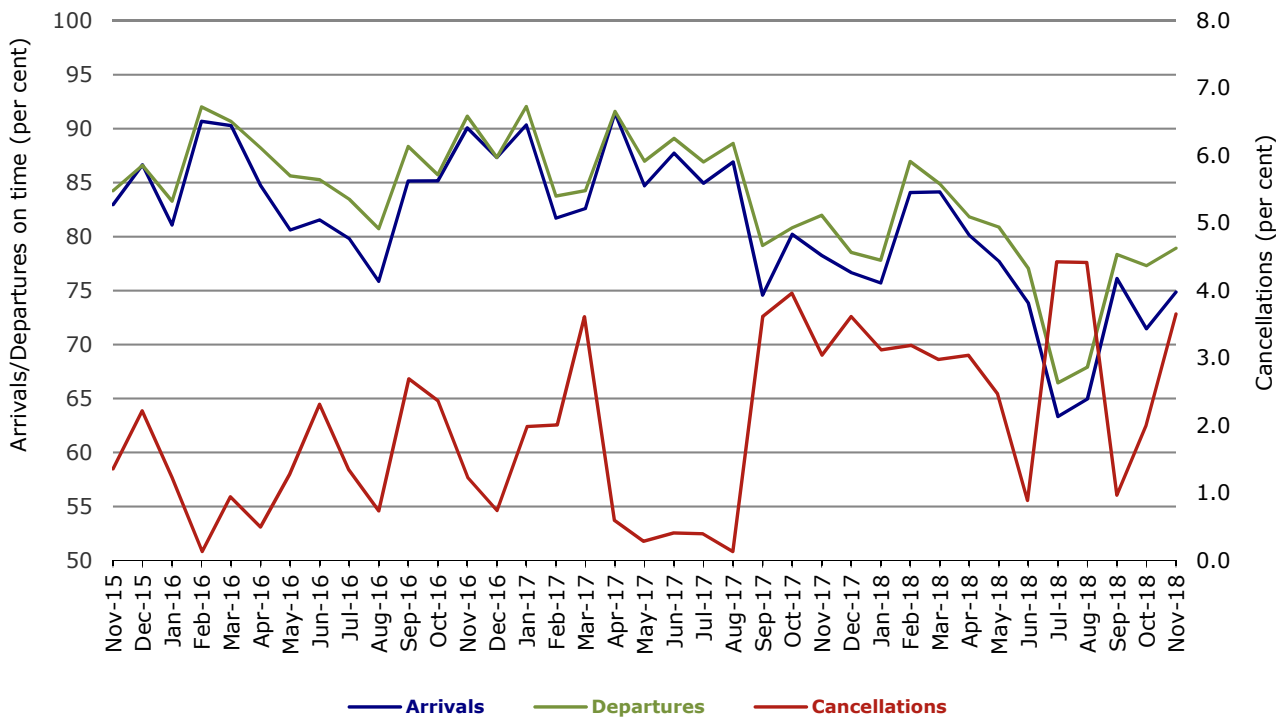


Figure 11 On time performance (by month from November 2015)
Virgin Australia Regional Airlines



In January 2016, Virgin Australia transferred their ATR fleet from Virgin Australia Regional Airlines to Virgin Australia.

Individual routes

On time performance is reported for all routes where the passenger load averages over 8000 passengers per month over the previous six months, and where two or more airlines operate in competition on those routes. There are now 65 routes which meet this definition. Over time, however, routes which meet this definition may change as airline networks and traffic levels vary.

	Sectors		Arrivals On Time		Departures On Time		Cancellations	
	Sched.	Flown	No.	%	No.	%	No.	%
Adelaide-Alice Springs								
Qantas	30	29	15	51.7	12	41.4	1	3.3
Virgin Australia	22	22	13	59.1	19	86.4	0	0.0
All Airlines	52	51	28	54.9	31	60.8	1	1.9
Adelaide-Brisbane								
Jetstar	22	21	11	52.4	8	38.1	1	4.5
Qantas	61	61	53	86.9	50	82.0	0	0.0
QantasLink	54	50	38	76.0	37	74.0	4	7.4
Tigerair Australia	30	30	20	66.7	20	66.7	0	0.0
Virgin Australia	110	109	101	92.7	90	82.6	1	0.9
All Airlines	277	271	223	82.3	205	75.6	6	2.2
Adelaide-Canberra								
Qantas	41	41	30	73.2	27	65.9	0	0.0
QantasLink	4	4	0	0.0	1	25.0	0	0.0
Virgin Australia	25	25	21	84.0	20	80.0	0	0.0
All Airlines	70	70	51	72.9	48	68.6	0	0.0
Adelaide-Gold Coast								
Jetstar	26	26	26	100.0	23	88.5	0	0.0
Virgin Australia	30	30	30	100.0	30	100.0	0	0.0
All Airlines	56	56	56	100.0	53	94.6	0	0.0
Adelaide-Melbourne								
Jetstar	99	98	60	61.2	67	68.4	1	1.0
Qantas	290	285	213	74.7	214	75.1	5	1.7
Tigerair Australia	77	71	40	56.3	37	52.1	6	7.8
Virgin Australia	273	259	182	70.3	181	69.9	14	5.1
Virgin Australia Regional Airlines	10	8	7	87.5	7	87.5	2	20.0
All Airlines	749	721	502	69.6	506	70.2	28	3.7
Adelaide-Perth								
Jetstar	27	24	20	83.3	18	75.0	3	11.1
Qantas	112	112	84	75.0	85	75.9	0	0.0
Virgin Australia	35	35	30	85.7	33	94.3	0	0.0
Virgin Australia Regional Airlines	37	35	15	42.9	26	74.3	2	5.4
All Airlines	211	206	149	72.3	162	78.6	5	2.4
Adelaide-Port Lincoln								
QantasLink	109	107	92	86.0	92	86.0	2	1.8
Regional Express	214	212	179	84.4	187	88.2	2	0.9
All Airlines	323	319	271	85.0	279	87.5	4	1.2
Adelaide-Sydney								
Jetstar	113	105	70	66.7	66	62.9	8	7.1
Qantas	219	213	162	76.1	153	71.8	6	2.7
QantasLink	39	37	24	64.9	20	54.1	2	5.1
Tigerair Australia	30	30	10	33.3	10	33.3	0	0.0
Virgin Australia	166	162	135	83.3	129	79.6	4	2.4
All Airlines	567	547	401	73.3	378	69.1	20	3.5

	Sectors		Arrivals On Time		Departures On Time		Cancellations	
	Sched.	Flown	No.	%	No.	%	No.	%
Albury-Sydney								
QantasLink	95	92	63	68.5	60	65.2	3	3.2
Regional Express	103	100	81	81.0	84	84.0	3	2.9
Virgin Australia	59	58	47	81.0	48	82.8	1	1.7
All Airlines	257	250	191	76.4	192	76.8	7	2.7
Alice Springs-Adelaide								
Qantas	30	29	15	51.7	15	51.7	1	3.3
Virgin Australia	22	22	21	95.5	21	95.5	0	0.0
All Airlines	52	51	36	70.6	36	70.6	1	1.9
Alice Springs-Darwin								
QantasLink	52	50	44	88.0	44	88.0	2	3.8
Virgin Australia	22	22	16	72.7	13	59.1	0	0.0
All Airlines	74	72	60	83.3	57	79.2	2	2.7
Armidale-Sydney								
QantasLink	116	113	91	80.5	87	77.0	3	2.6
Regional Express	74	73	41	56.2	48	65.8	1	1.4
All Airlines	190	186	132	71.0	135	72.6	4	2.1
Ayers Rock-Sydney								
Jetstar	26	26	10	38.5	8	30.8	0	0.0
Virgin Australia	30	30	22	73.3	15	50.0	0	0.0
All Airlines	56	56	32	57.1	23	41.1	0	0.0
Ballina-Sydney								
Jetstar	69	65	46	70.8	44	67.7	4	5.8
Regional Express	25	25	17	68.0	21	84.0	0	0.0
Virgin Australia	32	31	23	74.2	23	74.2	1	3.1
All Airlines	126	121	86	71.1	88	72.7	5	4.0
Brisbane-Adelaide								
Jetstar	22	21	16	76.2	14	66.7	1	4.5
Qantas	56	56	39	69.6	43	76.8	0	0.0
QantasLink	54	52	35	67.3	42	80.8	2	3.7
Tigerair Australia	30	30	22	73.3	25	83.3	0	0.0
Virgin Australia	111	110	87	79.1	102	92.7	1	0.9
All Airlines	273	269	199	74.0	226	84.0	4	1.5
Brisbane-Bundaberg								
QantasLink	120	120	109	90.8	106	88.3	0	0.0
Virgin Australia	30	30	26	86.7	26	86.7	0	0.0
All Airlines	150	150	135	90.0	132	88.0	0	0.0
Brisbane-Cairns								
Jetstar	86	85	72	84.7	70	82.4	1	1.2
Qantas	41	41	41	100.0	39	95.1	0	0.0
QantasLink	79	79	53	67.1	55	69.6	0	0.0
Tigerair Australia	30	29	19	65.5	13	44.8	1	3.3
Virgin Australia	130	130	110	84.6	112	86.2	0	0.0
All Airlines	366	364	295	81.0	289	79.4	2	0.5
Brisbane-Canberra								
QantasLink	150	149	111	74.5	116	77.9	1	0.7
Tigerair Australia	18	18	8	44.4	10	55.6	0	0.0
Virgin Australia	91	89	71	79.8	74	83.1	2	2.2
All Airlines	259	256	190	74.2	200	78.1	3	1.2

	<i>Sectors</i>		<i>Arrivals On Time</i>		<i>Departures On Time</i>		<i>Cancellations</i>	
	<i>Sched.</i>	<i>Flown</i>	<i>No.</i>	<i>%</i>	<i>No.</i>	<i>%</i>	<i>No.</i>	<i>%</i>
Brisbane-Darwin								
Jetstar	17	16	16	100.0	16	100.0	1	5.9
Qantas	31	31	29	93.5	27	87.1	0	0.0
Tigerair Australia	12	11	7	63.6	8	72.7	1	8.3
Virgin Australia	30	30	23	76.7	26	86.7	0	0.0
All Airlines	90	88	75	85.2	77	87.5	2	2.2
Brisbane-Emerald								
QantasLink	104	104	88	84.6	91	87.5	0	0.0
Virgin Australia	52	52	50	96.2	49	94.2	0	0.0
All Airlines	156	156	138	88.5	140	89.7	0	0.0
Brisbane-Gladstone								
QantasLink	131	131	107	81.7	110	84.0	0	0.0
Virgin Australia	73	73	70	95.9	68	93.2	0	0.0
All Airlines	204	204	177	86.8	178	87.3	0	0.0
Brisbane-Hamilton Island								
QantasLink	21	21	15	71.4	15	71.4	0	0.0
Virgin Australia	30	30	26	86.7	25	83.3	0	0.0
All Airlines	51	51	41	80.4	40	78.4	0	0.0
Brisbane-Hobart								
Jetstar	30	30	29	96.7	28	93.3	0	0.0
Virgin Australia	39	39	38	97.4	37	94.9	0	0.0
All Airlines	69	69	67	97.1	65	94.2	0	0.0
Brisbane-Mackay								
Jetstar	30	29	27	93.1	28	96.6	1	3.3
QantasLink	118	114	92	80.7	91	79.8	4	3.4
Virgin Australia	137	136	112	82.4	111	81.6	1	0.7
All Airlines	285	279	231	82.8	230	82.4	6	2.1
Brisbane-Melbourne								
Jetstar	120	116	65	56.0	65	56.0	4	3.3
Qantas	415	411	265	64.5	310	75.4	4	1.0
QantasLink	12	12	7	58.3	8	66.7	0	0.0
Tigerair Australia	119	108	52	48.1	58	53.7	11	9.2
Virgin Australia	388	375	237	63.2	290	77.3	13	3.4
All Airlines	1 054	1 022	626	61.3	731	71.5	32	3.0
Brisbane-Mount Isa								
QantasLink	54	54	38	70.4	39	72.2	0	0.0
Virgin Australia	17	17	13	76.5	14	82.4	0	0.0
All Airlines	71	71	51	71.8	53	74.6	0	0.0
Brisbane-Newcastle								
Jetstar	86	84	68	81.0	67	79.8	2	2.3
QantasLink	82	82	65	79.3	67	81.7	0	0.0
Virgin Australia	86	86	74	86.0	76	88.4	0	0.0
All Airlines	254	252	207	82.1	210	83.3	2	0.8
Brisbane-Perth								
Qantas	155	155	80	51.6	119	76.8	0	0.0
Virgin Australia	103	103	33	32.0	80	77.7	0	0.0
All Airlines	258	258	113	43.8	199	77.1	0	0.0
Brisbane-Proserpine								
Jetstar	30	30	28	93.3	28	93.3	0	0.0
Virgin Australia	45	45	39	86.7	42	93.3	0	0.0
All Airlines	75	75	67	89.3	70	93.3	0	0.0

	<i>Sectors</i>		<i>Arrivals On Time</i>		<i>Departures On Time</i>		<i>Cancellations</i>	
	<i>Sched.</i>	<i>Flown</i>	<i>No.</i>	<i>%</i>	<i>No.</i>	<i>%</i>	<i>No.</i>	<i>%</i>
Brisbane-Rockhampton								
QantasLink	177	174	135	77.6	140	80.5	3	1.7
Virgin Australia	138	138	116	84.1	114	82.6	0	0.0
All Airlines	315	312	251	80.4	254	81.4	3	1.0
Brisbane-Sydney								
Jetstar	159	146	120	82.2	112	76.7	13	8.2
Qantas	623	600	475	79.2	484	80.7	23	3.7
QantasLink	21	21	8	38.1	10	47.6	0	0.0
Tigerair Australia	125	117	68	58.1	80	68.4	8	6.4
Virgin Australia	523	506	399	78.9	406	80.2	17	3.3
All Airlines	1 451	1 390	1 070	77.0	1 092	78.6	61	4.2
Brisbane-Townsville								
Jetstar	43	43	40	93.0	39	90.7	0	0.0
Qantas	37	37	29	78.4	27	73.0	0	0.0
QantasLink	102	101	76	75.2	78	77.2	1	1.0
Virgin Australia	143	143	125	87.4	121	84.6	0	0.0
All Airlines	325	324	270	83.3	265	81.8	1	0.3
Broome-Perth								
QantasLink	81	80	67	83.8	62	77.5	1	1.2
Virgin Australia	1	1	0	0.0	0	0.0	0	0.0
Virgin Australia Regional Airlines	60	59	44	74.6	45	76.3	1	1.7
All Airlines	142	140	111	79.3	107	76.4	2	1.4
Bundaberg-Brisbane								
QantasLink	120	120	110	91.7	110	91.7	0	0.0
Virgin Australia	30	30	27	90.0	27	90.0	0	0.0
All Airlines	150	150	137	91.3	137	91.3	0	0.0
Cairns-Brisbane								
Jetstar	86	86	69	80.2	67	77.9	0	0.0
Qantas	41	41	38	92.7	37	90.2	0	0.0
QantasLink	79	77	55	71.4	58	75.3	2	2.5
Tigerair Australia	30	29	19	65.5	16	55.2	1	3.3
Virgin Australia	130	130	111	85.4	108	83.1	0	0.0
All Airlines	366	363	292	80.4	286	78.8	3	0.8
Cairns-Melbourne								
Jetstar	82	79	49	62.0	52	65.8	3	3.7
Qantas	34	34	25	73.5	24	70.6	0	0.0
Tigerair Australia	38	36	24	66.7	23	63.9	2	5.3
Virgin Australia	31	31	15	48.4	22	71.0	0	0.0
All Airlines	185	180	113	62.8	121	67.2	5	2.7
Cairns-Sydney								
Jetstar	77	76	52	68.4	55	72.4	1	1.3
Qantas	64	64	44	68.8	40	62.5	0	0.0
Tigerair Australia	42	41	34	82.9	34	82.9	1	2.4
Virgin Australia	84	83	71	85.5	70	84.3	1	1.2
All Airlines	267	264	201	76.1	199	75.4	3	1.1
Cairns-Townsville								
QantasLink	134	134	122	91.0	122	91.0	0	0.0
Regional Express	14	14	8	57.1	9	64.3	0	0.0
All Airlines	148	148	130	87.8	131	88.5	0	0.0

	<i>Sectors</i>		<i>Arrivals On Time</i>		<i>Departures On Time</i>		<i>Cancellations</i>	
	<i>Sched.</i>	<i>Flown</i>	<i>No.</i>	<i>%</i>	<i>No.</i>	<i>%</i>	<i>No.</i>	<i>%</i>
Canberra-Adelaide								
Qantas	41	41	36	87.8	38	92.7	0	0.0
QantasLink	4	4	2	50.0	3	75.0	0	0.0
Virgin Australia	25	25	14	56.0	17	68.0	0	0.0
All Airlines	70	70	52	74.3	58	82.9	0	0.0
Canberra-Brisbane								
QantasLink	150	148	108	73.0	108	73.0	2	1.3
Tigerair Australia	18	18	9	50.0	8	44.4	0	0.0
Virgin Australia	91	90	75	83.3	71	78.9	1	1.1
All Airlines	259	256	192	75.0	187	73.0	3	1.2
Canberra-Melbourne								
Qantas	244	241	184	76.3	199	82.6	3	1.2
QantasLink	44	43	25	58.1	28	65.1	1	2.3
Tigerair Australia	37	36	20	55.6	20	55.6	1	2.7
Virgin Australia	166	162	111	68.5	115	71.0	4	2.4
All Airlines	491	482	340	70.5	362	75.1	9	1.8
Canberra-Sydney								
QantasLink	486	463	344	74.3	350	75.6	23	4.7
Virgin Australia	260	244	196	80.3	196	80.3	16	6.2
All Airlines	746	707	540	76.4	546	77.2	39	5.2
Coffs Harbour-Sydney								
QantasLink	132	128	92	71.9	94	73.4	4	3.0
Tigerair Australia	17	17	13	76.5	12	70.6	0	0.0
Virgin Australia	54	53	42	79.2	42	79.2	1	1.9
All Airlines	203	198	147	74.2	148	74.7	5	2.5
Darwin-Alice Springs								
QantasLink	52	50	43	86.0	43	86.0	2	3.8
Virgin Australia	22	22	21	95.5	21	95.5	0	0.0
All Airlines	74	72	64	88.9	64	88.9	2	2.7
Darwin-Brisbane								
Jetstar	17	16	14	87.5	11	68.8	1	5.9
Qantas	32	32	28	87.5	25	78.1	0	0.0
Tigerair Australia	13	12	9	75.0	9	75.0	1	7.7
Virgin Australia	30	30	23	76.7	24	80.0	0	0.0
All Airlines	92	90	74	82.2	69	76.7	2	2.2
Darwin-Melbourne								
Jetstar	22	22	8	36.4	8	36.4	0	0.0
Qantas	30	30	23	76.7	18	60.0	0	0.0
Virgin Australia	30	30	26	86.7	26	86.7	0	0.0
All Airlines	82	82	57	69.5	52	63.4	0	0.0
Darwin-Perth								
Qantas	30	30	22	73.3	23	76.7	0	0.0
Virgin Australia	24	23	18	78.3	18	78.3	1	4.2
Virgin Australia Regional Airlines	8	6	6	100.0	4	66.7	2	25.0
All Airlines	62	59	46	78.0	45	76.3	3	4.8
Darwin-Sydney								
Jetstar	19	18	7	38.9	9	50.0	1	5.3
Qantas	46	46	33	71.7	30	65.2	0	0.0
Virgin Australia	30	29	27	93.1	26	89.7	1	3.3
All Airlines	95	93	67	72.0	65	69.9	2	2.1

	<i>Sectors</i>		<i>Arrivals On Time</i>		<i>Departures On Time</i>		<i>Cancellations</i>	
	<i>Sched.</i>	<i>Flown</i>	<i>No.</i>	<i>%</i>	<i>No.</i>	<i>%</i>	<i>No.</i>	<i>%</i>
Dubbo-Sydney								
QantasLink	104	100	80	80.0	74	74.0	4	3.8
Regional Express	129	126	97	77.0	101	80.2	3	2.3
All Airlines	233	226	177	78.3	175	77.4	7	3.0
Emerald-Brisbane								
QantasLink	104	103	85	82.5	88	85.4	1	1.0
Virgin Australia	52	52	52	100.0	49	94.2	0	0.0
All Airlines	156	155	137	88.4	137	88.4	1	0.6
Geraldton-Perth								
QantasLink	48	48	45	93.8	45	93.8	0	0.0
Virgin Australia Regional Airlines	51	51	38	74.5	37	72.5	0	0.0
All Airlines	99	99	83	83.8	82	82.8	0	0.0
Gladstone-Brisbane								
QantasLink	131	131	109	83.2	111	84.7	0	0.0
Virgin Australia	73	73	69	94.5	70	95.9	0	0.0
All Airlines	204	204	178	87.3	181	88.7	0	0.0
Gold Coast-Adelaide								
Jetstar	26	26	24	92.3	26	100.0	0	0.0
Virgin Australia	30	30	25	83.3	26	86.7	0	0.0
All Airlines	56	56	49	87.5	52	92.9	0	0.0
Gold Coast-Melbourne								
Jetstar	164	160	99	61.9	98	61.3	4	2.4
Qantas	32	31	19	61.3	17	54.8	1	3.1
Tigerair Australia	76	71	31	43.7	30	42.3	5	6.6
Virgin Australia	198	196	121	61.7	130	66.3	2	1.0
All Airlines	470	458	270	59.0	275	60.0	12	2.6
Gold Coast-Sydney								
Jetstar	271	258	199	77.1	196	76.0	13	4.8
Qantas	87	87	60	69.0	62	71.3	0	0.0
QantasLink	25	24	20	83.3	19	79.2	1	4.0
Tigerair Australia	96	89	58	65.2	59	66.3	7	7.3
Virgin Australia	253	244	187	76.6	187	76.6	9	3.6
All Airlines	732	702	524	74.6	523	74.5	30	4.1
Hamilton Island-Brisbane								
QantasLink	21	21	13	61.9	12	57.1	0	0.0
Virgin Australia	30	30	27	90.0	26	86.7	0	0.0
All Airlines	51	51	40	78.4	38	74.5	0	0.0
Hamilton Island-Sydney								
Jetstar	17	17	9	52.9	7	41.2	0	0.0
Qantas	8	8	8	100.0	8	100.0	0	0.0
QantasLink	22	20	13	65.0	11	55.0	2	9.1
Virgin Australia	28	28	24	85.7	25	89.3	0	0.0
All Airlines	75	73	54	74.0	51	69.9	2	2.7
Hobart-Brisbane								
Jetstar	30	30	29	96.7	26	86.7	0	0.0
Virgin Australia	38	38	37	97.4	36	94.7	0	0.0
All Airlines	68	68	66	97.1	62	91.2	0	0.0

	<i>Sectors</i>		<i>Arrivals On Time</i>		<i>Departures On Time</i>		<i>Cancellations</i>	
	<i>Sched.</i>	<i>Flown</i>	<i>No.</i>	<i>%</i>	<i>No.</i>	<i>%</i>	<i>No.</i>	<i>%</i>
Hobart-Melbourne								
Jetstar	178	172	83	48.3	79	45.9	6	3.4
Qantas	115	115	75	65.2	77	67.0	0	0.0
Tigerair Australia	51	50	21	42.0	25	50.0	1	2.0
Virgin Australia	144	141	88	62.4	108	76.6	3	2.1
All Airlines	488	478	267	55.9	289	60.5	10	2.0
Hobart-Sydney								
Jetstar	90	87	51	58.6	59	67.8	3	3.3
Qantas	13	13	11	84.6	9	69.2	0	0.0
QantasLink	47	46	37	80.4	37	80.4	1	2.1
Virgin Australia	68	67	49	73.1	50	74.6	1	1.5
All Airlines	218	213	148	69.5	155	72.8	5	2.3
Kalgoorlie-Perth								
Qantas	8	8	7	87.5	8	100.0	0	0.0
QantasLink	73	73	62	84.9	63	86.3	0	0.0
Virgin Australia	44	44	41	93.2	41	93.2	0	0.0
Virgin Australia Regional Airlines	24	24	19	79.2	20	83.3	0	0.0
All Airlines	149	149	129	86.6	132	88.6	0	0.0
Karratha-Perth								
Qantas	11	10	10	100.0	10	100.0	1	9.1
QantasLink	175	172	152	88.4	153	89.0	3	1.7
Virgin Australia	4	4	2	50.0	2	50.0	0	0.0
Virgin Australia Regional Airlines	70	64	50	78.1	52	81.3	6	8.6
All Airlines	260	250	214	85.6	217	86.8	10	3.8
Launceston-Melbourne								
Jetstar	135	132	73	55.3	69	52.3	3	2.2
QantasLink	116	113	81	71.7	83	73.5	3	2.6
Virgin Australia	98	98	76	77.6	82	83.7	0	0.0
All Airlines	349	343	230	67.1	234	68.2	6	1.7
Launceston-Sydney								
Jetstar	50	45	28	62.2	30	66.7	5	10.0
Virgin Australia	30	30	24	80.0	23	76.7	0	0.0
All Airlines	80	75	52	69.3	53	70.7	5	6.3
Mackay-Brisbane								
Jetstar	30	29	27	93.1	27	93.1	1	3.3
QantasLink	113	109	89	81.7	87	79.8	4	3.5
Virgin Australia	138	137	125	91.2	126	92.0	1	0.7
All Airlines	281	275	241	87.6	240	87.3	6	2.1
Melbourne-Adelaide								
Jetstar	99	98	58	59.2	58	59.2	1	1.0
Qantas	290	286	201	70.3	219	76.6	4	1.4
Tigerair Australia	77	72	43	59.7	44	61.1	5	6.5
Virgin Australia	266	252	182	72.2	200	79.4	14	5.3
Virgin Australia Regional Airlines	10	8	4	50.0	5	62.5	2	20.0
All Airlines	742	716	488	68.2	526	73.5	26	3.5
Melbourne-Brisbane								
Jetstar	120	117	68	58.1	55	47.0	3	2.5
Qantas	415	410	288	70.2	293	71.5	5	1.2
QantasLink	12	12	5	41.7	5	41.7	0	0.0
Tigerair Australia	119	108	64	59.3	65	60.2	11	9.2
Virgin Australia	386	373	284	76.1	292	78.3	13	3.4
All Airlines	1 052	1 020	709	69.5	710	69.6	32	3.0

	<i>Sectors</i>		<i>Arrivals On Time</i>		<i>Departures On Time</i>		<i>Cancellations</i>	
	<i>Sched.</i>	<i>Flown</i>	<i>No.</i>	<i>%</i>	<i>No.</i>	<i>%</i>	<i>No.</i>	<i>%</i>
Melbourne-Cairns								
Jetstar	82	80	49	61.3	45	56.3	2	2.4
Qantas	34	34	29	85.3	27	79.4	0	0.0
Tigerair Australia	38	36	28	77.8	30	83.3	2	5.3
Virgin Australia	31	31	30	96.8	30	96.8	0	0.0
All Airlines	185	181	136	75.1	132	72.9	4	2.2
Melbourne-Canberra								
Qantas	244	240	175	72.9	180	75.0	4	1.6
QantasLink	44	42	29	69.0	27	64.3	2	4.5
Tigerair Australia	37	36	22	61.1	19	52.8	1	2.7
Virgin Australia	165	160	118	73.8	120	75.0	5	3.0
All Airlines	490	478	344	72.0	346	72.4	12	2.4
Melbourne-Darwin								
Jetstar	22	22	16	72.7	15	68.2	0	0.0
Qantas	30	29	21	72.4	24	82.8	1	3.3
Virgin Australia	30	30	16	53.3	20	66.7	0	0.0
All Airlines	82	81	53	65.4	59	72.8	1	1.2
Melbourne-Gold Coast								
Jetstar	163	162	92	56.8	89	54.9	1	0.6
Qantas	32	32	24	75.0	22	68.8	0	0.0
Tigerair Australia	76	71	38	53.5	34	47.9	5	6.6
Virgin Australia	197	195	148	75.9	150	76.9	2	1.0
All Airlines	468	460	302	65.7	295	64.1	8	1.7
Melbourne-Hobart								
Jetstar	178	173	111	64.2	108	62.4	5	2.8
Qantas	117	117	89	76.1	86	73.5	0	0.0
Tigerair Australia	51	50	30	60.0	36	72.0	1	2.0
Virgin Australia	144	141	109	77.3	111	78.7	3	2.1
All Airlines	490	481	339	70.5	341	70.9	9	1.8
Melbourne-Launceston								
Jetstar	135	132	78	59.1	75	56.8	3	2.2
QantasLink	116	113	80	70.8	80	70.8	3	2.6
Virgin Australia	99	99	72	72.7	77	77.8	0	0.0
All Airlines	350	344	230	66.9	232	67.4	6	1.7
Melbourne-Mildura								
QantasLink	96	94	67	71.3	66	70.2	2	2.1
Regional Express	84	84	74	88.1	79	94.0	0	0.0
Virgin Australia	30	30	25	83.3	25	83.3	0	0.0
All Airlines	210	208	166	79.8	170	81.7	2	1.0
Melbourne-Newcastle								
Jetstar	91	89	58	65.2	49	55.1	2	2.2
Virgin Australia	46	44	30	68.2	33	75.0	2	4.3
All Airlines	137	133	88	66.2	82	61.7	4	2.9
Melbourne-Perth								
Jetstar	52	49	38	77.6	42	85.7	3	5.8
Qantas	196	195	108	55.4	123	63.1	1	0.5
Tigerair Australia	56	49	26	53.1	33	67.3	7	12.5
Virgin Australia	146	145	87	60.0	96	66.2	1	0.7
All Airlines	450	438	259	59.1	294	67.1	12	2.7

	<i>Sectors</i>		<i>Arrivals On Time</i>		<i>Departures On Time</i>		<i>Cancellations</i>	
	<i>Sched.</i>	<i>Flown</i>	<i>No.</i>	<i>%</i>	<i>No.</i>	<i>%</i>	<i>No.</i>	<i>%</i>
Melbourne-Sunshine Coast								
Jetstar	82	80	52	65.0	46	57.5	2	2.4
Virgin Australia	74	74	64	86.5	64	86.5	0	0.0
All Airlines	156	154	116	75.3	110	71.4	2	1.3
Melbourne-Sydney								
Jetstar	363	326	195	59.8	206	63.2	37	10.2
Qantas	1 087	997	703	70.5	732	73.4	90	8.3
Tigerair Australia	260	236	145	61.4	149	63.1	24	9.2
Virgin Australia	764	727	520	71.5	546	75.1	37	4.8
All Airlines	2 474	2 286	1 563	68.4	1 633	71.4	188	7.6
Mildura-Melbourne								
QantasLink	96	94	65	69.1	67	71.3	2	2.1
Regional Express	85	85	60	70.6	59	69.4	0	0.0
Virgin Australia	30	30	22	73.3	24	80.0	0	0.0
All Airlines	211	209	147	70.3	150	71.8	2	0.9
Mount Isa-Brisbane								
QantasLink	54	54	40	74.1	40	74.1	0	0.0
Virgin Australia	18	18	12	66.7	14	77.8	0	0.0
All Airlines	72	72	52	72.2	54	75.0	0	0.0
Newcastle-Brisbane								
Jetstar	86	84	71	84.5	75	89.3	2	2.3
QantasLink	82	80	64	80.0	61	76.3	2	2.4
Virgin Australia	86	86	76	88.4	75	87.2	0	0.0
All Airlines	254	250	211	84.4	211	84.4	4	1.6
Newcastle-Melbourne								
Jetstar	91	87	58	66.7	58	66.7	4	4.4
Virgin Australia	46	44	27	61.4	32	72.7	2	4.3
All Airlines	137	131	85	64.9	90	68.7	6	4.4
Newman-Perth								
Qantas	19	19	17	89.5	17	89.5	0	0.0
QantasLink	111	107	93	86.9	92	86.0	4	3.6
Virgin Australia	13	13	13	100.0	13	100.0	0	0.0
Virgin Australia Regional Airlines	26	26	22	84.6	22	84.6	0	0.0
All Airlines	169	165	145	87.9	144	87.3	4	2.4
Perth-Adelaide								
Jetstar	27	24	20	83.3	20	83.3	3	11.1
Qantas	118	118	97	82.2	89	75.4	0	0.0
Virgin Australia	41	41	33	80.5	35	85.4	0	0.0
Virgin Australia Regional Airlines	39	37	31	83.8	35	94.6	2	5.1
All Airlines	225	220	181	82.3	179	81.4	5	2.2
Perth-Brisbane								
Qantas	152	152	130	85.5	113	74.3	0	0.0
Virgin Australia	106	106	97	91.5	88	83.0	0	0.0
All Airlines	258	258	227	88.0	201	77.9	0	0.0
Perth-Broome								
QantasLink	81	80	65	81.3	63	78.8	1	1.2
Virgin Australia	1	1	0	0.0	0	0.0	0	0.0
Virgin Australia Regional Airlines	59	59	45	76.3	46	78.0	0	0.0
All Airlines	141	140	110	78.6	109	77.9	1	0.7

	<i>Sectors</i>		<i>Arrivals On Time</i>		<i>Departures On Time</i>		<i>Cancellations</i>	
	<i>Sched.</i>	<i>Flown</i>	<i>No.</i>	<i>%</i>	<i>No.</i>	<i>%</i>	<i>No.</i>	<i>%</i>
Perth-Darwin								
Qantas	30	30	25	83.3	25	83.3	0	0.0
Virgin Australia	23	23	20	87.0	21	91.3	0	0.0
Virgin Australia Regional Airlines	7	6	5	83.3	5	83.3	1	14.3
All Airlines	60	59	50	84.7	51	86.4	1	1.7
Perth-Geraldton								
QantasLink	48	48	44	91.7	43	89.6	0	0.0
Virgin Australia Regional Airlines	51	51	41	80.4	42	82.4	0	0.0
All Airlines	99	99	85	85.9	85	85.9	0	0.0
Perth-Kalgoorlie								
Qantas	8	8	8	100.0	8	100.0	0	0.0
QantasLink	73	73	60	82.2	64	87.7	0	0.0
Virgin Australia	44	44	42	95.5	42	95.5	0	0.0
Virgin Australia Regional Airlines	25	24	18	75.0	20	83.3	1	4.0
All Airlines	150	149	128	85.9	134	89.9	1	0.7
Perth-Karratha								
Qantas	11	11	11	100.0	10	90.9	0	0.0
QantasLink	175	173	143	82.7	150	86.7	2	1.1
Virgin Australia	4	4	3	75.0	3	75.0	0	0.0
Virgin Australia Regional Airlines	70	66	54	81.8	57	86.4	4	5.7
All Airlines	260	254	211	83.1	220	86.6	6	2.3
Perth-Melbourne								
Jetstar	51	48	36	75.0	32	66.7	3	5.9
Qantas	196	195	147	75.4	130	66.7	1	0.5
Tigerair Australia	56	49	38	77.6	33	67.3	7	12.5
Virgin Australia	140	139	122	87.8	122	87.8	1	0.7
All Airlines	443	431	343	79.6	317	73.5	12	2.7
Perth-Newman								
Qantas	19	19	18	94.7	17	89.5	0	0.0
QantasLink	111	110	98	89.1	100	90.9	1	0.9
Virgin Australia	13	13	13	100.0	13	100.0	0	0.0
Virgin Australia Regional Airlines	26	26	21	80.8	22	84.6	0	0.0
All Airlines	169	168	150	89.3	152	90.5	1	0.6
Perth-Port Hedland								
Qantas	25	25	22	88.0	21	84.0	0	0.0
QantasLink	111	110	89	80.9	96	87.3	1	0.9
Virgin Australia	28	28	26	92.9	25	89.3	0	0.0
Virgin Australia Regional Airlines	24	24	23	95.8	23	95.8	0	0.0
All Airlines	188	187	160	85.6	165	88.2	1	0.5
Perth-Sydney								
Jetstar	26	25	18	72.0	15	60.0	1	3.8
Qantas	214	213	166	77.9	159	74.6	1	0.5
Tigerair Australia	30	29	22	75.9	19	65.5	1	3.3
Virgin Australia	117	117	95	81.2	99	84.6	0	0.0
All Airlines	387	384	301	78.4	292	76.0	3	0.8
Port Hedland-Perth								
Qantas	25	25	22	88.0	22	88.0	0	0.0
QantasLink	111	110	88	80.0	91	82.7	1	0.9
Virgin Australia	28	28	26	92.9	26	92.9	0	0.0
Virgin Australia Regional Airlines	24	24	20	83.3	22	91.7	0	0.0
All Airlines	188	187	156	83.4	161	86.1	1	0.5

	<i>Sectors</i>		<i>Arrivals On Time</i>		<i>Departures On Time</i>		<i>Cancellations</i>	
	<i>Sched.</i>	<i>Flown</i>	<i>No.</i>	<i>%</i>	<i>No.</i>	<i>%</i>	<i>No.</i>	<i>%</i>
Port Lincoln-Adelaide								
QantasLink	109	107	95	88.8	95	88.8	2	1.8
Regional Express	215	210	183	87.1	187	89.0	5	2.3
All Airlines	324	317	278	87.7	282	89.0	7	2.2
Port Macquarie-Sydney								
QantasLink	95	92	75	81.5	77	83.7	3	3.2
Virgin Australia	59	55	37	67.3	36	65.5	4	6.8
All Airlines	154	147	112	76.2	113	76.9	7	4.5
Proserpine-Brisbane								
Jetstar	30	30	25	83.3	25	83.3	0	0.0
Virgin Australia	45	45	41	91.1	37	82.2	0	0.0
All Airlines	75	75	66	88.0	62	82.7	0	0.0
Proserpine-Sydney								
Jetstar	13	13	10	76.9	10	76.9	0	0.0
Tigerair Australia	17	17	10	58.8	11	64.7	0	0.0
All Airlines	30	30	20	66.7	21	70.0	0	0.0
Rockhampton-Brisbane								
QantasLink	182	180	144	80.0	144	80.0	2	1.1
Virgin Australia	138	138	126	91.3	123	89.1	0	0.0
All Airlines	320	318	270	84.9	267	84.0	2	0.6
Sunshine Coast-Melbourne								
Jetstar	82	80	44	55.0	44	55.0	2	2.4
Virgin Australia	74	74	51	68.9	57	77.0	0	0.0
All Airlines	156	154	95	61.7	101	65.6	2	1.3
Sunshine Coast-Sydney								
Jetstar	115	107	72	67.3	71	66.4	8	7.0
QantasLink	34	33	24	72.7	25	75.8	1	2.9
Virgin Australia	50	49	39	79.6	41	83.7	1	2.0
All Airlines	199	189	135	71.4	137	72.5	10	5.0
Sydney-Adelaide								
Jetstar	111	105	70	66.7	73	69.5	6	5.4
Qantas	218	214	146	68.2	155	72.4	4	1.8
QantasLink	39	35	13	37.1	20	57.1	4	10.3
Tigerair Australia	30	30	11	36.7	14	46.7	0	0.0
Virgin Australia	167	164	131	79.9	128	78.0	3	1.8
All Airlines	565	548	371	67.7	390	71.2	17	3.0
Sydney-Albury								
QantasLink	95	91	60	65.9	62	68.1	4	4.2
Regional Express	105	102	76	74.5	81	79.4	3	2.9
Virgin Australia	59	58	45	77.6	47	81.0	1	1.7
All Airlines	259	251	181	72.1	190	75.7	8	3.1
Sydney-Armidale								
QantasLink	116	114	87	76.3	89	78.1	2	1.7
Regional Express	74	74	53	71.6	54	73.0	0	0.0
All Airlines	190	188	140	74.5	143	76.1	2	1.1
Sydney-Ayers Rock								
Jetstar	25	25	16	64.0	16	64.0	0	0.0
Virgin Australia	30	30	22	73.3	24	80.0	0	0.0
All Airlines	55	55	38	69.1	40	72.7	0	0.0

	Sectors		Arrivals On Time		Departures On Time		Cancellations	
	Sched.	Flown	No.	%	No.	%	No.	%
Sydney-Ballina								
Jetstar	69	65	54	83.1	56	86.2	4	5.8
Regional Express	26	26	21	80.8	21	80.8	0	0.0
Virgin Australia	32	31	25	80.6	24	77.4	1	3.1
All Airlines	127	122	100	82.0	101	82.8	5	3.9
Sydney-Brisbane								
Jetstar	158	146	119	81.5	115	78.8	12	7.6
Qantas	622	601	451	75.0	455	75.7	21	3.4
QantasLink	21	19	10	52.6	9	47.4	2	9.5
Tigerair Australia	125	117	69	59.0	66	56.4	8	6.4
Virgin Australia	522	505	372	73.7	374	74.1	17	3.3
All Airlines	1 448	1 388	1 021	73.6	1 019	73.4	60	4.1
Sydney-Cairns								
Jetstar	77	76	62	81.6	55	72.4	1	1.3
Qantas	64	64	42	65.6	39	60.9	0	0.0
Tigerair Australia	42	41	33	80.5	34	82.9	1	2.4
Virgin Australia	84	83	64	77.1	62	74.7	1	1.2
All Airlines	267	264	201	76.1	190	72.0	3	1.1
Sydney-Canberra								
QantasLink	485	470	335	71.3	348	74.0	15	3.1
Virgin Australia	260	243	194	79.8	190	78.2	17	6.5
All Airlines	745	713	529	74.2	538	75.5	32	4.3
Sydney-Coffs Harbour								
QantasLink	132	129	104	80.6	99	76.7	3	2.3
Tigerair Australia	17	17	11	64.7	12	70.6	0	0.0
Virgin Australia	54	53	47	88.7	44	83.0	1	1.9
All Airlines	203	199	162	81.4	155	77.9	4	2.0
Sydney-Darwin								
Jetstar	18	18	8	44.4	12	66.7	0	0.0
Qantas	47	46	32	69.6	29	63.0	1	2.1
Virgin Australia	30	29	23	79.3	25	86.2	1	3.3
All Airlines	95	93	63	67.7	66	71.0	2	2.1
Sydney-Dubbo								
QantasLink	104	101	74	73.3	75	74.3	3	2.9
Regional Express	131	129	100	77.5	104	80.6	2	1.5
All Airlines	235	230	174	75.7	179	77.8	5	2.1
Sydney-Gold Coast								
Jetstar	270	259	195	75.3	188	72.6	11	4.1
Qantas	89	87	59	67.8	54	62.1	2	2.2
QantasLink	25	24	19	79.2	19	79.2	1	4.0
Tigerair Australia	96	89	62	69.7	64	71.9	7	7.3
Virgin Australia	254	245	188	76.7	189	77.1	9	3.5
All Airlines	734	704	523	74.3	514	73.0	30	4.1
Sydney-Hamilton Island								
Jetstar	17	17	10	58.8	12	70.6	0	0.0
Qantas	8	8	8	100.0	7	87.5	0	0.0
QantasLink	22	21	11	52.4	14	66.7	1	4.5
Virgin Australia	28	28	24	85.7	24	85.7	0	0.0
All Airlines	75	74	53	71.6	57	77.0	1	1.3

	<i>Sectors</i>		<i>Arrivals On Time</i>		<i>Departures On Time</i>		<i>Cancellations</i>	
	<i>Sched.</i>	<i>Flown</i>	<i>No.</i>	<i>%</i>	<i>No.</i>	<i>%</i>	<i>No.</i>	<i>%</i>
Sydney-Hobart								
Jetstar	90	87	71	81.6	68	78.2	3	3.3
Qantas	13	13	10	76.9	11	84.6	0	0.0
QantasLink	47	46	29	63.0	31	67.4	1	2.1
Virgin Australia	69	68	55	80.9	58	85.3	1	1.4
All Airlines	219	214	165	77.1	168	78.5	5	2.3
Sydney-Launceston								
Jetstar	47	46	37	80.4	36	78.3	1	2.1
Virgin Australia	30	30	21	70.0	23	76.7	0	0.0
All Airlines	77	76	58	76.3	59	77.6	1	1.3
Sydney-Melbourne								
Jetstar	362	324	189	58.3	179	55.2	38	10.5
Qantas	1 090	1 004	653	65.0	701	69.8	86	7.9
Tigerair Australia	260	238	132	55.5	145	60.9	22	8.5
Virgin Australia	762	724	488	67.4	542	74.9	38	5.0
All Airlines	2 474	2 290	1 462	63.8	1 567	68.4	184	7.4
Sydney-Perth								
Jetstar	26	25	16	64.0	17	68.0	1	3.8
Qantas	213	211	116	55.0	131	62.1	2	0.9
Tigerair Australia	30	29	22	75.9	18	62.1	1	3.3
Virgin Australia	117	117	69	59.0	68	58.1	0	0.0
All Airlines	386	382	223	58.4	234	61.3	4	1.0
Sydney-Port Macquarie								
QantasLink	95	92	76	82.6	74	80.4	3	3.2
Virgin Australia	59	56	45	80.4	48	85.7	3	5.1
All Airlines	154	148	121	81.8	122	82.4	6	3.9
Sydney-Proserpine								
Jetstar	13	13	12	92.3	12	92.3	0	0.0
Tigerair Australia	17	17	11	64.7	9	52.9	0	0.0
All Airlines	30	30	23	76.7	21	70.0	0	0.0
Sydney-Sunshine Coast								
Jetstar	115	107	88	82.2	87	81.3	8	7.0
QantasLink	34	32	20	62.5	17	53.1	2	5.9
Virgin Australia	51	51	44	86.3	43	84.3	0	0.0
All Airlines	200	190	152	80.0	147	77.4	10	5.0
Sydney-Tamworth								
QantasLink	126	119	87	73.1	82	68.9	7	5.6
Virgin Australia	52	50	40	80.0	40	80.0	2	3.8
All Airlines	178	169	127	75.1	122	72.2	9	5.1
Sydney-Townsville								
Jetstar	22	20	12	60.0	12	60.0	2	9.1
Virgin Australia	29	28	26	92.9	22	78.6	1	3.4
All Airlines	51	48	38	79.2	34	70.8	3	5.9
Sydney-Wagga Wagga								
QantasLink	95	92	72	78.3	71	77.2	3	3.2
Regional Express	131	129	99	76.7	103	79.8	2	1.5
All Airlines	226	221	171	77.4	174	78.7	5	2.2
Tamworth-Sydney								
QantasLink	126	118	87	73.7	85	72.0	8	6.3
Virgin Australia	52	51	42	82.4	45	88.2	1	1.9
All Airlines	178	169	129	76.3	130	76.9	9	5.1

	<i>Sectors</i>		<i>Arrivals On Time</i>		<i>Departures On Time</i>		<i>Cancellations</i>	
	<i>Sched.</i>	<i>Flown</i>	<i>No.</i>	<i>%</i>	<i>No.</i>	<i>%</i>	<i>No.</i>	<i>%</i>
Townsville-Brisbane								
Jetstar	43	42	38	90.5	37	88.1	1	2.3
Qantas	38	38	33	86.8	34	89.5	0	0.0
QantasLink	102	101	75	74.3	80	79.2	1	1.0
Virgin Australia	144	144	133	92.4	134	93.1	0	0.0
All Airlines	327	325	279	85.8	285	87.7	2	0.6
Townsville-Cairns								
QantasLink	135	133	116	87.2	116	87.2	2	1.5
Regional Express	14	14	9	64.3	8	57.1	0	0.0
All Airlines	149	147	125	85.0	124	84.4	2	1.3
Townsville-Sydney								
Jetstar	22	20	10	50.0	9	45.0	2	9.1
Virgin Australia	29	28	25	89.3	25	89.3	1	3.4
All Airlines	51	48	35	72.9	34	70.8	3	5.9
Wagga Wagga-Sydney								
QantasLink	95	92	71	77.2	70	76.1	3	3.2
Regional Express	131	129	96	74.4	99	76.7	2	1.5
All Airlines	226	221	167	75.6	169	76.5	5	2.2

Airports

On time performance is reported for all routes where the passenger load averages over 8000 passengers per month, and where two or more airlines operate in competition. The following data reports by airport against flights operated on those routes only. This month, 8 major city airports and 32 regional city airports are covered.

Airport	Arrivals			Departures		
	Sectors Flown	On Time No.	%	Sectors Flown	On Time No.	%
Adelaide						
Jetstar	274	188	68.6	274	182	66.4
Qantas	744	534	71.8	741	541	73.0
QantasLink	198	145	73.2	198	150	75.8
Regional Express	210	183	87.1	212	187	88.2
Tigerair Australia	132	76	57.6	131	67	51.1
Virgin Australia	644	493	76.6	642	502	78.2
Virgin Australia Regional Airlines	45	35	77.8	43	33	76.7
All Airlines	2 247	1 654	73.6	2 241	1 662	74.2
Relates to services to and from Alice Springs, Brisbane, Canberra, Gold Coast, Melbourne, Perth, Port Lincoln and Sydney.						
Albury						
QantasLink	91	60	65.9	92	60	65.2
Regional Express	102	76	74.5	100	84	84.0
Virgin Australia	58	45	77.6	58	48	82.8
All Airlines	251	181	72.1	250	192	76.8
Relates to services to and from Sydney only.						
Alice Springs						
Qantas	29	15	51.7	29	15	51.7
QantasLink	50	43	86.0	50	44	88.0
Virgin Australia	44	34	77.3	44	34	77.3
All Airlines	123	92	74.8	123	93	75.6
Relates to services to and from Adelaide and Darwin.						
Armidale						
QantasLink	114	87	76.3	113	87	77.0
Regional Express	74	53	71.6	73	48	65.8
All Airlines	188	140	74.5	186	135	72.6
Relates to services to and from Sydney only.						
Ayers Rock						
Jetstar	25	16	64.0	26	8	30.8
Virgin Australia	30	22	73.3	30	15	50.0
All Airlines	55	38	69.1	56	23	41.1
Relates to services to and from Sydney only.						
Ballina						
Jetstar	65	54	83.1	65	44	67.7
Regional Express	26	21	80.8	25	21	84.0
Virgin Australia	31	25	80.6	31	23	74.2
All Airlines	122	100	82.0	121	88	72.7
Relates to services to and from Sydney only.						

Airport	Arrivals			Departures		
	Sectors	On Time		Sectors	On Time	
	Flown	No.	%	Flown	No.	%
Brisbane						
Jetstar	601	471	78.4	600	467	77.8
Qantas	1 335	1 021	76.5	1 331	1 049	78.8
QantasLink	1 205	945	78.4	1 214	968	79.7
Tigerair Australia	314	190	60.5	313	194	62.0
Virgin Australia	2 134	1 788	83.8	2 132	1 773	83.2
All Airlines	5 589	4 415	79.0	5 590	4 451	79.6

Relates to services to and from Adelaide, Bundaberg, Cairns, Canberra, Darwin, Emerald, Gladstone, Hamilton Island, Hobart, Mackay, Melbourne, Mount Isa, Newcastle, Perth, Proserpine, Rockhampton, Sydney and Townsville.

Broome

QantasLink	80	65	81.3	80	62	77.5
Virgin Australia	1	0	0.0	1	0	0.0
Virgin Australia Regional Airlines	59	45	76.3	59	45	76.3
All Airlines	140	110	78.6	140	107	76.4

Relates to services to and from Perth only.

Bundaberg

QantasLink	120	109	90.8	120	110	91.7
Virgin Australia	30	26	86.7	30	27	90.0
All Airlines	150	135	90.0	150	137	91.3

Relates to services to and from Brisbane only.

Cairns

Jetstar	241	183	75.9	241	174	72.2
Qantas	139	112	80.6	139	101	72.7
QantasLink	212	169	79.7	211	180	85.3
Regional Express	14	9	64.3	14	9	64.3
Tigerair Australia	106	80	75.5	106	73	68.9
Virgin Australia	244	204	83.6	244	200	82.0
All Airlines	956	757	79.2	955	737	77.2

Relates to services to and from Brisbane, Melbourne, Sydney and Townsville.

Canberra

Qantas	281	205	73.0	282	237	84.0
QantasLink	665	475	71.4	658	489	74.3
Tigerair Australia	54	30	55.6	54	28	51.9
Virgin Australia	517	404	78.1	521	399	76.6
All Airlines	1 517	1 114	73.4	1 515	1 153	76.1

Relates to services to and from Adelaide, Brisbane, Melbourne and Sydney.

Coffs Harbour

QantasLink	129	104	80.6	128	94	73.4
Tigerair Australia	17	11	64.7	17	12	70.6
Virgin Australia	53	47	88.7	53	42	79.2
All Airlines	199	162	81.4	198	148	74.7

Relates to services to and from Sydney only.

Airport	Arrivals			Departures		
	Sectors Flown	On Time		Sectors Flown	On Time	
		No.	%		No.	%
Darwin						
Jetstar	56	40	71.4	56	28	50.0
Qantas	136	107	78.7	138	96	69.6
QantasLink	50	44	88.0	50	43	86.0
Tigerair Australia	11	7	63.6	12	9	75.0
Virgin Australia	134	98	73.1	134	115	85.8
Virgin Australia Regional Airlines	6	5	83.3	6	4	66.7
All Airlines	393	301	76.6	396	295	74.5
Relates to services to and from Alice Springs, Brisbane, Melbourne, Perth and Sydney.						
Dubbo						
QantasLink	101	74	73.3	100	74	74.0
Regional Express	129	100	77.5	126	101	80.2
All Airlines	230	174	75.7	226	175	77.4
Relates to services to and from Sydney only.						
Emerald						
QantasLink	104	88	84.6	103	88	85.4
Virgin Australia	52	50	96.2	52	49	94.2
All Airlines	156	138	88.5	155	137	88.4
Relates to services to and from Brisbane only.						
Geraldton						
QantasLink	48	44	91.7	48	45	93.8
Virgin Australia Regional Airlines	51	41	80.4	51	37	72.5
All Airlines	99	85	85.9	99	82	82.8
Relates to services to and from Perth only.						
Gladstone						
QantasLink	131	107	81.7	131	111	84.7
Virgin Australia	73	70	95.9	73	70	95.9
All Airlines	204	177	86.8	204	181	88.7
Relates to services to and from Brisbane only.						
Gold Coast						
Jetstar	447	313	70.0	444	320	72.1
Qantas	119	83	69.7	118	79	66.9
QantasLink	24	19	79.2	24	19	79.2
Tigerair Australia	160	100	62.5	160	89	55.6
Virgin Australia	470	366	77.9	470	343	73.0
All Airlines	1 220	881	72.2	1 216	850	69.9
Relates to services to and from Adelaide, Melbourne and Sydney.						
Hamilton Island						
Jetstar	17	10	58.8	17	7	41.2
Qantas	8	8	100.0	8	8	100.0
QantasLink	42	26	61.9	41	23	56.1
Virgin Australia	58	50	86.2	58	51	87.9
All Airlines	125	94	75.2	124	89	71.8
Relates to services to and from Brisbane and Sydney.						

Airport	Arrivals			Departures		
	Sectors Flown	On Time		Sectors Flown	On Time	
		No.	%		No.	%
Hobart						
Jetstar	290	211	72.8	289	164	56.7
Qantas	130	99	76.2	128	86	67.2
QantasLink	46	29	63.0	46	37	80.4
Tigerair Australia	50	30	60.0	50	25	50.0
Virgin Australia	248	202	81.5	246	194	78.9
All Airlines	764	571	74.7	759	506	66.7
Relates to services to and from Brisbane, Melbourne and Sydney.						
Kalgoorlie						
Qantas	8	8	100.0	8	8	100.0
QantasLink	73	60	82.2	73	63	86.3
Virgin Australia	44	42	95.5	44	41	93.2
Virgin Australia Regional Airlines	24	18	75.0	24	20	83.3
All Airlines	149	128	85.9	149	132	88.6
Relates to services to and from Perth only.						
Karratha						
Qantas	11	11	100.0	10	10	100.0
QantasLink	173	143	82.7	172	153	89.0
Virgin Australia	4	3	75.0	4	2	50.0
Virgin Australia Regional Airlines	66	54	81.8	64	52	81.3
All Airlines	254	211	83.1	250	217	86.8
Relates to services to and from Perth only.						
Launceston						
Jetstar	178	115	64.6	177	99	55.9
QantasLink	113	80	70.8	113	83	73.5
Virgin Australia	129	93	72.1	128	105	82.0
All Airlines	420	288	68.6	418	287	68.7
Relates to services to and from Melbourne and Sydney.						
Mackay						
Jetstar	29	27	93.1	29	27	93.1
QantasLink	114	92	80.7	109	87	79.8
Virgin Australia	136	112	82.4	137	126	92.0
All Airlines	279	231	82.8	275	240	87.3
Relates to services to and from Brisbane only.						
Melbourne						
Jetstar	1 318	764	58.0	1 328	788	59.3
Qantas	2 346	1 604	68.4	2 340	1 706	72.9
QantasLink	262	178	67.9	261	178	68.2
Regional Express	85	60	70.6	84	79	94.0
Tigerair Australia	659	358	54.3	658	410	62.3
Virgin Australia	2 303	1 566	68.0	2 301	1 764	76.7
Virgin Australia Regional Airlines	8	7	87.5	8	5	62.5
All Airlines	6 981	4 537	65.0	6 980	4 930	70.6
Relates to services to and from Adelaide, Brisbane, Cairns, Canberra, Darwin, Gold Coast, Hobart, Launceston, Mildura, Newcastle, Perth, Sunshine Coast and Sydney.						
Mildura						
QantasLink	94	67	71.3	94	67	71.3
Regional Express	84	74	88.1	85	59	69.4
Virgin Australia	30	25	83.3	30	24	80.0
All Airlines	208	166	79.8	209	150	71.8
Relates to services to and from Melbourne only.						

Airport	Arrivals			Departures		
	Sectors Flown	On Time		Sectors Flown	On Time	
		No.	%		No.	%
Mount Isa						
QantasLink	54	38	70.4	54	40	74.1
Virgin Australia	17	13	76.5	18	14	77.8
All Airlines	71	51	71.8	72	54	75.0
Relates to services to and from Brisbane only.						
Newcastle						
Jetstar	173	126	72.8	171	133	77.8
QantasLink	82	65	79.3	80	61	76.3
Virgin Australia	130	104	80.0	130	107	82.3
All Airlines	385	295	76.6	381	301	79.0
Relates to services to and from Brisbane and Melbourne.						
Newman						
Qantas	19	18	94.7	19	17	89.5
QantasLink	110	98	89.1	107	92	86.0
Virgin Australia	13	13	100.0	13	13	100.0
Virgin Australia Regional Airlines	26	21	80.8	26	22	84.6
All Airlines	168	150	89.3	165	144	87.3
Relates to services to and from Perth only.						
Perth						
Jetstar	98	74	75.5	97	67	69.1
Qantas	765	466	60.9	771	572	74.2
QantasLink	590	507	85.9	594	516	86.9
Tigerair Australia	78	48	61.5	78	52	66.7
Virgin Australia	513	319	62.2	516	448	86.8
Virgin Australia Regional Airlines	289	214	74.0	293	250	85.3
All Airlines	2 333	1 628	69.8	2 349	1 905	81.1
Relates to services to and from Adelaide, Brisbane, Broome, Darwin, Geraldton, Kalgoorlie, Karratha, Melbourne, Newman, Port Hedland and Sydney.						
Port Hedland						
Qantas	25	22	88.0	25	22	88.0
QantasLink	110	89	80.9	110	91	82.7
Virgin Australia	28	26	92.9	28	26	92.9
Virgin Australia Regional Airlines	24	23	95.8	24	22	91.7
All Airlines	187	160	85.6	187	161	86.1
Relates to services to and from Perth only.						
Port Lincoln						
QantasLink	107	92	86.0	107	95	88.8
Regional Express	212	179	84.4	210	187	89.0
All Airlines	319	271	85.0	317	282	89.0
Relates to services to and from Adelaide only.						
Port Macquarie						
QantasLink	92	76	82.6	92	77	83.7
Virgin Australia	56	45	80.4	55	36	65.5
All Airlines	148	121	81.8	147	113	76.9
Relates to services to and from Sydney only.						

Airport	Arrivals			Departures		
	Sectors Flown	On Time		Sectors Flown	On Time	
		No.	%		No.	%
Proserpine						
Jetstar	43	40	93.0	43	35	81.4
Tigerair Australia	17	11	64.7	17	11	64.7
Virgin Australia	45	39	86.7	45	37	82.2
All Airlines	105	90	85.7	105	83	79.0
Relates to services to and from Brisbane and Sydney.						
Rockhampton						
QantasLink	174	135	77.6	180	144	80.0
Virgin Australia	138	116	84.1	138	123	89.1
All Airlines	312	251	80.4	318	267	84.0
Relates to services to and from Brisbane only.						
Sunshine Coast						
Jetstar	187	140	74.9	187	115	61.5
QantasLink	32	20	62.5	33	25	75.8
Virgin Australia	125	108	86.4	123	98	79.7
All Airlines	344	268	77.9	343	238	69.4
Relates to services to and from Melbourne and Sydney.						
Sydney						
Jetstar	1 334	897	67.2	1 333	938	70.4
Qantas	2 241	1 662	74.2	2 248	1 582	70.4
QantasLink	1 379	1 029	74.6	1 385	1 010	72.9
Regional Express	453	332	73.3	460	363	78.9
Tigerair Australia	576	360	62.5	578	362	62.6
Virgin Australia	2 592	2 004	77.3	2 593	1 975	76.2
All Airlines	8 575	6 284	73.3	8 597	6 230	72.5
Relates to services to and from Adelaide, Albury, Armidale, Ayers Rock, Ballina, Brisbane, Cairns, Canberra, Coffs Harbour, Darwin, Dubbo, Gold Coast, Hamilton Island, Hobart, Launceston, Melbourne, Perth, Port Macquarie, Proserpine, Sunshine Coast, Tamworth, Townsville and Wagga Wagga.						
Tamworth						
QantasLink	119	87	73.1	118	85	72.0
Virgin Australia	50	40	80.0	51	45	88.2
All Airlines	169	127	75.1	169	130	76.9
Relates to services to and from Sydney only.						
Townsville						
Jetstar	63	52	82.5	62	46	74.2
Qantas	37	29	78.4	38	34	89.5
QantasLink	235	198	84.3	234	196	83.8
Regional Express	14	8	57.1	14	8	57.1
Virgin Australia	171	151	88.3	172	159	92.4
All Airlines	520	438	84.2	520	443	85.2
Relates to services to and from Brisbane, Cairns and Sydney.						
Wagga Wagga						
QantasLink	92	72	78.3	92	70	76.1
Regional Express	129	99	76.7	129	99	76.7
All Airlines	221	171	77.4	221	169	76.5
Relates to services to and from Sydney only.						

Definitions

On time arrival	A flight arrival is counted as "on time" if it arrived at the gate before 15 minutes after the scheduled arrival time shown in the carriers' schedule. Neither diverted nor cancelled flights count as on time.
On time departure	A flight departure is counted as "on time" if it departs the gate before 15 minutes after the scheduled departure time shown in the carriers' schedule.
Cancellation	A flight removed from service within 7 days of scheduled departure is regarded as a cancellation.
On time departure percentage	The percentage of on time departures is measured against the number of departures <i>operated</i> on any particular sector.
On time arrival percentage	The percentage of on time arrivals is measured against the number of arrivals <i>operated</i> on any particular sector.
Cancellation percentage	The percentage of cancellations is measured against the number of services <i>scheduled</i> on any particular sector.
