



**Australian Government**

**Department of Infrastructure and Regional Development**

Bureau of Infrastructure, Transport and Regional Economics

STATISTICAL REPORT



## Aviation

Domestic airline on time performance  
November 2015

© Commonwealth of Australia 2015

ISSN: 1832-0759

### **Ownership of intellectual property rights in this publication**

Unless otherwise noted, copyright (and any other intellectual property rights, if any) in this publication is owned by the Commonwealth of Australia (referred to below as the Commonwealth).

### **Disclaimer**

The material contained in this publication is made available on the understanding that the Commonwealth is not providing professional advice, and that users exercise their own skill and care with respect to its use, and seek independent advice if necessary.

The Commonwealth makes no representations or warranties as to the contents or accuracy of the information contained in this publication. To the extent permitted by law, the Commonwealth disclaims liability to any person or organisation in respect of anything done, or omitted to be done, in reliance upon information contained in this publication.

### **Creative Commons licence**

With the exception of (a) the Coat of Arms; and (b) the Department of Infrastructure and Regional Development's photos and graphics, copyright in this publication is licensed under a Creative Commons Attribution 3.0 Australia Licence.

Creative Commons Attribution 3.0 Australia Licence is a standard form licence agreement that allows you to copy, communicate and adapt this publication provided that you attribute the work to the Commonwealth and abide by the other licence terms. A summary of the licence terms is available from <http://creativecommons.org/licenses/by/3.0/au/deed.en>. The full licence terms are available from <http://creativecommons.org/licenses/by/3.0/au/legalcode>.

### **Use of the Coat of Arms**

The Department of the Prime Minister and Cabinet sets the terms under which the Coat of Arms is used. Please refer to the Department's Commonwealth Coat of Arms and Government branding web page <http://www.dpmmc.gov.au/guidelines/index.cfm#brand> and, in particular, the Guidelines on the use of the Commonwealth Coat of Arms publication.

An appropriate citation for this report is:

Bureau of Infrastructure, Transport and Regional Economics (BITRE), 2015, Domestic airline on time performance, Statistical Report, BITRE, Canberra ACT.

### **Contact us**

This publication is available in PDF format. All other rights are reserved, including in relation to any Departmental logos or trade marks which may exist. For enquiries regarding the licence and any use of this publication, please contact:

Bureau of Infrastructure, Transport and Regional Economics (BITRE)  
Department of Infrastructure and Regional Development  
GPO Box 501, Canberra ACT 2601, Australia  
Telephone: (international) +61 2 6274 7210  
Fax: (international) +61 2 6274 6855  
Email: [bitre@infrastructure.gov.au](mailto:bitre@infrastructure.gov.au)  
Website: [www.bitre.gov.au](http://www.bitre.gov.au)

### **Inquiries**

Should you require additional information about the statistics contained in this publication:

Telephone (02) 6274 7790 or Facsimile (02) 6274 7727

Electronic mail: [AVSTATS@infrastructure.gov.au](mailto:AVSTATS@infrastructure.gov.au)

Web site: <http://www.bitre.gov.au/statistics/aviation/otphome.aspx>

# Foreword

The Bureau of Infrastructure, Transport and Regional Economics (BITRE) monitors the punctuality and reliability of major domestic airlines operating between Australian airports. The purpose of this is to allow for evaluation of overall industry and individual airline performance, so that consumers of air travel can make informed decisions.

The following domestic airlines currently report this information monthly to the BITRE: Jetstar, Qantas, QantasLink, Regional Express, Tigerair, Virgin Australia and Virgin Australia Regional Airlines. Data has been gathered since November 2003, although some airlines commenced reporting at a later date, including Jetstar which first reported in May 2004, MacAir in July 2005 and Tigerair in April 2008. MacAir ceased operations in February 2009 and data was not received for December 2008 onwards. Virgin Blue was rebranded as Virgin Australia in May 2011 and Tiger Airways was rebranded as Tigerair in July 2013 and time series data in Microsoft Excel spreadsheet format on the BITRE website have been revised to reflect these changes. Virgin Australia Regional Airlines commenced operations in May 2013. It was formed after the acquisition of Skywest by Virgin Australia and represents a combination of operations previously reported under Skywest and Virgin Australia – ATR/F100 Operations. Services operated by Skywest on behalf of Virgin Australia using ATR/F100 aircraft commenced in November 2011 and were shown separately as Virgin Australia – ATR/F100 Operations until April 2013.

Information presented in this report is for Australian domestic routes for which the passenger load averaged 8 000 or more passengers per month over the previous six months and where two or more airlines operated in competition on those routes. There were 66 routes that met this definition in November 2015. Over time, routes which meet these criteria change as airline networks and traffic levels vary.

Participating airlines report their overall monthly network performance where this is possible.

Total industry figures encompass all services operated by reporting airlines only. These airlines collectively carried over 95 per cent of total domestic passengers (regular public transport only) in 2014.

The method of capturing on time performance varies between airlines utilising different recording systems. Jetstar and Qantas jet aircraft use Aircraft Communication Addressing and Reporting System (ACARS) to electronically measure on time performance. Regional Express, Tigerair, Virgin Australia, Virgin Australia Regional Airlines and the Qantas non-jet fleet record on time performance manually using records from pilots, gate agents and/or ground crews.

After initial data is collected, aggregate reports are audited internally by participating airlines prior to publication.

Reports and detailed time series data in Microsoft Excel spreadsheet format are available from the BITRE website at: <http://www.bitre.gov.au/statistics/aviation/otphome.aspx>.



# Contents

	Page
Industry performance .....	1
Individual routes .....	10
Airports .....	23
Definitions .....	30



## Industry performance

For November 2015, on time performance over all routes operated by participating airlines (Jetstar, Qantas, QantasLink, Regional Express, Tigerair, Virgin Australia and Virgin Australia Regional Airlines) averaged 83.1 per cent for on time arrivals and 84.1 per cent for on time departures. Cancellations represented 1.7 per cent of all scheduled flights. The equivalent figures for November 2014 were 85.2 per cent for arrivals, 87.3 per cent for departures and 1.2 per cent for cancellations.

This month's on time arrivals figure was better than the long term average performance for all routes (82.6 per cent) while the on time departures figure was the same as the long term average (84.1 per cent). The rate of cancellations was higher than the long term average of 1.4 per cent.

Virgin Australia achieved the highest on time arrivals among the major domestic airlines at 87.2 per cent, followed by Qantas at 85.4 per cent, Tigerair at 81.5 per cent and Jetstar at 72.5 per cent. QantasLink was the best performing regional airline for on time arrivals at 84.3 per cent, followed by Virgin Australia Regional Airlines at 83.1 per cent and Regional Express at 82.4 per cent. The Qantas network (Qantas and QantasLink combined operations) recorded 84.8 per cent for on time arrivals while the Virgin Australia network (Virgin Australia and Virgin Australia Regional Airlines combined operations) recorded 86.5 per cent.

Virgin Australia also achieved the highest level of on time departures for November 2015 at 89.0 per cent, followed by Qantas at 87.1 per cent, Tigerair at 82.9 per cent and Jetstar at 69.3 per cent. Of the regional airlines, Regional Express recorded 86.1 per cent followed by QantasLink at 85.2 per cent and Virgin Australia Regional Airlines at 84.3 per cent. The Qantas network recorded 86.1 per cent for on time departures while the Virgin Australia network recorded 88.2 per cent.

QantasLink had the highest percentage of cancellations (3.2 per cent) during the month, followed by Jetstar (2.3 per cent), Qantas (1.4 per cent), Virgin Australia Regional Airlines (1.3 per cent), Virgin Australia and Tigerair (both 1.2 per cent) and Regional Express (0.4 per cent).

Airlines' on time performance varies across the routes they serve. Individual route data by specific airline for 66 routes are shown on pages 10-22.

Of the 66 routes which met the criteria for on time performance reporting in November 2015, the Adelaide-Canberra and Canberra-Adelaide routes had the highest percentage of on time arrivals (both 97.3 per cent) and the Darwin-Perth route had the highest percentage of on time departures (97.2 per cent). The Port Macquarie-Sydney route had the lowest percentage of on time arrivals (61.0 per cent) and the Melbourne-Newcastle route had the lowest percentage of on time departures (59.5 per cent).

Cancellations were highest on the Moranbah-Brisbane route at 7.4 per cent, followed by the Canberra-Sydney route at 6.1 per cent, the Sydney-Canberra route at 5.8 per cent, the Launceston-Sydney and Brisbane-Moranbah routes at 5.6 per cent and the Port Hedland-Perth route at 5.4 per cent.

Mount Isa Airport recorded the highest percentage of on time arrivals (96.7 per cent) and the highest percentage of on time departures (also 96.7 per cent). Port Macquarie Airport recorded the lowest percentage of on time arrivals (65.8 per cent) and Sunshine Coast Airport recorded the lowest percentage of on time departures (70.3 per cent). These figures only refer to reported routes and do not cover all flights at these airports.



Table 1 On time performance for November 2015 — Total Industry

	<i>Sectors</i>		<i>Arrivals On Time</i>		<i>Departures On Time</i>		<i>Cancellations</i>	
	<i>Scheduled</i>	<i>Flown</i>	<i>No.</i>	<i>%</i>	<i>No.</i>	<i>%</i>	<i>No.</i>	<i>%</i>
Jetstar	6 949	6 789	4 923	72.5	4 703	69.3	160	2.3
Qantas	9 492	9 359	7 992	85.4	8 150	87.1	133	1.4
QantasLink	10 225	9 896	8 340	84.3	8 431	85.2	329	3.2
Regional Express	6 020	5 997	4 939	82.4	5 166	86.1	23	0.4
Tigerair	2 107	2 082	1 697	81.5	1 725	82.9	25	1.2
Virgin Australia	10 938	10 802	9 421	87.2	9 618	89.0	136	1.2
Virgin Australia Regional Airlines	2 447	2 414	2 005	83.1	2 036	84.3	33	1.3
All Airlines	48 178	47 339	39 317	83.1	39 829	84.1	839	1.7
Qantas - all QF designated services	19 717	19 255	16 332	84.8	16 581	86.1	462	2.3
Virgin Australia - all VA designated services	13 385	13 216	11 426	86.5	11 654	88.2	169	1.3

Total airline network data (including routes not shown in this report).

Airlines' on time performance varies across the routes they serve. Individual route data by specific airline for 66 routes are shown on pages 10-22.

Table 2 Top ten routes for on time performance for November 2015 (participating airlines only)

<i>Arrivals</i>		<i>Departures</i>	
<i>Route</i>	<i>On Time (%)</i>	<i>Route</i>	<i>On Time (%)</i>
Adelaide-Canberra	97.3	Darwin-Perth	97.2
Canberra-Adelaide	97.3	Mount Isa-Brisbane	96.7
Perth-Darwin	97.2	Perth-Newman	96.6
Townsville-Cairns	97.0	Townsville-Cairns	96.1
Darwin-Alice Springs	96.9	Adelaide-Canberra	95.9
Brisbane-Mount Isa	96.7	Perth-Darwin	95.8
Mount Isa-Brisbane	96.7	Newman-Perth	94.9
Hamilton Island-Brisbane	96.4	Brisbane-Hamilton Island	94.6
Darwin-Perth	95.8	Darwin-Alice Springs	93.8
Gold Coast-Adelaide	95.0	Cairns-Townsville	93.7

Table 3 Top ten airports for on time performance for November 2015 (participating airlines and reported routes only)

<i>Arrivals</i>		<i>Departures</i>	
<i>Airport</i>	<i>On Time (%)</i>	<i>Airport</i>	<i>On Time (%)</i>
Mount Isa	96.7	Mount Isa	96.7
Proserpine	93.9	Newman	94.9
Newman	93.8	Mildura	92.8
Hamilton Island	92.7	Karratha	90.6
Bundaberg	91.9	Townsville	90.5
Alice Springs	91.7	Port Hedland	90.2
Port Lincoln	90.4	Bundaberg	90.1
Gladstone	90.0	Port Lincoln	89.7
Port Hedland	89.3	Kalgoorlie	89.7
Rockhampton	89.2	Rockhampton	89.4

## Total industry on time performance

Figure 1 On time performance (by month from November 2012)—Total Industry

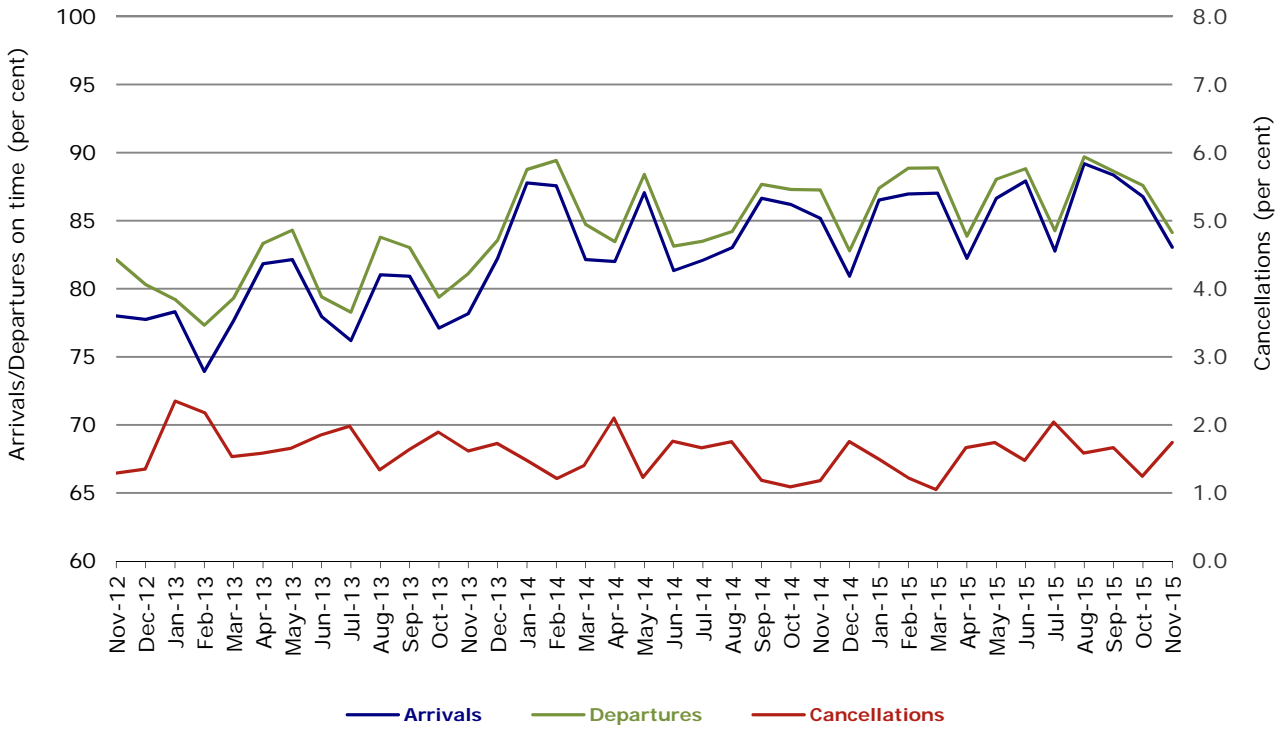


Figure 2 Arrivals on time (by month from November 2014)

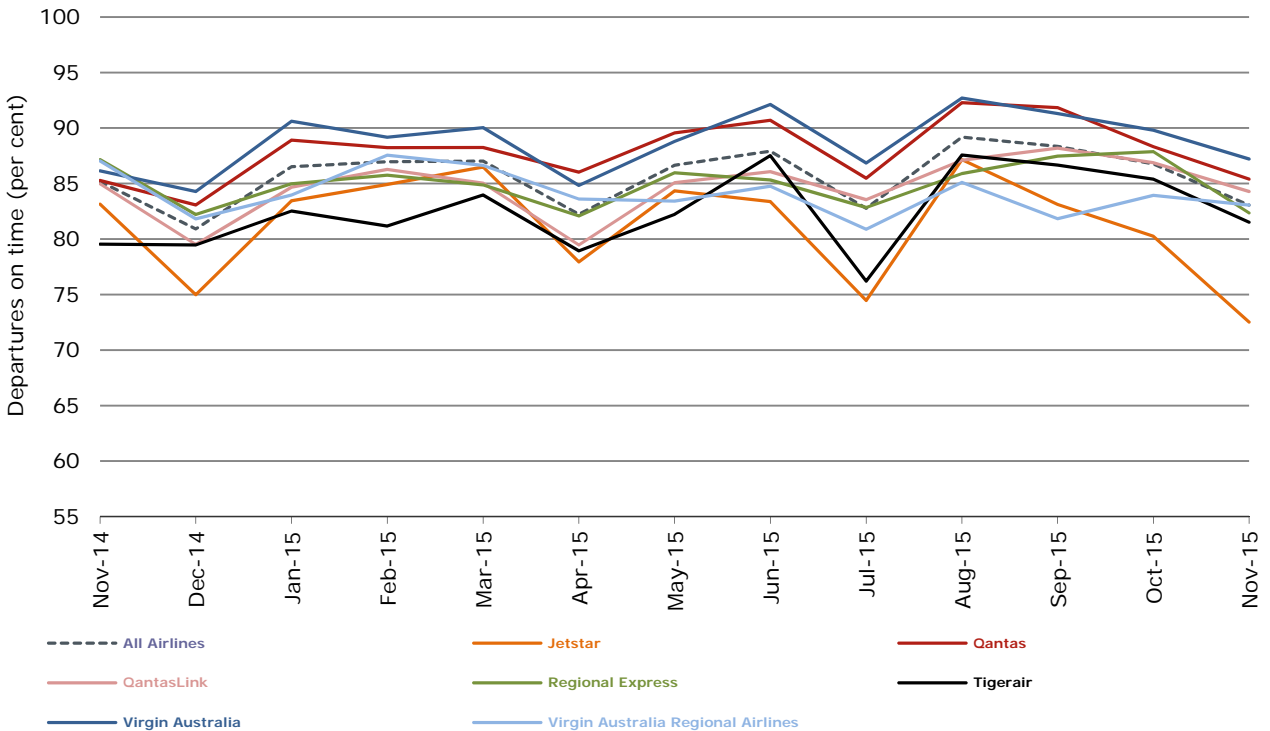


Figure 3 Departures on time (by month from November 2014)

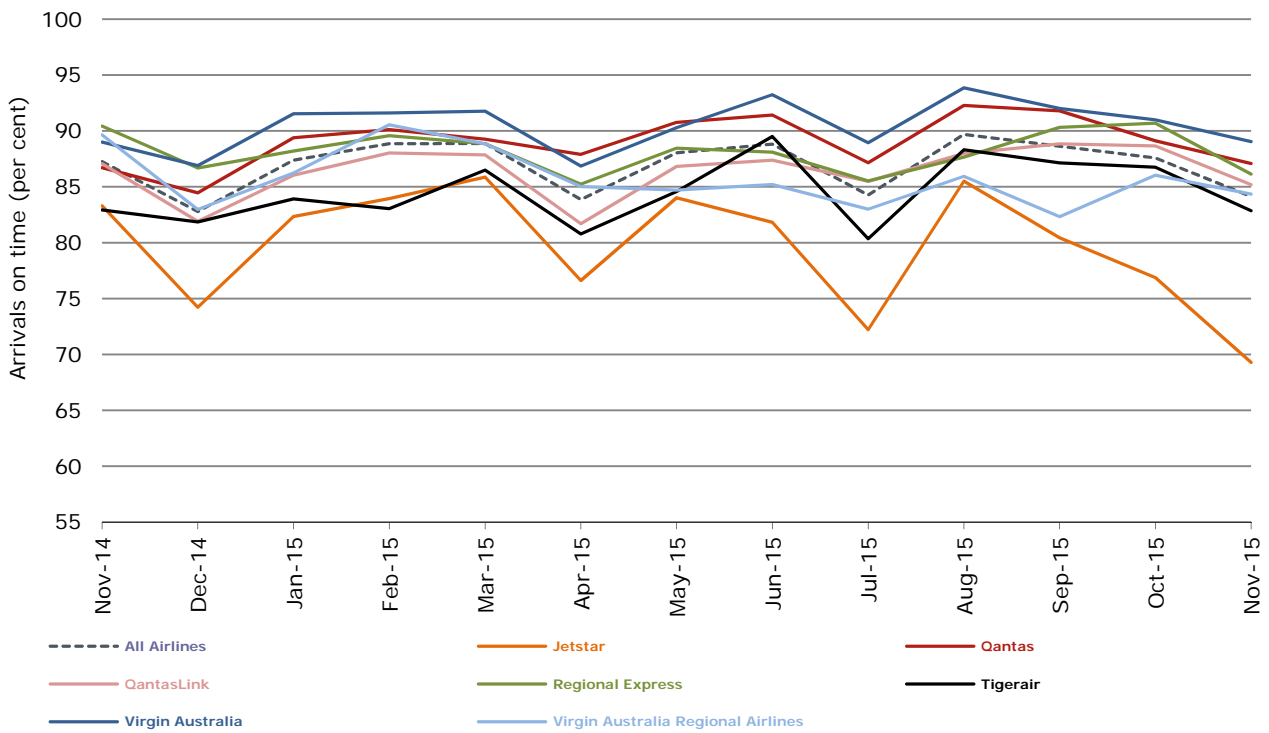
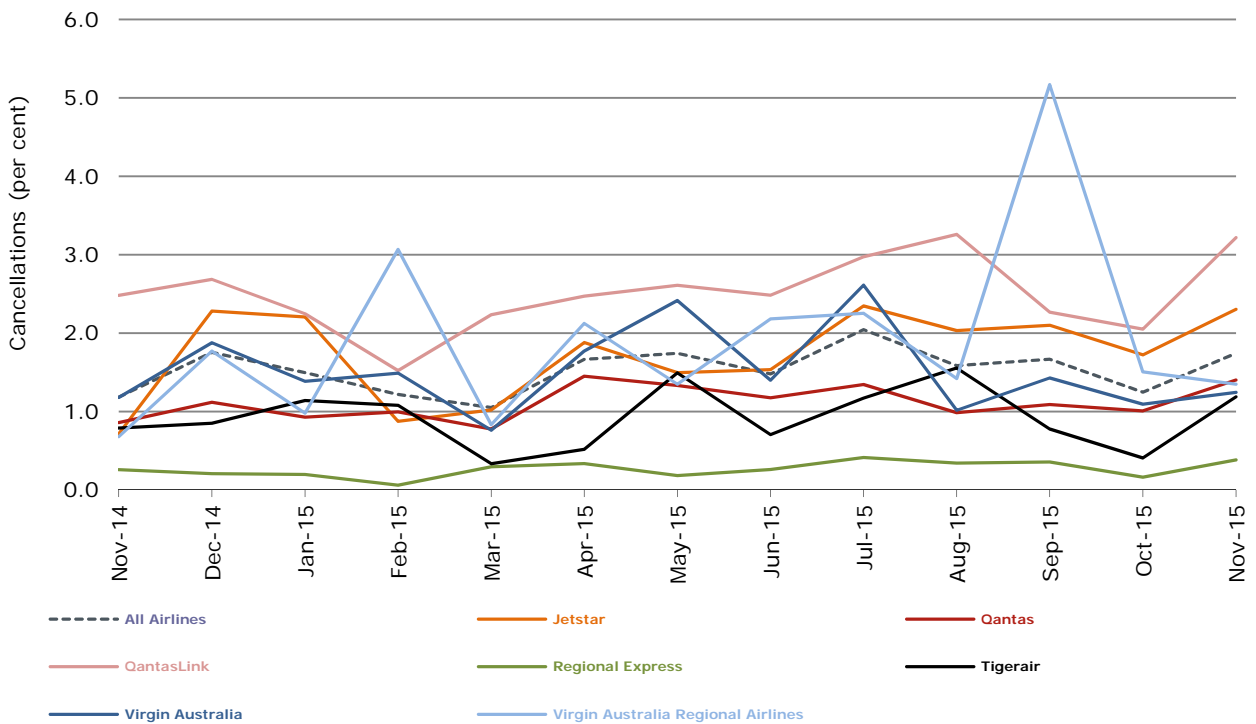


Figure 4 Cancellations (by month from November 2014)



## Major domestic airlines on time performance

Figure 5 On time performance (by month from November 2012)—Jetstar

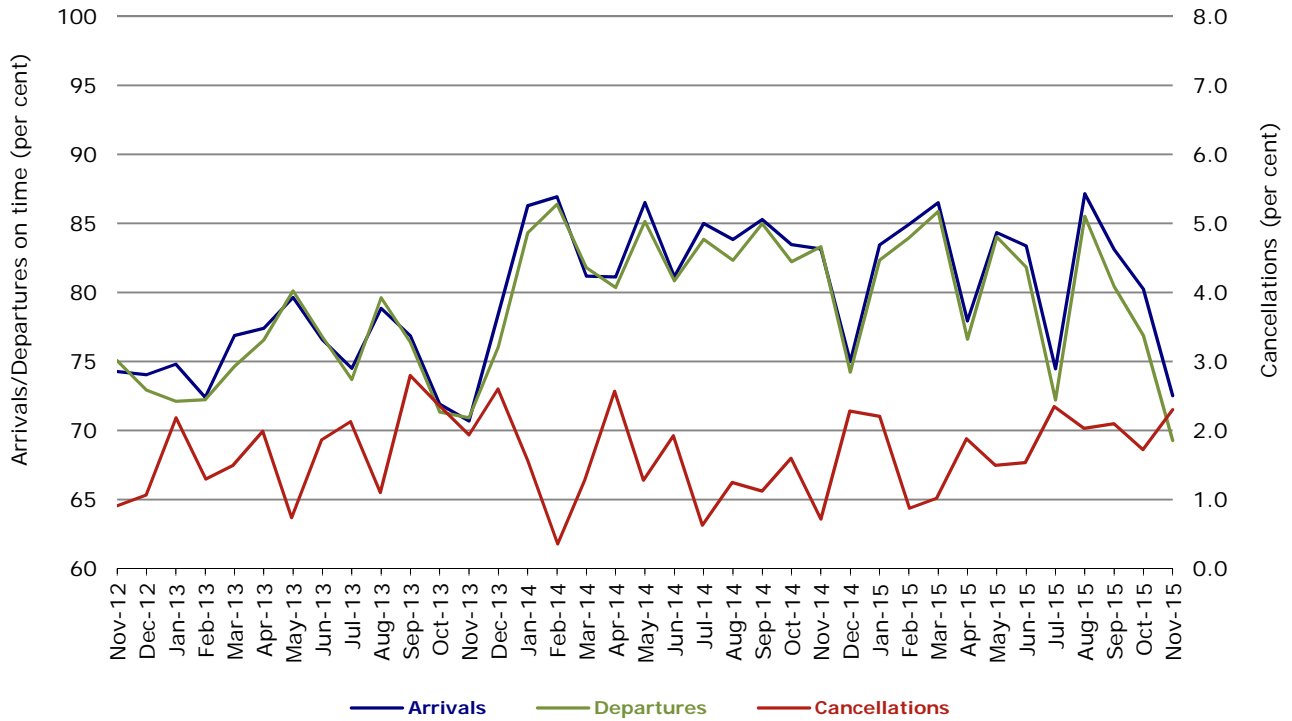


Figure 6 On time performance (by month from November 2012)—Qantas

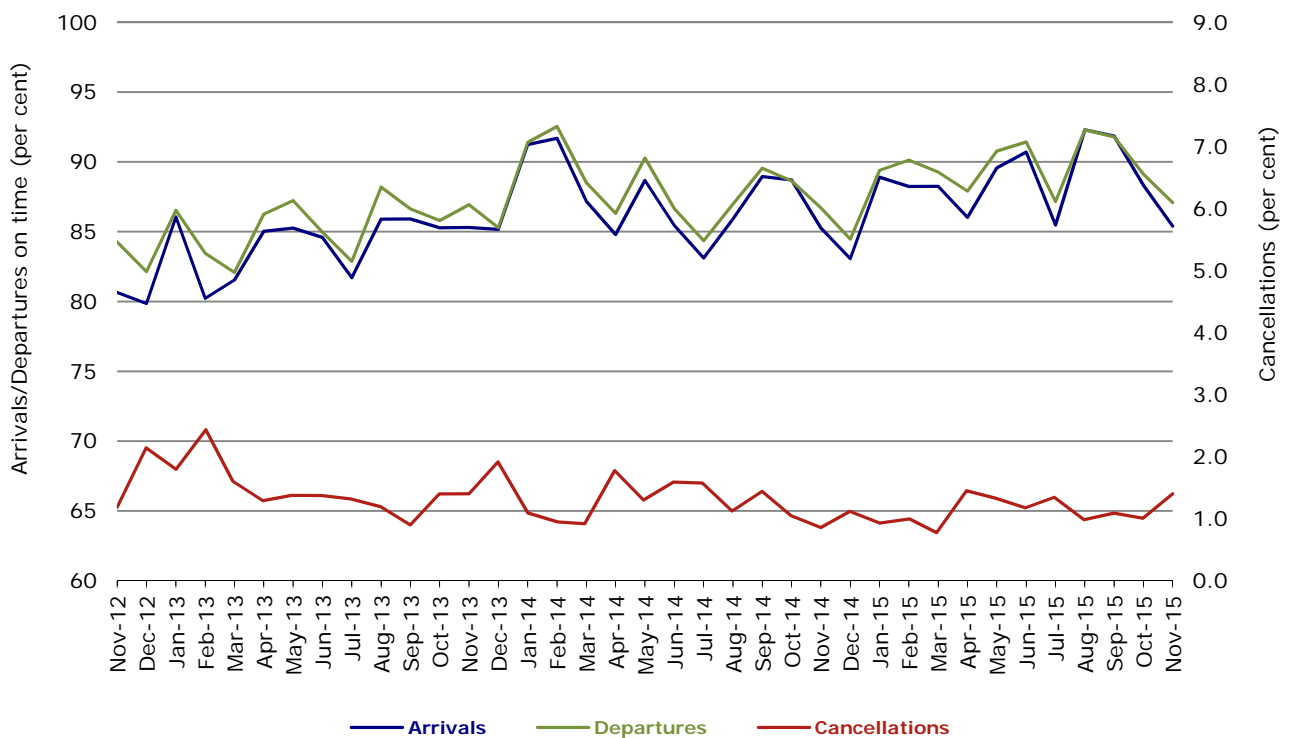


Figure 7 On time performance (by month from November 2012)—Tigerair

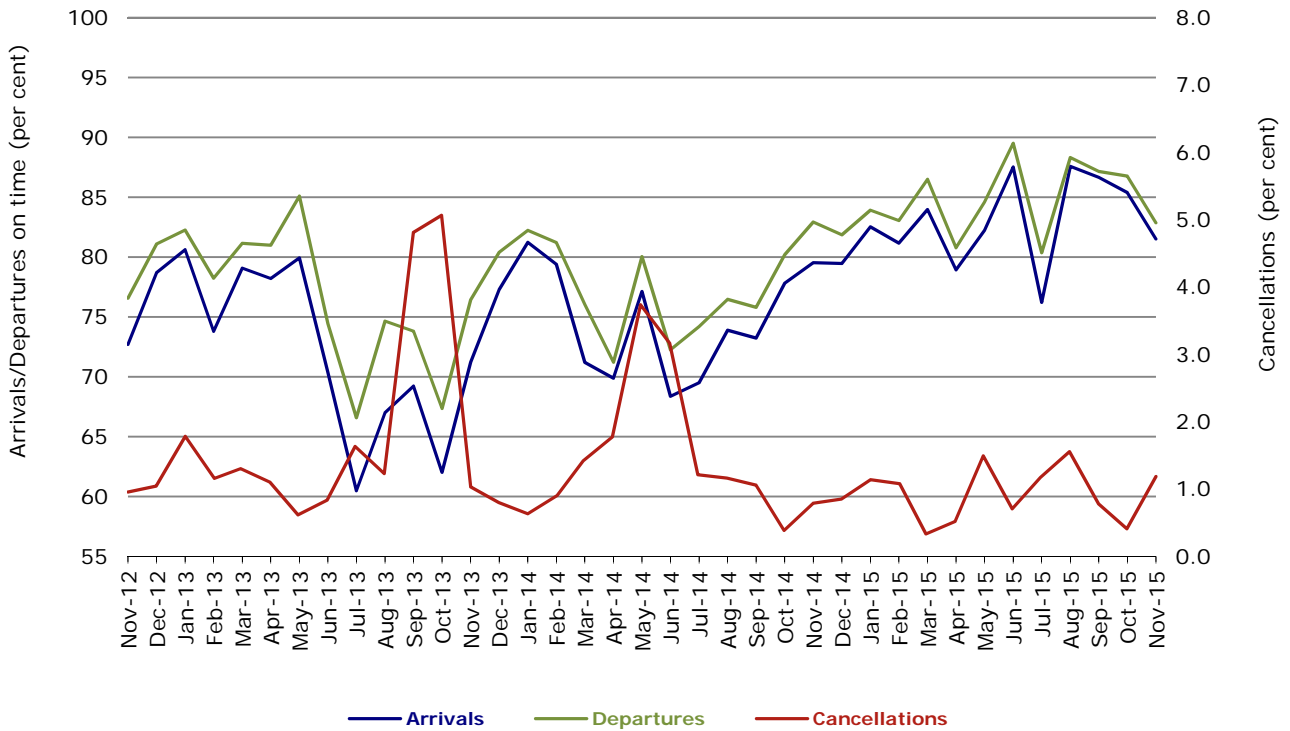
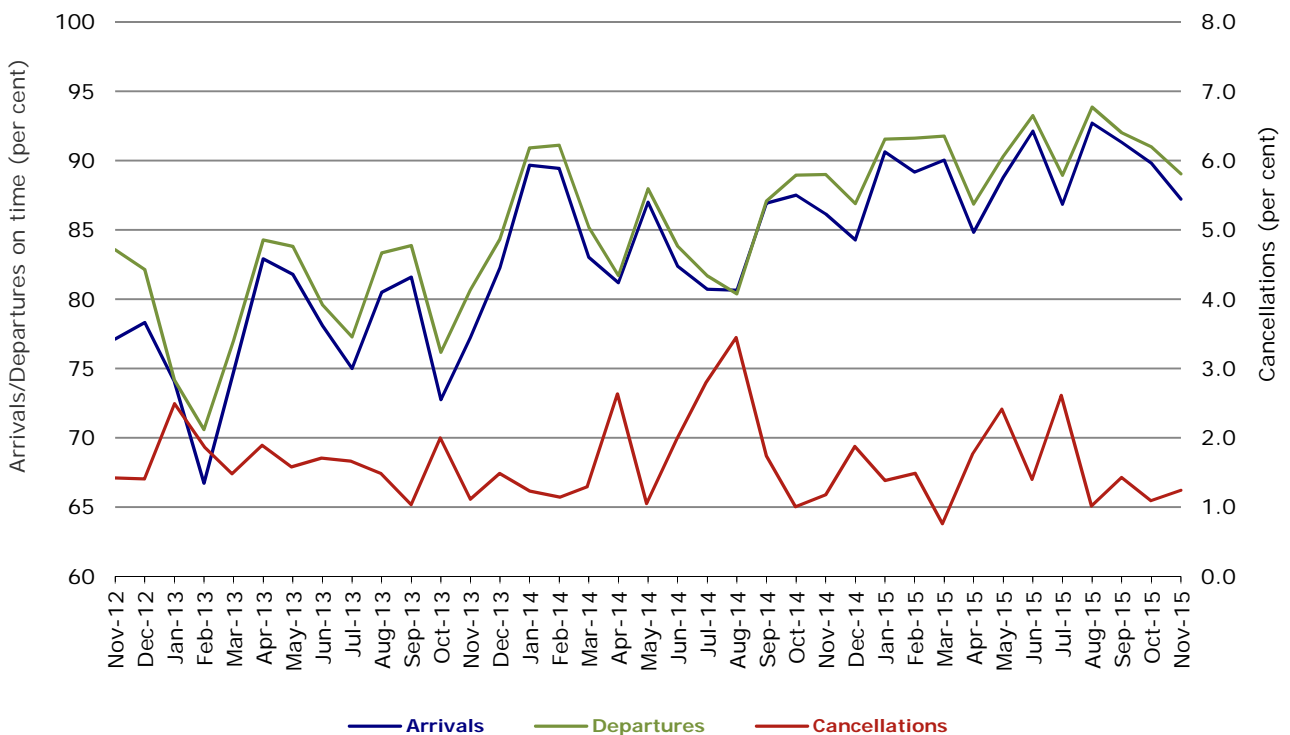


Figure 8 On time performance (by month from November 2012)—Virgin Australia



## Major regional airlines on time performance

Figure 9 On time performance (by month from November 2012)—QantasLink

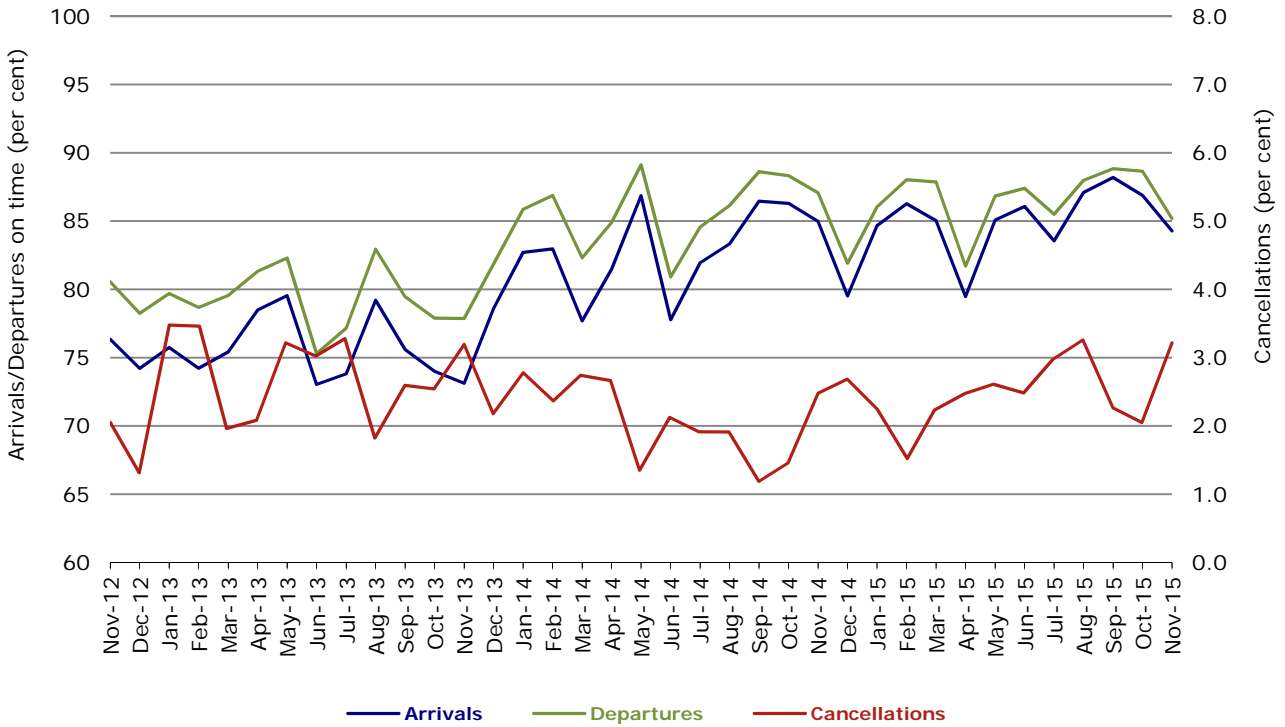


Figure 10 On time performance (by month from November 2012)—Regional Express

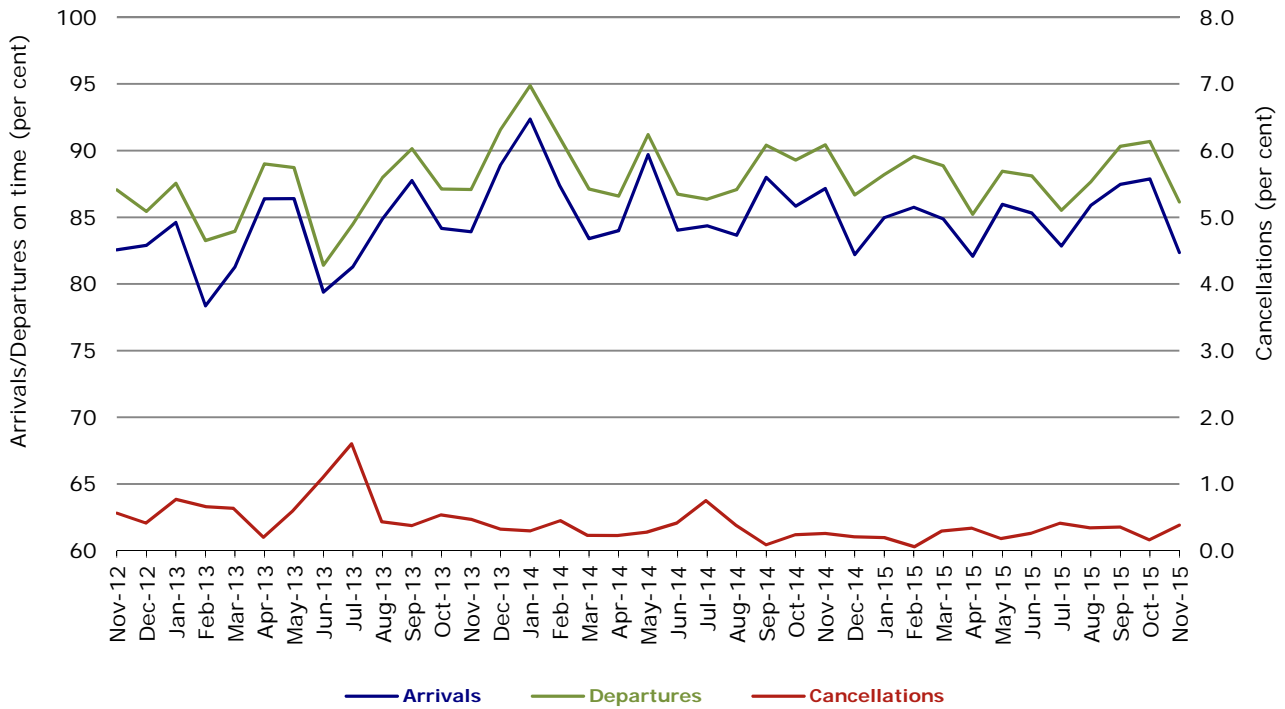
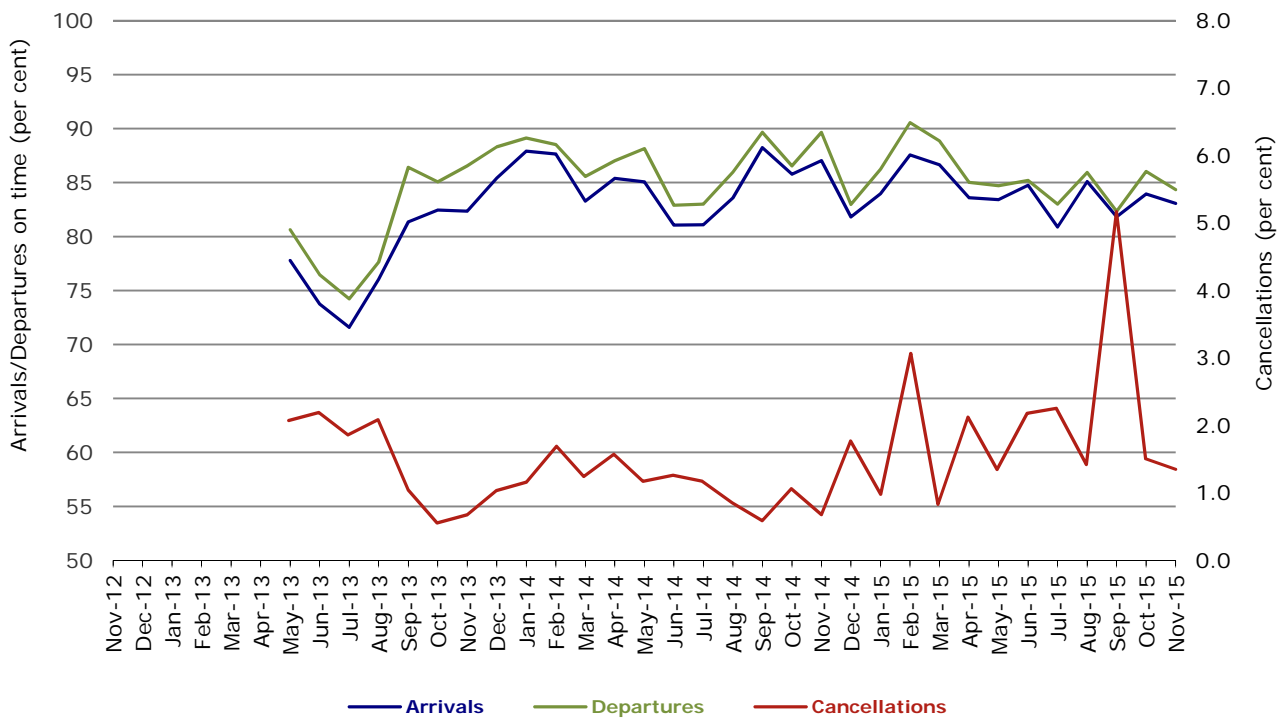


Figure 11 On time performance (by month from November 2012)  
Virgin Australia Regional Airlines



Virgin Australia Regional Airlines commenced operations in May 2013. It was formed after the acquisition of Skywest by Virgin Australia and represents a combination of operations previously reported under Skywest and Virgin Australia – ATR/F100 Operations.

## Individual routes

On time performance is reported for all routes where the passenger load averages over 8000 passengers per month over the previous six months, and where two or more airlines operate in competition on those routes. There are now 66 routes which meet this definition. Over time, however, routes which meet this definition may change as airline networks and traffic levels vary.

	<i>Sectors</i>		<i>Arrivals On Time</i>		<i>Departures On Time</i>		<i>Cancellations</i>	
	<i>Sched.</i>	<i>Flown</i>	<i>No.</i>	<i>%</i>	<i>No.</i>	<i>%</i>	<i>No.</i>	<i>%</i>
<b>Adelaide-Alice Springs</b>								
Qantas	30	30	26	86.7	27	90.0	0	0.0
Virgin Australia	13	13	10	76.9	10	76.9	0	0.0
All Airlines	43	43	36	83.7	37	86.0	0	0.0
<b>Adelaide-Brisbane</b>								
Jetstar	30	30	19	63.3	17	56.7	0	0.0
Qantas	118	118	116	98.3	115	97.5	0	0.0
Tigerair	26	26	21	80.8	22	84.6	0	0.0
Virgin Australia	117	117	108	92.3	110	94.0	0	0.0
All Airlines	291	291	264	90.7	264	90.7	0	0.0
<b>Adelaide-Canberra</b>								
Qantas	47	47	45	95.7	45	95.7	0	0.0
Virgin Australia	26	26	26	100.0	25	96.2	0	0.0
All Airlines	73	73	71	97.3	70	95.9	0	0.0
<b>Adelaide-Gold Coast</b>								
Jetstar	30	30	22	73.3	23	76.7	0	0.0
Virgin Australia	30	30	29	96.7	30	100.0	0	0.0
All Airlines	60	60	51	85.0	53	88.3	0	0.0
<b>Adelaide-Melbourne</b>								
Jetstar	97	96	75	78.1	71	74.0	1	1.0
Qantas	286	286	253	88.5	258	90.2	0	0.0
Tigerair	77	76	61	80.3	62	81.6	1	1.3
Virgin Australia	281	277	251	90.6	256	92.4	4	1.4
All Airlines	741	735	640	87.1	647	88.0	6	0.8
<b>Adelaide-Perth</b>								
Jetstar	30	30	26	86.7	24	80.0	0	0.0
Qantas	119	119	111	93.3	109	91.6	0	0.0
Virgin Australia	74	74	66	89.2	68	91.9	0	0.0
All Airlines	223	223	203	91.0	201	90.1	0	0.0
<b>Adelaide-Port Lincoln</b>								
QantasLink	108	107	92	86.0	89	83.2	1	0.9
Regional Express	207	207	192	92.8	195	94.2	0	0.0
All Airlines	315	314	284	90.4	284	90.4	1	0.3
<b>Adelaide-Sydney</b>								
Jetstar	112	108	91	84.3	87	80.6	4	3.6
Qantas	235	234	213	91.0	209	89.3	1	0.4
QantasLink	29	27	19	70.4	17	63.0	2	6.9
Tigerair	30	30	25	83.3	25	83.3	0	0.0
Virgin Australia	170	169	157	92.9	160	94.7	1	0.6
All Airlines	576	568	505	88.9	498	87.7	8	1.4
<b>Albury-Sydney</b>								
QantasLink	90	90	76	84.4	74	82.2	0	0.0
Regional Express	105	104	91	87.5	96	92.3	1	1.0
Virgin Australia Regional Airlines	60	60	47	78.3	50	83.3	0	0.0
All Airlines	255	254	214	84.3	220	86.6	1	0.4



	<i>Sectors</i>		<i>Arrivals On Time</i>		<i>Departures On Time</i>		<i>Cancellations</i>	
	<i>Sched.</i>	<i>Flown</i>	<i>No.</i>	<i>%</i>	<i>No.</i>	<i>%</i>	<i>No.</i>	<i>%</i>
<b>Alice Springs-Adelaide</b>								
Qantas	30	30	24	80.0	24	80.0	0	0.0
Virgin Australia	13	13	12	92.3	12	92.3	0	0.0
All Airlines	43	43	36	83.7	36	83.7	0	0.0
<b>Alice Springs-Darwin</b>								
QantasLink	52	52	49	94.2	48	92.3	0	0.0
Virgin Australia	13	13	12	92.3	10	76.9	0	0.0
All Airlines	65	65	61	93.8	58	89.2	0	0.0
<b>Armidale-Sydney</b>								
QantasLink	131	126	83	65.9	81	64.3	5	3.8
Regional Express	72	72	49	68.1	59	81.9	0	0.0
All Airlines	203	198	132	66.7	140	70.7	5	2.5
<b>Ayers Rock-Sydney</b>								
Jetstar	22	21	14	66.7	12	57.1	1	4.5
Virgin Australia	30	29	27	93.1	26	89.7	1	3.3
All Airlines	52	50	41	82.0	38	76.0	2	3.8
<b>Ballina-Sydney</b>								
Jetstar	59	58	47	81.0	40	69.0	1	1.7
Regional Express	25	25	18	72.0	19	76.0	0	0.0
Virgin Australia	31	31	25	80.6	26	83.9	0	0.0
All Airlines	115	114	90	78.9	85	74.6	1	0.9
<b>Brisbane-Adelaide</b>								
Jetstar	30	30	25	83.3	26	86.7	0	0.0
Qantas	118	118	111	94.1	113	95.8	0	0.0
Tigerair	26	26	22	84.6	20	76.9	0	0.0
Virgin Australia	121	121	112	92.6	112	92.6	0	0.0
All Airlines	295	295	270	91.5	271	91.9	0	0.0
<b>Brisbane-Bundaberg</b>								
QantasLink	132	132	121	91.7	122	92.4	0	0.0
Virgin Australia Regional Airlines	40	40	37	92.5	37	92.5	0	0.0
All Airlines	172	172	158	91.9	159	92.4	0	0.0
<b>Brisbane-Cairns</b>								
Jetstar	91	90	76	84.4	69	76.7	1	1.1
Qantas	116	116	108	93.1	104	89.7	0	0.0
QantasLink	4	4	2	50.0	2	50.0	0	0.0
Tigerair	30	30	28	93.3	27	90.0	0	0.0
Virgin Australia	132	132	121	91.7	119	90.2	0	0.0
All Airlines	373	372	335	90.1	321	86.3	1	0.3
<b>Brisbane-Canberra</b>								
Qantas	25	25	23	92.0	23	92.0	0	0.0
QantasLink	125	125	117	93.6	114	91.2	0	0.0
Virgin Australia	91	90	81	90.0	81	90.0	1	1.1
All Airlines	241	240	221	92.1	218	90.8	1	0.4
<b>Brisbane-Darwin</b>								
Jetstar	18	18	7	38.9	7	38.9	0	0.0
Qantas	47	47	42	89.4	45	95.7	0	0.0
Tigerair	22	22	17	77.3	19	86.4	0	0.0
Virgin Australia	30	30	24	80.0	28	93.3	0	0.0
All Airlines	117	117	90	76.9	99	84.6	0	0.0
<b>Brisbane-Emerald</b>								
QantasLink	141	134	122	91.0	124	92.5	7	5.0
Virgin Australia Regional Airlines	84	84	62	73.8	67	79.8	0	0.0
All Airlines	225	218	184	84.4	191	87.6	7	3.1

	<i>Sectors</i>		<i>Arrivals On Time</i>		<i>Departures On Time</i>		<i>Cancellations</i>	
	<i>Sched.</i>	<i>Flown</i>	<i>No.</i>	<i>%</i>	<i>No.</i>	<i>%</i>	<i>No.</i>	<i>%</i>
<b>Brisbane-Gladstone</b>								
QantasLink	204	197	181	91.9	182	92.4	7	3.4
Virgin Australia	68	66	62	93.9	61	92.4	2	2.9
Virgin Australia Regional Airlines	76	76	62	81.6	66	86.8	0	0.0
All Airlines	348	339	305	90.0	309	91.2	9	2.6
<b>Brisbane-Hamilton Island</b>								
QantasLink	26	26	23	88.5	23	88.5	0	0.0
Virgin Australia	30	30	30	100.0	30	100.0	0	0.0
All Airlines	56	56	53	94.6	53	94.6	0	0.0
<b>Brisbane-Hobart</b>								
Jetstar	30	30	25	83.3	26	86.7	0	0.0
Virgin Australia	30	30	29	96.7	29	96.7	0	0.0
All Airlines	60	60	54	90.0	55	91.7	0	0.0
<b>Brisbane-Mackay</b>								
Jetstar	48	48	32	66.7	29	60.4	0	0.0
QantasLink	107	104	98	94.2	95	91.3	3	2.8
Virgin Australia	154	153	142	92.8	138	90.2	1	0.6
All Airlines	309	305	272	89.2	262	85.9	4	1.3
<b>Brisbane-Melbourne</b>								
Jetstar	129	123	88	71.5	86	69.9	6	4.7
Qantas	424	422	366	86.7	391	92.7	2	0.5
Tigerair	128	124	96	77.4	96	77.4	4	3.1
Virgin Australia	391	380	317	83.4	346	91.1	11	2.8
All Airlines	1 072	1 049	867	82.7	919	87.6	23	2.1
<b>Brisbane-Moranbah</b>								
QantasLink	108	98	86	87.8	85	86.7	10	9.3
Virgin Australia Regional Airlines	71	71	63	88.7	60	84.5	0	0.0
All Airlines	179	169	149	88.2	145	85.8	10	5.6
<b>Brisbane-Mount Isa</b>								
Qantas	39	39	39	100.0	39	100.0	0	0.0
Virgin Australia	21	21	19	90.5	17	81.0	0	0.0
All Airlines	60	60	58	96.7	56	93.3	0	0.0
<b>Brisbane-Newcastle</b>								
Jetstar	81	78	61	78.2	63	80.8	3	3.7
QantasLink	89	87	81	93.1	78	89.7	2	2.2
Virgin Australia	81	81	78	96.3	79	97.5	0	0.0
All Airlines	251	246	220	89.4	220	89.4	5	2.0
<b>Brisbane-Perth</b>								
Qantas	131	131	100	76.3	103	78.6	0	0.0
Virgin Australia	108	108	92	85.2	82	75.9	0	0.0
All Airlines	239	239	192	80.3	185	77.4	0	0.0
<b>Brisbane-Proserpine</b>								
Jetstar	30	30	28	93.3	24	80.0	0	0.0
Virgin Australia	52	52	49	94.2	48	92.3	0	0.0
All Airlines	82	82	77	93.9	72	87.8	0	0.0
<b>Brisbane-Rockhampton</b>								
QantasLink	188	185	166	89.7	165	89.2	3	1.6
Virgin Australia	112	111	99	89.2	99	89.2	1	0.9
Virgin Australia Regional Airlines	80	74	65	87.8	67	90.5	6	7.5
All Airlines	380	370	330	89.2	331	89.5	10	2.6

	<i>Sectors</i>		<i>Arrivals On Time</i>		<i>Departures On Time</i>		<i>Cancellations</i>	
	<i>Sched.</i>	<i>Flown</i>	<i>No.</i>	<i>%</i>	<i>No.</i>	<i>%</i>	<i>No.</i>	<i>%</i>
<b>Brisbane-Sydney</b>								
Jetstar	178	169	126	74.6	127	75.1	9	5.1
Qantas	673	657	560	85.2	576	87.7	16	2.4
Tigerair	97	97	83	85.6	84	86.6	0	0.0
Virgin Australia	533	522	467	89.5	469	89.8	11	2.1
All Airlines	1 481	1 445	1 236	85.5	1 256	86.9	36	2.4
<b>Brisbane-Townsville</b>								
Jetstar	35	35	23	65.7	23	65.7	0	0.0
Qantas	145	145	128	88.3	125	86.2	0	0.0
Virgin Australia	150	150	130	86.7	130	86.7	0	0.0
All Airlines	330	330	281	85.2	278	84.2	0	0.0
<b>Broome-Perth</b>								
Qantas	25	23	20	87.0	16	69.6	2	8.0
QantasLink	57	56	50	89.3	47	83.9	1	1.8
Virgin Australia	9	9	8	88.9	8	88.9	0	0.0
Virgin Australia Regional Airlines	35	34	23	67.6	28	82.4	1	2.9
All Airlines	126	122	101	82.8	99	81.1	4	3.2
<b>Bundaberg-Brisbane</b>								
QantasLink	132	132	118	89.4	121	91.7	0	0.0
Virgin Australia Regional Airlines	39	39	35	89.7	33	84.6	0	0.0
All Airlines	171	171	153	89.5	154	90.1	0	0.0
<b>Cairns-Brisbane</b>								
Jetstar	91	91	76	83.5	75	82.4	0	0.0
Qantas	115	115	108	93.9	108	93.9	0	0.0
QantasLink	5	5	3	60.0	3	60.0	0	0.0
Tigerair	30	30	26	86.7	26	86.7	0	0.0
Virgin Australia	132	132	127	96.2	124	93.9	0	0.0
All Airlines	373	373	340	91.2	336	90.1	0	0.0
<b>Cairns-Melbourne</b>								
Jetstar	90	90	58	64.4	60	66.7	0	0.0
Qantas	39	39	37	94.9	37	94.9	0	0.0
Tigerair	33	33	27	81.8	27	81.8	0	0.0
Virgin Australia	30	30	27	90.0	27	90.0	0	0.0
All Airlines	192	192	149	77.6	151	78.6	0	0.0
<b>Cairns-Sydney</b>								
Jetstar	61	61	56	91.8	55	90.2	0	0.0
Qantas	74	74	64	86.5	60	81.1	0	0.0
Tigerair	30	30	25	83.3	26	86.7	0	0.0
Virgin Australia	85	85	76	89.4	75	88.2	0	0.0
All Airlines	250	250	221	88.4	216	86.4	0	0.0
<b>Cairns-Townsville</b>								
QantasLink	142	142	132	93.0	133	93.7	0	0.0
Regional Express	63	63	59	93.7	59	93.7	0	0.0
All Airlines	205	205	191	93.2	192	93.7	0	0.0
<b>Canberra-Adelaide</b>								
Qantas	47	47	45	95.7	42	89.4	0	0.0
Virgin Australia	26	26	26	100.0	26	100.0	0	0.0
All Airlines	73	73	71	97.3	68	93.2	0	0.0
<b>Canberra-Brisbane</b>								
Qantas	25	25	24	96.0	23	92.0	0	0.0
QantasLink	125	125	112	89.6	112	89.6	0	0.0
Virgin Australia	91	90	85	94.4	83	92.2	1	1.1
All Airlines	241	240	221	92.1	218	90.8	1	0.4

	<i>Sectors</i>		<i>Arrivals On Time</i>		<i>Departures On Time</i>		<i>Cancellations</i>	
	<i>Sched.</i>	<i>Flown</i>	<i>No.</i>	<i>%</i>	<i>No.</i>	<i>%</i>	<i>No.</i>	<i>%</i>
<b>Canberra-Melbourne</b>								
Qantas	205	204	172	84.3	178	87.3	1	0.5
QantasLink	80	79	64	81.0	70	88.6	1	1.3
Virgin Australia	155	153	138	90.2	143	93.5	2	1.3
Virgin Australia Regional Airlines	28	28	26	92.9	26	92.9	0	0.0
All Airlines	468	464	400	86.2	417	89.9	4	0.9
<b>Canberra-Sydney</b>								
QantasLink	505	462	391	84.6	383	82.9	43	8.5
Virgin Australia	28	27	23	85.2	22	81.5	1	3.6
Virgin Australia Regional Airlines	272	267	230	86.1	231	86.5	5	1.8
All Airlines	805	756	644	85.2	636	84.1	49	6.1
<b>Coffs Harbour-Sydney</b>								
QantasLink	150	148	111	75.0	115	77.7	2	1.3
Tigerair	14	14	11	78.6	11	78.6	0	0.0
Virgin Australia	60	56	49	87.5	49	87.5	4	6.7
All Airlines	224	218	171	78.4	175	80.3	6	2.7
<b>Darwin-Alice Springs</b>								
QantasLink	52	52	51	98.1	49	94.2	0	0.0
Virgin Australia	13	13	12	92.3	12	92.3	0	0.0
All Airlines	65	65	63	96.9	61	93.8	0	0.0
<b>Darwin-Brisbane</b>								
Jetstar	18	18	12	66.7	6	33.3	0	0.0
Qantas	47	47	44	93.6	40	85.1	0	0.0
Tigerair	22	22	20	90.9	19	86.4	0	0.0
Virgin Australia	30	30	23	76.7	26	86.7	0	0.0
All Airlines	117	117	99	84.6	91	77.8	0	0.0
<b>Darwin-Melbourne</b>								
Jetstar	22	22	11	50.0	12	54.5	0	0.0
Qantas	30	30	29	96.7	29	96.7	0	0.0
Virgin Australia	30	30	27	90.0	28	93.3	0	0.0
All Airlines	82	82	67	81.7	69	84.1	0	0.0
<b>Darwin-Perth</b>								
Qantas	42	41	40	97.6	40	97.6	1	2.4
Virgin Australia	30	30	28	93.3	29	96.7	0	0.0
All Airlines	72	71	68	95.8	69	97.2	1	1.4
<b>Darwin-Sydney</b>								
Jetstar	21	21	17	81.0	17	81.0	0	0.0
Qantas	49	47	42	89.4	44	93.6	2	4.1
Virgin Australia	30	30	26	86.7	22	73.3	0	0.0
All Airlines	100	98	85	86.7	83	84.7	2	2.0
<b>Dubbo-Sydney</b>								
QantasLink	124	123	92	74.8	94	76.4	1	0.8
Regional Express	152	152	124	81.6	132	86.8	0	0.0
All Airlines	276	275	216	78.5	226	82.2	1	0.4
<b>Emerald-Brisbane</b>								
QantasLink	141	133	113	85.0	116	87.2	8	5.7
Virgin Australia Regional Airlines	84	84	66	78.6	65	77.4	0	0.0
All Airlines	225	217	179	82.5	181	83.4	8	3.6
<b>Geraldton-Perth</b>								
QantasLink	47	47	44	93.6	41	87.2	0	0.0
Virgin Australia Regional Airlines	86	85	75	88.2	71	83.5	1	1.2
All Airlines	133	132	119	90.2	112	84.8	1	0.8

	<i>Sectors</i>		<i>Arrivals On Time</i>		<i>Departures On Time</i>		<i>Cancellations</i>	
	<i>Sched.</i>	<i>Flown</i>	<i>No.</i>	<i>%</i>	<i>No.</i>	<i>%</i>	<i>No.</i>	<i>%</i>
<b>Gladstone-Brisbane</b>								
QantasLink	204	196	172	87.8	169	86.2	8	3.9
Virgin Australia	68	66	61	92.4	63	95.5	2	2.9
Virgin Australia Regional Airlines	75	75	65	86.7	64	85.3	0	0.0
All Airlines	347	337	298	88.4	296	87.8	10	2.9
<b>Gold Coast-Adelaide</b>								
Jetstar	30	30	29	96.7	29	96.7	0	0.0
Virgin Australia	30	30	28	93.3	23	76.7	0	0.0
All Airlines	60	60	57	95.0	52	86.7	0	0.0
<b>Gold Coast-Melbourne</b>								
Jetstar	171	168	130	77.4	120	71.4	3	1.8
Qantas	30	30	26	86.7	28	93.3	0	0.0
Tigerair	87	86	76	88.4	70	81.4	1	1.1
Virgin Australia	189	186	158	84.9	160	86.0	3	1.6
All Airlines	477	470	390	83.0	378	80.4	7	1.5
<b>Gold Coast-Sydney</b>								
Jetstar	323	314	226	72.0	214	68.2	9	2.8
Qantas	90	90	82	91.1	83	92.2	0	0.0
Tigerair	109	108	84	77.8	89	82.4	1	0.9
Virgin Australia	254	249	211	84.7	212	85.1	5	2.0
All Airlines	776	761	603	79.2	598	78.6	15	1.9
<b>Hamilton Island-Brisbane</b>								
QantasLink	26	26	24	92.3	22	84.6	0	0.0
Virgin Australia	30	30	30	100.0	30	100.0	0	0.0
All Airlines	56	56	54	96.4	52	92.9	0	0.0
<b>Hamilton Island-Melbourne</b>								
Qantas	13	13	11	84.6	10	76.9	0	0.0
Virgin Australia	22	22	19	86.4	17	77.3	0	0.0
All Airlines	35	35	30	85.7	27	77.1	0	0.0
<b>Hamilton Island-Sydney</b>								
Jetstar	30	30	25	83.3	17	56.7	0	0.0
Qantas	13	13	11	84.6	10	76.9	0	0.0
Virgin Australia	30	30	28	93.3	27	90.0	0	0.0
All Airlines	73	73	64	87.7	54	74.0	0	0.0
<b>Hobart-Brisbane</b>								
Jetstar	30	30	25	83.3	21	70.0	0	0.0
Virgin Australia	30	30	29	96.7	29	96.7	0	0.0
All Airlines	60	60	54	90.0	50	83.3	0	0.0
<b>Hobart-Melbourne</b>								
Jetstar	193	193	112	58.0	87	45.1	0	0.0
QantasLink	120	120	87	72.5	94	78.3	0	0.0
Tigerair	31	31	23	74.2	25	80.6	0	0.0
Virgin Australia	143	143	114	79.7	125	87.4	0	0.0
All Airlines	487	487	336	69.0	331	68.0	0	0.0
<b>Hobart-Sydney</b>								
Jetstar	83	83	50	60.2	57	68.7	0	0.0
QantasLink	29	29	22	75.9	23	79.3	0	0.0
Virgin Australia	60	60	49	81.7	47	78.3	0	0.0
All Airlines	172	172	121	70.3	127	73.8	0	0.0

	<i>Sectors</i>		<i>Arrivals On Time</i>		<i>Departures On Time</i>		<i>Cancellations</i>	
	<i>Sched.</i>	<i>Flown</i>	<i>No.</i>	<i>%</i>	<i>No.</i>	<i>%</i>	<i>No.</i>	<i>%</i>
<b>Kalgoorlie-Perth</b>								
Qantas	13	13	12	92.3	10	76.9	0	0.0
QantasLink	69	67	61	91.0	61	91.0	2	2.9
Virgin Australia	32	32	30	93.8	30	93.8	0	0.0
Virgin Australia Regional Airlines	24	24	19	79.2	21	87.5	0	0.0
All Airlines	138	136	122	89.7	122	89.7	2	1.4
<b>Karratha-Perth</b>								
Qantas	56	50	47	94.0	46	92.0	6	10.7
QantasLink	160	152	132	86.8	134	88.2	8	5.0
Virgin Australia	43	43	43	100.0	43	100.0	0	0.0
Virgin Australia Regional Airlines	41	41	34	82.9	36	87.8	0	0.0
All Airlines	300	286	256	89.5	259	90.6	14	4.7
<b>Launceston-Melbourne</b>								
Jetstar	179	174	125	71.8	120	69.0	5	2.8
QantasLink	116	107	96	89.7	95	88.8	9	7.8
Virgin Australia	91	91	78	85.7	80	87.9	0	0.0
Virgin Australia Regional Airlines	4	4	2	50.0	2	50.0	0	0.0
All Airlines	390	376	301	80.1	297	79.0	14	3.6
<b>Launceston-Sydney</b>								
Jetstar	59	54	39	72.2	34	63.0	5	8.5
Virgin Australia	30	30	27	90.0	28	93.3	0	0.0
All Airlines	89	84	66	78.6	62	73.8	5	5.6
<b>Mackay-Brisbane</b>								
Jetstar	47	47	28	59.6	27	57.4	0	0.0
QantasLink	106	102	93	91.2	90	88.2	4	3.8
Virgin Australia	154	153	138	90.2	140	91.5	1	0.6
All Airlines	307	302	259	85.8	257	85.1	5	1.6
<b>Melbourne-Adelaide</b>								
Jetstar	97	93	58	62.4	64	68.8	4	4.1
Qantas	286	286	244	85.3	242	84.6	0	0.0
Tigerair	79	76	66	86.8	67	88.2	3	3.8
Virgin Australia	274	270	234	86.7	243	90.0	4	1.5
All Airlines	736	725	602	83.0	616	85.0	11	1.5
<b>Melbourne-Brisbane</b>								
Jetstar	129	124	82	66.1	73	58.9	5	3.9
Qantas	428	425	363	85.4	370	87.1	3	0.7
Tigerair	128	124	96	77.4	97	78.2	4	3.1
Virgin Australia	387	380	328	86.3	345	90.8	7	1.8
All Airlines	1 072	1 053	869	82.5	885	84.0	19	1.8
<b>Melbourne-Cairns</b>								
Jetstar	90	90	61	67.8	49	54.4	0	0.0
Qantas	39	39	37	94.9	36	92.3	0	0.0
Tigerair	33	33	29	87.9	29	87.9	0	0.0
Virgin Australia	30	30	27	90.0	27	90.0	0	0.0
All Airlines	192	192	154	80.2	141	73.4	0	0.0
<b>Melbourne-Canberra</b>								
Qantas	205	204	174	85.3	173	84.8	1	0.5
QantasLink	80	78	68	87.2	68	87.2	2	2.5
Virgin Australia	155	154	138	89.6	142	92.2	1	0.6
Virgin Australia Regional Airlines	30	30	26	86.7	25	83.3	0	0.0
All Airlines	470	466	406	87.1	408	87.6	4	0.9

	<i>Sectors</i>		<i>Arrivals On Time</i>		<i>Departures On Time</i>		<i>Cancellations</i>	
	<i>Sched.</i>	<i>Flown</i>	<i>No.</i>	<i>%</i>	<i>No.</i>	<i>%</i>	<i>No.</i>	<i>%</i>
<b>Melbourne-Darwin</b>								
Jetstar	22	22	15	68.2	16	72.7	0	0.0
Qantas	30	30	28	93.3	29	96.7	0	0.0
Virgin Australia	30	30	23	76.7	25	83.3	0	0.0
All Airlines	82	82	66	80.5	70	85.4	0	0.0
<b>Melbourne-Gold Coast</b>								
Jetstar	171	167	113	67.7	109	65.3	4	2.3
Qantas	30	30	27	90.0	26	86.7	0	0.0
Tigerair	87	86	78	90.7	78	90.7	1	1.1
Virgin Australia	189	187	156	83.4	158	84.5	2	1.1
All Airlines	477	470	374	79.6	371	78.9	7	1.5
<b>Melbourne-Hamilton Island</b>								
Qantas	13	13	12	92.3	12	92.3	0	0.0
Virgin Australia	22	22	19	86.4	20	90.9	0	0.0
All Airlines	35	35	31	88.6	32	91.4	0	0.0
<b>Melbourne-Hobart</b>								
Jetstar	192	192	120	62.5	124	64.6	0	0.0
QantasLink	120	120	85	70.8	85	70.8	0	0.0
Tigerair	31	31	26	83.9	25	80.6	0	0.0
Virgin Australia	143	143	130	90.9	128	89.5	0	0.0
All Airlines	486	486	361	74.3	362	74.5	0	0.0
<b>Melbourne-Launceston</b>								
Jetstar	179	174	131	75.3	127	73.0	5	2.8
QantasLink	116	108	89	82.4	97	89.8	8	6.9
Virgin Australia	91	91	80	87.9	81	89.0	0	0.0
Virgin Australia Regional Airlines	4	4	4	100.0	4	100.0	0	0.0
All Airlines	390	377	304	80.6	309	82.0	13	3.3
<b>Melbourne-Mildura</b>								
QantasLink	94	94	80	85.1	79	84.0	0	0.0
Regional Express	83	83	75	90.4	75	90.4	0	0.0
Virgin Australia	30	30	28	93.3	28	93.3	0	0.0
All Airlines	207	207	183	88.4	182	87.9	0	0.0
<b>Melbourne-Newcastle</b>								
Jetstar	90	90	52	57.8	46	51.1	0	0.0
Virgin Australia	31	31	28	90.3	26	83.9	0	0.0
All Airlines	121	121	80	66.1	72	59.5	0	0.0
<b>Melbourne-Perth</b>								
Jetstar	79	70	49	70.0	45	64.3	9	11.4
Qantas	192	191	143	74.9	143	74.9	1	0.5
Tigerair	60	60	54	90.0	55	91.7	0	0.0
Virgin Australia	141	140	119	85.0	112	80.0	1	0.7
All Airlines	472	461	365	79.2	355	77.0	11	2.3
<b>Melbourne-Sunshine Coast</b>								
Jetstar	90	90	60	66.7	48	53.3	0	0.0
Virgin Australia	31	31	30	96.8	29	93.5	0	0.0
All Airlines	121	121	90	74.4	77	63.6	0	0.0
<b>Melbourne-Sydney</b>								
Jetstar	360	340	223	65.6	206	60.6	20	5.6
Qantas	967	937	744	79.4	746	79.6	30	3.1
Tigerair	236	232	180	77.6	183	78.9	4	1.7
Virgin Australia	780	760	654	86.1	676	88.9	20	2.6
All Airlines	2 343	2 269	1 801	79.4	1 811	79.8	74	3.2

	<i>Sectors</i>		<i>Arrivals On Time</i>		<i>Departures On Time</i>		<i>Cancellations</i>	
	<i>Sched.</i>	<i>Flown</i>	<i>No.</i>	<i>%</i>	<i>No.</i>	<i>%</i>	<i>No.</i>	<i>%</i>
<b>Mildura-Melbourne</b>								
QantasLink	94	94	82	87.2	88	93.6	0	0.0
Regional Express	83	83	71	85.5	75	90.4	0	0.0
Virgin Australia	30	30	29	96.7	29	96.7	0	0.0
All Airlines	207	207	182	87.9	192	92.8	0	0.0
<b>Moranbah-Brisbane</b>								
QantasLink	104	92	77	83.7	77	83.7	12	11.5
Virgin Australia Regional Airlines	71	70	56	80.0	60	85.7	1	1.4
All Airlines	175	162	133	82.1	137	84.6	13	7.4
<b>Mount Isa-Brisbane</b>								
Qantas	39	39	39	100.0	39	100.0	0	0.0
Virgin Australia	21	21	19	90.5	19	90.5	0	0.0
All Airlines	60	60	58	96.7	58	96.7	0	0.0
<b>Newcastle-Brisbane</b>								
Jetstar	80	78	60	76.9	66	84.6	2	2.5
QantasLink	88	87	81	93.1	80	92.0	1	1.1
Virgin Australia	81	81	75	92.6	78	96.3	0	0.0
All Airlines	249	246	216	87.8	224	91.1	3	1.2
<b>Newcastle-Melbourne</b>								
Jetstar	90	90	58	64.4	62	68.9	0	0.0
Virgin Australia	31	31	25	80.6	27	87.1	0	0.0
All Airlines	121	121	83	68.6	89	73.6	0	0.0
<b>Newman-Perth</b>								
Qantas	75	73	71	97.3	71	97.3	2	2.7
QantasLink	72	69	66	95.7	66	95.7	3	4.2
Virgin Australia	20	20	17	85.0	17	85.0	0	0.0
Virgin Australia Regional Airlines	14	14	12	85.7	13	92.9	0	0.0
All Airlines	181	176	166	94.3	167	94.9	5	2.8
<b>Perth-Adelaide</b>								
Jetstar	29	29	19	65.5	17	58.6	0	0.0
Qantas	122	122	114	93.4	115	94.3	0	0.0
Virgin Australia	77	77	71	92.2	72	93.5	0	0.0
All Airlines	228	228	204	89.5	204	89.5	0	0.0
<b>Perth-Brisbane</b>								
Qantas	130	130	107	82.3	109	83.8	0	0.0
Virgin Australia	107	107	85	79.4	89	83.2	0	0.0
All Airlines	237	237	192	81.0	198	83.5	0	0.0
<b>Perth-Broome</b>								
Qantas	25	23	21	91.3	22	95.7	2	8.0
QantasLink	57	56	48	85.7	52	92.9	1	1.8
Virgin Australia	9	9	8	88.9	8	88.9	0	0.0
Virgin Australia Regional Airlines	35	35	24	68.6	29	82.9	0	0.0
All Airlines	126	123	101	82.1	111	90.2	3	2.4
<b>Perth-Darwin</b>								
Qantas	42	41	40	97.6	39	95.1	1	2.4
Virgin Australia	30	30	29	96.7	29	96.7	0	0.0
All Airlines	72	71	69	97.2	68	95.8	1	1.4
<b>Perth-Geraldton</b>								
QantasLink	47	47	43	91.5	42	89.4	0	0.0
Virgin Australia Regional Airlines	80	79	66	83.5	69	87.3	1	1.3
All Airlines	127	126	109	86.5	111	88.1	1	0.8



	<i>Sectors</i>		<i>Arrivals On Time</i>		<i>Departures On Time</i>		<i>Cancellations</i>	
	<i>Sched.</i>	<i>Flown</i>	<i>No.</i>	<i>%</i>	<i>No.</i>	<i>%</i>	<i>No.</i>	<i>%</i>
<b>Perth-Kalgoorlie</b>								
Qantas	13	13	9	69.2	11	84.6	0	0.0
QantasLink	68	67	61	91.0	60	89.6	1	1.5
Virgin Australia	32	32	30	93.8	30	93.8	0	0.0
Virgin Australia Regional Airlines	24	24	18	75.0	21	87.5	0	0.0
All Airlines	137	136	118	86.8	122	89.7	1	0.7
<b>Perth-Karratha</b>								
Qantas	56	51	46	90.2	48	94.1	5	8.9
QantasLink	162	154	130	84.4	137	89.0	8	4.9
Virgin Australia	43	43	41	95.3	41	95.3	0	0.0
Virgin Australia Regional Airlines	41	41	31	75.6	34	82.9	0	0.0
All Airlines	302	289	248	85.8	260	90.0	13	4.3
<b>Perth-Melbourne</b>								
Jetstar	78	69	49	71.0	42	60.9	9	11.5
Qantas	191	191	158	82.7	165	86.4	0	0.0
Tigerair	60	60	52	86.7	54	90.0	0	0.0
Virgin Australia	137	137	108	78.8	110	80.3	0	0.0
All Airlines	466	457	367	80.3	371	81.2	9	1.9
<b>Perth-Newman</b>								
Qantas	75	73	73	100.0	72	98.6	2	2.7
QantasLink	72	69	64	92.8	68	98.6	3	4.2
Virgin Australia	20	20	17	85.0	18	90.0	0	0.0
Virgin Australia Regional Airlines	14	14	11	78.6	12	85.7	0	0.0
All Airlines	181	176	165	93.8	170	96.6	5	2.8
<b>Perth-Port Hedland</b>								
Qantas	76	72	66	91.7	65	90.3	4	5.3
QantasLink	66	63	53	84.1	58	92.1	3	4.5
Virgin Australia	42	42	39	92.9	40	95.2	0	0.0
All Airlines	184	177	158	89.3	163	92.1	7	3.8
<b>Perth-Sydney</b>								
Jetstar	30	29	24	82.8	19	65.5	1	3.3
Qantas	200	198	171	86.4	175	88.4	2	1.0
Tigerair	25	25	24	96.0	24	96.0	0	0.0
Virgin Australia	115	114	95	83.3	96	84.2	1	0.9
All Airlines	370	366	314	85.8	314	85.8	4	1.1
<b>Port Hedland-Perth</b>								
Qantas	76	72	67	93.1	65	90.3	4	5.3
QantasLink	66	61	53	86.9	53	86.9	5	7.6
Virgin Australia	42	41	39	95.1	39	95.1	1	2.4
All Airlines	184	174	159	91.4	157	90.2	10	5.4
<b>Port Lincoln-Adelaide</b>								
QantasLink	107	106	87	82.1	87	82.1	1	0.9
Regional Express	207	206	196	95.1	193	93.7	1	0.5
All Airlines	314	312	283	90.7	280	89.7	2	0.6
<b>Port Macquarie-Sydney</b>								
QantasLink	133	129	72	55.8	87	67.4	4	3.0
Virgin Australia Regional Airlines	59	58	42	72.4	46	79.3	1	1.7
All Airlines	192	187	114	61.0	133	71.1	5	2.6
<b>Proserpine-Brisbane</b>								
Jetstar	30	30	23	76.7	22	73.3	0	0.0
Virgin Australia	52	52	50	96.2	49	94.2	0	0.0
All Airlines	82	82	73	89.0	71	86.6	0	0.0

	<i>Sectors</i>		<i>Arrivals On Time</i>		<i>Departures On Time</i>		<i>Cancellations</i>	
	<i>Sched.</i>	<i>Flown</i>	<i>No.</i>	<i>%</i>	<i>No.</i>	<i>%</i>	<i>No.</i>	<i>%</i>
<b>Rockhampton-Brisbane</b>								
QantasLink	188	184	156	84.8	160	87.0	4	2.1
Virgin Australia	112	111	103	92.8	101	91.0	1	0.9
Virgin Australia Regional Airlines	78	72	67	93.1	67	93.1	6	7.7
All Airlines	378	367	326	88.8	328	89.4	11	2.9
<b>Sunshine Coast-Melbourne</b>								
Jetstar	89	87	54	62.1	47	54.0	2	2.2
Virgin Australia	31	30	26	86.7	28	93.3	1	3.2
All Airlines	120	117	80	68.4	75	64.1	3	2.5
<b>Sunshine Coast-Sydney</b>								
Jetstar	111	109	80	73.4	75	68.8	2	1.8
Virgin Australia	30	30	30	100.0	30	100.0	0	0.0
All Airlines	141	139	110	79.1	105	75.5	2	1.4
<b>Sydney-Adelaide</b>								
Jetstar	113	111	70	63.1	72	64.9	2	1.8
Qantas	232	231	191	82.7	197	85.3	1	0.4
QantasLink	29	27	20	74.1	22	81.5	2	6.9
Tigerair	30	30	25	83.3	25	83.3	0	0.0
Virgin Australia	171	169	147	87.0	150	88.8	2	1.2
All Airlines	575	568	453	79.8	466	82.0	7	1.2
<b>Sydney-Albury</b>								
QantasLink	90	90	66	73.3	68	75.6	0	0.0
Regional Express	104	104	84	80.8	89	85.6	0	0.0
Virgin Australia Regional Airlines	60	60	52	86.7	52	86.7	0	0.0
All Airlines	254	254	202	79.5	209	82.3	0	0.0
<b>Sydney-Armidale</b>								
QantasLink	132	128	75	58.6	81	63.3	4	3.0
Regional Express	73	73	59	80.8	57	78.1	0	0.0
All Airlines	205	201	134	66.7	138	68.7	4	2.0
<b>Sydney-Ayers Rock</b>								
Jetstar	21	21	14	66.7	11	52.4	0	0.0
Virgin Australia	30	30	27	90.0	27	90.0	0	0.0
All Airlines	51	51	41	80.4	38	74.5	0	0.0
<b>Sydney-Ballina</b>								
Jetstar	59	58	44	75.9	44	75.9	1	1.7
Regional Express	25	25	22	88.0	22	88.0	0	0.0
Virgin Australia	31	31	25	80.6	30	96.8	0	0.0
All Airlines	115	114	91	79.8	96	84.2	1	0.9
<b>Sydney-Brisbane</b>								
Jetstar	177	169	120	71.0	116	68.6	8	4.5
Qantas	656	642	532	82.9	552	86.0	14	2.1
Tigerair	97	97	79	81.4	78	80.4	0	0.0
Virgin Australia	544	531	426	80.2	444	83.6	13	2.4
All Airlines	1 474	1 439	1 157	80.4	1 190	82.7	35	2.4
<b>Sydney-Cairns</b>								
Jetstar	61	61	54	88.5	52	85.2	0	0.0
Qantas	74	74	61	82.4	67	90.5	0	0.0
Tigerair	30	30	27	90.0	28	93.3	0	0.0
Virgin Australia	86	86	72	83.7	75	87.2	0	0.0
All Airlines	251	251	214	85.3	222	88.4	0	0.0

	<i>Sectors</i>		<i>Arrivals On Time</i>		<i>Departures On Time</i>		<i>Cancellations</i>	
	<i>Sched.</i>	<i>Flown</i>	<i>No.</i>	<i>%</i>	<i>No.</i>	<i>%</i>	<i>No.</i>	<i>%</i>
<b>Sydney-Canberra</b>								
QantasLink	504	463	370	79.9	371	80.1	41	8.1
Virgin Australia	28	27	23	85.2	24	88.9	1	3.6
Virgin Australia Regional Airlines	272	267	214	80.1	213	79.8	5	1.8
All Airlines	804	757	607	80.2	608	80.3	47	5.8
<b>Sydney-Coffs Harbour</b>								
QantasLink	150	149	111	74.5	113	75.8	1	0.7
Tigerair	14	14	12	85.7	13	92.9	0	0.0
Virgin Australia	59	56	50	89.3	51	91.1	3	5.1
All Airlines	223	219	173	79.0	177	80.8	4	1.8
<b>Sydney-Darwin</b>								
Jetstar	21	21	17	81.0	15	71.4	0	0.0
Qantas	47	47	41	87.2	45	95.7	0	0.0
Virgin Australia	30	30	23	76.7	27	90.0	0	0.0
All Airlines	98	98	81	82.7	87	88.8	0	0.0
<b>Sydney-Dubbo</b>								
QantasLink	125	124	81	65.3	79	63.7	1	0.8
Regional Express	151	151	128	84.8	129	85.4	0	0.0
All Airlines	276	275	209	76.0	208	75.6	1	0.4
<b>Sydney-Gold Coast</b>								
Jetstar	325	315	218	69.2	218	69.2	10	3.1
Qantas	90	90	79	87.8	75	83.3	0	0.0
Tigerair	109	108	88	81.5	96	88.9	1	0.9
Virgin Australia	254	249	210	84.3	221	88.8	5	2.0
All Airlines	778	762	595	78.1	610	80.1	16	2.1
<b>Sydney-Hamilton Island</b>								
Jetstar	30	30	27	90.0	24	80.0	0	0.0
Qantas	13	13	13	100.0	13	100.0	0	0.0
Virgin Australia	30	30	28	93.3	28	93.3	0	0.0
All Airlines	73	73	68	93.2	65	89.0	0	0.0
<b>Sydney-Hobart</b>								
Jetstar	83	83	64	77.1	65	78.3	0	0.0
QantasLink	29	29	23	79.3	25	86.2	0	0.0
Virgin Australia	60	60	51	85.0	51	85.0	0	0.0
All Airlines	172	172	138	80.2	141	82.0	0	0.0
<b>Sydney-Launceston</b>								
Jetstar	60	60	48	80.0	46	76.7	0	0.0
Virgin Australia	30	30	22	73.3	24	80.0	0	0.0
All Airlines	90	90	70	77.8	70	77.8	0	0.0
<b>Sydney-Melbourne</b>								
Jetstar	357	338	219	64.8	215	63.6	19	5.3
Qantas	965	936	704	75.2	791	84.5	29	3.0
Tigerair	236	231	162	70.1	167	72.3	5	2.1
Virgin Australia	773	755	592	78.4	647	85.7	18	2.3
All Airlines	2 331	2 260	1 677	74.2	1 820	80.5	71	3.0
<b>Sydney-Perth</b>								
Jetstar	30	30	24	80.0	21	70.0	0	0.0
Qantas	206	206	170	82.5	169	82.0	0	0.0
Tigerair	26	26	22	84.6	25	96.2	0	0.0
Virgin Australia	116	116	103	88.8	99	85.3	0	0.0
All Airlines	378	378	319	84.4	314	83.1	0	0.0

	<i>Sectors</i>		<i>Arrivals On Time</i>		<i>Departures On Time</i>		<i>Cancellations</i>	
	<i>Sched.</i>	<i>Flown</i>	<i>No.</i>	<i>%</i>	<i>No.</i>	<i>%</i>	<i>No.</i>	<i>%</i>
<b>Sydney-Port Macquarie</b>								
QantasLink	133	130	82	63.1	91	70.0	3	2.3
Virgin Australia Regional Airlines	59	57	41	71.9	43	75.4	2	3.4
All Airlines	192	187	123	65.8	134	71.7	5	2.6
<b>Sydney-Sunshine Coast</b>								
Jetstar	111	110	90	81.8	83	75.5	1	0.9
Virgin Australia	30	30	30	100.0	30	100.0	0	0.0
All Airlines	141	140	120	85.7	113	80.7	1	0.7
<b>Sydney-Tamworth</b>								
QantasLink	153	145	100	69.0	101	69.7	8	5.2
Virgin Australia Regional Airlines	26	26	18	69.2	18	69.2	0	0.0
All Airlines	179	171	118	69.0	119	69.6	8	4.5
<b>Sydney-Townsville</b>								
Jetstar	18	17	13	76.5	13	76.5	1	5.6
Virgin Australia	29	29	27	93.1	27	93.1	0	0.0
All Airlines	47	46	40	87.0	40	87.0	1	2.1
<b>Sydney-Wagga Wagga</b>								
QantasLink	111	111	77	69.4	78	70.3	0	0.0
Regional Express	133	133	109	82.0	112	84.2	0	0.0
All Airlines	244	244	186	76.2	190	77.9	0	0.0
<b>Tamworth-Sydney</b>								
QantasLink	152	143	100	69.9	103	72.0	9	5.9
Virgin Australia Regional Airlines	26	26	18	69.2	18	69.2	0	0.0
All Airlines	178	169	118	69.8	121	71.6	9	5.1
<b>Townsville-Brisbane</b>								
Jetstar	35	34	23	67.6	18	52.9	1	2.9
Qantas	145	145	137	94.5	138	95.2	0	0.0
Virgin Australia	150	149	134	89.9	134	89.9	1	0.7
All Airlines	330	328	294	89.6	290	88.4	2	0.6
<b>Townsville-Cairns</b>								
QantasLink	140	140	136	97.1	134	95.7	0	0.0
Regional Express	63	63	61	96.8	61	96.8	0	0.0
All Airlines	203	203	197	97.0	195	96.1	0	0.0
<b>Townsville-Sydney</b>								
Jetstar	18	17	13	76.5	11	64.7	1	5.6
Virgin Australia	29	29	26	89.7	26	89.7	0	0.0
All Airlines	47	46	39	84.8	37	80.4	1	2.1
<b>Wagga Wagga-Sydney</b>								
QantasLink	111	111	89	80.2	88	79.3	0	0.0
Regional Express	134	134	101	75.4	110	82.1	0	0.0
All Airlines	245	245	190	77.6	198	80.8	0	0.0

## Airports

On time performance is reported for all routes where the passenger load averages over 8000 passengers per month, and where two or more airlines operate in competition. The following data reports by airport against flights operated on those routes only. This month, 8 major city airports and 33 regional city airports are covered.

Airport	Arrivals			Departures		
	Sectors	On Time		Sectors	On Time	
	Flown	No.	%	Flown	No.	%
<b>Adelaide</b>						
Jetstar	293	201	68.6	294	222	75.5
Qantas	834	729	87.4	834	763	91.5
QantasLink	133	107	80.5	134	106	79.1
Regional Express	206	196	95.1	207	195	94.2
Tigerair	132	113	85.6	132	109	82.6
Virgin Australia	706	630	89.2	706	659	93.3
All Airlines	2 304	1 976	85.8	2 307	2 054	89.0
Relates to services to and from Alice Springs, Brisbane, Canberra, Gold Coast, Melbourne, Perth, Port Lincoln and Sydney.						
<b>Albury</b>						
QantasLink	90	66	73.3	90	74	82.2
Regional Express	104	84	80.8	104	96	92.3
Virgin Australia Regional Airlines	60	52	86.7	60	50	83.3
All Airlines	254	202	79.5	254	220	86.6
Relates to services to and from Sydney only.						
<b>Alice Springs</b>						
Qantas	30	26	86.7	30	24	80.0
QantasLink	52	51	98.1	52	48	92.3
Virgin Australia	26	22	84.6	26	22	84.6
All Airlines	108	99	91.7	108	94	87.0
Relates to services to and from Adelaide and Darwin.						
<b>Armidale</b>						
QantasLink	128	75	58.6	126	81	64.3
Regional Express	73	59	80.8	72	59	81.9
All Airlines	201	134	66.7	198	140	70.7
Relates to services to and from Sydney only.						
<b>Ayers Rock</b>						
Jetstar	21	14	66.7	21	12	57.1
Virgin Australia	30	27	90.0	29	26	89.7
All Airlines	51	41	80.4	50	38	76.0
Relates to services to and from Sydney only.						
<b>Ballina</b>						
Jetstar	58	44	75.9	58	40	69.0
Regional Express	25	22	88.0	25	19	76.0
Virgin Australia	31	25	80.6	31	26	83.9
All Airlines	114	91	79.8	114	85	74.6
Relates to services to and from Sydney only.						

Airport	Arrivals			Departures		
	Sectors Flown	On Time		Sectors Flown	On Time	
		No.	%		No.	%
<b>Brisbane</b>						
Jetstar	651	468	71.9	651	480	73.7
Qantas	1 686	1 470	87.2	1 700	1 519	89.4
QantasLink	1 082	949	87.7	1 092	990	90.7
Tigerair	299	242	80.9	299	246	82.3
Virgin Australia	2 080	1 821	87.5	2 077	1 868	89.9
Virgin Australia Regional Airlines	340	289	85.0	345	297	86.1
All Airlines	6 138	5 239	85.4	6 164	5 400	87.6

Relates to services to and from Adelaide, Bundaberg, Cairns, Canberra, Darwin, Emerald, Gladstone, Hamilton Island, Hobart, Mackay, Melbourne, Moranbah, Mount Isa, Newcastle, Perth, Proserpine, Rockhampton, Sydney and Townsville.

#### Broome

Qantas	23	21	91.3	23	16	69.6
QantasLink	56	48	85.7	56	47	83.9
Virgin Australia	9	8	88.9	9	8	88.9
Virgin Australia Regional Airlines	35	24	68.6	34	28	82.4
All Airlines	123	101	82.1	122	99	81.1

Relates to services to and from Perth only.

#### Bundaberg

QantasLink	132	121	91.7	132	121	91.7
Virgin Australia Regional Airlines	40	37	92.5	39	33	84.6
All Airlines	172	158	91.9	171	154	90.1

Relates to services to and from Brisbane only.

#### Cairns

Jetstar	241	191	79.3	242	190	78.5
Qantas	229	206	90.0	228	205	89.9
QantasLink	144	138	95.8	147	136	92.5
Regional Express	63	61	96.8	63	59	93.7
Tigerair	93	84	90.3	93	79	84.9
Virgin Australia	248	220	88.7	247	226	91.5
All Airlines	1 018	900	88.4	1 020	895	87.7

Relates to services to and from Brisbane, Melbourne, Sydney and Townsville.

#### Canberra

Qantas	276	242	87.7	276	243	88.0
QantasLink	666	555	83.3	666	565	84.8
Virgin Australia	297	268	90.2	296	274	92.6
Virgin Australia Regional Airlines	297	240	80.8	295	257	87.1
All Airlines	1 536	1 305	85.0	1 533	1 339	87.3

Relates to services to and from Adelaide, Brisbane, Melbourne and Sydney.

#### Coffs Harbour

QantasLink	149	111	74.5	148	115	77.7
Tigerair	14	12	85.7	14	11	78.6
Virgin Australia	56	50	89.3	56	49	87.5
All Airlines	219	173	79.0	218	175	80.3

Relates to services to and from Sydney only.

Airport	Arrivals			Departures		
	Sectors Flown	On Time		Sectors Flown	On Time	
		No.	%		No.	%
<b>Darwin</b>						
Jetstar	61	39	63.9	61	35	57.4
Qantas	165	151	91.5	165	153	92.7
QantasLink	52	49	94.2	52	49	94.2
Tigerair	22	17	77.3	22	19	86.4
Virgin Australia	133	111	83.5	133	117	88.0
All Airlines	433	367	84.8	433	373	86.1
Relates to services to and from Alice Springs, Brisbane, Melbourne, Perth and Sydney.						
<b>Dubbo</b>						
QantasLink	124	81	65.3	123	94	76.4
Regional Express	151	128	84.8	152	132	86.8
All Airlines	275	209	76.0	275	226	82.2
Relates to services to and from Sydney only.						
<b>Emerald</b>						
QantasLink	134	122	91.0	133	116	87.2
Virgin Australia Regional Airlines	84	62	73.8	84	65	77.4
All Airlines	218	184	84.4	217	181	83.4
Relates to services to and from Brisbane only.						
<b>Geraldton</b>						
QantasLink	47	43	91.5	47	41	87.2
Virgin Australia Regional Airlines	79	66	83.5	85	71	83.5
All Airlines	126	109	86.5	132	112	84.8
Relates to services to and from Perth only.						
<b>Gladstone</b>						
QantasLink	197	181	91.9	196	169	86.2
Virgin Australia	66	62	93.9	66	63	95.5
Virgin Australia Regional Airlines	76	62	81.6	75	64	85.3
All Airlines	339	305	90.0	337	296	87.8
Relates to services to and from Brisbane only.						
<b>Gold Coast</b>						
Jetstar	512	353	68.9	512	363	70.9
Qantas	120	106	88.3	120	111	92.5
Tigerair	194	166	85.6	194	159	82.0
Virgin Australia	466	395	84.8	465	395	84.9
All Airlines	1 292	1 020	78.9	1 291	1 028	79.6
Relates to services to and from Adelaide, Melbourne and Sydney.						
<b>Hamilton Island</b>						
Jetstar	30	27	90.0	30	17	56.7
Qantas	26	25	96.2	26	20	76.9
QantasLink	26	23	88.5	26	22	84.6
Virgin Australia	82	77	93.9	82	74	90.2
All Airlines	164	152	92.7	164	133	81.1
Relates to services to and from Brisbane, Melbourne and Sydney.						

Airport	Arrivals			Departures		
	Sectors	On Time		Sectors	On Time	
	Flown	No.	%	Flown	No.	%
<b>Hobart</b>						
Jetstar	305	209	68.5	306	165	53.9
QantasLink	149	108	72.5	149	117	78.5
Tigerair	31	26	83.9	31	25	80.6
Virgin Australia	233	210	90.1	233	201	86.3
All Airlines	718	553	77.0	719	508	70.7
Relates to services to and from Brisbane, Melbourne and Sydney.						
<b>Kalgoorlie</b>						
Qantas	13	9	69.2	13	10	76.9
QantasLink	67	61	91.0	67	61	91.0
Virgin Australia	32	30	93.8	32	30	93.8
Virgin Australia Regional Airlines	24	18	75.0	24	21	87.5
All Airlines	136	118	86.8	136	122	89.7
Relates to services to and from Perth only.						
<b>Karratha</b>						
Qantas	51	46	90.2	50	46	92.0
QantasLink	154	130	84.4	152	134	88.2
Virgin Australia	43	41	95.3	43	43	100.0
Virgin Australia Regional Airlines	41	31	75.6	41	36	87.8
All Airlines	289	248	85.8	286	259	90.6
Relates to services to and from Perth only.						
<b>Launceston</b>						
Jetstar	234	179	76.5	228	154	67.5
QantasLink	108	89	82.4	107	95	88.8
Virgin Australia	121	102	84.3	121	108	89.3
Virgin Australia Regional Airlines	4	4	100.0	4	2	50.0
All Airlines	467	374	80.1	460	359	78.0
Relates to services to and from Melbourne and Sydney.						
<b>Mackay</b>						
Jetstar	48	32	66.7	47	27	57.4
QantasLink	104	98	94.2	102	90	88.2
Virgin Australia	153	142	92.8	153	140	91.5
All Airlines	305	272	89.2	302	257	85.1
Relates to services to and from Brisbane only.						
<b>Melbourne</b>						
Jetstar	1 450	979	67.5	1 452	907	62.5
Qantas	2 151	1 756	81.6	2 155	1 777	82.5
QantasLink	400	329	82.3	400	329	82.3
Regional Express	83	71	85.5	83	75	90.4
Tigerair	641	497	77.5	642	534	83.2
Virgin Australia	2 295	1 909	83.2	2 299	2 040	88.7
Virgin Australia Regional Airlines	32	28	87.5	34	29	85.3
All Airlines	7 052	5 569	79.0	7 065	5 691	80.6
Relates to services to and from Adelaide, Brisbane, Cairns, Canberra, Darwin, Gold Coast, Hamilton Island, Hobart, Launceston, Mildura, Newcastle, Perth, Sunshine Coast and Sydney.						



Airport	Arrivals			Departures		
	Sectors Flown	On Time		Sectors Flown	On Time	
		No.	%		No.	%
<b>Mildura</b>						
QantasLink	94	80	85.1	94	88	93.6
Regional Express	83	75	90.4	83	75	90.4
Virgin Australia	30	28	93.3	30	29	96.7
All Airlines	207	183	88.4	207	192	92.8
Relates to services to and from Melbourne only.						
<b>Moranbah</b>						
QantasLink	98	86	87.8	92	77	83.7
Virgin Australia Regional Airlines	71	63	88.7	70	60	85.7
All Airlines	169	149	88.2	162	137	84.6
Relates to services to and from Brisbane only.						
<b>Mount Isa</b>						
Qantas	39	39	100.0	39	39	100.0
Virgin Australia	21	19	90.5	21	19	90.5
All Airlines	60	58	96.7	60	58	96.7
Relates to services to and from Brisbane only.						
<b>Newcastle</b>						
Jetstar	168	113	67.3	168	128	76.2
QantasLink	87	81	93.1	87	80	92.0
Virgin Australia	112	106	94.6	112	105	93.8
All Airlines	367	300	81.7	367	313	85.3
Relates to services to and from Brisbane and Melbourne.						
<b>Newman</b>						
Qantas	73	73	100.0	73	71	97.3
QantasLink	69	64	92.8	69	66	95.7
Virgin Australia	20	17	85.0	20	17	85.0
Virgin Australia Regional Airlines	14	11	78.6	14	13	92.9
All Airlines	176	165	93.8	176	167	94.9
Relates to services to and from Perth only.						
<b>Perth</b>						
Jetstar	130	99	76.2	127	78	61.4
Qantas	919	781	85.0	914	821	89.8
QantasLink	452	406	89.8	456	417	91.4
Tigerair	86	76	88.4	85	78	91.8
Virgin Australia	613	545	88.9	611	533	87.2
Virgin Australia Regional Airlines	198	163	82.3	193	165	85.5
All Airlines	2 398	2 070	86.3	2 386	2 092	87.7
Relates to services to and from Adelaide, Brisbane, Broome, Darwin, Geraldton, Kalgoorlie, Karratha, Melbourne, Newman, Port Hedland and Sydney.						
<b>Port Hedland</b>						
Qantas	72	66	91.7	72	65	90.3
QantasLink	63	53	84.1	61	53	86.9
Virgin Australia	42	39	92.9	41	39	95.1
All Airlines	177	158	89.3	174	157	90.2
Relates to services to and from Perth only.						

Airport	Arrivals			Departures		
	Sectors	On Time		Sectors	On Time	
	Flown	No.	%	Flown	No.	%
<b>Port Lincoln</b>						
QantasLink	107	92	86.0	106	87	82.1
Regional Express	207	192	92.8	206	193	93.7
All Airlines	314	284	90.4	312	280	89.7
Relates to services to and from Adelaide only.						
<b>Port Macquarie</b>						
QantasLink	130	82	63.1	129	87	67.4
Virgin Australia Regional Airlines	57	41	71.9	58	46	79.3
All Airlines	187	123	65.8	187	133	71.1
Relates to services to and from Sydney only.						
<b>Proserpine</b>						
Jetstar	30	28	93.3	30	22	73.3
Virgin Australia	52	49	94.2	52	49	94.2
All Airlines	82	77	93.9	82	71	86.6
Relates to services to and from Brisbane only.						
<b>Rockhampton</b>						
QantasLink	185	166	89.7	184	160	87.0
Virgin Australia	111	99	89.2	111	101	91.0
Virgin Australia Regional Airlines	74	65	87.8	72	67	93.1
All Airlines	370	330	89.2	367	328	89.4
Relates to services to and from Brisbane only.						
<b>Sunshine Coast</b>						
Jetstar	200	150	75.0	196	122	62.2
Virgin Australia	61	60	98.4	60	58	96.7
All Airlines	261	210	80.5	256	180	70.3
Relates to services to and from Melbourne and Sydney.						
<b>Sydney</b>						
Jetstar	1 414	1 031	72.9	1 424	995	69.9
Qantas	2 250	1 887	83.9	2 239	1 909	85.3
QantasLink	1 388	1 055	76.0	1 396	1 029	73.7
Regional Express	487	383	78.6	486	409	84.2
Tigerair	536	432	80.6	536	432	80.6
Virgin Australia	2 251	1 970	87.5	2 259	1 955	86.5
Virgin Australia Regional Airlines	411	337	82.0	410	326	79.5
All Airlines	8 737	7 095	81.2	8 750	7 055	80.6
Relates to services to and from Adelaide, Albury, Armidale, Ayers Rock, Ballina, Brisbane, Cairns, Canberra, Coffs Harbour, Darwin, Dubbo, Gold Coast, Hamilton Island, Hobart, Launceston, Melbourne, Perth, Port Macquarie, Sunshine Coast, Tamworth, Townsville and Wagga Wagga.						
<b>Tamworth</b>						
QantasLink	145	100	69.0	143	103	72.0
Virgin Australia Regional Airlines	26	18	69.2	26	18	69.2
All Airlines	171	118	69.0	169	121	71.6
Relates to services to and from Sydney only.						

<i>Airport</i>	<i>Arrivals</i>			<i>Departures</i>		
	<i>Sectors</i>	<i>On Time</i>		<i>Sectors</i>	<i>On Time</i>	
	<i>Flown</i>	<i>No.</i>	<i>%</i>	<i>Flown</i>	<i>No.</i>	<i>%</i>
<b>Townsville</b>						
Jetstar	52	36	69.2	51	29	56.9
Qantas	145	128	88.3	145	138	95.2
QantasLink	142	132	93.0	140	134	95.7
Regional Express	63	59	93.7	63	61	96.8
Virgin Australia	179	157	87.7	178	160	89.9
All Airlines	581	512	88.1	577	522	90.5
Relates to services to and from Brisbane, Cairns and Sydney.						
<b>Wagga Wagga</b>						
QantasLink	111	77	69.4	111	88	79.3
Regional Express	133	109	82.0	134	110	82.1
All Airlines	244	186	76.2	245	198	80.8
Relates to services to and from Sydney only.						

## Definitions

---

On time arrival	A flight arrival is counted as "on time" if it arrived at the gate before 15 minutes after the scheduled arrival time shown in the carriers' schedule. Neither diverted nor cancelled flights count as on time.
On time departure	A flight departure is counted as "on time" if it departs the gate before 15 minutes after the scheduled departure time shown in the carriers' schedule.
Cancellation	A flight removed from service within 7 days of scheduled departure is regarded as a cancellation.
On time departure percentage	The percentage of on time departures is measured against the number of departures <i>operated</i> on any particular sector.
On time arrival percentage	The percentage of on time arrivals is measured against the number of arrivals <i>operated</i> on any particular sector.
Cancellation percentage	The percentage of cancellations is measured against the number of services <i>scheduled</i> on any particular sector.

---