



**Australian Government**

**Department of Infrastructure and Regional Development**

Bureau of Infrastructure, Transport and Regional Economics

STATISTICAL REPORT



## Aviation

Domestic airline on time performance 2016-17

© Commonwealth of Australia 2017

ISSN: 1832-0759

### **Ownership of intellectual property rights in this publication**

Unless otherwise noted, copyright (and any other intellectual property rights, if any) in this publication is owned by the Commonwealth of Australia (referred to below as the Commonwealth).

### **Disclaimer**

The material contained in this publication is made available on the understanding that the Commonwealth is not providing professional advice, and that users exercise their own skill and care with respect to its use, and seek independent advice if necessary.

The Commonwealth makes no representations or warranties as to the contents or accuracy of the information contained in this publication. To the extent permitted by law, the Commonwealth disclaims liability to any person or organisation in respect of anything done, or omitted to be done, in reliance upon information contained in this publication.

### **Creative Commons licence**

With the exception of (a) the Coat of Arms; and (b) the Department of Infrastructure and Regional Development's photos and graphics, copyright in this publication is licensed under a Creative Commons Attribution 3.0 Australia Licence.

Creative Commons Attribution 3.0 Australia Licence is a standard form licence agreement that allows you to copy, communicate and adapt this publication provided that you attribute the work to the Commonwealth and abide by the other licence terms. A summary of the licence terms is available from <http://creativecommons.org/licenses/by/3.0/au/deed.en>. The full licence terms are available from <http://creativecommons.org/licenses/by/3.0/au/legalcode>.

### **Use of the Coat of Arms**

The Department of the Prime Minister and Cabinet sets the terms under which the Coat of Arms is used. Please refer to the Department's Commonwealth Coat of Arms and Government branding web page <http://www.dpmmc.gov.au/guidelines/index.cfm#brand> and, in particular, the Guidelines on the use of the Commonwealth Coat of Arms publication.

An appropriate citation for this report is:

Bureau of Infrastructure, Transport and Regional Economics (BITRE), 2017, Domestic airline on time performance, Statistical Report, BITRE, Canberra ACT.

### **Contact us**

This publication is available in PDF format. All other rights are reserved, including in relation to any Departmental logos or trade marks which may exist. For enquiries regarding the licence and any use of this publication, please contact:

Bureau of Infrastructure, Transport and Regional Economics (BITRE)  
Department of Infrastructure and Regional Development  
GPO Box 501, Canberra ACT 2601, Australia  
Telephone: (international) +61 2 6274 7210  
Fax: (international) +61 2 6274 6855  
Email: [bitre@infrastructure.gov.au](mailto:bitre@infrastructure.gov.au)  
Website: [www.bitre.gov.au](http://www.bitre.gov.au)

### **Inquiries**

Should you require additional information about the statistics contained in this publication:

Telephone (02) 6274 7790 or Facsimile (02) 6274 7727

Electronic mail: [AVSTATS@infrastructure.gov.au](mailto:AVSTATS@infrastructure.gov.au)

Web site: <http://www.bitre.gov.au/statistics/aviation/otphome.aspx>

# Foreword

The Bureau of Infrastructure, Transport and Regional Economics (BITRE) monitors the punctuality and reliability of major domestic airlines operating between Australian airports. The purpose of this is to allow for evaluation of overall industry and individual airline performance, so that consumers of air travel can make informed decisions.

The following domestic airlines currently report this information monthly to the BITRE: Jetstar, Qantas, QantasLink, Regional Express, Tigerair Australia, Virgin Australia and Virgin Australia Regional Airlines. Data has been gathered since November 2003, although some airlines commenced reporting at a later date, including Jetstar which first reported in May 2004, MacAir in July 2005, Tigerair Australia in April 2008 and Virgin Australia Regional Airlines in May 2013. MacAir ceased operations in February 2009 and data was not received for December 2008 onwards. Virgin Blue was rebranded as Virgin Australia in May 2011 and Tiger Airways was rebranded as Tigerair Australia in July 2013 and time series data in Microsoft Excel spreadsheet format on the BITRE website have been revised to reflect these changes. Services operated by Skywest on behalf of Virgin Australia using ATR/F100 aircraft commenced in November 2011 and were shown separately as Virgin Australia – ATR/F100 Operations. Virgin Australia Regional Airlines commenced operations in May 2013. It was formed after the acquisition of Skywest by Virgin Australia and represented a combination of operations previously reported under Skywest and Virgin Australia – ATR/F100 Operations. In January 2016, Virgin Australia transferred their ATR fleet from Virgin Australia Regional Airlines to Virgin Australia.

Information presented in this report is for Australian domestic routes for which the passenger load averaged 8 000 or more passengers per month over the previous six months and where two or more airlines operated in competition on those routes. There were 65 routes that met these criteria for all twelve months in 2016-17. Over time, routes which meet these criteria change as airline networks and traffic levels vary.

Participating airlines report their overall monthly network performance where this is possible.

Total industry figures encompass all services operated by reporting airlines only. These airlines collectively carried over 95 per cent of total domestic passengers (regular public transport only) in 2016.

The method of capturing on time performance varies between airlines utilising different recording systems. Jetstar and Qantas jet aircraft use Aircraft Communication Addressing and Reporting System (ACARS) to electronically measure on time performance. Regional Express, Tigerair Australia, Virgin Australia, Virgin Australia Regional Airlines and the Qantas non-jet fleet record on time performance manually using records from pilots, gate agents and/or ground crews.

After initial data is collected, aggregate reports are audited internally by participating airlines prior to publication.

Reports and detailed time series data in Microsoft Excel spreadsheet format are available from the BITRE website at: <http://www.bitre.gov.au/statistics/aviation/otphome.aspx>.



# Contents

	Page
Industry performance .....	1
Individual routes .....	9
Airports .....	22
Definitions .....	28



## Industry performance

For the year ended June 2017, on time performance over all routes operated by participating airlines (Jetstar, Qantas, QantasLink, Regional Express, Tigerair Australia, Virgin Australia and Virgin Australia Regional Airlines) averaged 83.0 per cent for on time arrivals and 83.8 per cent for on time departures. Cancellations represented 1.8 per cent of all scheduled flights. The equivalent figures for 2015-16 were 86.1 per cent for arrivals, 86.7 per cent for departures and 1.6 per cent for cancellations.

The 2016-17 on time arrivals figure was slightly above the long term average performance for all routes of 82.8 per cent and the on time departures figure was below the long term average of 84.2 per cent. The rate of cancellations was higher than the long term average of 1.4 per cent.

Qantas achieved the highest on time arrivals among the major domestic airlines at 86.0 per cent, followed by Virgin Australia at 85.1 per cent, Tigerair Australia at 76.0 per cent and Jetstar at 75.7 per cent. Virgin Australia Regional Airlines was the best performing regional airline for on time arrivals at 85.2 per cent, followed by QantasLink at 84.5 per cent and Regional Express at 82.8 per cent. The Qantas network (Qantas and QantasLink combined operations) recorded 85.2 per cent for on time arrivals while the Virgin Australia network (Virgin Australia and Virgin Australia Regional Airlines combined operations) recorded 85.1 per cent.

Qantas also achieved the highest level of on time departures for 2016-17 at 87.6 per cent, followed by Virgin Australia at 86.8 per cent, Tigerair Australia at 76.8 per cent and Jetstar at 72.6 per cent. The regional airlines were led by Virgin Australia Regional Airlines at 87.1 per cent, followed by Regional Express at 85.8 per cent and QantasLink at 85.1 per cent. The Qantas network recorded 86.3 per cent for on time departures while the Virgin Australia network recorded 86.8 per cent.

QantasLink had the highest percentage of cancellations (2.6 per cent) during 2016-17, followed by Virgin Australia (2.2 per cent), Jetstar (1.8 per cent), Virgin Australia Regional Airlines (1.5 per cent), Tigerair Australia (1.3 per cent), Qantas (1.2 per cent) and Regional Express (0.8 per cent).

Airlines' on time performance varies across the routes they serve. Individual route data by specific airline for 66 routes are shown on pages 9-21.

Of the 65 routes which met the criteria for on time performance reporting for all 12 months in 2016-17, the Cairns-Townsville route had the highest percentage of on time arrivals (94.3 per cent) and the Darwin-Alice Springs route had the highest percentage of on time departures (95.2 per cent). The Launceston-Sydney route had the lowest percentage of on time arrivals (69.7 per cent) and the Sunshine Coast-Melbourne route had the lowest percentage of on time departures (64.4 per cent).

Cancellations were highest on the Sydney-Hamilton Island route at 5.0 per cent, followed by the Hamilton Island-Sydney route at 4.8 per cent, the Canberra-Sydney and

Moranbah-Brisbane routes at 4.6 per cent, the Sydney-Canberra route at 4.2 per cent and the Sydney-Melbourne, Melbourne-Sydney, Brisbane-Moranbah and Rockhampton-Brisbane routes at 4.1 per cent.

Alice Springs Airport and Newman Airport recorded the highest percentage of on time arrivals (both at 92.4 per cent) and Newman Airport recorded the highest percentage of on time departures (92.6 per cent). Armidale Airport recorded the lowest percentage of on time arrivals (71.9 per cent) and Sunshine Coast Airport recorded the lowest percentage of on time departures (66.7 per cent). These figures only refer to reported routes and do not cover all flights at these airports.



Table 1 On time performance for the year ended June 2017 — Total Industry

	<i>Sectors</i>		<i>Arrivals On Time</i>		<i>Departures On Time</i>		<i>Cancellations</i>	
	<i>Scheduled</i>	<i>Flown</i>	<i>No.</i>	<i>%</i>	<i>No.</i>	<i>%</i>	<i>No.</i>	<i>%</i>
Jetstar	86 744	85 225	64 496	75.7	61 899	72.6	1 519	1.8
Qantas	107 981	106 705	91 807	86.0	93 439	87.6	1 276	1.2
QantasLink	124 706	121 438	102 586	84.5	103 338	85.1	3 268	2.6
Regional Express	75 672	75 051	62 106	82.8	64 414	85.8	621	0.8
Tigerair Australia	27 539	27 180	20 664	76.0	20 887	76.8	359	1.3
Virgin Australia	143 943	140 847	119 907	85.1	122 232	86.8	3 096	2.2
Virgin Australia Regional Airlines	8 155	8 033	6 843	85.2	6 994	87.1	122	1.5
All Airlines	574 740	564 479	468 409	83.0	473 203	83.8	10 261	1.8
Qantas - all QF designated services	232 687	228 143	194 393	85.2	196 777	86.3	4 544	2.0
Virgin Australia - all VA designated services	152 098	148 880	126 750	85.1	129 226	86.8	3 218	2.1

Total airline network data (including routes not shown in this report).

Airlines' on time performance varies across the routes they serve. Individual route data by specific airline for 66 routes are shown on pages 9-21.

Table 2 Top ten routes for on time performance for the year ended June 2017 (participating airlines only)

<i>Arrivals</i>		<i>Departures</i>	
<i>Route</i>	<i>On Time (%)</i>	<i>Route</i>	<i>On Time (%)</i>
Cairns-Townsville	94.3	Darwin-Alice Springs	95.2
Townsville-Cairns	93.3	Cairns-Townsville	94.2
Darwin-Alice Springs	93.2	Adelaide-Port Lincoln	94.0
Perth-Newman	92.4	Brisbane-Hobart	93.5
Perth-Adelaide	92.2	Perth-Newman	93.3
Brisbane-Hobart	92.1	Perth-Darwin	92.9
Adelaide-Port Lincoln	91.7	Townsville-Cairns	92.9
Perth-Darwin	91.7	Newman-Perth	92.6
Alice Springs-Darwin	91.6	Adelaide-Alice Springs	91.9
Newman-Perth	91.5	Perth-Karratha	91.9

Table 3 Top ten airports for on time performance for the year ended June 2017 (participating airlines and reported routes only)

<i>Arrivals</i>		<i>Departures</i>	
<i>Airport</i>	<i>On Time (%)</i>	<i>Airport</i>	<i>On Time (%)</i>
Alice Springs	92.4	Newman	92.6
Newman	92.4	Port Lincoln	91.5
Port Lincoln	91.7	Port Hedland	90.0
Mount Isa	90.6	Mount Isa	89.6
Karratha	90.5	Kalgoorlie	89.1
Kalgoorlie	89.8	Karratha	89.0
Emerald	89.7	Moranbah	88.6
Townsville	89.1	Perth	88.6
Broome	88.8	Alice Springs	88.1
Port Hedland	87.3	Emerald	87.9

## Total industry on time performance

Figure 1 On time performance (by month from June 2012)—Total Industry

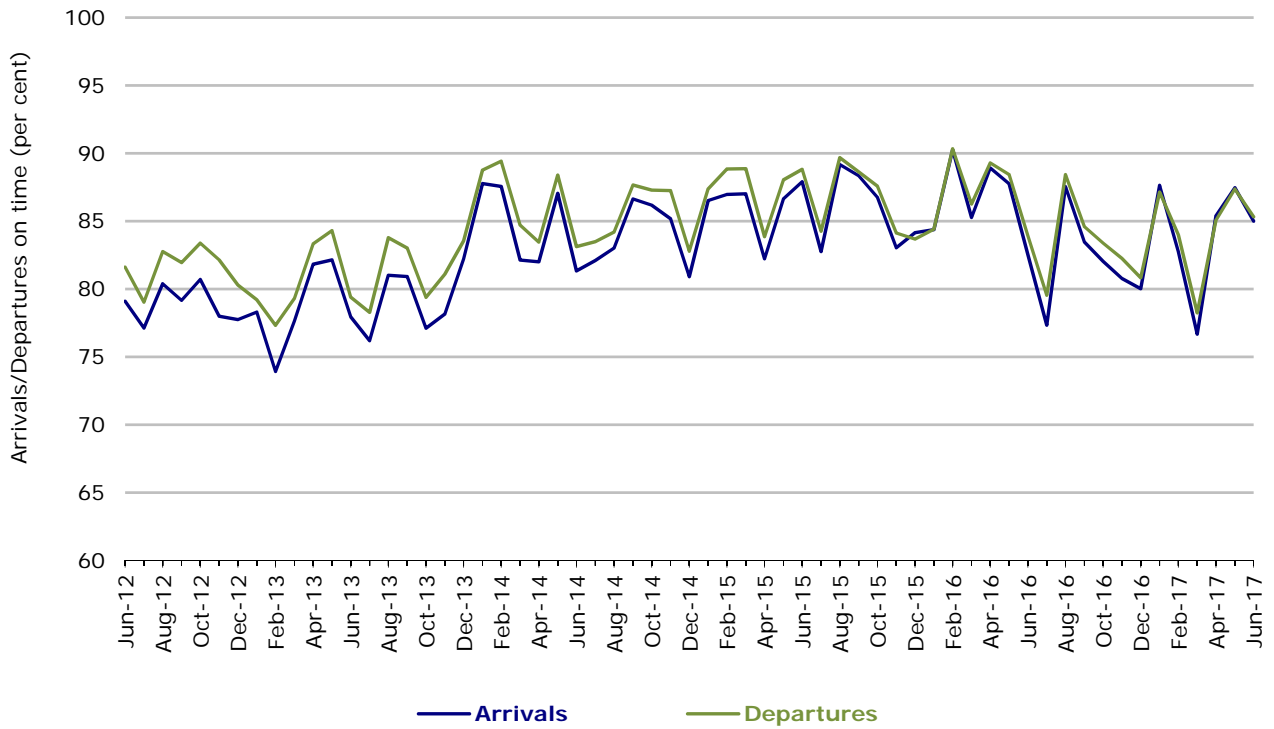
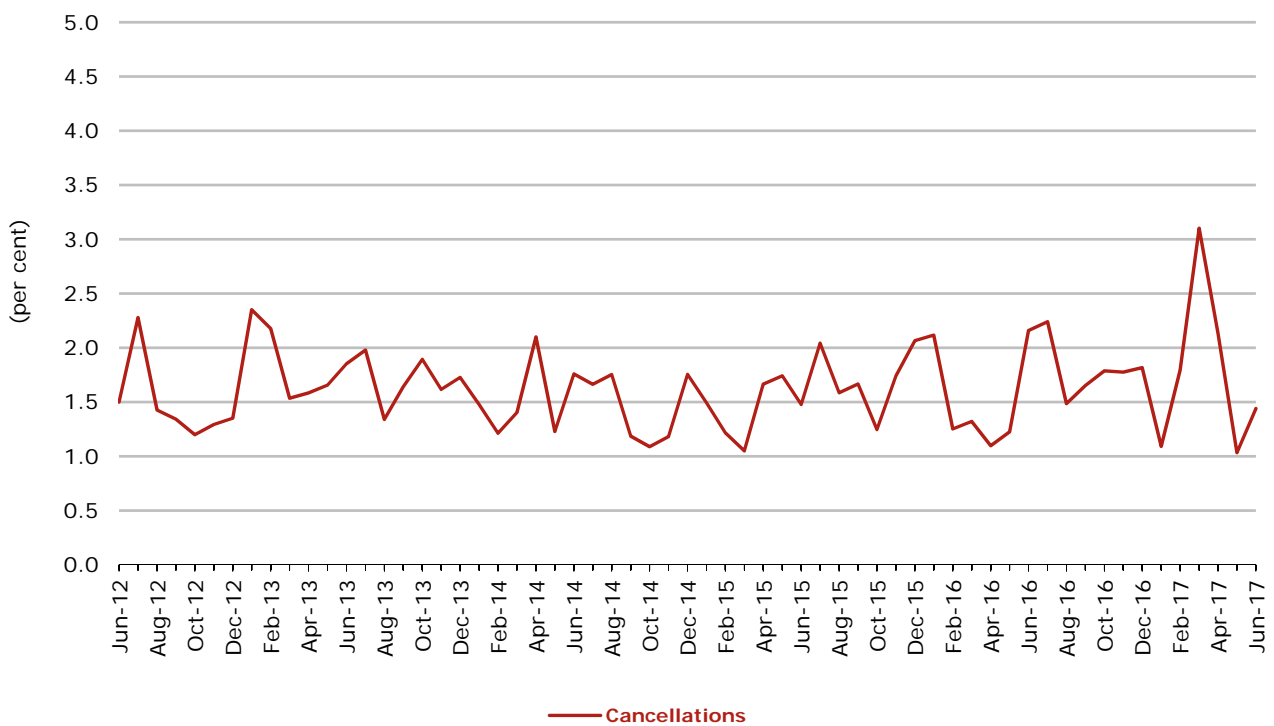


Figure 2 Cancellations (by month from June 2012)—Total Industry



## Major domestic airlines on time performance

Figure 3 On time performance (by month from June 2012)—Jetstar

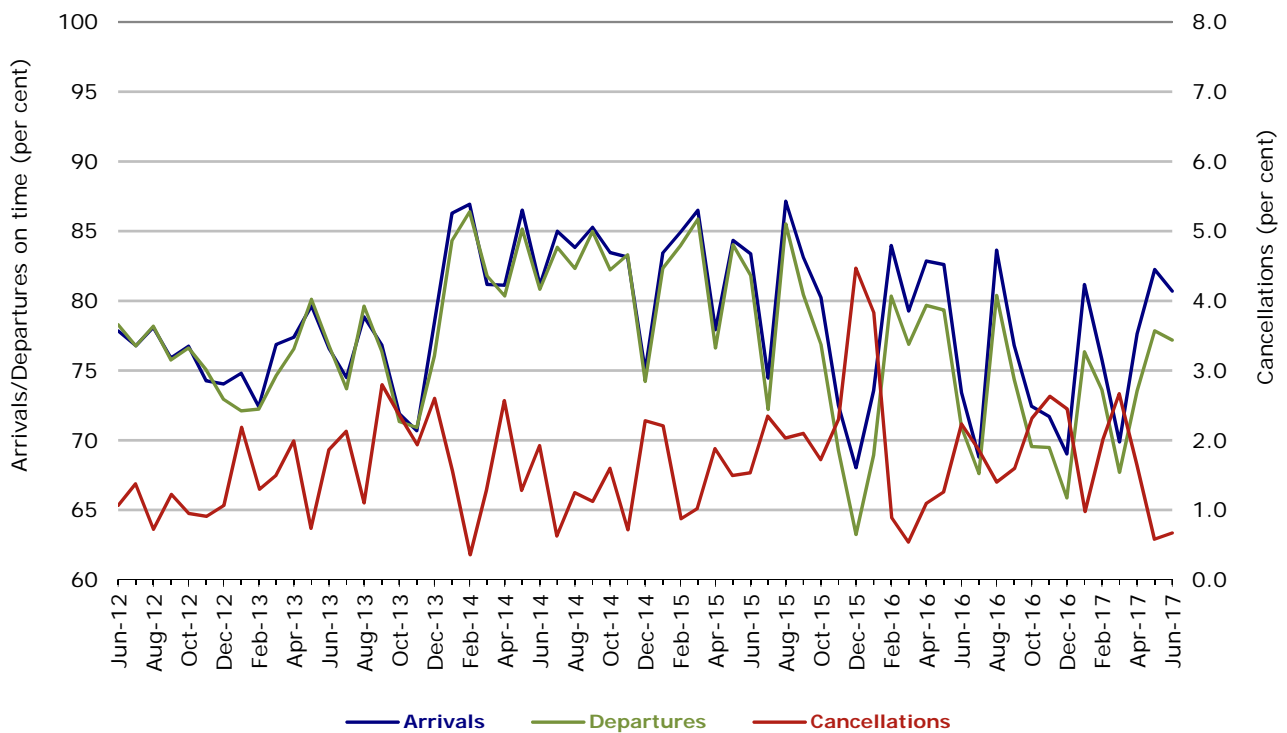


Figure 4 On time performance (by month from June 2012)—Qantas

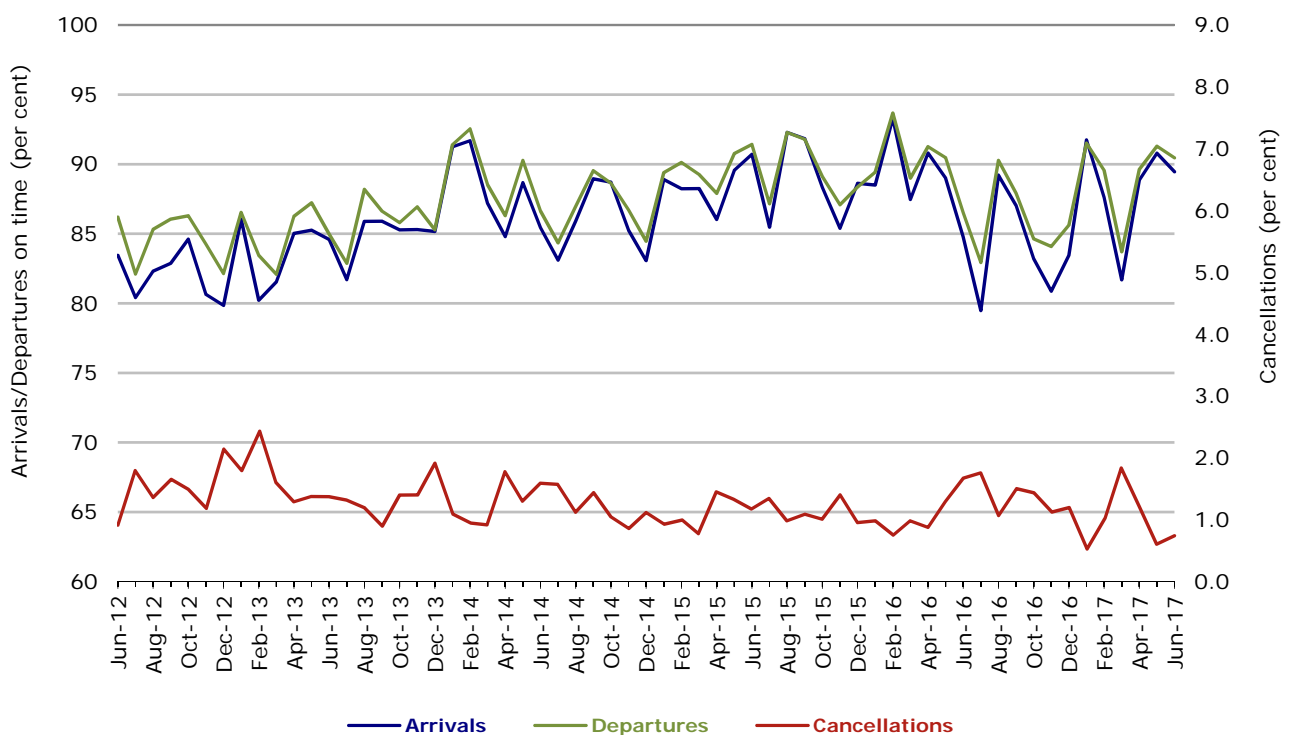


Figure 5 On time performance (by month from June 2012)—Tigerair Australia

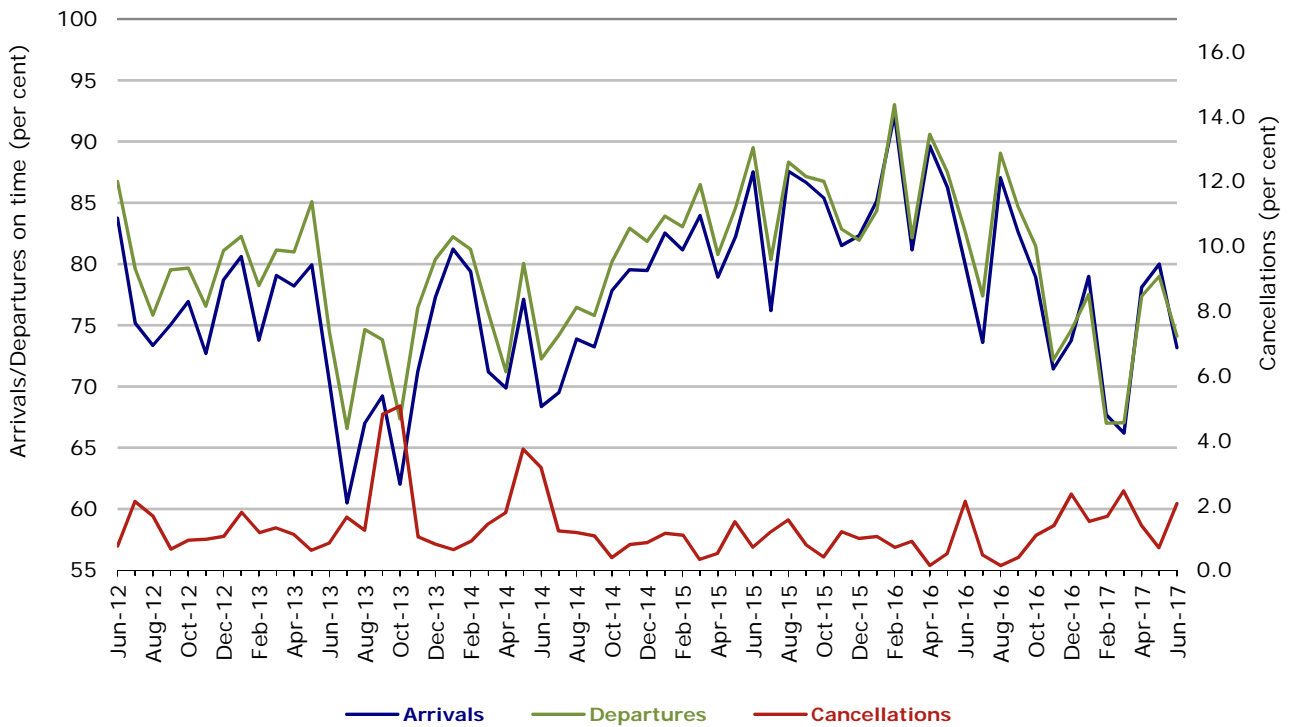
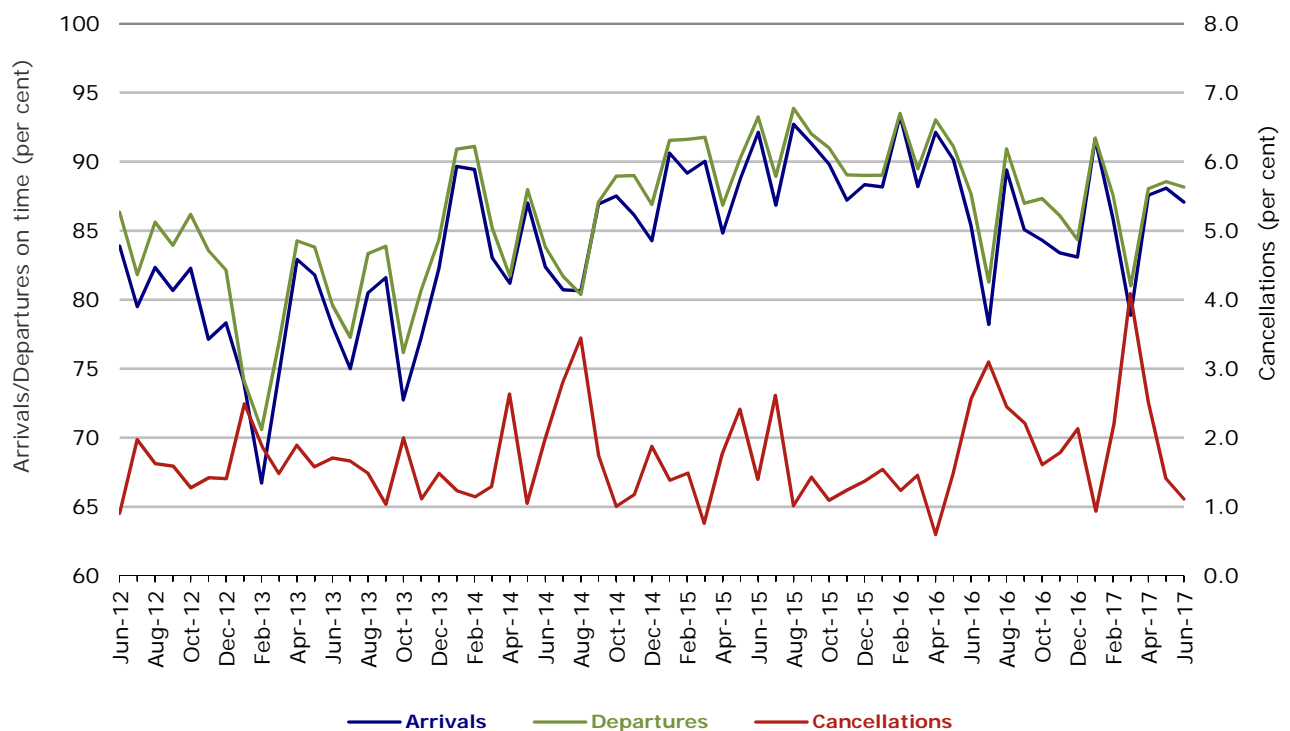


Figure 6 On time performance (by month from June 2012)—Virgin Australia



In January 2016, Virgin Australia transferred their ATR fleet from Virgin Australia Regional Airlines to Virgin Australia.

## Major regional airlines on time performance

Figure 7 On time performance (by month from June 2012)—QantasLink

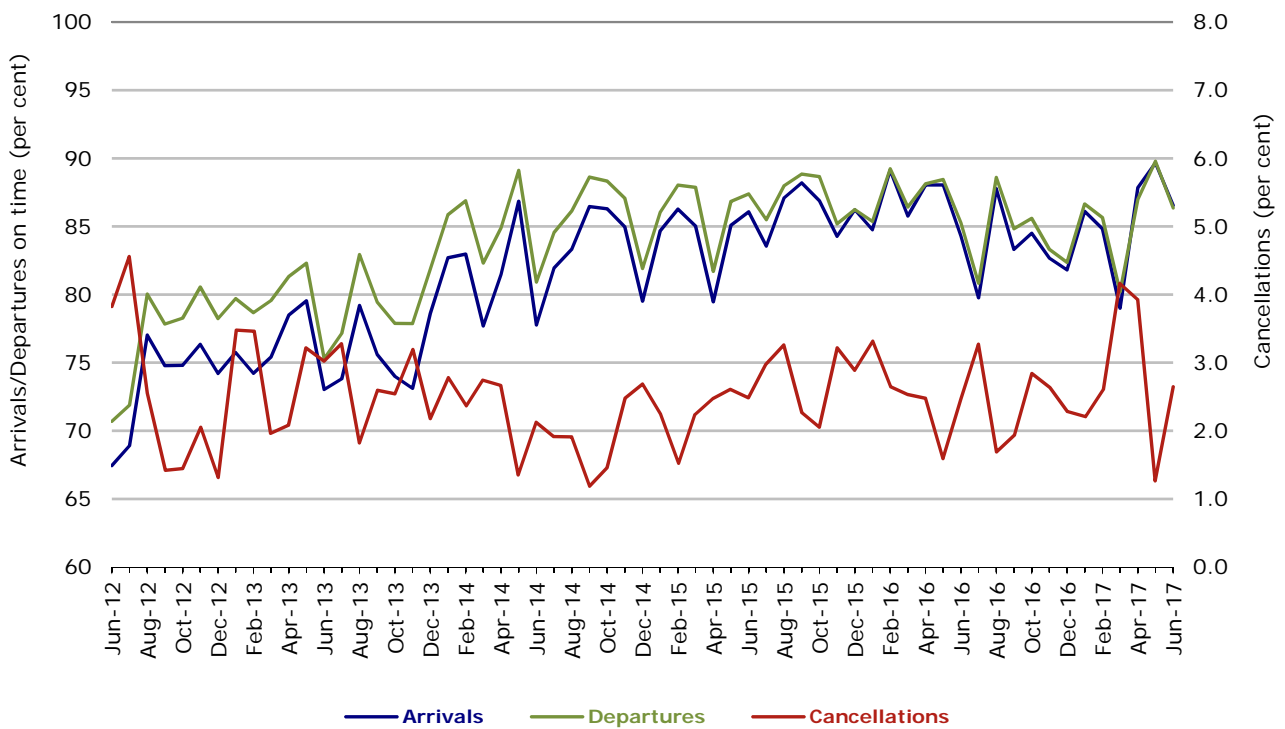


Figure 8 On time performance (by month from June 2012)—Regional Express

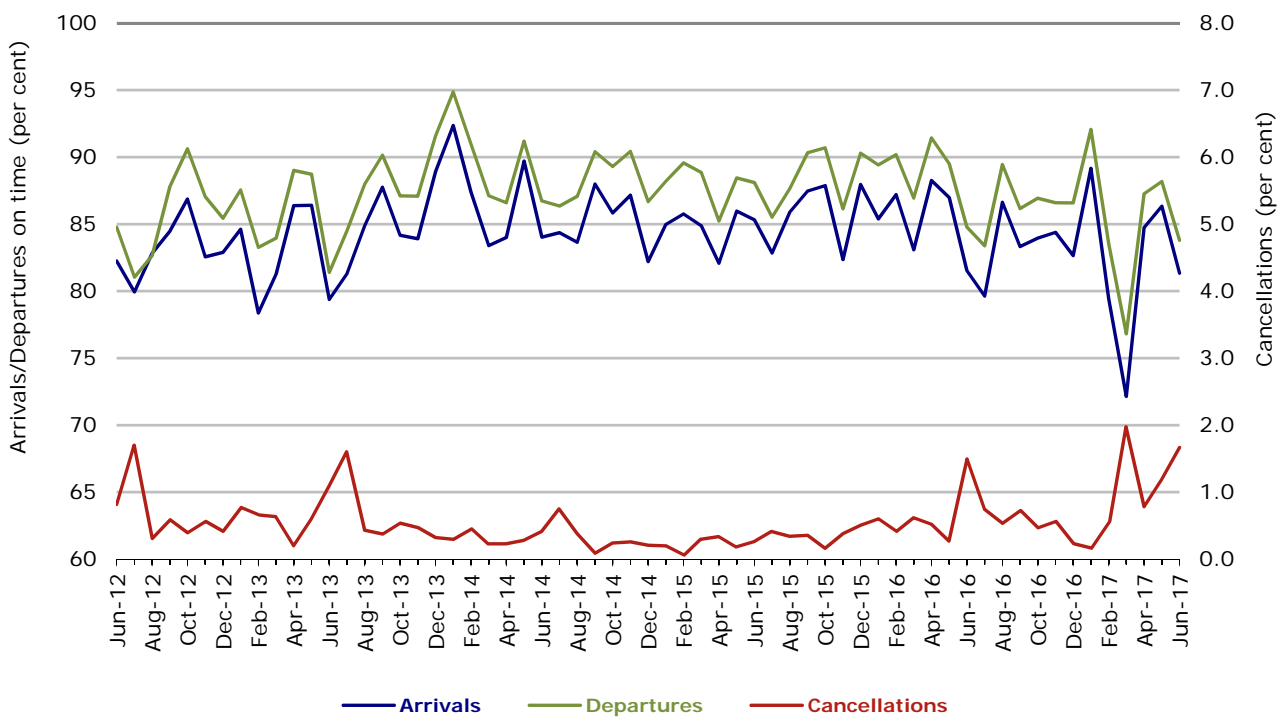
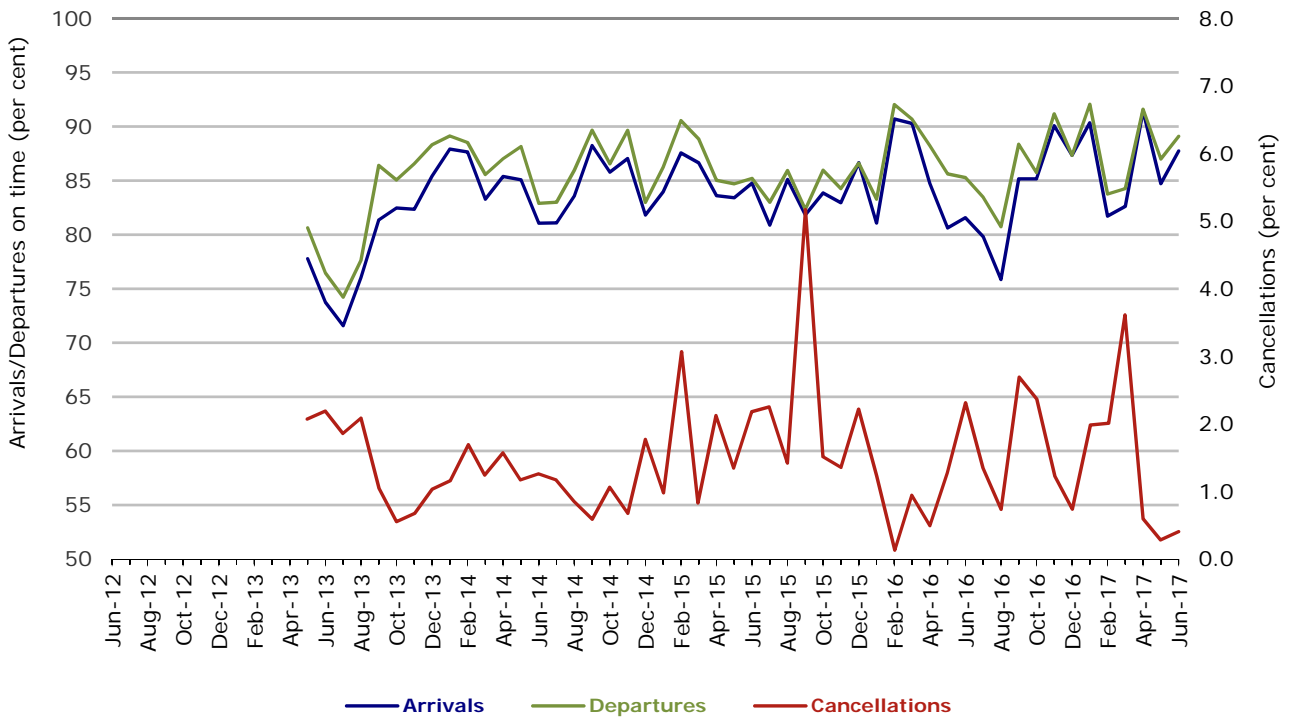


Figure 9 On time performance (by month from June 2012)  
Virgin Australia Regional Airlines



Virgin Australia Regional Airlines commenced operations in May 2013. It was formed after the acquisition of Skywest by Virgin Australia and represented a combination of operations previously reported under Skywest and Virgin Australia – ATR/F100 Operations. In January 2016, Virgin Australia transferred their ATR fleet from Virgin Australia Regional Airlines to Virgin Australia.

## Individual routes

On time performance is reported for all routes where the passenger load averages over 8000 passengers per month over the previous six months, and where two or more airlines operate in competition on those routes. There are now 65 routes which meet this definition. Over time, however, routes which meet this definition may change as airline networks and traffic levels vary.

	<i>Sectors</i>		<i>Arrivals On Time</i>		<i>Departures On Time</i>		<i>Cancellations</i>	
	<i>Sched.</i>	<i>Flown</i>	<i>No.</i>	<i>%</i>	<i>No.</i>	<i>%</i>	<i>No.</i>	<i>%</i>
<b>Adelaide-Alice Springs</b>								
Qantas	364	364	332	91.2	330	90.7	0	0.0
Virgin Australia	158	157	143	91.1	149	94.9	1	0.6
All Airlines	522	521	475	91.2	479	91.9	1	0.2
<b>Adelaide-Brisbane</b>								
Jetstar	327	325	258	79.4	258	79.4	2	0.6
Qantas	1 219	1 218	1 134	93.1	1 128	92.6	1	0.1
QantasLink	181	170	135	79.4	151	88.8	11	6.1
Tigerair Australia	317	315	263	83.5	263	83.5	2	0.6
Virgin Australia	1 324	1 317	1 200	91.1	1 161	88.2	7	0.5
All Airlines	3 368	3 345	2 990	89.4	2 961	88.5	23	0.7
<b>Adelaide-Canberra</b>								
Qantas	523	523	487	93.1	480	91.8	0	0.0
Virgin Australia	313	311	273	87.8	264	84.9	2	0.6
All Airlines	836	834	760	91.1	744	89.2	2	0.2
<b>Adelaide-Gold Coast</b>								
Jetstar	400	396	342	86.4	332	83.8	4	1.0
Virgin Australia	367	367	349	95.1	353	96.2	0	0.0
All Airlines	767	763	691	90.6	685	89.8	4	0.5
<b>Adelaide-Melbourne</b>								
Jetstar	1 306	1 274	945	74.2	870	68.3	32	2.5
Qantas	3 344	3 329	2 859	85.9	2 898	87.1	15	0.4
Tigerair Australia	895	885	675	76.3	672	75.9	10	1.1
Virgin Australia	3 290	3 232	2 758	85.3	2 731	84.5	58	1.8
All Airlines	8 835	8 720	7 237	83.0	7 171	82.2	115	1.3
<b>Adelaide-Perth</b>								
Jetstar	350	343	286	83.4	284	82.8	7	2.0
Qantas	1 182	1 182	1 067	90.3	1 069	90.4	0	0.0
QantasLink	160	150	130	86.7	131	87.3	10	6.3
Virgin Australia	854	847	741	87.5	766	90.4	7	0.8
All Airlines	2 546	2 522	2 224	88.2	2 250	89.2	24	0.9
<b>Adelaide-Port Lincoln</b>								
QantasLink	1 291	1 273	1 165	91.5	1 174	92.2	18	1.4
Regional Express	2 439	2 422	2 225	91.9	2 299	94.9	17	0.7
All Airlines	3 730	3 695	3 390	91.7	3 473	94.0	35	0.9
<b>Adelaide-Sydney</b>								
Jetstar	1 312	1 272	982	77.2	918	72.2	40	3.0
Qantas	2 753	2 748	2 452	89.2	2 529	92.0	5	0.2
QantasLink	341	320	268	83.8	260	81.3	21	6.2
Tigerair Australia	557	553	375	67.8	370	66.9	4	0.7
Virgin Australia	1 950	1 931	1 688	87.4	1 704	88.2	19	1.0
All Airlines	6 913	6 824	5 765	84.5	5 781	84.7	89	1.3
<b>Albury-Sydney</b>								
QantasLink	1 285	1 253	949	75.7	966	77.1	32	2.5
Regional Express	1 182	1 171	983	83.9	1 026	87.6	11	0.9
Virgin Australia	711	703	546	77.7	543	77.2	8	1.1
All Airlines	3 178	3 127	2 478	79.2	2 535	81.1	51	1.6

	<i>Sectors</i>		<i>Arrivals On Time</i>		<i>Departures On Time</i>		<i>Cancellations</i>	
	<i>Sched.</i>	<i>Flown</i>	<i>No.</i>	<i>%</i>	<i>No.</i>	<i>%</i>	<i>No.</i>	<i>%</i>
<b>Alice Springs-Adelaide</b>								
Qantas	365	364	312	85.7	303	83.2	1	0.3
Virgin Australia	158	157	138	87.9	136	86.6	1	0.6
All Airlines	523	521	450	86.4	439	84.3	2	0.4
<b>Alice Springs-Darwin</b>								
QantasLink	638	632	581	91.9	574	90.8	6	0.9
Virgin Australia	156	155	140	90.3	139	89.7	1	0.6
All Airlines	794	787	721	91.6	713	90.6	7	0.9
<b>Armidale-Sydney</b>								
QantasLink	1 423	1 383	976	70.6	964	69.7	40	2.8
Regional Express	877	866	638	73.7	684	79.0	11	1.3
All Airlines	2 300	2 249	1 614	71.8	1 648	73.3	51	2.2
<b>Ayers Rock-Sydney</b>								
Jetstar	335	329	261	79.3	228	69.3	6	1.8
Virgin Australia	365	364	290	79.7	261	71.7	1	0.3
All Airlines	700	693	551	79.5	489	70.6	7	1.0
<b>Ballina-Sydney</b>								
Jetstar	951	948	726	76.6	651	68.7	3	0.3
Regional Express	304	298	206	69.1	217	72.8	6	2.0
Virgin Australia	399	399	326	81.7	320	80.2	0	0.0
All Airlines	1 654	1 645	1 258	76.5	1 188	72.2	9	0.5
<b>Brisbane-Adelaide</b>								
Jetstar	326	324	293	90.4	288	88.9	2	0.6
Qantas	1 219	1 218	1 124	92.3	1 127	92.5	1	0.1
QantasLink	181	168	149	88.7	147	87.5	13	7.2
Tigerair Australia	317	316	271	85.8	264	83.5	1	0.3
Virgin Australia	1 330	1 325	1 167	88.1	1 176	88.8	5	0.4
All Airlines	3 373	3 351	3 004	89.6	3 002	89.6	22	0.7
<b>Brisbane-Bundaberg</b>								
QantasLink	1 581	1 568	1 356	86.5	1 363	86.9	13	0.8
Virgin Australia	365	364	320	87.9	317	87.1	1	0.3
All Airlines	1 946	1 932	1 676	86.7	1 680	87.0	14	0.7
<b>Brisbane-Cairns</b>								
Jetstar	1 277	1 260	1 007	79.9	919	72.9	17	1.3
Qantas	1 436	1 436	1 316	91.6	1 289	89.8	0	0.0
QantasLink	65	65	52	80.0	48	73.8	0	0.0
Tigerair Australia	411	410	343	83.7	344	83.9	1	0.2
Virgin Australia	1 574	1 573	1 414	89.9	1 384	88.0	1	0.1
All Airlines	4 763	4 744	4 132	87.1	3 984	84.0	19	0.4
<b>Brisbane-Canberra</b>								
Qantas	514	514	486	94.6	485	94.4	0	0.0
QantasLink	1 296	1 280	1 083	84.6	1 076	84.1	16	1.2
Virgin Australia	1 159	1 156	1 042	90.1	1 043	90.2	3	0.3
All Airlines	2 969	2 950	2 611	88.5	2 604	88.3	19	0.6
<b>Brisbane-Darwin</b>								
Jetstar	296	295	252	85.4	234	79.3	1	0.3
Qantas	559	559	515	92.1	529	94.6	0	0.0
Tigerair Australia	255	254	212	83.5	213	83.9	1	0.4
Virgin Australia	367	367	310	84.5	325	88.6	0	0.0
All Airlines	1 477	1 475	1 289	87.4	1 301	88.2	2	0.1
<b>Brisbane-Emerald</b>								
QantasLink	1 479	1 446	1 242	85.9	1 273	88.0	33	2.2
Virgin Australia	819	815	786	96.4	790	96.9	4	0.5
All Airlines	2 298	2 261	2 028	89.7	2 063	91.2	37	1.6



	<i>Sectors</i>		<i>Arrivals On Time</i>		<i>Departures On Time</i>		<i>Cancellations</i>	
	<i>Sched.</i>	<i>Flown</i>	<i>No.</i>	<i>%</i>	<i>No.</i>	<i>%</i>	<i>No.</i>	<i>%</i>
<b>Brisbane-Gladstone</b>								
QantasLink	1 896	1 860	1 540	82.8	1 628	87.5	36	1.9
Virgin Australia	1 211	1 178	1 031	87.5	1 032	87.6	33	2.7
All Airlines	3 107	3 038	2 571	84.6	2 660	87.6	69	2.2
<b>Brisbane-Hamilton Island</b>								
Qantas	5	4	3	75.0	3	75.0	1	20.0
QantasLink	422	403	349	86.6	345	85.6	19	4.5
Virgin Australia	364	355	326	91.8	332	93.5	9	2.5
All Airlines	791	762	678	89.0	680	89.2	29	3.7
<b>Brisbane-Hobart</b>								
Jetstar	334	334	312	93.4	315	94.3	0	0.0
Qantas	5	5	5	100.0	5	100.0	0	0.0
Virgin Australia	369	369	335	90.8	342	92.7	0	0.0
All Airlines	708	708	652	92.1	662	93.5	0	0.0
<b>Brisbane-Mackay</b>								
Jetstar	529	523	373	71.3	347	66.3	6	1.1
QantasLink	1 297	1 268	1 091	86.0	1 093	86.2	29	2.2
Virgin Australia	1 691	1 661	1 468	88.4	1 468	88.4	30	1.8
All Airlines	3 517	3 452	2 932	84.9	2 908	84.2	65	1.8
<b>Brisbane-Melbourne</b>								
Jetstar	1 456	1 409	1 111	78.9	1 038	73.7	47	3.2
Qantas	5 000	4 971	4 264	85.8	4 424	89.0	29	0.6
Tigerair Australia	1 525	1 499	1 140	76.1	1 158	77.3	26	1.7
Virgin Australia	4 644	4 493	3 627	80.7	3 955	88.0	151	3.3
All Airlines	12 625	12 372	10 142	82.0	10 575	85.5	253	2.0
<b>Brisbane-Moranbah</b>								
QantasLink	1 070	1 011	882	87.2	906	89.6	59	5.5
Virgin Australia	726	711	621	87.3	626	88.0	15	2.1
All Airlines	1 796	1 722	1 503	87.3	1 532	89.0	74	4.1
<b>Brisbane-Mount Isa</b>								
Qantas	107	107	98	91.6	105	98.1	0	0.0
QantasLink	559	552	500	90.6	492	89.1	7	1.3
Virgin Australia	207	207	187	90.3	198	95.7	0	0.0
All Airlines	873	866	785	90.6	795	91.8	7	0.8
<b>Brisbane-Newcastle</b>								
Jetstar	1 035	1 024	799	78.0	783	76.5	11	1.1
QantasLink	1 132	1 094	934	85.4	934	85.4	38	3.4
Virgin Australia	1 047	1 042	941	90.3	939	90.1	5	0.5
All Airlines	3 214	3 160	2 674	84.6	2 656	84.1	54	1.7
<b>Brisbane-Perth</b>								
Qantas	1 561	1 559	1 361	87.3	1 377	88.3	2	0.1
Tigerair Australia	21	21	18	85.7	18	85.7	0	0.0
Virgin Australia	1 301	1 299	1 052	81.0	1 060	81.6	2	0.2
All Airlines	2 883	2 879	2 431	84.4	2 455	85.3	4	0.1
<b>Brisbane-Proserpine</b>								
Jetstar	370	357	279	78.2	254	71.1	13	3.5
Tigerair Australia	58	54	51	94.4	51	94.4	4	6.9
Virgin Australia	391	378	349	92.3	347	91.8	13	3.3
All Airlines	819	789	679	86.1	652	82.6	30	3.7
<b>Brisbane-Rockhampton</b>								
QantasLink	2 227	2 165	1 822	84.2	1 858	85.8	62	2.8
Virgin Australia	1 940	1 855	1 599	86.2	1 616	87.1	85	4.4
All Airlines	4 167	4 020	3 421	85.1	3 474	86.4	147	3.5

	<i>Sectors</i>		<i>Arrivals On Time</i>		<i>Departures On Time</i>		<i>Cancellations</i>	
	<i>Sched.</i>	<i>Flown</i>	<i>No.</i>	<i>%</i>	<i>No.</i>	<i>%</i>	<i>No.</i>	<i>%</i>
<b>Brisbane-Sydney</b>								
Jetstar	2 091	2 008	1 485	74.0	1 435	71.5	83	4.0
Qantas	7 390	7 317	6 425	87.8	6 575	89.9	73	1.0
Tigerair Australia	1 259	1 244	962	77.3	965	77.6	15	1.2
Virgin Australia	6 387	6 201	5 369	86.6	5 518	89.0	186	2.9
All Airlines	17 127	16 770	14 241	84.9	14 493	86.4	357	2.1
<b>Brisbane-Townsville</b>								
Jetstar	526	521	440	84.5	444	85.2	5	1.0
Qantas	941	934	834	89.3	805	86.2	7	0.7
QantasLink	814	788	686	87.1	680	86.3	26	3.2
Virgin Australia	1 721	1 698	1 513	89.1	1 498	88.2	23	1.3
All Airlines	4 002	3 941	3 473	88.1	3 427	87.0	61	1.5
<b>Broome-Perth</b>								
Qantas	149	149	130	87.2	130	87.2	0	0.0
QantasLink	831	817	747	91.4	720	88.1	14	1.7
Virgin Australia	53	53	51	96.2	46	86.8	0	0.0
Virgin Australia Regional Airlines	624	620	435	70.2	457	73.7	4	0.6
All Airlines	1 657	1 639	1 363	83.2	1 353	82.6	18	1.1
<b>Bundaberg-Brisbane</b>								
QantasLink	1 581	1 568	1 339	85.4	1 380	88.0	13	0.8
Virgin Australia	365	363	308	84.8	293	80.7	2	0.5
All Airlines	1 946	1 931	1 647	85.3	1 673	86.6	15	0.8
<b>Cairns-Brisbane</b>								
Jetstar	1 276	1 257	1 042	82.9	1 003	79.8	19	1.5
Qantas	1 436	1 436	1 325	92.3	1 333	92.8	0	0.0
QantasLink	66	65	51	78.5	52	80.0	1	1.5
Tigerair Australia	411	408	338	82.8	337	82.6	3	0.7
Virgin Australia	1 572	1 570	1 404	89.4	1 396	88.9	2	0.1
All Airlines	4 761	4 736	4 160	87.8	4 121	87.0	25	0.5
<b>Cairns-Melbourne</b>								
Jetstar	1 212	1 207	858	71.1	860	71.3	5	0.4
Qantas	484	484	340	70.2	376	77.7	0	0.0
Tigerair Australia	453	452	340	75.2	334	73.9	1	0.2
Virgin Australia	390	390	277	71.0	300	76.9	0	0.0
All Airlines	2 539	2 533	1 815	71.7	1 870	73.8	6	0.2
<b>Cairns-Sydney</b>								
Jetstar	1 210	1 188	973	81.9	976	82.2	22	1.8
Qantas	926	925	785	84.9	759	82.1	1	0.1
Tigerair Australia	522	521	407	78.1	413	79.3	1	0.2
Virgin Australia	1 049	1 046	926	88.5	904	86.4	3	0.3
All Airlines	3 707	3 680	3 091	84.0	3 052	82.9	27	0.7
<b>Cairns-Townsville</b>								
QantasLink	1 695	1 675	1 578	94.2	1 576	94.1	20	1.2
Regional Express	582	561	530	94.5	531	94.7	21	3.6
All Airlines	2 277	2 236	2 108	94.3	2 107	94.2	41	1.8
<b>Canberra-Adelaide</b>								
Qantas	523	523	491	93.9	488	93.3	0	0.0
Virgin Australia	313	311	266	85.5	269	86.5	2	0.6
All Airlines	836	834	757	90.8	757	90.8	2	0.2
<b>Canberra-Brisbane</b>								
Qantas	515	515	490	95.1	494	95.9	0	0.0
QantasLink	1 295	1 276	1 068	83.7	1 054	82.6	19	1.5
Virgin Australia	1 157	1 151	1 009	87.7	1 028	89.3	6	0.5
All Airlines	2 967	2 942	2 567	87.3	2 576	87.6	25	0.8

	<i>Sectors</i>		<i>Arrivals On Time</i>		<i>Departures On Time</i>		<i>Cancellations</i>	
	<i>Sched.</i>	<i>Flown</i>	<i>No.</i>	<i>%</i>	<i>No.</i>	<i>%</i>	<i>No.</i>	<i>%</i>
<b>Canberra-Melbourne</b>								
Qantas	2 365	2 351	2 144	91.2	2 165	92.1	14	0.6
QantasLink	966	914	730	79.9	751	82.2	52	5.4
Tigerair Australia	207	206	122	59.2	114	55.3	1	0.5
Virgin Australia	2 020	1 958	1 644	84.0	1 700	86.8	62	3.1
All Airlines	5 558	5 429	4 640	85.5	4 730	87.1	129	2.3
<b>Canberra-Sydney</b>								
Qantas	72	71	61	85.9	64	90.1	1	1.4
QantasLink	5 381	5 142	4 397	85.5	4 356	84.7	239	4.4
Virgin Australia	3 092	2 939	2 525	85.9	2 542	86.5	153	4.9
All Airlines	8 545	8 152	6 983	85.7	6 962	85.4	393	4.6
<b>Coffs Harbour-Sydney</b>								
QantasLink	1 813	1 779	1 391	78.2	1 415	79.5	34	1.9
Tigerair Australia	159	158	129	81.6	126	79.7	1	0.6
Virgin Australia	686	677	590	87.1	592	87.4	9	1.3
All Airlines	2 658	2 614	2 110	80.7	2 133	81.6	44	1.7
<b>Darwin-Alice Springs</b>								
QantasLink	638	629	592	94.1	602	95.7	9	1.4
Virgin Australia	156	155	139	89.7	144	92.9	1	0.6
All Airlines	794	784	731	93.2	746	95.2	10	1.3
<b>Darwin-Brisbane</b>								
Jetstar	295	292	242	82.9	215	73.6	3	1.0
Qantas	559	558	506	90.7	485	86.9	1	0.2
Tigerair Australia	254	253	228	90.1	229	90.5	1	0.4
Virgin Australia	367	367	269	73.3	302	82.3	0	0.0
All Airlines	1 475	1 470	1 245	84.7	1 231	83.7	5	0.3
<b>Darwin-Melbourne</b>								
Jetstar	332	331	257	77.6	218	65.9	1	0.3
Qantas	389	389	333	85.6	329	84.6	0	0.0
Virgin Australia	369	366	308	84.2	316	86.3	3	0.8
All Airlines	1 090	1 086	898	82.7	863	79.5	4	0.4
<b>Darwin-Perth</b>								
Qantas	414	414	386	93.2	376	90.8	0	0.0
Virgin Australia	361	361	313	86.7	313	86.7	0	0.0
All Airlines	775	775	699	90.2	689	88.9	0	0.0
<b>Darwin-Sydney</b>								
Jetstar	308	303	236	77.9	228	75.2	5	1.6
Qantas	594	592	479	80.9	461	77.9	2	0.3
Virgin Australia	363	363	266	73.3	277	76.3	0	0.0
All Airlines	1 265	1 258	981	78.0	966	76.8	7	0.6
<b>Dubbo-Sydney</b>								
QantasLink	1 500	1 464	1 094	74.7	1 150	78.6	36	2.4
Regional Express	1 746	1 719	1 349	78.5	1 435	83.5	27	1.5
All Airlines	3 246	3 183	2 443	76.8	2 585	81.2	63	1.9
<b>Emerald-Brisbane</b>								
QantasLink	1 479	1 436	1 202	83.7	1 189	82.8	43	2.9
Virgin Australia	820	814	778	95.6	788	96.8	6	0.7
All Airlines	2 299	2 250	1 980	88.0	1 977	87.9	49	2.1
<b>Geraldton-Perth</b>								
QantasLink	551	546	497	91.0	494	90.5	5	0.9
Virgin Australia Regional Airlines	657	652	553	84.8	550	84.4	5	0.8
All Airlines	1 208	1 198	1 050	87.6	1 044	87.1	10	0.8

	<i>Sectors</i>		<i>Arrivals On Time</i>		<i>Departures On Time</i>		<i>Cancellations</i>	
	<i>Sched.</i>	<i>Flown</i>	<i>No.</i>	<i>%</i>	<i>No.</i>	<i>%</i>	<i>No.</i>	<i>%</i>
<b>Gladstone-Brisbane</b>								
QantasLink	1 896	1 858	1 590	85.6	1 559	83.9	38	2.0
Virgin Australia	1 213	1 173	1 033	88.1	1 045	89.1	40	3.3
All Airlines	3 109	3 031	2 623	86.5	2 604	85.9	78	2.5
<b>Gold Coast-Adelaide</b>								
Jetstar	401	400	338	84.5	342	85.5	1	0.2
Virgin Australia	367	366	307	83.9	324	88.5	1	0.3
All Airlines	768	766	645	84.2	666	86.9	2	0.3
<b>Gold Coast-Melbourne</b>								
Jetstar	2 390	2 358	1 851	78.5	1 691	71.7	32	1.3
Qantas	379	379	281	74.1	277	73.1	0	0.0
QantasLink	1	1	1	100.0	1	100.0	0	0.0
Tigerair Australia	985	978	718	73.4	702	71.8	7	0.7
Virgin Australia	2 192	2 174	1 768	81.3	1 727	79.4	18	0.8
All Airlines	5 947	5 890	4 619	78.4	4 398	74.7	57	1.0
<b>Gold Coast-Sydney</b>								
Jetstar	3 536	3 464	2 757	79.6	2 646	76.4	72	2.0
Qantas	1 127	1 126	1 006	89.3	993	88.2	1	0.1
QantasLink	179	170	122	71.8	122	71.8	9	5.0
Tigerair Australia	1 410	1 391	1 020	73.3	992	71.3	19	1.3
Virgin Australia	2 994	2 947	2 432	82.5	2 425	82.3	47	1.6
All Airlines	9 246	9 098	7 337	80.6	7 178	78.9	148	1.6
<b>Hamilton Island-Brisbane</b>								
Qantas	5	4	3	75.0	3	75.0	1	20.0
QantasLink	424	403	344	85.4	341	84.6	21	5.0
Virgin Australia	365	358	322	89.9	317	88.5	7	1.9
All Airlines	794	765	669	87.5	661	86.4	29	3.7
<b>Hamilton Island-Melbourne</b>								
			(To March 2017 only)					
Qantas	143	141	125	88.7	124	87.9	2	1.4
Virgin Australia	199	196	172	87.8	172	87.8	3	1.5
All Airlines	342	337	297	88.1	296	87.8	5	1.5
<b>Hamilton Island-Sydney</b>								
Jetstar	311	297	194	65.3	174	58.6	14	4.5
Qantas	176	169	145	85.8	133	78.7	7	4.0
QantasLink	148	141	105	74.5	105	74.5	7	4.7
Virgin Australia	351	332	281	84.6	267	80.4	19	5.4
All Airlines	986	939	725	77.2	679	72.3	47	4.8
<b>Hobart-Brisbane</b>								
Jetstar	332	332	291	87.7	274	82.5	0	0.0
Qantas	5	5	5	100.0	3	60.0	0	0.0
Virgin Australia	369	369	304	82.4	291	78.9	0	0.0
All Airlines	706	706	600	85.0	568	80.5	0	0.0
<b>Hobart-Melbourne</b>								
Jetstar	2 201	2 171	1 313	60.5	1 249	57.5	30	1.4
Qantas	33	33	26	78.8	28	84.8	0	0.0
QantasLink	1 643	1 607	1 327	82.6	1 389	86.4	36	2.2
Tigerair Australia	400	400	296	74.0	284	71.0	0	0.0
Virgin Australia	1 697	1 686	1 317	78.1	1 377	81.7	11	0.6
All Airlines	5 974	5 897	4 279	72.6	4 327	73.4	77	1.3
<b>Hobart-Sydney</b>								
Jetstar	1 002	997	683	68.5	649	65.1	5	0.5
Qantas	5	5	4	80.0	3	60.0	0	0.0
QantasLink	676	666	545	81.8	584	87.7	10	1.5
Virgin Australia	753	745	625	83.9	626	84.0	8	1.1
All Airlines	2 436	2 413	1 857	77.0	1 862	77.2	23	0.9

	<i>Sectors</i>		<i>Arrivals On Time</i>		<i>Departures On Time</i>		<i>Cancellations</i>	
	<i>Sched.</i>	<i>Flown</i>	<i>No.</i>	<i>%</i>	<i>No.</i>	<i>%</i>	<i>No.</i>	<i>%</i>
<b>Kalgoorlie-Perth</b>								
Qantas	69	69	62	89.9	60	87.0	0	0.0
QantasLink	877	870	774	89.0	761	87.5	7	0.8
Virgin Australia	349	346	318	91.9	316	91.3	3	0.9
Virgin Australia Regional Airlines	381	380	345	90.8	346	91.1	1	0.3
All Airlines	1 676	1 665	1 499	90.0	1 483	89.1	11	0.7
<b>Karratha-Perth</b>								
Qantas	285	280	269	96.1	267	95.4	5	1.8
QantasLink	2 039	1 950	1 752	89.8	1 766	90.6	89	4.4
Virgin Australia	59	57	40	70.2	39	68.4	2	3.4
Virgin Australia Regional Airlines	887	857	698	81.4	727	84.8	30	3.4
All Airlines	3 270	3 144	2 759	87.8	2 799	89.0	126	3.9
<b>Launceston-Melbourne</b>								
Jetstar	1 593	1 565	1 020	65.2	969	61.9	28	1.8
QantasLink	1 407	1 344	1 107	82.4	1 123	83.6	63	4.5
Virgin Australia	1 137	1 136	948	83.5	1 004	88.4	1	0.1
All Airlines	4 137	4 045	3 075	76.0	3 096	76.5	92	2.2
<b>Launceston-Sydney</b>								
Jetstar	618	611	388	63.5	356	58.3	7	1.1
Virgin Australia	366	366	293	80.1	294	80.3	0	0.0
All Airlines	984	977	681	69.7	650	66.5	7	0.7
<b>Mackay-Brisbane</b>								
Jetstar	528	520	357	68.7	312	60.0	8	1.5
QantasLink	1 300	1 267	1 056	83.3	1 053	83.1	33	2.5
Virgin Australia	1 693	1 662	1 487	89.5	1 474	88.7	31	1.8
All Airlines	3 521	3 449	2 900	84.1	2 839	82.3	72	2.0
<b>Melbourne-Adelaide</b>								
Jetstar	1 306	1 279	740	57.9	791	61.8	27	2.1
Qantas	3 344	3 332	2 906	87.2	2 958	88.8	12	0.4
Tigerair Australia	895	885	724	81.8	733	82.8	10	1.1
Virgin Australia	3 260	3 198	2 712	84.8	2 825	88.3	62	1.9
All Airlines	8 805	8 694	7 082	81.5	7 307	84.0	111	1.3
<b>Melbourne-Brisbane</b>								
Jetstar	1 455	1 418	990	69.8	938	66.1	37	2.5
Qantas	5 034	4 994	4 335	86.8	4 397	88.0	40	0.8
Tigerair Australia	1 527	1 504	1 167	77.6	1 166	77.5	23	1.5
Virgin Australia	4 581	4 433	3 821	86.2	3 957	89.3	148	3.2
All Airlines	12 597	12 349	10 313	83.5	10 458	84.7	248	2.0
<b>Melbourne-Cairns</b>								
Jetstar	1 211	1 209	853	70.6	810	67.0	2	0.2
Qantas	485	485	421	86.8	412	84.9	0	0.0
Tigerair Australia	454	453	364	80.4	380	83.9	1	0.2
Virgin Australia	390	390	318	81.5	335	85.9	0	0.0
All Airlines	2 540	2 537	1 956	77.1	1 937	76.4	3	0.1
<b>Melbourne-Canberra</b>								
Qantas	2 364	2 352	2 140	91.0	2 137	90.9	12	0.5
QantasLink	966	908	702	77.3	724	79.7	58	6.0
Tigerair Australia	207	206	152	73.8	158	76.7	1	0.5
Virgin Australia	2 017	1 956	1 706	87.2	1 742	89.1	61	3.0
All Airlines	5 554	5 422	4 700	86.7	4 761	87.8	132	2.4
<b>Melbourne-Darwin</b>								
Jetstar	332	331	272	82.2	259	78.2	1	0.3
Qantas	389	389	347	89.2	360	92.5	0	0.0
Virgin Australia	369	368	277	75.3	296	80.4	1	0.3
All Airlines	1 090	1 088	896	82.4	915	84.1	2	0.2

	<i>Sectors</i>		<i>Arrivals On Time</i>		<i>Departures On Time</i>		<i>Cancellations</i>	
	<i>Sched.</i>	<i>Flown</i>	<i>No.</i>	<i>%</i>	<i>No.</i>	<i>%</i>	<i>No.</i>	<i>%</i>
<b>Melbourne-Gold Coast</b>								
Jetstar	2 391	2 365	1 754	74.2	1 772	74.9	26	1.1
Qantas	379	379	305	80.5	316	83.4	0	0.0
QantasLink	1	1	1	100.0	1	100.0	0	0.0
Tigerair Australia	984	978	785	80.3	798	81.6	6	0.6
Virgin Australia	2 194	2 174	1 842	84.7	1 880	86.5	20	0.9
All Airlines	5 949	5 897	4 687	79.5	4 767	80.8	52	0.9
<b>Melbourne-Hamilton Island</b>								
			(To March 2017 only)					
Qantas	143	140	133	95.0	128	91.4	3	2.1
Virgin Australia	199	195	173	88.7	177	90.8	4	2.0
All Airlines	342	335	306	91.3	305	91.0	7	2.0
<b>Melbourne-Hobart</b>								
Jetstar	2 203	2 181	1 566	71.8	1 575	72.2	22	1.0
Qantas	33	33	31	93.9	32	97.0	0	0.0
QantasLink	1 643	1 604	1 360	84.8	1 388	86.5	39	2.4
Tigerair Australia	400	400	313	78.3	316	79.0	0	0.0
Virgin Australia	1 697	1 687	1 442	85.5	1 472	87.3	10	0.6
All Airlines	5 976	5 905	4 712	79.8	4 783	81.0	71	1.2
<b>Melbourne-Launceston</b>								
Jetstar	1 596	1 571	1 146	72.9	1 135	72.2	25	1.6
QantasLink	1 407	1 348	1 130	83.8	1 150	85.3	59	4.2
Virgin Australia	1 136	1 135	968	85.3	1 017	89.6	1	0.1
All Airlines	4 139	4 054	3 244	80.0	3 302	81.5	85	2.1
<b>Melbourne-Mildura</b>								
QantasLink	1 131	1 125	968	86.0	974	86.6	6	0.5
Regional Express	956	954	783	82.1	824	86.4	2	0.2
Virgin Australia	364	364	293	80.5	314	86.3	0	0.0
All Airlines	2 451	2 443	2 044	83.7	2 112	86.5	8	0.3
<b>Melbourne-Newcastle</b>								
Jetstar	1 317	1 310	982	75.0	931	71.1	7	0.5
Virgin Australia	376	375	313	83.5	329	87.7	1	0.3
All Airlines	1 693	1 685	1 295	76.9	1 260	74.8	8	0.5
<b>Melbourne-Perth</b>								
Jetstar	692	663	554	83.6	544	82.1	29	4.2
Qantas	2 371	2 369	1 822	76.9	1 877	79.2	2	0.1
Tigerair Australia	666	659	528	80.1	543	82.4	7	1.1
Virgin Australia	1 669	1 663	1 314	79.0	1 353	81.4	6	0.4
All Airlines	5 398	5 354	4 218	78.8	4 317	80.6	44	0.8
<b>Melbourne-Sunshine Coast</b>								
Jetstar	1 005	997	816	81.8	781	78.3	8	0.8
QantasLink	21	21	10	47.6	10	47.6	0	0.0
Virgin Australia	507	505	421	83.4	428	84.8	2	0.4
All Airlines	1 533	1 523	1 247	81.9	1 219	80.0	10	0.7
<b>Melbourne-Sydney</b>								
Jetstar	4 423	4 251	2 819	66.3	2 866	67.4	172	3.9
Qantas	11 726	11 277	9 221	81.8	9 599	85.1	449	3.8
Tigerair Australia	2 894	2 828	1 945	68.8	1 995	70.5	66	2.3
Virgin Australia	9 176	8 693	7 325	84.3	7 679	88.3	483	5.3
All Airlines	28 219	27 049	21 310	78.8	22 139	81.8	1 170	4.1
<b>Mildura-Melbourne</b>								
QantasLink	1 131	1 124	961	85.5	972	86.5	7	0.6
Regional Express	957	953	702	73.7	755	79.2	4	0.4
Virgin Australia	365	363	288	79.3	291	80.2	2	0.5
All Airlines	2 453	2 440	1 951	80.0	2 018	82.7	13	0.5

	<i>Sectors</i>		<i>Arrivals On Time</i>		<i>Departures On Time</i>		<i>Cancellations</i>	
	<i>Sched.</i>	<i>Flown</i>	<i>No.</i>	<i>%</i>	<i>No.</i>	<i>%</i>	<i>No.</i>	<i>%</i>
<b>Moranbah-Brisbane</b>								
QantasLink	1 024	960	829	86.4	840	87.5	64	6.3
Virgin Australia	725	709	629	88.7	639	90.1	16	2.2
All Airlines	1 749	1 669	1 458	87.4	1 479	88.6	80	4.6
<b>Mount Isa-Brisbane</b>								
Qantas	107	107	105	98.1	99	92.5	0	0.0
QantasLink	561	546	482	88.3	494	90.5	15	2.7
Virgin Australia	210	210	171	81.4	180	85.7	0	0.0
All Airlines	878	863	758	87.8	773	89.6	15	1.7
<b>Newcastle-Brisbane</b>								
Jetstar	1 035	1 023	807	78.9	834	81.5	12	1.2
QantasLink	1 132	1 092	959	87.8	941	86.2	40	3.5
Virgin Australia	1 048	1 040	945	90.9	945	90.9	8	0.8
All Airlines	3 215	3 155	2 711	85.9	2 720	86.2	60	1.9
<b>Newcastle-Melbourne</b>								
Jetstar	1 318	1 308	952	72.8	969	74.1	10	0.8
Virgin Australia	376	375	266	70.9	292	77.9	1	0.3
All Airlines	1 694	1 683	1 218	72.4	1 261	74.9	11	0.6
<b>Newman-Perth</b>								
Qantas	785	778	742	95.4	747	96.0	7	0.9
QantasLink	839	796	709	89.1	718	90.2	43	5.1
Virgin Australia	177	177	166	93.8	168	94.9	0	0.0
Virgin Australia Regional Airlines	291	288	248	86.1	256	88.9	3	1.0
All Airlines	2 092	2 039	1 865	91.5	1 889	92.6	53	2.5
<b>Perth-Adelaide</b>								
Jetstar	352	338	273	80.8	242	71.6	14	4.0
Qantas	1 234	1 234	1 167	94.6	1 153	93.4	0	0.0
QantasLink	159	152	133	87.5	139	91.4	7	4.4
Virgin Australia	872	865	813	94.0	799	92.4	7	0.8
All Airlines	2 617	2 589	2 386	92.2	2 333	90.1	28	1.1
<b>Perth-Brisbane</b>								
Qantas	1 520	1 519	1 378	90.7	1 372	90.3	1	0.1
Tigerair Australia	23	23	16	69.6	18	78.3	0	0.0
Virgin Australia	1 305	1 303	1 186	91.0	1 188	91.2	2	0.2
All Airlines	2 848	2 845	2 580	90.7	2 578	90.6	3	0.1
<b>Perth-Broome</b>								
Qantas	149	149	137	91.9	137	91.9	0	0.0
QantasLink	836	822	772	93.9	742	90.3	14	1.7
Virgin Australia	53	53	51	96.2	52	98.1	0	0.0
Virgin Australia Regional Airlines	621	621	501	80.7	540	87.0	0	0.0
All Airlines	1 659	1 645	1 461	88.8	1 471	89.4	14	0.8
<b>Perth-Darwin</b>								
Qantas	413	413	382	92.5	388	93.9	0	0.0
Virgin Australia	361	361	328	90.9	331	91.7	0	0.0
All Airlines	774	774	710	91.7	719	92.9	0	0.0
<b>Perth-Geraldton</b>								
QantasLink	551	547	478	87.4	469	85.7	4	0.7
Virgin Australia Regional Airlines	657	653	566	86.7	558	85.5	4	0.6
All Airlines	1 208	1 200	1 044	87.0	1 027	85.6	8	0.7

	<i>Sectors</i>		<i>Arrivals On Time</i>		<i>Departures On Time</i>		<i>Cancellations</i>	
	<i>Sched.</i>	<i>Flown</i>	<i>No.</i>	<i>%</i>	<i>No.</i>	<i>%</i>	<i>No.</i>	<i>%</i>
<b>Perth-Kalgoorlie</b>								
Qantas	68	68	64	94.1	63	92.6	0	0.0
QantasLink	878	870	769	88.4	760	87.4	8	0.9
Virgin Australia	350	347	325	93.7	325	93.7	3	0.9
Virgin Australia Regional Airlines	381	380	338	88.9	345	90.8	1	0.3
All Airlines	1 677	1 665	1 496	89.8	1 493	89.7	12	0.7
<b>Perth-Karratha</b>								
Qantas	285	282	269	95.4	271	96.1	3	1.1
QantasLink	2 047	1 986	1 799	90.6	1 800	90.6	61	3.0
Virgin Australia	59	57	53	93.0	55	96.5	2	3.4
Virgin Australia Regional Airlines	887	861	761	88.4	801	93.0	26	2.9
All Airlines	3 278	3 186	2 882	90.5	2 927	91.9	92	2.8
<b>Perth-Melbourne</b>								
Jetstar	692	657	513	78.1	428	65.1	35	5.1
Qantas	2 373	2 370	2 067	87.2	2 093	88.3	3	0.1
Tigerair Australia	665	656	558	85.1	525	80.0	9	1.4
Virgin Australia	1 653	1 647	1 437	87.2	1 445	87.7	6	0.4
All Airlines	5 383	5 330	4 575	85.8	4 491	84.3	53	1.0
<b>Perth-Newman</b>								
Qantas	785	780	746	95.6	746	95.6	5	0.6
QantasLink	841	807	717	88.8	729	90.3	34	4.0
Virgin Australia	177	177	171	96.6	172	97.2	0	0.0
Virgin Australia Regional Airlines	290	289	262	90.7	268	92.7	1	0.3
All Airlines	2 093	2 053	1 896	92.4	1 915	93.3	40	1.9
<b>Perth-Port Hedland</b>								
Qantas	471	467	443	94.9	442	94.6	4	0.8
QantasLink	1 144	1 112	905	81.4	974	87.6	32	2.8
Virgin Australia	247	247	234	94.7	234	94.7	0	0.0
Virgin Australia Regional Airlines	380	378	343	90.7	354	93.7	2	0.5
All Airlines	2 242	2 204	1 925	87.3	2 004	90.9	38	1.7
<b>Perth-Sydney</b>								
Jetstar	363	359	301	83.8	223	62.1	4	1.1
Qantas	2 443	2 440	2 142	87.8	2 087	85.5	3	0.1
Tigerair Australia	326	316	290	91.8	287	90.8	10	3.1
Virgin Australia	1 411	1 405	1 290	91.8	1 254	89.3	6	0.4
All Airlines	4 543	4 520	4 023	89.0	3 851	85.2	23	0.5
<b>Port Hedland-Perth</b>								
Qantas	474	467	436	93.4	431	92.3	7	1.5
QantasLink	1 141	1 092	967	88.6	957	87.6	49	4.3
Virgin Australia	247	247	223	90.3	230	93.1	0	0.0
Virgin Australia Regional Airlines	379	377	338	89.7	347	92.0	2	0.5
All Airlines	2 241	2 183	1 964	90.0	1 965	90.0	58	2.6
<b>Port Lincoln-Adelaide</b>								
QantasLink	1 291	1 272	1 154	90.7	1 151	90.5	19	1.5
Regional Express	2 449	2 428	2 196	90.4	2 235	92.1	21	0.9
All Airlines	3 740	3 700	3 350	90.5	3 386	91.5	40	1.1
<b>Port Macquarie-Sydney</b>								
QantasLink	1 603	1 568	1 103	70.3	1 128	71.9	35	2.2
Virgin Australia	698	689	533	77.4	537	77.9	9	1.3
All Airlines	2 301	2 257	1 636	72.5	1 665	73.8	44	1.9
<b>Proserpine-Brisbane</b>								
Jetstar	371	358	274	76.5	254	70.9	13	3.5
Tigerair Australia	58	54	50	92.6	50	92.6	4	6.9
Virgin Australia	391	378	335	88.6	326	86.2	13	3.3
All Airlines	820	790	659	83.4	630	79.7	30	3.7



	<i>Sectors</i>		<i>Arrivals On Time</i>		<i>Departures On Time</i>		<i>Cancellations</i>	
	<i>Sched.</i>	<i>Flown</i>	<i>No.</i>	<i>%</i>	<i>No.</i>	<i>%</i>	<i>No.</i>	<i>%</i>
<b>Rockhampton-Brisbane</b>								
QantasLink	2 243	2 160	1 783	82.5	1 825	84.5	83	3.7
Virgin Australia	1 939	1 852	1 621	87.5	1 616	87.3	87	4.5
All Airlines	4 182	4 012	3 404	84.8	3 441	85.8	170	4.1
<b>Sunshine Coast-Melbourne</b>								
Jetstar	1 005	994	670	67.4	596	60.0	11	1.1
QantasLink	21	21	11	52.4	11	52.4	0	0.0
Virgin Australia	506	503	382	75.9	370	73.6	3	0.6
All Airlines	1 532	1 518	1 063	70.0	977	64.4	14	0.9
<b>Sunshine Coast-Sydney</b>								
Jetstar	1 281	1 264	861	68.1	754	59.7	17	1.3
QantasLink	402	392	301	76.8	322	82.1	10	2.5
Virgin Australia	435	435	349	80.2	354	81.4	0	0.0
All Airlines	2 118	2 091	1 511	72.3	1 430	68.4	27	1.3
<b>Sydney-Adelaide</b>								
Jetstar	1 311	1 276	946	74.1	923	72.3	35	2.7
Qantas	2 702	2 698	2 327	86.2	2 343	86.8	4	0.1
QantasLink	343	323	260	80.5	264	81.7	20	5.8
Tigerair Australia	556	553	415	75.0	421	76.1	3	0.5
Virgin Australia	1 955	1 941	1 652	85.1	1 719	88.6	14	0.7
All Airlines	6 867	6 791	5 600	82.5	5 670	83.5	76	1.1
<b>Sydney-Albury</b>								
QantasLink	1 284	1 252	948	75.7	947	75.6	32	2.5
Regional Express	1 178	1 166	965	82.8	975	83.6	12	1.0
Virgin Australia	711	707	558	78.9	551	77.9	4	0.6
All Airlines	3 173	3 125	2 471	79.1	2 473	79.1	48	1.5
<b>Sydney-Armidale</b>								
QantasLink	1 421	1 403	925	65.9	992	70.7	18	1.3
Regional Express	878	875	714	81.6	715	81.7	3	0.3
All Airlines	2 299	2 278	1 639	71.9	1 707	74.9	21	0.9
<b>Sydney-Ayers Rock</b>								
Jetstar	336	334	282	84.4	304	91.0	2	0.6
Virgin Australia	365	364	295	81.0	322	88.5	1	0.3
All Airlines	701	698	577	82.7	626	89.7	3	0.4
<b>Sydney-Ballina</b>								
Jetstar	951	951	787	82.8	804	84.5	0	0.0
Regional Express	305	303	258	85.1	265	87.5	2	0.7
Virgin Australia	399	399	346	86.7	355	89.0	0	0.0
All Airlines	1 655	1 653	1 391	84.2	1 424	86.1	2	0.1
<b>Sydney-Brisbane</b>								
Jetstar	2 085	2 005	1 508	75.2	1 418	70.7	80	3.8
Qantas	7 392	7 335	6 225	84.9	6 445	87.9	57	0.8
Tigerair Australia	1 259	1 244	969	77.9	1 015	81.6	15	1.2
Virgin Australia	6 459	6 266	5 199	83.0	5 375	85.8	193	3.0
All Airlines	17 195	16 850	13 901	82.5	14 253	84.6	345	2.0
<b>Sydney-Cairns</b>								
Jetstar	1 211	1 194	973	81.5	905	75.8	17	1.4
Qantas	926	926	789	85.2	804	86.8	0	0.0
Tigerair Australia	521	520	437	84.0	463	89.0	1	0.2
Virgin Australia	1 048	1 048	903	86.2	916	87.4	0	0.0
All Airlines	3 706	3 688	3 102	84.1	3 088	83.7	18	0.5

	<i>Sectors</i>		<i>Arrivals On Time</i>		<i>Departures On Time</i>		<i>Cancellations</i>	
	<i>Sched.</i>	<i>Flown</i>	<i>No.</i>	<i>%</i>	<i>No.</i>	<i>%</i>	<i>No.</i>	<i>%</i>
<b>Sydney-Canberra</b>								
Qantas	72	71	61	85.9	62	87.3	1	1.4
QantasLink	5 370	5 165	4 245	82.2	4 212	81.5	205	3.8
Virgin Australia	3 088	2 939	2 449	83.3	2 407	81.9	149	4.8
All Airlines	8 530	8 175	6 755	82.6	6 681	81.7	355	4.2
<b>Sydney-Coffs Harbour</b>								
QantasLink	1 814	1 779	1 400	78.7	1 398	78.6	35	1.9
Tigerair Australia	160	159	134	84.3	138	86.8	1	0.6
Virgin Australia	686	677	605	89.4	607	89.7	9	1.3
All Airlines	2 660	2 615	2 139	81.8	2 143	82.0	45	1.7
<b>Sydney-Darwin</b>								
Jetstar	308	307	259	84.4	252	82.1	1	0.3
Qantas	594	594	483	81.3	460	77.4	0	0.0
Virgin Australia	363	362	301	83.1	323	89.2	1	0.3
All Airlines	1 265	1 263	1 043	82.6	1 035	81.9	2	0.2
<b>Sydney-Dubbo</b>								
QantasLink	1 499	1 468	1 074	73.2	1 076	73.3	31	2.1
Regional Express	1 736	1 716	1 478	86.1	1 450	84.5	20	1.2
All Airlines	3 235	3 184	2 552	80.2	2 526	79.3	51	1.6
<b>Sydney-Gold Coast</b>								
Jetstar	3 536	3 471	2 798	80.6	2 730	78.7	65	1.8
Qantas	1 126	1 126	1 011	89.8	998	88.6	0	0.0
QantasLink	179	170	125	73.5	140	82.4	9	5.0
Tigerair Australia	1 410	1 393	1 098	78.8	1 137	81.6	17	1.2
Virgin Australia	2 993	2 954	2 478	83.9	2 535	85.8	39	1.3
All Airlines	9 244	9 114	7 510	82.4	7 540	82.7	130	1.4
<b>Sydney-Hamilton Island</b>								
Jetstar	310	296	228	77.0	237	80.1	14	4.5
Qantas	174	167	145	86.8	142	85.0	7	4.0
QantasLink	149	141	108	76.6	113	80.1	8	5.4
Virgin Australia	351	331	282	85.2	303	91.5	20	5.7
All Airlines	984	935	763	81.6	795	85.0	49	5.0
<b>Sydney-Hobart</b>								
Jetstar	1 000	996	800	80.3	766	76.9	4	0.4
Qantas	5	5	5	100.0	5	100.0	0	0.0
QantasLink	676	671	570	84.9	558	83.2	5	0.7
Virgin Australia	754	747	672	90.0	681	91.2	7	0.9
All Airlines	2 435	2 419	2 047	84.6	2 010	83.1	16	0.7
<b>Sydney-Launceston</b>								
Jetstar	614	612	517	84.5	486	79.4	2	0.3
Virgin Australia	367	367	328	89.4	318	86.6	0	0.0
All Airlines	981	979	845	86.3	804	82.1	2	0.2
<b>Sydney-Melbourne</b>								
Jetstar	4 420	4 248	2 869	67.5	2 732	64.3	172	3.9
Qantas	11 760	11 315	8 902	78.7	9 501	84.0	445	3.8
Tigerair Australia	2 889	2 826	1 885	66.7	1 955	69.2	63	2.2
Virgin Australia	9 101	8 613	6 887	80.0	7 326	85.1	488	5.4
All Airlines	28 170	27 002	20 543	76.1	21 514	79.7	1 168	4.1
<b>Sydney-Perth</b>								
Jetstar	365	363	294	81.0	309	85.1	2	0.5
Qantas	2 455	2 454	1 956	79.7	1 962	80.0	1	0.0
Tigerair Australia	324	319	282	88.4	288	90.3	5	1.5
Virgin Australia	1 417	1 410	1 132	80.3	1 171	83.0	7	0.5
All Airlines	4 561	4 546	3 664	80.6	3 730	82.1	15	0.3

	<i>Sectors</i>		<i>Arrivals On Time</i>		<i>Departures On Time</i>		<i>Cancellations</i>	
	<i>Sched.</i>	<i>Flown</i>	<i>No.</i>	<i>%</i>	<i>No.</i>	<i>%</i>	<i>No.</i>	<i>%</i>
<b>Sydney-Port Macquarie</b>								
QantasLink	1 602	1 568	1 121	71.5	1 149	73.3	34	2.1
Virgin Australia	698	693	543	78.4	540	77.9	5	0.7
All Airlines	2 300	2 261	1 664	73.6	1 689	74.7	39	1.7
<b>Sydney-Sunshine Coast</b>								
Jetstar	1 283	1 272	984	77.4	918	72.2	11	0.9
QantasLink	402	395	314	79.5	323	81.8	7	1.7
Virgin Australia	434	434	380	87.6	386	88.9	0	0.0
All Airlines	2 119	2 101	1 678	79.9	1 627	77.4	18	0.8
<b>Sydney-Tamworth</b>								
QantasLink	1 847	1 778	1 383	77.8	1 400	78.7	69	3.7
Virgin Australia	567	564	470	83.3	477	84.6	3	0.5
All Airlines	2 414	2 342	1 853	79.1	1 877	80.1	72	3.0
<b>Sydney-Townsville</b>								
Jetstar	307	305	204	66.9	195	63.9	2	0.7
Virgin Australia	338	336	292	86.9	299	89.0	2	0.6
All Airlines	645	641	496	77.4	494	77.1	4	0.6
<b>Sydney-Wagga Wagga</b>								
QantasLink	1 350	1 334	1 015	76.1	1 041	78.0	16	1.2
Regional Express	1 518	1 501	1 302	86.7	1 326	88.3	17	1.1
All Airlines	2 868	2 835	2 317	81.7	2 367	83.5	33	1.2
<b>Tamworth-Sydney</b>								
QantasLink	1 849	1 770	1 418	80.1	1 418	80.1	79	4.3
Virgin Australia	566	562	487	86.7	492	87.5	4	0.7
All Airlines	2 415	2 332	1 905	81.7	1 910	81.9	83	3.4
<b>Townsville-Brisbane</b>								
Jetstar	526	520	427	82.1	399	76.7	6	1.1
Qantas	941	934	828	88.7	830	88.9	7	0.7
QantasLink	814	782	636	81.3	661	84.5	32	3.9
Virgin Australia	1 723	1 697	1 562	92.0	1 520	89.6	26	1.5
All Airlines	4 004	3 933	3 453	87.8	3 410	86.7	71	1.8
<b>Townsville-Cairns</b>								
QantasLink	1 688	1 663	1 544	92.8	1 536	92.4	25	1.5
Regional Express	584	561	530	94.5	529	94.3	23	3.9
All Airlines	2 272	2 224	2 074	93.3	2 065	92.9	48	2.1
<b>Townsville-Sydney</b>								
Jetstar	309	303	208	68.6	170	56.1	6	1.9
Virgin Australia	337	335	278	83.0	277	82.7	2	0.6
All Airlines	646	638	486	76.2	447	70.1	8	1.2
<b>Wagga Wagga-Sydney</b>								
QantasLink	1 350	1 333	1 084	81.3	1 072	80.4	17	1.3
Regional Express	1 515	1 499	1 205	80.4	1 281	85.5	16	1.1
All Airlines	2 865	2 832	2 289	80.8	2 353	83.1	33	1.2

## Airports

On time performance is reported for all routes where the passenger load averages over 8000 passengers per month, and where two or more airlines operate in competition. The following data reports by airport against flights operated on those routes only. This year, 8 major city airports and 33 regional city airports are covered.

Airport	Arrivals			Departures		
	Sectors	On Time		Sectors	On Time	
	Flown	No.	%	Flown	No.	%
<b>Adelaide</b>						
Jetstar	3 617	2 590	71.6	3 610	2 662	73.7
Qantas	9 369	8 327	88.9	9 364	8 434	90.1
QantasLink	1 915	1 696	88.6	1 913	1 716	89.7
Regional Express	2 428	2 196	90.4	2 422	2 299	94.9
Tigerair Australia	1 754	1 410	80.4	1 753	1 305	74.4
Virgin Australia	8 163	7 055	86.4	8 162	7 128	87.3
All Airlines	27 246	23 274	85.4	27 224	23 544	86.5

Relates to services to and from Alice Springs, Brisbane, Canberra, Gold Coast, Melbourne, Perth, Port Lincoln and Sydney.

### Albury

QantasLink	1 252	948	75.7	1 253	966	77.1
Regional Express	1 166	965	82.8	1 171	1 026	87.6
Virgin Australia	707	558	78.9	703	543	77.2
All Airlines	3 125	2 471	79.1	3 127	2 535	81.1

Relates to services to and from Sydney only.

### Alice Springs

Qantas	364	332	91.2	364	303	83.2
QantasLink	629	592	94.1	632	574	90.8
Virgin Australia	312	282	90.4	312	275	88.1
All Airlines	1 305	1 206	92.4	1 308	1 152	88.1

Relates to services to and from Adelaide and Darwin.

### Armidale

QantasLink	1 403	925	65.9	1 383	964	69.7
Regional Express	875	714	81.6	866	684	79.0
All Airlines	2 278	1 639	71.9	2 249	1 648	73.3

Relates to services to and from Sydney only.

### Ayers Rock

Jetstar	334	282	84.4	329	228	69.3
Virgin Australia	364	295	81.0	364	261	71.7
All Airlines	698	577	82.7	693	489	70.6

Relates to services to and from Sydney only.

### Ballina

Jetstar	951	787	82.8	948	651	68.7
Regional Express	303	258	85.1	298	217	72.8
Virgin Australia	399	346	86.7	399	320	80.2
All Airlines	1 653	1 391	84.2	1 645	1 188	72.2

Relates to services to and from Sydney only.

Airport	Arrivals			Departures		
	Sectors Flown	On Time		Sectors Flown	On Time	
		No.	%		No.	%
<b>Brisbane</b>						
Jetstar	8 050	6 196	77.0	8 055	6 057	75.2
Qantas	18 625	16 334	87.7	18 624	16 724	89.8
QantasLink	13 583	11 474	84.5	13 668	11 843	86.6
Tigerair Australia	3 801	3 031	79.7	3 798	3 013	79.3
Virgin Australia	27 032	23 583	87.2	27 047	23 966	88.6
All Airlines	71 091	60 618	85.3	71 192	61 603	86.5
Relates to services to and from Adelaide, Bundaberg, Cairns, Canberra, Darwin, Emerald, Gladstone, Hamilton Island, Hobart, Mackay, Melbourne, Moranbah, Mount Isa, Newcastle, Perth, Proserpine, Rockhampton, Sydney and Townsville.						
<b>Broome</b>						
Qantas	149	137	91.9	149	130	87.2
QantasLink	822	772	93.9	817	720	88.1
Virgin Australia	53	51	96.2	53	46	86.8
Virgin Australia Regional Airlines	621	501	80.7	620	457	73.7
All Airlines	1 645	1 461	88.8	1 639	1 353	82.6
Relates to services to and from Perth only.						
<b>Bundaberg</b>						
QantasLink	1 568	1 356	86.5	1 568	1 380	88.0
Virgin Australia	364	320	87.9	363	293	80.7
All Airlines	1 932	1 676	86.7	1 931	1 673	86.6
Relates to services to and from Brisbane only.						
<b>Cairns</b>						
Jetstar	3 663	2 833	77.3	3 652	2 839	77.7
Qantas	2 847	2 526	88.7	2 845	2 468	86.7
QantasLink	1 728	1 596	92.4	1 740	1 628	93.6
Regional Express	561	530	94.5	561	531	94.7
Tigerair Australia	1 383	1 144	82.7	1 381	1 084	78.5
Virgin Australia	3 011	2 635	87.5	3 006	2 600	86.5
All Airlines	13 193	11 264	85.4	13 185	11 150	84.6
Relates to services to and from Brisbane, Melbourne, Sydney and Townsville.						
<b>Canberra</b>						
Qantas	3 460	3 174	91.7	3 460	3 211	92.8
QantasLink	7 353	6 030	82.0	7 332	6 161	84.0
Tigerair Australia	206	152	73.8	206	114	55.3
Virgin Australia	6 362	5 470	86.0	6 359	5 539	87.1
All Airlines	17 381	14 826	85.3	17 357	15 025	86.6
Relates to services to and from Adelaide, Brisbane, Melbourne and Sydney.						
<b>Coffs Harbour</b>						
QantasLink	1 779	1 400	78.7	1 779	1 415	79.5
Tigerair Australia	159	134	84.3	158	126	79.7
Virgin Australia	677	605	89.4	677	592	87.4
All Airlines	2 615	2 139	81.8	2 614	2 133	81.6
Relates to services to and from Sydney only.						
<b>Darwin</b>						
Jetstar	933	783	83.9	926	661	71.4
Qantas	1 955	1 727	88.3	1 953	1 651	84.5
QantasLink	632	581	91.9	629	602	95.7
Tigerair Australia	254	212	83.5	253	229	90.5
Virgin Australia	1 613	1 356	84.1	1 612	1 352	83.9
All Airlines	5 387	4 659	86.5	5 373	4 495	83.7
Relates to services to and from Alice Springs, Brisbane, Melbourne, Perth and Sydney.						

Airport	Arrivals			Departures		
	Sectors Flown	On Time		Sectors Flown	On Time	
		No.	%		No.	%
<b>Dubbo</b>						
QantasLink	1 468	1 074	73.2	1 464	1 150	78.6
Regional Express	1 716	1 478	86.1	1 719	1 435	83.5
All Airlines	3 184	2 552	80.2	3 183	2 585	81.2
Relates to services to and from Sydney only.						
<b>Emerald</b>						
QantasLink	1 446	1 242	85.9	1 436	1 189	82.8
Virgin Australia	815	786	96.4	814	788	96.8
All Airlines	2 261	2 028	89.7	2 250	1 977	87.9
Relates to services to and from Brisbane only.						
<b>Geraldton</b>						
QantasLink	547	478	87.4	546	494	90.5
Virgin Australia Regional Airlines	653	566	86.7	652	550	84.4
All Airlines	1 200	1 044	87.0	1 198	1 044	87.1
Relates to services to and from Perth only.						
<b>Gladstone</b>						
QantasLink	1 860	1 540	82.8	1 858	1 559	83.9
Virgin Australia	1 178	1 031	87.5	1 173	1 045	89.1
All Airlines	3 038	2 571	84.6	3 031	2 604	85.9
Relates to services to and from Brisbane only.						
<b>Gold Coast</b>						
Jetstar	6 232	4 894	78.5	6 222	4 679	75.2
Qantas	1 505	1 316	87.4	1 505	1 270	84.4
QantasLink	171	126	73.7	171	123	71.9
Tigerair Australia	2 371	1 883	79.4	2 369	1 694	71.5
Virgin Australia	5 495	4 669	85.0	5 487	4 476	81.6
All Airlines	15 774	12 888	81.7	15 754	12 242	77.7
Relates to services to and from Adelaide, Melbourne and Sydney.						
<b>Hamilton Island</b>						
Jetstar	296	228	77.0	297	174	58.6
Qantas	311	281	90.4	314	260	82.8
QantasLink	544	457	84.0	544	446	82.0
Virgin Australia	881	781	88.6	886	756	85.3
All Airlines	2 032	1 747	86.0	2 041	1 636	80.2
Relates to services to and from Brisbane, Melbourne and Sydney.						
<b>Hobart</b>						
Jetstar	3 511	2 678	76.3	3 500	2 172	62.1
Qantas	43	41	95.3	43	34	79.1
QantasLink	2 275	1 930	84.8	2 273	1 973	86.8
Tigerair Australia	400	313	78.3	400	284	71.0
Virgin Australia	2 803	2 449	87.4	2 800	2 294	81.9
All Airlines	9 032	7 411	82.1	9 016	6 757	74.9
Relates to services to and from Brisbane, Melbourne and Sydney.						
<b>Kalgoorlie</b>						
Qantas	68	64	94.1	69	60	87.0
QantasLink	870	769	88.4	870	761	87.5
Virgin Australia	347	325	93.7	346	316	91.3
Virgin Australia Regional Airlines	380	338	88.9	380	346	91.1
All Airlines	1 665	1 496	89.8	1 665	1 483	89.1
Relates to services to and from Perth only.						

Airport	Arrivals			Departures		
	Sectors Flown	On Time		Sectors Flown	On Time	
		No.	%		No.	%
<b>Karratha</b>						
Qantas	282	269	95.4	280	267	95.4
QantasLink	1 986	1 799	90.6	1 950	1 766	90.6
Virgin Australia	57	53	93.0	57	39	68.4
Virgin Australia Regional Airlines	861	761	88.4	857	727	84.8
All Airlines	3 186	2 882	90.5	3 144	2 799	89.0
Relates to services to and from Perth only.						
<b>Launceston</b>						
Jetstar	2 183	1 663	76.2	2 176	1 325	60.9
QantasLink	1 348	1 130	83.8	1 344	1 123	83.6
Virgin Australia	1 502	1 296	86.3	1 502	1 298	86.4
All Airlines	5 033	4 089	81.2	5 022	3 746	74.6
Relates to services to and from Melbourne and Sydney.						
<b>Mackay</b>						
Jetstar	523	373	71.3	520	312	60.0
QantasLink	1 268	1 091	86.0	1 267	1 053	83.1
Virgin Australia	1 661	1 468	88.4	1 662	1 474	88.7
All Airlines	3 452	2 932	84.9	3 449	2 839	82.3
Relates to services to and from Brisbane only.						
<b>Melbourne</b>						
Jetstar	17 522	12 359	70.5	17 575	12 402	70.6
Qantas	25 762	21 341	82.8	25 750	22 216	86.3
QantasLink	5 011	4 137	82.6	5 007	4 247	84.8
Regional Express	953	702	73.7	954	824	86.4
Tigerair Australia	7 902	5 734	72.6	7 913	6 089	76.9
Virgin Australia	27 132	22 079	81.4	27 136	23 804	87.7
All Airlines	84 282	66 352	78.7	84 335	69 582	82.5
Relates to services to and from Adelaide, Brisbane, Cairns, Canberra, Darwin, Gold Coast, Hamilton Island, Hobart, Launceston, Mildura, Newcastle, Perth, Sunshine Coast and Sydney.						
<b>Mildura</b>						
QantasLink	1 125	968	86.0	1 124	972	86.5
Regional Express	954	783	82.1	953	755	79.2
Virgin Australia	364	293	80.5	363	291	80.2
All Airlines	2 443	2 044	83.7	2 440	2 018	82.7
Relates to services to and from Melbourne only.						
<b>Moranbah</b>						
QantasLink	1 011	882	87.2	960	840	87.5
Virgin Australia	711	621	87.3	709	639	90.1
All Airlines	1 722	1 503	87.3	1 669	1 479	88.6
Relates to services to and from Brisbane only.						
<b>Mount Isa</b>						
Qantas	107	98	91.6	107	99	92.5
QantasLink	552	500	90.6	546	494	90.5
Virgin Australia	207	187	90.3	210	180	85.7
All Airlines	866	785	90.6	863	773	89.6
Relates to services to and from Brisbane only.						

Airport	Arrivals			Departures		
	Sectors	On Time		Sectors	On Time	
	Flown	No.	%	Flown	No.	%
<b>Newcastle</b>						
Jetstar	2 334	1 781	76.3	2 331	1 803	77.3
QantasLink	1 094	934	85.4	1 092	941	86.2
Virgin Australia	1 417	1 254	88.5	1 415	1 237	87.4
All Airlines	4 845	3 969	81.9	4 838	3 981	82.3
Relates to services to and from Brisbane and Melbourne.						
<b>Newman</b>						
Qantas	780	746	95.6	778	747	96.0
QantasLink	807	717	88.8	796	718	90.2
Virgin Australia	177	171	96.6	177	168	94.9
Virgin Australia Regional Airlines	289	262	90.7	288	256	88.9
All Airlines	2 053	1 896	92.4	2 039	1 889	92.6
Relates to services to and from Perth only.						
<b>Perth</b>						
Jetstar	1 369	1 134	82.8	1 354	893	66.0
Qantas	9 721	8 231	84.7	9 722	8 752	90.0
QantasLink	6 221	5 576	89.6	6 296	5 613	89.2
Tigerair Australia	999	828	82.9	995	830	83.4
Virgin Australia	6 460	5 350	82.8	6 462	5 855	90.6
Virgin Australia Regional Airlines	3 174	2 617	82.5	3 182	2 866	90.1
All Airlines	27 944	23 736	84.9	28 011	24 809	88.6
Relates to services to and from Adelaide, Brisbane, Broome, Darwin, Geraldton, Kalgoorlie, Karratha, Melbourne, Newman, Port Hedland and Sydney.						
<b>Port Hedland</b>						
Qantas	467	443	94.9	467	431	92.3
QantasLink	1 112	905	81.4	1 092	957	87.6
Virgin Australia	247	234	94.7	247	230	93.1
Virgin Australia Regional Airlines	378	343	90.7	377	347	92.0
All Airlines	2 204	1 925	87.3	2 183	1 965	90.0
Relates to services to and from Perth only.						
<b>Port Lincoln</b>						
QantasLink	1 273	1 165	91.5	1 272	1 151	90.5
Regional Express	2 422	2 225	91.9	2 428	2 235	92.1
All Airlines	3 695	3 390	91.7	3 700	3 386	91.5
Relates to services to and from Adelaide only.						
<b>Port Macquarie</b>						
QantasLink	1 568	1 121	71.5	1 568	1 128	71.9
Virgin Australia	693	543	78.4	689	537	77.9
All Airlines	2 261	1 664	73.6	2 257	1 665	73.8
Relates to services to and from Sydney only.						
<b>Proserpine</b>						
Jetstar	357	279	78.2	358	254	70.9
Tigerair Australia	54	51	94.4	54	50	92.6
Virgin Australia	378	349	92.3	378	326	86.2
All Airlines	789	679	86.1	790	630	79.7
Relates to services to and from Brisbane only.						



Airport	Arrivals			Departures		
	Sectors Flown	On Time		Sectors Flown	On Time	
		No.	%		No.	%
<b>Rockhampton</b>						
QantasLink	2 165	1 822	84.2	2 160	1 825	84.5
Virgin Australia	1 855	1 599	86.2	1 852	1 616	87.3
All Airlines	4 020	3 421	85.1	4 012	3 441	85.8
Relates to services to and from Brisbane only.						
<b>Sunshine Coast</b>						
Jetstar	2 269	1 800	79.3	2 258	1 350	59.8
QantasLink	416	324	77.9	413	333	80.6
Virgin Australia	939	801	85.3	938	724	77.2
All Airlines	3 624	2 925	80.7	3 609	2 407	66.7
Relates to services to and from Melbourne and Sydney.						
<b>Sydney</b>						
Jetstar	17 594	12 874	73.2	17 630	12 979	73.6
Qantas	26 670	22 720	85.2	26 691	22 722	85.1
QantasLink	17 381	13 753	79.1	17 447	13 613	78.0
Regional Express	5 553	4 381	78.9	5 561	4 731	85.1
Tigerair Australia	7 011	5 128	73.1	7 014	5 417	77.2
Virgin Australia	31 132	26 419	84.9	31 152	26 611	85.4
All Airlines	105 341	85 275	81.0	105 495	86 073	81.6
Relates to services to and from Adelaide, Albury, Armidale, Ayers Rock, Ballina, Brisbane, Cairns, Canberra, Coffs Harbour, Darwin, Dubbo, Gold Coast, Hamilton Island, Hobart, Launceston, Melbourne, Perth, Port Macquarie, Sunshine Coast, Tamworth, Townsville and Wagga Wagga.						
<b>Tamworth</b>						
QantasLink	1 778	1 383	77.8	1 770	1 418	80.1
Virgin Australia	564	470	83.3	562	492	87.5
All Airlines	2 342	1 853	79.1	2 332	1 910	81.9
Relates to services to and from Sydney only.						
<b>Townsville</b>						
Jetstar	826	644	78.0	823	569	69.1
Qantas	934	834	89.3	934	830	88.9
QantasLink	2 463	2 264	91.9	2 445	2 197	89.9
Regional Express	561	530	94.5	561	529	94.3
Virgin Australia	2 034	1 805	88.7	2 032	1 797	88.4
All Airlines	6 818	6 077	89.1	6 795	5 922	87.2
Relates to services to and from Brisbane, Cairns and Sydney.						
<b>Wagga Wagga</b>						
QantasLink	1 334	1 015	76.1	1 333	1 072	80.4
Regional Express	1 501	1 302	86.7	1 499	1 281	85.5
All Airlines	2 835	2 317	81.7	2 832	2 353	83.1
Relates to services to and from Sydney only.						

## Definitions

---

On time arrival	A flight arrival is counted as "on time" if it arrived at the gate before 15 minutes after the scheduled arrival time shown in the carriers' schedule. Neither diverted nor cancelled flights count as on time.
On time departure	A flight departure is counted as "on time" if it departs the gate before 15 minutes after the scheduled departure time shown in the carriers' schedule.
Cancellation	A flight removed from service within 7 days of scheduled departure is regarded as a cancellation.
On time departure percentage	The percentage of on time departures is measured against the number of departures <i>operated</i> on any particular sector.
On time arrival percentage	The percentage of on time arrivals is measured against the number of arrivals <i>operated</i> on any particular sector.
Cancellation percentage	The percentage of cancellations is measured against the number of services <i>scheduled</i> on any particular sector.

---