



Australian Government

Department of Infrastructure, Regional Development and Cities

Bureau of Infrastructure, Transport and Regional Economics

STATISTICAL REPORT



Aviation

Domestic airline on time performance
September 2018

© Commonwealth of Australia 2018

ISSN: 1832-0759

Ownership of intellectual property rights in this publication

Unless otherwise noted, copyright (and any other intellectual property rights, if any) in this publication is owned by the Commonwealth of Australia (referred to below as the Commonwealth).

Disclaimer

The material contained in this publication is made available on the understanding that the Commonwealth is not providing professional advice, and that users exercise their own skill and care with respect to its use, and seek independent advice if necessary.

The Commonwealth makes no representations or warranties as to the contents or accuracy of the information contained in this publication. To the extent permitted by law, the Commonwealth disclaims liability to any person or organisation in respect of anything done, or omitted to be done, in reliance upon information contained in this publication.

Creative Commons licence

With the exception of (a) the Coat of Arms; and (b) the Department of Infrastructure, Regional Development and Cities' photos and graphics, copyright in this publication is licensed under a Creative Commons Attribution 3.0 Australia Licence.

Creative Commons Attribution 3.0 Australia Licence is a standard form licence agreement that allows you to copy, communicate and adapt this publication provided that you attribute the work to the Commonwealth and abide by the other licence terms. A summary of the licence terms is available from <http://creativecommons.org/licenses/by/3.0/au/deed.en>. The full licence terms are available from <http://creativecommons.org/licenses/by/3.0/au/legalcode>.

Use of the Coat of Arms

The Department of the Prime Minister and Cabinet sets the terms under which the Coat of Arms is used. Please refer to the Department's Commonwealth Coat of Arms and Government branding web page <http://www.dpmmc.gov.au/guidelines/index.cfm#brand> and, in particular, the Guidelines on the use of the Commonwealth Coat of Arms publication.

An appropriate citation for this report is:

Bureau of Infrastructure, Transport and Regional Economics (BITRE), 2018, Domestic airline on time performance, Statistical Report, BITRE, Canberra ACT.

Contact us

This publication is available in PDF format. All other rights are reserved, including in relation to any Departmental logos or trade marks which may exist. For enquiries regarding the licence and any use of this publication, please contact:

Bureau of Infrastructure, Transport and Regional Economics (BITRE)
Department of Infrastructure, Regional Development and Cities
GPO Box 501, Canberra ACT 2601, Australia
Telephone: (international) +61 2 6274 7210
Fax: (international) +61 2 6274 6855
Email: bitre@infrastructure.gov.au
Website: www.bitre.gov.au

Inquiries

Should you require additional information about the statistics contained in this publication:

Telephone (02) 6274 7790 or Facsimile (02) 6274 7727

Electronic mail: AVSTATS@infrastructure.gov.au

Web site: <http://www.bitre.gov.au/statistics/aviation/otphome.aspx>

Foreword

The Bureau of Infrastructure, Transport and Regional Economics (BITRE) monitors the punctuality and reliability of major domestic airlines operating between Australian airports. The purpose of this is to allow for evaluation of overall industry and individual airline performance, so that consumers of air travel can make informed decisions.

The following domestic airlines currently report this information monthly to the BITRE: Jetstar, Qantas, QantasLink, Regional Express, Tigerair Australia, Virgin Australia and Virgin Australia Regional Airlines. Data has been gathered since November 2003, although some airlines commenced reporting at a later date, including Jetstar which first reported in May 2004, MacAir in July 2005, Tigerair Australia in April 2008 and Virgin Australia Regional Airlines in May 2013. MacAir ceased operations in February 2009 and data was not received for December 2008 onwards. Virgin Blue was rebranded as Virgin Australia in May 2011 and Tiger Airways was rebranded as Tigerair Australia in July 2013 and time series data in Microsoft Excel spreadsheet format on the BITRE website have been revised to reflect these changes. Services operated by Skywest on behalf of Virgin Australia using ATR/F100 aircraft commenced in November 2011 and were shown separately as Virgin Australia – ATR/F100 Operations. Virgin Australia Regional Airlines commenced operations in May 2013. It was formed after the acquisition of Skywest by Virgin Australia and represented a combination of operations previously reported under Skywest and Virgin Australia – ATR/F100 Operations. In January 2016, Virgin Australia transferred their ATR fleet from Virgin Australia Regional Airlines to Virgin Australia.

Information presented in this report is for Australian domestic routes for which the passenger load averaged 8 000 or more passengers per month over the previous six months and where two or more airlines operated in competition on those routes. There were 65 routes that met this definition in September 2018. Over time, routes which meet these criteria change as airline networks and traffic levels vary.

Participating airlines report their overall monthly network performance where this is possible.

Total industry figures encompass all services operated by reporting airlines only. These airlines collectively carried over 95 per cent of total domestic passengers (regular public transport only) in 2017.

The method of capturing on time performance varies between airlines utilising different recording systems. Jetstar and Qantas jet aircraft use Aircraft Communication Addressing and Reporting System (ACARS) to electronically measure on time performance. Regional Express, Tigerair Australia, Virgin Australia, Virgin Australia Regional Airlines and the Qantas non-jet fleet record on time performance manually using records from pilots, gate agents and/or ground crews.

After initial data is collected, aggregate reports are audited internally by participating airlines prior to publication.

Reports and detailed time series data in Microsoft Excel spreadsheet format are available from the BITRE website at: <http://www.bitre.gov.au/statistics/aviation/otphome.aspx>.

Contents

	Page
Industry performance	1
Individual routes	10
Airports.....	24
Definitions	30

Industry performance

For September 2018, on time performance over all routes operated by participating airlines (Jetstar, Qantas, QantasLink, Regional Express, Tigerair Australia, Virgin Australia and Virgin Australia Regional Airlines) averaged 82.1 per cent for on time arrivals and 82.7 per cent for on time departures. Cancellations represented 2.0 per cent of all scheduled flights. The equivalent figures for September 2017 were 79.3 per cent for on time arrivals, 80.6 per cent for on time departures and 2.7 per cent for cancellations.

This month's on time arrivals figure was lower than the long term average performance for all routes (82.6 per cent) and the on time departures figure was also lower than the long term average (83.9 per cent). The rate of cancellations was higher than the long term average of 1.4 per cent.

Qantas achieved the highest on time arrivals among the major domestic airlines at 84.6 per cent followed by Virgin Australia at 82.7 per cent, Jetstar at 77.2 per cent and Tigerair Australia at 75.4 per cent. Of the regional airlines, QantasLink recorded 85.5 per cent for on time arrivals, followed by Regional Express at 80.7 per cent and Virgin Australia Regional Airlines at 76.1 per cent. The Qantas network (Qantas and QantasLink combined operations) recorded 85.1 per cent for on time arrivals while the Virgin Australia network (Virgin Australia and Virgin Australia Regional Airlines combined operations) recorded 82.3 per cent.

Qantas also achieved the highest level of on time departures among the major domestic airlines for September 2018 at 85.0 per cent, followed by Virgin Australia at 83.8 per cent, Tigerair Australia at 75.6 per cent and Jetstar at 74.3 per cent. Of the regional airlines, QantasLink recorded 87.2 per cent for on time departures, followed by Regional Express at 83.4 per cent and Virgin Australia Regional Airlines at 78.4 per cent. The Qantas network recorded 86.2 per cent for on time departures while the Virgin Australia network recorded 83.5 per cent.

Tigerair Australia recorded the highest percentage of cancellations (5.3 per cent) during the month, followed by Qantas (2.7 per cent), Jetstar (2.6 per cent), Virgin Australia (1.8 per cent), QantasLink (1.2 per cent), Virgin Australia Regional Airlines (1.0 per cent) and Regional Express (0.5 per cent).

Airlines' on time performance varies across the routes they serve. Individual route data by specific airline for 65 routes are shown on pages 10-23.

Of the 65 routes which met the criteria for on time performance reporting in September 2018, the Alice Springs-Darwin route had the highest percentage of on time arrivals (96.1 per cent) and the Gold Coast-Adelaide route had the highest percentage of on time departures (98.4 per cent). The Ballina-Sydney route had the lowest percentage of on time arrivals (65.7 per cent) and the Ayers Rock-Sydney route had the lowest percentage of on time departures (53.3 per cent).

Cancellations were highest on the Sydney-Melbourne route at 7.2 per cent, followed by the Melbourne-Sydney route at 7.1 per cent, the Alice Springs-Darwin route at 3.8 per cent, the

Melbourne-Brisbane route at 3.4 per cent and the Sydney-Brisbane, Brisbane-Sydney and Brisbane-Melbourne routes at 3.1 per cent.

Emerald Airport recorded the highest percentage of on time arrivals (93.1 per cent) and Alice Springs Airport recorded the highest percentage of on time departures (93.8 per cent). Ayers Rock Airport recorded the lowest percentage of on time arrivals (66.7 per cent) and the lowest percentage of on time departures (53.3 per cent). These figures only refer to reported routes and do not cover all flights at these airports.

Table 1 On time performance for September 2018 — Total Industry

	<i>Sectors</i>		<i>Arrivals On Time</i>		<i>Departures On Time</i>		<i>Cancellations</i>	
	<i>Scheduled</i>	<i>Flown</i>	<i>No.</i>	<i>%</i>	<i>No.</i>	<i>%</i>	<i>No.</i>	<i>%</i>
Jetstar	7 155	6 966	5 378	77.2	5 175	74.3	189	2.6
Qantas	8 643	8 410	7 114	84.6	7 151	85.0	233	2.7
QantasLink	9 828	9 714	8 307	85.5	8 468	87.2	114	1.2
Regional Express	6 058	6 025	4 863	80.7	5 026	83.4	33	0.5
Tigerair Australia	2 359	2 234	1 684	75.4	1 690	75.6	125	5.3
Virgin Australia	11 736	11 520	9 528	82.7	9 650	83.8	216	1.8
Virgin Australia Regional Airlines	723	716	545	76.1	561	78.4	7	1.0
All Airlines	46 502	45 585	37 419	82.1	37 721	82.7	917	2.0
Qantas - all QF designated services	18 471	18 124	15 421	85.1	15 619	86.2	347	1.9
Virgin Australia - all VA designated services	12 459	12 236	10 073	82.3	10 211	83.5	223	1.8

Total airline network data (including routes not shown in this report).

Airlines' on time performance varies across the routes they serve. Individual route data by specific airline for 65 routes are shown on pages 10-23.

Table 2 Top ten routes for on time performance for September 2018 (participating airlines only)

<i>Arrivals</i>		<i>Departures</i>	
<i>Route</i>	<i>On Time (%)</i>	<i>Route</i>	<i>On Time (%)</i>
Alice Springs-Darwin	96.1	Gold Coast-Adelaide	98.4
Adelaide-Gold Coast	95.0	Darwin-Alice Springs	94.9
Darwin-Alice Springs	94.9	Perth-Port Hedland	94.8
Sydney-Proserpine	94.9	Alice Springs-Darwin	94.8
Cairns-Townsville	93.7	Townsville-Cairns	94.3
Brisbane-Darwin	93.6	Emerald-Brisbane	92.4
Townsville-Cairns	93.6	Perth-Newman	92.4
Brisbane-Emerald	93.1	Cairns-Townsville	92.3
Emerald-Brisbane	93.1	Alice Springs-Adelaide	92.2
Sydney-Launceston	92.2	Adelaide-Port Lincoln	92.1

Table 3 Top ten airports for on time performance for September 2018 (participating airlines and reported routes only)

<i>Arrivals</i>		<i>Departures</i>	
<i>Airport</i>	<i>On Time (%)</i>	<i>Airport</i>	<i>On Time (%)</i>
Emerald	93.1	Alice Springs	93.8
Alice Springs	91.5	Emerald	92.4
Wagga Wagga	91.4	Newman	91.1
Newman	89.8	Port Hedland	90.7
Port Hedland	89.1	Port Lincoln	90.5
Port Lincoln	88.6	Bundaberg	90.2
Geraldton	88.5	Kalgoorlie	89.8
Kalgoorlie	88.4	Townsville	89.7
Townsville	88.0	Cairns	87.5
Cairns	87.2	Wagga Wagga	87.1

Total industry on time performance

Figure 1 On time performance (by month from September 2015)—Total Industry

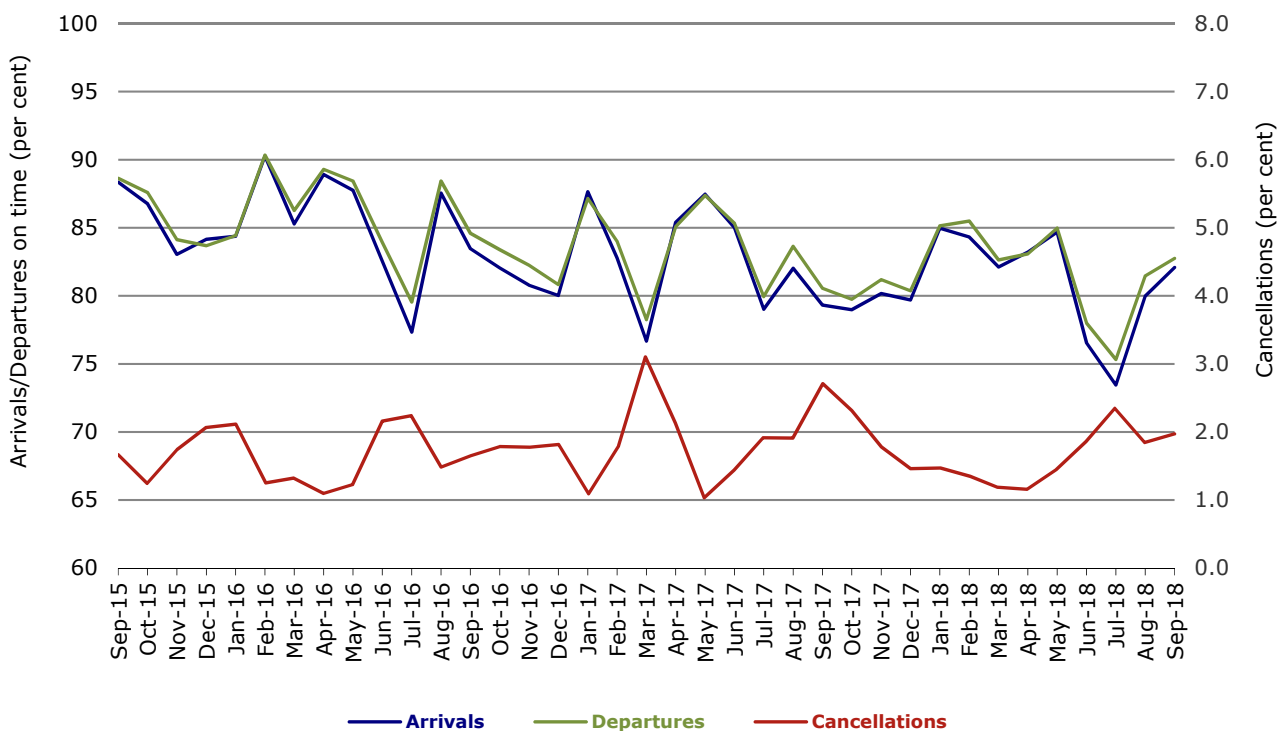


Figure 2 Arrivals on time (by month from September 2017)

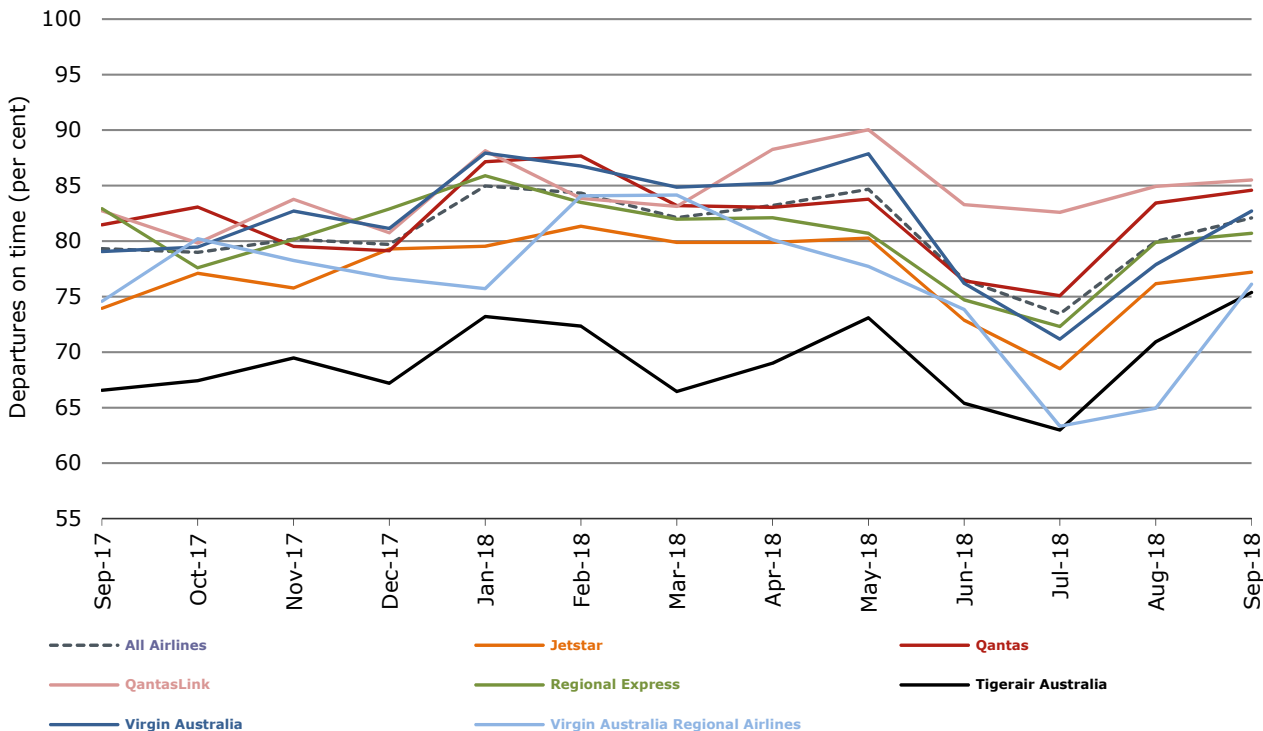


Figure 3 Departures on time (by month from September 2017)

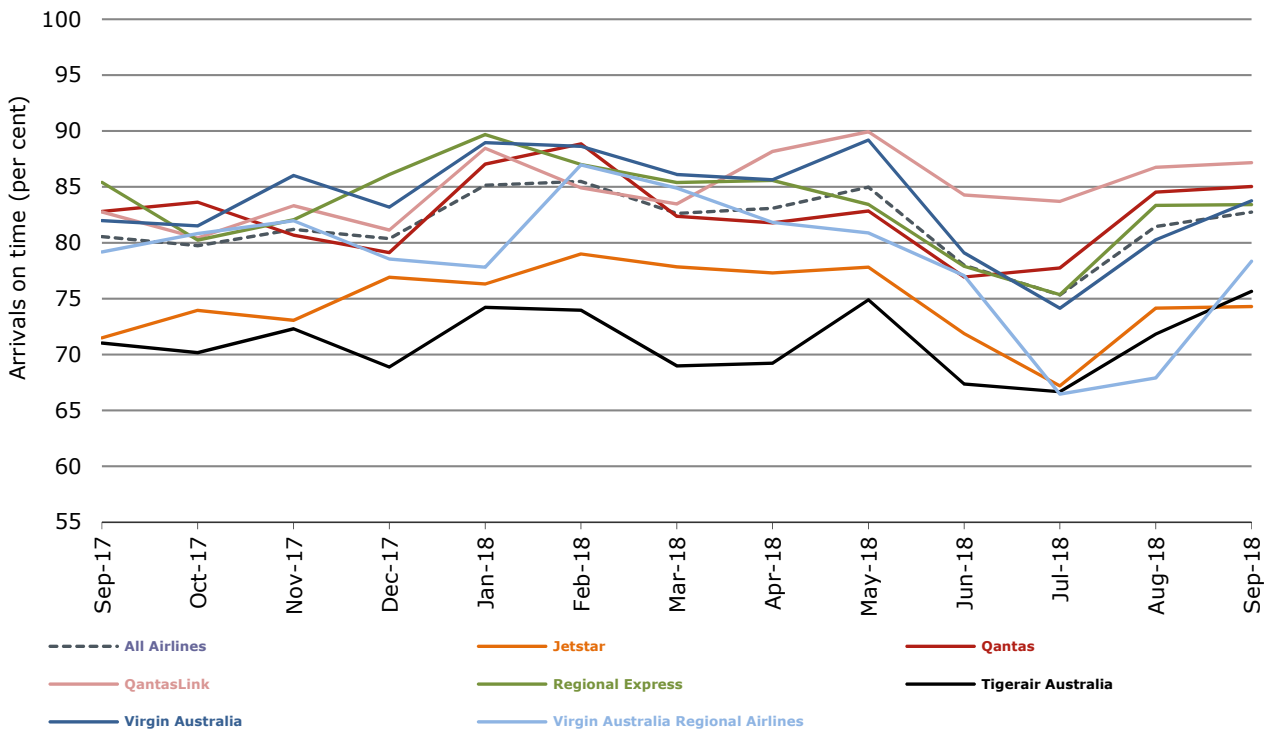
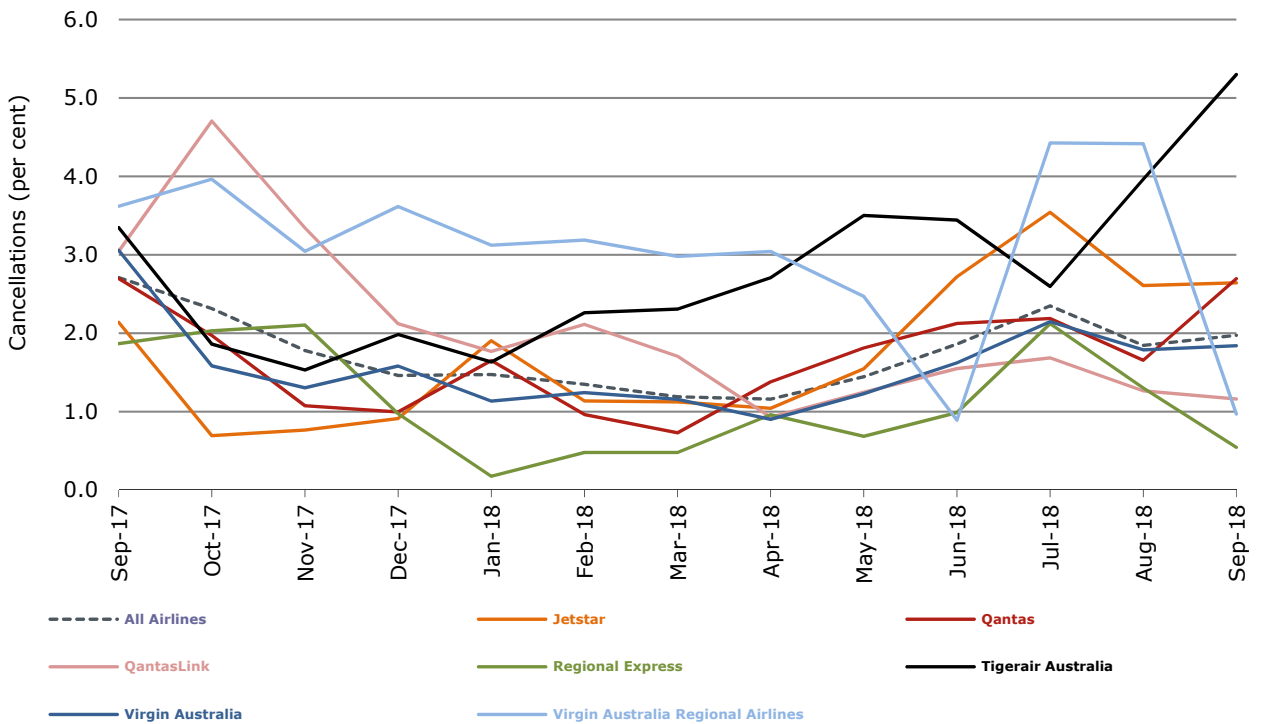


Figure 4 Cancellations (by month from September 2017)



Major domestic airlines on time performance

Figure 5 On time performance (by month from September 2015)—Jetstar

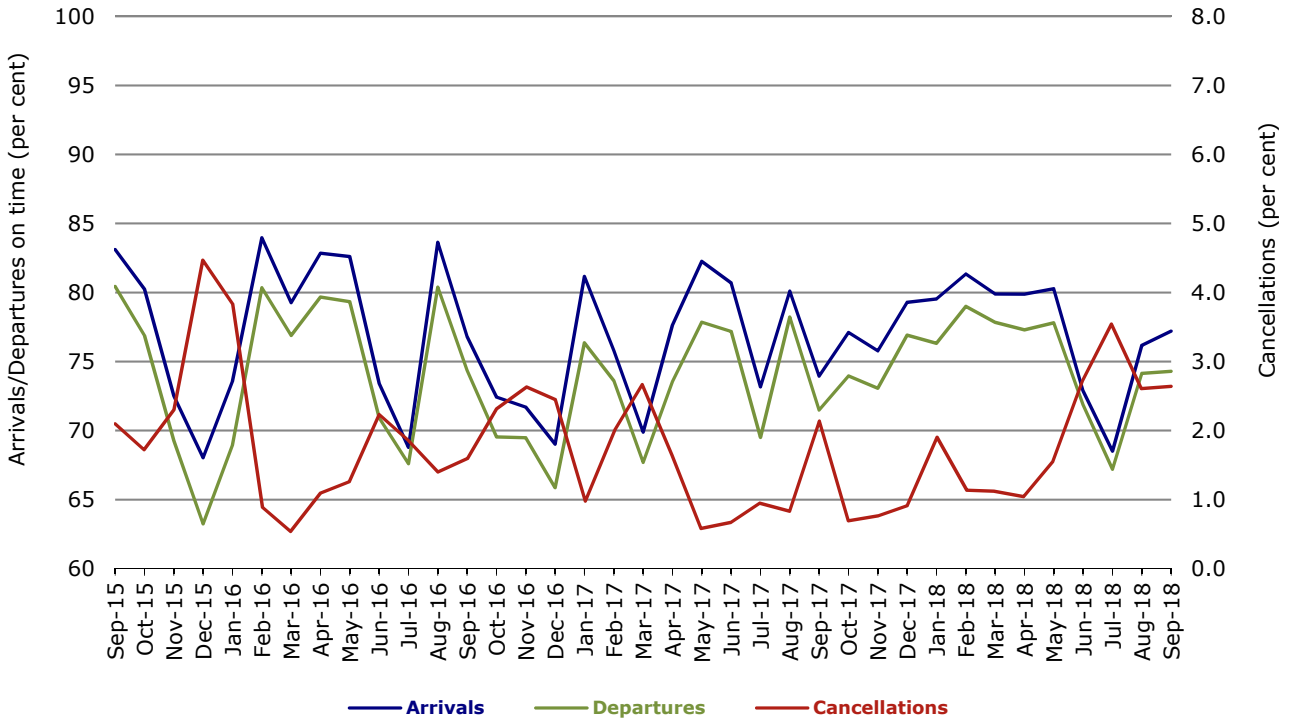


Figure 6 On time performance (by month from September 2015)—Qantas

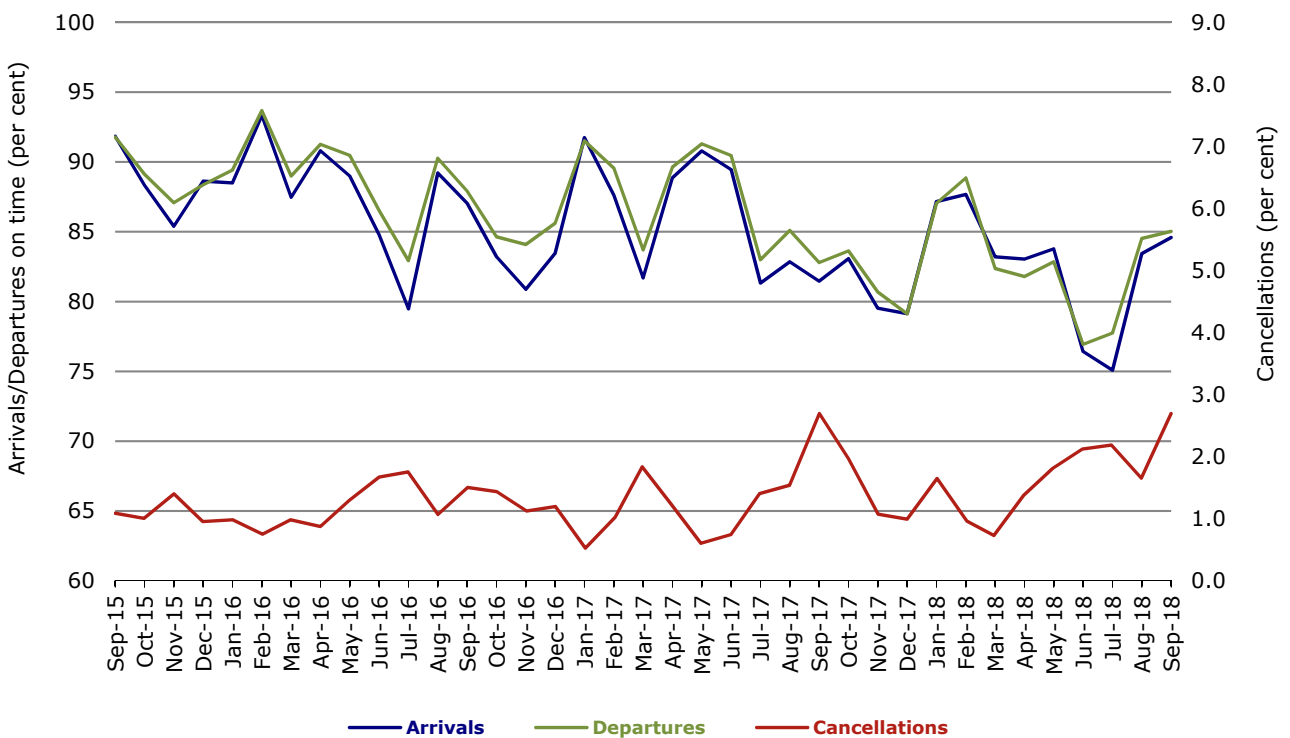


Figure 7 On time performance (by month from September 2015)—Tigerair Australia

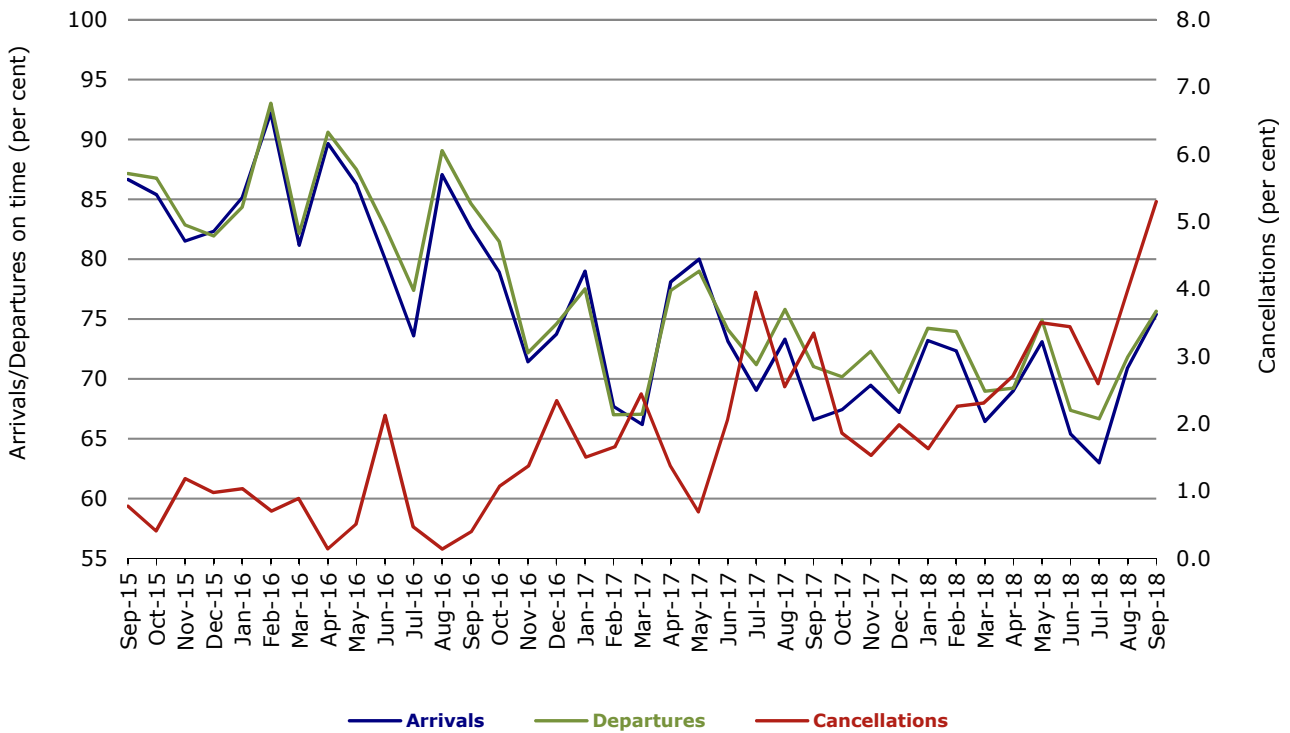
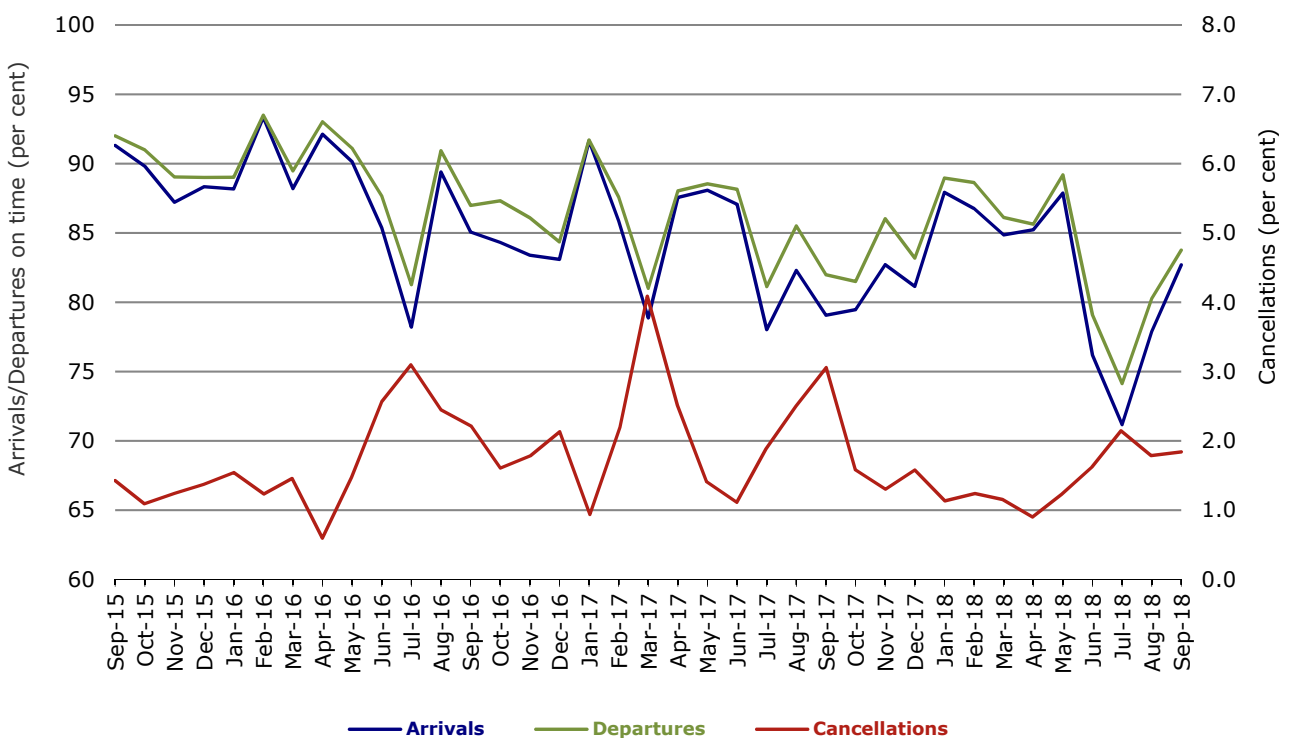


Figure 8 On time performance (by month from September 2015)—Virgin Australia



In January 2016, Virgin Australia transferred their ATR fleet from Virgin Australia Regional Airlines to Virgin Australia.

Major regional airlines on time performance

Figure 9 On time performance (by month from September 2015)—QantasLink

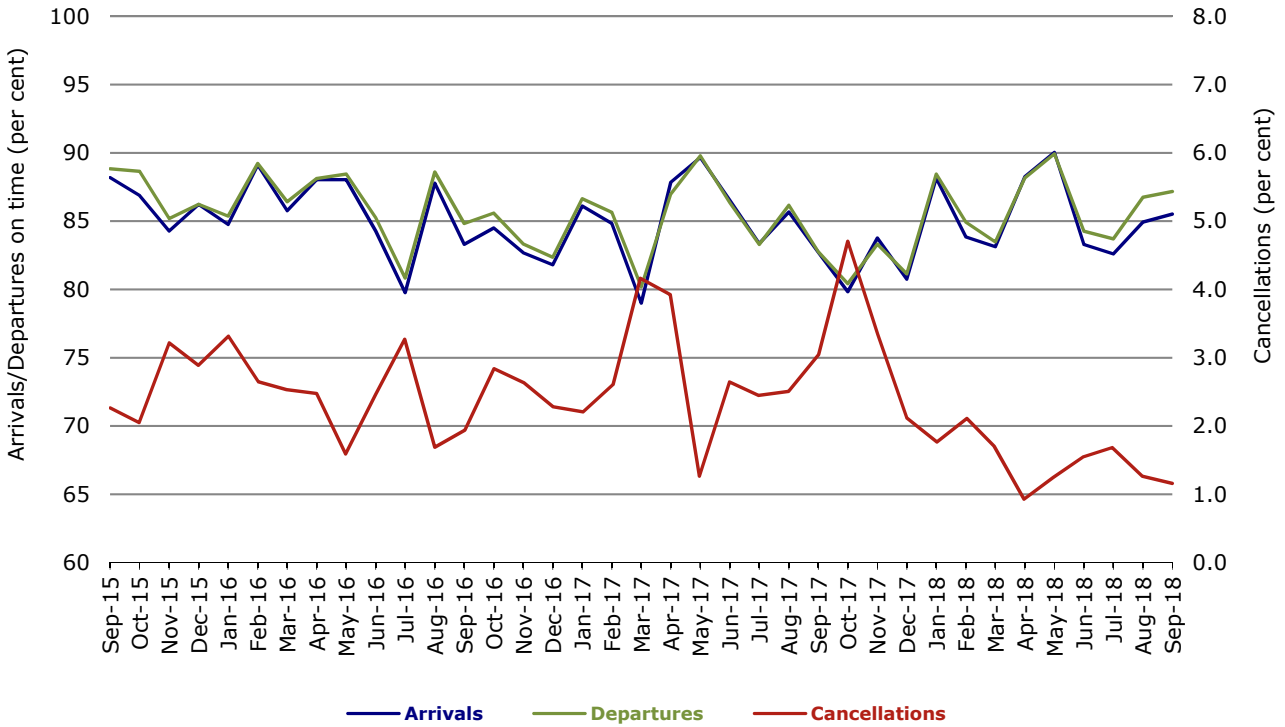


Figure 10 On time performance (by month from September 2015)—Regional Express

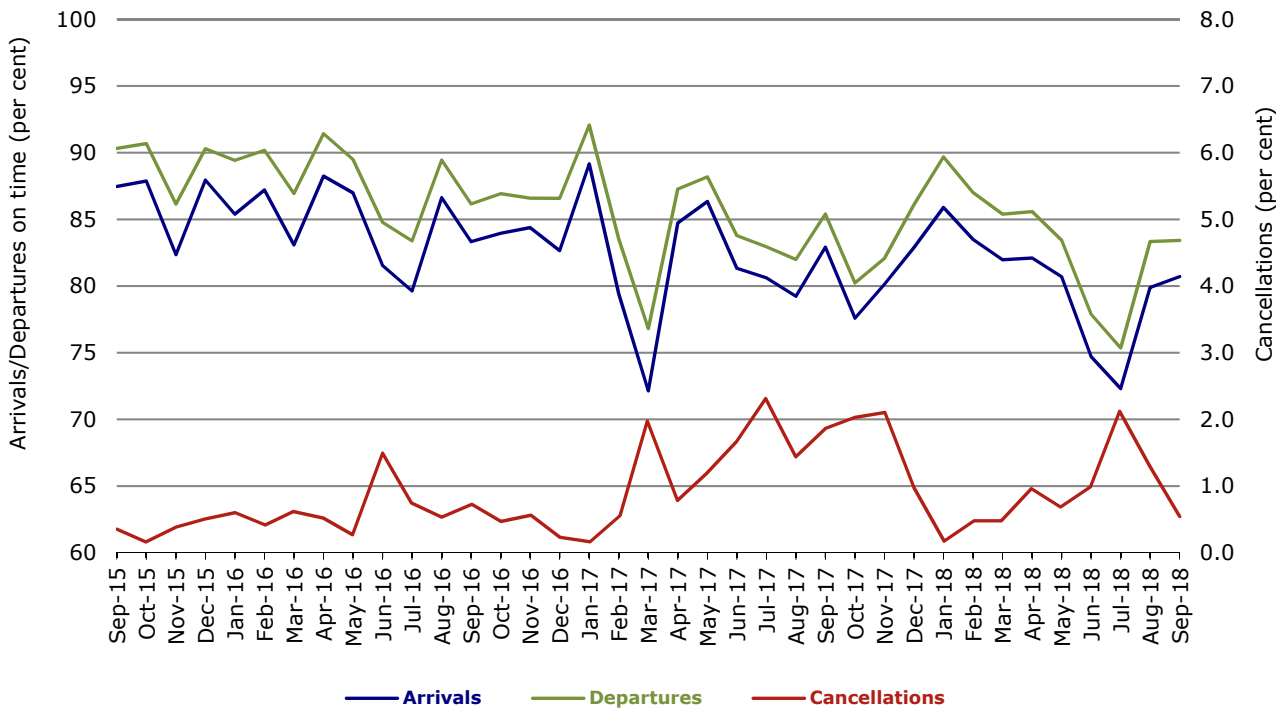
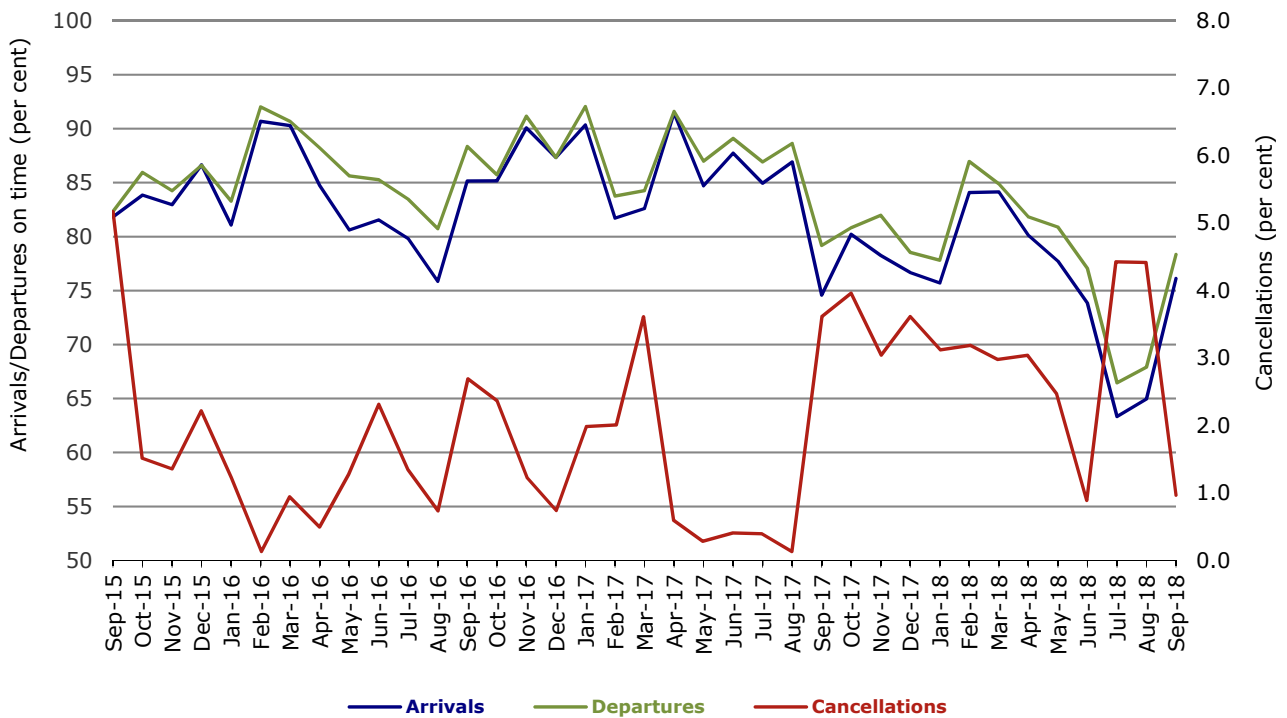


Figure 11 On time performance (by month from September 2015)
Virgin Australia Regional Airlines



In January 2016, Virgin Australia transferred their ATR fleet from Virgin Australia Regional Airlines to Virgin Australia.

Individual routes

On time performance is reported for all routes where the passenger load averages over 8000 passengers per month over the previous six months, and where two or more airlines operate in competition on those routes. There are now 65 routes which meet this definition. Over time, however, routes which meet this definition may change as airline networks and traffic levels vary.

	Sectors		Arrivals On Time		Departures On Time		Cancellations	
	Sched.	Flown	No.	%	No.	%	No.	%
Adelaide-Alice Springs								
Qantas	30	30	27	90.0	25	83.3	0	0.0
Virgin Australia	20	20	16	80.0	20	100.0	0	0.0
All Airlines	50	50	43	86.0	45	90.0	0	0.0
Adelaide-Brisbane								
Jetstar	27	26	20	76.9	19	73.1	1	3.7
Qantas	55	55	53	96.4	51	92.7	0	0.0
QantasLink	65	64	54	84.4	59	92.2	1	1.5
Tigerair Australia	24	24	21	87.5	20	83.3	0	0.0
Virgin Australia	106	105	96	91.4	92	87.6	1	0.9
All Airlines	277	274	244	89.1	241	88.0	3	1.1
Adelaide-Canberra								
Qantas	45	45	43	95.6	43	95.6	0	0.0
QantasLink	5	5	1	20.0	1	20.0	0	0.0
Virgin Australia	25	25	23	92.0	21	84.0	0	0.0
All Airlines	75	75	67	89.3	65	86.7	0	0.0
Adelaide-Gold Coast								
Jetstar	30	29	26	89.7	19	65.5	1	3.3
Virgin Australia	31	31	31	100.0	31	100.0	0	0.0
All Airlines	61	60	57	95.0	50	83.3	1	1.6
Adelaide-Melbourne								
Jetstar	101	94	82	87.2	71	75.5	7	6.9
Qantas	274	270	238	88.1	226	83.7	4	1.5
Tigerair Australia	73	68	46	67.6	46	67.6	5	6.8
Virgin Australia	274	269	222	82.5	226	84.0	5	1.8
All Airlines	722	701	588	83.9	569	81.2	21	2.9
Adelaide-Perth								
Jetstar	24	24	21	87.5	21	87.5	0	0.0
Qantas	82	81	76	93.8	71	87.7	1	1.2
QantasLink	25	24	24	100.0	23	95.8	1	4.0
Virgin Australia	40	40	34	85.0	38	95.0	0	0.0
Virgin Australia Regional Airlines	35	34	26	76.5	24	70.6	1	2.9
All Airlines	206	203	181	89.2	177	87.2	3	1.5
Adelaide-Port Lincoln								
QantasLink	106	105	95	90.5	95	90.5	1	0.9
Regional Express	212	211	185	87.7	196	92.9	1	0.5
All Airlines	318	316	280	88.6	291	92.1	2	0.6
Adelaide-Sydney								
Jetstar	102	99	84	84.8	78	78.8	3	2.9
Qantas	220	216	187	86.6	199	92.1	4	1.8
QantasLink	33	32	23	71.9	25	78.1	1	3.0
Tigerair Australia	47	47	30	63.8	28	59.6	0	0.0
Virgin Australia	159	155	133	85.8	138	89.0	4	2.5
All Airlines	561	549	457	83.2	468	85.2	12	2.1

	<i>Sectors</i>		<i>Arrivals On Time</i>		<i>Departures On Time</i>		<i>Cancellations</i>	
	<i>Sched.</i>	<i>Flown</i>	<i>No.</i>	<i>%</i>	<i>No.</i>	<i>%</i>	<i>No.</i>	<i>%</i>
Albury-Sydney								
QantasLink	93	92	71	77.2	72	78.3	1	1.1
Regional Express	100	98	86	87.8	86	87.8	2	2.0
Virgin Australia	60	60	45	75.0	47	78.3	0	0.0
All Airlines	253	250	202	80.8	205	82.0	3	1.2
Alice Springs-Adelaide								
Qantas	30	30	25	83.3	26	86.7	0	0.0
Virgin Australia	20	20	19	95.0	20	100.0	0	0.0
Virgin Australia Regional Airlines	1	1	1	100.0	1	100.0	0	0.0
All Airlines	51	51	45	88.2	47	92.2	0	0.0
Alice Springs-Darwin								
QantasLink	60	57	54	94.7	53	93.0	3	5.0
Virgin Australia	20	20	20	100.0	20	100.0	0	0.0
All Airlines	80	77	74	96.1	73	94.8	3	3.8
Armidale-Sydney								
QantasLink	114	112	97	86.6	96	85.7	2	1.8
Regional Express	70	70	45	64.3	46	65.7	0	0.0
All Airlines	184	182	142	78.0	142	78.0	2	1.1
Ayers Rock-Sydney								
Jetstar	30	30	21	70.0	13	43.3	0	0.0
Virgin Australia	30	30	22	73.3	19	63.3	0	0.0
All Airlines	60	60	43	71.7	32	53.3	0	0.0
Ballina-Sydney								
Jetstar	85	83	52	62.7	45	54.2	2	2.4
Regional Express	24	24	14	58.3	15	62.5	0	0.0
Virgin Australia	34	33	26	78.8	25	75.8	1	2.9
All Airlines	143	140	92	65.7	85	60.7	3	2.1
Brisbane-Adelaide								
Jetstar	27	27	18	66.7	20	74.1	0	0.0
Qantas	65	65	58	89.2	55	84.6	0	0.0
QantasLink	65	64	57	89.1	59	92.2	1	1.5
Tigerair Australia	24	24	20	83.3	22	91.7	0	0.0
Virgin Australia	100	99	82	82.8	85	85.9	1	1.0
All Airlines	281	279	235	84.2	241	86.4	2	0.7
Brisbane-Bundaberg								
QantasLink	102	102	87	85.3	87	85.3	0	0.0
Virgin Australia	30	30	27	90.0	27	90.0	0	0.0
All Airlines	132	132	114	86.4	114	86.4	0	0.0
Brisbane-Cairns								
Jetstar	110	105	93	88.6	90	85.7	5	4.5
Qantas	59	59	58	98.3	57	96.6	0	0.0
QantasLink	74	73	55	75.3	55	75.3	1	1.4
Tigerair Australia	30	30	27	90.0	25	83.3	0	0.0
Virgin Australia	121	121	114	94.2	106	87.6	0	0.0
All Airlines	394	388	347	89.4	333	85.8	6	1.5
Brisbane-Canberra								
Qantas	14	14	12	85.7	12	85.7	0	0.0
QantasLink	134	131	109	83.2	110	84.0	3	2.2
Tigerair Australia	18	18	15	83.3	15	83.3	0	0.0
Virgin Australia	99	99	89	89.9	90	90.9	0	0.0
All Airlines	265	262	225	85.9	227	86.6	3	1.1

	<i>Sectors</i>		<i>Arrivals On Time</i>		<i>Departures On Time</i>		<i>Cancellations</i>	
	<i>Sched.</i>	<i>Flown</i>	<i>No.</i>	<i>%</i>	<i>No.</i>	<i>%</i>	<i>No.</i>	<i>%</i>
Brisbane-Darwin								
Jetstar	27	26	25	96.2	24	92.3	1	3.7
Qantas	34	34	31	91.2	30	88.2	0	0.0
Tigerair Australia	21	20	19	95.0	18	90.0	1	4.8
Virgin Australia	30	30	28	93.3	27	90.0	0	0.0
All Airlines	112	110	103	93.6	99	90.0	2	1.8
Brisbane-Emerald								
QantasLink	96	96	91	94.8	89	92.7	0	0.0
Virgin Australia	49	49	44	89.8	44	89.8	0	0.0
All Airlines	145	145	135	93.1	133	91.7	0	0.0
Brisbane-Gladstone								
QantasLink	122	122	94	77.0	99	81.1	0	0.0
Virgin Australia	71	69	62	89.9	63	91.3	2	2.8
All Airlines	193	191	156	81.7	162	84.8	2	1.0
Brisbane-Hamilton Island								
QantasLink	22	22	19	86.4	19	86.4	0	0.0
Virgin Australia	30	30	27	90.0	26	86.7	0	0.0
All Airlines	52	52	46	88.5	45	86.5	0	0.0
Brisbane-Hobart								
Jetstar	24	24	24	100.0	24	100.0	0	0.0
Virgin Australia	39	39	34	87.2	34	87.2	0	0.0
All Airlines	63	63	58	92.1	58	92.1	0	0.0
Brisbane-Mackay								
Jetstar	35	35	24	68.6	22	62.9	0	0.0
QantasLink	113	112	99	88.4	96	85.7	1	0.9
Virgin Australia	140	139	113	81.3	116	83.5	1	0.7
All Airlines	288	286	236	82.5	234	81.8	2	0.7
Brisbane-Melbourne								
Jetstar	133	126	88	69.8	79	62.7	7	5.3
Qantas	403	400	342	85.5	355	88.8	3	0.7
QantasLink	4	4	2	50.0	2	50.0	0	0.0
Tigerair Australia	116	105	82	78.1	83	79.0	11	9.5
Virgin Australia	383	372	291	78.2	324	87.1	11	2.9
All Airlines	1 039	1 007	805	79.9	843	83.7	32	3.1
Brisbane-Mount Isa								
QantasLink	55	55	37	67.3	47	85.5	0	0.0
Virgin Australia	16	16	15	93.8	15	93.8	0	0.0
All Airlines	71	71	52	73.2	62	87.3	0	0.0
Brisbane-Newcastle								
Jetstar	86	86	66	76.7	65	75.6	0	0.0
QantasLink	46	45	36	80.0	38	84.4	1	2.2
Virgin Australia	83	83	75	90.4	73	88.0	0	0.0
All Airlines	215	214	177	82.7	176	82.2	1	0.5
Brisbane-Perth								
Qantas	141	140	123	87.9	117	83.6	1	0.7
Virgin Australia	104	104	77	74.0	81	77.9	0	0.0
All Airlines	245	244	200	82.0	198	81.1	1	0.4
Brisbane-Proserpine								
Jetstar	34	34	24	70.6	24	70.6	0	0.0
Virgin Australia	36	36	33	91.7	32	88.9	0	0.0
All Airlines	70	70	57	81.4	56	80.0	0	0.0

	<i>Sectors</i>		<i>Arrivals On Time</i>		<i>Departures On Time</i>		<i>Cancellations</i>	
	<i>Sched.</i>	<i>Flown</i>	<i>No.</i>	<i>%</i>	<i>No.</i>	<i>%</i>	<i>No.</i>	<i>%</i>
Brisbane-Rockhampton								
QantasLink	165	165	137	83.0	145	87.9	0	0.0
Virgin Australia	135	135	104	77.0	101	74.8	0	0.0
All Airlines	300	300	241	80.3	246	82.0	0	0.0
Brisbane-Sydney								
Jetstar	179	169	124	73.4	120	71.0	10	5.6
Qantas	579	567	479	84.5	506	89.2	12	2.1
QantasLink	30	29	22	75.9	25	86.2	1	3.3
Tigerair Australia	107	105	83	79.0	83	79.0	2	1.9
Virgin Australia	524	505	418	82.8	442	87.5	19	3.6
All Airlines	1 419	1 375	1 126	81.9	1 176	85.5	44	3.1
Brisbane-Townsville								
Jetstar	60	60	52	86.7	52	86.7	0	0.0
Qantas	51	50	47	94.0	47	94.0	1	2.0
QantasLink	89	89	76	85.4	79	88.8	0	0.0
Virgin Australia	138	135	117	86.7	109	80.7	3	2.2
All Airlines	338	334	292	87.4	287	85.9	4	1.2
Broome-Perth								
QantasLink	91	90	71	78.9	67	74.4	1	1.1
Virgin Australia	12	10	7	70.0	6	60.0	2	16.7
Virgin Australia Regional Airlines	68	66	48	72.7	44	66.7	2	2.9
All Airlines	171	166	126	75.9	117	70.5	5	2.9
Bundaberg-Brisbane								
QantasLink	102	102	90	88.2	90	88.2	0	0.0
Virgin Australia	30	30	29	96.7	29	96.7	0	0.0
All Airlines	132	132	119	90.2	119	90.2	0	0.0
Cairns-Brisbane								
Jetstar	110	106	96	90.6	97	91.5	4	3.6
Qantas	59	58	57	98.3	57	98.3	1	1.7
QantasLink	74	72	54	75.0	59	81.9	2	2.7
Tigerair Australia	30	30	27	90.0	26	86.7	0	0.0
Virgin Australia	121	121	113	93.4	110	90.9	0	0.0
All Airlines	394	387	347	89.7	349	90.2	7	1.8
Cairns-Melbourne								
Jetstar	117	117	94	80.3	95	81.2	0	0.0
Qantas	43	43	36	83.7	39	90.7	0	0.0
Tigerair Australia	43	42	32	76.2	32	76.2	1	2.3
Virgin Australia	38	38	20	52.6	27	71.1	0	0.0
All Airlines	241	240	182	75.8	193	80.4	1	0.4
Cairns-Sydney								
Jetstar	105	103	99	96.1	94	91.3	2	1.9
Qantas	78	77	65	84.4	62	80.5	1	1.3
Tigerair Australia	47	47	38	80.9	40	85.1	0	0.0
Virgin Australia	83	83	76	91.6	75	90.4	0	0.0
All Airlines	313	310	278	89.7	271	87.4	3	1.0
Cairns-Townsville								
QantasLink	131	131	122	93.1	120	91.6	0	0.0
Regional Express	11	11	11	100.0	11	100.0	0	0.0
All Airlines	142	142	133	93.7	131	92.3	0	0.0

	<i>Sectors</i>		<i>Arrivals On Time</i>		<i>Departures On Time</i>		<i>Cancellations</i>	
	<i>Sched.</i>	<i>Flown</i>	<i>No.</i>	<i>%</i>	<i>No.</i>	<i>%</i>	<i>No.</i>	<i>%</i>
Canberra-Adelaide								
Qantas	45	44	40	90.9	39	88.6	1	2.2
QantasLink	5	5	1	20.0	2	40.0	0	0.0
Virgin Australia	25	25	22	88.0	20	80.0	0	0.0
All Airlines	75	74	63	85.1	61	82.4	1	1.3
Canberra-Brisbane								
Qantas	19	19	18	94.7	17	89.5	0	0.0
QantasLink	129	128	117	91.4	119	93.0	1	0.8
Tigerair Australia	18	18	16	88.9	16	88.9	0	0.0
Virgin Australia	99	99	89	89.9	89	89.9	0	0.0
All Airlines	265	264	240	90.9	241	91.3	1	0.4
Canberra-Melbourne								
Qantas	228	226	213	94.2	215	95.1	2	0.9
QantasLink	42	40	33	82.5	32	80.0	2	4.8
Tigerair Australia	39	38	29	76.3	28	73.7	1	2.6
Virgin Australia	164	164	133	81.1	144	87.8	0	0.0
All Airlines	473	468	408	87.2	419	89.5	5	1.1
Canberra-Sydney								
Qantas	10	10	8	80.0	9	90.0	0	0.0
QantasLink	447	436	358	82.1	355	81.4	11	2.5
Virgin Australia	254	249	206	82.7	205	82.3	5	2.0
All Airlines	711	695	572	82.3	569	81.9	16	2.3
Coffs Harbour-Sydney								
QantasLink	122	120	98	81.7	103	85.8	2	1.6
Tigerair Australia	13	11	9	81.8	9	81.8	2	15.4
Virgin Australia	53	52	40	76.9	45	86.5	1	1.9
All Airlines	188	183	147	80.3	157	85.8	5	2.7
Darwin-Alice Springs								
QantasLink	60	58	54	93.1	54	93.1	2	3.3
Virgin Australia	20	20	20	100.0	20	100.0	0	0.0
Virgin Australia Regional Airlines	1	1	1	100.0	1	100.0	0	0.0
All Airlines	81	79	75	94.9	75	94.9	2	2.5
Darwin-Brisbane								
Jetstar	27	26	23	88.5	23	88.5	1	3.7
Qantas	35	35	28	80.0	29	82.9	0	0.0
Tigerair Australia	21	20	20	100.0	19	95.0	1	4.8
Virgin Australia	30	30	26	86.7	21	70.0	0	0.0
All Airlines	113	111	97	87.4	92	82.9	2	1.8
Darwin-Melbourne								
Jetstar	27	27	17	63.0	11	40.7	0	0.0
Qantas	30	30	18	60.0	22	73.3	0	0.0
Virgin Australia	33	33	29	87.9	32	97.0	0	0.0
All Airlines	90	90	64	71.1	65	72.2	0	0.0
Darwin-Perth								
Qantas	36	36	33	91.7	30	83.3	0	0.0
Virgin Australia	23	23	22	95.7	21	91.3	0	0.0
Virgin Australia Regional Airlines	7	7	3	42.9	3	42.9	0	0.0
All Airlines	66	66	58	87.9	54	81.8	0	0.0

	Sectors		Arrivals On Time		Departures On Time		Cancellations	
	Sched.	Flown	No.	%	No.	%	No.	%
Darwin-Sydney								
Jetstar	25	24	20	83.3	19	79.2	1	4.0
Qantas	50	49	38	77.6	35	71.4	1	2.0
Virgin Australia	30	30	17	56.7	26	86.7	0	0.0
All Airlines	105	103	75	72.8	80	77.7	2	1.9
Dubbo-Sydney								
QantasLink	101	99	77	77.8	81	81.8	2	2.0
Regional Express	121	121	96	79.3	103	85.1	0	0.0
All Airlines	222	220	173	78.6	184	83.6	2	0.9
Emerald-Brisbane								
QantasLink	96	96	88	91.7	88	91.7	0	0.0
Virgin Australia	49	49	47	95.9	46	93.9	0	0.0
All Airlines	145	145	135	93.1	134	92.4	0	0.0
Geraldton-Perth								
QantasLink	46	46	44	95.7	44	95.7	0	0.0
Virgin Australia Regional Airlines	50	49	40	81.6	38	77.6	1	2.0
All Airlines	96	95	84	88.4	82	86.3	1	1.0
Gladstone-Brisbane								
QantasLink	122	121	99	81.8	97	80.2	1	0.8
Virgin Australia	71	69	63	91.3	63	91.3	2	2.8
All Airlines	193	190	162	85.3	160	84.2	3	1.6
Gold Coast-Adelaide								
Jetstar	30	30	25	83.3	29	96.7	0	0.0
Virgin Australia	31	31	31	100.0	31	100.0	0	0.0
All Airlines	61	61	56	91.8	60	98.4	0	0.0
Gold Coast-Melbourne								
Jetstar	199	196	162	82.7	159	81.1	3	1.5
Qantas	30	29	21	72.4	18	62.1	1	3.3
Tigerair Australia	84	79	51	64.6	52	65.8	5	6.0
Virgin Australia	189	187	147	78.6	139	74.3	2	1.1
All Airlines	502	491	381	77.6	368	74.9	11	2.2
Gold Coast-Sydney								
Jetstar	298	290	235	81.0	228	78.6	8	2.7
Qantas	82	80	70	87.5	70	87.5	2	2.4
QantasLink	36	36	27	75.0	32	88.9	0	0.0
Tigerair Australia	108	103	80	77.7	80	77.7	5	4.6
Virgin Australia	249	244	192	78.7	190	77.9	5	2.0
All Airlines	773	753	604	80.2	600	79.7	20	2.6
Hamilton Island-Brisbane								
QantasLink	22	22	18	81.8	18	81.8	0	0.0
Virgin Australia	30	30	27	90.0	27	90.0	0	0.0
All Airlines	52	52	45	86.5	45	86.5	0	0.0
Hamilton Island-Sydney								
Jetstar	30	30	27	90.0	27	90.0	0	0.0
Qantas	11	11	8	72.7	8	72.7	0	0.0
QantasLink	19	19	17	89.5	17	89.5	0	0.0
Virgin Australia	24	24	22	91.7	21	87.5	0	0.0
All Airlines	84	84	74	88.1	73	86.9	0	0.0

	<i>Sectors</i>		<i>Arrivals On Time</i>		<i>Departures On Time</i>		<i>Cancellations</i>	
	<i>Sched.</i>	<i>Flown</i>	<i>No.</i>	<i>%</i>	<i>No.</i>	<i>%</i>	<i>No.</i>	<i>%</i>
Hobart-Brisbane								
Jetstar	24	24	23	95.8	22	91.7	0	0.0
Virgin Australia	40	40	31	77.5	30	75.0	0	0.0
All Airlines	64	64	54	84.4	52	81.3	0	0.0
Hobart-Melbourne								
Jetstar	158	153	89	58.2	94	61.4	5	3.2
Qantas	110	109	91	83.5	92	84.4	1	0.9
Tigerair Australia	38	38	30	78.9	31	81.6	0	0.0
Virgin Australia	140	137	98	71.5	107	78.1	3	2.1
All Airlines	446	437	308	70.5	324	74.1	9	2.0
Hobart-Sydney								
Jetstar	69	67	44	65.7	35	52.2	2	2.9
Qantas	5	5	3	60.0	3	60.0	0	0.0
QantasLink	55	55	39	70.9	46	83.6	0	0.0
Virgin Australia	73	71	63	88.7	63	88.7	2	2.7
All Airlines	202	198	149	75.3	147	74.2	4	2.0
Kalgoorlie-Perth								
Qantas	5	5	4	80.0	4	80.0	0	0.0
QantasLink	75	74	71	95.9	71	95.9	1	1.3
Virgin Australia	33	33	27	81.8	26	78.8	0	0.0
Virgin Australia Regional Airlines	35	35	33	94.3	31	88.6	0	0.0
All Airlines	148	147	135	91.8	132	89.8	1	0.7
Karratha-Perth								
Qantas	8	8	7	87.5	6	75.0	0	0.0
QantasLink	169	165	147	89.1	146	88.5	4	2.4
Virgin Australia	6	6	4	66.7	6	100.0	0	0.0
Virgin Australia Regional Airlines	61	61	44	72.1	47	77.0	0	0.0
All Airlines	244	240	202	84.2	205	85.4	4	1.6
Launceston-Melbourne								
Jetstar	100	99	67	67.7	62	62.6	1	1.0
QantasLink	107	106	90	84.9	95	89.6	1	0.9
Virgin Australia	97	97	69	71.1	84	86.6	0	0.0
All Airlines	304	302	226	74.8	241	79.8	2	0.7
Launceston-Sydney								
Jetstar	33	33	24	72.7	26	78.8	0	0.0
Virgin Australia	31	31	27	87.1	26	83.9	0	0.0
All Airlines	64	64	51	79.7	52	81.3	0	0.0
Mackay-Brisbane								
Jetstar	35	34	26	76.5	21	61.8	1	2.9
QantasLink	110	110	91	82.7	95	86.4	0	0.0
Virgin Australia	140	138	123	89.1	122	88.4	2	1.4
All Airlines	285	282	240	85.1	238	84.4	3	1.1
Melbourne-Adelaide								
Jetstar	101	94	65	69.1	73	77.7	7	6.9
Qantas	274	273	243	89.0	244	89.4	1	0.4
Tigerair Australia	73	68	52	76.5	55	80.9	5	6.8
Virgin Australia	276	270	225	83.3	223	82.6	6	2.2
All Airlines	724	705	585	83.0	595	84.4	19	2.6

	<i>Sectors</i>		<i>Arrivals On Time</i>		<i>Departures On Time</i>		<i>Cancellations</i>	
	<i>Sched.</i>	<i>Flown</i>	<i>No.</i>	<i>%</i>	<i>No.</i>	<i>%</i>	<i>No.</i>	<i>%</i>
Melbourne-Brisbane								
Jetstar	133	125	83	66.4	73	58.4	8	6.0
Qantas	419	414	357	86.2	354	85.5	5	1.2
QantasLink	5	4	2	50.0	3	75.0	1	20.0
Tigerair Australia	117	106	86	81.1	82	77.4	11	9.4
Virgin Australia	384	373	305	81.8	311	83.4	11	2.9
All Airlines	1 058	1 022	833	81.5	823	80.5	36	3.4
Melbourne-Cairns								
Jetstar	117	117	88	75.2	83	70.9	0	0.0
Qantas	43	43	38	88.4	37	86.0	0	0.0
Tigerair Australia	43	42	33	78.6	34	81.0	1	2.3
Virgin Australia	38	38	30	78.9	33	86.8	0	0.0
All Airlines	241	240	189	78.8	187	77.9	1	0.4
Melbourne-Canberra								
Qantas	233	230	209	90.9	212	92.2	3	1.3
QantasLink	41	39	35	89.7	35	89.7	2	4.9
Tigerair Australia	39	38	30	78.9	31	81.6	1	2.6
Virgin Australia	164	164	146	89.0	149	90.9	0	0.0
All Airlines	477	471	420	89.2	427	90.7	6	1.3
Melbourne-Darwin								
Jetstar	27	27	8	29.6	15	55.6	0	0.0
Qantas	30	30	28	93.3	27	90.0	0	0.0
Virgin Australia	33	33	28	84.8	28	84.8	0	0.0
All Airlines	90	90	64	71.1	70	77.8	0	0.0
Melbourne-Gold Coast								
Jetstar	199	195	154	79.0	151	77.4	4	2.0
Qantas	30	29	23	79.3	25	86.2	1	3.3
Tigerair Australia	83	78	59	75.6	60	76.9	5	6.0
Virgin Australia	188	186	161	86.6	159	85.5	2	1.1
All Airlines	500	488	397	81.4	395	80.9	12	2.4
Melbourne-Hobart								
Jetstar	157	154	103	66.9	108	70.1	3	1.9
Qantas	110	109	94	86.2	95	87.2	1	0.9
Tigerair Australia	38	38	31	81.6	34	89.5	0	0.0
Virgin Australia	140	137	110	80.3	117	85.4	3	2.1
All Airlines	445	438	338	77.2	354	80.8	7	1.6
Melbourne-Launceston								
Jetstar	101	100	71	71.0	71	71.0	1	1.0
QantasLink	107	106	93	87.7	89	84.0	1	0.9
Virgin Australia	96	96	70	72.9	78	81.3	0	0.0
All Airlines	304	302	234	77.5	238	78.8	2	0.7
Melbourne-Mildura								
QantasLink	93	93	86	92.5	86	92.5	0	0.0
Regional Express	78	78	70	89.7	73	93.6	0	0.0
Virgin Australia	30	30	19	63.3	25	83.3	0	0.0
All Airlines	201	201	175	87.1	184	91.5	0	0.0
Melbourne-Newcastle								
Jetstar	111	108	79	73.1	73	67.6	3	2.7
Virgin Australia	30	30	28	93.3	30	100.0	0	0.0
All Airlines	141	138	107	77.5	103	74.6	3	2.1

	<i>Sectors</i>		<i>Arrivals On Time</i>		<i>Departures On Time</i>		<i>Cancellations</i>	
	<i>Sched.</i>	<i>Flown</i>	<i>No.</i>	<i>%</i>	<i>No.</i>	<i>%</i>	<i>No.</i>	<i>%</i>
Melbourne-Perth								
Jetstar	46	46	36	78.3	36	78.3	0	0.0
Qantas	198	196	145	74.0	131	66.8	2	1.0
Tigerair Australia	48	46	31	67.4	31	67.4	2	4.2
Virgin Australia	165	164	128	78.0	116	70.7	1	0.6
All Airlines	457	452	340	75.2	314	69.5	5	1.1
Melbourne-Sunshine Coast								
Jetstar	93	93	80	86.0	74	79.6	0	0.0
Virgin Australia	72	72	59	81.9	55	76.4	0	0.0
All Airlines	165	165	139	84.2	129	78.2	0	0.0
Melbourne-Sydney								
Jetstar	363	338	245	72.5	248	73.4	25	6.9
Qantas	1 005	929	767	82.6	809	87.1	76	7.6
Tigerair Australia	253	225	145	64.4	147	65.3	28	11.1
Virgin Australia	738	700	541	77.3	579	82.7	38	5.1
All Airlines	2 359	2 192	1 698	77.5	1 783	81.3	167	7.1
Mildura-Melbourne								
QantasLink	93	93	81	87.1	82	88.2	0	0.0
Regional Express	77	77	60	77.9	62	80.5	0	0.0
Virgin Australia	30	30	23	76.7	23	76.7	0	0.0
All Airlines	200	200	164	82.0	167	83.5	0	0.0
Mount Isa-Brisbane								
QantasLink	55	55	48	87.3	48	87.3	0	0.0
Virgin Australia	16	16	12	75.0	13	81.3	0	0.0
All Airlines	71	71	60	84.5	61	85.9	0	0.0
Newcastle-Brisbane								
Jetstar	86	85	66	77.6	66	77.6	1	1.2
QantasLink	46	45	40	88.9	38	84.4	1	2.2
Virgin Australia	83	83	78	94.0	75	90.4	0	0.0
All Airlines	215	213	184	86.4	179	84.0	2	0.9
Newcastle-Melbourne								
Jetstar	111	109	76	69.7	74	67.9	2	1.8
Virgin Australia	30	30	23	76.7	27	90.0	0	0.0
All Airlines	141	139	99	71.2	101	72.7	2	1.4
Newman-Perth								
Qantas	19	19	19	100.0	19	100.0	0	0.0
QantasLink	104	101	91	90.1	90	89.1	3	2.9
Virgin Australia	13	13	12	92.3	12	92.3	0	0.0
Virgin Australia Regional Airlines	24	24	22	91.7	22	91.7	0	0.0
All Airlines	160	157	144	91.7	143	91.1	3	1.9
Perth-Adelaide								
Jetstar	24	24	19	79.2	12	50.0	0	0.0
Qantas	85	84	75	89.3	78	92.9	1	1.2
QantasLink	25	25	22	88.0	24	96.0	0	0.0
Virgin Australia	39	39	31	79.5	32	82.1	0	0.0
Virgin Australia Regional Airlines	34	34	22	64.7	28	82.4	0	0.0
All Airlines	207	206	169	82.0	174	84.5	1	0.5
Perth-Brisbane								
Qantas	142	140	124	88.6	120	85.7	2	1.4
Virgin Australia	103	103	92	89.3	90	87.4	0	0.0
All Airlines	245	243	216	88.9	210	86.4	2	0.8

	<i>Sectors</i>		<i>Arrivals On Time</i>		<i>Departures On Time</i>		<i>Cancellations</i>	
	<i>Sched.</i>	<i>Flown</i>	<i>No.</i>	<i>%</i>	<i>No.</i>	<i>%</i>	<i>No.</i>	<i>%</i>
Perth-Broome								
QantasLink	91	91	78	85.7	76	83.5	0	0.0
Virgin Australia	12	12	10	83.3	11	91.7	0	0.0
Virgin Australia Regional Airlines	68	67	53	79.1	55	82.1	1	1.5
All Airlines	171	170	141	82.9	142	83.5	1	0.6
Perth-Darwin								
Qantas	36	36	35	97.2	34	94.4	0	0.0
Virgin Australia	23	23	20	87.0	20	87.0	0	0.0
Virgin Australia Regional Airlines	7	7	4	57.1	5	71.4	0	0.0
All Airlines	66	66	59	89.4	59	89.4	0	0.0
Perth-Geraldton								
QantasLink	46	46	43	93.5	44	95.7	0	0.0
Virgin Australia Regional Airlines	50	50	42	84.0	42	84.0	0	0.0
All Airlines	96	96	85	88.5	86	89.6	0	0.0
Perth-Kalgoorlie								
Qantas	5	5	4	80.0	4	80.0	0	0.0
QantasLink	75	74	69	93.2	72	97.3	1	1.3
Virgin Australia	32	32	26	81.3	28	87.5	0	0.0
Virgin Australia Regional Airlines	35	35	30	85.7	30	85.7	0	0.0
All Airlines	147	146	129	88.4	134	91.8	1	0.7
Perth-Karratha								
Qantas	8	8	7	87.5	7	87.5	0	0.0
QantasLink	169	168	135	80.4	146	86.9	1	0.6
Virgin Australia	6	6	2	33.3	5	83.3	0	0.0
Virgin Australia Regional Airlines	61	61	43	70.5	50	82.0	0	0.0
All Airlines	244	243	187	77.0	208	85.6	1	0.4
Perth-Melbourne								
Jetstar	44	44	30	68.2	28	63.6	0	0.0
Qantas	201	200	164	82.0	161	80.5	1	0.5
Tigerair Australia	48	46	32	69.6	33	71.7	2	4.2
Virgin Australia	170	167	148	88.6	142	85.0	3	1.8
All Airlines	463	457	374	81.8	364	79.6	6	1.3
Perth-Newman								
Qantas	19	19	19	100.0	19	100.0	0	0.0
QantasLink	104	102	88	86.3	90	88.2	2	1.9
Virgin Australia	13	13	12	92.3	13	100.0	0	0.0
Virgin Australia Regional Airlines	24	23	22	95.7	23	100.0	1	4.2
All Airlines	160	157	141	89.8	145	92.4	3	1.9
Perth-Port Hedland								
Qantas	20	20	20	100.0	20	100.0	0	0.0
QantasLink	107	104	91	87.5	98	94.2	3	2.8
Virgin Australia	23	23	19	82.6	21	91.3	0	0.0
Virgin Australia Regional Airlines	27	27	25	92.6	26	96.3	0	0.0
All Airlines	177	174	155	89.1	165	94.8	3	1.7
Perth-Sydney								
Jetstar	24	23	20	87.0	14	60.9	1	4.2
Qantas	186	183	131	71.6	117	63.9	3	1.6
Tigerair Australia	27	27	21	77.8	20	74.1	0	0.0
Virgin Australia	115	115	108	93.9	91	79.1	0	0.0
All Airlines	352	348	280	80.5	242	69.5	4	1.1

	Sectors		Arrivals On Time		Departures On Time		Cancellations	
	Sched.	Flown	No.	%	No.	%	No.	%
Port Hedland-Perth								
Qantas	20	20	17	85.0	15	75.0	0	0.0
QantasLink	106	102	88	86.3	96	94.1	4	3.8
Virgin Australia	23	23	22	95.7	21	91.3	0	0.0
Virgin Australia Regional Airlines	27	27	23	85.2	24	88.9	0	0.0
All Airlines	176	172	150	87.2	156	90.7	4	2.3
Port Lincoln-Adelaide								
QantasLink	106	105	93	88.6	93	88.6	1	0.9
Regional Express	211	210	184	87.6	192	91.4	1	0.5
All Airlines	317	315	277	87.9	285	90.5	2	0.6
Port Macquarie-Sydney								
QantasLink	93	92	74	80.4	78	84.8	1	1.1
Virgin Australia	60	59	39	66.1	35	59.3	1	1.7
All Airlines	153	151	113	74.8	113	74.8	2	1.3
Proserpine-Brisbane								
Jetstar	34	34	25	73.5	24	70.6	0	0.0
Virgin Australia	36	36	32	88.9	32	88.9	0	0.0
All Airlines	70	70	57	81.4	56	80.0	0	0.0
Proserpine-Sydney								
Jetstar	13	13	12	92.3	10	76.9	0	0.0
Tigerair Australia	27	27	23	85.2	22	81.5	0	0.0
All Airlines	40	40	35	87.5	32	80.0	0	0.0
Rockhampton-Brisbane								
QantasLink	169	169	136	80.5	142	84.0	0	0.0
Virgin Australia	135	135	113	83.7	112	83.0	0	0.0
All Airlines	304	304	249	81.9	254	83.6	0	0.0
Sunshine Coast-Melbourne								
Jetstar	93	93	65	69.9	58	62.4	0	0.0
Virgin Australia	72	72	45	62.5	40	55.6	0	0.0
All Airlines	165	165	110	66.7	98	59.4	0	0.0
Sunshine Coast-Sydney								
Jetstar	100	99	69	69.7	63	63.6	1	1.0
QantasLink	35	34	26	76.5	27	79.4	1	2.9
Virgin Australia	51	50	39	78.0	40	80.0	1	2.0
All Airlines	186	183	134	73.2	130	71.0	3	1.6
Sydney-Adelaide								
Jetstar	102	98	74	75.5	69	70.4	4	3.9
Qantas	207	204	179	87.7	182	89.2	3	1.4
QantasLink	33	33	25	75.8	25	75.8	0	0.0
Tigerair Australia	47	47	29	61.7	28	59.6	0	0.0
Virgin Australia	163	161	141	87.6	142	88.2	2	1.2
All Airlines	552	543	448	82.5	446	82.1	9	1.6
Sydney-Albury								
QantasLink	93	92	69	75.0	73	79.3	1	1.1
Regional Express	102	100	85	85.0	83	83.0	2	2.0
Virgin Australia	60	60	47	78.3	44	73.3	0	0.0
All Airlines	255	252	201	79.8	200	79.4	3	1.2
Sydney-Armidale								
QantasLink	114	112	96	85.7	98	87.5	2	1.8
Regional Express	69	69	51	73.9	51	73.9	0	0.0
All Airlines	183	181	147	81.2	149	82.3	2	1.1

	<i>Sectors</i>		<i>Arrivals On Time</i>		<i>Departures On Time</i>		<i>Cancellations</i>	
	<i>Sched.</i>	<i>Flown</i>	<i>No.</i>	<i>%</i>	<i>No.</i>	<i>%</i>	<i>No.</i>	<i>%</i>
Sydney-Ayers Rock								
Jetstar	30	30	19	63.3	23	76.7	0	0.0
Virgin Australia	30	30	21	70.0	24	80.0	0	0.0
All Airlines	60	60	40	66.7	47	78.3	0	0.0
Sydney-Ballina								
Jetstar	84	84	61	72.6	63	75.0	0	0.0
Regional Express	23	23	19	82.6	19	82.6	0	0.0
Virgin Australia	34	33	27	81.8	28	84.8	1	2.9
All Airlines	141	140	107	76.4	110	78.6	1	0.7
Sydney-Brisbane								
Jetstar	179	169	137	81.1	130	76.9	10	5.6
Qantas	567	556	476	85.6	474	85.3	11	1.9
QantasLink	35	33	26	78.8	27	81.8	2	5.7
Tigerair Australia	107	105	88	83.8	90	85.7	2	1.9
Virgin Australia	520	501	417	83.2	413	82.4	19	3.7
All Airlines	1 408	1 364	1 144	83.9	1 134	83.1	44	3.1
Sydney-Cairns								
Jetstar	105	103	93	90.3	91	88.3	2	1.9
Qantas	78	77	63	81.8	56	72.7	1	1.3
Tigerair Australia	47	47	43	91.5	40	85.1	0	0.0
Virgin Australia	83	83	74	89.2	67	80.7	0	0.0
All Airlines	313	310	273	88.1	254	81.9	3	1.0
Sydney-Canberra								
Qantas	10	10	8	80.0	8	80.0	0	0.0
QantasLink	444	433	359	82.9	369	85.2	11	2.5
Virgin Australia	253	247	196	79.4	187	75.7	6	2.4
All Airlines	707	690	563	81.6	564	81.7	17	2.4
Sydney-Coffs Harbour								
QantasLink	122	121	99	81.8	92	76.0	1	0.8
Tigerair Australia	13	11	9	81.8	10	90.9	2	15.4
Virgin Australia	53	52	45	86.5	45	86.5	1	1.9
All Airlines	188	184	153	83.2	147	79.9	4	2.1
Sydney-Darwin								
Jetstar	24	24	17	70.8	19	79.2	0	0.0
Qantas	50	49	40	81.6	36	73.5	1	2.0
Virgin Australia	30	30	24	80.0	26	86.7	0	0.0
All Airlines	104	103	81	78.6	81	78.6	1	1.0
Sydney-Dubbo								
QantasLink	101	100	82	82.0	83	83.0	1	1.0
Regional Express	122	122	105	86.1	107	87.7	0	0.0
All Airlines	223	222	187	84.2	190	85.6	1	0.4
Sydney-Gold Coast								
Jetstar	298	291	233	80.1	227	78.0	7	2.3
Qantas	81	80	68	85.0	67	83.8	1	1.2
QantasLink	36	36	33	91.7	33	91.7	0	0.0
Tigerair Australia	108	103	83	80.6	85	82.5	5	4.6
Virgin Australia	249	244	190	77.9	193	79.1	5	2.0
All Airlines	772	754	607	80.5	605	80.2	18	2.3

	<i>Sectors</i>		<i>Arrivals On Time</i>		<i>Departures On Time</i>		<i>Cancellations</i>	
	<i>Sched.</i>	<i>Flown</i>	<i>No.</i>	<i>%</i>	<i>No.</i>	<i>%</i>	<i>No.</i>	<i>%</i>
Sydney-Hamilton Island								
Jetstar	30	30	28	93.3	26	86.7	0	0.0
Qantas	11	11	8	72.7	8	72.7	0	0.0
QantasLink	19	19	15	78.9	17	89.5	0	0.0
Virgin Australia	24	24	21	87.5	21	87.5	0	0.0
All Airlines	84	84	72	85.7	72	85.7	0	0.0
Sydney-Hobart								
Jetstar	68	67	49	73.1	45	67.2	1	1.5
Qantas	5	5	4	80.0	4	80.0	0	0.0
QantasLink	55	55	41	74.5	43	78.2	0	0.0
Virgin Australia	72	71	59	83.1	61	85.9	1	1.4
All Airlines	200	198	153	77.3	153	77.3	2	1.0
Sydney-Launceston								
Jetstar	33	33	30	90.9	29	87.9	0	0.0
Virgin Australia	31	31	29	93.5	26	83.9	0	0.0
All Airlines	64	64	59	92.2	55	85.9	0	0.0
Sydney-Melbourne								
Jetstar	363	336	266	79.2	253	75.3	27	7.4
Qantas	1 018	940	749	79.7	786	83.6	78	7.7
Tigerair Australia	252	225	147	65.3	152	67.6	27	10.7
Virgin Australia	731	693	553	79.8	581	83.8	38	5.2
All Airlines	2 364	2 194	1 715	78.2	1 772	80.8	170	7.2
Sydney-Perth								
Jetstar	24	24	18	75.0	17	70.8	0	0.0
Qantas	195	193	135	69.9	131	67.9	2	1.0
Tigerair Australia	27	27	21	77.8	21	77.8	0	0.0
Virgin Australia	118	118	97	82.2	89	75.4	0	0.0
All Airlines	364	362	271	74.9	258	71.3	2	0.5
Sydney-Port Macquarie								
QantasLink	93	93	72	77.4	80	86.0	0	0.0
Virgin Australia	60	59	42	71.2	41	69.5	1	1.7
All Airlines	153	152	114	75.0	121	79.6	1	0.7
Sydney-Proserpine								
Jetstar	12	12	11	91.7	11	91.7	0	0.0
Tigerair Australia	27	27	26	96.3	24	88.9	0	0.0
All Airlines	39	39	37	94.9	35	89.7	0	0.0
Sydney-Sunshine Coast								
Jetstar	100	99	69	69.7	64	64.6	1	1.0
QantasLink	35	34	27	79.4	29	85.3	1	2.9
Virgin Australia	51	50	44	88.0	42	84.0	1	2.0
All Airlines	186	183	140	76.5	135	73.8	3	1.6
Sydney-Tamworth								
QantasLink	113	111	87	78.4	87	78.4	2	1.8
Virgin Australia	50	50	35	70.0	35	70.0	0	0.0
All Airlines	163	161	122	75.8	122	75.8	2	1.2
Sydney-Townsville								
Jetstar	30	30	21	70.0	25	83.3	0	0.0
Virgin Australia	28	28	24	85.7	23	82.1	0	0.0
All Airlines	58	58	45	77.6	48	82.8	0	0.0

	<i>Sectors</i>		<i>Arrivals On Time</i>		<i>Departures On Time</i>		<i>Cancellations</i>	
	<i>Sched.</i>	<i>Flown</i>	<i>No.</i>	<i>%</i>	<i>No.</i>	<i>%</i>	<i>No.</i>	<i>%</i>
Sydney-Wagga Wagga								
QantasLink	93	92	82	89.1	78	84.8	1	1.1
Regional Express	129	129	120	93.0	118	91.5	0	0.0
All Airlines	222	221	202	91.4	196	88.7	1	0.5
Tamworth-Sydney								
QantasLink	113	110	86	78.2	95	86.4	3	2.7
Virgin Australia	50	50	42	84.0	43	86.0	0	0.0
All Airlines	163	160	128	80.0	138	86.3	3	1.8
Townsville-Brisbane								
Jetstar	60	60	48	80.0	46	76.7	0	0.0
Qantas	52	50	47	94.0	47	94.0	2	3.8
QantasLink	89	89	73	82.0	78	87.6	0	0.0
Virgin Australia	138	135	130	96.3	127	94.1	3	2.2
All Airlines	339	334	298	89.2	298	89.2	5	1.5
Townsville-Cairns								
QantasLink	129	129	120	93.0	121	93.8	0	0.0
Regional Express	11	11	11	100.0	11	100.0	0	0.0
All Airlines	140	140	131	93.6	132	94.3	0	0.0
Townsville-Sydney								
Jetstar	30	30	24	80.0	21	70.0	0	0.0
Virgin Australia	28	28	26	92.9	26	92.9	0	0.0
All Airlines	58	58	50	86.2	47	81.0	0	0.0
Wagga Wagga-Sydney								
QantasLink	93	92	82	89.1	82	89.1	1	1.1
Regional Express	132	132	105	79.5	113	85.6	0	0.0
All Airlines	225	224	187	83.5	195	87.1	1	0.4

Airports

On time performance is reported for all routes where the passenger load averages over 8000 passengers per month, and where two or more airlines operate in competition. The following data reports by airport against flights operated on those routes only. This month, 8 major city airports and 32 regional city airports are covered.

Airport	Arrivals			Departures		
	Sectors Flown	On Time No.	%	Sectors Flown	On Time No.	%
Adelaide						
Jetstar	273	201	73.6	272	208	76.5
Qantas	700	620	88.6	697	615	88.2
QantasLink	232	198	85.3	230	203	88.3
Regional Express	210	184	87.6	211	196	92.9
Tigerair Australia	139	101	72.7	139	94	67.6
Virgin Australia	645	551	85.4	645	566	87.8
Virgin Australia Regional Airlines	35	23	65.7	34	24	70.6
All Airlines	2 234	1 878	84.1	2 228	1 906	85.5
Relates to services to and from Alice Springs, Brisbane, Canberra, Gold Coast, Melbourne, Perth, Port Lincoln and Sydney.						
Albury						
QantasLink	92	69	75.0	92	72	78.3
Regional Express	100	85	85.0	98	86	87.8
Virgin Australia	60	47	78.3	60	47	78.3
All Airlines	252	201	79.8	250	205	82.0
Relates to services to and from Sydney only.						
Alice Springs						
Qantas	30	27	90.0	30	26	86.7
QantasLink	58	54	93.1	57	53	93.0
Virgin Australia	40	36	90.0	40	40	100.0
Virgin Australia Regional Airlines	1	1	100.0	1	1	100.0
All Airlines	129	118	91.5	128	120	93.8
Relates to services to and from Adelaide and Darwin.						
Armidale						
QantasLink	112	96	85.7	112	96	85.7
Regional Express	69	51	73.9	70	46	65.7
All Airlines	181	147	81.2	182	142	78.0
Relates to services to and from Sydney only.						
Ayers Rock						
Jetstar	30	19	63.3	30	13	43.3
Virgin Australia	30	21	70.0	30	19	63.3
All Airlines	60	40	66.7	60	32	53.3
Relates to services to and from Sydney only.						
Ballina						
Jetstar	84	61	72.6	83	45	54.2
Regional Express	23	19	82.6	24	15	62.5
Virgin Australia	33	27	81.8	33	25	75.8
All Airlines	140	107	76.4	140	85	60.7
Relates to services to and from Sydney only.						

Airport	Arrivals			Departures		
	Sectors	On Time		Sectors	On Time	
	Flown	No.	%	Flown	No.	%
Brisbane						
Jetstar	689	547	79.4	692	520	75.1
Qantas	1 327	1 160	87.4	1 329	1 179	88.7
QantasLink	1 110	936	84.3	1 109	950	85.7
Tigerair Australia	303	258	85.1	302	246	81.5
Virgin Australia	2 093	1 823	87.1	2 091	1 795	85.8
All Airlines	5 522	4 724	85.5	5 523	4 690	84.9

Relates to services to and from Adelaide, Bundaberg, Cairns, Canberra, Darwin, Emerald, Gladstone, Hamilton Island, Hobart, Mackay, Melbourne, Mount Isa, Newcastle, Perth, Proserpine, Rockhampton, Sydney and Townsville.

Broome

QantasLink	91	78	85.7	90	67	74.4
Virgin Australia	12	10	83.3	10	6	60.0
Virgin Australia Regional Airlines	67	53	79.1	66	44	66.7
All Airlines	170	141	82.9	166	117	70.5

Relates to services to and from Perth only.

Bundaberg

QantasLink	102	87	85.3	102	90	88.2
Virgin Australia	30	27	90.0	30	29	96.7
All Airlines	132	114	86.4	132	119	90.2

Relates to services to and from Brisbane only.

Cairns

Jetstar	325	274	84.3	326	286	87.7
Qantas	179	159	88.8	178	158	88.8
QantasLink	202	175	86.6	203	179	88.2
Regional Express	11	11	100.0	11	11	100.0
Tigerair Australia	119	103	86.6	119	98	82.4
Virgin Australia	242	218	90.1	242	212	87.6
All Airlines	1 078	940	87.2	1 079	944	87.5

Relates to services to and from Brisbane, Melbourne, Sydney and Townsville.

Canberra

Qantas	299	272	91.0	299	280	93.6
QantasLink	608	504	82.9	609	508	83.4
Tigerair Australia	56	45	80.4	56	44	78.6
Virgin Australia	535	454	84.9	537	458	85.3
All Airlines	1 498	1 275	85.1	1 501	1 290	85.9

Relates to services to and from Adelaide, Brisbane, Melbourne and Sydney.

Coffs Harbour

QantasLink	121	99	81.8	120	103	85.8
Tigerair Australia	11	9	81.8	11	9	81.8
Virgin Australia	52	45	86.5	52	45	86.5
All Airlines	184	153	83.2	183	157	85.8

Relates to services to and from Sydney only.

Airport	Arrivals			Departures		
	Sectors	On Time		Sectors	On Time	
	Flown	No.	%	Flown	No.	%
Darwin						
Jetstar	77	50	64.9	77	53	68.8
Qantas	149	134	89.9	150	116	77.3
QantasLink	57	54	94.7	58	54	93.1
Tigerair Australia	20	19	95.0	20	19	95.0
Virgin Australia	136	120	88.2	136	120	88.2
Virgin Australia Regional Airlines	7	4	57.1	8	4	50.0
All Airlines	446	381	85.4	449	366	81.5
Relates to services to and from Alice Springs, Brisbane, Melbourne, Perth and Sydney.						
Dubbo						
QantasLink	100	82	82.0	99	81	81.8
Regional Express	122	105	86.1	121	103	85.1
All Airlines	222	187	84.2	220	184	83.6
Relates to services to and from Sydney only.						
Emerald						
QantasLink	96	91	94.8	96	88	91.7
Virgin Australia	49	44	89.8	49	46	93.9
All Airlines	145	135	93.1	145	134	92.4
Relates to services to and from Brisbane only.						
Geraldton						
QantasLink	46	43	93.5	46	44	95.7
Virgin Australia Regional Airlines	50	42	84.0	49	38	77.6
All Airlines	96	85	88.5	95	82	86.3
Relates to services to and from Perth only.						
Gladstone						
QantasLink	122	94	77.0	121	97	80.2
Virgin Australia	69	62	89.9	69	63	91.3
All Airlines	191	156	81.7	190	160	84.2
Relates to services to and from Brisbane only.						
Gold Coast						
Jetstar	515	413	80.2	516	416	80.6
Qantas	109	91	83.5	109	88	80.7
QantasLink	36	33	91.7	36	32	88.9
Tigerair Australia	181	142	78.5	182	132	72.5
Virgin Australia	461	382	82.9	462	360	77.9
All Airlines	1 302	1 061	81.5	1 305	1 028	78.8
Relates to services to and from Adelaide, Melbourne and Sydney.						
Hamilton Island						
Jetstar	30	28	93.3	30	27	90.0
Qantas	11	8	72.7	11	8	72.7
QantasLink	41	34	82.9	41	35	85.4
Virgin Australia	54	48	88.9	54	48	88.9
All Airlines	136	118	86.8	136	118	86.8
Relates to services to and from Brisbane and Sydney.						

Airport	Arrivals			Departures		
	Sectors Flown	On Time		Sectors Flown	On Time	
		No.	%		No.	%
Hobart						
Jetstar	245	176	71.8	244	151	61.9
Qantas	114	98	86.0	114	95	83.3
QantasLink	55	41	74.5	55	46	83.6
Tigerair Australia	38	31	81.6	38	31	81.6
Virgin Australia	247	203	82.2	248	200	80.6
All Airlines	699	549	78.5	699	523	74.8
Relates to services to and from Brisbane, Melbourne and Sydney.						
Kalgoorlie						
Qantas	5	4	80.0	5	4	80.0
QantasLink	74	69	93.2	74	71	95.9
Virgin Australia	32	26	81.3	33	26	78.8
Virgin Australia Regional Airlines	35	30	85.7	35	31	88.6
All Airlines	146	129	88.4	147	132	89.8
Relates to services to and from Perth only.						
Karratha						
Qantas	8	7	87.5	8	6	75.0
QantasLink	168	135	80.4	165	146	88.5
Virgin Australia	6	2	33.3	6	6	100.0
Virgin Australia Regional Airlines	61	43	70.5	61	47	77.0
All Airlines	243	187	77.0	240	205	85.4
Relates to services to and from Perth only.						
Launceston						
Jetstar	133	101	75.9	132	88	66.7
QantasLink	106	93	87.7	106	95	89.6
Virgin Australia	127	99	78.0	128	110	85.9
All Airlines	366	293	80.1	366	293	80.1
Relates to services to and from Melbourne and Sydney.						
Mackay						
Jetstar	35	24	68.6	34	21	61.8
QantasLink	112	99	88.4	110	95	86.4
Virgin Australia	139	113	81.3	138	122	88.4
All Airlines	286	236	82.5	282	238	84.4
Relates to services to and from Brisbane only.						
Melbourne						
Jetstar	1 394	1 036	74.3	1 397	1 005	71.9
Qantas	2 247	1 872	83.3	2 253	1 934	85.8
QantasLink	243	206	84.8	242	213	88.0
Regional Express	77	60	77.9	78	73	93.6
Tigerair Australia	641	449	70.0	641	474	73.9
Virgin Australia	2 289	1 801	78.7	2 293	1 903	83.0
All Airlines	6 891	5 424	78.7	6 904	5 602	81.1
Relates to services to and from Adelaide, Brisbane, Cairns, Canberra, Darwin, Gold Coast, Hobart, Launceston, Mildura, Newcastle, Perth, Sunshine Coast and Sydney.						
Mildura						
QantasLink	93	86	92.5	93	82	88.2
Regional Express	78	70	89.7	77	62	80.5
Virgin Australia	30	19	63.3	30	23	76.7
All Airlines	201	175	87.1	200	167	83.5
Relates to services to and from Melbourne only.						

Airport	Arrivals			Departures		
	Sectors Flown	On Time		Sectors Flown	On Time	
		No.	%		No.	%
Mount Isa						
QantasLink	55	37	67.3	55	48	87.3
Virgin Australia	16	15	93.8	16	13	81.3
All Airlines	71	52	73.2	71	61	85.9
Relates to services to and from Brisbane only.						
Newcastle						
Jetstar	194	145	74.7	194	140	72.2
QantasLink	45	36	80.0	45	38	84.4
Virgin Australia	113	103	91.2	113	102	90.3
All Airlines	352	284	80.7	352	280	79.5
Relates to services to and from Brisbane and Melbourne.						
Newman						
Qantas	19	19	100.0	19	19	100.0
QantasLink	102	88	86.3	101	90	89.1
Virgin Australia	13	12	92.3	13	12	92.3
Virgin Australia Regional Airlines	23	22	95.7	24	22	91.7
All Airlines	157	141	89.8	157	143	91.1
Relates to services to and from Perth only.						
Perth						
Jetstar	94	75	79.8	91	54	59.3
Qantas	698	559	80.1	695	560	80.6
QantasLink	602	536	89.0	610	550	90.2
Tigerair Australia	73	52	71.2	73	53	72.6
Virgin Australia	534	430	80.5	533	453	85.0
Virgin Australia Regional Airlines	303	239	78.9	304	259	85.2
All Airlines	2 304	1 891	82.1	2 306	1 929	83.7
Relates to services to and from Adelaide, Brisbane, Broome, Darwin, Geraldton, Kalgoorlie, Karratha, Melbourne, Newman, Port Hedland and Sydney.						
Port Hedland						
Qantas	20	20	100.0	20	15	75.0
QantasLink	104	91	87.5	102	96	94.1
Virgin Australia	23	19	82.6	23	21	91.3
Virgin Australia Regional Airlines	27	25	92.6	27	24	88.9
All Airlines	174	155	89.1	172	156	90.7
Relates to services to and from Perth only.						
Port Lincoln						
QantasLink	105	95	90.5	105	93	88.6
Regional Express	211	185	87.7	210	192	91.4
All Airlines	316	280	88.6	315	285	90.5
Relates to services to and from Adelaide only.						
Port Macquarie						
QantasLink	93	72	77.4	92	78	84.8
Virgin Australia	59	42	71.2	59	35	59.3
All Airlines	152	114	75.0	151	113	74.8
Relates to services to and from Sydney only.						

Airport	Arrivals			Departures		
	Sectors Flown	On Time		Sectors Flown	On Time	
		No.	%		No.	%
Proserpine						
Jetstar	46	35	76.1	47	34	72.3
Tigerair Australia	27	26	96.3	27	22	81.5
Virgin Australia	36	33	91.7	36	32	88.9
All Airlines	109	94	86.2	110	88	80.0
Relates to services to and from Brisbane and Sydney.						
Rockhampton						
QantasLink	165	137	83.0	169	142	84.0
Virgin Australia	135	104	77.0	135	112	83.0
All Airlines	300	241	80.3	304	254	83.6
Relates to services to and from Brisbane only.						
Sunshine Coast						
Jetstar	192	149	77.6	192	121	63.0
QantasLink	34	27	79.4	34	27	79.4
Virgin Australia	122	103	84.4	122	80	65.6
All Airlines	348	279	80.2	348	228	65.5
Relates to services to and from Melbourne and Sydney.						
Sydney						
Jetstar	1 431	1 100	76.9	1 430	1 092	76.4
Qantas	2 127	1 756	82.6	2 125	1 752	82.4
QantasLink	1 358	1 097	80.8	1 364	1 134	83.1
Regional Express	445	346	77.8	443	378	85.3
Tigerair Australia	592	429	72.5	592	450	76.0
Virgin Australia	2 569	2 082	81.0	2 565	2 088	81.4
All Airlines	8 522	6 810	79.9	8 519	6 894	80.9
Relates to services to and from Adelaide, Albury, Armidale, Ayers Rock, Ballina, Brisbane, Cairns, Canberra, Coffs Harbour, Darwin, Dubbo, Gold Coast, Hamilton Island, Hobart, Launceston, Melbourne, Perth, Port Macquarie, Proserpine, Sunshine Coast, Tamworth, Townsville and Wagga Wagga.						
Tamworth						
QantasLink	111	87	78.4	110	95	86.4
Virgin Australia	50	35	70.0	50	43	86.0
All Airlines	161	122	75.8	160	138	86.3
Relates to services to and from Sydney only.						
Townsville						
Jetstar	90	73	81.1	90	67	74.4
Qantas	50	47	94.0	50	47	94.0
QantasLink	220	198	90.0	218	199	91.3
Regional Express	11	11	100.0	11	11	100.0
Virgin Australia	163	141	86.5	163	153	93.9
All Airlines	534	470	88.0	532	477	89.7
Relates to services to and from Brisbane, Cairns and Sydney.						
Wagga Wagga						
QantasLink	92	82	89.1	92	82	89.1
Regional Express	129	120	93.0	132	113	85.6
All Airlines	221	202	91.4	224	195	87.1
Relates to services to and from Sydney only.						

Definitions

On time arrival	A flight arrival is counted as "on time" if it arrived at the gate before 15 minutes after the scheduled arrival time shown in the carriers' schedule. Neither diverted nor cancelled flights count as on time.
On time departure	A flight departure is counted as "on time" if it departs the gate before 15 minutes after the scheduled departure time shown in the carriers' schedule.
Cancellation	A flight removed from service within 7 days of scheduled departure is regarded as a cancellation.
On time departure percentage	The percentage of on time departures is measured against the number of departures <i>operated</i> on any particular sector.
On time arrival percentage	The percentage of on time arrivals is measured against the number of arrivals <i>operated</i> on any particular sector.
Cancellation percentage	The percentage of cancellations is measured against the number of services <i>scheduled</i> on any particular sector.
