



**Australian Government**

**Department of Infrastructure, Regional Development and Cities**

Bureau of Infrastructure, Transport and Regional Economics

STATISTICAL REPORT



## Aviation

Domestic airline on time performance  
June 2018

© Commonwealth of Australia 2018

ISSN: 1832-0759

### **Ownership of intellectual property rights in this publication**

Unless otherwise noted, copyright (and any other intellectual property rights, if any) in this publication is owned by the Commonwealth of Australia (referred to below as the Commonwealth).

### **Disclaimer**

The material contained in this publication is made available on the understanding that the Commonwealth is not providing professional advice, and that users exercise their own skill and care with respect to its use, and seek independent advice if necessary.

The Commonwealth makes no representations or warranties as to the contents or accuracy of the information contained in this publication. To the extent permitted by law, the Commonwealth disclaims liability to any person or organisation in respect of anything done, or omitted to be done, in reliance upon information contained in this publication.

### **Creative Commons licence**

With the exception of (a) the Coat of Arms; and (b) the Department of Infrastructure, Regional Development and Cities' photos and graphics, copyright in this publication is licensed under a Creative Commons Attribution 3.0 Australia Licence.

Creative Commons Attribution 3.0 Australia Licence is a standard form licence agreement that allows you to copy, communicate and adapt this publication provided that you attribute the work to the Commonwealth and abide by the other licence terms. A summary of the licence terms is available from <http://creativecommons.org/licenses/by/3.0/au/deed.en>. The full licence terms are available from <http://creativecommons.org/licenses/by/3.0/au/legalcode>.

### **Use of the Coat of Arms**

The Department of the Prime Minister and Cabinet sets the terms under which the Coat of Arms is used. Please refer to the Department's Commonwealth Coat of Arms and Government branding web page <http://www.dpmmc.gov.au/guidelines/index.cfm#brand> and, in particular, the Guidelines on the use of the Commonwealth Coat of Arms publication.

An appropriate citation for this report is:

Bureau of Infrastructure, Transport and Regional Economics (BITRE), 2018, Domestic airline on time performance, Statistical Report, BITRE, Canberra ACT.

### **Contact us**

This publication is available in PDF format. All other rights are reserved, including in relation to any Departmental logos or trade marks which may exist. For enquiries regarding the licence and any use of this publication, please contact:

Bureau of Infrastructure, Transport and Regional Economics (BITRE)  
Department of Infrastructure, Regional Development and Cities  
GPO Box 501, Canberra ACT 2601, Australia  
Telephone: (international) +61 2 6274 7210  
Fax: (international) +61 2 6274 6855  
Email: [bitre@infrastructure.gov.au](mailto:bitre@infrastructure.gov.au)  
Website: [www.bitre.gov.au](http://www.bitre.gov.au)

### **Inquiries**

Should you require additional information about the statistics contained in this publication:

Telephone (02) 6274 7790 or Facsimile (02) 6274 7727

Electronic mail: [AVSTATS@infrastructure.gov.au](mailto:AVSTATS@infrastructure.gov.au)

Web site: <http://www.bitre.gov.au/statistics/aviation/otphome.aspx>

# Foreword

The Bureau of Infrastructure, Transport and Regional Economics (BITRE) monitors the punctuality and reliability of major domestic airlines operating between Australian airports. The purpose of this is to allow for evaluation of overall industry and individual airline performance, so that consumers of air travel can make informed decisions.

The following domestic airlines currently report this information monthly to the BITRE: Jetstar, Qantas, QantasLink, Regional Express, Tigerair Australia, Virgin Australia and Virgin Australia Regional Airlines. Data has been gathered since November 2003, although some airlines commenced reporting at a later date, including Jetstar which first reported in May 2004, MacAir in July 2005, Tigerair Australia in April 2008 and Virgin Australia Regional Airlines in May 2013. MacAir ceased operations in February 2009 and data was not received for December 2008 onwards. Virgin Blue was rebranded as Virgin Australia in May 2011 and Tiger Airways was rebranded as Tigerair Australia in July 2013 and time series data in Microsoft Excel spreadsheet format on the BITRE website have been revised to reflect these changes. Services operated by Skywest on behalf of Virgin Australia using ATR/F100 aircraft commenced in November 2011 and were shown separately as Virgin Australia – ATR/F100 Operations. Virgin Australia Regional Airlines commenced operations in May 2013. It was formed after the acquisition of Skywest by Virgin Australia and represented a combination of operations previously reported under Skywest and Virgin Australia – ATR/F100 Operations. In January 2016, Virgin Australia transferred their ATR fleet from Virgin Australia Regional Airlines to Virgin Australia.

Information presented in this report is for Australian domestic routes for which the passenger load averaged 8 000 or more passengers per month over the previous six months and where two or more airlines operated in competition on those routes. There were 66 routes that met this definition in June 2018. Over time, routes which meet these criteria change as airline networks and traffic levels vary.

Participating airlines report their overall monthly network performance where this is possible.

Total industry figures encompass all services operated by reporting airlines only. These airlines collectively carried over 95 per cent of total domestic passengers (regular public transport only) in 2017.

The method of capturing on time performance varies between airlines utilising different recording systems. Jetstar and Qantas jet aircraft use Aircraft Communication Addressing and Reporting System (ACARS) to electronically measure on time performance. Regional Express, Tigerair Australia, Virgin Australia, Virgin Australia Regional Airlines and the Qantas non-jet fleet record on time performance manually using records from pilots, gate agents and/or ground crews.

After initial data is collected, aggregate reports are audited internally by participating airlines prior to publication.

Reports and detailed time series data in Microsoft Excel spreadsheet format are available from the BITRE website at: <http://www.bitre.gov.au/statistics/aviation/otphome.aspx>.



# Contents

|                            | Page |
|----------------------------|------|
| Industry performance ..... | 1    |
| Individual routes .....    | 10   |
| Airports .....             | 24   |
| Definitions .....          | 30   |



## Industry performance

For June 2018, on time performance over all routes operated by participating airlines (Jetstar, Qantas, QantasLink, Regional Express, Tigerair Australia, Virgin Australia and Virgin Australia Regional Airlines) averaged 76.5 per cent for on time arrivals and 78.0 per cent for on time departures. Cancellations represented 1.9 per cent of all scheduled flights. The equivalent figures for June 2017 were 85.0 per cent for on time arrivals, 85.3 per cent for on time departures and 1.4 per cent for cancellations.

This month's on time arrivals figure was lower than the long term average performance for all routes (82.7 per cent) and the on time departures figure was also lower than the long term average (84.0 per cent). The rate of cancellations was higher than the long term average of 1.4 per cent.

Qantas achieved the highest on time arrivals among the major domestic airlines at 76.4 per cent followed by Virgin Australia at 76.2 per cent, Jetstar at 72.9 per cent and Tigerair Australia at 65.4 per cent. Of the regional airlines, QantasLink recorded 83.3 per cent for on time arrivals, followed by Regional Express at 74.7 per cent and Virgin Australia Regional Airlines at 73.8 per cent. The Qantas network (Qantas and QantasLink combined operations) recorded 80.0 per cent for on time arrivals while the Virgin Australia network (Virgin Australia and Virgin Australia Regional Airlines combined operations) recorded 76.0 per cent.

Virgin Australia achieved the highest level of on time departures among the major domestic airlines for June 2018 at 79.1 per cent, followed by Qantas at 76.9 per cent, Jetstar at 71.9 per cent and Tigerair Australia at 67.4 per cent. Of the regional airlines, QantasLink recorded 84.3 per cent for on time departures, followed by Regional Express at 77.9 per cent and Virgin Australia Regional Airlines at 77.1 per cent. The Qantas network recorded 80.8 per cent for on time departures while the Virgin Australia network recorded 79.0 per cent.

Tigerair Australia recorded the highest percentage of cancellations (3.4 per cent) during the month, followed by Jetstar (2.7 per cent), Qantas (2.1 per cent), Virgin Australia (1.6 per cent), QantasLink (1.5 per cent), Regional Express (1.0 per cent) and Virgin Australia Regional Airlines (0.9 per cent).

Airlines' on time performance varies across the routes they serve. Individual route data by specific airline for 66 routes are shown on pages 10-23.

Of the 66 routes which met the criteria for on time performance reporting in June 2018, the Cairns-Townsville route had the highest percentage of on time arrivals (94.6 per cent) and the highest percentage of on time departures (also 94.6 per cent). The Brisbane-Mount Isa route had the lowest percentage of on time arrivals (34.3 per cent) and the Townsville-Melbourne route had the lowest percentage of on time departures (51.3 per cent).

Cancellations were highest on the Sydney-Melbourne route at 5.7 per cent, followed by the Melbourne-Sydney route at 5.6 per cent, the Newcastle-Melbourne route at 3.6 per cent, the Geraldton-Perth route at 3.2 per cent and the Newman-Perth route at 3.1 per cent.

Alice Springs Airport and Port Lincoln Airport recorded the highest percentage of on time arrivals (90.1 per cent) and Hamilton Island Airport recorded the highest percentage of on time departures (89.4 per cent). Mount Isa Airport recorded the lowest percentage of on time arrivals (34.3 per cent) and Ayers Rock Airport recorded the lowest percentage of on time departures (51.7 per cent). These figures only refer to reported routes and do not cover all flights at these airports.



Table 1 On time performance for June 2018 — Total Industry

|   | Sectors   |        | Arrivals On Time |      | Departures On Time |      | Cancellations |     |
|---|-----------|--------|------------------|------|--------------------|------|---------------|-----|
|   | Scheduled | Flown  | No.              | %    | No.                | %    | No.           | %   |
| Jetstar                                       | 6 288     | 6 117  | 4 458            | 72.9 | 4 396              | 71.9 | 171           | 2.7 |
| Qantas  | 8 802     | 8 615  | 6 584            | 76.4 | 6 628              | 76.9 | 187           | 2.1 |
| QantasLink                                    | 9 558     | 9 410  | 7 838            | 83.3 | 7 930              | 84.3 | 148           | 1.5 |
| Regional Express                              | 5 672     | 5 616  | 4 196            | 74.7 | 4 374              | 77.9 | 56            | 1.0 |
| Tigerair Australia                            | 2 266     | 2 188  | 1 431            | 65.4 | 1 474              | 67.4 | 78            | 3.4 |
| Virgin Australia                              | 11 041    | 10 862 | 8 276            | 76.2 | 8 591              | 79.1 | 179           | 1.6 |
| Virgin Australia Regional Airlines            | 787       | 780    | 576              | 73.8 | 601                | 77.1 | 7             | 0.9 |
| All Airlines                                  | 44 414    | 43 588 | 33 359           | 76.5 | 33 994             | 78.0 | 826           | 1.9 |
| Qantas - all QF designated services           | 18 360    | 18 025 | 14 422           | 80.0 | 14 558             | 80.8 | 335           | 1.8 |
| Virgin Australia - all VA designated services | 11 828    | 11 642 | 8 852            | 76.0 | 9 192              | 79.0 | 186           | 1.6 |

Total airline network data (including routes not shown in this report).

Airlines' on time performance varies across the routes they serve. Individual route data by specific airline for 66 routes are shown on pages 10-23.

Table 2 Top ten routes for on time performance for June 2018 (participating airlines only)

| Arrivals              |             | Departures             |             |
|-----------------------|-------------|------------------------|-------------|
| Route                 | On Time (%) | Route                  | On Time (%) |
| Cairns-Townsville     | 94.6        | Cairns-Townsville      | 94.6        |
| Darwin-Alice Springs  | 93.8        | Darwin-Alice Springs   | 93.8        |
| Alice Springs-Darwin  | 93.8        | Alice Springs-Darwin   | 93.8        |
| Townsville-Cairns     | 91.9        | Adelaide-Port Lincoln  | 92.2        |
| Perth-Darwin          | 90.4        | Townsville-Cairns      | 90.5        |
| Adelaide-Port Lincoln | 90.1        | Perth-Newman           | 90.4        |
| Sydney-Proserpine     | 89.7        | Hamilton Island-Sydney | 90.2        |
| Adelaide-Gold Coast   | 89.3        | Sydney-Proserpine      | 89.7        |
| Sydney-Hobart         | 88.9        | Gold Coast-Adelaide    | 89.3        |
| Cairns-Sydney         | 88.9        | Adelaide-Canberra      | 89.1        |

Table 3 Top ten airports for on time performance for June 2018 (participating airlines and reported routes only)

| Arrivals        |             | Departures      |             |
|-----------------|-------------|-----------------|-------------|
| Airport         | On Time (%) | Airport         | On Time (%) |
| Alice Springs   | 90.1        | Hamilton Island | 89.4        |
| Port Lincoln    | 90.1        | Kalgoorlie      | 88.7        |
| Kalgoorlie      | 88.2        | Geraldton       | 88.0        |
| Hamilton Island | 86.7        | Port Lincoln    | 87.9        |
| Emerald         | 86.4        | Alice Springs   | 87.8        |
| Mildura         | 86.3        | Emerald         | 86.9        |
| Newman          | 86.0        | Gladstone       | 85.5        |
| Proserpine      | 84.4        | Tamworth        | 85.5        |
| Mackay          | 84.2        | Port Hedland    | 84.7        |
| Geraldton       | 84.0        | Coffs Harbour   | 83.4        |

## Total industry on time performance

Figure 1 On time performance (by month from June 2015)—Total Industry

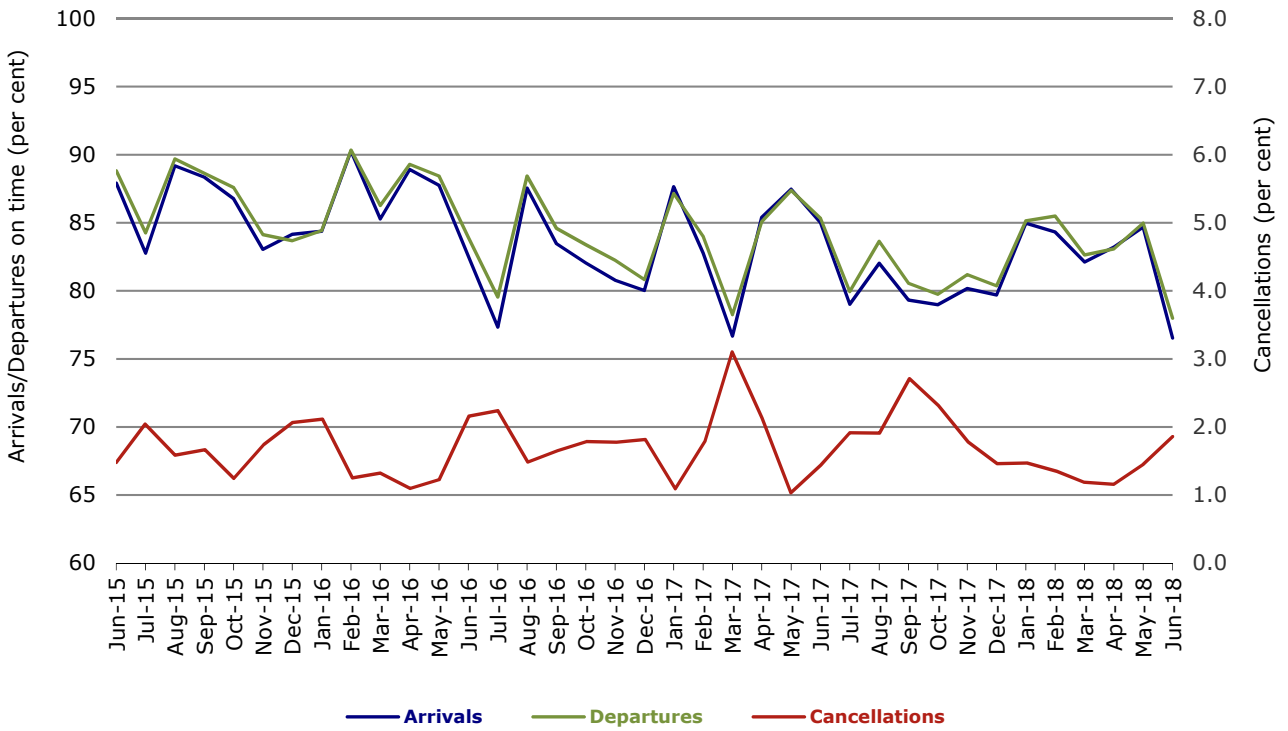


Figure 2 Arrivals on time (by month from June 2017)

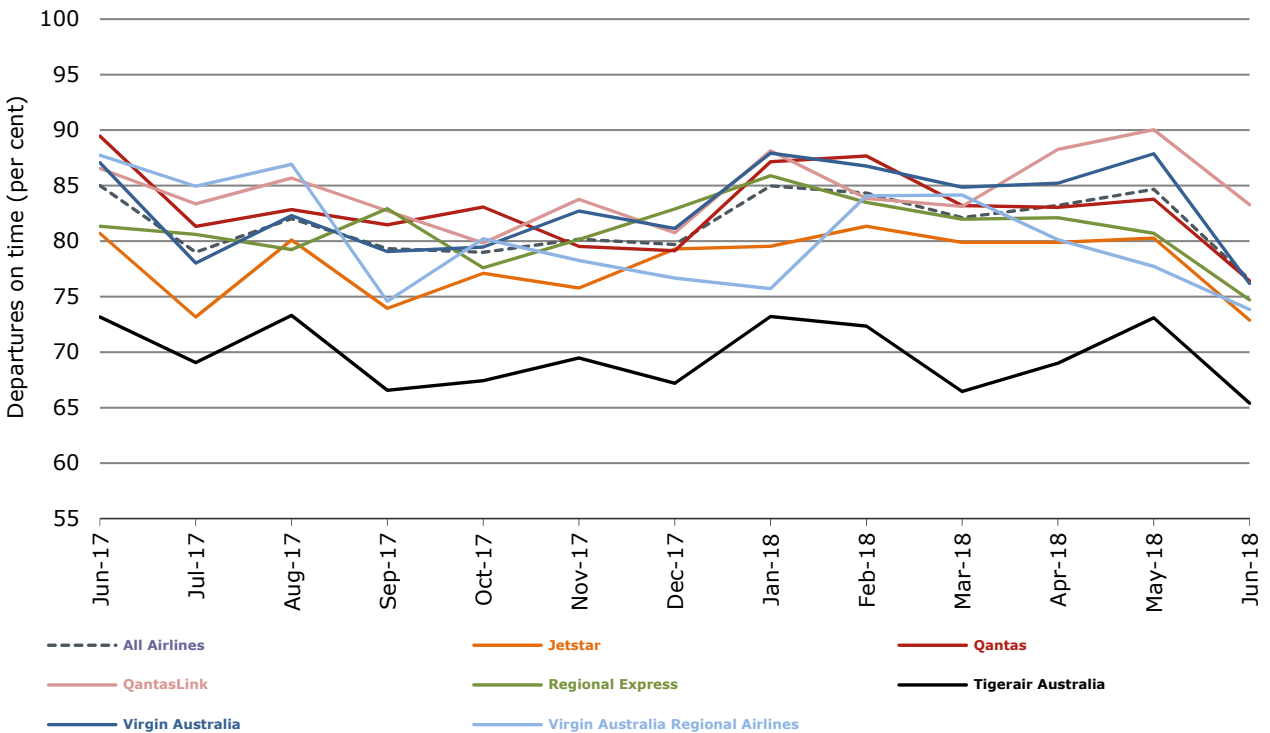


Figure 3 Departures on time (by month from June 2017)

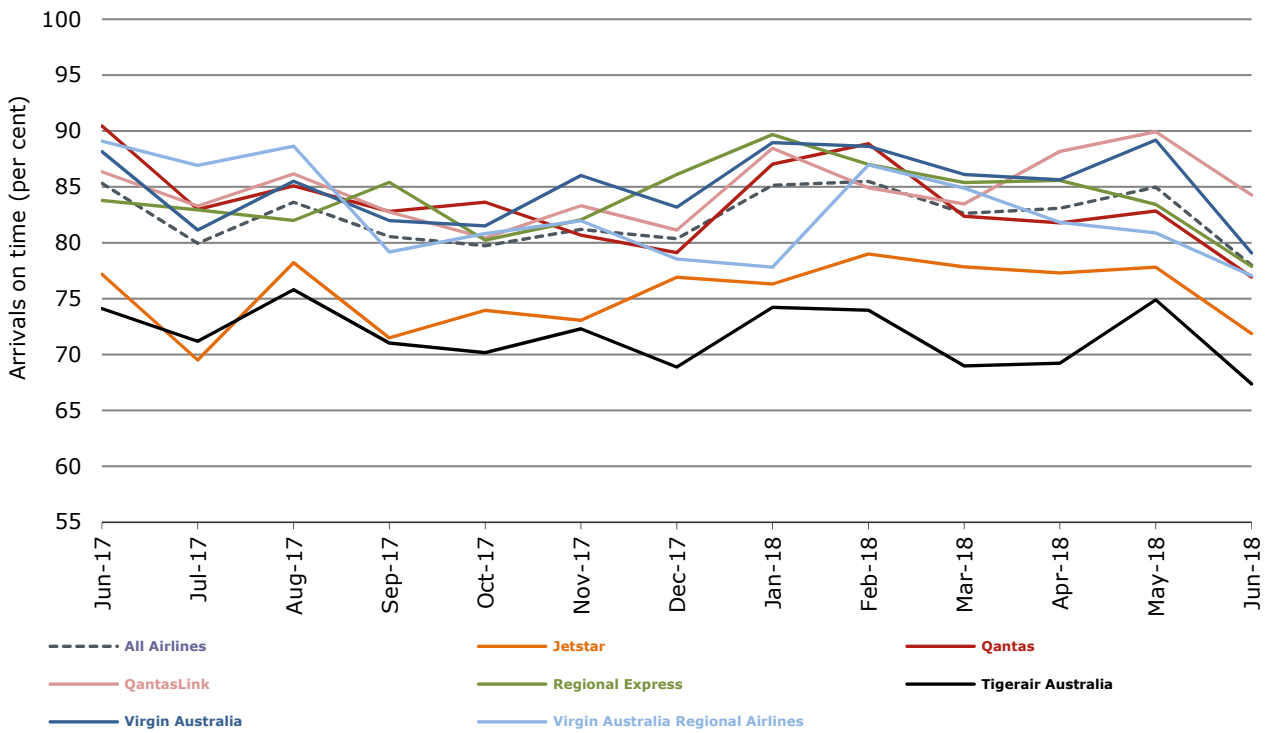
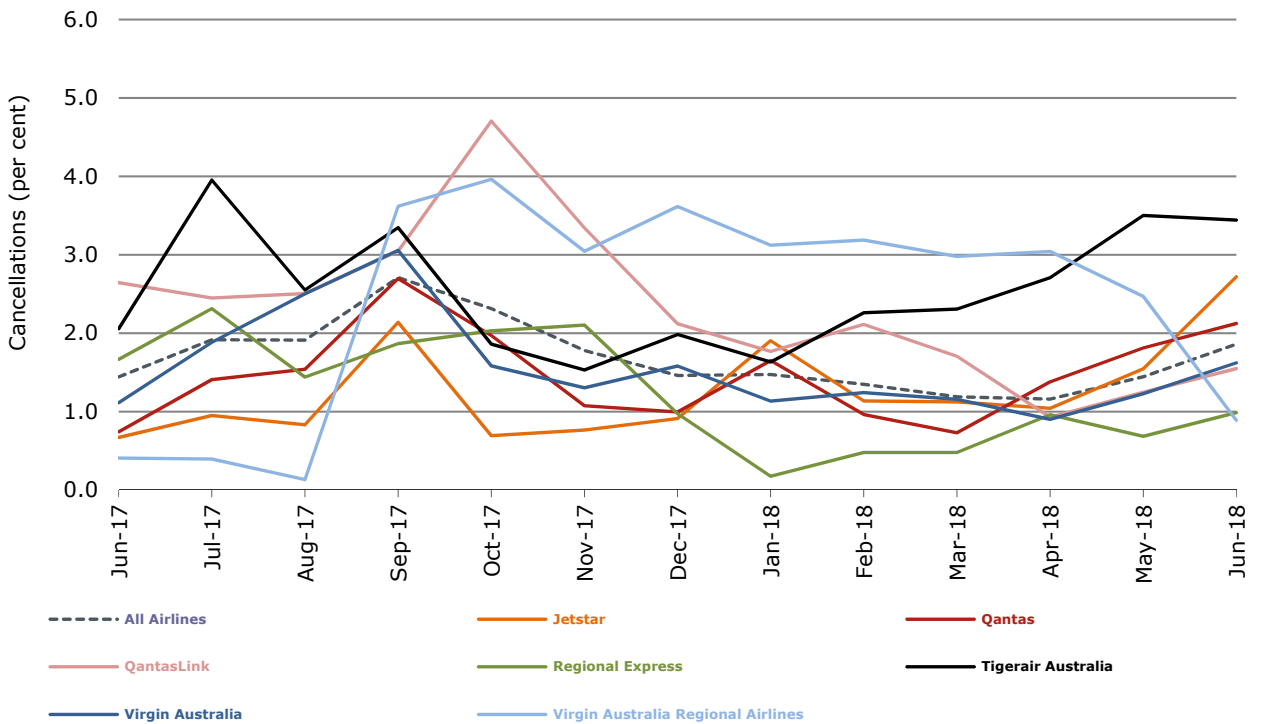


Figure 4 Cancellations (by month from June 2017)



## Major domestic airlines on time performance

Figure 5 On time performance (by month from June 2015)—Jetstar

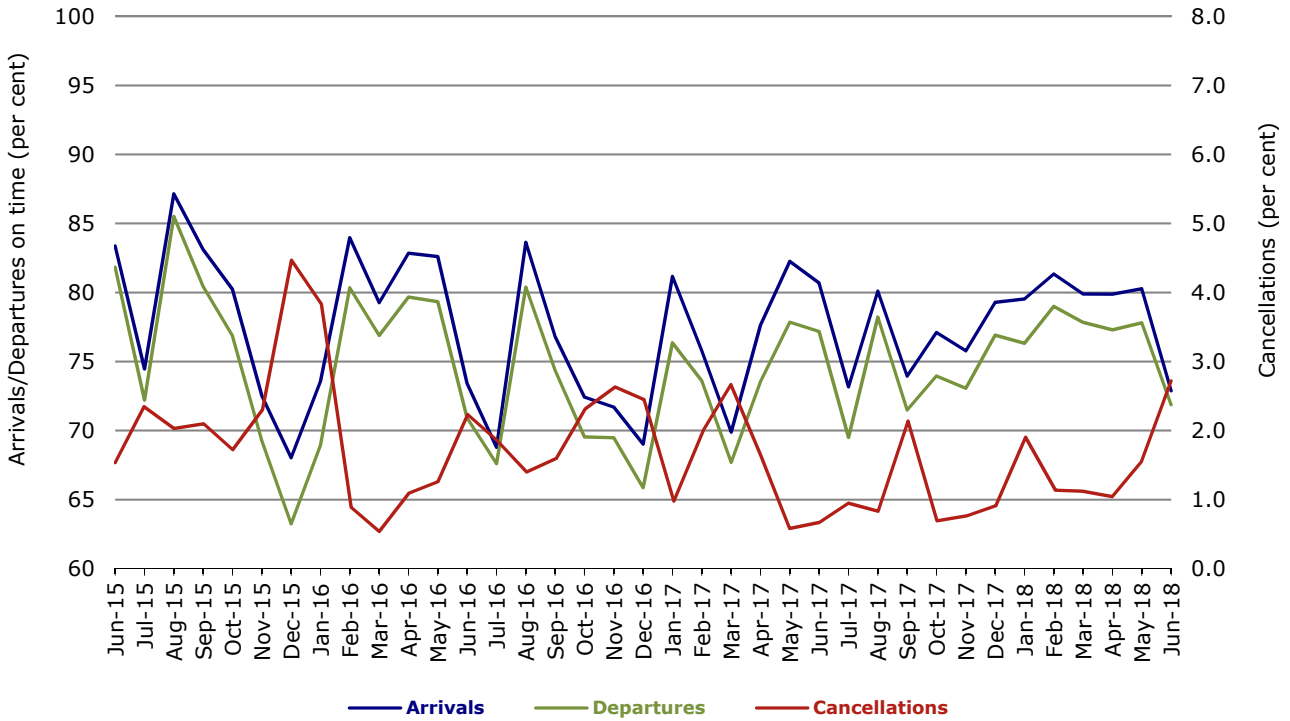


Figure 6 On time performance (by month from June 2015)—Qantas

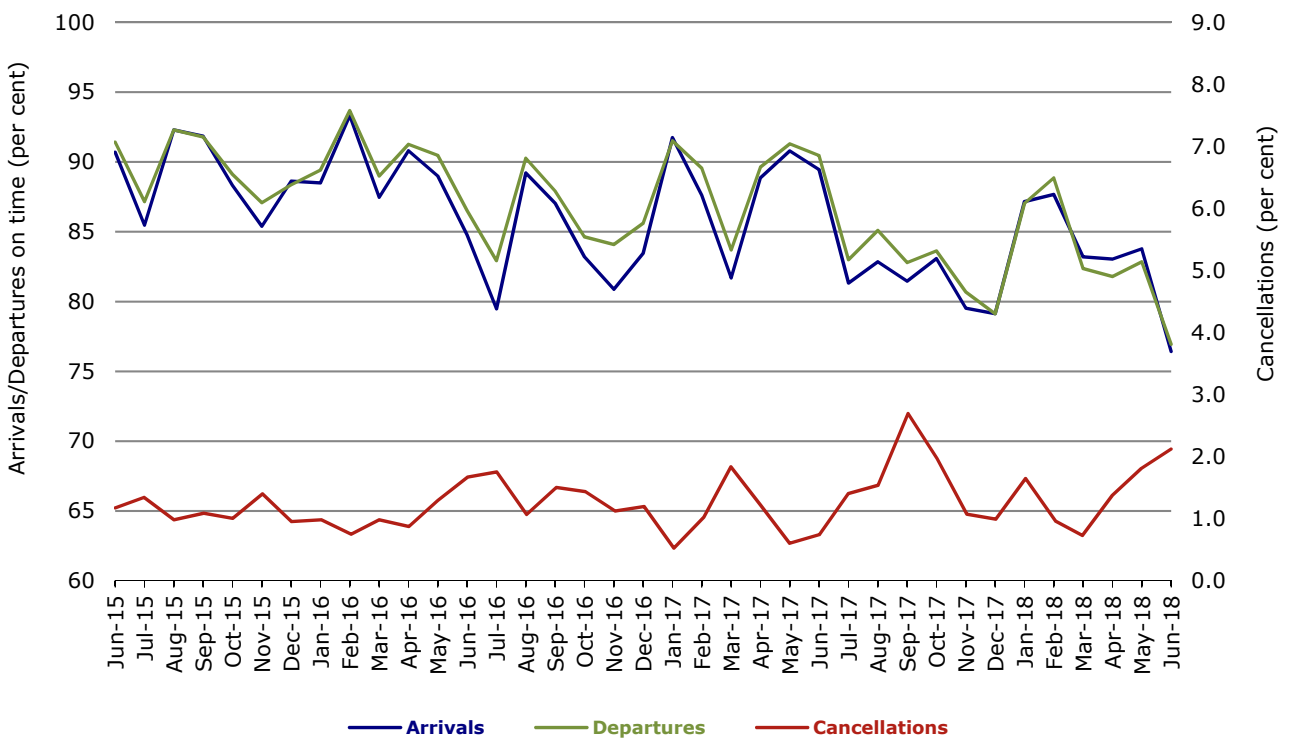


Figure 7 On time performance (by month from June 2015)—Tigerair Australia

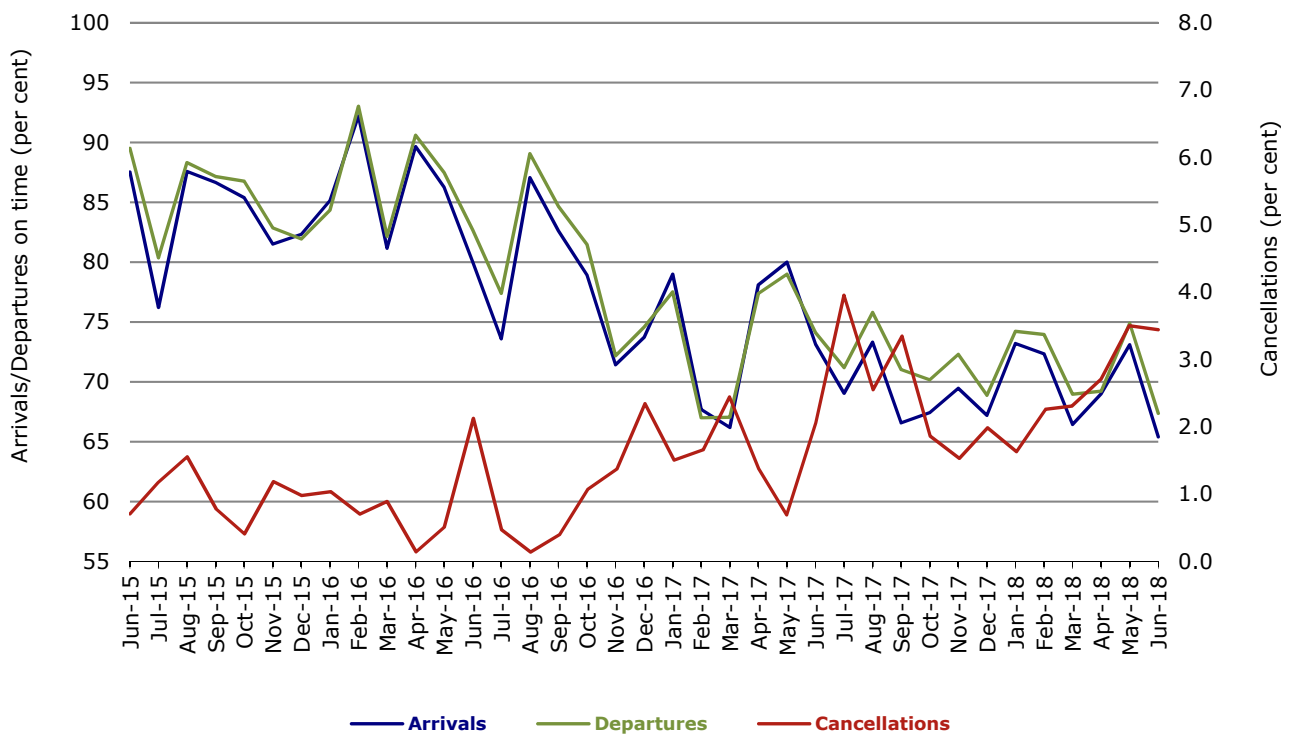
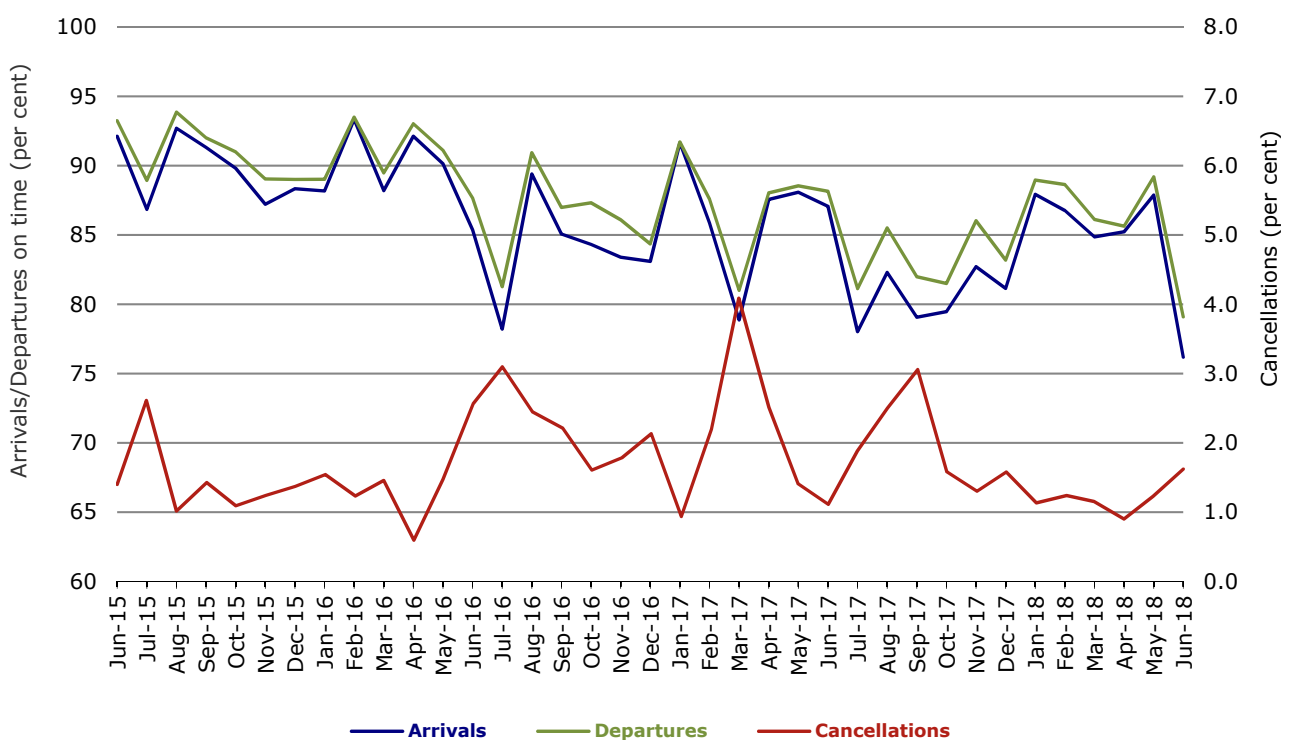


Figure 8 On time performance (by month from June 2015)—Virgin Australia



In January 2016, Virgin Australia transferred their ATR fleet from Virgin Australia Regional Airlines to Virgin Australia.

## Major regional airlines on time performance

Figure 9 On time performance (by month from June 2015)—QantasLink

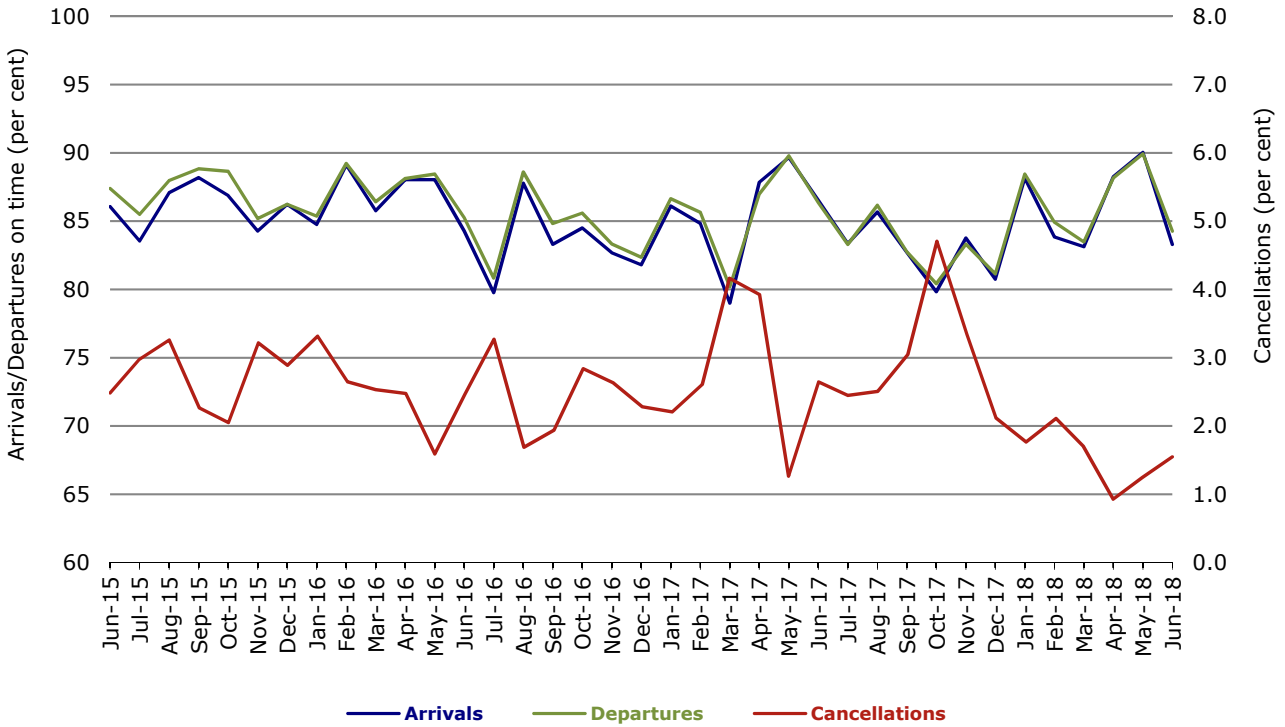


Figure 10 On time performance (by month from June 2015)—Regional Express

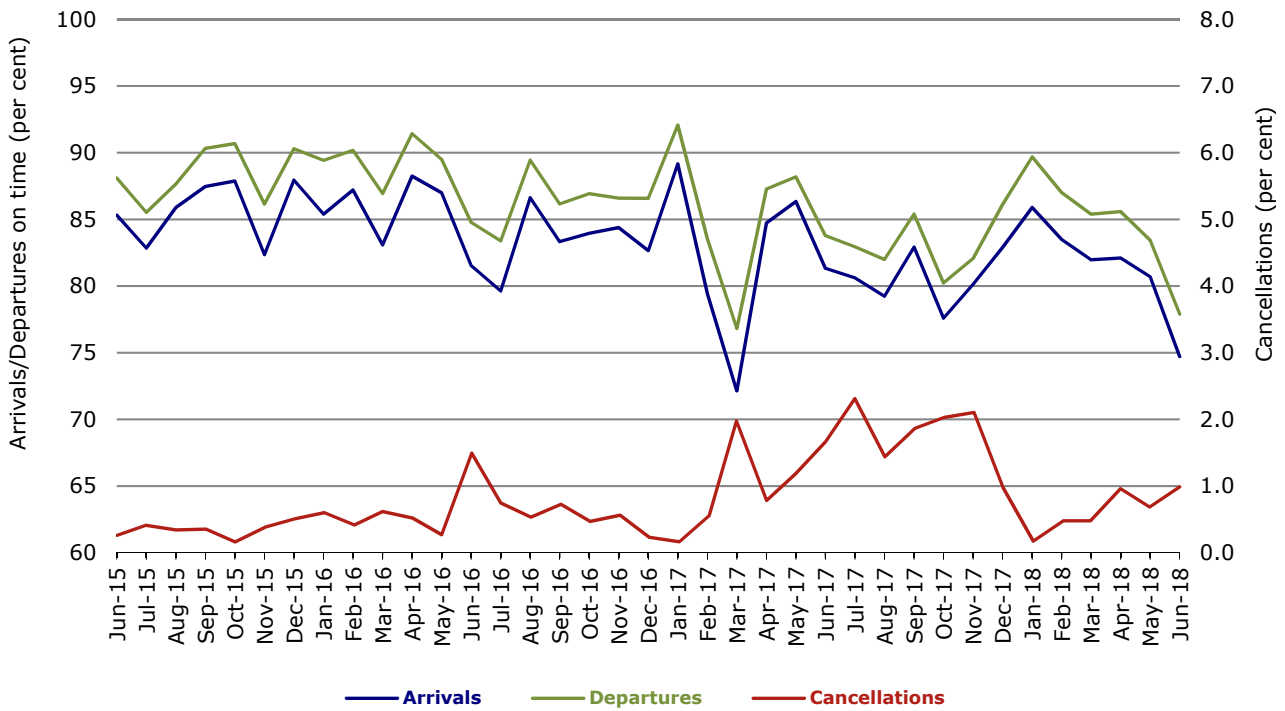
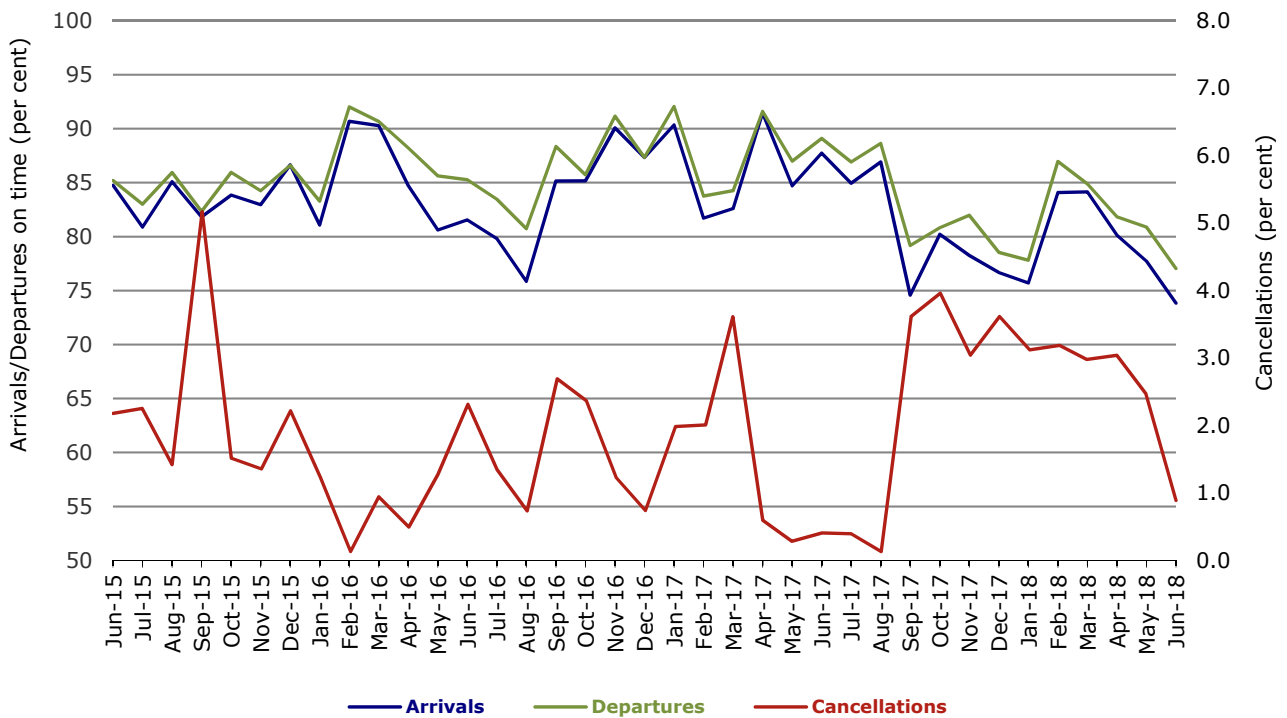


Figure 11 On time performance (by month from June 2015)  
Virgin Australia Regional Airlines



In January 2016, Virgin Australia transferred their ATR fleet from Virgin Australia Regional Airlines to Virgin Australia.

## Individual routes

On time performance is reported for all routes where the passenger load averages over 8000 passengers per month over the previous six months, and where two or more airlines operate in competition on those routes. There are now 66 routes which meet this definition. Over time, however, routes which meet this definition may change as airline networks and traffic levels vary.

|                                    | Sectors |       | Arrivals<br>On Time |       | Departures<br>On Time |       | Cancellations |     |
|------------------------------------|---------|-------|---------------------|-------|-----------------------|-------|---------------|-----|
|                                    | Sched.  | Flown | No.                 | %     | No.                   | %     | No.           | %   |
| <b>Adelaide-Alice Springs</b>      |         |       |                     |       |                       |       |               |     |
| Qantas                             | 30      | 29    | 25                  | 86.2  | 23                    | 79.3  | 1             | 3.3 |
| Virgin Australia                   | 4       | 4     | 4                   | 100.0 | 3                     | 75.0  | 0             | 0.0 |
| Virgin Australia Regional Airlines | 17      | 17    | 13                  | 76.5  | 13                    | 76.5  | 0             | 0.0 |
| All Airlines                       | 51      | 50    | 42                  | 84.0  | 39                    | 78.0  | 1             | 2.0 |
| <b>Adelaide-Brisbane</b>           |         |       |                     |       |                       |       |               |     |
| Jetstar                            | 22      | 22    | 18                  | 81.8  | 18                    | 81.8  | 0             | 0.0 |
| Qantas                             | 60      | 60    | 54                  | 90.0  | 53                    | 88.3  | 0             | 0.0 |
| QantasLink                         | 57      | 55    | 43                  | 78.2  | 48                    | 87.3  | 2             | 3.5 |
| Tigerair Australia                 | 24      | 24    | 12                  | 50.0  | 16                    | 66.7  | 0             | 0.0 |
| Virgin Australia                   | 103     | 102   | 87                  | 85.3  | 83                    | 81.4  | 1             | 1.0 |
| All Airlines                       | 266     | 263   | 214                 | 81.4  | 218                   | 82.9  | 3             | 1.1 |
| <b>Adelaide-Canberra</b>           |         |       |                     |       |                       |       |               |     |
| Qantas                             | 40      | 40    | 35                  | 87.5  | 36                    | 90.0  | 0             | 0.0 |
| Virgin Australia                   | 25      | 24    | 21                  | 87.5  | 21                    | 87.5  | 1             | 4.0 |
| All Airlines                       | 65      | 64    | 56                  | 87.5  | 57                    | 89.1  | 1             | 1.5 |
| <b>Adelaide-Gold Coast</b>         |         |       |                     |       |                       |       |               |     |
| Jetstar                            | 26      | 26    | 23                  | 88.5  | 21                    | 80.8  | 0             | 0.0 |
| Virgin Australia                   | 31      | 30    | 27                  | 90.0  | 27                    | 90.0  | 1             | 3.2 |
| All Airlines                       | 57      | 56    | 50                  | 89.3  | 48                    | 85.7  | 1             | 1.8 |
| <b>Adelaide-Melbourne</b>          |         |       |                     |       |                       |       |               |     |
| Jetstar                            | 93      | 88    | 73                  | 83.0  | 66                    | 75.0  | 5             | 5.4 |
| Qantas                             | 274     | 272   | 221                 | 81.3  | 216                   | 79.4  | 2             | 0.7 |
| Tigerair Australia                 | 73      | 69    | 39                  | 56.5  | 41                    | 59.4  | 4             | 5.5 |
| Virgin Australia                   | 262     | 255   | 189                 | 74.1  | 199                   | 78.0  | 7             | 2.7 |
| All Airlines                       | 702     | 684   | 522                 | 76.3  | 522                   | 76.3  | 18            | 2.6 |
| <b>Adelaide-Perth</b>              |         |       |                     |       |                       |       |               |     |
| Jetstar                            | 26      | 25    | 15                  | 60.0  | 16                    | 64.0  | 1             | 3.8 |
| Qantas                             | 95      | 95    | 84                  | 88.4  | 86                    | 90.5  | 0             | 0.0 |
| QantasLink                         | 10      | 10    | 9                   | 90.0  | 10                    | 100.0 | 0             | 0.0 |
| Virgin Australia                   | 35      | 35    | 27                  | 77.1  | 29                    | 82.9  | 0             | 0.0 |
| Virgin Australia Regional Airlines | 43      | 42    | 26                  | 61.9  | 30                    | 71.4  | 1             | 2.3 |
| All Airlines                       | 209     | 207   | 161                 | 77.8  | 171                   | 82.6  | 2             | 1.0 |
| <b>Adelaide-Port Lincoln</b>       |         |       |                     |       |                       |       |               |     |
| QantasLink                         | 107     | 107   | 101                 | 94.4  | 102                   | 95.3  | 0             | 0.0 |
| Regional Express                   | 176     | 175   | 153                 | 87.4  | 158                   | 90.3  | 1             | 0.6 |
| All Airlines                       | 283     | 282   | 254                 | 90.1  | 260                   | 92.2  | 1             | 0.4 |
| <b>Adelaide-Sydney</b>             |         |       |                     |       |                       |       |               |     |
| Jetstar                            | 83      | 79    | 59                  | 74.7  | 52                    | 65.8  | 4             | 4.8 |
| Qantas                             | 220     | 219   | 161                 | 73.5  | 180                   | 82.2  | 1             | 0.5 |
| QantasLink                         | 29      | 29    | 24                  | 82.8  | 23                    | 79.3  | 0             | 0.0 |
| Tigerair Australia                 | 47      | 46    | 25                  | 54.3  | 24                    | 52.2  | 1             | 2.1 |
| Virgin Australia                   | 141     | 141   | 100                 | 70.9  | 110                   | 78.0  | 0             | 0.0 |
| All Airlines                       | 520     | 514   | 369                 | 71.8  | 389                   | 75.7  | 6             | 1.2 |



|                                    | <i>Sectors</i> |              | <i>Arrivals<br/>On Time</i> |          | <i>Departures<br/>On Time</i> |          | <i>Cancellations</i> |          |
|------------------------------------|----------------|--------------|-----------------------------|----------|-------------------------------|----------|----------------------|----------|
|                                    | <i>Sched.</i>  | <i>Flown</i> | <i>No.</i>                  | <i>%</i> | <i>No.</i>                    | <i>%</i> | <i>No.</i>           | <i>%</i> |
| <b>Albury-Sydney</b>               |                |              |                             |          |                               |          |                      |          |
| QantasLink                         | 93             | 92           | 65                          | 70.7     | 72                            | 78.3     | 1                    | 1.1      |
| Regional Express                   | 92             | 92           | 64                          | 69.6     | 73                            | 79.3     | 0                    | 0.0      |
| Virgin Australia                   | 56             | 55           | 39                          | 70.9     | 41                            | 74.5     | 1                    | 1.8      |
| All Airlines                       | 241            | 239          | 168                         | 70.3     | 186                           | 77.8     | 2                    | 0.8      |
| <b>Alice Springs-Adelaide</b>      |                |              |                             |          |                               |          |                      |          |
| Qantas                             | 30             | 29           | 22                          | 75.9     | 21                            | 72.4     | 1                    | 3.3      |
| Virgin Australia                   | 4              | 4            | 3                           | 75.0     | 4                             | 100.0    | 0                    | 0.0      |
| Virgin Australia Regional Airlines | 18             | 18           | 16                          | 88.9     | 15                            | 83.3     | 0                    | 0.0      |
| All Airlines                       | 52             | 51           | 41                          | 80.4     | 40                            | 78.4     | 1                    | 1.9      |
| <b>Alice Springs-Darwin</b>        |                |              |                             |          |                               |          |                      |          |
| QantasLink                         | 60             | 59           | 58                          | 98.3     | 58                            | 98.3     | 1                    | 1.7      |
| Virgin Australia                   | 4              | 4            | 4                           | 100.0    | 3                             | 75.0     | 0                    | 0.0      |
| Virgin Australia Regional Airlines | 17             | 17           | 13                          | 76.5     | 14                            | 82.4     | 0                    | 0.0      |
| All Airlines                       | 81             | 80           | 75                          | 93.8     | 75                            | 93.8     | 1                    | 1.2      |
| <b>Armidale-Sydney</b>             |                |              |                             |          |                               |          |                      |          |
| QantasLink                         | 114            | 113          | 84                          | 74.3     | 89                            | 78.8     | 1                    | 0.9      |
| Regional Express                   | 65             | 64           | 32                          | 50.0     | 35                            | 54.7     | 1                    | 1.5      |
| All Airlines                       | 179            | 177          | 116                         | 65.5     | 124                           | 70.1     | 2                    | 1.1      |
| <b>Ayers Rock-Sydney</b>           |                |              |                             |          |                               |          |                      |          |
| Jetstar                            | 30             | 30           | 16                          | 53.3     | 13                            | 43.3     | 0                    | 0.0      |
| Virgin Australia                   | 30             | 30           | 19                          | 63.3     | 18                            | 60.0     | 0                    | 0.0      |
| All Airlines                       | 60             | 60           | 35                          | 58.3     | 31                            | 51.7     | 0                    | 0.0      |
| <b>Ballina-Sydney</b>              |                |              |                             |          |                               |          |                      |          |
| Jetstar                            | 70             | 70           | 57                          | 81.4     | 55                            | 78.6     | 0                    | 0.0      |
| Regional Express                   | 25             | 24           | 16                          | 66.7     | 18                            | 75.0     | 1                    | 4.0      |
| Virgin Australia                   | 31             | 31           | 26                          | 83.9     | 27                            | 87.1     | 0                    | 0.0      |
| All Airlines                       | 126            | 125          | 99                          | 79.2     | 100                           | 80.0     | 1                    | 0.8      |
| <b>Brisbane-Adelaide</b>           |                |              |                             |          |                               |          |                      |          |
| Jetstar                            | 22             | 22           | 19                          | 86.4     | 17                            | 77.3     | 0                    | 0.0      |
| Qantas                             | 69             | 69           | 59                          | 85.5     | 55                            | 79.7     | 0                    | 0.0      |
| QantasLink                         | 57             | 55           | 50                          | 90.9     | 52                            | 94.5     | 2                    | 3.5      |
| Tigerair Australia                 | 24             | 24           | 17                          | 70.8     | 16                            | 66.7     | 0                    | 0.0      |
| Virgin Australia                   | 97             | 97           | 80                          | 82.5     | 80                            | 82.5     | 0                    | 0.0      |
| All Airlines                       | 269            | 267          | 225                         | 84.3     | 220                           | 82.4     | 2                    | 0.7      |
| <b>Brisbane-Bundaberg</b>          |                |              |                             |          |                               |          |                      |          |
| QantasLink                         | 104            | 103          | 88                          | 85.4     | 88                            | 85.4     | 1                    | 1.0      |
| Virgin Australia                   | 30             | 30           | 23                          | 76.7     | 25                            | 83.3     | 0                    | 0.0      |
| All Airlines                       | 134            | 133          | 111                         | 83.5     | 113                           | 85.0     | 1                    | 0.7      |
| <b>Brisbane-Cairns</b>             |                |              |                             |          |                               |          |                      |          |
| Jetstar                            | 75             | 73           | 61                          | 83.6     | 64                            | 87.7     | 2                    | 2.7      |
| Qantas                             | 73             | 73           | 64                          | 87.7     | 66                            | 90.4     | 0                    | 0.0      |
| QantasLink                         | 60             | 60           | 39                          | 65.0     | 42                            | 70.0     | 0                    | 0.0      |
| Tigerair Australia                 | 27             | 27           | 20                          | 74.1     | 22                            | 81.5     | 0                    | 0.0      |
| Virgin Australia                   | 118            | 118          | 94                          | 79.7     | 96                            | 81.4     | 0                    | 0.0      |
| All Airlines                       | 353            | 351          | 278                         | 79.2     | 290                           | 82.6     | 2                    | 0.6      |
| <b>Brisbane-Canberra</b>           |                |              |                             |          |                               |          |                      |          |
| Qantas                             | 17             | 17           | 16                          | 94.1     | 15                            | 88.2     | 0                    | 0.0      |
| QantasLink                         | 131            | 130          | 115                         | 88.5     | 115                           | 88.5     | 1                    | 0.8      |
| Tigerair Australia                 | 12             | 12           | 11                          | 91.7     | 11                            | 91.7     | 0                    | 0.0      |
| Virgin Australia                   | 96             | 95           | 80                          | 84.2     | 81                            | 85.3     | 1                    | 1.0      |
| All Airlines                       | 256            | 254          | 222                         | 87.4     | 222                           | 87.4     | 2                    | 0.8      |

|                                 | <i>Sectors</i> |              | <i>Arrivals<br/>On Time</i> |          | <i>Departures<br/>On Time</i> |          | <i>Cancellations</i> |          |
|---------------------------------|----------------|--------------|-----------------------------|----------|-------------------------------|----------|----------------------|----------|
|                                 | <i>Sched.</i>  | <i>Flown</i> | <i>No.</i>                  | <i>%</i> | <i>No.</i>                    | <i>%</i> | <i>No.</i>           | <i>%</i> |
| <b>Brisbane-Darwin</b>          |                |              |                             |          |                               |          |                      |          |
| Jetstar                         | 22             | 22           | 16                          | 72.7     | 20                            | 90.9     | 0                    | 0.0      |
| Qantas                          | 45             | 45           | 35                          | 77.8     | 34                            | 75.6     | 0                    | 0.0      |
| Tigerair Australia              | 23             | 23           | 13                          | 56.5     | 17                            | 73.9     | 0                    | 0.0      |
| Virgin Australia                | 32             | 32           | 17                          | 53.1     | 25                            | 78.1     | 0                    | 0.0      |
| All Airlines                    | 122            | 122          | 81                          | 66.4     | 96                            | 78.7     | 0                    | 0.0      |
| <b>Brisbane-Emerald</b>         |                |              |                             |          |                               |          |                      |          |
| QantasLink                      | 97             | 97           | 86                          | 88.7     | 86                            | 88.7     | 0                    | 0.0      |
| Virgin Australia                | 50             | 50           | 41                          | 82.0     | 42                            | 84.0     | 0                    | 0.0      |
| All Airlines                    | 147            | 147          | 127                         | 86.4     | 128                           | 87.1     | 0                    | 0.0      |
| <b>Brisbane-Gladstone</b>       |                |              |                             |          |                               |          |                      |          |
| QantasLink                      | 125            | 121          | 98                          | 81.0     | 100                           | 82.6     | 4                    | 3.2      |
| Virgin Australia                | 71             | 71           | 63                          | 88.7     | 68                            | 95.8     | 0                    | 0.0      |
| All Airlines                    | 196            | 192          | 161                         | 83.9     | 168                           | 87.5     | 4                    | 2.0      |
| <b>Brisbane-Hamilton Island</b> |                |              |                             |          |                               |          |                      |          |
| QantasLink                      | 22             | 22           | 19                          | 86.4     | 18                            | 81.8     | 0                    | 0.0      |
| Virgin Australia                | 30             | 30           | 26                          | 86.7     | 27                            | 90.0     | 0                    | 0.0      |
| All Airlines                    | 52             | 52           | 45                          | 86.5     | 45                            | 86.5     | 0                    | 0.0      |
| <b>Brisbane-Hobart</b>          |                |              |                             |          |                               |          |                      |          |
| Jetstar                         | 18             | 18           | 16                          | 88.9     | 15                            | 83.3     | 0                    | 0.0      |
| Virgin Australia                | 32             | 32           | 28                          | 87.5     | 26                            | 81.3     | 0                    | 0.0      |
| All Airlines                    | 50             | 50           | 44                          | 88.0     | 41                            | 82.0     | 0                    | 0.0      |
| <b>Brisbane-Mackay</b>          |                |              |                             |          |                               |          |                      |          |
| Jetstar                         | 32             | 32           | 23                          | 71.9     | 22                            | 68.8     | 0                    | 0.0      |
| QantasLink                      | 113            | 112          | 97                          | 86.6     | 100                           | 89.3     | 1                    | 0.9      |
| Virgin Australia                | 136            | 135          | 115                         | 85.2     | 117                           | 86.7     | 1                    | 0.7      |
| All Airlines                    | 281            | 279          | 235                         | 84.2     | 239                           | 85.7     | 2                    | 0.7      |
| <b>Brisbane-Melbourne</b>       |                |              |                             |          |                               |          |                      |          |
| Jetstar                         | 111            | 103          | 67                          | 65.0     | 60                            | 58.3     | 8                    | 7.2      |
| Qantas                          | 395            | 393          | 306                         | 77.9     | 310                           | 78.9     | 2                    | 0.5      |
| Tigerair Australia              | 122            | 115          | 72                          | 62.6     | 78                            | 67.8     | 7                    | 5.7      |
| Virgin Australia                | 361            | 352          | 245                         | 69.6     | 274                           | 77.8     | 9                    | 2.5      |
| All Airlines                    | 989            | 963          | 690                         | 71.7     | 722                           | 75.0     | 26                   | 2.6      |
| <b>Brisbane-Mount Isa</b>       |                |              |                             |          |                               |          |                      |          |
| QantasLink                      | 55             | 54           | 11                          | 20.4     | 43                            | 79.6     | 1                    | 1.8      |
| Virgin Australia                | 16             | 16           | 13                          | 81.3     | 14                            | 87.5     | 0                    | 0.0      |
| All Airlines                    | 71             | 70           | 24                          | 34.3     | 57                            | 81.4     | 1                    | 1.4      |
| <b>Brisbane-Newcastle</b>       |                |              |                             |          |                               |          |                      |          |
| Jetstar                         | 77             | 75           | 61                          | 81.3     | 60                            | 80.0     | 2                    | 2.6      |
| QantasLink                      | 47             | 47           | 39                          | 83.0     | 43                            | 91.5     | 0                    | 0.0      |
| Virgin Australia                | 82             | 81           | 66                          | 81.5     | 71                            | 87.7     | 1                    | 1.2      |
| All Airlines                    | 206            | 203          | 166                         | 81.8     | 174                           | 85.7     | 3                    | 1.5      |
| <b>Brisbane-Perth</b>           |                |              |                             |          |                               |          |                      |          |
| Qantas                          | 140            | 139          | 105                         | 75.5     | 104                           | 74.8     | 1                    | 0.7      |
| Virgin Australia                | 98             | 96           | 58                          | 60.4     | 66                            | 68.8     | 2                    | 2.0      |
| All Airlines                    | 238            | 235          | 163                         | 69.4     | 170                           | 72.3     | 3                    | 1.3      |
| <b>Brisbane-Proserpine</b>      |                |              |                             |          |                               |          |                      |          |
| Jetstar                         | 27             | 27           | 24                          | 88.9     | 22                            | 81.5     | 0                    | 0.0      |
| Virgin Australia                | 30             | 30           | 22                          | 73.3     | 24                            | 80.0     | 0                    | 0.0      |
| All Airlines                    | 57             | 57           | 46                          | 80.7     | 46                            | 80.7     | 0                    | 0.0      |

|                                    | <i>Sectors</i> |              | <i>Arrivals<br/>On Time</i> |          | <i>Departures<br/>On Time</i> |          | <i>Cancellations</i> |          |
|------------------------------------|----------------|--------------|-----------------------------|----------|-------------------------------|----------|----------------------|----------|
|                                    | <i>Sched.</i>  | <i>Flown</i> | <i>No.</i>                  | <i>%</i> | <i>No.</i>                    | <i>%</i> | <i>No.</i>           | <i>%</i> |
| <b>Brisbane-Rockhampton</b>        |                |              |                             |          |                               |          |                      |          |
| QantasLink                         | 167            | 164          | 127                         | 77.4     | 129                           | 78.7     | 3                    | 1.8      |
| Virgin Australia                   | 133            | 132          | 86                          | 65.2     | 97                            | 73.5     | 1                    | 0.8      |
| All Airlines                       | 300            | 296          | 213                         | 72.0     | 226                           | 76.4     | 4                    | 1.3      |
| <b>Brisbane-Sydney</b>             |                |              |                             |          |                               |          |                      |          |
| Jetstar                            | 164            | 158          | 116                         | 73.4     | 115                           | 72.8     | 6                    | 3.7      |
| Qantas                             | 596            | 580          | 443                         | 76.4     | 443                           | 76.4     | 16                   | 2.7      |
| QantasLink                         | 3              | 3            | 2                           | 66.7     | 2                             | 66.7     | 0                    | 0.0      |
| Tigerair Australia                 | 96             | 92           | 63                          | 68.5     | 66                            | 71.7     | 4                    | 4.2      |
| Virgin Australia                   | 496            | 485          | 370                         | 76.3     | 397                           | 81.9     | 11                   | 2.2      |
| All Airlines                       | 1 355          | 1 318        | 994                         | 75.4     | 1 023                         | 77.6     | 37                   | 2.7      |
| <b>Brisbane-Townsville</b>         |                |              |                             |          |                               |          |                      |          |
| Jetstar                            | 62             | 62           | 41                          | 66.1     | 49                            | 79.0     | 0                    | 0.0      |
| Qantas                             | 76             | 76           | 51                          | 67.1     | 56                            | 73.7     | 0                    | 0.0      |
| QantasLink                         | 62             | 62           | 58                          | 93.5     | 59                            | 95.2     | 0                    | 0.0      |
| Virgin Australia                   | 133            | 132          | 106                         | 80.3     | 110                           | 83.3     | 1                    | 0.8      |
| All Airlines                       | 333            | 332          | 256                         | 77.1     | 274                           | 82.5     | 1                    | 0.3      |
| <b>Broome-Perth</b>                |                |              |                             |          |                               |          |                      |          |
| QantasLink                         | 82             | 82           | 63                          | 76.8     | 65                            | 79.3     | 0                    | 0.0      |
| Virgin Australia                   | 5              | 5            | 5                           | 100.0    | 5                             | 100.0    | 0                    | 0.0      |
| Virgin Australia Regional Airlines | 73             | 73           | 56                          | 76.7     | 52                            | 71.2     | 0                    | 0.0      |
| All Airlines                       | 160            | 160          | 124                         | 77.5     | 122                           | 76.3     | 0                    | 0.0      |
| <b>Bundaberg-Brisbane</b>          |                |              |                             |          |                               |          |                      |          |
| QantasLink                         | 104            | 103          | 86                          | 83.5     | 86                            | 83.5     | 1                    | 1.0      |
| Virgin Australia                   | 30             | 30           | 25                          | 83.3     | 23                            | 76.7     | 0                    | 0.0      |
| All Airlines                       | 134            | 133          | 111                         | 83.5     | 109                           | 82.0     | 1                    | 0.7      |
| <b>Cairns-Brisbane</b>             |                |              |                             |          |                               |          |                      |          |
| Jetstar                            | 75             | 74           | 69                          | 93.2     | 61                            | 82.4     | 1                    | 1.3      |
| Qantas                             | 73             | 72           | 60                          | 83.3     | 61                            | 84.7     | 1                    | 1.4      |
| QantasLink                         | 60             | 60           | 40                          | 66.7     | 42                            | 70.0     | 0                    | 0.0      |
| Tigerair Australia                 | 27             | 27           | 22                          | 81.5     | 19                            | 70.4     | 0                    | 0.0      |
| Virgin Australia                   | 118            | 118          | 107                         | 90.7     | 97                            | 82.2     | 0                    | 0.0      |
| All Airlines                       | 353            | 351          | 298                         | 84.9     | 280                           | 79.8     | 2                    | 0.6      |
| <b>Cairns-Melbourne</b>            |                |              |                             |          |                               |          |                      |          |
| Jetstar                            | 98             | 93           | 68                          | 73.1     | 78                            | 83.9     | 5                    | 5.1      |
| Qantas                             | 38             | 38           | 28                          | 73.7     | 24                            | 63.2     | 0                    | 0.0      |
| Tigerair Australia                 | 47             | 47           | 26                          | 55.3     | 24                            | 51.1     | 0                    | 0.0      |
| Virgin Australia                   | 36             | 35           | 18                          | 51.4     | 20                            | 57.1     | 1                    | 2.8      |
| All Airlines                       | 219            | 213          | 140                         | 65.7     | 146                           | 68.5     | 6                    | 2.7      |
| <b>Cairns-Sydney</b>               |                |              |                             |          |                               |          |                      |          |
| Jetstar                            | 76             | 76           | 70                          | 92.1     | 68                            | 89.5     | 0                    | 0.0      |
| Qantas                             | 81             | 81           | 76                          | 93.8     | 72                            | 88.9     | 0                    | 0.0      |
| Tigerair Australia                 | 43             | 43           | 37                          | 86.0     | 35                            | 81.4     | 0                    | 0.0      |
| Virgin Australia                   | 80             | 80           | 66                          | 82.5     | 66                            | 82.5     | 0                    | 0.0      |
| All Airlines                       | 280            | 280          | 249                         | 88.9     | 241                           | 86.1     | 0                    | 0.0      |
| <b>Cairns-Townsville</b>           |                |              |                             |          |                               |          |                      |          |
| QantasLink                         | 132            | 132          | 124                         | 93.9     | 124                           | 93.9     | 0                    | 0.0      |
| Regional Express                   | 19             | 15           | 15                          | 100.0    | 15                            | 100.0    | 4                    | 21.1     |
| All Airlines                       | 151            | 147          | 139                         | 94.6     | 139                           | 94.6     | 4                    | 2.6      |

|                                    | <i>Sectors</i> |              | <i>Arrivals<br/>On Time</i> |          | <i>Departures<br/>On Time</i> |          | <i>Cancellations</i> |          |
|------------------------------------|----------------|--------------|-----------------------------|----------|-------------------------------|----------|----------------------|----------|
|                                    | <i>Sched.</i>  | <i>Flown</i> | <i>No.</i>                  | <i>%</i> | <i>No.</i>                    | <i>%</i> | <i>No.</i>           | <i>%</i> |
| <b>Canberra-Adelaide</b>           |                |              |                             |          |                               |          |                      |          |
| Qantas                             | 40             | 40           | 35                          | 87.5     | 31                            | 77.5     | 0                    | 0.0      |
| Virgin Australia                   | 25             | 24           | 19                          | 79.2     | 19                            | 79.2     | 1                    | 4.0      |
| All Airlines                       | 65             | 64           | 54                          | 84.4     | 50                            | 78.1     | 1                    | 1.5      |
| <b>Canberra-Brisbane</b>           |                |              |                             |          |                               |          |                      |          |
| Qantas                             | 22             | 22           | 20                          | 90.9     | 20                            | 90.9     | 0                    | 0.0      |
| QantasLink                         | 126            | 123          | 107                         | 87.0     | 108                           | 87.8     | 3                    | 2.4      |
| Tigerair Australia                 | 12             | 12           | 11                          | 91.7     | 10                            | 83.3     | 0                    | 0.0      |
| Virgin Australia                   | 96             | 96           | 81                          | 84.4     | 82                            | 85.4     | 0                    | 0.0      |
| All Airlines                       | 256            | 253          | 219                         | 86.6     | 220                           | 87.0     | 3                    | 1.2      |
| <b>Canberra-Melbourne</b>          |                |              |                             |          |                               |          |                      |          |
| Qantas                             | 233            | 227          | 200                         | 88.1     | 205                           | 90.3     | 6                    | 2.6      |
| QantasLink                         | 43             | 42           | 33                          | 78.6     | 34                            | 81.0     | 1                    | 2.3      |
| Tigerair Australia                 | 30             | 29           | 20                          | 69.0     | 19                            | 65.5     | 1                    | 3.3      |
| Virgin Australia                   | 145            | 143          | 101                         | 70.6     | 111                           | 77.6     | 2                    | 1.4      |
| All Airlines                       | 451            | 441          | 354                         | 80.3     | 369                           | 83.7     | 10                   | 2.2      |
| <b>Canberra-Sydney</b>             |                |              |                             |          |                               |          |                      |          |
| Qantas                             | 20             | 20           | 16                          | 80.0     | 19                            | 95.0     | 0                    | 0.0      |
| QantasLink                         | 445            | 435          | 356                         | 81.8     | 358                           | 82.3     | 10                   | 2.2      |
| Virgin Australia                   | 244            | 243          | 187                         | 77.0     | 191                           | 78.6     | 1                    | 0.4      |
| All Airlines                       | 709            | 698          | 559                         | 80.1     | 568                           | 81.4     | 11                   | 1.6      |
| <b>Coffs Harbour-Sydney</b>        |                |              |                             |          |                               |          |                      |          |
| QantasLink                         | 124            | 122          | 100                         | 82.0     | 102                           | 83.6     | 2                    | 1.6      |
| Tigerair Australia                 | 13             | 13           | 11                          | 84.6     | 9                             | 69.2     | 0                    | 0.0      |
| Virgin Australia                   | 52             | 52           | 44                          | 84.6     | 45                            | 86.5     | 0                    | 0.0      |
| All Airlines                       | 189            | 187          | 155                         | 82.9     | 156                           | 83.4     | 2                    | 1.1      |
| <b>Darwin-Alice Springs</b>        |                |              |                             |          |                               |          |                      |          |
| QantasLink                         | 60             | 59           | 56                          | 94.9     | 56                            | 94.9     | 1                    | 1.7      |
| Virgin Australia                   | 4              | 4            | 4                           | 100.0    | 4                             | 100.0    | 0                    | 0.0      |
| Virgin Australia Regional Airlines | 18             | 18           | 16                          | 88.9     | 16                            | 88.9     | 0                    | 0.0      |
| All Airlines                       | 82             | 81           | 76                          | 93.8     | 76                            | 93.8     | 1                    | 1.2      |
| <b>Darwin-Brisbane</b>             |                |              |                             |          |                               |          |                      |          |
| Jetstar                            | 22             | 22           | 17                          | 77.3     | 15                            | 68.2     | 0                    | 0.0      |
| Qantas                             | 46             | 46           | 36                          | 78.3     | 35                            | 76.1     | 0                    | 0.0      |
| Tigerair Australia                 | 23             | 23           | 20                          | 87.0     | 18                            | 78.3     | 0                    | 0.0      |
| Virgin Australia                   | 33             | 33           | 25                          | 75.8     | 25                            | 75.8     | 0                    | 0.0      |
| All Airlines                       | 124            | 124          | 98                          | 79.0     | 93                            | 75.0     | 0                    | 0.0      |
| <b>Darwin-Melbourne</b>            |                |              |                             |          |                               |          |                      |          |
| Jetstar                            | 26             | 26           | 15                          | 57.7     | 8                             | 30.8     | 0                    | 0.0      |
| Qantas                             | 38             | 37           | 23                          | 62.2     | 22                            | 59.5     | 1                    | 2.6      |
| Virgin Australia                   | 32             | 32           | 28                          | 87.5     | 29                            | 90.6     | 0                    | 0.0      |
| All Airlines                       | 96             | 95           | 66                          | 69.5     | 59                            | 62.1     | 1                    | 1.0      |
| <b>Darwin-Perth</b>                |                |              |                             |          |                               |          |                      |          |
| Qantas                             | 42             | 42           | 34                          | 81.0     | 36                            | 85.7     | 0                    | 0.0      |
| Virgin Australia                   | 23             | 23           | 17                          | 73.9     | 19                            | 82.6     | 0                    | 0.0      |
| Virgin Australia Regional Airlines | 8              | 8            | 4                           | 50.0     | 8                             | 100.0    | 0                    | 0.0      |
| All Airlines                       | 73             | 73           | 55                          | 75.3     | 63                            | 86.3     | 0                    | 0.0      |
| <b>Darwin-Sydney</b>               |                |              |                             |          |                               |          |                      |          |
| Jetstar                            | 19             | 19           | 18                          | 94.7     | 15                            | 78.9     | 0                    | 0.0      |
| Qantas                             | 60             | 60           | 40                          | 66.7     | 31                            | 51.7     | 0                    | 0.0      |
| Virgin Australia                   | 32             | 32           | 14                          | 43.8     | 19                            | 59.4     | 0                    | 0.0      |
| All Airlines                       | 111            | 111          | 72                          | 64.9     | 65                            | 58.6     | 0                    | 0.0      |

|                                    | <i>Sectors</i> |              | <i>Arrivals<br/>On Time</i> |          | <i>Departures<br/>On Time</i> |          | <i>Cancellations</i> |          |
|------------------------------------|----------------|--------------|-----------------------------|----------|-------------------------------|----------|----------------------|----------|
|                                    | <i>Sched.</i>  | <i>Flown</i> | <i>No.</i>                  | <i>%</i> | <i>No.</i>                    | <i>%</i> | <i>No.</i>           | <i>%</i> |
| <b>Dubbo-Sydney</b>                |                |              |                             |          |                               |          |                      |          |
| QantasLink                         | 102            | 101          | 78                          | 77.2     | 80                            | 79.2     | 1                    | 1.0      |
| Regional Express                   | 125            | 125          | 80                          | 64.0     | 91                            | 72.8     | 0                    | 0.0      |
| All Airlines                       | 227            | 226          | 158                         | 69.9     | 171                           | 75.7     | 1                    | 0.4      |
| <b>Emerald-Brisbane</b>            |                |              |                             |          |                               |          |                      |          |
| QantasLink                         | 97             | 95           | 82                          | 86.3     | 81                            | 85.3     | 2                    | 2.1      |
| Virgin Australia                   | 50             | 50           | 46                          | 92.0     | 45                            | 90.0     | 0                    | 0.0      |
| All Airlines                       | 147            | 145          | 128                         | 88.3     | 126                           | 86.9     | 2                    | 1.4      |
| <b>Geraldton-Perth</b>             |                |              |                             |          |                               |          |                      |          |
| QantasLink                         | 47             | 44           | 42                          | 95.5     | 43                            | 97.7     | 3                    | 6.4      |
| Virgin Australia Regional Airlines | 48             | 48           | 38                          | 79.2     | 38                            | 79.2     | 0                    | 0.0      |
| All Airlines                       | 95             | 92           | 80                          | 87.0     | 81                            | 88.0     | 3                    | 3.2      |
| <b>Gladstone-Brisbane</b>          |                |              |                             |          |                               |          |                      |          |
| QantasLink                         | 125            | 121          | 104                         | 86.0     | 99                            | 81.8     | 4                    | 3.2      |
| Virgin Australia                   | 72             | 72           | 63                          | 87.5     | 66                            | 91.7     | 0                    | 0.0      |
| All Airlines                       | 197            | 193          | 167                         | 86.5     | 165                           | 85.5     | 4                    | 2.0      |
| <b>Gold Coast-Adelaide</b>         |                |              |                             |          |                               |          |                      |          |
| Jetstar                            | 26             | 26           | 24                          | 92.3     | 26                            | 100.0    | 0                    | 0.0      |
| Virgin Australia                   | 31             | 30           | 23                          | 76.7     | 24                            | 80.0     | 1                    | 3.2      |
| All Airlines                       | 57             | 56           | 47                          | 83.9     | 50                            | 89.3     | 1                    | 1.8      |
| <b>Gold Coast-Melbourne</b>        |                |              |                             |          |                               |          |                      |          |
| Jetstar                            | 171            | 171          | 134                         | 78.4     | 128                           | 74.9     | 0                    | 0.0      |
| Qantas                             | 30             | 30           | 23                          | 76.7     | 20                            | 66.7     | 0                    | 0.0      |
| Tigerair Australia                 | 72             | 68           | 41                          | 60.3     | 44                            | 64.7     | 4                    | 5.6      |
| Virgin Australia                   | 171            | 167          | 110                         | 65.9     | 106                           | 63.5     | 4                    | 2.3      |
| All Airlines                       | 444            | 436          | 308                         | 70.6     | 298                           | 68.3     | 8                    | 1.8      |
| <b>Gold Coast-Sydney</b>           |                |              |                             |          |                               |          |                      |          |
| Jetstar                            | 244            | 240          | 179                         | 74.6     | 178                           | 74.2     | 4                    | 1.6      |
| Qantas                             | 90             | 90           | 79                          | 87.8     | 76                            | 84.4     | 0                    | 0.0      |
| QantasLink                         | 21             | 21           | 16                          | 76.2     | 15                            | 71.4     | 0                    | 0.0      |
| Tigerair Australia                 | 95             | 94           | 63                          | 67.0     | 58                            | 61.7     | 1                    | 1.1      |
| Virgin Australia                   | 232            | 227          | 176                         | 77.5     | 171                           | 75.3     | 5                    | 2.2      |
| All Airlines                       | 682            | 672          | 513                         | 76.3     | 498                           | 74.1     | 10                   | 1.5      |
| <b>Hamilton Island-Brisbane</b>    |                |              |                             |          |                               |          |                      |          |
| QantasLink                         | 22             | 22           | 19                          | 86.4     | 19                            | 86.4     | 0                    | 0.0      |
| Virgin Australia                   | 30             | 30           | 27                          | 90.0     | 27                            | 90.0     | 0                    | 0.0      |
| All Airlines                       | 52             | 52           | 46                          | 88.5     | 46                            | 88.5     | 0                    | 0.0      |
| <b>Hamilton Island-Sydney</b>      |                |              |                             |          |                               |          |                      |          |
| Jetstar                            | 18             | 18           | 12                          | 66.7     | 16                            | 88.9     | 0                    | 0.0      |
| Qantas                             | 5              | 5            | 4                           | 80.0     | 4                             | 80.0     | 0                    | 0.0      |
| QantasLink                         | 20             | 19           | 18                          | 94.7     | 19                            | 100.0    | 1                    | 5.0      |
| Virgin Australia                   | 19             | 19           | 17                          | 89.5     | 16                            | 84.2     | 0                    | 0.0      |
| All Airlines                       | 62             | 61           | 51                          | 83.6     | 55                            | 90.2     | 1                    | 1.6      |
| <b>Hobart-Brisbane</b>             |                |              |                             |          |                               |          |                      |          |
| Jetstar                            | 18             | 18           | 17                          | 94.4     | 16                            | 88.9     | 0                    | 0.0      |
| Virgin Australia                   | 32             | 32           | 19                          | 59.4     | 18                            | 56.3     | 0                    | 0.0      |
| All Airlines                       | 50             | 50           | 36                          | 72.0     | 34                            | 68.0     | 0                    | 0.0      |

|                                    | <i>Sectors</i> |              | <i>Arrivals<br/>On Time</i> |          | <i>Departures<br/>On Time</i> |          | <i>Cancellations</i> |          |
|------------------------------------|----------------|--------------|-----------------------------|----------|-------------------------------|----------|----------------------|----------|
|                                    | <i>Sched.</i>  | <i>Flown</i> | <i>No.</i>                  | <i>%</i> | <i>No.</i>                    | <i>%</i> | <i>No.</i>           | <i>%</i> |
| <b>Hobart-Melbourne</b>            |                |              |                             |          |                               |          |                      |          |
| Jetstar                            | 139            | 137          | 86                          | 62.8     | 84                            | 61.3     | 2                    | 1.4      |
| Qantas                             | 111            | 111          | 96                          | 86.5     | 100                           | 90.1     | 0                    | 0.0      |
| Tigerair Australia                 | 29             | 29           | 16                          | 55.2     | 18                            | 62.1     | 0                    | 0.0      |
| Virgin Australia                   | 142            | 142          | 93                          | 65.5     | 99                            | 69.7     | 0                    | 0.0      |
| All Airlines                       | 421            | 419          | 291                         | 69.5     | 301                           | 71.8     | 2                    | 0.5      |
| <b>Hobart-Sydney</b>               |                |              |                             |          |                               |          |                      |          |
| Jetstar                            | 61             | 61           | 47                          | 77.0     | 43                            | 70.5     | 0                    | 0.0      |
| Qantas                             | 4              | 4            | 3                           | 75.0     | 3                             | 75.0     | 0                    | 0.0      |
| QantasLink                         | 58             | 55           | 46                          | 83.6     | 51                            | 92.7     | 3                    | 5.2      |
| Virgin Australia                   | 72             | 72           | 58                          | 80.6     | 61                            | 84.7     | 0                    | 0.0      |
| All Airlines                       | 195            | 192          | 154                         | 80.2     | 158                           | 82.3     | 3                    | 1.5      |
| <b>Kalgoorlie-Perth</b>            |                |              |                             |          |                               |          |                      |          |
| Qantas                             | 8              | 8            | 8                           | 100.0    | 8                             | 100.0    | 0                    | 0.0      |
| QantasLink                         | 72             | 70           | 65                          | 92.9     | 63                            | 90.0     | 2                    | 2.8      |
| Virgin Australia                   | 33             | 33           | 26                          | 78.8     | 28                            | 84.8     | 0                    | 0.0      |
| Virgin Australia Regional Airlines | 33             | 31           | 25                          | 80.6     | 27                            | 87.1     | 2                    | 6.1      |
| All Airlines                       | 146            | 142          | 124                         | 87.3     | 126                           | 88.7     | 4                    | 2.7      |
| <b>Karratha-Perth</b>              |                |              |                             |          |                               |          |                      |          |
| Qantas                             | 10             | 8            | 6                           | 75.0     | 6                             | 75.0     | 2                    | 20.0     |
| QantasLink                         | 173            | 170          | 135                         | 79.4     | 136                           | 80.0     | 3                    | 1.7      |
| Virgin Australia                   | 10             | 10           | 8                           | 80.0     | 8                             | 80.0     | 0                    | 0.0      |
| Virgin Australia Regional Airlines | 59             | 58           | 42                          | 72.4     | 42                            | 72.4     | 1                    | 1.7      |
| All Airlines                       | 252            | 246          | 191                         | 77.6     | 192                           | 78.0     | 6                    | 2.4      |
| <b>Launceston-Melbourne</b>        |                |              |                             |          |                               |          |                      |          |
| Jetstar                            | 93             | 90           | 50                          | 55.6     | 47                            | 52.2     | 3                    | 3.2      |
| QantasLink                         | 106            | 104          | 82                          | 78.8     | 84                            | 80.8     | 2                    | 1.9      |
| Virgin Australia                   | 94             | 94           | 66                          | 70.2     | 76                            | 80.9     | 0                    | 0.0      |
| All Airlines                       | 293            | 288          | 198                         | 68.8     | 207                           | 71.9     | 5                    | 1.7      |
| <b>Launceston-Sydney</b>           |                |              |                             |          |                               |          |                      |          |
| Jetstar                            | 27             | 26           | 18                          | 69.2     | 18                            | 69.2     | 1                    | 3.7      |
| Virgin Australia                   | 28             | 28           | 21                          | 75.0     | 21                            | 75.0     | 0                    | 0.0      |
| All Airlines                       | 55             | 54           | 39                          | 72.2     | 39                            | 72.2     | 1                    | 1.8      |
| <b>Mackay-Brisbane</b>             |                |              |                             |          |                               |          |                      |          |
| Jetstar                            | 32             | 32           | 26                          | 81.3     | 19                            | 59.4     | 0                    | 0.0      |
| QantasLink                         | 110            | 108          | 92                          | 85.2     | 89                            | 82.4     | 2                    | 1.8      |
| Virgin Australia                   | 137            | 136          | 119                         | 87.5     | 122                           | 89.7     | 1                    | 0.7      |
| All Airlines                       | 279            | 276          | 237                         | 85.9     | 230                           | 83.3     | 3                    | 1.1      |
| <b>Melbourne-Adelaide</b>          |                |              |                             |          |                               |          |                      |          |
| Jetstar                            | 93             | 88           | 60                          | 68.2     | 67                            | 76.1     | 5                    | 5.4      |
| Qantas                             | 275            | 273          | 212                         | 77.7     | 214                           | 78.4     | 2                    | 0.7      |
| Tigerair Australia                 | 74             | 70           | 46                          | 65.7     | 50                            | 71.4     | 4                    | 5.4      |
| Virgin Australia                   | 258            | 251          | 189                         | 75.3     | 195                           | 77.7     | 7                    | 2.7      |
| All Airlines                       | 700            | 682          | 507                         | 74.3     | 526                           | 77.1     | 18                   | 2.6      |
| <b>Melbourne-Brisbane</b>          |                |              |                             |          |                               |          |                      |          |
| Jetstar                            | 110            | 102          | 60                          | 58.8     | 54                            | 52.9     | 8                    | 7.3      |
| Qantas                             | 408            | 405          | 300                         | 74.1     | 290                           | 71.6     | 3                    | 0.7      |
| Tigerair Australia                 | 122            | 115          | 79                          | 68.7     | 79                            | 68.7     | 7                    | 5.7      |
| Virgin Australia                   | 360            | 352          | 270                         | 76.7     | 275                           | 78.1     | 8                    | 2.2      |
| All Airlines                       | 1 000          | 974          | 709                         | 72.8     | 698                           | 71.7     | 26                   | 2.6      |

|                             | <i>Sectors</i> |              | <i>Arrivals<br/>On Time</i> |          | <i>Departures<br/>On Time</i> |          | <i>Cancellations</i> |          |
|-----------------------------|----------------|--------------|-----------------------------|----------|-------------------------------|----------|----------------------|----------|
|                             | <i>Sched.</i>  | <i>Flown</i> | <i>No.</i>                  | <i>%</i> | <i>No.</i>                    | <i>%</i> | <i>No.</i>           | <i>%</i> |
| <b>Melbourne-Cairns</b>     |                |              |                             |          |                               |          |                      |          |
| Jetstar                     | 98             | 96           | 64                          | 66.7     | 67                            | 69.8     | 2                    | 2.0      |
| Qantas                      | 38             | 38           | 26                          | 68.4     | 30                            | 78.9     | 0                    | 0.0      |
| Tigerair Australia          | 47             | 47           | 28                          | 59.6     | 37                            | 78.7     | 0                    | 0.0      |
| Virgin Australia            | 36             | 35           | 20                          | 57.1     | 27                            | 77.1     | 1                    | 2.8      |
| All Airlines                | 219            | 216          | 138                         | 63.9     | 161                           | 74.5     | 3                    | 1.4      |
| <b>Melbourne-Canberra</b>   |                |              |                             |          |                               |          |                      |          |
| Qantas                      | 238            | 232          | 189                         | 81.5     | 187                           | 80.6     | 6                    | 2.5      |
| QantasLink                  | 43             | 42           | 34                          | 81.0     | 35                            | 83.3     | 1                    | 2.3      |
| Tigerair Australia          | 30             | 29           | 21                          | 72.4     | 21                            | 72.4     | 1                    | 3.3      |
| Virgin Australia            | 145            | 143          | 119                         | 83.2     | 118                           | 82.5     | 2                    | 1.4      |
| All Airlines                | 456            | 446          | 363                         | 81.4     | 361                           | 80.9     | 10                   | 2.2      |
| <b>Melbourne-Darwin</b>     |                |              |                             |          |                               |          |                      |          |
| Jetstar                     | 26             | 26           | 11                          | 42.3     | 13                            | 50.0     | 0                    | 0.0      |
| Qantas                      | 38             | 38           | 27                          | 71.1     | 30                            | 78.9     | 0                    | 0.0      |
| Virgin Australia            | 33             | 33           | 21                          | 63.6     | 24                            | 72.7     | 0                    | 0.0      |
| All Airlines                | 97             | 97           | 59                          | 60.8     | 67                            | 69.1     | 0                    | 0.0      |
| <b>Melbourne-Gold Coast</b> |                |              |                             |          |                               |          |                      |          |
| Jetstar                     | 171            | 171          | 127                         | 74.3     | 134                           | 78.4     | 0                    | 0.0      |
| Qantas                      | 30             | 30           | 21                          | 70.0     | 21                            | 70.0     | 0                    | 0.0      |
| Tigerair Australia          | 72             | 70           | 49                          | 70.0     | 51                            | 72.9     | 2                    | 2.8      |
| Virgin Australia            | 168            | 164          | 126                         | 76.8     | 126                           | 76.8     | 4                    | 2.4      |
| All Airlines                | 441            | 435          | 323                         | 74.3     | 332                           | 76.3     | 6                    | 1.4      |
| <b>Melbourne-Hobart</b>     |                |              |                             |          |                               |          |                      |          |
| Jetstar                     | 139            | 137          | 92                          | 67.2     | 98                            | 71.5     | 2                    | 1.4      |
| Qantas                      | 111            | 111          | 93                          | 83.8     | 98                            | 88.3     | 0                    | 0.0      |
| Tigerair Australia          | 29             | 29           | 21                          | 72.4     | 22                            | 75.9     | 0                    | 0.0      |
| Virgin Australia            | 144            | 143          | 102                         | 71.3     | 112                           | 78.3     | 1                    | 0.7      |
| All Airlines                | 423            | 420          | 308                         | 73.3     | 330                           | 78.6     | 3                    | 0.7      |
| <b>Melbourne-Launceston</b> |                |              |                             |          |                               |          |                      |          |
| Jetstar                     | 93             | 91           | 62                          | 68.1     | 65                            | 71.4     | 2                    | 2.2      |
| QantasLink                  | 106            | 104          | 81                          | 77.9     | 80                            | 76.9     | 2                    | 1.9      |
| Virgin Australia            | 94             | 94           | 65                          | 69.1     | 73                            | 77.7     | 0                    | 0.0      |
| All Airlines                | 293            | 289          | 208                         | 72.0     | 218                           | 75.4     | 4                    | 1.4      |
| <b>Melbourne-Mildura</b>    |                |              |                             |          |                               |          |                      |          |
| QantasLink                  | 93             | 89           | 86                          | 96.6     | 83                            | 93.3     | 4                    | 4.3      |
| Regional Express            | 72             | 71           | 57                          | 80.3     | 62                            | 87.3     | 1                    | 1.4      |
| Virgin Australia            | 30             | 30           | 21                          | 70.0     | 21                            | 70.0     | 0                    | 0.0      |
| All Airlines                | 195            | 190          | 164                         | 86.3     | 166                           | 87.4     | 5                    | 2.6      |
| <b>Melbourne-Newcastle</b>  |                |              |                             |          |                               |          |                      |          |
| Jetstar                     | 107            | 103          | 71                          | 68.9     | 62                            | 60.2     | 4                    | 3.7      |
| Virgin Australia            | 33             | 33           | 23                          | 69.7     | 24                            | 72.7     | 0                    | 0.0      |
| All Airlines                | 140            | 136          | 94                          | 69.1     | 86                            | 63.2     | 4                    | 2.9      |
| <b>Melbourne-Perth</b>      |                |              |                             |          |                               |          |                      |          |
| Jetstar                     | 41             | 38           | 33                          | 86.8     | 30                            | 78.9     | 3                    | 7.3      |
| Qantas                      | 189            | 188          | 140                         | 74.5     | 136                           | 72.3     | 1                    | 0.5      |
| Tigerair Australia          | 46             | 44           | 26                          | 59.1     | 25                            | 56.8     | 2                    | 4.3      |
| Virgin Australia            | 124            | 124          | 94                          | 75.8     | 87                            | 70.2     | 0                    | 0.0      |
| All Airlines                | 400            | 394          | 293                         | 74.4     | 278                           | 70.6     | 6                    | 1.5      |

|                                    | <i>Sectors</i> |              | <i>Arrivals<br/>On Time</i> |          | <i>Departures<br/>On Time</i> |          | <i>Cancellations</i> |          |
|------------------------------------|----------------|--------------|-----------------------------|----------|-------------------------------|----------|----------------------|----------|
|                                    | <i>Sched.</i>  | <i>Flown</i> | <i>No.</i>                  | <i>%</i> | <i>No.</i>                    | <i>%</i> | <i>No.</i>           | <i>%</i> |
| <b>Melbourne-Sunshine Coast</b>    |                |              |                             |          |                               |          |                      |          |
| Jetstar                            | 63             | 63           | 49                          | 77.8     | 52                            | 82.5     | 0                    | 0.0      |
| Virgin Australia                   | 58             | 57           | 46                          | 80.7     | 45                            | 78.9     | 1                    | 1.7      |
| All Airlines                       | 121            | 120          | 95                          | 79.2     | 97                            | 80.8     | 1                    | 0.8      |
| <b>Melbourne-Sydney</b>            |                |              |                             |          |                               |          |                      |          |
| Jetstar                            | 375            | 353          | 241                         | 68.3     | 251                           | 71.1     | 22                   | 5.9      |
| Qantas                             | 957            | 899          | 593                         | 66.0     | 651                           | 72.4     | 58                   | 6.1      |
| Tigerair Australia                 | 253            | 240          | 142                         | 59.2     | 152                           | 63.3     | 13                   | 5.1      |
| Virgin Australia                   | 712            | 677          | 488                         | 72.1     | 534                           | 78.9     | 35                   | 4.9      |
| All Airlines                       | 2 297          | 2 169        | 1 464                       | 67.5     | 1 588                         | 73.2     | 128                  | 5.6      |
| <b>Melbourne-Townsville</b>        |                |              |                             |          |                               |          |                      |          |
| Jetstar                            | 26             | 26           | 18                          | 69.2     | 18                            | 69.2     | 0                    | 0.0      |
| Tigerair Australia                 | 13             | 13           | 7                           | 53.8     | 9                             | 69.2     | 0                    | 0.0      |
| All Airlines                       | 39             | 39           | 25                          | 64.1     | 27                            | 69.2     | 0                    | 0.0      |
| <b>Mildura-Melbourne</b>           |                |              |                             |          |                               |          |                      |          |
| QantasLink                         | 93             | 89           | 76                          | 85.4     | 77                            | 86.5     | 4                    | 4.3      |
| Regional Express                   | 73             | 72           | 47                          | 65.3     | 52                            | 72.2     | 1                    | 1.4      |
| Virgin Australia                   | 30             | 30           | 20                          | 66.7     | 21                            | 70.0     | 0                    | 0.0      |
| All Airlines                       | 196            | 191          | 143                         | 74.9     | 150                           | 78.5     | 5                    | 2.6      |
| <b>Mount Isa-Brisbane</b>          |                |              |                             |          |                               |          |                      |          |
| QantasLink                         | 55             | 54           | 34                          | 63.0     | 26                            | 48.1     | 1                    | 1.8      |
| Virgin Australia                   | 17             | 17           | 12                          | 70.6     | 12                            | 70.6     | 0                    | 0.0      |
| All Airlines                       | 72             | 71           | 46                          | 64.8     | 38                            | 53.5     | 1                    | 1.4      |
| <b>Newcastle-Brisbane</b>          |                |              |                             |          |                               |          |                      |          |
| Jetstar                            | 77             | 75           | 57                          | 76.0     | 60                            | 80.0     | 2                    | 2.6      |
| QantasLink                         | 47             | 46           | 39                          | 84.8     | 40                            | 87.0     | 1                    | 2.1      |
| Virgin Australia                   | 84             | 83           | 67                          | 80.7     | 66                            | 79.5     | 1                    | 1.2      |
| All Airlines                       | 208            | 204          | 163                         | 79.9     | 166                           | 81.4     | 4                    | 1.9      |
| <b>Newcastle-Melbourne</b>         |                |              |                             |          |                               |          |                      |          |
| Jetstar                            | 107            | 102          | 71                          | 69.6     | 69                            | 67.6     | 5                    | 4.7      |
| Virgin Australia                   | 33             | 33           | 22                          | 66.7     | 22                            | 66.7     | 0                    | 0.0      |
| All Airlines                       | 140            | 135          | 93                          | 68.9     | 91                            | 67.4     | 5                    | 3.6      |
| <b>Newman-Perth</b>                |                |              |                             |          |                               |          |                      |          |
| Qantas                             | 20             | 19           | 17                          | 89.5     | 17                            | 89.5     | 1                    | 5.0      |
| QantasLink                         | 102            | 98           | 76                          | 77.6     | 73                            | 74.5     | 4                    | 3.9      |
| Virgin Australia                   | 17             | 17           | 15                          | 88.2     | 16                            | 94.1     | 0                    | 0.0      |
| Virgin Australia Regional Airlines | 20             | 20           | 17                          | 85.0     | 18                            | 90.0     | 0                    | 0.0      |
| All Airlines                       | 159            | 154          | 125                         | 81.2     | 124                           | 80.5     | 5                    | 3.1      |
| <b>Perth-Adelaide</b>              |                |              |                             |          |                               |          |                      |          |
| Jetstar                            | 27             | 25           | 18                          | 72.0     | 12                            | 48.0     | 2                    | 7.4      |
| Qantas                             | 100            | 100          | 87                          | 87.0     | 88                            | 88.0     | 0                    | 0.0      |
| QantasLink                         | 10             | 10           | 8                           | 80.0     | 10                            | 100.0    | 0                    | 0.0      |
| Virgin Australia                   | 35             | 35           | 29                          | 82.9     | 24                            | 68.6     | 0                    | 0.0      |
| Virgin Australia Regional Airlines | 43             | 43           | 29                          | 67.4     | 33                            | 76.7     | 0                    | 0.0      |
| All Airlines                       | 215            | 213          | 171                         | 80.3     | 167                           | 78.4     | 2                    | 0.9      |
| <b>Perth-Brisbane</b>              |                |              |                             |          |                               |          |                      |          |
| Qantas                             | 140            | 140          | 121                         | 86.4     | 118                           | 84.3     | 0                    | 0.0      |
| Virgin Australia                   | 96             | 94           | 77                          | 81.9     | 80                            | 85.1     | 2                    | 2.1      |
| All Airlines                       | 236            | 234          | 198                         | 84.6     | 198                           | 84.6     | 2                    | 0.8      |



|                                    | Sectors |       | Arrivals<br>On Time |       | Departures<br>On Time |       | Cancellations |      |
|------------------------------------|---------|-------|---------------------|-------|-----------------------|-------|---------------|------|
|                                    | Sched.  | Flown | No.                 | %     | No.                   | %     | No.           | %    |
| <b>Perth-Broome</b>                |         |       |                     |       |                       |       |               |      |
| QantasLink                         | 81      | 81    | 73                  | 90.1  | 70                    | 86.4  | 0             | 0.0  |
| Virgin Australia                   | 5       | 5     | 5                   | 100.0 | 5                     | 100.0 | 0             | 0.0  |
| Virgin Australia Regional Airlines | 73      | 73    | 54                  | 74.0  | 53                    | 72.6  | 0             | 0.0  |
| All Airlines                       | 159     | 159   | 132                 | 83.0  | 128                   | 80.5  | 0             | 0.0  |
| <b>Perth-Darwin</b>                |         |       |                     |       |                       |       |               |      |
| Qantas                             | 42      | 42    | 37                  | 88.1  | 35                    | 83.3  | 0             | 0.0  |
| Virgin Australia                   | 23      | 23    | 21                  | 91.3  | 19                    | 82.6  | 0             | 0.0  |
| Virgin Australia Regional Airlines | 8       | 8     | 8                   | 100.0 | 7                     | 87.5  | 0             | 0.0  |
| All Airlines                       | 73      | 73    | 66                  | 90.4  | 61                    | 83.6  | 0             | 0.0  |
| <b>Perth-Geraldton</b>             |         |       |                     |       |                       |       |               |      |
| QantasLink                         | 47      | 46    | 41                  | 89.1  | 41                    | 89.1  | 1             | 2.1  |
| Virgin Australia Regional Airlines | 48      | 48    | 38                  | 79.2  | 37                    | 77.1  | 0             | 0.0  |
| All Airlines                       | 95      | 94    | 79                  | 84.0  | 78                    | 83.0  | 1             | 1.1  |
| <b>Perth-Kalgoorlie</b>            |         |       |                     |       |                       |       |               |      |
| Qantas                             | 8       | 8     | 8                   | 100.0 | 8                     | 100.0 | 0             | 0.0  |
| QantasLink                         | 73      | 71    | 63                  | 88.7  | 58                    | 81.7  | 2             | 2.7  |
| Virgin Australia                   | 34      | 34    | 31                  | 91.2  | 31                    | 91.2  | 0             | 0.0  |
| Virgin Australia Regional Airlines | 33      | 31    | 25                  | 80.6  | 26                    | 83.9  | 2             | 6.1  |
| All Airlines                       | 148     | 144   | 127                 | 88.2  | 123                   | 85.4  | 4             | 2.7  |
| <b>Perth-Karratha</b>              |         |       |                     |       |                       |       |               |      |
| Qantas                             | 8       | 8     | 8                   | 100.0 | 7                     | 87.5  | 0             | 0.0  |
| QantasLink                         | 173     | 170   | 129                 | 75.9  | 140                   | 82.4  | 3             | 1.7  |
| Virgin Australia                   | 10      | 10    | 6                   | 60.0  | 8                     | 80.0  | 0             | 0.0  |
| Virgin Australia Regional Airlines | 59      | 58    | 42                  | 72.4  | 49                    | 84.5  | 1             | 1.7  |
| All Airlines                       | 250     | 246   | 185                 | 75.2  | 204                   | 82.9  | 4             | 1.6  |
| <b>Perth-Melbourne</b>             |         |       |                     |       |                       |       |               |      |
| Jetstar                            | 40      | 37    | 28                  | 75.7  | 26                    | 70.3  | 3             | 7.5  |
| Qantas                             | 196     | 195   | 160                 | 82.1  | 158                   | 81.0  | 1             | 0.5  |
| Tigerair Australia                 | 46      | 43    | 25                  | 58.1  | 24                    | 55.8  | 3             | 6.5  |
| Virgin Australia                   | 127     | 127   | 107                 | 84.3  | 113                   | 89.0  | 0             | 0.0  |
| All Airlines                       | 409     | 402   | 320                 | 79.6  | 321                   | 79.9  | 7             | 1.7  |
| <b>Perth-Newman</b>                |         |       |                     |       |                       |       |               |      |
| Qantas                             | 20      | 20    | 17                  | 85.0  | 18                    | 90.0  | 0             | 0.0  |
| QantasLink                         | 102     | 100   | 84                  | 84.0  | 88                    | 88.0  | 2             | 2.0  |
| Virgin Australia                   | 17      | 17    | 17                  | 100.0 | 16                    | 94.1  | 0             | 0.0  |
| Virgin Australia Regional Airlines | 20      | 20    | 17                  | 85.0  | 20                    | 100.0 | 0             | 0.0  |
| All Airlines                       | 159     | 157   | 135                 | 86.0  | 142                   | 90.4  | 2             | 1.3  |
| <b>Perth-Port Hedland</b>          |         |       |                     |       |                       |       |               |      |
| Qantas                             | 25      | 25    | 22                  | 88.0  | 21                    | 84.0  | 0             | 0.0  |
| QantasLink                         | 106     | 101   | 81                  | 80.2  | 83                    | 82.2  | 5             | 4.7  |
| Virgin Australia                   | 25      | 25    | 23                  | 92.0  | 23                    | 92.0  | 0             | 0.0  |
| Virgin Australia Regional Airlines | 26      | 26    | 21                  | 80.8  | 22                    | 84.6  | 0             | 0.0  |
| All Airlines                       | 182     | 177   | 147                 | 83.1  | 149                   | 84.2  | 5             | 2.7  |
| <b>Perth-Sydney</b>                |         |       |                     |       |                       |       |               |      |
| Jetstar                            | 30      | 30    | 23                  | 76.7  | 19                    | 63.3  | 0             | 0.0  |
| Qantas                             | 193     | 193   | 150                 | 77.7  | 152                   | 78.8  | 0             | 0.0  |
| Tigerair Australia                 | 26      | 23    | 20                  | 87.0  | 19                    | 82.6  | 3             | 11.5 |
| Virgin Australia                   | 116     | 116   | 100                 | 86.2  | 95                    | 81.9  | 0             | 0.0  |
| All Airlines                       | 365     | 362   | 293                 | 80.9  | 285                   | 78.7  | 3             | 0.8  |

|                                    | <i>Sectors</i> |              | <i>Arrivals<br/>On Time</i> |          | <i>Departures<br/>On Time</i> |          | <i>Cancellations</i> |          |
|------------------------------------|----------------|--------------|-----------------------------|----------|-------------------------------|----------|----------------------|----------|
|                                    | <i>Sched.</i>  | <i>Flown</i> | <i>No.</i>                  | <i>%</i> | <i>No.</i>                    | <i>%</i> | <i>No.</i>           | <i>%</i> |
| <b>Port Hedland-Perth</b>          |                |              |                             |          |                               |          |                      |          |
| Qantas                             | 25             | 25           | 17                          | 68.0     | 19                            | 76.0     | 0                    | 0.0      |
| QantasLink                         | 106            | 101          | 87                          | 86.1     | 88                            | 87.1     | 5                    | 4.7      |
| Virgin Australia                   | 25             | 25           | 22                          | 88.0     | 21                            | 84.0     | 0                    | 0.0      |
| Virgin Australia Regional Airlines | 26             | 26           | 21                          | 80.8     | 22                            | 84.6     | 0                    | 0.0      |
| All Airlines                       | 182            | 177          | 147                         | 83.1     | 150                           | 84.7     | 5                    | 2.7      |
| <b>Port Lincoln-Adelaide</b>       |                |              |                             |          |                               |          |                      |          |
| QantasLink                         | 108            | 106          | 97                          | 91.5     | 97                            | 91.5     | 2                    | 1.9      |
| Regional Express                   | 176            | 175          | 147                         | 84.0     | 150                           | 85.7     | 1                    | 0.6      |
| All Airlines                       | 284            | 281          | 244                         | 86.8     | 247                           | 87.9     | 3                    | 1.1      |
| <b>Port Macquarie-Sydney</b>       |                |              |                             |          |                               |          |                      |          |
| QantasLink                         | 93             | 93           | 74                          | 79.6     | 74                            | 79.6     | 0                    | 0.0      |
| Virgin Australia                   | 56             | 55           | 37                          | 67.3     | 36                            | 65.5     | 1                    | 1.8      |
| All Airlines                       | 149            | 148          | 111                         | 75.0     | 110                           | 74.3     | 1                    | 0.7      |
| <b>Proserpine-Brisbane</b>         |                |              |                             |          |                               |          |                      |          |
| Jetstar                            | 27             | 27           | 21                          | 77.8     | 21                            | 77.8     | 0                    | 0.0      |
| Virgin Australia                   | 30             | 30           | 25                          | 83.3     | 24                            | 80.0     | 0                    | 0.0      |
| All Airlines                       | 57             | 57           | 46                          | 80.7     | 45                            | 78.9     | 0                    | 0.0      |
| <b>Proserpine-Sydney</b>           |                |              |                             |          |                               |          |                      |          |
| Jetstar                            | 13             | 13           | 11                          | 84.6     | 10                            | 76.9     | 0                    | 0.0      |
| Tigerair Australia                 | 26             | 26           | 19                          | 73.1     | 20                            | 76.9     | 0                    | 0.0      |
| All Airlines                       | 39             | 39           | 30                          | 76.9     | 30                            | 76.9     | 0                    | 0.0      |
| <b>Rockhampton-Brisbane</b>        |                |              |                             |          |                               |          |                      |          |
| QantasLink                         | 172            | 168          | 136                         | 81.0     | 137                           | 81.5     | 4                    | 2.3      |
| Virgin Australia                   | 134            | 133          | 104                         | 78.2     | 102                           | 76.7     | 1                    | 0.7      |
| All Airlines                       | 306            | 301          | 240                         | 79.7     | 239                           | 79.4     | 5                    | 1.6      |
| <b>Sunshine Coast-Melbourne</b>    |                |              |                             |          |                               |          |                      |          |
| Jetstar                            | 63             | 63           | 37                          | 58.7     | 37                            | 58.7     | 0                    | 0.0      |
| Virgin Australia                   | 58             | 57           | 38                          | 66.7     | 38                            | 66.7     | 1                    | 1.7      |
| All Airlines                       | 121            | 120          | 75                          | 62.5     | 75                            | 62.5     | 1                    | 0.8      |
| <b>Sunshine Coast-Sydney</b>       |                |              |                             |          |                               |          |                      |          |
| Jetstar                            | 93             | 91           | 68                          | 74.7     | 65                            | 71.4     | 2                    | 2.2      |
| QantasLink                         | 35             | 34           | 26                          | 76.5     | 26                            | 76.5     | 1                    | 2.9      |
| Virgin Australia                   | 47             | 46           | 38                          | 82.6     | 39                            | 84.8     | 1                    | 2.1      |
| All Airlines                       | 175            | 171          | 132                         | 77.2     | 130                           | 76.0     | 4                    | 2.3      |
| <b>Sydney-Adelaide</b>             |                |              |                             |          |                               |          |                      |          |
| Jetstar                            | 83             | 79           | 45                          | 57.0     | 42                            | 53.2     | 4                    | 4.8      |
| Qantas                             | 207            | 206          | 169                         | 82.0     | 169                           | 82.0     | 1                    | 0.5      |
| QantasLink                         | 29             | 29           | 23                          | 79.3     | 25                            | 86.2     | 0                    | 0.0      |
| Tigerair Australia                 | 47             | 46           | 24                          | 52.2     | 26                            | 56.5     | 1                    | 2.1      |
| Virgin Australia                   | 150            | 149          | 109                         | 73.2     | 118                           | 79.2     | 1                    | 0.7      |
| All Airlines                       | 516            | 509          | 370                         | 72.7     | 380                           | 74.7     | 7                    | 1.4      |
| <b>Sydney-Albury</b>               |                |              |                             |          |                               |          |                      |          |
| QantasLink                         | 93             | 92           | 72                          | 78.3     | 72                            | 78.3     | 1                    | 1.1      |
| Regional Express                   | 93             | 93           | 74                          | 79.6     | 73                            | 78.5     | 0                    | 0.0      |
| Virgin Australia                   | 56             | 55           | 40                          | 72.7     | 41                            | 74.5     | 1                    | 1.8      |
| All Airlines                       | 242            | 240          | 186                         | 77.5     | 186                           | 77.5     | 2                    | 0.8      |
| <b>Sydney-Armidale</b>             |                |              |                             |          |                               |          |                      |          |
| QantasLink                         | 113            | 112          | 88                          | 78.6     | 89                            | 79.5     | 1                    | 0.9      |
| Regional Express                   | 61             | 61           | 41                          | 67.2     | 41                            | 67.2     | 0                    | 0.0      |
| All Airlines                       | 174            | 173          | 129                         | 74.6     | 130                           | 75.1     | 1                    | 0.6      |

|                             | Sectors |       | Arrivals<br>On Time |      | Departures<br>On Time |      | Cancellations |     |
|-----------------------------|---------|-------|---------------------|------|-----------------------|------|---------------|-----|
|                             | Sched.  | Flown | No.                 | %    | No.                   | %    | No.           | %   |
| <b>Sydney-Ayers Rock</b>    |         |       |                     |      |                       |      |               |     |
| Jetstar                     | 30      | 30    | 21                  | 70.0 | 26                    | 86.7 | 0             | 0.0 |
| Virgin Australia            | 30      | 30    | 19                  | 63.3 | 22                    | 73.3 | 0             | 0.0 |
| All Airlines                | 60      | 60    | 40                  | 66.7 | 48                    | 80.0 | 0             | 0.0 |
| <b>Sydney-Ballina</b>       |         |       |                     |      |                       |      |               |     |
| Jetstar                     | 70      | 70    | 57                  | 81.4 | 59                    | 84.3 | 0             | 0.0 |
| Regional Express            | 23      | 23    | 16                  | 69.6 | 15                    | 65.2 | 0             | 0.0 |
| Virgin Australia            | 31      | 31    | 26                  | 83.9 | 26                    | 83.9 | 0             | 0.0 |
| All Airlines                | 124     | 124   | 99                  | 79.8 | 100                   | 80.6 | 0             | 0.0 |
| <b>Sydney-Brisbane</b>      |         |       |                     |      |                       |      |               |     |
| Jetstar                     | 164     | 157   | 116                 | 73.9 | 111                   | 70.7 | 7             | 4.3 |
| Qantas                      | 587     | 571   | 441                 | 77.2 | 435                   | 76.2 | 16            | 2.7 |
| QantasLink                  | 9       | 9     | 8                   | 88.9 | 8                     | 88.9 | 0             | 0.0 |
| Tigerair Australia          | 96      | 92    | 63                  | 68.5 | 66                    | 71.7 | 4             | 4.2 |
| Virgin Australia            | 490     | 477   | 358                 | 75.1 | 369                   | 77.4 | 13            | 2.7 |
| All Airlines                | 1 346   | 1 306 | 986                 | 75.5 | 989                   | 75.7 | 40            | 3.0 |
| <b>Sydney-Cairns</b>        |         |       |                     |      |                       |      |               |     |
| Jetstar                     | 76      | 76    | 65                  | 85.5 | 60                    | 78.9 | 0             | 0.0 |
| Qantas                      | 81      | 81    | 66                  | 81.5 | 67                    | 82.7 | 0             | 0.0 |
| Tigerair Australia          | 43      | 43    | 40                  | 93.0 | 40                    | 93.0 | 0             | 0.0 |
| Virgin Australia            | 81      | 81    | 65                  | 80.2 | 63                    | 77.8 | 0             | 0.0 |
| All Airlines                | 281     | 281   | 236                 | 84.0 | 230                   | 81.9 | 0             | 0.0 |
| <b>Sydney-Canberra</b>      |         |       |                     |      |                       |      |               |     |
| Qantas                      | 20      | 20    | 19                  | 95.0 | 19                    | 95.0 | 0             | 0.0 |
| QantasLink                  | 440     | 430   | 342                 | 79.5 | 349                   | 81.2 | 10            | 2.3 |
| Virgin Australia            | 245     | 242   | 193                 | 79.8 | 182                   | 75.2 | 3             | 1.2 |
| All Airlines                | 705     | 692   | 554                 | 80.1 | 550                   | 79.5 | 13            | 1.8 |
| <b>Sydney-Coffs Harbour</b> |         |       |                     |      |                       |      |               |     |
| QantasLink                  | 123     | 122   | 99                  | 81.1 | 89                    | 73.0 | 1             | 0.8 |
| Tigerair Australia          | 13      | 13    | 10                  | 76.9 | 10                    | 76.9 | 0             | 0.0 |
| Virgin Australia            | 52      | 52    | 43                  | 82.7 | 46                    | 88.5 | 0             | 0.0 |
| All Airlines                | 188     | 187   | 152                 | 81.3 | 145                   | 77.5 | 1             | 0.5 |
| <b>Sydney-Darwin</b>        |         |       |                     |      |                       |      |               |     |
| Jetstar                     | 19      | 19    | 11                  | 57.9 | 14                    | 73.7 | 0             | 0.0 |
| Qantas                      | 59      | 59    | 34                  | 57.6 | 33                    | 55.9 | 0             | 0.0 |
| Virgin Australia            | 32      | 32    | 18                  | 56.3 | 25                    | 78.1 | 0             | 0.0 |
| All Airlines                | 110     | 110   | 63                  | 57.3 | 72                    | 65.5 | 0             | 0.0 |
| <b>Sydney-Dubbo</b>         |         |       |                     |      |                       |      |               |     |
| QantasLink                  | 101     | 100   | 72                  | 72.0 | 71                    | 71.0 | 1             | 1.0 |
| Regional Express            | 120     | 119   | 88                  | 73.9 | 85                    | 71.4 | 1             | 0.8 |
| All Airlines                | 221     | 219   | 160                 | 73.1 | 156                   | 71.2 | 2             | 0.9 |
| <b>Sydney-Gold Coast</b>    |         |       |                     |      |                       |      |               |     |
| Jetstar                     | 245     | 241   | 176                 | 73.0 | 181                   | 75.1 | 4             | 1.6 |
| Qantas                      | 90      | 90    | 64                  | 71.1 | 58                    | 64.4 | 0             | 0.0 |
| QantasLink                  | 21      | 21    | 14                  | 66.7 | 13                    | 61.9 | 0             | 0.0 |
| Tigerair Australia          | 95      | 94    | 66                  | 70.2 | 71                    | 75.5 | 1             | 1.1 |
| Virgin Australia            | 235     | 231   | 171                 | 74.0 | 174                   | 75.3 | 4             | 1.7 |
| All Airlines                | 686     | 677   | 491                 | 72.5 | 497                   | 73.4 | 9             | 1.3 |

|                               | <i>Sectors</i> |              | <i>Arrivals<br/>On Time</i> |          | <i>Departures<br/>On Time</i> |          | <i>Cancellations</i> |          |
|-------------------------------|----------------|--------------|-----------------------------|----------|-------------------------------|----------|----------------------|----------|
|                               | <i>Sched.</i>  | <i>Flown</i> | <i>No.</i>                  | <i>%</i> | <i>No.</i>                    | <i>%</i> | <i>No.</i>           | <i>%</i> |
| <b>Sydney-Hamilton Island</b> |                |              |                             |          |                               |          |                      |          |
| Jetstar                       | 18             | 18           | 14                          | 77.8     | 14                            | 77.8     | 0                    | 0.0      |
| Qantas                        | 5              | 5            | 4                           | 80.0     | 4                             | 80.0     | 0                    | 0.0      |
| QantasLink                    | 20             | 19           | 19                          | 100.0    | 17                            | 89.5     | 1                    | 5.0      |
| Virgin Australia              | 19             | 19           | 16                          | 84.2     | 15                            | 78.9     | 0                    | 0.0      |
| All Airlines                  | 62             | 61           | 53                          | 86.9     | 50                            | 82.0     | 1                    | 1.6      |
| <b>Sydney-Hobart</b>          |                |              |                             |          |                               |          |                      |          |
| Jetstar                       | 61             | 61           | 53                          | 86.9     | 51                            | 83.6     | 0                    | 0.0      |
| Qantas                        | 4              | 4            | 3                           | 75.0     | 3                             | 75.0     | 0                    | 0.0      |
| QantasLink                    | 57             | 55           | 48                          | 87.3     | 44                            | 80.0     | 2                    | 3.5      |
| Virgin Australia              | 70             | 70           | 65                          | 92.9     | 65                            | 92.9     | 0                    | 0.0      |
| All Airlines                  | 192            | 190          | 169                         | 88.9     | 163                           | 85.8     | 2                    | 1.0      |
| <b>Sydney-Launceston</b>      |                |              |                             |          |                               |          |                      |          |
| Jetstar                       | 27             | 26           | 20                          | 76.9     | 21                            | 80.8     | 1                    | 3.7      |
| Virgin Australia              | 28             | 28           | 26                          | 92.9     | 26                            | 92.9     | 0                    | 0.0      |
| All Airlines                  | 55             | 54           | 46                          | 85.2     | 47                            | 87.0     | 1                    | 1.8      |
| <b>Sydney-Melbourne</b>       |                |              |                             |          |                               |          |                      |          |
| Jetstar                       | 376            | 353          | 256                         | 72.5     | 265                           | 75.1     | 23                   | 6.1      |
| Qantas                        | 970            | 907          | 598                         | 65.9     | 614                           | 67.7     | 63                   | 6.5      |
| Tigerair Australia            | 253            | 240          | 145                         | 60.4     | 151                           | 62.9     | 13                   | 5.1      |
| Virgin Australia              | 709            | 677          | 464                         | 68.5     | 507                           | 74.9     | 32                   | 4.5      |
| All Airlines                  | 2 308          | 2 177        | 1 463                       | 67.2     | 1 537                         | 70.6     | 131                  | 5.7      |
| <b>Sydney-Perth</b>           |                |              |                             |          |                               |          |                      |          |
| Jetstar                       | 30             | 30           | 17                          | 56.7     | 12                            | 40.0     | 0                    | 0.0      |
| Qantas                        | 200            | 200          | 141                         | 70.5     | 128                           | 64.0     | 0                    | 0.0      |
| Tigerair Australia            | 25             | 23           | 16                          | 69.6     | 13                            | 56.5     | 2                    | 8.0      |
| Virgin Australia              | 116            | 116          | 84                          | 72.4     | 96                            | 82.8     | 0                    | 0.0      |
| All Airlines                  | 371            | 369          | 258                         | 69.9     | 249                           | 67.5     | 2                    | 0.5      |
| <b>Sydney-Port Macquarie</b>  |                |              |                             |          |                               |          |                      |          |
| QantasLink                    | 93             | 93           | 73                          | 78.5     | 76                            | 81.7     | 0                    | 0.0      |
| Virgin Australia              | 56             | 55           | 40                          | 72.7     | 39                            | 70.9     | 1                    | 1.8      |
| All Airlines                  | 149            | 148          | 113                         | 76.4     | 115                           | 77.7     | 1                    | 0.7      |
| <b>Sydney-Proserpine</b>      |                |              |                             |          |                               |          |                      |          |
| Jetstar                       | 13             | 13           | 12                          | 92.3     | 12                            | 92.3     | 0                    | 0.0      |
| Tigerair Australia            | 26             | 26           | 23                          | 88.5     | 23                            | 88.5     | 0                    | 0.0      |
| All Airlines                  | 39             | 39           | 35                          | 89.7     | 35                            | 89.7     | 0                    | 0.0      |
| <b>Sydney-Sunshine Coast</b>  |                |              |                             |          |                               |          |                      |          |
| Jetstar                       | 92             | 92           | 66                          | 71.7     | 66                            | 71.7     | 0                    | 0.0      |
| QantasLink                    | 34             | 34           | 31                          | 91.2     | 30                            | 88.2     | 0                    | 0.0      |
| Virgin Australia              | 47             | 46           | 35                          | 76.1     | 34                            | 73.9     | 1                    | 2.1      |
| All Airlines                  | 173            | 172          | 132                         | 76.7     | 130                           | 75.6     | 1                    | 0.6      |
| <b>Sydney-Tamworth</b>        |                |              |                             |          |                               |          |                      |          |
| QantasLink                    | 115            | 114          | 88                          | 77.2     | 94                            | 82.5     | 1                    | 0.9      |
| Virgin Australia              | 49             | 49           | 38                          | 77.6     | 39                            | 79.6     | 0                    | 0.0      |
| All Airlines                  | 164            | 163          | 126                         | 77.3     | 133                           | 81.6     | 1                    | 0.6      |
| <b>Sydney-Townsville</b>      |                |              |                             |          |                               |          |                      |          |
| Jetstar                       | 23             | 23           | 14                          | 60.9     | 12                            | 52.2     | 0                    | 0.0      |
| Virgin Australia              | 19             | 19           | 15                          | 78.9     | 16                            | 84.2     | 0                    | 0.0      |
| All Airlines                  | 42             | 42           | 29                          | 69.0     | 28                            | 66.7     | 0                    | 0.0      |

|                             | <i>Sectors</i> |              | <i>Arrivals<br/>On Time</i> |          | <i>Departures<br/>On Time</i> |          | <i>Cancellations</i> |          |
|-----------------------------|----------------|--------------|-----------------------------|----------|-------------------------------|----------|----------------------|----------|
|                             | <i>Sched.</i>  | <i>Flown</i> | <i>No.</i>                  | <i>%</i> | <i>No.</i>                    | <i>%</i> | <i>No.</i>           | <i>%</i> |
| <b>Sydney-Wagga Wagga</b>   |                |              |                             |          |                               |          |                      |          |
| QantasLink                  | 94             | 93           | 78                          | 83.9     | 74                            | 79.6     | 1                    | 1.1      |
| Regional Express            | 117            | 117          | 95                          | 81.2     | 97                            | 82.9     | 0                    | 0.0      |
| All Airlines                | 211            | 210          | 173                         | 82.4     | 171                           | 81.4     | 1                    | 0.5      |
| <b>Tamworth-Sydney</b>      |                |              |                             |          |                               |          |                      |          |
| QantasLink                  | 117            | 116          | 93                          | 80.2     | 97                            | 83.6     | 1                    | 0.9      |
| Virgin Australia            | 50             | 49           | 41                          | 83.7     | 44                            | 89.8     | 1                    | 2.0      |
| All Airlines                | 167            | 165          | 134                         | 81.2     | 141                           | 85.5     | 2                    | 1.2      |
| <b>Townsville-Brisbane</b>  |                |              |                             |          |                               |          |                      |          |
| Jetstar                     | 63             | 63           | 39                          | 61.9     | 38                            | 60.3     | 0                    | 0.0      |
| Qantas                      | 76             | 76           | 62                          | 81.6     | 59                            | 77.6     | 0                    | 0.0      |
| QantasLink                  | 62             | 62           | 56                          | 90.3     | 55                            | 88.7     | 0                    | 0.0      |
| Virgin Australia            | 135            | 134          | 119                         | 88.8     | 118                           | 88.1     | 1                    | 0.7      |
| All Airlines                | 336            | 335          | 276                         | 82.4     | 270                           | 80.6     | 1                    | 0.3      |
| <b>Townsville-Cairns</b>    |                |              |                             |          |                               |          |                      |          |
| QantasLink                  | 133            | 133          | 121                         | 91.0     | 119                           | 89.5     | 0                    | 0.0      |
| Regional Express            | 19             | 15           | 15                          | 100.0    | 15                            | 100.0    | 4                    | 21.1     |
| All Airlines                | 152            | 148          | 136                         | 91.9     | 134                           | 90.5     | 4                    | 2.6      |
| <b>Townsville-Melbourne</b> |                |              |                             |          |                               |          |                      |          |
| Jetstar                     | 26             | 26           | 16                          | 61.5     | 14                            | 53.8     | 0                    | 0.0      |
| Tigerair Australia          | 13             | 13           | 9                           | 69.2     | 6                             | 46.2     | 0                    | 0.0      |
| All Airlines                | 39             | 39           | 25                          | 64.1     | 20                            | 51.3     | 0                    | 0.0      |
| <b>Townsville-Sydney</b>    |                |              |                             |          |                               |          |                      |          |
| Jetstar                     | 23             | 23           | 18                          | 78.3     | 14                            | 60.9     | 0                    | 0.0      |
| Virgin Australia            | 19             | 19           | 14                          | 73.7     | 16                            | 84.2     | 0                    | 0.0      |
| All Airlines                | 42             | 42           | 32                          | 76.2     | 30                            | 71.4     | 0                    | 0.0      |
| <b>Wagga Wagga-Sydney</b>   |                |              |                             |          |                               |          |                      |          |
| QantasLink                  | 95             | 94           | 70                          | 74.5     | 72                            | 76.6     | 1                    | 1.1      |
| Regional Express            | 116            | 116          | 87                          | 75.0     | 93                            | 80.2     | 0                    | 0.0      |
| All Airlines                | 211            | 210          | 157                         | 74.8     | 165                           | 78.6     | 1                    | 0.5      |

## Airports

On time performance is reported for all routes where the passenger load averages over 8000 passengers per month, and where two or more airlines operate in competition. The following data reports by airport against flights operated on those routes only. This month, 8 major city airports and 32 regional city airports are covered.

| Airport   | Arrivals         |                |       | Departures       |                |      |
|---|------------------|----------------|-------|------------------|----------------|------|
|   | Sectors<br>Flown | On Time<br>No. | %     | Sectors<br>Flown | On Time<br>No. | %    |
| <b>Adelaide</b>   |                  |                |       |                  |                |      |
| Jetstar   | 240              | 166            | 69.2  | 240              | 173            | 72.1 |
| Qantas  | 717              | 584            | 81.5  | 715              | 594            | 83.1 |
| QantasLink  | 200              | 178            | 89.0  | 201              | 183            | 91.0 |
| Regional Express  | 175              | 147            | 84.0  | 175              | 158            | 90.3 |
| Tigerair Australia  | 140              | 87             | 62.1  | 139              | 81             | 58.3 |
| Virgin Australia  | 590              | 452            | 76.6  | 591              | 472            | 79.9 |
| Virgin Australia Regional Airlines  | 61               | 45             | 73.8  | 59               | 43             | 72.9 |
| All Airlines  | 2 123            | 1 659          | 78.1  | 2 120            | 1 704          | 80.4 |
| Relates to services to and from Alice Springs, Brisbane, Canberra, Gold Coast, Melbourne, Perth, Port Lincoln and Sydney. |                  |                |       |                  |                |      |
| <b>Albury</b>   |                  |                |       |                  |                |      |
| QantasLink  | 92               | 72             | 78.3  | 92               | 72             | 78.3 |
| Regional Express  | 93               | 74             | 79.6  | 92               | 73             | 79.3 |
| Virgin Australia  | 55               | 40             | 72.7  | 55               | 41             | 74.5 |
| All Airlines  | 240              | 186            | 77.5  | 239              | 186            | 77.8 |
| Relates to services to and from Sydney only.  |                  |                |       |                  |                |      |
| <b>Alice Springs</b>  |                  |                |       |                  |                |      |
| Qantas  | 29               | 25             | 86.2  | 29               | 21             | 72.4 |
| QantasLink  | 59               | 56             | 94.9  | 59               | 58             | 98.3 |
| Virgin Australia  | 8                | 8              | 100.0 | 8                | 7              | 87.5 |
| Virgin Australia Regional Airlines  | 35               | 29             | 82.9  | 35               | 29             | 82.9 |
| All Airlines  | 131              | 118            | 90.1  | 131              | 115            | 87.8 |
| Relates to services to and from Adelaide and Darwin.  |                  |                |       |                  |                |      |
| <b>Armidale</b>   |                  |                |       |                  |                |      |
| QantasLink  | 112              | 88             | 78.6  | 113              | 89             | 78.8 |
| Regional Express  | 61               | 41             | 67.2  | 64               | 35             | 54.7 |
| All Airlines  | 173              | 129            | 74.6  | 177              | 124            | 70.1 |
| Relates to services to and from Sydney only.  |                  |                |       |                  |                |      |
| <b>Ayers Rock</b>   |                  |                |       |                  |                |      |
| Jetstar   | 30               | 21             | 70.0  | 30               | 13             | 43.3 |
| Virgin Australia  | 30               | 19             | 63.3  | 30               | 18             | 60.0 |
| All Airlines  | 60               | 40             | 66.7  | 60               | 31             | 51.7 |
| Relates to services to and from Sydney only.  |                  |                |       |                  |                |      |
| <b>Ballina</b>  |                  |                |       |                  |                |      |
| Jetstar   | 70               | 57             | 81.4  | 70               | 55             | 78.6 |
| Regional Express  | 23               | 16             | 69.6  | 24               | 18             | 75.0 |
| Virgin Australia  | 31               | 26             | 83.9  | 31               | 27             | 87.1 |
| All Airlines  | 124              | 99             | 79.8  | 125              | 100            | 80.0 |
| Relates to services to and from Sydney only.  |                  |                |       |                  |                |      |

| Airport            | Arrivals |         |      | Departures |         |      |
|--------------------|----------|---------|------|------------|---------|------|
|                    | Sectors  | On Time |      | Sectors    | On Time |      |
|                    | Flown    | No.     | %    | Flown      | No.     | %    |
| <b>Brisbane</b>    |          |         |      |            |         |      |
| Jetstar            | 592      | 440     | 74.3 | 592        | 444     | 75.0 |
| Qantas             | 1 392    | 1 094   | 78.6 | 1 392      | 1 083   | 77.8 |
| QantasLink         | 1 026    | 846     | 82.5 | 1 030      | 877     | 85.1 |
| Tigerair Australia | 293      | 207     | 70.6 | 293        | 210     | 71.7 |
| Virgin Australia   | 2 019    | 1 631   | 80.8 | 2 014      | 1 640   | 81.4 |
| All Airlines       | 5 322    | 4 218   | 79.3 | 5 321      | 4 254   | 79.9 |

Relates to services to and from Adelaide, Bundaberg, Cairns, Canberra, Darwin, Emerald, Gladstone, Hamilton Island, Hobart, Mackay, Melbourne, Mount Isa, Newcastle, Perth, Proserpine, Rockhampton, Sydney and Townsville.

#### Broome

|                                    |     |     |       |     |     |       |
|------------------------------------|-----|-----|-------|-----|-----|-------|
| QantasLink                         | 81  | 73  | 90.1  | 82  | 65  | 79.3  |
| Virgin Australia                   | 5   | 5   | 100.0 | 5   | 5   | 100.0 |
| Virgin Australia Regional Airlines | 73  | 54  | 74.0  | 73  | 52  | 71.2  |
| All Airlines                       | 159 | 132 | 83.0  | 160 | 122 | 76.3  |

Relates to services to and from Perth only.

#### Bundaberg

|                  |     |     |      |     |     |      |
|------------------|-----|-----|------|-----|-----|------|
| QantasLink       | 103 | 88  | 85.4 | 103 | 86  | 83.5 |
| Virgin Australia | 30  | 23  | 76.7 | 30  | 23  | 76.7 |
| All Airlines     | 133 | 111 | 83.5 | 133 | 109 | 82.0 |

Relates to services to and from Brisbane only.

#### Cairns

|                    |     |     |       |     |     |       |
|--------------------|-----|-----|-------|-----|-----|-------|
| Jetstar            | 245 | 190 | 77.6  | 243 | 207 | 85.2  |
| Qantas             | 192 | 156 | 81.3  | 191 | 157 | 82.2  |
| QantasLink         | 193 | 160 | 82.9  | 192 | 166 | 86.5  |
| Regional Express   | 15  | 15  | 100.0 | 15  | 15  | 100.0 |
| Tigerair Australia | 117 | 88  | 75.2  | 117 | 78  | 66.7  |
| Virgin Australia   | 234 | 179 | 76.5  | 233 | 183 | 78.5  |
| All Airlines       | 996 | 788 | 79.1  | 991 | 806 | 81.3  |

Relates to services to and from Brisbane, Melbourne, Sydney and Townsville.

#### Canberra

|                    |       |       |      |       |       |      |
|--------------------|-------|-------|------|-------|-------|------|
| Qantas             | 309   | 259   | 83.8 | 309   | 275   | 89.0 |
| QantasLink         | 602   | 491   | 81.6 | 600   | 500   | 83.3 |
| Tigerair Australia | 41    | 32    | 78.0 | 41    | 29    | 70.7 |
| Virgin Australia   | 504   | 413   | 81.9 | 506   | 403   | 79.6 |
| All Airlines       | 1 456 | 1 195 | 82.1 | 1 456 | 1 207 | 82.9 |

Relates to services to and from Adelaide, Brisbane, Melbourne and Sydney.

#### Coffs Harbour

|                    |     |     |      |     |     |      |
|--------------------|-----|-----|------|-----|-----|------|
| QantasLink         | 122 | 99  | 81.1 | 122 | 102 | 83.6 |
| Tigerair Australia | 13  | 10  | 76.9 | 13  | 9   | 69.2 |
| Virgin Australia   | 52  | 43  | 82.7 | 52  | 45  | 86.5 |
| All Airlines       | 187 | 152 | 81.3 | 187 | 156 | 83.4 |

Relates to services to and from Sydney only.

| Airport   | Arrivals         |         |      | Departures       |         |      |
|---|------------------|---------|------|------------------|---------|------|
|   | Sectors<br>Flown | On Time |      | Sectors<br>Flown | On Time |      |
|   |                  | No.     | %    |                  | No.     | %    |
| <b>Darwin</b>   |                  |         |      |                  |         |      |
| Jetstar   | 67               | 38      | 56.7 | 67               | 38      | 56.7 |
| Qantas  | 184              | 133     | 72.3 | 185              | 124     | 67.0 |
| QantasLink  | 59               | 58      | 98.3 | 59               | 56      | 94.9 |
| Tigerair Australia  | 23               | 13      | 56.5 | 23               | 18      | 78.3 |
| Virgin Australia  | 124              | 81      | 65.3 | 124              | 96      | 77.4 |
| Virgin Australia Regional Airlines  | 25               | 21      | 84.0 | 26               | 24      | 92.3 |
| All Airlines  | 482              | 344     | 71.4 | 484              | 356     | 73.6 |
| Relates to services to and from Alice Springs, Brisbane, Melbourne, Perth and Sydney. |                  |         |      |                  |         |      |
| <b>Dubbo</b>  |                  |         |      |                  |         |      |
| QantasLink  | 100              | 72      | 72.0 | 101              | 80      | 79.2 |
| Regional Express  | 119              | 88      | 73.9 | 125              | 91      | 72.8 |
| All Airlines  | 219              | 160     | 73.1 | 226              | 171     | 75.7 |
| Relates to services to and from Sydney only.  |                  |         |      |                  |         |      |
| <b>Emerald</b>  |                  |         |      |                  |         |      |
| QantasLink  | 97               | 86      | 88.7 | 95               | 81      | 85.3 |
| Virgin Australia  | 50               | 41      | 82.0 | 50               | 45      | 90.0 |
| All Airlines  | 147              | 127     | 86.4 | 145              | 126     | 86.9 |
| Relates to services to and from Brisbane only.  |                  |         |      |                  |         |      |
| <b>Geraldton</b>  |                  |         |      |                  |         |      |
| QantasLink  | 46               | 41      | 89.1 | 44               | 43      | 97.7 |
| Virgin Australia Regional Airlines  | 48               | 38      | 79.2 | 48               | 38      | 79.2 |
| All Airlines  | 94               | 79      | 84.0 | 92               | 81      | 88.0 |
| Relates to services to and from Perth only.   |                  |         |      |                  |         |      |
| <b>Gladstone</b>  |                  |         |      |                  |         |      |
| QantasLink  | 121              | 98      | 81.0 | 121              | 99      | 81.8 |
| Virgin Australia  | 71               | 63      | 88.7 | 72               | 66      | 91.7 |
| All Airlines  | 192              | 161     | 83.9 | 193              | 165     | 85.5 |
| Relates to services to and from Brisbane only.  |                  |         |      |                  |         |      |
| <b>Gold Coast</b>   |                  |         |      |                  |         |      |
| Jetstar   | 438              | 326     | 74.4 | 437              | 332     | 76.0 |
| Qantas  | 120              | 85      | 70.8 | 120              | 96      | 80.0 |
| QantasLink  | 21               | 14      | 66.7 | 21               | 15      | 71.4 |
| Tigerair Australia  | 164              | 115     | 70.1 | 162              | 102     | 63.0 |
| Virgin Australia  | 425              | 324     | 76.2 | 424              | 301     | 71.0 |
| All Airlines  | 1 168            | 864     | 74.0 | 1 164            | 846     | 72.7 |
| Relates to services to and from Adelaide, Melbourne and Sydney.                       |                  |         |      |                  |         |      |
| <b>Hamilton Island</b>  |                  |         |      |                  |         |      |
| Jetstar   | 18               | 14      | 77.8 | 18               | 16      | 88.9 |
| Qantas  | 5                | 4       | 80.0 | 5                | 4       | 80.0 |
| QantasLink  | 41               | 38      | 92.7 | 41               | 38      | 92.7 |
| Virgin Australia  | 49               | 42      | 85.7 | 49               | 43      | 87.8 |
| All Airlines  | 113              | 98      | 86.7 | 113              | 101     | 89.4 |
| Relates to services to and from Brisbane and Sydney.                                  |                  |         |      |                  |         |      |



| Airport   | Arrivals         |         |       | Departures       |         |       |
|---|------------------|---------|-------|------------------|---------|-------|
|   | Sectors<br>Flown | On Time |       | Sectors<br>Flown | On Time |       |
|   |                  | No.     | %     |                  | No.     | %     |
| <b>Hobart</b>   |                  |         |       |                  |         |       |
| Jetstar   | 216              | 161     | 74.5  | 216              | 143     | 66.2  |
| Qantas  | 115              | 96      | 83.5  | 115              | 103     | 89.6  |
| QantasLink  | 55               | 48      | 87.3  | 55               | 51      | 92.7  |
| Tigerair Australia  | 29               | 21      | 72.4  | 29               | 18      | 62.1  |
| Virgin Australia  | 245              | 195     | 79.6  | 246              | 178     | 72.4  |
| All Airlines  | 660              | 521     | 78.9  | 661              | 493     | 74.6  |
| Relates to services to and from Brisbane, Melbourne and Sydney.   |                  |         |       |                  |         |       |
| <b>Kalgoorlie</b>   |                  |         |       |                  |         |       |
| Qantas  | 8                | 8       | 100.0 | 8                | 8       | 100.0 |
| QantasLink  | 71               | 63      | 88.7  | 70               | 63      | 90.0  |
| Virgin Australia  | 34               | 31      | 91.2  | 33               | 28      | 84.8  |
| Virgin Australia Regional Airlines  | 31               | 25      | 80.6  | 31               | 27      | 87.1  |
| All Airlines  | 144              | 127     | 88.2  | 142              | 126     | 88.7  |
| Relates to services to and from Perth only.   |                  |         |       |                  |         |       |
| <b>Karratha</b>   |                  |         |       |                  |         |       |
| Qantas  | 8                | 8       | 100.0 | 8                | 6       | 75.0  |
| QantasLink  | 170              | 129     | 75.9  | 170              | 136     | 80.0  |
| Virgin Australia  | 10               | 6       | 60.0  | 10               | 8       | 80.0  |
| Virgin Australia Regional Airlines  | 58               | 42      | 72.4  | 58               | 42      | 72.4  |
| All Airlines  | 246              | 185     | 75.2  | 246              | 192     | 78.0  |
| Relates to services to and from Perth only.   |                  |         |       |                  |         |       |
| <b>Launceston</b>   |                  |         |       |                  |         |       |
| Jetstar   | 117              | 82      | 70.1  | 116              | 65      | 56.0  |
| QantasLink  | 104              | 81      | 77.9  | 104              | 84      | 80.8  |
| Virgin Australia  | 122              | 91      | 74.6  | 122              | 97      | 79.5  |
| All Airlines  | 343              | 254     | 74.1  | 342              | 246     | 71.9  |
| Relates to services to and from Melbourne and Sydney.   |                  |         |       |                  |         |       |
| <b>Mackay</b>   |                  |         |       |                  |         |       |
| Jetstar   | 32               | 23      | 71.9  | 32               | 19      | 59.4  |
| QantasLink  | 112              | 97      | 86.6  | 108              | 89      | 82.4  |
| Virgin Australia  | 135              | 115     | 85.2  | 136              | 122     | 89.7  |
| All Airlines  | 279              | 235     | 84.2  | 276              | 230     | 83.3  |
| Relates to services to and from Brisbane only.  |                  |         |       |                  |         |       |
| <b>Melbourne</b>  |                  |         |       |                  |         |       |
| Jetstar   | 1 289            | 901     | 69.9  | 1 294            | 911     | 70.4  |
| Qantas  | 2 210            | 1 655   | 74.9  | 2 214            | 1 657   | 74.8  |
| QantasLink  | 235              | 191     | 81.3  | 235              | 198     | 84.3  |
| Regional Express  | 72               | 47      | 65.3  | 71               | 62      | 87.3  |
| Tigerair Australia  | 653              | 393     | 60.2  | 657              | 446     | 67.9  |
| Virgin Australia  | 2 144            | 1 501   | 70.0  | 2 136            | 1 661   | 77.8  |
| All Airlines  | 6 603            | 4 688   | 71.0  | 6 607            | 4 935   | 74.7  |
| Relates to services to and from Adelaide, Brisbane, Cairns, Canberra, Darwin, Gold Coast, Hobart, Launceston, Mildura, Newcastle, Perth, Sunshine Coast, Sydney and Townsville. |                  |         |       |                  |         |       |
| <b>Mildura</b>  |                  |         |       |                  |         |       |
| QantasLink  | 89               | 86      | 96.6  | 89               | 77      | 86.5  |
| Regional Express  | 71               | 57      | 80.3  | 72               | 52      | 72.2  |
| Virgin Australia  | 30               | 21      | 70.0  | 30               | 21      | 70.0  |
| All Airlines  | 190              | 164     | 86.3  | 191              | 150     | 78.5  |
| Relates to services to and from Melbourne only.   |                  |         |       |                  |         |       |

| Airport  | Arrivals         |         |       | Departures       |         |      |
|--|------------------|---------|-------|------------------|---------|------|
|  | Sectors<br>Flown | On Time |       | Sectors<br>Flown | On Time |      |
|  |                  | No.     | %     |                  | No.     | %    |
| <b>Mount Isa</b>   |                  |         |       |                  |         |      |
| QantasLink   | 54               | 11      | 20.4  | 54               | 26      | 48.1 |
| Virgin Australia   | 16               | 13      | 81.3  | 17               | 12      | 70.6 |
| All Airlines   | 70               | 24      | 34.3  | 71               | 38      | 53.5 |
| Relates to services to and from Brisbane only.   |                  |         |       |                  |         |      |
| <b>Newcastle</b>   |                  |         |       |                  |         |      |
| Jetstar  | 178              | 132     | 74.2  | 177              | 129     | 72.9 |
| QantasLink   | 47               | 39      | 83.0  | 46               | 40      | 87.0 |
| Virgin Australia   | 114              | 89      | 78.1  | 116              | 88      | 75.9 |
| All Airlines   | 339              | 260     | 76.7  | 339              | 257     | 75.8 |
| Relates to services to and from Brisbane and Melbourne.  |                  |         |       |                  |         |      |
| <b>Newman</b>  |                  |         |       |                  |         |      |
| Qantas   | 20               | 17      | 85.0  | 19               | 17      | 89.5 |
| QantasLink   | 100              | 84      | 84.0  | 98               | 73      | 74.5 |
| Virgin Australia   | 17               | 17      | 100.0 | 17               | 16      | 94.1 |
| Virgin Australia Regional Airlines   | 20               | 17      | 85.0  | 20               | 18      | 90.0 |
| All Airlines   | 157              | 135     | 86.0  | 154              | 124     | 80.5 |
| Relates to services to and from Perth only.  |                  |         |       |                  |         |      |
| <b>Perth</b>   |                  |         |       |                  |         |      |
| Jetstar  | 93               | 65      | 69.9  | 92               | 57      | 62.0 |
| Qantas   | 724              | 552     | 76.2  | 731              | 605     | 82.8 |
| QantasLink   | 575              | 477     | 83.0  | 579              | 490     | 84.6 |
| Tigerair Australia   | 67               | 42      | 62.7  | 66               | 43      | 65.2 |
| Virgin Australia   | 484              | 356     | 73.6  | 486              | 414     | 85.2 |
| Virgin Australia Regional Airlines   | 306              | 229     | 74.8  | 307              | 247     | 80.5 |
| All Airlines   | 2 249            | 1 721   | 76.5  | 2 261            | 1 856   | 82.1 |
| Relates to services to and from Adelaide, Brisbane, Broome, Darwin, Geraldton, Kalgoorlie, Karratha, Melbourne, Newman, Port Hedland and Sydney. |                  |         |       |                  |         |      |
| <b>Port Hedland</b>  |                  |         |       |                  |         |      |
| Qantas   | 25               | 22      | 88.0  | 25               | 19      | 76.0 |
| QantasLink   | 101              | 81      | 80.2  | 101              | 88      | 87.1 |
| Virgin Australia   | 25               | 23      | 92.0  | 25               | 21      | 84.0 |
| Virgin Australia Regional Airlines   | 26               | 21      | 80.8  | 26               | 22      | 84.6 |
| All Airlines   | 177              | 147     | 83.1  | 177              | 150     | 84.7 |
| Relates to services to and from Perth only.  |                  |         |       |                  |         |      |
| <b>Port Lincoln</b>  |                  |         |       |                  |         |      |
| QantasLink   | 107              | 101     | 94.4  | 106              | 97      | 91.5 |
| Regional Express   | 175              | 153     | 87.4  | 175              | 150     | 85.7 |
| All Airlines   | 282              | 254     | 90.1  | 281              | 247     | 87.9 |
| Relates to services to and from Adelaide only.   |                  |         |       |                  |         |      |
| <b>Port Macquarie</b>  |                  |         |       |                  |         |      |
| QantasLink   | 93               | 73      | 78.5  | 93               | 74      | 79.6 |
| Virgin Australia   | 55               | 40      | 72.7  | 55               | 36      | 65.5 |
| All Airlines   | 148              | 113     | 76.4  | 148              | 110     | 74.3 |
| Relates to services to and from Sydney only.   |                  |         |       |                  |         |      |

| Airport   | Arrivals         |         |       | Departures       |         |       |
|---|------------------|---------|-------|------------------|---------|-------|
|   | Sectors<br>Flown | On Time |       | Sectors<br>Flown | On Time |       |
|   |                  | No.     | %     |                  | No.     | %     |
| <b>Proserpine</b>   |                  |         |       |                  |         |       |
| Jetstar   | 40               | 36      | 90.0  | 40               | 31      | 77.5  |
| Tigerair Australia  | 26               | 23      | 88.5  | 26               | 20      | 76.9  |
| Virgin Australia  | 30               | 22      | 73.3  | 30               | 24      | 80.0  |
| All Airlines  | 96               | 81      | 84.4  | 96               | 75      | 78.1  |
| Relates to services to and from Brisbane and Sydney.  |                  |         |       |                  |         |       |
| <b>Rockhampton</b>  |                  |         |       |                  |         |       |
| QantasLink  | 164              | 127     | 77.4  | 168              | 137     | 81.5  |
| Virgin Australia  | 132              | 86      | 65.2  | 133              | 102     | 76.7  |
| All Airlines  | 296              | 213     | 72.0  | 301              | 239     | 79.4  |
| Relates to services to and from Brisbane only.  |                  |         |       |                  |         |       |
| <b>Sunshine Coast</b>   |                  |         |       |                  |         |       |
| Jetstar   | 155              | 115     | 74.2  | 154              | 102     | 66.2  |
| QantasLink  | 34               | 31      | 91.2  | 34               | 26      | 76.5  |
| Virgin Australia  | 103              | 81      | 78.6  | 103              | 77      | 74.8  |
| All Airlines  | 292              | 227     | 77.7  | 291              | 205     | 70.4  |
| Relates to services to and from Melbourne and Sydney.   |                  |         |       |                  |         |       |
| <b>Sydney</b>   |                  |         |       |                  |         |       |
| Jetstar   | 1 287            | 953     | 74.0  | 1 288            | 946     | 73.4  |
| Qantas  | 2 151            | 1 565   | 72.8  | 2 143            | 1 530   | 71.4  |
| QantasLink  | 1 327            | 1 052   | 79.3  | 1 323            | 1 051   | 79.4  |
| Regional Express  | 421              | 279     | 66.3  | 413              | 311     | 75.3  |
| Tigerair Australia  | 577              | 380     | 65.9  | 577              | 400     | 69.3  |
| Virgin Australia  | 2 457            | 1 855   | 75.5  | 2 459            | 1 903   | 77.4  |
| All Airlines  | 8 220            | 6 084   | 74.0  | 8 203            | 6 141   | 74.9  |
| Relates to services to and from Adelaide, Albury, Armidale, Ayers Rock, Ballina, Brisbane, Cairns, Canberra, Coffs Harbour, Darwin, Dubbo, Gold Coast, Hamilton Island, Hobart, Launceston, Melbourne, Perth, Port Macquarie, Proserpine, Sunshine Coast, Tamworth, Townsville and Wagga Wagga. |                  |         |       |                  |         |       |
| <b>Tamworth</b>   |                  |         |       |                  |         |       |
| QantasLink  | 114              | 88      | 77.2  | 116              | 97      | 83.6  |
| Virgin Australia  | 49               | 38      | 77.6  | 49               | 44      | 89.8  |
| All Airlines  | 163              | 126     | 77.3  | 165              | 141     | 85.5  |
| Relates to services to and from Sydney only.  |                  |         |       |                  |         |       |
| <b>Townsville</b>   |                  |         |       |                  |         |       |
| Jetstar   | 111              | 73      | 65.8  | 112              | 66      | 58.9  |
| Qantas  | 76               | 51      | 67.1  | 76               | 59      | 77.6  |
| QantasLink  | 194              | 182     | 93.8  | 195              | 174     | 89.2  |
| Regional Express  | 15               | 15      | 100.0 | 15               | 15      | 100.0 |
| Tigerair Australia  | 13               | 7       | 53.8  | 13               | 6       | 46.2  |
| Virgin Australia  | 151              | 121     | 80.1  | 153              | 134     | 87.6  |
| All Airlines  | 560              | 449     | 80.2  | 564              | 454     | 80.5  |
| Relates to services to and from Brisbane, Cairns, Melbourne and Sydney.   |                  |         |       |                  |         |       |
| <b>Wagga Wagga</b>  |                  |         |       |                  |         |       |
| QantasLink  | 93               | 78      | 83.9  | 94               | 72      | 76.6  |
| Regional Express  | 117              | 95      | 81.2  | 116              | 93      | 80.2  |
| All Airlines  | 210              | 173     | 82.4  | 210              | 165     | 78.6  |
| Relates to services to and from Sydney only.  |                  |         |       |                  |         |       |

## Definitions

---

|                              |  |
|------------------------------|--|
| On time arrival              | A flight arrival is counted as "on time" if it arrived at the gate before 15 minutes after the scheduled arrival time shown in the carriers' schedule.<br>Neither diverted nor cancelled flights count as on time. |
| On time departure            | A flight departure is counted as "on time" if it departs the gate before 15 minutes after the scheduled departure time shown in the carriers' schedule.  |
| Cancellation                 | A flight removed from service within 7 days of scheduled departure is regarded as a cancellation.  |
| On time departure percentage | The percentage of on time departures is measured against the number of departures <i>operated</i> on any particular sector.  |
| On time arrival percentage   | The percentage of on time arrivals is measured against the number of arrivals <i>operated</i> on any particular sector.  |
| Cancellation percentage      | The percentage of cancellations is measured against the number of services <i>scheduled</i> on any particular sector.  |

---