



Australian Government

Department of Infrastructure, Transport, Cities and Regional Development

Bureau of Infrastructure, Transport and Regional Economics

STATISTICAL REPORT



Aviation

Domestic airline on time performance
August 2019

© Commonwealth of Australia 2019

ISSN: 1832-0759

Ownership of intellectual property rights in this publication

Unless otherwise noted, copyright (and any other intellectual property rights, if any) in this publication is owned by the Commonwealth of Australia (referred to below as the Commonwealth).

Disclaimer

The material contained in this publication is made available on the understanding that the Commonwealth is not providing professional advice, and that users exercise their own skill and care with respect to its use, and seek independent advice if necessary.

The Commonwealth makes no representations or warranties as to the contents or accuracy of the information contained in this publication. To the extent permitted by law, the Commonwealth disclaims liability to any person or organisation in respect of anything done, or omitted to be done, in reliance upon information contained in this publication.

Creative Commons licence

With the exception of (a) the Coat of Arms; and (b) the Department of Infrastructure, Transport, Cities and Regional Development's photos and graphics, copyright in this publication is licensed under a Creative Commons Attribution 3.0 Australia Licence.

Creative Commons Attribution 3.0 Australia Licence is a standard form licence agreement that allows you to copy, communicate and adapt this publication provided that you attribute the work to the Commonwealth and abide by the other licence terms. A summary of the licence terms is available from <http://creativecommons.org/licenses/by/3.0/au/deed.en>. The full licence terms are available from <http://creativecommons.org/licenses/by/3.0/au/legalcode>.

Use of the Coat of Arms

The Department of the Prime Minister and Cabinet sets the terms under which the Coat of Arms is used. Please refer to the Department's Commonwealth Coat of Arms and Government branding web page <http://www.dpmc.gov.au/guidelines/index.cfm#brand> and, in particular, the Guidelines on the use of the Commonwealth Coat of Arms publication.

An appropriate citation for this report is:

Bureau of Infrastructure, Transport and Regional Economics (BITRE), 2019, Domestic airline on time performance, Statistical Report, BITRE, Canberra ACT.

Contact us

This publication is available in PDF format. All other rights are reserved, including in relation to any Departmental logos or trade marks which may exist. For enquiries regarding the licence and any use of this publication, please contact:

Bureau of Infrastructure, Transport and Regional Economics (BITRE)
Department of Infrastructure, Transport, Cities and Regional Development
GPO Box 501, Canberra ACT 2601, Australia
Telephone: (international) +61 2 6274 7210
Fax: (international) +61 2 6274 6855
Email: bitre@infrastructure.gov.au
Website: www.bitre.gov.au

Inquiries

Should you require additional information about the statistics contained in this publication:

Telephone (02) 6274 7790 or Facsimile (02) 6274 7727

Electronic mail: AVSTATS@infrastructure.gov.au

Web site: <http://www.bitre.gov.au/statistics/aviation/otphome.aspx>

Foreword

The Bureau of Infrastructure, Transport and Regional Economics (BITRE) monitors the punctuality and reliability of major domestic airlines operating between Australian airports. The purpose of this is to allow for evaluation of overall industry and individual airline performance, so that consumers of air travel can make informed decisions.

The following domestic airlines currently report this information monthly to the BITRE: Jetstar, Qantas, QantasLink, Regional Express, Tigerair Australia, Virgin Australia and Virgin Australia Regional Airlines. Data has been gathered since November 2003, although some airlines commenced reporting at a later date, including Jetstar which first reported in May 2004, MacAir in July 2005, Tigerair Australia in April 2008 and Virgin Australia Regional Airlines in May 2013. MacAir ceased operations in February 2009 and data was not received for December 2008 onwards. Virgin Blue was rebranded as Virgin Australia in May 2011 and Tiger Airways was rebranded as Tigerair Australia in July 2013 and time series data in Microsoft Excel spreadsheet format on the BITRE website have been revised to reflect these changes. Services operated by Skywest on behalf of Virgin Australia using ATR/F100 aircraft commenced in November 2011 and were shown separately as Virgin Australia – ATR/F100 Operations. Virgin Australia Regional Airlines commenced operations in May 2013. It was formed after the acquisition of Skywest by Virgin Australia and represented a combination of operations previously reported under Skywest and Virgin Australia – ATR/F100 Operations. In January 2016, Virgin Australia transferred their ATR fleet from Virgin Australia Regional Airlines to Virgin Australia.

Information presented in this report is for Australian domestic routes for which the passenger load averaged 8 000 or more passengers per month over the previous six months and where two or more airlines operated in competition on those routes. There were 64 routes that met this definition in August 2019. Over time, routes which meet these criteria change as airline networks and traffic levels vary.

Participating airlines report their overall monthly network performance where this is possible.

Total industry figures encompass all services operated by reporting airlines only. These airlines collectively carried over 95 per cent of total domestic passengers (regular public transport only) in 2018.

The method of capturing on time performance varies between airlines utilising different recording systems. Jetstar and Qantas jet aircraft use Aircraft Communication Addressing and Reporting System (ACARS) to electronically measure on time performance. Regional Express, Tigerair Australia, Virgin Australia, Virgin Australia Regional Airlines and the Qantas non-jet fleet record on time performance manually using records from pilots, gate agents and/or ground crews.

After initial data is collected, aggregate reports are audited internally by participating airlines prior to publication.

Reports and detailed time series data in Microsoft Excel spreadsheet format are available from the BITRE website at: <http://www.bitre.gov.au/statistics/aviation/otphome.aspx>.

Contents

	Page
Industry performance	1
Individual routes	10
Airports.....	24
Definitions	30

Industry performance

For August 2019, on time performance over all routes operated by participating airlines (Jetstar, Qantas, QantasLink, Regional Express, Tigerair Australia, Virgin Australia and Virgin Australia Regional Airlines) averaged 76.4 per cent for on time arrivals and 78.1 per cent for on time departures. Cancellations represented 2.6 per cent of all scheduled flights. The equivalent figures for August 2018 were 80.0 per cent for on time arrivals, 81.5 per cent for on time departures and 1.8 per cent for cancellations.

This month's on time arrivals figure was lower than the long term average performance for all routes (82.4 per cent) and the on time departures figure was also lower than the long term average (83.7 per cent). The rate of cancellations was higher than the long term average of 1.5 per cent.

Virgin Australia achieved the highest on time arrivals among the major domestic airlines at 76.3 per cent followed by Jetstar at 73.7 per cent, Qantas at 73.5 per cent and Tigerair Australia at 64.4 per cent. Of the regional airlines, QantasLink recorded 81.7 per cent for on time arrivals, followed by Regional Express at 78.8 per cent and Virgin Australia Regional Airlines at 75.0 per cent. The Qantas network (Qantas and QantasLink combined operations) recorded 77.9 per cent for on time arrivals while the Virgin Australia network (Virgin Australia and Virgin Australia Regional Airlines combined operations) recorded 76.2 per cent.

Virgin Australia also achieved the highest level of on time departures among the major domestic airlines for August 2019 at 79.3 per cent, followed by Qantas at 75.6 per cent, Jetstar at 72.5 per cent and Tigerair Australia at 66.3 per cent. Of the regional airlines, QantasLink recorded 82.5 per cent for on time departures, followed by Regional Express at 81.6 per cent and Virgin Australia Regional Airlines at 80.7 per cent. The Qantas network recorded 79.3 per cent for on time departures while the Virgin Australia network recorded 79.4 per cent.

Qantas recorded the highest percentage of cancellations (4.2 per cent) during the month, followed by Tigerair Australia (4.0 per cent), Virgin Australia (2.4 per cent), Jetstar (2.3 per cent), Regional Express (2.0 per cent), QantasLink (1.9 per cent) and Virgin Australia Regional Airlines (1.0 per cent).

Airlines' on time performance varies across the routes they serve. Individual route data by specific airline for 64 routes are shown on pages 10-23.

Of the 64 routes which met the criteria for on time performance reporting in August 2019, the Cairns-Townsville route had the highest percentage of on time arrivals (96.6 per cent) and the highest percentage of on time departures (97.3 per cent). The Ayers Rock-Sydney route had the lowest percentage of on time arrivals (48.4 per cent) and the lowest percentage of on time departures (43.5 per cent).

Cancellations were highest on the Melbourne-Sydney route at 9.1 per cent, followed by the Sydney-Melbourne route at 8.6 per cent, the Port Hedland-Perth route at 5.9 per cent, the

Brisbane-Sydney and Sydney-Brisbane routes at 5.6 per cent and the Canberra-Sydney route at 5.2 per cent.

Newman Airport recorded the highest percentage of on time arrivals (92.8 per cent) and the highest percentage of on time departures (90.5 per cent). Ayers Rock Airport recorded the lowest percentage of on time arrivals (64.5 per cent) and the lowest percentage of on time departures (43.5 per cent). These figures only refer to reported routes and do not cover all flights at these airports.

Table 1 On time performance for August 2019 – Total Industry

	<i>Sectors</i>		<i>Arrivals On Time</i>		<i>Departures On Time</i>		<i>Cancellations</i>	
	<i>Scheduled</i>	<i>Flown</i>	<i>No.</i>	<i>%</i>	<i>No.</i>	<i>%</i>	<i>No.</i>	<i>%</i>
Jetstar	6 589	6 438	4 744	73.7	4 666	72.5	151	2.3
Qantas	9 542	9 146	6 725	73.5	6 917	75.6	396	4.2
QantasLink	10 508	10 307	8 420	81.7	8 502	82.5	201	1.9
Regional Express	6 536	6 404	5 047	78.8	5 224	81.6	132	2.0
Tigerair Australia	2 275	2 185	1 407	64.4	1 448	66.3	90	4.0
Virgin Australia	11 785	11 500	8 775	76.3	9 116	79.3	285	2.4
Virgin Australia Regional Airlines	796	788	591	75.0	636	80.7	8	1.0
All Airlines	48 031	46 768	35 709	76.4	36 509	78.1	1 263	2.6
Qantas - all QF designated services	20 050	19 453	15 145	77.9	15 419	79.3	597	3.0
Virgin Australia - all VA designated services	12 581	12 288	9 366	76.2	9 752	79.4	293	2.3

Total airline network data (including routes not shown in this report).

Airlines' on time performance varies across the routes they serve. Individual route data by specific airline for 64 routes are shown on pages 10-23.

Table 2 Top ten routes for on time performance for August 2019 (participating airlines only)

<i>Arrivals</i>		<i>Departures</i>	
<i>Route</i>	<i>On Time (%)</i>	<i>Route</i>	<i>On Time (%)</i>
Cairns-Townsville	96.6	Cairns-Townsville	97.3
Townsville-Cairns	94.0	Perth-Newman	92.2
Adelaide-Gold Coast	93.0	Brisbane-Gladstone	92.1
Perth-Newman	92.8	Brisbane-Hobart	92.1
Brisbane-Emerald	92.0	Townsville-Cairns	92.1
Mackay-Brisbane	91.3	Brisbane-Emerald	91.4
Alice Springs-Darwin	91.3	Alice Springs-Darwin	91.3
Emerald-Brisbane	90.8	Gold Coast-Adelaide	91.2
Gladstone-Brisbane	90.2	Newman-Perth	90.5
Newcastle-Brisbane	89.7	Brisbane-Bundaberg	90.3

Table 3 Top ten airports for on time performance for August 2019 (participating airlines and reported routes only)

<i>Arrivals</i>		<i>Departures</i>	
<i>Airport</i>	<i>On Time (%)</i>	<i>Airport</i>	<i>On Time (%)</i>
Newman	92.8	Newman	90.5
Emerald	92.0	Bundaberg	89.6
Bundaberg	89.6	Gladstone	88.4
Gladstone	88.9	Emerald	87.4
Port Lincoln	87.1	Alice Springs	87.2
Mackay	86.7	Karratha	87.0
Port Hedland	85.3	Port Lincoln	86.1
Rockhampton	85.1	Mackay	86.0
Kalgoorlie	84.7	Newcastle	85.8
Karratha	84.3	Rockhampton	85.1

Total industry on time performance

Figure 1 On time performance (by month from August 2016)—Total Industry

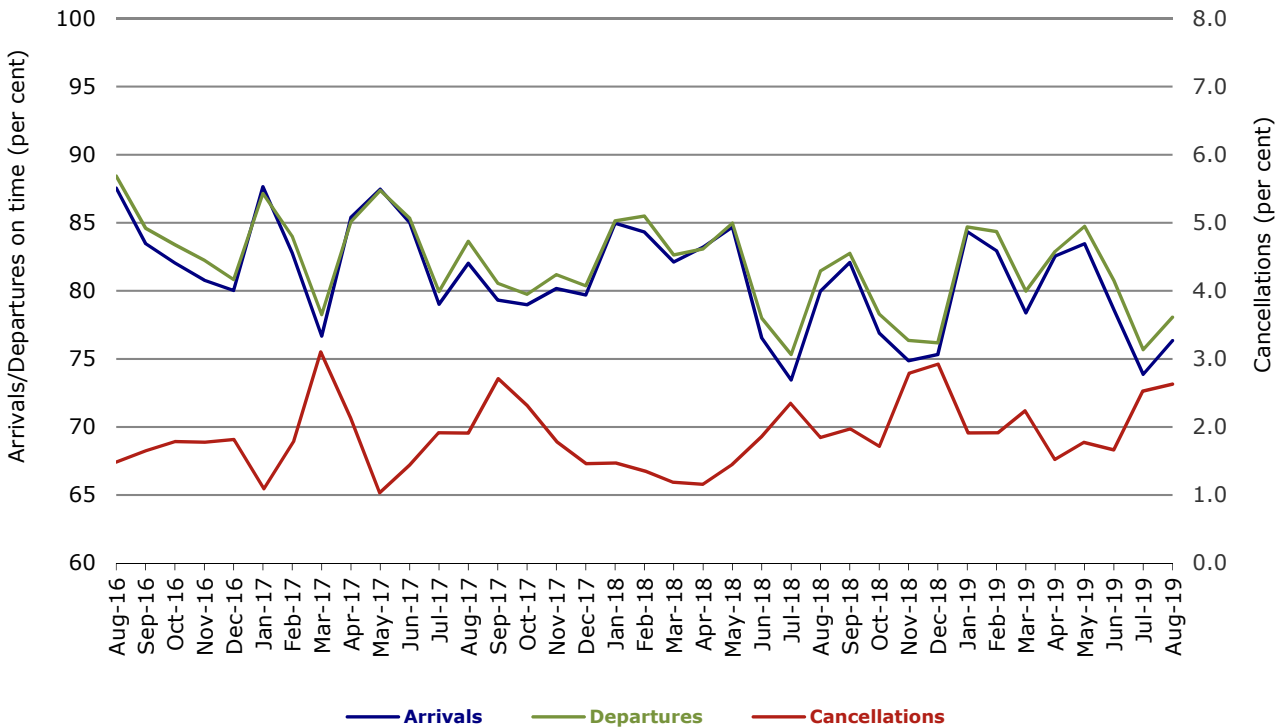


Figure 2 Arrivals on time (by month from August 2018)

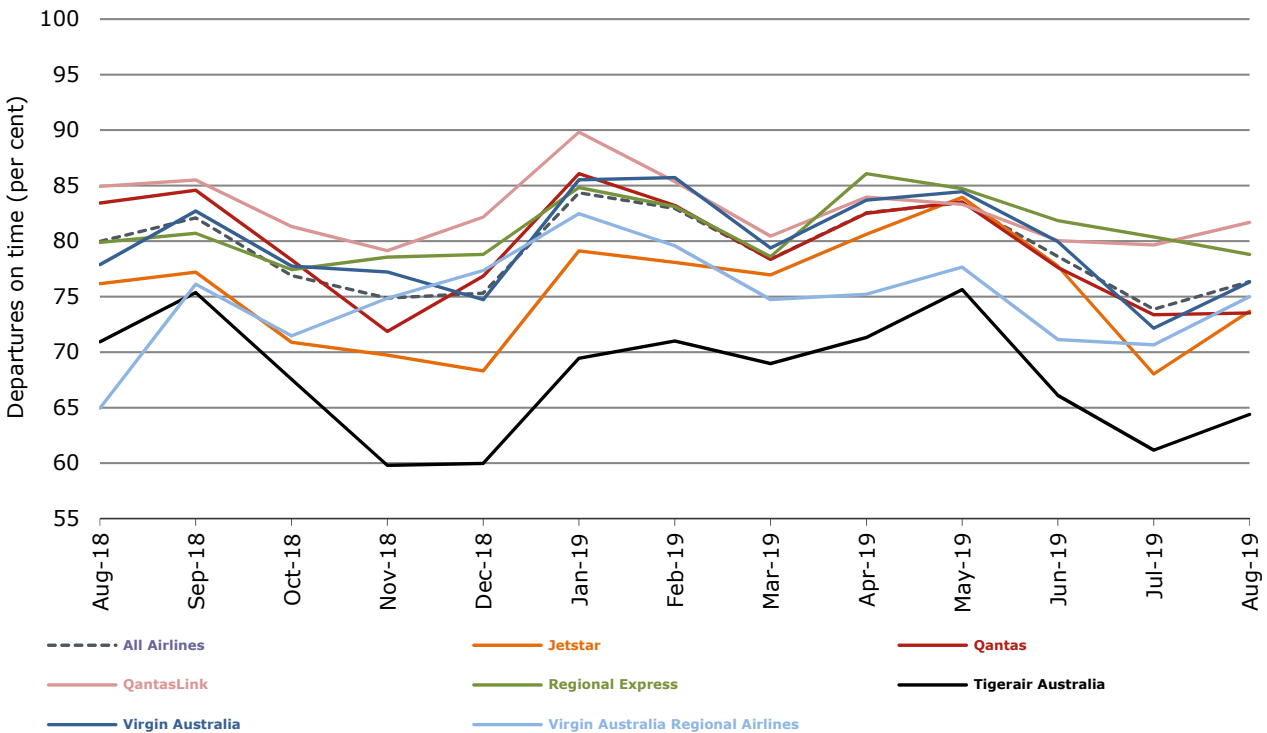


Figure 3 Departures on time (by month from August 2018)

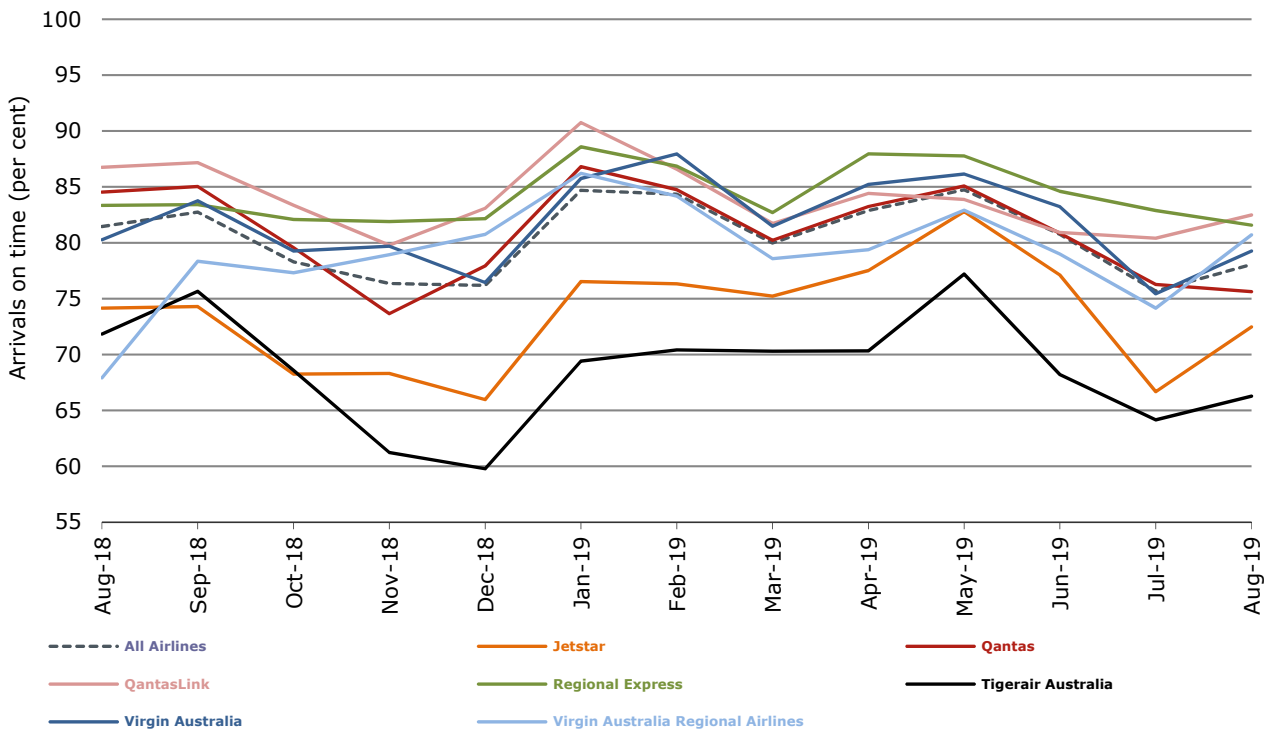
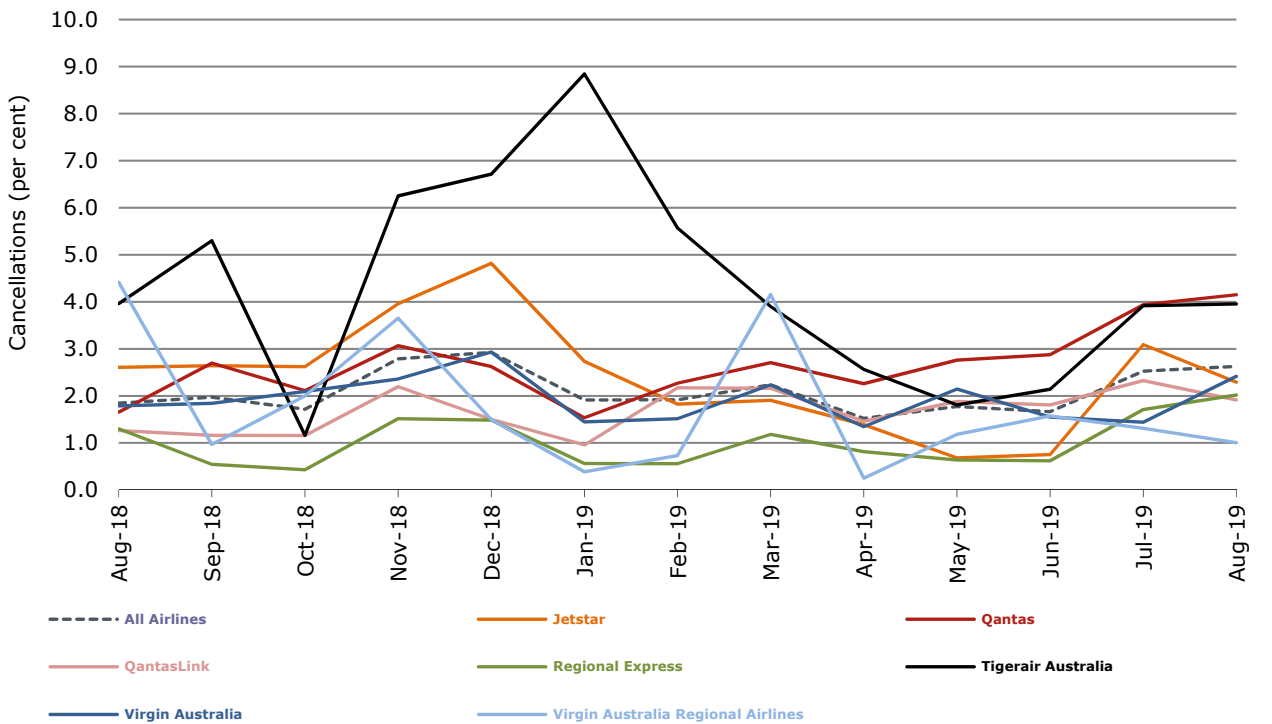


Figure 4 Cancellations (by month from August 2018)



Major domestic airlines on time performance

Figure 5 On time performance (by month from August 2016)—Jetstar

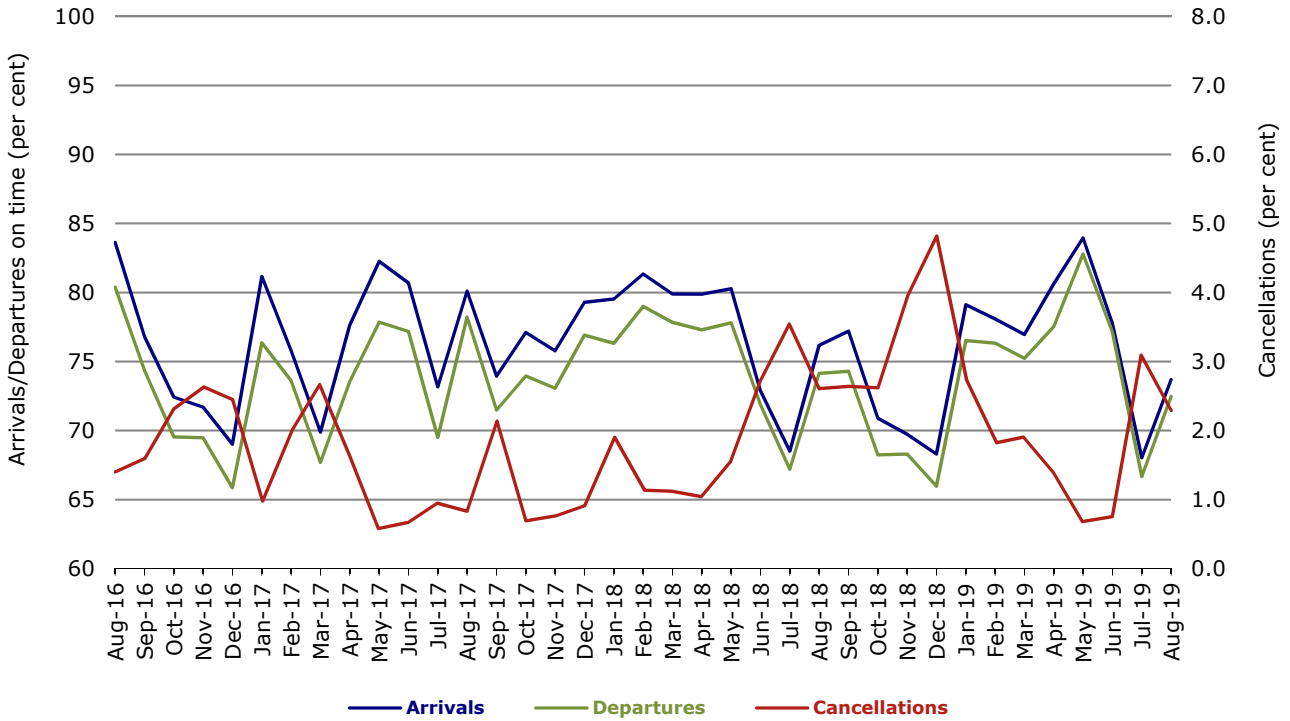


Figure 6 On time performance (by month from August 2016)—Qantas

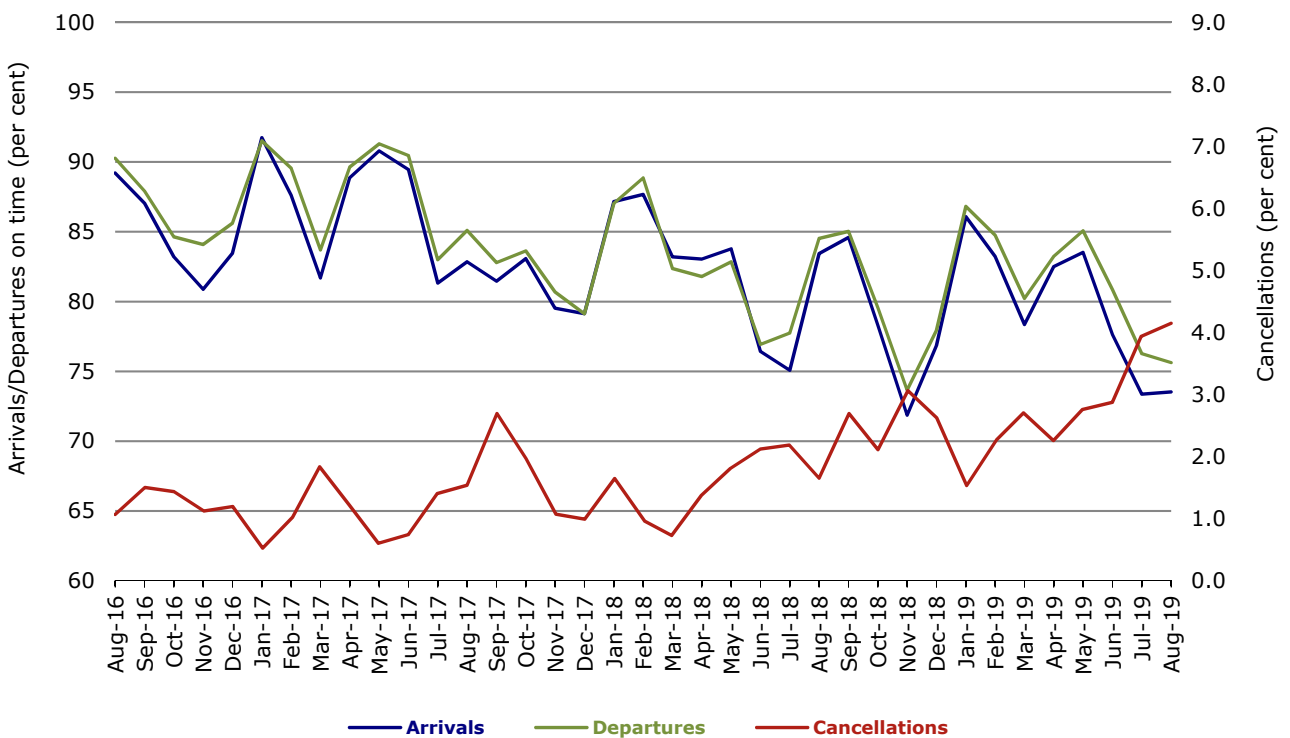


Figure 7 On time performance (by month from August 2016)—Tigerair Australia

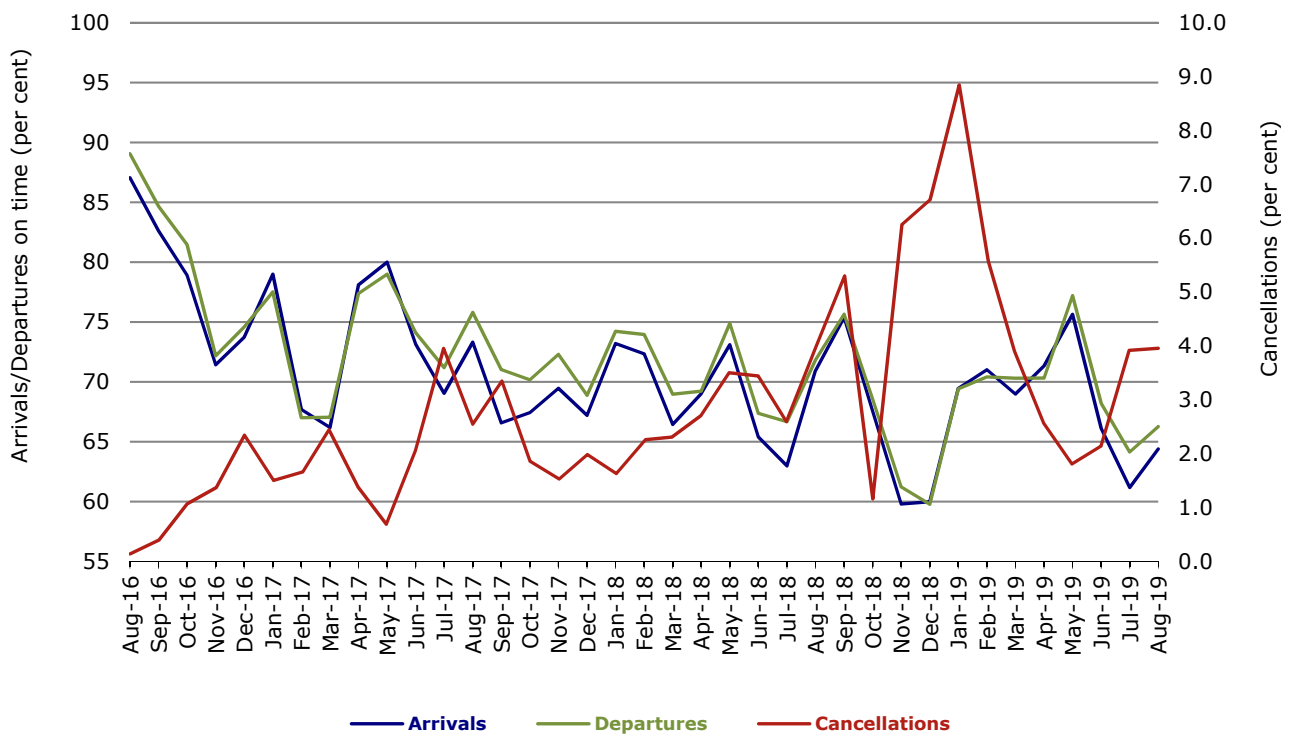
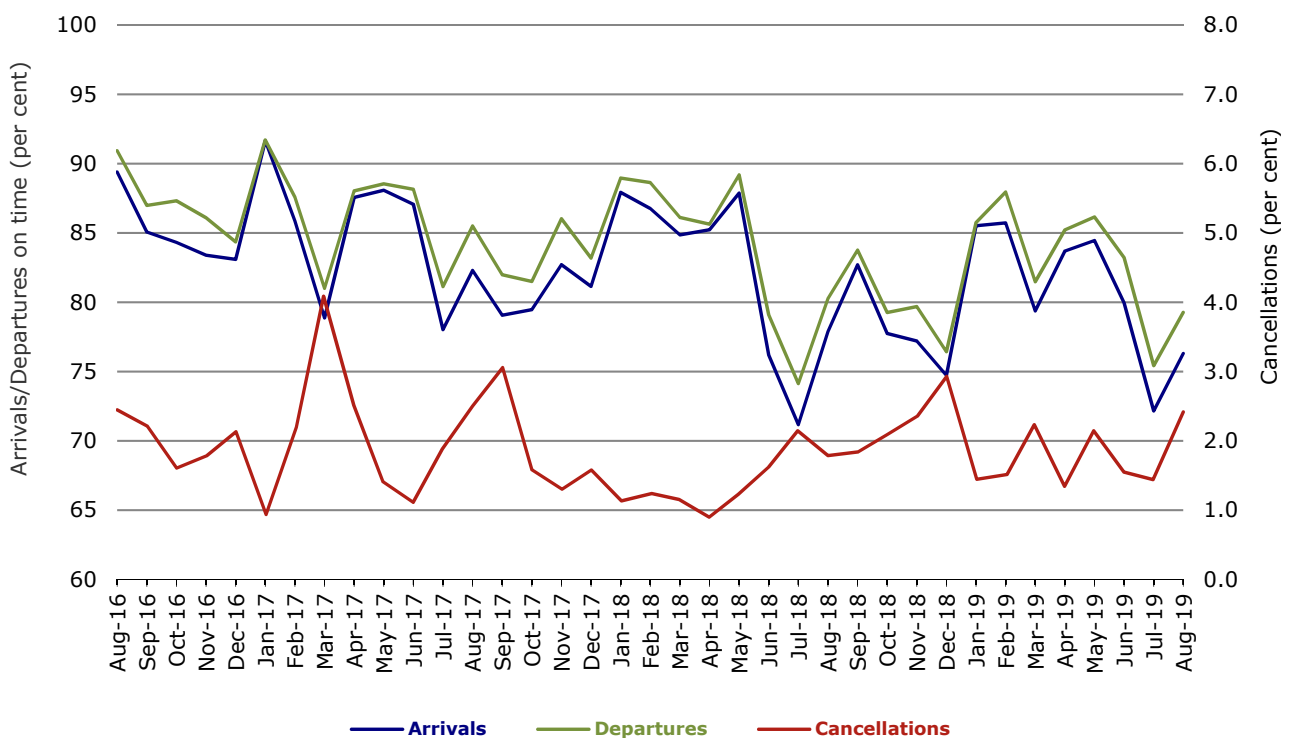


Figure 8 On time performance (by month from August 2016)—Virgin Australia



Major regional airlines on time performance

Figure 9 On time performance (by month from August 2016)—QantasLink

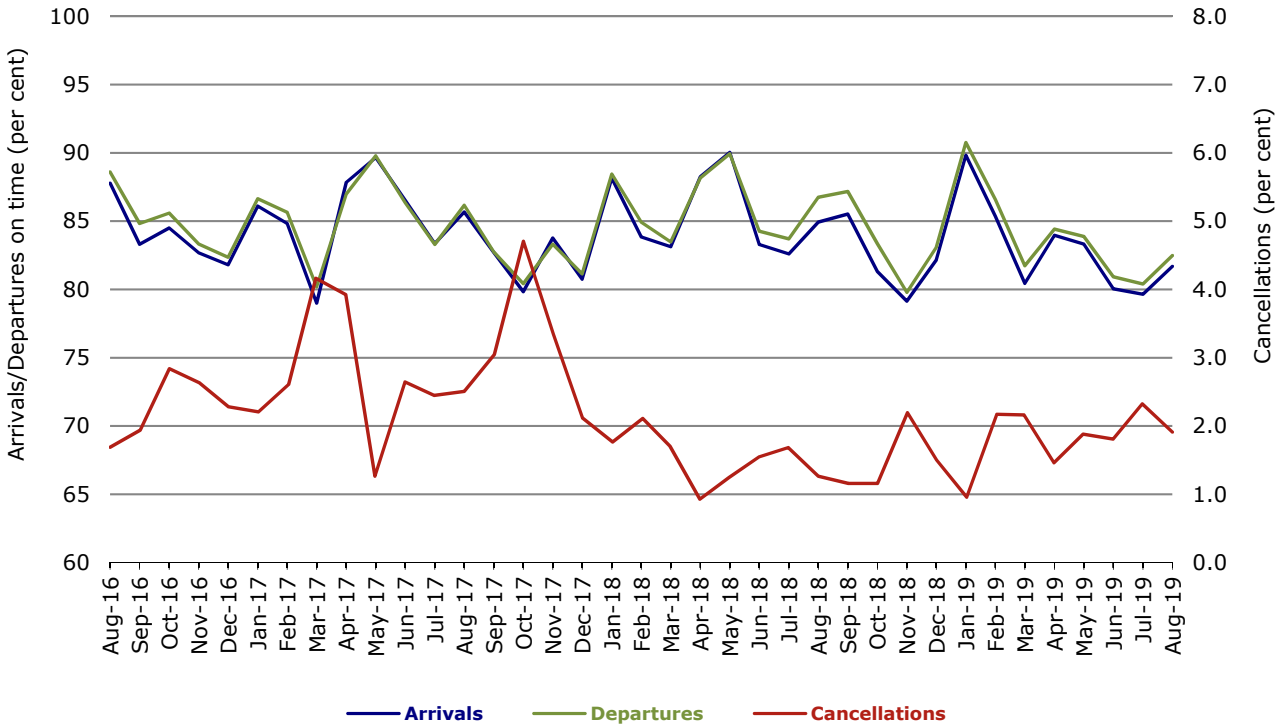


Figure 10 On time performance (by month from August 2016)—Regional Express

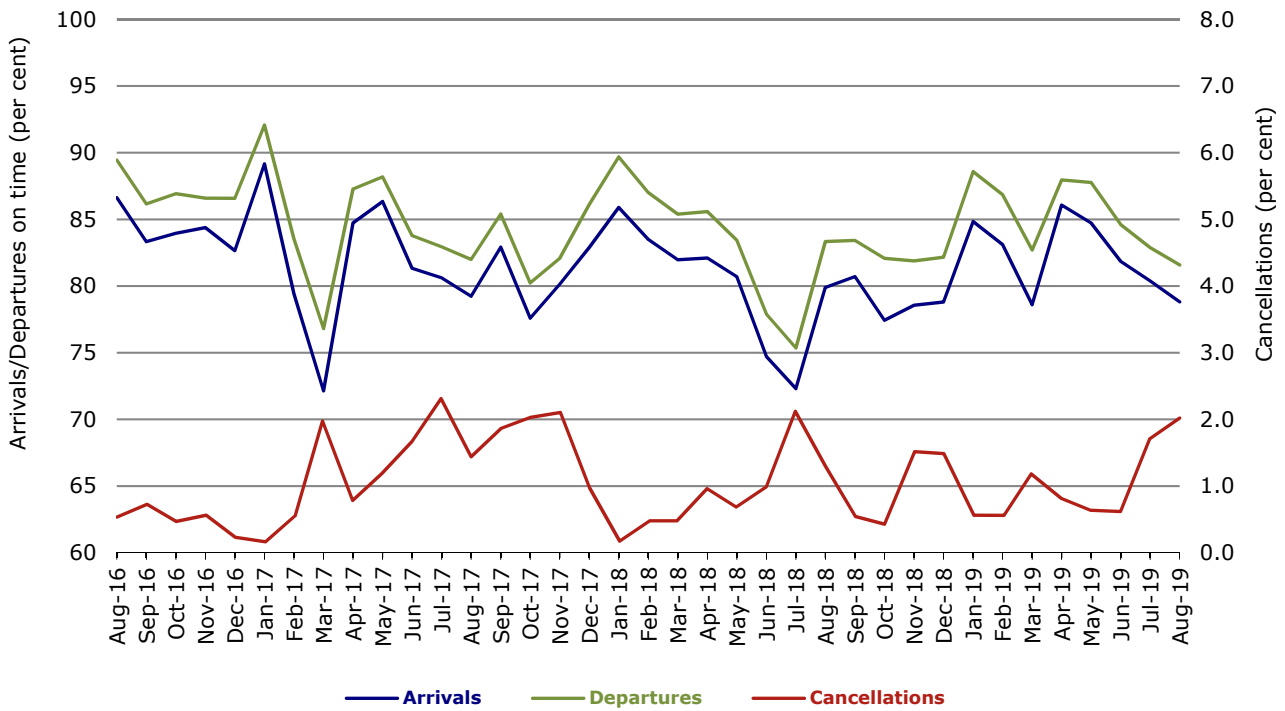
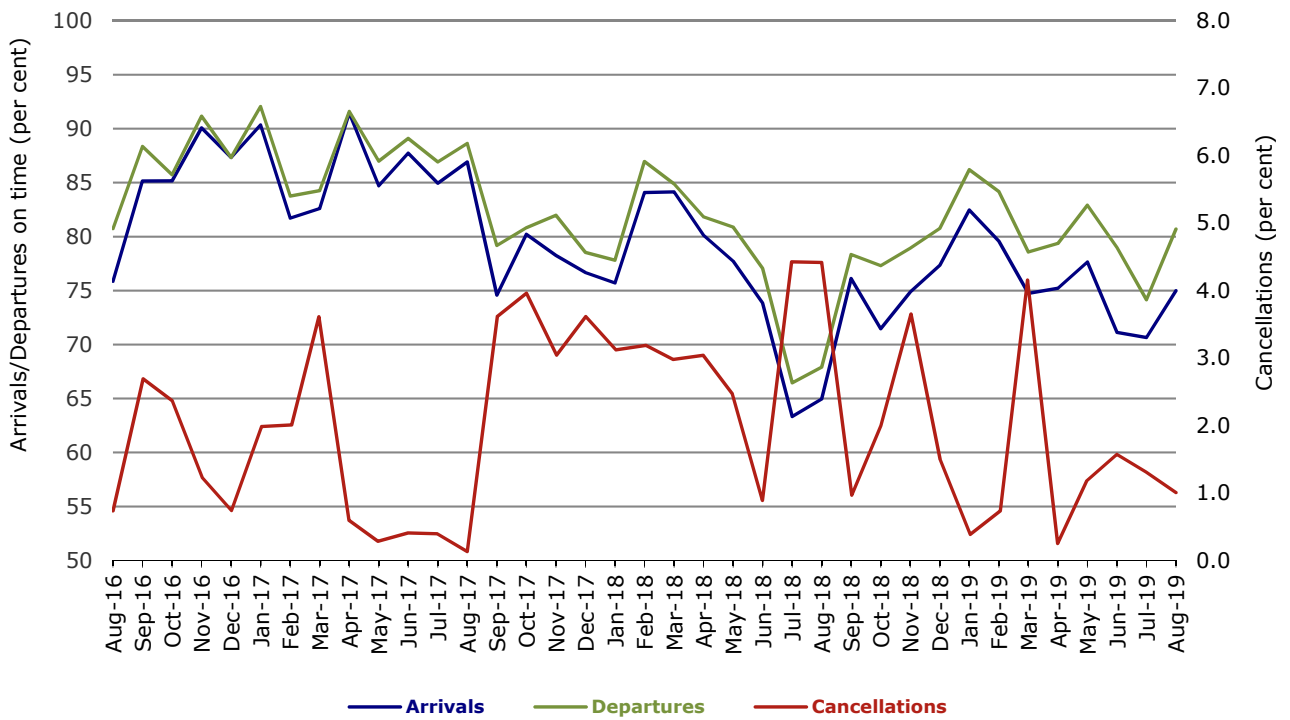


Figure 11 On time performance (by month from August 2016)
Virgin Australia Regional Airlines



Individual routes

On time performance is reported for all routes where the passenger load averages over 8000 passengers per month over the previous six months, and where two or more airlines operate in competition on those routes. There are now 64 routes which meet this definition. Over time, however, routes which meet this definition may change as airline networks and traffic levels vary.

	Sectors		Arrivals On Time		Departures On Time		Cancellations	
	Sched.	Flown	No.	%	No.	%	No.	%
Adelaide-Alice Springs								
Qantas	31	31	24	77.4	23	74.2	0	0.0
Virgin Australia	12	12	11	91.7	11	91.7	0	0.0
Virgin Australia Regional Airlines	10	10	4	40.0	6	60.0	0	0.0
All Airlines	53	53	39	73.6	40	75.5	0	0.0
Adelaide-Brisbane								
Jetstar	27	27	23	85.2	22	81.5	0	0.0
Qantas	106	106	94	88.7	89	84.0	0	0.0
Tigerair Australia	26	26	20	76.9	17	65.4	0	0.0
Virgin Australia	110	109	92	84.4	90	82.6	1	0.9
All Airlines	269	268	229	85.4	218	81.3	1	0.4
Adelaide-Canberra								
Qantas	48	48	40	83.3	38	79.2	0	0.0
QantasLink	5	5	4	80.0	4	80.0	0	0.0
Virgin Australia	26	26	21	80.8	21	80.8	0	0.0
All Airlines	79	79	65	82.3	63	79.7	0	0.0
Adelaide-Gold Coast								
Jetstar	27	27	23	85.2	21	77.8	0	0.0
Virgin Australia	30	30	30	100.0	30	100.0	0	0.0
All Airlines	57	57	53	93.0	51	89.5	0	0.0
Adelaide-Melbourne								
Jetstar	92	89	51	57.3	43	48.3	3	3.3
Qantas	291	284	214	75.4	215	75.7	7	2.4
Tigerair Australia	74	71	38	53.5	38	53.5	3	4.1
Virgin Australia	265	262	205	78.2	211	80.5	3	1.1
Virgin Australia Regional Airlines	8	8	7	87.5	7	87.5	0	0.0
All Airlines	730	714	515	72.1	514	72.0	16	2.2
Adelaide-Perth								
Jetstar	22	22	18	81.8	16	72.7	0	0.0
Qantas	118	118	101	85.6	98	83.1	0	0.0
Virgin Australia	37	37	32	86.5	36	97.3	0	0.0
Virgin Australia Regional Airlines	45	45	28	62.2	35	77.8	0	0.0
All Airlines	222	222	179	80.6	185	83.3	0	0.0
Adelaide-Port Lincoln								
QantasLink	102	99	83	83.8	84	84.8	3	2.9
Regional Express	224	218	193	88.5	201	92.2	6	2.7
All Airlines	326	317	276	87.1	285	89.9	9	2.8
Adelaide-Sydney								
Jetstar	75	69	52	75.4	51	73.9	6	8.0
Qantas	239	237	162	68.4	180	75.9	2	0.8
Tigerair Australia	29	29	14	48.3	15	51.7	0	0.0
Virgin Australia	160	156	115	73.7	123	78.8	4	2.5
All Airlines	503	491	343	69.9	369	75.2	12	2.4

	<i>Sectors</i>		<i>Arrivals On Time</i>		<i>Departures On Time</i>		<i>Cancellations</i>	
	<i>Sched.</i>	<i>Flown</i>	<i>No.</i>	<i>%</i>	<i>No.</i>	<i>%</i>	<i>No.</i>	<i>%</i>
Albury-Sydney								
QantasLink	106	105	58	55.2	64	61.0	1	0.9
Regional Express	105	101	82	81.2	86	85.1	4	3.8
Virgin Australia	56	55	33	60.0	37	67.3	1	1.8
All Airlines	267	261	173	66.3	187	71.6	6	2.2
Alice Springs-Adelaide								
Qantas	31	31	26	83.9	26	83.9	0	0.0
Virgin Australia	12	12	11	91.7	11	91.7	0	0.0
Virgin Australia Regional Airlines	10	10	5	50.0	6	60.0	0	0.0
All Airlines	53	53	42	79.2	43	81.1	0	0.0
Alice Springs-Darwin								
Qantas	62	58	56	96.6	56	96.6	4	6.5
Virgin Australia	12	12	11	91.7	11	91.7	0	0.0
Virgin Australia Regional Airlines	10	10	6	60.0	6	60.0	0	0.0
All Airlines	84	80	73	91.3	73	91.3	4	4.8
Armidale-Sydney								
QantasLink	122	117	79	67.5	80	68.4	5	4.1
Regional Express	73	71	42	59.2	43	60.6	2	2.7
All Airlines	195	188	121	64.4	123	65.4	7	3.6
Ayers Rock-Sydney								
Jetstar	31	31	11	35.5	9	29.0	0	0.0
Virgin Australia	31	31	19	61.3	18	58.1	0	0.0
All Airlines	62	62	30	48.4	27	43.5	0	0.0
Ballina-Sydney								
Jetstar	80	78	52	66.7	56	71.8	2	2.5
Regional Express	24	24	17	70.8	19	79.2	0	0.0
Virgin Australia	31	30	24	80.0	23	76.7	1	3.2
All Airlines	135	132	93	70.5	98	74.2	3	2.2
Brisbane-Adelaide								
Jetstar	27	27	23	85.2	24	88.9	0	0.0
Qantas	106	106	88	83.0	90	84.9	0	0.0
Tigerair Australia	26	26	18	69.2	22	84.6	0	0.0
Virgin Australia	101	101	81	80.2	85	84.2	0	0.0
All Airlines	260	260	210	80.8	221	85.0	0	0.0
Brisbane-Bundaberg								
QantasLink	123	123	108	87.8	111	90.2	0	0.0
Virgin Australia	31	31	30	96.8	28	90.3	0	0.0
All Airlines	154	154	138	89.6	139	90.3	0	0.0
Brisbane-Cairns								
Jetstar	105	104	90	86.5	90	86.5	1	1.0
Qantas	30	30	26	86.7	26	86.7	0	0.0
QantasLink	137	136	114	83.8	117	86.0	1	0.7
Tigerair Australia	29	29	22	75.9	22	75.9	0	0.0
Virgin Australia	134	133	115	86.5	107	80.5	1	0.7
All Airlines	435	432	367	85.0	362	83.8	3	0.7
Brisbane-Canberra								
Qantas	4	4	3	75.0	4	100.0	0	0.0
QantasLink	151	151	132	87.4	132	87.4	0	0.0
Tigerair Australia	27	27	18	66.7	19	70.4	0	0.0
Virgin Australia	102	102	84	82.4	85	83.3	0	0.0
All Airlines	284	284	237	83.5	240	84.5	0	0.0

	Sectors		Arrivals On Time		Departures On Time		Cancellations	
	Sched.	Flown	No.	%	No.	%	No.	%
Brisbane-Darwin								
Jetstar	26	26	24	92.3	26	100.0	0	0.0
Qantas	47	47	34	72.3	35	74.5	0	0.0
Tigerair Australia	14	14	10	71.4	9	64.3	0	0.0
Virgin Australia	31	31	21	67.7	25	80.6	0	0.0
All Airlines	118	118	89	75.4	95	80.5	0	0.0
Brisbane-Emerald								
QantasLink	122	122	113	92.6	111	91.0	0	0.0
Virgin Australia	52	52	47	90.4	48	92.3	0	0.0
All Airlines	174	174	160	92.0	159	91.4	0	0.0
Brisbane-Gladstone								
QantasLink	142	141	123	87.2	127	90.1	1	0.7
Virgin Australia	75	75	69	92.0	72	96.0	0	0.0
All Airlines	217	216	192	88.9	199	92.1	1	0.5
Brisbane-Hamilton Island								
QantasLink	30	29	22	75.9	19	65.5	1	3.3
Virgin Australia	31	31	23	74.2	24	77.4	0	0.0
All Airlines	61	60	45	75.0	43	71.7	1	1.6
Brisbane-Hobart								
Jetstar	23	23	21	91.3	22	95.7	0	0.0
Virgin Australia	40	40	32	80.0	36	90.0	0	0.0
All Airlines	63	63	53	84.1	58	92.1	0	0.0
Brisbane-Mackay								
Jetstar	36	36	28	77.8	28	77.8	0	0.0
QantasLink	143	139	128	92.1	121	87.1	4	2.8
Virgin Australia	149	149	125	83.9	129	86.6	0	0.0
All Airlines	328	324	281	86.7	278	85.8	4	1.2
Brisbane-Melbourne								
Jetstar	107	106	86	81.1	82	77.4	1	0.9
Qantas	423	419	291	69.5	320	76.4	4	0.9
Tigerair Australia	106	105	62	59.0	71	67.6	1	0.9
Virgin Australia	396	385	267	69.4	319	82.9	11	2.8
All Airlines	1 032	1 015	706	69.6	792	78.0	17	1.6
Brisbane-Mount Isa								
Qantas	1	1	0	0.0	1	100.0	0	0.0
QantasLink	55	55	41	74.5	47	85.5	0	0.0
Virgin Australia	18	18	16	88.9	18	100.0	0	0.0
All Airlines	74	74	57	77.0	66	89.2	0	0.0
Brisbane-Newcastle								
Jetstar	71	71	56	78.9	59	83.1	0	0.0
QantasLink	93	93	81	87.1	81	87.1	0	0.0
Virgin Australia	87	87	69	79.3	73	83.9	0	0.0
All Airlines	251	251	206	82.1	213	84.9	0	0.0
Brisbane-Perth								
Qantas	150	147	116	78.9	112	76.2	3	2.0
Virgin Australia	109	109	85	78.0	78	71.6	0	0.0
All Airlines	259	256	201	78.5	190	74.2	3	1.2
Brisbane-Proserpine								
Jetstar	31	31	28	90.3	28	90.3	0	0.0
Virgin Australia	41	41	32	78.0	34	82.9	0	0.0
All Airlines	72	72	60	83.3	62	86.1	0	0.0

	<i>Sectors</i>		<i>Arrivals On Time</i>		<i>Departures On Time</i>		<i>Cancellations</i>	
	<i>Sched.</i>	<i>Flown</i>	<i>No.</i>	<i>%</i>	<i>No.</i>	<i>%</i>	<i>No.</i>	<i>%</i>
Brisbane-Rockhampton								
QantasLink	176	175	153	87.4	157	89.7	1	0.6
Virgin Australia	141	141	116	82.3	122	86.5	0	0.0
All Airlines	317	316	269	85.1	279	88.3	1	0.3
Brisbane-Sydney								
Jetstar	165	157	98	62.4	91	58.0	8	4.8
Qantas	638	597	457	76.5	489	81.9	41	6.4
Tigerair Australia	133	128	83	64.8	90	70.3	5	3.8
Virgin Australia	551	522	389	74.5	432	82.8	29	5.3
All Airlines	1 487	1 404	1 027	73.1	1 102	78.5	83	5.6
Brisbane-Townsville								
Jetstar	62	62	53	85.5	55	88.7	0	0.0
Qantas	53	52	47	90.4	47	90.4	1	1.9
QantasLink	100	100	74	74.0	80	80.0	0	0.0
Virgin Australia	147	147	128	87.1	123	83.7	0	0.0
All Airlines	362	361	302	83.7	305	84.5	1	0.3
Broome-Perth								
Qantas	7	7	5	71.4	4	57.1	0	0.0
QantasLink	91	89	69	77.5	71	79.8	2	2.2
Virgin Australia	3	3	1	33.3	1	33.3	0	0.0
Virgin Australia Regional Airlines	68	68	53	77.9	51	75.0	0	0.0
All Airlines	169	167	128	76.6	127	76.0	2	1.2
Bundaberg-Brisbane								
QantasLink	123	123	108	87.8	109	88.6	0	0.0
Virgin Australia	31	31	29	93.5	29	93.5	0	0.0
All Airlines	154	154	137	89.0	138	89.6	0	0.0
Cairns-Brisbane								
Jetstar	105	104	97	93.3	90	86.5	1	1.0
Qantas	30	30	26	86.7	23	76.7	0	0.0
QantasLink	137	135	116	85.9	116	85.9	2	1.5
Tigerair Australia	29	29	23	79.3	21	72.4	0	0.0
Virgin Australia	134	133	119	89.5	114	85.7	1	0.7
All Airlines	435	431	381	88.4	364	84.5	4	0.9
Cairns-Melbourne								
Jetstar	116	116	98	84.5	95	81.9	0	0.0
Qantas	41	41	26	63.4	23	56.1	0	0.0
Tigerair Australia	38	38	26	68.4	25	65.8	0	0.0
Virgin Australia	36	36	22	61.1	21	58.3	0	0.0
All Airlines	231	231	172	74.5	164	71.0	0	0.0
Cairns-Sydney								
Jetstar	97	95	77	81.1	75	78.9	2	2.1
Qantas	69	69	51	73.9	42	60.9	0	0.0
Tigerair Australia	31	31	24	77.4	21	67.7	0	0.0
Virgin Australia	89	89	66	74.2	61	68.5	0	0.0
All Airlines	286	284	218	76.8	199	70.1	2	0.7
Cairns-Townsville								
QantasLink	136	135	131	97.0	132	97.8	1	0.7
Regional Express	14	14	13	92.9	13	92.9	0	0.0
All Airlines	150	149	144	96.6	145	97.3	1	0.7

	<i>Sectors</i>		<i>Arrivals On Time</i>		<i>Departures On Time</i>		<i>Cancellations</i>	
	<i>Sched.</i>	<i>Flown</i>	<i>No.</i>	<i>%</i>	<i>No.</i>	<i>%</i>	<i>No.</i>	<i>%</i>
Canberra-Adelaide								
Qantas	48	48	42	87.5	41	85.4	0	0.0
QantasLink	5	5	3	60.0	3	60.0	0	0.0
Virgin Australia	26	26	23	88.5	23	88.5	0	0.0
All Airlines	79	79	68	86.1	67	84.8	0	0.0
Canberra-Brisbane								
Qantas	3	3	3	100.0	3	100.0	0	0.0
QantasLink	150	149	119	79.9	123	82.6	1	0.7
Tigerair Australia	27	27	21	77.8	18	66.7	0	0.0
Virgin Australia	102	102	86	84.3	88	86.3	0	0.0
All Airlines	282	281	229	81.5	232	82.6	1	0.4
Canberra-Melbourne								
Qantas	248	243	189	77.8	193	79.4	5	2.0
QantasLink	45	45	30	66.7	33	73.3	0	0.0
Tigerair Australia	35	35	22	62.9	21	60.0	0	0.0
Virgin Australia	162	162	121	74.7	134	82.7	0	0.0
All Airlines	490	485	362	74.6	381	78.6	5	1.0
Canberra-Sydney								
Qantas	13	13	9	69.2	10	76.9	0	0.0
QantasLink	473	452	326	72.1	335	74.1	21	4.4
Virgin Australia	257	239	200	83.7	207	86.6	18	7.0
All Airlines	743	704	535	76.0	552	78.4	39	5.2
Coffs Harbour-Sydney								
QantasLink	142	140	104	74.3	111	79.3	2	1.4
Tigerair Australia	15	14	11	78.6	11	78.6	1	6.7
Virgin Australia	31	29	23	79.3	25	86.2	2	6.5
All Airlines	188	183	138	75.4	147	80.3	5	2.7
Darwin-Alice Springs								
Qantas	62	59	53	89.8	55	93.2	3	4.8
Virgin Australia	12	12	12	100.0	12	100.0	0	0.0
Virgin Australia Regional Airlines	10	10	6	60.0	6	60.0	0	0.0
All Airlines	84	81	71	87.7	73	90.1	3	3.6
Darwin-Brisbane								
Jetstar	26	26	26	100.0	24	92.3	0	0.0
Qantas	47	47	34	72.3	30	63.8	0	0.0
Tigerair Australia	15	15	12	80.0	9	60.0	0	0.0
Virgin Australia	31	31	26	83.9	24	77.4	0	0.0
All Airlines	119	119	98	82.4	87	73.1	0	0.0
Darwin-Melbourne								
Jetstar	25	25	19	76.0	13	52.0	0	0.0
Qantas	37	37	28	75.7	20	54.1	0	0.0
Virgin Australia	31	31	27	87.1	29	93.5	0	0.0
All Airlines	93	93	74	79.6	62	66.7	0	0.0
Darwin-Perth								
Qantas	31	31	28	90.3	28	90.3	0	0.0
Virgin Australia	21	21	12	57.1	14	66.7	0	0.0
Virgin Australia Regional Airlines	10	10	5	50.0	6	60.0	0	0.0
All Airlines	62	62	45	72.6	48	77.4	0	0.0

	<i>Sectors</i>		<i>Arrivals On Time</i>		<i>Departures On Time</i>		<i>Cancellations</i>	
	<i>Sched.</i>	<i>Flown</i>	<i>No.</i>	<i>%</i>	<i>No.</i>	<i>%</i>	<i>No.</i>	<i>%</i>
Darwin-Sydney								
Jetstar	18	18	15	83.3	13	72.2	0	0.0
Qantas	54	54	27	50.0	26	48.1	0	0.0
Virgin Australia	31	31	13	41.9	13	41.9	0	0.0
All Airlines	103	103	55	53.4	52	50.5	0	0.0
Dubbo-Sydney								
QantasLink	124	122	81	66.4	88	72.1	2	1.6
Regional Express	133	131	86	65.6	96	73.3	2	1.5
All Airlines	257	253	167	66.0	184	72.7	4	1.6
Emerald-Brisbane								
QantasLink	122	122	108	88.5	103	84.4	0	0.0
Virgin Australia	52	52	50	96.2	49	94.2	0	0.0
All Airlines	174	174	158	90.8	152	87.4	0	0.0
Gladstone-Brisbane								
QantasLink	141	140	124	88.6	120	85.7	1	0.7
Virgin Australia	75	75	70	93.3	70	93.3	0	0.0
All Airlines	216	215	194	90.2	190	88.4	1	0.5
Gold Coast-Adelaide								
Jetstar	27	27	21	77.8	26	96.3	0	0.0
Virgin Australia	30	30	23	76.7	26	86.7	0	0.0
All Airlines	57	57	44	77.2	52	91.2	0	0.0
Gold Coast-Melbourne								
Jetstar	199	199	153	76.9	160	80.4	0	0.0
Qantas	31	31	16	51.6	14	45.2	0	0.0
Tigerair Australia	72	72	39	54.2	42	58.3	0	0.0
Virgin Australia	177	177	127	71.8	126	71.2	0	0.0
All Airlines	479	479	335	69.9	342	71.4	0	0.0
Gold Coast-Sydney								
Jetstar	286	274	211	77.0	211	77.0	12	4.2
Qantas	76	74	49	66.2	51	68.9	2	2.6
QantasLink	56	55	40	72.7	44	80.0	1	1.8
Tigerair Australia	90	85	52	61.2	52	61.2	5	5.6
Virgin Australia	255	243	173	71.2	179	73.7	12	4.7
All Airlines	763	731	525	71.8	537	73.5	32	4.2
Hamilton Island-Brisbane								
QantasLink	31	30	19	63.3	20	66.7	1	3.2
Virgin Australia	31	31	26	83.9	24	77.4	0	0.0
All Airlines	62	61	45	73.8	44	72.1	1	1.6
Hamilton Island-Sydney								
Jetstar	18	18	12	66.7	11	61.1	0	0.0
Qantas	17	17	14	82.4	14	82.4	0	0.0
QantasLink	13	13	10	76.9	9	69.2	0	0.0
Virgin Australia	20	20	15	75.0	13	65.0	0	0.0
All Airlines	68	68	51	75.0	47	69.1	0	0.0
Hobart-Brisbane								
Jetstar	23	23	20	87.0	21	91.3	0	0.0
Virgin Australia	40	40	22	55.0	25	62.5	0	0.0
All Airlines	63	63	42	66.7	46	73.0	0	0.0

	Sectors		Arrivals On Time		Departures On Time		Cancellations	
	Sched.	Flown	No.	%	No.	%	No.	%
Hobart-Melbourne								
Jetstar	141	138	65	47.1	70	50.7	3	2.1
Qantas	111	110	74	67.3	89	80.9	1	0.9
Tigerair Australia	38	38	19	50.0	24	63.2	0	0.0
Virgin Australia	137	137	88	64.2	108	78.8	0	0.0
All Airlines	427	423	246	58.2	291	68.8	4	0.9
Hobart-Sydney								
Jetstar	56	54	36	66.7	35	64.8	2	3.6
Qantas	2	2	1	50.0	1	50.0	0	0.0
QantasLink	74	72	47	65.3	54	75.0	2	2.7
Virgin Australia	71	68	49	72.1	54	79.4	3	4.2
All Airlines	203	196	133	67.9	144	73.5	7	3.4
Kalgoorlie-Perth								
Qantas	7	7	6	85.7	5	71.4	0	0.0
QantasLink	87	86	66	76.7	67	77.9	1	1.1
Virgin Australia	28	28	24	85.7	23	82.1	0	0.0
Virgin Australia Regional Airlines	58	54	42	77.8	42	77.8	4	6.9
All Airlines	180	175	138	78.9	137	78.3	5	2.8
Karratha-Perth								
Qantas	32	32	30	93.8	29	90.6	0	0.0
QantasLink	154	148	128	86.5	129	87.2	6	3.9
Virgin Australia	6	6	3	50.0	2	33.3	0	0.0
Virgin Australia Regional Airlines	61	61	52	85.2	55	90.2	0	0.0
All Airlines	253	247	213	86.2	215	87.0	6	2.4
Launceston-Melbourne								
Jetstar	81	80	59	73.8	53	66.3	1	1.2
QantasLink	119	119	106	89.1	103	86.6	0	0.0
Virgin Australia	93	93	73	78.5	81	87.1	0	0.0
All Airlines	293	292	238	81.5	237	81.2	1	0.3
Launceston-Sydney								
Jetstar	27	26	18	69.2	20	76.9	1	3.7
Virgin Australia	31	31	24	77.4	22	71.0	0	0.0
All Airlines	58	57	42	73.7	42	73.7	1	1.7
Mackay-Brisbane								
Jetstar	36	35	32	91.4	22	62.9	1	2.8
QantasLink	140	136	120	88.2	117	86.0	4	2.9
Virgin Australia	150	150	141	94.0	137	91.3	0	0.0
All Airlines	326	321	293	91.3	276	86.0	5	1.5
Melbourne-Adelaide								
Jetstar	93	89	50	56.2	52	58.4	4	4.3
Qantas	290	285	216	75.8	230	80.7	5	1.7
Tigerair Australia	74	71	42	59.2	49	69.0	3	4.1
Virgin Australia	269	266	193	72.6	205	77.1	3	1.1
Virgin Australia Regional Airlines	8	8	6	75.0	6	75.0	0	0.0
All Airlines	734	719	507	70.5	542	75.4	15	2.0
Melbourne-Brisbane								
Jetstar	107	107	86	80.4	82	76.6	0	0.0
Qantas	423	419	321	76.6	317	75.7	4	0.9
Tigerair Australia	106	105	77	73.3	82	78.1	1	0.9
Virgin Australia	398	389	320	82.3	327	84.1	9	2.3
All Airlines	1 034	1 020	804	78.8	808	79.2	14	1.4

	<i>Sectors</i>		<i>Arrivals On Time</i>		<i>Departures On Time</i>		<i>Cancellations</i>	
	<i>Sched.</i>	<i>Flown</i>	<i>No.</i>	<i>%</i>	<i>No.</i>	<i>%</i>	<i>No.</i>	<i>%</i>
Melbourne-Cairns								
Jetstar	116	115	90	78.3	90	78.3	1	0.9
Qantas	41	41	31	75.6	29	70.7	0	0.0
Tigerair Australia	38	38	28	73.7	32	84.2	0	0.0
Virgin Australia	36	36	27	75.0	30	83.3	0	0.0
All Airlines	231	230	176	76.5	181	78.7	1	0.4
Melbourne-Canberra								
Qantas	248	244	183	75.0	184	75.4	4	1.6
QantasLink	45	45	35	77.8	34	75.6	0	0.0
Tigerair Australia	35	35	25	71.4	25	71.4	0	0.0
Virgin Australia	163	162	133	82.1	136	84.0	1	0.6
All Airlines	491	486	376	77.4	379	78.0	5	1.0
Melbourne-Darwin								
Jetstar	25	25	14	56.0	16	64.0	0	0.0
Qantas	37	37	29	78.4	30	81.1	0	0.0
Virgin Australia	31	31	18	58.1	20	64.5	0	0.0
All Airlines	93	93	61	65.6	66	71.0	0	0.0
Melbourne-Gold Coast								
Jetstar	199	198	157	79.3	149	75.3	1	0.5
Qantas	31	31	25	80.6	26	83.9	0	0.0
Tigerair Australia	72	72	54	75.0	53	73.6	0	0.0
Virgin Australia	177	177	145	81.9	145	81.9	0	0.0
All Airlines	479	478	381	79.7	373	78.0	1	0.2
Melbourne-Hobart								
Jetstar	141	140	82	58.6	89	63.6	1	0.7
Qantas	111	111	76	68.5	85	76.6	0	0.0
Tigerair Australia	38	38	29	76.3	29	76.3	0	0.0
Virgin Australia	138	138	91	65.9	109	79.0	0	0.0
All Airlines	428	427	278	65.1	312	73.1	1	0.2
Melbourne-Launceston								
Jetstar	81	80	60	75.0	57	71.3	1	1.2
QantasLink	119	119	99	83.2	103	86.6	0	0.0
Virgin Australia	93	93	65	69.9	72	77.4	0	0.0
All Airlines	293	292	224	76.7	232	79.5	1	0.3
Melbourne-Mildura								
QantasLink	98	97	79	81.4	79	81.4	1	1.0
Regional Express	85	85	74	87.1	74	87.1	0	0.0
Virgin Australia	31	31	25	80.6	30	96.8	0	0.0
All Airlines	214	213	178	83.6	183	85.9	1	0.5
Melbourne-Newcastle								
Jetstar	84	83	59	71.1	55	66.3	1	1.2
Virgin Australia	31	31	25	80.6	24	77.4	0	0.0
All Airlines	115	114	84	73.7	79	69.3	1	0.9
Melbourne-Perth								
Jetstar	35	35	34	97.1	33	94.3	0	0.0
Qantas	202	197	139	70.6	137	69.5	5	2.5
Tigerair Australia	51	51	32	62.7	39	76.5	0	0.0
Virgin Australia	136	136	104	76.5	94	69.1	0	0.0
All Airlines	424	419	309	73.7	303	72.3	5	1.2

	<i>Sectors</i>		<i>Arrivals On Time</i>		<i>Departures On Time</i>		<i>Cancellations</i>	
	<i>Sched.</i>	<i>Flown</i>	<i>No.</i>	<i>%</i>	<i>No.</i>	<i>%</i>	<i>No.</i>	<i>%</i>
Melbourne-Sunshine Coast								
Jetstar	85	85	70	82.4	70	82.4	0	0.0
Virgin Australia	65	65	49	75.4	46	70.8	0	0.0
All Airlines	150	150	119	79.3	116	77.3	0	0.0
Melbourne-Sydney								
Jetstar	335	316	195	61.7	210	66.5	19	5.7
Qantas	1 120	998	666	66.7	719	72.0	122	10.9
Tigerair Australia	255	224	133	59.4	136	60.7	31	12.2
Virgin Australia	774	721	492	68.2	551	76.4	53	6.8
All Airlines	2 484	2 259	1 486	65.8	1 616	71.5	225	9.1
Mildura-Melbourne								
QantasLink	98	96	68	70.8	74	77.1	2	2.0
Regional Express	85	84	64	76.2	70	83.3	1	1.2
Virgin Australia	31	31	25	80.6	26	83.9	0	0.0
All Airlines	214	211	157	74.4	170	80.6	3	1.4
Mount Isa-Brisbane								
Qantas	1	1	0	0.0	0	0.0	0	0.0
QantasLink	55	55	47	85.5	40	72.7	0	0.0
Virgin Australia	15	15	13	86.7	13	86.7	0	0.0
All Airlines	71	71	60	84.5	53	74.6	0	0.0
Newcastle-Brisbane								
Jetstar	71	71	65	91.5	65	91.5	0	0.0
QantasLink	94	94	86	91.5	84	89.4	0	0.0
Virgin Australia	88	88	76	86.4	74	84.1	0	0.0
All Airlines	253	253	227	89.7	223	88.1	0	0.0
Newcastle-Melbourne								
Jetstar	84	83	59	71.1	65	78.3	1	1.2
Virgin Australia	31	31	24	77.4	27	87.1	0	0.0
All Airlines	115	114	83	72.8	92	80.7	1	0.9
Newman-Perth								
Qantas	24	23	23	100.0	23	100.0	1	4.2
QantasLink	121	117	104	88.9	106	90.6	4	3.3
Virgin Australia	17	17	16	94.1	17	100.0	0	0.0
Virgin Australia Regional Airlines	22	22	17	77.3	16	72.7	0	0.0
All Airlines	184	179	160	89.4	162	90.5	5	2.7
Perth-Adelaide								
Jetstar	23	22	18	81.8	17	77.3	1	4.3
Qantas	118	118	100	84.7	103	87.3	0	0.0
Virgin Australia	37	37	33	89.2	28	75.7	0	0.0
Virgin Australia Regional Airlines	46	46	31	67.4	42	91.3	0	0.0
All Airlines	224	223	182	81.6	190	85.2	1	0.4
Perth-Brisbane								
Qantas	150	148	121	81.8	120	81.1	2	1.3
Virgin Australia	109	109	97	89.0	97	89.0	0	0.0
All Airlines	259	257	218	84.8	217	84.4	2	0.8
Perth-Broome								
Qantas	7	7	5	71.4	5	71.4	0	0.0
QantasLink	91	90	79	87.8	80	88.9	1	1.1
Virgin Australia	3	3	3	100.0	3	100.0	0	0.0
Virgin Australia Regional Airlines	68	68	53	77.9	51	75.0	0	0.0
All Airlines	169	168	140	83.3	139	82.7	1	0.6

	Sectors		Arrivals On Time		Departures On Time		Cancellations	
	Sched.	Flown	No.	%	No.	%	No.	%
Perth-Darwin								
Qantas	31	31	27	87.1	27	87.1	0	0.0
Virgin Australia	21	21	17	81.0	17	81.0	0	0.0
Virgin Australia Regional Airlines	10	10	8	80.0	8	80.0	0	0.0
All Airlines	62	62	52	83.9	52	83.9	0	0.0
Perth-Kalgoorlie								
Qantas	6	6	5	83.3	5	83.3	0	0.0
QantasLink	87	86	74	86.0	74	86.0	1	1.1
Virgin Australia	29	29	26	89.7	27	93.1	0	0.0
Virgin Australia Regional Airlines	58	56	45	80.4	51	91.1	2	3.4
All Airlines	180	177	150	84.7	157	88.7	3	1.7
Perth-Karratha								
Qantas	32	32	29	90.6	29	90.6	0	0.0
QantasLink	156	150	128	85.3	128	85.3	6	3.8
Virgin Australia	6	6	5	83.3	5	83.3	0	0.0
Virgin Australia Regional Airlines	61	61	48	78.7	57	93.4	0	0.0
All Airlines	255	249	210	84.3	219	88.0	6	2.4
Perth-Melbourne								
Jetstar	35	34	32	94.1	28	82.4	1	2.9
Qantas	204	199	148	74.4	150	75.4	5	2.5
Tigerair Australia	52	52	35	67.3	30	57.7	0	0.0
Virgin Australia	137	137	115	83.9	110	80.3	0	0.0
All Airlines	428	422	330	78.2	318	75.4	6	1.4
Perth-Newman								
Qantas	24	23	23	100.0	23	100.0	1	4.2
QantasLink	121	118	108	91.5	107	90.7	3	2.5
Virgin Australia	17	17	17	100.0	17	100.0	0	0.0
Virgin Australia Regional Airlines	22	22	19	86.4	19	86.4	0	0.0
All Airlines	184	180	167	92.8	166	92.2	4	2.2
Perth-Port Hedland								
Qantas	26	25	23	92.0	23	92.0	1	3.8
QantasLink	126	119	101	84.9	107	89.9	7	5.6
Virgin Australia	13	13	12	92.3	12	92.3	0	0.0
Virgin Australia Regional Airlines	40	40	32	80.0	32	80.0	0	0.0
All Airlines	205	197	168	85.3	174	88.3	8	3.9
Perth-Sydney								
Jetstar	19	18	13	72.2	9	50.0	1	5.3
Qantas	206	200	144	72.0	132	66.0	6	2.9
Tigerair Australia	27	27	18	66.7	12	44.4	0	0.0
Virgin Australia	121	121	111	91.7	102	84.3	0	0.0
All Airlines	373	366	286	78.1	255	69.7	7	1.9
Port Hedland-Perth								
Qantas	26	25	20	80.0	19	76.0	1	3.8
QantasLink	126	115	100	87.0	104	90.4	11	8.7
Virgin Australia	13	13	10	76.9	10	76.9	0	0.0
Virgin Australia Regional Airlines	40	40	28	70.0	28	70.0	0	0.0
All Airlines	205	193	158	81.9	161	83.4	12	5.9
Port Lincoln-Adelaide								
QantasLink	102	99	84	84.8	81	81.8	3	2.9
Regional Express	223	217	183	84.3	191	88.0	6	2.7
All Airlines	325	316	267	84.5	272	86.1	9	2.8

	<i>Sectors</i>		<i>Arrivals On Time</i>		<i>Departures On Time</i>		<i>Cancellations</i>	
	<i>Sched.</i>	<i>Flown</i>	<i>No.</i>	<i>%</i>	<i>No.</i>	<i>%</i>	<i>No.</i>	<i>%</i>
Port Macquarie-Sydney								
QantasLink	123	120	88	73.3	90	75.0	3	2.4
Virgin Australia	56	54	36	66.7	39	72.2	2	3.6
All Airlines	179	174	124	71.3	129	74.1	5	2.8
Proserpine-Brisbane								
Jetstar	31	31	28	90.3	26	83.9	0	0.0
Virgin Australia	41	41	33	80.5	26	63.4	0	0.0
All Airlines	72	72	61	84.7	52	72.2	0	0.0
Proserpine-Sydney								
Jetstar	14	14	10	71.4	8	57.1	0	0.0
Tigerair Australia	17	17	9	52.9	8	47.1	0	0.0
All Airlines	31	31	19	61.3	16	51.6	0	0.0
Rockhampton-Brisbane								
QantasLink	182	180	152	84.4	151	83.9	2	1.1
Virgin Australia	142	142	129	90.8	123	86.6	0	0.0
All Airlines	324	322	281	87.3	274	85.1	2	0.6
Sunshine Coast-Melbourne								
Jetstar	85	85	57	67.1	55	64.7	0	0.0
Virgin Australia	65	65	18	27.7	18	27.7	0	0.0
All Airlines	150	150	75	50.0	73	48.7	0	0.0
Sunshine Coast-Sydney								
Jetstar	88	83	52	62.7	50	60.2	5	5.7
QantasLink	58	57	38	66.7	35	61.4	1	1.7
Virgin Australia	50	49	25	51.0	30	61.2	1	2.0
All Airlines	196	189	115	60.8	115	60.8	7	3.6
Sydney-Adelaide								
Jetstar	75	69	40	58.0	36	52.2	6	8.0
Qantas	240	237	165	69.6	174	73.4	3	1.3
Tigerair Australia	29	29	20	69.0	18	62.1	0	0.0
Virgin Australia	164	159	112	70.4	117	73.6	5	3.0
All Airlines	508	494	337	68.2	345	69.8	14	2.8
Sydney-Albury								
QantasLink	106	105	74	70.5	71	67.6	1	0.9
Regional Express	107	102	75	73.5	77	75.5	5	4.7
Virgin Australia	56	55	39	70.9	41	74.5	1	1.8
All Airlines	269	262	188	71.8	189	72.1	7	2.6
Sydney-Armidale								
QantasLink	121	117	83	70.9	83	70.9	4	3.3
Regional Express	69	68	48	70.6	47	69.1	1	1.4
All Airlines	190	185	131	70.8	130	70.3	5	2.6
Sydney-Ayers Rock								
Jetstar	31	31	18	58.1	22	71.0	0	0.0
Virgin Australia	31	31	22	71.0	25	80.6	0	0.0
All Airlines	62	62	40	64.5	47	75.8	0	0.0
Sydney-Ballina								
Jetstar	80	78	63	80.8	64	82.1	2	2.5
Regional Express	25	25	22	88.0	20	80.0	0	0.0
Virgin Australia	31	30	24	80.0	22	73.3	1	3.2
All Airlines	136	133	109	82.0	106	79.7	3	2.2

	<i>Sectors</i>		<i>Arrivals On Time</i>		<i>Departures On Time</i>		<i>Cancellations</i>	
	<i>Sched.</i>	<i>Flown</i>	<i>No.</i>	<i>%</i>	<i>No.</i>	<i>%</i>	<i>No.</i>	<i>%</i>
Sydney-Brisbane								
Jetstar	166	157	101	64.3	97	61.8	9	5.4
Qantas	638	600	451	75.2	458	76.3	38	6.0
Tigerair Australia	133	128	91	71.1	92	71.9	5	3.8
Virgin Australia	540	510	377	73.9	378	74.1	30	5.6
All Airlines	1 477	1 395	1 020	73.1	1 025	73.5	82	5.6
Sydney-Cairns								
Jetstar	97	95	70	73.7	75	78.9	2	2.1
Qantas	69	69	47	68.1	44	63.8	0	0.0
Tigerair Australia	31	31	24	77.4	27	87.1	0	0.0
Virgin Australia	88	88	64	72.7	65	73.9	0	0.0
All Airlines	285	283	205	72.4	211	74.6	2	0.7
Sydney-Canberra								
Qantas	13	13	11	84.6	11	84.6	0	0.0
QantasLink	475	456	329	72.1	337	73.9	19	4.0
Virgin Australia	257	239	189	79.1	190	79.5	18	7.0
All Airlines	745	708	529	74.7	538	76.0	37	5.0
Sydney-Coffs Harbour								
QantasLink	141	139	113	81.3	116	83.5	2	1.4
Tigerair Australia	15	14	6	42.9	7	50.0	1	6.7
Virgin Australia	31	29	25	86.2	22	75.9	2	6.5
All Airlines	187	182	144	79.1	145	79.7	5	2.7
Sydney-Darwin								
Jetstar	18	18	12	66.7	12	66.7	0	0.0
Qantas	53	53	30	56.6	24	45.3	0	0.0
Virgin Australia	31	31	22	71.0	25	80.6	0	0.0
All Airlines	102	102	64	62.7	61	59.8	0	0.0
Sydney-Dubbo								
QantasLink	123	121	86	71.1	86	71.1	2	1.6
Regional Express	135	134	99	73.9	97	72.4	1	0.7
All Airlines	258	255	185	72.5	183	71.8	3	1.2
Sydney-Gold Coast								
Jetstar	287	274	218	79.6	207	75.5	13	4.5
Qantas	76	74	50	67.6	49	66.2	2	2.6
QantasLink	55	54	44	81.5	41	75.9	1	1.8
Tigerair Australia	90	85	62	72.9	62	72.9	5	5.6
Virgin Australia	255	243	167	68.7	173	71.2	12	4.7
All Airlines	763	730	541	74.1	532	72.9	33	4.3
Sydney-Hamilton Island								
Jetstar	18	18	14	77.8	13	72.2	0	0.0
Qantas	17	17	13	76.5	13	76.5	0	0.0
QantasLink	13	13	9	69.2	10	76.9	0	0.0
Virgin Australia	21	21	18	85.7	17	81.0	0	0.0
All Airlines	69	69	54	78.3	53	76.8	0	0.0
Sydney-Hobart								
Jetstar	56	54	42	77.8	39	72.2	2	3.6
Qantas	2	2	1	50.0	1	50.0	0	0.0
QantasLink	73	72	51	70.8	51	70.8	1	1.4
Virgin Australia	71	68	54	79.4	56	82.4	3	4.2
All Airlines	202	196	148	75.5	147	75.0	6	3.0

	<i>Sectors</i>		<i>Arrivals On Time</i>		<i>Departures On Time</i>		<i>Cancellations</i>	
	<i>Sched.</i>	<i>Flown</i>	<i>No.</i>	<i>%</i>	<i>No.</i>	<i>%</i>	<i>No.</i>	<i>%</i>
Sydney-Launceston								
Jetstar	27	26	22	84.6	22	84.6	1	3.7
Virgin Australia	31	31	27	87.1	25	80.6	0	0.0
All Airlines	58	57	49	86.0	47	82.5	1	1.7
Sydney-Melbourne								
Jetstar	335	316	201	63.6	217	68.7	19	5.7
Qantas	1 119	1 003	649	64.7	718	71.6	116	10.4
Tigerair Australia	255	226	128	56.6	140	61.9	29	11.4
Virgin Australia	778	728	497	68.3	557	76.5	50	6.4
All Airlines	2 487	2 273	1 475	64.9	1 632	71.8	214	8.6
Sydney-Perth								
Jetstar	19	19	9	47.4	7	36.8	0	0.0
Qantas	203	198	134	67.7	125	63.1	5	2.5
Tigerair Australia	26	26	16	61.5	11	42.3	0	0.0
Virgin Australia	120	120	74	61.7	71	59.2	0	0.0
All Airlines	368	363	233	64.2	214	59.0	5	1.4
Sydney-Port Macquarie								
QantasLink	123	120	82	68.3	89	74.2	3	2.4
Virgin Australia	56	54	43	79.6	43	79.6	2	3.6
All Airlines	179	174	125	71.8	132	75.9	5	2.8
Sydney-Proserpine								
Jetstar	13	13	12	92.3	11	84.6	0	0.0
Tigerair Australia	17	17	10	58.8	10	58.8	0	0.0
All Airlines	30	30	22	73.3	21	70.0	0	0.0
Sydney-Sunshine Coast								
Jetstar	88	84	51	60.7	50	59.5	4	4.5
QantasLink	57	56	35	62.5	38	67.9	1	1.8
Virgin Australia	51	50	29	58.0	27	54.0	1	2.0
All Airlines	196	190	115	60.5	115	60.5	6	3.1
Sydney-Tamworth								
QantasLink	126	120	92	76.7	87	72.5	6	4.8
Virgin Australia	52	51	36	70.6	35	68.6	1	1.9
All Airlines	178	171	128	74.9	122	71.3	7	3.9
Sydney-Townsville								
Jetstar	31	31	15	48.4	22	71.0	0	0.0
Virgin Australia	26	26	14	53.8	21	80.8	0	0.0
All Airlines	57	57	29	50.9	43	75.4	0	0.0
Sydney-Wagga Wagga								
QantasLink	118	115	89	77.4	87	75.7	3	2.5
Regional Express	125	121	93	76.9	98	81.0	4	3.2
All Airlines	243	236	182	77.1	185	78.4	7	2.9
Tamworth-Sydney								
QantasLink	127	120	78	65.0	90	75.0	7	5.5
Virgin Australia	53	52	41	78.8	44	84.6	1	1.9
All Airlines	180	172	119	69.2	134	77.9	8	4.4
Townsville-Brisbane								
Jetstar	62	62	51	82.3	46	74.2	0	0.0
Qantas	53	52	46	88.5	45	86.5	1	1.9
QantasLink	99	99	80	80.8	87	87.9	0	0.0
Virgin Australia	148	148	138	93.2	133	89.9	0	0.0
All Airlines	362	361	315	87.3	311	86.1	1	0.3

	<i>Sectors</i>		<i>Arrivals On Time</i>		<i>Departures On Time</i>		<i>Cancellations</i>	
	<i>Sched.</i>	<i>Flown</i>	<i>No.</i>	<i>%</i>	<i>No.</i>	<i>%</i>	<i>No.</i>	<i>%</i>
Townsville-Cairns								
QantasLink	138	137	129	94.2	126	92.0	1	0.7
Regional Express	14	14	13	92.9	13	92.9	0	0.0
All Airlines	152	151	142	94.0	139	92.1	1	0.7
Townsville-Sydney								
Jetstar	31	31	17	54.8	10	32.3	0	0.0
Virgin Australia	26	26	15	57.7	15	57.7	0	0.0
All Airlines	57	57	32	56.1	25	43.9	0	0.0
Wagga Wagga-Sydney								
QantasLink	119	116	76	65.5	85	73.3	3	2.5
Regional Express	126	122	88	72.1	96	78.7	4	3.2
All Airlines	245	238	164	68.9	181	76.1	7	2.9

Airports

On time performance is reported for all routes where the passenger load averages over 8000 passengers per month, and where two or more airlines operate in competition. The following data reports by airport against flights operated on those routes only. This month, 8 major city airports and 31 regional city airports are covered.

Airport	Arrivals			Departures		
	Sectors Flown	On Time No.	%	Sectors Flown	On Time No.	%
Adelaide						
Jetstar	234	152	65.0	234	153	65.4
Qantas	825	637	77.2	824	643	78.0
QantasLink	104	87	83.7	104	88	84.6
Regional Express	217	183	84.3	218	201	92.2
Tigerair Australia	126	80	63.5	126	70	55.6
Virgin Australia	631	476	75.4	632	522	82.6
Virgin Australia Regional Airlines	64	42	65.6	63	48	76.2
All Airlines	2 201	1 657	75.3	2 201	1 725	78.4
Relates to services to and from Alice Springs, Brisbane, Canberra, Gold Coast, Melbourne, Perth, Port Lincoln and Sydney.						
Albury						
QantasLink	105	74	70.5	105	64	61.0
Regional Express	102	75	73.5	101	86	85.1
Virgin Australia	55	39	70.9	55	37	67.3
All Airlines	262	188	71.8	261	187	71.6
Relates to services to and from Sydney only.						
Alice Springs						
Qantas	90	77	85.6	89	82	92.1
Virgin Australia	24	23	95.8	24	22	91.7
Virgin Australia Regional Airlines	20	10	50.0	20	12	60.0
All Airlines	134	110	82.1	133	116	87.2
Relates to services to and from Adelaide and Darwin.						
Armidale						
QantasLink	117	83	70.9	117	80	68.4
Regional Express	68	48	70.6	71	43	60.6
All Airlines	185	131	70.8	188	123	65.4
Relates to services to and from Sydney only.						
Ayers Rock						
Jetstar	31	18	58.1	31	9	29.0
Virgin Australia	31	22	71.0	31	18	58.1
All Airlines	62	40	64.5	62	27	43.5
Relates to services to and from Sydney only.						
Ballina						
Jetstar	78	63	80.8	78	56	71.8
Regional Express	25	22	88.0	24	19	79.2
Virgin Australia	30	24	80.0	30	23	76.7
All Airlines	133	109	82.0	132	98	74.2
Relates to services to and from Sydney only.						

Airport	Arrivals			Departures		
	Sectors	On Time		Sectors	On Time	
	Flown	No.	%	Flown	No.	%
Brisbane						
Jetstar	643	529	82.3	643	505	78.5
Qantas	1 406	1 096	78.0	1 403	1 124	80.1
QantasLink	1 263	1 079	85.4	1 264	1 103	87.3
Tigerair Australia	330	244	73.9	329	233	70.8
Virgin Australia	2 196	1 844	84.0	2 195	1 838	83.7
All Airlines	5 838	4 792	82.1	5 834	4 803	82.3

Relates to services to and from Adelaide, Bundaberg, Cairns, Canberra, Darwin, Emerald, Gladstone, Hamilton Island, Hobart, Mackay, Melbourne, Mount Isa, Newcastle, Perth, Proserpine, Rockhampton, Sydney and Townsville.

Broome

Qantas	7	5	71.4	7	4	57.1
QantasLink	90	79	87.8	89	71	79.8
Virgin Australia	3	3	100.0	3	1	33.3
Virgin Australia Regional Airlines	68	53	77.9	68	51	75.0
All Airlines	168	140	83.3	167	127	76.0

Relates to services to and from Perth only.

Bundaberg

QantasLink	123	108	87.8	123	109	88.6
Virgin Australia	31	30	96.8	31	29	93.5
All Airlines	154	138	89.6	154	138	89.6

Relates to services to and from Brisbane only.

Cairns

Jetstar	314	250	79.6	315	260	82.5
Qantas	140	104	74.3	140	88	62.9
QantasLink	273	243	89.0	270	248	91.9
Regional Express	14	13	92.9	14	13	92.9
Tigerair Australia	98	74	75.5	98	67	68.4
Virgin Australia	257	206	80.2	258	196	76.0
All Airlines	1 096	890	81.2	1 095	872	79.6

Relates to services to and from Brisbane, Melbourne, Sydney and Townsville.

Canberra

Qantas	309	237	76.7	307	247	80.5
QantasLink	657	500	76.1	651	494	75.9
Tigerair Australia	62	43	69.4	62	39	62.9
Virgin Australia	529	427	80.7	529	452	85.4
All Airlines	1 557	1 207	77.5	1 549	1 232	79.5

Relates to services to and from Adelaide, Brisbane, Melbourne and Sydney.

Coffs Harbour

QantasLink	139	113	81.3	140	111	79.3
Tigerair Australia	14	6	42.9	14	11	78.6
Virgin Australia	29	25	86.2	29	25	86.2
All Airlines	182	144	79.1	183	147	80.3

Relates to services to and from Sydney only.

Airport	Arrivals			Departures		
	Sectors	On Time		Sectors	On Time	
	Flown	No.	%	Flown	No.	%
Darwin						
Jetstar	69	50	72.5	69	50	72.5
Qantas	226	176	77.9	228	159	69.7
Tigerair Australia	14	10	71.4	15	9	60.0
Virgin Australia	126	89	70.6	126	92	73.0
Virgin Australia Regional Airlines	20	14	70.0	20	12	60.0
All Airlines	455	339	74.5	458	322	70.3
Relates to services to and from Alice Springs, Brisbane, Melbourne, Perth and Sydney.						
Dubbo						
QantasLink	121	86	71.1	122	88	72.1
Regional Express	134	99	73.9	131	96	73.3
All Airlines	255	185	72.5	253	184	72.7
Relates to services to and from Sydney only.						
Emerald						
QantasLink	122	113	92.6	122	103	84.4
Virgin Australia	52	47	90.4	52	49	94.2
All Airlines	174	160	92.0	174	152	87.4
Relates to services to and from Brisbane only.						
Gladstone						
QantasLink	141	123	87.2	140	120	85.7
Virgin Australia	75	69	92.0	75	70	93.3
All Airlines	216	192	88.9	215	190	88.4
Relates to services to and from Brisbane only.						
Gold Coast						
Jetstar	499	398	79.8	500	397	79.4
Qantas	105	75	71.4	105	65	61.9
QantasLink	54	44	81.5	55	44	80.0
Tigerair Australia	157	116	73.9	157	94	59.9
Virgin Australia	450	342	76.0	450	331	73.6
All Airlines	1 265	975	77.1	1 267	931	73.5
Relates to services to and from Adelaide, Melbourne and Sydney.						
Hamilton Island						
Jetstar	18	14	77.8	18	11	61.1
Qantas	17	13	76.5	17	14	82.4
QantasLink	42	31	73.8	43	29	67.4
Virgin Australia	52	41	78.8	51	37	72.5
All Airlines	129	99	76.7	129	91	70.5
Relates to services to and from Brisbane and Sydney.						
Hobart						
Jetstar	217	145	66.8	215	126	58.6
Qantas	113	77	68.1	112	90	80.4
QantasLink	72	51	70.8	72	54	75.0
Tigerair Australia	38	29	76.3	38	24	63.2
Virgin Australia	246	177	72.0	245	187	76.3
All Airlines	686	479	69.8	682	481	70.5
Relates to services to and from Brisbane, Melbourne and Sydney.						

Airport	Arrivals			Departures		
	Sectors Flown	On Time		Sectors Flown	On Time	
		No.	%		No.	%
Kalgoorlie						
Qantas	6	5	83.3	7	5	71.4
QantasLink	86	74	86.0	86	67	77.9
Virgin Australia	29	26	89.7	28	23	82.1
Virgin Australia Regional Airlines	56	45	80.4	54	42	77.8
All Airlines	177	150	84.7	175	137	78.3
Relates to services to and from Perth only.						
Karratha						
Qantas	32	29	90.6	32	29	90.6
QantasLink	150	128	85.3	148	129	87.2
Virgin Australia	6	5	83.3	6	2	33.3
Virgin Australia Regional Airlines	61	48	78.7	61	55	90.2
All Airlines	249	210	84.3	247	215	87.0
Relates to services to and from Perth only.						
Launceston						
Jetstar	106	82	77.4	106	73	68.9
QantasLink	119	99	83.2	119	103	86.6
Virgin Australia	124	92	74.2	124	103	83.1
All Airlines	349	273	78.2	349	279	79.9
Relates to services to and from Melbourne and Sydney.						
Mackay						
Jetstar	36	28	77.8	35	22	62.9
QantasLink	139	128	92.1	136	117	86.0
Virgin Australia	149	125	83.9	150	137	91.3
All Airlines	324	281	86.7	321	276	86.0
Relates to services to and from Brisbane only.						
Melbourne						
Jetstar	1 271	880	69.2	1 273	903	70.9
Qantas	2 367	1 635	69.1	2 363	1 757	74.4
QantasLink	260	204	78.5	261	216	82.8
Regional Express	84	64	76.2	85	74	87.1
Tigerair Australia	637	369	57.9	634	445	70.2
Virgin Australia	2 275	1 609	70.7	2 276	1 789	78.6
Virgin Australia Regional Airlines	8	7	87.5	8	6	75.0
All Airlines	6 902	4 768	69.1	6 900	5 190	75.2
Relates to services to and from Adelaide, Brisbane, Cairns, Canberra, Darwin, Gold Coast, Hobart, Launceston, Mildura, Newcastle, Perth, Sunshine Coast and Sydney.						
Mildura						
QantasLink	97	79	81.4	96	74	77.1
Regional Express	85	74	87.1	84	70	83.3
Virgin Australia	31	25	80.6	31	26	83.9
All Airlines	213	178	83.6	211	170	80.6
Relates to services to and from Melbourne only.						
Mount Isa						
Qantas	1	0	0.0	1	0	0.0
QantasLink	55	41	74.5	55	40	72.7
Virgin Australia	18	16	88.9	15	13	86.7
All Airlines	74	57	77.0	71	53	74.6
Relates to services to and from Brisbane only.						

Airport	Arrivals			Departures		
	Sectors	On Time		Sectors	On Time	
	Flown	No.	%	Flown	No.	%
Newcastle						
Jetstar	154	115	74.7	154	130	84.4
QantasLink	93	81	87.1	94	84	89.4
Virgin Australia	118	94	79.7	119	101	84.9
All Airlines	365	290	79.5	367	315	85.8
Relates to services to and from Brisbane and Melbourne.						
Newman						
Qantas	23	23	100.0	23	23	100.0
QantasLink	118	108	91.5	117	106	90.6
Virgin Australia	17	17	100.0	17	17	100.0
Virgin Australia Regional Airlines	22	19	86.4	22	16	72.7
All Airlines	180	167	92.8	179	162	90.5
Relates to services to and from Perth only.						
Perth						
Jetstar	76	61	80.3	74	54	73.0
Qantas	785	602	76.7	789	617	78.2
QantasLink	555	467	84.1	563	496	88.1
Tigerair Australia	77	48	62.3	79	42	53.2
Virgin Australia	490	361	73.7	493	418	84.8
Virgin Australia Regional Airlines	300	225	75.0	303	260	85.8
All Airlines	2 283	1 764	77.3	2 301	1 887	82.0
Relates to services to and from Adelaide, Brisbane, Broome, Darwin, Kalgoorlie, Karratha, Melbourne, Newman, Port Hedland and Sydney.						
Port Hedland						
Qantas	25	23	92.0	25	19	76.0
QantasLink	119	101	84.9	115	104	90.4
Virgin Australia	13	12	92.3	13	10	76.9
Virgin Australia Regional Airlines	40	32	80.0	40	28	70.0
All Airlines	197	168	85.3	193	161	83.4
Relates to services to and from Perth only.						
Port Lincoln						
QantasLink	99	83	83.8	99	81	81.8
Regional Express	218	193	88.5	217	191	88.0
All Airlines	317	276	87.1	316	272	86.1
Relates to services to and from Adelaide only.						
Port Macquarie						
QantasLink	120	82	68.3	120	90	75.0
Virgin Australia	54	43	79.6	54	39	72.2
All Airlines	174	125	71.8	174	129	74.1
Relates to services to and from Sydney only.						
Proserpine						
Jetstar	44	40	90.9	45	34	75.6
Tigerair Australia	17	10	58.8	17	8	47.1
Virgin Australia	41	32	78.0	41	26	63.4
All Airlines	102	82	80.4	103	68	66.0
Relates to services to and from Brisbane and Sydney.						

Airport	Arrivals			Departures		
	Sectors Flown	On Time		Sectors Flown	On Time	
		No.	%		No.	%
Rockhampton						
QantasLink	175	153	87.4	180	151	83.9
Virgin Australia	141	116	82.3	142	123	86.6
All Airlines	316	269	85.1	322	274	85.1
Relates to services to and from Brisbane only.						
Sunshine Coast						
Jetstar	169	121	71.6	168	105	62.5
QantasLink	56	35	62.5	57	35	61.4
Virgin Australia	115	78	67.8	114	48	42.1
All Airlines	340	234	68.8	339	188	55.5
Relates to services to and from Melbourne and Sydney.						
Sydney						
Jetstar	1 282	869	67.8	1 283	894	69.7
Qantas	2 261	1 580	69.9	2 266	1 617	71.4
QantasLink	1 489	1 025	68.8	1 488	1 096	73.7
Regional Express	449	315	70.2	450	339	75.3
Tigerair Australia	555	344	62.0	556	367	66.0
Virgin Australia	2 567	1 863	72.6	2 564	1 910	74.5
All Airlines	8 603	5 996	69.7	8 607	6 223	72.3
Relates to services to and from Adelaide, Albury, Armidale, Ayers Rock, Ballina, Brisbane, Cairns, Canberra, Coffs Harbour, Darwin, Dubbo, Gold Coast, Hamilton Island, Hobart, Launceston, Melbourne, Perth, Port Macquarie, Proserpine, Sunshine Coast, Tamworth, Townsville and Wagga Wagga.						
Tamworth						
QantasLink	120	92	76.7	120	90	75.0
Virgin Australia	51	36	70.6	52	44	84.6
All Airlines	171	128	74.9	172	134	77.9
Relates to services to and from Sydney only.						
Townsville						
Jetstar	93	68	73.1	93	56	60.2
Qantas	52	47	90.4	52	45	86.5
QantasLink	235	205	87.2	236	213	90.3
Regional Express	14	13	92.9	14	13	92.9
Virgin Australia	173	142	82.1	174	148	85.1
All Airlines	567	475	83.8	569	475	83.5
Relates to services to and from Brisbane, Cairns and Sydney.						
Wagga Wagga						
QantasLink	115	89	77.4	116	85	73.3
Regional Express	121	93	76.9	122	96	78.7
All Airlines	236	182	77.1	238	181	76.1
Relates to services to and from Sydney only.						

Definitions

On time arrival	A flight arrival is counted as "on time" if it arrived at the gate before 15 minutes after the scheduled arrival time shown in the carriers' schedule. Neither diverted nor cancelled flights count as on time.
On time departure	A flight departure is counted as "on time" if it departs the gate before 15 minutes after the scheduled departure time shown in the carriers' schedule.
Cancellation	A flight removed from service within 7 days of scheduled departure is regarded as a cancellation.
On time departure percentage	The percentage of on time departures is measured against the number of departures <i>operated</i> on any particular sector.
On time arrival percentage	The percentage of on time arrivals is measured against the number of arrivals <i>operated</i> on any particular sector.
Cancellation percentage	The percentage of cancellations is measured against the number of services <i>scheduled</i> on any particular sector.
