



Australian Government

Department of Infrastructure, Regional Development and Cities

Bureau of Infrastructure, Transport and Regional Economics

STATISTICAL REPORT



Aviation

Domestic airline on time performance
August 2018

© Commonwealth of Australia 2018

ISSN: 1832-0759

Ownership of intellectual property rights in this publication

Unless otherwise noted, copyright (and any other intellectual property rights, if any) in this publication is owned by the Commonwealth of Australia (referred to below as the Commonwealth).

Disclaimer

The material contained in this publication is made available on the understanding that the Commonwealth is not providing professional advice, and that users exercise their own skill and care with respect to its use, and seek independent advice if necessary.

The Commonwealth makes no representations or warranties as to the contents or accuracy of the information contained in this publication. To the extent permitted by law, the Commonwealth disclaims liability to any person or organisation in respect of anything done, or omitted to be done, in reliance upon information contained in this publication.

Creative Commons licence

With the exception of (a) the Coat of Arms; and (b) the Department of Infrastructure, Regional Development and Cities' photos and graphics, copyright in this publication is licensed under a Creative Commons Attribution 3.0 Australia Licence.

Creative Commons Attribution 3.0 Australia Licence is a standard form licence agreement that allows you to copy, communicate and adapt this publication provided that you attribute the work to the Commonwealth and abide by the other licence terms. A summary of the licence terms is available from <http://creativecommons.org/licenses/by/3.0/au/deed.en>. The full licence terms are available from <http://creativecommons.org/licenses/by/3.0/au/legalcode>.

Use of the Coat of Arms

The Department of the Prime Minister and Cabinet sets the terms under which the Coat of Arms is used. Please refer to the Department's Commonwealth Coat of Arms and Government branding web page <http://www.dpmc.gov.au/guidelines/index.cfm#brand> and, in particular, the Guidelines on the use of the Commonwealth Coat of Arms publication.

An appropriate citation for this report is:

Bureau of Infrastructure, Transport and Regional Economics (BITRE), 2018, Domestic airline on time performance, Statistical Report, BITRE, Canberra ACT.

Contact us

This publication is available in PDF format. All other rights are reserved, including in relation to any Departmental logos or trade marks which may exist. For enquiries regarding the licence and any use of this publication, please contact:

Bureau of Infrastructure, Transport and Regional Economics (BITRE)
Department of Infrastructure, Regional Development and Cities
GPO Box 501, Canberra ACT 2601, Australia
Telephone: (international) +61 2 6274 7210
Fax: (international) +61 2 6274 6855
Email: bitre@infrastructure.gov.au
Website: www.bitre.gov.au

Inquiries

Should you require additional information about the statistics contained in this publication:

Telephone (02) 6274 7790 or Facsimile (02) 6274 7727

Electronic mail: AVSTATS@infrastructure.gov.au

Web site: <http://www.bitre.gov.au/statistics/aviation/otphome.aspx>

Foreword

The Bureau of Infrastructure, Transport and Regional Economics (BITRE) monitors the punctuality and reliability of major domestic airlines operating between Australian airports. The purpose of this is to allow for evaluation of overall industry and individual airline performance, so that consumers of air travel can make informed decisions.

The following domestic airlines currently report this information monthly to the BITRE: Jetstar, Qantas, QantasLink, Regional Express, Tigerair Australia, Virgin Australia and Virgin Australia Regional Airlines. Data has been gathered since November 2003, although some airlines commenced reporting at a later date, including Jetstar which first reported in May 2004, MacAir in July 2005, Tigerair Australia in April 2008 and Virgin Australia Regional Airlines in May 2013. MacAir ceased operations in February 2009 and data was not received for December 2008 onwards. Virgin Blue was rebranded as Virgin Australia in May 2011 and Tiger Airways was rebranded as Tigerair Australia in July 2013 and time series data in Microsoft Excel spreadsheet format on the BITRE website have been revised to reflect these changes. Services operated by Skywest on behalf of Virgin Australia using ATR/F100 aircraft commenced in November 2011 and were shown separately as Virgin Australia – ATR/F100 Operations. Virgin Australia Regional Airlines commenced operations in May 2013. It was formed after the acquisition of Skywest by Virgin Australia and represented a combination of operations previously reported under Skywest and Virgin Australia – ATR/F100 Operations. In January 2016, Virgin Australia transferred their ATR fleet from Virgin Australia Regional Airlines to Virgin Australia.

Information presented in this report is for Australian domestic routes for which the passenger load averaged 8 000 or more passengers per month over the previous six months and where two or more airlines operated in competition on those routes. There were 65 routes that met this definition in August 2018. Over time, routes which meet these criteria change as airline networks and traffic levels vary.

Participating airlines report their overall monthly network performance where this is possible.

Total industry figures encompass all services operated by reporting airlines only. These airlines collectively carried over 95 per cent of total domestic passengers (regular public transport only) in 2017.

The method of capturing on time performance varies between airlines utilising different recording systems. Jetstar and Qantas jet aircraft use Aircraft Communication Addressing and Reporting System (ACARS) to electronically measure on time performance. Regional Express, Tigerair Australia, Virgin Australia, Virgin Australia Regional Airlines and the Qantas non-jet fleet record on time performance manually using records from pilots, gate agents and/or ground crews.

After initial data is collected, aggregate reports are audited internally by participating airlines prior to publication.

Reports and detailed time series data in Microsoft Excel spreadsheet format are available from the BITRE website at: <http://www.bitre.gov.au/statistics/aviation/otphome.aspx>.

Contents

	Page
Industry performance	1
Individual routes	10
Airports.....	24
Definitions	30

Industry performance

For August 2018, on time performance over all routes operated by participating airlines (Jetstar, Qantas, QantasLink, Regional Express, Tigerair Australia, Virgin Australia and Virgin Australia Regional Airlines) averaged 80.0 per cent for on time arrivals and 81.5 per cent for on time departures. Cancellations represented 1.8 per cent of all scheduled flights. The equivalent figures for August 2017 were 82.0 per cent for on time arrivals, 83.6 per cent for on time departures and 1.9 per cent for cancellations.

This month's on time arrivals figure was lower than the long term average performance for all routes (82.6 per cent) and the on time departures figure was also lower than the long term average (83.9 per cent). The rate of cancellations was higher than the long term average of 1.4 per cent.

Qantas achieved the highest on time arrivals among the major domestic airlines at 83.4 per cent followed by Virgin Australia at 77.9 per cent, Jetstar at 76.2 per cent and Tigerair Australia at 70.9 per cent. Of the regional airlines, QantasLink recorded 84.9 per cent for on time arrivals, followed by Regional Express at 79.9 per cent and Virgin Australia Regional Airlines at 65.0 per cent. The Qantas network (Qantas and QantasLink combined operations) recorded 84.2 per cent for on time arrivals while the Virgin Australia network (Virgin Australia and Virgin Australia Regional Airlines combined operations) recorded 77.1 per cent.

Qantas also achieved the highest level of on time departures among the major domestic airlines for August 2018 at 84.5 per cent, followed by Virgin Australia at 80.3 per cent, Jetstar at 74.1 per cent and Tigerair Australia at 71.8 per cent. Of the regional airlines, QantasLink recorded 86.7 per cent for on time departures, followed by Regional Express at 83.3 per cent and Virgin Australia Regional Airlines at 67.9 per cent. The Qantas network recorded 85.7 per cent for on time departures while the Virgin Australia network recorded 79.5 per cent.

Virgin Australia Regional Airlines recorded the highest percentage of cancellations (4.4 per cent) during the month, followed by Tigerair Australia (4.0 per cent), Jetstar (2.6 per cent), Virgin Australia (1.8 per cent), Qantas (1.7 per cent) and Regional Express and QantasLink (both at 1.3 per cent).

Airlines' on time performance varies across the routes they serve. Individual route data by specific airline for 65 routes are shown on pages 10-23.

Of the 65 routes which met the criteria for on time performance reporting in August 2018, the Brisbane-Proserpine route had the highest percentage of on time arrivals (96.8 per cent) and the highest percentage of on time departures (also 96.8 per cent). The Brisbane-Mount Isa route had the lowest percentage of on time arrivals (42.9 per cent) and the Ayers Rock-Sydney route had the lowest percentage of on time departures (22.6 per cent).

Cancellations were highest on the Melbourne-Sydney and Sydney-Melbourne routes at 6.0 per cent, followed by the Broome-Perth route at 4.0 per cent, the Geraldton-Perth route at 3.9 per cent, the Brisbane-Hamilton Island and Hamilton Island-Brisbane routes at 3.8 per cent and the Perth-Broome route at 3.5 per cent.

Proserpine Airport recorded the highest percentage of on time arrivals (94.1 per cent) and Bundaberg Airport recorded the highest percentage of on time departures (91.4 per cent). Mount Isa Airport recorded the lowest percentage of on time arrivals (42.9 per cent) and Ayers Rock Airport recorded the lowest percentage of on time departures (22.6 per cent). These figures only refer to reported routes and do not cover all flights at these airports.

Table 1 On time performance for August 2018 – Total Industry

	<i>Sectors</i>		<i>Arrivals On Time</i>		<i>Departures On Time</i>		<i>Cancellations</i>	
	<i>Scheduled</i>	<i>Flown</i>	<i>No.</i>	<i>%</i>	<i>No.</i>	<i>%</i>	<i>No.</i>	<i>%</i>
Jetstar	6 787	6 610	5 035	76.2	4 901	74.1	177	2.6
Qantas	9 069	8 919	7 441	83.4	7 539	84.5	150	1.7
QantasLink	10 287	10 157	8 627	84.9	8 811	86.7	130	1.3
Regional Express	6 611	6 525	5 213	79.9	5 438	83.3	86	1.3
Tigerair Australia	2 221	2 133	1 513	70.9	1 532	71.8	88	4.0
Virgin Australia	11 973	11 759	9 159	77.9	9 439	80.3	214	1.8
Virgin Australia Regional Airlines	815	779	506	65.0	529	67.9	36	4.4
All Airlines	47 763	46 882	37 494	80.0	38 189	81.5	881	1.8
Qantas - all QF designated services	19 356	19 076	16 068	84.2	16 350	85.7	280	1.4
Virgin Australia - all VA designated services	12 788	12 538	9 665	77.1	9 968	79.5	250	2.0

Total airline network data (including routes not shown in this report).

Airlines' on time performance varies across the routes they serve. Individual route data by specific airline for 65 routes are shown on pages 10-23.

Table 2 Top ten routes for on time performance for August 2018 (participating airlines only)

<i>Arrivals</i>		<i>Departures</i>	
<i>Route</i>	<i>On Time (%)</i>	<i>Route</i>	<i>On Time (%)</i>
Brisbane-Proserpine	96.8	Brisbane-Proserpine	96.8
Perth-Brisbane	93.4	Sydney-Proserpine	94.9
Gladstone-Brisbane	92.8	Brisbane-Hobart	93.7
Brisbane-Gladstone	92.3	Proserpine-Brisbane	93.5
Proserpine-Brisbane	91.9	Brisbane-Gladstone	92.3
Cairns-Townsville	91.3	Perth-Port Hedland	91.7
Mackay-Brisbane	90.9	Perth-Kalgoorlie	91.4
Emerald-Brisbane	90.5	Bundaberg-Brisbane	91.4
Brisbane-Mackay	90.4	Adelaide-Port Lincoln	91.4
Adelaide-Gold Coast	90.3	Cairns-Townsville	90.6

Table 3 Top ten airports for on time performance for August 2018 (participating airlines and reported routes only)

<i>Arrivals</i>		<i>Departures</i>	
<i>Airport</i>	<i>On Time (%)</i>	<i>Airport</i>	<i>On Time (%)</i>
Proserpine	94.1	Bundaberg	91.4
Gladstone	92.3	Proserpine	91.0
Mackay	90.4	Mackay	90.6
Bundaberg	89.9	Emerald	89.2
Kalgoorlie	89.6	Port Lincoln	88.9
Emerald	87.9	Gladstone	88.5
Newman	86.6	Newman	87.9
Brisbane	85.0	Tamworth	86.0
Port Hedland	84.9	Mildura	85.9
Port Lincoln	84.9	Port Hedland	85.9

Total industry on time performance

Figure 1 On time performance (by month from August 2015)—Total Industry

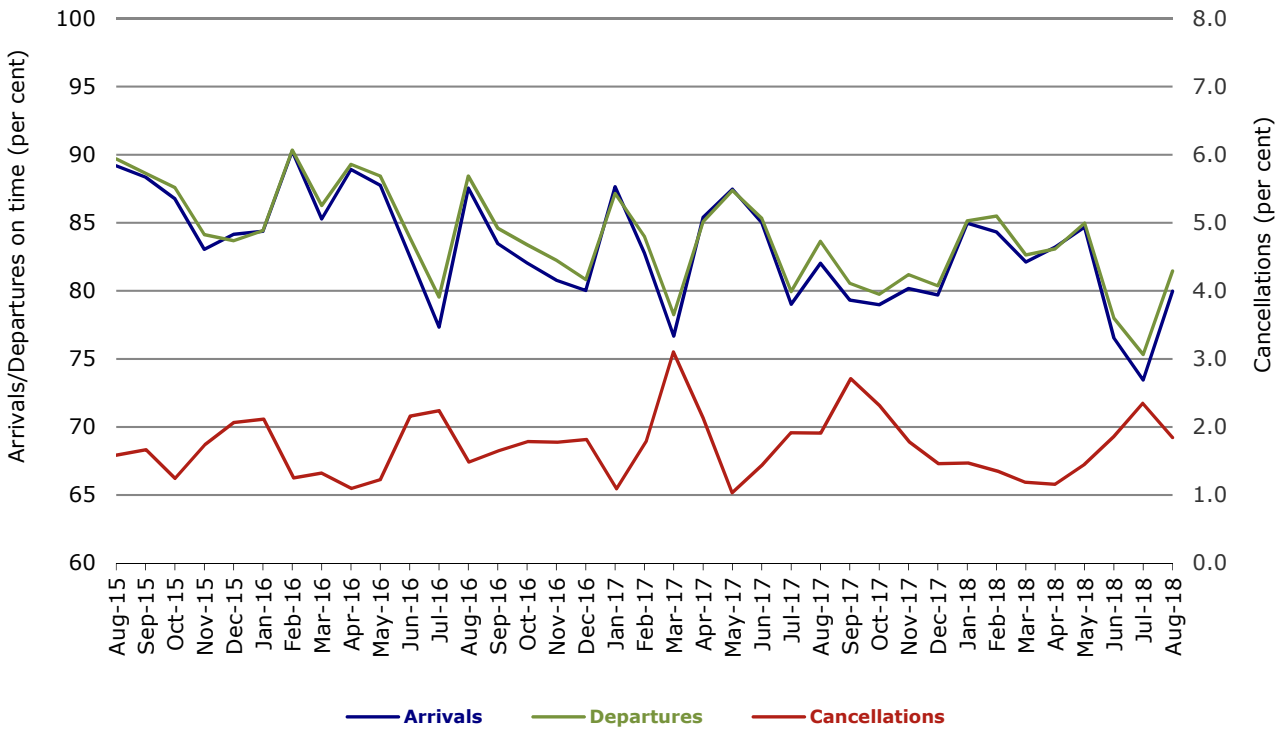


Figure 2 Arrivals on time (by month from August 2017)

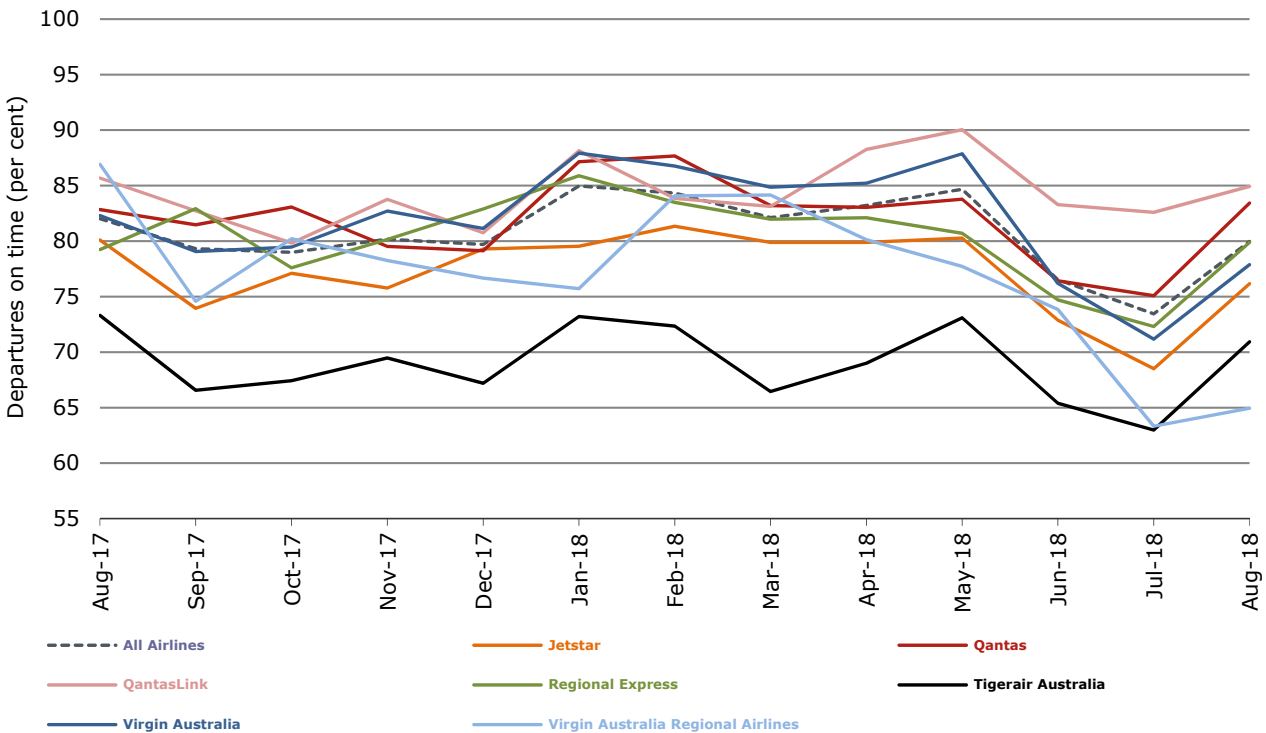


Figure 3 Departures on time (by month from August 2017)

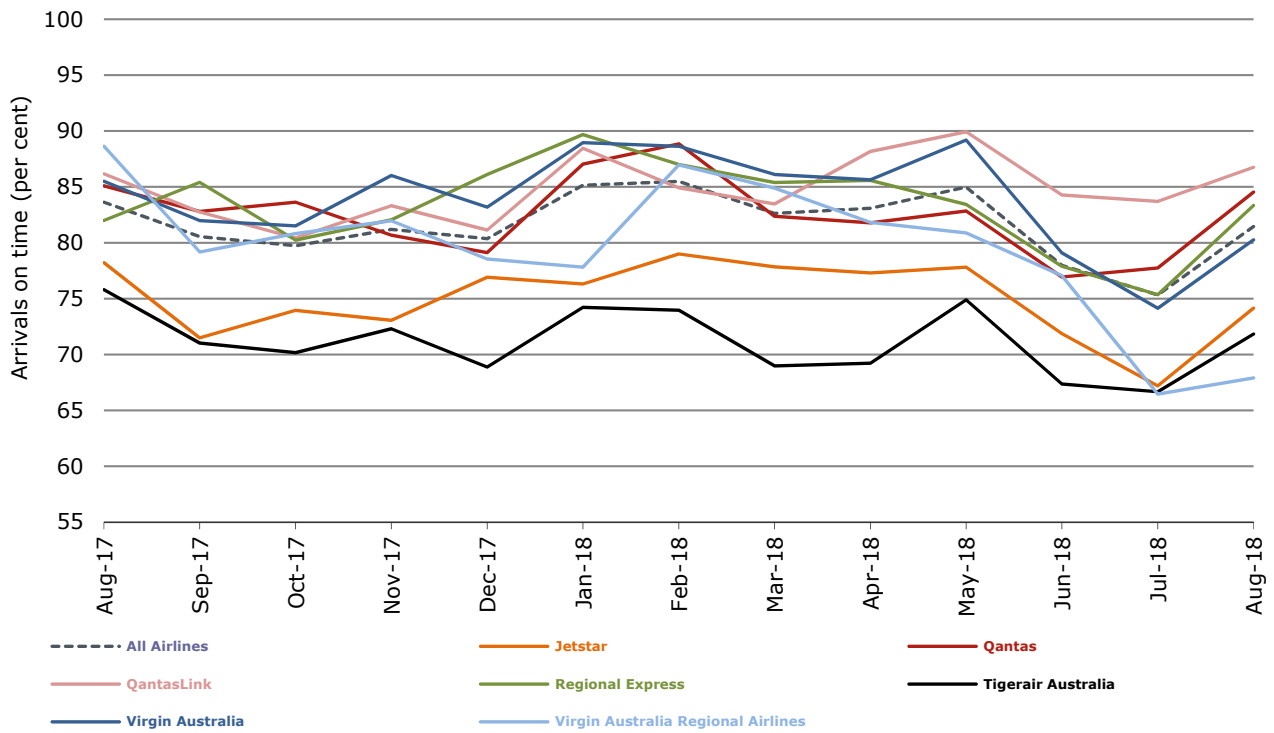
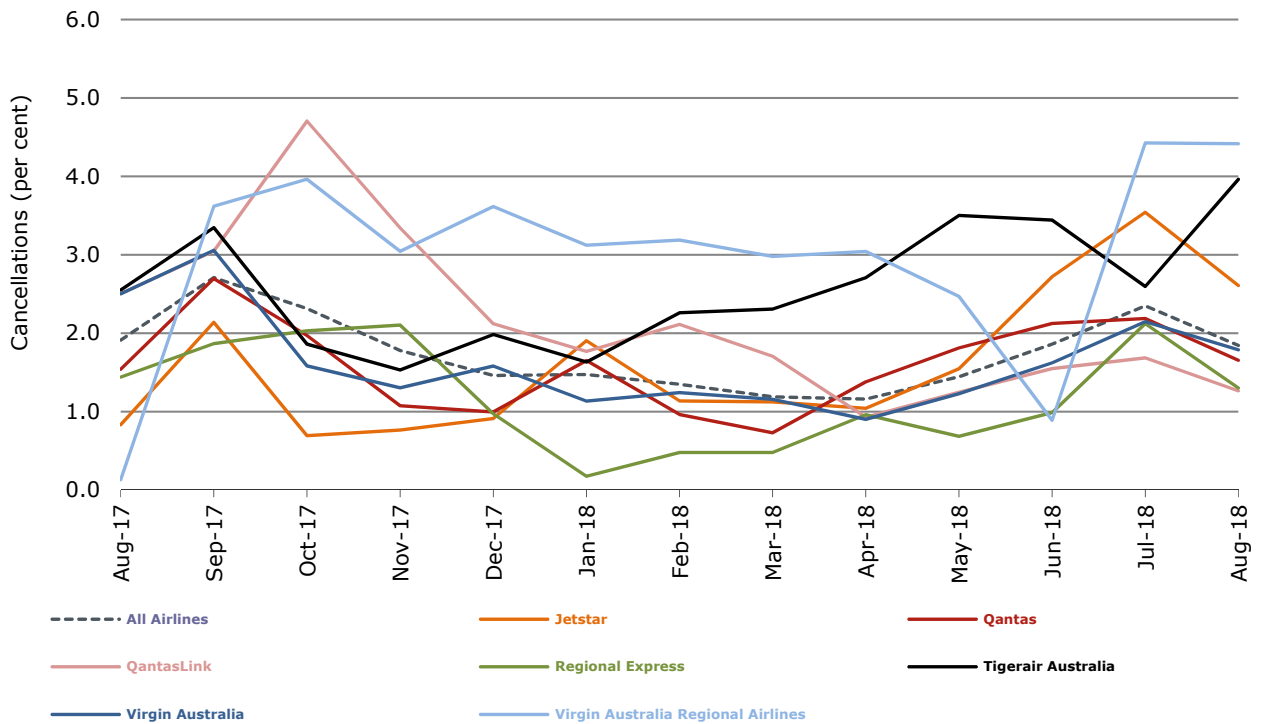


Figure 4 Cancellations (by month from August 2017)



Major domestic airlines on time performance

Figure 5 On time performance (by month from August 2015)—Jetstar

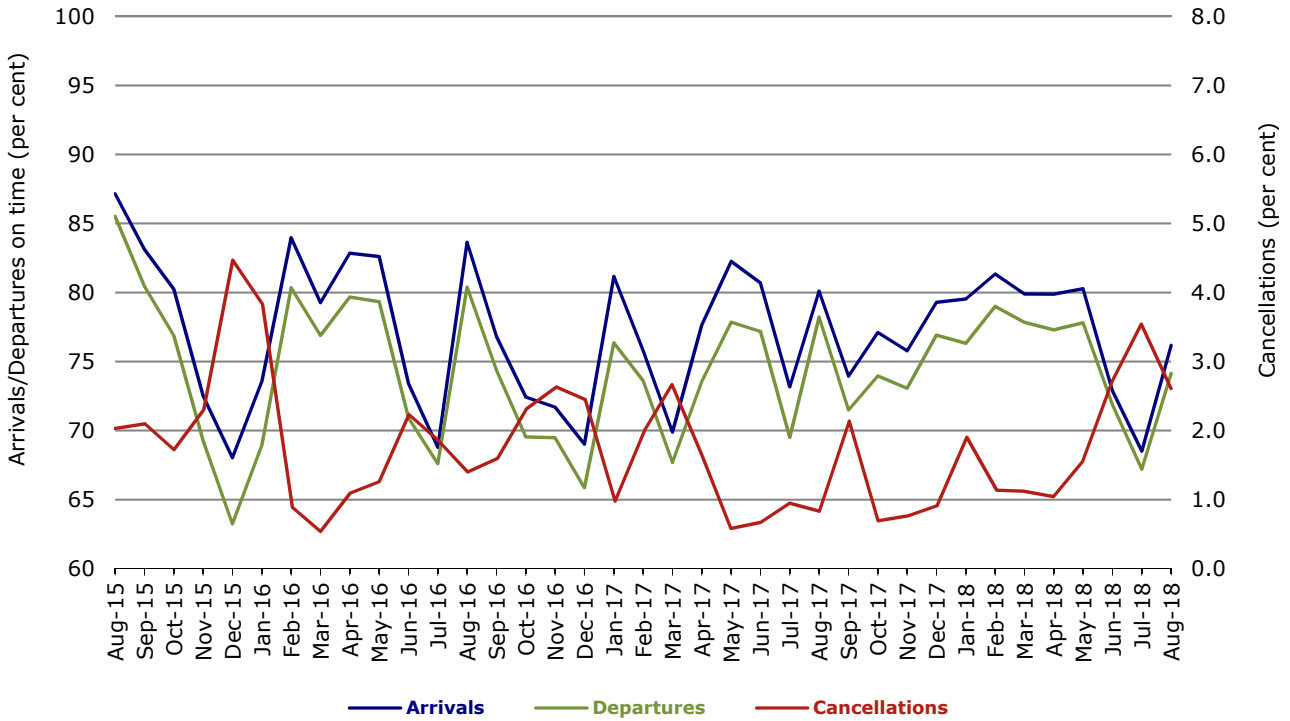


Figure 6 On time performance (by month from August 2015)—Qantas

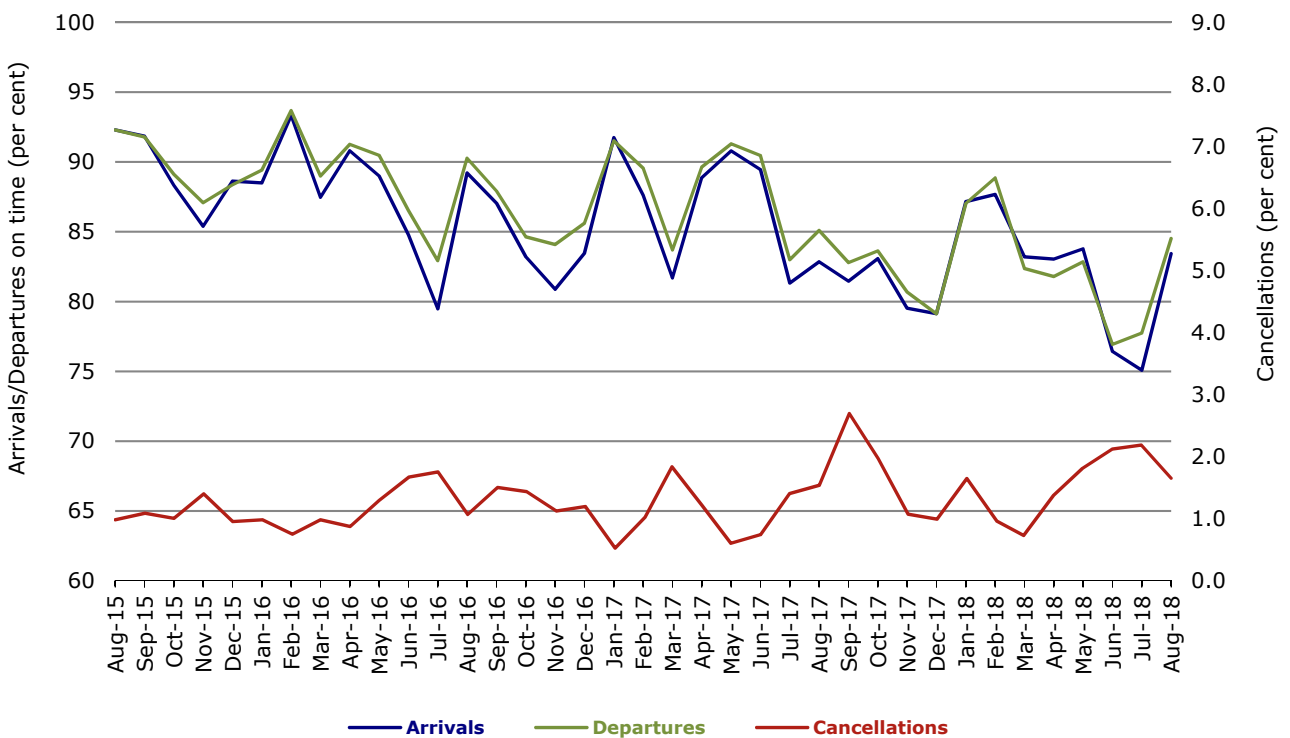


Figure 7 On time performance (by month from August 2015)—Tigerair Australia

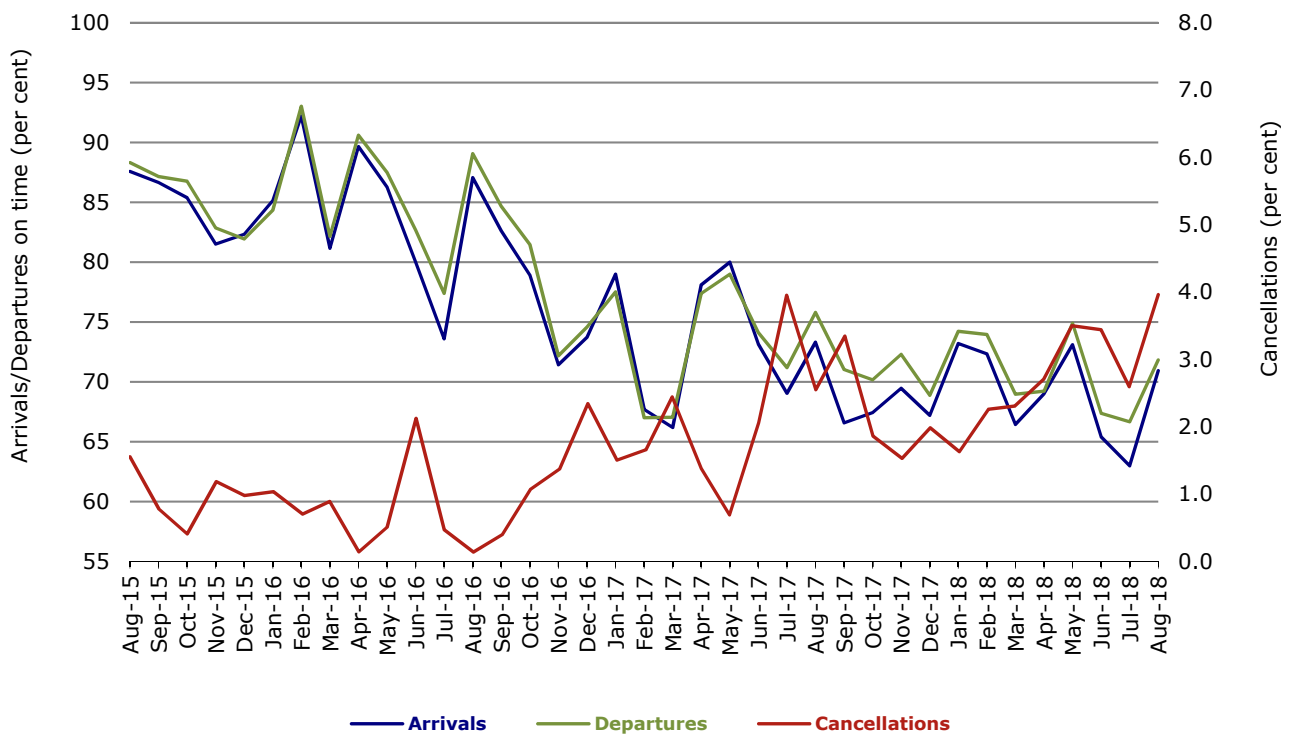
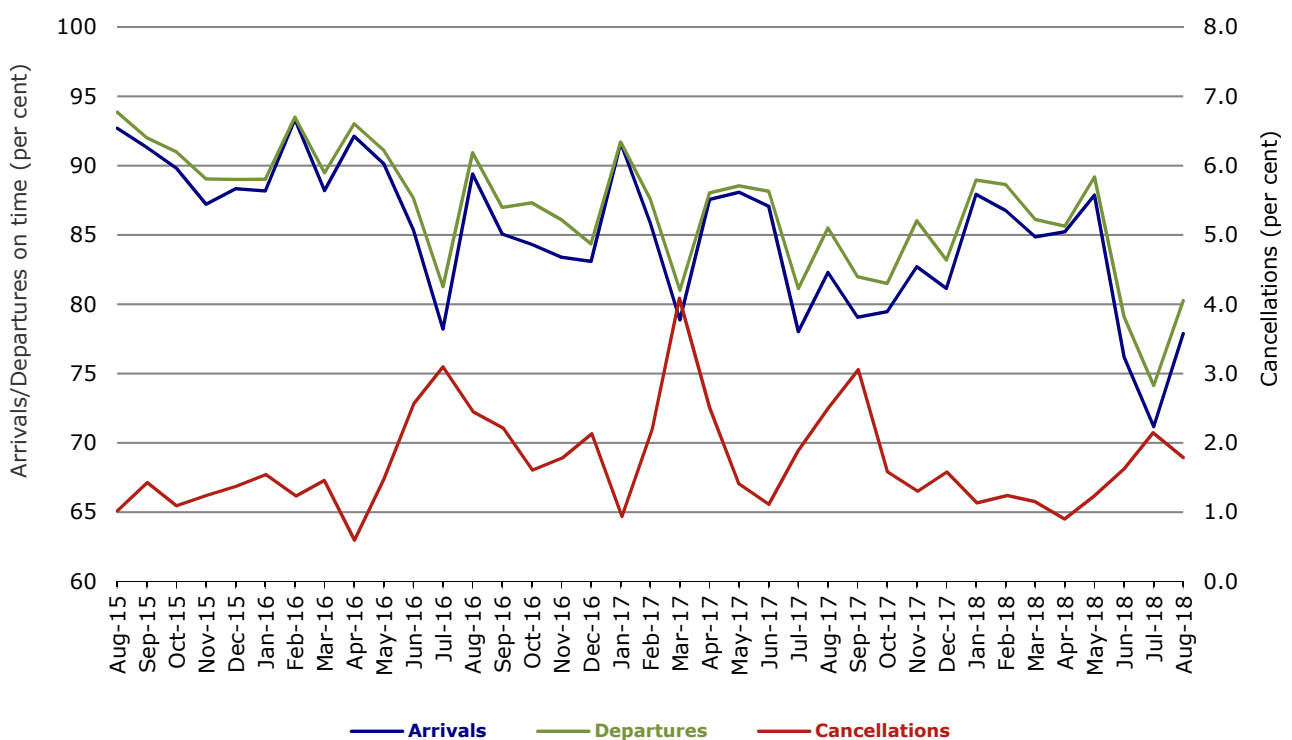


Figure 8 On time performance (by month from August 2015)—Virgin Australia



In January 2016, Virgin Australia transferred their ATR fleet from Virgin Australia Regional Airlines to Virgin Australia.

Major regional airlines on time performance

Figure 9 On time performance (by month from August 2015)—QantasLink

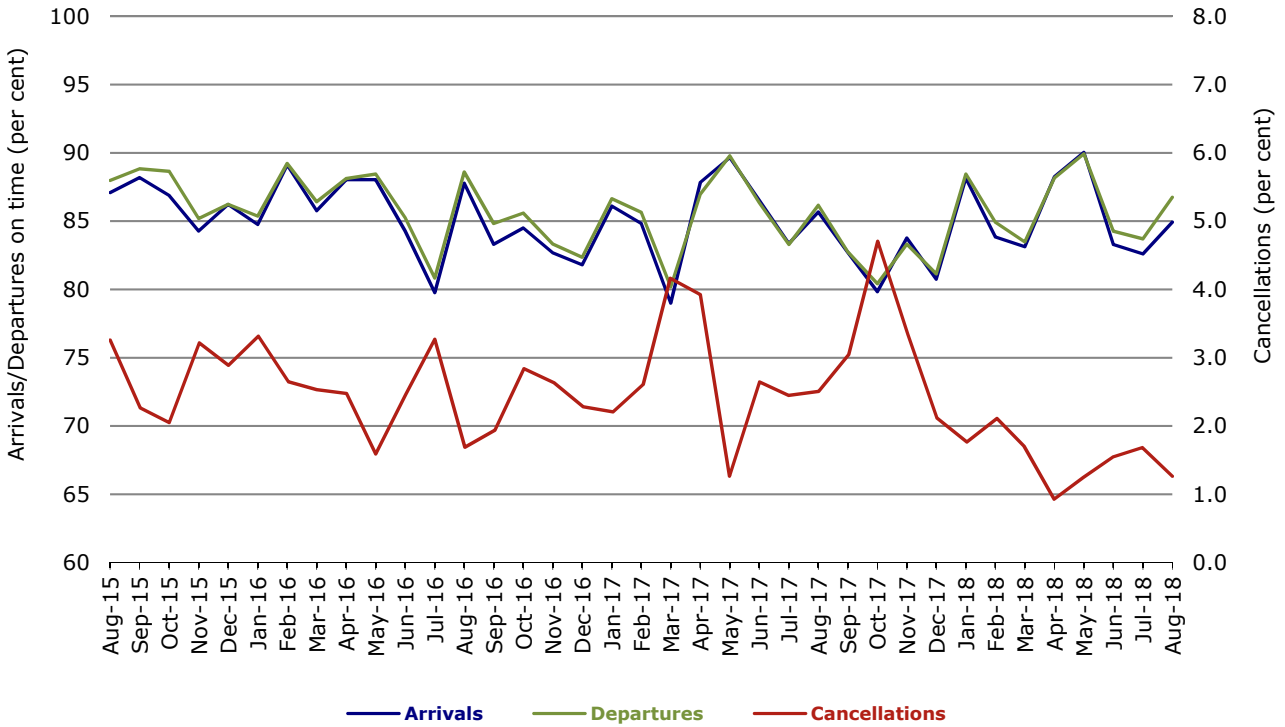


Figure 10 On time performance (by month from August 2015)—Regional Express

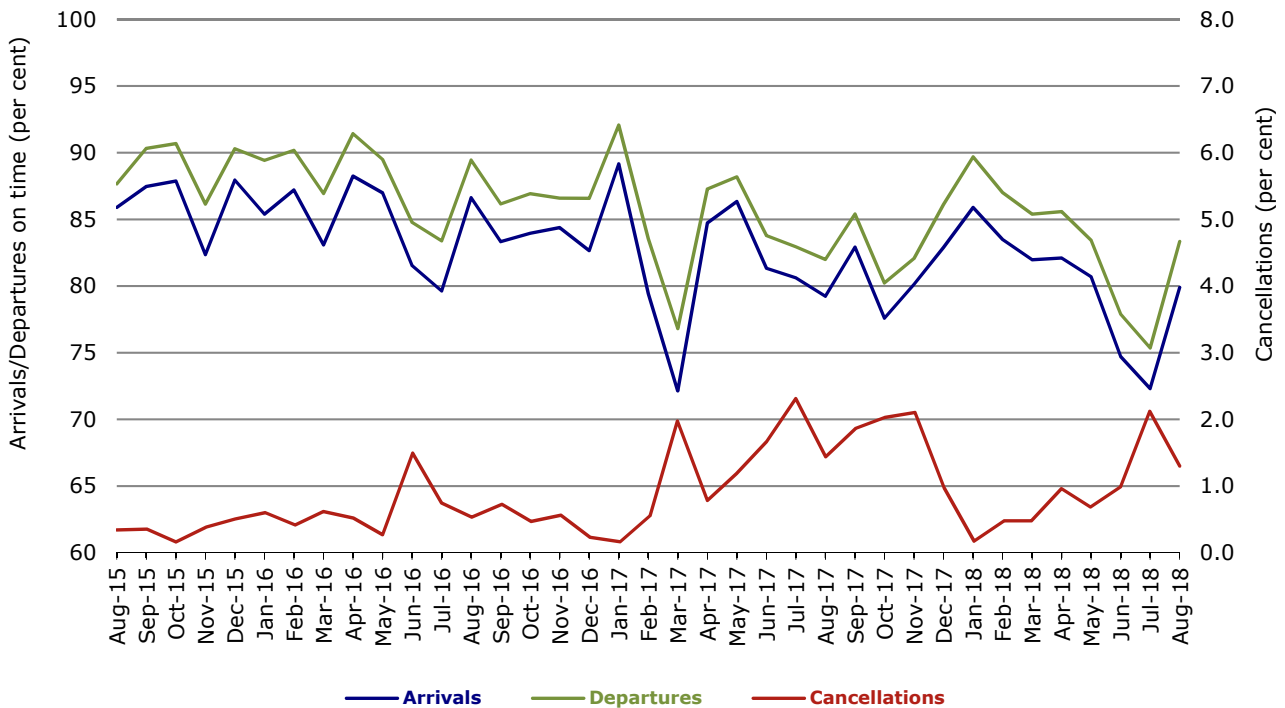
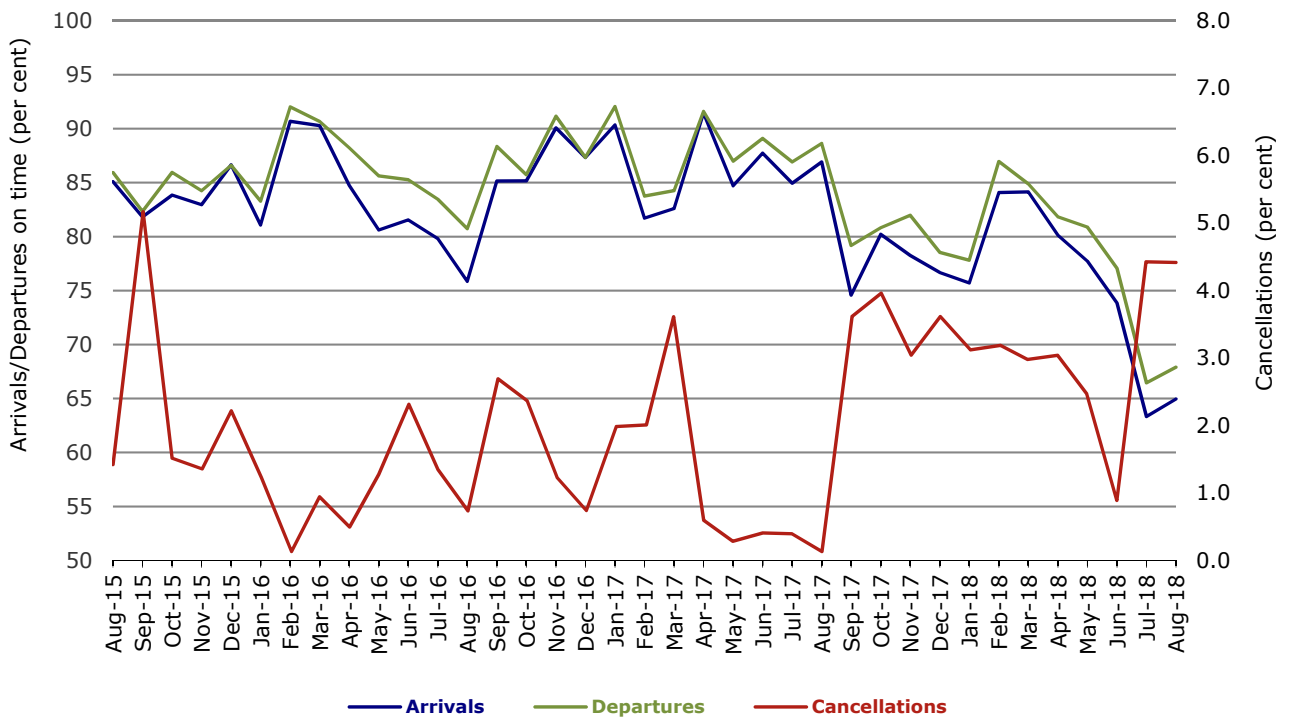


Figure 11 On time performance (by month from August 2015)
Virgin Australia Regional Airlines



In January 2016, Virgin Australia transferred their ATR fleet from Virgin Australia Regional Airlines to Virgin Australia.

Individual routes

On time performance is reported for all routes where the passenger load averages over 8000 passengers per month over the previous six months, and where two or more airlines operate in competition on those routes. There are now 65 routes which meet this definition. Over time, however, routes which meet this definition may change as airline networks and traffic levels vary.

	Sectors		Arrivals On Time		Departures On Time		Cancellations	
	Sched.	Flown	No.	%	No.	%	No.	%
Adelaide-Alice Springs								
Qantas	31	31	27	87.1	26	83.9	0	0.0
Virgin Australia	4	4	4	100.0	4	100.0	0	0.0
Virgin Australia Regional Airlines	19	19	9	47.4	11	57.9	0	0.0
All Airlines	54	54	40	74.1	41	75.9	0	0.0
Adelaide-Brisbane								
Jetstar	27	26	21	80.8	18	69.2	1	3.7
Qantas	58	58	52	89.7	50	86.2	0	0.0
QantasLink	68	65	54	83.1	57	87.7	3	4.4
Tigerair Australia	23	23	21	91.3	17	73.9	0	0.0
Virgin Australia	111	110	97	88.2	93	84.5	1	0.9
All Airlines	287	282	245	86.9	235	83.3	5	1.7
Adelaide-Canberra								
Qantas	50	50	44	88.0	44	88.0	0	0.0
Virgin Australia	28	28	18	64.3	19	67.9	0	0.0
All Airlines	78	78	62	79.5	63	80.8	0	0.0
Adelaide-Gold Coast								
Jetstar	32	31	27	87.1	18	58.1	1	3.1
Virgin Australia	31	31	29	93.5	25	80.6	0	0.0
All Airlines	63	62	56	90.3	43	69.4	1	1.6
Adelaide-Melbourne								
Jetstar	93	86	69	80.2	61	70.9	7	7.5
Qantas	280	278	237	85.3	232	83.5	2	0.7
Tigerair Australia	73	71	42	59.2	40	56.3	2	2.7
Virgin Australia	276	269	206	76.6	210	78.1	7	2.5
All Airlines	722	704	554	78.7	543	77.1	18	2.5
Adelaide-Perth								
Jetstar	22	21	18	85.7	19	90.5	1	4.5
Qantas	99	99	88	88.9	91	91.9	0	0.0
QantasLink	12	11	11	100.0	11	100.0	1	8.3
Virgin Australia	46	46	30	65.2	42	91.3	0	0.0
Virgin Australia Regional Airlines	34	32	16	50.0	19	59.4	2	5.9
All Airlines	213	209	163	78.0	182	87.1	4	1.9
Adelaide-Port Lincoln								
QantasLink	112	112	104	92.9	103	92.0	0	0.0
Regional Express	217	212	171	80.7	193	91.0	5	2.3
All Airlines	329	324	275	84.9	296	91.4	5	1.5
Adelaide-Sydney								
Jetstar	81	79	62	78.5	53	67.1	2	2.5
Qantas	233	233	192	82.4	198	85.0	0	0.0
QantasLink	30	27	22	81.5	22	81.5	3	10.0
Tigerair Australia	44	44	36	81.8	32	72.7	0	0.0
Virgin Australia	167	164	147	89.6	145	88.4	3	1.8
All Airlines	555	547	459	83.9	450	82.3	8	1.4

	Sectors		Arrivals On Time		Departures On Time		Cancellations	
	Sched.	Flown	No.	%	No.	%	No.	%
Albury-Sydney								
QantasLink	99	99	76	76.8	78	78.8	0	0.0
Regional Express	109	106	97	91.5	96	90.6	3	2.8
Virgin Australia	62	61	46	75.4	46	75.4	1	1.6
All Airlines	270	266	219	82.3	220	82.7	4	1.5
Alice Springs-Adelaide								
Qantas	31	31	28	90.3	27	87.1	0	0.0
Virgin Australia	4	4	3	75.0	4	100.0	0	0.0
Virgin Australia Regional Airlines	19	19	12	63.2	12	63.2	0	0.0
All Airlines	54	54	43	79.6	43	79.6	0	0.0
Alice Springs-Darwin								
QantasLink	62	62	52	83.9	53	85.5	0	0.0
Virgin Australia	4	4	4	100.0	4	100.0	0	0.0
Virgin Australia Regional Airlines	20	18	10	55.6	12	66.7	2	10.0
All Airlines	86	84	66	78.6	69	82.1	2	2.3
Armidale-Sydney								
QantasLink	120	120	95	79.2	93	77.5	0	0.0
Regional Express	78	77	49	63.6	52	67.5	1	1.3
All Airlines	198	197	144	73.1	145	73.6	1	0.5
Ayers Rock-Sydney								
Jetstar	31	31	11	35.5	3	9.7	0	0.0
Virgin Australia	31	31	22	71.0	11	35.5	0	0.0
All Airlines	62	62	33	53.2	14	22.6	0	0.0
Ballina-Sydney								
Jetstar	84	84	59	70.2	56	66.7	0	0.0
Regional Express	26	25	14	56.0	17	68.0	1	3.8
Virgin Australia	31	30	25	83.3	25	83.3	1	3.2
All Airlines	141	139	98	70.5	98	70.5	2	1.4
Brisbane-Adelaide								
Jetstar	27	26	19	73.1	21	80.8	1	3.7
Qantas	66	66	57	86.4	57	86.4	0	0.0
QantasLink	68	66	57	86.4	62	93.9	2	2.9
Tigerair Australia	23	23	22	95.7	22	95.7	0	0.0
Virgin Australia	103	102	71	69.6	86	84.3	1	1.0
All Airlines	287	283	226	79.9	248	87.6	4	1.4
Brisbane-Bundaberg								
QantasLink	108	108	98	90.7	95	88.0	0	0.0
Virgin Australia	31	31	27	87.1	29	93.5	0	0.0
All Airlines	139	139	125	89.9	124	89.2	0	0.0
Brisbane-Cairns								
Jetstar	110	109	92	84.4	88	80.7	1	0.9
Qantas	55	55	55	100.0	55	100.0	0	0.0
QantasLink	82	82	61	74.4	63	76.8	0	0.0
Tigerair Australia	31	31	24	77.4	22	71.0	0	0.0
Virgin Australia	126	126	113	89.7	106	84.1	0	0.0
All Airlines	404	403	345	85.6	334	82.9	1	0.2
Brisbane-Canberra								
Qantas	14	14	14	100.0	13	92.9	0	0.0
QantasLink	142	141	114	80.9	121	85.8	1	0.7
Tigerair Australia	17	17	12	70.6	12	70.6	0	0.0
Virgin Australia	102	102	86	84.3	88	86.3	0	0.0
All Airlines	275	274	226	82.5	234	85.4	1	0.4

	<i>Sectors</i>		<i>Arrivals On Time</i>		<i>Departures On Time</i>		<i>Cancellations</i>	
	<i>Sched.</i>	<i>Flown</i>	<i>No.</i>	<i>%</i>	<i>No.</i>	<i>%</i>	<i>No.</i>	<i>%</i>
Brisbane-Darwin								
Jetstar	26	25	23	92.0	25	100.0	1	3.8
Qantas	47	47	39	83.0	41	87.2	0	0.0
Tigerair Australia	18	18	16	88.9	15	83.3	0	0.0
Virgin Australia	31	31	26	83.9	26	83.9	0	0.0
All Airlines	122	121	104	86.0	107	88.4	1	0.8
Brisbane-Emerald								
QantasLink	103	103	92	89.3	94	91.3	0	0.0
Virgin Australia	54	54	46	85.2	47	87.0	0	0.0
All Airlines	157	157	138	87.9	141	89.8	0	0.0
Brisbane-Gladstone								
QantasLink	132	132	122	92.4	123	93.2	0	0.0
Virgin Australia	77	77	71	92.2	70	90.9	0	0.0
All Airlines	209	209	193	92.3	193	92.3	0	0.0
Brisbane-Hamilton Island								
QantasLink	22	20	17	85.0	13	65.0	2	9.1
Virgin Australia	31	31	25	80.6	24	77.4	0	0.0
All Airlines	53	51	42	82.4	37	72.5	2	3.8
Brisbane-Hobart								
Jetstar	23	23	21	91.3	21	91.3	0	0.0
Virgin Australia	40	40	34	85.0	38	95.0	0	0.0
All Airlines	63	63	55	87.3	59	93.7	0	0.0
Brisbane-Mackay								
Jetstar	35	35	33	94.3	31	88.6	0	0.0
QantasLink	121	120	111	92.5	106	88.3	1	0.8
Virgin Australia	147	147	129	87.8	126	85.7	0	0.0
All Airlines	303	302	273	90.4	263	87.1	1	0.3
Brisbane-Melbourne								
Jetstar	98	95	72	75.8	71	74.7	3	3.1
Qantas	405	402	348	86.6	379	94.3	3	0.7
Tigerair Australia	116	107	72	67.3	80	74.8	9	7.8
Virgin Australia	398	389	254	65.3	322	82.8	9	2.3
All Airlines	1 017	993	746	75.1	852	85.8	24	2.4
Brisbane-Mount Isa								
QantasLink	58	58	19	32.8	50	86.2	0	0.0
Virgin Australia	19	19	14	73.7	15	78.9	0	0.0
All Airlines	77	77	33	42.9	65	84.4	0	0.0
Brisbane-Newcastle								
Jetstar	91	90	68	75.6	68	75.6	1	1.1
QantasLink	49	48	42	87.5	44	91.7	1	2.0
Virgin Australia	90	90	68	75.6	70	77.8	0	0.0
All Airlines	230	228	178	78.1	182	79.8	2	0.9
Brisbane-Perth								
Qantas	146	146	114	78.1	129	88.4	0	0.0
Virgin Australia	112	112	64	57.1	81	72.3	0	0.0
All Airlines	258	258	178	69.0	210	81.4	0	0.0
Brisbane-Proserpine								
Jetstar	31	31	30	96.8	30	96.8	0	0.0
Virgin Australia	31	31	30	96.8	30	96.8	0	0.0
All Airlines	62	62	60	96.8	60	96.8	0	0.0

	<i>Sectors</i>		<i>Arrivals On Time</i>		<i>Departures On Time</i>		<i>Cancellations</i>	
	<i>Sched.</i>	<i>Flown</i>	<i>No.</i>	<i>%</i>	<i>No.</i>	<i>%</i>	<i>No.</i>	<i>%</i>
Brisbane-Rockhampton								
QantasLink	174	174	139	79.9	147	84.5	0	0.0
Virgin Australia	143	143	119	83.2	121	84.6	0	0.0
All Airlines	317	317	258	81.4	268	84.5	0	0.0
Brisbane-Sydney								
Jetstar	168	157	111	70.7	112	71.3	11	6.5
Qantas	618	615	545	88.6	566	92.0	3	0.5
QantasLink	19	19	10	52.6	13	68.4	0	0.0
Tigerair Australia	100	96	70	72.9	69	71.9	4	4.0
Virgin Australia	555	536	426	79.5	448	83.6	19	3.4
All Airlines	1 460	1 423	1 162	81.7	1 208	84.9	37	2.5
Brisbane-Townsville								
Jetstar	62	62	50	80.6	50	80.6	0	0.0
Qantas	54	54	47	87.0	51	94.4	0	0.0
QantasLink	93	92	74	80.4	80	87.0	1	1.1
Virgin Australia	140	139	121	87.1	120	86.3	1	0.7
All Airlines	349	347	292	84.1	301	86.7	2	0.6
Broome-Perth								
QantasLink	89	86	66	76.7	68	79.1	3	3.4
Virgin Australia	9	9	4	44.4	3	33.3	0	0.0
Virgin Australia Regional Airlines	75	71	46	64.8	42	59.2	4	5.3
All Airlines	173	166	116	69.9	113	68.1	7	4.0
Bundaberg-Brisbane								
QantasLink	108	108	96	88.9	98	90.7	0	0.0
Virgin Australia	31	31	29	93.5	29	93.5	0	0.0
All Airlines	139	139	125	89.9	127	91.4	0	0.0
Cairns-Brisbane								
Jetstar	110	109	93	85.3	93	85.3	1	0.9
Qantas	55	55	54	98.2	53	96.4	0	0.0
QantasLink	82	82	66	80.5	69	84.1	0	0.0
Tigerair Australia	31	31	23	74.2	21	67.7	0	0.0
Virgin Australia	126	126	108	85.7	103	81.7	0	0.0
All Airlines	404	403	344	85.4	339	84.1	1	0.2
Cairns-Melbourne								
Jetstar	115	111	90	81.1	94	84.7	4	3.5
Qantas	48	48	38	79.2	39	81.3	0	0.0
Tigerair Australia	41	40	19	47.5	19	47.5	1	2.4
Virgin Australia	35	35	14	40.0	21	60.0	0	0.0
All Airlines	239	234	161	68.8	173	73.9	5	2.1
Cairns-Sydney								
Jetstar	102	102	86	84.3	82	80.4	0	0.0
Qantas	87	87	71	81.6	66	75.9	0	0.0
Tigerair Australia	43	43	33	76.7	30	69.8	0	0.0
Virgin Australia	86	85	64	75.3	65	76.5	1	1.2
All Airlines	318	317	254	80.1	243	76.7	1	0.3
Cairns-Townsville								
QantasLink	138	136	125	91.9	124	91.2	2	1.4
Regional Express	14	13	11	84.6	11	84.6	1	7.1
All Airlines	152	149	136	91.3	135	90.6	3	2.0

	<i>Sectors</i>		<i>Arrivals On Time</i>		<i>Departures On Time</i>		<i>Cancellations</i>	
	<i>Sched.</i>	<i>Flown</i>	<i>No.</i>	<i>%</i>	<i>No.</i>	<i>%</i>	<i>No.</i>	<i>%</i>
Canberra-Adelaide								
Qantas	50	50	44	88.0	44	88.0	0	0.0
Virgin Australia	28	28	18	64.3	17	60.7	0	0.0
All Airlines	78	78	62	79.5	61	78.2	0	0.0
Canberra-Brisbane								
Qantas	18	18	18	100.0	18	100.0	0	0.0
QantasLink	138	135	111	82.2	114	84.4	3	2.2
Tigerair Australia	17	17	11	64.7	10	58.8	0	0.0
Virgin Australia	102	102	91	89.2	88	86.3	0	0.0
All Airlines	275	272	231	84.9	230	84.6	3	1.1
Canberra-Melbourne								
Qantas	246	245	227	92.7	230	93.9	1	0.4
QantasLink	46	44	40	90.9	41	93.2	2	4.3
Tigerair Australia	35	35	24	68.6	25	71.4	0	0.0
Virgin Australia	174	172	127	73.8	138	80.2	2	1.1
All Airlines	501	496	418	84.3	434	87.5	5	1.0
Canberra-Sydney								
Qantas	14	14	13	92.9	14	100.0	0	0.0
QantasLink	480	474	403	85.0	404	85.2	6	1.3
Virgin Australia	272	263	204	77.6	200	76.0	9	3.3
All Airlines	766	751	620	82.6	618	82.3	15	2.0
Coffs Harbour-Sydney								
QantasLink	131	131	106	80.9	108	82.4	0	0.0
Tigerair Australia	5	5	5	100.0	4	80.0	0	0.0
Virgin Australia	55	51	36	70.6	44	86.3	4	7.3
All Airlines	191	187	147	78.6	156	83.4	4	2.1
Darwin-Alice Springs								
QantasLink	62	62	51	82.3	57	91.9	0	0.0
Virgin Australia	4	4	4	100.0	4	100.0	0	0.0
Virgin Australia Regional Airlines	19	18	11	61.1	11	61.1	1	5.3
All Airlines	85	84	66	78.6	72	85.7	1	1.2
Darwin-Brisbane								
Jetstar	26	25	22	88.0	19	76.0	1	3.8
Qantas	47	47	38	80.9	36	76.6	0	0.0
Tigerair Australia	18	18	17	94.4	17	94.4	0	0.0
Virgin Australia	31	30	16	53.3	21	70.0	1	3.2
All Airlines	122	120	93	77.5	93	77.5	2	1.6
Darwin-Melbourne								
Jetstar	26	26	15	57.7	8	30.8	0	0.0
Qantas	41	41	22	53.7	23	56.1	0	0.0
Virgin Australia	31	31	28	90.3	30	96.8	0	0.0
All Airlines	98	98	65	66.3	61	62.2	0	0.0
Darwin-Perth								
Qantas	31	31	17	54.8	17	54.8	0	0.0
Virgin Australia	24	24	10	41.7	14	58.3	0	0.0
Virgin Australia Regional Airlines	7	7	5	71.4	4	57.1	0	0.0
All Airlines	62	62	32	51.6	35	56.5	0	0.0
Darwin-Sydney								
Jetstar	22	22	19	86.4	13	59.1	0	0.0
Qantas	53	53	29	54.7	23	43.4	0	0.0
Virgin Australia	31	31	16	51.6	20	64.5	0	0.0
All Airlines	106	106	64	60.4	56	52.8	0	0.0

	<i>Sectors</i>		<i>Arrivals On Time</i>		<i>Departures On Time</i>		<i>Cancellations</i>	
	<i>Sched.</i>	<i>Flown</i>	<i>No.</i>	<i>%</i>	<i>No.</i>	<i>%</i>	<i>No.</i>	<i>%</i>
Dubbo-Sydney								
QantasLink	108	107	87	81.3	88	82.2	1	0.9
Regional Express	135	135	112	83.0	114	84.4	0	0.0
All Airlines	243	242	199	82.2	202	83.5	1	0.4
Emerald-Brisbane								
QantasLink	103	102	90	88.2	89	87.3	1	1.0
Virgin Australia	56	56	53	94.6	52	92.9	0	0.0
All Airlines	159	158	143	90.5	141	89.2	1	0.6
Geraldton-Perth								
QantasLink	50	49	46	93.9	48	98.0	1	2.0
Virgin Australia Regional Airlines	53	50	33	66.0	32	64.0	3	5.7
All Airlines	103	99	79	79.8	80	80.8	4	3.9
Gladstone-Brisbane								
QantasLink	131	131	122	93.1	114	87.0	0	0.0
Virgin Australia	77	77	71	92.2	70	90.9	0	0.0
All Airlines	208	208	193	92.8	184	88.5	0	0.0
Gold Coast-Adelaide								
Jetstar	31	31	25	80.6	27	87.1	0	0.0
Virgin Australia	31	31	21	67.7	28	90.3	0	0.0
All Airlines	62	62	46	74.2	55	88.7	0	0.0
Gold Coast-Melbourne								
Jetstar	192	189	155	82.0	151	79.9	3	1.6
Qantas	31	31	25	80.6	24	77.4	0	0.0
Tigerair Australia	81	76	49	64.5	55	72.4	5	6.2
Virgin Australia	170	169	117	69.2	121	71.6	1	0.6
All Airlines	474	465	346	74.4	351	75.5	9	1.9
Gold Coast-Sydney								
Jetstar	285	277	212	76.5	216	78.0	8	2.8
Qantas	90	90	77	85.6	80	88.9	0	0.0
QantasLink	30	30	19	63.3	20	66.7	0	0.0
Tigerair Australia	92	90	63	70.0	63	70.0	2	2.2
Virgin Australia	253	249	208	83.5	207	83.1	4	1.6
All Airlines	750	736	579	78.7	586	79.6	14	1.9
Hamilton Island-Brisbane								
QantasLink	22	20	13	65.0	13	65.0	2	9.1
Virgin Australia	31	31	25	80.6	25	80.6	0	0.0
All Airlines	53	51	38	74.5	38	74.5	2	3.8
Hamilton Island-Sydney								
Jetstar	31	31	24	77.4	23	74.2	0	0.0
Qantas	10	10	5	50.0	4	40.0	0	0.0
QantasLink	21	20	18	90.0	17	85.0	1	4.8
Virgin Australia	23	22	17	77.3	17	77.3	1	4.3
All Airlines	85	83	64	77.1	61	73.5	2	2.4
Hobart-Brisbane								
Jetstar	22	22	20	90.9	19	86.4	0	0.0
Virgin Australia	39	39	30	76.9	26	66.7	0	0.0
All Airlines	61	61	50	82.0	45	73.8	0	0.0

	<i>Sectors</i>		<i>Arrivals On Time</i>		<i>Departures On Time</i>		<i>Cancellations</i>	
	<i>Sched.</i>	<i>Flown</i>	<i>No.</i>	<i>%</i>	<i>No.</i>	<i>%</i>	<i>No.</i>	<i>%</i>
Hobart-Melbourne								
Jetstar	150	144	94	65.3	95	66.0	6	4.0
Qantas	113	112	98	87.5	99	88.4	1	0.9
Tigerair Australia	31	31	20	64.5	22	71.0	0	0.0
Virgin Australia	141	140	100	71.4	107	76.4	1	0.7
All Airlines	435	427	312	73.1	323	75.6	8	1.8
Hobart-Sydney								
Jetstar	58	58	39	67.2	31	53.4	0	0.0
Qantas	3	3	1	33.3	1	33.3	0	0.0
QantasLink	58	56	41	73.2	46	82.1	2	3.4
Virgin Australia	70	70	54	77.1	54	77.1	0	0.0
All Airlines	189	187	135	72.2	132	70.6	2	1.1
Kalgoorlie-Perth								
Qantas	13	13	10	76.9	11	84.6	0	0.0
QantasLink	75	75	70	93.3	70	93.3	0	0.0
Virgin Australia	45	45	34	75.6	32	71.1	0	0.0
Virgin Australia Regional Airlines	31	29	26	89.7	25	86.2	2	6.5
All Airlines	164	162	140	86.4	138	85.2	2	1.2
Karratha-Perth								
Qantas	9	9	8	88.9	8	88.9	0	0.0
QantasLink	185	180	152	84.4	152	84.4	5	2.7
Virgin Australia Regional Airlines	67	64	41	64.1	43	67.2	3	4.5
All Airlines	261	253	201	79.4	203	80.2	8	3.1
Launceston-Melbourne								
Jetstar	84	84	52	61.9	53	63.1	0	0.0
QantasLink	110	108	99	91.7	101	93.5	2	1.8
Virgin Australia	94	94	67	71.3	77	81.9	0	0.0
All Airlines	288	286	218	76.2	231	80.8	2	0.7
Launceston-Sydney								
Jetstar	27	27	24	88.9	24	88.9	0	0.0
Virgin Australia	32	32	26	81.3	24	75.0	0	0.0
All Airlines	59	59	50	84.7	48	81.4	0	0.0
Mackay-Brisbane								
Jetstar	37	35	33	94.3	33	94.3	2	5.4
QantasLink	116	115	96	83.5	99	86.1	1	0.9
Virgin Australia	147	147	141	95.9	137	93.2	0	0.0
All Airlines	300	297	270	90.9	269	90.6	3	1.0
Melbourne-Adelaide								
Jetstar	93	86	60	69.8	66	76.7	7	7.5
Qantas	280	278	228	82.0	236	84.9	2	0.7
Tigerair Australia	73	71	42	59.2	47	66.2	2	2.7
Virgin Australia	280	273	212	77.7	217	79.5	7	2.5
All Airlines	726	708	542	76.6	566	79.9	18	2.5
Melbourne-Brisbane								
Jetstar	98	95	72	75.8	69	72.6	3	3.1
Qantas	415	413	366	88.6	356	86.2	2	0.5
Tigerair Australia	116	107	76	71.0	74	69.2	9	7.8
Virgin Australia	394	385	323	83.9	319	82.9	9	2.3
All Airlines	1 023	1 000	837	83.7	818	81.8	23	2.2

	<i>Sectors</i>		<i>Arrivals On Time</i>		<i>Departures On Time</i>		<i>Cancellations</i>	
	<i>Sched.</i>	<i>Flown</i>	<i>No.</i>	<i>%</i>	<i>No.</i>	<i>%</i>	<i>No.</i>	<i>%</i>
Melbourne-Cairns								
Jetstar	115	111	88	79.3	84	75.7	4	3.5
Qantas	48	48	42	87.5	44	91.7	0	0.0
Tigerair Australia	41	40	26	65.0	30	75.0	1	2.4
Virgin Australia	35	35	29	82.9	28	80.0	0	0.0
All Airlines	239	234	185	79.1	186	79.5	5	2.1
Melbourne-Canberra								
Qantas	250	249	231	92.8	232	93.2	1	0.4
QantasLink	46	45	42	93.3	42	93.3	1	2.2
Tigerair Australia	35	35	26	74.3	25	71.4	0	0.0
Virgin Australia	173	170	133	78.2	134	78.8	3	1.7
All Airlines	504	499	432	86.6	433	86.8	5	1.0
Melbourne-Darwin								
Jetstar	26	26	12	46.2	19	73.1	0	0.0
Qantas	41	41	33	80.5	40	97.6	0	0.0
Virgin Australia	31	31	18	58.1	18	58.1	0	0.0
All Airlines	98	98	63	64.3	77	78.6	0	0.0
Melbourne-Gold Coast								
Jetstar	191	190	155	81.6	146	76.8	1	0.5
Qantas	31	31	25	80.6	26	83.9	0	0.0
Tigerair Australia	81	76	60	78.9	60	78.9	5	6.2
Virgin Australia	170	169	139	82.2	140	82.8	1	0.6
All Airlines	473	466	379	81.3	372	79.8	7	1.5
Melbourne-Hobart								
Jetstar	150	144	99	68.8	107	74.3	6	4.0
Qantas	113	112	96	85.7	98	87.5	1	0.9
Tigerair Australia	31	31	24	77.4	24	77.4	0	0.0
Virgin Australia	141	140	103	73.6	117	83.6	1	0.7
All Airlines	435	427	322	75.4	346	81.0	8	1.8
Melbourne-Launceston								
Jetstar	84	84	61	72.6	60	71.4	0	0.0
QantasLink	110	108	92	85.2	95	88.0	2	1.8
Virgin Australia	94	94	63	67.0	71	75.5	0	0.0
All Airlines	288	286	216	75.5	226	79.0	2	0.7
Melbourne-Mildura								
QantasLink	99	96	81	84.4	84	87.5	3	3.0
Regional Express	87	87	72	82.8	79	90.8	0	0.0
Virgin Australia	31	31	22	71.0	28	90.3	0	0.0
All Airlines	217	214	175	81.8	191	89.3	3	1.4
Melbourne-Newcastle								
Jetstar	110	107	79	73.8	72	67.3	3	2.7
Virgin Australia	31	31	28	90.3	26	83.9	0	0.0
All Airlines	141	138	107	77.5	98	71.0	3	2.1
Melbourne-Perth								
Jetstar	35	34	30	88.2	28	82.4	1	2.9
Qantas	198	198	127	64.1	134	67.7	0	0.0
Tigerair Australia	44	40	17	42.5	23	57.5	4	9.1
Virgin Australia	139	139	81	58.3	97	69.8	0	0.0
All Airlines	416	411	255	62.0	282	68.6	5	1.2

	<i>Sectors</i>		<i>Arrivals On Time</i>		<i>Departures On Time</i>		<i>Cancellations</i>	
	<i>Sched.</i>	<i>Flown</i>	<i>No.</i>	<i>%</i>	<i>No.</i>	<i>%</i>	<i>No.</i>	<i>%</i>
Melbourne-Sunshine Coast								
Jetstar	91	91	79	86.8	74	81.3	0	0.0
Virgin Australia	65	64	53	82.8	48	75.0	1	1.5
All Airlines	156	155	132	85.2	122	78.7	1	0.6
Melbourne-Sydney								
Jetstar	341	312	240	76.9	226	72.4	29	8.5
Qantas	1 018	957	788	82.3	784	81.9	61	6.0
Tigerair Australia	251	234	164	70.1	158	67.5	17	6.8
Virgin Australia	776	739	577	78.1	588	79.6	37	4.8
All Airlines	2 386	2 242	1 769	78.9	1 756	78.3	144	6.0
Mildura-Melbourne								
QantasLink	99	95	81	85.3	81	85.3	4	4.0
Regional Express	87	87	71	81.6	76	87.4	0	0.0
Virgin Australia	31	31	26	83.9	26	83.9	0	0.0
All Airlines	217	213	178	83.6	183	85.9	4	1.8
Mount Isa-Brisbane								
QantasLink	58	58	38	65.5	30	51.7	0	0.0
Virgin Australia	20	20	16	80.0	16	80.0	0	0.0
All Airlines	78	78	54	69.2	46	59.0	0	0.0
Newcastle-Brisbane								
Jetstar	91	90	70	77.8	70	77.8	1	1.1
QantasLink	49	48	41	85.4	43	89.6	1	2.0
Virgin Australia	89	88	77	87.5	76	86.4	1	1.1
All Airlines	229	226	188	83.2	189	83.6	3	1.3
Newcastle-Melbourne								
Jetstar	110	107	70	65.4	75	70.1	3	2.7
Virgin Australia	31	31	27	87.1	26	83.9	0	0.0
All Airlines	141	138	97	70.3	101	73.2	3	2.1
Newman-Perth								
Qantas	20	20	19	95.0	19	95.0	0	0.0
QantasLink	115	112	97	86.6	98	87.5	3	2.6
Virgin Australia	18	18	18	100.0	17	94.4	0	0.0
Virgin Australia Regional Airlines	24	23	16	69.6	18	78.3	1	4.2
All Airlines	177	173	150	86.7	152	87.9	4	2.3
Perth-Adelaide								
Jetstar	23	21	20	95.2	16	76.2	2	8.7
Qantas	105	105	102	97.1	97	92.4	0	0.0
QantasLink	12	12	11	91.7	12	100.0	0	0.0
Virgin Australia	47	47	39	83.0	36	76.6	0	0.0
Virgin Australia Regional Airlines	34	32	17	53.1	17	53.1	2	5.9
All Airlines	221	217	189	87.1	178	82.0	4	1.8
Perth-Brisbane								
Qantas	147	147	144	98.0	137	93.2	0	0.0
Virgin Australia	112	112	98	87.5	90	80.4	0	0.0
All Airlines	259	259	242	93.4	227	87.6	0	0.0
Perth-Broome								
QantasLink	89	87	77	88.5	75	86.2	2	2.2
Virgin Australia	9	9	5	55.6	5	55.6	0	0.0
Virgin Australia Regional Airlines	75	71	48	67.6	48	67.6	4	5.3
All Airlines	173	167	130	77.8	128	76.6	6	3.5

	<i>Sectors</i>		<i>Arrivals On Time</i>		<i>Departures On Time</i>		<i>Cancellations</i>	
	<i>Sched.</i>	<i>Flown</i>	<i>No.</i>	<i>%</i>	<i>No.</i>	<i>%</i>	<i>No.</i>	<i>%</i>
Perth-Darwin								
Qantas	31	31	26	83.9	26	83.9	0	0.0
Virgin Australia	24	24	15	62.5	16	66.7	0	0.0
Virgin Australia Regional Airlines	7	7	5	71.4	4	57.1	0	0.0
All Airlines	62	62	46	74.2	46	74.2	0	0.0
Perth-Geraldton								
QantasLink	50	49	45	91.8	44	89.8	1	2.0
Virgin Australia Regional Airlines	54	52	34	65.4	33	63.5	2	3.7
All Airlines	104	101	79	78.2	77	76.2	3	2.9
Perth-Kalgoorlie								
Qantas	12	12	12	100.0	12	100.0	0	0.0
QantasLink	75	75	69	92.0	70	93.3	0	0.0
Virgin Australia	47	47	42	89.4	43	91.5	0	0.0
Virgin Australia Regional Airlines	31	29	23	79.3	24	82.8	2	6.5
All Airlines	165	163	146	89.6	149	91.4	2	1.2
Perth-Karratha								
Qantas	9	9	9	100.0	9	100.0	0	0.0
QantasLink	185	181	149	82.3	163	90.1	4	2.2
Virgin Australia Regional Airlines	67	65	38	58.5	53	81.5	2	3.0
All Airlines	261	255	196	76.9	225	88.2	6	2.3
Perth-Melbourne								
Jetstar	35	34	33	97.1	25	73.5	1	2.9
Qantas	203	203	178	87.7	164	80.8	0	0.0
Tigerair Australia	43	39	25	64.1	22	56.4	4	9.3
Virgin Australia	140	140	103	73.6	95	67.9	0	0.0
All Airlines	421	416	339	81.5	306	73.6	5	1.2
Perth-Newman								
Qantas	20	20	19	95.0	19	95.0	0	0.0
QantasLink	114	112	97	86.6	98	87.5	2	1.8
Virgin Australia	18	18	15	83.3	16	88.9	0	0.0
Virgin Australia Regional Airlines	24	22	18	81.8	20	90.9	2	8.3
All Airlines	176	172	149	86.6	153	89.0	4	2.3
Perth-Port Hedland								
Qantas	26	25	23	92.0	25	100.0	1	3.8
QantasLink	114	113	94	83.2	101	89.4	1	0.9
Virgin Australia	26	26	23	88.5	26	100.0	0	0.0
Virgin Australia Regional Airlines	28	28	23	82.1	24	85.7	0	0.0
All Airlines	194	192	163	84.9	176	91.7	2	1.0
Perth-Sydney								
Jetstar	22	21	17	81.0	11	52.4	1	4.5
Qantas	202	199	160	80.4	125	62.8	3	1.5
Tigerair Australia	23	23	20	87.0	15	65.2	0	0.0
Virgin Australia	120	120	110	91.7	92	76.7	0	0.0
All Airlines	367	363	307	84.6	243	66.9	4	1.1
Port Hedland-Perth								
Qantas	26	25	24	96.0	22	88.0	1	3.8
QantasLink	115	112	83	74.1	97	86.6	3	2.6
Virgin Australia	26	26	25	96.2	24	92.3	0	0.0
Virgin Australia Regional Airlines	28	28	22	78.6	21	75.0	0	0.0
All Airlines	195	191	154	80.6	164	85.9	4	2.1

	<i>Sectors</i>		<i>Arrivals On Time</i>		<i>Departures On Time</i>		<i>Cancellations</i>	
	<i>Sched.</i>	<i>Flown</i>	<i>No.</i>	<i>%</i>	<i>No.</i>	<i>%</i>	<i>No.</i>	<i>%</i>
Port Lincoln-Adelaide								
QantasLink	112	112	104	92.9	104	92.9	0	0.0
Regional Express	216	211	173	82.0	183	86.7	5	2.3
All Airlines	328	323	277	85.8	287	88.9	5	1.5
Port Macquarie-Sydney								
QantasLink	98	97	68	70.1	72	74.2	1	1.0
Virgin Australia	58	56	37	66.1	36	64.3	2	3.4
All Airlines	156	153	105	68.6	108	70.6	3	1.9
Proserpine-Brisbane								
Jetstar	31	31	29	93.5	30	96.8	0	0.0
Virgin Australia	31	31	28	90.3	28	90.3	0	0.0
All Airlines	62	62	57	91.9	58	93.5	0	0.0
Proserpine-Sydney								
Jetstar	13	13	10	76.9	11	84.6	0	0.0
Tigerair Australia	25	25	21	84.0	22	88.0	0	0.0
All Airlines	38	38	31	81.6	33	86.8	0	0.0
Rockhampton-Brisbane								
QantasLink	178	178	146	82.0	150	84.3	0	0.0
Virgin Australia	143	143	127	88.8	123	86.0	0	0.0
All Airlines	321	321	273	85.0	273	85.0	0	0.0
Sunshine Coast-Melbourne								
Jetstar	91	91	62	68.1	54	59.3	0	0.0
Virgin Australia	65	64	25	39.1	21	32.8	1	1.5
All Airlines	156	155	87	56.1	75	48.4	1	0.6
Sunshine Coast-Sydney								
Jetstar	93	91	60	65.9	58	63.7	2	2.2
QantasLink	35	35	31	88.6	32	91.4	0	0.0
Virgin Australia	49	49	33	67.3	34	69.4	0	0.0
All Airlines	177	175	124	70.9	124	70.9	2	1.1
Sydney-Adelaide								
Jetstar	81	79	50	63.3	53	67.1	2	2.5
Qantas	219	219	179	81.7	187	85.4	0	0.0
QantasLink	30	27	22	81.5	23	85.2	3	10.0
Tigerair Australia	44	44	38	86.4	37	84.1	0	0.0
Virgin Australia	172	169	119	70.4	134	79.3	3	1.7
All Airlines	546	538	408	75.8	434	80.7	8	1.5
Sydney-Albury								
QantasLink	99	99	78	78.8	80	80.8	0	0.0
Regional Express	112	109	83	76.1	84	77.1	3	2.7
Virgin Australia	62	61	45	73.8	48	78.7	1	1.6
All Airlines	273	269	206	76.6	212	78.8	4	1.5
Sydney-Armidale								
QantasLink	120	120	101	84.2	103	85.8	0	0.0
Regional Express	74	74	53	71.6	53	71.6	0	0.0
All Airlines	194	194	154	79.4	156	80.4	0	0.0
Sydney-Ayers Rock								
Jetstar	31	31	10	32.3	21	67.7	0	0.0
Virgin Australia	31	31	18	58.1	27	87.1	0	0.0
All Airlines	62	62	28	45.2	48	77.4	0	0.0

	Sectors		Arrivals On Time		Departures On Time		Cancellations	
	Sched.	Flown	No.	%	No.	%	No.	%
Sydney-Ballina								
Jetstar	84	84	68	81.0	71	84.5	0	0.0
Regional Express	26	26	17	65.4	16	61.5	0	0.0
Virgin Australia	31	30	26	86.7	26	86.7	1	3.2
All Airlines	141	140	111	79.3	113	80.7	1	0.7
Sydney-Brisbane								
Jetstar	168	157	124	79.0	118	75.2	11	6.5
Qantas	610	606	520	85.8	520	85.8	4	0.7
QantasLink	23	23	14	60.9	17	73.9	0	0.0
Tigerair Australia	100	96	78	81.3	77	80.2	4	4.0
Virgin Australia	546	531	425	80.0	425	80.0	15	2.7
All Airlines	1 447	1 413	1 161	82.2	1 157	81.9	34	2.3
Sydney-Cairns								
Jetstar	102	102	80	78.4	80	78.4	0	0.0
Qantas	88	88	73	83.0	74	84.1	0	0.0
Tigerair Australia	43	43	34	79.1	37	86.0	0	0.0
Virgin Australia	86	86	71	82.6	72	83.7	0	0.0
All Airlines	319	319	258	80.9	263	82.4	0	0.0
Sydney-Canberra								
Qantas	14	14	13	92.9	14	100.0	0	0.0
QantasLink	477	473	385	81.4	410	86.7	4	0.8
Virgin Australia	272	262	195	74.4	198	75.6	10	3.7
All Airlines	763	749	593	79.2	622	83.0	14	1.8
Sydney-Coffs Harbour								
QantasLink	131	131	100	76.3	94	71.8	0	0.0
Tigerair Australia	5	5	5	100.0	5	100.0	0	0.0
Virgin Australia	55	52	43	82.7	44	84.6	3	5.5
All Airlines	191	188	148	78.7	143	76.1	3	1.6
Sydney-Darwin								
Jetstar	22	22	16	72.7	18	81.8	0	0.0
Qantas	54	54	39	72.2	39	72.2	0	0.0
Virgin Australia	31	31	24	77.4	23	74.2	0	0.0
All Airlines	107	107	79	73.8	80	74.8	0	0.0
Sydney-Dubbo								
QantasLink	108	108	88	81.5	88	81.5	0	0.0
Regional Express	135	135	115	85.2	115	85.2	0	0.0
All Airlines	243	243	203	83.5	203	83.5	0	0.0
Sydney-Gold Coast								
Jetstar	285	278	225	80.9	214	77.0	7	2.5
Qantas	91	91	77	84.6	77	84.6	0	0.0
QantasLink	30	30	20	66.7	21	70.0	0	0.0
Tigerair Australia	92	91	70	76.9	74	81.3	1	1.1
Virgin Australia	254	249	195	78.3	197	79.1	5	2.0
All Airlines	752	739	587	79.4	583	78.9	13	1.7
Sydney-Hamilton Island								
Jetstar	31	31	27	87.1	27	87.1	0	0.0
Qantas	10	10	5	50.0	5	50.0	0	0.0
QantasLink	21	21	17	81.0	20	95.2	0	0.0
Virgin Australia	23	22	16	72.7	17	77.3	1	4.3
All Airlines	85	84	65	77.4	69	82.1	1	1.2

	<i>Sectors</i>		<i>Arrivals On Time</i>		<i>Departures On Time</i>		<i>Cancellations</i>	
	<i>Sched.</i>	<i>Flown</i>	<i>No.</i>	<i>%</i>	<i>No.</i>	<i>%</i>	<i>No.</i>	<i>%</i>
Sydney-Hobart								
Jetstar	58	58	41	70.7	42	72.4	0	0.0
Qantas	3	3	2	66.7	2	66.7	0	0.0
QantasLink	58	57	45	78.9	48	84.2	1	1.7
Virgin Australia	71	71	61	85.9	62	87.3	0	0.0
All Airlines	190	189	149	78.8	154	81.5	1	0.5
Sydney-Launceston								
Jetstar	27	27	24	88.9	23	85.2	0	0.0
Virgin Australia	33	33	29	87.9	27	81.8	0	0.0
All Airlines	60	60	53	88.3	50	83.3	0	0.0
Sydney-Melbourne								
Jetstar	341	313	236	75.4	252	80.5	28	8.2
Qantas	1 032	971	744	76.6	804	82.8	61	5.9
Tigerair Australia	251	234	152	65.0	167	71.4	17	6.8
Virgin Australia	779	742	542	73.0	597	80.5	37	4.7
All Airlines	2 403	2 260	1 674	74.1	1 820	80.5	143	6.0
Sydney-Perth								
Jetstar	22	21	14	66.7	13	61.9	1	4.5
Qantas	208	205	121	59.0	134	65.4	3	1.4
Tigerair Australia	23	23	14	60.9	16	69.6	0	0.0
Virgin Australia	120	120	60	50.0	87	72.5	0	0.0
All Airlines	373	369	209	56.6	250	67.8	4	1.1
Sydney-Port Macquarie								
QantasLink	98	97	70	72.2	73	75.3	1	1.0
Virgin Australia	58	57	41	71.9	38	66.7	1	1.7
All Airlines	156	154	111	72.1	111	72.1	2	1.3
Sydney-Proserpine								
Jetstar	14	14	12	85.7	13	92.9	0	0.0
Tigerair Australia	25	25	23	92.0	24	96.0	0	0.0
All Airlines	39	39	35	89.7	37	94.9	0	0.0
Sydney-Sunshine Coast								
Jetstar	93	91	63	69.2	61	67.0	2	2.2
QantasLink	35	35	30	85.7	29	82.9	0	0.0
Virgin Australia	50	50	37	74.0	37	74.0	0	0.0
All Airlines	178	176	130	73.9	127	72.2	2	1.1
Sydney-Tamworth								
QantasLink	122	122	89	73.0	96	78.7	0	0.0
Virgin Australia	54	51	37	72.5	37	72.5	3	5.6
All Airlines	176	173	126	72.8	133	76.9	3	1.7
Sydney-Townsville								
Jetstar	31	31	20	64.5	22	71.0	0	0.0
Virgin Australia	26	26	20	76.9	22	84.6	0	0.0
All Airlines	57	57	40	70.2	44	77.2	0	0.0
Sydney-Wagga Wagga								
QantasLink	98	96	80	83.3	77	80.2	2	2.0
Regional Express	140	139	118	84.9	121	87.1	1	0.7
All Airlines	238	235	198	84.3	198	84.3	3	1.3
Tamworth-Sydney								
QantasLink	122	120	100	83.3	104	86.7	2	1.6
Virgin Australia	54	51	42	82.4	43	84.3	3	5.6
All Airlines	176	171	142	83.0	147	86.0	5	2.8

	<i>Sectors</i>		<i>Arrivals On Time</i>		<i>Departures On Time</i>		<i>Cancellations</i>	
	<i>Sched.</i>	<i>Flown</i>	<i>No.</i>	<i>%</i>	<i>No.</i>	<i>%</i>	<i>No.</i>	<i>%</i>
Townsville-Brisbane								
Jetstar	62	61	47	77.0	44	72.1	1	1.6
Qantas	54	54	45	83.3	43	79.6	0	0.0
QantasLink	93	92	76	82.6	78	84.8	1	1.1
Virgin Australia	140	139	132	95.0	130	93.5	1	0.7
All Airlines	349	346	300	86.7	295	85.3	3	0.9
Townsville-Cairns								
QantasLink	140	139	125	89.9	124	89.2	1	0.7
Regional Express	14	13	12	92.3	11	84.6	1	7.1
All Airlines	154	152	137	90.1	135	88.8	2	1.3
Townsville-Sydney								
Jetstar	31	31	23	74.2	18	58.1	0	0.0
Virgin Australia	26	26	19	73.1	18	69.2	0	0.0
All Airlines	57	57	42	73.7	36	63.2	0	0.0
Wagga Wagga-Sydney								
QantasLink	98	96	77	80.2	76	79.2	2	2.0
Regional Express	143	141	116	82.3	119	84.4	2	1.4
All Airlines	241	237	193	81.4	195	82.3	4	1.7

Airports

On time performance is reported for all routes where the passenger load averages over 8000 passengers per month, and where two or more airlines operate in competition. The following data reports by airport against flights operated on those routes only. This month, 8 major city airports and 32 regional city airports are covered.

Airport	Arrivals			Departures		
	Sectors	On Time		Sectors	On Time	
	Flown	No.	%	Flown	No.	%
Adelaide						
Jetstar	243	174	71.6	243	169	69.5
Qantas	749	638	85.2	749	641	85.6
QantasLink	217	194	89.4	215	193	89.8
Regional Express	211	173	82.0	212	193	91.0
Tigerair Australia	138	102	73.9	138	89	64.5
Virgin Australia	654	483	73.9	652	538	82.5
Virgin Australia Regional Airlines	51	29	56.9	51	30	58.8
All Airlines	2 263	1 793	79.2	2 260	1 853	82.0
Relates to services to and from Alice Springs, Brisbane, Canberra, Gold Coast, Melbourne, Perth, Port Lincoln and Sydney.						
Albury						
QantasLink	99	78	78.8	99	78	78.8
Regional Express	109	83	76.1	106	96	90.6
Virgin Australia	61	45	73.8	61	46	75.4
All Airlines	269	206	76.6	266	220	82.7
Relates to services to and from Sydney only.						
Alice Springs						
Qantas	31	27	87.1	31	27	87.1
QantasLink	62	51	82.3	62	53	85.5
Virgin Australia	8	8	100.0	8	8	100.0
Virgin Australia Regional Airlines	37	20	54.1	37	24	64.9
All Airlines	138	106	76.8	138	112	81.2
Relates to services to and from Adelaide and Darwin.						
Armidale						
QantasLink	120	101	84.2	120	93	77.5
Regional Express	74	53	71.6	77	52	67.5
All Airlines	194	154	79.4	197	145	73.6
Relates to services to and from Sydney only.						
Ayers Rock						
Jetstar	31	10	32.3	31	3	9.7
Virgin Australia	31	18	58.1	31	11	35.5
All Airlines	62	28	45.2	62	14	22.6
Relates to services to and from Sydney only.						
Ballina						
Jetstar	84	68	81.0	84	56	66.7
Regional Express	26	17	65.4	25	17	68.0
Virgin Australia	30	26	86.7	30	25	83.3
All Airlines	140	111	79.3	139	98	70.5
Relates to services to and from Sydney only.						

Airport	Arrivals			Departures		
	Sectors	On Time		Sectors	On Time	
	Flown	No.	%	Flown	No.	%
Brisbane						
Jetstar	651	531	81.6	653	517	79.2
Qantas	1 398	1 237	88.5	1 399	1 291	92.3
QantasLink	1 157	963	83.2	1 163	1 011	86.9
Tigerair Australia	292	226	77.4	292	220	75.3
Virgin Australia	2 198	1 887	85.9	2 200	1 847	84.0
All Airlines	5 696	4 844	85.0	5 707	4 886	85.6

Relates to services to and from Adelaide, Bundaberg, Cairns, Canberra, Darwin, Emerald, Gladstone, Hamilton Island, Hobart, Mackay, Melbourne, Mount Isa, Newcastle, Perth, Proserpine, Rockhampton, Sydney and Townsville.

Broome

QantasLink	87	77	88.5	86	68	79.1
Virgin Australia	9	5	55.6	9	3	33.3
Virgin Australia Regional Airlines	71	48	67.6	71	42	59.2
All Airlines	167	130	77.8	166	113	68.1

Relates to services to and from Perth only.

Bundaberg

QantasLink	108	98	90.7	108	98	90.7
Virgin Australia	31	27	87.1	31	29	93.5
All Airlines	139	125	89.9	139	127	91.4

Relates to services to and from Brisbane only.

Cairns

Jetstar	322	260	80.7	322	269	83.5
Qantas	191	170	89.0	190	158	83.2
QantasLink	221	186	84.2	218	193	88.5
Regional Express	13	12	92.3	13	11	84.6
Tigerair Australia	114	84	73.7	114	70	61.4
Virgin Australia	247	213	86.2	246	189	76.8
All Airlines	1 108	925	83.5	1 103	890	80.7

Relates to services to and from Brisbane, Melbourne, Sydney and Townsville.

Canberra

Qantas	327	302	92.4	327	306	93.6
QantasLink	659	541	82.1	653	559	85.6
Tigerair Australia	52	38	73.1	52	35	67.3
Virgin Australia	562	432	76.9	565	443	78.4
All Airlines	1 600	1 313	82.1	1 597	1 343	84.1

Relates to services to and from Adelaide, Brisbane, Melbourne and Sydney.

Coffs Harbour

QantasLink	131	100	76.3	131	108	82.4
Tigerair Australia	5	5	100.0	5	4	80.0
Virgin Australia	52	43	82.7	51	44	86.3
All Airlines	188	148	78.7	187	156	83.4

Relates to services to and from Sydney only.

Airport	Arrivals			Departures		
	Sectors	On Time		Sectors	On Time	
	Flown	No.	%	Flown	No.	%
Darwin						
Jetstar	73	51	69.9	73	40	54.8
Qantas	173	137	79.2	172	99	57.6
QantasLink	62	52	83.9	62	57	91.9
Tigerair Australia	18	16	88.9	18	17	94.4
Virgin Australia	121	87	71.9	120	89	74.2
Virgin Australia Regional Airlines	25	15	60.0	25	15	60.0
All Airlines	472	358	75.8	470	317	67.4
Relates to services to and from Alice Springs, Brisbane, Melbourne, Perth and Sydney.						
Dubbo						
QantasLink	108	88	81.5	107	88	82.2
Regional Express	135	115	85.2	135	114	84.4
All Airlines	243	203	83.5	242	202	83.5
Relates to services to and from Sydney only.						
Emerald						
QantasLink	103	92	89.3	102	89	87.3
Virgin Australia	54	46	85.2	56	52	92.9
All Airlines	157	138	87.9	158	141	89.2
Relates to services to and from Brisbane only.						
Geraldton						
QantasLink	49	45	91.8	49	48	98.0
Virgin Australia Regional Airlines	52	34	65.4	50	32	64.0
All Airlines	101	79	78.2	99	80	80.8
Relates to services to and from Perth only.						
Gladstone						
QantasLink	132	122	92.4	131	114	87.0
Virgin Australia	77	71	92.2	77	70	90.9
All Airlines	209	193	92.3	208	184	88.5
Relates to services to and from Brisbane only.						
Gold Coast						
Jetstar	499	407	81.6	497	394	79.3
Qantas	122	102	83.6	121	104	86.0
QantasLink	30	20	66.7	30	20	66.7
Tigerair Australia	167	130	77.8	166	118	71.1
Virgin Australia	449	363	80.8	449	356	79.3
All Airlines	1 267	1 022	80.7	1 263	992	78.5
Relates to services to and from Adelaide, Melbourne and Sydney.						
Hamilton Island						
Jetstar	31	27	87.1	31	23	74.2
Qantas	10	5	50.0	10	4	40.0
QantasLink	41	34	82.9	40	30	75.0
Virgin Australia	53	41	77.4	53	42	79.2
All Airlines	135	107	79.3	134	99	73.9
Relates to services to and from Brisbane and Sydney.						

Airport	Arrivals			Departures		
	Sectors Flown	On Time		Sectors Flown	On Time	
		No.	%		No.	%
Hobart						
Jetstar	225	161	71.6	224	145	64.7
Qantas	115	98	85.2	115	100	87.0
QantasLink	57	45	78.9	56	46	82.1
Tigerair Australia	31	24	77.4	31	22	71.0
Virgin Australia	251	198	78.9	249	187	75.1
All Airlines	679	526	77.5	675	500	74.1
Relates to services to and from Brisbane, Melbourne and Sydney.						
Kalgoorlie						
Qantas	12	12	100.0	13	11	84.6
QantasLink	75	69	92.0	75	70	93.3
Virgin Australia	47	42	89.4	45	32	71.1
Virgin Australia Regional Airlines	29	23	79.3	29	25	86.2
All Airlines	163	146	89.6	162	138	85.2
Relates to services to and from Perth only.						
Karratha						
Qantas	9	9	100.0	9	8	88.9
QantasLink	181	149	82.3	180	152	84.4
Virgin Australia Regional Airlines	65	38	58.5	64	43	67.2
All Airlines	255	196	76.9	253	203	80.2
Relates to services to and from Perth only.						
Launceston						
Jetstar	111	85	76.6	111	77	69.4
QantasLink	108	92	85.2	108	101	93.5
Virgin Australia	127	92	72.4	126	101	80.2
All Airlines	346	269	77.7	345	279	80.9
Relates to services to and from Melbourne and Sydney.						
Mackay						
Jetstar	35	33	94.3	35	33	94.3
QantasLink	120	111	92.5	115	99	86.1
Virgin Australia	147	129	87.8	147	137	93.2
All Airlines	302	273	90.4	297	269	90.6
Relates to services to and from Brisbane only.						
Melbourne						
Jetstar	1 280	948	74.1	1 280	951	74.3
Qantas	2 331	1 917	82.2	2 327	1 950	83.8
QantasLink	247	220	89.1	249	221	88.8
Regional Express	87	71	81.6	87	79	90.8
Tigerair Australia	633	403	63.7	634	441	69.6
Virgin Australia	2 307	1 636	70.9	2 301	1 831	79.6
All Airlines	6 885	5 195	75.5	6 878	5 473	79.6
Relates to services to and from Adelaide, Brisbane, Cairns, Canberra, Darwin, Gold Coast, Hobart, Launceston, Mildura, Newcastle, Perth, Sunshine Coast and Sydney.						
Mildura						
QantasLink	96	81	84.4	95	81	85.3
Regional Express	87	72	82.8	87	76	87.4
Virgin Australia	31	22	71.0	31	26	83.9
All Airlines	214	175	81.8	213	183	85.9
Relates to services to and from Melbourne only.						

Airport	Arrivals			Departures		
	Sectors Flown	On Time		Sectors Flown	On Time	
		No.	%		No.	%
Mount Isa						
QantasLink	58	19	32.8	58	30	51.7
Virgin Australia	19	14	73.7	20	16	80.0
All Airlines	77	33	42.9	78	46	59.0
Relates to services to and from Brisbane only.						
Newcastle						
Jetstar	197	147	74.6	197	145	73.6
QantasLink	48	42	87.5	48	43	89.6
Virgin Australia	121	96	79.3	119	102	85.7
All Airlines	366	285	77.9	364	290	79.7
Relates to services to and from Brisbane and Melbourne.						
Newman						
Qantas	20	19	95.0	20	19	95.0
QantasLink	112	97	86.6	112	98	87.5
Virgin Australia	18	15	83.3	18	17	94.4
Virgin Australia Regional Airlines	22	18	81.8	23	18	78.3
All Airlines	172	149	86.6	173	152	87.9
Relates to services to and from Perth only.						
Perth						
Jetstar	76	62	81.6	76	52	68.4
Qantas	746	528	70.8	751	614	81.8
QantasLink	625	525	84.0	629	563	89.5
Tigerair Australia	63	31	49.2	62	37	59.7
Virgin Australia	539	326	60.5	543	419	77.2
Virgin Australia Regional Airlines	304	205	67.4	306	223	72.9
All Airlines	2 353	1 677	71.3	2 367	1 908	80.6
Relates to services to and from Adelaide, Brisbane, Broome, Darwin, Geraldton, Kalgoorlie, Karratha, Melbourne, Newman, Port Hedland and Sydney.						
Port Hedland						
Qantas	25	23	92.0	25	22	88.0
QantasLink	113	94	83.2	112	97	86.6
Virgin Australia	26	23	88.5	26	24	92.3
Virgin Australia Regional Airlines	28	23	82.1	28	21	75.0
All Airlines	192	163	84.9	191	164	85.9
Relates to services to and from Perth only.						
Port Lincoln						
QantasLink	112	104	92.9	112	104	92.9
Regional Express	212	171	80.7	211	183	86.7
All Airlines	324	275	84.9	323	287	88.9
Relates to services to and from Adelaide only.						
Port Macquarie						
QantasLink	97	70	72.2	97	72	74.2
Virgin Australia	57	41	71.9	56	36	64.3
All Airlines	154	111	72.1	153	108	70.6
Relates to services to and from Sydney only.						

Airport	Arrivals			Departures		
	Sectors Flown	On Time		Sectors Flown	On Time	
		No.	%		No.	%
Proserpine						
Jetstar	45	42	93.3	44	41	93.2
Tigerair Australia	25	23	92.0	25	22	88.0
Virgin Australia	31	30	96.8	31	28	90.3
All Airlines	101	95	94.1	100	91	91.0
Relates to services to and from Brisbane and Sydney.						
Rockhampton						
QantasLink	174	139	79.9	178	150	84.3
Virgin Australia	143	119	83.2	143	123	86.0
All Airlines	317	258	81.4	321	273	85.0
Relates to services to and from Brisbane only.						
Sunshine Coast						
Jetstar	182	142	78.0	182	112	61.5
QantasLink	35	30	85.7	35	32	91.4
Virgin Australia	114	90	78.9	113	55	48.7
All Airlines	331	262	79.2	330	199	60.3
Relates to services to and from Melbourne and Sydney.						
Sydney						
Jetstar	1 336	997	74.6	1 339	1 028	76.8
Qantas	2 261	1 881	83.2	2 261	1 856	82.1
QantasLink	1 431	1 153	80.6	1 439	1 179	81.9
Regional Express	484	388	80.2	483	389	80.5
Tigerair Australia	560	412	73.6	561	437	77.9
Virgin Australia	2 666	2 109	79.1	2 674	2 118	79.2
All Airlines	8 738	6 940	79.4	8 757	7 007	80.0
Relates to services to and from Adelaide, Albury, Armidale, Ayers Rock, Ballina, Brisbane, Cairns, Canberra, Coffs Harbour, Darwin, Dubbo, Gold Coast, Hamilton Island, Hobart, Launceston, Melbourne, Perth, Port Macquarie, Proserpine, Sunshine Coast, Tamworth, Townsville and Wagga Wagga.						
Tamworth						
QantasLink	122	89	73.0	120	104	86.7
Virgin Australia	51	37	72.5	51	43	84.3
All Airlines	173	126	72.8	171	147	86.0
Relates to services to and from Sydney only.						
Townsville						
Jetstar	93	70	75.3	92	62	67.4
Qantas	54	47	87.0	54	43	79.6
QantasLink	228	199	87.3	231	202	87.4
Regional Express	13	11	84.6	13	11	84.6
Virgin Australia	165	141	85.5	165	148	89.7
All Airlines	553	468	84.6	555	466	84.0
Relates to services to and from Brisbane, Cairns and Sydney.						
Wagga Wagga						
QantasLink	96	80	83.3	96	76	79.2
Regional Express	139	118	84.9	141	119	84.4
All Airlines	235	198	84.3	237	195	82.3
Relates to services to and from Sydney only.						

Definitions

On time arrival	A flight arrival is counted as "on time" if it arrived at the gate before 15 minutes after the scheduled arrival time shown in the carriers' schedule. Neither diverted nor cancelled flights count as on time.
On time departure	A flight departure is counted as "on time" if it departs the gate before 15 minutes after the scheduled departure time shown in the carriers' schedule.
Cancellation	A flight removed from service within 7 days of scheduled departure is regarded as a cancellation.
On time departure percentage	The percentage of on time departures is measured against the number of departures <i>operated</i> on any particular sector.
On time arrival percentage	The percentage of on time arrivals is measured against the number of arrivals <i>operated</i> on any particular sector.
Cancellation percentage	The percentage of cancellations is measured against the number of services <i>scheduled</i> on any particular sector.
