



Australian Government

Department of Infrastructure, Transport,
Regional Development and Local Government
Bureau of Infrastructure, Transport and Regional Economics



bitre

AVIATION STATISTICS

Airline
On Time Performance

2008—OTP 69

© Commonwealth of Australia 2009

ISSN 1832-0759

This work is copyright and the data contained in this publication should not be reproduced or used in any form without acknowledgement.

Enquiries

Bureau of Infrastructure, Transport and Regional Economics
GPO Box 501
Canberra ACT 2601

Telephone: 02 6274 7790

Facsimile: 02 6274 7727

Website: www.bitre.gov.au

Email: avstats@infrastructure.gov.au

This publication, including a spreadsheet of the time-series data, can be downloaded from the BITRE website:

<http://www.bitre.gov.au/info.aspx?ResourceId=214&NodeId=104>.

Disclaimers

BITRE seeks to publish its work to the highest professional standards. However, it cannot accept responsibility for any consequences arising from the use of information herein. Readers should rely on their own skill and judgment in applying any information or analysis to particular issues or circumstances.

Foreword

The Bureau of Infrastructure, Transport and Regional Economics (BITRE) monitors the punctuality and reliability of major domestic airlines operating between Australian airports. The purpose of this is to allow for evaluation of overall industry and individual airline performance, so that consumers of air travel can make informed decisions.

The following domestic airlines report this data monthly to the BITRE: Jetstar, MacAir, Qantas, QantasLink, Regional Express, Skywest Airlines, Tiger Airways, and Virgin Blue. Data has been gathered since November 2003, although some airlines commenced reporting since then, including Jetstar which first reported in May 2004, MacAir in July 2005 and Tiger Airways in April 2008. MacAir ceased operations in February 2009 and data was not received for December 2008 or January 2009.

Information presented in this report is for Australian domestic routes for which the passenger load averaged 8000 or more passengers per month over the previous six months, *and* where two or more airlines operated in competition on those routes. 43 routes met these criteria for all twelve months in 2008, plus another 9 routes did so for a shorter period of the year. Over time, routes which meet these criteria change as airline networks and traffic levels vary.

Participating airlines report their overall monthly network performance where this is possible. An exception is MacAir, which supplied total network data because it did not operate on competitive routes.

Total industry figures encompass all services operated by reporting airlines only. These airlines collectively carried over 95 per cent of total domestic passengers (regular public transport only) in 2008.

The method of capturing on time performance varies between airlines utilising different recording systems. Jetstar and Qantas jet aircraft use Aircraft Communication Addressing and Reporting System (ACARS) to electronically measure on time performance. MacAir, Regional Express, Skywest, Tiger Airways, Virgin Blue and the Qantas non-jet fleet record on time performance manually using records from pilots, gate agents and/or ground crews.

After initial data is collected, aggregate reports are audited internally by participating airlines prior to publication.

Information on the total network for the year ended December 2008 is presented on Page 1.

On time performance reporting was provided for 52 different routes covering 32 airports for 2008. Detailed information on the performance of these routes is included in the tables beginning on Page 9, while detailed information on performance by airport is included from Page 21. The definitions can be found on Page 27.

Reports and detailed time series data in Microsoft Excel spreadsheet format are available from the BITRE website at:
<http://www.bitre.gov.au/info.aspx?ResourceId=214&NodeId=104>.

Contents

	Page
Industry performance	1
Individual routes	9
Airports	21
Definitions.....	27

Industry performance

For the year ended December 2008, on time performance over all routes operated by participating airlines (Jetstar, MacAir, Qantas, QantasLink, Regional Express, Skywest Airlines, Tiger Airways and Virgin Blue) averaged 79.1 per cent for on time departures, and 77.1 per cent for on time arrivals. Cancellations for 2008 represented 2.1 per cent of all scheduled flights. The equivalent figures for the year ended December 2007 were 83.7 per cent for departures, 82.2 per cent for arrivals and 1.2 per cent for cancellations.

The long term average performance for all routes since reporting commenced in November 2003 is 84.9 per cent for on time departures and 83.6 per cent for on time arrivals. Cancellations average 1.2 per cent of all scheduled flights. However, as shown in Figure 1, there has been a noticeable decrease in airline on time performance since June 2007. Whereas on time arrivals and on time departures tracked around 87 per cent before June 2007, they have since been below 80 per cent. Similarly, except for one or two occasions, there has been a steady increase in the number of cancellations since December 2006 (Figure 2 refers).

Of the major domestic airlines, Tiger Airways achieved the highest level of on time departures for 2008 at 82.7 per cent, followed by Virgin Blue at 79.3 per cent, Qantas at 77.1 per cent and Jetstar at 76.2 per cent. The regional airlines were led by QantasLink at 81.8 per cent, Regional Express at 80.8 per cent, Skywest at 80.1 per cent and MacAir at 79.2 per cent.

Tiger Airways also achieved the highest on time arrivals among the major domestic airlines at 83.5 per cent, trailed by Qantas at 77.2 per cent, Virgin Blue at 75.9 per cent and Jetstar at 74.9 per cent. MacAir was the best performing regional airline for on time arrivals at 80.5 per cent, followed by QantasLink at 79.5 per cent, Skywest at 79.4 per cent and Regional Express at 75.9 per cent.

MacAir had the highest percentage of cancellations for 2008 at 7.7 per cent, while Tiger Airways had the lowest at 0.4 per cent.

Of the 43 routes which met the criteria for on time performance reporting for all twelve months in 2008, the Canberra-Adelaide route had the highest percentage of on time departures (89.2 per cent), while the Perth-Brisbane route had the lowest (62.8 per cent). On time arrivals were highest on the Canberra-Adelaide route (87.9 per cent) and lowest on the Ballina-Sydney route (58.7 per cent).

Cancellations were highest on the Melbourne-Sydney route at 6.1 per cent, followed by Sydney-Melbourne at 6.0 per cent, Sydney-Brisbane at 5.0 per cent, Brisbane-Sydney at 4.9 per cent and Perth-Kalgoorlie at 2.7 per cent.

Townsville Airport recorded the highest percentage of on time departures (86.1 per cent), while Darwin recorded the lowest (69.7 per cent). Hamilton Island Airport recorded the highest percentage of on time arrivals (86.6 per cent), while Wagga Wagga Airport recorded the lowest (61.4 per cent).

Table 1 On time performance for the year ended December 2008 — Total Industry

	<i>Sectors</i>		<i>Departures On Time</i>		<i>Arrivals On Time</i>		<i>Cancellations</i>	
	<i>Scheduled</i>	<i>Flown</i>	<i>No.</i>	<i>%</i>	<i>No.</i>	<i>%</i>	<i>No.</i>	<i>%</i>
Jetstar	59 566	58 982	44 972	76.2	44 203	74.9	584	1.0
MacAir	12 371	11 424	9 050	79.2	9 200	80.5	947	7.7
Qantas	126 178	122 385	94 349	77.1	94 457	77.2	3 793	3.0
QantasLink	92 352	91 265	74 629	81.8	72 519	79.5	1 087	1.2
Regional Express	64 733	63 994	51 686	80.8	48 561	75.9	739	1.1
Skywest	13 189	13 039	10 438	80.1	10 349	79.4	150	1.1
Tiger Airways	7 182	7 152	5 913	82.7	5 975	83.5	30	0.4
Virgin Blue	134 145	130 970	103 864	79.3	99 422	75.9	3 175	2.4
All Airlines	509 716	499 211	394 901	79.1	384 686	77.1	10 505	2.1

1. Total airline network data (including routes not shown in this report).
2. Tiger Airways began reporting in April 2008.
3. No data received from MacAir for December 2008. Operations ceased in February 2009.

Table 2 Top ten routes for on time performance for the year ended December 2008 (covers participating airlines only and routes reported for all twelve months)

<i>Departures</i>		<i>Arrivals</i>	
<i>Route</i>	<i>On Time (%)</i>	<i>Route</i>	<i>On Time (%)</i>
Canberra-Adelaide	89.2	Canberra-Adelaide	87.9
Canberra-Melbourne	87.2	Brisbane-Hamilton Island	86.6
Brisbane-Hamilton Island	86.7	Townsville-Brisbane	86.4
Sydney-Townsville	86.6	Hamilton Island-Brisbane	85.3
Townsville-Brisbane	86.3	Melbourne-Canberra	85.2
Hamilton Island-Brisbane	85.6	Sydney-Townsville	85.1
Melbourne-Mildura	85.5	Canberra-Melbourne	85.0
Canberra-Brisbane	84.9	Mildura-Melbourne	84.8
Mildura-Melbourne	84.8	Adelaide-Melbourne	84.2
Townsville-Sydney	84.5	Cairns-Brisbane	83.8

Table 3 Top ten airports for on time performance for the year ended December 2008 (covers participating airlines only and routes reported for all twelve months)

<i>Departures</i>		<i>Arrivals</i>	
<i>Airport</i>	<i>On Time (%)</i>	<i>Airport</i>	<i>On Time (%)</i>
Townsville	86.1	Hamilton Island	86.6
Hamilton Island	85.6	Mildura	82.5
Mildura	84.8	Townsville	82.1
Canberra	84.0	Canberra	80.2
Hobart	82.8	Hervey Bay	80.2
Adelaide	82.4	Adelaide	79.8
Cairns	80.7	Brisbane	78.4
Mackay	80.0	Rockhampton	78.4
Brisbane	79.8	Cairns	77.7
Rockhampton	79.6	Maroochydore	77.7

Total industry on time performance

Figure 1 On time performance (by month from December 2003)—Total Industry

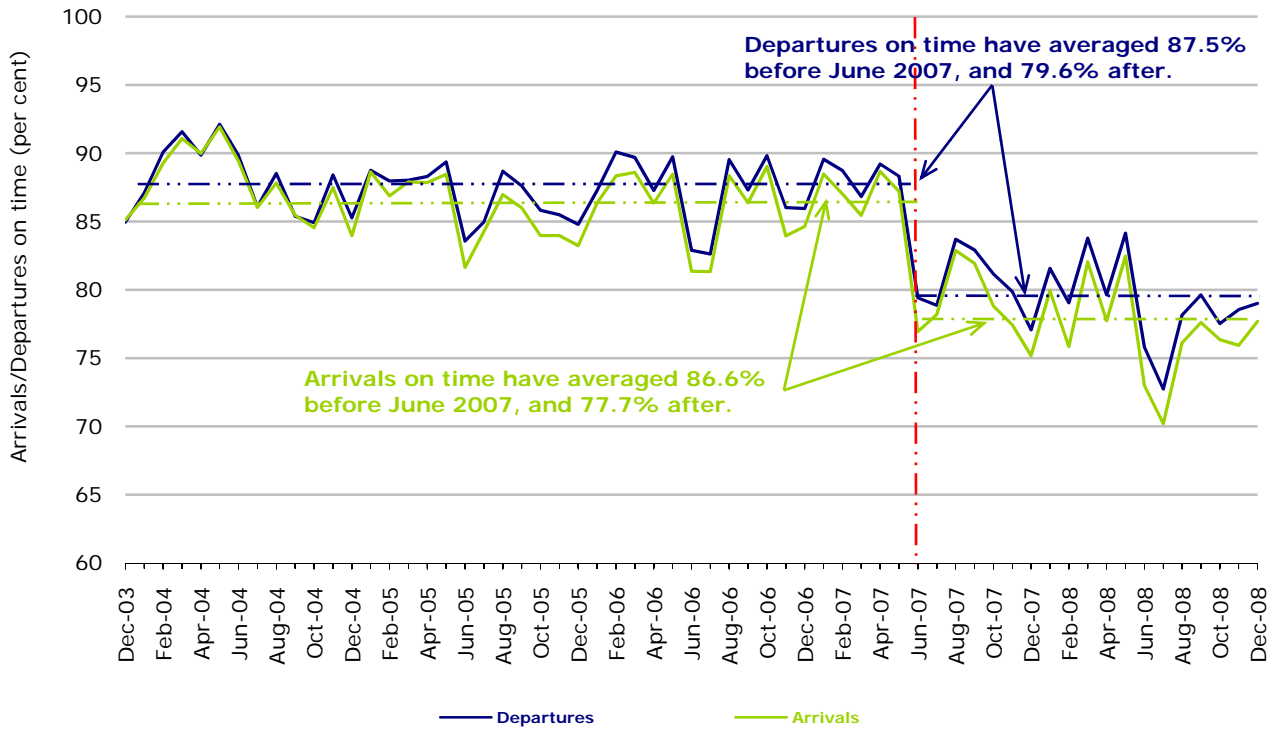
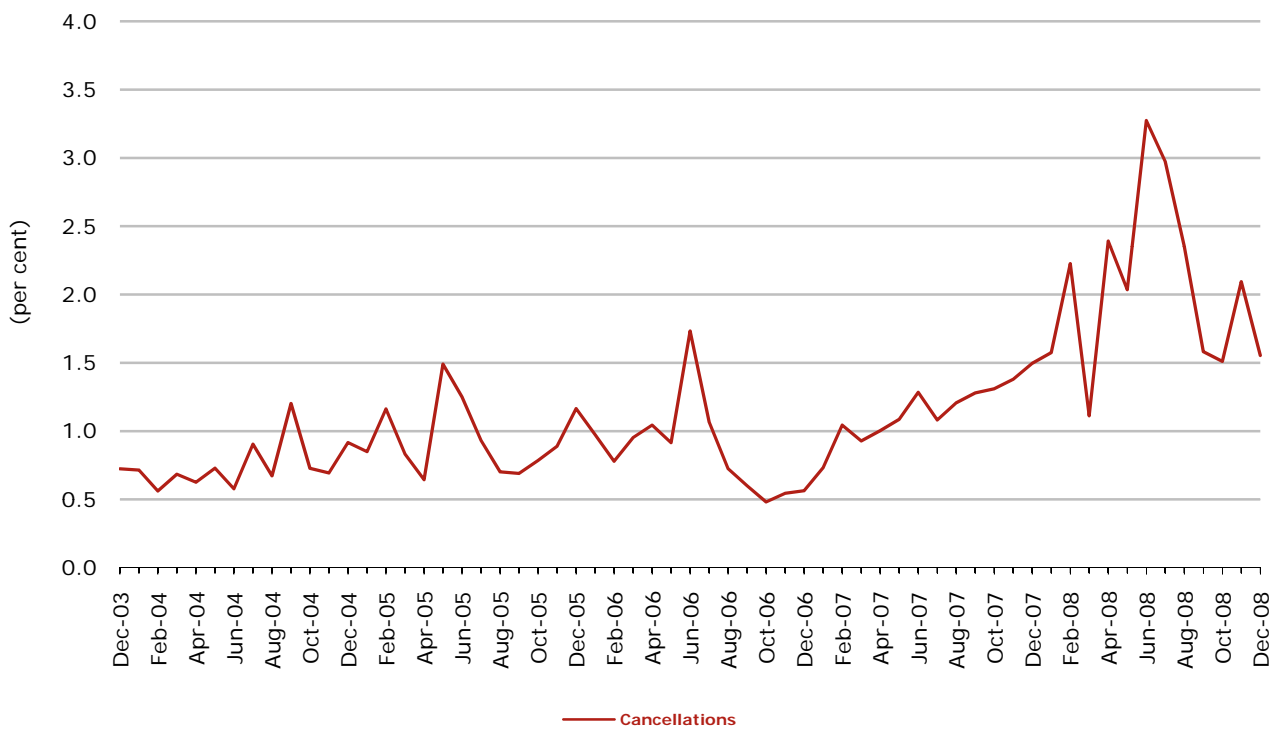
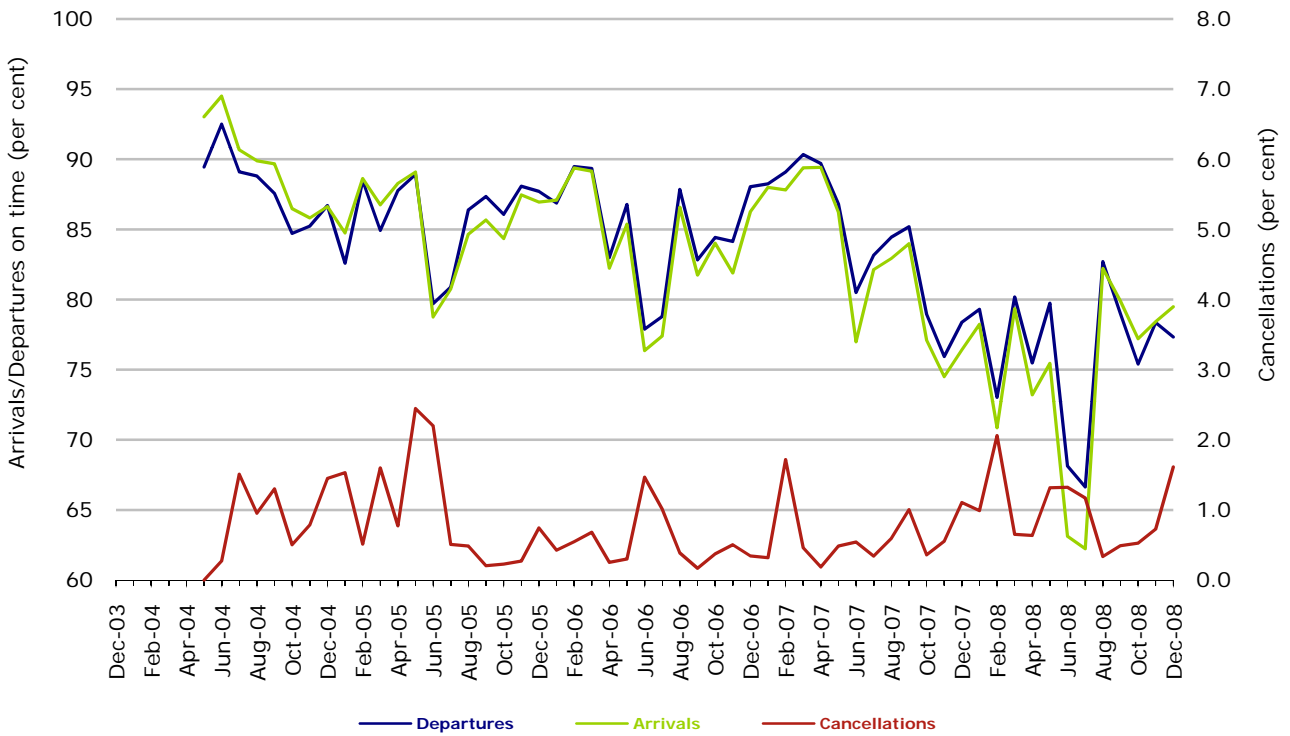


Figure 2 Cancellations (by month from December 2003)—Total Industry



Major domestic airlines on time performance

Figure 3 On time performance (by month from December 2003)—Jetstar



Jetstar commenced reporting in May 2004.

Figure 4 On time performance (by month from December 2003)—Qantas

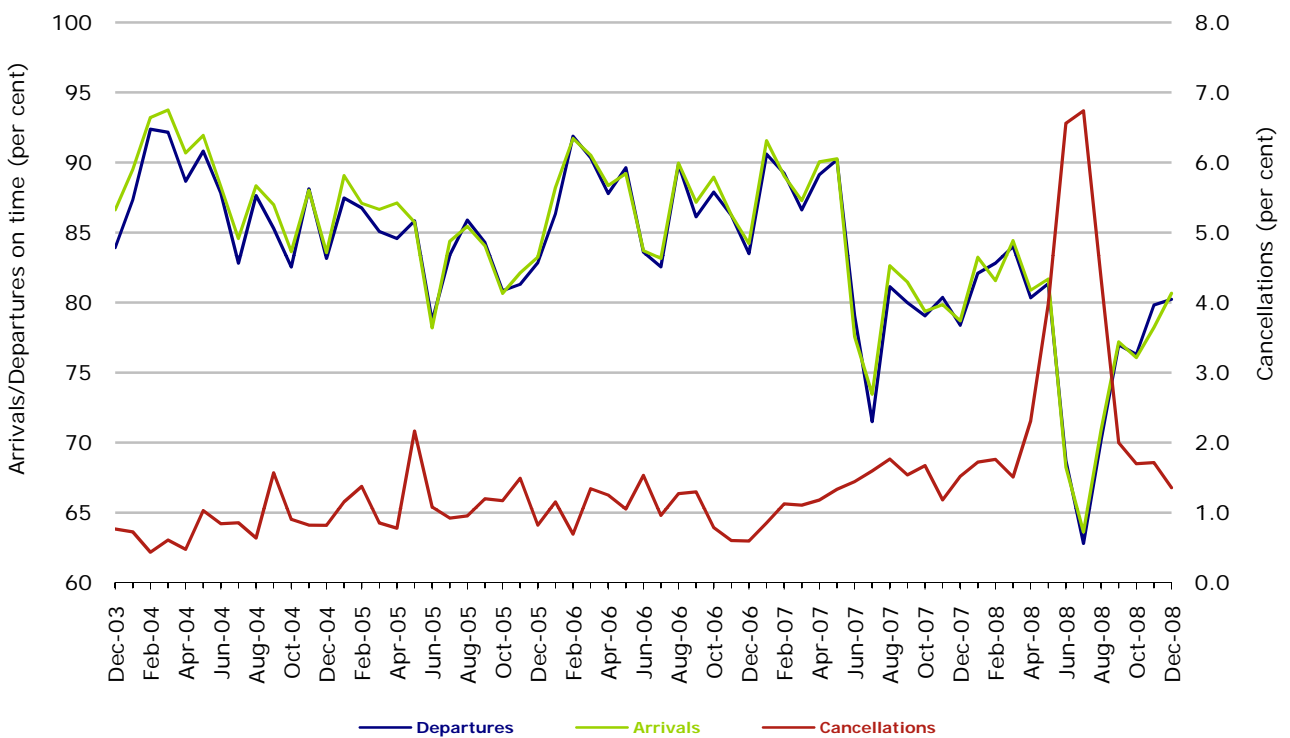
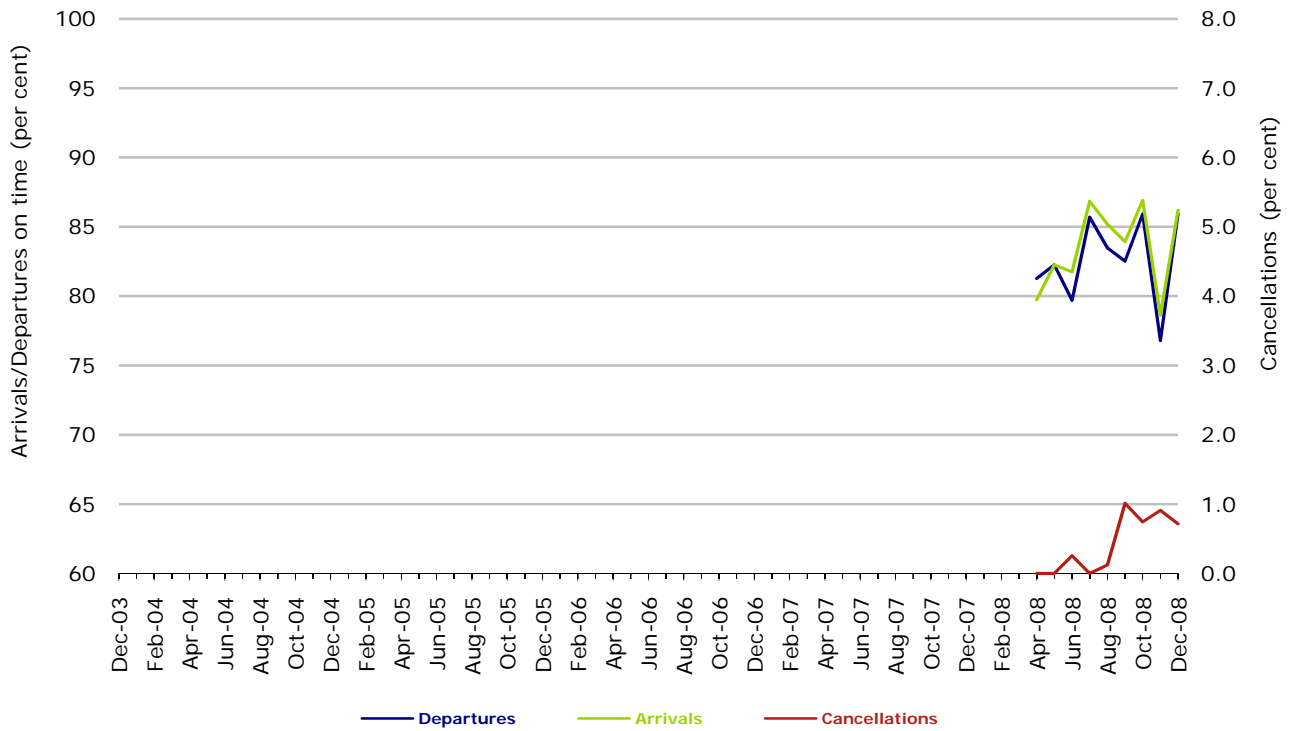
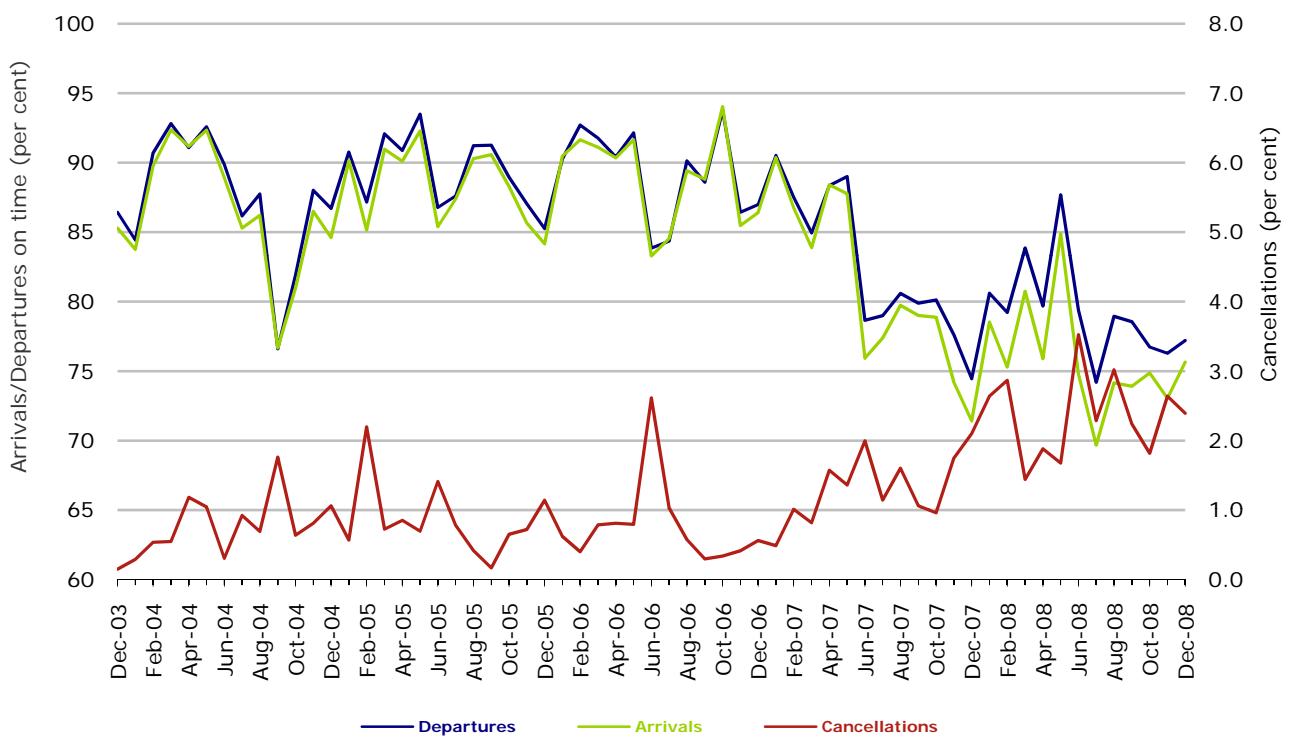


Figure 5 On time performance (by month from December 2003)—Tiger Airways



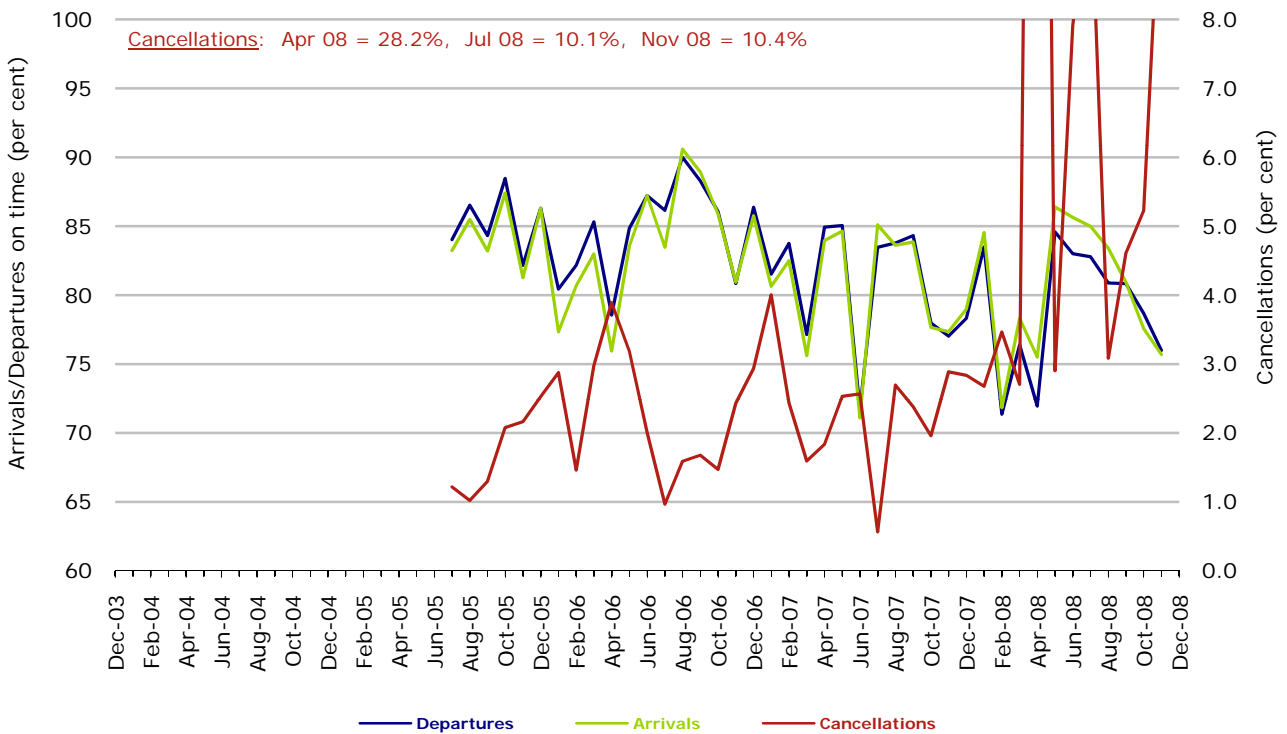
Tiger Airways commenced reporting in April 2008.

Figure 6 On time performance (by month from December 2003)—Virgin Blue



Major regional airlines on time performance

Figure 7 On time performance (by month from December 2003)—MacAir



MacAir commenced reporting in July 2005. No data received for December 2008. Operations ceased in February 2009.

Figure 8 On time performance (by month from December 2003)—QantasLink

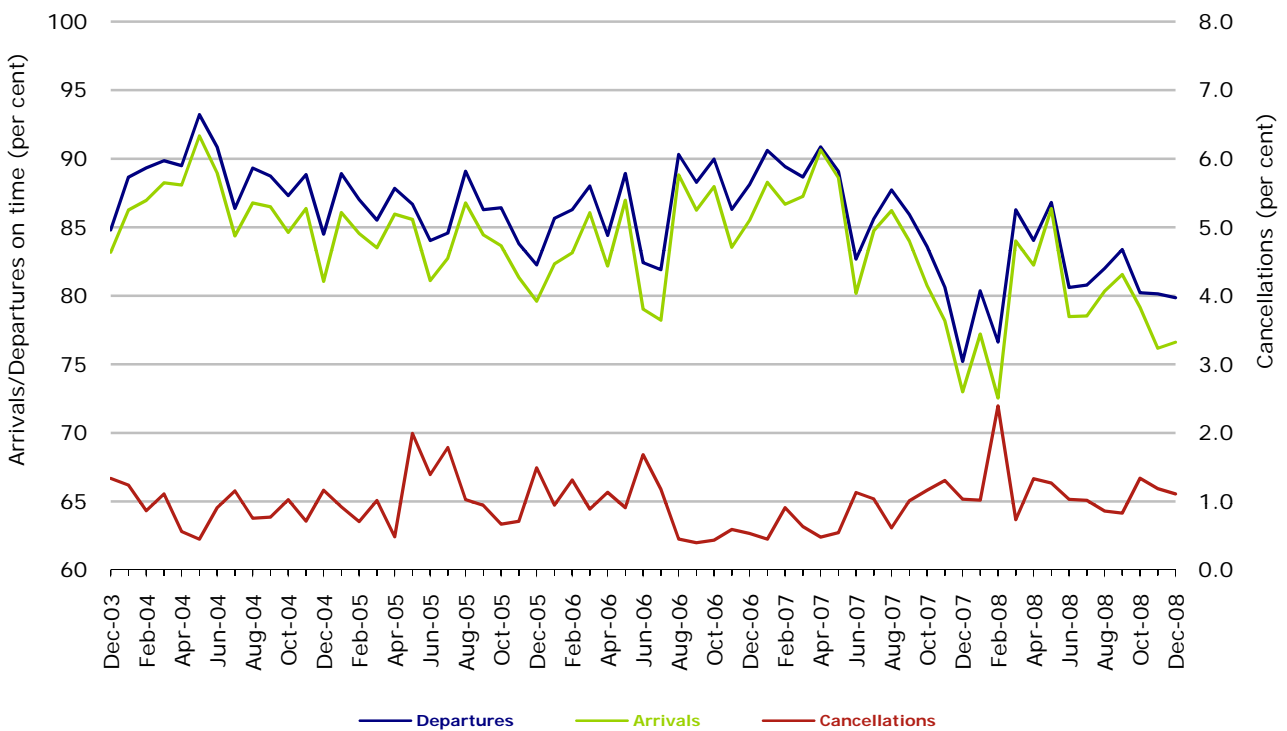


Figure 9 On time performance (by month from December 2003)—Regional Express

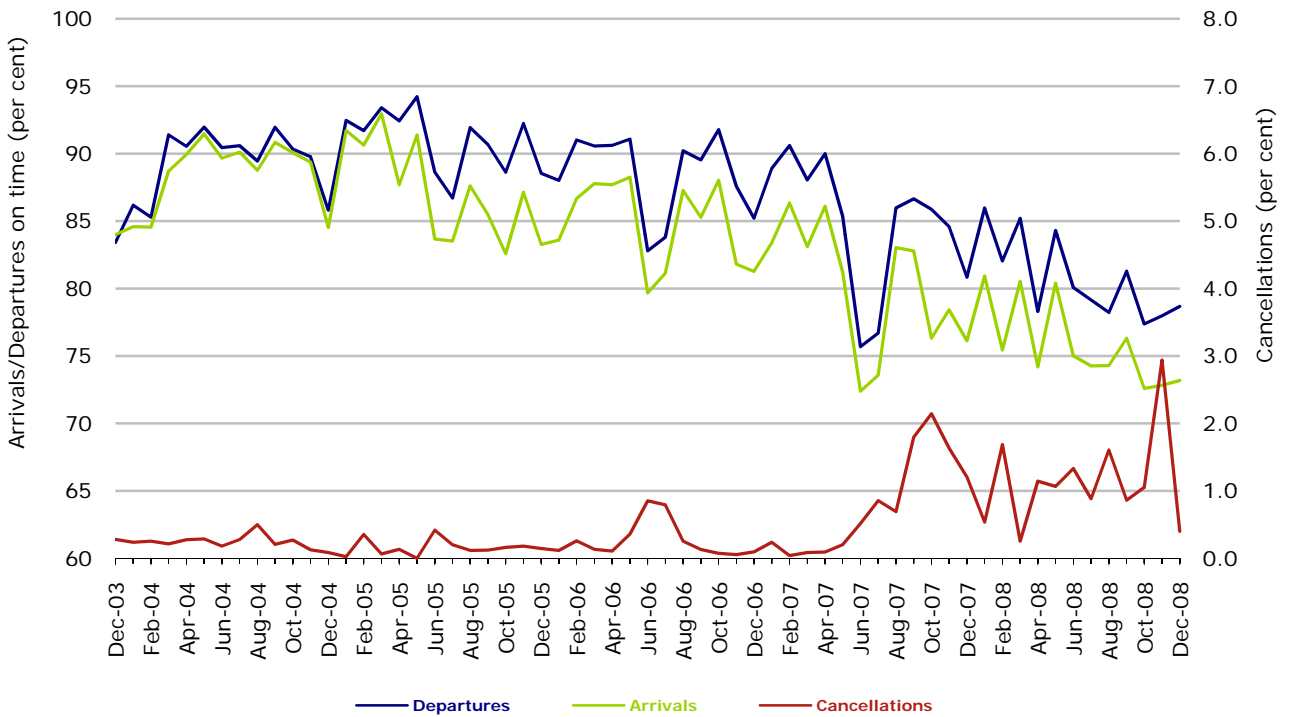
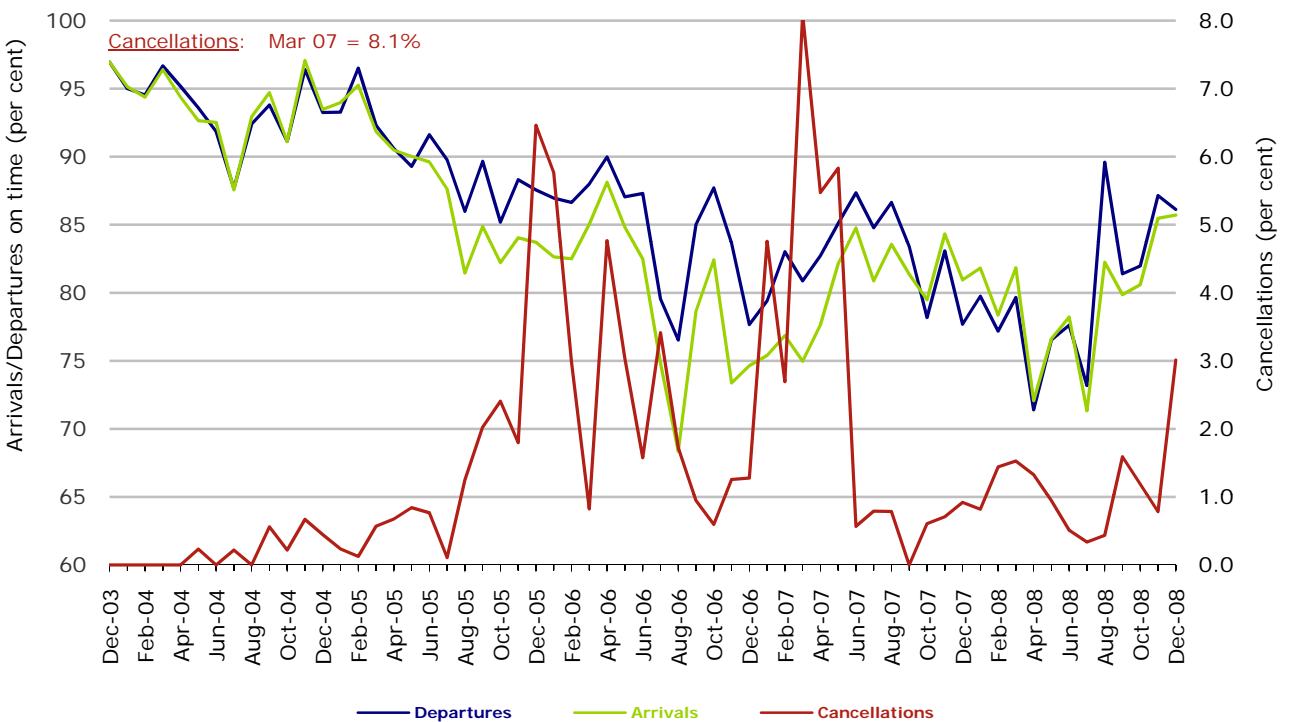


Figure 10 On time performance (by month from December 2003)—Skywest



Individual routes

On time performance is reported for all routes where the passenger load averages over 8000 passengers per month over the previous six months, and where two or more airlines operate in competition on those routes. 43 routes met these criteria for all twelve months in 2008, plus another nine routes did so for a shorter period of the year. Over time, however, routes which meet this definition may change as airline networks and traffic levels vary.

	<i>Sectors</i>		<i>Departures On Time</i>		<i>Arrivals On Time</i>		<i>Cancellations</i>	
	<i>Sched.</i>	<i>Flown</i>	<i>No.</i>	<i>%</i>	<i>No.</i>	<i>%</i>	<i>No.</i>	<i>%</i>
Adelaide-Brisbane								
Jetstar	349	342	253	74.0	265	77.5	7	2.0
Qantas	1,049	1,045	902	86.3	888	85.0	4	0.4
Virgin Blue	1,260	1,239	902	72.8	932	75.2	21	1.7
All Airlines	2,658	2,626	2,057	78.3	2,085	79.4	32	1.2
Adelaide-Canberra								
Qantas	549	547	462	84.5	469	85.7	2	0.4
Virgin Blue	367	362	263	72.7	265	73.2	5	1.4
All Airlines	916	909	725	79.8	734	80.7	7	0.8
Adelaide-Gold Coast								
Jetstar	363	363	298	82.1	296	81.5	0	0.0
Virgin Blue	367	364	308	84.6	296	81.3	3	0.8
All Airlines	730	727	606	83.4	592	81.4	3	0.4
Adelaide-Melbourne								
Qantas	4,427	4,312	3,701	85.8	3,705	85.9	115	2.6
Tiger Airways	608	600	465	77.5	485	80.8	8	1.3
Virgin Blue	3,257	3,197	2,661	83.2	2,636	82.5	60	1.8
All Airlines	8,292	8,109	6,827	84.2	6,826	84.2	183	2.2
Adelaide-Perth								
Qantas	1,726	1,718	1,387	80.7	1,460	85.0	8	0.5
Virgin Blue	595	588	503	85.5	427	72.6	7	1.2
All Airlines	2,321	2,306	1,890	82.0	1,887	81.8	15	0.6
Adelaide-Sydney								
Jetstar	540	533	439	82.4	434	81.4	7	1.3
Qantas	3,805	3,748	3,159	84.3	3,112	83.0	57	1.5
Virgin Blue	1,829	1,814	1,417	78.1	1,450	79.9	15	0.8
All Airlines	6,174	6,095	5,015	82.3	4,996	82.0	79	1.3
Albury-Sydney								
QantasLink	1,369	1,365	1,011	74.1	1,018	74.6	4	0.3
Regional Express	1,383	1,360	983	72.3	962	70.7	23	1.7
Virgin Blue	626	610	429	70.3	387	63.4	16	2.6
All Airlines	3,378	3,335	2,423	72.7	2,367	71.0	43	1.3

	<i>Sectors</i>		<i>Departures On Time</i>		<i>Arrivals On Time</i>		<i>Cancellations</i>	
	<i>Sched.</i>	<i>Flown</i>	<i>No.</i>	<i>%</i>	<i>No.</i>	<i>%</i>	<i>No.</i>	<i>%</i>
Alice Springs-Melbourne	(April to December 2008 only)							
Qantas	275	275	174	63.3	193	70.2	0	0.0
Tiger Airways	120	120	94	78.3	97	80.8	0	0.0
All Airlines	395	395	268	67.8	290	73.4	0	0.0
Ballina-Sydney								
Jetstar	360	360	258	71.7	236	65.6	0	0.0
Regional Express	1,082	1,060	640	60.4	551	52.0	22	2.0
Virgin Blue	414	404	310	76.7	284	70.3	10	2.4
All Airlines	1,856	1,824	1,208	66.2	1,071	58.7	32	1.7
Brisbane-Adelaide								
Jetstar	350	342	287	83.9	279	81.6	8	2.3
Qantas	1,050	1,047	868	82.9	900	86.0	3	0.3
Virgin Blue	1,266	1,244	1,005	80.8	860	69.1	22	1.7
All Airlines	2,666	2,633	2,160	82.0	2,039	77.4	33	1.2
Brisbane-Cairns								
Jetstar	1,140	1,126	784	69.6	807	71.7	14	1.2
Qantas	1,464	1,463	1,168	79.8	1,251	85.5	1	0.1
Virgin Blue	1,613	1,610	1,386	86.1	1,350	83.9	3	0.2
All Airlines	4,217	4,199	3,338	79.5	3,408	81.2	18	0.4
Brisbane-Canberra								
Qantas	1,682	1,674	1,378	82.3	1,447	86.4	8	0.5
QantasLink	129	127	114	89.8	117	92.1	2	1.6
Virgin Blue	1,588	1,551	1,297	83.6	1,203	77.6	37	2.3
All Airlines	3,399	3,352	2,789	83.2	2,767	82.5	47	1.4
Brisbane-Darwin								
Jetstar	342	339	251	74.0	233	68.7	3	0.9
Qantas	367	367	283	77.1	294	80.1	0	0.0
Virgin Blue	369	366	264	72.1	267	73.0	3	0.8
All Airlines	1,078	1,072	798	74.4	794	74.1	6	0.6
Brisbane-Hamilton Island								
Jetstar	366	366	300	82.0	312	85.2	0	0.0
Virgin Blue	366	365	334	91.5	321	87.9	1	0.3
All Airlines	732	731	634	86.7	633	86.6	1	0.1
Brisbane-Hobart	(January to June 2008 only)							
Jetstar	78	78	51	65.4	48	61.5	0	0.0
Virgin Blue	216	216	191	88.4	194	89.8	0	0.0
All Airlines	294	294	242	82.3	242	82.3	0	0.0
Brisbane-Mackay								
Jetstar	1,092	1,084	854	78.8	861	79.4	8	0.7
QantasLink	595	590	464	78.6	441	74.7	5	0.8
Virgin Blue	1,582	1,567	1,265	80.7	1,166	74.4	15	0.9
All Airlines	3,269	3,241	2,583	79.7	2,468	76.1	28	0.9

	<i>Sectors</i>		<i>Departures On Time</i>		<i>Arrivals On Time</i>		<i>Cancellations</i>	
	<i>Sched.</i>	<i>Flown</i>	<i>No.</i>	<i>%</i>	<i>No.</i>	<i>%</i>	<i>No.</i>	<i>%</i>
Brisbane-Melbourne								
Qantas	5,402	5,260	4,262	81.0	4,374	83.2	142	2.6
Virgin Blue	4,178	4,124	3,535	85.7	3,304	80.1	54	1.3
All Airlines	9,580	9,384	7,797	83.1	7,678	81.8	196	2.0
Brisbane-Newcastle								
Jetstar	1,286	1,286	923	71.8	977	76.0	0	0.0
QantasLink	377	363	294	81.0	245	67.5	14	3.7
Virgin Blue	588	587	493	84.0	483	82.3	1	0.2
All Airlines	2,251	2,236	1,710	76.5	1,705	76.3	15	0.7
Brisbane-Perth								
Qantas	1,478	1,478	1,002	67.8	1,026	69.4	0	0.0
Virgin Blue	559	559	430	76.9	299	53.5	0	0.0
All Airlines	2,037	2,037	1,432	70.3	1,325	65.0	0	0.0
Brisbane-Proserpine								
Jetstar	366	356	244	68.5	262	73.6	10	2.7
Virgin Blue	372	368	294	79.9	273	74.2	4	1.1
All Airlines	738	724	538	74.3	535	73.9	14	1.9
Brisbane-Rockhampton								
Jetstar	366	366	298	81.4	299	81.7	0	0.0
QantasLink	1,865	1,851	1,512	81.7	1,500	81.0	14	0.8
Virgin Blue	1,557	1,543	1,198	77.6	1,147	74.3	14	0.9
All Airlines	3,788	3,760	3,008	80.0	2,946	78.4	28	0.7
Brisbane-Sydney								
Qantas	8,098	7,688	5,763	75.0	5,317	69.2	410	5.1
Virgin Blue	7,247	6,911	5,682	82.2	5,182	75.0	336	4.6
All Airlines	15,345	14,599	11,445	78.4	10,499	71.9	746	4.9
Brisbane-Townsville								
Jetstar	546	533	412	77.3	428	80.3	13	2.4
Qantas	1,882	1,873	1,485	79.3	1,546	82.5	9	0.5
Virgin Blue	1,546	1,542	1,297	84.1	1,246	80.8	4	0.3
All Airlines	3,974	3,948	3,194	80.9	3,220	81.6	26	0.7
Broome-Perth								
Qantas	335	331	189	57.1	208	62.8	4	1.2
QantasLink	528	525	424	80.8	420	80.0	3	0.6
Skywest	340	331	236	71.3	210	63.4	9	2.6
Virgin Blue	384	369	199	53.9	216	58.5	15	3.9
All Airlines	1,587	1,556	1,048	67.4	1,054	67.7	31	2.0
Cairns-Brisbane								
Jetstar	1,143	1,129	884	78.3	837	74.1	14	1.2
Qantas	1,463	1,461	1,252	85.7	1,296	88.7	2	0.1
Virgin Blue	1,614	1,609	1,389	86.3	1,386	86.1	5	0.3
All Airlines	4,220	4,199	3,525	83.9	3,519	83.8	21	0.5

	<i>Sectors</i>		<i>Departures On Time</i>		<i>Arrivals On Time</i>		<i>Cancellations</i>	
	<i>Sched.</i>	<i>Flown</i>	<i>No.</i>	<i>%</i>	<i>No.</i>	<i>%</i>	<i>No.</i>	<i>%</i>
Cairns-Melbourne								
Jetstar	503	498	398	79.9	353	70.9	5	1.0
Qantas	361	355	218	61.4	263	74.1	6	1.7
Virgin Blue	768	766	582	76.0	535	69.8	2	0.3
All Airlines	1,632	1,619	1,198	74.0	1,151	71.1	13	0.8
Cairns-Sydney								
Jetstar	573	561	416	74.2	428	76.3	12	2.1
Qantas	1,275	1,268	997	78.6	1,053	83.0	7	0.5
Virgin Blue	1,357	1,337	1,112	83.2	1,112	83.2	20	1.5
All Airlines	3,205	3,166	2,525	79.8	2,593	81.9	39	1.2
Canberra-Adelaide								
Qantas	599	599	538	89.8	541	90.3	0	0.0
Virgin Blue	366	363	320	88.2	305	84.0	3	0.8
All Airlines	965	962	858	89.2	846	87.9	3	0.3
Canberra-Brisbane								
Qantas	1,685	1,675	1,460	87.2	1,407	84.0	10	0.6
QantasLink	128	125	95	76.0	92	73.6	3	2.3
Virgin Blue	1,588	1,542	1,284	83.3	1,277	82.8	46	2.9
All Airlines	3,401	3,342	2,839	84.9	2,776	83.1	59	1.7
Canberra-Melbourne								
Qantas	3,044	2,973	2,567	86.3	2,515	84.6	71	2.3
QantasLink	681	649	577	88.9	553	85.2	32	4.7
Tiger Airways	397	395	344	87.1	345	87.3	2	0.5
Virgin Blue	1,852	1,806	1,591	88.1	1,536	85.0	46	2.5
All Airlines	5,974	5,823	5,079	87.2	4,949	85.0	151	2.5
Canberra-Sydney (February to December 2008 only)								
Qantas	2,101	2,017	1,692	83.9	1,629	80.8	84	4.0
QantasLink	4,994	4,669	3,672	78.6	3,507	75.1	325	6.5
Virgin Blue	2,432	2,271	1,882	82.9	1,825	80.4	161	6.6
All Airlines	9,527	8,957	7,246	80.9	6,961	77.7	570	6.0
Coffs Harbour-Sydney								
QantasLink	1,447	1,447	1,035	71.5	976	67.4	0	0.0
Virgin Blue	729	726	614	84.6	580	79.9	3	0.4
All Airlines	2,176	2,173	1,649	75.9	1,556	71.6	3	0.1
Darwin-Brisbane								
Jetstar	342	338	203	60.1	237	70.1	4	1.2
Qantas	367	367	239	65.1	270	73.6	0	0.0
Virgin Blue	368	365	260	71.2	282	77.3	3	0.8
All Airlines	1,077	1,070	702	65.6	789	73.7	7	0.6

	<i>Sectors</i>		<i>Departures On Time</i>		<i>Arrivals On Time</i>		<i>Cancellations</i>	
	<i>Sched.</i>	<i>Flown</i>	<i>No.</i>	<i>%</i>	<i>No.</i>	<i>%</i>	<i>No.</i>	<i>%</i>
Darwin-Melbourne	(January to October 2008 only)							
Jetstar	502	500	407	81.4	402	80.4	2	0.4
Tiger Airways	185	185	110	59.5	152	82.2	0	0.0
Virgin Blue	89	89	67	75.3	61	68.5	0	0.0
All Airlines	776	774	584	75.5	615	79.5	2	0.3
Dubbo-Sydney								
QantasLink	1,030	1,028	834	81.1	719	69.9	2	0.2
Regional Express	1,847	1,820	1,292	71.0	1,233	67.7	27	1.5
All Airlines	2,877	2,848	2,126	74.6	1,952	68.5	29	1.0
Gold Coast-Adelaide								
Jetstar	363	363	258	71.1	256	70.5	0	0.0
Virgin Blue	366	363	263	72.5	218	60.1	3	0.8
All Airlines	729	726	521	71.8	474	65.3	3	0.4
Gold Coast-Melbourne								
Jetstar	2,454	2,454	1,883	76.7	1,719	70.0	0	0.0
Tiger Airways	803	802	674	84.0	685	85.4	1	0.1
Virgin Blue	2,287	2,245	1,726	76.9	1,537	68.5	42	1.8
All Airlines	5,544	5,501	4,283	77.9	3,941	71.6	43	0.8
Gold Coast-Newcastle	(November and December 2008 only)							
Jetstar	59	59	45	76.3	44	74.6	0	0.0
Virgin Blue	27	27	25	92.6	25	92.6	0	0.0
All Airlines	86	86	70	81.4	69	80.2	0	0.0
Gold Coast-Sydney								
Jetstar	3,222	3,222	2,409	74.8	2,102	65.2	0	0.0
Qantas	426	425	375	88.2	366	86.1	1	0.2
Virgin Blue	4,325	4,178	3,271	78.3	3,136	75.1	147	3.4
All Airlines	7,973	7,825	6,055	77.4	5,604	71.6	148	1.9
Hamilton Island-Brisbane								
Jetstar	366	366	297	81.1	296	80.9	0	0.0
Virgin Blue	366	364	328	90.1	327	89.8	2	0.5
All Airlines	732	730	625	85.6	623	85.3	2	0.3
Hervey Bay-Sydney								
Jetstar	209	209	178	85.2	184	88.0	0	0.0
Virgin Blue	367	365	267	73.2	257	70.4	2	0.5
All Airlines	576	574	445	77.5	441	76.8	2	0.3
Hobart-Brisbane	(January to June 2008 only)							
Jetstar	78	78	41	52.6	40	51.3	0	0.0
Virgin Blue	216	216	174	80.6	172	79.6	0	0.0
All Airlines	294	294	215	73.1	212	72.1	0	0.0

	<i>Sectors</i>		<i>Departures On Time</i>		<i>Arrivals On Time</i>		<i>Cancellations</i>	
	<i>Sched.</i>	<i>Flown</i>	<i>No.</i>	<i>%</i>	<i>No.</i>	<i>%</i>	<i>No.</i>	<i>%</i>
Hobart-Melbourne								
Jetstar	1,666	1,656	1,407	85.0	1,365	82.4	10	0.6
Qantas	732	731	626	85.6	609	83.3	1	0.1
Tiger Airways	283	283	234	82.7	233	82.3	0	0.0
Virgin Blue	1,689	1,681	1,345	80.0	1,286	76.5	8	0.5
All Airlines	4,370	4,351	3,612	83.0	3,493	80.3	19	0.4
Hobart-Sydney								
Jetstar	603	602	491	81.6	458	76.1	1	0.2
Qantas	370	370	297	80.3	308	83.2	0	0.0
Virgin Blue	733	732	640	87.4	602	82.2	1	0.1
All Airlines	1,706	1,704	1,428	83.8	1,368	80.3	2	0.1
Kalgoorlie-Perth								
Qantas	668	659	494	75.0	524	79.5	9	1.3
QantasLink	342	338	281	83.1	296	87.6	4	1.2
Skywest	486	458	325	71.0	293	64.0	28	5.8
All Airlines	1,496	1,455	1,100	75.6	1,113	76.5	41	2.7
Karratha-Perth (October to December 2008 only)								
Qantas	359	354	288	81.4	284	80.2	5	1.4
QantasLink	107	105	95	90.5	97	92.4	2	1.9
Skywest	17	17	14	82.4	14	82.4	0	0.0
Virgin Blue	124	116	80	69.0	86	74.1	8	6.5
All Airlines	607	592	477	80.6	481	81.3	15	2.5
Launceston-Melbourne								
Jetstar	1,096	1,090	804	73.8	817	75.0	6	0.5
QantasLink	764	753	651	86.5	545	72.4	11	1.4
Tiger Airways	278	277	231	83.4	237	85.6	1	0.4
Virgin Blue	1,516	1,504	1,258	83.6	1,247	82.9	12	0.8
All Airlines	3,654	3,624	2,944	81.2	2,846	78.5	30	0.8
Launceston-Sydney								
Jetstar	366	359	202	56.3	244	68.0	7	1.9
Virgin Blue	388	386	287	74.4	291	75.4	2	0.5
All Airlines	754	745	489	65.6	535	71.8	9	1.2
Mackay-Brisbane								
Jetstar	1,093	1,086	818	75.3	790	72.7	7	0.6
QantasLink	592	587	485	82.6	495	84.3	5	0.8
Virgin Blue	1,581	1,565	1,289	82.4	1,251	79.9	16	1.0
All Airlines	3,266	3,238	2,592	80.0	2,536	78.3	28	0.9
Maroochydore-Melbourne								
Jetstar	852	835	561	67.2	563	67.4	17	2.0
Tiger Airways	137	137	118	86.1	123	89.8	0	0.0
Virgin Blue	614	594	456	76.8	404	68.0	20	3.3
All Airlines	1,603	1,566	1,135	72.5	1,090	69.6	37	2.3

	<i>Sectors</i>		<i>Departures On Time</i>		<i>Arrivals On Time</i>		<i>Cancellations</i>	
	<i>Sched.</i>	<i>Flown</i>	<i>No.</i>	<i>%</i>	<i>No.</i>	<i>%</i>	<i>No.</i>	<i>%</i>
Maroochydore-Sydney								
Jetstar	1,048	1,029	685	66.6	681	66.2	19	1.8
Virgin Blue	686	665	495	74.4	483	72.6	21	3.1
All Airlines	1,734	1,694	1,180	69.7	1,164	68.7	40	2.3
Melbourne-Adelaide								
Qantas	4,494	4,386	3,696	84.3	3,732	85.1	108	2.4
Tiger Airways	608	601	494	82.2	497	82.7	7	1.2
Virgin Blue	3,257	3,204	2,525	78.8	2,442	76.2	53	1.6
All Airlines	8,359	8,191	6,715	82.0	6,671	81.4	168	2.0
Melbourne-Alice Springs (April to December 2008 only)								
Qantas	275	275	211	76.7	223	81.1	0	0.0
Tiger Airways	120	120	105	87.5	105	87.5	0	0.0
All Airlines	395	395	316	80.0	328	83.0	0	0.0
Melbourne-Brisbane								
Qantas	5,359	5,235	4,299	82.1	4,227	80.7	124	2.3
Virgin Blue	4,173	4,115	3,418	83.1	3,291	80.0	58	1.4
All Airlines	9,532	9,350	7,717	82.5	7,518	80.4	182	1.9
Melbourne-Cairns								
Jetstar	503	498	398	79.9	383	76.9	5	1.0
Qantas	361	355	238	67.0	258	72.7	6	1.7
Virgin Blue	768	767	531	69.2	519	67.7	1	0.1
All Airlines	1,632	1,620	1,167	72.0	1,160	71.6	12	0.7
Melbourne-Canberra								
Qantas	2,998	2,926	2,418	82.6	2,493	85.2	72	2.4
QantasLink	681	648	564	87.0	548	84.6	33	4.8
Tiger Airways	397	395	335	84.8	338	85.6	2	0.5
Virgin Blue	1,838	1,787	1,519	85.0	1,523	85.2	51	2.8
All Airlines	5,914	5,756	4,836	84.0	4,902	85.2	158	2.7
Melbourne-Darwin (January to October 2008 only)								
Jetstar	503	501	398	79.4	357	71.3	2	0.4
Tiger Airways	184	184	166	90.2	138	75.0	0	0.0
Virgin Blue	89	89	77	86.5	71	79.8	0	0.0
All Airlines	776	774	641	82.8	566	73.1	2	0.3
Melbourne-Gold Coast								
Jetstar	2,464	2,464	2,015	81.8	1,973	80.1	0	0.0
Tiger Airways	803	802	689	85.9	680	84.8	1	0.1
Virgin Blue	2,288	2,252	1,802	80.0	1,717	76.2	36	1.6
All Airlines	5,555	5,518	4,506	81.7	4,370	79.2	37	0.7
Melbourne-Hobart								
Jetstar	1,666	1,656	1,347	81.3	1,359	82.1	10	0.6
Qantas	732	731	512	70.0	506	69.2	1	0.1
Tiger Airways	283	283	233	82.3	231	81.6	0	0.0
Virgin Blue	1,688	1,681	1,256	74.7	1,252	74.5	7	0.4
All Airlines	4,369	4,351	3,348	76.9	3,348	76.9	18	0.4

	<i>Sectors</i>		<i>Departures On Time</i>		<i>Arrivals On Time</i>		<i>Cancellations</i>	
	<i>Sched.</i>	<i>Flown</i>	<i>No.</i>	<i>%</i>	<i>No.</i>	<i>%</i>	<i>No.</i>	<i>%</i>
Melbourne-Launceston								
Jetstar	1,094	1,089	846	77.7	812	74.6	5	0.5
QantasLink	764	754	583	77.3	587	77.9	10	1.3
Tiger Airways	278	277	239	86.3	226	81.6	1	0.4
Virgin Blue	1,514	1,507	1,209	80.2	1,157	76.8	7	0.5
All Airlines	3,650	3,627	2,877	79.3	2,782	76.7	23	0.6
Melbourne-Maroochydore								
Jetstar	852	838	682	81.4	644	76.8	14	1.6
Tiger Airways	137	137	127	92.7	124	90.5	0	0.0
Virgin Blue	614	602	489	81.2	507	84.2	12	2.0
All Airlines	1,603	1,577	1,298	82.3	1,275	80.8	26	1.6
Melbourne-Mildura								
QantasLink	1,342	1,341	1,070	79.8	1,037	77.3	1	0.1
Regional Express	1,280	1,270	1,165	91.7	1,123	88.4	10	0.8
Virgin Blue	80	80	65	81.3	61	76.3	0	0.0
All Airlines	2,702	2,691	2,300	85.5	2,221	82.5	11	0.4
Melbourne-Newcastle								
Jetstar	909	909	634	69.7	625	68.8	0	0.0
QantasLink	86	86	76	88.4	71	82.6	0	0.0
Tiger Airways	132	132	108	81.8	113	85.6	0	0.0
Virgin Blue	366	364	337	92.6	325	89.3	2	0.5
All Airlines	1,493	1,491	1,155	77.5	1,134	76.1	2	0.1
Melbourne-Perth								
Qantas	2,523	2,480	1,446	58.3	1,602	64.6	43	1.7
Tiger Airways	345	342	308	90.1	312	91.2	3	0.9
Virgin Blue	1,462	1,456	1,281	88.0	1,163	79.9	6	0.4
All Airlines	4,330	4,278	3,035	70.9	3,077	71.9	52	1.2
Melbourne-Sydney								
Qantas	11,462	10,581	7,887	74.5	7,243	68.5	881	7.7
Virgin Blue	10,128	9,699	7,373	76.0	6,934	71.5	429	4.2
All Airlines	21,590	20,280	15,260	75.2	14,177	69.9	1,310	6.1
Mildura-Melbourne								
QantasLink	1,342	1,337	1,079	80.7	1,093	81.8	5	0.4
Regional Express	1,278	1,268	1,146	90.4	1,120	88.3	10	0.8
Virgin Blue	80	80	53	66.3	63	78.8	0	0.0
All Airlines	2,700	2,685	2,278	84.8	2,276	84.8	15	0.6
Newcastle-Brisbane								
Jetstar	1,285	1,285	902	70.2	856	66.6	0	0.0
QantasLink	377	363	271	74.7	281	77.4	14	3.7
Virgin Blue	587	585	494	84.4	493	84.3	2	0.3
All Airlines	2,249	2,233	1,667	74.7	1,630	73.0	16	0.7

	<i>Sectors</i>		<i>Departures On Time</i>		<i>Arrivals On Time</i>		<i>Cancellations</i>	
	<i>Sched.</i>	<i>Flown</i>	<i>No.</i>	<i>%</i>	<i>No.</i>	<i>%</i>	<i>No.</i>	<i>%</i>
Newcastle-Gold Coast	(November and December 2008 only)							
Jetstar	60	60	52	86.7	53	88.3	0	0.0
Virgin Blue	27	27	25	92.6	26	96.3	0	0.0
All Airlines	87	87	77	88.5	79	90.8	0	0.0
Newcastle-Melbourne								
Jetstar	912	912	658	72.1	673	73.8	0	0.0
QantasLink	87	87	58	66.7	63	72.4	0	0.0
Tiger Airways	132	132	115	87.1	113	85.6	0	0.0
Virgin Blue	366	364	296	81.3	281	77.2	2	0.5
All Airlines	1,497	1,495	1,127	75.4	1,130	75.6	2	0.1
Newman-Perth	(November and December 2008 only)							
QantasLink	164	161	131	81.4	131	81.4	3	1.8
Virgin Blue	61	61	45	73.8	45	73.8	0	0.0
All Airlines	225	222	176	79.3	176	79.3	3	1.3
Perth-Adelaide								
Qantas	1,726	1,710	1,292	75.6	1,327	77.6	16	0.9
Virgin Blue	592	585	473	80.9	499	85.3	7	1.2
All Airlines	2,318	2,295	1,765	76.9	1,826	79.6	23	1.0
Perth-Brisbane								
Qantas	1,480	1,475	863	58.5	949	64.3	5	0.3
Virgin Blue	560	559	414	74.1	432	77.3	1	0.2
All Airlines	2,040	2,034	1,277	62.8	1,381	67.9	6	0.3
Perth-Broome								
Qantas	334	332	229	69.0	243	73.2	2	0.6
QantasLink	527	525	419	79.8	412	78.5	2	0.4
Skywest	341	332	243	73.2	232	69.9	9	2.6
Virgin Blue	383	373	233	62.5	233	62.5	10	2.6
All Airlines	1,585	1,562	1,124	72.0	1,120	71.7	23	1.5
Perth-Kalgoorlie								
Qantas	668	659	527	80.0	529	80.3	9	1.3
QantasLink	341	337	262	77.7	263	78.0	4	1.2
Skywest	483	455	345	75.8	311	68.4	28	5.8
All Airlines	1,492	1,451	1,134	78.2	1,103	76.0	41	2.7
Perth-Karratha	(October to December 2008 only)							
Qantas	361	354	300	84.7	292	82.5	7	1.9
QantasLink	109	107	100	93.5	98	91.6	2	1.8
Skywest	18	18	14	77.8	9	50.0	0	0.0
Virgin Blue	123	119	98	82.4	94	79.0	4	3.3
All Airlines	611	598	512	85.6	493	82.4	13	2.1
Perth-Melbourne								
Qantas	2,521	2,469	1,528	61.9	1,540	62.4	52	2.1
Tiger Airways	346	343	216	63.0	230	67.1	3	0.9
Virgin Blue	1,462	1,455	1,166	80.1	1,107	76.1	7	0.5
All Airlines	4,329	4,267	2,910	68.2	2,877	67.4	62	1.4

	<i>Sectors</i>		<i>Departures On Time</i>		<i>Arrivals On Time</i>		<i>Cancellations</i>	
	<i>Sched.</i>	<i>Flown</i>	<i>No.</i>	<i>%</i>	<i>No.</i>	<i>%</i>	<i>No.</i>	<i>%</i>
Perth-Newman			(November and December 2008 only)					
QantasLink	164	160	141	88.1	137	85.6	4	2.4
Virgin Blue	61	61	57	93.4	57	93.4	0	0.0
All Airlines	225	221	198	89.6	194	87.8	4	1.8
Perth-Port Hedland			(January to April 2008 only)					
QantasLink	330	330	281	85.2	289	87.6	0	0.0
Skywest	46	46	35	76.1	32	69.6	0	0.0
All Airlines	376	376	316	84.0	321	85.4	0	0.0
Perth-Sydney								
Qantas	2,070	2,044	1,325	64.8	1,387	67.9	26	1.3
Virgin Blue	1,452	1,446	1,189	82.2	1,123	77.7	6	0.4
All Airlines	3,522	3,490	2,514	72.0	2,510	71.9	32	0.9
Port Hedland-Perth			(January to April 2008 only)					
QantasLink	329	329	294	89.4	293	89.1	0	0.0
Skywest	50	50	35	70.0	28	56.0	0	0.0
All Airlines	379	379	329	86.8	321	84.7	0	0.0
Port Macquarie-Sydney			(February to December 2008 only)					
QantasLink	1,292	1,288	978	75.9	926	71.9	4	0.3
Virgin Blue	482	473	305	64.5	267	56.4	9	1.9
All Airlines	1,774	1,761	1,283	72.9	1,193	67.7	13	0.7
Proserpine-Brisbane								
Jetstar	366	355	233	65.6	238	67.0	11	3.0
Virgin Blue	373	367	283	77.1	287	78.2	6	1.6
All Airlines	739	722	516	71.5	525	72.7	17	2.3
Rockhampton-Brisbane								
Jetstar	366	366	278	76.0	262	71.6	0	0.0
QantasLink	1,554	1,543	1,271	82.4	1,269	82.2	11	0.7
Virgin Blue	1,559	1,538	1,195	77.7	1,172	76.2	21	1.3
All Airlines	3,479	3,447	2,744	79.6	2,703	78.4	32	0.9
Sydney-Adelaide								
Jetstar	538	534	394	73.8	446	83.5	4	0.7
Qantas	3,688	3,645	2,869	78.7	3,011	82.6	43	1.2
Virgin Blue	1,829	1,815	1,429	78.7	1,276	70.3	14	0.8
All Airlines	6,055	5,994	4,692	78.3	4,733	79.0	61	1.0
Sydney-Albury								
QantasLink	1,371	1,367	994	72.7	928	67.9	4	0.3
Regional Express	1,380	1,357	942	69.4	835	61.5	23	1.7
Virgin Blue	627	613	443	72.3	441	71.9	14	2.2
All Airlines	3,378	3,337	2,379	71.3	2,204	66.0	41	1.2

	<i>Sectors</i>		<i>Departures On Time</i>		<i>Arrivals On Time</i>		<i>Cancellations</i>	
	<i>Sched.</i>	<i>Flown</i>	<i>No.</i>	<i>%</i>	<i>No.</i>	<i>%</i>	<i>No.</i>	<i>%</i>
Sydney-Ballina								
Jetstar	365	365	287	78.6	291	79.7	0	0.0
Regional Express	1,090	1,071	755	70.5	671	62.7	19	1.7
Virgin Blue	417	412	339	82.3	328	79.6	5	1.2
All Airlines	1,872	1,848	1,381	74.7	1,290	69.8	24	1.3
Sydney-Brisbane								
Qantas	8,140	7,718	5,767	74.7	5,986	77.6	422	5.2
Virgin Blue	7,243	6,903	5,065	73.4	4,945	71.6	340	4.7
All Airlines	15,383	14,621	10,832	74.1	10,931	74.8	762	5.0
Sydney-Cairns								
Jetstar	573	563	487	86.5	474	84.2	10	1.7
Qantas	1,274	1,271	915	72.0	956	75.2	3	0.2
Virgin Blue	1,355	1,340	1,076	80.3	994	74.2	15	1.1
All Airlines	3,202	3,174	2,478	78.1	2,424	76.4	28	0.9
Sydney-Canberra								
			(February to December 2008 only)					
Qantas	2,167	2,094	1,635	78.1	1,609	76.8	73	3.4
QantasLink	4,991	4,676	3,777	80.8	3,537	75.6	315	6.3
Virgin Blue	2,442	2,287	1,750	76.5	1,756	76.8	155	6.3
All Airlines	9,600	9,057	7,162	79.1	6,902	76.2	543	5.7
Sydney-Coffs Harbour								
QantasLink	1,449	1,449	1,055	72.8	1,002	69.2	0	0.0
Virgin Blue	732	731	614	84.0	608	83.2	1	0.1
All Airlines	2,181	2,180	1,669	76.6	1,610	73.9	1	0.0
Sydney-Dubbo								
QantasLink	1,030	1,029	787	76.5	800	77.7	1	0.1
Regional Express	1,847	1,824	1,228	67.3	1,132	62.1	23	1.2
All Airlines	2,877	2,853	2,015	70.6	1,932	67.7	24	0.8
Sydney-Gold Coast								
Jetstar	3,232	3,232	2,460	76.1	2,469	76.4	0	0.0
Qantas	427	425	324	76.2	305	71.8	2	0.5
Virgin Blue	4,324	4,191	3,257	77.7	3,195	76.2	133	3.1
All Airlines	7,983	7,848	6,041	77.0	5,969	76.1	135	1.7
Sydney-Hervey Bay								
Jetstar	209	209	192	91.9	190	90.9	0	0.0
Virgin Blue	368	367	272	74.1	272	74.1	1	0.3
All Airlines	577	576	464	80.6	462	80.2	1	0.2
Sydney-Hobart								
Jetstar	603	602	492	81.7	514	85.4	1	0.2
Qantas	370	370	304	82.2	303	81.9	0	0.0
Virgin Blue	733	732	454	62.0	441	60.2	1	0.1
All Airlines	1,706	1,704	1,250	73.4	1,258	73.8	2	0.1

	<i>Sectors</i>		<i>Departures On Time</i>		<i>Arrivals On Time</i>		<i>Cancellations</i>	
	<i>Sched.</i>	<i>Flown</i>	<i>No.</i>	<i>%</i>	<i>No.</i>	<i>%</i>	<i>No.</i>	<i>%</i>
Sydney-Launceston								
Jetstar	366	364	242	66.5	241	66.2	2	0.5
Virgin Blue	389	388	308	79.4	294	75.8	1	0.3
All Airlines	755	752	550	73.1	535	71.1	3	0.4
Sydney-Maroochydore								
Jetstar	1,046	1,034	778	75.2	750	72.5	12	1.1
Virgin Blue	686	670	524	78.2	525	78.4	16	2.3
All Airlines	1,732	1,704	1,302	76.4	1,275	74.8	28	1.6
Sydney-Melbourne								
Qantas	11,443	10,589	7,368	69.6	6,992	66.0	854	7.5
Virgin Blue	10,108	9,674	7,483	77.4	7,092	73.3	434	4.3
All Airlines	21,551	20,263	14,851	73.3	14,084	69.5	1,288	6.0
Sydney-Perth								
Qantas	2,071	2,057	1,317	64.0	1,356	65.9	14	0.7
Virgin Blue	1,453	1,450	1,065	73.4	843	58.1	3	0.2
All Airlines	3,524	3,507	2,382	67.9	2,199	62.7	17	0.5
Sydney-Port Macquarie (February to December 2008 only)								
QantasLink	1,291	1,288	989	76.8	906	70.3	3	0.2
Virgin Blue	481	475	346	72.8	333	70.1	6	1.2
All Airlines	1,772	1,763	1,335	75.7	1,239	70.3	9	0.5
Sydney-Townsville								
Jetstar	260	260	249	95.8	243	93.5	0	0.0
Virgin Blue	366	366	293	80.1	290	79.2	0	0.0
All Airlines	626	626	542	86.6	533	85.1	0	0.0
Sydney-Wagga Wagga								
QantasLink	1,316	1,314	914	69.6	836	63.6	2	0.2
Regional Express	1,546	1,534	1,070	69.8	913	59.5	12	0.8
All Airlines	2,862	2,848	1,984	69.7	1,749	61.4	14	0.5
Townsville-Brisbane								
Jetstar	544	531	404	76.1	404	76.1	13	2.4
Qantas	1,880	1,870	1,619	86.6	1,609	86.0	10	0.5
Virgin Blue	1,546	1,542	1,380	89.5	1,395	90.5	4	0.3
All Airlines	3,970	3,943	3,403	86.3	3,408	86.4	27	0.7
Townsville-Sydney								
Jetstar	259	259	229	88.4	228	88.0	0	0.0
Virgin Blue	366	366	299	81.7	295	80.6	0	0.0
All Airlines	625	625	528	84.5	523	83.7	0	0.0
Wagga Wagga-Sydney								
QantasLink	1,316	1,315	974	74.1	868	66.0	1	0.1
Regional Express	1,541	1,529	1,085	71.0	1,033	67.6	12	0.8
All Airlines	2,857	2,844	2,059	72.4	1,901	66.8	13	0.5

Airports

On time performance is reported for all routes where the passenger load averages over 8000 passengers per month, and where two or more airlines operate in competition. The following data reports by airport against flights operated on those routes only.

Airport	Departures			Arrivals		
	Sectors	On Time		Sectors	On Time	
	Flown	No.	%	Flown	No.	%
Adelaide						
Jetstar	1 238	990	80.0	1 239	981	79.2
Qantas	11 370	9 611	84.5	11 387	9 511	83.5
Tiger Airways	600	465	77.5	601	497	82.7
Virgin Blue	7 564	6 054	80.0	7 574	5 600	73.9
All Airlines	20 772	17 120	82.4	20 801	16 589	79.8
Relates to services to and from Brisbane, Canberra, Gold Coast, Melbourne, Perth and Sydney.						
Albury						
QantasLink	1 365	1 011	74.1	1 367	928	67.9
Regional Express	1 360	983	72.3	1 357	835	61.5
Virgin Blue	610	429	70.3	613	441	71.9
All Airlines	3 335	2 423	72.7	3 337	2 204	66.0
Relates to services to and from Sydney only.						
Alice Springs						
Qantas	275	174	63.3	275	223	81.1
Tiger Airways	120	94	78.3	120	105	87.5
All Airlines	395	268	67.8	395	328	83.0
Relates to services to and from Melbourne only						
Ballina						
Jetstar	360	258	71.7	365	291	79.7
Regional Express	1 060	640	60.4	1 071	671	62.7
Virgin Blue	404	310	76.7	412	328	79.6
All Airlines	1 824	1 208	66.2	1 848	1 290	69.8
Relates to services to and from Sydney only.						
Brisbane						
Jetstar	5 876	4 404	74.9	5 876	4 225	71.9
Qantas	20 850	16 209	77.7	20 846	16 632	79.8
QantasLink	2 931	2 384	81.3	2 618	2 137	81.6
Virgin Blue	22 553	18 671	82.8	22 509	17 642	78.4
All Airlines	52 210	41 668	79.8	51 849	40 636	78.4
Relates to services to and from Adelaide, Cairns, Canberra, Darwin, Hamilton Island, Hobart, Mackay, Melbourne, Newcastle, Perth, Proserpine, Rockhampton, Sydney and Townsville.						

<i>Airport</i>	<i>Departures</i>			<i>Arrivals</i>		
	<i>Sectors Flown</i>	<i>On Time</i>		<i>Sectors Flown</i>	<i>On Time</i>	
		<i>No.</i>	<i>%</i>		<i>No.</i>	<i>%</i>
Broome						
Qantas	331	189	57.1	332	243	73.2
QantasLink	525	424	80.8	525	412	78.5
Skywest	331	236	71.3	332	232	69.9
Virgin Blue	369	199	53.9	373	233	62.5
All Airlines	1 556	1 048	67.4	1 562	1 120	71.7
Relates to services to and from Perth only.						
Cairns						
Jetstar	2 188	1 698	77.6	2 187	1 664	76.1
Qantas	3 084	2 467	80.0	3 089	2 465	79.8
Virgin Blue	3 712	3 083	83.1	3 717	2 863	77.0
All Airlines	8 984	7 248	80.7	8 993	6 992	77.7
Relates to services to and from Brisbane, Melbourne and Sydney.						
Canberra						
Qantas	7 264	6 257	86.1	7 241	6 018	83.1
QantasLink	5 443	4 344	79.8	5 451	4 202	77.1
Tiger Airways	395	344	87.1	395	338	85.6
Virgin Blue	5 982	5 077	84.9	5 987	4 747	79.3
All Airlines	19 084	16 022	84.0	19 074	15 305	80.2
Relates to services to and from Adelaide, Brisbane, Melbourne and Sydney.						
Coffs Harbour						
QantasLink	1 447	1 035	71.5	1 449	1 002	69.2
Virgin Blue	726	614	84.6	731	608	83.2
All Airlines	2 173	1 649	75.9	2 180	1 610	73.9
Relates to services to and from Sydney only.						
Darwin						
Jetstar	838	610	72.8	840	590	70.2
Qantas	367	239	65.1	367	294	80.1
Tiger Airways	185	110	59.5	184	138	75.0
Virgin Blue	454	327	72.0	455	338	74.3
All Airlines	1 844	1 286	69.7	1 846	1 360	73.7
Relates to services to and from Brisbane and Melbourne.						
Dubbo						
QantasLink	1 028	834	81.1	1 029	800	77.7
Regional Express	1 820	1 292	71.0	1 824	1 132	62.1
All Airlines	2 848	2 126	74.6	2 853	1 932	67.7
Relates to services to and from Sydney only.						

Airport	Departures			Arrivals		
	Sectors	On Time		Sectors	On Time	
	Flown	No.	%	Flown	No.	%
Gold Coast						
Jetstar	6 098	4 595	75.4	6 119	4 791	78.3
Qantas	425	375	88.2	425	305	71.8
Tiger Airways	802	674	84.0	802	680	84.8
Virgin Blue	6 813	5 285	77.6	6 834	5 234	76.6
All Airlines	14 138	10 929	77.3	14 180	11 010	77.6
Relates to services to and from Adelaide, Melbourne, Newcastle and Sydney.						
Hamilton Island						
Jetstar	366	297	81.1	366	312	85.2
Virgin Blue	364	328	90.1	365	321	87.9
All Airlines	730	625	85.6	731	633	86.6
Relates to services to and from Brisbane only.						
Hervey Bay						
Jetstar	209	178	85.2	209	190	90.9
Virgin Blue	365	267	73.2	367	272	74.1
All Airlines	574	445	77.5	576	462	80.2
Relates to services to and from Sydney only.						
Hobart						
Jetstar	2 336	1 939	83.0	2 336	1 921	82.2
Qantas	1 101	923	83.8	1 101	809	73.5
Tiger Airways	283	234	82.7	283	231	81.6
Virgin Blue	2 629	2 159	82.1	2 629	1 887	71.8
All Airlines	6 349	5 255	82.8	6 349	4 848	76.4
Relates to services to and from Brisbane, Melbourne and Sydney.						
Kalgoorlie						
Qantas	659	494	75.0	659	529	80.3
QantasLink	338	281	83.1	337	263	78.0
Skywest	458	325	71.0	455	311	68.4
All Airlines	1 455	1 100	75.6	1 451	1 103	76.0
Relates to services to and from Perth only.						
Karratha						
Qantas	354	288	81.4	354	292	82.5
QantasLink	105	95	90.5	107	98	91.6
Skywest	17	14	82.4	18	9	50.0
Virgin Blue	116	80	69.0	119	94	79.0
All Airlines	592	477	80.6	598	493	82.4
Relates to services to and from Perth only.						

Airport	Departures			Arrivals		
	Sectors	On Time		Sectors	On Time	
	Flown	No.	%	Flown	No.	%
Launceston						
Jetstar	1 449	1 006	69.4	1 453	1 053	72.5
QantasLink	753	651	86.5	754	587	77.9
Tiger Airways	277	231	83.4	277	226	81.6
Virgin Blue	1 890	1 545	81.7	1 895	1 451	76.6
All Airlines	4 369	3 433	78.6	4 379	3 317	75.7
Relates to services to and from Melbourne and Sydney.						
Mackay						
Jetstar	1 086	818	75.3	1 084	861	79.4
QantasLink	587	485	82.6	590	441	74.7
Virgin Blue	1 565	1 289	82.4	1 567	1 166	74.4
All Airlines	3 238	2 592	80.0	3 241	2 468	76.1
Relates to services to and from Brisbane only.						
Maroochydore						
Jetstar	1 864	1 246	66.8	1 872	1 394	74.5
Tiger Airways	137	118	86.1	137	124	90.5
Virgin Blue	1 259	951	75.5	1 272	1 032	81.1
All Airlines	3 260	2 315	71.0	3 281	2 550	77.7
Relates to services to and from Melbourne and Sydney.						
Melbourne						
Jetstar	7 955	6 320	79.4	7 945	5 892	74.2
Qantas	26 969	20 707	76.8	26 964	20 191	74.9
QantasLink	2 829	2 293	81.1	2 826	2 254	79.8
Regional Express	1 270	1 165	91.7	1 268	1 120	88.3
Tiger Airways	3 273	2 804	85.7	3 274	2 700	82.5
Virgin Blue	27 603	21 882	79.3	27 579	21 089	76.5
All Airlines	69 899	55 171	78.9	69 856	53 246	76.2
Relates to services to and from Adelaide, Alice Springs, Brisbane, Cairns, Canberra, Darwin, Gold Coast, Hobart, Launceston, Maroochydore, Mildura, Newcastle, Perth and Sydney.						
Mildura						
QantasLink	1 337	1 079	80.7	1 341	1 037	77.3
Regional Express	1 268	1 146	90.4	1 270	1 123	88.4
Virgin Blue	80	53	66.3	80	61	76.3
All Airlines	2 685	2 278	84.8	2 691	2 221	82.5
Relates to services to and from Melbourne only.						
Newcastle						
Jetstar	2 257	1 612	71.4	2 254	1 646	73.0
QantasLink	450	329	73.1	449	316	70.4
Virgin Blue	976	815	83.5	978	833	85.2
Tiger Airways	132	115	87.1	132	113	85.6
All Airlines	3 815	2 871	75.3	3 813	2 908	76.3
Relates to services to and from Brisbane, Gold Coast and Melbourne.						

Airport	Departures			Arrivals		
	Sectors	On Time		Sectors	On Time	
	Flown	No.	%	Flown	No.	%
Newman						
QantasLink	161	131	81.4	160	137	85.6
Virgin Blue	61	45	73.8	61	57	93.4
All Airlines	222	176	79.3	221	194	87.8
Relates to services to and from Perth only.						
Perth						
Qantas	9 043	6 064	67.1	9 077	6 460	71.2
QantasLink	1 459	1 203	82.5	1 458	1 237	84.8
Skywest	851	637	74.9	856	545	63.7
Tiger Airways	343	216	63.0	342	312	91.2
Virgin Blue	4 598	3 630	78.9	4 599	3 079	66.9
All Airlines	16 294	11 750	72.1	16 332	11 633	71.2
Relates to services to and from Adelaide, Brisbane, Broome, Kalgoorlie, Karratha, Melbourne, Newman, Port Hedland and Sydney.						
Port Hedland						
QantasLink	329	294	89.4	330	289	87.6
Skywest	50	35	70.0	46	32	69.6
All Airlines	379	329	86.8	376	321	85.4
Relates to services to and from Perth only.						
Port Macquarie						
QantasLink	1 288	978	75.9	1 288	906	70.3
Virgin Blue	473	305	64.5	475	333	70.1
All Airlines	1 761	1 283	72.9	1 763	1 239	70.3
Relates to services to and from Sydney only.						
Proserpine						
Jetstar	355	233	65.6	356	262	73.6
Virgin Blue	367	283	77.1	368	273	74.2
All Airlines	722	516	71.5	724	535	73.9
Relates to services to and from Brisbane only.						
Rockhampton						
Jetstar	366	278	76.0	366	299	81.7
QantasLink	1 543	1 271	82.4	1 851	1 500	81.0
Virgin Blue	1 538	1 195	77.7	1 543	1 147	74.3
All Airlines	3 447	2 744	79.6	3 760	2 946	78.4
Relates to services to and from Brisbane only.						

<i>Airport</i>	<i>Departures</i>			<i>Arrivals</i>		
	<i>Sectors Flown</i>	<i>On Time</i>		<i>Sectors Flown</i>	<i>On Time</i>	
		<i>No.</i>	<i>%</i>		<i>No.</i>	<i>%</i>
Sydney						
Jetstar	7 163	5 581	77.9	7 134	4 995	70.0
Qantas	28 169	20 499	72.8	28 141	20 415	72.5
QantasLink	11 123	8 516	76.6	11 112	8 014	72.1
Regional Express	5 786	3 995	69.0	5 769	3 779	65.5
Virgin Blue	32 414	24 718	76.3	32 383	24 208	74.8
All Airlines	84 655	63 309	74.8	84 539	61 411	72.6
Relates to services to and from Adelaide, Albury, Ballina, Brisbane, Cairns, Canberra, Coffs Harbour, Dubbo, Gold Coast, Hervey Bay, Hobart, Launceston, Maroochydore, Melbourne, Perth, Port Macquarie, Townsville and Wagga Wagga.						
Townsville						
Jetstar	790	633	80.1	793	671	84.6
Qantas	1 870	1 619	86.6	1 873	1 546	82.5
Virgin Blue	1 908	1 679	88.0	1 908	1 536	80.5
All Airlines	4 568	3 931	86.1	4 574	3 753	82.1
Relates to services to and from Brisbane and Sydney.						
Wagga Wagga						
QantasLink	1 315	974	74.1	1 314	836	63.6
Regional Express	1 529	1 085	71.0	1 534	913	59.5
All Airlines	2 844	2 059	72.4	2 848	1 749	61.4
Relates to services to and from Sydney only.						

Definitions

On time departure A flight departure is counted as "on time" if it departs the gate within 15 minutes of the scheduled departure time shown in the carriers' schedule.

On time arrival A flight arrival is counted as "on time" if it arrived at the gate within 15 minutes of the scheduled arrival time shown in the carriers' schedule.
Neither diverted nor cancelled flights count as on time.

Cancellation A flight is regarded as a cancellation if it is cancelled or rescheduled less than 7 days prior to its scheduled departure time.

On time departure percentage The percentage of on time departures is measured against the number of departures *operated* on any particular sector.

On time arrival percentage The percentage of on time arrivals is measured against the number of arrivals *operated* on any particular sector.

Cancellation percentage The percentage of cancellations is measured against the number of services *scheduled* on any particular sector.
