



**Australian Government**

**Department of Infrastructure and Regional Development**

Bureau of Infrastructure, Transport and Regional Economics

STATISTICAL REPORT



## Aviation

Domestic airline on time performance  
December 2016

© Commonwealth of Australia 2017

ISSN: 1832-0759

### **Ownership of intellectual property rights in this publication**

Unless otherwise noted, copyright (and any other intellectual property rights, if any) in this publication is owned by the Commonwealth of Australia (referred to below as the Commonwealth).

### **Disclaimer**

The material contained in this publication is made available on the understanding that the Commonwealth is not providing professional advice, and that users exercise their own skill and care with respect to its use, and seek independent advice if necessary.

The Commonwealth makes no representations or warranties as to the contents or accuracy of the information contained in this publication. To the extent permitted by law, the Commonwealth disclaims liability to any person or organisation in respect of anything done, or omitted to be done, in reliance upon information contained in this publication.

### **Creative Commons licence**

With the exception of (a) the Coat of Arms; and (b) the Department of Infrastructure and Regional Development's photos and graphics, copyright in this publication is licensed under a Creative Commons Attribution 3.0 Australia Licence.

Creative Commons Attribution 3.0 Australia Licence is a standard form licence agreement that allows you to copy, communicate and adapt this publication provided that you attribute the work to the Commonwealth and abide by the other licence terms. A summary of the licence terms is available from <http://creativecommons.org/licenses/by/3.0/au/deed.en>. The full licence terms are available from <http://creativecommons.org/licenses/by/3.0/au/legalcode>.

### **Use of the Coat of Arms**

The Department of the Prime Minister and Cabinet sets the terms under which the Coat of Arms is used. Please refer to the Department's Commonwealth Coat of Arms and Government branding web page <http://www.dpmmc.gov.au/guidelines/index.cfm#brand> and, in particular, the Guidelines on the use of the Commonwealth Coat of Arms publication.

An appropriate citation for this report is:

Bureau of Infrastructure, Transport and Regional Economics (BITRE), 2017, Domestic airline on time performance, Statistical Report, BITRE, Canberra ACT.

### **Contact us**

This publication is available in PDF format. All other rights are reserved, including in relation to any Departmental logos or trade marks which may exist. For enquiries regarding the licence and any use of this publication, please contact:

Bureau of Infrastructure, Transport and Regional Economics (BITRE)  
Department of Infrastructure and Regional Development  
GPO Box 501, Canberra ACT 2601, Australia  
Telephone: (international) +61 2 6274 7210  
Fax: (international) +61 2 6274 6855  
Email: [bitre@infrastructure.gov.au](mailto:bitre@infrastructure.gov.au)  
Website: [www.bitre.gov.au](http://www.bitre.gov.au)

### **Inquiries**

Should you require additional information about the statistics contained in this publication:

Telephone (02) 6274 7790 or Facsimile (02) 6274 7727

Electronic mail: [AVSTATS@infrastructure.gov.au](mailto:AVSTATS@infrastructure.gov.au)

Web site: <http://www.bitre.gov.au/statistics/aviation/otphome.aspx>

# Foreword

The Bureau of Infrastructure, Transport and Regional Economics (BITRE) monitors the punctuality and reliability of major domestic airlines operating between Australian airports. The purpose of this is to allow for evaluation of overall industry and individual airline performance, so that consumers of air travel can make informed decisions.

The following domestic airlines currently report this information monthly to the BITRE: Jetstar, Qantas, QantasLink, Regional Express, Tigerair Australia, Virgin Australia and Virgin Australia Regional Airlines. Data has been gathered since November 2003, although some airlines commenced reporting at a later date, including Jetstar which first reported in May 2004, MacAir in July 2005, Tigerair Australia in April 2008 and Virgin Australia Regional Airlines in May 2013. MacAir ceased operations in February 2009 and data was not received for December 2008 onwards. Virgin Blue was rebranded as Virgin Australia in May 2011 and Tiger Airways was rebranded as Tigerair Australia in July 2013 and time series data in Microsoft Excel spreadsheet format on the BITRE website have been revised to reflect these changes. Services operated by Skywest on behalf of Virgin Australia using ATR/F100 aircraft commenced in November 2011 and were shown separately as Virgin Australia – ATR/F100 Operations. Virgin Australia Regional Airlines commenced operations in May 2013. It was formed after the acquisition of Skywest by Virgin Australia and represented a combination of operations previously reported under Skywest and Virgin Australia – ATR/F100 Operations. In January 2016, Virgin Australia transferred their ATR fleet from Virgin Australia Regional Airlines to Virgin Australia.

Information presented in this report is for Australian domestic routes for which the passenger load averaged 8 000 or more passengers per month over the previous six months and where two or more airlines operated in competition on those routes. There were 66 routes that met this definition in December 2016. Over time, routes which meet these criteria change as airline networks and traffic levels vary.

Participating airlines report their overall monthly network performance where this is possible.

Total industry figures encompass all services operated by reporting airlines only. These airlines collectively carried over 95 per cent of total domestic passengers (regular public transport only) in 2015.

The method of capturing on time performance varies between airlines utilising different recording systems. Jetstar and Qantas jet aircraft use Aircraft Communication Addressing and Reporting System (ACARS) to electronically measure on time performance. Regional Express, Tigerair Australia, Virgin Australia, Virgin Australia Regional Airlines and the Qantas non-jet fleet record on time performance manually using records from pilots, gate agents and/or ground crews.

After initial data is collected, aggregate reports are audited internally by participating airlines prior to publication.

Reports and detailed time series data in Microsoft Excel spreadsheet format are available from the BITRE website at: <http://www.bitre.gov.au/statistics/aviation/otphome.aspx>.



# Contents

	Page
Industry performance .....	1
Individual routes .....	10
Airports .....	23
Definitions .....	29



## Industry performance

For December 2016, on time performance over all routes operated by participating airlines (Jetstar, Qantas, QantasLink, Regional Express, Tigerair Australia, Virgin Australia and Virgin Australia Regional Airlines) averaged 80.0 per cent for on time arrivals and 80.8 per cent for on time departures. Cancellations represented 1.8 per cent of all scheduled flights. The equivalent figures for December 2015 were 84.2 per cent for arrivals, 83.7 per cent for departures and 2.1 per cent for cancellations.

This month's on time arrivals figure was lower than the long term average performance for all routes (82.7 per cent) and the on time departures figure was also lower than the long term average (84.2 per cent). The rate of cancellations was higher than the long term average of 1.4 per cent.

Qantas achieved the highest on time arrivals among the major domestic airlines at 83.5 per cent followed by Virgin Australia at 83.1 per cent, Tigerair Australia at 73.7 per cent and Jetstar at 69.0 per cent. Of the regional airlines, Virgin Australia Regional Airlines recorded 87.3 per cent for on time arrivals, followed by Regional Express at 82.7 per cent and QantasLink at 81.8 per cent. The Qantas network (Qantas and QantasLink combined operations) recorded 82.6 per cent for on time arrivals while the Virgin Australia network (Virgin Australia and Virgin Australia Regional Airlines combined operations) recorded 83.3 per cent.

Qantas also achieved the highest level of on time departures for December 2016 at 85.6 per cent, followed by Virgin Australia at 84.4 per cent, Tigerair Australia at 74.6 per cent and Jetstar at 65.9 per cent. Of the regional airlines, Virgin Australia Regional Airlines recorded 87.3 per cent, followed by Regional Express at 86.6 per cent and QantasLink at 82.4 per cent. The Qantas network recorded 83.9 per cent for on time departures while the Virgin Australia network recorded 84.5 per cent.

Jetstar recorded the highest percentage of cancellations (2.4 per cent) during the month, followed by Tigerair Australia and QantasLink (both at 2.3 per cent), Virgin Australia (2.1 per cent), Qantas (1.2 per cent), Virgin Australia Regional Airlines (0.7 per cent) and Regional Express (0.2 per cent).

Airlines' on time performance varies across the routes they serve. Individual route data by specific airline for 66 routes are shown on pages 10-22.

Of the 66 routes which met the criteria for on time performance reporting in December 2016, the Townsville-Cairns and Cairns-Townsville routes had the highest percentage of on time arrivals (both at 97.7 per cent) and the Cairns-Townsville route had the highest percentage of on time departures (98.9 per cent). The Hobart-Melbourne route had the lowest percentage of on time arrivals (62.8 per cent) and the Townsville-Sydney route had the lowest percentage of on time departures (56.1 per cent).

Cancellations were highest on the Mount Isa-Brisbane route at 5.6 per cent, followed by the Sydney-Melbourne route at 5.2 per cent, the Melbourne-Sydney route at 4.9 per cent, the Ayers Rock-Sydney route at 3.8 per cent and the Sydney-Ayers Rock route at 3.7 per cent.

Broome Airport recorded the highest percentage of on time arrivals (94.4 per cent) and Newman Airport recorded the highest percentage of on time departures (90.8 per cent). Armidale Airport recorded the lowest percentage of on time arrivals (65.1 per cent) and Sunshine Coast Airport recorded the lowest percentage of on time departures (64.5 per cent). These figures only refer to reported routes and do not cover all flights at these airports.



Table 1 On time performance for December 2016 — Total Industry

	Sectors		Arrivals On Time		Departures On Time		Cancellations	
	Scheduled	Flown	No.	%	No.	%	No.	%
Jetstar	8 331	8 127	5 609	69.0	5 353	65.9	204	2.4
Qantas	8 856	8 750	7 302	83.5	7 491	85.6	106	1.2
QantasLink	10 255	10 021	8 198	81.8	8 253	82.4	234	2.3
Regional Express	5 633	5 620	4 645	82.7	4 866	86.6	13	0.2
Tigerair Australia	2 389	2 333	1 720	73.7	1 740	74.6	56	2.3
Virgin Australia	12 196	11 936	9 918	83.1	10 069	84.4	260	2.1
Virgin Australia Regional Airlines	676	671	586	87.3	586	87.3	5	0.7
All Airlines	48 336	47 458	37 978	80.0	38 358	80.8	878	1.8
Qantas - all QF designated services	19 111	18 771	15 500	82.6	15 744	83.9	340	1.8
Virgin Australia - all VA designated services	12 872	12 607	10 504	83.3	10 655	84.5	265	2.1

Total airline network data (including routes not shown in this report).

Airlines' on time performance varies across the routes they serve. Individual route data by specific airline for 66 routes are shown on pages 10-22.

Table 2 Top ten routes for on time performance for December 2016 (participating airlines only)

Arrivals		Departures	
Route	On Time (%)	Route	On Time (%)
Townsville-Cairns	97.7	Cairns-Townsville	98.9
Cairns-Townsville	97.7	Adelaide-Alice Springs	97.8
Darwin-Perth	95.3	Townsville-Cairns	97.7
Perth-Broome	94.4	Darwin-Perth	95.3
Perth-Darwin	93.8	Melbourne-Hamilton Island	93.0
Adelaide-Alice Springs	93.3	Adelaide-Canberra	92.8
Alice Springs-Adelaide	93.3	Brisbane-Hobart	92.5
Brisbane-Darwin	93.1	Perth-Darwin	92.2
Melbourne-Hamilton Island	93.0	Adelaide-Port Lincoln	91.7
Adelaide-Canberra	92.8	Brisbane-Bundaberg	91.5

Table 3 Top ten airports for on time performance for December 2016 (participating airlines and reported routes only)

Arrivals		Departures	
Airport	On Time (%)	Airport	On Time (%)
Broome	94.4	Newman	90.8
Alice Springs	92.2	Port Hedland	89.4
Karratha	92.0	Geraldton	89.4
Mount Isa	90.8	Port Lincoln	88.4
Emerald	90.7	Alice Springs	88.2
Port Lincoln	88.7	Bundaberg	87.8
Newman	88.4	Moranbah	87.2
Cairns	88.0	Karratha	86.5
Bundaberg	87.8	Rockhampton	86.3
Hamilton Island	86.9	Emerald	86.2

## Total industry on time performance

Figure 1 On time performance (by month from December 2013)—Total Industry

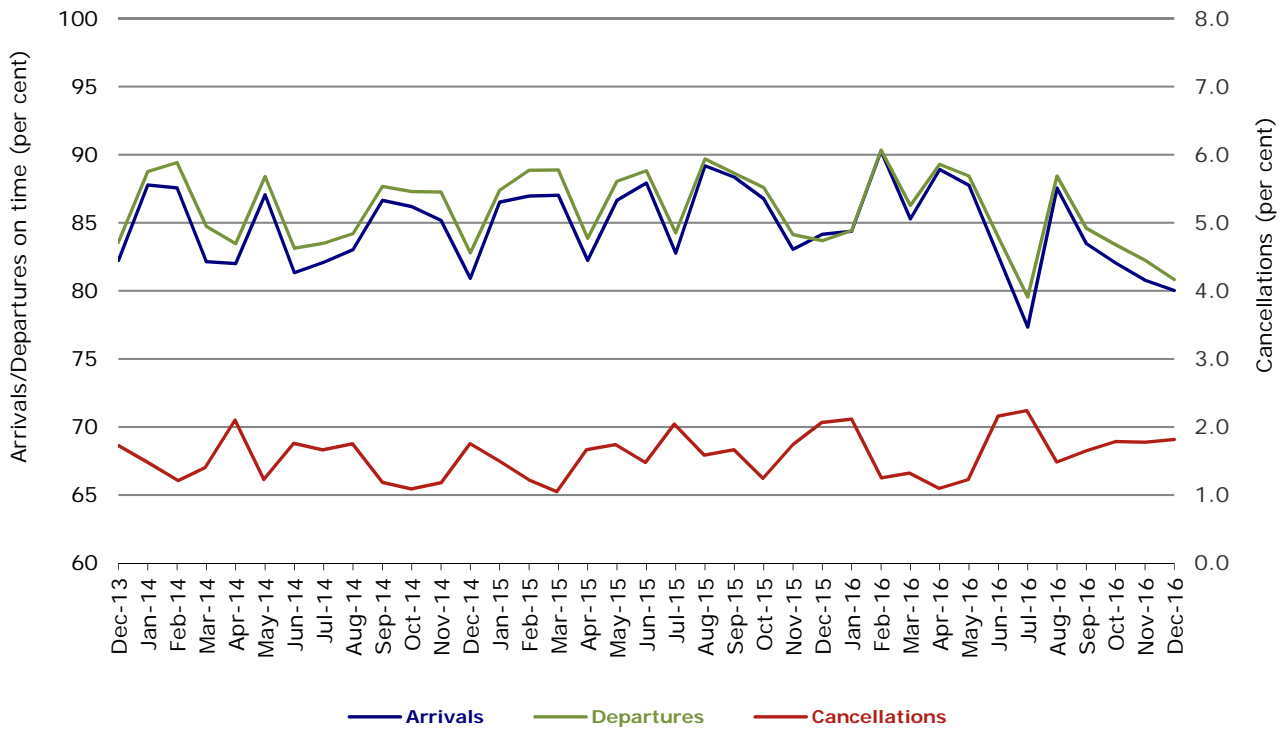


Figure 2 Arrivals on time (by month from December 2015)

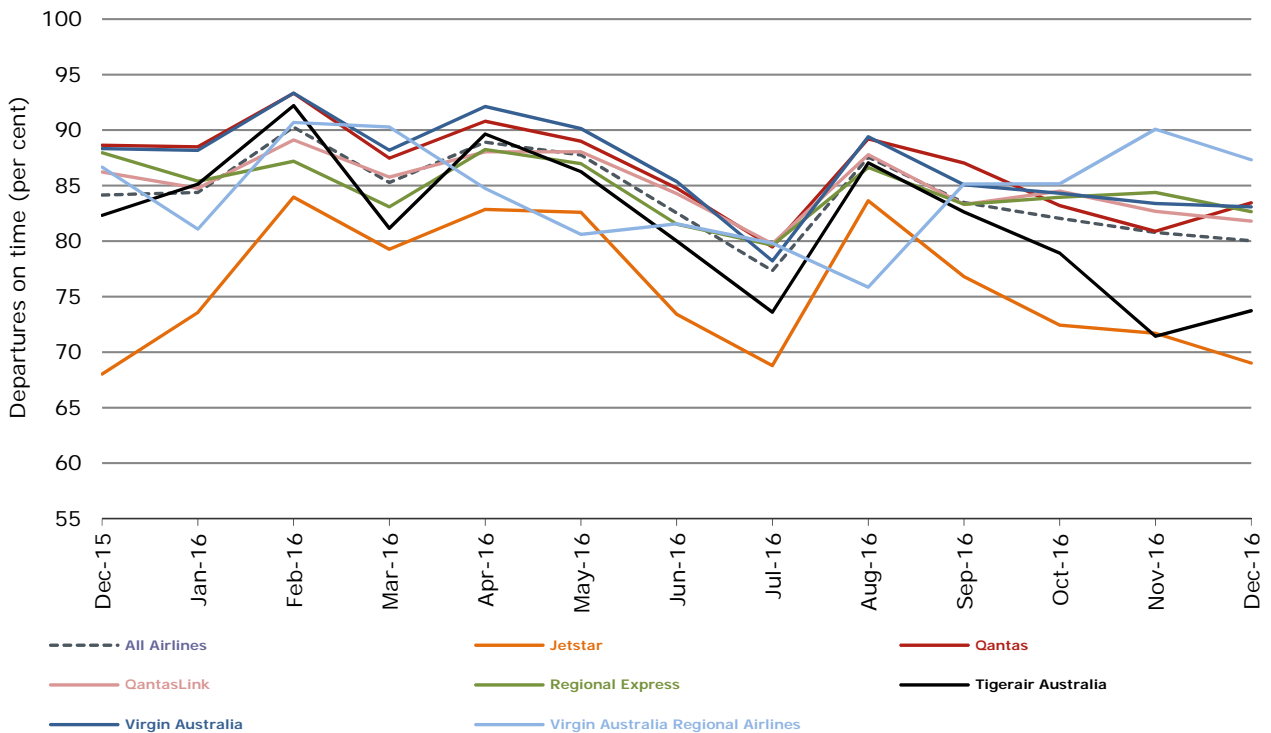


Figure 3 Departures on time (by month from December 2015)

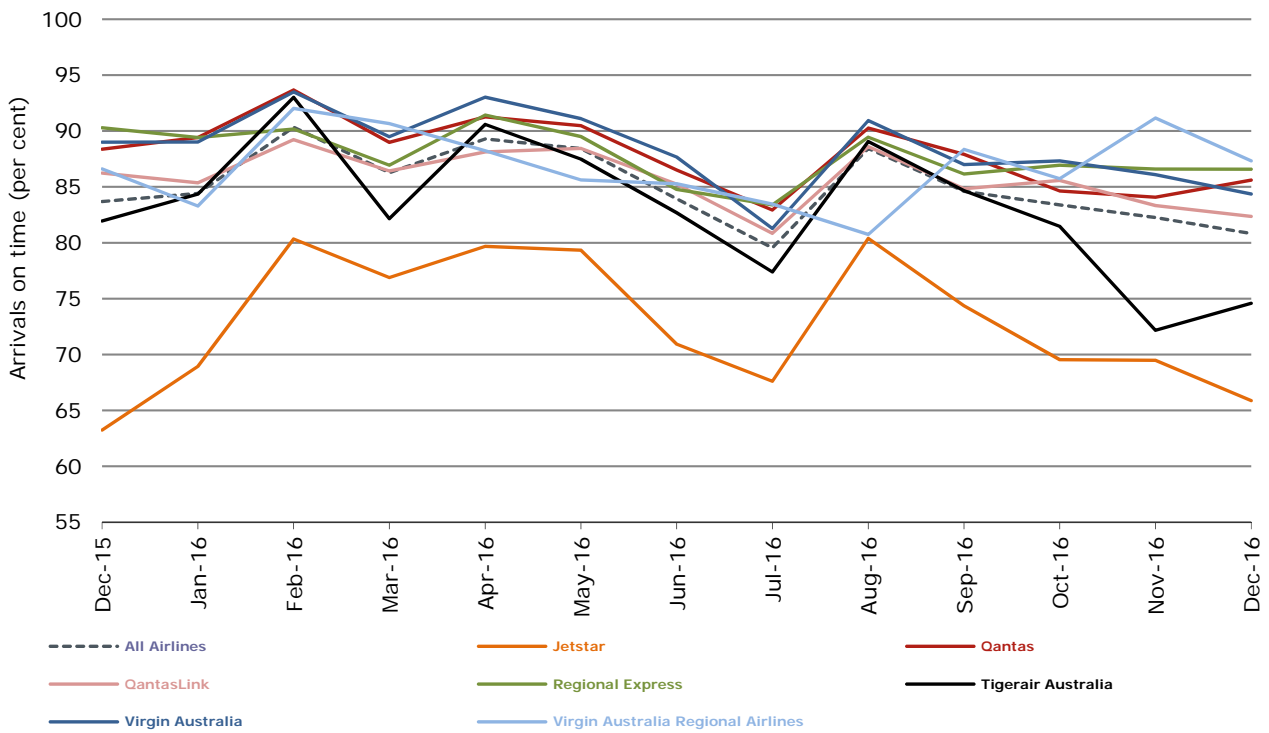
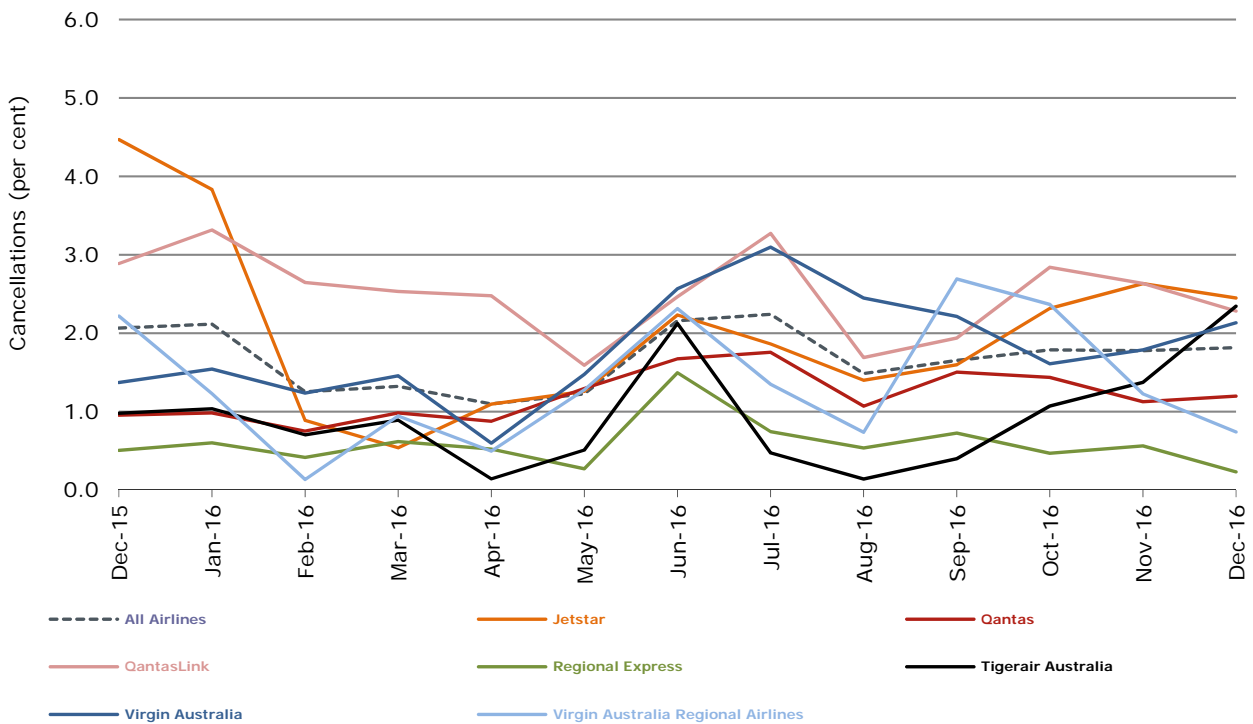


Figure 4 Cancellations (by month from December 2015)



## Major domestic airlines on time performance

Figure 5 On time performance (by month from December 2013)—Jetstar

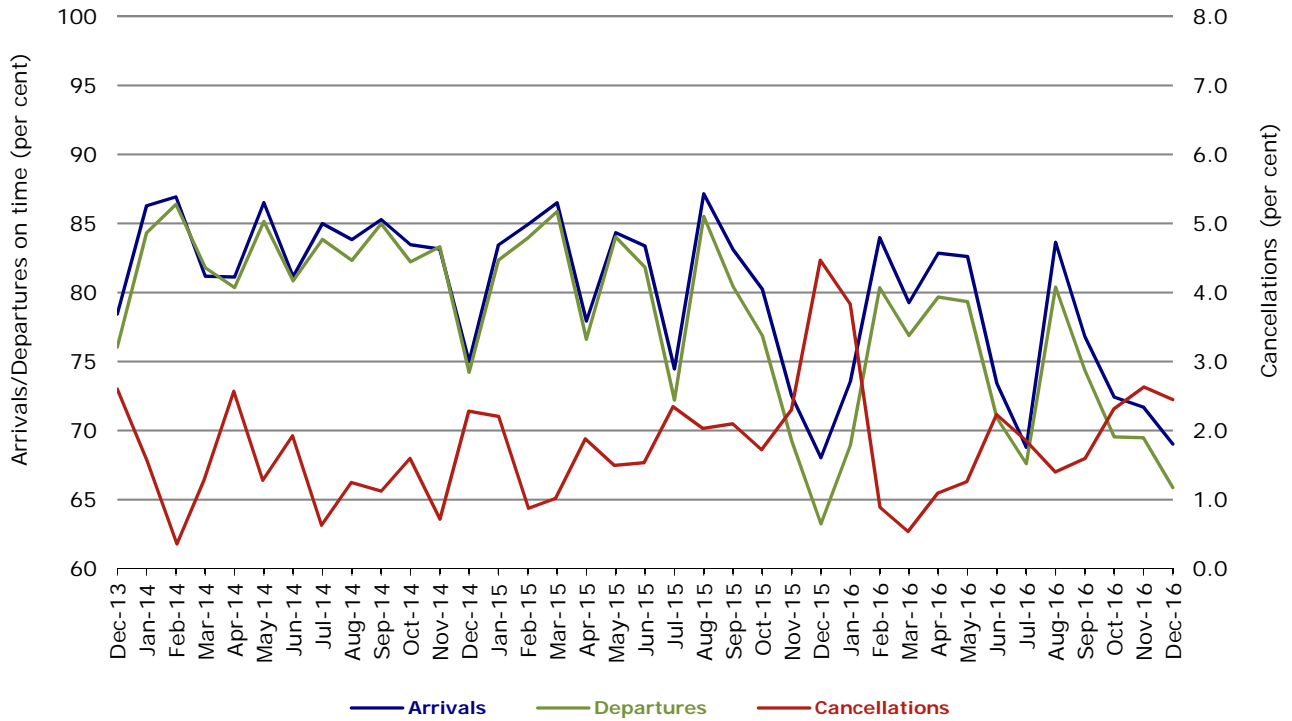


Figure 6 On time performance (by month from December 2013)—Qantas

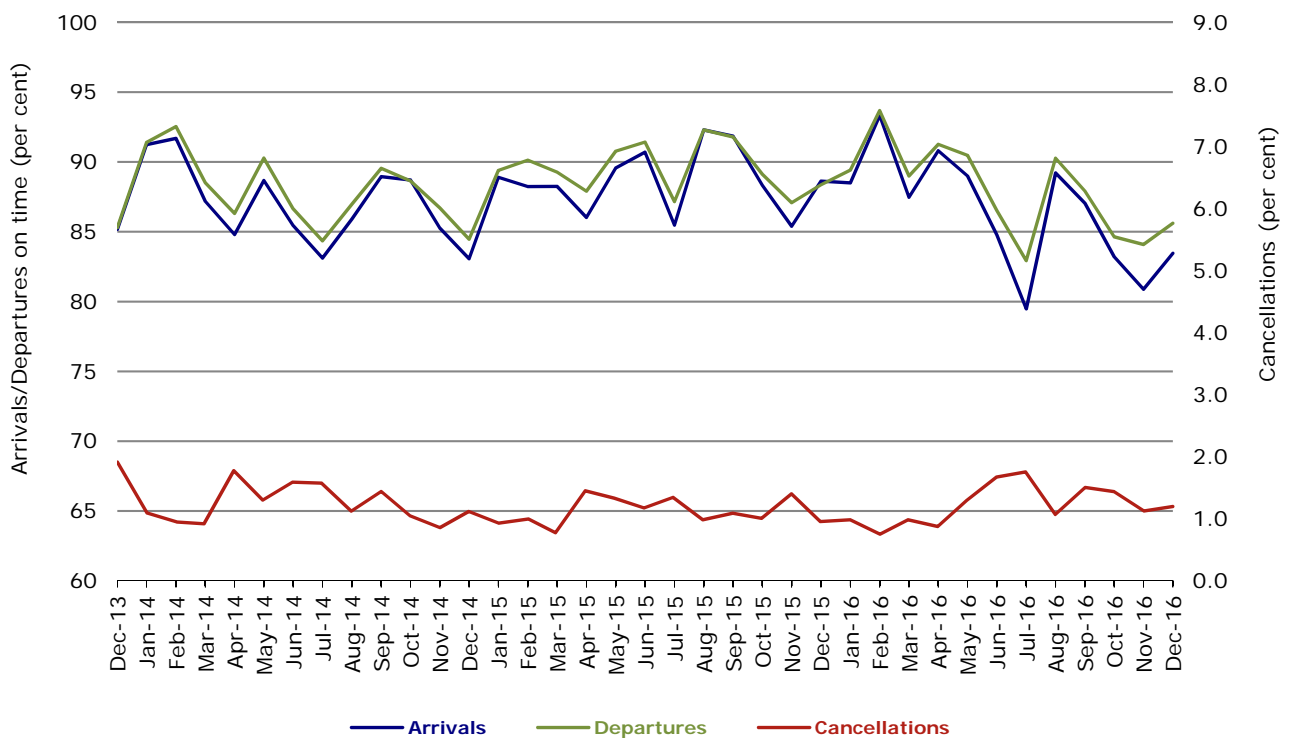


Figure 7 On time performance (by month from December 2013)—Tigerair Australia

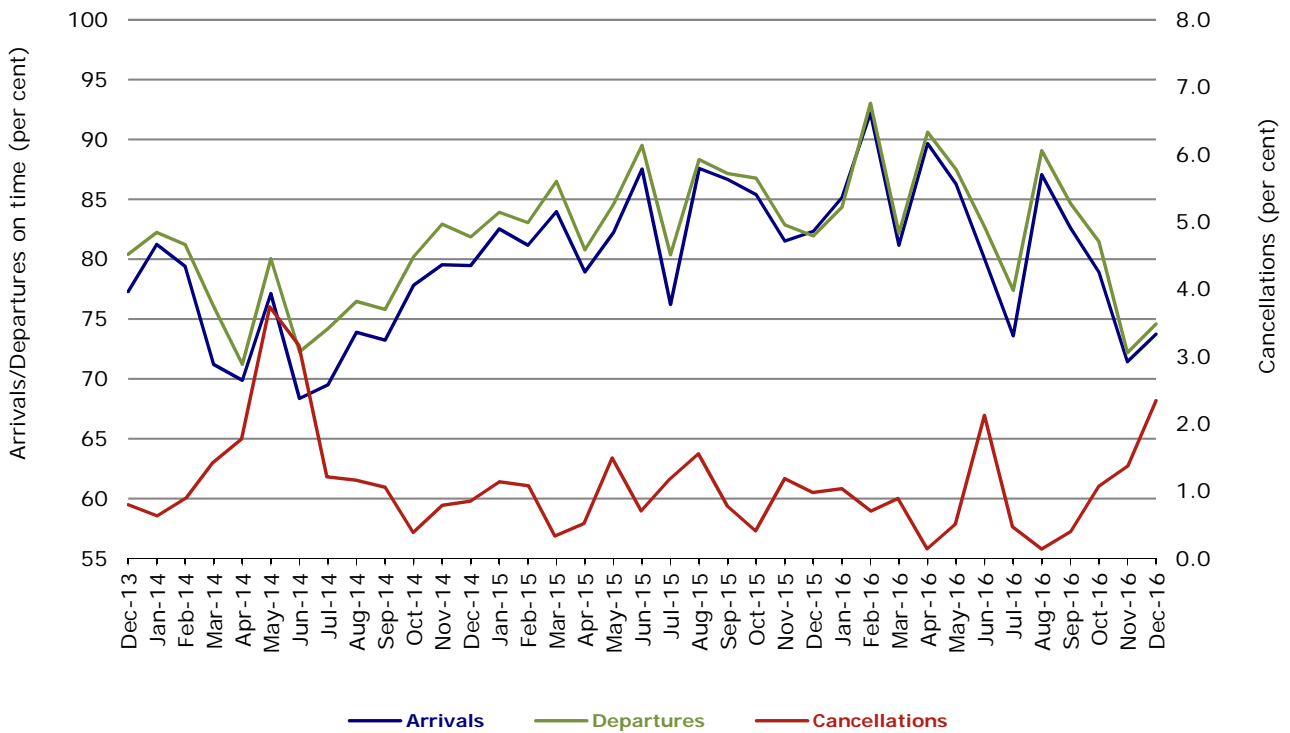
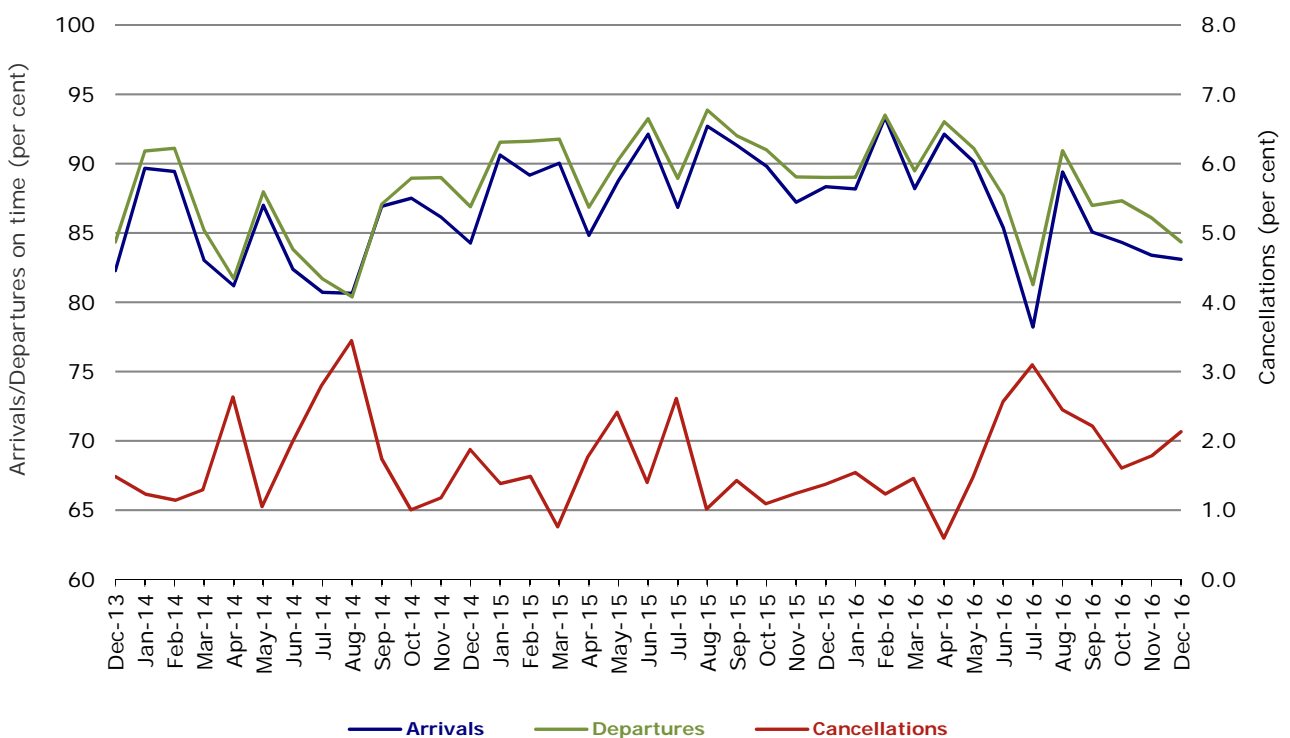


Figure 8 On time performance (by month from December 2013)—Virgin Australia



In January 2016, Virgin Australia transferred their ATR fleet from Virgin Australia Regional Airlines to Virgin Australia.

## Major regional airlines on time performance

Figure 9 On time performance (by month from December 2013)—QantasLink

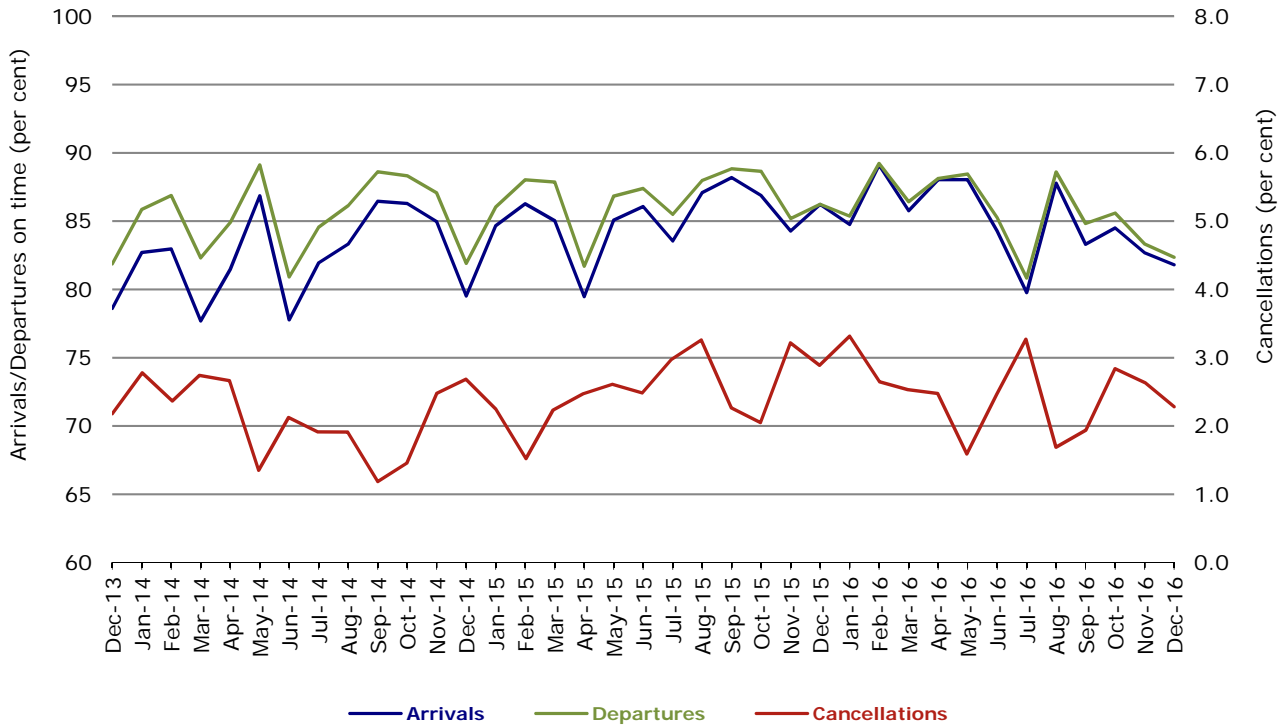


Figure 10 On time performance (by month from December 2013)—Regional Express

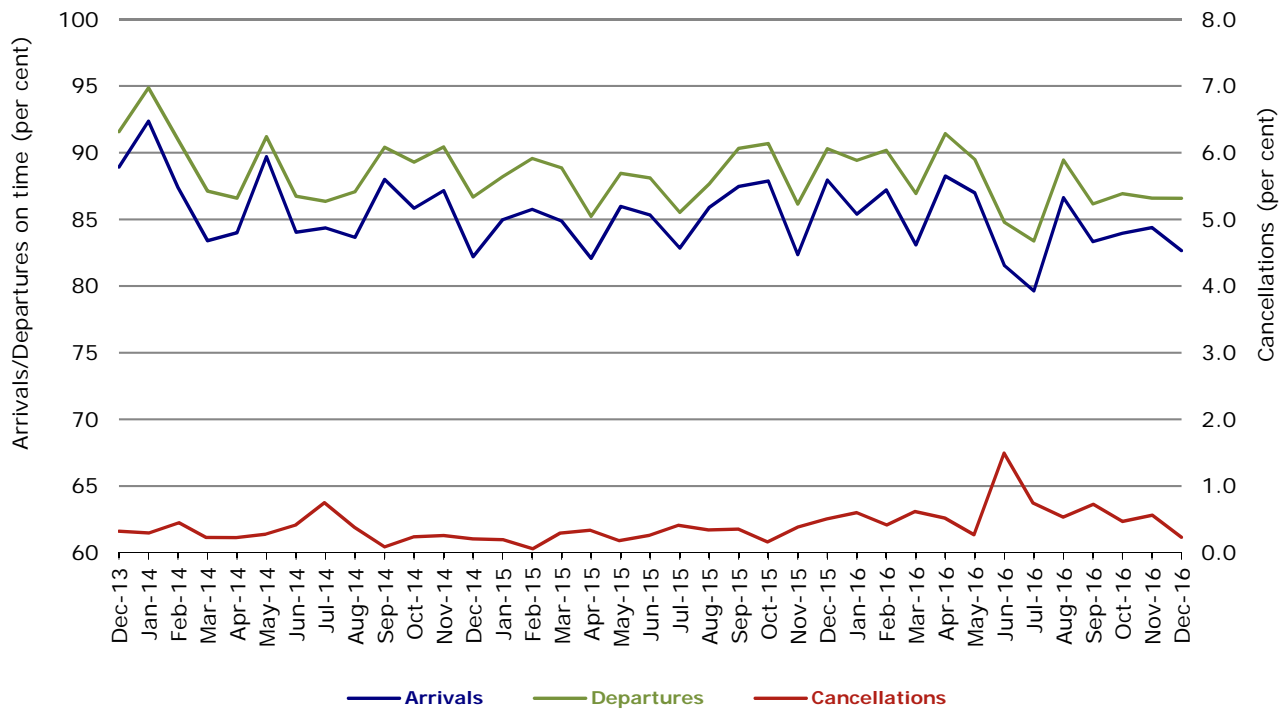
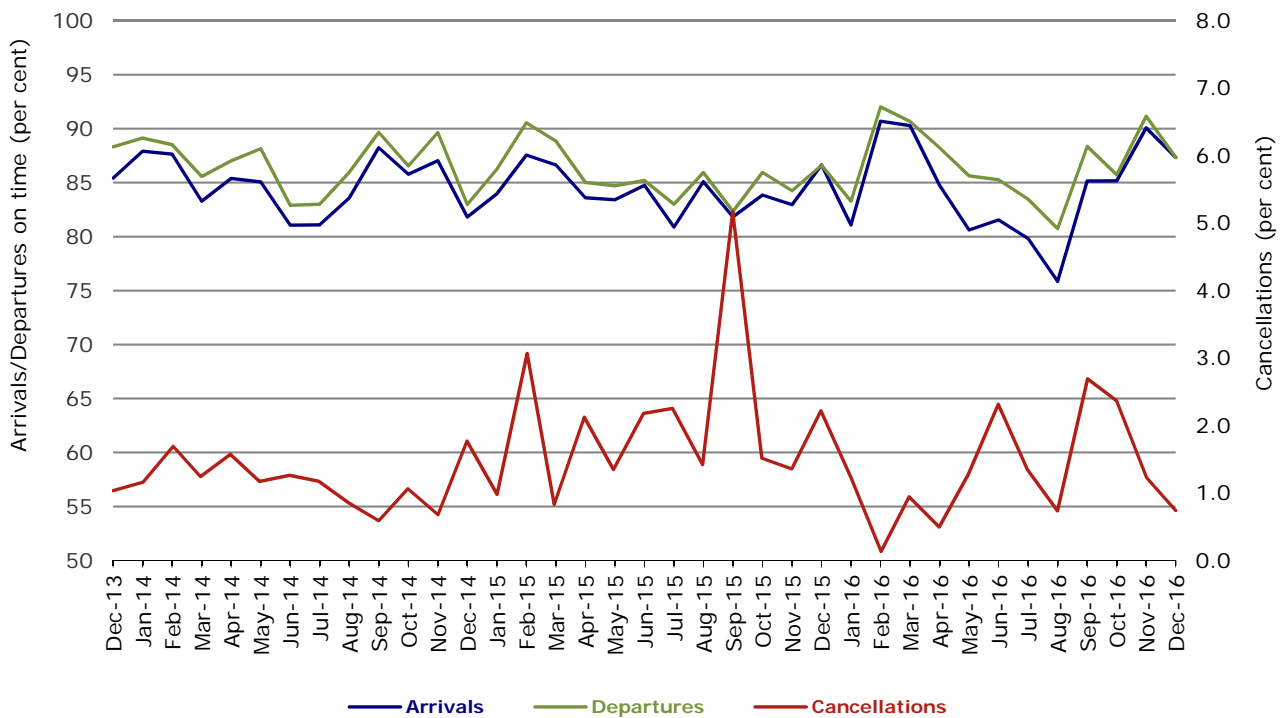


Figure 11 On time performance (by month from December 2013)  
Virgin Australia Regional Airlines



In January 2016, Virgin Australia transferred their ATR fleet from Virgin Australia Regional Airlines to Virgin Australia.

## Individual routes

On time performance is reported for all routes where the passenger load averages over 8000 passengers per month over the previous six months, and where two or more airlines operate in competition on those routes. There are now 66 routes which meet this definition. Over time, however, routes which meet this definition may change as airline networks and traffic levels vary.

	<i>Sectors</i>		<i>Arrivals On Time</i>		<i>Departures On Time</i>		<i>Cancellations</i>	
	<i>Sched.</i>	<i>Flown</i>	<i>No.</i>	<i>%</i>	<i>No.</i>	<i>%</i>	<i>No.</i>	<i>%</i>
<b>Adelaide-Alice Springs</b>								
Qantas	31	31	29	93.5	31	100.0	0	0.0
Virgin Australia	15	14	13	92.9	13	92.9	1	6.7
All Airlines	46	45	42	93.3	44	97.8	1	2.2
<b>Adelaide-Brisbane</b>								
Jetstar	31	31	22	71.0	20	64.5	0	0.0
Qantas	98	98	82	83.7	81	82.7	0	0.0
QantasLink	23	21	18	85.7	19	90.5	2	8.7
Tigerair Australia	28	28	23	82.1	24	85.7	0	0.0
Virgin Australia	110	107	97	90.7	96	89.7	3	2.7
All Airlines	290	285	242	84.9	240	84.2	5	1.7
<b>Adelaide-Canberra</b>								
Qantas	43	43	42	97.7	42	97.7	0	0.0
Virgin Australia	26	26	22	84.6	22	84.6	0	0.0
All Airlines	69	69	64	92.8	64	92.8	0	0.0
<b>Adelaide-Gold Coast</b>								
Jetstar	30	30	25	83.3	26	86.7	0	0.0
Virgin Australia	31	31	29	93.5	29	93.5	0	0.0
All Airlines	61	61	54	88.5	55	90.2	0	0.0
<b>Adelaide-Melbourne</b>								
Jetstar	123	121	71	58.7	70	57.9	2	1.6
Qantas	263	263	200	76.0	212	80.6	0	0.0
Tigerair Australia	77	74	59	79.7	56	75.7	3	3.9
Virgin Australia	279	274	222	81.0	219	79.9	5	1.8
All Airlines	742	732	552	75.4	557	76.1	10	1.3
<b>Adelaide-Perth</b>								
Jetstar	31	31	26	83.9	26	83.9	0	0.0
Qantas	96	96	83	86.5	80	83.3	0	0.0
QantasLink	13	13	11	84.6	10	76.9	0	0.0
Virgin Australia	74	74	66	89.2	61	82.4	0	0.0
All Airlines	214	214	186	86.9	177	82.7	0	0.0
<b>Adelaide-Port Lincoln</b>								
QantasLink	110	110	91	82.7	94	85.5	0	0.0
Regional Express	192	191	176	92.1	182	95.3	1	0.5
All Airlines	302	301	267	88.7	276	91.7	1	0.3
<b>Adelaide-Sydney</b>								
Jetstar	140	133	102	76.7	85	63.9	7	5.0
Qantas	235	234	220	94.0	216	92.3	1	0.4
QantasLink	31	28	24	85.7	23	82.1	3	9.7
Tigerair Australia	49	48	37	77.1	36	75.0	1	2.0
Virgin Australia	164	161	146	90.7	148	91.9	3	1.8
All Airlines	619	604	529	87.6	508	84.1	15	2.4
<b>Albury-Sydney</b>								
QantasLink	110	107	85	79.4	81	75.7	3	2.7
Regional Express	83	83	69	83.1	75	90.4	0	0.0
Virgin Australia	62	61	48	78.7	44	72.1	1	1.6
All Airlines	255	251	202	80.5	200	79.7	4	1.6



	<i>Sectors</i>		<i>Arrivals</i>		<i>Departures</i>		<i>Cancellations</i>	
	<i>Sched.</i>	<i>Flown</i>	<i>On Time</i>		<i>On Time</i>		<i>No.</i>	<i>%</i>
			<i>No.</i>	<i>%</i>	<i>No.</i>	<i>%</i>		
<b>Alice Springs-Adelaide</b>								
Qantas	31	31	29	93.5	28	90.3	0	0.0
Virgin Australia	15	14	13	92.9	13	92.9	1	6.7
All Airlines	46	45	42	93.3	41	91.1	1	2.2
<b>Alice Springs-Darwin</b>								
QantasLink	44	44	37	84.1	38	86.4	0	0.0
Virgin Australia	14	13	12	92.3	11	84.6	1	7.1
All Airlines	58	57	49	86.0	49	86.0	1	1.7
<b>Armidale-Sydney</b>								
QantasLink	116	112	70	62.5	70	62.5	4	3.4
Regional Express	64	62	49	79.0	51	82.3	2	3.1
All Airlines	180	174	119	68.4	121	69.5	6	3.3
<b>Ayers Rock-Sydney</b>								
Jetstar	22	21	15	71.4	16	76.2	1	4.5
Virgin Australia	31	30	26	86.7	25	83.3	1	3.2
All Airlines	53	51	41	80.4	41	80.4	2	3.8
<b>Ballina-Sydney</b>								
Jetstar	90	89	68	76.4	52	58.4	1	1.1
Regional Express	28	28	23	82.1	24	85.7	0	0.0
Virgin Australia	40	40	35	87.5	32	80.0	0	0.0
All Airlines	158	157	126	80.3	108	68.8	1	0.6
<b>Brisbane-Adelaide</b>								
Jetstar	31	31	30	96.8	30	96.8	0	0.0
Qantas	98	98	82	83.7	76	77.6	0	0.0
QantasLink	23	21	19	90.5	18	85.7	2	8.7
Tigerair Australia	28	28	23	82.1	21	75.0	0	0.0
Virgin Australia	113	112	90	80.4	93	83.0	1	0.9
All Airlines	293	290	244	84.1	238	82.1	3	1.0
<b>Brisbane-Bundaberg</b>								
QantasLink	133	133	116	87.2	121	91.0	0	0.0
Virgin Australia	31	31	28	90.3	29	93.5	0	0.0
All Airlines	164	164	144	87.8	150	91.5	0	0.0
<b>Brisbane-Cairns</b>								
Jetstar	132	129	100	77.5	88	68.2	3	2.3
Qantas	119	119	113	95.0	110	92.4	0	0.0
QantasLink	5	5	5	100.0	4	80.0	0	0.0
Tigerair Australia	31	31	27	87.1	25	80.6	0	0.0
Virgin Australia	142	142	130	91.5	124	87.3	0	0.0
All Airlines	429	426	375	88.0	351	82.4	3	0.7
<b>Brisbane-Canberra</b>								
Qantas	83	83	77	92.8	77	92.8	0	0.0
QantasLink	67	66	53	80.3	53	80.3	1	1.5
Virgin Australia	93	92	80	87.0	81	88.0	1	1.1
All Airlines	243	241	210	87.1	211	87.6	2	0.8
<b>Brisbane-Darwin</b>								
Jetstar	26	26	24	92.3	19	73.1	0	0.0
Qantas	48	48	47	97.9	46	95.8	0	0.0
Tigerair Australia	26	26	24	92.3	23	88.5	0	0.0
Virgin Australia	31	31	27	87.1	26	83.9	0	0.0
All Airlines	131	131	122	93.1	114	87.0	0	0.0
<b>Brisbane-Emerald</b>								
QantasLink	115	113	97	85.8	95	84.1	2	1.7
Virgin Australia	69	69	68	98.6	68	98.6	0	0.0
All Airlines	184	182	165	90.7	163	89.6	2	1.1

	<i>Sectors</i>		<i>Arrivals On Time</i>		<i>Departures On Time</i>		<i>Cancellations</i>	
	<i>Sched.</i>	<i>Flown</i>	<i>No.</i>	<i>%</i>	<i>No.</i>	<i>%</i>	<i>No.</i>	<i>%</i>
<b>Brisbane-Gladstone</b>								
QantasLink	136	136	98	72.1	105	77.2	0	0.0
Virgin Australia	97	97	80	82.5	82	84.5	0	0.0
All Airlines	233	233	178	76.4	187	80.3	0	0.0
<b>Brisbane-Hamilton Island</b>								
QantasLink	40	40	36	90.0	34	85.0	0	0.0
Virgin Australia	31	31	28	90.3	28	90.3	0	0.0
All Airlines	71	71	64	90.1	62	87.3	0	0.0
<b>Brisbane-Hobart</b>								
Jetstar	31	31	28	90.3	29	93.5	0	0.0
Qantas	2	2	2	100.0	2	100.0	0	0.0
Virgin Australia	34	34	32	94.1	31	91.2	0	0.0
All Airlines	67	67	62	92.5	62	92.5	0	0.0
<b>Brisbane-Mackay</b>								
Jetstar	35	35	21	60.0	15	42.9	0	0.0
QantasLink	110	108	89	82.4	86	79.6	2	1.8
Virgin Australia	144	144	126	87.5	119	82.6	0	0.0
All Airlines	289	287	236	82.2	220	76.7	2	0.7
<b>Brisbane-Melbourne</b>								
Jetstar	151	149	100	67.1	94	63.1	2	1.3
Qantas	425	423	329	77.8	356	84.2	2	0.5
Tigerair Australia	132	128	93	72.7	95	74.2	4	3.0
Virgin Australia	395	380	274	72.1	308	81.1	15	3.8
All Airlines	1 103	1 080	796	73.7	853	79.0	23	2.1
<b>Brisbane-Moranbah</b>								
QantasLink	78	76	63	82.9	64	84.2	2	2.6
Virgin Australia	54	53	48	90.6	47	88.7	1	1.9
All Airlines	132	129	111	86.0	111	86.0	3	2.3
<b>Brisbane-Mount Isa</b>								
QantasLink	51	49	44	89.8	41	83.7	2	3.9
Virgin Australia	16	16	15	93.8	15	93.8	0	0.0
All Airlines	67	65	59	90.8	56	86.2	2	3.0
<b>Brisbane-Newcastle</b>								
Jetstar	93	91	63	69.2	63	69.2	2	2.2
QantasLink	97	90	72	80.0	71	78.9	7	7.2
Virgin Australia	90	89	78	87.6	77	86.5	1	1.1
All Airlines	280	270	213	78.9	211	78.1	10	3.6
<b>Brisbane-Perth</b>								
Qantas	134	134	120	89.6	120	89.6	0	0.0
Virgin Australia	115	114	87	76.3	84	73.7	1	0.9
All Airlines	249	248	207	83.5	204	82.3	1	0.4
<b>Brisbane-Proserpine</b>								
Jetstar	40	40	30	75.0	24	60.0	0	0.0
Virgin Australia	40	40	37	92.5	37	92.5	0	0.0
All Airlines	80	80	67	83.8	61	76.3	0	0.0
<b>Brisbane-Rockhampton</b>								
QantasLink	194	192	165	85.9	156	81.3	2	1.0
Virgin Australia	172	171	147	86.0	147	86.0	1	0.6
All Airlines	366	363	312	86.0	303	83.5	3	0.8

	<i>Sectors</i>		<i>Arrivals On Time</i>		<i>Departures On Time</i>		<i>Cancellations</i>	
	<i>Sched.</i>	<i>Flown</i>	<i>No.</i>	<i>%</i>	<i>No.</i>	<i>%</i>	<i>No.</i>	<i>%</i>
<b>Brisbane-Sydney</b>								
Jetstar	191	178	116	65.2	113	63.5	13	6.8
Qantas	639	629	537	85.4	548	87.1	10	1.6
Tigerair Australia	105	104	82	78.8	83	79.8	1	1.0
Virgin Australia	526	506	422	83.4	431	85.2	20	3.8
All Airlines	1 461	1 417	1 157	81.7	1 175	82.9	44	3.0
<b>Brisbane-Townsville</b>								
Jetstar	47	47	37	78.7	35	74.5	0	0.0
Qantas	72	72	60	83.3	59	81.9	0	0.0
QantasLink	73	69	54	78.3	53	76.8	4	5.5
Virgin Australia	147	145	123	84.8	114	78.6	2	1.4
All Airlines	339	333	274	82.3	261	78.4	6	1.8
<b>Broome-Perth</b>								
QantasLink	81	81	75	92.6	70	86.4	0	0.0
Virgin Australia	7	7	7	100.0	7	100.0	0	0.0
Virgin Australia Regional Airlines	37	37	30	81.1	29	78.4	0	0.0
All Airlines	125	125	112	89.6	106	84.8	0	0.0
<b>Bundaberg-Brisbane</b>								
QantasLink	133	133	112	84.2	117	88.0	0	0.0
Virgin Australia	31	31	26	83.9	27	87.1	0	0.0
All Airlines	164	164	138	84.1	144	87.8	0	0.0
<b>Cairns-Brisbane</b>								
Jetstar	132	128	94	73.4	96	75.0	4	3.0
Qantas	120	120	110	91.7	114	95.0	0	0.0
QantasLink	5	4	4	100.0	4	100.0	1	20.0
Tigerair Australia	31	31	23	74.2	27	87.1	0	0.0
Virgin Australia	142	142	115	81.0	125	88.0	0	0.0
All Airlines	430	425	346	81.4	366	86.1	5	1.2
<b>Cairns-Melbourne</b>								
Jetstar	107	105	64	61.0	73	69.5	2	1.9
Qantas	38	38	23	60.5	30	78.9	0	0.0
Tigerair Australia	46	46	34	73.9	36	78.3	0	0.0
Virgin Australia	34	34	24	70.6	28	82.4	0	0.0
All Airlines	225	223	145	65.0	167	74.9	2	0.9
<b>Cairns-Sydney</b>								
Jetstar	116	113	80	70.8	85	75.2	3	2.6
Qantas	80	80	74	92.5	73	91.3	0	0.0
Tigerair Australia	46	46	38	82.6	41	89.1	0	0.0
Virgin Australia	94	94	86	91.5	82	87.2	0	0.0
All Airlines	336	333	278	83.5	281	84.4	3	0.9
<b>Cairns-Townsville</b>								
QantasLink	140	139	136	97.8	137	98.6	1	0.7
Regional Express	37	37	36	97.3	37	100.0	0	0.0
All Airlines	177	176	172	97.7	174	98.9	1	0.6
<b>Canberra-Adelaide</b>								
Qantas	43	43	40	93.0	39	90.7	0	0.0
Virgin Australia	26	26	20	76.9	21	80.8	0	0.0
All Airlines	69	69	60	87.0	60	87.0	0	0.0
<b>Canberra-Brisbane</b>								
Qantas	82	82	81	98.8	82	100.0	0	0.0
QantasLink	68	67	52	77.6	50	74.6	1	1.5
Virgin Australia	94	93	86	92.5	82	88.2	1	1.1
All Airlines	244	242	219	90.5	214	88.4	2	0.8

	<i>Sectors</i>		<i>Arrivals On Time</i>		<i>Departures On Time</i>		<i>Cancellations</i>	
	<i>Sched.</i>	<i>Flown</i>	<i>No.</i>	<i>%</i>	<i>No.</i>	<i>%</i>	<i>No.</i>	<i>%</i>
<b>Canberra-Melbourne</b>								
Qantas	172	171	145	84.8	148	86.5	1	0.6
QantasLink	79	77	62	80.5	65	84.4	2	2.5
Tigerair Australia	24	24	8	33.3	7	29.2	0	0.0
Virgin Australia	160	157	127	80.9	129	82.2	3	1.9
All Airlines	435	429	342	79.7	349	81.4	6	1.4
<b>Canberra-Sydney</b>								
QantasLink	388	376	312	83.0	304	80.9	12	3.1
Virgin Australia	235	227	204	89.9	203	89.4	8	3.4
All Airlines	623	603	516	85.6	507	84.1	20	3.2
<b>Coffs Harbour-Sydney</b>								
QantasLink	154	150	118	78.7	122	81.3	4	2.6
Tigerair Australia	13	13	10	76.9	11	84.6	0	0.0
Virgin Australia	58	57	53	93.0	52	91.2	1	1.7
All Airlines	225	220	181	82.3	185	84.1	5	2.2
<b>Darwin-Alice Springs</b>								
QantasLink	44	44	40	90.9	39	88.6	0	0.0
Virgin Australia	14	13	12	92.3	12	92.3	1	7.1
All Airlines	58	57	52	91.2	51	89.5	1	1.7
<b>Darwin-Brisbane</b>								
Jetstar	26	25	19	76.0	18	72.0	1	3.8
Qantas	48	48	41	85.4	44	91.7	0	0.0
Tigerair Australia	26	26	23	88.5	24	92.3	0	0.0
Virgin Australia	31	31	19	61.3	21	67.7	0	0.0
All Airlines	131	130	102	78.5	107	82.3	1	0.8
<b>Darwin-Melbourne</b>								
Jetstar	30	29	15	51.7	11	37.9	1	3.3
Qantas	31	31	23	74.2	23	74.2	0	0.0
Virgin Australia	31	31	24	77.4	26	83.9	0	0.0
All Airlines	92	91	62	68.1	60	65.9	1	1.1
<b>Darwin-Perth</b>								
Qantas	33	33	31	93.9	31	93.9	0	0.0
Virgin Australia	31	31	30	96.8	30	96.8	0	0.0
All Airlines	64	64	61	95.3	61	95.3	0	0.0
<b>Darwin-Sydney</b>								
Jetstar	29	29	19	65.5	18	62.1	0	0.0
Qantas	54	54	43	79.6	40	74.1	0	0.0
Virgin Australia	31	31	27	87.1	25	80.6	0	0.0
All Airlines	114	114	89	78.1	83	72.8	0	0.0
<b>Dubbo-Sydney</b>								
QantasLink	124	121	84	69.4	89	73.6	3	2.4
Regional Express	131	131	109	83.2	113	86.3	0	0.0
All Airlines	255	252	193	76.6	202	80.2	3	1.2
<b>Emerald-Brisbane</b>								
QantasLink	116	113	87	77.0	92	81.4	3	2.6
Virgin Australia	69	68	64	94.1	64	94.1	1	1.4
All Airlines	185	181	151	83.4	156	86.2	4	2.2
<b>Geraldton-Perth</b>								
QantasLink	42	42	38	90.5	38	90.5	0	0.0
Virgin Australia Regional Airlines	52	52	48	92.3	46	88.5	0	0.0
All Airlines	94	94	86	91.5	84	89.4	0	0.0

	<i>Sectors</i>		<i>Arrivals On Time</i>		<i>Departures On Time</i>		<i>Cancellations</i>	
	<i>Sched.</i>	<i>Flown</i>	<i>No.</i>	<i>%</i>	<i>No.</i>	<i>%</i>	<i>No.</i>	<i>%</i>
<b>Gladstone-Brisbane</b>								
QantasLink	136	136	104	76.5	97	71.3	0	0.0
Virgin Australia	98	97	82	84.5	81	83.5	1	1.0
All Airlines	234	233	186	79.8	178	76.4	1	0.4
<b>Gold Coast-Adelaide</b>								
Jetstar	30	30	27	90.0	26	86.7	0	0.0
Virgin Australia	31	31	27	87.1	28	90.3	0	0.0
All Airlines	61	61	54	88.5	54	88.5	0	0.0
<b>Gold Coast-Melbourne</b>								
Jetstar	236	229	178	77.7	170	74.2	7	3.0
Qantas	37	37	22	59.5	26	70.3	0	0.0
Tigerair Australia	105	101	72	71.3	69	68.3	4	3.8
Virgin Australia	194	192	152	79.2	147	76.6	2	1.0
All Airlines	572	559	424	75.8	412	73.7	13	2.3
<b>Gold Coast-Sydney</b>								
Jetstar	340	328	236	72.0	231	70.4	12	3.5
Qantas	109	109	96	88.1	95	87.2	0	0.0
QantasLink	12	11	3	27.3	5	45.5	1	8.3
Tigerair Australia	126	122	79	64.8	73	59.8	4	3.2
Virgin Australia	262	255	217	85.1	211	82.7	7	2.7
All Airlines	849	825	631	76.5	615	74.5	24	2.8
<b>Hamilton Island-Brisbane</b>								
QantasLink	40	40	32	80.0	34	85.0	0	0.0
Virgin Australia	31	31	29	93.5	28	90.3	0	0.0
All Airlines	71	71	61	85.9	62	87.3	0	0.0
<b>Hamilton Island-Melbourne</b>								
Qantas	18	18	16	88.9	17	94.4	0	0.0
Virgin Australia	25	25	21	84.0	22	88.0	0	0.0
All Airlines	43	43	37	86.0	39	90.7	0	0.0
<b>Hamilton Island-Sydney</b>								
Jetstar	31	31	18	58.1	16	51.6	0	0.0
Qantas	21	21	20	95.2	19	90.5	0	0.0
QantasLink	14	14	11	78.6	11	78.6	0	0.0
Virgin Australia	34	33	28	84.8	27	81.8	1	2.9
All Airlines	100	99	77	77.8	73	73.7	1	1.0
<b>Hobart-Brisbane</b>								
Jetstar	31	31	25	80.6	22	71.0	0	0.0
Qantas	2	2	2	100.0	0	0.0	0	0.0
Virgin Australia	34	34	30	88.2	27	79.4	0	0.0
All Airlines	67	67	57	85.1	49	73.1	0	0.0
<b>Hobart-Melbourne</b>								
Jetstar	227	224	125	55.8	115	51.3	3	1.3
Qantas	13	13	9	69.2	10	76.9	0	0.0
QantasLink	129	127	98	77.2	101	79.5	2	1.6
Tigerair Australia	43	43	24	55.8	27	62.8	0	0.0
Virgin Australia	147	147	92	62.6	103	70.1	0	0.0
All Airlines	559	554	348	62.8	356	64.3	5	0.9
<b>Hobart-Sydney</b>								
Jetstar	124	122	77	63.1	81	66.4	2	1.6
Qantas	2	2	2	100.0	2	100.0	0	0.0
QantasLink	58	58	49	84.5	50	86.2	0	0.0
Virgin Australia	71	70	61	87.1	59	84.3	1	1.4
All Airlines	255	252	189	75.0	192	76.2	3	1.2

	<i>Sectors</i>		<i>Arrivals On Time</i>		<i>Departures On Time</i>		<i>Cancellations</i>	
	<i>Sched.</i>	<i>Flown</i>	<i>No.</i>	<i>%</i>	<i>No.</i>	<i>%</i>	<i>No.</i>	<i>%</i>
<b>Kalgoorlie-Perth</b>								
Qantas	4	4	3	75.0	3	75.0	0	0.0
QantasLink	70	70	59	84.3	53	75.7	0	0.0
Virgin Australia	22	21	19	90.5	19	90.5	1	4.5
Virgin Australia Regional Airlines	38	37	35	94.6	35	94.6	1	2.6
All Airlines	134	132	116	87.9	110	83.3	2	1.5
<b>Karratha-Perth</b>								
Qantas	9	9	8	88.9	8	88.9	0	0.0
QantasLink	177	170	158	92.9	154	90.6	7	4.0
Virgin Australia	2	2	0	0.0	0	0.0	0	0.0
Virgin Australia Regional Airlines	80	79	62	78.5	63	79.7	1	1.3
All Airlines	268	260	228	87.7	225	86.5	8	3.0
<b>Launceston-Melbourne</b>								
Jetstar	194	188	116	61.7	107	56.9	6	3.1
QantasLink	122	116	91	78.4	97	83.6	6	4.9
Virgin Australia	100	100	78	78.0	83	83.0	0	0.0
All Airlines	416	404	285	70.5	287	71.0	12	2.9
<b>Launceston-Sydney</b>								
Jetstar	89	87	54	62.1	46	52.9	2	2.2
Virgin Australia	32	32	29	90.6	29	90.6	0	0.0
All Airlines	121	119	83	69.7	75	63.0	2	1.7
<b>Mackay-Brisbane</b>								
Jetstar	35	35	15	42.9	16	45.7	0	0.0
QantasLink	111	109	87	79.8	92	84.4	2	1.8
Virgin Australia	145	145	122	84.1	123	84.8	0	0.0
All Airlines	291	289	224	77.5	231	79.9	2	0.7
<b>Melbourne-Adelaide</b>								
Jetstar	123	122	44	36.1	47	38.5	1	0.8
Qantas	264	263	216	82.1	225	85.6	1	0.4
Tigerair Australia	77	74	60	81.1	62	83.8	3	3.9
Virgin Australia	274	268	209	78.0	221	82.5	6	2.2
All Airlines	738	727	529	72.8	555	76.3	11	1.5
<b>Melbourne-Brisbane</b>								
Jetstar	151	148	96	64.9	81	54.7	3	2.0
Qantas	429	424	352	83.0	354	83.5	5	1.2
Tigerair Australia	132	128	93	72.7	95	74.2	4	3.0
Virgin Australia	383	367	292	79.6	309	84.2	16	4.2
All Airlines	1 095	1 067	833	78.1	839	78.6	28	2.6
<b>Melbourne-Cairns</b>								
Jetstar	107	106	82	77.4	71	67.0	1	0.9
Qantas	38	38	33	86.8	32	84.2	0	0.0
Tigerair Australia	46	46	39	84.8	37	80.4	0	0.0
Virgin Australia	34	34	29	85.3	28	82.4	0	0.0
All Airlines	225	224	183	81.7	168	75.0	1	0.4
<b>Melbourne-Canberra</b>								
Qantas	173	172	151	87.8	148	86.0	1	0.6
QantasLink	79	75	55	73.3	57	76.0	4	5.1
Tigerair Australia	24	24	16	66.7	17	70.8	0	0.0
Virgin Australia	159	155	123	79.4	128	82.6	4	2.5
All Airlines	435	426	345	81.0	350	82.2	9	2.1
<b>Melbourne-Darwin</b>								
Jetstar	30	29	19	65.5	18	62.1	1	3.3
Qantas	31	31	26	83.9	25	80.6	0	0.0
Virgin Australia	31	31	22	71.0	19	61.3	0	0.0
All Airlines	92	91	67	73.6	62	68.1	1	1.1

	<i>Sectors</i>		<i>Arrivals On Time</i>		<i>Departures On Time</i>		<i>Cancellations</i>	
	<i>Sched.</i>	<i>Flown</i>	<i>No.</i>	<i>%</i>	<i>No.</i>	<i>%</i>	<i>No.</i>	<i>%</i>
<b>Melbourne-Gold Coast</b>								
Jetstar	236	231	163	70.6	167	72.3	5	2.1
Qantas	37	37	28	75.7	29	78.4	0	0.0
Tigerair Australia	104	101	79	78.2	76	75.2	3	2.9
Virgin Australia	195	193	154	79.8	161	83.4	2	1.0
All Airlines	572	562	424	75.4	433	77.0	10	1.7
<b>Melbourne-Hamilton Island</b>								
Qantas	18	18	17	94.4	17	94.4	0	0.0
Virgin Australia	25	25	23	92.0	23	92.0	0	0.0
All Airlines	43	43	40	93.0	40	93.0	0	0.0
<b>Melbourne-Hobart</b>								
Jetstar	228	225	139	61.8	138	61.3	3	1.3
Qantas	13	13	13	100.0	13	100.0	0	0.0
QantasLink	129	128	97	75.8	101	78.9	1	0.8
Tigerair Australia	43	43	30	69.8	31	72.1	0	0.0
Virgin Australia	147	146	115	78.8	120	82.2	1	0.7
All Airlines	560	555	394	71.0	403	72.6	5	0.9
<b>Melbourne-Launceston</b>								
Jetstar	195	188	128	68.1	120	63.8	7	3.6
QantasLink	122	117	97	82.9	93	79.5	5	4.1
Virgin Australia	100	100	81	81.0	82	82.0	0	0.0
All Airlines	417	405	306	75.6	295	72.8	12	2.9
<b>Melbourne-Mildura</b>								
QantasLink	94	93	69	74.2	73	78.5	1	1.1
Regional Express	69	69	57	82.6	59	85.5	0	0.0
Virgin Australia	31	31	23	74.2	27	87.1	0	0.0
All Airlines	194	193	149	77.2	159	82.4	1	0.5
<b>Melbourne-Newcastle</b>								
Jetstar	118	117	75	64.1	70	59.8	1	0.8
Virgin Australia	33	33	25	75.8	27	81.8	0	0.0
All Airlines	151	150	100	66.7	97	64.7	1	0.7
<b>Melbourne-Perth</b>								
Jetstar	62	58	44	75.9	40	69.0	4	6.5
Qantas	203	203	126	62.1	147	72.4	0	0.0
Tigerair Australia	62	60	54	90.0	55	91.7	2	3.2
Virgin Australia	156	156	114	73.1	123	78.8	0	0.0
All Airlines	483	477	338	70.9	365	76.5	6	1.2
<b>Melbourne-Sunshine Coast</b>								
Jetstar	93	92	63	68.5	58	63.0	1	1.1
QantasLink	9	9	5	55.6	6	66.7	0	0.0
Virgin Australia	44	44	36	81.8	33	75.0	0	0.0
All Airlines	146	145	104	71.7	97	66.9	1	0.7
<b>Melbourne-Sydney</b>								
Jetstar	401	381	220	57.7	226	59.3	20	5.0
Qantas	896	860	702	81.6	724	84.2	36	4.0
Tigerair Australia	214	206	123	59.7	125	60.7	8	3.7
Virgin Australia	733	687	561	81.7	584	85.0	46	6.3
All Airlines	2 244	2 134	1 606	75.3	1 659	77.7	110	4.9
<b>Mildura-Melbourne</b>								
QantasLink	94	92	73	79.3	73	79.3	2	2.1
Regional Express	70	70	45	64.3	50	71.4	0	0.0
Virgin Australia	31	31	24	77.4	25	80.6	0	0.0
All Airlines	195	193	142	73.6	148	76.7	2	1.0

	<i>Sectors</i>		<i>Arrivals On Time</i>		<i>Departures On Time</i>		<i>Cancellations</i>	
	<i>Sched.</i>	<i>Flown</i>	<i>No.</i>	<i>%</i>	<i>No.</i>	<i>%</i>	<i>No.</i>	<i>%</i>
<b>Moranbah-Brisbane</b>								
QantasLink	75	72	59	81.9	60	83.3	3	4.0
Virgin Australia	54	53	49	92.5	49	92.5	1	1.9
All Airlines	129	125	108	86.4	109	87.2	4	3.1
<b>Mount Isa-Brisbane</b>								
QantasLink	52	48	36	75.0	41	85.4	4	7.7
Virgin Australia	19	19	16	84.2	16	84.2	0	0.0
All Airlines	71	67	52	77.6	57	85.1	4	5.6
<b>Newcastle-Brisbane</b>								
Jetstar	93	92	65	70.7	69	75.0	1	1.1
QantasLink	98	92	75	81.5	79	85.9	6	6.1
Virgin Australia	90	89	80	89.9	78	87.6	1	1.1
All Airlines	281	273	220	80.6	226	82.8	8	2.8
<b>Newcastle-Melbourne</b>								
Jetstar	118	116	73	62.9	78	67.2	2	1.7
Virgin Australia	33	33	21	63.6	23	69.7	0	0.0
All Airlines	151	149	94	63.1	101	67.8	2	1.3
<b>Newman-Perth</b>								
Qantas	51	50	47	94.0	47	94.0	1	2.0
QantasLink	79	75	66	88.0	64	85.3	4	5.1
Virgin Australia	8	8	8	100.0	8	100.0	0	0.0
Virgin Australia Regional Airlines	30	30	29	96.7	29	96.7	0	0.0
All Airlines	168	163	150	92.0	148	90.8	5	3.0
<b>Perth-Adelaide</b>								
Jetstar	31	31	24	77.4	21	67.7	0	0.0
Qantas	102	102	98	96.1	98	96.1	0	0.0
QantasLink	13	13	12	92.3	12	92.3	0	0.0
Virgin Australia	80	80	73	91.3	72	90.0	0	0.0
All Airlines	226	226	207	91.6	203	89.8	0	0.0
<b>Perth-Brisbane</b>								
Qantas	130	129	115	89.1	110	85.3	1	0.8
Virgin Australia	116	116	106	91.4	99	85.3	0	0.0
All Airlines	246	245	221	90.2	209	85.3	1	0.4
<b>Perth-Broome</b>								
QantasLink	81	81	79	97.5	71	87.7	0	0.0
Virgin Australia	7	7	7	100.0	7	100.0	0	0.0
Virgin Australia Regional Airlines	36	36	31	86.1	32	88.9	0	0.0
All Airlines	124	124	117	94.4	110	88.7	0	0.0
<b>Perth-Darwin</b>								
Qantas	33	33	30	90.9	30	90.9	0	0.0
Virgin Australia	31	31	30	96.8	29	93.5	0	0.0
All Airlines	64	64	60	93.8	59	92.2	0	0.0
<b>Perth-Geraldton</b>								
QantasLink	42	42	35	83.3	34	81.0	0	0.0
Virgin Australia Regional Airlines	52	52	46	88.5	45	86.5	0	0.0
All Airlines	94	94	81	86.2	79	84.0	0	0.0
<b>Perth-Kalgoorlie</b>								
Qantas	4	4	3	75.0	3	75.0	0	0.0
QantasLink	70	70	52	74.3	52	74.3	0	0.0
Virgin Australia	23	22	20	90.9	20	90.9	1	4.3
Virgin Australia Regional Airlines	38	37	32	86.5	32	86.5	1	2.6
All Airlines	135	133	107	80.5	107	80.5	2	1.5



	<i>Sectors</i>		<i>Arrivals On Time</i>		<i>Departures On Time</i>		<i>Cancellations</i>	
	<i>Sched.</i>	<i>Flown</i>	<i>No.</i>	<i>%</i>	<i>No.</i>	<i>%</i>	<i>No.</i>	<i>%</i>
<b>Perth-Karratha</b>								
Qantas	9	9	9	100.0	9	100.0	0	0.0
QantasLink	178	172	158	91.9	155	90.1	6	3.4
Virgin Australia	2	2	2	100.0	2	100.0	0	0.0
Virgin Australia Regional Airlines	80	78	71	91.0	72	92.3	2	2.5
All Airlines	269	261	240	92.0	238	91.2	8	3.0
<b>Perth-Melbourne</b>								
Jetstar	62	57	41	71.9	37	64.9	5	8.1
Qantas	204	204	176	86.3	173	84.8	0	0.0
Tigerair Australia	62	60	57	95.0	52	86.7	2	3.2
Virgin Australia	151	150	128	85.3	128	85.3	1	0.7
All Airlines	479	471	402	85.4	390	82.8	8	1.7
<b>Perth-Newman</b>								
Qantas	51	51	47	92.2	44	86.3	0	0.0
QantasLink	79	75	63	84.0	66	88.0	4	5.1
Virgin Australia	8	8	7	87.5	7	87.5	0	0.0
Virgin Australia Regional Airlines	30	30	28	93.3	29	96.7	0	0.0
All Airlines	168	164	145	88.4	146	89.0	4	2.4
<b>Perth-Port Hedland</b>								
Qantas	32	31	29	93.5	28	90.3	1	3.1
QantasLink	99	97	79	81.4	85	87.6	2	2.0
Virgin Australia	24	24	24	100.0	24	100.0	0	0.0
Virgin Australia Regional Airlines	29	29	25	86.2	25	86.2	0	0.0
All Airlines	184	181	157	86.7	162	89.5	3	1.6
<b>Perth-Sydney</b>								
Jetstar	30	30	22	73.3	17	56.7	0	0.0
Qantas	210	210	182	86.7	169	80.5	0	0.0
Tigerair Australia	31	31	29	93.5	30	96.8	0	0.0
Virgin Australia	130	129	120	93.0	107	82.9	1	0.8
All Airlines	401	400	353	88.3	323	80.8	1	0.2
<b>Port Hedland-Perth</b>								
Qantas	34	32	27	84.4	26	81.3	2	5.9
QantasLink	99	96	91	94.8	88	91.7	3	3.0
Virgin Australia	24	24	23	95.8	23	95.8	0	0.0
Virgin Australia Regional Airlines	28	28	24	85.7	24	85.7	0	0.0
All Airlines	185	180	165	91.7	161	89.4	5	2.7
<b>Port Lincoln-Adelaide</b>								
QantasLink	111	111	96	86.5	94	84.7	0	0.0
Regional Express	193	192	174	90.6	174	90.6	1	0.5
All Airlines	304	303	270	89.1	268	88.4	1	0.3
<b>Port Macquarie-Sydney</b>								
QantasLink	134	127	87	68.5	89	70.1	7	5.2
Virgin Australia	60	60	45	75.0	43	71.7	0	0.0
All Airlines	194	187	132	70.6	132	70.6	7	3.6
<b>Proserpine-Brisbane</b>								
Jetstar	40	40	25	62.5	26	65.0	0	0.0
Virgin Australia	40	40	36	90.0	36	90.0	0	0.0
All Airlines	80	80	61	76.3	62	77.5	0	0.0
<b>Rockhampton-Brisbane</b>								
QantasLink	194	193	150	77.7	163	84.5	1	0.5
Virgin Australia	173	171	145	84.8	151	88.3	2	1.2
All Airlines	367	364	295	81.0	314	86.3	3	0.8

	<i>Sectors</i>		<i>Arrivals On Time</i>		<i>Departures On Time</i>		<i>Cancellations</i>	
	<i>Sched.</i>	<i>Flown</i>	<i>No.</i>	<i>%</i>	<i>No.</i>	<i>%</i>	<i>No.</i>	<i>%</i>
<b>Sunshine Coast-Melbourne</b>								
Jetstar	93	91	55	60.4	50	54.9	2	2.2
QantasLink	9	9	6	66.7	6	66.7	0	0.0
Virgin Australia	44	44	31	70.5	28	63.6	0	0.0
All Airlines	146	144	92	63.9	84	58.3	2	1.4
<b>Sunshine Coast-Sydney</b>								
Jetstar	123	120	72	60.0	72	60.0	3	2.4
QantasLink	36	35	27	77.1	29	82.9	1	2.8
Virgin Australia	42	42	36	85.7	35	83.3	0	0.0
All Airlines	201	197	135	68.5	136	69.0	4	2.0
<b>Sydney-Adelaide</b>								
Jetstar	141	134	86	64.2	83	61.9	7	5.0
Qantas	229	228	194	85.1	195	85.5	1	0.4
QantasLink	31	28	21	75.0	22	78.6	3	9.7
Tigerair Australia	49	48	37	77.1	39	81.3	1	2.0
Virgin Australia	159	156	133	85.3	135	86.5	3	1.9
All Airlines	609	594	471	79.3	474	79.8	15	2.5
<b>Sydney-Albury</b>								
QantasLink	110	107	77	72.0	84	78.5	3	2.7
Regional Express	84	84	76	90.5	76	90.5	0	0.0
Virgin Australia	62	61	49	80.3	49	80.3	1	1.6
All Airlines	256	252	202	80.2	209	82.9	4	1.6
<b>Sydney-Armidale</b>								
QantasLink	115	113	64	56.6	72	63.7	2	1.7
Regional Express	62	62	50	80.6	51	82.3	0	0.0
All Airlines	177	175	114	65.1	123	70.3	2	1.1
<b>Sydney-Ayers Rock</b>								
Jetstar	23	22	18	81.8	18	81.8	1	4.3
Virgin Australia	31	30	27	90.0	27	90.0	1	3.2
All Airlines	54	52	45	86.5	45	86.5	2	3.7
<b>Sydney-Ballina</b>								
Jetstar	90	90	67	74.4	71	78.9	0	0.0
Regional Express	27	27	26	96.3	26	96.3	0	0.0
Virgin Australia	40	40	37	92.5	37	92.5	0	0.0
All Airlines	157	157	130	82.8	134	85.4	0	0.0
<b>Sydney-Brisbane</b>								
Jetstar	191	178	113	63.5	102	57.3	13	6.8
Qantas	638	632	545	86.2	563	89.1	6	0.9
Tigerair Australia	106	105	82	78.1	83	79.0	1	0.9
Virgin Australia	538	521	421	80.8	441	84.6	17	3.2
All Airlines	1 473	1 436	1 161	80.8	1 189	82.8	37	2.5
<b>Sydney-Cairns</b>								
Jetstar	116	114	91	79.8	79	69.3	2	1.7
Qantas	80	80	74	92.5	74	92.5	0	0.0
Tigerair Australia	46	46	43	93.5	41	89.1	0	0.0
Virgin Australia	93	93	82	88.2	82	88.2	0	0.0
All Airlines	335	333	290	87.1	276	82.9	2	0.6
<b>Sydney-Canberra</b>								
QantasLink	387	380	290	76.3	299	78.7	7	1.8
Virgin Australia	235	225	190	84.4	185	82.2	10	4.3
All Airlines	622	605	480	79.3	484	80.0	17	2.7

	<i>Sectors</i>		<i>Arrivals On Time</i>		<i>Departures On Time</i>		<i>Cancellations</i>	
	<i>Sched.</i>	<i>Flown</i>	<i>No.</i>	<i>%</i>	<i>No.</i>	<i>%</i>	<i>No.</i>	<i>%</i>
<b>Sydney-Coffs Harbour</b>								
QantasLink	153	149	122	81.9	118	79.2	4	2.6
Tigerair Australia	13	13	11	84.6	11	84.6	0	0.0
Virgin Australia	58	57	52	91.2	52	91.2	1	1.7
All Airlines	224	219	185	84.5	181	82.6	5	2.2
<b>Sydney-Darwin</b>								
Jetstar	29	29	22	75.9	21	72.4	0	0.0
Qantas	53	53	42	79.2	42	79.2	0	0.0
Virgin Australia	31	31	27	87.1	29	93.5	0	0.0
All Airlines	113	113	91	80.5	92	81.4	0	0.0
<b>Sydney-Dubbo</b>								
QantasLink	123	120	82	68.3	85	70.8	3	2.4
Regional Express	127	127	112	88.2	112	88.2	0	0.0
All Airlines	250	247	194	78.5	197	79.8	3	1.2
<b>Sydney-Gold Coast</b>								
Jetstar	340	327	255	78.0	250	76.5	13	3.8
Qantas	109	109	98	89.9	100	91.7	0	0.0
QantasLink	12	11	6	54.5	6	54.5	1	8.3
Tigerair Australia	127	124	87	70.2	93	75.0	3	2.4
Virgin Australia	262	255	223	87.5	228	89.4	7	2.7
All Airlines	850	826	669	81.0	677	82.0	24	2.8
<b>Sydney-Hamilton Island</b>								
Jetstar	31	31	21	67.7	20	64.5	0	0.0
Qantas	21	21	21	100.0	19	90.5	0	0.0
QantasLink	14	14	11	78.6	12	85.7	0	0.0
Virgin Australia	34	33	28	84.8	31	93.9	1	2.9
All Airlines	100	99	81	81.8	82	82.8	1	1.0
<b>Sydney-Hobart</b>								
Jetstar	124	122	96	78.7	89	73.0	2	1.6
Qantas	2	2	2	100.0	2	100.0	0	0.0
QantasLink	57	56	46	82.1	47	83.9	1	1.8
Virgin Australia	71	71	64	90.1	64	90.1	0	0.0
All Airlines	254	251	208	82.9	202	80.5	3	1.2
<b>Sydney-Launceston</b>								
Jetstar	89	89	72	80.9	68	76.4	0	0.0
Virgin Australia	32	32	28	87.5	30	93.8	0	0.0
All Airlines	121	121	100	82.6	98	81.0	0	0.0
<b>Sydney-Melbourne</b>								
Jetstar	397	375	211	56.3	199	53.1	22	5.5
Qantas	899	862	645	74.8	719	83.4	37	4.1
Tigerair Australia	214	203	121	59.6	135	66.5	11	5.1
Virgin Australia	726	679	511	75.3	568	83.7	47	6.5
All Airlines	2 236	2 119	1 488	70.2	1 621	76.5	117	5.2
<b>Sydney-Perth</b>								
Jetstar	31	31	22	71.0	22	71.0	0	0.0
Qantas	208	208	139	66.8	156	75.0	0	0.0
Tigerair Australia	30	29	25	86.2	23	79.3	1	3.3
Virgin Australia	129	128	99	77.3	98	76.6	1	0.8
All Airlines	398	396	285	72.0	299	75.5	2	0.5
<b>Sydney-Port Macquarie</b>								
QantasLink	133	127	82	64.6	83	65.4	6	4.5
Virgin Australia	60	60	47	78.3	46	76.7	0	0.0
All Airlines	193	187	129	69.0	129	69.0	6	3.1

	<i>Sectors</i>		<i>Arrivals On Time</i>		<i>Departures On Time</i>		<i>Cancellations</i>	
	<i>Sched.</i>	<i>Flown</i>	<i>No.</i>	<i>%</i>	<i>No.</i>	<i>%</i>	<i>No.</i>	<i>%</i>
<b>Sydney-Sunshine Coast</b>								
Jetstar	124	122	92	75.4	87	71.3	2	1.6
QantasLink	35	34	30	88.2	30	88.2	1	2.9
Virgin Australia	42	42	36	85.7	37	88.1	0	0.0
All Airlines	201	198	158	79.8	154	77.8	3	1.5
<b>Sydney-Tamworth</b>								
QantasLink	151	147	112	76.2	110	74.8	4	2.6
Virgin Australia	41	41	34	82.9	35	85.4	0	0.0
All Airlines	192	188	146	77.7	145	77.1	4	2.1
<b>Sydney-Townsville</b>								
Jetstar	29	28	12	42.9	9	32.1	1	3.4
Virgin Australia	29	29	24	82.8	24	82.8	0	0.0
All Airlines	58	57	36	63.2	33	57.9	1	1.7
<b>Sydney-Wagga Wagga</b>								
QantasLink	114	113	85	75.2	91	80.5	1	0.9
Regional Express	108	108	91	84.3	96	88.9	0	0.0
All Airlines	222	221	176	79.6	187	84.6	1	0.5
<b>Tamworth-Sydney</b>								
QantasLink	152	145	113	77.9	114	78.6	7	4.6
Virgin Australia	41	41	35	85.4	34	82.9	0	0.0
All Airlines	193	186	148	79.6	148	79.6	7	3.6
<b>Townsville-Brisbane</b>								
Jetstar	47	47	35	74.5	32	68.1	0	0.0
Qantas	72	72	65	90.3	64	88.9	0	0.0
QantasLink	74	70	47	67.1	54	77.1	4	5.4
Virgin Australia	148	146	128	87.7	124	84.9	2	1.4
All Airlines	341	335	275	82.1	274	81.8	6	1.8
<b>Townsville-Cairns</b>								
QantasLink	142	140	136	97.1	136	97.1	2	1.4
Regional Express	37	37	37	100.0	37	100.0	0	0.0
All Airlines	179	177	173	97.7	173	97.7	2	1.1
<b>Townsville-Sydney</b>								
Jetstar	29	28	12	42.9	10	35.7	1	3.4
Virgin Australia	29	29	24	82.8	22	75.9	0	0.0
All Airlines	58	57	36	63.2	32	56.1	1	1.7
<b>Wagga Wagga-Sydney</b>								
QantasLink	114	113	91	80.5	87	77.0	1	0.9
Regional Express	106	106	87	82.1	90	84.9	0	0.0
All Airlines	220	219	178	81.3	177	80.8	1	0.5

# Airports

On time performance is reported for all routes where the passenger load averages over 8000 passengers per month, and where two or more airlines operate in competition. The following data reports by airport against flights operated on those routes only. This month, 8 major city airports and 33 regional city airports are covered.

Airport	Arrivals			Departures		
	Sectors	On Time		Sectors	On Time	
	Flown	No.	%	Flown	No.	%
<b>Adelaide</b>						
Jetstar	348	211	60.6	346	227	65.6
Qantas	765	659	86.1	765	662	86.5
QantasLink	173	148	85.5	172	146	84.9
Regional Express	192	174	90.6	191	182	95.3
Tigerair Australia	150	120	80.0	150	116	77.3
Virgin Australia	687	565	82.2	687	588	85.6
All Airlines	2 315	1 877	81.1	2 311	1 921	83.1
Relates to services to and from Alice Springs, Brisbane, Canberra, Gold Coast, Melbourne, Perth, Port Lincoln and Sydney.						
<b>Albury</b>						
QantasLink	107	77	72.0	107	81	75.7
Regional Express	84	76	90.5	83	75	90.4
Virgin Australia	61	49	80.3	61	44	72.1
All Airlines	252	202	80.2	251	200	79.7
Relates to services to and from Sydney only.						
<b>Alice Springs</b>						
Qantas	31	29	93.5	31	28	90.3
QantasLink	44	40	90.9	44	38	86.4
Virgin Australia	27	25	92.6	27	24	88.9
All Airlines	102	94	92.2	102	90	88.2
Relates to services to and from Adelaide and Darwin.						
<b>Armidale</b>						
QantasLink	113	64	56.6	112	70	62.5
Regional Express	62	50	80.6	62	51	82.3
All Airlines	175	114	65.1	174	121	69.5
Relates to services to and from Sydney only.						
<b>Ayers Rock</b>						
Jetstar	22	18	81.8	21	16	76.2
Virgin Australia	30	27	90.0	30	25	83.3
All Airlines	52	45	86.5	51	41	80.4
Relates to services to and from Sydney only.						
<b>Ballina</b>						
Jetstar	90	67	74.4	89	52	58.4
Regional Express	27	26	96.3	28	24	85.7
Virgin Australia	40	37	92.5	40	32	80.0
All Airlines	157	130	82.8	157	108	68.8
Relates to services to and from Sydney only.						

Airport	Arrivals			Departures		
	Sectors Flown	On Time		Sectors Flown	On Time	
		No.	%		No.	%
<b>Brisbane</b>						
Jetstar	755	509	67.4	757	510	67.4
Qantas	1 607	1 393	86.7	1 608	1 394	86.7
QantasLink	1 098	863	78.6	1 098	901	82.1
Tigerair Australia	318	244	76.7	317	247	77.9
Virgin Australia	2 301	1 943	84.4	2 297	1 941	84.5
All Airlines	6 079	4 952	81.5	6 077	4 993	82.2

Relates to services to and from Adelaide, Bundaberg, Cairns, Canberra, Darwin, Emerald, Gladstone, Hamilton Island, Hobart, Mackay, Melbourne, Moranbah, Mount Isa, Newcastle, Perth, Proserpine, Rockhampton, Sydney and Townsville.

#### Broome

QantasLink	81	79	97.5	81	70	86.4
Virgin Australia	7	7	100.0	7	7	100.0
Virgin Australia Regional Airlines	36	31	86.1	37	29	78.4
All Airlines	124	117	94.4	125	106	84.8

Relates to services to and from Perth only.

#### Bundaberg

QantasLink	133	116	87.2	133	117	88.0
Virgin Australia	31	28	90.3	31	27	87.1
All Airlines	164	144	87.8	164	144	87.8

Relates to services to and from Brisbane only.

#### Cairns

Jetstar	349	273	78.2	346	254	73.4
Qantas	237	220	92.8	238	217	91.2
QantasLink	145	141	97.2	143	141	98.6
Regional Express	37	37	100.0	37	37	100.0
Tigerair Australia	123	109	88.6	123	104	84.6
Virgin Australia	269	241	89.6	270	235	87.0
All Airlines	1 160	1 021	88.0	1 157	988	85.4

Relates to services to and from Brisbane, Melbourne, Sydney and Townsville.

#### Canberra

Qantas	298	270	90.6	296	269	90.9
QantasLink	521	398	76.4	520	419	80.6
Tigerair Australia	24	16	66.7	24	7	29.2
Virgin Australia	498	415	83.3	503	435	86.5
All Airlines	1 341	1 099	82.0	1 343	1 130	84.1

Relates to services to and from Adelaide, Brisbane, Melbourne and Sydney.

#### Coffs Harbour

QantasLink	149	122	81.9	150	122	81.3
Tigerair Australia	13	11	84.6	13	11	84.6
Virgin Australia	57	52	91.2	57	52	91.2
All Airlines	219	185	84.5	220	185	84.1

Relates to services to and from Sydney only.

#### Darwin

Jetstar	84	65	77.4	83	47	56.6
Qantas	165	145	87.9	166	138	83.1
QantasLink	44	37	84.1	44	39	88.6
Tigerair Australia	26	24	92.3	26	24	92.3
Virgin Australia	137	118	86.1	137	114	83.2
All Airlines	456	389	85.3	456	362	79.4

Relates to services to and from Alice Springs, Brisbane, Melbourne, Perth and Sydney.

Airport	Arrivals			Departures		
	Sectors Flown	On Time		Sectors Flown	On Time	
		No.	%		No.	%
<b>Dubbo</b>						
QantasLink	120	82	68.3	121	89	73.6
Regional Express	127	112	88.2	131	113	86.3
All Airlines	247	194	78.5	252	202	80.2
Relates to services to and from Sydney only.						
<b>Emerald</b>						
QantasLink	113	97	85.8	113	92	81.4
Virgin Australia	69	68	98.6	68	64	94.1
All Airlines	182	165	90.7	181	156	86.2
Relates to services to and from Brisbane only.						
<b>Geraldton</b>						
QantasLink	42	35	83.3	42	38	90.5
Virgin Australia Regional Airlines	52	46	88.5	52	46	88.5
All Airlines	94	81	86.2	94	84	89.4
Relates to services to and from Perth only.						
<b>Gladstone</b>						
QantasLink	136	98	72.1	136	97	71.3
Virgin Australia	97	80	82.5	97	81	83.5
All Airlines	233	178	76.4	233	178	76.4
Relates to services to and from Brisbane only.						
<b>Gold Coast</b>						
Jetstar	588	443	75.3	587	427	72.7
Qantas	146	126	86.3	146	121	82.9
QantasLink	11	6	54.5	11	5	45.5
Tigerair Australia	225	166	73.8	223	142	63.7
Virgin Australia	479	406	84.8	478	386	80.8
All Airlines	1 449	1 147	79.2	1 445	1 081	74.8
Relates to services to and from Adelaide, Melbourne and Sydney.						
<b>Hamilton Island</b>						
Jetstar	31	21	67.7	31	16	51.6
Qantas	39	38	97.4	39	36	92.3
QantasLink	54	47	87.0	54	45	83.3
Virgin Australia	89	79	88.8	89	77	86.5
All Airlines	213	185	86.9	213	174	81.7
Relates to services to and from Brisbane, Melbourne and Sydney.						
<b>Hobart</b>						
Jetstar	378	263	69.6	377	218	57.8
Qantas	17	17	100.0	17	12	70.6
QantasLink	184	143	77.7	185	151	81.6
Tigerair Australia	43	30	69.8	43	27	62.8
Virgin Australia	251	211	84.1	251	189	75.3
All Airlines	873	664	76.1	873	597	68.4
Relates to services to and from Brisbane, Melbourne and Sydney.						
<b>Kalgoorlie</b>						
Qantas	4	3	75.0	4	3	75.0
QantasLink	70	52	74.3	70	53	75.7
Virgin Australia	22	20	90.9	21	19	90.5
Virgin Australia Regional Airlines	37	32	86.5	37	35	94.6
All Airlines	133	107	80.5	132	110	83.3
Relates to services to and from Perth only.						

Airport	Arrivals			Departures		
	Sectors Flown	On Time		Sectors Flown	On Time	
		No.	%		No.	%
<b>Karratha</b>						
Qantas	9	9	100.0	9	8	88.9
QantasLink	172	158	91.9	170	154	90.6
Virgin Australia	2	2	100.0	2	0	0.0
Virgin Australia Regional Airlines	78	71	91.0	79	63	79.7
All Airlines	261	240	92.0	260	225	86.5
Relates to services to and from Perth only.						
<b>Launceston</b>						
Jetstar	277	200	72.2	275	153	55.6
QantasLink	117	97	82.9	116	97	83.6
Virgin Australia	132	109	82.6	132	112	84.8
All Airlines	526	406	77.2	523	362	69.2
Relates to services to and from Melbourne and Sydney.						
<b>Mackay</b>						
Jetstar	35	21	60.0	35	16	45.7
QantasLink	108	89	82.4	109	92	84.4
Virgin Australia	144	126	87.5	145	123	84.8
All Airlines	287	236	82.2	289	231	79.9
Relates to services to and from Brisbane only.						
<b>Melbourne</b>						
Jetstar	1 684	1 049	62.3	1 697	1 036	61.0
Qantas	2 060	1 588	77.1	2 059	1 714	83.2
QantasLink	421	330	78.4	422	330	78.2
Regional Express	70	45	64.3	69	59	85.5
Tigerair Australia	679	468	68.9	682	498	73.0
Virgin Australia	2 277	1 729	75.9	2 270	1 885	83.0
All Airlines	7 191	5 209	72.4	7 199	5 522	76.7
Relates to services to and from Adelaide, Brisbane, Cairns, Canberra, Darwin, Gold Coast, Hamilton Island, Hobart, Launceston, Mildura, Newcastle, Perth, Sunshine Coast and Sydney.						
<b>Mildura</b>						
QantasLink	93	69	74.2	92	73	79.3
Regional Express	69	57	82.6	70	50	71.4
Virgin Australia	31	23	74.2	31	25	80.6
All Airlines	193	149	77.2	193	148	76.7
Relates to services to and from Melbourne only.						
<b>Moranbah</b>						
QantasLink	76	63	82.9	72	60	83.3
Virgin Australia	53	48	90.6	53	49	92.5
All Airlines	129	111	86.0	125	109	87.2
Relates to services to and from Brisbane only.						
<b>Mount Isa</b>						
QantasLink	49	44	89.8	48	41	85.4
Virgin Australia	16	15	93.8	19	16	84.2
All Airlines	65	59	90.8	67	57	85.1
Relates to services to and from Brisbane only.						



Airport	Arrivals			Departures		
	Sectors	On Time		Sectors	On Time	
	Flown	No.	%	Flown	No.	%
<b>Newcastle</b>						
Jetstar	208	138	66.3	208	147	70.7
QantasLink	90	72	80.0	92	79	85.9
Virgin Australia	122	103	84.4	122	101	82.8
All Airlines	420	313	74.5	422	327	77.5
Relates to services to and from Brisbane and Melbourne.						
<b>Newman</b>						
Qantas	51	47	92.2	50	47	94.0
QantasLink	75	63	84.0	75	64	85.3
Virgin Australia	8	7	87.5	8	8	100.0
Virgin Australia Regional Airlines	30	28	93.3	30	29	96.7
All Airlines	164	145	88.4	163	148	90.8
Relates to services to and from Perth only.						
<b>Perth</b>						
Jetstar	120	92	76.7	118	75	63.6
Qantas	769	584	75.9	773	664	85.9
QantasLink	547	498	91.0	550	475	86.4
Tigerair Australia	89	79	88.8	91	82	90.1
Virgin Australia	565	453	80.2	569	495	87.0
Virgin Australia Regional Airlines	263	228	86.7	262	235	89.7
All Airlines	2 353	1 934	82.2	2 363	2 026	85.7
Relates to services to and from Adelaide, Brisbane, Broome, Darwin, Geraldton, Kalgoorlie, Karratha, Melbourne, Newman, Port Hedland and Sydney.						
<b>Port Hedland</b>						
Qantas	31	29	93.5	32	26	81.3
QantasLink	97	79	81.4	96	88	91.7
Virgin Australia	24	24	100.0	24	23	95.8
Virgin Australia Regional Airlines	29	25	86.2	28	24	85.7
All Airlines	181	157	86.7	180	161	89.4
Relates to services to and from Perth only.						
<b>Port Lincoln</b>						
QantasLink	110	91	82.7	111	94	84.7
Regional Express	191	176	92.1	192	174	90.6
All Airlines	301	267	88.7	303	268	88.4
Relates to services to and from Adelaide only.						
<b>Port Macquarie</b>						
QantasLink	127	82	64.6	127	89	70.1
Virgin Australia	60	47	78.3	60	43	71.7
All Airlines	187	129	69.0	187	132	70.6
Relates to services to and from Sydney only.						
<b>Proserpine</b>						
Jetstar	40	30	75.0	40	26	65.0
Virgin Australia	40	37	92.5	40	36	90.0
All Airlines	80	67	83.8	80	62	77.5
Relates to services to and from Brisbane only.						

Airport	Arrivals			Departures		
	Sectors Flown	On Time		Sectors Flown	On Time	
		No.	%		No.	%
<b>Rockhampton</b>						
QantasLink	192	165	85.9	193	163	84.5
Virgin Australia	171	147	86.0	171	151	88.3
All Airlines	363	312	86.0	364	314	86.3
Relates to services to and from Brisbane only.						
<b>Sunshine Coast</b>						
Jetstar	214	155	72.4	211	122	57.8
QantasLink	43	35	81.4	44	35	79.5
Virgin Australia	86	72	83.7	86	63	73.3
All Airlines	343	262	76.4	341	220	64.5
Relates to services to and from Melbourne and Sydney.						
<b>Sydney</b>						
Jetstar	1 690	1 111	65.7	1 692	1 118	66.1
Qantas	2 199	1 876	85.3	2 195	1 870	85.2
QantasLink	1 397	1 074	76.9	1 399	1 059	75.7
Regional Express	410	337	82.2	408	361	88.5
Tigerair Australia	570	398	69.8	568	425	74.8
Virgin Australia	2 585	2 203	85.2	2 584	2 198	85.1
All Airlines	8 851	6 999	79.1	8 846	7 031	79.5
Relates to services to and from Adelaide, Albury, Armidale, Ayers Rock, Ballina, Brisbane, Cairns, Canberra, Coffs Harbour, Darwin, Dubbo, Gold Coast, Hamilton Island, Hobart, Launceston, Melbourne, Perth, Port Macquarie, Sunshine Coast, Tamworth, Townsville and Wagga Wagga.						
<b>Tamworth</b>						
QantasLink	147	112	76.2	145	114	78.6
Virgin Australia	41	34	82.9	41	34	82.9
All Airlines	188	146	77.7	186	148	79.6
Relates to services to and from Sydney only.						
<b>Townsville</b>						
Jetstar	75	49	65.3	75	42	56.0
Qantas	72	60	83.3	72	64	88.9
QantasLink	208	190	91.3	210	190	90.5
Regional Express	37	36	97.3	37	37	100.0
Virgin Australia	174	147	84.5	175	146	83.4
All Airlines	566	482	85.2	569	479	84.2
Relates to services to and from Brisbane, Cairns and Sydney.						
<b>Wagga Wagga</b>						
QantasLink	113	85	75.2	113	87	77.0
Regional Express	108	91	84.3	106	90	84.9
All Airlines	221	176	79.6	219	177	80.8
Relates to services to and from Sydney only.						

## Definitions

---

On time arrival	A flight arrival is counted as "on time" if it arrived at the gate before 15 minutes after the scheduled arrival time shown in the carriers' schedule. Neither diverted nor cancelled flights count as on time.
On time departure	A flight departure is counted as "on time" if it departs the gate before 15 minutes after the scheduled departure time shown in the carriers' schedule.
Cancellation	A flight removed from service within 7 days of scheduled departure is regarded as a cancellation.
On time departure percentage	The percentage of on time departures is measured against the number of departures <i>operated</i> on any particular sector.
On time arrival percentage	The percentage of on time arrivals is measured against the number of arrivals <i>operated</i> on any particular sector.
Cancellation percentage	The percentage of cancellations is measured against the number of services <i>scheduled</i> on any particular sector.

---