



**Australian Government**

**Department of Infrastructure, Regional Development and Cities**

Bureau of Infrastructure, Transport and Regional Economics

STATISTICAL REPORT



## Aviation

Domestic airline on time performance  
July 2018

© Commonwealth of Australia 2018

ISSN: 1832-0759

### **Ownership of intellectual property rights in this publication**

Unless otherwise noted, copyright (and any other intellectual property rights, if any) in this publication is owned by the Commonwealth of Australia (referred to below as the Commonwealth).

### **Disclaimer**

The material contained in this publication is made available on the understanding that the Commonwealth is not providing professional advice, and that users exercise their own skill and care with respect to its use, and seek independent advice if necessary.

The Commonwealth makes no representations or warranties as to the contents or accuracy of the information contained in this publication. To the extent permitted by law, the Commonwealth disclaims liability to any person or organisation in respect of anything done, or omitted to be done, in reliance upon information contained in this publication.

### **Creative Commons licence**

With the exception of (a) the Coat of Arms; and (b) the Department of Infrastructure, Regional Development and Cities' photos and graphics, copyright in this publication is licensed under a Creative Commons Attribution 3.0 Australia Licence.

Creative Commons Attribution 3.0 Australia Licence is a standard form licence agreement that allows you to copy, communicate and adapt this publication provided that you attribute the work to the Commonwealth and abide by the other licence terms. A summary of the licence terms is available from <http://creativecommons.org/licenses/by/3.0/au/deed.en>. The full licence terms are available from <http://creativecommons.org/licenses/by/3.0/au/legalcode>.

### **Use of the Coat of Arms**

The Department of the Prime Minister and Cabinet sets the terms under which the Coat of Arms is used. Please refer to the Department's Commonwealth Coat of Arms and Government branding web page <http://www.dpmc.gov.au/guidelines/index.cfm#brand> and, in particular, the Guidelines on the use of the Commonwealth Coat of Arms publication.

An appropriate citation for this report is:

Bureau of Infrastructure, Transport and Regional Economics (BITRE), 2018, Domestic airline on time performance, Statistical Report, BITRE, Canberra ACT.

### **Contact us**

This publication is available in PDF format. All other rights are reserved, including in relation to any Departmental logos or trade marks which may exist. For enquiries regarding the licence and any use of this publication, please contact:

Bureau of Infrastructure, Transport and Regional Economics (BITRE)  
Department of Infrastructure, Regional Development and Cities  
GPO Box 501, Canberra ACT 2601, Australia  
Telephone: (international) +61 2 6274 7210  
Fax: (international) +61 2 6274 6855  
Email: [bitre@infrastructure.gov.au](mailto:bitre@infrastructure.gov.au)  
Website: [www.bitre.gov.au](http://www.bitre.gov.au)

### **Inquiries**

Should you require additional information about the statistics contained in this publication:

Telephone (02) 6274 7790 or Facsimile (02) 6274 7727

Electronic mail: [AVSTATS@infrastructure.gov.au](mailto:AVSTATS@infrastructure.gov.au)

Web site: <http://www.bitre.gov.au/statistics/aviation/otphome.aspx>

# Foreword

The Bureau of Infrastructure, Transport and Regional Economics (BITRE) monitors the punctuality and reliability of major domestic airlines operating between Australian airports. The purpose of this is to allow for evaluation of overall industry and individual airline performance, so that consumers of air travel can make informed decisions.

The following domestic airlines currently report this information monthly to the BITRE: Jetstar, Qantas, QantasLink, Regional Express, Tigerair Australia, Virgin Australia and Virgin Australia Regional Airlines. Data has been gathered since November 2003, although some airlines commenced reporting at a later date, including Jetstar which first reported in May 2004, MacAir in July 2005, Tigerair Australia in April 2008 and Virgin Australia Regional Airlines in May 2013. MacAir ceased operations in February 2009 and data was not received for December 2008 onwards. Virgin Blue was rebranded as Virgin Australia in May 2011 and Tiger Airways was rebranded as Tigerair Australia in July 2013 and time series data in Microsoft Excel spreadsheet format on the BITRE website have been revised to reflect these changes. Services operated by Skywest on behalf of Virgin Australia using ATR/F100 aircraft commenced in November 2011 and were shown separately as Virgin Australia – ATR/F100 Operations. Virgin Australia Regional Airlines commenced operations in May 2013. It was formed after the acquisition of Skywest by Virgin Australia and represented a combination of operations previously reported under Skywest and Virgin Australia – ATR/F100 Operations. In January 2016, Virgin Australia transferred their ATR fleet from Virgin Australia Regional Airlines to Virgin Australia.

Information presented in this report is for Australian domestic routes for which the passenger load averaged 8 000 or more passengers per month over the previous six months and where two or more airlines operated in competition on those routes. There were 66 routes that met this definition in July 2018. Over time, routes which meet these criteria change as airline networks and traffic levels vary.

Participating airlines report their overall monthly network performance where this is possible.

Total industry figures encompass all services operated by reporting airlines only. These airlines collectively carried over 95 per cent of total domestic passengers (regular public transport only) in 2017.

The method of capturing on time performance varies between airlines utilising different recording systems. Jetstar and Qantas jet aircraft use Aircraft Communication Addressing and Reporting System (ACARS) to electronically measure on time performance. Regional Express, Tigerair Australia, Virgin Australia, Virgin Australia Regional Airlines and the Qantas non-jet fleet record on time performance manually using records from pilots, gate agents and/or ground crews.

After initial data is collected, aggregate reports are audited internally by participating airlines prior to publication.

Reports and detailed time series data in Microsoft Excel spreadsheet format are available from the BITRE website at: <http://www.bitre.gov.au/statistics/aviation/otphome.aspx>.



# Contents

	Page
Industry performance .....	1
Individual routes .....	10
Airports.....	24
Definitions .....	30



# Industry performance

For July 2018, on time performance over all routes operated by participating airlines (Jetstar, Qantas, QantasLink, Regional Express, Tigerair Australia, Virgin Australia and Virgin Australia Regional Airlines) averaged 73.5 per cent for on time arrivals and 75.3 per cent for on time departures. Cancellations represented 2.3 per cent of all scheduled flights. The equivalent figures for July 2017 were 79.0 per cent for on time arrivals, 79.9 per cent for on time departures and 1.9 per cent for cancellations.

This month's on time arrivals figure was significantly lower than the long term average performance for all routes (82.6 per cent) and the on time departures figure was also significantly lower than the long term average (84.0 per cent). The rate of cancellations was higher than the long term average of 1.4 per cent.

Qantas achieved the highest on time arrivals among the major domestic airlines at 75.1 per cent followed by Virgin Australia at 71.2 per cent, Jetstar at 68.5 per cent and Tigerair Australia at 63.0 per cent. Of the regional airlines, QantasLink recorded 82.6 per cent for on time arrivals, followed by Regional Express at 72.3 per cent and Virgin Australia Regional Airlines at 63.3 per cent. The Qantas network (Qantas and QantasLink combined operations) recorded 79.0 per cent for on time arrivals while the Virgin Australia network (Virgin Australia and Virgin Australia Regional Airlines combined operations) recorded 70.7 per cent.

Qantas achieved the highest level of on time departures among the major domestic airlines for July 2018 at 77.7 per cent, followed by Virgin Australia at 74.1 per cent, Jetstar at 67.2 per cent and Tigerair Australia at 66.7 per cent. Of the regional airlines, QantasLink recorded 83.7 per cent for on time departures, followed by Regional Express at 75.4 per cent and Virgin Australia Regional Airlines at 66.5 per cent. The Qantas network recorded 80.9 per cent for on time departures while the Virgin Australia network recorded 73.6 per cent.

Virgin Australia Regional Airlines recorded the highest percentage of cancellations (4.4 per cent) during the month, followed by Jetstar (3.5 per cent), Tigerair Australia (2.6 per cent), Qantas (2.2 per cent), Virgin Australia and Regional Express (both at 2.1 per cent) and QantasLink (1.7 per cent).

Airlines' on time performance varies across the routes they serve. Individual route data by specific airline for 66 routes are shown on pages 10-23.

Of the 66 routes which met the criteria for on time performance reporting in July 2018, the Brisbane-Emerald and Emerald-Brisbane routes had the highest percentage of on time arrivals (both at 92.9 per cent) and the Darwin-Alice Springs route had the highest percentage of on time departures (93.8 per cent). The Brisbane-Mount Isa route had the lowest percentage of on time arrivals (42.1 per cent) and the Ayers Rock-Sydney route had the lowest percentage of on time departures (38.7 per cent).

Cancellations were highest on the Sydney-Melbourne route at 8.0 per cent, followed by the Melbourne-Sydney route at 7.9 per cent, the Armidale-Sydney, Geraldton-Perth and

Perth-Geraldton routes at 5.0 per cent, the Kalgoorlie-Perth route at 4.5 per cent and the Port Lincoln-Adelaide and Adelaide-Sydney routes at 3.7 per cent.

Emerald Airport recorded the highest percentage of on time arrivals (92.9 per cent) and the highest percentage of on time departures (93.5 per cent). Mount Isa Airport recorded the lowest percentage of on time arrivals (42.1 per cent) followed by Perth Airport (61.6 per cent) and Melbourne Airport (62.7 per cent). Ayers Rock Airport recorded the lowest percentage of on time departures (38.7 per cent). These figures only refer to reported routes and do not cover all flights at these airports.



Table 1 On time performance for July 2018 – Total Industry

	Sectors		Arrivals On Time		Departures On Time		Cancellations	
	Scheduled	Flown	No.	%	No.	%	No.	%
Jetstar	8 075	7 789	5 336	68.5	5 234	67.2	286	3.5
Qantas	9 096	8 897	6 680	75.1	6 917	77.7	199	2.2
QantasLink	10 088	9 918	8 192	82.6	8 302	83.7	170	1.7
Regional Express	6 173	6 042	4 369	72.3	4 553	75.4	131	2.1
Tigerair Australia	2 427	2 364	1 489	63.0	1 576	66.7	63	2.6
Virgin Australia	12 067	11 808	8 404	71.2	8 754	74.1	259	2.1
Virgin Australia Regional Airlines	836	799	506	63.3	531	66.5	37	4.4
All Airlines	48 762	47 617	34 976	73.5	35 867	75.3	1 145	2.3
Qantas - all QF designated services	19 184	18 815	14 872	79.0	15 219	80.9	369	1.9
Virgin Australia - all VA designated services	12 903	12 607	8 910	70.7	9 285	73.6	296	2.3

Total airline network data (including routes not shown in this report).

Airlines' on time performance varies across the routes they serve. Individual route data by specific airline for 66 routes are shown on pages 10-23.

Table 2 Top ten routes for on time performance for July 2018 (participating airlines only)

Arrivals		Departures	
Route	On Time (%)	Route	On Time (%)
Brisbane-Emerald	92.9	Darwin-Alice Springs	93.8
Emerald-Brisbane	92.9	Emerald-Brisbane	93.5
Adelaide-Gold Coast	91.9	Brisbane-Emerald	92.3
Bundaberg-Brisbane	89.7	Gold Coast-Adelaide	91.9
Perth-Kalgoorlie	89.3	Adelaide-Port Lincoln	90.4
Darwin-Alice Springs	88.9	Alice Springs-Darwin	89.0
Adelaide-Canberra	88.2	Bundaberg-Brisbane	88.2
Brisbane-Bundaberg	88.2	Brisbane-Gladstone	88.1
Perth-Brisbane	88.1	Coffs Harbour-Sydney	87.8
Sydney-Coffs Harbour	87.9	Brisbane-Bundaberg	87.5

Table 3 Top ten airports for on time performance for July 2018 (participating airlines and reported routes only)

Arrivals		Departures	
Airport	On Time (%)	Airport	On Time (%)
Emerald	92.9	Emerald	93.5
Kalgoorlie	89.3	Bundaberg	88.2
Bundaberg	88.2	Coffs Harbour	87.8
Coffs Harbour	87.9	Gladstone	87.1
Newman	87.9	Kalgoorlie	85.9
Gladstone	86.6	Alice Springs	85.0
Port Lincoln	85.0	Port Lincoln	84.9
Alice Springs	84.2	Mackay	84.2
Mackay	83.5	Tamworth	83.9
Port Hedland	82.4	Dubbo	83.6

## Total industry on time performance

Figure 1 On time performance (by month from July 2015)—Total Industry

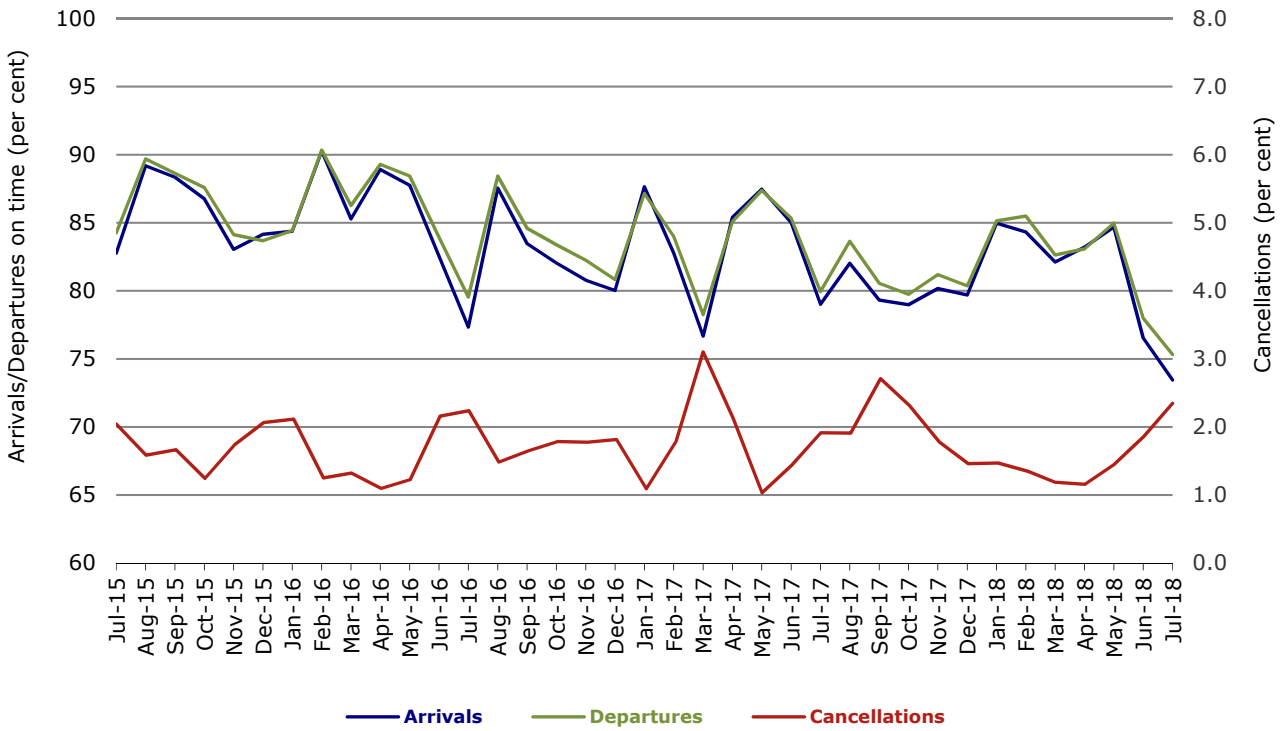


Figure 2 Arrivals on time (by month from July 2017)

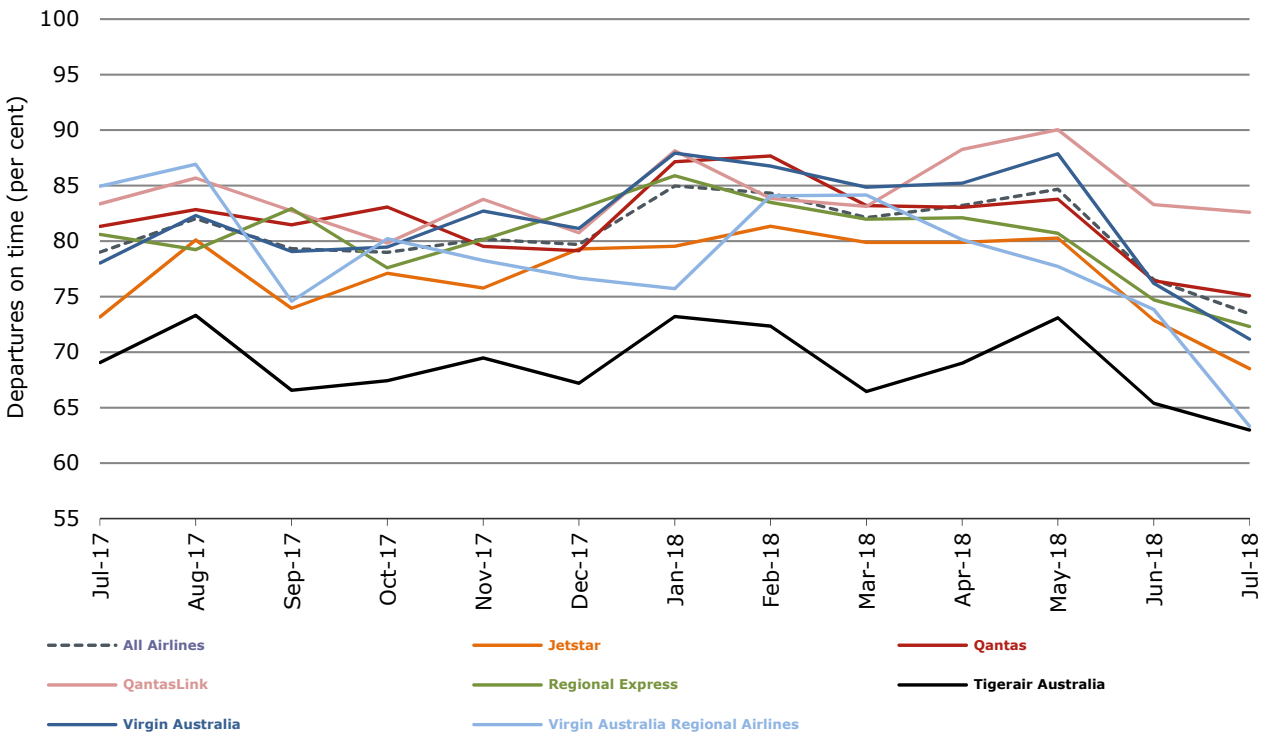


Figure 3 Departures on time (by month from July 2017)

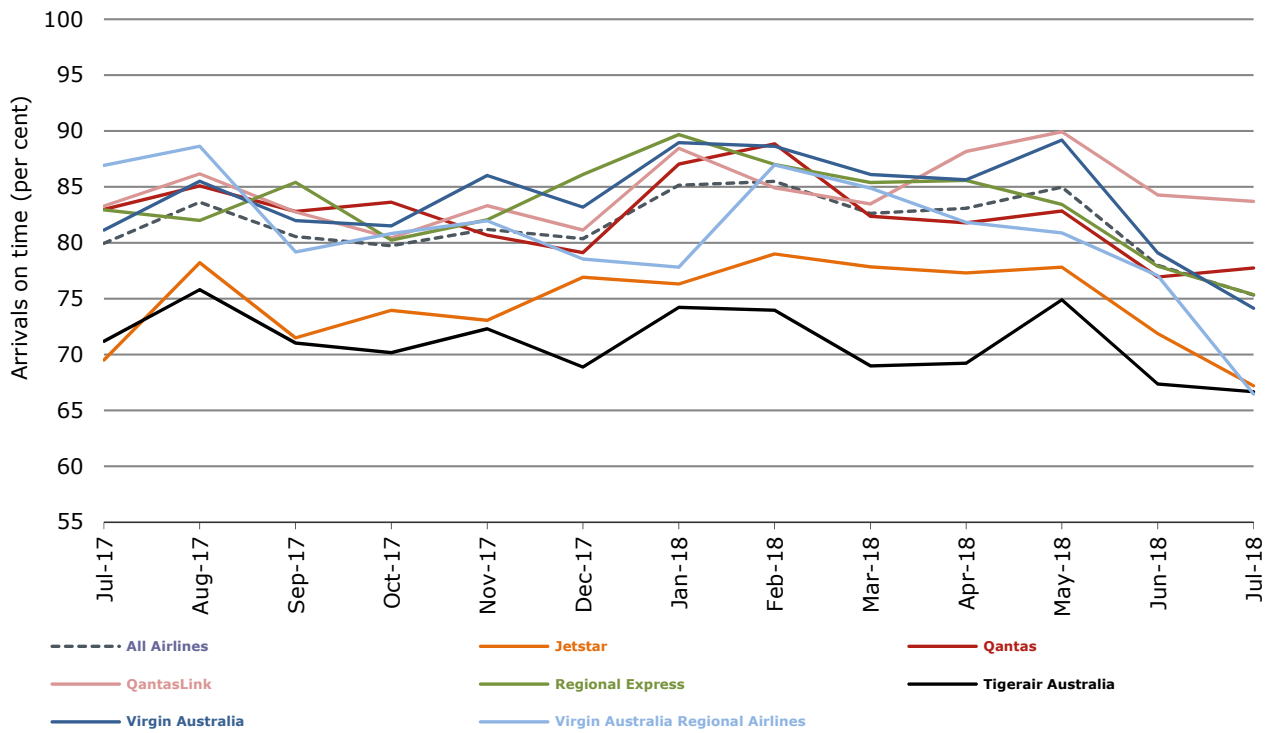
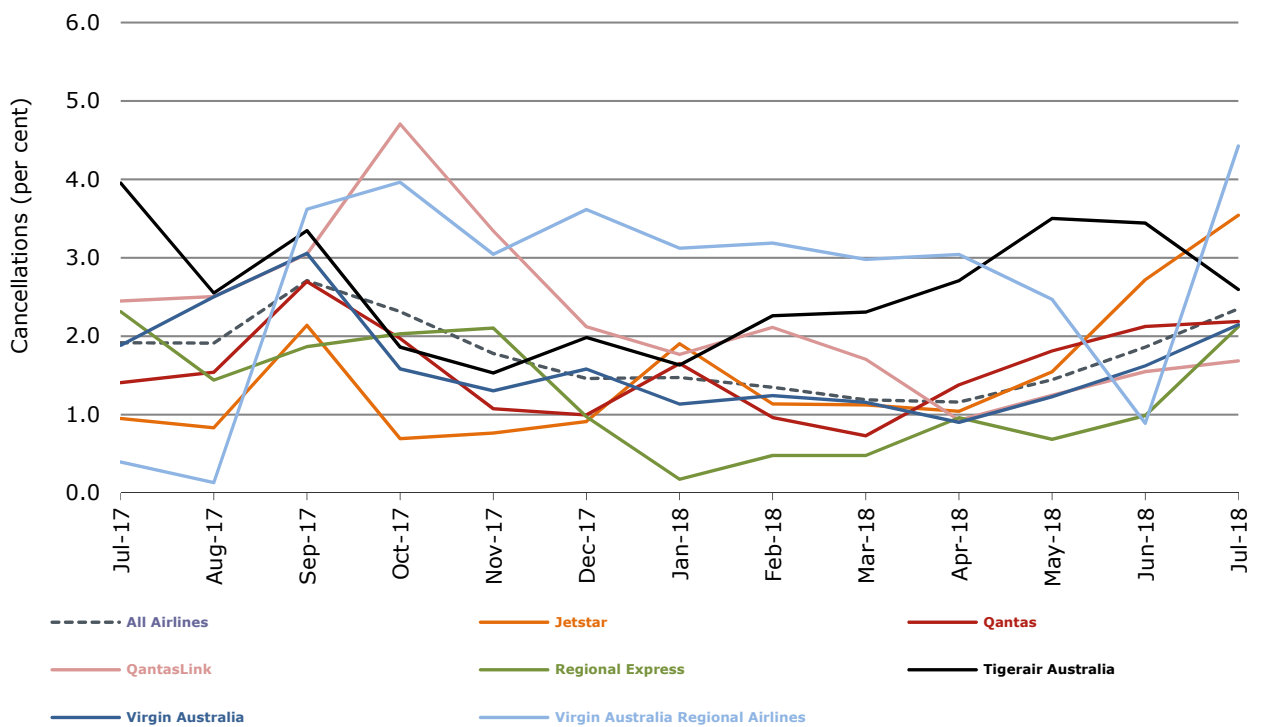


Figure 4 Cancellations (by month from July 2017)



## Major domestic airlines on time performance

Figure 5 On time performance (by month from July 2015)—Jetstar

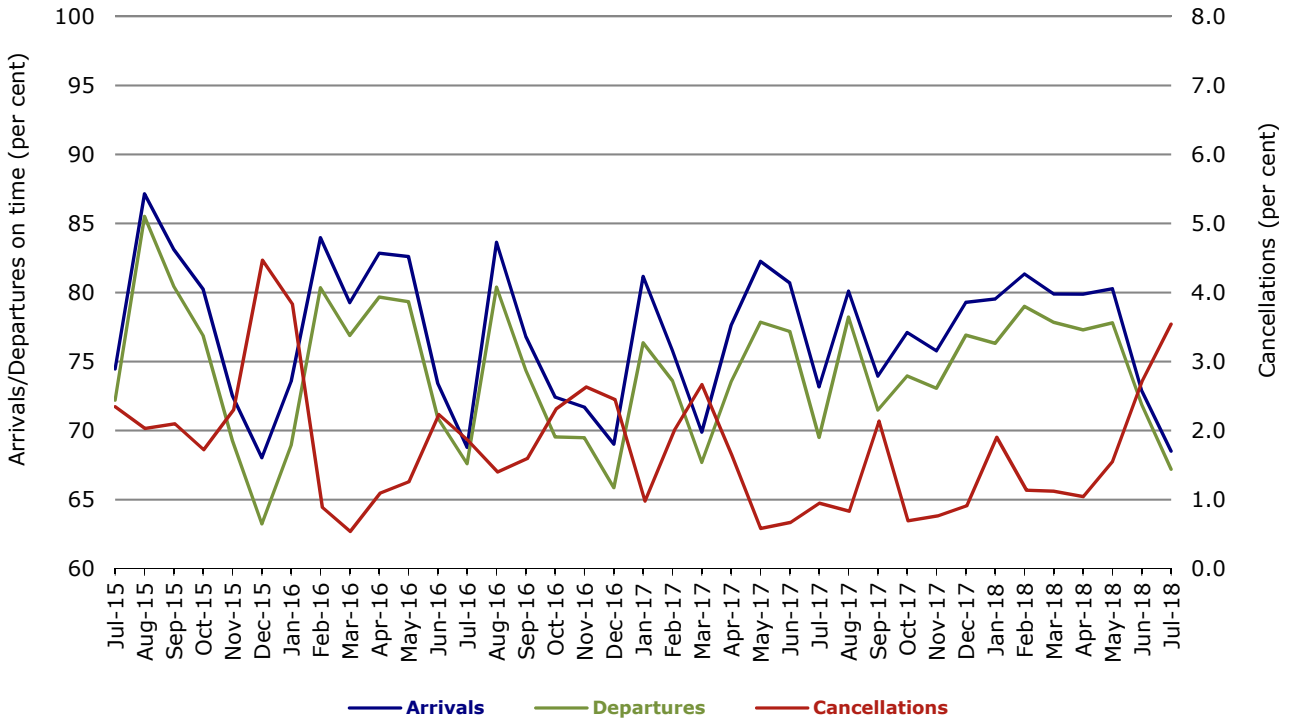


Figure 6 On time performance (by month from July 2015)—Qantas

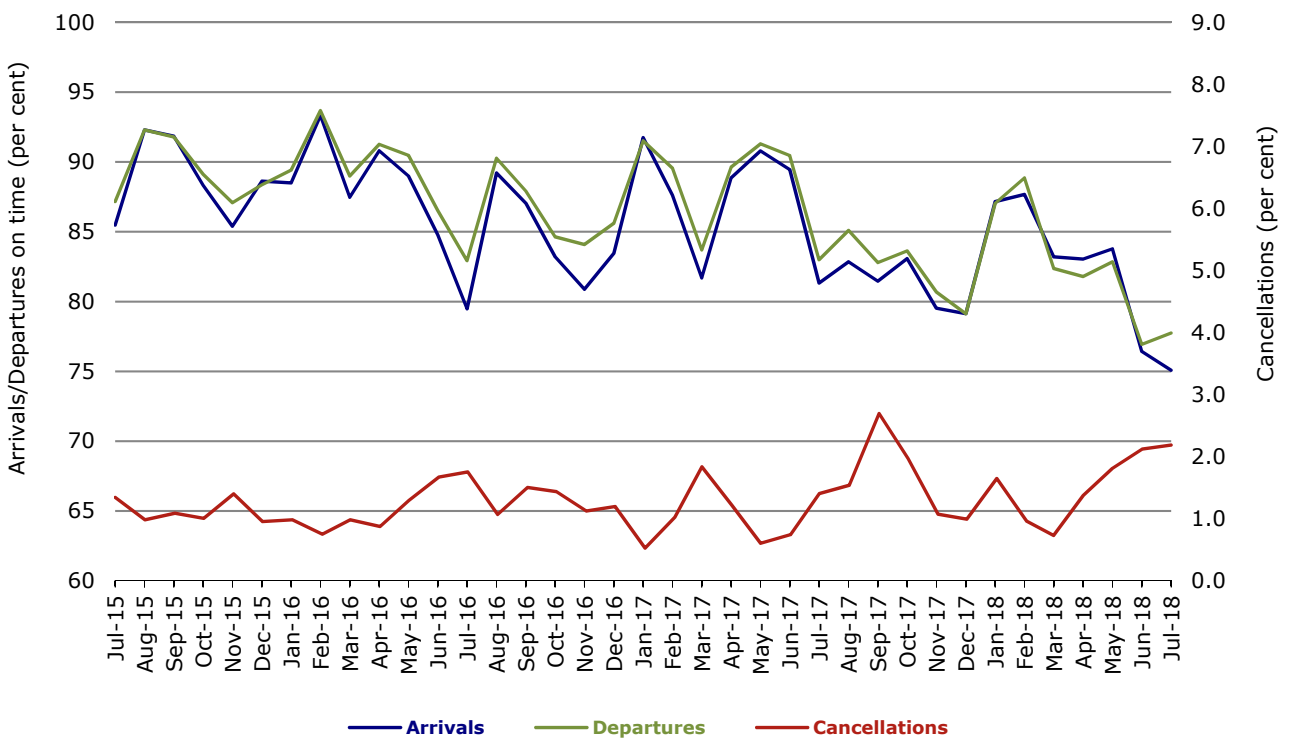


Figure 7 On time performance (by month from July 2015)—Tigerair Australia

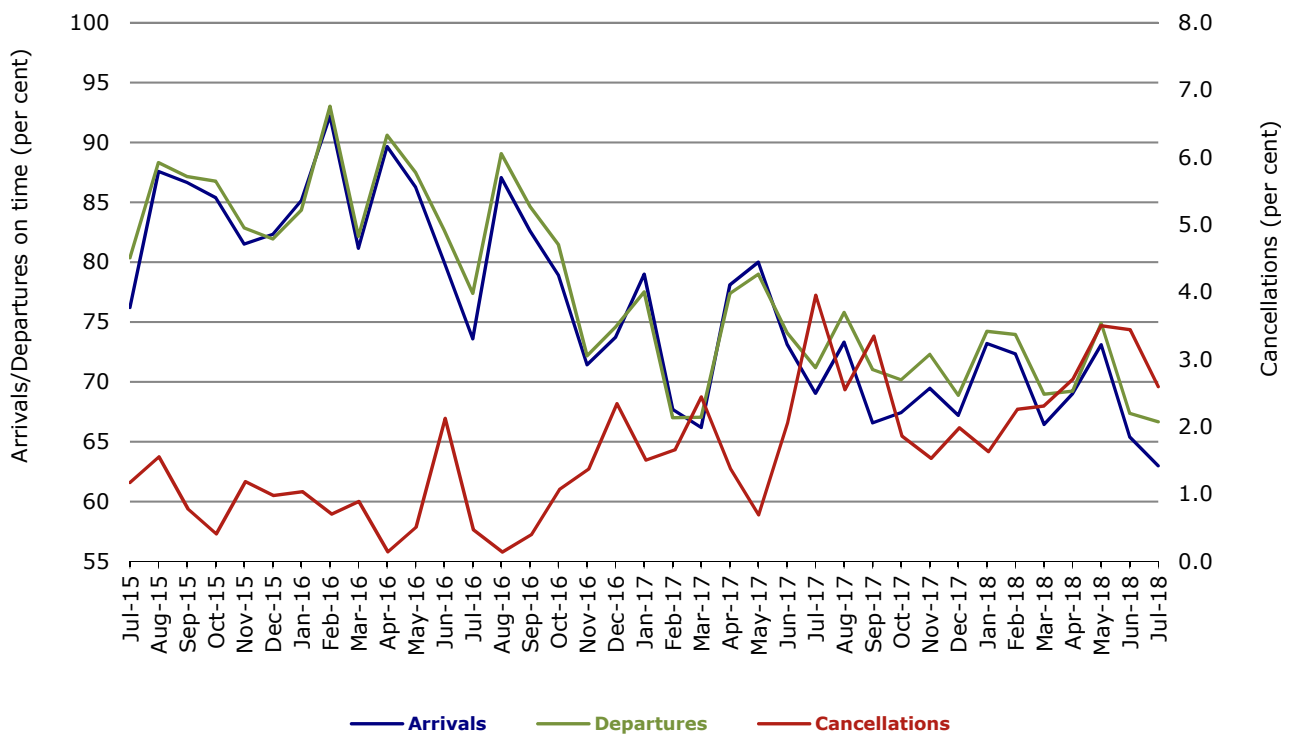
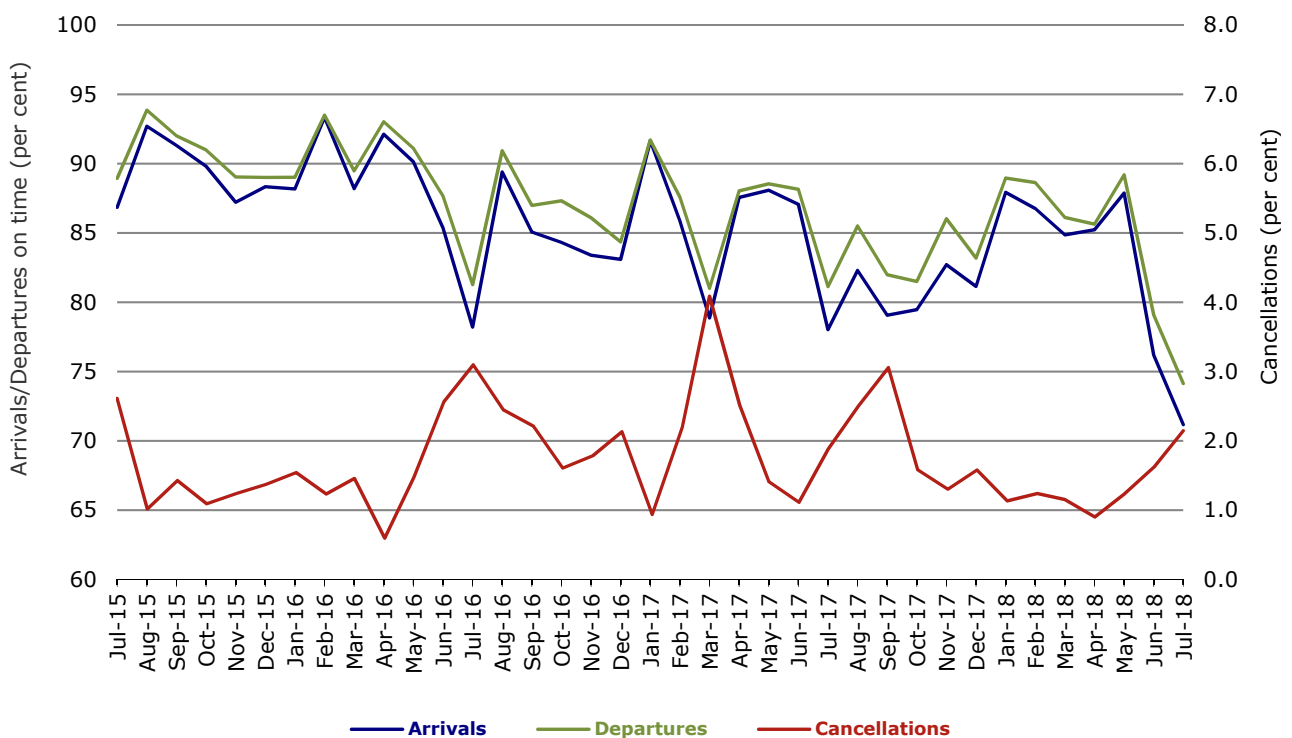


Figure 8 On time performance (by month from July 2015)—Virgin Australia



In January 2016, Virgin Australia transferred their ATR fleet from Virgin Australia Regional Airlines to Virgin Australia.

## Major regional airlines on time performance

Figure 9 On time performance (by month from July 2015)—QantasLink

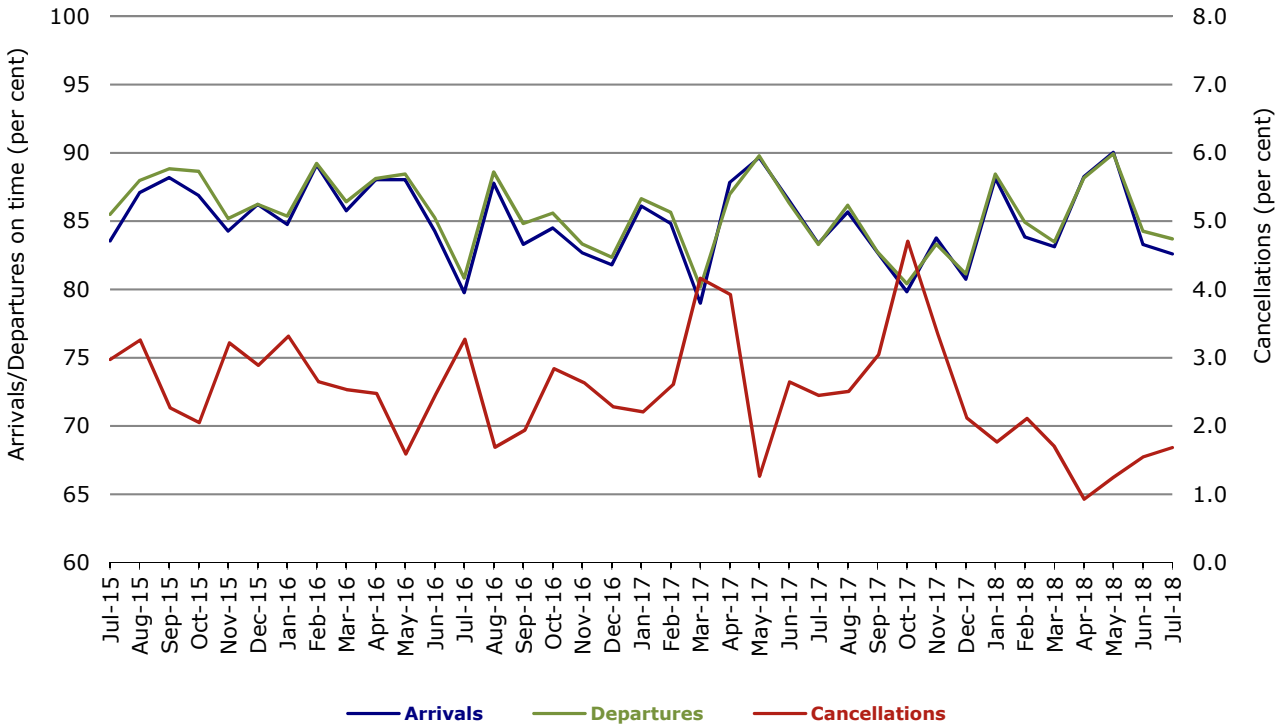


Figure 10 On time performance (by month from July 2015)—Regional Express

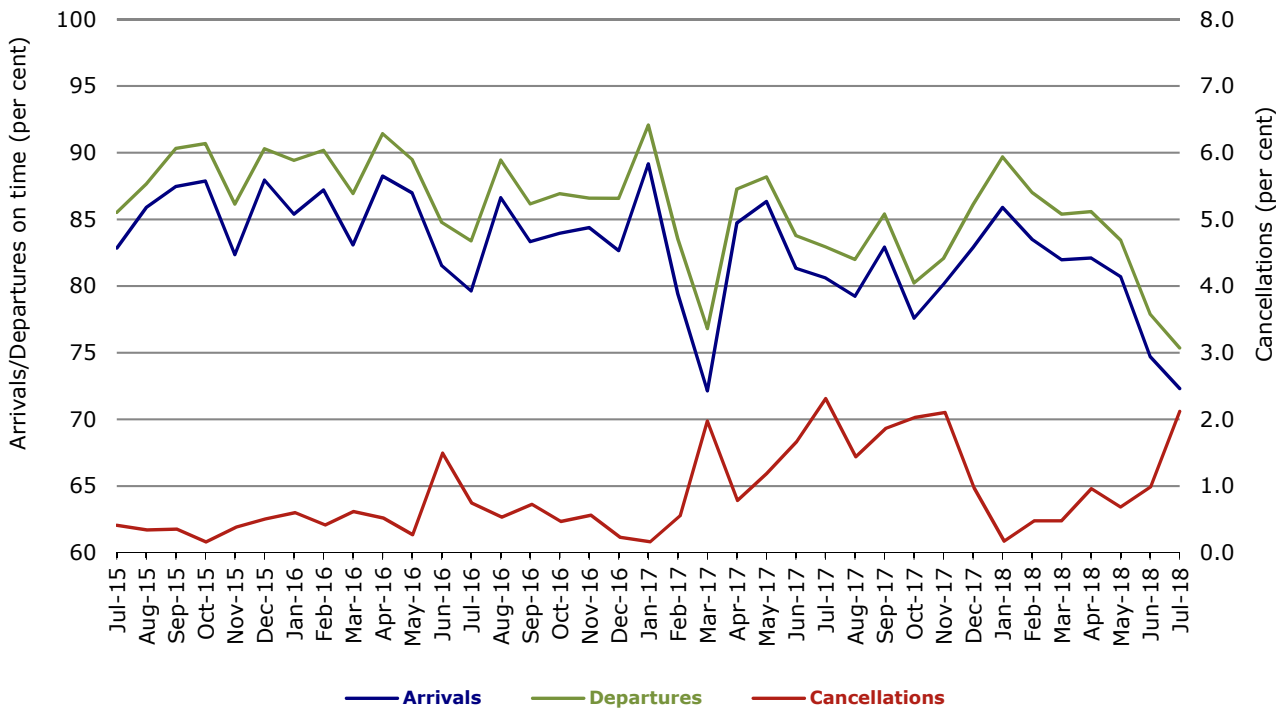
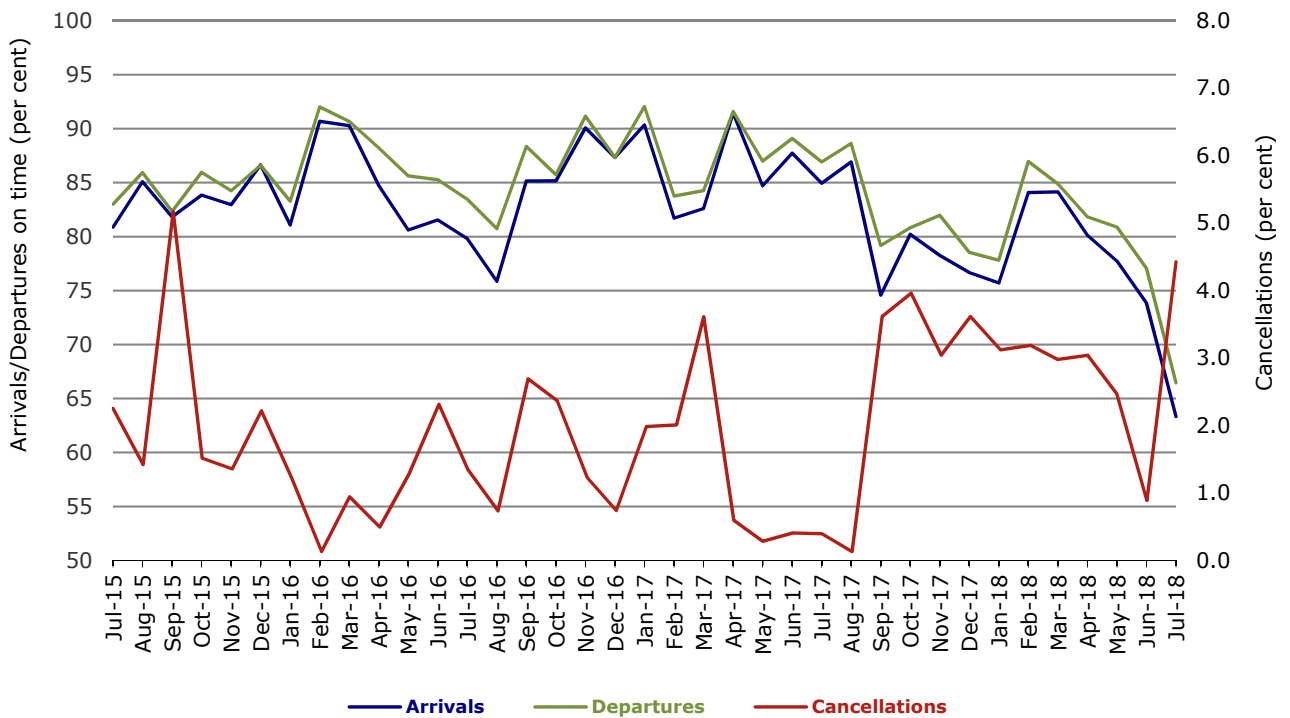


Figure 11 On time performance (by month from July 2015)  
Virgin Australia Regional Airlines



In January 2016, Virgin Australia transferred their ATR fleet from Virgin Australia Regional Airlines to Virgin Australia.

## Individual routes

On time performance is reported for all routes where the passenger load averages over 8000 passengers per month over the previous six months, and where two or more airlines operate in competition on those routes. There are now 66 routes which meet this definition. Over time, however, routes which meet this definition may change as airline networks and traffic levels vary.

	Sectors		Arrivals On Time		Departures On Time		Cancellations	
	Sched.	Flown	No.	%	No.	%	No.	%
<b>Adelaide-Alice Springs</b>								
Qantas	31	31	29	93.5	24	77.4	0	0.0
Virgin Australia	5	5	5	100.0	5	100.0	0	0.0
Virgin Australia Regional Airlines	17	16	6	37.5	10	62.5	1	5.9
All Airlines	53	52	40	76.9	39	75.0	1	1.9
<b>Adelaide-Brisbane</b>								
Jetstar	29	29	22	75.9	18	62.1	0	0.0
Qantas	62	62	54	87.1	49	79.0	0	0.0
QantasLink	66	65	51	78.5	53	81.5	1	1.5
Tigerair Australia	27	27	17	63.0	17	63.0	0	0.0
Virgin Australia	112	110	91	82.7	80	72.7	2	1.8
All Airlines	296	293	235	80.2	217	74.1	3	1.0
<b>Adelaide-Canberra</b>								
Qantas	42	42	38	90.5	37	88.1	0	0.0
Virgin Australia	27	26	22	84.6	21	80.8	1	3.7
All Airlines	69	68	60	88.2	58	85.3	1	1.4
<b>Adelaide-Gold Coast</b>								
Jetstar	31	31	27	87.1	22	71.0	0	0.0
Virgin Australia	31	31	30	96.8	29	93.5	0	0.0
All Airlines	62	62	57	91.9	51	82.3	0	0.0
<b>Adelaide-Melbourne</b>								
Jetstar	115	109	79	72.5	74	67.9	6	5.2
Qantas	287	286	228	79.7	228	79.7	1	0.3
Tigerair Australia	78	75	37	49.3	39	52.0	3	3.8
Virgin Australia	285	280	173	61.8	194	69.3	5	1.8
All Airlines	765	750	517	68.9	535	71.3	15	2.0
<b>Adelaide-Perth</b>								
Jetstar	29	29	18	62.1	22	75.9	0	0.0
Qantas	98	98	74	75.5	84	85.7	0	0.0
QantasLink	15	14	10	71.4	14	100.0	1	6.7
Virgin Australia	49	48	22	45.8	35	72.9	1	2.0
Virgin Australia Regional Airlines	31	30	10	33.3	16	53.3	1	3.2
All Airlines	222	219	134	61.2	171	78.1	3	1.4
<b>Adelaide-Port Lincoln</b>								
QantasLink	111	108	102	94.4	105	97.2	3	2.7
Regional Express	212	205	164	80.0	178	86.8	7	3.3
All Airlines	323	313	266	85.0	283	90.4	10	3.1
<b>Adelaide-Sydney</b>								
Jetstar	134	122	95	77.9	85	69.7	12	9.0
Qantas	219	218	182	83.5	178	81.7	1	0.5
QantasLink	31	28	21	75.0	22	78.6	3	9.7
Tigerair Australia	48	47	23	48.9	19	40.4	1	2.1
Virgin Australia	168	163	135	82.8	131	80.4	5	3.0
All Airlines	600	578	456	78.9	435	75.3	22	3.7



	<i>Sectors</i>		<i>Arrivals On Time</i>		<i>Departures On Time</i>		<i>Cancellations</i>	
	<i>Sched.</i>	<i>Flown</i>	<i>No.</i>	<i>%</i>	<i>No.</i>	<i>%</i>	<i>No.</i>	<i>%</i>
<b>Albury-Sydney</b>								
QantasLink	97	97	75	77.3	67	69.1	0	0.0
Regional Express	94	91	75	82.4	75	82.4	3	3.2
Virgin Australia	62	61	40	65.6	38	62.3	1	1.6
All Airlines	253	249	190	76.3	180	72.3	4	1.6
<b>Alice Springs-Adelaide</b>								
Qantas	31	31	25	80.6	25	80.6	0	0.0
Virgin Australia	5	5	3	60.0	4	80.0	0	0.0
Virgin Australia Regional Airlines	16	15	10	66.7	11	73.3	1	6.3
All Airlines	52	51	38	74.5	40	78.4	1	1.9
<b>Alice Springs-Darwin</b>								
QantasLink	62	61	60	98.4	60	98.4	1	1.6
Virgin Australia	5	5	4	80.0	5	100.0	0	0.0
Virgin Australia Regional Airlines	17	16	8	50.0	8	50.0	1	5.9
All Airlines	84	82	72	87.8	73	89.0	2	2.4
<b>Armidale-Sydney</b>								
QantasLink	119	111	87	78.4	83	74.8	8	6.7
Regional Express	62	61	38	62.3	38	62.3	1	1.6
All Airlines	181	172	125	72.7	121	70.3	9	5.0
<b>Ayers Rock-Sydney</b>								
Jetstar	31	31	18	58.1	13	41.9	0	0.0
Virgin Australia	31	31	19	61.3	11	35.5	0	0.0
All Airlines	62	62	37	59.7	24	38.7	0	0.0
<b>Ballina-Sydney</b>								
Jetstar	90	90	61	67.8	55	61.1	0	0.0
Regional Express	24	24	15	62.5	15	62.5	0	0.0
Virgin Australia	37	37	28	75.7	32	86.5	0	0.0
All Airlines	151	151	104	68.9	102	67.5	0	0.0
<b>Brisbane-Adelaide</b>								
Jetstar	29	29	22	75.9	24	82.8	0	0.0
Qantas	68	68	55	80.9	55	80.9	0	0.0
QantasLink	69	68	52	76.5	57	83.8	1	1.4
Tigerair Australia	27	27	22	81.5	22	81.5	0	0.0
Virgin Australia	105	103	80	77.7	83	80.6	2	1.9
All Airlines	298	295	231	78.3	241	81.7	3	1.0
<b>Brisbane-Bundaberg</b>								
QantasLink	105	105	90	85.7	89	84.8	0	0.0
Virgin Australia	31	31	30	96.8	30	96.8	0	0.0
All Airlines	136	136	120	88.2	119	87.5	0	0.0
<b>Brisbane-Cairns</b>								
Jetstar	118	117	100	85.5	92	78.6	1	0.8
Qantas	66	66	52	78.8	51	77.3	0	0.0
QantasLink	72	72	53	73.6	55	76.4	0	0.0
Tigerair Australia	31	31	23	74.2	24	77.4	0	0.0
Virgin Australia	128	128	111	86.7	106	82.8	0	0.0
All Airlines	415	414	339	81.9	328	79.2	1	0.2
<b>Brisbane-Canberra</b>								
Qantas	12	12	10	83.3	10	83.3	0	0.0
QantasLink	144	140	105	75.0	105	75.0	4	2.8
Tigerair Australia	18	18	12	66.7	16	88.9	0	0.0
Virgin Australia	102	102	85	83.3	84	82.4	0	0.0
All Airlines	276	272	212	77.9	215	79.0	4	1.4

	<i>Sectors</i>		<i>Arrivals On Time</i>		<i>Departures On Time</i>		<i>Cancellations</i>	
	<i>Sched.</i>	<i>Flown</i>	<i>No.</i>	<i>%</i>	<i>No.</i>	<i>%</i>	<i>No.</i>	<i>%</i>
<b>Brisbane-Darwin</b>								
Jetstar	30	29	25	86.2	25	86.2	1	3.3
Qantas	49	49	41	83.7	33	67.3	0	0.0
Tigerair Australia	27	27	23	85.2	23	85.2	0	0.0
Virgin Australia	31	31	24	77.4	25	80.6	0	0.0
All Airlines	137	136	113	83.1	106	77.9	1	0.7
<b>Brisbane-Emerald</b>								
QantasLink	103	102	94	92.2	93	91.2	1	1.0
Virgin Australia	54	54	51	94.4	51	94.4	0	0.0
All Airlines	157	156	145	92.9	144	92.3	1	0.6
<b>Brisbane-Gladstone</b>								
QantasLink	126	126	103	81.7	106	84.1	0	0.0
Virgin Australia	75	75	71	94.7	71	94.7	0	0.0
All Airlines	201	201	174	86.6	177	88.1	0	0.0
<b>Brisbane-Hamilton Island</b>								
QantasLink	26	25	19	76.0	17	68.0	1	3.8
Virgin Australia	31	31	27	87.1	24	77.4	0	0.0
All Airlines	57	56	46	82.1	41	73.2	1	1.8
<b>Brisbane-Hobart</b>								
Jetstar	27	27	25	92.6	25	92.6	0	0.0
Virgin Australia	36	36	29	80.6	30	83.3	0	0.0
All Airlines	63	63	54	85.7	55	87.3	0	0.0
<b>Brisbane-Mackay</b>								
Jetstar	49	47	34	72.3	32	68.1	2	4.1
QantasLink	119	118	106	89.8	102	86.4	1	0.8
Virgin Australia	151	151	124	82.1	123	81.5	0	0.0
All Airlines	319	316	264	83.5	257	81.3	3	0.9
<b>Brisbane-Melbourne</b>								
Jetstar	178	173	109	63.0	116	67.1	5	2.8
Qantas	376	372	263	70.7	301	80.9	4	1.1
QantasLink	18	18	9	50.0	14	77.8	0	0.0
Tigerair Australia	125	121	72	59.5	85	70.2	4	3.2
Virgin Australia	398	384	222	57.8	292	76.0	14	3.5
All Airlines	1 095	1 068	675	63.2	808	75.7	27	2.5
<b>Brisbane-Mount Isa</b>								
QantasLink	58	58	18	31.0	45	77.6	0	0.0
Virgin Australia	18	18	14	77.8	16	88.9	0	0.0
All Airlines	76	76	32	42.1	61	80.3	0	0.0
<b>Brisbane-Newcastle</b>								
Jetstar	93	93	58	62.4	54	58.1	0	0.0
QantasLink	49	46	37	80.4	38	82.6	3	6.1
Virgin Australia	89	89	71	79.8	71	79.8	0	0.0
All Airlines	231	228	166	72.8	163	71.5	3	1.3
<b>Brisbane-Perth</b>								
Qantas	150	150	100	66.7	127	84.7	0	0.0
Virgin Australia	110	110	52	47.3	74	67.3	0	0.0
All Airlines	260	260	152	58.5	201	77.3	0	0.0
<b>Brisbane-Proserpine</b>								
Jetstar	40	40	30	75.0	29	72.5	0	0.0
Virgin Australia	31	31	28	90.3	28	90.3	0	0.0
All Airlines	71	71	58	81.7	57	80.3	0	0.0

	<i>Sectors</i>		<i>Arrivals On Time</i>		<i>Departures On Time</i>		<i>Cancellations</i>	
	<i>Sched.</i>	<i>Flown</i>	<i>No.</i>	<i>%</i>	<i>No.</i>	<i>%</i>	<i>No.</i>	<i>%</i>
<b>Brisbane-Rockhampton</b>								
QantasLink	172	171	118	69.0	127	74.3	1	0.6
Virgin Australia	144	142	105	73.9	114	80.3	2	1.4
All Airlines	316	313	223	71.2	241	77.0	3	0.9
<b>Brisbane-Sydney</b>								
Jetstar	213	199	124	62.3	121	60.8	14	6.6
Qantas	631	621	494	79.5	513	82.6	10	1.6
QantasLink	10	9	5	55.6	7	77.8	1	10.0
Tigerair Australia	111	106	70	66.0	77	72.6	5	4.5
Virgin Australia	536	518	390	75.3	412	79.5	18	3.4
All Airlines	1 501	1 453	1 083	74.5	1 130	77.8	48	3.2
<b>Brisbane-Townsville</b>								
Jetstar	62	61	48	78.7	49	80.3	1	1.6
Qantas	78	78	66	84.6	63	80.8	0	0.0
QantasLink	69	69	60	87.0	59	85.5	0	0.0
Virgin Australia	151	149	122	81.9	116	77.9	2	1.3
All Airlines	360	357	296	82.9	287	80.4	3	0.8
<b>Broome-Perth</b>								
Qantas	3	3	1	33.3	0	0.0	0	0.0
QantasLink	80	79	57	72.2	61	77.2	1	1.3
Virgin Australia	1	1	1	100.0	1	100.0	0	0.0
Virgin Australia Regional Airlines	83	82	51	62.2	51	62.2	1	1.2
All Airlines	167	165	110	66.7	113	68.5	2	1.2
<b>Bundaberg-Brisbane</b>								
QantasLink	105	105	92	87.6	90	85.7	0	0.0
Virgin Australia	31	31	30	96.8	30	96.8	0	0.0
All Airlines	136	136	122	89.7	120	88.2	0	0.0
<b>Cairns-Brisbane</b>								
Jetstar	117	117	100	85.5	94	80.3	0	0.0
Qantas	66	66	52	78.8	49	74.2	0	0.0
QantasLink	72	72	56	77.8	59	81.9	0	0.0
Tigerair Australia	31	31	24	77.4	23	74.2	0	0.0
Virgin Australia	128	128	110	85.9	102	79.7	0	0.0
All Airlines	414	414	342	82.6	327	79.0	0	0.0
<b>Cairns-Melbourne</b>								
Jetstar	128	128	96	75.0	99	77.3	0	0.0
Qantas	48	48	31	64.6	32	66.7	0	0.0
Tigerair Australia	45	45	23	51.1	22	48.9	0	0.0
Virgin Australia	38	38	17	44.7	23	60.5	0	0.0
All Airlines	259	259	167	64.5	176	68.0	0	0.0
<b>Cairns-Sydney</b>								
Jetstar	118	115	100	87.0	100	87.0	3	2.5
Qantas	89	89	70	78.7	71	79.8	0	0.0
Tigerair Australia	44	44	35	79.5	35	79.5	0	0.0
Virgin Australia	95	95	77	81.1	68	71.6	0	0.0
All Airlines	346	343	282	82.2	274	79.9	3	0.9
<b>Cairns-Townsville</b>								
QantasLink	138	137	119	86.9	118	86.1	1	0.7
Regional Express	15	13	8	61.5	8	61.5	2	13.3
All Airlines	153	150	127	84.7	126	84.0	3	2.0

	Sectors		Arrivals On Time		Departures On Time		Cancellations	
	Sched.	Flown	No.	%	No.	%	No.	%
<b>Canberra-Adelaide</b>								
Qantas	42	42	36	85.7	35	83.3	0	0.0
Virgin Australia	27	26	21	80.8	21	80.8	1	3.7
All Airlines	69	68	57	83.8	56	82.4	1	1.4
<b>Canberra-Brisbane</b>								
Qantas	16	16	15	93.8	14	87.5	0	0.0
QantasLink	140	135	103	76.3	106	78.5	5	3.6
Tigerair Australia	18	18	16	88.9	13	72.2	0	0.0
Virgin Australia	102	102	85	83.3	84	82.4	0	0.0
All Airlines	276	271	219	80.8	217	80.1	5	1.8
<b>Canberra-Melbourne</b>								
Qantas	242	236	204	86.4	213	90.3	6	2.5
QantasLink	43	42	31	73.8	33	78.6	1	2.3
Tigerair Australia	39	39	18	46.2	22	56.4	0	0.0
Virgin Australia	174	170	112	65.9	131	77.1	4	2.3
All Airlines	498	487	365	74.9	399	81.9	11	2.2
<b>Canberra-Sydney</b>								
Qantas	19	18	16	88.9	15	83.3	1	5.3
QantasLink	472	459	385	83.9	374	81.5	13	2.8
Virgin Australia	264	254	204	80.3	195	76.8	10	3.8
All Airlines	755	731	605	82.8	584	79.9	24	3.2
<b>Coffs Harbour-Sydney</b>								
QantasLink	127	127	116	91.3	114	89.8	0	0.0
Tigerair Australia	14	14	12	85.7	12	85.7	0	0.0
Virgin Australia	61	56	45	80.4	47	83.9	5	8.2
All Airlines	202	197	173	87.8	173	87.8	5	2.5
<b>Darwin-Alice Springs</b>								
QantasLink	62	61	58	95.1	58	95.1	1	1.6
Virgin Australia	5	5	4	80.0	5	100.0	0	0.0
Virgin Australia Regional Airlines	16	15	10	66.7	13	86.7	1	6.3
All Airlines	83	81	72	88.9	76	93.8	2	2.4
<b>Darwin-Brisbane</b>								
Jetstar	30	29	22	75.9	23	79.3	1	3.3
Qantas	48	48	34	70.8	29	60.4	0	0.0
Tigerair Australia	26	26	25	96.2	23	88.5	0	0.0
Virgin Australia	31	31	21	67.7	23	74.2	0	0.0
All Airlines	135	134	102	76.1	98	73.1	1	0.7
<b>Darwin-Melbourne</b>								
Jetstar	30	30	14	46.7	9	30.0	0	0.0
Qantas	39	39	10	25.6	20	51.3	0	0.0
Virgin Australia	33	32	25	78.1	28	87.5	1	3.0
All Airlines	102	101	49	48.5	57	56.4	1	1.0
<b>Darwin-Perth</b>								
Qantas	43	43	32	74.4	31	72.1	0	0.0
Virgin Australia	25	25	10	40.0	12	48.0	0	0.0
Virgin Australia Regional Airlines	8	8	6	75.0	6	75.0	0	0.0
All Airlines	76	76	48	63.2	49	64.5	0	0.0
<b>Darwin-Sydney</b>								
Jetstar	29	29	26	89.7	23	79.3	0	0.0
Qantas	67	67	44	65.7	32	47.8	0	0.0
Virgin Australia	32	32	12	37.5	17	53.1	0	0.0
All Airlines	128	128	82	64.1	72	56.3	0	0.0

	<i>Sectors</i>		<i>Arrivals On Time</i>		<i>Departures On Time</i>		<i>Cancellations</i>	
	<i>Sched.</i>	<i>Flown</i>	<i>No.</i>	<i>%</i>	<i>No.</i>	<i>%</i>	<i>No.</i>	<i>%</i>
<b>Dubbo-Sydney</b>								
QantasLink	105	105	87	82.9	88	83.8	0	0.0
Regional Express	129	127	106	83.5	106	83.5	2	1.6
All Airlines	234	232	193	83.2	194	83.6	2	0.9
<b>Emerald-Brisbane</b>								
QantasLink	103	102	92	90.2	93	91.2	1	1.0
Virgin Australia	53	53	52	98.1	52	98.1	0	0.0
All Airlines	156	155	144	92.9	145	93.5	1	0.6
<b>Geraldton-Perth</b>								
QantasLink	48	46	39	84.8	38	82.6	2	4.2
Virgin Australia Regional Airlines	53	50	33	66.0	30	60.0	3	5.7
All Airlines	101	96	72	75.0	68	70.8	5	5.0
<b>Gladstone-Brisbane</b>								
QantasLink	127	127	110	86.6	107	84.3	0	0.0
Virgin Australia	75	75	67	89.3	69	92.0	0	0.0
All Airlines	202	202	177	87.6	176	87.1	0	0.0
<b>Gold Coast-Adelaide</b>								
Jetstar	31	31	26	83.9	30	96.8	0	0.0
Virgin Australia	31	31	21	67.7	27	87.1	0	0.0
All Airlines	62	62	47	75.8	57	91.9	0	0.0
<b>Gold Coast-Melbourne</b>								
Jetstar	223	219	154	70.3	157	71.7	4	1.8
Qantas	31	31	20	64.5	19	61.3	0	0.0
Tigerair Australia	84	84	46	54.8	56	66.7	0	0.0
Virgin Australia	178	177	89	50.3	96	54.2	1	0.6
All Airlines	516	511	309	60.5	328	64.2	5	1.0
<b>Gold Coast-Sydney</b>								
Jetstar	291	272	209	76.8	198	72.8	19	6.5
Qantas	93	93	73	78.5	73	78.5	0	0.0
QantasLink	24	24	16	66.7	16	66.7	0	0.0
Tigerair Australia	107	105	69	65.7	67	63.8	2	1.9
Virgin Australia	259	253	175	69.2	172	68.0	6	2.3
All Airlines	774	747	542	72.6	526	70.4	27	3.5
<b>Hamilton Island-Brisbane</b>								
QantasLink	26	25	17	68.0	17	68.0	1	3.8
Virgin Australia	31	31	28	90.3	28	90.3	0	0.0
All Airlines	57	56	45	80.4	45	80.4	1	1.8
<b>Hamilton Island-Sydney</b>								
Jetstar	31	31	22	71.0	23	74.2	0	0.0
Qantas	9	9	8	88.9	6	66.7	0	0.0
QantasLink	21	20	17	85.0	18	90.0	1	4.8
Virgin Australia	28	27	23	85.2	23	85.2	1	3.6
All Airlines	89	87	70	80.5	70	80.5	2	2.2
<b>Hobart-Brisbane</b>								
Jetstar	28	28	22	78.6	21	75.0	0	0.0
Virgin Australia	36	36	21	58.3	20	55.6	0	0.0
All Airlines	64	64	43	67.2	41	64.1	0	0.0

	Sectors		Arrivals On Time		Departures On Time		Cancellations	
	Sched.	Flown	No.	%	No.	%	No.	%
<b>Hobart-Melbourne</b>								
Jetstar	176	168	75	44.6	91	54.2	8	4.5
Qantas	116	116	87	75.0	95	81.9	0	0.0
Tigerair Australia	31	31	15	48.4	14	45.2	0	0.0
Virgin Australia	142	141	76	53.9	83	58.9	1	0.7
All Airlines	465	456	253	55.5	283	62.1	9	1.9
<b>Hobart-Sydney</b>								
Jetstar	82	82	59	72.0	48	58.5	0	0.0
Qantas	3	3	0	0.0	0	0.0	0	0.0
QantasLink	57	56	48	85.7	49	87.5	1	1.8
Virgin Australia	71	71	59	83.1	53	74.6	0	0.0
All Airlines	213	212	166	78.3	150	70.8	1	0.5
<b>Kalgoorlie-Perth</b>								
Qantas	9	9	8	88.9	7	77.8	0	0.0
QantasLink	76	73	62	84.9	66	90.4	3	3.9
Virgin Australia	34	33	24	72.7	26	78.8	1	2.9
Virgin Australia Regional Airlines	37	34	30	88.2	29	85.3	3	8.1
All Airlines	156	149	124	83.2	128	85.9	7	4.5
<b>Karratha-Perth</b>								
Qantas	6	6	6	100.0	6	100.0	0	0.0
QantasLink	181	176	138	78.4	143	81.3	5	2.8
Virgin Australia	4	4	2	50.0	3	75.0	0	0.0
Virgin Australia Regional Airlines	66	64	31	48.4	31	48.4	2	3.0
All Airlines	257	250	177	70.8	183	73.2	7	2.7
<b>Launceston-Melbourne</b>								
Jetstar	127	127	60	47.2	65	51.2	0	0.0
QantasLink	112	110	81	73.6	86	78.2	2	1.8
Virgin Australia	106	106	67	63.2	78	73.6	0	0.0
All Airlines	345	343	208	60.6	229	66.8	2	0.6
<b>Launceston-Sydney</b>								
Jetstar	44	43	31	72.1	31	72.1	1	2.3
Virgin Australia	31	31	24	77.4	25	80.6	0	0.0
All Airlines	75	74	55	74.3	56	75.7	1	1.3
<b>Mackay-Brisbane</b>								
Jetstar	49	47	36	76.6	29	61.7	2	4.1
QantasLink	114	113	94	83.2	98	86.7	1	0.9
Virgin Australia	151	151	138	91.4	135	89.4	0	0.0
All Airlines	314	311	268	86.2	262	84.2	3	1.0
<b>Melbourne-Adelaide</b>								
Jetstar	115	109	68	62.4	77	70.6	6	5.2
Qantas	285	285	216	75.8	235	82.5	0	0.0
Tigerair Australia	78	75	48	64.0	53	70.7	3	3.8
Virgin Australia	288	283	179	63.3	185	65.4	5	1.7
All Airlines	766	752	511	68.0	550	73.1	14	1.8
<b>Melbourne-Brisbane</b>								
Jetstar	178	173	105	60.7	92	53.2	5	2.8
Qantas	393	389	300	77.1	301	77.4	4	1.0
QantasLink	18	18	12	66.7	12	66.7	0	0.0
Tigerair Australia	125	121	84	69.4	80	66.1	4	3.2
Virgin Australia	396	383	270	70.5	285	74.4	13	3.3
All Airlines	1 110	1 084	771	71.1	770	71.0	26	2.3

	<i>Sectors</i>		<i>Arrivals On Time</i>		<i>Departures On Time</i>		<i>Cancellations</i>	
	<i>Sched.</i>	<i>Flown</i>	<i>No.</i>	<i>%</i>	<i>No.</i>	<i>%</i>	<i>No.</i>	<i>%</i>
<b>Melbourne-Cairns</b>								
Jetstar	128	128	92	71.9	88	68.8	0	0.0
Qantas	48	48	29	60.4	33	68.8	0	0.0
Tigerair Australia	45	45	29	64.4	33	73.3	0	0.0
Virgin Australia	38	38	28	73.7	29	76.3	0	0.0
All Airlines	259	259	178	68.7	183	70.7	0	0.0
<b>Melbourne-Canberra</b>								
Qantas	246	240	182	75.8	184	76.7	6	2.4
QantasLink	43	43	35	81.4	33	76.7	0	0.0
Tigerair Australia	39	39	24	61.5	23	59.0	0	0.0
Virgin Australia	175	167	120	71.9	121	72.5	8	4.6
All Airlines	503	489	361	73.8	361	73.8	14	2.8
<b>Melbourne-Darwin</b>								
Jetstar	30	30	10	33.3	13	43.3	0	0.0
Qantas	39	39	30	76.9	27	69.2	0	0.0
Virgin Australia	34	34	20	58.8	18	52.9	0	0.0
All Airlines	103	103	60	58.3	58	56.3	0	0.0
<b>Melbourne-Gold Coast</b>								
Jetstar	224	221	157	71.0	152	68.8	3	1.3
Qantas	31	31	23	74.2	25	80.6	0	0.0
Tigerair Australia	84	84	62	73.8	61	72.6	0	0.0
Virgin Australia	178	178	124	69.7	118	66.3	0	0.0
All Airlines	517	514	366	71.2	356	69.3	3	0.6
<b>Melbourne-Hobart</b>								
Jetstar	176	169	96	56.8	105	62.1	7	4.0
Qantas	116	116	83	71.6	89	76.7	0	0.0
Tigerair Australia	30	30	15	50.0	16	53.3	0	0.0
Virgin Australia	143	142	71	50.0	92	64.8	1	0.7
All Airlines	465	457	265	58.0	302	66.1	8	1.7
<b>Melbourne-Launceston</b>								
Jetstar	126	126	62	49.2	67	53.2	0	0.0
QantasLink	112	110	86	78.2	88	80.0	2	1.8
Virgin Australia	106	106	55	51.9	68	64.2	0	0.0
All Airlines	344	342	203	59.4	223	65.2	2	0.6
<b>Melbourne-Mildura</b>								
QantasLink	97	93	78	83.9	82	88.2	4	4.1
Regional Express	71	69	42	60.9	51	73.9	2	2.8
Virgin Australia	31	31	15	48.4	20	64.5	0	0.0
All Airlines	199	193	135	69.9	153	79.3	6	3.0
<b>Melbourne-Newcastle</b>								
Jetstar	122	119	77	64.7	66	55.5	3	2.5
Virgin Australia	31	31	21	67.7	20	64.5	0	0.0
All Airlines	153	150	98	65.3	86	57.3	3	2.0
<b>Melbourne-Perth</b>								
Jetstar	54	52	36	69.2	43	82.7	2	3.7
Qantas	199	197	91	46.2	121	61.4	2	1.0
Tigerair Australia	47	45	18	40.0	29	64.4	2	4.3
Virgin Australia	140	139	53	38.1	71	51.1	1	0.7
All Airlines	440	433	198	45.7	264	61.0	7	1.6

	<i>Sectors</i>		<i>Arrivals On Time</i>		<i>Departures On Time</i>		<i>Cancellations</i>	
	<i>Sched.</i>	<i>Flown</i>	<i>No.</i>	<i>%</i>	<i>No.</i>	<i>%</i>	<i>No.</i>	<i>%</i>
<b>Melbourne-Sunshine Coast</b>								
Jetstar	102	101	67	66.3	66	65.3	1	1.0
Virgin Australia	62	62	38	61.3	38	61.3	0	0.0
All Airlines	164	163	105	64.4	104	63.8	1	0.6
<b>Melbourne-Sydney</b>								
Jetstar	444	389	248	63.8	247	63.5	55	12.4
Qantas	989	913	684	74.9	688	75.4	76	7.7
Tigerair Australia	251	237	142	59.9	145	61.2	14	5.6
Virgin Australia	770	720	526	73.1	521	72.4	50	6.5
All Airlines	2 454	2 259	1 600	70.8	1 601	70.9	195	7.9
<b>Melbourne-Townsville</b>								
Jetstar	31	31	25	80.6	23	74.2	0	0.0
Tigerair Australia	17	17	12	70.6	11	64.7	0	0.0
All Airlines	48	48	37	77.1	34	70.8	0	0.0
<b>Mildura-Melbourne</b>								
QantasLink	97	93	75	80.6	80	86.0	4	4.1
Regional Express	71	69	40	58.0	47	68.1	2	2.8
Virgin Australia	31	31	15	48.4	18	58.1	0	0.0
All Airlines	199	193	130	67.4	145	75.1	6	3.0
<b>Mount Isa-Brisbane</b>								
QantasLink	55	55	35	63.6	26	47.3	0	0.0
Virgin Australia	17	17	13	76.5	16	94.1	0	0.0
All Airlines	72	72	48	66.7	42	58.3	0	0.0
<b>Newcastle-Brisbane</b>								
Jetstar	93	93	59	63.4	62	66.7	0	0.0
QantasLink	49	46	40	87.0	37	80.4	3	6.1
Virgin Australia	89	89	75	84.3	75	84.3	0	0.0
All Airlines	231	228	174	76.3	174	76.3	3	1.3
<b>Newcastle-Melbourne</b>								
Jetstar	121	118	61	51.7	69	58.5	3	2.5
Virgin Australia	31	31	17	54.8	21	67.7	0	0.0
All Airlines	152	149	78	52.3	90	60.4	3	2.0
<b>Newman-Perth</b>								
Qantas	21	21	21	100.0	21	100.0	0	0.0
QantasLink	112	109	83	76.1	91	83.5	3	2.7
Virgin Australia	17	17	14	82.4	15	88.2	0	0.0
Virgin Australia Regional Airlines	24	23	11	47.8	13	56.5	1	4.2
All Airlines	174	170	129	75.9	140	82.4	4	2.3
<b>Perth-Adelaide</b>								
Jetstar	29	29	22	75.9	13	44.8	0	0.0
Qantas	101	101	93	92.1	86	85.1	0	0.0
QantasLink	16	16	16	100.0	16	100.0	0	0.0
Virgin Australia	49	48	36	75.0	30	62.5	1	2.0
Virgin Australia Regional Airlines	32	30	15	50.0	18	60.0	2	6.3
All Airlines	227	224	182	81.3	163	72.8	3	1.3
<b>Perth-Brisbane</b>								
Qantas	149	149	136	91.3	124	83.2	0	0.0
Virgin Australia	111	111	93	83.8	80	72.1	0	0.0
All Airlines	260	260	229	88.1	204	78.5	0	0.0



	<i>Sectors</i>		<i>Arrivals On Time</i>		<i>Departures On Time</i>		<i>Cancellations</i>	
	<i>Sched.</i>	<i>Flown</i>	<i>No.</i>	<i>%</i>	<i>No.</i>	<i>%</i>	<i>No.</i>	<i>%</i>
<b>Perth-Broome</b>								
Qantas	3	3	3	100.0	3	100.0	0	0.0
QantasLink	81	80	70	87.5	66	82.5	1	1.2
Virgin Australia	1	1	1	100.0	1	100.0	0	0.0
Virgin Australia Regional Airlines	83	82	57	69.5	57	69.5	1	1.2
All Airlines	168	166	131	78.9	127	76.5	2	1.2
<b>Perth-Darwin</b>								
Qantas	43	43	37	86.0	37	86.0	0	0.0
Virgin Australia	24	24	12	50.0	11	45.8	0	0.0
Virgin Australia Regional Airlines	8	8	7	87.5	5	62.5	0	0.0
All Airlines	75	75	56	74.7	53	70.7	0	0.0
<b>Perth-Geraldton</b>								
QantasLink	48	46	41	89.1	40	87.0	2	4.2
Virgin Australia Regional Airlines	53	50	35	70.0	35	70.0	3	5.7
All Airlines	101	96	76	79.2	75	78.1	5	5.0
<b>Perth-Kalgoorlie</b>								
Qantas	9	9	9	100.0	8	88.9	0	0.0
QantasLink	75	73	66	90.4	64	87.7	2	2.7
Virgin Australia	33	33	29	87.9	28	84.8	0	0.0
Virgin Australia Regional Airlines	37	34	29	85.3	29	85.3	3	8.1
All Airlines	154	149	133	89.3	129	86.6	5	3.2
<b>Perth-Karratha</b>								
Qantas	6	6	6	100.0	6	100.0	0	0.0
QantasLink	181	176	145	82.4	142	80.7	5	2.8
Virgin Australia	4	4	3	75.0	4	100.0	0	0.0
Virgin Australia Regional Airlines	66	64	43	67.2	50	78.1	2	3.0
All Airlines	257	250	197	78.8	202	80.8	7	2.7
<b>Perth-Melbourne</b>								
Jetstar	55	53	46	86.8	27	50.9	2	3.6
Qantas	202	201	179	89.1	151	75.1	1	0.5
Tigerair Australia	47	45	28	62.2	22	48.9	2	4.3
Virgin Australia	139	139	101	72.7	91	65.5	0	0.0
All Airlines	443	438	354	80.8	291	66.4	5	1.1
<b>Perth-Newman</b>								
Qantas	21	21	21	100.0	21	100.0	0	0.0
QantasLink	112	112	99	88.4	91	81.3	0	0.0
Virgin Australia	17	17	16	94.1	16	94.1	0	0.0
Virgin Australia Regional Airlines	24	23	16	69.6	16	69.6	1	4.2
All Airlines	174	173	152	87.9	144	83.2	1	0.6
<b>Perth-Port Hedland</b>								
Qantas	26	26	25	96.2	25	96.2	0	0.0
QantasLink	110	108	83	76.9	83	76.9	2	1.8
Virgin Australia	27	27	25	92.6	27	100.0	0	0.0
Virgin Australia Regional Airlines	27	27	22	81.5	23	85.2	0	0.0
All Airlines	190	188	155	82.4	158	84.0	2	1.1
<b>Perth-Sydney</b>								
Jetstar	28	26	15	57.7	9	34.6	2	7.1
Qantas	203	200	163	81.5	130	65.0	3	1.5
Tigerair Australia	28	28	24	85.7	17	60.7	0	0.0
Virgin Australia	123	123	107	87.0	87	70.7	0	0.0
All Airlines	382	377	309	82.0	243	64.5	5	1.3

	<i>Sectors</i>		<i>Arrivals On Time</i>		<i>Departures On Time</i>		<i>Cancellations</i>	
	<i>Sched.</i>	<i>Flown</i>	<i>No.</i>	<i>%</i>	<i>No.</i>	<i>%</i>	<i>No.</i>	<i>%</i>
<b>Port Hedland-Perth</b>								
Qantas	26	26	23	88.5	23	88.5	0	0.0
QantasLink	108	106	77	72.6	83	78.3	2	1.9
Virgin Australia	27	27	23	85.2	23	85.2	0	0.0
Virgin Australia Regional Airlines	27	27	21	77.8	22	81.5	0	0.0
All Airlines	188	186	144	77.4	151	81.2	2	1.1
<b>Port Lincoln-Adelaide</b>								
QantasLink	110	107	97	90.7	95	88.8	3	2.7
Regional Express	213	204	161	78.9	169	82.8	9	4.2
All Airlines	323	311	258	83.0	264	84.9	12	3.7
<b>Port Macquarie-Sydney</b>								
QantasLink	98	98	78	79.6	79	80.6	0	0.0
Virgin Australia	62	62	43	69.4	42	67.7	0	0.0
All Airlines	160	160	121	75.6	121	75.6	0	0.0
<b>Proserpine-Brisbane</b>								
Jetstar	40	40	29	72.5	29	72.5	0	0.0
Virgin Australia	31	31	28	90.3	26	83.9	0	0.0
All Airlines	71	71	57	80.3	55	77.5	0	0.0
<b>Proserpine-Sydney</b>								
Jetstar	13	13	11	84.6	10	76.9	0	0.0
Tigerair Australia	27	27	20	74.1	19	70.4	0	0.0
All Airlines	40	40	31	77.5	29	72.5	0	0.0
<b>Rockhampton-Brisbane</b>								
QantasLink	177	175	127	72.6	127	72.6	2	1.1
Virgin Australia	143	142	118	83.1	117	82.4	1	0.7
All Airlines	320	317	245	77.3	244	77.0	3	0.9
<b>Sunshine Coast-Melbourne</b>								
Jetstar	102	100	50	50.0	49	49.0	2	2.0
Virgin Australia	62	62	22	35.5	21	33.9	0	0.0
All Airlines	164	162	72	44.4	70	43.2	2	1.2
<b>Sunshine Coast-Sydney</b>								
Jetstar	116	113	77	68.1	66	58.4	3	2.6
QantasLink	34	33	26	78.8	26	78.8	1	2.9
Virgin Australia	49	48	38	79.2	40	83.3	1	2.0
All Airlines	199	194	141	72.7	132	68.0	5	2.5
<b>Sydney-Adelaide</b>								
Jetstar	134	122	84	68.9	88	72.1	12	9.0
Qantas	211	211	167	79.1	176	83.4	0	0.0
QantasLink	28	26	18	69.2	21	80.8	2	7.1
Tigerair Australia	48	47	31	66.0	36	76.6	1	2.1
Virgin Australia	173	168	116	69.0	131	78.0	5	2.9
All Airlines	594	574	416	72.5	452	78.7	20	3.4
<b>Sydney-Albury</b>								
QantasLink	97	96	71	74.0	77	80.2	1	1.0
Regional Express	97	95	55	57.9	63	66.3	2	2.1
Virgin Australia	62	61	37	60.7	36	59.0	1	1.6
All Airlines	256	252	163	64.7	176	69.8	4	1.6
<b>Sydney-Armidale</b>								
QantasLink	121	116	88	75.9	95	81.9	5	4.1
Regional Express	61	61	38	62.3	37	60.7	0	0.0
All Airlines	182	177	126	71.2	132	74.6	5	2.7

	<i>Sectors</i>		<i>Arrivals On Time</i>		<i>Departures On Time</i>		<i>Cancellations</i>	
	<i>Sched.</i>	<i>Flown</i>	<i>No.</i>	<i>%</i>	<i>No.</i>	<i>%</i>	<i>No.</i>	<i>%</i>
<b>Sydney-Ayers Rock</b>								
Jetstar	31	31	22	71.0	29	93.5	0	0.0
Virgin Australia	31	31	20	64.5	25	80.6	0	0.0
All Airlines	62	62	42	67.7	54	87.1	0	0.0
<b>Sydney-Ballina</b>								
Jetstar	90	90	65	72.2	66	73.3	0	0.0
Regional Express	24	23	16	69.6	16	69.6	1	4.2
Virgin Australia	37	37	29	78.4	31	83.8	0	0.0
All Airlines	151	150	110	73.3	113	75.3	1	0.7
<b>Sydney-Brisbane</b>								
Jetstar	213	201	138	68.7	131	65.2	12	5.6
Qantas	620	616	470	76.3	491	79.7	4	0.6
QantasLink	16	16	11	68.8	12	75.0	0	0.0
Tigerair Australia	111	106	72	67.9	81	76.4	5	4.5
Virgin Australia	533	518	379	73.2	385	74.3	15	2.8
All Airlines	1 493	1 457	1 070	73.4	1 100	75.5	36	2.4
<b>Sydney-Cairns</b>								
Jetstar	118	117	99	84.6	92	78.6	1	0.8
Qantas	89	89	71	79.8	71	79.8	0	0.0
Tigerair Australia	44	44	39	88.6	39	88.6	0	0.0
Virgin Australia	95	95	70	73.7	68	71.6	0	0.0
All Airlines	346	345	279	80.9	270	78.3	1	0.3
<b>Sydney-Canberra</b>								
Qantas	19	18	14	77.8	15	83.3	1	5.3
QantasLink	466	455	371	81.5	386	84.8	11	2.4
Virgin Australia	264	255	188	73.7	189	74.1	9	3.4
All Airlines	749	728	573	78.7	590	81.0	21	2.8
<b>Sydney-Coffs Harbour</b>								
QantasLink	128	128	110	85.9	99	77.3	0	0.0
Tigerair Australia	14	14	14	100.0	14	100.0	0	0.0
Virgin Australia	61	56	50	89.3	50	89.3	5	8.2
All Airlines	203	198	174	87.9	163	82.3	5	2.5
<b>Sydney-Darwin</b>								
Jetstar	29	29	22	75.9	24	82.8	0	0.0
Qantas	67	67	46	68.7	42	62.7	0	0.0
Virgin Australia	32	32	25	78.1	25	78.1	0	0.0
All Airlines	128	128	93	72.7	91	71.1	0	0.0
<b>Sydney-Dubbo</b>								
QantasLink	106	106	89	84.0	92	86.8	0	0.0
Regional Express	128	127	100	78.7	88	69.3	1	0.8
All Airlines	234	233	189	81.1	180	77.3	1	0.4
<b>Sydney-Gold Coast</b>								
Jetstar	289	271	208	76.8	201	74.2	18	6.2
Qantas	93	92	74	80.4	65	70.7	1	1.1
QantasLink	24	24	18	75.0	19	79.2	0	0.0
Tigerair Australia	107	105	75	71.4	83	79.0	2	1.9
Virgin Australia	259	254	169	66.5	176	69.3	5	1.9
All Airlines	772	746	544	72.9	544	72.9	26	3.4

	<i>Sectors</i>		<i>Arrivals On Time</i>		<i>Departures On Time</i>		<i>Cancellations</i>	
	<i>Sched.</i>	<i>Flown</i>	<i>No.</i>	<i>%</i>	<i>No.</i>	<i>%</i>	<i>No.</i>	<i>%</i>
<b>Sydney-Hamilton Island</b>								
Jetstar	31	31	24	77.4	22	71.0	0	0.0
Qantas	9	9	7	77.8	7	77.8	0	0.0
QantasLink	21	20	16	80.0	19	95.0	1	4.8
Virgin Australia	28	27	22	81.5	24	88.9	1	3.6
All Airlines	89	87	69	79.3	72	82.8	2	2.2
<b>Sydney-Hobart</b>								
Jetstar	82	82	64	78.0	65	79.3	0	0.0
Qantas	3	3	2	66.7	2	66.7	0	0.0
QantasLink	58	57	43	75.4	45	78.9	1	1.7
Virgin Australia	71	71	51	71.8	57	80.3	0	0.0
All Airlines	214	213	160	75.1	169	79.3	1	0.5
<b>Sydney-Launceston</b>								
Jetstar	43	43	39	90.7	39	90.7	0	0.0
Virgin Australia	31	31	26	83.9	25	80.6	0	0.0
All Airlines	74	74	65	87.8	64	86.5	0	0.0
<b>Sydney-Melbourne</b>								
Jetstar	445	389	227	58.4	265	68.1	56	12.6
Qantas	1 001	924	573	62.0	703	76.1	77	7.7
Tigerair Australia	251	237	108	45.6	134	56.5	14	5.6
Virgin Australia	768	718	420	58.5	504	70.2	50	6.5
All Airlines	2 465	2 268	1 328	58.6	1 606	70.8	197	8.0
<b>Sydney-Perth</b>								
Jetstar	28	27	9	33.3	14	51.9	1	3.6
Qantas	215	214	115	53.7	157	73.4	1	0.5
Tigerair Australia	29	29	16	55.2	21	72.4	0	0.0
Virgin Australia	123	123	49	39.8	85	69.1	0	0.0
All Airlines	395	393	189	48.1	277	70.5	2	0.5
<b>Sydney-Port Macquarie</b>								
QantasLink	98	98	83	84.7	87	88.8	0	0.0
Virgin Australia	62	62	48	77.4	45	72.6	0	0.0
All Airlines	160	160	131	81.9	132	82.5	0	0.0
<b>Sydney-Proserpine</b>								
Jetstar	13	13	11	84.6	11	84.6	0	0.0
Tigerair Australia	27	27	20	74.1	22	81.5	0	0.0
All Airlines	40	40	31	77.5	33	82.5	0	0.0
<b>Sydney-Sunshine Coast</b>								
Jetstar	116	113	73	64.6	72	63.7	3	2.6
QantasLink	36	36	30	83.3	29	80.6	0	0.0
Virgin Australia	49	49	40	81.6	40	81.6	0	0.0
All Airlines	201	198	143	72.2	141	71.2	3	1.5
<b>Sydney-Tamworth</b>								
QantasLink	119	116	99	85.3	98	84.5	3	2.5
Virgin Australia	54	54	38	70.4	40	74.1	0	0.0
All Airlines	173	170	137	80.6	138	81.2	3	1.7
<b>Sydney-Townsville</b>								
Jetstar	31	31	20	64.5	23	74.2	0	0.0
Virgin Australia	32	32	27	84.4	29	90.6	0	0.0
All Airlines	63	63	47	74.6	52	82.5	0	0.0

	<i>Sectors</i>		<i>Arrivals On Time</i>		<i>Departures On Time</i>		<i>Cancellations</i>	
	<i>Sched.</i>	<i>Flown</i>	<i>No.</i>	<i>%</i>	<i>No.</i>	<i>%</i>	<i>No.</i>	<i>%</i>
<b>Sydney-Wagga Wagga</b>								
QantasLink	98	98	82	83.7	85	86.7	0	0.0
Regional Express	134	127	103	81.1	105	82.7	7	5.2
All Airlines	232	225	185	82.2	190	84.4	7	3.0
<b>Tamworth-Sydney</b>								
QantasLink	118	115	97	84.3	99	86.1	3	2.5
Virgin Australia	53	53	43	81.1	42	79.2	0	0.0
All Airlines	171	168	140	83.3	141	83.9	3	1.8
<b>Townsville-Brisbane</b>								
Jetstar	62	61	46	75.4	41	67.2	1	1.6
Qantas	78	78	68	87.2	70	89.7	0	0.0
QantasLink	69	68	55	80.9	53	77.9	1	1.4
Virgin Australia	151	149	137	91.9	134	89.9	2	1.3
All Airlines	360	356	306	86.0	298	83.7	4	1.1
<b>Townsville-Cairns</b>								
QantasLink	135	134	118	88.1	117	87.3	1	0.7
Regional Express	15	13	8	61.5	9	69.2	2	13.3
All Airlines	150	147	126	85.7	126	85.7	3	2.0
<b>Townsville-Melbourne</b>								
Jetstar	31	31	21	67.7	21	67.7	0	0.0
Tigerair Australia	17	16	10	62.5	10	62.5	1	5.9
All Airlines	48	47	31	66.0	31	66.0	1	2.1
<b>Townsville-Sydney</b>								
Jetstar	31	31	21	67.7	17	54.8	0	0.0
Virgin Australia	32	32	24	75.0	26	81.3	0	0.0
All Airlines	63	63	45	71.4	43	68.3	0	0.0
<b>Wagga Wagga-Sydney</b>								
QantasLink	97	97	77	79.4	75	77.3	0	0.0
Regional Express	138	132	106	80.3	109	82.6	6	4.3
All Airlines	235	229	183	79.9	184	80.3	6	2.6

## Airports

On time performance is reported for all routes where the passenger load averages over 8000 passengers per month, and where two or more airlines operate in competition. The following data reports by airport against flights operated on those routes only. This month, 8 major city airports and 32 regional city airports are covered.

Airport	Arrivals			Departures		
	Sectors	On Time		Sectors	On Time	
	Flown	No.	%	Flown	No.	%
<b>Adelaide</b>						
Jetstar	320	222	69.4	320	221	69.1
Qantas	738	592	80.2	737	600	81.4
QantasLink	217	183	84.3	215	194	90.2
Regional Express	204	161	78.9	205	178	86.8
Tigerair Australia	149	101	67.8	149	75	50.3
Virgin Australia	664	456	68.7	663	495	74.7
Virgin Australia Regional Airlines	45	25	55.6	46	26	56.5
All Airlines	2 337	1 740	74.5	2 335	1 789	76.6
Relates to services to and from Alice Springs, Brisbane, Canberra, Gold Coast, Melbourne, Perth, Port Lincoln and Sydney.						
<b>Albury</b>						
QantasLink	96	71	74.0	97	67	69.1
Regional Express	95	55	57.9	91	75	82.4
Virgin Australia	61	37	60.7	61	38	62.3
All Airlines	252	163	64.7	249	180	72.3
Relates to services to and from Sydney only.						
<b>Alice Springs</b>						
Qantas	31	29	93.5	31	25	80.6
QantasLink	61	58	95.1	61	60	98.4
Virgin Australia	10	9	90.0	10	9	90.0
Virgin Australia Regional Airlines	31	16	51.6	31	19	61.3
All Airlines	133	112	84.2	133	113	85.0
Relates to services to and from Adelaide and Darwin.						
<b>Armidale</b>						
QantasLink	116	88	75.9	111	83	74.8
Regional Express	61	38	62.3	61	38	62.3
All Airlines	177	126	71.2	172	121	70.3
Relates to services to and from Sydney only.						
<b>Ayers Rock</b>						
Jetstar	31	22	71.0	31	13	41.9
Virgin Australia	31	20	64.5	31	11	35.5
All Airlines	62	42	67.7	62	24	38.7
Relates to services to and from Sydney only.						
<b>Ballina</b>						
Jetstar	90	65	72.2	90	55	61.1
Regional Express	23	16	69.6	24	15	62.5
Virgin Australia	37	29	78.4	37	32	86.5
All Airlines	150	110	73.3	151	102	67.5
Relates to services to and from Sydney only.						

Airport	Arrivals			Departures		
	Sectors	On Time		Sectors	On Time	
	Flown	No.	%	Flown	No.	%
<b>Brisbane</b>						
Jetstar	818	579	70.8	815	567	69.6
Qantas	1 424	1 129	79.3	1 416	1 153	81.4
QantasLink	1 122	895	79.8	1 127	914	81.1
Tigerair Australia	329	238	72.3	330	247	74.8
Virgin Australia	2 188	1 756	80.3	2 183	1 750	80.2
All Airlines	5 881	4 597	78.2	5 871	4 631	78.9

Relates to services to and from Adelaide, Bundaberg, Cairns, Canberra, Darwin, Emerald, Gladstone, Hamilton Island, Hobart, Mackay, Melbourne, Mount Isa, Newcastle, Perth, Proserpine, Rockhampton, Sydney and Townsville.

### Broome

Qantas	3	3	100.0	3	0	0.0
QantasLink	80	70	87.5	79	61	77.2
Virgin Australia	1	1	100.0	1	1	100.0
Virgin Australia Regional Airlines	82	57	69.5	82	51	62.2
All Airlines	166	131	78.9	165	113	68.5

Relates to services to and from Perth only.

### Bundaberg

QantasLink	105	90	85.7	105	90	85.7
Virgin Australia	31	30	96.8	31	30	96.8
All Airlines	136	120	88.2	136	120	88.2

Relates to services to and from Brisbane only.

### Cairns

Jetstar	362	291	80.4	360	293	81.4
Qantas	203	152	74.9	203	152	74.9
QantasLink	206	171	83.0	209	177	84.7
Regional Express	13	8	61.5	13	8	61.5
Tigerair Australia	120	91	75.8	120	80	66.7
Virgin Australia	261	209	80.1	261	193	73.9
All Airlines	1 165	922	79.1	1 166	903	77.4

Relates to services to and from Brisbane, Melbourne, Sydney and Townsville.

### Canberra

Qantas	312	244	78.2	312	277	88.8
QantasLink	638	511	80.1	636	513	80.7
Tigerair Australia	57	36	63.2	57	35	61.4
Virgin Australia	550	415	75.5	552	431	78.1
All Airlines	1 557	1 206	77.5	1 557	1 256	80.7

Relates to services to and from Adelaide, Brisbane, Melbourne and Sydney.

### Coffs Harbour

QantasLink	128	110	85.9	127	114	89.8
Tigerair Australia	14	14	100.0	14	12	85.7
Virgin Australia	56	50	89.3	56	47	83.9
All Airlines	198	174	87.9	197	173	87.8

Relates to services to and from Sydney only.

Airport	Arrivals			Departures		
	Sectors Flown	On Time		Sectors Flown	On Time	
		No.	%		No.	%
<b>Darwin</b>						
Jetstar	88	57	64.8	88	55	62.5
Qantas	198	154	77.8	197	112	56.9
QantasLink	61	60	98.4	61	58	95.1
Tigerair Australia	27	23	85.2	26	23	88.5
Virgin Australia	126	85	67.5	125	85	68.0
Virgin Australia Regional Airlines	24	15	62.5	23	19	82.6
All Airlines	524	394	75.2	520	352	67.7
Relates to services to and from Alice Springs, Brisbane, Melbourne, Perth and Sydney.						
<b>Dubbo</b>						
QantasLink	106	89	84.0	105	88	83.8
Regional Express	127	100	78.7	127	106	83.5
All Airlines	233	189	81.1	232	194	83.6
Relates to services to and from Sydney only.						
<b>Emerald</b>						
QantasLink	102	94	92.2	102	93	91.2
Virgin Australia	54	51	94.4	53	52	98.1
All Airlines	156	145	92.9	155	145	93.5
Relates to services to and from Brisbane only.						
<b>Geraldton</b>						
QantasLink	46	41	89.1	46	38	82.6
Virgin Australia Regional Airlines	50	35	70.0	50	30	60.0
All Airlines	96	76	79.2	96	68	70.8
Relates to services to and from Perth only.						
<b>Gladstone</b>						
QantasLink	126	103	81.7	127	107	84.3
Virgin Australia	75	71	94.7	75	69	92.0
All Airlines	201	174	86.6	202	176	87.1
Relates to services to and from Brisbane only.						
<b>Gold Coast</b>						
Jetstar	523	392	75.0	522	385	73.8
Qantas	123	97	78.9	124	92	74.2
QantasLink	24	18	75.0	24	16	66.7
Tigerair Australia	189	137	72.5	189	123	65.1
Virgin Australia	463	323	69.8	461	295	64.0
All Airlines	1 322	967	73.1	1 320	911	69.0
Relates to services to and from Adelaide, Melbourne and Sydney.						
<b>Hamilton Island</b>						
Jetstar	31	24	77.4	31	23	74.2
Qantas	9	7	77.8	9	6	66.7
QantasLink	45	35	77.8	45	35	77.8
Virgin Australia	58	49	84.5	58	51	87.9
All Airlines	143	115	80.4	143	115	80.4
Relates to services to and from Brisbane and Sydney.						



Airport	Arrivals			Departures		
	Sectors Flown	On Time		Sectors Flown	On Time	
		No.	%		No.	%
<b>Hobart</b>						
Jetstar	278	185	66.5	278	160	57.6
Qantas	119	85	71.4	119	95	79.8
QantasLink	57	43	75.4	56	49	87.5
Tigerair Australia	30	15	50.0	31	14	45.2
Virgin Australia	249	151	60.6	248	156	62.9
All Airlines	733	479	65.3	732	474	64.8
Relates to services to and from Brisbane, Melbourne and Sydney.						
<b>Kalgoorlie</b>						
Qantas	9	9	100.0	9	7	77.8
QantasLink	73	66	90.4	73	66	90.4
Virgin Australia	33	29	87.9	33	26	78.8
Virgin Australia Regional Airlines	34	29	85.3	34	29	85.3
All Airlines	149	133	89.3	149	128	85.9
Relates to services to and from Perth only.						
<b>Karratha</b>						
Qantas	6	6	100.0	6	6	100.0
QantasLink	176	145	82.4	176	143	81.3
Virgin Australia	4	3	75.0	4	3	75.0
Virgin Australia Regional Airlines	64	43	67.2	64	31	48.4
All Airlines	250	197	78.8	250	183	73.2
Relates to services to and from Perth only.						
<b>Launceston</b>						
Jetstar	169	101	59.8	170	96	56.5
QantasLink	110	86	78.2	110	86	78.2
Virgin Australia	137	81	59.1	137	103	75.2
All Airlines	416	268	64.4	417	285	68.3
Relates to services to and from Melbourne and Sydney.						
<b>Mackay</b>						
Jetstar	47	34	72.3	47	29	61.7
QantasLink	118	106	89.8	113	98	86.7
Virgin Australia	151	124	82.1	151	135	89.4
All Airlines	316	264	83.5	311	262	84.2
Relates to services to and from Brisbane only.						
<b>Melbourne</b>						
Jetstar	1 645	992	60.3	1 648	1 039	63.0
Qantas	2 253	1 595	70.8	2 258	1 703	75.4
QantasLink	263	196	74.5	264	215	81.4
Regional Express	69	40	58.0	69	51	73.9
Tigerair Australia	693	357	51.5	693	451	65.1
Virgin Australia	2 309	1 356	58.7	2 314	1 586	68.5
All Airlines	7 232	4 536	62.7	7 246	5 045	69.6
Relates to services to and from Adelaide, Brisbane, Cairns, Canberra, Darwin, Gold Coast, Hobart, Launceston, Mildura, Newcastle, Perth, Sunshine Coast, Sydney and Townsville.						
<b>Mildura</b>						
QantasLink	93	78	83.9	93	80	86.0
Regional Express	69	42	60.9	69	47	68.1
Virgin Australia	31	15	48.4	31	18	58.1
All Airlines	193	135	69.9	193	145	75.1
Relates to services to and from Melbourne only.						

Airport	Arrivals			Departures		
	Sectors Flown	On Time		Sectors Flown	On Time	
		No.	%		No.	%
<b>Mount Isa</b>						
QantasLink	58	18	31.0	55	26	47.3
Virgin Australia	18	14	77.8	17	16	94.1
All Airlines	76	32	42.1	72	42	58.3
Relates to services to and from Brisbane only.						
<b>Newcastle</b>						
Jetstar	212	135	63.7	211	131	62.1
QantasLink	46	37	80.4	46	37	80.4
Virgin Australia	120	92	76.7	120	96	80.0
All Airlines	378	264	69.8	377	264	70.0
Relates to services to and from Brisbane and Melbourne.						
<b>Newman</b>						
Qantas	21	21	100.0	21	21	100.0
QantasLink	112	99	88.4	109	91	83.5
Virgin Australia	17	16	94.1	17	15	88.2
Virgin Australia Regional Airlines	23	16	69.6	23	13	56.5
All Airlines	173	152	87.9	170	140	82.4
Relates to services to and from Perth only.						
<b>Perth</b>						
Jetstar	108	63	58.3	108	49	45.4
Qantas	767	471	61.4	759	591	77.9
QantasLink	603	466	77.3	611	502	82.2
Tigerair Australia	74	34	45.9	73	39	53.4
Virgin Australia	527	250	47.4	527	375	71.2
Virgin Australia Regional Airlines	318	193	60.7	318	233	73.3
All Airlines	2 397	1 477	61.6	2 396	1 789	74.7
Relates to services to and from Adelaide, Brisbane, Broome, Darwin, Geraldton, Kalgoorlie, Karratha, Melbourne, Newman, Port Hedland and Sydney.						
<b>Port Hedland</b>						
Qantas	26	25	96.2	26	23	88.5
QantasLink	108	83	76.9	106	83	78.3
Virgin Australia	27	25	92.6	27	23	85.2
Virgin Australia Regional Airlines	27	22	81.5	27	22	81.5
All Airlines	188	155	82.4	186	151	81.2
Relates to services to and from Perth only.						
<b>Port Lincoln</b>						
QantasLink	108	102	94.4	107	95	88.8
Regional Express	205	164	80.0	204	169	82.8
All Airlines	313	266	85.0	311	264	84.9
Relates to services to and from Adelaide only.						
<b>Port Macquarie</b>						
QantasLink	98	83	84.7	98	79	80.6
Virgin Australia	62	48	77.4	62	42	67.7
All Airlines	160	131	81.9	160	121	75.6
Relates to services to and from Sydney only.						

Airport	Arrivals			Departures		
	Sectors Flown	On Time		Sectors Flown	On Time	
		No.	%		No.	%
<b>Proserpine</b>						
Jetstar	53	41	77.4	53	39	73.6
Tigerair Australia	27	20	74.1	27	19	70.4
Virgin Australia	31	28	90.3	31	26	83.9
All Airlines	111	89	80.2	111	84	75.7
Relates to services to and from Brisbane and Sydney.						
<b>Rockhampton</b>						
QantasLink	171	118	69.0	175	127	72.6
Virgin Australia	142	105	73.9	142	117	82.4
All Airlines	313	223	71.2	317	244	77.0
Relates to services to and from Brisbane only.						
<b>Sunshine Coast</b>						
Jetstar	214	140	65.4	213	115	54.0
QantasLink	36	30	83.3	33	26	78.8
Virgin Australia	111	78	70.3	110	61	55.5
All Airlines	361	248	68.7	356	202	56.7
Relates to services to and from Melbourne and Sydney.						
<b>Sydney</b>						
Jetstar	1 586	1 117	70.4	1 590	1 142	71.8
Qantas	2 231	1 734	77.7	2 243	1 729	77.1
QantasLink	1 379	1 135	82.3	1 392	1 164	83.6
Regional Express	435	340	78.2	433	309	71.4
Tigerair Australia	608	395	65.0	609	430	70.6
Virgin Australia	2 667	2 012	75.4	2 674	1 965	73.5
All Airlines	8 906	6 733	75.6	8 941	6 739	75.4
Relates to services to and from Adelaide, Albury, Armidale, Ayers Rock, Ballina, Brisbane, Cairns, Canberra, Coffs Harbour, Darwin, Dubbo, Gold Coast, Hamilton Island, Hobart, Launceston, Melbourne, Perth, Port Macquarie, Proserpine, Sunshine Coast, Tamworth, Townsville and Wagga Wagga.						
<b>Tamworth</b>						
QantasLink	116	99	85.3	115	99	86.1
Virgin Australia	54	38	70.4	53	42	79.2
All Airlines	170	137	80.6	168	141	83.9
Relates to services to and from Sydney only.						
<b>Townsville</b>						
Jetstar	123	93	75.6	123	79	64.2
Qantas	78	66	84.6	78	70	89.7
QantasLink	206	179	86.9	202	170	84.2
Regional Express	13	8	61.5	13	9	69.2
Tigerair Australia	17	12	70.6	16	10	62.5
Virgin Australia	181	149	82.3	181	160	88.4
All Airlines	618	507	82.0	613	498	81.2
Relates to services to and from Brisbane, Cairns, Melbourne and Sydney.						
<b>Wagga Wagga</b>						
QantasLink	98	82	83.7	97	75	77.3
Regional Express	127	103	81.1	132	109	82.6
All Airlines	225	185	82.2	229	184	80.3
Relates to services to and from Sydney only.						

## Definitions

---

On time arrival	A flight arrival is counted as "on time" if it arrived at the gate before 15 minutes after the scheduled arrival time shown in the carriers' schedule. Neither diverted nor cancelled flights count as on time.
On time departure	A flight departure is counted as "on time" if it departs the gate before 15 minutes after the scheduled departure time shown in the carriers' schedule.
Cancellation	A flight removed from service within 7 days of scheduled departure is regarded as a cancellation.
On time departure percentage	The percentage of on time departures is measured against the number of departures <i>operated</i> on any particular sector.
On time arrival percentage	The percentage of on time arrivals is measured against the number of arrivals <i>operated</i> on any particular sector.
Cancellation percentage	The percentage of cancellations is measured against the number of services <i>scheduled</i> on any particular sector.

---