



Australian Government

Department of Infrastructure and Regional Development

Bureau of Infrastructure, Transport and Regional Economics

STATISTICAL REPORT



Aviation

Domestic airline on time performance
July 2015

© Commonwealth of Australia 2015

ISSN: 1832-0759

Ownership of intellectual property rights in this publication

Unless otherwise noted, copyright (and any other intellectual property rights, if any) in this publication is owned by the Commonwealth of Australia (referred to below as the Commonwealth).

Disclaimer

The material contained in this publication is made available on the understanding that the Commonwealth is not providing professional advice, and that users exercise their own skill and care with respect to its use, and seek independent advice if necessary.

The Commonwealth makes no representations or warranties as to the contents or accuracy of the information contained in this publication. To the extent permitted by law, the Commonwealth disclaims liability to any person or organisation in respect of anything done, or omitted to be done, in reliance upon information contained in this publication.

Creative Commons licence

With the exception of (a) the Coat of Arms; and (b) the Department of Infrastructure and Regional Development's photos and graphics, copyright in this publication is licensed under a Creative Commons Attribution 3.0 Australia Licence.

Creative Commons Attribution 3.0 Australia Licence is a standard form licence agreement that allows you to copy, communicate and adapt this publication provided that you attribute the work to the Commonwealth and abide by the other licence terms. A summary of the licence terms is available from <http://creativecommons.org/licenses/by/3.0/au/deed.en>. The full licence terms are available from <http://creativecommons.org/licenses/by/3.0/au/legalcode>.

Use of the Coat of Arms

The Department of the Prime Minister and Cabinet sets the terms under which the Coat of Arms is used. Please refer to the Department's Commonwealth Coat of Arms and Government branding web page <http://www.dpmmc.gov.au/guidelines/index.cfm#brand> and, in particular, the Guidelines on the use of the Commonwealth Coat of Arms publication.

An appropriate citation for this report is:

Bureau of Infrastructure, Transport and Regional Economics (BITRE), 2015, Domestic airline on time performance, Statistical Report, BITRE, Canberra ACT.

Contact us

This publication is available in PDF format. All other rights are reserved, including in relation to any Departmental logos or trade marks which may exist. For enquiries regarding the licence and any use of this publication, please contact:

Bureau of Infrastructure, Transport and Regional Economics (BITRE)
Department of Infrastructure and Regional Development
GPO Box 501, Canberra ACT 2601, Australia
Telephone: (international) +61 2 6274 7210
Fax: (international) +61 2 6274 6855
Email: bitre@infrastructure.gov.au
Website: www.bitre.gov.au

Inquiries

Should you require additional information about the statistics contained in this publication:

Telephone (02) 6274 7790 or Facsimile (02) 6274 7727

Electronic mail: AVSTATS@infrastructure.gov.au

Web site: <http://www.bitre.gov.au/statistics/aviation/otphome.aspx>

Foreword

The Bureau of Infrastructure, Transport and Regional Economics (BITRE) monitors the punctuality and reliability of major domestic airlines operating between Australian airports. The purpose of this is to allow for evaluation of overall industry and individual airline performance, so that consumers of air travel can make informed decisions.

The following domestic airlines currently report this information monthly to the BITRE: Jetstar, Qantas, QantasLink, Regional Express, Tigerair, Virgin Australia and Virgin Australia Regional Airlines. Data has been gathered since November 2003, although some airlines commenced reporting at a later date, including Jetstar which first reported in May 2004, MacAir in July 2005 and Tigerair in April 2008. MacAir ceased operations in February 2009 and data was not received for December 2008 onwards. Virgin Blue was rebranded as Virgin Australia in May 2011 and Tiger Airways was rebranded as Tigerair in July 2013 and time series data in Microsoft Excel spreadsheet format on the BITRE website have been revised to reflect these changes. Virgin Australia Regional Airlines commenced operations in May 2013. It was formed after the acquisition of Skywest by Virgin Australia and represents a combination of operations previously reported under Skywest and Virgin Australia – ATR/F100 Operations. Services operated by Skywest on behalf of Virgin Australia using ATR/F100 aircraft commenced in November 2011 and were shown separately as Virgin Australia – ATR/F100 Operations until April 2013.

Information presented in this report is for Australian domestic routes for which the passenger load averaged 8 000 or more passengers per month over the previous six months and where two or more airlines operated in competition on those routes. There were 63 routes that met this definition in July 2015. Over time, routes which meet these criteria change as airline networks and traffic levels vary.

Participating airlines report their overall monthly network performance where this is possible.

Total industry figures encompass all services operated by reporting airlines only. These airlines collectively carried over 95 per cent of total domestic passengers (regular public transport only) in 2014.

The method of capturing on time performance varies between airlines utilising different recording systems. Jetstar and Qantas jet aircraft use Aircraft Communication Addressing and Reporting System (ACARS) to electronically measure on time performance. Regional Express, Tigerair, Virgin Australia, Virgin Australia Regional Airlines and the Qantas non-jet fleet record on time performance manually using records from pilots, gate agents and/or ground crews.

After initial data is collected, aggregate reports are audited internally by participating airlines prior to publication.

Reports and detailed time series data in Microsoft Excel spreadsheet format are available from the BITRE website at: <http://www.bitre.gov.au/statistics/aviation/otphome.aspx>.

Contents

	Page
Industry performance	1
Individual routes	10
Airports	23
Definitions	29

Industry performance

For July 2015, on time performance over all routes operated by participating airlines (Jetstar, Qantas, QantasLink, Regional Express, Tigerair, Virgin Australia and Virgin Australia Regional Airlines) averaged 82.8 per cent for on time arrivals and 84.3 per cent for on time departures. Cancellations represented 2.0 per cent of all scheduled flights. The equivalent figures for July 2014 were 82.1 per cent for arrivals, 83.5 per cent for departures and 1.7 per cent for cancellations.

This month's figures were above the long term average performance for all routes (82.5 per cent for arrivals and 84.0 per cent for departures). The rate of cancellations was higher than the long term average of 1.3 per cent.

Virgin Australia achieved the highest on time arrivals among the major domestic airlines at 86.8 per cent, followed by Qantas at 85.5 per cent, Tigerair at 76.2 per cent and Jetstar at 74.5 per cent. QantasLink was the best performing regional airline for on time arrivals at 83.6 per cent, followed by Regional Express at 82.8 per cent and Virgin Australia Regional Airlines at 80.9 per cent. The Qantas network (Qantas and QantasLink combined operations) recorded 84.5 per cent for on time arrivals while the Virgin Australia network (Virgin Australia and Virgin Australia Regional Airlines combined operations) recorded 85.7 per cent.

Virgin Australia also achieved the highest level of on time departures for July 2015 at 88.9 per cent, followed by Qantas at 87.2 per cent, Tigerair at 80.4 per cent and Jetstar at 72.2 per cent. Of the regional airlines, Regional Express and QantasLink both recorded 85.5 per cent and Virgin Australia Regional Airlines recorded 83.0 per cent. The Qantas network recorded 86.3 per cent for on time departures while the Virgin Australia network recorded 87.8 per cent.

QantasLink had the highest percentage of cancellations (3.0 per cent) during the month, followed by Virgin Australia (2.6 per cent), Jetstar (2.3 per cent), Virgin Australia Regional Airlines (also 2.3 per cent), Qantas (1.3 per cent), Tigerair (1.2 per cent) and Regional Express (0.4 per cent).

Airlines' on time performance varies across the routes they serve. Individual route data by specific airline for 63 routes are shown on pages 10-22.

Of the 63 routes which met the criteria for on time performance reporting in July 2015, the Newman-Perth route had the highest percentage of on time arrivals (96.3 per cent) and the Brisbane-Mount Isa route had the highest percentage of on time departures (100.0 per cent). The Darwin-Sydney route had the lowest percentage of on time arrivals (56.6 per cent) and the lowest percentage of on time departures (50.8 per cent).

Cancellations were highest on the Hamilton Island-Brisbane route at 8.3 per cent, followed by the Hamilton Island-Sydney route at 8.1 per cent, the Moranbah-Brisbane route at 7.9 per cent, the Canberra-Sydney and Sydney-Canberra routes at 7.6 per cent and the Brisbane-Moranbah route at 6.8 per cent.

Mount Isa Airport recorded the highest percentage of on time arrivals (95.3 per cent) and Newman Airport recorded the highest percentage of on time departures (96.3 per cent). Launceston Airport recorded the lowest percentage of on time arrivals (75.5 per cent) and

Broome Airport recorded the lowest percentage of on time departures (66.0 per cent). These figures only refer to reported routes and do not cover all flights at these airports.

Table 1 On time performance for July 2015 — Total Industry

	<i>Sectors</i>		<i>Arrivals On Time</i>		<i>Departures On Time</i>		<i>Cancellations</i>	
	<i>Scheduled</i>	<i>Flown</i>	<i>No.</i>	<i>%</i>	<i>No.</i>	<i>%</i>	<i>No.</i>	<i>%</i>
Jetstar	7 628	7 449	5 547	74.5	5 379	72.2	179	2.3
Qantas	10 042	9 907	8 468	85.5	8 635	87.2	135	1.3
QantasLink	10 527	10 214	8 534	83.6	8 733	85.5	313	3.0
Regional Express	6 303	6 277	5 200	82.8	5 368	85.5	26	0.4
Tigerair	2 220	2 194	1 672	76.2	1 763	80.4	26	1.2
Virgin Australia	11 521	11 220	9 744	86.8	9 979	88.9	301	2.6
Virgin Australia Regional Airlines	2 708	2 647	2 141	80.9	2 197	83.0	61	2.3
All Airlines	50 949	49 908	41 306	82.8	42 054	84.3	1 041	2.0
Qantas - all QF designated services	20 569	20 121	17 002	84.5	17 368	86.3	448	2.2
Virgin Australia - all VA designated services	14 229	13 867	11 885	85.7	12 176	87.8	362	2.5

Total airline network data (including routes not shown in this report).

Airlines' on time performance varies across the routes they serve. Individual route data by specific airline for 62 routes are shown on pages 10-21.

Table 2 Top ten routes for on time performance for July 2015 (participating airlines only)

<i>Arrivals</i>		<i>Departures</i>	
<i>Route</i>	<i>On Time (%)</i>	<i>Route</i>	<i>On Time (%)</i>
Newman-Perth	96.3	Brisbane-Mount Isa	100.0
Brisbane-Mount Isa	95.3	Perth-Karratha	96.4
Perth-Newman	94.8	Newman-Perth	96.3
Perth-Brisbane	93.9	Perth-Newman	95.8
Mount Isa-Brisbane	93.8	Brisbane-Moranbah	94.2
Perth-Karratha	93.7	Gold Coast-Adelaide	94.2
Perth-Adelaide	93.6	Perth-Port Hedland	93.8
Ayers Rock-Sydney	93.4	Sydney-Ayers Rock	93.5
Gold Coast-Adelaide	92.8	Brisbane-Hamilton Island	93.3
Perth-Port Hedland	92.7	Perth-Darwin	93.2

Table 3 Top ten airports for on time performance for July 2015 (participating airlines and reported routes only)

<i>Arrivals</i>		<i>Departures</i>	
<i>Airport</i>	<i>On Time (%)</i>	<i>Airport</i>	<i>On Time (%)</i>
Mount Isa	95.3	Newman	96.3
Newman	94.8	Kalgoorlie	92.4
Karratha	93.7	Port Hedland	92.3
Port Hedland	92.7	Karratha	90.6
Kalgoorlie	92.4	Mount Isa	90.6
Moranbah	91.1	Port Lincoln	90.5
Bundaberg	89.7	Perth	89.3
Gladstone	89.3	Moranbah	89.2
Alice Springs	88.4	Bundaberg	88.4
Adelaide	88.1	Adelaide	88.2

Total industry on time performance

Figure 1 On time performance (by month from July 2012)—Total Industry

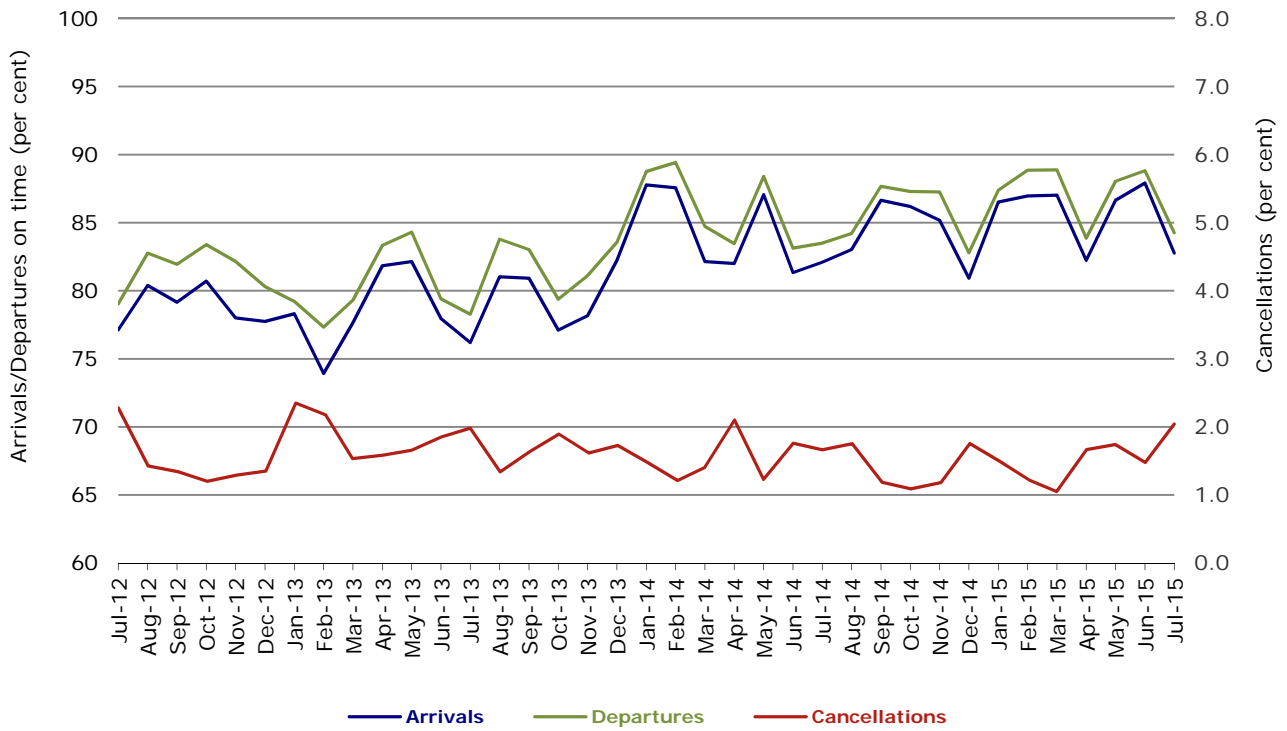


Figure 2 Arrivals on time (by month from July 2014)

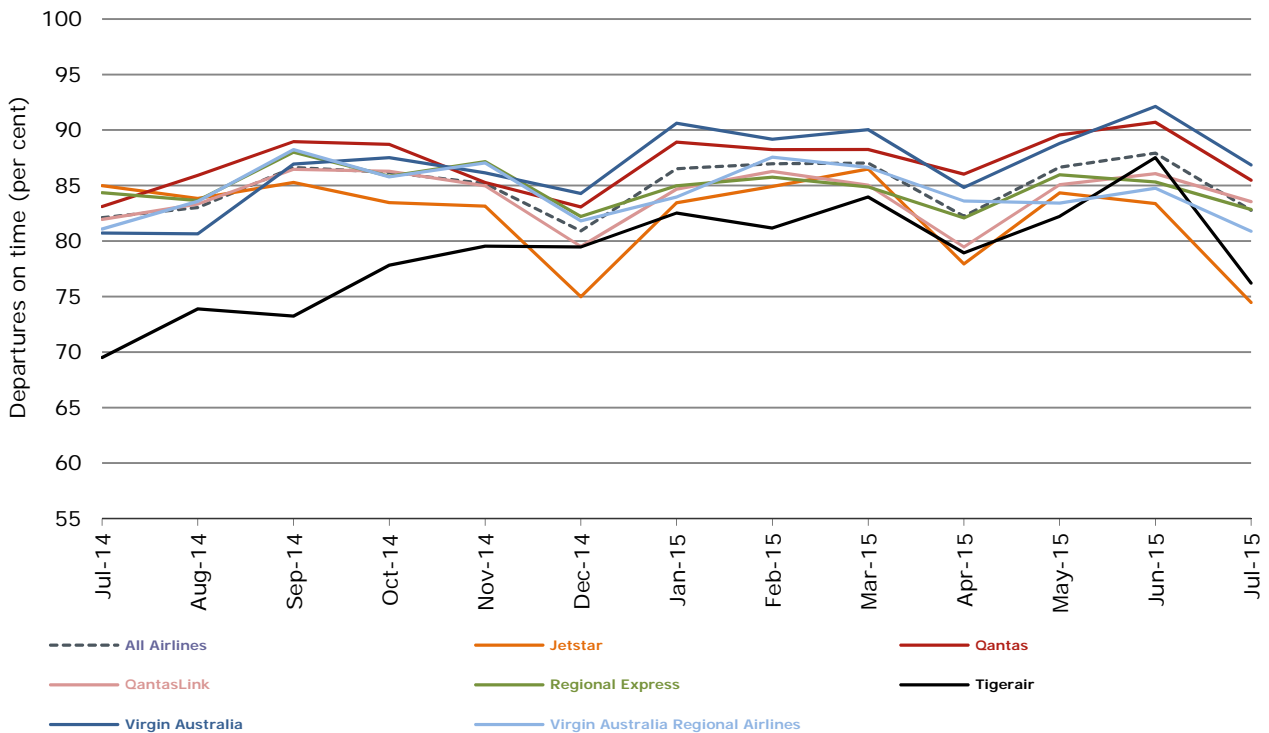


Figure 3 Departures on time (by month from July 2014)

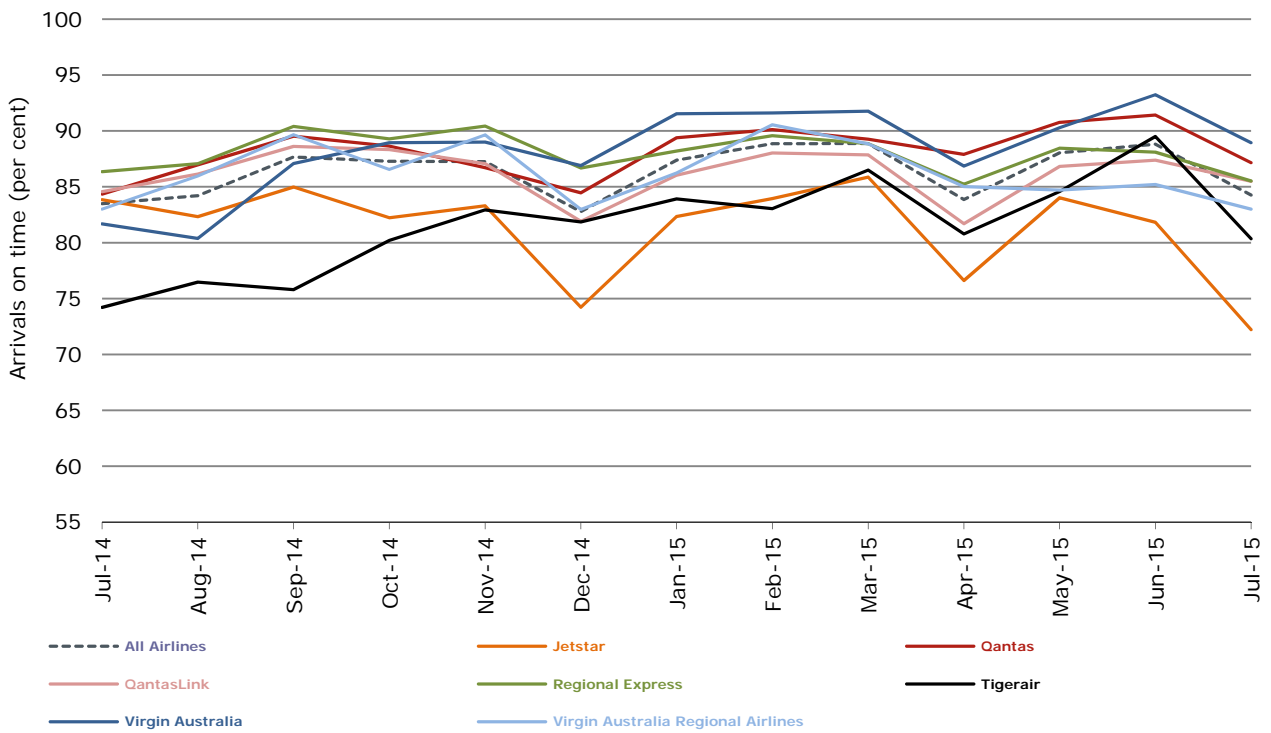
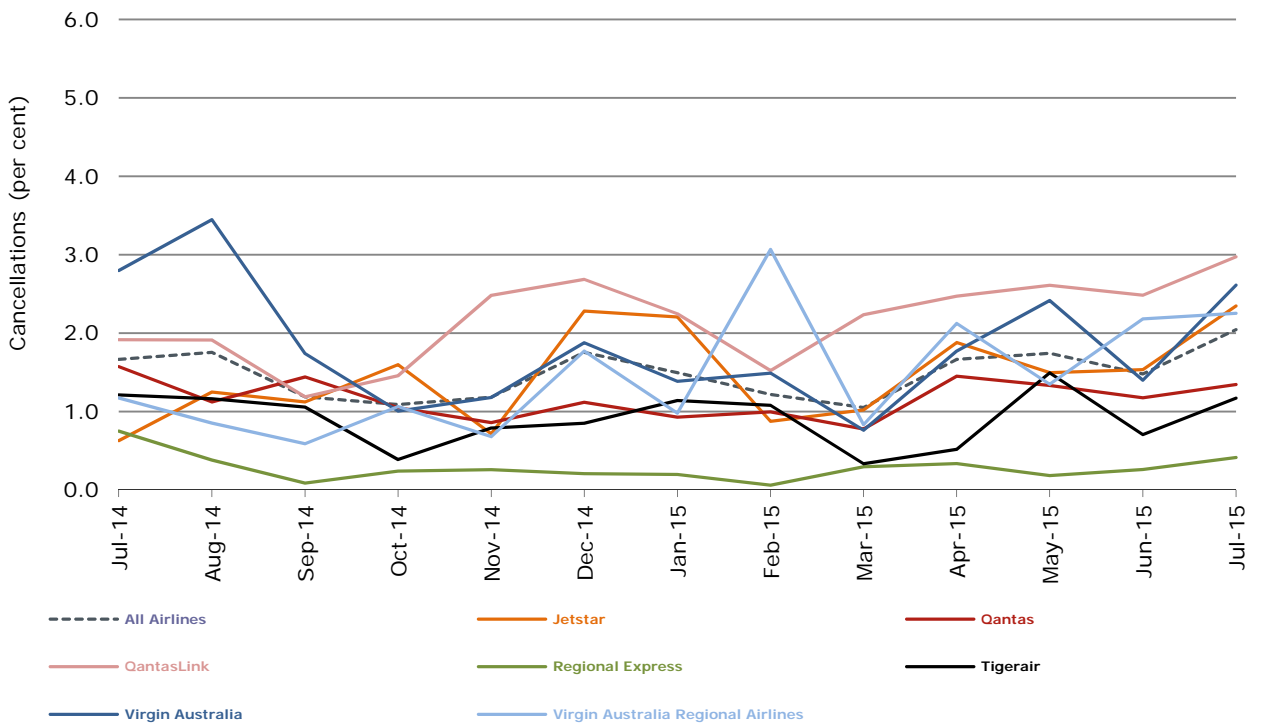


Figure 4 Cancellations (by month from July 2014)



Major domestic airlines on time performance

Figure 5 On time performance (by month from July 2012)—Jetstar

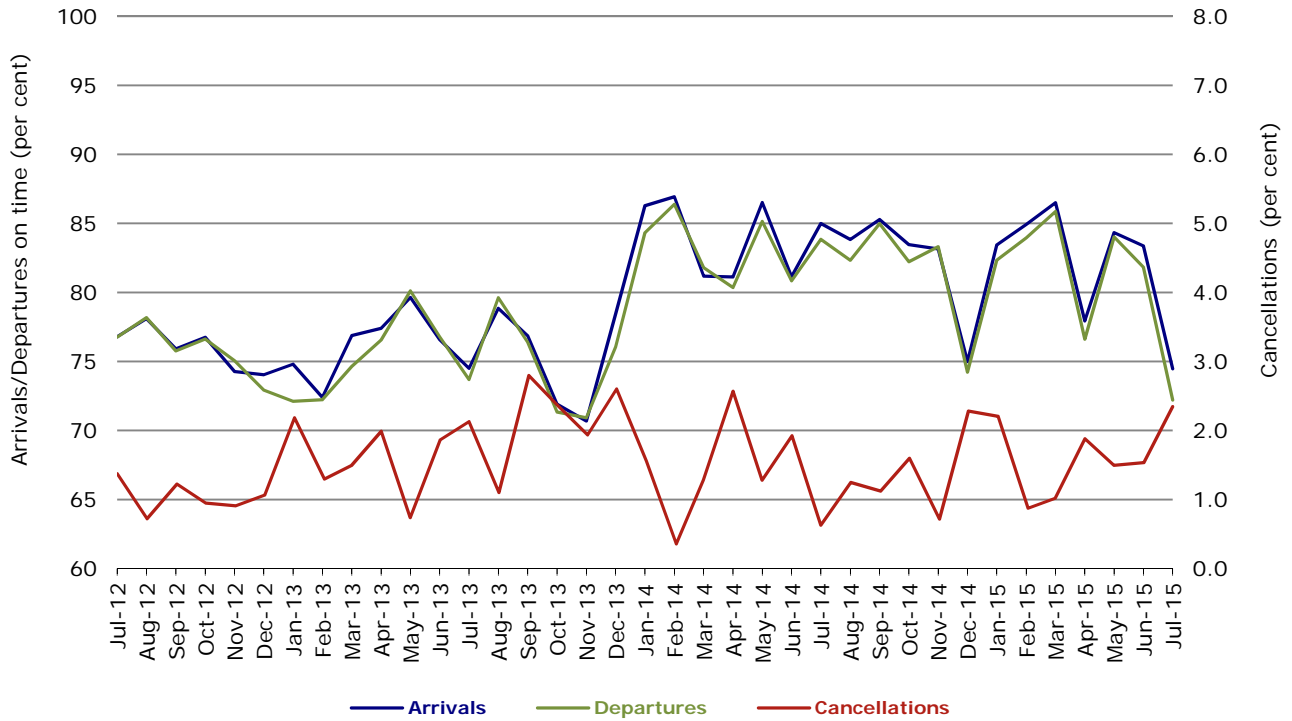


Figure 6 On time performance (by month from July 2012)—Qantas

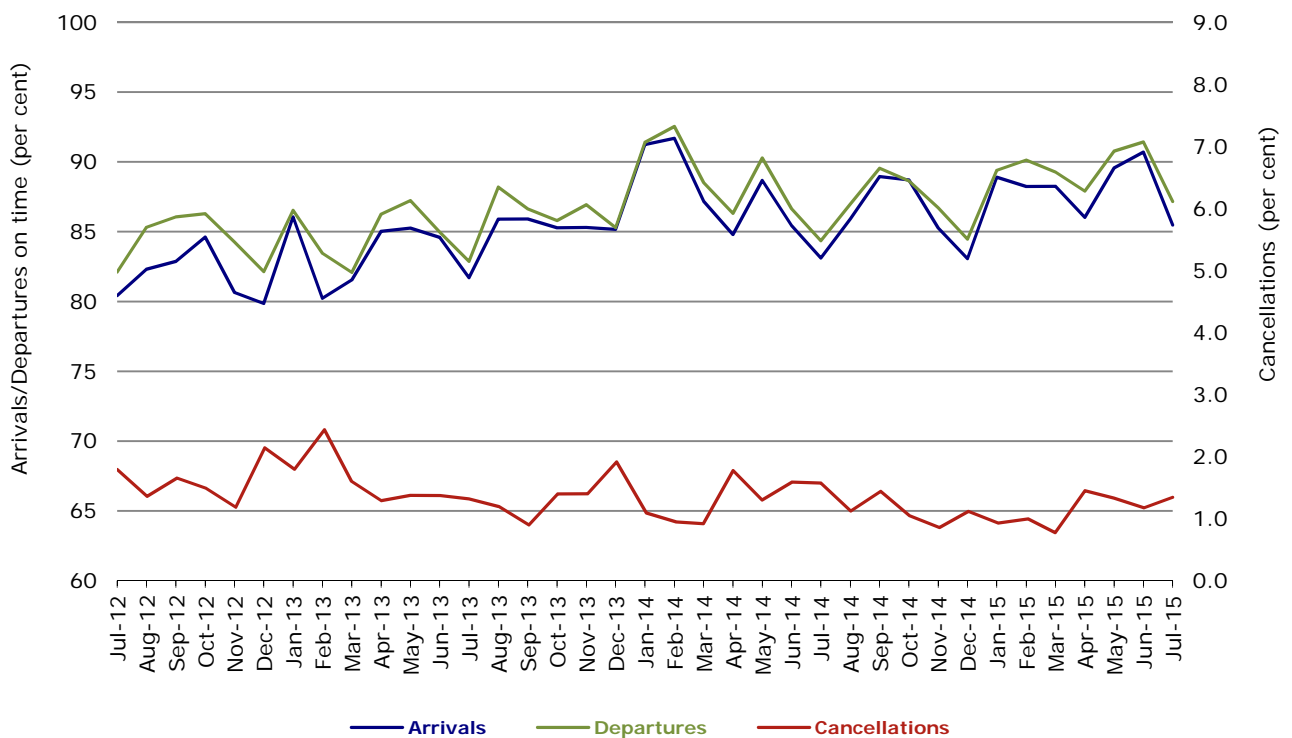


Figure 7 On time performance (by month from July 2012)—Tigerair

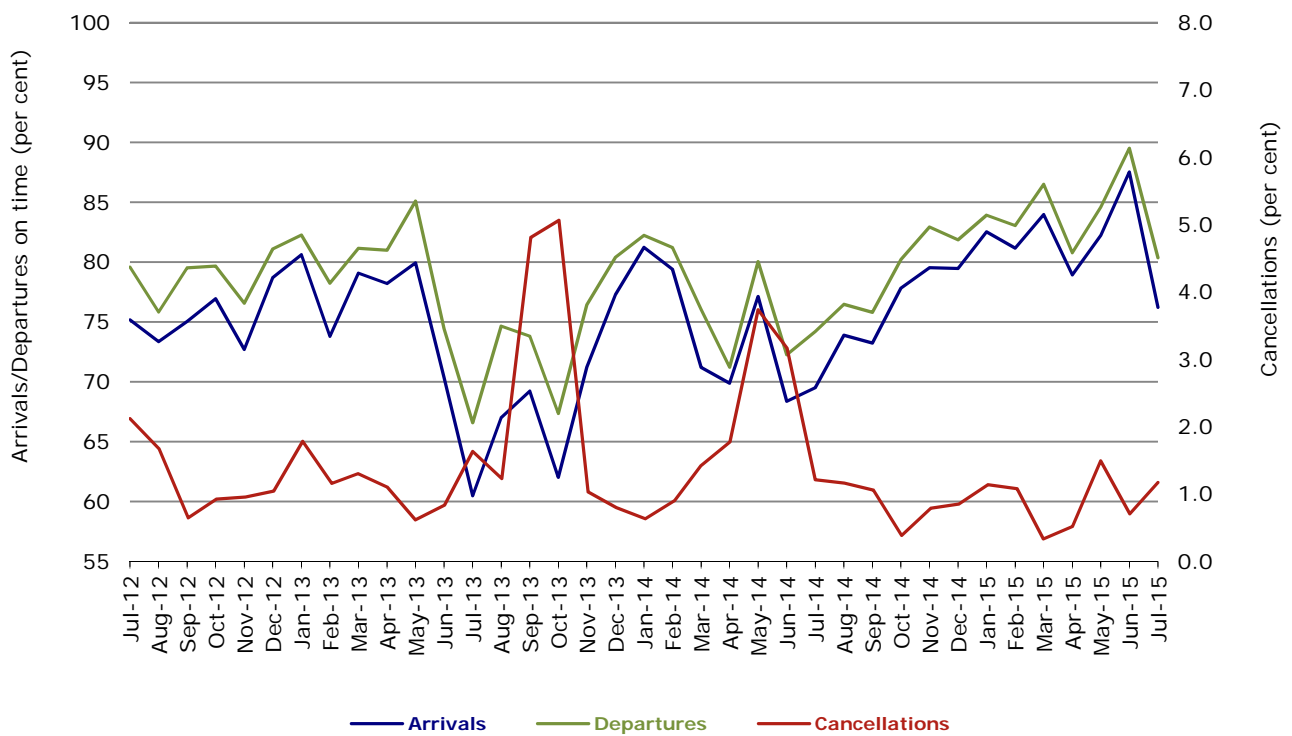
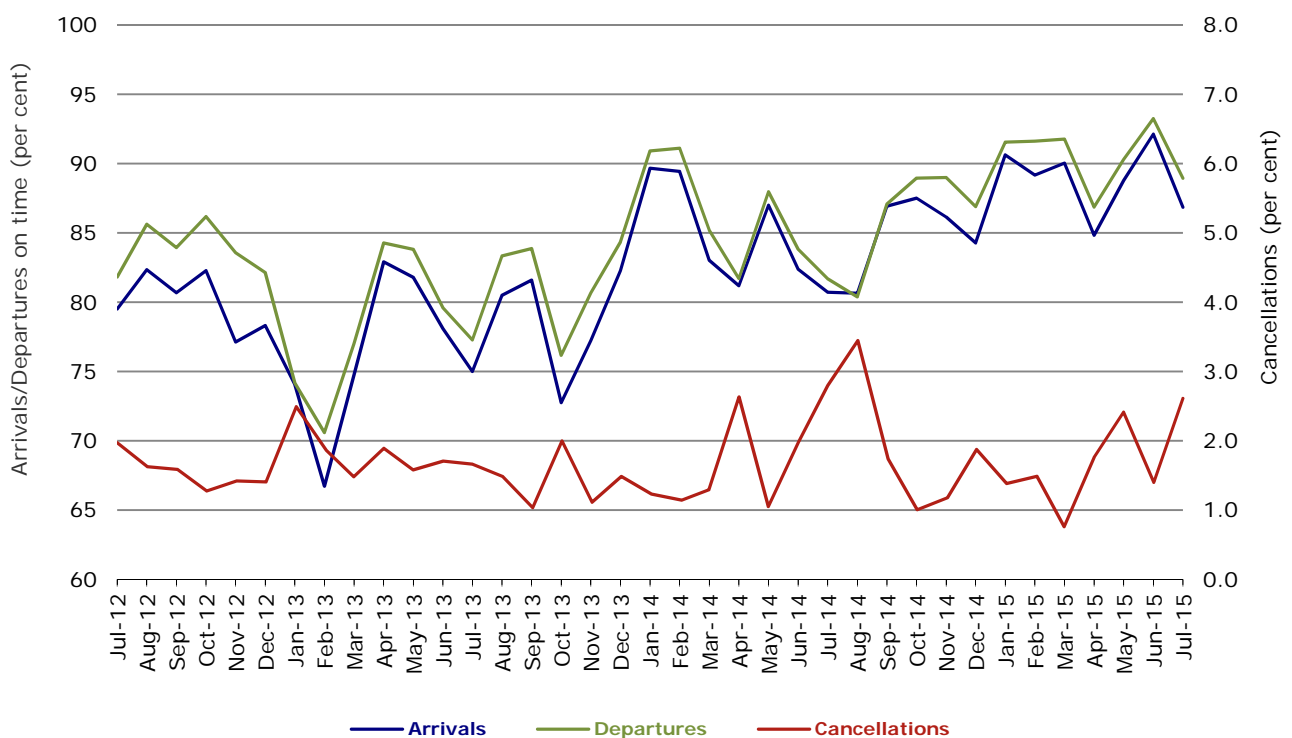


Figure 8 On time performance (by month from July 2012)—Virgin Australia



Major regional airlines on time performance

Figure 9 On time performance (by month from July 2012)—QantasLink

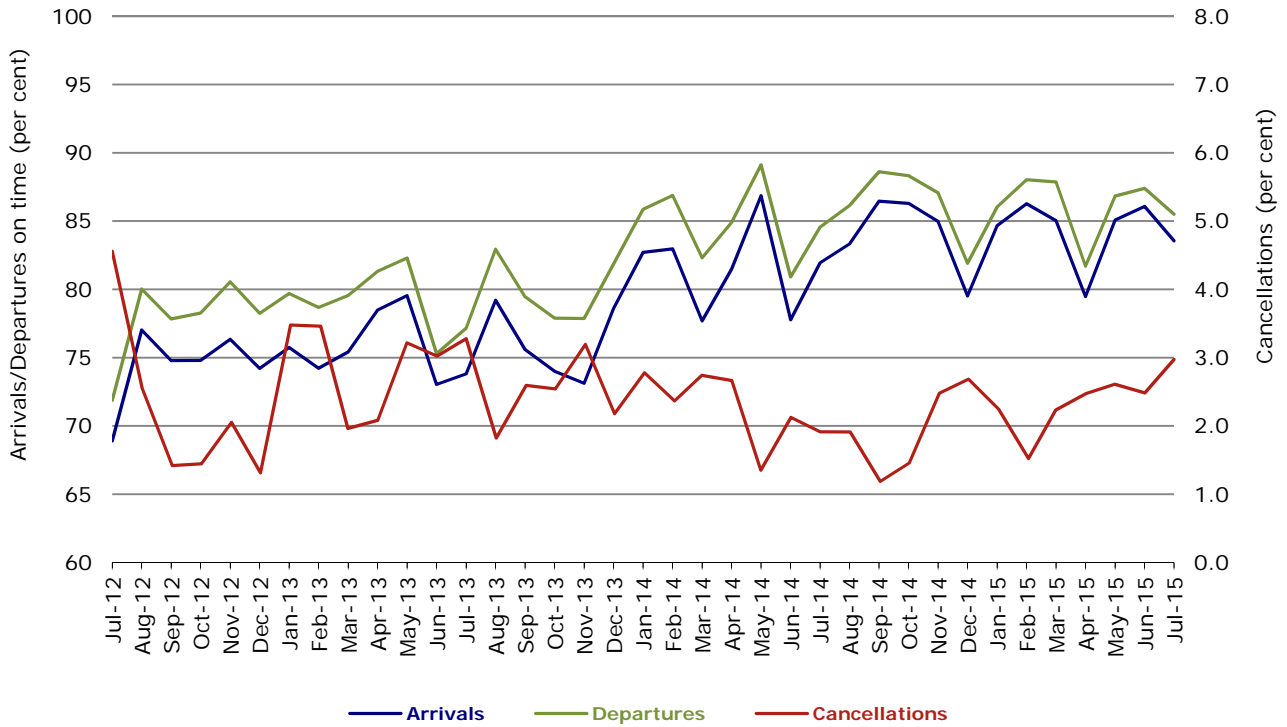


Figure 10 On time performance (by month from July 2012)—Regional Express

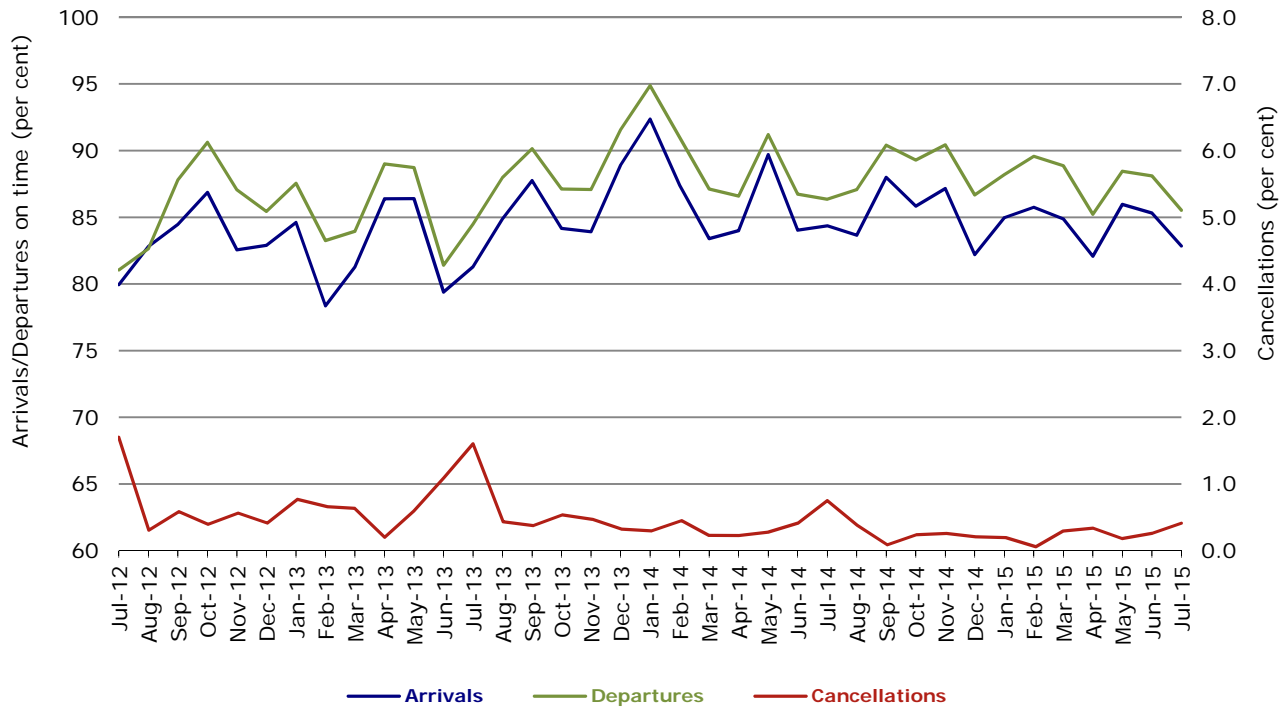
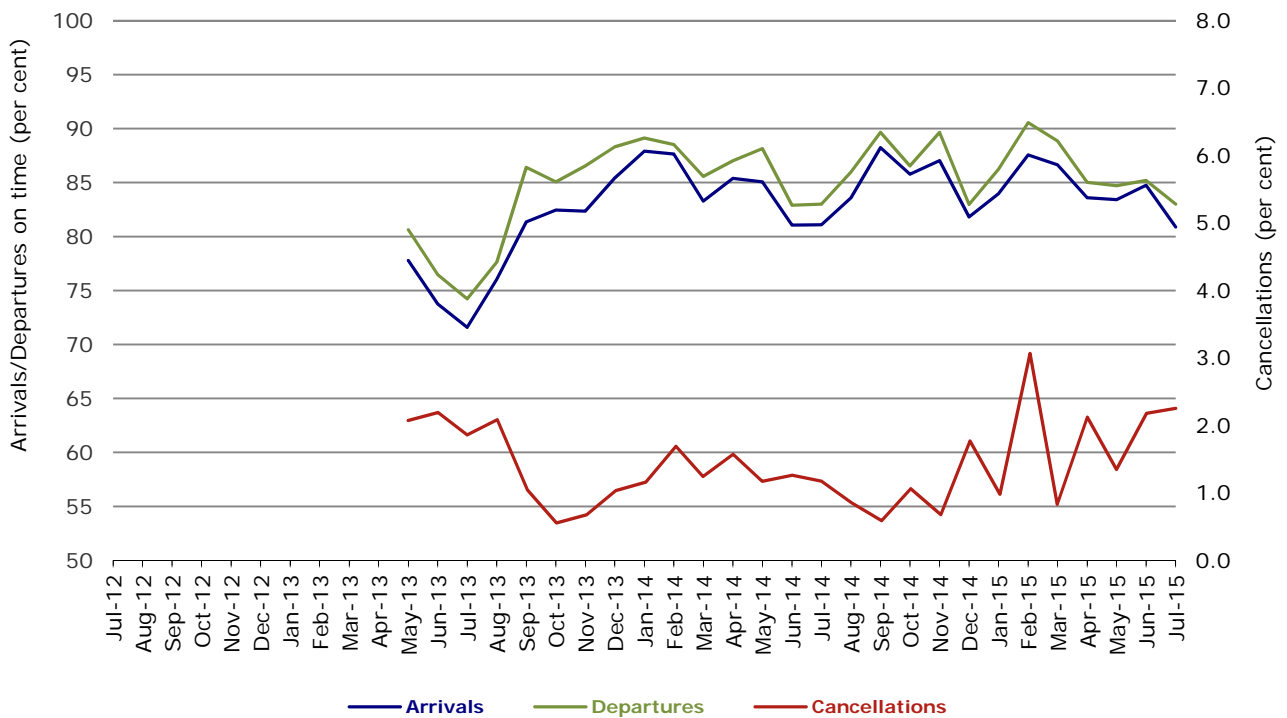


Figure 11 On time performance (by month from July 2012)
Virgin Australia Regional Airlines



Virgin Australia Regional Airlines commenced operations in May 2013. It was formed after the acquisition of Skywest by Virgin Australia and represents a combination of operations previously reported under Skywest and Virgin Australia – ATR/F100 Operations.

Individual routes

On time performance is reported for all routes where the passenger load averages over 8000 passengers per month over the previous six months, and where two or more airlines operate in competition on those routes. There are now 63 routes which meet this definition. Over time, however, routes which meet this definition may change as airline networks and traffic levels vary.

	<i>Sectors</i>		<i>Arrivals On Time</i>		<i>Departures On Time</i>		<i>Cancellations</i>	
	<i>Sched.</i>	<i>Flown</i>	<i>No.</i>	<i>%</i>	<i>No.</i>	<i>%</i>	<i>No.</i>	<i>%</i>
Adelaide-Alice Springs								
Qantas	31	31	28	90.3	25	80.6	0	0.0
Virgin Australia	14	14	12	85.7	11	78.6	0	0.0
All Airlines	45	45	40	88.9	36	80.0	0	0.0
Adelaide-Brisbane								
Jetstar	31	31	29	93.5	28	90.3	0	0.0
Qantas	112	112	97	86.6	103	92.0	0	0.0
Tigerair	27	27	23	85.2	24	88.9	0	0.0
Virgin Australia	116	114	108	94.7	105	92.1	2	1.7
All Airlines	286	284	257	90.5	260	91.5	2	0.7
Adelaide-Canberra								
Qantas	50	50	43	86.0	44	88.0	0	0.0
Virgin Australia	27	27	26	96.3	26	96.3	0	0.0
All Airlines	77	77	69	89.6	70	90.9	0	0.0
Adelaide-Gold Coast								
Jetstar	38	38	32	84.2	34	89.5	0	0.0
Virgin Australia	32	32	31	96.9	31	96.9	0	0.0
All Airlines	70	70	63	90.0	65	92.9	0	0.0
Adelaide-Melbourne								
Jetstar	116	106	75	70.8	66	62.3	10	8.6
Qantas	296	293	264	90.1	269	91.8	3	1.0
Tigerair	76	75	57	76.0	59	78.7	1	1.3
Virgin Australia	306	300	264	88.0	268	89.3	6	2.0
All Airlines	794	774	660	85.3	662	85.5	20	2.5
Adelaide-Perth								
Jetstar	36	36	27	75.0	29	80.6	0	0.0
Qantas	116	116	99	85.3	110	94.8	0	0.0
Virgin Australia	77	76	62	81.6	68	89.5	1	1.3
All Airlines	229	228	188	82.5	207	90.8	1	0.4
Adelaide-Port Lincoln								
QantasLink	112	109	90	82.6	94	86.2	3	2.7
Regional Express	219	219	198	90.4	210	95.9	0	0.0
All Airlines	331	328	288	87.8	304	92.7	3	0.9
Adelaide-Sydney								
Jetstar	126	117	95	81.2	92	78.6	9	7.1
Qantas	249	246	220	89.4	221	89.8	3	1.2
QantasLink	20	17	8	47.1	8	47.1	3	15.0
Tigerair	31	31	30	96.8	31	100.0	0	0.0
Virgin Australia	179	176	156	88.6	155	88.1	3	1.7
All Airlines	605	587	509	86.7	507	86.4	18	3.0
Albury-Sydney								
QantasLink	98	98	79	80.6	79	80.6	0	0.0
Regional Express	112	111	96	86.5	100	90.1	1	0.9
Virgin Australia Regional Airlines	62	62	49	79.0	53	85.5	0	0.0
All Airlines	272	271	224	82.7	232	85.6	1	0.4

	<i>Sectors</i>		<i>Arrivals On Time</i>		<i>Departures On Time</i>		<i>Cancellations</i>	
	<i>Sched.</i>	<i>Flown</i>	<i>No.</i>	<i>%</i>	<i>No.</i>	<i>%</i>	<i>No.</i>	<i>%</i>
Alice Springs-Adelaide								
Qantas	31	31	26	83.9	28	90.3	0	0.0
Virgin Australia	14	14	11	78.6	11	78.6	0	0.0
All Airlines	45	45	37	82.2	39	86.7	0	0.0
Alice Springs-Darwin								
QantasLink	62	62	58	93.5	57	91.9	0	0.0
Virgin Australia	14	14	11	78.6	10	71.4	0	0.0
All Airlines	76	76	69	90.8	67	88.2	0	0.0
Armidale-Sydney								
QantasLink	139	133	111	83.5	105	78.9	6	4.3
Regional Express	80	79	54	68.4	63	79.7	1	1.3
All Airlines	219	212	165	77.8	168	79.2	7	3.2
Ayers Rock-Sydney								
Jetstar	31	31	29	93.5	23	74.2	0	0.0
Virgin Australia	31	30	28	93.3	25	83.3	1	3.2
All Airlines	62	61	57	93.4	48	78.7	1	1.6
Ballina-Sydney								
Jetstar	79	78	56	71.8	52	66.7	1	1.3
Regional Express	26	26	17	65.4	20	76.9	0	0.0
Virgin Australia	31	31	29	93.5	30	96.8	0	0.0
All Airlines	136	135	102	75.6	102	75.6	1	0.7
Brisbane-Adelaide								
Jetstar	31	31	28	90.3	28	90.3	0	0.0
Qantas	112	112	105	93.8	97	86.6	0	0.0
Tigerair	27	27	23	85.2	24	88.9	0	0.0
Virgin Australia	116	116	102	87.9	104	89.7	0	0.0
All Airlines	286	286	258	90.2	253	88.5	0	0.0
Brisbane-Bundaberg								
QantasLink	138	137	125	91.2	127	92.7	1	0.7
Virgin Australia Regional Airlines	38	37	31	83.8	31	83.8	1	2.6
All Airlines	176	174	156	89.7	158	90.8	2	1.1
Brisbane-Cairns								
Jetstar	121	119	85	71.4	88	73.9	2	1.7
Qantas	120	120	95	79.2	94	78.3	0	0.0
QantasLink	4	4	4	100.0	4	100.0	0	0.0
Tigerair	31	31	26	83.9	27	87.1	0	0.0
Virgin Australia	138	138	122	88.4	124	89.9	0	0.0
All Airlines	414	412	332	80.6	337	81.8	2	0.5
Brisbane-Canberra								
Qantas	27	27	27	100.0	26	96.3	0	0.0
QantasLink	129	127	90	70.9	95	74.8	2	1.6
Virgin Australia	97	96	85	88.5	88	91.7	1	1.0
All Airlines	253	250	202	80.8	209	83.6	3	1.2
Brisbane-Darwin								
Jetstar	31	31	24	77.4	27	87.1	0	0.0
Qantas	49	49	43	87.8	47	95.9	0	0.0
Tigerair	27	27	17	63.0	25	92.6	0	0.0
Virgin Australia	31	31	26	83.9	29	93.5	0	0.0
All Airlines	138	138	110	79.7	128	92.8	0	0.0
Brisbane-Emerald								
QantasLink	148	146	128	87.7	130	89.0	2	1.4
Virgin Australia Regional Airlines	78	76	56	73.7	68	89.5	2	2.6
All Airlines	226	222	184	82.9	198	89.2	4	1.8

	<i>Sectors</i>		<i>Arrivals On Time</i>		<i>Departures On Time</i>		<i>Cancellations</i>	
	<i>Sched.</i>	<i>Flown</i>	<i>No.</i>	<i>%</i>	<i>No.</i>	<i>%</i>	<i>No.</i>	<i>%</i>
Brisbane-Gladstone								
QantasLink	217	213	195	91.5	203	95.3	4	1.8
Virgin Australia	6	6	5	83.3	4	66.7	0	0.0
Virgin Australia Regional Airlines	150	147	127	86.4	129	87.8	3	2.0
All Airlines	373	366	327	89.3	336	91.8	7	1.9
Brisbane-Hamilton Island								
QantasLink	17	17	13	76.5	16	94.1	0	0.0
Virgin Australia	30	28	25	89.3	26	92.9	2	6.7
All Airlines	47	45	38	84.4	42	93.3	2	4.3
Brisbane-Hobart								
Jetstar	31	31	24	77.4	22	71.0	0	0.0
Virgin Australia	31	31	29	93.5	31	100.0	0	0.0
All Airlines	62	62	53	85.5	53	85.5	0	0.0
Brisbane-Mackay								
Jetstar	62	60	47	78.3	51	85.0	2	3.2
QantasLink	113	108	98	90.7	101	93.5	5	4.4
Virgin Australia	161	158	140	88.6	149	94.3	3	1.9
All Airlines	336	326	285	87.4	301	92.3	10	3.0
Brisbane-Melbourne								
Jetstar	130	127	88	69.3	76	59.8	3	2.3
Qantas	456	456	384	84.2	404	88.6	0	0.0
Tigerair	133	130	83	63.8	100	76.9	3	2.3
Virgin Australia	420	399	312	78.2	363	91.0	21	5.0
All Airlines	1 139	1 112	867	78.0	943	84.8	27	2.4
Brisbane-Moranbah								
QantasLink	127	115	106	92.2	110	95.7	12	9.4
Virgin Australia Regional Airlines	78	76	68	89.5	70	92.1	2	2.6
All Airlines	205	191	174	91.1	180	94.2	14	6.8
Brisbane-Mount Isa								
Qantas	41	41	38	92.7	41	100.0	0	0.0
Virgin Australia	23	23	23	100.0	23	100.0	0	0.0
All Airlines	64	64	61	95.3	64	100.0	0	0.0
Brisbane-Newcastle								
Jetstar	93	91	83	91.2	80	87.9	2	2.2
QantasLink	81	81	64	79.0	68	84.0	0	0.0
Virgin Australia	85	84	77	91.7	78	92.9	1	1.2
All Airlines	259	256	224	87.5	226	88.3	3	1.2
Brisbane-Perth								
Qantas	132	132	110	83.3	114	86.4	0	0.0
Virgin Australia	111	110	77	70.0	92	83.6	1	0.9
All Airlines	243	242	187	77.3	206	85.1	1	0.4
Brisbane-Proserpine								
Jetstar	31	31	25	80.6	26	83.9	0	0.0
Virgin Australia	55	55	49	89.1	49	89.1	0	0.0
All Airlines	86	86	74	86.0	75	87.2	0	0.0
Brisbane-Rockhampton								
QantasLink	197	194	175	90.2	179	92.3	3	1.5
Virgin Australia	105	104	96	92.3	98	94.2	1	1.0
Virgin Australia Regional Airlines	107	103	79	76.7	83	80.6	4	3.7
All Airlines	409	401	350	87.3	360	89.8	8	2.0

	<i>Sectors</i>		<i>Arrivals On Time</i>		<i>Departures On Time</i>		<i>Cancellations</i>	
	<i>Sched.</i>	<i>Flown</i>	<i>No.</i>	<i>%</i>	<i>No.</i>	<i>%</i>	<i>No.</i>	<i>%</i>
Brisbane-Sydney								
Jetstar	186	180	131	72.8	134	74.4	6	3.2
Qantas	635	626	556	88.8	566	90.4	9	1.4
Tigerair	105	105	78	74.3	80	76.2	0	0.0
Virgin Australia	585	566	518	91.5	526	92.9	19	3.2
All Airlines	1 511	1 477	1 283	86.9	1 306	88.4	34	2.3
Brisbane-Townsville								
Jetstar	62	62	53	85.5	53	85.5	0	0.0
Qantas	152	152	123	80.9	127	83.6	0	0.0
Virgin Australia	166	164	149	90.9	151	92.1	2	1.2
All Airlines	380	378	325	86.0	331	87.6	2	0.5
Broome-Perth								
Qantas	36	36	19	52.8	15	41.7	0	0.0
QantasLink	49	49	44	89.8	42	85.7	0	0.0
Virgin Australia	24	24	18	75.0	17	70.8	0	0.0
Virgin Australia Regional Airlines	47	47	22	46.8	29	61.7	0	0.0
All Airlines	156	156	103	66.0	103	66.0	0	0.0
Bundaberg-Brisbane								
QantasLink	138	136	119	87.5	125	91.9	2	1.4
Virgin Australia Regional Airlines	37	36	31	86.1	27	75.0	1	2.7
All Airlines	175	172	150	87.2	152	88.4	3	1.7
Cairns-Brisbane								
Jetstar	121	118	89	75.4	75	63.6	3	2.5
Qantas	120	120	98	81.7	102	85.0	0	0.0
QantasLink	4	4	4	100.0	4	100.0	0	0.0
Tigerair	31	31	20	64.5	23	74.2	0	0.0
Virgin Australia	138	138	124	89.9	120	87.0	0	0.0
All Airlines	414	411	335	81.5	324	78.8	3	0.7
Cairns-Melbourne								
Jetstar	121	120	81	67.5	72	60.0	1	0.8
Qantas	39	39	27	69.2	31	79.5	0	0.0
Tigerair	41	40	26	65.0	26	65.0	1	2.4
Virgin Australia	36	36	32	88.9	34	94.4	0	0.0
All Airlines	237	235	166	70.6	163	69.4	2	0.8
Cairns-Sydney								
Jetstar	119	118	92	78.0	83	70.3	1	0.8
Qantas	75	75	67	89.3	62	82.7	0	0.0
Tigerair	32	32	27	84.4	22	68.8	0	0.0
Virgin Australia	93	92	81	88.0	81	88.0	1	1.1
All Airlines	319	317	267	84.2	248	78.2	2	0.6
Canberra-Adelaide								
Qantas	50	48	44	91.7	42	87.5	2	4.0
Virgin Australia	27	27	25	92.6	26	96.3	0	0.0
All Airlines	77	75	69	92.0	68	90.7	2	2.6
Canberra-Brisbane								
Qantas	27	27	23	85.2	22	81.5	0	0.0
QantasLink	129	125	77	61.6	78	62.4	4	3.1
Virgin Australia	97	96	80	83.3	83	86.5	1	1.0
All Airlines	253	248	180	72.6	183	73.8	5	2.0
Canberra-Melbourne								
Qantas	195	194	167	86.1	173	89.2	1	0.5
QantasLink	85	80	60	75.0	61	76.3	5	5.9
Virgin Australia	160	156	126	80.8	125	80.1	4	2.5
Virgin Australia Regional Airlines	31	30	17	56.7	25	83.3	1	3.2
All Airlines	471	460	370	80.4	384	83.5	11	2.3

	<i>Sectors</i>		<i>Arrivals On Time</i>		<i>Departures On Time</i>		<i>Cancellations</i>	
	<i>Sched.</i>	<i>Flown</i>	<i>No.</i>	<i>%</i>	<i>No.</i>	<i>%</i>	<i>No.</i>	<i>%</i>
Canberra-Sydney								
QantasLink	527	479	373	77.9	379	79.1	48	9.1
Virgin Australia	21	19	18	94.7	18	94.7	2	9.5
Virgin Australia Regional Airlines	279	266	225	84.6	222	83.5	13	4.7
All Airlines	827	764	616	80.6	619	81.0	63	7.6
Coffs Harbour-Sydney								
QantasLink	157	156	129	82.7	130	83.3	1	0.6
Tigerair	13	12	11	91.7	11	91.7	1	7.7
Virgin Australia	62	58	51	87.9	50	86.2	4	6.5
All Airlines	232	226	191	84.5	191	84.5	6	2.6
Darwin-Alice Springs								
QantasLink	62	62	54	87.1	57	91.9	0	0.0
Virgin Australia	14	14	13	92.9	13	92.9	0	0.0
All Airlines	76	76	67	88.2	70	92.1	0	0.0
Darwin-Brisbane								
Jetstar	31	31	26	83.9	20	64.5	0	0.0
Qantas	49	49	42	85.7	37	75.5	0	0.0
Tigerair	27	26	21	80.8	13	50.0	1	3.7
Virgin Australia	31	31	22	71.0	21	67.7	0	0.0
All Airlines	138	137	111	81.0	91	66.4	1	0.7
Darwin-Melbourne								
Jetstar	31	30	17	56.7	14	46.7	1	3.2
Qantas	31	31	26	83.9	27	87.1	0	0.0
Virgin Australia	36	36	22	61.1	22	61.1	0	0.0
All Airlines	98	97	65	67.0	63	64.9	1	1.0
Darwin-Perth								
Qantas	41	41	37	90.2	35	85.4	0	0.0
Virgin Australia	35	35	25	71.4	29	82.9	0	0.0
All Airlines	76	76	62	81.6	64	84.2	0	0.0
Darwin-Sydney								
Jetstar	31	31	8	25.8	6	19.4	0	0.0
Qantas	58	58	46	79.3	43	74.1	0	0.0
Virgin Australia	33	33	15	45.5	13	39.4	0	0.0
All Airlines	122	122	69	56.6	62	50.8	0	0.0
Dubbo-Sydney								
QantasLink	129	129	96	74.4	96	74.4	0	0.0
Regional Express	159	158	135	85.4	138	87.3	1	0.6
All Airlines	288	287	231	80.5	234	81.5	1	0.3
Emerald-Brisbane								
QantasLink	148	145	121	83.4	115	79.3	3	2.0
Virgin Australia Regional Airlines	78	76	68	89.5	66	86.8	2	2.6
All Airlines	226	221	189	85.5	181	81.9	5	2.2
Geraldton-Perth								
QantasLink	54	54	50	92.6	49	90.7	0	0.0
Virgin Australia Regional Airlines	95	94	76	80.9	79	84.0	1	1.1
All Airlines	149	148	126	85.1	128	86.5	1	0.7
Gladstone-Brisbane								
QantasLink	212	207	184	88.9	185	89.4	5	2.4
Virgin Australia	6	6	6	100.0	4	66.7	0	0.0
Virgin Australia Regional Airlines	151	147	126	85.7	122	83.0	4	2.6
All Airlines	369	360	316	87.8	311	86.4	9	2.4

	<i>Sectors</i>		<i>Arrivals On Time</i>		<i>Departures On Time</i>		<i>Cancellations</i>	
	<i>Sched.</i>	<i>Flown</i>	<i>No.</i>	<i>%</i>	<i>No.</i>	<i>%</i>	<i>No.</i>	<i>%</i>
Gold Coast-Adelaide								
Jetstar	38	38	35	92.1	35	92.1	0	0.0
Virgin Australia	31	31	29	93.5	30	96.8	0	0.0
All Airlines	69	69	64	92.8	65	94.2	0	0.0
Gold Coast-Melbourne								
Jetstar	255	248	193	77.8	183	73.8	7	2.7
Tigerair	80	78	45	57.7	51	65.4	2	2.5
Virgin Australia	188	187	161	86.1	158	84.5	1	0.5
All Airlines	523	513	399	77.8	392	76.4	10	1.9
Gold Coast-Sydney								
Jetstar	312	307	241	78.5	239	77.9	5	1.6
Qantas	91	91	81	89.0	84	92.3	0	0.0
QantasLink	2	2	2	100.0	2	100.0	0	0.0
Tigerair	110	110	83	75.5	83	75.5	0	0.0
Virgin Australia	259	258	231	89.5	234	90.7	1	0.4
All Airlines	774	768	638	83.1	642	83.6	6	0.8
Hamilton Island-Brisbane								
QantasLink	17	17	15	88.2	10	58.8	0	0.0
Virgin Australia	31	27	25	92.6	25	92.6	4	12.9
All Airlines	48	44	40	90.9	35	79.5	4	8.3
Hamilton Island-Sydney								
Jetstar	29	29	20	69.0	18	62.1	0	0.0
Qantas	14	12	9	75.0	7	58.3	2	14.3
Virgin Australia	31	27	26	96.3	23	85.2	4	12.9
All Airlines	74	68	55	80.9	48	70.6	6	8.1
Hobart-Brisbane								
Jetstar	31	31	21	67.7	21	67.7	0	0.0
Virgin Australia	31	31	27	87.1	28	90.3	0	0.0
All Airlines	62	62	48	77.4	49	79.0	0	0.0
Hobart-Melbourne								
Jetstar	174	169	104	61.5	111	65.7	5	2.9
QantasLink	124	122	95	77.9	97	79.5	2	1.6
Tigerair	31	31	21	67.7	22	71.0	0	0.0
Virgin Australia	146	144	124	86.1	124	86.1	2	1.4
All Airlines	475	466	344	73.8	354	76.0	9	1.9
Hobart-Sydney								
Jetstar	68	67	56	83.6	54	80.6	1	1.5
QantasLink	31	31	22	71.0	24	77.4	0	0.0
Virgin Australia	62	62	51	82.3	53	85.5	0	0.0
All Airlines	161	160	129	80.6	131	81.9	1	0.6
Kalgoorlie-Perth								
Qantas	22	22	20	90.9	20	90.9	0	0.0
QantasLink	63	63	56	88.9	57	90.5	0	0.0
Virgin Australia	36	36	33	91.7	35	97.2	0	0.0
Virgin Australia Regional Airlines	23	23	18	78.3	21	91.3	0	0.0
All Airlines	144	144	127	88.2	133	92.4	0	0.0
Karratha-Perth								
Qantas	104	99	87	87.9	90	90.9	5	4.8
QantasLink	116	115	102	88.7	107	93.0	1	0.9
Virgin Australia	71	64	59	92.2	56	87.5	7	9.9
Virgin Australia Regional Airlines	21	21	16	76.2	18	85.7	0	0.0
All Airlines	312	299	264	88.3	271	90.6	13	4.2

	<i>Sectors</i>		<i>Arrivals On Time</i>		<i>Departures On Time</i>		<i>Cancellations</i>	
	<i>Sched.</i>	<i>Flown</i>	<i>No.</i>	<i>%</i>	<i>No.</i>	<i>%</i>	<i>No.</i>	<i>%</i>
Launceston-Melbourne								
Jetstar	118	117	78	66.7	75	64.1	1	0.8
QantasLink	120	116	89	76.7	90	77.6	4	3.3
Virgin Australia	95	94	75	79.8	82	87.2	1	1.1
Virgin Australia Regional Airlines	4	4	2	50.0	1	25.0	0	0.0
All Airlines	337	331	244	73.7	248	74.9	6	1.8
Launceston-Sydney								
Jetstar	44	44	33	75.0	34	77.3	0	0.0
Virgin Australia	31	31	25	80.6	25	80.6	0	0.0
All Airlines	75	75	58	77.3	59	78.7	0	0.0
Mackay-Brisbane								
Jetstar	62	58	41	70.7	36	62.1	4	6.5
QantasLink	113	107	95	88.8	95	88.8	6	5.3
Virgin Australia	161	157	140	89.2	135	86.0	4	2.5
All Airlines	336	322	276	85.7	266	82.6	14	4.2
Melbourne-Adelaide								
Jetstar	116	106	67	63.2	66	62.3	10	8.6
Qantas	296	294	273	92.9	254	86.4	2	0.7
Tigerair	77	76	61	80.3	62	81.6	1	1.3
Virgin Australia	303	298	272	91.3	267	89.6	5	1.7
All Airlines	792	774	673	87.0	649	83.9	18	2.3
Melbourne-Brisbane								
Jetstar	130	127	84	66.1	78	61.4	3	2.3
Qantas	444	442	343	77.6	348	78.7	2	0.5
Tigerair	133	132	101	76.5	97	73.5	1	0.8
Virgin Australia	419	395	326	82.5	346	87.6	24	5.7
All Airlines	1 126	1 096	854	77.9	869	79.3	30	2.7
Melbourne-Cairns								
Jetstar	121	120	77	64.2	74	61.7	1	0.8
Qantas	39	39	31	79.5	26	66.7	0	0.0
Tigerair	41	41	31	75.6	34	82.9	0	0.0
Virgin Australia	36	36	31	86.1	33	91.7	0	0.0
All Airlines	237	236	170	72.0	167	70.8	1	0.4
Melbourne-Canberra								
Qantas	195	193	166	86.0	170	88.1	2	1.0
QantasLink	85	80	64	80.0	68	85.0	5	5.9
Virgin Australia	160	156	134	85.9	138	88.5	4	2.5
Virgin Australia Regional Airlines	30	28	16	57.1	18	64.3	2	6.7
All Airlines	470	457	380	83.2	394	86.2	13	2.8
Melbourne-Darwin								
Jetstar	31	31	22	71.0	17	54.8	0	0.0
Qantas	31	31	29	93.5	29	93.5	0	0.0
Virgin Australia	38	38	31	81.6	37	97.4	0	0.0
All Airlines	100	100	82	82.0	83	83.0	0	0.0
Melbourne-Gold Coast								
Jetstar	255	246	174	70.7	172	69.9	9	3.5
Tigerair	80	80	61	76.3	74	92.5	0	0.0
Virgin Australia	187	187	168	89.8	169	90.4	0	0.0
All Airlines	522	513	403	78.6	415	80.9	9	1.7
Melbourne-Hobart								
Jetstar	174	170	119	70.0	119	70.0	4	2.3
QantasLink	124	123	90	73.2	92	74.8	1	0.8
Tigerair	31	31	25	80.6	24	77.4	0	0.0
Virgin Australia	146	145	124	85.5	124	85.5	1	0.7
All Airlines	475	469	358	76.3	359	76.5	6	1.3

	<i>Sectors</i>		<i>Arrivals On Time</i>		<i>Departures On Time</i>		<i>Cancellations</i>	
	<i>Sched.</i>	<i>Flown</i>	<i>No.</i>	<i>%</i>	<i>No.</i>	<i>%</i>	<i>No.</i>	<i>%</i>
Melbourne-Launceston								
Jetstar	118	117	84	71.8	83	70.9	1	0.8
QantasLink	120	117	84	71.8	94	80.3	3	2.5
Virgin Australia	95	95	77	81.1	87	91.6	0	0.0
Virgin Australia Regional Airlines	4	4	3	75.0	4	100.0	0	0.0
All Airlines	337	333	248	74.5	268	80.5	4	1.2
Melbourne-Mildura								
QantasLink	89	89	64	71.9	72	80.9	0	0.0
Regional Express	89	89	77	86.5	79	88.8	0	0.0
Virgin Australia	31	31	30	96.8	29	93.5	0	0.0
All Airlines	209	209	171	81.8	180	86.1	0	0.0
Melbourne-Newcastle								
Jetstar	108	107	84	78.5	84	78.5	1	0.9
Virgin Australia	34	34	32	94.1	32	94.1	0	0.0
All Airlines	142	141	116	82.3	116	82.3	1	0.7
Melbourne-Perth								
Jetstar	73	67	50	74.6	44	65.7	6	8.2
Qantas	228	228	180	78.9	185	81.1	0	0.0
Tigerair	62	61	40	65.6	51	83.6	1	1.6
Virgin Australia	144	142	118	83.1	113	79.6	2	1.4
All Airlines	507	498	388	77.9	393	78.9	9	1.8
Melbourne-Sunshine Coast								
Jetstar	87	86	61	70.9	57	66.3	1	1.1
Virgin Australia	38	38	29	76.3	30	78.9	0	0.0
All Airlines	125	124	90	72.6	87	70.2	1	0.8
Melbourne-Sydney								
Jetstar	377	356	241	67.7	232	65.2	21	5.6
Qantas	1 054	1 012	843	83.3	860	85.0	42	4.0
Tigerair	247	243	191	78.6	192	79.0	4	1.6
Virgin Australia	845	788	695	88.2	705	89.5	57	6.7
All Airlines	2 523	2 399	1 970	82.1	1 989	82.9	124	4.9
Mildura-Melbourne								
QantasLink	89	89	68	76.4	77	86.5	0	0.0
Regional Express	89	89	70	78.7	75	84.3	0	0.0
Virgin Australia	31	31	29	93.5	30	96.8	0	0.0
All Airlines	209	209	167	79.9	182	87.1	0	0.0
Moranbah-Brisbane								
QantasLink	124	110	99	90.0	97	88.2	14	11.3
Virgin Australia Regional Airlines	78	76	66	86.8	69	90.8	2	2.6
All Airlines	202	186	165	88.7	166	89.2	16	7.9
Mount Isa-Brisbane								
Qantas	41	41	37	90.2	35	85.4	0	0.0
Virgin Australia	23	23	23	100.0	23	100.0	0	0.0
All Airlines	64	64	60	93.8	58	90.6	0	0.0
Newcastle-Brisbane								
Jetstar	93	91	70	76.9	74	81.3	2	2.2
QantasLink	81	81	65	80.2	68	84.0	0	0.0
Virgin Australia	85	84	74	88.1	76	90.5	1	1.2
All Airlines	259	256	209	81.6	218	85.2	3	1.2
Newcastle-Melbourne								
Jetstar	108	107	83	77.6	85	79.4	1	0.9
Virgin Australia	34	34	30	88.2	31	91.2	0	0.0
All Airlines	142	141	113	80.1	116	82.3	1	0.7

	<i>Sectors</i>		<i>Arrivals On Time</i>		<i>Departures On Time</i>		<i>Cancellations</i>	
	<i>Sched.</i>	<i>Flown</i>	<i>No.</i>	<i>%</i>	<i>No.</i>	<i>%</i>	<i>No.</i>	<i>%</i>
Newman-Perth								
Qantas	86	86	84	97.7	84	97.7	0	0.0
QantasLink	71	71	70	98.6	70	98.6	0	0.0
Virgin Australia	29	29	25	86.2	25	86.2	0	0.0
Virgin Australia Regional Airlines	4	4	4	100.0	4	100.0	0	0.0
All Airlines	190	190	183	96.3	183	96.3	0	0.0
Perth-Adelaide								
Jetstar	36	35	31	88.6	26	74.3	1	2.8
Qantas	122	122	119	97.5	119	97.5	0	0.0
Virgin Australia	77	76	68	89.5	64	84.2	1	1.3
All Airlines	235	233	218	93.6	209	89.7	2	0.9
Perth-Brisbane								
Qantas	134	134	124	92.5	121	90.3	0	0.0
Virgin Australia	112	112	107	95.5	101	90.2	0	0.0
All Airlines	246	246	231	93.9	222	90.2	0	0.0
Perth-Broome								
Qantas	36	36	33	91.7	30	83.3	0	0.0
QantasLink	49	49	43	87.8	45	91.8	0	0.0
Virgin Australia	24	24	21	87.5	21	87.5	0	0.0
Virgin Australia Regional Airlines	47	47	37	78.7	40	85.1	0	0.0
All Airlines	156	156	134	85.9	136	87.2	0	0.0
Perth-Darwin								
Qantas	40	40	37	92.5	37	92.5	0	0.0
Virgin Australia	33	33	30	90.9	31	93.9	0	0.0
All Airlines	73	73	67	91.8	68	93.2	0	0.0
Perth-Geraldton								
QantasLink	54	54	49	90.7	50	92.6	0	0.0
Virgin Australia Regional Airlines	90	90	76	84.4	76	84.4	0	0.0
All Airlines	144	144	125	86.8	126	87.5	0	0.0
Perth-Kalgoorlie								
Qantas	22	22	20	90.9	20	90.9	0	0.0
QantasLink	63	63	60	95.2	60	95.2	0	0.0
Virgin Australia	37	37	35	94.6	35	94.6	0	0.0
Virgin Australia Regional Airlines	23	23	19	82.6	19	82.6	0	0.0
All Airlines	145	145	134	92.4	134	92.4	0	0.0
Perth-Karratha								
Qantas	104	101	100	99.0	99	98.0	3	2.9
QantasLink	116	115	110	95.7	111	96.5	1	0.9
Virgin Australia	71	66	59	89.4	62	93.9	5	7.0
Virgin Australia Regional Airlines	21	21	15	71.4	20	95.2	0	0.0
All Airlines	312	303	284	93.7	292	96.4	9	2.9
Perth-Melbourne								
Jetstar	74	67	49	73.1	50	74.6	7	9.5
Qantas	228	227	196	86.3	194	85.5	1	0.4
Tigerair	62	61	42	68.9	48	78.7	1	1.6
Virgin Australia	145	143	121	84.6	121	84.6	2	1.4
All Airlines	509	498	408	81.9	413	82.9	11	2.2
Perth-Newman								
Qantas	86	86	83	96.5	85	98.8	0	0.0
QantasLink	72	72	69	95.8	69	95.8	0	0.0
Virgin Australia	29	29	25	86.2	25	86.2	0	0.0
Virgin Australia Regional Airlines	4	4	4	100.0	4	100.0	0	0.0
All Airlines	191	191	181	94.8	183	95.8	0	0.0

	<i>Sectors</i>		<i>Arrivals On Time</i>		<i>Departures On Time</i>		<i>Cancellations</i>	
	<i>Sched.</i>	<i>Flown</i>	<i>No.</i>	<i>%</i>	<i>No.</i>	<i>%</i>	<i>No.</i>	<i>%</i>
Perth-Port Hedland								
Qantas	114	107	103	96.3	102	95.3	7	6.1
QantasLink	40	40	34	85.0	37	92.5	0	0.0
Virgin Australia	46	46	42	91.3	42	91.3	0	0.0
All Airlines	200	193	179	92.7	181	93.8	7	3.5
Perth-Sydney								
Jetstar	33	33	26	78.8	19	57.6	0	0.0
Qantas	209	209	182	87.1	180	86.1	0	0.0
Tigerair	28	26	22	84.6	23	88.5	2	7.1
Virgin Australia	119	118	107	90.7	107	90.7	1	0.8
All Airlines	389	386	337	87.3	329	85.2	3	0.8
Port Hedland-Perth								
Qantas	114	108	103	95.4	102	94.4	6	5.3
QantasLink	40	40	34	85.0	36	90.0	0	0.0
Virgin Australia	46	46	41	89.1	41	89.1	0	0.0
All Airlines	200	194	178	91.8	179	92.3	6	3.0
Port Lincoln-Adelaide								
QantasLink	112	109	94	86.2	96	88.1	3	2.7
Regional Express	219	218	197	90.4	200	91.7	1	0.5
All Airlines	331	327	291	89.0	296	90.5	4	1.2
Port Macquarie-Sydney								
QantasLink	140	137	87	63.5	102	74.5	3	2.1
Virgin Australia Regional Airlines	62	61	47	77.0	47	77.0	1	1.6
All Airlines	202	198	134	67.7	149	75.3	4	2.0
Proserpine-Brisbane								
Jetstar	31	31	26	83.9	22	71.0	0	0.0
Virgin Australia	55	55	47	85.5	45	81.8	0	0.0
All Airlines	86	86	73	84.9	67	77.9	0	0.0
Rockhampton-Brisbane								
QantasLink	197	194	157	80.9	162	83.5	3	1.5
Virgin Australia	105	104	98	94.2	97	93.3	1	1.0
Virgin Australia Regional Airlines	106	100	88	88.0	85	85.0	6	5.7
All Airlines	408	398	343	86.2	344	86.4	10	2.5
Sunshine Coast-Melbourne								
Jetstar	87	86	53	61.6	49	57.0	1	1.1
Virgin Australia	38	38	25	65.8	27	71.1	0	0.0
All Airlines	125	124	78	62.9	76	61.3	1	0.8
Sunshine Coast-Sydney								
Jetstar	105	105	78	74.3	74	70.5	0	0.0
Virgin Australia	31	31	28	90.3	27	87.1	0	0.0
All Airlines	136	136	106	77.9	101	74.3	0	0.0
Sydney-Adelaide								
Jetstar	126	119	91	76.5	99	83.2	7	5.6
Qantas	244	243	217	89.3	221	90.9	1	0.4
QantasLink	20	17	9	52.9	10	58.8	3	15.0
Tigerair	31	31	30	96.8	29	93.5	0	0.0
Virgin Australia	178	178	155	87.1	161	90.4	0	0.0
All Airlines	599	588	502	85.4	520	88.4	11	1.8
Sydney-Albury								
QantasLink	98	97	77	79.4	76	78.4	1	1.0
Regional Express	112	111	89	80.2	88	79.3	1	0.9
Virgin Australia Regional Airlines	62	62	52	83.9	53	85.5	0	0.0
All Airlines	272	270	218	80.7	217	80.4	2	0.7

	<i>Sectors</i>		<i>Arrivals On Time</i>		<i>Departures On Time</i>		<i>Cancellations</i>	
	<i>Sched.</i>	<i>Flown</i>	<i>No.</i>	<i>%</i>	<i>No.</i>	<i>%</i>	<i>No.</i>	<i>%</i>
Sydney-Armidale								
QantasLink	139	134	107	79.9	109	81.3	5	3.6
Regional Express	80	79	59	74.7	59	74.7	1	1.3
All Airlines	219	213	166	77.9	168	78.9	6	2.7
Sydney-Ayers Rock								
Jetstar	31	31	25	80.6	29	93.5	0	0.0
Virgin Australia	31	31	25	80.6	29	93.5	0	0.0
All Airlines	62	62	50	80.6	58	93.5	0	0.0
Sydney-Ballina								
Jetstar	79	79	56	70.9	52	65.8	0	0.0
Regional Express	27	27	22	81.5	22	81.5	0	0.0
Virgin Australia	31	31	30	96.8	30	96.8	0	0.0
All Airlines	137	137	108	78.8	104	75.9	0	0.0
Sydney-Brisbane								
Jetstar	186	180	129	71.7	130	72.2	6	3.2
Qantas	642	638	512	80.3	555	87.0	4	0.6
Tigerair	105	105	78	74.3	85	81.0	0	0.0
Virgin Australia	585	568	499	87.9	529	93.1	17	2.9
All Airlines	1 518	1 491	1 218	81.7	1 299	87.1	27	1.8
Sydney-Cairns								
Jetstar	119	118	86	72.9	84	71.2	1	0.8
Qantas	75	75	62	82.7	68	90.7	0	0.0
Tigerair	32	32	24	75.0	32	100.0	0	0.0
Virgin Australia	93	92	82	89.1	82	89.1	1	1.1
All Airlines	319	317	254	80.1	266	83.9	2	0.6
Sydney-Canberra								
QantasLink	528	479	370	77.2	379	79.1	49	9.3
Virgin Australia	21	19	19	100.0	19	100.0	2	9.5
Virgin Australia Regional Airlines	279	267	221	82.8	223	83.5	12	4.3
All Airlines	828	765	610	79.7	621	81.2	63	7.6
Sydney-Coffs Harbour								
QantasLink	157	156	129	82.7	126	80.8	1	0.6
Tigerair	13	13	12	92.3	12	92.3	0	0.0
Virgin Australia	62	59	54	91.5	54	91.5	3	4.8
All Airlines	232	228	195	85.5	192	84.2	4	1.7
Sydney-Darwin								
Jetstar	31	31	16	51.6	21	67.7	0	0.0
Qantas	58	58	43	74.1	39	67.2	0	0.0
Virgin Australia	33	33	27	81.8	30	90.9	0	0.0
All Airlines	122	122	86	70.5	90	73.8	0	0.0
Sydney-Dubbo								
QantasLink	129	128	92	71.9	85	66.4	1	0.8
Regional Express	160	159	134	84.3	130	81.8	1	0.6
All Airlines	289	287	226	78.7	215	74.9	2	0.7
Sydney-Gold Coast								
Jetstar	313	307	247	80.5	243	79.2	6	1.9
Qantas	91	91	90	98.9	90	98.9	0	0.0
QantasLink	2	2	2	100.0	2	100.0	0	0.0
Tigerair	110	110	92	83.6	96	87.3	0	0.0
Virgin Australia	258	256	227	88.7	233	91.0	2	0.8
All Airlines	774	766	658	85.9	664	86.7	8	1.0

	<i>Sectors</i>		<i>Arrivals On Time</i>		<i>Departures On Time</i>		<i>Cancellations</i>	
	<i>Sched.</i>	<i>Flown</i>	<i>No.</i>	<i>%</i>	<i>No.</i>	<i>%</i>	<i>No.</i>	<i>%</i>
Sydney-Hamilton Island								
Jetstar	31	31	20	64.5	22	71.0	0	0.0
Qantas	14	13	11	84.6	13	100.0	1	7.1
Virgin Australia	30	27	24	88.9	26	96.3	3	10.0
All Airlines	75	71	55	77.5	61	85.9	4	5.3
Sydney-Hobart								
Jetstar	68	67	58	86.6	59	88.1	1	1.5
QantasLink	31	31	27	87.1	27	87.1	0	0.0
Virgin Australia	62	61	55	90.2	54	88.5	1	1.6
All Airlines	161	159	140	88.1	140	88.1	2	1.2
Sydney-Launceston								
Jetstar	44	44	33	75.0	33	75.0	0	0.0
Virgin Australia	31	31	27	87.1	25	80.6	0	0.0
All Airlines	75	75	60	80.0	58	77.3	0	0.0
Sydney-Melbourne								
Jetstar	376	356	248	69.7	248	69.7	20	5.3
Qantas	1 047	1 009	813	80.6	875	86.7	38	3.6
Tigerair	249	244	192	78.7	198	81.1	5	2.0
Virgin Australia	845	785	648	82.5	692	88.2	60	7.1
All Airlines	2 517	2 394	1 901	79.4	2 013	84.1	123	4.9
Sydney-Perth								
Jetstar	32	32	25	78.1	24	75.0	0	0.0
Qantas	213	213	170	79.8	186	87.3	0	0.0
Tigerair	27	25	23	92.0	25	100.0	2	7.4
Virgin Australia	119	118	96	81.4	105	89.0	1	0.8
All Airlines	391	388	314	80.9	340	87.6	3	0.8
Sydney-Port Macquarie								
QantasLink	139	136	105	77.2	121	89.0	3	2.2
Virgin Australia Regional Airlines	62	62	51	82.3	49	79.0	0	0.0
All Airlines	201	198	156	78.8	170	85.9	3	1.5
Sydney-Sunshine Coast								
Jetstar	104	104	86	82.7	79	76.0	0	0.0
Virgin Australia	31	31	28	90.3	28	90.3	0	0.0
All Airlines	135	135	114	84.4	107	79.3	0	0.0
Sydney-Townsville								
Jetstar	28	28	23	82.1	21	75.0	0	0.0
Virgin Australia	27	27	21	77.8	23	85.2	0	0.0
All Airlines	55	55	44	80.0	44	80.0	0	0.0
Sydney-Wagga Wagga								
QantasLink	116	116	91	78.4	93	80.2	0	0.0
Regional Express	143	142	123	86.6	125	88.0	1	0.7
All Airlines	259	258	214	82.9	218	84.5	1	0.4
Townsville-Brisbane								
Jetstar	62	62	49	79.0	43	69.4	0	0.0
Qantas	152	152	142	93.4	140	92.1	0	0.0
Virgin Australia	166	163	154	94.5	142	87.1	3	1.8
All Airlines	380	377	345	91.5	325	86.2	3	0.8
Townsville-Sydney								
Jetstar	28	28	23	82.1	20	71.4	0	0.0
Virgin Australia	27	27	18	66.7	16	59.3	0	0.0
All Airlines	55	55	41	74.5	36	65.5	0	0.0

	<i>Sectors</i>		<i>Arrivals On Time</i>		<i>Departures On Time</i>		<i>Cancellations</i>	
	<i>Sched.</i>	<i>Flown</i>	<i>No.</i>	<i>%</i>	<i>No.</i>	<i>%</i>	<i>No.</i>	<i>%</i>
Wagga Wagga-Sydney								
QantasLink	116	115	91	79.1	91	79.1	1	0.9
Regional Express	142	140	122	87.1	120	85.7	2	1.4
All Airlines	258	255	213	83.5	211	82.7	3	1.2

Airports

On time performance is reported for all routes where the passenger load averages over 8000 passengers per month, and where two or more airlines operate in competition. The following data reports by airport against flights operated on those routes only. This month, 8 major city airports and 32 regional city airports are covered.

Airport	Arrivals			Departures		
	Sectors	On Time		Sectors	On Time	
	Flown	No.	%	Flown	No.	%
Adelaide						
Jetstar	329	252	76.6	328	249	75.9
Qantas	850	784	92.2	848	772	91.0
QantasLink	126	103	81.7	126	102	81.0
Regional Express	218	197	90.4	219	210	95.9
Tigerair	134	114	85.1	133	114	85.7
Virgin Australia	740	662	89.5	739	664	89.9
All Airlines	2 397	2 112	88.1	2 393	2 111	88.2
Relates to services to and from Alice Springs, Brisbane, Canberra, Gold Coast, Melbourne, Perth, Port Lincoln and Sydney.						
Albury						
QantasLink	97	77	79.4	98	79	80.6
Regional Express	111	89	80.2	111	100	90.1
Virgin Australia Regional Airlines	62	52	83.9	62	53	85.5
All Airlines	270	218	80.7	271	232	85.6
Relates to services to and from Sydney only.						
Alice Springs						
Qantas	31	28	90.3	31	28	90.3
QantasLink	62	54	87.1	62	57	91.9
Virgin Australia	28	25	89.3	28	21	75.0
All Airlines	121	107	88.4	121	106	87.6
Relates to services to and from Adelaide and Darwin.						
Armidale						
QantasLink	134	107	79.9	133	105	78.9
Regional Express	79	59	74.7	79	63	79.7
All Airlines	213	166	77.9	212	168	79.2
Relates to services to and from Sydney only.						
Ayers Rock						
Jetstar	31	25	80.6	31	23	74.2
Virgin Australia	31	25	80.6	30	25	83.3
All Airlines	62	50	80.6	61	48	78.7
Relates to services to and from Sydney only.						
Ballina						
Jetstar	79	56	70.9	78	52	66.7
Regional Express	27	22	81.5	26	20	76.9
Virgin Australia	31	30	96.8	31	30	96.8
All Airlines	137	108	78.8	135	102	75.6
Relates to services to and from Sydney only.						

Airport	Arrivals			Departures		
	Sectors	On Time		Sectors	On Time	
	Flown	No.	%	Flown	No.	%
Brisbane						
Jetstar	760	564	74.2	763	585	76.7
Qantas	1 715	1 418	82.7	1 715	1 516	88.4
QantasLink	1 126	936	83.1	1 142	1 033	90.5
Tigerair	321	243	75.7	320	256	80.0
Virgin Australia	2 104	1 860	88.4	2 109	1 935	91.7
Virgin Australia Regional Airlines	435	379	87.1	439	381	86.8
All Airlines	6 461	5 400	83.6	6 488	5 706	87.9

Relates to services to and from Adelaide, Bundaberg, Cairns, Canberra, Darwin, Emerald, Gladstone, Hamilton Island, Hobart, Mackay, Melbourne, Moranbah, Mount Isa, Newcastle, Perth, Proserpine, Rockhampton, Sydney and Townsville.

Broome

Qantas	36	33	91.7	36	15	41.7
QantasLink	49	43	87.8	49	42	85.7
Virgin Australia	24	21	87.5	24	17	70.8
Virgin Australia Regional Airlines	47	37	78.7	47	29	61.7
All Airlines	156	134	85.9	156	103	66.0

Relates to services to and from Perth only.

Bundaberg

QantasLink	137	125	91.2	136	125	91.9
Virgin Australia Regional Airlines	37	31	83.8	36	27	75.0
All Airlines	174	156	89.7	172	152	88.4

Relates to services to and from Brisbane only.

Cairns

Jetstar	357	248	69.5	356	230	64.6
Qantas	234	188	80.3	234	195	83.3
QantasLink	4	4	100.0	4	4	100.0
Tigerair	104	81	77.9	103	71	68.9
Virgin Australia	266	235	88.3	266	235	88.3
All Airlines	965	756	78.3	963	735	76.3

Relates to services to and from Brisbane, Melbourne and Sydney.

Canberra

Qantas	270	236	87.4	269	237	88.1
QantasLink	686	524	76.4	684	518	75.7
Virgin Australia	298	264	88.6	298	252	84.6
Virgin Australia Regional Airlines	295	237	80.3	296	247	83.4
All Airlines	1 549	1 261	81.4	1 547	1 254	81.1

Relates to services to and from Adelaide, Brisbane, Melbourne and Sydney.

Coffs Harbour

QantasLink	156	129	82.7	156	130	83.3
Tigerair	13	12	92.3	12	11	91.7
Virgin Australia	59	54	91.5	58	50	86.2
All Airlines	228	195	85.5	226	191	84.5

Relates to services to and from Sydney only.

Airport	Arrivals			Departures		
	Sectors Flown	On Time		Sectors Flown	On Time	
		No.	%		No.	%
Darwin						
Jetstar	93	62	66.7	92	40	43.5
Qantas	178	152	85.4	179	142	79.3
QantasLink	62	58	93.5	62	57	91.9
Tigerair	27	17	63.0	26	13	50.0
Virgin Australia	149	125	83.9	149	98	65.8
All Airlines	509	414	81.3	508	350	68.9
Relates to services to and from Alice Springs, Brisbane, Melbourne, Perth and Sydney.						
Dubbo						
QantasLink	128	92	71.9	129	96	74.4
Regional Express	159	134	84.3	158	138	87.3
All Airlines	287	226	78.7	287	234	81.5
Relates to services to and from Sydney only.						
Emerald						
QantasLink	146	128	87.7	145	115	79.3
Virgin Australia Regional Airlines	76	56	73.7	76	66	86.8
All Airlines	222	184	82.9	221	181	81.9
Relates to services to and from Brisbane only.						
Geraldton						
QantasLink	54	49	90.7	54	49	90.7
Virgin Australia Regional Airlines	90	76	84.4	94	79	84.0
All Airlines	144	125	86.8	148	128	86.5
Relates to services to and from Perth only.						
Gladstone						
QantasLink	213	195	91.5	207	185	89.4
Virgin Australia	6	5	83.3	6	4	66.7
Virgin Australia Regional Airlines	147	127	86.4	147	122	83.0
All Airlines	366	327	89.3	360	311	86.4
Relates to services to and from Brisbane only.						
Gold Coast						
Jetstar	591	453	76.6	593	457	77.1
Qantas	91	90	98.9	91	84	92.3
QantasLink	2	2	100.0	2	2	100.0
Tigerair	190	153	80.5	188	134	71.3
Virgin Australia	475	426	89.7	476	422	88.7
All Airlines	1 349	1 124	83.3	1 350	1 099	81.4
Relates to services to and from Adelaide, Melbourne and Sydney.						
Hamilton Island						
Jetstar	31	20	64.5	29	18	62.1
Qantas	13	11	84.6	12	7	58.3
QantasLink	17	13	76.5	17	10	58.8
Virgin Australia	55	49	89.1	54	48	88.9
All Airlines	116	93	80.2	112	83	74.1
Relates to services to and from Brisbane and Sydney.						

Airport	Arrivals			Departures		
	Sectors	On Time		Sectors	On Time	
	Flown	No.	%	Flown	No.	%
Hobart						
Jetstar	268	201	75.0	267	186	69.7
QantasLink	154	117	76.0	153	121	79.1
Tigerair	31	25	80.6	31	22	71.0
Virgin Australia	237	208	87.8	237	205	86.5
All Airlines	690	551	79.9	688	534	77.6
Relates to services to and from Brisbane, Melbourne and Sydney.						
Kalgoorlie						
Qantas	22	20	90.9	22	20	90.9
QantasLink	63	60	95.2	63	57	90.5
Virgin Australia	37	35	94.6	36	35	97.2
Virgin Australia Regional Airlines	23	19	82.6	23	21	91.3
All Airlines	145	134	92.4	144	133	92.4
Relates to services to and from Perth only.						
Karratha						
Qantas	101	100	99.0	99	90	90.9
QantasLink	115	110	95.7	115	107	93.0
Virgin Australia	66	59	89.4	64	56	87.5
Virgin Australia Regional Airlines	21	15	71.4	21	18	85.7
All Airlines	303	284	93.7	299	271	90.6
Relates to services to and from Perth only.						
Launceston						
Jetstar	161	117	72.7	161	109	67.7
QantasLink	117	84	71.8	116	90	77.6
Virgin Australia	126	104	82.5	125	107	85.6
Virgin Australia Regional Airlines	4	3	75.0	4	1	25.0
All Airlines	408	308	75.5	406	307	75.6
Relates to services to and from Melbourne and Sydney.						
Mackay						
Jetstar	60	47	78.3	58	36	62.1
QantasLink	108	98	90.7	107	95	88.8
Virgin Australia	158	140	88.6	157	135	86.0
All Airlines	326	285	87.4	322	266	82.6
Relates to services to and from Brisbane only.						
Melbourne						
Jetstar	1 533	1 069	69.7	1 533	1 026	66.9
Qantas	2 249	1 877	83.5	2 239	1 872	83.6
QantasLink	407	312	76.7	409	326	79.7
Regional Express	89	70	78.7	89	79	88.8
Tigerair	659	466	70.7	664	534	80.4
Virgin Australia	2 383	1 969	82.6	2 383	2 110	88.5
Virgin Australia Regional Airlines	34	19	55.9	32	22	68.8
All Airlines	7 354	5 782	78.6	7 349	5 969	81.2
Relates to services to and from Adelaide, Brisbane, Cairns, Canberra, Darwin, Gold Coast, Hobart, Launceston, Mildura, Newcastle, Perth, Sunshine Coast and Sydney.						

Airport	Arrivals			Departures		
	Sectors Flown	On Time		Sectors Flown	On Time	
		No.	%		No.	%
Mildura						
QantasLink	89	64	71.9	89	77	86.5
Regional Express	89	77	86.5	89	75	84.3
Virgin Australia	31	30	96.8	31	30	96.8
All Airlines	209	171	81.8	209	182	87.1
Relates to services to and from Melbourne only.						
Moranbah						
QantasLink	115	106	92.2	110	97	88.2
Virgin Australia Regional Airlines	76	68	89.5	76	69	90.8
All Airlines	191	174	91.1	186	166	89.2
Relates to services to and from Brisbane only.						
Mount Isa						
Qantas	41	38	92.7	41	35	85.4
Virgin Australia	23	23	100.0	23	23	100.0
All Airlines	64	61	95.3	64	58	90.6
Relates to services to and from Brisbane only.						
Newcastle						
Jetstar	198	167	84.3	198	159	80.3
QantasLink	81	64	79.0	81	68	84.0
Virgin Australia	118	109	92.4	118	107	90.7
All Airlines	397	340	85.6	397	334	84.1
Relates to services to and from Brisbane and Melbourne.						
Newman						
Qantas	86	83	96.5	86	84	97.7
QantasLink	72	69	95.8	71	70	98.6
Virgin Australia	29	25	86.2	29	25	86.2
Virgin Australia Regional Airlines	4	4	100.0	4	4	100.0
All Airlines	191	181	94.8	190	183	96.3
Relates to services to and from Perth only.						
Perth						
Jetstar	135	102	75.6	135	95	70.4
Qantas	1 081	909	84.1	1 084	987	91.1
QantasLink	392	356	90.8	393	372	94.7
Tigerair	86	63	73.3	87	71	81.6
Virgin Australia	680	554	81.5	684	609	89.0
Virgin Australia Regional Airlines	189	136	72.0	185	159	85.9
All Airlines	2 563	2 120	82.7	2 568	2 293	89.3
Relates to services to and from Adelaide, Brisbane, Broome, Darwin, Geraldton, Kalgoorlie, Karratha, Melbourne, Newman, Port Hedland and Sydney.						
Port Hedland						
Qantas	107	103	96.3	108	102	94.4
QantasLink	40	34	85.0	40	36	90.0
Virgin Australia	46	42	91.3	46	41	89.1
All Airlines	193	179	92.7	194	179	92.3
Relates to services to and from Perth only.						

Airport	Arrivals			Departures		
	Sectors	On Time		Sectors	On Time	
	Flown	No.	%	Flown	No.	%
Port Lincoln						
QantasLink	109	90	82.6	109	96	88.1
Regional Express	219	198	90.4	218	200	91.7
All Airlines	328	288	87.8	327	296	90.5
Relates to services to and from Adelaide only.						
Port Macquarie						
QantasLink	136	105	77.2	137	102	74.5
Virgin Australia Regional Airlines	62	51	82.3	61	47	77.0
All Airlines	198	156	78.8	198	149	75.3
Relates to services to and from Sydney only.						
Proserpine						
Jetstar	31	25	80.6	31	22	71.0
Virgin Australia	55	49	89.1	55	45	81.8
All Airlines	86	74	86.0	86	67	77.9
Relates to services to and from Brisbane only.						
Rockhampton						
QantasLink	194	175	90.2	194	162	83.5
Virgin Australia	104	96	92.3	104	97	93.3
Virgin Australia Regional Airlines	103	79	76.7	100	85	85.0
All Airlines	401	350	87.3	398	344	86.4
Relates to services to and from Brisbane only.						
Sunshine Coast						
Jetstar	190	147	77.4	191	123	64.4
Virgin Australia	69	57	82.6	69	54	78.3
All Airlines	259	204	78.8	260	177	68.1
Relates to services to and from Melbourne and Sydney.						
Sydney						
Jetstar	1 524	1 129	74.1	1 527	1 144	74.9
Qantas	2 329	2 004	86.0	2 340	2 047	87.5
QantasLink	1 297	998	76.9	1 296	1 028	79.3
Regional Express	514	424	82.5	518	424	81.9
Tigerair	559	442	79.1	560	477	85.2
Virgin Australia	2 347	2 077	88.5	2 347	2 120	90.3
Virgin Australia Regional Airlines	389	321	82.5	391	325	83.1
All Airlines	8 959	7 395	82.5	8 979	7 565	84.3
Relates to services to and from Adelaide, Albury, Armidale, Ayers Rock, Ballina, Brisbane, Cairns, Canberra, Coffs Harbour, Darwin, Dubbo, Gold Coast, Hamilton Island, Hobart, Launceston, Melbourne, Perth, Port Macquarie, Sunshine Coast, Townsville and Wagga Wagga.						
Townsville						
Jetstar	90	76	84.4	90	63	70.0
Qantas	152	123	80.9	152	140	92.1
Virgin Australia	191	170	89.0	190	158	83.2
All Airlines	433	369	85.2	432	361	83.6
Relates to services to and from Brisbane and Sydney.						
Wagga Wagga						
QantasLink	116	91	78.4	115	91	79.1
Regional Express	142	123	86.6	140	120	85.7
All Airlines	258	214	82.9	255	211	82.7
Relates to services to and from Sydney only.						

Definitions

On time arrival	A flight arrival is counted as "on time" if it arrived at the gate before 15 minutes after the scheduled arrival time shown in the carriers' schedule. Neither diverted nor cancelled flights count as on time.
On time departure	A flight departure is counted as "on time" if it departs the gate before 15 minutes after the scheduled departure time shown in the carriers' schedule.
Cancellation	A flight removed from service within 7 days of scheduled departure is regarded as a cancellation.
On time departure percentage	The percentage of on time departures is measured against the number of departures <i>operated</i> on any particular sector.
On time arrival percentage	The percentage of on time arrivals is measured against the number of arrivals <i>operated</i> on any particular sector.
Cancellation percentage	The percentage of cancellations is measured against the number of services <i>scheduled</i> on any particular sector.
