



Australian Government

Department of Infrastructure and Regional Development

Bureau of Infrastructure, Transport and Regional Economics

STATISTICAL REPORT



Aviation

Domestic airline on time performance 2013

© Commonwealth of Australia 2014

ISSN: 1832-0759

Ownership of intellectual property rights in this publication

Unless otherwise noted, copyright (and any other intellectual property rights, if any) in this publication is owned by the Commonwealth of Australia (referred to below as the Commonwealth).

Disclaimer

The material contained in this publication is made available on the understanding that the Commonwealth is not providing professional advice, and that users exercise their own skill and care with respect to its use, and seek independent advice if necessary.

The Commonwealth makes no representations or warranties as to the contents or accuracy of the information contained in this publication. To the extent permitted by law, the Commonwealth disclaims liability to any person or organisation in respect of anything done, or omitted to be done, in reliance upon information contained in this publication.

Creative Commons licence

With the exception of (a) the Coat of Arms; and (b) the Department of Infrastructure and Regional Development's photos and graphics, copyright in this publication is licensed under a Creative Commons Attribution 3.0 Australia Licence.

Creative Commons Attribution 3.0 Australia Licence is a standard form licence agreement that allows you to copy, communicate and adapt this publication provided that you attribute the work to the Commonwealth and abide by the other licence terms. A summary of the licence terms is available from <http://creativecommons.org/licenses/by/3.0/au/deed.en>. The full licence terms are available from <http://creativecommons.org/licenses/by/3.0/au/legalcode>.

Use of the Coat of Arms

The Department of the Prime Minister and Cabinet sets the terms under which the Coat of Arms is used. Please refer to the Department's Commonwealth Coat of Arms and Government branding web page <http://www.dpmmc.gov.au/guidelines/index.cfm#brand> and, in particular, the Guidelines on the use of the Commonwealth Coat of Arms publication.

An appropriate citation for this report is:

Bureau of Infrastructure, Transport and Regional Economics (BITRE), 2014, Domestic airline on time performance, Statistical Report, BITRE, Canberra ACT.

Contact us

This publication is available in PDF format. All other rights are reserved, including in relation to any Departmental logos or trade marks which may exist. For enquiries regarding the licence and any use of this publication, please contact:

Bureau of Infrastructure, Transport and Regional Economics (BITRE)
Department of Infrastructure and Regional Development
GPO Box 501, Canberra ACT 2601, Australia
Telephone: (international) +61 2 6274 7210
Fax: (international) +61 2 6274 6855
Email: bitre@infrastructure.gov.au
Website: www.bitre.gov.au

Inquiries

Should you require additional information about the statistics contained in this publication:

Telephone (02) 6274 7790 or Facsimile (02) 6274 7727

Electronic mail: AVSTATS@infrastructure.gov.au

Web site: <http://www.bitre.gov.au/statistics/aviation/otphome.aspx>

Foreword

The Bureau of Infrastructure, Transport and Regional Economics (BITRE) monitors the punctuality and reliability of major domestic airlines operating between Australian airports. The purpose of this is to allow for evaluation of overall industry and individual airline performance, so that consumers of air travel can make informed decisions.

The following domestic airlines currently report this information monthly to the BITRE: Jetstar, Qantas, QantasLink, Regional Express, Tigerair, Virgin Australia and Virgin Australia Regional Airlines. Data has been gathered since November 2003, although some airlines commenced reporting at a later date, including Jetstar which first reported in May 2004, MacAir in July 2005 and Tigerair in April 2008. MacAir ceased operations in February 2009 and data was not received for December 2008 onwards. Virgin Blue was rebranded as Virgin Australia in May 2011 and Tiger Airways was rebranded as Tigerair in July 2013 and time series data in Microsoft Excel spreadsheet format on the BITRE website have been revised to reflect these changes. Virgin Australia Regional Airlines commenced operations in May 2013. It was formed after the acquisition of Skywest by Virgin Australia and represents a combination of operations previously reported under Skywest and Virgin Australia – ATR/F100 Operations. Services operated by Skywest on behalf of Virgin Australia using ATR/F100 aircraft commenced in November 2011 and were shown separately as Virgin Australia – ATR/F100 Operations until April 2013.

Information presented in this report is for Australian domestic routes for which the passenger load averaged 8 000 or more passengers per month over the previous six months and where two or more airlines operated in competition on those routes. There were 58 routes that met these criteria for all twelve months in 2013 and another 4 routes did so for a shorter period of the year. Over time, routes which meet these criteria change as airline networks and traffic levels vary.

Participating airlines report their overall monthly network performance where this is possible.

Total industry figures encompass all services operated by reporting airlines only. These airlines collectively carried over 95 per cent of total domestic passengers (regular public transport only) in 2012.

The method of capturing on time performance varies between airlines utilising different recording systems. Jetstar and Qantas jet aircraft use Aircraft Communication Addressing and Reporting System (ACARS) to electronically measure on time performance. Regional Express, Tigerair, Virgin Australia, Virgin Australia Regional Airlines and the Qantas non-jet fleet record on time performance manually using records from pilots, gate agents and/or ground crews.

After initial data is collected, aggregate reports are audited internally by participating airlines prior to publication.

Reports and detailed time series data in Microsoft Excel spreadsheet format are available from the BITRE website at: <http://www.bitre.gov.au/statistics/aviation/otphome.aspx>.

Contents

	Page
Industry performance	1
Individual routes	9
Airports	22
Definitions	29

Industry performance

For the year ended December 2013, on time performance over all routes operated by participating airlines (Jetstar, Qantas, QantasLink, Regional Express, Skywest, Tigerair, Virgin Australia, Virgin Australia ATR/F100 Operations and Virgin Australia Regional Airlines) averaged 81.0 per cent for on time departures and 79.0 per cent for on time arrivals. Cancellations represented 1.8 per cent of all scheduled flights. The equivalent figures for 2012 were 81.7 per cent for departures, 79.5 per cent for arrivals and 1.5 per cent for cancellations.

The figures for 2013 were below the long term average performance for all routes (83.5 per cent for departures and 82.0 per cent for arrivals). The rate of cancellations was above the long term average of 1.3 per cent.

Of the major domestic airlines, Qantas achieved the highest level of on time departures for 2013 at 85.5 per cent, followed by Virgin Australia at 79.6 per cent, Tigerair at 76.6 per cent and Jetstar at 75.0 per cent. The regional airlines were led by Regional Express at 86.9 per cent, followed by Virgin Australia Regional Airlines at 81.8 per cent, QantasLink at 79.5 per cent, Virgin Australia ATR/F100 Operations at 78.1 per cent and Skywest at 77.5 per cent.

Qantas also achieved the highest on time arrivals among the major domestic airlines at 84.3 per cent, followed by Virgin Australia at 77.3 per cent, Jetstar at 75.7 per cent and Tigerair at 72.2 per cent. Regional Express was the best performing regional airline for on time arrivals at 84.0 per cent, followed by Virgin Australia Regional Airlines at 78.8 per cent, Virgin Australia ATR/F100 Operations at 76.4 per cent, Skywest at 76.1 per cent and QantasLink at 75.9 per cent.

Virgin Australia ATR/F100 Operations had the highest percentage of cancellations (3.8 per cent) during 2013, followed by QantasLink (2.7 per cent), Jetstar (1.9 per cent), Tigerair (1.8 per cent), Virgin Australia (1.6 per cent), Qantas (1.5 per cent), Virgin Australia Regional Airlines (1.4 per cent), Regional Express (0.6 per cent) and Skywest (0.2 per cent).

Of the 58 routes which met the criteria for on time performance reporting for all 12 months in 2013, the Adelaide-Port Lincoln route had the highest percentage of on time departures (92.4 per cent) while the Sunshine Coast-Melbourne route had the lowest percentage of on time departures (65.8 per cent). The Darwin-Perth route had the highest percentage of on time arrivals (92.8 per cent) while the Proserpine-Brisbane route had the lowest percentage of on time arrivals (61.7 per cent). Cancellations were highest on the Karratha-Perth route at 5.5 per cent, followed by Perth-Karratha at 5.0 per cent, Emerald-Brisbane at 4.1 per cent, Canberra-Sydney at 3.8 per cent and Brisbane Emerald and Sydney-Canberra at 3.6 per cent.

Of the airports with on time performance reporting for all 12 months in 2013, Port Lincoln Airport recorded the highest percentage of on time departures (90.9 per cent) and Karratha Airport recorded the highest percentage of on time arrivals (91.4 per cent). Port Macquarie Airport recorded the lowest percentage of on time departures (69.0 per cent) and the lowest percentage of on time arrivals (68.4 per cent). These figures only refer to reported routes and do not cover all flights at these airports.

Table 1 On time performance for the year ended December 2013 — Total Industry

	<i>Sectors</i>		<i>Departures On Time</i>		<i>Arrivals On Time</i>		<i>Cancellations</i>	
	<i>Scheduled</i>	<i>Flown</i>	<i>No.</i>	<i>%</i>	<i>No.</i>	<i>%</i>	<i>No.</i>	<i>%</i>
Jetstar	79 180	77 654	58 219	75.0	58 821	75.7	1 526	1.9
Qantas	125 384	123 517	105 646	85.5	104 179	84.3	1 867	1.5
QantasLink	116 303	113 131	89 968	79.5	85 901	75.9	3 172	2.7
Regional Express	64 580	64 166	55 755	86.9	53 900	84.0	414	0.6
Skywest	3 233	3 225	2 498	77.5	2 453	76.1	8	0.2
Tigerair	19 915	19 547	14 970	76.6	14 120	72.2	368	1.8
Virgin Australia	133 809	131 602	104 798	79.6	101 787	77.3	2 207	1.6
Virgin Australia - ATR/F100 Operations	6 337	6 094	4 758	78.1	4 656	76.4	243	3.8
Virgin Australia Regional Airlines	21 242	20 934	17 133	81.8	16 492	78.8	308	1.4
All Airlines	569 983	559 870	453 745	81.0	442 309	79.0	10 113	1.8

Total airline network data (including routes not shown in this report).

Virgin Australia Regional Airlines commenced operations in May 2013. It was formed after the acquisition of Skywest by Virgin Australia and represents a combination of operations previously reported under Skywest and Virgin Australia – ATR/F100 Operations.

Table 2 Top ten routes for on time performance for the year ended December 2013 (participating airlines only)

<i>Departures</i>		<i>Arrivals</i>	
<i>Route</i>	<i>On Time (%)</i>	<i>Route</i>	<i>On Time (%)</i>
Adelaide-Port Lincoln	92.4	Darwin-Perth	92.8
Perth-Karratha	91.7	Perth-Karratha	91.4
Perth-Port Hedland	91.0	Perth-Port Hedland	90.8
Port Lincoln-Adelaide	90.9	Perth-Adelaide	90.7
Perth-Newman	89.9	Adelaide-Gold Coast	90.2
Karratha-Perth	89.3	Adelaide-Port Lincoln	90.2
Cairns-Townsville	89.3	Port Lincoln-Adelaide	90.1
Perth-Darwin	88.9	Perth-Newman	89.6
Perth-Kalgoorlie	88.8	Adelaide-Canberra	89.2
Brisbane-Mount Isa	88.8	Brisbane-Mount Isa	89.1

Table 3 Top ten airports for on time performance for the year ended December 2013 (participating airlines and reported routes only)

<i>Departures</i>		<i>Arrivals</i>	
<i>Airport</i>	<i>On Time (%)</i>	<i>Airport</i>	<i>On Time (%)</i>
Port Lincoln	90.9	Karratha	91.4
Karratha	89.3	Port Hedland	90.8
Port Hedland	88.1	Port Lincoln	90.2
Mildura	87.5	Newman	89.6
Newman	86.7	Mount Isa	89.1
Kalgoorlie	86.4	Kalgoorlie	87.7
Mount Isa	85.3	Broome	87.1
Perth	85.0	Adelaide	85.0
Adelaide	85.0	Cairns	83.4
Geraldton	84.5	Townsville	83.4

Total industry on time performance

Figure 1 On time performance (by month from December 2008)—Total Industry

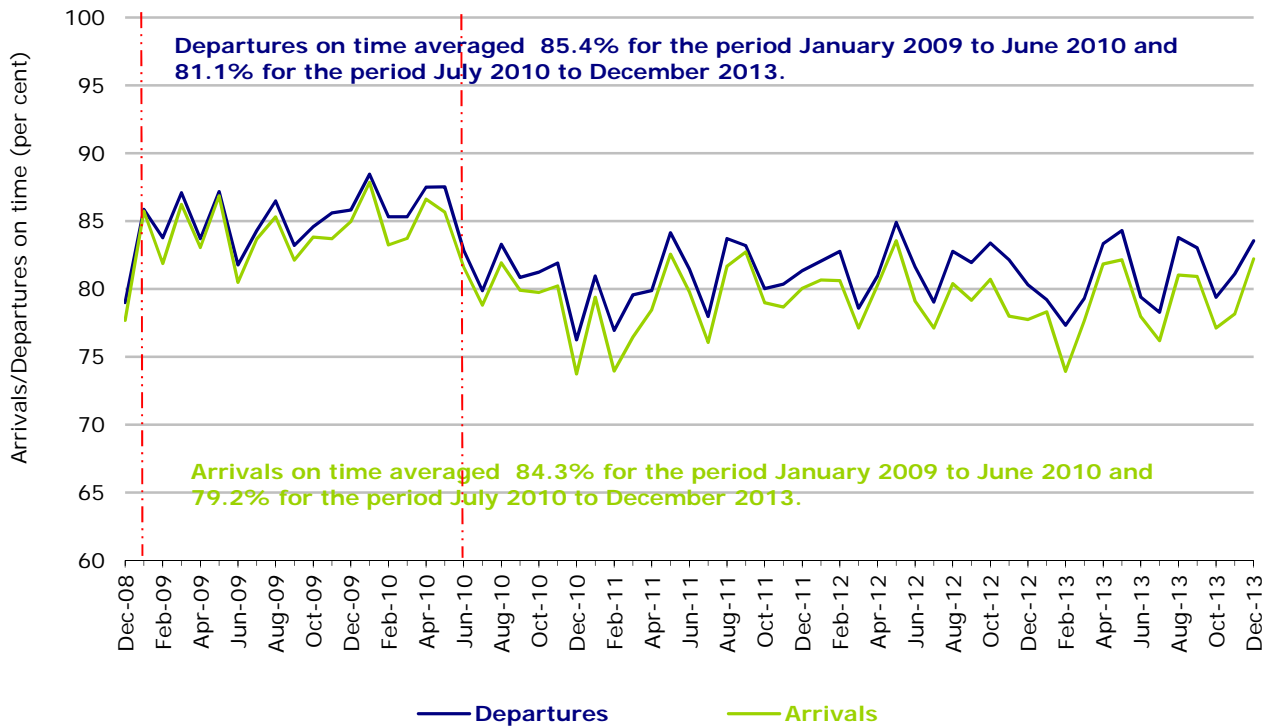
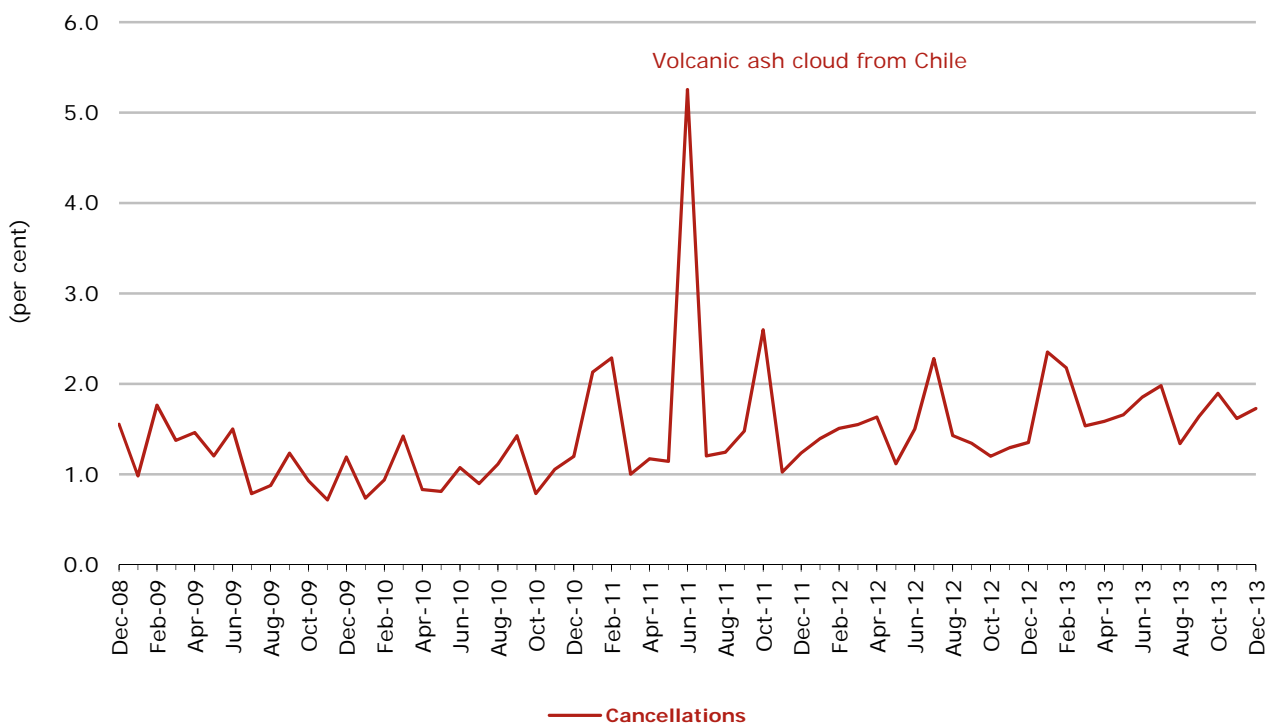


Figure 2 Cancellations (by month from December 2008)—Total Industry



Major domestic airlines on time performance

Figure 3 On time performance (by month from December 2008)—Jetstar

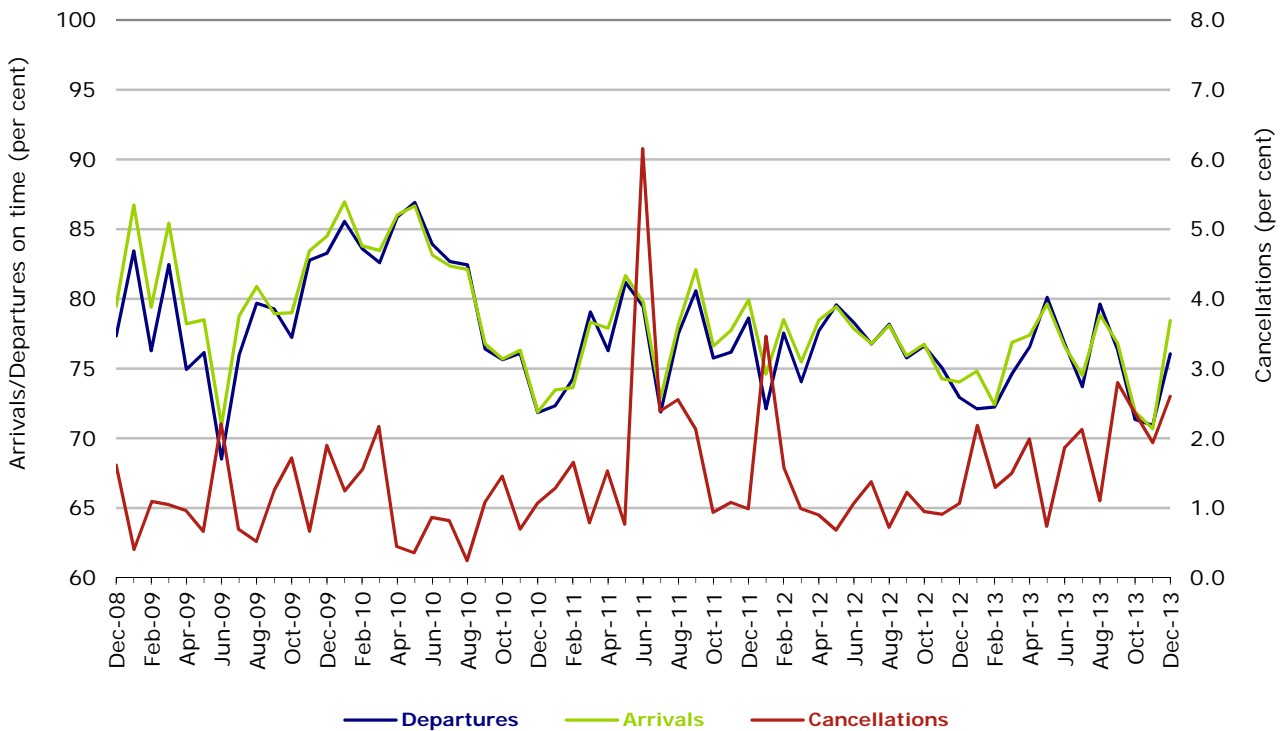
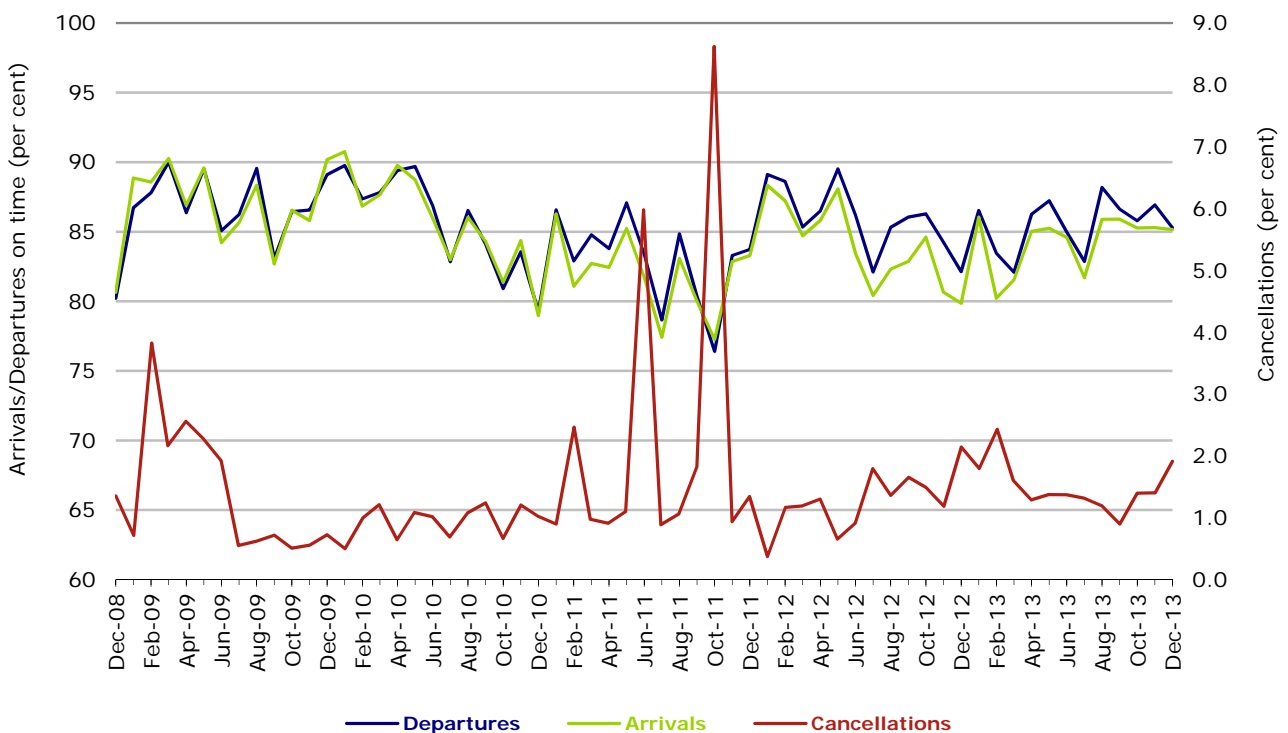
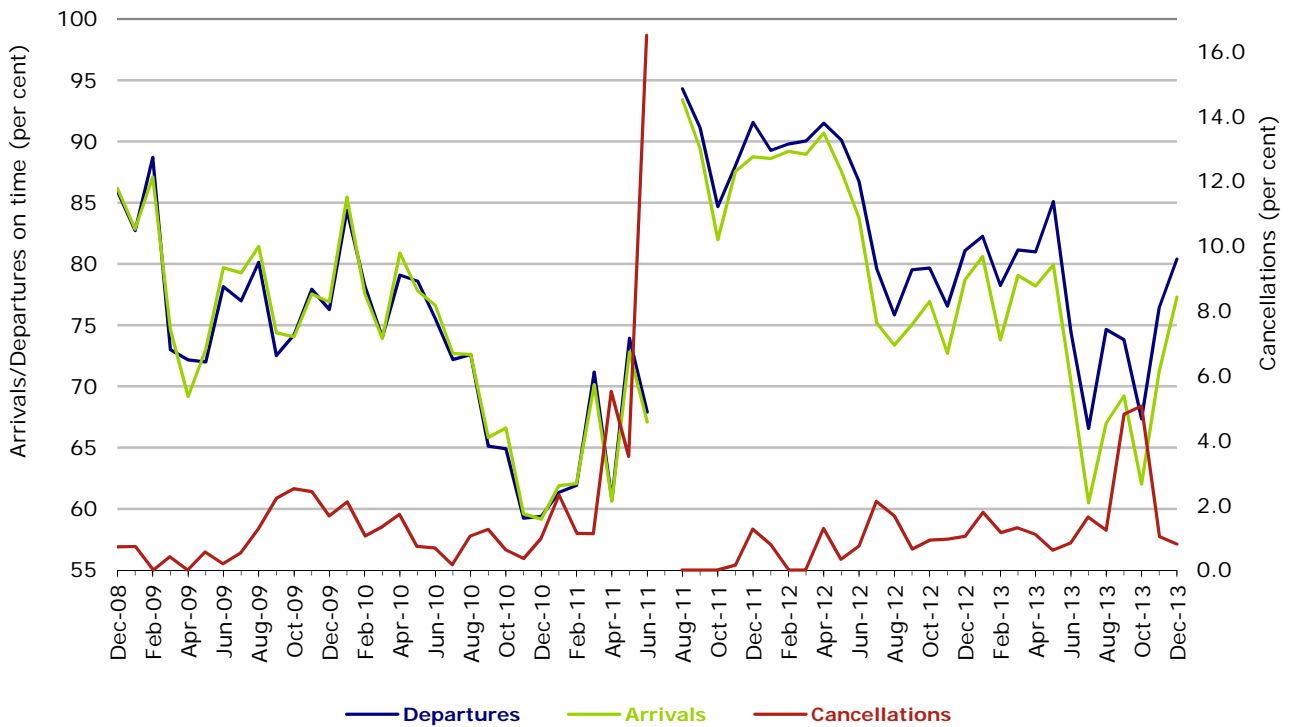


Figure 4 On time performance (by month from December 2008)—Qantas



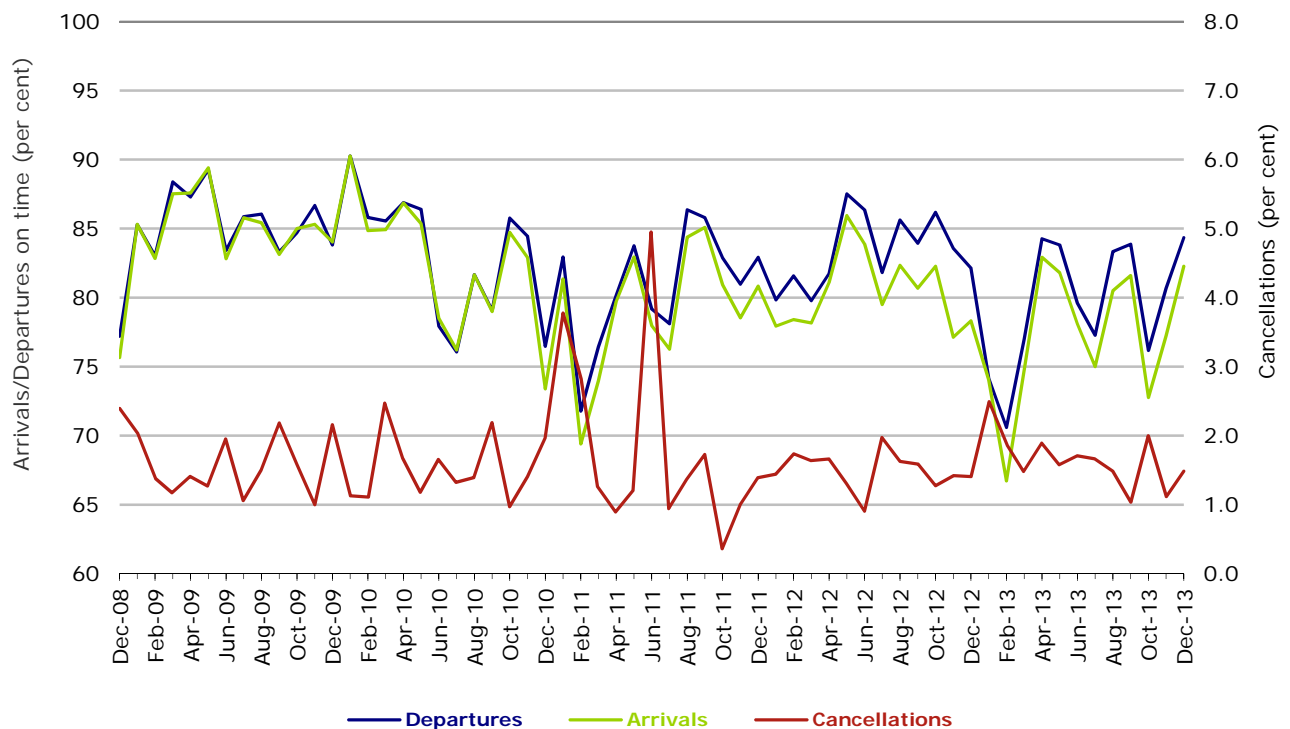
During October 2011 there were disruptions to Qantas services on several days due to industrial disputes and the entire fleet was grounded for nearly 48 hours at the end of the month.

Figure 5 On time performance (by month from December 2008)—Tiger Airways



No data for Tiger Airways for July 2011 as it was grounded by CASA from 2/7/2011 to 11/8/2011.

Figure 6 On time performance (by month from December 2008)—Virgin Australia



Major regional airlines on time performance

Figure 7 On time performance (by month from December 2008)—QantasLink

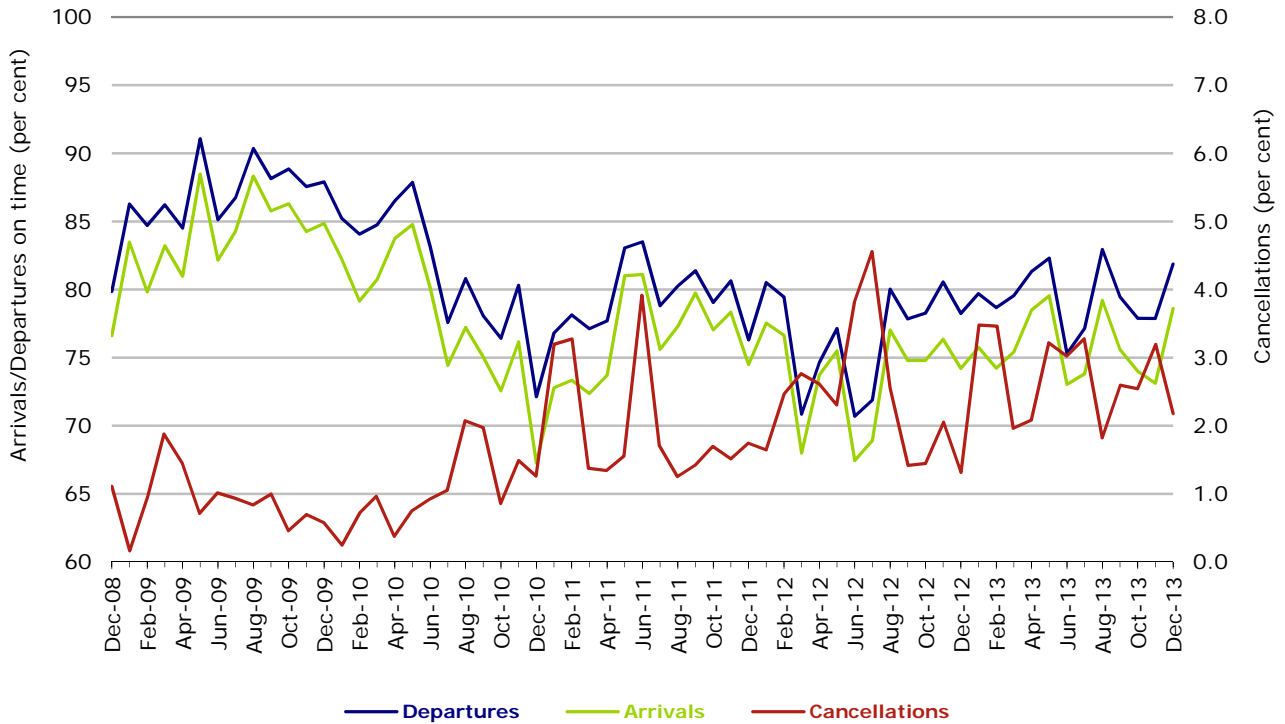


Figure 8 On time performance (by month from December 2008)—Regional Express

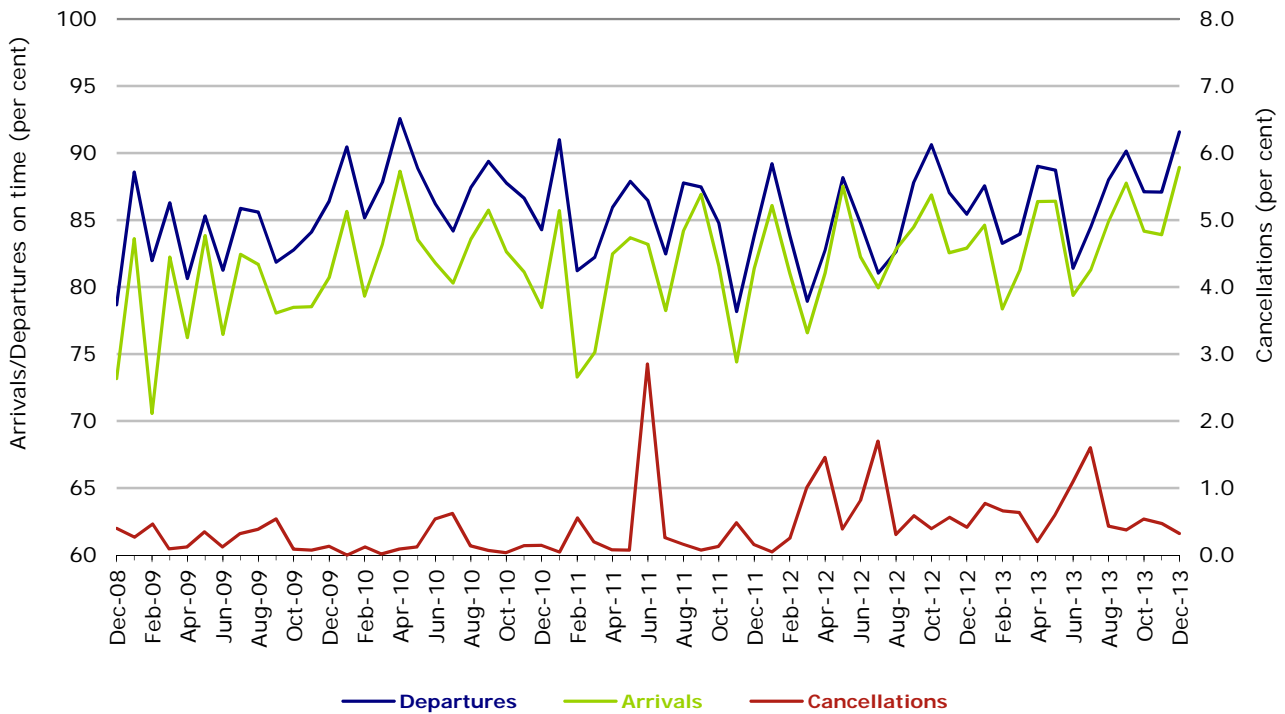
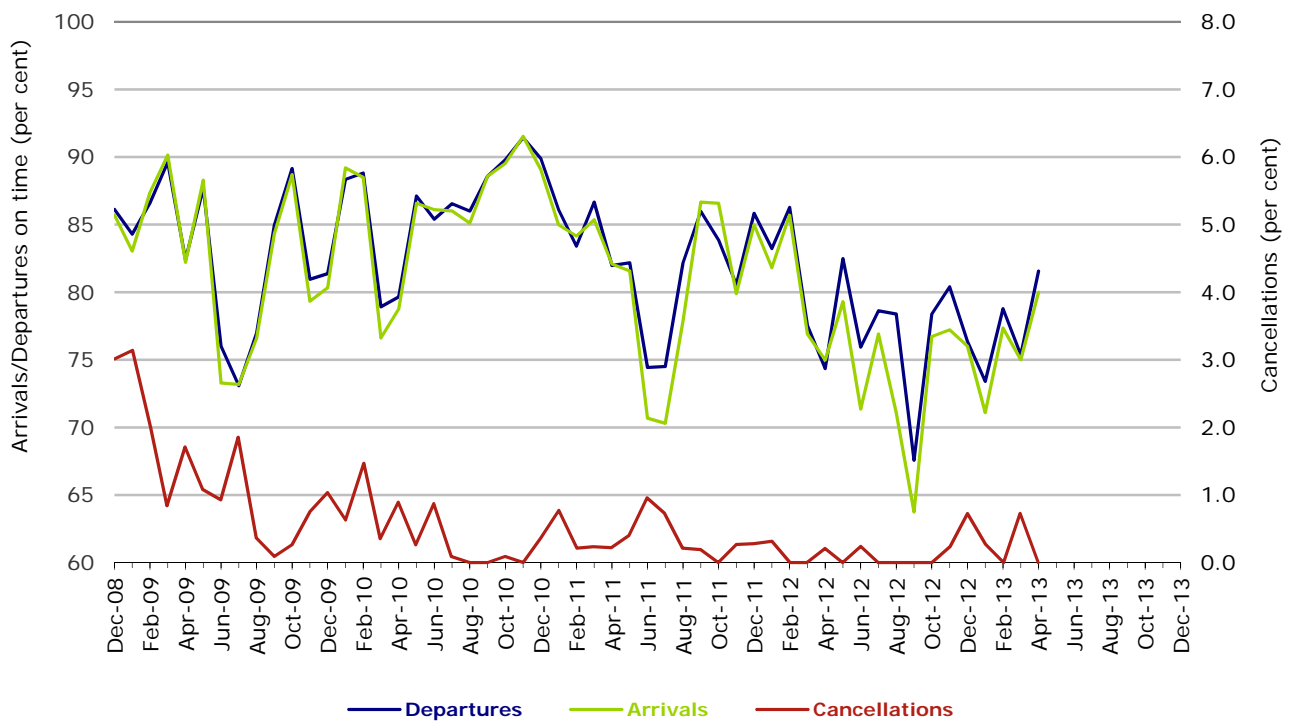
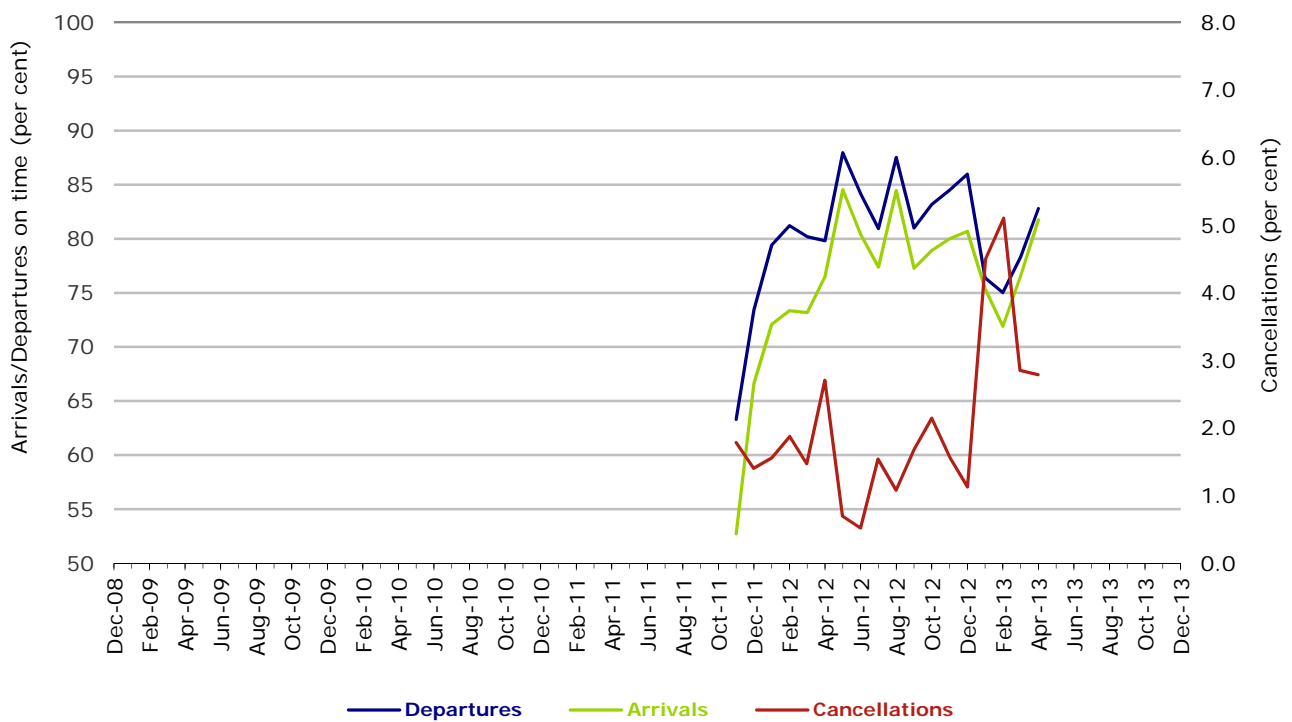


Figure 9 On time performance (by month from December 2008)—Skywest



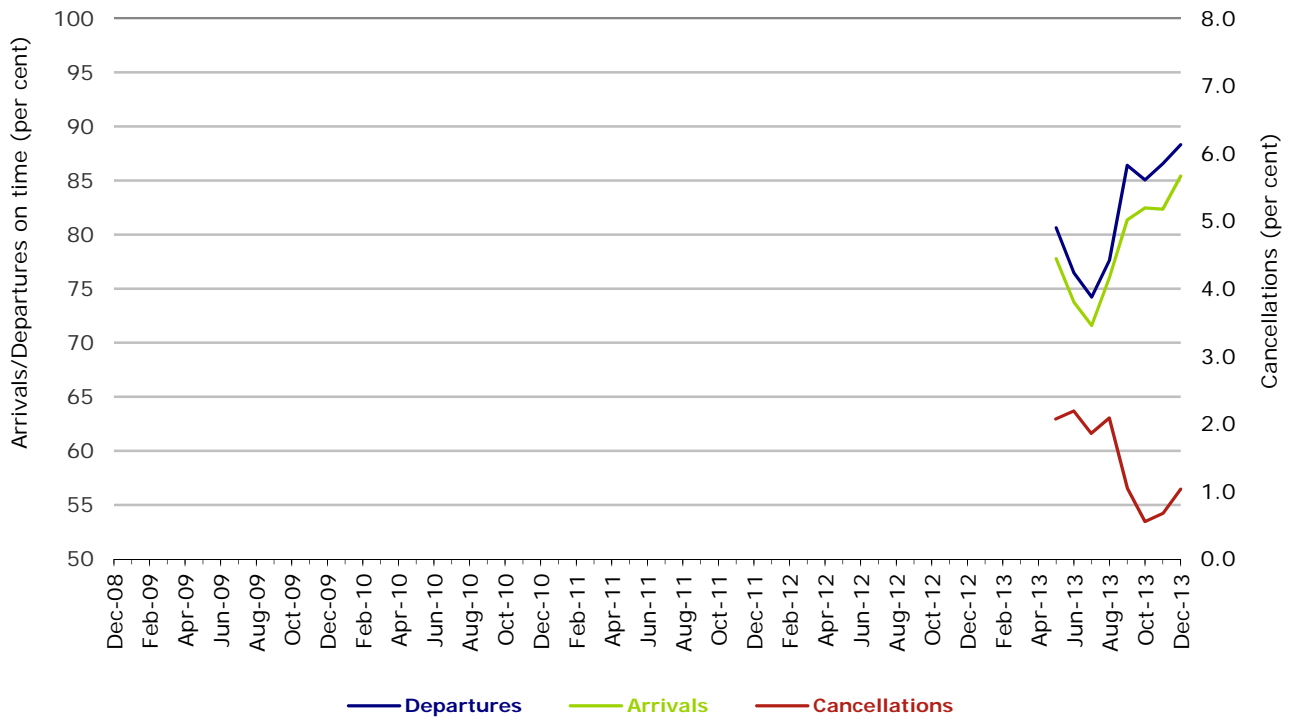
Following the acquisition of Skywest by Virgin Australia in May 2013, operations previously reported as Skywest and as Virgin Australia ATR/F100 Operations are reported as Virgin Australia Regional Airlines.

Figure 10 On time performance (by month from December 2008) Virgin Australia - ATR/F100 Operations



Following the acquisition of Skywest by Virgin Australia in May 2013, operations previously reported as Skywest and as Virgin Australia ATR/F100 Operations are reported as Virgin Australia Regional Airlines.

Figure 11 On time performance (by month from December 2008)
Virgin Australia Regional Airlines



Virgin Australia Regional Airlines commenced operations in May 2013. It was formed after the acquisition of Skywest by Virgin Australia and represents a combination of operations previously reported under Skywest and Virgin Australia – ATR/F100 Operations.

Individual routes

On time performance is reported for all routes where the passenger load averages over 8000 passengers per month over the previous six months, and where two or more airlines operate in competition on those routes. There are now 62 routes which meet this definition. Over time, however, routes which meet this definition may change as airline networks and traffic levels vary.

	<i>Sectors</i>		<i>Departures On Time</i>		<i>Arrivals On Time</i>		<i>Cancellations</i>	
	<i>Sched.</i>	<i>Flown</i>	<i>No.</i>	<i>%</i>	<i>No.</i>	<i>%</i>	<i>No.</i>	<i>%</i>
Adelaide-Brisbane								
Jetstar	349	349	285	81.7	275	78.8	0	0.0
Qantas	1 260	1 258	1 081	85.9	1 049	83.4	2	0.2
Virgin Australia	1 347	1 334	1 092	81.9	1 051	78.8	13	1.0
All Airlines	2 956	2 941	2 458	83.6	2 375	80.8	15	0.5
Adelaide-Canberra								
Qantas	521	520	481	92.5	494	95.0	1	0.2
QantasLink	260	252	157	62.3	185	73.4	8	3.1
Virgin Australia	313	309	283	91.6	285	92.2	4	1.3
All Airlines	1 094	1 081	921	85.2	964	89.2	13	1.2
Adelaide-Gold Coast								
Jetstar	438	432	346	80.1	371	85.9	6	1.4
Virgin Australia	364	355	331	93.2	339	95.5	9	2.5
All Airlines	802	787	677	86.0	710	90.2	15	1.9
Adelaide-Melbourne								
Jetstar	1 031	1 017	802	78.9	808	79.4	14	1.4
Qantas	3 486	3 451	2 976	86.2	3 082	89.3	35	1.0
QantasLink	208	203	184	90.6	183	90.1	5	2.4
Tigerair	770	752	594	79.0	560	74.5	18	2.3
Virgin Australia	3 292	3 248	2 763	85.1	2 772	85.3	44	1.3
All Airlines	8 787	8 671	7 319	84.4	7 405	85.4	116	1.3
Adelaide-Perth								
Jetstar	422	417	294	70.5	281	67.4	5	1.2
Qantas	1 317	1 317	1 145	86.9	1 152	87.5	0	0.0
Virgin Australia	742	739	633	85.7	610	82.5	3	0.4
All Airlines	2 481	2 473	2 072	83.8	2 043	82.6	8	0.3
Adelaide-Port Lincoln								
QantasLink	1 143	1 114	1 001	89.9	982	88.2	29	2.5
Regional Express	2 388	2 381	2 228	93.6	2 171	91.2	7	0.3
All Airlines	3 531	3 495	3 229	92.4	3 153	90.2	36	1.0
Adelaide-Sydney								
Jetstar	1 233	1 185	813	68.6	852	71.9	48	3.9
Qantas	3 228	3 213	2 793	86.9	2 842	88.5	15	0.5
Virgin Australia	2 007	1 985	1 664	83.8	1 678	84.5	22	1.1
All Airlines	6 468	6 383	5 270	82.6	5 372	84.2	85	1.3
Albury-Sydney								
QantasLink	1 332	1 324	802	60.6	789	59.6	8	0.6
Regional Express	1 253	1 248	1 069	85.7	1 040	83.3	5	0.4
Virgin Australia	2	2	1	50.0	2	100.0	0	0.0
Virgin Australia - ATR/F100 Operations	236	233	185	79.4	150	64.4	3	1.3
Virgin Australia Regional Airlines	489	486	366	75.3	328	67.5	3	0.6
All Airlines	3 312	3 293	2 423	73.6	2 309	70.1	19	0.6
Alice Springs-Melbourne								
	(From July 2013 only)							
Qantas	184	184	121	65.8	145	78.8	0	0.0
Tigerair	105	104	59	56.7	63	60.6	1	1.0
All Airlines	289	288	180	62.5	208	72.2	1	0.3

	<i>Sectors</i>		<i>Departures On Time</i>		<i>Arrivals On Time</i>		<i>Cancellations</i>	
	<i>Sched.</i>	<i>Flown</i>	<i>No.</i>	<i>%</i>	<i>No.</i>	<i>%</i>	<i>No.</i>	<i>%</i>
Alice Springs-Sydney	(From August 2013 only)							
Qantas	153	153	81	52.9	118	77.1	0	0.0
Tigerair	87	87	67	77.0	63	72.4	0	0.0
All Airlines	240	240	148	61.7	181	75.4	0	0.0
Ayers Rock-Sydney								
Jetstar	105	104	69	66.3	63	60.6	1	1.0
Qantas	154	154	137	89.0	138	89.6	0	0.0
Virgin Australia	365	364	269	73.9	303	83.2	1	0.3
All Airlines	624	622	475	76.4	504	81.0	2	0.3
Ballina-Sydney								
Jetstar	765	750	538	71.7	529	70.5	15	2.0
Regional Express	297	295	205	69.5	186	63.1	2	0.7
Virgin Australia	365	361	276	76.5	264	73.1	4	1.1
All Airlines	1 427	1 406	1 019	72.5	979	69.6	21	1.5
Brisbane-Adelaide								
Jetstar	347	347	323	93.1	315	90.8	0	0.0
Qantas	1 260	1 259	1 024	81.3	1 076	85.5	1	0.1
Virgin Australia	1 350	1 342	1 067	79.5	1 068	79.6	8	0.6
All Airlines	2 957	2 948	2 414	81.9	2 459	83.4	9	0.3
Brisbane-Bundaberg	(From July 2013 only)							
QantasLink	724	717	581	81.0	583	81.3	7	1.0
Virgin Australia Regional Airlines	184	184	151	82.1	157	85.3	0	0.0
All Airlines	908	901	732	81.2	740	82.1	7	0.8
Brisbane-Cairns								
Jetstar	1 319	1 295	952	73.5	1 001	77.3	24	1.8
Qantas	1 373	1 373	1 149	83.7	1 192	86.8	0	0.0
QantasLink	52	51	48	94.1	47	92.2	1	1.9
Virgin Australia	1 912	1 898	1 547	81.5	1 556	82.0	14	0.7
Virgin Australia - ATR/F100 Operations	35	35	30	85.7	31	88.6	0	0.0
All Airlines	4 691	4 652	3 726	80.1	3 827	82.3	39	0.8
Brisbane-Canberra								
Qantas	1 589	1 574	1 385	88.0	1 414	89.8	15	0.9
QantasLink	360	345	289	83.8	272	78.8	15	4.2
Virgin Australia	1 154	1 150	901	78.3	881	76.6	4	0.3
All Airlines	3 103	3 069	2 575	83.9	2 567	83.6	34	1.1
Brisbane-Darwin								
Jetstar	34	34	19	55.9	20	58.8	0	0.0
Qantas	369	369	294	79.7	302	81.8	0	0.0
Virgin Australia	367	365	259	71.0	259	71.0	2	0.5
All Airlines	770	768	572	74.5	581	75.7	2	0.3
Brisbane-Emerald								
QantasLink	2 175	2 079	1 851	89.0	1 694	81.5	96	4.4
Virgin Australia - ATR/F100 Operations	413	399	329	82.5	338	84.7	14	3.4
Virgin Australia Regional Airlines	814	800	702	87.8	646	80.8	14	1.7
All Airlines	3 402	3 278	2 882	87.9	2 678	81.7	124	3.6
Brisbane-Gladstone								
QantasLink	2 686	2 597	2 251	86.7	2 175	83.8	89	3.3
Virgin Australia	129	126	106	84.1	97	77.0	3	2.3
Virgin Australia - ATR/F100 Operations	505	491	373	76.0	370	75.4	14	2.8
Virgin Australia Regional Airlines	1 032	1 000	742	74.2	739	73.9	32	3.1
All Airlines	4 352	4 214	3 472	82.4	3 381	80.2	138	3.2

	<i>Sectors</i>		<i>Departures On Time</i>		<i>Arrivals On Time</i>		<i>Cancellations</i>	
	<i>Sched.</i>	<i>Flown</i>	<i>No.</i>	<i>%</i>	<i>No.</i>	<i>%</i>	<i>No.</i>	<i>%</i>
Brisbane-Hamilton Island								
Jetstar	208	208	153	73.6	185	88.9	0	0.0
Virgin Australia	368	367	308	83.9	307	83.7	1	0.3
All Airlines	576	575	461	80.2	492	85.6	1	0.2
Brisbane-Mackay								
Jetstar	1 208	1 185	879	74.2	937	79.1	23	1.9
QantasLink	1 306	1 294	1 114	86.1	1 107	85.5	12	0.9
Virgin Australia	1 951	1 924	1 549	80.5	1 504	78.2	27	1.4
All Airlines	4 465	4 403	3 542	80.4	3 548	80.6	62	1.4
Brisbane-Melbourne								
Jetstar	1 193	1 167	790	67.7	863	74.0	26	2.2
Qantas	4 985	4 948	4 165	84.2	4 050	81.9	37	0.7
Tigerair	1 037	1 011	628	62.1	626	61.9	26	2.5
Virgin Australia	4 545	4 466	3 491	78.2	3 116	69.8	79	1.7
All Airlines	11 760	11 592	9 074	78.3	8 655	74.7	168	1.4
Brisbane-Moranbah (From July 2013 only)								
QantasLink	978	894	792	88.6	818	91.5	84	8.6
Virgin Australia Regional Airlines	442	438	364	83.1	279	63.7	4	0.9
All Airlines	1 420	1 332	1 156	86.8	1 097	82.4	88	6.2
Brisbane-Mount Isa								
Qantas	676	676	603	89.2	614	90.8	0	0.0
Virgin Australia	259	259	227	87.6	219	84.6	0	0.0
All Airlines	935	935	830	88.8	833	89.1	0	0.0
Brisbane-Newcastle								
Jetstar	1 348	1 336	1 073	80.3	1 074	80.4	12	0.9
QantasLink	831	802	595	74.2	382	47.6	29	3.5
Virgin Australia	855	845	713	84.4	703	83.2	10	1.2
Virgin Australia - ATR/F100 Operations	112	107	88	82.2	85	79.4	5	4.5
All Airlines	3 146	3 090	2 469	79.9	2 244	72.6	56	1.8
Brisbane-Perth								
Jetstar	302	302	240	79.5	227	75.2	0	0.0
Qantas	1 472	1 472	1 117	75.9	1 216	82.6	0	0.0
Virgin Australia	1 056	1 052	775	73.7	687	65.3	4	0.4
All Airlines	2 830	2 826	2 132	75.4	2 130	75.4	4	0.1
Brisbane-Proserpine								
Jetstar	352	352	244	69.3	226	64.2	0	0.0
Virgin Australia	577	575	498	86.6	494	85.9	2	0.3
Virgin Australia - ATR/F100 Operations	30	30	21	70.0	22	73.3	0	0.0
All Airlines	959	957	763	79.7	742	77.5	2	0.2
Brisbane-Rockhampton								
QantasLink	2 504	2 423	1 958	80.8	1 936	79.9	81	3.2
Virgin Australia	1 163	1 147	904	78.8	912	79.5	16	1.4
Virgin Australia - ATR/F100 Operations	488	458	348	76.0	360	78.6	30	6.1
Virgin Australia Regional Airlines	929	913	725	79.4	752	82.4	16	1.7
All Airlines	5 084	4 941	3 935	79.6	3 960	80.1	143	2.8
Brisbane-Sydney								
Jetstar	1 399	1 326	874	65.9	924	69.7	73	5.2
Qantas	7 256	7 105	5 725	80.6	5 580	78.5	151	2.1
Tigerair	913	889	550	61.9	527	59.3	24	2.6
Virgin Australia	6 551	6 340	5 016	79.1	4 867	76.8	211	3.2
All Airlines	16 119	15 660	12 165	77.7	11 898	76.0	459	2.8

	<i>Sectors</i>		<i>Departures On Time</i>		<i>Arrivals On Time</i>		<i>Cancellations</i>	
	<i>Sched.</i>	<i>Flown</i>	<i>No.</i>	<i>%</i>	<i>No.</i>	<i>%</i>	<i>No.</i>	<i>%</i>
Brisbane-Townsville								
Jetstar	364	361	265	73.4	283	78.4	3	0.8
Qantas	1 757	1 756	1 460	83.1	1 483	84.5	1	0.1
Virgin Australia	1 962	1 948	1 515	77.8	1 517	77.9	14	0.7
All Airlines	4 083	4 065	3 240	79.7	3 283	80.8	18	0.4
Broome-Perth								
Qantas	369	368	237	64.4	289	78.5	1	0.3
QantasLink	652	638	569	89.2	580	90.9	14	2.1
Skywest	62	62	34	54.8	34	54.8	0	0.0
Virgin Australia	545	533	394	73.9	413	77.5	12	2.2
Virgin Australia Regional Airlines	163	163	89	54.6	80	49.1	0	0.0
All Airlines	1 791	1 764	1 323	75.0	1 396	79.1	27	1.5
Bundaberg-Brisbane (From July 2013 only)								
QantasLink	724	719	566	78.7	503	70.0	5	0.7
Virgin Australia Regional Airlines	184	184	145	78.8	145	78.8	0	0.0
All Airlines	908	903	711	78.7	648	71.8	5	0.6
Cairns-Brisbane								
Jetstar	1 321	1 304	991	76.0	890	68.3	17	1.3
Qantas	1 373	1 370	1 189	86.8	1 105	80.7	3	0.2
QantasLink	53	51	48	94.1	48	94.1	2	3.8
Virgin Australia	1 909	1 894	1 486	78.5	1 388	73.3	15	0.8
Virgin Australia - ATR/F100 Operations	36	36	29	80.6	29	80.6	0	0.0
All Airlines	4 692	4 655	3 743	80.4	3 460	74.3	37	0.8
Cairns-Melbourne								
Jetstar	1 067	1 055	869	82.4	866	82.1	12	1.1
Qantas	365	365	288	78.9	305	83.6	0	0.0
Tigerair	454	447	345	77.2	311	69.6	7	1.5
Virgin Australia	407	404	276	68.3	283	70.0	3	0.7
All Airlines	2 293	2 271	1 778	78.3	1 765	77.7	22	1.0
Cairns-Sydney								
Jetstar	1 055	1 046	874	83.6	825	78.9	9	0.9
Qantas	860	858	720	83.9	745	86.8	2	0.2
Tigerair	282	281	211	75.1	207	73.7	1	0.4
Virgin Australia	1 061	1 057	892	84.4	912	86.3	4	0.4
All Airlines	3 258	3 242	2 697	83.2	2 689	82.9	16	0.5
Cairns-Townsville								
QantasLink	2 165	2 122	1 886	88.9	1 876	88.4	43	2.0
Virgin Australia - ATR/F100 Operations	103	99	83	83.8	83	83.8	4	3.9
Virgin Australia Regional Airlines	211	207	199	96.1	193	93.2	4	1.9
All Airlines	2 479	2 428	2 168	89.3	2 152	88.6	51	2.1
Canberra-Adelaide								
Qantas	566	565	515	91.2	517	91.5	1	0.2
QantasLink	260	256	189	73.8	167	65.2	4	1.5
Virgin Australia	313	309	280	90.6	278	90.0	4	1.3
All Airlines	1 139	1 130	984	87.1	962	85.1	9	0.8
Canberra-Brisbane								
Qantas	1 590	1 574	1 413	89.8	1 360	86.4	16	1.0
QantasLink	358	341	235	68.9	252	73.9	17	4.7
Virgin Australia	1 156	1 148	924	80.5	896	78.0	8	0.7
All Airlines	3 104	3 063	2 572	84.0	2 508	81.9	41	1.3
Canberra-Melbourne								
Qantas	2 926	2 880	2 600	90.3	2 575	89.4	46	1.6
QantasLink	507	491	381	77.6	330	67.2	16	3.2
Virgin Australia	2 100	2 062	1 640	79.5	1 630	79.0	38	1.8
All Airlines	5 533	5 433	4 621	85.1	4 535	83.5	100	1.8

	<i>Sectors</i>		<i>Departures On Time</i>		<i>Arrivals On Time</i>		<i>Cancellations</i>	
	<i>Sched.</i>	<i>Flown</i>	<i>No.</i>	<i>%</i>	<i>No.</i>	<i>%</i>	<i>No.</i>	<i>%</i>
Canberra-Sydney								
Qantas	1 720	1 686	1 489	88.3	1 466	87.0	34	2.0
QantasLink	4 762	4 509	3 554	78.8	3 544	78.6	253	5.3
Virgin Australia	695	677	568	83.9	557	82.3	18	2.6
Virgin Australia - ATR/F100 Operations	768	744	598	80.4	582	78.2	24	3.1
Virgin Australia Regional Airlines	1 979	1 930	1 701	88.1	1 657	85.9	49	2.5
All Airlines	9 924	9 546	7 910	82.9	7 806	81.8	378	3.8
Coffs Harbour-Sydney								
QantasLink	1 787	1 771	1 204	68.0	1 259	71.1	16	0.9
Tigerair	235	230	183	79.6	180	78.3	5	2.1
Virgin Australia	721	709	569	80.3	590	83.2	12	1.7
All Airlines	2 743	2 710	1 956	72.2	2 029	74.9	33	1.2
Darwin-Brisbane								
Jetstar	32	32	15	46.9	16	50.0	0	0.0
Qantas	370	369	239	64.8	249	67.5	1	0.3
Virgin Australia	368	365	255	69.9	281	77.0	3	0.8
All Airlines	770	766	509	66.4	546	71.3	4	0.5
Darwin-Melbourne								
Jetstar	205	204	103	50.5	128	62.7	1	0.5
Qantas	190	190	146	76.8	153	80.5	0	0.0
Virgin Australia	364	362	340	93.9	326	90.1	2	0.5
All Airlines	759	756	589	77.9	607	80.3	3	0.4
Darwin-Perth								
Qantas	364	364	284	78.0	327	89.8	0	0.0
Virgin Australia	313	312	296	94.9	300	96.2	1	0.3
All Airlines	677	676	580	85.8	627	92.8	1	0.1
Darwin-Sydney								
Jetstar	328	324	215	66.4	248	76.5	4	1.2
Qantas	594	593	486	82.0	508	85.7	1	0.2
Virgin Australia	360	358	268	74.9	259	72.3	2	0.6
All Airlines	1 282	1 275	969	76.0	1 015	79.6	7	0.5
Dubbo-Sydney								
QantasLink	1 436	1 424	913	64.1	802	56.3	12	0.8
Regional Express	1 792	1 777	1 538	86.6	1 475	83.0	15	0.8
All Airlines	3 228	3 201	2 451	76.6	2 277	71.1	27	0.8
Emerald-Brisbane								
QantasLink	2 174	2 072	1 634	78.9	1 522	73.5	102	4.7
Virgin Australia - ATR/F100 Operations	413	395	336	85.1	308	78.0	18	4.4
Virgin Australia Regional Airlines	815	796	641	80.5	666	83.7	19	2.3
All Airlines	3 402	3 263	2 611	80.0	2 496	76.5	139	4.1
Geraldton-Perth								
QantasLink	681	678	581	85.7	563	83.0	3	0.4
Skywest	316	316	250	79.1	237	75.0	0	0.0
Virgin Australia Regional Airlines	760	745	638	85.6	603	80.9	15	2.0
All Airlines	1 757	1 739	1 469	84.5	1 403	80.7	18	1.0
Gladstone-Brisbane								
QantasLink	2 920	2 818	2 249	79.8	2 050	72.7	102	3.5
Virgin Australia	124	120	78	65.0	57	47.5	4	3.2
Virgin Australia - ATR/F100 Operations	505	481	354	73.6	335	69.6	24	4.8
Virgin Australia Regional Airlines	1 034	1 003	763	76.1	717	71.5	31	3.0
All Airlines	4 583	4 422	3 444	77.9	3 159	71.4	161	3.5

	<i>Sectors</i>		<i>Departures On Time</i>		<i>Arrivals On Time</i>		<i>Cancellations</i>	
	<i>Sched.</i>	<i>Flown</i>	<i>No.</i>	<i>%</i>	<i>No.</i>	<i>%</i>	<i>No.</i>	<i>%</i>
Gold Coast-Adelaide								
Jetstar	439	435	369	84.8	372	85.5	4	0.9
Virgin Australia	363	353	319	90.4	322	91.2	10	2.8
All Airlines	802	788	688	87.3	694	88.1	14	1.7
Gold Coast-Melbourne								
Jetstar	2 328	2 300	1 827	79.4	1 780	77.4	28	1.2
Tigerair	854	846	555	65.6	501	59.2	8	0.9
Virgin Australia	2 126	2 103	1 645	78.2	1 684	80.1	23	1.1
All Airlines	5 308	5 249	4 027	76.7	3 965	75.5	59	1.1
Gold Coast-Sydney								
Jetstar	3 774	3 591	2 724	75.9	2 773	77.2	183	4.8
Qantas	1 096	1 089	938	86.1	945	86.8	7	0.6
Tigerair	717	695	502	72.2	457	65.8	22	3.1
Virgin Australia	3 785	3 680	2 864	77.8	2 932	79.7	105	2.8
All Airlines	9 372	9 055	7 028	77.6	7 107	78.5	317	3.4
Hamilton Island-Brisbane								
Jetstar	208	208	170	81.7	167	80.3	0	0.0
Virgin Australia	368	365	286	78.4	277	75.9	3	0.8
All Airlines	576	573	456	79.6	444	77.5	3	0.5
Hamilton Island-Sydney								
Jetstar	335	334	228	68.3	243	72.8	1	0.3
Virgin Australia	365	362	271	74.9	277	76.5	3	0.8
All Airlines	700	696	499	71.7	520	74.7	4	0.6
Hobart-Melbourne								
Jetstar	2 035	2 010	1 443	71.8	1 416	70.4	25	1.2
Qantas	730	728	655	90.0	645	88.6	2	0.3
QantasLink	365	362	333	92.0	262	72.4	3	0.8
Tigerair	421	416	295	70.9	278	66.8	5	1.2
Virgin Australia	1 749	1 742	1 342	77.0	1 360	78.1	7	0.4
All Airlines	5 300	5 258	4 068	77.4	3 961	75.3	42	0.8
Hobart-Sydney								
Jetstar	937	931	605	65.0	659	70.8	6	0.6
Qantas	365	365	311	85.2	317	86.8	0	0.0
Virgin Australia	717	712	547	76.8	578	81.2	5	0.7
All Airlines	2 019	2 008	1 463	72.9	1 554	77.4	11	0.5
Kalgoorlie-Perth								
Qantas	730	709	639	90.1	638	90.0	21	2.9
QantasLink	335	330	297	90.0	292	88.5	5	1.5
Skywest	228	228	176	77.2	152	66.7	0	0.0
Virgin Australia	224	222	188	84.7	173	77.9	2	0.9
Virgin Australia Regional Airlines	238	237	192	81.0	176	74.3	1	0.4
All Airlines	1 755	1 726	1 492	86.4	1 431	82.9	29	1.7
Karratha-Perth								
Qantas	2 230	2 113	1 931	91.4	1 909	90.3	117	5.2
QantasLink	772	702	644	91.7	624	88.9	70	9.1
Virgin Australia	801	780	636	81.5	608	77.9	21	2.6
All Airlines	3 803	3 595	3 211	89.3	3 141	87.4	208	5.5
Launceston-Melbourne								
Jetstar	1 520	1 497	1 059	70.7	1 019	68.1	23	1.5
QantasLink	1 395	1 349	1 096	81.2	1 057	78.4	46	3.3
Virgin Australia	1 471	1 466	1 185	80.8	1 130	77.1	5	0.3
All Airlines	4 386	4 312	3 340	77.5	3 206	74.4	74	1.7

	<i>Sectors</i>		<i>Departures On Time</i>		<i>Arrivals On Time</i>		<i>Cancellations</i>	
	<i>Sched.</i>	<i>Flown</i>	<i>No.</i>	<i>%</i>	<i>No.</i>	<i>%</i>	<i>No.</i>	<i>%</i>
Launceston-Sydney								
Jetstar	700	696	431	61.9	442	63.5	4	0.6
Virgin Australia	364	362	265	73.2	275	76.0	2	0.5
All Airlines	1 064	1 058	696	65.8	717	67.8	6	0.6
Mackay-Brisbane								
Jetstar	1 213	1 183	746	63.1	687	58.1	30	2.5
QantasLink	1 306	1 290	1 080	83.7	1 063	82.4	16	1.2
Virgin Australia	1 950	1 919	1 533	79.9	1 398	72.9	31	1.6
All Airlines	4 469	4 392	3 359	76.5	3 148	71.7	77	1.7
Melbourne-Adelaide								
Jetstar	1 022	1 016	841	82.8	812	79.9	6	0.6
Qantas	3 486	3 457	3 081	89.1	3 061	88.5	29	0.8
QantasLink	208	204	181	88.7	171	83.8	4	1.9
Tigerair	768	753	657	87.3	600	79.7	15	2.0
Virgin Australia	3 296	3 262	2 682	82.2	2 630	80.6	34	1.0
All Airlines	8 780	8 692	7 442	85.6	7 274	83.7	88	1.0
Melbourne-Alice Springs								
			(From July 2013 only)					
Qantas	184	184	157	85.3	153	83.2	0	0.0
Tigerair	105	104	86	82.7	69	66.3	1	1.0
All Airlines	289	288	243	84.4	222	77.1	1	0.3
Melbourne-Brisbane								
Jetstar	1 185	1 157	648	56.0	630	54.5	28	2.4
Qantas	4 988	4 947	4 197	84.8	3 804	76.9	41	0.8
Tigerair	1 039	1 013	713	70.4	629	62.1	26	2.5
Virgin Australia	4 533	4 452	3 329	74.8	2 953	66.3	81	1.8
All Airlines	11 745	11 569	8 887	76.8	8 016	69.3	176	1.5
Melbourne-Cairns								
Jetstar	1 070	1 059	838	79.1	886	83.7	11	1.0
Qantas	365	365	305	83.6	308	84.4	0	0.0
Tigerair	453	449	399	88.9	387	86.2	4	0.9
Virgin Australia	407	406	322	79.3	338	83.3	1	0.2
All Airlines	2 295	2 279	1 864	81.8	1 919	84.2	16	0.7
Melbourne-Canberra								
Qantas	2 926	2 883	2 591	89.9	2 582	89.6	43	1.5
QantasLink	506	481	429	89.2	373	77.5	25	4.9
Virgin Australia	2 100	2 067	1 632	79.0	1 631	78.9	33	1.6
All Airlines	5 532	5 431	4 652	85.7	4 586	84.4	101	1.8
Melbourne-Darwin								
Jetstar	205	204	137	67.2	143	70.1	1	0.5
Qantas	190	190	167	87.9	162	85.3	0	0.0
Virgin Australia	365	364	323	88.7	290	79.7	1	0.3
All Airlines	760	758	627	82.7	595	78.5	2	0.3
Melbourne-Gold Coast								
Jetstar	2 332	2 310	1 621	70.2	1 682	72.8	22	0.9
Tigerair	854	847	648	76.5	592	69.9	7	0.8
Virgin Australia	2 125	2 107	1 583	75.1	1 607	76.3	18	0.8
All Airlines	5 311	5 264	3 852	73.2	3 881	73.7	47	0.9
Melbourne-Hobart								
Jetstar	2 032	2 010	1 524	75.8	1 556	77.4	22	1.1
Qantas	730	730	684	93.7	674	92.3	0	0.0
QantasLink	365	360	256	71.1	246	68.3	5	1.4
Tigerair	421	417	316	75.8	308	73.9	4	1.0
Virgin Australia	1 748	1 741	1 354	77.8	1 335	76.7	7	0.4
All Airlines	5 296	5 258	4 134	78.6	4 119	78.3	38	0.7

	<i>Sectors</i>		<i>Departures On Time</i>		<i>Arrivals On Time</i>		<i>Cancellations</i>	
	<i>Sched.</i>	<i>Flown</i>	<i>No.</i>	<i>%</i>	<i>No.</i>	<i>%</i>	<i>No.</i>	<i>%</i>
Melbourne-Launceston								
Jetstar	1 512	1 492	1 157	77.5	1 170	78.4	20	1.3
QantasLink	1 395	1 349	1 102	81.7	1 036	76.8	46	3.3
Virgin Australia	1 469	1 465	1 167	79.7	1 195	81.6	4	0.3
All Airlines	4 376	4 306	3 426	79.6	3 401	79.0	70	1.6
Melbourne-Mildura								
QantasLink	1 043	1 038	864	83.2	798	76.9	5	0.5
Regional Express	974	974	912	93.6	872	89.5	0	0.0
Virgin Australia	365	365	302	82.7	291	79.7	0	0.0
All Airlines	2 382	2 377	2 078	87.4	1 961	82.5	5	0.2
Melbourne-Newcastle								
Jetstar	1 241	1 231	935	76.0	946	76.8	10	0.8
Virgin Australia	365	363	301	82.9	303	83.5	2	0.5
All Airlines	1 606	1 594	1 236	77.5	1 249	78.4	12	0.7
Melbourne-Perth								
Jetstar	964	938	763	81.3	734	78.3	26	2.7
Qantas	2 613	2 602	2 095	80.5	2 039	78.4	11	0.4
Tigerair	717	710	591	83.2	547	77.0	7	1.0
Virgin Australia	1 680	1 677	1 349	80.4	1 163	69.4	3	0.2
All Airlines	5 974	5 927	4 798	81.0	4 483	75.6	47	0.8
Melbourne-Sunshine Coast								
Jetstar	738	729	517	70.9	549	75.3	9	1.2
Tigerair	257	246	225	91.5	214	87.0	11	4.3
Virgin Australia	365	361	296	82.0	282	78.1	4	1.1
All Airlines	1 360	1 336	1 038	77.7	1 045	78.2	24	1.8
Melbourne-Sydney								
Jetstar	3 636	3 488	2 410	69.1	2 522	72.3	148	4.1
Qantas	10 367	10 022	8 635	86.2	8 334	83.2	345	3.3
Tigerair	2 531	2 480	1 957	78.9	2 022	81.5	51	2.0
Virgin Australia	9 231	8 931	7 077	79.2	6 798	76.1	300	3.2
All Airlines	25 765	24 921	20 079	80.6	19 676	79.0	844	3.3
Mildura-Melbourne								
QantasLink	1 043	1 037	899	86.7	858	82.7	6	0.6
Regional Express	975	974	900	92.4	870	89.3	1	0.1
Virgin Australia	365	365	279	76.4	287	78.6	0	0.0
All Airlines	2 383	2 376	2 078	87.5	2 015	84.8	7	0.3
Moranbah-Brisbane								
	(From July 2013 only)							
QantasLink	946	866	730	84.3	698	80.6	80	8.5
Virgin Australia Regional Airlines	442	437	298	68.2	185	42.3	5	1.1
All Airlines	1 388	1 303	1 028	78.9	883	67.8	85	6.1
Mount Isa-Brisbane								
Qantas	676	674	583	86.5	560	83.1	2	0.3
Virgin Australia	259	256	210	82.0	180	70.3	3	1.2
All Airlines	935	930	793	85.3	740	79.6	5	0.5
Newcastle-Brisbane								
Jetstar	1 345	1 334	1 028	77.1	1 006	75.4	11	0.8
QantasLink	831	802	373	46.5	362	45.1	29	3.5
Virgin Australia	856	841	616	73.2	542	64.4	15	1.8
Virgin Australia - ATR/F100 Operations	112	107	85	79.4	72	67.3	5	4.5
All Airlines	3 144	3 084	2 102	68.2	1 982	64.3	60	1.9
Newcastle-Melbourne								
Jetstar	1 243	1 233	929	75.3	903	73.2	10	0.8
Virgin Australia	365	362	214	59.1	225	62.2	3	0.8
All Airlines	1 608	1 595	1 143	71.7	1 128	70.7	13	0.8

	<i>Sectors</i>		<i>Departures On Time</i>		<i>Arrivals On Time</i>		<i>Cancellations</i>	
	<i>Sched.</i>	<i>Flown</i>	<i>No.</i>	<i>%</i>	<i>No.</i>	<i>%</i>	<i>No.</i>	<i>%</i>
Newman-Perth								
Qantas	1 576	1 537	1 347	87.6	1 313	85.4	39	2.5
QantasLink	375	358	329	91.9	324	90.5	17	4.5
Skywest	48	48	43	89.6	42	87.5	0	0.0
Virgin Australia	457	448	362	80.8	355	79.2	9	2.0
Virgin Australia Regional Airlines	83	75	58	77.3	53	70.7	8	9.6
All Airlines	2 539	2 466	2 139	86.7	2 087	84.6	73	2.9
Perth-Adelaide								
Jetstar	421	419	314	74.9	350	83.5	2	0.5
Qantas	1 355	1 354	1 136	83.9	1 224	90.4	1	0.1
Virgin Australia	741	733	670	91.4	699	95.4	8	1.1
All Airlines	2 517	2 506	2 120	84.6	2 273	90.7	11	0.4
Perth-Brisbane								
Jetstar	305	304	162	53.3	209	68.8	1	0.3
Qantas	1 472	1 469	1 257	85.6	1 226	83.5	3	0.2
Virgin Australia	1 055	1 054	883	83.8	803	76.2	1	0.1
All Airlines	2 832	2 827	2 302	81.4	2 238	79.2	5	0.2
Perth-Broome								
Qantas	370	370	325	87.8	319	86.2	0	0.0
QantasLink	652	635	578	91.0	571	89.9	17	2.6
Skywest	53	53	40	75.5	40	75.5	0	0.0
Virgin Australia	545	537	457	85.1	475	88.5	8	1.5
Virgin Australia Regional Airlines	159	159	122	76.7	123	77.4	0	0.0
All Airlines	1 779	1 754	1 522	86.8	1 528	87.1	25	1.4
Perth-Darwin								
Qantas	364	364	321	88.2	317	87.1	0	0.0
Virgin Australia	313	313	281	89.8	279	89.1	0	0.0
All Airlines	677	677	602	88.9	596	88.0	0	0.0
Perth-Geraldton								
QantasLink	681	679	585	86.2	555	81.7	2	0.3
Skywest	312	312	240	76.9	227	72.8	0	0.0
Virgin Australia Regional Airlines	752	737	647	87.8	629	85.3	15	2.0
All Airlines	1 745	1 728	1 472	85.2	1 411	81.7	17	1.0
Perth-Kalgoorlie								
Qantas	732	712	646	90.7	649	91.2	20	2.7
QantasLink	333	330	309	93.6	308	93.3	3	0.9
Skywest	228	228	181	79.4	165	72.4	0	0.0
Virgin Australia	225	224	193	86.2	193	86.2	1	0.4
Virgin Australia Regional Airlines	234	234	206	88.0	200	85.5	0	0.0
All Airlines	1 752	1 728	1 535	88.8	1 515	87.7	24	1.4
Perth-Karratha								
Qantas	2 230	2 125	1 952	91.9	1 941	91.3	105	4.7
QantasLink	772	702	659	93.9	660	94.0	70	9.1
Virgin Australia	800	784	699	89.2	699	89.2	16	2.0
All Airlines	3 802	3 611	3 310	91.7	3 300	91.4	191	5.0
Perth-Melbourne								
Jetstar	968	933	627	67.2	680	72.9	35	3.6
Qantas	2 615	2 602	2 141	82.3	2 228	85.6	13	0.5
Tigerair	716	707	523	74.0	508	71.9	9	1.3
Virgin Australia	1 679	1 677	1 419	84.6	1 390	82.9	2	0.1
All Airlines	5 978	5 919	4 710	79.6	4 806	81.2	59	1.0

	<i>Sectors</i>		<i>Departures On Time</i>		<i>Arrivals On Time</i>		<i>Cancellations</i>	
	<i>Sched.</i>	<i>Flown</i>	<i>No.</i>	<i>%</i>	<i>No.</i>	<i>%</i>	<i>No.</i>	<i>%</i>
Perth-Newman								
Qantas	1 576	1 540	1 394	90.5	1 388	90.1	36	2.3
QantasLink	375	359	326	90.8	330	91.9	16	4.3
Skywest	48	48	43	89.6	42	87.5	0	0.0
Virgin Australia	457	449	406	90.4	396	88.2	8	1.8
Virgin Australia Regional Airlines	87	80	58	72.5	63	78.8	7	8.0
All Airlines	2 543	2 476	2 227	89.9	2 219	89.6	67	2.6
Perth-Port Hedland								
Qantas	1 490	1 442	1 309	90.8	1 300	90.2	48	3.2
QantasLink	513	495	467	94.3	470	94.9	18	3.5
Virgin Australia	711	692	616	89.0	616	89.0	19	2.7
All Airlines	2 714	2 629	2 392	91.0	2 386	90.8	85	3.1
Perth-Sydney								
Jetstar	491	483	281	58.2	352	72.9	8	1.6
Qantas	2 426	2 421	2 028	83.8	2 155	89.0	5	0.2
Tigerair	10	10	8	80.0	10	100.0	0	0.0
Virgin Australia	1 388	1 383	1 134	82.0	1 182	85.5	5	0.4
All Airlines	4 315	4 297	3 451	80.3	3 699	86.1	18	0.4
Port Hedland-Perth								
Qantas	1 492	1 437	1 266	88.1	1 243	86.5	55	3.7
QantasLink	513	494	453	91.7	456	92.3	19	3.7
Virgin Australia	711	692	591	85.4	562	81.2	19	2.7
All Airlines	2 716	2 623	2 310	88.1	2 261	86.2	93	3.4
Port Lincoln-Adelaide								
QantasLink	1 142	1 118	1 009	90.3	1 003	89.7	24	2.1
Regional Express	2 388	2 380	2 172	91.3	2 148	90.3	8	0.3
All Airlines	3 530	3 498	3 181	90.9	3 151	90.1	32	0.9
Port Macquarie-Sydney								
QantasLink	1 606	1 571	1 025	65.2	933	59.4	35	2.2
Virgin Australia - ATR/F100 Operations	242	229	178	77.7	164	71.6	13	5.4
Virgin Australia Regional Airlines	491	484	373	77.1	352	72.7	7	1.4
All Airlines	2 339	2 284	1 576	69.0	1 449	63.4	55	2.4
Proserpine-Brisbane								
Jetstar	352	352	256	72.7	246	69.9	0	0.0
Virgin Australia	579	574	435	75.8	333	58.0	5	0.9
Virgin Australia - ATR/F100 Operations	29	29	17	58.6	10	34.5	0	0.0
All Airlines	960	955	708	74.1	589	61.7	5	0.5
Rockhampton-Brisbane								
QantasLink	2 277	2 187	1 679	76.8	1 528	69.9	90	4.0
Virgin Australia	1 166	1 143	867	75.9	747	65.4	23	2.0
Virgin Australia - ATR/F100 Operations	486	456	359	78.7	353	77.4	30	6.2
Virgin Australia Regional Airlines	928	914	775	84.8	741	81.1	14	1.5
All Airlines	4 857	4 700	3 680	78.3	3 369	71.7	157	3.2
Sunshine Coast-Melbourne								
Jetstar	744	732	463	63.3	477	65.2	12	1.6
Tigerair	256	246	206	83.7	174	70.7	10	3.9
Virgin Australia	365	357	209	58.5	221	61.9	8	2.2
All Airlines	1 365	1 335	878	65.8	872	65.3	30	2.2
Sunshine Coast-Sydney								
Jetstar	1 209	1 187	913	76.9	919	77.4	22	1.8
Virgin Australia	411	402	308	76.6	301	74.9	9	2.2
All Airlines	1 620	1 589	1 221	76.8	1 220	76.8	31	1.9

	<i>Sectors</i>		<i>Departures On Time</i>		<i>Arrivals On Time</i>		<i>Cancellations</i>	
	<i>Sched.</i>	<i>Flown</i>	<i>No.</i>	<i>%</i>	<i>No.</i>	<i>%</i>	<i>No.</i>	<i>%</i>
Sydney-Adelaide								
Jetstar	1 227	1 190	909	76.4	901	75.7	37	3.0
Qantas	3 146	3 144	2 671	85.0	2 660	84.6	2	0.1
Virgin Australia	2 005	1 985	1 565	78.8	1 619	81.6	20	1.0
All Airlines	6 378	6 319	5 145	81.4	5 180	82.0	59	0.9
Sydney-Albury								
QantasLink	1 332	1 327	829	62.5	725	54.6	5	0.4
Regional Express	1 246	1 241	1 016	81.9	1 024	82.5	5	0.4
Virgin Australia	2	2	0	0.0	1	50.0	0	0.0
Virgin Australia - ATR/F100 Operations	236	233	189	81.1	188	80.7	3	1.3
Virgin Australia Regional Airlines	488	487	389	79.9	359	73.7	1	0.2
All Airlines	3 304	3 290	2 423	73.6	2 297	69.8	14	0.4
Sydney-Alice Springs								
	(From August 2013 only)							
Qantas	153	153	132	86.3	131	85.6	0	0.0
Tigerair	87	87	78	89.7	73	83.9	0	0.0
All Airlines	240	240	210	87.5	204	85.0	0	0.0
Sydney-Ayers Rock								
Jetstar	102	102	80	78.4	80	78.4	0	0.0
Qantas	154	154	138	89.6	137	89.0	0	0.0
Virgin Australia	365	364	290	79.7	274	75.3	1	0.3
All Airlines	621	620	508	81.9	491	79.2	1	0.2
Sydney-Ballina								
Jetstar	754	748	569	76.1	602	80.5	6	0.8
Regional Express	342	341	278	81.5	261	76.5	1	0.3
Virgin Australia	365	363	316	87.1	303	83.5	2	0.5
All Airlines	1 461	1 452	1 163	80.1	1 166	80.3	9	0.6
Sydney-Brisbane								
Jetstar	1 387	1 332	984	73.9	891	66.9	55	4.0
Qantas	6 914	6 794	5 661	83.3	5 014	73.8	120	1.7
Tigerair	917	901	659	73.1	496	55.0	16	1.7
Virgin Australia	6 562	6 333	5 018	79.2	4 486	70.8	229	3.5
All Airlines	15 780	15 360	12 322	80.2	10 887	70.9	420	2.7
Sydney-Cairns								
Jetstar	1 061	1 053	830	78.8	878	83.4	8	0.8
Qantas	860	860	731	85.0	774	90.0	0	0.0
Tigerair	282	281	252	89.7	237	84.3	1	0.4
Virgin Australia	1 061	1 058	827	78.2	879	83.1	3	0.3
All Airlines	3 264	3 252	2 640	81.2	2 768	85.1	12	0.4
Sydney-Canberra								
Qantas	1 769	1 729	1 532	88.6	1 481	85.7	40	2.3
QantasLink	4 763	4 537	3 426	75.5	3 464	76.4	226	4.7
Virgin Australia	695	682	588	86.2	597	87.5	13	1.9
Virgin Australia - ATR/F100 Operations	769	742	514	69.3	561	75.6	27	3.5
Virgin Australia Regional Airlines	1 982	1 932	1 650	85.4	1 638	84.8	50	2.5
All Airlines	9 978	9 622	7 710	80.1	7 741	80.5	356	3.6
Sydney-Coffs Harbour								
QantasLink	1 788	1 774	1 288	72.6	1 191	67.1	14	0.8
Tigerair	235	231	176	76.2	174	75.3	4	1.7
Virgin Australia	721	713	583	81.8	600	84.2	8	1.1
All Airlines	2 744	2 718	2 047	75.3	1 965	72.3	26	0.9
Sydney-Darwin								
Jetstar	333	331	280	84.6	284	85.8	2	0.6
Qantas	593	593	470	79.3	489	82.5	0	0.0
Virgin Australia	360	360	291	80.8	281	78.1	0	0.0
All Airlines	1 286	1 284	1 041	81.1	1 054	82.1	2	0.2

	<i>Sectors</i>		<i>Departures On Time</i>		<i>Arrivals On Time</i>		<i>Cancellations</i>	
	<i>Sched.</i>	<i>Flown</i>	<i>No.</i>	<i>%</i>	<i>No.</i>	<i>%</i>	<i>No.</i>	<i>%</i>
Sydney-Dubbo								
QantasLink	1 436	1 426	1 017	71.3	897	62.9	10	0.7
Regional Express	1 748	1 742	1 484	85.2	1 508	86.6	6	0.3
All Airlines	3 184	3 168	2 501	78.9	2 405	75.9	16	0.5
Sydney-Gold Coast								
Jetstar	3 776	3 605	2 834	78.6	2 818	78.2	171	4.5
Qantas	1 096	1 091	995	91.2	1 009	92.5	5	0.5
Tigerair	713	697	529	75.9	539	77.3	16	2.2
Virgin Australia	3 788	3 702	2 901	78.4	2 839	76.7	86	2.3
All Airlines	9 373	9 095	7 259	79.8	7 205	79.2	278	3.0
Sydney-Hamilton Island								
Jetstar	331	330	253	76.7	271	82.1	1	0.3
Virgin Australia	365	364	293	80.5	287	78.8	1	0.3
All Airlines	696	694	546	78.7	558	80.4	2	0.3
Sydney-Hobart								
Jetstar	933	930	718	77.2	733	78.8	3	0.3
Qantas	365	365	317	86.8	312	85.5	0	0.0
Virgin Australia	718	714	606	84.9	620	86.8	4	0.6
All Airlines	2 016	2 009	1 641	81.7	1 665	82.9	7	0.3
Sydney-Launceston								
Jetstar	697	695	510	73.4	511	73.5	2	0.3
Virgin Australia	365	364	287	78.8	284	78.0	1	0.3
All Airlines	1 062	1 059	797	75.3	795	75.1	3	0.3
Sydney-Melbourne								
Jetstar	3 645	3 495	2 676	76.6	2 699	77.2	150	4.1
Qantas	10 366	10 015	8 755	87.4	8 417	84.0	351	3.4
Tigerair	2 533	2 480	2 032	81.9	1 902	76.7	53	2.1
Virgin Australia	9 214	8 914	7 051	79.1	6 868	77.0	300	3.3
All Airlines	25 758	24 904	20 514	82.4	19 886	79.9	854	3.3
Sydney-Perth								
Jetstar	488	483	380	78.7	354	73.3	5	1.0
Qantas	2 462	2 458	1 951	79.4	1 906	77.5	4	0.2
Tigerair	10	10	7	70.0	7	70.0	0	0.0
Virgin Australia	1 388	1 385	1 077	77.8	1 006	72.6	3	0.2
All Airlines	4 348	4 336	3 415	78.8	3 273	75.5	12	0.3
Sydney-Port Macquarie								
QantasLink	1 607	1 574	1 143	72.6	1 031	65.5	33	2.1
Virgin Australia - ATR/F100 Operations	242	232	185	79.7	161	69.4	10	4.1
Virgin Australia Regional Airlines	491	486	383	78.8	376	77.4	5	1.0
All Airlines	2 340	2 292	1 711	74.7	1 568	68.4	48	2.1
Sydney-Sunshine Coast								
Jetstar	1 206	1 191	997	83.7	1 014	85.1	15	1.2
Virgin Australia	411	405	334	82.5	335	82.7	6	1.5
All Airlines	1 617	1 596	1 331	83.4	1 349	84.5	21	1.3
Sydney-Townsville								
Jetstar	291	291	236	81.1	250	85.9	0	0.0
Virgin Australia	359	359	295	82.2	275	76.6	0	0.0
All Airlines	650	650	531	81.7	525	80.8	0	0.0
Sydney-Wagga Wagga								
QantasLink	1 314	1 306	924	70.8	796	60.9	8	0.6
Regional Express	1 484	1 480	1 297	87.6	1 291	87.2	4	0.3
All Airlines	2 798	2 786	2 221	79.7	2 087	74.9	12	0.4

	<i>Sectors</i>		<i>Departures On Time</i>		<i>Arrivals On Time</i>		<i>Cancellations</i>	
	<i>Sched.</i>	<i>Flown</i>	<i>No.</i>	<i>%</i>	<i>No.</i>	<i>%</i>	<i>No.</i>	<i>%</i>
Townsville-Brisbane								
Jetstar	366	361	243	67.3	228	63.2	5	1.4
Qantas	1 757	1 752	1 567	89.4	1 493	85.2	5	0.3
Virgin Australia	1 963	1 950	1 525	78.2	1 357	69.6	13	0.7
All Airlines	4 086	4 063	3 335	82.1	3 078	75.8	23	0.6
Townsville-Cairns								
QantasLink	2 165	2 114	1 713	81.0	1 718	81.3	51	2.4
Virgin Australia - ATR/F100 Operations	103	99	89	89.9	86	86.9	4	3.9
Virgin Australia Regional Airlines	210	207	200	96.6	198	95.7	3	1.4
All Airlines	2 478	2 420	2 002	82.7	2 002	82.7	58	2.3
Townsville-Sydney								
Jetstar	292	292	231	79.1	225	77.1	0	0.0
Virgin Australia	359	356	218	61.2	228	64.0	3	0.8
All Airlines	651	648	449	69.3	453	69.9	3	0.5
Wagga Wagga-Sydney								
QantasLink	1 313	1 303	882	67.7	832	63.9	10	0.8
Regional Express	1 481	1 477	1 289	87.3	1 251	84.7	4	0.3
All Airlines	2 794	2 780	2 171	78.1	2 083	74.9	14	0.5

Airports

On time performance is reported for all routes where the passenger load averages over 8000 passengers per month, and where two or more airlines operate in competition. The following data reports by airport against flights operated on those routes only.

Airport	Departures			Arrivals		
	Sectors	On Time		Sectors	On Time	
	Flown	No.	%	Flown	No.	%
Adelaide						
Jetstar	3 400	2 540	74.7	3 407	2 750	80.7
Qantas	9 759	8 476	86.9	9 779	8 538	87.3
QantasLink	1 569	1 342	85.5	1 578	1 341	85.0
Regional Express	2 381	2 228	93.6	2 380	2 148	90.3
Tigerair	752	594	79.0	753	600	79.7
Virgin Australia	7 970	6 766	84.9	7 984	6 616	82.9
All Airlines	25 831	21 946	85.0	25 881	21 993	85.0

Relates to services to and from Brisbane, Canberra, Gold Coast, Melbourne, Perth, Port Lincoln and Sydney.

Albury

QantasLink	1 324	802	60.6	1 327	725	54.6
Regional Express	1 248	1 069	85.7	1 241	1 024	82.5
Virgin Australia	2	1	50.0	2	1	50.0
Virgin Australia - ATR/F100 Operations	233	185	79.4	233	188	80.7
Virgin Australia Regional Airlines	486	366	75.3	487	359	73.7
All Airlines	3 293	2 423	73.6	3 290	2 297	69.8

Relates to services to and from Sydney only.

Alice Springs

(From July 2013 only)

Qantas	337	202	59.9	337	284	84.3
Tigerair	191	126	66.0	191	142	74.3
All Airlines	528	328	62.1	528	426	80.7

Relates to services to and from Melbourne and Sydney.

Ayers Rock

Jetstar	104	69	66.3	102	80	78.4
Qantas	154	137	89.0	154	137	89.0
Virgin Australia	364	269	73.9	364	274	75.3
All Airlines	622	475	76.4	620	491	79.2

Relates to services to and from Sydney only.

Ballina

Jetstar	750	538	71.7	748	602	80.5
Regional Express	295	205	69.5	341	261	76.5
Virgin Australia	361	276	76.5	363	303	83.5
All Airlines	1 406	1 019	72.5	1 452	1 166	80.3

Relates to services to and from Sydney only.

Airport	Departures			Arrivals		
	Sectors Flown	On Time		Sectors Flown	On Time	
		No.	%		No.	%
Brisbane						
Jetstar	7 913	5 812	73.4	7 916	5 245	66.3
Qantas	20 532	16 922	82.4	20 207	15 860	78.5
QantasLink	11 202	9 479	84.6	11 146	8 026	72.0
Tigerair	1 900	1 178	62.0	1 914	1 125	58.8
Virgin Australia	23 804	18 876	79.3	23 748	16 749	70.5
Virgin Australia - ATR/F100 Operations	1 520	1 189	78.2	1 504	1 107	73.6
Virgin Australia Regional Airlines	3 335	2 684	80.5	3 334	2 454	73.6
All Airlines	70 206	56 140	80.0	69 769	50 566	72.5

Relates to services to and from Adelaide, Bundaberg, Cairns, Canberra, Darwin, Emerald, Gladstone, Hamilton Island, Mackay, Melbourne, Moranbah, Mount Isa, Newcastle, Perth, Proserpine, Rockhampton, Sydney and Townsville.

Broome

Qantas	368	237	64.4	370	319	86.2
QantasLink	638	569	89.2	635	571	89.9
Skywest	62	34	54.8	53	40	75.5
Virgin Australia	533	394	73.9	537	475	88.5
Virgin Australia Regional Airlines	163	89	54.6	159	123	77.4
All Airlines	1 764	1 323	75.0	1 754	1 528	87.1

Relates to services to and from Perth only.

Bundaberg

(From July 2013 only)

QantasLink	719	566	78.7	717	583	81.3
Virgin Australia Regional Airlines	184	145	78.8	184	157	85.3
All Airlines	903	711	78.7	901	740	82.1

Relates to services to and from Brisbane only.

Cairns

Jetstar	3 405	2 734	80.3	3 407	2 765	81.2
Qantas	2 593	2 197	84.7	2 598	2 274	87.5
QantasLink	2 173	1 934	89.0	2 165	1 765	81.5
Tigerair	728	556	76.4	730	624	85.5
Virgin Australia	3 355	2 654	79.1	3 362	2 773	82.5
Virgin Australia - ATR/F100 Operations	135	112	83.0	134	117	87.3
Virgin Australia Regional Airlines	207	199	96.1	207	198	95.7
All Airlines	12 596	10 386	82.5	12 603	10 516	83.4

Relates to services to and from Brisbane, Melbourne, Sydney and Townsville.

Canberra

Qantas	6 705	6 017	89.7	6 706	5 971	89.0
QantasLink	5 597	4 359	77.9	5 615	4 294	76.5
Virgin Australia	4 196	3 412	81.3	4 208	3 394	80.7
Virgin Australia - ATR/F100 Operations	744	598	80.4	742	561	75.6
Virgin Australia Regional Airlines	1 930	1 701	88.1	1 932	1 638	84.8
All Airlines	19 172	16 087	83.9	19 203	15 858	82.6

Relates to services to and from Adelaide, Brisbane, Melbourne and Sydney.

Coffs Harbour

QantasLink	1 771	1 204	68.0	1 774	1 191	67.1
Tigerair	230	183	79.6	231	174	75.3
Virgin Australia	709	569	80.3	713	600	84.2
All Airlines	2 710	1 956	72.2	2 718	1 965	72.3

Relates to services to and from Sydney only.

Airport	Departures			Arrivals		
	Sectors	On Time		Sectors	On Time	
	Flown	No.	%	Flown	No.	%
Darwin						
Jetstar	560	333	59.5	569	447	78.6
Qantas	1 516	1 155	76.2	1 516	1 270	83.8
Virgin Australia	1 397	1 159	83.0	1 402	1 109	79.1
All Airlines	3 473	2 647	76.2	3 487	2 826	81.0
Relates to services to and from Brisbane, Melbourne, Perth and Sydney.						
Dubbo						
QantasLink	1 424	913	64.1	1 426	897	62.9
Regional Express	1 777	1 538	86.6	1 742	1 508	86.6
All Airlines	3 201	2 451	76.6	3 168	2 405	75.9
Relates to services to and from Sydney only.						
Emerald						
QantasLink	2 072	1 634	78.9	2 079	1 694	81.5
Virgin Australia - ATR/F100 Operations	395	336	85.1	399	338	84.7
Virgin Australia Regional Airlines	796	641	80.5	800	646	80.8
All Airlines	3 263	2 611	80.0	3 278	2 678	81.7
Relates to services to and from Brisbane only.						
Geraldton						
QantasLink	678	581	85.7	679	555	81.7
Skywest	316	250	79.1	312	227	72.8
Virgin Australia Regional Airlines	745	638	85.6	737	629	85.3
All Airlines	1 739	1 469	84.5	1 728	1 411	81.7
Relates to services to and from Perth only.						
Gladstone						
QantasLink	2 818	2 249	79.8	2 597	2 175	83.8
Virgin Australia	120	78	65.0	126	97	77.0
Virgin Australia - ATR/F100 Operations	481	354	73.6	491	370	75.4
Virgin Australia Regional Airlines	1 003	763	76.1	1 000	739	73.9
All Airlines	4 422	3 444	77.9	4 214	3 381	80.2
Relates to services to and from Brisbane only.						
Gold Coast						
Jetstar	6 326	4 920	77.8	6 347	4 871	76.7
Qantas	1 089	938	86.1	1 091	1 009	92.5
Tigerair	1 541	1 057	68.6	1 544	1 131	73.3
Virgin Australia	6 136	4 828	78.7	6 164	4 785	77.6
All Airlines	15 092	11 743	77.8	15 146	11 796	77.9
Relates to services to and from Adelaide, Melbourne and Sydney.						
Hamilton Island						
Jetstar	542	398	73.4	538	456	84.8
Virgin Australia	727	557	76.6	731	594	81.3
All Airlines	1 269	955	75.3	1 269	1 050	82.7
Relates to services to and from Brisbane and Sydney.						

Airport	Departures			Arrivals		
	Sectors	On Time		Sectors	On Time	
	Flown	No.	%	Flown	No.	%
Hobart						
Jetstar	2 941	2 048	69.6	2 940	2 289	77.9
Qantas	1 093	966	88.4	1 095	986	90.0
QantasLink	362	333	92.0	360	246	68.3
Tigerair	416	295	70.9	417	308	73.9
Virgin Australia	2 454	1 889	77.0	2 455	1 955	79.6
All Airlines	7 266	5 531	76.1	7 267	5 784	79.6
Relates to services to and from Melbourne and Sydney.						
Kalgoorlie						
Qantas	709	639	90.1	712	649	91.2
QantasLink	330	297	90.0	330	308	93.3
Skywest	228	176	77.2	228	165	72.4
Virgin Australia	222	188	84.7	224	193	86.2
Virgin Australia Regional Airlines	237	192	81.0	234	200	85.5
All Airlines	1 726	1 492	86.4	1 728	1 515	87.7
Relates to services to and from Perth only.						
Karratha						
Qantas	2 113	1 931	91.4	2 125	1 941	91.3
QantasLink	702	644	91.7	702	660	94.0
Virgin Australia	780	636	81.5	784	699	89.2
All Airlines	3 595	3 211	89.3	3 611	3 300	91.4
Relates to services to and from Perth only.						
Launceston						
Jetstar	2 193	1 490	67.9	2 187	1 681	76.9
QantasLink	1 349	1 096	81.2	1 349	1 036	76.8
Virgin Australia	1 828	1 450	79.3	1 829	1 479	80.9
All Airlines	5 370	4 036	75.2	5 365	4 196	78.2
Relates to services to and from Melbourne and Sydney.						
Mackay						
Jetstar	1 183	746	63.1	1 185	937	79.1
QantasLink	1 290	1 080	83.7	1 294	1 107	85.5
Virgin Australia	1 919	1 533	79.9	1 924	1 504	78.2
All Airlines	4 392	3 359	76.5	4 403	3 548	80.6
Relates to services to and from Brisbane only.						
Melbourne						
Jetstar	15 634	11 391	72.9	15 643	11 639	74.4
Qantas	25 380	21 912	86.3	25 363	21 600	85.2
QantasLink	3 432	2 832	82.5	3 442	2 690	78.2
Regional Express	974	912	93.6	974	870	89.3
Tigerair	7 019	5 592	79.7	7 009	4 923	70.2
Virgin Australia	27 561	21 717	78.8	27 528	21 292	77.3
All Airlines	80 000	64 356	80.4	79 959	63 014	78.8
Relates to services to and from Adelaide, Alice Springs, Brisbane, Cairns, Canberra, Darwin, Gold Coast, Hobart, Launceston, Mildura, Newcastle, Perth, Sunshine Coast and Sydney.						

Airport	Departures			Arrivals		
	Sectors Flown	On Time		Sectors Flown	On Time	
		No.	%		No.	%
Mildura						
QantasLink	1 037	899	86.7	1 038	798	76.9
Regional Express	974	900	92.4	974	872	89.5
Virgin Australia	365	279	76.4	365	291	79.7
All Airlines	2 376	2 078	87.5	2 377	1 961	82.5
Relates to services to and from Melbourne only.						
Moranbah						
	(From July 2013 only)					
QantasLink	866	730	84.3	894	818	91.5
Virgin Australia Regional Airlines	437	298	68.2	438	279	63.7
All Airlines	1 303	1 028	78.9	1 332	1 097	82.4
Relates to services to and from Brisbane only.						
Mount Isa						
Qantas	674	583	86.5	676	614	90.8
Virgin Australia	256	210	82.0	259	219	84.6
All Airlines	930	793	85.3	935	833	89.1
Relates to services to and from Brisbane only.						
Newcastle						
Jetstar	2 567	1 957	76.2	2 567	2 020	78.7
QantasLink	802	373	46.5	802	382	47.6
Virgin Australia	1 203	830	69.0	1 208	1 006	83.3
Virgin Australia - ATR/F100 Operations	107	85	79.4	107	85	79.4
All Airlines	4 679	3 245	69.4	4 684	3 493	74.6
Relates to services to and from Brisbane and Melbourne.						
Newman						
Qantas	1 537	1 347	87.6	1 540	1 388	90.1
QantasLink	358	329	91.9	359	330	91.9
Skywest	48	43	89.6	48	42	87.5
Virgin Australia	448	362	80.8	449	396	88.2
Virgin Australia Regional Airlines	75	58	77.3	80	63	78.8
All Airlines	2 466	2 139	86.7	2 476	2 219	89.6
Relates to services to and from Perth only.						
Perth						
Jetstar	2 139	1 384	64.7	2 140	1 596	74.6
Qantas	14 399	12 509	86.9	14 377	12 032	83.7
QantasLink	3 200	2 924	91.4	3 200	2 839	88.7
Skywest	641	504	78.6	654	465	71.1
Tigerair	717	531	74.1	720	554	76.9
Virgin Australia	7 846	6 758	86.1	7 840	5 877	75.0
Virgin Australia Regional Airlines	1 210	1 033	85.4	1 220	912	74.8
All Airlines	30 152	25 643	85.0	30 151	24 275	80.5
Relates to services to and from Adelaide, Brisbane, Broome, Darwin, Geraldton, Kalgoorlie, Karratha, Melbourne, Newman, Port Hedland and Sydney.						
Port Hedland						
Qantas	1 437	1 266	88.1	1 442	1 300	90.2
QantasLink	494	453	91.7	495	470	94.9
Virgin Australia	692	591	85.4	692	616	89.0
All Airlines	2 623	2 310	88.1	2 629	2 386	90.8
Relates to services to and from Perth only.						

Airport	Departures			Arrivals		
	Sectors	On Time		Sectors	On Time	
	Flown	No.	%	Flown	No.	%
Port Lincoln						
QantasLink	1 118	1 009	90.3	1 114	982	88.2
Regional Express	2 380	2 172	91.3	2 381	2 171	91.2
All Airlines	3 498	3 181	90.9	3 495	3 153	90.2
Relates to services to and from Adelaide only.						
Port Macquarie						
QantasLink	1 571	1 025	65.2	1 574	1 031	65.5
Virgin Australia - ATR/F100 Operations	229	178	77.7	232	161	69.4
Virgin Australia Regional Airlines	484	373	77.1	486	376	77.4
All Airlines	2 284	1 576	69.0	2 292	1 568	68.4
Relates to services to and from Sydney only.						
Proserpine						
Jetstar	352	256	72.7	352	226	64.2
Virgin Australia	574	435	75.8	575	494	85.9
Virgin Australia - ATR/F100 Operations	29	17	58.6	30	22	73.3
All Airlines	955	708	74.1	957	742	77.5
Relates to services to and from Brisbane only.						
Rockhampton						
QantasLink	2 187	1 679	76.8	2 423	1 936	79.9
Virgin Australia	1 143	867	75.9	1 147	912	79.5
Virgin Australia Regional Airlines	914	775	84.8	913	752	82.4
Virgin Australia - ATR/F100 Operations	456	359	78.7	458	360	78.6
All Airlines	4 700	3 680	78.3	4 941	3 960	80.1
Relates to services to and from Brisbane only.						
Sunshine Coast						
Jetstar	1 919	1 376	71.7	1 920	1 563	81.4
Tigerair	246	206	83.7	246	214	87.0
Virgin Australia	759	517	68.1	766	617	80.5
All Airlines	2 924	2 099	71.8	2 932	2 394	81.7
Relates to services to and from Melbourne and Sydney.						
Sydney						
Jetstar	15 776	12 256	77.7	15 737	11 576	73.6
Qantas	27 356	23 353	85.4	27 659	23 148	83.7
QantasLink	11 944	8 627	72.2	11 902	8 159	68.6
Regional Express	4 804	4 075	84.8	4 797	3 952	82.4
Tigerair	4 687	3 733	79.6	4 672	3 466	74.2
Virgin Australia	28 067	22 322	79.5	28 041	22 003	78.5
Virgin Australia - ATR/F100 Operations	1 207	888	73.6	1 206	896	74.3
Virgin Australia Regional Airlines	2 905	2 422	83.4	2 900	2 337	80.6
All Airlines	96 746	77 676	80.3	96 914	75 537	77.9
Relates to services to and from Adelaide, Albury, Alice Springs, Ayers Rock, Ballina, Brisbane, Cairns, Canberra, Coffs Harbour, Darwin, Dubbo, Gold Coast, Hamilton Island, Hobart, Launceston, Melbourne, Perth, Port Macquarie, Sunshine Coast, Townsville and Wagga Wagga.						

<i>Airport</i>	<i>Departures</i>			<i>Arrivals</i>		
	<i>Sectors</i>	<i>On Time</i>		<i>Sectors</i>	<i>On Time</i>	
	<i>Flown</i>	<i>No.</i>	<i>%</i>	<i>Flown</i>	<i>No.</i>	<i>%</i>
Townsville						
Jetstar	653	474	72.6	652	533	81.7
Qantas	1 752	1 567	89.4	1 756	1 483	84.5
QantasLink	2 114	1 713	81.0	2 122	1 876	88.4
Virgin Australia	2 306	1 743	75.6	2 307	1 792	77.7
Virgin Australia - ATR/F100 Operations	99	89	89.9	99	83	83.8
Virgin Australia Regional Airlines	207	200	96.6	207	193	93.2
All Airlines	7 131	5 786	81.1	7 143	5 960	83.4
Relates to services to and from Brisbane, Cairns and Sydney.						
Wagga Wagga						
QantasLink	1 303	882	67.7	1 306	796	60.9
Regional Express	1 477	1 289	87.3	1 480	1 291	87.2
All Airlines	2 780	2 171	78.1	2 786	2 087	74.9
Relates to services to and from Sydney only.						

Definitions

On time departure A flight departure is counted as "on time" if it departs the gate before 15 minutes after the scheduled departure time shown in the carriers' schedule.

On time arrival A flight arrival is counted as "on time" if it arrived at the gate before 15 minutes after the scheduled arrival time shown in the carriers' schedule.
Neither diverted nor cancelled flights count as on time.

Cancellation A flight removed from service within 7 days of scheduled departure is regarded as a cancellation.

On time departure percentage The percentage of on time departures is measured against the number of departures *operated* on any particular sector.

On time arrival percentage The percentage of on time arrivals is measured against the number of arrivals *operated* on any particular sector.

Cancellation percentage The percentage of cancellations is measured against the number of services *scheduled* on any particular sector.
