



Australian Government

Department of Infrastructure, Regional Development and Cities

Bureau of Infrastructure, Transport and Regional Economics

STATISTICAL REPORT



Aviation

Domestic airline on time performance
January 2018

© Commonwealth of Australia 2018

ISSN: 1832-0759

Ownership of intellectual property rights in this publication

Unless otherwise noted, copyright (and any other intellectual property rights, if any) in this publication is owned by the Commonwealth of Australia (referred to below as the Commonwealth).

Disclaimer

The material contained in this publication is made available on the understanding that the Commonwealth is not providing professional advice, and that users exercise their own skill and care with respect to its use, and seek independent advice if necessary.

The Commonwealth makes no representations or warranties as to the contents or accuracy of the information contained in this publication. To the extent permitted by law, the Commonwealth disclaims liability to any person or organisation in respect of anything done, or omitted to be done, in reliance upon information contained in this publication.

Creative Commons licence

With the exception of (a) the Coat of Arms; and (b) the Department of Infrastructure, Regional Development and Cities' photos and graphics, copyright in this publication is licensed under a Creative Commons Attribution 3.0 Australia Licence.

Creative Commons Attribution 3.0 Australia Licence is a standard form licence agreement that allows you to copy, communicate and adapt this publication provided that you attribute the work to the Commonwealth and abide by the other licence terms. A summary of the licence terms is available from <http://creativecommons.org/licenses/by/3.0/au/deed.en>. The full licence terms are available from <http://creativecommons.org/licenses/by/3.0/au/legalcode>.

Use of the Coat of Arms

The Department of the Prime Minister and Cabinet sets the terms under which the Coat of Arms is used. Please refer to the Department's Commonwealth Coat of Arms and Government branding web page <http://www.dpmmc.gov.au/guidelines/index.cfm#brand> and, in particular, the Guidelines on the use of the Commonwealth Coat of Arms publication.

An appropriate citation for this report is:

Bureau of Infrastructure, Transport and Regional Economics (BITRE), 2018, Domestic airline on time performance, Statistical Report, BITRE, Canberra ACT.

Contact us

This publication is available in PDF format. All other rights are reserved, including in relation to any Departmental logos or trade marks which may exist. For enquiries regarding the licence and any use of this publication, please contact:

Bureau of Infrastructure, Transport and Regional Economics (BITRE)
Department of Infrastructure, Regional Development and Cities
GPO Box 501, Canberra ACT 2601, Australia
Telephone: (international) +61 2 6274 7210
Fax: (international) +61 2 6274 6855
Email: bitre@infrastructure.gov.au
Website: www.bitre.gov.au

Inquiries

Should you require additional information about the statistics contained in this publication:

Telephone (02) 6274 7790 or Facsimile (02) 6274 7727

Electronic mail: AVSTATS@infrastructure.gov.au

Web site: <http://www.bitre.gov.au/statistics/aviation/otphome.aspx>

Foreword

The Bureau of Infrastructure, Transport and Regional Economics (BITRE) monitors the punctuality and reliability of major domestic airlines operating between Australian airports. The purpose of this is to allow for evaluation of overall industry and individual airline performance, so that consumers of air travel can make informed decisions.

The following domestic airlines currently report this information monthly to the BITRE: Jetstar, Qantas, QantasLink, Regional Express, Tigerair Australia, Virgin Australia and Virgin Australia Regional Airlines. Data has been gathered since November 2003, although some airlines commenced reporting at a later date, including Jetstar which first reported in May 2004, MacAir in July 2005, Tigerair Australia in April 2008 and Virgin Australia Regional Airlines in May 2013. MacAir ceased operations in February 2009 and data was not received for December 2008 onwards. Virgin Blue was rebranded as Virgin Australia in May 2011 and Tiger Airways was rebranded as Tigerair Australia in July 2013 and time series data in Microsoft Excel spreadsheet format on the BITRE website have been revised to reflect these changes. Services operated by Skywest on behalf of Virgin Australia using ATR/F100 aircraft commenced in November 2011 and were shown separately as Virgin Australia – ATR/F100 Operations. Virgin Australia Regional Airlines commenced operations in May 2013. It was formed after the acquisition of Skywest by Virgin Australia and represented a combination of operations previously reported under Skywest and Virgin Australia – ATR/F100 Operations. In January 2016, Virgin Australia transferred their ATR fleet from Virgin Australia Regional Airlines to Virgin Australia.

Information presented in this report is for Australian domestic routes for which the passenger load averaged 8 000 or more passengers per month over the previous six months and where two or more airlines operated in competition on those routes. There were 66 routes that met this definition in January 2018. Over time, routes which meet these criteria change as airline networks and traffic levels vary.

Participating airlines report their overall monthly network performance where this is possible.

Total industry figures encompass all services operated by reporting airlines only. These airlines collectively carried over 95 per cent of total domestic passengers (regular public transport only) in 2016.

The method of capturing on time performance varies between airlines utilising different recording systems. Jetstar and Qantas jet aircraft use Aircraft Communication Addressing and Reporting System (ACARS) to electronically measure on time performance. Regional Express, Tigerair Australia, Virgin Australia, Virgin Australia Regional Airlines and the Qantas non-jet fleet record on time performance manually using records from pilots, gate agents and/or ground crews.

After initial data is collected, aggregate reports are audited internally by participating airlines prior to publication.

Reports and detailed time series data in Microsoft Excel spreadsheet format are available from the BITRE website at: <http://www.bitre.gov.au/statistics/aviation/otphome.aspx>.

Contents

	Page
Industry performance	1
Individual routes	10
Airports	24
Definitions	30

Industry performance

For January 2018, on time performance over all routes operated by participating airlines (Jetstar, Qantas, QantasLink, Regional Express, Tigerair Australia, Virgin Australia and Virgin Australia Regional Airlines) averaged 85.0 per cent for on time arrivals and 85.1 per cent for on time departures. Cancellations represented 1.5 per cent of all scheduled flights. The equivalent figures for January 2017 were 87.6 per cent for on time arrivals, 87.2 per cent for on time departures and 1.1 per cent for cancellations.

This month's on time arrivals figure was higher than the long term average performance for all routes (82.7 per cent) and the on time departures figure was also higher than the long term average (84.0 per cent). The rate of cancellations was higher than the long term average of 1.4 per cent.

Virgin Australia achieved the highest on time arrivals among the major domestic airlines at 87.9 per cent followed by Qantas at 87.2 per cent, Jetstar at 79.5 per cent and Tigerair Australia at 73.2 per cent. Of the regional airlines, QantasLink recorded 88.1 per cent for on time arrivals, followed by Regional Express at 85.9 per cent and Virgin Australia Regional Airlines at 75.7 per cent. The Qantas network (Qantas and QantasLink combined operations) recorded 87.7 per cent for on time arrivals while the Virgin Australia network (Virgin Australia and Virgin Australia Regional Airlines combined operations) recorded 87.1 per cent.

Virgin Australia also achieved the highest level of on time departures among the major domestic airlines for January 2018 at 89.0 per cent, followed by Qantas at 87.0 per cent, Jetstar at 76.3 per cent and Tigerair Australia at 74.2 per cent. Of the regional airlines, Regional Express recorded 89.7 per cent, followed by QantasLink at 88.5 per cent and Virgin Australia Regional Airlines at 77.8 per cent. The Qantas network recorded 87.8 per cent for on time departures while the Virgin Australia network recorded 88.2 per cent.

Virgin Australia Regional Airlines recorded the highest percentage of cancellations (3.1 per cent) during the month, followed by Jetstar (1.9 per cent), QantasLink (1.8 per cent), Qantas and Tigerair Australia (both at 1.6 per cent), Virgin Australia (1.1 per cent) and Regional Express (0.2 per cent).

Airlines' on time performance varies across the routes they serve. Individual route data by specific airline for 66 routes are shown on pages 10-23.

Of the 66 routes which met the criteria for on time performance reporting in January 2018, the Sydney-Hamilton Island route had the highest percentage of on time arrivals (97.8 per cent) and the Hamilton Island-Sydney route had the highest percentage of on time departures (94.6 per cent). The Mount Isa-Brisbane route had the lowest percentage of on time arrivals (60.0 per cent) and the lowest percentage of on time departures (68.6 per cent).

Cancellations were highest on the Broome-Perth route at 13.0 per cent, followed by the Perth-Broome route at 10.3 per cent, the Newcastle-Brisbane route at 8.0 per cent, the Brisbane-Newcastle route at 7.6 per cent and the Newcastle-Melbourne route at 6.5 per cent.

Hamilton Island Airport recorded the highest percentage of on time arrivals (96.0 per cent) and Bundaberg Airport recorded the highest percentage of on time departures (94.3 per cent). Mount Isa Airport recorded the lowest percentage of on time arrivals (75.0 per cent) and the lowest percentage of on time departures (68.6 per cent). These figures only refer to reported routes and do not cover all flights at these airports.

Table 1 On time performance for January 2018 — Total Industry

	<i>Sectors</i>		<i>Arrivals On Time</i>		<i>Departures On Time</i>		<i>Cancellations</i>	
	<i>Scheduled</i>	<i>Flown</i>	<i>No.</i>	<i>%</i>	<i>No.</i>	<i>%</i>	<i>No.</i>	<i>%</i>
Jetstar	8 613	8 449	6 720	79.5	6 448	76.3	164	1.9
Qantas	8 305	8 168	7 119	87.2	7 109	87.0	137	1.6
QantasLink	9 337	9 172	8 085	88.1	8 113	88.5	165	1.8
Regional Express	4 573	4 565	3 921	85.9	4 094	89.7	8	0.2
Tigerair Australia	2 698	2 654	1 943	73.2	1 970	74.2	44	1.6
Virgin Australia	11 372	11 243	9 886	87.9	10 002	89.0	129	1.1
Virgin Australia Regional Airlines	833	807	611	75.7	628	77.8	26	3.1
All Airlines	45 731	45 058	38 285	85.0	38 364	85.1	673	1.5
Qantas - all QF designated services	17 642	17 340	15 204	87.7	15 222	87.8	302	1.7
Virgin Australia - all VA designated services	12 205	12 050	10 497	87.1	10 630	88.2	155	1.3

Total airline network data (including routes not shown in this report).

Airlines' on time performance varies across the routes they serve. Individual route data by specific airline for 66 routes are shown on pages 10-23.

Table 2 Top ten routes for on time performance for January 2018 (participating airlines only)

<i>Arrivals</i>		<i>Departures</i>	
<i>Route</i>	<i>On Time (%)</i>	<i>Route</i>	<i>On Time (%)</i>
Sydney-Hamilton Island	97.8	Hamilton Island-Sydney	94.6
Hamilton Island-Sydney	95.7	Bundaberg-Brisbane	94.3
Townsville-Brisbane	94.8	Emerald-Brisbane	94.1
Brisbane-Proserpine	94.7	Sydney-Hobart	94.0
Sydney-Ayers Rock	94.3	Proserpine-Brisbane	93.7
Brisbane-Darwin	93.6	Darwin-Brisbane	93.6
Brisbane-Bundaberg	93.6	Sydney-Hamilton Island	93.5
Brisbane-Emerald	93.5	Brisbane-Emerald	93.5
Brisbane-Hamilton Island	93.1	Townsville-Brisbane	93.2
Bundaberg-Brisbane	92.9	Brisbane-Gladstone	93.1

Table 3 Top ten airports for on time performance for January 2018 (participating airlines and reported routes only)

<i>Arrivals</i>		<i>Departures</i>	
<i>Airport</i>	<i>On Time (%)</i>	<i>Airport</i>	<i>On Time (%)</i>
Hamilton Island	96.0	Bundaberg	94.3
Ayers Rock	94.3	Emerald	94.1
Bundaberg	93.6	Hamilton Island	93.4
Emerald	93.5	Newman	92.3
Proserpine	93.3	Port Lincoln	92.3
Port Lincoln	91.6	Wagga Wagga	91.9
Karratha	90.7	Mackay	91.6
Newman	90.6	Rockhampton	91.0
Wagga Wagga	90.5	Karratha	90.6
Townsville	90.1	Ayers Rock	90.6

Total industry on time performance

Figure 1 On time performance (by month from January 2015)—Total Industry

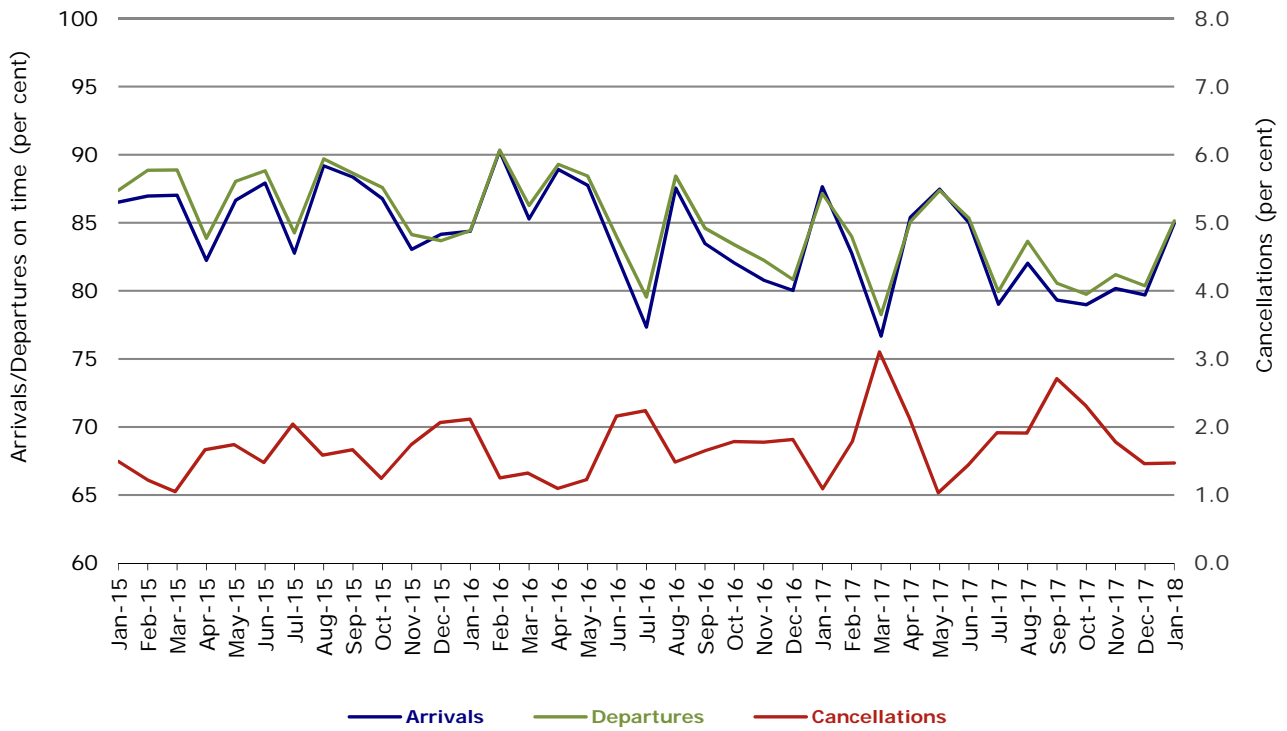


Figure 2 Arrivals on time (by month from January 2017)

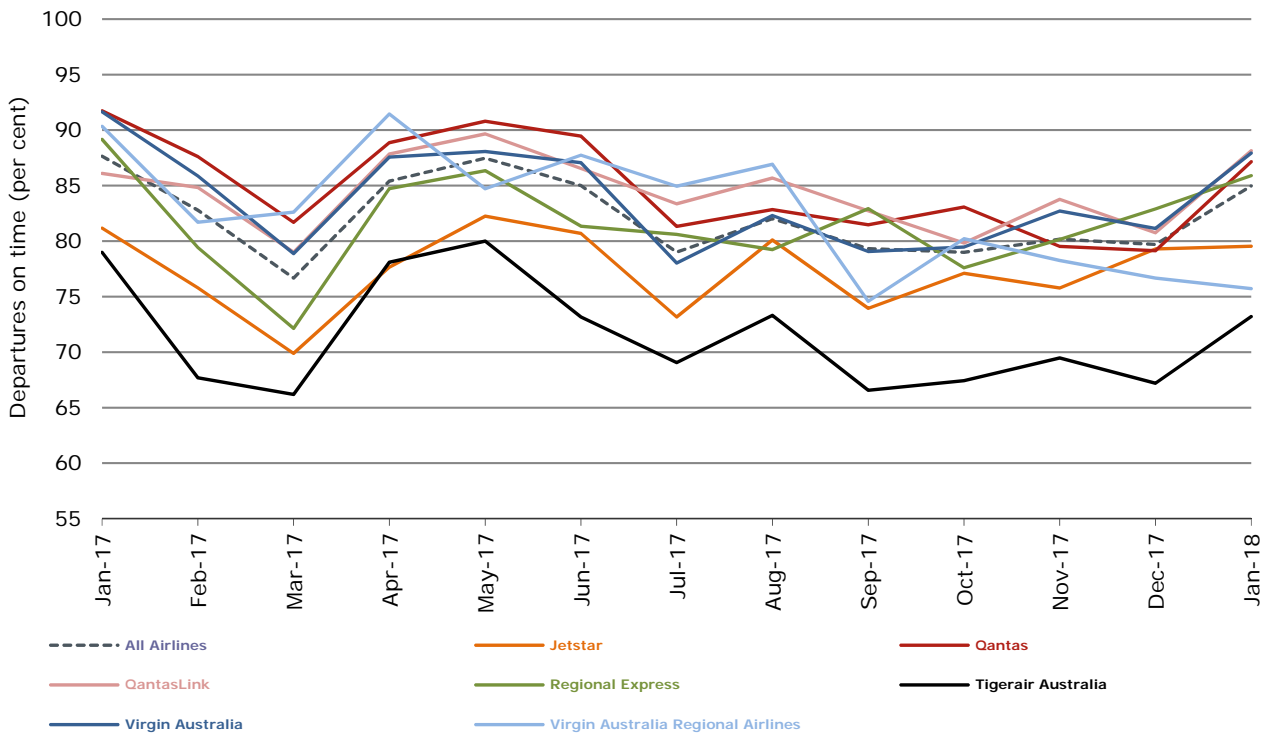


Figure 3 Departures on time (by month from January 2017)

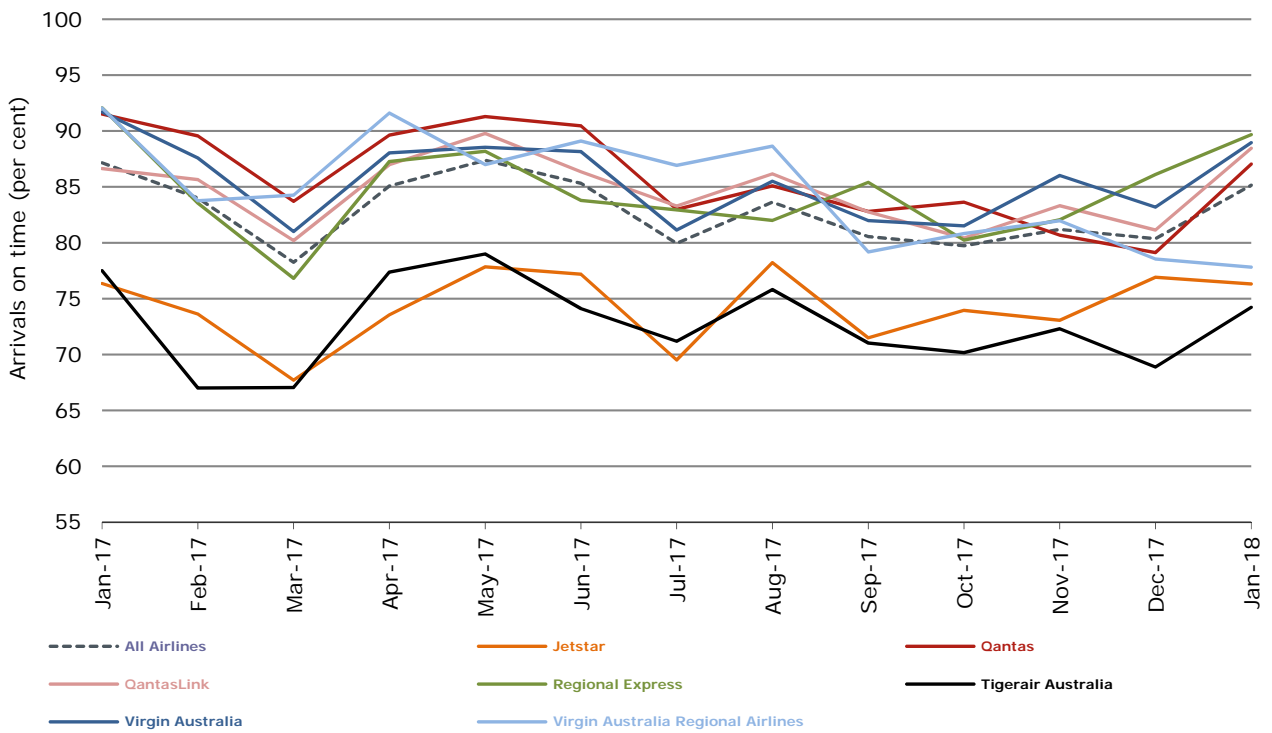
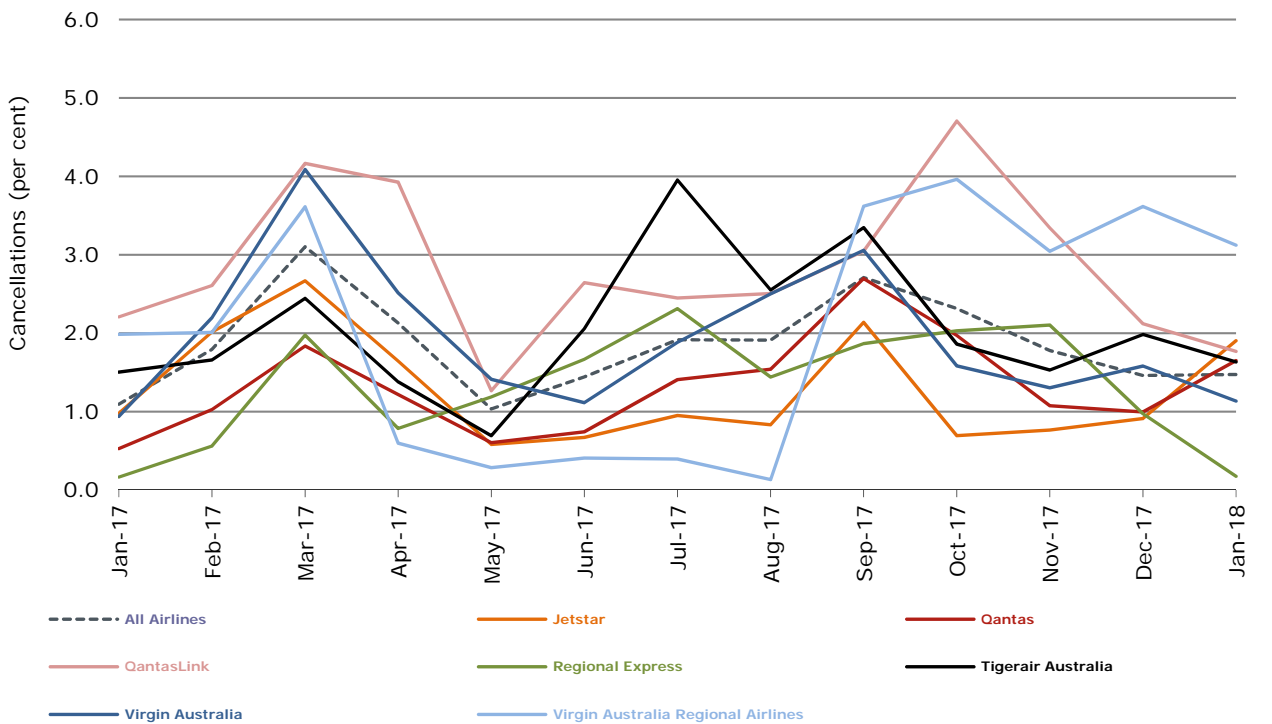


Figure 4 Cancellations (by month from January 2017)



Major domestic airlines on time performance

Figure 5 On time performance (by month from January 2015)—Jetstar

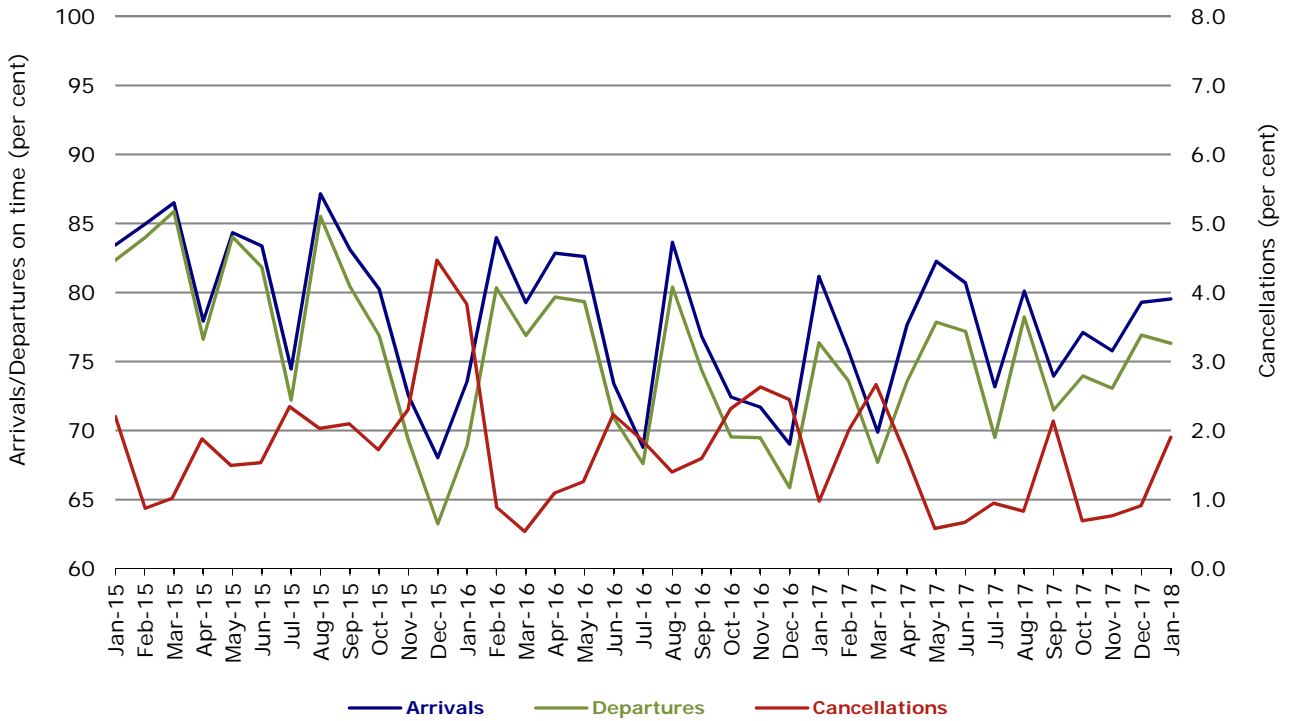


Figure 6 On time performance (by month from January 2015)—Qantas

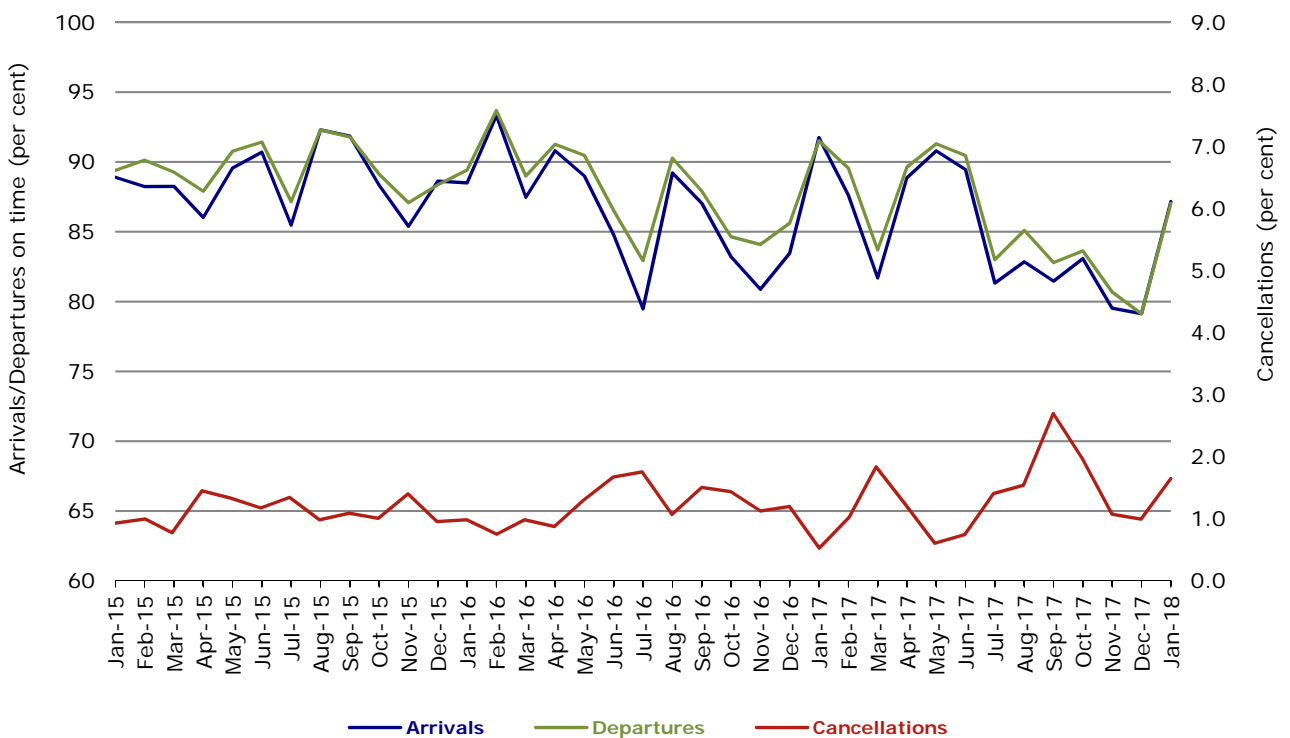


Figure 7 On time performance (by month from January 2015)—Tigerair Australia

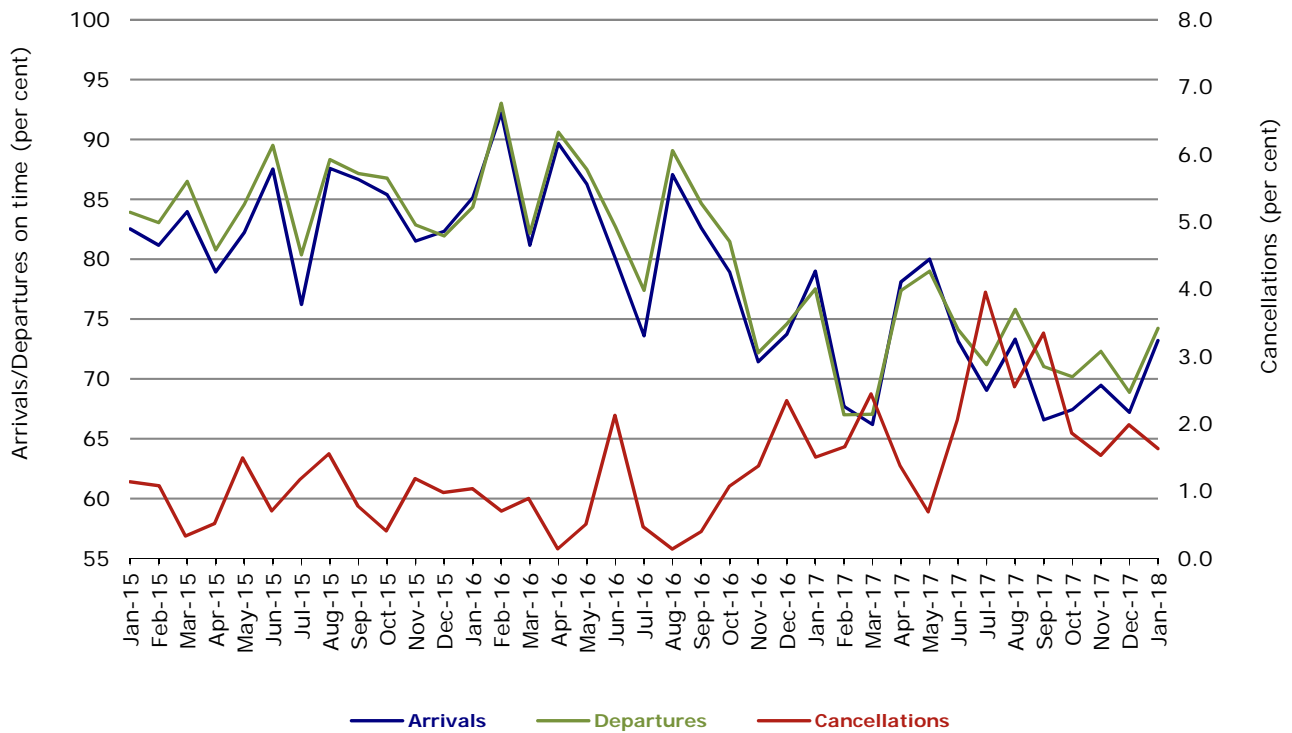
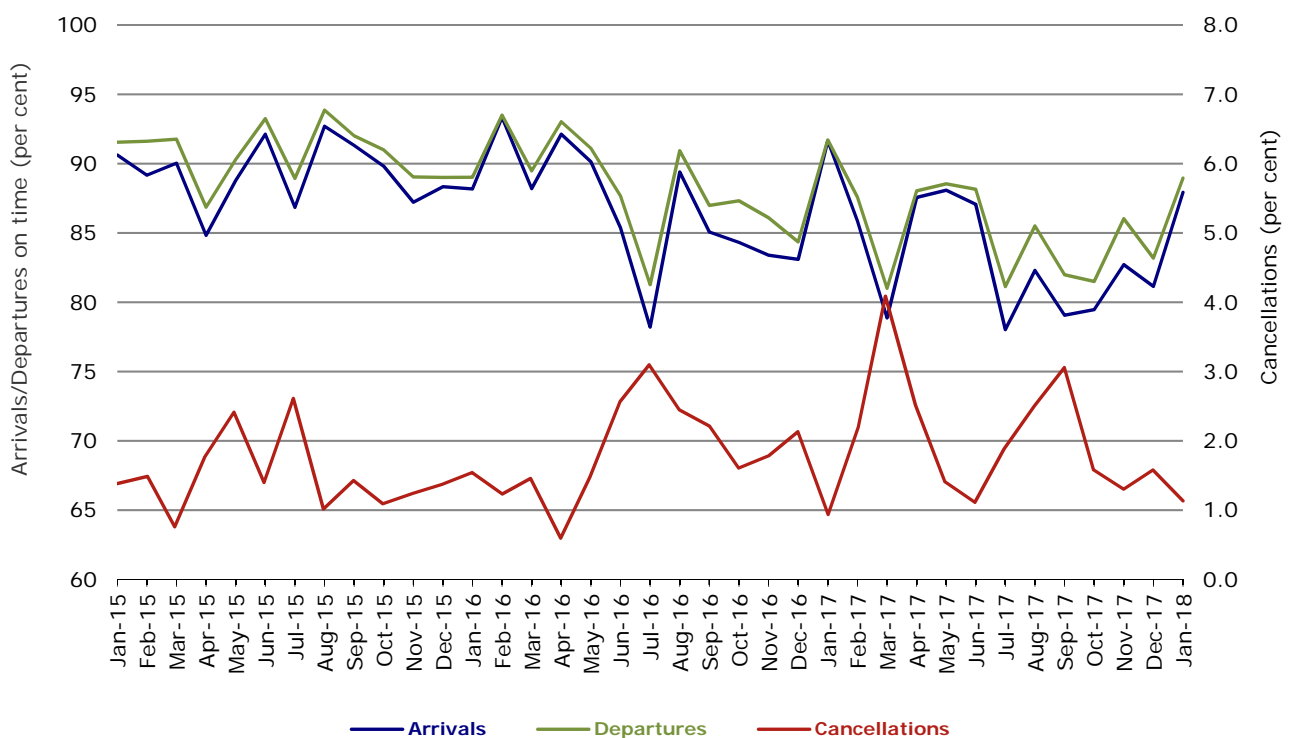


Figure 8 On time performance (by month from January 2015)—Virgin Australia



In January 2016, Virgin Australia transferred their ATR fleet from Virgin Australia Regional Airlines to Virgin Australia.

Major regional airlines on time performance

Figure 9 On time performance (by month from January 2015)—QantasLink

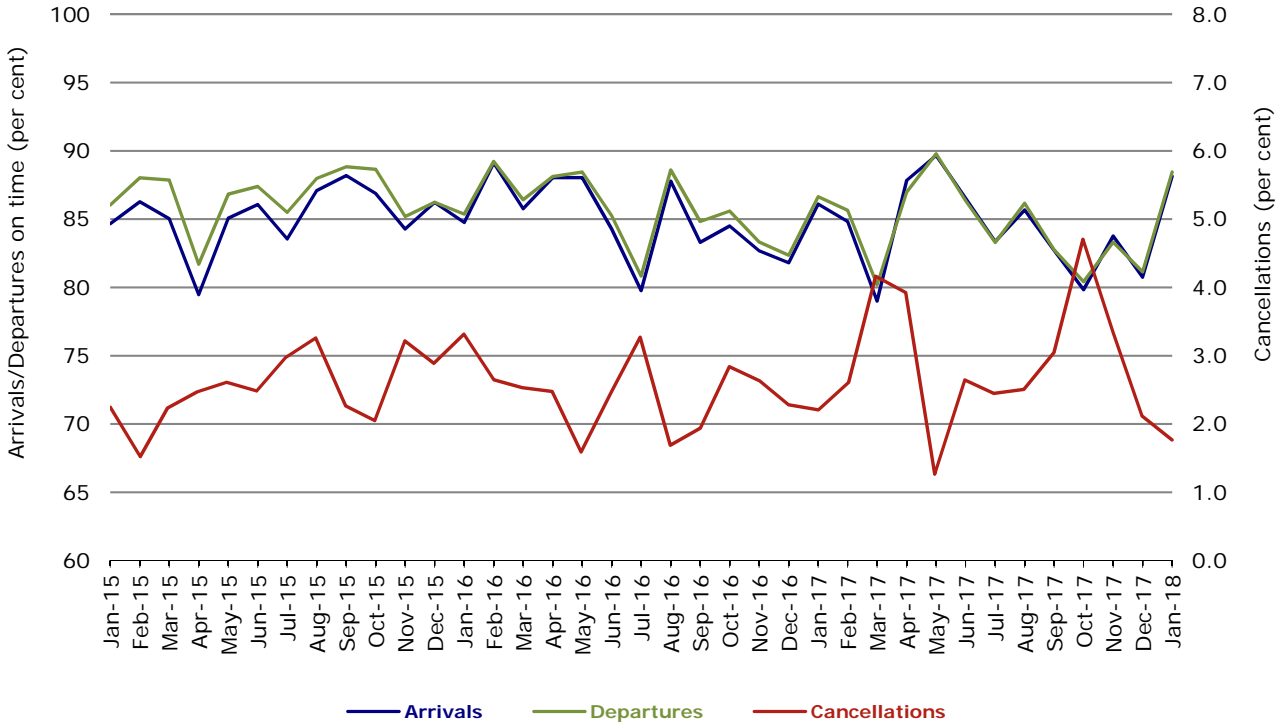


Figure 10 On time performance (by month from January 2015)—Regional Express

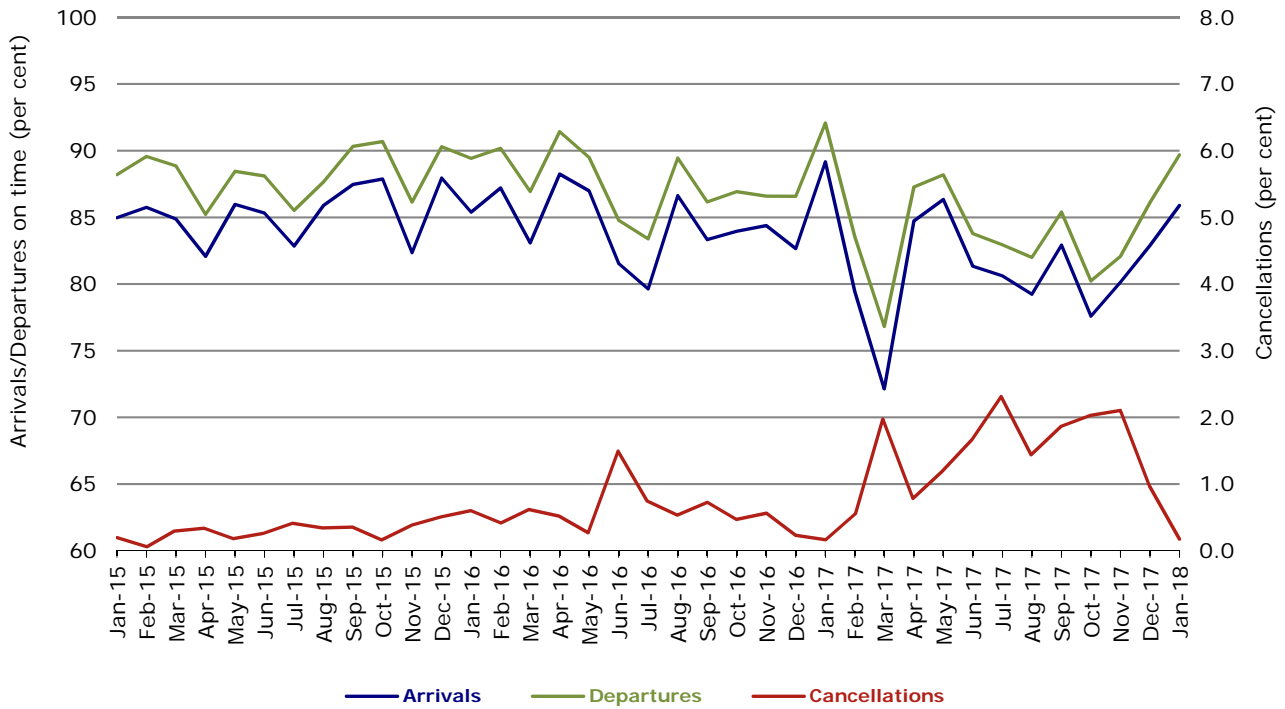
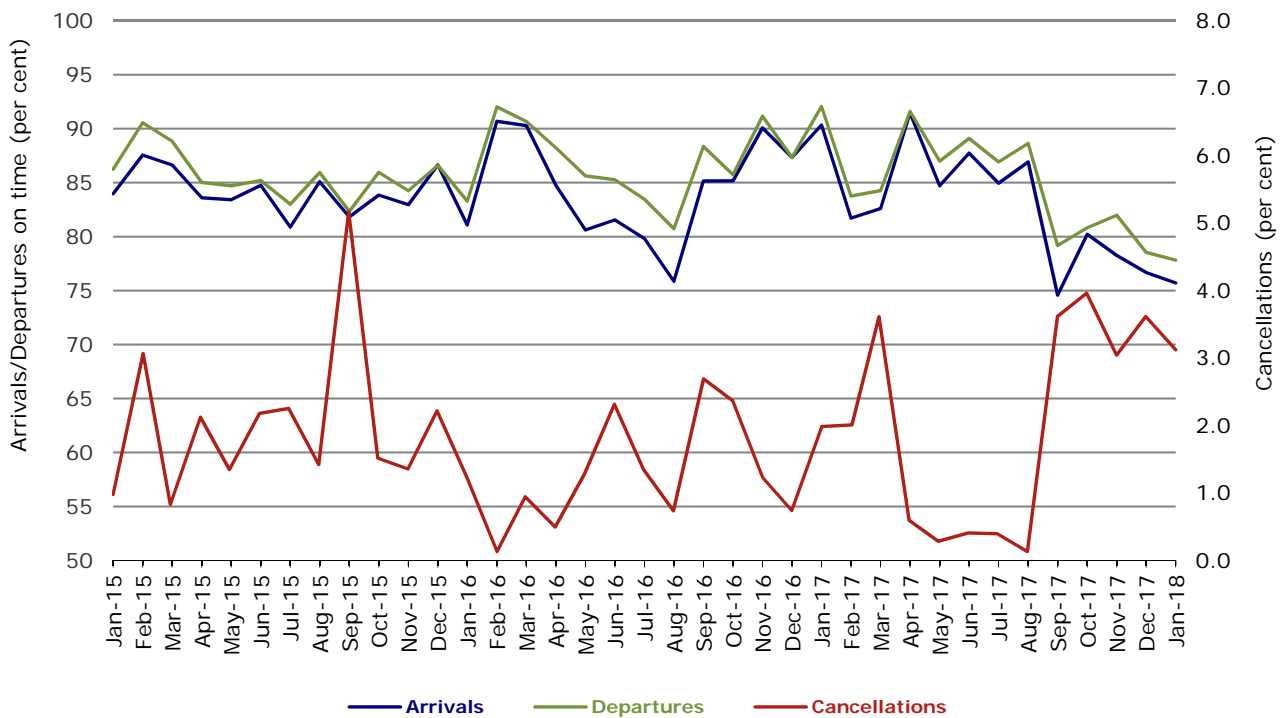


Figure 11 On time performance (by month from January 2015)
Virgin Australia Regional Airlines



In January 2016, Virgin Australia transferred their ATR fleet from Virgin Australia Regional Airlines to Virgin Australia.

Individual routes

On time performance is reported for all routes where the passenger load averages over 8000 passengers per month over the previous six months, and where two or more airlines operate in competition on those routes. There are now 66 routes which meet this definition. Over time, however, routes which meet this definition may change as airline networks and traffic levels vary.

	<i>Sectors</i>		<i>Arrivals On Time</i>		<i>Departures On Time</i>		<i>Cancellations</i>	
	<i>Sched.</i>	<i>Flown</i>	<i>No.</i>	<i>%</i>	<i>No.</i>	<i>%</i>	<i>No.</i>	<i>%</i>
Adelaide-Alice Springs								
Qantas	31	31	28	90.3	29	93.5	0	0.0
Virgin Australia	5	5	5	100.0	5	100.0	0	0.0
Virgin Australia Regional Airlines	18	18	10	55.6	10	55.6	0	0.0
All Airlines	54	54	43	79.6	44	81.5	0	0.0
Adelaide-Brisbane								
Jetstar	30	30	24	80.0	25	83.3	0	0.0
Qantas	85	85	74	87.1	78	91.8	0	0.0
QantasLink	27	26	24	92.3	26	100.0	1	3.7
Tigerair Australia	31	30	28	93.3	28	93.3	1	3.2
Virgin Australia	109	109	101	92.7	99	90.8	0	0.0
All Airlines	282	280	251	89.6	256	91.4	2	0.7
Adelaide-Canberra								
Qantas	32	32	27	84.4	25	78.1	0	0.0
Virgin Australia	27	27	22	81.5	22	81.5	0	0.0
All Airlines	59	59	49	83.1	47	79.7	0	0.0
Adelaide-Gold Coast								
Jetstar	40	40	35	87.5	34	85.0	0	0.0
Virgin Australia	35	35	33	94.3	33	94.3	0	0.0
All Airlines	75	75	68	90.7	67	89.3	0	0.0
Adelaide-Melbourne								
Jetstar	123	119	94	79.0	86	72.3	4	3.3
Qantas	244	244	226	92.6	225	92.2	0	0.0
Tigerair Australia	79	78	54	69.2	59	75.6	1	1.3
Virgin Australia	278	273	244	89.4	238	87.2	5	1.8
All Airlines	724	714	618	86.6	608	85.2	10	1.4
Adelaide-Perth								
Jetstar	30	30	25	83.3	19	63.3	0	0.0
Qantas	98	97	94	96.9	90	92.8	1	1.0
QantasLink	9	8	8	100.0	8	100.0	1	11.1
Virgin Australia	53	53	49	92.5	48	90.6	0	0.0
Virgin Australia Regional Airlines	28	27	19	70.4	20	74.1	1	3.6
All Airlines	218	215	195	90.7	185	86.0	3	1.4
Adelaide-Port Lincoln								
QantasLink	110	110	99	90.0	100	90.9	0	0.0
Regional Express	177	177	164	92.7	165	93.2	0	0.0
All Airlines	287	287	263	91.6	265	92.3	0	0.0
Adelaide-Sydney								
Jetstar	142	135	115	85.2	107	79.3	7	4.9
Qantas	227	227	216	95.2	211	93.0	0	0.0
QantasLink	26	26	24	92.3	24	92.3	0	0.0
Tigerair Australia	48	46	35	76.1	35	76.1	2	4.2
Virgin Australia	157	156	148	94.9	148	94.9	1	0.6
All Airlines	600	590	538	91.2	525	89.0	10	1.7

	<i>Sectors</i>		<i>Arrivals On Time</i>		<i>Departures On Time</i>		<i>Cancellations</i>	
	<i>Sched.</i>	<i>Flown</i>	<i>No.</i>	<i>%</i>	<i>No.</i>	<i>%</i>	<i>No.</i>	<i>%</i>
Albury-Sydney								
QantasLink	79	77	62	80.5	64	83.1	2	2.5
Regional Express	52	52	50	96.2	47	90.4	0	0.0
Virgin Australia	59	59	50	84.7	48	81.4	0	0.0
All Airlines	190	188	162	86.2	159	84.6	2	1.1
Alice Springs-Adelaide								
Qantas	31	31	30	96.8	28	90.3	0	0.0
Virgin Australia	5	5	4	80.0	4	80.0	0	0.0
Virgin Australia Regional Airlines	17	17	8	47.1	9	52.9	0	0.0
All Airlines	53	53	42	79.2	41	77.4	0	0.0
Alice Springs-Darwin								
QantasLink	31	30	28	93.3	28	93.3	1	3.2
Virgin Australia	5	5	4	80.0	5	100.0	0	0.0
Virgin Australia Regional Airlines	18	18	9	50.0	9	50.0	0	0.0
All Airlines	54	53	41	77.4	42	79.2	1	1.9
Armidale-Sydney								
QantasLink	107	106	84	79.2	87	82.1	1	0.9
Regional Express	44	44	39	88.6	40	90.9	0	0.0
All Airlines	151	150	123	82.0	127	84.7	1	0.7
Ayers Rock-Sydney								
Jetstar	22	22	18	81.8	19	86.4	0	0.0
Virgin Australia	31	31	29	93.5	29	93.5	0	0.0
All Airlines	53	53	47	88.7	48	90.6	0	0.0
Ballina-Sydney								
Jetstar	106	106	84	79.2	72	67.9	0	0.0
Regional Express	3	3	1	33.3	0	0.0	0	0.0
Virgin Australia	44	44	40	90.9	41	93.2	0	0.0
All Airlines	153	153	125	81.7	113	73.9	0	0.0
Brisbane-Adelaide								
Jetstar	30	30	25	83.3	23	76.7	0	0.0
Qantas	86	85	79	92.9	81	95.3	1	1.2
QantasLink	27	26	26	100.0	26	100.0	1	3.7
Tigerair Australia	31	30	28	93.3	28	93.3	1	3.2
Virgin Australia	113	113	103	91.2	103	91.2	0	0.0
All Airlines	287	284	261	91.9	261	91.9	3	1.0
Brisbane-Bundaberg								
QantasLink	111	110	102	92.7	98	89.1	1	0.9
Virgin Australia	31	31	30	96.8	29	93.5	0	0.0
All Airlines	142	141	132	93.6	127	90.1	1	0.7
Brisbane-Cairns								
Jetstar	122	121	109	90.1	100	82.6	1	0.8
Qantas	109	105	98	93.3	101	96.2	4	3.7
QantasLink	5	5	4	80.0	5	100.0	0	0.0
Tigerair Australia	42	42	37	88.1	37	88.1	0	0.0
Virgin Australia	131	131	125	95.4	117	89.3	0	0.0
All Airlines	409	404	373	92.3	360	89.1	5	1.2
Brisbane-Canberra								
Qantas	27	27	22	81.5	24	88.9	0	0.0
QantasLink	128	128	118	92.2	117	91.4	0	0.0
Tigerair Australia	13	13	5	38.5	10	76.9	0	0.0
Virgin Australia	92	91	81	89.0	82	90.1	1	1.1
All Airlines	260	259	226	87.3	233	90.0	1	0.4

	<i>Sectors</i>		<i>Arrivals On Time</i>		<i>Departures On Time</i>		<i>Cancellations</i>	
	<i>Sched.</i>	<i>Flown</i>	<i>No.</i>	<i>%</i>	<i>No.</i>	<i>%</i>	<i>No.</i>	<i>%</i>
Brisbane-Darwin								
Jetstar	30	30	29	96.7	27	90.0	0	0.0
Qantas	31	31	29	93.5	29	93.5	0	0.0
Tigerair Australia	17	17	15	88.2	15	88.2	0	0.0
Virgin Australia	32	32	30	93.8	28	87.5	0	0.0
All Airlines	110	110	103	93.6	99	90.0	0	0.0
Brisbane-Emerald								
QantasLink	100	100	93	93.0	94	94.0	0	0.0
Virgin Australia	53	53	50	94.3	49	92.5	0	0.0
All Airlines	153	153	143	93.5	143	93.5	0	0.0
Brisbane-Gladstone								
QantasLink	117	117	107	91.5	108	92.3	0	0.0
Virgin Australia	72	72	58	80.6	68	94.4	0	0.0
All Airlines	189	189	165	87.3	176	93.1	0	0.0
Brisbane-Hamilton Island								
QantasLink	27	27	25	92.6	22	81.5	0	0.0
Virgin Australia	31	31	29	93.5	27	87.1	0	0.0
All Airlines	58	58	54	93.1	49	84.5	0	0.0
Brisbane-Hobart								
Jetstar	40	40	33	82.5	37	92.5	0	0.0
Qantas	2	2	0	0.0	1	50.0	0	0.0
Virgin Australia	41	41	39	95.1	38	92.7	0	0.0
All Airlines	83	83	72	86.7	76	91.6	0	0.0
Brisbane-Mackay								
Jetstar	31	31	24	77.4	26	83.9	0	0.0
QantasLink	104	100	88	88.0	90	90.0	4	3.8
Virgin Australia	140	139	126	90.6	121	87.1	1	0.7
All Airlines	275	270	238	88.1	237	87.8	5	1.8
Brisbane-Melbourne								
Jetstar	153	151	126	83.4	123	81.5	2	1.3
Qantas	372	371	307	82.7	329	88.7	1	0.3
QantasLink	16	16	15	93.8	16	100.0	0	0.0
Tigerair Australia	137	135	101	74.8	101	74.8	2	1.5
Virgin Australia	370	362	296	81.8	327	90.3	8	2.2
All Airlines	1 048	1 035	845	81.6	896	86.6	13	1.2
Brisbane-Mount Isa								
QantasLink	53	53	36	67.9	41	77.4	0	0.0
Virgin Australia	19	19	18	94.7	18	94.7	0	0.0
All Airlines	72	72	54	75.0	59	81.9	0	0.0
Brisbane-Newcastle								
Jetstar	95	85	57	67.1	57	67.1	10	10.5
QantasLink	61	56	51	91.1	53	94.6	5	8.2
Virgin Australia	68	66	58	87.9	60	90.9	2	2.9
All Airlines	224	207	166	80.2	170	82.1	17	7.6
Brisbane-Perth								
Qantas	129	129	113	87.6	117	90.7	0	0.0
Tigerair Australia	17	17	17	100.0	17	100.0	0	0.0
Virgin Australia	109	109	103	94.5	99	90.8	0	0.0
All Airlines	255	255	233	91.4	233	91.4	0	0.0
Brisbane-Proserpine								
Jetstar	44	44	41	93.2	40	90.9	0	0.0
Tigerair Australia	17	17	16	94.1	15	88.2	0	0.0
Virgin Australia	34	34	33	97.1	32	94.1	0	0.0
All Airlines	95	95	90	94.7	87	91.6	0	0.0

	<i>Sectors</i>		<i>Arrivals On Time</i>		<i>Departures On Time</i>		<i>Cancellations</i>	
	<i>Sched.</i>	<i>Flown</i>	<i>No.</i>	<i>%</i>	<i>No.</i>	<i>%</i>	<i>No.</i>	<i>%</i>
Brisbane-Rockhampton								
QantasLink	146	142	128	90.1	127	89.4	4	2.7
Virgin Australia	142	142	125	88.0	126	88.7	0	0.0
All Airlines	288	284	253	89.1	253	89.1	4	1.4
Brisbane-Sydney								
Jetstar	180	171	140	81.9	133	77.8	9	5.0
Qantas	533	528	473	89.6	470	89.0	5	0.9
QantasLink	5	5	5	100.0	5	100.0	0	0.0
Tigerair Australia	123	120	88	73.3	88	73.3	3	2.4
Virgin Australia	499	488	454	93.0	459	94.1	11	2.2
All Airlines	1 340	1 312	1 160	88.4	1 155	88.0	28	2.1
Brisbane-Townsville								
Jetstar	47	46	40	87.0	38	82.6	1	2.1
Qantas	76	75	67	89.3	66	88.0	1	1.3
QantasLink	70	70	66	94.3	66	94.3	0	0.0
Virgin Australia	135	135	127	94.1	120	88.9	0	0.0
All Airlines	328	326	300	92.0	290	89.0	2	0.6
Broome-Perth								
QantasLink	92	79	61	77.2	60	75.9	13	14.1
Virgin Australia	2	2	1	50.0	0	0.0	0	0.0
Virgin Australia Regional Airlines	60	53	40	75.5	37	69.8	7	11.7
All Airlines	154	134	102	76.1	97	72.4	20	13.0
Bundaberg-Brisbane								
QantasLink	112	110	104	94.5	104	94.5	2	1.8
Virgin Australia	31	31	27	87.1	29	93.5	0	0.0
All Airlines	143	141	131	92.9	133	94.3	2	1.4
Cairns-Brisbane								
Jetstar	122	121	101	83.5	97	80.2	1	0.8
Qantas	110	105	94	89.5	95	90.5	5	4.5
QantasLink	5	5	4	80.0	4	80.0	0	0.0
Tigerair Australia	42	42	37	88.1	35	83.3	0	0.0
Virgin Australia	131	131	123	93.9	127	96.9	0	0.0
All Airlines	410	404	359	88.9	358	88.6	6	1.5
Cairns-Melbourne								
Jetstar	107	106	74	69.8	75	70.8	1	0.9
Qantas	40	40	29	72.5	34	85.0	0	0.0
Tigerair Australia	44	43	33	76.7	33	76.7	1	2.3
Virgin Australia	34	34	23	67.6	30	88.2	0	0.0
All Airlines	225	223	159	71.3	172	77.1	2	0.9
Cairns-Sydney								
Jetstar	127	126	78	61.9	94	74.6	1	0.8
Qantas	75	75	72	96.0	73	97.3	0	0.0
Tigerair Australia	49	49	40	81.6	38	77.6	0	0.0
Virgin Australia	92	92	86	93.5	81	88.0	0	0.0
All Airlines	343	342	276	80.7	286	83.6	1	0.3
Cairns-Townsville								
QantasLink	131	130	121	93.1	120	92.3	1	0.8
Regional Express	13	13	11	84.6	12	92.3	0	0.0
All Airlines	144	143	132	92.3	132	92.3	1	0.7
Canberra-Adelaide								
Qantas	32	32	31	96.9	31	96.9	0	0.0
Virgin Australia	27	27	22	81.5	20	74.1	0	0.0
All Airlines	59	59	53	89.8	51	86.4	0	0.0

	<i>Sectors</i>		<i>Arrivals On Time</i>		<i>Departures On Time</i>		<i>Cancellations</i>	
	<i>Sched.</i>	<i>Flown</i>	<i>No.</i>	<i>%</i>	<i>No.</i>	<i>%</i>	<i>No.</i>	<i>%</i>
Canberra-Brisbane								
Qantas	27	27	27	100.0	27	100.0	0	0.0
QantasLink	128	128	116	90.6	115	89.8	0	0.0
Tigerair Australia	13	13	7	53.8	5	38.5	0	0.0
Virgin Australia	92	91	87	95.6	85	93.4	1	1.1
All Airlines	260	259	237	91.5	232	89.6	1	0.4
Canberra-Melbourne								
Qantas	155	154	136	88.3	140	90.9	1	0.6
QantasLink	89	87	78	89.7	82	94.3	2	2.2
Tigerair Australia	31	29	19	65.5	20	69.0	2	6.5
Virgin Australia	140	140	119	85.0	119	85.0	0	0.0
All Airlines	415	410	352	85.9	361	88.0	5	1.2
Canberra-Sydney								
Qantas	4	4	4	100.0	4	100.0	0	0.0
QantasLink	275	269	244	90.7	243	90.3	6	2.2
Virgin Australia	162	159	145	91.2	141	88.7	3	1.9
All Airlines	441	432	393	91.0	388	89.8	9	2.0
Coffs Harbour-Sydney								
QantasLink	150	149	124	83.2	126	84.6	1	0.7
Tigerair Australia	13	13	12	92.3	12	92.3	0	0.0
Virgin Australia	34	34	30	88.2	31	91.2	0	0.0
All Airlines	197	196	166	84.7	169	86.2	1	0.5
Darwin-Alice Springs								
QantasLink	31	30	28	93.3	28	93.3	1	3.2
Virgin Australia	5	5	4	80.0	5	100.0	0	0.0
Virgin Australia Regional Airlines	17	17	10	58.8	10	58.8	0	0.0
All Airlines	53	52	42	80.8	43	82.7	1	1.9
Darwin-Brisbane								
Jetstar	30	30	28	93.3	27	90.0	0	0.0
Qantas	31	31	30	96.8	29	93.5	0	0.0
Tigerair Australia	17	17	17	100.0	17	100.0	0	0.0
Virgin Australia	32	32	21	65.6	30	93.8	0	0.0
All Airlines	110	110	96	87.3	103	93.6	0	0.0
Darwin-Melbourne								
Jetstar	30	30	22	73.3	20	66.7	0	0.0
Qantas	31	31	31	100.0	31	100.0	0	0.0
Virgin Australia	31	31	25	80.6	27	87.1	0	0.0
All Airlines	92	92	78	84.8	78	84.8	0	0.0
Darwin-Perth								
Qantas	31	31	28	90.3	27	87.1	0	0.0
Virgin Australia	27	27	24	88.9	24	88.9	0	0.0
Virgin Australia Regional Airlines	5	5	5	100.0	5	100.0	0	0.0
All Airlines	63	63	57	90.5	56	88.9	0	0.0
Darwin-Sydney								
Jetstar	31	30	22	73.3	22	73.3	1	3.2
Qantas	32	32	29	90.6	28	87.5	0	0.0
Virgin Australia	32	32	28	87.5	29	90.6	0	0.0
All Airlines	95	94	79	84.0	79	84.0	1	1.1
Dubbo-Sydney								
QantasLink	86	86	70	81.4	72	83.7	0	0.0
Regional Express	90	90	74	82.2	80	88.9	0	0.0
All Airlines	176	176	144	81.8	152	86.4	0	0.0

	<i>Sectors</i>		<i>Arrivals On Time</i>		<i>Departures On Time</i>		<i>Cancellations</i>	
	<i>Sched.</i>	<i>Flown</i>	<i>No.</i>	<i>%</i>	<i>No.</i>	<i>%</i>	<i>No.</i>	<i>%</i>
Emerald-Brisbane								
QantasLink	99	99	89	89.9	92	92.9	0	0.0
Virgin Australia	53	53	52	98.1	51	96.2	0	0.0
All Airlines	152	152	141	92.8	143	94.1	0	0.0
Geraldton-Perth								
QantasLink	41	41	37	90.2	37	90.2	0	0.0
Virgin Australia Regional Airlines	49	48	37	77.1	37	77.1	1	2.0
All Airlines	90	89	74	83.1	74	83.1	1	1.1
Gladstone-Brisbane								
QantasLink	117	116	107	92.2	101	87.1	1	0.9
Virgin Australia	71	71	60	84.5	61	85.9	0	0.0
All Airlines	188	187	167	89.3	162	86.6	1	0.5
Gold Coast-Adelaide								
Jetstar	40	40	36	90.0	36	90.0	0	0.0
Virgin Australia	35	35	31	88.6	29	82.9	0	0.0
All Airlines	75	75	67	89.3	65	86.7	0	0.0
Gold Coast-Melbourne								
Jetstar	243	242	210	86.8	194	80.2	1	0.4
Qantas	39	39	32	82.1	31	79.5	0	0.0
Tigerair Australia	93	93	62	66.7	60	64.5	0	0.0
Virgin Australia	212	211	165	78.2	160	75.8	1	0.5
All Airlines	587	585	469	80.2	445	76.1	2	0.3
Gold Coast-Sydney								
Jetstar	348	343	271	79.0	250	72.9	5	1.4
Qantas	105	105	95	90.5	92	87.6	0	0.0
QantasLink	23	23	22	95.7	22	95.7	0	0.0
Tigerair Australia	118	115	78	67.8	79	68.7	3	2.5
Virgin Australia	253	253	217	85.8	209	82.6	0	0.0
All Airlines	847	839	683	81.4	652	77.7	8	0.9
Hamilton Island-Brisbane								
QantasLink	27	27	24	88.9	25	92.6	0	0.0
Virgin Australia	31	31	28	90.3	28	90.3	0	0.0
All Airlines	58	58	52	89.7	53	91.4	0	0.0
Hamilton Island-Sydney								
Jetstar	31	31	29	93.5	29	93.5	0	0.0
Qantas	25	25	25	100.0	25	100.0	0	0.0
QantasLink	6	6	6	100.0	6	100.0	0	0.0
Virgin Australia	31	31	29	93.5	28	90.3	0	0.0
All Airlines	93	93	89	95.7	88	94.6	0	0.0
Hobart-Brisbane								
Jetstar	40	40	32	80.0	27	67.5	0	0.0
Qantas	2	2	0	0.0	0	0.0	0	0.0
Virgin Australia	41	41	34	82.9	35	85.4	0	0.0
All Airlines	83	83	66	79.5	62	74.7	0	0.0
Hobart-Melbourne								
Jetstar	246	241	159	66.0	143	59.3	5	2.0
QantasLink	102	102	84	82.4	87	85.3	0	0.0
Tigerair Australia	47	46	23	50.0	25	54.3	1	2.1
Virgin Australia	145	144	105	72.9	118	81.9	1	0.7
All Airlines	540	533	371	69.6	373	70.0	7	1.3

	<i>Sectors</i>		<i>Arrivals On Time</i>		<i>Departures On Time</i>		<i>Cancellations</i>	
	<i>Sched.</i>	<i>Flown</i>	<i>No.</i>	<i>%</i>	<i>No.</i>	<i>%</i>	<i>No.</i>	<i>%</i>
Hobart-Sydney								
Jetstar	136	134	101	75.4	101	75.4	2	1.5
Qantas	52	52	43	82.7	43	82.7	0	0.0
QantasLink	6	6	5	83.3	5	83.3	0	0.0
Virgin Australia	76	75	64	85.3	63	84.0	1	1.3
All Airlines	270	267	213	79.8	212	79.4	3	1.1
Kalgoorlie-Perth								
Qantas	10	10	10	100.0	9	90.0	0	0.0
QantasLink	63	61	56	91.8	56	91.8	2	3.2
Virgin Australia	25	25	23	92.0	24	96.0	0	0.0
Virgin Australia Regional Airlines	47	45	38	84.4	38	84.4	2	4.3
All Airlines	145	141	127	90.1	127	90.1	4	2.8
Karratha-Perth								
Qantas	20	18	17	94.4	15	83.3	2	10.0
QantasLink	169	167	157	94.0	156	93.4	2	1.2
Virgin Australia	7	7	6	85.7	5	71.4	0	0.0
Virgin Australia Regional Airlines	65	63	50	79.4	55	87.3	2	3.1
All Airlines	261	255	230	90.2	231	90.6	6	2.3
Launceston-Melbourne								
Jetstar	199	198	157	79.3	155	78.3	1	0.5
QantasLink	120	117	100	85.5	100	85.5	3	2.5
Virgin Australia	104	104	84	80.8	89	85.6	0	0.0
All Airlines	423	419	341	81.4	344	82.1	4	0.9
Launceston-Sydney								
Jetstar	91	91	70	76.9	63	69.2	0	0.0
Virgin Australia	34	34	31	91.2	30	88.2	0	0.0
All Airlines	125	125	101	80.8	93	74.4	0	0.0
Mackay-Brisbane								
Jetstar	31	31	27	87.1	24	77.4	0	0.0
QantasLink	105	103	89	86.4	96	93.2	2	1.9
Virgin Australia	140	139	132	95.0	130	93.5	1	0.7
All Airlines	276	273	248	90.8	250	91.6	3	1.1
Melbourne-Adelaide								
Jetstar	123	119	84	70.6	79	66.4	4	3.3
Qantas	248	248	222	89.5	225	90.7	0	0.0
Tigerair Australia	79	78	67	85.9	66	84.6	1	1.3
Virgin Australia	269	265	227	85.7	243	91.7	4	1.5
All Airlines	719	710	600	84.5	613	86.3	9	1.3
Melbourne-Brisbane								
Jetstar	154	152	132	86.8	114	75.0	2	1.3
Qantas	379	376	307	81.6	285	75.8	3	0.8
QantasLink	16	16	16	100.0	16	100.0	0	0.0
Tigerair Australia	136	134	101	75.4	98	73.1	2	1.5
Virgin Australia	353	343	295	86.0	307	89.5	10	2.8
All Airlines	1 038	1 021	851	83.3	820	80.3	17	1.6
Melbourne-Cairns								
Jetstar	108	108	91	84.3	85	78.7	0	0.0
Qantas	40	40	37	92.5	35	87.5	0	0.0
Tigerair Australia	44	43	38	88.4	38	88.4	1	2.3
Virgin Australia	34	34	34	100.0	32	94.1	0	0.0
All Airlines	226	225	200	88.9	190	84.4	1	0.4

	<i>Sectors</i>		<i>Arrivals On Time</i>		<i>Departures On Time</i>		<i>Cancellations</i>	
	<i>Sched.</i>	<i>Flown</i>	<i>No.</i>	<i>%</i>	<i>No.</i>	<i>%</i>	<i>No.</i>	<i>%</i>
Melbourne-Canberra								
Qantas	155	154	136	88.3	134	87.0	1	0.6
QantasLink	89	86	77	89.5	78	90.7	3	3.4
Tigerair Australia	31	29	21	72.4	23	79.3	2	6.5
Virgin Australia	141	141	113	80.1	115	81.6	0	0.0
All Airlines	416	410	347	84.6	350	85.4	6	1.4
Melbourne-Darwin								
Jetstar	31	31	26	83.9	26	83.9	0	0.0
Qantas	31	31	31	100.0	29	93.5	0	0.0
Virgin Australia	31	31	27	87.1	25	80.6	0	0.0
All Airlines	93	93	84	90.3	80	86.0	0	0.0
Melbourne-Gold Coast								
Jetstar	244	242	182	75.2	178	73.6	2	0.8
Qantas	39	39	34	87.2	34	87.2	0	0.0
Tigerair Australia	93	93	63	67.7	66	71.0	0	0.0
Virgin Australia	211	211	172	81.5	178	84.4	0	0.0
All Airlines	587	585	451	77.1	456	77.9	2	0.3
Melbourne-Hobart								
Jetstar	246	241	180	74.7	187	77.6	5	2.0
QantasLink	103	103	86	83.5	94	91.3	0	0.0
Tigerair Australia	47	46	35	76.1	39	84.8	1	2.1
Virgin Australia	145	144	124	86.1	131	91.0	1	0.7
All Airlines	541	534	425	79.6	451	84.5	7	1.3
Melbourne-Launceston								
Jetstar	197	197	169	85.8	163	82.7	0	0.0
QantasLink	120	117	101	86.3	100	85.5	3	2.5
Virgin Australia	104	104	97	93.3	98	94.2	0	0.0
All Airlines	421	418	367	87.8	361	86.4	3	0.7
Melbourne-Mildura								
QantasLink	87	86	70	81.4	70	81.4	1	1.1
Regional Express	48	48	34	70.8	40	83.3	0	0.0
Virgin Australia	31	31	28	90.3	30	96.8	0	0.0
All Airlines	166	165	132	80.0	140	84.8	1	0.6
Melbourne-Newcastle								
Jetstar	124	118	90	76.3	88	74.6	6	4.8
Virgin Australia	32	31	24	77.4	26	83.9	1	3.1
All Airlines	156	149	114	76.5	114	76.5	7	4.5
Melbourne-Perth								
Jetstar	61	60	57	95.0	52	86.7	1	1.6
Qantas	202	202	167	82.7	153	75.7	0	0.0
Tigerair Australia	60	60	45	75.0	45	75.0	0	0.0
Virgin Australia	144	144	111	77.1	107	74.3	0	0.0
All Airlines	467	466	380	81.5	357	76.6	1	0.2
Melbourne-Sunshine Coast								
Jetstar	88	88	79	89.8	74	84.1	0	0.0
QantasLink	18	18	12	66.7	13	72.2	0	0.0
Virgin Australia	73	72	66	91.7	65	90.3	1	1.4
All Airlines	179	178	157	88.2	152	85.4	1	0.6
Melbourne-Sydney								
Jetstar	420	402	277	68.9	276	68.7	18	4.3
Qantas	850	807	678	84.0	682	84.5	43	5.1
QantasLink	2	2	2	100.0	2	100.0	0	0.0
Tigerair Australia	264	260	167	64.2	166	63.8	4	1.5
Virgin Australia	694	669	596	89.1	602	90.0	25	3.6
All Airlines	2 230	2 140	1 720	80.4	1 728	80.7	90	4.0

	<i>Sectors</i>		<i>Arrivals On Time</i>		<i>Departures On Time</i>		<i>Cancellations</i>	
	<i>Sched.</i>	<i>Flown</i>	<i>No.</i>	<i>%</i>	<i>No.</i>	<i>%</i>	<i>No.</i>	<i>%</i>
Melbourne-Townsville								
Jetstar	30	30	20	66.7	19	63.3	0	0.0
Tigerair Australia	17	16	14	87.5	16	100.0	1	5.9
All Airlines	47	46	34	73.9	35	76.1	1	2.1
Mildura-Melbourne								
QantasLink	87	87	74	85.1	73	83.9	0	0.0
Regional Express	47	47	37	78.7	39	83.0	0	0.0
Virgin Australia	31	31	29	93.5	30	96.8	0	0.0
All Airlines	165	165	140	84.8	142	86.1	0	0.0
Mount Isa-Brisbane								
QantasLink	52	52	29	55.8	31	59.6	0	0.0
Virgin Australia	18	18	13	72.2	17	94.4	0	0.0
All Airlines	70	70	42	60.0	48	68.6	0	0.0
Newcastle-Brisbane								
Jetstar	95	85	63	74.1	69	81.2	10	10.5
QantasLink	62	57	53	93.0	53	93.0	5	8.1
Virgin Australia	68	65	60	92.3	59	90.8	3	4.4
All Airlines	225	207	176	85.0	181	87.4	18	8.0
Newcastle-Melbourne								
Jetstar	123	116	93	80.2	94	81.0	7	5.7
Virgin Australia	32	29	24	82.8	23	79.3	3	9.4
All Airlines	155	145	117	80.7	117	80.7	10	6.5
Newman-Perth								
Qantas	54	49	42	85.7	45	91.8	5	9.3
QantasLink	81	79	74	93.7	73	92.4	2	2.5
Virgin Australia	17	17	17	100.0	17	100.0	0	0.0
Virgin Australia Regional Airlines	24	24	20	83.3	21	87.5	0	0.0
All Airlines	176	169	153	90.5	156	92.3	7	4.0
Perth-Adelaide								
Jetstar	30	30	23	76.7	20	66.7	0	0.0
Qantas	102	101	92	91.1	94	93.1	1	1.0
QantasLink	9	9	9	100.0	9	100.0	0	0.0
Virgin Australia	55	55	50	90.9	51	92.7	0	0.0
Virgin Australia Regional Airlines	29	29	16	55.2	22	75.9	0	0.0
All Airlines	225	224	190	84.8	196	87.5	1	0.4
Perth-Brisbane								
Qantas	124	124	106	85.5	106	85.5	0	0.0
Tigerair Australia	17	17	16	94.1	16	94.1	0	0.0
Virgin Australia	108	108	88	81.5	94	87.0	0	0.0
All Airlines	249	249	210	84.3	216	86.7	0	0.0
Perth-Broome								
QantasLink	93	83	72	86.7	71	85.5	10	10.8
Virgin Australia	2	2	1	50.0	2	100.0	0	0.0
Virgin Australia Regional Airlines	60	54	42	77.8	41	75.9	6	10.0
All Airlines	155	139	115	82.7	114	82.0	16	10.3
Perth-Darwin								
Qantas	31	31	28	90.3	28	90.3	0	0.0
Virgin Australia	27	27	25	92.6	24	88.9	0	0.0
Virgin Australia Regional Airlines	5	5	5	100.0	5	100.0	0	0.0
All Airlines	63	63	58	92.1	57	90.5	0	0.0
Perth-Geraldton								
QantasLink	41	41	37	90.2	36	87.8	0	0.0
Virgin Australia Regional Airlines	49	48	36	75.0	36	75.0	1	2.0
All Airlines	90	89	73	82.0	72	80.9	1	1.1

	<i>Sectors</i>		<i>Arrivals On Time</i>		<i>Departures On Time</i>		<i>Cancellations</i>	
	<i>Sched.</i>	<i>Flown</i>	<i>No.</i>	<i>%</i>	<i>No.</i>	<i>%</i>	<i>No.</i>	<i>%</i>
Perth-Kalgoorlie								
Qantas	10	10	8	80.0	8	80.0	0	0.0
QantasLink	63	63	56	88.9	57	90.5	0	0.0
Virgin Australia	25	25	23	92.0	24	96.0	0	0.0
Virgin Australia Regional Airlines	47	45	37	82.2	37	82.2	2	4.3
All Airlines	145	143	124	86.7	126	88.1	2	1.4
Perth-Karratha								
Qantas	20	18	16	88.9	17	94.4	2	10.0
QantasLink	171	170	155	91.2	153	90.0	1	0.6
Virgin Australia	7	7	6	85.7	6	85.7	0	0.0
Virgin Australia Regional Airlines	65	63	57	90.5	57	90.5	2	3.1
All Airlines	263	258	234	90.7	233	90.3	5	1.9
Perth-Melbourne								
Jetstar	61	59	53	89.8	50	84.7	2	3.3
Qantas	201	199	179	89.9	173	86.9	2	1.0
Tigerair Australia	60	60	48	80.0	44	73.3	0	0.0
Virgin Australia	143	143	121	84.6	124	86.7	0	0.0
All Airlines	465	461	401	87.0	391	84.8	4	0.9
Perth-Newman								
Qantas	54	50	47	94.0	47	94.0	4	7.4
QantasLink	81	80	72	90.0	73	91.3	1	1.2
Virgin Australia	17	17	16	94.1	16	94.1	0	0.0
Virgin Australia Regional Airlines	24	24	20	83.3	20	83.3	0	0.0
All Airlines	176	171	155	90.6	156	91.2	5	2.8
Perth-Port Hedland								
Qantas	34	33	29	87.9	28	84.8	1	2.9
QantasLink	96	92	81	88.0	79	85.9	4	4.2
Virgin Australia	14	14	13	92.9	14	100.0	0	0.0
Virgin Australia Regional Airlines	39	39	28	71.8	31	79.5	0	0.0
All Airlines	183	178	151	84.8	152	85.4	5	2.7
Perth-Sydney								
Jetstar	31	30	19	63.3	18	60.0	1	3.2
Qantas	203	203	180	88.7	173	85.2	0	0.0
Tigerair Australia	28	27	27	100.0	25	92.6	1	3.6
Virgin Australia	123	123	93	75.6	97	78.9	0	0.0
All Airlines	385	383	319	83.3	313	81.7	2	0.5
Port Hedland-Perth								
Qantas	34	33	31	93.9	31	93.9	1	2.9
QantasLink	91	85	77	90.6	77	90.6	6	6.6
Virgin Australia	14	14	14	100.0	14	100.0	0	0.0
Virgin Australia Regional Airlines	39	39	29	74.4	29	74.4	0	0.0
All Airlines	178	171	151	88.3	151	88.3	7	3.9
Port Lincoln-Adelaide								
QantasLink	110	108	96	88.9	96	88.9	2	1.8
Regional Express	176	176	164	93.2	166	94.3	0	0.0
All Airlines	286	284	260	91.5	262	92.3	2	0.7
Port Macquarie-Sydney								
QantasLink	114	112	88	78.6	89	79.5	2	1.8
Virgin Australia	60	60	49	81.7	49	81.7	0	0.0
All Airlines	174	172	137	79.7	138	80.2	2	1.1
Proserpine-Brisbane								
Jetstar	44	44	41	93.2	41	93.2	0	0.0
Tigerair Australia	17	17	14	82.4	16	94.1	0	0.0
Virgin Australia	34	34	32	94.1	32	94.1	0	0.0
All Airlines	95	95	87	91.6	89	93.7	0	0.0

	<i>Sectors</i>		<i>Arrivals On Time</i>		<i>Departures On Time</i>		<i>Cancellations</i>	
	<i>Sched.</i>	<i>Flown</i>	<i>No.</i>	<i>%</i>	<i>No.</i>	<i>%</i>	<i>No.</i>	<i>%</i>
Proserpine-Sydney								
Jetstar	13	13	12	92.3	10	76.9	0	0.0
Tigerair Australia	26	26	20	76.9	20	76.9	0	0.0
All Airlines	39	39	32	82.1	30	76.9	0	0.0
Rockhampton-Brisbane								
QantasLink	138	135	119	88.1	119	88.1	3	2.2
Virgin Australia	142	142	132	93.0	133	93.7	0	0.0
All Airlines	280	277	251	90.6	252	91.0	3	1.1
Sunshine Coast-Melbourne								
Jetstar	89	89	77	86.5	76	85.4	0	0.0
QantasLink	17	17	15	88.2	16	94.1	0	0.0
Virgin Australia	73	73	65	89.0	61	83.6	0	0.0
All Airlines	179	179	157	87.7	153	85.5	0	0.0
Sunshine Coast-Sydney								
Jetstar	134	134	110	82.1	104	77.6	0	0.0
QantasLink	32	32	26	81.3	27	84.4	0	0.0
Virgin Australia	63	62	58	93.5	58	93.5	1	1.6
All Airlines	229	228	194	85.1	189	82.9	1	0.4
Sydney-Adelaide								
Jetstar	142	138	117	84.8	116	84.1	4	2.8
Qantas	219	219	195	89.0	187	85.4	0	0.0
QantasLink	26	26	24	92.3	22	84.6	0	0.0
Tigerair Australia	48	47	35	74.5	32	68.1	1	2.1
Virgin Australia	159	157	147	93.6	146	93.0	2	1.3
All Airlines	594	587	518	88.2	503	85.7	7	1.2
Sydney-Albury								
QantasLink	79	77	64	83.1	63	81.8	2	2.5
Regional Express	52	52	45	86.5	48	92.3	0	0.0
Virgin Australia	59	59	50	84.7	47	79.7	0	0.0
All Airlines	190	188	159	84.6	158	84.0	2	1.1
Sydney-Armidale								
QantasLink	107	106	88	83.0	83	78.3	1	0.9
Regional Express	45	45	43	95.6	41	91.1	0	0.0
All Airlines	152	151	131	86.8	124	82.1	1	0.7
Sydney-Ayers Rock								
Jetstar	22	22	21	95.5	17	77.3	0	0.0
Virgin Australia	31	31	29	93.5	29	93.5	0	0.0
All Airlines	53	53	50	94.3	46	86.8	0	0.0
Sydney-Ballina								
Jetstar	106	106	86	81.1	90	84.9	0	0.0
Regional Express	4	4	4	100.0	4	100.0	0	0.0
Virgin Australia	44	44	42	95.5	43	97.7	0	0.0
All Airlines	154	154	132	85.7	137	89.0	0	0.0
Sydney-Brisbane								
Jetstar	180	173	141	81.5	135	78.0	7	3.9
Qantas	532	528	470	89.0	466	88.3	4	0.8
QantasLink	4	4	4	100.0	4	100.0	0	0.0
Tigerair Australia	123	120	92	76.7	98	81.7	3	2.4
Virgin Australia	521	512	464	90.6	467	91.2	9	1.7
All Airlines	1 360	1 337	1 171	87.6	1 170	87.5	23	1.7

	<i>Sectors</i>		<i>Arrivals On Time</i>		<i>Departures On Time</i>		<i>Cancellations</i>	
	<i>Sched.</i>	<i>Flown</i>	<i>No.</i>	<i>%</i>	<i>No.</i>	<i>%</i>	<i>No.</i>	<i>%</i>
Sydney-Cairns								
Jetstar	127	126	107	84.9	88	69.8	1	0.8
Qantas	75	75	71	94.7	72	96.0	0	0.0
Tigerair Australia	49	49	43	87.8	42	85.7	0	0.0
Virgin Australia	92	92	72	78.3	72	78.3	0	0.0
All Airlines	343	342	293	85.7	274	80.1	1	0.3
Sydney-Canberra								
Qantas	4	4	4	100.0	4	100.0	0	0.0
QantasLink	278	273	236	86.4	237	86.8	5	1.8
Virgin Australia	163	160	136	85.0	131	81.9	3	1.8
All Airlines	445	437	376	86.0	372	85.1	8	1.8
Sydney-Coffs Harbour								
QantasLink	151	150	126	84.0	124	82.7	1	0.7
Tigerair Australia	13	13	12	92.3	13	100.0	0	0.0
Virgin Australia	34	34	31	91.2	30	88.2	0	0.0
All Airlines	198	197	169	85.8	167	84.8	1	0.5
Sydney-Darwin								
Jetstar	31	30	23	76.7	16	53.3	1	3.2
Qantas	32	32	28	87.5	24	75.0	0	0.0
Virgin Australia	32	32	31	96.9	31	96.9	0	0.0
All Airlines	95	94	82	87.2	71	75.5	1	1.1
Sydney-Dubbo								
QantasLink	87	87	71	81.6	69	79.3	0	0.0
Regional Express	93	93	85	91.4	86	92.5	0	0.0
All Airlines	180	180	156	86.7	155	86.1	0	0.0
Sydney-Gold Coast								
Jetstar	348	344	273	79.4	263	76.5	4	1.1
Qantas	104	104	95	91.3	93	89.4	0	0.0
QantasLink	24	24	22	91.7	21	87.5	0	0.0
Tigerair Australia	118	115	84	73.0	90	78.3	3	2.5
Virgin Australia	252	252	213	84.5	220	87.3	0	0.0
All Airlines	846	839	687	81.9	687	81.9	7	0.8
Sydney-Hamilton Island								
Jetstar	31	31	31	100.0	29	93.5	0	0.0
Qantas	25	25	25	100.0	22	88.0	0	0.0
QantasLink	6	6	6	100.0	6	100.0	0	0.0
Virgin Australia	31	31	29	93.5	30	96.8	0	0.0
All Airlines	93	93	91	97.8	87	93.5	0	0.0
Sydney-Hobart								
Jetstar	135	134	117	87.3	120	89.6	1	0.7
Qantas	54	54	52	96.3	53	98.1	0	0.0
QantasLink	4	4	3	75.0	4	100.0	0	0.0
Virgin Australia	76	75	69	92.0	74	98.7	1	1.3
All Airlines	269	267	241	90.3	251	94.0	2	0.7
Sydney-Launceston								
Jetstar	90	90	72	80.0	67	74.4	0	0.0
Virgin Australia	34	34	30	88.2	29	85.3	0	0.0
All Airlines	124	124	102	82.3	96	77.4	0	0.0
Sydney-Melbourne								
Jetstar	421	404	277	68.6	282	69.8	17	4.0
Qantas	866	818	618	75.6	651	79.6	48	5.5
QantasLink	3	3	3	100.0	2	66.7	0	0.0
Tigerair Australia	264	259	152	58.7	165	63.7	5	1.9
Virgin Australia	670	644	558	86.6	588	91.3	26	3.9
All Airlines	2 224	2 128	1 608	75.6	1 688	79.3	96	4.3

	<i>Sectors</i>		<i>Arrivals On Time</i>		<i>Departures On Time</i>		<i>Cancellations</i>	
	<i>Sched.</i>	<i>Flown</i>	<i>No.</i>	<i>%</i>	<i>No.</i>	<i>%</i>	<i>No.</i>	<i>%</i>
Sydney-Perth								
Jetstar	31	31	22	71.0	17	54.8	0	0.0
Qantas	202	202	169	83.7	165	81.7	0	0.0
Tigerair Australia	29	28	27	96.4	26	92.9	1	3.4
Virgin Australia	125	125	98	78.4	91	72.8	0	0.0
All Airlines	387	386	316	81.9	299	77.5	1	0.3
Sydney-Port Macquarie								
QantasLink	115	114	94	82.5	93	81.6	1	0.9
Virgin Australia	60	60	49	81.7	50	83.3	0	0.0
All Airlines	175	174	143	82.2	143	82.2	1	0.6
Sydney-Proserpine								
Jetstar	13	13	12	92.3	11	84.6	0	0.0
Tigerair Australia	26	26	23	88.5	22	84.6	0	0.0
All Airlines	39	39	35	89.7	33	84.6	0	0.0
Sydney-Sunshine Coast								
Jetstar	134	133	115	86.5	108	81.2	1	0.7
QantasLink	34	34	27	79.4	28	82.4	0	0.0
Virgin Australia	63	63	61	96.8	60	95.2	0	0.0
All Airlines	231	230	203	88.3	196	85.2	1	0.4
Sydney-Tamworth								
QantasLink	122	120	96	80.0	96	80.0	2	1.6
Virgin Australia	51	50	41	82.0	41	82.0	1	2.0
All Airlines	173	170	137	80.6	137	80.6	3	1.7
Sydney-Townsville								
Jetstar	31	31	26	83.9	23	74.2	0	0.0
Virgin Australia	19	19	17	89.5	18	94.7	0	0.0
All Airlines	50	50	43	86.0	41	82.0	0	0.0
Sydney-Wagga Wagga								
QantasLink	96	96	84	87.5	83	86.5	0	0.0
Regional Express	62	62	59	95.2	59	95.2	0	0.0
All Airlines	158	158	143	90.5	142	89.9	0	0.0
Tamworth-Sydney								
QantasLink	121	119	95	79.8	96	80.7	2	1.7
Virgin Australia	51	50	41	82.0	42	84.0	1	2.0
All Airlines	172	169	136	80.5	138	81.7	3	1.7
Townsville-Brisbane								
Jetstar	47	46	42	91.3	40	87.0	1	2.1
Qantas	75	74	68	91.9	67	90.5	1	1.3
QantasLink	70	69	65	94.2	64	92.8	1	1.4
Virgin Australia	135	135	132	97.8	131	97.0	0	0.0
All Airlines	327	324	307	94.8	302	93.2	3	0.9
Townsville-Cairns								
QantasLink	132	130	115	88.5	117	90.0	2	1.5
Regional Express	13	13	12	92.3	12	92.3	0	0.0
All Airlines	145	143	127	88.8	129	90.2	2	1.4
Townsville-Melbourne								
Jetstar	30	30	21	70.0	21	70.0	0	0.0
Tigerair Australia	17	16	13	81.3	13	81.3	1	5.9
All Airlines	47	46	34	73.9	34	73.9	1	2.1
Townsville-Sydney								
Jetstar	31	30	22	73.3	25	83.3	1	3.2
Virgin Australia	19	19	16	84.2	16	84.2	0	0.0
All Airlines	50	49	38	77.6	41	83.7	1	2.0

	<i>Sectors</i>		<i>Arrivals On Time</i>		<i>Departures On Time</i>		<i>Cancellations</i>	
	<i>Sched.</i>	<i>Flown</i>	<i>No.</i>	<i>%</i>	<i>No.</i>	<i>%</i>	<i>No.</i>	<i>%</i>
Wagga Wagga-Sydney								
QantasLink	95	95	85	89.5	87	91.6	0	0.0
Regional Express	65	65	54	83.1	60	92.3	0	0.0
All Airlines	160	160	139	86.9	147	91.9	0	0.0

Airports

On time performance is reported for all routes where the passenger load averages over 8000 passengers per month, and where two or more airlines operate in competition. The following data reports by airport against flights operated on those routes only. This month, 8 major city airports and 32 regional city airports are covered.

Airport	Arrivals			Departures		
	Sectors	On Time		Sectors	On Time	
	Flown	No.	%	Flown	No.	%
Adelaide						
Jetstar	357	285	79.8	354	271	76.6
Qantas	716	649	90.6	716	658	91.9
QantasLink	169	155	91.7	170	158	92.9
Regional Express	176	164	93.2	177	165	93.2
Tigerair Australia	155	130	83.9	154	122	79.2
Virgin Australia	657	584	88.9	658	593	90.1
Virgin Australia Regional Airlines	46	24	52.2	45	30	66.7
All Airlines	2 276	1 991	87.5	2 274	1 997	87.8
Relates to services to and from Alice Springs, Brisbane, Canberra, Gold Coast, Melbourne, Perth, Port Lincoln and Sydney.						
Albury						
QantasLink	77	64	83.1	77	64	83.1
Regional Express	52	45	86.5	52	47	90.4
Virgin Australia	59	50	84.7	59	48	81.4
All Airlines	188	159	84.6	188	159	84.6
Relates to services to and from Sydney only.						
Alice Springs						
Qantas	31	28	90.3	31	28	90.3
QantasLink	30	28	93.3	30	28	93.3
Virgin Australia	10	9	90.0	10	9	90.0
Virgin Australia Regional Airlines	35	20	57.1	35	18	51.4
All Airlines	106	85	80.2	106	83	78.3
Relates to services to and from Adelaide and Darwin.						
Armidale						
QantasLink	106	88	83.0	106	87	82.1
Regional Express	45	43	95.6	44	40	90.9
All Airlines	151	131	86.8	150	127	84.7
Relates to services to and from Sydney only.						
Ayers Rock						
Jetstar	22	21	95.5	22	19	86.4
Virgin Australia	31	29	93.5	31	29	93.5
All Airlines	53	50	94.3	53	48	90.6
Relates to services to and from Sydney only.						
Ballina						
Jetstar	106	86	81.1	106	72	67.9
Regional Express	4	4	100.0	3	0	0.0
Virgin Australia	44	42	95.5	44	41	93.2
All Airlines	154	132	85.7	153	113	73.9
Relates to services to and from Sydney only.						

Airport	Arrivals			Departures		
	Sectors	On Time		Sectors	On Time	
	Flown	No.	%	Flown	No.	%
Brisbane						
Jetstar	752	631	83.9	749	604	80.6
Qantas	1 352	1 176	87.0	1 353	1 218	90.0
QantasLink	947	843	89.0	955	868	90.9
Tigerair Australia	390	312	80.0	391	311	79.5
Virgin Australia	2 086	1 881	90.2	2 089	1 903	91.1
All Airlines	5 527	4 843	87.6	5 537	4 904	88.6

Relates to services to and from Adelaide, Bundaberg, Cairns, Canberra, Darwin, Emerald, Gladstone, Hamilton Island, Hobart, Mackay, Melbourne, Mount Isa, Newcastle, Perth, Proserpine, Rockhampton, Sydney and Townsville.

Broome

QantasLink	83	72	86.7	79	60	75.9
Virgin Australia	2	1	50.0	2	0	0.0
Virgin Australia Regional Airlines	54	42	77.8	53	37	69.8
All Airlines	139	115	82.7	134	97	72.4

Relates to services to and from Perth only.

Bundaberg

QantasLink	110	102	92.7	110	104	94.5
Virgin Australia	31	30	96.8	31	29	93.5
All Airlines	141	132	93.6	141	133	94.3

Relates to services to and from Brisbane only.

Cairns

Jetstar	355	307	86.5	353	266	75.4
Qantas	220	206	93.6	220	202	91.8
QantasLink	135	119	88.1	135	124	91.9
Regional Express	13	12	92.3	13	12	92.3
Tigerair Australia	134	118	88.1	134	106	79.1
Virgin Australia	257	231	89.9	257	238	92.6
All Airlines	1 114	993	89.1	1 112	948	85.3

Relates to services to and from Brisbane, Melbourne, Sydney and Townsville.

Canberra

Qantas	217	189	87.1	217	202	93.1
QantasLink	487	431	88.5	484	440	90.9
Tigerair Australia	42	26	61.9	42	25	59.5
Virgin Australia	419	352	84.0	417	365	87.5
All Airlines	1 165	998	85.7	1 160	1 032	89.0

Relates to services to and from Adelaide, Brisbane, Melbourne and Sydney.

Coffs Harbour

QantasLink	150	126	84.0	149	126	84.6
Tigerair Australia	13	12	92.3	13	12	92.3
Virgin Australia	34	31	91.2	34	31	91.2
All Airlines	197	169	85.8	196	169	86.2

Relates to services to and from Sydney only.

Airport	Arrivals			Departures		
	Sectors Flown	On Time		Sectors Flown	On Time	
		No.	%		No.	%
Darwin						
Jetstar	91	78	85.7	90	69	76.7
Qantas	125	116	92.8	125	115	92.0
QantasLink	30	28	93.3	30	28	93.3
Tigerair Australia	17	15	88.2	17	17	100.0
Virgin Australia	127	117	92.1	127	115	90.6
Virgin Australia Regional Airlines	23	14	60.9	22	15	68.2
All Airlines	413	368	89.1	411	359	87.3
Relates to services to and from Alice Springs, Brisbane, Melbourne, Perth and Sydney.						
Dubbo						
QantasLink	87	71	81.6	86	72	83.7
Regional Express	93	85	91.4	90	80	88.9
All Airlines	180	156	86.7	176	152	86.4
Relates to services to and from Sydney only.						
Emerald						
QantasLink	100	93	93.0	99	92	92.9
Virgin Australia	53	50	94.3	53	51	96.2
All Airlines	153	143	93.5	152	143	94.1
Relates to services to and from Brisbane only.						
Geraldton						
QantasLink	41	37	90.2	41	37	90.2
Virgin Australia Regional Airlines	48	36	75.0	48	37	77.1
All Airlines	89	73	82.0	89	74	83.1
Relates to services to and from Perth only.						
Gladstone						
QantasLink	117	107	91.5	116	101	87.1
Virgin Australia	72	58	80.6	71	61	85.9
All Airlines	189	165	87.3	187	162	86.6
Relates to services to and from Brisbane only.						
Gold Coast						
Jetstar	626	490	78.3	625	480	76.8
Qantas	143	129	90.2	144	123	85.4
QantasLink	24	22	91.7	23	22	95.7
Tigerair Australia	208	147	70.7	208	139	66.8
Virgin Australia	498	418	83.9	499	398	79.8
All Airlines	1 499	1 206	80.5	1 499	1 162	77.5
Relates to services to and from Adelaide, Melbourne and Sydney.						
Hamilton Island						
Jetstar	31	31	100.0	31	29	93.5
Qantas	25	25	100.0	25	25	100.0
QantasLink	33	31	93.9	33	31	93.9
Virgin Australia	62	58	93.5	62	56	90.3
All Airlines	151	145	96.0	151	141	93.4
Relates to services to and from Brisbane and Sydney.						

Airport	Arrivals			Departures		
	Sectors Flown	On Time		Sectors Flown	On Time	
		No.	%		No.	%
Hobart						
Jetstar	415	330	79.5	415	271	65.3
Qantas	56	52	92.9	54	43	79.6
QantasLink	107	89	83.2	108	92	85.2
Tigerair Australia	46	35	76.1	46	25	54.3
Virgin Australia	260	232	89.2	260	216	83.1
All Airlines	884	738	83.5	883	647	73.3
Relates to services to and from Brisbane, Melbourne and Sydney.						
Kalgoorlie						
Qantas	10	8	80.0	10	9	90.0
QantasLink	63	56	88.9	61	56	91.8
Virgin Australia	25	23	92.0	25	24	96.0
Virgin Australia Regional Airlines	45	37	82.2	45	38	84.4
All Airlines	143	124	86.7	141	127	90.1
Relates to services to and from Perth only.						
Karratha						
Qantas	18	16	88.9	18	15	83.3
QantasLink	170	155	91.2	167	156	93.4
Virgin Australia	7	6	85.7	7	5	71.4
Virgin Australia Regional Airlines	63	57	90.5	63	55	87.3
All Airlines	258	234	90.7	255	231	90.6
Relates to services to and from Perth only.						
Launceston						
Jetstar	287	241	84.0	289	218	75.4
QantasLink	117	101	86.3	117	100	85.5
Virgin Australia	138	127	92.0	138	119	86.2
All Airlines	542	469	86.5	544	437	80.3
Relates to services to and from Melbourne and Sydney.						
Mackay						
Jetstar	31	24	77.4	31	24	77.4
QantasLink	100	88	88.0	103	96	93.2
Virgin Australia	139	126	90.6	139	130	93.5
All Airlines	270	238	88.1	273	250	91.6
Relates to services to and from Brisbane only.						
Melbourne						
Jetstar	1 785	1 363	76.4	1 788	1 341	75.0
Qantas	1 896	1 558	82.2	1 897	1 577	83.1
QantasLink	429	369	86.0	428	373	87.1
Regional Express	47	37	78.7	48	40	83.3
Tigerair Australia	759	505	66.5	759	557	73.4
Virgin Australia	2 219	1 858	83.7	2 220	1 959	88.2
All Airlines	7 135	5 690	79.7	7 140	5 847	81.9
Relates to services to and from Adelaide, Brisbane, Cairns, Canberra, Darwin, Gold Coast, Hobart, Launceston, Mildura, Newcastle, Perth, Sunshine Coast, Sydney and Townsville.						
Mildura						
QantasLink	86	70	81.4	87	73	83.9
Regional Express	48	34	70.8	47	39	83.0
Virgin Australia	31	28	90.3	31	30	96.8
All Airlines	165	132	80.0	165	142	86.1
Relates to services to and from Melbourne only.						

Airport	Arrivals			Departures		
	Sectors Flown	On Time		Sectors Flown	On Time	
		No.	%		No.	%
Mount Isa						
QantasLink	53	36	67.9	52	31	59.6
Virgin Australia	19	18	94.7	18	17	94.4
All Airlines	72	54	75.0	70	48	68.6
Relates to services to and from Brisbane only.						
Newcastle						
Jetstar	203	147	72.4	201	163	81.1
QantasLink	56	51	91.1	57	53	93.0
Virgin Australia	97	82	84.5	94	82	87.2
All Airlines	356	280	78.7	352	298	84.7
Relates to services to and from Brisbane and Melbourne.						
Newman						
Qantas	50	47	94.0	49	45	91.8
QantasLink	80	72	90.0	79	73	92.4
Virgin Australia	17	16	94.1	17	17	100.0
Virgin Australia Regional Airlines	24	20	83.3	24	21	87.5
All Airlines	171	155	90.6	169	156	92.3
Relates to services to and from Perth only.						
Perth						
Jetstar	121	104	86.0	119	88	73.9
Qantas	771	671	87.0	769	674	87.6
QantasLink	520	470	90.4	538	478	88.8
Tigerair Australia	105	89	84.8	104	85	81.7
Virgin Australia	523	446	85.3	521	452	86.8
Virgin Australia Regional Airlines	304	238	78.3	307	249	81.1
All Airlines	2 344	2 018	86.1	2 358	2 026	85.9
Relates to services to and from Adelaide, Brisbane, Broome, Darwin, Geraldton, Kalgoorlie, Karratha, Melbourne, Newman, Port Hedland and Sydney.						
Port Hedland						
Qantas	33	29	87.9	33	31	93.9
QantasLink	92	81	88.0	85	77	90.6
Virgin Australia	14	13	92.9	14	14	100.0
Virgin Australia Regional Airlines	39	28	71.8	39	29	74.4
All Airlines	178	151	84.8	171	151	88.3
Relates to services to and from Perth only.						
Port Lincoln						
QantasLink	110	99	90.0	108	96	88.9
Regional Express	177	164	92.7	176	166	94.3
All Airlines	287	263	91.6	284	262	92.3
Relates to services to and from Adelaide only.						
Port Macquarie						
QantasLink	114	94	82.5	112	89	79.5
Virgin Australia	60	49	81.7	60	49	81.7
All Airlines	174	143	82.2	172	138	80.2
Relates to services to and from Sydney only.						

Airport	Arrivals			Departures		
	Sectors Flown	On Time		Sectors Flown	On Time	
		No.	%		No.	%
Proserpine						
Jetstar	57	53	93.0	57	51	89.5
Tigerair Australia	43	39	90.7	43	36	83.7
Virgin Australia	34	33	97.1	34	32	94.1
All Airlines	134	125	93.3	134	119	88.8
Relates to services to and from Brisbane and Sydney.						
Rockhampton						
QantasLink	142	128	90.1	135	119	88.1
Virgin Australia	142	125	88.0	142	133	93.7
All Airlines	284	253	89.1	277	252	91.0
Relates to services to and from Brisbane only.						
Sunshine Coast						
Jetstar	221	194	87.8	223	180	80.7
QantasLink	52	39	75.0	49	43	87.8
Virgin Australia	135	127	94.1	135	119	88.1
All Airlines	408	360	88.2	407	342	84.0
Relates to services to and from Melbourne and Sydney.						
Sydney						
Jetstar	1 798	1 368	76.1	1 806	1 382	76.5
Qantas	2 058	1 815	88.2	2 061	1 737	84.3
QantasLink	1 113	942	84.6	1 124	935	83.2
Regional Express	254	218	85.8	256	238	93.0
Tigerair Australia	656	467	71.2	657	488	74.3
Virgin Australia	2 471	2 204	89.2	2 474	2 197	88.8
All Airlines	8 350	7 014	84.0	8 378	6 977	83.3
Relates to services to and from Adelaide, Albury, Armidale, Ayers Rock, Ballina, Brisbane, Cairns, Canberra, Coffs Harbour, Darwin, Dubbo, Gold Coast, Hamilton Island, Hobart, Launceston, Melbourne, Perth, Port Macquarie, Proserpine, Sunshine Coast, Tamworth, Townsville and Wagga Wagga.						
Tamworth						
QantasLink	120	96	80.0	119	96	80.7
Virgin Australia	50	41	82.0	50	42	84.0
All Airlines	170	137	80.6	169	138	81.7
Relates to services to and from Sydney only.						
Townsville						
Jetstar	107	86	80.4	106	86	81.1
Qantas	75	67	89.3	74	67	90.5
QantasLink	200	187	93.5	199	181	91.0
Regional Express	13	11	84.6	13	12	92.3
Tigerair Australia	16	14	87.5	16	13	81.3
Virgin Australia	154	144	93.5	154	147	95.5
All Airlines	565	509	90.1	562	506	90.0
Relates to services to and from Brisbane, Cairns, Melbourne and Sydney.						
Wagga Wagga						
QantasLink	96	84	87.5	95	87	91.6
Regional Express	62	59	95.2	65	60	92.3
All Airlines	158	143	90.5	160	147	91.9
Relates to services to and from Sydney only.						

Definitions

On time arrival	A flight arrival is counted as "on time" if it arrived at the gate before 15 minutes after the scheduled arrival time shown in the carriers' schedule. Neither diverted nor cancelled flights count as on time.
On time departure	A flight departure is counted as "on time" if it departs the gate before 15 minutes after the scheduled departure time shown in the carriers' schedule.
Cancellation	A flight removed from service within 7 days of scheduled departure is regarded as a cancellation.
On time departure percentage	The percentage of on time departures is measured against the number of departures <i>operated</i> on any particular sector.
On time arrival percentage	The percentage of on time arrivals is measured against the number of arrivals <i>operated</i> on any particular sector.
Cancellation percentage	The percentage of cancellations is measured against the number of services <i>scheduled</i> on any particular sector.
