



Australian Government

Department of Infrastructure and Regional Development

Bureau of Infrastructure, Transport and Regional Economics

STATISTICAL REPORT



Aviation

Domestic airline on time performance
October 2017

© Commonwealth of Australia 2017

ISSN: 1832-0759

Ownership of intellectual property rights in this publication

Unless otherwise noted, copyright (and any other intellectual property rights, if any) in this publication is owned by the Commonwealth of Australia (referred to below as the Commonwealth).

Disclaimer

The material contained in this publication is made available on the understanding that the Commonwealth is not providing professional advice, and that users exercise their own skill and care with respect to its use, and seek independent advice if necessary.

The Commonwealth makes no representations or warranties as to the contents or accuracy of the information contained in this publication. To the extent permitted by law, the Commonwealth disclaims liability to any person or organisation in respect of anything done, or omitted to be done, in reliance upon information contained in this publication.

Creative Commons licence

With the exception of (a) the Coat of Arms; and (b) the Department of Infrastructure and Regional Development's photos and graphics, copyright in this publication is licensed under a Creative Commons Attribution 3.0 Australia Licence.

Creative Commons Attribution 3.0 Australia Licence is a standard form licence agreement that allows you to copy, communicate and adapt this publication provided that you attribute the work to the Commonwealth and abide by the other licence terms. A summary of the licence terms is available from <http://creativecommons.org/licenses/by/3.0/au/deed.en>. The full licence terms are available from <http://creativecommons.org/licenses/by/3.0/au/legalcode>.

Use of the Coat of Arms

The Department of the Prime Minister and Cabinet sets the terms under which the Coat of Arms is used. Please refer to the Department's Commonwealth Coat of Arms and Government branding web page <http://www.dpmmc.gov.au/guidelines/index.cfm#brand> and, in particular, the Guidelines on the use of the Commonwealth Coat of Arms publication.

An appropriate citation for this report is:

Bureau of Infrastructure, Transport and Regional Economics (BITRE), 2017, Domestic airline on time performance, Statistical Report, BITRE, Canberra ACT.

Contact us

This publication is available in PDF format. All other rights are reserved, including in relation to any Departmental logos or trade marks which may exist. For enquiries regarding the licence and any use of this publication, please contact:

Bureau of Infrastructure, Transport and Regional Economics (BITRE)
Department of Infrastructure and Regional Development
GPO Box 501, Canberra ACT 2601, Australia
Telephone: (international) +61 2 6274 7210
Fax: (international) +61 2 6274 6855
Email: bitre@infrastructure.gov.au
Website: www.bitre.gov.au

Inquiries

Should you require additional information about the statistics contained in this publication:

Telephone (02) 6274 7790 or Facsimile (02) 6274 7727

Electronic mail: AVSTATS@infrastructure.gov.au

Web site: <http://www.bitre.gov.au/statistics/aviation/otphome.aspx>

Foreword

The Bureau of Infrastructure, Transport and Regional Economics (BITRE) monitors the punctuality and reliability of major domestic airlines operating between Australian airports. The purpose of this is to allow for evaluation of overall industry and individual airline performance, so that consumers of air travel can make informed decisions.

The following domestic airlines currently report this information monthly to the BITRE: Jetstar, Qantas, QantasLink, Regional Express, Tigerair Australia, Virgin Australia and Virgin Australia Regional Airlines. Data has been gathered since November 2003, although some airlines commenced reporting at a later date, including Jetstar which first reported in May 2004, MacAir in July 2005, Tigerair Australia in April 2008 and Virgin Australia Regional Airlines in May 2013. MacAir ceased operations in February 2009 and data was not received for December 2008 onwards. Virgin Blue was rebranded as Virgin Australia in May 2011 and Tiger Airways was rebranded as Tigerair Australia in July 2013 and time series data in Microsoft Excel spreadsheet format on the BITRE website have been revised to reflect these changes. Services operated by Skywest on behalf of Virgin Australia using ATR/F100 aircraft commenced in November 2011 and were shown separately as Virgin Australia – ATR/F100 Operations. Virgin Australia Regional Airlines commenced operations in May 2013. It was formed after the acquisition of Skywest by Virgin Australia and represented a combination of operations previously reported under Skywest and Virgin Australia – ATR/F100 Operations. In January 2016, Virgin Australia transferred their ATR fleet from Virgin Australia Regional Airlines to Virgin Australia.

Information presented in this report is for Australian domestic routes for which the passenger load averaged 8 000 or more passengers per month over the previous six months and where two or more airlines operated in competition on those routes. There were 64 routes that met this definition in October 2017. Over time, routes which meet these criteria change as airline networks and traffic levels vary.

Participating airlines report their overall monthly network performance where this is possible.

Total industry figures encompass all services operated by reporting airlines only. These airlines collectively carried over 95 per cent of total domestic passengers (regular public transport only) in 2016.

The method of capturing on time performance varies between airlines utilising different recording systems. Jetstar and Qantas jet aircraft use Aircraft Communication Addressing and Reporting System (ACARS) to electronically measure on time performance. Regional Express, Tigerair Australia, Virgin Australia, Virgin Australia Regional Airlines and the Qantas non-jet fleet record on time performance manually using records from pilots, gate agents and/or ground crews.

After initial data is collected, aggregate reports are audited internally by participating airlines prior to publication.

Reports and detailed time series data in Microsoft Excel spreadsheet format are available from the BITRE website at: <http://www.bitre.gov.au/statistics/aviation/otphome.aspx>.

Contents

	Page
Industry performance	1
Individual routes	10
Airports	23
Definitions	29

Industry performance

For October 2017, on time performance over all routes operated by participating airlines (Jetstar, Qantas, QantasLink, Regional Express, Tigerair Australia, Virgin Australia and Virgin Australia Regional Airlines) averaged 79.0 per cent for on time arrivals and 79.7 per cent for on time departures. Cancellations represented 2.3 per cent of all scheduled flights. The equivalent figures for October 2016 were 82.0 per cent for on time arrivals, 83.4 per cent for on time departures and 1.8 per cent for cancellations.

This month's on time arrivals figure was lower than the long term average performance for all routes (82.7 per cent) and the on time departures figure was also lower than the long term average (84.1 per cent). The rate of cancellations was higher than the long term average of 1.4 per cent.

Qantas achieved the highest on time arrivals among the major domestic airlines at 83.1 per cent followed by Virgin Australia at 79.5 per cent, Jetstar at 77.1 per cent and Tigerair Australia at 67.4 per cent. Of the regional airlines, Virgin Australia Regional Airlines recorded 80.2 per cent for on time arrivals, followed by QantasLink at 79.8 per cent and Regional Express at 77.6 per cent. The Qantas network (Qantas and QantasLink combined operations) recorded 81.4 per cent for on time arrivals while the Virgin Australia network (Virgin Australia and Virgin Australia Regional Airlines combined operations) recorded 79.5 per cent.

Qantas also achieved the highest level of on time departures among the major domestic airlines for October 2017 at 83.6 per cent, followed by Virgin Australia at 81.5 per cent, Jetstar at 74.0 per cent and Tigerair Australia at 70.2 per cent. Of the regional airlines, Virgin Australia Regional Airlines recorded 80.8 per cent, followed by QantasLink at 80.4 per cent and Regional Express at 80.2 per cent. The Qantas network recorded 81.9 per cent for on time departures while the Virgin Australia network recorded 81.5 per cent.

QantasLink recorded the highest percentage of cancellations (4.7 per cent) during the month, followed by Virgin Australia Regional Airlines (4.0 per cent), Regional Express and Qantas (both at 2.0 per cent), Tigerair Australia (1.9 per cent), Virgin Australia (1.6 per cent) and Jetstar (0.7 per cent).

Airlines' on time performance varies across the routes they serve. Individual route data by specific airline for 64 routes are shown on pages 10-22.

Of the 64 routes which met the criteria for on time performance reporting in October 2017, the Darwin-Perth and Perth-Darwin routes had the highest percentage of on time arrivals (95.3 per cent) and the Perth-Darwin route recorded the highest percentage of on time departures (96.9 per cent). The Brisbane-Rockhampton route had the lowest percentage of on time arrivals (59.1 per cent) and the Sunshine Coast-Melbourne route had the lowest percentage of on time departures (61.6 per cent).

Cancellations were highest on the Mount Isa-Brisbane route at 10.7 per cent, followed by the Hamilton Island-Brisbane route at 10.4 per cent, the Port Hedland-Perth route at 7.9 per cent,

the Brisbane-Hamilton Island route at 7.6 per cent and the Brisbane-Mount Isa route at 6.7 per cent.

Newman Airport recorded the highest percentage of on time arrivals (94.0 per cent) and the highest percentage of on time departures (93.4 per cent). Rockhampton Airport recorded the lowest percentage of on time arrivals (59.1 per cent) and the lowest percentage of on time departures (63.4 per cent). These figures only refer to reported routes and do not cover all flights at these airports.

Table 1 On time performance for October 2017 — Total Industry

	<i>Sectors</i>		<i>Arrivals On Time</i>		<i>Departures On Time</i>		<i>Cancellations</i>	
	<i>Scheduled</i>	<i>Flown</i>	<i>No.</i>	<i>%</i>	<i>No.</i>	<i>%</i>	<i>No.</i>	<i>%</i>
Jetstar	7 354	7 303	5 631	77.1	5 401	74.0	51	0.7
Qantas	9 332	9 148	7 600	83.1	7 650	83.6	184	2.0
QantasLink	10 625	10 125	8 083	79.8	8 143	80.4	500	4.7
Regional Express	6 599	6 465	5 016	77.6	5 187	80.2	134	2.0
Tigerair Australia	2 634	2 585	1 743	67.4	1 814	70.2	49	1.9
Virgin Australia	11 818	11 631	9 243	79.5	9 480	81.5	187	1.6
Virgin Australia Regional Airlines	858	824	661	80.2	666	80.8	34	4.0
All Airlines	49 220	48 081	37 977	79.0	38 341	79.7	1 139	2.3
Qantas - all QF designated services	19 957	19 273	15 683	81.4	15 793	81.9	684	3.4
Virgin Australia - all VA designated services	12 676	12 455	9 904	79.5	10 146	81.5	221	1.7

Total airline network data (including routes not shown in this report).

Airlines' on time performance varies across the routes they serve. Individual route data by specific airline for 64 routes are shown on pages 10-22.

Table 2 Top ten routes for on time performance for October 2017 (participating airlines only)

<i>Arrivals</i>		<i>Departures</i>	
<i>Route</i>	<i>On Time (%)</i>	<i>Route</i>	<i>On Time (%)</i>
Darwin-Perth	95.3	Perth-Darwin	96.9
Perth-Darwin	95.3	Perth-Newman	95.8
Karratha-Perth	94.2	Adelaide-Gold Coast	95.2
Perth-Newman	94.0	Darwin-Perth	93.8
Newman-Perth	92.8	Adelaide-Port Lincoln	93.5
Perth-Kalgoorlie	91.9	Newman-Perth	93.4
Port Lincoln-Adelaide	91.0	Karratha-Perth	92.6
Adelaide-Port Lincoln	90.7	Port Lincoln-Adelaide	92.2
Adelaide-Gold Coast	90.5	Perth-Kalgoorlie	91.2
Gold Coast-Adelaide	90.5	Sydney-Ayers Rock	90.2

Table 3 Top ten airports for on time performance for October 2017 (participating airlines and reported routes only)

<i>Arrivals</i>		<i>Departures</i>	
<i>Airport</i>	<i>On Time (%)</i>	<i>Airport</i>	<i>On Time (%)</i>
Newman	94.0	Newman	93.4
Kalgoorlie	91.9	Karratha	92.6
Port Lincoln	90.7	Port Lincoln	92.2
Ayers Rock	90.2	Kalgoorlie	89.9
Karratha	89.9	Port Hedland	89.7
Port Hedland	87.2	Perth	86.1
Proserpine	86.9	Geraldton	85.9
Hamilton Island	86.7	Proserpine	85.7
Wagga Wagga	86.2	Wagga Wagga	85.2
Darwin	85.8	Adelaide	84.9

Total industry on time performance

Figure 1 On time performance (by month from October 2014)—Total Industry

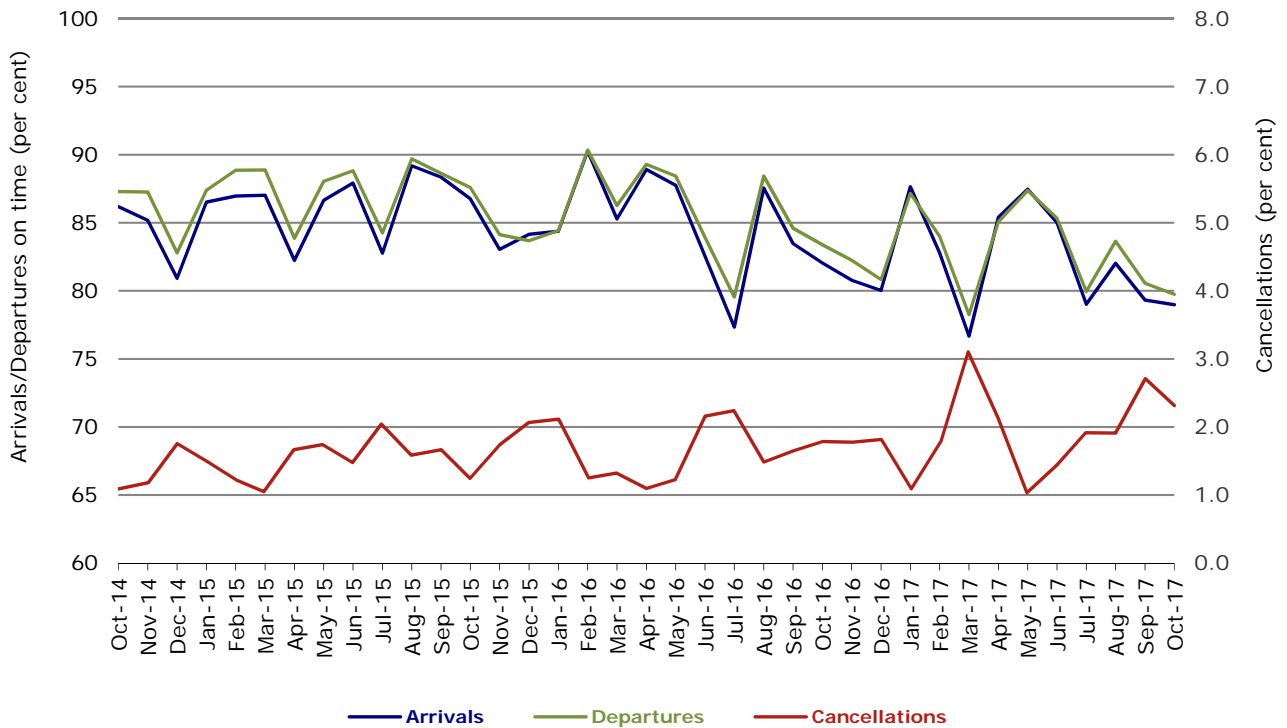


Figure 2 Arrivals on time (by month from October 2016)

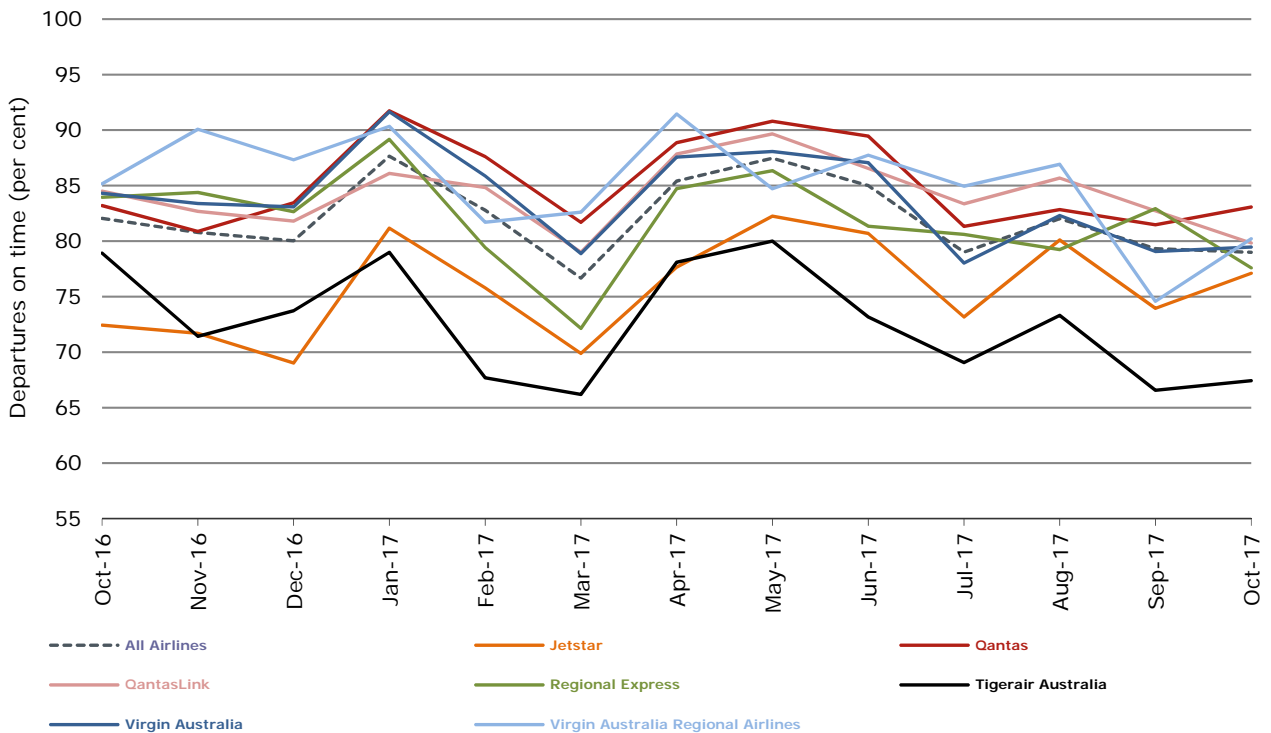


Figure 3 Departures on time (by month from October 2016)

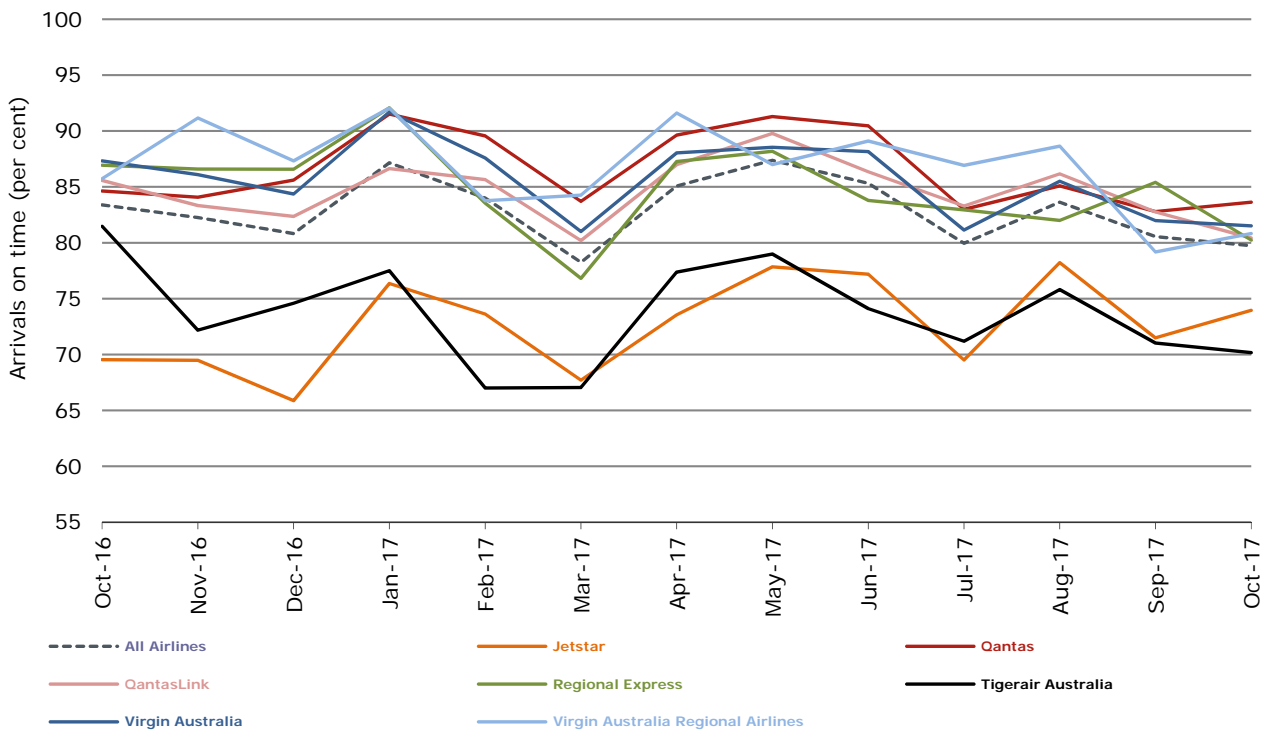
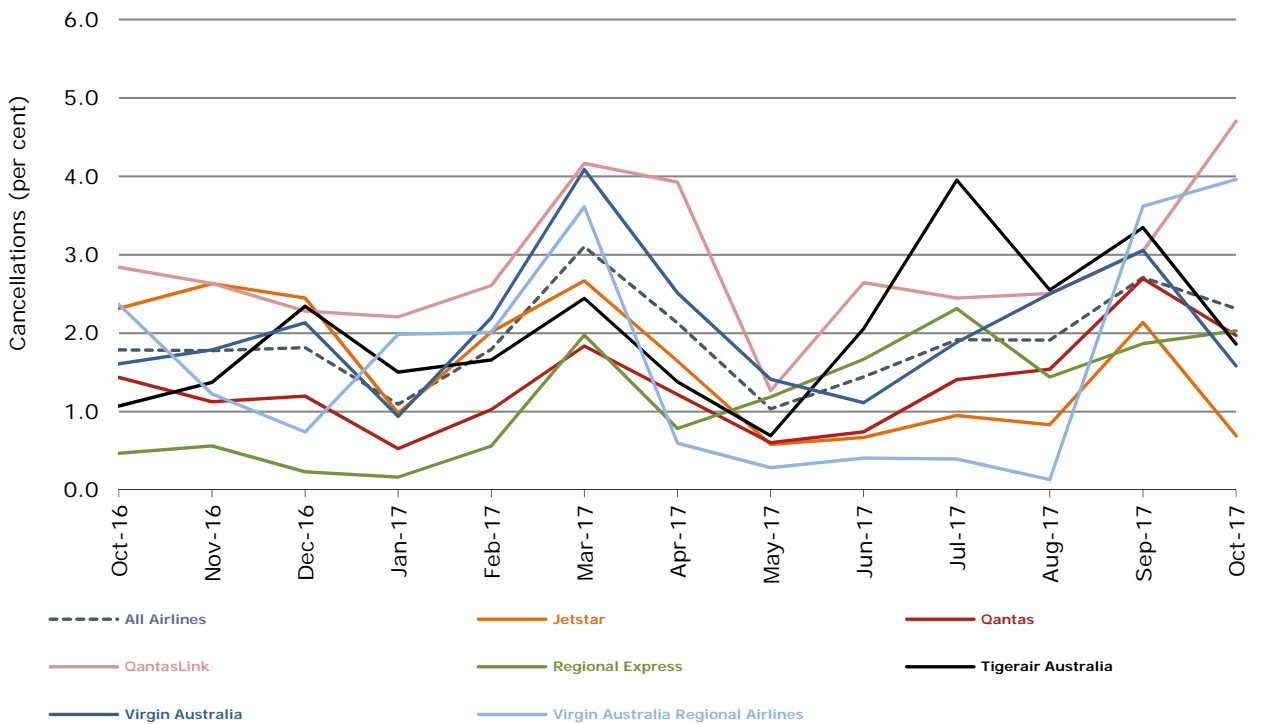


Figure 4 Cancellations (by month from October 2016)



Major domestic airlines on time performance

Figure 5 On time performance (by month from October 2014)—Jetstar

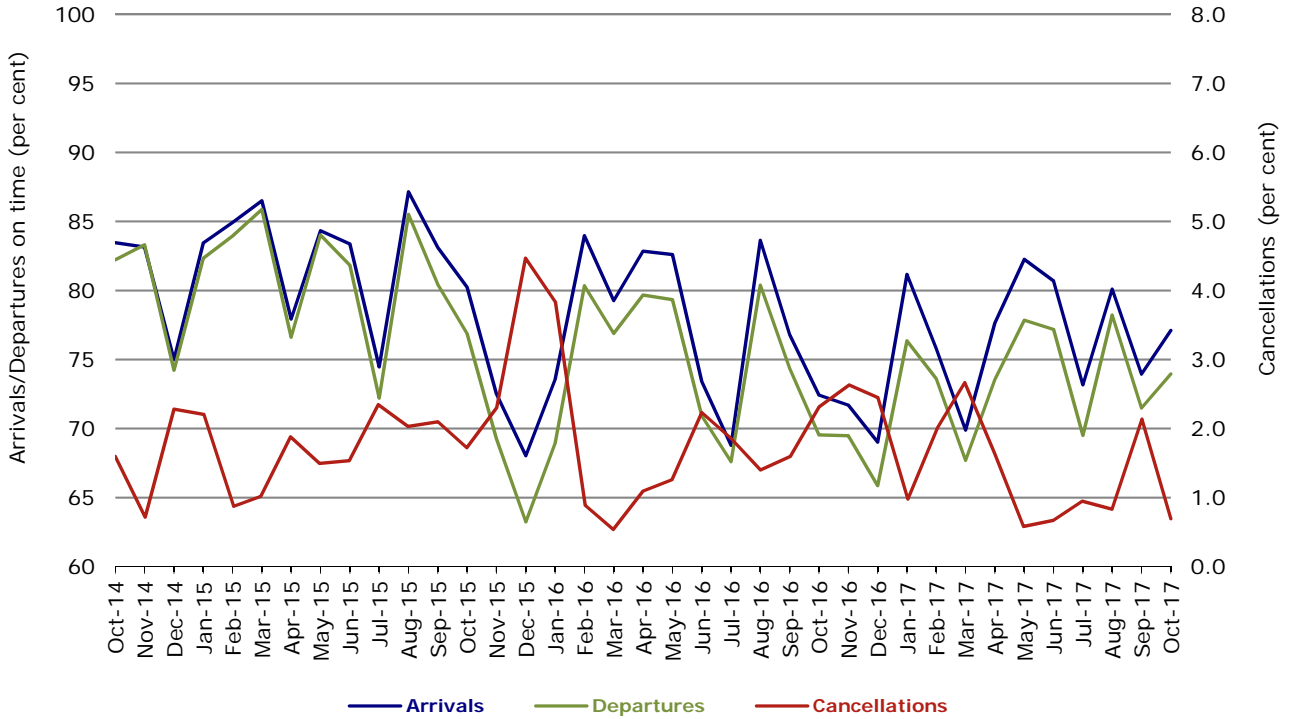


Figure 6 On time performance (by month from October 2014)—Qantas

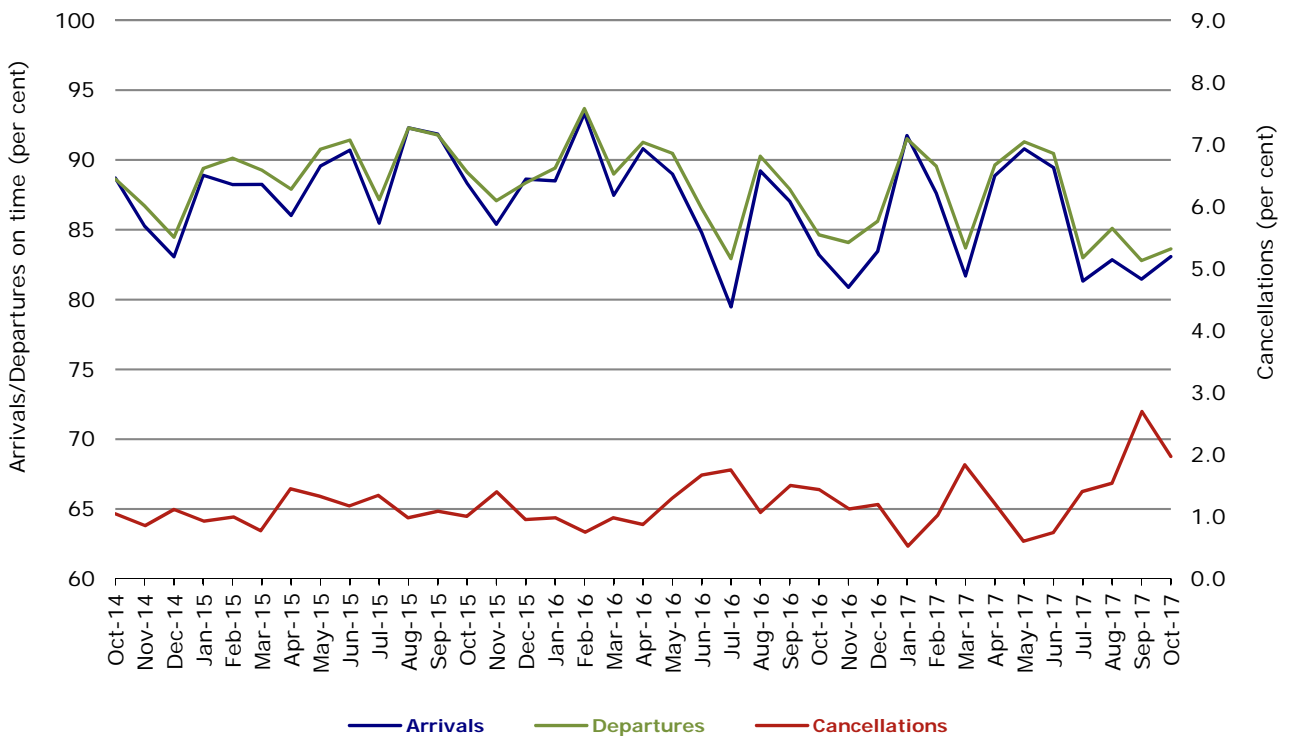


Figure 7 On time performance (by month from October 2014)—Tigerair Australia

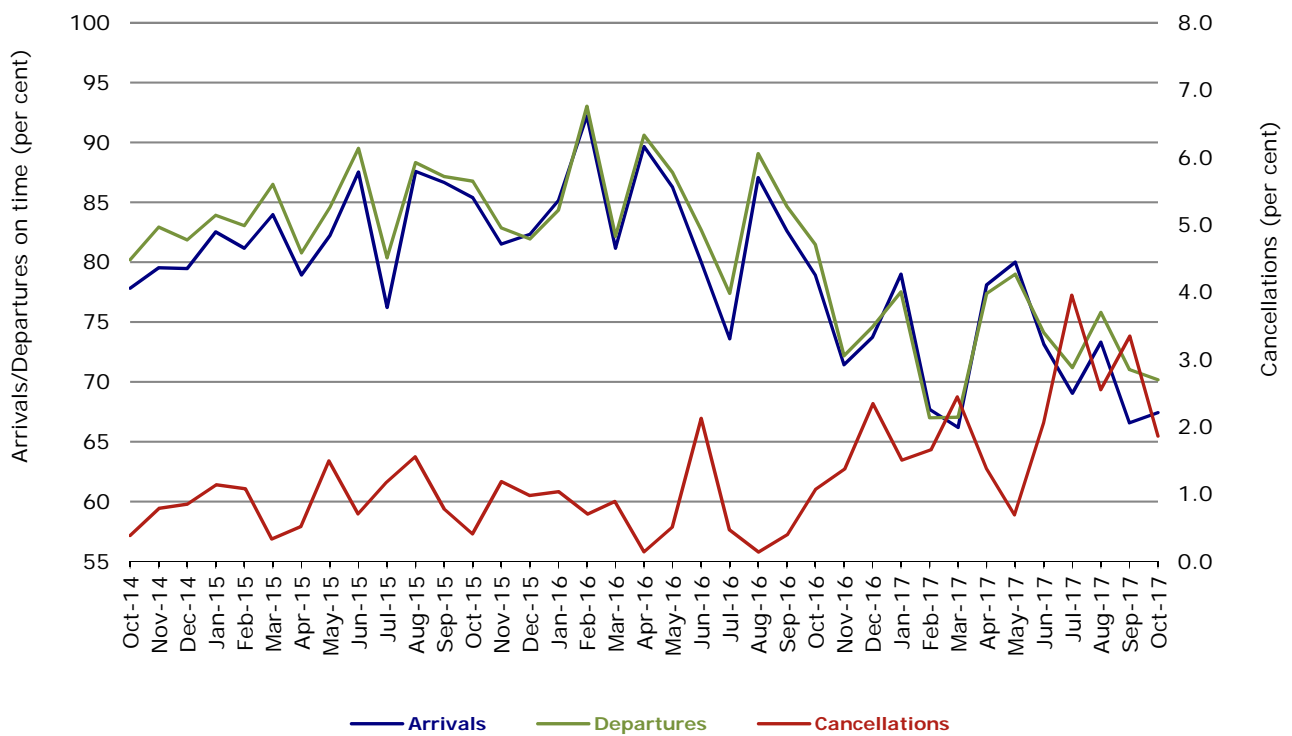
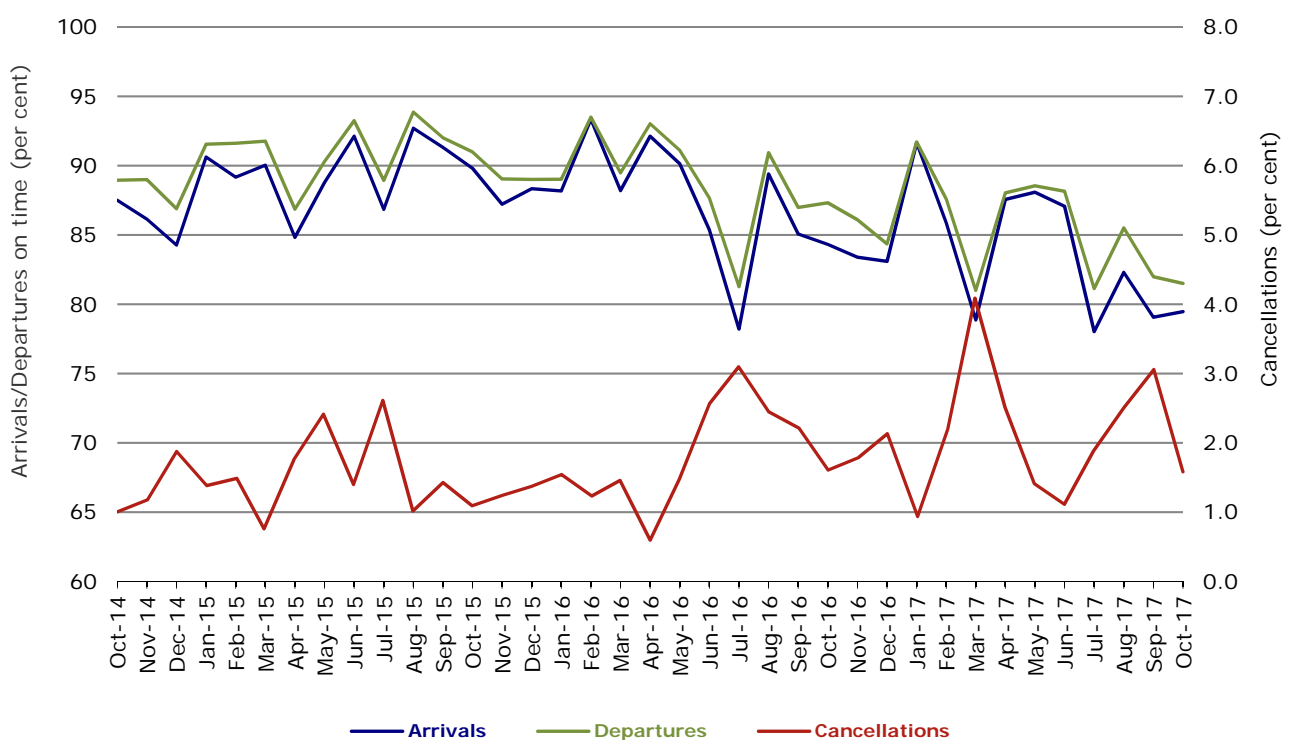


Figure 8 On time performance (by month from October 2014)—Virgin Australia



In January 2016, Virgin Australia transferred their ATR fleet from Virgin Australia Regional Airlines to Virgin Australia.

Major regional airlines on time performance

Figure 9 On time performance (by month from October 2014)—QantasLink

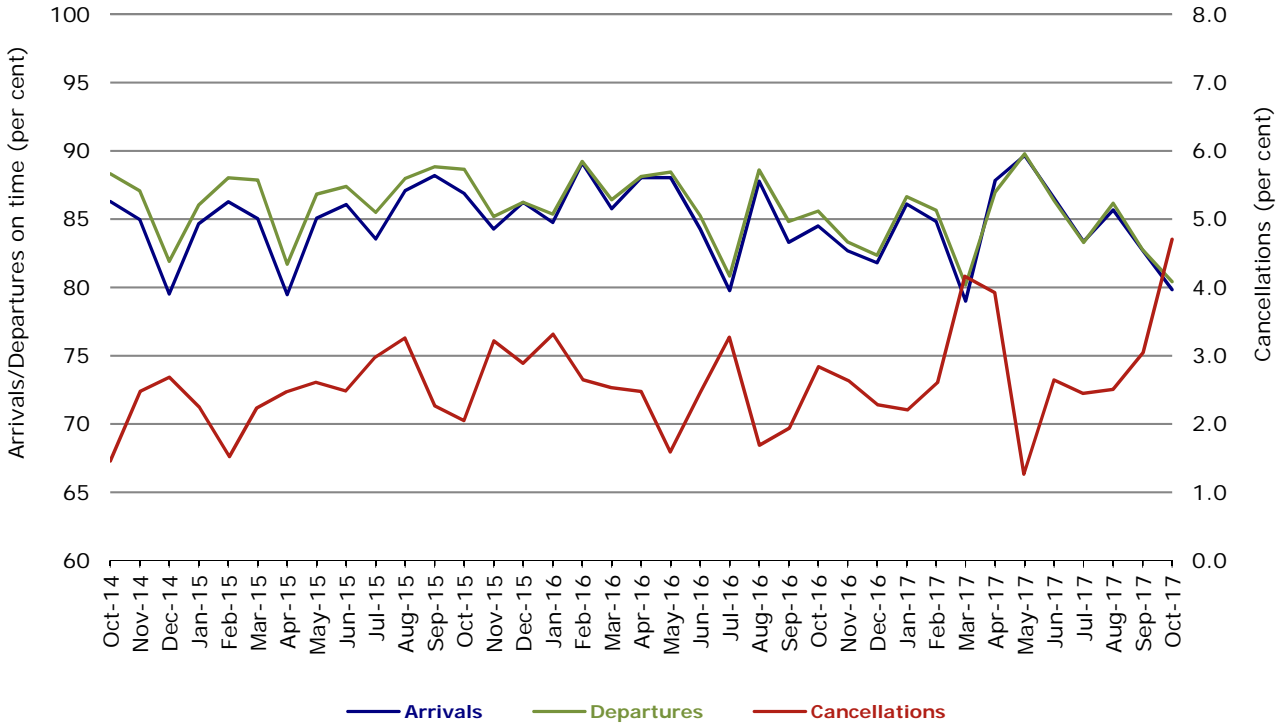


Figure 10 On time performance (by month from October 2014)—Regional Express

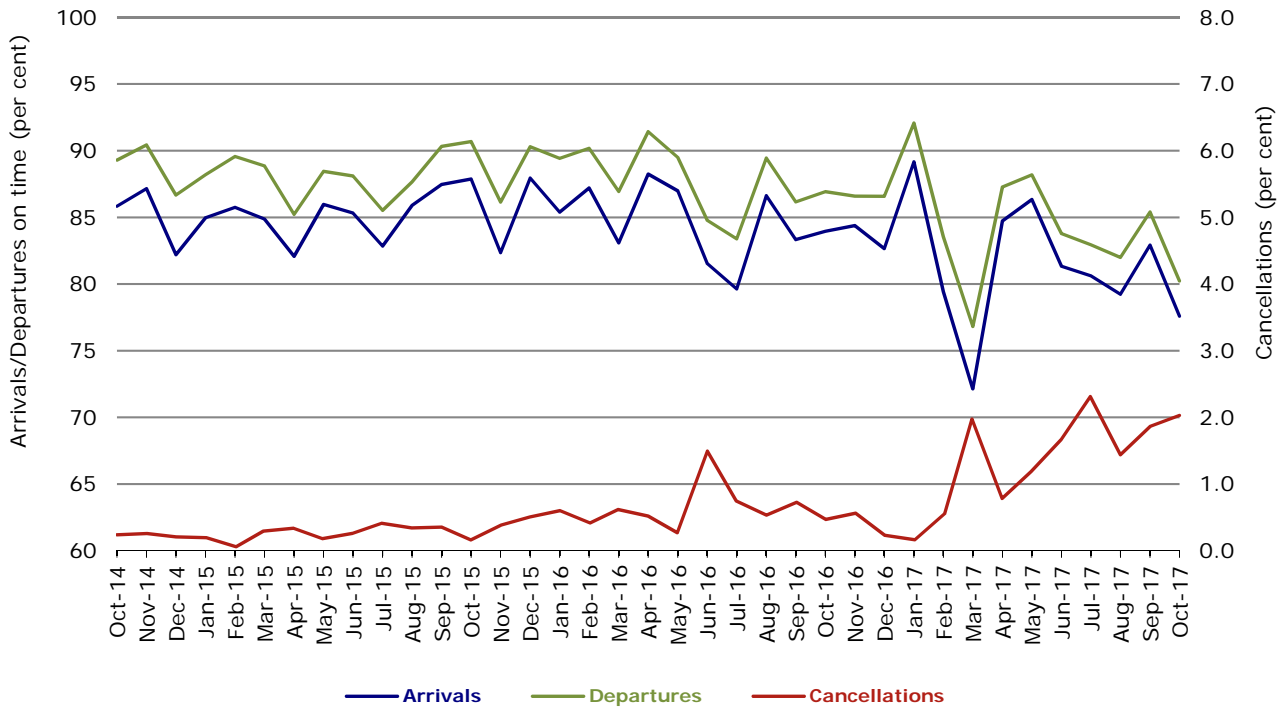
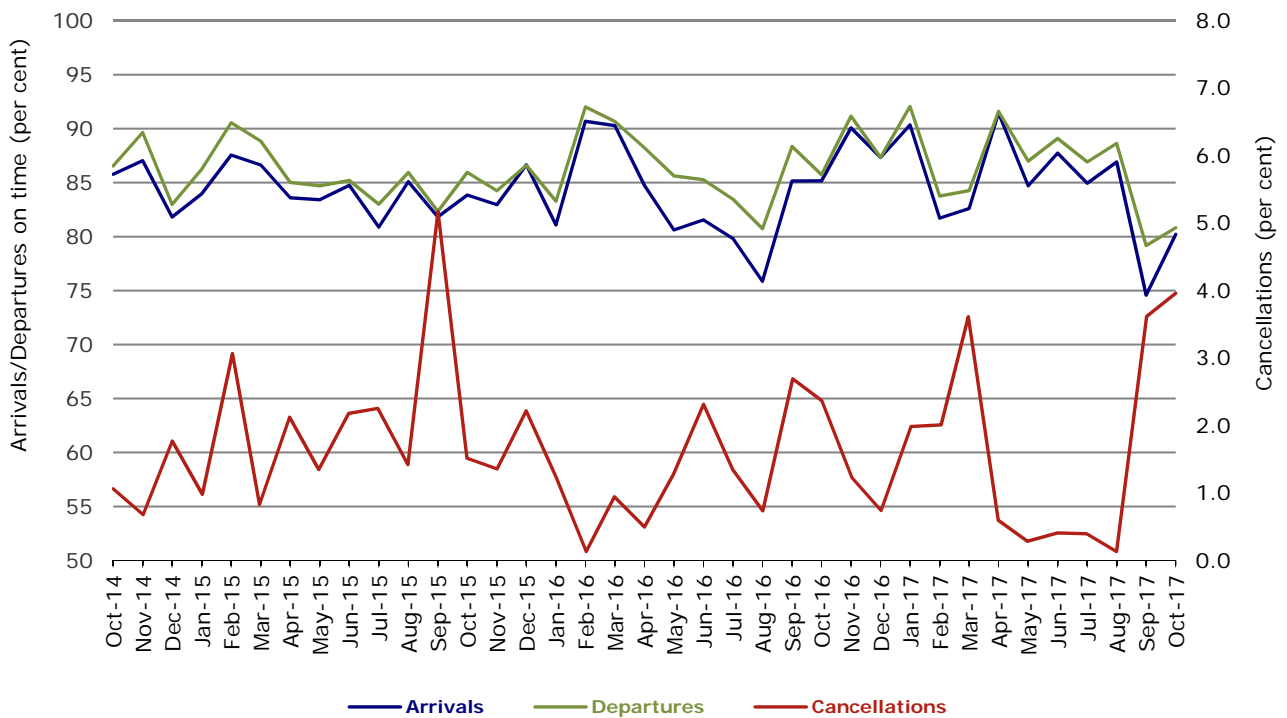


Figure 11 On time performance (by month from October 2014)
Virgin Australia Regional Airlines



In January 2016, Virgin Australia transferred their ATR fleet from Virgin Australia Regional Airlines to Virgin Australia.

Individual routes

On time performance is reported for all routes where the passenger load averages over 8000 passengers per month over the previous six months, and where two or more airlines operate in competition on those routes. There are now 64 routes which meet this definition. Over time, however, routes which meet this definition may change as airline networks and traffic levels vary.

	<i>Sectors</i>		<i>Arrivals On Time</i>		<i>Departures On Time</i>		<i>Cancellations</i>	
	<i>Sched.</i>	<i>Flown</i>	<i>No.</i>	<i>%</i>	<i>No.</i>	<i>%</i>	<i>No.</i>	<i>%</i>
Adelaide-Alice Springs								
Qantas	31	31	29	93.5	28	90.3	0	0.0
Virgin Australia	5	5	4	80.0	4	80.0	0	0.0
Virgin Australia Regional Airlines	21	18	7	38.9	10	55.6	3	14.3
All Airlines	57	54	40	74.1	42	77.8	3	5.3
Adelaide-Brisbane								
Jetstar	32	32	25	78.1	25	78.1	0	0.0
Qantas	100	100	84	84.0	84	84.0	0	0.0
QantasLink	32	28	18	64.3	21	75.0	4	12.5
Tigerair Australia	31	31	19	61.3	20	64.5	0	0.0
Virgin Australia	108	106	92	86.8	94	88.7	2	1.9
All Airlines	303	297	238	80.1	244	82.2	6	2.0
Adelaide-Canberra								
Qantas	49	49	45	91.8	44	89.8	0	0.0
Virgin Australia	27	27	22	81.5	21	77.8	0	0.0
All Airlines	76	76	67	88.2	65	85.5	0	0.0
Adelaide-Gold Coast								
Jetstar	32	32	31	96.9	30	93.8	0	0.0
Virgin Australia	31	31	26	83.9	30	96.8	0	0.0
All Airlines	63	63	57	90.5	60	95.2	0	0.0
Adelaide-Melbourne								
Jetstar	101	100	86	86.0	75	75.0	1	1.0
Qantas	290	288	256	88.9	249	86.5	2	0.7
Tigerair Australia	81	81	60	74.1	64	79.0	0	0.0
Virgin Australia	272	268	210	78.4	208	77.6	4	1.5
All Airlines	744	737	612	83.0	596	80.9	7	0.9
Adelaide-Perth								
Jetstar	28	28	24	85.7	23	82.1	0	0.0
Qantas	96	96	85	88.5	84	87.5	0	0.0
QantasLink	26	22	21	95.5	21	95.5	4	15.4
Virgin Australia	52	52	48	92.3	46	88.5	0	0.0
Virgin Australia Regional Airlines	28	27	19	70.4	19	70.4	1	3.6
All Airlines	230	225	197	87.6	193	85.8	5	2.2
Adelaide-Port Lincoln								
QantasLink	111	109	101	92.7	101	92.7	2	1.8
Regional Express	224	215	193	89.8	202	94.0	9	4.0
All Airlines	335	324	294	90.7	303	93.5	11	3.3
Adelaide-Sydney								
Jetstar	100	98	83	84.7	85	86.7	2	2.0
Qantas	243	242	197	81.4	214	88.4	1	0.4
QantasLink	25	16	14	87.5	13	81.3	9	36.0
Tigerair Australia	49	48	24	50.0	26	54.2	1	2.0
Virgin Australia	169	168	144	85.7	153	91.1	1	0.6
All Airlines	586	572	462	80.8	491	85.8	14	2.4

	<i>Sectors</i>		<i>Arrivals On Time</i>		<i>Departures On Time</i>		<i>Cancellations</i>	
	<i>Sched.</i>	<i>Flown</i>	<i>No.</i>	<i>%</i>	<i>No.</i>	<i>%</i>	<i>No.</i>	<i>%</i>
Albury-Sydney								
QantasLink	82	81	64	79.0	63	77.8	1	1.2
Regional Express	105	105	86	81.9	91	86.7	0	0.0
Virgin Australia	61	61	46	75.4	50	82.0	0	0.0
All Airlines	248	247	196	79.4	204	82.6	1	0.4
Alice Springs-Adelaide								
Qantas	31	31	27	87.1	26	83.9	0	0.0
Virgin Australia	5	5	4	80.0	3	60.0	0	0.0
Virgin Australia Regional Airlines	16	16	11	68.8	10	62.5	0	0.0
All Airlines	52	52	42	80.8	39	75.0	0	0.0
Alice Springs-Darwin								
QantasLink	60	59	51	86.4	51	86.4	1	1.7
Virgin Australia	5	5	4	80.0	4	80.0	0	0.0
Virgin Australia Regional Airlines	17	14	8	57.1	8	57.1	3	17.6
All Airlines	82	78	63	80.8	63	80.8	4	4.9
Armidale-Sydney								
QantasLink	122	119	80	67.2	81	68.1	3	2.5
Regional Express	75	74	52	70.3	58	78.4	1	1.3
All Airlines	197	193	132	68.4	139	72.0	4	2.0
Ayers Rock-Sydney								
Jetstar	30	30	25	83.3	20	66.7	0	0.0
Virgin Australia	31	30	26	86.7	26	86.7	1	3.2
All Airlines	61	60	51	85.0	46	76.7	1	1.6
Ballina-Sydney								
Jetstar	91	91	73	80.2	68	74.7	0	0.0
Regional Express	26	26	15	57.7	17	65.4	0	0.0
Virgin Australia	35	34	29	85.3	27	79.4	1	2.9
All Airlines	152	151	117	77.5	112	74.2	1	0.7
Brisbane-Adelaide								
Jetstar	32	32	30	93.8	30	93.8	0	0.0
Qantas	100	100	91	91.0	82	82.0	0	0.0
QantasLink	32	28	19	67.9	22	78.6	4	12.5
Tigerair Australia	31	31	27	87.1	26	83.9	0	0.0
Virgin Australia	108	106	91	85.8	89	84.0	2	1.9
All Airlines	303	297	258	86.9	249	83.8	6	2.0
Brisbane-Bundaberg								
QantasLink	123	116	83	71.6	85	73.3	7	5.7
Virgin Australia	31	30	24	80.0	25	83.3	1	3.2
All Airlines	154	146	107	73.3	110	75.3	8	5.2
Brisbane-Cairns								
Jetstar	112	110	86	78.2	81	73.6	2	1.8
Qantas	128	128	104	81.3	110	85.9	0	0.0
QantasLink	4	4	3	75.0	3	75.0	0	0.0
Tigerair Australia	47	47	35	74.5	36	76.6	0	0.0
Virgin Australia	123	123	105	85.4	100	81.3	0	0.0
All Airlines	414	412	333	80.8	330	80.1	2	0.5
Brisbane-Canberra								
Qantas	28	28	17	60.7	19	67.9	0	0.0
QantasLink	125	111	83	74.8	79	71.2	14	11.2
Tigerair Australia	14	14	11	78.6	12	85.7	0	0.0
Virgin Australia	102	102	81	79.4	78	76.5	0	0.0
All Airlines	269	255	192	75.3	188	73.7	14	5.2

	<i>Sectors</i>		<i>Arrivals On Time</i>		<i>Departures On Time</i>		<i>Cancellations</i>	
	<i>Sched.</i>	<i>Flown</i>	<i>No.</i>	<i>%</i>	<i>No.</i>	<i>%</i>	<i>No.</i>	<i>%</i>
Brisbane-Darwin								
Jetstar	24	24	20	83.3	19	79.2	0	0.0
Qantas	49	49	47	95.9	48	98.0	0	0.0
Tigerair Australia	18	18	13	72.2	12	66.7	0	0.0
Virgin Australia	31	31	25	80.6	26	83.9	0	0.0
All Airlines	122	122	105	86.1	105	86.1	0	0.0
Brisbane-Emerald								
QantasLink	117	109	78	71.6	83	76.1	8	6.8
Virgin Australia	54	54	43	79.6	44	81.5	0	0.0
All Airlines	171	163	121	74.2	127	77.9	8	4.7
Brisbane-Gladstone								
QantasLink	130	130	90	69.2	92	70.8	0	0.0
Virgin Australia	76	76	56	73.7	65	85.5	0	0.0
All Airlines	206	206	146	70.9	157	76.2	0	0.0
Brisbane-Hamilton Island								
QantasLink	36	31	26	83.9	25	80.6	5	13.9
Virgin Australia	30	30	26	86.7	25	83.3	0	0.0
All Airlines	66	61	52	85.2	50	82.0	5	7.6
Brisbane-Hobart								
Jetstar	28	28	25	89.3	26	92.9	0	0.0
Virgin Australia	32	32	24	75.0	27	84.4	0	0.0
All Airlines	60	60	49	81.7	53	88.3	0	0.0
Brisbane-Mackay								
Jetstar	48	48	35	72.9	31	64.6	0	0.0
QantasLink	108	103	83	80.6	85	82.5	5	4.6
Virgin Australia	144	143	117	81.8	120	83.9	1	0.7
All Airlines	300	294	235	79.9	236	80.3	6	2.0
Brisbane-Melbourne								
Jetstar	136	135	94	69.6	83	61.5	1	0.7
Qantas	421	416	351	84.4	352	84.6	5	1.2
QantasLink	13	10	8	80.0	8	80.0	3	23.1
Tigerair Australia	137	132	85	64.4	82	62.1	5	3.6
Virgin Australia	402	392	297	75.8	316	80.6	10	2.5
All Airlines	1 109	1 085	835	77.0	841	77.5	24	2.2
Brisbane-Mount Isa								
QantasLink	57	52	39	75.0	38	73.1	5	8.8
Virgin Australia	18	18	14	77.8	16	88.9	0	0.0
All Airlines	75	70	53	75.7	54	77.1	5	6.7
Brisbane-Newcastle								
Jetstar	93	92	73	79.3	64	69.6	1	1.1
QantasLink	85	78	54	69.2	54	69.2	7	8.2
Virgin Australia	87	86	68	79.1	66	76.7	1	1.1
All Airlines	265	256	195	76.2	184	71.9	9	3.4
Brisbane-Perth								
Qantas	139	138	120	87.0	116	84.1	1	0.7
Tigerair Australia	20	20	18	90.0	19	95.0	0	0.0
Virgin Australia	109	108	91	84.3	81	75.0	1	0.9
All Airlines	268	266	229	86.1	216	81.2	2	0.7
Brisbane-Proserpine								
Jetstar	34	34	31	91.2	30	88.2	0	0.0
Tigerair Australia	18	18	15	83.3	17	94.4	0	0.0
Virgin Australia	32	32	27	84.4	28	87.5	0	0.0
All Airlines	84	84	73	86.9	75	89.3	0	0.0

	<i>Sectors</i>		<i>Arrivals On Time</i>		<i>Departures On Time</i>		<i>Cancellations</i>	
	<i>Sched.</i>	<i>Flown</i>	<i>No.</i>	<i>%</i>	<i>No.</i>	<i>%</i>	<i>No.</i>	<i>%</i>
Brisbane-Rockhampton								
QantasLink	178	178	113	63.5	120	67.4	0	0.0
Virgin Australia	142	142	76	53.5	97	68.3	0	0.0
All Airlines	320	320	189	59.1	217	67.8	0	0.0
Brisbane-Sydney								
Jetstar	170	162	113	69.8	112	69.1	8	4.7
Qantas	653	637	507	79.6	515	80.8	16	2.5
QantasLink	16	13	9	69.2	9	69.2	3	18.8
Tigerair Australia	113	110	78	70.9	82	74.5	3	2.7
Virgin Australia	521	504	391	77.6	401	79.6	17	3.3
All Airlines	1 473	1 426	1 098	77.0	1 119	78.5	47	3.2
Brisbane-Townsville								
Jetstar	48	48	33	68.8	33	68.8	0	0.0
Qantas	76	76	53	69.7	57	75.0	0	0.0
QantasLink	74	65	44	67.7	50	76.9	9	12.2
Virgin Australia	134	132	109	82.6	108	81.8	2	1.5
All Airlines	332	321	239	74.5	248	77.3	11	3.3
Broome-Perth								
Qantas	8	7	4	57.1	4	57.1	1	12.5
QantasLink	97	92	78	84.8	72	78.3	5	5.2
Virgin Australia	7	7	7	100.0	5	71.4	0	0.0
Virgin Australia Regional Airlines	73	71	58	81.7	49	69.0	2	2.7
All Airlines	185	177	147	83.1	130	73.4	8	4.3
Bundaberg-Brisbane								
QantasLink	124	117	79	67.5	87	74.4	7	5.6
Virgin Australia	31	30	22	73.3	24	80.0	1	3.2
All Airlines	155	147	101	68.7	111	75.5	8	5.2
Cairns-Brisbane								
Jetstar	111	109	87	79.8	79	72.5	2	1.8
Qantas	127	127	92	72.4	100	78.7	0	0.0
QantasLink	5	5	4	80.0	4	80.0	0	0.0
Tigerair Australia	47	47	31	66.0	33	70.2	0	0.0
Virgin Australia	123	123	100	81.3	104	84.6	0	0.0
All Airlines	413	411	314	76.4	320	77.9	2	0.5
Cairns-Melbourne								
Jetstar	113	113	90	79.6	85	75.2	0	0.0
Qantas	40	40	23	57.5	25	62.5	0	0.0
Tigerair Australia	42	42	28	66.7	32	76.2	0	0.0
Virgin Australia	36	36	29	80.6	28	77.8	0	0.0
All Airlines	231	231	170	73.6	170	73.6	0	0.0
Cairns-Sydney								
Jetstar	112	112	89	79.5	85	75.9	0	0.0
Qantas	76	76	68	89.5	68	89.5	0	0.0
Tigerair Australia	48	47	31	66.0	36	76.6	1	2.1
Virgin Australia	90	90	79	87.8	81	90.0	0	0.0
All Airlines	326	325	267	82.2	270	83.1	1	0.3
Cairns-Townsville								
QantasLink	145	144	132	91.7	132	91.7	1	0.7
Regional Express	41	38	27	71.1	29	76.3	3	7.3
All Airlines	186	182	159	87.4	161	88.5	4	2.2
Canberra-Adelaide								
Qantas	49	49	46	93.9	46	93.9	0	0.0
Virgin Australia	27	27	20	74.1	18	66.7	0	0.0
All Airlines	76	76	66	86.8	64	84.2	0	0.0

	<i>Sectors</i>		<i>Arrivals On Time</i>		<i>Departures On Time</i>		<i>Cancellations</i>	
	<i>Sched.</i>	<i>Flown</i>	<i>No.</i>	<i>%</i>	<i>No.</i>	<i>%</i>	<i>No.</i>	<i>%</i>
Canberra-Brisbane								
Qantas	28	28	26	92.9	25	89.3	0	0.0
QantasLink	125	111	78	70.3	78	70.3	14	11.2
Tigerair Australia	14	14	12	85.7	10	71.4	0	0.0
Virgin Australia	103	103	83	80.6	81	78.6	0	0.0
All Airlines	270	256	199	77.7	194	75.8	14	5.2
Canberra-Melbourne								
Qantas	208	207	188	90.8	190	91.8	1	0.5
QantasLink	98	85	69	81.2	71	83.5	13	13.3
Tigerair Australia	36	36	22	61.1	22	61.1	0	0.0
Virgin Australia	176	173	133	76.9	141	81.5	3	1.7
All Airlines	518	501	412	82.2	424	84.6	17	3.3
Canberra-Sydney								
Qantas	8	7	6	85.7	7	100.0	1	12.5
QantasLink	475	433	349	80.6	351	81.1	42	8.8
Virgin Australia	248	243	208	85.6	211	86.8	5	2.0
All Airlines	731	683	563	82.4	569	83.3	48	6.6
Coffs Harbour-Sydney								
QantasLink	155	152	117	77.0	121	79.6	3	1.9
Tigerair Australia	14	14	11	78.6	11	78.6	0	0.0
Virgin Australia	54	52	44	84.6	46	88.5	2	3.7
All Airlines	223	218	172	78.9	178	81.7	5	2.2
Darwin-Alice Springs								
QantasLink	60	59	50	84.7	50	84.7	1	1.7
Virgin Australia	5	5	4	80.0	4	80.0	0	0.0
Virgin Australia Regional Airlines	16	13	8	61.5	10	76.9	3	18.8
All Airlines	81	77	62	80.5	64	83.1	4	4.9
Darwin-Brisbane								
Jetstar	24	24	16	66.7	16	66.7	0	0.0
Qantas	49	49	43	87.8	44	89.8	0	0.0
Tigerair Australia	18	18	15	83.3	15	83.3	0	0.0
Virgin Australia	31	31	23	74.2	28	90.3	0	0.0
All Airlines	122	122	97	79.5	103	84.4	0	0.0
Darwin-Melbourne								
Jetstar	30	30	24	80.0	20	66.7	0	0.0
Qantas	31	31	28	90.3	27	87.1	0	0.0
Virgin Australia	32	32	27	84.4	28	87.5	0	0.0
All Airlines	93	93	79	84.9	75	80.6	0	0.0
Darwin-Perth								
Qantas	33	33	32	97.0	31	93.9	0	0.0
Virgin Australia	24	24	23	95.8	23	95.8	0	0.0
Virgin Australia Regional Airlines	7	7	6	85.7	6	85.7	0	0.0
All Airlines	64	64	61	95.3	60	93.8	0	0.0
Darwin-Sydney								
Jetstar	24	24	22	91.7	21	87.5	0	0.0
Qantas	53	53	46	86.8	44	83.0	0	0.0
Virgin Australia	31	31	19	61.3	20	64.5	0	0.0
All Airlines	108	108	87	80.6	85	78.7	0	0.0
Dubbo-Sydney								
QantasLink	113	111	80	72.1	83	74.8	2	1.8
Regional Express	156	154	121	78.6	127	82.5	2	1.3
All Airlines	269	265	201	75.8	210	79.2	4	1.5

	<i>Sectors</i>		<i>Arrivals On Time</i>		<i>Departures On Time</i>		<i>Cancellations</i>	
	<i>Sched.</i>	<i>Flown</i>	<i>No.</i>	<i>%</i>	<i>No.</i>	<i>%</i>	<i>No.</i>	<i>%</i>
Emerald-Brisbane								
QantasLink	117	108	71	65.7	73	67.6	9	7.7
Virgin Australia	53	53	40	75.5	40	75.5	0	0.0
All Airlines	170	161	111	68.9	113	70.2	9	5.3
Geraldton-Perth								
QantasLink	48	48	40	83.3	40	83.3	0	0.0
Virgin Australia Regional Airlines	53	51	45	88.2	45	88.2	2	3.8
All Airlines	101	99	85	85.9	85	85.9	2	2.0
Gladstone-Brisbane								
QantasLink	130	130	97	74.6	92	70.8	0	0.0
Virgin Australia	76	76	52	68.4	55	72.4	0	0.0
All Airlines	206	206	149	72.3	147	71.4	0	0.0
Gold Coast-Adelaide								
Jetstar	32	32	31	96.9	30	93.8	0	0.0
Virgin Australia	31	31	26	83.9	24	77.4	0	0.0
All Airlines	63	63	57	90.5	54	85.7	0	0.0
Gold Coast-Melbourne								
Jetstar	222	221	184	83.3	149	67.4	1	0.5
Qantas	31	31	24	77.4	21	67.7	0	0.0
Tigerair Australia	90	89	54	60.7	50	56.2	1	1.1
Virgin Australia	193	191	151	79.1	138	72.3	2	1.0
All Airlines	536	532	413	77.6	358	67.3	4	0.7
Gold Coast-Sydney								
Jetstar	297	295	218	73.9	204	69.2	2	0.7
Qantas	96	96	82	85.4	76	79.2	0	0.0
QantasLink	22	20	13	65.0	10	50.0	2	9.1
Tigerair Australia	125	123	82	66.7	79	64.2	2	1.6
Virgin Australia	252	246	189	76.8	180	73.2	6	2.4
All Airlines	792	780	584	74.9	549	70.4	12	1.5
Hamilton Island-Brisbane								
QantasLink	36	30	21	70.0	22	73.3	6	16.7
Virgin Australia	31	30	25	83.3	25	83.3	1	3.2
All Airlines	67	60	46	76.7	47	78.3	7	10.4
Hamilton Island-Sydney								
Jetstar	31	31	26	83.9	25	80.6	0	0.0
Qantas	12	12	12	100.0	12	100.0	0	0.0
QantasLink	19	14	11	78.6	10	71.4	5	26.3
Virgin Australia	24	24	20	83.3	20	83.3	0	0.0
All Airlines	86	81	69	85.2	67	82.7	5	5.8
Hobart-Brisbane								
Jetstar	29	29	25	86.2	24	82.8	0	0.0
Virgin Australia	32	32	13	40.6	17	53.1	0	0.0
All Airlines	61	61	38	62.3	41	67.2	0	0.0
Hobart-Melbourne								
Jetstar	151	151	89	58.9	81	53.6	0	0.0
QantasLink	141	132	93	70.5	98	74.2	9	6.4
Tigerair Australia	34	34	19	55.9	22	64.7	0	0.0
Virgin Australia	145	145	100	69.0	109	75.2	0	0.0
All Airlines	471	462	301	65.2	310	67.1	9	1.9
Hobart-Sydney								
Jetstar	91	91	79	86.8	75	82.4	0	0.0
QantasLink	57	54	28	51.9	35	64.8	3	5.3
Virgin Australia	72	72	57	79.2	55	76.4	0	0.0
All Airlines	220	217	164	75.6	165	76.0	3	1.4

	<i>Sectors</i>		<i>Arrivals On Time</i>		<i>Departures On Time</i>		<i>Cancellations</i>	
	<i>Sched.</i>	<i>Flown</i>	<i>No.</i>	<i>%</i>	<i>No.</i>	<i>%</i>	<i>No.</i>	<i>%</i>
Kalgoorlie-Perth								
Qantas	5	5	4	80.0	4	80.0	0	0.0
QantasLink	78	77	72	93.5	73	94.8	1	1.3
Virgin Australia	25	25	22	88.0	22	88.0	0	0.0
Virgin Australia Regional Airlines	42	42	36	85.7	35	83.3	0	0.0
All Airlines	150	149	134	89.9	134	89.9	1	0.7
Karratha-Perth								
Qantas	16	16	16	100.0	16	100.0	0	0.0
QantasLink	169	163	156	95.7	152	93.3	6	3.6
Virgin Australia	8	8	7	87.5	8	100.0	0	0.0
Virgin Australia Regional Airlines	61	56	50	89.3	49	87.5	5	8.2
All Airlines	254	243	229	94.2	225	92.6	11	4.3
Launceston-Melbourne								
Jetstar	112	112	82	73.2	82	73.2	0	0.0
QantasLink	120	119	106	89.1	110	92.4	1	0.8
Virgin Australia	97	97	65	67.0	80	82.5	0	0.0
All Airlines	329	328	253	77.1	272	82.9	1	0.3
Launceston-Sydney								
Jetstar	39	38	26	68.4	27	71.1	1	2.6
Virgin Australia	31	31	25	80.6	27	87.1	0	0.0
All Airlines	70	69	51	73.9	54	78.3	1	1.4
Mackay-Brisbane								
Jetstar	48	47	34	72.3	27	57.4	1	2.1
QantasLink	107	102	67	65.7	70	68.6	5	4.7
Virgin Australia	144	144	118	81.9	120	83.3	0	0.0
All Airlines	299	293	219	74.7	217	74.1	6	2.0
Melbourne-Adelaide								
Jetstar	101	101	69	68.3	72	71.3	0	0.0
Qantas	290	289	247	85.5	251	86.9	1	0.3
Tigerair Australia	81	81	69	85.2	73	90.1	0	0.0
Virgin Australia	273	270	218	80.7	218	80.7	3	1.1
All Airlines	745	741	603	81.4	614	82.9	4	0.5
Melbourne-Brisbane								
Jetstar	135	134	84	62.7	80	59.7	1	0.7
Qantas	426	422	346	82.0	347	82.2	4	0.9
QantasLink	14	11	8	72.7	10	90.9	3	21.4
Tigerair Australia	137	132	84	63.6	81	61.4	5	3.6
Virgin Australia	395	382	302	79.1	321	84.0	13	3.3
All Airlines	1 107	1 081	824	76.2	839	77.6	26	2.3
Melbourne-Cairns								
Jetstar	114	114	90	78.9	90	78.9	0	0.0
Qantas	40	40	29	72.5	34	85.0	0	0.0
Tigerair Australia	42	42	35	83.3	37	88.1	0	0.0
Virgin Australia	36	36	31	86.1	34	94.4	0	0.0
All Airlines	232	232	185	79.7	195	84.1	0	0.0
Melbourne-Canberra								
Qantas	208	207	181	87.4	184	88.9	1	0.5
QantasLink	99	86	69	80.2	70	81.4	13	13.1
Tigerair Australia	36	36	26	72.2	28	77.8	0	0.0
Virgin Australia	177	173	134	77.5	141	81.5	4	2.3
All Airlines	520	502	410	81.7	423	84.3	18	3.5

	<i>Sectors</i>		<i>Arrivals On Time</i>		<i>Departures On Time</i>		<i>Cancellations</i>	
	<i>Sched.</i>	<i>Flown</i>	<i>No.</i>	<i>%</i>	<i>No.</i>	<i>%</i>	<i>No.</i>	<i>%</i>
Melbourne-Darwin								
Jetstar	30	30	23	76.7	23	76.7	0	0.0
Qantas	31	31	28	90.3	27	87.1	0	0.0
Virgin Australia	32	32	27	84.4	28	87.5	0	0.0
All Airlines	93	93	78	83.9	78	83.9	0	0.0
Melbourne-Gold Coast								
Jetstar	223	222	163	73.4	180	81.1	1	0.4
Qantas	31	31	26	83.9	28	90.3	0	0.0
Tigerair Australia	90	89	65	73.0	71	79.8	1	1.1
Virgin Australia	193	191	148	77.5	161	84.3	2	1.0
All Airlines	537	533	402	75.4	440	82.6	4	0.7
Melbourne-Hobart								
Jetstar	151	151	115	76.2	126	83.4	0	0.0
QantasLink	142	134	86	64.2	96	71.6	8	5.6
Tigerair Australia	34	34	24	70.6	26	76.5	0	0.0
Virgin Australia	145	145	115	79.3	124	85.5	0	0.0
All Airlines	472	464	340	73.3	372	80.2	8	1.7
Melbourne-Launceston								
Jetstar	111	111	81	73.0	81	73.0	0	0.0
QantasLink	120	119	103	86.6	103	86.6	1	0.8
Virgin Australia	97	97	79	81.4	85	87.6	0	0.0
All Airlines	328	327	263	80.4	269	82.3	1	0.3
Melbourne-Mildura								
QantasLink	97	95	83	87.4	88	92.6	2	2.1
Regional Express	86	83	65	78.3	70	84.3	3	3.5
Virgin Australia	31	31	26	83.9	27	87.1	0	0.0
All Airlines	214	209	174	83.3	185	88.5	5	2.3
Melbourne-Newcastle								
Jetstar	115	115	78	67.8	79	68.7	0	0.0
Virgin Australia	35	35	30	85.7	32	91.4	0	0.0
All Airlines	150	150	108	72.0	111	74.0	0	0.0
Melbourne-Perth								
Jetstar	52	51	47	92.2	44	86.3	1	1.9
Qantas	206	206	137	66.5	144	69.9	0	0.0
Tigerair Australia	52	52	38	73.1	35	67.3	0	0.0
Virgin Australia	137	137	107	78.1	99	72.3	0	0.0
All Airlines	447	446	329	73.8	322	72.2	1	0.2
Melbourne-Sunshine Coast								
Jetstar	94	94	82	87.2	79	84.0	0	0.0
Virgin Australia	61	61	51	83.6	52	85.2	0	0.0
All Airlines	155	155	133	85.8	131	84.5	0	0.0
Melbourne-Sydney								
Jetstar	342	337	231	68.5	245	72.7	5	1.5
Qantas	1 076	1 014	823	81.2	866	85.4	62	5.8
QantasLink	5	4	3	75.0	3	75.0	1	20.0
Tigerair Australia	258	249	134	53.8	154	61.8	9	3.5
Virgin Australia	764	733	591	80.6	629	85.8	31	4.1
All Airlines	2 445	2 337	1 782	76.3	1 897	81.2	108	4.4
Mildura-Melbourne								
QantasLink	97	95	87	91.6	88	92.6	2	2.1
Regional Express	85	82	61	74.4	65	79.3	3	3.5
Virgin Australia	31	31	21	67.7	22	71.0	0	0.0
All Airlines	213	208	169	81.3	175	84.1	5	2.3

	<i>Sectors</i>		<i>Arrivals On Time</i>		<i>Departures On Time</i>		<i>Cancellations</i>	
	<i>Sched.</i>	<i>Flown</i>	<i>No.</i>	<i>%</i>	<i>No.</i>	<i>%</i>	<i>No.</i>	<i>%</i>
Mount Isa-Brisbane								
QantasLink	58	50	33	66.0	40	80.0	8	13.8
Virgin Australia	17	17	7	41.2	14	82.4	0	0.0
All Airlines	75	67	40	59.7	54	80.6	8	10.7
Newcastle-Brisbane								
Jetstar	93	92	75	81.5	75	81.5	1	1.1
QantasLink	84	77	61	79.2	59	76.6	7	8.3
Virgin Australia	88	87	73	83.9	74	85.1	1	1.1
All Airlines	265	256	209	81.6	208	81.3	9	3.4
Newcastle-Melbourne								
Jetstar	115	115	88	76.5	85	73.9	0	0.0
Virgin Australia	35	35	22	62.9	23	65.7	0	0.0
All Airlines	150	150	110	73.3	108	72.0	0	0.0
Newman-Perth								
Qantas	61	60	58	96.7	59	98.3	1	1.6
QantasLink	72	66	63	95.5	62	93.9	6	8.3
Virgin Australia	17	17	17	100.0	17	100.0	0	0.0
Virgin Australia Regional Airlines	24	23	16	69.6	17	73.9	1	4.2
All Airlines	174	166	154	92.8	155	93.4	8	4.6
Perth-Adelaide								
Jetstar	28	28	24	85.7	20	71.4	0	0.0
Qantas	99	99	86	86.9	87	87.9	0	0.0
QantasLink	26	22	22	100.0	22	100.0	4	15.4
Virgin Australia	52	52	45	86.5	44	84.6	0	0.0
Virgin Australia Regional Airlines	28	28	20	71.4	24	85.7	0	0.0
All Airlines	233	229	197	86.0	197	86.0	4	1.7
Perth-Brisbane								
Qantas	133	133	115	86.5	119	89.5	0	0.0
Tigerair Australia	20	20	17	85.0	16	80.0	0	0.0
Virgin Australia	110	110	93	84.5	100	90.9	0	0.0
All Airlines	263	263	225	85.6	235	89.4	0	0.0
Perth-Broome								
Qantas	8	7	5	71.4	5	71.4	1	12.5
QantasLink	98	93	80	86.0	73	78.5	5	5.1
Virgin Australia	7	7	7	100.0	7	100.0	0	0.0
Virgin Australia Regional Airlines	73	71	58	81.7	58	81.7	2	2.7
All Airlines	186	178	150	84.3	143	80.3	8	4.3
Perth-Darwin								
Qantas	33	33	31	93.9	32	97.0	0	0.0
Virgin Australia	24	24	24	100.0	24	100.0	0	0.0
Virgin Australia Regional Airlines	7	7	6	85.7	6	85.7	0	0.0
All Airlines	64	64	61	95.3	62	96.9	0	0.0
Perth-Geraldton								
QantasLink	48	48	39	81.3	38	79.2	0	0.0
Virgin Australia Regional Airlines	53	51	43	84.3	41	80.4	2	3.8
All Airlines	101	99	82	82.8	79	79.8	2	2.0
Perth-Kalgoorlie								
Qantas	5	5	4	80.0	4	80.0	0	0.0
QantasLink	78	77	74	96.1	70	90.9	1	1.3
Virgin Australia	24	24	24	100.0	24	100.0	0	0.0
Virgin Australia Regional Airlines	42	42	34	81.0	37	88.1	0	0.0
All Airlines	149	148	136	91.9	135	91.2	1	0.7

	<i>Sectors</i>		<i>Arrivals On Time</i>		<i>Departures On Time</i>		<i>Cancellations</i>	
	<i>Sched.</i>	<i>Flown</i>	<i>No.</i>	<i>%</i>	<i>No.</i>	<i>%</i>	<i>No.</i>	<i>%</i>
Perth-Karratha								
Qantas	16	16	16	100.0	16	100.0	0	0.0
QantasLink	170	167	153	91.6	145	86.8	3	1.8
Virgin Australia	8	8	8	100.0	8	100.0	0	0.0
Virgin Australia Regional Airlines	62	57	46	80.7	51	89.5	5	8.1
All Airlines	256	248	223	89.9	220	88.7	8	3.1
Perth-Melbourne								
Jetstar	53	51	44	86.3	38	74.5	2	3.8
Qantas	205	203	171	84.2	168	82.8	2	1.0
Tigerair Australia	51	51	40	78.4	40	78.4	0	0.0
Virgin Australia	134	134	114	85.1	114	85.1	0	0.0
All Airlines	443	439	369	84.1	360	82.0	4	0.9
Perth-Newman								
Qantas	61	60	58	96.7	59	98.3	1	1.6
QantasLink	72	68	63	92.6	64	94.1	4	5.6
Virgin Australia	17	17	17	100.0	17	100.0	0	0.0
Virgin Australia Regional Airlines	23	22	19	86.4	20	90.9	1	4.3
All Airlines	173	167	157	94.0	160	95.8	6	3.5
Perth-Port Hedland								
Qantas	32	30	28	93.3	28	93.3	2	6.3
QantasLink	103	96	84	87.5	82	85.4	7	6.8
Virgin Australia	21	21	19	90.5	19	90.5	0	0.0
Virgin Australia Regional Airlines	32	32	25	78.1	27	84.4	0	0.0
All Airlines	188	179	156	87.2	156	87.2	9	4.8
Perth-Sydney								
Jetstar	27	27	21	77.8	18	66.7	0	0.0
Qantas	212	211	184	87.2	175	82.9	1	0.5
Tigerair Australia	29	27	27	100.0	25	92.6	2	6.9
Virgin Australia	122	122	110	90.2	103	84.4	0	0.0
All Airlines	390	387	342	88.4	321	82.9	3	0.8
Port Hedland-Perth								
Qantas	32	30	29	96.7	29	96.7	2	6.3
QantasLink	104	91	81	89.0	82	90.1	13	12.5
Virgin Australia	21	21	20	95.2	19	90.5	0	0.0
Virgin Australia Regional Airlines	32	32	27	84.4	26	81.3	0	0.0
All Airlines	189	174	157	90.2	156	89.7	15	7.9
Port Lincoln-Adelaide								
QantasLink	110	108	98	90.7	100	92.6	2	1.8
Regional Express	222	213	194	91.1	196	92.0	9	4.1
All Airlines	332	321	292	91.0	296	92.2	11	3.3
Port Macquarie-Sydney								
QantasLink	130	127	78	61.4	72	56.7	3	2.3
Virgin Australia	58	57	48	84.2	46	80.7	1	1.7
All Airlines	188	184	126	68.5	118	64.1	4	2.1
Proserpine-Brisbane								
Jetstar	34	34	26	76.5	30	88.2	0	0.0
Tigerair Australia	18	18	15	83.3	15	83.3	0	0.0
Virgin Australia	32	32	25	78.1	27	84.4	0	0.0
All Airlines	84	84	66	78.6	72	85.7	0	0.0
Rockhampton-Brisbane								
QantasLink	177	176	108	61.4	116	65.9	1	0.6
Virgin Australia	141	141	91	64.5	85	60.3	0	0.0
All Airlines	318	317	199	62.8	201	63.4	1	0.3

	<i>Sectors</i>		<i>Arrivals On Time</i>		<i>Departures On Time</i>		<i>Cancellations</i>	
	<i>Sched.</i>	<i>Flown</i>	<i>No.</i>	<i>%</i>	<i>No.</i>	<i>%</i>	<i>No.</i>	<i>%</i>
Sunshine Coast-Melbourne								
Jetstar	92	90	72	80.0	54	60.0	2	2.2
Virgin Australia	61	61	43	70.5	39	63.9	0	0.0
All Airlines	153	151	115	76.2	93	61.6	2	1.3
Sunshine Coast-Sydney								
Jetstar	124	124	97	78.2	82	66.1	0	0.0
QantasLink	35	31	20	64.5	21	67.7	4	11.4
Virgin Australia	51	50	38	76.0	40	80.0	1	2.0
All Airlines	210	205	155	75.6	143	69.8	5	2.4
Sydney-Adelaide								
Jetstar	100	98	88	89.8	79	80.6	2	2.0
Qantas	239	238	209	87.8	199	83.6	1	0.4
QantasLink	25	17	14	82.4	14	82.4	8	32.0
Tigerair Australia	49	48	29	60.4	28	58.3	1	2.0
Virgin Australia	168	166	143	86.1	141	84.9	2	1.2
All Airlines	581	567	483	85.2	461	81.3	14	2.4
Sydney-Albury								
QantasLink	83	83	57	68.7	53	63.9	0	0.0
Regional Express	105	104	72	69.2	73	70.2	1	1.0
Virgin Australia	61	61	49	80.3	47	77.0	0	0.0
All Airlines	249	248	178	71.8	173	69.8	1	0.4
Sydney-Armidale								
QantasLink	123	121	81	66.9	83	68.6	2	1.6
Regional Express	76	75	56	74.7	54	72.0	1	1.3
All Airlines	199	196	137	69.9	137	69.9	3	1.5
Sydney-Ayers Rock								
Jetstar	30	30	26	86.7	25	83.3	0	0.0
Virgin Australia	31	31	29	93.5	30	96.8	0	0.0
All Airlines	61	61	55	90.2	55	90.2	0	0.0
Sydney-Ballina								
Jetstar	91	91	77	84.6	78	85.7	0	0.0
Regional Express	27	26	23	88.5	23	88.5	1	3.7
Virgin Australia	35	35	29	82.9	30	85.7	0	0.0
All Airlines	153	152	129	84.9	131	86.2	1	0.7
Sydney-Brisbane								
Jetstar	168	163	121	74.2	113	69.3	5	3.0
Qantas	651	638	505	79.2	516	80.9	13	2.0
QantasLink	16	13	10	76.9	10	76.9	3	18.8
Tigerair Australia	113	110	67	60.9	80	72.7	3	2.7
Virgin Australia	531	514	381	74.1	409	79.6	17	3.2
All Airlines	1 479	1 438	1 084	75.4	1 128	78.4	41	2.8
Sydney-Cairns								
Jetstar	113	113	92	81.4	85	75.2	0	0.0
Qantas	76	76	71	93.4	64	84.2	0	0.0
Tigerair Australia	48	48	44	91.7	47	97.9	0	0.0
Virgin Australia	90	90	79	87.8	74	82.2	0	0.0
All Airlines	327	327	286	87.5	270	82.6	0	0.0
Sydney-Canberra								
Qantas	9	7	7	100.0	6	85.7	2	22.2
QantasLink	469	433	339	78.3	326	75.3	36	7.7
Virgin Australia	248	243	208	85.6	205	84.4	5	2.0
All Airlines	726	683	554	81.1	537	78.6	43	5.9

	<i>Sectors</i>		<i>Arrivals On Time</i>		<i>Departures On Time</i>		<i>Cancellations</i>	
	<i>Sched.</i>	<i>Flown</i>	<i>No.</i>	<i>%</i>	<i>No.</i>	<i>%</i>	<i>No.</i>	<i>%</i>
Sydney-Coffs Harbour								
QantasLink	155	151	115	76.2	110	72.8	4	2.6
Tigerair Australia	14	14	12	85.7	12	85.7	0	0.0
Virgin Australia	54	53	48	90.6	48	90.6	1	1.9
All Airlines	223	218	175	80.3	170	78.0	5	2.2
Sydney-Darwin								
Jetstar	24	24	22	91.7	22	91.7	0	0.0
Qantas	53	53	44	83.0	41	77.4	0	0.0
Virgin Australia	31	31	26	83.9	24	77.4	0	0.0
All Airlines	108	108	92	85.2	87	80.6	0	0.0
Sydney-Dubbo								
QantasLink	114	111	76	68.5	82	73.9	3	2.6
Regional Express	154	151	110	72.8	107	70.9	3	1.9
All Airlines	268	262	186	71.0	189	72.1	6	2.2
Sydney-Gold Coast								
Jetstar	296	294	216	73.5	214	72.8	2	0.7
Qantas	96	96	79	82.3	77	80.2	0	0.0
QantasLink	23	19	15	78.9	16	84.2	4	17.4
Tigerair Australia	125	123	90	73.2	96	78.0	2	1.6
Virgin Australia	252	247	191	77.3	205	83.0	5	2.0
All Airlines	792	779	591	75.9	608	78.0	13	1.6
Sydney-Hamilton Island								
Jetstar	31	31	30	96.8	28	90.3	0	0.0
Qantas	12	12	12	100.0	12	100.0	0	0.0
QantasLink	19	15	10	66.7	10	66.7	4	21.1
Virgin Australia	24	24	20	83.3	21	87.5	0	0.0
All Airlines	86	82	72	87.8	71	86.6	4	4.7
Sydney-Hobart								
Jetstar	92	92	87	94.6	86	93.5	0	0.0
QantasLink	58	55	37	67.3	35	63.6	3	5.2
Virgin Australia	72	72	60	83.3	61	84.7	0	0.0
All Airlines	222	219	184	84.0	182	83.1	3	1.4
Sydney-Launceston								
Jetstar	38	38	31	81.6	29	76.3	0	0.0
Virgin Australia	31	31	29	93.5	24	77.4	0	0.0
All Airlines	69	69	60	87.0	53	76.8	0	0.0
Sydney-Melbourne								
Jetstar	342	340	239	70.3	236	69.4	2	0.6
Qantas	1 084	1 025	815	79.5	798	77.9	59	5.4
QantasLink	5	4	4	100.0	4	100.0	1	20.0
Tigerair Australia	258	249	135	54.2	138	55.4	9	3.5
Virgin Australia	759	724	579	80.0	602	83.1	35	4.6
All Airlines	2 448	2 342	1 772	75.7	1 778	75.9	106	4.3
Sydney-Perth								
Jetstar	27	27	22	81.5	22	81.5	0	0.0
Qantas	215	214	164	76.6	166	77.6	1	0.5
Tigerair Australia	28	26	23	88.5	24	92.3	2	7.1
Virgin Australia	122	122	100	82.0	88	72.1	0	0.0
All Airlines	392	389	309	79.4	300	77.1	3	0.8
Sydney-Port Macquarie								
QantasLink	131	127	75	59.1	80	63.0	4	3.1
Virgin Australia	58	58	42	72.4	40	69.0	0	0.0
All Airlines	189	185	117	63.2	120	64.9	4	2.1

	<i>Sectors</i>		<i>Arrivals On Time</i>		<i>Departures On Time</i>		<i>Cancellations</i>	
	<i>Sched.</i>	<i>Flown</i>	<i>No.</i>	<i>%</i>	<i>No.</i>	<i>%</i>	<i>No.</i>	<i>%</i>
Sydney-Sunshine Coast								
Jetstar	124	124	100	80.6	95	76.6	0	0.0
QantasLink	35	31	22	71.0	22	71.0	4	11.4
Virgin Australia	51	51	38	74.5	39	76.5	0	0.0
All Airlines	210	206	160	77.7	156	75.7	4	1.9
Sydney-Tamworth								
QantasLink	143	137	112	81.8	113	82.5	6	4.2
Virgin Australia	52	52	41	78.8	44	84.6	0	0.0
All Airlines	195	189	153	81.0	157	83.1	6	3.1
Sydney-Townsville								
Jetstar	29	28	23	82.1	22	78.6	1	3.4
Qantas	4	3	2	66.7	3	100.0	1	25.0
Virgin Australia	26	26	24	92.3	21	80.8	0	0.0
All Airlines	59	57	49	86.0	46	80.7	2	3.4
Sydney-Wagga Wagga								
QantasLink	112	112	98	87.5	94	83.9	0	0.0
Regional Express	136	134	114	85.1	113	84.3	2	1.5
All Airlines	248	246	212	86.2	207	84.1	2	0.8
Tamworth-Sydney								
QantasLink	142	135	115	85.2	109	80.7	7	4.9
Virgin Australia	51	51	41	80.4	44	86.3	0	0.0
All Airlines	193	186	156	83.9	153	82.3	7	3.6
Townsville-Brisbane								
Jetstar	48	48	28	58.3	31	64.6	0	0.0
Qantas	76	76	59	77.6	64	84.2	0	0.0
QantasLink	74	64	45	70.3	50	78.1	10	13.5
Virgin Australia	134	132	100	75.8	99	75.0	2	1.5
All Airlines	332	320	232	72.5	244	76.3	12	3.6
Townsville-Cairns								
QantasLink	138	134	123	91.8	124	92.5	4	2.9
Regional Express	40	36	28	77.8	29	80.6	4	10.0
All Airlines	178	170	151	88.8	153	90.0	8	4.5
Townsville-Sydney								
Jetstar	30	29	24	82.8	21	72.4	1	3.3
Qantas	4	3	2	66.7	2	66.7	1	25.0
Virgin Australia	26	26	19	73.1	20	76.9	0	0.0
All Airlines	60	58	45	77.6	43	74.1	2	3.3
Wagga Wagga-Sydney								
QantasLink	111	111	99	89.2	100	90.1	0	0.0
Regional Express	136	132	103	78.0	107	81.1	4	2.9
All Airlines	247	243	202	83.1	207	85.2	4	1.6

Airports

On time performance is reported for all routes where the passenger load averages over 8000 passengers per month, and where two or more airlines operate in competition. The following data reports by airport against flights operated on those routes only. This month, 8 major city airports and 32 regional city airports are covered.

Airport	Arrivals			Departures		
	Sectors	On Time		Sectors	On Time	
	Flown	No.	%	Flown	No.	%
Adelaide						
Jetstar	291	242	83.2	290	238	82.1
Qantas	806	706	87.6	806	703	87.2
QantasLink	175	153	87.4	175	156	89.1
Regional Express	213	194	91.1	215	202	94.0
Tigerair Australia	160	125	78.1	160	110	68.8
Virgin Australia	657	547	83.3	657	556	84.6
Virgin Australia Regional Airlines	44	31	70.5	45	29	64.4
All Airlines	2 346	1 998	85.2	2 348	1 994	84.9
Relates to services to and from Alice Springs, Brisbane, Canberra, Gold Coast, Melbourne, Perth, Port Lincoln and Sydney.						
Albury						
QantasLink	83	57	68.7	81	63	77.8
Regional Express	104	72	69.2	105	91	86.7
Virgin Australia	61	49	80.3	61	50	82.0
All Airlines	248	178	71.8	247	204	82.6
Relates to services to and from Sydney only.						
Alice Springs						
Qantas	31	29	93.5	31	26	83.9
QantasLink	59	50	84.7	59	51	86.4
Virgin Australia	10	8	80.0	10	7	70.0
Virgin Australia Regional Airlines	31	15	48.4	30	18	60.0
All Airlines	131	102	77.9	130	102	78.5
Relates to services to and from Adelaide and Darwin.						
Armidale						
QantasLink	121	81	66.9	119	81	68.1
Regional Express	75	56	74.7	74	58	78.4
All Airlines	196	137	69.9	193	139	72.0
Relates to services to and from Sydney only.						
Ayers Rock						
Jetstar	30	26	86.7	30	20	66.7
Virgin Australia	31	29	93.5	30	26	86.7
All Airlines	61	55	90.2	60	46	76.7
Relates to services to and from Sydney only.						
Ballina						
Jetstar	91	77	84.6	91	68	74.7
Regional Express	26	23	88.5	26	17	65.4
Virgin Australia	35	29	82.9	34	27	79.4
All Airlines	152	129	84.9	151	112	74.2
Relates to services to and from Sydney only.						

Airport	Arrivals			Departures		
	Sectors	On Time		Sectors	On Time	
	Flown	No.	%	Flown	No.	%
Brisbane						
Jetstar	712	521	73.2	713	509	71.4
Qantas	1 573	1 270	80.7	1 572	1 299	82.6
QantasLink	1 022	700	68.5	1 028	753	73.2
Tigerair Australia	390	260	66.7	390	286	73.3
Virgin Australia	2 143	1 640	76.5	2 141	1 712	80.0
All Airlines	5 840	4 391	75.2	5 844	4 559	78.0

Relates to services to and from Adelaide, Bundaberg, Cairns, Canberra, Darwin, Emerald, Gladstone, Hamilton Island, Hobart, Mackay, Melbourne, Mount Isa, Newcastle, Perth, Proserpine, Rockhampton, Sydney and Townsville.

Broome

Qantas	7	5	71.4	7	4	57.1
QantasLink	93	80	86.0	92	72	78.3
Virgin Australia	7	7	100.0	7	5	71.4
Virgin Australia Regional Airlines	71	58	81.7	71	49	69.0
All Airlines	178	150	84.3	177	130	73.4

Relates to services to and from Perth only.

Bundaberg

QantasLink	116	83	71.6	117	87	74.4
Virgin Australia	30	24	80.0	30	24	80.0
All Airlines	146	107	73.3	147	111	75.5

Relates to services to and from Brisbane only.

Cairns

Jetstar	337	268	79.5	334	249	74.6
Qantas	244	204	83.6	243	193	79.4
QantasLink	138	126	91.3	149	136	91.3
Regional Express	36	28	77.8	38	29	76.3
Tigerair Australia	137	114	83.2	136	101	74.3
Virgin Australia	249	215	86.3	249	213	85.5
All Airlines	1 141	955	83.7	1 149	921	80.2

Relates to services to and from Brisbane, Melbourne, Sydney and Townsville.

Canberra

Qantas	291	250	85.9	291	268	92.1
QantasLink	630	491	77.9	629	500	79.5
Tigerair Australia	50	37	74.0	50	32	64.0
Virgin Australia	545	445	81.7	546	451	82.6
All Airlines	1 516	1 223	80.7	1 516	1 251	82.5

Relates to services to and from Adelaide, Brisbane, Melbourne and Sydney.

Coffs Harbour

QantasLink	151	115	76.2	152	121	79.6
Tigerair Australia	14	12	85.7	14	11	78.6
Virgin Australia	53	48	90.6	52	46	88.5
All Airlines	218	175	80.3	218	178	81.7

Relates to services to and from Sydney only.

Airport	Arrivals			Departures		
	Sectors Flown	On Time		Sectors Flown	On Time	
		No.	%		No.	%
Darwin						
Jetstar	78	65	83.3	78	57	73.1
Qantas	166	150	90.4	166	146	88.0
QantasLink	59	51	86.4	59	50	84.7
Tigerair Australia	18	13	72.2	18	15	83.3
Virgin Australia	123	106	86.2	123	103	83.7
Virgin Australia Regional Airlines	21	14	66.7	20	16	80.0
All Airlines	465	399	85.8	464	387	83.4
Relates to services to and from Alice Springs, Brisbane, Melbourne, Perth and Sydney.						
Dubbo						
QantasLink	111	76	68.5	111	83	74.8
Regional Express	151	110	72.8	154	127	82.5
All Airlines	262	186	71.0	265	210	79.2
Relates to services to and from Sydney only.						
Emerald						
QantasLink	109	78	71.6	108	73	67.6
Virgin Australia	54	43	79.6	53	40	75.5
All Airlines	163	121	74.2	161	113	70.2
Relates to services to and from Brisbane only.						
Geraldton						
QantasLink	48	39	81.3	48	40	83.3
Virgin Australia Regional Airlines	51	43	84.3	51	45	88.2
All Airlines	99	82	82.8	99	85	85.9
Relates to services to and from Perth only.						
Gladstone						
QantasLink	130	90	69.2	130	92	70.8
Virgin Australia	76	56	73.7	76	55	72.4
All Airlines	206	146	70.9	206	147	71.4
Relates to services to and from Brisbane only.						
Gold Coast						
Jetstar	548	410	74.8	548	383	69.9
Qantas	127	105	82.7	127	97	76.4
QantasLink	19	15	78.9	20	10	50.0
Tigerair Australia	212	155	73.1	212	129	60.8
Virgin Australia	469	365	77.8	468	342	73.1
All Airlines	1 375	1 050	76.4	1 375	961	69.9
Relates to services to and from Adelaide, Melbourne and Sydney.						
Hamilton Island						
Jetstar	31	30	96.8	31	25	80.6
Qantas	12	12	100.0	12	12	100.0
QantasLink	46	36	78.3	44	32	72.7
Virgin Australia	54	46	85.2	54	45	83.3
All Airlines	143	124	86.7	141	114	80.9
Relates to services to and from Brisbane and Sydney.						

Airport	Arrivals			Departures		
	Sectors Flown	On Time		Sectors Flown	On Time	
		No.	%		No.	%
Hobart						
Jetstar	271	227	83.8	271	180	66.4
QantasLink	189	123	65.1	186	133	71.5
Tigerair Australia	34	24	70.6	34	22	64.7
Virgin Australia	249	199	79.9	249	181	72.7
All Airlines	743	573	77.1	740	516	69.7
Relates to services to and from Brisbane, Melbourne and Sydney.						
Kalgoorlie						
Qantas	5	4	80.0	5	4	80.0
QantasLink	77	74	96.1	77	73	94.8
Virgin Australia	24	24	100.0	25	22	88.0
Virgin Australia Regional Airlines	42	34	81.0	42	35	83.3
All Airlines	148	136	91.9	149	134	89.9
Relates to services to and from Perth only.						
Karratha						
Qantas	16	16	100.0	16	16	100.0
QantasLink	167	153	91.6	163	152	93.3
Virgin Australia	8	8	100.0	8	8	100.0
Virgin Australia Regional Airlines	57	46	80.7	56	49	87.5
All Airlines	248	223	89.9	243	225	92.6
Relates to services to and from Perth only.						
Launceston						
Jetstar	149	112	75.2	150	109	72.7
QantasLink	119	103	86.6	119	110	92.4
Virgin Australia	128	108	84.4	128	107	83.6
All Airlines	396	323	81.6	397	326	82.1
Relates to services to and from Melbourne and Sydney.						
Mackay						
Jetstar	48	35	72.9	47	27	57.4
QantasLink	103	83	80.6	102	70	68.6
Virgin Australia	143	117	81.8	144	120	83.3
All Airlines	294	235	79.9	293	217	74.1
Relates to services to and from Brisbane only.						
Melbourne						
Jetstar	1 458	1 092	74.9	1 460	1 099	75.3
Qantas	2 241	1 856	82.8	2 240	1 881	84.0
QantasLink	445	367	82.5	449	370	82.4
Regional Express	82	61	74.4	83	70	84.3
Tigerair Australia	714	443	62.0	715	505	70.6
Virgin Australia	2 319	1 791	77.2	2 323	1 951	84.0
All Airlines	7 259	5 610	77.3	7 270	5 876	80.8
Relates to services to and from Adelaide, Brisbane, Cairns, Canberra, Darwin, Gold Coast, Hobart, Launceston, Mildura, Newcastle, Perth, Sunshine Coast and Sydney.						
Mildura						
QantasLink	95	83	87.4	95	88	92.6
Regional Express	83	65	78.3	82	65	79.3
Virgin Australia	31	26	83.9	31	22	71.0
All Airlines	209	174	83.3	208	175	84.1
Relates to services to and from Melbourne only.						

Airport	Arrivals			Departures		
	Sectors Flown	On Time		Sectors Flown	On Time	
		No.	%		No.	%
Mount Isa						
QantasLink	52	39	75.0	50	40	80.0
Virgin Australia	18	14	77.8	17	14	82.4
All Airlines	70	53	75.7	67	54	80.6
Relates to services to and from Brisbane only.						
Newcastle						
Jetstar	207	151	72.9	207	160	77.3
QantasLink	78	54	69.2	77	59	76.6
Virgin Australia	121	98	81.0	122	97	79.5
All Airlines	406	303	74.6	406	316	77.8
Relates to services to and from Brisbane and Melbourne.						
Newman						
Qantas	60	58	96.7	60	59	98.3
QantasLink	68	63	92.6	66	62	93.9
Virgin Australia	17	17	100.0	17	17	100.0
Virgin Australia Regional Airlines	22	19	86.4	23	17	73.9
All Airlines	167	157	94.0	166	155	93.4
Relates to services to and from Perth only.						
Perth						
Jetstar	106	93	87.7	106	76	71.7
Qantas	805	649	80.6	797	693	87.0
QantasLink	559	511	91.4	571	494	86.5
Tigerair Australia	98	79	80.6	98	81	82.7
Virgin Australia	521	442	84.8	519	460	88.6
Virgin Australia Regional Airlines	309	257	83.2	310	264	85.2
All Airlines	2 398	2 031	84.7	2 401	2 068	86.1
Relates to services to and from Adelaide, Brisbane, Broome, Darwin, Geraldton, Kalgoorlie, Karratha, Melbourne, Newman, Port Hedland and Sydney.						
Port Hedland						
Qantas	30	28	93.3	30	29	96.7
QantasLink	96	84	87.5	91	82	90.1
Virgin Australia	21	19	90.5	21	19	90.5
Virgin Australia Regional Airlines	32	25	78.1	32	26	81.3
All Airlines	179	156	87.2	174	156	89.7
Relates to services to and from Perth only.						
Port Lincoln						
QantasLink	109	101	92.7	108	100	92.6
Regional Express	215	193	89.8	213	196	92.0
All Airlines	324	294	90.7	321	296	92.2
Relates to services to and from Adelaide only.						
Port Macquarie						
QantasLink	127	75	59.1	127	72	56.7
Virgin Australia	58	42	72.4	57	46	80.7
All Airlines	185	117	63.2	184	118	64.1
Relates to services to and from Sydney only.						

Airport	Arrivals			Departures		
	Sectors Flown	On Time		Sectors Flown	On Time	
		No.	%		No.	%
Proserpine						
Jetstar	34	31	91.2	34	30	88.2
Tigerair Australia	18	15	83.3	18	15	83.3
Virgin Australia	32	27	84.4	32	27	84.4
All Airlines	84	73	86.9	84	72	85.7
Relates to services to and from Brisbane only.						
Rockhampton						
QantasLink	178	113	63.5	176	116	65.9
Virgin Australia	142	76	53.5	141	85	60.3
All Airlines	320	189	59.1	317	201	63.4
Relates to services to and from Brisbane only.						
Sunshine Coast						
Jetstar	218	182	83.5	214	136	63.6
QantasLink	31	22	71.0	31	21	67.7
Virgin Australia	112	89	79.5	111	79	71.2
All Airlines	361	293	81.2	356	236	66.3
Relates to services to and from Melbourne and Sydney.						
Sydney						
Jetstar	1 489	1 127	75.7	1 493	1 134	76.0
Qantas	2 351	1 927	82.0	2 362	1 882	79.7
QantasLink	1 421	1 080	76.0	1 429	1 052	73.6
Regional Express	491	377	76.8	490	370	75.5
Tigerair Australia	618	387	62.6	618	425	68.8
Virgin Australia	2 625	2 124	80.9	2 631	2 153	81.8
All Airlines	8 995	7 022	78.1	9 023	7 016	77.8
Relates to services to and from Adelaide, Albury, Armidale, Ayers Rock, Ballina, Brisbane, Cairns, Canberra, Coffs Harbour, Darwin, Dubbo, Gold Coast, Hamilton Island, Hobart, Launceston, Melbourne, Perth, Port Macquarie, Sunshine Coast, Tamworth, Townsville and Wagga Wagga.						
Tamworth						
QantasLink	137	112	81.8	135	109	80.7
Virgin Australia	52	41	78.8	51	44	86.3
All Airlines	189	153	81.0	186	153	82.3
Relates to services to and from Sydney only.						
Townsville						
Jetstar	76	56	73.7	77	52	67.5
Qantas	79	55	69.6	79	66	83.5
QantasLink	209	176	84.2	198	174	87.9
Regional Express	38	27	71.1	36	29	80.6
Virgin Australia	158	133	84.2	158	119	75.3
All Airlines	560	447	79.8	548	440	80.3
Relates to services to and from Brisbane, Cairns and Sydney.						
Wagga Wagga						
QantasLink	112	98	87.5	111	100	90.1
Regional Express	134	114	85.1	132	107	81.1
All Airlines	246	212	86.2	243	207	85.2
Relates to services to and from Sydney only.						

Definitions

On time arrival	A flight arrival is counted as "on time" if it arrived at the gate before 15 minutes after the scheduled arrival time shown in the carriers' schedule. Neither diverted nor cancelled flights count as on time.
On time departure	A flight departure is counted as "on time" if it departs the gate before 15 minutes after the scheduled departure time shown in the carriers' schedule.
Cancellation	A flight removed from service within 7 days of scheduled departure is regarded as a cancellation.
On time departure percentage	The percentage of on time departures is measured against the number of departures <i>operated</i> on any particular sector.
On time arrival percentage	The percentage of on time arrivals is measured against the number of arrivals <i>operated</i> on any particular sector.
Cancellation percentage	The percentage of cancellations is measured against the number of services <i>scheduled</i> on any particular sector.
