



Australian Government

Department of Infrastructure, Regional Development and Cities

Bureau of Infrastructure, Transport and Regional Economics

STATISTICAL REPORT



Aviation

Domestic airline on time performance
October 2018

© Commonwealth of Australia 2018

ISSN: 1832-0759

Ownership of intellectual property rights in this publication

Unless otherwise noted, copyright (and any other intellectual property rights, if any) in this publication is owned by the Commonwealth of Australia (referred to below as the Commonwealth).

Disclaimer

The material contained in this publication is made available on the understanding that the Commonwealth is not providing professional advice, and that users exercise their own skill and care with respect to its use, and seek independent advice if necessary.

The Commonwealth makes no representations or warranties as to the contents or accuracy of the information contained in this publication. To the extent permitted by law, the Commonwealth disclaims liability to any person or organisation in respect of anything done, or omitted to be done, in reliance upon information contained in this publication.

Creative Commons licence

With the exception of (a) the Coat of Arms; and (b) the Department of Infrastructure, Regional Development and Cities' photos and graphics, copyright in this publication is licensed under a Creative Commons Attribution 3.0 Australia Licence.

Creative Commons Attribution 3.0 Australia Licence is a standard form licence agreement that allows you to copy, communicate and adapt this publication provided that you attribute the work to the Commonwealth and abide by the other licence terms. A summary of the licence terms is available from <http://creativecommons.org/licenses/by/3.0/au/deed.en>. The full licence terms are available from <http://creativecommons.org/licenses/by/3.0/au/legalcode>.

Use of the Coat of Arms

The Department of the Prime Minister and Cabinet sets the terms under which the Coat of Arms is used. Please refer to the Department's Commonwealth Coat of Arms and Government branding web page <http://www.dpmc.gov.au/guidelines/index.cfm#brand> and, in particular, the Guidelines on the use of the Commonwealth Coat of Arms publication.

An appropriate citation for this report is:

Bureau of Infrastructure, Transport and Regional Economics (BITRE), 2018, Domestic airline on time performance, Statistical Report, BITRE, Canberra ACT.

Contact us

This publication is available in PDF format. All other rights are reserved, including in relation to any Departmental logos or trade marks which may exist. For enquiries regarding the licence and any use of this publication, please contact:

Bureau of Infrastructure, Transport and Regional Economics (BITRE)
Department of Infrastructure, Regional Development and Cities
GPO Box 501, Canberra ACT 2601, Australia
Telephone: (international) +61 2 6274 7210
Fax: (international) +61 2 6274 6855
Email: bitre@infrastructure.gov.au
Website: www.bitre.gov.au

Inquiries

Should you require additional information about the statistics contained in this publication:

Telephone (02) 6274 7790 or Facsimile (02) 6274 7727

Electronic mail: AVSTATS@infrastructure.gov.au

Web site: <http://www.bitre.gov.au/statistics/aviation/otphome.aspx>

Foreword

The Bureau of Infrastructure, Transport and Regional Economics (BITRE) monitors the punctuality and reliability of major domestic airlines operating between Australian airports. The purpose of this is to allow for evaluation of overall industry and individual airline performance, so that consumers of air travel can make informed decisions.

The following domestic airlines currently report this information monthly to the BITRE: Jetstar, Qantas, QantasLink, Regional Express, Tigerair Australia, Virgin Australia and Virgin Australia Regional Airlines. Data has been gathered since November 2003, although some airlines commenced reporting at a later date, including Jetstar which first reported in May 2004, MacAir in July 2005, Tigerair Australia in April 2008 and Virgin Australia Regional Airlines in May 2013. MacAir ceased operations in February 2009 and data was not received for December 2008 onwards. Virgin Blue was rebranded as Virgin Australia in May 2011 and Tiger Airways was rebranded as Tigerair Australia in July 2013 and time series data in Microsoft Excel spreadsheet format on the BITRE website have been revised to reflect these changes. Services operated by Skywest on behalf of Virgin Australia using ATR/F100 aircraft commenced in November 2011 and were shown separately as Virgin Australia – ATR/F100 Operations. Virgin Australia Regional Airlines commenced operations in May 2013. It was formed after the acquisition of Skywest by Virgin Australia and represented a combination of operations previously reported under Skywest and Virgin Australia – ATR/F100 Operations. In January 2016, Virgin Australia transferred their ATR fleet from Virgin Australia Regional Airlines to Virgin Australia.

Information presented in this report is for Australian domestic routes for which the passenger load averaged 8 000 or more passengers per month over the previous six months and where two or more airlines operated in competition on those routes. There were 65 routes that met this definition in October 2018. Over time, routes which meet these criteria change as airline networks and traffic levels vary.

Participating airlines report their overall monthly network performance where this is possible.

Total industry figures encompass all services operated by reporting airlines only. These airlines collectively carried over 95 per cent of total domestic passengers (regular public transport only) in 2017.

The method of capturing on time performance varies between airlines utilising different recording systems. Jetstar and Qantas jet aircraft use Aircraft Communication Addressing and Reporting System (ACARS) to electronically measure on time performance. Regional Express, Tigerair Australia, Virgin Australia, Virgin Australia Regional Airlines and the Qantas non-jet fleet record on time performance manually using records from pilots, gate agents and/or ground crews.

After initial data is collected, aggregate reports are audited internally by participating airlines prior to publication.

Reports and detailed time series data in Microsoft Excel spreadsheet format are available from the BITRE website at: <http://www.bitre.gov.au/statistics/aviation/otphome.aspx>.

Contents

	Page
Industry performance	1
Individual routes	10
Airports.....	24
Definitions	30

Industry performance

For October 2018, on time performance over all routes operated by participating airlines (Jetstar, Qantas, QantasLink, Regional Express, Tigerair Australia, Virgin Australia and Virgin Australia Regional Airlines) averaged 76.9 per cent for on time arrivals and 78.3 per cent for on time departures. Cancellations represented 1.7 per cent of all scheduled flights. The equivalent figures for October 2017 were 79.0 per cent for on time arrivals, 79.7 per cent for on time departures and 2.3 per cent for cancellations.

This month's on time arrivals figure was lower than the long term average performance for all routes (82.6 per cent) and the on time departures figure was also lower than the long term average (83.9 per cent). The rate of cancellations was higher than the long term average of 1.4 per cent.

Qantas achieved the highest on time arrivals among the major domestic airlines at 78.3 per cent followed by Virgin Australia at 77.7 per cent, Jetstar at 70.9 per cent and Tigerair Australia at 67.6 per cent. Of the regional airlines, QantasLink recorded 81.3 per cent for on time arrivals, followed by Regional Express at 77.4 per cent and Virgin Australia Regional Airlines at 71.5 per cent. The Qantas network (Qantas and QantasLink combined operations) recorded 79.9 per cent for on time arrivals while the Virgin Australia network (Virgin Australia and Virgin Australia Regional Airlines combined operations) recorded 77.4 per cent.

Qantas also achieved the highest level of on time departures among the major domestic airlines for October 2018 at 79.6 per cent, followed by Virgin Australia at 79.3 per cent, Tigerair Australia at 68.6 per cent and Jetstar at 68.2 per cent. Of the regional airlines, QantasLink recorded 83.4 per cent for on time departures, followed by Regional Express at 82.1 per cent and Virgin Australia Regional Airlines at 77.3 per cent. The Qantas network recorded 81.6 per cent for on time departures while the Virgin Australia network recorded 79.2 per cent.

Jetstar recorded the highest percentage of cancellations (2.6 per cent) during the month, followed by Qantas and Virgin Australia (both at 2.1 per cent), Virgin Australia Regional Airlines (2.0 per cent), Tigerair Australia and QantasLink (both at 1.2 per cent) and Regional Express (0.4 per cent).

Airlines' on time performance varies across the routes they serve. Individual route data by specific airline for 65 routes are shown on pages 10-23.

Of the 65 routes which met the criteria for on time performance reporting in October 2018, the Townsville-Cairns route had the highest percentage of on time arrivals (96.0 per cent) and the Adelaide-Port Lincoln route had the highest percentage of on time departures (93.9 per cent). The Sunshine Coast-Sydney route had the lowest percentage of on time arrivals (54.0 per cent) and the Sunshine Coast-Melbourne route had the lowest percentage of on time departures (46.5 per cent).

Cancellations were highest on the Melbourne-Sydney route at 5.3 per cent, followed by the Sydney-Melbourne route at 5.2 per cent, the Brisbane-Sydney route at 5.0 per cent, the Sydney-Brisbane route at 4.4 per cent and the Darwin-Alice Springs route at 3.7 per cent.

Port Lincoln Airport recorded the highest percentage of on time arrivals (91.2 per cent) and the highest percentage of on time departures (93.3 per cent). Sunshine Coast Airport recorded the lowest percentage of on time arrivals (64.5 per cent) and the lowest percentage of on time departures (47.8 per cent). These figures only refer to reported routes and do not cover all flights at these airports.

Table 1 On time performance for October 2018 — Total Industry

	<i>Sectors</i>		<i>Arrivals On Time</i>		<i>Departures On Time</i>		<i>Cancellations</i>	
	<i>Scheduled</i>	<i>Flown</i>	<i>No.</i>	<i>%</i>	<i>No.</i>	<i>%</i>	<i>No.</i>	<i>%</i>
Jetstar	7 670	7 469	5 295	70.9	5 097	68.2	201	2.6
Qantas	9 279	9 083	7 113	78.3	7 227	79.6	196	2.1
QantasLink	10 352	10 232	8 320	81.3	8 529	83.4	120	1.2
Regional Express	6 530	6 502	5 035	77.4	5 337	82.1	28	0.4
Tigerair Australia	2 495	2 466	1 666	67.6	1 691	68.6	29	1.2
Virgin Australia	12 370	12 111	9 416	77.7	9 600	79.3	259	2.1
Virgin Australia Regional Airlines	751	736	526	71.5	569	77.3	15	2.0
All Airlines	49 447	48 599	37 371	76.9	38 050	78.3	848	1.7
Qantas - all QF designated services	19 631	19 315	15 433	79.9	15 756	81.6	316	1.6
Virgin Australia - all VA designated services	13 121	12 847	9 942	77.4	10 169	79.2	274	2.1

Total airline network data (including routes not shown in this report).

Airlines' on time performance varies across the routes they serve. Individual route data by specific airline for 65 routes are shown on pages 10-23.

Table 2 Top ten routes for on time performance for October 2018 (participating airlines only)

<i>Arrivals</i>		<i>Departures</i>	
<i>Route</i>	<i>On Time (%)</i>	<i>Route</i>	<i>On Time (%)</i>
Townsville-Cairns	96.0	Adelaide-Port Lincoln	93.9
Cairns-Townsville	92.6	Port Lincoln-Adelaide	93.3
Adelaide-Port Lincoln	91.2	Townsville-Cairns	93.3
Darwin-Perth	91.2	Perth-Darwin	92.6
Perth-Darwin	91.2	Melbourne-Mildura	91.2
Brisbane-Emerald	91.1	Darwin-Alice Springs	91.1
Darwin-Alice Springs	91.1	Cairns-Townsville	90.6
Port Lincoln-Adelaide	90.9	Perth-Kalgoorlie	90.5
Alice Springs-Darwin	90.1	Darwin-Perth	89.7
Kalgoorlie-Perth	89.2	Brisbane-Emerald	89.2

Table 3 Top ten airports for on time performance for October 2018 (participating airlines and reported routes only)

<i>Arrivals</i>		<i>Departures</i>	
<i>Airport</i>	<i>On Time (%)</i>	<i>Airport</i>	<i>On Time (%)</i>
Port Lincoln	91.2	Port Lincoln	93.3
Emerald	91.1	Mount Isa	88.2
Kalgoorlie	89.2	Townsville	86.9
Mildura	88.5	Emerald	86.5
Newman	87.6	Mildura	86.2
Wagga Wagga	85.7	Kalgoorlie	86.1
Alice Springs	85.7	Perth	85.8
Port Hedland	85.3	Karratha	85.0
Cairns	84.8	Port Hedland	84.7
Darwin	84.6	Wagga Wagga	84.3

Total industry on time performance

Figure 1 On time performance (by month from October 2015)—Total Industry

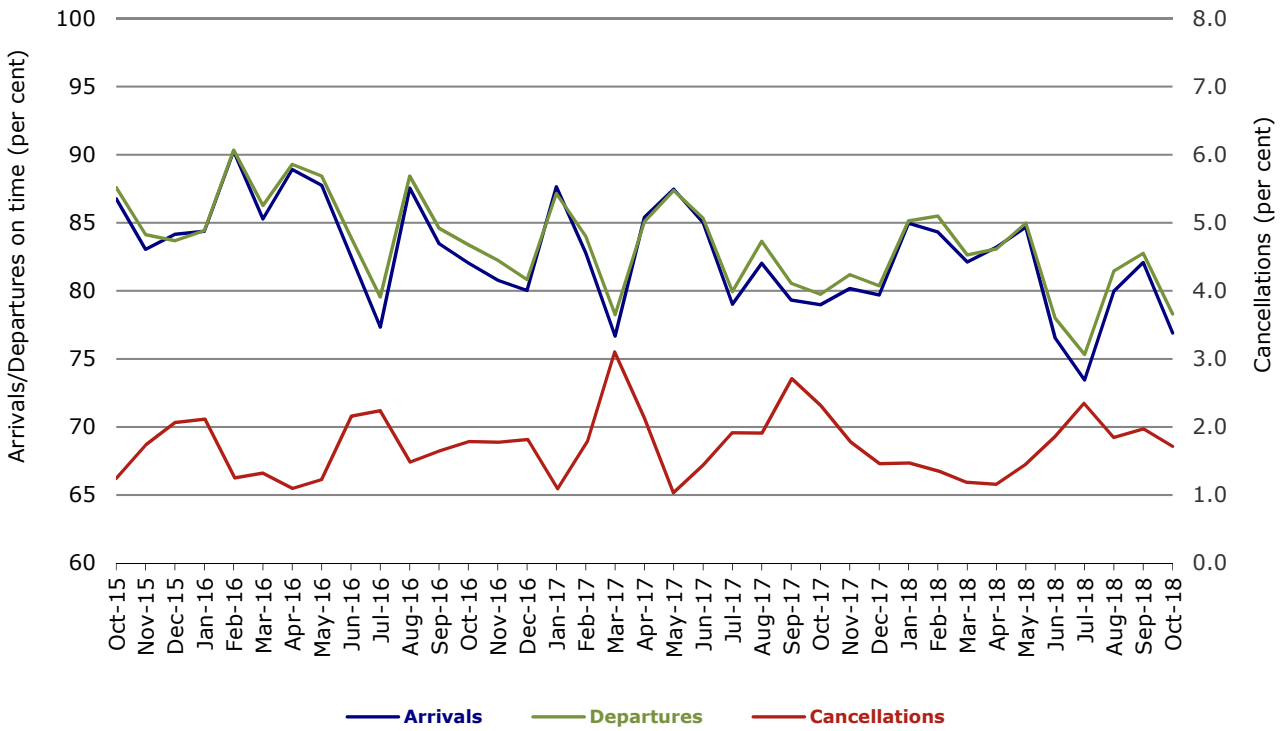


Figure 2 Arrivals on time (by month from October 2017)

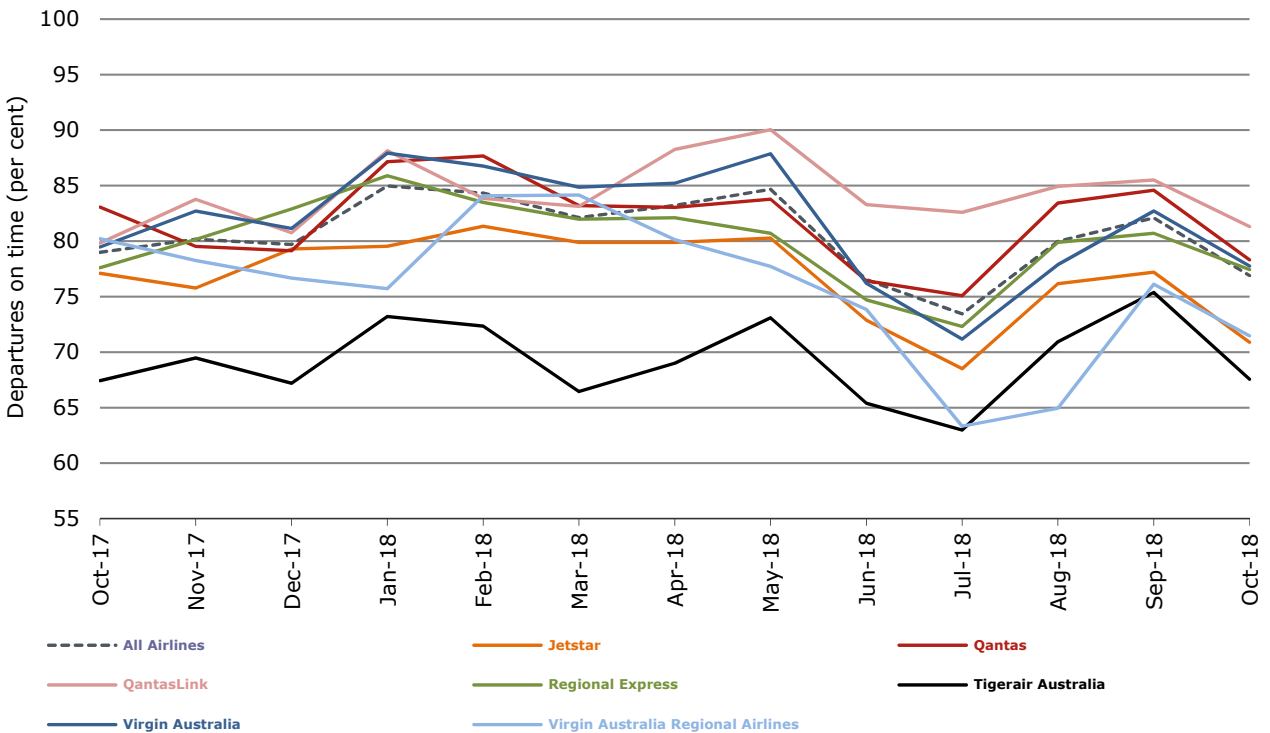


Figure 3 Departures on time (by month from October 2017)

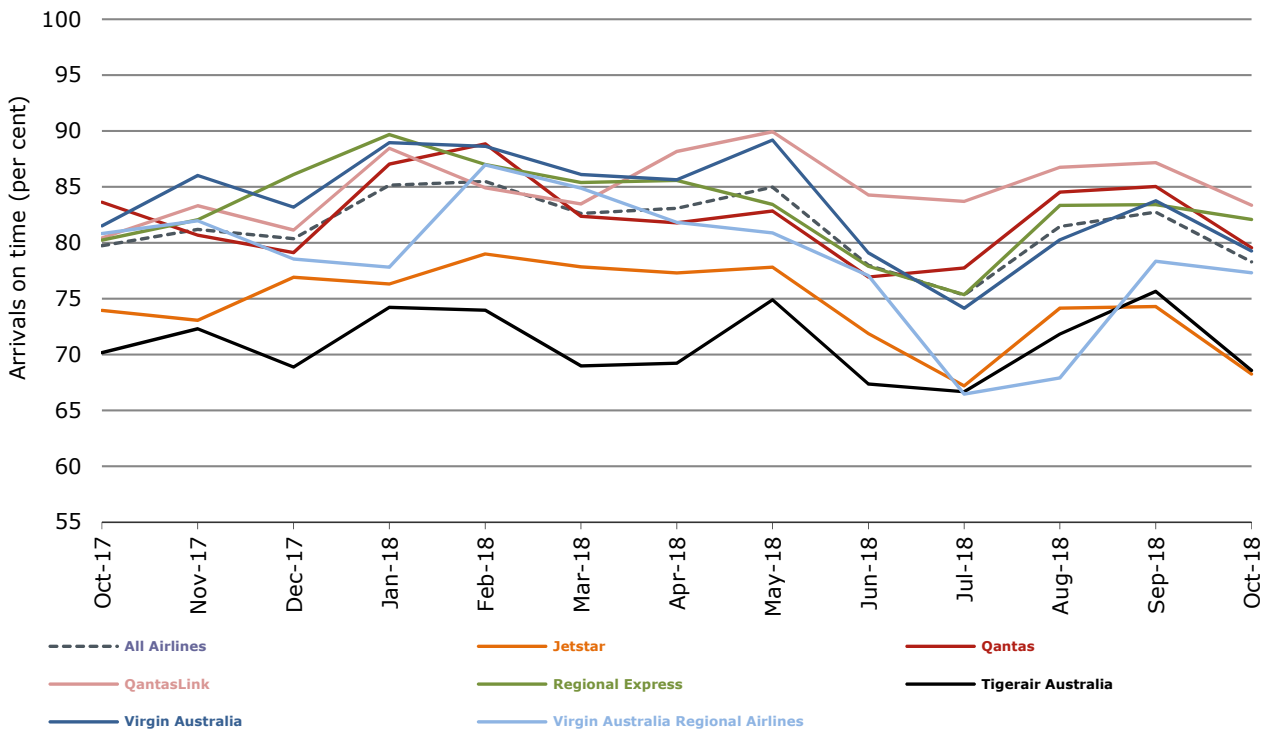
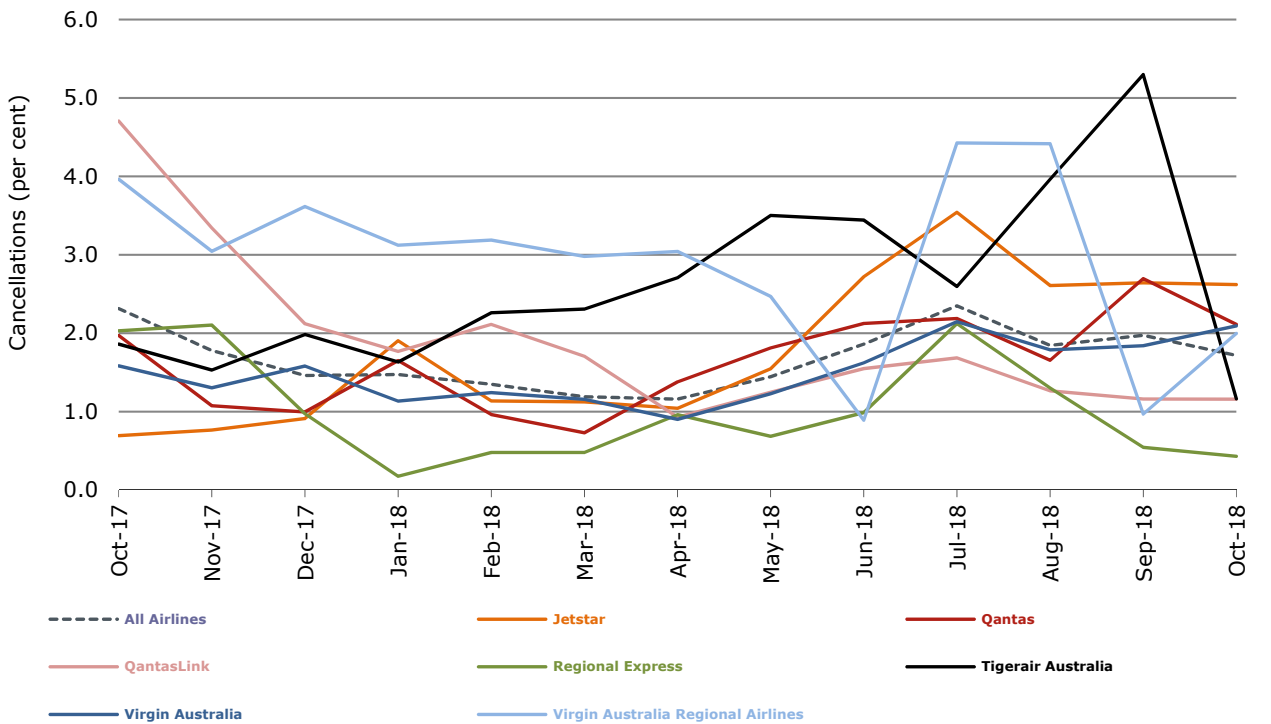


Figure 4 Cancellations (by month from October 2017)



Major domestic airlines on time performance

Figure 5 On time performance (by month from October 2015)—Jetstar

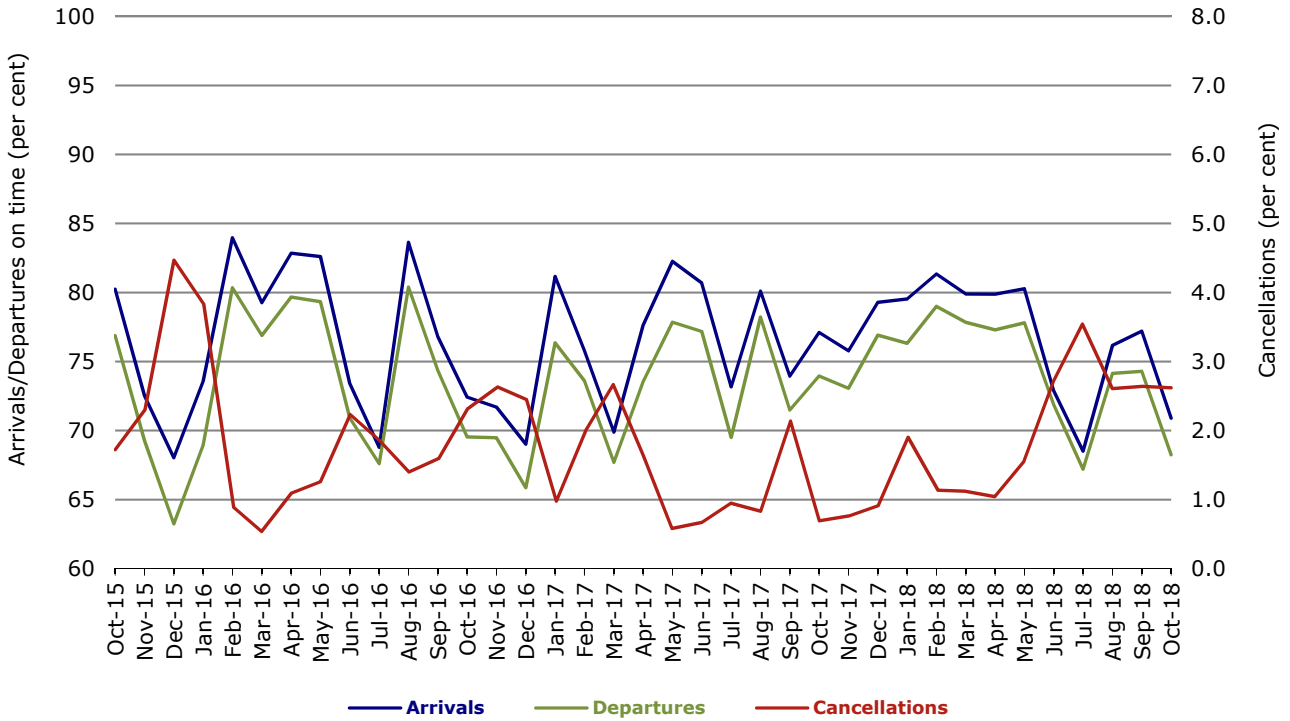


Figure 6 On time performance (by month from October 2015)—Qantas

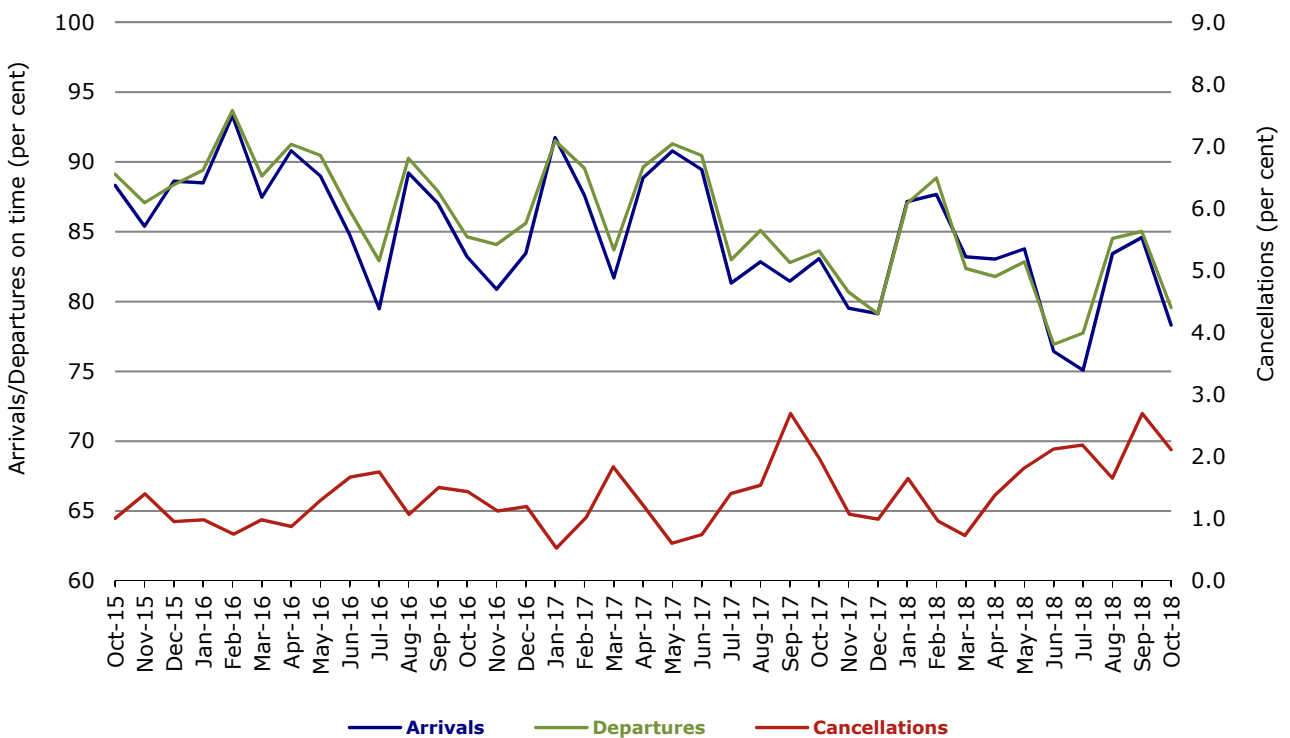


Figure 7 On time performance (by month from October 2015)—Tigerair Australia

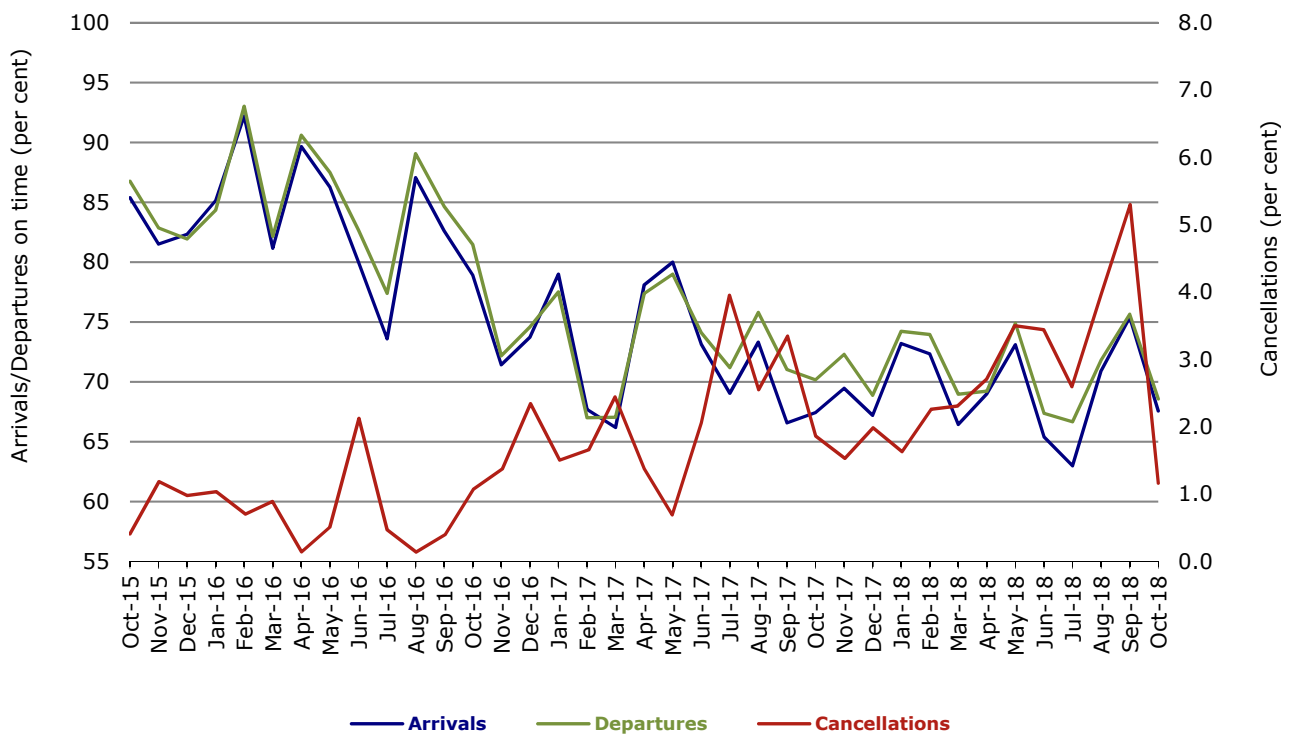
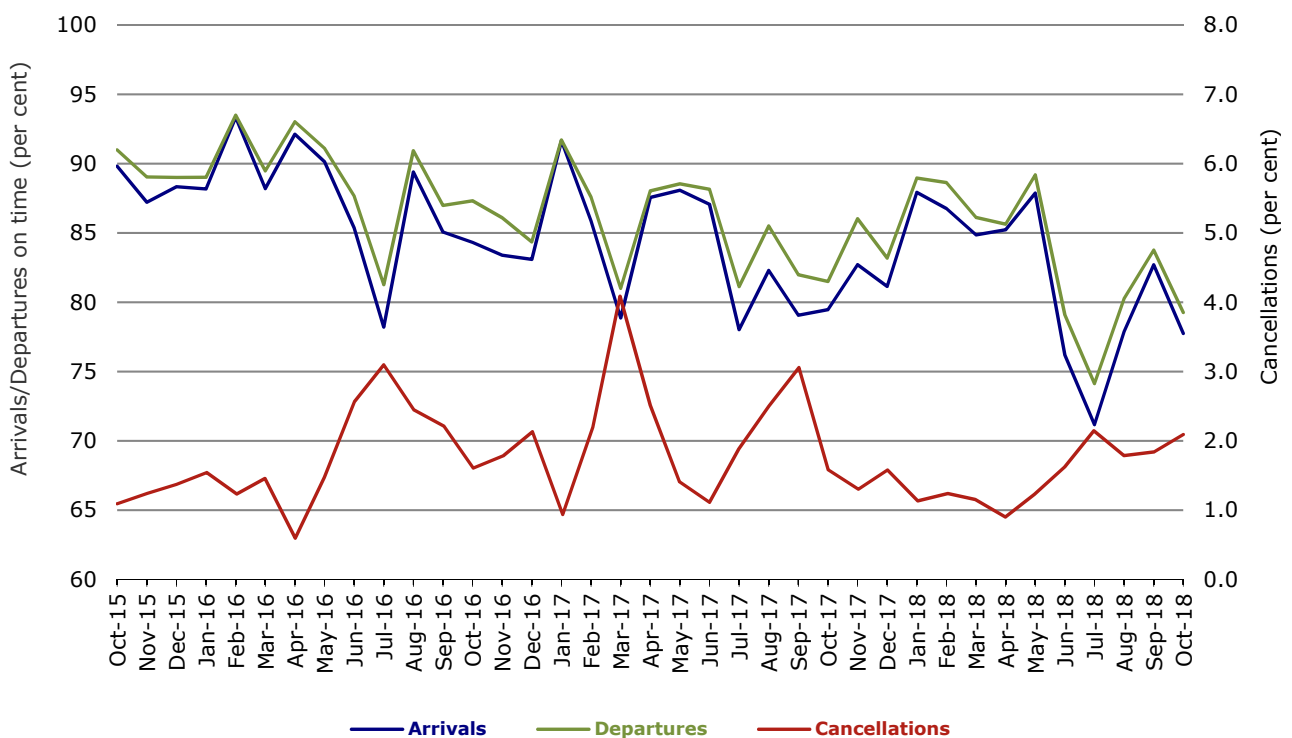


Figure 8 On time performance (by month from October 2015)—Virgin Australia



In January 2016, Virgin Australia transferred their ATR fleet from Virgin Australia Regional Airlines to Virgin Australia.

Major regional airlines on time performance

Figure 9 On time performance (by month from October 2015)—QantasLink

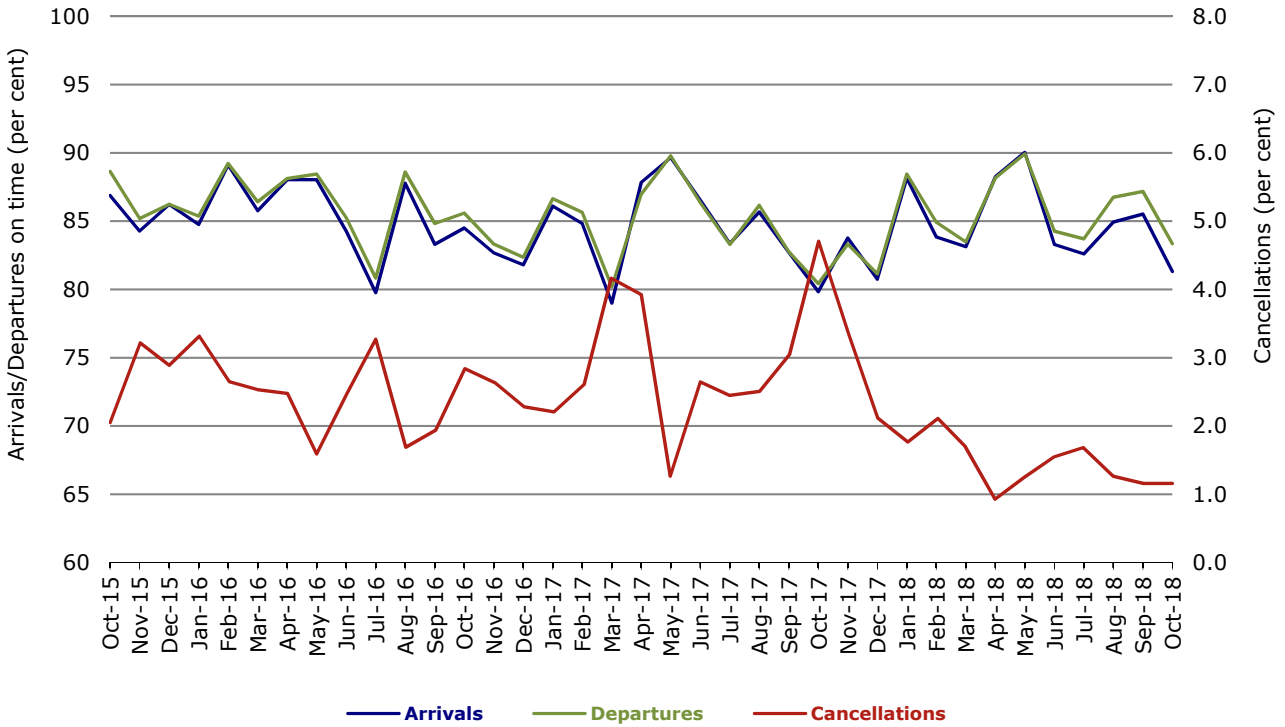


Figure 10 On time performance (by month from October 2015)—Regional Express

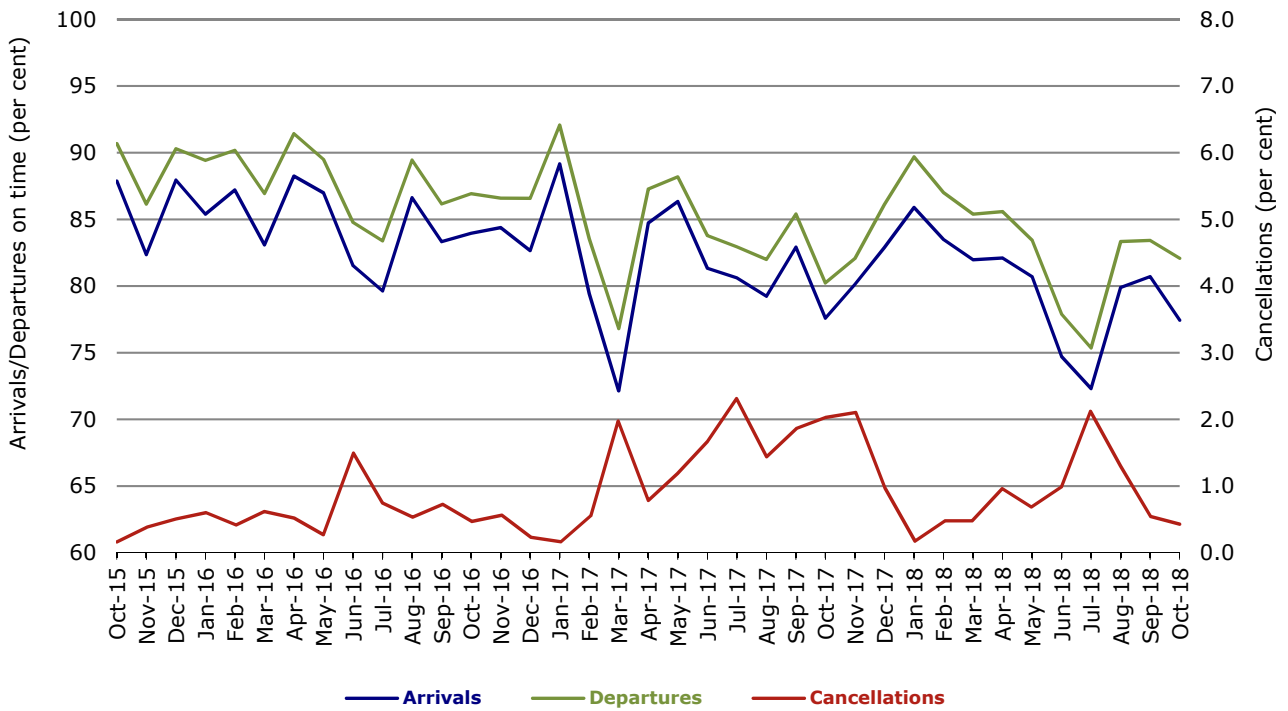
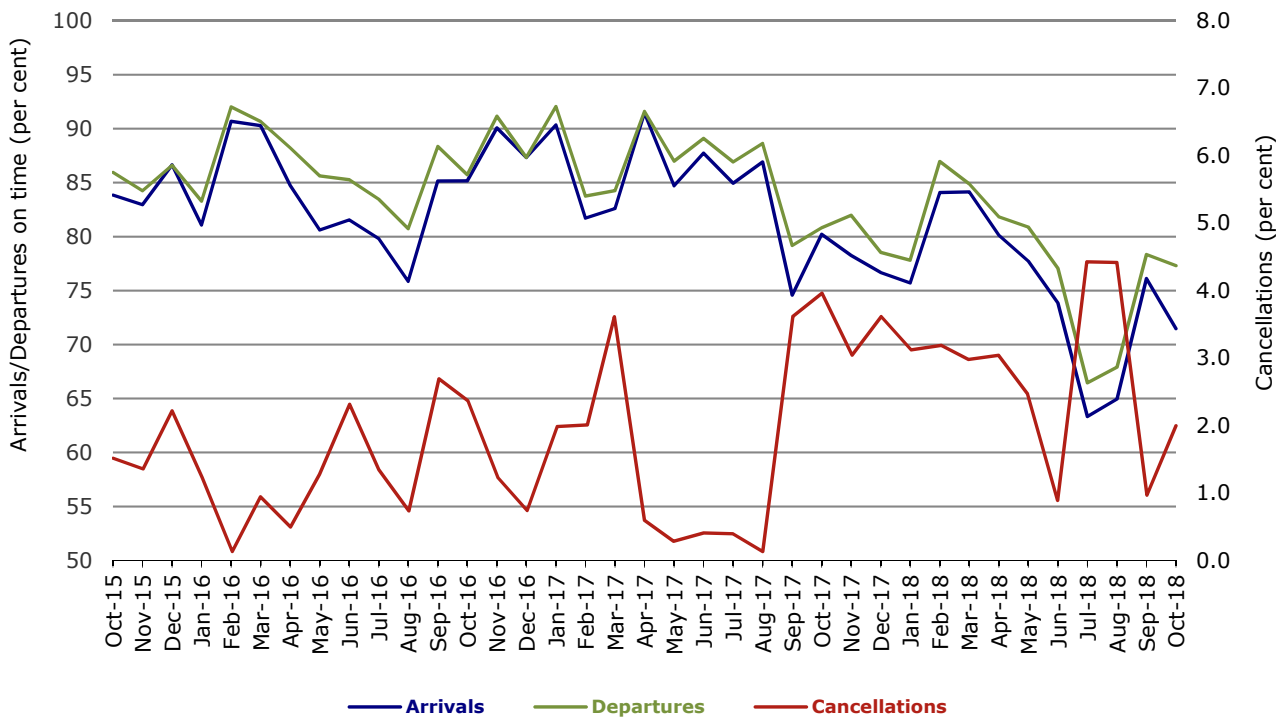


Figure 11 On time performance (by month from October 2015)
Virgin Australia Regional Airlines



In January 2016, Virgin Australia transferred their ATR fleet from Virgin Australia Regional Airlines to Virgin Australia.

Individual routes

On time performance is reported for all routes where the passenger load averages over 8000 passengers per month over the previous six months, and where two or more airlines operate in competition on those routes. There are now 65 routes which meet this definition. Over time, however, routes which meet this definition may change as airline networks and traffic levels vary.

	Sectors		Arrivals On Time		Departures On Time		Cancellations	
	Sched.	Flown	No.	%	No.	%	No.	%
Adelaide-Alice Springs								
Qantas	31	31	27	87.1	23	74.2	0	0.0
Virgin Australia	23	23	15	65.2	16	69.6	0	0.0
All Airlines	54	54	42	77.8	39	72.2	0	0.0
Adelaide-Brisbane								
Jetstar	26	26	18	69.2	15	57.7	0	0.0
Qantas	58	58	53	91.4	53	91.4	0	0.0
QantasLink	70	70	58	82.9	64	91.4	0	0.0
Tigerair Australia	26	26	16	61.5	18	69.2	0	0.0
Virgin Australia	115	114	98	86.0	100	87.7	1	0.9
All Airlines	295	294	243	82.7	250	85.0	1	0.3
Adelaide-Canberra								
Qantas	49	49	46	93.9	44	89.8	0	0.0
QantasLink	4	4	0	0.0	3	75.0	0	0.0
Virgin Australia	27	27	19	70.4	21	77.8	0	0.0
All Airlines	80	80	65	81.3	68	85.0	0	0.0
Adelaide-Gold Coast								
Jetstar	31	31	25	80.6	24	77.4	0	0.0
Virgin Australia	34	34	29	85.3	30	88.2	0	0.0
All Airlines	65	65	54	83.1	54	83.1	0	0.0
Adelaide-Melbourne								
Jetstar	107	101	81	80.2	80	79.2	6	5.6
Qantas	288	285	235	82.5	230	80.7	3	1.0
Tigerair Australia	79	79	63	79.7	62	78.5	0	0.0
Virgin Australia	284	271	224	82.7	226	83.4	13	4.6
All Airlines	758	736	603	81.9	598	81.3	22	2.9
Adelaide-Perth								
Jetstar	28	28	25	89.3	21	75.0	0	0.0
Qantas	90	90	84	93.3	82	91.1	0	0.0
QantasLink	26	26	22	84.6	24	92.3	0	0.0
Virgin Australia	43	41	36	87.8	36	87.8	2	4.7
Virgin Australia Regional Airlines	37	36	22	61.1	21	58.3	1	2.7
All Airlines	224	221	189	85.5	184	83.3	3	1.3
Adelaide-Port Lincoln								
QantasLink	110	108	99	91.7	96	88.9	2	1.8
Regional Express	222	222	202	91.0	214	96.4	0	0.0
All Airlines	332	330	301	91.2	310	93.9	2	0.6
Adelaide-Sydney								
Jetstar	125	121	83	68.6	89	73.6	4	3.2
Qantas	235	234	162	69.2	191	81.6	1	0.4
QantasLink	32	28	19	67.9	23	82.1	4	12.5
Tigerair Australia	46	45	22	48.9	26	57.8	1	2.2
Virgin Australia	169	167	116	69.5	138	82.6	2	1.2
All Airlines	607	595	402	67.6	467	78.5	12	2.0

	Sectors		Arrivals On Time		Departures On Time		Cancellations	
	Sched.	Flown	No.	%	No.	%	No.	%
Albury-Sydney								
QantasLink	98	98	77	78.6	81	82.7	0	0.0
Regional Express	109	109	75	68.8	83	76.1	0	0.0
Virgin Australia	63	62	41	66.1	48	77.4	1	1.6
All Airlines	270	269	193	71.7	212	78.8	1	0.4
Alice Springs-Adelaide								
Qantas	31	31	24	77.4	25	80.6	0	0.0
Virgin Australia	22	21	15	71.4	15	71.4	1	4.5
All Airlines	53	52	39	75.0	40	76.9	1	1.9
Alice Springs-Darwin								
QantasLink	60	59	56	94.9	56	94.9	1	1.7
Virgin Australia	22	22	17	77.3	16	72.7	0	0.0
All Airlines	82	81	73	90.1	72	88.9	1	1.2
Armidale-Sydney								
QantasLink	121	119	87	73.1	88	73.9	2	1.7
Regional Express	75	75	43	57.3	53	70.7	0	0.0
All Airlines	196	194	130	67.0	141	72.7	2	1.0
Ayers Rock-Sydney								
Jetstar	32	31	16	51.6	10	32.3	1	3.1
Virgin Australia	31	31	22	71.0	20	64.5	0	0.0
All Airlines	63	62	38	61.3	30	48.4	1	1.6
Ballina-Sydney								
Jetstar	88	88	55	62.5	49	55.7	0	0.0
Regional Express	25	25	13	52.0	17	68.0	0	0.0
Virgin Australia	38	38	29	76.3	29	76.3	0	0.0
All Airlines	151	151	97	64.2	95	62.9	0	0.0
Brisbane-Adelaide								
Jetstar	26	26	18	69.2	17	65.4	0	0.0
Qantas	66	66	57	86.4	50	75.8	0	0.0
QantasLink	70	70	65	92.9	61	87.1	0	0.0
Tigerair Australia	26	26	20	76.9	20	76.9	0	0.0
Virgin Australia	115	113	99	87.6	92	81.4	2	1.7
All Airlines	303	301	259	86.0	240	79.7	2	0.7
Brisbane-Bundaberg								
QantasLink	109	108	81	75.0	87	80.6	1	0.9
Virgin Australia	31	31	24	77.4	23	74.2	0	0.0
All Airlines	140	139	105	75.5	110	79.1	1	0.7
Brisbane-Cairns								
Jetstar	104	102	85	83.3	78	76.5	2	1.9
Qantas	55	55	50	90.9	45	81.8	0	0.0
QantasLink	80	80	71	88.8	66	82.5	0	0.0
Tigerair Australia	31	31	25	80.6	25	80.6	0	0.0
Virgin Australia	134	134	120	89.6	109	81.3	0	0.0
All Airlines	404	402	351	87.3	323	80.3	2	0.5
Brisbane-Canberra								
Qantas	11	10	9	90.0	9	90.0	1	9.1
QantasLink	146	143	121	84.6	120	83.9	3	2.1
Tigerair Australia	17	17	10	58.8	9	52.9	0	0.0
Virgin Australia	105	105	81	77.1	85	81.0	0	0.0
All Airlines	279	275	221	80.4	223	81.1	4	1.4

	<i>Sectors</i>		<i>Arrivals On Time</i>		<i>Departures On Time</i>		<i>Cancellations</i>	
	<i>Sched.</i>	<i>Flown</i>	<i>No.</i>	<i>%</i>	<i>No.</i>	<i>%</i>	<i>No.</i>	<i>%</i>
Brisbane-Darwin								
Jetstar	24	22	21	95.5	20	90.9	2	8.3
Qantas	36	36	31	86.1	28	77.8	0	0.0
Tigerair Australia	25	25	20	80.0	19	76.0	0	0.0
Virgin Australia	31	31	28	90.3	27	87.1	0	0.0
All Airlines	116	114	100	87.7	94	82.5	2	1.7
Brisbane-Emerald								
QantasLink	104	103	93	90.3	92	89.3	1	1.0
Virgin Australia	55	55	51	92.7	49	89.1	0	0.0
All Airlines	159	158	144	91.1	141	89.2	1	0.6
Brisbane-Gladstone								
QantasLink	129	128	104	81.3	107	83.6	1	0.8
Virgin Australia	75	75	66	88.0	66	88.0	0	0.0
All Airlines	204	203	170	83.7	173	85.2	1	0.5
Brisbane-Hamilton Island								
QantasLink	22	22	17	77.3	17	77.3	0	0.0
Virgin Australia	31	31	29	93.5	27	87.1	0	0.0
All Airlines	53	53	46	86.8	44	83.0	0	0.0
Brisbane-Hobart								
Jetstar	27	27	24	88.9	21	77.8	0	0.0
Virgin Australia	40	40	33	82.5	32	80.0	0	0.0
All Airlines	67	67	57	85.1	53	79.1	0	0.0
Brisbane-Mackay								
Jetstar	36	35	25	71.4	24	68.6	1	2.8
QantasLink	121	117	101	86.3	95	81.2	4	3.3
Virgin Australia	146	145	122	84.1	114	78.6	1	0.7
All Airlines	303	297	248	83.5	233	78.5	6	2.0
Brisbane-Melbourne								
Jetstar	139	135	100	74.1	79	58.5	4	2.9
Qantas	429	428	365	85.3	359	83.9	1	0.2
QantasLink	6	6	6	100.0	6	100.0	0	0.0
Tigerair Australia	129	129	89	69.0	85	65.9	0	0.0
Virgin Australia	403	387	307	79.3	316	81.7	16	4.0
All Airlines	1 106	1 085	867	79.9	845	77.9	21	1.9
Brisbane-Mount Isa								
QantasLink	58	58	47	81.0	50	86.2	0	0.0
Virgin Australia	19	19	18	94.7	18	94.7	0	0.0
All Airlines	77	77	65	84.4	68	88.3	0	0.0
Brisbane-Newcastle								
Jetstar	81	80	67	83.8	68	85.0	1	1.2
QantasLink	53	51	42	82.4	42	82.4	2	3.8
Virgin Australia	89	89	78	87.6	74	83.1	0	0.0
All Airlines	223	220	187	85.0	184	83.6	3	1.3
Brisbane-Perth								
Qantas	154	154	137	89.0	129	83.8	0	0.0
Virgin Australia	109	109	90	82.6	84	77.1	0	0.0
All Airlines	263	263	227	86.3	213	81.0	0	0.0
Brisbane-Proserpine								
Jetstar	37	37	31	83.8	28	75.7	0	0.0
Virgin Australia	45	45	41	91.1	40	88.9	0	0.0
All Airlines	82	82	72	87.8	68	82.9	0	0.0

	<i>Sectors</i>		<i>Arrivals On Time</i>		<i>Departures On Time</i>		<i>Cancellations</i>	
	<i>Sched.</i>	<i>Flown</i>	<i>No.</i>	<i>%</i>	<i>No.</i>	<i>%</i>	<i>No.</i>	<i>%</i>
Brisbane-Rockhampton								
QantasLink	175	175	134	76.6	138	78.9	0	0.0
Virgin Australia	143	143	110	76.9	114	79.7	0	0.0
All Airlines	318	318	244	76.7	252	79.2	0	0.0
Brisbane-Sydney								
Jetstar	187	171	98	57.3	95	55.6	16	8.6
Qantas	649	626	471	75.2	501	80.0	23	3.5
QantasLink	5	5	4	80.0	4	80.0	0	0.0
Tigerair Australia	114	109	73	67.0	74	67.9	5	4.4
Virgin Australia	551	519	363	69.9	391	75.3	32	5.8
All Airlines	1 506	1 430	1 009	70.6	1 065	74.5	76	5.0
Brisbane-Townsville								
Jetstar	57	56	46	82.1	44	78.6	1	1.8
Qantas	61	61	47	77.0	47	77.0	0	0.0
QantasLink	87	87	74	85.1	74	85.1	0	0.0
Virgin Australia	142	140	116	82.9	109	77.9	2	1.4
All Airlines	347	344	283	82.3	274	79.7	3	0.9
Broome-Perth								
Qantas	1	1	0	0.0	0	0.0	0	0.0
QantasLink	88	87	73	83.9	73	83.9	1	1.1
Virgin Australia	17	17	13	76.5	14	82.4	0	0.0
Virgin Australia Regional Airlines	65	63	51	81.0	47	74.6	2	3.1
All Airlines	171	168	137	81.5	134	79.8	3	1.8
Bundaberg-Brisbane								
QantasLink	109	108	86	79.6	84	77.8	1	0.9
Virgin Australia	31	31	25	80.6	24	77.4	0	0.0
All Airlines	140	139	111	79.9	108	77.7	1	0.7
Cairns-Brisbane								
Jetstar	104	101	89	88.1	86	85.1	3	2.9
Qantas	55	55	45	81.8	49	89.1	0	0.0
QantasLink	81	81	57	70.4	69	85.2	0	0.0
Tigerair Australia	31	31	26	83.9	25	80.6	0	0.0
Virgin Australia	134	134	116	86.6	117	87.3	0	0.0
All Airlines	405	402	333	82.8	346	86.1	3	0.7
Cairns-Melbourne								
Jetstar	121	120	93	77.5	91	75.8	1	0.8
Qantas	37	37	27	73.0	27	73.0	0	0.0
Tigerair Australia	41	41	30	73.2	31	75.6	0	0.0
Virgin Australia	38	38	23	60.5	29	76.3	0	0.0
All Airlines	237	236	173	73.3	178	75.4	1	0.4
Cairns-Sydney								
Jetstar	111	108	85	78.7	88	81.5	3	2.7
Qantas	83	83	65	78.3	70	84.3	0	0.0
Tigerair Australia	49	48	36	75.0	37	77.1	1	2.0
Virgin Australia	97	97	73	75.3	81	83.5	0	0.0
All Airlines	340	336	259	77.1	276	82.1	4	1.2
Cairns-Townsville								
QantasLink	138	136	125	91.9	122	89.7	2	1.4
Regional Express	13	13	13	100.0	13	100.0	0	0.0
All Airlines	151	149	138	92.6	135	90.6	2	1.3

	<i>Sectors</i>		<i>Arrivals On Time</i>		<i>Departures On Time</i>		<i>Cancellations</i>	
	<i>Sched.</i>	<i>Flown</i>	<i>No.</i>	<i>%</i>	<i>No.</i>	<i>%</i>	<i>No.</i>	<i>%</i>
Canberra-Adelaide								
Qantas	49	49	46	93.9	43	87.8	0	0.0
QantasLink	4	4	0	0.0	0	0.0	0	0.0
Virgin Australia	27	27	22	81.5	20	74.1	0	0.0
All Airlines	80	80	68	85.0	63	78.8	0	0.0
Canberra-Brisbane								
Qantas	15	14	12	85.7	13	92.9	1	6.7
QantasLink	142	137	117	85.4	119	86.9	5	3.5
Tigerair Australia	17	17	8	47.1	10	58.8	0	0.0
Virgin Australia	105	105	82	78.1	84	80.0	0	0.0
All Airlines	279	273	219	80.2	226	82.8	6	2.2
Canberra-Melbourne								
Qantas	247	245	223	91.0	226	92.2	2	0.8
QantasLink	44	44	36	81.8	36	81.8	0	0.0
Tigerair Australia	39	39	28	71.8	25	64.1	0	0.0
Virgin Australia	166	164	121	73.8	128	78.0	2	1.2
All Airlines	496	492	408	82.9	415	84.3	4	0.8
Canberra-Sydney								
QantasLink	498	491	357	72.7	391	79.6	7	1.4
Virgin Australia	244	234	169	72.2	175	74.8	10	4.1
All Airlines	742	725	526	72.6	566	78.1	17	2.3
Coffs Harbour-Sydney								
QantasLink	130	130	99	76.2	108	83.1	0	0.0
Tigerair Australia	14	14	8	57.1	8	57.1	0	0.0
Virgin Australia	54	53	39	73.6	44	83.0	1	1.9
All Airlines	198	197	146	74.1	160	81.2	1	0.5
Darwin-Alice Springs								
QantasLink	60	58	55	94.8	54	93.1	2	3.3
Virgin Australia	22	21	17	81.0	18	85.7	1	4.5
All Airlines	82	79	72	91.1	72	91.1	3	3.7
Darwin-Brisbane								
Jetstar	24	23	19	82.6	19	82.6	1	4.2
Qantas	35	35	25	71.4	23	65.7	0	0.0
Tigerair Australia	25	25	23	92.0	21	84.0	0	0.0
Virgin Australia	31	30	22	73.3	27	90.0	1	3.2
All Airlines	115	113	89	78.8	90	79.6	2	1.7
Darwin-Melbourne								
Jetstar	27	27	17	63.0	15	55.6	0	0.0
Qantas	31	31	21	67.7	25	80.6	0	0.0
Virgin Australia	32	32	27	84.4	29	90.6	0	0.0
All Airlines	90	90	65	72.2	69	76.7	0	0.0
Darwin-Perth								
Qantas	37	37	34	91.9	35	94.6	0	0.0
Virgin Australia	26	26	24	92.3	23	88.5	0	0.0
Virgin Australia Regional Airlines	5	5	4	80.0	3	60.0	0	0.0
All Airlines	68	68	62	91.2	61	89.7	0	0.0
Darwin-Sydney								
Jetstar	27	27	23	85.2	27	100.0	0	0.0
Qantas	50	50	25	50.0	35	70.0	0	0.0
Virgin Australia	31	31	18	58.1	25	80.6	0	0.0
All Airlines	108	108	66	61.1	87	80.6	0	0.0

	<i>Sectors</i>		<i>Arrivals On Time</i>		<i>Departures On Time</i>		<i>Cancellations</i>	
	<i>Sched.</i>	<i>Flown</i>	<i>No.</i>	<i>%</i>	<i>No.</i>	<i>%</i>	<i>No.</i>	<i>%</i>
Dubbo-Sydney								
QantasLink	107	107	70	65.4	80	74.8	0	0.0
Regional Express	132	132	84	63.6	97	73.5	0	0.0
All Airlines	239	239	154	64.4	177	74.1	0	0.0
Emerald-Brisbane								
QantasLink	104	102	79	77.5	87	85.3	2	1.9
Virgin Australia	55	54	49	90.7	48	88.9	1	1.8
All Airlines	159	156	128	82.1	135	86.5	3	1.9
Geraldton-Perth								
QantasLink	49	49	44	89.8	46	93.9	0	0.0
Virgin Australia Regional Airlines	54	53	33	62.3	33	62.3	1	1.9
All Airlines	103	102	77	75.5	79	77.5	1	1.0
Gladstone-Brisbane								
QantasLink	129	128	102	79.7	101	78.9	1	0.8
Virgin Australia	75	74	63	85.1	66	89.2	1	1.3
All Airlines	204	202	165	81.7	167	82.7	2	1.0
Gold Coast-Adelaide								
Jetstar	31	31	26	83.9	24	77.4	0	0.0
Virgin Australia	34	34	28	82.4	25	73.5	0	0.0
All Airlines	65	65	54	83.1	49	75.4	0	0.0
Gold Coast-Melbourne								
Jetstar	217	211	171	81.0	148	70.1	6	2.8
Qantas	31	31	23	74.2	21	67.7	0	0.0
Tigerair Australia	86	86	60	69.8	54	62.8	0	0.0
Virgin Australia	196	193	152	78.8	133	68.9	3	1.5
All Airlines	530	521	406	77.9	356	68.3	9	1.7
Gold Coast-Sydney								
Jetstar	317	306	225	73.5	221	72.2	11	3.5
Qantas	91	91	68	74.7	71	78.0	0	0.0
QantasLink	31	30	22	73.3	19	63.3	1	3.2
Tigerair Australia	110	107	57	53.3	57	53.3	3	2.7
Virgin Australia	262	256	186	72.7	181	70.7	6	2.3
All Airlines	811	790	558	70.6	549	69.5	21	2.6
Hamilton Island-Brisbane								
QantasLink	22	22	12	54.5	17	77.3	0	0.0
Virgin Australia	31	31	28	90.3	30	96.8	0	0.0
All Airlines	53	53	40	75.5	47	88.7	0	0.0
Hamilton Island-Sydney								
Jetstar	29	29	21	72.4	21	72.4	0	0.0
Qantas	8	8	8	100.0	8	100.0	0	0.0
QantasLink	23	23	16	69.6	16	69.6	0	0.0
Virgin Australia	29	29	24	82.8	24	82.8	0	0.0
All Airlines	89	89	69	77.5	69	77.5	0	0.0
Hobart-Brisbane								
Jetstar	28	28	21	75.0	20	71.4	0	0.0
Virgin Australia	40	40	24	60.0	27	67.5	0	0.0
All Airlines	68	68	45	66.2	47	69.1	0	0.0

	<i>Sectors</i>		<i>Arrivals On Time</i>		<i>Departures On Time</i>		<i>Cancellations</i>	
	<i>Sched.</i>	<i>Flown</i>	<i>No.</i>	<i>%</i>	<i>No.</i>	<i>%</i>	<i>No.</i>	<i>%</i>
Hobart-Melbourne								
Jetstar	180	176	111	63.1	115	65.3	4	2.2
Qantas	116	116	93	80.2	104	89.7	0	0.0
Tigerair Australia	41	41	27	65.9	28	68.3	0	0.0
Virgin Australia	154	153	114	74.5	121	79.1	1	0.6
All Airlines	491	486	345	71.0	368	75.7	5	1.0
Hobart-Sydney								
Jetstar	93	93	64	68.8	60	64.5	0	0.0
Qantas	4	4	4	100.0	4	100.0	0	0.0
QantasLink	58	55	38	69.1	45	81.8	3	5.2
Virgin Australia	81	81	62	76.5	66	81.5	0	0.0
All Airlines	236	233	168	72.1	175	75.1	3	1.3
Kalgoorlie-Perth								
Qantas	10	10	9	90.0	7	70.0	0	0.0
QantasLink	75	74	62	83.8	63	85.1	1	1.3
Virgin Australia	47	47	45	95.7	41	87.2	0	0.0
Virgin Australia Regional Airlines	27	27	25	92.6	25	92.6	0	0.0
All Airlines	159	158	141	89.2	136	86.1	1	0.6
Karratha-Perth								
Qantas	9	9	7	77.8	7	77.8	0	0.0
QantasLink	185	184	164	89.1	161	87.5	1	0.5
Virgin Australia	8	7	5	71.4	5	71.4	1	12.5
Virgin Australia Regional Airlines	66	66	52	78.8	53	80.3	0	0.0
All Airlines	268	266	228	85.7	226	85.0	2	0.7
Launceston-Melbourne								
Jetstar	119	119	89	74.8	83	69.7	0	0.0
QantasLink	112	111	90	81.1	97	87.4	1	0.9
Virgin Australia	104	104	73	70.2	83	79.8	0	0.0
All Airlines	335	334	252	75.4	263	78.7	1	0.3
Launceston-Sydney								
Jetstar	43	42	23	54.8	27	64.3	1	2.3
Virgin Australia	32	32	25	78.1	28	87.5	0	0.0
All Airlines	75	74	48	64.9	55	74.3	1	1.3
Mackay-Brisbane								
Jetstar	35	34	26	76.5	23	67.6	1	2.9
QantasLink	116	113	89	78.8	94	83.2	3	2.6
Virgin Australia	145	144	125	86.8	127	88.2	1	0.7
All Airlines	296	291	240	82.5	244	83.8	5	1.7
Melbourne-Adelaide								
Jetstar	107	102	74	72.5	75	73.5	5	4.7
Qantas	288	287	239	83.3	245	85.4	1	0.3
Tigerair Australia	79	79	63	79.7	64	81.0	0	0.0
Virgin Australia	283	270	236	87.4	238	88.1	13	4.6
All Airlines	757	738	612	82.9	622	84.3	19	2.5
Melbourne-Brisbane								
Jetstar	139	135	85	63.0	88	65.2	4	2.9
Qantas	440	433	351	81.1	358	82.7	7	1.6
QantasLink	6	6	5	83.3	6	100.0	0	0.0
Tigerair Australia	130	130	93	71.5	100	76.9	0	0.0
Virgin Australia	410	393	312	79.4	330	84.0	17	4.1
All Airlines	1 125	1 097	846	77.1	882	80.4	28	2.5

	<i>Sectors</i>		<i>Arrivals On Time</i>		<i>Departures On Time</i>		<i>Cancellations</i>	
	<i>Sched.</i>	<i>Flown</i>	<i>No.</i>	<i>%</i>	<i>No.</i>	<i>%</i>	<i>No.</i>	<i>%</i>
Melbourne-Cairns								
Jetstar	120	119	92	77.3	84	70.6	1	0.8
Qantas	37	37	29	78.4	27	73.0	0	0.0
Tigerair Australia	41	41	33	80.5	33	80.5	0	0.0
Virgin Australia	38	38	34	89.5	33	86.8	0	0.0
All Airlines	236	235	188	80.0	177	75.3	1	0.4
Melbourne-Canberra								
Qantas	251	249	215	86.3	221	88.8	2	0.8
QantasLink	44	42	36	85.7	36	85.7	2	4.5
Tigerair Australia	39	39	26	66.7	28	71.8	0	0.0
Virgin Australia	167	164	134	81.7	144	87.8	3	1.8
All Airlines	501	494	411	83.2	429	86.8	7	1.4
Melbourne-Darwin								
Jetstar	27	27	18	66.7	20	74.1	0	0.0
Qantas	31	31	28	90.3	28	90.3	0	0.0
Virgin Australia	32	32	22	68.8	20	62.5	0	0.0
All Airlines	90	90	68	75.6	68	75.6	0	0.0
Melbourne-Gold Coast								
Jetstar	218	211	144	68.2	164	77.7	7	3.2
Qantas	31	31	27	87.1	30	96.8	0	0.0
Tigerair Australia	85	85	63	74.1	66	77.6	0	0.0
Virgin Australia	195	194	144	74.2	159	82.0	1	0.5
All Airlines	529	521	378	72.6	419	80.4	8	1.5
Melbourne-Hobart								
Jetstar	179	175	127	72.6	129	73.7	4	2.2
Qantas	116	116	94	81.0	95	81.9	0	0.0
Tigerair Australia	41	41	28	68.3	30	73.2	0	0.0
Virgin Australia	154	153	118	77.1	129	84.3	1	0.6
All Airlines	490	485	367	75.7	383	79.0	5	1.0
Melbourne-Launceston								
Jetstar	118	118	88	74.6	87	73.7	0	0.0
QantasLink	112	111	93	83.8	92	82.9	1	0.9
Virgin Australia	104	104	80	76.9	84	80.8	0	0.0
All Airlines	334	333	261	78.4	263	79.0	1	0.3
Melbourne-Mildura								
QantasLink	97	97	86	88.7	88	90.7	0	0.0
Regional Express	89	89	79	88.8	82	92.1	0	0.0
Virgin Australia	31	31	27	87.1	28	90.3	0	0.0
All Airlines	217	217	192	88.5	198	91.2	0	0.0
Melbourne-Newcastle								
Jetstar	112	111	79	71.2	79	71.2	1	0.9
Virgin Australia	35	35	29	82.9	32	91.4	0	0.0
All Airlines	147	146	108	74.0	111	76.0	1	0.7
Melbourne-Perth								
Jetstar	53	51	45	88.2	37	72.5	2	3.8
Qantas	198	196	144	73.5	135	68.9	2	1.0
Tigerair Australia	51	51	41	80.4	40	78.4	0	0.0
Virgin Australia	148	148	113	76.4	99	66.9	0	0.0
All Airlines	450	446	343	76.9	311	69.7	4	0.9

	<i>Sectors</i>		<i>Arrivals On Time</i>		<i>Departures On Time</i>		<i>Cancellations</i>	
	<i>Sched.</i>	<i>Flown</i>	<i>No.</i>	<i>%</i>	<i>No.</i>	<i>%</i>	<i>No.</i>	<i>%</i>
Melbourne-Sunshine Coast								
Jetstar	97	95	59	62.1	63	66.3	2	2.1
Virgin Australia	64	64	56	87.5	54	84.4	0	0.0
All Airlines	161	159	115	72.3	117	73.6	2	1.2
Melbourne-Sydney								
Jetstar	392	365	205	56.2	249	68.2	27	6.9
Qantas	1 115	1 048	711	67.8	844	80.5	67	6.0
Tigerair Australia	273	270	153	56.7	188	69.6	3	1.1
Virgin Australia	770	733	515	70.3	612	83.5	37	4.8
All Airlines	2 550	2 416	1 584	65.6	1 893	78.4	134	5.3
Mildura-Melbourne								
QantasLink	97	97	89	91.8	91	93.8	0	0.0
Regional Express	89	89	65	73.0	68	76.4	0	0.0
Virgin Australia	31	31	29	93.5	28	90.3	0	0.0
All Airlines	217	217	183	84.3	187	86.2	0	0.0
Mount Isa-Brisbane								
QantasLink	58	58	50	86.2	53	91.4	0	0.0
Virgin Australia	18	18	13	72.2	14	77.8	0	0.0
All Airlines	76	76	63	82.9	67	88.2	0	0.0
Newcastle-Brisbane								
Jetstar	81	80	63	78.8	65	81.3	1	1.2
QantasLink	52	51	44	86.3	44	86.3	1	1.9
Virgin Australia	89	89	78	87.6	78	87.6	0	0.0
All Airlines	222	220	185	84.1	187	85.0	2	0.9
Newcastle-Melbourne								
Jetstar	112	111	81	73.0	82	73.9	1	0.9
Virgin Australia	35	35	23	65.7	28	80.0	0	0.0
All Airlines	147	146	104	71.2	110	75.3	1	0.7
Newman-Perth								
Qantas	24	24	20	83.3	22	91.7	0	0.0
QantasLink	113	111	99	89.2	90	81.1	2	1.8
Virgin Australia	17	17	15	88.2	16	94.1	0	0.0
Virgin Australia Regional Airlines	26	26	21	80.8	22	84.6	0	0.0
All Airlines	180	178	155	87.1	150	84.3	2	1.1
Perth-Adelaide								
Jetstar	28	28	21	75.0	20	71.4	0	0.0
Qantas	95	95	83	87.4	82	86.3	0	0.0
QantasLink	26	26	22	84.6	25	96.2	0	0.0
Virgin Australia	42	41	35	85.4	37	90.2	1	2.4
Virgin Australia Regional Airlines	37	36	16	44.4	29	80.6	1	2.7
All Airlines	228	226	177	78.3	193	85.4	2	0.9
Perth-Brisbane								
Qantas	151	151	121	80.1	134	88.7	0	0.0
Virgin Australia	109	109	89	81.7	95	87.2	0	0.0
All Airlines	260	260	210	80.8	229	88.1	0	0.0
Perth-Broome								
Qantas	1	1	1	100.0	0	0.0	0	0.0
QantasLink	88	87	71	81.6	81	93.1	1	1.1
Virgin Australia	17	17	16	94.1	16	94.1	0	0.0
Virgin Australia Regional Airlines	65	64	50	78.1	53	82.8	1	1.5
All Airlines	171	169	138	81.7	150	88.8	2	1.2

	<i>Sectors</i>		<i>Arrivals On Time</i>		<i>Departures On Time</i>		<i>Cancellations</i>	
	<i>Sched.</i>	<i>Flown</i>	<i>No.</i>	<i>%</i>	<i>No.</i>	<i>%</i>	<i>No.</i>	<i>%</i>
Perth-Darwin								
Qantas	37	37	35	94.6	35	94.6	0	0.0
Virgin Australia	26	26	24	92.3	24	92.3	0	0.0
Virgin Australia Regional Airlines	5	5	3	60.0	4	80.0	0	0.0
All Airlines	68	68	62	91.2	63	92.6	0	0.0
Perth-Geraldton								
QantasLink	49	49	45	91.8	44	89.8	0	0.0
Virgin Australia Regional Airlines	54	53	36	67.9	38	71.7	1	1.9
All Airlines	103	102	81	79.4	82	80.4	1	1.0
Perth-Kalgoorlie								
Qantas	10	10	9	90.0	9	90.0	0	0.0
QantasLink	75	74	63	85.1	65	87.8	1	1.3
Virgin Australia	47	47	45	95.7	44	93.6	0	0.0
Virgin Australia Regional Airlines	27	27	24	88.9	25	92.6	0	0.0
All Airlines	159	158	141	89.2	143	90.5	1	0.6
Perth-Karratha								
Qantas	9	9	8	88.9	8	88.9	0	0.0
QantasLink	185	185	143	77.3	160	86.5	0	0.0
Virgin Australia	8	7	5	71.4	7	100.0	1	12.5
Virgin Australia Regional Airlines	66	66	51	77.3	61	92.4	0	0.0
All Airlines	268	267	207	77.5	236	88.4	1	0.4
Perth-Melbourne								
Jetstar	54	52	36	69.2	37	71.2	2	3.7
Qantas	202	200	164	82.0	171	85.5	2	1.0
Tigerair Australia	52	52	46	88.5	40	76.9	0	0.0
Virgin Australia	148	148	126	85.1	133	89.9	0	0.0
All Airlines	456	452	372	82.3	381	84.3	4	0.9
Perth-Newman								
Qantas	24	24	24	100.0	23	95.8	0	0.0
QantasLink	112	111	94	84.7	96	86.5	1	0.9
Virgin Australia	18	18	18	100.0	18	100.0	0	0.0
Virgin Australia Regional Airlines	25	25	20	80.0	21	84.0	0	0.0
All Airlines	179	178	156	87.6	158	88.8	1	0.6
Perth-Port Hedland								
Qantas	31	31	30	96.8	30	96.8	0	0.0
QantasLink	108	106	90	84.9	94	88.7	2	1.9
Virgin Australia	26	26	22	84.6	23	88.5	0	0.0
Virgin Australia Regional Airlines	28	28	21	75.0	22	78.6	0	0.0
All Airlines	193	191	163	85.3	169	88.5	2	1.0
Perth-Sydney								
Jetstar	27	27	19	70.4	15	55.6	0	0.0
Qantas	199	199	137	68.8	149	74.9	0	0.0
Tigerair Australia	28	28	20	71.4	19	67.9	0	0.0
Virgin Australia	121	121	110	90.9	112	92.6	0	0.0
All Airlines	375	375	286	76.3	295	78.7	0	0.0
Port Hedland-Perth								
Qantas	31	31	30	96.8	26	83.9	0	0.0
QantasLink	108	106	88	83.0	95	89.6	2	1.9
Virgin Australia	25	25	21	84.0	20	80.0	0	0.0
Virgin Australia Regional Airlines	28	28	20	71.4	20	71.4	0	0.0
All Airlines	192	190	159	83.7	161	84.7	2	1.0

	<i>Sectors</i>		<i>Arrivals On Time</i>		<i>Departures On Time</i>		<i>Cancellations</i>	
	<i>Sched.</i>	<i>Flown</i>	<i>No.</i>	<i>%</i>	<i>No.</i>	<i>%</i>	<i>No.</i>	<i>%</i>
Port Lincoln-Adelaide								
QantasLink	110	108	99	91.7	99	91.7	2	1.8
Regional Express	222	222	201	90.5	209	94.1	0	0.0
All Airlines	332	330	300	90.9	308	93.3	2	0.6
Port Macquarie-Sydney								
QantasLink	98	97	70	72.2	74	76.3	1	1.0
Virgin Australia	61	61	38	62.3	35	57.4	0	0.0
All Airlines	159	158	108	68.4	109	69.0	1	0.6
Proserpine-Brisbane								
Jetstar	37	37	28	75.7	28	75.7	0	0.0
Virgin Australia	45	45	42	93.3	39	86.7	0	0.0
All Airlines	82	82	70	85.4	67	81.7	0	0.0
Proserpine-Sydney								
Jetstar	13	13	11	84.6	11	84.6	0	0.0
Tigerair Australia	29	28	15	53.6	15	53.6	1	3.4
All Airlines	42	41	26	63.4	26	63.4	1	2.4
Rockhampton-Brisbane								
QantasLink	179	178	125	70.2	136	76.4	1	0.6
Virgin Australia	144	144	121	84.0	119	82.6	0	0.0
All Airlines	323	322	246	76.4	255	79.2	1	0.3
Sunshine Coast-Melbourne								
Jetstar	95	93	55	59.1	39	41.9	2	2.1
Virgin Australia	64	64	46	71.9	34	53.1	0	0.0
All Airlines	159	157	101	64.3	73	46.5	2	1.3
Sunshine Coast-Sydney								
Jetstar	124	121	64	52.9	51	42.1	3	2.4
QantasLink	35	35	20	57.1	20	57.1	0	0.0
Virgin Australia	57	57	31	54.4	33	57.9	0	0.0
All Airlines	216	213	115	54.0	104	48.8	3	1.4
Sydney-Adelaide								
Jetstar	126	122	88	72.1	74	60.7	4	3.2
Qantas	223	222	175	78.8	163	73.4	1	0.4
QantasLink	32	29	23	79.3	23	79.3	3	9.4
Tigerair Australia	46	45	29	64.4	20	44.4	1	2.2
Virgin Australia	170	169	141	83.4	136	80.5	1	0.6
All Airlines	597	587	456	77.7	416	70.9	10	1.7
Sydney-Albury								
QantasLink	98	98	76	77.6	72	73.5	0	0.0
Regional Express	108	108	80	74.1	79	73.1	0	0.0
Virgin Australia	63	62	49	79.0	47	75.8	1	1.6
All Airlines	269	268	205	76.5	198	73.9	1	0.4
Sydney-Armidale								
QantasLink	121	120	89	74.2	87	72.5	1	0.8
Regional Express	76	76	58	76.3	60	78.9	0	0.0
All Airlines	197	196	147	75.0	147	75.0	1	0.5
Sydney-Ayers Rock								
Jetstar	32	32	19	59.4	22	68.8	0	0.0
Virgin Australia	31	31	25	80.6	22	71.0	0	0.0
All Airlines	63	63	44	69.8	44	69.8	0	0.0

	<i>Sectors</i>		<i>Arrivals On Time</i>		<i>Departures On Time</i>		<i>Cancellations</i>	
	<i>Sched.</i>	<i>Flown</i>	<i>No.</i>	<i>%</i>	<i>No.</i>	<i>%</i>	<i>No.</i>	<i>%</i>
Sydney-Ballina								
Jetstar	88	88	56	63.6	58	65.9	0	0.0
Regional Express	26	26	20	76.9	19	73.1	0	0.0
Virgin Australia	38	38	29	76.3	32	84.2	0	0.0
All Airlines	152	152	105	69.1	109	71.7	0	0.0
Sydney-Brisbane								
Jetstar	186	170	109	64.1	103	60.6	16	8.6
Qantas	646	630	455	72.2	452	71.7	16	2.5
QantasLink	9	9	7	77.8	7	77.8	0	0.0
Tigerair Australia	114	109	77	70.6	78	71.6	5	4.4
Virgin Australia	546	517	357	69.1	360	69.6	29	5.3
All Airlines	1 501	1 435	1 005	70.0	1 000	69.7	66	4.4
Sydney-Cairns								
Jetstar	110	107	82	76.6	67	62.6	3	2.7
Qantas	81	81	67	82.7	56	69.1	0	0.0
Tigerair Australia	49	48	41	85.4	41	85.4	1	2.0
Virgin Australia	97	97	77	79.4	73	75.3	0	0.0
All Airlines	337	333	267	80.2	237	71.2	4	1.2
Sydney-Canberra								
QantasLink	494	490	378	77.1	381	77.8	4	0.8
Virgin Australia	243	235	164	69.8	145	61.7	8	3.3
All Airlines	737	725	542	74.8	526	72.6	12	1.6
Sydney-Coffs Harbour								
QantasLink	130	130	104	80.0	97	74.6	0	0.0
Tigerair Australia	14	14	9	64.3	10	71.4	0	0.0
Virgin Australia	54	53	45	84.9	46	86.8	1	1.9
All Airlines	198	197	158	80.2	153	77.7	1	0.5
Sydney-Darwin								
Jetstar	27	27	22	81.5	21	77.8	0	0.0
Qantas	49	49	37	75.5	28	57.1	0	0.0
Virgin Australia	31	31	27	87.1	23	74.2	0	0.0
All Airlines	107	107	86	80.4	72	67.3	0	0.0
Sydney-Dubbo								
QantasLink	107	107	79	73.8	79	73.8	0	0.0
Regional Express	133	132	103	78.0	95	72.0	1	0.8
All Airlines	240	239	182	76.2	174	72.8	1	0.4
Sydney-Gold Coast								
Jetstar	317	305	227	74.4	216	70.8	12	3.8
Qantas	91	91	65	71.4	57	62.6	0	0.0
QantasLink	31	31	18	58.1	21	67.7	0	0.0
Tigerair Australia	110	107	68	63.6	75	70.1	3	2.7
Virgin Australia	263	258	193	74.8	196	76.0	5	1.9
All Airlines	812	792	571	72.1	565	71.3	20	2.5
Sydney-Hamilton Island								
Jetstar	29	29	22	75.9	17	58.6	0	0.0
Qantas	8	8	8	100.0	7	87.5	0	0.0
QantasLink	23	23	18	78.3	16	69.6	0	0.0
Virgin Australia	29	29	24	82.8	23	79.3	0	0.0
All Airlines	89	89	72	80.9	63	70.8	0	0.0

	<i>Sectors</i>		<i>Arrivals On Time</i>		<i>Departures On Time</i>		<i>Cancellations</i>	
	<i>Sched.</i>	<i>Flown</i>	<i>No.</i>	<i>%</i>	<i>No.</i>	<i>%</i>	<i>No.</i>	<i>%</i>
Sydney-Hobart								
Jetstar	94	94	78	83.0	69	73.4	0	0.0
Qantas	4	4	4	100.0	3	75.0	0	0.0
QantasLink	58	57	40	70.2	39	68.4	1	1.7
Virgin Australia	81	81	70	86.4	69	85.2	0	0.0
All Airlines	237	236	192	81.4	180	76.3	1	0.4
Sydney-Launceston								
Jetstar	42	42	35	83.3	31	73.8	0	0.0
Virgin Australia	32	32	24	75.0	20	62.5	0	0.0
All Airlines	74	74	59	79.7	51	68.9	0	0.0
Sydney-Melbourne								
Jetstar	392	365	234	64.1	230	63.0	27	6.9
Qantas	1 127	1 061	792	74.6	778	73.3	66	5.9
Tigerair Australia	274	270	162	60.0	160	59.3	4	1.5
Virgin Australia	770	734	527	71.8	535	72.9	36	4.7
All Airlines	2 563	2 430	1 715	70.6	1 703	70.1	133	5.2
Sydney-Perth								
Jetstar	27	27	16	59.3	12	44.4	0	0.0
Qantas	207	207	160	77.3	120	58.0	0	0.0
Tigerair Australia	27	27	20	74.1	18	66.7	0	0.0
Virgin Australia	121	121	100	82.6	71	58.7	0	0.0
All Airlines	382	382	296	77.5	221	57.9	0	0.0
Sydney-Port Macquarie								
QantasLink	98	96	73	76.0	76	79.2	2	2.0
Virgin Australia	61	61	40	65.6	39	63.9	0	0.0
All Airlines	159	157	113	72.0	115	73.2	2	1.3
Sydney-Proserpine								
Jetstar	13	13	12	92.3	12	92.3	0	0.0
Tigerair Australia	29	28	18	64.3	16	57.1	1	3.4
All Airlines	42	41	30	73.2	28	68.3	1	2.4
Sydney-Sunshine Coast								
Jetstar	124	122	68	55.7	59	48.4	2	1.6
QantasLink	35	35	23	65.7	25	71.4	0	0.0
Virgin Australia	56	56	34	60.7	36	64.3	0	0.0
All Airlines	215	213	125	58.7	120	56.3	2	0.9
Sydney-Tamworth								
QantasLink	122	120	89	74.2	92	76.7	2	1.6
Virgin Australia	55	55	41	74.5	44	80.0	0	0.0
All Airlines	177	175	130	74.3	136	77.7	2	1.1
Sydney-Townsville								
Jetstar	29	29	21	72.4	18	62.1	0	0.0
Virgin Australia	29	29	23	79.3	19	65.5	0	0.0
All Airlines	58	58	44	75.9	37	63.8	0	0.0
Sydney-Wagga Wagga								
QantasLink	98	98	82	83.7	78	79.6	0	0.0
Regional Express	140	140	122	87.1	121	86.4	0	0.0
All Airlines	238	238	204	85.7	199	83.6	0	0.0
Tamworth-Sydney								
QantasLink	122	121	93	76.9	91	75.2	1	0.8
Virgin Australia	55	55	37	67.3	41	74.5	0	0.0
All Airlines	177	176	130	73.9	132	75.0	1	0.6

	<i>Sectors</i>		<i>Arrivals On Time</i>		<i>Departures On Time</i>		<i>Cancellations</i>	
	<i>Sched.</i>	<i>Flown</i>	<i>No.</i>	<i>%</i>	<i>No.</i>	<i>%</i>	<i>No.</i>	<i>%</i>
Townsville-Brisbane								
Jetstar	58	57	44	77.2	45	78.9	1	1.7
Qantas	60	60	48	80.0	49	81.7	0	0.0
QantasLink	87	87	70	80.5	75	86.2	0	0.0
Virgin Australia	141	139	124	89.2	126	90.6	2	1.4
All Airlines	346	343	286	83.4	295	86.0	3	0.9
Townsville-Cairns								
QantasLink	139	136	130	95.6	126	92.6	3	2.2
Regional Express	13	13	13	100.0	13	100.0	0	0.0
All Airlines	152	149	143	96.0	139	93.3	3	2.0
Townsville-Sydney								
Jetstar	29	29	21	72.4	20	69.0	0	0.0
Virgin Australia	29	29	18	62.1	24	82.8	0	0.0
All Airlines	58	58	39	67.2	44	75.9	0	0.0
Wagga Wagga-Sydney								
QantasLink	98	98	80	81.6	85	86.7	0	0.0
Regional Express	138	138	93	67.4	114	82.6	0	0.0
All Airlines	236	236	173	73.3	199	84.3	0	0.0

Airports

On time performance is reported for all routes where the passenger load averages over 8000 passengers per month, and where two or more airlines operate in competition. The following data reports by airport against flights operated on those routes only. This month, 8 major city airports and 32 regional city airports are covered.

Airport	Arrivals			Departures		
	Sectors	On Time		Sectors	On Time	
	Flown	No.	%	Flown	No.	%
Adelaide						
Jetstar	309	227	73.5	307	229	74.6
Qantas	750	624	83.2	747	623	83.4
QantasLink	237	209	88.2	236	210	89.0
Regional Express	222	201	90.5	222	214	96.4
Tigerair Australia	150	112	74.7	150	106	70.7
Virgin Australia	675	576	85.3	677	567	83.8
Virgin Australia Regional Airlines	36	16	44.4	36	21	58.3
All Airlines	2 379	1 965	82.6	2 375	1 970	82.9
Relates to services to and from Alice Springs, Brisbane, Canberra, Gold Coast, Melbourne, Perth, Port Lincoln and Sydney.						
Albury						
QantasLink	98	76	77.6	98	81	82.7
Regional Express	108	80	74.1	109	83	76.1
Virgin Australia	62	49	79.0	62	48	77.4
All Airlines	268	205	76.5	269	212	78.8
Relates to services to and from Sydney only.						
Alice Springs						
Qantas	31	27	87.1	31	25	80.6
QantasLink	58	55	94.8	59	56	94.9
Virgin Australia	44	32	72.7	43	31	72.1
All Airlines	133	114	85.7	133	112	84.2
Relates to services to and from Adelaide and Darwin.						
Armidale						
QantasLink	120	89	74.2	119	88	73.9
Regional Express	76	58	76.3	75	53	70.7
All Airlines	196	147	75.0	194	141	72.7
Relates to services to and from Sydney only.						
Ayers Rock						
Jetstar	32	19	59.4	31	10	32.3
Virgin Australia	31	25	80.6	31	20	64.5
All Airlines	63	44	69.8	62	30	48.4
Relates to services to and from Sydney only.						
Ballina						
Jetstar	88	56	63.6	88	49	55.7
Regional Express	26	20	76.9	25	17	68.0
Virgin Australia	38	29	76.3	38	29	76.3
All Airlines	152	105	69.1	151	95	62.9
Relates to services to and from Sydney only.						

Airport	Arrivals			Departures		
	Sectors	On Time		Sectors	On Time	
	Flown	No.	%	Flown	No.	%
Brisbane						
Jetstar	691	502	72.6	691	474	68.6
Qantas	1 436	1 110	77.3	1 436	1 168	81.3
QantasLink	1 150	901	78.3	1 153	959	83.2
Tigerair Australia	338	243	71.9	337	232	68.8
Virgin Australia	2 211	1 768	80.0	2 211	1 770	80.1
All Airlines	5 826	4 524	77.7	5 828	4 603	79.0

Relates to services to and from Adelaide, Bundaberg, Cairns, Canberra, Darwin, Emerald, Gladstone, Hamilton Island, Hobart, Mackay, Melbourne, Mount Isa, Newcastle, Perth, Proserpine, Rockhampton, Sydney and Townsville.

Broome

Qantas	1	1	100.0	1	0	0.0
QantasLink	87	71	81.6	87	73	83.9
Virgin Australia	17	16	94.1	17	14	82.4
Virgin Australia Regional Airlines	64	50	78.1	63	47	74.6
All Airlines	169	138	81.7	168	134	79.8

Relates to services to and from Perth only.

Bundaberg

QantasLink	108	81	75.0	108	84	77.8
Virgin Australia	31	24	77.4	31	24	77.4
All Airlines	139	105	75.5	139	108	77.7

Relates to services to and from Brisbane only.

Cairns

Jetstar	328	259	79.0	329	265	80.5
Qantas	173	146	84.4	175	146	83.4
QantasLink	216	201	93.1	217	191	88.0
Regional Express	13	13	100.0	13	13	100.0
Tigerair Australia	120	99	82.5	120	93	77.5
Virgin Australia	269	231	85.9	269	227	84.4
All Airlines	1 119	949	84.8	1 123	935	83.3

Relates to services to and from Brisbane, Melbourne, Sydney and Townsville.

Canberra

Qantas	308	270	87.7	308	282	91.6
QantasLink	679	535	78.8	676	546	80.8
Tigerair Australia	56	36	64.3	56	35	62.5
Virgin Australia	531	398	75.0	530	407	76.8
All Airlines	1 574	1 239	78.7	1 570	1 270	80.9

Relates to services to and from Adelaide, Brisbane, Melbourne and Sydney.

Coffs Harbour

QantasLink	130	104	80.0	130	108	83.1
Tigerair Australia	14	9	64.3	14	8	57.1
Virgin Australia	53	45	84.9	53	44	83.0
All Airlines	197	158	80.2	197	160	81.2

Relates to services to and from Sydney only.

Airport	Arrivals			Departures		
	Sectors Flown	On Time		Sectors Flown	On Time	
		No.	%		No.	%
Darwin						
Jetstar	76	61	80.3	77	61	79.2
Qantas	153	131	85.6	153	118	77.1
QantasLink	59	56	94.9	58	54	93.1
Tigerair Australia	25	20	80.0	25	21	84.0
Virgin Australia	142	118	83.1	140	122	87.1
Virgin Australia Regional Airlines	5	3	60.0	5	3	60.0
All Airlines	460	389	84.6	458	379	82.8
Relates to services to and from Alice Springs, Brisbane, Melbourne, Perth and Sydney.						
Dubbo						
QantasLink	107	79	73.8	107	80	74.8
Regional Express	132	103	78.0	132	97	73.5
All Airlines	239	182	76.2	239	177	74.1
Relates to services to and from Sydney only.						
Emerald						
QantasLink	103	93	90.3	102	87	85.3
Virgin Australia	55	51	92.7	54	48	88.9
All Airlines	158	144	91.1	156	135	86.5
Relates to services to and from Brisbane only.						
Geraldton						
QantasLink	49	45	91.8	49	46	93.9
Virgin Australia Regional Airlines	53	36	67.9	53	33	62.3
All Airlines	102	81	79.4	102	79	77.5
Relates to services to and from Perth only.						
Gladstone						
QantasLink	128	104	81.3	128	101	78.9
Virgin Australia	75	66	88.0	74	66	89.2
All Airlines	203	170	83.7	202	167	82.7
Relates to services to and from Brisbane only.						
Gold Coast						
Jetstar	547	396	72.4	548	393	71.7
Qantas	122	92	75.4	122	92	75.4
QantasLink	31	18	58.1	30	19	63.3
Tigerair Australia	192	131	68.2	193	111	57.5
Virgin Australia	486	366	75.3	483	339	70.2
All Airlines	1 378	1 003	72.8	1 376	954	69.3
Relates to services to and from Adelaide, Melbourne and Sydney.						
Hamilton Island						
Jetstar	29	22	75.9	29	21	72.4
Qantas	8	8	100.0	8	8	100.0
QantasLink	45	35	77.8	45	33	73.3
Virgin Australia	60	53	88.3	60	54	90.0
All Airlines	142	118	83.1	142	116	81.7
Relates to services to and from Brisbane and Sydney.						

Airport	Arrivals			Departures		
	Sectors Flown	On Time		Sectors Flown	On Time	
		No.	%		No.	%
Hobart						
Jetstar	296	229	77.4	297	195	65.7
Qantas	120	98	81.7	120	108	90.0
QantasLink	57	40	70.2	55	45	81.8
Tigerair Australia	41	28	68.3	41	28	68.3
Virgin Australia	274	221	80.7	274	214	78.1
All Airlines	788	616	78.2	787	590	75.0
Relates to services to and from Brisbane, Melbourne and Sydney.						
Kalgoorlie						
Qantas	10	9	90.0	10	7	70.0
QantasLink	74	63	85.1	74	63	85.1
Virgin Australia	47	45	95.7	47	41	87.2
Virgin Australia Regional Airlines	27	24	88.9	27	25	92.6
All Airlines	158	141	89.2	158	136	86.1
Relates to services to and from Perth only.						
Karratha						
Qantas	9	8	88.9	9	7	77.8
QantasLink	185	143	77.3	184	161	87.5
Virgin Australia	7	5	71.4	7	5	71.4
Virgin Australia Regional Airlines	66	51	77.3	66	53	80.3
All Airlines	267	207	77.5	266	226	85.0
Relates to services to and from Perth only.						
Launceston						
Jetstar	160	123	76.9	161	110	68.3
QantasLink	111	93	83.8	111	97	87.4
Virgin Australia	136	104	76.5	136	111	81.6
All Airlines	407	320	78.6	408	318	77.9
Relates to services to and from Melbourne and Sydney.						
Mackay						
Jetstar	35	25	71.4	34	23	67.6
QantasLink	117	101	86.3	113	94	83.2
Virgin Australia	145	122	84.1	144	127	88.2
All Airlines	297	248	83.5	291	244	83.8
Relates to services to and from Brisbane only.						
Melbourne						
Jetstar	1 510	1 068	70.7	1 509	1 075	71.2
Qantas	2 434	1 943	79.8	2 428	1 983	81.7
QantasLink	258	221	85.7	256	222	86.7
Regional Express	89	65	73.0	89	82	92.1
Tigerair Australia	737	505	68.5	736	549	74.6
Virgin Australia	2 354	1 792	76.1	2 359	1 962	83.2
All Airlines	7 382	5 594	75.8	7 377	5 873	79.6
Relates to services to and from Adelaide, Brisbane, Cairns, Canberra, Darwin, Gold Coast, Hobart, Launceston, Mildura, Newcastle, Perth, Sunshine Coast and Sydney.						
Mildura						
QantasLink	97	86	88.7	97	91	93.8
Regional Express	89	79	88.8	89	68	76.4
Virgin Australia	31	27	87.1	31	28	90.3
All Airlines	217	192	88.5	217	187	86.2
Relates to services to and from Melbourne only.						

Airport	Arrivals			Departures		
	Sectors Flown	On Time		Sectors Flown	On Time	
		No.	%		No.	%
Mount Isa						
QantasLink	58	47	81.0	58	53	91.4
Virgin Australia	19	18	94.7	18	14	77.8
All Airlines	77	65	84.4	76	67	88.2
Relates to services to and from Brisbane only.						
Newcastle						
Jetstar	191	146	76.4	191	147	77.0
QantasLink	51	42	82.4	51	44	86.3
Virgin Australia	124	107	86.3	124	106	85.5
All Airlines	366	295	80.6	366	297	81.1
Relates to services to and from Brisbane and Melbourne.						
Newman						
Qantas	24	24	100.0	24	22	91.7
QantasLink	111	94	84.7	111	90	81.1
Virgin Australia	18	18	100.0	17	16	94.1
Virgin Australia Regional Airlines	25	20	80.0	26	22	84.6
All Airlines	178	156	87.6	178	150	84.3
Relates to services to and from Perth only.						
Perth						
Jetstar	106	86	81.1	107	72	67.3
Qantas	759	625	82.3	757	641	84.7
QantasLink	637	552	86.7	638	565	88.6
Tigerair Australia	78	61	78.2	80	59	73.8
Virgin Australia	558	462	82.8	560	509	90.9
Virgin Australia Regional Airlines	304	228	75.0	304	253	83.2
All Airlines	2 442	2 014	82.5	2 446	2 099	85.8
Relates to services to and from Adelaide, Brisbane, Broome, Darwin, Geraldton, Kalgoorlie, Karratha, Melbourne, Newman, Port Hedland and Sydney.						
Port Hedland						
Qantas	31	30	96.8	31	26	83.9
QantasLink	106	90	84.9	106	95	89.6
Virgin Australia	26	22	84.6	25	20	80.0
Virgin Australia Regional Airlines	28	21	75.0	28	20	71.4
All Airlines	191	163	85.3	190	161	84.7
Relates to services to and from Perth only.						
Port Lincoln						
QantasLink	108	99	91.7	108	99	91.7
Regional Express	222	202	91.0	222	209	94.1
All Airlines	330	301	91.2	330	308	93.3
Relates to services to and from Adelaide only.						
Port Macquarie						
QantasLink	96	73	76.0	97	74	76.3
Virgin Australia	61	40	65.6	61	35	57.4
All Airlines	157	113	72.0	158	109	69.0
Relates to services to and from Sydney only.						

Airport	Arrivals			Departures		
	Sectors Flown	On Time		Sectors Flown	On Time	
		No.	%		No.	%
Proserpine						
Jetstar	50	43	86.0	50	39	78.0
Tigerair Australia	28	18	64.3	28	15	53.6
Virgin Australia	45	41	91.1	45	39	86.7
All Airlines	123	102	82.9	123	93	75.6
Relates to services to and from Brisbane and Sydney.						
Rockhampton						
QantasLink	175	134	76.6	178	136	76.4
Virgin Australia	143	110	76.9	144	119	82.6
All Airlines	318	244	76.7	322	255	79.2
Relates to services to and from Brisbane only.						
Sunshine Coast						
Jetstar	217	127	58.5	214	90	42.1
QantasLink	35	23	65.7	35	20	57.1
Virgin Australia	120	90	75.0	121	67	55.4
All Airlines	372	240	64.5	370	177	47.8
Relates to services to and from Melbourne and Sydney.						
Sydney						
Jetstar	1 571	1 013	64.5	1 572	1 009	64.2
Qantas	2 343	1 651	70.5	2 353	1 664	70.7
QantasLink	1 437	1 052	73.2	1 443	1 093	75.7
Regional Express	479	308	64.3	482	374	77.6
Tigerair Australia	649	384	59.2	648	418	64.5
Virgin Australia	2 686	1 916	71.3	2 689	1 936	72.0
All Airlines	9 165	6 324	69.0	9 187	6 494	70.7
Relates to services to and from Adelaide, Albury, Armidale, Ayers Rock, Ballina, Brisbane, Cairns, Canberra, Coffs Harbour, Darwin, Dubbo, Gold Coast, Hamilton Island, Hobart, Launceston, Melbourne, Perth, Port Macquarie, Proserpine, Sunshine Coast, Tamworth, Townsville and Wagga Wagga.						
Tamworth						
QantasLink	120	89	74.2	121	91	75.2
Virgin Australia	55	41	74.5	55	41	74.5
All Airlines	175	130	74.3	176	132	75.0
Relates to services to and from Sydney only.						
Townsville						
Jetstar	85	67	78.8	86	65	75.6
Qantas	61	47	77.0	60	49	81.7
QantasLink	223	199	89.2	223	201	90.1
Regional Express	13	13	100.0	13	13	100.0
Virgin Australia	169	139	82.2	168	150	89.3
All Airlines	551	465	84.4	550	478	86.9
Relates to services to and from Brisbane, Cairns and Sydney.						
Wagga Wagga						
QantasLink	98	82	83.7	98	85	86.7
Regional Express	140	122	87.1	138	114	82.6
All Airlines	238	204	85.7	236	199	84.3
Relates to services to and from Sydney only.						

Definitions

On time arrival	A flight arrival is counted as "on time" if it arrived at the gate before 15 minutes after the scheduled arrival time shown in the carriers' schedule. Neither diverted nor cancelled flights count as on time.
On time departure	A flight departure is counted as "on time" if it departs the gate before 15 minutes after the scheduled departure time shown in the carriers' schedule.
Cancellation	A flight removed from service within 7 days of scheduled departure is regarded as a cancellation.
On time departure percentage	The percentage of on time departures is measured against the number of departures <i>operated</i> on any particular sector.
On time arrival percentage	The percentage of on time arrivals is measured against the number of arrivals <i>operated</i> on any particular sector.
Cancellation percentage	The percentage of cancellations is measured against the number of services <i>scheduled</i> on any particular sector.
