



Australian Government

Department of Infrastructure, Transport, Cities and Regional Development

Bureau of Infrastructure, Transport and Regional Economics

STATISTICAL REPORT



Aviation

Domestic airline on time performance
May 2019

© Commonwealth of Australia 2019

ISSN: 1832-0759

Ownership of intellectual property rights in this publication

Unless otherwise noted, copyright (and any other intellectual property rights, if any) in this publication is owned by the Commonwealth of Australia (referred to below as the Commonwealth).

Disclaimer

The material contained in this publication is made available on the understanding that the Commonwealth is not providing professional advice, and that users exercise their own skill and care with respect to its use, and seek independent advice if necessary.

The Commonwealth makes no representations or warranties as to the contents or accuracy of the information contained in this publication. To the extent permitted by law, the Commonwealth disclaims liability to any person or organisation in respect of anything done, or omitted to be done, in reliance upon information contained in this publication.

Creative Commons licence

With the exception of (a) the Coat of Arms; and (b) the Department of Infrastructure, Transport, Cities and Regional Development's photos and graphics, copyright in this publication is licensed under a Creative Commons Attribution 3.0 Australia Licence.

Creative Commons Attribution 3.0 Australia Licence is a standard form licence agreement that allows you to copy, communicate and adapt this publication provided that you attribute the work to the Commonwealth and abide by the other licence terms. A summary of the licence terms is available from <http://creativecommons.org/licenses/by/3.0/au/deed.en>. The full licence terms are available from <http://creativecommons.org/licenses/by/3.0/au/legalcode>.

Use of the Coat of Arms

The Department of the Prime Minister and Cabinet sets the terms under which the Coat of Arms is used. Please refer to the Department's Commonwealth Coat of Arms and Government branding web page <http://www.dpmc.gov.au/guidelines/index.cfm#brand> and, in particular, the Guidelines on the use of the Commonwealth Coat of Arms publication.

An appropriate citation for this report is:

Bureau of Infrastructure, Transport and Regional Economics (BITRE), 2019, Domestic airline on time performance, Statistical Report, BITRE, Canberra ACT.

Contact us

This publication is available in PDF format. All other rights are reserved, including in relation to any Departmental logos or trade marks which may exist. For enquiries regarding the licence and any use of this publication, please contact:

Bureau of Infrastructure, Transport and Regional Economics (BITRE)
Department of Infrastructure, Transport, Cities and Regional Development
GPO Box 501, Canberra ACT 2601, Australia
Telephone: (international) +61 2 6274 7210
Fax: (international) +61 2 6274 6855
Email: bitre@infrastructure.gov.au
Website: www.bitre.gov.au

Inquiries

Should you require additional information about the statistics contained in this publication:

Telephone (02) 6274 7790 or Facsimile (02) 6274 7727

Electronic mail: AVSTATS@infrastructure.gov.au

Web site: <http://www.bitre.gov.au/statistics/aviation/otphome.aspx>

Foreword

The Bureau of Infrastructure, Transport and Regional Economics (BITRE) monitors the punctuality and reliability of major domestic airlines operating between Australian airports. The purpose of this is to allow for evaluation of overall industry and individual airline performance, so that consumers of air travel can make informed decisions.

The following domestic airlines currently report this information monthly to the BITRE: Jetstar, Qantas, QantasLink, Regional Express, Tigerair Australia, Virgin Australia and Virgin Australia Regional Airlines. Data has been gathered since November 2003, although some airlines commenced reporting at a later date, including Jetstar which first reported in May 2004, MacAir in July 2005, Tigerair Australia in April 2008 and Virgin Australia Regional Airlines in May 2013. MacAir ceased operations in February 2009 and data was not received for December 2008 onwards. Virgin Blue was rebranded as Virgin Australia in May 2011 and Tiger Airways was rebranded as Tigerair Australia in July 2013 and time series data in Microsoft Excel spreadsheet format on the BITRE website have been revised to reflect these changes. Services operated by Skywest on behalf of Virgin Australia using ATR/F100 aircraft commenced in November 2011 and were shown separately as Virgin Australia – ATR/F100 Operations. Virgin Australia Regional Airlines commenced operations in May 2013. It was formed after the acquisition of Skywest by Virgin Australia and represented a combination of operations previously reported under Skywest and Virgin Australia – ATR/F100 Operations. In January 2016, Virgin Australia transferred their ATR fleet from Virgin Australia Regional Airlines to Virgin Australia.

Information presented in this report is for Australian domestic routes for which the passenger load averaged 8 000 or more passengers per month over the previous six months and where two or more airlines operated in competition on those routes. There were 65 routes that met this definition in May 2019. Over time, routes which meet these criteria change as airline networks and traffic levels vary.

Participating airlines report their overall monthly network performance where this is possible.

Total industry figures encompass all services operated by reporting airlines only. These airlines collectively carried over 95 per cent of total domestic passengers (regular public transport only) in 2018.

The method of capturing on time performance varies between airlines utilising different recording systems. Jetstar and Qantas jet aircraft use Aircraft Communication Addressing and Reporting System (ACARS) to electronically measure on time performance. Regional Express, Tigerair Australia, Virgin Australia, Virgin Australia Regional Airlines and the Qantas non-jet fleet record on time performance manually using records from pilots, gate agents and/or ground crews.

After initial data is collected, aggregate reports are audited internally by participating airlines prior to publication.

Reports and detailed time series data in Microsoft Excel spreadsheet format are available from the BITRE website at: <http://www.bitre.gov.au/statistics/aviation/otphome.aspx>.

Contents

	Page
Industry performance	1
Individual routes	10
Airports.....	24
Definitions	30

Industry performance

For May 2019, on time performance over all routes operated by participating airlines (Jetstar, Qantas, QantasLink, Regional Express, Tigerair Australia, Virgin Australia and Virgin Australia Regional Airlines) averaged 83.5 per cent for on time arrivals and 84.7 per cent for on time departures. Cancellations represented 1.8 per cent of all scheduled flights. The equivalent figures for May 2018 were 84.7 per cent for on time arrivals, 85.0 per cent for on time departures and 1.4 per cent for cancellations.

This month's on time arrivals figure was higher than the long term average performance for all routes (82.5 per cent) and the on time departures figure was also higher than the long term average (83.8 per cent). The rate of cancellations was higher than the long term average of 1.5 per cent.

Virgin Australia achieved the highest on time arrivals among the major domestic airlines at 84.5 per cent followed by Jetstar at 84.0 per cent, Qantas at 83.5 per cent and Tigerair Australia at 75.6 per cent. Of the regional airlines, Regional Express recorded 84.7 per cent for on time arrivals, followed by QantasLink at 83.3 per cent and Virgin Australia Regional Airlines at 77.7 per cent. The Qantas network (Qantas and QantasLink combined operations) recorded 83.4 per cent for on time arrivals while the Virgin Australia network (Virgin Australia and Virgin Australia Regional Airlines combined operations) recorded 84.0 per cent.

Virgin Australia also achieved the highest level of on time departures among the major domestic airlines for May 2019 at 86.2 per cent, followed by Qantas at 85.1 per cent, Jetstar at 82.8 per cent and Tigerair Australia at 77.2 per cent. Of the regional airlines, Regional Express recorded 87.8 per cent for on time departures, followed by QantasLink at 83.9 per cent and Virgin Australia Regional Airlines at 82.9 per cent. The Qantas network recorded 84.4 per cent for on time departures while the Virgin Australia network recorded 85.9 per cent.

Qantas recorded the highest percentage of cancellations (2.8 per cent) during the month, followed by Virgin Australia (2.1 per cent), QantasLink (1.9 per cent), Tigerair Australia (1.8 per cent), Virgin Australia Regional Airlines (1.2 per cent), Jetstar (0.7 per cent) and Regional Express (0.6 per cent).

Airlines' on time performance varies across the routes they serve. Individual route data by specific airline for 65 routes are shown on pages 10-23.

Of the 65 routes which met the criteria for on time performance reporting in May 2019, the Adelaide-Gold Coast route had the highest percentage of on time arrivals (96.6 per cent) and the Brisbane-Mount Isa route had the highest percentage of on time departures (95.9 per cent). The Melbourne-Darwin route had the lowest percentage of on time arrivals (57.8 per cent) and the Darwin-Sydney route had the lowest percentage of on time departures (56.2 per cent).

Cancellations were highest on the Melbourne-Sydney route at 6.3 per cent, followed by the Sydney-Melbourne route at 6.2 per cent, the Brisbane-Hamilton Island and Hamilton

Island-Brisbane routes at 4.9 per cent, the Canberra-Sydney route at 4.3 per cent and the Alice Springs-Darwin route at 3.6 per cent.

Newman Airport recorded the highest percentage of on time arrivals (93.2 per cent) and the highest percentage of on time departures (92.6 per cent). Tamworth Airport and Armidale Airport recorded the lowest percentage of on time arrivals (both at 72.7 per cent) and Ayers Rock Airport recorded the lowest percentage of on time departures (61.3 per cent). These figures only refer to reported routes and do not cover all flights at these airports.

Table 1 On time performance for May 2019 — Total Industry

	<i>Sectors</i>		<i>Arrivals On Time</i>		<i>Departures On Time</i>		<i>Cancellations</i>	
	<i>Scheduled</i>	<i>Flown</i>	<i>No.</i>	<i>%</i>	<i>No.</i>	<i>%</i>	<i>No.</i>	<i>%</i>
Jetstar	6 313	6 270	5 264	84.0	5 191	82.8	43	0.7
Qantas	9 385	9 126	7 623	83.5	7 764	85.1	259	2.8
QantasLink	10 680	10 479	8 731	83.3	8 790	83.9	201	1.9
Regional Express	6 590	6 548	5 548	84.7	5 747	87.8	42	0.6
Tigerair Australia	2 211	2 171	1 642	75.6	1 676	77.2	40	1.8
Virgin Australia	11 793	11 540	9 746	84.5	9 942	86.2	253	2.1
Virgin Australia Regional Airlines	847	837	650	77.7	694	82.9	10	1.2
All Airlines	47 819	46 971	39 204	83.5	39 804	84.7	848	1.8
Qantas - all QF designated services	20 065	19 605	16 354	83.4	16 554	84.4	460	2.3
Virgin Australia - all VA designated services	12 640	12 377	10 396	84.0	10 636	85.9	263	2.1

Total airline network data (including routes not shown in this report).

Airlines' on time performance varies across the routes they serve. Individual route data by specific airline for 65 routes are shown on pages 10-23.

Table 2 Top ten routes for on time performance for May 2019 (participating airlines only)

<i>Arrivals</i>		<i>Departures</i>	
<i>Route</i>	<i>On Time (%)</i>	<i>Route</i>	<i>On Time (%)</i>
Adelaide-Gold Coast	96.6	Brisbane-Mount Isa	95.9
Sydney-Launceston	94.7	Brisbane-Proserpine	95.7
Canberra-Adelaide	93.8	Perth-Karratha	95.4
Perth-Newman	93.2	Adelaide-Gold Coast	94.8
Brisbane-Perth	93.1	Perth-Newman	94.2
Kalgoorlie-Perth	93.1	Brisbane-Gladstone	93.2
Geraldton-Perth	92.9	Sydney-Launceston	93.0
Mount Isa-Brisbane	92.9	Sydney-Ballina	92.9
Brisbane-Adelaide	92.5	Alice Springs-Darwin	92.6
Mackay-Brisbane	92.0	Newman-Perth	92.6

Table 3 Top ten airports for on time performance for May 2019 (participating airlines and reported routes only)

<i>Arrivals</i>		<i>Departures</i>	
<i>Airport</i>	<i>On Time (%)</i>	<i>Airport</i>	<i>On Time (%)</i>
Newman	93.2	Newman	92.6
Port Lincoln	90.6	Kalgoorlie	92.5
Emerald	90.4	Bundaberg	92.2
Gladstone	88.6	Port Lincoln	91.9
Proserpine	88.6	Mackay	90.8
Wagga Wagga	88.3	Mildura	90.2
Ballina	88.2	Karratha	90.1
Karratha	88.2	Mount Isa	90.0
Geraldton	88.1	Geraldton	89.3
Mackay	87.7	Rockhampton	88.9

Total industry on time performance

Figure 1 On time performance (by month from May 2016)—Total Industry

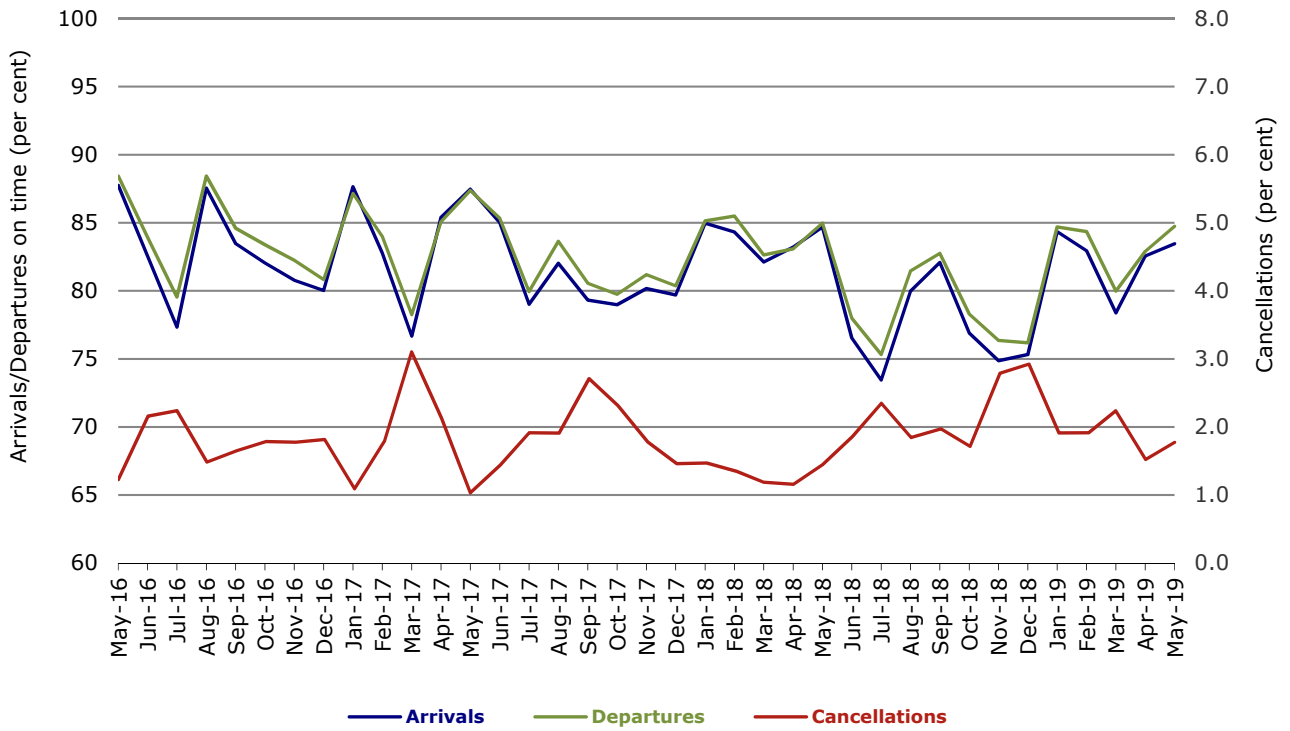


Figure 2 Arrivals on time (by month from May 2018)

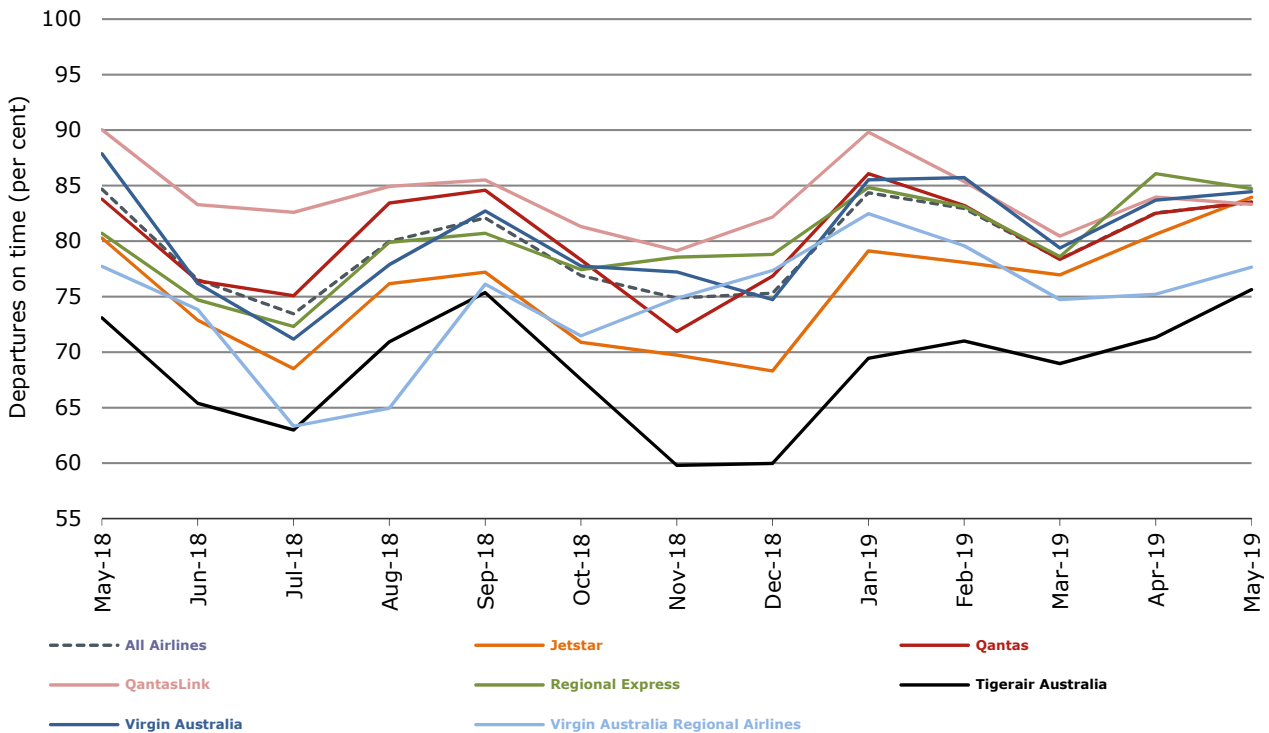


Figure 3 Departures on time (by month from May 2018)

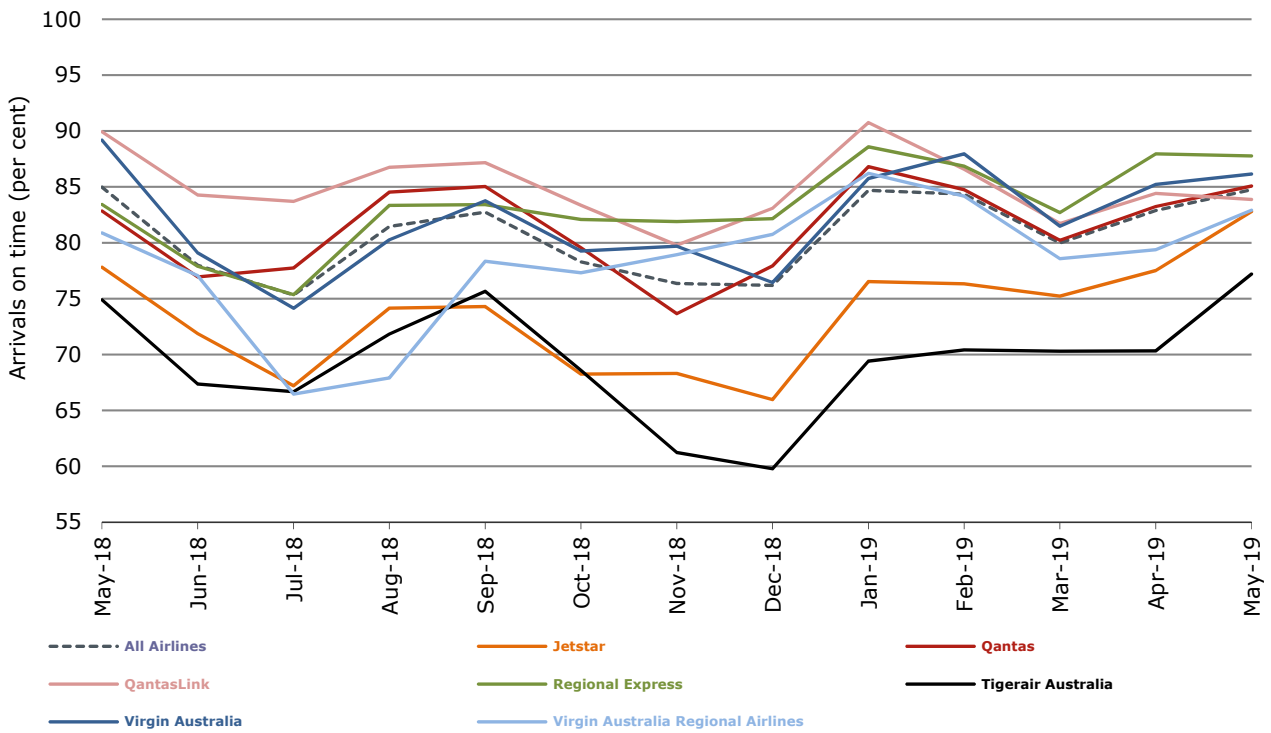
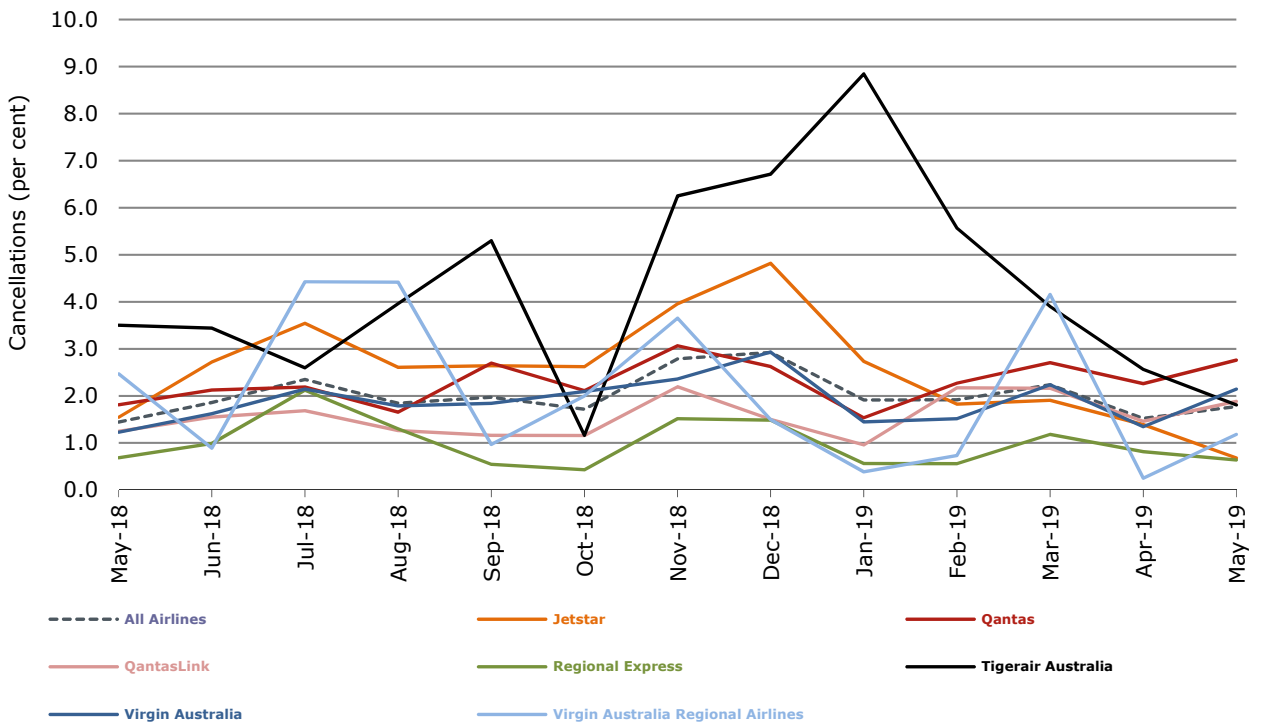


Figure 4 Cancellations (by month from May 2018)



Major domestic airlines on time performance

Figure 5 On time performance (by month from May 2016)—Jetstar

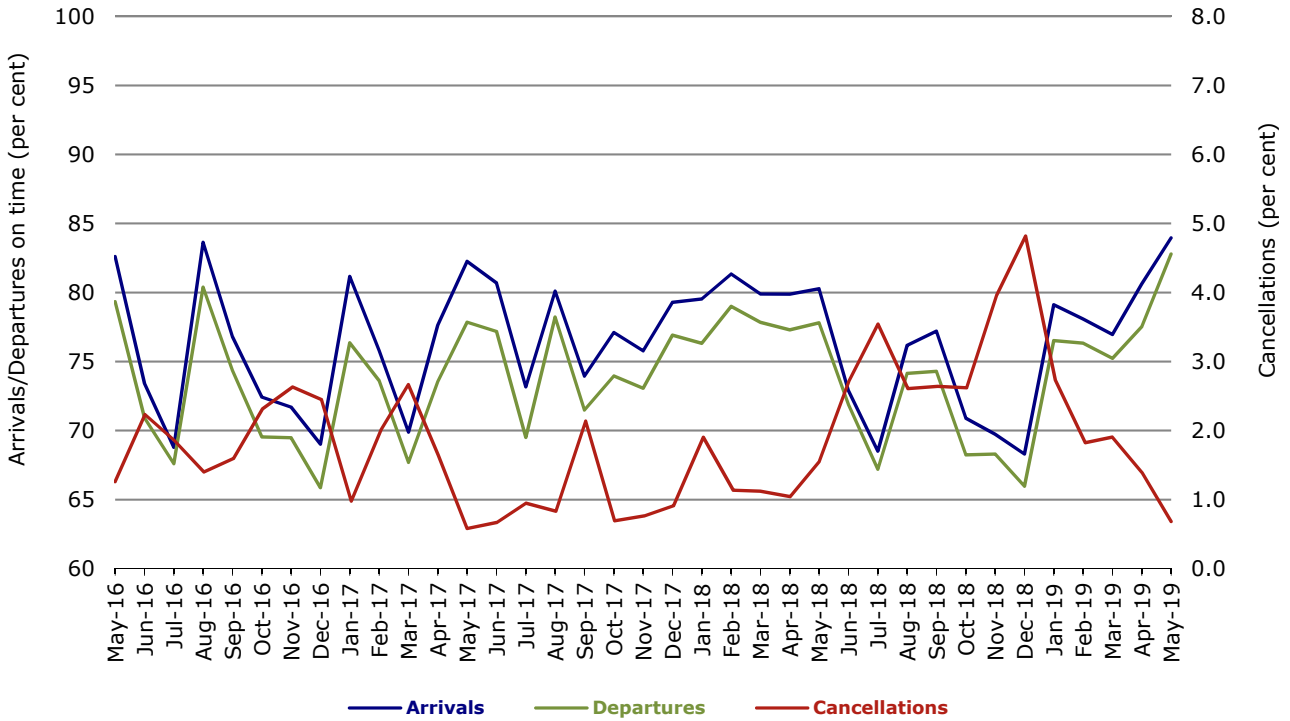


Figure 6 On time performance (by month from May 2016)—Qantas

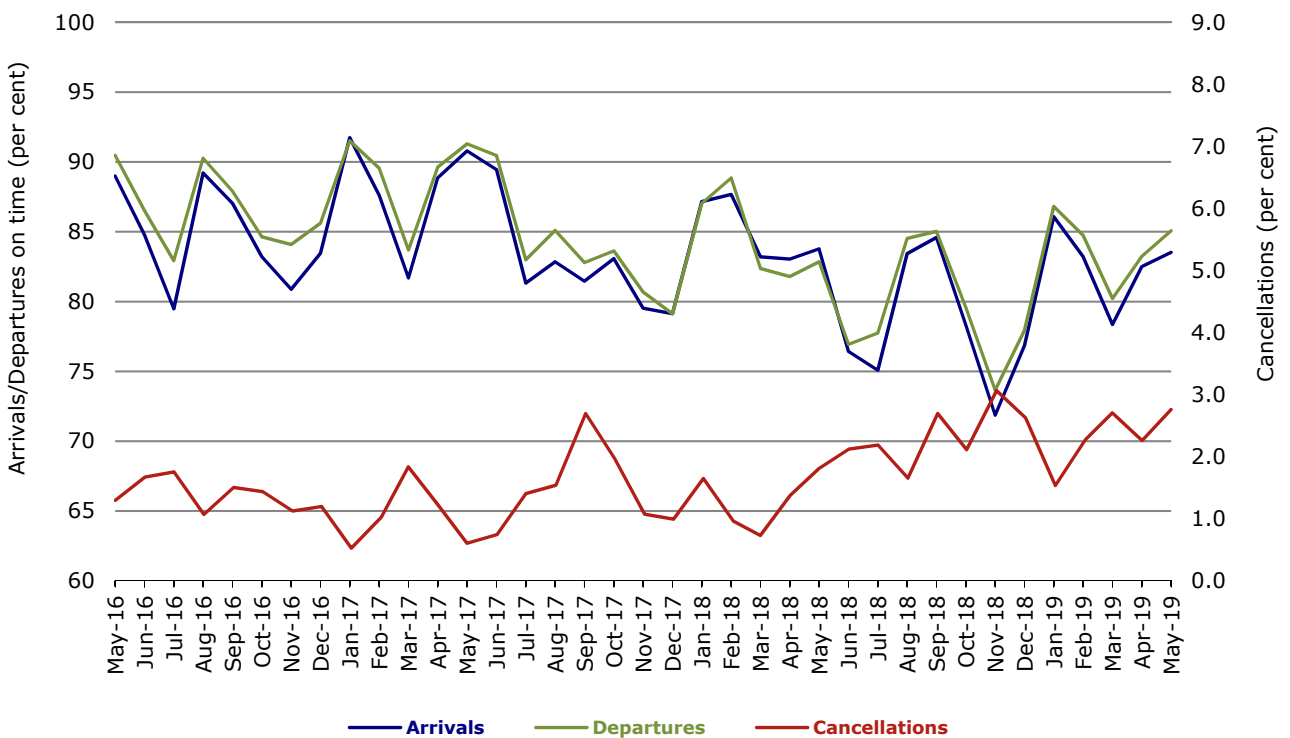


Figure 7 On time performance (by month from May 2016)—Tigerair Australia

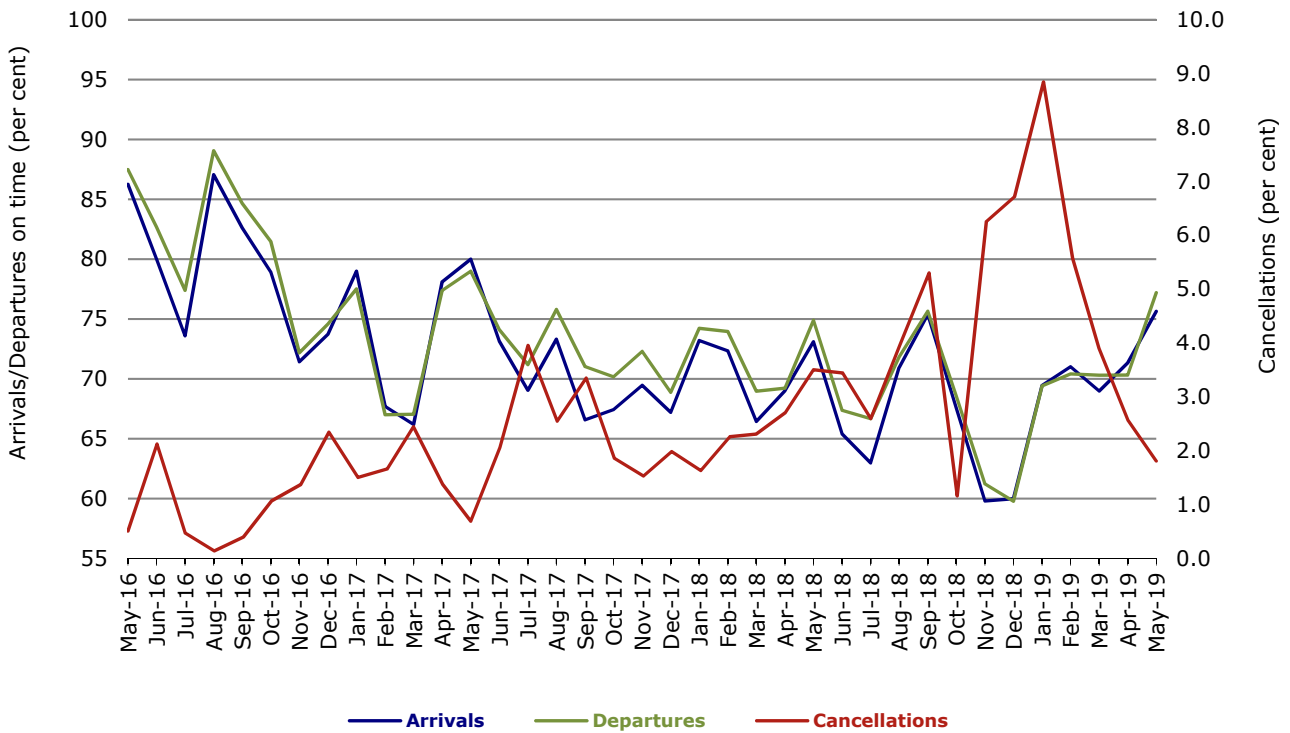
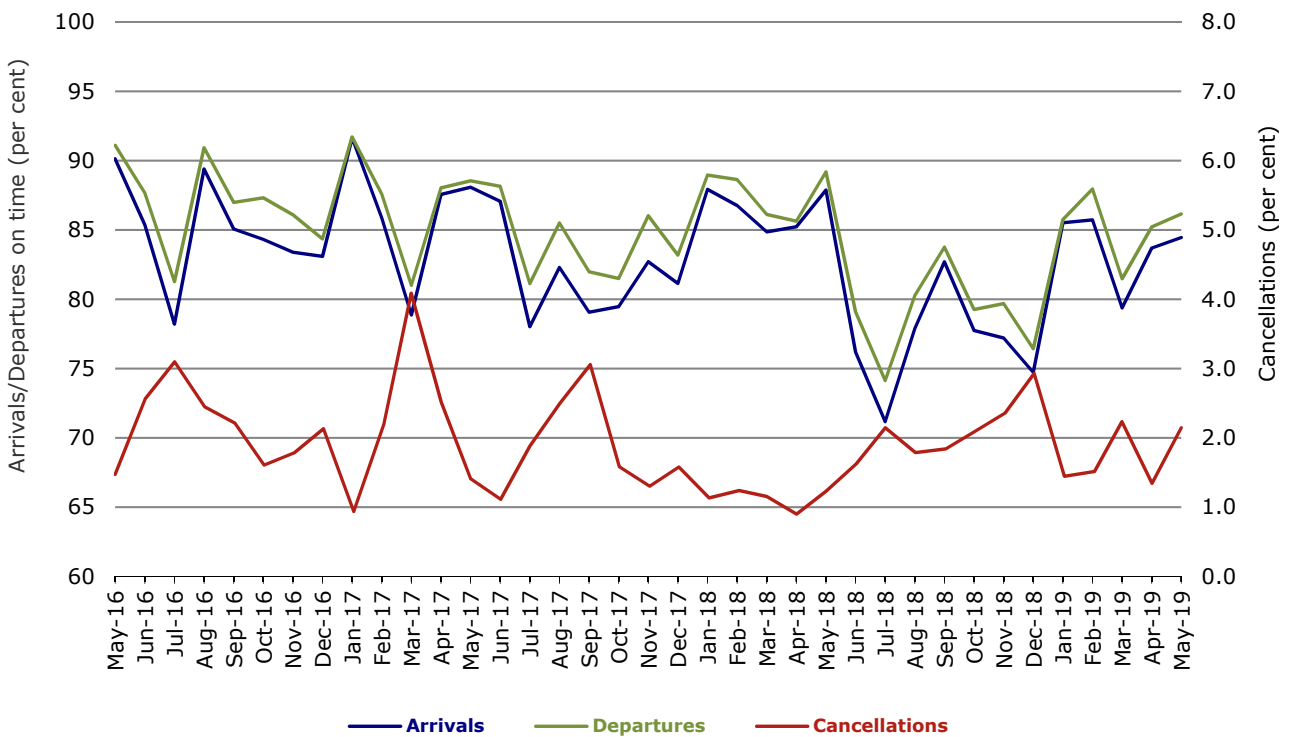


Figure 8 On time performance (by month from May 2016)—Virgin Australia



Major regional airlines on time performance

Figure 9 On time performance (by month from May 2016)—QantasLink

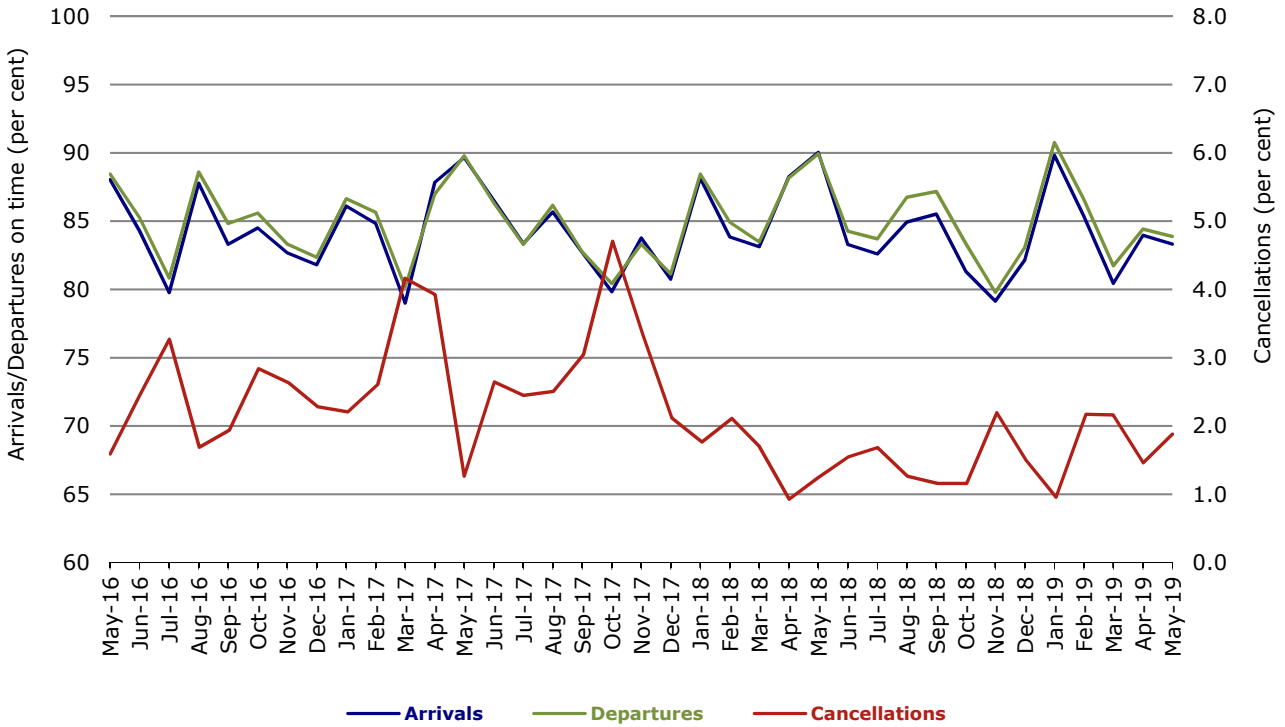


Figure 10 On time performance (by month from May 2016)—Regional Express

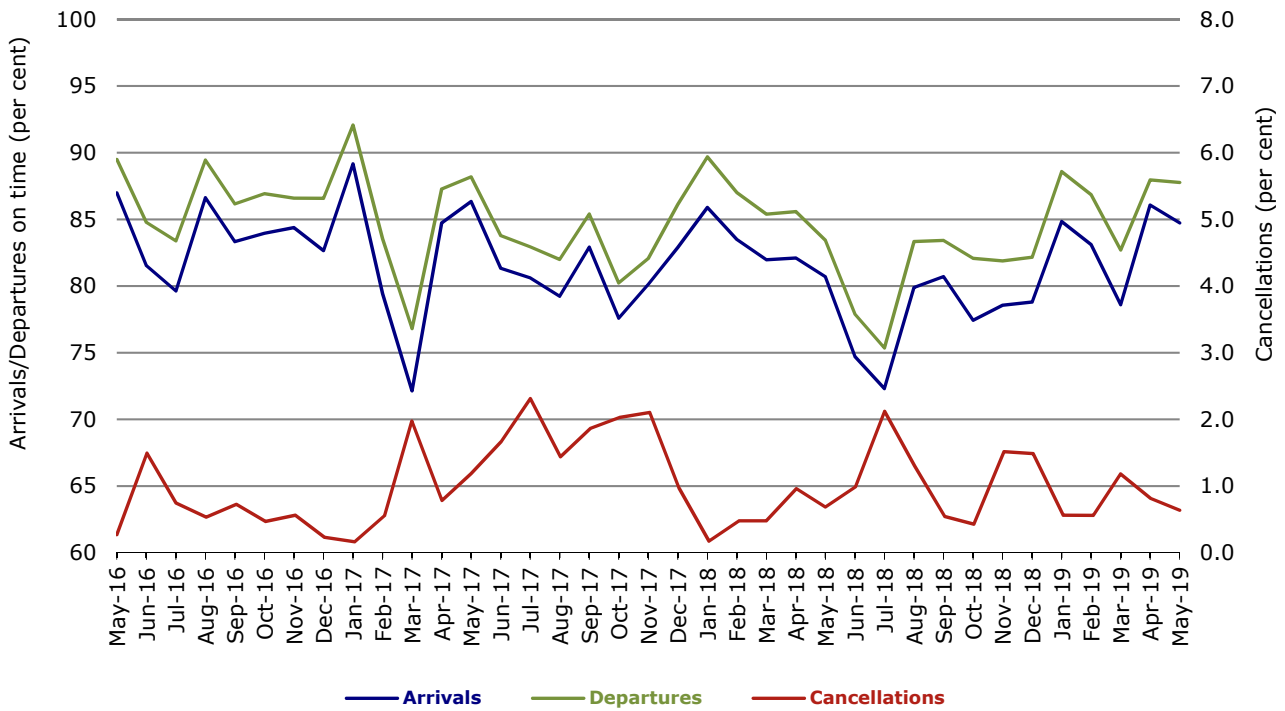
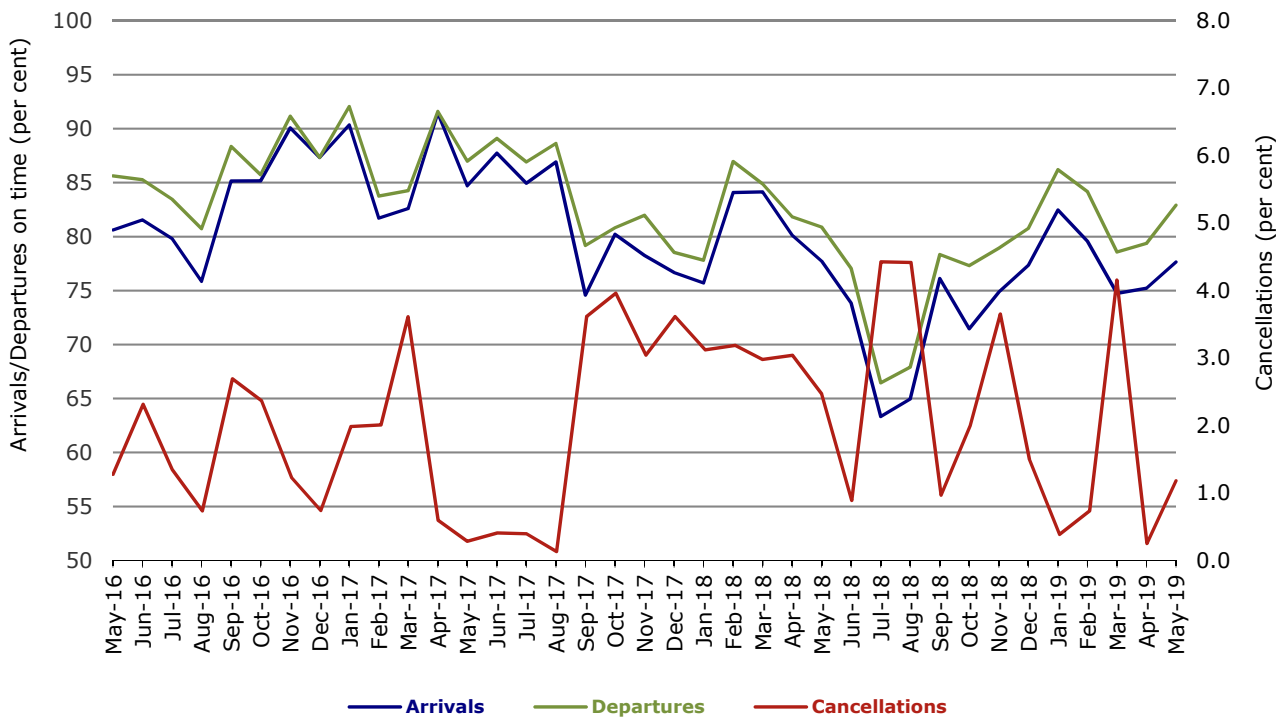


Figure 11 On time performance (by month from May 2016)
Virgin Australia Regional Airlines



Individual routes

On time performance is reported for all routes where the passenger load averages over 8000 passengers per month over the previous six months, and where two or more airlines operate in competition on those routes. There are now 65 routes which meet this definition. Over time, however, routes which meet this definition may change as airline networks and traffic levels vary.

	Sectors		Arrivals On Time		Departures On Time		Cancellations	
	Sched.	Flown	No.	%	No.	%	No.	%
Adelaide-Alice Springs								
Qantas	31	31	24	77.4	26	83.9	0	0.0
Virgin Australia	14	14	11	78.6	12	85.7	0	0.0
Virgin Australia Regional Airlines	9	9	4	44.4	5	55.6	0	0.0
All Airlines	54	54	39	72.2	43	79.6	0	0.0
Adelaide-Brisbane								
Jetstar	22	22	21	95.5	20	90.9	0	0.0
Qantas	109	109	103	94.5	102	93.6	0	0.0
QantasLink	1	1	0	0.0	0	0.0	0	0.0
Tigerair Australia	29	29	21	72.4	20	69.0	0	0.0
Virgin Australia	111	111	100	90.1	100	90.1	0	0.0
All Airlines	272	272	245	90.1	242	89.0	0	0.0
Adelaide-Canberra								
Qantas	50	50	44	88.0	43	86.0	0	0.0
QantasLink	4	4	2	50.0	2	50.0	0	0.0
Virgin Australia	27	27	22	81.5	23	85.2	0	0.0
All Airlines	81	81	68	84.0	68	84.0	0	0.0
Adelaide-Gold Coast								
Jetstar	26	26	25	96.2	24	92.3	0	0.0
Virgin Australia	32	32	31	96.9	31	96.9	0	0.0
All Airlines	58	58	56	96.6	55	94.8	0	0.0
Adelaide-Melbourne								
Jetstar	93	91	70	76.9	69	75.8	2	2.2
Qantas	309	297	250	84.2	256	86.2	12	3.9
Tigerair Australia	67	66	46	69.7	46	69.7	1	1.5
Virgin Australia	266	258	220	85.3	232	89.9	8	3.0
Virgin Australia Regional Airlines	8	8	7	87.5	8	100.0	0	0.0
All Airlines	743	720	593	82.4	611	84.9	23	3.1
Adelaide-Perth								
Jetstar	27	27	25	92.6	25	92.6	0	0.0
Qantas	119	119	108	90.8	103	86.6	0	0.0
QantasLink	2	2	2	100.0	2	100.0	0	0.0
Virgin Australia	37	37	36	97.3	31	83.8	0	0.0
Virgin Australia Regional Airlines	42	42	29	69.0	27	64.3	0	0.0
All Airlines	227	227	200	88.1	188	82.8	0	0.0
Adelaide-Port Lincoln								
QantasLink	103	103	92	89.3	93	90.3	0	0.0
Regional Express	218	216	197	91.2	201	93.1	2	0.9
All Airlines	321	319	289	90.6	294	92.2	2	0.6

	Sectors		Arrivals On Time		Departures On Time		Cancellations	
	Sched.	Flown	No.	%	No.	%	No.	%
Adelaide-Sydney								
Jetstar	85	83	66	79.5	70	84.3	2	2.4
Qantas	247	247	199	80.6	197	79.8	0	0.0
QantasLink	1	1	1	100.0	0	0.0	0	0.0
Tigerair Australia	27	27	21	77.8	21	77.8	0	0.0
Virgin Australia	164	160	132	82.5	134	83.8	4	2.4
All Airlines	524	518	419	80.9	422	81.5	6	1.1
Albury-Sydney								
QantasLink	108	104	65	62.5	65	62.5	4	3.7
Regional Express	108	107	89	83.2	90	84.1	1	0.9
Virgin Australia	60	59	42	71.2	42	71.2	1	1.7
All Airlines	276	270	196	72.6	197	73.0	6	2.2
Alice Springs-Adelaide								
Qantas	31	31	28	90.3	22	71.0	0	0.0
Virgin Australia	14	14	14	100.0	14	100.0	0	0.0
Virgin Australia Regional Airlines	8	8	4	50.0	4	50.0	0	0.0
All Airlines	53	53	46	86.8	40	75.5	0	0.0
Alice Springs-Darwin								
Qantas	61	58	54	93.1	57	98.3	3	4.9
Virgin Australia	14	14	12	85.7	12	85.7	0	0.0
Virgin Australia Regional Airlines	9	9	5	55.6	6	66.7	0	0.0
All Airlines	84	81	71	87.7	75	92.6	3	3.6
Armidale-Sydney								
QantasLink	120	118	82	69.5	84	71.2	2	1.7
Regional Express	76	76	54	71.1	56	73.7	0	0.0
All Airlines	196	194	136	70.1	140	72.2	2	1.0
Ayers Rock-Sydney								
Jetstar	31	31	21	67.7	20	64.5	0	0.0
Virgin Australia	31	31	25	80.6	18	58.1	0	0.0
All Airlines	62	62	46	74.2	38	61.3	0	0.0
Ballina-Sydney								
Jetstar	70	70	62	88.6	61	87.1	0	0.0
Regional Express	26	26	15	57.7	15	57.7	0	0.0
Virgin Australia	31	31	27	87.1	27	87.1	0	0.0
All Airlines	127	127	104	81.9	103	81.1	0	0.0
Brisbane-Adelaide								
Jetstar	22	22	20	90.9	19	86.4	0	0.0
Qantas	109	109	109	100.0	106	97.2	0	0.0
QantasLink	1	1	1	100.0	1	100.0	0	0.0
Tigerair Australia	29	29	22	75.9	23	79.3	0	0.0
Virgin Australia	106	106	95	89.6	88	83.0	0	0.0
All Airlines	267	267	247	92.5	237	88.8	0	0.0
Brisbane-Bundaberg								
QantasLink	124	122	105	86.1	110	90.2	2	1.6
Virgin Australia	31	31	27	87.1	27	87.1	0	0.0
All Airlines	155	153	132	86.3	137	89.5	2	1.3

	<i>Sectors</i>		<i>Arrivals On Time</i>		<i>Departures On Time</i>		<i>Cancellations</i>	
	<i>Sched.</i>	<i>Flown</i>	<i>No.</i>	<i>%</i>	<i>No.</i>	<i>%</i>	<i>No.</i>	<i>%</i>
Brisbane-Cairns								
Jetstar	79	79	71	89.9	72	91.1	0	0.0
Qantas	22	22	22	100.0	21	95.5	0	0.0
QantasLink	155	154	123	79.9	132	85.7	1	0.6
Tigerair Australia	31	31	24	77.4	23	74.2	0	0.0
Virgin Australia	131	131	114	87.0	118	90.1	0	0.0
All Airlines	418	417	354	84.9	366	87.8	1	0.2
Brisbane-Canberra								
Qantas	1	1	1	100.0	1	100.0	0	0.0
QantasLink	155	153	121	79.1	127	83.0	2	1.3
Tigerair Australia	22	22	15	68.2	14	63.6	0	0.0
Virgin Australia	104	103	91	88.3	89	86.4	1	1.0
All Airlines	282	279	228	81.7	231	82.8	3	1.1
Brisbane-Darwin								
Jetstar	19	19	18	94.7	19	100.0	0	0.0
Qantas	36	36	32	88.9	31	86.1	0	0.0
Tigerair Australia	13	13	12	92.3	11	84.6	0	0.0
Virgin Australia	31	31	20	64.5	26	83.9	0	0.0
All Airlines	99	99	82	82.8	87	87.9	0	0.0
Brisbane-Emerald								
QantasLink	124	123	108	87.8	109	88.6	1	0.8
Virgin Australia	54	54	52	96.3	52	96.3	0	0.0
All Airlines	178	177	160	90.4	161	91.0	1	0.6
Brisbane-Gladstone								
QantasLink	144	142	123	86.6	130	91.5	2	1.4
Virgin Australia	77	77	71	92.2	74	96.1	0	0.0
All Airlines	221	219	194	88.6	204	93.2	2	0.9
Brisbane-Hamilton Island								
QantasLink	30	28	22	78.6	21	75.0	2	6.7
Virgin Australia	31	30	25	83.3	27	90.0	1	3.2
All Airlines	61	58	47	81.0	48	82.8	3	4.9
Brisbane-Hobart								
Jetstar	18	18	17	94.4	17	94.4	0	0.0
Virgin Australia	36	36	30	83.3	29	80.6	0	0.0
All Airlines	54	54	47	87.0	46	85.2	0	0.0
Brisbane-Mackay								
Jetstar	31	31	28	90.3	27	87.1	0	0.0
QantasLink	143	137	118	86.1	120	87.6	6	4.2
Virgin Australia	151	150	133	88.7	137	91.3	1	0.7
All Airlines	325	318	279	87.7	284	89.3	7	2.2
Brisbane-Melbourne								
Jetstar	102	102	92	90.2	88	86.3	0	0.0
Qantas	403	401	361	90.0	356	88.8	2	0.5
Tigerair Australia	104	101	81	80.2	85	84.2	3	2.9
Virgin Australia	375	367	296	80.7	311	84.7	8	2.1
All Airlines	984	971	830	85.5	840	86.5	13	1.3
Brisbane-Mount Isa								
QantasLink	56	56	46	82.1	54	96.4	0	0.0
Virgin Australia	18	18	16	88.9	17	94.4	0	0.0
All Airlines	74	74	62	83.8	71	95.9	0	0.0

	Sectors		Arrivals On Time		Departures On Time		Cancellations	
	Sched.	Flown	No.	%	No.	%	No.	%
Brisbane-Newcastle								
Jetstar	68	68	61	89.7	57	83.8	0	0.0
QantasLink	94	90	77	85.6	74	82.2	4	4.3
Virgin Australia	88	88	76	86.4	81	92.0	0	0.0
All Airlines	250	246	214	87.0	212	86.2	4	1.6
Brisbane-Perth								
Qantas	152	150	147	98.0	140	93.3	2	1.3
Virgin Australia	112	112	97	86.6	90	80.4	0	0.0
All Airlines	264	262	244	93.1	230	87.8	2	0.8
Brisbane-Proserpine								
Jetstar	27	27	26	96.3	26	96.3	0	0.0
Virgin Australia	42	42	36	85.7	40	95.2	0	0.0
All Airlines	69	69	62	89.9	66	95.7	0	0.0
Brisbane-Rockhampton								
QantasLink	187	185	161	87.0	163	88.1	2	1.1
Virgin Australia	143	143	124	86.7	129	90.2	0	0.0
All Airlines	330	328	285	86.9	292	89.0	2	0.6
Brisbane-Sydney								
Jetstar	170	168	139	82.7	134	79.8	2	1.2
Qantas	640	620	559	90.2	558	90.0	20	3.1
Tigerair Australia	121	121	85	70.2	83	68.6	0	0.0
Virgin Australia	541	520	442	85.0	442	85.0	21	3.9
All Airlines	1 472	1 429	1 225	85.7	1 217	85.2	43	2.9
Brisbane-Townsville								
Jetstar	64	64	56	87.5	60	93.8	0	0.0
Qantas	48	48	44	91.7	47	97.9	0	0.0
QantasLink	115	114	85	74.6	90	78.9	1	0.9
Virgin Australia	149	147	127	86.4	128	87.1	2	1.3
All Airlines	376	373	312	83.6	325	87.1	3	0.8
Broome-Perth								
Qantas	6	6	6	100.0	5	83.3	0	0.0
QantasLink	87	87	74	85.1	74	85.1	0	0.0
Virgin Australia Regional Airlines	72	72	55	76.4	53	73.6	0	0.0
All Airlines	165	165	135	81.8	132	80.0	0	0.0
Bundaberg-Brisbane								
QantasLink	124	122	112	91.8	113	92.6	2	1.6
Virgin Australia	31	31	27	87.1	28	90.3	0	0.0
All Airlines	155	153	139	90.8	141	92.2	2	1.3
Cairns-Brisbane								
Jetstar	78	78	74	94.9	71	91.0	0	0.0
Qantas	22	22	21	95.5	21	95.5	0	0.0
QantasLink	155	152	128	84.2	128	84.2	3	1.9
Tigerair Australia	31	31	23	74.2	22	71.0	0	0.0
Virgin Australia	131	131	119	90.8	113	86.3	0	0.0
All Airlines	417	414	365	88.2	355	85.7	3	0.7
Cairns-Melbourne								
Jetstar	90	89	80	89.9	77	86.5	1	1.1
Qantas	31	31	22	71.0	19	61.3	0	0.0
Tigerair Australia	31	31	26	83.9	21	67.7	0	0.0
Virgin Australia	32	32	27	84.4	23	71.9	0	0.0
All Airlines	184	183	155	84.7	140	76.5	1	0.5

	<i>Sectors</i>		<i>Arrivals On Time</i>		<i>Departures On Time</i>		<i>Cancellations</i>	
	<i>Sched.</i>	<i>Flown</i>	<i>No.</i>	<i>%</i>	<i>No.</i>	<i>%</i>	<i>No.</i>	<i>%</i>
Cairns-Sydney								
Jetstar	69	69	66	95.7	66	95.7	0	0.0
Qantas	59	59	51	86.4	46	78.0	0	0.0
Tigerair Australia	31	31	29	93.5	25	80.6	0	0.0
Virgin Australia	82	81	69	85.2	65	80.2	1	1.2
All Airlines	241	240	215	89.6	202	84.2	1	0.4
Cairns-Townsville								
QantasLink	138	136	125	91.9	124	91.2	2	1.4
Regional Express	14	14	12	85.7	12	85.7	0	0.0
All Airlines	152	150	137	91.3	136	90.7	2	1.3
Canberra-Adelaide								
Qantas	50	50	49	98.0	45	90.0	0	0.0
QantasLink	4	4	3	75.0	2	50.0	0	0.0
Virgin Australia	27	27	24	88.9	24	88.9	0	0.0
All Airlines	81	81	76	93.8	71	87.7	0	0.0
Canberra-Brisbane								
Qantas	1	1	1	100.0	1	100.0	0	0.0
QantasLink	155	151	124	82.1	125	82.8	4	2.6
Tigerair Australia	22	22	15	68.2	15	68.2	0	0.0
Virgin Australia	102	101	86	85.1	88	87.1	1	1.0
All Airlines	280	275	226	82.2	229	83.3	5	1.8
Canberra-Melbourne								
Qantas	246	243	217	89.3	216	88.9	3	1.2
QantasLink	44	41	32	78.0	36	87.8	3	6.8
Tigerair Australia	35	34	23	67.6	26	76.5	1	2.9
Virgin Australia	170	169	135	79.9	142	84.0	1	0.6
All Airlines	495	487	407	83.6	420	86.2	8	1.6
Canberra-Sydney								
QantasLink	485	459	360	78.4	362	78.9	26	5.4
Virgin Australia	254	248	219	88.3	215	86.7	6	2.4
All Airlines	739	707	579	81.9	577	81.6	32	4.3
Coffs Harbour-Sydney								
QantasLink	137	136	115	84.6	112	82.4	1	0.7
Tigerair Australia	23	23	21	91.3	21	91.3	0	0.0
Virgin Australia	31	30	23	76.7	24	80.0	1	3.2
All Airlines	191	189	159	84.1	157	83.1	2	1.0
Darwin-Alice Springs								
Qantas	62	60	54	90.0	55	91.7	2	3.2
Virgin Australia	14	14	14	100.0	14	100.0	0	0.0
Virgin Australia Regional Airlines	8	8	3	37.5	4	50.0	0	0.0
All Airlines	84	82	71	86.6	73	89.0	2	2.4
Darwin-Brisbane								
Jetstar	19	19	18	94.7	16	84.2	0	0.0
Qantas	37	37	34	91.9	28	75.7	0	0.0
Tigerair Australia	13	13	11	84.6	10	76.9	0	0.0
Virgin Australia	31	31	23	74.2	23	74.2	0	0.0
All Airlines	100	100	86	86.0	77	77.0	0	0.0
Darwin-Melbourne								
Jetstar	25	25	21	84.0	17	68.0	0	0.0
Qantas	27	27	16	59.3	13	48.1	0	0.0
Virgin Australia	31	31	27	87.1	25	80.6	0	0.0
All Airlines	83	83	64	77.1	55	66.3	0	0.0

	<i>Sectors</i>		<i>Arrivals On Time</i>		<i>Departures On Time</i>		<i>Cancellations</i>	
	<i>Sched.</i>	<i>Flown</i>	<i>No.</i>	<i>%</i>	<i>No.</i>	<i>%</i>	<i>No.</i>	<i>%</i>
Darwin-Perth								
Qantas	31	31	26	83.9	27	87.1	0	0.0
Virgin Australia	24	24	13	54.2	12	50.0	0	0.0
Virgin Australia Regional Airlines	7	7	6	85.7	5	71.4	0	0.0
All Airlines	62	62	45	72.6	44	71.0	0	0.0
Darwin-Sydney								
Jetstar	18	18	14	77.8	14	77.8	0	0.0
Qantas	44	43	29	67.4	23	53.5	1	2.3
Virgin Australia	28	28	13	46.4	13	46.4	0	0.0
All Airlines	90	89	56	62.9	50	56.2	1	1.1
Dubbo-Sydney								
QantasLink	118	115	94	81.7	89	77.4	3	2.5
Regional Express	135	135	102	75.6	109	80.7	0	0.0
All Airlines	253	250	196	78.4	198	79.2	3	1.2
Emerald-Brisbane								
QantasLink	124	122	104	85.2	99	81.1	2	1.6
Virgin Australia	55	55	52	94.5	51	92.7	0	0.0
All Airlines	179	177	156	88.1	150	84.7	2	1.1
Geraldton-Perth								
QantasLink	54	54	52	96.3	50	92.6	0	0.0
Virgin Australia Regional Airlines	31	30	26	86.7	25	83.3	1	3.2
All Airlines	85	84	78	92.9	75	89.3	1	1.2
Gladstone-Brisbane								
QantasLink	143	141	120	85.1	115	81.6	2	1.4
Virgin Australia	77	77	70	90.9	71	92.2	0	0.0
All Airlines	220	218	190	87.2	186	85.3	2	0.9
Gold Coast-Adelaide								
Jetstar	26	26	24	92.3	24	92.3	0	0.0
Virgin Australia	31	31	28	90.3	28	90.3	0	0.0
All Airlines	57	57	52	91.2	52	91.2	0	0.0
Gold Coast-Melbourne								
Jetstar	169	169	148	87.6	139	82.2	0	0.0
Qantas	31	31	21	67.7	18	58.1	0	0.0
Tigerair Australia	76	74	58	78.4	56	75.7	2	2.6
Virgin Australia	177	174	144	82.8	136	78.2	3	1.7
All Airlines	453	448	371	82.8	349	77.9	5	1.1
Gold Coast-Sydney								
Jetstar	284	282	249	88.3	238	84.4	2	0.7
Qantas	59	59	48	81.4	46	78.0	0	0.0
QantasLink	69	67	52	77.6	52	77.6	2	2.9
Tigerair Australia	84	81	65	80.2	59	72.8	3	3.6
Virgin Australia	254	249	213	85.5	202	81.1	5	2.0
All Airlines	750	738	627	85.0	597	80.9	12	1.6
Hamilton Island-Brisbane								
QantasLink	30	28	22	78.6	22	78.6	2	6.7
Virgin Australia	31	30	28	93.3	28	93.3	1	3.2
All Airlines	61	58	50	86.2	50	86.2	3	4.9

	<i>Sectors</i>		<i>Arrivals On Time</i>		<i>Departures On Time</i>		<i>Cancellations</i>	
	<i>Sched.</i>	<i>Flown</i>	<i>No.</i>	<i>%</i>	<i>No.</i>	<i>%</i>	<i>No.</i>	<i>%</i>
Hamilton Island-Sydney								
Jetstar	14	14	14	100.0	13	92.9	0	0.0
Qantas	4	4	4	100.0	4	100.0	0	0.0
QantasLink	23	23	15	65.2	15	65.2	0	0.0
Virgin Australia	20	20	17	85.0	17	85.0	0	0.0
All Airlines	61	61	50	82.0	49	80.3	0	0.0
Hobart-Brisbane								
Jetstar	18	18	16	88.9	17	94.4	0	0.0
Virgin Australia	37	37	24	64.9	26	70.3	0	0.0
All Airlines	55	55	40	72.7	43	78.2	0	0.0
Hobart-Melbourne								
Jetstar	138	138	88	63.8	86	62.3	0	0.0
Qantas	111	109	81	74.3	80	73.4	2	1.8
Tigerair Australia	39	39	32	82.1	33	84.6	0	0.0
Virgin Australia	137	137	109	79.6	110	80.3	0	0.0
All Airlines	425	423	310	73.3	309	73.0	2	0.5
Hobart-Sydney								
Jetstar	57	57	44	77.2	41	71.9	0	0.0
QantasLink	76	76	59	77.6	62	81.6	0	0.0
Virgin Australia	70	69	61	88.4	60	87.0	1	1.4
All Airlines	203	202	164	81.2	163	80.7	1	0.5
Kalgoorlie-Perth								
Qantas	8	8	7	87.5	7	87.5	0	0.0
QantasLink	87	87	80	92.0	79	90.8	0	0.0
Virgin Australia	36	35	35	100.0	35	100.0	1	2.8
Virgin Australia Regional Airlines	48	44	40	90.9	40	90.9	4	8.3
All Airlines	179	174	162	93.1	161	92.5	5	2.8
Karratha-Perth								
Qantas	42	42	42	100.0	41	97.6	0	0.0
QantasLink	153	152	130	85.5	133	87.5	1	0.7
Virgin Australia	3	3	3	100.0	3	100.0	0	0.0
Virgin Australia Regional Airlines	65	65	57	87.7	59	90.8	0	0.0
All Airlines	263	262	232	88.5	236	90.1	1	0.4
Launceston-Melbourne								
Jetstar	93	93	68	73.1	66	71.0	0	0.0
QantasLink	120	115	100	87.0	104	90.4	5	4.2
Virgin Australia	98	97	78	80.4	89	91.8	1	1.0
All Airlines	311	305	246	80.7	259	84.9	6	1.9
Launceston-Sydney								
Jetstar	27	27	23	85.2	23	85.2	0	0.0
Virgin Australia	31	31	25	80.6	28	90.3	0	0.0
All Airlines	58	58	48	82.8	51	87.9	0	0.0
Mackay-Brisbane								
Jetstar	33	31	29	93.5	25	80.6	2	6.1
QantasLink	138	132	120	90.9	123	93.2	6	4.3
Virgin Australia	151	151	140	92.7	137	90.7	0	0.0
All Airlines	322	314	289	92.0	285	90.8	8	2.5

	<i>Sectors</i>		<i>Arrivals On Time</i>		<i>Departures On Time</i>		<i>Cancellations</i>	
	<i>Sched.</i>	<i>Flown</i>	<i>No.</i>	<i>%</i>	<i>No.</i>	<i>%</i>	<i>No.</i>	<i>%</i>
Melbourne-Adelaide								
Jetstar	93	91	64	70.3	66	72.5	2	2.2
Qantas	309	302	251	83.1	265	87.7	7	2.3
Tigerair Australia	67	66	49	74.2	60	90.9	1	1.5
Virgin Australia	269	263	223	84.8	226	85.9	6	2.2
Virgin Australia Regional Airlines	8	8	5	62.5	5	62.5	0	0.0
All Airlines	746	730	592	81.1	622	85.2	16	2.1
Melbourne-Brisbane								
Jetstar	102	102	87	85.3	86	84.3	0	0.0
Qantas	401	399	338	84.7	345	86.5	2	0.5
Tigerair Australia	104	101	84	83.2	90	89.1	3	2.9
Virgin Australia	380	371	317	85.4	322	86.8	9	2.4
All Airlines	987	973	826	84.9	843	86.6	14	1.4
Melbourne-Cairns								
Jetstar	90	89	69	77.5	72	80.9	1	1.1
Qantas	31	31	22	71.0	25	80.6	0	0.0
Tigerair Australia	31	31	26	83.9	29	93.5	0	0.0
Virgin Australia	32	32	25	78.1	30	93.8	0	0.0
All Airlines	184	183	142	77.6	156	85.2	1	0.5
Melbourne-Canberra								
Qantas	246	244	212	86.9	218	89.3	2	0.8
QantasLink	46	42	36	85.7	37	88.1	4	8.7
Tigerair Australia	35	34	27	79.4	28	82.4	1	2.9
Virgin Australia	168	167	134	80.2	141	84.4	1	0.6
All Airlines	495	487	409	84.0	424	87.1	8	1.6
Melbourne-Darwin								
Jetstar	25	25	15	60.0	21	84.0	0	0.0
Qantas	27	27	15	55.6	20	74.1	0	0.0
Virgin Australia	31	31	18	58.1	23	74.2	0	0.0
All Airlines	83	83	48	57.8	64	77.1	0	0.0
Melbourne-Gold Coast								
Jetstar	169	169	137	81.1	146	86.4	0	0.0
Qantas	30	30	23	76.7	25	83.3	0	0.0
Tigerair Australia	76	74	60	81.1	63	85.1	2	2.6
Virgin Australia	177	174	147	84.5	153	87.9	3	1.7
All Airlines	452	447	367	82.1	387	86.6	5	1.1
Melbourne-Hobart								
Jetstar	138	138	101	73.2	103	74.6	0	0.0
Qantas	111	111	83	74.8	90	81.1	0	0.0
QantasLink	1	1	0	0.0	1	100.0	0	0.0
Tigerair Australia	39	39	35	89.7	34	87.2	0	0.0
Virgin Australia	138	138	108	78.3	117	84.8	0	0.0
All Airlines	427	427	327	76.6	345	80.8	0	0.0
Melbourne-Launceston								
Jetstar	93	93	76	81.7	77	82.8	0	0.0
QantasLink	118	115	100	87.0	99	86.1	3	2.5
Virgin Australia	97	97	83	85.6	89	91.8	0	0.0
All Airlines	308	305	259	84.9	265	86.9	3	1.0

	<i>Sectors</i>		<i>Arrivals On Time</i>		<i>Departures On Time</i>		<i>Cancellations</i>	
	<i>Sched.</i>	<i>Flown</i>	<i>No.</i>	<i>%</i>	<i>No.</i>	<i>%</i>	<i>No.</i>	<i>%</i>
Melbourne-Mildura								
QantasLink	99	95	81	85.3	86	90.5	4	4.0
Regional Express	88	88	72	81.8	80	90.9	0	0.0
Virgin Australia	31	31	25	80.6	30	96.8	0	0.0
All Airlines	218	214	178	83.2	196	91.6	4	1.8
Melbourne-Newcastle								
Jetstar	98	98	76	77.6	70	71.4	0	0.0
Virgin Australia	31	31	25	80.6	26	83.9	0	0.0
All Airlines	129	129	101	78.3	96	74.4	0	0.0
Melbourne-Perth								
Jetstar	39	39	39	100.0	38	97.4	0	0.0
Qantas	205	202	171	84.7	151	74.8	3	1.5
Tigerair Australia	44	44	31	70.5	35	79.5	0	0.0
Virgin Australia	144	140	126	90.0	108	77.1	4	2.8
All Airlines	432	425	367	86.4	332	78.1	7	1.6
Melbourne-Sunshine Coast								
Jetstar	62	62	57	91.9	55	88.7	0	0.0
Virgin Australia	62	62	55	88.7	55	88.7	0	0.0
All Airlines	124	124	112	90.3	110	88.7	0	0.0
Melbourne-Sydney								
Jetstar	356	351	266	75.8	280	79.8	5	1.4
Qantas	1 132	1 045	859	82.2	888	85.0	87	7.7
Tigerair Australia	249	239	168	70.3	170	71.1	10	4.0
Virgin Australia	769	714	597	83.6	630	88.2	55	7.2
All Airlines	2 506	2 349	1 890	80.5	1 968	83.8	157	6.3
Mildura-Melbourne								
QantasLink	99	95	82	86.3	81	85.3	4	4.0
Regional Express	89	89	73	82.0	83	93.3	0	0.0
Virgin Australia	31	31	28	90.3	30	96.8	0	0.0
All Airlines	219	215	183	85.1	194	90.2	4	1.8
Mount Isa-Brisbane								
QantasLink	56	55	52	94.5	51	92.7	1	1.8
Virgin Australia	15	15	13	86.7	12	80.0	0	0.0
All Airlines	71	70	65	92.9	63	90.0	1	1.4
Newcastle-Brisbane								
Jetstar	68	68	61	89.7	57	83.8	0	0.0
QantasLink	93	90	78	86.7	74	82.2	3	3.2
Virgin Australia	87	87	81	93.1	79	90.8	0	0.0
All Airlines	248	245	220	89.8	210	85.7	3	1.2
Newcastle-Melbourne								
Jetstar	98	98	88	89.8	82	83.7	0	0.0
Virgin Australia	31	31	27	87.1	26	83.9	0	0.0
All Airlines	129	129	115	89.1	108	83.7	0	0.0
Newman-Perth								
Qantas	28	28	28	100.0	28	100.0	0	0.0
QantasLink	122	119	106	89.1	108	90.8	3	2.5
Virgin Australia	18	18	15	83.3	16	88.9	0	0.0
Virgin Australia Regional Airlines	23	23	22	95.7	22	95.7	0	0.0
All Airlines	191	188	171	91.0	174	92.6	3	1.6

	<i>Sectors</i>		<i>Arrivals On Time</i>		<i>Departures On Time</i>		<i>Cancellations</i>	
	<i>Sched.</i>	<i>Flown</i>	<i>No.</i>	<i>%</i>	<i>No.</i>	<i>%</i>	<i>No.</i>	<i>%</i>
Perth-Adelaide								
Jetstar	27	27	21	77.8	22	81.5	0	0.0
Qantas	119	119	97	81.5	109	91.6	0	0.0
QantasLink	2	2	1	50.0	1	50.0	0	0.0
Virgin Australia	38	38	32	84.2	36	94.7	0	0.0
Virgin Australia Regional Airlines	43	43	17	39.5	34	79.1	0	0.0
All Airlines	229	229	168	73.4	202	88.2	0	0.0
Perth-Brisbane								
Qantas	152	150	112	74.7	132	88.0	2	1.3
Virgin Australia	112	112	96	85.7	100	89.3	0	0.0
All Airlines	264	262	208	79.4	232	88.5	2	0.8
Perth-Broome								
Qantas	6	6	5	83.3	5	83.3	0	0.0
QantasLink	87	87	70	80.5	77	88.5	0	0.0
Virgin Australia Regional Airlines	72	72	54	75.0	54	75.0	0	0.0
All Airlines	165	165	129	78.2	136	82.4	0	0.0
Perth-Darwin								
Qantas	31	31	23	74.2	25	80.6	0	0.0
Virgin Australia	24	24	17	70.8	18	75.0	0	0.0
Virgin Australia Regional Airlines	7	7	6	85.7	6	85.7	0	0.0
All Airlines	62	62	46	74.2	49	79.0	0	0.0
Perth-Geraldton								
QantasLink	54	54	47	87.0	44	81.5	0	0.0
Virgin Australia Regional Airlines	31	30	27	90.0	26	86.7	1	3.2
All Airlines	85	84	74	88.1	70	83.3	1	1.2
Perth-Kalgoorlie								
Qantas	8	8	6	75.0	6	75.0	0	0.0
QantasLink	87	87	75	86.2	78	89.7	0	0.0
Virgin Australia	36	35	33	94.3	34	97.1	1	2.8
Virgin Australia Regional Airlines	49	47	39	83.0	43	91.5	2	4.1
All Airlines	180	177	153	86.4	161	91.0	3	1.7
Perth-Karratha								
Qantas	42	42	41	97.6	42	100.0	0	0.0
QantasLink	153	152	138	90.8	143	94.1	1	0.7
Virgin Australia	3	3	3	100.0	3	100.0	0	0.0
Virgin Australia Regional Airlines	65	65	49	75.4	62	95.4	0	0.0
All Airlines	263	262	231	88.2	250	95.4	1	0.4
Perth-Melbourne								
Jetstar	40	40	34	85.0	35	87.5	0	0.0
Qantas	206	203	149	73.4	175	86.2	3	1.5
Tigerair Australia	44	44	20	45.5	25	56.8	0	0.0
Virgin Australia	146	143	106	74.1	126	88.1	3	2.1
All Airlines	436	430	309	71.9	361	84.0	6	1.4
Perth-Newman								
Qantas	28	28	27	96.4	27	96.4	0	0.0
QantasLink	122	121	111	91.7	112	92.6	1	0.8
Virgin Australia	18	18	18	100.0	18	100.0	0	0.0
Virgin Australia Regional Airlines	23	23	21	91.3	22	95.7	0	0.0
All Airlines	191	190	177	93.2	179	94.2	1	0.5

	<i>Sectors</i>		<i>Arrivals On Time</i>		<i>Departures On Time</i>		<i>Cancellations</i>	
	<i>Sched.</i>	<i>Flown</i>	<i>No.</i>	<i>%</i>	<i>No.</i>	<i>%</i>	<i>No.</i>	<i>%</i>
Perth-Port Hedland								
Qantas	36	36	30	83.3	32	88.9	0	0.0
QantasLink	123	123	97	78.9	110	89.4	0	0.0
Virgin Australia	15	15	14	93.3	14	93.3	0	0.0
Virgin Australia Regional Airlines	39	39	34	87.2	35	89.7	0	0.0
All Airlines	213	213	175	82.2	191	89.7	0	0.0
Perth-Sydney								
Jetstar	22	22	18	81.8	19	86.4	0	0.0
Qantas	205	203	144	70.9	158	77.8	2	1.0
Tigerair Australia	26	26	18	69.2	20	76.9	0	0.0
Virgin Australia	120	120	104	86.7	107	89.2	0	0.0
All Airlines	373	371	284	76.5	304	81.9	2	0.5
Port Hedland-Perth								
Qantas	36	36	34	94.4	33	91.7	0	0.0
QantasLink	123	122	106	86.9	108	88.5	1	0.8
Virgin Australia	15	15	13	86.7	14	93.3	0	0.0
Virgin Australia Regional Airlines	39	39	32	82.1	32	82.1	0	0.0
All Airlines	213	212	185	87.3	187	88.2	1	0.5
Port Lincoln-Adelaide								
QantasLink	103	103	92	89.3	92	89.3	0	0.0
Regional Express	219	217	191	88.0	202	93.1	2	0.9
All Airlines	322	320	283	88.4	294	91.9	2	0.6
Port Macquarie-Sydney								
QantasLink	119	116	84	72.4	85	73.3	3	2.5
Virgin Australia	60	59	48	81.4	45	76.3	1	1.7
All Airlines	179	175	132	75.4	130	74.3	4	2.2
Proserpine-Brisbane								
Jetstar	27	27	26	96.3	24	88.9	0	0.0
Virgin Australia	42	42	33	78.6	34	81.0	0	0.0
All Airlines	69	69	59	85.5	58	84.1	0	0.0
Proserpine-Sydney								
Jetstar	13	13	11	84.6	11	84.6	0	0.0
Tigerair Australia	22	22	17	77.3	17	77.3	0	0.0
All Airlines	35	35	28	80.0	28	80.0	0	0.0
Rockhampton-Brisbane								
QantasLink	191	189	165	87.3	163	86.2	2	1.0
Virgin Australia	143	143	133	93.0	132	92.3	0	0.0
All Airlines	334	332	298	89.8	295	88.9	2	0.6
Sunshine Coast-Melbourne								
Jetstar	62	62	54	87.1	54	87.1	0	0.0
Virgin Australia	62	61	42	68.9	43	70.5	1	1.6
All Airlines	124	123	96	78.0	97	78.9	1	0.8
Sunshine Coast-Sydney								
Jetstar	95	93	80	86.0	74	79.6	2	2.1
QantasLink	58	58	44	75.9	43	74.1	0	0.0
Virgin Australia	48	48	34	70.8	39	81.3	0	0.0
All Airlines	201	199	158	79.4	156	78.4	2	1.0

	<i>Sectors</i>		<i>Arrivals On Time</i>		<i>Departures On Time</i>		<i>Cancellations</i>	
	<i>Sched.</i>	<i>Flown</i>	<i>No.</i>	<i>%</i>	<i>No.</i>	<i>%</i>	<i>No.</i>	<i>%</i>
Sydney-Adelaide								
Jetstar	85	83	69	83.1	70	84.3	2	2.4
Qantas	246	246	203	82.5	206	83.7	0	0.0
Tigerair Australia	27	27	21	77.8	21	77.8	0	0.0
Virgin Australia	168	163	138	84.7	140	85.9	5	3.0
All Airlines	526	519	431	83.0	437	84.2	7	1.3
Sydney-Albury								
QantasLink	106	105	72	68.6	72	68.6	1	0.9
Regional Express	105	105	85	81.0	86	81.9	0	0.0
Virgin Australia	60	59	41	69.5	43	72.9	1	1.7
All Airlines	271	269	198	73.6	201	74.7	2	0.7
Sydney-Armidale								
QantasLink	120	119	82	68.9	79	66.4	1	0.8
Regional Express	75	75	59	78.7	59	78.7	0	0.0
All Airlines	195	194	141	72.7	138	71.1	1	0.5
Sydney-Ayers Rock								
Jetstar	31	31	25	80.6	28	90.3	0	0.0
Virgin Australia	31	31	28	90.3	29	93.5	0	0.0
All Airlines	62	62	53	85.5	57	91.9	0	0.0
Sydney-Ballina								
Jetstar	70	70	66	94.3	67	95.7	0	0.0
Regional Express	26	26	19	73.1	21	80.8	0	0.0
Virgin Australia	31	31	27	87.1	30	96.8	0	0.0
All Airlines	127	127	112	88.2	118	92.9	0	0.0
Sydney-Brisbane								
Jetstar	169	168	138	82.1	136	81.0	1	0.6
Qantas	639	624	534	85.6	552	88.5	15	2.3
Tigerair Australia	121	121	91	75.2	89	73.6	0	0.0
Virgin Australia	532	507	413	81.5	438	86.4	25	4.7
All Airlines	1 461	1 420	1 176	82.8	1 215	85.6	41	2.8
Sydney-Cairns								
Jetstar	69	69	65	94.2	67	97.1	0	0.0
Qantas	59	59	44	74.6	47	79.7	0	0.0
Tigerair Australia	31	31	26	83.9	30	96.8	0	0.0
Virgin Australia	82	82	71	86.6	72	87.8	0	0.0
All Airlines	241	241	206	85.5	216	89.6	0	0.0
Sydney-Canberra								
QantasLink	486	467	349	74.7	371	79.4	19	3.9
Virgin Australia	253	248	210	84.7	207	83.5	5	2.0
All Airlines	739	715	559	78.2	578	80.8	24	3.2
Sydney-Coffs Harbour								
QantasLink	137	136	115	84.6	105	77.2	1	0.7
Tigerair Australia	23	23	16	69.6	16	69.6	0	0.0
Virgin Australia	31	30	30	100.0	30	100.0	1	3.2
All Airlines	191	189	161	85.2	151	79.9	2	1.0
Sydney-Darwin								
Jetstar	18	18	14	77.8	16	88.9	0	0.0
Qantas	45	45	31	68.9	32	71.1	0	0.0
Virgin Australia	28	28	18	64.3	22	78.6	0	0.0
All Airlines	91	91	63	69.2	70	76.9	0	0.0

	<i>Sectors</i>		<i>Arrivals On Time</i>		<i>Departures On Time</i>		<i>Cancellations</i>	
	<i>Sched.</i>	<i>Flown</i>	<i>No.</i>	<i>%</i>	<i>No.</i>	<i>%</i>	<i>No.</i>	<i>%</i>
Sydney-Dubbo								
QantasLink	118	115	88	76.5	87	75.7	3	2.5
Regional Express	139	139	112	80.6	114	82.0	0	0.0
All Airlines	257	254	200	78.7	201	79.1	3	1.2
Sydney-Gold Coast								
Jetstar	284	282	253	89.7	249	88.3	2	0.7
Qantas	59	59	49	83.1	48	81.4	0	0.0
QantasLink	69	66	49	74.2	50	75.8	3	4.3
Tigerair Australia	84	81	68	84.0	71	87.7	3	3.6
Virgin Australia	254	250	210	84.0	212	84.8	4	1.6
All Airlines	750	738	629	85.2	630	85.4	12	1.6
Sydney-Hamilton Island								
Jetstar	14	14	13	92.9	13	92.9	0	0.0
Qantas	4	4	4	100.0	4	100.0	0	0.0
QantasLink	23	23	12	52.2	15	65.2	0	0.0
Virgin Australia	20	20	18	90.0	20	100.0	0	0.0
All Airlines	61	61	47	77.0	52	85.2	0	0.0
Sydney-Hobart								
Jetstar	57	57	52	91.2	53	93.0	0	0.0
QantasLink	76	76	58	76.3	56	73.7	0	0.0
Virgin Australia	71	70	62	88.6	62	88.6	1	1.4
All Airlines	204	203	172	84.7	171	84.2	1	0.5
Sydney-Launceston								
Jetstar	27	27	26	96.3	26	96.3	0	0.0
Virgin Australia	31	30	28	93.3	27	90.0	1	3.2
All Airlines	58	57	54	94.7	53	93.0	1	1.7
Sydney-Melbourne								
Jetstar	355	350	285	81.4	285	81.4	5	1.4
Qantas	1 131	1 044	790	75.7	873	83.6	87	7.7
Tigerair Australia	249	239	160	66.9	171	71.5	10	4.0
Virgin Australia	776	723	593	82.0	638	88.2	53	6.8
All Airlines	2 511	2 356	1 828	77.6	1 967	83.5	155	6.2
Sydney-Perth								
Jetstar	22	22	21	95.5	14	63.6	0	0.0
Qantas	205	203	158	77.8	125	61.6	2	1.0
Tigerair Australia	27	27	23	85.2	21	77.8	0	0.0
Virgin Australia	120	119	109	91.6	93	78.2	1	0.8
All Airlines	374	371	311	83.8	253	68.2	3	0.8
Sydney-Port Macquarie								
QantasLink	119	117	85	72.6	85	72.6	2	1.7
Virgin Australia	60	59	54	91.5	52	88.1	1	1.7
All Airlines	179	176	139	79.0	137	77.8	3	1.7
Sydney-Proserpine								
Jetstar	14	14	13	92.9	13	92.9	0	0.0
Tigerair Australia	22	22	18	81.8	18	81.8	0	0.0
All Airlines	36	36	31	86.1	31	86.1	0	0.0
Sydney-Sunshine Coast								
Jetstar	95	94	84	89.4	82	87.2	1	1.1
QantasLink	58	58	36	62.1	39	67.2	0	0.0
Virgin Australia	49	49	38	77.6	39	79.6	0	0.0
All Airlines	202	201	158	78.6	160	79.6	1	0.5

	<i>Sectors</i>		<i>Arrivals On Time</i>		<i>Departures On Time</i>		<i>Cancellations</i>	
	<i>Sched.</i>	<i>Flown</i>	<i>No.</i>	<i>%</i>	<i>No.</i>	<i>%</i>	<i>No.</i>	<i>%</i>
Sydney-Tamworth								
QantasLink	130	129	92	71.3	87	67.4	1	0.8
Virgin Australia	54	54	41	75.9	43	79.6	0	0.0
All Airlines	184	183	133	72.7	130	71.0	1	0.5
Sydney-Townsville								
Jetstar	23	23	17	73.9	20	87.0	0	0.0
Virgin Australia	24	24	17	70.8	21	87.5	0	0.0
All Airlines	47	47	34	72.3	41	87.2	0	0.0
Sydney-Wagga Wagga								
QantasLink	109	109	91	83.5	90	82.6	0	0.0
Regional Express	139	138	127	92.0	128	92.8	1	0.7
All Airlines	248	247	218	88.3	218	88.3	1	0.4
Tamworth-Sydney								
QantasLink	130	128	95	74.2	94	73.4	2	1.5
Virgin Australia	54	54	48	88.9	46	85.2	0	0.0
All Airlines	184	182	143	78.6	140	76.9	2	1.1
Townsville-Brisbane								
Jetstar	64	64	56	87.5	54	84.4	0	0.0
Qantas	48	48	47	97.9	42	87.5	0	0.0
QantasLink	115	114	98	86.0	100	87.7	1	0.9
Virgin Australia	149	147	139	94.6	136	92.5	2	1.3
All Airlines	376	373	340	91.2	332	89.0	3	0.8
Townsville-Cairns								
QantasLink	140	136	118	86.8	119	87.5	4	2.9
Regional Express	14	14	12	85.7	12	85.7	0	0.0
All Airlines	154	150	130	86.7	131	87.3	4	2.6
Townsville-Sydney								
Jetstar	23	23	17	73.9	12	52.2	0	0.0
Virgin Australia	24	24	14	58.3	16	66.7	0	0.0
All Airlines	47	47	31	66.0	28	59.6	0	0.0
Wagga Wagga-Sydney								
QantasLink	108	108	94	87.0	93	86.1	0	0.0
Regional Express	137	136	122	89.7	122	89.7	1	0.7
All Airlines	245	244	216	88.5	215	88.1	1	0.4

Airports

On time performance is reported for all routes where the passenger load averages over 8000 passengers per month, and where two or more airlines operate in competition. The following data reports by airport against flights operated on those routes only. This month, 8 major city airports and 32 regional city airports are covered.

Airport	Arrivals			Departures		
	Sectors Flown	On Time No.	%	Sectors Flown	On Time No.	%
Adelaide						
Jetstar	249	198	79.5	249	208	83.5
Qantas	857	737	86.0	853	727	85.2
QantasLink	110	97	88.2	111	97	87.4
Regional Express	217	191	88.0	216	201	93.1
Tigerair Australia	122	92	75.4	122	87	71.3
Virgin Australia	642	554	86.3	639	563	88.1
Virgin Australia Regional Airlines	59	26	44.1	59	40	67.8
All Airlines	2 256	1 895	84.0	2 249	1 923	85.5
Relates to services to and from Alice Springs, Brisbane, Canberra, Gold Coast, Melbourne, Perth, Port Lincoln and Sydney.						
Albury						
QantasLink	105	72	68.6	104	65	62.5
Regional Express	105	85	81.0	107	90	84.1
Virgin Australia	59	41	69.5	59	42	71.2
All Airlines	269	198	73.6	270	197	73.0
Relates to services to and from Sydney only.						
Alice Springs						
Qantas	91	78	85.7	89	79	88.8
Virgin Australia	28	25	89.3	28	26	92.9
Virgin Australia Regional Airlines	17	7	41.2	17	10	58.8
All Airlines	136	110	80.9	134	115	85.8
Relates to services to and from Adelaide and Darwin.						
Armidale						
QantasLink	119	82	68.9	118	84	71.2
Regional Express	75	59	78.7	76	56	73.7
All Airlines	194	141	72.7	194	140	72.2
Relates to services to and from Sydney only.						
Ayers Rock						
Jetstar	31	25	80.6	31	20	64.5
Virgin Australia	31	28	90.3	31	18	58.1
All Airlines	62	53	85.5	62	38	61.3
Relates to services to and from Sydney only.						
Ballina						
Jetstar	70	66	94.3	70	61	87.1
Regional Express	26	19	73.1	26	15	57.7
Virgin Australia	31	27	87.1	31	27	87.1
All Airlines	127	112	88.2	127	103	81.1
Relates to services to and from Sydney only.						

Airport	Arrivals			Departures		
	Sectors	On Time		Sectors	On Time	
	Flown	No.	%	Flown	No.	%
Brisbane						
Jetstar	597	526	88.1	598	519	86.8
Qantas	1 390	1 190	85.6	1 387	1 260	90.8
QantasLink	1 297	1 123	86.6	1 305	1 131	86.7
Tigerair Australia	317	245	77.3	317	239	75.4
Virgin Australia	2 179	1 894	86.9	2 186	1 905	87.1
All Airlines	5 780	4 978	86.1	5 793	5 054	87.2

Relates to services to and from Adelaide, Bundaberg, Cairns, Canberra, Darwin, Emerald, Gladstone, Hamilton Island, Hobart, Mackay, Melbourne, Mount Isa, Newcastle, Perth, Proserpine, Rockhampton, Sydney and Townsville.

Broome

Qantas	6	5	83.3	6	5	83.3
QantasLink	87	70	80.5	87	74	85.1
Virgin Australia Regional Airlines	72	54	75.0	72	53	73.6
All Airlines	165	129	78.2	165	132	80.0

Relates to services to and from Perth only.

Bundaberg

QantasLink	122	105	86.1	122	113	92.6
Virgin Australia	31	27	87.1	31	28	90.3
All Airlines	153	132	86.3	153	141	92.2

Relates to services to and from Brisbane only.

Cairns

Jetstar	237	205	86.5	236	214	90.7
Qantas	112	88	78.6	112	86	76.8
QantasLink	290	241	83.1	288	252	87.5
Regional Express	14	12	85.7	14	12	85.7
Tigerair Australia	93	76	81.7	93	68	73.1
Virgin Australia	245	210	85.7	244	201	82.4
All Airlines	991	832	84.0	987	833	84.4

Relates to services to and from Brisbane, Melbourne, Sydney and Townsville.

Canberra

Qantas	295	257	87.1	294	262	89.1
QantasLink	666	508	76.3	655	525	80.2
Tigerair Australia	56	42	75.0	56	41	73.2
Virgin Australia	545	457	83.9	545	469	86.1
All Airlines	1 562	1 264	80.9	1 550	1 297	83.7

Relates to services to and from Adelaide, Brisbane, Melbourne and Sydney.

Coffs Harbour

QantasLink	136	115	84.6	136	112	82.4
Tigerair Australia	23	16	69.6	23	21	91.3
Virgin Australia	30	30	100.0	30	24	80.0
All Airlines	189	161	85.2	189	157	83.1

Relates to services to and from Sydney only.

Airport	Arrivals			Departures		
	Sectors Flown	On Time		Sectors Flown	On Time	
		No.	%		No.	%
Darwin						
Jetstar	62	47	75.8	62	47	75.8
Qantas	197	155	78.7	198	146	73.7
Tigerair Australia	13	12	92.3	13	10	76.9
Virgin Australia	128	85	66.4	128	87	68.0
Virgin Australia Regional Airlines	16	11	68.8	15	9	60.0
All Airlines	416	310	74.5	416	299	71.9
Relates to services to and from Alice Springs, Brisbane, Melbourne, Perth and Sydney.						
Dubbo						
QantasLink	115	88	76.5	115	89	77.4
Regional Express	139	112	80.6	135	109	80.7
All Airlines	254	200	78.7	250	198	79.2
Relates to services to and from Sydney only.						
Emerald						
QantasLink	123	108	87.8	122	99	81.1
Virgin Australia	54	52	96.3	55	51	92.7
All Airlines	177	160	90.4	177	150	84.7
Relates to services to and from Brisbane only.						
Geraldton						
QantasLink	54	47	87.0	54	50	92.6
Virgin Australia Regional Airlines	30	27	90.0	30	25	83.3
All Airlines	84	74	88.1	84	75	89.3
Relates to services to and from Perth only.						
Gladstone						
QantasLink	142	123	86.6	141	115	81.6
Virgin Australia	77	71	92.2	77	71	92.2
All Airlines	219	194	88.6	218	186	85.3
Relates to services to and from Brisbane only.						
Gold Coast						
Jetstar	477	415	87.0	477	401	84.1
Qantas	89	72	80.9	90	64	71.1
QantasLink	66	49	74.2	67	52	77.6
Tigerair Australia	155	128	82.6	155	115	74.2
Virgin Australia	456	388	85.1	454	366	80.6
All Airlines	1 243	1 052	84.6	1 243	998	80.3
Relates to services to and from Adelaide, Melbourne and Sydney.						
Hamilton Island						
Jetstar	14	13	92.9	14	13	92.9
Qantas	4	4	100.0	4	4	100.0
QantasLink	51	34	66.7	51	37	72.5
Virgin Australia	50	43	86.0	50	45	90.0
All Airlines	119	94	79.0	119	99	83.2
Relates to services to and from Brisbane and Sydney.						

Airport	Arrivals			Departures		
	Sectors Flown	On Time		Sectors Flown	On Time	
		No.	%		No.	%
Hobart						
Jetstar	213	170	79.8	213	144	67.6
Qantas	111	83	74.8	109	80	73.4
QantasLink	77	58	75.3	76	62	81.6
Tigerair Australia	39	35	89.7	39	33	84.6
Virgin Australia	244	200	82.0	243	196	80.7
All Airlines	684	546	79.8	680	515	75.7
Relates to services to and from Brisbane, Melbourne and Sydney.						
Kalgoorlie						
Qantas	8	6	75.0	8	7	87.5
QantasLink	87	75	86.2	87	79	90.8
Virgin Australia	35	33	94.3	35	35	100.0
Virgin Australia Regional Airlines	47	39	83.0	44	40	90.9
All Airlines	177	153	86.4	174	161	92.5
Relates to services to and from Perth only.						
Karratha						
Qantas	42	41	97.6	42	41	97.6
QantasLink	152	138	90.8	152	133	87.5
Virgin Australia	3	3	100.0	3	3	100.0
Virgin Australia Regional Airlines	65	49	75.4	65	59	90.8
All Airlines	262	231	88.2	262	236	90.1
Relates to services to and from Perth only.						
Launceston						
Jetstar	120	102	85.0	120	89	74.2
QantasLink	115	100	87.0	115	104	90.4
Virgin Australia	127	111	87.4	128	117	91.4
All Airlines	362	313	86.5	363	310	85.4
Relates to services to and from Melbourne and Sydney.						
Mackay						
Jetstar	31	28	90.3	31	25	80.6
QantasLink	137	118	86.1	132	123	93.2
Virgin Australia	150	133	88.7	151	137	90.7
All Airlines	318	279	87.7	314	285	90.8
Relates to services to and from Brisbane only.						
Melbourne						
Jetstar	1 257	1 028	81.8	1 257	1 014	80.7
Qantas	2 386	1 907	79.9	2 391	2 027	84.8
QantasLink	251	214	85.3	253	223	88.1
Regional Express	89	73	82.0	88	80	90.9
Tigerair Australia	628	446	71.0	628	509	81.1
Virgin Australia	2 254	1 832	81.3	2 251	1 950	86.6
Virgin Australia Regional Airlines	8	7	87.5	8	5	62.5
All Airlines	6 873	5 507	80.1	6 876	5 808	84.5
Relates to services to and from Adelaide, Brisbane, Cairns, Canberra, Darwin, Gold Coast, Hobart, Launceston, Mildura, Newcastle, Perth, Sunshine Coast and Sydney.						
Mildura						
QantasLink	95	81	85.3	95	81	85.3
Regional Express	88	72	81.8	89	83	93.3
Virgin Australia	31	25	80.6	31	30	96.8
All Airlines	214	178	83.2	215	194	90.2
Relates to services to and from Melbourne only.						

Airport	Arrivals			Departures		
	Sectors Flown	On Time		Sectors Flown	On Time	
		No.	%		No.	%
Mount Isa						
QantasLink	56	46	82.1	55	51	92.7
Virgin Australia	18	16	88.9	15	12	80.0
All Airlines	74	62	83.8	70	63	90.0
Relates to services to and from Brisbane only.						
Newcastle						
Jetstar	166	137	82.5	166	139	83.7
QantasLink	90	77	85.6	90	74	82.2
Virgin Australia	119	101	84.9	118	105	89.0
All Airlines	375	315	84.0	374	318	85.0
Relates to services to and from Brisbane and Melbourne.						
Newman						
Qantas	28	27	96.4	28	28	100.0
QantasLink	121	111	91.7	119	108	90.8
Virgin Australia	18	18	100.0	18	16	88.9
Virgin Australia Regional Airlines	23	21	91.3	23	22	95.7
All Airlines	190	177	93.2	188	174	92.6
Relates to services to and from Perth only.						
Perth						
Jetstar	88	85	96.6	89	76	85.4
Qantas	825	727	88.1	826	711	86.1
QantasLink	623	550	88.3	626	565	90.3
Tigerair Australia	71	54	76.1	70	45	64.3
Virgin Australia	503	447	88.9	508	456	89.8
Virgin Australia Regional Airlines	322	267	82.9	326	282	86.5
All Airlines	2 432	2 130	87.6	2 445	2 135	87.3
Relates to services to and from Adelaide, Brisbane, Broome, Darwin, Geraldton, Kalgoorlie, Karratha, Melbourne, Newman, Port Hedland and Sydney.						
Port Hedland						
Qantas	36	30	83.3	36	33	91.7
QantasLink	123	97	78.9	122	108	88.5
Virgin Australia	15	14	93.3	15	14	93.3
Virgin Australia Regional Airlines	39	34	87.2	39	32	82.1
All Airlines	213	175	82.2	212	187	88.2
Relates to services to and from Perth only.						
Port Lincoln						
QantasLink	103	92	89.3	103	92	89.3
Regional Express	216	197	91.2	217	202	93.1
All Airlines	319	289	90.6	320	294	91.9
Relates to services to and from Adelaide only.						
Port Macquarie						
QantasLink	117	85	72.6	116	85	73.3
Virgin Australia	59	54	91.5	59	45	76.3
All Airlines	176	139	79.0	175	130	74.3
Relates to services to and from Sydney only.						

Airport	Arrivals			Departures		
	Sectors Flown	On Time		Sectors Flown	On Time	
		No.	%		No.	%
Proserpine						
Jetstar	41	39	95.1	40	35	87.5
Tigerair Australia	22	18	81.8	22	17	77.3
Virgin Australia	42	36	85.7	42	34	81.0
All Airlines	105	93	88.6	104	86	82.7
Relates to services to and from Brisbane and Sydney.						
Rockhampton						
QantasLink	185	161	87.0	189	163	86.2
Virgin Australia	143	124	86.7	143	132	92.3
All Airlines	328	285	86.9	332	295	88.9
Relates to services to and from Brisbane only.						
Sunshine Coast						
Jetstar	156	141	90.4	155	128	82.6
QantasLink	58	36	62.1	58	43	74.1
Virgin Australia	111	93	83.8	109	82	75.2
All Airlines	325	270	83.1	322	253	78.6
Relates to services to and from Melbourne and Sydney.						
Sydney						
Jetstar	1 321	1 090	82.5	1 322	1 139	86.2
Qantas	2 280	1 893	83.0	2 284	1 887	82.6
QantasLink	1 509	1 160	76.9	1 520	1 136	74.7
Regional Express	480	382	79.6	483	408	84.5
Tigerair Australia	570	424	74.4	571	437	76.5
Virgin Australia	2 576	2 153	83.6	2 577	2 218	86.1
All Airlines	8 736	7 102	81.3	8 757	7 225	82.5
Relates to services to and from Adelaide, Albury, Armidale, Ayers Rock, Ballina, Brisbane, Cairns, Canberra, Coffs Harbour, Darwin, Dubbo, Gold Coast, Hamilton Island, Hobart, Launceston, Melbourne, Perth, Port Macquarie, Proserpine, Sunshine Coast, Tamworth, Townsville and Wagga Wagga.						
Tamworth						
QantasLink	129	92	71.3	128	94	73.4
Virgin Australia	54	41	75.9	54	46	85.2
All Airlines	183	133	72.7	182	140	76.9
Relates to services to and from Sydney only.						
Townsville						
Jetstar	87	73	83.9	87	66	75.9
Qantas	48	44	91.7	48	42	87.5
QantasLink	250	210	84.0	250	219	87.6
Regional Express	14	12	85.7	14	12	85.7
Virgin Australia	171	144	84.2	171	152	88.9
All Airlines	570	483	84.7	570	491	86.1
Relates to services to and from Brisbane, Cairns and Sydney.						
Wagga Wagga						
QantasLink	109	91	83.5	108	93	86.1
Regional Express	138	127	92.0	136	122	89.7
All Airlines	247	218	88.3	244	215	88.1
Relates to services to and from Sydney only.						

Definitions

On time arrival	A flight arrival is counted as "on time" if it arrived at the gate before 15 minutes after the scheduled arrival time shown in the carriers' schedule. Neither diverted nor cancelled flights count as on time.
On time departure	A flight departure is counted as "on time" if it departs the gate before 15 minutes after the scheduled departure time shown in the carriers' schedule.
Cancellation	A flight removed from service within 7 days of scheduled departure is regarded as a cancellation.
On time departure percentage	The percentage of on time departures is measured against the number of departures <i>operated</i> on any particular sector.
On time arrival percentage	The percentage of on time arrivals is measured against the number of arrivals <i>operated</i> on any particular sector.
Cancellation percentage	The percentage of cancellations is measured against the number of services <i>scheduled</i> on any particular sector.
