



**Australian Government**

**Department of Infrastructure and Regional Development**

Bureau of Infrastructure, Transport and Regional Economics

STATISTICAL REPORT



## Aviation

Domestic airline on time performance  
March 2016

© Commonwealth of Australia 2016

ISSN: 1832-0759

### **Ownership of intellectual property rights in this publication**

Unless otherwise noted, copyright (and any other intellectual property rights, if any) in this publication is owned by the Commonwealth of Australia (referred to below as the Commonwealth).

### **Disclaimer**

The material contained in this publication is made available on the understanding that the Commonwealth is not providing professional advice, and that users exercise their own skill and care with respect to its use, and seek independent advice if necessary.

The Commonwealth makes no representations or warranties as to the contents or accuracy of the information contained in this publication. To the extent permitted by law, the Commonwealth disclaims liability to any person or organisation in respect of anything done, or omitted to be done, in reliance upon information contained in this publication.

### **Creative Commons licence**

With the exception of (a) the Coat of Arms; and (b) the Department of Infrastructure and Regional Development's photos and graphics, copyright in this publication is licensed under a Creative Commons Attribution 3.0 Australia Licence.

Creative Commons Attribution 3.0 Australia Licence is a standard form licence agreement that allows you to copy, communicate and adapt this publication provided that you attribute the work to the Commonwealth and abide by the other licence terms. A summary of the licence terms is available from <http://creativecommons.org/licenses/by/3.0/au/deed.en>. The full licence terms are available from <http://creativecommons.org/licenses/by/3.0/au/legalcode>.

### **Use of the Coat of Arms**

The Department of the Prime Minister and Cabinet sets the terms under which the Coat of Arms is used. Please refer to the Department's Commonwealth Coat of Arms and Government branding web page <http://www.dpmmc.gov.au/guidelines/index.cfm#brand> and, in particular, the Guidelines on the use of the Commonwealth Coat of Arms publication.

An appropriate citation for this report is:

Bureau of Infrastructure, Transport and Regional Economics (BITRE), 2016, Domestic airline on time performance, Statistical Report, BITRE, Canberra ACT.

### **Contact us**

This publication is available in PDF format. All other rights are reserved, including in relation to any Departmental logos or trade marks which may exist. For enquiries regarding the licence and any use of this publication, please contact:

Bureau of Infrastructure, Transport and Regional Economics (BITRE)  
Department of Infrastructure and Regional Development  
GPO Box 501, Canberra ACT 2601, Australia  
Telephone: (international) +61 2 6274 7210  
Fax: (international) +61 2 6274 6855  
Email: [bitre@infrastructure.gov.au](mailto:bitre@infrastructure.gov.au)  
Website: [www.bitre.gov.au](http://www.bitre.gov.au)

### **Inquiries**

Should you require additional information about the statistics contained in this publication:

Telephone (02) 6274 7790 or Facsimile (02) 6274 7727

Electronic mail: [AVSTATS@infrastructure.gov.au](mailto:AVSTATS@infrastructure.gov.au)

Web site: <http://www.bitre.gov.au/statistics/aviation/otphome.aspx>

# Foreword

The Bureau of Infrastructure, Transport and Regional Economics (BITRE) monitors the punctuality and reliability of major domestic airlines operating between Australian airports. The purpose of this is to allow for evaluation of overall industry and individual airline performance, so that consumers of air travel can make informed decisions.

The following domestic airlines currently report this information monthly to the BITRE: Jetstar, Qantas, QantasLink, Regional Express, Tigerair Australia, Virgin Australia and Virgin Australia Regional Airlines. Data has been gathered since November 2003, although some airlines commenced reporting at a later date, including Jetstar which first reported in May 2004, MacAir in July 2005, Tigerair Australia in April 2008 and Virgin Australia Regional Airlines in May 2013. MacAir ceased operations in February 2009 and data was not received for December 2008 onwards. Virgin Blue was rebranded as Virgin Australia in May 2011 and Tiger Airways was rebranded as Tigerair Australia in July 2013 and time series data in Microsoft Excel spreadsheet format on the BITRE website have been revised to reflect these changes. Services operated by Skywest on behalf of Virgin Australia using ATR/F100 aircraft commenced in November 2011 and were shown separately as Virgin Australia – ATR/F100 Operations. Virgin Australia Regional Airlines commenced operations in May 2013. It was formed after the acquisition of Skywest by Virgin Australia and represented a combination of operations previously reported under Skywest and Virgin Australia – ATR/F100 Operations. In January 2016, Virgin Australia transferred their ATR fleet from Virgin Australia Regional Airlines to Virgin Australia.

Information presented in this report is for Australian domestic routes for which the passenger load averaged 8 000 or more passengers per month over the previous six months and where two or more airlines operated in competition on those routes. There were 66 routes that met this definition in March 2016. Over time, routes which meet these criteria change as airline networks and traffic levels vary.

Participating airlines report their overall monthly network performance where this is possible.

Total industry figures encompass all services operated by reporting airlines only. These airlines collectively carried over 95 per cent of total domestic passengers (regular public transport only) in 2015.

The method of capturing on time performance varies between airlines utilising different recording systems. Jetstar and Qantas jet aircraft use Aircraft Communication Addressing and Reporting System (ACARS) to electronically measure on time performance. Regional Express, Tigerair Australia, Virgin Australia, Virgin Australia Regional Airlines and the Qantas non-jet fleet record on time performance manually using records from pilots, gate agents and/or ground crews.

After initial data is collected, aggregate reports are audited internally by participating airlines prior to publication.

Reports and detailed time series data in Microsoft Excel spreadsheet format are available from the BITRE website at: <http://www.bitre.gov.au/statistics/aviation/otphome.aspx>.



# Contents

	Page
Industry performance .....	1
Individual routes .....	10
Airports .....	23
Definitions .....	29



## Industry performance

For March 2016, on time performance over all routes operated by participating airlines (Jetstar, Qantas, QantasLink, Regional Express, Tigerair Australia, Virgin Australia and Virgin Australia Regional Airlines) averaged 85.3 per cent for on time arrivals and 86.3 per cent for on time departures. Cancellations represented 1.3 per cent of all scheduled flights. The equivalent figures for March 2015 were 87.0 per cent for arrivals, 88.9 per cent for departures and 1.0 per cent for cancellations.

This month's on time arrivals figure was better than the long term average performance for all routes (82.7 per cent) and the on time departures figure was also better than the long term average (84.1 per cent). The rate of cancellations was lower than the long term average of 1.4 per cent.

Virgin Australia achieved the highest on time arrivals among the major domestic airlines at 88.2 per cent followed by Qantas at 87.5 per cent, Tigerair Australia at 81.2 per cent and Jetstar at 79.3 per cent. Virgin Australia Regional Airlines was the best performing regional airline for on time arrivals at 90.3 per cent, followed by QantasLink at 85.8 per cent and Regional Express at 83.1 per cent. The Qantas network (Qantas and QantasLink combined operations) recorded 86.6 per cent for on time arrivals while the Virgin Australia network (Virgin Australia and Virgin Australia Regional Airlines combined operations) recorded 88.3 per cent.

Virgin Australia also achieved the highest level of on time departures for March 2016 at 89.5 per cent, followed by Qantas at 89.0 per cent, Tigerair Australia at 82.1 per cent and Jetstar at 76.9 per cent. Of the regional airlines, Virgin Australia Regional Airlines recorded 90.7 per cent followed by Regional Express at 86.9 per cent and QantasLink at 86.4 per cent. The Qantas network recorded 87.7 per cent for on time departures while the Virgin Australia network recorded 89.5 per cent.

QantasLink had the highest percentage of cancellations (2.5 per cent) during the month, followed by Virgin Australia (1.5 per cent), Qantas (1.0 per cent), Virgin Australia Regional Airlines and Tigerair Australia (both 0.9 per cent), Regional Express (0.6 per cent) and Jetstar (0.5 per cent).

Airlines' on time performance varies across the routes they serve. Individual route data by specific airline for 66 routes are shown on pages 10-22.

Of the 66 routes which met the criteria for on time performance reporting in March 2016, the Brisbane-Mount Isa, Mount Isa-Brisbane, Brisbane-Hobart and Hobart-Brisbane routes all recorded 100.0 per cent for on time arrivals. The Mount Isa-Brisbane and Hobart-Brisbane routes recorded 100.0 per cent for on time departures. The Port Macquarie-Sydney route had the lowest percentage of on time arrivals (65.5 per cent) and the Hamilton Island-Sydney route had the lowest percentage of on time departures (59.7 per cent).

Cancellations were highest on the Brisbane-Hamilton Island and Hamilton Island-Brisbane routes at 5.1 per cent, followed by the Sydney-Canberra route at 4.9 per cent, the Brisbane-

Moranbah and Canberra-Sydney routes at 4.8 per cent, the Moranbah-Brisbane route at 4.4 per cent and the Tamworth-Sydney route at 3.8 per cent.

Mount Isa Airport recorded the highest percentage of on time arrivals (100.0 per cent) and the highest percentage of on time departures (also 100.0 per cent). Port Macquarie Airport recorded the lowest percentage of on time arrivals (68.7 per cent) and the lowest percentage of on time departures (71.0 per cent). These figures only refer to reported routes and do not cover all flights at these airports.



Table 1 On time performance for March 2016 — Total Industry

	<i>Sectors</i>		<i>Arrivals On Time</i>		<i>Departures On Time</i>		<i>Cancellations</i>	
	<i>Scheduled</i>	<i>Flown</i>	<i>No.</i>	<i>%</i>	<i>No.</i>	<i>%</i>	<i>No.</i>	<i>%</i>
Jetstar	7 061	7 023	5 567	79.3	5 400	76.9	38	0.5
Qantas	9 670	9 575	8 375	87.5	8 521	89.0	95	1.0
QantasLink	10 581	10 313	8 845	85.8	8 913	86.4	268	2.5
Regional Express	6 474	6 434	5 346	83.1	5 594	86.9	40	0.6
Tigerair Australia	2 244	2 224	1 805	81.2	1 827	82.1	20	0.9
Virgin Australia	12 833	12 646	11 153	88.2	11 316	89.5	187	1.5
Virgin Australia Regional Airlines	530	525	474	90.3	476	90.7	5	0.9
All Airlines	49 393	48 740	41 565	85.3	42 047	86.3	653	1.3
Qantas - all QF designated services	20 251	19 888	17 220	86.6	17 434	87.7	363	1.8
Virgin Australia - all VA designated services	13 363	13 171	11 627	88.3	11 792	89.5	192	1.4

Total airline network data (including routes not shown in this report).

In January 2016, Virgin Australia transferred their ATR fleet from Virgin Australia Regional Airlines to Virgin Australia.

Airlines' on time performance varies across the routes they serve. Individual route data by specific airline for 66 routes are shown on pages 10-22.

Table 2 Top ten routes for on time performance for March 2016 (participating airlines only)

<i>Arrivals</i>		<i>Departures</i>	
<i>Route</i>	<i>On Time (%)</i>	<i>Route</i>	<i>On Time (%)</i>
Brisbane-Mount Isa	100.0	Mount Isa-Brisbane	100.0
Mount Isa-Brisbane	100.0	Hobart-Brisbane	100.0
Brisbane-Hobart	100.0	Brisbane-Mount Isa	98.8
Hobart-Brisbane	100.0	Brisbane-Hobart	98.4
Adelaide-Alice Springs	97.8	Adelaide-Alice Springs	97.8
Perth-Port Hedland	97.5	Perth-Port Hedland	97.0
Perth-Newman	96.9	Perth-Newman	96.4
Sydney-Ayers Rock	96.6	Brisbane-Darwin	95.9
Port Hedland-Perth	96.5	Perth-Darwin	95.8
Darwin-Brisbane	95.9	Perth-Karratha	95.6

Table 3 Top ten airports for on time performance for March 2016 (participating airlines and reported routes only)

<i>Arrivals</i>		<i>Departures</i>	
<i>Airport</i>	<i>On Time (%)</i>	<i>Airport</i>	<i>On Time (%)</i>
Mount Isa	100.0	Mount Isa	100.0
Port Hedland	97.5	Newman	95.4
Newman	96.9	Port Hedland	95.0
Ayers Rock	96.6	Kalgoorlie	93.9
Alice Springs	95.6	Moranbah	93.6
Kalgoorlie	95.3	Karratha	93.6
Karratha	94.6	Geraldton	93.6
Geraldton	92.7	Wagga Wagga	93.5
Darwin	91.8	Perth	93.4
Perth	91.1	Townsville	92.3

## Total industry on time performance

Figure 1 On time performance (by month from March 2013)—Total Industry

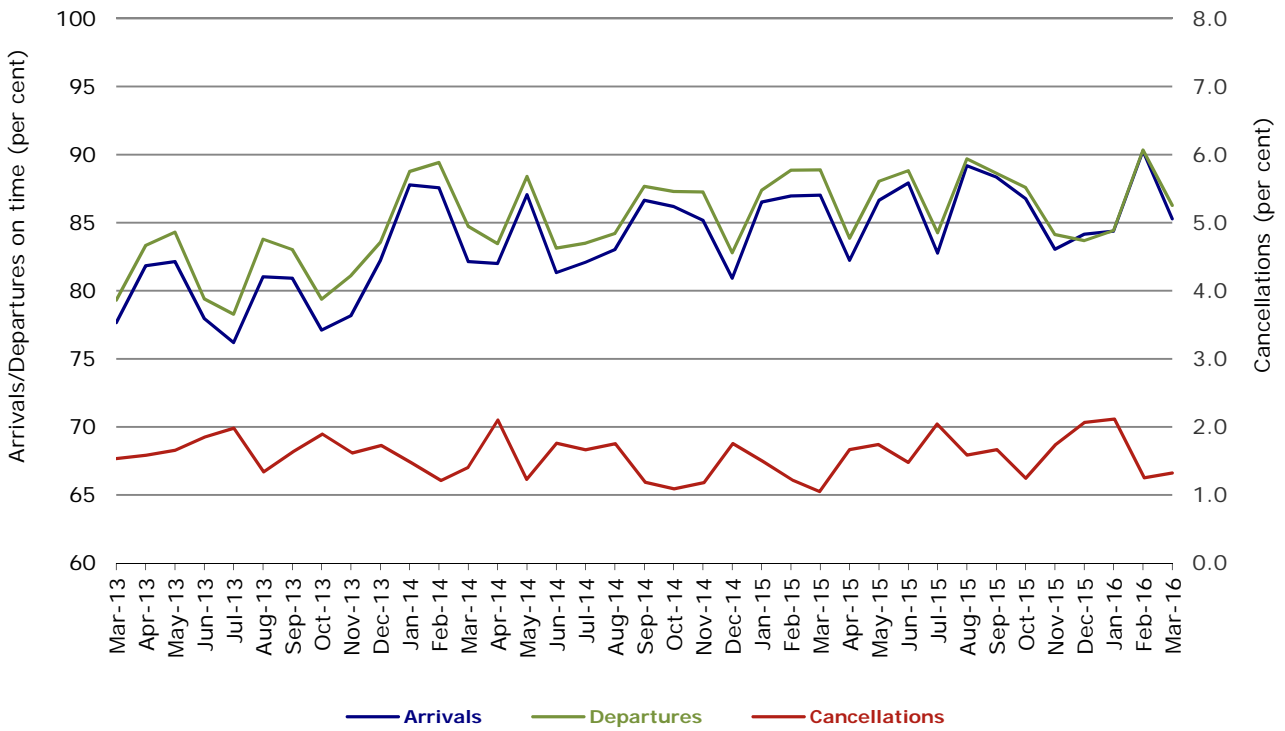


Figure 2 Arrivals on time (by month from March 2015)

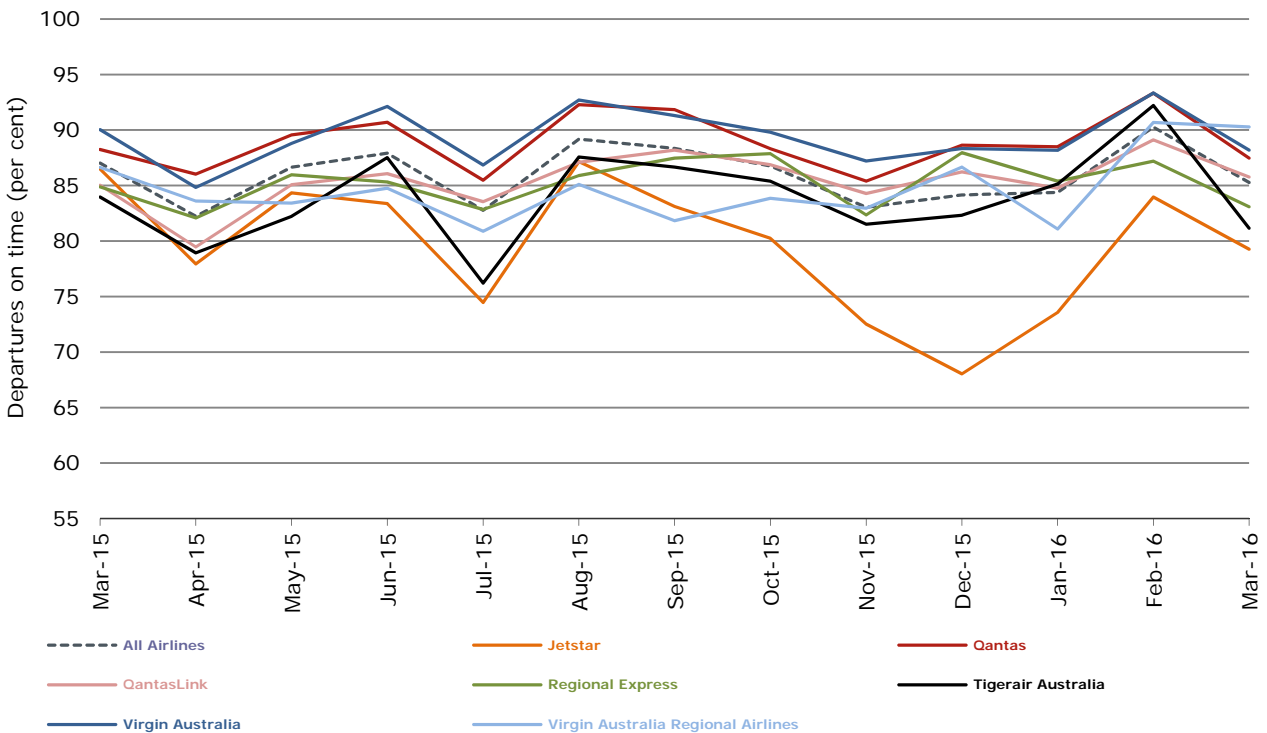


Figure 3 Departures on time (by month from March 2015)

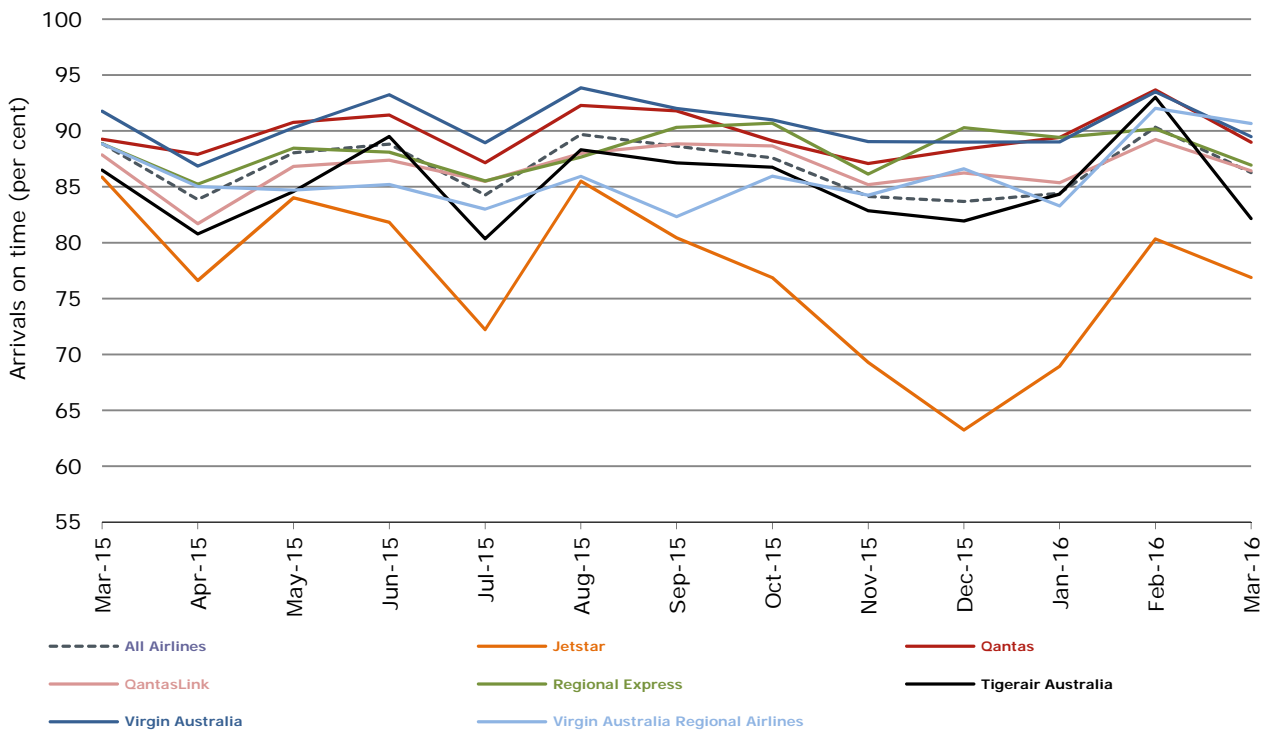
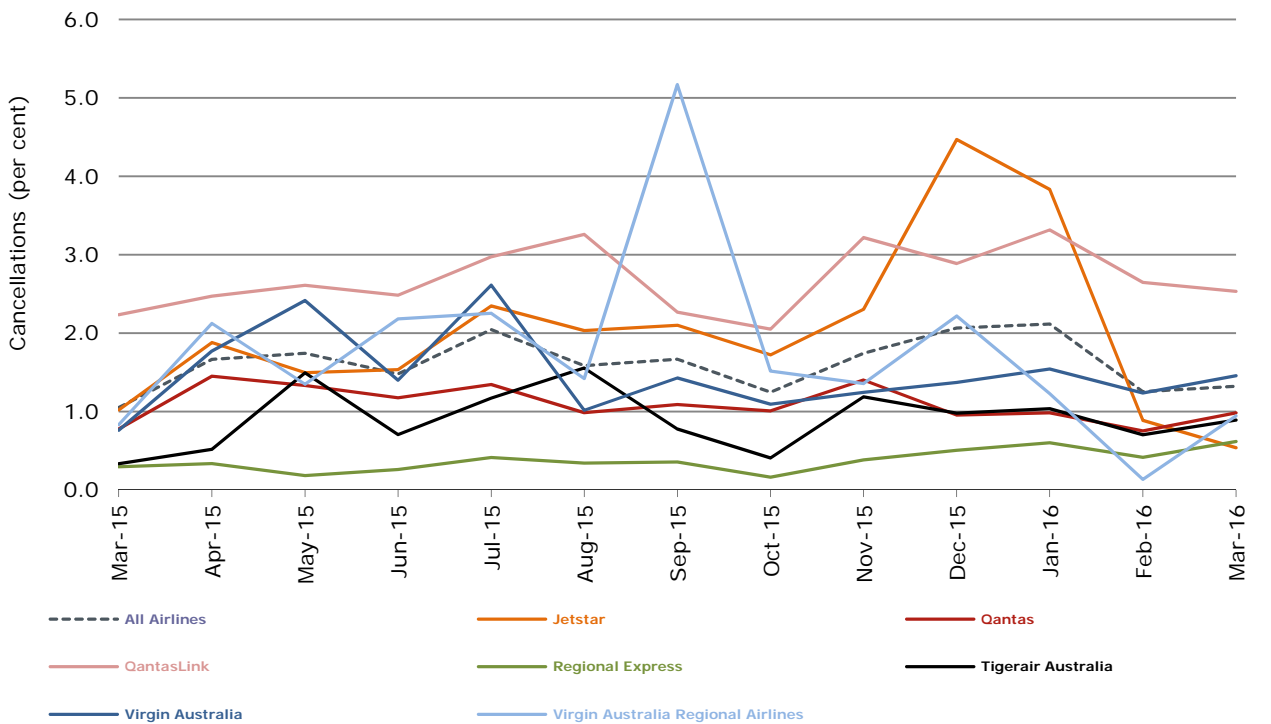


Figure 4 Cancellations (by month from March 2015)



## Major domestic airlines on time performance

Figure 5 On time performance (by month from March 2013)—Jetstar

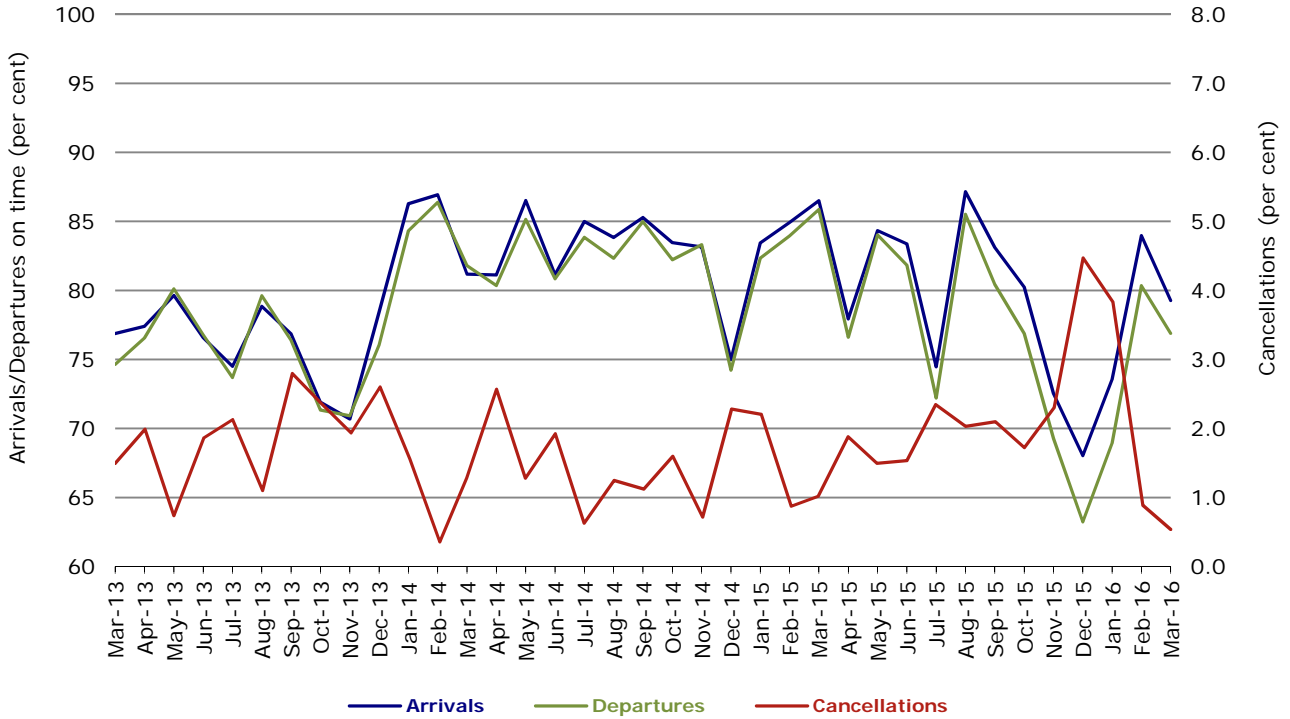


Figure 6 On time performance (by month from March 2013)—Qantas

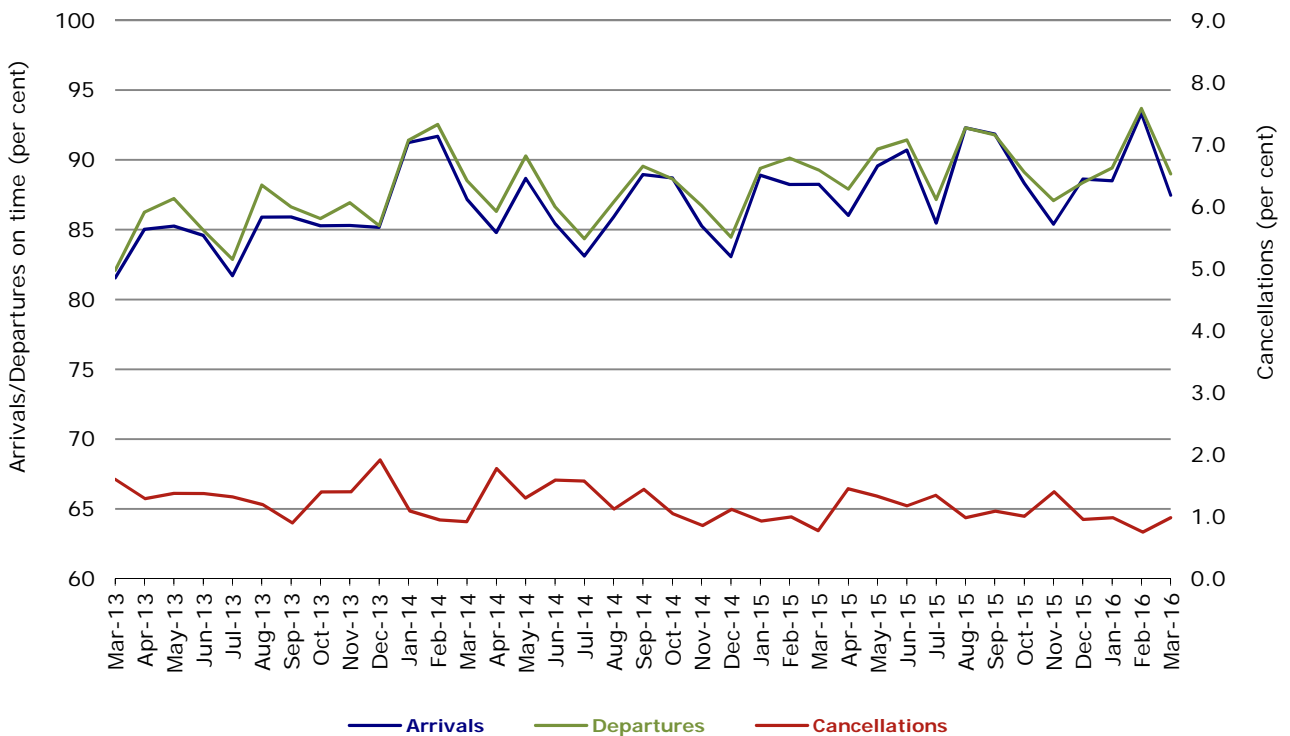


Figure 7 On time performance (by month from March 2013)—Tigerair Australia

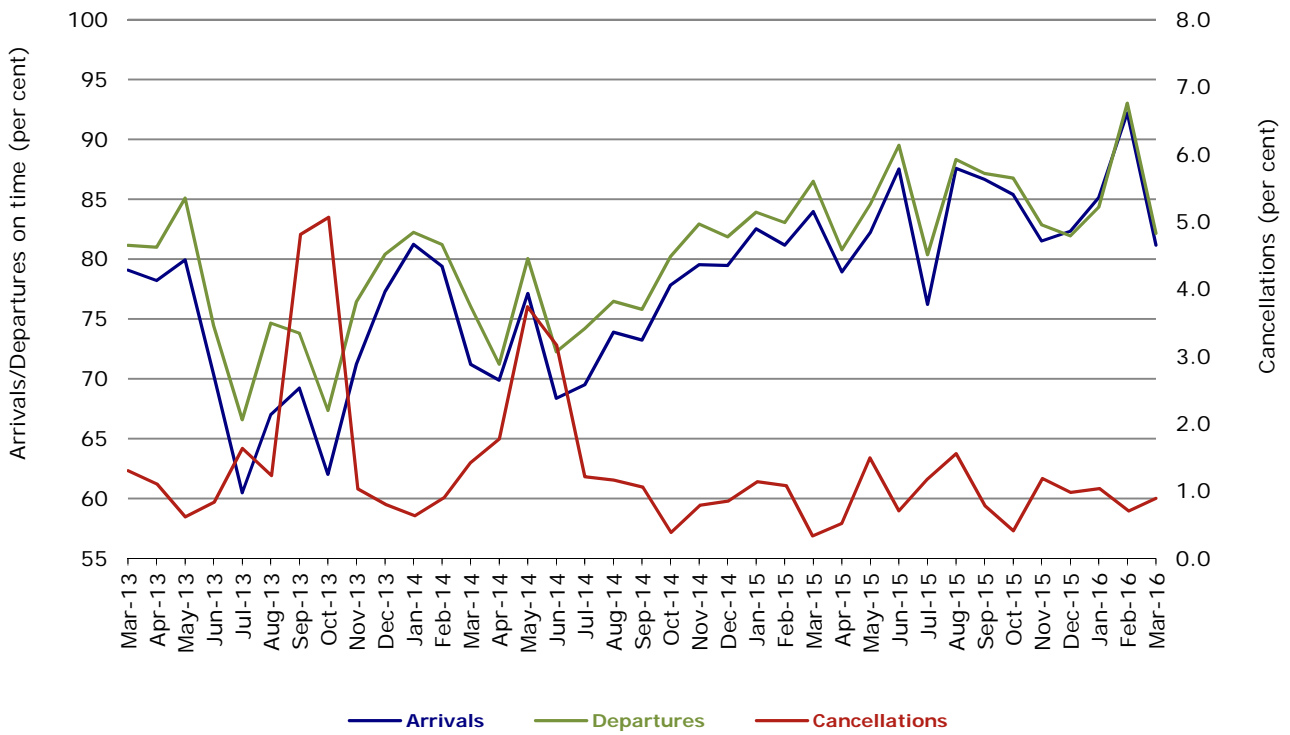
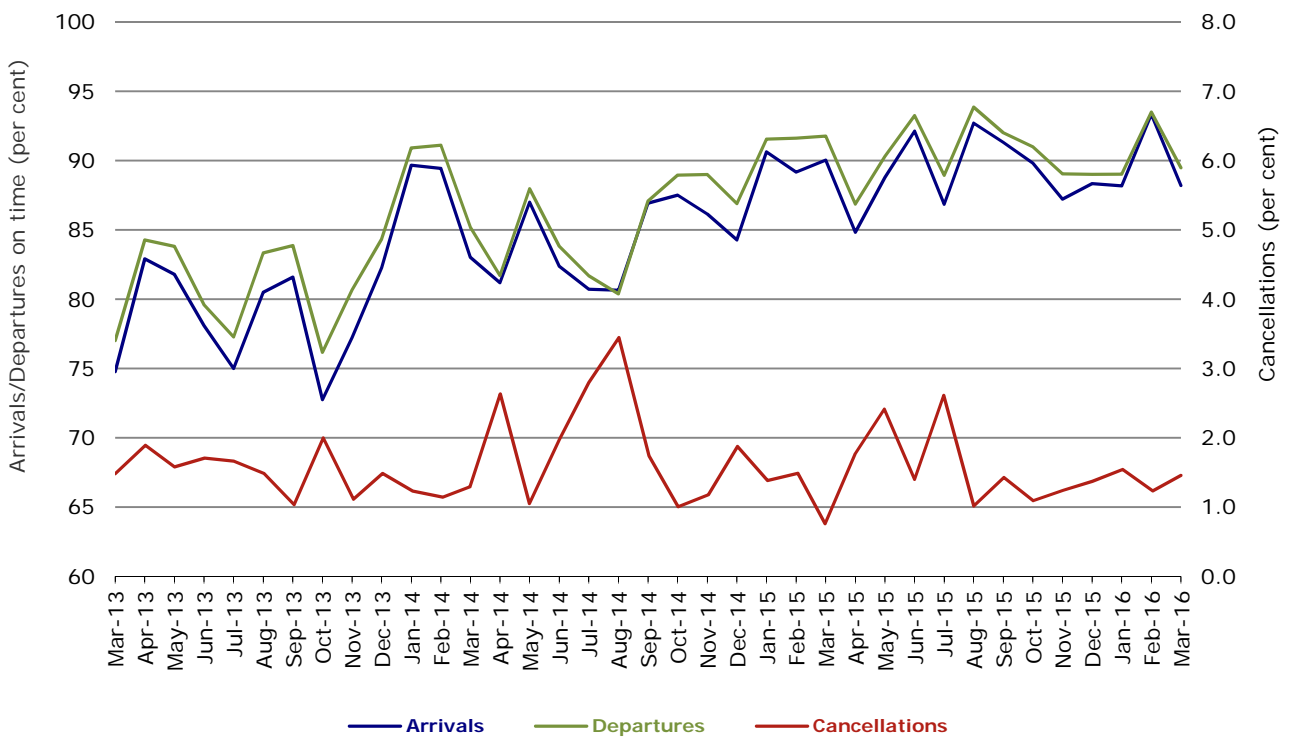


Figure 8 On time performance (by month from March 2013)—Virgin Australia



In January 2016, Virgin Australia transferred their ATR fleet from Virgin Australia Regional Airlines to Virgin Australia.

## Major regional airlines on time performance

Figure 9 On time performance (by month from March 2013)—QantasLink

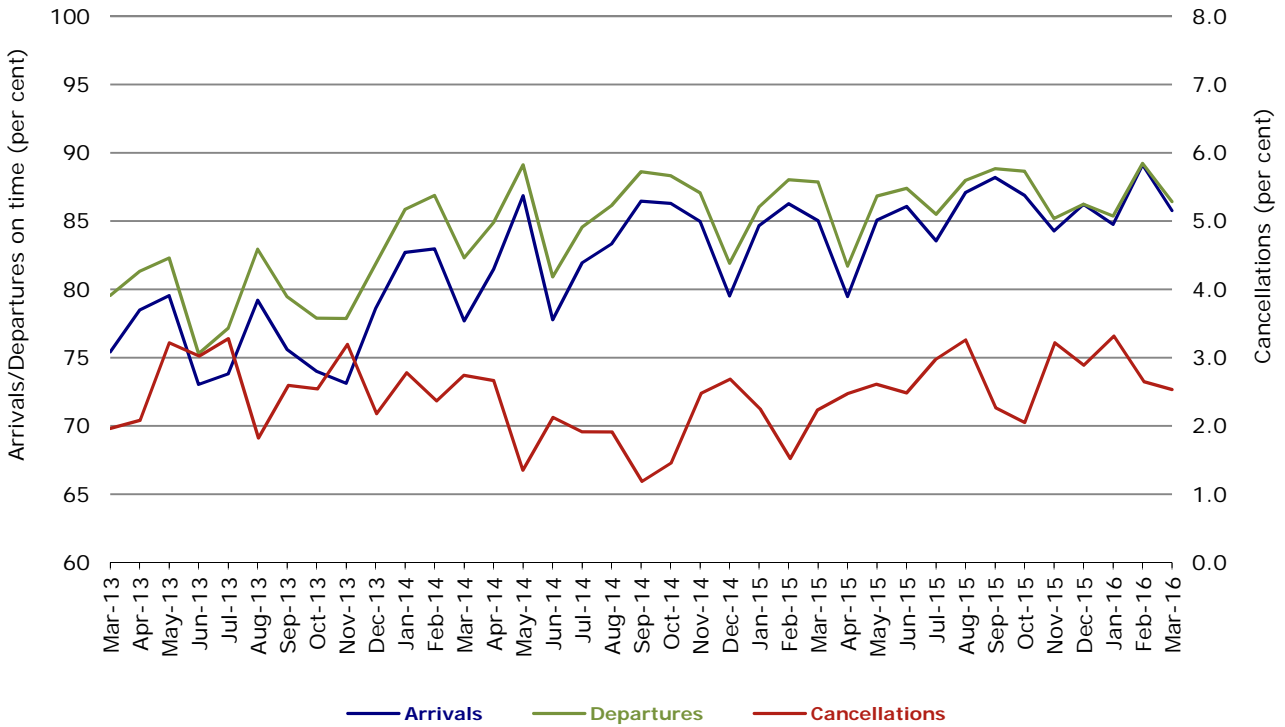


Figure 10 On time performance (by month from March 2013)—Regional Express

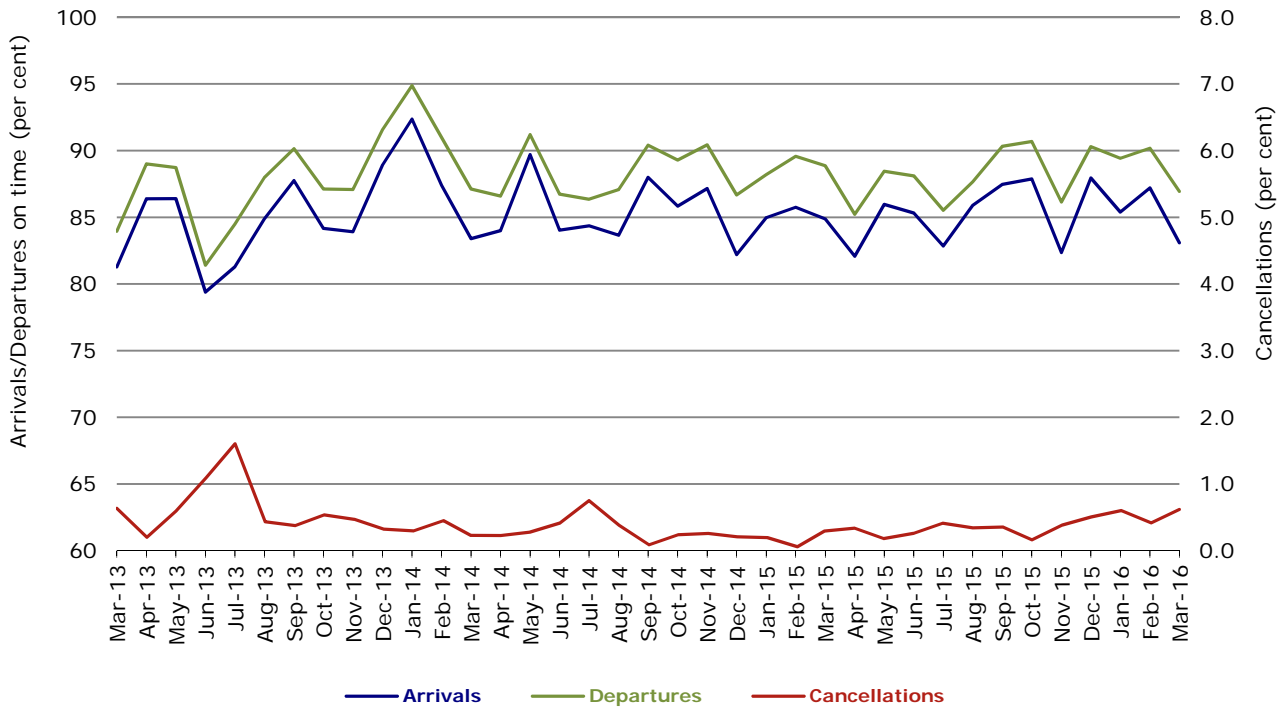
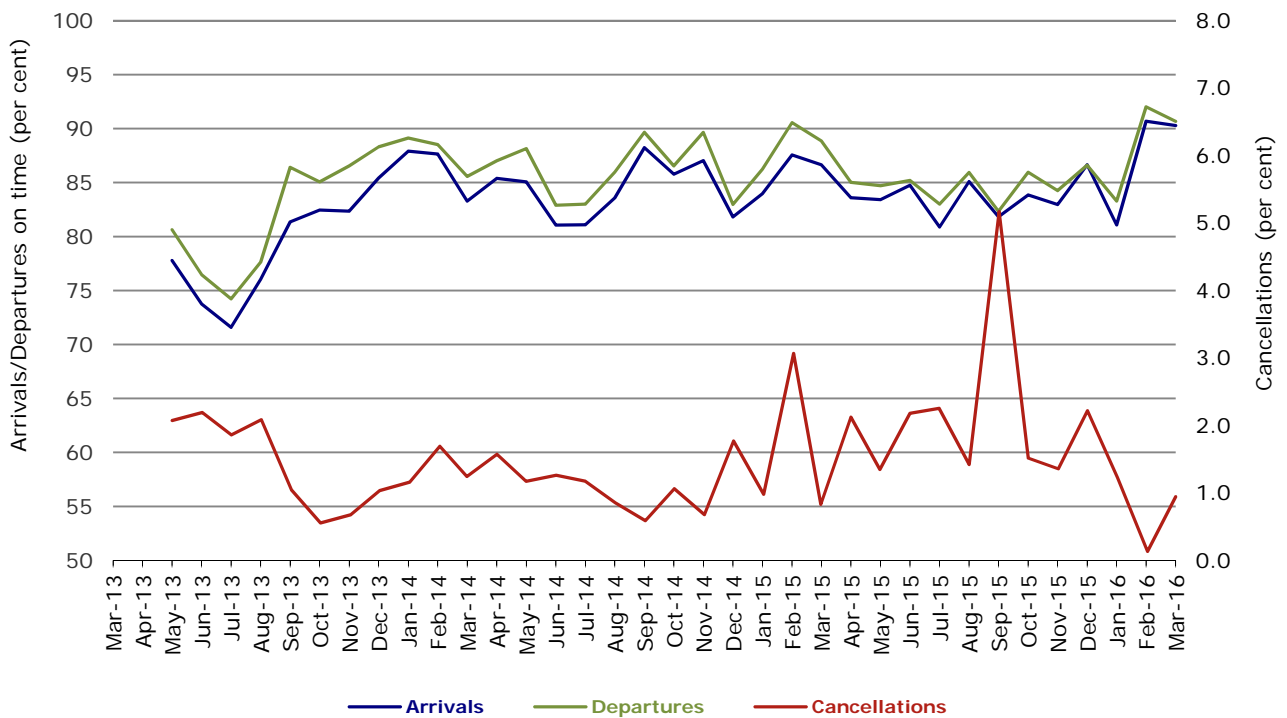


Figure 11 On time performance (by month from March 2013)  
Virgin Australia Regional Airlines



Virgin Australia Regional Airlines commenced operations in May 2013. It was formed after the acquisition of Skywest by Virgin Australia and represented a combination of operations previously reported under Skywest and Virgin Australia – ATR/F100 Operations. In January 2016, Virgin Australia transferred their ATR fleet from Virgin Australia Regional Airlines to Virgin Australia.

## Individual routes

On time performance is reported for all routes where the passenger load averages over 8000 passengers per month over the previous six months, and where two or more airlines operate in competition on those routes. There are now 66 routes which meet this definition. Over time, however, routes which meet this definition may change as airline networks and traffic levels vary.

	<i>Sectors</i>		<i>Arrivals On Time</i>		<i>Departures On Time</i>		<i>Cancellations</i>	
	<i>Sched.</i>	<i>Flown</i>	<i>No.</i>	<i>%</i>	<i>No.</i>	<i>%</i>	<i>No.</i>	<i>%</i>
<b>Adelaide-Alice Springs</b>								
Qantas	31	31	31	100.0	31	100.0	0	0.0
Virgin Australia	14	14	13	92.9	13	92.9	0	0.0
All Airlines	45	45	44	97.8	44	97.8	0	0.0
<b>Adelaide-Brisbane</b>								
Jetstar	27	27	21	77.8	23	85.2	0	0.0
Qantas	122	122	119	97.5	118	96.7	0	0.0
Tigerair Australia	25	25	23	92.0	23	92.0	0	0.0
Virgin Australia	120	120	109	90.8	112	93.3	0	0.0
All Airlines	294	294	272	92.5	276	93.9	0	0.0
<b>Adelaide-Canberra</b>								
Qantas	50	50	47	94.0	48	96.0	0	0.0
Virgin Australia	27	27	24	88.9	25	92.6	0	0.0
All Airlines	77	77	71	92.2	73	94.8	0	0.0
<b>Adelaide-Gold Coast</b>								
Jetstar	35	34	30	88.2	30	88.2	1	2.9
Virgin Australia	31	31	27	87.1	28	90.3	0	0.0
All Airlines	66	65	57	87.7	58	89.2	1	1.5
<b>Adelaide-Melbourne</b>								
Jetstar	117	117	92	78.6	90	76.9	0	0.0
Qantas	294	294	236	80.3	244	83.0	0	0.0
Tigerair Australia	77	77	65	84.4	65	84.4	0	0.0
Virgin Australia	294	293	254	86.7	257	87.7	1	0.3
All Airlines	782	781	647	82.8	656	84.0	1	0.1
<b>Adelaide-Perth</b>								
Jetstar	31	31	27	87.1	26	83.9	0	0.0
Qantas	125	123	118	95.9	116	94.3	2	1.6
Virgin Australia	76	76	71	93.4	68	89.5	0	0.0
All Airlines	232	230	216	93.9	210	91.3	2	0.9
<b>Adelaide-Port Lincoln</b>								
QantasLink	110	107	87	81.3	89	83.2	3	2.7
Regional Express	204	202	182	90.1	187	92.6	2	1.0
All Airlines	314	309	269	87.1	276	89.3	5	1.6
<b>Adelaide-Sydney</b>								
Jetstar	128	127	103	81.1	99	78.0	1	0.8
Qantas	237	234	210	89.7	213	91.0	3	1.3
QantasLink	26	25	18	72.0	17	68.0	1	3.8
Tigerair Australia	47	47	37	78.7	38	80.9	0	0.0
Virgin Australia	175	175	162	92.6	163	93.1	0	0.0
All Airlines	613	608	530	87.2	530	87.2	5	0.8
<b>Albury-Sydney</b>								
QantasLink	93	93	79	84.9	84	90.3	0	0.0
Regional Express	105	105	91	86.7	96	91.4	0	0.0
Virgin Australia	61	61	47	77.0	51	83.6	0	0.0
All Airlines	259	259	217	83.8	231	89.2	0	0.0



	<i>Sectors</i>		<i>Arrivals On Time</i>		<i>Departures On Time</i>		<i>Cancellations</i>	
	<i>Sched.</i>	<i>Flown</i>	<i>No.</i>	<i>%</i>	<i>No.</i>	<i>%</i>	<i>No.</i>	<i>%</i>
<b>Alice Springs-Adelaide</b>								
Qantas	31	31	27	87.1	26	83.9	0	0.0
Virgin Australia	14	14	13	92.9	13	92.9	0	0.0
All Airlines	45	45	40	88.9	39	86.7	0	0.0
<b>Alice Springs-Darwin</b>								
QantasLink	54	53	49	92.5	46	86.8	1	1.9
Virgin Australia	14	14	13	92.9	13	92.9	0	0.0
All Airlines	68	67	62	92.5	59	88.1	1	1.5
<b>Armidale-Sydney</b>								
QantasLink	139	135	110	81.5	105	77.8	4	2.9
Regional Express	77	77	51	66.2	64	83.1	0	0.0
All Airlines	216	212	161	75.9	169	79.7	4	1.9
<b>Ayers Rock-Sydney</b>								
Jetstar	26	26	22	84.6	22	84.6	0	0.0
Virgin Australia	31	31	28	90.3	27	87.1	0	0.0
All Airlines	57	57	50	87.7	49	86.0	0	0.0
<b>Ballina-Sydney</b>								
Jetstar	77	77	61	79.2	53	68.8	0	0.0
Regional Express	26	26	20	76.9	22	84.6	0	0.0
Virgin Australia	35	35	34	97.1	34	97.1	0	0.0
All Airlines	138	138	115	83.3	109	79.0	0	0.0
<b>Brisbane-Adelaide</b>								
Jetstar	27	27	27	100.0	27	100.0	0	0.0
Qantas	122	122	116	95.1	112	91.8	0	0.0
Tigerair Australia	25	25	24	96.0	24	96.0	0	0.0
Virgin Australia	123	123	116	94.3	116	94.3	0	0.0
All Airlines	297	297	283	95.3	279	93.9	0	0.0
<b>Brisbane-Bundaberg</b>								
QantasLink	135	134	120	89.6	121	90.3	1	0.7
Virgin Australia	31	31	29	93.5	28	90.3	0	0.0
All Airlines	166	165	149	90.3	149	90.3	1	0.6
<b>Brisbane-Cairns</b>								
Jetstar	98	98	87	88.8	84	85.7	0	0.0
Qantas	113	113	105	92.9	106	93.8	0	0.0
QantasLink	4	4	4	100.0	4	100.0	0	0.0
Tigerair Australia	31	31	28	90.3	29	93.5	0	0.0
Virgin Australia	138	138	133	96.4	129	93.5	0	0.0
All Airlines	384	384	357	93.0	352	91.7	0	0.0
<b>Brisbane-Canberra</b>								
Qantas	27	27	25	92.6	25	92.6	0	0.0
QantasLink	125	118	101	85.6	100	84.7	7	5.6
Virgin Australia	91	91	91	100.0	89	97.8	0	0.0
All Airlines	243	236	217	91.9	214	90.7	7	2.9
<b>Brisbane-Darwin</b>								
Jetstar	21	21	21	100.0	21	100.0	0	0.0
Qantas	50	50	49	98.0	50	100.0	0	0.0
Tigerair Australia	21	21	20	95.2	20	95.2	0	0.0
Virgin Australia	30	30	26	86.7	26	86.7	0	0.0
All Airlines	122	122	116	95.1	117	95.9	0	0.0
<b>Brisbane-Emerald</b>								
QantasLink	145	142	129	90.8	132	93.0	3	2.1
Virgin Australia	73	73	63	86.3	66	90.4	0	0.0
All Airlines	218	215	192	89.3	198	92.1	3	1.4

	<i>Sectors</i>		<i>Arrivals On Time</i>		<i>Departures On Time</i>		<i>Cancellations</i>	
	<i>Sched.</i>	<i>Flown</i>	<i>No.</i>	<i>%</i>	<i>No.</i>	<i>%</i>	<i>No.</i>	<i>%</i>
<b>Brisbane-Gladstone</b>								
QantasLink	187	183	163	89.1	169	92.3	4	2.1
Virgin Australia	140	140	128	91.4	131	93.6	0	0.0
All Airlines	327	323	291	90.1	300	92.9	4	1.2
<b>Brisbane-Hamilton Island</b>								
QantasLink	28	26	23	88.5	24	92.3	2	7.1
Virgin Australia	31	30	28	93.3	29	96.7	1	3.2
All Airlines	59	56	51	91.1	53	94.6	3	5.1
<b>Brisbane-Hobart</b>								
Jetstar	31	31	31	100.0	30	96.8	0	0.0
Virgin Australia	31	31	31	100.0	31	100.0	0	0.0
All Airlines	62	62	62	100.0	61	98.4	0	0.0
<b>Brisbane-Mackay</b>								
Jetstar	48	48	36	75.0	30	62.5	0	0.0
QantasLink	109	102	92	90.2	95	93.1	7	6.4
Virgin Australia	151	150	139	92.7	136	90.7	1	0.7
All Airlines	308	300	267	89.0	261	87.0	8	2.6
<b>Brisbane-Melbourne</b>								
Jetstar	118	118	99	83.9	97	82.2	0	0.0
Qantas	438	436	365	83.7	400	91.7	2	0.5
Tigerair Australia	127	125	101	80.8	97	77.6	2	1.6
Virgin Australia	401	386	311	80.6	342	88.6	15	3.7
All Airlines	1 084	1 065	876	82.3	936	87.9	19	1.8
<b>Brisbane-Moranbah</b>								
QantasLink	115	107	97	90.7	98	91.6	8	7.0
Virgin Australia	71	70	64	91.4	64	91.4	1	1.4
All Airlines	186	177	161	91.0	162	91.5	9	4.8
<b>Brisbane-Mount Isa</b>								
Qantas	39	39	39	100.0	38	97.4	0	0.0
QantasLink	19	19	19	100.0	19	100.0	0	0.0
Virgin Australia	23	23	23	100.0	23	100.0	0	0.0
All Airlines	81	81	81	100.0	80	98.8	0	0.0
<b>Brisbane-Newcastle</b>								
Jetstar	83	83	72	86.7	69	83.1	0	0.0
QantasLink	98	98	93	94.9	89	90.8	0	0.0
Virgin Australia	91	91	84	92.3	85	93.4	0	0.0
All Airlines	272	272	249	91.5	243	89.3	0	0.0
<b>Brisbane-Perth</b>								
Qantas	136	136	125	91.9	124	91.2	0	0.0
Virgin Australia	111	111	102	91.9	101	91.0	0	0.0
All Airlines	247	247	227	91.9	225	91.1	0	0.0
<b>Brisbane-Proserpine</b>								
Jetstar	28	28	24	85.7	22	78.6	0	0.0
Virgin Australia	50	49	44	89.8	47	95.9	1	2.0
All Airlines	78	77	68	88.3	69	89.6	1	1.3
<b>Brisbane-Rockhampton</b>								
QantasLink	185	179	159	88.8	157	87.7	6	3.2
Virgin Australia	193	193	176	91.2	178	92.2	0	0.0
All Airlines	378	372	335	90.1	335	90.1	6	1.6

	<i>Sectors</i>		<i>Arrivals On Time</i>		<i>Departures On Time</i>		<i>Cancellations</i>	
	<i>Sched.</i>	<i>Flown</i>	<i>No.</i>	<i>%</i>	<i>No.</i>	<i>%</i>	<i>No.</i>	<i>%</i>
<b>Brisbane-Sydney</b>								
Jetstar	178	174	134	77.0	127	73.0	4	2.2
Qantas	641	637	567	89.0	586	92.0	4	0.6
Tigerair Australia	103	99	90	90.9	90	90.9	4	3.9
Virgin Australia	556	542	500	92.3	506	93.4	14	2.5
All Airlines	1 478	1 452	1 291	88.9	1 309	90.2	26	1.8
<b>Brisbane-Townsville</b>								
Jetstar	39	39	29	74.4	30	76.9	0	0.0
Qantas	151	151	141	93.4	136	90.1	0	0.0
Virgin Australia	154	154	148	96.1	144	93.5	0	0.0
All Airlines	344	344	318	92.4	310	90.1	0	0.0
<b>Broome-Perth</b>								
Qantas	17	17	16	94.1	16	94.1	0	0.0
QantasLink	68	67	58	86.6	60	89.6	1	1.5
Virgin Australia	16	15	14	93.3	14	93.3	1	6.3
Virgin Australia Regional Airlines	28	28	23	82.1	22	78.6	0	0.0
All Airlines	129	127	111	87.4	112	88.2	2	1.6
<b>Bundaberg-Brisbane</b>								
QantasLink	135	134	126	94.0	125	93.3	1	0.7
Virgin Australia	31	31	26	83.9	27	87.1	0	0.0
All Airlines	166	165	152	92.1	152	92.1	1	0.6
<b>Cairns-Brisbane</b>								
Jetstar	100	99	90	90.9	89	89.9	1	1.0
Qantas	113	113	108	95.6	111	98.2	0	0.0
QantasLink	4	3	3	100.0	3	100.0	1	25.0
Tigerair Australia	31	31	28	90.3	28	90.3	0	0.0
Virgin Australia	138	138	129	93.5	130	94.2	0	0.0
All Airlines	386	384	358	93.2	361	94.0	2	0.5
<b>Cairns-Melbourne</b>								
Jetstar	86	83	65	78.3	68	81.9	3	3.5
Qantas	39	39	34	87.2	33	84.6	0	0.0
Tigerair Australia	38	38	27	71.1	25	65.8	0	0.0
Virgin Australia	31	31	24	77.4	26	83.9	0	0.0
All Airlines	194	191	150	78.5	152	79.6	3	1.5
<b>Cairns-Sydney</b>								
Jetstar	89	88	80	90.9	79	89.8	1	1.1
Qantas	76	76	71	93.4	66	86.8	0	0.0
Tigerair Australia	41	41	34	82.9	34	82.9	0	0.0
Virgin Australia	90	90	82	91.1	78	86.7	0	0.0
All Airlines	296	295	267	90.5	257	87.1	1	0.3
<b>Cairns-Townsville</b>								
QantasLink	147	145	125	86.2	128	88.3	2	1.4
Regional Express	58	57	55	96.5	55	96.5	1	1.7
All Airlines	205	202	180	89.1	183	90.6	3	1.5
<b>Canberra-Adelaide</b>								
Qantas	50	50	42	84.0	42	84.0	0	0.0
Virgin Australia	27	26	22	84.6	23	88.5	1	3.7
All Airlines	77	76	64	84.2	65	85.5	1	1.3
<b>Canberra-Brisbane</b>								
Qantas	27	27	24	88.9	25	92.6	0	0.0
QantasLink	123	117	95	81.2	95	81.2	6	4.9
Virgin Australia	92	92	89	96.7	89	96.7	0	0.0
All Airlines	242	236	208	88.1	209	88.6	6	2.5

	<i>Sectors</i>		<i>Arrivals On Time</i>		<i>Departures On Time</i>		<i>Cancellations</i>	
	<i>Sched.</i>	<i>Flown</i>	<i>No.</i>	<i>%</i>	<i>No.</i>	<i>%</i>	<i>No.</i>	<i>%</i>
<b>Canberra-Melbourne</b>								
Qantas	216	213	183	85.9	194	91.1	3	1.4
QantasLink	82	78	55	70.5	56	71.8	4	4.9
Virgin Australia	186	184	152	82.6	153	83.2	2	1.1
All Airlines	484	475	390	82.1	403	84.8	9	1.9
<b>Canberra-Sydney</b>								
Qantas	31	30	26	86.7	26	86.7	1	3.2
QantasLink	461	438	377	86.1	377	86.1	23	5.0
Virgin Australia	285	272	223	82.0	229	84.2	13	4.6
All Airlines	777	740	626	84.6	632	85.4	37	4.8
<b>Coffs Harbour-Sydney</b>								
QantasLink	156	154	124	80.5	121	78.6	2	1.3
Tigerair Australia	12	12	10	83.3	11	91.7	0	0.0
Virgin Australia	60	59	50	84.7	52	88.1	1	1.7
All Airlines	228	225	184	81.8	184	81.8	3	1.3
<b>Darwin-Alice Springs</b>								
QantasLink	54	54	51	94.4	51	94.4	0	0.0
Virgin Australia	14	14	13	92.9	14	100.0	0	0.0
All Airlines	68	68	64	94.1	65	95.6	0	0.0
<b>Darwin-Brisbane</b>								
Jetstar	21	21	20	95.2	20	95.2	0	0.0
Qantas	50	50	50	100.0	47	94.0	0	0.0
Tigerair Australia	21	21	20	95.2	20	95.2	0	0.0
Virgin Australia	31	30	27	90.0	27	90.0	1	3.2
All Airlines	123	122	117	95.9	114	93.4	1	0.8
<b>Darwin-Melbourne</b>								
Jetstar	24	23	19	82.6	14	60.9	1	4.2
Qantas	31	31	27	87.1	27	87.1	0	0.0
Virgin Australia	31	31	24	77.4	25	80.6	0	0.0
All Airlines	86	85	70	82.4	66	77.6	1	1.2
<b>Darwin-Perth</b>								
Qantas	39	39	38	97.4	36	92.3	0	0.0
Virgin Australia	31	31	29	93.5	28	90.3	0	0.0
All Airlines	70	70	67	95.7	64	91.4	0	0.0
<b>Darwin-Sydney</b>								
Jetstar	21	21	21	100.0	19	90.5	0	0.0
Qantas	39	39	33	84.6	34	87.2	0	0.0
Virgin Australia	31	31	29	93.5	29	93.5	0	0.0
All Airlines	91	91	83	91.2	82	90.1	0	0.0
<b>Dubbo-Sydney</b>								
QantasLink	130	127	103	81.1	105	82.7	3	2.3
Regional Express	152	151	123	81.5	138	91.4	1	0.7
All Airlines	282	278	226	81.3	243	87.4	4	1.4
<b>Emerald-Brisbane</b>								
QantasLink	144	142	124	87.3	123	86.6	2	1.4
Virgin Australia	73	73	66	90.4	67	91.8	0	0.0
All Airlines	217	215	190	88.4	190	88.4	2	0.9
<b>Geraldton-Perth</b>								
QantasLink	49	49	47	95.9	46	93.9	0	0.0
Virgin Australia Regional Airlines	61	60	56	93.3	56	93.3	1	1.6
All Airlines	110	109	103	94.5	102	93.6	1	0.9

	<i>Sectors</i>		<i>Arrivals On Time</i>		<i>Departures On Time</i>		<i>Cancellations</i>	
	<i>Sched.</i>	<i>Flown</i>	<i>No.</i>	<i>%</i>	<i>No.</i>	<i>%</i>	<i>No.</i>	<i>%</i>
<b>Gladstone-Brisbane</b>								
QantasLink	186	181	162	89.5	157	86.7	5	2.7
Virgin Australia	140	140	125	89.3	124	88.6	0	0.0
All Airlines	326	321	287	89.4	281	87.5	5	1.5
<b>Gold Coast-Adelaide</b>								
Jetstar	35	34	32	94.1	33	97.1	1	2.9
Virgin Australia	31	31	27	87.1	23	74.2	0	0.0
All Airlines	66	65	59	90.8	56	86.2	1	1.5
<b>Gold Coast-Melbourne</b>								
Jetstar	165	165	128	77.6	117	70.9	0	0.0
Qantas	33	33	24	72.7	24	72.7	0	0.0
Tigerair Australia	85	84	70	83.3	67	79.8	1	1.2
Virgin Australia	187	187	159	85.0	153	81.8	0	0.0
All Airlines	470	469	381	81.2	361	77.0	1	0.2
<b>Gold Coast-Sydney</b>								
Jetstar	295	292	246	84.2	224	76.7	3	1.0
Qantas	98	98	91	92.9	91	92.9	0	0.0
QantasLink	13	11	9	81.8	8	72.7	2	15.4
Tigerair Australia	119	118	99	83.9	95	80.5	1	0.8
Virgin Australia	257	254	217	85.4	218	85.8	3	1.2
All Airlines	782	773	662	85.6	636	82.3	9	1.2
<b>Hamilton Island-Brisbane</b>								
QantasLink	28	26	24	92.3	22	84.6	2	7.1
Virgin Australia	31	30	28	93.3	28	93.3	1	3.2
All Airlines	59	56	52	92.9	50	89.3	3	5.1
<b>Hamilton Island-Melbourne</b>								
Qantas	12	12	9	75.0	9	75.0	0	0.0
Virgin Australia	19	19	15	78.9	14	73.7	0	0.0
All Airlines	31	31	24	77.4	23	74.2	0	0.0
<b>Hamilton Island-Sydney</b>								
Jetstar	21	21	16	76.2	12	57.1	0	0.0
Qantas	21	20	17	85.0	11	55.0	1	4.8
Virgin Australia	31	31	25	80.6	20	64.5	0	0.0
All Airlines	73	72	58	80.6	43	59.7	1	1.4
<b>Hobart-Brisbane</b>								
Jetstar	30	30	30	100.0	30	100.0	0	0.0
Virgin Australia	31	31	31	100.0	31	100.0	0	0.0
All Airlines	61	61	61	100.0	61	100.0	0	0.0
<b>Hobart-Melbourne</b>								
Jetstar	195	194	137	70.6	127	65.5	1	0.5
Qantas	3	3	2	66.7	2	66.7	0	0.0
QantasLink	138	134	98	73.1	111	82.8	4	2.9
Tigerair Australia	35	35	25	71.4	25	71.4	0	0.0
Virgin Australia	144	143	118	82.5	121	84.6	1	0.7
All Airlines	515	509	380	74.7	386	75.8	6	1.2
<b>Hobart-Sydney</b>								
Jetstar	86	86	64	74.4	64	74.4	0	0.0
Qantas	1	1	1	100.0	1	100.0	0	0.0
QantasLink	51	51	38	74.5	41	80.4	0	0.0
Virgin Australia	63	63	55	87.3	55	87.3	0	0.0
All Airlines	201	201	158	78.6	161	80.1	0	0.0

	<i>Sectors</i>		<i>Arrivals On Time</i>		<i>Departures On Time</i>		<i>Cancellations</i>	
	<i>Sched.</i>	<i>Flown</i>	<i>No.</i>	<i>%</i>	<i>No.</i>	<i>%</i>	<i>No.</i>	<i>%</i>
<b>Kalgoorlie-Perth</b>								
Qantas	4	4	4	100.0	4	100.0	0	0.0
QantasLink	81	81	76	93.8	76	93.8	0	0.0
Virgin Australia	33	32	32	100.0	32	100.0	1	3.0
Virgin Australia Regional Airlines	30	30	27	90.0	26	86.7	0	0.0
All Airlines	148	147	139	94.6	138	93.9	1	0.7
<b>Karratha-Perth</b>								
Qantas	48	47	47	100.0	47	100.0	1	2.1
QantasLink	168	163	154	94.5	153	93.9	5	3.0
Virgin Australia	40	40	38	95.0	38	95.0	0	0.0
Virgin Australia Regional Airlines	47	46	39	84.8	39	84.8	1	2.1
All Airlines	303	296	278	93.9	277	93.6	7	2.3
<b>Launceston-Melbourne</b>								
Jetstar	143	143	96	67.1	101	70.6	0	0.0
QantasLink	120	113	91	80.5	91	80.5	7	5.8
Virgin Australia	94	94	81	86.2	83	88.3	0	0.0
All Airlines	357	350	268	76.6	275	78.6	7	2.0
<b>Launceston-Sydney</b>								
Jetstar	63	62	45	72.6	44	71.0	1	1.6
Virgin Australia	31	31	27	87.1	28	90.3	0	0.0
All Airlines	94	93	72	77.4	72	77.4	1	1.1
<b>Mackay-Brisbane</b>								
Jetstar	48	48	35	72.9	35	72.9	0	0.0
QantasLink	109	101	89	88.1	88	87.1	8	7.3
Virgin Australia	150	149	135	90.6	137	91.9	1	0.7
All Airlines	307	298	259	86.9	260	87.2	9	2.9
<b>Melbourne-Adelaide</b>								
Jetstar	117	117	87	74.4	95	81.2	0	0.0
Qantas	294	294	250	85.0	248	84.4	0	0.0
Tigerair Australia	77	77	70	90.9	71	92.2	0	0.0
Virgin Australia	286	286	236	82.5	246	86.0	0	0.0
All Airlines	774	774	643	83.1	660	85.3	0	0.0
<b>Melbourne-Brisbane</b>								
Jetstar	118	118	93	78.8	86	72.9	0	0.0
Qantas	436	435	385	88.5	383	88.0	1	0.2
Tigerair Australia	128	126	94	74.6	102	81.0	2	1.6
Virgin Australia	399	384	342	89.1	345	89.8	15	3.8
All Airlines	1 081	1 063	914	86.0	916	86.2	18	1.7
<b>Melbourne-Cairns</b>								
Jetstar	86	85	59	69.4	53	62.4	1	1.2
Qantas	39	39	34	87.2	31	79.5	0	0.0
Tigerair Australia	38	38	30	78.9	32	84.2	0	0.0
Virgin Australia	31	31	27	87.1	27	87.1	0	0.0
All Airlines	194	193	150	77.7	143	74.1	1	0.5
<b>Melbourne-Canberra</b>								
Qantas	216	213	183	85.9	182	85.4	3	1.4
QantasLink	82	77	58	75.3	59	76.6	5	6.1
Virgin Australia	186	183	162	88.5	163	89.1	3	1.6
All Airlines	484	473	403	85.2	404	85.4	11	2.3
<b>Melbourne-Darwin</b>								
Jetstar	25	25	21	84.0	23	92.0	0	0.0
Qantas	31	31	30	96.8	30	96.8	0	0.0
Virgin Australia	31	31	25	80.6	25	80.6	0	0.0
All Airlines	87	87	76	87.4	78	89.7	0	0.0

	<i>Sectors</i>		<i>Arrivals On Time</i>		<i>Departures On Time</i>		<i>Cancellations</i>	
	<i>Sched.</i>	<i>Flown</i>	<i>No.</i>	<i>%</i>	<i>No.</i>	<i>%</i>	<i>No.</i>	<i>%</i>
<b>Melbourne-Gold Coast</b>								
Jetstar	166	166	113	68.1	115	69.3	0	0.0
Qantas	33	33	25	75.8	29	87.9	0	0.0
Tigerair Australia	85	84	76	90.5	78	92.9	1	1.2
Virgin Australia	187	187	155	82.9	156	83.4	0	0.0
All Airlines	471	470	369	78.5	378	80.4	1	0.2
<b>Melbourne-Hamilton Island</b>								
Qantas	12	12	12	100.0	11	91.7	0	0.0
Virgin Australia	19	19	16	84.2	17	89.5	0	0.0
All Airlines	31	31	28	90.3	28	90.3	0	0.0
<b>Melbourne-Hobart</b>								
Jetstar	196	196	147	75.0	144	73.5	0	0.0
Qantas	3	3	2	66.7	2	66.7	0	0.0
QantasLink	138	134	106	79.1	110	82.1	4	2.9
Tigerair Australia	35	35	30	85.7	31	88.6	0	0.0
Virgin Australia	144	143	127	88.8	129	90.2	1	0.7
All Airlines	516	511	412	80.6	416	81.4	5	1.0
<b>Melbourne-Launceston</b>								
Jetstar	143	143	103	72.0	102	71.3	0	0.0
QantasLink	120	113	88	77.9	96	85.0	7	5.8
Virgin Australia	94	94	81	86.2	82	87.2	0	0.0
All Airlines	357	350	272	77.7	280	80.0	7	2.0
<b>Melbourne-Mildura</b>								
QantasLink	96	95	72	75.8	71	74.7	1	1.0
Regional Express	80	80	67	83.8	71	88.8	0	0.0
Virgin Australia	31	31	27	87.1	29	93.5	0	0.0
All Airlines	207	206	166	80.6	171	83.0	1	0.5
<b>Melbourne-Newcastle</b>								
Jetstar	99	99	72	72.7	73	73.7	0	0.0
Virgin Australia	35	35	31	88.6	34	97.1	0	0.0
All Airlines	134	134	103	76.9	107	79.9	0	0.0
<b>Melbourne-Perth</b>								
Jetstar	81	80	73	91.3	68	85.0	1	1.2
Qantas	198	198	169	85.4	163	82.3	0	0.0
Tigerair Australia	58	58	51	87.9	47	81.0	0	0.0
Virgin Australia	148	148	129	87.2	125	84.5	0	0.0
All Airlines	485	484	422	87.2	403	83.3	1	0.2
<b>Melbourne-Sunshine Coast</b>								
Jetstar	74	74	63	85.1	63	85.1	0	0.0
Virgin Australia	35	35	26	74.3	30	85.7	0	0.0
All Airlines	109	109	89	81.7	93	85.3	0	0.0
<b>Melbourne-Sydney</b>								
Jetstar	378	377	264	70.0	266	70.6	1	0.3
Qantas	984	955	778	81.5	810	84.8	29	2.9
Tigerair Australia	244	242	168	69.4	178	73.6	2	0.8
Virgin Australia	804	769	663	86.2	692	90.0	35	4.4
All Airlines	2 410	2 343	1 873	79.9	1 946	83.1	67	2.8
<b>Mildura-Melbourne</b>								
QantasLink	96	95	76	80.0	80	84.2	1	1.0
Regional Express	80	80	53	66.3	57	71.3	0	0.0
Virgin Australia	31	31	28	90.3	29	93.5	0	0.0
All Airlines	207	206	157	76.2	166	80.6	1	0.5

	<i>Sectors</i>		<i>Arrivals On Time</i>		<i>Departures On Time</i>		<i>Cancellations</i>	
	<i>Sched.</i>	<i>Flown</i>	<i>No.</i>	<i>%</i>	<i>No.</i>	<i>%</i>	<i>No.</i>	<i>%</i>
<b>Moranbah-Brisbane</b>								
QantasLink	110	103	88	85.4	94	91.3	7	6.4
Virgin Australia	71	70	66	94.3	68	97.1	1	1.4
All Airlines	181	173	154	89.0	162	93.6	8	4.4
<b>Mount Isa-Brisbane</b>								
Qantas	39	39	39	100.0	39	100.0	0	0.0
QantasLink	19	19	19	100.0	19	100.0	0	0.0
Virgin Australia	23	23	23	100.0	23	100.0	0	0.0
All Airlines	81	81	81	100.0	81	100.0	0	0.0
<b>Newcastle-Brisbane</b>								
Jetstar	83	83	64	77.1	69	83.1	0	0.0
QantasLink	98	97	93	95.9	89	91.8	1	1.0
Virgin Australia	92	90	84	93.3	84	93.3	2	2.2
All Airlines	273	270	241	89.3	242	89.6	3	1.1
<b>Newcastle-Melbourne</b>								
Jetstar	99	98	68	69.4	71	72.4	1	1.0
Virgin Australia	35	35	26	74.3	27	77.1	0	0.0
All Airlines	134	133	94	70.7	98	73.7	1	0.7
<b>Newman-Perth</b>								
Qantas	82	81	79	97.5	79	97.5	1	1.2
QantasLink	76	75	71	94.7	70	93.3	1	1.3
Virgin Australia	20	20	20	100.0	20	100.0	0	0.0
Virgin Australia Regional Airlines	18	18	15	83.3	16	88.9	0	0.0
All Airlines	196	194	185	95.4	185	95.4	2	1.0
<b>Perth-Adelaide</b>								
Jetstar	31	31	24	77.4	24	77.4	0	0.0
Qantas	130	128	123	96.1	122	95.3	2	1.5
Virgin Australia	80	80	74	92.5	76	95.0	0	0.0
All Airlines	241	239	221	92.5	222	92.9	2	0.8
<b>Perth-Brisbane</b>								
Qantas	137	137	122	89.1	128	93.4	0	0.0
Virgin Australia	112	112	105	93.8	105	93.8	0	0.0
All Airlines	249	249	227	91.2	233	93.6	0	0.0
<b>Perth-Broome</b>								
Qantas	17	17	16	94.1	16	94.1	0	0.0
QantasLink	68	68	62	91.2	63	92.6	0	0.0
Virgin Australia	16	16	16	100.0	16	100.0	0	0.0
Virgin Australia Regional Airlines	28	28	23	82.1	24	85.7	0	0.0
All Airlines	129	129	117	90.7	119	92.2	0	0.0
<b>Perth-Darwin</b>								
Qantas	40	40	38	95.0	38	95.0	0	0.0
Virgin Australia	31	31	30	96.8	30	96.8	0	0.0
All Airlines	71	71	68	95.8	68	95.8	0	0.0
<b>Perth-Geraldton</b>								
QantasLink	49	49	47	95.9	46	93.9	0	0.0
Virgin Australia Regional Airlines	61	61	55	90.2	56	91.8	0	0.0
All Airlines	110	110	102	92.7	102	92.7	0	0.0
<b>Perth-Kalgoorlie</b>								
Qantas	4	4	4	100.0	4	100.0	0	0.0
QantasLink	81	81	76	93.8	75	92.6	0	0.0
Virgin Australia	33	33	33	100.0	33	100.0	0	0.0
Virgin Australia Regional Airlines	30	30	28	93.3	28	93.3	0	0.0
All Airlines	148	148	141	95.3	140	94.6	0	0.0



	<i>Sectors</i>		<i>Arrivals On Time</i>		<i>Departures On Time</i>		<i>Cancellations</i>	
	<i>Sched.</i>	<i>Flown</i>	<i>No.</i>	<i>%</i>	<i>No.</i>	<i>%</i>	<i>No.</i>	<i>%</i>
<b>Perth-Karratha</b>								
Qantas	48	47	45	95.7	45	95.7	1	2.1
QantasLink	169	163	154	94.5	157	96.3	6	3.6
Virgin Australia	40	40	39	97.5	39	97.5	0	0.0
Virgin Australia Regional Airlines	47	47	43	91.5	43	91.5	0	0.0
All Airlines	304	297	281	94.6	284	95.6	7	2.3
<b>Perth-Melbourne</b>								
Jetstar	81	80	69	86.3	71	88.8	1	1.2
Qantas	198	198	176	88.9	181	91.4	0	0.0
Tigerair Australia	57	57	48	84.2	47	82.5	0	0.0
Virgin Australia	145	145	125	86.2	135	93.1	0	0.0
All Airlines	481	480	418	87.1	434	90.4	1	0.2
<b>Perth-Newman</b>								
Qantas	82	82	80	97.6	80	97.6	0	0.0
QantasLink	77	75	72	96.0	71	94.7	2	2.6
Virgin Australia	20	20	20	100.0	20	100.0	0	0.0
Virgin Australia Regional Airlines	18	18	17	94.4	17	94.4	0	0.0
All Airlines	197	195	189	96.9	188	96.4	2	1.0
<b>Perth-Port Hedland</b>								
Qantas	73	73	73	100.0	73	100.0	0	0.0
QantasLink	73	73	69	94.5	71	97.3	0	0.0
Virgin Australia	40	40	39	97.5	36	90.0	0	0.0
Virgin Australia Regional Airlines	14	14	14	100.0	14	100.0	0	0.0
All Airlines	200	200	195	97.5	194	97.0	0	0.0
<b>Perth-Sydney</b>								
Jetstar	31	31	29	93.5	28	90.3	0	0.0
Qantas	206	206	190	92.2	189	91.7	0	0.0
Tigerair Australia	27	27	25	92.6	24	88.9	0	0.0
Virgin Australia	119	119	110	92.4	110	92.4	0	0.0
All Airlines	383	383	354	92.4	351	91.6	0	0.0
<b>Port Hedland-Perth</b>								
Qantas	73	73	71	97.3	70	95.9	0	0.0
QantasLink	72	72	69	95.8	69	95.8	0	0.0
Virgin Australia	40	40	38	95.0	36	90.0	0	0.0
Virgin Australia Regional Airlines	14	14	14	100.0	14	100.0	0	0.0
All Airlines	199	199	192	96.5	189	95.0	0	0.0
<b>Port Lincoln-Adelaide</b>								
QantasLink	109	107	86	80.4	86	80.4	2	1.8
Regional Express	206	200	175	87.5	182	91.0	6	2.9
All Airlines	315	307	261	85.0	268	87.3	8	2.5
<b>Port Macquarie-Sydney</b>								
QantasLink	141	140	85	60.7	93	66.4	1	0.7
Virgin Australia	61	60	46	76.7	49	81.7	1	1.6
All Airlines	202	200	131	65.5	142	71.0	2	1.0
<b>Proserpine-Brisbane</b>								
Jetstar	27	27	23	85.2	22	81.5	0	0.0
Virgin Australia	50	49	43	87.8	42	85.7	1	2.0
All Airlines	77	76	66	86.8	64	84.2	1	1.3
<b>Rockhampton-Brisbane</b>								
QantasLink	185	180	156	86.7	158	87.8	5	2.7
Virgin Australia	192	191	183	95.8	182	95.3	1	0.5
All Airlines	377	371	339	91.4	340	91.6	6	1.6

	<i>Sectors</i>		<i>Arrivals On Time</i>		<i>Departures On Time</i>		<i>Cancellations</i>	
	<i>Sched.</i>	<i>Flown</i>	<i>No.</i>	<i>%</i>	<i>No.</i>	<i>%</i>	<i>No.</i>	<i>%</i>
<b>Sunshine Coast-Melbourne</b>								
Jetstar	73	73	56	76.7	54	74.0	0	0.0
Virgin Australia	35	35	27	77.1	24	68.6	0	0.0
All Airlines	108	108	83	76.9	78	72.2	0	0.0
<b>Sunshine Coast-Sydney</b>								
Jetstar	100	98	72	73.5	64	65.3	2	2.0
QantasLink	27	27	22	81.5	23	85.2	0	0.0
Virgin Australia	31	31	30	96.8	29	93.5	0	0.0
All Airlines	158	156	124	79.5	116	74.4	2	1.3
<b>Sydney-Adelaide</b>								
Jetstar	128	128	92	71.9	84	65.6	0	0.0
Qantas	232	231	212	91.8	206	89.2	1	0.4
QantasLink	26	25	18	72.0	18	72.0	1	3.8
Tigerair Australia	47	47	40	85.1	37	78.7	0	0.0
Virgin Australia	176	176	159	90.3	161	91.5	0	0.0
All Airlines	609	607	521	85.8	506	83.4	2	0.3
<b>Sydney-Albury</b>								
QantasLink	93	93	82	88.2	74	79.6	0	0.0
Regional Express	105	105	94	89.5	96	91.4	0	0.0
Virgin Australia	62	62	52	83.9	52	83.9	0	0.0
All Airlines	260	260	228	87.7	222	85.4	0	0.0
<b>Sydney-Armidale</b>								
QantasLink	139	132	98	74.2	103	78.0	7	5.0
Regional Express	77	77	63	81.8	66	85.7	0	0.0
All Airlines	216	209	161	77.0	169	80.9	7	3.2
<b>Sydney-Ayers Rock</b>								
Jetstar	27	27	26	96.3	25	92.6	0	0.0
Virgin Australia	31	31	30	96.8	29	93.5	0	0.0
All Airlines	58	58	56	96.6	54	93.1	0	0.0
<b>Sydney-Ballina</b>								
Jetstar	77	77	64	83.1	67	87.0	0	0.0
Regional Express	27	27	27	100.0	27	100.0	0	0.0
Virgin Australia	35	35	34	97.1	33	94.3	0	0.0
All Airlines	139	139	125	89.9	127	91.4	0	0.0
<b>Sydney-Brisbane</b>								
Jetstar	178	174	129	74.1	126	72.4	4	2.2
Qantas	622	618	529	85.6	546	88.3	4	0.6
Tigerair Australia	103	99	92	92.9	95	96.0	4	3.9
Virgin Australia	563	548	484	88.3	496	90.5	15	2.7
All Airlines	1 466	1 439	1 234	85.8	1 263	87.8	27	1.8
<b>Sydney-Cairns</b>								
Jetstar	89	88	77	87.5	73	83.0	1	1.1
Qantas	76	76	67	88.2	67	88.2	0	0.0
Tigerair Australia	41	41	36	87.8	37	90.2	0	0.0
Virgin Australia	90	90	76	84.4	74	82.2	0	0.0
All Airlines	296	295	256	86.8	251	85.1	1	0.3
<b>Sydney-Canberra</b>								
Qantas	31	30	26	86.7	27	90.0	1	3.2
QantasLink	459	435	359	82.5	352	80.9	24	5.2
Virgin Australia	285	272	220	80.9	217	79.8	13	4.6
All Airlines	775	737	605	82.1	596	80.9	38	4.9

	<i>Sectors</i>		<i>Arrivals On Time</i>		<i>Departures On Time</i>		<i>Cancellations</i>	
	<i>Sched.</i>	<i>Flown</i>	<i>No.</i>	<i>%</i>	<i>No.</i>	<i>%</i>	<i>No.</i>	<i>%</i>
<b>Sydney-Coffs Harbour</b>								
QantasLink	156	154	118	76.6	113	73.4	2	1.3
Tigerair Australia	12	12	11	91.7	11	91.7	0	0.0
Virgin Australia	60	59	54	91.5	53	89.8	1	1.7
All Airlines	228	225	183	81.3	177	78.7	3	1.3
<b>Sydney-Darwin</b>								
Jetstar	21	21	19	90.5	19	90.5	0	0.0
Qantas	39	39	30	76.9	32	82.1	0	0.0
Virgin Australia	31	31	31	100.0	31	100.0	0	0.0
All Airlines	91	91	80	87.9	82	90.1	0	0.0
<b>Sydney-Dubbo</b>								
QantasLink	129	127	99	78.0	97	76.4	2	1.6
Regional Express	149	148	139	93.9	136	91.9	1	0.7
All Airlines	278	275	238	86.5	233	84.7	3	1.1
<b>Sydney-Gold Coast</b>								
Jetstar	295	292	244	83.6	240	82.2	3	1.0
Qantas	98	98	91	92.9	89	90.8	0	0.0
QantasLink	13	11	9	81.8	10	90.9	2	15.4
Tigerair Australia	119	118	101	85.6	103	87.3	1	0.8
Virgin Australia	257	254	220	86.6	228	89.8	3	1.2
All Airlines	782	773	665	86.0	670	86.7	9	1.2
<b>Sydney-Hamilton Island</b>								
Jetstar	23	23	19	82.6	20	87.0	0	0.0
Qantas	21	20	18	90.0	18	90.0	1	4.8
Virgin Australia	31	31	24	77.4	29	93.5	0	0.0
All Airlines	75	74	61	82.4	67	90.5	1	1.3
<b>Sydney-Hobart</b>								
Jetstar	85	85	69	81.2	66	77.6	0	0.0
Qantas	1	1	1	100.0	1	100.0	0	0.0
QantasLink	52	52	44	84.6	41	78.8	0	0.0
Virgin Australia	63	63	58	92.1	58	92.1	0	0.0
All Airlines	201	201	172	85.6	166	82.6	0	0.0
<b>Sydney-Launceston</b>								
Jetstar	63	63	56	88.9	51	81.0	0	0.0
Virgin Australia	31	31	28	90.3	27	87.1	0	0.0
All Airlines	94	94	84	89.4	78	83.0	0	0.0
<b>Sydney-Melbourne</b>								
Jetstar	378	375	262	69.9	245	65.3	3	0.8
Qantas	986	954	764	80.1	811	85.0	32	3.2
Tigerair Australia	244	242	167	69.0	176	72.7	2	0.8
Virgin Australia	796	762	621	81.5	655	86.0	34	4.3
All Airlines	2 404	2 333	1 814	77.8	1 887	80.9	71	3.0
<b>Sydney-Perth</b>								
Jetstar	31	31	30	96.8	30	96.8	0	0.0
Qantas	211	211	171	81.0	171	81.0	0	0.0
Tigerair Australia	27	27	25	92.6	26	96.3	0	0.0
Virgin Australia	119	119	104	87.4	102	85.7	0	0.0
All Airlines	388	388	330	85.1	329	84.8	0	0.0
<b>Sydney-Port Macquarie</b>								
QantasLink	139	138	90	65.2	105	76.1	1	0.7
Virgin Australia	60	60	46	76.7	47	78.3	0	0.0
All Airlines	199	198	136	68.7	152	76.8	1	0.5

	<i>Sectors</i>		<i>Arrivals On Time</i>		<i>Departures On Time</i>		<i>Cancellations</i>	
	<i>Sched.</i>	<i>Flown</i>	<i>No.</i>	<i>%</i>	<i>No.</i>	<i>%</i>	<i>No.</i>	<i>%</i>
<b>Sydney-Sunshine Coast</b>								
Jetstar	100	99	78	78.8	68	68.7	1	1.0
QantasLink	27	27	15	55.6	16	59.3	0	0.0
Virgin Australia	31	31	31	100.0	30	96.8	0	0.0
All Airlines	158	157	124	79.0	114	72.6	1	0.6
<b>Sydney-Tamworth</b>								
QantasLink	158	152	124	81.6	125	82.2	6	3.8
Virgin Australia	27	27	22	81.5	22	81.5	0	0.0
All Airlines	185	179	146	81.6	147	82.1	6	3.2
<b>Sydney-Townsville</b>								
Jetstar	21	21	16	76.2	14	66.7	0	0.0
Virgin Australia	29	29	28	96.6	29	100.0	0	0.0
All Airlines	50	50	44	88.0	43	86.0	0	0.0
<b>Sydney-Wagga Wagga</b>								
QantasLink	116	116	97	83.6	94	81.0	0	0.0
Regional Express	132	132	122	92.4	123	93.2	0	0.0
All Airlines	248	248	219	88.3	217	87.5	0	0.0
<b>Tamworth-Sydney</b>								
QantasLink	158	151	128	84.8	130	86.1	7	4.4
Virgin Australia	27	27	21	77.8	21	77.8	0	0.0
All Airlines	185	178	149	83.7	151	84.8	7	3.8
<b>Townsville-Brisbane</b>								
Jetstar	39	39	31	79.5	29	74.4	0	0.0
Qantas	151	151	145	96.0	146	96.7	0	0.0
Virgin Australia	153	153	149	97.4	148	96.7	0	0.0
All Airlines	343	343	325	94.8	323	94.2	0	0.0
<b>Townsville-Cairns</b>								
QantasLink	147	144	130	90.3	129	89.6	3	2.0
Regional Express	58	57	52	91.2	54	94.7	1	1.7
All Airlines	205	201	182	90.5	183	91.0	4	2.0
<b>Townsville-Sydney</b>								
Jetstar	21	21	14	66.7	13	61.9	0	0.0
Virgin Australia	29	29	29	100.0	29	100.0	0	0.0
All Airlines	50	50	43	86.0	42	84.0	0	0.0
<b>Wagga Wagga-Sydney</b>								
QantasLink	116	116	103	88.8	105	90.5	0	0.0
Regional Express	132	132	113	85.6	127	96.2	0	0.0
All Airlines	248	248	216	87.1	232	93.5	0	0.0

## Airports

On time performance is reported for all routes where the passenger load averages over 8000 passengers per month, and where two or more airlines operate in competition. The following data reports by airport against flights operated on those routes only. This month, 8 major city airports and 33 regional city airports are covered.

Airport	Arrivals			Departures		
	Sectors	On Time		Sectors	On Time	
	Flown	No.	%	Flown	No.	%
<b>Adelaide</b>						
Jetstar	337	262	77.7	336	268	79.8
Qantas	856	770	90.0	854	770	90.2
QantasLink	132	104	78.8	132	106	80.3
Regional Express	200	175	87.5	202	187	92.6
Tigerair Australia	149	134	89.9	149	126	84.6
Virgin Australia	736	647	87.9	736	666	90.5
All Airlines	2 410	2 092	86.8	2 409	2 123	88.1
Relates to services to and from Alice Springs, Brisbane, Canberra, Gold Coast, Melbourne, Perth, Port Lincoln and Sydney.						
<b>Albury</b>						
QantasLink	93	82	88.2	93	84	90.3
Regional Express	105	94	89.5	105	96	91.4
Virgin Australia	62	52	83.9	61	51	83.6
All Airlines	260	228	87.7	259	231	89.2
Relates to services to and from Sydney only.						
<b>Alice Springs</b>						
Qantas	31	31	100.0	31	26	83.9
QantasLink	54	51	94.4	53	46	86.8
Virgin Australia	28	26	92.9	28	26	92.9
All Airlines	113	108	95.6	112	98	87.5
Relates to services to and from Adelaide and Darwin.						
<b>Armidale</b>						
QantasLink	132	98	74.2	135	105	77.8
Regional Express	77	63	81.8	77	64	83.1
All Airlines	209	161	77.0	212	169	79.7
Relates to services to and from Sydney only.						
<b>Ayers Rock</b>						
Jetstar	27	26	96.3	26	22	84.6
Virgin Australia	31	30	96.8	31	27	87.1
All Airlines	58	56	96.6	57	49	86.0
Relates to services to and from Sydney only.						
<b>Ballina</b>						
Jetstar	77	64	83.1	77	53	68.8
Regional Express	27	27	100.0	26	22	84.6
Virgin Australia	35	34	97.1	35	34	97.1
All Airlines	139	125	89.9	138	109	79.0
Relates to services to and from Sydney only.						

Airport	Arrivals			Departures		
	Sectors Flown	On Time		Sectors Flown	On Time	
		No.	%		No.	%
<b>Brisbane</b>						
Jetstar	666	536	80.5	667	537	80.5
Qantas	1 692	1 521	89.9	1 711	1 577	92.2
QantasLink	1 103	979	88.8	1 112	1 008	90.6
Tigerair Australia	302	257	85.1	301	260	86.4
Virgin Australia	2 454	2 244	91.4	2 456	2 271	92.5
All Airlines	6 217	5 537	89.1	6 247	5 653	90.5

Relates to services to and from Adelaide, Bundaberg, Cairns, Canberra, Darwin, Emerald, Gladstone, Hamilton Island, Hobart, Mackay, Melbourne, Moranbah, Mount Isa, Newcastle, Perth, Proserpine, Rockhampton, Sydney and Townsville.

#### Broome

Qantas	17	16	94.1	17	16	94.1
QantasLink	68	62	91.2	67	60	89.6
Virgin Australia	16	16	100.0	15	14	93.3
Virgin Australia Regional Airlines	28	23	82.1	28	22	78.6
All Airlines	129	117	90.7	127	112	88.2

Relates to services to and from Perth only.

#### Bundaberg

QantasLink	134	120	89.6	134	125	93.3
Virgin Australia	31	29	93.5	31	27	87.1
All Airlines	165	149	90.3	165	152	92.1

Relates to services to and from Brisbane only.

#### Cairns

Jetstar	271	223	82.3	270	236	87.4
Qantas	228	206	90.4	228	210	92.1
QantasLink	148	134	90.5	148	131	88.5
Regional Express	57	52	91.2	57	55	96.5
Tigerair Australia	110	94	85.5	110	87	79.1
Virgin Australia	259	236	91.1	259	234	90.3
All Airlines	1 073	945	88.1	1 072	953	88.9

Relates to services to and from Brisbane, Melbourne, Sydney and Townsville.

#### Canberra

Qantas	320	281	87.8	320	287	89.7
QantasLink	630	518	82.2	633	528	83.4
Virgin Australia	573	497	86.7	574	494	86.1
All Airlines	1 523	1 296	85.1	1 527	1 309	85.7

Relates to services to and from Adelaide, Brisbane, Melbourne and Sydney.

#### Coffs Harbour

QantasLink	154	118	76.6	154	121	78.6
Tigerair Australia	12	11	91.7	12	11	91.7
Virgin Australia	59	54	91.5	59	52	88.1
All Airlines	225	183	81.3	225	184	81.8

Relates to services to and from Sydney only.

#### Darwin

Jetstar	67	61	91.0	65	53	81.5
Qantas	160	147	91.9	159	144	90.6
QantasLink	53	49	92.5	54	51	94.4
Tigerair Australia	21	20	95.2	21	20	95.2
Virgin Australia	137	125	91.2	137	123	89.8
All Airlines	438	402	91.8	436	391	89.7

Relates to services to and from Alice Springs, Brisbane, Melbourne, Perth and Sydney.

Airport	Arrivals			Departures		
	Sectors Flown	On Time		Sectors Flown	On Time	
		No.	%		No.	%
<b>Dubbo</b>						
QantasLink	127	99	78.0	127	105	82.7
Regional Express	148	139	93.9	151	138	91.4
All Airlines	275	238	86.5	278	243	87.4
Relates to services to and from Sydney only.						
<b>Emerald</b>						
QantasLink	142	129	90.8	142	123	86.6
Virgin Australia	73	63	86.3	73	67	91.8
All Airlines	215	192	89.3	215	190	88.4
Relates to services to and from Brisbane only.						
<b>Geraldton</b>						
QantasLink	49	47	95.9	49	46	93.9
Virgin Australia Regional Airlines	61	55	90.2	60	56	93.3
All Airlines	110	102	92.7	109	102	93.6
Relates to services to and from Perth only.						
<b>Gladstone</b>						
QantasLink	183	163	89.1	181	157	86.7
Virgin Australia	140	128	91.4	140	124	88.6
All Airlines	323	291	90.1	321	281	87.5
Relates to services to and from Brisbane only.						
<b>Gold Coast</b>						
Jetstar	492	387	78.7	491	374	76.2
Qantas	131	116	88.5	131	115	87.8
QantasLink	11	9	81.8	11	8	72.7
Tigerair Australia	202	177	87.6	202	162	80.2
Virgin Australia	472	402	85.2	472	394	83.5
All Airlines	1 308	1 091	83.4	1 307	1 053	80.6
Relates to services to and from Adelaide, Melbourne and Sydney.						
<b>Hamilton Island</b>						
Jetstar	23	19	82.6	21	12	57.1
Qantas	32	30	93.8	32	20	62.5
QantasLink	26	23	88.5	26	22	84.6
Virgin Australia	80	68	85.0	80	62	77.5
All Airlines	161	140	87.0	159	116	73.0
Relates to services to and from Brisbane, Melbourne and Sydney.						
<b>Hobart</b>						
Jetstar	312	247	79.2	310	221	71.3
Qantas	4	3	75.0	4	3	75.0
QantasLink	186	150	80.6	185	152	82.2
Tigerair Australia	35	30	85.7	35	25	71.4
Virgin Australia	237	216	91.1	237	207	87.3
All Airlines	774	646	83.5	771	608	78.9
Relates to services to and from Brisbane, Melbourne and Sydney.						
<b>Kalgoorlie</b>						
Qantas	4	4	100.0	4	4	100.0
QantasLink	81	76	93.8	81	76	93.8
Virgin Australia	33	33	100.0	32	32	100.0
Virgin Australia Regional Airlines	30	28	93.3	30	26	86.7
All Airlines	148	141	95.3	147	138	93.9
Relates to services to and from Perth only.						

Airport	Arrivals			Departures		
	Sectors Flown	On Time		Sectors Flown	On Time	
		No.	%		No.	%
<b>Karratha</b>						
Qantas	47	45	95.7	47	47	100.0
QantasLink	163	154	94.5	163	153	93.9
Virgin Australia	40	39	97.5	40	38	95.0
Virgin Australia Regional Airlines	47	43	91.5	46	39	84.8
All Airlines	297	281	94.6	296	277	93.6
Relates to services to and from Perth only.						
<b>Launceston</b>						
Jetstar	206	159	77.2	205	145	70.7
QantasLink	113	88	77.9	113	91	80.5
Virgin Australia	125	109	87.2	125	111	88.8
All Airlines	444	356	80.2	443	347	78.3
Relates to services to and from Melbourne and Sydney.						
<b>Mackay</b>						
Jetstar	48	36	75.0	48	35	72.9
QantasLink	102	92	90.2	101	88	87.1
Virgin Australia	150	139	92.7	149	137	91.9
All Airlines	300	267	89.0	298	260	87.2
Relates to services to and from Brisbane only.						
<b>Melbourne</b>						
Jetstar	1 469	1 091	74.3	1 480	1 088	73.5
Qantas	2 213	1 820	82.2	2 213	1 889	85.4
QantasLink	420	320	76.2	419	336	80.2
Regional Express	80	53	66.3	80	71	88.8
Tigerair Australia	658	503	76.4	660	539	81.7
Virgin Australia	2 376	1 965	82.7	2 376	2 100	88.4
All Airlines	7 216	5 752	79.7	7 228	6 023	83.3
Relates to services to and from Adelaide, Brisbane, Cairns, Canberra, Darwin, Gold Coast, Hamilton Island, Hobart, Launceston, Mildura, Newcastle, Perth, Sunshine Coast and Sydney.						
<b>Mildura</b>						
QantasLink	95	72	75.8	95	80	84.2
Regional Express	80	67	83.8	80	57	71.3
Virgin Australia	31	27	87.1	31	29	93.5
All Airlines	206	166	80.6	206	166	80.6
Relates to services to and from Melbourne only.						
<b>Moranbah</b>						
QantasLink	107	97	90.7	103	94	91.3
Virgin Australia	70	64	91.4	70	68	97.1
All Airlines	177	161	91.0	173	162	93.6
Relates to services to and from Brisbane only.						
<b>Mount Isa</b>						
Qantas	39	39	100.0	39	39	100.0
QantasLink	19	19	100.0	19	19	100.0
Virgin Australia	23	23	100.0	23	23	100.0
All Airlines	81	81	100.0	81	81	100.0
Relates to services to and from Brisbane only.						



Airport	Arrivals			Departures		
	Sectors Flown	On Time		Sectors Flown	On Time	
		No.	%		No.	%
<b>Newcastle</b>						
Jetstar	182	144	79.1	181	140	77.3
QantasLink	98	93	94.9	97	89	91.8
Virgin Australia	126	115	91.3	125	111	88.8
All Airlines	406	352	86.7	403	340	84.4
Relates to services to and from Brisbane and Melbourne.						
<b>Newman</b>						
Qantas	82	80	97.6	81	79	97.5
QantasLink	75	72	96.0	75	70	93.3
Virgin Australia	20	20	100.0	20	20	100.0
Virgin Australia Regional Airlines	18	17	94.4	18	16	88.9
All Airlines	195	189	96.9	194	185	95.4
Relates to services to and from Perth only.						
<b>Perth</b>						
Jetstar	142	130	91.5	142	123	86.6
Qantas	929	838	90.2	932	876	94.0
QantasLink	507	475	93.7	509	483	94.9
Tigerair Australia	85	76	89.4	84	71	84.5
Virgin Australia	632	577	91.3	636	600	94.3
Virgin Australia Regional Airlines	196	174	88.8	198	182	91.9
All Airlines	2 491	2 270	91.1	2 501	2 335	93.4
Relates to services to and from Adelaide, Brisbane, Broome, Darwin, Geraldton, Kalgoorlie, Karratha, Melbourne, Newman, Port Hedland and Sydney.						
<b>Port Hedland</b>						
Qantas	73	73	100.0	73	70	95.9
QantasLink	73	69	94.5	72	69	95.8
Virgin Australia	40	39	97.5	40	36	90.0
Virgin Australia Regional Airlines	14	14	100.0	14	14	100.0
All Airlines	200	195	97.5	199	189	95.0
Relates to services to and from Perth only.						
<b>Port Lincoln</b>						
QantasLink	107	87	81.3	107	86	80.4
Regional Express	202	182	90.1	200	182	91.0
All Airlines	309	269	87.1	307	268	87.3
Relates to services to and from Adelaide only.						
<b>Port Macquarie</b>						
QantasLink	138	90	65.2	140	93	66.4
Virgin Australia	60	46	76.7	60	49	81.7
All Airlines	198	136	68.7	200	142	71.0
Relates to services to and from Sydney only.						
<b>Proserpine</b>						
Jetstar	28	24	85.7	27	22	81.5
Virgin Australia	49	44	89.8	49	42	85.7
All Airlines	77	68	88.3	76	64	84.2
Relates to services to and from Brisbane only.						

Airport	Arrivals			Departures		
	Sectors Flown	On Time		Sectors Flown	On Time	
		No.	%		No.	%
<b>Rockhampton</b>						
QantasLink	179	159	88.8	180	158	87.8
Virgin Australia	193	176	91.2	191	182	95.3
All Airlines	372	335	90.1	371	340	91.6
Relates to services to and from Brisbane only.						
<b>Sunshine Coast</b>						
Jetstar	173	141	81.5	171	118	69.0
QantasLink	27	15	55.6	27	23	85.2
Virgin Australia	66	57	86.4	66	53	80.3
All Airlines	266	213	80.1	264	194	73.5
Relates to services to and from Melbourne and Sydney.						
<b>Sydney</b>						
Jetstar	1 501	1 171	78.0	1 504	1 128	75.0
Qantas	2 296	1 984	86.4	2 278	1 968	86.4
QantasLink	1 468	1 196	81.5	1 462	1 148	78.5
Regional Express	491	398	81.1	489	448	91.6
Tigerair Australia	586	463	79.0	586	485	82.8
Virgin Australia	2 710	2 378	87.7	2 711	2 373	87.5
All Airlines	9 052	7 590	83.8	9 030	7 550	83.6
Relates to services to and from Adelaide, Albury, Armidale, Ayers Rock, Ballina, Brisbane, Cairns, Canberra, Coffs Harbour, Darwin, Dubbo, Gold Coast, Hamilton Island, Hobart, Launceston, Melbourne, Perth, Port Macquarie, Sunshine Coast, Tamworth, Townsville and Wagga Wagga.						
<b>Tamworth</b>						
QantasLink	152	124	81.6	151	130	86.1
Virgin Australia	27	22	81.5	27	21	77.8
All Airlines	179	146	81.6	178	151	84.8
Relates to services to and from Sydney only.						
<b>Townsville</b>						
Jetstar	60	45	75.0	60	42	70.0
Qantas	151	141	93.4	151	146	96.7
QantasLink	145	125	86.2	144	129	89.6
Regional Express	57	55	96.5	57	54	94.7
Virgin Australia	183	176	96.2	182	177	97.3
All Airlines	596	542	90.9	594	548	92.3
Relates to services to and from Brisbane, Cairns and Sydney.						
<b>Wagga Wagga</b>						
QantasLink	116	97	83.6	116	105	90.5
Regional Express	132	122	92.4	132	127	96.2
All Airlines	248	219	88.3	248	232	93.5
Relates to services to and from Sydney only.						

## Definitions

---

On time arrival	A flight arrival is counted as "on time" if it arrived at the gate before 15 minutes after the scheduled arrival time shown in the carriers' schedule. Neither diverted nor cancelled flights count as on time.
On time departure	A flight departure is counted as "on time" if it departs the gate before 15 minutes after the scheduled departure time shown in the carriers' schedule.
Cancellation	A flight removed from service within 7 days of scheduled departure is regarded as a cancellation.
On time departure percentage	The percentage of on time departures is measured against the number of departures <i>operated</i> on any particular sector.
On time arrival percentage	The percentage of on time arrivals is measured against the number of arrivals <i>operated</i> on any particular sector.
Cancellation percentage	The percentage of cancellations is measured against the number of services <i>scheduled</i> on any particular sector.

---